

# Lebanon Fire Risk Bulletin



CIVIL DEDEFENCE

**Refer to cadast table condition.**

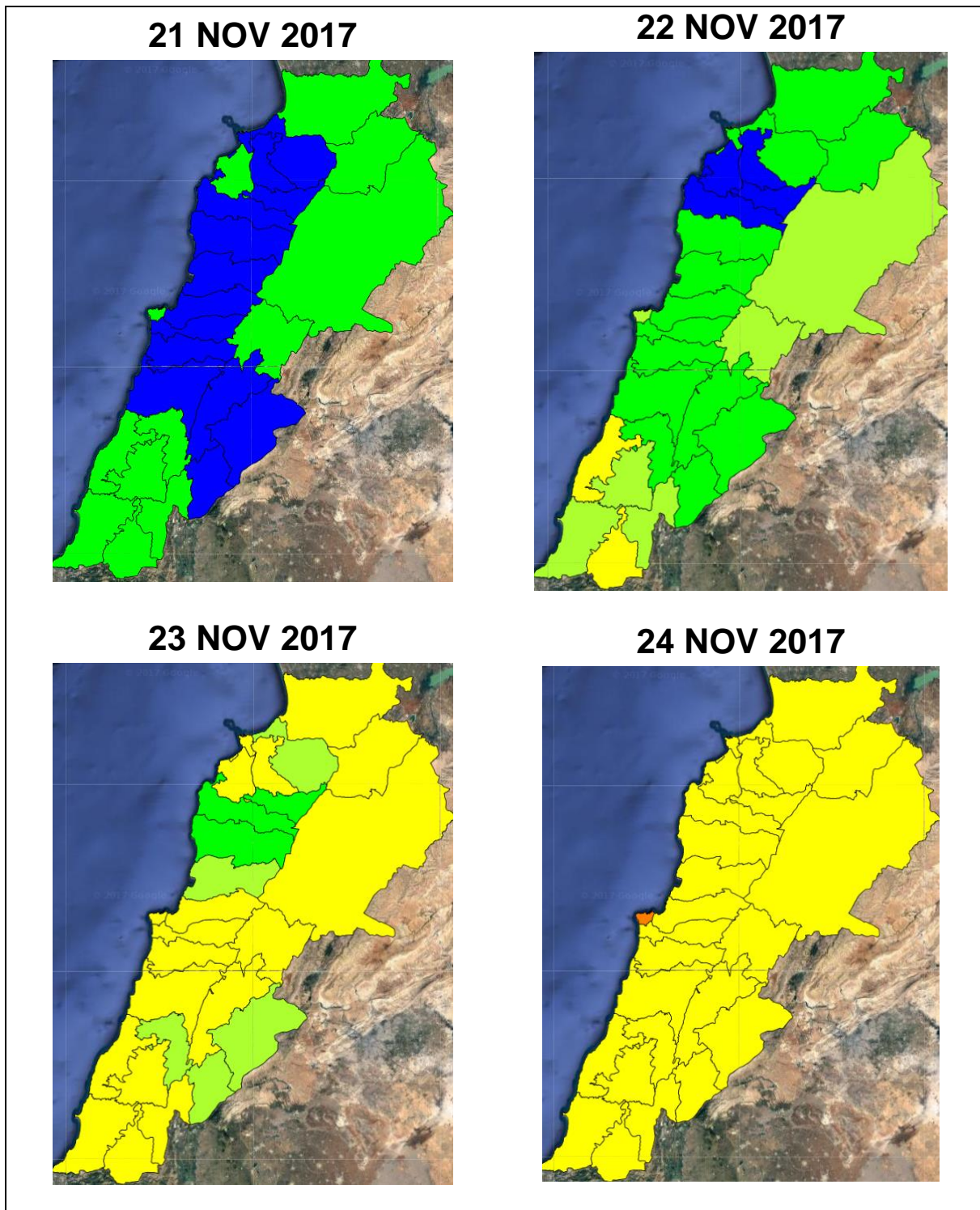
**Please note that the indicated temperature is at 2 meters height from the ground.**

General description of potential fire risk situation

Symbol	Level of risk	Meaning and actions
VL	Very low	Very low fire risk. Controlled burning operations can be hardly executed due to high fuel moisture content. Normally wildfires self-extinguish.
L	Low	Low fire risk. Controlled burning operations can be executed with a reasonable degree of safety.
ML	Medium low	Medium-low fire risk. Controlled burning operations can be executed in safety conditions. All the fires need to be extinguished.
M	Medium	Medium fire risk. Controlled burning operations would be avoided. All the fires need to be very well extinguished.
M	Medium high	Controlled burning is not recommended. Open flame will start fires. Cured grasslands and forest litter will burn readily. Spread is moderate in forests and fast in exposed areas. Patrolling and monitoring is suggested. Fight fires with direct attack and all available resources.
H	High	Ignition can occur easily with fast spread in grass, shrubs and forests. Fires will be very hot with crowning and short to medium spotting. Direct attack on the head may not be possible requiring indirect methods on flanks. Patrolling and monitoring the territory is highly suggested.
E	Extreme	Ignition can occur also from sparks. Fires will be extremely hot with fast rate of spread. Control may not be possible during day due to long range spotting and crowning. Suppression forces should limit efforts to limiting lateral spread. Damage potential total. Patrolling and monitoring the territory is highly suggested.

**Beirut, 22 November 2017**

# FIRE RISK INDEX



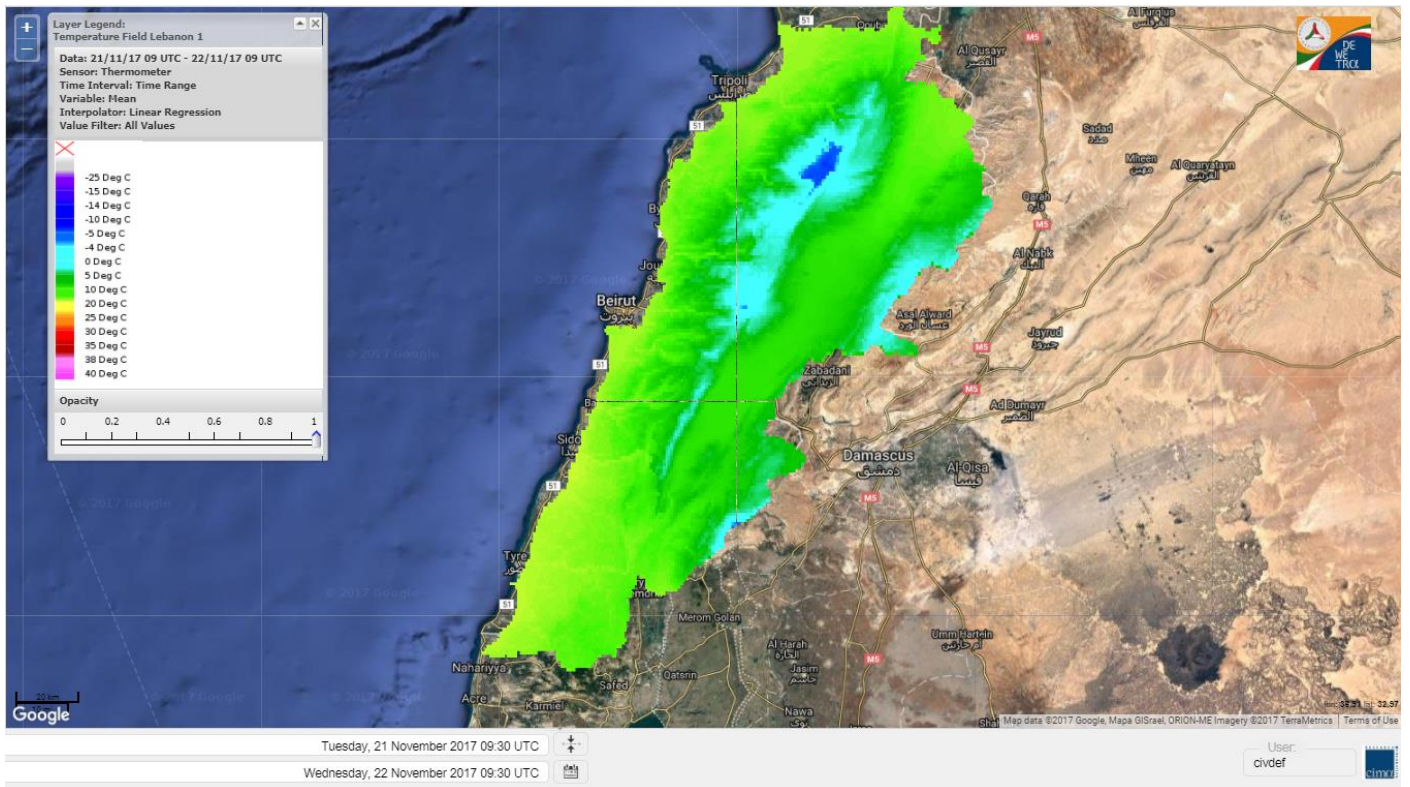
Layer Legend:  
Lebanon Wildfire Risk Index 1

Data: Run: 22/11/2017 00:00. Forecast for 22  
Model: RISICO for the Republic of Lebanon  
Variable: Fire Weather Index  
Spatial Resolution: Caza

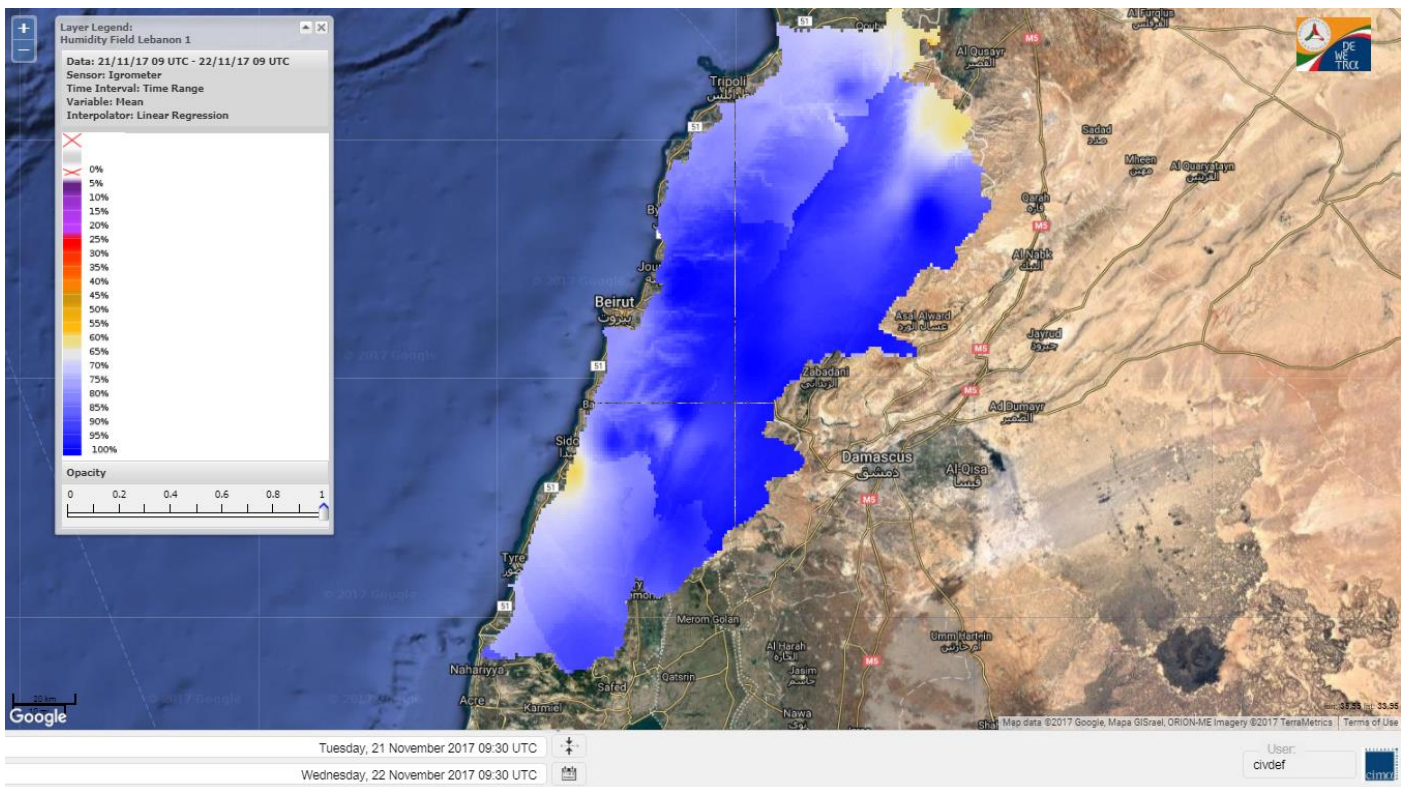
- VERY LOW
- LOW
- MEDIUM-LOW
- MEDIUM
- MEDIUM-HIGH
- HIGH
- EXTREME



# Lebanon temperature for 22 NOV 2017

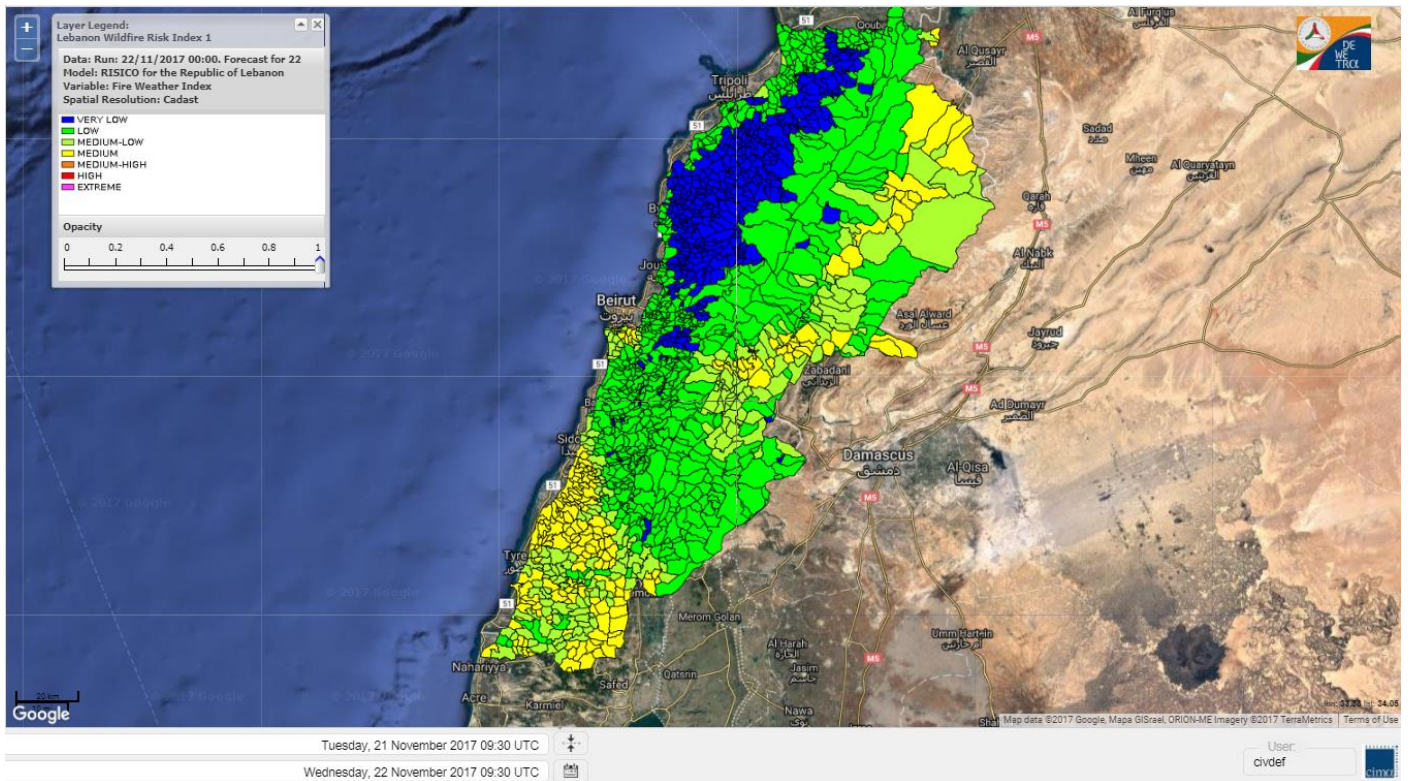


# Lebanon humidity for 22 NOV 2017

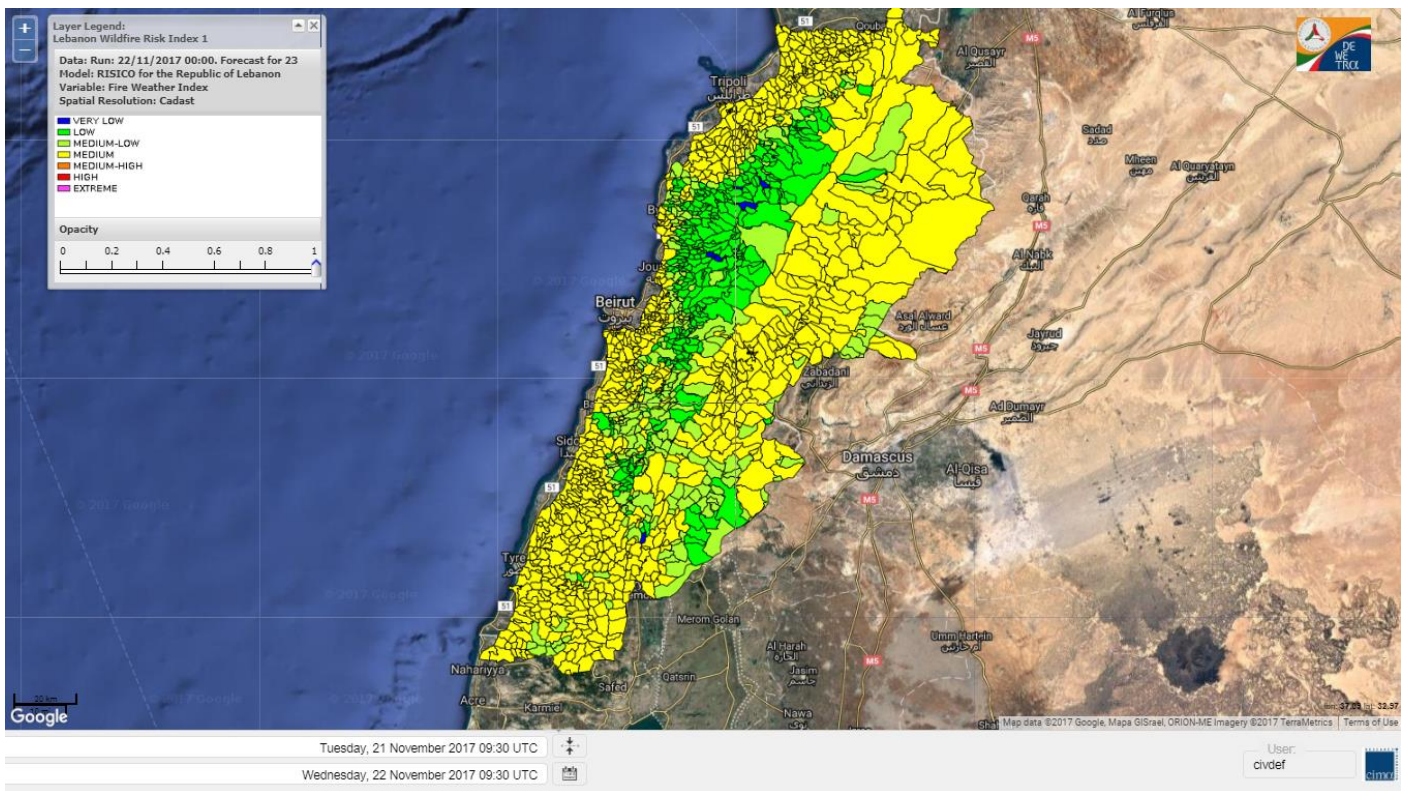




# Lebanon for 22 NOV 2017

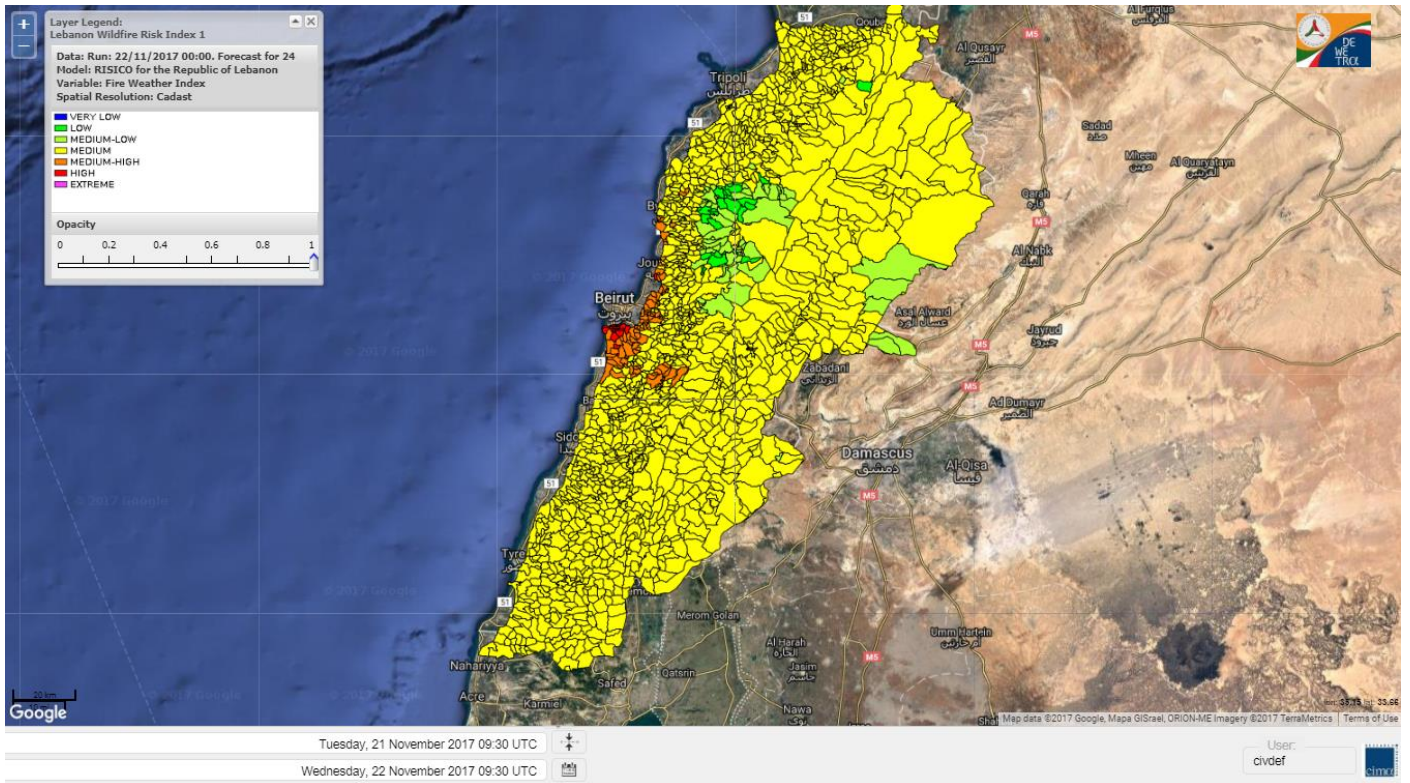


# Lebanon for 23 NOV 2017

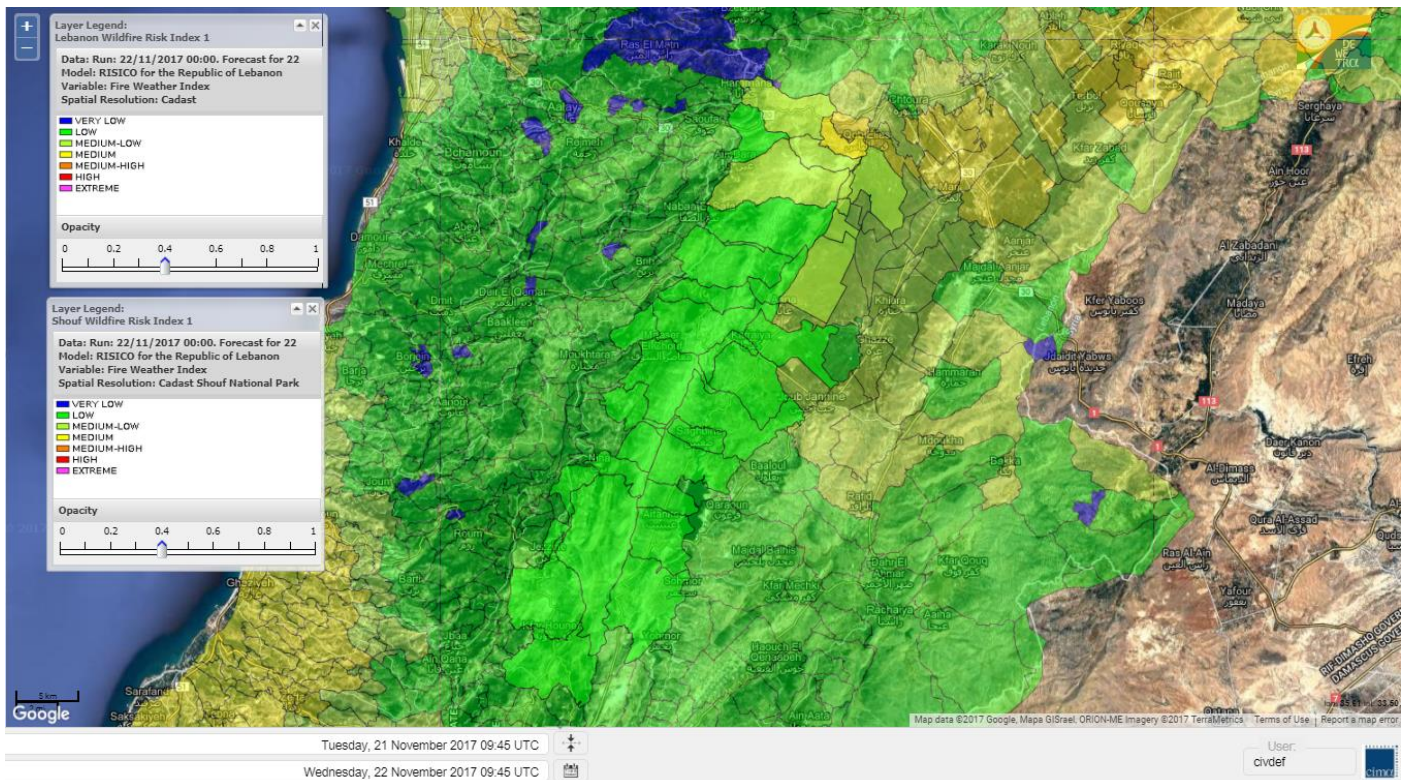




# Lebanon for 24 NOV 2017

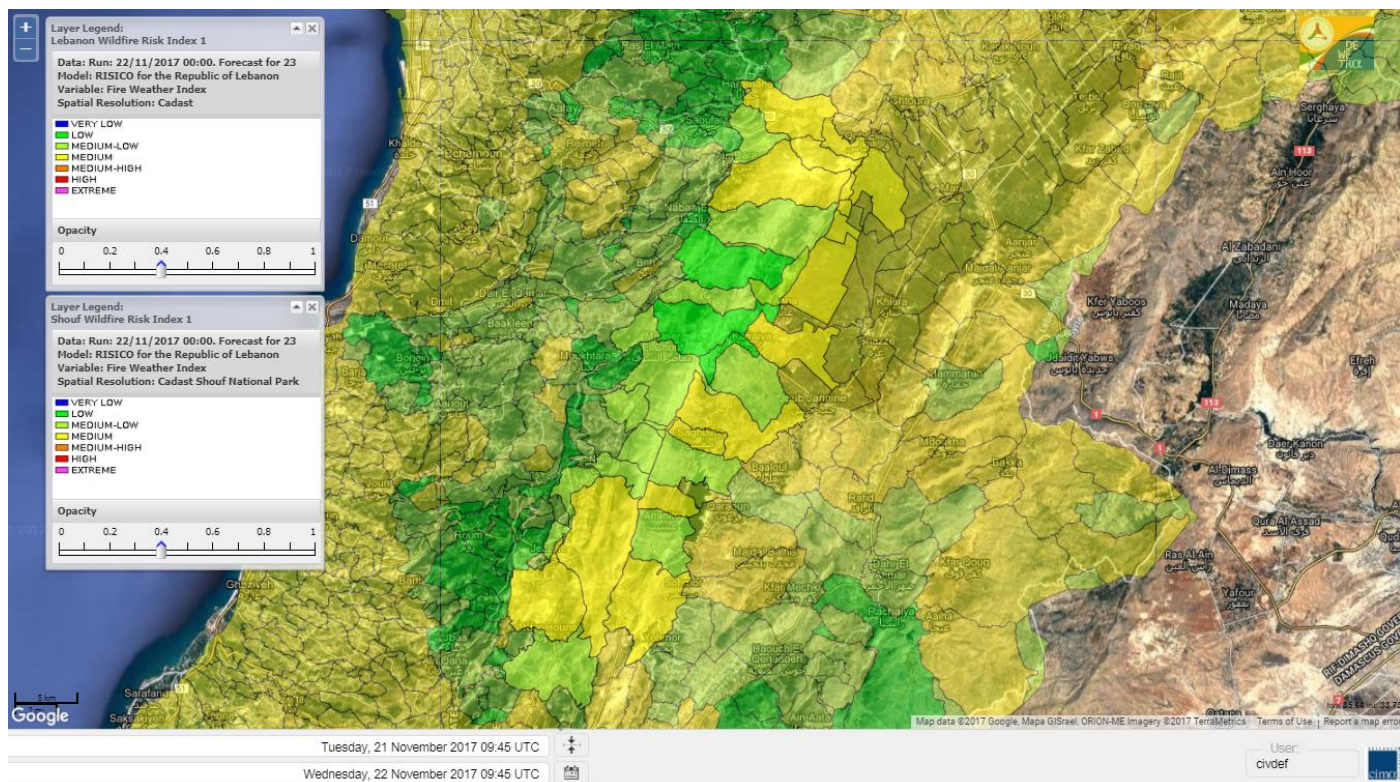


# Shouf Biosphere Reserve Forecast for 22 NOV 2017

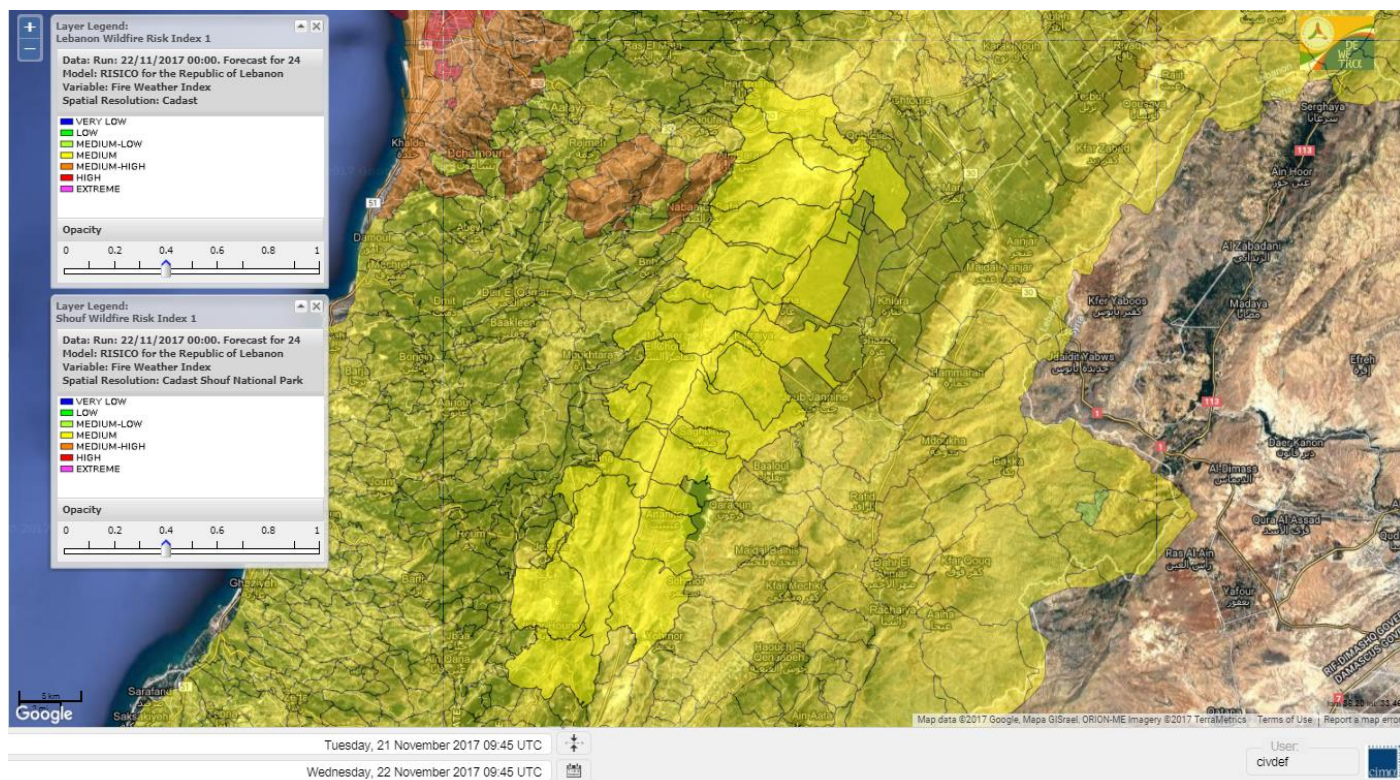




# Shouf Biosphere Reserve Forecast for 23 NOV 2017

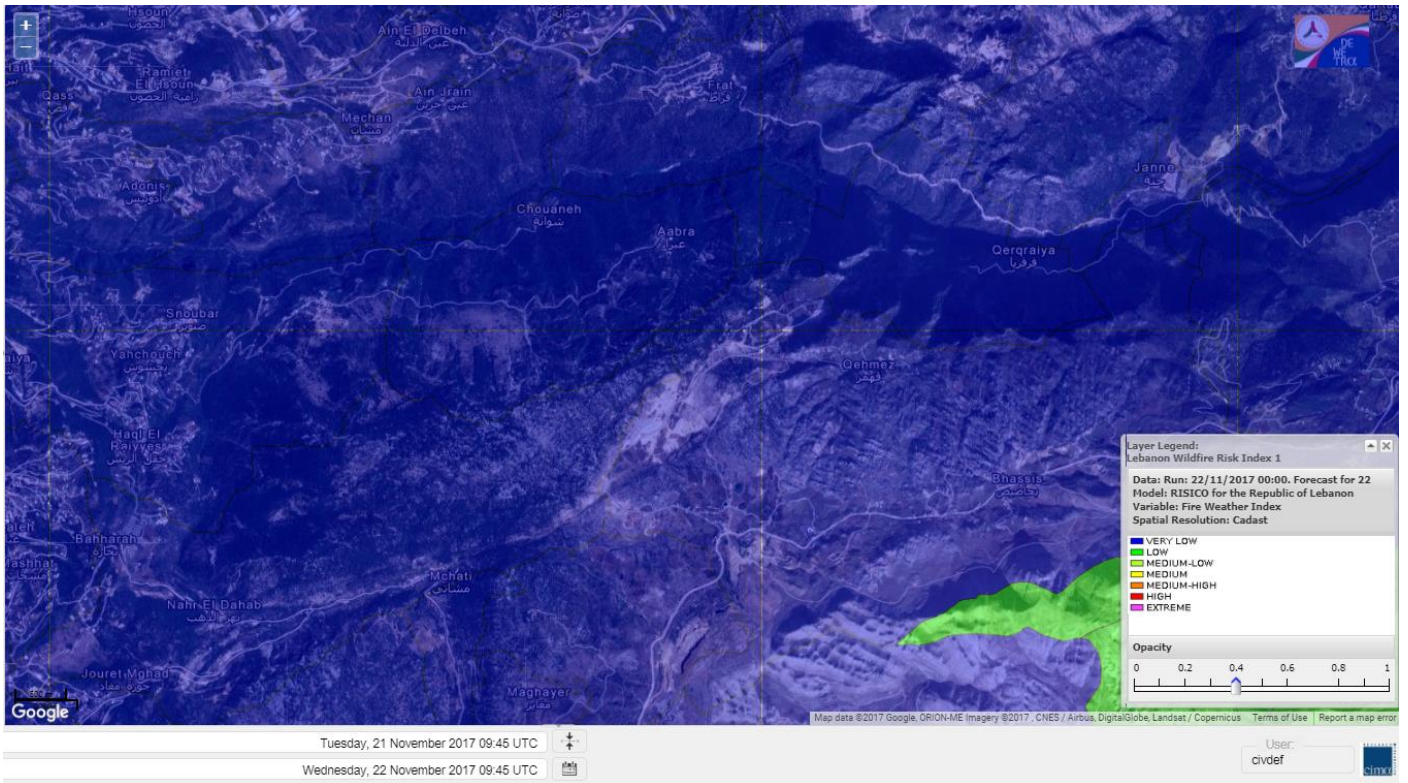


# Shouf Biosphere Reserve Forecast for 24 NOV 2017

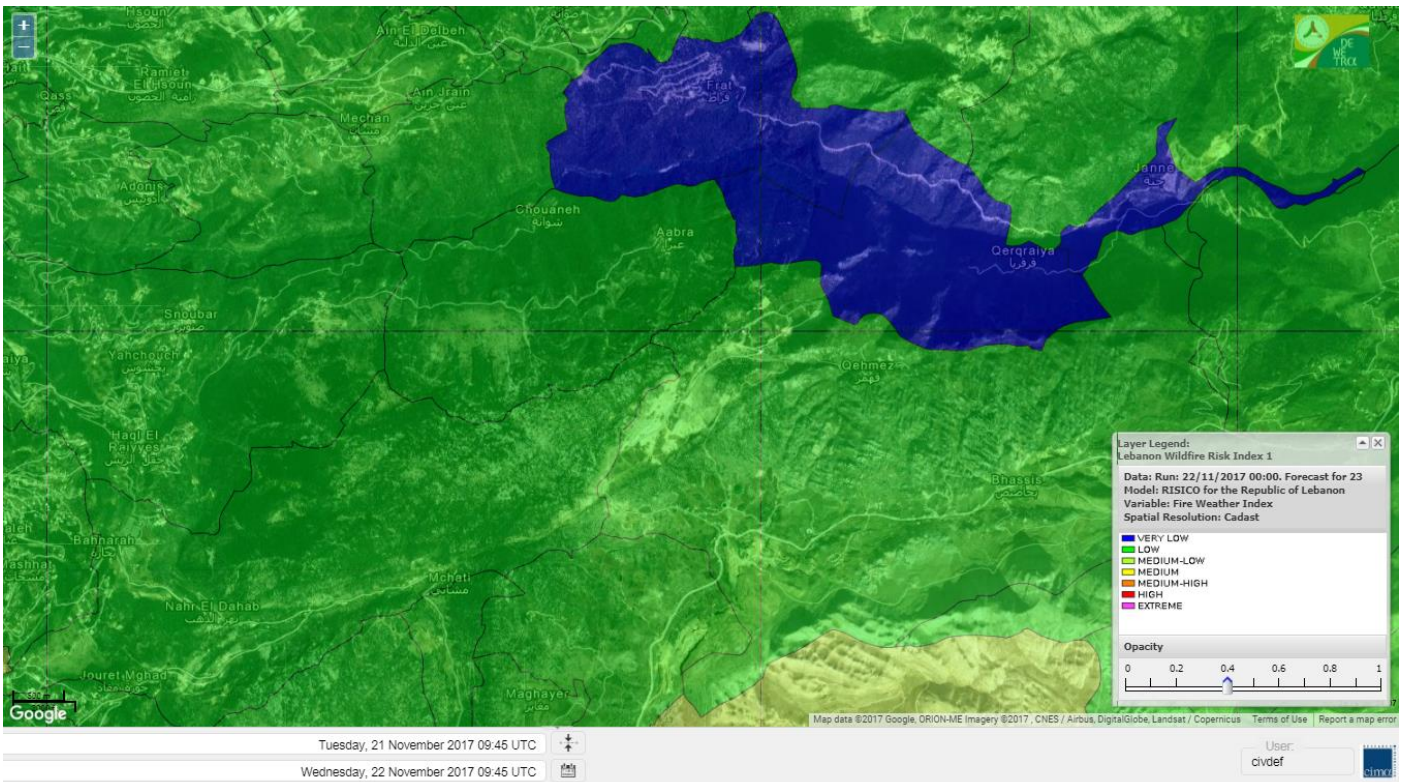




# Jabal Moussa Reserve Forecast for 22 NOV 2017

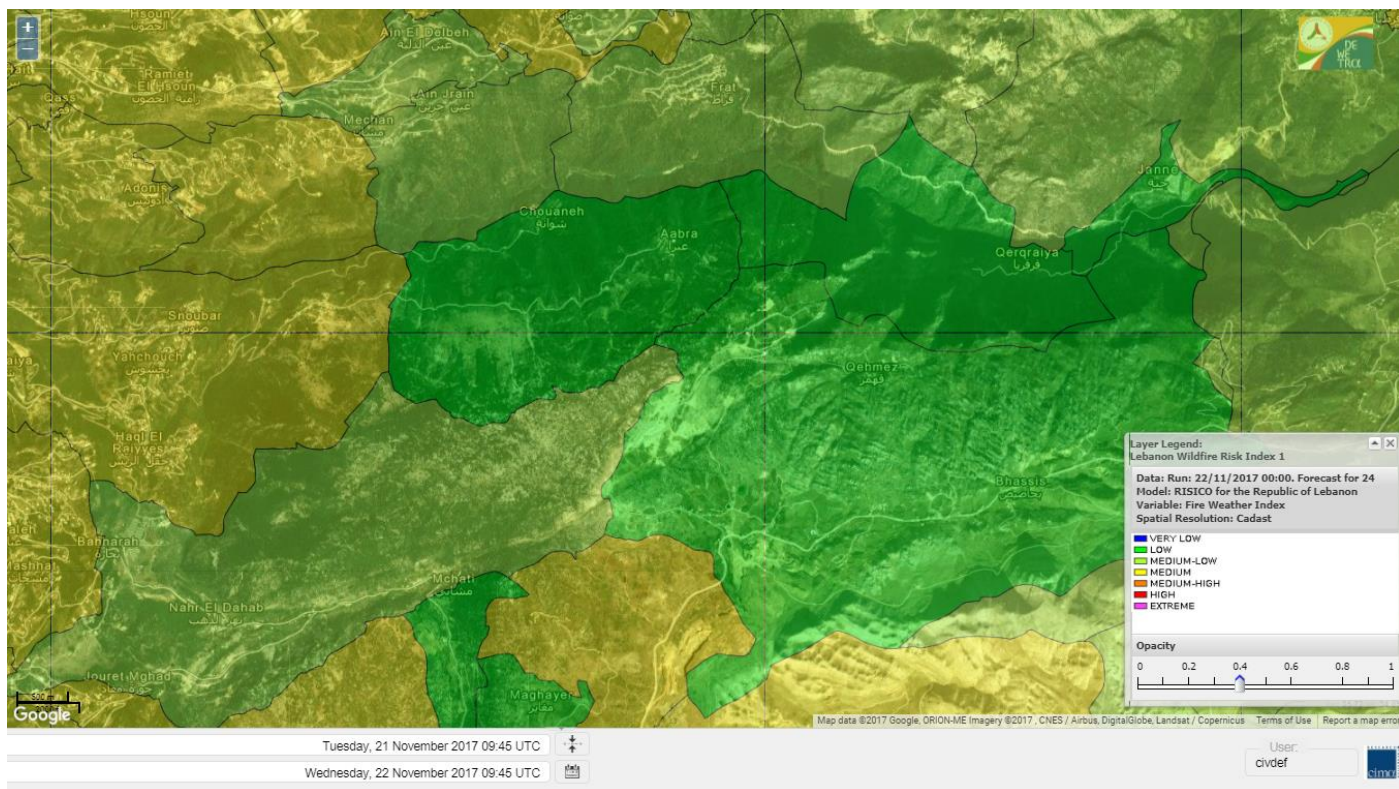


# Jabal Moussa Reserve Forecast for 23 NOV 2017





# Jabal Moussa Reserve Forecast for 24 NOV 2017





## Nord

### Koura

Municipality	22-Nov	23-Nov	24-Nov	Municipality	22-Nov	23-Nov	24-Nov	Municipality	22-Nov	23-Nov	24-Nov
Aaba	VL	M	M	Afsaddiq	VL	M	M	Ain Ekriane	VL	M	M
Amioun	VL	M	M	Anfeh	L	M	M	Badbhoun	VL	M	M
Barghoun	L	M	M	Barsa	VL	M	M	Batroumine	L	M	M
Bdebba	VL	M	M	Bechmizine	VL	M	M	Bednayet El-Koura	L	M	M
Bhabbouch El-Koura	VL	ML	M	Bkeftine	VL	M	M	Bnehran	VL	ML	M
Bqaiia El-Koura	VL	M	M	Bsarma	VL	M	M	Btaaboura	VL	M	M
Bttram	VL	M	M	Btouratij	VL	M	M	Bziza	VL	M	M
Dar Beechtar	VL	M	M	Dar Chmezzine	VL	M	M	Deddeh	L	M	M
Deir El-Balamand	L	M	M	Fih	L	M	M	Hraiche	L	M	M
Ijdaabrine	VL	ML	M	Kaftoun	VL	M	M	Kefraya El-Koura	L	M	M
Kfarakka	VL	M	M	Kfarhata	VL	M	M	Kfarhazir	VL	M	M
Kfarkahel	VL	M	M	Kfarsaroun	VL	M	M	Kosba	VL	M	M
Mejdel el-Koura	VL	ML	M	Nakhle	VL	M	M	Qalhat	L	M	M
Ras Masqa	L	M	M	Rechdibbine	VL	M	M	Zakroun	L	M	M
Zgharta El-Mtaouile	VL	L	M								

### Bcharre

Municipality	22-Nov	23-Nov	24-Nov	Municipality	22-Nov	23-Nov	24-Nov	Municipality	22-Nov	23-Nov	24-Nov
Aabdine	VL	L	M	Bane	VL	L	M	Barhelioun	VL	L	M
Bazouone	VL	L	ML	Becharre	L	L	M	Beit Menzer	VL	L	M
Billa	VL	L	M	Blaouza	VL	L	M	Bqaa Kafra	VL	L	ML
Bqerqacha	VL	L	ML	Breissat	VL	L	ML	Dimane	VL	L	ML
Hadath El Jobbeh	VL	L	ML	Hadchit	VL	L	M	Hasroun	VL	L	ML
Mazraat Aassaf	VL	VL	L	Mazraat Bani Saab	VL	L	ML	Mchaa El-Jobbeh	L	ML	ML
Metrit	VL	L	M	Moghr El-Ahoual	VL	ML	M	Ouadi Qannoubine	VL	VL	L
Qanat	VL	L	M	Qnayouer	VL	L	M	Tourza	VL	L	M

### Batroun

Municipality	22-Nov	23-Nov	24-Nov	Municipality	22-Nov	23-Nov	24-Nov	Municipality	22-Nov	23-Nov	24-Nov
Aabrine	VL	L	M	Aalali	VL	L	ML	Aartziz	VL	L	M
Abdelli	VL	L	M	Ajdabra	VL	L	M	Assia	VL	L	ML
Basbina	VL	M	M	Batroun	VL	M	M	Bcheleh	VL	L	L
Bechtoudar	VL	L	L	Beit Chlala	VL	L	L	Beit Kassab	VL	L	L
Bijdarfil	VL	M	M	Bqesmaya	VL	L	M	Chatine	VL	L	L
Chebtin	VL	L	M	Chekka	L	M	M	Daael	VL	L	ML
Dahr Abi Yaghi	VL	L	M	Daraya El-Batroun	VL	ML	M	Deir Billa	VL	L	M
Deir Kfifane	VL	M	M	Deir Mar Youhanna EL	VL	L	L	Deir Mar Youssef Jra	VL	L	M
Douma	VL	L	L	Douq	VL	L	M	Eddeh El-Batroun	VL	ML	M
Ftahat El-Batroun	VL	L	ML	Ghouma	VL	ML	M	Hadtoun	VL	L	ML
Hamat	VL	ML	M	Harbouna	VL	L	M	Hardine	VL	L	L
Helta	VL	L	ML	Hery	L	M	M	Jebbla	VL	L	M
Jrabta El-Batroun	VL	L	M	Jrane El-Batroun	VL	M	MH	Kfar Aabida	L	ML	M
Kfar Halda	VL	L	L	Kfarb Shlaimane	VL	L	ML	Kfarhatna	VL	L	M
Kfarhay	VL	ML	M	Kfarhelos	VL	L	M	Kfifane	VL	M	MH



Kfour El Arabi	VL	L	ML	Koubba	VL	M	M	Kour	VL	ML	M
Mar Mama	VL	L	L	Masrah	VL	L	M	Mehmarch	VL	L	ML
Mrah Chdid	VL	ML	M	Mrah El Ziyat	VL	ML	M	Mrah El-Hajj	VL	L	L
Nahle El-Batroun	VL	L	ML	Niha El-Batroun	VL	L	ML	Ouahj El-Hajjar	VL	ML	M
Ouata Houb	VL	L	L	Qatnaaoun	VL	ML	M	Racha	VL	L	ML
Rachana	VL	L	M	Rachkida	VL	ML	M	Ram El-Batroun	VL	L	L
Ras Nahhach	VL	ML	M	Selaata	L	M	M	Sghar	VL	ML	M
Smar Jbayl	VL	ML	M	Sourat El-Batroun	VL	L	M	Tannourine El-Faouqa	L	L	ML
Tannourine Et-Tahta	VL	VL	L	Thoum	L	ML	M	Toula El-Batroun	VL	L	M
Zan	VL	L	M								

## Zgharta

Municipality	22-Nov	23-Nov	24-Nov	Municipality	22-Nov	23-Nov	24-Nov	Municipality	22-Nov	23-Nov	24-Nov
Aachach	L	M	M	Aalma	L	M	M	Aarde	VL	M	M
Aintourine	VL	ML	M	Arabet Qozhaya	VL	L	M	Arde	VL	M	M
Arjis	VL	M	M	Asnoun	VL	M	M	Ayto	VL	L	M
Basloukit	VL	L	M	Bchannine	VL	M	M	Besebeel	VL	M	M
Bhairret Toula	VL	VL	M	Bnachee	VL	ML	M	Boussit	L	M	M
Danha	VL	M	M	Daraiya Zgharta	VL	M	M	Deir Jdeide	VL	M	M
Ehden	VL	L	M	Halan	L	M	M	Hariq Zgharta	VL	M	M
Houakir	VL	ML	M	Hraiqis	VL	M	M	laal	VL	M	M
Ijbaa	VL	ML	M	Karm Saddeh	VL	L	M	Kfarchakhna	VL	M	M
Kfardlaqous	VL	M	M	Kfarfou	VL	M	M	Kfarhata Zgharta	VL	M	M
Kfarhoura	VL	M	M	Kfarsghab	VL	L	M	Kfaryachit	VL	M	M
Kfarzaina	VL	M	M	Khaldiye	VL	M	M	Mazraat Ajbeaa	VL	M	M
Mazraat Et-Teffah	VL	L	M	Mazraat Jneid	VL	M	M	Mejdlayia Zgharta	L	M	M
Merh Kfarsghab	VL	M	M	Miryata	VL	M	M	Miziara	VL	L	M
Mzraat Kefraya	L	M	M	Qorah Bach	VL	M	M	Rachiine	VL	M	M
Ras Kifa	VL	M	M	Sakhra	VL	M	M	Sebhel Zgharta	VL	ML	M
Serhel	VL	L	ML	Tallet Zgharta	VL	M	M	Toula Zgharta	VL	L	M
Zgharta	VL	M	M								

## Minieh-Denniye

Municipality	22-Nov	23-Nov	24-Nov	Municipality	22-Nov	23-Nov	24-Nov	Municipality	22-Nov	23-Nov	24-Nov
Aasaymout	VL	L	M	Aaymar	VL	ML	M	Aazki	L	M	M
Ain El-Tineh-Miniyeh	VL	L	M	Assoun	VL	ML	M	Bakhaaoun	VL	M	M
Bchennata	VL	L	M	Bechehhara	VL	L	M	Beddawi	L	M	M
Behouaita	VL	L	M	Beit El Foqss	L	L	M	Beit Haouik	L	M	M
Beit Zoud	VL	ML	M	Bekaasafrine	L	L	M	Borj El Yahoudiyeh	VL	M	M
Bqarsouna	L	L	M	Btermaz	VL	ML	M	Debaael	VL	L	M
Deir Ammar	VL	M	M	Deir Nbouh	VL	ML	M	Haouaret-Miniyeh	VL	ML	M
Haql el Azimeh	VL	L	M	Harf El Siyad	VL	ML	M	Hazmiye-Miniyeh	VL	L	M
Izal	VL	ML	M	Jarjour	VL	L	M	Jayroun	VL	L	M
Kahf El-Malloul	VL	L	M	Karm El-Moher	VL	L	M	Kfar Binine	VL	L	M
Kfarchalane	VL	M	M	Kfarhabou	VL	M	M	Kharroub-Miniyeh	VL	M	M
Mazraat El-Kreme	VL	L	M	Mazraat Ketrane	VL	L	M	Merkebtta	L	M	M
Minyeh	ML	M	M	Mrah El Sfirat	VL	L	M	Mrah Sraj	VL	ML	M
Mrebbine	L	M	M	Nabi Youcheaa	VL	M	M	Nemrine	L	L	M



Qarhaiya	VL	ML	M	Qarne	VL	L	M	Qarsita	VL	L	M
Qattineh-Miniyeh	VL	L	M	Qemmamine	VL	L	M	Qraine	VL	L	M
Raouda-Aadoua	L	M	M	Rihaniyet-Miniyeh	L	M	M	Sfireh	VL	L	M
Sir Ed-Danniyeh	VL	L	M	Tarane	VL	L	M	Terbol-Miniyeh	L	M	M
Zaghartaghriane	VL	ML	M	Zouq Bhannine	L	M	M				

## Nabatiye

### Nabatiye

Municipality	22-Nov	23-Nov	24-Nov	Municipality	22-Nov	23-Nov	24-Nov	Municipality	22-Nov	23-Nov	24-Nov
Aabba	M	M	M	Aazzi	ML	M	M	Adchit El-Chqif	M	M	M
Ain Bou Swar	L	M	M	Ain Kana	L	M	M	Ali El-Taher	L	M	M
Ansar	M	M	M	Arab Salim	L	M	M	Arnoun	ML	M	M
Bfaroue	ML	M	M	Breyqaah	ML	M	M	Charqiyeh	M	M	M
Choukine	M	M	M	Deir El Zahrani	M	M	M	Doueir El-Nabatiyeh	M	M	M
Habbouch El-Nabatiye	M	M	M	Hamra El-Nabatiyeh	M	M	M	Harouf El-Nabatiyeh	M	M	M
Hmaile	ML	M	M	Houmin El Faouqa	ML	M	M	Houmin El Tahta	M	M	M
Jarjough	L	M	M	Jbaah El-Nabatiyeh	L	ML	M	Jebchit	M	M	M
Kfar Djal El-Nabatiy	M	M	M	Kfar Remmane	ML	M	M	Kfar Sir	M	M	M
Kfar Tebnit	ML	M	M	Kfarfila	L	M	M	Kfour El-Nabatieh	M	M	M
Mayfadoun	M	M	M	Mazraat Bsaffour	M	M	M	Mazraat Chalbaal	M	M	M
Mazraat Dmoul	M	M	M	Mazraat El Khreibeh	ML	M	M	Mazraat El-Bayad El-	ML	M	M
Mazraat Kfarjaouz	M	M	M	Mazraat Qalaat Meiss	ML	M	M	Nabatiyeh El-Fawka	M	M	M
Nabatiyeh Et-Tahta	M	M	M	Namiriyeh	M	M	M	Qaaqaaiyet El Jisr	ML	M	M
Qossaibeh El-Nabatiy	M	M	M	Roumine	ML	M	M	Sarba El-Nabatieh	L	M	M
Sir El-Gharbiyeh	ML	M	M	Toul	M	M	M	Yehmor El-Nabatiyeh	ML	M	M
Zaoutar El Charkiyeh	M	M	M	Zaoutar El-Gharbiyeh	M	M	M	Zebdine El-Nabatiyeh	M	M	M
Zefta	ML	M	M								

### Hasbaiya

Municipality	22-Nov	23-Nov	24-Nov	Municipality	22-Nov	23-Nov	24-Nov	Municipality	22-Nov	23-Nov	24-Nov
Ain Jarfa	L	ML	M	Abou Qamha	L	M	M	Ain Qania	L	ML	M
Bourghos	L	M	M	Chebaa	L	L	M	Chouaya Hasbaya	L	L	M
Dellafeh	L	M	M	Fardiss Hasbaiya	L	M	M	Hasbaya	L	M	M
Hbariyeh	L	ML	M	Kaoukaba Hasbaiya	L	M	M	Kfar Chouba	L	ML	M
Kfar Hamam	L	ML	M	Kfeir El-Zait	L	L	M	Khalwat Hasbaya	L	L	M
Khreibet Hasbaiya	L	M	M	Majidiyeh Hasbaiya	ML	M	M	Marj Ez-Zhour (Haouc	L	L	M
Meri	ML	M	M	Mimass	L	M	M	Rachaiya El-Fokhar	L	ML	M
Salaiyeb	M	M	M								

### Marjayoun

Municipality	22-Nov	23-Nov	24-Nov	Municipality	22-Nov	23-Nov	24-Nov	Municipality	22-Nov	23-Nov	24-Nov
Aalmane Marjaayoun	L	ML	M	Aamra	M	M	M	Adayseh Marjaayoun	M	M	M
Adchit El-Koussair	M	M	M	Ain Aarab Marjaayoun	M	M	M	Bani Haiyann	ML	M	M
Blatt Marjaayoun	L	M	M	Blida	M	M	M	Borj El-Moulouk	ML	M	M
Boueyda Marjaayoun	L	M	M	Deir Mimass	L	M	M	Deir Siriane	ML	M	M
Dibbine	L	M	M	Ebel El Saqi	L	M	M	Houla	M	M	M
Houra	ML	M	M	Kfar Kila	ML	M	M	Khiam Marjaayoun	ML	M	M



Klayaa	ML	M	M	Majdel Selem	M	M	M	Marjaayoun	ML	M	M
Markaba	M	M	M	Mays El-Jabal	M	M	M	Mazraat Doumiat	ML	M	M
Mazraat Sarada	M	M	M	Mhaibib	M	M	M	Qabrikha	ML	M	M
Qantara	ML	M	M	Rab El-Thalathine	M	M	M	Saouaneh Marjayoun	M	M	M
Talloussa	ML	ML	M	Taybeh Matjaayoun	M	M	M	Touline	ML	M	M

## Bent Jbail

Municipality	22-Nov	23-Nov	24-Nov	Municipality	22-Nov	23-Nov	24-Nov	Municipality	22-Nov	23-Nov	24-Nov
Ain-Ebel	M	M	M	Aitaroun	M	M	M	Aynata Bint Jbeil	M	M	M
Ayta El-Chaeb	ML	M	M	Ayta El-Jabal	ML	M	M	Beit Lif	ML	ML	M
Beit Yahoun	ML	M	M	Bint Jbeil	M	M	M	Borj Qalaway	M	M	M
Braachit	ML	M	M	Chakra	M	M	M	Debel	M	M	M
Deir Antar	ML	M	M	Froun	ML	M	M	Ghandouriyeh Bint Jb	ML	M	M
Hanine	M	M	M	Hariss	ML	M	M	Hdatha	ML	M	M
Jmeymeh	M	M	M	Kafra Bint Jbeil	L	ML	M	Kfar Dounine	ML	M	M
Khirbet Selm	ML	M	M	Kounine	M	M	M	Maroun El Ras	M	M	M
Qalaway	ML	M	M	Qaouzah	ML	ML	M	Qatmoun	M	M	M
Ramya Bint Jbeil	ML	ML	M	Rchaf	ML	ML	M	Rmeich	M	M	M
Safad Al Battikh	ML	M	M	Salhaneh	L	ML	M	Serbine	M	M	M
Sultanieh Bint Jbeil	ML	M	M	Tibnine	ML	M	M	Tiri	ML	M	M
Yaroun	M	M	M	Yater	ML	M	M				

## Mont Liban

### Jbail

Municipality	22-Nov	23-Nov	24-Nov	Municipality	22-Nov	23-Nov	24-Nov	Municipality	22-Nov	23-Nov	24-Nov
Aabeydat	VL	L	M	Aalita	VL	L	M	Aamchit	L	M	MH
Aarab El-Lahib	L	L	ML	Aarasta	VL	L	ML	Adonis Jbeil	VL	L	M
Afqa Jbeil	VL	L	L	Ain El Delbeh Jbeil	VL	L	ML	Ain El-Ghouayba	VL	L	L
Ain Jrain	VL	L	ML	Ain Kfah	VL	ML	M	Almat El Chemaliyat	VL	L	ML
Almat El-Jenoubiya	VL	L	ML	Aqoura	L	ML	M	Bayzoun	VL	L	M
Bchille Jbeil	VL	L	M	Bechtlida	VL	L	M	Behdaydat	VL	ML	M
Beit Habbaq	VL	ML	M	Bejjeh	VL	ML	M	Bekhaaz	VL	ML	M
Berbara Jbeil	L	M	M	Bintael	VL	L	M	Birket Hjoula	VL	L	M
Blatt Jbeil	VL	ML	M	Boulhos	VL	L	ML	Breyj Jbeil	VL	L	M
Chamat	VL	M	M	Chikhane	L	M	M	Chmout	VL	L	M
Eddeh Jbeil	L	M	M	Ehmej	VL	L	ML	Fatre	VL	L	M
Ferhet	VL	ML	M	Fghal	VL	L	M	Frat	VL	VL	ML
Ghabat	VL	L	ML	Ghalboun	VL	ML	M	Gharzouz	VL	M	M
Ghofrine	L	M	M	Habil	VL	L	M	Halate	L	M	M
Haqel	VL	L	M	Hbaline	VL	ML	M	Hboub	VL	ML	M
Hdeine	VL	L	ML	Hema Er-Rehban	VL	L	M	Hema Mar Maroun Aann	VL	L	M
Hjoula	VL	L	M	Hosrayel	L	M	M	Hsarat	VL	ML	M
Hsoun	VL	L	M	Jaj	VL	L	ML	Janne	VL	VL	L
Jbeil	L	M	MH	Jeddeyl Jbeil	L	M	MH	Jlisse	VL	L	M
Jouret El-Qattine	VL	L	M	Kfar Baal Annaya	VL	L	M	Kfar Kidde	L	M	M
Kfar Kouas	VL	L	M	Kfar Mashoun	VL	M	MH	Kfoun	VL	L	M

Kharbe Jbeil	VL	ML	M	Laqlouq	VL	L	M	Lassa	VL	L	ML
Lehfed	VL	L	L	Maad	VL	ML	M	Mar Sarkis	VL	L	M
Mastita	L	M	MH	Mayfouq	VL	L	L	Mazraat El Siyad	VL	L	M
Mazraat El-Maaden	VL	L	ML	Mechane	VL	L	M	Mechmech Jbeil	VL	L	ML
Mehrin	VL	ML	M	Mejdel El-Akoura	VL	L	ML	Mghayreh Jbeil	VL	L	ML
Mounsef	L	M	M	Nahr Ibrahim	L	M	MH	Qahmez	VL	L	L
Qartaba	VL	L	ML	Qartaboun	L	M	MH	Qattara Jbeil	VL	L	L
Qorqraya	VL	VL	L	Ramout	VL	ML	M	Ras Osta	VL	L	M
Rihane Jbeil	L	M	MH	Sakiet El-Khayt	VL	L	M	Saqi Richmaya	VL	L	L
Sebrine	VL	L	M	Seraita	VL	L	ML	Souane Jbeil	VL	L	M
Tadmor	VL	L	M	Tartej	VL	L	ML	Torzaiya	VL	L	M
Yanouh Jbeil	VL	L	ML	Zibdine Jbeil	VL	L	M				

## El Metn

Municipality	22-Nov	23-Nov	24-Nov	Municipality	22-Nov	23-Nov	24-Nov	Municipality	22-Nov	23-Nov	24-Nov
Aain El-Qabu	VL	L	ML	Aain El-Qach	L	ML	M	Aain El-Teffaha	L	ML	M
Aain el-Safsaf El-M	L	L	M	Abou Mizane	L	ML	M	Ain Aar	L	M	MH
Ain Alaq	L	M	M	Ain El-Kharroube	L	M	M	Ain El-Sendianeh	L	L	M
Ain El-Zeitoune	L	L	M	Ain Saadeh	L	M	MH	Aintoura El-Matn	L	ML	M
Amaret Chalhoub	ML	M	MH	Antelias	L	M	MH	Atchaneh	L	M	M
Ayroun	L	ML	M	Baabdat	VL	L	M	Baouchariyeh	M	M	MH
Baskinta	L	L	ML	Beit Chabab	L	M	M	Beit El-Chaar	L	M	MH
Beit El-Kekko	L	M	MH	Beit Mery	L	M	M	Bhersaf	L	ML	M
Bikfaya	L	ML	M	Biyakout	L	M	MH	Bnabil	L	L	M
Bourj Hammoud	M	M	MH	Bqennaya	L	M	M	Broummana El-Matn	L	M	M
Bsalim	L	M	MH	Bsifrine	VL	L	M	Bteghrine	VL	L	M
Chaouiye	L	M	M	Chouaya El-Matn	L	ML	M	Choueir	L	ML	M
Chrine	L	L	M	Dahr El Sawan El-Mat	L	ML	M	Daychouniyeh	L	M	MH
Dbayeh	L	M	MH	Deir Chamra	VL	L	M	Deir Mar Abda el Mch	L	M	M
Deir Mar Roukouz	ML	M	MH	Deir Tamiche	L	M	M	Dik El-Mehdi	L	M	MH
Dikwaneh	M	M	MH	Douar El-Matn	L	L	M	Fanar	ML	M	MH
Fraike	L	M	M	Haret El-Ballaneh	L	M	MH	Hbous	L	M	MH
Himlaya	L	ML	M	Jal El Did	L	M	MH	Jdeideh El-Metn	ML	M	MH
Jouar El-Matn	L	L	M	Jouret El-Ballout	L	M	M	Kaaqour	VL	L	M
Kfar Aaqab	VL	L	M	Kfertay El-Matn	VL	L	M	Khenchara	L	L	M
Khillet El-Mtain	VL	L	M	Konnabat Broummana	L	M	M	Konnabat Salima	VL	L	M
Machraah El-Matn	L	L	M	Majdel Tarchich	L	M	M	Majzoub	L	M	MH
Mansouriyeh El-Metn	ML	M	MH	Mar Boutros Karm Et-	L	ML	M	Mar Chaya et Mzekke	L	M	M
Mar Moussa Ed-Douar	VL	L	M	Marjaba	L	L	M	Masqa	VL	ML	M
Mayasse	L	ML	M	Mazraat Deir Aoukar	L	M	MH	Mazraat El-Hadirat	L	M	MH
Mazraat Yachouh	L	M	MH	Mchikha	L	L	M	Menqlet Mezher	L	M	MH
Mhaydseh Matn	L	ML	M	Mkalles	M	M	MH	Mrouj	L	ML	M
Mtain	L	ML	M	Mtayleb	L	M	MH	Nabay	L	M	M
Naccache	L	M	MH	Ouadi Chahine	L	ML	M	Ouadi El-Karm El-Mat	VL	L	M
Ouata El-Mrouj	L	ML	M	Ouyoun El-Matn	VL	L	M	Qornet Chehwan	L	M	MH
Qornet El-Hamra	L	M	M	Roumieh	L	M	M	Sfeilet Bikfaya	L	ML	M
Sinn El-Fil	M	M	MH	Zabbougha	VL	L	M	Zalqa	ML	M	MH



Zarouon	VL	L	M	Zekrite	L	M	M	Zighrine El-Matn	L	ML	M
Zouk El-Khrab	L	M	MH								

## Chouf

Municipality	22-Nov	23-Nov	24-Nov	Municipality	22-Nov	23-Nov	24-Nov	Municipality	22-Nov	23-Nov	24-Nov
Aalmane El-Chouf	M	M	M	Aammiq El-Chouf	L	ML	M	Ain Ouzein	L	L	M
Ain Qani	L	L	M	Ain Zhalta	L	L	M	Ainbal	L	ML	M
Amatour	L	L	M	Anout	L	M	M	Atrine	L	ML	M
Baadarane	L	ML	M	Baaqline	L	ML	M	Baasir	L	M	M
Barja	ML	M	M	Barouk	L	L	M	Bater	L	ML	M
Batloun	L	ML	M	Bayqoun	L	M	M	Bchetfine	L	ML	M
Beiteddine	L	ML	M	Benouati Ech-Chouf	L	ML	M	Berjein	L	ML	M
Bireh et Mtalleh	L	ML	M	Biret El-Chouf	L	M	M	Bkechtine Ouel Mchei	VL	L	M
Bkifa El-Chouf	L	M	M	Botme	L	L	M	Bqaiaa Ech-Chouf	L	ML	M
Bsaba El-Chouf	L	ML	M	Chammis El-Chouf	L	M	M	Chehim	L	M	M
Chemaarine	L	L	M	Chourit	VL	L	M	Daher El-Chouf	L	ML	M
Dalhoun	L	M	M	Damour	L	M	M	Daraya El-Chouf	L	ML	M
Deir El-Moukhalles	L	ML	M	Deir Baba	L	ML	M	Deir Dourit	L	ML	M
Deir El-Qamar	L	ML	M	Deir Kouche	L	ML	M	Dibbieh	L	L	M
Dmit	L	ML	M	Fouara Jaafar	VL	L	M	Fraidis El-Chouf	L	ML	M
Ghabet Jaafar	L	ML	M	Gharife	L	ML	M	Haret Jandal	L	ML	M
Hasrout	L	M	M	Jadra	ML	M	M	Jahlieh	L	ML	M
Jbeih El-Chouf	L	ML	M	Jdeidet El-Chouf	L	ML	M	Jiyeh	ML	M	M
Jleilyeh	L	M	M	Jmailiyeh	ML	M	M	Joun	ML	M	M
Kahlounie El-Chouf	L	M	M	Ketermaya	L	M	M	Kfar Faqoud	L	ML	M
Kfar Hamal	L	M	M	Kfar Him	L	M	M	Kfar Katra	L	ML	M
Kfar Niss	L	ML	M	Kfar hay	L	ML	M	Kfarnabrakh	L	ML	M
Khirbet Bisri	L	L	M	Knayse El-Chouf	VL	ML	M	Maaniyeh	L	M	M
Maasser Beiteddine	L	ML	M	Maasser El-Chouf	L	ML	M	Majdalouna	L	M	M
Majdel El-Meouch	L	ML	M	Mazboud	L	M	M	Mazmoura	L	M	M
Mazraat El Chouf	L	ML	M	Mazraat El Daher	L	ML	M	Mazraat El-Douair	L	L	M
Mechref	L	M	M	Mghairie	L	M	M	Mghayrie El-Chouf	L	ML	M
Moukhtara	L	ML	M	Mrusti	L	ML	M	Mtolle	L	M	M
Naameh	L	M	M	Niha El-Chouf	L	M	M	Ouadi Abou Youssef	VL	L	M
Ouadi Ed-Deir	L	M	M	Ouadi El-Sit	L	ML	M	Ouadi bnehlay	VL	ML	M
Qraibeh	L	ML	M	Qreiaa	VL	L	M	Rmayle El-Chouf	M	M	M
Semqaniyeh	L	M	M	Sibline	ML	M	M	Sirjbeil	L	M	M
Warhanieh	L	ML	M	Werdaniyeh	ML	M	M	Zaarourieh	L	M	M

## Baabda

Municipality	22-Nov	23-Nov	24-Nov	Municipality	22-Nov	23-Nov	24-Nov	Municipality	22-Nov	23-Nov	24-Nov
Abadiyeh	L	ML	M	Ain Mouaffaq	L	ML	M	Araiya	L	ML	M
Arbaniyeh	VL	L	M	Arsoun	VL	L	M	Baabda	L	M	MH
Baalchmey	L	M	M	Bmaryam	L	L	M	Bourj El-Brajneh	ML	M	MH
Boutchay	L	M	MH	Bsaba Baabda	L	M	MH	Btekhney	L	L	M
Btibyat	L	L	M	Bzebdine	L	L	M	Chbeniyeh	L	L	M
Chiyah	ML	M	MH	Chmeisset Baabda	VL	L	M	Chouit	VL	L	M
Deir El-harf	L	L	M	Deir Khouna	L	L	M	Dlaybeh	VL	L	M

Falougha	ML	M	M	Furn El-Chebbak	ML	M	MH	Hadath Beyrouth	L	M	MH
Halaliyeh Baabda	VL	L	M	Hammana	L	ML	M	Haret El Sett	L	M	M
Haret Hamze	L	L	M	Haret Hreik	ML	M	MH	Hasbaiya El-Metn	VL	L	M
Jouar El-Hoz	L	L	M	Jouret Arsoun	VL	L	M	Kfar Chima	L	M	MH
Kfar Selouane	L	ML	M	Khalouat Baabda	L	ML	M	Kneisset Baabda	VL	L	M
Laylakeh	L	M	MH	Louayzeh Baabda	L	M	MH	Merdache	L	M	MH
Mzairaa Baabda	VL	L	M	Ouadi Chahrour El Ol	L	M	M	Ouadi Chahrour El So	L	M	M
Qalaa Baabda	L	L	M	Qhraybe Baabda	L	L	M	Qobbayaa	L	L	M
Qornayel	VL	L	M	Qortada	VL	L	M	Qrayeh Baabda	L	L	M
Qsaibeh Baabda	VL	ML	M	Qtale Baabda	L	L	M	Ras El Metn	L	ML	M
Ras El-Haref	L	ML	M	Rouayset El-Ballout	L	L	M	Salima Baabda	VL	L	M
Tahouitat El Ghadir	ML	M	MH	Tarchich	L	ML	M	Zandouqa	VL	L	M

## Aley

Municipality	22-Nov	23-Nov	24-Nov	Municipality	22-Nov	23-Nov	24-Nov	Municipality	22-Nov	23-Nov	24-Nov
Abey	L	M	M	Aghmid	L	L	M	Ain Dara	ML	M	M
Ain Drafil	L	M	M	Ain El Halazoun	L	M	MH	Ain El-Rmmaneh	VL	L	M
Ain Jedideh	L	M	M	Ain Ksour	L	M	M	Ain Onoub	L	M	M
Ain Traz	L	M	M	Ainab	L	ML	M	Aley	L	M	M
Aramoun	L	M	M	Aytat	L	M	MH	Azouniyeh	L	ML	M
Baawerta	L	M	M	Badghan Oua Wadi Bad	L	ML	M	Bassatine	L	M	M
Bayssour	L	M	M	Bchamoun	L	M	MH	Bdadoun	L	M	M
Behouara	L	ML	M	Bennay	L	M	M	Bhamdoun El-Dayaa	L	M	MH
Bhamdoun El-Mhatta	L	M	MH	Bkhechthey	L	M	M	Bleibel	L	M	M
Bmakine	L	M	MH	Bmehray	L	ML	M	Bouzrid	VL	ML	M
Bserrine	L	M	MH	Bsous	VL	ML	M	Btalloun	L	M	MH
Btater	L	M	MH	Chanay	L	M	MH	Charoun	L	ML	MH
Chartoun	L	ML	M	Chemlane	L	M	M	Choueifat El-Aamrous	L	M	MH
Choueifat El-Oumara	L	M	MH	Choueifat El-Quoubbe	L	M	MH	Dakkoun	L	M	M
Deir Qoubel	L	M	M	Dfoun	L	M	M	Douair El Remmaneh	VL	ML	M
Ghaboun	L	ML	M	Habramoun	L	L	M	Homs Oua Hama	L	ML	M
Houmal	L	M	M	Jisr El Qadi	L	M	M	Kehaleh	L	ML	M
Keyfoun	L	M	MH	Kfar Aamey	L	ML	M	Kommatyeh	L	M	MH
Maasrati	L	ML	M	Majdel Baana	L	ML	MH	Mansourieh et Ain El	L	M	MH
Mazraat El-Nahr	L	ML	M	Mchakhte	L	L	M	Mecherfeh	L	ML	M
Mejdlaya	L	M	M	Mrayjat	L	ML	M	Ramliyah	L	ML	M
Rechmaya	L	ML	M	Rejmeh	L	ML	M	Remhala	L	M	M
Rouaysset El Neemane	L	ML	M	Saoufar	L	ML	M	Selfaya	L	ML	M
Sirhmoul	L	M	M	Souq El Ghareb	L	M	MH	Taazanieh	L	M	MH

## Kesrouane

Municipality	22-Nov	23-Nov	24-Nov	Municipality	22-Nov	23-Nov	24-Nov	Municipality	22-Nov	23-Nov	24-Nov
Achkout	L	L	M	Adma Oua Dafneh	L	M	MH	Ain Ed-Delbe Kesroua	VL	L	L
Ain El-Rihane	L	M	M	Aintoura Kesrouane	L	M	MH	Ajaltoun	L	ML	M
Akaybeh Kesrouane	L	M	MH	Aramoun Kesrouane	L	ML	M	Azra ouel Ozor	VL	L	M
Ballouneh	L	ML	M	Batha	VL	ML	M	Bekaatat Achkout	L	ML	M
Bekaatat Kanaan	VL	L	ML	Bizhel	VL	L	M	Bouar	L	M	M
Bqaatouta	VL	L	M	Bqaq Ed-Dine	L	M	M	Bzommar	L	ML	M



Chahtoul	VL	L	M	Chnaniir	VL	ML	M	Chouan	VL	L	L
Daraya Kesrouane	L	ML	M	Darououn	L	M	M	Deir Baqlouch	VL	M	M
Dlebta	VL	L	M	Eghbeh	VL	L	M	Faraya	L	L	ML
Fatka	L	ML	M	Feytroun	VL	L	M	Ghazir	L	M	M
Ghbaleh Kesrouane	VL	L	M	Ghedrass	VL	L	M	Ghosta	VL	ML	M
Ghyneh	VL	ML	M	Harharaya w Kattine	VL	L	M	Harissa Kesrouane	L	M	MH
Hayata	VL	L	M	Hosein	VL	L	M	Hrajel	VL	ML	M
Jdeideh Ghazir	L	ML	M	Jeita	L	M	M	Jounieh Ghadir	L	M	MH
Jounieh Haret Sakhr	L	M	MH	Jounieh Salel Alma	L	M	MH	Jounieh Sarba	L	M	MH
Jouret Bedrane	VL	L	M	Jouret Mhad	VL	L	M	Jouret Termos	VL	ML	M
Kfar Debiane	L	L	M	Kfar Tay Kesrouane	VL	L	M	Kfar Yassine	L	M	MH
Kfour Kesrouane	VL	ML	M	Kharayeb Nahr Ibrahi	VL	ML	M	Klayaat Kesrouane	L	L	M
Maarab	VL	L	M	Maaysra Kesrouane	VL	L	M	Mayrouba	VL	L	M
Mazraat Er-Ras	L	M	MH	Mazraat Mrah El-Mir	VL	ML	M	Mchaa El Ftouh	L	L	ML
Mchaa Faraya	L	L	ML	Mchaa Kfar Dibiane	L	L	ML	Mghaer	VL	L	L
Mradiyah	VL	L	M	Nahr Ed-Dahab	VL	L	ML	Nammoura Kesrouane	VL	L	M
Ouata El Jaouz	VL	L	M	Ouata Sillam	L	M	MH	Raachine	VL	L	M
Rayfoun	L	ML	M	Safra Kesrouane	L	M	MH	Shayle Kesrouane	L	M	M
Tabarja	L	M	MH	Yahchouch	VL	L	M	Zaaytreh	VL	L	M
Zeytoun	VL	ML	M	Zouk Mikael	L	M	MH	Zouk Mosbeh	L	M	MH

## Baalbek\_Hermel

### Baalbek

Municipality	22-Nov	23-Nov	24-Nov	Municipality	22-Nov	23-Nov	24-Nov	Municipality	22-Nov	23-Nov	24-Nov
Aadous	ML	M	M	Aamchki	L	M	ML	Aarsal	ML	M	M
Ain Baalbek	M	M	M	Ain Bourday	ML	M	M	Ain El-Benye	L	ML	M
Ain El-Jaouz Baalbek	M	M	ML	Ain El-Siya Chadoura	L	ML	ML	Al Khodr Baalbek	ML	M	M
Al Nabi Chit	ML	M	M	Aynata Baalbek	L	M	M	Baalbek	ML	M	M
Bachwat	L	M	M	Barqa	VL	ML	M	Bednayel Baalbak	L	M	M
Beit Chama	L	M	M	Bijjaje	M	M	M	Bouday	L	M	M
Brital	ML	M	M	Btadi	L	M	M	Chaat	M	M	M
Chaibe	L	ML	M	Chlifa	L	M	M	Chmestar	L	M	M
Dar El-Oussa	VL	M	M	Deir El-Ahmar	L	M	M	Deir Mar Maroun Baal	ML	M	M
Douris	ML	M	M	Fakiha	M	M	M	Hadath Baalbek	L	M	M
Ham	L	ML	M	Haour Taala	ML	M	M	Hizzine	ML	M	M
Hlebta	L	ML	M	Hosh Barada	L	M	M	Hosh El Dahab	ML	M	M
Hosh El Snid	L	M	M	Hosh El-Nabi	L	M	M	Hosh El-Rafiq	L	M	M
Hosh Tal Safiya	ML	M	M	Hrebta	ML	M	M	laat	M	M	M
Jebaa	L	M	M	Jenta	ML	M	M	Kfar Dabach	L	M	M
Kfar Dane	ML	M	M	Khraibeh El-Hermel	ML	M	M	Khreibet Baalbek	M	M	M
Kneisset Baalbek	ML	M	M	Labueh	M	M	M	Maarboun	ML	ML	M
Majdaloun	ML	M	M	Maqneh	M	M	M	Mazraat Beit Mcheik	L	M	M
Misraya	L	M	M	Moqraq	M	M	M	Nabha El-Damdoum	L	M	M
Nabi Chbay	L	M	M	Nabi Osman	M	M	M	Nahleh baalbek	L	M	ML
Ouadi El-Oss	L	ML	M	Qaa Baayoun	M	M	M	Qaa Jouar Maqiye	M	M	M
Qaa Ouadi El-Khanzir	M	M	M	Qah Baalbek	ML	M	M	Qarha Baalbek	L	M	M

Qsarnaba	ML	M	M	Ram Baalbek	L	M	M	Ras Baalbek El Sahl	ML	M	M
Ras Baalbek El-Charq	ML	M	M	Riha	ML	M	M	Saaide	ML	M	M
Sbouba	M	M	M	Seriine El-Tahta	M	M	M	Slouqi	L	ML	M
Taiba Baalbek	ML	M	M	Talia	ML	M	M	Taraiya	L	M	M
Temnin El Fawqa	L	M	M	Temnin El-Tahta	M	M	M	Tfail	M	M	ML
Yahfoufa	M	M	M	Yammouneh	L	M	M	Younine	ML	M	M
Zboud	M	M	M								

## Hermel

Municipality	22-Nov	23-Nov	24-Nov	Municipality	22-Nov	23-Nov	24-Nov	Municipality	22-Nov	23-Nov	24-Nov
Charbine El-Hermel	L	M	M	Hermel Jbab	L	M	M	Hermel	M	M	M
Maaysra El-Hermel	L	M	M	Michaa Mrajhine	L	M	M	Ouadi Faara	L	L	M
Ras Baalbek - Ouadi	L	M	M	Ras Baalbek El Gharb	L	ML	M	Zighrine	L	ML	M

## Akkar

### Akkar

Municipality	22-Nov	23-Nov	24-Nov	Municipality	22-Nov	23-Nov	24-Nov	Municipality	22-Nov	23-Nov	24-Nov
Aain Tinta	VL	M	M	Aaiyat	VL	M	M	Aakkar El-Aatiqa	L	M	M
Aamar Akkar	L	M	M	Aamar El Baykat	L	M	M	Aamayer	L	M	M
Aamriyet Akkar	L	M	M	Aandqet	L	M	M	Aarmeh	L	M	M
Aarqa	L	M	M	Aawaynat	L	M	M	Aayoun Akkar	VL	M	M
Abboudiye	VL	M	M	Ain El-Zeit	L	M	M	Ain Yaaqoub	L	M	M
Akroum	L	M	M	Aridet Cheikh Zennad	L	M	M	Baldeh w Mazraat Bal	VL	M	M
Barcha	L	M	M	Bardeh	L	M	M	Bebnine	L	M	M
Beino	VL	M	M	Beit Ayoub	VL	M	M	Beit El-Haouch	L	M	M
Beit Mellat	VL	M	M	Beit Younes	VL	ML	M	Berbara Akkar	VL	M	M
Berqayel	L	M	M	Bezbina	VL	ML	M	Bireh Akkar	L	M	M
Borj	VL	M	M	Bqerezla	VL	M	M	Bzal	VL	M	M
Chane	VL	ML	M	Chaqdouf	L	M	M	Charbila	VL	M	M
Cheikh Mohammad	L	M	M	Cheikh Taba Es-Sahl	L	M	M	Cheikh Taba	L	M	M
Cheikh Zennad	L	M	M	Cheikhlar	L	M	M	Chir Hmairine	L	M	M
Daghle	VL	M	M	Dahr Laissine	L	M	M	Darine	L	M	M
Dawra	VL	M	M	Dawsa w Baghdadi	L	M	M	Dayret Nahr El-Kabir	L	M	M
Deir Dalloum	L	M	M	Deir Jennine	VL	M	M	Denbou	VL	M	M
Dibbabiyyeh	L	M	M	Douair Aadwiyeh	VL	M	M	Fassikine	VL	M	M
Fnaydek	L	M	M	Fraydes Akkar	L	M	M	Ghazayle	L	M	M
Habchit	VL	ML	M	Hakour	VL	M	M	Halba	L	M	M
Haouchab	L	M	M	Hayssat	L	M	M	Haytla	VL	M	M
Hayzouq	VL	M	M	Hedd	VL	M	M	Hmaira Akkar	VL	M	M
Hmaiss Akkar	VL	M	M	Hnaider	ML	M	M	Hokr Ed-Dahri	L	M	M
Hokr Etti	L	M	M	Hokr Jouret Srar	L	M	M	Houaich	VL	M	M
Hrar	L	M	M	Idbil	L	M	M	Ilal	VL	M	M
Janine	L	M	M	Jdeidet El-Joumeh	L	M	M	Jdeidet El-Kaiteh	VL	M	M
Jebroyel	VL	M	M	Kafr	VL	ML	M	Kafr	L	M	M
Karm Asfour	VL	M	M	Kfar Melki Akkar	L	M	M	Kfar Noun	L	M	M
Kfarharra	VL	M	M	Khalsa	L	M	M	Kharnoubet Akkar	VL	M	M



Khirbet Daoud Aakkar	L	M	M	Khirbet El Remmane	L	M	M	Khirbet Shar	VL	M	M
Khoreybet El-Jindi	L	M	M	Khreibet Aakkar	VL	M	M	Kneisset Aakkar	L	M	M
Kneisset Hnaider	M	M	M	Knisse	VL	M	M	Kroum El-Aarab	L	M	M
Kwachra	L	M	M	Kweykhath	L	M	M	Machta Hammoud	L	M	M
Majdala	L	M	M	Majdel Akkar	VL	M	M	Mar Touma	L	M	M
Marlaya Melhem	L	M	M	Mashha	L	M	M	Massoudiye	L	M	M
Mazraat Beit Ghattas	VL	M	M	Mazraat En-Nahriye	L	M	M	Mechmech	L	M	M
Memneh	VL	L	ML	Mhammara	L	M	M	Mighraq Aakkar	L	M	M
Minyara	L	M	M	Moqayteh	ML	M	M	Mounjez	L	M	M
Msalla	L	M	M	Mzeihmeh	VL	M	M	Nfaisheh	L	M	M
Noura Et-Tahta	L	M	M	Ouadi El-Haour	VL	M	M	Ouadi El-Jamous	L	M	M
Ouyoun El-Ghizlane	L	M	M	Qaabarine	L	M	M	Qabaait	VL	ML	M
Qachlaq	VL	M	M	Qantara Aakkar	VL	M	M	Qarha Aakkar	M	M	M
Qarqaf	L	M	M	Qboula	VL	M	M	Qleiaat Aakkar	L	M	M
Qloud El-Baqie	VL	M	M	Qobaiyat Aakkar	L	M	M	Qobbat Chamrat	L	M	M
Qorayat	VL	ML	M	Qornet Aakkar	VL	M	M	Qsair Aakkar	L	M	M
Rahbe	VL	M	M	Rihaniyet Aakkar	L	M	M	Rmah	L	M	M
Rmoul	L	M	M	Saadine	L	M	M	Sadaqa	L	M	M
Saidnaya	VL	M	M	Sammouniye	L	M	M	Sayssoq	VL	M	M
Semmaqiye	L	M	M	Semmaqli	ML	M	M	Sfinet El-Dreib	VL	M	M
Sfinet El-Qaitaa	VL	M	M	Sindyanet Zeidane	VL	M	M	Souaisset Aakkar	L	M	M
Srar	VL	M	M	Tal Abbas El Gharby	L	M	M	Tal Abbas El-Chargy	L	M	M
Tal Biret	L	M	M	Tal Hmayra	L	M	M	Tal Maayan Tal Kiri	L	M	M
Tal Sibel	ML	M	M	Tallet Chattaha	VL	M	M	Tikrit	VL	M	M
Tleil	VL	M	M	Tshea	VL	ML	M	Zawarib	L	M	M
Zouq El Hosniyeh	VL	M	M	Zouq El-Haddara	L	M	M	Zouq El-Hbalsa	L	M	M
Zouq El-Moqachrine	L	M	M								

## Sud

### Sour

Municipality	22-Nov	23-Nov	24-Nov	Municipality	22-Nov	23-Nov	24-Nov	Municipality	22-Nov	23-Nov	24-Nov
Aaiyeh	M	M	M	Aalma El-Chaab	ML	M	M	Aaytit	ML	M	M
Abbassiyeh Sour	M	M	M	Abou Chech	M	M	M	Ain Abou Abdallah	ML	M	M
Ain Baal	M	M	M	Arzoun	ML	M	M	Aziyeh	L	M	M
Baflaya	M	M	M	Barich	ML	M	M	Batouliyeh	M	M	M
Bayad	ML	M	M	Bazouriyeh	ML	M	M	Bediass	ML	M	M
Bestiyat	ML	M	M	Borj El Chemali	M	M	M	Borj En-Naqoura	M	M	M
Borj Rahhal	ML	M	M	Boustane	M	M	M	Btaychiyeh	M	M	M
Chaaitiye	ML	M	M	Chameh	ML	M	M	Chehabiye	M	M	M
Chehour	L	ML	M	Chihine	ML	ML	M	Debaal Sour	M	M	M
Deir Amess	L	ML	M	Deir Kifa	M	M	M	Deir Qanoun El-Ain	M	M	M
Deir Qanoun El-Naher	ML	M	M	Derdghaiya	M	M	M	Dhayra	ML	M	M
Halloussiyeh	ML	M	M	Hamoul	L	M	M	Hanaouey	M	M	M
Henniye	M	M	M	Hmairi Sour	ML	M	M	Iskandarouna Sour	ML	M	M
Jbal El Botom	ML	M	M	Jebbin	M	M	M	Jennata	ML	M	M
Jijim	L	M	M	Jouaiya	M	M	M	Kneisset Sour	M	M	M

Maarake	M	M	M	Maaroub	ML	M	M	Majadel	M	M	M
Majdalzoun	ML	M	M	Mansouri Sour	M	M	M	Marnba	L	ML	M
Marouahine	ML	ML	M	Mazraat El-Zalloutiy	M	M	M	Mazraat Mechref	ML	M	M
Mazraat Tayr Semhat	L	L	M	Mheilib	ML	M	M	Neffakhiyeh	M	M	M
Niha Sour	M	M	M	Ouadi Jilo	ML	M	M	Qana	ML	M	M
Qolaileh Sour	ML	M	M	Rechknany	ML	M	M	Rmadiyeh	M	M	M
Selha Sour	ML	M	M	Siddiqine	M	M	M	Sour	M	M	M
Srifa	ML	M	M	Tayr Debbe	ML	M	M	Tayr Felsay	ML	M	M
Tayr Harfa	M	M	M	Touayri	L	ML	M	Toura	ML	M	M
Yanouh Sour	ML	M	M	Yarine	M	M	M	Zebqine	L	ML	M

## Saida

Municipality	22-Nov	23-Nov	24-Nov	Municipality	22-Nov	23-Nov	24-Nov	Municipality	22-Nov	23-Nov	24-Nov
Aanqoun	M	M	M	Aaqtanit	M	M	M	Aarab Ej-Jall	ML	M	M
Aarab Tabbaya	M	M	M	Abra Saida	M	M	M	Adloun	M	M	M
Adousiyeh	M	M	M	Ain-El-Deleb	M	M	M	Arzai	ML	M	M
Babliyah	M	M	M	Barty	L	M	M	Bissariyeh	M	M	M
Bnaafoul	M	M	M	Bqosta	M	M	M	Bramiy --	M	M	M
Daoudiyeh	M	M	M	Dareb El-Sim	M	M	M	Erkay	M	M	M
Ghassanieh	M	M	M	Ghazieh	M	M	M	Hajeh	M	M	M
Haret Saida	M	M	M	Hartiyeh	M	M	M	Hlaliye Saida	M	M	M
Insariyat	M	M	M	Jazira Saida	M	M	M	Kafar Bit	ML	M	M
Kaoutariyet El-Siyad	M	M	M	Kfar Chellal	ML	M	M	Kfar Hatta Saida	ML	M	M
Kfar Milke Saida	ML	M	M	Khartoum	M	M	M	Khaziz	M	M	M
Khirbet Ed-Douair Sa	M	M	M	Khirbet El-Bassal	M	M	M	Khrayeb Saida	ML	M	M
Loubieh	M	M	M	Maghdouche	M	M	M	Majdelyoun	M	M	M
Matariyet El-Choumar	M	M	M	Matayriyeh	M	M	M	Mazraat 'Mseileh	M	M	M
Mazraat 'Snaiber	M	M	M	Mazraat Aarab Soukka	ML	M	M	Mazraat Deir Taqla	M	M	M
Mazraat El Yahoudiye	M	M	M	Mazraat El-Housseini	M	M	M	Mazraat El-Mhaydaleh	M	M	M
Mazraat El-Ouasta	ML	M	M	Mazraat Jamjim	M	M	M	Mazraat Kaoutariyet	M	M	M
Mazraat Kfar Badda	M	M	M	Mazraat Oussamiyat	M	M	M	Mazraat Sari	M	M	M
Mazraat Sinai	M	M	M	Meemariyeh	M	M	M	Merouaniyeh	M	M	M
Miyeh ou Miyeh	M	M	M	Najjariyeh	M	M	M	Qaaqiyat El-Snaouba	M	M	M
Qnarit	M	M	M	Qraiye Saida	M	M	M	Saida Ed-Dekermane	M	M	M
Saida El-Oustani	M	M	M	Saida El-Qadimeh	M	M	M	Saida Kefraya	M	M	M
Saksakiyeh	M	M	M	Salhie Saida	M	M	M	Sarafand	M	M	M
Sfenta	L	M	M	Tafahta	M	M	M	Tanbourit	M	M	M
Tebna	M	M	M	Zaghdraiya	M	M	M	Zeita	M	M	M
Zrariyeh	ML	M	M								

## Jezzine

Municipality	22-Nov	23-Nov	24-Nov	Municipality	22-Nov	23-Nov	24-Nov	Municipality	22-Nov	23-Nov	24-Nov
Ain El-Mir (El Estab	ML	M	M	Anane	L	ML	M	Aramta	L	M	M
Ariya	L	ML	M	Aychiyeh	L	ML	M	Azour	L	L	M
Baba	L	L	M	Baysour Jezzine	ML	M	M	Benoueteh Jezzine	L	ML	M
Bhannine	L	ML	M	Bisri	L	L	M	Bkassine	L	L	M
Bouslaya	L	L	M	Btedine El-Leqech	L	L	M	Chbail	VL	L	M
Choualiq Jezzine	M	M	M	Dahr Ed-Deir	L	ML	M	Deir El Qattine	L	L	M

Demachqiyeh	ML	M	M	Ghabbatiyeh	L	ML	M	Harf Jezzine	L	L	M
Hassaniyeh	ML	M	M	Haytouleh	L	M	M	Haytura	L	L	M
Hidab	L	ML	M	Homsiyeh	L	L	M	Jabal Toura	L	ML	M
Jarmaq	ML	M	M	Jensnaya	M	M	M	Jernaya	L	M	M
Jezzine	L	M	M	Karkha	ML	M	M	Kfar Falous	L	M	M
Kfar Houna	L	ML	M	Kfar Jarrah	M	M	M	Lebaa	ML	M	M
Louayzet Jezzine	L	ML	M	Machmouche	L	L	M	Mahmoudiyeh Jezzine	ML	M	M
Maknounye Jezzine	L	L	M	Maraat Ouazaiyeh	L	M	M	Mazraat Daraya	L	ML	M
Mazraat El-Aarqoub	L	ML	M	Mazraat El-Mathane	VL	L	M	Mazraat El-Rahbane	L	L	M
Mazraat Khallet Khaz	L	ML	M	Mazraat Louzid (Loua	L	L	M	Mazraat Qrouh	L	M	M
Mazraat Tamra	ML	M	M	Mazraat Zighrine Jez	L	ML	M	Mazraat	L	L	M
Mharbiyeh	M	M	M	Midane Jezzine	L	ML	M	Mjeydel Jezzine	M	M	M
Mlikh	L	ML	M	Mrach El-Hbasse	ML	M	M	Ouadi Baanqoudaine	M	M	M
Ouadi El-Laymoun	ML	M	M	Ouardiyeh	VL	VL	M	Qabaa Jezzine	L	L	M
Qatrani	L	ML	M	Qaytouleh	L	L	M	Qtaleh Jezzine	L	ML	M
Rihane Jezzine	L	M	M	Rimat	L	ML	M	Roum	L	L	M
Roummanet	L	M	M	Sabbah	L	L	M	Saydoun	L	ML	M
Sfaray	L	ML	M	Snaya	L	L	M	Sojoud	L	ML	M
Srayri	L	ML	M	Taaid	L	ML	M	Wadi Jezzine	L	ML	M
Zhalta	L	L	M								

## Bekaa

### West Bekaa

Municipality	22-Nov	23-Nov	24-Nov	Municipality	22-Nov	23-Nov	24-Nov	Municipality	22-Nov	23-Nov	24-Nov
Aammiq BG	ML	M	M	Ain El Tineh BG	L	M	M	Ain Zebdeh	L	M	M
Ana	L	M	M	Aytanit	L	ML	M	Baaloul BG	L	ML	M
Bab Mareh	L	M	M	Chouberqiye Aammiq	ML	M	M	Dakoue	ML	M	M
Deir Ain El-Jaouze	L	M	M	Deir Tahniche	ML	M	M	Ghaza	ML	M	M
Harime El-Soughra	ML	M	M	Hoch Harimeh	ML	M	M	Jazira BG	ML	M	M
Jib Jennine	ML	M	M	Kamed-El-Laouz	ML	M	M	Kefraya BG	L	ML	M
Khiara El Atika	ML	M	M	Khiara	ML	M	M	Khirbet Qanafar	L	M	M
Lala	L	M	M	Lebbaya BG	L	ML	M	Loussa	L	M	M
Machghara	L	M	M	Manara (Hammar) BG	L	ML	M	Mansoura BG	L	M	M
Marej BG	ML	M	M	Maydoun	L	M	M	Ouaqf BG	ML	M	M
Qaraaoun	L	M	M	Qelya	L	M	M	Raouda (Istabel)	ML	M	M
Saghbine	L	ML	M	Sohmor	L	ML	M	Soltan Yacoub el Ara	ML	M	M
Souairy	ML	M	M	Sultan Yaacoub	ML	M	M	Tal Znoub	ML	M	M
Yehmor BG	L	ML	M	Zilaya	L	ML	M				

### Zahle

Municipality	22-Nov	23-Nov	24-Nov	Municipality	22-Nov	23-Nov	24-Nov	Municipality	22-Nov	23-Nov	24-Nov
Aanjar (Haouch Mouss)	ML	M	M	Ablah	M	M	M	Ain Kfarzabad	L	M	M
Ali-El-Nahri	M	M	M	Bar Elias	M	M	M	Bouarej	M	M	M
Cheberqiyet Tabet	ML	M	M	Chtaura	M	M	M	Deir El Ghazal	ML	ML	M
Delhamiyet Zahle	M	M	M	Ferzol	ML	M	M	Haouch El-Ghanam	M	M	M
Haouch Es-Siyadeh	ML	M	M	Haouch Hala	M	M	M	Haouch Mandara	ML	M	M



Haouch Qayssar	ML	M	M	Hezerta	L	M	M	Hosh Moussa	M	M	M
Jdita	ML	M	M	Kfarzabad	ML	M	M	Ksara	M	M	M
Majdel Aanjar	L	M	M	Makssi	M	M	M	Massa	M	M	M
Mazraat Er-Remtaniye	ML	M	M	Mrayjat Zahle	M	M	M	Mzaraa Zahle	ML	M	M
Nabi Ayla	ML	M	M	Nasriyet Rizk	M	M	M	Nasriyet Zahle	ML	M	M
Niha Zahle	ML	M	M	Ouadi Ed-Deloum	ML	M	M	Ouadi El-Arayech	L	M	M
Qaa El Rim	L	M	M	Qab Elias	ML	M	M	Qousaya	ML	M	M
Rhit	M	M	M	Riyak	M	M	M	Saadnayel	M	M	M
Taal El-Akhdar	ML	M	M	Taalbeya	M	M	M	Taanayel	M	M	M
Talamara	M	M	M	Tcheflik Edde Haouch	ML	M	M	Tcheflik Qiqano	ML	M	M
Terbol Zahle	ML	M	M	Touaite Zahle	L	M	M	Zahle Aradi	ML	M	M
Zahle El-Berbara	ML	M	M	Zahle El-Maallaqa	ML	M	M	Zahle El-Midane	ML	M	M
Zahle Er-Rassiye	ML	M	M	Zahle Haouch El-Ouma	M	M	M	Zahle Haouch El-Ouma	M	M	M
Zahle Haouch Ez-Zara	ML	M	M	Zahle Maalaqa Aradi	ML	M	M	Zahle Mar Antonios	ML	M	M
Zahle Mar Elias	ML	M	M	Zahle Mar Gerios	ML	M	M	Zahle Saydet En-Naja	ML	M	M
Zebdoul	ML	M	M								

## Rachaiya

Municipality	22-Nov	23-Nov	24-Nov	Municipality	22-Nov	23-Nov	24-Nov	Municipality	22-Nov	23-Nov	24-Nov
Ain Arab Rachaiya	L	ML	M	Ain Ata	L	L	M	Ain Harche	L	ML	M
Aqabe Rachaya	L	ML	M	Ayha	L	M	M	Ayta El Fokhar	ML	M	M
Bakifa Rachaya	L	ML	M	Bakka	ML	M	M	Beit Lahya	L	ML	M
Bireh Rachaiya	ML	M	M	Daher El Ahmar	L	ML	M	Deir El-Achayer	L	M	M
Heloua Rachaiya	ML	M	M	Hoch El Qannabeh Rac	L	ML	M	Kaoukaba Bou Arab	L	ML	M
Kfar Danis	L	ML	M	Kfar Mechki	L	ML	M	Kfar Qouq	L	M	M
Kherbet Rouha	L	ML	M	Majdel Balhiss	L	M	M	Mdoukha	L	M	M
Mhaydseh Rachaiya	L	ML	M	Nabi Safa	L	ML	M	Rachaiya	L	L	M
Rafid Rachaiya	L	ML	M	Selsata (Mazraat Dei	VL	ML	ML	Tannoura	L	ML	M
Yanta	L	M	M								

## Beyrouth

### Beyrouth

Municipality	22-Nov	23-Nov	24-Nov	Municipality	22-Nov	23-Nov	24-Nov	Municipality	22-Nov	23-Nov	24-Nov
Achrafieh	M	M	MH	Ain el-Mreisse	ML	M	H	Bachoura	ML	M	MH
Beirut Central Distr	ML	M	MH	Marfai	ML	M	MH	Mazraa	ML	M	MH
Medaouar	ML	M	MH	Minet el-Hosn	ML	M	MH	Mwssaitbeh	ML	M	MH
Ras Beirut	ML	M	H	Rmeil	ML	M	MH	Saifi	ML	M	MH
Zqaq el-Blat	ML	M	MH								