

# Lebanon Fire Risk Bulletin



CIVIL DEDEFENCE

**Refer to cadast table condition.**

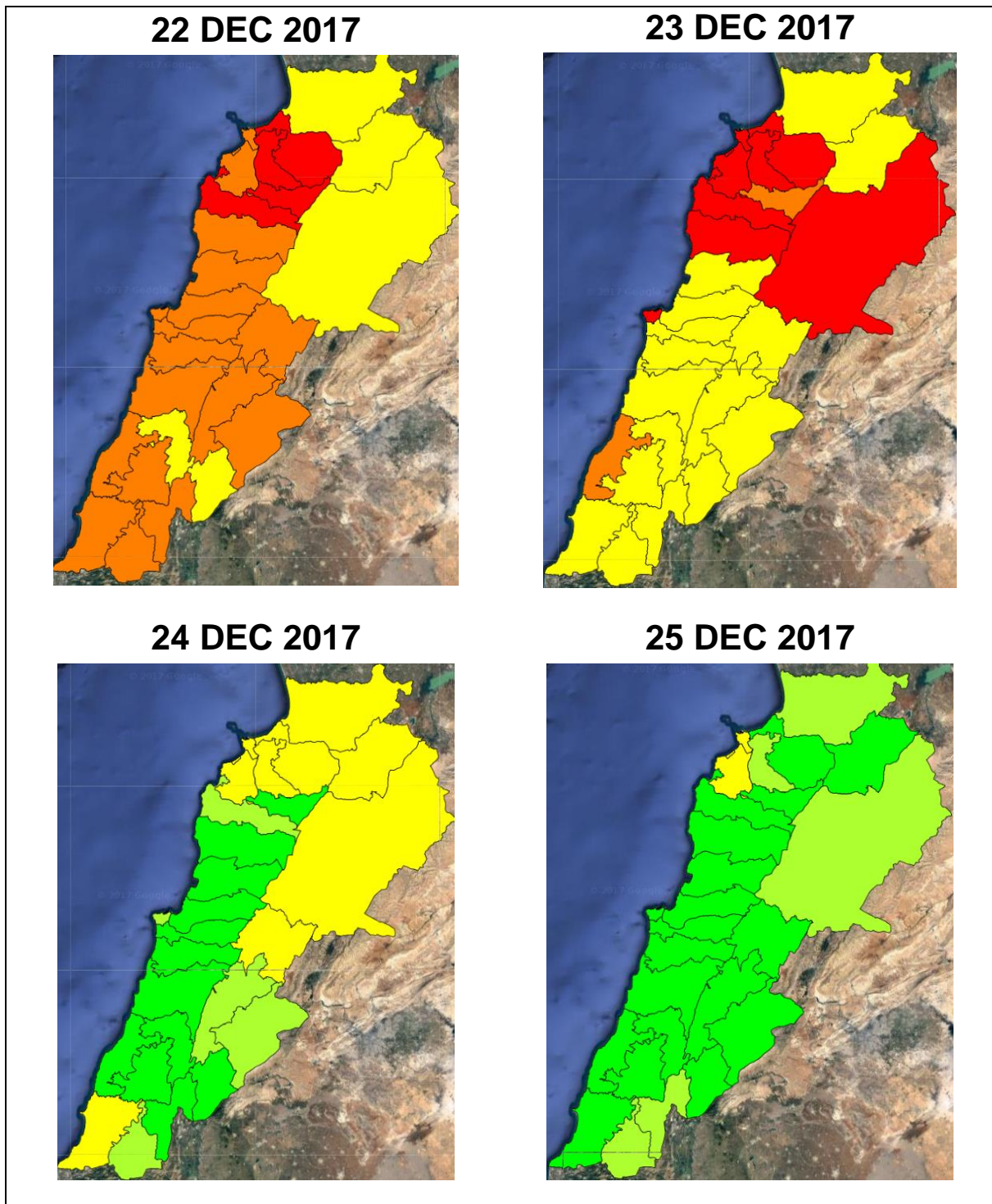
**Please note that the indicated temperature is at 2 meters height from the ground.**

General description of potential fire risk situation

Symbol	Level of risk	Meaning and actions
VL	Very low	Very low fire risk. Controlled burning operations can be hardly executed due to high fuel moisture content. Normally wildfires self-extinguish.
L	Low	Low fire risk. Controlled burning operations can be executed with a reasonable degree of safety.
ML	Medium low	Medium-low fire risk. Controlled burning operations can be executed in safety conditions. All the fires need to be extinguished.
M	Medium	Medium fire risk. Controlled burning operations would be avoided. All the fires need to be very well extinguished.
MH	Medium high	Controlled burning is not recommended. Open flame will start fires. Cured grasslands and forest litter will burn readily. Spread is moderate in forests and fast in exposed areas. Patrolling and monitoring is suggested. Fight fires with direct attack and all available resources.
H	High	Ignition can occur easily with fast spread in grass, shrubs and forests. Fires will be very hot with crowning and short to medium spotting. Direct attack on the head may not be possible requiring indirect methods on flanks. Patrolling and monitoring the territory is highly suggested.
E	Extreme	Ignition can occur also from sparks. Fires will be extremely hot with fast rate of spread. Control may not be possible during day due to long range spotting and crowning. Suppression forces should limit efforts to limiting lateral spread. Damage potential total. Patrolling and monitoring the territory is highly suggested.

**Beirut, 23 December 2017**

# FIRE RISK INDEX

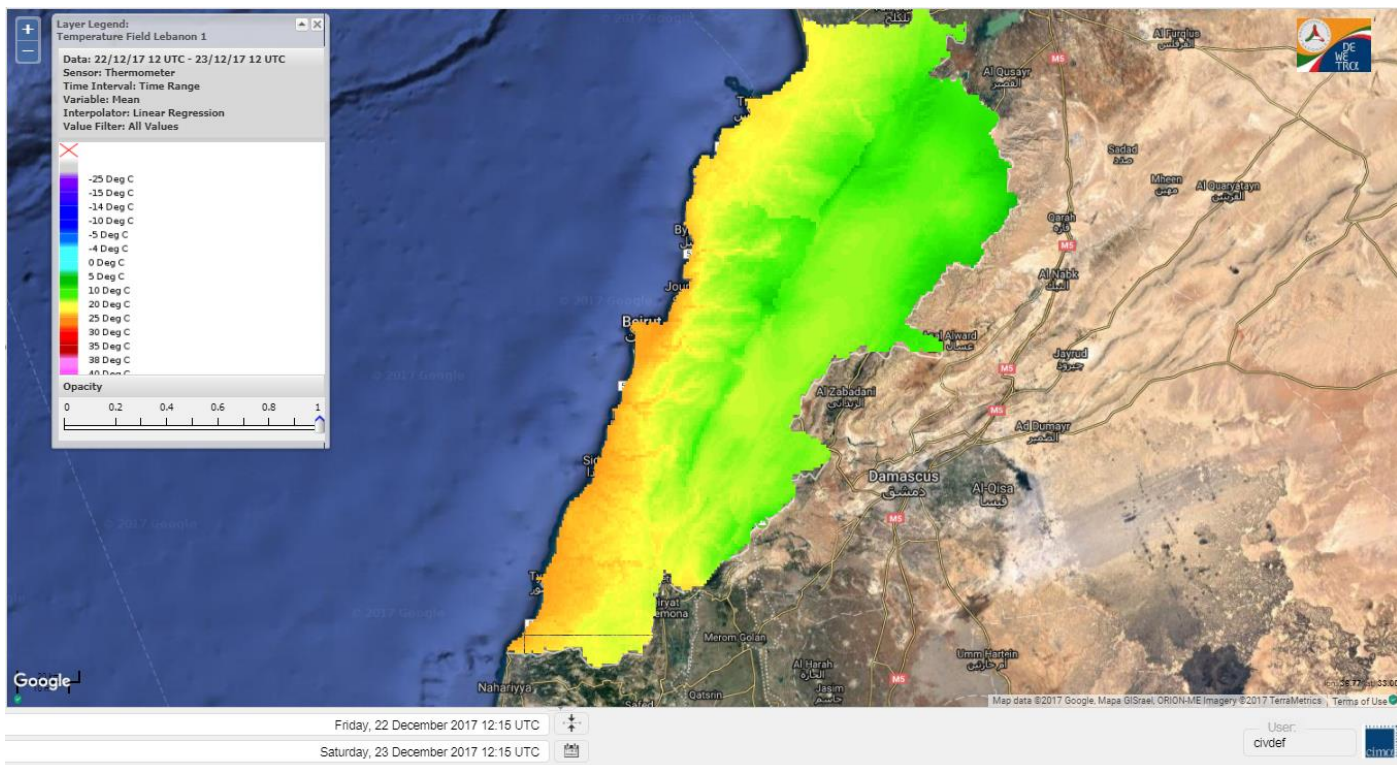


Layer Legend:  
Lebanon Wildfire Risk Index 1

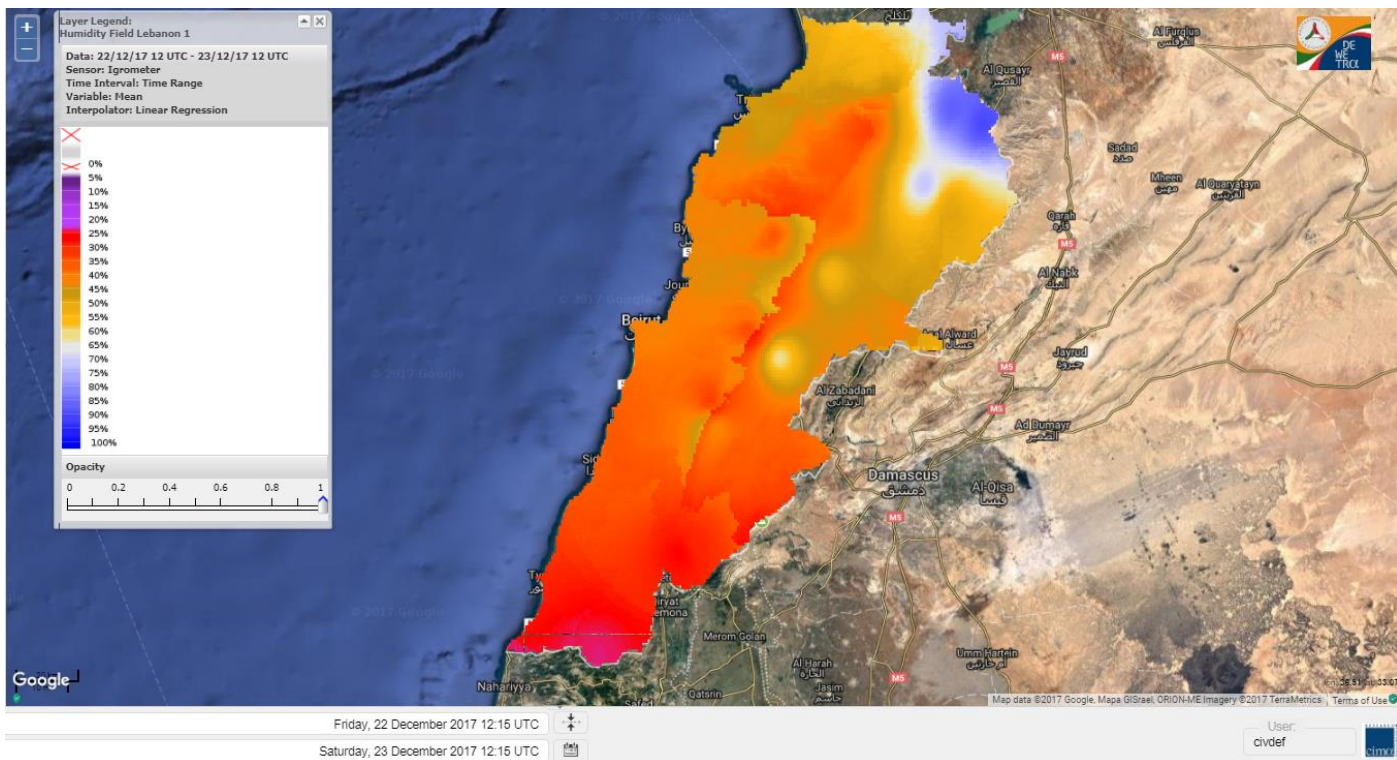
Data: Run: 23/12/2017 00:00. Forecast for 23  
Model: RISICO for the Republic of Lebanon  
Variable: Fire Weather Index  
Spatial Resolution: Caza

- VERY LOW
- LOW
- MEDIUM-LOW
- MEDIUM
- MEDIUM-HIGH
- HIGH
- EXTREME

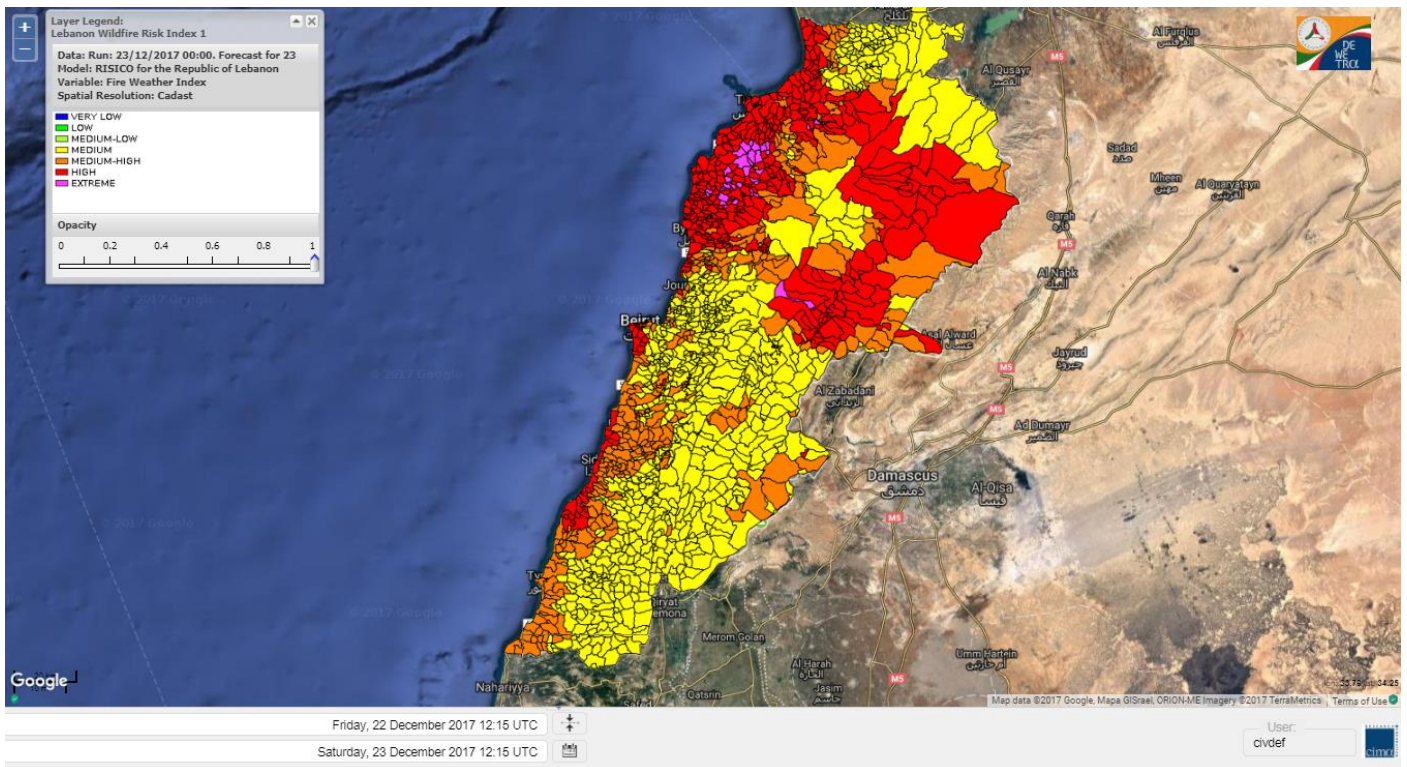
## Lebanon temperature for 23 DEC 2017



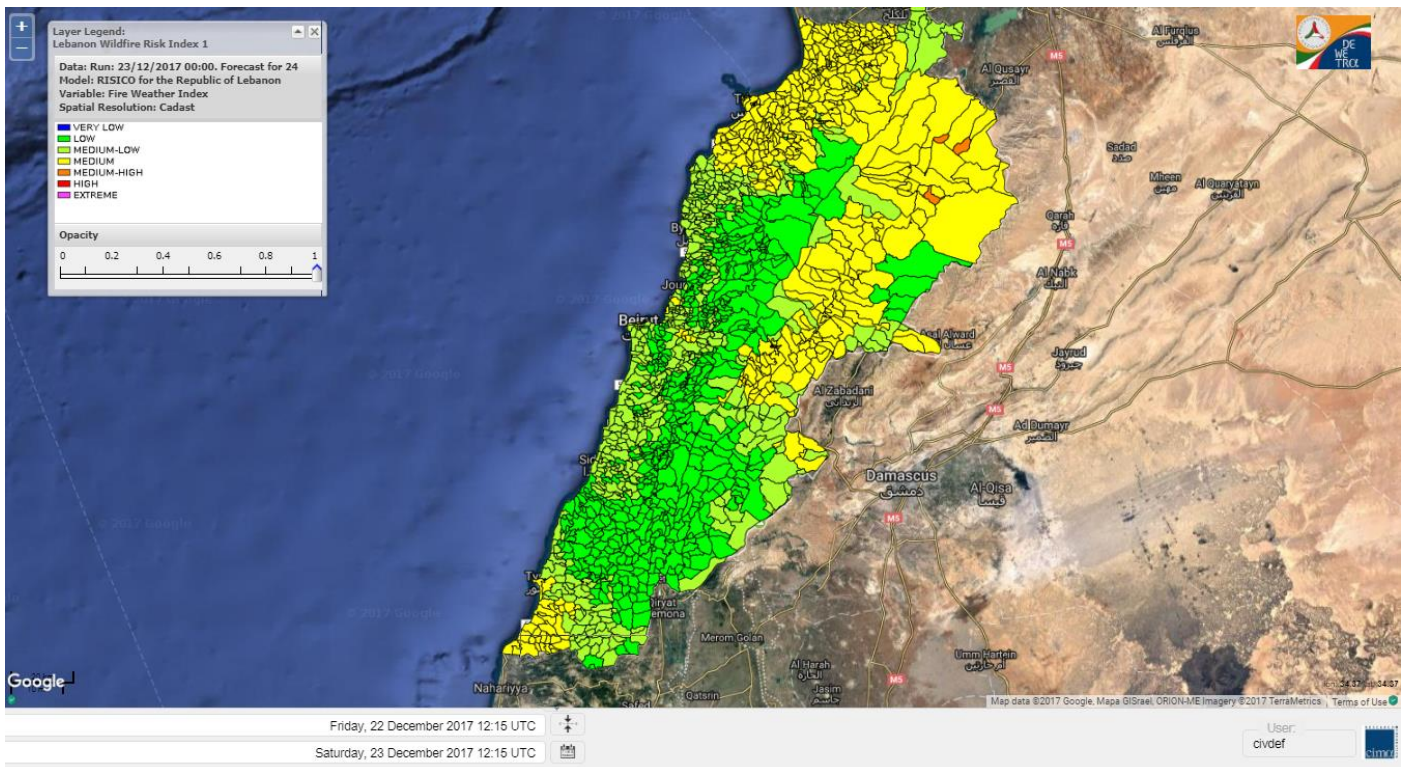
## Lebanon humidity for 123 7 DEC 2017



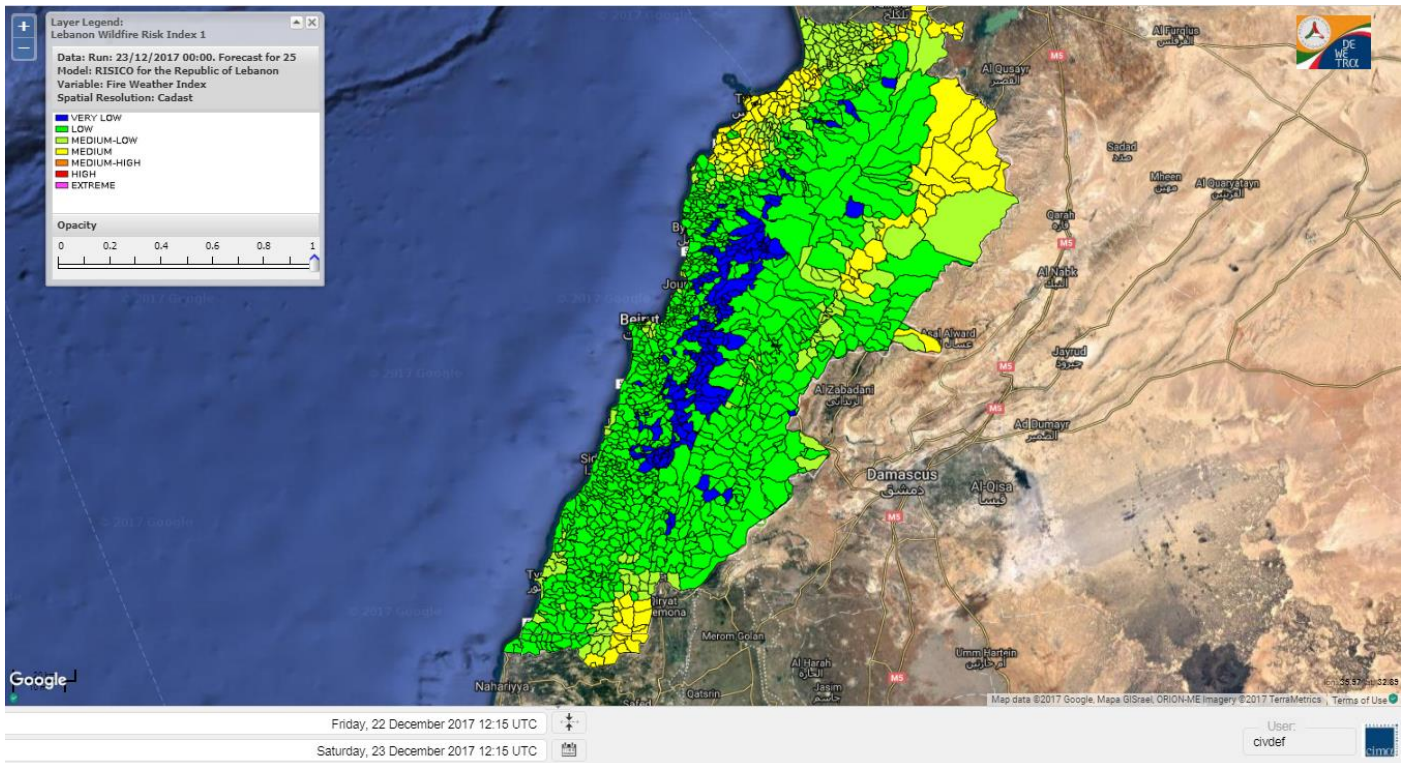
# Lebanon for 23 DEC 2017



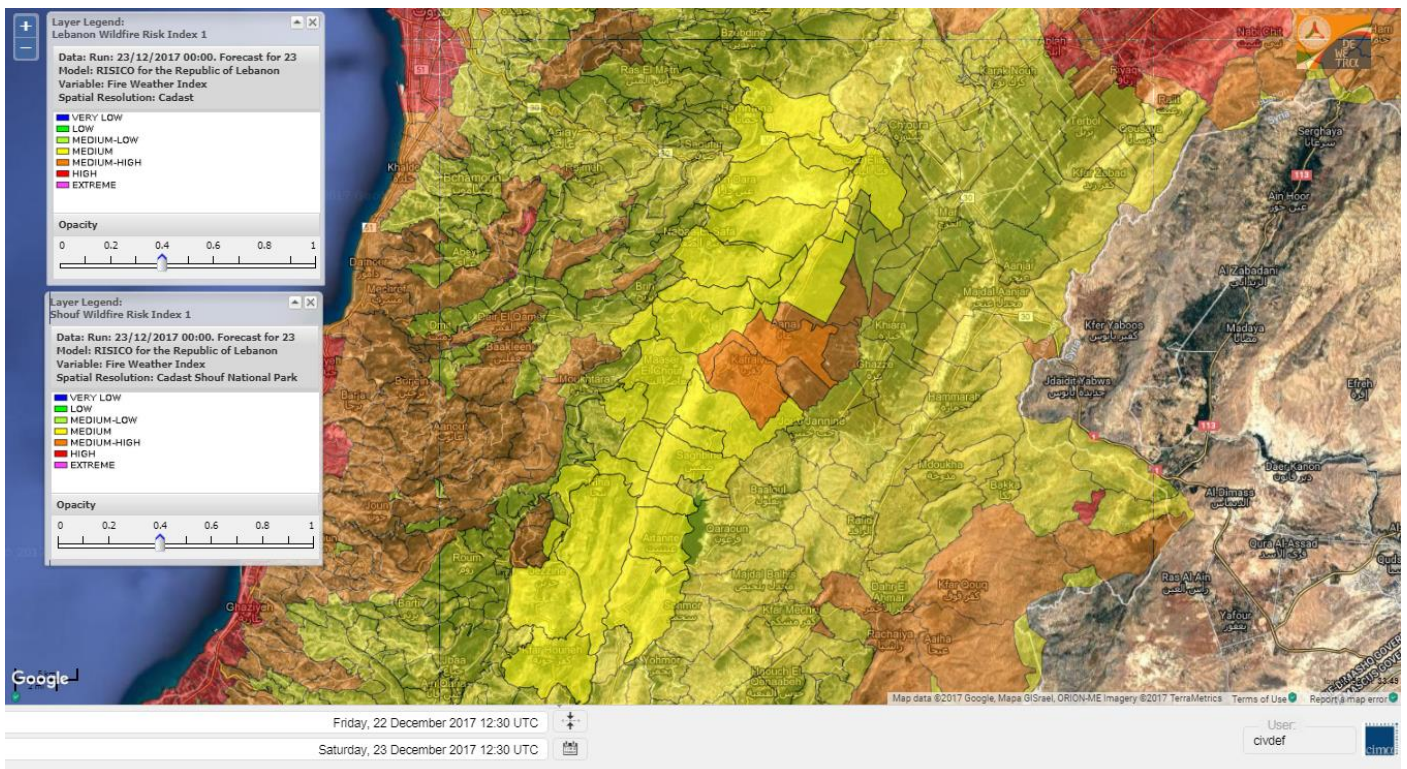
# Lebanon for 24 DEC 2017



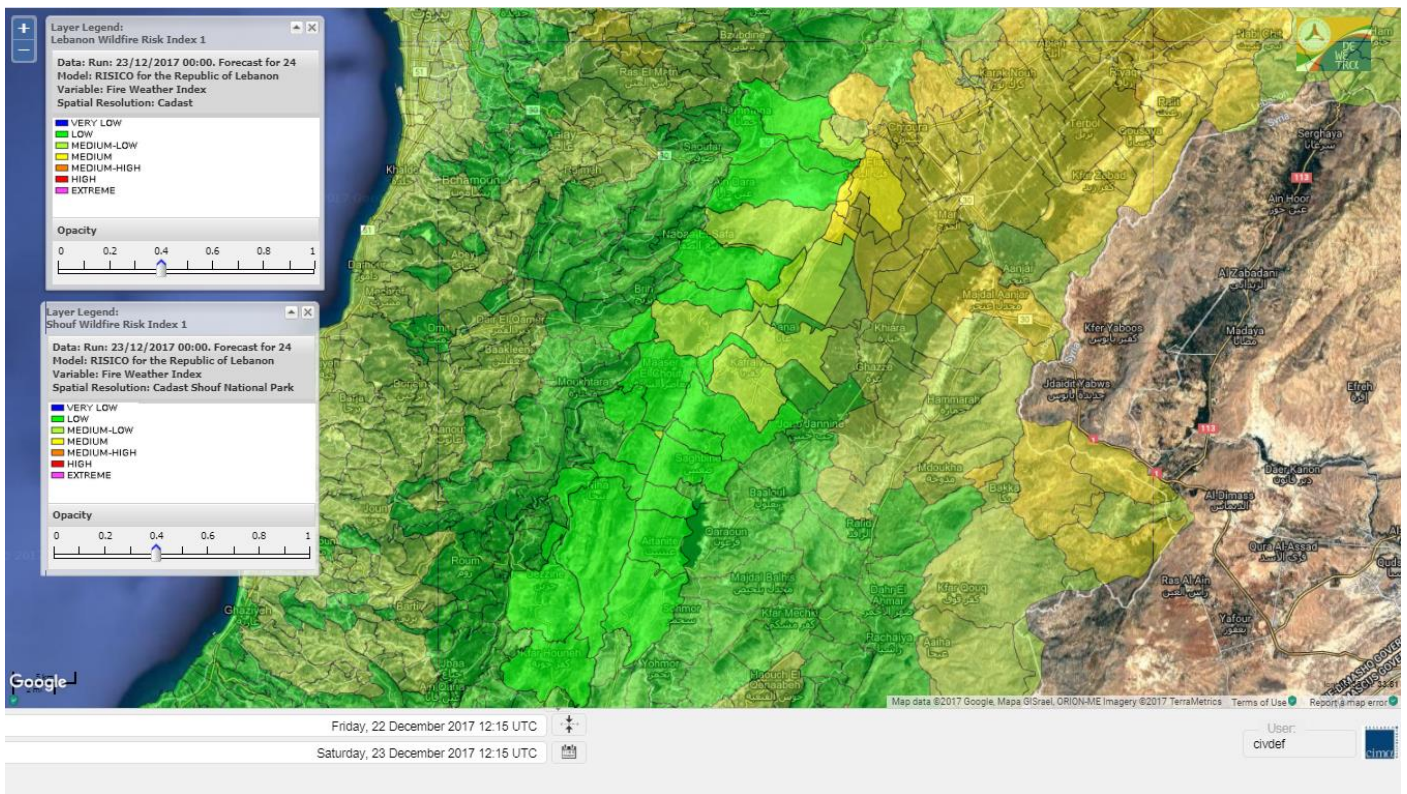
# Lebanon for 25 DEC 2017



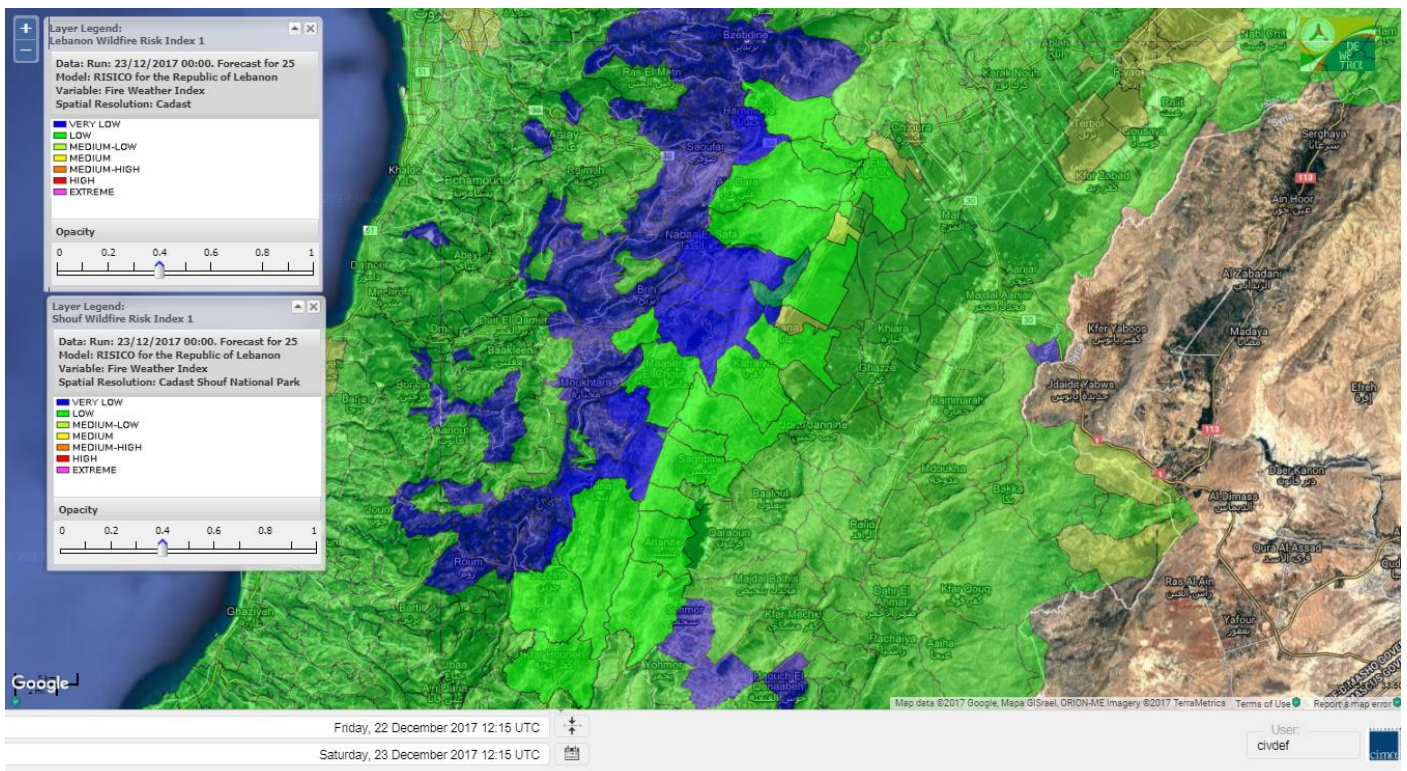
# Shouf Biosphere Reserve Forecast for 23 DEC 2017



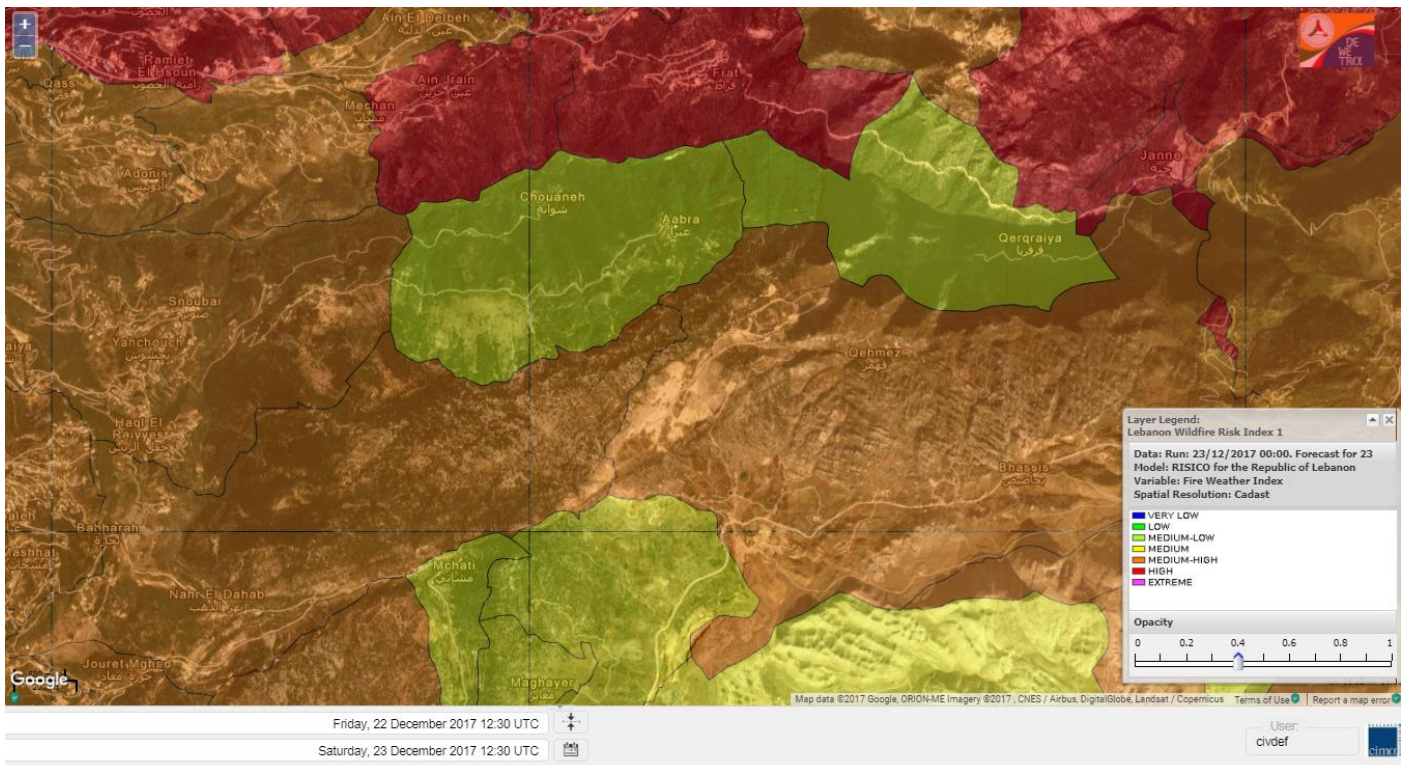
# Shouf Biosphere Reserve Forecast for 24 DEC 2017



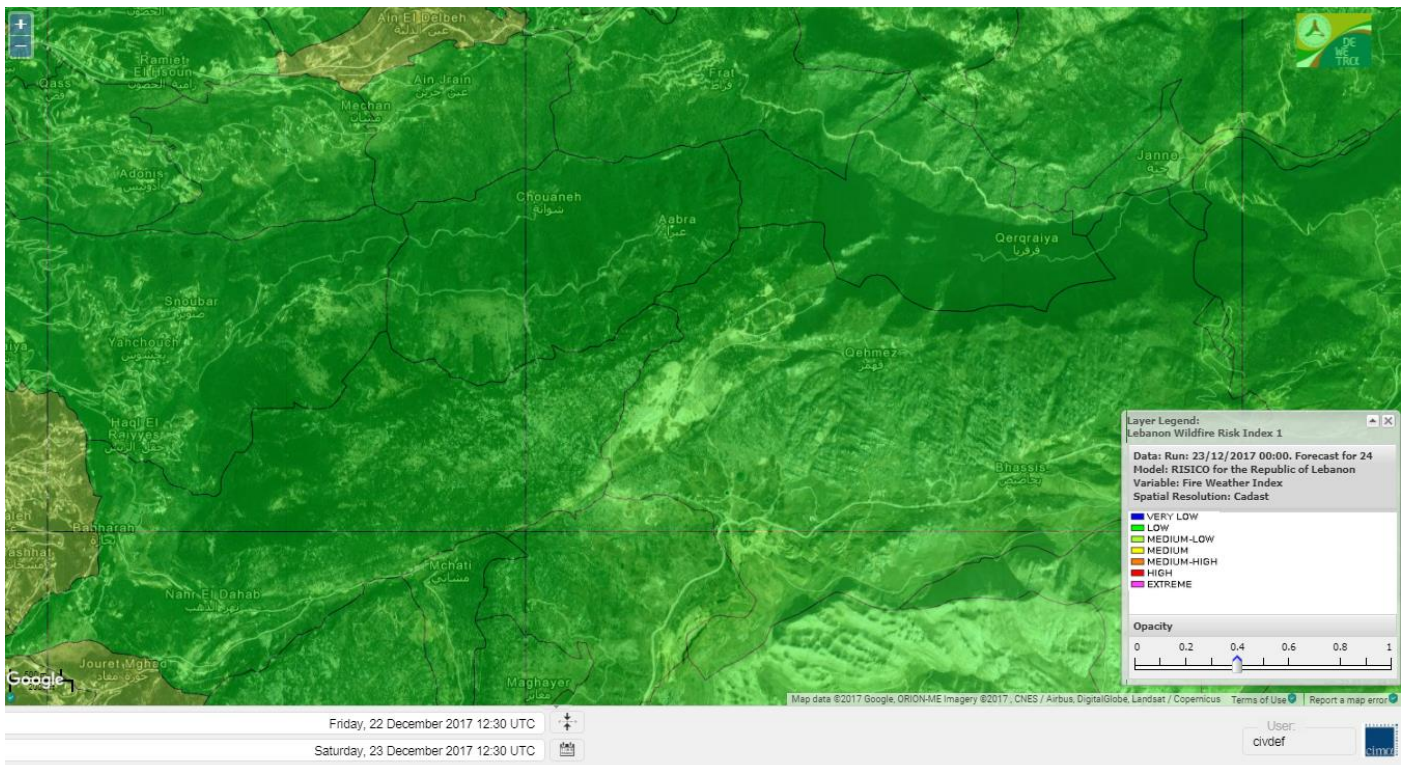
# Shouf Biosphere Reserve Forecast for 25 DEC 2017



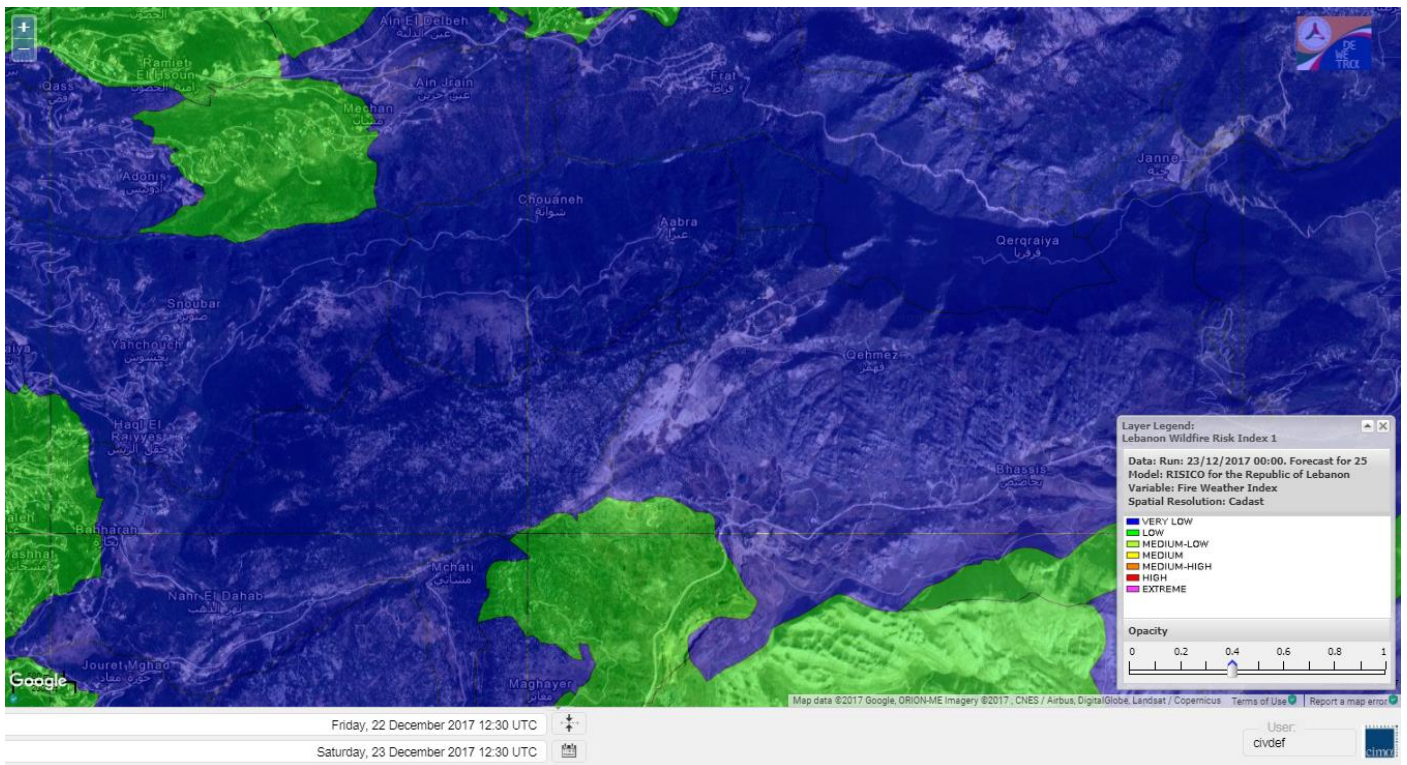
## Jabal Moussa Reserve Forecast for 23 DEC 2017



## Jabal Moussa Reserve Forecast for 24 DEC 2017



# Jabal Moussa Reserve Forecast for 25 DEC 2017





## Nord

### Koura

Municipality	23-Dec	24-Dec	25-Dec	Municipality	23-Dec	24-Dec	25-Dec	Municipality	23-Dec	24-Dec	25-Dec
Aaba	E	M	M	Afsaddiq	H	M	M	Ain Ekriane	MH	M	M
Amioun	E	M	M	Anfeh	H	M	M	Badbhoun	H	M	M
Barghoun	H	M	M	Barsa	H	M	ML	Batroumine	H	M	M
Bdebba	H	M	M	Bechmizine	E	M	M	Bednayel El-Koura	H	M	ML
Bhabbouch El-Koura	H	M	ML	Bkeftine	H	M	ML	Bnehran	E	M	ML
Bqaiia El-Koura	H	M	ML	Bsarma	E	M	M	Btaaboura	E	M	M
Bterram	E	M	M	Btouratij	H	M	M	Bziza	E	M	M
Dar Beechtar	H	ML	M	Dar Chmezzine	H	M	M	Deddeh	H	M	M
Deir El-Balamand	H	M	L	Fih	H	M	M	Hraiche	H	M	M
Ijdaabrine	H	ML	ML	Kaftoun	H	ML	ML	Kefraya El-Koura	H	ML	M
Kfarakka	E	M	M	Kfarhata	H	M	ML	Kfarhazir	H	M	M
Kfarkahel	H	M	ML	Kfarsaroun	E	M	M	Kosba	E	M	M
Mejdel el-Koura	H	ML	ML	Nakhle	H	M	ML	Qalhat	H	M	L
Ras Masqa	H	M	M	Rechdibbine	H	M	M	Zakroun	H	M	M
Zgharta El-Mtaouile	E	M	L								

### Bcharre

Municipality	23-Dec	24-Dec	25-Dec	Municipality	23-Dec	24-Dec	25-Dec	Municipality	23-Dec	24-Dec	25-Dec
Aabdine	H	M	L	Bane	MH	ML	L	Barhelioun	H	M	L
Bazouone	MH	L	L	Becharre	M	L	L	Beit Menzer	H	M	L
Billa	H	M	L	Blaouza	M	L	L	Bqaa Kafra	M	L	L
Bqerqacha	M	L	L	Breissat	H	ML	L	Dimane	H	M	L
Hadath El Jobbeh	H	ML	L	Hadchit	MH	L	L	Hasroun	MH	L	L
Mazraat Aassaf	H	M	VL	Mazraat Bani Saab	H	M	L	Mchaa El-Jobbeh	M	L	L
Metrit	H	ML	L	Moghr El-Ahoual	H	M	ML	Ouadi Qannoubine	H	ML	VL
Qanat	H	M	L	Qnayouer	H	M	VL	Tourza	H	M	L

### Batroun

Municipality	23-Dec	24-Dec	25-Dec	Municipality	23-Dec	24-Dec	25-Dec	Municipality	23-Dec	24-Dec	25-Dec
Aabrine	H	ML	L	Aalali	H	ML	L	Aartziz	E	ML	L
Abdelli	H	ML	L	Ajdabra	H	ML	L	Assia	H	ML	L
Basbina	H	ML	ML	Batroun	H	ML	ML	Bcheleh	H	L	L
Bechtoudar	H	ML	L	Beit Chlala	E	ML	L	Beit Kassab	E	M	L
Bijdarfil	H	ML	ML	Bqesmaya	E	ML	L	Chatine	H	L	VL
Chebtin	E	ML	L	Chekka	H	M	M	Daael	E	ML	L
Dahr Abi Yaghi	H	ML	L	Daraya El-Batroun	E	ML	L	Deir Billa	H	ML	L
Deir Kfifane	H	ML	L	Deir Mar Youhanna EL	E	ML	L	Deir Mar Youssef Jra	H	ML	L
Douma	H	L	L	Douq	E	ML	L	Eddeh El-Batroun	H	ML	L
Ftahat El-Batroun	E	ML	L	Ghouma	H	L	L	Hadtoun	H	ML	L
Hamat	H	ML	L	Harbouna	H	ML	L	Hardine	H	M	L
Helta	E	ML	L	Hery	H	ML	M	Jebbla	H	ML	L
Jrabta El-Batroun	H	ML	L	Jrane El-Batroun	E	ML	ML	Kfar Aabida	H	ML	L
Kfar Halda	H	ML	L	Kfarb Shlaimane	H	ML	L	Kfarhatna	E	ML	L
Kfarhay	H	ML	ML	Kfarhelos	H	ML	L	Kfifane	H	ML	ML

Kfour El Arabi	MH	ML	L	Koubba	H	ML	L	Kour	H	ML	L
Mar Mama	E	ML	VL	Masrah	H	L	VL	Mehmarch	H	ML	L
Mrah Chdid	H	ML	L	Mrah El Ziyat	E	ML	L	Mrah El-Hajj	E	ML	VL
Nahle El-Batroun	H	ML	L	Niha El-Batroun	H	M	L	Ouahj El-Hajjar	H	ML	L
Ouata Houb	MH	L	VL	Qatnaaoun	H	ML	L	Racha	E	ML	L
Rachana	H	ML	L	Rachkida	H	ML	L	Ram El-Batroun	H	ML	L
Ras Nahhach	H	ML	L	Selaata	H	ML	ML	Sghar	H	ML	L
Smar Jbayl	H	ML	L	Sourat El-Batroun	E	ML	L	Tannourine El-Faouqa	MH	L	L
Tannourine Et-Tahta	MH	L	VL	Thoum	H	ML	L	Toula El-Batroun	H	ML	L
Zan	H	ML	L								

## Zgharta

Municipality	23-Dec	24-Dec	25-Dec	Municipality	23-Dec	24-Dec	25-Dec	Municipality	23-Dec	24-Dec	25-Dec
Aachach	H	M	M	Aalma	H	M	M	Aarde	H	M	ML
Aintourine	MH	ML	ML	Arabet Qozhaya	MH	ML	L	Arde	H	M	M
Arjis	E	M	ML	Asnoun	H	M	ML	Ayto	MH	M	L
Basloukit	MH	M	L	Bchannine	H	M	M	Besebeel	H	M	ML
Bhairret Toula	H	M	VL	Bnachee	H	M	ML	Boussit	MH	M	M
Danha	MH	M	ML	Daraiya Zgharta	E	M	M	Deir Jdeide	H	M	ML
Ehden	MH	M	L	Halan	H	M	M	Hariq Zgharta	H	M	ML
Houakir	M	M	L	Hraiqis	M	M	M	laal	MH	M	ML
Ijbaa	M	M	ML	Karm Saddeh	H	M	L	Kfarchakhna	H	M	ML
Kfardlaqous	H	M	ML	Kfarfou	E	M	ML	Kfarhata Zgharta	H	M	ML
Kfarhoura	H	M	ML	Kfarsghab	H	ML	L	Kfaryachit	H	M	ML
Kfarzaina	H	M	ML	Khaldiye	H	M	ML	Mazraat Ajbeaa	H	M	ML
Mazraat Et-Teffah	M	M	L	Mazraat Jneid	E	M	ML	Mejdlaya Zgharta	H	M	M
Merh Kfarsghab	MH	M	L	Miryata	H	M	M	Miziara	MH	M	L
Mzraat Kefraya	H	M	M	Qorah Bach	E	M	ML	Rachiine	H	M	ML
Ras Kifa	H	M	ML	Sakhra	MH	M	L	Sebhel Zgharta	MH	M	ML
Serhel	H	ML	L	Tallet Zgharta	H	M	ML	Toula Zgharta	MH	M	L
Zgharta	H	M	ML								

## Minieh-Denniye

Municipality	23-Dec	24-Dec	25-Dec	Municipality	23-Dec	24-Dec	25-Dec	Municipality	23-Dec	24-Dec	25-Dec
Aasaymout	MH	M	VL	Aaymar	H	M	L	Aazki	H	M	ML
Ain El-Tineh-Miniyeh	MH	ML	VL	Assoun	H	M	L	Bakhaaoun	H	M	L
Bchennata	MH	M	L	Bechehhara	M	M	L	Beddawi	H	M	M
Behouaita	MH	M	L	Beit El Foqss	MH	M	L	Beit Haouik	H	M	ML
Beit Zoud	H	M	L	Bekaasafrine	MH	L	L	Borj El Yahoudiyeh	H	M	M
Bqarsouna	H	M	L	Btermaz	H	M	L	Debaael	MH	M	L
Deir Ammar	H	M	M	Deir Nbouh	MH	M	L	Haouaret-Miniyeh	MH	M	L
Haql el Azimeh	E	M	L	Harf El Siyad	H	M	L	Hazmiye-Miniyeh	H	M	L
Izal	H	M	ML	Jarjour	M	L	VL	Jayroun	H	M	L
Kahf El-Malloul	M	M	L	Karm El-Moher	H	M	L	Kfar Binine	H	M	L
Kfarchalane	H	M	ML	Kfarhabou	H	M	ML	Kharroub-Miniyeh	H	M	ML
Mazraat El-Kreme	MH	M	L	Mazraat Ketrane	E	M	L	Merkebtta	H	M	M
Minyeh	H	M	M	Mrah El Sfirat	M	L	VL	Mrah Sraj	H	M	L
Mrebbine	H	M	L	Nabi Youcheaa	H	M	M	Nemrine	H	ML	L

Qarhaiya	H	M	L	Qarne	H	M	VL	Qarsita	H	M	VL
Qattineh-Miniyeh	E	M	VL	Qemmamine	H	M	VL	Qraine	MH	M	L
Raouda-Aadoua	H	M	ML	Rihaniyet-Miniyeh	H	M	M	Sfireh	H	M	L
Sir Ed-Danniyeh	H	M	L	Tarane	MH	ML	L	Terbol-Miniyeh	H	M	M
Zaghartaghriine	MH	M	L	Zouq Bhannine	H	M	M				

## Nabatiye

### Nabatiye

Municipality	23-Dec	24-Dec	25-Dec	Municipality	23-Dec	24-Dec	25-Dec	Municipality	23-Dec	24-Dec	25-Dec
Aabba	M	L	L	Aazzi	M	L	L	Adchit El-Chqif	M	L	L
Ain Bou Swar	M	L	L	Ain Kana	M	L	L	Ali El-TaHER	M	L	L
Ansar	MH	L	L	Arab Salim	M	L	L	Arnoun	M	L	L
Bfaroue	M	L	L	Breyqaah	M	L	L	Charqiyeh	MH	L	L
Choukine	M	L	L	Deir El Zahrani	M	L	L	Doueir El-Nabatiyeh	MH	L	L
Habbouch El-Nabatiye	M	L	L	Hamra El-Nabatiyeh	M	L	ML	Harouf El-Nabatiyeh	M	L	L
Hmaile	M	L	L	Houmin El Faouqa	M	L	L	Houmin El Tahta	MH	ML	L
Jarjough	M	L	L	Jbaah El-Nabatiyeh	M	L	L	Jebchit	M	L	L
Kfar Djal El-Nabatiy	M	L	L	Kfar Remmane	M	L	L	Kfar Sir	M	L	L
Kfar Tebnit	M	L	L	Kfarfila	M	ML	L	Kfour El-Nabatieh	M	L	L
Mayfadoun	M	L	L	Mazraat Bsaffour	M	L	L	Mazraat Chalbaal	M	L	L
Mazraat Dmoul	MH	L	L	Mazraat El Khreibeh	M	ML	L	Mazraat El-Bayad El-	M	L	L
Mazraat Kfarjaouz	M	L	L	Mazraat Qalaat Meiss	MH	L	L	Nabatiyeh El-Fawka	M	L	L
Nabatiyeh Et-Tahta	M	L	L	Namiriyeh	MH	L	L	Qaaqaaiyet El Jisr	M	L	L
Qossaibeh El-Nabatiy	M	L	L	Roumine	M	L	L	Sarba El-Nabatieh	M	L	L
Sir El-Gharbiyeh	M	L	L	Toul	M	L	L	Yehmor El-Nabatiyeh	M	L	L
Zaoutar El Charkiyeh	M	L	ML	Zaoutar El-Gharbiyeh	M	L	ML	Zebdine El-Nabatiyeh	M	L	L
Zefta	MH	L	L								

### Hasbaiya

Municipality	23-Dec	24-Dec	25-Dec	Municipality	23-Dec	24-Dec	25-Dec	Municipality	23-Dec	24-Dec	25-Dec
Aain Jarfa	M	L	L	Abou Qamha	M	L	L	Ain Qania	M	L	L
Bourghos	M	L	L	Chebaa	M	L	L	Chouaya Hasbaya	M	L	L
Dellafeh	M	L	L	Fardiss Hasbaiya	M	L	L	Hasbaya	M	L	L
Hbariyeh	M	L	L	Kaoukaba Hasbaiya	M	L	L	Kfar Chouba	M	L	L
Kfar Hamam	M	L	L	Kfeir El-Zait	M	ML	L	Khalwat Hasbaya	M	ML	L
Khreibet Hasbaiya	M	L	L	Majidiyeh Hasbaiya	M	L	L	Marj Ez-Zhour (Haouc	M	ML	L
Meri	M	L	L	Mimass	M	L	L	Rachaiya El-Fokhar	M	L	L
Salaiyeb	M	L	L								

### Marjayoun

Municipality	23-Dec	24-Dec	25-Dec	Municipality	23-Dec	24-Dec	25-Dec	Municipality	23-Dec	24-Dec	25-Dec
Aalmane Marjaayoun	M	L	L	Aamra	M	L	ML	Adayseh Marjaayoun	M	L	ML
Adchit El-Koussair	M	L	ML	Ain Aarab Marjaayoun	M	L	L	Bani Haiyann	M	L	ML
Blatt Marjaayoun	M	L	L	Blida	M	ML	M	Borj El-Moulouk	M	L	L
Boueyda Marjaayoun	M	L	L	Deir Mimass	M	L	L	Deir Siriane	M	L	L
Dibbine	M	L	L	Ebel El Saqi	M	L	L	Houla	M	L	M
Houra	M	L	L	Kfar Kila	M	L	ML	Khiam Marjaayoun	M	L	L

Klayaa	M	L	L	Majdel Selem	M	L	M	Marjaayoun	M	L	L
Markaba	M	L	ML	Mays El-Jabal	M	L	M	Mazraat Doumiat	M	L	L
Mazraat Sarada	M	L	L	Mhaibib	M	ML	M	Qabrikha	M	L	ML
Qantara	M	L	ML	Rab El-Thalathine	M	L	ML	Saouaneh Marjayoun	M	L	ML
Talloussa	M	L	L	Taybeh Matjaayoun	M	L	ML	Touline	M	L	L

## Bent Jbail

Municipality	23-Dec	24-Dec	25-Dec	Municipality	23-Dec	24-Dec	25-Dec	Municipality	23-Dec	24-Dec	25-Dec
Ain-Ebel	M	ML	ML	Aitaroun	M	L	M	Aynata Bint Jbeil	M	ML	M
Ayta El-Chaeb	M	ML	ML	Ayta El-Jabal	M	ML	ML	Beit Lif	M	ML	L
Beit Yahoun	M	ML	ML	Bint Jbeil	M	ML	M	Borj Qalaway	M	L	L
Braachit	M	L	M	Chakra	M	L	M	Debel	M	ML	ML
Deir Antar	M	L	L	Froun	M	L	L	Ghandouriyeh Bint Jb	M	L	L
Hanine	M	ML	ML	Hariss	M	ML	ML	Hdatha	M	ML	ML
Jmeymeh	M	L	M	Kafra Bint Jbeil	M	ML	L	Kfar Dounine	M	L	L
Khirbet Selm	M	ML	L	Kounine	M	ML	M	Maroun El Ras	M	L	M
Qalaway	M	ML	L	Qaouzah	M	ML	L	Qatmoun	M	L	M
Ramya Bint Jbeil	M	ML	L	Rchaf	M	ML	L	Rmeich	M	L	M
Safad Al Battikh	M	ML	ML	Salhaneh	M	ML	L	Serbine	M	ML	ML
Sultanieh Bint Jbeil	M	ML	ML	Tibnine	M	ML	ML	Tiri	M	ML	ML
Yaroun	M	ML	M	Yater	M	ML	L				

## Mont Liban

### Jbail

Municipality	23-Dec	24-Dec	25-Dec	Municipality	23-Dec	24-Dec	25-Dec	Municipality	23-Dec	24-Dec	25-Dec
Aabeydat	H	ML	L	Aalita	H	ML	L	Aamchit	H	ML	L
Aarab El-Lahib	M	L	VL	Aarasta	MH	L	VL	Adonis Jbeil	MH	L	VL
Afqa Jbeil	MH	L	VL	Ain El Delbeh Jbeil	MH	ML	VL	Ain El-Ghouayba	H	L	VL
Ain Jrain	H	L	VL	Ain Kfah	H	ML	L	Almat El Chemaliyat	H	L	L
Almat El-Jenoubiya	MH	L	VL	Aqoura	M	L	L	Bayzoun	H	L	L
Bchille Jbeil	H	L	L	Bechtlida	MH	L	VL	Behdaydat	H	ML	L
Beit Habbaq	H	ML	L	Bejjeh	H	ML	L	Bekhaaz	H	ML	L
Berbara Jbeil	H	ML	L	Bintael	H	ML	L	Birket Hjoula	H	ML	VL
Blatt Jbeil	H	ML	L	Boulhos	MH	L	VL	Breyj Jbeil	H	ML	VL
Chamat	H	ML	L	Chikhane	H	ML	L	Chmout	H	ML	L
Eddeh Jbeil	H	ML	L	Ehmej	MH	L	VL	Fatre	MH	L	VL
Ferhet	H	L	L	Fghal	H	ML	L	Frat	H	L	VL
Ghabat	H	L	VL	Ghalboun	H	ML	L	Gharzouz	H	ML	L
Ghofrine	H	ML	L	Habil	H	L	VL	Halate	H	ML	L
Haqel	H	L	L	Hbaline	H	ML	L	Hboub	H	ML	L
Hdeine	H	L	VL	Hema Er-Rehban	MH	L	VL	Hema Mar Maroun Aann	M	L	VL
Hjoula	H	L	L	Hosrayel	H	ML	L	Hsarat	H	ML	L
Hsoun	H	L	L	Jaj	H	L	VL	Janne	H	L	VL
Jbeil	H	ML	L	Jeddeyl Jbeil	H	ML	L	Jlisse	H	L	VL
Jouret El-Qattine	H	L	L	Kfar Baal Annaya	H	L	L	Kfar Kidde	H	ML	L
Kfar Kouas	H	ML	L	Kfar Mashoun	H	ML	L	Kfoun	H	ML	L

Kharbe Jbeil	H	ML	L	Laqlouq	MH	L	VL	Lassa	MH	L	VL
Lehfed	H	ML	L	Maad	H	ML	L	Mar Sarkis	MH	L	VL
Mastita	H	ML	L	Mayfouq	H	L	L	Mazraat El Siyad	MH	L	VL
Mazraat El-Maaden	M	L	VL	Mechane	MH	L	L	Mechmech Jbeil	H	L	L
Mehrin	H	ML	L	Mejdel El-Akoura	M	L	VL	Mghayreh Jbeil	H	L	VL
Mounsef	H	ML	L	Nahr Ibrahim	H	ML	L	Qahmez	MH	L	VL
Qartaba	H	L	VL	Qartaboun	H	ML	L	Qattara Jbeil	H	ML	VL
Qorqraya	M	L	VL	Ramout	E	ML	L	Ras Osta	H	ML	L
Rihane Jbeil	H	ML	L	Sakiet El-Khayt	H	ML	L	Saqi Richmaya	H	L	L
Sebrine	H	ML	L	Seraita	H	L	VL	Souane Jbeil	H	L	L
Tadmor	MH	L	VL	Tartej	H	L	L	Torzaiya	H	L	L
Yanouh Jbeil	H	L	VL	Zibidine Jbeil	H	ML	L				

## El Metn

Municipality	23-Dec	24-Dec	25-Dec	Municipality	23-Dec	24-Dec	25-Dec	Municipality	23-Dec	24-Dec	25-Dec
Aain El-Qabu	M	L	VL	Aain El-Qach	M	L	L	Aain El-Teffaha	M	L	L
Aain el-Safssaf El-M	M	ML	L	Abou Mizane	M	L	L	Ain Aar	M	ML	L
Ain Alaq	M	ML	L	Ain El-Kharroube	M	L	L	Ain El-Sendiane	M	L	L
Ain El-Zeitoune	M	ML	VL	Ain Saadeh	M	L	L	Aintoura El-Matn	M	L	L
Amaret Chalhoub	MH	ML	ML	Antelias	MH	ML	L	Atchaneh	M	L	L
Ayroun	M	L	L	Baabdat	M	ML	VL	Baouchariyeh	M	L	L
Baskinta	M	L	L	Beit Chabab	M	L	L	Beit El-Chaar	M	ML	L
Beit El-Kekko	M	ML	ML	Beit Mery	MH	ML	L	Bhersaf	M	L	VL
Bikfaya	M	L	L	Biyakout	M	L	L	Bnabil	M	ML	VL
Bourj Hammoud	MH	ML	ML	Bqennaya	M	L	L	Broummana El-Matn	MH	M	L
Bsalim	MH	ML	L	Bsifrine	M	ML	VL	Bteghrine	M	L	VL
Chaouiye	M	ML	L	Chouaya El-Matn	M	L	L	Choueir	M	ML	L
Chrine	M	ML	VL	Dahr El Sawan El-Mat	M	L	L	Daychouniyeh	M	L	L
Dbayeh	MH	M	L	Deir Chamra	M	L	VL	Deir Mar Abda el Mch	M	ML	L
Deir Mar Roukouz	M	L	L	Deir Tamiche	M	ML	L	Dik El-Mehdi	M	ML	L
Dikwaneh	M	ML	ML	Douar El-Matn	M	L	VL	Fanar	M	L	L
Fraike	M	ML	L	Haret El-Ballaneh	M	ML	L	Hbous	M	M	L
Himlaya	M	L	L	Jal El Did	MH	ML	L	Jdeideh El-Metn	M	L	L
Jouar El-Matn	M	ML	L	Jouret El-Ballout	M	ML	L	Kaaqour	M	ML	VL
Kfar Aaqab	M	L	VL	Kfertay El-Matn	M	L	VL	Khenchara	M	L	VL
Khillet El-Mtain	M	ML	VL	Konnabat Broummana	M	ML	L	Konnabat Salima	M	ML	VL
Machraah El-Matn	M	L	VL	Majdel Tarchich	M	L	L	Majzoub	MH	ML	L
Mansouriyeh El-Metn	M	L	L	Mar Boutros Karm Et-	M	ML	VL	Mar Chaya et Mzekke	M	ML	L
Mar Moussa Ed-Douar	M	L	VL	Marjaba	M	L	VL	Masqa	MH	M	VL
Mayasse	M	L	L	Mazraat Deir Aoukar	M	ML	L	Mazraat El-Hadirat	M	ML	L
Mazraat Yachouh	M	ML	L	Mchikha	M	L	VL	Menqlet Mezher	M	ML	L
Mhaydseh Matn	M	L	L	Mkalles	M	L	L	Mrouj	M	L	L
Mtain	M	L	L	Mtayleb	M	ML	L	Nabay	M	ML	L
Naccache	M	ML	L	Ouadi Chahine	M	ML	VL	Ouadi El-Karm El-Mat	M	L	VL
Ouata El-Mrouj	M	L	VL	Ouyoun El-Matn	MH	ML	VL	Qornet Chehwan	M	ML	L
Qornet El-Hamra	M	ML	L	Roumieh	M	ML	L	Sfeilet Bikfaya	M	L	VL
Sinn El-Fil	M	L	ML	Zabbougha	M	L	VL	Zalqa	M	L	L

Zarououn	M	L	VL	Zekrite	M	ML	L	Zighrine El-Matn	M	L	L
Zouk El-Khrab	M	ML	L								

## Chouf

Municipality	23-Dec	24-Dec	25-Dec	Municipality	23-Dec	24-Dec	25-Dec	Municipality	23-Dec	24-Dec	25-Dec
Aalmane El-Chouf	MH	ML	L	Aammqi El-Chouf	M	L	VL	Ain Ouzein	MH	L	VL
Ain Qani	M	L	VL	Ain Zhalta	M	L	VL	Ainbal	MH	ML	VL
Amatour	M	L	VL	Anout	MH	ML	L	Atrine	M	ML	L
Baadarane	M	L	VL	Baaqline	MH	ML	L	Baasir	MH	ML	L
Barja	MH	ML	L	Barouk	M	ML	VL	Bater	M	L	VL
Batloun	M	L	L	Bayqoun	MH	L	L	Bchetfine	M	L	L
Beiteddine	M	ML	L	Benouati Ech-Chouf	M	ML	L	Berjein	MH	ML	L
Bireh et Mtalleh	M	L	VL	Biret El-Chouf	MH	L	L	Bkechtine Ouel Mchei	MH	ML	VL
Bkifa El-Chouf	MH	ML	L	Botme	M	L	VL	Bqaiaa Ech-Chouf	MH	L	L
Bsaba El-Chouf	MH	L	L	Chammis El-Chouf	MH	ML	L	Chehim	MH	ML	L
Chemaarine	MH	ML	L	Chourit	M	L	VL	Daher El-Chouf	MH	ML	L
Dalhoun	MH	ML	L	Damour	MH	ML	L	Daraya El-Chouf	MH	ML	VL
Deir El-Moukhalles	MH	L	VL	Deir Baba	M	ML	L	Deir Dourit	M	ML	L
Deir El-Qamar	MH	ML	L	Deir Kouche	M	ML	L	Dibbieh	MH	ML	L
Dmit	M	L	L	Fouara Jaafar	M	L	VL	Fraidis El-Chouf	M	L	VL
Ghabet Jaafar	M	L	L	Gharife	MH	ML	VL	Haret Jandal	M	L	L
Hasrout	MH	L	L	Jadra	H	ML	ML	Jahlieh	M	ML	L
Jbeih El-Chouf	M	L	VL	Jdeidet El-Chouf	MH	L	VL	Jiyeh	H	ML	ML
Jleilyeh	MH	L	L	Jmailiyeh	MH	ML	L	Joun	MH	ML	L
Kahlounie El-Chouf	MH	L	L	Ketermaya	MH	ML	L	Kfar Faqoud	M	ML	L
Kfar Hamal	M	ML	L	Kfar Him	MH	ML	L	Kfar Katra	M	ML	L
Kfar Niss	M	L	L	Kfar hay	M	L	VL	Kfarnabrakh	M	L	VL
Khirbet Bisri	MH	L	L	Knayse El-Chouf	M	ML	VL	Maaniyeh	MH	ML	L
Maasser Beiteddine	M	L	VL	Maasser El-Chouf	M	L	L	Majdalouna	MH	ML	L
Majdel El-Meouch	M	L	VL	Mazboud	MH	ML	L	Mazmoura	M	ML	L
Mazraat El Chouf	MH	L	L	Mazraat El Daher	MH	L	VL	Mazraat El-Douair	M	L	VL
Mechref	MH	ML	L	Mghairie	MH	ML	L	Mghayrie El-Chouf	MH	L	L
Moukhtara	M	L	VL	Mrusti	M	L	VL	Mtolle	MH	ML	L
Naameh	MH	ML	L	Niha El-Chouf	M	L	L	Ouadi Abou Youssef	MH	L	VL
Ouadi Ed-Deir	H	ML	L	Ouadi El-Sit	MH	L	VL	Ouadi bnehlay	M	ML	VL
Qraibeh	M	L	VL	Qreiaa	MH	L	VL	Rmayle El-Chouf	H	ML	L
Semqaniyeh	M	L	L	Sibline	H	ML	L	Sirjbeil	MH	L	L
Warhanieh	M	L	VL	Werdaniyeh	H	ML	L	Zaarourieh	MH	ML	L

## Baabda

Municipality	23-Dec	24-Dec	25-Dec	Municipality	23-Dec	24-Dec	25-Dec	Municipality	23-Dec	24-Dec	25-Dec
Abadiyeh	M	ML	L	Ain Mouaffaq	M	ML	L	Araiya	M	L	L
Arbaniyeh	M	ML	VL	Arsoun	M	ML	VL	Baabda	M	L	L
Baalchmey	M	ML	L	Bmaryam	M	L	VL	Bourj El-Brajneh	H	ML	L
Boutchay	M	L	L	Bsaba Baabda	M	L	L	Btekhney	M	ML	VL
Btibyat	M	ML	VL	Bzebdine	M	ML	VL	Chbeniyeh	M	L	VL
Chiyah	H	ML	L	Chmeisset Baabda	M	L	VL	Chouit	M	ML	VL
Deir El-harf	M	ML	VL	Deir Khouna	M	L	L	Dlaybeh	M	M	VL

Falougha	M	L	L	Furn El-Chebbak	MH	ML	ML	Hadath Beyrouth	M	ML	L
Halaliyeh Baabda	M	ML	VL	Hammana	M	L	VL	Haret El Sett	M	L	L
Haret Hamze	M	ML	VL	Haret Hreik	H	ML	L	Hasbaiya El-Metn	M	ML	VL
Jouar El-Hoz	M	ML	VL	Jouret Arsoun	M	ML	VL	Kfar Chima	M	ML	L
Kfar Selouane	M	L	VL	Khalouat Baabda	M	L	VL	Kneisset Baabda	M	M	VL
Laylakeh	MH	ML	L	Louayzeh Baabda	M	L	L	Merdache	M	L	L
Mzairaa Baabda	MH	ML	VL	Ouadi Chahrour El Ol	M	ML	L	Ouadi Chahrour El So	M	L	L
Qalaa Baabda	M	L	VL	Qhraybe Baabda	M	L	VL	Qobbayaa	M	L	VL
Qornayel	M	ML	VL	Qortada	MH	ML	VL	Qrayeh Baabda	M	L	VL
Qsaibeh Baabda	MH	M	VL	Qtale Baabda	M	ML	VL	Ras El Metn	M	ML	L
Ras El-Haref	M	L	VL	Rouayset El-Ballout	M	ML	VL	Salima Baabda	M	ML	VL
Tahouitat El Ghadir	H	ML	L	Tarchich	M	L	L	Zandouqa	MH	M	VL

## Aley

Municipality	23-Dec	24-Dec	25-Dec	Municipality	23-Dec	24-Dec	25-Dec	Municipality	23-Dec	24-Dec	25-Dec
Abey	M	ML	L	Aghmid	M	L	VL	Ain Dara	M	L	L
Ain Drafil	MH	L	VL	Ain El Halazoun	MH	L	L	Ain El-Rmmaneh	M	L	VL
Ain Jedideh	M	ML	L	Ain Ksour	M	L	L	Ain Onoub	M	L	L
Ain Traz	M	L	L	Ainab	M	ML	L	Aley	M	ML	L
Aramoun	M	ML	L	Aytat	M	L	L	Azouniyeh	M	L	VL
Baawerta	MH	ML	L	Badghan Oua Wadi Bad	M	L	VL	Bassatine	M	ML	L
Bayssour	MH	ML	L	Bchamoun	M	ML	L	Bdadoun	M	L	L
Behouara	MH	ML	L	Bennay	MH	ML	L	Bhamdoun El-Dayaa	M	ML	L
Bhamdoun El-Mhatta	M	ML	L	Bkhechthey	M	ML	L	Bleibel	M	L	L
Bmakine	M	L	L	Bmehray	M	ML	L	Bouzrid	M	L	VL
Bserrine	MH	L	L	Bsous	M	L	VL	Btalloun	M	ML	L
Btater	M	L	L	Chanay	M	L	L	Charoun	M	L	VL
Chartoun	M	L	VL	Chemlane	M	L	L	Choueifat El-Aamrous	MH	ML	L
Choueifat El-Oumara	MH	ML	L	Choueifat El-Quoubbe	MH	ML	L	Dakkoun	M	L	L
Deir Qoubel	M	L	L	Dfoun	MH	ML	L	Douair El Remmaneh	M	L	VL
Ghaboun	M	ML	L	Habramoun	MH	L	VL	Homs Oua Hama	M	L	L
Houmal	M	L	L	Jisr El Qadi	H	ML	L	Kehaleh	M	L	L
Keyfoun	MH	ML	L	Kfar Aamey	M	L	VL	Kommatyeh	M	L	L
Maasrati	MH	L	VL	Majdel Baana	M	L	VL	Mansourieh et Ain El	M	L	L
Mazraat El-Nahr	MH	L	VL	Mchakhte	M	L	VL	Mecherfeh	M	L	VL
Mejdaya	H	ML	L	Mrayjat	M	L	VL	Ramliyah	M	L	VL
Rechmaya	MH	L	VL	Rejmeh	M	ML	L	Remhala	MH	ML	L
Rouaysset El Neemane	M	L	VL	Saoufar	M	L	VL	Selfaya	M	L	VL
Sirhmoul	M	ML	L	Souq El Ghareb	M	L	L	Taazanieh	M	ML	L

## Kesrouane

Municipality	23-Dec	24-Dec	25-Dec	Municipality	23-Dec	24-Dec	25-Dec	Municipality	23-Dec	24-Dec	25-Dec
Achkout	M	ML	L	Adma Oua Dafneh	MH	ML	L	Ain Ed-Delbe Kesroua	M	L	VL
Ain El-Rihane	M	L	L	Aintoura Kesrouane	M	M	L	Ajaltoun	M	ML	L
Akaybeh Kesrouane	H	ML	ML	Aramoun Kesrouane	M	L	VL	Azra ouel Ozor	MH	ML	L
Ballouneh	M	L	L	Batha	M	L	VL	Bekaatat Achkout	M	ML	L
Bekaatat Kanaan	M	L	VL	Bizhel	M	ML	VL	Bouar	H	ML	L
Bqaatouta	M	L	VL	Bqaq Ed-Dine	H	ML	L	Bzommar	M	ML	L

Chahtoul	MH	ML	L	Chnaniir	M	L	VL	Chouan	M	L	VL
Daraya Kesrouane	M	L	L	Darououn	M	L	L	Deir Baqlouch	M	L	L
Dlebta	M	L	VL	Eghbeh	M	L	VL	Faraya	M	L	VL
Fatka	MH	ML	L	Feytroun	M	L	VL	Ghazir	M	L	L
Ghbaleh Kesrouane	MH	ML	L	Ghedrass	MH	L	L	Ghosta	M	L	VL
Ghyneh	H	ML	L	Harharaya w Kattine	MH	L	L	Harissa Kesrouane	M	L	L
Hayata	M	L	VL	Hosein	MH	ML	L	Hrajel	M	L	L
Jdeideh Ghazir	M	ML	L	Jeita	M	L	L	Jounieh Ghadir	MH	L	L
Jounieh Haret Sakhr	MH	ML	L	Jounieh Salel Alma	M	L	L	Jounieh Sarba	H	ML	ML
Jouret Bedrane	MH	ML	L	Jouret Mhad	MH	ML	VL	Jouret Termos	MH	ML	L
Kfar Debiane	M	L	VL	Kfar Tay Kesrouane	M	L	VL	Kfar Yassine	M	ML	ML
Kfour Kesrouane	M	L	L	Kharayeb Nahr Ibrahi	H	ML	L	Klayaat Kesrouane	M	L	VL
Maarab	M	L	VL	Maaysra Kesrouane	MH	ML	L	Mayrouba	M	L	L
Mazraat Er-Ras	M	ML	L	Mazraat Mrah El-Mir	M	L	VL	Mchaa El Ftouh	MH	L	L
Mchaa Faraya	MH	L	VL	Mchaa Kfar Dibiane	M	L	L	Mghaer	M	L	VL
Mradiyah	M	ML	VL	Nahr Ed-Dahab	MH	L	VL	Nammoura Kesrouane	MH	L	L
Ouata El Jaouz	MH	L	VL	Ouata Sillam	H	ML	ML	Raachine	M	ML	VL
Rayfoun	M	ML	L	Safra Kesrouane	H	ML	L	Shayle Kesrouane	M	L	L
Tabarja	MH	ML	L	Yahchouch	MH	L	VL	Zaaytreh	MH	ML	L
Zeytoun	MH	ML	L	Zouk Mikael	MH	ML	L	Zouk Mosbeh	M	M	L

## Baalbek\_Hermel

### Baalbek

Municipality	23-Dec	24-Dec	25-Dec	Municipality	23-Dec	24-Dec	25-Dec	Municipality	23-Dec	24-Dec	25-Dec
Aadous	H	M	M	Aamchki	MH	L	L	Aarsal	H	M	ML
Ain Baalbek	H	M	M	Ain Bourday	H	L	L	Ain El-Benye	MH	ML	L
Ain El-Jaouz Baalbek	MH	M	ML	Ain El-Siya Chadoura	M	L	L	Al Khodr Baalbek	H	M	L
Al Nabi Chit	H	M	L	Aynata Baalbek	M	L	L	Baalbek	H	M	ML
Bachwat	M	M	L	Barqa	M	M	VL	Bednayel Baalbak	H	ML	L
Beit Chama	H	M	L	Bijjaje	H	M	M	Bouday	MH	M	L
Brital	H	M	L	Btadi	M	M	L	Chaat	H	M	M
Chaibe	MH	L	L	Chlifa	MH	M	ML	Chmestar	H	M	L
Dar El-Oussa	M	ML	L	Deir El-Ahmar	M	M	L	Deir Mar Maroun Baal	M	MH	M
Douris	H	M	M	Fakiha	H	M	M	Hadath Baalbek	H	M	ML
Ham	MH	ML	L	Haour Taala	H	M	L	Hizzine	H	M	ML
Hlebta	H	M	L	Hosh Barada	H	M	M	Hosh El Dahab	H	M	M
Hosh El Snid	H	M	ML	Hosh El-Nabi	H	M	ML	Hosh El-Rafiq	H	M	ML
Hosh Tal Safiya	H	M	M	Hrebta	H	M	L	laat	H	M	M
Jebaa	H	M	ML	Jenta	MH	M	L	Kfar Dabach	H	M	ML
Kfar Dane	H	M	ML	Khraibeh El-Hermel	H	M	L	Khreibet Baalbek	MH	ML	L
Kneisset Baalbek	MH	M	ML	Labueh	H	M	M	Maarboun	MH	ML	L
Majdaloun	H	M	M	Maqneh	H	M	M	Mazraat Beit Mcheik	H	M	ML
Misraya	H	M	ML	Moqraq	H	M	M	Nabha El-Damdoum	H	ML	L
Nabi Chbay	MH	L	L	Nabi Osman	H	MH	M	Nahleh baalbek	MH	L	L
Ouadi El-Oss	H	M	L	Qaa Baayoun	M	M	M	Qaa Jouar Maqiye	M	M	M
Qaa Ouadi El-Khanzir	M	M	M	Qah Baalbek	M	MH	M	Qarha Baalbek	H	M	L



Qsarnaba	H	M	L	Ram Baalbek	M	ML	L	Ras Baalbek El Sahl	H	M	M
Ras Baalbek El-Charq	MH	M	M	Riha	MH	M	ML	Saaide	MH	M	ML
Sbouba	H	M	ML	Seriine El-Tahta	H	M	ML	Slouqi	E	ML	L
Taiba Baalbek	H	M	ML	Talia	H	M	ML	Taraiya	H	M	L
Temnin El Fawqa	H	M	L	Temnin El-Tahta	H	M	L	Tfail	H	M	M
Yahfoufa	MH	ML	L	Yammouneh	M	ML	L	Younine	H	M	ML
Zboud	H	M	ML								

## Hermel

Municipality	23-Dec	24-Dec	25-Dec	Municipality	23-Dec	24-Dec	25-Dec	Municipality	23-Dec	24-Dec	25-Dec
Charbine El-Hermel	M	M	L	Hermel Jbab	H	M	L	Hermel	M	M	M
Maaysra El-Hermel	H	M	L	Michaa Mrjihine	H	M	L	Ouadi Faara	H	M	L
Ras Baalbek - Ouadi	H	M	M	Ras Baalbek El Gharb	H	M	L	Zighrine	M	M	L

## Akkar

### Akkar

Municipality	23-Dec	24-Dec	25-Dec	Municipality	23-Dec	24-Dec	25-Dec	Municipality	23-Dec	24-Dec	25-Dec
Aain Tinta	M	M	ML	Aaiyat	M	M	ML	Aakkar El-Aatiqa	M	M	L
Aamar Akkar	H	M	ML	Aamar El Baykat	M	M	ML	Aamayer	M	ML	M
Aamriyet Akkar	M	M	M	Aandqet	M	ML	ML	Aarmeh	M	M	ML
Aarqa	H	M	ML	Aawaynat	M	ML	M	Aayoun Akkar	M	M	ML
Abboudiye	M	M	ML	Ain El-Zeit	M	M	M	Ain Yaaqoub	M	M	L
Akroum	M	ML	ML	Aridet Cheikh Zennad	H	M	ML	Baldeh w Mazraat Bal	M	M	ML
Barcha	M	M	ML	Bardeh	M	M	M	Bebnine	H	M	M
Beino	M	M	ML	Beit Ayoub	M	M	ML	Beit El-Haouch	H	M	M
Beit Mellat	M	M	ML	Beit Younes	M	M	L	Berbara Akkar	M	M	ML
Berqayel	H	M	M	Bezbina	M	M	L	Bireh Akkar	M	M	M
Borj	M	M	ML	Bqerezla	M	M	ML	Bzal	H	M	L
Chane	M	M	L	Chaqdouf	MH	M	L	Charbila	M	M	ML
Cheikh Mohammad	M	M	ML	Cheikh Taba Es-Sahl	MH	M	ML	Cheikh Taba	MH	M	ML
Cheikh Zennad	H	M	ML	Cheikhlar	M	ML	M	Chir Hmairine	MH	M	ML
Daghle	M	M	ML	Dahr Laissine	M	M	ML	Darine	MH	M	ML
Dawra	M	M	L	Dawsa w Baghdadi	M	M	ML	Dayret Nahr El-Kabir	M	ML	M
Deir Dalloum	H	M	M	Deir Jennine	M	M	ML	Denbou	M	M	L
Dibbbiyeh	M	M	M	Douair Aadwiyeh	M	M	ML	Fassikine	M	M	ML
Fnaydek	MH	M	L	Fraydes Akkar	M	M	ML	Ghazayle	M	M	ML
Habchit	MH	M	L	Hakour	M	M	ML	Halba	MH	M	ML
Haouchab	M	M	ML	Hayssat	MH	M	ML	Haytla	M	M	ML
Hayzouq	M	M	ML	Hedd	M	M	ML	Hmaira Akkar	MH	M	ML
Hmaiss Akkar	M	M	ML	Hnaider	M	ML	M	Hokr Ed-Dahri	H	M	ML
Hokr Etti	M	M	ML	Hokr Jouret Srar	MH	M	ML	Houaich	M	M	L
Hrar	H	M	L	Idbil	M	M	ML	Ilal	MH	M	ML
Janine	M	M	ML	Jdeidet El-Joumeh	MH	M	ML	Jdeidet El-Kaiteh	H	M	ML
Jebayel	M	M	ML	Kafr	H	ML	L	Kafr	M	M	M
Karm Asfour	M	M	ML	Kfar Melki Akkar	H	M	ML	Kfar Noun	M	M	ML
Kfarharra	M	M	ML	Khalsa	M	ML	M	Kharnoubet Akkar	M	M	ML

Khirbet Daoud Aakkar	M	M	ML	Khirbet El Remmane	M	ML	M	Khirbet Shar	M	M	ML
Khoreybet El-Jindi	M	M	ML	Khreibet Aakkar	M	M	ML	Kneisset Aakkar	H	M	ML
Kneisset Hnaider	M	ML	M	Knisse	M	M	ML	Kroum El-Aarab	M	M	ML
Kwachra	M	M	M	Kweykhath	M	M	ML	Machta Hammoud	M	ML	M
Majdala	H	M	M	Majdel Akkar	M	M	M	Mar Touma	H	M	M
Marlaya Melhem	H	M	ML	Mashha	M	M	ML	Massoudiye	H	M	ML
Mazraat Beit Ghattas	M	M	ML	Mazraat En-Nahriye	M	ML	M	Mechmech	H	M	L
Memneh	M	ML	L	Mhammara	H	M	M	Mighraq Aakkar	H	M	ML
Minyara	MH	M	ML	Moqayteh	H	M	ML	Mounjez	M	M	ML
Msalla	M	M	ML	Mzeihmeh	M	M	ML	Nfaisheh	M	M	ML
Noura Et-Tahta	M	M	ML	Ouadi El-Haour	M	M	ML	Ouadi El-Jamous	H	M	M
Ouyoun El-Ghizlane	H	M	M	Qaabarine	H	M	ML	Qabaait	H	M	L
Qachlaq	M	M	ML	Qantara Aakkar	MH	M	ML	Qarha Aakkar	M	ML	M
Qarqaf	H	M	M	Qboula	M	M	ML	Qleiaat Aakkar	H	M	ML
Qloud El-Baqie	M	M	ML	Qobaiyat Aakkar	M	M	L	Qobbat Chamrat	H	M	ML
Qorayat	M	ML	L	Qornet Aakkar	M	M	ML	Qsair Aakkar	M	M	M
Rahbe	M	M	ML	Rihaniyet Aakkar	M	M	ML	Rmah	M	M	M
Rmoul	H	M	ML	Saadine	MH	M	ML	Sadaqa	H	M	L
Saidnaya	M	M	ML	Sammouniye	MH	M	ML	Sayssoq	M	M	ML
Semmaqiye	H	M	ML	Semmaqli	H	M	ML	Sfinet El-Dreib	M	M	ML
Sfinet El-Qaitaa	H	M	ML	Sindyanet Zeidane	M	M	ML	Souaisset Aakkar	M	M	ML
Srar	M	M	ML	Tal Abbas El Gharby	MH	M	ML	Tal Abbas El-Chargy	MH	M	ML
Tal Biret	MH	M	ML	Tal Hmayra	MH	M	ML	Tal Maayan Tal Kiri	H	M	ML
Tal Sibel	H	M	ML	Tallet Chattaha	M	M	ML	Tikrit	M	M	ML
Tleil	M	M	ML	Tshea	M	M	L	Zawarib	M	M	ML
Zouq El Hosniyeh	M	M	ML	Zouq El-Haddara	H	M	M	Zouq El-Hbalsa	MH	M	ML
Zouq El-Moqachrine	H	M	M								

## Sud

### Sour

Municipality	23-Dec	24-Dec	25-Dec	Municipality	23-Dec	24-Dec	25-Dec	Municipality	23-Dec	24-Dec	25-Dec
Aaiyeh	M	M	L	Aalma El-Chaab	MH	M	L	Aaytit	M	ML	L
Abbassiyeh Sour	MH	ML	ML	Abou Chech	MH	M	L	Ain Abou Abdallah	MH	ML	ML
Ain Baal	MH	ML	L	Arzoun	M	L	L	Aziyeh	MH	M	L
Baflaya	M	ML	L	Barich	M	ML	L	Batouliyah	MH	ML	L
Bayad	M	M	L	Bazouriyeh	MH	ML	L	Bediass	M	ML	L
Bestiyat	M	L	L	Borj El Chemali	MH	M	L	Borj En-Naqoura	MH	M	L
Borj Rahhal	M	ML	ML	Boustane	M	M	L	Btaychiyeh	MH	M	L
Chaaitiye	M	M	L	Chameh	MH	M	L	Chehabiye	M	L	L
Chehour	M	L	L	Chihine	MH	M	L	Debaal Sour	M	ML	L
Deir Amess	M	ML	L	Deir Kifa	M	L	L	Deir Qanoun El-Ain	MH	M	L
Deir Qanoun El-Naher	M	L	L	Derdghaiya	M	L	L	Dhayra	MH	M	L
Halloussiyeh	M	L	L	Hamoul	MH	M	L	Hanaouey	M	M	L
Henniye	MH	M	ML	Hmairi Sour	M	L	L	Iskandarouna Sour	MH	M	L
Jbal El Botom	M	ML	L	Jebbin	M	M	L	Jennata	M	L	L
Jijim	MH	M	L	Jouaiya	M	ML	L	Kneisset Sour	M	M	L

Maarake	M	ML	L	Maaroub	M	L	L	Majadel	M	ML	L
Majdalzoun	MH	M	L	Mansouri Sour	MH	M	ML	Marnba	M	L	L
Marouahine	M	M	L	Mazraat El-Zalloutiy	M	M	L	Mazraat Mechref	M	ML	L
Mazraat Tayr Semhat	M	L	L	Mheilib	MH	ML	ML	Neffakhiyeh	M	L	L
Niha Sour	M	ML	L	Ouadi Jilo	M	ML	L	Qana	M	M	L
Qolaileh Sour	MH	M	L	Rechknany	M	ML	L	Rmadiyeh	M	M	ML
Selha Sour	M	L	L	Siddiqine	M	M	L	Sour	MH	M	ML
Srifa	M	L	L	Tayr Debbe	M	ML	L	Tayr Felsay	M	L	L
Tayr Harfa	MH	M	L	Touayri	M	ML	L	Toura	M	L	L
Yanouh Sour	M	ML	L	Yarine	M	M	L	Zebqine	MH	M	L

## Saida

Municipality	23-Dec	24-Dec	25-Dec	Municipality	23-Dec	24-Dec	25-Dec	Municipality	23-Dec	24-Dec	25-Dec
Aanqoun	M	ML	L	Aaqtanit	MH	ML	L	Aarab Ej-Jall	M	ML	L
Aarab Tabbaya	M	ML	L	Abra Saida	MH	ML	L	Adloun	MH	ML	L
Adousiyeh	H	L	L	Ain-El-Deleb	MH	ML	L	Arzai	M	L	L
Babliyah	H	L	L	Barty	M	ML	L	Bissariyeh	H	L	L
Bnaafoul	MH	ML	L	Bqosta	MH	ML	L	Bramiy	MH	ML	L
Daoudiyeh	H	L	L	Dareb El-Sim	MH	ML	L	Erkay	M	L	L
Ghassanieh	MH	L	L	Ghazieh	H	L	L	Hajjeh	M	L	L
Haret Saida	MH	ML	L	Hartiyeh	MH	ML	ML	Hlaliye Saida	MH	ML	L
Insariyat	H	L	L	Jazira Saida	MH	ML	ML	Kafar Bit	M	ML	L
Kaoutariyet El-Siyad	MH	L	L	Kfar Chellal	M	ML	L	Kfar Hatta Saida	M	ML	L
Kfar Milke Saida	M	ML	L	Khartoum	MH	L	L	Khaziz	M	L	L
Khirbet Ed-Douair Sa	H	L	L	Khirbet El-Bassal	MH	L	L	Khrayeb Saida	MH	L	L
Loubieh	H	L	L	Maghdouche	MH	ML	L	Majdelyoun	MH	ML	L
Matariyet El-Choumar	M	ML	ML	Matayriyeh	M	L	L	Mazraat 'Mseileh	MH	L	L
Mazraat 'Snaiber	MH	L	L	Mazraat Aarab Soukka	M	ML	L	Mazraat Deir Taqla	MH	L	L
Mazraat El Yahoudiye	MH	ML	L	Mazraat El-Housseini	H	L	L	Mazraat El-Mhaydaleh	MH	L	L
Mazraat El-Ouasta	MH	ML	L	Mazraat Jamjim	MH	L	L	Mazraat Kaoutariyet	MH	L	L
Mazraat Kfar Badda	MH	L	ML	Mazraat Oussamiyat	MH	L	L	Mazraat Sari	MH	L	ML
Mazraat Sinai	MH	L	L	Meemariyeh	MH	L	L	Merouaniyeh	MH	L	L
Miyeh ou Miyeh	MH	ML	L	Najjariyeh	H	L	L	Qaaqaiyat El-Snaouba	H	L	L
Qnarit	MH	ML	L	Qraiye Saida	MH	ML	L	Saida Ed-Dekermane	H	ML	L
Saida El-Oustani	H	ML	L	Saida El-Qadimeh	H	ML	L	Saida Kefraya	M	ML	L
Saksakiyeh	H	ML	L	Salhie Saida	MH	L	L	Sarafand	H	L	L
Sfenta	M	L	L	Tafahta	MH	L	L	Tanbourit	M	L	L
Tebna	H	L	L	Zaghdraiya	MH	L	L	Zeita	MH	ML	L
Zrariyeh	MH	L	L								

## Jezzine

Municipality	23-Dec	24-Dec	25-Dec	Municipality	23-Dec	24-Dec	25-Dec	Municipality	23-Dec	24-Dec	25-Dec
Ain El-Mir (El Estab	MH	ML	L	Anane	MH	ML	L	Aramta	M	L	L
Ariya	M	L	VL	Aychiyeh	M	L	L	Azour	M	L	VL
Baba	M	L	VL	Baysour Jezzine	MH	ML	L	Benoueteh Jezzine	MH	L	VL
Bhannine	M	L	VL	Bisri	MH	L	VL	Bkassine	MH	L	VL
Bouslaya	M	L	L	Btedine El-Leqech	M	L	VL	Chbail	M	L	VL
Choualiq Jezzine	MH	ML	L	Dahr Ed-Deir	M	ML	L	Deir El Qattine	M	L	L

Demachqiyeh	M	L	L	Ghabbatiyeh	MH	L	VL	Harf Jezzine	M	L	VL
Hassaniyeh	M	ML	L	Haytouleh	M	L	L	Haytura	M	L	L
Hidab	M	L	L	Homsiyeh	M	L	VL	Jabal Toura	M	L	L
Jarmaq	M	L	L	Jensnaya	MH	ML	L	Jernaya	M	ML	L
Jezzine	M	L	L	Karkha	MH	L	L	Kfar Falous	MH	ML	L
Kfar Houna	M	L	L	Kfar Jarrah	MH	ML	L	Lebaa	MH	ML	L
Louayzet Jezzine	M	L	L	Machmouche	M	L	VL	Mahmoudiyeh Jezzine	M	L	L
Maknounye Jezzine	M	L	L	Maraat Ouazaiyeh	M	L	L	Mazraat Daraya	M	L	L
Mazraat El-Aarqoub	M	L	L	Mazraat El-Mathane	MH	L	VL	Mazraat El-Rahbane	M	L	L
Mazraat Khallet Khaz	M	L	L	Mazraat Louzid (Loua	M	L	VL	Mazraat Qrouh	M	L	L
Mazraat Tamra	M	L	L	Mazraat Zighrine Jez	M	L	L	Mazraat	M	L	L
Mharbiyeh	MH	L	L	Midane Jezzine	M	L	VL	Mjeydel Jezzine	M	L	L
Mlikh	M	L	L	Mrach El-Hbasse	MH	ML	L	Ouadi Baanqoudaine	MH	ML	L
Ouadi El-Laymoun	M	ML	L	Ouardiyeh	MH	L	VL	Qabaa Jezzine	M	L	VL
Qatrani	M	L	L	Qaytouleh	M	L	L	Qtaleh Jezzine	M	L	VL
Rihane Jezzine	M	L	L	Rimat	M	ML	L	Roum	M	L	VL
Roummanet	M	L	L	Sabbah	MH	L	VL	Saydoun	M	L	L
Sfaray	MH	ML	L	Snaya	M	L	L	Sojoud	M	L	L
Srayri	M	L	L	Taaid	M	L	VL	Wadi Jezzine	MH	L	VL
Zhalta	M	L	L								

## Bekaa

### West Bekaa

Municipality	23-Dec	24-Dec	25-Dec	Municipality	23-Dec	24-Dec	25-Dec	Municipality	23-Dec	24-Dec	25-Dec
Aammiq BG	M	ML	L	Ain El Tineh BG	M	L	L	Ain Zebdeh	M	L	L
Ana	MH	ML	L	Aytanit	M	L	L	Baaloul BG	M	L	L
Bab Mareh	M	L	L	Chouberqiye Aammiq	MH	ML	L	Dakoue	M	ML	L
Deir Ain El-Jaouze	M	L	L	Deir Tahniche	MH	L	ML	Ghaza	M	ML	L
Harime El-Soughra	M	M	L	Hoch Harimeh	M	M	L	Jazira BG	M	M	L
Jib Jennine	M	L	L	Kamed-El-Laouz	M	ML	L	Kefraya BG	MH	ML	L
Khiara El Atika	MH	M	L	Khiara	M	ML	L	Khirbet Qanafar	M	L	L
Lala	M	L	L	Lebbaya BG	M	L	VL	Loussa	M	L	L
Machghara	M	L	L	Manara (Hammar) BG	M	ML	L	Mansoura BG	MH	ML	L
Marej BG	M	M	L	Maydoun	M	L	L	Ouaqf BG	M	M	L
Qaraaoun	M	L	L	Qelya	M	L	L	Raouda (Istabel)	M	M	L
Saghbine	M	L	L	Sohmor	M	L	VL	Soltan Yacoub el Ara	M	ML	L
Souairy	M	ML	L	Sultan Yaacoub	M	ML	L	Tal Znoun	MH	L	L
Yehmor BG	M	L	L	Zilaya	M	L	L				

### Zahle

Municipality	23-Dec	24-Dec	25-Dec	Municipality	23-Dec	24-Dec	25-Dec	Municipality	23-Dec	24-Dec	25-Dec
Aanjar (Haouch Mouss	M	ML	L	Ablah	H	M	L	Ain Kfarzabad	M	M	L
Ali-El-Nahri	H	M	ML	Bar Elias	M	M	L	Bouarej	M	ML	L
Cheberqiyet Tabet	M	M	L	Chtaura	M	M	ML	Deir El Ghazal	M	M	L
Delhamiyet Zahle	M	M	L	Ferzol	M	M	L	Haouch El-Ghanam	H	M	ML
Haouch Es-Siyadeh	M	M	L	Haouch Hala	MH	M	L	Haouch Mandara	M	M	L

Haouch Qayssar	M	M	L	Hezerta	M	L	L	Hosh Moussa	M	M	ML
Jdita	M	M	L	Kfarzabad	M	M	L	Ksara	M	M	L
Majdel Aanjar	M	M	L	Makssi	M	M	ML	Massa	H	M	L
Mazraat Er-Remtaniye	M	M	L	Mrayjat Zahle	M	ML	L	Mzaraa Zahle	M	M	L
Nabi Ayla	MH	M	L	Nasriyet Rizk	H	M	ML	Nasriyet Zahle	M	M	L
Niha Zahle	MH	ML	L	Ouadi Ed-Deloum	M	L	L	Ouadi El-Arayech	M	ML	L
Qaa El Rim	MH	L	L	Qab Elias	M	M	L	Qousaya	M	M	L
Rhit	MH	M	L	Riyak	H	M	ML	Saadnayel	M	M	L
Taal El-Akhdar	M	M	L	Taalbeya	M	M	L	Taanayel	M	M	L
Talamara	H	M	ML	Tcheflik Edde Haouch	M	M	ML	Tcheflik Qiqano	M	M	L
Terbol Zahle	M	M	ML	Touaite Zahle	M	L	L	Zahle Aradi	M	M	L
Zahle El-Berbara	M	ML	L	Zahle El-Maallaqa	M	M	L	Zahle El-Midane	M	ML	L
Zahle Er-Rassiye	M	ML	L	Zahle Haouch El-Ouma	M	M	L	Zahle Haouch El-Ouma	M	M	L
Zahle Haouch Ez-Zara	M	ML	L	Zahle Maalqa Aradi	M	M	L	Zahle Mar Antonios	M	ML	L
Zahle Mar Elias	M	ML	L	Zahle Mar Gerios	M	ML	L	Zahle Saydet En-Naja	M	ML	L
Zebdoul	M	M	L								

## Rachaiya

Municipality	23-Dec	24-Dec	25-Dec	Municipality	23-Dec	24-Dec	25-Dec	Municipality	23-Dec	24-Dec	25-Dec
Ain Arab Rachaiya	M	L	L	Ain Ata	MH	ML	L	Ain Harche	M	L	L
Aqabe Rachaya	M	L	L	Ayha	MH	ML	L	Ayta El Fokhar	M	ML	L
Bakifa Rachaya	M	L	L	Bakka	M	ML	L	Beit Lahya	M	L	L
Bireh Rachaiya	M	ML	L	Daher El Ahmar	M	L	L	Deir El-Achayer	MH	M	ML
Heloua Rachaiya	M	M	ML	Hoch El Qannabeh Rac	M	ML	VL	Kaoukaba Bou Arab	M	L	L
Kfar Danis	M	L	L	Kfar Mechki	M	L	L	Kfar Qouq	MH	ML	L
Kherbet Rouha	M	L	L	Majdel Balhiss	M	L	L	Mdoukha	M	ML	L
Mhaydseh Rachaiya	M	L	L	Nabi Safa	M	L	L	Rachaiya	MH	L	L
Rafid Rachaiya	M	L	L	Selsata (Mazraat Dei	H	M	L	Tannoura	M	L	L
Yanta	M	M	L								

## Beyrouth

### Beyrouth

Municipality	23-Dec	24-Dec	25-Dec	Municipality	23-Dec	24-Dec	25-Dec	Municipality	23-Dec	24-Dec	25-Dec
Achrafieh	M	ML	ML	Ain el-Mreisse	H	ML	L	Bachoura	H	ML	L
Beirut Central Distr	H	M	L	Marfai	MH	ML	L	Mazraa	H	ML	L
Medaouar	MH	ML	ML	Minet el-Hosn	H	ML	L	Mwssaitbeh	H	ML	L
Ras Beirut	H	ML	L	Rmeil	M	L	ML	Saifi	H	ML	L
Zqaq el-Blat	H	ML	L								