

Lebanon Fire Risk Bulletin



CIVIL DEDEFENCE

Refer to cadast table condition.

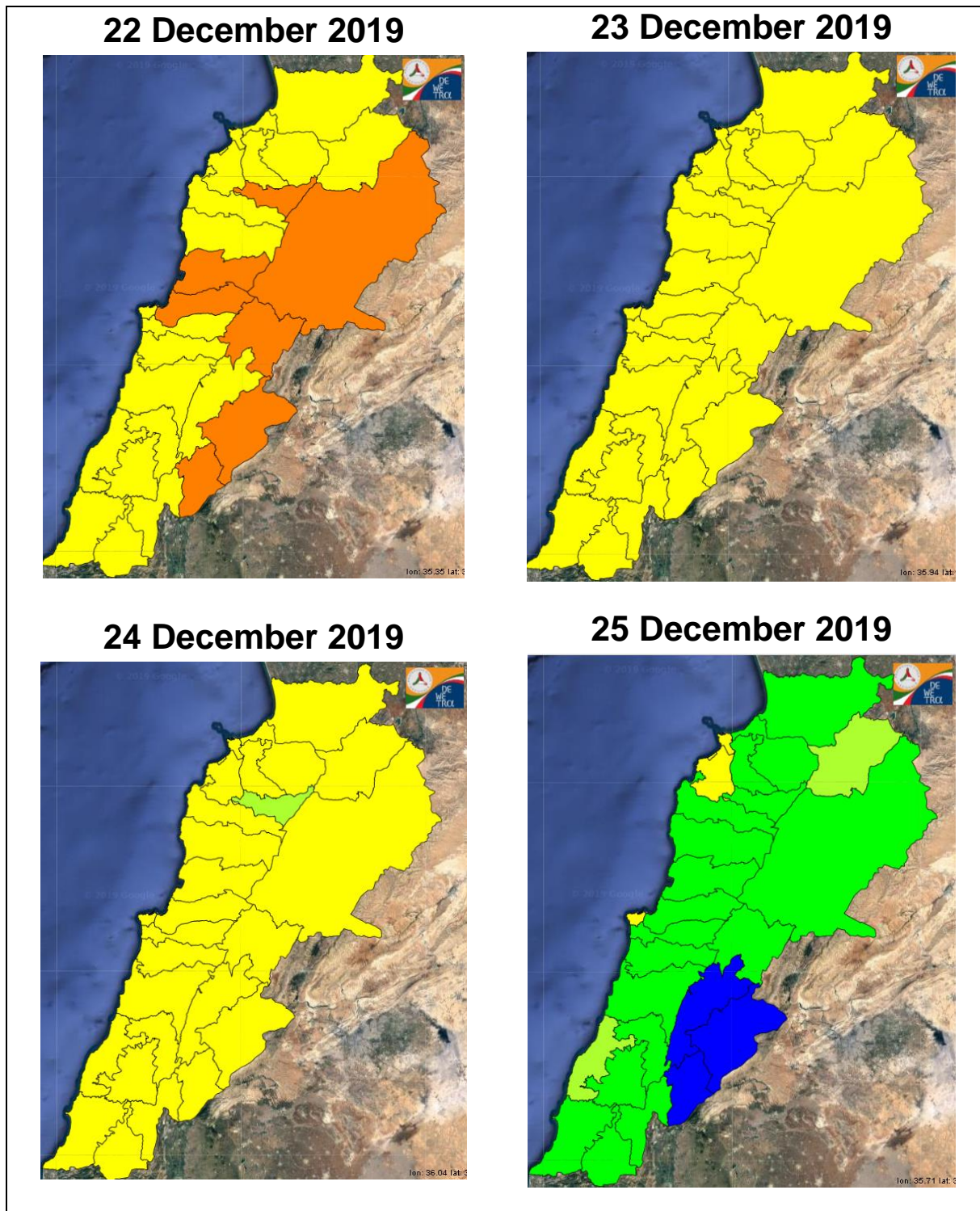
Please note that the indicated temperature is at 2 meters height from the ground.

General description of potential fire risk situation

Symbol	Level of risk	Meaning and actions
VL	Very low	Very low fire risk. Controlled burning operations can be hardly executed due to high fuel moisture content. Normally wildfires self-extinguish.
L	Low	Low fire risk. Controlled burning operations can be executed with a reasonable degree of safety.
ML	Medium low	Medium-low fire risk. Controlled burning operations can be executed in safety conditions. All the fires need to be extinguished.
M	Medium	Medium fire risk. Controlled burning operations would be avoided. All the fires need to be very well extinguished.
M	Medium high	Controlled burning is not recommended. Open flame will start fires. Cured grasslands and forest litter will burn readily. Spread is moderate in forests and fast in exposed areas. Patrolling and monitoring is suggested. Fight fires with direct attack and all available resources.
H	High	Ignition can occur easily with fast spread in grass, shrubs and forests. Fires will be very hot with crowning and short to medium spotting. Direct attack on the head may not be possible requiring indirect methods on flanks. Patrolling and monitoring the territory is highly suggested.
E	Extreme	Ignition can occur also from sparks. Fires will be extremely hot with fast rate of spread. Control may not be possible during day due to long range spotting and crowning. Suppression forces should limit efforts to limiting lateral spread. Damage potential total. Patrolling and monitoring the territory is highly suggested.

Beirut, 23 December 2019

FIRE RISK INDEX

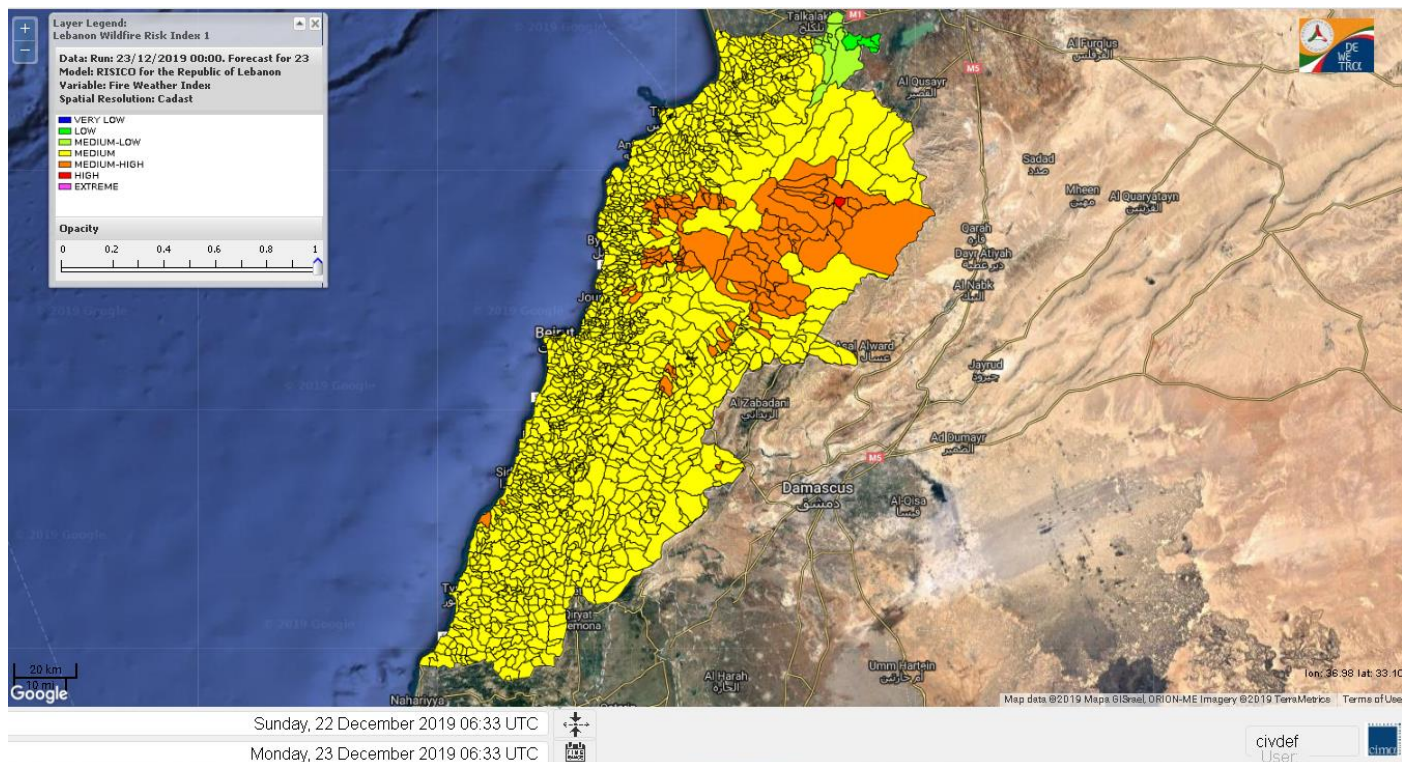


Layer Legend:
Lebanon Wildfire Risk Index 1

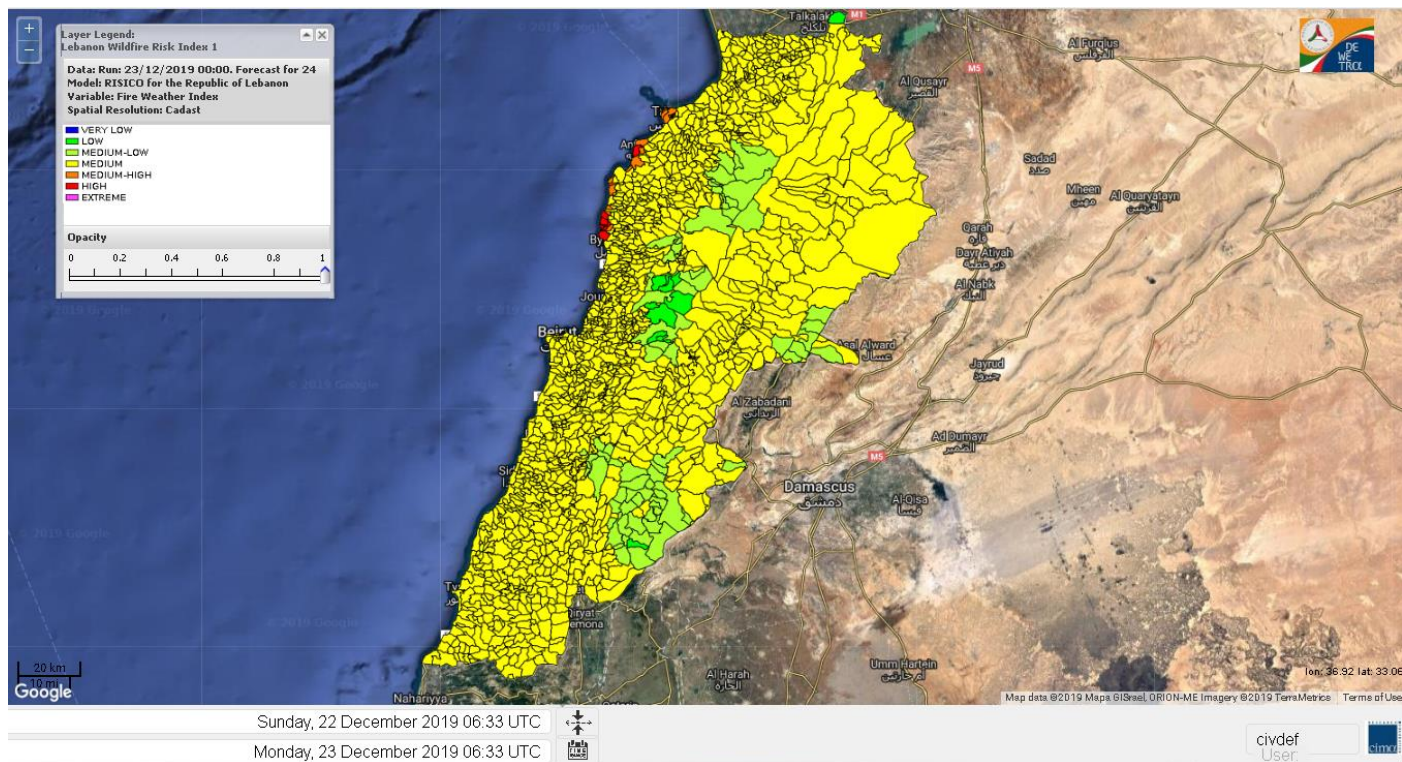
Data: Run: 23/12/2019 00:00. Forecast for 23
Model: RISICO for the Republic of Lebanon
Variable: Fire Weather Index
Spatial Resolution: Caza

- VERY LOW
- LOW
- MEDIUM-LOW
- MEDIUM
- MEDIUM-HIGH
- HIGH
- EXTREME

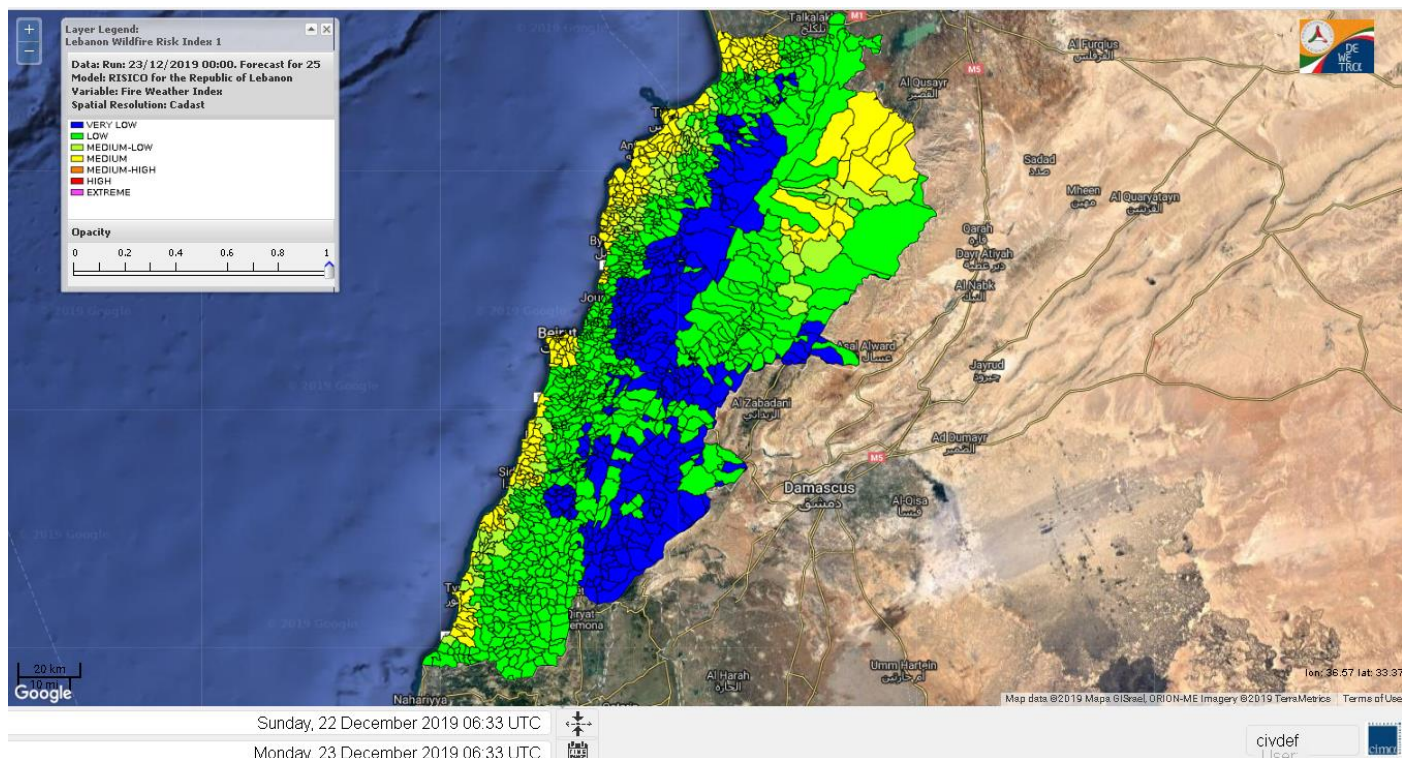
Lebanon for 23 December 2019



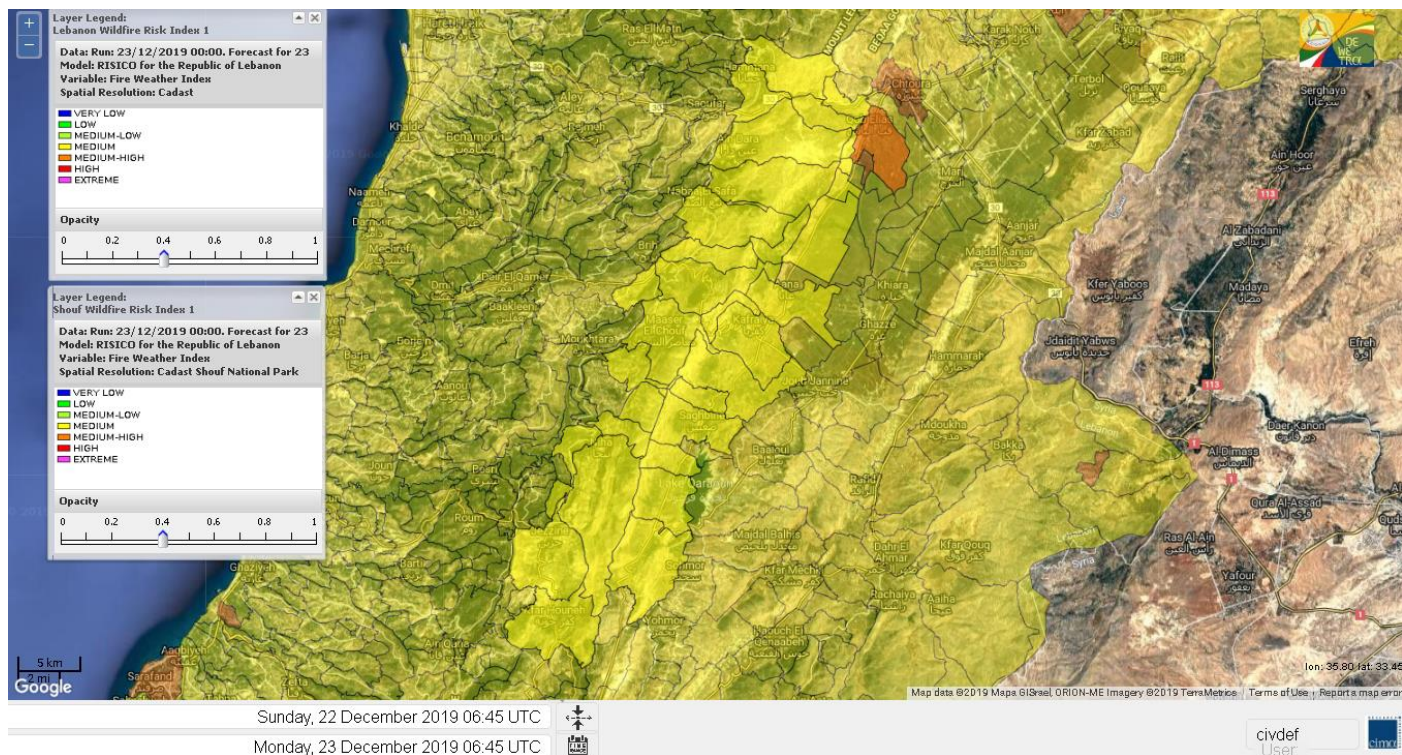
Lebanon for 24 December 2019



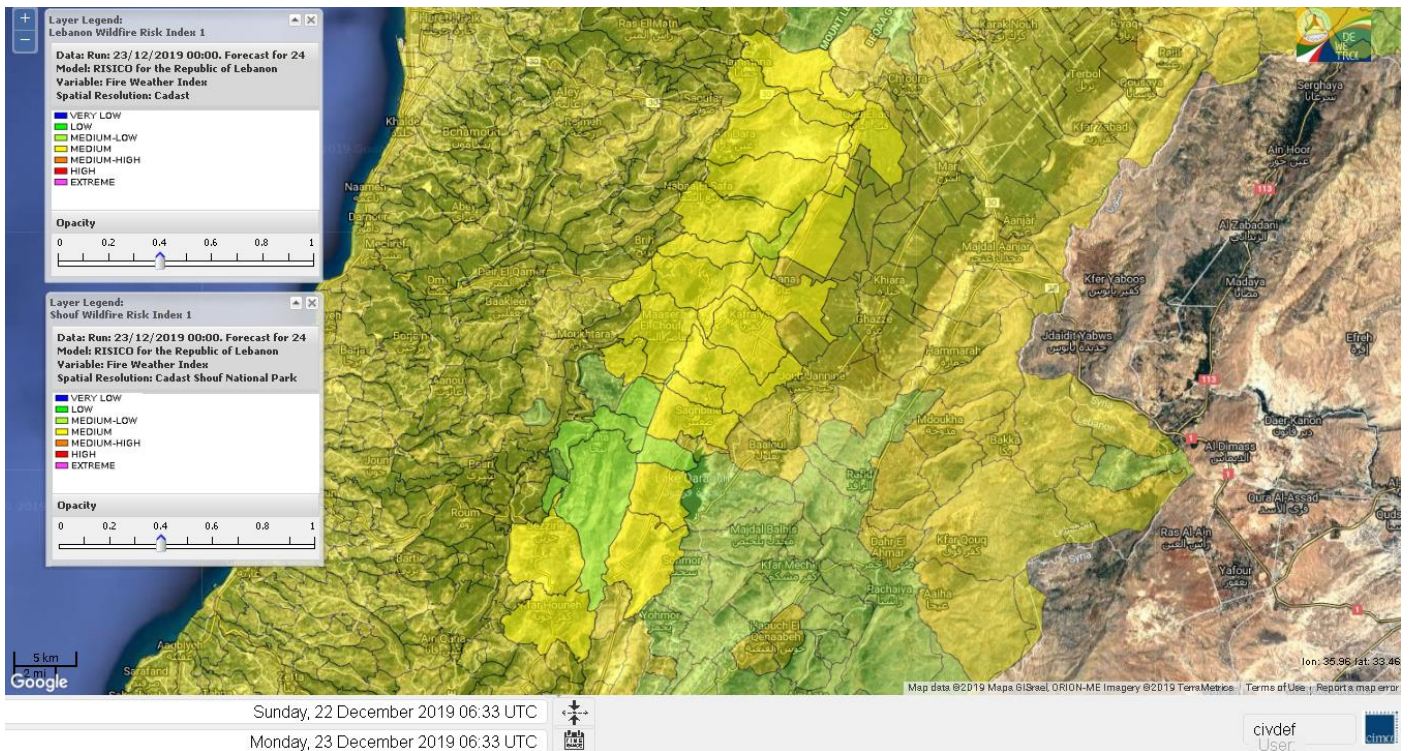
Lebanon for 25 December 2019



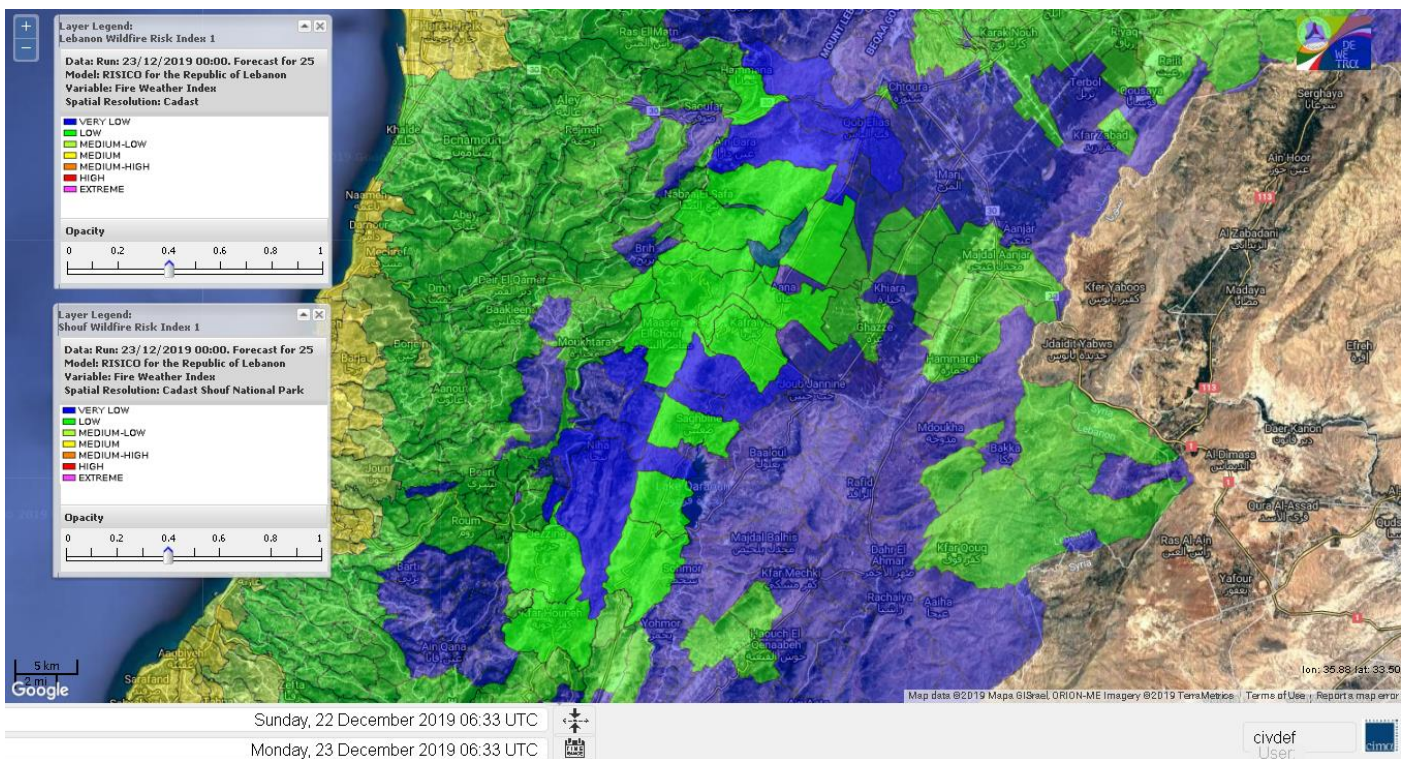
Shouf Biosphere Reserve Forecast for 23 December 2019



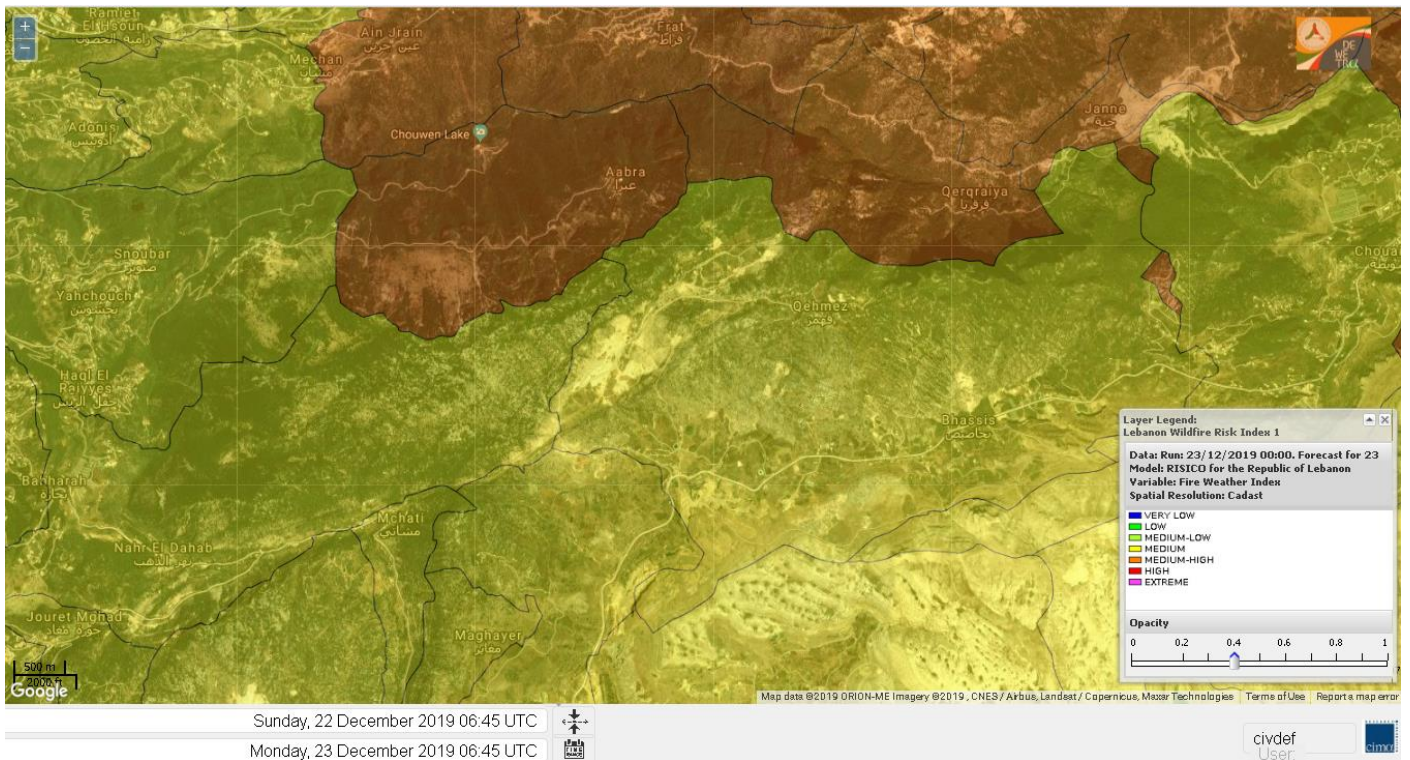
Shouf Biosphere Reserve Forecast for 24 December 2019



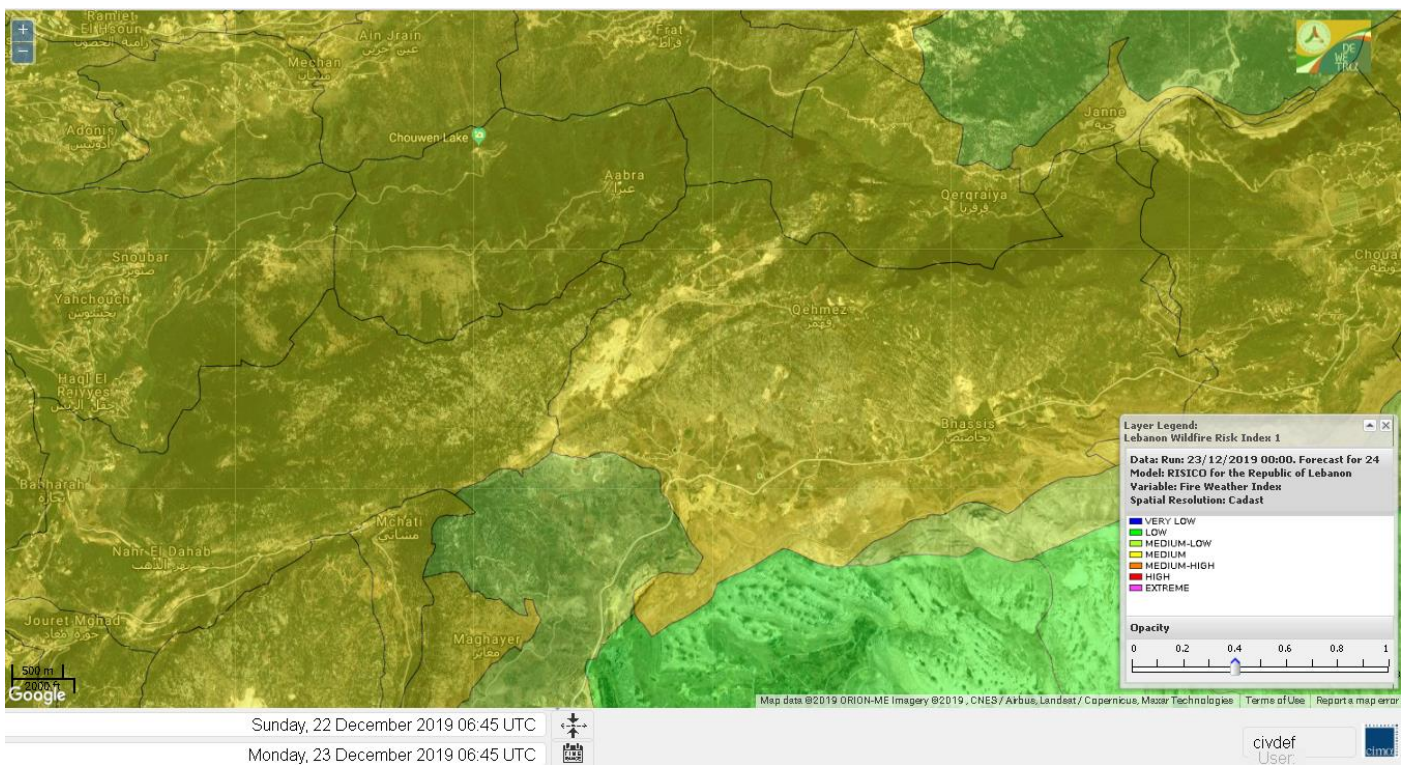
Shouf Biosphere Reserve Forecast for 25 December 2019



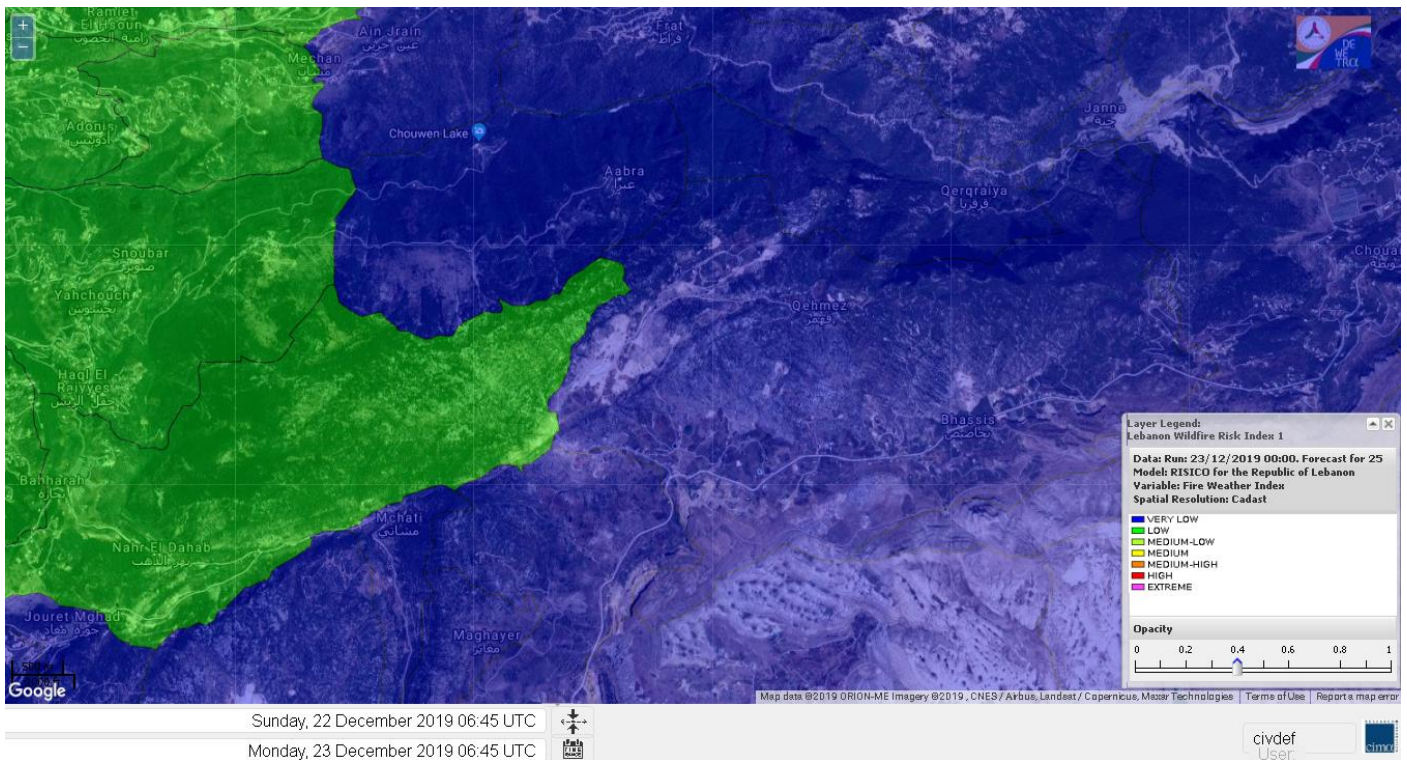
Jabal Moussa Reserve Forecast for 23 December 2019



Jabal Moussa Reserve Forecast for 24 December 2019



Jabal Moussa Reserve Forecast for 25 December 2019

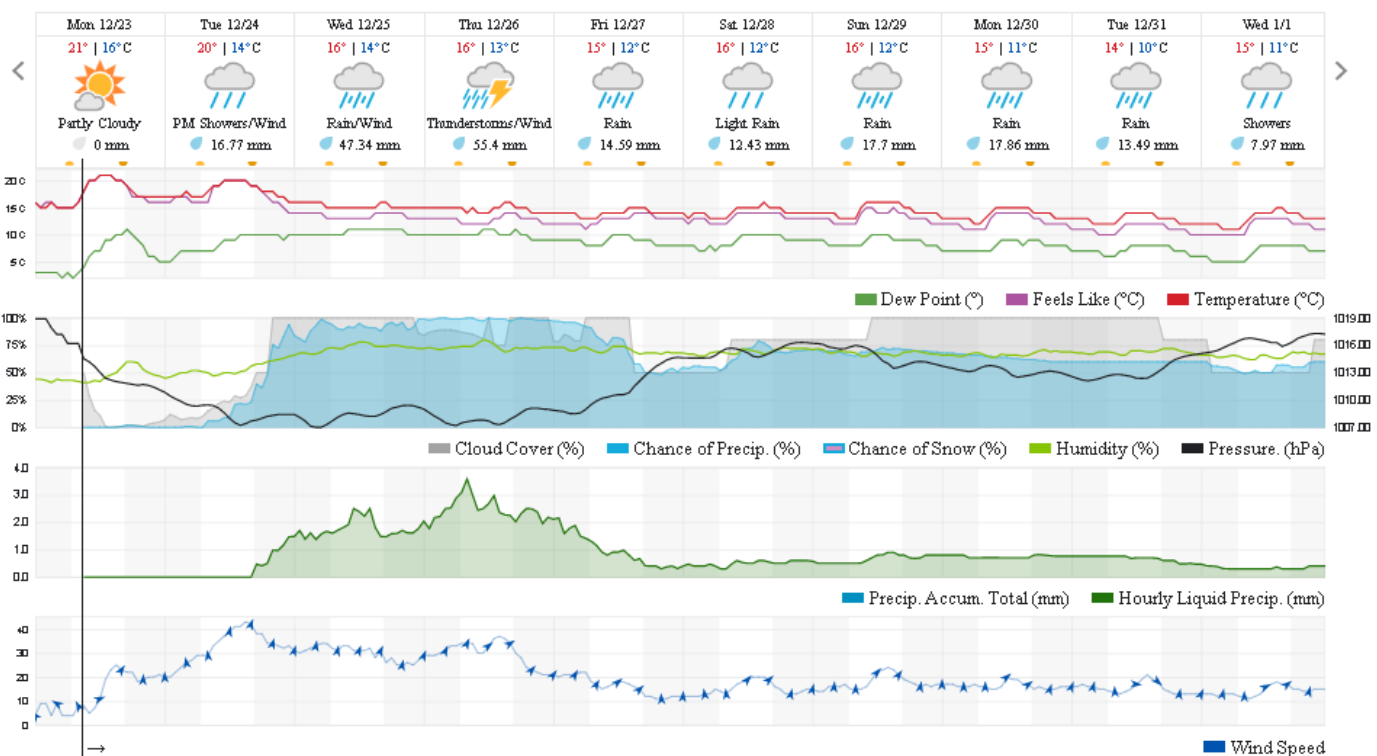


Beirut, Beirut Governorate, Lebanon 10-Day Weather Forecast

18° ACHRAFIEH,RIZK STATION | CHANGE

TODAY HOURLY 10-DAY CALENDAR HISTORY WUNDERMAP

Customize



Nord

Koura

Municipality	23-Dec	24-Dec	25-Dec	Municipality	23-Dec	24-Dec	25-Dec	Municipality	23-Dec	24-Dec	25-Dec
Aaba	M	M	M	Afsaddiq	M	M	ML	Ain Ekriane	M	M	ML
Amioun	M	M	ML	Anfeh	M	H	M	Badbhoun	M	M	M
Barghoun	M	M	M	Barsa	M	M	M	Batroumine	M	M	M
Bdebba	M	M	M	Bechmizine	M	M	ML	Bednayet El-Koura	M	M	M
Bhabbouch El-Koura	M	M	ML	Bkeftine	M	M	M	Bnehran	M	M	ML
Bqaiiaa El-Koura	M	M	M	Bsarma	M	M	ML	Btaaboura	M	M	M
Bttram	M	M	ML	Btouratij	M	M	M	Bziza	M	M	ML
Dar Beechtar	M	M	ML	Dar Chmezzine	M	M	ML	Deddeh	M	M	M
Deir El-Balamand	M	M	M	Fih	M	M	M	Hraiche	M	MH	M
Ijdaabrine	M	M	M	Kaftoun	M	M	M	Kefraya El-Koura	M	M	M
Kfarakka	M	M	ML	Kfarhata	M	M	M	Kfarhazir	M	M	M
Kfarkahel	M	M	M	Kfarsaroun	M	M	ML	Kosba	M	M	ML
Mejdel el-Koura	M	M	ML	Nakhle	M	M	M	Qalhat	M	M	M
Ras Masqa	M	M	M	Rechdibbine	M	M	L	Zakroun	M	MH	M
Zgharta El-Mtaouile	M	M	ML								

Bcharre

Municipality	23-Dec	24-Dec	25-Dec	Municipality	23-Dec	24-Dec	25-Dec	Municipality	23-Dec	24-Dec	25-Dec
Aabdine	M	M	L	Bane	M	ML	VL	Barhelioun	M	M	L
Bazooune	MH	ML	VL	Becharre	M	ML	VL	Beit Menzer	M	M	L
Billa	M	M	L	Blaouza	M	M	L	Bqaa Kafra	MH	ML	VL
Bqerqacha	MH	ML	VL	Breissat	MH	M	VL	Dimane	MH	M	L
Hadath El Jobbeh	MH	M	L	Hadchit	M	ML	VL	Hasroun	MH	M	VL
Mazraat Aassaf	M	M	L	Mazraat Bani Saab	MH	M	L	Mchaa El-Jobbeh	M	ML	VL
Metrit	M	M	ML	Moghr El-Ahoual	M	M	L	Ouadi Qannoubine	MH	M	L
Qanat	M	M	L	Qnayouer	M	M	L	Tourza	M	M	L

Batroun

Municipality	23-Dec	24-Dec	25-Dec	Municipality	23-Dec	24-Dec	25-Dec	Municipality	23-Dec	24-Dec	25-Dec
Aabrine	M	M	M	Aalali	M	M	L	Aartziz	M	M	M
Abdelli	M	M	ML	Ajdabra	M	M	M	Assia	MH	M	L
Basbina	M	M	M	Batroun	M	MH	M	Bcheleh	MH	M	L
Bechtoudar	MH	M	L	Beit Chlala	MH	M	L	Beit Kassab	M	M	ML
Bijdarfil	M	M	M	Bqesmaya	M	M	M	Chatine	MH	M	VL
Chebtin	M	M	ML	Chekka	M	MH	M	Daael	M	M	L
Dahr Abi Yaghi	M	M	ML	Daraya El-Batroun	M	M	M	Deir Billa	M	M	ML
Deir Kfifane	M	M	M	Deir Mar Youhanna EL	MH	M	L	Deir Mar Youssef Jra	M	M	ML
Douma	MH	M	L	Douq	M	M	ML	Edeh El-Batroun	M	M	M
Ftihat El-Batroun	M	M	ML	Ghouma	M	M	ML	Hadtoun	MH	M	L
Hamat	M	M	M	Harbouna	M	M	M	Hardine	MH	M	L
Helta	M	M	L	Hery	M	MH	M	Jebbla	M	M	ML
Jrabta El-Batroun	M	M	ML	Jrane El-Batroun	M	M	M	Kfar Aabida	M	M	M
Kfar Halda	MH	M	L	Kfarb Shlaimane	MH	M	L	Kfarhatna	M	M	M
Kfarhay	M	M	M	Kfarhelos	M	M	M	Kfifane	M	M	M

Kfour El Arabi	MH	M	L	Koubba	M	MH	M	Kour	M	M	M
Mar Mama	M	M	ML	Masrah	M	M	ML	Mehmarch	M	M	L
Mrah Chdid	M	M	M	Mrah El Ziyat	M	M	M	Mrah El-Hajj	MH	M	L
Nahle El-Batroun	MH	M	L	Niha El-Batroun	MH	M	VL	Ouahj El-Hajjar	M	M	M
Ouata Houb	MH	M	VL	Qatnaaoun	M	M	M	Racha	M	M	L
Rachana	M	M	M	Rachkida	M	M	M	Ram El-Batroun	MH	M	L
Ras Nahhach	M	M	M	Selaata	M	MH	M	Sghar	M	M	ML
Smar Jbayl	M	M	ML	Sourat El-Batroun	M	M	ML	Tannourine El-Faouqa	M	ML	VL
Tannourine Et-Tahta	MH	M	VL	Thoum	M	MH	M	Toula El-Batroun	M	M	ML
Zan	M	M	ML								

Zgharta

Municipality	23-Dec	24-Dec	25-Dec	Municipality	23-Dec	24-Dec	25-Dec	Municipality	23-Dec	24-Dec	25-Dec
Aachach	M	M	L	Aalma	M	M	L	Aarde	M	M	ML
Aintourine	M	M	L	Arabet Qozhaya	M	M	L	Arde	M	M	ML
Arjis	M	M	L	Asnoun	M	M	ML	Ayto	M	M	L
Basloukit	M	ML	VL	Bchannine	M	M	ML	Besebeel	M	M	ML
Bhairret Toula	M	ML	VL	Bnachee	M	M	L	Boussit	M	M	L
Danha	M	M	L	Daraiya Zgharta	M	M	L	Deir Jdeide	M	M	ML
Ehden	M	ML	VL	Halan	M	M	L	Hariq Zgharta	M	M	ML
Houakir	M	M	ML	Hraiqis	M	M	M	laal	M	M	L
Ijbaa	M	M	VL	Karm Saddeh	M	M	L	Kfarchakhna	M	M	ML
Kfardlaqous	M	M	ML	Kfarfou	M	M	VL	Kfarhata Zgharta	M	M	ML
Kfarhoura	M	M	ML	Kfarsghab	M	ML	VL	Kfaryachit	M	M	ML
Kfarzaina	M	M	ML	Khaldiye	M	M	ML	Mazraat Ajbeaa	M	M	ML
Mazraat Et-Teffah	M	M	L	Mazraat Jneid	M	M	ML	Mejdlaya Zgharta	M	M	ML
Merh Kfarsghab	M	M	L	Miryata	M	M	L	Miziara	M	M	L
Mzraat Kefraya	M	M	L	Qorah Bach	M	M	ML	Rachiine	M	M	ML
Ras Kifa	M	M	L	Sakhra	M	M	ML	Sebhel Zgharta	M	M	L
Serhel	M	M	L	Tallet Zgharta	M	M	ML	Toula Zgharta	M	M	L
Zgharta	M	M	ML								

Minieh-Denniye

Municipality	23-Dec	24-Dec	25-Dec	Municipality	23-Dec	24-Dec	25-Dec	Municipality	23-Dec	24-Dec	25-Dec
Aasaymout	M	M	L	Aaymar	M	M	VL	Aazki	M	M	VL
Ain El-Tineh-Miniyeh	M	M	VL	Assoun	M	M	VL	Bakhaaoun	M	M	VL
Bchennata	M	ML	VL	Bechehhara	M	M	M	Beddawi	M	M	M
Behouaita	M	M	L	Beit El Foqss	M	M	VL	Beit Haouik	M	M	L
Beit Zoud	M	M	VL	Bekaasafrine	M	ML	VL	Borj El Yahoudiyeh	M	M	M
Bqarsouna	M	M	L	Btermaz	M	M	VL	Debaael	M	M	L
Deir Ammar	M	M	M	Deir Nbouh	M	M	ML	Haouaret-Miniyeh	M	M	L
Haql el Azimeh	M	M	VL	Harf El Siyad	M	M	VL	Hazmiye-Miniyeh	M	M	VL
Izal	M	M	L	Jarjour	M	M	M	Jayroun	M	M	VL
Kahf El-Malloul	M	M	ML	Karm El-Moher	M	M	VL	Kfar Binine	M	M	VL
Kfarchalane	M	M	VL	Kfarhabou	M	M	L	Kharroub-Miniyeh	M	M	VL
Mazraat El-Kreme	M	M	L	Mazraat Ketrane	M	M	VL	Merkebtta	M	M	ML
Minyeh	M	M	M	Mrah El Sfirat	M	M	VL	Mrah Sraj	M	M	VL
Mrebbine	M	M	VL	Nabi Youcheaa	M	M	M	Nemrine	M	M	VL

Qarhaiya	M	M	VL	Qarne	M	M	VL	Qarsita	M	M	L
Qattineh-Miniyeh	M	M	VL	Qemmamine	M	M	VL	Qraine	M	M	VL
Raouda-Aadoua	M	M	L	Rihaniyet-Miniyeh	M	M	L	Sfireh	M	M	L
Sir Ed-Danniyeh	M	M	VL	Tarane	M	M	VL	Terbol-Miniyeh	M	M	ML
Zaghartaghriine	M	M	ML	Zouq Bhannine	M	M	ML				

Nabatiye

Nabatiye

Municipality	23-Dec	24-Dec	25-Dec	Municipality	23-Dec	24-Dec	25-Dec	Municipality	23-Dec	24-Dec	25-Dec
Aabba	M	M	L	Aazzi	M	M	L	Adchit El-Chqif	M	M	L
Ain Bou Swar	M	M	VL	Ain Kana	M	M	VL	Ali El-Taher	M	M	L
Ansar	M	M	ML	Arab Salim	M	M	L	Arnoun	M	M	L
Bfaroue	M	M	L	Breyqaah	M	M	L	Charqiyeh	M	M	L
Choukine	M	M	L	Deir El Zahrani	M	M	L	Doueir El-Nabatiyeh	M	M	L
Habbouch El-Nabatiye	M	M	L	Hamra El-Nabatiyeh	M	M	L	Harouf El-Nabatiyeh	M	M	L
Hmaile	M	M	L	Houmin El Faouqa	M	M	L	Houmin El Tahta	M	M	L
Jarjough	M	M	L	Jbaah El-Nabatiyeh	M	M	VL	Jebchit	M	M	L
Kfar Djal El-Nabatiy	M	M	L	Kfar Remmane	M	M	L	Kfar Sir	M	M	L
Kfar Tebnit	M	M	L	Kfarfila	M	M	VL	Kfour El-Nabatieh	M	M	L
Mayfadoun	M	M	L	Mazraat Bsaffour	M	M	L	Mazraat Chalbaal	M	M	L
Mazraat Dmoul	M	M	L	Mazraat El Khreibeh	M	M	L	Mazraat El-Bayad El-	M	M	L
Mazraat Kfarjaouz	M	M	L	Mazraat Qalaat Meiss	M	M	L	Nabatiyeh El-Fawka	M	M	L
Nabatiyeh Et-Tahta	M	M	L	Namiriyeh	M	M	L	Qaaqaaiyet El Jisr	M	M	L
Qossaibeh El-Nabatiy	M	M	L	Roumine	M	M	L	Sarba El-Nabatieh	M	M	L
Sir El-Gharbiyeh	M	M	L	Toul	M	M	L	Yehmor El-Nabatiyeh	M	M	L
Zaoutar El Charkiyeh	M	M	L	Zaoutar El-Gharbiyeh	M	M	L	Zebdine El-Nabatiyeh	M	M	L
Zefta	M	M	L								

Hasbaiya

Municipality	23-Dec	24-Dec	25-Dec	Municipality	23-Dec	24-Dec	25-Dec	Municipality	23-Dec	24-Dec	25-Dec
Ain Jarfa	M	ML	VL	Abou Qamha	M	M	VL	Ain Qania	M	ML	VL
Bourghos	M	M	VL	Chebaa	M	ML	VL	Chouaya Hasbaya	M	L	VL
Dellafeh	M	M	VL	Fardiss Hasbaiya	M	M	VL	Hasbaya	M	ML	VL
Hbariyeh	M	ML	VL	Kaoukaba Hasbaiya	M	M	VL	Kfar Chouba	M	M	VL
Kfar Hamam	M	M	VL	Kfeir El-Zait	M	ML	VL	Khalwat Hasbaya	M	ML	VL
Khreibet Hasbaiya	M	M	VL	Majdiyyeh Hasbaiya	M	M	VL	Marj Ez-Zhour (Haouc	M	M	L
Meri	M	M	VL	Mimass	M	ML	VL	Rachaiya El-Fokhar	M	M	VL
Salaiyeb	M	M	VL								

Marjayoun

Municipality	23-Dec	24-Dec	25-Dec	Municipality	23-Dec	24-Dec	25-Dec	Municipality	23-Dec	24-Dec	25-Dec
Aalmane Marjaayoun	M	M	L	Aamra	M	M	VL	Adayseh Marjaayoun	M	M	L
Adchit El-Koussair	M	M	L	Ain Aarab Marjaayoun	M	M	VL	Bani Haiyann	M	M	L
Blatt Marjaayoun	M	M	VL	Blida	M	M	L	Borj El-Moulouk	M	M	L
Boueyda Marjaayoun	M	M	L	Deir Mimass	M	M	L	Deir Siriane	M	M	L
Dibbine	M	M	VL	Ebel El Saqi	M	M	VL	Houla	M	M	L
Houra	M	M	L	Kfar Kila	M	M	L	Khiam Marjaayoun	M	M	VL

Klayaa	M	M	L	Majdel Selem	M	M	L	Marjaayoun	M	M	VL
Markaba	M	M	L	Mays El-Jabal	M	M	L	Mazraat Doumiat	M	M	L
Mazraat Sarada	M	M	VL	Mhaibib	M	M	L	Qabrikha	M	M	L
Qantara	M	M	L	Rab El-Thalathine	M	M	L	Saouaneh Marjayoun	M	M	L
Talloussa	M	M	L	Taybeh Matjaayoun	M	M	L	Touline	M	M	L

Bent Jbail

Municipality	23-Dec	24-Dec	25-Dec	Municipality	23-Dec	24-Dec	25-Dec	Municipality	23-Dec	24-Dec	25-Dec
Ain-Ebel	M	M	L	Aitaroun	M	M	L	Aynata Bint Jbeil	M	M	L
Ayta El-Chaeb	M	M	L	Ayta El-Jabal	M	M	L	Beit Lif	M	M	L
Beit Yahoun	M	M	L	Bint Jbeil	M	M	L	Borj Qalaway	M	M	L
Braachit	M	M	L	Chakra	M	M	L	Debel	M	M	L
Deir Antar	M	M	L	Froun	M	M	L	Ghandouriyeh Bint Jb	M	M	L
Hanine	M	M	L	Hariss	M	M	L	Hdatha	M	M	L
Jmeymeh	M	M	L	Kafra Bint Jbeil	M	M	L	Kfar Dounine	M	M	L
Khirbet Selm	M	M	L	Kounine	M	M	L	Maroun El Ras	M	M	L
Qalaway	M	M	L	Qaouzah	M	M	L	Qatmoun	M	M	L
Ramya Bint Jbeil	M	M	L	Rchaf	M	M	L	Rmeich	M	M	L
Safad Al Battikh	M	M	L	Salhaneh	M	M	L	Serbine	M	M	L
Sultanieh Bint Jbeil	M	M	L	Tibnine	M	M	L	Tiri	M	M	L
Yaroun	M	M	L	Yater	M	M	L				

Mont Liban

Jbail

Municipality	23-Dec	24-Dec	25-Dec	Municipality	23-Dec	24-Dec	25-Dec	Municipality	23-Dec	24-Dec	25-Dec
Aabeydat	M	M	ML	Aalita	M	M	L	Aamchit	M	H	M
Aarab El-Lahib	M	ML	VL	Aarasta	MH	M	VL	Adonis Jbeil	M	M	L
Afqa Jbeil	MH	M	L	Ain El Delbeh Jbeil	M	M	L	Ain El-Ghouayba	MH	M	VL
Ain Jrain	MH	M	VL	Ain Kfah	M	M	ML	Almat El Chemaliyat	MH	M	VL
Almat El-Jenoubiya	MH	M	VL	Aqoura	MH	M	VL	Bayzoun	M	M	L
Bchille Jbeil	M	M	L	Bechtlida	M	M	L	Behdaydat	M	M	ML
Beit Habbaq	M	M	ML	Bejjeh	M	M	ML	Bekhaaz	M	M	M
Berbara Jbeil	M	H	M	Bintael	M	M	L	Birket Hjoula	M	M	L
Blatt Jbeil	M	M	L	Boulhos	MH	M	VL	Breyj Jbeil	M	M	L
Chamat	M	M	ML	Chikhane	M	H	M	Chmout	M	M	ML
Eddeh Jbeil	M	M	M	Ehmej	M	ML	VL	Fatre	M	M	L
Ferhet	M	M	L	Fghal	M	M	M	Frat	MH	M	VL
Ghabat	MH	M	VL	Ghalboun	M	M	ML	Gharzouz	M	M	M
Ghofrine	M	M	M	Habil	M	M	ML	Halate	M	M	L
Haqel	M	M	ML	Hbaline	M	M	ML	Hboub	M	M	L
Hdeine	MH	M	VL	Hema Er-Rehban	M	ML	VL	Hema Mar Maroun Aann	M	ML	VL
Hjoula	M	M	L	Hosrayel	M	MH	M	Hsarat	M	M	ML
Hsoun	M	M	L	Jaj	M	M	L	Janne	MH	M	VL
Jbeil	M	M	M	Jeddeyl Jbeil	M	H	M	Jlisse	M	M	L
Jouret El-Qattine	M	M	L	Kfar Baal Annaya	M	M	L	Kfar Kidde	M	MH	M
Kfar Kouas	M	M	L	Kfar Mashoun	M	M	ML	Kfoun	M	M	ML

Kharbe Jbeil	M	M	ML	Laqlouq	M	ML	VL	Lassa	M	M	VL
Lehfed	M	M	L	Maad	M	M	M	Mar Sarkis	M	ML	VL
Mastita	M	M	M	Mayfouq	M	M	L	Mazraat El Siyad	M	ML	VL
Mazraat El-Maaden	MH	M	VL	Mechane	M	M	L	Mechmech Jbeil	M	M	L
Mehrin	M	M	L	Mejdel El-Akoura	MH	M	VL	Mghayreh Jbeil	MH	M	VL
Mounsef	M	H	M	Nahr Ibrahim	M	M	M	Qahmez	M	M	VL
Qartaba	MH	ML	VL	Qartaboun	M	M	M	Qattara Jbeil	MH	M	L
Qorqraya	MH	M	VL	Ramout	M	M	ML	Ras Osta	M	M	L
Rihane Jbeil	M	H	M	Sakiet El-Khayt	M	M	ML	Saqi Richmaya	MH	M	L
Sebrine	M	M	L	Seraita	MH	M	L	Souane Jbeil	MH	ML	VL
Tadmor	MH	M	VL	Tartej	M	M	L	Torzaiya	M	M	L
Yanouh Jbeil	MH	M	VL	Zibdine Jbeil	M	M	L				

El Metn

Municipality	23-Dec	24-Dec	25-Dec	Municipality	23-Dec	24-Dec	25-Dec	Municipality	23-Dec	24-Dec	25-Dec
Aain El-Qabu	M	M	VL	Aain El-Qach	M	M	VL	Aain El-Teffaha	M	M	VL
Aain el-Safssaf El-M	M	M	VL	Abou Mizane	M	M	VL	Ain Aar	M	M	L
Ain Alaq	M	M	L	Ain El-Kharroube	M	M	VL	Ain El-Sendianeh	M	M	VL
Ain El-Zeitoune	M	M	VL	Ain Saadeh	M	M	L	Aintoura El-Matn	M	L	VL
Amaret Chalhoub	M	M	L	Antelias	M	M	L	Atchaneh	M	M	L
Ayroun	M	M	VL	Baabdat	M	M	VL	Baouchariyeh	M	M	M
Baskinta	M	L	VL	Beit Chabab	M	M	VL	Beit El-Chaar	M	M	L
Beit El-Kekko	M	M	L	Beit Mery	M	M	L	Bhersaf	M	M	L
Bikfaya	M	M	VL	Biyakout	M	M	L	Bnabil	M	M	VL
Bourj Hammoud	M	M	M	Bqennaya	M	M	L	Broummana El-Matn	M	M	L
Bsalim	M	M	L	Bsifrine	M	M	VL	Bteghrine	M	M	VL
Chaouiye	M	M	L	Chouaya El-Matn	M	M	VL	Choueir	M	M	VL
Chrine	M	M	VL	Dahr El Sawan El-Mat	M	M	L	Daychouniyeh	M	M	L
Dbayeh	M	M	L	Deir Chamra	M	M	VL	Deir Mar Abda el Mch	M	M	L
Deir Mar Roukouz	M	M	ML	Deir Tamiche	M	M	L	Dik El-Mehdi	M	M	L
Dikwaneh	M	M	M	Douar El-Matn	M	M	VL	Fanar	M	M	L
Fraike	M	M	L	Haret El-Ballaneh	M	M	L	Hbous	M	M	L
Himlaya	M	M	VL	Jal El Did	M	M	L	Jdeideh El-Metn	M	M	L
Jouar El-Matn	M	M	VL	Jouret El-Ballout	M	M	L	Kaaqour	M	M	VL
Kfar Aaqab	M	M	VL	Kfertay El-Matn	M	ML	VL	Khenchara	M	M	VL
Khillet El-Mtain	M	M	VL	Konnabat Broummana	M	M	L	Konnabat Salima	M	M	VL
Machraah El-Matn	M	M	VL	Majdel Tarchich	M	L	VL	Majzoub	M	M	L
Mansouriyeh El-Metn	M	M	L	Mar Boutros Karm Et-	M	M	VL	Mar Chaya et Mzekke	M	M	L
Mar Moussa Ed-Douar	M	M	VL	Marjaba	M	M	VL	Masqa	M	M	L
Mayasse	M	M	VL	Mazraat Deir Aoukar	M	M	L	Mazraat El-Hadirat	M	M	L
Mazraat Yachouh	M	M	L	Mchikha	M	M	VL	Menqlet Mezher	M	M	L
Mhaydseh Matn	M	M	VL	Mkalles	M	M	M	Mrouj	M	M	VL
Mtain	M	ML	VL	Mtayleb	M	M	L	Nabay	M	M	L
Naccache	M	M	L	Ouadi Chahine	M	M	VL	Ouadi El-Karm El-Mat	M	M	VL
Ouata El-Mrouj	M	M	VL	Ouyoun El-Matn	M	M	L	Qornet Chehwan	M	M	L
Qornet El-Hamra	M	M	L	Roumieh	M	M	L	Sfeilet Bikfaya	M	M	VL
Sinn El-Fil	M	M	M	Zabbougha	M	M	VL	Zalqa	M	M	L

Zarouon	M	M	VL	Zekrite	M	M	L	Zighrine El-Matn	M	M	VL
Zouk El-Khrab	M	M	L								

Chouf

Municipality	23-Dec	24-Dec	25-Dec	Municipality	23-Dec	24-Dec	25-Dec	Municipality	23-Dec	24-Dec	25-Dec
Aalmane El-Chouf	M	M	M	Aammqi El-Chouf	M	M	L	Ain Ouzein	M	M	L
Ain Qani	M	M	L	Ain Zhalta	M	M	L	Ainbal	M	M	L
Amatour	M	M	L	Anout	M	M	L	Atrine	M	M	L
Baadarane	M	ML	VL	Baaqline	M	M	L	Baasir	M	M	M
Barja	M	M	M	Barouk	M	M	L	Bater	M	ML	VL
Batloun	M	M	L	Bayqoun	M	ML	VL	Bchetfine	M	M	L
Beiteddine	M	M	L	Benouati Ech-Chouf	M	M	L	Berjein	M	M	L
Bireh et Mtalleh	M	M	VL	Biret El-Chouf	M	M	VL	Bkechtine Ouel Mchei	M	M	L
Bkifa El-Chouf	M	M	L	Botme	M	M	L	Bqaiaa Ech-Chouf	M	M	L
Bsaba El-Chouf	M	M	L	Chammis El-Chouf	M	M	ML	Chehim	M	M	L
Chemaarine	M	M	L	Chourit	M	M	L	Daher El-Chouf	M	M	M
Dalhoun	M	M	ML	Damour	M	M	M	Daraya El-Chouf	M	M	L
Deir El-Moukhalles	M	M	L	Deir Baba	M	M	L	Deir Dourit	M	M	L
Deir El-Qamar	M	M	L	Deir Kouche	M	M	L	Dibbieh	M	M	ML
Dmit	M	M	L	Fouara Jaafar	M	M	L	Fraidis El-Chouf	M	M	L
Ghabet Jaafar	M	M	L	Gharife	M	M	L	Haret Jandal	M	M	VL
Hasrout	M	M	L	Jadra	M	M	M	Jahlieh	M	M	L
Jbeih El-Chouf	M	ML	VL	Jdeidet El-Chouf	M	M	L	Jiyeh	M	M	M
Jleilyeh	M	M	L	Jmailiyeh	M	M	M	Joun	M	M	ML
Kahlounie El-Chouf	M	M	VL	Ketermaya	M	M	M	Kfar Faqoud	M	M	L
Kfar Hamal	M	M	L	Kfar Him	M	M	L	Kfar Katra	M	M	L
Kfar Niss	M	M	L	Kfar hay	M	M	L	Kfarnabrakh	M	M	L
Khirbet Bisri	M	M	L	Knayse El-Chouf	M	M	L	Maaniyeh	M	M	M
Maasser Beiteddine	M	M	L	Maasser El-Chouf	M	M	L	Majdalouna	M	M	M
Majdel El-Meouch	M	M	L	Mazboud	M	M	L	Mazmoura	M	M	L
Mazraat El Chouf	M	M	VL	Mazraat El Daher	M	M	L	Mazraat El-Douair	M	M	L
Mechref	M	M	L	Mghairie	M	M	ML	Mghayrie El-Chouf	M	M	L
Moukhtara	M	M	L	Mrusti	M	ML	VL	Mtolle	M	M	L
Naameh	M	M	M	Niha El-Chouf	M	ML	VL	Ouadi Abou Youssef	M	M	L
Ouadi Ed-Deir	M	M	L	Ouadi El-Sit	M	M	L	Ouadi bnehlay	M	M	L
Qraibeh	M	M	VL	Qreiaa	M	M	L	Rmayle El-Chouf	M	M	M
Semqaniyeh	M	M	VL	Sibline	M	M	M	Sirjbeil	M	M	L
Warhanieh	M	M	VL	Werdaniyeh	M	M	M	Zaarourieh	M	M	L

Baabda

Municipality	23-Dec	24-Dec	25-Dec	Municipality	23-Dec	24-Dec	25-Dec	Municipality	23-Dec	24-Dec	25-Dec
Abadiyeh	M	M	L	Ain Mouaffaq	M	M	L	Araiya	M	M	L
Arbaniyeh	M	M	VL	Arsoun	M	M	VL	Baabda	M	M	M
Baalchmey	M	M	L	Bmaryam	M	M	L	Bourj El-Brajneh	M	M	M
Boutchay	M	M	L	Bsaba Baabda	M	M	L	Btekhney	M	M	L
Btibyat	M	M	L	Bzebdine	M	M	VL	Chbeniyeh	M	M	L
Chiyah	M	M	M	Chmeisset Baabda	M	M	L	Chouit	M	M	L
Deir El-harf	M	M	VL	Deir Khouna	M	M	L	Dlaybeh	M	M	VL

Falougha	M	M	VL	Furn El-Chebbak	M	M	M	Hadath Beyrouth	M	M	M
Halaliyeh Baabda	M	M	L	Hammana	M	M	L	Haret El Sett	M	M	L
Haret Hamze	M	M	L	Haret Hreik	M	M	M	Hasbaiya El-Metn	M	M	VL
Jouar El-Hoz	M	M	VL	Jouret Arsoun	M	M	VL	Kfar Chima	M	M	L
Kfar Selouane	M	ML	VL	Khalouat Baabda	M	M	L	Kneisset Baabda	M	M	L
Laylakeh	M	M	M	Louayzeh Baabda	M	M	L	Merdache	M	M	L
Mzairaa Baabda	M	M	L	Ouadi Chahrour El OI	M	M	L	Ouadi Chahrour El So	M	M	L
Qalaa Baabda	M	M	L	Qhraybe Baabda	M	M	L	Qobbayaa	M	M	L
Qornayel	M	M	VL	Qortada	M	M	L	Qrayeh Baabda	M	M	L
Qsaibeh Baabda	M	M	L	Qtale Baabda	M	M	L	Ras El Metn	M	M	L
Ras El-Haref	M	M	L	Rouayset El-Ballout	M	M	L	Salima Baabda	M	M	VL
Tahouitat El Ghadir	M	M	M	Tarchich	M	ML	VL	Zandouqa	M	M	L

Aley

Municipality	23-Dec	24-Dec	25-Dec	Municipality	23-Dec	24-Dec	25-Dec	Municipality	23-Dec	24-Dec	25-Dec
Abey	M	M	L	Aghmid	M	M	L	Ain Dara	M	M	VL
Ain Drafil	M	M	L	Ain El Halazoun	M	M	L	Ain El-Rmmaneh	M	M	L
Ain Jedideh	M	M	L	Ain Ksour	M	M	L	Ain Onoub	M	M	L
Ain Traz	M	M	L	Ainab	M	M	L	Aley	M	M	L
Aramoun	M	M	L	Aytat	M	M	L	Azouniyeh	M	M	L
Baawerta	M	M	L	Badghan Oua Wadi Bad	M	M	L	Bassatine	M	M	L
Bayssour	M	M	L	Bchamoun	M	M	L	Bdadoun	M	M	L
Behouara	M	M	L	Bennay	M	M	L	Bhamdoun El-Dayaa	M	M	L
Bhamdoun El-Mhatta	M	M	VL	Bkhechthey	M	M	L	Bleibel	M	M	L
Bmakine	M	M	L	Bmehray	M	M	L	Bouzrid	M	M	L
Bserrine	M	M	L	Bsous	M	M	L	Btalloun	M	M	L
Btater	M	M	L	Chanay	M	M	VL	Charoun	M	M	VL
Chartoun	M	M	L	Chemlane	M	M	L	Chouefat El-Aamrous	M	M	L
Chouefat El-Oumara	M	M	L	Chouefat El-Quoubbe	M	M	L	Dakkoun	M	M	L
Deir Qoubel	M	M	L	Dfoun	M	M	L	Douair El Remmaneh	M	M	L
Ghaboun	M	M	L	Habramoun	M	M	L	Homs Oua Hama	M	M	L
Houmal	M	M	L	Jisr El Qadi	M	M	L	Kehaleh	M	M	L
Keyfoun	M	M	L	Kfar Aamey	M	M	L	Kommatyeh	M	M	L
Maasrati	M	M	L	Majdel Baana	M	M	L	Mansourieh et Ain El	M	M	L
Mazraat El-Nahr	M	M	L	Mchakhte	M	M	L	Mecherfeh	M	M	L
Mejdlaya	M	M	L	Mrayjat	M	M	L	Ramliyah	M	M	L
Rechmaya	M	M	L	Rejmeh	M	M	L	Remhala	M	M	L
Rouaysset El Neemane	M	M	L	Saoufar	M	M	VL	Selfaya	M	M	L
Sirhmoul	M	M	L	Souq El Ghareb	M	M	L	Taazanieh	M	M	L

Kesrouane

Municipality	23-Dec	24-Dec	25-Dec	Municipality	23-Dec	24-Dec	25-Dec	Municipality	23-Dec	24-Dec	25-Dec
Achkout	M	M	VL	Adma Oua Dafneh	M	M	L	Ain Ed-Delbe Kesroua	M	M	VL
Ain El-Rihane	M	M	L	Aintoura Kesrouane	M	M	L	Ajaltoun	M	M	VL
Akaybeh Kesrouane	M	M	M	Aramoun Kesrouane	M	M	VL	Azra ouel Ozor	M	M	L
Ballouneh	M	M	VL	Batha	M	M	L	Bekaatat Achkout	M	M	VL
Bekaatat Kanaan	M	M	VL	Bizhel	M	M	L	Bouar	M	M	M
Bqaatouta	M	L	VL	Bqaq Ed-Dine	M	M	M	Bzommar	M	M	VL

Chahtoul	M	M	VL	Chnaniir	M	M	L	Chouan	MH	M	VL
Daraya Kesrouane	M	M	VL	Darououn	M	M	L	Deir Baqlouch	M	M	L
Dlebta	M	M	VL	Eghbeh	MH	M	VL	Faraya	M	L	VL
Fatka	M	M	L	Feytroun	MH	M	VL	Ghazir	M	M	L
Ghbaleh Kesrouane	M	M	L	Ghedrass	M	M	L	Ghosta	M	M	VL
Ghynéh	M	M	VL	Harharaya w Kattine	M	M	VL	Harissa Kesrouane	M	M	L
Hayata	M	M	VL	Hosein	M	M	L	Hrajel	M	L	VL
Jdeideh Ghazir	M	M	VL	Jeita	M	M	L	Jounieh Ghadir	M	M	L
Jounieh Haret Sakhr	M	M	L	Jounieh Salel Alma	M	M	L	Jounieh Sarba	M	M	L
Jouret Bedrane	M	M	L	Jouret Mhad	M	M	VL	Jouret Termos	M	M	L
Kfar Debiane	M	ML	VL	Kfar Tay Kesrouane	M	M	VL	Kfar Yassine	M	M	L
Kfour Kesrouane	M	M	VL	Kharayeb Nahr Ibrahi	M	M	M	Klayaat Kesrouane	M	M	VL
Maarab	M	M	VL	Maaysra Kesrouane	M	M	L	Mayrouba	M	ML	VL
Mazraat Er-Ras	M	M	L	Mazraat Mrah El-Mir	M	M	VL	Mchaa El Ftouh	M	ML	VL
Mchaa Faraya	M	L	VL	Mchaa Kfar Dibiane	M	L	VL	Mghaer	M	M	VL
Mradiyah	M	M	L	Nahr Ed-Dahab	M	M	L	Nammoura Kesrouane	M	M	L
Ouata El Jaouz	M	M	VL	Ouata Sillam	M	M	L	Raachine	MH	M	VL
Rayfoun	M	M	VL	Safra Kesrouane	M	M	M	Shayle Kesrouane	M	M	L
Tabarja	M	M	ML	Yahchouch	M	M	L	Zaaytreh	M	M	L
Zeytoun	M	M	L	Zouk Mikael	M	M	L	Zouk Mosbeh	M	M	L

Baalbek_Hermel

Baalbek

Municipality	23-Dec	24-Dec	25-Dec	Municipality	23-Dec	24-Dec	25-Dec	Municipality	23-Dec	24-Dec	25-Dec
Aadous	MH	M	L	Aamchki	M	M	L	Aarsal	MH	M	L
Ain Baalbek	MH	M	L	Ain Bourday	MH	M	ML	Ain El-Benye	M	ML	VL
Ain El-Jaouz Baalbek	M	ML	VL	Ain El-Siya Chadoura	M	ML	L	Al Khodr Baalbek	MH	M	L
Al Nabi Chit	M	M	L	Aynata Baalbek	M	ML	VL	Baalbek	MH	M	ML
Bachwat	MH	M	L	Barqa	MH	M	L	Bednayel Baalbak	M	M	L
Beit Chama	MH	M	L	Bijjaje	MH	M	M	Bouday	MH	M	L
Brital	M	M	L	Btadi	MH	M	L	Chaat	MH	M	M
Chaibe	M	ML	VL	Chlifa	MH	M	L	Chmestar	M	M	L
Dar El-Oussa	MH	M	L	Deir El-Ahmar	MH	M	L	Deir Mar Maroun Baal	M	M	M
Douris	MH	M	L	Fakiha	MH	M	ML	Hadath Baalbek	MH	M	L
Ham	M	ML	VL	Haour Taala	M	M	L	Hizzine	MH	M	L
Hlebta	MH	M	ML	Hosh Barada	MH	M	L	Hosh El Dahab	MH	M	L
Hosh El Snid	M	M	L	Hosh El-Nabi	M	M	L	Hosh El-Rafiq	M	M	L
Hosh Tal Safiya	MH	M	L	Hrebta	MH	M	M	laat	MH	M	L
Jebaa	M	M	L	Jenta	M	M	L	Kfar Dabach	M	M	L
Kfar Dane	MH	M	L	Khraibeh El-Hermel	MH	M	ML	Khreibet Baalbek	M	ML	L
Kneisset Baalbek	MH	M	ML	Labueh	MH	M	M	Maarboun	M	ML	VL
Majdaloun	MH	M	L	Maqneh	M	M	ML	Mazraat Beit Mcheik	MH	M	VL
Misraya	M	M	L	Moqraq	MH	M	M	Nabha El-Damdoum	MH	M	L
Nabi Chbay	M	M	L	Nabi Osman	MH	M	ML	Nahleh baalbek	M	M	L
Ouadi El-Oss	MH	M	L	Qaa Baayoun	M	M	M	Qaa Jouar Maqiye	M	M	M
Qaa Ouadi El-Khanzir	M	M	M	Qah Baalbek	M	M	M	Qarha Baalbek	MH	M	M

Qsarnaba	MH	M	L	Ram Baalbek	MH	M	M	Ras Baalbek El Sahl	M	M	M
Ras Baalbek El-Charq	M	M	ML	Riha	MH	M	M	Saaide	MH	M	L
Sbouba	MH	M	M	Seriine El-Tahta	M	M	L	Slouqi	M	M	L
Taiba Baalbek	MH	M	L	Talia	MH	M	L	Taraiya	M	M	L
Temnin El Fawqa	M	M	L	Temnin El-Tahta	MH	M	L	Tfail	M	M	L
Yahfoufa	M	M	L	Yammouneh	MH	M	L	Younine	MH	M	ML
Zboud	MH	M	ML								

Hermel

Municipality	23-Dec	24-Dec	25-Dec	Municipality	23-Dec	24-Dec	25-Dec	Municipality	23-Dec	24-Dec	25-Dec
Charbine El-Hermel	M	M	L	Hermel Jbab	M	M	L	Hermel	M	M	M
Maaysra El-Hermel	MH	M	M	Michaa Mrajhine	M	M	L	Ouadi Faara	MH	M	L
Ras Baalbek - Ouadi	M	M	M	Ras Baalbek El Gharb	MH	M	L	Zighrine	M	M	M

Akkar

Akkar

Municipality	23-Dec	24-Dec	25-Dec	Municipality	23-Dec	24-Dec	25-Dec	Municipality	23-Dec	24-Dec	25-Dec
Aain Tinta	M	M	L	Aaiyat	M	M	VL	Aakkar El-Aatiqa	M	M	L
Aamar Akkar	M	M	L	Aamar El Baykat	M	M	L	Aamayer	L	M	L
Aamriyet Akkar	M	M	L	Aandqet	ML	M	L	Aarmeh	M	M	ML
Aarqa	M	M	L	Aawaynat	ML	M	VL	Aayoun Akkar	M	M	VL
Abboudiye	M	M	M	Ain El-Zeit	M	M	L	Ain Yaaqoub	M	M	VL
Akroum	ML	M	L	Aridet Cheikh Zennad	M	M	M	Baldeh w Mazraat Bal	M	M	M
Barcha	M	M	M	Bardeh	M	M	L	Bebnine	M	M	L
Beino	M	M	L	Beit Ayoub	M	M	VL	Beit El-Haouch	M	M	L
Beit Mellat	M	M	VL	Beit Younes	M	M	L	Berbara Akkar	M	M	L
Berqayel	M	M	L	Bezbina	M	M	L	Bireh Akkar	M	M	L
Borj	M	M	VL	Bqerezla	M	M	L	Bzal	M	M	L
Chane	M	M	L	Chaqdouf	M	M	VL	Charbila	M	M	M
Cheikh Mohammad	M	M	M	Cheikh Taba Es-Sahl	M	M	M	Cheikh Taba	M	M	VL
Cheikh Zennad	M	M	M	Cheikhlar	ML	M	L	Chir Hmairine	M	M	M
Daghle	M	M	L	Dahr Laissine	M	M	L	Darine	M	M	M
Dawra	M	M	L	Dawsa w Baghdadi	M	M	L	Dayret Nahr El-Kabir	ML	L	L
Deir Dalloum	M	M	L	Deir Jennine	M	M	L	Denbou	M	M	L
Dibbabiyyeh	M	M	L	Douair Aadwiyeh	M	M	L	Fassikine	M	M	L
Fnaydek	M	M	L	Fraydes Akkar	M	M	L	Ghazayle	M	M	M
Habchit	M	M	L	Hakour	M	M	L	Halba	M	M	ML
Haouchab	M	M	M	Hayssat	M	M	M	Haytla	M	M	M
Hayzouq	M	M	M	Hedd	M	M	M	Hmaira Akkar	M	M	L
Hmaiss Akkar	M	M	M	Hnaider	L	M	L	Hokr Ed-Dahri	M	M	M
Hokr Etti	M	M	M	Hokr Jouret Srar	M	M	M	Houaich	M	M	L
Hrar	M	M	L	Idbil	M	M	VL	Ilat	M	M	L
Janine	M	M	M	Jdeidet El-Joumeh	M	M	L	Jdeidet El-Kaiteh	M	M	L
J Brayel	M	M	L	Kafr	M	M	ML	Kafr	M	M	L
Karm Asfour	M	M	L	Kfar Melki Akkar	M	M	M	Kfar Noun	M	M	L
Kfarharra	M	M	M	Khalsa	ML	M	L	Kharnoubet Akkar	M	M	M

Khirbet Daoud Aakkar	M	M	L	Khirbet El Remmane	ML	M	L	Khirbet Shar	M	M	L
Khoreybet El-Jindi	M	M	M	Khreibet Aakkar	M	M	VL	Kneisset Aakkar	M	M	M
Kneisset Hnaider	L	M	L	Knisse	M	M	M	Kroum El-Aarab	M	M	M
Kwachra	M	M	L	Kweykhath	M	M	M	Machta Hammoud	ML	M	L
Majdala	M	M	L	Majdel Akkar	M	M	L	Mar Touma	M	M	L
Marlaya Melhem	M	M	L	Mashha	M	M	L	Massoudiye	M	M	M
Mazraat Beit Ghattas	M	M	L	Mazraat En-Nahriye	ML	M	L	Mechmech	M	M	L
Memneh	M	M	L	Mhammara	M	M	L	Mighraq Aakkar	M	M	M
Minyara	M	M	L	Moqayteh	M	M	M	Mounjez	M	M	L
Msalla	M	M	L	Mzeihmeh	M	M	M	Nfaisch	M	M	L
Noura Et-Tahta	M	M	L	Ouadi El-Haour	M	M	M	Ouadi El-Jamous	M	M	L
Ouyoun El-Ghizlane	M	M	L	Qaabarine	M	M	M	Qabaait	M	M	L
Qachlaq	M	M	M	Qantara Aakkar	M	M	VL	Qarha Aakkar	L	M	L
Qarqaf	M	M	L	Qboula	M	M	VL	Qleiaat Aakkar	M	M	M
Qloud El-Baqie	M	M	L	Qobaiyat Aakkar	M	M	L	Qobbat Chamrat	M	M	L
Qorayat	M	M	L	Qornet Aakkar	M	M	VL	Qsair Aakkar	M	M	L
Rahbe	M	M	L	Rihaniyet Aakkar	M	M	M	Rmah	M	M	L
Rmoul	M	M	M	Saadine	M	M	M	Sadaqa	M	M	L
Saidnaya	M	M	M	Sammouniye	M	M	M	Sayssoq	M	M	L
Semmaqiye	M	M	M	Semmaqli	M	M	L	Sfinet El-Dreib	M	M	ML
Sfinet El-Qaitaa	M	M	L	Sindyanet Zeidane	M	M	L	Souaisset Aakkar	M	M	M
Srar	M	M	M	Tal Abbas El Gharby	M	M	M	Tal Abbas El-Chargy	M	M	M
Tal Biret	M	M	M	Tal Hmayra	M	M	M	Tal Maayan Tal Kiri	M	M	M
Tal Sibel	M	M	M	Tallet Chattaha	M	M	VL	Tikrit	M	M	VL
Tleil	M	M	M	Tshea	M	M	L	Zawarib	M	M	L
Zouq El Hosniyeh	M	M	L	Zouq El-Haddara	M	M	L	Zouq El-Hbalsa	M	M	L
Zouq El-Moqachrine	M	M	L								

Sud

Sour

Municipality	23-Dec	24-Dec	25-Dec	Municipality	23-Dec	24-Dec	25-Dec	Municipality	23-Dec	24-Dec	25-Dec
Aaiyeh	M	M	L	Aalma El-Chaab	M	M	L	Aaytit	M	M	L
Abbassiyeh Sour	M	M	ML	Abou Chech	M	M	L	Ain Abou Abdallah	M	M	ML
Ain Baal	M	M	ML	Arzoun	M	M	L	Aziyeh	M	M	M
Baflaya	M	M	L	Barich	M	M	L	Batouliyah	M	M	M
Bayad	M	M	L	Bazouriyeh	M	M	L	Bediass	M	M	L
Bestiyat	M	M	L	Borj El Chemali	M	M	M	Borj En-Naqoura	M	M	L
Borj Rahhal	M	M	L	Boustane	M	M	L	Btaychiyeh	M	M	L
Chaaitiye	M	M	M	Chameh	M	M	L	Chehabiye	M	M	L
Chehour	M	M	L	Chihine	M	M	L	Debaal Sour	M	M	L
Deir Amess	M	M	L	Deir Kifa	M	M	L	Deir Qanoun El-Ain	M	M	M
Deir Qanoun El-Naher	M	M	L	Derdghaiya	M	M	L	Dhayra	M	M	L
Halloussiyeh	M	M	L	Hamoul	M	M	L	Hanaouey	M	M	L
Henniye	M	M	M	Hmairi Sour	M	M	L	Iskandarouna Sour	M	M	ML
Jbal El Botom	M	M	L	Jebbin	M	M	L	Jennata	M	M	L
Jijim	M	M	L	Jouaiya	M	M	L	Kneisset Sour	M	M	M

Maarake	M	M	L	Maaroub	M	M	L	Majadel	M	M	L
Majdalzoun	M	M	M	Mansouri Sour	M	M	M	Marnba	M	M	L
Marouahine	M	M	L	Mazraat El-Zalloutiy	M	M	L	Mazraat Mechref	M	M	L
Mazraat Tayr Semhat	M	M	L	Mheilib	M	M	M	Neffakhiyeh	M	M	L
Niha Sour	M	M	L	Ouadi Jilo	M	M	L	Qana	M	M	L
Qolaileh Sour	M	M	M	Rechknany	M	M	L	Rmadiyeh	M	M	L
Selha Sour	M	M	L	Siddiqine	M	M	L	Sour	M	M	M
Srifa	M	M	L	Tayr Debbe	M	M	L	Tayr Felsay	M	M	L
Tayr Harfa	M	M	L	Touayri	M	M	L	Toura	M	M	L
Yanouh Sour	M	M	L	Yarine	M	M	L	Zebqine	M	M	L

Saida

Municipality	23-Dec	24-Dec	25-Dec	Municipality	23-Dec	24-Dec	25-Dec	Municipality	23-Dec	24-Dec	25-Dec
Aanqoun	M	M	L	Aaqtanit	M	M	L	Aarab Ej-Jall	M	M	L
Aarab Tabbaya	M	M	L	Abra Saida	M	M	M	Adloun	M	M	ML
Adousiyeh	M	M	M	Ain-El-Deleb	M	M	M	Arzai	M	M	L
Babliyah	M	M	ML	Barty	M	M	VL	Bissariyeh	M	M	M
Bnaafoul	M	M	L	Bqosta	M	M	M	Bramiy --	M	M	M
Daoudiyeh	M	M	M	Dareb El-Sim	M	M	ML	Erkay	M	M	L
Ghassanieh	M	M	ML	Ghazieh	M	M	ML	Hajjeh	M	M	L
Haret Saida	M	M	M	Hartiyeh	M	M	ML	Hlaliye Saida	M	M	M
Insariyat	M	M	ML	Jazira Saida	M	M	ML	Kafar Bit	M	M	L
Kaoutariyet El-Siyad	M	M	L	Kfar Chellal	M	M	L	Kfar Hatta Saida	M	M	L
Kfar Milke Saida	M	M	VL	Khartoum	M	M	L	Khaziz	M	M	L
Khirbet Ed-Douair Sa	M	M	M	Khirbet El-Bassal	M	M	ML	Khrayeb Saida	M	M	ML
Loubieh	M	M	ML	Maghdouche	M	M	L	Majdelyoun	M	M	M
Matariyet El-Choumar	M	M	L	Matayriyeh	M	M	L	Mazraat 'Mseileh	M	M	ML
Mazraat 'Snaiber	M	M	M	Mazraat Aarab Soukka	M	M	L	Mazraat Deir Taqla	M	M	ML
Mazraat El Yahoudiye	M	M	M	Mazraat El-Housseini	MH	M	M	Mazraat El-Mhaydaleh	M	M	ML
Mazraat El-Ouasta	M	M	ML	Mazraat Jamjim	M	M	ML	Mazraat Kaoutariyet	M	M	ML
Mazraat Kfar Badda	M	M	ML	Mazraat Oussamiyat	M	M	ML	Mazraat Sari	M	M	ML
Mazraat Sinai	M	M	L	Meemariyeh	M	M	L	Merouaniyeh	M	M	ML
Miyeh ou Miyeh	M	M	M	Najjariyeh	M	M	M	Qaaqiyat El-Snaouba	M	M	M
Qnarit	M	M	L	Qraiye Saida	M	M	ML	Saida Ed-Dekermane	M	M	M
Saida El-Oustani	M	M	M	Saida El-Qadimeh	M	M	M	Saida Kefraya	M	M	M
Saksakiyeh	M	M	M	Salhieh Saida	M	M	M	Sarafand	MH	M	M
Sfenta	M	M	VL	Tafahta	M	M	ML	Tanbourit	M	M	L
Tebna	M	M	M	Zaghdraiya	M	M	ML	Zeita	M	M	L
Zrariyeh	M	M	L								

Jezzine

Municipality	23-Dec	24-Dec	25-Dec	Municipality	23-Dec	24-Dec	25-Dec	Municipality	23-Dec	24-Dec	25-Dec
Ain El-Mir (El Estab	M	M	L	Anane	M	M	L	Aramta	M	M	L
Ariya	M	ML	VL	Aychiyeh	M	M	L	Azour	M	M	L
Baba	M	M	L	Bayssour Jezzine	M	M	M	Benoueteh Jezzine	M	M	L
Bhannine	M	ML	VL	Bisri	M	M	L	Bkassine	M	M	L
Bouslaya	M	M	VL	Btedine El-Leqech	M	M	L	Chbail	M	M	VL
Choualiq Jezzine	M	M	M	Dahr Ed-Deir	M	M	VL	Deir El Qattine	M	M	VL

Demachqiyeh	M	M	L	Ghabbatiyeh	M	M	VL	Harf Jezzine	M	M	L
Hassaniyeh	M	M	L	Haytouleh	M	M	VL	Haytura	M	M	VL
Hidab	M	M	VL	Homsiyeh	M	M	L	Jabal Toura	M	M	L
Jarmaq	M	M	L	Jensnaya	M	M	M	Jernaya	M	M	VL
Jezzine	M	M	L	Karkha	M	M	ML	Kfar Falous	M	M	L
Kfar Houna	M	M	L	Kfar Jarrah	M	M	M	Lebaa	M	M	M
Louayzet Jezzine	M	M	VL	Machmouche	M	M	L	Mahmoudiyeh Jezzine	M	M	L
Maknounye Jezzine	M	M	VL	Maraat Ouazaiyeh	M	M	VL	Mazraat Daraya	M	M	L
Mazraat El-Aarqoub	M	M	L	Mazraat El-Mathane	M	M	L	Mazraat El-Rahbane	M	M	VL
Mazraat Khallet Khaz	M	M	VL	Mazraat Louzid (Loua	M	M	VL	Mazraat Qrouh	M	M	VL
Mazraat Tamra	M	M	L	Mazraat Zighrine Jez	M	M	L	Mazraat	M	M	VL
Mharbiyeh	M	M	L	Midane Jezzine	M	M	L	Mjeydel Jezzine	M	M	L
Mlikh	M	M	VL	Mrach El-Hbasse	M	M	ML	Ouadi Baanqoudaine	M	M	M
Ouadi El-Laymoun	M	M	L	Ouardiyeh	M	M	VL	Qabaa Jezzine	M	M	L
Qatrani	M	M	VL	Qaytouleh	M	M	L	Qtaleh Jezzine	M	M	VL
Rihane Jezzine	M	M	L	Rimat	M	M	VL	Roum	M	M	L
Roummanet	M	M	VL	Sabbah	M	M	VL	Saydoun	M	M	VL
Sfaray	M	M	L	Snaya	M	M	VL	Sojoud	M	M	L
Srayri	M	M	VL	Taaid	M	M	L	Wadi Jezzine	M	M	L
Zhalta	M	M	VL								

Bekaa

West Bekaa

Municipality	23-Dec	24-Dec	25-Dec	Municipality	23-Dec	24-Dec	25-Dec	Municipality	23-Dec	24-Dec	25-Dec
Aammiq BG	M	M	L	Ain El Tineh BG	M	M	L	Ain Zebdeh	M	M	VL
Ana	M	M	L	Aytanit	M	M	L	Baaloul BG	M	M	VL
Bab Mareh	M	ML	VL	Chouberqiye Aammiq	M	M	VL	Dakoue	M	M	L
Deir Ain El-Jaouze	M	M	VL	Deir Tahniche	M	M	VL	Ghaza	M	M	VL
Harime El-Soughra	M	M	VL	Hoch Harimeh	M	M	VL	Jazira BG	M	M	VL
Jib Jennine	M	M	VL	Kamed-El-Laouz	M	M	VL	Kefraya BG	M	M	L
Khiara El Atika	M	M	VL	Khiara	M	M	VL	Khirbet Qanafar	M	M	VL
Lala	M	M	VL	Lebbaya BG	M	ML	L	Loussa	M	M	L
Machghara	M	M	L	Manara (Hammar) BG	M	M	L	Mansoura BG	M	M	VL
Marej BG	M	M	VL	Maydoun	M	M	L	Ouaqf BG	M	M	VL
Qaraaoun	M	ML	VL	Qelya	M	ML	VL	Raouda (Istabel)	M	M	VL
Saghbine	M	M	L	Sohmor	M	ML	VL	Soltan Yacoub el Ara	M	M	VL
Souairy	M	M	L	Sultan Yaacoub	M	M	VL	Tal Znoun	M	M	VL
Yehmor BG	M	ML	VL	Zilaya	M	M	VL				

Zahle

Municipality	23-Dec	24-Dec	25-Dec	Municipality	23-Dec	24-Dec	25-Dec	Municipality	23-Dec	24-Dec	25-Dec
Aanjar (Haouch Mouss	M	M	VL	Ablah	MH	M	L	Ain Kfarzabad	M	M	L
Ali-El-Nahri	M	M	L	Bar Elias	M	M	VL	Bouarej	M	M	VL
Cheberqiyet Tabet	M	M	VL	Chtaura	MH	M	VL	Deir El Ghazal	M	M	L
Delhamiyet Zahle	M	M	VL	Ferzol	M	M	L	Haouch El-Ghanam	M	M	L
Haouch Es-Siyadeh	MH	M	VL	Haouch Hala	M	M	L	Haouch Mandara	M	M	VL

Haouch Qayssar	M	M	VL	Hezerta	M	M	L	Hosh Moussa	M	M	L
Jdita	MH	M	VL	Kfarzabad	M	M	VL	Ksara	M	M	VL
Majdel Aanjar	M	M	L	Makssi	M	M	VL	Massa	M	M	L
Mazraat Er-Remtaniye	M	M	VL	Mrayjat Zahle	M	M	VL	Mzaraa Zahle	M	M	VL
Nabi Ayla	M	M	L	Nasriyet Rizk	M	M	L	Nasriyet Zahle	M	M	VL
Niha Zahle	M	M	L	Ouadi Ed-Deloum	M	M	VL	Ouadi El-Arayech	M	M	L
Qaa El Rim	M	M	L	Qab Elias	MH	M	VL	Qousaya	M	M	VL
Rhit	M	M	L	Riyak	M	M	L	Saadnayel	M	M	VL
Taal El-Akhdar	M	M	VL	Taalbeya	M	M	VL	Taanayel	M	M	VL
Talamara	M	M	L	Tcheflik Edde Haouch	M	M	VL	Tcheflik Qiqano	M	M	VL
Terbol Zahle	M	M	VL	Touaite Zahle	M	ML	VL	Zahle Aradi	M	M	L
Zahle El-Berbara	M	M	VL	Zahle El-Maallaqa	M	M	L	Zahle El-Midane	M	M	L
Zahle Er-Rassiye	M	M	L	Zahle Haouch El-Ouma	M	M	VL	Zahle Haouch El-Ouma	M	M	L
Zahle Haouch Ez-Zara	M	M	L	Zahle Maalqa Aradi	M	M	L	Zahle Mar Antonios	M	M	L
Zahle Mar Elias	M	M	VL	Zahle Mar Gerios	M	M	L	Zahle Saydet En-Naja	M	M	L
Zebdoul	MH	M	L								

Rachaiya

Municipality	23-Dec	24-Dec	25-Dec	Municipality	23-Dec	24-Dec	25-Dec	Municipality	23-Dec	24-Dec	25-Dec
Ain Arab Rachaiya	M	M	L	Ain Ata	M	ML	VL	Ain Harche	M	ML	VL
Aqabe Rachaya	M	ML	VL	Ayha	M	M	VL	Ayta El Fokhar	M	M	VL
Bakifa Rachaya	M	ML	VL	Bakka	M	M	VL	Beit Lahya	M	ML	VL
Bireh Rachaiya	M	ML	VL	Daher El Ahmar	M	M	VL	Deir El-Achayer	M	M	L
Heloua Rachaiya	M	M	L	Hoch El Qannabeh Rac	M	M	VL	Kaoukaba Bou Arab	M	ML	VL
Kfar Danis	M	M	VL	Kfar Mechki	M	ML	VL	Kfar Qouq	M	M	L
Kherbet Rouha	M	M	VL	Majdel Balhiss	M	ML	VL	Mdoukha	M	M	VL
Mhaydseh Rachaiya	M	ML	VL	Nabi Safa	M	ML	L	Rachaiya	M	ML	VL
Rafid Rachaiya	M	ML	VL	Selsata (Mazraat Dei	MH	M	L	Tannoura	M	ML	VL
Yanta	M	M	L								

Beyrouth

Beyrouth

Municipality	23-Dec	24-Dec	25-Dec	Municipality	23-Dec	24-Dec	25-Dec	Municipality	23-Dec	24-Dec	25-Dec
Achrafieh	M	M	M	Ain el-Mreisse	M	M	M	Bachoura	M	M	M
Beirut Central Distr	M	M	M	Marfai	M	M	M	Mazraa	M	M	M
Medaouar	M	M	M	Minet el-Hosn	M	M	M	Mwssaitbeh	M	M	M
Ras Beirut	M	M	M	Rmeil	M	M	M	Saifi	M	M	M
Zqaq el-Blat	M	M	M								