

# Lebanon Fire Risk Bulletin



CIVIL DEDEFENCE

**Refer to cadast table condition.**

**Please note that the indicated temperature is at 2 meters height from the ground.**

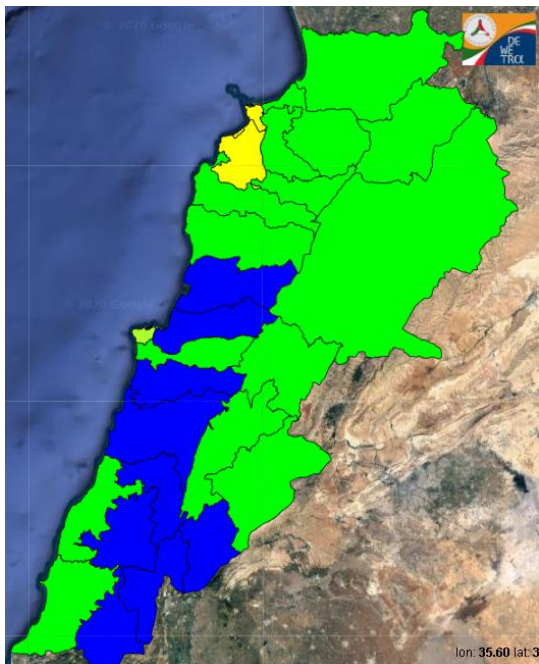
General description of potential fire risk situation

Symbol	Level of risk	Meaning and actions
VL	Very low	Very low fire risk. Controlled burning operations can be hardly executed due to high fuel moisture content. Normally wildfires self-extinguish.
L	Low	Low fire risk. Controlled burning operations can be executed with a reasonable degree of safety.
ML	Medium low	Medium-low fire risk. Controlled burning operations can be executed in safety conditions. All the fires need to be extinguished.
M	Medium	Medium fire risk. Controlled burning operations would be avoided. All the fires need to be very well extinguished.
M	Medium high	Controlled burning is not recommended. Open flame will start fires. Cured grasslands and forest litter will burn readily. Spread is moderate in forests and fast in exposed areas. Patrolling and monitoring is suggested. Fight fires with direct attack and all available resources.
H	High	Ignition can occur easily with fast spread in grass, shrubs and forests. Fires will be very hot with crowning and short to medium spotting. Direct attack on the head may not be possible requiring indirect methods on flanks. Patrolling and monitoring the territory is highly suggested.
E	Extreme	Ignition can occur also from sparks. Fires will be extremely hot with fast rate of spread. Control may not be possible during day due to long range spotting and crowning. Suppression forces should limit efforts to limiting lateral spread. Damage potential total. Patrolling and monitoring the territory is highly suggested.

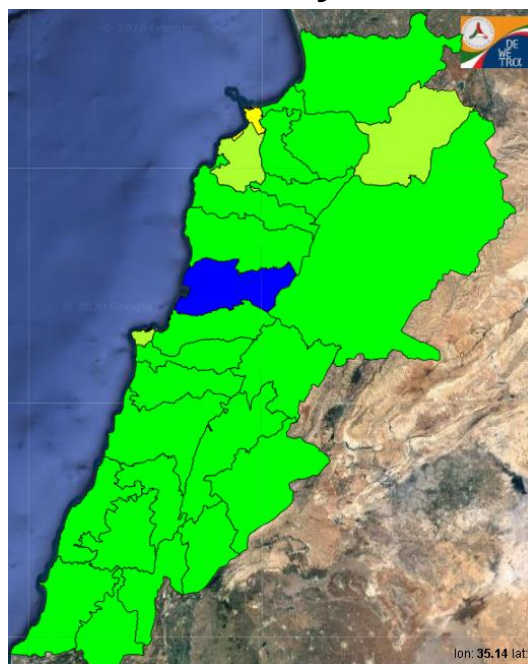
**Beirut, 23 February 2020**

# FIRE RISK INDEX

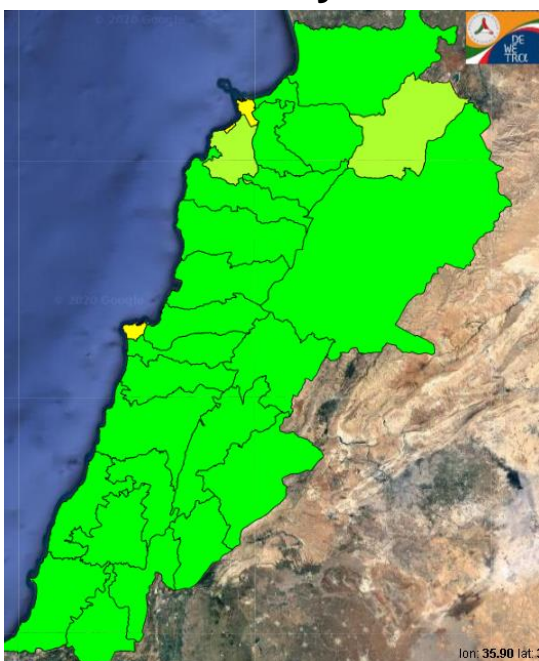
## 22 February 2020



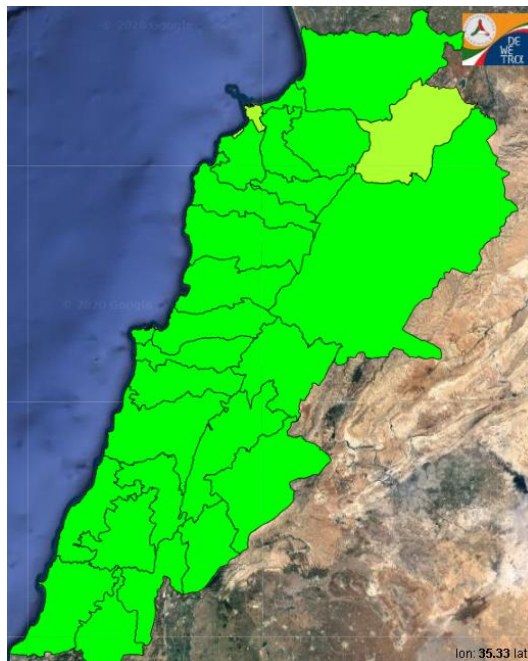
## 23 February 2020



## 24 February 2020



## 25 February 2020

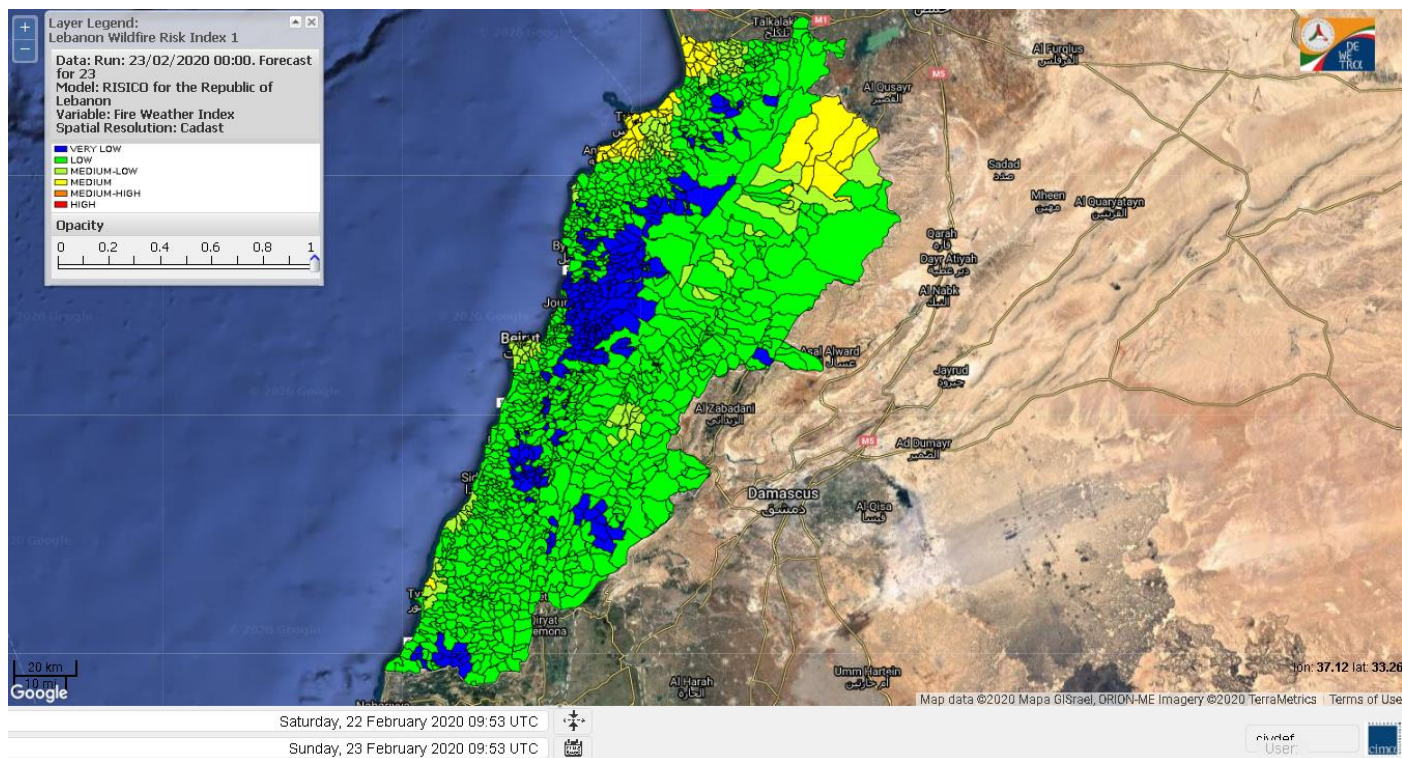


Layer Legend:  
Lebanon Wildfire Risk Index 1

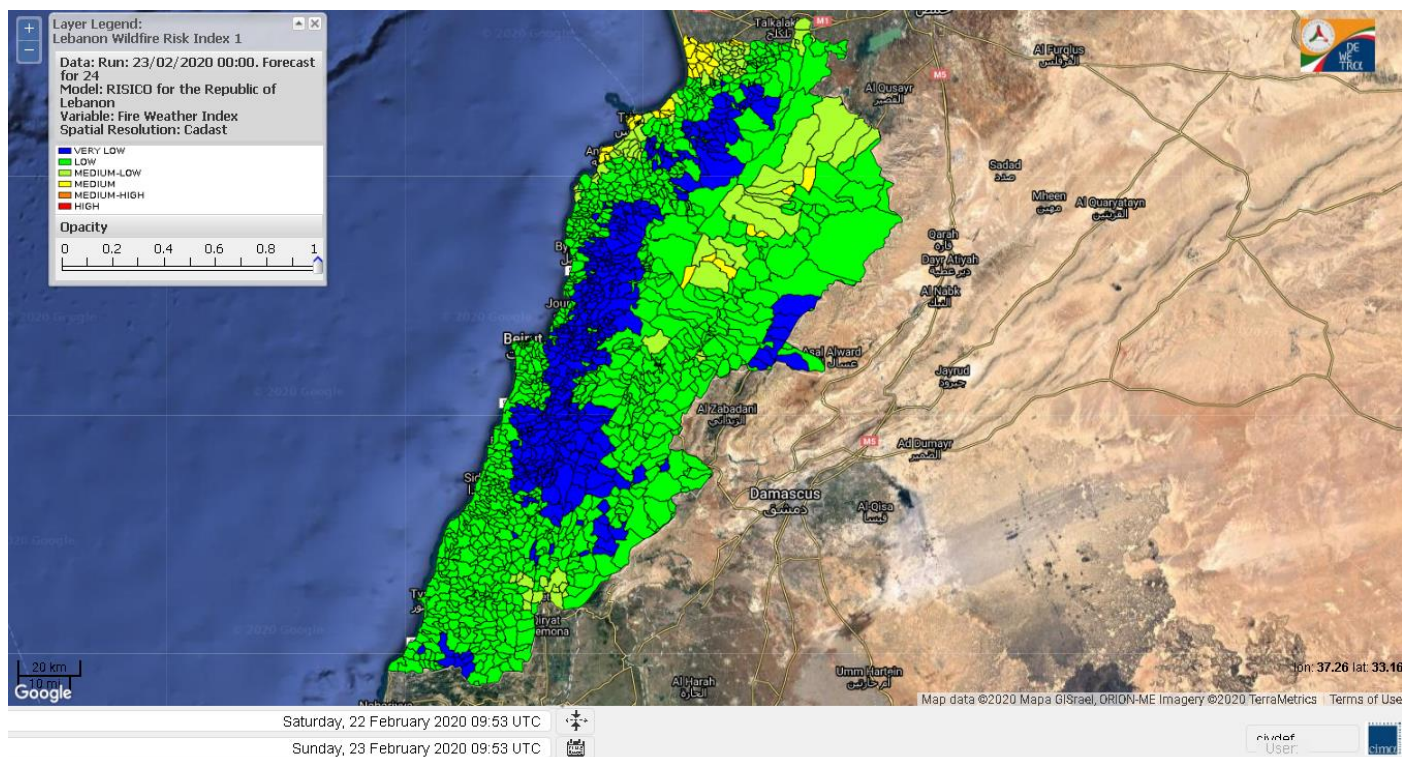
Data: Run: 23/02/2020 00:00. Forecast for 23  
Model: RISICO for the Republic of Lebanon  
Variable: Fire Weather Index  
Spatial Resolution: Caza

- VERY LOW
- LOW
- MEDIUM-LOW
- MEDIUM
- MEDIUM-HIGH
- HIGH

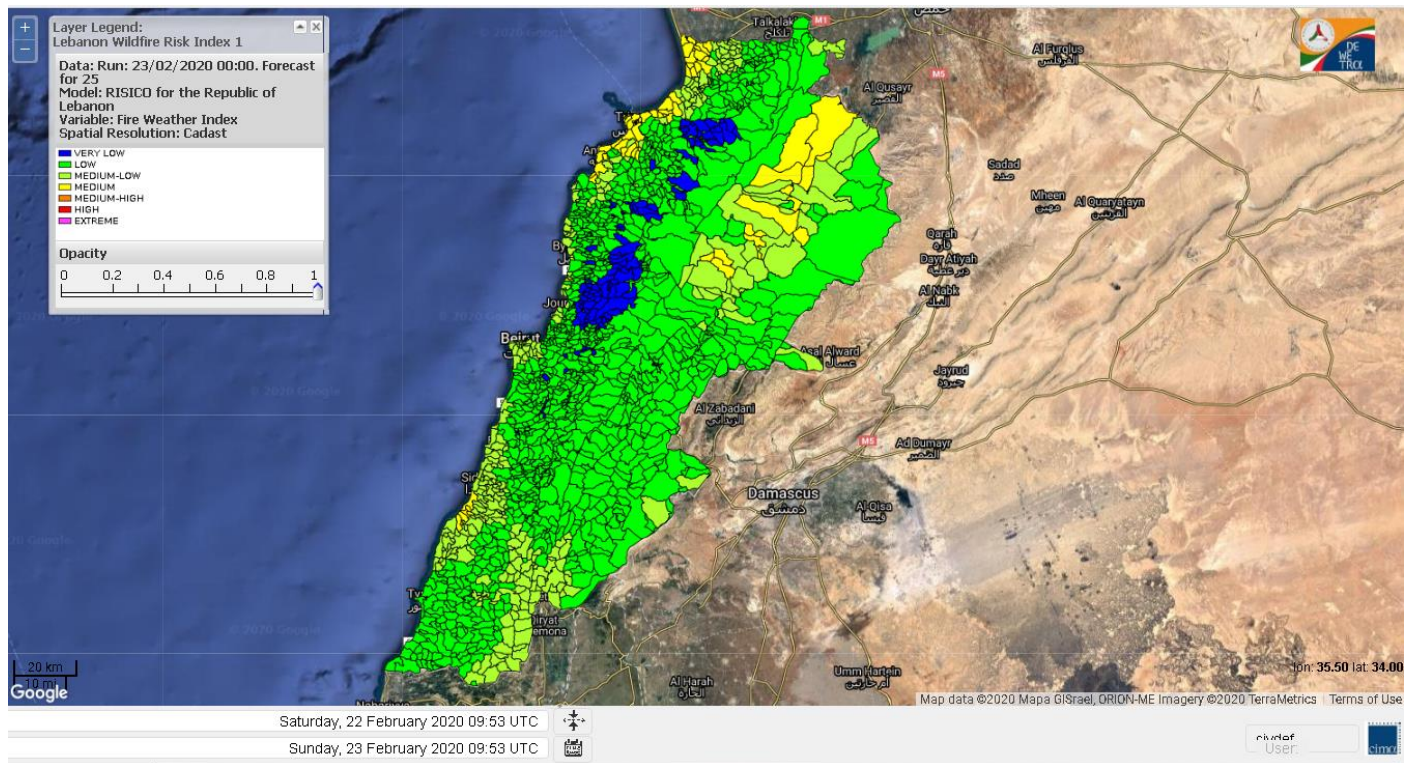
## Lebanon for 23 February 2020



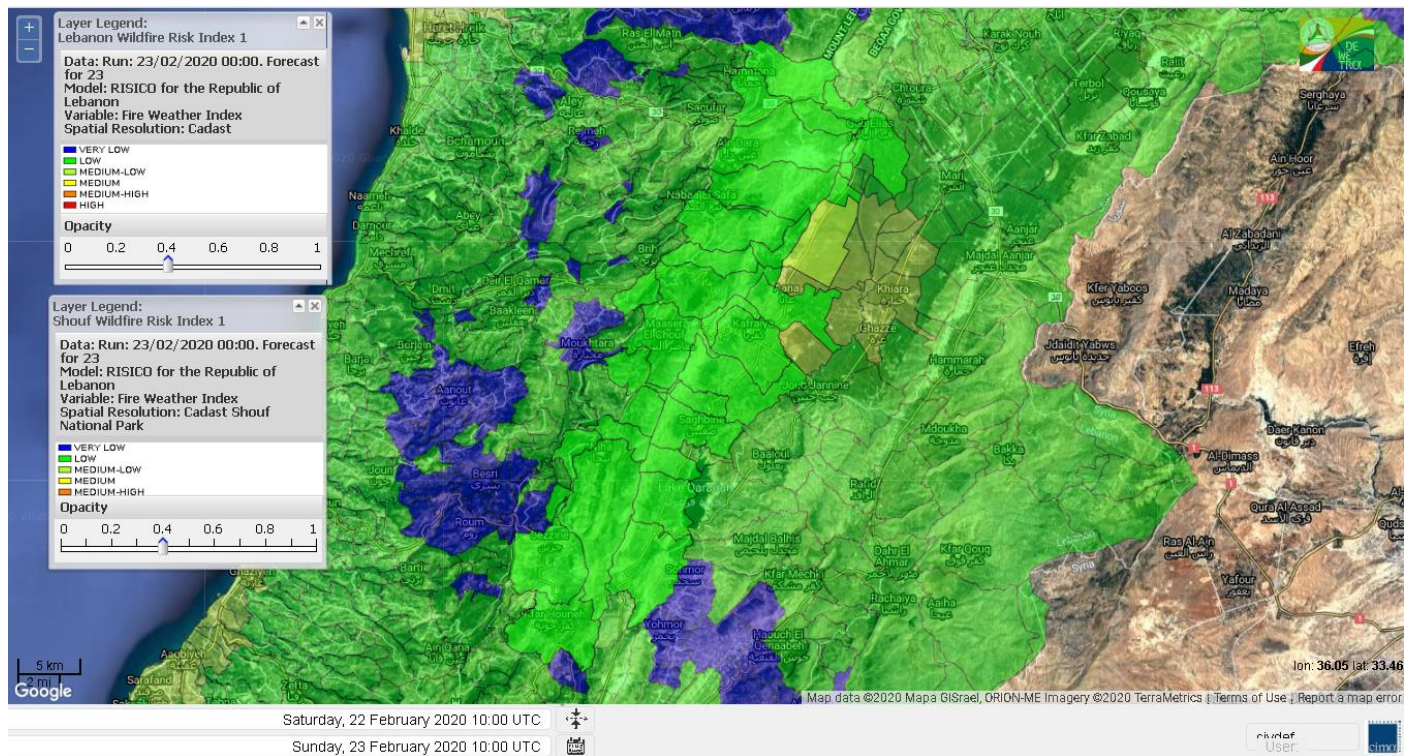
## Lebanon for 24 February 2020



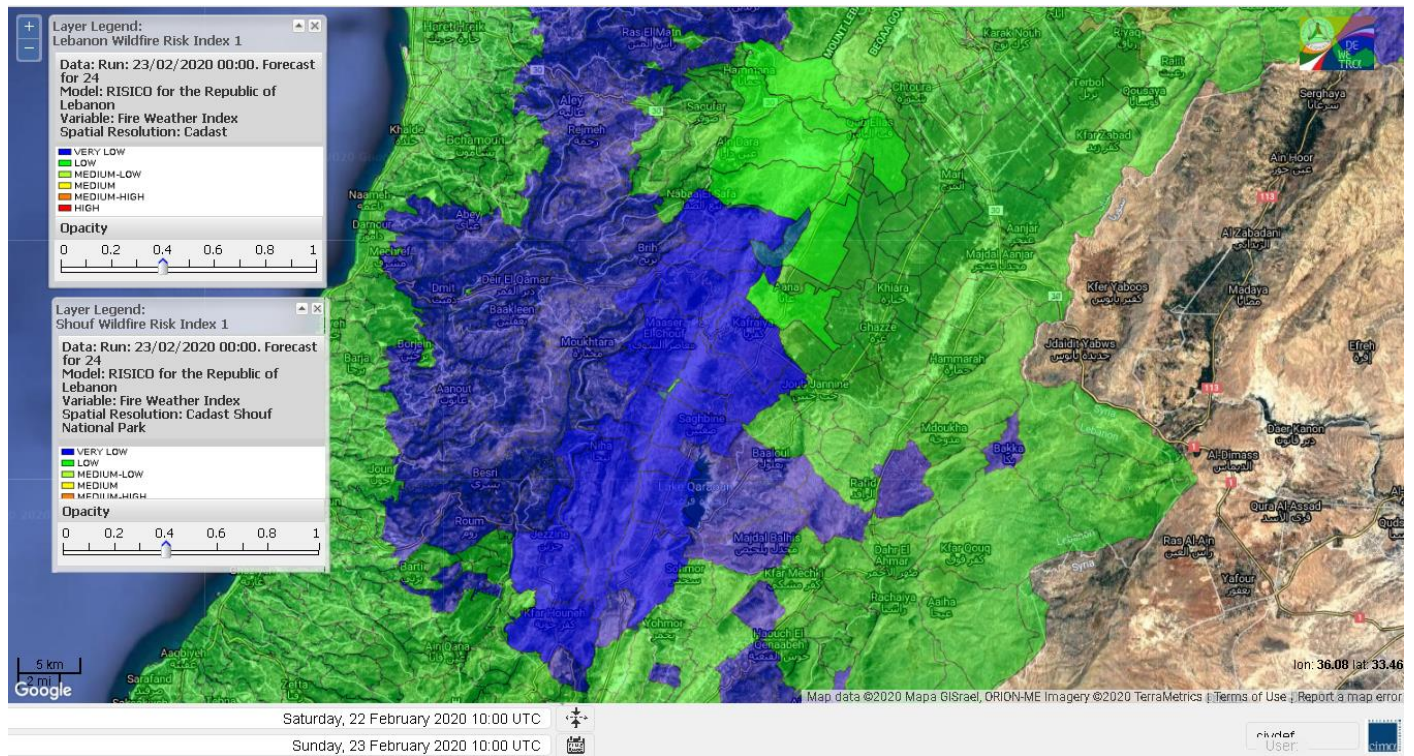
# Lebanon for 25 February 2020



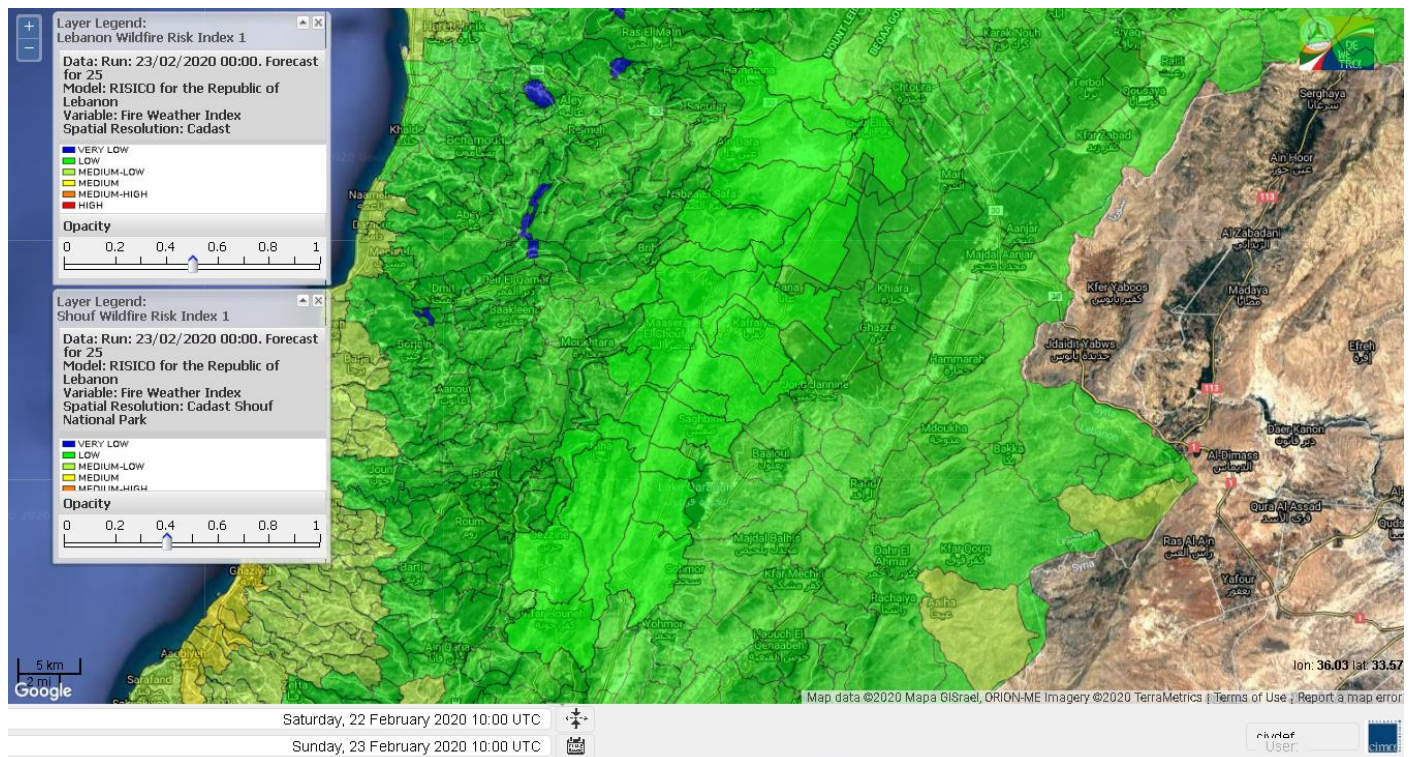
# Shouf Biosphere Reserve Forecast for 23 February 2020



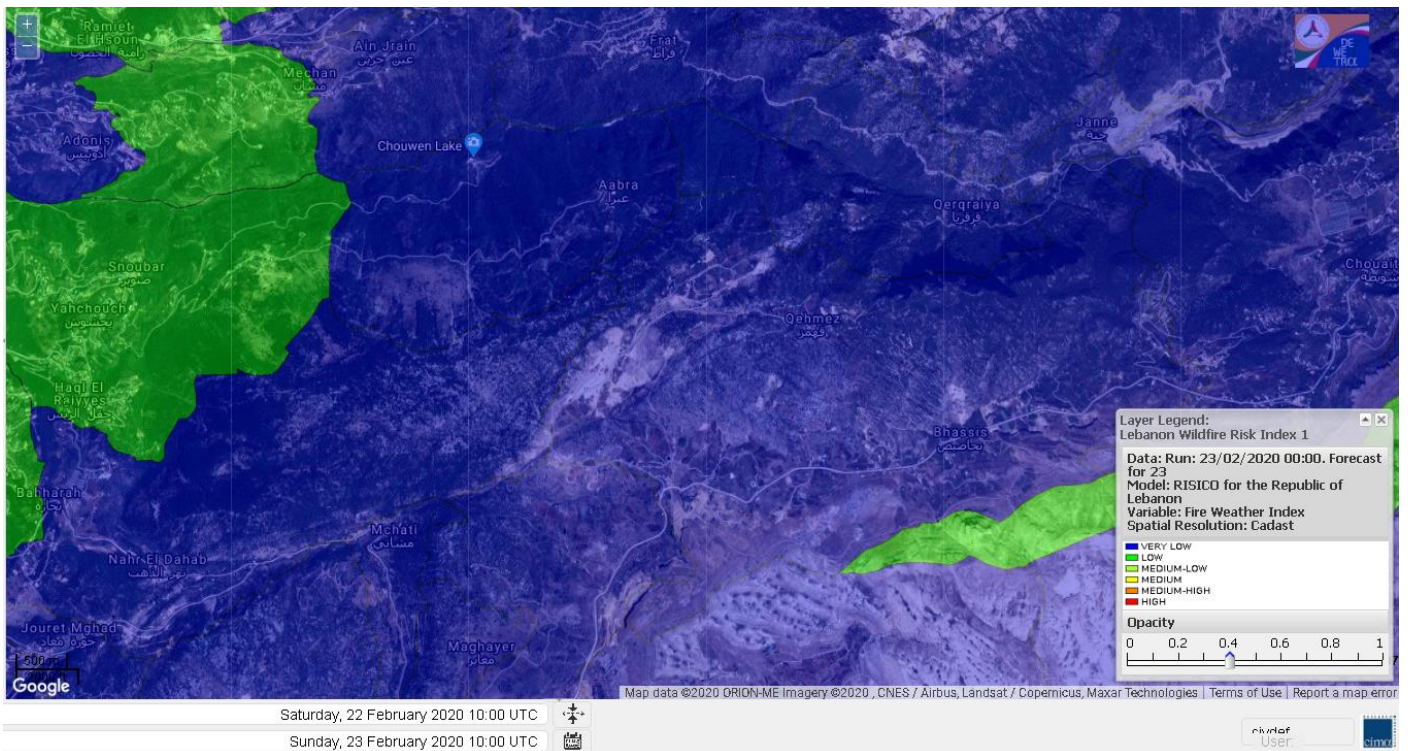
# Shouf Biosphere Reserve Forecast for 24 February 2020



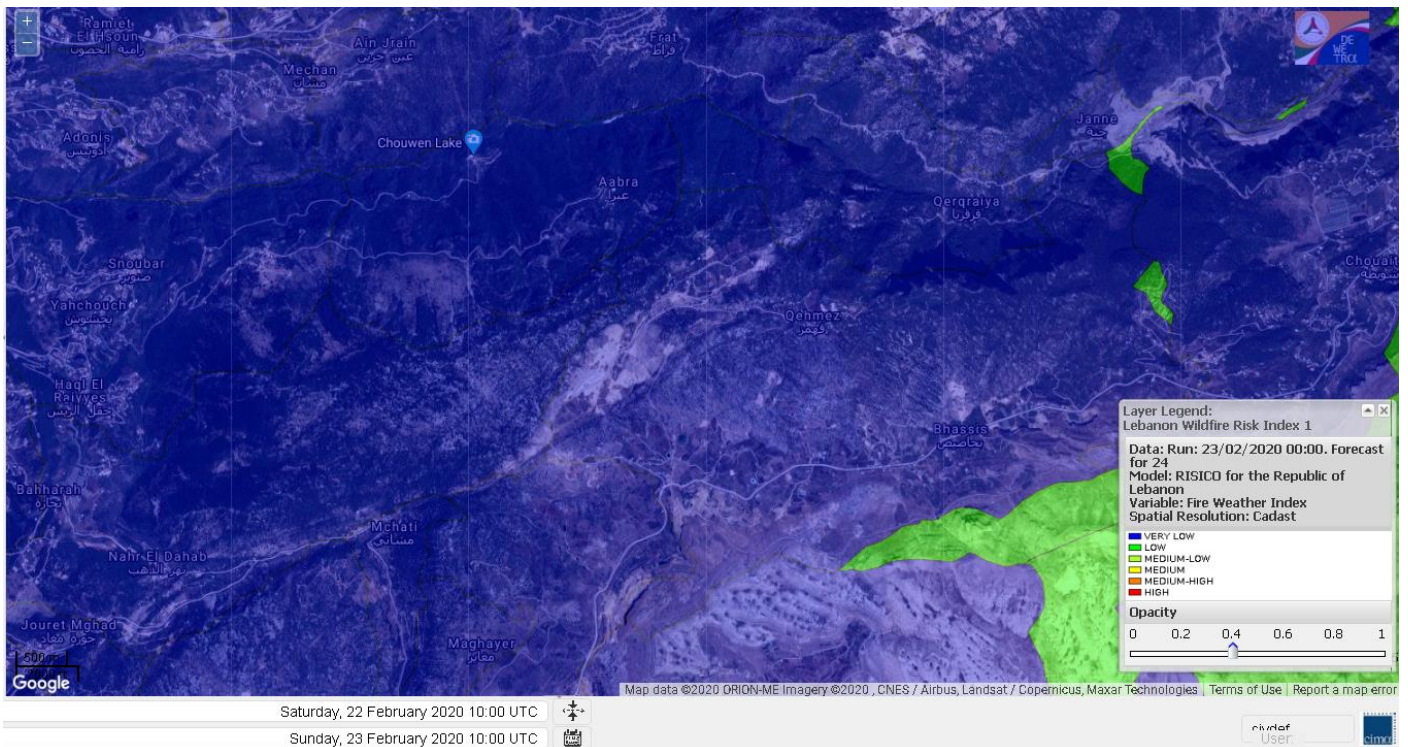
# Shouf Biosphere Reserve Forecast for 25 February 2020



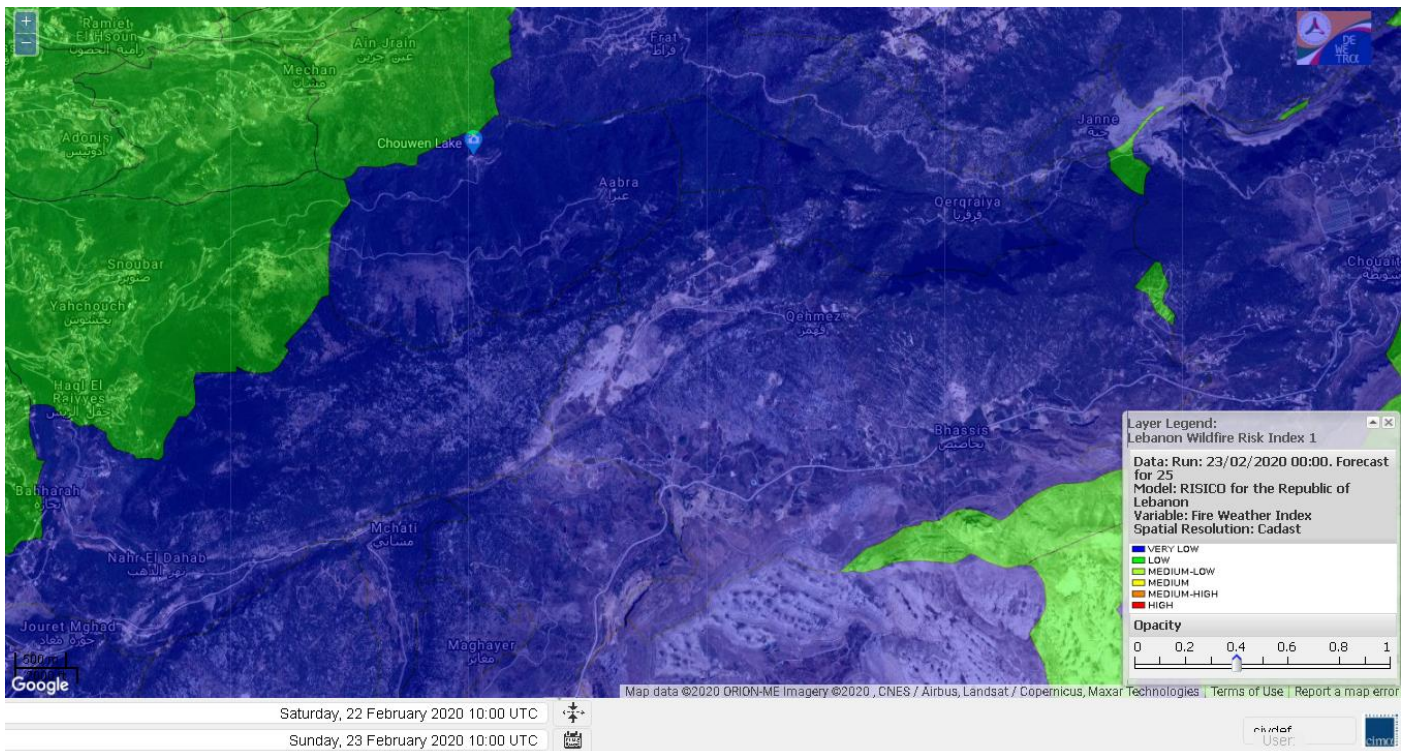
## Jabal Moussa Reserve Forecast for 23 February 2020



## Jabal Moussa Reserve Forecast for 24 February 2020



# Jabal Moussa Reserve Forecast for 25 February 2020

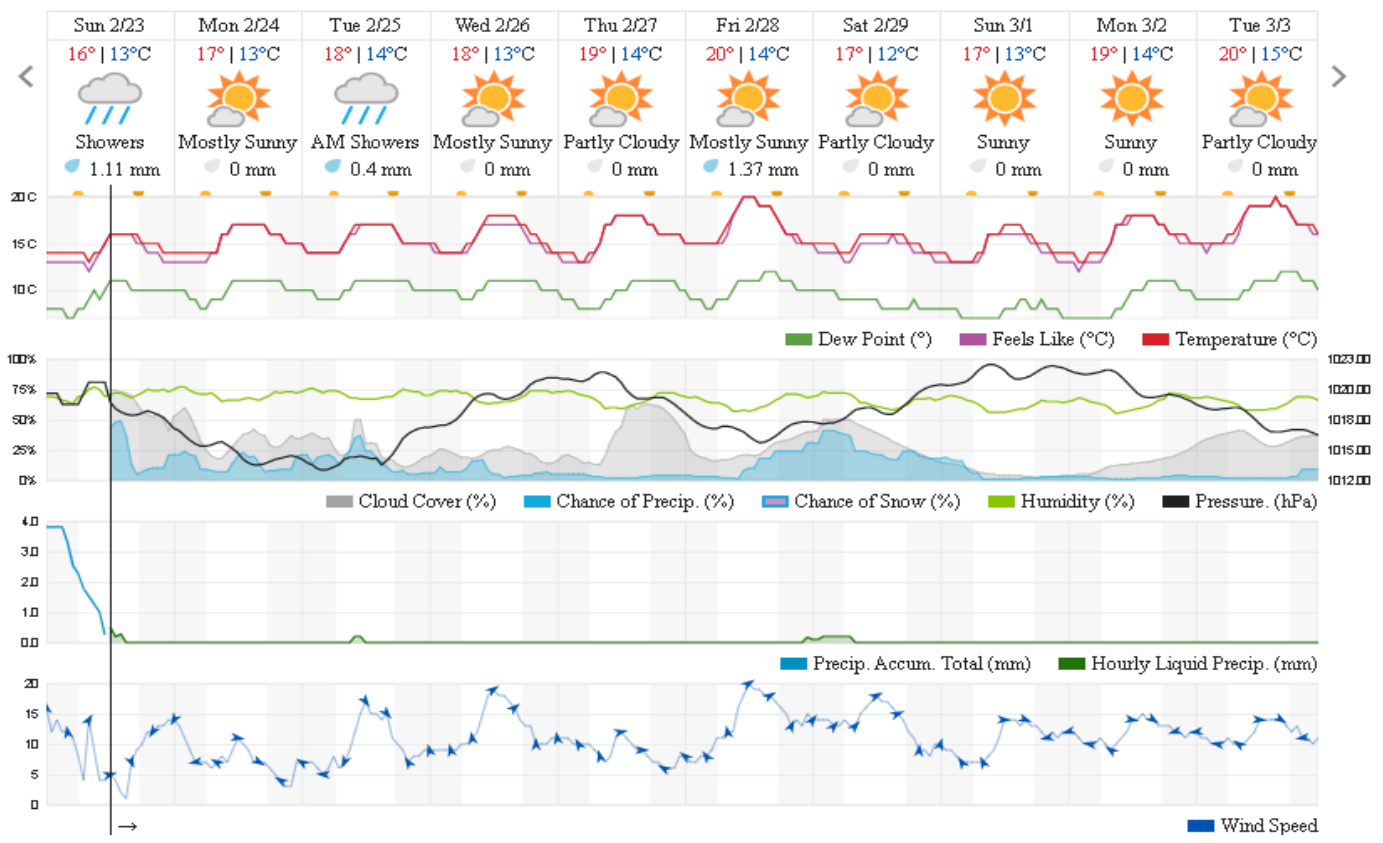


## Beirut, Beirut Governorate, Lebanon 10-Day Weather Forecast

16° ACHRAFIEH, RIZK STATION | CHANGE

TODAY    HOURLY    **10-DAY**    CALENDAR    HISTORY    WUNDERMAP

Customize



## Nord

### Koura

Municipality	23-Feb	24-Feb	25-Feb	Municipality	23-Feb	24-Feb	25-Feb	Municipality	23-Feb	24-Feb	25-Feb
Aaba	ML	L	L	Afsaddiq	L	L	L	Ain Ekrine	L	L	ML
Amioun	L	L	L	Anfeh	M	M	M	Badbhoun	L	L	ML
Barghoun	ML	L	ML	Barsa	M	ML	ML	Batroumine	M	ML	M
Bdebba	M	ML	ML	Bechmizine	L	L	L	Bednaye El-Koura	L	L	ML
Bhabbouch El-Koura	L	L	L	Bkeftine	M	L	ML	Bnehran	L	L	L
Bqaiia El-Koura	M	ML	M	Bsarma	L	L	L	Btaaboura	L	L	ML
Bttram	L	L	L	Btouratij	M	ML	M	Bziza	L	L	L
Dar Beehtar	L	L	L	Dar Chmezzine	L	L	L	Deddeh	M	ML	M
Deir El-Balamand	M	ML	L	Fih	ML	L	ML	Hraiche	M	M	M
Ijdaabrine	L	L	ML	Kaftoun	L	L	L	Kefraya El-Koura	L	ML	M
Kfarakka	L	L	L	Kfarhata	L	L	ML	Kfarhazir	L	L	ML
Kfarkahel	M	ML	M	Kfarsaroun	L	L	L	Kosba	L	L	L
Mejdel el-Koura	L	L	L	Nakhle	M	ML	M	Qalhat	M	ML	L
Ras Masqa	M	ML	M	Rechdibbine	L	L	L	Zakroun	M	M	M
Zgharta El-Mtaouile	L	L	L								

### Bcharre

Municipality	23-Feb	24-Feb	25-Feb	Municipality	23-Feb	24-Feb	25-Feb	Municipality	23-Feb	24-Feb	25-Feb
Aabdine	VL	VL	VL	Bane	VL	VL	VL	Barhelioun	L	L	L
Bazooune	VL	VL	L	Becharre	VL	L	L	Beit Menzer	VL	VL	VL
Billa	VL	VL	VL	Blaouza	VL	VL	VL	Bqaa Kafra	VL	VL	L
Bqerqacha	VL	VL	L	Breissat	VL	VL	VL	Dimane	VL	VL	L
Hadath El Jobbeh	VL	VL	VL	Hadchit	VL	VL	VL	Hasroun	VL	VL	L
Mazraat Aassaf	VL	VL	VL	Mazraat Bani Saab	VL	VL	VL	Mchaa El-Jobbeh	VL	VL	L
Metrit	L	L	L	Moghr El-Ahoual	VL	VL	VL	Ouadi Qannoubine	VL	VL	VL
Qanat	VL	VL	VL	Qnayer	VL	VL	VL	Tourza	VL	VL	VL

### Batroun

Municipality	23-Feb	24-Feb	25-Feb	Municipality	23-Feb	24-Feb	25-Feb	Municipality	23-Feb	24-Feb	25-Feb
Aabrine	L	L	L	Aalali	VL	VL	L	Aartiz	VL	VL	L
Abdelli	VL	VL	L	Ajdabra	L	L	L	Assia	VL	VL	L
Basbina	L	L	ML	Batroun	ML	ML	ML	Bcheleh	VL	VL	L
Bechtoudar	VL	VL	L	Beit Chlala	VL	VL	VL	Beit Kassab	L	VL	L
Bijdarfil	L	L	ML	Bqesmaya	L	L	L	Chatine	VL	VL	VL
Chebtin	VL	L	L	Chekka	L	ML	M	Daael	L	VL	L
Dahr Abi Yaghi	VL	VL	L	Daraya El-Batroun	VL	L	L	Deir Billa	L	L	L
Deir Kfifane	VL	L	L	Deir Mar Youhanna EL	VL	VL	VL	Deir Mar Youssef Jra	VL	L	L
Douma	VL	VL	L	Douq	VL	L	L	Eddeh El-Batroun	VL	L	L
Ftihat El-Batroun	VL	VL	L	Ghouma	VL	L	L	Hadtoun	VL	VL	L
Hamat	L	L	L	Harbouna	VL	VL	L	Hardine	L	VL	VL
Helta	L	VL	VL	Hery	L	ML	M	Jebba	L	L	L
Jrabta El-Batroun	VL	L	L	Jrane El-Batroun	VL	L	L	Kfar Aabida	L	L	L
Kfar Halda	VL	VL	VL	Kfarb Shlaimane	VL	VL	VL	Kfarhatna	VL	VL	L
Kfarhay	L	L	ML	Kfarhelos	L	L	L	Kfifane	VL	L	L



Kfour El Arabi	VL	VL	VL	Koubba	ML	ML	ML	Kour	L	L	L
Mar Mama	VL	VL	L	Masrah	VL	VL	L	Mehmarch	VL	VL	L
Mrah Chdid	VL	L	L	Mrah El Ziyat	VL	L	L	Mrah El-Hajj	VL	VL	VL
Nahle El-Batroun	VL	VL	VL	Niha El-Batroun	VL	VL	VL	Ouajh El-Hajjar	L	L	L
Ouata Houb	VL	VL	VL	Qatnaaoun	L	L	L	Racha	VL	VL	L
Rachana	L	L	L	Rachkida	L	L	L	Ram El-Batroun	VL	VL	VL
Ras Nahhach	L	L	L	Selaata	ML	ML	ML	Sghar	VL	L	L
Smar Jbayl	L	L	L	Sourat El-Batroun	L	L	L	Tannourine El-Faouqa	L	L	L
Tannourine Et-Tahta	VL	VL	VL	Thoum	L	L	L	Toula El-Batroun	VL	L	L
Zan	VL	L	L								

## Zgharta

Municipality	23-Feb	24-Feb	25-Feb	Municipality	23-Feb	24-Feb	25-Feb	Municipality	23-Feb	24-Feb	25-Feb
Aachach	ML	L	L	Aalma	ML	L	L	Aarde	ML	L	L
Aintourine	VL	VL	VL	Arabet Qozhaya	VL	VL	VL	Arde	ML	L	L
Arjis	L	VL	VL	Asnoun	ML	VL	L	Ayto	VL	VL	VL
Basloukit	VL	VL	VL	Bchannine	ML	L	L	Besebeel	ML	VL	L
Bhairret Toula	VL	VL	VL	Bnachee	L	VL	VL	Boussit	ML	L	ML
Danha	ML	L	L	Daraiya Zgharta	L	L	L	Deir Jdeide	ML	VL	L
Ehden	VL	VL	VL	Halan	L	L	L	Hariq Zgharta	ML	VL	L
Houakir	M	VL	L	Hraiqis	M	M	M	laal	L	VL	L
Ijbaa	VL	VL	VL	Karm Saddeh	VL	VL	VL	Kfarchakhna	ML	L	L
Kfardlaqous	ML	L	L	Kfarfou	VL	VL	VL	Kfarhata Zgharta	ML	VL	L
Kfarhoura	ML	VL	L	Kfarsghab	VL	VL	VL	Kfaryachit	ML	VL	L
Kfarzaina	ML	VL	L	Khaldiye	ML	VL	L	Mazraat Ajbeaa	ML	VL	L
Mazraat Et-Teffah	VL	VL	VL	Mazraat Jneid	ML	VL	VL	Mejdlaiya Zgharta	ML	L	L
Merh Kfarsghab	L	L	L	Miryata	ML	L	L	Miziara	L	VL	L
Mzraat Kefraya	L	L	L	Qorah Bach	ML	VL	L	Rachiine	ML	L	L
Ras Kifa	L	L	L	Sakhra	ML	VL	L	Sebhel Zgharta	VL	VL	VL
Serhel	VL	VL	VL	Tallet Zgharta	ML	VL	L	Toula Zgharta	VL	VL	VL
Zgharta	ML	VL	L								

## Minieh-Denniye

Municipality	23-Feb	24-Feb	25-Feb	Municipality	23-Feb	24-Feb	25-Feb	Municipality	23-Feb	24-Feb	25-Feb
Aasaymout	VL	VL	VL	Aaymar	L	VL	L	Aazki	VL	VL	VL
Ain El-Tineh-Miniyeh	VL	VL	VL	Assoun	VL	VL	VL	Bakhaaoun	VL	VL	VL
Bchennata	VL	VL	VL	Bechehhara	M	VL	L	Beddawi	M	ML	M
Behouaita	VL	VL	VL	Beit El Foqss	VL	VL	VL	Beit Haouik	VL	VL	VL
Beit Zoud	VL	VL	VL	Bekaasafrine	VL	VL	L	Borj El Yahoudiyeh	M	M	M
Bqarsouna	VL	VL	VL	Btermaz	VL	VL	VL	Debaael	VL	VL	VL
Deir Ammar	M	M	M	Deir Nbouh	ML	L	L	Haouaret-Miniyeh	VL	VL	VL
Haql el Azimeh	VL	VL	VL	Harf El Siyad	VL	VL	VL	Hazmiye-Miniyeh	VL	VL	VL
Izal	L	L	L	Jarjour	M	VL	L	Jayroun	VL	VL	VL
Kahf El-Malloul	ML	VL	L	Karm El-Moher	L	VL	VL	Kfar Binine	VL	VL	VL
Kfarchalane	VL	VL	VL	Kfarhabou	L	L	L	Kharroub-Miniyeh	VL	VL	VL
Mazraat El-Kreme	ML	VL	L	Mazraat Ketrane	VL	VL	VL	Merkebta	ML	L	M
Minyeh	M	M	M	Mrah El Sfirat	VL	VL	VL	Mrah Sraj	VL	VL	VL
Mrebbine	L	L	L	Nabi Youcheaa	M	M	M	Nemrine	VL	VL	L

Qarhaiya	VL	VL	L	Qarne	L	VL	VL	Qarsita	VL	VL	VL
Qattineh-Miniyeh	VL	VL	VL	Qemmamine	VL	VL	VL	Qraine	VL	VL	VL
Raouda-Aadoua	L	L	ML	Rihaniyet-Miniyeh	L	L	ML	Sfireh	VL	VL	VL
Sir Ed-Danniyeh	VL	VL	VL	Tarane	VL	VL	VL	Terbol-Miniyeh	M	ML	M
Zaghartaghriine	ML	L	L	Zouq Bhannine	M	ML	M				

## Nabatiye

### Nabatiye

Municipality	23-Feb	24-Feb	25-Feb	Municipality	23-Feb	24-Feb	25-Feb	Municipality	23-Feb	24-Feb	25-Feb
Aabba	L	L	L	Aazzi	L	L	L	Adchit El-Chqif	L	L	L
Ain Bou Swar	L	L	L	Ain Kana	L	L	L	Ali El-Taher	L	L	L
Ansar	L	L	ML	Arab Salim	L	L	ML	Arnoun	L	L	ML
Bfaroue	L	L	L	Breyqaah	L	L	L	Chargiyeh	L	L	L
Choukine	L	L	L	Deir El Zahrani	L	L	L	Doueir El-Nabatiyeh	L	L	L
Habbouch El-Nabatiye	L	L	ML	Hamra El-Nabatiyeh	L	ML	ML	Harouf El-Nabatiyeh	L	L	L
Hmaile	L	L	L	Houmin El Faouqa	L	L	ML	Houmin El Tahta	L	L	ML
Jarjough	L	L	L	Jbaah El-Nabatiyeh	L	L	L	Jebchit	L	L	L
Kfar Djal El-Nabatiy	L	L	L	Kfar Remmane	L	L	ML	Kfar Sir	L	L	ML
Kfar Tebnit	L	L	ML	Kfarfila	L	L	L	Kfour El-Nabatieh	L	L	L
Mayfadoun	L	L	ML	Mazraat Bsaffour	L	L	L	Mazraat Chalbaal	L	L	L
Mazraat Dmoul	L	L	L	Mazraat El Khreibeh	L	L	ML	Mazraat El-Bayad El-	L	VL	ML
Mazraat Kfarjaouz	L	L	ML	Mazraat Qalaat Meiss	L	L	L	Nabatiyeh El-Fawka	L	L	ML
Nabatiyeh Et-Tahta	L	L	ML	Namiriyyeh	L	L	L	Qaaqaaiyet El Jisr	L	L	L
Qossaibeh El-Nabatiy	L	L	L	Roumine	L	L	ML	Sarba El-Nabatieh	L	L	L
Sir El-Gharbiyeh	L	L	L	Toul	L	L	L	Yehmor El-Nabatiyeh	L	ML	ML
Zaoutar El Charkiyeh	L	ML	ML	Zaoutar El-Gharbiyeh	L	L	ML	Zebdine El-Nabatiyeh	L	L	L
Zefta	L	L	L								

### Hasbaiya

Municipality	23-Feb	24-Feb	25-Feb	Municipality	23-Feb	24-Feb	25-Feb	Municipality	23-Feb	24-Feb	25-Feb
Ain Jarfa	L	VL	L	Abou Qamha	L	L	L	Ain Qania	L	L	L
Bourghos	L	L	ML	Chebaa	L	L	L	Chouaya Hasbaya	L	VL	L
Dellafeh	L	L	ML	Fardiss Hasbaiya	L	L	L	Hasbaya	L	L	L
Hbariyeh	L	L	L	Kaoukaba Hasbaiya	L	L	ML	Kfar Chouba	L	L	L
Kfar Hamam	L	L	L	Kfeir El-Zait	VL	VL	L	Khalwat Hasbaya	VL	VL	L
Khreibet Hasbaiya	L	L	ML	Majidiyeh Hasbaiya	L	L	ML	Marj Ez-Zhour (Haouc	VL	VL	L
Meri	L	L	ML	Mimass	L	L	L	Rachaiya El-Fokhar	L	L	L
Salaiyeb	L	ML	ML								

### Marjayoun

Municipality	23-Feb	24-Feb	25-Feb	Municipality	23-Feb	24-Feb	25-Feb	Municipality	23-Feb	24-Feb	25-Feb
Aalmane Marjaayoun	L	L	L	Aamra	L	ML	ML	Adayseh Marjaayoun	L	L	ML
Adchit El-Koussair	L	L	ML	Ain Arab Marjaayoun	L	ML	ML	Bani Haiyann	L	L	ML
Blatt Marjaayoun	L	L	ML	Blida	L	L	ML	Borj El-Moulouk	L	ML	ML
Boueyda Marjaayoun	L	L	L	Deir Mimass	L	L	ML	Deir Siriane	L	L	ML
Dibbine	L	L	ML	Ebel El Saqi	L	L	ML	Houla	L	L	ML
Houra	L	L	ML	Kfar Kila	L	ML	ML	Khiam Marjaayoun	L	ML	ML

Klayaa	L	L	ML	Majdel Selem	L	L	ML	Marjaayoun	L	L	ML
Markaba	L	L	ML	Mays El-Jabal	L	L	ML	Mazraat Doumiat	L	L	ML
Mazraat Sarada	L	ML	ML	Mhaibib	L	L	ML	Qabrikha	L	L	L
Qantara	L	L	L	Rab El-Thalathine	L	ML	ML	Saouaneh Marjayoun	L	L	L
Talloussa	L	L	ML	Taybeh Matjaayoun	L	ML	ML	Touline	L	L	L

## Bent Jbail

Municipality	23-Feb	24-Feb	25-Feb	Municipality	23-Feb	24-Feb	25-Feb	Municipality	23-Feb	24-Feb	25-Feb
Ain-Ebel	L	L	ML	Aitaroun	L	L	ML	Aynata Bint Jbeil	L	L	ML
Ayta El-Chaeb	VL	VL	L	Ayta El-Jabal	L	L	L	Beit Lif	VL	VL	L
Beit Yahoun	L	L	L	Bint Jbeil	L	L	ML	Borj Qalaway	L	L	ML
Braachit	L	L	L	Chakra	L	L	ML	Debel	L	L	L
Deir Antar	L	L	L	Froun	L	L	L	Ghandouriyeh Bint Jb	L	L	ML
Hanine	L	L	ML	Hariss	L	L	L	Hdatha	L	L	L
Jmeymeh	L	L	L	Kafra Bint Jbeil	L	L	L	Kfar Dounine	L	L	L
Khirbet Selm	L	L	L	Kounine	L	L	ML	Maroun El Ras	L	L	ML
Qalaway	L	L	L	Qaouzah	VL	VL	L	Qatmoun	L	L	L
Ramya Bint Jbeil	VL	VL	L	Rchaf	L	L	L	Rmeich	L	L	ML
Safad Al Battikh	L	L	L	Salhaneh	VL	VL	L	Serbine	L	L	L
Sultanieh Bint Jbeil	L	L	L	Tibnine	L	L	L	Tiri	L	L	L
Yaroun	L	L	ML	Yater	VL	L	L				

## Mont Liban

### Jbail

Municipality	23-Feb	24-Feb	25-Feb	Municipality	23-Feb	24-Feb	25-Feb	Municipality	23-Feb	24-Feb	25-Feb
Aabeydat	VL	L	L	Aalita	VL	VL	L	Aamchit	L	L	ML
Aarab El-Lahib	VL	VL	VL	Aarasta	VL	L	L	Adonis Jbeil	VL	VL	L
Afqa Jbeil	VL	L	L	Ain El Delbeh Jbeil	VL	VL	L	Ain El-Ghouyba	VL	VL	VL
Ain Jrain	VL	VL	L	Ain Kfah	VL	L	L	Almat El Chemaliyat	VL	VL	VL
Almat El-Jenoubiya	VL	VL	VL	Aqoura	L	L	L	Bayzoun	L	VL	L
Bchille Jbeil	L	VL	L	Bechtlida	VL	VL	VL	Behdaydat	VL	L	L
Beit Habbaq	VL	L	L	Bejjeh	VL	L	L	Bekhaaz	L	L	L
Berbara Jbeil	L	L	ML	Bintael	VL	VL	L	Birket Hjoula	VL	VL	L
Blatt Jbeil	L	L	L	Boulhos	VL	VL	VL	Breyj Jbeil	VL	VL	L
Chamat	VL	L	L	Chikhane	L	L	ML	Chmout	L	L	L
Eddeh Jbeil	L	L	L	Ehmej	VL	VL	VL	Fatre	VL	VL	L
Ferhet	L	VL	L	Fghal	L	L	L	Frat	VL	VL	VL
Ghabat	VL	L	L	Ghalboun	VL	L	L	Gharzouz	L	L	L
Ghofrine	L	L	L	Habil	VL	VL	L	Halate	L	L	L
Haqel	VL	L	L	Hbaline	VL	L	L	Hboub	L	VL	L
Hdeine	VL	L	L	Hema Er-Rehban	VL	VL	L	Hema Mar Maroun Aann	VL	VL	VL
Hjoula	L	VL	L	Hosrayel	L	L	ML	Hsarat	VL	L	L
Hsoun	L	VL	L	Jaj	VL	VL	L	Janne	VL	VL	VL
Jbeil	L	L	ML	Jeddeyel Jbeil	L	L	ML	Jlisse	VL	VL	L
Jouret El-Qattine	L	VL	L	Kfar Baal Annaya	VL	VL	L	Kfar Kidde	L	L	L
Kfar Kouas	L	VL	L	Kfar Mashoun	VL	L	L	Kfoun	VL	VL	L

Kharbe Jbeil	VL	L	L	Laqlouq	VL	L	L	Lassa	VL	VL	VL
Lehfed	VL	VL	L	Maad	VL	L	L	Mar Sarkis	VL	L	VL
Mastita	VL	L	ML	Mayfouq	VL	VL	L	Mazraat El Siyad	VL	L	L
Mazraat El-Maaden	VL	VL	VL	Mechane	L	VL	L	Mechmech Jbeil	VL	VL	L
Mehrin	L	VL	L	Mejdel El-Akoura	VL	L	L	Mghayreh Jbeil	VL	L	L
Mounsef	L	L	ML	Nahr Ibrahim	VL	L	ML	Qahmez	VL	VL	VL
Qartaba	VL	VL	VL	Qartaboun	L	L	M	Qattara Jbeil	VL	VL	VL
Qorqraya	VL	VL	VL	Ramout	VL	L	L	Ras Osta	L	VL	L
Rihane Jbeil	L	L	ML	Sakiet El-Khayt	VL	L	L	Saqi Richmaya	VL	VL	VL
Sebrine	L	VL	L	Seraita	VL	L	L	Souane Jbeil	VL	VL	VL
Tadmor	VL	L	L	Tartej	VL	VL	L	Torzaiya	L	VL	L
Yanouh Jbeil	VL	L	L	Zibidine Jbeil	VL	VL	VL				

## El Metn

Municipality	23-Feb	24-Feb	25-Feb	Municipality	23-Feb	24-Feb	25-Feb	Municipality	23-Feb	24-Feb	25-Feb
Aain El-Qabu	VL	VL	L	Aain El-Qach	VL	L	L	Aain El-Teffaha	VL	VL	L
Aain el-Safssaf El-M	VL	VL	L	Abou Mizane	VL	VL	L	Ain Aar	L	VL	L
Ain Alaq	L	VL	L	Ain El-Kharroube	VL	L	L	Ain El-Sendiane	VL	L	L
Ain El-Zeitoune	VL	VL	L	Ain Saadeh	L	VL	L	Aintoura El-Matn	VL	VL	L
Amaret Chalhoub	L	VL	L	Antelias	L	L	L	Atchaneh	VL	VL	L
Ayroun	VL	VL	L	Baabdat	VL	VL	L	Baouchariyeh	ML	L	ML
Baskinta	VL	VL	L	Beit Chabab	VL	VL	L	Beit El-Charar	L	VL	L
Beit El-Kekko	L	VL	L	Beit Mery	L	VL	L	Bhersaf	VL	VL	L
Bikfaya	VL	VL	L	Biyakout	L	VL	L	Bnabil	VL	VL	L
Bourj Hammoud	ML	VL	ML	Bqennaya	L	VL	L	Broummana El-Matn	L	VL	L
Bsalim	L	VL	L	Bsifrine	VL	VL	VL	Bteghrine	VL	VL	L
Chaouiye	L	VL	L	Chouaya El-Matn	VL	L	L	Choueir	VL	VL	L
Chrine	VL	VL	VL	Dahr El Sawan El-Mat	VL	VL	L	Daychouniyeh	L	L	L
Dbayeh	L	L	L	Deir Chamra	VL	VL	VL	Deir Mar Abda el Mch	VL	VL	L
Deir Mar Roukouz	L	L	ML	Deir Tamiche	L	VL	L	Dik El-Mehdi	L	VL	L
Dikwaneh	ML	L	ML	Douar El-Matn	VL	VL	L	Fanar	L	VL	L
Fraike	VL	VL	L	Haret El-Ballaneh	L	L	L	Hbous	L	VL	L
Himlaya	VL	VL	L	Jal El Did	L	VL	L	Jdeideh El-Metn	L	VL	L
Jouar El-Matn	VL	VL	L	Jouret El-Ballout	L	VL	L	Kaaqour	VL	VL	L
Kfar Aaqab	VL	VL	VL	Kfertay El-Matn	VL	VL	VL	Khenchara	VL	VL	L
Khillet El-Mtain	VL	VL	L	Konnabat Broummana	L	VL	L	Konnabat Salima	VL	VL	VL
Machraah El-Matn	VL	VL	L	Majdel Tarchich	VL	VL	L	Majzoub	L	L	L
Mansouriyeh El-Metn	L	L	L	Mar Boutros Karm Et-	VL	VL	VL	Mar Chaya et Mzekke	L	VL	L
Mar Moussa Ed-Douar	VL	VL	L	Marjaba	VL	VL	L	Masqa	VL	VL	L
Mayasse	VL	VL	VL	Mazraat Deir Aoukar	L	VL	L	Mazraat El-Hadirat	L	VL	L
Mazraat Yachouh	L	VL	L	Mchikha	VL	VL	L	Menqlet Mezher	L	L	L
Mhaydseh Matn	VL	VL	L	Mkalles	ML	L	ML	Mrouj	VL	L	L
Mtain	L	L	L	Mtayleb	L	VL	L	Nabay	L	VL	L
Naccache	L	VL	L	Ouadi Chahine	VL	VL	VL	Ouadi El-Karm El-Mat	VL	VL	VL
Ouata El-Mrouj	VL	VL	L	Ouyoun El-Matn	VL	VL	L	Qornet Chehwan	L	VL	L
Qornet El-Hamra	L	VL	L	Roumieh	L	VL	L	Sfeilet Bikfaya	VL	VL	VL
Sinn El-Fil	ML	L	ML	Zabbougha	VL	VL	VL	Zalqa	L	VL	L

Zarouon	VL	VL	L	Zekrite	L	VL	L	Zighrine El-Matn	VL	VL	L
Zouk El-Khrab	L	L	L								

## Chouf

Municipality	23-Feb	24-Feb	25-Feb	Municipality	23-Feb	24-Feb	25-Feb	Municipality	23-Feb	24-Feb	25-Feb
Aalmane El-Chouf	L	L	ML	Aammq El-Chouf	L	VL	L	Ain Ouzein	VL	VL	L
Ain Qani	VL	VL	L	Ain Zhalta	L	VL	L	Ainbal	L	VL	L
Amatour	L	VL	L	Anout	VL	VL	L	Atrine	L	VL	L
Baadarane	L	VL	L	Baaqline	L	VL	L	Baasir	L	L	ML
Barja	L	L	ML	Barouk	L	VL	L	Bater	L	VL	L
Batloun	L	VL	L	Bayqoun	L	VL	L	Bchetfine	L	VL	L
Beiteddine	VL	VL	L	Benouati Ech-Chouf	L	VL	L	Berjein	L	VL	L
Bireh et Mtalleh	L	VL	L	Biret El-Chouf	L	VL	L	Bkechtine Ouel Mchei	VL	VL	L
Bkifa El-Chouf	L	VL	L	Botme	L	VL	L	Bqaiaa Ech-Chouf	L	VL	L
Bsaba El-Chouf	L	VL	L	Chammis El-Chouf	L	L	ML	Chehim	VL	VL	L
Chemaarine	L	VL	L	Chourit	VL	VL	L	Daher El-Chouf	L	L	L
Dalhoun	L	L	L	Damour	L	L	ML	Daraya El-Chouf	VL	VL	L
Deir El-Moukhalles	VL	VL	L	Deir Baba	L	VL	L	Deir Dourit	L	VL	L
Deir El-Qamar	L	VL	L	Deir Kouche	L	VL	L	Dibbieh	L	L	L
Dmit	L	VL	L	Fouara Jaafar	VL	VL	L	Fraidis El-Chouf	L	VL	L
Ghabet Jaafar	L	VL	L	Gharife	VL	VL	L	Haret Jandal	L	VL	L
Hasrout	VL	VL	L	Jadra	L	L	ML	Jahlieh	L	VL	L
Jbeih El-Chouf	L	VL	L	Jdeidet El-Chouf	VL	VL	L	Jiyeh	L	L	ML
Jleilyeh	L	VL	L	Jmailiyeh	L	L	ML	Joun	L	L	L
Kahlounie El-Chouf	L	VL	L	Ketermaya	L	L	ML	Kfar Faqoud	L	VL	L
Kfar Hamal	L	VL	L	Kfar Him	L	VL	L	Kfar Katra	L	VL	L
Kfar Niss	L	VL	L	Kfar hay	VL	VL	L	Kfarnabrakh	L	VL	L
Khirbet Bisri	VL	VL	L	Knayse El-Chouf	VL	VL	VL	Maaniyeh	L	L	ML
Maasser Beiteddine	L	VL	L	Maasser El-Chouf	L	VL	L	Majdalouna	L	L	ML
Majdel El-Meouch	L	VL	L	Mazboud	VL	VL	L	Mazmoura	VL	VL	L
Mazraat El Chouf	L	VL	L	Mazraat El Daher	VL	VL	L	Mazraat El-Douair	VL	VL	L
Mechref	L	VL	L	Mghairie	L	L	ML	Mghayrie El-Chouf	L	VL	L
Moukhtara	VL	VL	L	Mrusti	L	VL	L	Mtolle	VL	VL	L
Naameh	L	L	ML	Niha El-Chouf	L	VL	L	Ouadi Abou Youssef	VL	VL	VL
Ouadi Ed-Deir	L	VL	L	Ouadi El-Sit	L	VL	L	Ouadi bnehlay	VL	VL	L
Qraibeh	L	VL	L	Qreiaa	VL	VL	L	Rmayle El-Chouf	L	L	ML
Semqaniyeh	L	VL	L	Sibline	L	L	ML	Sirjbeil	L	VL	L
Warhanieh	L	VL	L	Werdaniyeh	L	L	ML	Zaarourieh	VL	VL	L

## Baabda

Municipality	23-Feb	24-Feb	25-Feb	Municipality	23-Feb	24-Feb	25-Feb	Municipality	23-Feb	24-Feb	25-Feb
Abadiyeh	VL	VL	L	Ain Mouaffaq	VL	VL	L	Araiya	L	VL	L
Arbaniyeh	VL	VL	VL	Arsoun	VL	VL	L	Baabda	L	L	L
Baalchmey	L	VL	L	Bmaryam	L	L	L	Bourj El-Brajneh	L	L	L
Boutchay	L	L	L	Bsaba Baabda	L	L	L	Btekhney	L	VL	L
Btibyat	L	VL	L	Bzbeddine	VL	VL	L	Chbeniyeh	L	L	L
Chiyah	ML	L	ML	Chmeisset Baabda	VL	VL	L	Chouit	VL	VL	L
Deir El-harf	L	L	L	Deir Khouna	L	L	L	Dlaybeh	VL	VL	VL

Falougha	L	L	L	Furn El-Chebbak	ML	VL	ML	Hadath Beyrouth	L	L	L
Halaliyeh Baabda	VL	VL	VL	Hammana	L	L	L	Haret El Sett	VL	VL	L
Haret Hamze	L	VL	L	Haret Hreik	ML	L	ML	Hasbaiya El-Metn	VL	VL	VL
Jouar El-Hoz	VL	VL	L	Jouret Arsoun	VL	VL	L	Kfar Chima	L	L	L
Kfar Selouane	L	L	L	Khalouat Baabda	L	L	L	Kneisset Baabda	VL	VL	L
Laylakeh	L	L	L	Louayzeh Baabda	L	L	L	Merdache	L	L	L
Mzairaa Baabda	L	VL	L	Ouadi Chahrour El Ol	L	L	L	Ouadi Chahrour El So	L	L	L
Qalaa Baabda	L	L	L	Qhraybe Baabda	L	L	L	Qobbayaa	L	L	L
Qornayel	VL	VL	L	Qortada	VL	VL	L	Qrayeh Baabda	L	L	L
Qsaibeh Baabda	VL	VL	L	Qtale Baabda	L	VL	L	Ras El Metn	L	VL	L
Ras El-Haref	L	L	L	Rouayset El-Ballout	VL	VL	L	Salima Baabda	VL	VL	L
Tahouitat El Ghadir	L	L	L	Tarchich	VL	VL	L	Zandouqa	VL	VL	VL

## Aley

Municipality	23-Feb	24-Feb	25-Feb	Municipality	23-Feb	24-Feb	25-Feb	Municipality	23-Feb	24-Feb	25-Feb
Abey	L	VL	L	Aghmid	L	L	L	Ain Dara	L	L	L
Ain Drafil	L	L	L	Ain El Halazoun	L	VL	L	Ain El-Rmmaneh	VL	VL	L
Ain Jedideh	L	VL	L	Ain Ksour	L	L	L	Ain Onoub	L	L	L
Ain Traz	VL	VL	L	Ainab	L	L	L	Aley	L	VL	L
Aramoun	L	L	L	Aytat	L	L	L	Azouniyeh	L	L	L
Baawerta	L	VL	L	Badghan Oua Wadi Bad	L	L	L	Bassatine	L	L	L
Bayssour	L	L	L	Bchamoun	L	L	L	Bdadoun	L	VL	L
Behouara	L	VL	L	Bennay	L	VL	L	Bhamdoun El-Dayaa	L	VL	L
Bhamdoun El-Mhatta	L	L	L	Bkhechey	L	VL	L	Bleibel	L	L	L
Bmakine	L	L	L	Bmehray	L	L	L	Bouzrid	VL	VL	VL
Bserrine	L	VL	L	Bsous	VL	VL	VL	Btalloun	L	VL	L
Btater	L	VL	L	Chanay	L	L	L	Charoun	L	L	L
Chartoun	VL	VL	L	Chemlane	L	L	L	Chouifat El-Aamrous	L	L	L
Chouifat El-Oumara	L	L	L	Chouifat El-Quoubbe	L	L	L	Dakkoun	L	VL	L
Deir Qoubel	L	L	L	Dfoun	L	L	L	Douair El Remmaneh	VL	VL	VL
Ghaboun	L	VL	L	Habramoun	VL	VL	L	Homs Oua Hama	L	VL	L
Houmal	L	L	L	Jisr El Qadi	L	VL	L	Kehaleh	VL	VL	L
Keyfoun	L	L	L	Kfar Aamey	L	VL	L	Kommatyeh	L	VL	L
Maasrati	L	VL	L	Majdel Baana	L	L	L	Mansourieh et Ain El	L	VL	L
Mazraat El-Nahr	L	VL	L	Mchakhte	L	L	L	Mecherfeh	L	L	L
Mejdlaya	VL	VL	L	Mrayjat	L	L	L	Ramliyah	L	VL	L
Rechmaya	L	VL	L	Rejmeh	VL	VL	L	Remhala	L	L	L
Rouaysset El Neemane	L	VL	L	Saoufar	L	L	L	Selfaya	VL	VL	VL
Sirhmoul	L	L	L	Souq El Ghareb	L	L	L	Taazanieh	VL	VL	L

## Kesrouane

Municipality	23-Feb	24-Feb	25-Feb	Municipality	23-Feb	24-Feb	25-Feb	Municipality	23-Feb	24-Feb	25-Feb
Achkout	VL	VL	VL	Adma Oua Dafneh	VL	L	L	Ain Ed-Delbe Kesroua	VL	VL	VL
Ain El-Rihane	VL	L	L	Aintoura Kesrouane	VL	L	L	Ajaltoun	VL	VL	VL
Akaybeh Kesrouane	VL	L	M	Aramoun Kesrouane	VL	VL	VL	Azra ouel Ozor	VL	VL	L
Ballouneh	VL	VL	VL	Batha	VL	VL	L	Bekaatat Achkout	VL	VL	VL
Bekaatat Kanaan	VL	VL	VL	Bizhel	L	VL	L	Bouar	VL	L	L
Bqaatouta	VL	VL	VL	Bqaq Ed-Dine	VL	L	ML	Bzommar	VL	VL	VL

Chahtoul	VL	VL	VL	Chnaniir	VL	VL	L	Chouan	VL	VL	VL
Daraya Kesrouane	VL	VL	VL	Darououn	VL	VL	L	Deir Baqlouch	VL	VL	L
Dlebta	VL	VL	VL	Eghbeh	VL	VL	VL	Faraya	VL	VL	VL
Fatka	VL	VL	L	Feytroun	VL	VL	VL	Ghazir	VL	VL	L
Ghbaleh Kesrouane	L	VL	L	Ghedrass	VL	VL	L	Ghosta	VL	VL	VL
Ghynéh	VL	VL	VL	Harharaya w Kattine	VL	VL	VL	Harissa Kesrouane	VL	VL	L
Hayata	VL	VL	VL	Hosein	VL	VL	VL	Hrajel	VL	VL	VL
Jdeideh Ghazir	VL	VL	VL	Jeita	VL	VL	L	Jounieh Ghadir	VL	L	L
Jounieh Haret Sakhr	VL	L	ML	Jounieh Salel Alma	VL	L	L	Jounieh Sarba	VL	L	ML
Jouret Bedrane	L	VL	L	Jouret Mhad	VL	VL	VL	Jouret Termos	VL	VL	L
Kfar Debiane	VL	VL	VL	Kfar Tay Kesrouane	VL	VL	VL	Kfar Yassine	VL	L	ML
Kfour Kesrouane	VL	VL	VL	Kharayeb Nahr Ibrahi	VL	L	L	Klayaat Kesrouane	VL	VL	VL
Maarab	VL	VL	VL	Maaysra Kesrouane	L	L	L	Mayrouba	VL	VL	VL
Mazraat Er-Ras	L	L	L	Mazraat Mrah El-Mir	VL	VL	VL	Mchaa El Ftouh	L	L	L
Mchaa Faraya	VL	L	L	Mchaa Kfar Dibiane	VL	L	L	Mghaer	VL	VL	VL
Mradiyah	L	VL	L	Nahr Ed-Dahab	VL	VL	VL	Nammoura Kesrouane	L	L	L
Ouata El Jaouz	VL	VL	VL	Ouata Sillam	VL	L	ML	Raachine	VL	VL	VL
Rayfoun	VL	VL	VL	Safra Kesrouane	VL	L	ML	Shayle Kesrouane	VL	VL	L
Tabarja	VL	L	L	Yahchouch	L	VL	L	Zaaytreh	VL	VL	L
Zeytoun	L	L	L	Zouk Mikael	VL	L	ML	Zouk Mosbeh	L	L	ML

## Baalbek\_Hermel

### Baalbek

Municipality	23-Feb	24-Feb	25-Feb	Municipality	23-Feb	24-Feb	25-Feb	Municipality	23-Feb	24-Feb	25-Feb
Aadous	L	L	ML	Aamchki	VL	VL	L	Aarsal	L	L	L
Ain Baalbek	L	L	L	Ain Bourday	L	L	L	Ain El-Benye	VL	VL	L
Ain El-Jaouz Baalbek	L	VL	L	Ain El-Siya Chadoura	L	VL	L	Al Khodr Baalbek	L	L	L
Al Nabi Chit	L	L	L	Aynata Baalbek	L	L	L	Baalbek	L	L	L
Bachwat	L	L	L	Barqa	L	L	L	Bednayel Baalbak	L	L	L
Beit Chama	L	L	L	Bijjaje	L	L	ML	Bouday	L	ML	ML
Brital	L	L	L	Btadi	ML	ML	M	Chaat	L	L	ML
Chaibe	VL	VL	L	Chlifa	ML	M	M	Chmestar	L	L	L
Dar El-Oussa	L	M	M	Deir El-Ahmar	L	ML	ML	Deir Mar Maroun Baal	M	ML	M
Douris	L	L	L	Fakiha	ML	L	ML	Hadath Baalbek	L	L	L
Ham	VL	VL	L	Haour Taala	L	L	L	Hizzine	L	L	ML
Hlebta	L	ML	ML	Hosh Barada	L	L	ML	Hosh El Dahab	L	L	ML
Hosh El Snid	L	L	L	Hosh El-Nabi	L	L	L	Hosh El-Rafiq	L	L	L
Hosh Tal Safiya	L	L	ML	Hrebta	ML	ML	M	laat	L	L	ML
Jebaa	ML	L	ML	Jenta	L	L	L	Kfar Dabach	L	L	ML
Kfar Dane	ML	L	ML	Khraibeh El-Hermel	ML	L	L	Khreibet Baalbek	L	L	L
Kneisset Baalbek	L	L	ML	Labueh	L	L	ML	Maarboun	VL	VL	L
Majdaloun	L	L	ML	Maqneh	L	L	ML	Mazraat Beit Mcheik	ML	M	ML
Misraya	L	L	L	Moqraq	L	L	M	Nabha El-Damdoum	L	ML	ML
Nabi Chbay	VL	VL	L	Nabi Osman	L	L	L	Nahleh baalbek	L	L	L
Ouadi El-Oss	L	ML	ML	Qaa Baayoun	ML	L	L	Qaa Jouar Maqiye	M	ML	ML
Qaa Ouadi El-Khanzir	M	ML	ML	Qah Baalbek	M	L	ML	Qarha Baalbek	ML	M	M

Qsarnaba	L	L	L	Ram Baalbek	ML	M	M	Ras Baalbek El Sahl	M	L	ML
Ras Baalbek El-Charq	L	L	L	Riha	L	L	M	Saaide	L	L	ML
Sbouba	ML	L	ML	Seriine El-Tahta	L	L	L	Slouqi	L	L	L
Taiba Baalbek	L	L	ML	Talia	L	L	L	Taraiya	L	L	L
Temnin El Fawqa	L	L	L	Temnin El-Tahta	L	L	L	Tfail	L	L	ML
Yahfoufa	L	L	L	Yammouneh	L	ML	ML	Younine	L	L	ML
Zboud	ML	L	M								

## Hermel

Municipality	23-Feb	24-Feb	25-Feb	Municipality	23-Feb	24-Feb	25-Feb	Municipality	23-Feb	24-Feb	25-Feb
Charbine El-Hermel	L	L	L	Hermel Jbab	L	L	L	Hermel	M	ML	M
Maaysra El-Hermel	M	M	M	Michaa Mrajhine	L	L	L	Ouadi Faara	L	ML	ML
Ras Baalbek - Ouadi	M	M	M	Ras Baalbek El Gharb	ML	ML	M	Zighrine	M	ML	M

## Akkar

### Akkar

Municipality	23-Feb	24-Feb	25-Feb	Municipality	23-Feb	24-Feb	25-Feb	Municipality	23-Feb	24-Feb	25-Feb
Aain Tinta	L	L	L	Aaiyat	L	L	L	Aakkar El-Aatiqa	L	L	L
Aamar Akkar	L	L	ML	Aamar El Baykat	ML	ML	L	Aamayer	L	L	ML
Aamriyet Akkar	L	L	L	Aandqet	L	L	L	Aarmeh	L	ML	L
Aarqa	ML	ML	ML	Aawaynat	L	ML	L	Aayoun Akkar	L	VL	L
Abboudiye	ML	M	ML	Ain El-Zeit	L	L	L	Ain Yaaqoub	L	VL	L
Akroum	L	L	L	Aridet Cheikh Zennad	M	M	M	Baldeh w Mazraat Bal	ML	ML	L
Barcha	ML	M	ML	Bardeh	L	L	L	Bebnine	L	L	ML
Beino	L	L	L	Beit Ayoub	L	VL	L	Beit El-Haouch	L	L	ML
Beit Mellat	L	L	L	Beit Younes	VL	VL	L	Berbara Akkar	L	L	L
Berqayel	L	L	ML	Bezbina	L	VL	L	Bireh Akkar	L	L	L
Borj	L	VL	L	Bqerezla	L	L	L	Bzal	L	L	L
Chane	VL	VL	L	Chaqdouf	L	VL	L	Charbila	ML	ML	ML
Cheikh Mohammad	ML	ML	ML	Cheikh Taba Es-Sahl	M	M	ML	Cheikh Taba	L	L	L
Cheikh Zennad	M	M	M	Cheikhlar	L	L	L	Chir Hmairine	ML	ML	ML
Daghle	L	L	L	Dahr Laissine	L	L	L	Darine	ML	ML	ML
Dawra	L	L	L	Dawsa w Baghdadi	L	L	L	Dayret Nahr El-Kabir	L	ML	L
Deir Dalloum	L	L	ML	Deir Jennine	L	L	L	Denbou	VL	VL	L
Dibbabiye	L	L	L	Douair Aadwiyeh	L	L	L	Fassikine	L	L	L
Fnaydek	L	VL	L	Fraydes Akkar	L	L	L	Ghazayle	ML	ML	ML
Habchit	VL	VL	L	Hakour	L	L	ML	Halba	ML	ML	L
Haouchab	ML	ML	ML	Hayssat	M	M	M	Haytla	ML	ML	ML
Hayzouq	ML	ML	L	Hedd	ML	ML	L	Hmaira Akkar	L	L	ML
Hmaiss Akkar	ML	ML	ML	Hnaider	L	L	ML	Hokr Ed-Dahri	M	M	M
Hokr Etti	ML	ML	ML	Hokr Jouret Srar	ML	M	ML	Houaich	L	VL	L
Hrar	VL	VL	L	Idbil	L	VL	L	Ilal	L	L	L
Janine	ML	M	ML	Jdeidet El-Joume	L	L	L	Jdeidet El-Kaiteh	L	L	ML
Jebraiel	L	L	L	Kafr	VL	L	L	Kafr	L	L	L
Karm Asfour	L	L	L	Kfar Melki Akkar	M	M	M	Kfar Noun	L	L	L
Kfarharra	ML	ML	ML	Khalsa	L	ML	L	Kharnoubet Akkar	ML	M	ML



Khirbet Daoud Aakkar	L	L	L	Khirbet El Remmane	L	L	L	Khirbet Shar	L	L	L
Khoreybet El-Jindi	ML	ML	ML	Khreibet Aakkar	L	L	L	Kneisset Aakkar	M	M	M
Kneisset Hnaider	L	L	ML	Knisse	ML	ML	ML	Kroum El-Aarab	ML	ML	ML
Kwachra	L	L	L	Kweykhat	ML	ML	ML	Machta Hammoud	L	ML	L
Majdala	L	L	ML	Majdel Akkar	L	L	L	Mar Touma	L	L	ML
Marlaya Melhem	L	L	ML	Mashha	L	L	L	Massoudiye	M	M	M
Mazraat Beit Ghattas	L	L	ML	Mazraat En-Nahriye	L	L	L	Mechmech	L	L	L
Memneh	L	VL	L	Mhammara	L	L	ML	Mighraq Aakkar	M	M	M
Minyara	L	L	ML	Moqayteh	M	M	M	Mounjez	L	L	L
Msalla	L	L	L	Mzeihmeh	ML	ML	ML	Nfaiseh	L	L	L
Noura Et-Tahta	L	L	L	Ouadi El-Haour	ML	ML	ML	Ouadi El-Jamous	L	L	ML
Ouyoun El-Ghizlane	L	L	ML	Qaabarine	M	M	M	Qabaait	L	VL	L
Qachlaq	ML	ML	ML	Qantara Aakkar	L	L	L	Qarha Aakkar	L	L	ML
Qarqaf	L	L	ML	Qboula	L	VL	L	Qleiaat Aakkar	M	M	M
Qloud El-Baqie	L	L	ML	Qobaiyat Aakkar	L	L	L	Qobbat Chamrat	L	L	ML
Qorayat	VL	VL	L	Qornet Aakkar	L	VL	L	Qsair Aakkar	L	L	L
Rahbe	L	L	L	Rihaniyet Aakkar	ML	ML	ML	Rmah	L	L	L
Rmoul	M	M	M	Saadine	ML	ML	ML	Sadaqa	L	L	L
Saidnaya	ML	ML	ML	Sammouniye	M	M	M	Sayssouq	L	L	L
Semmaqiye	M	M	M	Semmaqli	ML	ML	ML	Sfinet El-Dreib	ML	ML	L
Sfinet El-Qaitaa	L	L	L	Sindyanet Zeidane	L	L	L	Souaisset Aakkar	ML	ML	ML
Srar	ML	ML	ML	Tal Abbas El Gharby	M	M	ML	Tal Abbas El-Chargy	M	ML	L
Tal Biret	M	M	M	Tal Hmayra	ML	ML	ML	Tal Maayan Tal Kiri	M	M	M
Tal Sibel	M	M	M	Tallet Chattaha	L	VL	L	Tikrit	L	VL	L
Tleil	ML	ML	ML	Tshea	L	VL	L	Zawarib	L	VL	L
Zouq El Hosniyeh	L	L	ML	Zouq El-Haddara	L	L	ML	Zouq El-Hbalsa	L	L	ML
Zouq El-Moqachrine	L	L	ML								

## Sud

### Sour

Municipality	23-Feb	24-Feb	25-Feb	Municipality	23-Feb	24-Feb	25-Feb	Municipality	23-Feb	24-Feb	25-Feb
Aaiyeh	L	L	L	Aalma El-Chaab	L	L	L	Aaytit	L	L	L
Abbassiyeh Sour	ML	L	L	Abou Chech	VL	L	L	Ain Abou Abdallah	ML	L	L
Ain Baal	L	L	L	Arzoun	L	L	ML	Aziyeh	L	L	L
Baflaya	L	L	L	Barich	L	L	L	Batouliyeh	L	L	L
Bayad	L	L	L	Bazouriyeh	L	L	L	Bediass	L	L	L
Bestiyat	L	L	L	Borj El Chemali	ML	L	L	Borj En-Naqoura	L	L	L
Borj Rahhal	L	L	L	Boustane	L	L	L	Btaychiyeh	L	L	L
Chaaitiye	L	L	L	Chameh	VL	VL	L	Chehabiye	L	L	L
Chehour	L	L	L	Chihine	VL	L	L	Debaal Sour	L	L	L
Deir Amess	L	L	L	Deir Kifa	L	L	L	Deir Qanoun El-Ain	L	L	L
Deir Qanoun El-Naher	L	L	L	Derdghaiya	L	L	ML	Dhayra	VL	L	L
Halloussiyeh	L	L	L	Hamoul	L	L	L	Hanaouey	L	L	L
Henniye	L	L	L	Hmairi Sour	L	L	L	Iskandarouna Sour	L	L	L
Jbal El Botom	L	L	L	Jebbin	L	L	L	Jennata	L	L	L
Jijim	VL	L	L	Jouaiya	L	L	L	Kneisset Sour	L	L	L

Maarake	L	L	L	Maaroub	L	L	L	Majadel	L	L	L
Majdalzoun	L	L	L	Mansouri Sour	L	L	L	Marnba	L	L	L
Marouahine	VL	VL	L	Mazraat El-Zalloutiy	L	L	L	Mazraat Mechref	L	L	L
Mazraat Tayr Semhat	L	L	L	Mheilib	M	L	L	Neffakhiyeh	L	L	ML
Niha Sour	L	L	ML	Ouadi Jilo	L	L	L	Qana	L	L	L
Qolaileh Sour	L	L	L	Rechknany	L	L	L	Rmadiyah	L	L	L
Selha Sour	L	L	ML	Siddiqine	L	L	L	Sour	L	L	L
Srifa	L	L	ML	Tayr Debbe	L	L	L	Tayr Felsay	L	L	L
Tayr Harfa	L	L	L	Touayri	L	L	L	Toura	L	L	L
Yanouh Sour	L	L	L	Yarine	L	L	L	Zebqine	VL	VL	L

## Saida

Municipality	23-Feb	24-Feb	25-Feb	Municipality	23-Feb	24-Feb	25-Feb	Municipality	23-Feb	24-Feb	25-Feb
Aanqoun	L	L	ML	Aaqtanit	L	L	ML	Aarab Ej-Jall	L	L	ML
Aarab Tabbaya	L	L	ML	Abra Saida	L	L	ML	Adloun	L	L	ML
Adousiyeh	ML	L	M	Ain-El-Deleb	L	L	ML	Arzai	L	L	L
Babliyah	L	L	ML	Barty	L	L	L	Bissariyeh	ML	L	M
Bnaafoul	L	L	ML	Bqosta	L	L	ML	Bramiy	L	L	ML
Daoudiyeh	L	L	ML	Dareb El-Sim	L	L	ML	Erkay	L	L	ML
Ghassanieh	L	L	ML	Ghazieh	ML	L	M	Hajjeh	L	L	ML
Haret Saida	L	L	ML	Hartiyeh	L	L	ML	Hlaliye Saida	L	L	ML
Insariyat	L	L	ML	Jazira Saida	L	L	L	Kafar Bit	L	L	ML
Kaoutariyet El-Siyad	L	L	L	Kfar Chellal	L	L	L	Kfar Hatta Saida	L	L	ML
Kfar Milke Saida	L	L	L	Khartoum	L	L	L	Khaziz	L	L	ML
Khirbet Ed-Douair Sa	L	L	ML	Khirbet El-Bassal	L	L	ML	Khrayeb Saida	L	L	L
Loubieh	L	L	ML	Maghdouche	L	L	ML	Majdelyoun	L	L	ML
Matariyet El-Choumar	L	L	L	Matayriyeh	L	L	ML	Mazraat 'Mseileh	ML	L	M
Mazraat 'Snaiber	ML	L	M	Mazraat Aarab Soukka	L	L	ML	Mazraat Deir Taqla	L	L	ML
Mazraat El Yahoudiye	ML	L	ML	Mazraat El-Housseini	ML	L	M	Mazraat El-Mhaydaleh	L	L	ML
Mazraat El-Ouasta	ML	L	ML	Mazraat Jamjim	L	L	ML	Mazraat Kaoutariyet	L	L	ML
Mazraat Kfar Badda	L	L	ML	Mazraat Oussamiyat	L	L	ML	Mazraat Sari	L	L	ML
Mazraat Sinai	L	L	ML	Meemariyeh	L	L	ML	Merouaniyeh	L	L	ML
Miyeh ou Miyeh	L	L	ML	Najjariyeh	ML	L	M	Qaaqaiyat El-Snaouba	L	L	ML
Qnarit	L	L	ML	Qraiye Saida	L	L	ML	Saida Ed-Dekermane	L	L	ML
Saida El-Oustani	L	L	ML	Saida El-Qadimeh	L	L	ML	Saida Kefraya	L	L	ML
Saksakiyeh	L	L	ML	Salhie Saida	L	L	ML	Sarafand	ML	L	ML
Sfenta	L	VL	L	Tafahta	L	L	ML	Tanbourit	L	L	ML
Tebna	L	L	ML	Zaghdraiya	L	L	ML	Zeita	L	L	ML
Zrariyeh	L	L	L								

## Jezzine

Municipality	23-Feb	24-Feb	25-Feb	Municipality	23-Feb	24-Feb	25-Feb	Municipality	23-Feb	24-Feb	25-Feb
Ain El-Mir (El Estab	L	L	ML	Anane	VL	VL	L	Aramta	L	L	L
Ariya	L	VL	L	Aychiyeh	L	L	L	Azour	VL	VL	L
Baba	VL	VL	L	Bayssour Jezzine	L	L	ML	Benoueteh Jezzine	L	VL	L
Bhannine	L	VL	L	Bisri	VL	VL	L	Bkassine	VL	VL	L
Bouslaya	L	VL	L	Btedine El-Leqech	VL	VL	L	Chbail	VL	L	L
Choualiq Jezzine	L	L	ML	Dahr Ed-Deir	L	L	L	Deir El Qattine	L	L	L

Demachqiyeh	L	VL	ML	Ghabbatiyeh	L	VL	L	Harf Jezzine	VL	VL	L
Hassaniyeh	L	L	ML	Haytouleh	L	L	L	Haytura	L	L	L
Hidab	L	L	L	Homsiyeh	VL	VL	L	Jabal Toura	L	L	L
Jarmaq	L	VL	ML	Jensnaya	L	L	ML	Jernaya	L	L	L
Jezzine	L	VL	L	Karkha	L	L	L	Kfar Falous	L	VL	L
Kfar Houna	L	VL	L	Kfar Jarrah	L	L	ML	Lebaa	L	L	ML
Louayzet Jezzine	L	L	L	Machmouche	VL	VL	L	Mahmoudiyeh Jezzine	L	L	ML
Maknounye Jezzine	L	L	L	Maraat Ouzaïyeh	L	L	L	Mazraat Daraya	VL	VL	L
Mazraat El-Aarqoub	L	VL	L	Mazraat El-Mathane	VL	VL	L	Mazraat El-Rahbane	L	L	L
Mazraat Khallet Khaz	L	L	L	Mazraat Louzid (Loua	VL	L	L	Mazraat Qrouh	L	L	L
Mazraat Tamra	L	VL	ML	Mazraat Zighrine Jez	L	L	L	Mazraat	L	L	L
Mharbiyeh	L	L	ML	Midane Jezzine	VL	VL	L	Mjeydel Jezzine	L	L	ML
Mlikh	L	L	L	Mrah El-Hbasse	L	L	ML	Ouadi Baanquodaine	L	L	ML
Ouadi El-Laymoun	L	L	L	Ouardiyeh	VL	VL	L	Qabaa Jezzine	VL	L	L
Qatrani	L	L	L	Qaytouleh	L	L	L	Qtaleh Jezzine	VL	VL	L
Rihane Jezzine	L	L	L	Rimat	L	L	L	Roum	VL	VL	L
Roummanet	L	L	L	Sabbah	L	VL	L	Saydoun	L	VL	L
Sfaray	VL	VL	L	Snaya	VL	VL	L	Sojoud	L	L	L
Srayri	L	L	L	Taaid	VL	VL	L	Wadi Jezzine	VL	VL	L
Zhalta	VL	VL	L								

## Bekaa

### West Bekaa

Municipality	23-Feb	24-Feb	25-Feb	Municipality	23-Feb	24-Feb	25-Feb	Municipality	23-Feb	24-Feb	25-Feb
Aammiq BG	ML	L	L	Ain El Tineh BG	L	VL	L	Ain Zebdeh	L	VL	L
Ana	L	L	L	Aytanit	L	VL	L	Baaloul BG	L	VL	L
Bab Mareh	L	VL	L	Chouberqiye Aammiq	ML	L	L	Dakoue	L	L	L
Deir Ain El-Jaouze	L	VL	L	Deir Tahniche	ML	L	L	Ghaza	ML	L	L
Harime El-Soughra	L	L	L	Hoch Harimeh	ML	L	L	Jazira BG	ML	L	L
Jib Jennine	L	L	L	Kamed-El-Laouz	L	L	L	Kefraya BG	L	VL	L
Khiara El Atika	ML	L	L	Khiara	ML	L	L	Khirbet Qanafar	L	VL	L
Lala	L	VL	L	Lebbaya BG	VL	L	L	Loussa	L	L	L
Machghara	L	VL	L	Manara (Hammara) BG	L	L	L	Mansoura BG	ML	L	L
Marej BG	L	L	L	Maydoun	L	L	L	Ouaqf BG	ML	L	L
Qaraaoun	L	VL	L	Qelya	L	L	L	Raouda (Istabel)	L	VL	L
Saghbine	L	VL	L	Sohmor	VL	L	L	Soltan Yacoub el Ara	L	L	L
Souairy	L	L	L	Sultan Yaacoub	L	L	L	Tal Znoun	ML	L	L
Yehmor BG	VL	L	L	Zilaya	VL	VL	L				

### Zahle

Municipality	23-Feb	24-Feb	25-Feb	Municipality	23-Feb	24-Feb	25-Feb	Municipality	23-Feb	24-Feb	25-Feb
Aanjar (Haouch Mouss	L	L	L	Ablah	L	L	L	Ain Kfarzabad	L	L	L
Ali-El-Nahri	L	ML	L	Bar Elias	L	L	L	Bouarej	L	L	L
Cheberqiyet Tabet	L	L	L	Chtaura	L	L	L	Deir El Ghazal	L	L	L
Delhamiyet Zahle	L	L	L	Ferzol	L	L	L	Haouch El-Ghanam	L	ML	L
Haouch Es-Siyadeh	L	L	L	Haouch Hala	L	L	L	Haouch Mandara	L	L	L

Haouch Qayssar	L	L	L	Hezerta	L	L	L	Hosh Moussa	L	L	L
Jdita	L	L	L	Kfarzabad	L	L	L	Ksara	L	VL	L
Majdel Aanjar	L	L	L	Makssi	L	L	L	Massa	L	L	L
Mazraat Er-Remtaniye	L	L	L	Mrayjat Zahle	L	L	L	Mzaraa Zahle	L	L	L
Nabi Ayla	L	L	L	Nasriyet Rizk	L	L	L	Nasriyet Zahle	L	L	L
Niha Zahle	L	L	L	Ouadi Ed-Deloum	L	L	L	Ouadi El-Arayech	L	L	L
Qaa El Rim	L	ML	L	Qab Elias	L	L	L	Qousaya	L	L	L
Rhit	L	L	L	Riyak	L	L	L	Saadnayel	L	VL	L
Taal El-Akhdar	ML	L	L	Taalbeya	L	L	L	Taanayel	L	L	L
Talamara	L	ML	L	Tcheflik Edde Haouch	L	L	L	Tcheflik Qiqano	L	L	L
Terbol Zahle	L	L	L	Touaite Zahle	L	L	L	Zahle Aradi	L	L	L
Zahle El-Berbara	L	ML	L	Zahle El-Maallaqa	L	L	L	Zahle El-Midane	L	L	L
Zahle Er-Rassiye	L	ML	L	Zahle Haouch El-Ouma	L	VL	L	Zahle Haouch El-Ouma	L	VL	L
Zahle Haouch Ez-Zara	L	L	L	Zahle Maalqa Aradi	L	L	L	Zahle Mar Antonios	L	ML	L
Zahle Mar Elias	L	L	L	Zahle Mar Gerios	L	L	L	Zahle Saydet En-Naja	L	L	L
Zebdoul	L	L	L								

## Rachaiya

Municipality	23-Feb	24-Feb	25-Feb	Municipality	23-Feb	24-Feb	25-Feb	Municipality	23-Feb	24-Feb	25-Feb
Ain Arab Rachaiya	L	VL	L	Ain Ata	VL	VL	L	Ain Harche	L	L	L
Aqabe Rachaya	L	L	L	Ayha	L	L	ML	Ayta El Fokhar	L	L	L
Bakifa Rachaya	L	L	L	Bakka	VL	VL	L	Beit Lahya	L	L	L
Bireh Rachaiya	L	VL	L	Daher El Ahmar	L	L	L	Deir El-Achayer	L	L	ML
Heloua Rachaiya	L	L	L	Hoch El Qannabeh Rac	L	L	L	Kaoukaba Bou Arab	L	L	L
Kfar Danis	L	L	L	Kfar Mechki	L	L	L	Kfar Qouq	L	L	L
Kherbet Rouha	L	VL	L	Majdel Balhiss	L	VL	L	Mdoukha	L	VL	L
Mhaydseh Rachaiya	L	VL	L	Nabi Safa	VL	VL	L	Rachaiya	L	L	L
Rafid Rachaiya	L	VL	L	Selsata (Mazraat Dei	L	L	L	Tannoura	L	L	L
Yanta	L	L	L								

## Beyrouth

### Beyrouth

Municipality	23-Feb	24-Feb	25-Feb	Municipality	23-Feb	24-Feb	25-Feb	Municipality	23-Feb	24-Feb	25-Feb
Achrafieh	ML	L	ML	Ain el-Mreisse	ML	VL	ML	Bachoura	ML	VL	ML
Beirut Central Distr	ML	VL	ML	Marfai	ML	VL	ML	Mazraa	ML	L	ML
Medaouar	ML	L	ML	Minet el-Hosn	ML	VL	ML	Mwssaitbeh	ML	L	ML
Ras Beirut	ML	L	ML	Rmeil	ML	VL	ML	Saifi	ML	VL	ML
Zqaq el-Blat	ML	VL	ML								