

# Lebanon Fire Risk Bulletin



CIVIL DEDEFENCE

**Refer to cadast table condition.**

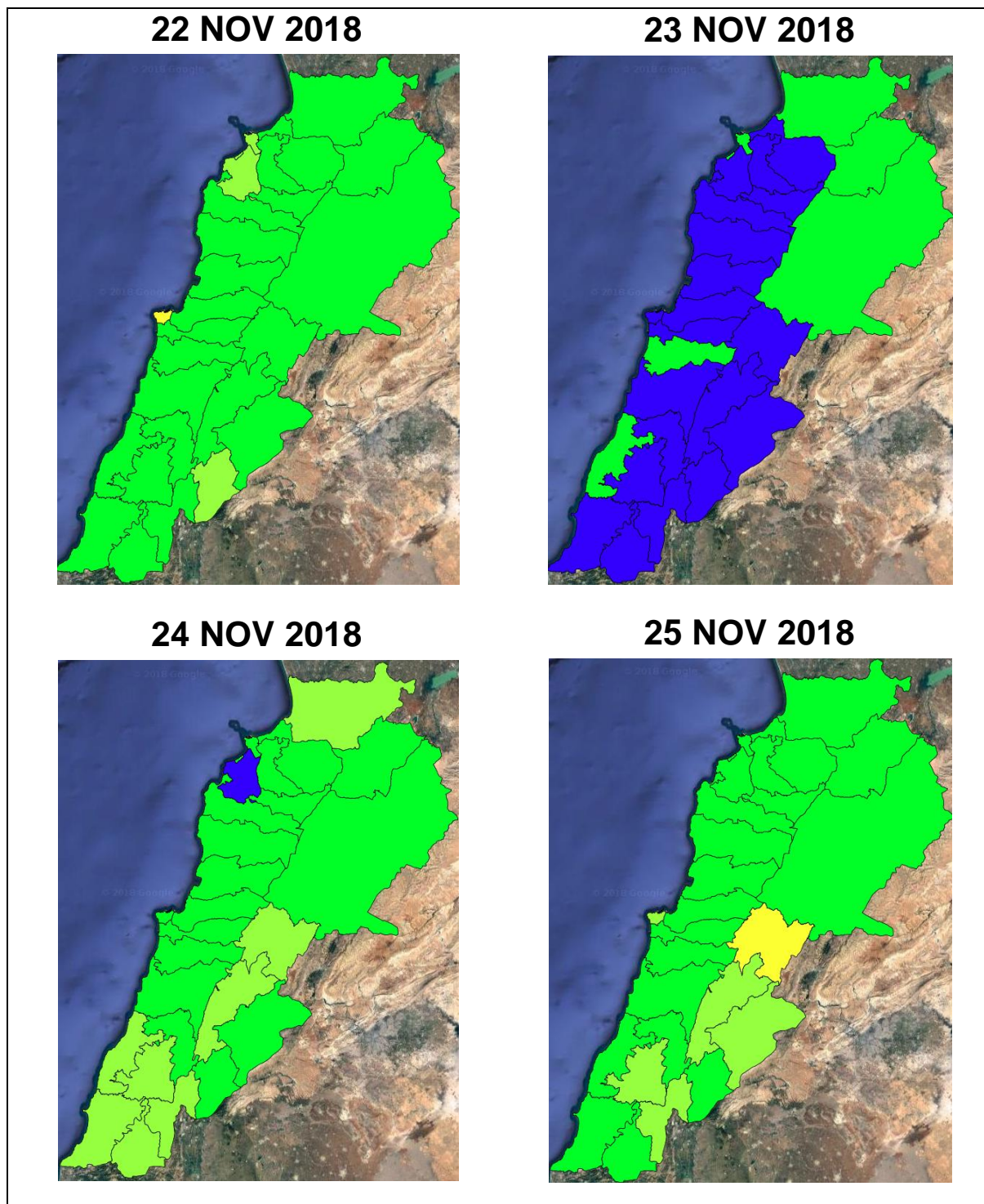
**Please note that the indicated temperature is at 2 meters height from the ground.**

General description of potential fire risk situation

Symbol	Level of risk	Meaning and actions
VL	<b>Very low</b>	Very low fire risk. Controlled burning operations can be hardly executed due to high fuel moisture content. Normally wildfires self-extinguish.
L	<b>Low</b>	Low fire risk. Controlled burning operations can be executed with a reasonable degree of safety.
ML	<b>Medium low</b>	Medium-low fire risk. Controlled burning operations can be executed in safety conditions. All the fires need to be extinguished.
M	<b>Medium</b>	Medium fire risk. Controlled burning operations would be avoided. All the fires need to be very well extinguished.
M	<b>Medium high</b>	Controlled burning is not recommended. Open flame will start fires. Cured grasslands and forest litter will burn readily. Spread is moderate in forests and fast in exposed areas. Patrolling and monitoring is suggested. Fight fires with direct attack and all available resources.
H	<b>High</b>	Ignition can occur easily with fast spread in grass, shrubs and forests. Fires will be very hot with crowning and short to medium spotting. Direct attack on the head may not be possible requiring indirect methods on flanks. Patrolling and monitoring the territory is highly suggested.
E	<b>Extreme</b>	Ignition can occur also from sparks. Fires will be extremely hot with fast rate of spread. Control may not be possible during day due to long range spotting and crowning. Suppression forces should limit efforts to limiting lateral spread. Damage potential total. Patrolling and monitoring the territory is highly suggested.

**Beirut, 23 November 2018**

# FIRE RISK INDEX

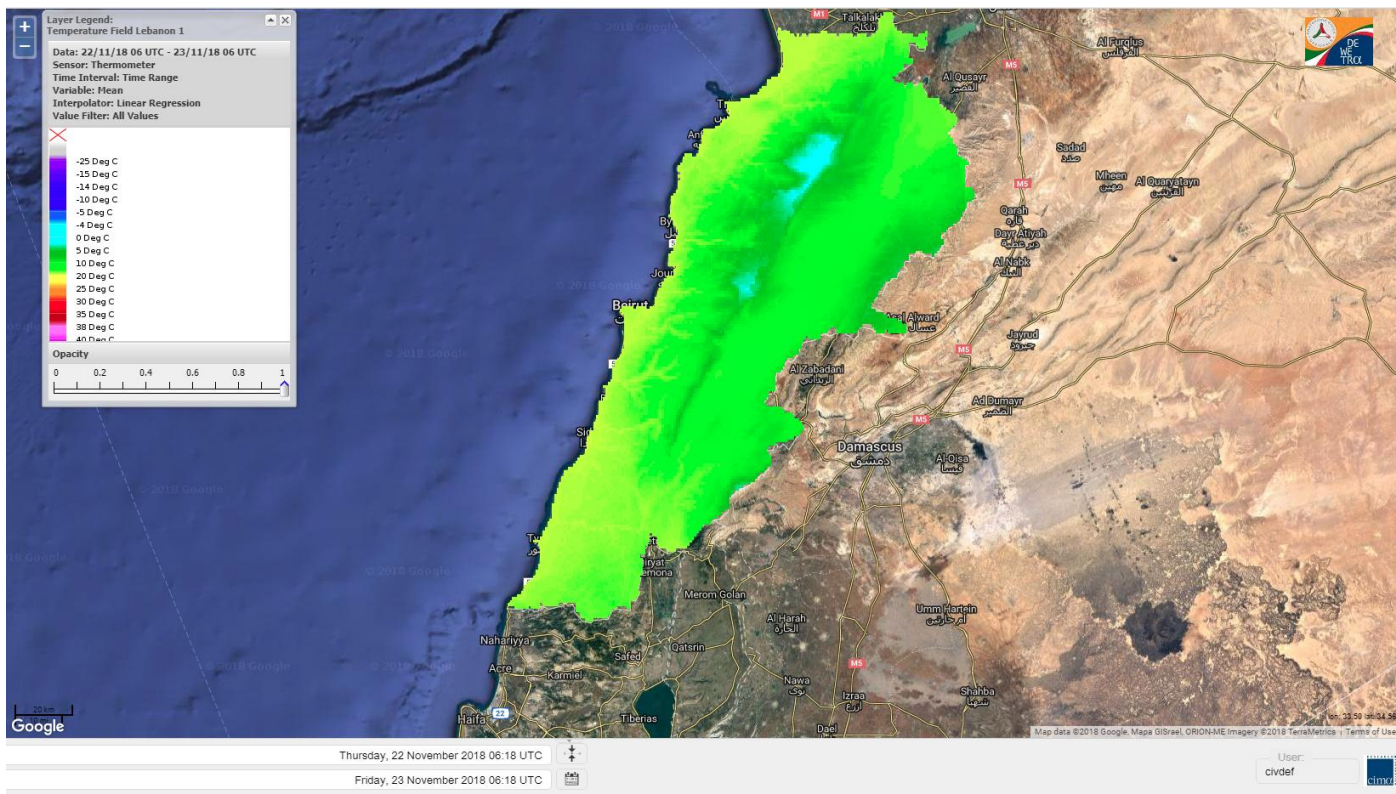


**Layer Legend:**  
Lebanon Wildfire Risk Index 1

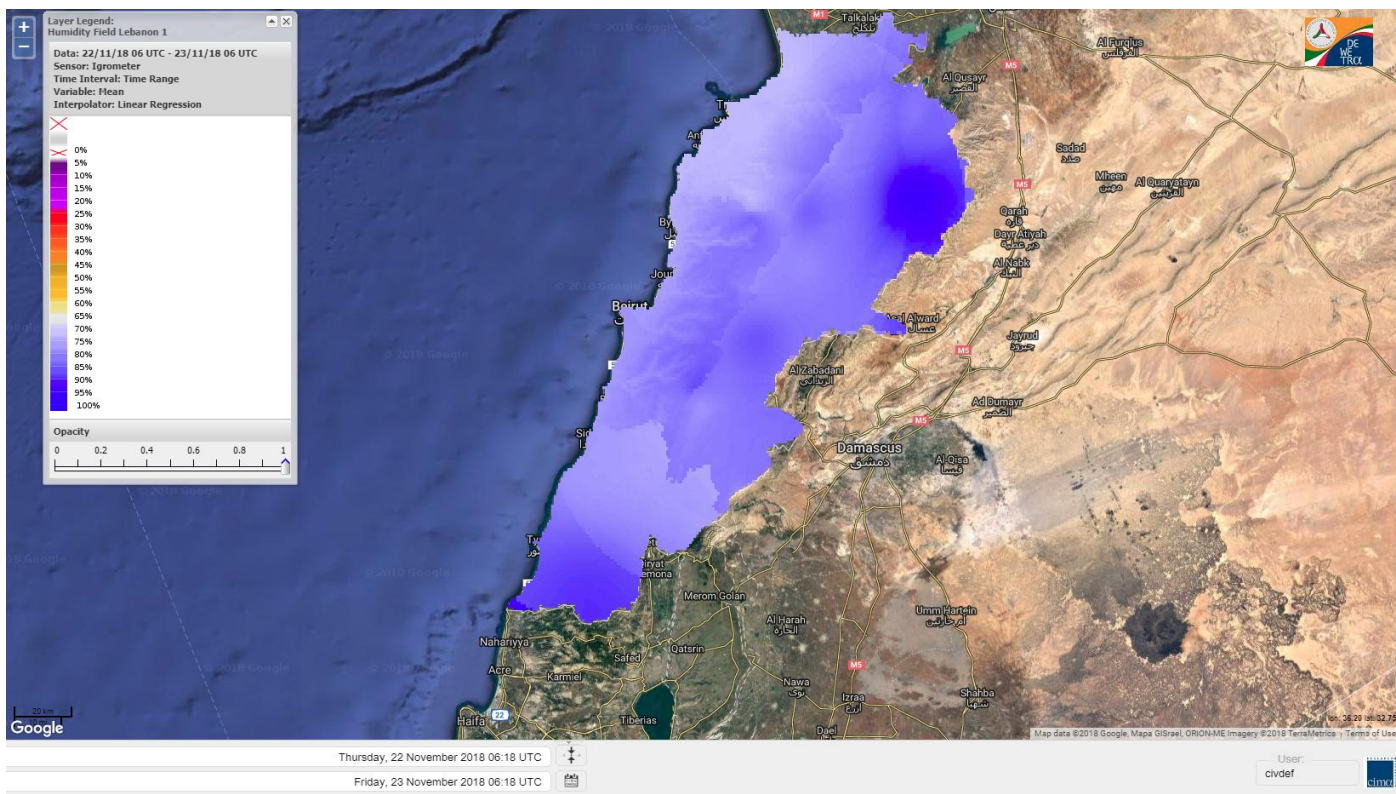
Data: Run: 23/11/2018 00:00. Forecast for 23  
Model: RISICO for the Republic of Lebanon  
Variable: Fire Weather Index  
Spatial Resolution: Caza

- VERY LOW
- LOW
- MEDIUM-LOW
- MEDIUM
- MEDIUM-HIGH
- HIGH
- EXTREME

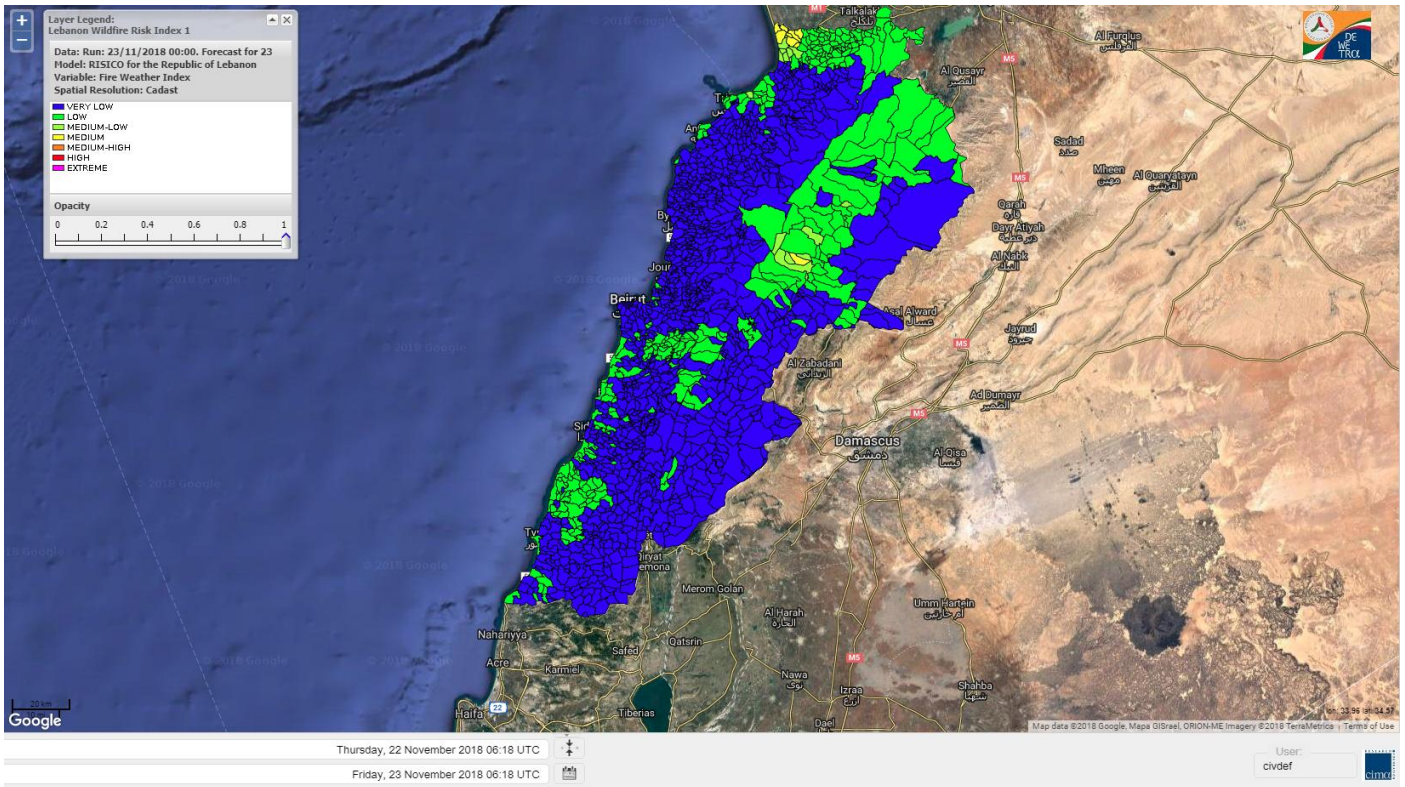
# Lebanon temperature for Lebanon 23 NOV 2018



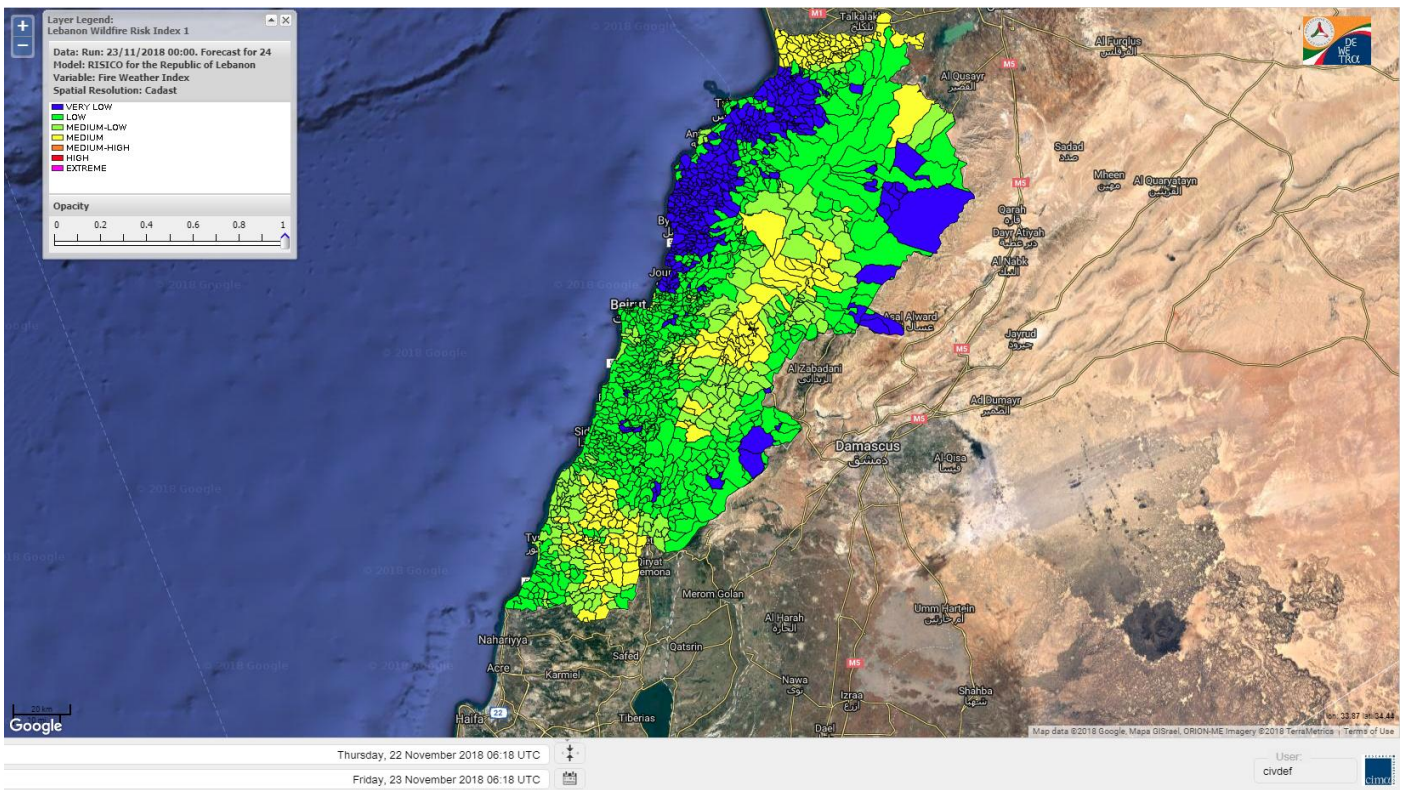
# Lebanon humidity for Lebanon 23 NOV 2018



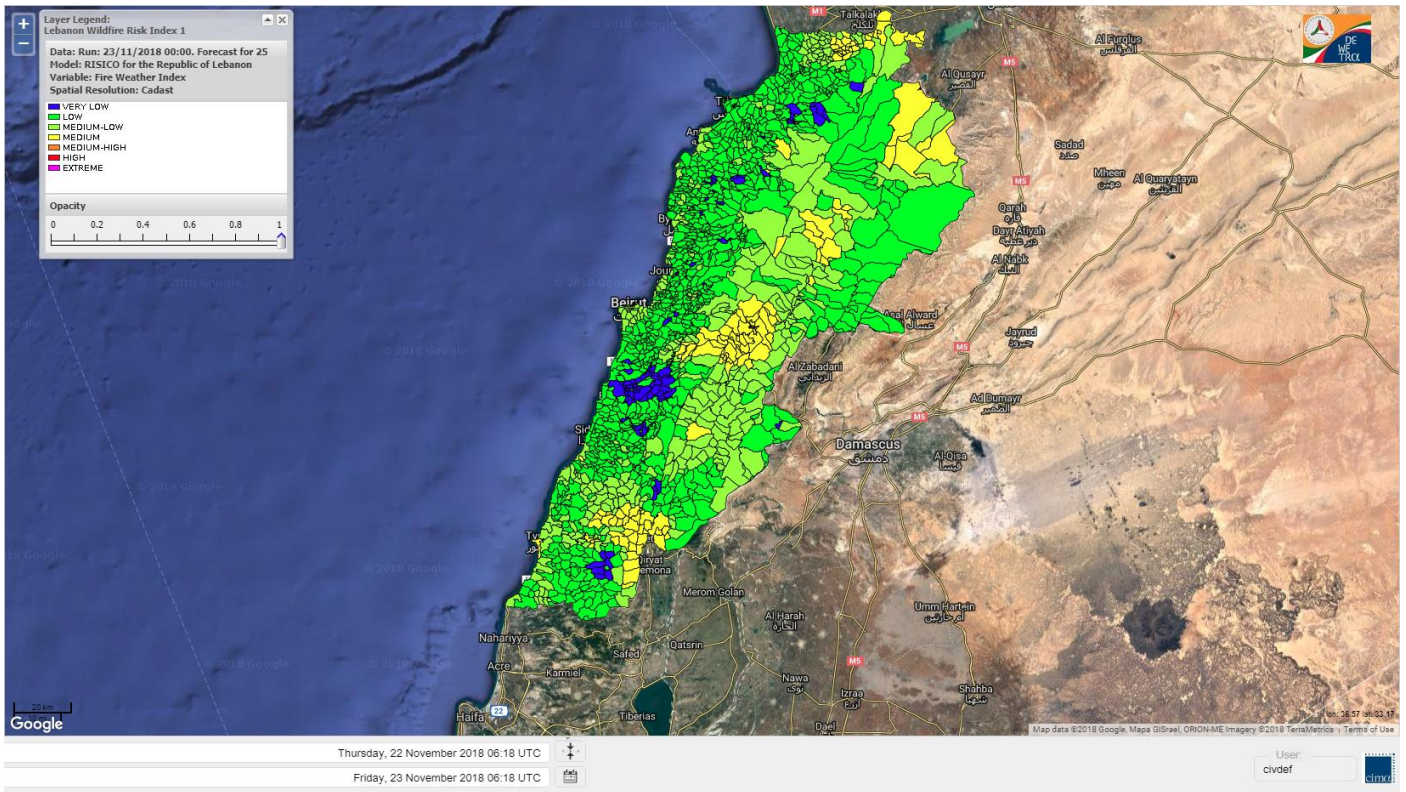
# Lebanon for 23 NOV 2018



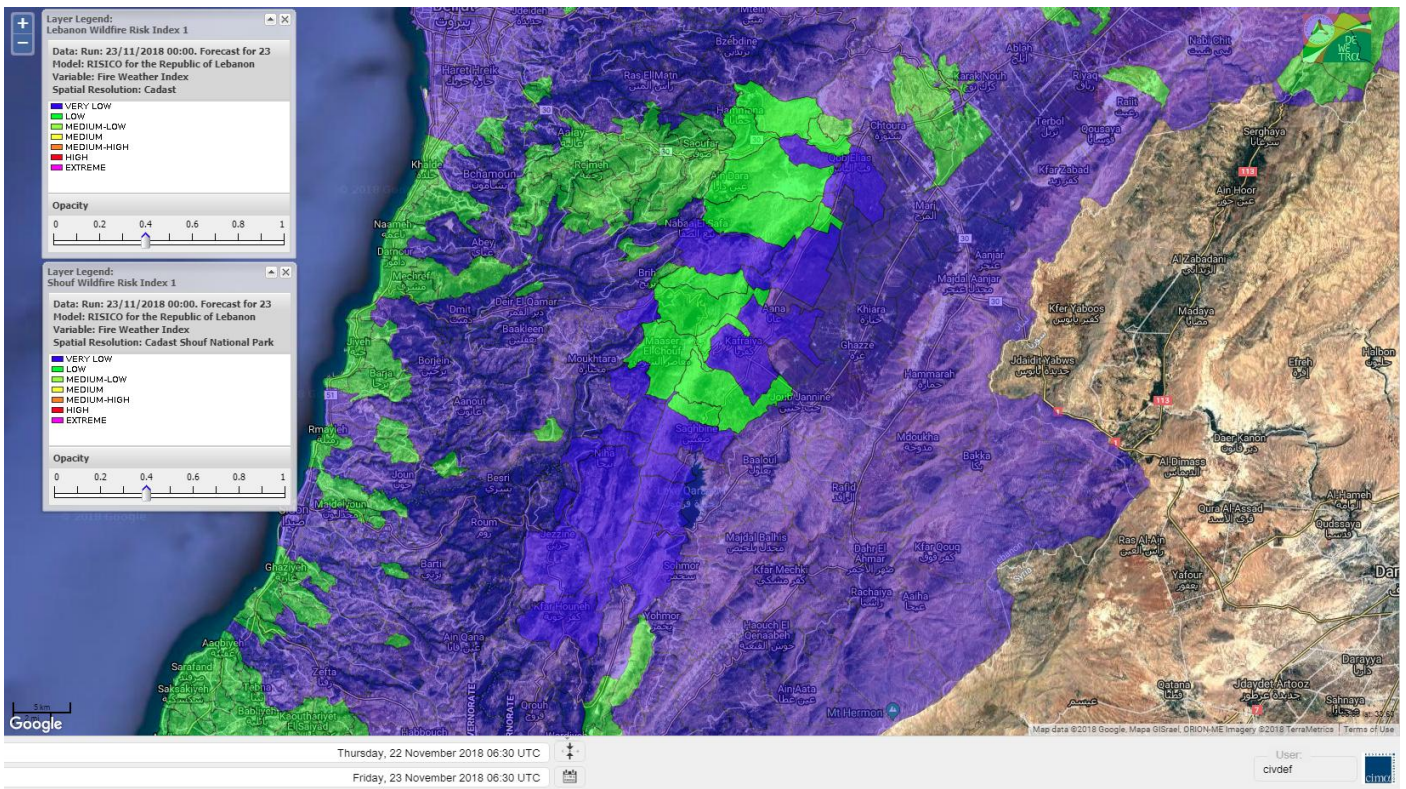
# Lebanon for 24 NOV 2018



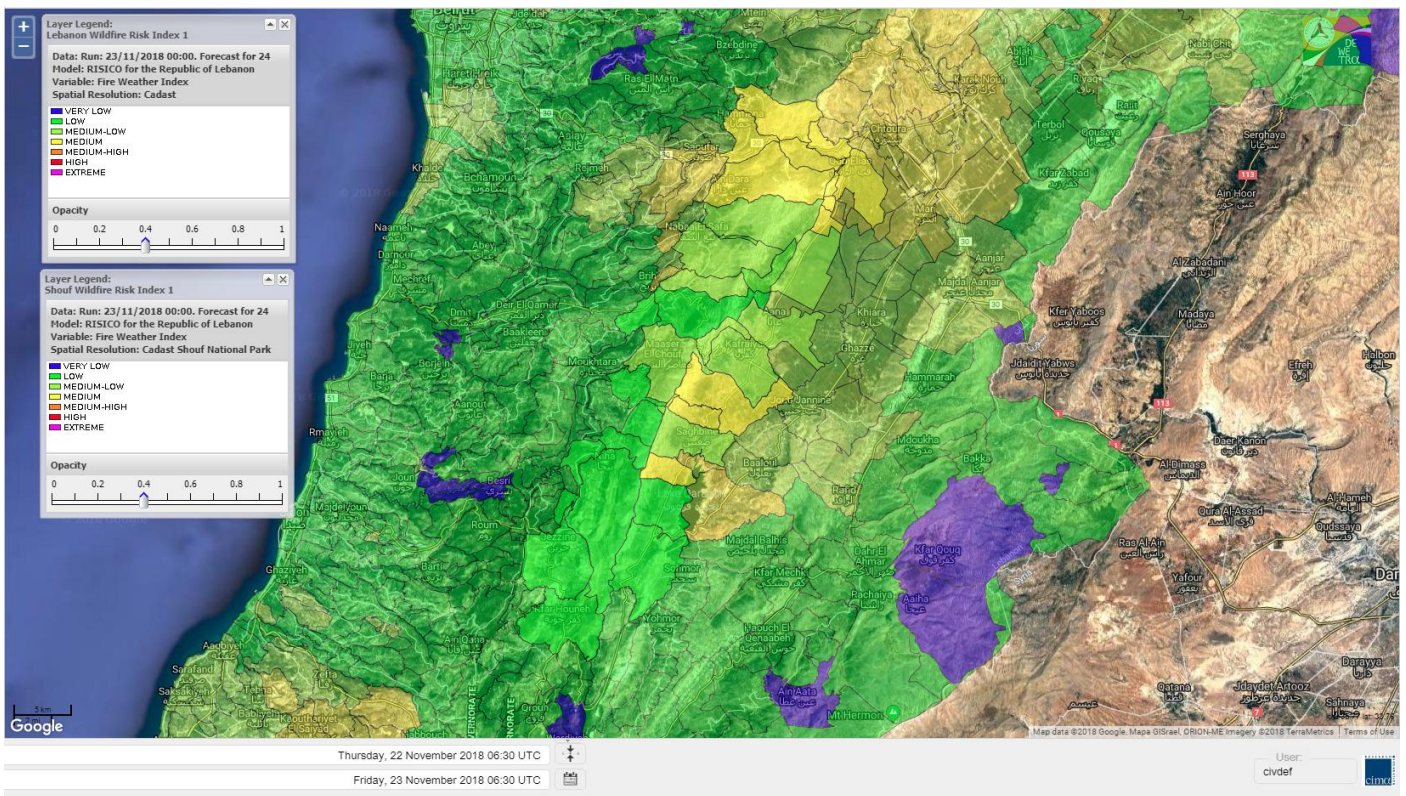
# Lebanon for 25 NOV 2018



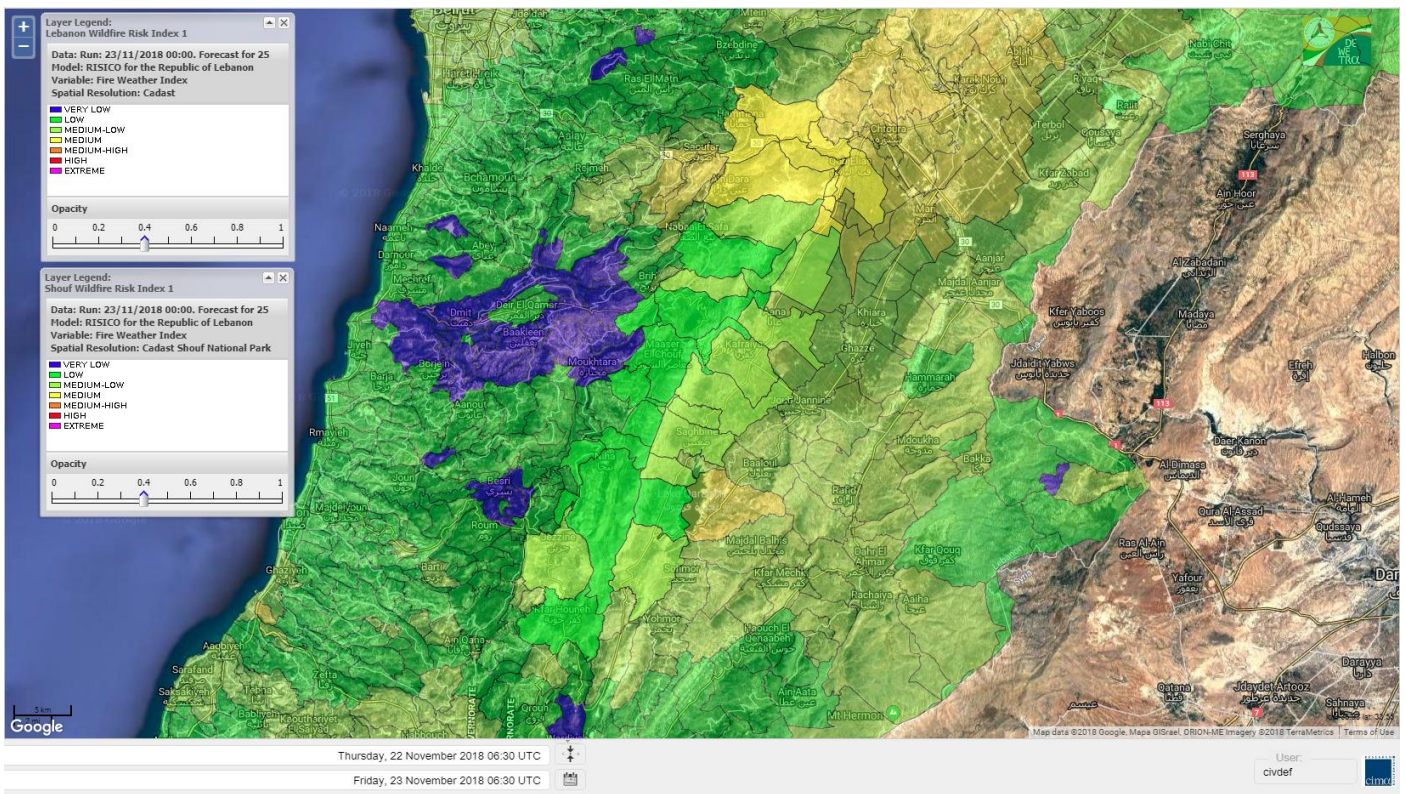
# Shouf Biosphere Reserve Forecast for 23 NOV 2018



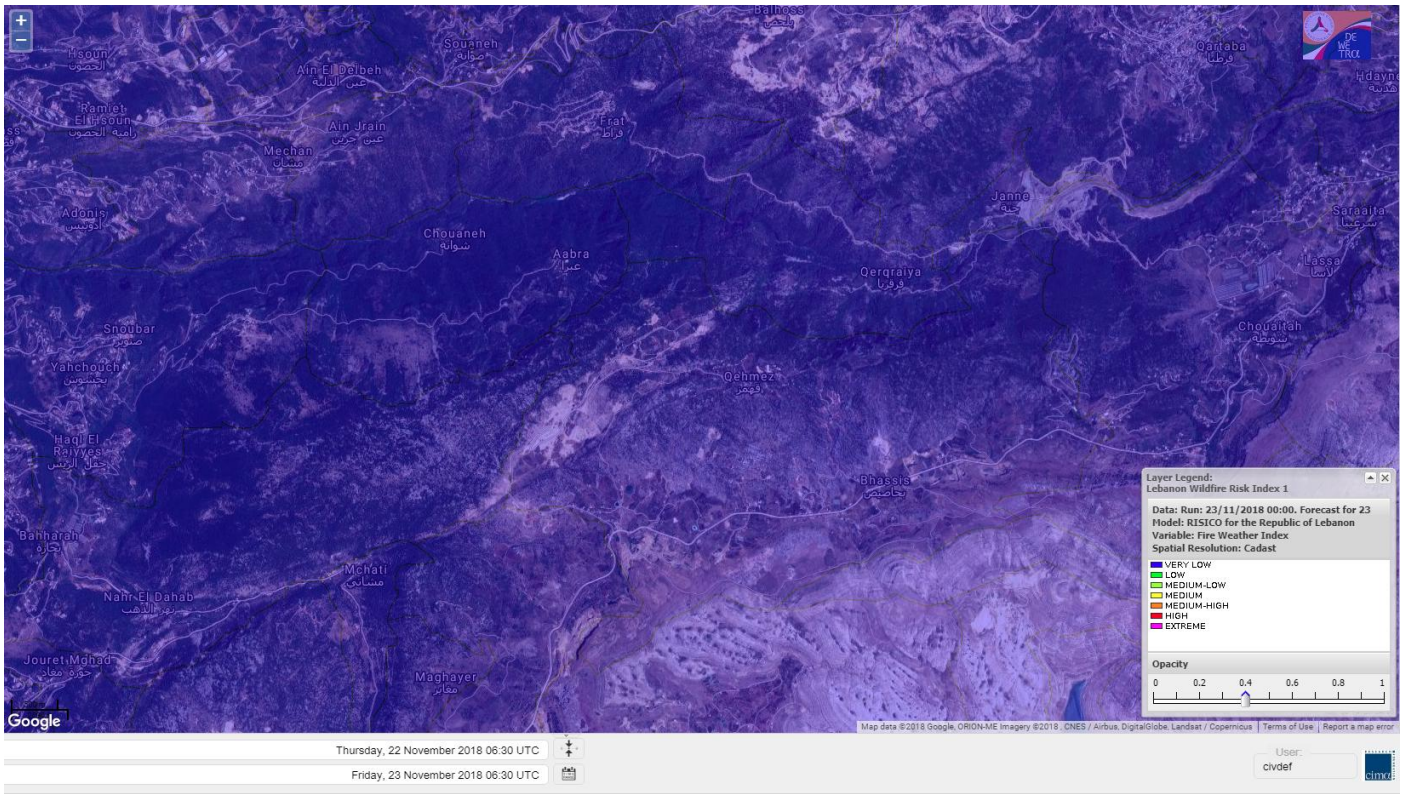
# Shouf Biosphere Reserve Forecast for 24 NOV 2018



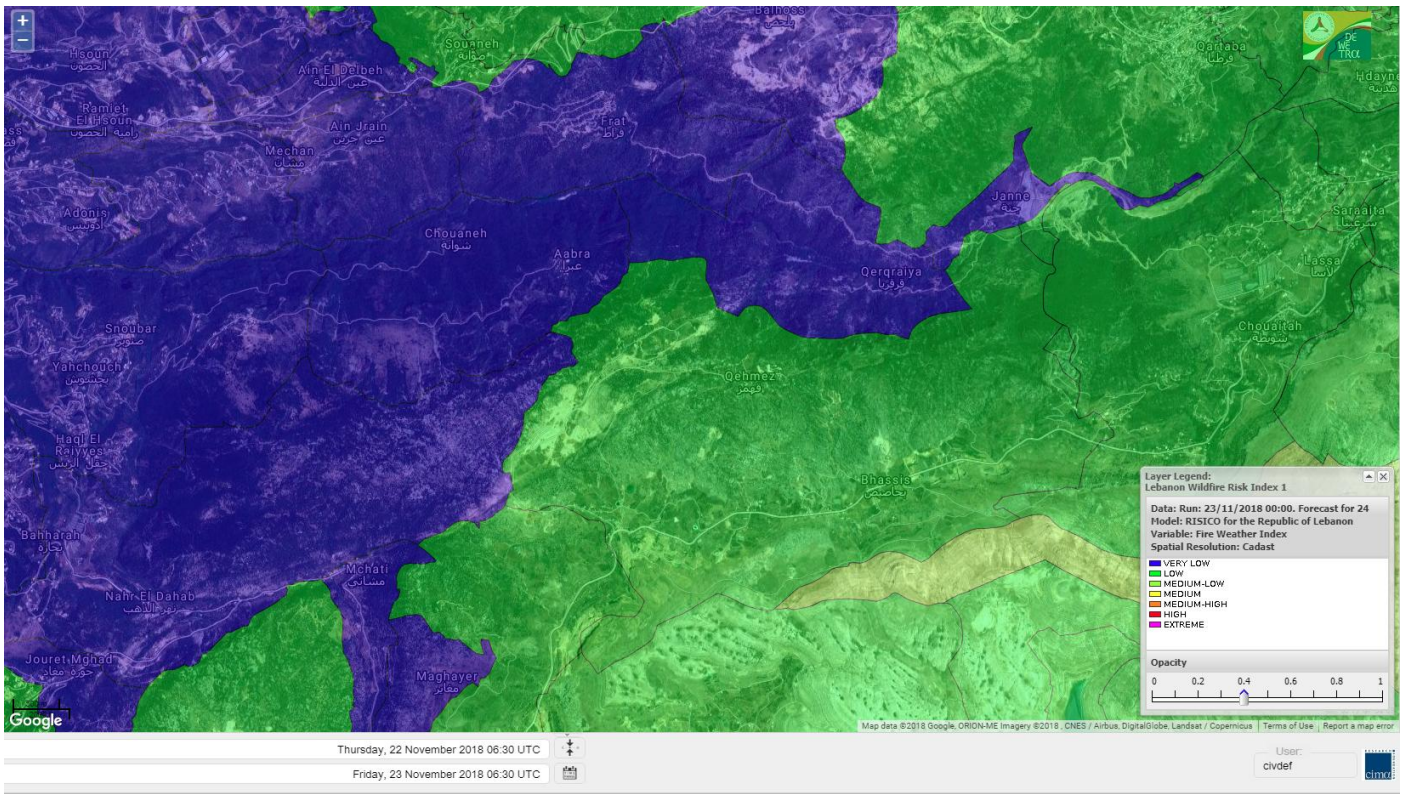
# Shouf Biosphere Reserve Forecast for 25 NOV 2018



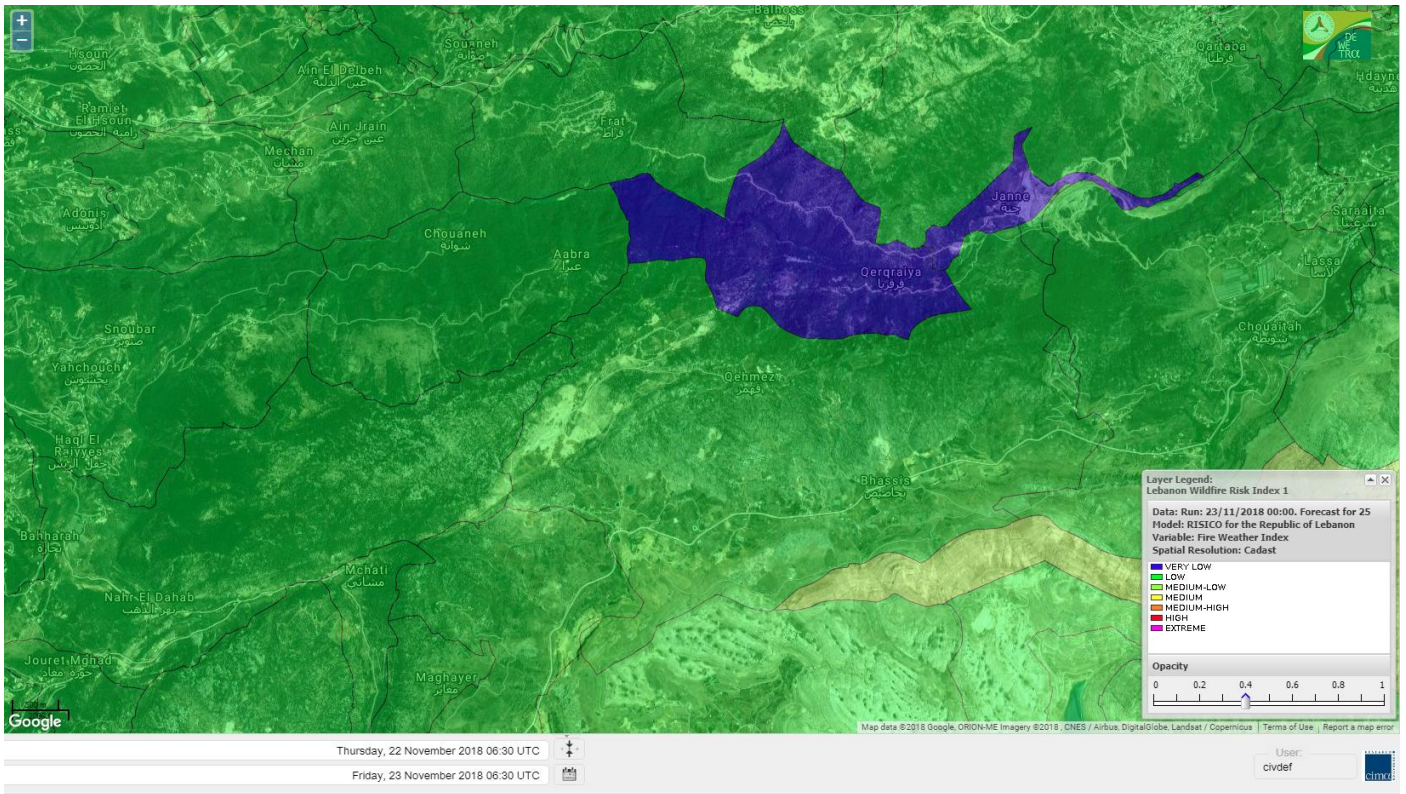
# Jabal Moussa Reserve Forecast for 23 NOV 2018



# Jabal Moussa Reserve Forecast for 24 NOV 2018



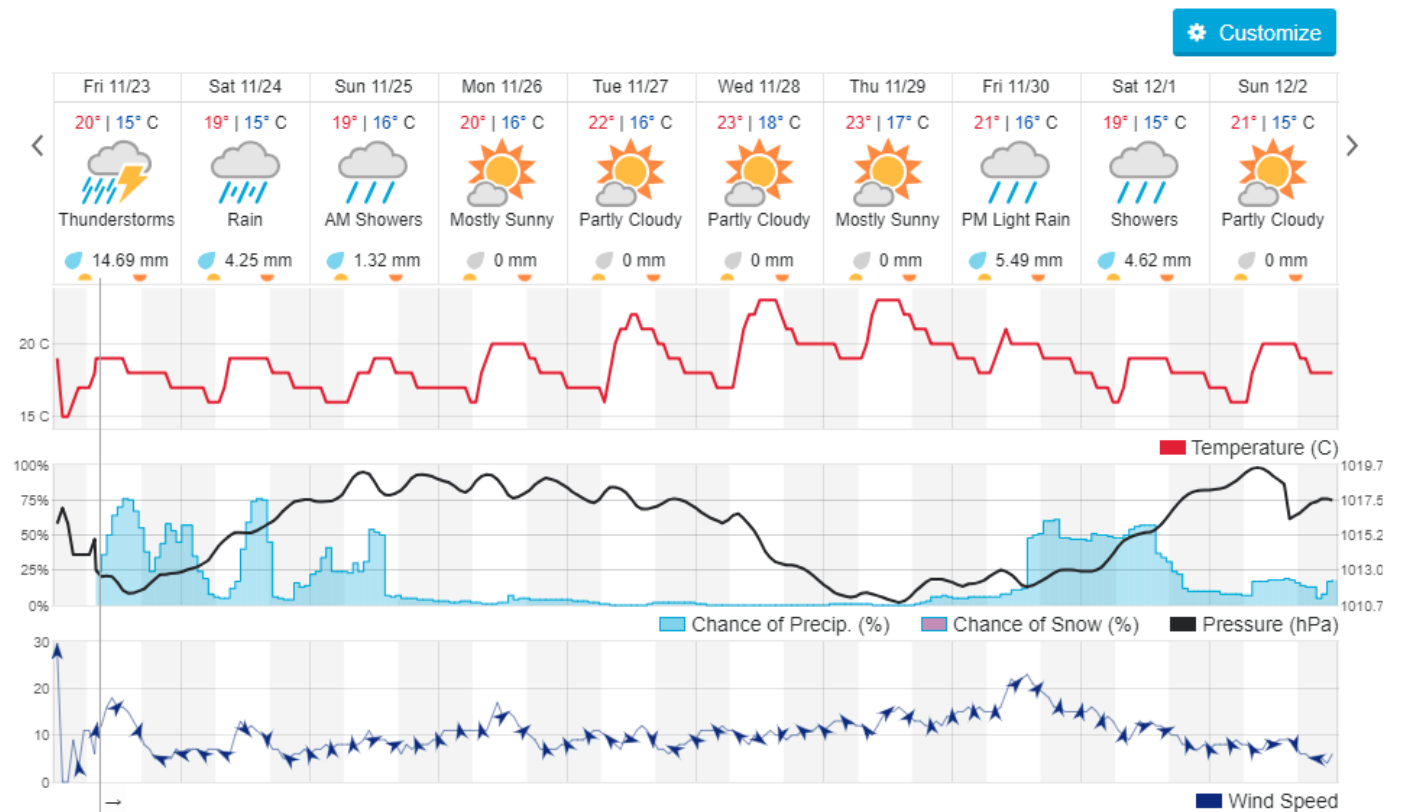
# Jabal Moussa Reserve Forecast for 25 NOV 2018



## Beirut, Lebanon

19° ACHRAFIEH, RIZK STATION | REPORT | CHANGE

TODAY HOURLY 10-DAY CALENDAR HISTORY WUNDERMAP





## Nord

### Koura

Municipality	23-Nov	24-Nov	25-Nov	Municipality	23-Nov	24-Nov	25-Nov	Municipality	23-Nov	24-Nov	25-Nov
Aaba	VL	VL	L	Afsaddiq	VL	VL	L	Ain Ekrine	VL	VL	L
Amioun	VL	VL	L	Anfeh	L	ML	ML	Badbhoun	VL	VL	ML
Barghoun	VL	VL	L	Barsa	VL	VL	L	Batroumine	VL	VL	L
Bdebba	VL	VL	L	Bechmizine	VL	VL	L	Bednayet El-Koura	VL	VL	L
Bhabbouch El-Koura	VL	VL	L	Bkeftine	VL	VL	L	Bnehran	VL	VL	L
Bqaiaa El-Koura	VL	VL	L	Bsarma	VL	VL	L	Btaaboura	VL	VL	L
Bterram	VL	VL	L	Btouratij	VL	VL	L	Bziza	VL	VL	L
Dar Beehtar	VL	VL	L	Dar Chmezzine	VL	VL	L	Deddeh	VL	L	L
Deir El-Balamand	VL	VL	L	Fih	VL	L	L	Hraiche	L	ML	ML
Ijdaabrine	VL	VL	L	Kaftoun	VL	VL	L	Kefraya El-Koura	VL	L	L
Kfarakka	VL	VL	L	Kfarhata	VL	VL	L	Kfarhazir	VL	VL	L
Kfarkahel	VL	VL	L	Kfarsaroun	VL	VL	L	Kosba	VL	VL	L
Mejdel el-Koura	VL	VL	L	Nakhle	VL	VL	L	Qalhat	VL	VL	L
Ras Masqa	VL	VL	L	Rechdibbine	VL	L	ML	Zakroun	L	ML	L
Zgharta El-Mtaouile	VL	VL	L								

### Bcharre

Municipality	23-Nov	24-Nov	25-Nov	Municipality	23-Nov	24-Nov	25-Nov	Municipality	23-Nov	24-Nov	25-Nov
Aabdine	VL	L	L	Bane	VL	L	ML	Barhelioun	VL	L	L
Bazouone	VL	L	L	Becharre	VL	L	ML	Beit Menzer	VL	L	L
Billa	VL	L	L	Blaouza	VL	L	M	Bqaa Kafra	VL	ML	L
Bqerqacha	VL	ML	L	Breissat	VL	L	L	Dimane	VL	L	L
Hadath El Jobbeh	VL	L	L	Hadchit	VL	VL	L	Hasroun	VL	L	L
Mazraat Aassaf	VL	VL	VL	Mazraat Bani Saab	VL	L	L	Mchaa El-Jobbeh	VL	ML	L
Metrit	VL	VL	L	Moghr El-Ahoual	VL	L	L	Ouadi Qannoubine	VL	VL	VL
Qanat	VL	L	L	Qnayouer	VL	L	L	Tourza	VL	L	L

### Batroun

Municipality	23-Nov	24-Nov	25-Nov	Municipality	23-Nov	24-Nov	25-Nov	Municipality	23-Nov	24-Nov	25-Nov
Aabrine	VL	VL	L	Aalali	VL	VL	L	Aartziz	VL	VL	VL
Abdelli	VL	VL	L	Ajdabra	VL	VL	L	Assia	VL	VL	L
Basbina	VL	VL	ML	Batroun	VL	L	ML	Bcheleh	VL	VL	L
Bechtoudar	VL	VL	L	Beit Chlala	VL	VL	L	Beit Kassab	VL	VL	VL
Bijdarfil	VL	VL	L	Bqesmaya	VL	VL	L	Chatine	VL	L	L
Chebtin	VL	VL	L	Chekka	VL	L	ML	Daael	VL	VL	L
Dahr Abi Yaghi	VL	VL	L	Daraya El-Batroun	VL	VL	L	Deir Billa	VL	VL	L
Deir Kfifane	VL	VL	ML	Deir Mar Youhanna EL	VL	VL	L	Deir Mar Youssef Jra	VL	VL	L
Douma	VL	L	L	Douq	VL	VL	L	Eddeh El-Batroun	VL	VL	L
Ftihat El-Batroun	VL	VL	VL	Ghouma	VL	VL	L	Hadtoun	VL	VL	L
Hamat	VL	VL	L	Harbouna	VL	VL	L	Hardine	VL	VL	VL
Helta	VL	VL	VL	Hery	VL	L	ML	Jebbla	VL	VL	VL
Jrabta El-Batroun	VL	VL	L	Jrane El-Batroun	VL	VL	ML	Kfar Aabida	VL	VL	L
Kfar Halda	VL	VL	L	Kfarb Shlaimane	VL	VL	VL	Kfarhatna	VL	VL	L
Kfarhay	VL	VL	L	Kfarhelos	VL	VL	L	Kfifane	VL	VL	L

Kfour El Arabi	VL	L	L	Koubba	VL	VL	L	Kour	VL	VL	L
Mar Mama	VL	VL	VL	Masrah	VL	VL	L	Mehmarch	VL	VL	L
Mrah Chdid	VL	VL	L	Mrah El Ziyat	VL	VL	L	Mrah El-Hajj	VL	VL	VL
Nahle El-Batroun	VL	VL	L	Niha El-Batroun	VL	L	L	Ouahj El-Hajjar	VL	VL	L
Ouata Houb	VL	L	L	Qatnaaoun	VL	VL	L	Racha	VL	VL	L
Rachana	VL	VL	L	Rachkida	VL	VL	L	Ram El-Batroun	VL	VL	L
Ras Nabhach	VL	VL	L	Selaata	L	L	ML	Sghar	VL	VL	L
Smar Jbayl	VL	VL	L	Sourat El-Batroun	VL	VL	L	Tannourine El-Fauouqa	VL	ML	L
Tannourine Et-Tahta	VL	L	L	Thoum	VL	VL	L	Toula El-Batroun	VL	VL	L
Zan	VL	VL	L								

## Zgharta

Municipality	23-Nov	24-Nov	25-Nov	Municipality	23-Nov	24-Nov	25-Nov	Municipality	23-Nov	24-Nov	25-Nov
Aachach	L	VL	L	Aalma	VL	VL	L	Aarde	VL	VL	L
Aintourine	VL	L	ML	Arabet Qozhaya	VL	L	L	Arde	VL	VL	L
Arjis	VL	L	ML	Asnoun	VL	VL	L	Ayto	VL	L	L
Basloukit	VL	L	ML	Bchannine	VL	L	L	Besebeel	VL	VL	L
Bhairret Toula	VL	VL	L	Bnachee	VL	L	ML	Boussit	L	L	ML
Danha	L	VL	L	Daraiya Zgharta	VL	L	L	Deir Jdeide	VL	VL	L
Ehden	VL	L	ML	Halan	L	L	ML	Hariq Zgharta	VL	VL	L
Houakir	VL	VL	L	Hraiqis	ML	L	L	Iaal	VL	VL	L
Ijbaa	VL	L	ML	Karm Saddeh	VL	L	L	Kfarchakhna	VL	VL	L
Kfardlaqous	VL	VL	L	Kfarfou	VL	L	L	Kfarhata Zgharta	VL	VL	L
Kfarhoura	VL	VL	L	Kfarsghab	VL	L	L	Kfaryachit	VL	VL	L
Kfarzaina	VL	VL	L	Khaldiye	VL	VL	L	Mazraat Ajbeaa	VL	VL	L
Mazraat Et-Teffah	VL	VL	L	Mazraat Jneid	VL	VL	VL	Mejdlaya Zgharta	L	VL	L
Merh Kfarsghab	VL	VL	L	Miryata	L	VL	L	Miziara	VL	L	L
Mzraat Kefraya	L	VL	L	Qorah Bach	VL	VL	L	Rachiine	VL	VL	L
Ras Kifa	VL	L	L	Sakhra	VL	VL	L	Sebhel Zgharta	VL	L	L
Serhel	VL	VL	L	Tallet Zgharta	VL	VL	L	Toula Zgharta	VL	L	L
Zgharta	VL	VL	L								

## Minieh-Denniye

Municipality	23-Nov	24-Nov	25-Nov	Municipality	23-Nov	24-Nov	25-Nov	Municipality	23-Nov	24-Nov	25-Nov
Aasaymout	VL	VL	VL	Aaymar	VL	VL	L	Aazki	VL	VL	L
Ain El-Tineh-Miniyeh	VL	VL	L	Assoun	VL	VL	L	Bakhaaoun	VL	VL	L
Bchennata	VL	L	M	Bechehhara	VL	VL	L	Beddawi	L	L	L
Behouaita	VL	L	L	Beit El Foqss	VL	VL	L	Beit Haouik	VL	VL	L
Beit Zoud	VL	VL	L	Bekaasafrine	VL	L	ML	Borj El Yahoudiyeh	L	L	L
Bqarsouna	VL	VL	L	Btermaz	VL	VL	VL	Debaael	VL	VL	L
Deir Ammar	ML	L	L	Deir Nbouh	VL	VL	L	Haouaret-Miniyeh	VL	VL	L
Haql el Azimeh	VL	VL	VL	Harf El Siyad	VL	VL	L	Hazmiye-Miniyeh	VL	VL	VL
Izal	VL	VL	L	Jarjour	VL	VL	VL	Jayroun	VL	VL	VL
Kahf El-Malloul	VL	VL	L	Karm El-Moher	VL	L	L	Kfar Binine	VL	VL	L
Kfarchalane	VL	VL	L	Kfarhabou	VL	VL	L	Kharroub-Miniyeh	VL	VL	L
Mazraat El-Kreme	VL	VL	L	Mazraat Ketrane	VL	VL	L	Merkebtta	L	VL	L
Minyeh	L	VL	L	Mrah El Sfirat	VL	VL	VL	Mrah Sraj	VL	VL	L
Mrebbine	VL	L	L	Nabi Youcheaa	L	VL	L	Nemrine	VL	VL	L

Qarhaiya	VL	VL	L	Qarne	VL	VL	VL	Qarsita	VL	VL	L
Qattineh-Miniyeh	VL	VL	VL	Qemmamine	VL	VL	VL	Qraine	VL	VL	VL
Raouda-Aadoua	VL	VL	L	Rihaniyet-Miniyeh	VL	VL	L	Sfireh	VL	VL	L
Sir Ed-Danniyeh	VL	VL	L	Tarane	VL	VL	VL	Terbol-Miniyeh	L	L	L
Zaghartagrine	L	VL	L	Zouq Bhannine	L	VL	L				

## Nabatiye

### Nabatiye

Municipality	23-Nov	24-Nov	25-Nov	Municipality	23-Nov	24-Nov	25-Nov	Municipality	23-Nov	24-Nov	25-Nov
Aabba	L	M	ML	Aazzi	VL	L	L	Adchit El-Chqif	VL	M	M
Ain Bou Swar	VL	L	ML	Ain Kana	VL	L	L	Ali El-Taher	VL	L	ML
Ansar	L	ML	L	Arab Salim	VL	L	ML	Arnoun	VL	M	M
Bfaroue	VL	ML	L	Breyqaah	VL	M	ML	Charqiyeh	L	M	ML
Choukine	VL	M	ML	Deir El Zahrani	VL	M	ML	Doueir El-Nabatiyeh	L	M	ML
Habbouch El-Nabatiye	VL	L	ML	Hamra El-Nabatiyeh	VL	M	M	Harouf El-Nabatiyeh	L	M	ML
Hmaile	VL	L	L	Houmin El Faouqa	VL	L	ML	Houmin El Tahta	VL	L	L
Jarjough	VL	L	L	Jbaah El-Nabatiyeh	VL	L	L	Jebchit	VL	M	ML
Kfar Djal El-Nabatiy	VL	M	M	Kfar Remmane	VL	L	ML	Kfar Sir	VL	M	M
Kfar Tebnit	VL	ML	M	Kfarfila	VL	L	ML	Kfour El-Nabatieh	VL	M	ML
Mayfadoun	VL	M	M	Mazraat Bsaffour	L	M	L	Mazraat Chalbaal	L	M	ML
Mazraat Dmoul	L	M	ML	Mazraat El Khreibeh	L	L	L	Mazraat El-Bayad El-	VL	L	ML
Mazraat Kfarjaouz	VL	L	ML	Mazraat Qalaat Meiss	L	ML	L	Nabatiyeh El-Fawka	VL	ML	M
Nabatiyeh Et-Tahta	VL	L	ML	Namiriyeh	L	M	ML	Qaaqaaiyet El Jisr	VL	M	M
Qossaibeh El-Nabatiy	VL	M	M	Roumine	VL	L	L	Sarba El-Nabatieh	VL	L	L
Sir El-Gharbiyeh	VL	M	ML	Toul	VL	M	ML	Yehmor El-Nabatiyeh	VL	M	M
Zaoutar El Charkiyeh	VL	M	M	Zaoutar El-Gharbiyeh	VL	M	M	Zebdine El-Nabatiyeh	VL	ML	ML
Zefta	VL	ML	L								

### Hasbaiya

Municipality	23-Nov	24-Nov	25-Nov	Municipality	23-Nov	24-Nov	25-Nov	Municipality	23-Nov	24-Nov	25-Nov
Aain Jarfa	VL	L	L	Abou Qamha	VL	L	L	Ain Qania	VL	L	L
Bourghos	L	L	L	Chebaa	VL	L	L	Chouaya Hasbaya	VL	L	L
Dellafeh	VL	L	L	Fardiss Hasbaiya	VL	L	L	Hasbaya	VL	L	L
Hbariyeh	VL	L	L	Kaoukaba Hasbaiya	VL	L	L	Kfar Chouba	VL	L	L
Kfar Hamam	VL	L	L	Kfeir El-Zait	VL	L	L	Khalwat Hasbaya	VL	L	L
Khreibet Hasbaiya	VL	L	ML	Majidiyeh Hasbaiya	VL	L	ML	Marj Ez-Zhour (Haouc	VL	L	L
Meri	VL	L	ML	Mimass	VL	L	L	Rachaiya El-Fokhar	VL	L	L
Salaiyeb	VL	ML	M								

### Marjayoun

Municipality	23-Nov	24-Nov	25-Nov	Municipality	23-Nov	24-Nov	25-Nov	Municipality	23-Nov	24-Nov	25-Nov
Aalmane Marjaayoun	VL	ML	ML	Aamra	VL	ML	M	Adayseh Marjaayoun	VL	M	M
Adchit El-Koussair	VL	M	M	Ain Aarab Marjaayoun	VL	ML	M	Bani Haiyann	VL	M	ML
Blatt Marjaayoun	VL	L	L	Blida	VL	L	ML	Borj El-Moulouk	VL	ML	M
Boueyda Marjaayoun	VL	L	L	Deir Mimass	VL	ML	M	Deir Siriane	VL	M	M
Dibbine	VL	L	L	Ebel El Saqi	VL	L	L	Houla	VL	M	M
Houra	VL	ML	M	Kfar Kila	VL	M	M	Khiam Marjaayoun	VL	ML	M

Klayaa	VL	ML	M	Majdel Selem	VL	M	L	Marjaayoun	VL	L	L
Markaba	VL	M	M	Mays El-Jabal	VL	M	M	Mazraat Doumrat	VL	ML	M
Mazraat Sarada	VL	ML	M	Mhaibib	VL	ML	M	Qabrikha	VL	ML	L
Qantara	VL	M	M	Rab El-Thalathine	VL	M	M	Saouaneh Marjayoun	VL	M	VL
Talloussa	VL	ML	ML	Taybeh Matjaayoun	VL	M	M	Touline	VL	ML	L

## Bent Jbail

Municipality	23-Nov	24-Nov	25-Nov	Municipality	23-Nov	24-Nov	25-Nov	Municipality	23-Nov	24-Nov	25-Nov
Ain-Ebel	VL	ML	L	Aitaroun	VL	L	ML	Aynata Bint Jbeil	VL	ML	L
Ayta El-Chaeb	VL	ML	L	Ayta El-Jabal	VL	M	VL	Beit Lif	VL	ML	L
Beit Yahoun	VL	M	L	Bint Jbeil	VL	M	L	Borj Qalaway	VL	M	ML
Braachit	VL	M	VL	Chakra	VL	M	ML	Debel	VL	ML	L
Deir Antar	VL	M	L	Froun	VL	ML	ML	Ghandouriyeh Bint Jb	VL	M	ML
Hanine	VL	ML	L	Hariss	VL	M	L	Hdatha	VL	M	L
Jmeyjme	VL	M	VL	Kafra Bint Jbeil	VL	L	L	Kfar Dounine	VL	M	L
Khirbet Selm	VL	M	VL	Kounine	VL	ML	L	Maroun El Ras	VL	ML	L
Qalaway	VL	M	L	Qaouzah	VL	ML	L	Qatmoun	VL	M	L
Ramya Bint Jbeil	VL	ML	L	Rchaf	VL	ML	L	Rmeich	VL	M	L
Safad Al Battikh	VL	M	VL	Salhaneh	VL	L	L	Serbine	VL	M	L
Sultanieh Bint Jbeil	VL	M	VL	Tibnine	VL	M	VL	Tiri	VL	ML	L
Yaroun	VL	M	L	Yater	VL	ML	L				

## Mont Liban

### Jbail

Municipality	23-Nov	24-Nov	25-Nov	Municipality	23-Nov	24-Nov	25-Nov	Municipality	23-Nov	24-Nov	25-Nov
Aabeydat	VL	VL	L	Aalita	VL	VL	L	Aamchit	VL	VL	L
Aarab El-Lahib	VL	L	L	Aarasta	VL	L	L	Adonis Jbeil	VL	VL	L
Afqa Jbeil	VL	L	L	Ain El Delbeh Jbeil	VL	VL	L	Ain El-Ghouayba	VL	L	L
Ain Jrain	VL	VL	L	Ain Kfah	VL	VL	L	Almat El Chemaliyat	VL	VL	L
Almat El-Jenoubiya	VL	L	L	Aqoura	L	M	ML	Bayzoun	VL	VL	L
Bchille Jbeil	VL	VL	L	Bechtida	VL	VL	L	Behdaydat	VL	VL	L
Beit Habbaq	VL	VL	L	Bejjeh	VL	VL	L	Bekhaaz	VL	VL	L
Berbara Jbeil	VL	VL	L	Bintael	VL	VL	L	Birket Hjoula	VL	VL	L
Blatt Jbeil	VL	VL	L	Boulhos	VL	VL	L	Breyj Jbeil	VL	VL	L
Chamat	VL	VL	ML	Chikhane	VL	VL	L	Chmout	VL	VL	L
Eddeh Jbeil	VL	VL	ML	Ehmej	VL	L	L	Fatre	VL	VL	L
Ferhet	VL	VL	L	Fghal	VL	VL	L	Frat	VL	VL	L
Ghabat	VL	L	L	Ghalboun	VL	VL	L	Gharzouz	VL	VL	ML
Ghofrine	VL	VL	L	Habil	VL	VL	VL	Halate	VL	VL	L
Haqel	VL	VL	L	Hbaline	VL	VL	L	Hboub	VL	VL	ML
Hdeine	VL	L	L	Hema Er-Rehban	VL	L	ML	Hema Mar Maroun Aann	VL	L	L
Hjoula	VL	VL	L	Hosrayel	VL	VL	L	Hsarat	VL	VL	L
Hsoun	VL	VL	L	Jaj	VL	VL	L	Janne	VL	VL	VL
Jbeil	VL	VL	ML	Jeddey Jbeil	VL	VL	L	Jlisse	VL	VL	L
Jouret El-Qattine	VL	VL	L	Kfar Baal Annaya	VL	VL	L	Kfar Kidde	VL	VL	L
Kfar Kouas	VL	VL	L	Kfar Mashoun	VL	VL	ML	Kfoun	VL	VL	L

Kharbe Jbeil	VL	VL	L	Laqlouq	VL	ML	ML	Lassa	VL	L	L
Lehfed	VL	VL	L	Maad	VL	VL	ML	Mar Sarkis	VL	L	L
Mastita	VL	VL	L	Mayfouq	VL	VL	L	Mazraat El Siyad	VL	L	L
Mazraat El-Maaden	VL	VL	L	Mechane	VL	VL	L	Mechmech Jbeil	VL	VL	L
Mehrin	VL	VL	ML	Mejdel El-Akoura	VL	L	L	Mghayreh Jbeil	VL	ML	L
Mounsef	VL	VL	L	Nahr Ibrahim	VL	VL	ML	Qahmez	VL	L	L
Qartaba	VL	L	L	Qartaboun	VL	VL	ML	Qattara Jbeil	VL	VL	VL
Qorqraya	VL	VL	VL	Ramout	VL	VL	L	Ras Osta	VL	VL	L
Rihane Jbeil	VL	VL	L	Sakiet El-Khayt	VL	VL	L	Saqi Richmaya	VL	L	L
Sebrine	VL	VL	L	Seraita	VL	L	L	Souane Jbeil	VL	L	L
Tadmor	VL	ML	L	Tartej	VL	VL	L	Torzaiya	VL	VL	L
Yanouh Jbeil	VL	L	L	Zibdine Jbeil	VL	VL	L				

## El Metn

Municipality	23-Nov	24-Nov	25-Nov	Municipality	23-Nov	24-Nov	25-Nov	Municipality	23-Nov	24-Nov	25-Nov
Aain El-Qabu	VL	L	L	Aain El-Qach	VL	L	L	Aain El-Teffaha	VL	ML	ML
Aain el-Safsaf El-M	VL	L	L	Abou Mizane	VL	L	ML	Ain Aar	VL	L	L
Ain Alaq	VL	L	L	Ain El-Kharroube	VL	ML	ML	Ain El-Sendianeh	VL	L	L
Ain El-Zeitoune	VL	L	L	Ain Saadeh	VL	L	L	Aintoura El-Matn	VL	ML	ML
Amaret Chalhoub	VL	ML	ML	Antelias	L	ML	ML	Atchaneh	VL	L	L
Ayroun	VL	L	L	Baabdat	VL	L	L	Baouchariyeh	VL	L	ML
Baskinta	VL	L	L	Beit Chabab	VL	L	L	Beit El-Chaar	VL	L	L
Beit El-Kekko	VL	ML	ML	Beit Mery	VL	L	L	Bhersaf	VL	L	L
Bikfaya	VL	L	L	Biyakout	VL	L	L	Bnabil	VL	L	L
Bourj Hammoud	VL	L	ML	Bqennaya	VL	L	L	Broummana El-Matn	VL	L	L
Bsalim	VL	L	L	Bsifrine	VL	L	L	Bteghrine	VL	L	L
Chaouiye	VL	L	L	Chouaya El-Matn	VL	ML	ML	Choueir	VL	L	L
Chrine	VL	L	L	Dahr El Sawan El-Mat	VL	L	L	Daychouniyeh	L	L	L
Dbayeh	VL	ML	ML	Deir Chamra	VL	L	L	Deir Mar Abda el Mch	VL	L	L
Deir Mar Roukouz	VL	L	L	Deir Tamiche	VL	L	L	Dik El-Mehdi	VL	L	L
Dikwaneh	VL	L	ML	Douar El-Matn	VL	L	L	Fanar	VL	L	L
Fraike	VL	L	L	Haret El-Ballaneh	VL	L	L	Hbous	VL	L	L
Himlaya	VL	L	L	Jal El Did	VL	ML	ML	Jdeideh El-Metn	VL	L	L
Jouar El-Matn	VL	L	L	Jouret El-Ballout	VL	L	L	Kaaqour	VL	L	L
Kfar Aaqab	VL	L	L	Kfertay El-Matn	VL	L	L	Khenchara	VL	L	L
Khillet El-Mtain	VL	L	L	Konnabat Broummana	VL	L	L	Konnabat Salima	VL	VL	L
Machraah El-Matn	VL	L	L	Majdel Tarchich	VL	ML	ML	Majzoub	L	L	L
Mansouriyeh El-Metn	VL	L	L	Mar Boutros Karm Et-	VL	L	L	Mar Chaya et Mzekke	VL	L	L
Mar Moussa Ed-Douar	VL	L	L	Marjaba	VL	L	L	Masqa	VL	L	L
Mayasse	VL	L	L	Mazraat Deir Aoukar	VL	L	L	Mazraat El-Hadirat	VL	L	L
Mazraat Yachouh	VL	L	L	Mchikha	VL	ML	ML	Menqlet Mezher	VL	L	L
Mhaydseh Matn	VL	L	L	Mkalles	VL	L	L	Mrouj	VL	ML	L
Mtain	VL	ML	ML	Mtayleb	VL	L	L	Nabay	VL	L	L
Naccache	VL	L	L	Ouadi Chahine	VL	L	L	Ouadi El-Karm El-Mat	VL	VL	L
Ouata El-Mrouj	VL	L	ML	Ouyoun El-Matn	VL	VL	VL	Qornet Chehwan	VL	L	L
Qornet El-Hamra	VL	L	L	Roumieh	VL	L	L	Sfeilet Bikfaya	VL	L	L
Sinn El-Fil	VL	L	ML	Zabbougha	VL	VL	L	Zalqa	VL	ML	ML

Zarououn	VL	L	L	Zekrite	VL	L	L	Zighrine El-Matn	VL	ML	ML
Zouk El-Khrab	L	L	ML								

## Chouf

Municipality	23-Nov	24-Nov	25-Nov	Municipality	23-Nov	24-Nov	25-Nov	Municipality	23-Nov	24-Nov	25-Nov
Aalmane El-Chouf	VL	L	L	Aammqi El-Chouf	VL	L	VL	Ain Ouzein	VL	L	VL
Ain Qani	VL	L	VL	Ain Zhalta	VL	ML	L	Ainbal	VL	L	VL
Amatour	VL	L	L	Anout	VL	L	L	Atrine	VL	L	VL
Baadarane	VL	L	L	Baaqline	VL	L	VL	Baasir	L	L	L
Barja	L	L	L	Barouk	L	L	L	Bater	VL	L	L
Batloun	VL	L	L	Bayqoun	L	L	L	Bchetfine	VL	L	VL
Beiteddine	VL	L	VL	Benouati Ech-Chouf	VL	L	L	Berjein	VL	L	L
Bireh et Mtalleh	VL	L	L	Biret El-Chouf	VL	L	L	Bkechtine Ouel Mchei	VL	VL	VL
Bkifa El-Chouf	L	L	L	Botme	VL	L	VL	Bqaiia Ech-Chouf	VL	L	VL
Bsaba El-Chouf	VL	L	L	Chammis El-Chouf	L	L	L	Chehim	VL	L	L
Chemaarine	VL	VL	VL	Chourit	VL	L	VL	Daher El-Chouf	L	L	L
Dalhoun	VL	L	L	Damour	L	L	L	Daraya El-Chouf	VL	L	VL
Deir El-Moukhalles	VL	VL	L	Deir Baba	VL	L	VL	Deir Dourit	VL	L	VL
Deir El-Qamar	VL	L	L	Deir Kouche	VL	L	VL	Dibbieh	VL	L	VL
Dmit	VL	L	VL	Fouara Jaafar	VL	L	VL	Fraidis El-Chouf	L	ML	ML
Ghabet Jaafar	VL	L	VL	Gharife	VL	L	L	Haret Jandal	VL	L	L
Hasrout	VL	L	L	Jadra	VL	L	L	Jahlieh	VL	L	VL
Jbeih El-Chouf	VL	L	L	Jdeidet El-Chouf	VL	L	VL	Jiyeh	L	L	L
Jleilyeh	VL	L	L	Jmailiyeh	VL	L	L	Joun	VL	L	L
Kahlounie El-Chouf	VL	L	L	Ketermaya	L	L	L	Kfar Faqoud	VL	L	VL
Kfar Hamal	L	L	L	Kfar Him	VL	L	VL	Kfar Katra	VL	L	VL
Kfar Niss	L	L	L	Kfar hay	VL	L	L	Kfarnabrakh	VL	L	VL
Khirbet Bisri	VL	L	L	Knayse El-Chouf	VL	L	VL	Maaniyeh	VL	L	L
Maasser Beiteddine	VL	L	VL	Maasser El-Chouf	L	ML	L	Majdalouna	VL	L	L
Majdel El-Meouch	VL	L	VL	Mazboud	VL	L	L	Mazmoura	VL	L	L
Mazraat El Chouf	VL	L	L	Mazraat El Daher	VL	L	L	Mazraat El-Douair	VL	L	VL
Mechref	L	L	L	Mghairie	L	L	L	Mghayrie El-Chouf	VL	L	VL
Moukhtara	VL	L	VL	Mrusti	VL	L	L	Mtolle	VL	L	L
Naameh	L	L	L	Niha El-Chouf	VL	L	L	Ouadi Abou Youssef	VL	VL	VL
Ouadi Ed-Deir	VL	L	VL	Ouadi El-Sit	VL	L	VL	Ouadi bnehlay	VL	L	VL
Qraibeh	VL	L	L	Qreiaa	VL	VL	VL	Rmayle El-Chouf	L	L	L
Semqaniyeh	VL	L	VL	Sibline	VL	L	L	Sirjbeil	VL	L	VL
Warhanieh	L	M	ML	Werdaniyeh	VL	L	L	Zaarourieh	VL	L	L

## Baabda

Municipality	23-Nov	24-Nov	25-Nov	Municipality	23-Nov	24-Nov	25-Nov	Municipality	23-Nov	24-Nov	25-Nov
Abadiyeh	VL	L	L	Ain Mouaffaq	VL	L	L	Araiya	VL	L	L
Arbaniyeh	VL	L	L	Arsoun	VL	L	L	Baabda	VL	L	L
Baalchmey	L	L	L	Bmaryam	VL	L	L	Bourj El-Brajneh	VL	ML	L
Boutchay	VL	L	L	Bsaba Baabda	L	L	L	Btekhney	VL	L	L
Btibyat	VL	L	L	Bzabdine	VL	L	L	Chbeniyeh	L	ML	ML
Chiyah	VL	L	ML	Chmeisset Baabda	VL	L	L	Chouit	VL	L	L
Deir El-harf	VL	L	L	Deir Khouna	L	L	L	Dlaybeh	VL	L	L

Falougha	L	M	M	Furn El-Chebbak	VL	L	ML	Hadath Beyrouth	VL	ML	L
Halaliyeh Baabda	VL	L	L	Hammana	L	M	M	Haret El Sett	VL	L	L
Haret Hamze	L	L	L	Haret Hreik	VL	L	ML	Hasbaiya El-Metn	VL	L	L
Jouar El-Hoz	VL	L	L	Jouret Arsoun	VL	L	L	Kfar Chima	L	ML	L
Kfar Selouane	VL	ML	ML	Khalouat Baabda	L	ML	ML	Kneisset Baabda	VL	L	L
Laylakeh	VL	ML	L	Louayzeh Baabda	L	L	L	Merdache	L	L	L
Mzairaa Baabda	VL	L	L	Ouadi Chahrour El Ol	L	L	L	Ouadi Chahrour El So	VL	L	L
Qalaa Baabda	VL	L	L	Qhraybe Baabda	VL	L	L	Qobbayaa	L	ML	ML
Qornayel	VL	L	L	Qortada	VL	VL	VL	Qrayeh Baabda	L	ML	ML
Qsaibeh Baabda	VL	VL	L	Qtale Baabda	VL	L	L	Ras El Metn	VL	L	L
Ras El-Haref	L	ML	ML	Rouayset El-Ballout	VL	L	L	Salima Baabda	VL	L	L
Tahouitat El Ghadir	VL	ML	L	Tarchich	VL	ML	ML	Zandouqa	VL	VL	VL

## Aley

Municipality	23-Nov	24-Nov	25-Nov	Municipality	23-Nov	24-Nov	25-Nov	Municipality	23-Nov	24-Nov	25-Nov
Abey	VL	L	L	Aghmid	VL	ML	ML	Ain Dara	L	M	M
Ain Drafil	VL	L	VL	Ain El Halazoun	L	ML	L	Ain El-Rmmaneh	VL	L	L
Ain Jedideh	L	L	L	Ain Ksour	VL	L	L	Ain Onoub	VL	L	L
Ain Traz	VL	L	VL	Ainab	VL	L	L	Aley	L	L	L
Aramoun	L	L	L	Aytat	VL	L	L	Azouniyeh	L	M	M
Baawerta	VL	L	L	Badghan Oua Wadi Bad	L	M	M	Bassatine	VL	L	L
Bayssour	L	L	L	Bchamoun	VL	L	L	Bdadoun	VL	L	L
Behouara	L	L	L	Bennay	VL	L	L	Bhamdoun El-Dayaa	L	ML	ML
Bhamdoun El-Mhatta	L	ML	ML	Bkhechthey	L	L	L	Bleibel	VL	L	L
Bmakine	L	L	L	Bmehray	L	ML	ML	Bouzrid	VL	L	VL
Bserrine	L	ML	ML	Bsous	VL	L	L	Btalloun	L	ML	ML
Btater	L	ML	ML	Chanay	L	ML	ML	Charoun	L	M	M
Chartoun	VL	L	L	Chemlane	VL	L	L	Choueifat El-Aamrous	VL	ML	L
Choueifat El-Oumara	VL	L	L	Choueifat El-Quoubbe	L	ML	L	Dakkoun	VL	L	VL
Deir Qoubel	VL	L	L	Dfoun	L	L	L	Douair El Remmaneh	VL	L	L
Ghaboun	L	L	L	Habramoun	VL	L	L	Homs Oua Hama	L	L	L
Houmal	VL	L	L	Jisr El Qadi	L	L	L	Kehaleh	VL	L	L
Keyfoun	L	L	L	Kfar Aamey	L	L	L	Kommatyeh	L	L	L
Maasrati	L	L	L	Majdel Baana	L	M	M	Mansourieh et Ain El	L	ML	ML
Mazraat El-Nahr	VL	L	L	Mchakhte	VL	L	L	Mecherfeh	L	ML	ML
Mejdlaya	L	L	L	Mrayjat	VL	M	ML	Ramliyah	VL	L	L
Rechmaya	VL	L	L	Rejmeh	L	L	L	Remhala	VL	L	L
Rouayset El Neemane	L	L	L	Saoufar	L	M	M	Selfaya	VL	L	VL
Sirhmoul	VL	L	L	Souq El Ghareb	L	L	L	Taazanieh	L	ML	ML

## Kesrouane

Municipality	23-Nov	24-Nov	25-Nov	Municipality	23-Nov	24-Nov	25-Nov	Municipality	23-Nov	24-Nov	25-Nov
Achkout	VL	L	L	Adma Oua Dafneh	VL	VL	L	Ain Ed-Delbe Kesroua	VL	VL	L
Ain El-Rihane	VL	VL	L	Aintoura Kesrouane	VL	VL	L	Ajaltoun	VL	L	L
Akaybeh Kesrouane	VL	VL	ML	Aramoun Kesrouane	VL	L	L	Azra ouel Ozor	VL	VL	L
Ballouneh	VL	L	L	Batha	VL	VL	VL	Bekaatat Achkout	VL	L	ML
Bekaatat Kanaan	VL	L	L	Bizhel	VL	VL	L	Bouar	VL	VL	L
Bqaatouta	VL	L	L	Bqaq Ed-Dine	VL	VL	L	Bzommar	VL	L	L

Chahtoul	VL	L	L	Chnaniir	VL	VL	L	Chouan	VL	VL	L
Daraya Kesrouane	VL	L	L	Darououn	VL	VL	L	Deir Baqlouch	VL	VL	VL
Dlebta	VL	VL	L	Eghbeh	VL	VL	VL	Faraya	VL	L	L
Fatka	VL	L	L	Feytroun	VL	L	L	Ghazir	VL	VL	L
Ghbaleh Kesrouane	VL	VL	L	Ghedrass	VL	VL	L	Ghosta	VL	L	L
Ghynéh	VL	L	ML	Harharaya w Kattine	VL	L	L	Harissa Kesrouane	VL	VL	L
Hayata	VL	VL	L	Hosein	VL	VL	L	Hrajel	VL	L	L
Jdeideh Ghazir	VL	L	L	Jeita	VL	VL	L	Jounieh Ghadir	VL	VL	L
Jounieh Haret Sakhr	VL	VL	ML	Jounieh Salel Alma	VL	VL	L	Jounieh Sarba	VL	VL	ML
Jouret Bedrane	VL	VL	L	Jouret Mhad	VL	VL	L	Jouret Termos	VL	L	ML
Kfar Debiane	VL	L	L	Kfar Tay Kesrouane	VL	VL	VL	Kfar Yassine	VL	VL	ML
Kfour Kesrouane	VL	L	L	Kharayeb Nahr Ibrahi	VL	VL	L	Klayaat Kesrouane	VL	L	L
Maarab	VL	VL	L	Maaysra Kesrouane	VL	VL	L	Mayrouba	VL	L	L
Mazraat Er-Ras	VL	VL	L	Mazraat Mrah El-Mir	VL	VL	L	Mchaa El Ftouh	VL	ML	ML
Mchaa Faraya	VL	L	L	Mchaa Kfar Dibiane	VL	ML	ML	Mghaer	VL	VL	L
Mradiyeh	VL	VL	L	Nahr Ed-Dahab	VL	VL	L	Nammoura Kesrouane	VL	VL	L
Ouata El Jaouz	VL	L	L	Ouata Sillam	VL	VL	ML	Raachine	VL	L	L
Rayfoun	VL	L	L	Safra Kesrouane	VL	VL	ML	Shayle Kesrouane	VL	VL	L
Tabarja	VL	VL	L	Yahchouch	VL	VL	L	Zaaytreh	VL	VL	L
Zeytoun	VL	VL	L	Zouk Mikael	VL	VL	ML	Zouk Mosbeh	VL	VL	ML

## Baalbek\_Hermel

### Baalbek

Municipality	23-Nov	24-Nov	25-Nov	Municipality	23-Nov	24-Nov	25-Nov	Municipality	23-Nov	24-Nov	25-Nov
Aadous	L	M	ML	Aamchki	VL	VL	L	Aarsal	VL	VL	L
Ain Baalbek	VL	VL	L	Ain Bourday	VL	ML	L	Ain El-Benye	L	VL	L
Ain El-Jaouz Baalbek	VL	VL	L	Ain El-Siya Chadoura	VL	L	L	Al Khodr Baalbek	VL	ML	ML
Al Nabi Chit	VL	ML	L	Aynata Baalbek	L	ML	ML	Baalbek	VL	ML	L
Bachwat	L	L	ML	Barqa	VL	L	L	Bednayel Baalbak	L	M	ML
Beit Chama	VL	L	ML	Bijjaje	L	VL	L	Bouday	L	ML	ML
Brital	L	L	L	Btadi	L	ML	M	Chaat	L	L	ML
Chaibe	VL	L	L	Chlifa	ML	M	M	Chmestar	L	M	L
Dar El-Oussa	L	L	ML	Deir El-Ahmar	L	ML	M	Deir Mar Maroun Baal	L	ML	M
Douris	L	M	ML	Fakiha	L	L	ML	Hadath Baalbek	ML	M	ML
Ham	L	L	L	Haour Taala	VL	L	L	Hizzine	L	M	M
Hlebta	VL	L	L	Hosh Barada	L	M	ML	Hosh El Dahab	L	M	M
Hosh El Snid	VL	ML	L	Hosh El-Nabi	VL	ML	ML	Hosh El-Rafiq	VL	ML	ML
Hosh Tal Safiya	L	M	M	Hrebta	L	L	L	laat	L	M	M
Jebaa	ML	M	ML	Jenta	VL	L	L	Kfar Dabach	L	ML	ML
Kfar Dane	M	M	ML	Khraibeh El-Hermel	VL	VL	L	Khreibet Baalbek	VL	L	L
Kneisset Baalbek	L	ML	ML	Labueh	VL	VL	L	Maarboun	L	L	L
Majdaloun	L	M	ML	Maqneh	L	ML	ML	Mazraat Beit Mcheik	ML	M	M
Misraya	VL	ML	ML	Moqraq	VL	VL	L	Nabha El-Damdoum	L	L	ML
Nabi Chbay	VL	L	L	Nabi Osman	VL	VL	L	Nahleh baalbek	VL	L	L
Ouadi El-Oss	VL	L	L	Qaa Baayoun	L	L	M	Qaa Jouar Maqiye	L	ML	ML
Qaa Ouadi El-Khanzir	L	ML	ML	Qah Baalbek	L	L	M	Qarha Baalbek	ML	M	M



Qsarnaba	VL	L	ML	Ram Baalbek	L	L	M	Ras Baalbek El Sahl	L	VL	M
Ras Baalbek El-Charq	VL	L	ML	Riha	L	ML	M	Saaide	ML	M	ML
Sboubba	L	VL	L	Seriine El-Tahta	VL	ML	ML	Slouqi	L	ML	L
Taiba Baalbek	L	M	ML	Talia	L	M	ML	Taraiya	L	M	ML
Temnin El Fawqa	L	ML	ML	Temnin El-Tahta	VL	L	ML	Tfail	VL	VL	L
Yahfoufa	VL	ML	L	Yammouneh	L	ML	ML	Younine	VL	L	L
Zboud	L	L	ML								

## Hermel

Municipality	23-Nov	24-Nov	25-Nov	Municipality	23-Nov	24-Nov	25-Nov	Municipality	23-Nov	24-Nov	25-Nov
Charbine El-Hermel	VL	L	L	Hermel Jbab	L	L	L	Hermel	L	M	M
Maaysra El-Hermel	VL	VL	L	Michaa Mrajhine	VL	L	L	Ouadi Faara	L	L	L
Ras Baalbek - Ouadi	L	L	M	Ras Baalbek El Gharb	L	L	L	Zighrine	L	L	L

## Akkar

### Akkar

Municipality	23-Nov	24-Nov	25-Nov	Municipality	23-Nov	24-Nov	25-Nov	Municipality	23-Nov	24-Nov	25-Nov
Aain Tinta	L	M	M	Aaiyat	L	ML	ML	Aakkar El-Aatiqa	VL	L	L
Aamar Akkar	VL	VL	L	Aamar El Baykat	L	M	M	Aamayer	L	M	M
Aamriyet Akkar	L	M	M	Aandqet	L	L	ML	Aarmeh	L	M	ML
Aarqa	L	L	L	Aawaynat	L	M	M	Aayoun Akkar	VL	L	L
Abboudiye	L	M	ML	Ain El-Zeit	L	M	M	Ain Yaaqoub	VL	L	L
Akroum	L	L	ML	Aridet Cheikh Zennad	M	M	L	Baldeh w Mazraat Bal	L	M	ML
Barcha	L	M	ML	Bardeh	L	M	ML	Bebnine	VL	VL	L
Beino	L	ML	ML	Beit Ayoub	VL	L	L	Beit El-Haouch	VL	VL	L
Beit Mellat	L	L	L	Beit Younes	VL	VL	L	Berbara Akkar	L	M	M
Berqayel	VL	VL	L	Bezbina	VL	L	L	Bireh Akkar	L	M	M
Borj	L	L	ML	Bqerezla	VL	VL	L	Bzal	VL	VL	L
Chane	VL	VL	L	Chaqdouf	L	L	ML	Charbila	L	M	ML
Cheikh Mohammad	L	M	ML	Cheikh Taba Es-Sahl	L	M	ML	Cheikh Taba	VL	L	L
Cheikh Zennad	M	M	L	Cheikhlar	L	M	M	Chir Hmairine	L	M	ML
Daghle	L	M	M	Dahr Laissine	L	L	L	Darine	L	M	ML
Dawra	L	L	L	Dawsa w Baghdadi	L	M	M	Dayret Nahr El-Kabir	L	M	M
Deir Dalloum	VL	VL	L	Deir Jennine	L	M	M	Denbou	VL	VL	L
Dibbabiyyeh	L	M	M	Douair Aadwiyeh	L	M	M	Fassikine	L	M	M
Fnaydek	VL	L	L	Fraydes Akkar	L	M	ML	Ghazayle	L	M	ML
Habchit	VL	VL	L	Hakour	VL	VL	L	Halba	L	M	ML
Haouchab	L	M	ML	Hayssat	M	M	L	Haytla	L	M	ML
Hayzouq	L	M	ML	Hedd	L	M	ML	Hmaira Akkar	VL	VL	L
Hmaiss Akkar	L	M	ML	Hnaider	L	M	M	Hokr Ed-Dahri	M	M	L
Hokr Etti	L	M	ML	Hokr Jouret Srar	L	M	ML	Houaich	VL	VL	L
Hrar	VL	L	L	Idbil	L	L	L	Ilfat	VL	L	L
Janine	ML	M	ML	Jdeidet El-Joumeh	L	L	L	Jdeidet El-Kaiteh	VL	VL	L
Jebayel	L	L	L	Kafr	VL	VL	L	Kafr	L	M	M
Karm Asfour	VL	VL	L	Kfar Melki Akkar	ML	M	L	Kfar Noun	L	M	ML
Kfarharra	L	M	ML	Khalsa	L	M	M	Kharnoubet Akkar	L	M	ML

Khirbet Daoud Aakkar	L	M	M	Khirbet El Remmane	L	M	M	Khirbet Shar	L	M	M
Khoreybet El-Jindi	L	M	ML	Khreibet Aakkar	VL	L	L	Kneisset Aakkar	M	M	L
Kneisset Hnaider	L	M	M	Knisse	L	M	ML	Kroum El-Aarab	L	M	ML
Kwachra	L	M	M	Kweykhat	L	M	ML	Machta Hammoud	L	M	M
Majdala	VL	VL	L	Majdel Akkar	L	M	M	Mar Touma	VL	VL	L
Marlaya Melhem	VL	VL	L	Mashha	L	ML	L	Massouidiye	M	M	L
Mazraat Beit Ghattas	VL	VL	L	Mazraat En-Nahriye	L	ML	M	Mechmech	VL	L	L
Memneh	VL	L	L	Mhammara	VL	VL	L	Mighraq Aakkar	M	M	L
Minyara	VL	VL	L	Moqayteh	ML	M	L	Mounjez	L	M	ML
Msalla	L	M	M	Mzeihmeh	L	M	ML	Nfaisheh	L	M	ML
Noura Et-Tahta	L	M	ML	Ouadi El-Haour	L	M	ML	Ouadi El-Jamous	VL	VL	L
Ouyoun El-Ghizlane	VL	VL	L	Qaabarine	ML	M	L	Qabaait	VL	VL	L
Qachlaq	L	M	ML	Qantara Aakkar	VL	L	L	Qarha Aakkar	L	M	M
Qarqaf	VL	VL	L	Qboula	L	L	ML	Qleiaat Aakkar	ML	M	L
Qloud El-Baqie	VL	VL	L	Qobaiyat Aakkar	L	L	L	Qobbat Chamrat	VL	VL	L
Qorayat	VL	L	L	Qornet Aakkar	VL	L	L	Qsair Aakkar	L	M	M
Rahbe	VL	L	L	Rihaniyet Aakkar	L	M	ML	Rmah	L	M	ML
Rmoul	ML	M	L	Saadine	L	M	ML	Sadaqa	VL	L	L
Saidnaya	L	M	ML	Sammouniye	ML	M	L	Sayssouq	VL	VL	L
Semmaqiye	M	M	L	Semmaqli	L	L	L	Sfinet El-Dreib	L	M	ML
Sfinet El-Qaitaa	VL	VL	L	Sindyanet Zeidane	L	ML	ML	Souaisset Aakkar	L	M	ML
Srar	L	M	ML	Tal Abbas El Gharby	L	M	ML	Tal Abbas El-Charqy	L	M	ML
Tal Biret	M	M	L	Tal Hmayra	L	M	ML	Tal Maayan Tal Kiri	M	M	L
Tal Sibel	ML	M	L	Tallet Chattaha	L	ML	ML	Tikrit	VL	L	L
Tleil	L	M	ML	Tshea	VL	L	L	Zawarib	VL	L	L
Zouq El Hosniyeh	VL	VL	L	Zouq El-Haddara	VL	VL	L	Zouq El-Hbalsa	VL	VL	L
Zouq El-Mogachrine	VL	VL	L								

## Sud

### Sour

Municipality	23-Nov	24-Nov	25-Nov	Municipality	23-Nov	24-Nov	25-Nov	Municipality	23-Nov	24-Nov	25-Nov
Aaiyeh	VL	ML	L	Aalma El-Chaab	VL	L	L	Aaytit	VL	ML	L
Abbassiyeh Sour	VL	ML	ML	Abou Chech	VL	L	ML	Ain Abou Abdallah	VL	ML	ML
Ain Baal	VL	L	L	Arzoun	VL	M	ML	Aziyeh	VL	L	L
Baflaya	VL	M	ML	Barich	L	M	ML	Batouliyah	VL	L	L
Bayad	VL	L	L	Bazouriyeh	VL	ML	L	Bediass	VL	ML	L
Bestiyat	VL	M	ML	Borj El Chemali	VL	L	ML	Borj En-Naqoura	L	L	ML
Borj Rahhal	VL	ML	ML	Boustane	VL	L	L	Btaychiyeh	L	L	ML
Chaaitiye	VL	L	L	Chameh	VL	L	L	Chehabiye	VL	M	L
Chehour	VL	L	L	Chihine	VL	L	L	Debaal Sour	VL	ML	L
Deir Amess	VL	L	L	Deir Kifa	VL	M	ML	Deir Qanoun El-Ain	VL	L	ML
Deir Qanoun El-Naher	VL	ML	L	Derdghaiya	VL	M	M	Dhayra	VL	L	ML
Halloussiyeh	L	M	ML	Hamoul	VL	L	L	Hanaouey	VL	ML	L
Henniye	VL	L	ML	Hmairi Sour	L	ML	L	Iskandarouna Sour	VL	L	L
Jbal El Botom	VL	L	L	Jebbin	L	ML	ML	Jennata	L	M	ML
Jijim	VL	L	L	Jouaiya	VL	ML	L	Kneisset Sour	VL	L	L

Maarake	L	M	ML	Maaroub	L	M	ML	Majadel	VL	ML	L
Majdalzoun	L	L	ML	Mansouri Sour	L	L	ML	Marnba	VL	L	L
Marouahine	VL	L	L	Mazraat El-Zalloutiy	VL	ML	ML	Mazraat Mechref	VL	ML	L
Mazraat Tayr Semhat	VL	L	L	Mheilib	VL	L	ML	Neffakhiyeh	VL	M	M
Niha Sour	VL	M	M	Ouadi Jilo	VL	ML	L	Qana	VL	L	L
Qolaileh Sour	VL	L	ML	Rechknanay	VL	L	L	Rmadiyeh	VL	ML	L
Selha Sour	VL	M	M	Siddiqine	VL	ML	L	Sour	L	ML	M
Srifa	VL	ML	ML	Tayr Debbe	VL	ML	L	Tayr Felsay	L	ML	L
Tayr Harfa	L	L	ML	Touayri	VL	L	L	Toura	L	M	ML
Yanouh Sour	L	M	ML	Yarine	L	ML	ML	Zebqine	VL	L	L

## Saida

Municipality	23-Nov	24-Nov	25-Nov	Municipality	23-Nov	24-Nov	25-Nov	Municipality	23-Nov	24-Nov	25-Nov
Aanqoun	VL	L	L	Aaqtanit	L	ML	L	Aarab Ej-Jall	VL	ML	ML
Aarab Tabbaya	VL	ML	ML	Abra Saida	L	L	L	Adloun	L	ML	L
Adousiyeh	VL	L	L	Ain-El-Deleb	VL	L	L	Arzai	L	M	ML
Babliyah	L	ML	L	Barty	VL	L	ML	Bissariyeh	L	ML	ML
Bnaafoul	VL	L	L	Bqosta	L	L	L	Bramiy	VL	L	L
Daoudiyeh	L	ML	ML	Dareb El-Sim	VL	L	L	Erkay	VL	L	L
Ghassanieh	L	ML	ML	Ghazieh	L	L	ML	Hajjeh	VL	L	L
Haret Saida	VL	L	L	Hartiyeh	L	ML	L	Hlaliye Saida	VL	L	L
Insariyat	L	ML	L	Jazira Saida	L	ML	L	Kafar Bit	VL	L	L
Kaoutariyet El-Siyad	L	M	ML	Kfar Chellal	VL	L	L	Kfar Hatta Saida	VL	L	L
Kfar Milke Saida	VL	L	L	Khartoum	L	M	ML	Khaziz	VL	L	L
Khirbet Ed-Douair Sa	L	ML	L	Khirbet El-Bassal	VL	ML	ML	Khrayeb Saida	L	ML	L
Loubieh	L	ML	L	Maghdouche	L	L	L	Majdelyoun	VL	L	L
Matariyet El-Choumar	L	M	L	Matayriyeh	L	L	L	Mazraat 'Mseileh	L	L	ML
Mazraat 'Snaiber	L	L	ML	Mazraat Aarab Soukka	VL	ML	ML	Mazraat Deir Taqla	VL	ML	L
Mazraat El Yahouidiye	L	ML	ML	Mazraat El-Housseini	L	ML	M	Mazraat El-Mhaydaleh	L	ML	L
Mazraat El-Ouasta	L	ML	L	Mazraat Jamjim	VL	ML	L	Mazraat Kaoutariyet	L	ML	L
Mazraat Kfar Badda	VL	ML	L	Mazraat Oussamiyat	L	ML	ML	Mazraat Sari	L	ML	L
Mazraat Sinai	L	M	ML	Meemariyeh	VL	L	L	Merouaniyeh	VL	ML	L
Miyeh ou Miyeh	VL	L	L	Najjariyeh	L	L	L	Qaaqaiyat El-Snaouba	L	ML	ML
Qnarit	L	ML	L	Qraiye Saida	VL	L	L	Saida Ed-Dekermane	VL	L	L
Saida El-Oustani	VL	L	L	Saida El-Qadimeh	VL	L	L	Saida Kefraya	L	L	L
Saksakiyeh	L	ML	ML	Salhieh Saida	L	L	L	Sarafand	L	ML	ML
Sfenta	VL	L	L	Tafahta	VL	M	ML	Tanbourit	VL	L	L
Tebna	L	ML	ML	Zaghdraiya	VL	L	L	Zeita	VL	L	L
Zrariyeh	L	ML	L								

## Jezzine

Municipality	23-Nov	24-Nov	25-Nov	Municipality	23-Nov	24-Nov	25-Nov	Municipality	23-Nov	24-Nov	25-Nov
Ain El-Mir (El Estab)	VL	L	ML	Anane	VL	L	L	Aramta	VL	L	ML
Ariya	VL	L	L	Aychiyeh	VL	L	L	Azour	VL	L	VL
Baba	VL	L	VL	Bayssour Jezzine	VL	L	L	Benoueteh Jezzine	VL	L	L
Bhannine	VL	L	L	Bisri	VL	VL	VL	Bkassine	VL	L	L
Bouslaya	VL	L	L	Btedine El-Leqech	VL	L	VL	Chbail	VL	VL	VL
Choualiq Jezzine	L	L	L	Dahr Ed-Deir	VL	L	L	Deir El Qattine	VL	L	L

Demachqiyeh	VL	L	ML	Ghabbatiyeh	VL	L	L	Harf Jezzine	VL	L	VL
Hassaniyeh	L	L	L	Haytouleh	VL	L	L	Haytura	VL	L	L
Hidab	VL	L	L	Homsiyeh	VL	L	L	Jabal Toura	VL	L	ML
Jarmaq	VL	L	ML	Jensnaya	VL	L	L	Jernaya	VL	L	ML
Jezzine	VL	L	ML	Karkha	L	L	L	Kfar Falous	VL	L	L
Kfar Houna	VL	L	L	Kfar Jarrah	VL	L	L	Lebaa	VL	L	L
Louayzet Jezzine	VL	L	L	Machmouche	VL	L	L	Mahmoudiyeh Jezzine	VL	L	ML
Maknounye Jezzine	VL	L	L	Maraat Ouazaiyeh	VL	L	L	Mazraat Daraya	VL	L	L
Mazraat El-Aarqoub	VL	L	L	Mazraat El-Mathane	VL	VL	VL	Mazraat El-Rahbane	VL	L	L
Mazraat Khallet Khaz	VL	L	L	Mazraat Louzid (Loua	VL	VL	VL	Mazraat Qrouh	VL	L	L
Mazraat Tamra	VL	L	ML	Mazraat Zighrine Jez	VL	L	L	Mazraat	VL	L	L
Mharbiyeh	VL	L	L	Midane Jezzine	VL	L	L	Mjeydel Jezzine	VL	L	L
Mliikh	VL	L	L	Mrah El-Hbasse	VL	L	L	Ouadi Baanqoudaine	VL	ML	L
Ouadi El-Laymoun	VL	L	L	Ouardiyeh	VL	VL	VL	Qabaa Jezzine	VL	L	L
Qatrani	VL	L	L	Qaytouleh	VL	L	L	Qtaleh Jezzine	VL	VL	L
Rihane Jezzine	VL	L	L	Rimat	VL	L	L	Roum	VL	L	L
Roummanet	VL	L	ML	Sabbah	VL	L	L	Saydoun	VL	L	L
Sfaray	VL	L	L	Snaya	VL	L	L	Sojoud	VL	L	L
Srayri	L	L	L	Taaid	VL	L	VL	Wadi Jezzine	VL	L	L
Zhalta	VL	L	L								

## Bekaa

### West Bekaa

Municipality	23-Nov	24-Nov	25-Nov	Municipality	23-Nov	24-Nov	25-Nov	Municipality	23-Nov	24-Nov	25-Nov
Aammiq BG	VL	ML	ML	Ain El Tineh BG	VL	L	ML	Ain Zebdeh	L	M	ML
Ana	VL	ML	ML	Aytanit	VL	L	L	Baaloul BG	VL	ML	ML
Bab Mareh	VL	M	ML	Chouberqiye Aammiq	VL	ML	ML	Dakoue	VL	ML	ML
Deir Ain El-Jaouze	VL	M	ML	Deir Tahniche	VL	ML	ML	Ghaza	VL	ML	ML
Harime El-Soughra	VL	ML	ML	Hoch Harimeh	VL	ML	ML	Jazira BG	VL	ML	ML
Jib Jennine	VL	ML	ML	Kamed-El-Laouz	VL	ML	ML	Kefraya BG	VL	ML	ML
Khiara El Atika	VL	ML	ML	Khiara	VL	ML	ML	Khirbet Qanafar	L	M	ML
Lala	VL	ML	ML	Lebbaya BG	VL	L	ML	Loussa	L	L	ML
Machghara	VL	L	ML	Manara (Hammara) BG	VL	L	L	Mansoura BG	VL	ML	ML
Marej BG	VL	M	M	Maydoun	VL	L	ML	Ouaqf BG	VL	ML	ML
Qaraaoun	VL	M	M	Qelya	VL	L	L	Raouda (Istabel)	VL	M	M
Saghbine	VL	ML	ML	Sohmor	VL	L	ML	Soltan Yacoub el Ara	VL	ML	ML
Souairy	VL	ML	ML	Sultan Yaacoub	VL	ML	ML	Tal Znoun	VL	ML	ML
Yehmor BG	VL	L	ML	Zilaya	VL	L	ML				

### Zahle

Municipality	23-Nov	24-Nov	25-Nov	Municipality	23-Nov	24-Nov	25-Nov	Municipality	23-Nov	24-Nov	25-Nov
Aanjar (Haouch Mouss	VL	ML	ML	Ablah	VL	L	M	Ain Kfarzabad	VL	L	ML
Ali-El-Nahri	VL	ML	ML	Bar Elias	VL	M	M	Bouarej	L	M	M
Cheberqiyet Tabet	VL	M	M	Chtaura	VL	M	M	Deir El Ghazal	VL	L	ML
Delhamiyet Zahle	VL	ML	M	Ferzol	VL	ML	M	Haouch El-Ghanam	VL	ML	ML
Haouch Es-Siyadeh	VL	M	M	Haouch Hala	VL	L	ML	Haouch Mandara	VL	M	M

Haouch Qayssar	VL	M	M	Hezerta	VL	M	M	Hosh Moussa	VL	L	ML
Jdita	VL	M	M	Kfarzabad	VL	L	ML	Ksara	L	M	M
Majdel Aanjar	VL	ML	ML	Makssi	VL	M	M	Massa	L	L	ML
Mazraat Er-Remtaniye	VL	M	M	Mrayjat Zahle	L	M	M	Mzaraa Zahle	VL	M	M
Nabi Ayla	VL	ML	M	Nasriyet Rizk	VL	ML	L	Nasriyet Zahle	VL	M	M
Niha Zahle	VL	ML	M	Ouadi Ed-Deloum	VL	M	M	Ouadi El-Arayech	VL	M	M
Qaa El Rim	VL	M	M	Qab Elias	VL	M	M	Qousaya	VL	L	ML
Rhit	VL	L	L	Riyak	VL	ML	ML	Saadnayel	L	M	M
Taal El-Akhdar	VL	ML	M	Taalbeya	VL	M	M	Taanayel	VL	M	M
Talamara	VL	ML	ML	Tcheflik Edde Haouch	L	M	M	Tcheflik Qiqano	VL	M	M
Terbol Zahle	VL	L	ML	Touaite Zahle	VL	M	M	Zahle Aradi	L	M	M
Zahle El-Berbara	L	M	M	Zahle El-Maallaqa	L	M	M	Zahle El-Midane	L	M	M
Zahle Er-Rassiye	L	M	M	Zahle Haouch El-Ouma	L	M	M	Zahle Haouch El-Ouma	VL	M	M
Zahle Haouch Ez-Zara	L	M	M	Zahle Maallaqa Aradi	VL	M	M	Zahle Mar Antonios	L	M	M
Zahle Mar Elias	L	M	M	Zahle Mar Gerios	L	M	M	Zahle Saydet En-Naja	VL	M	M
Zebdoul	VL	M	M								

## Rachaiya

Municipality	23-Nov	24-Nov	25-Nov	Municipality	23-Nov	24-Nov	25-Nov	Municipality	23-Nov	24-Nov	25-Nov
Ain Arab Rachaiya	VL	L	ML	Ain Ata	VL	VL	L	Ain Harche	VL	L	L
Aqabe Rachaya	VL	L	ML	Ayha	VL	VL	ML	Ayta El Fokhar	VL	L	ML
Bakifa Rachaya	VL	L	ML	Bakka	VL	L	ML	Beit Lahya	VL	L	ML
Bireh Rachaiya	VL	ML	ML	Daher El Ahmar	VL	L	ML	Deir El-Achayer	VL	L	L
Heloua Rachaiya	VL	L	L	Hoch El Qannabeh Rac	VL	L	L	Kaoukaba Bou Arab	VL	L	ML
Kfar Danis	VL	L	ML	Kfar Mechki	VL	L	ML	Kfar Qouq	VL	VL	L
Kherbet Rouha	VL	L	ML	Majdel Balhiss	VL	L	ML	Mdoukha	VL	L	ML
Mhaydseh Rachaiya	VL	L	ML	Nabi Safa	VL	L	ML	Rachaiya	VL	L	ML
Rafid Rachaiya	VL	ML	ML	Selsata (Mazraat Dei	VL	VL	VL	Tannoura	VL	L	ML
Yanta	VL	L	L								

## Beyrouth

### Beyrouth

Municipality	23-Nov	24-Nov	25-Nov	Municipality	23-Nov	24-Nov	25-Nov	Municipality	23-Nov	24-Nov	25-Nov
Achrafieh	VL	L	ML	Ain el-Mreisse	VL	L	ML	Bachoura	VL	L	ML
Beirut Central Distr	VL	L	ML	Marfai	VL	L	ML	Mazraa	VL	L	ML
Medaouar	VL	L	ML	Minet el-Hosn	VL	L	ML	Mwssaitbeh	VL	L	ML
Ras Beirut	VL	L	ML	Rmeil	VL	L	ML	Saifi	VL	L	ML
Zqaq el-Blat	VL	L	ML								