

Lebanon Fire Risk Bulletin



CIVIL DEDEFENCE

Refer to cadast table condition.

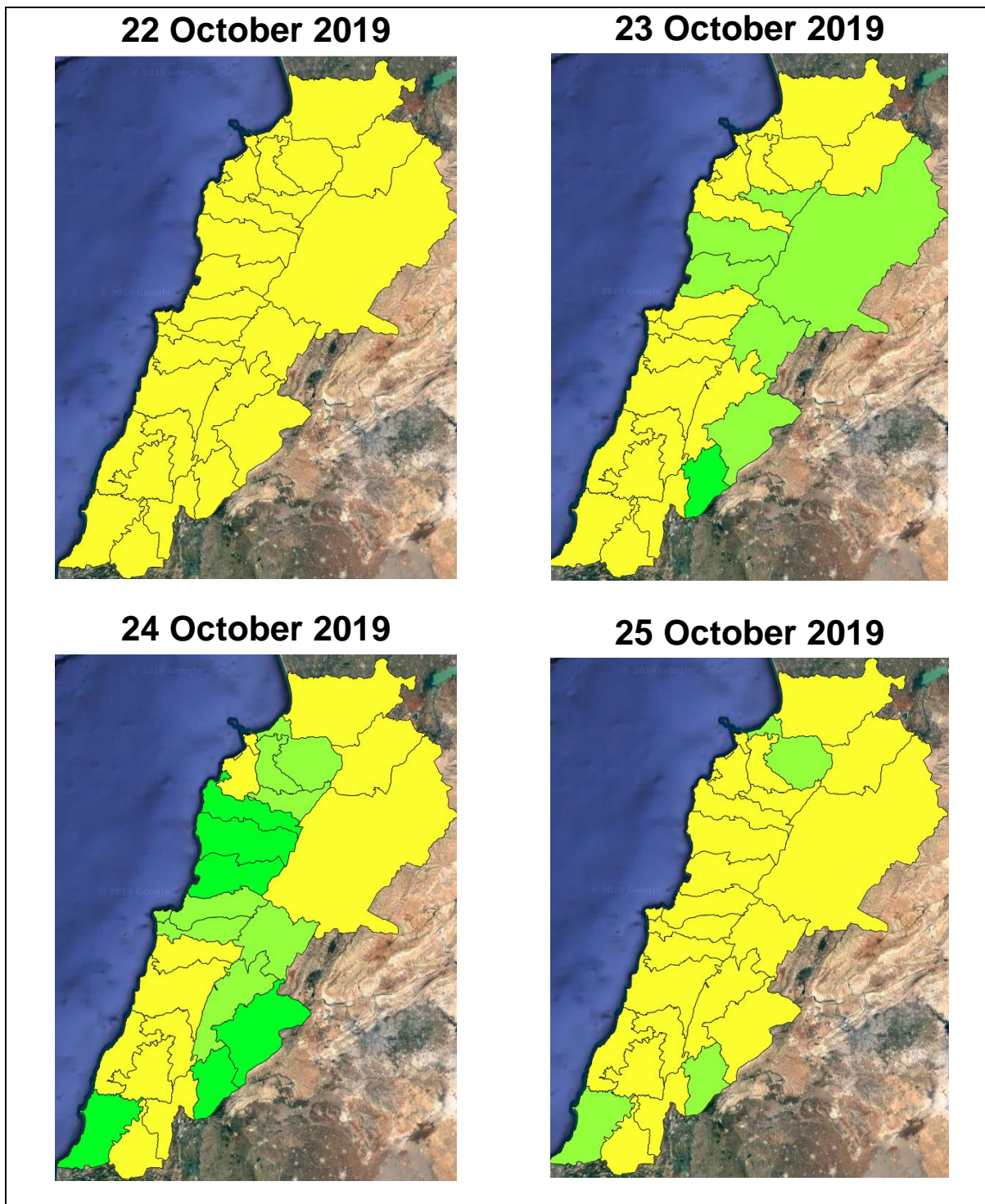
Please note that the indicated temperature is at 2 meters height from the ground.

General description of potential fire risk situation

Symbol	Level of risk	Meaning and actions
VL	Very low	Very low fire risk. Controlled burning operations can be hardly executed due to high fuel moisture content. Normally wildfires self-extinguish.
L	Low	Low fire risk. Controlled burning operations can be executed with a reasonable degree of safety.
ML	Medium low	Medium-low fire risk. Controlled burning operations can be executed in safety conditions. All the fires need to be extinguished.
M	Medium	Medium fire risk. Controlled burning operations would be avoided. All the fires need to be very well extinguished.
M	Medium high	Controlled burning is not recommended. Open flame will start fires. Cured grasslands and forest litter will burn readily. Spread is moderate in forests and fast in exposed areas. Patrolling and monitoring is suggested. Fight fires with direct attack and all available resources.
H	High	Ignition can occur easily with fast spread in grass, shrubs and forests. Fires will be very hot with crowning and short to medium spotting. Direct attack on the head may not be possible requiring indirect methods on flanks. Patrolling and monitoring the territory is highly suggested.
E	Extreme	Ignition can occur also from sparks. Fires will be extremely hot with fast rate of spread. Control may not be possible during day due to long range spotting and crowning. Suppression forces should limit efforts to limiting lateral spread. Damage potential total. Patrolling and monitoring the territory is highly suggested.

Beirut, 23 October 2019

FIRE RISK INDEX

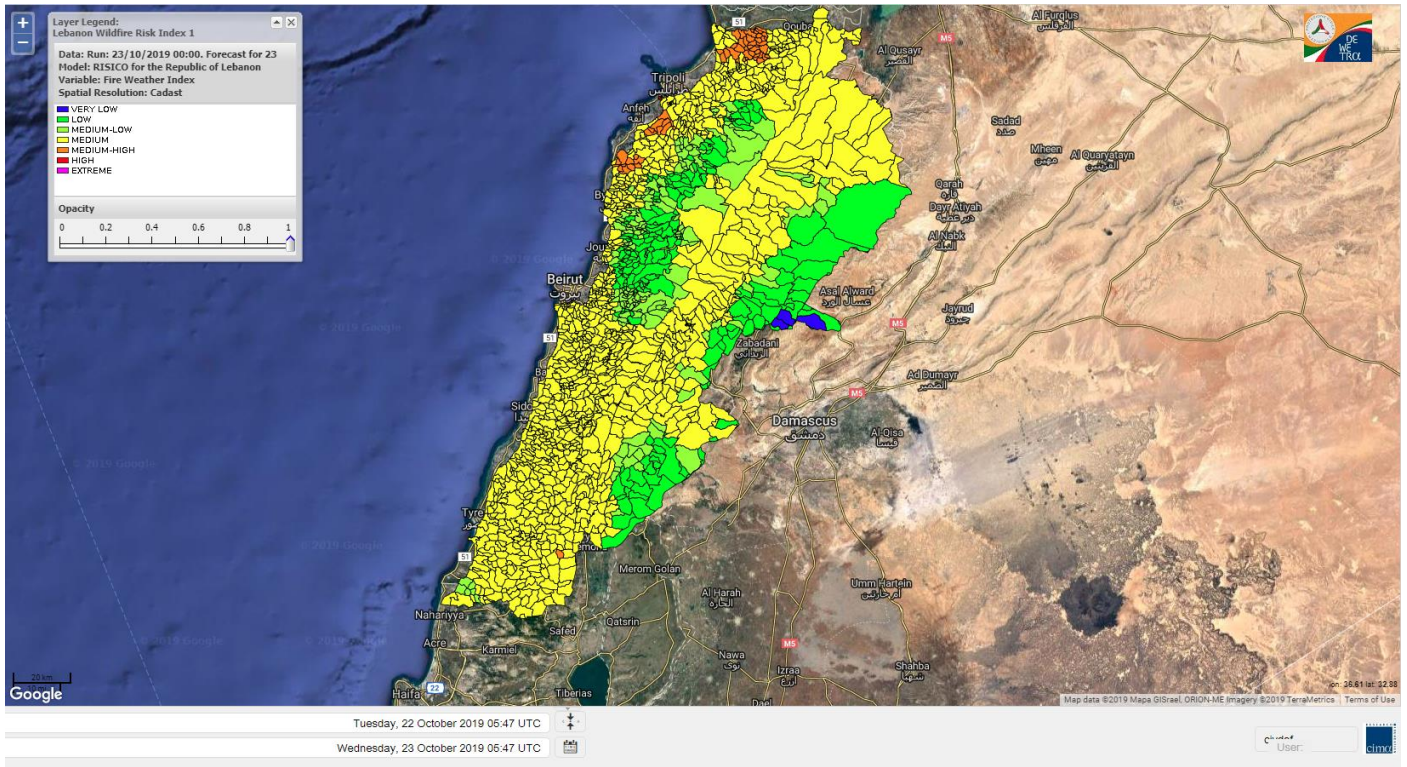


Layer Legend: Lebanon Wildfire Risk Index 1

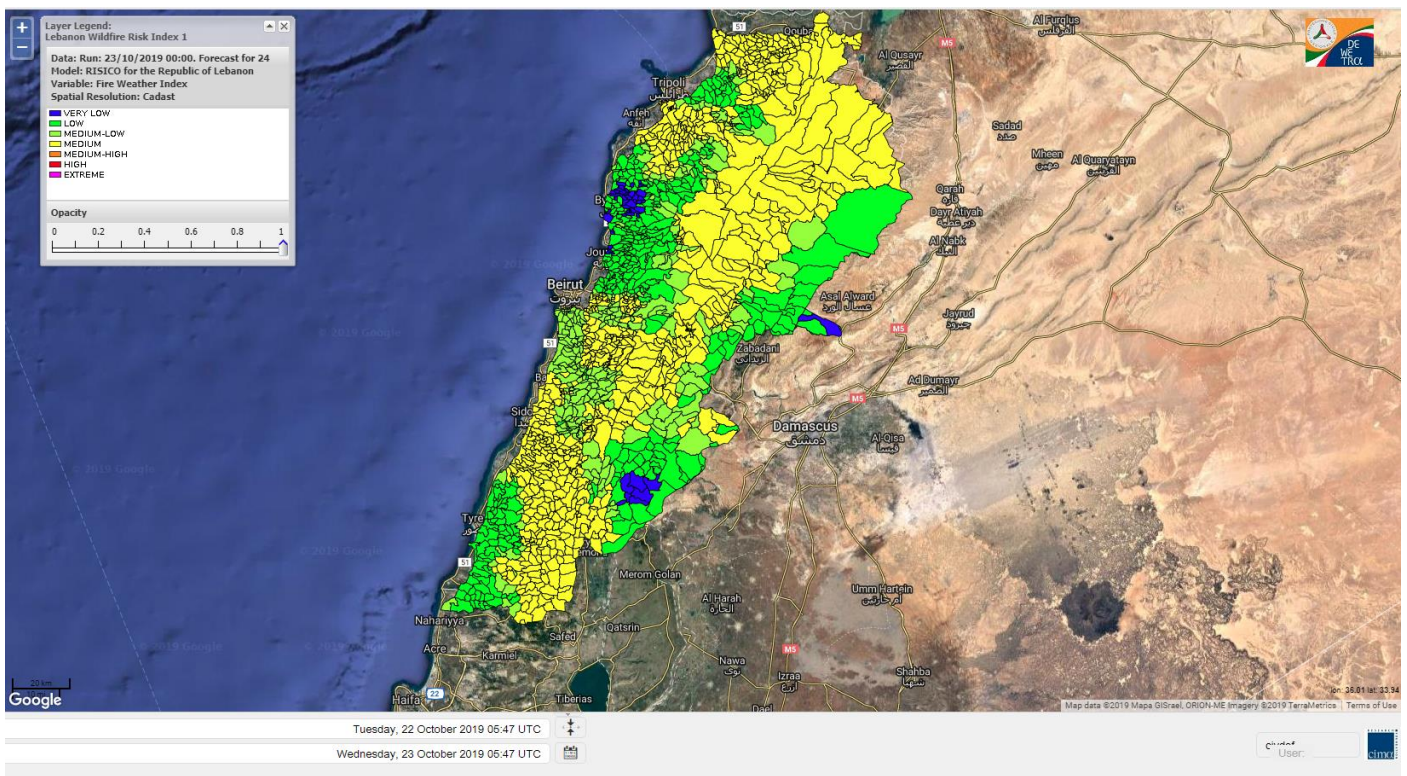
Data: Run: 23/10/2019 00:00. Forecast for 23
Model: RISICO for the Republic of Lebanon
Variable: Fire Weather Index
Spatial Resolution: Caza

- VERY LOW
- LOW
- MEDIUM-LOW
- MEDIUM
- MEDIUM-HIGH
- HIGH
- EXTREME

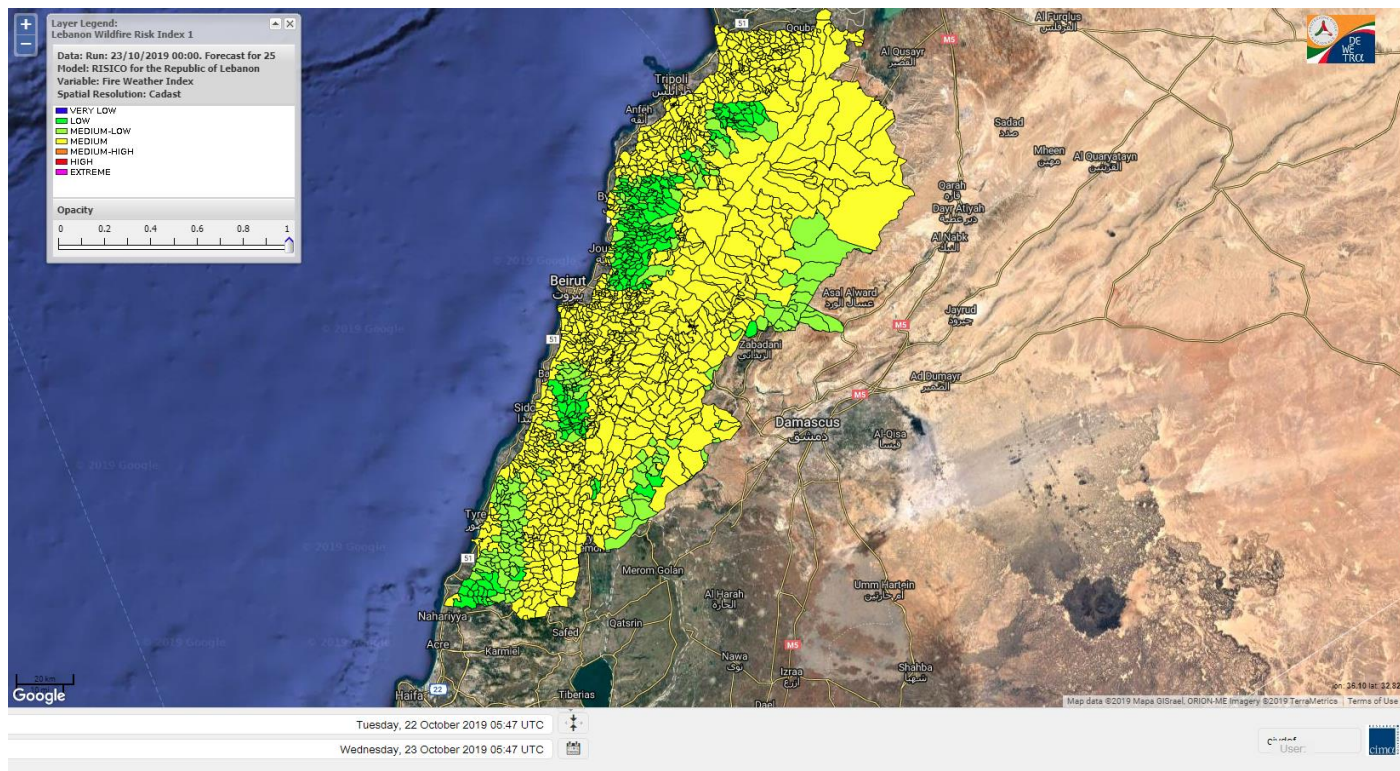
Lebanon for 23 October 2019



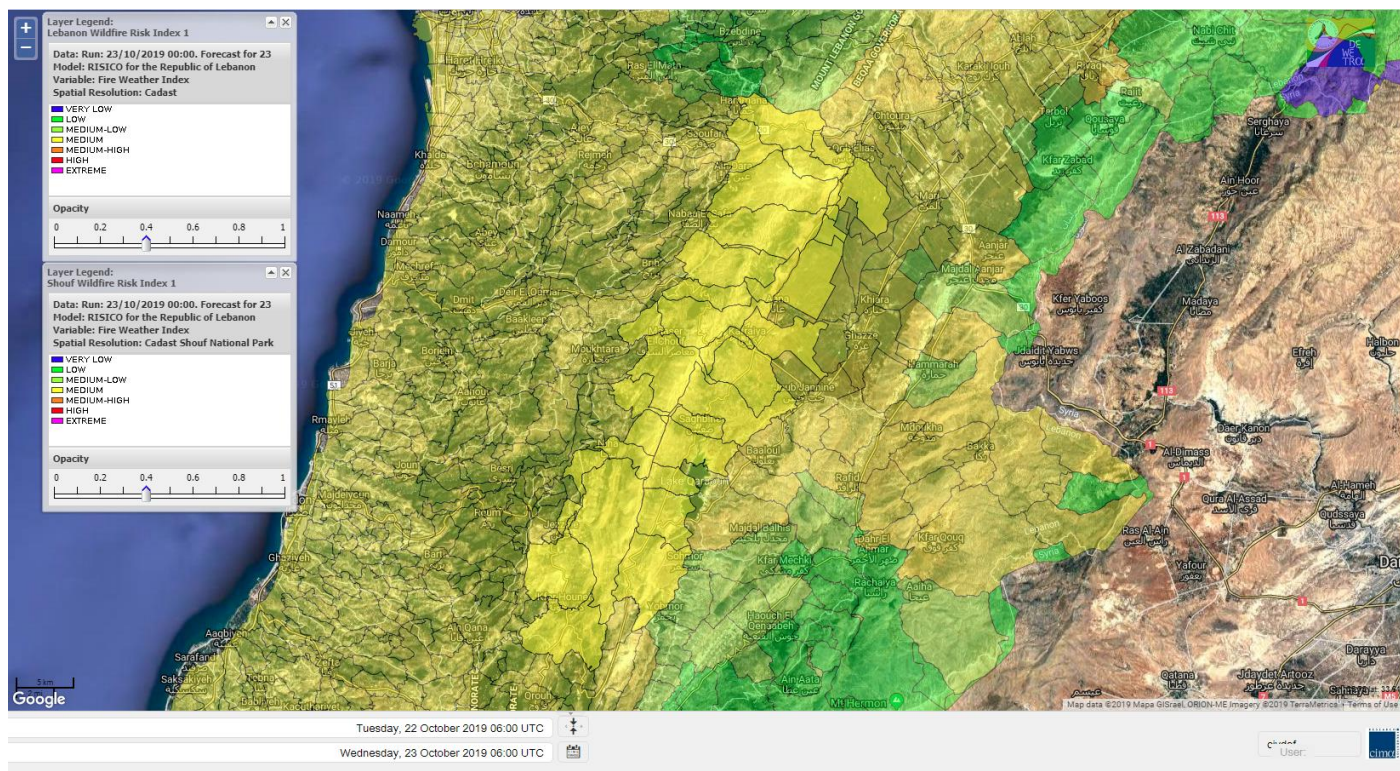
Lebanon for 24 October 2019



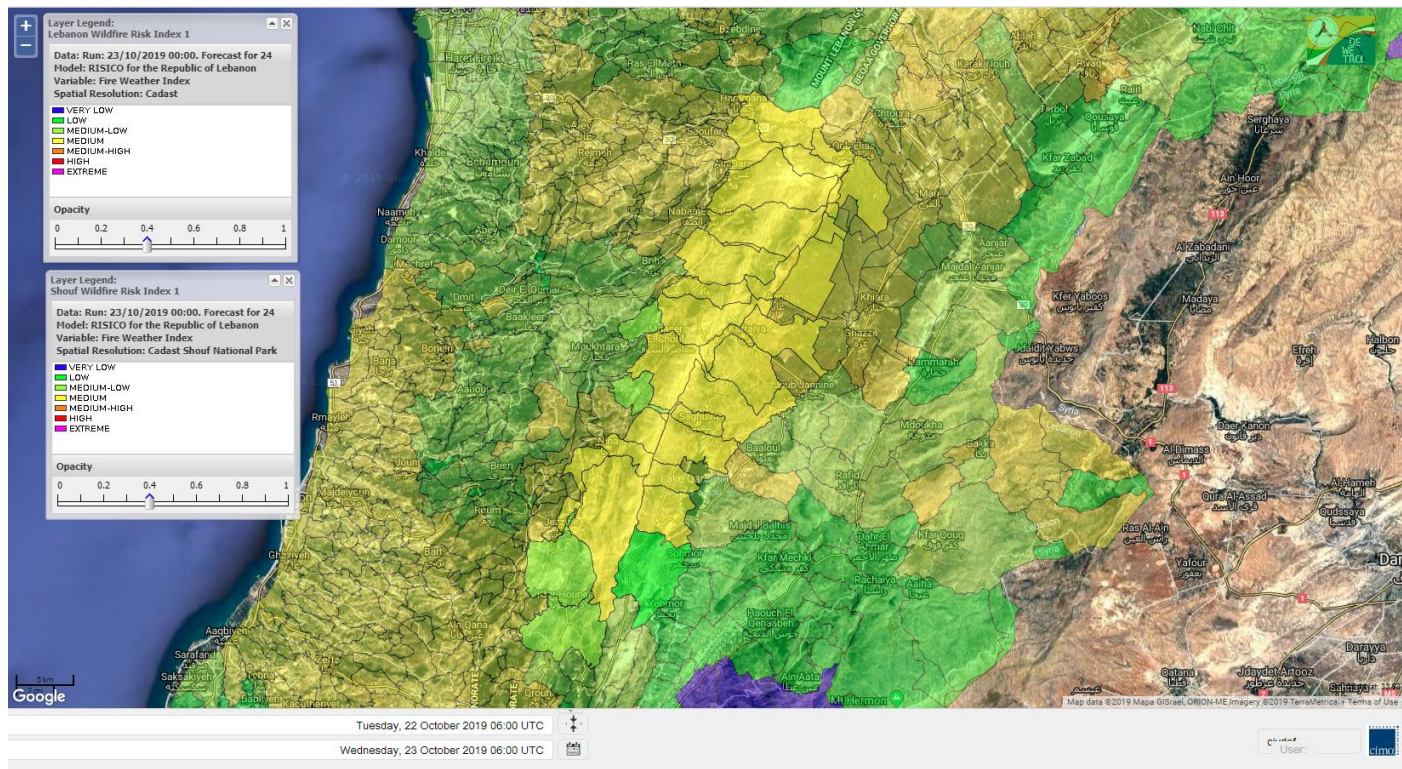
Lebanon for 25 October 2019



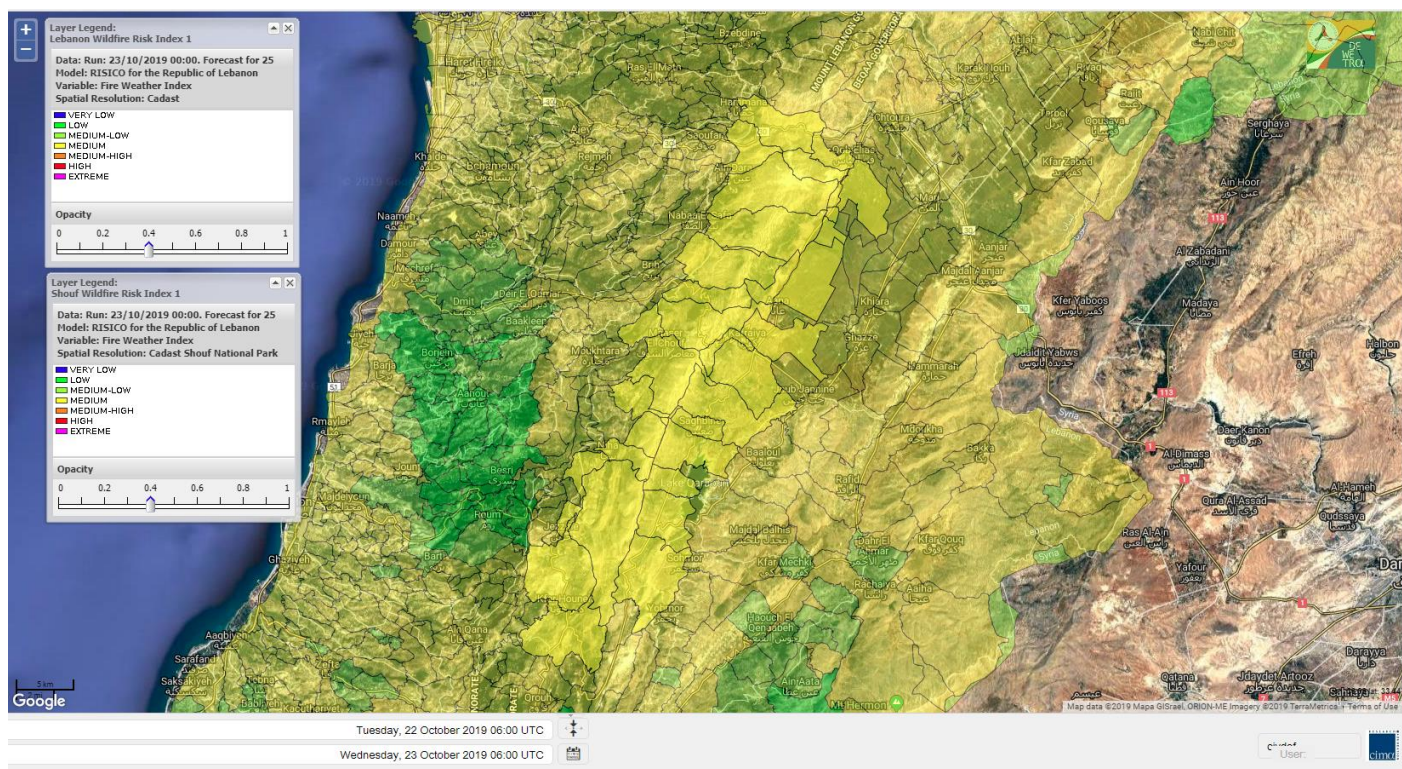
Shouf Biosphere Reserve Forecast for 23 October 2019



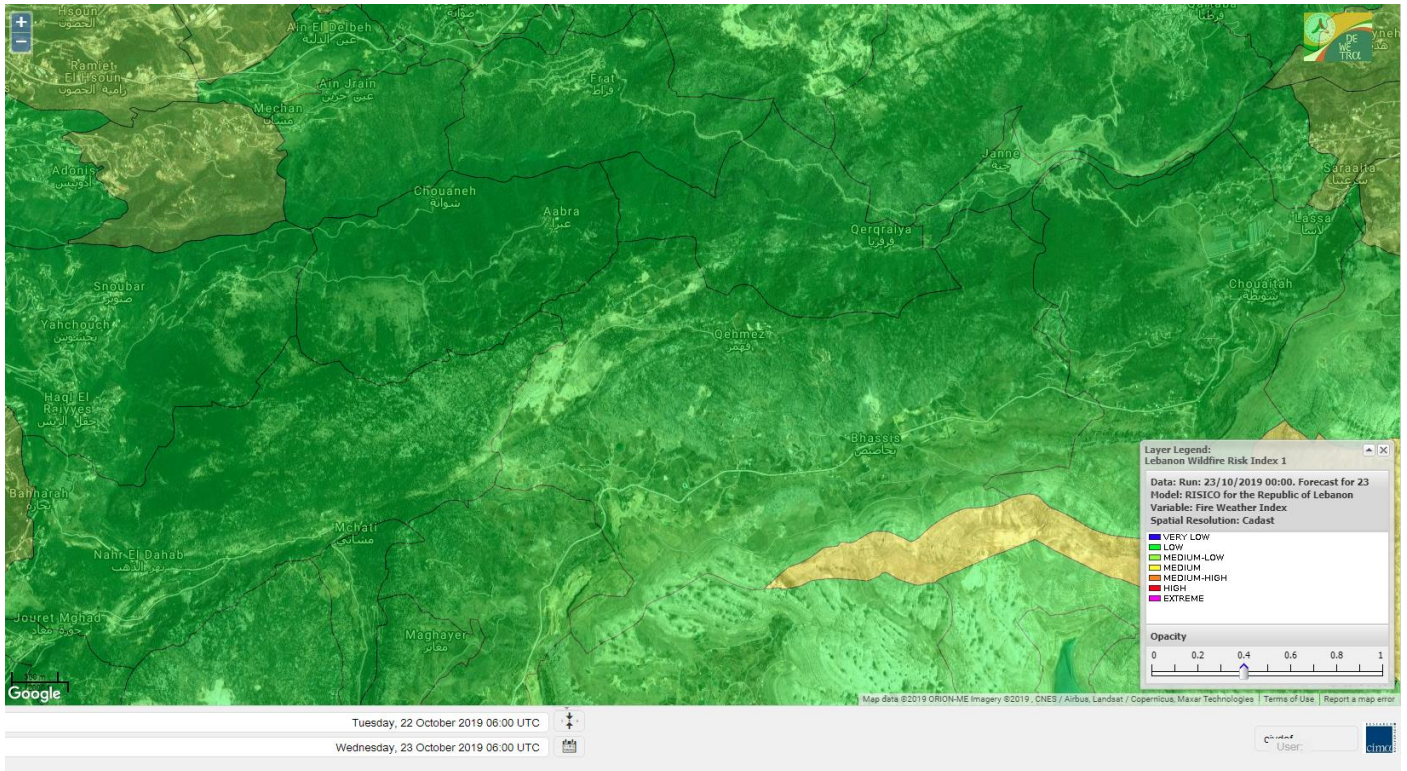
Shouf Biosphere Reserve Forecast for 24 October 2019



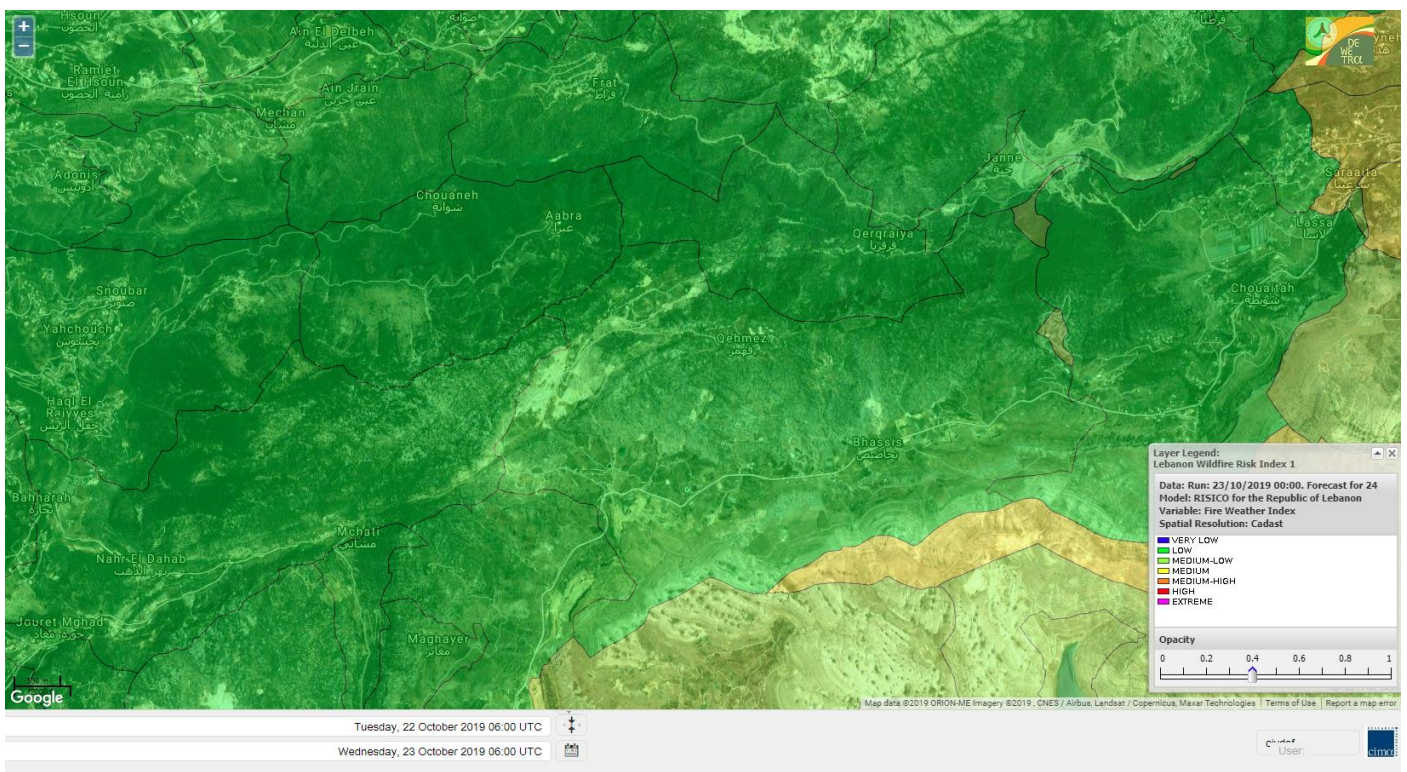
Shouf Biosphere Reserve Forecast for 25 October 2019



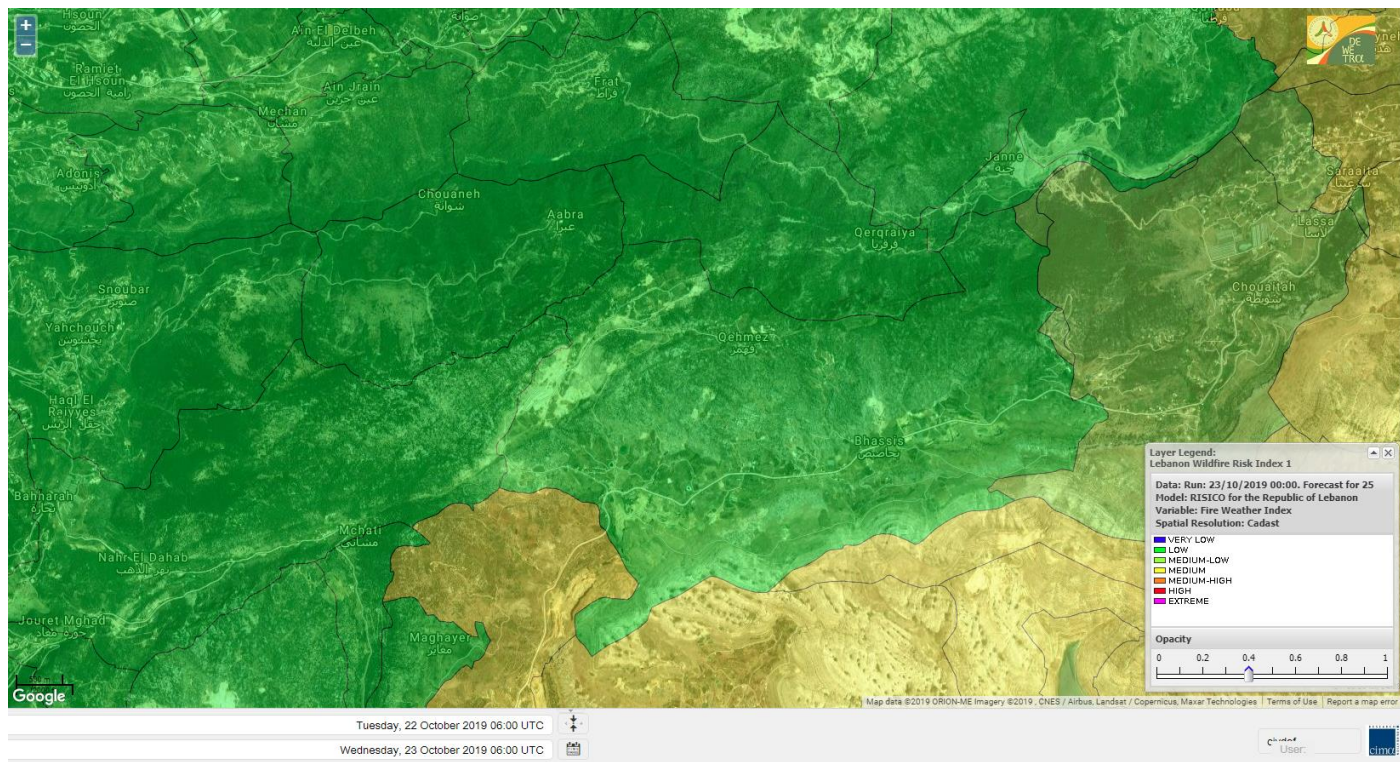
Jabal Moussa Reserve Forecast for 23 October 2019



Jabal Moussa Reserve Forecast for 24 October 2019



Jabal Moussa Reserve Forecast for 25 October 2019

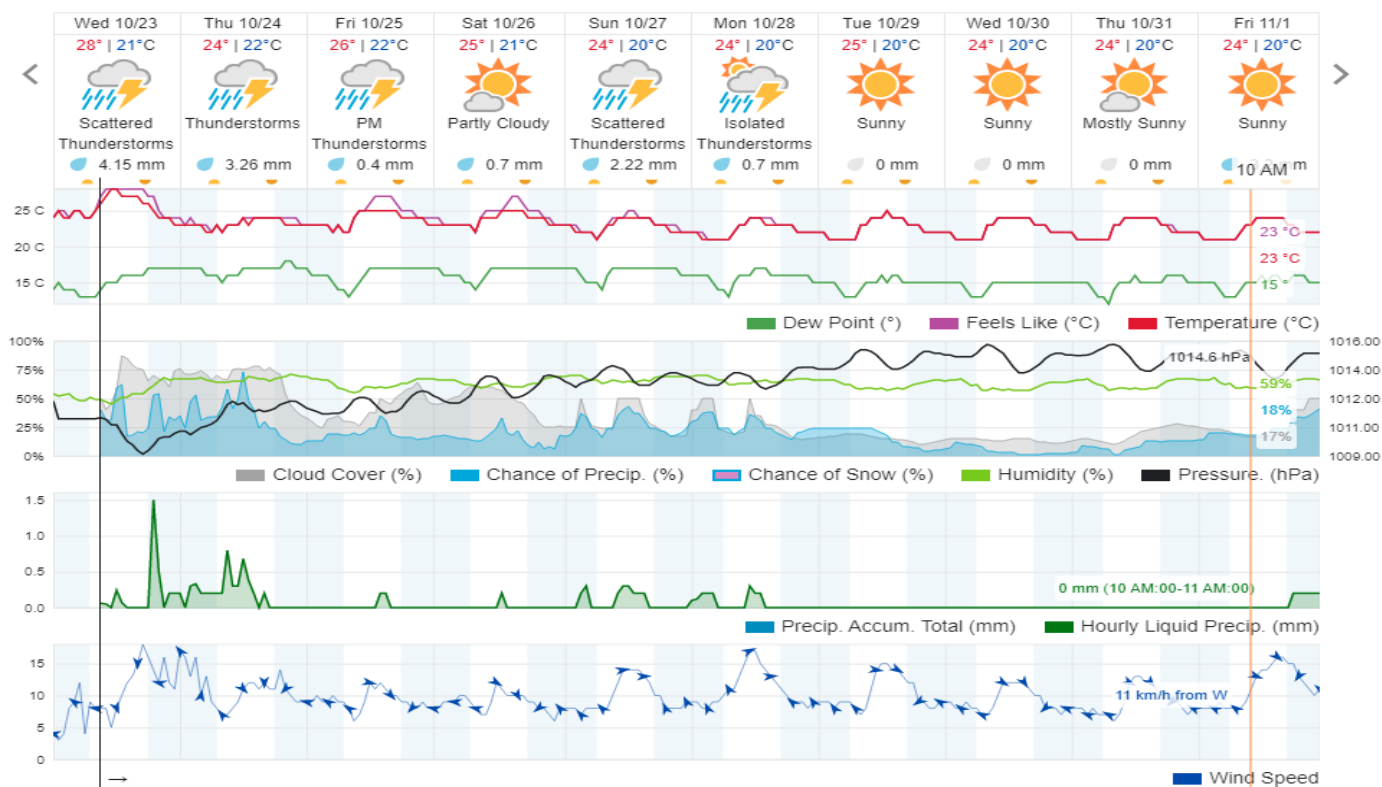


Beirut, Beirut Governorate, Lebanon 10-Day Weather Forecast

26° ACHRAFIEH, RIZK STATION | CHANGE

TODAY HOURLY 10-DAY CALENDAR HISTORY WUNDERMAP

Customize



Nord

Koura

Municipality	23-Oct	24-Oct	25-Oct	Municipality	23-Oct	24-Oct	25-Oct	Municipality	23-Oct	24-Oct	25-Oct
Aaba	M	M	M	Afsaddiq	M	M	M	Ain Ekrine	M	M	M
Amioun	M	M	M	Anfeh	M	M	M	Badbhoun	M	ML	M
Barghoun	M	ML	M	Barsa	MH	M	M	Batroumine	MH	M	M
Bdebba	M	M	M	Bechmizine	M	M	M	Bednaye El-Koura	MH	L	M
Bhabbouch El-Koura	M	M	M	Bkeftine	M	M	M	Bnehran	M	M	M
Bqaiia El-Koura	MH	M	M	Bsarma	M	M	M	Btaaboura	M	ML	M
Bterram	M	M	M	Btouratij	M	M	M	Bziza	M	M	M
Dar Beechtar	M	M	M	Dar Chmezzine	M	M	M	Deddeh	MH	M	M
Deir El-Balamand	MH	M	M	Fih	M	M	M	Hraiche	M	M	M
Ijdaabrine	MH	L	M	Kaftoun	M	M	M	Kefraya El-Koura	M	L	M
Kfarakka	M	M	M	Kfarhata	MH	L	M	Kfarhazir	M	ML	M
Kfarkahel	M	M	M	Kfarsaroun	M	M	M	Kosba	M	M	M
Mejdel el-Koura	M	ML	M	Nakhle	MH	M	M	Qalhat	MH	M	M
Ras Masqa	MH	M	M	Rechdibbine	M	M	M	Zakroun	M	M	M
Zgharta El-Mtaouile	ML	M	ML								

Bcharre

Municipality	23-Oct	24-Oct	25-Oct	Municipality	23-Oct	24-Oct	25-Oct	Municipality	23-Oct	24-Oct	25-Oct
Aabdine	ML	ML	M	Bane	L	M	M	Barhelioun	ML	ML	M
Bazooune	M	M	M	Becharre	ML	M	M	Beit Menzer	ML	ML	M
Billa	ML	ML	M	Blaouza	ML	M	M	Bqaa Kafra	M	M	M
Bqerqacha	M	M	M	Breissat	L	L	M	Dimane	L	ML	M
Hadath El Jobbeh	L	L	ML	Hadchit	L	ML	ML	Hasroun	M	M	M
Mazraat Aassaf	L	L	ML	Mazraat Bani Saab	L	L	M	Mchaa El-Jobbeh	M	M	M
Metrit	M	M	M	Moghr El-Ahoual	ML	ML	M	Ouadi Qannoubine	L	L	L
Qanat	L	L	ML	Qnayer	L	L	ML	Tourza	ML	ML	ML

Batroun

Municipality	23-Oct	24-Oct	25-Oct	Municipality	23-Oct	24-Oct	25-Oct	Municipality	23-Oct	24-Oct	25-Oct
Aabrine	MH	L	M	Aalali	ML	L	L	Aartiz	M	VL	L
Abdelli	ML	VL	L	Ajdabra	M	L	ML	Assia	ML	L	L
Basbina	M	L	M	Batroun	M	L	M	Bcheleh	ML	L	L
Bechtoudar	ML	L	L	Beit Chlala	L	L	L	Beit Kassab	L	ML	L
Bijdarfil	M	L	M	Bqesmaya	M	ML	M	Chatine	L	L	M
Chebtein	M	VL	L	Chekka	M	L	M	Daael	L	L	L
Dahr Abi Yaghi	ML	VL	L	Daraya El-Batroun	M	VL	ML	Deir Billa	M	ML	ML
Deir Kfifane	M	L	ML	Deir Mar Youhanna EL	L	L	L	Deir Mar Youssef Jra	M	VL	L
Douma	L	L	ML	Douq	M	VL	L	Eddeh El-Batroun	M	VL	L
Ftachat El-Batroun	M	VL	L	Ghouma	M	VL	L	Hadtoun	L	L	L
Hamat	MH	L	M	Harbouna	M	VL	L	Hardine	L	L	L
Helta	L	L	L	Hery	M	L	M	Jebbla	ML	ML	L
Jrabta El-Batroun	M	VL	L	Jrane El-Batroun	M	L	ML	Kfar Aabida	M	L	ML
Kfar Halda	L	L	L	Kfarb Shlaimane	L	L	L	Kfarhatna	M	VL	L

Kfarhay	M	L	M	Kfarhelos	MH	L	M	Kfifane	M	VL	ML
Kfour El Arabi	L	L	M	Koubba	MH	L	M	Kour	M	L	ML
Mar Mama	ML	VL	L	Masrah	ML	VL	L	Mehmarch	ML	L	L
Mrah Chdid	M	VL	L	Mrah El Ziyat	M	VL	L	Mrah El-Hajj	L	L	L
Nahle El-Batroun	L	L	L	Niha El-Batroun	L	L	M	Oujh El-Hajjar	MH	L	M
Ouata Houb	L	L	M	Qatnaaoun	MH	L	M	Racha	ML	ML	L
Rachana	M	VL	L	Rachkida	MH	L	M	Ram El-Batroun	L	L	L
Ras Nahhach	MH	L	M	Selaata	M	ML	M	Sghar	M	VL	L
Smar Jbayl	M	VL	L	Sourat El-Batroun	M	L	L	Tannourine El-Faouqa	ML	M	M
Tannourine Et-Tahta	L	L	M	Thoum	M	VL	M	Toula El-Batroun	M	VL	L
Zan	M	L	L								

Zgharta

Municipality	23-Oct	24-Oct	25-Oct	Municipality	23-Oct	24-Oct	25-Oct	Municipality	23-Oct	24-Oct	25-Oct
Aachach	M	M	M	Aalma	M	M	M	Aarde	M	M	M
Aintourine	ML	M	M	Arabet Qozhaya	ML	L	ML	Arde	M	M	M
Arjis	ML	M	M	Asnoun	M	M	M	Ayto	ML	L	ML
Basloukit	L	L	M	Bchannine	M	M	M	Besebeel	M	M	M
Bhairret Toula	L	L	M	Bnachee	ML	M	M	Boussit	M	ML	M
Danha	M	M	M	Daraiya Zgharta	ML	M	M	Deir Jdeide	M	M	M
Ehden	L	ML	M	Halan	M	M	M	Hariq Zgharta	M	M	M
Houakir	M	M	M	Hraiqis	M	L	M	laal	M	M	M
Ijbaa	ML	ML	M	Karm Saddeh	ML	L	L	Kfarchakhna	M	M	M
Kfardlaqous	M	M	M	Kfarfou	ML	M	M	Kfarhata Zgharta	M	M	M
Kfarhoura	M	M	M	Kfarsghab	L	L	M	Kfaryachit	M	M	M
Kfarzaina	M	M	M	Khaldiye	M	M	M	Mazraat Ajbeaa	M	M	M
Mazraat Et-Teffah	L	L	M	Mazraat Jneid	M	M	M	Mejdlaia Zgharta	M	M	M
Merh Kfarsghab	M	M	M	Miryata	M	M	M	Miziara	ML	ML	M
Mzraat Kefraya	M	ML	M	Qorah Bach	M	M	M	Rachiine	M	M	M
Ras Kifa	ML	M	M	Sakhra	M	M	M	Sebhel Zgharta	ML	ML	M
Serhel	L	L	L	Tallet Zgharta	M	M	M	Toula Zgharta	L	L	ML
Zgharta	M	M	M								

Minieh-Denniye

Municipality	23-Oct	24-Oct	25-Oct	Municipality	23-Oct	24-Oct	25-Oct	Municipality	23-Oct	24-Oct	25-Oct
Aasaymout	L	L	L	Aaymar	M	ML	L	Aazki	M	M	L
Ain El-Tineh-Miniyeh	ML	M	L	Assoun	M	M	L	Bakhaaoun	M	ML	L
Bchennata	L	ML	ML	Bechehhara	M	M	M	Beddawi	M	ML	M
Behouaita	L	L	ML	Beit El Foqss	ML	M	L	Beit Haouik	L	ML	ML
Beit Zoud	ML	M	L	Bekaasafrine	ML	M	M	Borj El Yahoudiyeh	M	L	M
Bqarsouna	ML	ML	L	Btermaz	ML	M	L	Debaael	L	L	L
Deir Ammar	M	L	M	Deir Nbouh	M	M	M	Haouaret-Miniyeh	L	L	L
Haql el Azimeh	ML	M	L	Harf El Siyad	ML	L	L	Hazmiye-Miniyeh	ML	M	L
Izal	M	M	ML	Jarjour	M	M	M	Jayroun	L	L	L
Kahf El-Malloul	M	ML	M	Karm El-Moher	ML	M	L	Kfar Binine	L	L	L
Kfarchalane	M	ML	L	Kfarhabou	M	M	ML	Kharroub-Miniyeh	M	M	L
Mazraat El-Kreme	M	M	ML	Mazraat Ketrane	M	M	L	Merkebta	M	L	M

Minyeh	M	L	M	Mrah El Sfirat	ML	M	L	Mrah Sraj	ML	ML	L
Mrebbine	ML	ML	ML	Nabi Youcheaa	M	L	M	Nemrine	L	ML	L
Qarhaiya	L	L	L	Qarne	L	L	L	Qarsita	L	L	L
Qattineh-Miniyeh	L	ML	L	Qemmamine	L	L	L	Qraine	ML	M	L
Raouda-Aadoua	M	L	M	Rihaniyet-Miniyeh	M	L	M	Sfireh	L	ML	L
Sir Ed-Danniyeh	ML	M	L	Tarane	ML	M	L	Terbol-Miniyeh	M	ML	M
Zaghartagrhrine	M	M	M	Zouq Bhannine	M	L	M				

Nabatiye

Nabatiye

Municipality	23-Oct	24-Oct	25-Oct	Municipality	23-Oct	24-Oct	25-Oct	Municipality	23-Oct	24-Oct	25-Oct
Aabba	M	M	M	Aazzi	M	M	ML	Adchit El-Chqif	M	M	M
Ain Bou Swar	M	M	M	Ain Kana	M	M	M	Ali El-Taher	M	M	M
Ansar	M	L	ML	Arab Salim	M	M	M	Arnoun	M	M	M
Bfaroue	M	M	ML	Breyqaah	M	M	M	Charqiyeh	M	M	M
Choukine	M	M	M	Deir El Zahrani	M	M	M	Doueir El-Nabatiyeh	M	M	M
Habbouch El-Nabatiye	M	M	M	Hamra El-Nabatiyeh	M	M	M	Harouf El-Nabatiyeh	M	M	M
Hmaile	M	M	M	Houmin El Faouqa	M	M	M	Houmin El Tahta	M	M	M
Jarjough	M	M	M	Jbaah El-Nabatiyeh	M	M	M	Jebchit	M	M	M
Kfar Djal El-Nabatiy	M	M	M	Kfar Remmane	M	M	M	Kfar Sir	M	M	M
Kfar Tebnit	M	M	M	Kfarfila	M	M	M	Kfour El-Nabatieh	M	M	M
Mayfadoun	M	M	M	Mazraat Bsaffour	M	M	M	Mazraat Chalbaal	M	M	M
Mazraat Dmoul	M	M	M	Mazraat El Khreibeh	M	M	M	Mazraat El-Bayad El-	M	M	M
Mazraat Kfarjaouz	M	M	M	Mazraat Qalaat Meiss	M	ML	ML	Nabatiyeh El-Fawka	M	M	M
Nabatiyeh Et-Tahta	M	M	M	Namiriyeh	M	M	M	Qaaqaaiyet El Jisr	M	M	M
Qossabeh El-Nabatiy	M	M	M	Roumine	M	M	M	Sarba El-Nabatieh	M	M	M
Sir El-Gharbiyeh	M	ML	ML	Toul	M	M	M	Yehmor El-Nabatiyeh	M	M	M
Zaoutar El Charkiyeh	M	M	M	Zaoutar El-Gharbiyeh	M	M	M	Zebdine El-Nabatiyeh	M	M	M
Zefta	M	M	M								

Hasbaiya

Municipality	23-Oct	24-Oct	25-Oct	Municipality	23-Oct	24-Oct	25-Oct	Municipality	23-Oct	24-Oct	25-Oct
Aain Jarfa	L	VL	ML	Abou Qamha	M	ML	M	Ain Qania	L	VL	ML
Bourghos	M	ML	M	Chebaa	L	L	ML	Chouaya Hasbaya	L	VL	ML
Dellafeh	M	M	M	Fardiss Hasbaiya	M	ML	M	Hasbaya	L	L	M
Hbariyeh	L	L	ML	Kaoukaba Hasbaiya	M	M	M	Kfar Chouba	L	L	ML
Kfar Hamam	ML	L	M	Kfeir El-Zait	L	VL	ML	Khalwat Hasbaya	L	VL	L
Khreibet Hasbaiya	M	M	M	Majidiyeh Hasbaiya	M	M	M	Marj Ez-Zhour (Haouc	ML	VL	ML
Meri	M	M	M	Mimass	L	VL	M	Rachaiya El-Fokhar	M	ML	M
Salaiyeb	M	M	M								

Marjayoun

Municipality	23-Oct	24-Oct	25-Oct	Municipality	23-Oct	24-Oct	25-Oct	Municipality	23-Oct	24-Oct	25-Oct
Aalmane Marjaayoun	M	M	M	Aamra	M	M	M	Adayseh Marjaayoun	M	M	M
Adchit El-Koussair	M	M	M	Ain Aarab Marjaayoun	M	M	M	Bani Haiyann	M	M	M
Blatt Marjaayoun	M	M	M	Blida	M	M	M	Borj El-Moulouk	M	M	M

Boueyda Marjaayoun	M	M	M	Deir Mimass	M	M	M	Deir Siriane	M	M	M
Dibbine	M	M	M	Ebel El Saqi	M	M	M	Houla	M	M	M
Houra	M	M	M	Kfar Kila	M	M	M	Khiam Marjaayoun	M	M	M
Klayaa	M	M	M	Majdel Selem	M	M	M	Marjaayoun	M	M	M
Markaba	M	M	M	Mays El-Jabal	M	M	M	Mazraat Doumiat	M	M	M
Mazraat Sarada	M	M	M	Mhaibib	M	M	M	Qabrikha	M	M	M
Qantara	M	M	M	Rab El-Thalathine	M	M	M	Saouaneh Marjayoun	M	M	M
Talloussa	MH	M	M	Taybeh Matjaayoun	M	M	M	Touline	M	M	M

Bent Jbail

Municipality	23-Oct	24-Oct	25-Oct	Municipality	23-Oct	24-Oct	25-Oct	Municipality	23-Oct	24-Oct	25-Oct
Ain-Ebel	M	M	M	Aitaroun	M	M	M	Aynata Bint Jbeil	M	M	M
Ayta El-Chaeb	M	ML	M	Ayta El-Jabal	M	M	M	Beit Lif	M	L	ML
Beit Yahoun	M	M	M	Bint Jbeil	M	M	M	Borj Qalaway	M	M	M
Braachit	M	M	M	Chakra	M	M	M	Debel	M	M	M
Deir Antar	M	M	M	Froun	M	M	M	Ghandouriyeh Bint Jb	M	M	M
Hanine	M	M	M	Hariss	M	M	M	Hdatha	M	M	M
Jmeyjmeh	M	M	M	Kafra Bint Jbeil	M	M	L	Kfar Dounine	M	M	M
Khirbet Selm	M	M	M	Kounine	M	M	M	Maroun El Ras	M	M	M
Qalaway	M	M	M	Qaouzah	M	L	ML	Qatmoun	M	M	M
Ramya Bint Jbeil	M	ML	ML	Rchaf	M	M	M	Rmeich	M	M	M
Safad Al Battikh	M	M	M	Salhaneh	M	L	ML	Serbine	M	M	M
Sultanieh Bint Jbeil	M	M	M	Tibnine	M	M	M	Tiri	M	M	M
Yaroun	M	M	M	Yater	M	ML	ML				

Mont Liban

Jbail

Municipality	23-Oct	24-Oct	25-Oct	Municipality	23-Oct	24-Oct	25-Oct	Municipality	23-Oct	24-Oct	25-Oct
Aabeydat	M	VL	L	Aalita	ML	L	L	Aamchit	M	VL	M
Aarab El-Lahib	L	ML	M	Aarasta	L	M	M	Adonis Jbeil	L	L	L
Afqa Jbeil	ML	ML	M	Ain El Delbeh Jbeil	L	L	L	Ain El-Ghouyba	L	L	ML
Ain Jrain	L	L	L	Ain Kfah	M	VL	ML	Almat El Chemaliyat	L	L	L
Almat El-Jenoubiya	L	L	L	Aqoura	M	M	M	Bayzoun	ML	L	L
Bchille Jbeil	ML	L	L	Bechtlida	L	L	L	Behdaydat	M	L	L
Beit Habbaq	M	VL	ML	Bejjeh	M	VL	L	Bekhaaz	M	L	M
Berbara Jbeil	M	L	M	Bintael	ML	L	L	Birket Hjoula	ML	L	L
Blatt Jbeil	ML	L	L	Boulhos	L	L	L	Breyj Jbeil	L	L	L
Chamat	M	L	ML	Chikhane	M	L	M	Chmout	M	VL	L
Eddeh Jbeil	M	L	ML	Ehmej	L	L	ML	Fatre	L	L	L
Ferhet	ML	L	L	Fghal	M	VL	L	Frat	L	L	L
Ghabat	ML	M	M	Ghalboun	M	VL	L	Gharzouz	M	L	ML
Ghofrine	M	L	M	Habil	ML	VL	L	Halate	M	L	ML
Haqel	M	VL	L	Hbaline	M	L	ML	Hboub	ML	ML	L
Hdeine	ML	M	M	Hema Er-Rehban	L	M	M	Hema Mar Maroun Aann	L	L	M
Hjoula	ML	L	L	Hosrayel	M	L	M	Hsarat	M	L	ML

Hsoun	ML	L	L	Jaj	ML	ML	L	Janne	L	L	L
Jbeil	M	L	M	Jeddeyel Jbeil	M	VL	M	Jlisse	L	L	L
Jouret El-Qattine	ML	L	L	Kfar Baal Annaya	ML	L	L	Kfar Kidde	M	L	M
Kfar Kouas	ML	L	L	Kfar Mashoun	M	L	ML	Kfoun	ML	VL	L
Kharbe Jbeil	M	L	ML	Laqlouq	ML	M	M	Lassa	L	L	ML
Lehfed	ML	L	L	Maad	M	L	ML	Mar Sarkis	L	L	M
Mastita	M	VL	M	Mayfouq	ML	L	L	Mazraat El Siyad	L	ML	M
Mazraat El-Maaden	L	L	L	Mechane	ML	L	L	Mechmech Jbeil	L	L	L
Mehrin	ML	ML	L	Mejdel El-Akoura	ML	M	M	Mghayreh Jbeil	ML	M	M
Mounsef	M	L	M	Nahr Ibrahim	M	VL	M	Qahmez	L	L	L
Qartaba	L	L	L	Qartaboun	M	VL	M	Qattara Jbeil	L	L	L
Qorqraya	L	L	L	Ramout	M	VL	ML	Ras Osta	ML	L	L
Rihane Jbeil	M	L	M	Sakiet El-Khayt	M	VL	L	Saqi Richmaya	L	L	L
Sebrine	ML	L	L	Seraita	ML	M	M	Souane Jbeil	L	L	L
Tadmor	ML	M	M	Tartej	ML	ML	L	Torzaiya	ML	L	L
Yanouh Jbeil	ML	M	M	Zibidine Jbeil	ML	L	L				

El Metn

Municipality	23-Oct	24-Oct	25-Oct	Municipality	23-Oct	24-Oct	25-Oct	Municipality	23-Oct	24-Oct	25-Oct
Aain El-Qabu	L	L	M	Aain El-Qach	ML	M	M	Aain El-Teffaha	ML	M	M
Aain el-Safssaf El-M	ML	M	M	Abou Mizane	ML	ML	M	Ain Aar	M	M	M
Ain Alaq	M	ML	M	Ain El-Kharroube	ML	M	M	Ain El-Sendianeh	ML	M	M
Ain El-Zeitoune	ML	M	M	Ain Saadeh	M	M	M	Aintoura El-Matn	ML	ML	M
Amaret Chalhoub	M	M	M	Antelias	M	M	M	Atchaneh	M	ML	M
Ayroun	ML	M	M	Baabdat	ML	ML	M	Baouchariyeh	M	ML	M
Baskinta	L	L	M	Beit Chabab	ML	M	M	Beit El-Chaar	M	M	M
Beit El-Kekko	M	M	M	Beit Mery	M	M	M	Bhersaf	ML	ML	M
Bikfaya	ML	M	M	Biyakout	M	M	M	Bnabil	ML	ML	M
Bourj Hammoud	M	ML	M	Bqennaya	M	M	M	Broummana El-Matn	M	ML	M
Bsalim	M	M	M	Bsifrine	L	ML	M	Bteghrine	ML	L	M
Chaouiye	M	M	M	Chouaya El-Matn	ML	M	M	Choueir	ML	M	M
Chrine	L	ML	M	Dahr El Sawan El-Mat	M	ML	M	Daychouniyeh	M	M	M
Dbayeh	M	M	M	Deir Chamra	L	L	L	Deir Mar Abda el Mch	M	ML	M
Deir Mar Roukouz	M	ML	M	Deir Tamiche	M	M	M	Dik El-Mehdi	M	M	M
Dikwaneh	M	ML	M	Douar El-Matn	ML	M	M	Fanar	M	M	M
Fraike	M	ML	M	Haret El-Ballaneh	M	M	M	Hbous	M	M	M
Himlaya	ML	ML	M	Jal El Did	M	M	M	Jdeideh El-Metn	M	M	M
Jouar El-Matn	ML	ML	M	Jouret El-Ballout	M	ML	M	Kaaqour	ML	M	M
Kfar Aaqab	L	ML	M	Kfertay El-Matn	L	L	ML	Khenchara	ML	M	M
Khillet El-Mtain	L	ML	M	Konnabat Broummana	M	ML	M	Konnabat Salima	L	ML	M
Machraah El-Matn	ML	ML	M	Majdel Tarchich	ML	ML	M	Majzoub	M	M	M
Mansouriyeh El-Metn	M	M	M	Mar Boutros Karm Et-	ML	ML	M	Mar Chaya et Mzekke	M	ML	M
Mar Moussa Ed-Douar	ML	M	M	Marjaba	ML	ML	M	Masqa	M	ML	M
Mayasse	ML	M	M	Mazraat Deir Aoukar	M	M	M	Mazraat El-Hadirat	M	M	M
Mazraat Yachouh	M	M	M	Mchikha	ML	M	M	Menqlet Mezher	M	M	M
Mhayseh Matn	ML	M	M	Mkalles	M	ML	M	Mrouj	M	M	M

Mtain	ML	ML	M	Mtayleb	M	M	M	Nabay	M	ML	M
Naccache	M	M	M	Ouadi Chahine	ML	M	M	Ouadi El-Karm El-Mat	L	L	L
Ouata El-Mrouj	ML	M	M	Ouyoun El-Matn	M	ML	M	Qornet Chehwan	M	M	M
Qornet El-Hamra	M	ML	M	Roumieh	M	ML	M	Sfeilet Bikfaya	L	ML	M
Sinn El-Fil	M	ML	M	Zabbougha	L	L	L	Zalqa	M	M	M
Zarououn	ML	M	M	Zekrite	M	ML	M	Zighrine El-Matn	ML	M	M
Zouk El-Khrab	M	ML	M								

Chouf

Municipality	23-Oct	24-Oct	25-Oct	Municipality	23-Oct	24-Oct	25-Oct	Municipality	23-Oct	24-Oct	25-Oct
Aalmane El-Chouf	M	M	M	Aammq El-Chouf	M	ML	M	Ain Ouzein	M	ML	M
Ain Qani	M	ML	M	Ain Zhalta	M	M	M	Ainbal	M	ML	L
Amatour	M	M	M	Anout	M	ML	L	Atrine	M	ML	M
Baadarane	M	M	M	Baaqline	M	ML	ML	Baasir	M	M	M
Barja	M	M	M	Barouk	M	M	M	Bater	M	M	M
Batloun	M	ML	M	Bayqoun	M	ML	M	Bchetfine	M	ML	ML
Beiteddine	M	ML	M	Benouati Ech-Chouf	M	M	L	Berjein	M	M	L
Bireh et Mtalleh	M	ML	M	Biret El-Chouf	M	ML	M	Bkechtine Ouel Mchei	M	M	L
Bkifa El-Chouf	M	ML	L	Botme	M	ML	M	Bqaiaa Ech-Chouf	M	M	L
Bsaba El-Chouf	M	ML	L	Chammis El-Chouf	M	M	ML	Chehim	M	ML	L
Chemaarine	M	M	L	Chourit	M	ML	M	Daher El-Chouf	M	M	ML
Dalhoun	M	M	ML	Damour	M	M	M	Daraya El-Chouf	M	ML	L
Deir El-Moukhalles	M	ML	L	Deir Baba	M	ML	ML	Deir Dourit	M	ML	L
Deir El-Qamar	M	ML	ML	Deir Kouche	M	ML	M	Dibbieh	M	M	L
Dmit	M	M	ML	Fouara Jaafar	M	ML	M	Fraidis El-Chouf	M	M	M
Ghabet Jaafar	M	ML	ML	Gharife	M	ML	L	Haret Jandal	M	M	M
Hasrout	M	ML	L	Jadra	M	M	M	Jahlieh	M	ML	ML
Jbeih El-Chouf	M	M	M	Jdeidet El-Chouf	M	ML	M	Jiyeh	M	M	M
Jleiliyeh	M	ML	L	Jmailiyeh	M	M	M	Joun	M	M	ML
Kahlounie El-Chouf	M	ML	M	Ketermaya	M	M	M	Kfar Faqoud	M	M	ML
Kfar Hamal	M	ML	M	Kfar Him	M	ML	ML	Kfar Katra	M	ML	M
Kfar Niss	M	ML	M	Kfar hay	M	M	M	Kfarnabrakh	M	ML	M
Khirbet Bisri	M	ML	L	Knayse El-Chouf	M	L	M	Maaniyeh	M	M	M
Maasser Beiteddine	M	ML	M	Maasser El-Chouf	M	M	M	Majdalouna	M	M	M
Majdel El-Meouch	M	ML	M	Mazboud	M	ML	L	Mazmoura	M	ML	L
Mazraat El Chouf	M	M	M	Mazraat El Daher	M	ML	L	Mazraat El-Douair	M	ML	M
Mechref	M	M	ML	Mghairie	M	M	M	Mghayrie El-Chouf	M	M	ML
Moukhtara	M	ML	M	Mrusti	M	M	M	Mtolle	M	M	L
Naameh	M	ML	M	Niha El-Chouf	M	M	M	Ouadi Abou Youssef	M	M	L
Ouadi Ed-Deir	M	ML	ML	Ouadi El-Sit	M	ML	M	Ouadi bnehlay	M	M	L
Qraibeh	M	ML	M	Qreiaa	M	L	L	Rmayle El-Chouf	M	M	M
Semqaniyeh	M	ML	M	Sibline	M	M	M	Sirjbeil	M	ML	ML
Warhanieh	M	M	M	Werdaniyeh	M	M	M	Zaarourieh	M	ML	L

Baabda

Municipality	23-Oct	24-Oct	25-Oct	Municipality	23-Oct	24-Oct	25-Oct	Municipality	23-Oct	24-Oct	25-Oct
Abadiyeh	M	M	M	Ain Mouaffaq	M	M	M	Araiya	M	M	M

Arbaniyeh	L	ML	M	Arsoun	ML	ML	M	Baabda	M	ML	M
Baalchmey	M	M	M	Bmaryam	M	M	M	Bourj El-Brajneh	M	ML	M
Boutchay	M	ML	M	Bsaba Baabda	M	ML	M	Btekhney	M	M	M
Btibyat	M	M	M	Bzbedine	ML	M	M	Chbeniyeh	M	M	M
Chiyah	M	ML	M	Chmeisset Baabda	M	M	M	Chouit	M	M	M
Deir El-harf	ML	M	M	Deir Khouna	M	M	M	Dlaybeh	L	ML	M
Falougha	M	M	M	Furn El-Chebbak	M	ML	M	Hadath Beyrouth	M	ML	M
Halaliyeh Baabda	M	M	M	Hammana	M	M	M	Haret El Sett	M	M	M
Haret Hamze	M	M	M	Haret Hreik	M	ML	M	Hasbaiya El-Metn	L	ML	M
Jouar El-Hoz	ML	ML	M	Jouret Arsoun	ML	ML	M	Kfar Chima	M	ML	M
Kfar Selouane	ML	L	M	Khalouat Baabda	M	M	M	Kneisset Baabda	ML	ML	M
Laylakeh	M	ML	M	Louayzeh Baabda	M	M	M	Merdache	M	ML	M
Mzairaa Baabda	M	M	M	Ouadi Chahrour El Ol	M	M	M	Ouadi Chahrour El So	M	ML	M
Qalaa Baabda	M	M	M	Qhraybe Baabda	M	M	M	Qobbayaa	M	M	M
Qornayel	L	ML	M	Qortada	M	ML	M	Qrayeh Baabda	M	M	M
Qsaibeh Baabda	M	ML	M	Qtale Baabda	M	M	M	Ras El Metn	M	M	M
Ras El-Haref	M	M	M	Rouayset El-Ballout	M	M	M	Salima Baabda	ML	M	M
Tahouitat El Ghadir	M	ML	M	Tarchich	ML	L	M	Zandouqa	M	ML	M

Aley

Municipality	23-Oct	24-Oct	25-Oct	Municipality	23-Oct	24-Oct	25-Oct	Municipality	23-Oct	24-Oct	25-Oct
Abey	M	ML	ML	Aghmid	M	M	M	Ain Dara	M	M	M
Ain Drafil	M	ML	M	Ain El Halazoun	M	M	M	Ain El-Rmmaneh	M	M	M
Ain Jedideh	M	M	M	Ain Ksour	M	ML	ML	Ain Onoub	M	ML	M
Ain Traz	M	ML	M	Ainab	M	ML	M	Aley	M	M	M
Aramoun	M	ML	M	Aytat	M	ML	M	Azouniyeh	M	M	M
Baawerta	M	ML	ML	Badghan Oua Wadi Bad	M	M	M	Bassatine	M	ML	M
Bayssour	M	M	M	Bchamoun	M	ML	M	Bdadoun	M	M	M
Behouara	M	M	M	Bennay	M	ML	ML	Bhamdoun El-Dayaa	M	M	M
Bhamdoun El-Mhatta	M	M	M	Bkhechthey	M	M	M	Bleibel	M	ML	M
Bmaknine	M	M	M	Bmehray	M	M	M	Bouzrid	M	ML	M
Bserrine	M	M	M	Bsous	M	M	M	Btalloun	M	M	M
Btater	M	M	M	Chanay	M	M	M	Charoun	M	M	M
Chartoun	M	M	M	Chemlane	M	ML	M	Choueifat El-Aamrous	M	ML	M
Choueifat El-Oumara	M	ML	M	Choueifat El-Quoubbe	M	ML	M	Dakkoun	M	M	ML
Deir Qoubel	M	ML	M	Dfoun	M	ML	M	Douair El Remmaneh	M	M	M
Ghaboun	M	M	M	Habramoun	M	M	M	Homs Oua Hama	M	M	M
Houmal	M	ML	M	Jisr El Qadi	M	ML	ML	Kehaleh	M	M	M
Keyfoun	M	M	M	Kfar Aamey	M	M	M	Kommatyeh	M	M	M
Maasrati	M	M	M	Majdel Baana	M	M	M	Mansourieh et Ain El	M	M	M
Mazraat El-Nahr	M	M	M	Mchakhte	M	M	M	Mecherfeh	M	M	M
Mejdlaya	M	M	M	Mrayjat	M	M	M	Ramliyah	M	M	M
Rechmaya	M	ML	M	Rejmeh	M	M	M	Remhala	M	ML	M
Rouayset El Neemane	M	M	M	Saoufar	M	M	M	Selfaya	M	L	M
Sirhmoul	M	ML	M	Souq El Ghareb	M	M	M	Taazanieh	M	M	M

Kesrouane

Municipality	23-Oct	24-Oct	25-Oct	Municipality	23-Oct	24-Oct	25-Oct	Municipality	23-Oct	24-Oct	25-Oct
Achkout	L	L	L	Adma Oua Dafneh	M	L	ML	Ain Ed-Delbe Kesroua	L	L	L
Ain El-Rihane	M	L	L	Aintoura Kesrouane	M	L	ML	Ajaltoun	L	L	L
Akaybeh Kesrouane	M	VL	M	Aramoun Kesrouane	L	L	L	Azra ouel Ozor	ML	L	L
Ballouneh	L	L	L	Batha	ML	L	L	Bekaatat Achkout	L	L	L
Bekaatat Kanaan	L	L	L	Bizhel	L	L	L	Bouar	M	L	ML
Bqaatouta	L	L	M	Bqaq Ed-Dine	M	VL	ML	Bzommar	L	L	L
Chahtoul	L	L	L	Chnaniir	L	L	L	Chouan	L	L	L
Daraya Kesrouane	L	L	L	Darououn	M	L	L	Deir Baqlouch	M	L	L
Diebta	L	L	L	Eghbeh	L	L	L	Faraya	L	ML	M
Fatka	ML	L	L	Feytroun	L	L	L	Ghazir	ML	L	L
Ghbaleh Kesrouane	ML	L	L	Ghedrass	L	L	L	Ghosta	L	L	L
Ghyneh	L	L	L	Harharaya w Kattine	L	L	L	Harissa Kesrouane	M	L	L
Hayata	L	L	L	Hosein	ML	L	L	Hrajel	L	ML	M
Jdeideh Ghazir	L	L	L	Jeita	M	L	ML	Jounieh Ghadir	M	L	ML
Jounieh Haret Sakhr	M	L	M	Jounieh Salel Alma	M	L	ML	Jounieh Sarba	M	L	M
Jouret Bedrane	ML	L	L	Jouret Mhad	L	L	L	Jouret Termos	L	L	L
Kfar Debiane	L	L	ML	Kfar Tay Kesrouane	L	L	L	Kfar Yassine	M	L	M
Kfour Kesrouane	L	L	L	Kharayeb Nahr Ibrahi	M	L	L	Klayaat Kesrouane	L	L	L
Maarab	L	L	L	Maaysra Kesrouane	M	L	L	Mayrouba	L	L	M
Mazraat Er-Ras	M	L	ML	Mazraat Mrah El-Mir	L	L	L	Mchaa El Ftouh	M	M	M
Mchaa Faraya	L	ML	M	Mchaa Kfar Dibiane	ML	ML	M	Mghaer	L	L	L
Mradiyah	L	L	L	Nahr Ed-Dahab	L	L	L	Nammoura Kesrouane	M	L	L
Ouata El Jaouz	L	L	L	Ouata Sillam	M	L	M	Raachine	L	L	L
Rayfoun	L	L	L	Safra Kesrouane	M	L	M	Shayle Kesrouane	M	L	L
Tabarja	M	L	ML	Yahchouch	L	L	L	Zaaytreh	ML	L	L
Zeytoun	M	L	L	Zouk Mikael	M	L	M	Zouk Mosbeh	M	L	M

Baalbek_Hermel

Baalbek

Municipality	23-Oct	24-Oct	25-Oct	Municipality	23-Oct	24-Oct	25-Oct	Municipality	23-Oct	24-Oct	25-Oct
Aadous	M	M	M	Aamchki	L	L	ML	Aarsal	L	L	M
Ain Baalbek	M	M	M	Ain Bourday	L	ML	ML	Ain El-Benye	VL	L	ML
Ain El-Jaouz Baalbek	VL	VL	ML	Ain El-Siya Chadoura	L	L	ML	Al Khodr Baalbek	L	L	M
Al Nabi Chit	L	L	M	Aynata Baalbek	M	M	M	Baalbek	L	ML	M
Bachwat	M	M	M	Barqa	M	M	M	Bednayel Baalbak	M	M	M
Beit Chama	M	M	M	Bijjaje	ML	M	M	Bouday	M	M	M
Brital	L	L	M	Btadi	M	M	M	Chaat	ML	M	M
Chaibe	VL	L	ML	Chlifa	M	M	M	Chmestar	M	M	M
Dar El-Oussa	M	M	M	Deir El-Ahmar	M	M	M	Deir Mar Maroun Baal	M	M	M
Douris	ML	M	M	Fakiha	M	M	M	Hadath Baalbek	M	M	M
Ham	VL	L	ML	Haour Taala	L	L	ML	Hizzine	M	M	M
Hlebta	M	M	M	Hosh Barada	M	M	M	Hosh El Dahab	M	M	M
Hosh El Snid	L	L	M	Hosh El-Nabi	ML	M	M	Hosh El-Rafiq	M	M	M
Hosh Tal Safiya	M	M	M	Hrebta	M	M	M	laat	M	M	M

Jebaa	M	M	M	Jenta	L	L	L	Kfar Dabach	M	M	M
Kfar Dane	M	M	M	Khraibeh El-Hermel	ML	M	M	Khreibet Baalbek	L	L	ML
Kneisset Baalbek	M	M	M	Labueh	ML	M	M	Maarboun	VL	L	ML
Majdaloun	M	M	M	Maqneh	M	M	M	Mazraat Beit Mcheik	M	M	M
Misraya	M	M	M	Moqraq	ML	M	M	Nabha El-Damdoum	M	M	M
Nabi Chbay	VL	VL	ML	Nabi Osman	M	M	M	Nahleh baalbek	L	L	ML
Ouadi El-Oss	ML	M	M	Qaa Baayoun	M	M	M	Qaa Jouar Maqiye	M	M	M
Qaa Ouadi El-Khanzir	M	M	M	Qah Baalbek	M	M	M	Qarha Baalbek	M	M	M
Qsarnaba	M	M	M	Ram Baalbek	M	M	M	Ras Baalbek El Sahl	M	M	M
Ras Baalbek El-Charq	M	M	M	Riha	M	M	M	Saaide	M	M	M
Sbouba	ML	M	M	Seriine El-Tahta	L	ML	M	Slouqi	M	M	M
Taiba Baalbek	ML	M	M	Talia	ML	ML	M	Taraiya	M	M	M
Temnin El Fawqa	M	M	M	Temnin El-Tahta	M	M	M	Tfail	L	VL	ML
Yahfoufa	L	L	ML	Yammouneh	M	M	M	Younine	L	ML	ML
Zboud	M	M	M								

Hermel

Municipality	23-Oct	24-Oct	25-Oct	Municipality	23-Oct	24-Oct	25-Oct	Municipality	23-Oct	24-Oct	25-Oct
Charbine El-Hermel	M	M	M	Hermel Jbab	M	M	M	Hermel	M	M	M
Maaysra El-Hermel	M	M	M	Michaa Mrajhine	M	M	M	Ouadi Faara	M	M	M
Ras Baalbek - Ouadi	M	M	M	Ras Baalbek El Gharb	M	M	M	Zighrine	M	M	M

Akkar

Akkar

Municipality	23-Oct	24-Oct	25-Oct	Municipality	23-Oct	24-Oct	25-Oct	Municipality	23-Oct	24-Oct	25-Oct
Aain Tinta	M	M	M	Aaiyat	M	M	M	Aakkar El-Aatiqa	M	M	M
Aamar Akkar	M	L	M	Aamar El Baykat	M	M	M	Aamayer	M	M	M
Aamriyet Akkar	M	M	M	Aandqet	M	M	M	Aarmeh	M	M	M
Aarqa	M	ML	M	Aawaynat	M	M	M	Aayoun Akkar	M	M	M
Abboudiye	MH	M	M	Ain El-Zeit	M	M	M	Ain Yaaqoub	M	M	M
Akroum	M	M	M	Aridet Cheikh Zennad	M	M	M	Baldehy w Mazraat Bal	MH	M	M
Barcha	MH	M	M	Bardeh	M	M	M	Bebnine	M	L	M
Beino	M	M	M	Beit Ayoub	M	M	M	Beit El-Haouch	M	L	M
Beit Mellat	M	M	M	Beit Younes	M	M	M	Berbara Akkar	M	M	M
Berqayel	M	L	M	Bezbina	M	M	M	Bireh Akkar	M	M	M
Borj	M	M	M	Bqerezla	M	ML	M	Bzal	M	L	M
Chane	M	M	M	Chaqdouf	M	M	M	Charbila	MH	M	M
Cheikh Mohammad	MH	M	M	Cheikh Taba Es-Sahl	MH	M	M	Cheikh Taba	M	M	M
Cheikh Zennad	M	M	M	Cheikhlar	M	M	M	Chir Hmairine	MH	M	M
Daghle	M	M	M	Dahr Laissine	M	M	M	Darine	MH	M	M
Dawra	M	M	M	Dawsa w Baghdadi	M	M	M	Dayret Nahr El-Kabir	M	M	M
Deir Dalloum	M	L	M	Deir Jennine	M	M	M	Denbou	M	M	M
Dibbabiyyeh	M	M	M	Douair Aadwiyeh	M	M	M	Fassikine	M	M	M
Fnaydek	M	M	M	Fraydes Akkar	M	M	M	Ghazayle	MH	M	M
Habchit	M	M	M	Hakour	M	L	M	Halba	M	M	M

Haouchab	MH	M	M	Hayssat	MH	M	M	Haytla	MH	M	M
Hayzouq	MH	M	M	Hedd	MH	M	M	Hmaira Aakkar	M	L	M
Hmaiss Aakkar	MH	M	M	Hnaider	M	M	M	Hokr Ed-Dahri	M	M	M
Hokr Etti	MH	M	M	Hokr Jouret Srar	MH	M	M	Houaich	M	M	M
Hrar	M	M	M	Idbil	M	M	M	llat	M	M	M
Janine	MH	M	M	Jdeidet El-Joumeh	M	M	M	Jdeidet El-Kaiteh	M	L	M
Jebrayel	M	M	M	Kafr	M	VL	L	Kafr	M	M	M
Karm Asfour	M	M	M	Kfar Melki Aakkar	MH	M	M	Kfar Noun	M	M	M
Kfarharra	MH	M	M	Khalsa	M	M	M	Kharnoubet Aakkar	MH	M	M
Khirbet Daoud Aakkar	M	M	M	Khirbet El Remmane	M	M	M	Khirbet Shar	M	M	M
Khoreybet El-Jindi	MH	M	M	Khreibet Aakkar	M	M	M	Kneisset Aakkar	M	M	M
Kneisset Hnaider	M	M	M	Knisse	MH	M	M	Kroum El-Aarab	MH	M	M
Kwachra	M	M	M	Kweykhat	MH	M	M	Machta Hammoud	M	M	M
Majdala	M	L	M	Majdel Akkar	M	M	M	Mar Touma	M	L	M
Marlaya Melhem	M	ML	M	Mashha	M	M	M	Massoudiye	M	M	M
Mazraat Beit Ghattas	M	L	M	Mazraat En-Nahriye	M	M	M	Mechmech	M	M	M
Memneh	M	M	M	Mhammara	M	L	M	Mighraq Aakkar	M	M	M
Minyara	M	ML	M	Moqayteh	M	M	M	Mounjez	M	M	M
Msalla	M	M	M	Mzeihmeh	MH	M	M	Nfaiseh	M	M	M
Noura Et-Tahta	M	M	M	Ouadi El-Haour	MH	M	M	Ouadi El-Jamous	M	L	M
Ouyoun El-Ghizlane	M	L	M	Qaabarine	MH	M	M	Qabaait	M	M	M
Qachlaq	MH	M	M	Qantara Aakkar	M	M	M	Qarha Aakkar	M	M	M
Qarqaf	M	L	M	Qboula	M	M	M	Qleiaat Aakkar	M	M	M
Qloud El-Baqie	M	L	M	Qobaiyat Aakkar	M	M	M	Qobbat Chamrat	M	ML	M
Qorayat	M	M	M	Qornet Aakkar	M	M	M	Qsair Aakkar	M	M	M
Rahbe	M	M	M	Rihaniyet Aakkar	MH	M	M	Rmah	M	M	M
Rmoul	MH	M	M	Saadine	MH	M	M	Sadaqa	M	M	M
Saidnaya	MH	M	M	Sammouniye	MH	M	M	Sayssouq	M	ML	M
Semmaqiye	M	M	M	Semmaqli	M	M	M	Sfinet El-Dreib	M	M	M
Sfinet El-Qaitaa	M	L	M	Sindyanet Zeidane	M	M	M	Souaisset Aakkar	MH	M	M
Srar	MH	M	M	Tal Abbas El Gharby	MH	M	M	Tal Abbas El-Charqy	MH	M	M
Tal Biret	MH	M	M	Tal Hmayra	MH	M	M	Tal Maayan Tal Kiri	M	M	M
Tal Sibel	M	M	M	Tallet Chattaha	M	M	M	Tikrit	M	M	M
Tleil	MH	M	M	Tshea	M	M	M	Zawarib	M	M	M
Zouq El Hosniyeh	M	L	M	Zouq El-Haddara	M	L	M	Zouq El-Hbalsa	M	L	M
Zouq El-Moqachrine	M	L	M								

Sud

Sour

Municipality	23-Oct	24-Oct	25-Oct	Municipality	23-Oct	24-Oct	25-Oct	Municipality	23-Oct	24-Oct	25-Oct
Aaiyeh	M	M	ML	Aalma El-Chaab	M	L	L	Aaytit	M	M	ML
Abbassiyeh Sour	M	L	M	Abou Chech	ML	L	L	Ain Abou Abdallah	M	L	M
Ain Baal	M	L	ML	Arzoun	M	M	M	Aziyeh	M	L	L
Baflaya	M	ML	M	Barich	M	L	ML	Batouliyeh	M	L	ML
Bayad	M	M	ML	Bazouriyeh	M	L	M	Bediass	M	L	ML

Bestiyat	M	L	ML	Borj El Chemali	M	L	M	Borj En-Naqoura	M	ML	M
Borj Rahhal	M	L	ML	Boustane	M	L	L	Btaychiyeh	M	L	L
Chaaitiye	M	L	ML	Chameh	ML	L	L	Chehabiye	M	M	M
Chehour	M	M	M	Chihine	M	L	L	Debaal Sour	M	L	ML
Deir Amess	M	ML	L	Deir Kifa	M	M	M	Deir Qanoun El-Ain	M	L	ML
Deir Qanoun El-Naher	M	L	ML	Derdghaiya	M	M	M	Dhayra	ML	L	L
Halloussiyeh	M	L	ML	Hamoul	ML	L	L	Hanaouey	M	ML	ML
Henniye	M	L	ML	Hmairi Sour	M	L	ML	Iskandarouna Sour	ML	L	L
Jbal El Botom	M	ML	ML	Jebbin	M	L	L	Jennata	M	L	ML
Jijim	ML	L	L	Jouaiya	M	ML	ML	Kneisset Sour	M	L	ML
Maarake	M	L	ML	Maaroub	M	L	ML	Majadel	M	M	M
Majdalzoun	M	L	L	Mansouri Sour	M	L	ML	Marnba	M	M	M
Marouahine	M	L	ML	Mazraat El-Zalloutiy	M	L	ML	Mazraat Mechref	M	M	ML
Mazraat Tayr Semhat	M	M	M	Mheilib	M	L	M	Neffakhiyeh	M	M	M
Niha Sour	M	M	M	Ouadi Jilo	M	ML	ML	Qana	M	M	ML
Qolaileh Sour	M	L	ML	Rechknany	M	M	ML	Rmadiyah	M	M	ML
Selha Sour	M	M	M	Siddiqine	M	M	ML	Sour	M	L	M
Srifa	M	M	M	Tayr Debbe	M	L	ML	Tayr Felsay	M	L	ML
Tayr Harfa	M	L	L	Touayri	M	M	M	Toura	M	L	ML
Yanouh Sour	M	L	ML	Yarine	M	L	L	Zebqine	M	L	L

Saida

Municipality	23-Oct	24-Oct	25-Oct	Municipality	23-Oct	24-Oct	25-Oct	Municipality	23-Oct	24-Oct	25-Oct
Aanqoun	M	M	M	Aaqtanit	M	M	M	Aarab Ej-Jall	M	M	ML
Aarab Tabbaya	M	M	ML	Abra Saida	M	M	M	Adloun	M	L	ML
Adousiyeh	M	M	M	Ain-El-Deleb	M	M	M	Arzai	M	L	ML
Babliyah	M	L	ML	Barty	M	M	M	Bissariyeh	M	M	M
Bnaafoul	M	M	M	Bqosta	M	M	M	Bramiy	M	M	M
Daoudiyeh	M	L	ML	Dareb El-Sim	M	M	M	Erkay	M	M	ML
Ghassanieh	M	ML	ML	Ghazieh	M	M	M	Hajjeh	M	M	M
Haret Saida	M	M	M	Hartiyeh	M	L	ML	Hlaliye Saida	M	M	M
Insariyat	M	L	ML	Jazira Saida	M	L	M	Kafar Bit	M	M	M
Kaoutariyet El-Siyad	M	M	M	Kfar Chellal	M	M	M	Kfar Hatta Saida	M	M	M
Kfar Milke Saida	M	M	M	Khartoum	M	M	M	Khaziz	M	M	M
Khirbet Ed-Douair Sa	M	L	ML	Khirbet El-Bassal	M	M	M	Khrayeb Saida	M	L	ML
Loubieh	M	L	ML	Maghdouche	M	M	M	Majdelyoun	M	M	M
Matariyet El-Choumar	M	L	M	Matayriyeh	M	M	M	Mazraat 'Mseileh	M	M	M
Mazraat 'Snaiber	M	M	M	Mazraat Aarab Soukka	M	M	ML	Mazraat Deir Taqla	M	L	ML
Mazraat El Yahoudiye	M	L	M	Mazraat El-Housseini	M	M	M	Mazraat El-Mhaydaleh	M	L	ML
Mazraat El-Ouasta	M	L	M	Mazraat Jamjim	M	L	ML	Mazraat Kaoutariyet	M	L	ML
Mazraat Kfar Badda	M	L	ML	Mazraat Oussamiyat	M	L	ML	Mazraat Sari	M	L	ML
Mazraat Sinai	M	ML	ML	Meemariyeh	M	M	M	Merouaniyeh	M	M	M
Miyeh ou Miyeh	M	M	M	Najjariyeh	M	M	M	Qaaqiyat El-Snaouba	M	L	ML
Qnarit	M	M	M	Qraiye Saida	M	M	M	Saida Ed-Dekermane	M	M	M
Saida El-Oustani	M	M	M	Saida El-Qadimeh	M	M	M	Saida Kefraya	M	M	M
Saksakiyeh	M	L	ML	Salhieh Saida	M	M	M	Sarafand	M	ML	M

Sfenta	M	M	M	Tafahta	M	M	M	Tanbourit	M	M	M
Tebna	M	ML	ML	Zaghdraiya	M	M	M	Zeita	M	M	M
Zrariyeh	M	L	ML								

Jezzine

Municipality	23-Oct	24-Oct	25-Oct	Municipality	23-Oct	24-Oct	25-Oct	Municipality	23-Oct	24-Oct	25-Oct
Ain El-Mir (El Estab)	M	M	M	Anane	M	ML	L	Aramta	M	ML	M
Ariya	M	M	M	Aychiyeh	M	M	M	Azour	M	ML	L
Baba	M	ML	L	Baysour Jezzine	M	M	M	Benoueteh Jezzine	M	M	M
Bhannine	M	M	M	Bisri	M	ML	L	Bkassine	M	M	M
Bouslaya	M	M	M	Btedine El-Leqech	M	ML	L	Chbail	M	L	L
Chouliq Jezzine	M	M	M	Dahr Ed-Deir	M	M	M	Deir El Qattine	M	M	M
Demachqiyeh	M	M	M	Ghabbatiyeh	M	M	M	Harf Jezzine	M	ML	L
Hassaniyeh	M	M	M	Haytouleh	M	M	M	Haytura	M	M	M
Hidab	M	M	M	Homsiyeh	M	M	L	Jabal Toura	M	M	M
Jarmaq	M	M	M	Jensnaya	M	M	M	Jernaya	M	M	M
Jezzine	M	ML	M	Karkha	M	M	M	Kfar Falous	M	M	ML
Kfar Houna	M	ML	M	Kfar Jarrah	M	M	M	Lebaa	M	M	M
Louayzet Jezzine	M	M	M	Machmouche	M	M	M	Mahmoudiyeh Jezzine	M	M	M
Maknounye Jezzine	M	M	M	Maraat Ouazaiyeh	M	M	M	Mazraat Daraya	M	ML	M
Mazraat El-Aarqoub	M	M	M	Mazraat El-Mathane	M	L	L	Mazraat El-Rahbane	M	M	M
Mazraat Khallet Khaz	M	ML	ML	Mazraat Louzid (Loua	M	ML	L	Mazraat Qrouh	M	M	M
Mazraat Tamra	M	M	M	Mazraat Zighrine Jez	M	M	M	Mazraat	M	M	M
Mharbiyeh	M	M	ML	Midane Jezzine	M	M	ML	Mjeydel Jezzine	M	M	M
Mlikh	M	M	M	Mrah El-Hbasse	M	M	M	Ouadi Baanqoudaine	M	M	M
Ouadi El-Laymoun	M	M	M	Ouardiyeh	M	L	L	Qabaa Jezzine	M	M	M
Qatrani	M	ML	M	Qaytouleh	M	M	M	Qtaleh Jezzine	M	ML	L
Rihane Jezzine	M	M	M	Rimat	M	M	M	Roum	M	M	ML
Roummanet	M	M	M	Sabbah	M	M	M	Saydoun	M	M	M
Sfaray	M	M	L	Snaya	M	M	M	Sojoud	M	M	M
Srayri	M	ML	M	Taaid	M	ML	L	Wadi Jezzine	M	M	M
Zhalta	M	M	M								

Bekaa

West Bekaa

Municipality	23-Oct	24-Oct	25-Oct	Municipality	23-Oct	24-Oct	25-Oct	Municipality	23-Oct	24-Oct	25-Oct
Aammiq BG	M	M	M	Ain El Tineh BG	M	ML	M	Ain Zebdeh	M	M	M
Ana	M	M	M	Aytanit	M	M	M	Baaloul BG	M	M	M
Bab Mareh	M	M	M	Chouberqiye Aammiq	M	M	M	Dakoue	M	ML	M
Deir Ain El-Jaouze	M	M	M	Deir Tahniche	M	M	M	Ghaza	M	M	M
Harime El-Soughra	ML	ML	M	Hoch Harimeh	M	M	M	Jazira BG	M	M	M
Jib Jennine	M	ML	M	Kamed-El-Laouz	M	ML	M	Kefraya BG	M	M	M
Khiara El Atika	M	M	M	Khiara	M	M	M	Khirbet Qanafar	M	M	M
Lala	M	ML	M	Lebbaya BG	ML	VL	M	Loussa	M	ML	M
Machghara	M	L	M	Manara (Hammara) BG	ML	L	M	Mansoura BG	M	M	M

Marej BG	M	M	M	Maydoun	M	ML	M	Ouaqf BG	M	M	M
Qaraaoun	M	ML	M	Qelya	ML	L	M	Raouda (Istabel)	M	ML	M
Saghbine	M	M	M	Sohmor	ML	VL	M	Soltan Yacoub el Ara	M	M	M
Souairy	M	ML	M	Sultan Yaacoub	M	M	M	Tal Znoub	M	M	M
Yehmor BG	ML	L	M	Zilaya	ML	L	ML				

Zahle

Municipality	23-Oct	24-Oct	25-Oct	Municipality	23-Oct	24-Oct	25-Oct	Municipality	23-Oct	24-Oct	25-Oct
Aanjar (Haouch Mouss)	M	ML	M	Ablah	M	M	M	Ain Kfarzabad	L	L	M
Ali-El-Nahri	M	M	M	Bar Elias	M	M	M	Bouarej	M	M	M
Cheberqiyet Tabet	M	M	M	Chtaura	M	M	M	Deir El Ghazal	L	L	ML
Delhamiyet Zahle	ML	ML	M	Ferzol	M	ML	M	Haouch El-Ghanam	M	M	M
Haouch Es-Siyadeh	M	M	M	Haouch Hala	ML	ML	M	Haouch Mandara	M	M	M
Haouch Qayssar	M	M	M	Hezerta	M	M	M	Hosh Moussa	L	L	M
Jdita	M	M	M	Kfarzabad	L	L	M	Ksara	M	M	M
Majdel Aanjar	ML	ML	M	Makssi	M	M	M	Massa	ML	ML	M
Mazraat Er-Remtaniye	M	M	M	Mrayjat Zahle	M	M	M	Mzaraa Zahle	M	M	M
Nabi Ayla	M	M	M	Nasriyet Rizk	L	ML	M	Nasriyet Zahle	M	M	M
Niha Zahle	M	M	M	Ouadi Ed-Deloum	M	M	M	Ouadi El-Arayech	M	M	M
Qaa El Rim	M	M	M	Qab Elias	M	M	M	Qousaya	L	L	M
Rhit	L	L	M	Riyak	M	M	M	Saadnayel	M	M	M
Taal El-Akhdar	M	M	M	Taalbeya	M	M	M	Taanayel	M	M	M
Talamara	M	M	M	Tcheflik Edde Haouch	M	M	M	Tcheflik Qiqano	M	M	M
Terbol Zahle	L	L	M	Touaite Zahle	M	ML	M	Zahle Aradi	M	M	M
Zahle El-Berbara	M	M	M	Zahle El-Maallaqa	M	M	M	Zahle El-Midane	M	M	M
Zahle Er-Rassiyeh	M	M	M	Zahle Haouch El-Ouma	M	M	M	Zahle Haouch El-Ouma	M	M	M
Zahle Haouch Ez-Zara	M	M	M	Zahle Maallaqa Aradi	M	M	M	Zahle Mar Antonios	M	M	M
Zahle Mar Elias	M	M	M	Zahle Mar Gerios	M	M	M	Zahle Saydet En-Naja	M	M	M
Zebdoul	M	ML	M								

Rachaiya

Municipality	23-Oct	24-Oct	25-Oct	Municipality	23-Oct	24-Oct	25-Oct	Municipality	23-Oct	24-Oct	25-Oct
Ain Arab Rachaiya	M	M	M	Ain Ata	L	VL	L	Ain Harche	L	L	ML
Aqabe Rachaya	L	L	ML	Ayha	ML	L	M	Ayta El Fokhar	M	ML	M
Bakifa Rachaya	L	L	ML	Bakka	M	ML	M	Beit Lahya	L	L	ML
Bireh Rachaiya	M	ML	M	Daher El Ahmar	L	L	ML	Deir El-Achayer	M	M	M
Heloua Rachaiya	M	M	M	Hoch El Qannabeh Rac	L	L	ML	Kaoukaba Bou Arab	L	L	ML
Kfar Danis	M	L	M	Kfar Mechki	ML	L	M	Kfar Qouq	M	ML	M
Kherbet Rouha	M	ML	M	Majdel Balhiss	ML	L	M	Mdoukha	M	ML	M
Mhaydseh Rachaiya	ML	L	M	Nabi Safa	ML	VL	ML	Rachaiya	L	L	M
Rafid Rachaiya	ML	ML	M	Selsata (Mazraat Dei	M	M	ML	Tannoura	L	L	M
Yanta	M	M	M								

Beyrouth

Beyrouth

Municipality	23-Oct	24-Oct	25-Oct	Municipality	23-Oct	24-Oct	25-Oct	Municipality	23-Oct	24-Oct	25-Oct
--------------	--------	--------	--------	--------------	--------	--------	--------	--------------	--------	--------	--------

Achrafieh	M	ML	M	Ain el-Mreisse	M	ML	M	Bachoura	M	ML	M
Beirut Central Distr	M	ML	M	Marfai	M	ML	M	Mazraa	M	ML	M
Medaouar	M	ML	M	Minet el-Hosn	M	ML	M	Mwssaitbeh	M	ML	M
Ras Beirut	M	ML	M	Rmeil	M	ML	M	Saifi	M	ML	M
Zqaq el-Blat	M	ML	M								