

# Lebanon Fire Risk Bulletin



CIVIL DEDEFENCE

**Refer to cadast table condition.**

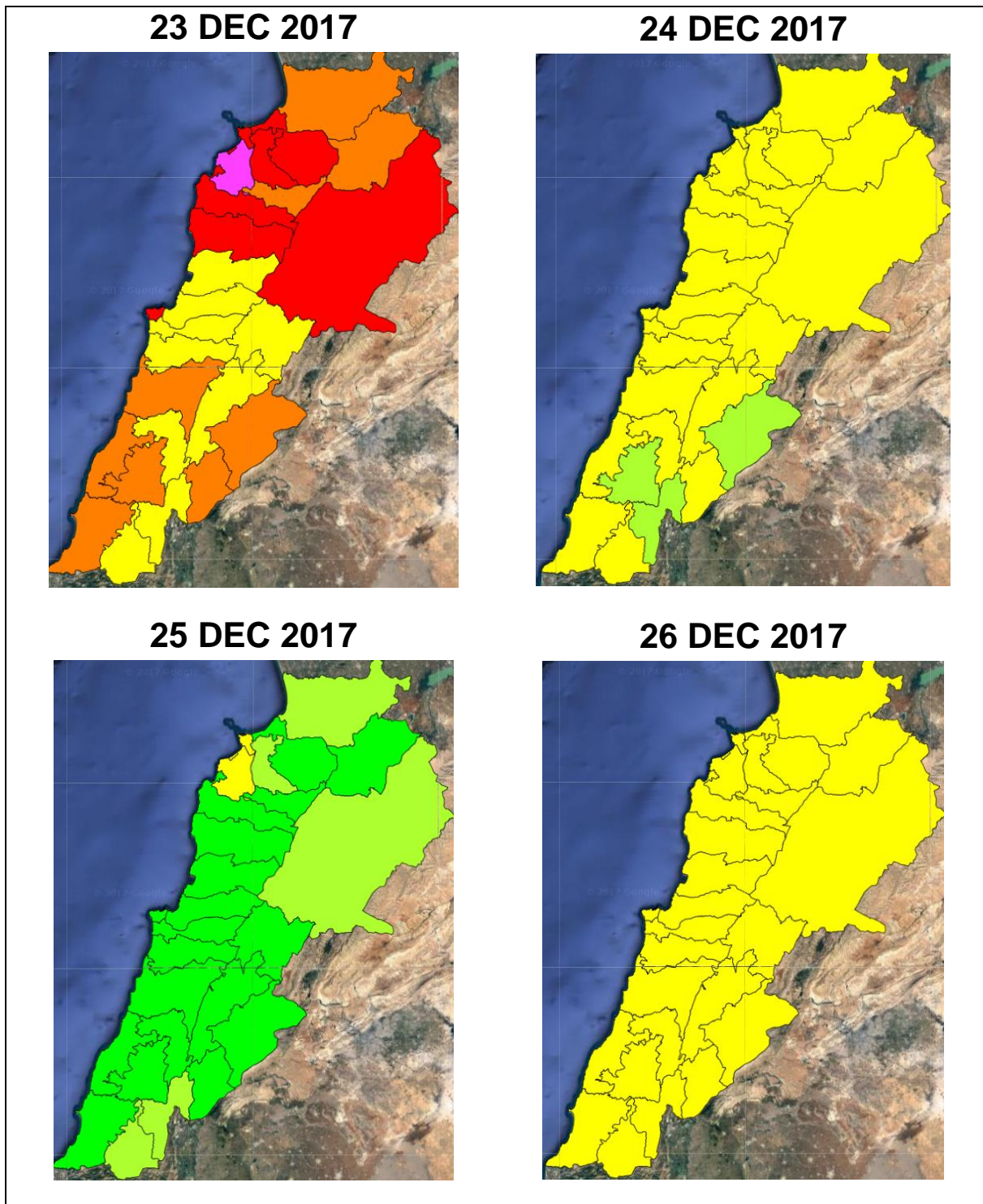
**Please note that the indicated temperature is at 2 meters height from the ground.**

General description of potential fire risk situation

Symbol	Level of risk	Meaning and actions
VL	Very low	Very low fire risk. Controlled burning operations can be hardly executed due to high fuel moisture content. Normally wildfires self-extinguish.
L	Low	Low fire risk. Controlled burning operations can be executed with a reasonable degree of safety.
ML	Medium low	Medium-low fire risk. Controlled burning operations can be executed in safety conditions. All the fires need to be extinguished.
M	Medium	Medium fire risk. Controlled burning operations would be avoided. All the fires need to be very well extinguished.
MH	Medium high	Controlled burning is not recommended. Open flame will start fires. Cured grasslands and forest litter will burn readily. Spread is moderate in forests and fast in exposed areas. Patrolling and monitoring is suggested. Fight fires with direct attack and all available resources.
H	High	Ignition can occur easily with fast spread in grass, shrubs and forests. Fires will be very hot with crowning and short to medium spotting. Direct attack on the head may not be possible requiring indirect methods on flanks. Patrolling and monitoring the territory is highly suggested.
E	Extreme	Ignition can occur also from sparks. Fires will be extremely hot with fast rate of spread. Control may not be possible during day due to long range spotting and crowning. Suppression forces should limit efforts to limiting lateral spread. Damage potential total. Patrolling and monitoring the territory is highly suggested.

**Beirut, 24 December 2017**

# FIRE RISK INDEX

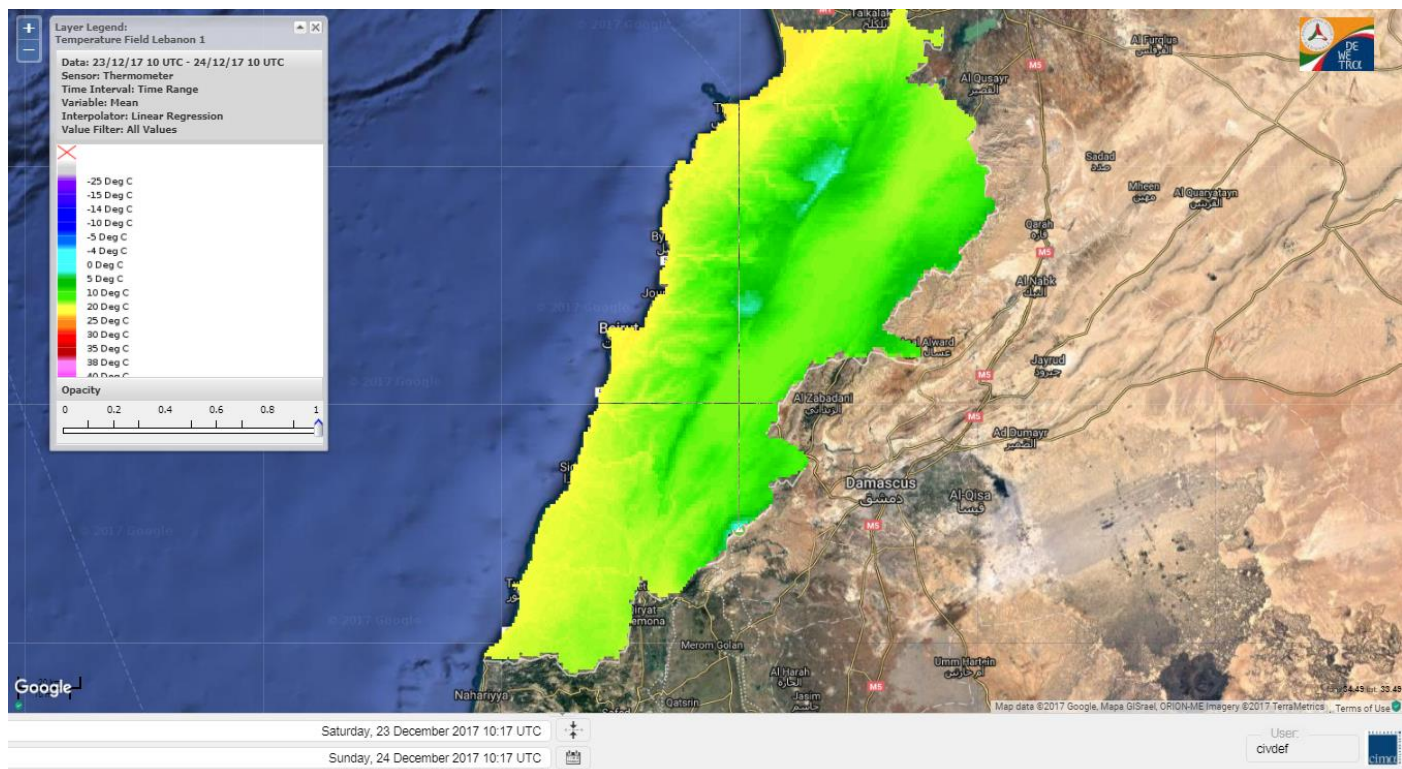


Layer Legend:  
Lebanon Wildfire Risk Index 1

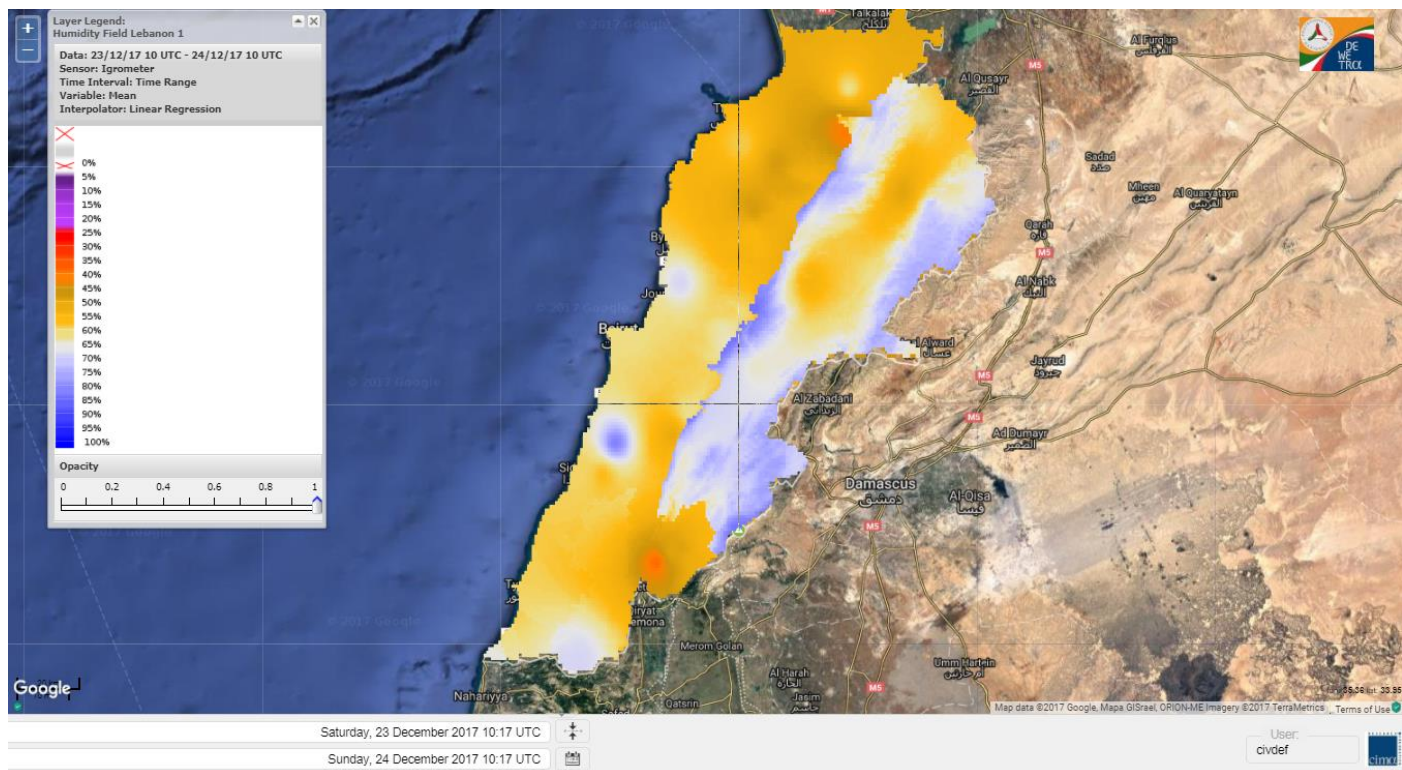
Data: Run: 24/12/2017 00:00. Forecast for 24  
Model: RISICO for the Republic of Lebanon  
Variable: Fire Weather Index  
Spatial Resolution: Caza

- VERY LOW
- LOW
- MEDIUM-LOW
- MEDIUM
- MEDIUM-HIGH
- HIGH
- EXTREME

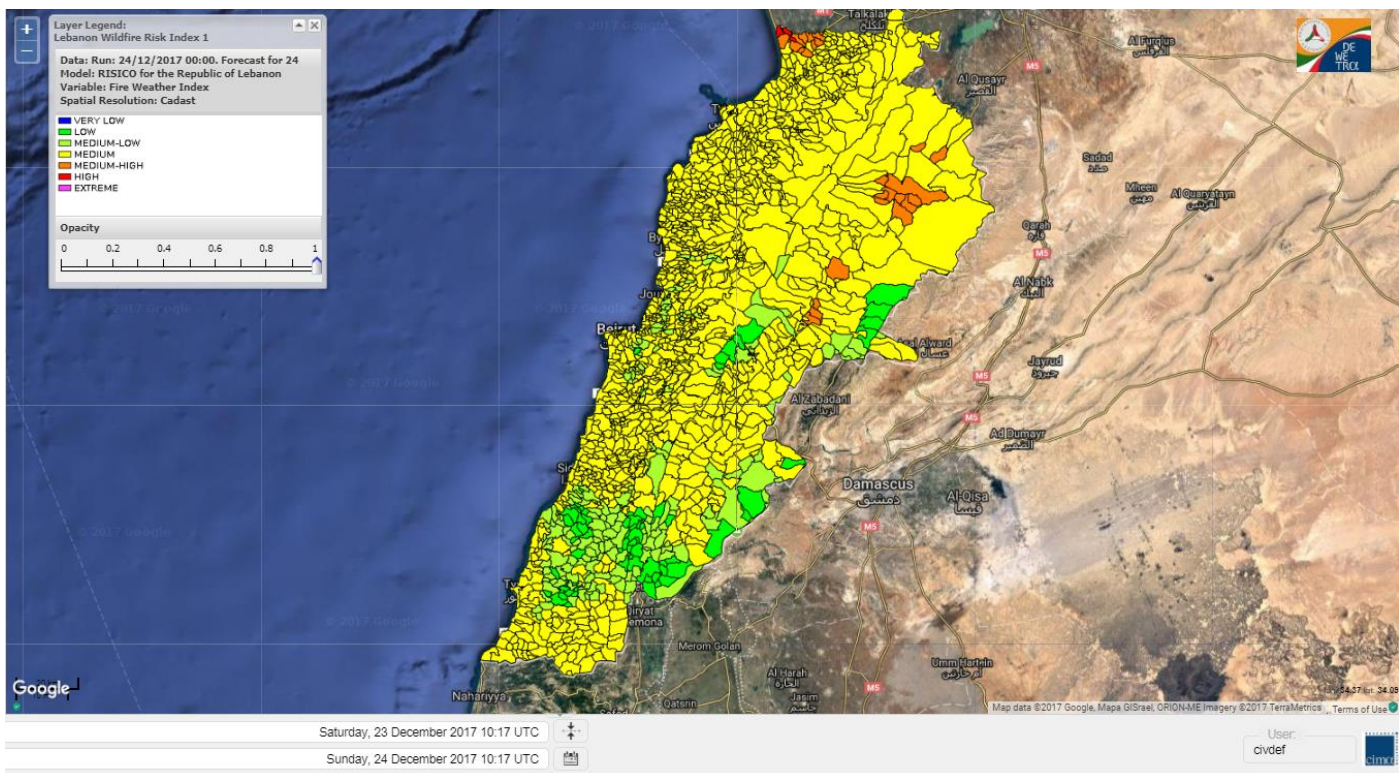
# Lebanon temperature for 24 DEC 2017



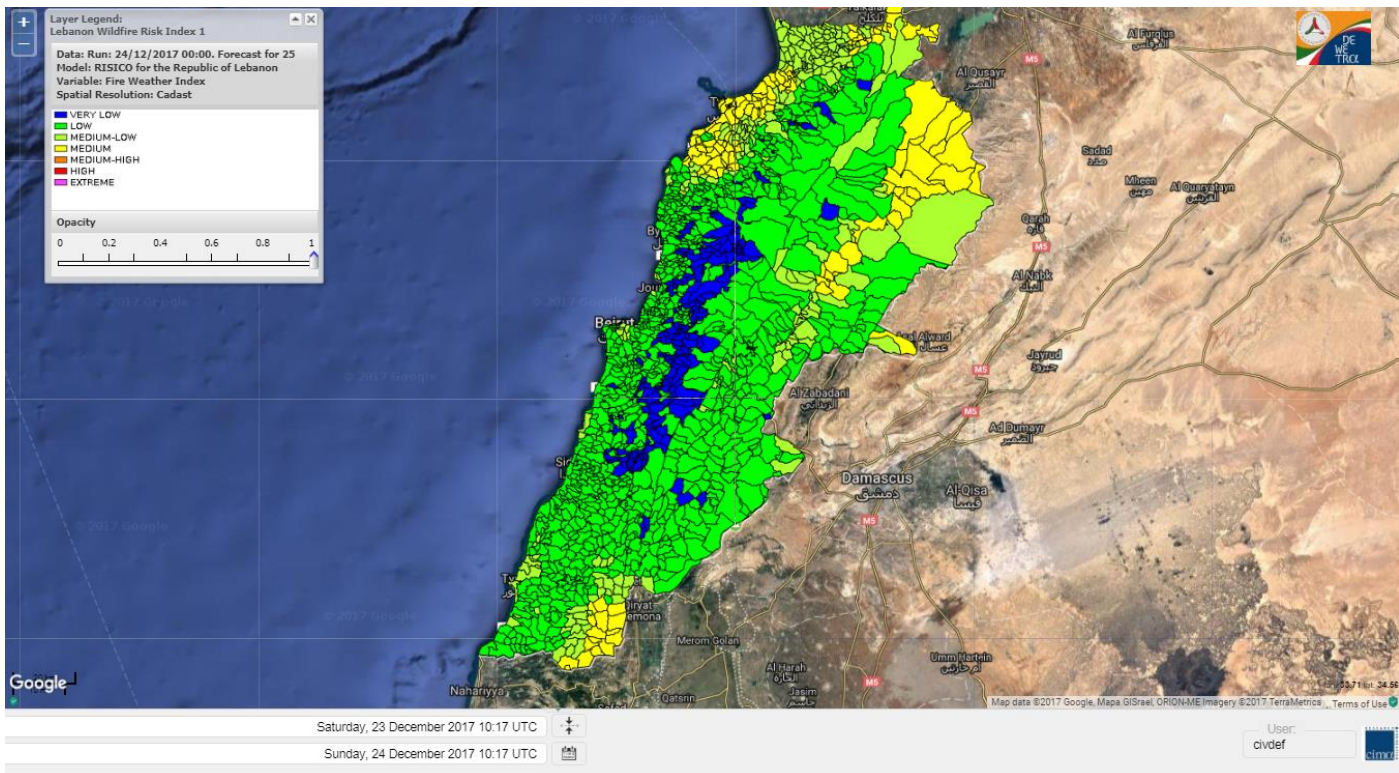
# Lebanon humidity for 24 DEC 2017



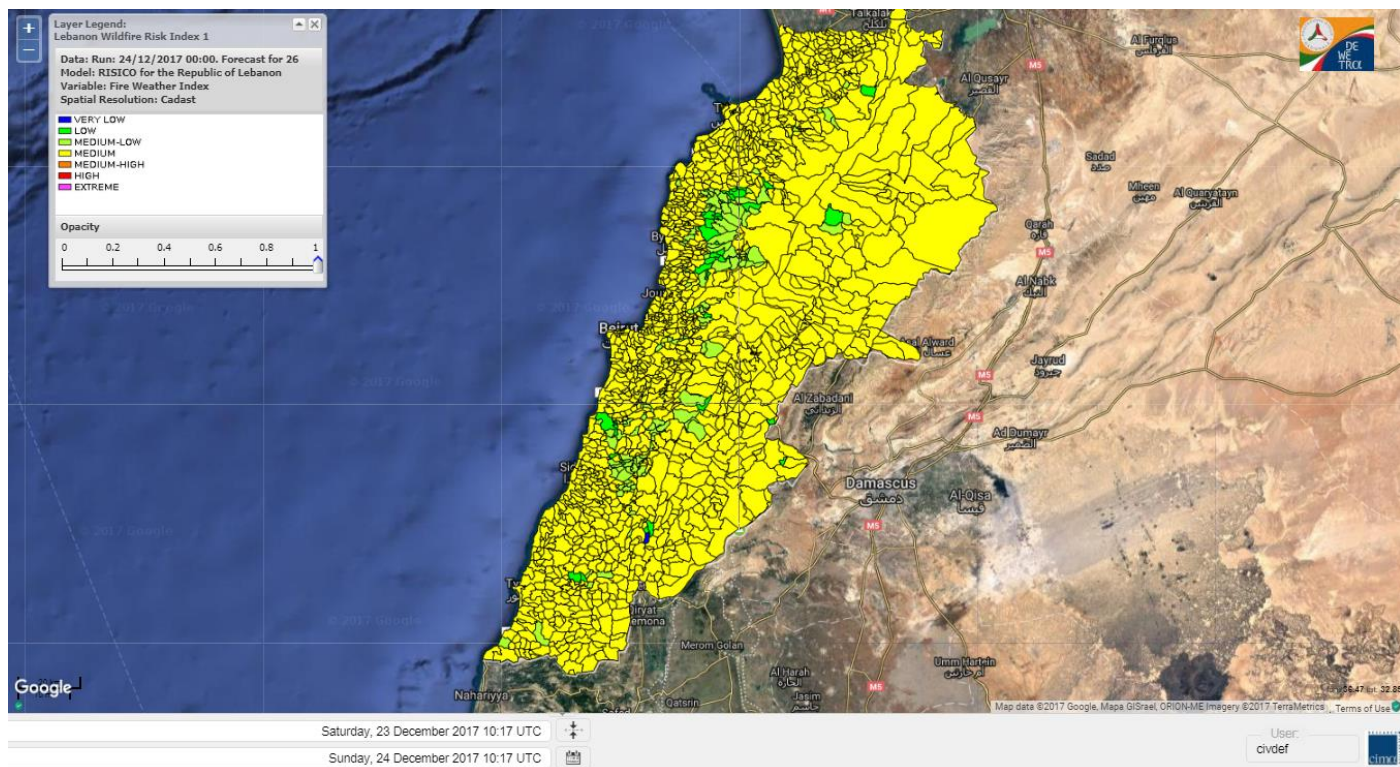
# Lebanon for 24 DEC 2017



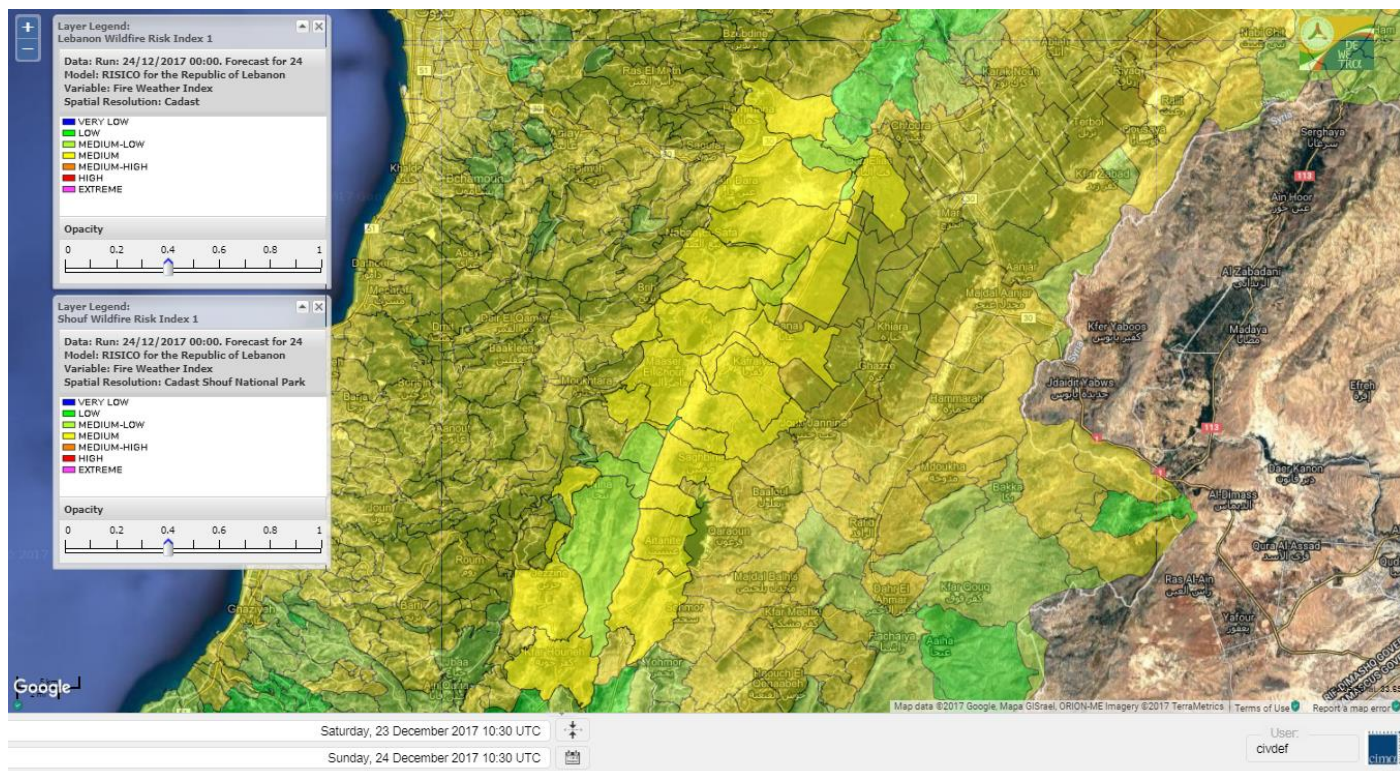
# Lebanon for 25 DEC 2017



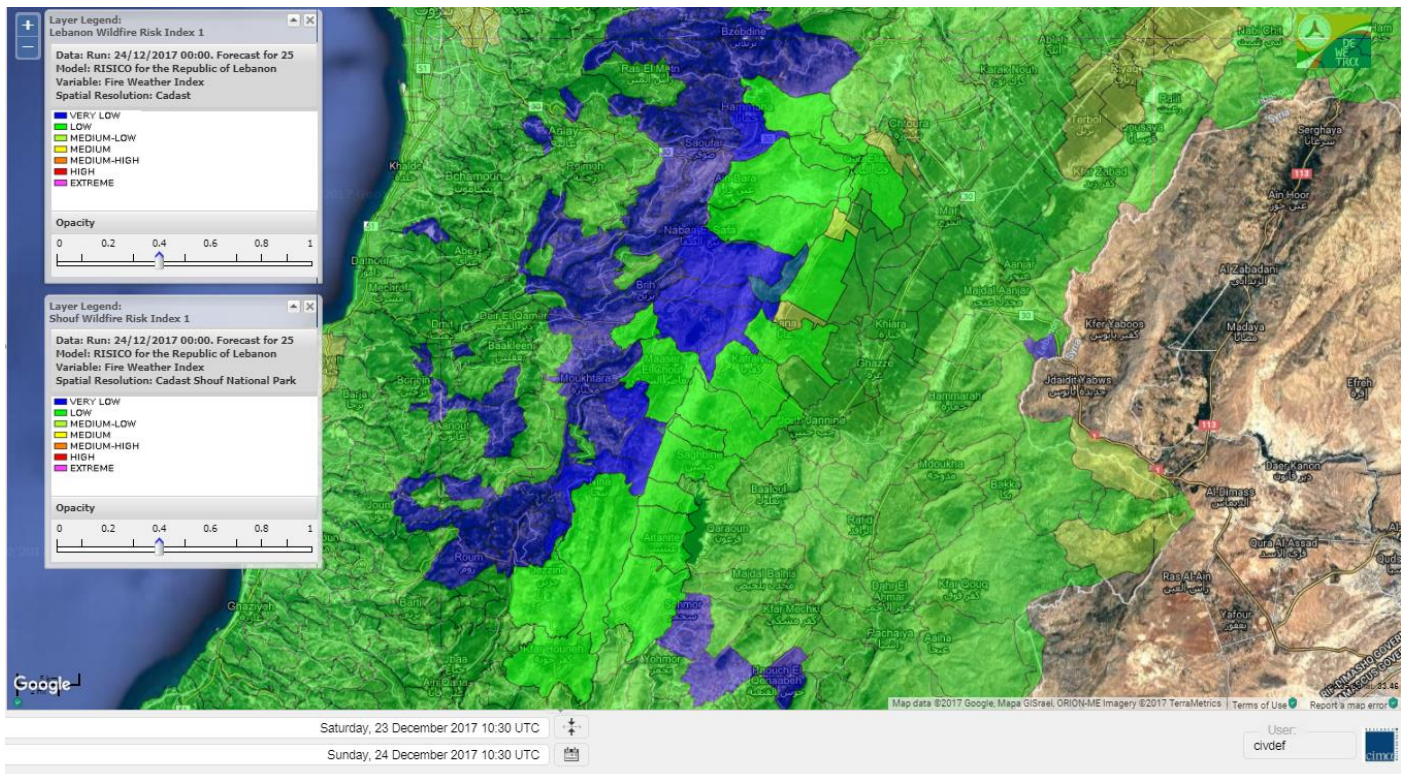
# Lebanon for 26 DEC 2017



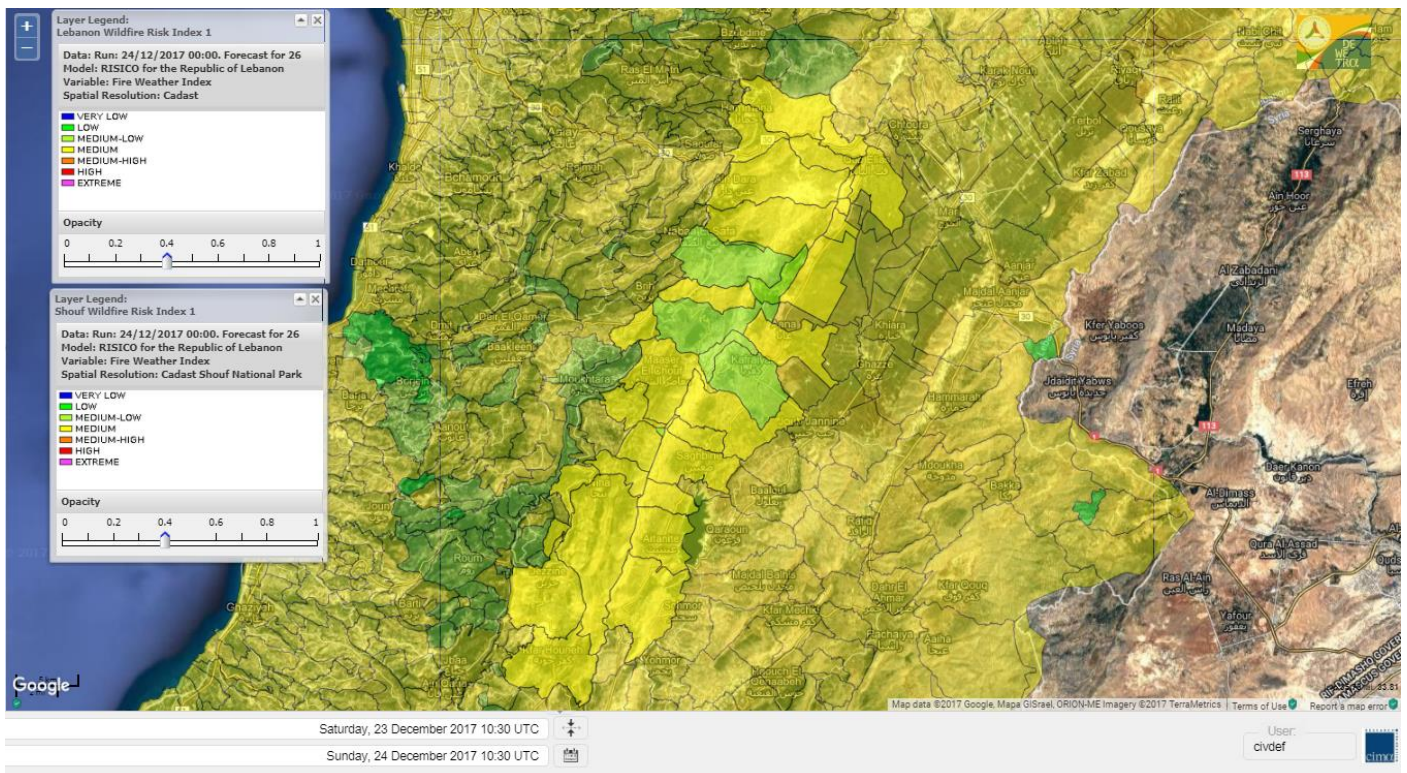
# Shouf Biosphere Reserve Forecast for 24 DEC 2017



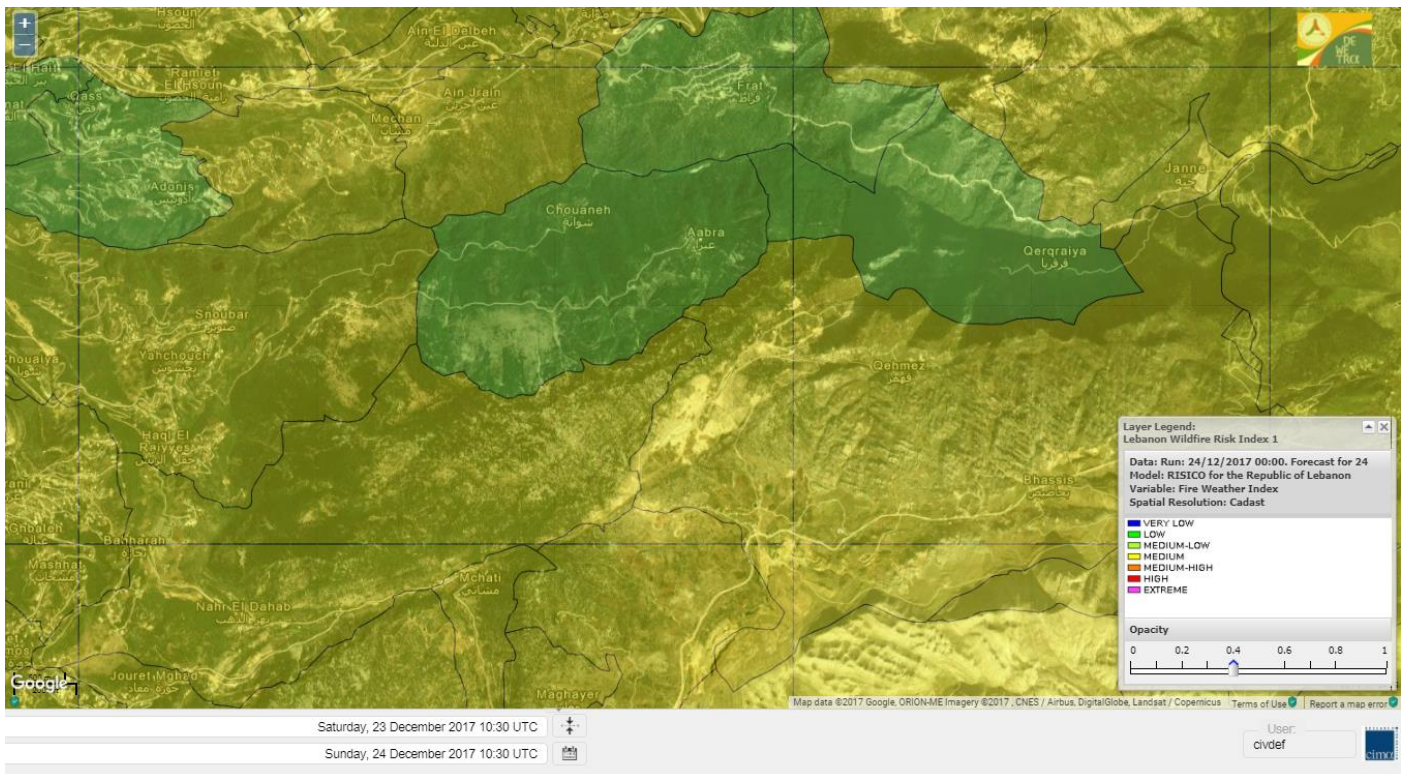
# Shouf Biosphere Reserve Forecast for 25 DEC 2017



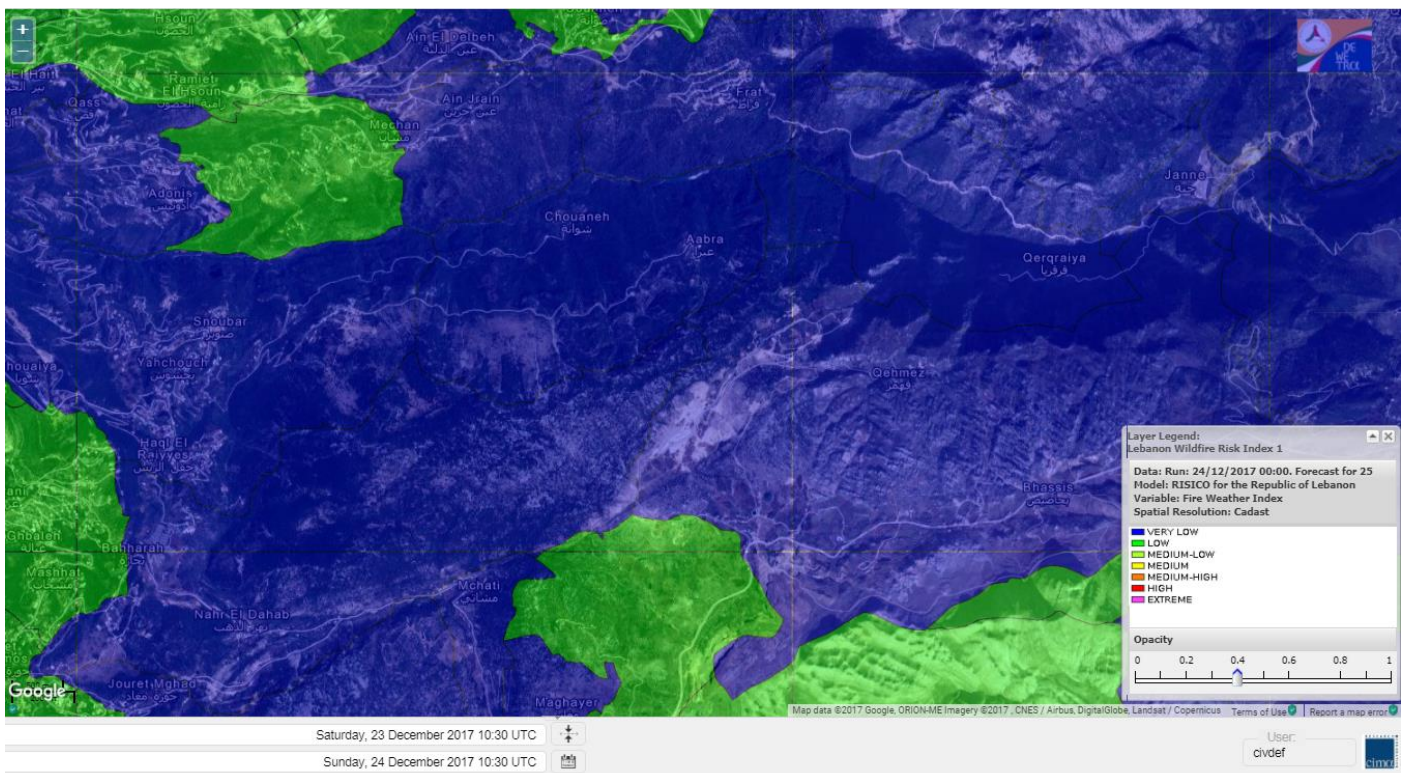
# Shouf Biosphere Reserve Forecast for 26 DEC 2017



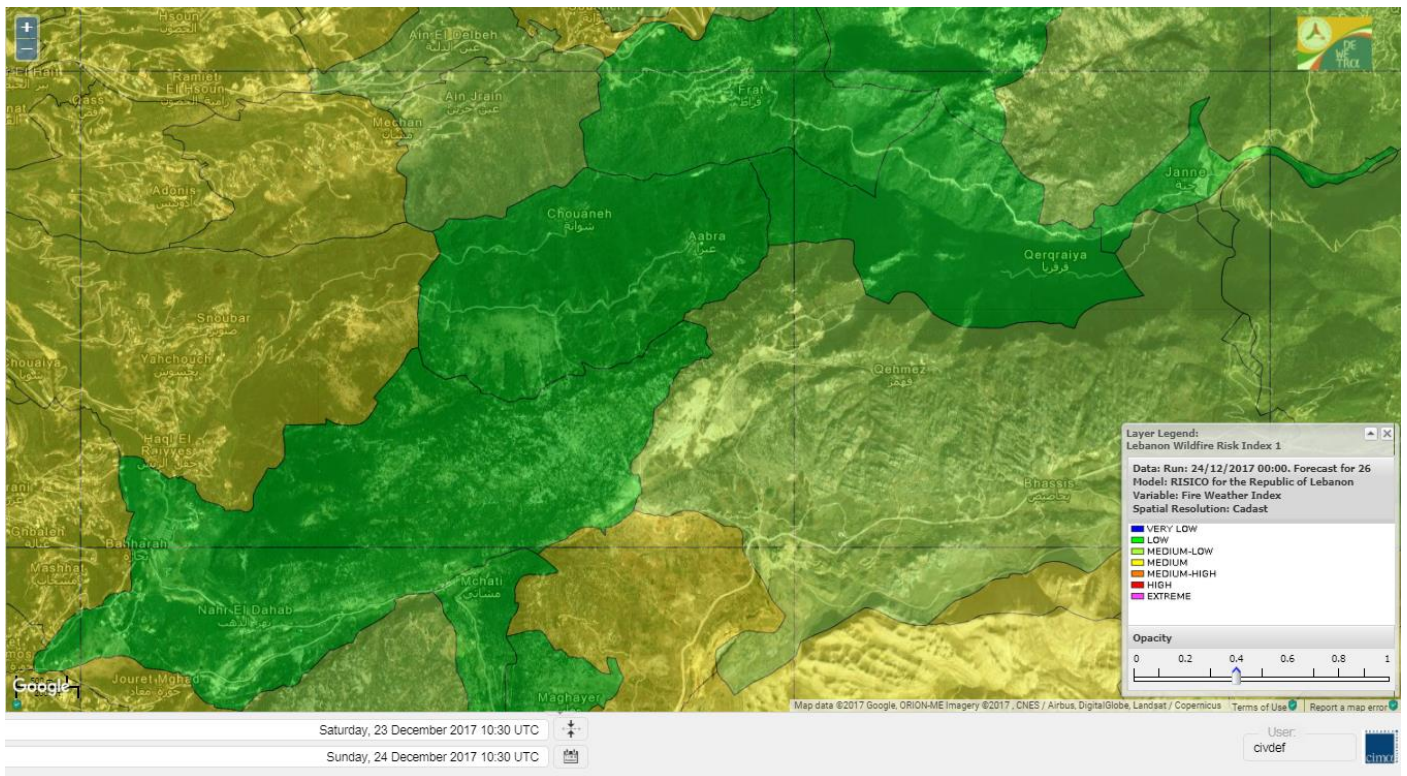
## Jabal Moussa Reserve Forecast for 24 DEC 2017



## Jabal Moussa Reserve Forecast for 25 DEC 2017



# Jabal Moussa Reserve Forecast for 26 DEC 2017





## Nord

### Koura

Municipality	24-Dec	25-Dec	26-Dec	Municipality	24-Dec	25-Dec	26-Dec	Municipality	24-Dec	25-Dec	26-Dec
Aaba	M	M	M	Afsaddiq	M	M	M	Ain Ekriane	M	M	M
Amioun	M	M	M	Anfeh	M	M	M	Badbhoun	M	M	M
Barghoun	M	M	M	Barsa	M	ML	M	Batroumine	M	M	M
Bdebba	M	M	M	Bechmizine	M	M	M	Bednaye El-Koura	M	ML	M
Bhabbouch El-Koura	M	ML	M	Bkeftine	M	ML	M	Bnehran	M	ML	M
Bqaiia El-Koura	M	ML	M	Bsarma	M	M	M	Btaaboura	M	M	M
Bterram	M	M	M	Btouratij	M	M	M	Bziza	M	M	M
Dar Beehtar	M	M	M	Dar Chmezzine	M	M	M	Deddeh	M	M	M
Deir El-Balamand	M	L	M	Fih	M	M	M	Hraiche	M	M	M
Ijdaabrine	M	ML	M	Kaftoun	M	ML	M	Kefraya El-Koura	M	M	M
Kfarakka	M	M	M	Kfarhata	M	ML	M	Kfarhazir	M	M	M
Kfarkahel	M	ML	M	Kfarsaroun	M	M	M	Kosba	M	M	M
Mejdel el-Koura	M	ML	M	Nakhle	M	ML	M	Qalhat	M	L	M
Ras Masqa	M	M	M	Rechdibbine	M	M	M	Zakroun	M	M	M
Zgharta El-Mtaouile	M	L	M								

### Bcharre

Municipality	24-Dec	25-Dec	26-Dec	Municipality	24-Dec	25-Dec	26-Dec	Municipality	24-Dec	25-Dec	26-Dec
Aabdine	M	L	M	Bane	M	L	M	Barhelioun	M	L	M
Bazooune	M	L	M	Becharre	M	L	M	Beit Menzer	M	L	M
Billa	M	L	M	Blaouza	M	L	M	Bqaa Kafra	M	L	M
Bqerqacha	M	L	M	Breissat	M	L	ML	Dimane	M	L	M
Hadath El Jobbeh	M	L	ML	Hadchit	M	L	M	Hasroun	M	L	M
Mazraat Aassaf	M	VL	L	Mazraat Bani Saab	M	L	ML	Mchaa El-Jobbeh	M	L	M
Metrit	M	L	M	Moghr El-Ahoual	M	ML	M	Ouadi Qannoubine	M	VL	L
Qanat	M	L	M	Qnayouer	M	VL	M	Tourza	M	L	M

### Batroun

Municipality	24-Dec	25-Dec	26-Dec	Municipality	24-Dec	25-Dec	26-Dec	Municipality	24-Dec	25-Dec	26-Dec
Aabrine	M	L	M	Aalali	M	L	ML	Aartziz	M	L	ML
Abdelli	M	L	M	Ajdabra	M	L	M	Assia	M	L	ML
Basbina	M	ML	M	Batroun	M	ML	M	Bcheleh	M	L	ML
Bechtoudar	M	L	ML	Beit Chlala	M	L	ML	Beit Kassab	M	L	L
Bijdarfil	M	ML	M	Bqesmaya	M	L	M	Chatine	M	VL	ML
Chebtin	M	L	M	Chekka	M	M	M	Daael	M	L	ML
Dahr Abi Yaghi	M	L	M	Daraya El-Batroun	M	L	M	Deir Billa	M	L	M
Deir Kfifane	M	L	M	Deir Mar Youhanna EL	M	L	L	Deir Mar Youssef Jra	M	L	M
Douma	M	L	ML	Douq	M	L	M	Eddeh El-Batroun	M	L	M
Ftihat El-Batroun	M	L	ML	Ghouma	M	L	M	Hadtoun	M	L	ML
Hamat	M	L	M	Harbouna	M	L	M	Hardine	M	L	L
Helta	M	L	ML	Hery	M	M	M	Jebbla	M	L	ML
Jrabta El-Batroun	M	L	M	Jrane El-Batroun	M	ML	M	Kfar Aabida	M	L	M
Kfar Halda	M	L	L	Kfarb Shlaimane	M	L	ML	Kfarhatna	M	L	M
Kfarhay	M	ML	M	Kfarhelos	M	L	ML	Kfifane	M	ML	M

Kfour El Arabi	M	L	ML	Koubba	M	L	M	Kour	M	L	M
Mar Mama	M	VL	L	Masrah	M	VL	M	Mehmarch	M	L	ML
Mrah Chdid	M	L	M	Mrah El Ziyat	M	L	M	Mrah El-Hajj	M	VL	L
Nahle El-Batroun	M	L	ML	Niha El-Batroun	M	L	M	Ouahj El-Hajjar	M	L	M
Ouata Houb	M	VL	ML	Qatnaaoun	M	L	M	Racha	M	L	ML
Rachana	M	L	M	Rachkida	M	L	M	Ram El-Batroun	M	L	L
Ras Nahhach	M	L	M	Selaata	M	ML	M	Sghar	M	L	M
Smar Jbayl	M	L	M	Sourat El-Batroun	M	L	ML	Tannourine El-Faouqa	M	L	M
Tannourine Et-Tahta	M	VL	L	Thoum	M	L	M	Toula El-Batroun	M	L	M
Zan	M	L	M								

## Zgharta

Municipality	24-Dec	25-Dec	26-Dec	Municipality	24-Dec	25-Dec	26-Dec	Municipality	24-Dec	25-Dec	26-Dec
Aachach	M	M	M	Aalma	M	M	M	Aarde	M	ML	M
Aintourine	M	ML	M	Arabet Qozhaya	M	L	M	Arde	M	M	M
Arjis	M	ML	M	Asnoun	M	ML	M	Ayto	M	L	M
Basloukit	M	L	M	Bchannine	M	M	M	Besebeel	M	ML	M
Bhairret Toula	M	VL	M	Bnachee	M	ML	M	Boussit	M	M	M
Danha	M	ML	M	Daraiya Zgharta	M	M	M	Deir Jdeide	M	ML	M
Ehden	M	L	M	Halan	M	M	M	Hariq Zgharta	M	ML	M
Houakir	M	L	M	Hraiqis	M	M	M	laal	M	ML	M
Ijbaa	M	ML	M	Karm Saddeh	M	L	M	Kfarchakhna	M	ML	M
Kfardlaqous	M	ML	M	Kfarfou	M	ML	M	Kfarhata Zgharta	M	ML	M
Kfarhoura	M	ML	M	Kfarsghab	M	L	M	Kfaryachit	M	ML	M
Kfarzaina	M	ML	M	Khaldiye	M	ML	M	Mazraat Ajbeaa	M	ML	M
Mazraat Et-Teffah	M	L	M	Mazraat Jneid	M	ML	M	Mejdlaya Zgharta	M	M	M
Merh Kfarsghab	M	L	M	Miryata	M	M	M	Miziara	M	L	M
Mzraat Kefraya	M	M	M	Qorah Bach	M	ML	M	Rachiine	M	ML	M
Ras Kifa	M	ML	M	Sakhra	M	L	M	Sebhel Zgharta	M	ML	M
Serhel	M	L	ML	Tallet Zgharta	M	ML	M	Toula Zgharta	M	L	M
Zgharta	M	ML	M								

## Minieh-Denniye

Municipality	24-Dec	25-Dec	26-Dec	Municipality	24-Dec	25-Dec	26-Dec	Municipality	24-Dec	25-Dec	26-Dec
Aasaymout	M	VL	ML	Aaymar	M	L	M	Aazki	M	ML	M
Ain El-Tineh-Miniyeh	M	VL	M	Assoun	M	L	M	Bakhaaoun	M	L	M
Bchennata	M	L	M	Bechehhara	M	L	M	Beddawi	M	M	M
Behouaita	M	L	M	Beit El Foqss	M	L	M	Beit Haouik	M	ML	M
Beit Zoud	M	L	M	Bekaasafrine	M	L	M	Borj El Yahoudiyeh	M	M	M
Bqarsouna	M	L	M	Btermaz	M	L	M	Debaael	M	L	M
Deir Ammar	M	M	M	Deir Nbouh	M	L	M	Haouaret-Miniyeh	M	L	M
Haql el Azimeh	M	L	M	Harf El Siyad	M	L	M	Hazmiye-Miniyeh	M	L	M
Izal	M	ML	M	Jarjour	M	VL	ML	Jayroun	M	L	M
Kahf El-Malloul	M	L	M	Karm El-Moher	M	L	M	Kfar Binine	M	L	M
Kfarchalane	M	ML	M	Kfarhabou	M	ML	M	Kharroub-Miniyeh	M	ML	M
Mazraat El-Kreme	M	L	M	Mazraat Ketrane	M	L	M	Merkebta	M	M	M
Minyeh	M	M	M	Mrah El Sfirat	M	VL	M	Mrah Sraj	M	L	M
Mrebbine	M	L	M	Nabi Youcheaa	M	M	M	Nemrine	M	L	M

Qarhaiya	M	L	M	Qarne	M	VL	ML	Qarsita	M	VL	M
Qattineh-Miniyeh	M	VL	ML	Qemmamine	M	VL	ML	Qraine	M	L	M
Raouda-Aadoua	M	ML	M	Rihaniyet-Miniyeh	M	M	M	Sfireh	M	L	M
Sir Ed-Danniyeh	M	L	M	Tarane	M	L	M	Terbol-Miniyeh	M	M	M
Zaghartaghriane	M	L	M	Zouq Bhannine	M	M	M				

## Nabatiye

### Nabatiye

Municipality	24-Dec	25-Dec	26-Dec	Municipality	24-Dec	25-Dec	26-Dec	Municipality	24-Dec	25-Dec	26-Dec
Aabba	L	L	M	Aazzi	ML	L	M	Adchit El-Chqif	ML	L	M
Ain Bou Swar	ML	L	M	Ain Kana	ML	L	M	Ali El-Taher	L	L	M
Ansar	M	L	M	Arab Salim	ML	L	M	Arnoun	L	L	M
Bfaroue	L	L	M	Breyqaah	ML	L	M	Charqiyeh	L	L	M
Choukine	ML	L	M	Deir El Zahrani	ML	L	M	Doueir El-Nabatiyeh	ML	L	M
Habbouch El-Nabatiye	ML	L	M	Hamra El-Nabatiyeh	M	ML	M	Harouf El-Nabatiyeh	ML	L	M
Hmaile	ML	L	M	Houmin El Faouqa	ML	L	M	Houmin El Tahta	M	L	M
Jarjough	ML	L	M	Jbaah El-Nabatiyeh	ML	L	M	Jebchit	ML	L	M
Kfar Djal El-Nabatiy	ML	L	M	Kfar Remmane	ML	L	M	Kfar Sir	M	L	M
Kfar Tebnit	ML	L	M	Kfarfila	M	L	M	Kfour El-Nabatieh	ML	L	M
Mayfadoun	M	L	M	Mazraat Bsaffour	L	L	M	Mazraat Chalbaal	ML	L	M
Mazraat Dmoul	ML	L	M	Mazraat El Khreibeh	M	L	M	Mazraat El-Bayad El-	ML	L	M
Mazraat Kfarjaouz	ML	L	M	Mazraat Qalaat Meiss	M	L	M	Nabatiyeh El-Fawka	ML	L	M
Nabatiyeh Et-Tahta	ML	L	M	Namiriyeh	L	L	M	Qaaqaaiyet El Jisr	ML	L	M
Qossaibeh El-Nabatiy	ML	L	M	Roumine	ML	L	M	Sarba El-Nabatieh	ML	L	M
Sir El-Gharbiyeh	ML	L	M	Toul	ML	L	M	Yehmor El-Nabatiyeh	ML	L	M
Zaoutar El Charkiyeh	M	ML	M	Zaoutar El-Gharbiyeh	M	ML	M	Zebdine El-Nabatiyeh	ML	L	M
Zefta	L	L	M								

### Hasbaiya

Municipality	24-Dec	25-Dec	26-Dec	Municipality	24-Dec	25-Dec	26-Dec	Municipality	24-Dec	25-Dec	26-Dec
Aain Jarfa	M	L	M	Abou Qamha	ML	L	M	Ain Qania	M	L	M
Bourghos	ML	L	M	Chebaa	M	L	M	Chouaya Hasbaya	M	L	M
Dellafeh	ML	L	M	Fardiss Hasbaiya	ML	L	M	Hasbaya	M	L	M
Hbariyeh	ML	L	M	Kaoukaba Hasbaiya	ML	L	M	Kfar Chouba	L	L	M
Kfar Hamam	L	L	M	Kfeir El-Zait	M	L	M	Khalwat Hasbaya	M	L	M
Khreibet Hasbaiya	L	L	M	Majidiyeh Hasbaiya	L	L	M	Marj Ez-Zhour (Haouc	M	L	M
Meri	L	L	M	Mimass	M	L	M	Rachaiya El-Fokhar	ML	L	M
Salaiyeb	L	L	M								

### Marjayoun

Municipality	24-Dec	25-Dec	26-Dec	Municipality	24-Dec	25-Dec	26-Dec	Municipality	24-Dec	25-Dec	26-Dec
Aalmane Marjaayoun	ML	L	ML	Aamra	L	ML	M	Adayseh Marjaayoun	ML	ML	M
Adchit El-Koussair	M	ML	M	Ain Aarab Marjaayoun	L	L	M	Bani Haiyann	M	ML	M
Blatt Marjaayoun	ML	L	M	Blida	M	M	M	Borj El-Moulouk	ML	L	M
Boueyda Marjaayoun	L	L	M	Deir Mimass	ML	L	M	Deir Siriane	ML	L	M
Dibbine	ML	L	M	Ebel El Saqi	ML	L	M	Houla	M	M	M
Houra	ML	L	M	Kfar Kila	ML	ML	M	Khiam Marjaayoun	L	L	M

Klayaa	L	L	M	Majdel Selem	M	M	M	Marjaayoun	ML	L	M
Markaba	M	ML	M	Mays El-Jabal	M	M	M	Mazraat Doumiat	L	L	M
Mazraat Sarada	L	L	M	Mhaibib	M	M	M	Qabrikha	M	ML	M
Qantara	ML	ML	M	Rab El-Thalathine	M	ML	M	Saouaneh Marjayoun	M	ML	M
Talloussa	M	L	M	Taybeh Matjaayoun	ML	ML	M	Touline	ML	L	M

## Bent Jbail

Municipality	24-Dec	25-Dec	26-Dec	Municipality	24-Dec	25-Dec	26-Dec	Municipality	24-Dec	25-Dec	26-Dec
Ain-Ebel	M	ML	M	Aitaroun	M	M	M	Aynata Bint Jbeil	M	M	M
Ayta El-Chaeb	M	ML	M	Ayta El-Jabal	M	ML	M	Beit Lif	M	L	M
Beit Yahoun	M	ML	M	Bint Jbeil	M	M	M	Borj Qalaway	ML	L	M
Braachit	M	M	M	Chakra	M	M	M	Debel	M	ML	M
Deir Antar	M	L	M	Froun	ML	L	M	Ghandouriyeh Bint Jb	ML	L	M
Hanine	M	ML	M	Hariss	M	ML	M	Hdatha	M	ML	M
Jmeymeh	M	M	M	Kafra Bint Jbeil	M	L	M	Kfar Dounine	M	L	M
Khirbet Selm	M	L	M	Kounine	M	M	M	Maroun El Ras	M	M	M
Qalaway	ML	L	M	Qaouzah	M	L	M	Qatmoun	M	M	M
Ramya Bint Jbeil	M	L	M	Rchaf	M	L	M	Rmeich	M	M	M
Safad Al Battikh	M	ML	M	Salhaneh	M	L	M	Serbine	M	ML	M
Sultanieh Bint Jbeil	M	ML	M	Tibnine	M	ML	M	Tiri	M	ML	M
Yaroun	M	M	M	Yater	M	L	M				

## Mont Liban

### Jbail

Municipality	24-Dec	25-Dec	26-Dec	Municipality	24-Dec	25-Dec	26-Dec	Municipality	24-Dec	25-Dec	26-Dec
Aabeydat	M	L	M	Aalita	M	L	M	Aamchit	M	L	M
Aarab El-Lahib	M	VL	M	Aarasta	M	VL	L	Adonis Jbeil	ML	VL	M
Afqa Jbeil	M	VL	ML	Ain El Delbeh Jbeil	M	VL	ML	Ain El-Ghouayba	M	VL	ML
Ain Jrain	M	VL	ML	Ain Kfah	M	L	M	Almat El Chemaliyat	M	L	ML
Almat El-Jenoubiya	M	VL	ML	Aqoura	M	L	M	Bayzoun	M	L	M
Bchille Jbeil	M	L	M	Bechtlida	M	VL	ML	Behdaydat	M	L	M
Beit Habbaq	M	L	M	Bejjeh	M	L	M	Bekhaaz	M	L	M
Berbara Jbeil	M	L	M	Bintael	M	L	M	Birket Hjoula	M	VL	ML
Blatt Jbeil	M	L	M	Boulhos	M	VL	L	Breyj Jbeil	M	VL	ML
Chamat	M	L	M	Chikhane	M	L	M	Chmout	M	L	M
Eddeh Jbeil	M	L	M	Ehmej	M	VL	ML	Fatre	ML	VL	M
Ferhet	M	L	M	Fghal	M	L	M	Frat	ML	VL	L
Ghabat	M	VL	M	Ghalboun	M	L	M	Gharzouz	M	L	M
Ghofrine	M	L	M	Habil	ML	VL	ML	Halate	M	L	M
Haqel	M	L	M	Hbaline	M	L	M	Hboub	M	L	M
Hdeine	M	VL	M	Hema Er-Rehban	M	VL	M	Hema Mar Maroun Aann	M	VL	M
Hjoula	M	L	M	Hosrayel	M	L	M	Hsarat	M	L	M
Hsoun	M	L	M	Jaj	M	VL	ML	Janne	M	VL	L
Jbeil	M	L	M	Jeddeyl Jbeil	M	L	M	Jlisse	M	VL	ML
Jouret El-Qattine	M	L	M	Kfar Baal Annaya	M	L	M	Kfar Kidde	M	L	M
Kfar Kouas	M	L	M	Kfar Mashoun	M	L	M	Kfoun	M	L	M

Kharbe Jbeil	M	L	M	Laqlouq	M	VL	M	Lassa	M	VL	ML
Lehfed	M	L	L	Maad	M	L	M	Mar Sarkis	M	VL	M
Mastita	M	L	M	Mayfouq	M	L	L	Mazraat El Siyad	M	VL	M
Mazraat El-Maaden	M	VL	L	Mechane	M	L	M	Mechmech Jbeil	M	L	L
Mehrin	M	L	M	Mejdel El-Akoura	M	VL	ML	Mghayreh Jbeil	M	VL	M
Mounsef	M	L	M	Nahr Ibrahim	M	L	M	Qahmez	M	VL	ML
Qartaba	M	VL	ML	Qartaboun	M	L	M	Qattara Jbeil	M	VL	L
Qorqraya	ML	VL	L	Ramout	M	L	M	Ras Osta	M	L	M
Rihane Jbeil	M	L	M	Sakiet El-Khayt	M	L	M	Saqi Richmaya	M	L	ML
Sebrine	M	L	M	Seraita	M	VL	ML	Souane Jbeil	M	L	M
Tadmor	M	VL	M	Tartej	M	L	ML	Torzaiya	M	L	M
Yanouh Jbeil	M	VL	ML	Zibdine Jbeil	M	L	M				

## El Metn

Municipality	24-Dec	25-Dec	26-Dec	Municipality	24-Dec	25-Dec	26-Dec	Municipality	24-Dec	25-Dec	26-Dec
Aain El-Qabu	M	VL	L	Aain El-Qach	M	L	M	Aain El-Teffaha	ML	L	M
Aain el-Safssaf El-M	M	L	M	Abou Mizane	M	L	M	Ain Aar	M	L	M
Ain Alaq	M	L	M	Ain El-Kharroube	ML	L	M	Ain El-Sendianeh	M	L	M
Ain El-Zeitoune	M	VL	M	Ain Saadeh	ML	L	M	Aintoura El-Matn	M	L	M
Amaret Chalhoub	M	ML	M	Antelias	M	L	M	Atchaneh	ML	L	M
Ayroun	M	L	M	Baabdat	M	VL	M	Baouchariyeh	M	L	M
Baskinta	M	L	M	Beit Chabab	M	L	M	Beit El-Chaar	M	L	M
Beit El-Kekko	M	ML	M	Beit Mery	M	L	M	Bhersaf	M	VL	M
Bikfaya	M	L	M	Biyakout	ML	L	M	Bnabil	M	VL	M
Bourj Hammoud	M	ML	M	Bqennaya	M	L	M	Broummana El-Matn	M	L	M
Bsalim	M	L	M	Bsifrine	ML	VL	ML	Bteghrine	M	VL	ML
Chaouiye	M	L	M	Chouaya El-Matn	M	L	M	Choueir	M	L	M
Chrine	M	VL	M	Dahr El Sawan El-Mat	ML	L	M	Daychouniyeh	ML	L	M
Dbayeh	M	L	M	Deir Chamra	ML	VL	ML	Deir Mar Abda el Mch	M	L	M
Deir Mar Roukouz	ML	L	M	Deir Tamiche	ML	L	M	Dik El-Mehdi	M	L	M
Dikwaneh	M	ML	M	Douar El-Matn	M	VL	M	Fanar	ML	L	M
Fraike	M	L	M	Haret El-Ballaneh	M	L	M	Hbous	M	L	M
Himlaya	M	L	M	Jal El Did	M	L	M	Jdeideh El-Metn	M	L	M
Jouar El-Matn	M	L	M	Jouret El-Ballout	M	L	M	Kaaqour	M	VL	M
Kfar Aaqab	ML	VL	M	Kfertay El-Matn	M	VL	ML	Khenchara	M	VL	M
Khillet El-Mtain	M	VL	M	Konnabat Broummana	M	L	M	Konnabat Salima	M	VL	ML
Machraah El-Matn	M	VL	ML	Majdel Tarchich	M	L	M	Majzoub	M	L	M
Mansouriyeh El-Metn	L	L	M	Mar Boutros Karm Et-	M	VL	M	Mar Chaya et Mzekke	M	L	M
Mar Moussa Ed-Douar	M	VL	M	Marjaba	M	VL	ML	Masqa	M	VL	M
Mayasse	ML	L	M	Mazraat Deir Aoukar	M	L	M	Mazraat El-Hadirat	M	L	M
Mazraat Yachouh	M	L	M	Mchikha	M	VL	M	Menqlet Mezher	M	L	M
Mhaydseh Matn	M	L	M	Mkalles	ML	L	M	Mrouj	M	L	M
Mtain	M	L	M	Mtayleb	M	L	M	Nabay	ML	L	M
Naccache	M	L	M	Ouadi Chahine	M	VL	M	Ouadi El-Karm El-Mat	M	VL	ML
Ouata El-Mrouj	M	VL	M	Ouyoun El-Matn	M	VL	ML	Qornet Chehwan	ML	L	M
Qornet El-Hamra	ML	L	M	Roumieh	M	L	M	Sfeilet Bikfaya	ML	VL	M
Sinn El-Fil	M	ML	M	Zabbougha	M	VL	ML	Zalqa	M	L	M

Zarouon	M	VL	M	Zekrite	M	L	M	Zighrine El-Matn	M	L	M
Zouk El-Khrab	M	L	M								

## Chouf

Municipality	24-Dec	25-Dec	26-Dec	Municipality	24-Dec	25-Dec	26-Dec	Municipality	24-Dec	25-Dec	26-Dec
Aalmane El-Chouf	M	L	M	Aammqi El-Chouf	M	VL	ML	Ain Ouzein	M	VL	ML
Ain Qani	M	VL	ML	Ain Zhalta	M	VL	ML	Ainbal	M	VL	ML
Amatour	M	VL	ML	Anout	M	L	M	Atrine	M	L	M
Baadarane	M	VL	M	Baaqline	M	L	M	Baasir	M	L	M
Barja	M	L	M	Barouk	M	VL	ML	Bater	M	VL	M
Batloun	M	L	M	Bayqoun	M	L	M	Bchetfine	M	L	M
Beiteddine	M	L	ML	Benouati Ech-Chouf	M	L	M	Berjein	M	L	ML
Bireh et Mtalleh	M	VL	M	Biret El-Chouf	M	L	M	Bkechtine Ouel Mchei	M	VL	L
Bkifa El-Chouf	M	L	M	Botme	M	VL	ML	Bqaiaa Ech-Chouf	ML	L	M
Bsaba El-Chouf	M	L	M	Chammis El-Chouf	M	L	M	Chehim	M	L	ML
Chemaarine	M	L	ML	Chourit	M	VL	ML	Daher El-Chouf	M	L	ML
Dalhoun	M	L	M	Damour	M	L	M	Daraya El-Chouf	M	VL	ML
Deir El-Moukhalles	M	VL	ML	Deir Baba	M	L	M	Deir Dourit	M	L	ML
Deir El-Qamar	M	L	M	Deir Kouche	M	L	M	Dibbieh	M	L	L
Dmit	M	L	M	Fouara Jaafar	M	VL	M	Fraidis El-Chouf	M	VL	M
Ghabet Jaafar	M	L	M	Gharife	M	VL	M	Haret Jandal	ML	L	M
Hasrout	M	L	M	Jadra	M	ML	M	Jahlieh	M	L	M
Jbeih El-Chouf	ML	VL	M	Jdeidet El-Chouf	M	VL	ML	Jiyeh	M	ML	M
Jleilyeh	M	L	M	Jmailiyeh	M	L	M	Joun	M	L	M
Kahlounie El-Chouf	M	L	M	Ketermaya	M	L	M	Kfar Faqoud	M	L	M
Kfar Hamal	M	L	M	Kfar Him	M	L	M	Kfar Katra	M	L	M
Kfar Niss	M	L	M	Kfar hay	M	VL	M	Kfarnabrakh	M	VL	M
Khirbet Bisri	M	L	ML	Knayse El-Chouf	M	VL	ML	Maaniyeh	M	L	M
Maasser Beiteddine	M	VL	M	Maasser El-Chouf	M	L	M	Majdalouna	M	L	M
Majdel El-Meouch	M	VL	M	Mazboud	M	L	M	Mazmoura	M	L	M
Mazraat El Chouf	M	L	M	Mazraat El Daher	M	VL	ML	Mazraat El-Douair	M	VL	ML
Mechref	M	L	M	Mghairie	M	L	M	Mghayrie El-Chouf	M	L	M
Moukhtara	M	VL	ML	Mrusti	ML	VL	M	Mtolle	M	L	M
Naameh	M	L	M	Niha El-Chouf	ML	L	M	Ouadi Abou Youssef	M	VL	L
Ouadi Ed-Deir	M	L	M	Ouadi El-Sit	M	VL	M	Ouadi bnehlay	M	VL	ML
Qraibeh	M	VL	M	Qreiaa	M	VL	L	Rmayle El-Chouf	M	L	M
Semqaniyeh	M	L	M	Sibline	M	L	M	Sirjbeil	M	L	M
Warhanieh	M	VL	M	Werdaniyeh	M	L	M	Zaarourieh	M	L	M

## Baabda

Municipality	24-Dec	25-Dec	26-Dec	Municipality	24-Dec	25-Dec	26-Dec	Municipality	24-Dec	25-Dec	26-Dec
Abadiyeh	M	L	M	Ain Mouaffaq	M	L	M	Araiya	M	L	M
Arbaniyeh	M	VL	ML	Arsoun	M	VL	M	Baabda	M	L	M
Baalchmey	M	L	M	Bmaryam	M	VL	M	Bourj El-Brajneh	M	L	M
Boutchay	ML	L	M	Bsaba Baabda	M	L	M	Btekhney	M	VL	M
Btibyat	M	VL	M	Bzebdine	M	VL	M	Chbeniyeh	M	VL	M
Chiyah	M	L	M	Chmeisset Baabda	M	VL	M	Chouit	M	VL	M
Deir El-harf	M	VL	M	Deir Khouna	M	L	M	Dlaybeh	M	VL	M

Falougha	M	L	M	Furn El-Chebbak	M	ML	M	Hadath Beyrouth	M	L	M
Halaliyeh Baabda	M	VL	M	Hammana	M	VL	M	Haret El Sett	M	L	M
Haret Hamze	M	VL	M	Haret Hreik	M	L	M	Hasbaiya El-Metn	M	VL	M
Jouar El-Hoz	M	VL	ML	Jouret Arsoun	M	VL	M	Kfar Chima	M	L	M
Kfar Selouane	M	VL	ML	Khalouat Baabda	M	VL	M	Kneisset Baabda	M	VL	M
Laylakeh	M	L	M	Louayzeh Baabda	M	L	M	Merdache	ML	L	M
Mzairaa Baabda	M	VL	M	Ouadi Chahrour El Ol	M	L	M	Ouadi Chahrour El So	M	L	M
Qalaa Baabda	M	VL	M	Qhraybe Baabda	M	VL	M	Qobbayaa	M	VL	M
Qornayel	M	VL	M	Qortada	ML	VL	ML	Qrayeh Baabda	M	VL	M
Qsaibeh Baabda	M	VL	M	Qtale Baabda	M	VL	M	Ras El Metn	M	L	M
Ras El-Haref	M	VL	M	Rouayset El-Ballout	M	VL	M	Salima Baabda	M	VL	M
Tahouitat El Ghadir	M	L	M	Tarchich	M	L	M	Zandouqa	M	VL	ML

## Aley

Municipality	24-Dec	25-Dec	26-Dec	Municipality	24-Dec	25-Dec	26-Dec	Municipality	24-Dec	25-Dec	26-Dec
Abey	M	L	M	Aghmid	M	VL	M	Ain Dara	M	L	M
Ain Drafil	M	VL	M	Ain El Halazoun	M	L	M	Ain El-Rmmaneh	ML	VL	M
Ain Jedideh	M	L	M	Ain Ksour	M	L	M	Ain Onoub	ML	L	M
Ain Traz	M	L	M	Ainab	M	L	M	Aley	M	L	M
Aramoun	M	L	M	Aytat	ML	L	M	Azouniyeh	M	VL	M
Baawerta	M	L	M	Badghan Oua Wadi Bad	M	VL	M	Bassatine	M	L	M
Bayssour	M	L	M	Bchamoun	M	L	M	Bdadoun	M	L	M
Behouara	M	L	M	Bennay	M	L	M	Bhamdoun El-Dayaa	M	L	M
Bhamdoun El-Mhatta	M	L	M	Bkhechthey	M	L	M	Bleibel	ML	L	M
Bmakine	ML	L	M	Bmehray	M	L	M	Bouzrid	ML	VL	ML
Bserrine	M	L	M	Bsous	ML	VL	M	Btalloun	M	L	M
Btater	M	L	M	Chanay	M	L	M	Charoun	M	VL	M
Chartoun	ML	VL	M	Chemlane	ML	L	M	Choueifat El-Aamrous	M	L	M
Choueifat El-Oumara	M	L	M	Choueifat El-Quoubbe	M	L	M	Dakkoun	M	L	M
Deir Qoubel	M	L	M	Dfoun	M	L	M	Douair El Remmaneh	ML	VL	M
Ghaboun	M	L	M	Habramoun	M	VL	M	Homs Oua Hama	M	L	M
Houmal	ML	L	M	Jisr El Qadi	M	L	M	Kehaleh	M	L	M
Keyfoun	M	L	M	Kfar Aamey	M	VL	M	Kommatyeh	M	L	M
Maasrati	M	VL	M	Majdel Baana	M	VL	M	Mansourieh et Ain El	M	L	M
Mazraat El-Nahr	M	VL	M	Mchakhte	M	VL	M	Mecherfeh	ML	VL	M
Mejdlaya	M	L	M	Mrayjat	M	VL	M	Ramliyah	M	VL	M
Rechmaya	M	VL	M	Rejmeh	M	L	M	Remhala	M	L	M
Rouaysset El Neemane	M	VL	M	Saoufar	M	VL	M	Selfaya	M	VL	ML
Sirhmoul	M	L	M	Souq El Ghareb	M	L	M	Taazanieh	M	L	M

## Kesrouane

Municipality	24-Dec	25-Dec	26-Dec	Municipality	24-Dec	25-Dec	26-Dec	Municipality	24-Dec	25-Dec	26-Dec
Achkout	M	L	M	Adma Oua Dafneh	M	L	M	Ain Ed-Delbe Kesroua	M	VL	L
Ain El-Rihane	ML	L	M	Aintoura Kesrouane	M	L	M	Ajaltoun	M	L	M
Akaybeh Kesrouane	M	ML	M	Aramoun Kesrouane	M	L	M	Azra ouel Ozor	M	L	M
Ballouneh	M	L	M	Batha	ML	VL	M	Bekaatat Achkout	M	L	M
Bekaatat Kanaan	M	VL	ML	Bizhel	M	VL	M	Bouar	M	L	M
Bqaatouta	M	VL	M	Bqaq Ed-Dine	M	L	M	Bzommar	M	L	M

Chahtoul	M	L	M	Chnaniir	ML	VL	M	Chouan	ML	VL	L
Daraya Kesrouane	M	L	M	Darououn	ML	L	M	Deir Baqlouch	ML	L	M
Dlebta	ML	VL	M	Eghbeh	M	VL	ML	Faraya	M	VL	M
Fatka	M	L	M	Feytroun	M	VL	M	Ghazir	M	L	M
Ghbaleh Kesrouane	M	L	M	Ghedrass	M	L	M	Ghosta	M	VL	M
Ghynéh	M	L	M	Harharaya w Kattine	M	L	M	Harissa Kesrouane	ML	L	M
Hayata	ML	VL	M	Hosein	M	L	ML	Hrajel	M	L	M
Jdeideh Ghazir	M	L	M	Jeita	ML	L	M	Jounieh Ghadir	M	L	M
Jounieh Haret Sakhr	M	L	M	Jounieh Salel Alma	M	L	M	Jounieh Sarba	M	ML	M
Jouret Bedrane	M	L	M	Jouret Mhad	M	VL	M	Jouret Termos	M	L	M
Kfar Debiane	M	VL	M	Kfar Tay Kesrouane	M	VL	ML	Kfar Yassine	M	ML	M
Kfour Kesrouane	M	L	M	Kharayeb Nahr Ibrahi	M	L	M	Klayaat Kesrouane	M	VL	M
Maarab	M	VL	M	Maaysra Kesrouane	M	L	M	Mayrouba	M	L	M
Mazraat Er-Ras	M	L	M	Mazraat Mrah El-Mir	M	VL	M	Mchaa El Ftouh	M	L	M
Mchaa Faraya	M	VL	M	Mchaa Kfar Dibiane	M	L	M	Mghaer	M	VL	L
Mradiyah	M	VL	M	Nahr Ed-Dahab	M	VL	L	Nammoura Kesrouane	M	L	M
Ouata El Jaouz	M	VL	ML	Ouata Sillam	M	ML	M	Raachine	M	VL	M
Rayfoun	M	L	M	Safra Kesrouane	M	L	M	Shayle Kesrouane	ML	L	M
Tabarja	M	L	M	Yahchouch	M	VL	M	Zaaytreh	M	L	M
Zeytoun	M	L	M	Zouk Mikael	M	L	M	Zouk Mosbeh	M	L	M

## Baalbek\_Hermel

### Baalbek

Municipality	24-Dec	25-Dec	26-Dec	Municipality	24-Dec	25-Dec	26-Dec	Municipality	24-Dec	25-Dec	26-Dec
Aadous	M	M	M	Aamchki	L	L	M	Aarsal	M	ML	M
Ain Baalbek	MH	M	M	Ain Bourday	M	L	M	Ain El-Benye	L	L	M
Ain El-Jaouz Baalbek	M	ML	M	Ain El-Siya Chadoura	L	L	M	Al Khodr Baalbek	M	L	M
Al Nabi Chit	M	L	M	Aynata Baalbek	M	L	M	Baalbek	M	ML	M
Bachwat	M	L	ML	Barqa	M	VL	L	Bednayel Baalbak	ML	L	M
Beit Chama	M	L	M	Bijjaje	MH	M	M	Bouday	M	L	M
Brital	M	L	M	Btadi	M	L	M	Chaat	M	M	M
Chaibe	L	L	M	Chlifa	M	ML	M	Chmestar	M	L	M
Dar El-Oussa	M	L	M	Deir El-Ahmar	M	L	M	Deir Mar Maroun Baal	MH	M	M
Douris	M	M	M	Fakiha	MH	M	M	Hadath Baalbek	M	ML	M
Ham	ML	L	M	Haour Taala	M	L	M	Hizzine	MH	ML	M
Hlebta	M	L	M	Hosh Barada	M	M	M	Hosh El Dahab	M	M	M
Hosh El Snid	MH	ML	M	Hosh El-Nabi	M	ML	M	Hosh El-Rafiq	M	ML	M
Hosh Tal Safiya	M	M	M	Hrebta	M	L	M	laat	MH	M	M
Jebaa	M	ML	M	Jenta	M	L	M	Kfar Dabach	M	ML	M
Kfar Dane	M	ML	M	Khraibeh El-Hermel	MH	ML	M	Khreibet Baalbek	ML	L	M
Kneisset Baalbek	M	ML	M	Labueh	MH	M	M	Maarboun	ML	L	M
Majdaloun	M	M	M	Maqneh	M	M	M	Mazraat Beit Mcheik	ML	ML	M
Misraya	M	ML	M	Moqraq	M	M	M	Nabha El-Damdoum	M	L	M
Nabi Chbay	L	L	M	Nabi Osman	MH	M	M	Nahleh baalbek	M	L	M
Ouadi El-Oss	M	L	M	Qaa Baayoun	M	M	M	Qaa Jouar Maqiye	M	M	M
Qaa Ouadi El-Khanzir	M	M	M	Qah Baalbek	MH	M	M	Qarha Baalbek	M	L	M



Qsarnaba	M	L	M	Ram Baalbek	M	L	ML	Ras Baalbek El Sahl	M	M	M
Ras Baalbek El-Charq	M	M	M	Riha	M	ML	M	Saaide	M	ML	M
Sbouba	MH	ML	M	Seriine El-Tahta	M	ML	M	Slouqi	ML	L	M
Taiba Baalbek	M	ML	M	Talia	MH	ML	M	Taraiya	M	L	M
Temnin El Fawqa	M	L	M	Temnin El-Tahta	M	L	M	Tfail	M	M	M
Yahfoufa	ML	L	M	Yammouneh	M	L	M	Younine	M	ML	M
Zboud	MH	M	M								

## Hermel

Municipality	24-Dec	25-Dec	26-Dec	Municipality	24-Dec	25-Dec	26-Dec	Municipality	24-Dec	25-Dec	26-Dec
Charbine El-Hermel	M	L	M	Hermel Jbab	M	ML	M	Hermel	M	M	M
Maaysra El-Hermel	MH	L	M	Michaa Mrajhine	M	L	M	Ouadi Faara	M	L	M
Ras Baalbek - Ouadi	M	M	M	Ras Baalbek El Gharb	M	L	M	Zighrine	M	L	M

## Akkar

### Akkar

Municipality	24-Dec	25-Dec	26-Dec	Municipality	24-Dec	25-Dec	26-Dec	Municipality	24-Dec	25-Dec	26-Dec
Aain Tinta	M	ML	M	Aaiyat	M	ML	M	Aakkar El-Aatiqa	M	L	M
Aamar Akkar	M	ML	M	Aamar El Baykat	M	ML	M	Aamayer	M	M	M
Aamriyet Akkar	M	M	M	Aandqet	M	ML	M	Aarmeh	M	ML	M
Aarqa	M	ML	M	Aawaynat	M	M	M	Aayoun Akkar	M	ML	M
Abbdouiyeh	MH	ML	M	Ain El-Zeit	M	M	M	Ain Yaaqoub	M	L	M
Akroum	M	ML	M	Aridet Cheikh Zennad	H	ML	M	Baldeh w Mazraat Bal	M	ML	M
Barcha	M	ML	M	Bardeh	M	M	M	Bebnine	M	M	M
Beino	M	ML	M	Beit Ayoub	M	ML	M	Beit El-Haouch	M	M	M
Beit Mellat	M	ML	M	Beit Younes	M	L	M	Berbara Akkar	M	ML	M
Berqayel	M	M	M	Bezbina	M	L	M	Bireh Akkar	M	M	M
Borj	M	ML	M	Bqerezla	M	ML	M	Bzal	M	L	M
Chane	M	L	M	Chaqdouf	M	L	M	Charbila	M	ML	M
Cheikh Mohammad	M	ML	M	Cheikh Taba Es-Sahl	M	ML	M	Cheikh Taba	M	ML	M
Cheikh Zennad	MH	ML	M	Cheikhlar	M	M	M	Chir Hmairine	MH	ML	M
Daghle	M	ML	M	Dahr Laissine	M	ML	M	Darine	MH	ML	M
Dawra	M	L	M	Dawsa w Baghdadi	M	ML	M	Dayret Nahr El-Kabir	M	M	M
Deir Dalloum	M	M	M	Deir Jennine	M	ML	M	Denbou	M	L	M
Dibbbiyeh	M	M	M	Douair Aadwiyeh	M	ML	M	Fassikine	M	ML	M
Fnaydek	M	L	M	Fraydes Akkar	M	ML	M	Ghazayle	M	ML	M
Habchit	M	L	M	Hakour	M	ML	M	Halba	M	ML	M
Haouchab	M	ML	M	Hayssat	MH	ML	M	Haytla	M	ML	M
Hayzouq	M	ML	M	Hedd	M	ML	M	Hmaira Akkar	M	ML	M
Hmaiss Akkar	M	ML	M	Hnaider	M	M	M	Hokr Ed-Dahri	H	ML	M
Hokr Etti	M	ML	M	Hokr Jouret Srar	MH	ML	M	Houaich	M	L	M
Hrar	M	L	M	Idbil	M	ML	M	Ilal	M	ML	M
Janine	M	ML	M	Jdeidet El-Joumeh	M	ML	M	Jdeidet El-Kaiteh	M	ML	M
Jebayel	M	ML	M	Kafr	M	L	M	Kafr	M	M	M
Karm Asfour	M	ML	M	Kfar Melki Akkar	M	ML	M	Kfar Noun	M	ML	M
Kfarharra	M	ML	M	Khalsa	M	M	M	Kharnoubet Akkar	M	ML	M

Khirbet Daoud Aakkar	M	ML	M	Khirbet El Remmane	M	M	M	Khirbet Shar	M	ML	M
Khoreybet El-Jindi	M	ML	M	Khreibet Aakkar	M	ML	M	Kneisset Aakkar	H	ML	M
Kneisset Hnaider	M	M	M	Knisse	M	ML	M	Kroum El-Aarab	M	ML	M
Kwachra	M	M	M	Kweykhath	M	ML	M	Machta Hammoud	M	M	M
Majdala	M	M	M	Majdel Akkar	M	M	M	Mar Touma	M	M	M
Marlaya Melhem	M	ML	M	Mashha	M	ML	M	Massoudiye	MH	ML	M
Mazraat Beit Ghattas	M	ML	M	Mazraat En-Nahriye	M	M	M	Mechmech	M	L	M
Memneh	M	L	ML	Mhammara	M	M	M	Mighraq Aakkar	MH	ML	M
Minyara	M	ML	M	Moqayteh	M	ML	M	Mounjez	M	ML	M
Msalla	M	ML	M	Mzeihmeh	M	ML	M	Nfaisah	M	ML	M
Noura Et-Tahta	M	ML	M	Ouadi El-Haour	M	ML	M	Ouadi El-Jamous	M	M	M
Ouyoun El-Ghizlane	M	M	M	Qaabarine	M	ML	M	Qabaait	M	L	M
Qachlaq	M	ML	M	Qantara Aakkar	M	ML	M	Qarha Aakkar	M	M	M
Qarqaf	M	M	M	Qboula	M	ML	M	Qleiaat Aakkar	M	ML	M
Qloud El-Baqie	M	ML	M	Qobaiyat Aakkar	M	L	M	Qobbat Chamrat	M	ML	M
Qorayat	M	L	M	Qornet Aakkar	M	ML	M	Qsair Aakkar	M	M	M
Rahbe	M	ML	M	Rihaniyet Aakkar	M	ML	M	Rmah	M	M	M
Rmoul	M	ML	M	Saadine	MH	ML	M	Sadaqa	M	L	M
Saidnaya	M	ML	M	Sammouniye	M	ML	M	Sayssoq	M	ML	M
Semmaqiye	H	ML	M	Semmaqli	M	ML	M	Sfinet El-Dreib	M	ML	M
Sfinet El-Qaitaa	M	ML	M	Sindyanet Zeidane	M	ML	M	Souaisset Aakkar	M	ML	M
Srar	M	ML	M	Tal Abbas El Gharby	MH	ML	M	Tal Abbas El-Chargy	M	ML	M
Tal Biret	MH	ML	M	Tal Hmayra	MH	ML	M	Tal Maayan Tal Kiri	MH	ML	M
Tal Sibel	M	ML	M	Tallet Chattaha	M	ML	M	Tikrit	M	ML	M
Tleil	M	ML	M	Tshea	M	L	M	Zawarib	M	ML	M
Zouq El Hosniyeh	M	ML	M	Zouq El-Haddara	M	M	M	Zouq El-Hbalsa	M	ML	M
Zouq El-Moqachrine	M	M	M								

## Sud

### Sour

Municipality	24-Dec	25-Dec	26-Dec	Municipality	24-Dec	25-Dec	26-Dec	Municipality	24-Dec	25-Dec	26-Dec
Aaiyeh	M	L	M	Aalma El-Chaab	M	L	M	Aaytit	ML	L	M
Abbassiyeh Sour	M	ML	M	Abou Chech	M	L	M	Ain Abou Abdallah	M	ML	M
Ain Baal	M	L	M	Arzoun	L	L	M	Aziyeh	M	L	M
Baflaya	L	L	M	Barich	L	L	M	Batouliyeh	M	L	M
Bayad	M	L	M	Bazouriyeh	M	L	M	Bediass	ML	L	M
Bestiyat	L	L	M	Borj El Chemali	M	L	M	Borj En-Naqoura	M	L	M
Borj Rahhal	M	ML	M	Boustane	M	L	M	Btaychiyeh	M	L	M
Chaaitiye	M	L	M	Chameh	M	L	M	Chehabiye	ML	L	M
Chehour	ML	L	L	Chihine	M	L	M	Debaal Sour	L	L	M
Deir Amess	M	L	M	Deir Kifa	ML	L	M	Deir Qanoun El-Ain	M	L	M
Deir Qanoun El-Naher	ML	L	M	Derdghaiya	ML	L	M	Dhayra	M	L	M
Halloussiyeh	L	L	M	Hamoul	M	L	ML	Hanaouey	ML	L	M
Henniye	M	ML	M	Hmairi Sour	ML	L	M	Iskandarouna Sour	M	L	M
Jbal El Botom	M	L	M	Jebbin	M	L	M	Jennata	ML	L	M
Jijim	M	L	M	Jouaiya	L	L	M	Kneisset Sour	M	L	M

Maarake	ML	L	M	Maaroub	ML	L	M	Majadel	L	L	M
Majdalzoun	M	L	M	Mansouri Sour	M	ML	M	Marnba	ML	L	ML
Marouahine	M	L	M	Mazraat El-Zalloutiy	M	L	M	Mazraat Mechref	M	L	M
Mazraat Tayr Semhat	M	L	L	Mheilib	M	ML	M	Neffakhiyeh	L	L	M
Niha Sour	ML	L	M	Ouadi Jilo	ML	L	M	Qana	M	L	M
Qolaileh Sour	M	L	M	Rechknany	M	L	M	Rmadiyeh	ML	ML	M
Selha Sour	L	L	M	Siddiqine	M	L	M	Sour	M	ML	M
Srifa	ML	L	M	Tayr Debbe	M	L	M	Tayr Felsay	ML	L	M
Tayr Harfa	M	L	M	Touayri	ML	L	ML	Toura	ML	L	M
Yanouh Sour	L	L	M	Yarine	M	L	M	Zebqine	M	L	ML

## Saida

Municipality	24-Dec	25-Dec	26-Dec	Municipality	24-Dec	25-Dec	26-Dec	Municipality	24-Dec	25-Dec	26-Dec
Aanqoun	ML	L	M	Aaqtanit	ML	L	M	Aarab Ej-Jall	M	L	M
Aarab Tabbaya	M	L	M	Abra Saida	M	L	M	Adloun	M	L	M
Adousiyeh	M	L	M	Ain-El-Deleb	M	L	M	Arzai	ML	L	M
Babliyah	ML	L	M	Barty	M	L	M	Bissariyeh	ML	L	M
Bnaafoul	ML	L	M	Bqosta	M	L	M	Bramiy --	M	L	M
Daoudiyeh	ML	L	M	Dareb El-Sim	M	L	M	Erkay	L	L	M
Ghassanieh	ML	L	M	Ghazieh	M	L	M	Hajeh	L	L	M
Haret Saida	M	L	M	Hartiyeh	M	ML	M	Hlaliye Saida	M	L	M
Insariyat	M	L	M	Jazira Saida	M	ML	M	Kafar Bit	M	L	M
Kaoutariyet El-Siyad	L	L	M	Kfar Chellal	M	L	M	Kfar Hatta Saida	M	L	M
Kfar Milke Saida	M	L	M	Khartoum	ML	L	M	Khaziz	L	L	M
Khirbet Ed-Douair Sa	ML	L	M	Khirbet El-Bassal	ML	L	M	Khrayeb Saida	M	L	M
Loubieh	M	L	M	Maghdouche	ML	L	M	Majdelyoun	M	L	M
Matariyet El-Choumar	M	ML	M	Matayriyeh	L	L	M	Mazraat 'Mseileh	M	L	M
Mazraat 'Snaiber	ML	L	M	Mazraat Aarab Soukka	M	L	M	Mazraat Deir Taqla	ML	L	M
Mazraat El Yahoudiye	M	L	M	Mazraat El-Housseini	M	L	M	Mazraat El-Mhaydaleh	ML	L	M
Mazraat El-Ouasta	M	L	M	Mazraat Jamjim	M	L	M	Mazraat Kaoutariyet	ML	L	M
Mazraat Kfar Badda	M	ML	M	Mazraat Oussamiyat	ML	L	M	Mazraat Sari	M	ML	M
Mazraat Sinai	ML	L	M	Meemariyeh	ML	L	M	Merouaniyeh	L	L	M
Miyeh ou Miyeh	M	L	M	Najjariyeh	M	L	M	Qaaqiyat El-Snaouba	ML	L	M
Qnarit	ML	L	M	Qraiye Saida	M	L	M	Saida Ed-Dekermane	M	L	M
Saida El-Oustani	M	L	M	Saida El-Qadimeh	M	L	M	Saida Kefraya	M	L	M
Saksakiyeh	M	L	M	Salhie Saida	M	L	M	Sarafand	ML	L	M
Sfenta	ML	L	M	Tafahta	L	L	M	Tanbourit	ML	L	M
Tebna	ML	L	M	Zaghdraiya	ML	L	M	Zeita	ML	L	M
Zrariyeh	ML	L	M								

## Jezzine

Municipality	24-Dec	25-Dec	26-Dec	Municipality	24-Dec	25-Dec	26-Dec	Municipality	24-Dec	25-Dec	26-Dec
Ain El-Mir (El Estab	M	L	M	Anane	M	L	ML	Aramta	L	L	M
Ariya	M	VL	M	Aychiyeh	L	L	M	Azour	M	VL	ML
Baba	M	VL	ML	Baysour Jezzine	M	L	M	Benoueteh Jezzine	M	VL	M
Bhannine	ML	VL	M	Bisri	M	VL	ML	Bkassine	M	VL	ML
Bouslaya	M	L	ML	Btedine El-Leqech	M	VL	ML	Chbail	ML	VL	L
Choualiq Jezzine	M	L	M	Dahr Ed-Deir	M	L	M	Deir El Qattine	M	L	ML

Demachqiyeh	L	L	M	Ghabbatiyeh	M	VL	M	Harf Jezzine	M	VL	ML
Hassaniyeh	M	L	M	Haytouleh	M	L	M	Haytura	ML	L	ML
Hidab	M	L	M	Homsiyeh	M	VL	M	Jabal Toura	M	L	M
Jarmaq	L	L	M	Jensnaya	M	L	M	Jernaya	M	L	M
Jezzine	M	L	M	Karkha	M	L	M	Kfar Falous	M	L	M
Kfar Houna	M	L	M	Kfar Jarrah	M	L	M	Lebaa	M	L	M
Louayzet Jezzine	M	L	M	Machmouche	M	VL	ML	Mahmoudiyeh Jezzine	L	L	M
Maknounye Jezzine	M	L	ML	Maraat Ouazaiyeh	L	L	M	Mazraat Daraya	ML	L	M
Mazraat El-Aarqoub	L	L	ML	Mazraat El-Mathane	M	VL	L	Mazraat El-Rahbane	M	L	M
Mazraat Khallet Khaz	L	L	M	Mazraat Louzid (Loua	ML	VL	L	Mazraat Qrouh	L	L	M
Mazraat Tamra	L	L	M	Mazraat Zighrine Jez	L	L	M	Mazraat	L	L	ML
Mharbiyeh	M	L	M	Midane Jezzine	M	VL	ML	Mjeydel Jezzine	M	L	M
Mlikh	M	L	M	Mrach El-Hbasse	M	L	M	Ouadi Baanqoudaine	M	L	M
Ouadi El-Laymoun	M	L	M	Ouardiyeh	ML	VL	VL	Qabaa Jezzine	M	VL	ML
Qatrani	ML	L	M	Qaytouleh	M	L	M	Qtaleh Jezzine	M	VL	ML
Rihane Jezzine	L	L	M	Rimat	M	L	M	Roum	M	VL	ML
Roummanet	M	L	M	Sabbah	M	VL	ML	Saydoun	M	L	ML
Sfaray	M	L	ML	Snaya	M	L	ML	Sojoud	L	L	M
Srayri	ML	L	M	Taaid	M	VL	ML	Wadi Jezzine	M	VL	ML
Zhalta	ML	L	ML								

## Bekaa

### West Bekaa

Municipality	24-Dec	25-Dec	26-Dec	Municipality	24-Dec	25-Dec	26-Dec	Municipality	24-Dec	25-Dec	26-Dec
Aammiq BG	M	L	M	Ain El Tineh BG	M	L	M	Ain Zebdeh	M	L	M
Ana	M	L	M	Aytanit	M	L	M	Baaloul BG	M	L	M
Bab Mareh	M	L	M	Chouberqiye Aammiq	M	L	M	Dakoue	M	L	M
Deir Ain El-Jaouze	M	L	M	Deir Tahniche	M	ML	M	Ghaza	M	L	M
Harime El-Soughra	M	L	M	Hoch Harimeh	M	L	M	Jazira BG	M	L	M
Jib Jennine	M	L	M	Kamed-El-Laouz	M	L	M	Kefraya BG	M	L	ML
Khiara El Atika	M	L	M	Khiara	M	L	M	Khirbet Qanafar	M	L	M
Lala	M	L	M	Lebbaya BG	M	VL	M	Loussa	ML	L	M
Machghara	M	L	M	Manara (Hammar) BG	M	L	M	Mansoura BG	M	L	M
Marej BG	M	L	M	Maydoun	L	L	M	Ouaqf BG	M	L	M
Qaraaoun	M	L	M	Qelya	L	L	M	Raouda (Istabel)	M	L	M
Saghbine	M	L	M	Sohmor	M	VL	M	Soltan Yacoub el Ara	M	L	M
Souairy	M	L	M	Sultan Yaacoub	M	L	M	Tal Znoun	M	L	M
Yehmor BG	ML	L	M	Zilaya	ML	L	M				

### Zahle

Municipality	24-Dec	25-Dec	26-Dec	Municipality	24-Dec	25-Dec	26-Dec	Municipality	24-Dec	25-Dec	26-Dec
Aanjar (Haouch Mouss	M	L	M	Ablah	M	L	M	Ain Kfarzabad	ML	L	M
Ali-El-Nahri	M	ML	M	Bar Elias	M	L	M	Bouarej	L	L	M
Cheberqiyet Tabet	M	L	M	Chtaura	M	ML	M	Deir El Ghazal	M	L	M
Delhamiyet Zahle	M	L	M	Ferzol	M	L	M	Haouch El-Ghanam	M	ML	M
Haouch Es-Siyadeh	M	L	M	Haouch Hala	M	ML	M	Haouch Mandara	M	L	M

Haouch Qayssar	M	L	M	Hezerta	L	L	M	Hosh Moussa	M	ML	M
Jdita	M	L	M	Kfarzabad	M	L	M	Ksara	M	L	M
Majdel Aanjar	M	L	M	Makssi	M	ML	M	Massa	M	L	M
Mazraat Er-Remtaniye	L	L	M	Mrayjat Zahle	ML	L	M	Mzaraa Zahle	M	L	M
Nabi Ayla	M	L	M	Nasriyet Rizk	M	ML	M	Nasriyet Zahle	M	L	M
Niha Zahle	M	L	M	Ouadi Ed-Deloum	ML	L	M	Ouadi El-Arayech	ML	L	M
Qaa El Rim	L	L	M	Qab Elias	M	L	M	Qousaya	M	L	M
Rhit	M	L	M	Riyak	M	ML	M	Saadnayel	M	L	M
Taal El-Akhdar	M	L	M	Taalbeya	M	L	M	Taanayel	M	L	M
Talamara	M	ML	M	Tcheflik Edde Haouch	M	ML	M	Tcheflik Qiqano	M	L	M
Terbol Zahle	M	ML	M	Touaite Zahle	L	L	M	Zahle Aradi	ML	L	M
Zahle El-Berbara	M	L	M	Zahle El-Maallaqa	M	L	M	Zahle El-Midane	M	L	M
Zahle Er-Rassiye	M	ML	M	Zahle Haouch El-Ouma	M	L	M	Zahle Haouch El-Ouma	M	L	M
Zahle Haouch Ez-Zara	M	L	M	Zahle Maalqa Aradi	M	L	M	Zahle Mar Antonios	M	ML	M
Zahle Mar Elias	M	L	M	Zahle Mar Gerios	M	L	M	Zahle Saydet En-Naja	M	L	M
Zebdoul	M	L	M								

## Rachaiya

Municipality	24-Dec	25-Dec	26-Dec	Municipality	24-Dec	25-Dec	26-Dec	Municipality	24-Dec	25-Dec	26-Dec
Ain Arab Rachaiya	ML	L	M	Ain Ata	ML	L	M	Ain Harche	ML	L	M
Aqabe Rachaya	M	L	M	Ayha	L	L	M	Ayta El Fokhar	M	L	M
Bakifa Rachaya	M	L	M	Bakka	ML	L	M	Beit Lahya	M	L	M
Bireh Rachaiya	M	L	M	Daher El Ahmar	M	L	M	Deir El-Achayer	M	ML	M
Heloua Rachaiya	M	ML	M	Hoch El Qannabeh Rac	M	VL	M	Kaoukaba Bou Arab	M	L	M
Kfar Danis	ML	L	M	Kfar Mechki	M	L	M	Kfar Qouq	ML	L	M
Kherbet Rouha	M	L	M	Majdel Balhiss	M	L	M	Mdoukha	M	L	M
Mhaydseh Rachaiya	ML	L	M	Nabi Safa	M	L	M	Rachaiya	ML	L	M
Rafid Rachaiya	M	L	M	Selsata (Mazraat Dei	M	L	L	Tannoura	M	L	M
Yanta	M	L	M								

## Beyrouth

### Beyrouth

Municipality	24-Dec	25-Dec	26-Dec	Municipality	24-Dec	25-Dec	26-Dec	Municipality	24-Dec	25-Dec	26-Dec
Achrafieh	M	ML	M	Ain el-Mreisse	M	L	M	Bachoura	M	L	M
Beirut Central Distr	M	L	M	Marfai	M	L	M	Mazraa	M	L	M
Medaouar	M	ML	M	Minet el-Hosn	M	L	M	Mwssaitbeh	M	L	M
Ras Beirut	M	L	M	Rmeil	M	ML	M	Saifi	M	L	M
Zqaq el-Blat	M	L	M								