

# Lebanon Fire Risk Bulletin



CIVIL DEDEFENCE

**Refer to cadast table condition.**

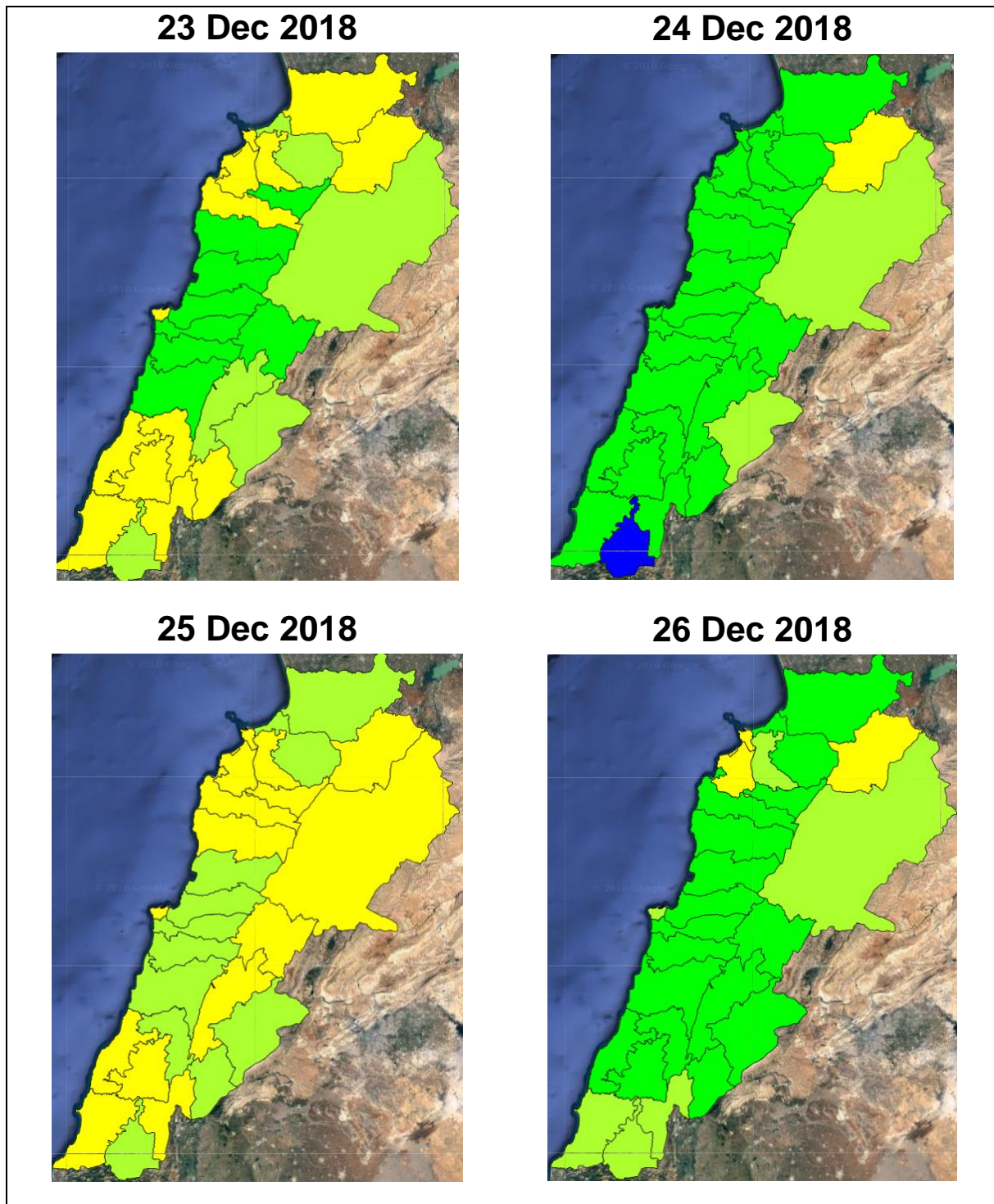
**Please note that the indicated temperature is at 2 meters height from the ground.**

General description of potential fire risk situation

Symbol	Level of risk	Meaning and actions
VL	Very low	Very low fire risk. Controlled burning operations can be hardly executed due to high fuel moisture content. Normally wildfires self-extinguish.
L	Low	Low fire risk. Controlled burning operations can be executed with a reasonable degree of safety.
ML	Medium low	Medium-low fire risk. Controlled burning operations can be executed in safety conditions. All the fires need to be extinguished.
M	Medium	Medium fire risk. Controlled burning operations would be avoided. All the fires need to be very well extinguished.
MH	Medium high	Controlled burning is not recommended. Open flame will start fires. Cured grasslands and forest litter will burn readily. Spread is moderate in forests and fast in exposed areas. Patrolling and monitoring is suggested. Fight fires with direct attack and all available resources.
H	High	Ignition can occur easily with fast spread in grass, shrubs and forests. Fires will be very hot with crowning and short to medium spotting. Direct attack on the head may not be possible requiring indirect methods on flanks. Patrolling and monitoring the territory is highly suggested.
E	Extreme	Ignition can occur also from sparks. Fires will be extremely hot with fast rate of spread. Control may not be possible during day due to long range spotting and crowning. Suppression forces should limit efforts to limiting lateral spread. Damage potential total. Patrolling and monitoring the territory is highly suggested.

**Beirut, 24 December 2018**

# FIRE RISK INDEX

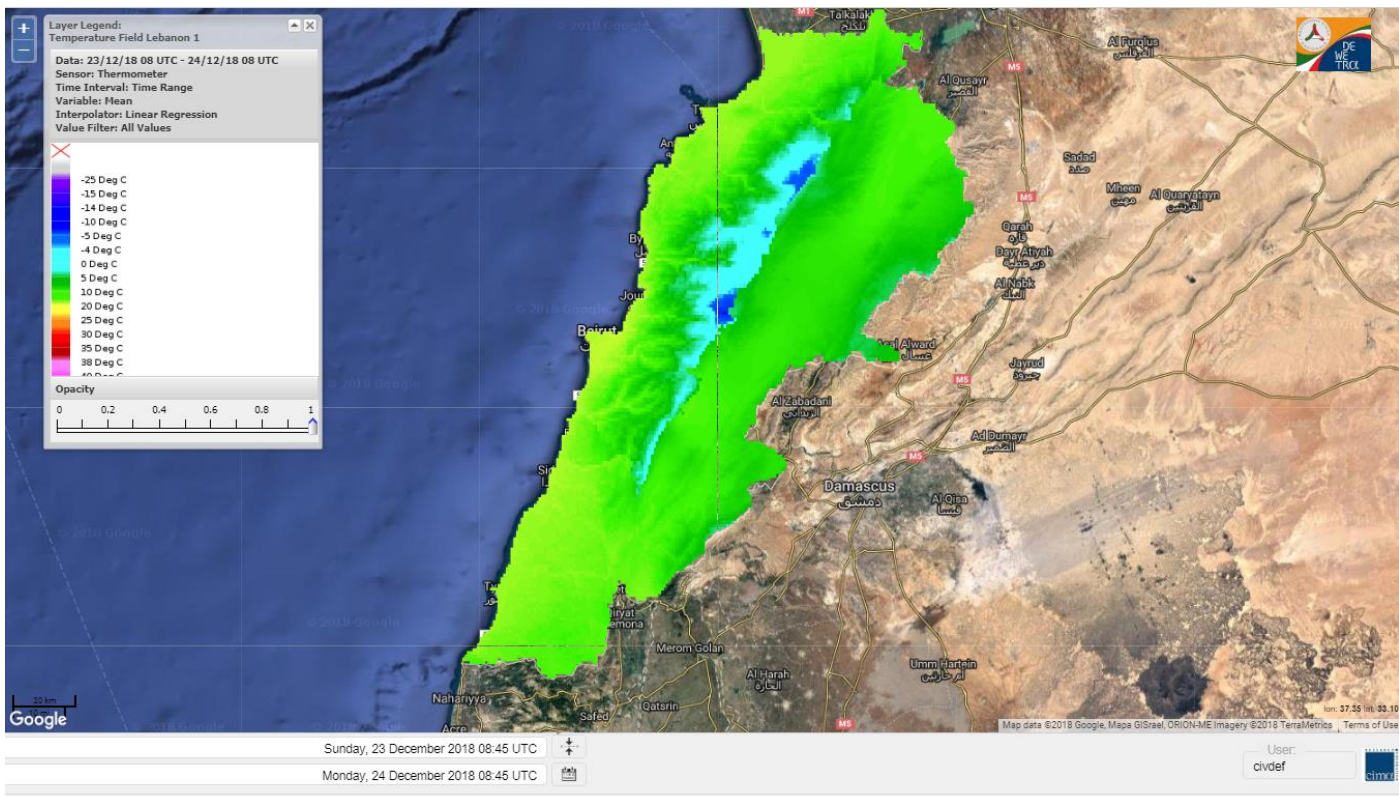


Layer Legend:  
Lebanon Wildfire Risk Index 1

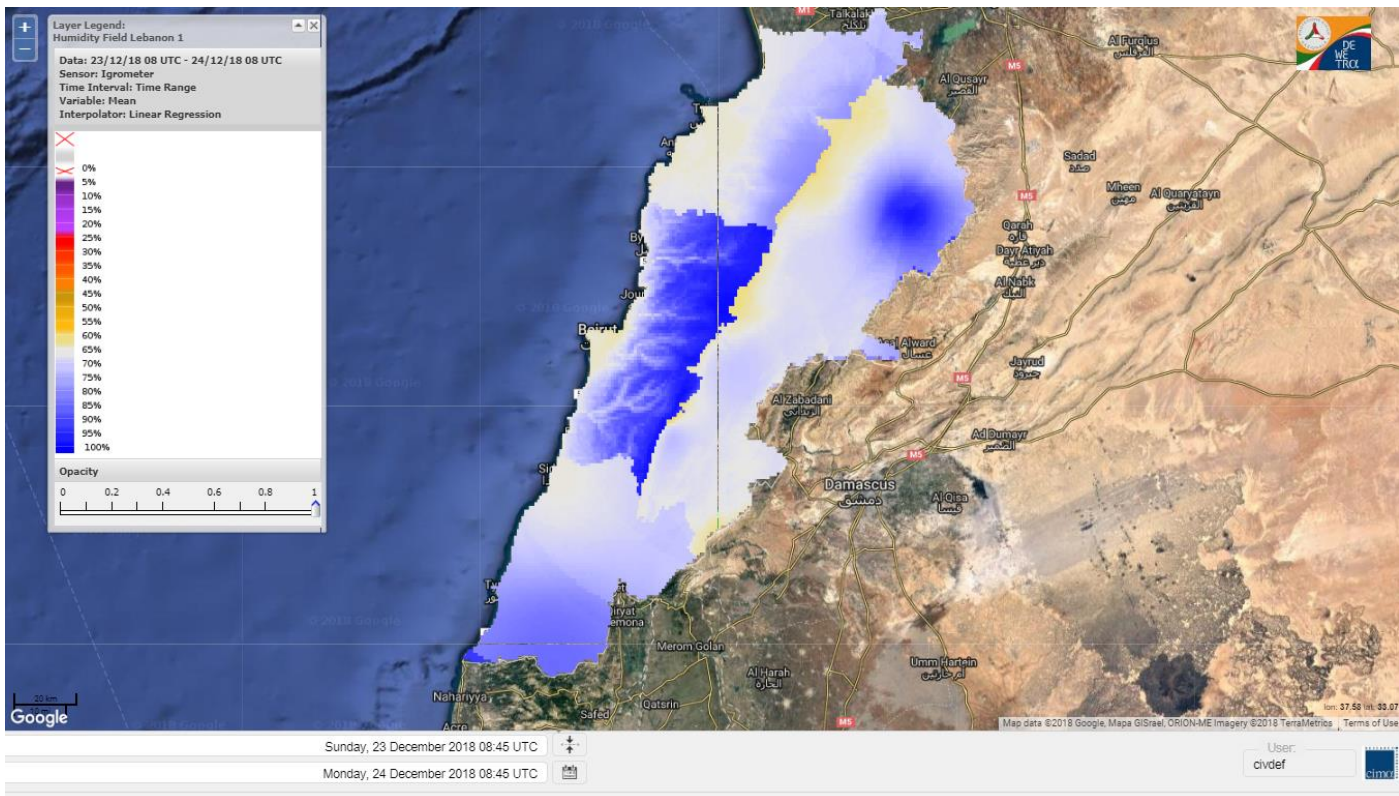
Data: Run: 24/12/2018 00:00. Forecast for 24  
Model: RISICO for the Republic of Lebanon  
Variable: Fire Weather Index  
Spatial Resolution: Caza

- VERY LOW
- LOW
- MEDIUM-LOW
- MEDIUM
- MEDIUM-HIGH
- HIGH
- EXTREME

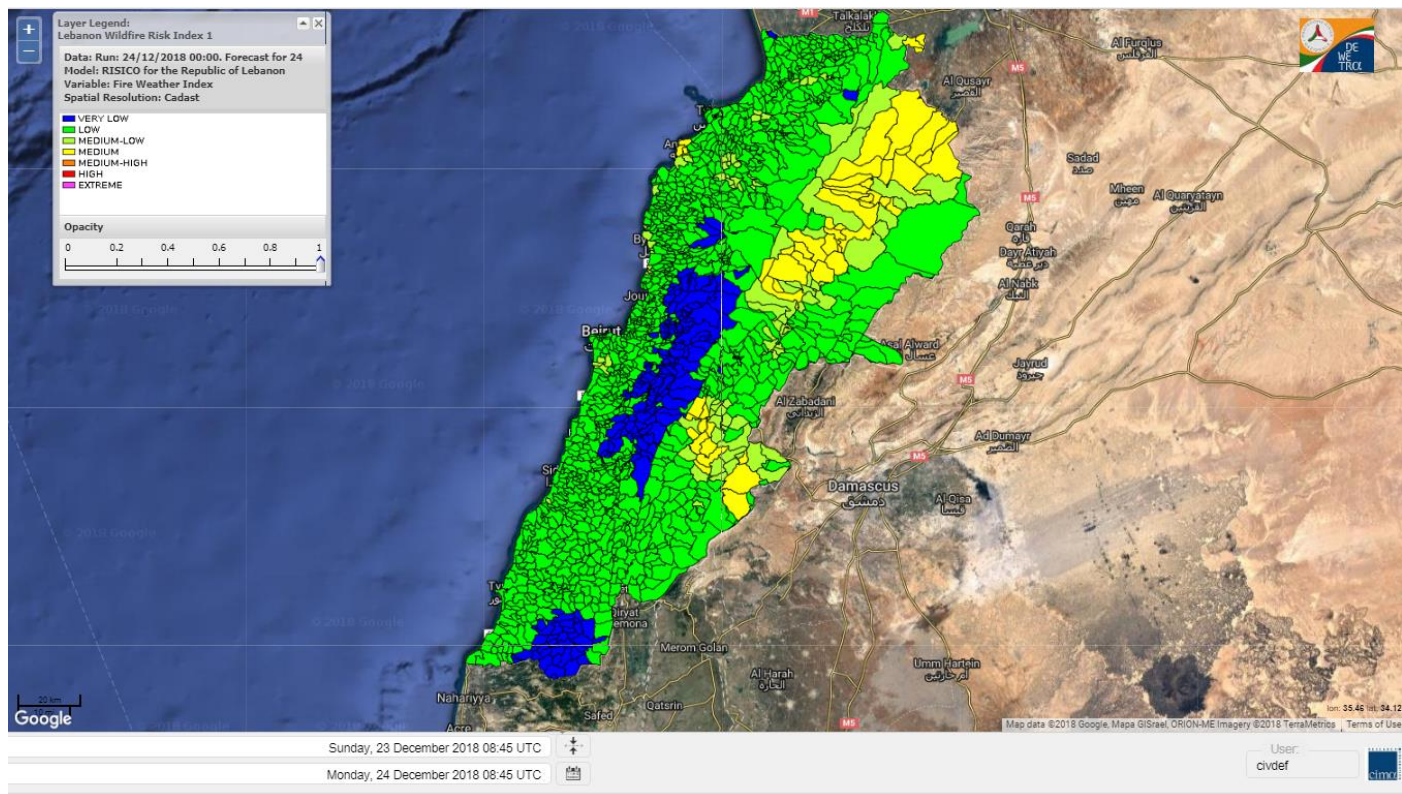
# Lebanon temperature for 24 Dec 2018



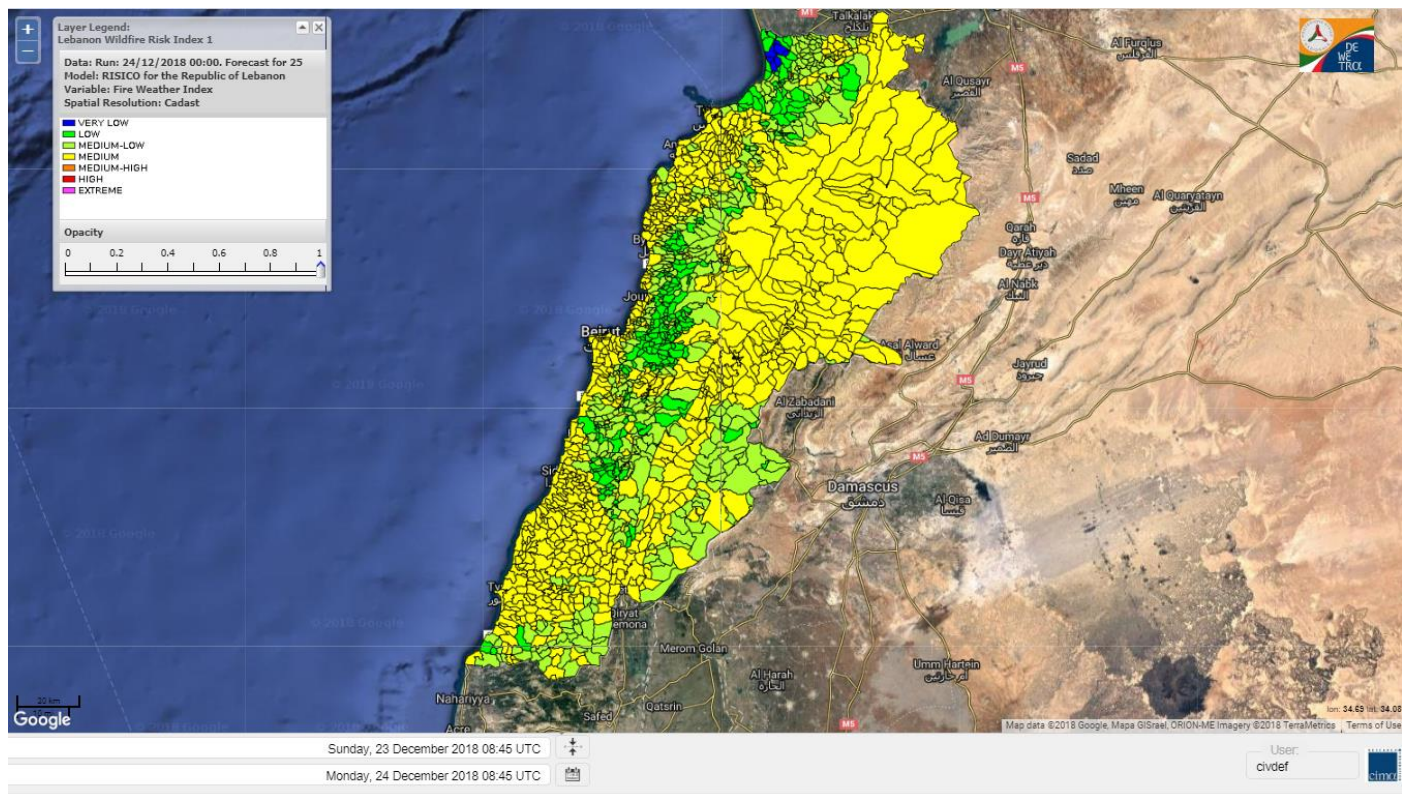
# Lebanon humidity for 24 Dec 2018



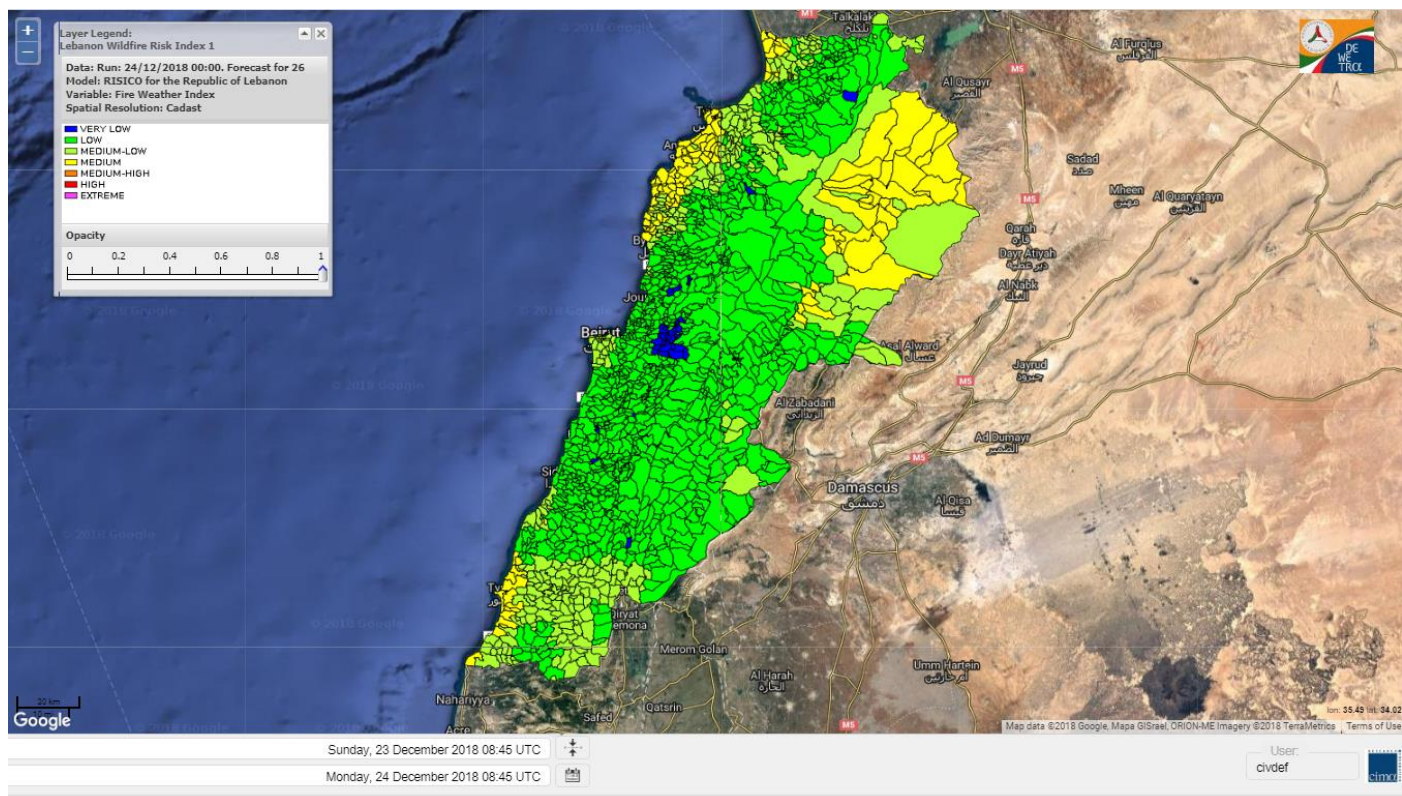
# Lebanon for 24 Dec 2018



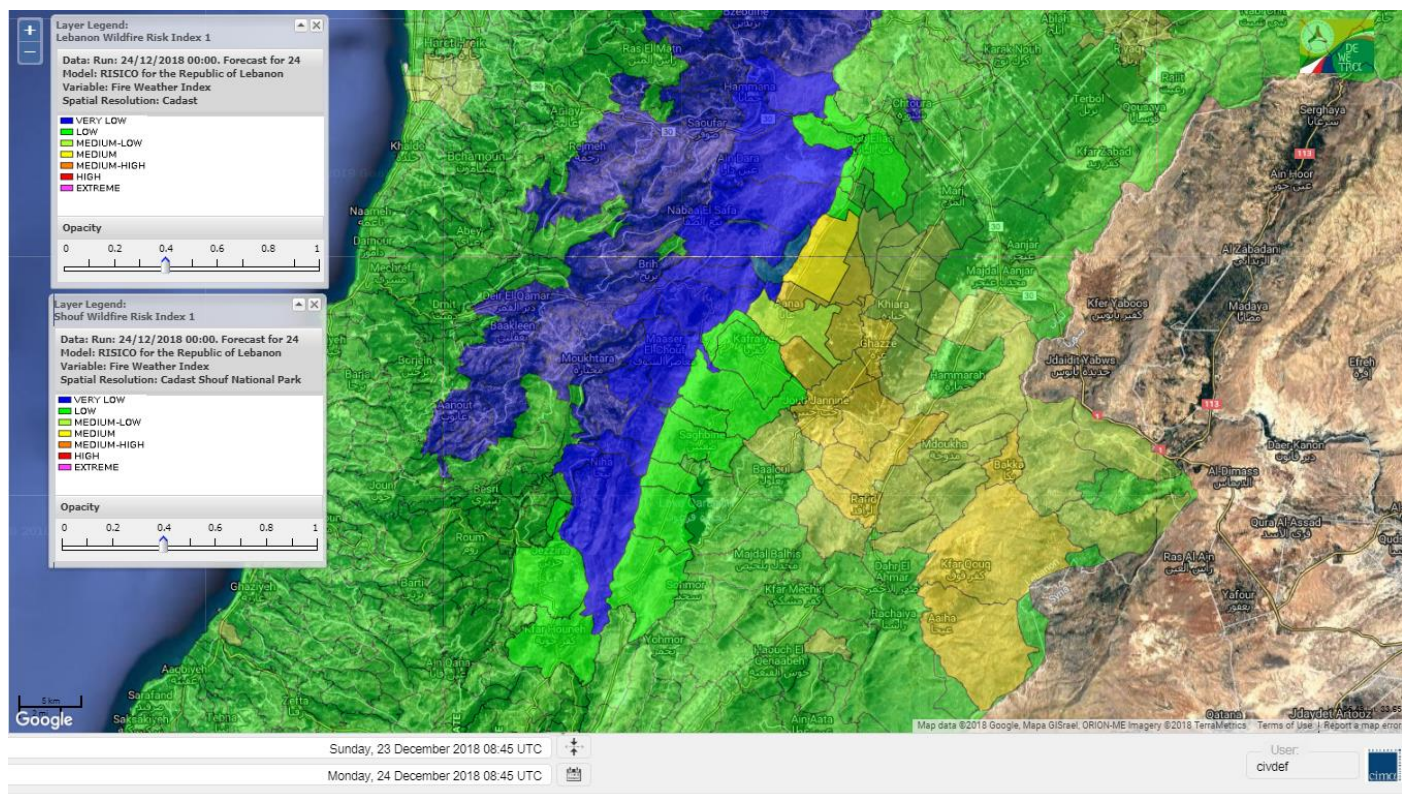
# Lebanon for 25 Dec 2018



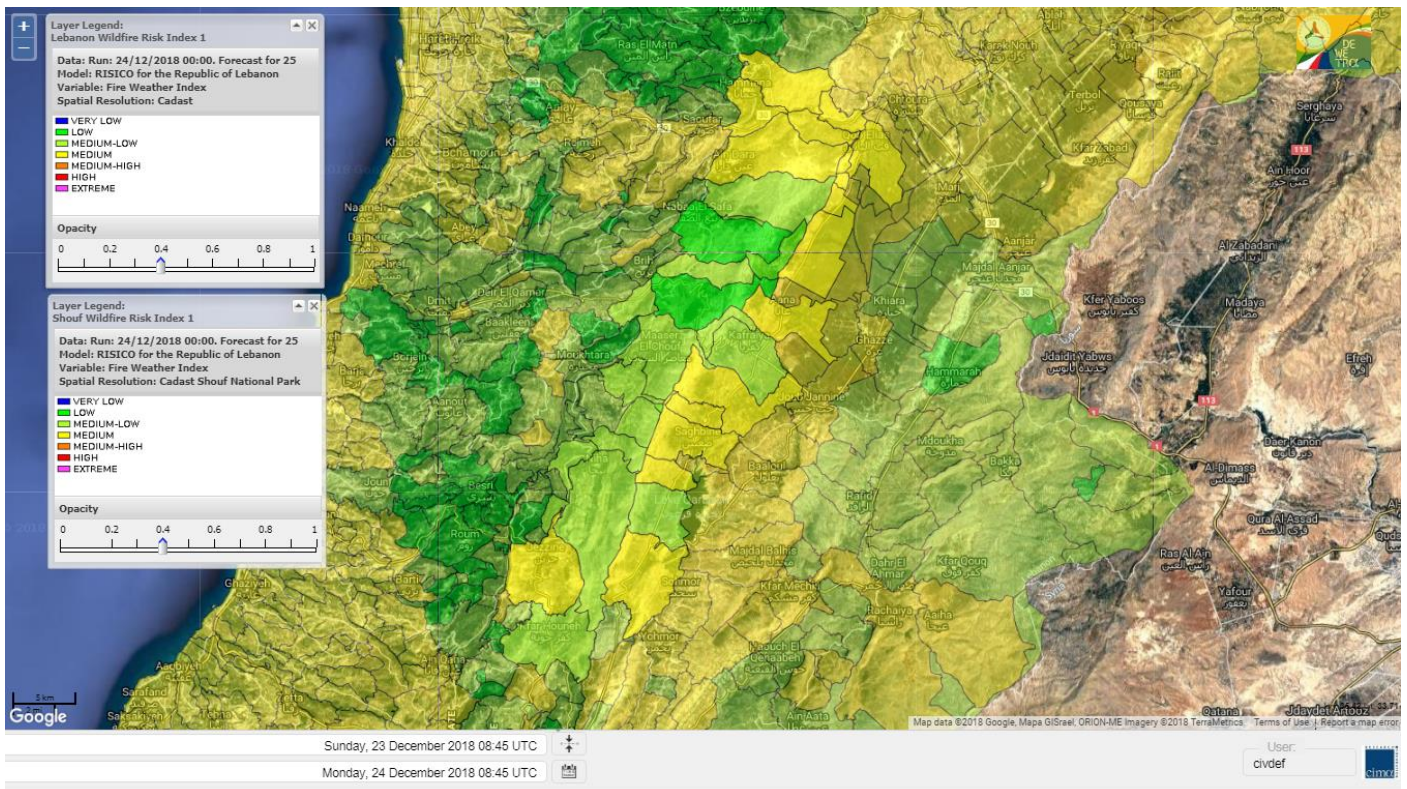
# Lebanon for 26 Dec 2018



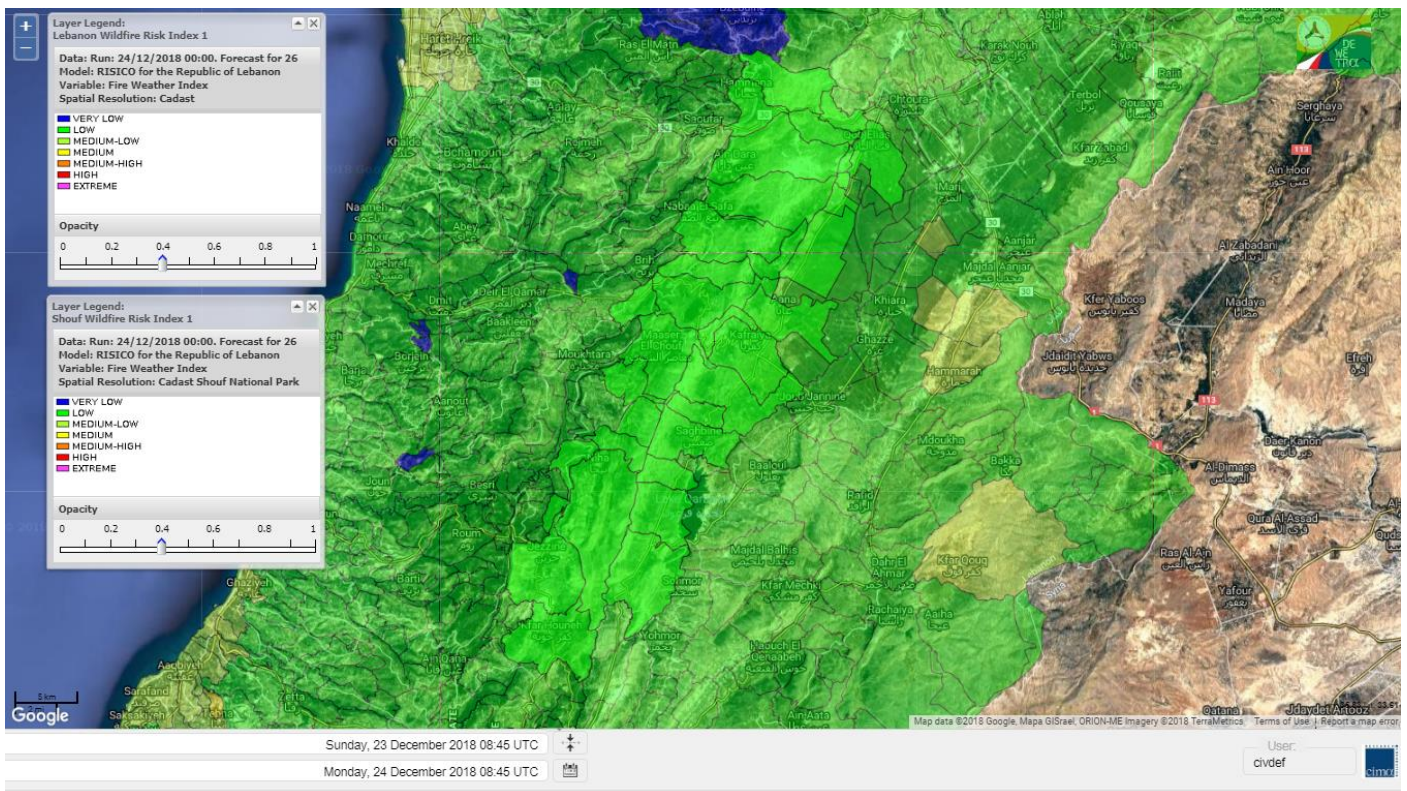
# Shouf Biosphere Reserve Forecast for 24 Dec 2018



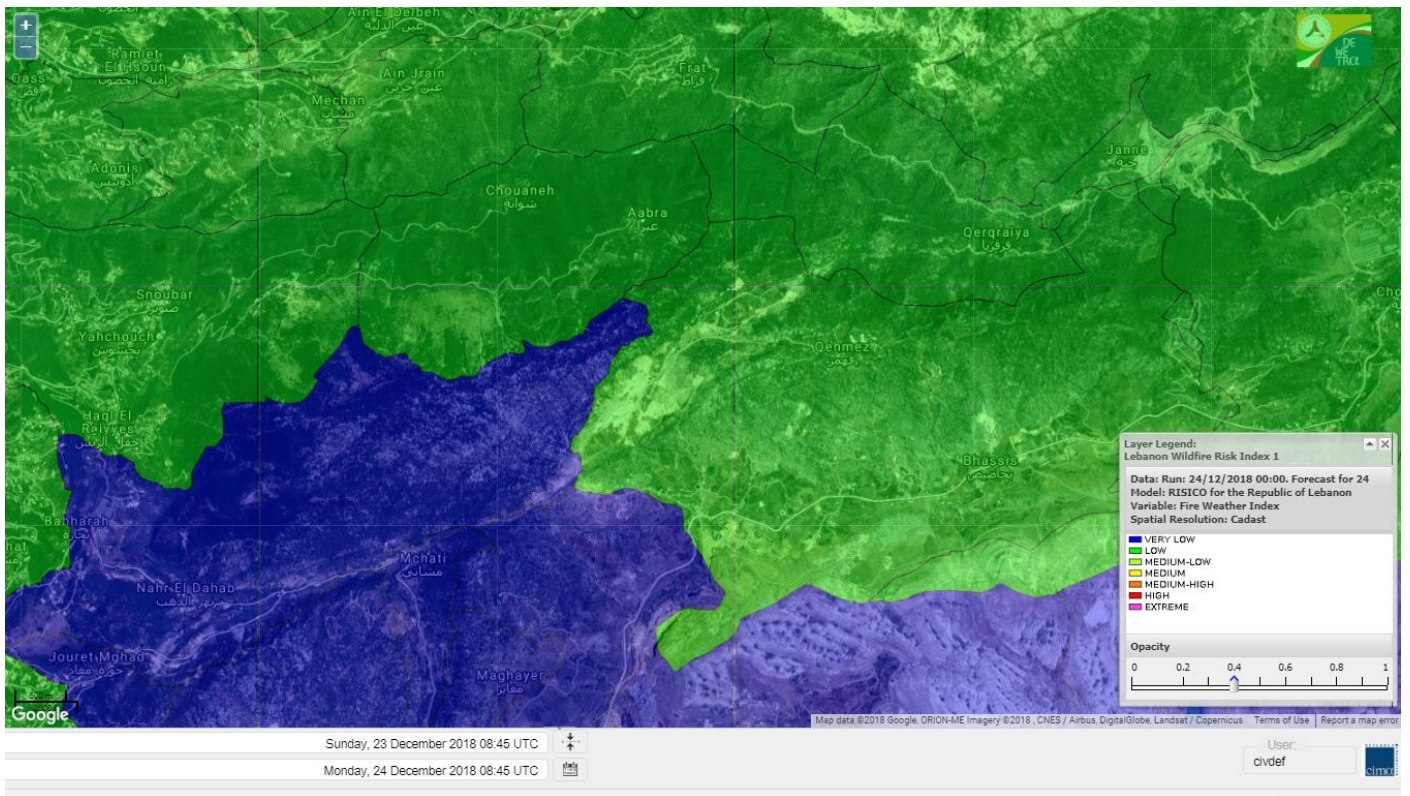
# Shouf Biosphere Reserve Forecast for 25 Dec 2018



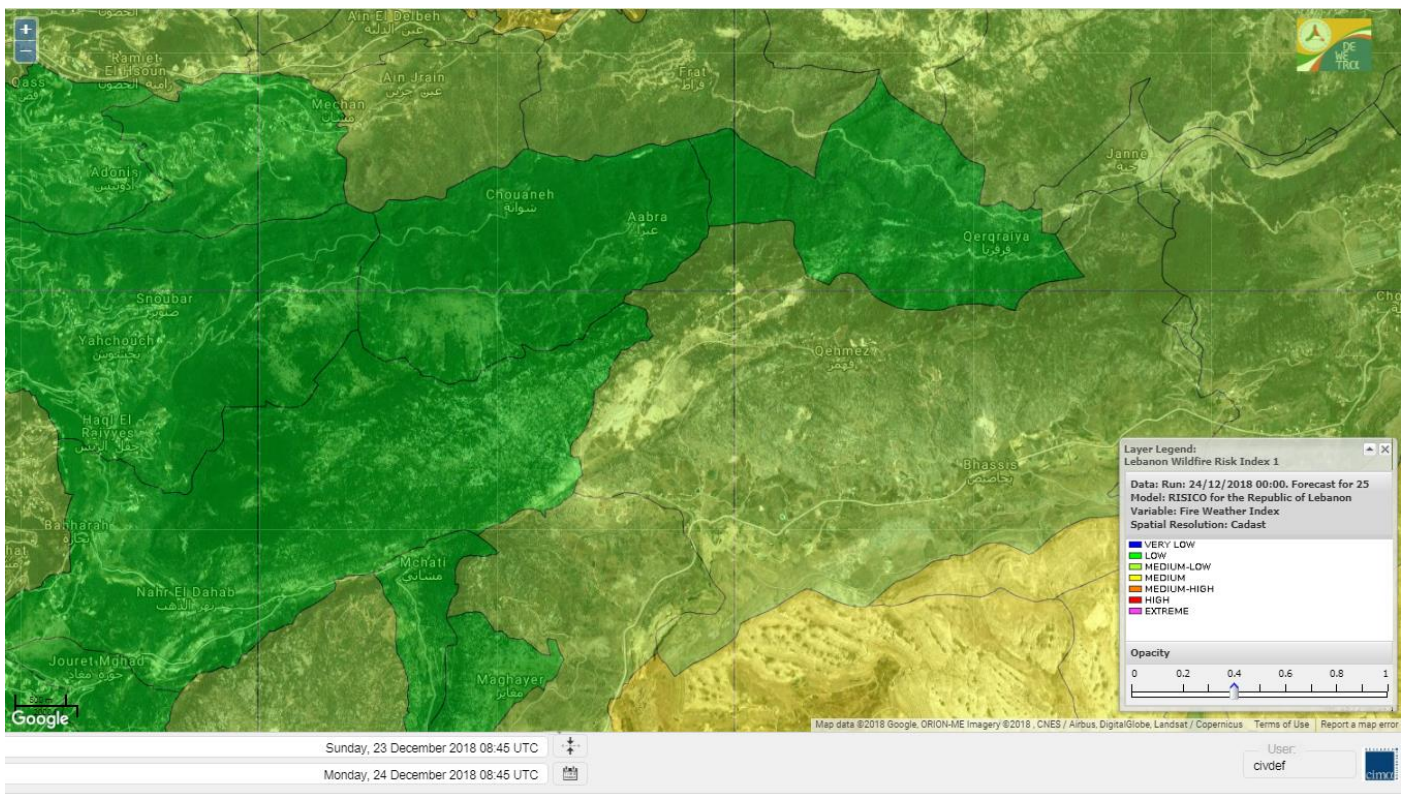
# Shouf Biosphere Reserve Forecast for 26 Dec 2018



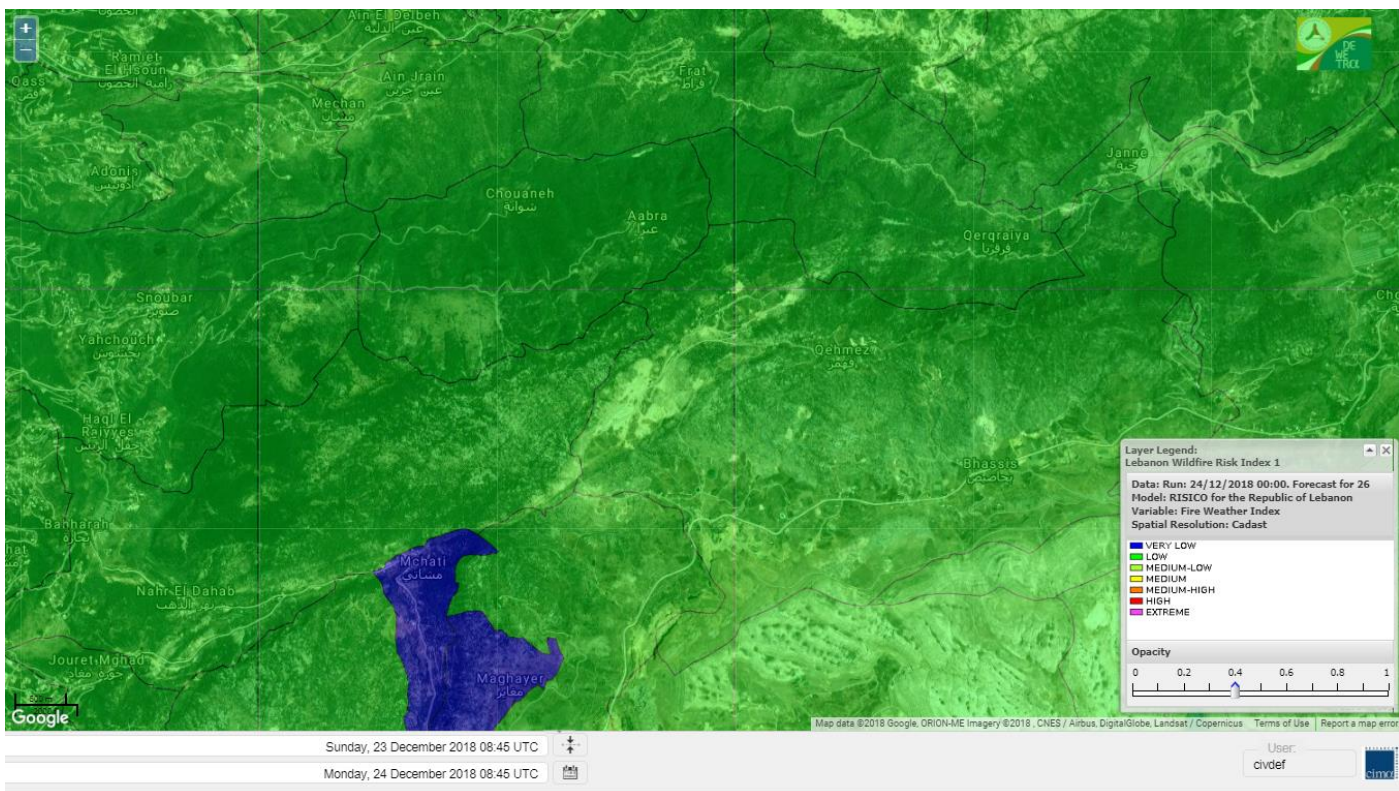
# Jabal Moussa Reserve Forecast for 24 Dec 2018



# Jabal Moussa Reserve Forecast for 25 Dec 2018



# Jabal Moussa Reserve Forecast for 26 Dec 2018



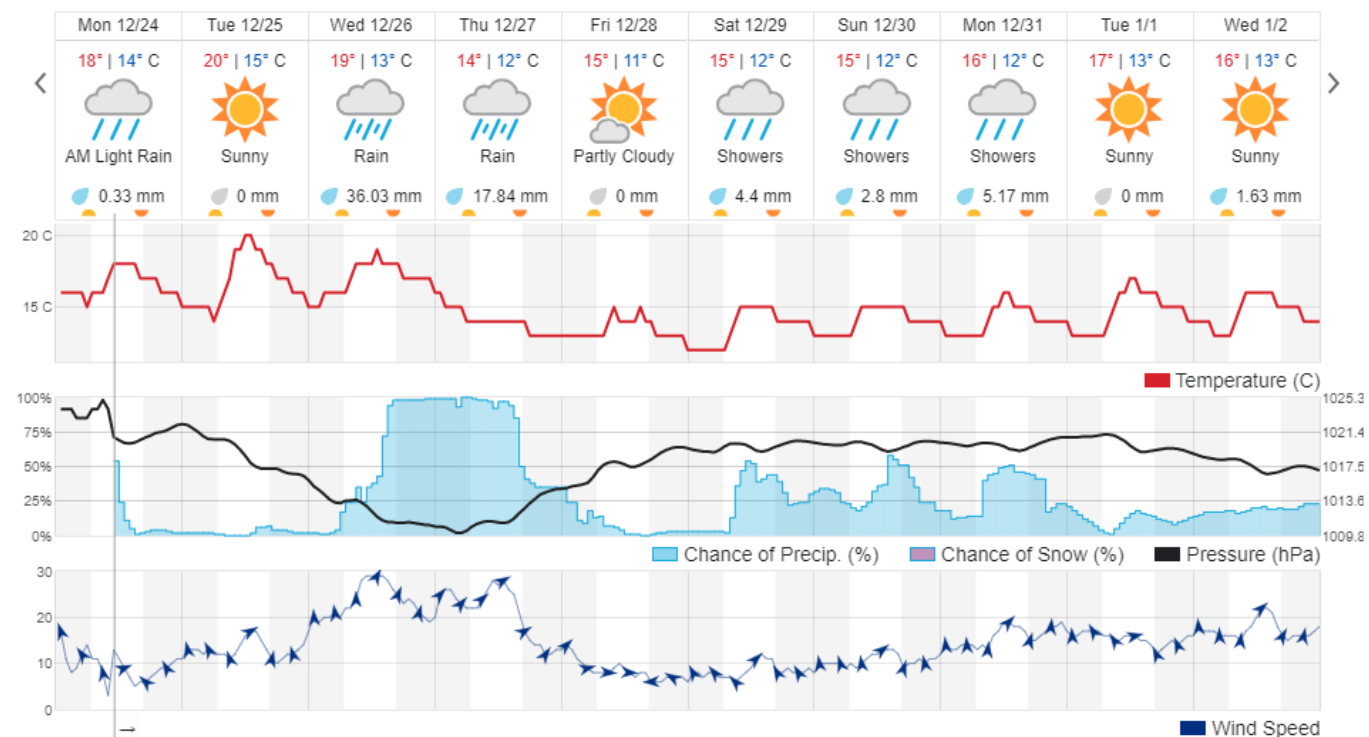
Elev 103m 33.89 °N, 35.52 °E

## Beirut, Lebanon

19° ACHRAFIEH,RIZK STATION | REPORT | CHANGE

TODAY HOURLY 10-DAY CALENDAR HISTORY WUNDERMAP

Customize





## Nord

### Koura

Municipality	24-Dec	25-Dec	26-Dec	Municipality	24-Dec	25-Dec	26-Dec	Municipality	24-Dec	25-Dec	26-Dec
Aaba	L	M	M	Afsaddiq	L	M	M	Ain Ekrine	L	M	ML
Amioun	L	M	ML	Anfeh	M	M	M	Badbhoun	ML	M	M
Barghoun	ML	M	M	Barsa	L	M	M	Batroumine	L	M	M
Bdebba	L	M	M	Bechmizine	L	M	ML	Bednayet El-Koura	L	M	M
Bhabbouch El-Koura	L	M	ML	Bkeftine	L	M	ML	Bnehran	L	M	ML
Bqaiia El-Koura	L	M	M	Bsarma	L	M	M	Btaaboura	L	M	M
Bterram	L	M	M	Btouratij	L	M	M	Bziza	L	M	ML
Dar Beechtar	L	M	ML	Dar Chmezzine	L	M	ML	Deddeh	L	M	M
Deir El-Balamand	L	ML	ML	Fih	L	M	M	Hraiche	M	M	M
Ijdaabrine	L	M	M	Kaftoun	L	M	ML	Kefraya El-Koura	L	M	M
Kfarakka	L	M	ML	Kfarhata	L	M	M	Kfarhazir	L	M	M
Kfarkahel	L	M	M	Kfarsaroun	L	M	ML	Kosba	L	M	ML
Mejdel el-Koura	L	ML	L	Nakhle	L	M	M	Qalhat	L	ML	M
Ras Masqa	L	M	M	Rechdibbine	ML	M	ML	Zakroun	M	M	M
Zgharta El-Mtaouile	L	ML	ML								

### Bcharre

Municipality	24-Dec	25-Dec	26-Dec	Municipality	24-Dec	25-Dec	26-Dec	Municipality	24-Dec	25-Dec	26-Dec
Aabdine	ML	M	L	Bane	ML	M	ML	Barhelioun	L	M	L
Bazouone	L	M	L	Becharre	L	M	L	Beit Menzer	ML	M	L
Billa	ML	M	L	Blaouza	ML	M	L	Bqaa Kafra	L	M	L
Bqerqacha	L	M	L	Breissat	L	ML	L	Dimane	L	ML	L
Hadath El Jobbeh	L	ML	L	Hadchit	L	M	L	Hasroun	L	M	L
Mazraat Aassaf	L	ML	L	Mazraat Bani Saab	L	ML	L	Mchaa El-Jobbeh	L	M	L
Metrit	L	M	ML	Moghr El-Ahoual	ML	M	L	Ouadi Qannoubine	L	L	VL
Qanat	L	ML	L	Qnayouer	L	ML	L	Tourza	ML	ML	L

### Batroun

Municipality	24-Dec	25-Dec	26-Dec	Municipality	24-Dec	25-Dec	26-Dec	Municipality	24-Dec	25-Dec	26-Dec
Aabrine	L	ML	M	Aalali	L	M	L	Aartziz	L	ML	ML
Abdelli	L	M	ML	Ajdabra	L	ML	ML	Assia	L	M	L
Basbina	L	M	M	Batroun	ML	M	M	Bcheleh	L	ML	L
Bechtoudar	L	M	L	Beit Chlala	L	ML	L	Beit Kassab	L	ML	L
Bijdarfil	L	M	M	Bqesmaya	L	M	ML	Chatine	L	ML	L
Chebtin	L	M	ML	Chekka	ML	M	M	Daael	L	ML	L
Dahr Abi Yaghi	L	ML	ML	Daraya El-Batroun	L	M	M	Deir Billa	L	ML	L
Deir Kfifane	L	M	M	Deir Mar Youhanna EL	L	ML	L	Deir Mar Youssef Jra	L	M	ML
Douma	L	ML	L	Douq	L	M	ML	Eddeh El-Batroun	L	M	ML
Ftahat El-Batroun	L	M	L	Ghouma	L	M	ML	Hadtoun	L	ML	L
Hamat	L	ML	M	Harbouna	L	ML	ML	Hardine	L	ML	L
Helta	L	ML	L	Hery	L	M	M	Jebbla	L	ML	L
Jrabta El-Batroun	L	M	ML	Jrane El-Batroun	L	M	M	Kfar Aabida	L	M	M
Kfar Halda	L	M	L	Kfarb Shlaimane	L	ML	L	Kfarhatna	L	M	ML
Kfarhay	L	M	M	Kfarhelos	L	ML	M	Kfifane	L	M	M

Kfour El Arabi	L	ML	L	Koubba	L	M	M	Kour	L	M	M
Mar Mama	L	ML	ML	Masrah	L	ML	ML	Mehmarch	L	M	L
Mrah Chdid	L	M	ML	Mrah El Ziyat	L	M	M	Mrah El-Hajj	L	ML	L
Nahle El-Batroun	L	M	L	Niha El-Batroun	L	ML	L	Ouahj El-Hajjar	L	M	M
Ouata Houb	L	ML	L	Qatnaaoun	L	ML	M	Racha	L	M	L
Rachana	L	M	ML	Rachkida	L	ML	M	Ram El-Batroun	L	L	L
Ras Nahhach	L	M	M	Selaata	L	M	M	Sghar	L	M	ML
Smar Jbayl	L	M	ML	Sourat El-Batroun	L	M	L	Tannourine El-Faouqa	L	M	L
Tannourine Et-Tahta	L	L	L	Thoum	L	M	M	Toula El-Batroun	L	M	ML
Zan	L	M	L								

## Zgharta

Municipality	24-Dec	25-Dec	26-Dec	Municipality	24-Dec	25-Dec	26-Dec	Municipality	24-Dec	25-Dec	26-Dec
Aachach	L	M	ML	Aalma	L	M	ML	Aarde	L	M	ML
Aintourine	ML	M	L	Arabet Qozhaya	L	ML	L	Arde	L	M	ML
Arjis	ML	M	ML	Asnoun	L	M	ML	Ayto	L	ML	L
Basloukit	L	M	ML	Bchannine	L	M	ML	Besebeel	L	M	ML
Bhairret Toula	L	M	L	Bnachee	ML	M	ML	Boussit	L	M	ML
Danha	L	M	ML	Daraiya Zgharta	ML	M	ML	Deir Jdeide	L	M	ML
Ehden	L	M	L	Halan	ML	M	ML	Hariq Zgharta	L	M	ML
Houakir	L	ML	L	Hraiqis	L	L	ML	laal	L	M	ML
Ijbaa	L	M	ML	Karm Saddeh	L	ML	L	Kfarchakhna	L	M	ML
Kfardlaqous	L	M	ML	Kfarfou	ML	M	ML	Kfarhata Zgharta	L	M	ML
Kfarhoura	L	M	L	Kfarsghab	L	M	L	Kfaryachit	L	M	ML
Kfarzaina	L	M	ML	Khaldiye	L	M	ML	Mazraat Ajbeaa	L	M	ML
Mazraat Et-Teffah	L	M	ML	Mazraat Jneid	L	M	ML	Mejdlaya Zgharta	L	M	ML
Merh Kfarsghab	L	M	ML	Miryata	L	M	ML	Miziara	L	ML	L
Mzraat Kefraya	ML	M	ML	Qorah Bach	L	M	ML	Rachiine	L	M	ML
Ras Kifa	ML	M	L	Sakhra	L	M	ML	Sebhel Zgharta	ML	M	ML
Serhel	L	L	L	Tallet Zgharta	L	M	ML	Toula Zgharta	L	ML	L
Zgharta	L	M	ML								

## Minieh-Denniye

Municipality	24-Dec	25-Dec	26-Dec	Municipality	24-Dec	25-Dec	26-Dec	Municipality	24-Dec	25-Dec	26-Dec
Aasaymout	L	L	L	Aaymar	L	M	ML	Aazki	ML	M	L
Ain El-Tineh-Miniyeh	L	L	ML	Assoun	L	ML	ML	Bakhaaoun	L	ML	L
Bchennata	L	M	ML	Bechehhara	L	L	L	Beddawi	L	ML	ML
Behouaita	L	ML	L	Beit El Foqss	L	L	ML	Beit Haouik	L	ML	L
Beit Zoud	L	ML	ML	Bekaasafrine	L	M	ML	Borj El Yahoudiyeh	L	L	ML
Bqarsouna	L	L	L	Btermaz	L	L	L	Debaael	L	L	L
Deir Ammar	L	ML	ML	Deir Nbouh	L	ML	L	Haouaret-Miniyeh	L	ML	L
Haql el Azimeh	L	L	ML	Harf El Siyad	L	L	L	Hazmiye-Miniyeh	L	L	ML
Izal	L	M	ML	Jarjour	L	L	L	Jayroun	L	ML	L
Kahf El-Malloul	L	ML	L	Karm El-Moher	L	M	ML	Kfar Binine	L	ML	L
Kfarchalane	L	ML	L	Kfarhabou	L	M	ML	Kharroub-Miniyeh	L	M	ML
Mazraat El-Kreme	L	L	L	Mazraat Ketrane	L	ML	ML	Merkebta	L	L	L
Minyeh	L	L	ML	Mrah El Sfirat	L	L	ML	Mrah Sraj	L	L	L
Mrebbine	L	M	L	Nabi Youcheaa	L	L	ML	Nemrine	L	ML	L

Qarhaiya	ML	ML	L	Qarne	L	ML	L	Qarsita	L	L	L
Qattineh-Miniyeh	L	L	ML	Qemmamine	L	ML	L	Qraine	L	L	ML
Raouda-Aadoua	L	L	L	Rihaniyet-Miniyeh	L	ML	L	Sfireh	L	ML	L
Sir Ed-Danniyeh	L	ML	ML	Tarane	L	ML	ML	Terbol-Miniyeh	L	M	ML
Zaghartaghriane	L	ML	L	Zouq Bhannine	L	L	ML				

## Nabatiye

### Nabatiye

Municipality	24-Dec	25-Dec	26-Dec	Municipality	24-Dec	25-Dec	26-Dec	Municipality	24-Dec	25-Dec	26-Dec
Aabba	L	M	L	Aazzi	L	M	L	Adchit El-Chqif	L	M	ML
Ain Bou Swar	L	M	L	Ain Kana	L	M	L	Ali El-Taher	L	M	L
Ansar	L	M	L	Arab Salim	L	M	L	Arnoun	L	M	ML
Bfaroue	L	M	L	Breyqaah	L	M	ML	Charqiyeh	L	M	L
Choukine	L	M	ML	Deir El Zahrani	L	M	L	Doueir El-Nabatiyeh	L	M	L
Habbouch El-Nabatiye	L	M	L	Hamra El-Nabatiyeh	L	M	ML	Harouf El-Nabatiyeh	L	M	L
Hmaile	L	M	L	Houmin El Faouqa	L	M	L	Houmin El Tahta	L	M	L
Jarjough	L	M	L	Jbaah El-Nabatiyeh	L	ML	L	Jebchit	L	M	L
Kfar Djal El-Nabatiy	L	M	ML	Kfar Remmane	L	M	L	Kfar Sir	L	M	ML
Kfar Tebnit	L	M	ML	Kfarfila	L	M	L	Kfour El-Nabatieh	L	M	L
Mayfadoun	L	M	ML	Mazraat Bsaffour	L	M	L	Mazraat Chalbaal	L	M	L
Mazraat Dmoul	L	M	L	Mazraat El Khreibeh	L	M	L	Mazraat El-Bayad El-	L	M	L
Mazraat Kfarjaouz	L	M	L	Mazraat Qalaat Meiss	L	M	L	Nabatiyeh El-Fawka	L	M	L
Nabatiyeh Et-Tahta	L	M	L	Namiriyeh	L	M	L	Qaaqaaiyet El Jisr	L	M	ML
Qossaibeh El-Nabatiy	L	M	ML	Roumine	L	M	L	Sarba El-Nabatieh	L	M	L
Sir El-Gharbiyeh	L	M	ML	Toul	L	M	L	Yehmor El-Nabatiyeh	L	M	ML
Zaoutar El Charkiyeh	L	M	ML	Zaoutar El-Gharbiyeh	L	M	ML	Zebdine El-Nabatiyeh	L	M	L
Zefta	L	M	L								

### Hasbaiya

Municipality	24-Dec	25-Dec	26-Dec	Municipality	24-Dec	25-Dec	26-Dec	Municipality	24-Dec	25-Dec	26-Dec
Ain Jarfa	L	ML	L	Abou Qamha	L	ML	L	Ain Qania	L	ML	L
Bourghos	L	M	L	Chebaa	L	M	L	Chouaya Hasbaya	L	ML	L
Dellafeh	L	M	L	Fardiss Hasbaiya	L	M	L	Hasbaya	L	M	L
Hbariyeh	L	ML	L	Kaoukaba Hasbaiya	L	M	L	Kfar Chouba	L	ML	L
Kfar Hamam	L	ML	L	Kfeir El-Zait	L	ML	L	Khalwat Hasbaya	L	ML	L
Khreibet Hasbaiya	L	M	L	Majidiyeh Hasbaiya	L	M	L	Marj Ez-Zhour (Haouc	L	ML	L
Meri	L	M	ML	Mimass	L	M	L	Rachaiya El-Fokhar	L	ML	L
Salaiyeb	L	M	ML								

### Marjayoun

Municipality	24-Dec	25-Dec	26-Dec	Municipality	24-Dec	25-Dec	26-Dec	Municipality	24-Dec	25-Dec	26-Dec
Aalmane Marjaayoun	L	ML	ML	Aamra	L	M	ML	Adayseh Marjaayoun	L	M	ML
Adchit El-Koussair	L	M	ML	Ain Aarab Marjaayoun	L	M	ML	Bani Haiyann	L	ML	L
Blatt Marjaayoun	L	M	L	Blida	L	ML	ML	Borj El-Moulouk	L	M	ML
Boueyda Marjaayoun	L	M	L	Deir Mimass	L	M	ML	Deir Siriane	L	M	ML
Dibbine	L	M	L	Ebel El Saqi	L	M	L	Houla	L	M	L
Houra	L	M	ML	Kfar Kila	L	M	ML	Khiam Marjaayoun	L	M	ML

Klayaa	L	M	ML	Majdel Selem	L	ML	ML	Marjaayoun	L	M	L
Markaba	L	M	L	Mays El-Jabal	L	ML	L	Mazraat Doumiat	L	M	ML
Mazraat Sarada	L	M	ML	Mhaibib	VL	ML	L	Qabrikha	L	ML	ML
Qantara	L	M	ML	Rab El-Thalathine	L	M	ML	Saouaneh Marjayoun	L	M	ML
Talloussa	L	ML	L	Taybeh Matjaayoun	L	M	ML	Touline	L	M	ML

## Bent Jbail

Municipality	24-Dec	25-Dec	26-Dec	Municipality	24-Dec	25-Dec	26-Dec	Municipality	24-Dec	25-Dec	26-Dec
Ain-Ebel	VL	ML	ML	Aitaroun	L	ML	ML	Aynata Bint Jbeil	VL	ML	ML
Ayta El-Chaeb	VL	ML	L	Ayta El-Jabal	VL	ML	ML	Beit Lif	VL	ML	L
Beit Yahoun	VL	ML	ML	Bint Jbeil	VL	M	ML	Borj Qalaway	L	M	ML
Braachit	VL	ML	ML	Chakra	VL	ML	ML	Debel	VL	M	L
Deir Antar	VL	M	ML	Froun	L	M	ML	Ghandouriyeh Bint Jb	L	M	ML
Hanine	VL	M	ML	Hariss	VL	M	ML	Hdatha	VL	ML	ML
Jmeymeh	VL	ML	ML	Kafra Bint Jbeil	VL	ML	L	Kfar Dounine	L	M	ML
Khirbet Selm	L	M	ML	Kounine	VL	ML	ML	Maroun El Ras	VL	M	ML
Qalaway	L	M	ML	Qaouzah	VL	ML	L	Qatmoun	VL	M	ML
Ramya Bint Jbeil	VL	ML	L	Rchaf	VL	ML	L	Rmeich	VL	M	L
Safad Al Battikh	VL	ML	ML	Salhaneh	VL	ML	L	Serbine	VL	M	ML
Sultanieh Bint Jbeil	VL	M	ML	Tibnine	VL	ML	ML	Tiri	VL	ML	ML
Yaroun	VL	ML	ML	Yater	VL	M	L				

## Mont Liban

### Jbail

Municipality	24-Dec	25-Dec	26-Dec	Municipality	24-Dec	25-Dec	26-Dec	Municipality	24-Dec	25-Dec	26-Dec
Aabeydat	L	ML	ML	Aalita	L	ML	L	Aamchit	ML	M	M
Aarab El-Lahib	VL	M	L	Aarasta	L	M	L	Adonis Jbeil	L	L	L
Afqa Jbeil	L	ML	L	Ain El Delbeh Jbeil	L	ML	L	Ain El-Ghouayba	L	ML	L
Ain Jrain	L	ML	L	Ain Kfah	L	M	M	Almat El Chemaliyat	L	ML	L
Almat El-Jenoubiya	L	ML	L	Aqoura	L	M	L	Bayzoun	L	ML	L
Bchille Jbeil	L	ML	L	Bechtlida	L	L	L	Behdaydat	L	ML	ML
Beit Habbaq	L	M	ML	Bejjeh	L	M	ML	Bekhaaz	L	M	ML
Berbara Jbeil	L	M	M	Bintael	L	ML	L	Birket Hjoula	L	L	L
Blatt Jbeil	L	ML	L	Boulhos	L	ML	L	Breyj Jbeil	L	L	L
Chamat	L	M	M	Chikhane	L	M	M	Chmout	L	M	ML
Eddeh Jbeil	L	M	ML	Ehmej	VL	ML	L	Fatre	L	ML	L
Ferhet	L	M	L	Fghal	L	M	ML	Frat	L	ML	L
Ghabat	L	M	L	Ghalboun	L	M	ML	Gharzouz	L	M	M
Ghofrine	L	M	M	Habil	L	L	L	Halate	L	M	L
Haqel	L	ML	ML	Hbaline	L	M	ML	Hboub	L	ML	L
Hdeine	L	M	L	Hema Er-Rehban	VL	M	L	Hema Mar Maroun Aann	VL	M	L
Hjoula	L	L	L	Hosrayel	L	M	M	Hsarat	L	M	ML
Hsoun	L	ML	L	Jaj	VL	ML	L	Janne	L	ML	L
Jbeil	ML	M	ML	Jeddeyl Jbeil	L	M	M	Jlisse	L	L	L
Jouret El-Qattine	L	L	L	Kfar Baal Annaya	L	L	L	Kfar Kidde	L	M	M
Kfar Kouas	L	L	L	Kfar Mashoun	L	M	ML	Kfoun	L	ML	ML

Kharbe Jbeil	L	M	ML	Laqlouq	L	M	L	Lassa	L	ML	L
Lehfed	L	L	L	Maad	L	M	M	Mar Sarkis	L	M	L
Mastita	ML	M	L	Mayfouq	L	ML	L	Mazraat El Siyad	L	M	L
Mazraat El-Maaden	L	ML	L	Mechane	L	L	L	Mechmech Jbeil	L	ML	L
Mehrin	L	M	L	Mejdel El-Akoura	L	M	L	Mghayreh Jbeil	L	M	L
Mounsef	L	M	M	Nahr Ibrahim	ML	M	ML	Qahmez	L	ML	L
Qartaba	L	ML	L	Qartaboun	ML	M	ML	Qattara Jbeil	L	L	L
Qorqraya	L	L	L	Ramout	L	M	ML	Ras Osta	L	L	L
Rihane Jbeil	ML	M	M	Sakiet El-Khayt	L	M	ML	Saqi Richmaya	L	ML	L
Sebrine	L	L	L	Seraita	L	M	L	Souane Jbeil	L	M	L
Tadmor	L	M	L	Tartej	VL	ML	L	Torzaiya	L	ML	L
Yanouh Jbeil	L	M	L	Zibdine Jbeil	L	ML	L				

## El Metn

Municipality	24-Dec	25-Dec	26-Dec	Municipality	24-Dec	25-Dec	26-Dec	Municipality	24-Dec	25-Dec	26-Dec
Aain El-Qabu	VL	L	L	Aain El-Qach	VL	L	VL	Aain El-Teffaha	L	ML	L
Aain el-Safssaf El-M	VL	L	VL	Abou Mizane	L	ML	L	Ain Aar	L	M	L
Ain Alaq	L	L	L	Ain El-Kharroube	VL	ML	L	Ain El-Sendiane	VL	L	VL
Ain El-Zeitoune	VL	L	VL	Ain Saadeh	L	ML	L	Aintoura El-Matn	VL	M	L
Amaret Chalhoub	L	M	L	Antelias	L	M	L	Atchaneh	L	L	L
Ayroun	VL	L	VL	Baabdat	L	L	VL	Baouchariyeh	L	M	L
Baskinta	VL	ML	L	Beit Chabab	L	L	L	Beit El-Chaar	L	M	L
Beit El-Kekko	L	M	L	Beit Mery	L	L	L	Bhersaf	L	L	L
Bikfaya	VL	L	VL	Biyakout	L	M	L	Bnabil	VL	L	VL
Bourj Hammoud	L	M	ML	Bqennaya	L	ML	L	Broummana El-Matn	L	L	L
Bsalim	L	ML	L	Bsifrine	L	L	VL	Btegrine	VL	L	L
Chaouiye	L	ML	L	Chouaya El-Matn	VL	ML	L	Choueir	VL	L	VL
Chrine	L	L	VL	Dahr El Sawan El-Mat	VL	L	L	Daychouniyeh	L	M	L
Dbayeh	L	M	L	Deir Chamra	L	L	L	Deir Mar Abda el Mch	L	L	L
Deir Mar Roukouz	L	M	L	Deir Tamiche	L	ML	L	Dik El-Mehdi	L	ML	L
Dikwaneh	L	M	ML	Douar El-Matn	VL	L	VL	Fanar	L	ML	L
Fraike	L	L	L	Haret El-Ballaneh	L	M	L	Hbous	L	M	L
Himlaya	VL	L	L	Jal El Did	L	M	L	Jdeideh El-Metn	L	M	L
Jouar El-Matn	VL	L	VL	Jouret El-Ballout	L	L	L	Kaaqour	L	L	VL
Kfar Aaqab	VL	L	VL	Kfertay El-Matn	VL	ML	L	Khenchara	VL	L	VL
Khillet El-Mtain	VL	L	VL	Konnabat Broummana	L	L	L	Konnabat Salima	L	L	VL
Machraah El-Matn	VL	L	L	Majdel Tarchich	VL	M	L	Majzoub	L	M	L
Mansouriyeh El-Metn	L	M	L	Mar Boutros Karm Et-	L	L	L	Mar Chaya et Mzekke	L	L	L
Mar Moussa Ed-Douar	VL	L	VL	Marjaba	VL	L	L	Masqa	L	L	L
Mayasse	L	L	L	Mazraat Deir Aoukar	L	M	L	Mazraat El-Hadirat	L	ML	L
Mazraat Yachouh	L	M	L	Mchikha	VL	ML	L	Menqlet Mezher	L	M	L
Mhaydseh Matn	VL	L	VL	Mkalles	L	M	L	Mrouj	VL	M	L
Mtain	VL	M	L	Mtayleb	L	ML	L	Nabay	L	L	L
Naccache	L	M	L	Ouadi Chahine	L	L	L	Ouadi El-Karm El-Mat	VL	L	L
Ouata El-Mrouj	VL	ML	L	Ouyoun El-Matn	L	L	L	Qornet Chehwan	L	ML	L
Qornet El-Hamra	L	ML	L	Roumieh	L	ML	L	Sfeilet Bikfaya	L	L	L
Sinn El-Fil	L	M	ML	Zabbougha	VL	L	L	Zalqa	L	M	L

Zarouon	VL	L	VL	Zekrite	L	ML	L	Zighrine El-Matn	VL	ML	L
Zouk El-Khrab	L	M	L								

## Chouf

Municipality	24-Dec	25-Dec	26-Dec	Municipality	24-Dec	25-Dec	26-Dec	Municipality	24-Dec	25-Dec	26-Dec
Aalmane El-Chouf	L	M	L	Aammqi El-Chouf	L	L	L	Ain Ouzein	VL	L	L
Ain Qani	VL	ML	L	Ain Zhalta	VL	L	L	Ainbal	VL	L	L
Amatour	L	ML	L	Anout	VL	ML	L	Atrine	VL	L	L
Baadarane	VL	ML	L	Baaqline	VL	ML	L	Baasir	L	M	L
Barja	L	M	L	Barouk	VL	L	L	Bater	VL	ML	L
Batloun	VL	ML	L	Bayqoun	L	M	L	Bchetfine	L	ML	L
Beiteddine	VL	L	L	Benouati Ech-Chouf	L	ML	L	Berjein	L	ML	L
Bireh et Mtalleh	VL	ML	L	Biret El-Chouf	VL	M	L	Bkechtine Ouel Mchei	L	L	VL
Bkifa El-Chouf	L	ML	L	Botme	VL	L	L	Bqaiaa Ech-Chouf	L	ML	L
Bsaba El-Chouf	L	ML	L	Chammis El-Chouf	L	M	L	Chehim	L	ML	L
Chemaarine	L	L	L	Chourit	L	L	L	Daher El-Chouf	L	ML	L
Dalhoun	L	ML	L	Damour	L	M	L	Daraya El-Chouf	L	L	L
Deir El-Moukhalles	L	L	L	Deir Baba	L	ML	L	Deir Dourit	L	ML	L
Deir El-Qamar	VL	ML	L	Deir Kouche	L	ML	L	Dibbieh	L	L	L
Dmit	L	ML	L	Fouara Jaafar	VL	L	L	Fraidis El-Chouf	VL	ML	L
Ghabet Jaafar	L	M	L	Gharife	VL	L	L	Haret Jandal	VL	ML	L
Hasrout	VL	ML	L	Jadra	L	M	L	Jahlieh	L	ML	L
Jbeih El-Chouf	VL	ML	L	Jdeidet El-Chouf	VL	ML	L	Jiyeh	L	M	L
Jleilyeh	VL	ML	L	Jmailiyeh	L	M	L	Joun	L	ML	L
Kahlounie El-Chouf	VL	M	L	Ketermaya	L	M	L	Kfar Faqoud	L	ML	L
Kfar Hamal	L	M	L	Kfar Him	L	M	L	Kfar Katra	L	ML	L
Kfar Niss	VL	ML	L	Kfar hay	VL	ML	L	Kfarnabrakh	VL	ML	L
Khirbet Bisri	L	L	L	Knayse El-Chouf	L	L	L	Maaniyeh	L	M	L
Maasser Beiteddine	VL	ML	L	Maasser El-Chouf	VL	ML	L	Majdalouna	L	M	L
Majdel El-Meouch	VL	ML	L	Mazboud	L	ML	L	Mazmoura	VL	ML	L
Mazraat El Chouf	L	ML	L	Mazraat El Daher	L	L	L	Mazraat El-Douair	VL	L	VL
Mechref	L	ML	L	Mghairie	L	M	L	Mghayrie El-Chouf	L	ML	L
Moukhtara	VL	ML	L	Mrusti	VL	ML	L	Mtolle	VL	ML	L
Naameh	L	M	L	Niha El-Chouf	VL	ML	L	Ouadi Abou Youssef	L	L	VL
Ouadi Ed-Deir	L	M	L	Ouadi El-Sit	VL	ML	L	Ouadi bnehlay	L	L	L
Qraibeh	VL	ML	L	Qreiaa	L	L	VL	Rmayle El-Chouf	L	M	L
Semqaniyeh	VL	M	L	Sibline	L	M	L	Sirjbeil	L	ML	L
Warhanieh	VL	ML	L	Werdaniyeh	L	M	L	Zaarourieh	VL	ML	L

## Baabda

Municipality	24-Dec	25-Dec	26-Dec	Municipality	24-Dec	25-Dec	26-Dec	Municipality	24-Dec	25-Dec	26-Dec
Abadiyeh	L	ML	L	Ain Mouaffaq	VL	ML	L	Araiya	L	ML	L
Arbaniyeh	L	L	VL	Arsoun	VL	L	VL	Baabda	L	M	L
Baalchmey	VL	M	L	Bmaryam	VL	L	L	Bourj El-Brajneh	ML	M	ML
Boutchay	L	M	L	Bsaba Baabda	L	M	L	Btekhney	VL	L	L
Btibyat	VL	L	L	Bzebdine	VL	L	VL	Chbeniyeh	VL	ML	L
Chiyah	L	M	ML	Chmeisset Baabda	VL	L	L	Chouit	L	L	L
Deir El-harf	VL	L	L	Deir Khouna	L	ML	L	Dlaybeh	L	L	VL

Falougha	VL	M	L	Furn El-Chebbak	L	M	ML	Hadath Beyrouth	ML	M	ML
Halaliyeh Baabda	VL	L	L	Hammana	VL	M	L	Haret El Sett	L	L	L
Haret Hamze	L	L	L	Haret Hreik	L	M	ML	Hasbaiya El-Metn	VL	L	VL
Jouar El-Hoz	VL	L	VL	Jouret Arsoun	VL	L	VL	Kfar Chima	L	M	L
Kfar Selouane	VL	ML	L	Khalouat Baabda	VL	ML	L	Kneisset Baabda	VL	L	VL
Laylakeh	ML	M	ML	Louayzeh Baabda	L	ML	L	Merdache	L	M	L
Mzairaa Baabda	VL	L	L	Ouadi Chahrour El OI	L	ML	L	Ouadi Chahrour El So	L	ML	L
Qalaa Baabda	VL	L	L	Qhraybe Baabda	VL	L	L	Qobbayaa	VL	ML	L
Qornayel	VL	L	VL	Qortada	L	L	L	Qrayeh Baabda	VL	ML	L
Qsaibeh Baabda	L	L	L	Qtale Baabda	VL	L	L	Ras El Metn	L	L	L
Ras El-Haref	L	ML	L	Rouayset El-Ballout	VL	L	L	Salima Baabda	L	L	VL
Tahouitat El Ghadir	ML	M	ML	Tarchich	VL	ML	L	Zandouqa	L	L	L

## Aley

Municipality	24-Dec	25-Dec	26-Dec	Municipality	24-Dec	25-Dec	26-Dec	Municipality	24-Dec	25-Dec	26-Dec
Abey	L	M	L	Aghmid	VL	ML	L	Ain Dara	VL	M	L
Ain Drafil	L	ML	L	Ain El Halazoun	VL	M	L	Ain El-Rmmaneh	L	L	L
Ain Jedideh	VL	M	L	Ain Ksour	L	ML	L	Ain Onoub	L	ML	L
Ain Traz	L	ML	L	Ainab	L	ML	L	Aley	L	M	L
Aramoun	L	M	L	Aytat	L	M	L	Azouniyeh	VL	M	L
Baawerta	L	ML	L	Badghan Oua Wadi Bad	VL	M	L	Bassatine	L	M	L
Bayssour	L	ML	L	Bchamoun	L	M	L	Bdadoun	L	ML	L
Behouara	L	ML	L	Bennay	L	M	L	Bhamdoun El-Dayaa	VL	M	L
Bhamdoun El-Mhatta	VL	M	L	Bkhechthey	VL	M	L	Bleibel	L	ML	L
Bmakine	L	M	L	Bmehray	VL	ML	L	Bouzrid	L	L	L
Bserrine	L	M	L	Bsous	L	L	L	Btalloun	VL	M	L
Btater	VL	M	L	Chanay	VL	M	L	Charoun	VL	M	L
Chartoun	VL	L	L	Chemlane	L	ML	L	Choueifat El-Aamrous	ML	M	L
Choueifat El-Oumara	L	M	L	Choueifat El-Quoubbe	L	M	L	Dakkoun	L	ML	L
Deir Qoubel	L	M	L	Dfoun	L	M	L	Douair El Remmaneh	VL	L	L
Ghaboun	L	ML	L	Habramoun	VL	L	L	Homs Oua Hama	VL	ML	L
Houmal	L	ML	L	Jisr El Qadi	L	ML	L	Kehaleh	L	L	L
Keyfoun	L	M	L	Kfar Aamey	L	ML	L	Kommatyeh	L	ML	L
Maasrati	L	ML	L	Majdel Baana	VL	M	L	Mansourieh et Ain El	VL	M	L
Mazraat El-Nahr	VL	ML	L	Mchakhte	VL	L	L	Mecherfeh	VL	M	L
Mejdaya	VL	ML	L	Mrayjat	VL	ML	L	Ramliyah	VL	ML	L
Rechmaya	L	ML	L	Rejmeh	VL	ML	L	Remhala	L	M	L
Rouaysset El Neemane	VL	ML	L	Saoufar	VL	M	L	Selfaya	L	ML	L
Sirhmoul	L	M	L	Souq El Ghareb	L	ML	L	Taazanieh	VL	M	L

## Kesrouane

Municipality	24-Dec	25-Dec	26-Dec	Municipality	24-Dec	25-Dec	26-Dec	Municipality	24-Dec	25-Dec	26-Dec
Achkout	VL	L	L	Adma Oua Dafneh	L	M	L	Ain Ed-Delbe Kesroua	VL	L	VL
Ain El-Rihane	L	ML	L	Aintoura Kesrouane	L	M	L	Ajaltoun	L	L	L
Akaybeh Kesrouane	ML	M	ML	Aramoun Kesrouane	L	L	L	Azra ouel Ozor	L	ML	L
Ballouneh	L	L	L	Batha	L	L	L	Bekaatat Achkout	VL	ML	L
Bekaatat Kanaan	VL	L	L	Bizhel	L	ML	L	Bouar	L	M	L
Bqaatouta	VL	ML	L	Bqaq Ed-Dine	ML	M	ML	Bzommar	L	ML	L

Chahtoul	L	L	L	Chnaniir	L	ML	L	Chouan	L	L	L
Daraya Kesrouane	L	L	L	Darououn	L	ML	L	Deir Baqlouch	L	ML	L
Dlebta	L	L	L	Eghbeh	VL	L	VL	Faraya	VL	M	L
Fatka	L	ML	L	Feytroun	VL	L	L	Ghazir	L	ML	L
Ghbaleh Kesrouane	L	ML	L	Ghedrass	L	L	L	Ghosta	L	L	L
Ghynéh	L	ML	L	Harharaya w Kattine	L	L	L	Harissa Kesrouane	L	ML	L
Hayata	VL	L	L	Hosein	L	L	L	Hrajel	VL	M	L
Jdeideh Ghazir	L	ML	L	Jeita	L	ML	L	Jounieh Ghadir	L	M	L
Jounieh Haret Sakhr	L	M	L	Jounieh Salel Alma	L	M	L	Jounieh Sarba	L	M	L
Jouret Bedrane	L	ML	L	Jouret Mhad	VL	L	L	Jouret Termos	L	ML	L
Kfar Debiane	VL	ML	L	Kfar Tay Kesrouane	VL	L	L	Kfar Yassine	L	M	L
Kfour Kesrouane	L	ML	L	Kharayeb Nahr Ibrahi	L	ML	L	Klayaat Kesrouane	VL	L	L
Maarab	L	L	L	Maaysra Kesrouane	L	ML	L	Mayrouba	VL	ML	L
Mazraat Er-Ras	L	M	L	Mazraat Mrah El-Mir	VL	L	L	Mchaa El Ftouh	L	M	L
Mchaa Faraya	VL	M	L	Mchaa Kfar Dibiane	VL	M	L	Mghaer	VL	L	VL
Mradiyah	L	ML	L	Nahr Ed-Dahab	VL	L	L	Nammoura Kesrouane	L	ML	L
Ouata El Jaouz	VL	ML	L	Ouata Sillam	L	M	L	Raachine	VL	L	VL
Rayfoun	VL	L	L	Safra Kesrouane	L	M	L	Shayle Kesrouane	L	ML	L
Tabarja	L	M	L	Yahchouch	L	L	L	Zaaytreh	L	ML	L
Zeytoun	L	ML	L	Zouk Mikael	L	M	L	Zouk Mosbeh	L	M	L

## Baalbek\_Hermel

### Baalbek

Municipality	24-Dec	25-Dec	26-Dec	Municipality	24-Dec	25-Dec	26-Dec	Municipality	24-Dec	25-Dec	26-Dec
Aadous	ML	M	ML	Aamchki	L	M	ML	Aarsal	L	M	ML
Ain Baalbek	ML	M	ML	Ain Bourday	L	M	ML	Ain El-Benye	L	M	L
Ain El-Jaouz Baalbek	L	M	ML	Ain El-Siya Chadoura	L	M	ML	Al Khodr Baalbek	L	M	L
Al Nabi Chit	L	M	L	Aynata Baalbek	L	M	L	Baalbek	L	M	ML
Bachwat	ML	M	L	Barqa	L	M	L	Bednayel Baalbak	L	M	L
Beit Chama	ML	M	L	Bijjaje	M	M	M	Bouday	M	M	L
Brital	L	M	ML	Btadi	M	M	L	Chaat	M	M	M
Chaibe	L	M	L	Chlifa	M	M	L	Chmestar	ML	M	L
Dar El-Oussa	M	M	L	Deir El-Ahmar	M	M	L	Deir Mar Maroun Baal	M	M	M
Douris	ML	M	ML	Fakiha	ML	M	M	Hadath Baalbek	M	M	L
Ham	L	M	L	Haour Taala	L	M	L	Hizzine	ML	M	M
Hlebta	M	M	M	Hosh Barada	ML	M	M	Hosh El Dahab	ML	M	L
Hosh El Snid	L	M	ML	Hosh El-Nabi	L	M	L	Hosh El-Rafiq	ML	M	L
Hosh Tal Safiya	ML	M	M	Hrebta	M	M	M	laat	M	M	L
Jebaa	M	M	L	Jenta	L	M	L	Kfar Dabach	ML	M	L
Kfar Dane	ML	M	L	Khraibeh El-Hermel	M	M	M	Khreibet Baalbek	L	M	L
Kneisset Baalbek	M	M	M	Labueh	ML	M	M	Maarboun	L	M	L
Majdaloun	ML	M	M	Maqneh	M	M	ML	Mazraat Beit Mcheik	M	M	L
Misraya	ML	M	L	Moqraq	ML	M	M	Nabha El-Damdoum	ML	M	ML
Nabi Chbay	L	M	L	Nabi Osman	M	M	M	Nahleh baalbek	L	M	M
Ouadi El-Oss	M	M	ML	Qaa Baayoun	M	M	M	Qaa Jouar Maqiye	M	M	M
Qaa Ouadi El-Khanzir	M	M	M	Qah Baalbek	M	M	M	Qarha Baalbek	M	M	M



Qsarnaba	ML	M	L	Ram Baalbek	M	M	M	Ras Baalbek El Sahl	M	M	M
Ras Baalbek El-Charq	ML	M	M	Riha	M	M	M	Saaide	ML	M	ML
Sbouba	M	M	M	Seriine El-Tahta	L	M	L	Slouqi	L	M	L
Taiba Baalbek	L	M	M	Talia	L	M	M	Taraiya	ML	M	L
Temnin El Fawqa	L	M	L	Temnin El-Tahta	ML	M	L	Tfail	L	M	ML
Yahfoufa	L	M	L	Yammouneh	ML	M	L	Younine	ML	M	M
Zboud	M	M	M								

## Hermel

Municipality	24-Dec	25-Dec	26-Dec	Municipality	24-Dec	25-Dec	26-Dec	Municipality	24-Dec	25-Dec	26-Dec
Charbine El-Hermel	ML	M	ML	Hermel Jbab	ML	M	ML	Hermel	M	M	M
Maaysra El-Hermel	M	M	M	Michaa Mrjihine	ML	M	L	Ouadi Faara	M	M	M
Ras Baalbek - Ouadi	M	M	M	Ras Baalbek El Gharb	M	M	M	Zighrine	M	M	M

## Akkar

### Akkar

Municipality	24-Dec	25-Dec	26-Dec	Municipality	24-Dec	25-Dec	26-Dec	Municipality	24-Dec	25-Dec	26-Dec
Aain Tinta	L	ML	L	Aaiyat	L	M	L	Aakkar El-Aatiqa	L	L	L
Aamar Akkar	L	ML	ML	Aamar El Baykat	L	M	L	Aamayer	ML	M	ML
Aamriyet Akkar	L	M	L	Aandqet	L	M	L	Aarmeh	L	ML	L
Aarqa	L	L	ML	Aawaynat	L	M	L	Aayoun Akkar	ML	M	L
Abboudiye	VL	ML	L	Ain El-Zeit	L	M	L	Ain Yaaqoub	L	ML	L
Akroum	L	M	L	Aridet Cheikh Zennad	L	L	M	Baldeh w Mazraat Bal	L	ML	L
Barcha	L	ML	ML	Bardeh	L	M	L	Bebnine	L	ML	L
Beino	L	ML	L	Beit Ayoub	L	M	L	Beit El-Haouch	L	ML	L
Beit Mellat	ML	M	L	Beit Younes	L	ML	L	Berbara Akkar	L	M	L
Berqayel	L	L	L	Bezbina	L	ML	L	Bireh Akkar	L	M	L
Borj	ML	M	L	Bqerezla	L	ML	L	Bzal	L	L	L
Chane	L	L	L	Chaqdouf	L	M	L	Charbila	L	ML	L
Cheikh Mohammad	L	ML	L	Cheikh Taba Es-Sahl	L	L	ML	Cheikh Taba	L	ML	ML
Cheikh Zennad	L	L	M	Cheikhlar	L	M	L	Chir Hmairine	L	ML	ML
Daghle	L	ML	L	Dahr Laissine	L	M	L	Darine	L	ML	ML
Dawra	L	L	L	Dawsa w Baghdadi	L	M	L	Dayret Nahr El-Kabir	L	M	ML
Deir Dalloum	L	ML	ML	Deir Jennine	L	ML	L	Denbou	L	L	L
Dibbabiyyeh	L	M	L	Douair Aadwiyeh	L	M	L	Fassikine	L	M	L
Fnaydek	L	ML	L	Fraydes Akkar	L	M	L	Ghazayle	L	ML	ML
Habchit	L	L	L	Hakour	L	ML	L	Halba	L	ML	ML
Haouchab	L	ML	ML	Hayssat	L	VL	ML	Haytla	L	ML	ML
Hayzouq	L	ML	L	Hedd	L	ML	L	Hmaira Akkar	L	L	L
Hmaiss Akkar	L	ML	ML	Hnaider	M	M	ML	Hokr Ed-Dahri	L	L	M
Hokr Etti	L	ML	ML	Hokr Jouret Srar	L	ML	ML	Houaich	L	ML	L
Hrar	L	ML	L	Idbil	L	ML	L	Ilal	ML	M	L
Janine	L	ML	ML	Jdeidet El-Joumeh	L	ML	ML	Jdeidet El-Kaiteh	L	ML	L
Jebayel	ML	M	L	Kafr	L	M	ML	Kafr	L	M	L
Karm Asfour	L	ML	L	Kfar Melki Akkar	L	VL	ML	Kfar Noun	L	ML	L
Kfarharra	L	ML	L	Khalsa	L	M	ML	Kharnoubet Akkar	L	ML	ML

Khirbet Daoud Aakkar	L	M	L	Khirbet El Remmane	L	M	L	Khirbet Shar	L	ML	L
Khoreybet El-Jindi	L	ML	ML	Khreibet Aakkar	L	ML	L	Kneisset Aakkar	L	VL	M
Kneisset Hnaider	M	M	ML	Knisse	L	ML	ML	Kroum El-Aarab	L	ML	L
Kwachra	L	M	L	Kweykhath	L	ML	L	Machta Hammoud	L	M	L
Majdala	L	ML	L	Majdel Akkar	L	M	L	Mar Touma	L	L	L
Marlaya Melhem	L	L	M	Mashha	L	ML	L	Massoudiye	L	L	M
Mazraat Beit Ghattas	L	ML	L	Mazraat En-Nahriye	L	M	L	Mechmech	L	ML	L
Memneh	L	L	L	Mhammara	L	ML	ML	Mighraq Aakkar	L	VL	M
Minyara	L	ML	ML	Moqayteh	L	L	M	Mounjez	L	ML	L
Msalla	L	M	L	Mzeihmeh	L	ML	ML	Nfaiseh	L	ML	L
Noura Et-Tahta	L	M	L	Ouadi El-Haour	L	ML	ML	Ouadi El-Jamous	L	ML	L
Ouyoun El-Ghizlane	L	L	L	Qaabarine	L	VL	ML	Qabaait	L	L	L
Qachlaq	L	ML	ML	Qantara Aakkar	ML	ML	L	Qarha Aakkar	M	M	ML
Qarqaf	L	ML	L	Qboula	ML	M	L	Qleiaat Aakkar	L	VL	M
Qloud El-Baqie	L	ML	L	Qobaiyat Aakkar	L	ML	L	Qobbat Chamrat	L	L	M
Qorayat	L	ML	L	Qornet Aakkar	L	M	L	Qsair Aakkar	L	M	L
Rahbe	L	ML	L	Rihaniyet Aakkar	L	ML	L	Rmah	L	M	L
Rmoul	L	VL	ML	Saadine	L	ML	ML	Sadaqa	L	M	L
Saidnaya	L	ML	ML	Sammouniye	L	L	ML	Sayssoq	L	ML	L
Semmaqiye	VL	L	M	Semmaqli	L	L	M	Sfinet El-Dreib	L	M	L
Sfinet El-Qaitaa	L	L	L	Sindyanet Zeidane	L	ML	L	Souaisset Aakkar	L	ML	L
Srar	L	ML	ML	Tal Abbas El Gharby	L	L	ML	Tal Abbas El-Chargy	L	ML	L
Tal Biret	L	L	ML	Tal Hmayra	L	ML	L	Tal Maayan Tal Kiri	L	VL	M
Tal Sibel	L	L	M	Tallet Chattaha	ML	M	L	Tikrit	L	ML	L
Tleil	L	ML	ML	Tshea	L	ML	L	Zawarib	L	ML	L
Zouq El Hosniyeh	L	L	L	Zouq El-Haddara	L	ML	L	Zouq El-Hbalsa	L	L	L
Zouq El-Moqachrine	L	L	L								

## Sud

### Sour

Municipality	24-Dec	25-Dec	26-Dec	Municipality	24-Dec	25-Dec	26-Dec	Municipality	24-Dec	25-Dec	26-Dec
Aaiyeh	VL	M	ML	Aalma El-Chaab	L	ML	ML	Aaytit	L	M	ML
Abbassiyeh Sour	L	M	M	Abou Chech	L	ML	ML	Ain Abou Abdallah	L	M	M
Ain Baal	L	M	M	Arzoun	L	M	ML	Aziyeh	L	M	ML
Baflaya	L	M	ML	Barich	L	M	ML	Batouliyah	L	M	M
Bayad	L	M	ML	Bazouriyeh	L	M	ML	Bediass	L	M	ML
Bestiyat	L	M	ML	Borj El Chemali	L	M	M	Borj En-Naqoura	L	M	M
Borj Rahhal	L	M	ML	Boustane	VL	M	ML	Btaychiyeh	L	ML	ML
Chaaitiye	L	M	ML	Chameh	L	ML	ML	Chehabiye	L	M	ML
Chehour	L	ML	ML	Chihine	L	ML	L	Debaal Sour	L	M	ML
Deir Amess	L	ML	L	Deir Kifa	L	M	ML	Deir Qanoun El-Ain	L	M	M
Deir Qanoun El-Naher	L	M	ML	Derdghaiya	L	M	ML	Dhayra	L	ML	ML
Halloussiyeh	L	M	ML	Hamoul	L	L	ML	Hanaouey	L	M	ML
Henniye	L	M	M	Hmairi Sour	L	M	ML	Iskandarouna Sour	L	ML	ML
Jbal El Botom	L	ML	L	Jebbin	L	M	ML	Jennata	L	M	ML
Jijim	L	L	ML	Jouaiya	L	M	ML	Kneisset Sour	L	M	ML

Maarake	L	M	ML	Maaroub	L	M	ML	Majadel	L	M	ML
Majdalzoun	L	M	ML	Mansouri Sour	L	M	M	Marnba	L	ML	ML
Marouahine	VL	ML	L	Mazraat El-Zalloutiy	VL	M	ML	Mazraat Mechref	L	M	ML
Mazraat Tayr Semhat	L	ML	ML	Mheilib	L	M	M	Neffakhiyeh	L	M	ML
Niha Sour	L	M	ML	Ouadi Jilo	L	M	ML	Qana	L	M	ML
Qolaileh Sour	L	M	M	Rechknany	VL	ML	L	Rmadiyeh	L	M	ML
Selha Sour	L	M	ML	Siddiqine	L	M	ML	Sour	L	M	M
Srifa	L	M	ML	Tayr Debbe	L	M	ML	Tayr Felsay	L	M	ML
Tayr Harfa	L	M	ML	Touayri	L	ML	ML	Toura	L	M	ML
Yanouh Sour	L	M	ML	Yarine	L	M	ML	Zebqine	L	L	L

## Saida

Municipality	24-Dec	25-Dec	26-Dec	Municipality	24-Dec	25-Dec	26-Dec	Municipality	24-Dec	25-Dec	26-Dec
Aanqoun	L	M	L	Aaqtanit	L	M	L	Aarab Ej-Jall	L	M	L
Aarab Tabbaya	L	M	L	Abra Saida	L	M	L	Adloun	L	M	L
Adousiyeh	L	M	ML	Ain-El-Deleb	L	M	L	Arzai	L	M	ML
Babliyah	L	M	L	Barty	L	M	L	Bissariyeh	L	M	ML
Bnaafoul	L	M	L	Bqosta	L	M	L	Bramiy --	L	M	L
Daoudiyeh	L	M	L	Dareb El-Sim	L	M	L	Erkay	L	M	L
Ghassanieh	L	M	L	Ghazieh	L	M	ML	Hajjeh	L	M	L
Haret Saida	L	M	L	Hartiyeh	L	M	L	Hlaliye Saida	L	M	L
Insariyat	L	M	L	Jazira Saida	L	M	M	Kafar Bit	L	M	L
Kaoutariyet El-Siyad	L	M	L	Kfar Chellal	L	M	L	Kfar Hatta Saida	L	M	L
Kfar Milke Saida	L	M	L	Khartoum	L	M	L	Khaziz	L	M	L
Khirbet Ed-Douair Sa	L	M	ML	Khirbet El-Bassal	L	M	L	Khrayeb Saida	L	M	L
Loubieh	L	M	L	Maghdouche	L	M	L	Majdelyoun	L	M	L
Matariyet El-Choumar	L	M	ML	Matayriyeh	L	M	L	Mazraat 'Mseileh	L	M	ML
Mazraat 'Snaiber	L	M	ML	Mazraat Aarab Soukka	L	M	L	Mazraat Deir Taqla	L	M	L
Mazraat El Yahoudiye	L	M	M	Mazraat El-Housseini	ML	M	ML	Mazraat El-Mhaydaleh	L	M	L
Mazraat El-Ouasta	L	M	M	Mazraat Jamjim	L	M	L	Mazraat Kaoutariyet	L	M	L
Mazraat Kfar Badda	L	M	L	Mazraat Oussamiyat	L	M	L	Mazraat Sari	L	M	L
Mazraat Sinai	L	M	L	Meemariyeh	L	M	L	Merouaniyeh	L	M	L
Miyeh ou Miyeh	L	M	L	Najjariyeh	L	M	ML	Qaaqaiyat El-Snaouba	L	M	ML
Qnarit	L	M	L	Qraiye Saida	L	M	L	Saida Ed-Dekermane	L	M	L
Saida El-Oustani	L	M	L	Saida El-Qadimeh	L	M	L	Saida Kefraya	L	M	L
Saksakiyeh	L	M	ML	Salhie Saida	L	M	L	Sarafand	L	M	ML
Sfenta	L	ML	L	Tafahta	L	M	L	Tanbourit	L	M	L
Tebna	L	M	M	Zaghdraiya	L	M	L	Zeita	L	M	L
Zrariyeh	L	M	ML								

## Jezzine

Municipality	24-Dec	25-Dec	26-Dec	Municipality	24-Dec	25-Dec	26-Dec	Municipality	24-Dec	25-Dec	26-Dec
Ain El-Mir (El Estab	L	M	L	Anane	L	L	L	Aramta	L	M	L
Ariya	L	ML	L	Aychiyeh	L	ML	L	Azour	L	L	L
Baba	L	L	L	Baysour Jezzine	L	M	L	Benoueteh Jezzine	L	ML	L
Bhannine	L	ML	L	Bisri	L	L	L	Bkassine	L	L	L
Bouslaya	L	L	L	Btedine El-Leqech	L	L	L	Chbail	L	L	L
Choualiq Jezzine	L	M	L	Dahr Ed-Deir	L	ML	L	Deir El Qattine	L	L	L

Demachqiyeh	L	M	L	Ghabbatiyeh	L	ML	L	Harf Jezzine	L	L	L
Hassaniyeh	L	M	L	Haytouleh	L	M	L	Haytura	L	ML	L
Hidab	L	ML	L	Homsiyeh	L	ML	L	Jabal Toura	L	ML	L
Jarmaq	L	M	L	Jensnaya	L	M	L	Jernaya	L	M	L
Jezzine	L	M	L	Karkha	L	M	L	Kfar Falous	L	M	L
Kfar Houna	L	ML	L	Kfar Jarrah	L	M	L	Lebaa	L	M	L
Louayzet Jezzine	L	ML	L	Machmouche	L	L	L	Mahmoudiyeh Jezzine	L	M	L
Maknounye Jezzine	L	L	L	Maraat Ouazaiyeh	L	ML	L	Mazraat Daraya	L	ML	L
Mazraat El-Aarqoub	L	ML	L	Mazraat El-Mathane	L	L	L	Mazraat El-Rahbane	L	L	L
Mazraat Khallet Khaz	L	ML	L	Mazraat Louzid (Loua	L	L	L	Mazraat Qrouh	L	M	L
Mazraat Tamra	L	M	L	Mazraat Zighrine Jez	L	ML	L	Mazraat	L	L	L
Mharbiyeh	L	M	L	Midane Jezzine	L	ML	L	Mjeydel Jezzine	L	M	L
Mlikh	L	ML	L	Mrach El-Hbasse	L	M	L	Ouadi Baanqoudaine	L	M	L
Ouadi El-Laymoun	L	M	L	Ouardiyeh	L	L	VL	Qabaa Jezzine	L	L	L
Qatrani	L	ML	L	Qaytouleh	L	ML	L	Qtaleh Jezzine	L	L	L
Rihane Jezzine	L	ML	L	Rimat	L	ML	L	Roum	L	L	L
Roummanet	L	M	L	Sabbah	L	ML	L	Saydoun	L	L	L
Sfaray	L	L	L	Snaya	L	L	L	Sojoud	L	ML	L
Srayri	L	ML	L	Taaid	L	L	L	Wadi Jezzine	L	ML	L
Zhalta	L	ML	L								

## Bekaa

### West Bekaa

Municipality	24-Dec	25-Dec	26-Dec	Municipality	24-Dec	25-Dec	26-Dec	Municipality	24-Dec	25-Dec	26-Dec
Aammq BG	M	M	L	Ain El Tineh BG	L	ML	L	Ain Zebdeh	L	M	L
Ana	ML	M	L	Aytanit	L	ML	L	Baaloul BG	L	M	L
Bab Mareh	L	M	L	Chouberqiye Aammq	M	M	L	Dakoue	ML	ML	ML
Deir Ain El-Jaouze	L	M	L	Deir Tahniche	M	M	L	Ghaza	M	M	L
Harime El-Soughra	ML	ML	ML	Hoch Harimeh	ML	ML	L	Jazira BG	ML	ML	L
Jib Jennine	M	M	L	Kamed-El-Laouz	M	ML	L	Kefraya BG	L	ML	L
Khiara El Atika	ML	ML	L	Khiara	ML	ML	L	Khirbet Qanafar	L	M	L
Lala	ML	M	L	Lebbaya BG	L	M	L	Loussa	L	M	L
Machghara	L	M	L	Manara (Hammar) BG	L	L	ML	Mansoura BG	M	M	L
Marej BG	L	M	L	Maydoun	L	M	L	Ouaqf BG	ML	M	L
Qaraaoun	L	M	L	Qelya	L	M	L	Raouda (Istabel)	L	M	L
Saghbine	L	M	L	Sohmor	L	M	L	Soltan Yacoub el Ara	ML	ML	L
Souairy	ML	ML	ML	Sultan Yaacoub	ML	ML	L	Tal Znoun	M	M	L
Yehmor BG	L	M	L	Zilaya	L	ML	L				

### Zahle

Municipality	24-Dec	25-Dec	26-Dec	Municipality	24-Dec	25-Dec	26-Dec	Municipality	24-Dec	25-Dec	26-Dec
Aanjar (Haouch Mouss	L	M	L	Ablah	L	M	L	Ain Kfarzabad	L	M	L
Ali-El-Nahri	ML	M	L	Bar Elias	L	M	L	Bouarej	L	M	L
Cheberqiyet Tabet	L	M	L	Chtaura	VL	M	L	Deir El Ghazal	L	M	L
Delhamiyet Zahle	L	M	L	Ferzol	L	M	L	Haouch El-Ghanam	ML	M	L
Haouch Es-Siyadeh	L	M	L	Haouch Hala	L	M	L	Haouch Mandara	L	M	L

Haouch Qayssar	L	M	L	Hezerta	L	M	L	Hosh Moussa	L	M	L
Jdita	L	M	L	Kfarzabad	L	M	L	Ksara	VL	M	L
Majdel Aanjar	L	ML	L	Makssi	L	M	L	Massa	L	M	L
Mazraat Er-Remtaniye	L	M	L	Mrayjat Zahle	L	M	L	Mzaraa Zahle	L	M	L
Nabi Ayla	L	M	L	Nasriyet Rizk	L	M	L	Nasriyet Zahle	L	M	L
Niha Zahle	L	M	L	Ouadi Ed-Deloum	L	M	L	Ouadi El-Arayech	L	M	L
Qaa El Rim	L	M	L	Qab Elias	L	M	L	Qousaya	L	M	L
Rhit	L	M	L	Riyak	ML	M	L	Saadnayel	L	M	L
Taal El-Akhdar	ML	M	L	Taalbeya	L	M	L	Taanayel	L	M	L
Talamara	ML	M	L	Tcheflik Edde Haouch	L	M	L	Tcheflik Qiqano	L	M	L
Terbol Zahle	L	M	L	Touaite Zahle	L	M	L	Zahle Aradi	L	M	L
Zahle El-Berbara	L	M	L	Zahle El-Maallaqa	L	M	L	Zahle El-Midane	VL	M	L
Zahle Er-Rassiye	L	M	L	Zahle Haouch El-Ouma	L	M	L	Zahle Haouch El-Ouma	VL	M	L
Zahle Haouch Ez-Zara	VL	M	L	Zahle Maalqa Aradi	L	M	L	Zahle Mar Antonios	VL	M	L
Zahle Mar Elias	VL	M	L	Zahle Mar Gerios	VL	M	L	Zahle Saydet En-Naja	VL	M	L
Zebdoul	L	M	L								

## Rachaiya

Municipality	24-Dec	25-Dec	26-Dec	Municipality	24-Dec	25-Dec	26-Dec	Municipality	24-Dec	25-Dec	26-Dec
Ain Arab Rachaiya	ML	ML	L	Ain Ata	L	ML	L	Ain Harche	L	M	L
Aqabe Rachaya	L	ML	L	Ayha	M	M	L	Ayta El Fokhar	ML	ML	L
Bakifa Rachaya	L	ML	L	Bakka	M	ML	L	Beit Lahya	ML	ML	L
Bireh Rachaiya	M	ML	L	Daher El Ahmar	L	ML	L	Deir El-Achayer	ML	ML	L
Heloua Rachaiya	ML	ML	L	Hoch El Qannabeh Rac	L	ML	L	Kaoukaba Bou Arab	L	ML	L
Kfar Danis	ML	ML	L	Kfar Mechki	L	M	L	Kfar Qouq	M	ML	ML
Kherbet Rouha	ML	ML	L	Majdel Balhiss	L	M	L	Mdoukha	ML	ML	L
Mhaydseh Rachaiya	ML	ML	L	Nabi Safa	L	M	L	Rachaiya	L	M	L
Rafid Rachaiya	M	ML	L	Selsata (Mazraat Dei	L	L	L	Tannoura	L	M	L
Yanta	ML	ML	L								

## Beyrouth

### Beyrouth

Municipality	24-Dec	25-Dec	26-Dec	Municipality	24-Dec	25-Dec	26-Dec	Municipality	24-Dec	25-Dec	26-Dec
Achrafieh	L	M	ML	Ain el-Mreisse	L	M	ML	Bachoura	L	M	ML
Beirut Central Distr	L	M	ML	Marfai	L	M	ML	Mazraa	L	M	ML
Medaouar	L	M	ML	Minet el-Hosn	L	M	ML	Mwssaitbeh	L	M	ML
Ras Beirut	L	M	ML	Rmeil	L	M	ML	Saifi	L	M	ML
Zqaq el-Blat	L	M	ML								