

# Lebanon Fire Risk Bulletin



CIVIL DEDEFENCE

**Refer to cadast table condition.**

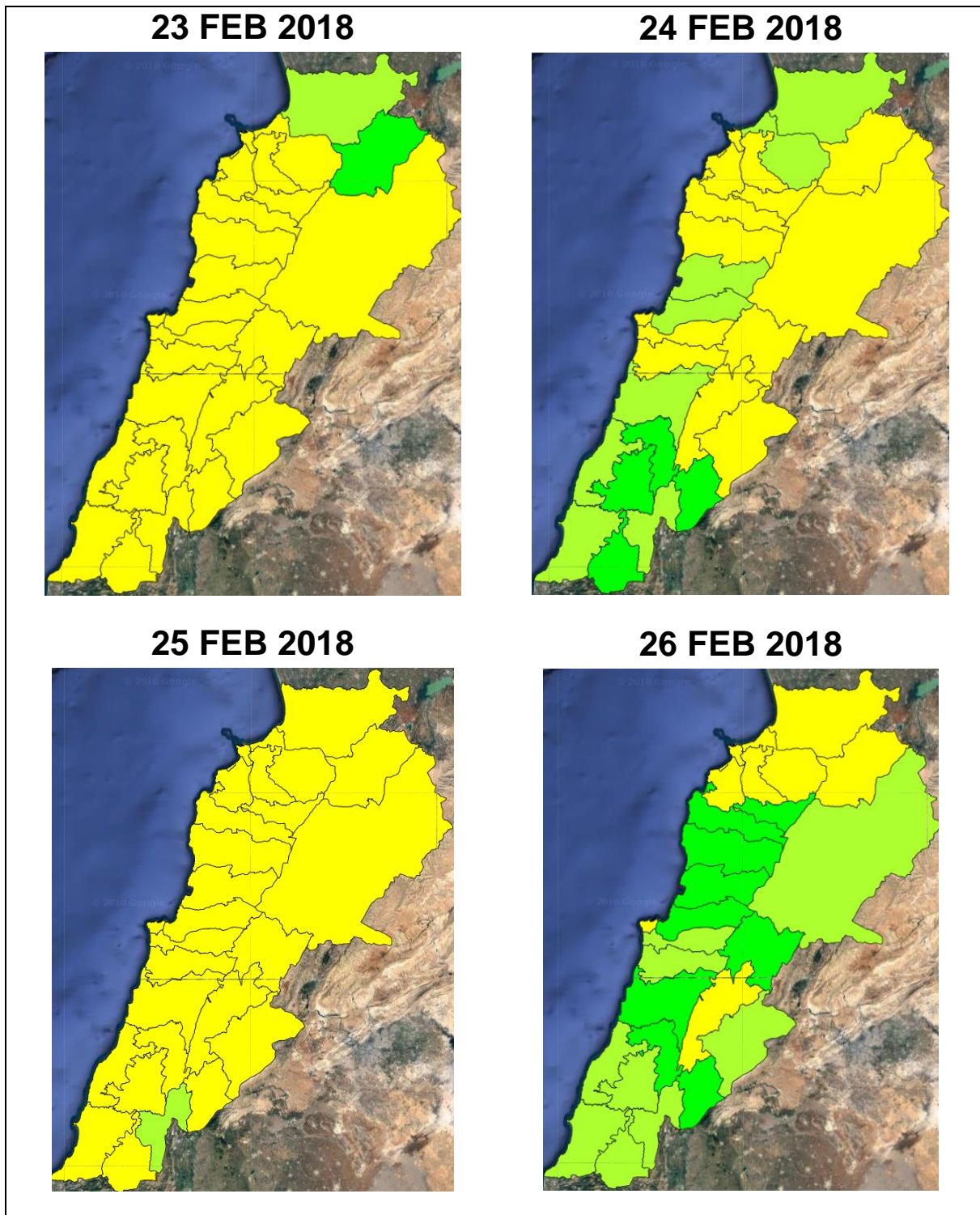
**Please note that the indicated temperature is at 2 meters height from the ground.**

General description of potential fire risk situation

Symbol	Level of risk	Meaning and actions
VL	Very low	Very low fire risk. Controlled burning operations can be hardly executed due to high fuel moisture content. Normally wildfires self-extinguish.
L	Low	Low fire risk. Controlled burning operations can be executed with a reasonable degree of safety.
ML	Medium low	Medium-low fire risk. Controlled burning operations can be executed in safety conditions. All the fires need to be extinguished.
M	Medium	Medium fire risk. Controlled burning operations would be avoided. All the fires need to be very well extinguished.
MH	Medium high	Controlled burning is not recommended. Open flame will start fires. Cured grasslands and forest litter will burn readily. Spread is moderate in forests and fast in exposed areas. Patrolling and monitoring is suggested. Fight fires with direct attack and all available resources.
H	High	Ignition can occur easily with fast spread in grass, shrubs and forests. Fires will be very hot with crowning and short to medium spotting. Direct attack on the head may not be possible requiring indirect methods on flanks. Patrolling and monitoring the territory is highly suggested.
E	Extreme	Ignition can occur also from sparks. Fires will be extremely hot with fast rate of spread. Control may not be possible during day due to long range spotting and crowning. Suppression forces should limit efforts to limiting lateral spread. Damage potential total. Patrolling and monitoring the territory is highly suggested.

**Beirut, 24 February 2018**

# FIRE RISK INDEX

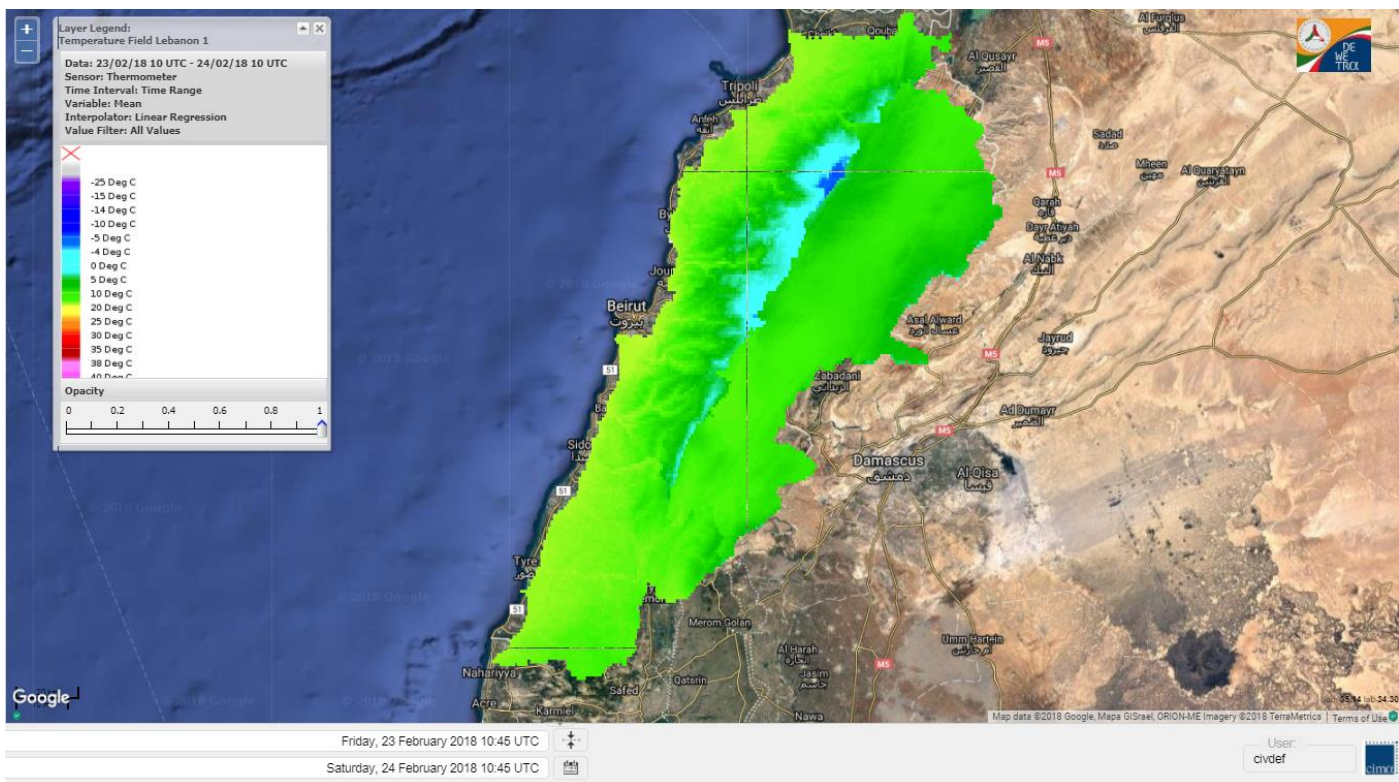


Layer Legend:  
Lebanon Wildfire Risk Index 1

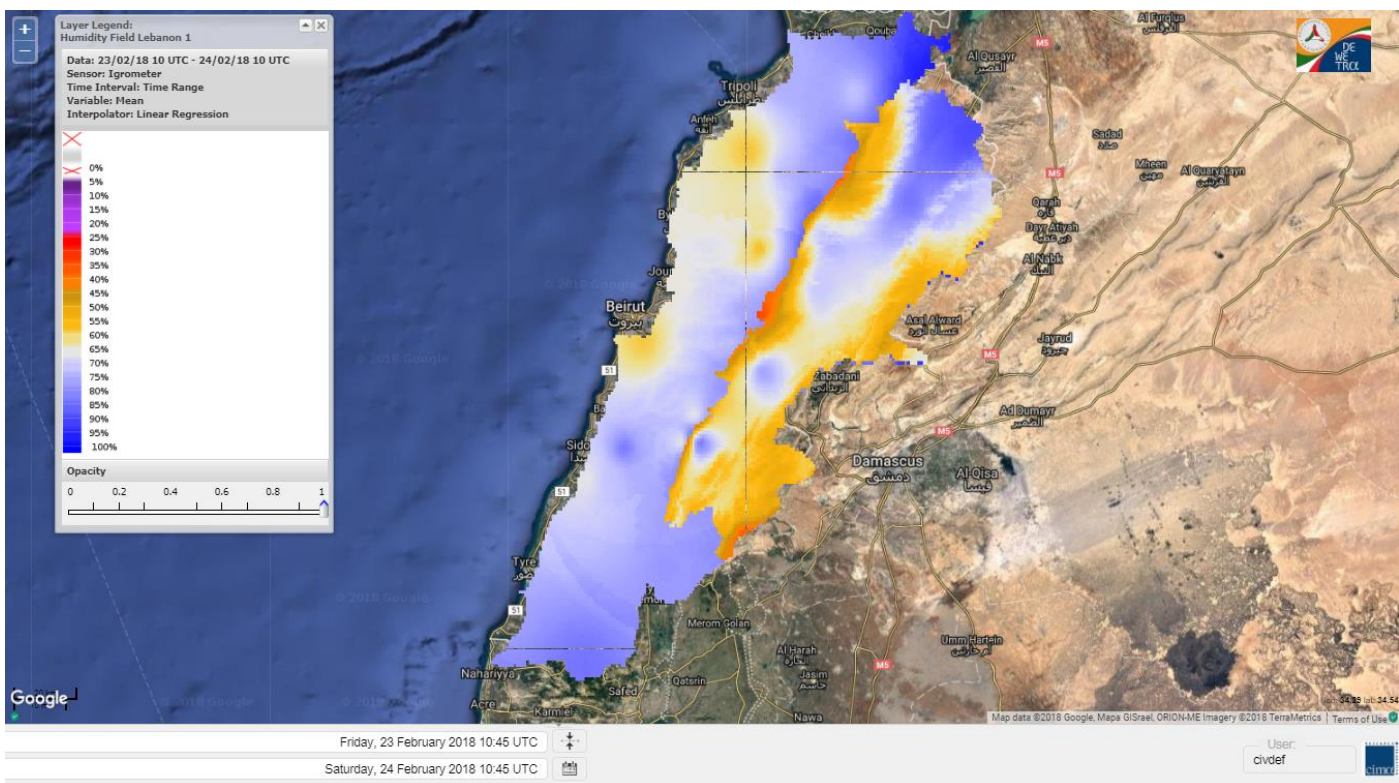
Data: Run: 24/02/2018 00:00. Forecast for 24  
Model: RISICO for the Republic of Lebanon  
Variable: Fire Weather Index  
Spatial Resolution: Caza

- VERY LOW
- LOW
- MEDIUM-LOW
- MEDIUM
- MEDIUM-HIGH
- HIGH
- EXTREME

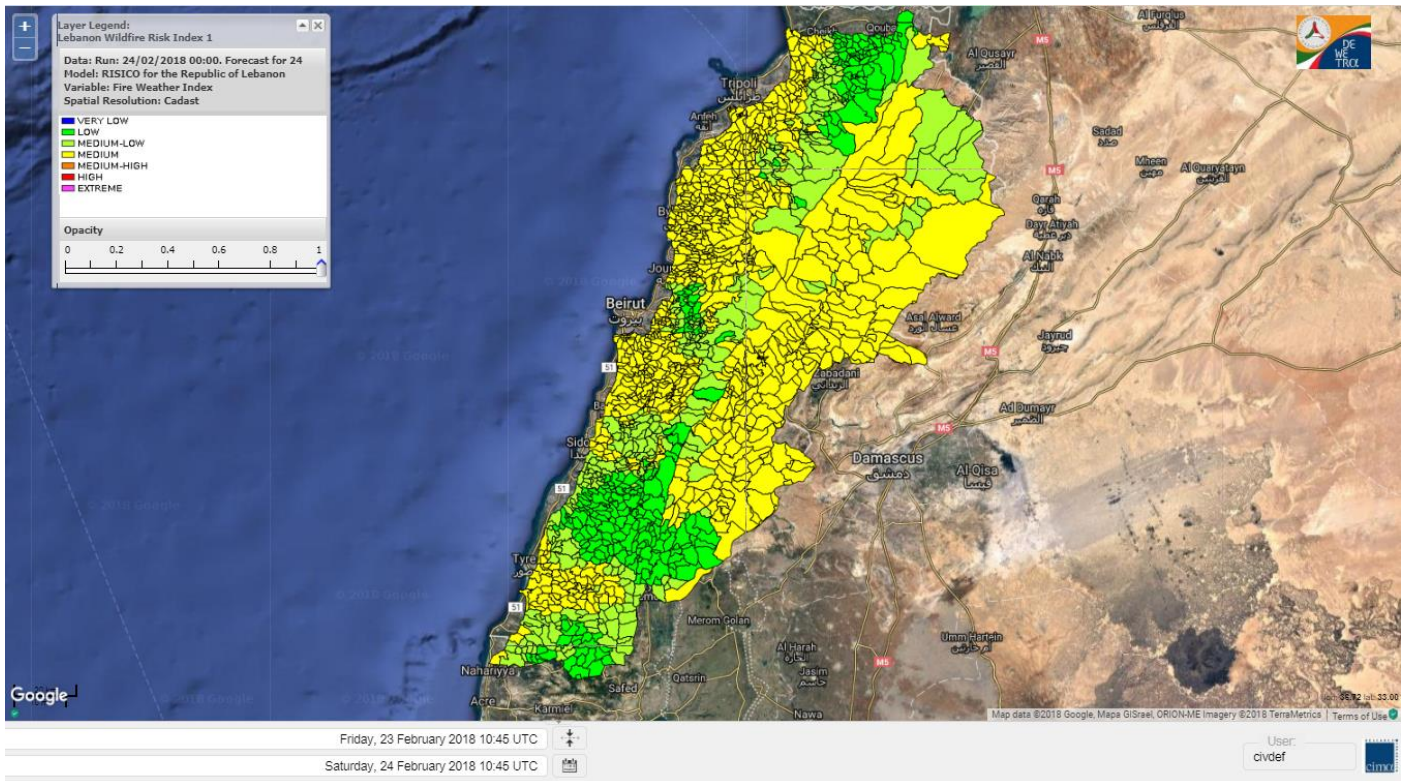
# Lebanon temperature for 24 FEB 2018



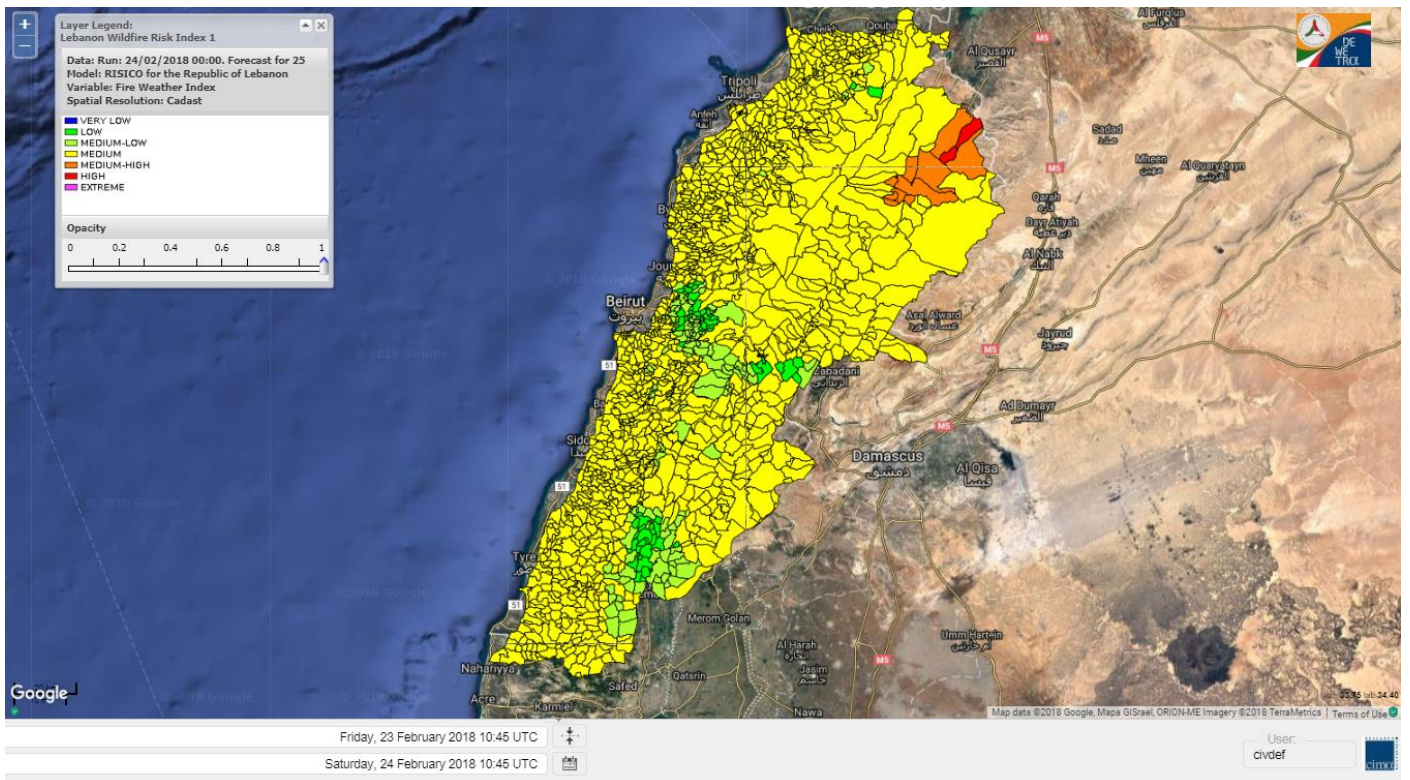
# Lebanon humidity for 24 FEB 2018



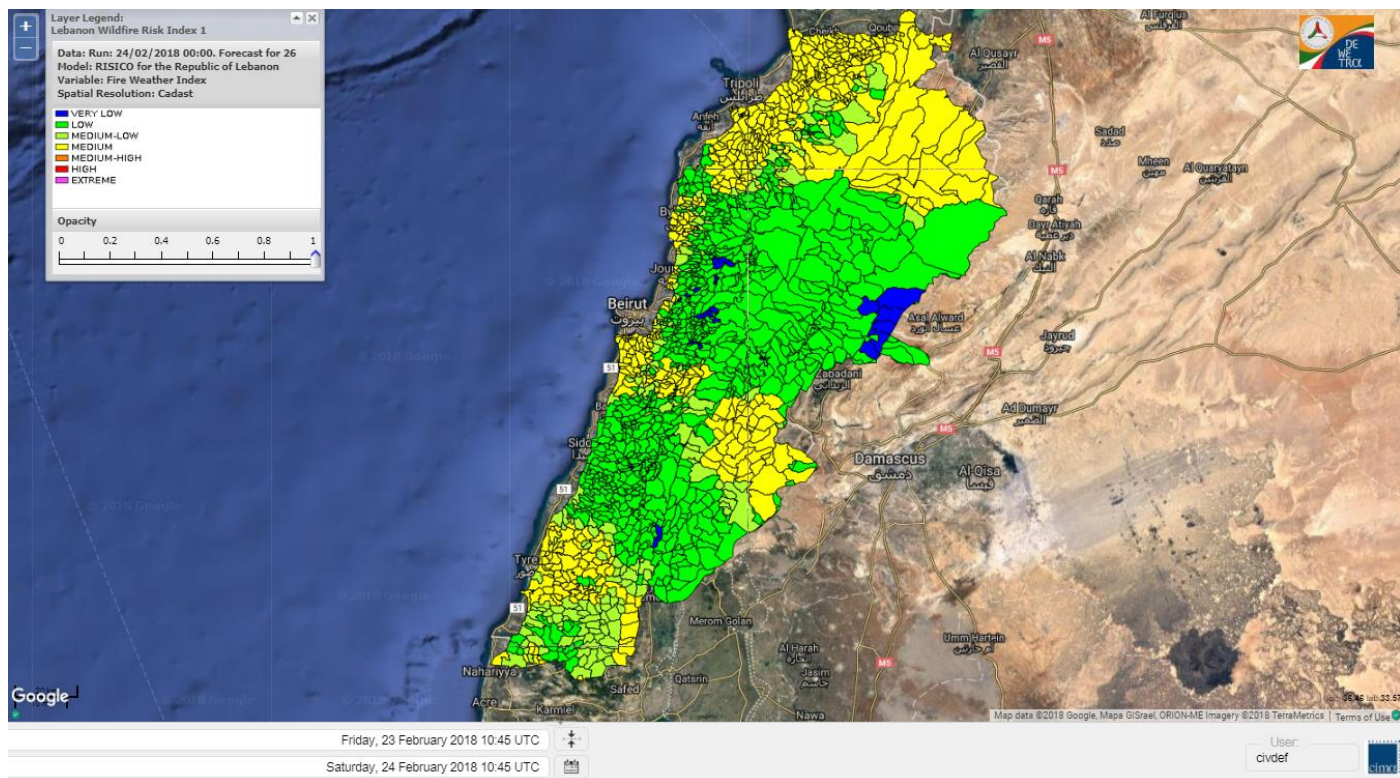
# Lebanon for 24 FEB 2018



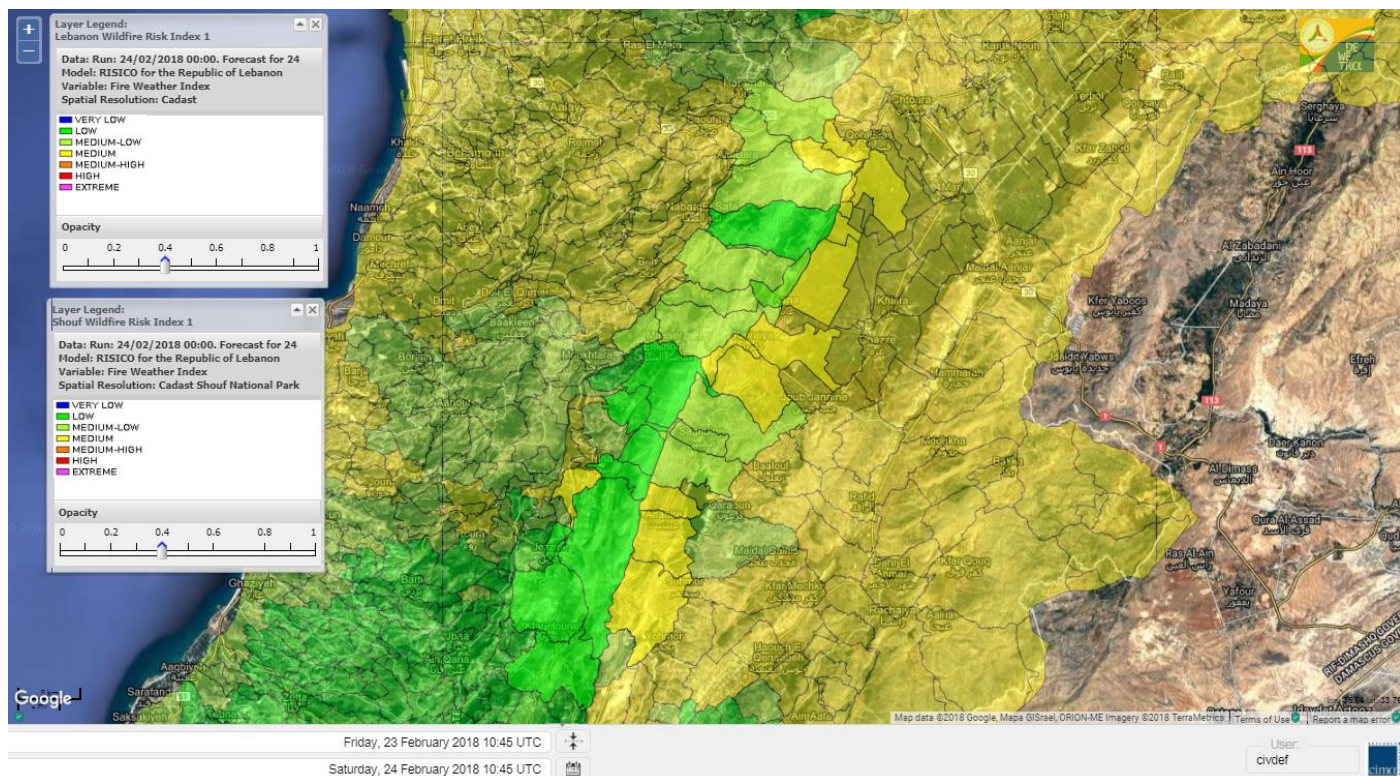
# Lebanon for 25 FEB 2018



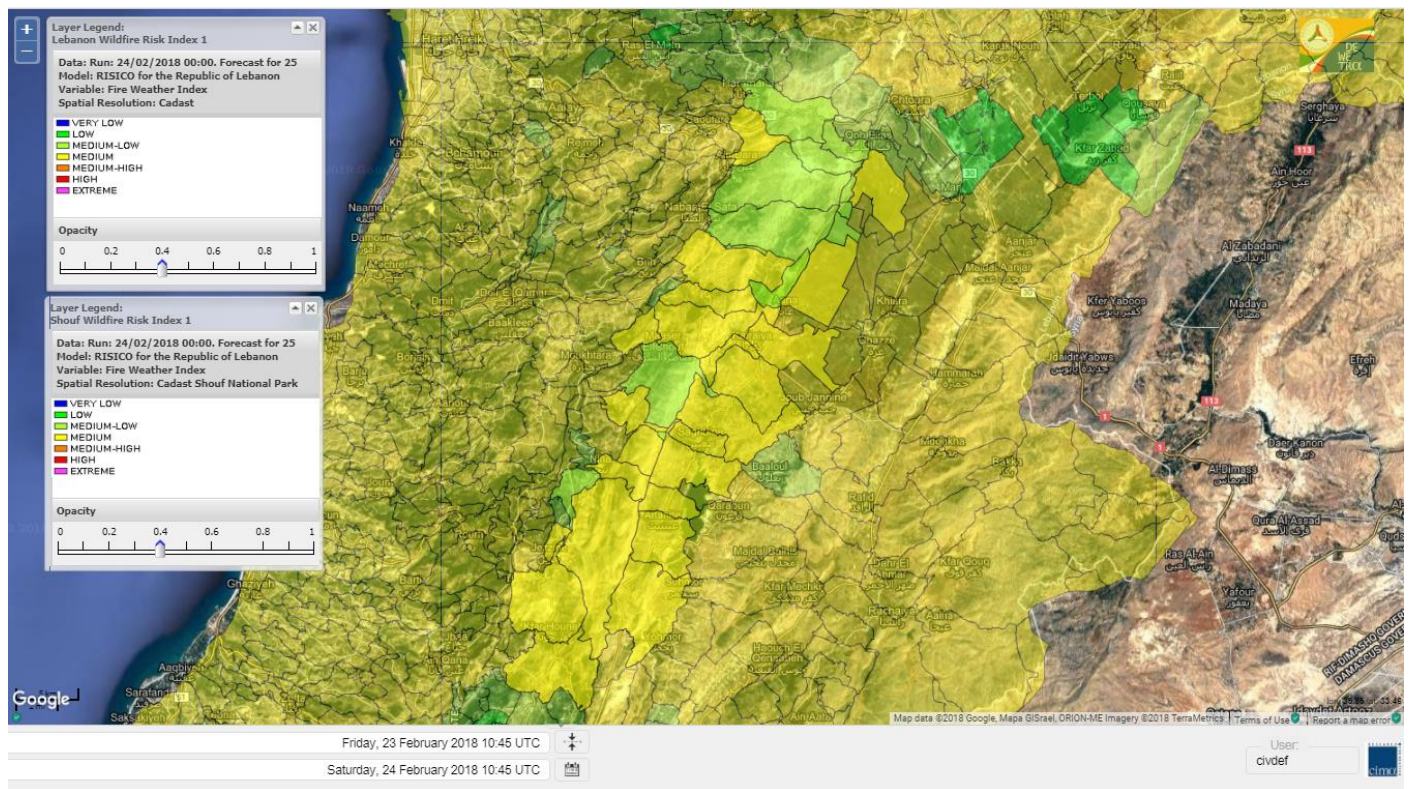
# Lebanon for 26 FEB 2018



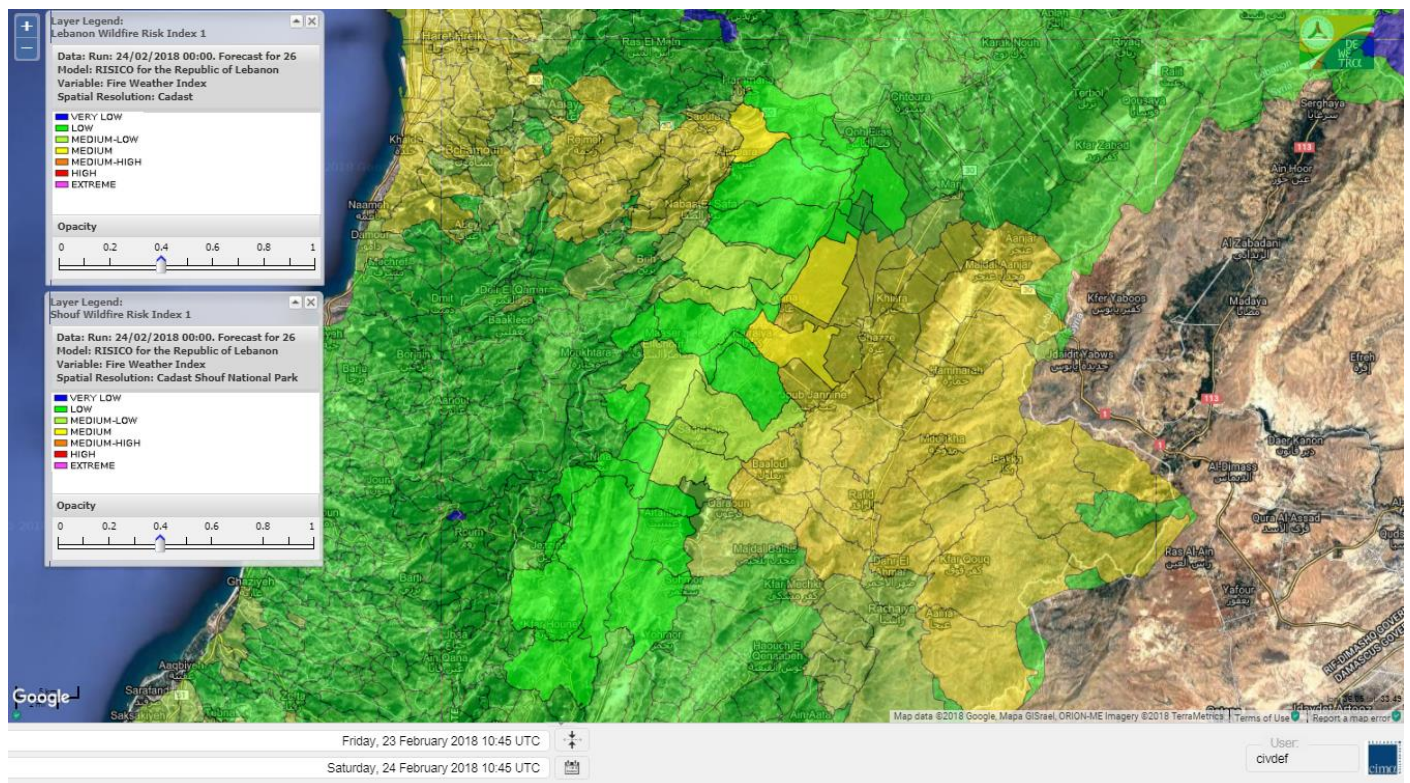
# Shouf Biosphere Reserve Forecast for 24 FEB 2018



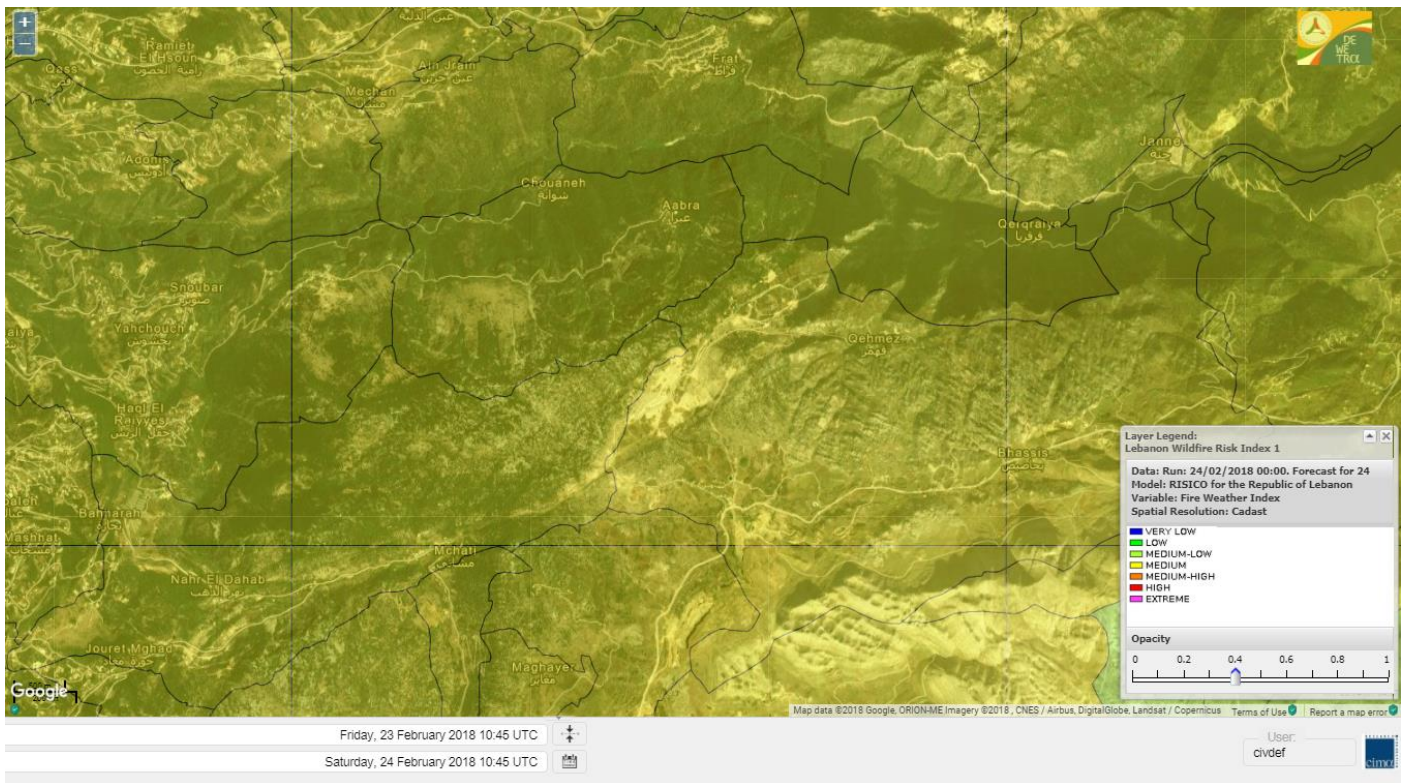
# Shouf Biosphere Reserve Forecast for 25 FEB 2018



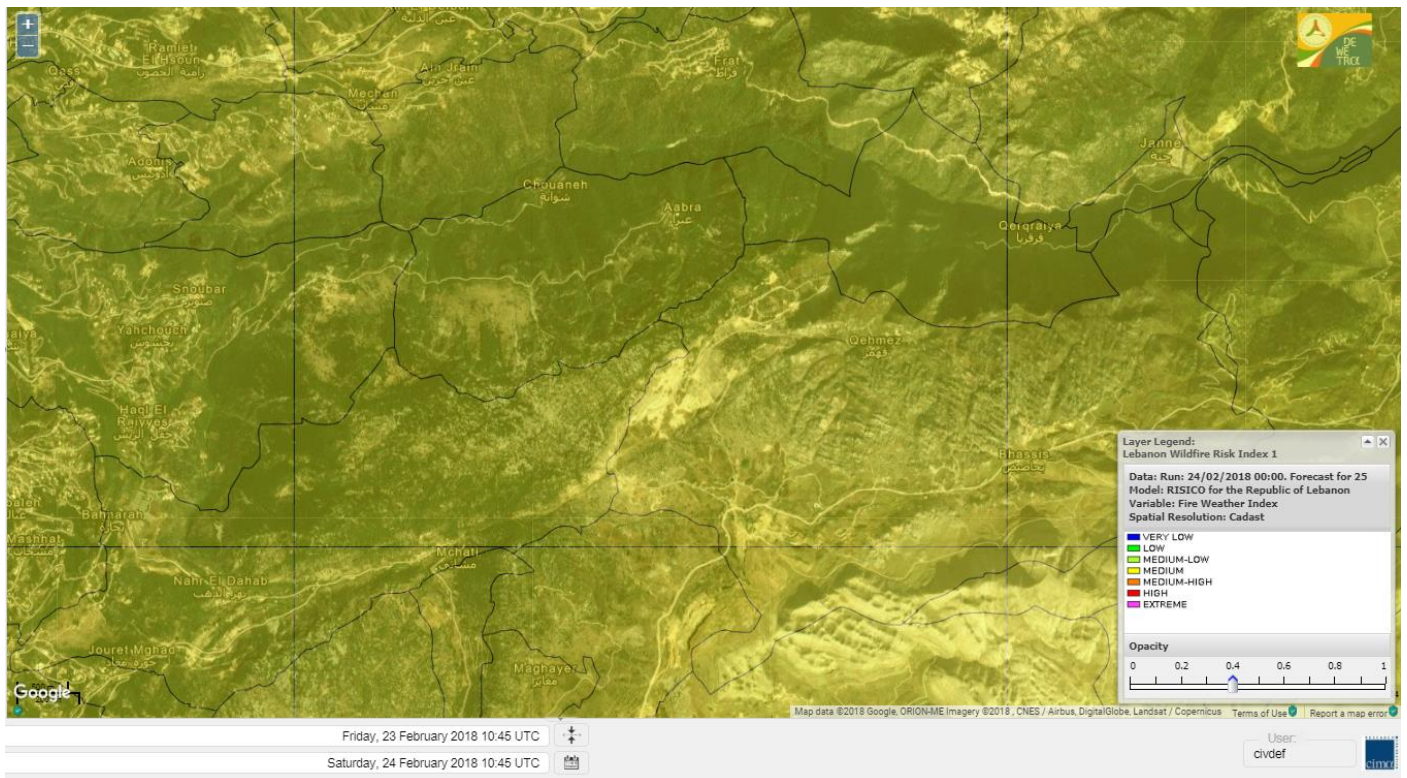
# Shouf Biosphere Reserve Forecast for 26 FEB 2018



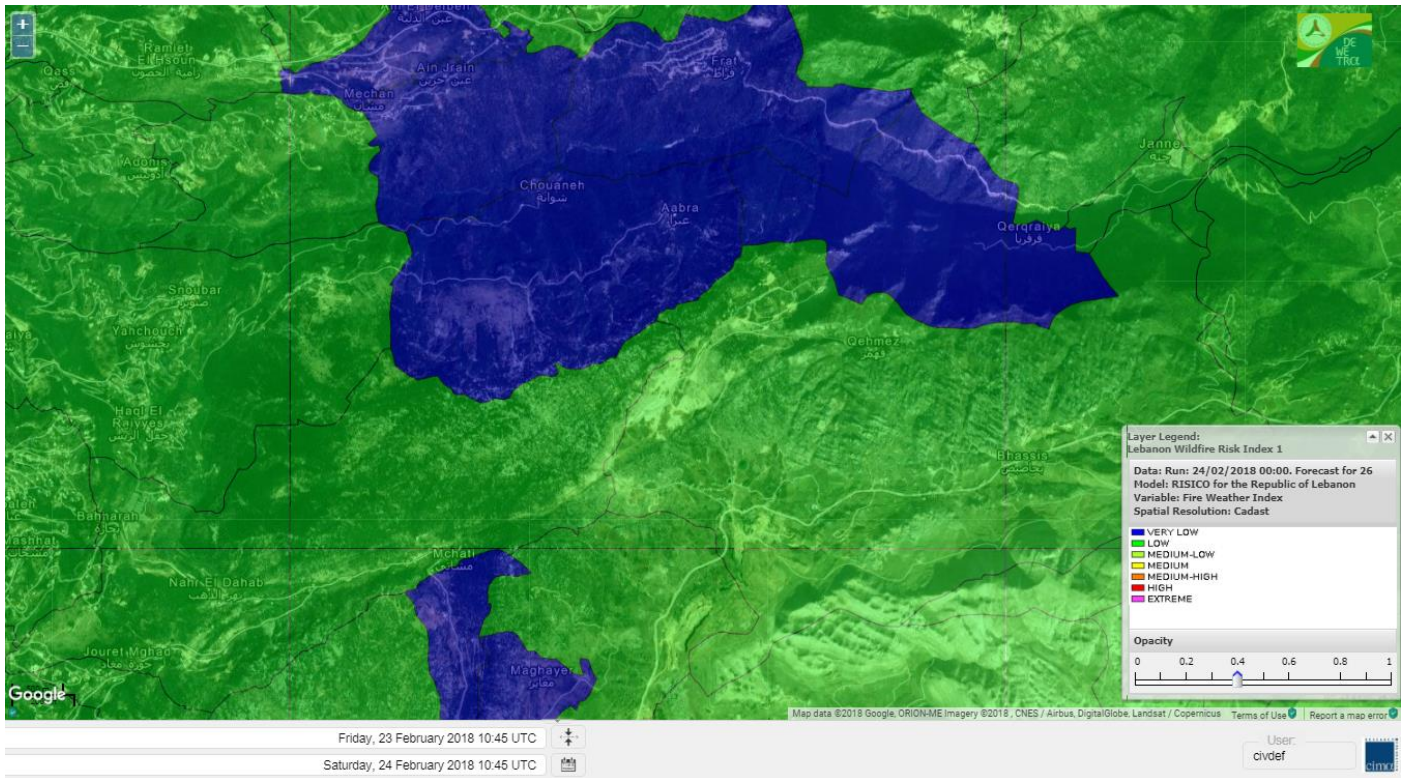
## Jabal Moussa Reserve Forecast for 24 FEB 2018



## Jabal Moussa Reserve Forecast for 25 FEB 2018



# Jabal Moussa Reserve Forecast for 26 FEB 2018





## Nord

### Koura

Municipality	24-Feb	25-Feb	26-Feb	Municipality	24-Feb	25-Feb	26-Feb	Municipality	24-Feb	25-Feb	26-Feb
Aaba	M	M	M	Afsaddiq	M	M	M	Ain Ekrine	M	M	M
Amioun	M	M	M	Anfeh	M	M	L	Badbhoun	M	M	M
Barghoun	M	M	M	Barsa	M	M	M	Batroumine	M	M	M
Bdebba	M	M	M	Bechmizine	M	M	M	Bednaye El-Koura	M	M	L
Bhabbouch El-Koura	M	M	M	Bkeftine	M	M	M	Bnehran	M	M	M
Bqaiia El-Koura	M	M	M	Bsarma	M	M	M	Btaaboura	M	M	M
Bttram	M	M	M	Btouratij	M	M	M	Bziza	M	M	M
Dar Beehtar	M	M	M	Dar Chmezzine	M	M	M	Deddeh	M	M	M
Deir El-Balamand	M	M	M	Fih	M	M	M	Hraiche	M	M	M
Ijdaabrine	M	M	L	Kaftoun	M	M	M	Kefraya El-Koura	M	M	L
Kfarakka	M	M	M	Kfarhata	M	M	L	Kfarhazir	M	M	M
Kfarkahel	M	M	M	Kfarsaroun	M	M	M	Kosba	M	M	M
Mejdel el-Koura	M	M	M	Nakhle	M	M	M	Qalhat	M	M	M
Ras Masqa	M	M	M	Rechdibbine	M	M	M	Zakroun	M	M	M
Zgharta El-Mtaouile	M	M	ML								

### Bcharre

Municipality	24-Feb	25-Feb	26-Feb	Municipality	24-Feb	25-Feb	26-Feb	Municipality	24-Feb	25-Feb	26-Feb
Aabdine	M	M	ML	Bane	M	M	ML	Barhelioun	M	M	ML
Bazooune	ML	M	L	Becharre	ML	M	L	Beit Menzer	M	M	ML
Billa	M	M	M	Blaouza	M	M	M	Bqaa Kafra	L	M	L
Bqerqacha	ML	M	L	Breissat	M	M	L	Dimane	M	M	L
Hadath El Jobbeh	M	M	L	Hadchit	M	M	L	Hasroun	M	M	L
Mazraat Aassaf	M	M	L	Mazraat Bani Saab	M	M	L	Mchaa El-Jobbeh	ML	M	L
Metrit	M	M	M	Moghr El-Ahoual	M	M	M	Ouadi Qannoubine	M	M	L
Qanat	M	M	L	Qnayer	M	M	L	Tourza	M	M	L

### Batroun

Municipality	24-Feb	25-Feb	26-Feb	Municipality	24-Feb	25-Feb	26-Feb	Municipality	24-Feb	25-Feb	26-Feb
Aabrine	M	M	L	Aalali	M	M	L	Aartiz	M	M	L
Abdelli	M	M	L	Ajdabra	M	M	L	Assia	M	M	L
Basbina	M	M	M	Batroun	M	M	L	Bcheleh	M	M	L
Bechtoudar	M	M	L	Beit Chlala	M	M	L	Beit Kassab	M	M	L
Bijdarfil	M	M	ML	Bqesmaya	M	M	ML	Chatine	M	M	L
Chebtin	M	M	L	Chekka	M	M	L	Daael	M	M	L
Dahr Abi Yaghi	M	M	L	Daraya El-Batroun	M	M	M	Deir Billa	M	M	ML
Deir Kfifane	M	M	M	Deir Mar Youhanna EL	M	M	L	Deir Mar Youssef Jra	M	M	L
Douma	M	M	L	Douq	M	M	L	Eddeh El-Batroun	M	M	M
Ftihat El-Batroun	M	M	L	Ghouma	M	M	ML	Hadtoun	M	M	L
Hamat	M	M	L	Harbouna	M	M	L	Hardine	M	M	L
Helta	M	M	L	Hery	M	M	L	Jebbla	M	M	L
Jrabta El-Batroun	M	M	ML	Jrane El-Batroun	M	M	M	Kfar Aabida	M	M	M
Kfar Halda	M	M	L	Kfarb Shlaimane	M	M	L	Kfarhatna	M	M	L
Kfarhay	M	M	L	Kfarhelos	M	M	L	Kfifane	M	M	M

Kfour El Arabi	M	M	L	Koubba	M	M	L	Kour	M	M	ML
Mar Mama	M	M	L	Masrah	M	M	L	Mehmarch	M	M	L
Mrah Chdid	M	M	ML	Mrah El Ziyat	M	M	ML	Mrah El-Hajj	M	M	L
Nahle El-Batroun	M	M	L	Niha El-Batroun	M	M	L	Ouajh El-Hajjar	M	M	L
Ouata Houb	M	M	L	Qatnaaoun	M	M	L	Racha	M	M	L
Rachana	M	M	ML	Rachkida	M	M	L	Ram El-Batroun	M	M	L
Ras Nahhach	M	M	L	Selaata	M	M	L	Sghar	M	M	M
Smar Jbayl	M	M	M	Sourat El-Batroun	M	M	L	Tannourine El-Faouqa	ML	M	L
Tannourine Et-Tahta	M	M	L	Thoum	M	M	ML	Toula El-Batroun	M	M	ML
Zan	M	M	L								

## Zgharta

Municipality	24-Feb	25-Feb	26-Feb	Municipality	24-Feb	25-Feb	26-Feb	Municipality	24-Feb	25-Feb	26-Feb
Aachach	M	M	M	Aalma	M	M	M	Aarde	M	M	M
Aintourine	ML	M	M	Arabet Qozhaya	ML	M	L	Arde	M	M	M
Arjis	M	M	M	Asnoun	M	M	M	Ayto	ML	M	L
Basloukit	M	M	M	Bchannine	M	M	M	Besebeel	M	M	M
Bhairret Toula	M	M	L	Bnachee	ML	M	M	Boussit	M	M	M
Danha	M	M	M	Daraiya Zgharta	M	M	M	Deir Jdeide	M	M	M
Ehden	ML	M	ML	Halan	M	M	M	Hariq Zgharta	M	M	M
Houakir	ML	M	ML	Hraiqis	M	M	M	laal	M	M	M
Ijbaa	ML	M	ML	Karm Saddeh	M	M	ML	Kfarchakhna	M	M	M
Kfardlaqous	M	M	M	Kfarfou	M	M	M	Kfarhata Zgharta	M	M	M
Kfarhoura	M	M	M	Kfarsghab	M	M	ML	Kfaryachit	M	M	M
Kfarzaina	M	M	M	Khaldiye	M	M	M	Mazraat Ajbeaa	M	M	M
Mazraat Et-Teffah	L	M	L	Mazraat Jneid	M	M	M	Mejdlaiya Zgharta	M	M	M
Merh Kfarsghab	ML	M	M	Miryata	M	M	M	Miziara	ML	M	ML
Mzraat Kefraya	M	M	M	Qorah Bach	M	M	M	Rachiine	M	M	M
Ras Kifa	M	M	M	Sakhra	M	M	M	Sebhel Zgharta	ML	M	M
Serhel	L	ML	L	Tallet Zgharta	M	M	M	Toula Zgharta	ML	M	L
Zgharta	M	M	M								

## Minieh-Denniye

Municipality	24-Feb	25-Feb	26-Feb	Municipality	24-Feb	25-Feb	26-Feb	Municipality	24-Feb	25-Feb	26-Feb
Aasaymout	L	M	L	Aaymar	M	M	M	Aazki	M	M	M
Ain El-Tineh-Miniyeh	M	M	L	Assoun	M	M	ML	Bakhaaoun	M	M	M
Bchennata	ML	M	M	Bechehhara	ML	M	L	Beddawi	M	M	M
Behouaita	M	M	ML	Beit El Foqss	M	M	L	Beit Haouik	ML	M	M
Beit Zoud	M	M	M	Bekaasafrine	ML	M	M	Borj El Yahoudiyeh	M	M	M
Bqarsouna	ML	M	L	Btermaz	ML	M	ML	Debaael	ML	M	L
Deir Ammar	M	M	M	Deir Nbouh	ML	M	M	Haouaret-Miniyeh	ML	M	M
Haql el Azimeh	ML	M	L	Harf El Siyad	ML	M	L	Hazmiye-Miniyeh	M	M	L
Izal	M	M	M	Jarjour	L	ML	L	Jayroun	L	M	L
Kahf El-Malloul	ML	M	ML	Karm El-Moher	M	M	ML	Kfar Binine	L	M	ML
Kfarchalane	M	M	M	Kfarhabou	M	M	M	Kharroub-Miniyeh	M	M	M
Mazraat El-Kreme	ML	M	L	Mazraat Ketrane	M	M	ML	Merkebta	M	M	M
Minyeh	M	M	M	Mrah El Sfirat	ML	M	L	Mrah Sraj	ML	M	ML
Mrebbine	L	M	ML	Nabi Youcheaa	M	M	M	Nemrine	ML	M	ML

Qarhaiya	ML	M	M	Qarne	L	M	L	Qarsita	ML	M	L
Qattineh-Miniyeh	ML	M	L	Qemmamine	L	M	L	Qraine	ML	M	L
Raouda-Aadoua	M	M	M	Rihaniyet-Miniyeh	M	M	M	Sfireh	M	M	L
Sir Ed-Danniyeh	ML	M	ML	Tarane	ML	M	L	Terbol-Miniyeh	M	M	M
Zaghartaghriane	ML	M	M	Zouq Bhannine	M	M	M				

## Nabatiye

### Nabatiye

Municipality	24-Feb	25-Feb	26-Feb	Municipality	24-Feb	25-Feb	26-Feb	Municipality	24-Feb	25-Feb	26-Feb
Aabba	L	M	M	Aazzi	L	M	L	Adchit El-Chqif	L	M	M
Ain Bou Swar	L	ML	L	Ain Kana	L	M	L	Ali El-TaHER	L	L	L
Ansar	ML	M	M	Arab Salim	L	M	L	Arnoun	L	L	ML
Bfaroue	L	M	L	Breyqaah	ML	M	M	Charqiyeh	L	M	M
Choukine	L	M	M	Deir El Zahrani	L	M	ML	Doueir El-Nabatiyeh	L	M	M
Habbouch El-Nabatiye	L	M	L	Hamra El-Nabatiyeh	ML	M	ML	Harouf El-Nabatiyeh	L	M	M
Hmaile	L	M	L	Houmin El Faouqa	L	M	L	Houmin El Tahta	L	M	L
Jarjough	L	ML	L	Jbaah El-Nabatiyeh	L	M	L	Jebchit	L	M	ML
Kfar Djal El-Nabatiy	L	M	M	Kfar Remmane	L	ML	L	Kfar Sir	M	M	M
Kfar Tebnit	L	ML	L	Kfarfila	L	M	L	Kfour El-Nabatieh	L	M	ML
Mayfadoun	ML	M	ML	Mazraat Bsaffour	L	M	ML	Mazraat Chalbaal	L	M	ML
Mazraat Dmoul	L	M	M	Mazraat El Khreibeh	L	M	L	Mazraat El-Bayad El-	L	M	L
Mazraat Kfarjaouz	L	M	L	Mazraat Qalaat Meiss	ML	M	M	Nabatiyeh El-Fawka	L	M	L
Nabatiyeh Et-Tahta	L	M	L	Namiriyyeh	L	M	ML	Qaaqaaiyet El Jisr	M	M	M
Qossaibeh El-Nabatiy	M	M	M	Roumine	L	M	L	Sarba El-Nabatieh	L	M	L
Sir El-Gharbiyeh	M	M	M	Toul	L	M	M	Yehmor El-Nabatiyeh	ML	ML	ML
Zaoutar El Charkiyeh	ML	M	ML	Zaoutar El-Gharbiyeh	ML	ML	M	Zebdine El-Nabatiyeh	L	M	ML
Zefta	L	M	ML								

### Hasbaiya

Municipality	24-Feb	25-Feb	26-Feb	Municipality	24-Feb	25-Feb	26-Feb	Municipality	24-Feb	25-Feb	26-Feb
Ain Jarfa	L	M	L	Abou Qamha	L	L	L	Ain Qania	L	M	L
Bourghos	L	ML	L	Chebaa	L	M	L	Chouaya Hasbaya	L	M	L
Dellafeh	L	ML	L	Fardiss Hasbaiya	L	ML	L	Hasbaya	L	M	L
Hbariyeh	L	M	L	Kaoukaba Hasbaiya	L	ML	L	Kfar Chouba	L	ML	L
Kfar Hamam	L	ML	L	Kfeir El-Zait	L	M	L	Khalwat Hasbaya	L	M	L
Khreibet Hasbaiya	L	ML	L	Majidiyeh Hasbaiya	ML	ML	L	Marj Ez-Zhour (Haouc	ML	M	L
Meri	L	ML	L	Mimass	L	M	L	Rachaiya El-Fokhar	L	ML	L
Salaiyeb	ML	ML	L								

### Marjayoun

Municipality	24-Feb	25-Feb	26-Feb	Municipality	24-Feb	25-Feb	26-Feb	Municipality	24-Feb	25-Feb	26-Feb
Aalmane Marjaayoun	M	ML	ML	Aamra	ML	ML	L	Adayseh Marjaayoun	ML	M	M
Adchit El-Koussair	M	M	M	Ain Arab Marjaayoun	ML	ML	L	Bani Haiyann	M	ML	ML
Blatt Marjaayoun	L	L	L	Blida	ML	M	M	Borj El-Moulouk	L	L	ML
Boueyda Marjaayoun	L	L	L	Deir Mimass	L	L	L	Deir Siriane	ML	ML	ML
Dibbine	L	ML	L	Ebel El Saqi	L	ML	L	Houla	ML	ML	M
Houra	L	L	ML	Kfar Kila	ML	ML	ML	Khiam Marjaayoun	L	ML	L

Klayaa	L	L	ML	Majdel Selem	ML	ML	ML	Marjaayoun	L	ML	L
Markaba	ML	M	M	Mays El-Jabal	ML	ML	M	Mazraat Doumiat	L	L	ML
Mazraat Sarada	L	ML	L	Mhaibib	ML	M	M	Qabrikha	M	ML	ML
Qantara	M	ML	ML	Rab El-Thalathine	ML	M	M	Saouaneh Marjayoun	ML	M	ML
Talloussa	ML	ML	ML	Taybeh Matjaayoun	ML	ML	ML	Touline	M	M	ML

## Bent Jbail

Municipality	24-Feb	25-Feb	26-Feb	Municipality	24-Feb	25-Feb	26-Feb	Municipality	24-Feb	25-Feb	26-Feb
Ain-Ebel	L	M	ML	Aitaroun	ML	M	M	Aynata Bint Jbeil	L	M	ML
Ayta El-Chaeb	L	M	L	Ayta El-Jabal	ML	M	ML	Beit Lif	ML	M	L
Beit Yahoun	L	M	ML	Bint Jbeil	L	M	ML	Borj Qalaway	M	M	M
Braachit	ML	M	ML	Chakra	ML	ML	ML	Debel	L	M	ML
Deir Antar	ML	M	ML	Froun	M	M	M	Ghandouriyeh Bint Jb	M	M	M
Hanine	L	M	ML	Hariss	L	M	ML	Hdatha	L	M	ML
Jmeyjmeh	ML	M	ML	Kafra Bint Jbeil	L	M	L	Kfar Dounine	M	M	ML
Khirbet Selm	M	M	ML	Kounine	ML	M	ML	Maroun El Ras	L	M	ML
Qalaway	M	M	M	Qaouzah	ML	M	L	Qatmoun	L	M	M
Ramya Bint Jbeil	ML	M	L	Rchaf	L	M	L	Rmeich	L	M	ML
Safad Al Battikh	ML	M	ML	Salhaneh	ML	M	L	Serbine	L	M	ML
Sultanieh Bint Jbeil	ML	M	ML	Tibnine	ML	M	ML	Tiri	L	M	ML
Yaroun	L	M	ML	Yater	L	M	ML				

## Mont Liban

### Jbail

Municipality	24-Feb	25-Feb	26-Feb	Municipality	24-Feb	25-Feb	26-Feb	Municipality	24-Feb	25-Feb	26-Feb
Aabeydat	M	M	ML	Aalita	M	M	L	Aamchit	M	M	M
Aarab El-Lahib	M	M	L	Aarasta	M	M	L	Adonis Jbeil	M	M	L
Afqa Jbeil	M	M	L	Ain El Delbeh Jbeil	M	M	VL	Ain El-Ghouyba	M	M	L
Ain Jrain	M	M	VL	Ain Kfah	M	M	M	Almat El Chemaliyat	M	M	L
Almat El-Jenoubiya	M	M	L	Aqoura	M	M	L	Bayzoun	M	M	L
Bchille Jbeil	M	M	L	Bechtida	M	M	L	Behdaydat	M	M	ML
Beit Habbaq	M	M	M	Bejjeh	M	M	ML	Bekhaaz	M	M	M
Berbara Jbeil	M	M	M	Bintael	M	M	L	Birket Hjoula	M	M	L
Blatt Jbeil	M	M	ML	Boulhos	M	M	L	Breyj Jbeil	M	M	L
Chamat	M	M	M	Chikhane	M	M	M	Chmout	M	M	ML
Eddeh Jbeil	M	M	M	Ehmej	M	M	L	Fatre	M	M	L
Ferhet	M	M	L	Fghal	M	M	L	Frat	M	M	VL
Ghabat	M	M	L	Ghalboun	M	M	ML	Gharzouz	M	M	M
Ghofrine	M	M	M	Habil	M	M	L	Halate	M	M	ML
Haqel	M	M	L	Hbaline	M	M	M	Hboub	M	M	ML
Hdeine	M	M	L	Hema Er-Rehban	M	M	L	Hema Mar Maroun Aann	M	M	L
Hjoula	M	M	L	Hosrayel	M	M	M	Hsarat	M	M	M
Hsoun	M	M	L	Jaj	M	M	L	Janne	M	M	L
Jbeil	M	M	M	Jeddeyel Jbeil	M	M	M	Jlisse	M	M	L
Jouret El-Qattine	M	M	ML	Kfar Baal Annaya	M	M	L	Kfar Kidde	M	M	M
Kfar Kouas	M	M	ML	Kfar Mashoun	M	M	M	Kfoun	M	M	L

Kharbe Jbeil	M	M	ML	Laqlouq	M	M	L	Lassa	M	M	L
Lehfed	M	M	L	Maad	M	M	M	Mar Sarkis	M	M	L
Mastita	M	M	M	Mayfouq	M	M	L	Mazraat El Siyad	M	M	L
Mazraat El-Maaden	M	M	L	Mechane	M	M	L	Mechmech Jbeil	M	M	L
Mehrin	M	M	M	Mejdel El-Akoura	M	M	L	Mghayreh Jbeil	M	M	L
Mounsef	M	M	M	Nahr Ibrahim	M	M	M	Qahmez	M	M	L
Qartaba	M	M	L	Qartaboun	M	M	M	Qattara Jbeil	M	M	L
Qorqraya	M	M	VL	Ramout	M	M	M	Ras Osta	M	M	L
Rihane Jbeil	M	M	M	Sakiet El-Khayt	M	M	ML	Saqi Richmaya	M	M	L
Sebrine	M	M	L	Seraita	M	M	L	Souane Jbeil	M	M	L
Tadmor	M	M	L	Tartej	M	M	L	Torzaiya	M	M	L
Yanouh Jbeil	M	M	L	Zibidine Jbeil	M	M	L				

## El Metn

Municipality	24-Feb	25-Feb	26-Feb	Municipality	24-Feb	25-Feb	26-Feb	Municipality	24-Feb	25-Feb	26-Feb
Aain El-Qabu	M	L	VL	Aain El-Qach	ML	L	L	Aain El-Teffaha	ML	L	L
Aain el-Safssaf El-M	L	L	L	Abou Mizane	ML	L	L	Ain Aar	M	M	ML
Ain Alaq	ML	ML	L	Ain El-Kharroube	ML	ML	L	Ain El-Sendiane	ML	ML	L
Ain El-Zeitoune	M	ML	L	Ain Saadeh	M	M	ML	Aintoura El-Matn	L	M	L
Amaret Chalhoub	M	M	M	Antelias	M	M	M	Atchaneh	ML	ML	L
Ayroun	ML	ML	L	Baabdat	ML	ML	L	Baouchariyeh	M	M	M
Baskinta	ML	ML	L	Beit Chabab	ML	L	L	Beit El-Chaar	M	M	ML
Beit El-Kekko	M	M	ML	Beit Mery	M	M	L	Bhersaf	L	L	L
Bikfaya	L	ML	L	Biyakout	M	M	M	Bnabil	ML	ML	L
Bourj Hammoud	M	M	M	Bqennaya	M	M	M	Broummana El-Matn	M	M	L
Bsalim	M	M	ML	Bsifrine	ML	ML	VL	Bteghrine	M	L	L
Chaouiye	ML	ML	L	Chouaya El-Matn	ML	ML	L	Choueir	L	ML	L
Chrine	L	L	L	Dahr El Sawan El-Mat	M	ML	L	Daychouniyeh	M	M	M
Dbayeh	M	M	M	Deir Chamra	L	L	VL	Deir Mar Abda el Mch	M	M	L
Deir Mar Roukouz	M	M	M	Deir Tamiche	M	ML	L	Dik El-Mehdi	M	M	L
Dikwaneh	M	M	M	Douar El-Matn	ML	ML	L	Fanar	M	M	M
Fraike	ML	ML	L	Haret El-Ballaneh	M	M	ML	Hbous	ML	M	ML
Himlaya	L	ML	L	Jal El Did	M	M	M	Jdeideh El-Metn	M	M	M
Jouar El-Matn	ML	ML	L	Jouret El-Ballout	M	M	L	Kaaqour	ML	ML	L
Kfar Aaqab	M	L	L	Kfertay El-Matn	M	ML	L	Khenchara	ML	L	L
Khillet El-Mtain	ML	ML	L	Konnabat Broummana	M	M	L	Konnabat Salima	ML	ML	VL
Machraah El-Matn	M	L	L	Majdel Tarchich	ML	M	L	Majzoub	M	M	M
Mansouriyeh El-Metn	M	M	M	Mar Boutros Karm Et-	L	L	L	Mar Chaya et Mzekke	M	M	L
Mar Moussa Ed-Douar	ML	ML	L	Marjaba	M	L	L	Masqa	M	M	L
Mayasse	L	L	L	Mazraat Deir Aoukar	M	M	ML	Mazraat El-Hadirat	M	M	ML
Mazraat Yachouh	M	M	ML	Mchikha	ML	M	L	Menqlet Mezher	M	M	ML
Mhaydseh Matn	L	ML	L	Mkalles	M	M	M	Mrouj	ML	L	L
Mtain	ML	M	L	Mtayleb	M	M	ML	Nabay	M	M	L
Naccache	M	M	ML	Ouadi Chahine	L	ML	L	Ouadi El-Karm El-Mat	M	L	VL
Ouata El-Mrouj	ML	L	L	Ouyoun El-Matn	M	M	L	Qornet Chehwan	ML	M	L
Qornet El-Hamra	ML	ML	L	Roumieh	M	M	ML	Sfeilet Bikfaya	L	L	L
Sinn El-Fil	M	M	M	Zabbougha	ML	L	VL	Zalqa	M	M	M

Zarouon	ML	ML	L	Zekrite	M	ML	L	Zighrine El-Matn	ML	ML	L
Zouk El-Khrab	M	M	ML								

## Chouf

Municipality	24-Feb	25-Feb	26-Feb	Municipality	24-Feb	25-Feb	26-Feb	Municipality	24-Feb	25-Feb	26-Feb
Aalmane El-Chouf	ML	M	L	Aammq El-Chouf	M	M	L	Ain Ouzein	ML	M	L
Ain Qani	M	M	L	Ain Zhalta	ML	M	ML	Ainbal	ML	M	L
Amatour	M	M	L	Anout	ML	M	L	Atrine	ML	M	L
Baadarane	ML	M	L	Baaqline	ML	M	L	Baasir	M	M	L
Barja	M	M	L	Barouk	ML	M	L	Bater	M	ML	L
Batloun	ML	M	L	Bayqoun	ML	M	L	Bchetfine	ML	M	L
Beiteddine	ML	M	L	Benouati Ech-Chouf	M	M	L	Berjein	ML	M	L
Bireh et Mtalleh	M	M	L	Biret El-Chouf	M	M	L	Bkechtine Ouel Mchei	ML	M	L
Bkifa El-Chouf	ML	M	L	Botme	L	M	L	Bqaiaa Ech-Chouf	ML	M	L
Bsaba El-Chouf	ML	M	L	Chammis El-Chouf	M	M	L	Chehim	ML	M	L
Chemaarine	ML	M	L	Chourit	M	ML	L	Daher El-Chouf	ML	M	L
Dalhoun	ML	M	L	Damour	M	M	L	Daraya El-Chouf	ML	M	L
Deir El-Moukhalles	ML	M	L	Deir Baba	ML	M	L	Deir Dourit	ML	M	L
Deir El-Qamar	ML	M	L	Deir Kouche	M	M	L	Dibbieh	ML	M	L
Dmit	M	M	L	Fouara Jaafar	M	M	L	Fraidis El-Chouf	ML	M	ML
Ghabet Jaafar	ML	M	L	Gharife	ML	M	L	Haret Jandal	M	ML	L
Hasrout	ML	M	L	Jadra	M	M	L	Jahlieh	ML	M	L
Jbeih El-Chouf	L	M	L	Jdeidet El-Chouf	ML	M	L	Jiyeh	M	M	L
Jleilyeh	ML	M	L	Jmailiyeh	ML	M	L	Joun	ML	M	L
Kahlounie El-Chouf	ML	M	L	Ketermaya	M	M	L	Kfar Faqoud	ML	M	L
Kfar Hamal	M	M	ML	Kfar Him	M	M	L	Kfar Katra	ML	M	L
Kfar Niss	M	M	ML	Kfar hay	M	M	L	Kfarnabrakh	M	M	L
Khirbet Bisri	M	M	L	Knayse El-Chouf	M	M	L	Maaniyeh	M	M	L
Maasser Beiteddine	ML	M	L	Maasser El-Chouf	L	ML	ML	Majdalouna	M	M	L
Majdel El-Meouch	M	M	ML	Mazboud	M	M	L	Mazmoura	ML	M	L
Mazraat El Chouf	ML	M	L	Mazraat El Daher	M	M	L	Mazraat El-Douair	M	M	L
Mechref	M	M	L	Mghairie	M	M	L	Mghayrie El-Chouf	ML	M	L
Moukhtara	ML	M	L	Mrusti	L	M	L	Mtolle	ML	M	L
Naameh	M	M	ML	Niha El-Chouf	L	M	L	Ouadi Abou Youssef	ML	M	L
Ouadi Ed-Deir	M	M	L	Ouadi El-Sit	M	M	L	Ouadi bnehlay	ML	M	L
Qraibeh	L	M	L	Qreiaa	ML	M	L	Rmayle El-Chouf	ML	M	L
Semqaniyeh	ML	M	L	Sibline	M	M	L	Sirjbeil	M	M	L
Warhanieh	M	ML	ML	Werdaniyeh	M	M	L	Zaarourieh	ML	M	L

## Baabda

Municipality	24-Feb	25-Feb	26-Feb	Municipality	24-Feb	25-Feb	26-Feb	Municipality	24-Feb	25-Feb	26-Feb
Abadiyeh	M	M	M	Ain Mouaffaq	M	M	ML	Araiya	M	M	ML
Arbaniyeh	ML	L	L	Arsoun	ML	ML	L	Baabda	M	M	M
Baalchmey	M	M	M	Bmaryam	M	M	ML	Bourj El-Brajneh	M	M	M
Boutchay	M	M	M	Bsaba Baabda	M	M	M	Btekhney	M	M	L
Btibyat	M	M	L	Bzbeddine	ML	ML	L	Chbeniyeh	M	M	M
Chiyah	M	M	M	Chmeisset Baabda	M	M	L	Chouit	M	M	L
Deir El-harf	ML	ML	L	Deir Khouna	M	M	M	Dlaybeh	ML	ML	L

Falougha	ML	ML	L	Furn El-Chebbak	M	M	M	Hadath Beyrouth	M	M	M
Halaliyeh Baabda	M	M	L	Hammana	ML	M	M	Haret El Sett	M	M	ML
Haret Hamze	M	M	ML	Haret Hreik	M	M	M	Hasbaiya El-Metn	ML	ML	VL
Jouar El-Hoz	ML	ML	L	Jouret Arsoun	ML	ML	L	Kfar Chima	M	M	M
Kfar Selouane	ML	ML	L	Khalouat Baabda	M	M	M	Kneisset Baabda	ML	ML	L
Laylakeh	M	M	M	Louayzeh Baabda	M	M	M	Merdache	M	M	M
Mzairaa Baabda	M	M	L	Ouadi Chahrour El Ol	M	M	ML	Ouadi Chahrour El So	M	M	ML
Qalaa Baabda	M	M	ML	Qhraybe Baabda	M	M	ML	Qobbayaa	M	M	M
Qornayel	ML	ML	L	Qortada	M	ML	L	Qrayeh Baabda	M	M	M
Qsaibeh Baabda	M	M	L	Qtale Baabda	M	M	L	Ras El Metn	M	M	L
Ras El-Haref	M	M	M	Rouayset El-Ballout	M	M	L	Salima Baabda	ML	ML	L
Tahouitat El Ghadir	M	M	M	Tarchich	M	M	L	Zandouqa	M	M	L

## Aley

Municipality	24-Feb	25-Feb	26-Feb	Municipality	24-Feb	25-Feb	26-Feb	Municipality	24-Feb	25-Feb	26-Feb
Abey	M	M	L	Aghmid	M	M	ML	Ain Dara	ML	ML	L
Ain Drafil	M	M	L	Ain El Halazoun	M	M	L	Ain El-Rmmaneh	M	ML	L
Ain Jedideh	M	M	M	Ain Ksour	M	M	L	Ain Onoub	M	M	ML
Ain Traz	M	M	L	Ainab	M	M	ML	Aley	M	M	M
Aramoun	M	M	M	Aytat	M	M	M	Azouniyeh	M	M	M
Baawerta	M	M	L	Badghan Oua Wadi Bad	M	M	M	Bassatine	M	M	ML
Bayssour	M	M	ML	Bchamoun	M	M	M	Bdadoun	M	M	ML
Behouara	M	M	M	Bennay	M	M	L	Bhamdoun El-Dayaa	M	M	M
Bhamdoun El-Mhatta	M	M	M	Bkhechtey	M	M	M	Bleibel	M	M	ML
Bmakine	M	M	M	Bmehray	L	ML	L	Bouzrid	M	ML	L
Bserrine	M	M	ML	Bsous	M	ML	L	Btalloun	M	M	M
Btater	M	M	M	Chanay	M	M	M	Charoun	M	M	M
Chartoun	M	ML	L	Chemlane	M	M	ML	Choueifat El-Aamrous	M	M	M
Choueifat El-Oumara	M	M	M	Choueifat El-Quoubbe	M	M	M	Dakkoun	M	M	L
Deir Qoubel	M	M	ML	Dfoun	M	M	ML	Douair El Remmaneh	M	ML	L
Ghaboun	M	M	ML	Habramoun	M	M	L	Homs Oua Hama	M	M	L
Houmal	M	M	ML	Jisr El Qadi	M	M	L	Kehaleh	M	M	ML
Keyfoun	M	M	M	Kfar Aamey	M	ML	M	Kommatyeh	M	M	M
Maasrati	M	M	L	Majdel Baana	M	M	M	Mansourieh et Ain El	M	M	M
Mazraat El-Nahr	M	M	L	Mchakhte	M	M	ML	Mecherfeh	M	M	M
Mejdlaya	M	M	L	Mrayjat	M	M	ML	Ramliyah	M	M	L
Rechmaya	M	M	L	Rejmeh	M	M	M	Remhala	M	M	L
Rouaysset El Neemane	M	M	M	Saoufar	M	M	M	Selfaya	M	M	L
Sirhmoul	M	M	L	Souq El Ghareb	M	M	M	Taazanieh	M	M	M

## Kesrouane

Municipality	24-Feb	25-Feb	26-Feb	Municipality	24-Feb	25-Feb	26-Feb	Municipality	24-Feb	25-Feb	26-Feb
Achkout	L	L	L	Adma Oua Dafneh	ML	M	ML	Ain Ed-Delbe Kesroua	M	M	VL
Ain El-Rihane	ML	ML	L	Aintoura Kesrouane	M	M	L	Ajaltoun	L	ML	L
Akaybeh Kesrouane	M	M	M	Aramoun Kesrouane	L	L	L	Azra ouel Ozor	M	M	L
Ballouneh	ML	L	L	Batha	L	L	VL	Bekaatat Achkout	ML	ML	L
Bekaatat Kanaan	M	ML	VL	Bizhel	M	M	L	Bouar	M	M	ML
Bqaatouta	M	M	L	Bqaq Ed-Dine	M	M	M	Bzommar	ML	ML	L

Chahtoul	M	M	L	Chnaniir	L	L	L	Chouan	M	M	VL
Daraya Kesrouane	L	L	L	Darououn	ML	ML	L	Deir Baqlouch	ML	ML	L
Dlebta	L	L	L	Eghbeh	L	L	VL	Faraya	ML	M	L
Fatka	M	M	L	Feytroun	M	M	L	Ghazir	ML	ML	L
Ghbaleh Kesrouane	M	M	L	Ghedrass	M	M	L	Ghosta	L	ML	L
Ghynéh	M	M	L	Harharaya w Kattine	ML	M	L	Harissa Kesrouane	ML	ML	L
Hayata	L	L	L	Hosein	M	M	L	Hrajel	M	M	L
Jdeideh Ghazir	L	ML	L	Jeita	M	ML	L	Jounieh Ghadir	M	M	ML
Jounieh Haret Sakhr	M	M	M	Jounieh Salel Alma	ML	M	ML	Jounieh Sarba	M	M	M
Jouret Bedrane	M	M	L	Jouret Mhad	M	M	L	Jouret Termos	M	M	L
Kfar Debiane	M	M	L	Kfar Tay Kesrouane	M	L	VL	Kfar Yassine	ML	M	M
Kfour Kesrouane	M	M	L	Kharayeb Nahr Ibrahi	M	M	L	Klayaat Kesrouane	L	L	L
Maarab	L	L	VL	Maaysra Kesrouane	M	M	L	Mayrouba	M	M	L
Mazraat Er-Ras	M	M	L	Mazraat Mrah El-Mir	L	L	L	Mchaa El Ftouh	M	M	L
Mchaa Faraya	ML	M	L	Mchaa Kfar Dibiane	ML	M	L	Mghaer	M	M	VL
Mradiyah	M	M	L	Nahr Ed-Dahab	M	M	L	Nammoura Kesrouane	M	M	L
Ouata El Jaouz	M	M	L	Ouata Sillam	ML	M	M	Raachine	ML	ML	L
Rayfoun	L	ML	L	Safra Kesrouane	M	M	M	Shayle Kesrouane	ML	ML	L
Tabarja	M	M	ML	Yahchouch	M	M	L	Zaaytreh	M	M	L
Zeytoun	M	M	ML	Zouk Mikael	M	M	M	Zouk Mosbeh	M	M	L

## Baalbek\_Hermel

### Baalbek

Municipality	24-Feb	25-Feb	26-Feb	Municipality	24-Feb	25-Feb	26-Feb	Municipality	24-Feb	25-Feb	26-Feb
Aadous	M	M	L	Aamchki	M	M	VL	Aarsal	M	M	L
Ain Baalbek	ML	M	M	Ain Bourday	M	M	VL	Ain El-Benye	M	M	VL
Ain El-Jaouz Baalbek	M	M	L	Ain El-Siya Chadoura	M	M	VL	Al Khodr Baalbek	M	M	L
Al Nabi Chit	M	M	L	Aynata Baalbek	M	M	L	Baalbek	M	M	L
Bachwat	M	M	L	Barqa	M	M	L	Bednayel Baalbak	M	M	L
Beit Chama	M	M	L	Bijjaje	M	MH	M	Bouday	M	M	L
Brital	M	M	L	Btadi	M	M	L	Chaat	ML	M	L
Chaibe	M	M	VL	Chlifa	M	M	L	Chmestar	M	M	L
Dar El-Oussa	M	M	L	Deir El-Ahmar	M	M	L	Deir Mar Maroun Baal	ML	M	M
Douris	M	M	L	Fakiha	M	MH	M	Hadath Baalbek	M	M	L
Ham	M	M	VL	Haour Taala	M	M	L	Hizzine	M	M	L
Hlebta	M	M	M	Hosh Barada	M	M	L	Hosh El Dahab	ML	M	L
Hosh El Snid	M	M	L	Hosh El-Nabi	M	M	L	Hosh El-Rafiq	M	M	L
Hosh Tal Safiya	M	M	L	Hrebta	M	M	L	laat	M	M	L
Jebaa	M	M	L	Jenta	M	M	L	Kfar Dabach	M	M	L
Kfar Dane	ML	M	L	Khraibeh El-Hermel	M	MH	L	Khreibet Baalbek	M	M	L
Kneisset Baalbek	M	M	L	Labueh	ML	M	ML	Maarboun	M	M	L
Majdaloun	M	M	L	Maqneh	M	M	L	Mazraat Beit Mcheik	M	M	L
Misraya	M	M	L	Moqraq	ML	M	L	Nabha El-Damdoum	M	M	L
Nabi Chbay	M	M	VL	Nabi Osman	ML	M	M	Nahleh baalbek	M	M	L
Ouadi El-Oss	M	M	L	Qaa Baayoun	ML	MH	M	Qaa Jouar Maqiye	ML	H	M
Qaa Ouadi El-Khanzir	ML	MH	M	Qah Baalbek	ML	H	M	Qarha Baalbek	M	M	L



Qsarnaba	M	M	L	Ram Baalbek	M	M	L	Ras Baalbek El Sahl	ML	MH	M
Ras Baalbek El-Charq	ML	M	M	Riha	M	M	L	Saaide	ML	M	L
Sbouba	M	MH	L	Seriine El-Tahta	M	M	L	Slouqi	M	M	L
Taiba Baalbek	M	M	L	Talia	M	M	L	Taraiya	M	M	L
Temnin El Fawqa	M	M	L	Temnin El-Tahta	M	M	L	Tfail	M	M	L
Yahfoufa	M	M	L	Yammouneh	M	M	L	Younine	M	M	L
Zboud	M	MH	M								

## Hermel

Municipality	24-Feb	25-Feb	26-Feb	Municipality	24-Feb	25-Feb	26-Feb	Municipality	24-Feb	25-Feb	26-Feb
Charbine El-Hermel	M	M	M	Hermel Jbab	M	M	M	Hermel	ML	M	M
Maaysra El-Hermel	M	MH	M	Michaa Mrajhine	M	M	M	Ouadi Faara	M	M	M
Ras Baalbek - Ouadi	ML	MH	M	Ras Baalbek El Gharb	M	M	M	Zighrine	M	M	M

## Akkar

### Akkar

Municipality	24-Feb	25-Feb	26-Feb	Municipality	24-Feb	25-Feb	26-Feb	Municipality	24-Feb	25-Feb	26-Feb
Aain Tinta	L	M	M	Aaiyat	L	M	M	Aakkar El-Aatiqa	L	M	ML
Aamar Akkar	M	M	M	Aamar El Baykat	L	M	M	Aamayer	M	M	M
Aamriyet Akkar	L	M	M	Aandqet	L	M	M	Aarmeh	L	M	M
Aarqa	M	M	M	Aawaynat	L	M	M	Aayoun Akkar	L	M	M
Abbdouiyeh	L	M	M	Ain El-Zeit	L	M	M	Ain Yaaqoub	L	M	M
Akroum	ML	M	M	Aridet Cheikh Zennad	M	M	M	Baldeh w Mazraat Bal	L	M	M
Barcha	L	M	M	Bardeh	L	M	M	Bebnine	M	M	M
Beino	L	M	M	Beit Ayoub	L	M	M	Beit El-Haouch	M	M	M
Beit Mellat	L	M	M	Beit Younes	L	ML	M	Berbara Akkar	L	M	M
Berqayel	M	M	M	Bezrina	L	M	ML	Bireh Akkar	L	M	M
Borj	L	M	M	Bqerezla	ML	M	M	Bzal	ML	M	ML
Chane	ML	M	M	Chaqdouf	ML	M	M	Charbila	L	M	M
Cheikh Mohammad	ML	M	M	Cheikh Taba Es-Sahl	ML	M	M	Cheikh Taba	ML	M	M
Cheikh Zennad	M	M	M	Cheikhlar	L	M	M	Chir Hmairine	ML	M	M
Daghle	L	M	M	Dahr Laissine	ML	M	M	Darine	M	M	M
Dawra	L	ML	ML	Dawsa w Baghdadi	L	M	M	Dayret Nahr El-Kabir	L	M	M
Deir Dalloum	M	M	M	Deir Jennine	L	M	M	Denbou	ML	M	M
Dibbabiyyeh	L	M	M	Douair Aadwiyeh	L	M	M	Fassikine	L	M	M
Fnaydek	L	M	M	Fraydes Akkar	L	M	M	Ghazayle	ML	M	M
Habchit	ML	M	ML	Hakour	ML	M	M	Halba	ML	M	M
Haouchab	ML	M	M	Hayssat	M	M	M	Haytla	L	M	M
Hayzouq	ML	M	M	Hedd	L	M	M	Hmaira Akkar	ML	M	M
Hmaiss Akkar	L	M	M	Hnaider	M	M	M	Hokr Ed-Dahri	M	M	M
Hokr Etti	ML	M	M	Hokr Jouret Srar	ML	M	M	Houaich	ML	M	M
Hrar	ML	M	M	Idbil	ML	M	M	Ilal	ML	M	M
Janine	L	M	M	Jdeidet El-JoumeH	ML	M	M	Jdeidet El-Kaiteh	M	M	M
Jebraiyel	ML	M	M	Kafr	M	M	ML	Kafr	L	M	M
Karm Asfour	ML	M	M	Kfar Melki Akkar	M	M	M	Kfar Noun	L	M	M
Kfarharra	L	M	M	Khalsa	L	M	M	Kharnoubet Akkar	L	M	M

Khirbet Daoud Aakkar	L	M	M	Khirbet El Remmane	L	M	M	Khirbet Shar	L	M	M
Khoreybet El-Jindi	ML	M	M	Khreibet Aakkar	ML	M	M	Kneisset Aakkar	M	M	M
Kneisset Hnaider	M	M	M	Knisse	L	M	M	Kroum El-Aarab	ML	M	M
Kwachra	L	M	M	Kweykhat	ML	M	M	Machta Hammoud	L	M	M
Majdala	M	M	M	Majdel Akkar	L	M	M	Mar Touma	M	M	M
Marlaya Melhem	M	M	M	Mashha	ML	M	M	Massoudiye	M	M	M
Mazraat Beit Ghattas	ML	M	M	Mazraat En-Nahriye	L	M	M	Mechmech	L	M	ML
Memneh	L	L	L	Mhammara	M	M	M	Mighraq Aakkar	M	M	M
Minyara	ML	M	M	Moqayteh	M	M	M	Mounjez	L	M	M
Msalla	L	M	M	Mzeihmeh	L	M	M	Nfaiseh	ML	M	M
Noura Et-Tahta	L	M	M	Ouadi El-Haour	L	M	M	Ouadi El-Jamous	M	M	M
Ouyoun El-Ghizlane	M	M	M	Qaabarine	M	M	M	Qabaait	ML	M	ML
Qachlaq	L	M	M	Qantara Aakkar	ML	M	M	Qarha Aakkar	M	M	M
Qarqaf	M	M	M	Qboula	L	M	M	Qleiaat Aakkar	M	M	M
Qloud El-Baqie	ML	M	M	Qobaiyat Aakkar	L	M	M	Qobbat Chamrat	M	M	M
Qorayat	L	ML	M	Qornet Aakkar	L	M	M	Qsair Aakkar	L	M	M
Rahbe	L	M	M	Rihaniyet Aakkar	ML	M	M	Rmah	L	M	M
Rmoul	M	M	M	Saadine	M	M	M	Sadaqa	ML	M	M
Saidnaya	L	M	M	Sammouniye	M	M	M	Sayssoq	ML	M	M
Semmaqiye	M	M	M	Semmaqli	M	M	M	Sfinet El-Dreib	L	M	M
Sfinet El-Qaitaa	M	M	M	Sindyanet Zeidane	L	M	M	Souaisset Aakkar	ML	M	M
Srar	L	M	M	Tal Abbas El Gharby	ML	M	M	Tal Abbas El-Chargy	M	M	M
Tal Biret	M	M	M	Tal Hmayra	M	M	M	Tal Maayan Tal Kiri	M	M	M
Tal Sibel	M	M	M	Tallet Chattaha	L	M	M	Tikrit	L	M	M
Tleil	L	M	M	Tshea	L	ML	ML	Zawarib	ML	M	M
Zouq El Hosniyeh	M	M	M	Zouq El-Haddara	M	M	M	Zouq El-Hbalsa	M	M	M
Zouq El-Moqachrine	M	M	M								

## Sud

### Sour

Municipality	24-Feb	25-Feb	26-Feb	Municipality	24-Feb	25-Feb	26-Feb	Municipality	24-Feb	25-Feb	26-Feb
Aaiyeh	ML	M	ML	Aalma El-Chaab	ML	M	ML	Aaytit	M	M	ML
Abbassiyeh Sour	M	M	M	Abou Chech	ML	M	ML	Ain Abou Abdallah	M	M	M
Ain Baal	M	M	ML	Arzoun	M	M	M	Aziyeh	ML	M	L
Baflaya	M	M	M	Barich	M	M	M	Batouliyeh	M	M	ML
Bayad	L	M	ML	Bazouriyeh	M	M	M	Bediass	M	M	M
Bestiyat	M	M	M	Borj El Chemali	M	M	M	Borj En-Naqoura	M	M	M
Borj Rahhal	M	M	M	Boustane	L	M	M	Btaychiyeh	ML	M	M
Chaaitiye	ML	M	L	Chameh	ML	M	ML	Chehabiye	M	M	ML
Chehour	M	M	L	Chihine	L	M	ML	Debaal Sour	M	M	M
Deir Amess	ML	M	L	Deir Kifa	M	M	M	Deir Qanoun El-Ain	ML	M	ML
Deir Qanoun El-Naher	M	M	M	Derdghaiya	M	M	M	Dhayra	L	M	ML
Halloussiyeh	M	M	M	Hamoul	ML	M	L	Hanaouey	M	M	ML
Henniye	ML	M	ML	Hmairi Sour	M	M	M	Iskandarouna Sour	M	M	L
Jbal El Botom	ML	M	L	Jebbin	ML	M	M	Jennata	M	M	M
Jijim	ML	M	L	Jouaiya	M	M	ML	Kneisset Sour	ML	M	L

Maarake	M	M	M	Maaroub	M	M	M	Majadel	M	M	ML
Majdalzoun	ML	M	ML	Mansouri Sour	M	M	ML	Marnba	M	M	ML
Marouahine	L	M	L	Mazraat El-Zalloutiy	L	M	M	Mazraat Mechref	ML	M	ML
Mazraat Tayr Semhat	M	M	L	Mheilb	M	M	ML	Neffakhiyeh	M	M	M
Niha Sour	M	M	M	Ouadi Jilo	M	M	M	Qana	ML	M	ML
Qolaileh Sour	ML	M	ML	Rechknay	L	M	L	Rmadiyah	ML	M	ML
Selha Sour	M	M	M	Siddiqine	ML	M	ML	Sour	M	M	M
Srifa	M	M	M	Tayr Debbe	M	M	M	Tayr Felsay	M	M	M
Tayr Harfa	ML	M	M	Touayri	ML	M	ML	Toura	M	M	M
Yanouh Sour	M	M	M	Yarine	L	M	M	Zebqine	ML	M	L

## Saida

Municipality	24-Feb	25-Feb	26-Feb	Municipality	24-Feb	25-Feb	26-Feb	Municipality	24-Feb	25-Feb	26-Feb
Aanqoun	L	M	L	Aaqtanit	L	M	L	Aarab Ej-Jall	L	M	L
Aarab Tabbaya	L	M	L	Abra Saida	ML	M	L	Adloun	M	M	M
Adousiyeh	ML	M	L	Ain-El-Deleb	ML	M	L	Arzai	M	M	M
Babliyah	ML	M	M	Barty	L	M	L	Bissariyeh	L	M	ML
Bnaafoul	L	M	L	Bqosta	ML	M	L	Bramiy	ML	M	L
Daoudiyeh	L	M	M	Dareb El-Sim	ML	M	L	Erkay	L	M	L
Ghassanieh	L	M	M	Ghazieh	ML	M	ML	Hajjeh	L	M	L
Haret Saida	ML	M	L	Hartiyeh	M	M	M	Hlaliye Saida	ML	M	L
Insariyat	ML	M	M	Jazira Saida	M	M	M	Kafar Bit	L	M	L
Kaoutariyet El-Siyad	L	M	M	Kfar Chellal	L	M	L	Kfar Hatta Saida	L	M	L
Kfar Milke Saida	L	M	L	Khartoum	L	M	M	Khaziz	L	M	L
Khirbet Ed-Douair Sa	L	M	ML	Khirbet El-Bassal	L	M	L	Khrayeb Saida	ML	M	M
Loubieh	ML	M	M	Maghdouche	L	M	L	Majdelyoun	ML	M	L
Matariyet El-Choumar	M	M	M	Matayriyeh	L	M	ML	Mazraat 'Mseileh	ML	M	ML
Mazraat 'Snaiber	L	M	ML	Mazraat Aarab Soukka	L	M	L	Mazraat Deir Taqla	ML	M	ML
Mazraat El Yahoudiye	M	M	M	Mazraat El-Housseini	ML	M	ML	Mazraat El-Mhaydaleh	ML	M	M
Mazraat El-Ouasta	M	M	M	Mazraat Jamjim	M	M	M	Mazraat Kaoutariyet	ML	M	M
Mazraat Kfar Badda	M	M	M	Mazraat Oussamiyat	ML	M	M	Mazraat Sari	M	M	M
Mazraat Sinai	ML	M	M	Meemariyeh	L	M	L	Merouaniyeh	L	M	L
Miyeh ou Miyeh	ML	M	L	Najjariyeh	ML	M	L	Qaaqiyat El-Snaouba	L	M	M
Qnarit	L	M	L	Qraiye Saida	ML	M	L	Saida Ed-Dekermane	ML	M	L
Saida El-Oustani	ML	M	L	Saida El-Qadimeh	ML	M	L	Saida Kefraya	ML	M	L
Saksakiyeh	ML	M	M	Salhie Saida	ML	M	L	Sarafand	ML	M	ML
Sfenta	L	M	L	Tafahta	L	M	ML	Tanbourit	L	M	L
Tebna	L	M	ML	Zaghdraiya	ML	M	L	Zeita	L	M	L
Zrariyeh	ML	M	M								

## Jezzine

Municipality	24-Feb	25-Feb	26-Feb	Municipality	24-Feb	25-Feb	26-Feb	Municipality	24-Feb	25-Feb	26-Feb
Ain El-Mir (El Estab	L	M	L	Anane	ML	M	L	Aramta	L	ML	L
Ariya	L	M	L	Aychiyeh	L	L	L	Azour	ML	M	L
Baba	ML	M	L	Bayssour Jezzine	L	M	L	Benoueteh Jezzine	ML	M	L
Bhannine	ML	ML	L	Bisri	M	M	L	Bkassine	L	M	L
Bouslaya	L	M	L	Btedine El-Leqech	ML	M	L	Chbail	L	L	VL
Choualiq Jezzine	L	M	L	Dahr Ed-Deir	L	M	L	Deir El Qattine	ML	M	L

Demachqiyeh	L	L	L	Ghabbatiyeh	ML	M	L	Harf Jezzine	ML	M	L
Hassaniyeh	L	M	L	Haytouleh	L	M	L	Haytura	L	M	L
Hidab	L	M	L	Homsiyeh	L	M	L	Jabal Toura	L	M	L
Jarmaq	L	L	L	Jensnaya	ML	M	L	Jernaya	L	M	L
Jezzine	L	M	L	Karkha	ML	M	L	Kfar Falous	L	M	L
Kfar Houna	L	M	L	Kfar Jarrah	ML	M	L	Lebaa	L	M	L
Louayzet Jezzine	L	ML	L	Machmouche	L	M	L	Mahmoudiyeh Jezzine	L	L	L
Maknounye Jezzine	L	M	L	Maraat Ouzaïyeh	L	L	L	Mazraat Daraya	L	ML	L
Mazraat El-Aarqoub	L	L	L	Mazraat El-Mathane	M	M	VL	Mazraat El-Rahbane	L	M	L
Mazraat Khallet Khaz	L	L	L	Mazraat Louzid (Loua	L	L	L	Mazraat Qrouh	L	ML	L
Mazraat Tamra	L	L	L	Mazraat Zighrine Jez	L	L	L	Mazraat	L	L	L
Mharbiyeh	L	M	L	Midane Jezzine	L	M	L	Mjeydel Jezzine	L	M	L
Mlikh	L	ML	L	Mrah El-Hbasse	L	M	L	Ouadi Baanquodaine	L	M	L
Ouadi El-Laymoun	L	M	L	Ouardiyeh	L	L	VL	Qabaa Jezzine	L	M	L
Qatrani	L	L	L	Qaytouleh	L	M	L	Qtaleh Jezzine	ML	M	L
Rihane Jezzine	L	L	L	Rimat	L	M	L	Roum	L	M	L
Roummanet	L	M	L	Sabbah	L	M	L	Saydoun	L	M	L
Sfaray	L	M	L	Snaya	L	M	L	Sojoud	L	L	L
Srayri	L	ML	L	Taaid	M	M	L	Wadi Jezzine	L	M	L
Zhalta	L	M	L								

## Bekaa

### West Bekaa

Municipality	24-Feb	25-Feb	26-Feb	Municipality	24-Feb	25-Feb	26-Feb	Municipality	24-Feb	25-Feb	26-Feb
Aammiq BG	M	M	M	Ain El Tineh BG	ML	M	L	Ain Zebdeh	ML	M	ML
Ana	M	M	M	Aytanit	M	M	L	Baaloul BG	M	M	M
Bab Mareh	M	M	L	Chouberqiye Aammiq	M	M	M	Dakoue	M	M	M
Deir Ain El-Jaouze	M	M	ML	Deir Tahniche	M	M	M	Ghaza	M	M	M
Harime El-Soughra	M	M	M	Hoch Harimeh	M	M	M	Jazira BG	M	M	M
Jib Jennine	M	M	M	Kamed-El-Laouz	M	M	M	Kefraya BG	M	M	L
Khiara El Atika	M	M	M	Khiara	M	M	M	Khirbet Qanafar	ML	M	ML
Lala	M	ML	M	Lebbaya BG	M	M	L	Loussa	M	M	L
Machghara	M	M	L	Manara (Hammara) BG	M	M	M	Mansoura BG	M	M	M
Marej BG	M	M	ML	Maydoun	M	M	L	Ouaqf BG	M	M	M
Qaraaoun	ML	M	ML	Qelya	M	ML	L	Raouda (Istabel)	M	M	M
Saghbine	ML	M	ML	Sohmor	M	M	L	Soltan Yacoub el Ara	M	M	M
Souairy	M	M	M	Sultan Yaacoub	M	M	M	Tal Znoun	M	M	M
Yehmor BG	M	M	L	Zilaya	ML	ML	L				

### Zahle

Municipality	24-Feb	25-Feb	26-Feb	Municipality	24-Feb	25-Feb	26-Feb	Municipality	24-Feb	25-Feb	26-Feb
Aanjar (Haouch Mouss	M	M	M	Ablah	M	M	L	Ain Kfarzabad	M	L	L
Ali-El-Nahri	M	M	L	Bar Elias	M	M	L	Bouarej	M	ML	L
Cheberqiyet Tabet	M	M	L	Chtaura	M	ML	L	Deir El Ghazal	M	ML	L
Delhamiyet Zahle	M	L	L	Ferzol	M	M	L	Haouch El-Ghanam	M	M	L
Haouch Es-Siyadeh	M	M	L	Haouch Hala	M	M	L	Haouch Mandara	M	M	L

Haouch Qayssar	M	M	L	Hezerta	M	M	L	Hosh Moussa	M	L	L
Jdita	M	ML	L	Kfarzabad	M	M	L	Ksara	M	L	L
Majdel Aanjar	M	M	M	Makssi	M	ML	L	Massa	M	M	L
Mazraat Er-Remtaniye	M	ML	L	Mrayjat Zahle	M	ML	L	Mzaraa Zahle	M	ML	L
Nabi Ayla	M	M	L	Nasriyet Rizk	M	M	L	Nasriyet Zahle	M	M	ML
Niha Zahle	M	M	L	Ouadi Ed-Deloum	M	ML	L	Ouadi El-Arayech	M	M	L
Qaa El Rim	M	M	L	Qab Elias	M	M	L	Qousaya	M	ML	L
Rhit	M	M	L	Riyak	M	M	L	Saadnayel	M	L	L
Taal El-Akhdar	M	M	M	Taalbeya	M	ML	L	Taanayel	M	ML	L
Talamara	M	M	L	Tcheflik Edde Haouch	M	ML	L	Tcheflik Qiqano	M	M	L
Terbol Zahle	M	L	L	Touaite Zahle	M	M	L	Zahle Aradi	M	M	L
Zahle El-Berbara	M	M	L	Zahle El-Maallaqa	M	M	L	Zahle El-Midane	M	M	L
Zahle Er-Rassiye	M	M	L	Zahle Haouch El-Ouma	M	L	L	Zahle Haouch El-Ouma	M	L	L
Zahle Haouch Ez-Zara	M	M	L	Zahle Maalaga Aradi	M	M	L	Zahle Mar Antonios	M	M	L
Zahle Mar Elias	M	M	L	Zahle Mar Gerios	M	M	L	Zahle Saydet En-Naja	M	M	L
Zebdoul	M	ML	L								

## Rachaiya

Municipality	24-Feb	25-Feb	26-Feb	Municipality	24-Feb	25-Feb	26-Feb	Municipality	24-Feb	25-Feb	26-Feb
Ain Arab Rachaiya	M	M	M	Ain Ata	M	M	L	Ain Harche	M	M	L
Aqabe Rachaya	M	M	ML	Ayha	M	M	M	Ayta El Fokhar	M	M	M
Bakifa Rachaya	M	M	ML	Bakka	M	M	M	Beit Lahya	M	M	ML
Bireh Rachaiya	M	M	M	Daheer El Ahmar	M	M	ML	Deir El-Achayer	M	M	M
Heloua Rachaiya	M	M	M	Hoch El Qannabeh Rac	M	M	L	Kaoukaba Bou Arab	M	M	ML
Kfar Danis	M	M	M	Kfar Mechki	M	M	L	Kfar Qouq	M	M	M
Kherbet Rouha	M	M	M	Majdel Balhiss	M	M	L	Mdoukha	M	M	M
Mhaydseh Rachaiya	M	M	M	Nabi Safa	M	M	L	Rachaiya	M	M	ML
Rafid Rachaiya	M	M	M	Selsata (Mazraat Dei	M	M	L	Tannoura	M	M	ML
Yanta	M	M	M								

## Beyrouth

### Beyrouth

Municipality	24-Feb	25-Feb	26-Feb	Municipality	24-Feb	25-Feb	26-Feb	Municipality	24-Feb	25-Feb	26-Feb
Achrafieh	M	M	M	Ain el-Mreisse	M	M	M	Bachoura	M	M	M
Beirut Central Distr	M	M	M	Marfai	M	M	M	Mazraa	M	M	M
Medaouar	M	M	M	Minet el-Hosn	M	M	M	Mwssaitbeh	M	M	M
Ras Beirut	M	M	M	Rmeil	M	M	M	Saifi	M	M	M
Zqaq el-Blat	M	M	M								