

Lebanon Fire Risk Bulletin



CIVIL DEDEFENCE

Refer to cadast table condition.

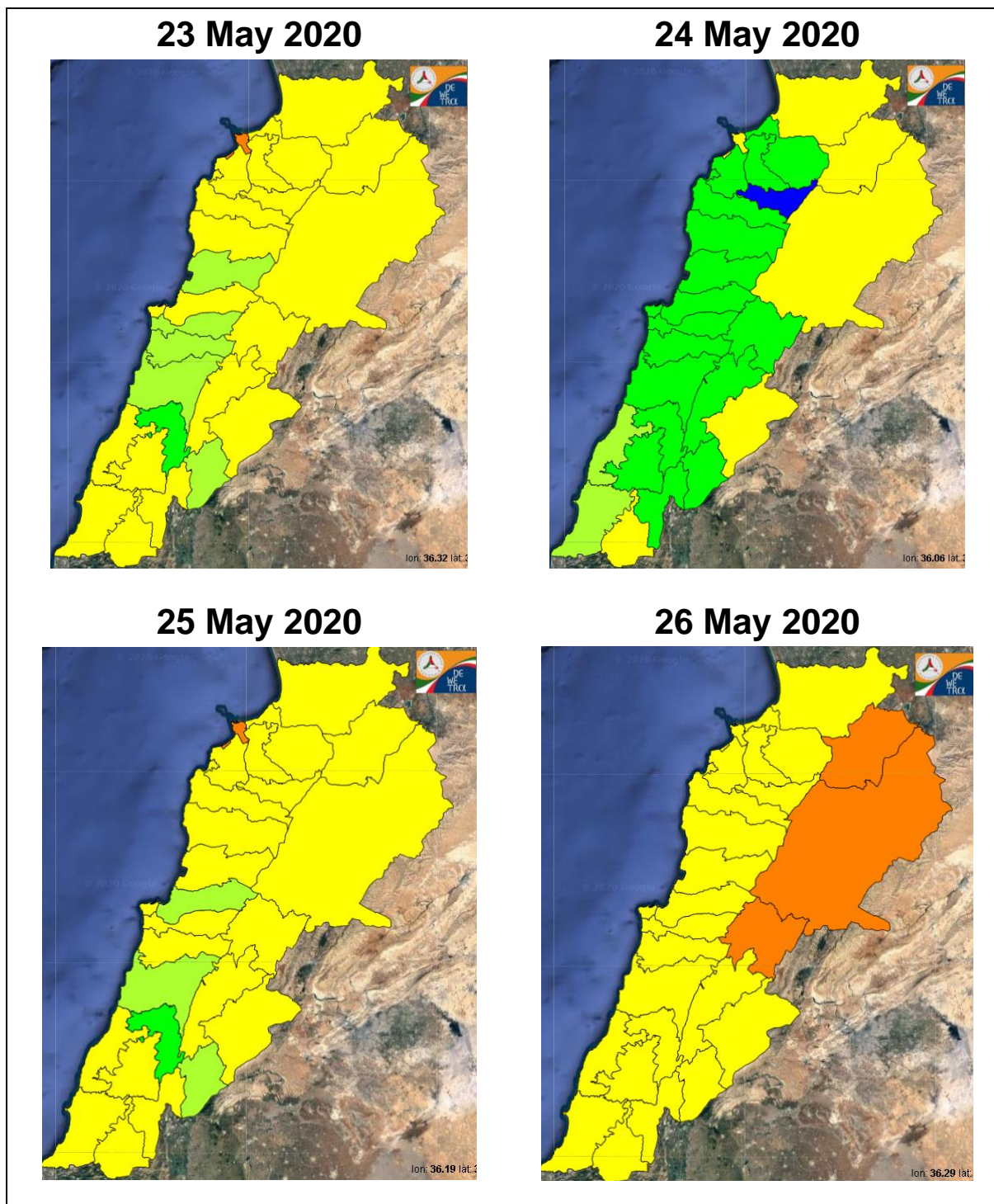
Please note that the indicated temperature is at 2 meters height from the ground.

General description of potential fire risk situation

Symbol	Level of risk	Meaning and actions
VL	Very low	Very low fire risk. Controlled burning operations can be hardly executed due to high fuel moisture content. Normally wildfires self-extinguish.
L	Low	Low fire risk. Controlled burning operations can be executed with a reasonable degree of safety.
ML	Medium low	Medium-low fire risk. Controlled burning operations can be executed in safety conditions. All the fires need to be extinguished.
M	Medium	Medium fire risk. Controlled burning operations would be avoided. All the fires need to be very well extinguished.
M	Medium high	Controlled burning is not recommended. Open flame will start fires. Cured grasslands and forest litter will burn readily. Spread is moderate in forests and fast in exposed areas. Patrolling and monitoring is suggested. Fight fires with direct attack and all available resources.
H	High	Ignition can occur easily with fast spread in grass, shrubs and forests. Fires will be very hot with crowning and short to medium spotting. Direct attack on the head may not be possible requiring indirect methods on flanks. Patrolling and monitoring the territory is highly suggested.
E	Extreme	Ignition can occur also from sparks. Fires will be extremely hot with fast rate of spread. Control may not be possible during day due to long range spotting and crowning. Suppression forces should limit efforts to limiting lateral spread. Damage potential total. Patrolling and monitoring the territory is highly suggested.

Beirut, 24 May 2020

FIRE RISK INDEX

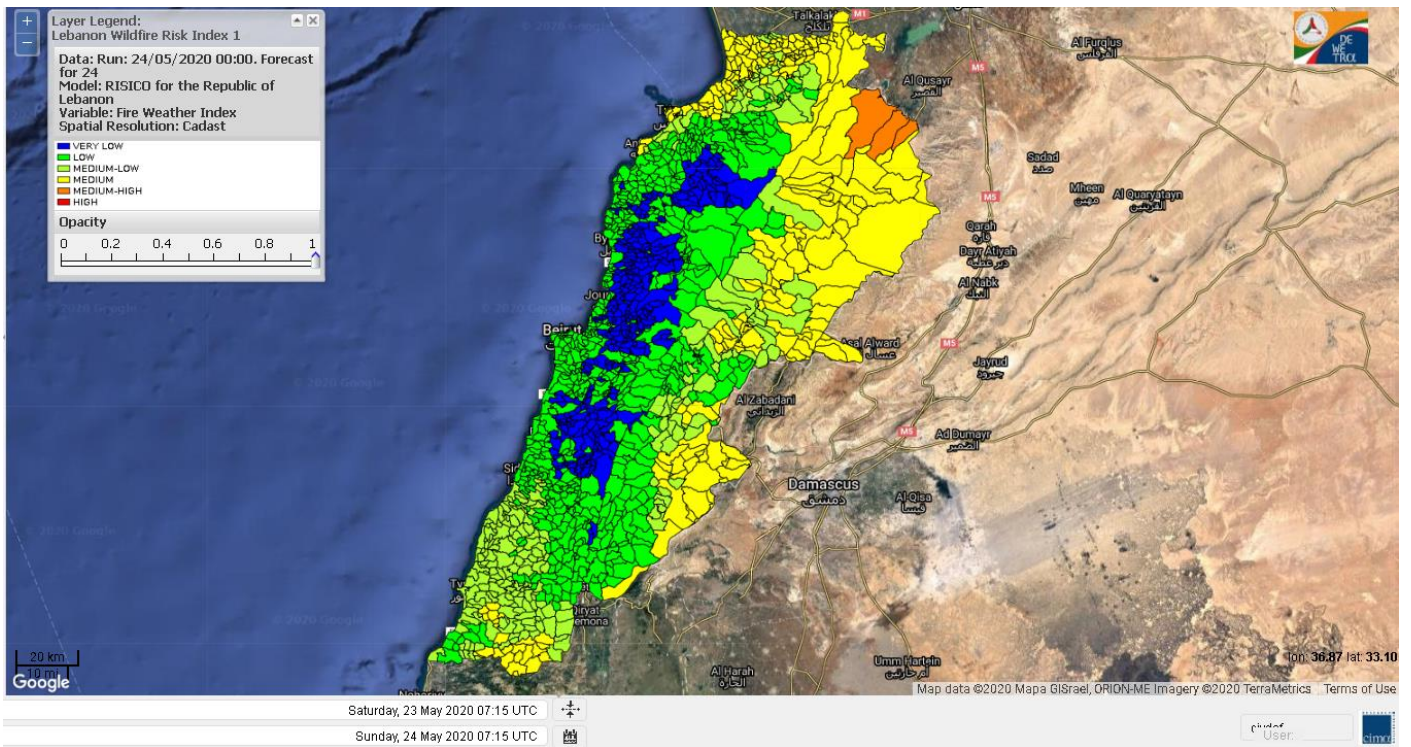


Layer Legend:
Lebanon Wildfire Risk Index 1

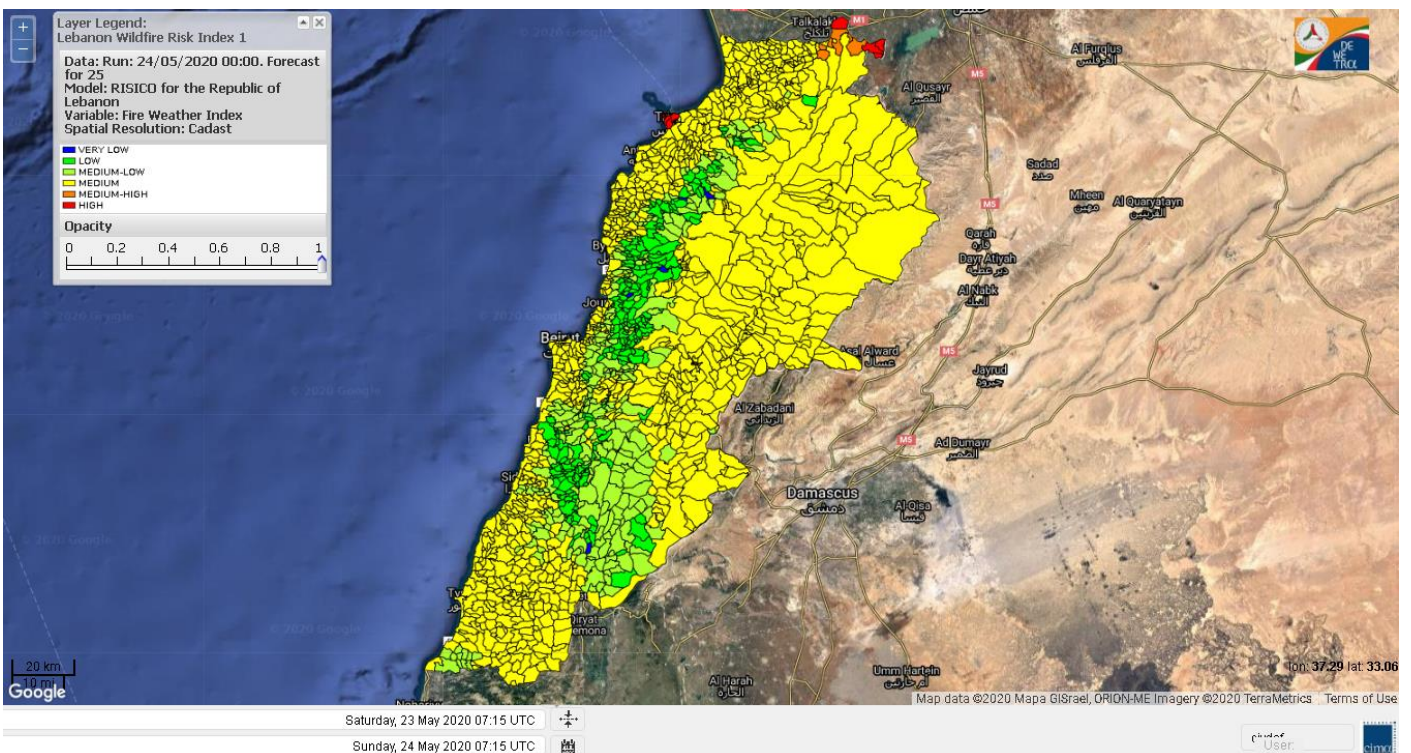
Data: Run: 24/05/2020 00:00. Forecast for 24
Model: RISICO for the Republic of Lebanon
Variable: Fire Weather Index
Spatial Resolution: Caza

- VERY LOW
- LOW
- MEDIUM-LOW
- MEDIUM
- MEDIUM-HIGH
- HIGH
- EXTREME

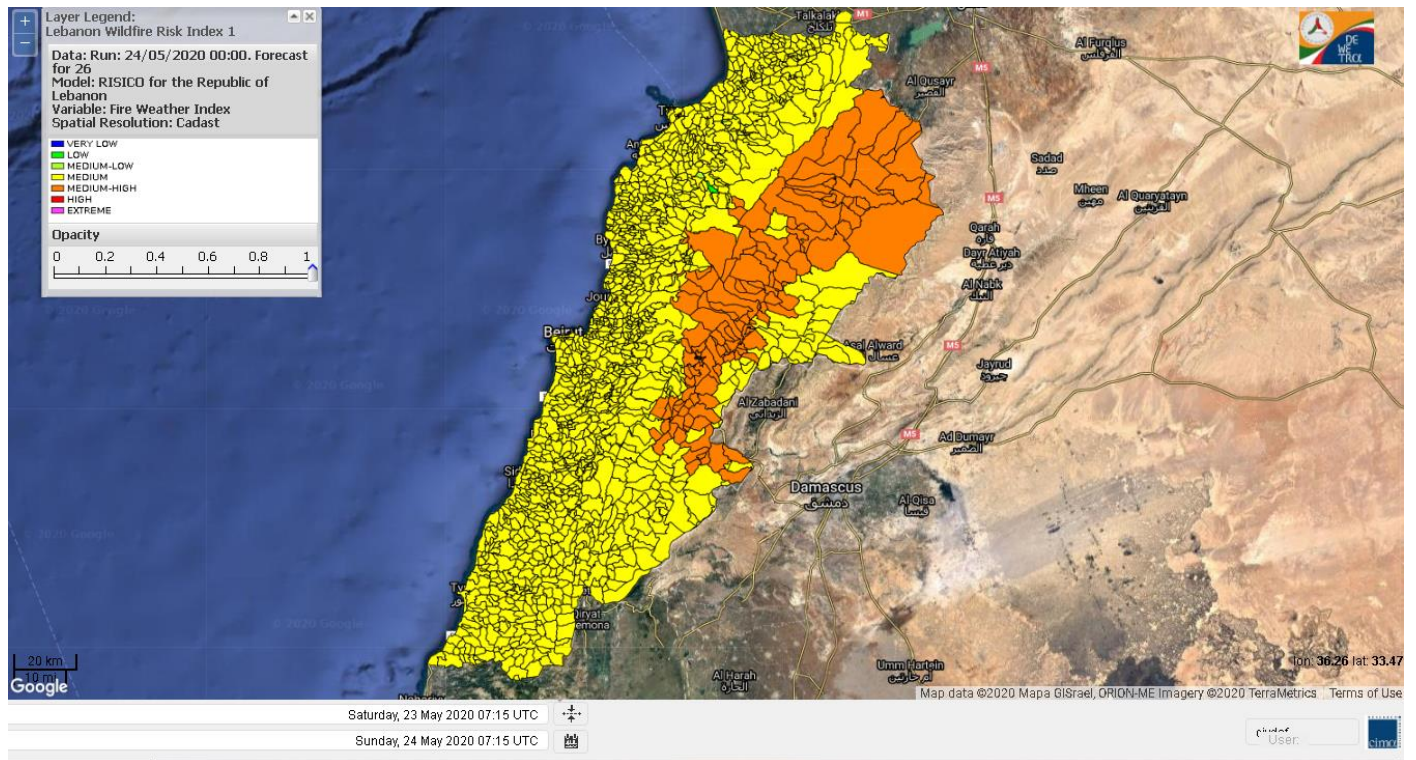
Lebanon for 24 May 2020



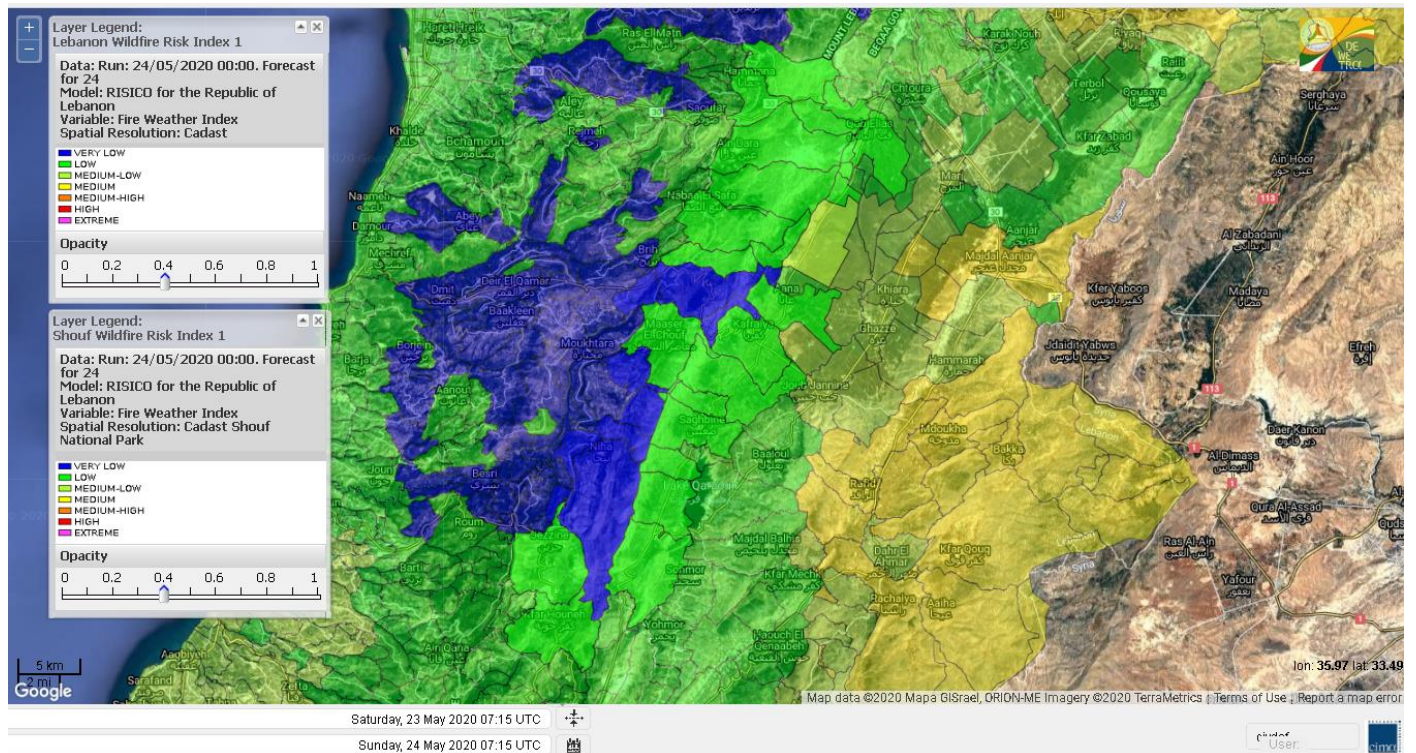
Lebanon for 25 May 2020



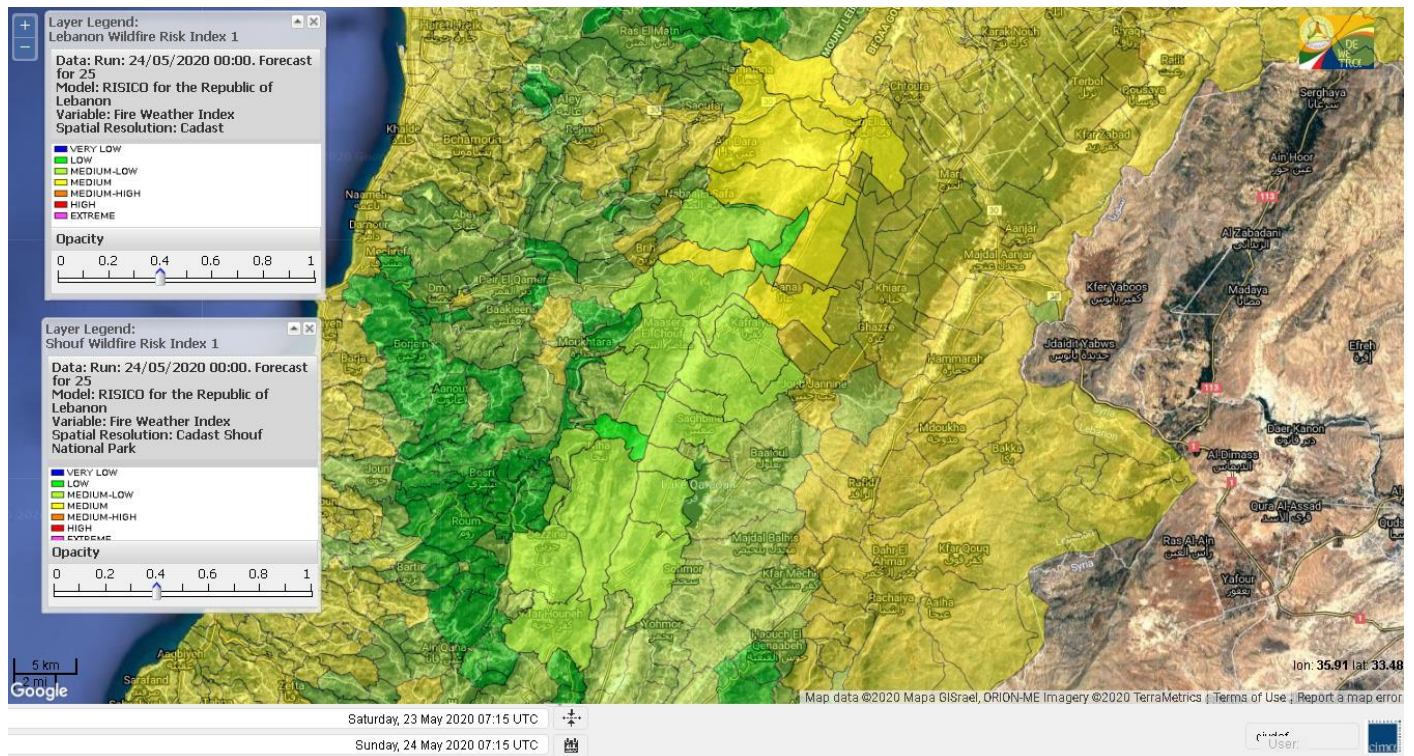
Lebanon for 26 May 2020



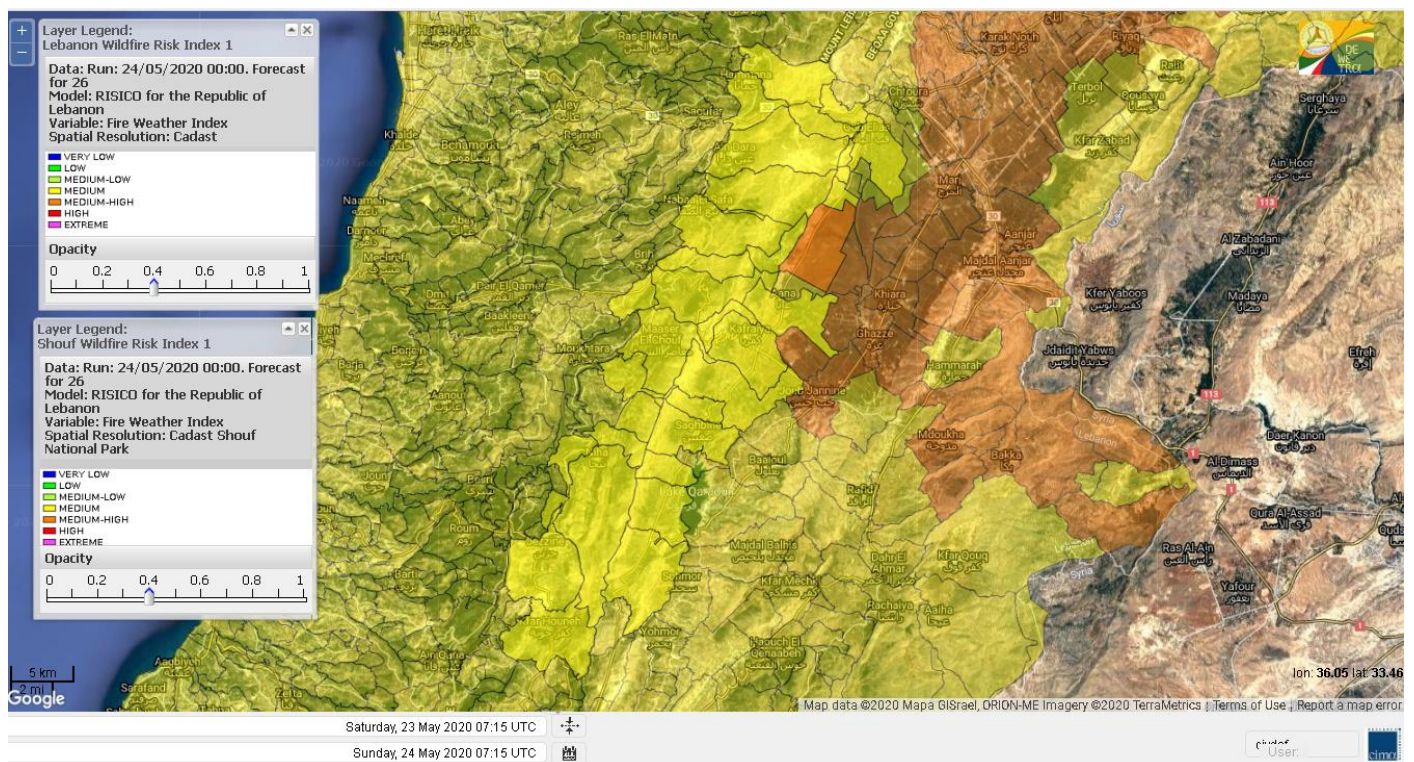
Shouf Biosphere Reserve Forecast for 24 May 2020



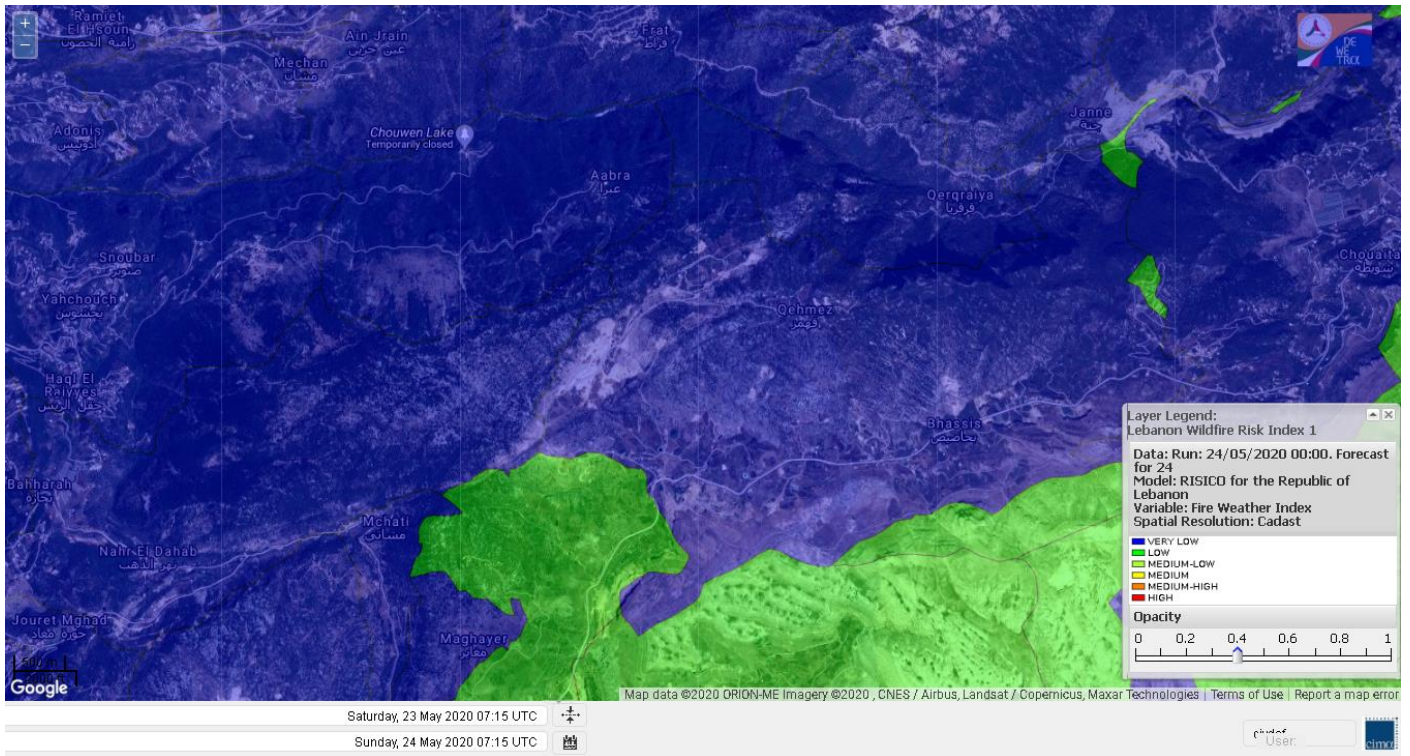
Shouf Biosphere Reserve Forecast for 25 May 2020



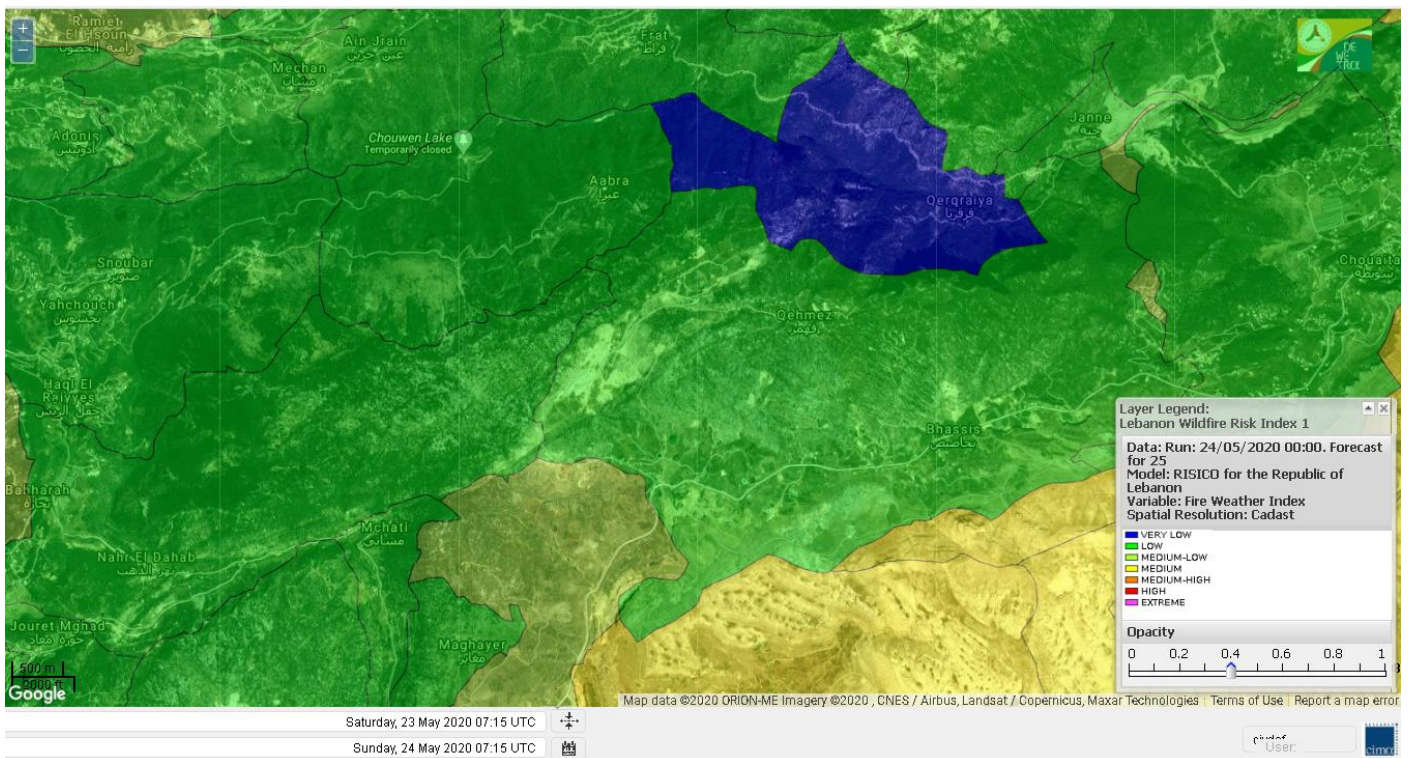
Shouf Biosphere Reserve Forecast for 26 May 2020



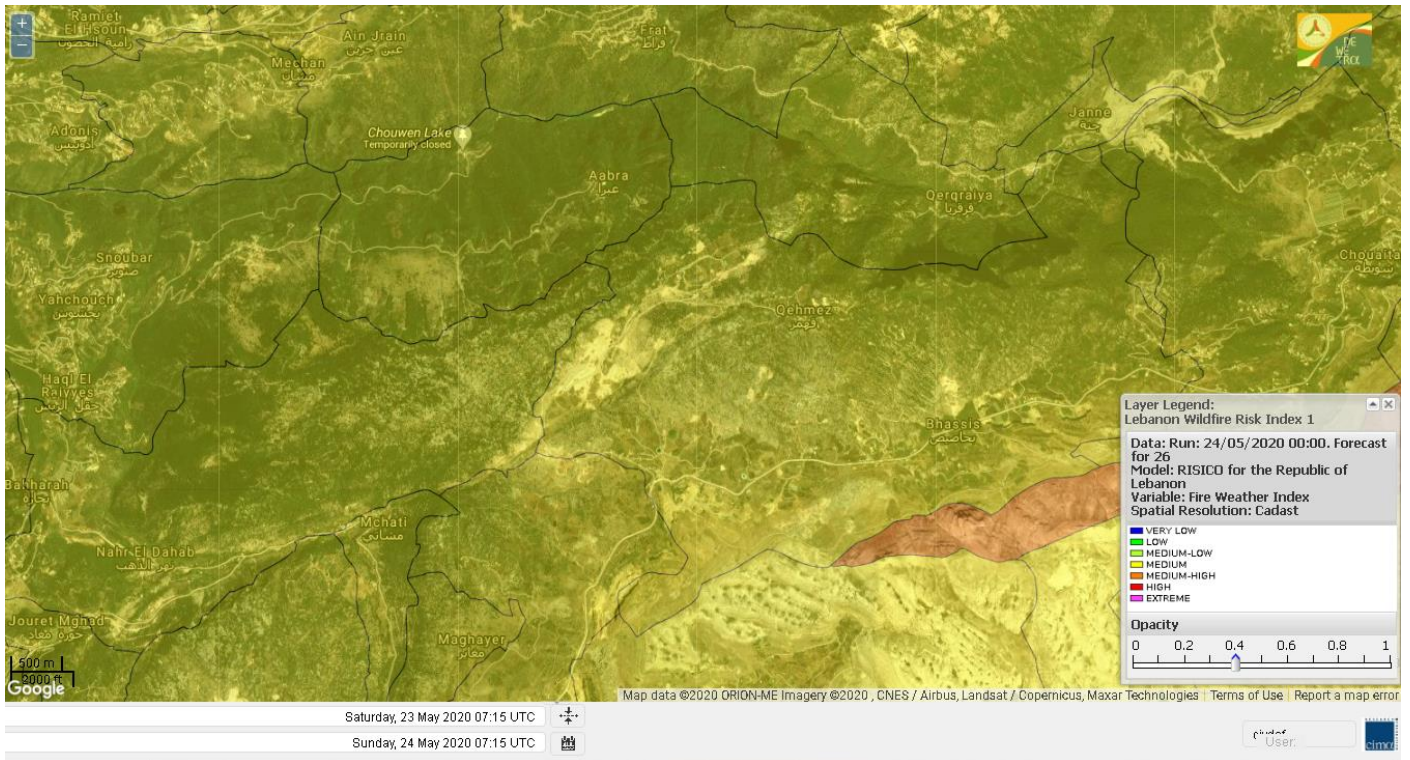
Jabal Moussa Reserve Forecast for 24 May 2020



Jabal Moussa Reserve Forecast for 25 May 2020



Jabal Moussa Reserve Forecast for 26 May 2020

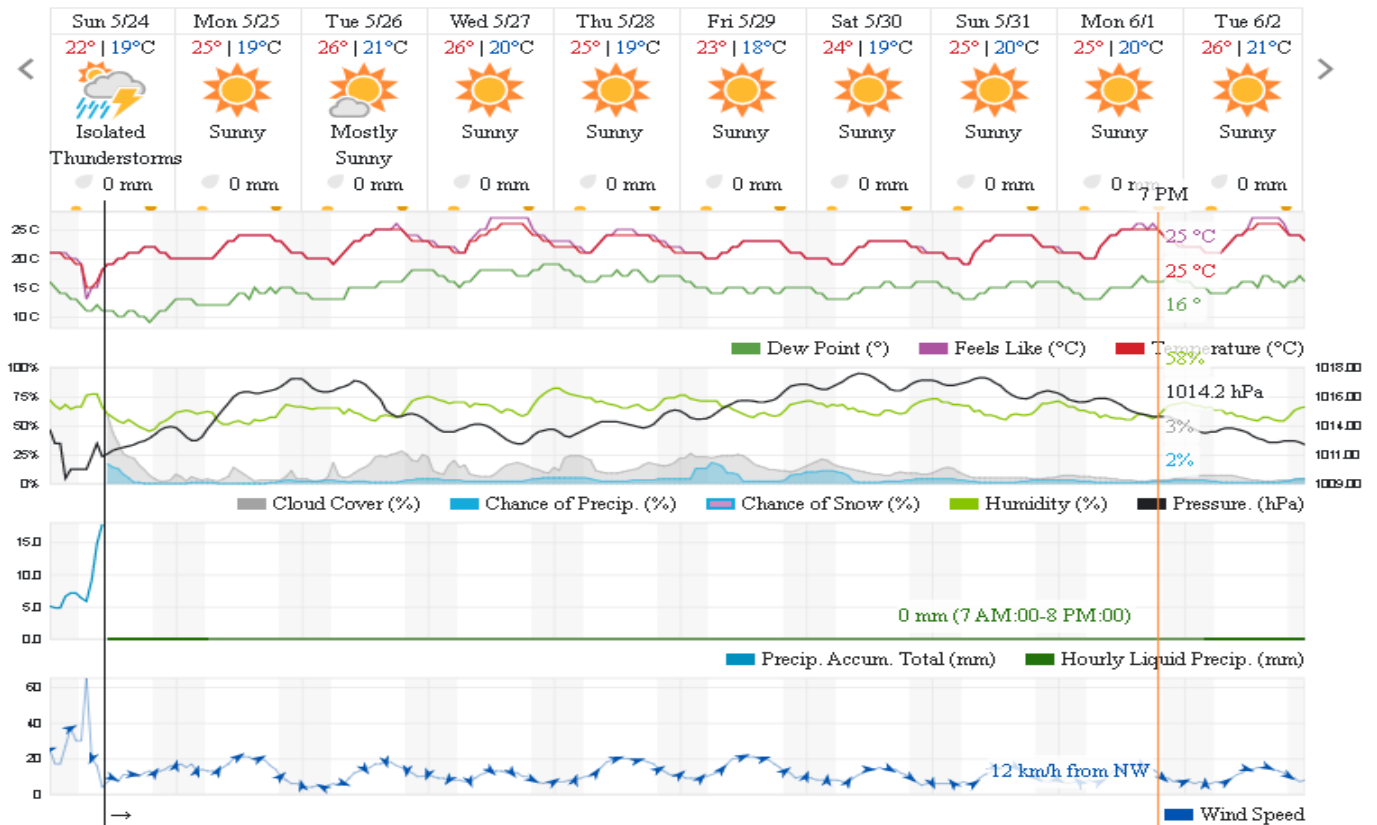


Beirut, Beirut Governorate, Lebanon 10-Day Weather Forecast

21° ACHRAFIEH, RIZK STATION | CHANGE

TODAY HOURLY **10-DAY** CALENDAR HISTORY WUNDERMAP

Customize



Nord

Koura

Municipality	24-May	25-May	26-May	Municipality	24-May	25-May	26-May	Municipality	24-May	25-May	26-May
Aaba	L	M	M	Afsaddiq	L	M	M	Ain Ekriane	L	M	M
Amioun	L	M	M	Anfeh	M	M	M	Badbhoun	L	M	M
Barghoun	ML	M	M	Barsa	L	M	M	Batroumine	L	M	M
Bdebba	L	M	M	Bechmizine	L	M	M	Bednayet El-Koura	L	M	M
Bhabbouch El-Koura	L	M	M	Bkeftine	L	M	M	Bnehran	L	M	M
Bqaiia El-Koura	L	M	M	Bsarma	L	M	M	Btaaboura	L	M	M
Bterram	L	M	M	Btouratij	ML	M	M	Bziza	L	M	M
Dar Beechtar	L	M	M	Dar Chmezzine	L	M	M	Deddeh	ML	M	M
Deir El-Balamand	L	M	M	Fih	L	M	M	Hraiche	M	M	M
Ijdaabrine	L	M	M	Kaftoun	L	M	M	Kefraya El-Koura	L	M	M
Kfarakka	L	M	M	Kfarhata	L	M	M	Kfarhazir	L	M	M
Kfarkahel	L	M	M	Kfarsaroun	L	M	M	Kosba	L	M	M
Mejdel el-Koura	L	M	M	Nakhle	L	M	M	Qalhat	L	M	M
Ras Masqa	ML	M	M	Rechdibbine	L	M	M	Zakroun	ML	M	M
Zgharta El-Mtaouile	L	ML	M								

Bcharre

Municipality	24-May	25-May	26-May	Municipality	24-May	25-May	26-May	Municipality	24-May	25-May	26-May
Aabdine	VL	ML	M	Bane	VL	M	M	Barhelioun	VL	L	M
Bazooune	VL	M	M	Becharre	VL	M	M	Beit Menzer	VL	L	M
Billa	VL	ML	M	Blaouza	VL	M	M	Bqaa Kafra	VL	M	MH
Bqerqacha	VL	M	M	Breissat	VL	ML	M	Dimane	VL	ML	M
Hadath El Jobbeh	VL	ML	M	Hadchit	VL	ML	M	Hasroun	VL	M	M
Mazraat Aassaf	VL	VL	M	Mazraat Bani Saab	VL	ML	M	Mchaa El-Jobbeh	L	M	MH
Metrit	L	M	M	Moghri El-Ahoual	VL	ML	M	Ouadi Qannoubine	VL	VL	L
Qanat	VL	ML	M	Qnayouer	VL	L	M	Tourza	VL	L	M

Batroun

Municipality	24-May	25-May	26-May	Municipality	24-May	25-May	26-May	Municipality	24-May	25-May	26-May
Aabrine	L	M	M	Aalali	L	ML	M	Aartziz	VL	M	M
Abdelli	VL	ML	M	Ajdabra	L	M	M	Assia	L	L	M
Basbina	L	M	M	Batroun	L	M	M	Bcheleh	L	ML	M
Bechtoudar	L	L	M	Beit Chlala	VL	L	M	Beit Kassab	VL	L	M
Bijdarfil	L	M	M	Bqesmaya	L	M	M	Chatine	L	ML	M
Chebtin	VL	M	M	Chekka	L	M	M	Daael	VL	L	M
Dahr Abi Yaghi	VL	ML	M	Daraya El-Batroun	L	M	M	Deir Billa	L	ML	M
Deir Kfifane	L	M	M	Deir Mar Youhanna EL	VL	L	M	Deir Mar Youssef Jra	VL	M	M
Douma	L	ML	M	Douq	VL	M	M	Eddeh El-Batroun	L	M	M
Ftihat El-Batroun	VL	ML	M	Ghouma	L	M	M	Hadtoun	L	L	M
Hamat	L	M	M	Harbouna	VL	M	M	Hardine	VL	L	M
Helta	VL	L	M	Hery	L	M	M	Jebbla	VL	ML	M
Jrabta El-Batroun	L	M	M	Jrane El-Batroun	L	M	M	Kfar Aabida	L	M	M
Kfar Halda	VL	L	M	Kfarb Shlaimane	VL	L	M	Kfarhatna	L	M	M
Kfarhay	L	M	M	Kfarhelos	VL	M	M	Kfifane	L	M	M

Kfour El Arabi	VL	ML	M	Koubba	L	M	M	Kour	L	M	M
Mar Mama	VL	ML	M	Masrah	VL	ML	M	Mehmarch	L	ML	M
Mrah Chdid	L	M	M	Mrah El Ziyat	VL	M	M	Mrah El-Hajj	VL	L	M
Nahle El-Batroun	VL	L	M	Niha El-Batroun	VL	ML	M	Ouahj El-Hajjar	L	M	M
Ouata Houb	L	L	M	Qatnaaoun	L	M	M	Racha	L	ML	M
Rachana	L	M	M	Rachkida	L	M	M	Ram El-Batroun	VL	L	M
Ras Nahhach	L	M	M	Selaata	L	M	M	Sghar	L	M	M
Smar Jbayl	L	M	M	Sourat El-Batroun	VL	M	M	Tannourine El-Faouqa	L	M	M
Tannourine Et-Tahta	VL	L	M	Thoum	L	M	M	Toula El-Batroun	VL	M	M
Zan	VL	ML	M								

Zgharta

Municipality	24-May	25-May	26-May	Municipality	24-May	25-May	26-May	Municipality	24-May	25-May	26-May
Aachach	L	M	M	Aalma	L	M	M	Aarde	L	M	M
Aintourine	VL	ML	M	Arabet Qozhaya	VL	L	M	Arde	L	M	M
Arjis	L	M	M	Asnoun	L	M	M	Ayto	VL	L	M
Basloukit	VL	ML	M	Bchannine	L	M	M	Besebeel	L	M	M
Bhairret Toula	VL	L	M	Bnachee	L	M	M	Boussit	M	M	M
Danha	L	M	M	Daraiya Zgharta	L	M	M	Deir Jdeide	L	M	M
Ehden	VL	ML	M	Halan	M	M	M	Hariq Zgharta	L	M	M
Houakir	L	M	M	Hraiqis	M	M	M	laal	L	M	M
Ijbaa	VL	ML	M	Karm Saddeh	VL	L	M	Kfarchakhna	L	M	M
Kfardlaqous	L	M	M	Kfarfou	VL	ML	M	Kfarhata Zgharta	L	M	M
Kfarhoura	L	M	M	Kfarsghab	VL	ML	M	Kfaryachit	L	M	M
Kfarzaina	L	M	M	Khaldiye	L	M	M	Mazraat Ajbeaa	L	M	M
Mazraat Et-Teffah	VL	L	M	Mazraat Jneid	L	M	M	Mejdlayia Zgharta	ML	M	M
Merh Kfarsghab	L	M	M	Miryata	L	M	M	Miziara	VL	ML	M
Mzraat Kefraya	M	M	M	Qorah Bach	L	M	M	Rachiine	L	M	M
Ras Kifa	VL	ML	M	Sakhra	L	M	M	Sebhel Zgharta	VL	ML	M
Serhel	VL	L	ML	Tallet Zgharta	L	M	M	Toula Zgharta	VL	L	M
Zgharta	L	M	M								

Minieh-Denniye

Municipality	24-May	25-May	26-May	Municipality	24-May	25-May	26-May	Municipality	24-May	25-May	26-May
Aasaymout	L	M	M	Aaymar	L	ML	M	Aazki	ML	M	M
Ain El-Tineh-Miniyeh	L	L	M	Assoun	L	ML	M	Bakhaaoun	L	ML	M
Bchennata	L	ML	M	Bechehhara	VL	M	M	Beddawi	M	M	M
Behouaita	VL	L	M	Beit El Foqss	L	L	M	Beit Haouik	L	ML	M
Beit Zoud	L	L	M	Bekaasafrine	L	M	M	Borj El Yahoudiyeh	M	M	M
Bqarsouna	L	L	M	Btermaz	L	ML	M	Debaael	L	M	M
Deir Ammar	M	M	M	Deir Nbouh	L	M	M	Haouaret-Miniyeh	L	ML	M
Haql el Azimeh	L	L	M	Harf El Siyad	L	ML	ML	Hazmiye-Miniyeh	L	L	M
Izal	L	M	M	Jarjour	VL	ML	M	Jayroun	L	ML	M
Kahf El-Malloul	L	M	M	Karm El-Moher	L	ML	M	Kfar Binine	L	M	M
Kfarchalane	L	M	ML	Kfarhabou	L	M	M	Kharroub-Miniyeh	L	M	M
Mazraat El-Kreme	L	ML	M	Mazraat Ketrane	L	ML	M	Merkebta	M	M	M
Minyeh	M	M	M	Mrah El Sfirat	L	L	M	Mrah Sraj	L	L	M
Mrebbine	L	M	M	Nabi Youcheaa	M	M	M	Nemrine	L	ML	M

Qarhaiya	L	M	M	Qarne	L	M	M	Qarsita	L	L	M
Qattineh-Miniyeh	L	L	M	Qemmamine	L	ML	M	Qraine	L	L	M
Raouda-Aadoua	ML	M	M	Rihaniyet-Miniyeh	M	M	M	Sfireh	L	ML	M
Sir Ed-Danniyeh	L	L	M	Tarane	L	ML	M	Terbol-Miniyeh	M	M	M
Zaghartaghriane	L	M	M	Zouq Bhannine	M	M	M				

Nabatiye

Nabatiye

Municipality	24-May	25-May	26-May	Municipality	24-May	25-May	26-May	Municipality	24-May	25-May	26-May
Aabba	ML	M	M	Aazzi	L	ML	M	Adchit El-Chqif	ML	M	M
Ain Bou Swar	L	ML	M	Ain Kana	L	ML	M	Ali El-Taher	L	ML	M
Ansar	ML	M	M	Arab Salim	L	ML	M	Arnoun	L	M	M
Bfaroue	L	ML	M	Breyqaah	ML	M	M	Charqiyeh	ML	ML	M
Choukine	ML	M	M	Deir El Zahrani	L	ML	M	Doueir El-Nabatiyeh	ML	M	M
Habbouch El-Nabatiye	L	M	M	Hamra El-Nabatiyeh	L	M	M	Harouf El-Nabatiyeh	ML	ML	M
Hmaile	L	ML	M	Houmin El Faouqa	L	M	M	Houmin El Tahta	ML	M	M
Jarjough	L	ML	M	Jbaah El-Nabatiyeh	L	L	M	Jebchit	ML	M	M
Kfar Djal El-Nabatiy	ML	M	M	Kfar Remmane	L	M	M	Kfar Sir	ML	M	M
Kfar Tebnit	L	M	M	Kfarfila	L	ML	M	Kfour El-Nabatieh	ML	M	M
Mayfadoun	L	M	M	Mazraat Bsaffour	L	ML	M	Mazraat Chalbaal	L	M	M
Mazraat Dmoul	ML	M	M	Mazraat El Khreibeh	L	ML	M	Mazraat El-Bayad El-	L	M	M
Mazraat Kfarjaouz	L	M	M	Mazraat Qalaat Meiss	L	M	M	Nabatiyeh El-Fawka	L	M	M
Nabatiyeh Et-Tahta	L	M	M	Namiriyeh	ML	M	M	Qaaqaaiyet El Jisr	ML	M	M
Qossaibeh El-Nabatiy	ML	M	M	Roumine	L	M	M	Sarba El-Nabatieh	L	ML	M
Sir El-Gharbiyeh	ML	M	M	Toul	ML	ML	M	Yehmor El-Nabatiyeh	L	M	M
Zaoutar El Charkiyeh	L	M	M	Zaoutar El-Gharbiyeh	ML	M	M	Zebdine El-Nabatiyeh	L	M	M
Zefta	ML	M	M								

Hasbaiya

Municipality	24-May	25-May	26-May	Municipality	24-May	25-May	26-May	Municipality	24-May	25-May	26-May
Ain Jarfa	L	L	M	Abou Qamha	L	ML	M	Ain Qania	L	ML	M
Bourghos	L	ML	M	Chebaa	L	ML	M	Chouaya Hasbaya	L	ML	M
Dellafeh	L	ML	M	Fardiss Hasbaiya	L	ML	M	Hasbaya	L	ML	M
Hbariyeh	L	ML	M	Kaoukaba Hasbaiya	L	ML	M	Kfar Chouba	L	L	M
Kfar Hamam	L	ML	M	Kfeir El-Zait	L	L	M	Khalwat Hasbaya	L	L	M
Khreibet Hasbaiya	L	ML	M	Majidiyeh Hasbaiya	L	ML	M	Marj Ez-Zhour (Haouc	L	L	M
Meri	L	ML	M	Mimass	L	ML	M	Rachaiya El-Fokhar	L	ML	M
Salaiyeb	L	ML	M								

Marjayoun

Municipality	24-May	25-May	26-May	Municipality	24-May	25-May	26-May	Municipality	24-May	25-May	26-May
Aalmane Marjaayoun	L	M	M	Aamra	L	M	M	Adayseh Marjaayoun	L	M	M
Adchit El-Koussair	L	M	M	Ain Aarab Marjaayoun	L	ML	M	Bani Haiyann	L	M	M
Blatt Marjaayoun	L	ML	M	Blida	ML	M	M	Borj El-Moulouk	L	M	M
Boueyda Marjaayoun	L	ML	M	Deir Mimass	L	M	M	Deir Siriane	L	M	M
Dibbine	L	ML	M	Ebel El Saqi	L	ML	M	Houla	ML	M	M
Houra	L	M	M	Kfar Kila	L	M	M	Khiam Marjaayoun	L	ML	M

Klayaa	L	M	M	Majdel Selem	ML	M	M	Marjaayoun	L	ML	M
Markaba	ML	M	M	Mays El-Jabal	ML	M	M	Mazraat Doumiat	L	M	M
Mazraat Sarada	L	ML	M	Mhaibib	ML	M	M	Qabrikha	L	M	M
Qantara	L	M	M	Rab El-Thalathine	L	M	M	Saouaneh Marjayoun	ML	M	M
Taloussa	L	M	M	Taybeh Matjaayoun	L	M	M	Touline	L	M	M

Bent Jbail

Municipality	24-May	25-May	26-May	Municipality	24-May	25-May	26-May	Municipality	24-May	25-May	26-May
Ain-Ebel	M	M	M	Aitaroun	ML	M	M	Aynata Bint Jbeil	M	M	M
Ayta El-Chaeb	M	M	M	Ayta El-Jabal	ML	M	M	Beit Lif	ML	M	M
Beit Yahoun	ML	M	M	Bint Jbeil	M	M	M	Borj Qalaway	ML	M	M
Braachit	ML	M	M	Chakra	ML	M	M	Debel	M	M	M
Deir Antar	ML	M	M	Froun	L	M	M	Ghandouriyeh Bint Jb	ML	M	M
Hanine	M	M	M	Hariss	ML	M	M	Hdatha	ML	M	M
Jmeymeh	ML	M	M	Kafra Bint Jbeil	ML	M	M	Kfar Dounine	ML	M	M
Khirbet Selm	ML	M	M	Kounine	M	M	M	Maroun El Ras	M	M	M
Qalaway	ML	M	M	Qaouzah	M	M	M	Qatmoun	M	M	M
Ramya Bint Jbeil	M	M	M	Rchaf	ML	M	M	Rmeich	M	M	M
Safad Al Battikh	ML	M	M	Salhaneh	ML	M	M	Serbine	ML	M	M
Sultanieh Bint Jbeil	ML	M	M	Tibnine	ML	M	M	Tiri	M	M	M
Yaroun	M	M	M	Yater	M	M	M				

Mont Liban

Jbail

Municipality	24-May	25-May	26-May	Municipality	24-May	25-May	26-May	Municipality	24-May	25-May	26-May
Aabeydat	VL	M	M	Aalita	VL	L	M	Aamchit	L	M	M
Aarab El-Lahib	L	M	M	Aarasta	L	M	M	Adonis Jbeil	VL	L	M
Afqa Jbeil	L	M	M	Ain El Delbeh Jbeil	VL	L	M	Ain El-Ghouayba	VL	L	M
Ain Jrain	VL	L	M	Ain Kfah	L	M	M	Almat El Chemaliyat	VL	L	M
Almat El-Jenoubiya	VL	L	M	Aqoura	L	M	MH	Bayzoun	VL	ML	M
Bchille Jbeil	VL	L	M	Bechtlida	VL	L	M	Behdaydat	VL	M	M
Beit Habbaq	L	M	M	Bejjeh	L	M	M	Bekhaaz	L	M	M
Berbara Jbeil	L	M	M	Bintael	VL	L	M	Birket Hjoula	VL	L	M
Blatt Jbeil	VL	ML	M	Boulhos	VL	L	M	Breyj Jbeil	VL	L	M
Chamat	L	M	M	Chikhane	L	M	M	Chmout	VL	M	M
Eddeh Jbeil	L	M	M	Ehmej	VL	L	M	Fatre	VL	L	M
Ferhet	L	ML	M	Fghal	VL	M	M	Frat	VL	L	M
Ghabat	L	M	M	Ghalboun	L	M	M	Gharzouz	L	M	M
Ghofrine	L	M	M	Habil	VL	L	M	Halate	L	M	M
Haqel	VL	M	M	Hbaline	L	M	M	Hboub	VL	ML	M
Hdeine	L	M	M	Hema Er-Rehban	L	M	M	Hema Mar Maroun Aann	VL	M	M
Hjoula	VL	L	M	Hosrayel	L	M	M	Hsarat	L	M	M
Hsoun	VL	ML	M	Jaj	L	ML	M	Janne	VL	L	M
Jbeil	L	M	M	Jeddeyl Jbeil	L	M	M	Jlisse	VL	L	M
Jouret El-Qattine	VL	L	M	Kfar Baal Annaya	VL	L	M	Kfar Kidde	L	M	M
Kfar Kouas	VL	L	M	Kfar Mashoun	L	M	M	Kfoun	VL	ML	M

Kharbe Jbeil	L	M	M	Laqlouq	L	M	MH	Lassa	VL	L	M
Lehfed	VL	L	M	Maad	L	M	M	Mar Sarkis	L	M	M
Mastita	L	M	M	Mayfouq	L	L	M	Mazraat El Siyad	L	M	M
Mazraat El-Maaden	VL	L	M	Mechane	VL	L	M	Mechmech Jbeil	VL	L	M
Mehrin	VL	ML	M	Mejdel El-Akoura	L	M	M	Mghayreh Jbeil	L	M	M
Mounsef	L	M	M	Nahr Ibrahim	L	M	M	Qahmez	VL	L	M
Qartaba	VL	L	M	Qartaboun	L	M	M	Qattara Jbeil	VL	L	M
Qorqraya	VL	VL	M	Ramout	L	M	M	Ras Osta	VL	L	M
Rihane Jbeil	L	M	M	Sakiet El-Khayt	VL	M	M	Saqi Richmaya	L	L	M
Sebrine	VL	L	M	Seraita	L	M	M	Souane Jbeil	VL	L	M
Tadmor	L	M	MH	Tartej	L	ML	M	Torzaiya	VL	ML	M
Yanouh Jbeil	L	M	M	Zibdine Jbeil	VL	L	M				

El Metn

Municipality	24-May	25-May	26-May	Municipality	24-May	25-May	26-May	Municipality	24-May	25-May	26-May
Aain El-Qabu	VL	L	M	Aain El-Qach	L	L	M	Aain El-Teffaha	VL	ML	M
Aain el-Safssaf El-M	VL	L	M	Abou Mizane	VL	L	M	Ain Aar	L	M	M
Ain Alaq	L	ML	M	Ain El-Kharroube	VL	ML	M	Ain El-Sendianeh	L	L	M
Ain El-Zeitoune	VL	L	M	Ain Saadeh	L	ML	M	Aintoura El-Matn	VL	M	M
Amaret Chalhoub	L	M	M	Antelias	L	M	M	Atchaneh	VL	ML	M
Ayroun	VL	L	M	Baabdat	VL	L	M	Baouchariyeh	L	M	M
Baskinta	VL	ML	M	Beit Chabab	VL	L	M	Beit El-Chaar	L	M	M
Beit El-Kekko	L	M	M	Beit Mery	L	ML	M	Bhersaf	VL	L	M
Bikfaya	VL	L	M	Biyakout	L	M	M	Bnabil	VL	L	M
Bourj Hammoud	L	M	M	Bqennaya	L	ML	M	Broummana El-Matn	L	ML	M
Bsalim	L	ML	M	Bsifrine	VL	L	M	Bteghrine	VL	L	M
Chaouiye	VL	ML	M	Chouaya El-Matn	L	ML	M	Choueir	VL	L	M
Chrine	VL	L	M	Dahr El Sawan El-Mat	VL	ML	M	Daychouniyeh	L	ML	M
Dbayeh	L	M	M	Deir Chamra	VL	L	M	Deir Mar Abda el Mch	VL	ML	M
Deir Mar Roukouz	L	M	M	Deir Tamiche	VL	ML	M	Dik El-Mehdi	VL	ML	M
Dikwaneh	L	M	M	Douar El-Matn	VL	L	M	Fanar	L	M	M
Fraike	VL	ML	M	Haret El-Ballaneh	VL	M	M	Hbous	L	M	M
Himlaya	VL	L	M	Jal El Did	L	M	M	Jdeideh El-Metn	L	M	M
Jouar El-Matn	VL	L	M	Jouret El-Ballout	VL	ML	M	Kaaqour	VL	L	M
Kfar Aaqab	VL	L	M	Kfertay El-Matn	VL	L	M	Khenchara	VL	L	M
Khillet El-Mtain	VL	L	M	Konnabat Broummana	L	ML	M	Konnabat Salima	VL	L	M
Machraah El-Matn	VL	L	M	Majdel Tarchich	VL	M	M	Majzoub	L	M	M
Mansouriyeh El-Metn	L	M	M	Mar Boutros Karm Et-	VL	L	M	Mar Chaya et Mzekke	VL	ML	M
Mar Moussa Ed-Douar	VL	L	M	Marjaba	VL	L	M	Masqa	VL	L	M
Mayasse	VL	L	M	Mazraat Deir Aoukar	VL	M	M	Mazraat El-Hadirat	VL	ML	M
Mazraat Yachouh	L	M	M	Mchikha	L	ML	M	Menqlet Mezher	L	ML	M
Mhaydseh Matn	VL	L	M	Mkalles	L	M	M	Mrouj	L	M	M
Mtain	L	M	M	Mtayleb	L	ML	M	Nabay	VL	ML	M
Naccache	L	M	M	Ouadi Chahine	VL	L	M	Ouadi El-Karm El-Mat	VL	L	M
Ouata El-Mrouj	VL	ML	M	Ouyoun El-Matn	VL	L	M	Qornet Chehwan	L	ML	M
Qornet El-Hamra	VL	ML	M	Roumieh	L	ML	M	Sfeilet Bikfaya	VL	L	M
Sinn El-Fil	L	M	M	Zabbougha	VL	L	M	Zalqa	L	M	M

Zarouon	VL	L	M	Zekrite	VL	ML	M	Zighrine El-Matn	VL	ML	M
Zouk El-Khrab	L	M	M								

Chouf

Municipality	24-May	25-May	26-May	Municipality	24-May	25-May	26-May	Municipality	24-May	25-May	26-May
Aalmane El-Chouf	L	M	M	Aammiq El-Chouf	VL	L	M	Ain Ouzein	VL	L	M
Ain Qani	VL	L	M	Ain Zhalta	L	ML	M	Ainbal	VL	ML	M
Amatour	VL	L	M	Anout	L	L	M	Atrine	VL	ML	M
Baadarane	VL	ML	M	Baaqline	VL	ML	M	Baasir	L	M	M
Barja	L	M	M	Barouk	VL	ML	M	Bater	VL	ML	M
Batloun	VL	ML	M	Bayqoun	L	ML	M	Bchetfine	VL	ML	M
Beiteddine	VL	L	M	Benouati Ech-Chouf	VL	L	M	Berjein	VL	L	M
Bireh et Mtalleh	VL	M	M	Biret El-Chouf	L	M	M	Bkechtine Ouel Mchei	VL	L	M
Bkifa El-Chouf	L	L	M	Botme	VL	L	M	Bqaiia Ech-Chouf	VL	L	M
Bsaba El-Chouf	VL	L	M	Chammis El-Chouf	L	ML	M	Chehim	VL	L	M
Chemaarine	VL	L	M	Chourit	VL	L	M	Daher El-Chouf	L	M	M
Dalhoun	L	ML	M	Damour	L	M	M	Daraya El-Chouf	VL	L	M
Deir El-Moukhalles	VL	L	M	Deir Baba	VL	ML	M	Deir Dourit	VL	ML	M
Deir El-Qamar	VL	ML	M	Deir Kouche	VL	ML	M	Dibbieh	L	L	M
Dmit	VL	ML	M	Fouara Jaafar	VL	ML	M	Fraidis El-Chouf	L	M	M
Ghabet Jaafar	VL	ML	M	Gharife	VL	L	M	Haret Jandal	VL	ML	M
Hasrout	L	ML	M	Jadra	L	M	M	Jahlieh	VL	ML	M
Jbeih El-Chouf	VL	L	M	Jdeidet El-Chouf	VL	ML	M	Jiyeh	L	M	M
Jleilyeh	L	L	M	Jmailiyeh	L	M	M	Joun	L	ML	M
Kahlounie El-Chouf	VL	M	M	Ketermaya	L	M	M	Kfar Faqoud	VL	ML	M
Kfar Hamal	L	ML	M	Kfar Him	VL	M	M	Kfar Katra	VL	L	M
Kfar Niss	L	ML	M	Kfar hay	L	ML	M	Kfarnabrakh	VL	ML	M
Khirbet Bisri	VL	L	M	Knayse El-Chouf	VL	L	M	Maaniyeh	L	M	M
Maasser Beiteddine	VL	ML	M	Maasser El-Chouf	L	ML	M	Majdalouna	L	M	M
Majdel El-Meouch	VL	ML	M	Mazboud	VL	ML	M	Mazmoura	L	L	M
Mazraat El Chouf	VL	ML	M	Mazraat El Daher	L	L	M	Mazraat El-Douair	VL	L	M
Mechref	L	L	M	Mghairie	L	M	M	Mghayrie El-Chouf	VL	L	M
Moukhtara	VL	ML	M	Mrusti	VL	ML	M	Mtolle	L	ML	M
Naameh	L	M	M	Niha El-Chouf	VL	ML	M	Ouadi Abou Youssef	VL	L	M
Ouadi Ed-Deir	VL	M	M	Ouadi El-Sit	VL	ML	M	Ouadi bnehlay	VL	L	M
Qraibeh	VL	ML	M	Qreiaa	VL	L	M	Rmayle El-Chouf	L	M	M
Semqaniyeh	VL	M	M	Sibline	L	M	M	Sirjbeil	VL	ML	M
Warhanieh	L	M	M	Werdaniyeh	L	M	M	Zaarourieh	L	L	M

Baabda

Municipality	24-May	25-May	26-May	Municipality	24-May	25-May	26-May	Municipality	24-May	25-May	26-May
Abadiyeh	VL	ML	M	Ain Mouaffaq	VL	ML	M	Araiya	VL	ML	M
Arbaniyeh	VL	L	M	Arsoun	VL	L	M	Baabda	L	M	M
Baalchmey	VL	ML	M	Bmaryam	L	ML	M	Bourj El-Brajneh	L	M	M
Boutchay	L	M	M	Bsaba Baabda	L	M	M	Btekhney	L	ML	M
Btibyat	L	ML	M	Bzebdine	VL	L	M	Chbeniyeh	L	ML	M
Chiyah	L	M	M	Chmeisset Baabda	VL	ML	M	Chouit	VL	ML	M
Deir El-harf	L	L	M	Deir Khouna	L	ML	M	Dlaybeh	VL	L	M

Falougha	L	M	M	Furn El-Chebbak	L	M	M	Hadath Beyrouth	L	M	M
Halaliyeh Baabda	VL	ML	M	Hammana	L	M	M	Haret El Sett	VL	ML	M
Haret Hamze	VL	ML	M	Haret Hreik	L	M	M	Hasbaiya El-Metn	VL	L	M
Jouar El-Hoz	VL	L	M	Jouret Arsoum	VL	L	M	Kfar Chima	L	M	M
Kfar Selouane	L	ML	M	Khalouat Baabda	L	M	M	Kneisset Baabda	VL	L	M
Laylakeh	L	M	M	Louayzeh Baabda	L	M	M	Merdache	L	M	M
Mzairaa Baabda	VL	ML	M	Ouadi Chahrour El OI	L	M	M	Ouadi Chahrour El So	L	M	M
Qalaa Baabda	L	ML	M	Qhraybe Baabda	L	ML	M	Qobbayaa	VL	ML	M
Qornayel	VL	L	M	Qortada	VL	L	M	Qrayeh Baabda	VL	ML	M
Qsaibeh Baabda	VL	ML	M	Qtale Baabda	VL	ML	M	Ras El Metn	L	ML	M
Ras El-Haref	L	M	M	Rouayset El-Ballout	VL	ML	M	Salima Baabda	VL	L	M
Tahouitat El Ghadir	L	M	M	Tarchich	VL	ML	M	Zandouqa	VL	L	M

Aley

Municipality	24-May	25-May	26-May	Municipality	24-May	25-May	26-May	Municipality	24-May	25-May	26-May
Abey	VL	ML	M	Aghmid	L	ML	M	Ain Dara	L	M	M
Ain Drafil	VL	ML	M	Ain El Halazoun	L	ML	M	Ain El-Rmmaneh	VL	L	M
Ain Jedideh	L	M	M	Ain Ksour	L	M	M	Ain Onoub	L	M	M
Ain Traz	VL	ML	M	Ainab	L	M	M	Aley	L	ML	M
Aramoun	L	M	M	Aytat	L	M	M	Azouniyeh	L	M	M
Baawerta	VL	ML	M	Badghan Oua Wadi Bad	L	M	M	Bassatine	L	M	M
Bayssour	L	M	M	Bchamoun	L	M	M	Bdadoun	VL	ML	M
Behouara	L	ML	M	Bennay	VL	ML	M	Bhamdoun El-Dayaa	L	M	M
Bhamdoun El-Mhatta	L	M	M	Bkhechtey	L	M	M	Bleibel	L	M	M
Bmakine	L	M	M	Bmehray	L	M	M	Bouzrid	VL	ML	M
Bserrine	L	ML	M	Bsous	VL	L	M	Btalloun	L	M	M
Btater	L	M	M	Chanay	L	M	M	Charoun	L	M	M
Chartoun	VL	ML	M	Chemlane	L	M	M	Chouefat El-Aamrous	L	M	M
Chouefat El-Oumara	L	M	M	Chouefat El-Quoubbe	L	M	M	Dakkoun	VL	ML	M
Deir Qoubel	L	M	M	Dfoun	L	M	M	Douair El Remmaneh	VL	ML	M
Ghaboun	L	ML	M	Habramoun	L	L	M	Homs Oua Hama	L	M	M
Houmal	L	M	M	Jisr El Qadi	L	ML	M	Kehaleh	VL	L	M
Keyfoun	L	M	M	Kfar Aamey	VL	ML	M	Kommatyeh	VL	ML	M
Maasrati	L	ML	M	Majdel Baana	L	M	M	Mansourieh et Ain El	L	M	M
Mazraat El-Nahr	L	ML	M	Mchakhte	L	ML	M	Mecherfeh	VL	M	M
Mejdaya	L	ML	M	Mrayjat	L	M	M	Ramliyah	VL	ML	M
Rechmaya	L	ML	M	Rejmeh	VL	ML	M	Remhala	L	M	M
Rouaysset El Neemane	L	ML	M	Saoufar	L	M	M	Selfaya	VL	ML	M
Sirhmoul	L	M	M	Souq El Ghareb	L	M	M	Taazanieh	VL	M	M

Kesrouane

Municipality	24-May	25-May	26-May	Municipality	24-May	25-May	26-May	Municipality	24-May	25-May	26-May
Achkout	VL	L	M	Adma Oua Dafneh	L	M	M	Ain Ed-Delbe Kesroua	VL	L	M
Ain El-Rihane	VL	ML	M	Aintoura Kesrouane	L	M	M	Ajaltoun	VL	L	M
Akaybeh Kesrouane	L	M	M	Aramoun Kesrouane	VL	L	M	Azra ouel Ozor	VL	ML	M
Ballouneh	VL	L	M	Batha	VL	L	M	Bekaatat Achkout	VL	ML	M
Bekaatat Kanaan	VL	L	M	Bizhel	VL	ML	M	Bouar	L	M	M
Bqaatouta	VL	ML	M	Bqaq Ed-Dine	L	M	M	Bzommar	VL	L	M

Chahtoul	VL	L	M	Chnaniir	VL	L	M	Chouan	VL	L	M
Daraya Kesrouane	VL	L	M	Darououn	VL	ML	M	Deir Baqlouch	VL	ML	M
Dlebta	VL	L	M	Eghbeh	VL	VL	M	Faraya	VL	M	M
Fatka	VL	ML	M	Feytroun	VL	L	M	Ghazir	VL	ML	M
Ghbaleh Kesrouane	VL	ML	M	Ghedrass	VL	L	M	Ghosta	VL	L	M
Ghyneh	VL	L	M	Harharaya w Kattine	VL	L	M	Harissa Kesrouane	VL	ML	M
Hayata	VL	L	M	Hosein	VL	L	M	Hrajel	L	M	M
Jdeideh Ghazir	VL	L	M	Jeita	VL	ML	M	Jounieh Ghadir	L	M	M
Jounieh Haret Sakhr	L	M	M	Jounieh Salel Alma	L	M	M	Jounieh Sarba	L	M	M
Jouret Bedrane	VL	ML	M	Jouret Mhad	VL	L	M	Jouret Termos	VL	ML	M
Kfar Debiane	VL	ML	M	Kfar Tay Kesrouane	VL	L	M	Kfar Yassine	L	M	M
Kfour Kesrouane	VL	L	M	Kharayeb Nahr Ibrahi	L	M	M	Klayaat Kesrouane	VL	L	M
Maarab	VL	L	M	Maaysra Kesrouane	VL	ML	M	Mayrouba	L	ML	M
Mazraat Er-Ras	L	M	M	Mazraat Mrah El-Mir	VL	L	M	Mchaa El Ftouh	L	M	MH
Mchaa Faraya	L	M	M	Mchaa Kfar Dibiane	L	M	MH	Mghaer	VL	L	M
Mradiyah	VL	ML	M	Nahr Ed-Dahab	VL	L	M	Nammoura Kesrouane	VL	ML	M
Ouata El Jaouz	VL	L	M	Ouata Sillam	L	M	M	Raachine	VL	L	M
Rayfoun	VL	L	M	Safra Kesrouane	L	M	M	Shayle Kesrouane	VL	ML	M
Tabarja	L	M	M	Yahchouch	VL	L	M	Zaaytreh	VL	ML	M
Zeytoun	L	M	M	Zouk Mikael	L	M	M	Zouk Mosbeh	L	M	M

Baalbek_Hermel

Baalbek

Municipality	24-May	25-May	26-May	Municipality	24-May	25-May	26-May	Municipality	24-May	25-May	26-May
Aadous	M	M	MH	Aamchki	M	M	M	Aarsal	M	M	MH
Ain Baalbek	M	M	MH	Ain Bourday	ML	M	M	Ain El-Benye	M	M	M
Ain El-Jaouz Baalbek	M	M	M	Ain El-Siya Chadoura	M	M	M	Al Khodr Baalbek	ML	M	M
Al Nabi Chit	ML	M	M	Aynata Baalbek	L	M	MH	Baalbek	ML	M	M
Bachwat	L	M	M	Barqa	L	M	M	Bednayel Baalbak	ML	M	MH
Beit Chama	M	M	MH	Bijjaje	M	M	MH	Bouday	ML	M	MH
Brital	ML	M	M	Btadi	M	M	MH	Chaat	M	M	MH
Chaibe	M	M	M	Chlifa	M	M	MH	Chmestar	ML	M	MH
Dar El-Oussa	ML	M	MH	Deir El-Ahmar	M	M	MH	Deir Mar Maroun Baal	M	M	MH
Douris	M	M	MH	Fakiha	M	M	MH	Hadath Baalbek	ML	M	MH
Ham	M	M	M	Haour Taala	M	M	M	Hizzine	M	M	MH
Hlebta	M	M	MH	Hosh Barada	M	M	MH	Hosh El Dahab	M	M	MH
Hosh El Snid	ML	M	M	Hosh El-Nabi	ML	M	MH	Hosh El-Rafiq	M	M	MH
Hosh Tal Safiya	M	M	MH	Hrebta	M	M	MH	laat	M	M	MH
Jebaa	ML	M	MH	Jenta	ML	M	M	Kfar Dabach	M	M	MH
Kfar Dane	M	M	MH	Khraibeh El-Hermel	M	M	MH	Khreibet Baalbek	M	M	M
Kneisset Baalbek	M	M	MH	Labueh	M	M	MH	Maarboun	M	M	M
Majdaloun	M	M	MH	Maqneh	M	M	MH	Mazraat Beit Mcheik	L	M	MH
Misraya	M	M	MH	Moqraq	M	M	MH	Nabha El-Damdoum	ML	M	MH
Nabi Chbay	L	M	M	Nabi Osman	M	M	MH	Nahleh baalbek	M	M	M
Ouadi El-Oss	M	M	MH	Qaa Baayoun	M	M	MH	Qaa Jouar Maqiye	MH	M	MH
Qaa Ouadi El-Khanzir	MH	M	MH	Qah Baalbek	M	M	MH	Qarha Baalbek	M	M	MH

Qsarnaba	M	M	MH	Ram Baalbek	M	M	MH	Ras Baalbek El Sahl	M	M	MH
Ras Baalbek El-Charq	M	M	MH	Riha	M	M	MH	Saaide	M	M	MH
Sbouba	M	M	MH	Seriine El-Tahta	M	M	MH	Slouqi	L	M	MH
Taiba Baalbek	M	M	MH	Talia	ML	M	MH	Taraiya	ML	M	MH
Temnin El Fawqa	M	M	MH	Temnin El-Tahta	M	M	MH	Tfail	M	M	M
Yahfoufa	ML	M	M	Yammouneh	L	M	MH	Younine	M	M	MH
Zboud	M	M	MH								

Hermel

Municipality	24-May	25-May	26-May	Municipality	24-May	25-May	26-May	Municipality	24-May	25-May	26-May
Charbine El-Hermel	M	M	M	Hermel Jbab	M	M	MH	Hermel	MH	M	MH
Maaysra El-Hermel	M	M	MH	Michaa Mrajhine	M	M	M	Ouadi Faara	M	M	MH
Ras Baalbek - Ouadi	M	M	MH	Ras Baalbek El Gharb	M	M	MH	Zighrine	M	M	MH

Akkar

Akkar

Municipality	24-May	25-May	26-May	Municipality	24-May	25-May	26-May	Municipality	24-May	25-May	26-May
Aain Tinta	M	M	M	Aaiyat	ML	M	M	Aakkar El-Aatiqa	ML	M	M
Aamar Akkar	M	M	M	Aamar El Baykat	M	M	M	Aamayer	M	MH	M
Aamriyet Akkar	M	M	M	Aandqet	M	M	M	Aarmeh	M	M	M
Aarqa	M	M	M	Aawaynat	M	MH	M	Aayoun Akkar	M	M	M
Abboudiye	ML	M	M	Ain El-Zeit	M	M	M	Ain Yaaqoub	ML	M	M
Akroum	M	M	M	Aridet Cheikh Zennad	M	M	M	Baldeh w Mazraat Bal	ML	M	M
Barcha	ML	M	M	Bardeh	M	M	M	Bebnine	M	M	M
Beino	M	M	M	Beit Ayoub	ML	M	M	Beit El-Haouch	M	M	M
Beit Mellat	M	M	M	Beit Younes	L	M	M	Berbara Akkar	M	M	M
Berqayel	ML	M	M	Bezbina	L	M	M	Bireh Akkar	M	M	M
Borj	M	M	M	Bqerezla	ML	M	M	Bzal	ML	M	M
Chane	L	M	M	Chaqdouf	M	M	M	Charbila	ML	M	M
Cheikh Mohammad	ML	M	M	Cheikh Taba Es-Sahl	M	M	M	Cheikh Taba	ML	M	M
Cheikh Zennad	M	M	M	Cheikhlar	M	MH	M	Chir Hmairine	ML	M	M
Daghle	M	M	M	Dahr Laissine	M	M	M	Darine	M	M	M
Dawra	ML	M	M	Dawsa w Baghdadi	M	M	M	Dayret Nahr El-Kabir	M	H	M
Deir Dalloum	M	M	M	Deir Jennine	M	M	M	Denbou	ML	M	M
Dibbbiyeh	M	M	M	Douair Aadwiyeh	M	M	M	Fassikine	M	M	M
Fnaydek	ML	M	M	Fraydes Akkar	M	M	M	Ghazayle	M	M	M
Habchit	L	M	M	Hakour	M	M	M	Halba	M	M	M
Haouchab	M	M	M	Hayssat	M	M	M	Haytla	M	M	M
Hayzouq	ML	M	M	Hedd	M	M	M	Hmaira Akkar	ML	M	M
Hmaiss Akkar	M	M	M	Hnaider	M	H	M	Hokr Ed-Dahri	M	M	M
Hokr Etti	M	M	M	Hokr Jouret Srar	ML	M	M	Houaich	ML	M	M
Hrar	ML	M	M	Idbil	ML	M	M	Ilal	M	M	M
Janine	ML	M	M	Jdeidet El-Joumeh	M	M	M	Jdeidet El-Kaiteh	ML	M	M
Jebroyel	ML	M	M	Kafr	VL	M	M	Kafr	M	M	M
Karm Asfour	M	M	M	Kfar Melki Akkar	M	M	M	Kfar Noun	M	M	M
Kfarharra	M	M	M	Khalsa	M	M	M	Kharnoubet Akkar	ML	M	M

Khirbet Daoud Aakkar	M	M	M	Khirbet El Remmane	M	M	M	Khirbet Shar	M	M	M
Khoreybet El-Jindi	M	M	M	Khreibet Aakkar	ML	M	M	Kneisset Aakkar	M	M	M
Kneisset Hnaider	M	H	M	Knisse	M	M	M	Kroum El-Aarab	ML	M	M
Kwachra	M	M	M	Kweykhat	ML	M	M	Machta Hammoud	M	MH	M
Majdala	M	M	M	Majdel Akkar	M	M	M	Mar Touma	ML	M	M
Marlaya Melhem	M	M	M	Mashha	ML	M	M	Massoudiye	M	M	M
Mazraat Beit Ghattas	M	M	M	Mazraat En-Nahriye	M	MH	M	Mechmech	ML	M	M
Memneh	L	ML	M	Mhammara	M	M	M	Mighraq Aakkar	M	M	M
Minyara	M	M	M	Moqayteh	M	M	M	Mounjez	M	M	M
Msalla	M	M	M	Mzeihmeh	M	M	M	Nfaisheh	ML	M	M
Noura Et-Tahta	M	M	M	Ouadi El-Haour	ML	M	M	Ouadi El-Jamous	M	M	M
Ouyoun El-Ghizlane	ML	M	M	Qaabarine	M	M	M	Qabaait	ML	M	M
Qachlaq	M	M	M	Qantara Aakkar	ML	M	M	Qarha Aakkar	M	H	M
Qarqaf	M	M	M	Qboula	M	M	M	Qleiaat Aakkar	M	M	M
Qloud El-Baqie	M	M	M	Qobaiyat Aakkar	M	M	M	Qobbat Chamrat	M	M	M
Qorayat	L	M	M	Qornet Aakkar	ML	M	M	Qsair Aakkar	M	M	M
Rahbe	ML	M	M	Rihaniyet Aakkar	ML	M	M	Rmah	M	M	M
Rmoul	M	M	M	Saadine	M	M	M	Sadaqa	ML	M	M
Saidnaya	M	M	M	Sammouniye	M	M	M	Sayssoq	M	M	M
Semmaqiye	M	M	M	Semmaqli	M	M	M	Sfinet El-Dreib	M	M	M
Sfinet El-Qaitaa	ML	M	M	Sindyanet Zeidane	M	M	M	Souaisset Aakkar	ML	M	M
Srar	M	M	M	Tal Abbas El Gharby	M	M	M	Tal Abbas El-Chargy	M	M	M
Tal Biret	M	M	M	Tal Hmayra	M	M	M	Tal Maayan Tal Kiri	M	M	M
Tal Sibel	M	M	M	Tallet Chattaha	M	M	M	Tikrit	ML	M	M
Tleil	M	M	M	Tshea	L	M	M	Zawarib	ML	M	M
Zouq El Hosniyeh	ML	M	M	Zouq El-Haddara	M	M	M	Zouq El-Hbalsa	ML	M	M
Zouq El-Moqachrine	ML	M	M								

Sud

Sour

Municipality	24-May	25-May	26-May	Municipality	24-May	25-May	26-May	Municipality	24-May	25-May	26-May
Aaiyeh	M	M	M	Aalma El-Chaab	L	ML	M	Aaytit	M	M	M
Abbassiyeh Sour	ML	M	M	Abou Chech	ML	ML	M	Ain Abou Abdallah	ML	M	M
Ain Baal	ML	M	M	Arzoun	ML	M	M	Aziyeh	L	M	M
Baflaya	ML	M	M	Barich	ML	M	M	Batouliyeh	ML	M	M
Bayad	M	M	M	Bazouriyeh	ML	M	M	Bediass	ML	M	M
Bestiyat	ML	M	M	Borj El Chemali	ML	M	M	Borj En-Naqoura	ML	M	M
Borj Rahhal	ML	M	M	Boustane	ML	M	M	Btaychiyeh	ML	ML	M
Chaaitiye	ML	M	M	Chameh	L	ML	M	Chehabiye	ML	M	M
Chehour	L	M	M	Chihine	ML	ML	M	Debaal Sour	ML	M	M
Deir Amess	ML	M	M	Deir Kifa	ML	M	M	Deir Qanoun El-Ain	ML	M	M
Deir Qanoun El-Naher	ML	M	M	Derdghaiya	ML	M	M	Dhayra	ML	ML	M
Halloussiyeh	ML	M	M	Hamoul	L	ML	M	Hanaouey	M	M	M
Henniye	ML	M	M	Hmairi Sour	ML	M	M	Iskandarouna Sour	L	M	M
Jbal El Botom	ML	M	M	Jebbin	ML	ML	M	Jennata	ML	M	M
Jijim	L	ML	M	Jouaiya	ML	M	M	Kneisset Sour	ML	M	M

Maarake	ML	M	M	Maaroub	ML	M	M	Majadel	ML	M	M
Majdalzoun	L	M	M	Mansouri Sour	ML	M	M	Marnba	L	M	M
Marouahine	M	M	M	Mazraat El-Zalloutiy	M	M	M	Mazraat Mechref	ML	M	M
Mazraat Tayr Semhat	L	M	M	Mheilib	ML	M	M	Neffakhiyeh	ML	M	M
Niha Sour	ML	M	M	Ouadi Jilo	ML	M	M	Qana	M	M	M
Qolaileh Sour	ML	M	M	Rechknayanay	ML	M	M	Rmadiyeh	M	M	M
Selha Sour	ML	M	M	Siddiqine	M	M	M	Sour	ML	M	M
Srifa	ML	M	M	Tayr Debbe	ML	M	M	Tayr Felsay	ML	M	M
Tayr Harfa	ML	ML	M	Touayri	L	M	M	Toura	ML	M	M
Yanouh Sour	ML	M	M	Yarine	ML	ML	M	Zebqine	L	M	M

Saida

Municipality	24-May	25-May	26-May	Municipality	24-May	25-May	26-May	Municipality	24-May	25-May	26-May
Aanqoun	ML	M	M	Aaqtanit	ML	M	M	Aarab Ej-Jall	ML	M	M
Aarab Tabbaya	ML	M	M	Abra Saida	L	M	M	Adloun	ML	M	M
Adousiyeh	ML	M	M	Ain-El-Deleb	L	M	M	Arzai	ML	M	M
Babliyah	ML	M	M	Barty	L	ML	M	Bissariyeh	ML	M	M
Bnaafoul	ML	M	M	Bqosta	L	M	M	Bramiy	L	M	M
Daoudiyeh	ML	M	M	Dareb El-Sim	L	ML	M	Erkay	ML	M	M
Ghassanieh	ML	M	M	Ghazieh	ML	M	M	Hajeh	ML	M	M
Haret Saida	L	M	M	Hartiyeh	ML	M	M	Hlaliye Saida	L	M	M
Insariyat	ML	M	M	Jazira Saida	ML	M	M	Kafar Bit	L	M	M
Kaoutariyet El-Siyad	ML	M	M	Kfar Chellal	L	M	M	Kfar Hatta Saida	L	M	M
Kfar Milke Saida	L	M	M	Khartoum	ML	M	M	Khaziz	L	M	M
Khirbet Ed-Douair Sa	ML	M	M	Khirbet El-Bassal	ML	M	M	Khrayeb Saida	ML	M	M
Loubieh	ML	M	M	Maghdouche	L	M	M	Majdelyoun	L	M	M
Matariyet El-Choumar	ML	M	M	Matayriyeh	L	M	M	Mazraat 'Mseileh	ML	M	M
Mazraat 'Snaiber	ML	M	M	Mazraat Aarab Soukka	ML	ML	M	Mazraat Deir Taqla	ML	M	M
Mazraat El Yahoudiye	ML	M	M	Mazraat El-Housseini	ML	M	M	Mazraat El-Mhaydaleh	ML	M	M
Mazraat El-Ouasta	ML	M	M	Mazraat Jamjim	ML	M	M	Mazraat Kaoutariyet	ML	M	M
Mazraat Kfar Badda	ML	M	M	Mazraat Oussamiyat	ML	M	M	Mazraat Sari	ML	M	M
Mazraat Sinai	ML	M	M	Meemariyeh	L	M	M	Merouaniyeh	ML	M	M
Miyeh ou Miyeh	L	ML	M	Najjariyeh	ML	M	M	Qaaqiyat El-Snaouba	ML	M	M
Qnarit	ML	M	M	Qraiye Saida	L	ML	M	Saida Ed-Dekermane	L	M	M
Saida El-Oustani	L	M	M	Saida El-Qadimeh	L	M	M	Saida Kefraya	L	M	M
Saksakiyeh	ML	M	M	Salhie Saida	L	M	M	Sarafand	ML	M	M
Sfenta	L	ML	M	Tafahta	ML	M	M	Tanbourit	L	M	M
Tebna	ML	M	M	Zaghdraiya	L	M	M	Zeita	L	M	M
Zrariyeh	ML	M	M								

Jezzine

Municipality	24-May	25-May	26-May	Municipality	24-May	25-May	26-May	Municipality	24-May	25-May	26-May
Ain El-Mir (El Estab	L	ML	M	Anane	L	L	M	Aramta	L	ML	M
Ariya	VL	ML	M	Aychiyeh	L	ML	M	Azour	VL	L	M
Baba	VL	L	M	Bayssour Jezzine	ML	ML	M	Benoueteh Jezzine	VL	L	M
Bhannine	VL	ML	M	Bisri	VL	L	M	Bkassine	VL	L	M
Bouslaya	L	L	M	Btedine El-Leqech	VL	L	M	Chbail	VL	L	M
Choualiq Jezzine	L	M	M	Dahr Ed-Deir	L	L	M	Deir El Qattine	L	L	M

Demachqiyeh	L	M	M	Ghabbatiyeh	VL	L	M	Harf Jezzine	VL	L	M
Hassaniyeh	L	M	M	Haytouleh	L	ML	M	Haytura	L	L	M
Hidab	L	ML	M	Homsiyeh	VL	L	M	Jabal Toura	L	ML	M
Jarmaq	L	ML	M	Jensnaya	ML	ML	M	Jernaya	L	ML	M
Jezzine	L	ML	M	Karkha	L	M	M	Kfar Falous	L	ML	M
Kfar Houna	L	ML	M	Kfar Jarrah	L	M	M	Lebaa	L	M	M
Louayzet Jezzine	L	L	M	Machmouche	VL	L	M	Mahmoudiyeh Jezzine	L	ML	M
Maknounye Jezzine	L	L	M	Maraat Ouazaiyeh	L	ML	M	Mazraat Daraya	L	L	M
Mazraat El-Aarqoub	L	L	M	Mazraat El-Mathane	VL	L	M	Mazraat El-Rahbane	L	L	M
Mazraat Khallet Khaz	L	L	M	Mazraat Louzid (Loua)	VL	L	M	Mazraat Qrouh	L	ML	M
Mazraat Tamra	L	M	M	Mazraat Zighrine Jez	L	L	M	Mazraat	L	L	M
Mharbiyeh	ML	ML	M	Midane Jezzine	VL	L	M	Mjeydel Jezzine	ML	M	M
Mlikh	L	L	M	Mrah El-Hbasse	L	M	M	Ouadi Baanqoudaine	ML	ML	M
Ouadi El-Laymoun	L	M	M	Ouardiyeh	VL	VL	M	Qabaa Jezzine	L	L	M
Qatrani	L	L	M	Qaytouleh	L	ML	M	Qtaleh Jezzine	VL	L	M
Rihane Jezzine	L	ML	M	Rimat	L	L	M	Roum	L	L	M
Roummanet	L	ML	M	Sabbah	VL	L	M	Saydoun	L	L	M
Sfaray	VL	L	M	Snaya	L	L	M	Sojoud	L	ML	M
Srayri	L	ML	M	Taaid	VL	L	M	Wadi Jezzine	VL	L	M
Zhalta	L	L	M								

Bekaa

West Bekaa

Municipality	24-May	25-May	26-May	Municipality	24-May	25-May	26-May	Municipality	24-May	25-May	26-May
Aammiq BG	ML	M	MH	Ain El Tineh BG	L	ML	M	Ain Zebdeh	L	ML	M
Ana	L	M	M	Aytanit	L	ML	M	Baaloul BG	L	ML	M
Bab Mareh	L	ML	M	Chouberqiye Aammiq	ML	M	MH	Dakoue	M	M	MH
Deir Ain El-Jaouze	L	ML	M	Deir Tahniche	L	M	M	Ghaza	ML	M	MH
Harime El-Soughra	ML	M	MH	Hoch Harimeh	M	M	MH	Jazira BG	ML	M	MH
Jib Jennine	ML	M	MH	Kamed-El-Laouz	ML	ML	M	Kefraya BG	L	ML	M
Khiara El Atika	ML	M	MH	Khiara	ML	M	MH	Khirbet Qanafar	L	ML	M
Lala	L	ML	M	Lebbaya BG	L	ML	M	Loussa	L	ML	M
Machghara	L	ML	M	Manara (Hammar) BG	ML	M	M	Mansoura BG	ML	M	MH
Marej BG	ML	M	MH	Maydoun	L	ML	M	Ouaqf BG	ML	M	MH
Qaraaoun	L	ML	M	Qelya	L	ML	M	Raouda (Istabel)	L	M	MH
Saghbine	L	ML	M	Sohmor	L	ML	M	Soltan Yacoub el Ara	ML	M	MH
Souairy	ML	M	MH	Sultan Yaacoub	ML	M	MH	Tal Znoun	ML	M	MH
Yehmor BG	L	ML	M	Zilaya	L	ML	M				

Zahle

Municipality	24-May	25-May	26-May	Municipality	24-May	25-May	26-May	Municipality	24-May	25-May	26-May
Aanjar (Haouch Mouss)	L	M	MH	Ablah	M	M	MH	Ain Kfarzabad	L	M	M
Ali-El-Nahri	M	M	MH	Bar Elias	ML	M	MH	Bouarej	L	M	M
Cheberqiyet Tabet	ML	M	MH	Chtaura	L	M	M	Deir El Ghazal	L	M	M
Delhamiyet Zahle	ML	M	MH	Ferzol	ML	M	MH	Haouch El-Ghanam	M	M	MH
Haouch Es-Siyadeh	L	M	M	Haouch Hala	ML	M	MH	Haouch Mandara	L	M	M

Haouch Qayssar	L	M	M	Hezerta	L	M	MH	Hosh Moussa	L	M	M
Jdita	L	M	M	Kfarzabad	L	M	M	Ksara	L	M	MH
Majdel Aanjar	M	M	MH	Makssi	L	M	M	Massa	ML	M	MH
Mazraat Er-Remtaniye	L	M	M	Mrayjat Zahle	L	M	M	Mzaraa Zahle	L	M	M
Nabi Ayla	M	M	MH	Nasriyet Rizk	M	M	M	Nasriyet Zahle	L	M	M
Niha Zahle	M	M	MH	Ouadi Ed-Deloum	L	M	M	Ouadi El-Arayech	ML	M	MH
Qaa El Rim	ML	M	MH	Qab Elias	L	M	M	Qousaya	L	M	M
Rhit	L	M	M	Riyak	ML	M	MH	Saadnayel	ML	M	MH
Taal El-Akhdar	ML	M	MH	Taalbeya	L	M	MH	Taanayel	ML	M	MH
Talamara	M	M	MH	Tcheflik Edde Haouch	L	M	M	Tcheflik Qiqano	L	M	M
Terbol Zahle	L	M	M	Touaite Zahle	L	M	M	Zahle Aradi	L	M	MH
Zahle El-Berbara	ML	M	MH	Zahle El-Maallaqa	L	M	MH	Zahle El-Midane	ML	M	MH
Zahle Er-Rassiye	ML	M	MH	Zahle Haouch El-Ouma	L	M	MH	Zahle Haouch El-Ouma	L	M	MH
Zahle Haouch Ez-Zara	L	M	MH	Zahle Maalaqa Aradi	L	M	MH	Zahle Mar Antonios	ML	M	MH
Zahle Mar Elias	L	M	MH	Zahle Mar Gerios	L	M	MH	Zahle Saydet En-Naja	L	M	MH
Zebdoul	L	M	M								

Rachaiya

Municipality	24-May	25-May	26-May	Municipality	24-May	25-May	26-May	Municipality	24-May	25-May	26-May
Ain Arab Rachaiya	M	M	MH	Ain Ata	ML	ML	M	Ain Harche	ML	M	M
Aqabe Rachaya	ML	M	M	Ayha	M	M	M	Ayta El Fokhar	M	M	MH
Bakifa Rachaya	ML	M	M	Bakka	M	M	MH	Beit Lahya	ML	M	M
Bireh Rachaiya	M	M	M	Daher El Ahmar	ML	M	M	Deir El-Achayer	M	M	MH
Heloua Rachaiya	M	M	MH	Hoch El Qannabeh Rac	L	ML	M	Kaoukaba Bou Arab	ML	M	M
Kfar Danis	M	M	M	Kfar Mechki	L	ML	M	Kfar Qouq	M	M	M
Kherbet Rouha	M	M	M	Majdel Balhiss	L	ML	M	Mdoukha	M	M	MH
Mhaydseh Rachaiya	M	M	M	Nabi Safa	L	ML	M	Rachaiya	M	M	M
Rafid Rachaiya	M	M	M	Selsata (Mazraat Dei	M	M	M	Tannoura	ML	M	M
Yanta	M	M	MH								

Beyrouth

Beyrouth

Municipality	24-May	25-May	26-May	Municipality	24-May	25-May	26-May	Municipality	24-May	25-May	26-May
Achrafieh	L	M	M	Ain el-Mreisse	L	M	M	Bachoura	L	M	M
Beirut Central Distr	L	M	M	Marfai	L	M	M	Mazraa	L	M	M
Medaouar	L	M	M	Minet el-Hosn	L	M	M	Mwssaitbeh	L	M	M
Ras Beirut	L	M	M	Rmeil	L	M	M	Saifi	L	M	M
Zqaq el-Blat	L	M	M								