

Lebanon Fire Risk Bulletin



CIVIL DEDEFENCE

Refer to cadast table condition.

Please note that the indicated temperature is at 2 meters height from the ground.

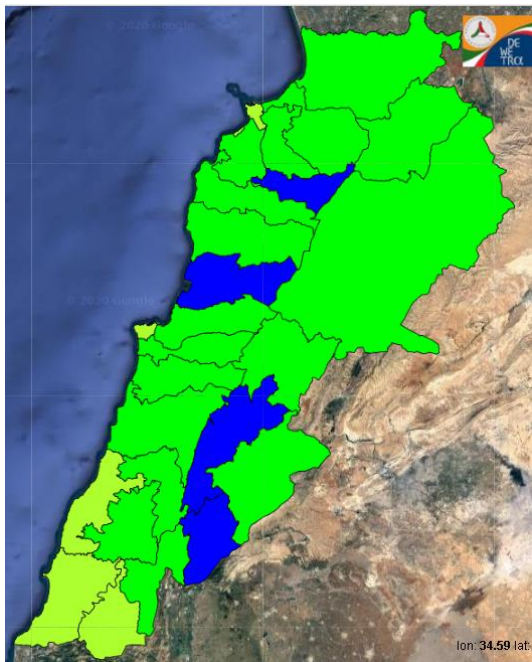
General description of potential fire risk situation

Symbol	Level of risk	Meaning and actions
VL	Very low	Very low fire risk. Controlled burning operations can be hardly executed due to high fuel moisture content. Normally wildfires self-extinguish.
L	Low	Low fire risk. Controlled burning operations can be executed with a reasonable degree of safety.
ML	Medium low	Medium-low fire risk. Controlled burning operations can be executed in safety conditions. All the fires need to be extinguished.
M	Medium	Medium fire risk. Controlled burning operations would be avoided. All the fires need to be very well extinguished.
M	Medium high	Controlled burning is not recommended. Open flame will start fires. Cured grasslands and forest litter will burn readily. Spread is moderate in forests and fast in exposed areas. Patrolling and monitoring is suggested. Fight fires with direct attack and all available resources.
H	High	Ignition can occur easily with fast spread in grass, shrubs and forests. Fires will be very hot with crowning and short to medium spotting. Direct attack on the head may not be possible requiring indirect methods on flanks. Patrolling and monitoring the territory is highly suggested.
E	Extreme	Ignition can occur also from sparks. Fires will be extremely hot with fast rate of spread. Control may not be possible during day due to long range spotting and crowning. Suppression forces should limit efforts to limiting lateral spread. Damage potential total. Patrolling and monitoring the territory is highly suggested.

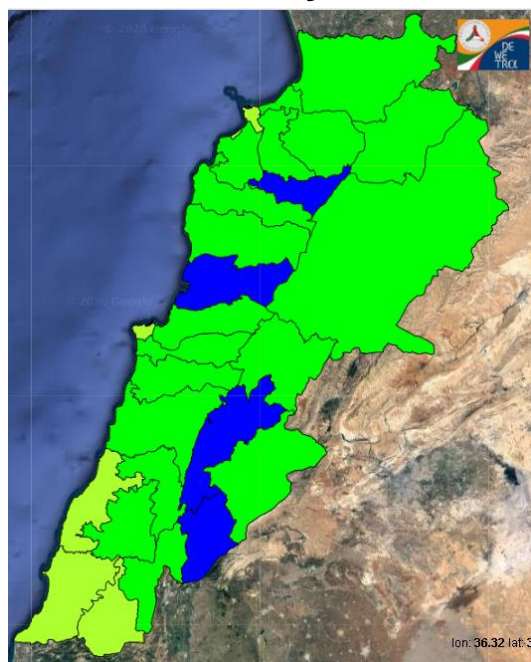
Beirut, 25 January 2020

FIRE RISK INDEX

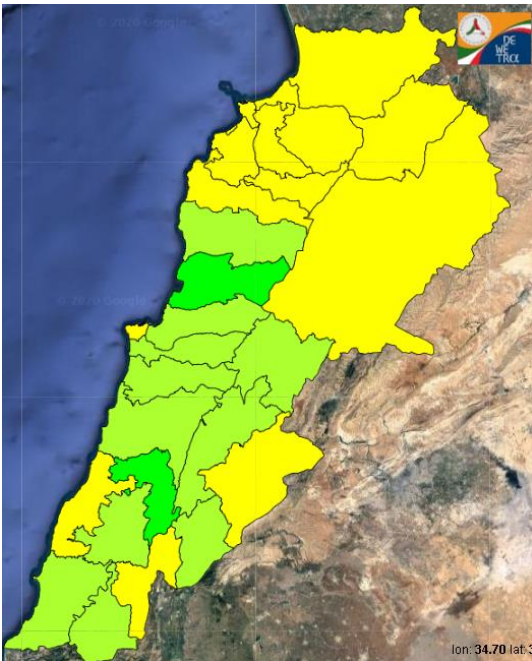
24 January 2020



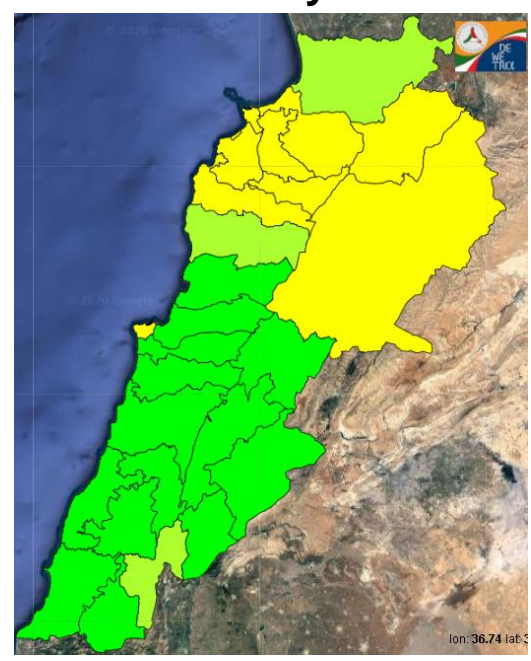
25 January 2020



26 January 2020



27 January 2020

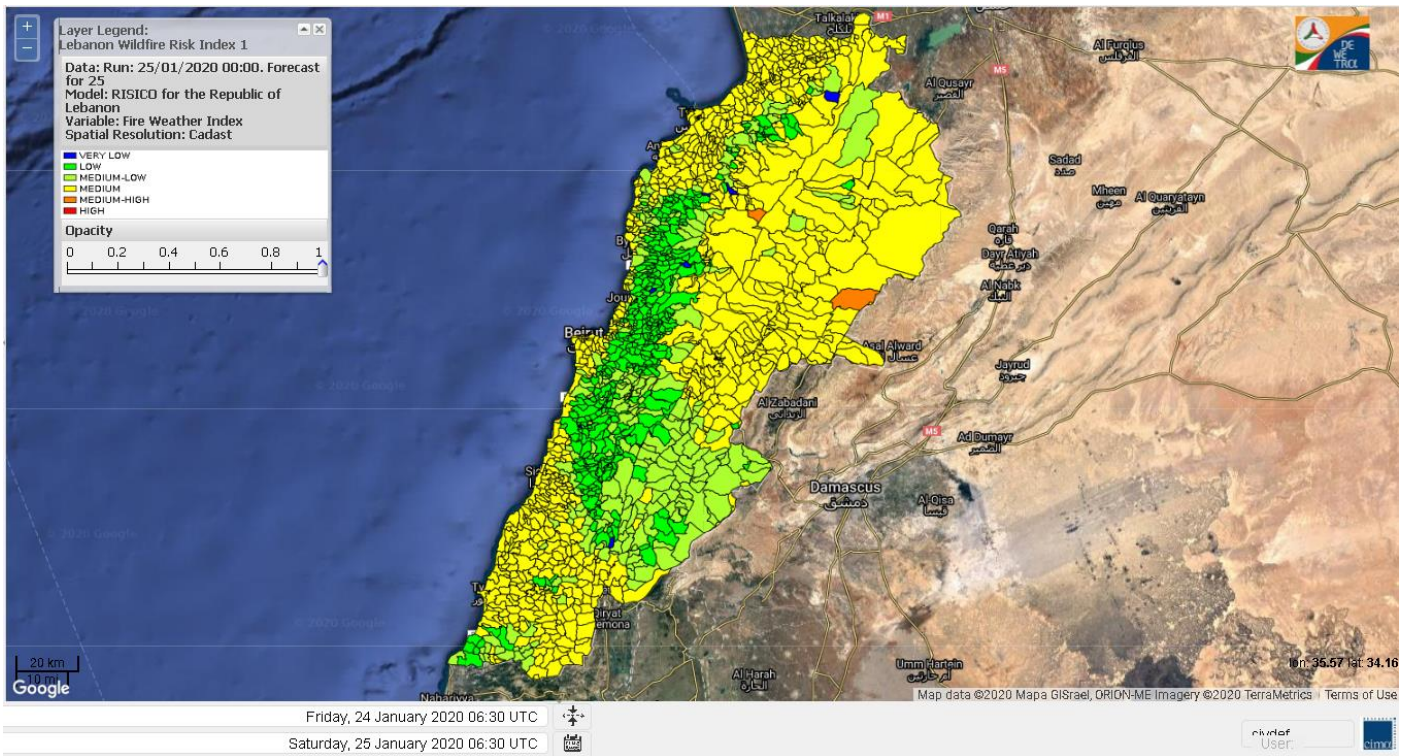


Layer Legend:
Lebanon Wildfire Risk Index 1

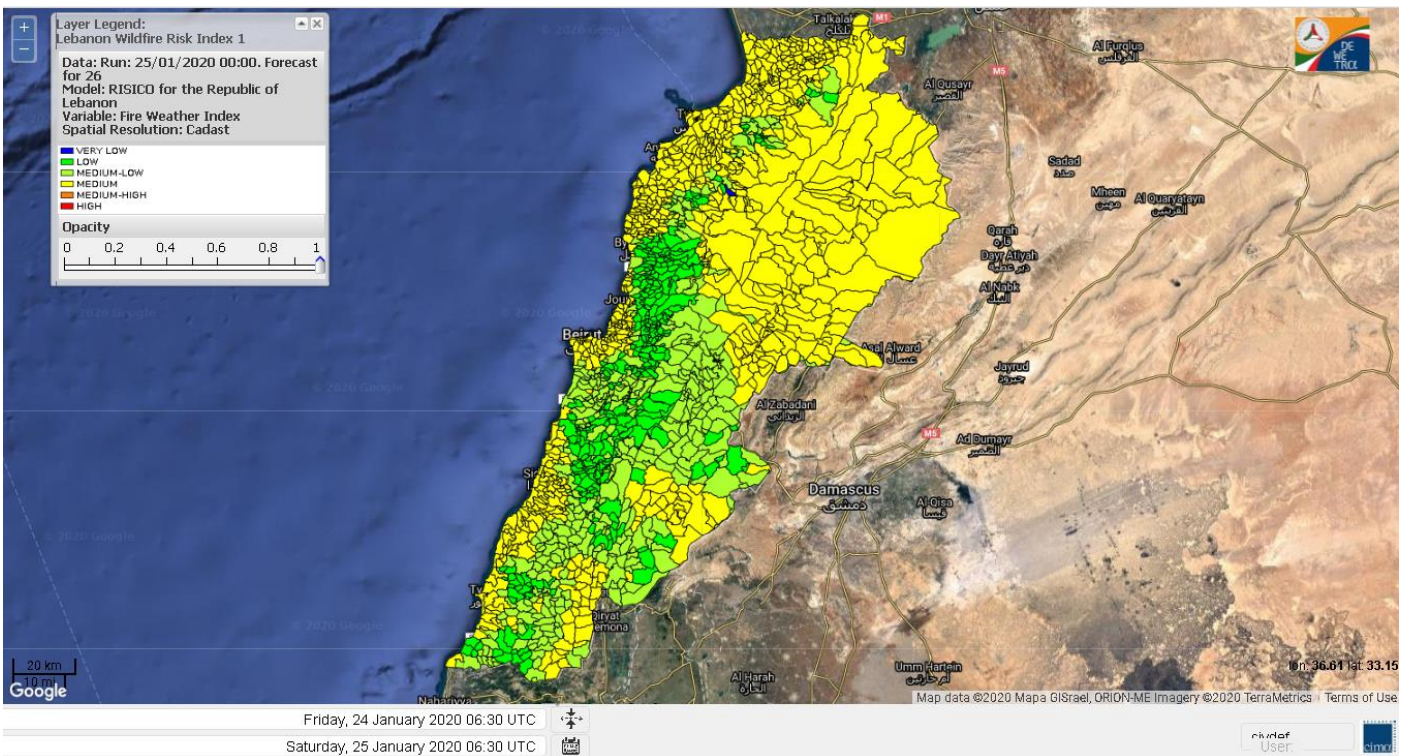
Data: Run: 25/01/2020 00:00. Forecast for 25
Model: RISICO for the Republic of Lebanon
Variable: Fire Weather Index
Spatial Resolution: Caza

- VERY LOW
- LOW
- MEDIUM-LOW
- MEDIUM
- MEDIUM-HIGH
- HIGH
- EXTREME

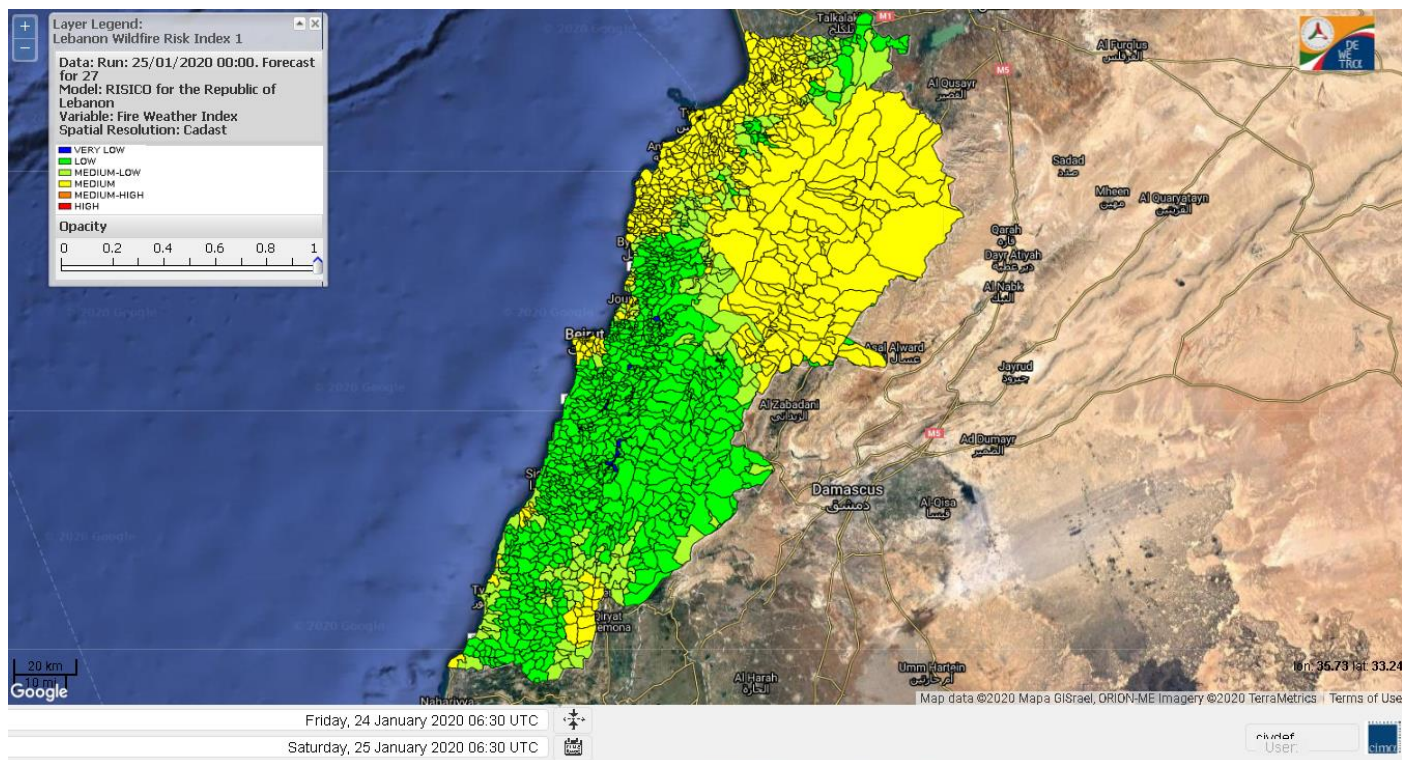
Lebanon for 25 January 2020



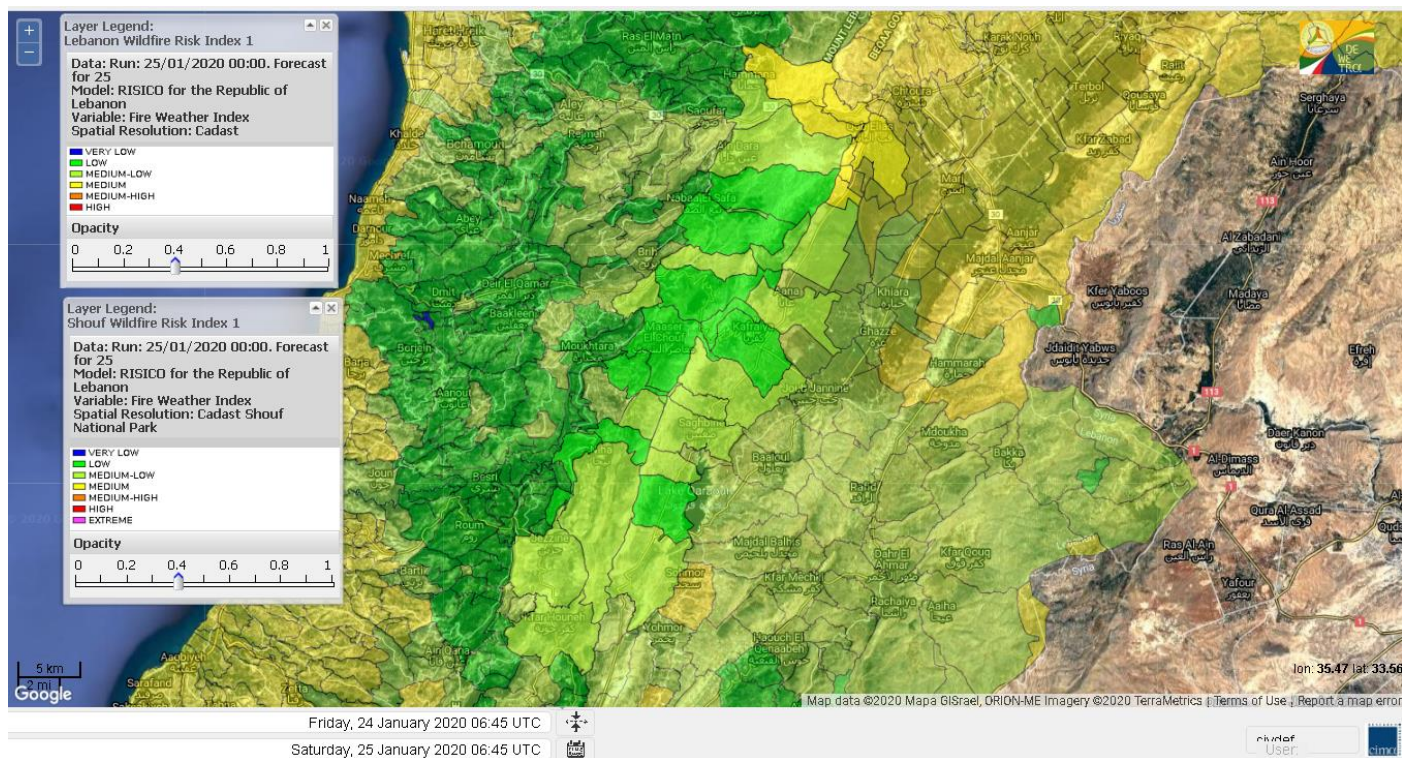
Lebanon for 26 January 2020



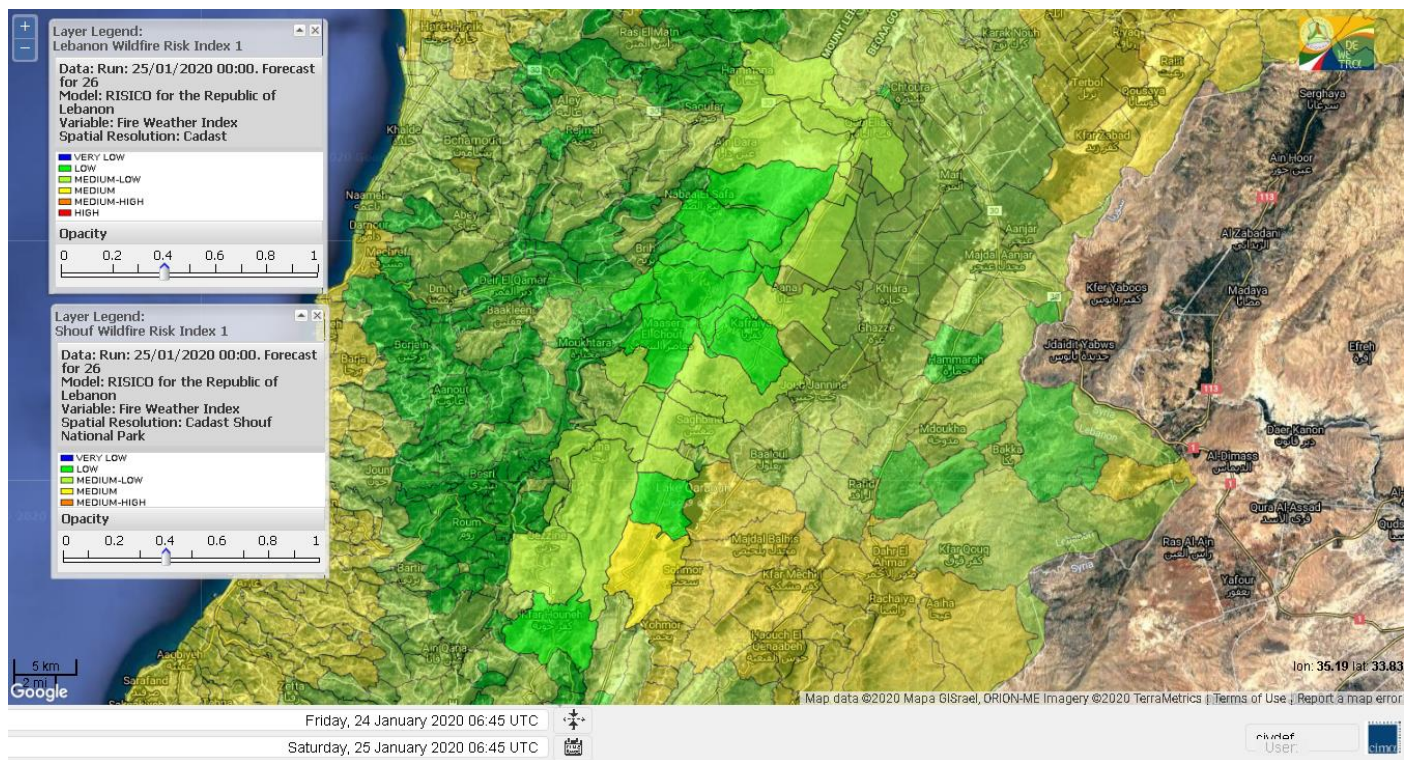
Lebanon for 27 January 2020



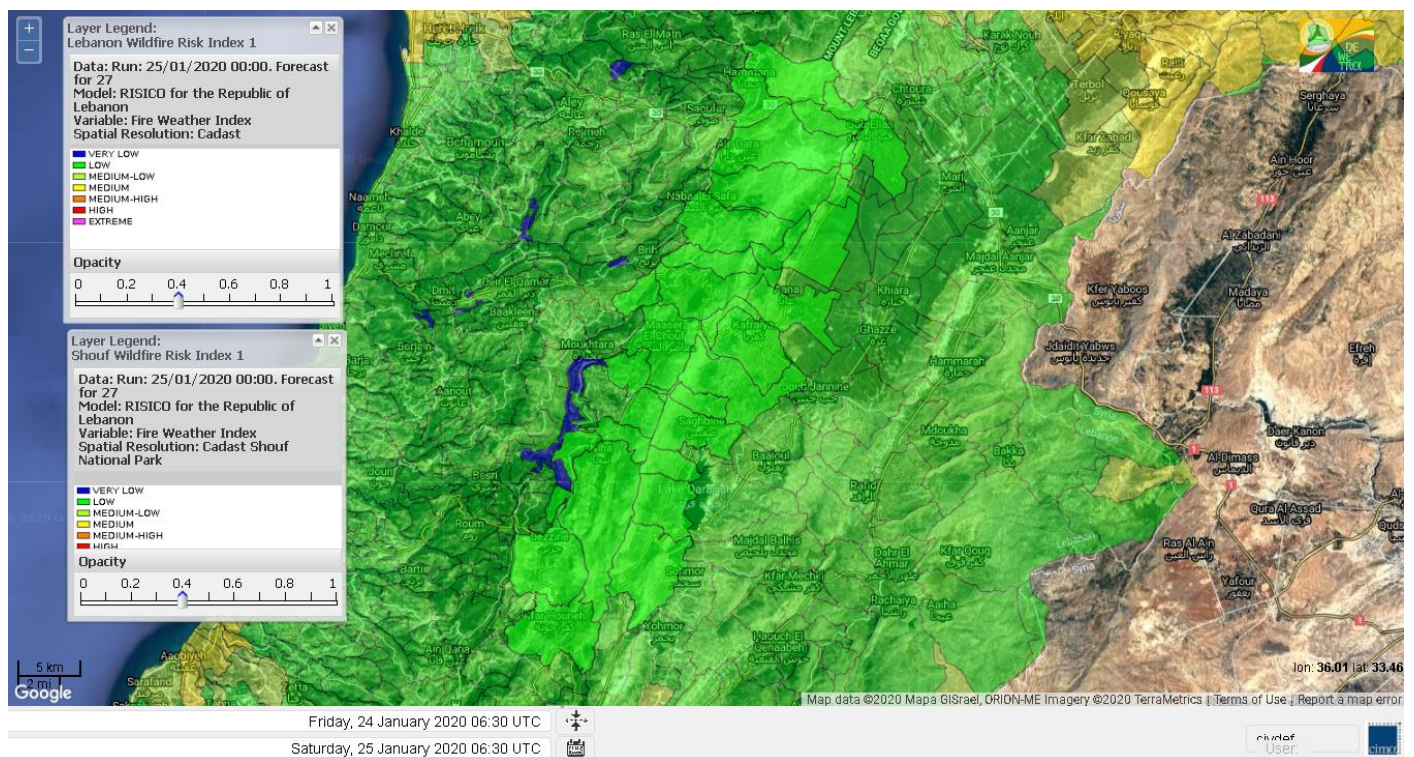
Shouf Biosphere Reserve Forecast for 25 January 2020



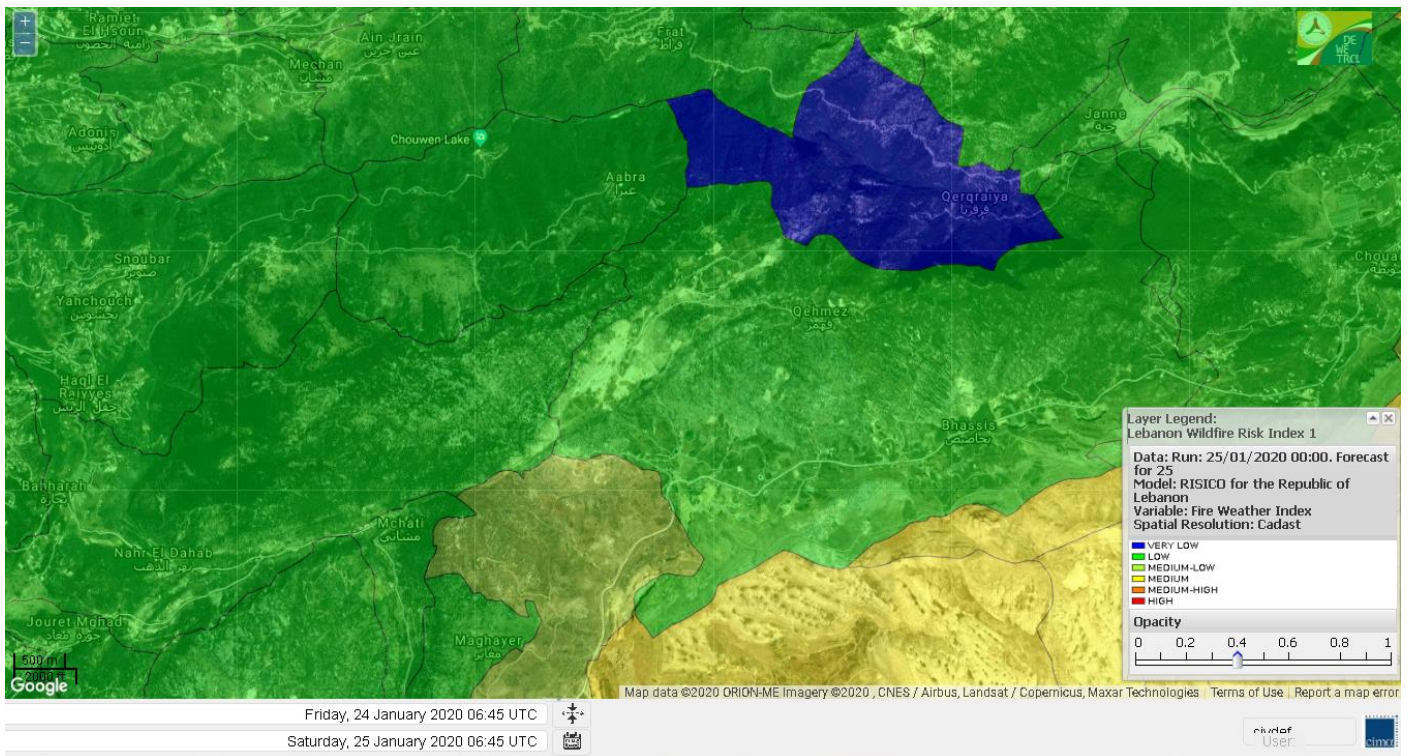
Shouf Biosphere Reserve Forecast for 26 January 2020



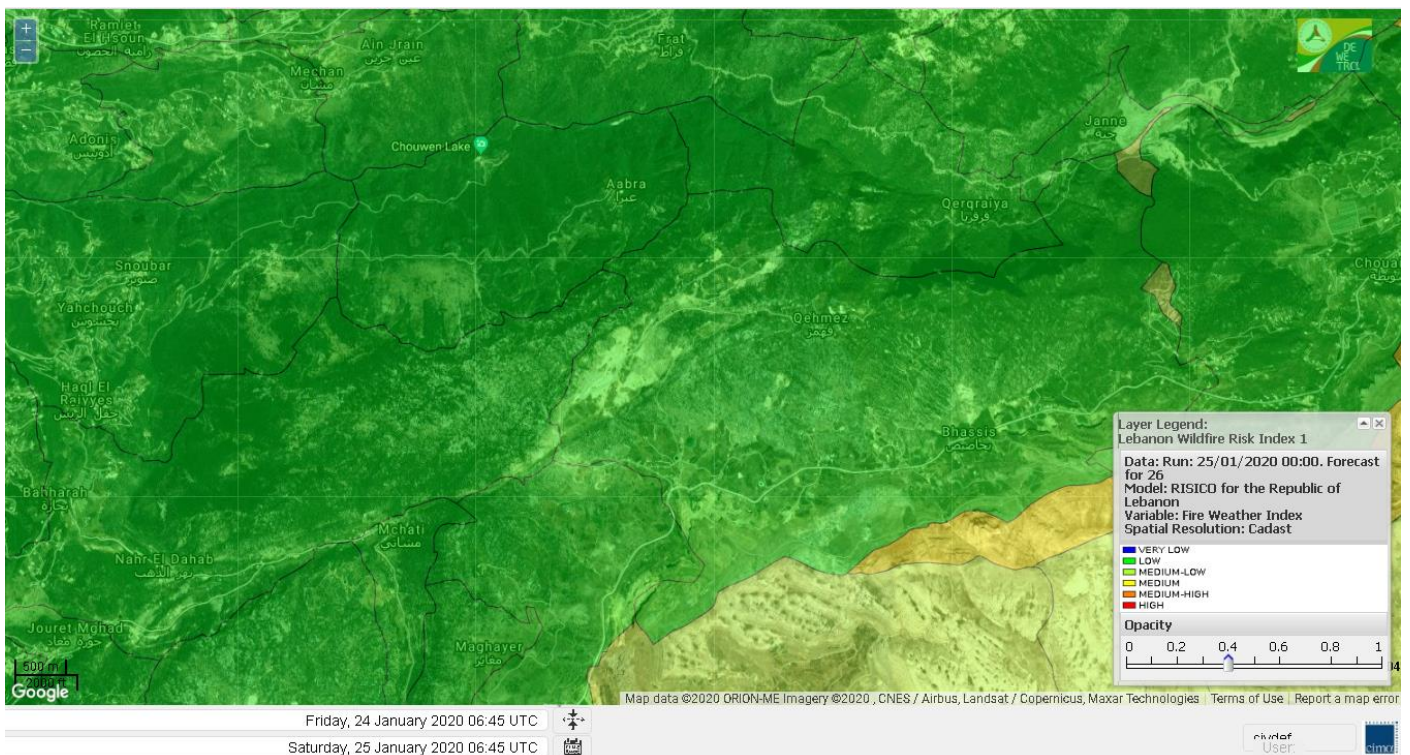
Shouf Biosphere Reserve Forecast for 27 January 2020



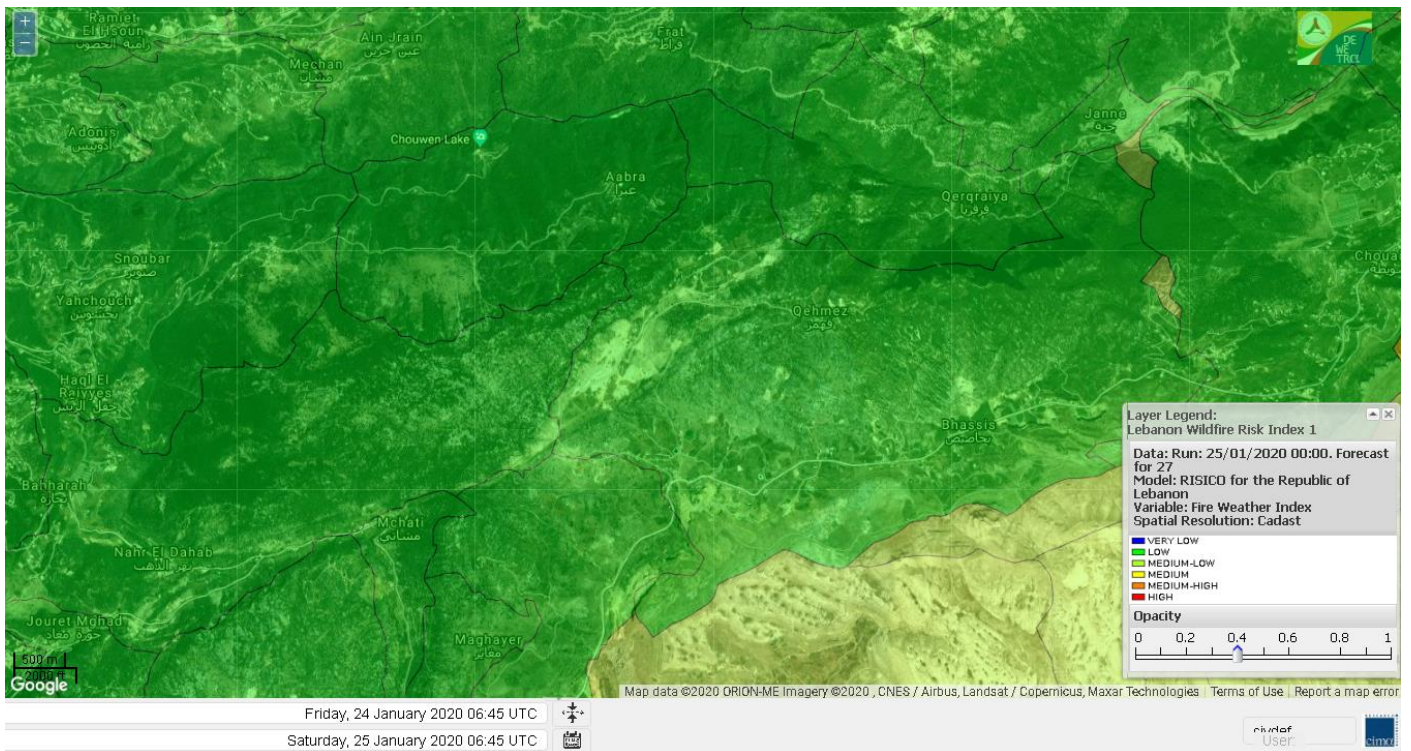
Jabal Moussa Reserve Forecast for 25 January 2020



Jabal Moussa Reserve Forecast for 26 January 2020



Jabal Moussa Reserve Forecast for 27 January 2020

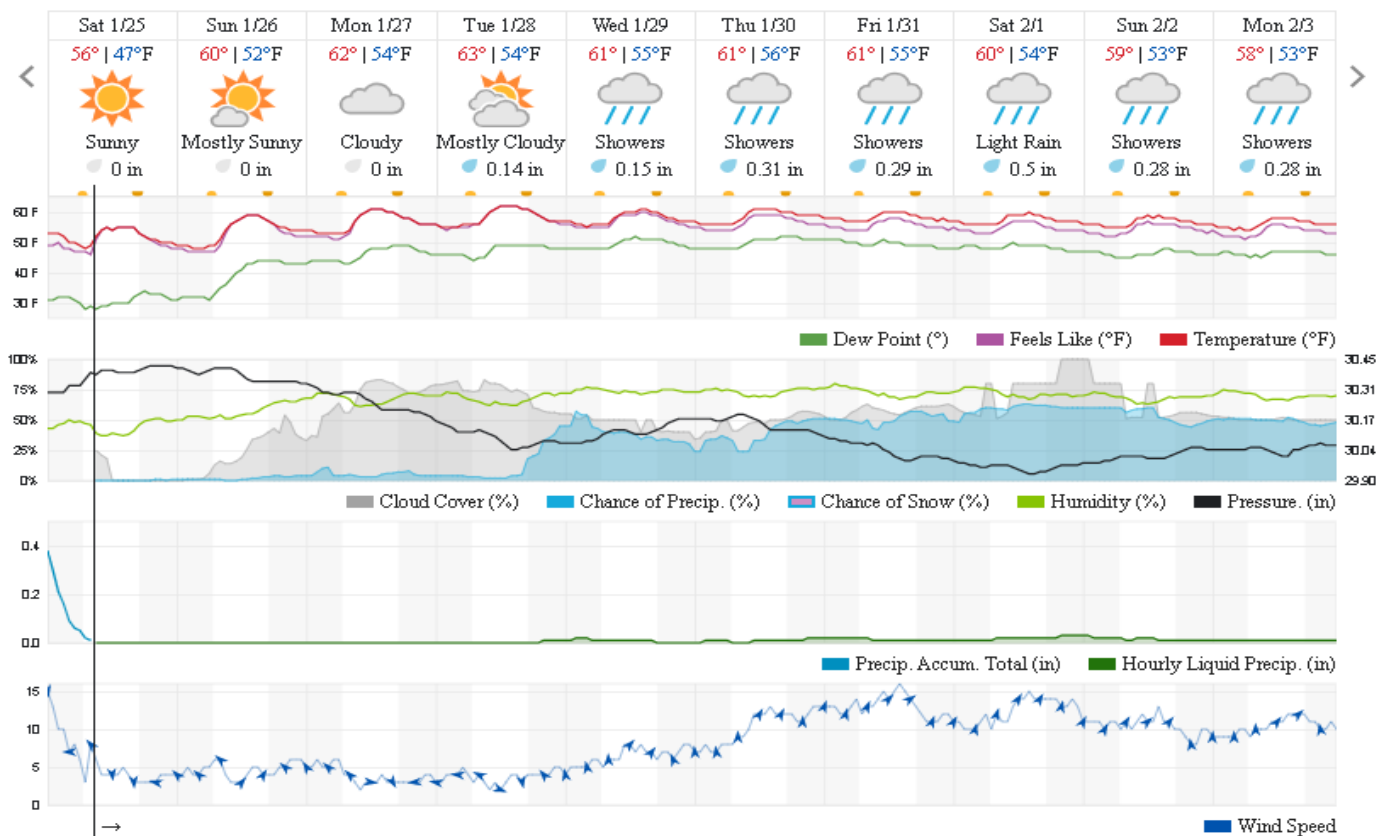


Beirut, Beirut Governorate, Lebanon 10-Day Weather Forecast

49° ACHRAFIEH,RIZK STATION | CHANGE

TODAY HOURLY **10-DAY** CALENDAR HISTORY WUNDERMAP

Customize



Nord

Koura

Municipality	25-Jan	26-Jan	27-Jan	Municipality	25-Jan	26-Jan	27-Jan	Municipality	25-Jan	26-Jan	27-Jan
Aaba	M	M	M	Afsaddiq	M	M	M	Ain Ekrine	M	M	M
Amioun	M	M	M	Anfeh	M	M	M	Badbhoun	M	M	M
Barghoun	M	M	M	Barsa	M	M	M	Batroumine	M	M	M
Bdebba	M	M	M	Bechmizine	M	M	M	Bednayel El-Koura	M	M	M
Bhabbouch El-Koura	M	M	M	Bkeftine	M	M	M	Bnehran	M	M	M
Bqaiia El-Koura	M	M	M	Bsarma	M	M	M	Btaaboura	M	M	M
Bttram	M	M	M	Btouratij	M	M	M	Bziza	M	M	M
Dar Beechtar	M	M	M	Dar Chmezzine	M	M	M	Deddeh	M	M	M
Deir El-Balamand	ML	M	M	Fih	M	M	M	Hraiche	M	M	M
Ijdaabrine	M	M	M	Kaftoun	M	M	M	Kefraya El-Koura	M	M	M
Kfarakka	M	M	M	Kfarhata	M	M	M	Kfarhazir	M	M	M
Kfarkahel	M	M	M	Kfarsaroun	M	M	M	Kosba	M	M	M
Mejdel el-Koura	ML	ML	M	Nakhle	M	M	M	Qalhat	ML	M	M
Ras Masqa	M	M	M	Rechdibbine	M	M	M	Zakroun	M	M	M
Zgharta El-Mtaouile	L	L	M								

Bcharre

Municipality	25-Jan	26-Jan	27-Jan	Municipality	25-Jan	26-Jan	27-Jan	Municipality	25-Jan	26-Jan	27-Jan
Aabdine	M	M	M	Bane	M	M	M	Barhelioun	M	ML	M
Bazooune	M	M	M	Becharre	M	M	M	Beit Menzer	M	M	M
Billa	M	ML	M	Blaouza	M	M	M	Bqaa Kafra	M	M	M
Bqerqacha	M	M	M	Breissat	M	M	M	Dimane	M	M	M
Hadath El Jobbeh	M	M	ML	Hadchit	M	M	ML	Hasroun	M	M	M
Mazraat Aassaf	VL	L	M	Mazraat Bani Saab	M	M	M	Mchaa El-Jobbeh	MH	M	M
Metrit	ML	ML	M	Moghr El-Ahoual	M	M	M	Ouadi Qannoubine	VL	VL	L
Qanat	M	M	ML	Qnayer	L	L	ML	Tourza	M	ML	M

Batroun

Municipality	25-Jan	26-Jan	27-Jan	Municipality	25-Jan	26-Jan	27-Jan	Municipality	25-Jan	26-Jan	27-Jan
Aabrine	ML	M	M	Aalali	L	ML	ML	Aartiz	L	M	M
Abdelli	L	M	M	Ajdabra	ML	M	M	Assia	L	ML	ML
Basbina	M	M	M	Batroun	M	M	M	Bcheleh	L	ML	ML
Bechtoudar	L	ML	ML	Beit Chlala	L	ML	ML	Beit Kassab	L	L	M
Bijdarfil	M	M	M	Bqesmaya	ML	M	M	Chatine	M	M	M
Chebtin	L	M	M	Chekka	M	M	M	Daael	L	ML	ML
Dahr Abi Yaghi	L	M	M	Daraya El-Batroun	M	M	M	Deir Billa	L	L	ML
Deir Kfifane	ML	M	M	Deir Mar Youhanna EL	L	L	ML	Deir Mar Youssef Jra	L	M	M
Douma	ML	M	ML	Douq	L	M	M	Eddeh El-Batroun	ML	M	M
Ftihat El-Batroun	L	ML	M	Ghouma	ML	M	M	Hadtoun	L	ML	ML
Hamat	ML	M	M	Harbouna	L	M	M	Hardine	L	L	ML
Helta	L	ML	ML	Hery	M	M	M	Jebbla	L	ML	M
Jrabta El-Batroun	ML	M	M	Jrane El-Batroun	M	M	M	Kfar Aabida	M	M	M
Kfar Halda	L	L	ML	Kfarb Shlaimane	L	L	ML	Kfarhatna	L	M	M
Kfarhay	M	M	M	Kfarhelos	ML	M	M	Kfifane	M	M	M

Kfour El Arabi	M	M	M	Koubba	M	M	M	Kour	ML	M	M
Mar Mama	L	ML	M	Masrah	L	M	M	Mehmarch	ML	M	M
Mrah Chdid	L	M	M	Mrah El Ziyat	ML	M	M	Mrah El-Hajj	L	L	ML
Nahle El-Batroun	L	ML	ML	Niha El-Batroun	M	M	M	Ouajh El-Hajjar	M	M	M
Ouata Houb	M	M	M	Qatnaaoun	M	M	M	Racha	ML	M	ML
Rachana	ML	M	M	Rachkida	M	M	M	Ram El-Batroun	L	ML	ML
Ras Nahhach	M	M	M	Selaata	M	M	M	Sghar	ML	M	M
Smar Jbayl	ML	M	M	Sourat El-Batroun	L	M	M	Tannourine El-Faouqa	M	M	M
Tannourine Et-Tahta	ML	M	M	Thoum	M	M	M	Toula El-Batroun	L	M	M
Zan	L	ML	M								

Zgharta

Municipality	25-Jan	26-Jan	27-Jan	Municipality	25-Jan	26-Jan	27-Jan	Municipality	25-Jan	26-Jan	27-Jan
Aachach	M	M	M	Aalma	M	M	M	Aarde	M	M	M
Aintourine	M	M	M	Arabet Qozhaya	ML	ML	ML	Arde	M	M	M
Arjis	M	M	M	Asnoun	M	M	M	Ayto	ML	M	ML
Basloukit	M	M	M	Bchannine	M	M	M	Besebeel	M	M	M
Bhairret Toula	ML	M	M	Bnachee	M	M	M	Boussit	M	M	M
Danha	M	M	M	Daraiya Zgharta	M	M	M	Deir Jdeide	M	M	M
Ehden	M	M	M	Halan	M	M	M	Hariq Zgharta	M	M	M
Houakir	ML	M	M	Hraiqis	M	M	M	laal	M	M	M
Ijbaa	M	M	M	Karm Saddeh	M	ML	ML	Kfarchakhna	M	M	M
Kfardlaqous	M	M	M	Kfarfou	M	M	M	Kfarhata Zgharta	M	M	M
Kfarhoura	M	M	M	Kfarsghab	M	M	M	Kfaryachit	M	M	M
Kfarzaina	M	M	M	Khaldiye	M	M	M	Mazraat Ajbeaa	M	M	M
Mazraat Et-Teffah	L	M	M	Mazraat Jneid	M	M	M	Mejdlaiya Zgharta	M	M	M
Merh Kfarsghab	M	M	M	Miryata	M	M	M	Miziara	ML	M	M
Mzraat Kefraya	M	M	M	Qorah Bach	M	M	M	Rachiine	M	M	M
Ras Kifa	M	M	M	Sakhra	M	M	M	Sebhel Zgharta	M	M	M
Serhel	L	L	L	Tallet Zgharta	M	M	M	Toula Zgharta	M	M	M
Zgharta	M	M	M								

Minieh-Denniye

Municipality	25-Jan	26-Jan	27-Jan	Municipality	25-Jan	26-Jan	27-Jan	Municipality	25-Jan	26-Jan	27-Jan
Aasaymout	L	M	M	Aaymar	M	ML	L	Aazki	M	ML	ML
Ain El-Tineh-Miniyeh	L	L	L	Assoun	ML	ML	L	Bakhaaoun	ML	ML	L
Bchennata	M	M	M	Bechehhara	L	ML	M	Beddawi	M	M	M
Behouaita	M	M	M	Beit El Foqss	ML	L	L	Beit Haouik	M	M	M
Beit Zoud	L	L	L	Bekaasafrine	M	M	M	Borj El Yahoudiyeh	M	M	M
Bqarsouna	ML	L	L	Btermaz	L	ML	ML	Debaael	ML	ML	ML
Deir Ammar	M	M	M	Deir Nbouh	ML	M	M	Haouaret-Miniyeh	M	ML	M
Haql el Azimeh	L	L	L	Harf El Siyad	L	L	L	Hazmiye-Miniyeh	L	L	L
Izal	ML	ML	ML	Jarjour	L	ML	M	Jayroun	L	M	M
Kahf El-Malloul	L	ML	M	Karm El-Moher	M	M	ML	Kfar Binine	M	M	M
Kfarchalane	ML	ML	L	Kfarhabou	M	M	ML	Kharroub-Miniyeh	M	M	ML
Mazraat El-Kreme	L	L	ML	Mazraat Ketrane	ML	L	L	Merkebta	M	M	M
Minyeh	M	M	M	Mrah El Sfirat	L	L	L	Mrah Sraj	L	L	L
Mrebbine	M	M	M	Nabi Youcheaa	M	M	M	Nemrine	M	ML	M

Qarhaiya	M	M	M	Qarne	L	M	M	Qarsita	L	ML	M
Qattineh-Miniyeh	L	L	L	Qemmamine	L	M	M	Qraine	L	L	L
Raouda-Aadoua	M	M	M	Rihaniyet-Miniyeh	M	M	M	Sfireh	L	M	M
Sir Ed-Danniyeh	L	L	L	Tarane	L	ML	ML	Terbol-Miniyeh	M	M	M
Zaghartaghriine	ML	M	M	Zouq Bhannine	M	M	M				

Nabatiye

Nabatiye

Municipality	25-Jan	26-Jan	27-Jan	Municipality	25-Jan	26-Jan	27-Jan	Municipality	25-Jan	26-Jan	27-Jan
Aabba	M	ML	L	Aazzi	M	ML	L	Adchit El-Chqif	M	ML	L
Ain Bou Swar	ML	ML	L	Ain Kana	ML	ML	L	Ali El-TaHER	ML	ML	L
Ansar	M	M	L	Arab Salim	ML	ML	ML	Arnoun	M	M	ML
Bfaroue	ML	ML	L	Breyqaah	M	ML	L	Chargiyeh	M	ML	L
Choukine	M	ML	L	Deir El Zahrani	M	ML	L	Doueir El-Nabatiyeh	M	ML	L
Habbouch El-Nabatiye	M	ML	ML	Hamra El-Nabatiyeh	M	M	ML	Harouf El-Nabatiyeh	M	ML	L
Hmaile	ML	ML	L	Houmin El Faouqa	M	ML	L	Houmin El Tahta	M	M	L
Jarjough	ML	ML	L	Jbaah El-Nabatiyeh	L	ML	L	Jebchit	M	ML	L
Kfar Djal El-Nabatiy	M	ML	ML	Kfar Remmane	ML	ML	L	Kfar Sir	M	ML	ML
Kfar Tebnit	M	M	ML	Kfarfila	ML	ML	L	Kfour El-Nabatieh	M	ML	L
Mayfadoun	M	M	ML	Mazraat Bsaffour	M	ML	L	Mazraat Chalbaal	ML	ML	L
Mazraat Dmoul	M	ML	L	Mazraat El Khreibeh	M	M	L	Mazraat El-Bayad El-	M	ML	ML
Mazraat Kfarjaouz	M	ML	ML	Mazraat Qalaat Meiss	M	ML	L	Nabatiyeh El-Fawka	M	M	ML
Nabatiyeh Et-Tahta	M	ML	ML	Namiriyyeh	M	ML	L	Qaaqaaiyet El Jisr	M	M	ML
Qossaibeh El-Nabatiy	M	ML	ML	Roumine	M	M	L	Sarba El-Nabatieh	ML	ML	L
Sir El-Gharbiyeh	M	ML	L	Toul	M	ML	L	Yehmor El-Nabatiyeh	M	M	M
Zaoutar El Charkiyeh	M	M	ML	Zaoutar El-Gharbiyeh	M	ML	ML	Zebdine El-Nabatiyeh	M	ML	L
Zefta	M	ML	L								

Hasbaiya

Municipality	25-Jan	26-Jan	27-Jan	Municipality	25-Jan	26-Jan	27-Jan	Municipality	25-Jan	26-Jan	27-Jan
Ain Jarfa	L	L	L	Abou Qamha	ML	ML	L	Ain Qania	L	ML	L
Bourghos	ML	ML	L	Chebaa	ML	ML	L	Chouaya Hasbaya	ML	ML	L
Dellafeh	ML	ML	ML	Fardiss Hasbaiya	ML	ML	L	Hasbaya	ML	ML	L
Hbariyeh	L	L	L	Kaoukaba Hasbaiya	ML	ML	ML	Kfar Chouba	ML	L	L
Kfar Hamam	ML	ML	L	Kfeir El-Zait	L	ML	L	Khalwat Hasbaya	L	L	L
Khreibet Hasbaiya	ML	ML	ML	Majidiyeh Hasbaiya	ML	ML	L	Marj Ez-Zhour (Haouc	L	M	L
Meri	ML	M	ML	Mimass	ML	ML	L	Rachaiya El-Fokhar	ML	ML	L
Salaiyeb	M	ML	ML								

Marjayoun

Municipality	25-Jan	26-Jan	27-Jan	Municipality	25-Jan	26-Jan	27-Jan	Municipality	25-Jan	26-Jan	27-Jan
Aalmane Marjaayoun	ML	ML	ML	Aamra	M	ML	ML	Adayseh Marjaayoun	M	M	M
Adchit El-Koussair	M	M	ML	Ain Arab Marjaayoun	M	ML	ML	Bani Haiyann	M	M	M
Blatt Marjaayoun	ML	ML	ML	Blida	M	ML	ML	Borj El-Moulouk	M	M	ML
Boueyda Marjaayoun	ML	ML	L	Deir Mimass	M	M	M	Deir Siriane	M	M	ML
Dibbine	ML	ML	ML	Ebel El Saqi	ML	ML	ML	Houla	M	M	M
Houra	M	M	M	Kfar Kila	M	M	M	Kham Marjaayoun	M	ML	ML

Klayaa	M	M	ML	Majdel Selem	M	M	M	Marjaayoun	M	ML	ML
Markaba	M	M	M	Mays El-Jabal	M	M	M	Mazraat Doumiat	M	M	ML
Mazraat Sarada	M	ML	ML	Mhaibib	M	M	M	Qabrikha	M	ML	ML
Qantara	M	ML	ML	Rab El-Thalathine	M	M	M	Saouaneh Marjayoun	M	ML	L
Talloussa	M	M	M	Taybeh Matjaayoun	M	M	M	Touline	ML	ML	L

Bent Jbail

Municipality	25-Jan	26-Jan	27-Jan	Municipality	25-Jan	26-Jan	27-Jan	Municipality	25-Jan	26-Jan	27-Jan
Ain-Ebel	M	M	L	Aitaroun	M	ML	ML	Aynata Bint Jbeil	M	M	ML
Ayta El-Chaeb	ML	L	L	Ayta El-Jabal	M	ML	L	Beit Lif	ML	L	L
Beit Yahoun	M	ML	L	Bint Jbeil	M	M	ML	Borj Qalaway	M	ML	L
Braachit	M	ML	L	Chakra	M	M	M	Debel	M	ML	L
Deir Antar	M	ML	L	Froun	ML	ML	L	Ghandouriyeh Bint Jb	M	ML	L
Hanine	M	ML	L	Hariss	M	ML	L	Hdatha	M	ML	L
Jmeymeh	M	ML	L	Kafra Bint Jbeil	ML	L	L	Kfar Dounine	M	ML	L
Khirbet Selm	M	ML	L	Kounine	M	M	ML	Maroun El Ras	M	M	ML
Qalaway	M	ML	L	Qaouzah	ML	L	L	Qatmoun	M	ML	L
Ramya Bint Jbeil	ML	L	L	Rchaf	ML	ML	L	Rmeich	M	ML	L
Safad Al Battikh	M	ML	L	Salhaneh	ML	L	L	Serbine	M	ML	L
Sultanieh Bint Jbeil	M	ML	L	Tibnine	M	ML	L	Tiri	M	ML	L
Yaroun	M	M	ML	Yater	M	ML	L				

Mont Liban

Jbail

Municipality	25-Jan	26-Jan	27-Jan	Municipality	25-Jan	26-Jan	27-Jan	Municipality	25-Jan	26-Jan	27-Jan
Aabeydat	L	M	M	Aalita	L	L	L	Aamchit	M	M	M
Aarab El-Lahib	M	M	M	Aarasta	L	M	M	Adonis Jbeil	L	L	L
Afqa Jbeil	ML	ML	ML	Ain El Delbeh Jbeil	L	L	L	Ain El-Ghouyba	L	L	L
Ain Jrain	L	L	L	Ain Kfah	ML	M	M	Almat El Chemaliyat	L	L	L
Almat El-Jenoubiya	L	L	L	Aqoura	M	M	M	Bayzoun	L	L	L
Bchille Jbeil	L	L	L	Bechtlida	L	L	L	Behdaydat	ML	ML	ML
Beit Habbaq	ML	M	M	Bejjeh	ML	M	M	Bekhaaz	M	M	M
Berbara Jbeil	M	M	M	Bintael	L	L	L	Birket Hjoula	L	L	L
Blatt Jbeil	ML	L	L	Boulhos	L	L	L	Breyj Jbeil	L	L	L
Chamat	M	M	M	Chikhane	M	M	M	Chmout	L	M	M
Eddeh Jbeil	ML	ML	ML	Ehmej	ML	L	L	Fatre	L	L	L
Ferhet	ML	L	L	Fghal	ML	M	M	Frat	L	L	L
Ghabat	M	M	M	Ghalboun	ML	M	M	Gharzouz	M	M	M
Ghofrine	M	M	M	Habil	L	ML	M	Halate	ML	ML	L
Haqel	L	M	M	Hbaline	ML	M	M	Hboub	ML	L	L
Hdeine	M	M	ML	Hema Er-Rehban	M	M	M	Hema Mar Maroun Aann	M	ML	ML
Hjoula	L	L	L	Hosrayel	M	M	M	Hsarat	ML	M	M
Hsoun	L	L	L	Jaj	ML	ML	ML	Janne	L	L	L
Jbeil	M	M	ML	Jeddeyel Jbeil	M	M	M	Jlisse	L	L	L
Jouret El-Qattine	L	L	L	Kfar Baal Annaya	L	L	L	Kfar Kidde	M	M	M
Kfar Kouas	L	L	L	Kfar Mashoun	M	M	ML	Kfoun	L	M	M

Kharbe Jbeil	ML	M	M	Laqlouq	M	M	ML	Lassa	L	L	L
Lehfed	L	L	ML	Maad	ML	M	M	Mar Sarkis	M	M	ML
Mastita	M	M	ML	Mayfouq	L	ML	ML	Mazraat El Siyad	M	M	ML
Mazraat El-Maaden	L	L	L	Mechane	L	L	L	Mechmech Jbeil	L	L	L
Mehrin	ML	L	L	Mejdel El-Akoura	M	M	ML	Mghayreh Jbeil	M	M	ML
Mounsef	M	M	M	Nahr Ibrahim	M	M	ML	Qahmez	L	L	L
Qartaba	L	L	L	Qartaboun	M	M	ML	Qattara Jbeil	L	L	L
Qorqraya	VL	L	L	Ramout	ML	M	M	Ras Osta	L	L	L
Rihane Jbeil	M	M	M	Sakiet El-Khayt	L	M	M	Saqi Richmaya	ML	ML	ML
Sebrine	L	L	L	Seraita	M	ML	ML	Souane Jbeil	L	L	L
Tadmor	M	M	M	Tartej	ML	M	ML	Torzaiya	L	L	L
Yanouh Jbeil	M	M	M	Zibidine Jbeil	L	L	L				

El Metn

Municipality	25-Jan	26-Jan	27-Jan	Municipality	25-Jan	26-Jan	27-Jan	Municipality	25-Jan	26-Jan	27-Jan
Aain El-Qabu	L	ML	L	Aain El-Qach	L	L	L	Aain El-Teffaha	L	L	L
Aain el-Safssaf El-M	L	L	L	Abou Mizane	L	L	L	Ain Aar	M	M	L
Ain Alaq	L	M	L	Ain El-Kharroube	L	L	L	Ain El-Sendiane	L	L	L
Ain El-Zeitoune	L	L	VL	Ain Saadeh	L	M	L	Aintoura El-Matn	M	ML	ML
Amaret Chalhoub	M	M	L	Antelias	M	M	L	Atchaneh	L	M	L
Ayroun	L	L	L	Baabdat	L	L	L	Baouchariyeh	M	M	M
Baskinta	ML	ML	L	Beit Chabab	L	L	L	Beit El-Char	M	M	L
Beit El-Kekko	M	M	L	Beit Mery	L	ML	L	Bhersaf	L	ML	L
Bikfaya	L	L	L	Biyakout	M	M	L	Bnabil	L	L	L
Bourj Hammoud	M	M	M	Bqennaya	ML	M	L	Broummana El-Matn	L	M	L
Bsalim	L	M	L	Bsifrine	L	L	L	Bteghrine	L	ML	L
Chaouiye	ML	M	L	Chouaya El-Matn	L	L	L	Choueir	L	L	L
Chrine	L	L	L	Dahr El Sawan El-Mat	L	ML	L	Daychouniyeh	ML	ML	L
Dbayeh	M	M	L	Deir Chamra	L	L	VL	Deir Mar Abda el Mch	L	M	ML
Deir Mar Roukouz	M	M	M	Deir Tamiche	L	M	L	Dik El-Mehdi	ML	M	L
Dikwaneh	M	M	M	Douar El-Matn	L	L	L	Fanar	ML	M	L
Fraike	L	M	L	Haret El-Ballaneh	ML	M	L	Hbous	ML	M	L
Himlaya	L	L	L	Jal El Did	M	M	L	Jdeideh El-Metn	M	M	L
Jouar El-Matn	L	L	L	Jouret El-Ballout	L	M	L	Kaaqour	L	L	L
Kfar Aaqab	L	L	L	Kfertay El-Matn	L	L	L	Khenchara	L	L	L
Khillet El-Mtain	L	L	L	Konnabat Broummana	L	M	L	Konnabat Salima	L	L	L
Machraah El-Matn	L	L	L	Majdel Tarchich	M	ML	ML	Majzoub	ML	M	L
Mansouriyeh El-Metn	M	M	L	Mar Boutros Karm Et-	L	L	L	Mar Chaya et Mzekke	L	M	L
Mar Moussa Ed-Douar	L	L	L	Marjaba	L	L	L	Masqa	L	M	L
Mayasse	L	L	L	Mazraat Deir Aoukar	M	M	L	Mazraat El-Hadirat	ML	M	L
Mazraat Yachouh	M	M	L	Mchikha	ML	L	L	Menqlet Mezher	M	M	L
Mhaydseh Matn	L	L	L	Mkalles	M	M	M	Mrouj	ML	L	L
Mtain	M	ML	L	Mtayleb	ML	M	L	Nabay	L	M	L
Naccache	M	M	L	Ouadi Chahine	L	L	VL	Ouadi El-Karm El-Mat	L	L	L
Ouata El-Mrouj	L	L	VL	Ouyoun El-Matn	L	L	L	Qornet Chehwan	ML	M	L
Qornet El-Hamra	L	M	L	Roumieh	L	M	L	Sfeilet Bikfaya	L	L	L
Sinn El-Fil	M	M	M	Zabbougha	L	L	L	Zalqa	M	M	L

Zarouon	L	L	L	Zekrite	L	M	L	Zighrine El-Matn	L	L	L
Zouk El-Khrab	M	M	ML								

Chouf

Municipality	25-Jan	26-Jan	27-Jan	Municipality	25-Jan	26-Jan	27-Jan	Municipality	25-Jan	26-Jan	27-Jan
Aalmane El-Chouf	M	M	L	Aammq El-Chouf	L	L	L	Ain Ouzein	L	L	L
Ain Qani	L	L	VL	Ain Zhalta	L	L	L	Ainbal	L	L	L
Amatour	L	L	VL	Anout	L	L	L	Atrine	L	L	L
Baadarane	ML	ML	L	Baaqline	L	ML	L	Baasir	M	M	L
Barja	M	M	L	Barouk	L	L	L	Bater	L	ML	L
Batloun	ML	L	L	Bayqoun	ML	ML	L	Bchetfine	L	ML	L
Beiteddine	L	L	L	Benouati Ech-Chouf	L	L	L	Berjein	L	L	L
Bireh et Mtalleh	ML	ML	L	Biret El-Chouf	ML	ML	L	Bkechtine Ouel Mchei	L	L	L
Bkifa El-Chouf	L	L	L	Botme	L	L	L	Bqaiaa Ech-Chouf	L	L	L
Bsaba El-Chouf	L	L	L	Chammis El-Chouf	M	ML	L	Chehim	L	L	L
Chemaarine	L	L	L	Chourit	L	L	VL	Daher El-Chouf	L	ML	L
Dalhoun	ML	ML	L	Damour	M	M	L	Daraya El-Chouf	L	L	L
Deir El-Moukhalles	L	L	L	Deir Baba	L	ML	L	Deir Dourit	L	L	L
Deir El-Qamar	L	L	L	Deir Kouche	L	L	L	Dibbieh	L	L	L
Dmit	L	ML	L	Fouara Jaafar	L	L	VL	Fraidis El-Chouf	ML	L	L
Ghabet Jaafar	L	ML	VL	Gharife	L	L	L	Haret Jandal	L	ML	L
Hasrout	ML	L	L	Jadra	M	M	L	Jahlieh	L	L	L
Jbeih El-Chouf	L	ML	L	Jdeidet El-Chouf	L	L	L	Jiyeh	M	M	L
Jleilyeh	L	L	L	Jmailiyeh	M	M	L	Joun	ML	ML	L
Kahlounie El-Chouf	ML	ML	L	Ketermaya	M	M	L	Kfar Faqoud	L	L	L
Kfar Hamal	ML	ML	L	Kfar Him	ML	ML	L	Kfar Katra	L	L	L
Kfar Niss	ML	ML	L	Kfar hay	L	ML	VL	Kfarnabrakh	ML	L	L
Khirbet Bisri	L	L	L	Knayse El-Chouf	L	L	VL	Maaniyeh	M	ML	L
Maasser Beiteddine	L	L	L	Maasser El-Chouf	L	L	L	Majdalouna	M	ML	L
Majdel El-Meouch	ML	L	L	Mazboud	ML	ML	L	Mazmoura	L	L	L
Mazraat El Chouf	L	L	L	Mazraat El Daher	L	L	L	Mazraat El-Douair	L	L	L
Mechref	L	L	L	Mghairie	M	M	L	Mghayrie El-Chouf	L	L	L
Moukhtara	L	L	L	Mrusti	ML	ML	L	Mtolle	ML	ML	L
Naameh	M	ML	L	Niha El-Chouf	ML	ML	L	Ouadi Abou Youssef	VL	L	VL
Ouadi Ed-Deir	ML	ML	VL	Ouadi El-Sit	L	L	L	Ouadi bnehlay	L	L	L
Qraibeh	L	ML	L	Qreiaa	L	L	L	Rmayle El-Chouf	M	M	L
Semqaniyeh	ML	ML	L	Sibline	M	M	L	Sirjbeil	L	ML	L
Warhanieh	ML	L	L	Werdaniyeh	M	M	L	Zaarourieh	L	L	L

Baabda

Municipality	25-Jan	26-Jan	27-Jan	Municipality	25-Jan	26-Jan	27-Jan	Municipality	25-Jan	26-Jan	27-Jan
Abadiyeh	L	L	L	Ain Mouaffaq	L	ML	VL	Araiya	L	L	L
Arbaniyeh	L	L	L	Arsoun	L	L	L	Baabda	ML	M	ML
Baalchmey	ML	ML	L	Bmaryam	L	L	L	Bourj El-Brajneh	M	ML	L
Boutchay	ML	M	L	Bsaba Baabda	ML	ML	L	Btekhney	L	L	L
Btibyat	L	L	L	Bzbeddine	L	L	L	Chbeniyeh	L	L	L
Chiyah	M	M	M	Chmeisset Baabda	L	L	L	Chouit	L	L	L
Deir El-harf	L	L	L	Deir Khouna	L	L	L	Dlaybeh	L	L	L

Falougha	M	ML	L	Furn El-Chebbak	M	M	M	Hadath Beyrouth	M	M	L
Halaliyeh Baabda	L	L	VL	Hammana	ML	ML	L	Haret El Sett	L	L	L
Haret Hamze	L	L	L	Haret Hreik	M	M	M	Hasbaiya El-Metn	L	L	VL
Jouar El-Hoz	L	L	L	Jouret Arsoun	L	L	L	Kfar Chima	M	ML	L
Kfar Selouane	ML	ML	L	Khalouat Baabda	ML	ML	L	Kneisset Baabda	L	L	L
Laylakeh	M	ML	L	Louayzeh Baabda	L	L	L	Merdache	ML	ML	L
Mzairaa Baabda	L	L	L	Ouadi Chahrour El Ol	L	ML	L	Ouadi Chahrour El So	L	ML	L
Qalaa Baabda	L	L	L	Qhraybe Baabda	L	L	L	Qobbayaa	L	L	L
Qornayel	L	L	L	Qortada	L	L	L	Qrayeh Baabda	L	L	L
Qsaibeh Baabda	L	M	L	Qtale Baabda	L	L	L	Ras El Metn	L	ML	L
Ras El-Haref	L	L	L	Rouayset El-Ballout	L	L	L	Salima Baabda	L	L	L
Tahouitat El Ghadir	M	ML	L	Tarchich	ML	ML	L	Zandouqa	L	ML	L

Aley

Municipality	25-Jan	26-Jan	27-Jan	Municipality	25-Jan	26-Jan	27-Jan	Municipality	25-Jan	26-Jan	27-Jan
Abey	L	ML	L	Aghmid	L	L	L	Ain Dara	ML	ML	L
Ain Drafil	L	ML	L	Ain El Halazoun	ML	ML	L	Ain El-Rmmaneh	L	L	L
Ain Jedideh	ML	ML	L	Ain Ksour	L	ML	L	Ain Onoub	L	ML	L
Ain Traz	L	L	L	Ainab	L	ML	L	Aley	ML	ML	L
Aramoun	ML	ML	L	Aytat	ML	ML	L	Azouniyeh	ML	ML	L
Baawerta	L	L	L	Badghan Oua Wadi Bad	ML	ML	L	Bassatine	ML	ML	L
Bayssour	L	ML	L	Bchamoun	ML	ML	L	Bdadoun	L	ML	L
Behouara	L	L	L	Bennay	L	ML	L	Bhamdoun El-Dayaa	ML	ML	L
Bhamdoun El-Mhatta	ML	ML	L	Bkhechtey	ML	ML	L	Bleibel	L	ML	L
Bmakine	ML	ML	L	Bmehray	L	L	L	Bouzrid	L	L	VL
Bserrine	ML	ML	L	Bsous	L	L	L	Btalloun	ML	ML	L
Btater	ML	ML	L	Chanay	ML	ML	L	Charoun	ML	ML	L
Chartoun	L	ML	L	Chemlane	ML	ML	L	Choueifat El-Aamrous	M	ML	L
Choueifat El-Oumara	ML	ML	L	Choueifat El-Quoubbe	M	ML	L	Dakkoun	L	ML	L
Deir Qoubel	L	ML	L	Dfoun	ML	ML	L	Douair El Remmaneh	L	L	L
Ghaboun	L	L	L	Habramoun	L	L	L	Homs Oua Hama	ML	ML	L
Houmal	L	ML	L	Jisr El Qadi	L	L	L	Kehaleh	L	L	L
Keyfoun	ML	ML	L	Kfar Aamey	L	ML	L	Kommatyeh	L	L	L
Maasrati	ML	ML	L	Majdel Baana	ML	ML	L	Mansourieh et Ain El	ML	ML	L
Mazraat El-Nahr	L	ML	L	Mchakhte	L	L	L	Mecherfeh	ML	ML	L
Mejdlaya	L	ML	L	Mrayjat	ML	ML	L	Ramliyah	L	L	L
Rechmaya	ML	ML	L	Rejmeh	L	L	L	Remhala	L	ML	L
Rouaysset El Neemane	L	ML	L	Saoufar	ML	ML	L	Selfaya	L	L	VL
Sirhmoul	L	M	L	Souq El Ghareb	ML	ML	L	Taazanieh	ML	ML	L

Kesrouane

Municipality	25-Jan	26-Jan	27-Jan	Municipality	25-Jan	26-Jan	27-Jan	Municipality	25-Jan	26-Jan	27-Jan
Achkout	L	L	L	Adma Oua Dafneh	ML	M	ML	Ain Ed-Delbe Kesroua	L	L	L
Ain El-Rihane	L	M	M	Aintoura Kesrouane	ML	M	M	Ajaltoun	L	L	L
Akaybeh Kesrouane	M	M	ML	Aramoun Kesrouane	L	L	L	Azra ouel Ozor	L	L	L
Ballouneh	L	L	L	Batha	L	ML	ML	Bekaatat Achkout	ML	L	L
Bekaatat Kanaan	L	L	L	Bizhel	L	L	L	Bouar	ML	M	M
Bqaatouta	ML	L	L	Bqaq Ed-Dine	ML	M	M	Bzommar	L	L	L

Chahtoul	L	L	L	Chnaniir	L	L	L	Chouan	L	L	L
Daraya Kesrouane	L	L	L	Darououn	L	ML	ML	Deir Baqlouch	L	M	M
Dlebta	L	L	L	Eghbeh	VL	L	L	Faraya	M	ML	ML
Fatka	L	L	L	Feytroun	L	L	L	Ghazir	L	ML	L
Ghbaleh Kesrouane	L	L	L	Ghedrass	L	L	L	Ghosta	L	L	L
Ghynéh	L	L	L	Harharaya w Kattine	L	L	L	Harissa Kesrouane	L	M	M
Hayata	L	L	L	Hosein	L	L	L	Hrajel	M	ML	ML
Jdeideh Ghazir	L	L	L	Jeita	L	M	ML	Jounieh Ghadir	ML	M	M
Jounieh Haret Sakhr	M	M	M	Jounieh Salel Alma	ML	M	M	Jounieh Sarba	M	M	ML
Jouret Bedrane	L	L	L	Jouret Mhad	L	L	L	Jouret Termos	L	L	L
Kfar Debiane	L	L	L	Kfar Tay Kesrouane	L	L	L	Kfar Yassine	M	M	ML
Kfour Kesrouane	L	L	L	Kharayeb Nahr Ibrahi	L	ML	ML	Klayaat Kesrouane	L	L	L
Maarab	L	L	L	Maaysra Kesrouane	L	L	L	Mayrouba	ML	L	L
Mazraat Er-Ras	ML	M	M	Mazraat Mrah El-Mir	L	L	L	Mchaa El Ftouh	M	M	ML
Mchaa Faraya	M	ML	ML	Mchaa Kfar Dibiane	M	ML	ML	Mghaer	L	L	L
Mradiyah	L	L	L	Nahr Ed-Dahab	L	L	L	Nammoura Kesrouane	L	L	L
Ouata El Jaouz	L	L	L	Ouata Sillam	M	M	ML	Raachine	L	L	L
Rayfoun	L	L	L	Safra Kesrouane	M	M	M	Shayle Kesrouane	L	ML	ML
Tabarja	ML	M	M	Yahchouch	L	L	L	Zaaytreh	L	L	L
Zeytoun	ML	ML	L	Zouk Mikael	M	M	ML	Zouk Mosbeh	M	M	M

Baalbek_Hermel

Baalbek

Municipality	25-Jan	26-Jan	27-Jan	Municipality	25-Jan	26-Jan	27-Jan	Municipality	25-Jan	26-Jan	27-Jan
Aadous	M	M	M	Aamchki	MH	M	M	Aarsal	M	M	M
Ain Baalbek	M	M	M	Ain Bourday	M	M	M	Ain El-Benye	M	M	M
Ain El-Jaouz Baalbek	M	M	M	Ain El-Siya Chadoura	M	M	M	Al Khodr Baalbek	M	M	M
Al Nabi Chit	M	M	M	Aynata Baalbek	M	M	M	Baalbek	M	M	M
Bachwat	M	M	M	Barqa	ML	M	M	Bednayel Baalbak	M	M	ML
Beit Chama	M	M	M	Bijjaje	M	M	M	Bouday	M	M	M
Brital	M	M	M	Btadi	M	M	M	Chaat	M	M	M
Chaibe	M	M	M	Chlifa	M	M	M	Chmestar	M	M	M
Dar El-Oussa	ML	M	M	Deir El-Ahmar	M	M	M	Deir Mar Maroun Baal	M	M	M
Douris	M	M	M	Fakiha	M	M	M	Hadath Baalbek	M	M	M
Ham	M	M	M	Haour Taala	M	M	M	Hizzine	M	M	M
Hlebta	M	M	M	Hosh Barada	M	M	M	Hosh El Dahab	M	M	M
Hosh El Snid	M	M	M	Hosh El-Nabi	M	M	M	Hosh El-Rafiq	M	M	M
Hosh Tal Safiya	M	M	M	Hrebta	M	M	M	laat	M	M	M
Jebaa	M	M	M	Jenta	M	M	M	Kfar Dabach	M	M	M
Kfar Dane	M	M	M	Khraibeh El-Hermel	ML	M	M	Khreibet Baalbek	M	M	M
Kneisset Baalbek	M	M	M	Labueh	M	M	M	Maarboun	M	M	M
Majdaloun	M	M	M	Maqneh	M	M	M	Mazraat Beit Mcheik	M	M	M
Misraya	M	M	M	Moqraq	M	M	M	Nabha El-Damdoum	M	M	M
Nabi Chbay	M	M	M	Nabi Osman	M	M	M	Nahleh baalbek	M	M	M
Ouadi El-Oss	ML	M	M	Qaa Baayoun	M	M	M	Qaa Jouar Maqiye	M	M	M
Qaa Ouadi El-Khanzir	M	M	M	Qah Baalbek	M	M	M	Qarha Baalbek	M	M	M

Qsarnaba	M	M	M	Ram Baalbek	M	M	M	Ras Baalbek El Sahl	M	M	M
Ras Baalbek El-Charq	M	M	M	Riha	M	M	M	Saaide	M	M	M
Sbouba	ML	M	M	Seriine El-Tahta	M	M	M	Slouqi	M	ML	M
Taiba Baalbek	M	M	M	Talia	M	M	M	Taraiya	M	M	M
Temnin El Fawqa	M	M	M	Temnin El-Tahta	M	M	M	Tfail	M	M	M
Yahfoufa	M	M	M	Yammouneh	M	M	M	Younine	M	M	M
Zboud	M	M	M								

Hermel

Municipality	25-Jan	26-Jan	27-Jan	Municipality	25-Jan	26-Jan	27-Jan	Municipality	25-Jan	26-Jan	27-Jan
Charbine El-Hermel	ML	M	M	Hermel Jbab	M	M	M	Hermel	M	M	M
Maaysra El-Hermel	L	M	M	Michaa Mrajhine	M	M	M	Ouadi Faara	M	M	M
Ras Baalbek - Ouadi	M	M	M	Ras Baalbek El Gharb	M	M	M	Zighrine	ML	M	M

Akkar

Akkar

Municipality	25-Jan	26-Jan	27-Jan	Municipality	25-Jan	26-Jan	27-Jan	Municipality	25-Jan	26-Jan	27-Jan
Aain Tinta	M	M	ML	Aaiyat	M	M	M	Aakkar El-Aatiqa	ML	ML	ML
Aamar Akkar	M	M	M	Aamar El Baykat	M	M	M	Aamayer	M	M	L
Aamriyet Akkar	M	M	ML	Aandqet	M	M	ML	Aarmeh	M	M	M
Aarqa	M	M	M	Aawaynat	M	M	L	Aayoun Akkar	M	M	M
Abboudiye	M	M	M	Ain El-Zeit	M	M	ML	Ain Yaaqoub	M	M	M
Akroum	M	M	ML	Aridet Cheikh Zennad	M	M	M	Baldeh w Mazraat Bal	M	M	M
Barcha	M	M	M	Bardeh	M	M	ML	Bebnine	M	M	M
Beino	M	M	M	Beit Ayoub	M	M	M	Beit El-Haouch	M	M	M
Beit Mellat	M	M	M	Beit Younes	M	ML	ML	Berbara Akkar	M	M	ML
Berqayel	M	M	M	Bezbina	ML	ML	L	Bireh Akkar	M	M	ML
Borj	M	M	M	Bqerezla	M	M	M	Bzal	ML	M	M
Chane	ML	M	M	Chaqdouf	M	M	M	Charbila	M	M	M
Cheikh Mohammad	M	M	M	Cheikh Taba Es-Sahl	M	M	M	Cheikh Taba	M	M	M
Cheikh Zennad	M	M	M	Cheikhlar	M	M	L	Chir Hmairine	M	M	M
Daghle	M	M	ML	Dahr Laissine	M	M	M	Darine	M	M	M
Dawra	M	M	M	Dawsa w Baghdadi	M	M	ML	Dayret Nahr El-Kabir	M	M	L
Deir Dalloum	M	M	M	Deir Jennine	M	M	ML	Denbou	M	M	M
Dibbabiyyeh	M	M	ML	Douair Aadwiyeh	M	M	ML	Fassikine	M	M	ML
Fnaydek	M	ML	ML	Fraydes Akkar	M	M	L	Ghazayle	M	M	M
Habchit	ML	M	M	Hakour	M	M	M	Halba	M	M	M
Haouchab	M	M	M	Hayssat	M	M	M	Haytla	M	M	M
Hayzouq	M	M	M	Hedd	M	M	M	Hmaira Akkar	M	M	M
Hmaiss Akkar	M	M	M	Hnaider	M	M	L	Hokr Ed-Dahri	M	M	M
Hokr Etti	M	M	M	Hokr Jouret Srar	M	M	M	Houaich	M	M	M
Hrar	M	M	M	Idbil	M	M	M	Ilal	M	M	M
Janine	M	M	M	Jdeidet El-JoumeH	M	M	M	Jdeidet El-Kaiteh	M	M	M
Jebraiel	M	M	M	Kafr	ML	M	M	Kafr	M	M	ML
Karm Asfour	M	M	M	Kfar Melki Akkar	M	M	M	Kfar Noun	M	M	ML
Kfarharra	M	M	M	Khalsa	M	M	L	Kharnoubet Akkar	M	M	M

Khirbet Daoud Aakkar	M	M	ML	Khirbet El Remmane	M	M	L	Khirbet Shar	M	M	M
Khoreybet El-Jindi	M	M	M	Khreibet Aakkar	M	M	M	Kneisset Aakkar	M	M	M
Kneisset Hnaider	M	M	L	Knisse	M	M	M	Kroum El-Aarab	M	M	M
Kwachra	M	M	ML	Kweykhat	M	M	M	Machta Hammoud	M	M	L
Majdala	M	M	M	Majdel Akkar	M	M	ML	Mar Touma	M	M	M
Marlaya Melhem	M	M	M	Mashha	M	M	M	Massoudiye	M	M	M
Mazraat Beit Ghattas	M	M	M	Mazraat En-Nahriye	M	M	L	Mechmech	M	M	M
Memneh	L	L	L	Mhammara	M	M	M	Mighraq Aakkar	M	M	M
Minyara	M	M	M	Moqayteh	M	M	M	Mounjez	M	M	ML
Msalla	M	M	ML	Mzeihmeh	M	M	M	Nfaiseh	M	M	M
Noura Et-Tahta	M	M	ML	Ouadi El-Haour	M	M	M	Ouadi El-Jamous	M	M	M
Ouyoun El-Ghizlane	M	M	M	Qaabarine	M	M	M	Qabaait	ML	M	M
Qachlaq	M	M	M	Qantara Aakkar	M	M	M	Qarha Aakkar	M	M	L
Qarqaf	M	M	M	Qboula	M	M	M	Qleiaat Aakkar	M	M	M
Qloud El-Baqie	M	M	M	Qobaiyat Aakkar	M	M	L	Qobbat Chamrat	M	M	M
Qorayat	M	ML	ML	Qornet Aakkar	M	M	ML	Qsair Aakkar	M	M	ML
Rahbe	M	M	M	Rihaniyet Aakkar	M	M	M	Rmah	M	M	L
Rmoul	M	M	M	Saadine	M	M	M	Sadaqa	M	M	M
Saidnaya	M	M	M	Sammouniye	M	M	M	Sayssouq	M	M	M
Semmaqiye	M	M	M	Semmaqli	M	M	M	Sfinet El-Dreib	M	M	M
Sfinet El-Qaitaa	M	M	M	Sindyanet Zeidane	M	M	ML	Souaisset Aakkar	M	M	M
Srar	M	M	M	Tal Abbas El Gharby	M	M	M	Tal Abbas El-Chargy	M	M	M
Tal Biret	M	M	M	Tal Hmayra	M	M	M	Tal Maayan Tal Kiri	M	M	M
Tal Sibel	M	M	M	Tallet Chattaha	M	M	M	Tikrit	M	M	M
Tleil	M	M	M	Tshea	ML	L	L	Zawarib	M	M	M
Zouq El Hosniyeh	M	M	M	Zouq El-Haddara	M	M	M	Zouq El-Hbalsa	M	M	M
Zouq El-Moqachrine	M	M	M								

Sud

Sour

Municipality	25-Jan	26-Jan	27-Jan	Municipality	25-Jan	26-Jan	27-Jan	Municipality	25-Jan	26-Jan	27-Jan
Aaiyeh	M	ML	L	Aalma El-Chaab	L	ML	ML	Aaytit	M	ML	L
Abbassiyeh Sour	M	M	ML	Abou Chech	ML	ML	L	Ain Abou Abdallah	M	M	ML
Ain Baal	M	M	L	Arzoun	M	ML	ML	Aziyeh	L	ML	ML
Baflaya	M	ML	L	Barich	M	L	L	Batouliyah	M	M	ML
Bayad	M	ML	L	Bazouriyeh	M	M	L	Bediass	M	L	L
Bestiyat	M	L	L	Borj El Chemali	M	M	ML	Borj En-Naqoura	ML	M	M
Borj Rahhal	M	L	L	Boustane	M	ML	L	Btaychiyeh	ML	ML	L
Chaaitiye	M	M	L	Chameh	L	L	L	Chehabiye	M	M	L
Chehour	L	L	L	Chihine	ML	L	L	Debaal Sour	M	ML	L
Deir Amess	ML	L	L	Deir Kifa	M	ML	ML	Deir Qanoun El-Ain	M	M	ML
Deir Qanoun El-Naher	M	L	L	Derdghaiya	M	ML	L	Dhayra	ML	ML	L
Halloussiyeh	M	L	L	Hamoul	L	L	L	Hanaouey	M	ML	L
Henniye	M	M	ML	Hmairi Sour	ML	L	L	Iskandarouna Sour	L	L	L
Jbal El Botom	ML	L	L	Jebbin	M	ML	L	Jennata	M	L	L
Jijim	L	L	L	Jouaiya	M	ML	L	Kneisset Sour	M	M	ML

Maarake	M	L	L	Maaroub	M	L	L	Majadel	M	ML	L
Majdalzoun	ML	ML	L	Mansouri Sour	M	M	ML	Marnba	L	L	L
Marouahine	ML	L	L	Mazraat El-Zalloutiy	M	ML	L	Mazraat Mechref	M	ML	L
Mazraat Tayr Semhat	L	L	L	Mheilib	M	M	M	Neffakhiyeh	M	ML	ML
Niha Sour	M	ML	ML	Ouadi Jilo	M	ML	L	Qana	M	M	L
Qolaileh Sour	M	M	ML	Rechknanay	M	ML	L	Rmadiyah	M	ML	L
Selha Sour	M	M	ML	Siddiqine	M	M	L	Sour	M	M	ML
Srifa	ML	ML	L	Tayr Debbe	M	ML	L	Tayr Felsay	M	L	L
Tayr Harfa	ML	ML	L	Touayri	L	L	L	Toura	M	L	L
Yanouh Sour	M	L	L	Yarine	M	ML	L	Zebqine	L	L	L

Saida

Municipality	25-Jan	26-Jan	27-Jan	Municipality	25-Jan	26-Jan	27-Jan	Municipality	25-Jan	26-Jan	27-Jan
Aanqoun	M	M	L	Aaqtanit	M	M	L	Aarab Ej-Jall	M	M	L
Aarab Tabbaya	M	M	L	Abra Saida	M	M	L	Adloun	M	M	ML
Adousiyeh	M	M	M	Ain-El-Deleb	M	M	L	Arzai	M	L	L
Babliyah	M	M	L	Barty	ML	ML	L	Bissariyeh	M	M	M
Bnaafoul	M	M	L	Bqosta	M	M	L	Bramiy	M	M	L
Daoudiyeh	M	M	L	Dareb El-Sim	M	M	L	Erkay	M	M	L
Ghassanieh	M	M	L	Ghazieh	M	M	ML	Hajjeh	M	M	L
Haret Saida	M	M	L	Hartiyeh	M	M	L	Hlaliye Saida	M	M	L
Insariyat	M	M	L	Jazira Saida	M	ML	ML	Kafar Bit	M	M	L
Kaoutariyet El-Siyad	M	ML	L	Kfar Chellal	M	ML	L	Kfar Hatta Saida	M	M	L
Kfar Milke Saida	M	ML	L	Khartoum	M	ML	L	Khaziz	M	M	L
Khirbet Ed-Douair Sa	M	M	L	Khirbet El-Bassal	M	M	ML	Khrayeb Saida	M	ML	L
Loubieh	M	M	L	Maghdouche	M	M	L	Majdelyoun	M	M	L
Matariyet El-Choumar	M	L	L	Matayriyeh	M	M	L	Mazraat 'Mseileh	M	M	M
Mazraat 'Snaiber	M	M	M	Mazraat Aarab Soukka	M	ML	L	Mazraat Deir Taqla	M	M	L
Mazraat El Yahoudiye	M	M	M	Mazraat El-Housseini	M	M	M	Mazraat El-Mhaydaleh	M	M	L
Mazraat El-Ouasta	M	M	ML	Mazraat Jamjim	M	M	L	Mazraat Kaoutariyet	M	M	L
Mazraat Kfar Badda	M	M	L	Mazraat Oussamiyat	M	M	L	Mazraat Sari	M	M	L
Mazraat Sinai	M	M	L	Meemariyeh	M	M	L	Merouaniyeh	M	M	ML
Miyeh ou Miyeh	M	M	L	Najjariyeh	M	M	M	Qaaqaiyat El-Snaouba	M	M	L
Qnarit	M	M	L	Qraiye Saida	M	M	L	Saida Ed-Dekermane	M	M	L
Saida El-Oustani	M	M	L	Saida El-Qadimeh	M	M	L	Saida Kefraya	M	M	L
Saksakiyeh	M	M	L	Salhie Saida	M	M	L	Sarafand	M	M	ML
Sfenta	ML	ML	L	Tafahta	M	M	L	Tanbourit	M	M	L
Tebna	M	M	ML	Zaghdraiya	M	M	L	Zeita	M	M	L
Zrariyeh	M	ML	L								

Jezzine

Municipality	25-Jan	26-Jan	27-Jan	Municipality	25-Jan	26-Jan	27-Jan	Municipality	25-Jan	26-Jan	27-Jan
Ain El-Mir (El Estab	M	M	L	Anane	L	L	L	Aramta	ML	ML	L
Ariya	L	ML	L	Aychiyeh	L	L	L	Azour	L	L	L
Baba	L	L	L	Bayssour Jezzine	M	M	L	Benoueteh Jezzine	L	ML	L
Bhannine	L	ML	VL	Bisri	L	L	L	Bkassine	L	L	L
Bouslaya	L	L	L	Btedine El-Leqech	L	L	L	Chbail	L	L	L
Choualiq Jezzine	M	M	L	Dahr Ed-Deir	L	L	L	Deir El Qattine	L	L	L

Demachqiyeh	M	ML	ML	Ghabbatiyeh	L	L	L	Harf Jezzine	L	L	L
Hassaniyeh	M	M	L	Haytouleh	ML	ML	L	Haytura	L	L	L
Hidab	ML	ML	L	Homsiyeh	L	L	L	Jabal Toura	ML	ML	L
Jarmaq	ML	ML	L	Jensnaya	M	M	L	Jernaya	M	ML	L
Jezzine	ML	ML	L	Karkha	ML	ML	L	Kfar Falous	ML	ML	L
Kfar Houna	ML	L	L	Kfar Jarrah	M	M	L	Lebaa	M	M	L
Louayzet Jezzine	L	ML	L	Machmouche	L	L	VL	Mahmoudiyeh Jezzine	ML	ML	ML
Maknounye Jezzine	L	L	L	Maraat Ouzaïyeh	ML	ML	L	Mazraat Daraya	L	L	L
Mazraat El-Aarqoub	L	L	L	Mazraat El-Mathane	L	L	L	Mazraat El-Rahbane	L	L	L
Mazraat Khallet Khaz	L	ML	L	Mazraat Louzid (Loua	L	L	L	Mazraat Qrouh	ML	ML	L
Mazraat Tamra	M	ML	ML	Mazraat Zighrine Jez	L	L	L	Mazraat	L	L	L
Mharbiyeh	M	M	L	Midane Jezzine	L	L	L	Mjeydel Jezzine	M	M	L
Mlikh	L	ML	L	Mrah El-Hbasse	M	M	L	Ouadi Baanqoudaine	M	M	L
Ouadi El-Laymoun	M	ML	L	Ouardiyeh	VL	L	L	Qabaa Jezzine	L	L	L
Qatrani	L	L	L	Qaytouleh	L	L	L	Qtaleh Jezzine	L	L	L
Rihane Jezzine	ML	ML	L	Rimat	L	L	L	Roum	L	L	L
Roummanet	ML	ML	L	Sabbah	L	L	L	Saydoun	L	L	L
Sfaray	L	L	L	Snaya	L	L	L	Sojoud	L	L	L
Srayri	ML	L	L	Taaid	L	L	L	Wadi Jezzine	L	L	L
Zhalta	L	ML	L								

Bekaa

West Bekaa

Municipality	25-Jan	26-Jan	27-Jan	Municipality	25-Jan	26-Jan	27-Jan	Municipality	25-Jan	26-Jan	27-Jan
Aammiq BG	ML	ML	L	Ain El Tineh BG	ML	ML	L	Ain Zebdeh	ML	ML	L
Ana	ML	ML	L	Aytanit	L	L	L	Baaloul BG	ML	ML	L
Bab Mareh	ML	ML	L	Chouberqiye Aammiq	ML	ML	L	Dakoue	M	ML	L
Deir Ain El-Jaouze	ML	ML	L	Deir Tahniche	ML	ML	L	Ghaza	ML	ML	L
Harime El-Soughra	M	ML	L	Hoch Harimeh	M	ML	L	Jazira BG	ML	ML	L
Jib Jennine	ML	ML	L	Kamed-El-Laouz	ML	ML	L	Kefraya BG	L	L	L
Khiara El Atika	ML	ML	L	Khiara	ML	ML	L	Khirbet Qanafar	ML	ML	L
Lala	ML	ML	L	Lebbaya BG	ML	M	L	Loussa	ML	ML	L
Machghara	ML	M	L	Manara (Hammara) BG	ML	L	L	Mansoura BG	ML	ML	L
Marej BG	M	ML	L	Maydoun	ML	ML	L	Ouaqf BG	ML	ML	L
Qaraaoun	ML	M	L	Qelya	M	M	ML	Raouda (Istabel)	M	ML	L
Saghbine	ML	ML	L	Sohmor	M	M	L	Soltan Yacoub el Ara	M	ML	L
Souairy	M	ML	L	Sultan Yaacoub	M	ML	L	Tal Znoun	ML	ML	L
Yehmor BG	ML	M	L	Zilaya	ML	M	L				

Zahle

Municipality	25-Jan	26-Jan	27-Jan	Municipality	25-Jan	26-Jan	27-Jan	Municipality	25-Jan	26-Jan	27-Jan
Aanjar (Haouch Mouss	M	ML	L	Ablah	M	M	M	Ain Kfarzabad	M	M	ML
Ali-El-Nahri	M	M	M	Bar Elias	M	ML	L	Bouarej	M	ML	L
Cheberqiyet Tabet	M	ML	L	Chtaura	M	ML	L	Deir El Ghazal	M	M	M
Delhamiyet Zahle	M	M	L	Ferzol	M	M	ML	Haouch El-Ghanam	M	M	M
Haouch Es-Siyadeh	M	ML	L	Haouch Hala	M	M	M	Haouch Mandara	M	ML	L

Haouch Qayssar	M	ML	L	Hezerta	M	ML	ML	Hosh Moussa	M	M	ML
Jdita	M	ML	L	Kfarzabad	M	M	ML	Ksara	M	ML	L
Majdel Aanjar	M	ML	L	Makssi	M	ML	L	Massa	M	M	M
Mazraat Er-Remtaniye	M	ML	L	Mrayjat Zahle	M	ML	L	Mzaraa Zahle	M	ML	L
Nabi Ayla	M	M	M	Nasriyet Rizk	M	M	M	Nasriyet Zahle	M	ML	L
Niha Zahle	M	M	M	Ouadi Ed-Deloum	M	ML	L	Ouadi El-Arayech	M	ML	ML
Qaa El Rim	M	ML	ML	Qab Elias	M	ML	L	Qousaya	M	M	M
Rhit	M	M	M	Riyak	M	M	M	Saadnayel	M	ML	L
Taal El-Akhdar	M	ML	L	Taalbeya	M	ML	L	Taanayel	M	ML	L
Talamara	M	M	M	Tcheflik Edde Haouch	M	ML	L	Tcheflik Qiqano	M	ML	L
Terbol Zahle	M	M	ML	Touaite Zahle	M	ML	L	Zahle Aradi	M	ML	L
Zahle El-Berbara	M	ML	ML	Zahle El-Maallaqa	M	ML	L	Zahle El-Midane	M	ML	ML
Zahle Er-Rassiye	M	ML	ML	Zahle Haouch El-Ouma	M	ML	L	Zahle Haouch El-Ouma	M	ML	L
Zahle Haouch Ez-Zara	M	ML	L	Zahle Maalqa Aradi	M	ML	L	Zahle Mar Antonios	M	ML	ML
Zahle Mar Elias	M	ML	L	Zahle Mar Gerios	M	ML	L	Zahle Saydet En-Naja	M	ML	L
Zebdoul	M	L	L								

Rachaiya

Municipality	25-Jan	26-Jan	27-Jan	Municipality	25-Jan	26-Jan	27-Jan	Municipality	25-Jan	26-Jan	27-Jan
Ain Arab Rachaiya	ML	L	L	Ain Ata	L	M	L	Ain Harche	ML	M	L
Aqabe Rachaya	ML	M	L	Ayha	ML	M	L	Ayta El Fokhar	M	ML	L
Bakifa Rachaya	ML	M	L	Bakka	ML	ML	L	Beit Lahya	ML	M	L
Bireh Rachaiya	ML	ML	L	Daher El Ahmar	ML	M	L	Deir El-Achayer	ML	ML	L
Heloua Rachaiya	ML	ML	L	Hoch El Qannabeh Rac	ML	M	L	Kaoukaba Bou Arab	ML	M	L
Kfar Danis	ML	ML	L	Kfar Mechki	ML	M	L	Kfar Qouq	ML	ML	L
Kherbet Rouha	ML	L	L	Majdel Balhiss	ML	M	L	Mdoukha	ML	ML	L
Mhaydseh Rachaiya	ML	ML	L	Nabi Safa	ML	M	L	Rachaiya	ML	M	L
Rafid Rachaiya	ML	ML	L	Selsata (Mazraat Dei	L	L	L	Tannoura	ML	M	L
Yanta	ML	L	L								

Beyrouth

Beyrouth

Municipality	25-Jan	26-Jan	27-Jan	Municipality	25-Jan	26-Jan	27-Jan	Municipality	25-Jan	26-Jan	27-Jan
Achrafieh	M	M	M	Ain el-Mreisse	M	M	M	Bachoura	M	M	M
Beirut Central Distr	M	M	M	Marfai	M	M	M	Mazraa	M	M	M
Medaouar	M	M	M	Minet el-Hosn	M	M	M	Mwssaitbeh	M	M	M
Ras Beirut	M	M	M	Rmeil	M	M	M	Saifi	M	M	M
Zqaq el-Blat	M	M	M								