

Lebanon Fire Risk Bulletin



CIVIL DEDEFENCE

Refer to cadast table condition.

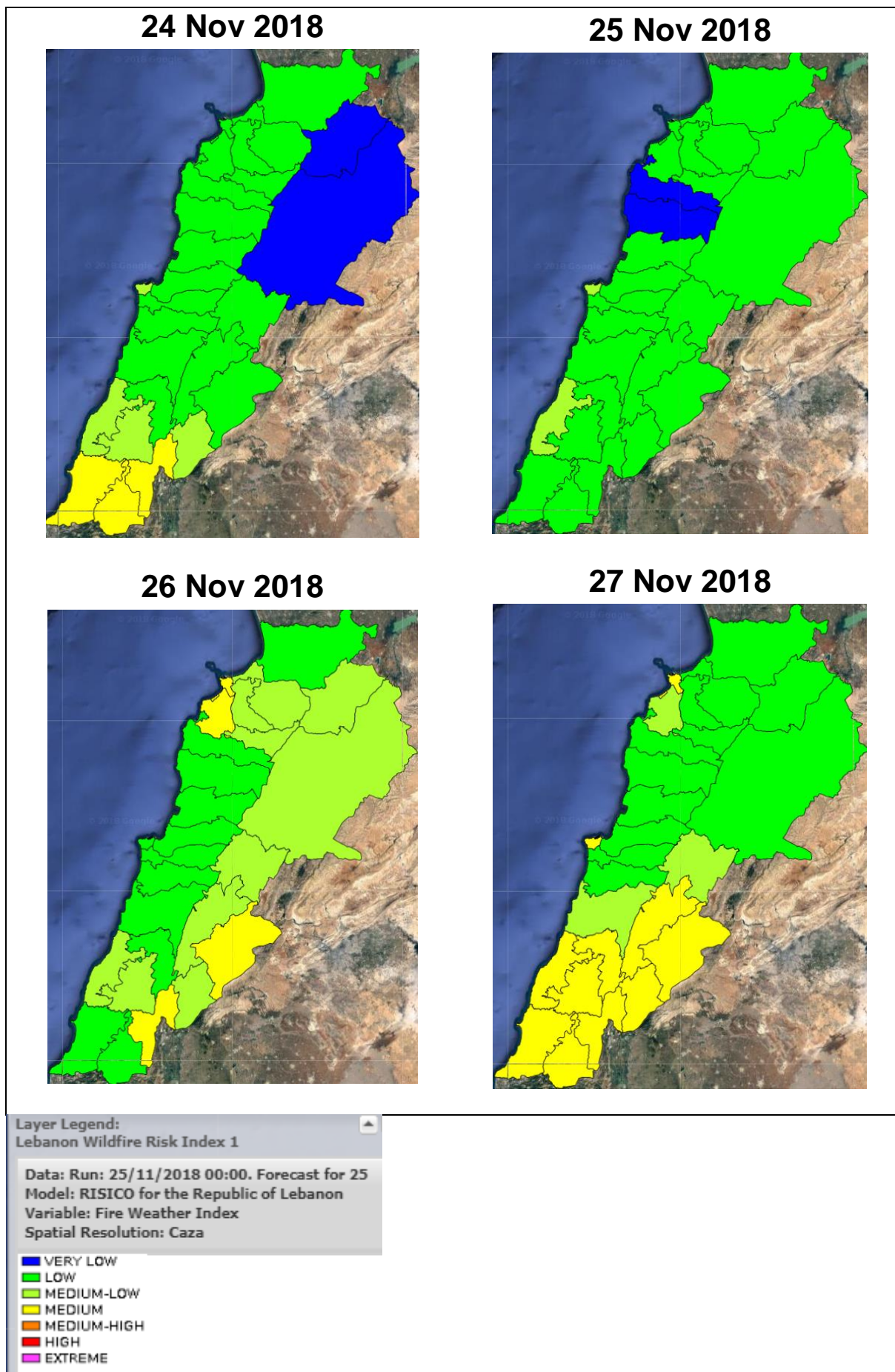
Please note that the indicated temperature is at 2 meters height from the ground.

General description of potential fire risk situation

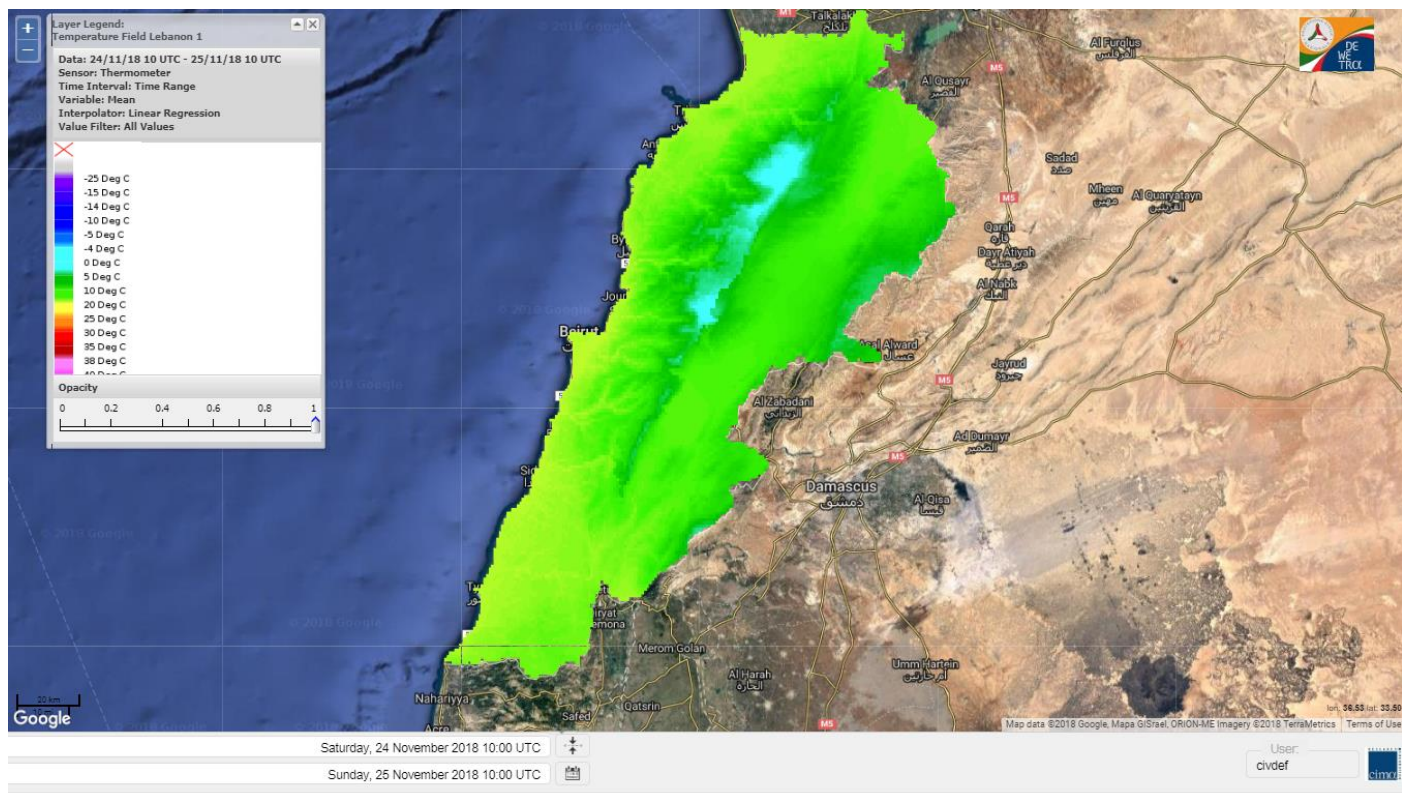
Symbol	Level of risk	Meaning and actions
VL	Very low	Very low fire risk. Controlled burning operations can be hardly executed due to high fuel moisture content. Normally wildfires self-extinguish.
L	Low	Low fire risk. Controlled burning operations can be executed with a reasonable degree of safety.
ML	Medium low	Medium-low fire risk. Controlled burning operations can be executed in safety conditions. All the fires need to be extinguished.
M	Medium	Medium fire risk. Controlled burning operations would be avoided. All the fires need to be very well extinguished.
MH	Medium high	Controlled burning is not recommended. Open flame will start fires. Cured grasslands and forest litter will burn readily. Spread is moderate in forests and fast in exposed areas. Patrolling and monitoring is suggested. Fight fires with direct attack and all available resources.
H	High	Ignition can occur easily with fast spread in grass, shrubs and forests. Fires will be very hot with crowning and short to medium spotting. Direct attack on the head may not be possible requiring indirect methods on flanks. Patrolling and monitoring the territory is highly suggested.
E	Extreme	Ignition can occur also from sparks. Fires will be extremely hot with fast rate of spread. Control may not be possible during day due to long range spotting and crowning. Suppression forces should limit efforts to limiting lateral spread. Damage potential total. Patrolling and monitoring the territory is highly suggested.

Beirut, 25 November 2018

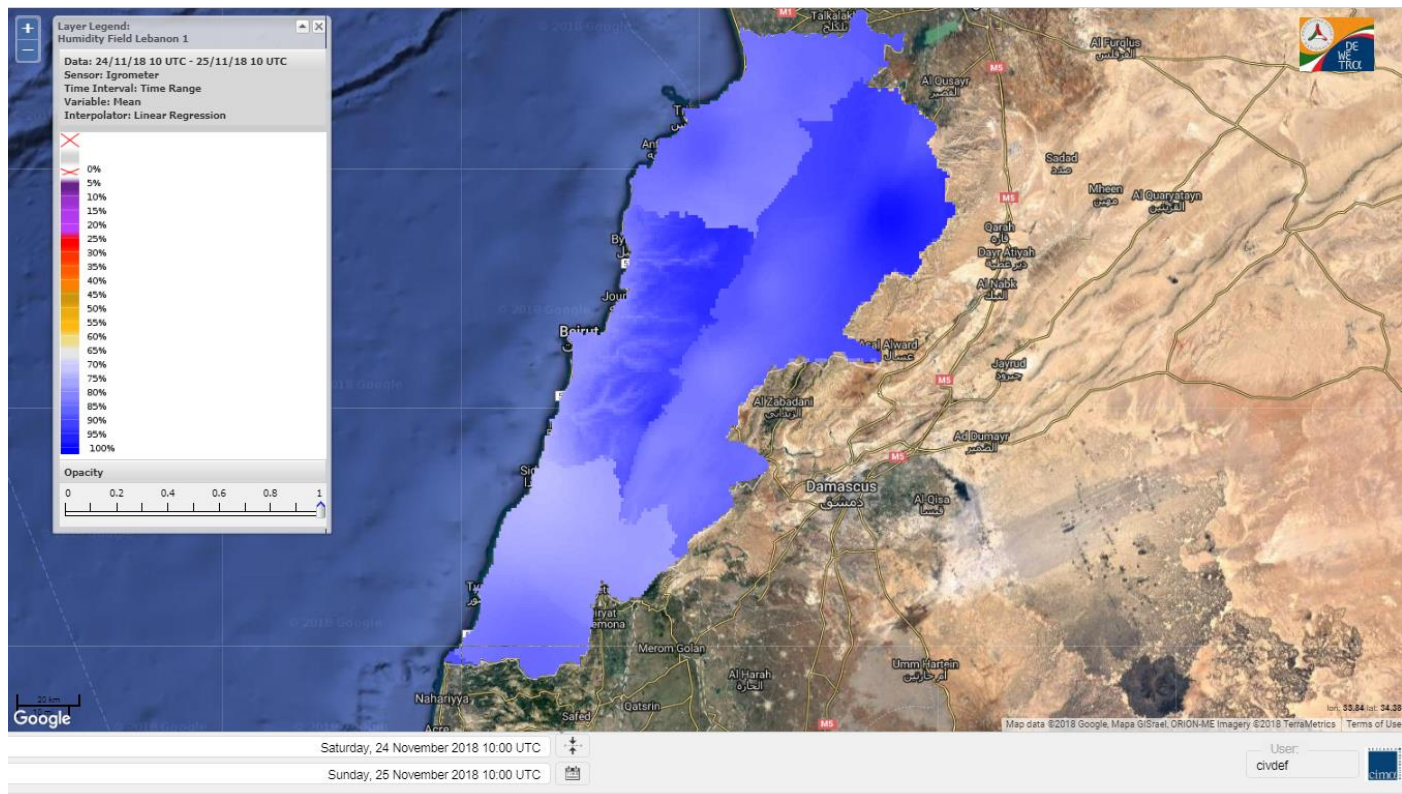
FIRE RISK INDEX



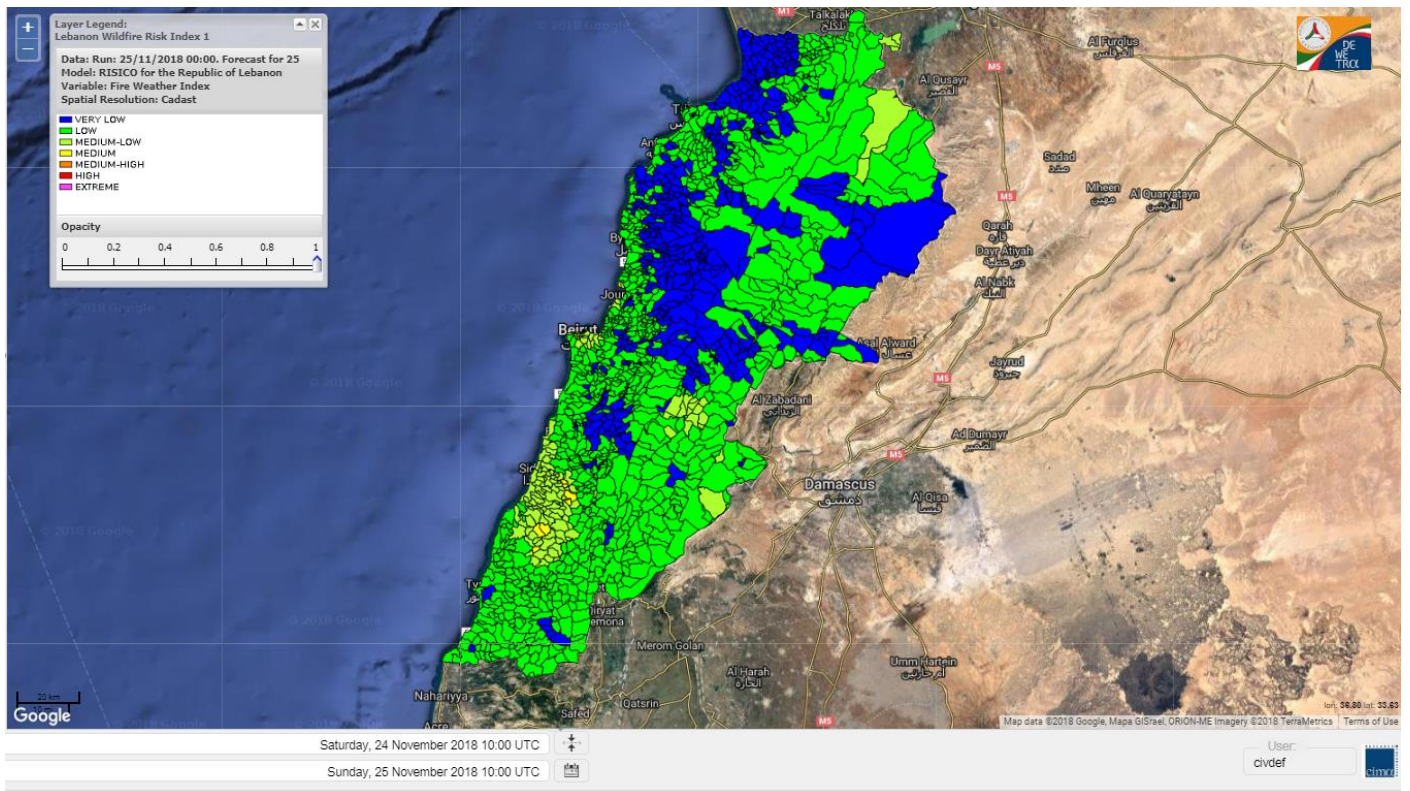
Lebanon temperature for 25 Nov 2018



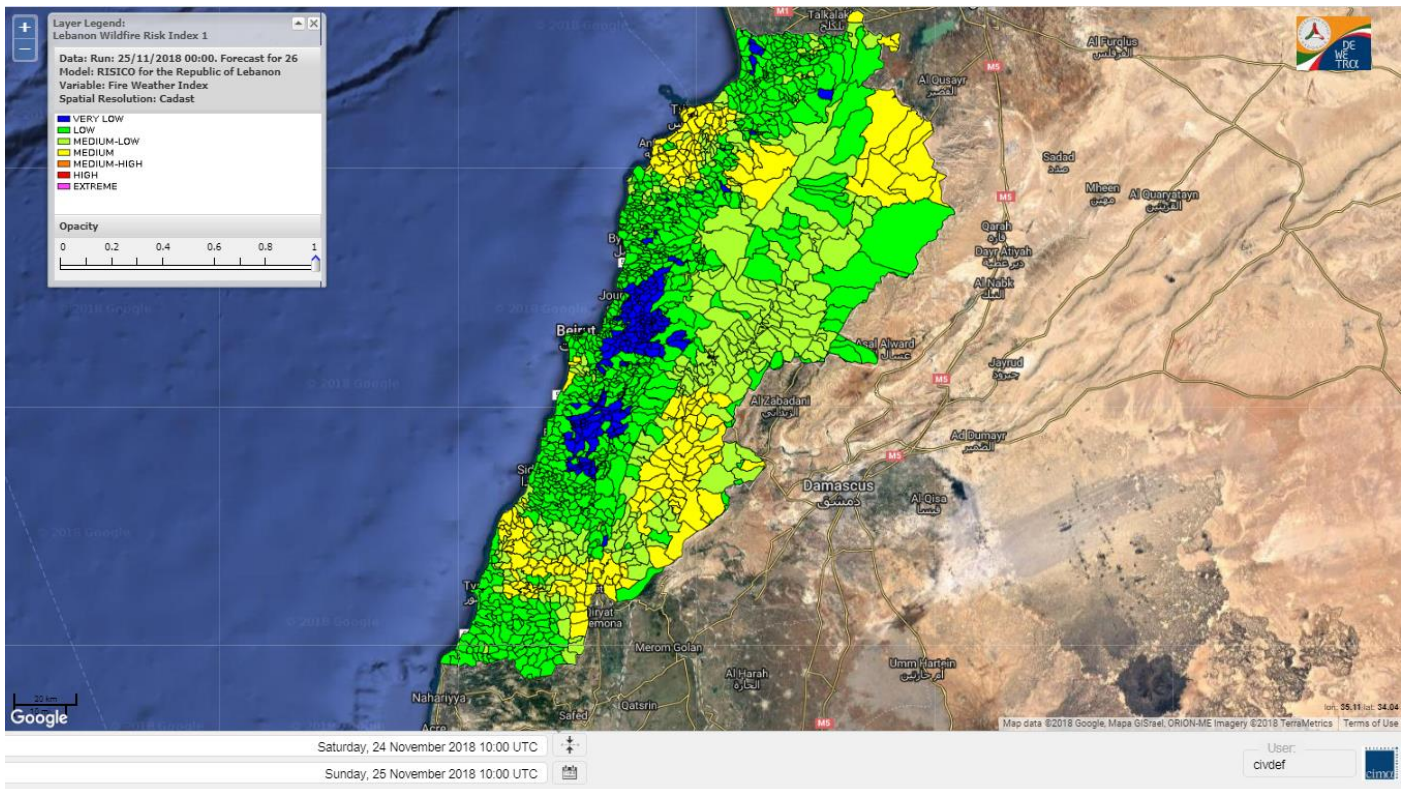
Lebanon humidity for 25 Nov 2018



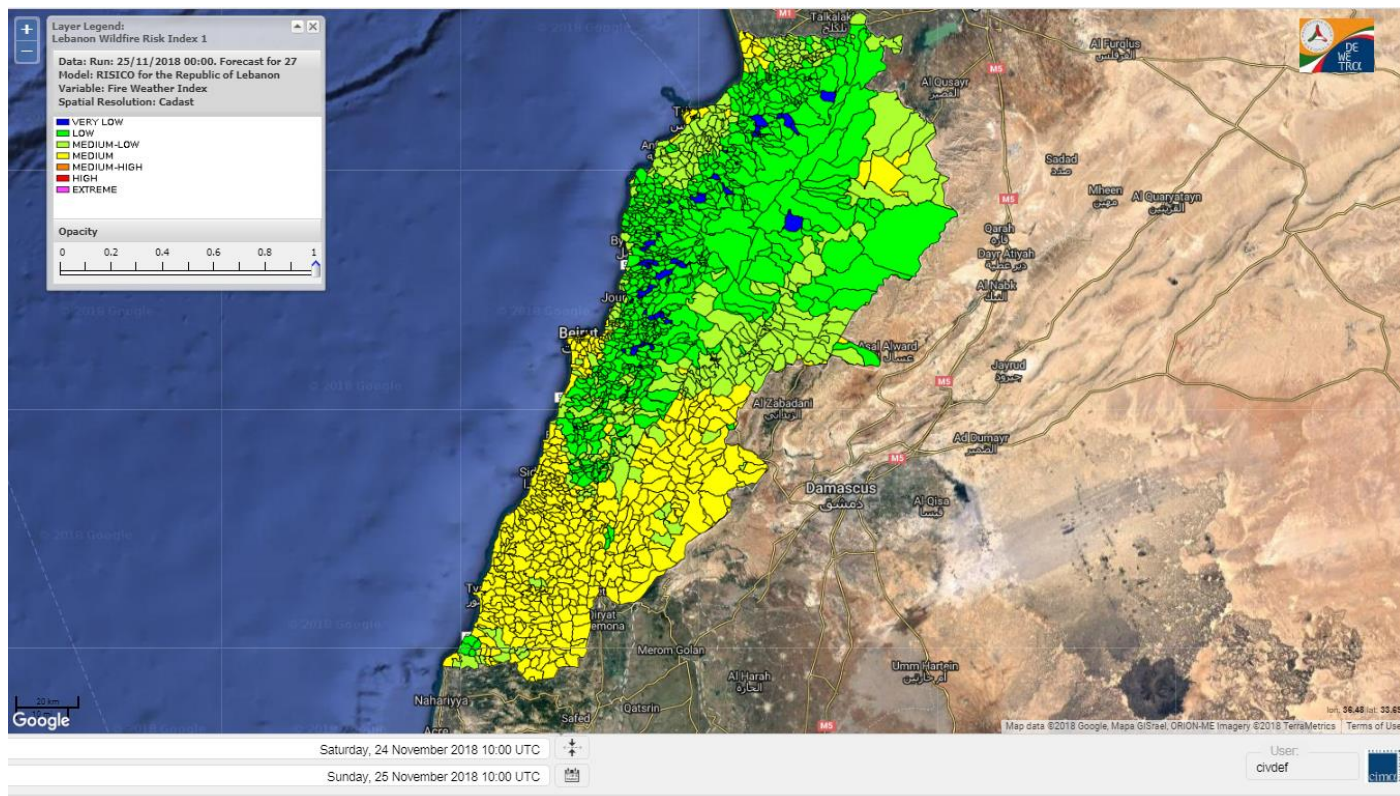
Lebanon for 25 Nov 2018



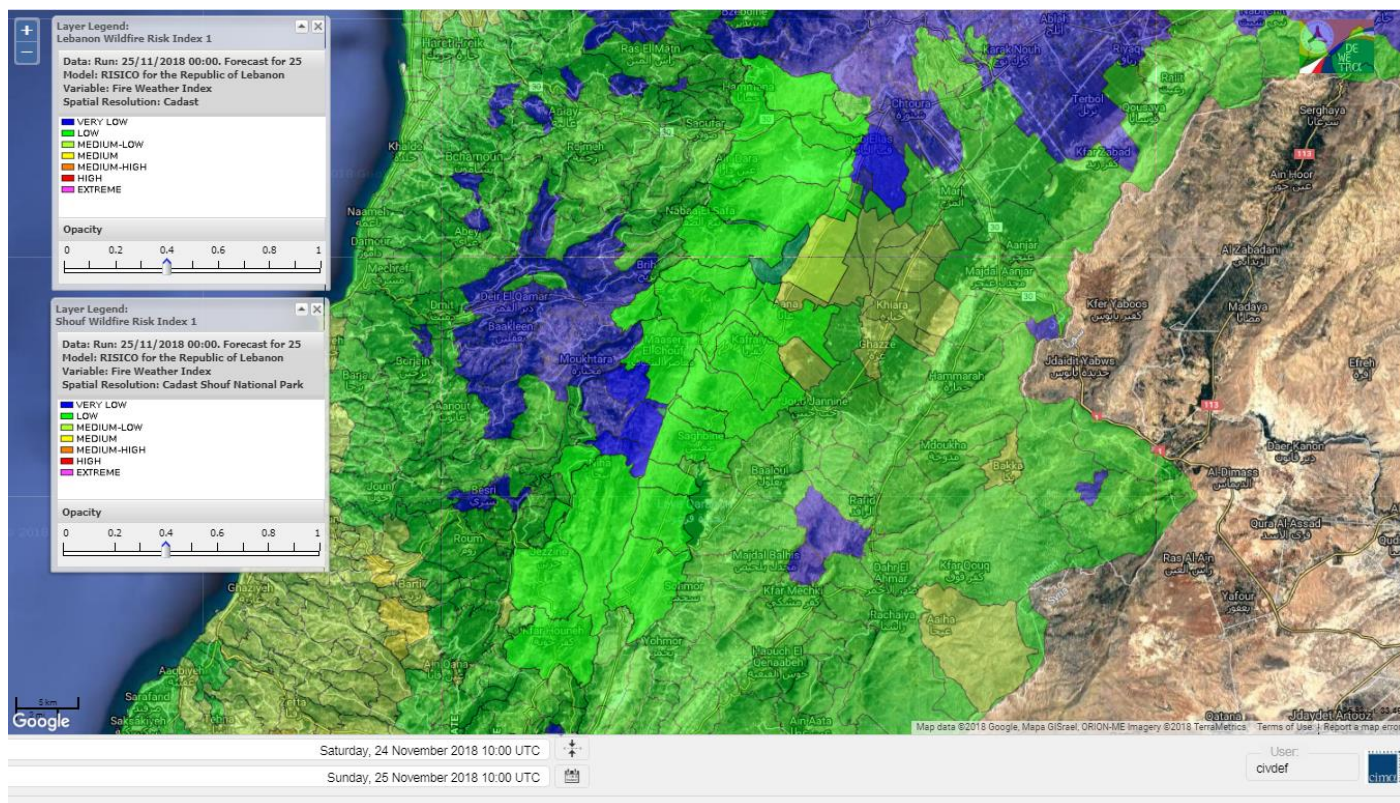
Lebanon for 26 Nov 2018



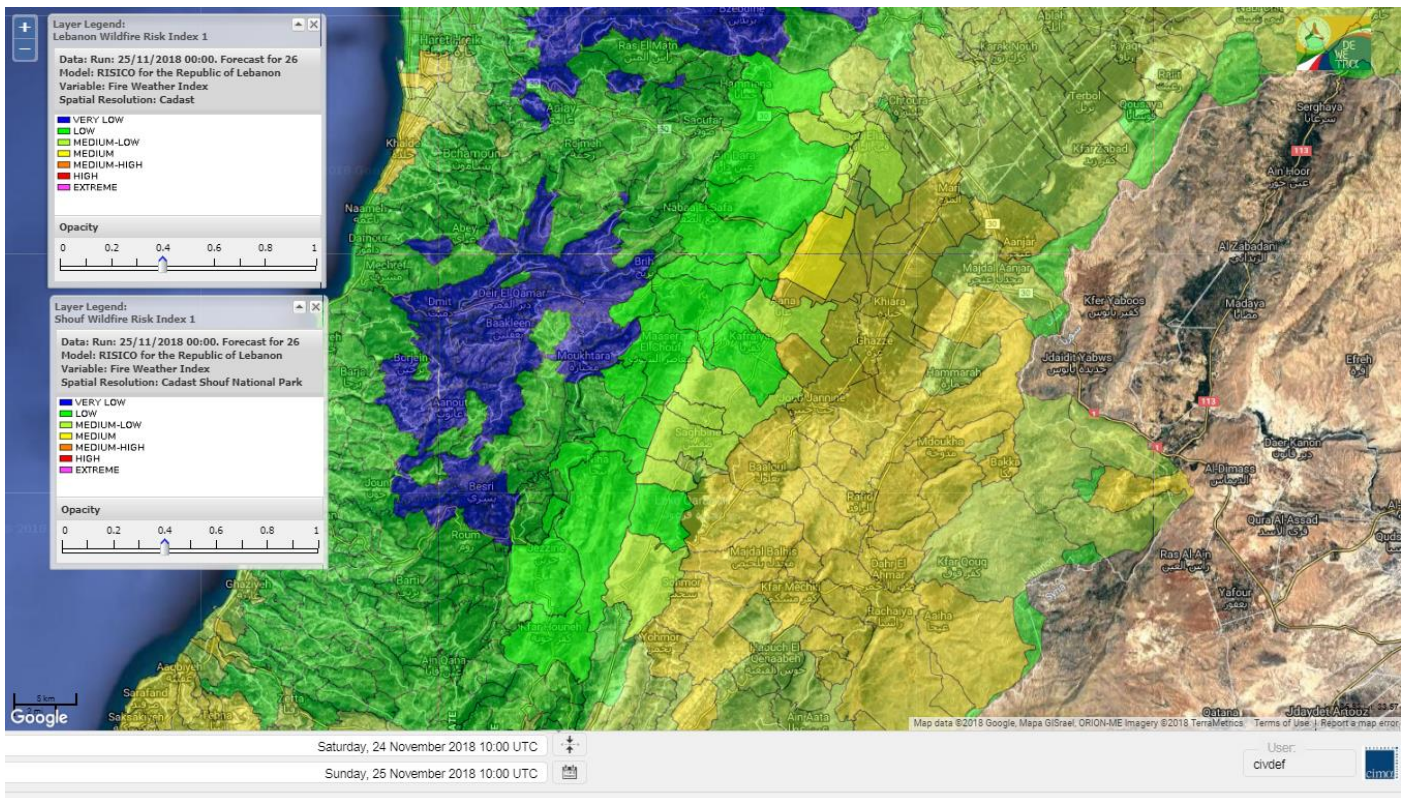
Lebanon for 27 Nov 2018



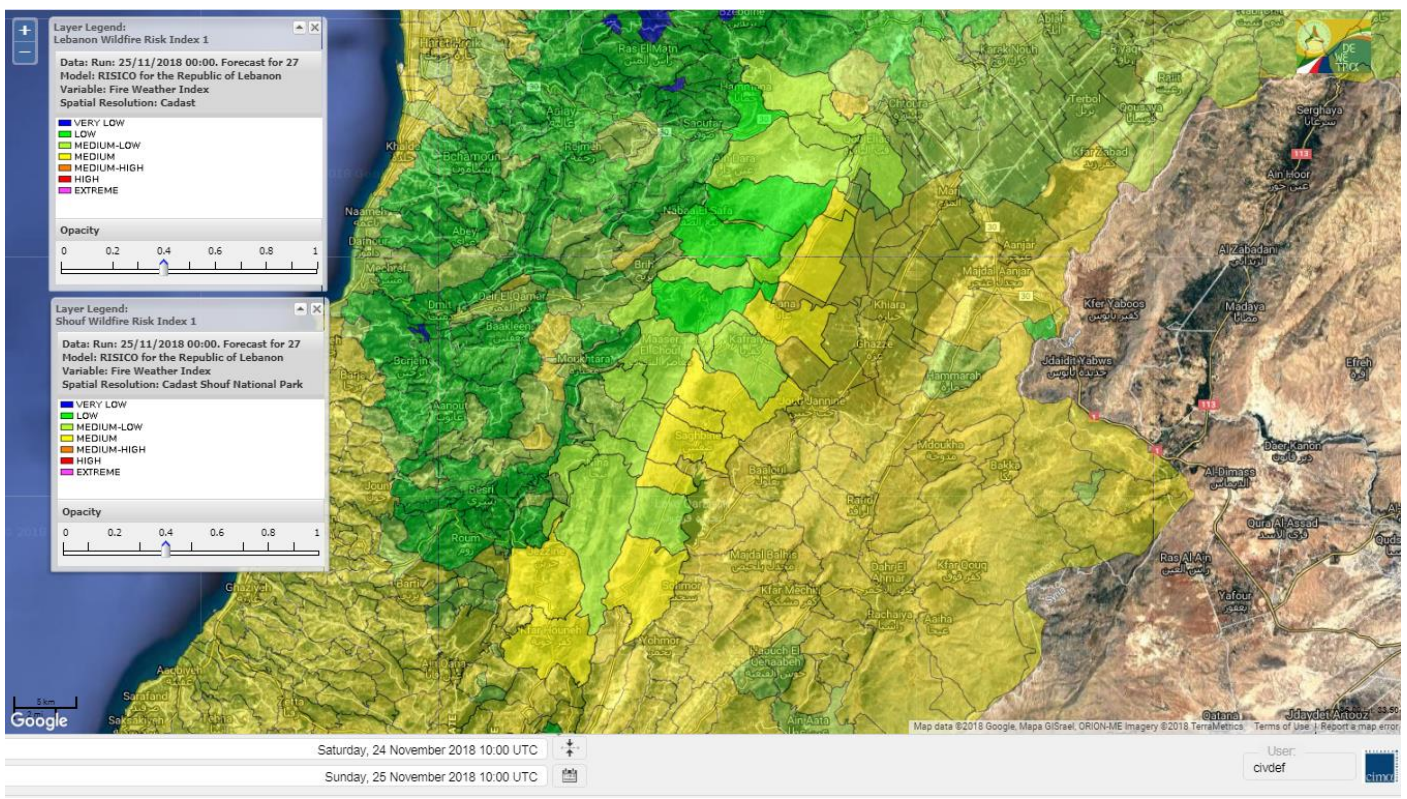
Shouf Biosphere Reserve Forecast for 25 Nov 2018



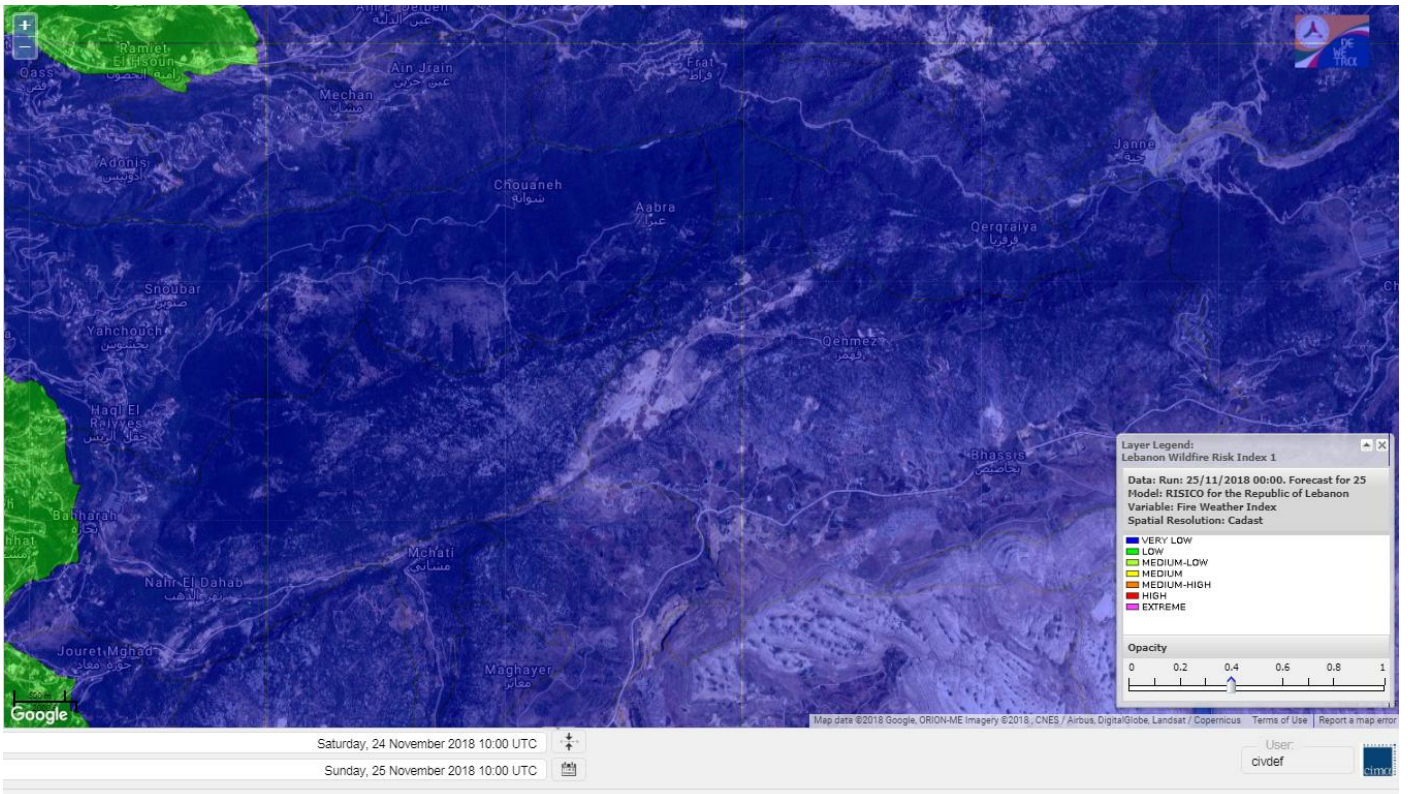
Shouf Biosphere Reserve Forecast for 26 Nov 2018



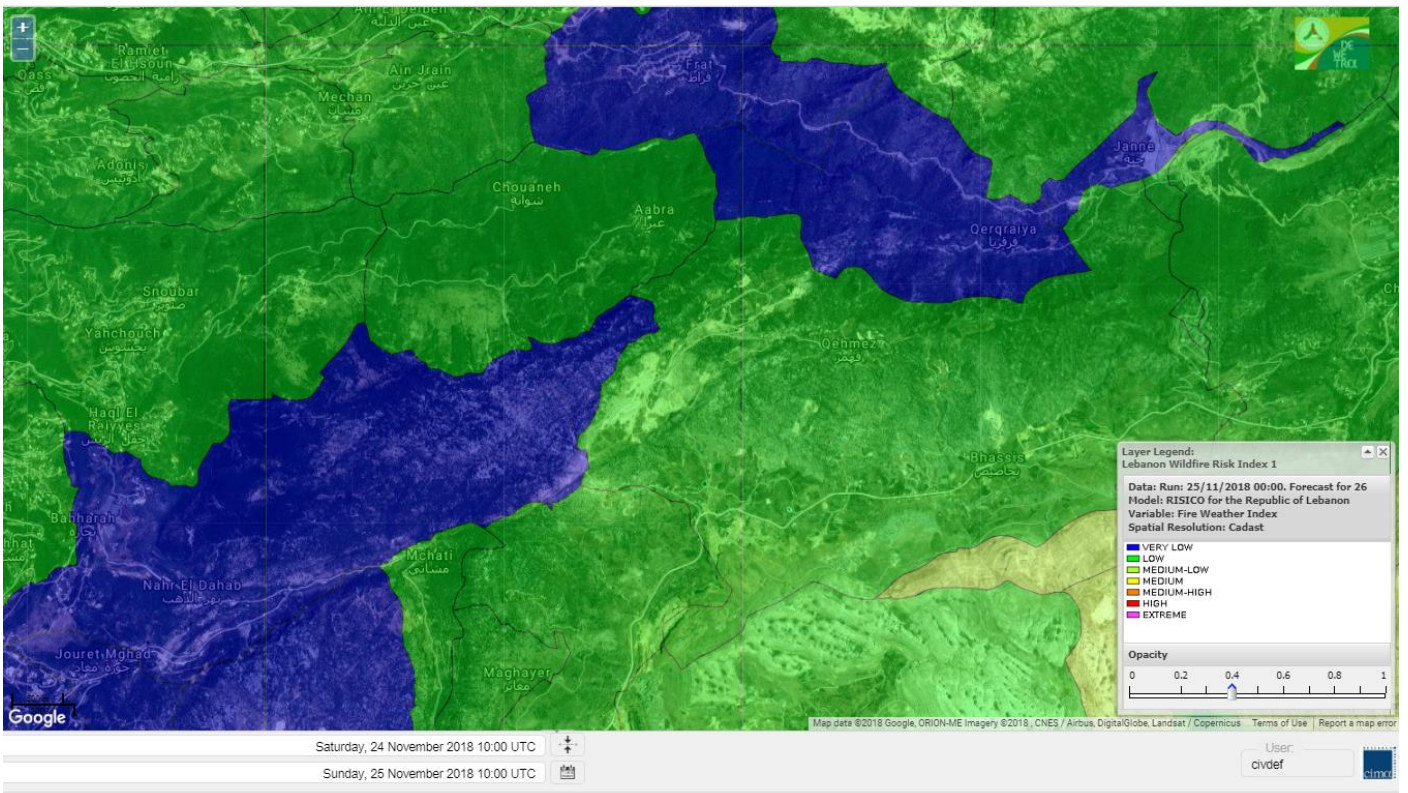
Shouf Biosphere Reserve Forecast for 27 Nov 2018



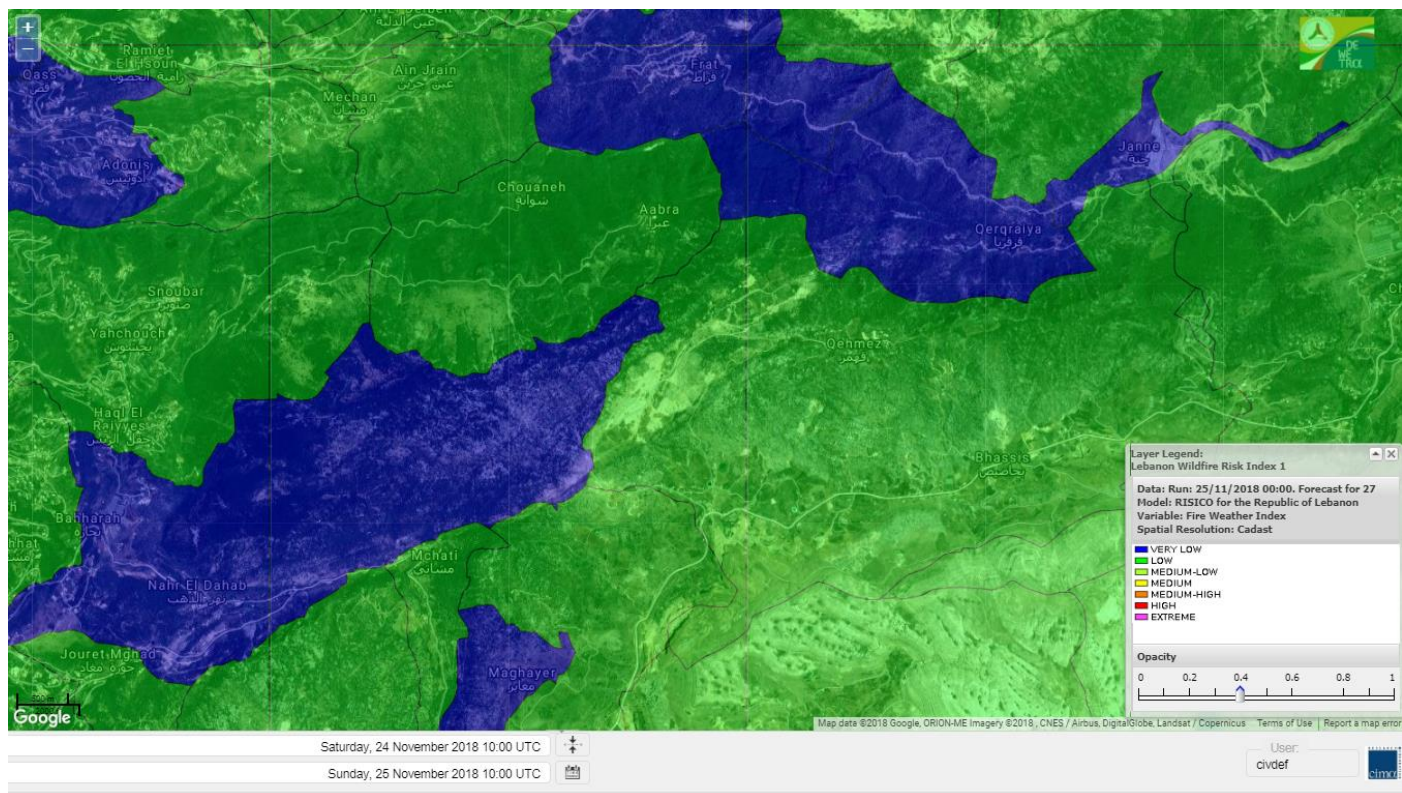
Jabal Moussa Reserve Forecast for 25 Nov 2018



Jabal Moussa Reserve Forecast for 26 Nov 2018



Jabal Moussa Reserve Forecast for 27 Nov 2018

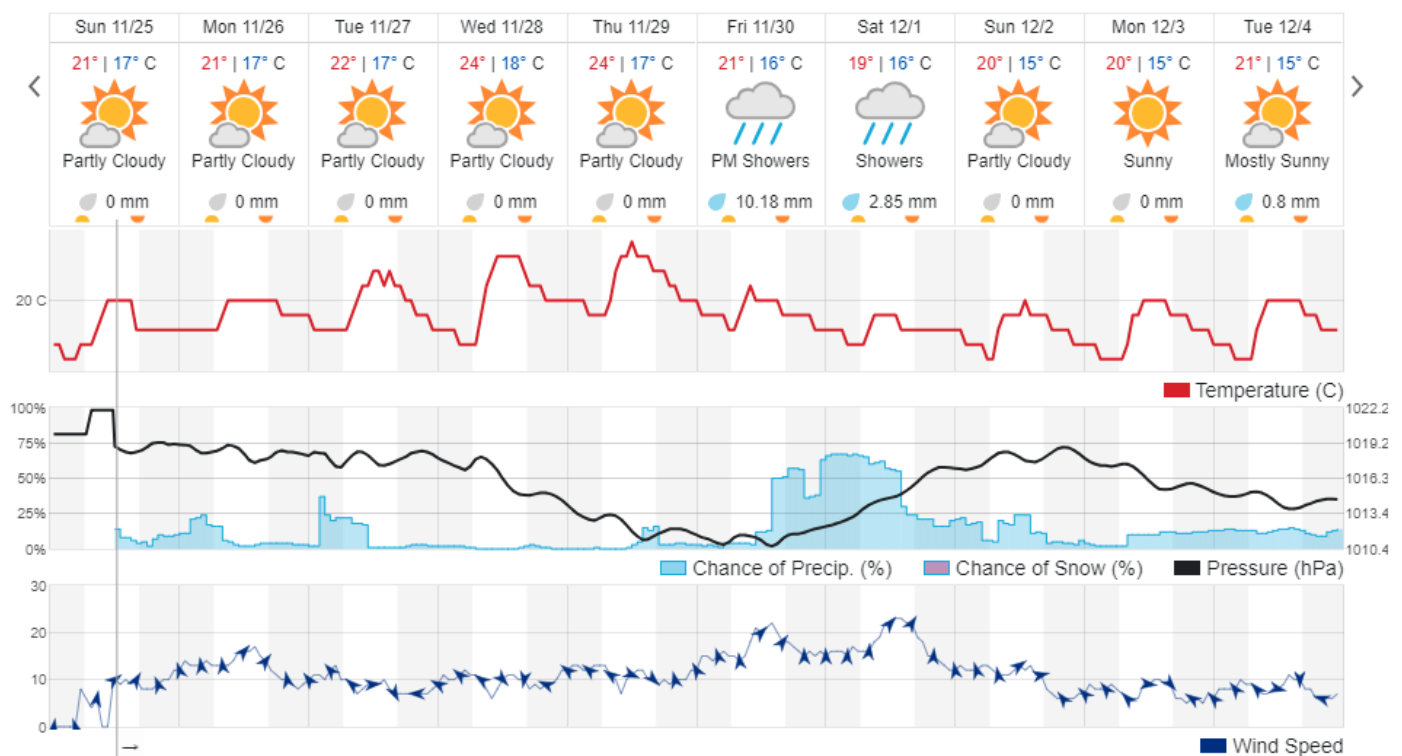


Beirut, Lebanon

21° ACHRAFIEH, RIZK STATION | REPORT | CHANGE

TODAY HOURLY 10-DAY CALENDAR HISTORY WUNDERMAP

Customize



Nord

Koura

Municipality	25-Nov	26-Nov	27-Nov	Municipality	25-Nov	26-Nov	27-Nov	Municipality	25-Nov	26-Nov	27-Nov
Aaba	L	M	ML	Afsaddiq	L	M	ML	Ain Ekrine	L	M	ML
Amioun	VL	M	ML	Anfeh	L	M	ML	Badbhoun	VL	M	ML
Barghoun	L	M	ML	Barsa	L	ML	ML	Batroumine	L	M	ML
Bdebba	L	M	ML	Bechmizine	VL	M	ML	Bednayet El-Koura	VL	L	L
Bhabbouch El-Koura	L	ML	L	Bkeftine	L	M	ML	Bnehran	L	ML	L
Bqaiia El-Koura	L	M	ML	Bsarma	L	M	ML	Btaaboura	VL	ML	ML
Bttram	L	M	ML	Btouratij	L	M	ML	Bziza	L	M	ML
Dar Beehtar	VL	M	ML	Dar Chmezzine	VL	M	ML	Deddeh	L	M	ML
Deir El-Balamand	VL	L	L	Fih	L	M	ML	Hraiche	L	M	ML
Ijdaabrine	VL	L	L	Kaftoun	VL	ML	L	Kefraya El-Koura	L	ML	ML
Kfarakka	VL	M	ML	Kfarhata	VL	L	L	Kfarhazir	VL	M	ML
Kfarkahel	L	M	ML	Kfarsaroun	L	M	ML	Kosba	L	M	ML
Mejdel el-Koura	VL	ML	L	Nakhle	L	M	ML	Qalhat	VL	L	L
Ras Masqa	L	M	ML	Rechdibbine	L	M	L	Zakroun	L	M	ML
Zgharta El-Mtaouile	L	L	L								

Bcharre

Municipality	25-Nov	26-Nov	27-Nov	Municipality	25-Nov	26-Nov	27-Nov	Municipality	25-Nov	26-Nov	27-Nov
Aabdine	L	ML	L	Bane	L	M	L	Barhelioun	L	L	L
Bazouone	VL	L	L	Becharre	L	M	L	Beit Menzer	L	L	L
Billa	L	ML	L	Blaouza	L	M	L	Bqaa Kafra	L	ML	L
Bqerqacha	VL	ML	L	Breissat	VL	L	L	Dimane	VL	L	L
Hadath El Jobbeh	VL	L	L	Hadchit	L	ML	L	Hasroun	VL	L	L
Mazraat Aassaf	VL	VL	VL	Mazraat Bani Saab	L	L	L	Mchaa El-Jobbeh	VL	ML	L
Metrit	L	ML	L	Moghr El-Ahoual	L	ML	L	Ouadi Qannoubine	VL	VL	VL
Qanat	L	L	L	Qnayouer	VL	L	L	Tourza	L	L	L

Batroun

Municipality	25-Nov	26-Nov	27-Nov	Municipality	25-Nov	26-Nov	27-Nov	Municipality	25-Nov	26-Nov	27-Nov
Aabrine	VL	L	L	Aalali	VL	L	L	Aartziz	VL	L	L
Abdelli	VL	L	L	Ajdabra	VL	L	L	Assia	VL	L	L
Basbina	L	ML	L	Batroun	L	ML	ML	Bcheleh	VL	L	L
Bechtoudar	VL	L	L	Beit Chlala	L	L	L	Beit Kassab	VL	L	L
Bijdarfil	L	ML	L	Bqesmaya	VL	L	L	Chatine	L	L	L
Chebtin	VL	L	L	Chekka	L	M	ML	Daael	VL	L	L
Dahr Abi Yaghi	VL	L	L	Daraya El-Batroun	VL	L	L	Deir Billa	VL	L	L
Deir Kfifane	L	ML	L	Deir Mar Youhanna EL	VL	L	L	Deir Mar Youssef Jra	VL	L	L
Douma	L	L	L	Douq	VL	L	L	Eddeh El-Batroun	L	L	L
Ftahat El-Batroun	VL	L	L	Ghouma	VL	L	L	Hadtoun	VL	L	L
Hamat	VL	L	L	Harbouna	VL	L	L	Hardine	VL	L	VL
Helta	VL	L	L	Hery	L	M	ML	Jebbla	VL	L	L
Jrabta El-Batroun	L	L	L	Jrane El-Batroun	L	ML	ML	Kfar Aabida	L	L	L
Kfar Halda	VL	L	L	Kfarb Shlaimane	VL	VL	VL	Kfarhatna	VL	L	L
Kfarhay	L	ML	L	Kfarhelos	VL	L	L	Kfifane	VL	L	L

Kfour El Arabi	L	L	L	Koubba	L	ML	L	Kour	VL	L	L
Mar Mama	VL	L	L	Masrah	VL	L	L	Mehmarch	VL	L	L
Mrah Chdid	VL	L	L	Mrah El Ziyat	VL	L	L	Mrah El-Hajj	VL	VL	VL
Nahle El-Batroun	VL	L	L	Niha El-Batroun	L	L	L	Ouahj El-Hajjar	VL	L	L
Ouata Houb	L	L	L	Qatnaaoun	VL	L	L	Racha	VL	L	L
Rachana	VL	L	L	Rachkida	VL	L	L	Ram El-Batroun	VL	L	L
Ras Nahhach	VL	L	L	Selaata	L	ML	ML	Sghar	L	L	L
Smar Jbayl	VL	L	L	Sourat El-Batroun	VL	L	L	Tannourine El-Faouqa	L	ML	L
Tannourine Et-Tahta	L	L	L	Thoum	L	L	L	Toula El-Batroun	VL	L	L
Zan	VL	L	L								

Zgharta

Municipality	25-Nov	26-Nov	27-Nov	Municipality	25-Nov	26-Nov	27-Nov	Municipality	25-Nov	26-Nov	27-Nov
Aachach	L	M	ML	Aalma	L	M	ML	Aarde	VL	ML	ML
Aintourine	L	ML	L	Arabet Qozhaya	L	L	L	Arde	VL	M	ML
Arjis	L	ML	L	Asnoun	VL	ML	ML	Ayto	VL	L	L
Basloukit	L	ML	L	Bchannine	L	M	ML	Besebeel	L	ML	ML
Bhairret Toula	VL	L	VL	Bnachee	L	ML	L	Boussit	L	M	ML
Danha	L	M	ML	Daraiya Zgharta	L	M	L	Deir Jdeide	L	ML	ML
Ehden	L	M	L	Halan	L	M	ML	Hariq Zgharta	VL	ML	ML
Houakir	VL	L	L	Hraiqis	VL	ML	ML	laal	VL	ML	ML
Ijbaa	L	L	L	Karm Saddeh	L	L	L	Kfarchakhna	L	M	ML
Kfardlaqous	VL	M	ML	Kfarfou	L	ML	L	Kfarhata Zgharta	VL	M	ML
Kfarhoura	L	ML	ML	Kfarsghab	L	ML	L	Kfaryachit	L	ML	ML
Kfarzaina	L	ML	ML	Khaldiye	VL	ML	ML	Mazraat Ajbeaa	VL	ML	ML
Mazraat Et-Teffah	VL	L	L	Mazraat Jneid	L	ML	ML	Mejdlayia Zgharta	L	M	ML
Merh Kfarsghab	L	ML	L	Miryata	L	M	ML	Miziara	VL	L	L
Mzraat Kefraya	L	M	ML	Qorah Bach	VL	ML	ML	Rachiine	VL	M	ML
Ras Kifa	L	ML	L	Sakhra	VL	ML	ML	Sebhel Zgharta	L	ML	L
Serhel	VL	L	VL	Tallet Zgharta	L	ML	ML	Toula Zgharta	L	L	L
Zgharta	VL	M	ML								

Minieh-Denniye

Municipality	25-Nov	26-Nov	27-Nov	Municipality	25-Nov	26-Nov	27-Nov	Municipality	25-Nov	26-Nov	27-Nov
Aasaymout	VL	L	VL	Aaymar	L	ML	L	Aazki	L	ML	L
Ain El-Tineh-Miniyeh	VL	L	L	Assoun	L	L	L	Bakhaaoun	L	L	L
Bchennata	L	M	L	Bechehhara	VL	L	L	Beddawi	L	M	M
Behouaita	L	L	L	Beit El Foqss	VL	L	L	Beit Haouik	L	ML	L
Beit Zoud	VL	L	L	Bekaasafrine	L	M	L	Borj El Yahoudiyeh	VL	ML	ML
Bqarsouna	VL	L	L	Btermaz	VL	L	VL	Debaael	VL	L	L
Deir Ammar	VL	M	ML	Deir Nbouh	VL	L	L	Haouaret-Miniyeh	L	L	L
Haql el Azimeh	VL	L	L	Harf El Siyad	VL	L	L	Hazmiye-Miniyeh	VL	L	L
Izal	L	ML	L	Jarjour	VL	VL	VL	Jayroun	VL	L	L
Kahf El-Malloul	VL	L	L	Karm El-Moher	L	ML	L	Kfar Binine	L	L	L
Kfarchalane	L	ML	L	Kfarhabou	VL	ML	L	Kharroub-Miniyeh	L	ML	L
Mazraat El-Kreme	VL	L	L	Mazraat Ketrane	L	L	L	Merkebtta	VL	L	L
Minyeh	VL	ML	ML	Mrah El Sfirat	VL	L	VL	Mrah Sraj	VL	L	L
Mrebbine	L	ML	L	Nabi Youcheaa	VL	ML	ML	Nemrine	L	ML	L

Qarhaiya	L	ML	L	Qarne	VL	L	VL	Qarsita	VL	L	L
Qattineh-Miniyeh	VL	VL	VL	Qemmamine	VL	L	VL	Qraine	VL	L	L
Raouda-Aadoua	VL	L	L	Rihaniyet-Miniyeh	VL	L	L	Sfireh	VL	L	L
Sir Ed-Danniyeh	VL	L	L	Tarane	VL	L	VL	Terbol-Miniyeh	L	M	M
Zaghartaghriine	L	L	L	Zouq Bhannine	VL	L	L				

Nabatiye

Nabatiye

Municipality	25-Nov	26-Nov	27-Nov	Municipality	25-Nov	26-Nov	27-Nov	Municipality	25-Nov	26-Nov	27-Nov
Aabba	ML	ML	M	Aazzi	ML	L	M	Adchit El-Chqif	ML	M	M
Ain Bou Swar	ML	L	M	Ain Kana	L	L	M	Ali El-Taher	L	ML	M
Ansar	L	M	M	Arab Salim	L	L	M	Arnoun	L	M	M
Bfaroue	ML	L	M	Breyqaah	ML	M	M	Charqiyeh	ML	ML	M
Choukine	L	M	M	Deir El Zahrani	ML	ML	M	Doueir El-Nabatiyeh	ML	ML	M
Habbouch El-Nabatiye	ML	ML	M	Hamra El-Nabatiyeh	L	M	M	Harouf El-Nabatiyeh	ML	ML	M
Hmaile	ML	L	M	Houmin El Faouqa	L	L	M	Houmin El Tahta	ML	L	M
Jarjough	L	L	M	Jbaah El-Nabatiyeh	L	L	M	Jebchit	ML	ML	M
Kfar Djal El-Nabatiy	ML	M	M	Kfar Remmane	L	ML	M	Kfar Sir	L	M	M
Kfar Tebnit	L	ML	M	Kfarfila	ML	L	M	Kfour El-Nabatieh	ML	ML	M
Mayfadoun	L	M	M	Mazraat Bsaffour	ML	ML	M	Mazraat Chalbaal	ML	ML	M
Mazraat Dmoul	M	M	M	Mazraat El Khreibeh	ML	L	M	Mazraat El-Bayad El-	ML	ML	M
Mazraat Kfarjaouz	ML	ML	M	Mazraat Qalaat Meiss	ML	ML	M	Nabatiyeh El-Fawka	L	ML	M
Nabatiyeh Et-Tahta	L	ML	M	Namiriyeh	M	ML	M	Qaaqaaiyet El Jisr	L	M	M
Qossaibeh El-Nabatiy	ML	M	M	Roumine	ML	L	M	Sarba El-Nabatieh	ML	L	M
Sir El-Gharbiyeh	L	M	M	Toul	ML	ML	M	Yehmor El-Nabatiyeh	L	M	M
Zaoutar El Charkiyeh	L	M	M	Zaoutar El-Gharbiyeh	L	M	M	Zebdine El-Nabatiyeh	L	ML	M
Zefta	ML	ML	M								

Hasbaiya

Municipality	25-Nov	26-Nov	27-Nov	Municipality	25-Nov	26-Nov	27-Nov	Municipality	25-Nov	26-Nov	27-Nov
Ain Jarfa	L	ML	M	Abou Qamha	L	L	M	Ain Qania	L	ML	M
Bourghos	L	ML	M	Chebaa	L	M	M	Chouaya Hasbaya	L	ML	M
Dellafeh	L	ML	M	Fardiss Hasbaiya	L	ML	M	Hasbaya	L	ML	M
Hbariyeh	L	ML	M	Kaoukaba Hasbaiya	L	ML	M	Kfar Chouba	L	ML	M
Kfar Hamam	L	ML	M	Kfeir El-Zait	L	ML	M	Khalwat Hasbaya	L	L	ML
Khreibet Hasbaiya	L	M	M	Majdiyyeh Hasbaiya	L	M	M	Marj Ez-Zhour (Haouc	L	ML	ML
Meri	L	M	M	Mimass	L	M	M	Rachaiya El-Fokhar	L	ML	M
Salaiyeb	L	M	M								

Marjayoun

Municipality	25-Nov	26-Nov	27-Nov	Municipality	25-Nov	26-Nov	27-Nov	Municipality	25-Nov	26-Nov	27-Nov
Aalmane Marjaayoun	L	ML	M	Aamra	L	M	M	Adayseh Marjaayoun	L	M	M
Adchit El-Koussair	L	M	M	Ain Aarab Marjaayoun	L	M	M	Bani Haiyann	L	ML	M
Blatt Marjaayoun	L	ML	M	Blida	L	ML	M	Borj El-Moulouk	L	M	M
Boueyda Marjaayoun	L	L	M	Deir Mimass	L	ML	M	Deir Siriane	L	M	M
Dibbine	L	ML	M	Ebel El Saqi	L	ML	M	Houla	L	M	M
Houra	L	M	M	Kfar Kila	L	M	M	Khiam Marjaayoun	L	M	M

Klayaa	L	M	M	Majdel Selem	L	ML	M	Marjaayoun	L	M	M
Markaba	L	M	M	Mays El-Jabal	L	M	M	Mazraat Doumiat	L	ML	M
Mazraat Sarada	L	M	M	Mhaibib	L	ML	M	Qabrikha	L	ML	M
Qantara	L	M	M	Rab El-Thalathine	L	M	M	Saouaneh Marjayoun	L	L	M
Talloussa	L	ML	M	Taybeh Matjaayoun	L	M	M	Touline	L	ML	M

Bent Jbail

Municipality	25-Nov	26-Nov	27-Nov	Municipality	25-Nov	26-Nov	27-Nov	Municipality	25-Nov	26-Nov	27-Nov
Ain-Ebel	L	L	M	Aitaroun	L	ML	M	Aynata Bint Jbeil	L	L	M
Ayta El-Chaeb	L	L	M	Ayta El-Jabal	VL	L	M	Beit Lif	L	L	ML
Beit Yahoun	VL	L	M	Bint Jbeil	L	L	M	Borj Qalaway	L	M	M
Braachit	L	L	M	Chakra	L	ML	M	Debel	L	L	M
Deir Antar	L	L	M	Froun	L	ML	M	Ghandouriyeh Bint Jb	L	M	M
Hanine	L	L	M	Hariss	L	L	M	Hdatha	L	L	M
Jmeymeh	L	L	M	Kafra Bint Jbeil	L	L	M	Kfar Dounine	L	L	M
Khirbet Selm	L	L	M	Kounine	VL	L	M	Maroun El Ras	L	L	M
Qalaway	L	ML	M	Qaouzah	L	L	ML	Qatmoun	L	L	M
Ramya Bint Jbeil	L	L	M	Rchaf	L	L	M	Rmeich	L	L	M
Safad Al Battikh	L	L	M	Salhaneh	L	L	ML	Serbine	L	L	M
Sultanieh Bint Jbeil	L	L	M	Tibnine	VL	L	M	Tiri	L	L	M
Yaroun	L	L	M	Yater	L	L	M				

Mont Liban

Jbail

Municipality	25-Nov	26-Nov	27-Nov	Municipality	25-Nov	26-Nov	27-Nov	Municipality	25-Nov	26-Nov	27-Nov
Aabeydat	VL	L	L	Aalita	L	L	L	Aamchit	L	L	ML
Aarab El-Lahib	VL	ML	L	Aarasta	VL	L	L	Adonis Jbeil	VL	L	VL
Afqa Jbeil	VL	L	L	Ain El Delbeh Jbeil	VL	L	L	Ain El-Ghouayba	VL	L	L
Ain Jrain	VL	L	L	Ain Kfah	L	L	L	Almat El Chemaliyat	VL	L	L
Almat El-Jenoubiya	VL	L	L	Aqoura	VL	ML	L	Bayzoun	VL	L	L
Bchille Jbeil	L	L	L	Bechtlida	VL	VL	VL	Behdaydat	VL	L	L
Beit Habbaq	L	L	L	Bejjeh	VL	L	L	Bekhaaz	L	L	L
Berbara Jbeil	L	L	L	Bintael	VL	L	L	Birket Hjoula	VL	L	L
Blatt Jbeil	L	L	L	Boulhos	VL	L	L	Breyj Jbeil	VL	L	VL
Chamat	L	ML	ML	Chikhane	L	L	L	Chmout	VL	L	L
Eddeh Jbeil	L	L	L	Ehmej	VL	L	L	Fatre	VL	L	VL
Ferhet	VL	L	L	Fghal	VL	L	L	Frat	VL	VL	VL
Ghabat	VL	L	L	Ghalboun	VL	L	L	Gharzouz	L	L	L
Ghofrine	L	L	L	Habil	VL	VL	VL	Halate	L	L	L
Haqel	VL	L	L	Hbaline	L	L	L	Hboub	L	L	L
Hdeine	VL	L	L	Hema Er-Rehban	VL	ML	L	Hema Mar Maroun Aann	VL	ML	L
Hjoula	VL	L	L	Hosrayel	L	L	L	Hsarat	L	L	L
Hsoun	L	L	L	Jaj	VL	L	L	Janne	VL	VL	VL
Jbeil	L	L	ML	Jeddeyl Jbeil	L	L	L	Jlisse	VL	L	VL
Jouret El-Qattine	L	L	L	Kfar Baal Annaya	VL	L	L	Kfar Kidde	L	L	L
Kfar Kouas	L	L	L	Kfar Mashoun	L	ML	L	Kfoun	VL	L	L

Kharbe Jbeil	L	L	L	Laqlouq	VL	ML	L	Lassa	VL	L	L
Lehfed	VL	L	L	Maad	L	L	L	Mar Sarkis	VL	L	L
Mastita	L	L	ML	Mayfouq	VL	L	L	Mazraat El Siyad	VL	L	L
Mazraat El-Maaden	VL	L	L	Mechane	VL	L	L	Mechmech Jbeil	VL	L	L
Mehrin	L	L	L	Mejdel El-Akoura	VL	L	L	Mghayreh Jbeil	VL	L	L
Mounsef	L	L	L	Nahr Ibrahim	L	L	ML	Qahmez	VL	L	L
Qartaba	VL	L	L	Qartaboun	L	L	ML	Qattara Jbeil	VL	L	L
Qorqraya	VL	VL	VL	Ramout	VL	L	L	Ras Osta	VL	L	L
Rihane Jbeil	L	L	L	Sakiet El-Khayt	VL	L	L	Saqi Richmaya	VL	L	L
Sebrine	VL	L	L	Seraita	VL	L	L	Souane Jbeil	VL	L	L
Tadmor	VL	L	L	Tartej	VL	L	L	Torzaiya	VL	L	L
Yanouh Jbeil	VL	L	L	Zibdine Jbeil	VL	L	L				

El Metn

Municipality	25-Nov	26-Nov	27-Nov	Municipality	25-Nov	26-Nov	27-Nov	Municipality	25-Nov	26-Nov	27-Nov
Aain El-Qabu	VL	VL	VL	Aain El-Qach	L	VL	L	Aain El-Teffaha	L	VL	L
Aain el-Safsaf El-M	L	VL	L	Abou Mizane	L	VL	L	Ain Aar	L	L	ML
Ain Alaq	L	VL	L	Ain El-Kharroube	L	VL	L	Ain El-Sendianeh	L	VL	L
Ain El-Zeitoune	L	VL	L	Ain Saadeh	L	VL	L	Aintoura El-Matn	VL	VL	L
Amaret Chalhoub	ML	L	M	Antelias	L	L	M	Atchaneh	VL	VL	L
Ayroun	L	VL	L	Baabdat	L	VL	L	Baouchariyeh	ML	L	M
Baskinta	VL	L	L	Beit Chabab	L	VL	L	Beit El-Chaar	L	L	ML
Beit El-Kekko	L	L	M	Beit Mery	L	VL	L	Bhersaf	L	VL	L
Bikfaya	L	VL	L	Biyakout	L	L	ML	Bnabil	L	VL	L
Bourj Hammoud	ML	L	M	Bqennaya	L	L	ML	Broummana El-Matn	VL	VL	L
Bsalim	L	L	L	Bsifrine	VL	VL	VL	Bteghrine	VL	VL	L
Chaouiye	L	L	L	Chouaya El-Matn	L	VL	L	Choueir	L	VL	L
Chrine	L	VL	L	Dahr El Sawan El-Mat	L	VL	L	Daychouniyeh	L	L	ML
Dbayeh	L	L	M	Deir Chamra	VL	VL	VL	Deir Mar Abda el Mch	L	VL	L
Deir Mar Roukouz	L	L	M	Deir Tamiche	L	VL	L	Dik El-Mehdi	L	L	ML
Dikwaneh	ML	L	M	Douar El-Matn	L	VL	L	Fanar	L	L	ML
Fraike	L	VL	L	Haret El-Ballaneh	L	L	ML	Hbous	L	L	ML
Himlaya	L	VL	L	Jal El Did	L	L	M	Jdeideh El-Metn	ML	L	M
Jouar El-Matn	L	VL	L	Jouret El-Ballout	VL	VL	L	Kaaqour	L	VL	L
Kfar Aaqab	VL	VL	L	Kfertay El-Matn	VL	L	L	Khenchara	L	VL	L
Khillet El-Mtain	L	VL	L	Konnabat Broummana	L	VL	L	Konnabat Salima	VL	VL	VL
Machraah El-Matn	VL	VL	L	Majdel Tarchich	L	VL	L	Majzoub	L	L	ML
Mansouriyeh El-Metn	L	L	M	Mar Boutros Karm Et-	L	VL	L	Mar Chaya et Mzekke	VL	VL	L
Mar Moussa Ed-Douar	L	VL	L	Marjaba	L	VL	L	Masqa	VL	VL	L
Mayasse	L	VL	L	Mazraat Deir Aoukar	L	L	ML	Mazraat El-Hadirat	L	L	ML
Mazraat Yachouh	L	L	ML	Mchikha	L	VL	L	Menqlet Mezher	L	L	ML
Mhaydseh Matn	L	VL	L	Mkalles	L	L	M	Mrouj	L	VL	L
Mtain	VL	L	L	Mtayleb	L	L	ML	Nabay	VL	VL	L
Naccache	L	L	ML	Ouadi Chahine	L	VL	L	Ouadi El-Karm El-Mat	VL	VL	VL
Ouata El-Mrouj	L	VL	L	Ouyoun El-Matn	VL	VL	L	Qornet Chehwan	L	L	L
Qornet El-Hamra	L	VL	L	Roumieh	L	VL	L	Sfeilet Bikfaya	L	VL	L
Sinn El-Fil	ML	L	M	Zabbougha	VL	VL	VL	Zalqa	L	L	M

Zarouon	L	VL	L	Zekrite	L	VL	L	Zighrine El-Matn	L	VL	L
Zouk El-Khrab	L	L	ML								

Chouf

Municipality	25- Nov	26- Nov	27- Nov	Municipality	25- Nov	26- Nov	27- Nov	Municipality	25- Nov	26- Nov	27- Nov
Aalmane El-Chouf	ML	L	M	Aammq El-Chouf	VL	VL	L	Ain Ouzein	VL	VL	L
Ain Qani	VL	VL	L	Ain Zhalta	L	L	L	Ainbal	VL	VL	L
Amatour	L	L	L	Anout	L	VL	L	Atrine	VL	VL	L
Baadarane	VL	L	ML	Baaqline	VL	VL	L	Baasir	L	L	M
Barja	L	L	M	Barouk	L	L	L	Bater	L	L	ML
Batloun	L	L	ML	Bayqoun	L	L	M	Bchetfine	VL	VL	L
Beiteddine	VL	VL	L	Benouati Ech-Chouf	L	VL	L	Berjein	L	VL	L
Bireh et Mtalleh	VL	VL	ML	Biret El-Chouf	L	L	M	Bkechtine Ouel Mchei	VL	VL	L
Bkifa El-Chouf	L	L	ML	Botme	VL	VL	L	Bqaiaa Ech-Chouf	L	VL	L
Bsaba El-Chouf	L	L	ML	Chammis El-Chouf	L	L	M	Chehim	L	VL	L
Chemaarine	L	VL	L	Chourit	VL	VL	L	Daher El-Chouf	L	L	ML
Dalhoun	L	L	ML	Damour	L	L	ML	Daraya El-Chouf	L	VL	L
Deir El-Moukhalles	L	VL	L	Deir Baba	L	VL	L	Deir Dourit	VL	VL	L
Deir El-Qamar	VL	VL	ML	Deir Kouche	VL	VL	L	Dibbieh	L	L	L
Dmit	L	VL	L	Fouara Jaafar	VL	VL	L	Fraidis El-Chouf	L	L	ML
Ghabet Jaafar	VL	VL	L	Gharife	VL	VL	L	Haret Jandal	L	L	ML
Hasrout	L	L	ML	Jadra	ML	L	M	Jahlieh	L	VL	L
Jbeih El-Chouf	VL	L	ML	Jdeidet El-Chouf	VL	VL	ML	Jiyeh	ML	L	M
Jleilyeh	L	L	ML	Jmailiyeh	ML	L	M	Joun	L	L	M
Kahlounie El-Chouf	VL	L	M	Ketermaya	L	L	M	Kfar Faqoud	VL	VL	L
Kfar Hamal	L	L	M	Kfar Him	L	VL	ML	Kfar Katra	L	VL	L
Kfar Niss	L	L	ML	Kfar hay	VL	VL	L	Kfarnabrakh	VL	VL	ML
Khirbet Bisri	L	VL	L	Knayse El-Chouf	VL	VL	L	Maaniyeh	L	L	M
Maasser Beiteddine	VL	VL	ML	Maasser El-Chouf	L	L	ML	Majdalouna	L	L	M
Majdel El-Meouch	VL	VL	ML	Mazboud	L	L	ML	Mazmoura	L	L	L
Mazraat El Chouf	L	L	ML	Mazraat El Daher	L	VL	L	Mazraat El-Douair	VL	VL	L
Mechref	L	L	L	Mghairie	L	L	M	Mghayrie El-Chouf	L	VL	L
Moukhtara	VL	VL	ML	Mrusti	VL	L	ML	Mtolle	L	VL	ML
Naameh	L	L	ML	Niha El-Chouf	L	L	ML	Ouadi Abou Youssef	VL	VL	VL
Ouadi Ed-Deir	L	VL	ML	Ouadi El-Sit	VL	VL	ML	Ouadi bnehlay	VL	VL	L
Qraibeh	VL	L	ML	Qreiaa	L	VL	L	Rmayle El-Chouf	ML	L	M
Semqaniyeh	VL	L	M	Sibline	ML	L	M	Sirjbeil	L	VL	L
Warhanieh	L	L	ML	Werdaniyeh	ML	L	M	Zaarourieh	L	L	ML

Baabda

Municipality	25- Nov	26- Nov	27- Nov	Municipality	25- Nov	26- Nov	27- Nov	Municipality	25- Nov	26- Nov	27- Nov
Abadiyeh	L	L	L	Ain Mouaffaq	L	L	L	Araiya	L	VL	L
Arbaniyeh	VL	VL	VL	Arsoun	L	VL	L	Baabda	L	L	ML
Baalchmey	L	L	L	Bmaryam	L	L	L	Bourj El-Brajneh	L	M	ML
Boutchay	L	L	ML	Bsaba Baabda	L	ML	ML	Btekhney	L	L	L
Btibyat	L	L	L	Bzebdine	L	VL	L	Chbeniyeh	L	L	L
Chiyah	L	L	M	Chmeisset Baabda	VL	VL	VL	Chouit	VL	VL	L
Deir El-harf	L	L	L	Deir Khouna	L	L	L	Dlaybeh	VL	VL	VL

Falougha	L	L	ML	Furn El-Chebbak	ML	L	M	Hadath Beyrouth	L	ML	M
Halaliyeh Baabda	VL	VL	L	Hammana	L	L	L	Haret El Sett	L	VL	L
Haret Hamze	L	L	L	Haret Hreik	L	L	M	Hasbaiya El-Metn	VL	VL	VL
Jouar El-Hoz	VL	VL	L	Jouret Arsoun	L	VL	L	Kfar Chima	L	ML	M
Kfar Selouane	VL	L	L	Khalouat Baabda	L	L	L	Kneisset Baabda	VL	VL	VL
Laylakeh	L	M	ML	Louayzeh Baabda	L	L	L	Merdache	L	ML	ML
Mzairaa Baabda	VL	VL	L	Ouadi Chahrour El Ol	L	L	L	Ouadi Chahrour El So	VL	L	L
Qalaa Baabda	L	L	L	Qhraybe Baabda	L	L	L	Qobbayaa	L	L	L
Qornayel	VL	VL	L	Qortada	VL	VL	L	Qrayeh Baabda	L	L	L
Qsaibeh Baabda	VL	VL	L	Qtale Baabda	L	L	L	Ras El Metn	L	L	L
Ras El-Haref	L	L	L	Rouayset El-Ballout	VL	VL	L	Salima Baabda	L	VL	L
Tahouitat El Ghadir	L	M	M	Tarchich	VL	VL	L	Zandouqa	VL	VL	VL

Aley

Municipality	25-Nov	26-Nov	27-Nov	Municipality	25-Nov	26-Nov	27-Nov	Municipality	25-Nov	26-Nov	27-Nov
Abey	L	L	L	Aghmid	L	L	L	Ain Dara	L	L	ML
Ain Drafil	L	L	L	Ain El Halazoun	L	L	L	Ain El-Rmmaneh	VL	VL	L
Ain Jedideh	L	L	L	Ain Ksour	VL	L	L	Ain Onoub	L	L	L
Ain Traz	VL	VL	L	Ainab	L	L	L	Aley	L	L	L
Aramoun	L	L	L	Aytat	L	ML	ML	Azouniyeh	L	L	L
Baawerta	L	L	L	Badghan Oua Wadi Bad	L	L	L	Bassatine	L	L	ML
Bayssour	L	L	L	Bchamoun	L	L	L	Bdadoun	L	L	L
Behouara	L	L	L	Bennay	L	VL	ML	Bhamdoun El-Dayaa	L	L	ML
Bhamdoun El-Mhatta	L	L	ML	Bkhechthey	L	L	L	Bleibel	VL	L	L
Bmakine	L	L	L	Bmehray	L	L	L	Bouzrid	VL	VL	L
Bserrine	L	L	L	Bsous	VL	VL	L	Btalloun	L	L	ML
Btater	L	L	L	Chanay	L	L	ML	Charoun	L	L	L
Chartoun	VL	VL	L	Chemlane	L	L	L	Chouefat El-Aamrous	L	ML	M
Chouefat El-Oumara	L	ML	ML	Chouefat El-Quoubbe	L	M	M	Dakkoun	L	VL	L
Deir Qoubel	L	L	L	Dfoun	L	L	ML	Douair El Remmaneh	VL	VL	L
Ghaboun	L	L	L	Habramoun	L	VL	L	Homs Oua Hama	L	L	L
Houmal	L	L	L	Jisr El Qadi	L	VL	L	Kehaleh	L	L	L
Keyfoun	L	L	ML	Kfar Aamey	L	L	L	Kommatyeh	L	L	L
Maasrati	L	L	L	Majdel Baana	L	L	L	Mansourieh et Ain El	L	L	L
Mazraat El-Nahr	L	L	L	Mchakhte	L	L	L	Mecherfeh	L	L	L
Mejdaya	L	L	L	Mrayjat	L	L	ML	Ramliyah	L	L	L
Rechmaya	L	L	ML	Rejmeh	L	L	L	Remhala	L	L	ML
Rouaysset El Neemane	L	L	L	Saoufar	L	L	L	Selfaya	VL	VL	L
Sirhmoul	VL	L	L	Souq El Ghareb	L	L	L	Taazanieh	L	L	L

Kesrouane

Municipality	25-Nov	26-Nov	27-Nov	Municipality	25-Nov	26-Nov	27-Nov	Municipality	25-Nov	26-Nov	27-Nov
Achkout	L	VL	L	Adma Oua Dafneh	L	L	L	Ain Ed-Delbe Kesroua	VL	L	L
Ain El-Rihane	L	VL	L	Aintoura Kesrouane	L	L	L	Ajaltoun	L	VL	L
Akaybeh Kesrouane	L	L	ML	Aramoun Kesrouane	L	VL	L	Azra ouel Ozor	VL	L	L
Ballouneh	L	VL	L	Batha	VL	VL	VL	Bekaatat Achkout	L	VL	L
Bekaatat Kanaan	VL	L	L	Bizhel	VL	L	VL	Bouar	L	L	L
Bqaatouta	VL	L	L	Bqaq Ed-Dine	L	L	L	Bzommar	L	VL	L

Chahtoul	L	VL	L	Chnaniir	L	VL	L	Chouan	VL	L	L
Daraya Kesrouane	L	VL	L	Darououn	VL	VL	L	Deir Baqlouch	VL	VL	L
Dlebta	L	VL	VL	Eghbeh	VL	VL	VL	Faraya	VL	L	L
Fatka	L	L	L	Feytroun	L	VL	L	Ghazir	L	VL	L
Ghbaleh Kesrouane	L	L	L	Ghedrass	L	L	L	Ghosta	L	VL	L
Ghynéh	L	L	L	Harharaya w Kattine	L	VL	L	Harissa Kesrouane	VL	VL	L
Hayata	VL	VL	VL	Hosein	VL	L	L	Hrajel	VL	L	L
Jdeideh Ghazir	L	VL	L	Jeita	L	VL	L	Jounieh Ghadir	L	L	L
Jounieh Haret Sakhr	L	L	ML	Jounieh Salel Alma	L	L	L	Jounieh Sarba	ML	L	ML
Jouret Bedrane	L	L	L	Jouret Mhad	VL	VL	L	Jouret Termos	L	L	L
Kfar Debiane	VL	L	L	Kfar Tay Kesrouane	VL	VL	VL	Kfar Yassine	ML	L	ML
Kfour Kesrouane	L	L	L	Kharayeb Nahr Ibrahi	L	L	L	Klayaat Kesrouane	L	VL	L
Maarab	VL	VL	VL	Maaysra Kesrouane	L	L	L	Mayrouba	VL	L	L
Mazraat Er-Ras	L	L	L	Mazraat Mrah El-Mir	VL	VL	VL	Mchaa El Ftouh	VL	ML	L
Mchaa Faraya	VL	ML	L	Mchaa Kfar Dibiane	VL	ML	ML	Mghaer	VL	L	VL
Mradiyah	VL	L	VL	Nahr Ed-Dahab	VL	VL	VL	Nammoura Kesrouane	L	L	L
Ouata El Jaouz	VL	VL	L	Ouata Sillam	ML	L	ML	Raachine	VL	VL	L
Rayfoun	L	VL	L	Safra Kesrouane	L	L	ML	Shayle Kesrouane	L	VL	L
Tabarja	L	L	L	Yahchouch	VL	L	L	Zaaytreh	VL	L	L
Zeytoun	L	L	L	Zouk Mikael	ML	L	ML	Zouk Mosbeh	L	L	ML

Baalbek_Hermel

Baalbek

Municipality	25-Nov	26-Nov	27-Nov	Municipality	25-Nov	26-Nov	27-Nov	Municipality	25-Nov	26-Nov	27-Nov
Aadous	L	ML	ML	Aamchki	L	L	L	Aarsal	VL	L	L
Ain Baalbek	L	ML	L	Ain Bourday	L	ML	L	Ain El-Benye	VL	ML	ML
Ain El-Jaouz Baalbek	L	L	ML	Ain El-Siya Chadoura	L	L	ML	Al Khodr Baalbek	VL	ML	ML
Al Nabi Chit	VL	ML	ML	Aynata Baalbek	VL	ML	L	Baalbek	L	ML	L
Bachwat	VL	L	L	Barqa	VL	L	VL	Bednayel Baalbak	L	ML	ML
Beit Chama	VL	ML	ML	Bijjaje	L	ML	L	Bouday	L	L	L
Brital	L	ML	ML	Btadi	L	ML	L	Chaat	L	ML	ML
Chaibe	L	L	ML	Chlifa	L	ML	L	Chmestar	L	ML	L
Dar El-Oussa	VL	L	L	Deir El-Ahmar	L	L	L	Deir Mar Maroun Baal	ML	M	ML
Douris	L	ML	L	Fakiha	L	M	ML	Hadath Baalbek	L	ML	L
Ham	VL	ML	ML	Haour Taala	VL	ML	ML	Hizzine	L	ML	ML
Hlebta	VL	L	L	Hosh Barada	L	ML	ML	Hosh El Dahab	L	ML	ML
Hosh El Snid	L	ML	ML	Hosh El-Nabi	L	ML	ML	Hosh El-Rafiq	VL	ML	ML
Hosh Tal Safiya	L	ML	ML	Hrebta	VL	L	L	laat	L	ML	ML
Jebaa	L	ML	ML	Jenta	L	L	ML	Kfar Dabach	L	ML	ML
Kfar Dane	L	ML	ML	Khraibeh El-Hermel	L	L	L	Khreibet Baalbek	VL	ML	ML
Kneisset Baalbek	L	ML	ML	Labueh	VL	ML	L	Maarboun	L	ML	ML
Majdaloun	L	ML	ML	Maqneh	L	ML	ML	Mazraat Beit Mcheik	VL	ML	L
Misraya	VL	ML	ML	Moqraq	VL	ML	ML	Nabha El-Damdoum	L	ML	L
Nabi Chbay	L	L	ML	Nabi Osman	VL	ML	L	Nahleh baalbek	VL	L	L
Ouadi El-Oss	VL	L	L	Qaa Baayoun	L	M	ML	Qaa Jouar Maqiye	L	M	ML
Qaa Ouadi El-Khanzir	L	M	ML	Qah Baalbek	L	M	M	Qarha Baalbek	L	ML	L

Qsarnaba	VL	ML	ML	Ram Baalbek	L	L	L	Ras Baalbek El Sahl	L	M	M
Ras Baalbek El-Charq	L	M	ML	Riha	L	ML	L	Saaide	L	ML	ML
Sbouba	VL	L	L	Seriine El-Tahta	L	ML	ML	Slouqi	VL	L	L
Taiba Baalbek	L	ML	ML	Talia	L	ML	ML	Taraiya	L	ML	L
Temnin El Fawqa	L	ML	ML	Temnin El-Tahta	VL	ML	ML	Tfail	VL	L	L
Yahfoufa	L	ML	ML	Yammouneh	L	L	L	Younine	VL	ML	L
Zboud	L	ML	ML								

Hermel

Municipality	25-Nov	26-Nov	27-Nov	Municipality	25-Nov	26-Nov	27-Nov	Municipality	25-Nov	26-Nov	27-Nov
Charbine El-Hermel	L	L	L	Hermel Jbab	L	ML	L	Hermel	ML	M	ML
Maaysra El-Hermel	VL	L	L	Michaa Mrjihine	L	ML	L	Ouadi Faara	VL	L	L
Ras Baalbek - Ouadi	ML	M	M	Ras Baalbek El Gharb	L	ML	L	Zighrine	L	L	L

Akkar

Akkar

Municipality	25-Nov	26-Nov	27-Nov	Municipality	25-Nov	26-Nov	27-Nov	Municipality	25-Nov	26-Nov	27-Nov
Aain Tinta	L	L	ML	Aaiyat	L	ML	L	Aakkar El-Aatiqa	L	L	L
Aamar Akkar	VL	L	L	Aamar El Baykat	L	L	ML	Aamayer	L	ML	ML
Aamriyet Akkar	L	ML	ML	Aandqet	L	L	L	Aarmeh	L	L	L
Aarqa	VL	L	L	Aawaynat	L	L	L	Aayoun Akkar	L	ML	L
Abboudiye	VL	VL	L	Ain El-Zeit	L	ML	ML	Ain Yaaqoub	L	L	L
Akroum	L	L	L	Aridet Cheikh Zennad	VL	L	M	Baldeh w Mazraat Bal	VL	L	ML
Barcha	VL	L	ML	Bardeh	L	L	ML	Bebnine	VL	L	L
Beino	L	L	L	Beit Ayoub	L	ML	L	Beit El-Haouch	VL	L	L
Beit Mellat	L	ML	L	Beit Younes	L	L	L	Berbara Akkar	L	L	ML
Berqayel	VL	L	L	Bezbina	L	L	L	Bireh Akkar	L	L	ML
Borj	L	ML	L	Bqerezla	L	L	L	Bzal	VL	L	L
Chane	VL	L	L	Chaqdouf	L	ML	L	Charbila	VL	L	ML
Cheikh Mohammad	VL	L	ML	Cheikh Taba Es-Sahl	VL	L	ML	Cheikh Taba	VL	L	L
Cheikh Zennad	VL	L	M	Cheikhlar	L	L	L	Chir Hmairine	VL	L	ML
Daghle	L	L	ML	Dahr Laissine	VL	L	L	Darine	VL	L	ML
Dawra	L	L	L	Dawsa w Baghdadi	L	L	L	Dayret Nahr El-Kabir	L	M	ML
Deir Dalloum	VL	L	L	Deir Jennine	L	L	L	Denbou	VL	L	L
Dibbabiyyeh	L	ML	ML	Douair Aadwiyeh	L	L	ML	Fassikine	L	L	ML
Fnaydek	L	L	L	Fraydes Akkar	L	L	L	Ghazayle	VL	L	ML
Habchit	VL	L	L	Hakour	VL	L	L	Halba	VL	L	L
Haouchab	VL	L	ML	Hayssat	VL	VL	ML	Haytla	VL	L	ML
Hayzouq	VL	L	L	Hedd	VL	L	ML	Hmaira Akkar	VL	L	L
Hmaiss Akkar	VL	L	ML	Hnaider	ML	M	ML	Hokr Ed-Dahri	VL	L	M
Hokr Etti	VL	L	ML	Hokr Jouret Srar	VL	L	ML	Houaich	L	L	L
Hrar	L	L	L	Idbil	VL	L	L	Ilal	L	L	L
Janine	VL	L	ML	Jdeidet El-Joumeh	VL	L	L	Jdeidet El-Kaiteh	VL	L	L
Jebayel	L	ML	L	Kafr	VL	L	L	Kafr	L	ML	ML
Karm Asfour	VL	L	L	Kfar Melki Akkar	VL	L	ML	Kfar Noun	L	L	L
Kfarharra	VL	L	ML	Khalsa	L	ML	ML	Kharnoubet Akkar	VL	L	ML

Khirbet Daoud Aakkar	L	L	ML	Khirbet El Remmane	L	L	L	Khirbet Shar	L	L	ML
Khoreybet El-Jindi	VL	L	ML	Khreibet Aakkar	L	L	L	Kneisset Aakkar	VL	VL	M
Kneisset Hnaider	ML	M	ML	Knisse	VL	L	ML	Kroum El-Aarab	VL	L	ML
Kwachra	L	ML	ML	Kweykhath	VL	L	ML	Machta Hammoud	L	ML	L
Majdala	VL	L	L	Majdel Akkar	L	L	ML	Mar Touma	VL	L	L
Marlaya Melhem	VL	VL	L	Mashha	VL	L	L	Massoudiye	VL	L	M
Mazraat Beit Ghattas	L	L	L	Mazraat En-Nahriye	L	L	L	Mechmech	L	L	L
Memneh	VL	L	L	Mhammara	VL	L	L	Mighraq Aakkar	VL	VL	M
Minyara	VL	L	L	Moqayteh	VL	L	M	Mounjez	L	L	L
Msalla	L	ML	ML	Mzeihmeh	VL	L	ML	Nfaisch	VL	L	L
Noura Et-Tahta	L	L	L	Ouadi El-Haour	VL	L	ML	Ouadi El-Jamous	VL	L	L
Ouyoun El-Ghizlane	VL	L	L	Qaabarine	VL	VL	ML	Qabaait	VL	L	L
Qachlaq	VL	L	ML	Qantara Aakkar	L	L	L	Qarha Aakkar	ML	M	ML
Qarqaf	VL	L	L	Qboula	L	ML	L	Qleiaat Aakkar	VL	L	M
Qloud El-Baqie	VL	L	L	Qobaiyat Aakkar	L	L	L	Qobbat Chamrat	VL	L	L
Qorayat	L	L	L	Qornet Aakkar	L	ML	L	Qsair Aakkar	L	L	L
Rahbe	L	L	L	Rihaniyet Aakkar	VL	L	ML	Rmah	L	L	L
Rmoul	VL	L	ML	Saadine	VL	L	ML	Sadaqa	L	ML	L
Saidnaya	VL	L	ML	Sammouniye	VL	L	M	Sayssoq	L	L	L
Semmaqiye	VL	L	M	Semmaqli	VL	L	L	Sfinet El-Dreib	L	L	ML
Sfinet El-Qaitaa	VL	L	L	Sindyanet Zeidane	L	L	L	Souaisset Aakkar	VL	L	ML
Srar	VL	L	ML	Tal Abbas El Gharby	VL	L	ML	Tal Abbas El-Chargy	VL	L	L
Tal Biret	VL	L	ML	Tal Hmayra	VL	L	ML	Tal Maayan Tal Kiri	VL	VL	M
Tal Sibel	VL	VL	M	Tallet Chattaha	L	ML	L	Tikrit	L	L	L
Tleil	VL	L	ML	Tshea	L	L	L	Zawarib	VL	L	L
Zouq El Hosniyeh	VL	L	L	Zouq El-Haddara	VL	L	L	Zouq El-Hbalsa	VL	L	L
Zouq El-Moqachrine	VL	L	L								

Sud

Sour

Municipality	25-Nov	26-Nov	27-Nov	Municipality	25-Nov	26-Nov	27-Nov	Municipality	25-Nov	26-Nov	27-Nov
Aaiyeh	L	L	M	Aalma El-Chaab	L	L	ML	Aaytit	L	L	M
Abbassiyeh Sour	L	L	M	Abou Chech	L	L	ML	Ain Abou Abdallah	L	L	M
Ain Baal	L	L	M	Arzoun	L	M	M	Aziyeh	L	L	ML
Baflaya	L	M	M	Barich	L	M	M	Batouliyeh	L	L	M
Bayad	L	L	M	Bazouriyeh	L	L	M	Bediass	L	ML	M
Bestiyat	L	M	M	Borj El Chemali	VL	L	M	Borj En-Naqoura	L	L	M
Borj Rahhal	L	ML	M	Boustane	L	L	M	Btaychiyeh	L	L	ML
Chaaitiye	L	L	M	Chameh	L	L	L	Chehabiye	L	L	M
Chehour	L	L	ML	Chihine	L	L	M	Debaal Sour	L	ML	M
Deir Amess	L	L	M	Deir Kifa	L	ML	M	Deir Qanoun El-Ain	L	L	M
Deir Qanoun El-Naher	L	ML	M	Derdghaiya	L	M	M	Dhayra	L	L	ML
Halloussiyeh	L	M	M	Hamoul	L	L	L	Hanaouey	L	L	M
Henniye	L	L	M	Hmairi Sour	L	ML	M	Iskandarouna Sour	L	L	L
Jbal El Botom	L	L	M	Jebbin	L	ML	M	Jennata	L	M	M
Jijim	VL	L	L	Jouaiya	L	L	M	Kneisset Sour	L	L	M

Maarake	L	M	M	Maaroub	L	M	M	Majadel	L	L	M
Majdzoun	L	L	M	Mansouri Sour	L	L	M	Marnba	L	L	M
Marouahine	L	L	ML	Mazraat El-Zalloutiy	L	L	M	Mazraat Mechref	L	L	M
Mazraat Tayr Semhat	L	L	ML	Mheilib	L	L	M	Neffakhiyeh	L	M	M
Niha Sour	L	M	M	Ouadi Jilo	L	L	M	Qana	L	L	M
Qolaileh Sour	L	L	M	Rechknany	L	L	M	Rmadiyeh	L	L	M
Selha Sour	L	M	M	Siddiqine	L	L	M	Sour	L	L	M
Srifa	L	ML	M	Tayr Debbe	L	ML	M	Tayr Felsay	L	ML	M
Tayr Harfa	L	L	M	Touayri	L	ML	M	Toura	L	ML	M
Yanouh Sour	L	M	M	Yarine	L	L	M	Zebqine	L	L	ML

Saida

Municipality	25-Nov	26-Nov	27-Nov	Municipality	25-Nov	26-Nov	27-Nov	Municipality	25-Nov	26-Nov	27-Nov
Aanqoun	ML	L	M	Aaqtanit	ML	L	M	Aarab Ej-Jall	ML	L	M
Aarab Tabbaya	ML	L	M	Abra Saida	ML	L	M	Adloun	L	L	M
Adousiyeh	L	ML	M	Ain-El-Deleb	ML	L	M	Arzai	L	M	M
Babliyah	ML	M	M	Barty	ML	L	M	Bissariyeh	ML	M	M
Bnaafoul	ML	L	M	Bqosta	ML	L	M	Bramiy	ML	L	M
Daoudiyeh	L	M	M	Dareb El-Sim	ML	L	M	Erkay	ML	L	M
Ghassanieh	ML	M	M	Ghazieh	ML	ML	M	Hajeh	ML	L	M
Haret Saida	ML	L	M	Hartiyeh	L	ML	M	Hlaliye Saida	ML	L	M
Insariyat	L	M	M	Jazira Saida	L	ML	M	Kafar Bit	ML	L	M
Kaoutariyet El-Siyad	M	ML	M	Kfar Chellal	ML	L	M	Kfar Hatta Saida	ML	L	M
Kfar Milke Saida	M	L	M	Khartoum	ML	M	M	Khaziz	ML	L	M
Khirbet Ed-Douair Sa	L	M	M	Khirbet El-Bassal	ML	ML	M	Khrayeb Saida	L	ML	M
Loubieh	L	M	M	Maghdouche	ML	L	M	Majdelyoun	ML	L	M
Matariyet El-Choumar	L	ML	M	Matayriyeh	ML	L	M	Mazraat 'Mseileh	ML	ML	M
Mazraat 'Snaiber	L	M	M	Mazraat Aarab Soukka	ML	L	M	Mazraat Deir Taqla	L	ML	M
Mazraat El Yahoudiye	L	L	M	Mazraat El-Housseini	ML	M	M	Mazraat El-Mhaydaleh	L	M	M
Mazraat El-Ouasta	L	L	M	Mazraat Jamjim	L	ML	M	Mazraat Kaoutariyet	L	M	M
Mazraat Kfar Badda	L	ML	M	Mazraat Oussamiyat	L	M	M	Mazraat Sari	L	ML	M
Mazraat Sinai	ML	M	M	Meemariyeh	ML	L	M	Merouaniyeh	ML	L	M
Miyeh ou Miyeh	ML	L	M	Najjariyeh	L	M	M	Qaaqiyat El-Snaouba	ML	M	M
Qnarit	ML	L	M	Qraiye Saida	ML	L	M	Saida Ed-Dekermane	ML	L	M
Saida El-Oustani	ML	L	M	Saida El-Qadimeh	ML	L	M	Saida Kefraya	ML	L	M
Saksakiyeh	L	M	M	Salhie Saida	ML	L	M	Sarafand	L	M	M
Sfenta	ML	L	M	Tafahta	ML	M	M	Tanbourit	ML	L	M
Tebna	L	M	M	Zaghdraiya	ML	L	M	Zeita	ML	L	M
Zrariyeh	L	M	M								

Jezzine

Municipality	25-Nov	26-Nov	27-Nov	Municipality	25-Nov	26-Nov	27-Nov	Municipality	25-Nov	26-Nov	27-Nov
Ain El-Mir (El Estab	M	L	M	Anane	L	VL	L	Aramta	L	L	M
Ariya	L	L	ML	Aychiyeh	L	L	M	Azour	L	VL	L
Baba	L	VL	L	Bayssour Jezzine	ML	L	M	Benoueteh Jezzine	L	L	ML
Bhannine	L	L	ML	Bisri	VL	VL	L	Bkassine	L	L	L
Bouslaya	L	L	ML	Btedine El-Leqech	L	VL	L	Chbail	VL	L	L
Choualiq Jezzine	ML	L	M	Dahr Ed-Deir	L	L	M	Deir El Qattine	L	L	ML

Demachqiyeh	L	L	M	Ghabbatiyeh	L	L	L	Harf Jezzine	VL	VL	L
Hassaniyeh	ML	L	M	Haytouleh	ML	L	M	Haytura	L	L	ML
Hidab	L	L	M	Homsiyeh	L	VL	L	Jabal Toura	L	L	M
Jarmaq	L	ML	M	Jensnaya	ML	L	M	Jernaya	M	L	M
Jezzine	L	L	M	Karkha	L	L	M	Kfar Falous	ML	L	ML
Kfar Houna	L	L	M	Kfar Jarrah	ML	L	M	Lebaa	ML	L	M
Louayzet Jezzine	L	L	M	Machmouche	VL	L	L	Mahmoudiyeh Jezzine	L	L	M
Maknounye Jezzine	L	L	ML	Maraat Ouazaiyeh	L	L	M	Mazraat Daraya	L	L	M
Mazraat El-Aarqoub	L	L	M	Mazraat El-Mathane	VL	VL	L	Mazraat El-Rahbane	L	L	M
Mazraat Khallet Khaz	L	L	M	Mazraat Louzid (Loua	VL	L	L	Mazraat Qrouh	L	ML	M
Mazraat Tamra	L	L	M	Mazraat Zighrine Jez	L	L	M	Mazraat	L	L	ML
Mharbiyeh	ML	L	M	Midane Jezzine	L	L	L	Mjeydel Jezzine	ML	L	M
Mlikh	L	L	M	Mrach El-Hbasse	ML	L	M	Ouadi Baanqoudaine	ML	L	M
Ouadi El-Laymoun	M	L	M	Ouardiyeh	VL	VL	L	Qabaa Jezzine	L	L	ML
Qatrani	L	L	M	Qaytouleh	L	L	M	Qtaleh Jezzine	L	VL	L
Rihane Jezzine	L	L	M	Rimat	L	L	M	Roum	L	L	L
Roummanet	ML	L	M	Sabbah	L	L	L	Saydoun	L	L	ML
Sfaray	L	L	L	Snaya	L	L	ML	Sojoud	L	L	M
Srayri	L	ML	M	Taaid	VL	VL	L	Wadi Jezzine	L	L	L
Zhalta	L	L	ML								

Bekaa

West Bekaa

Municipality	25-Nov	26-Nov	27-Nov	Municipality	25-Nov	26-Nov	27-Nov	Municipality	25-Nov	26-Nov	27-Nov
Aammiq BG	ML	M	M	Ain El Tineh BG	L	L	M	Ain Zebdeh	L	ML	M
Ana	L	ML	M	Aytanit	L	L	ML	Baaloul BG	L	M	M
Bab Mareh	L	ML	M	Chouberqiye Aammiq	ML	M	M	Dakoue	ML	M	M
Deir Ain El-Jaouze	L	ML	M	Deir Tahniche	ML	M	M	Ghaza	ML	M	M
Harime El-Soughra	ML	M	M	Hoch Harimeh	ML	M	M	Jazira BG	ML	M	M
Jib Jennine	L	M	M	Kamed-El-Laouz	L	M	M	Kefraya BG	L	L	ML
Khiara El Atika	ML	M	M	Khiara	ML	M	M	Khirbet Qanafar	L	ML	M
Lala	L	M	M	Lebbaya BG	L	M	M	Loussa	L	ML	M
Machghara	L	ML	M	Manara (Hammar) BG	L	ML	ML	Mansoura BG	L	M	M
Marej BG	L	M	M	Maydoun	L	L	M	Ouaqf BG	ML	M	M
Qaraaoun	L	M	M	Qelya	L	ML	M	Raouda (Istabel)	L	M	M
Saghbine	L	ML	M	Sohmor	L	M	M	Soltan Yacoub el Ara	ML	M	M
Souairy	L	M	M	Sultan Yaacoub	L	M	M	Tal Znoub	ML	M	M
Yehmor BG	L	M	M	Zilaya	L	ML	M				

Zahle

Municipality	25-Nov	26-Nov	27-Nov	Municipality	25-Nov	26-Nov	27-Nov	Municipality	25-Nov	26-Nov	27-Nov
Aanjar (Haouch Mouss	L	M	M	Ablah	VL	ML	ML	Ain Kfarzabad	VL	ML	ML
Ali-El-Nahri	VL	ML	ML	Bar Elias	L	ML	ML	Bouarej	L	ML	M
Cheberqiyet Tabet	VL	ML	ML	Chtaura	VL	ML	ML	Deir El Ghazal	L	ML	ML
Delhamiyet Zahle	VL	ML	ML	Ferzol	VL	ML	ML	Haouch El-Ghanam	VL	ML	ML
Haouch Es-Siyadeh	VL	ML	ML	Haouch Hala	VL	ML	ML	Haouch Mandara	VL	ML	ML

Haouch Qayssar	L	ML	ML	Hezerta	VL	L	L	Hosh Moussa	L	ML	ML
Jdita	VL	ML	ML	Kfarzabad	L	ML	M	Ksara	VL	ML	ML
Majdel Aanjar	L	ML	M	Makssi	VL	ML	ML	Massa	L	ML	ML
Mazraat Er-Remtaniye	VL	ML	ML	Mrayjat Zahle	L	ML	ML	Mzaraa Zahle	L	ML	ML
Nabi Ayla	VL	ML	L	Nasriyet Rizk	L	ML	ML	Nasriyet Zahle	L	M	M
Niha Zahle	VL	ML	ML	Ouadi Ed-Deloum	L	ML	ML	Ouadi El-Arayech	VL	ML	L
Qaa El Rim	VL	ML	ML	Qab Elias	VL	ML	ML	Qousaya	L	L	ML
Rhit	L	ML	ML	Riyak	VL	ML	ML	Saadnayel	VL	ML	ML
Taal El-Akhdar	ML	M	M	Taalbeya	VL	ML	ML	Taanayel	VL	ML	ML
Talamara	VL	ML	ML	Tcheflik Edde Haouch	L	ML	M	Tcheflik Qiqano	L	ML	ML
Terbol Zahle	VL	ML	ML	Touaite Zahle	VL	L	L	Zahle Aradi	L	ML	ML
Zahle El-Berbara	VL	ML	ML	Zahle El-Maallaqa	VL	ML	ML	Zahle El-Midane	VL	ML	ML
Zahle Er-Rassiye	VL	ML	ML	Zahle Haouch El-Ouma	VL	ML	ML	Zahle Haouch El-Ouma	VL	ML	ML
Zahle Haouch Ez-Zara	VL	ML	ML	Zahle Maalaqa Aradi	VL	ML	ML	Zahle Mar Antonios	VL	ML	ML
Zahle Mar Elias	VL	ML	ML	Zahle Mar Gerios	VL	ML	ML	Zahle Saydet En-Naja	VL	ML	ML
Zebdoul	VL	L	ML								

Rachaiya

Municipality	25-Nov	26-Nov	27-Nov	Municipality	25-Nov	26-Nov	27-Nov	Municipality	25-Nov	26-Nov	27-Nov
Ain Arab Rachaiya	L	M	M	Ain Ata	L	ML	ML	Ain Harche	L	ML	M
Aqabe Rachaya	L	M	M	Ayha	ML	M	M	Ayta El Fokhar	L	M	M
Bakifa Rachaya	L	M	M	Bakka	ML	M	M	Beit Lahya	L	M	M
Bireh Rachaiya	L	M	M	Daher El Ahmar	L	M	M	Deir El-Achayer	L	ML	M
Heloua Rachaiya	L	ML	M	Hoch El Qannabeh Rac	L	ML	ML	Kaoukaba Bou Arab	VL	M	M
Kfar Danis	L	M	M	Kfar Mechki	L	M	M	Kfar Qouq	L	ML	M
Kherbet Rouha	L	M	M	Majdel Balhiss	L	M	M	Mdoukha	L	M	M
Mhaydseh Rachaiya	VL	M	M	Nabi Safa	L	ML	M	Rachaiya	L	M	M
Rafid Rachaiya	L	M	M	Selsata (Mazraat Dei	VL	L	ML	Tannoura	L	M	M
Yanta	L	ML	M								

Beyrouth

Beyrouth

Municipality	25-Nov	26-Nov	27-Nov	Municipality	25-Nov	26-Nov	27-Nov	Municipality	25-Nov	26-Nov	27-Nov
Achrafieh	ML	L	M	Ain el-Mreisse	ML	L	M	Bachoura	ML	L	M
Beirut Central Distr	ML	L	M	Marfai	ML	L	M	Mazraa	ML	L	M
Medaouar	ML	L	M	Minet el-Hosn	ML	L	M	Mwssaitbeh	L	L	M
Ras Beirut	L	L	M	Rmeil	ML	L	M	Saifi	ML	L	M
Zqaq el-Blat	ML	L	M								