

# Lebanon Fire Risk Bulletin



CIVIL DEDEFENCE

**Refer to cadast table condition.**

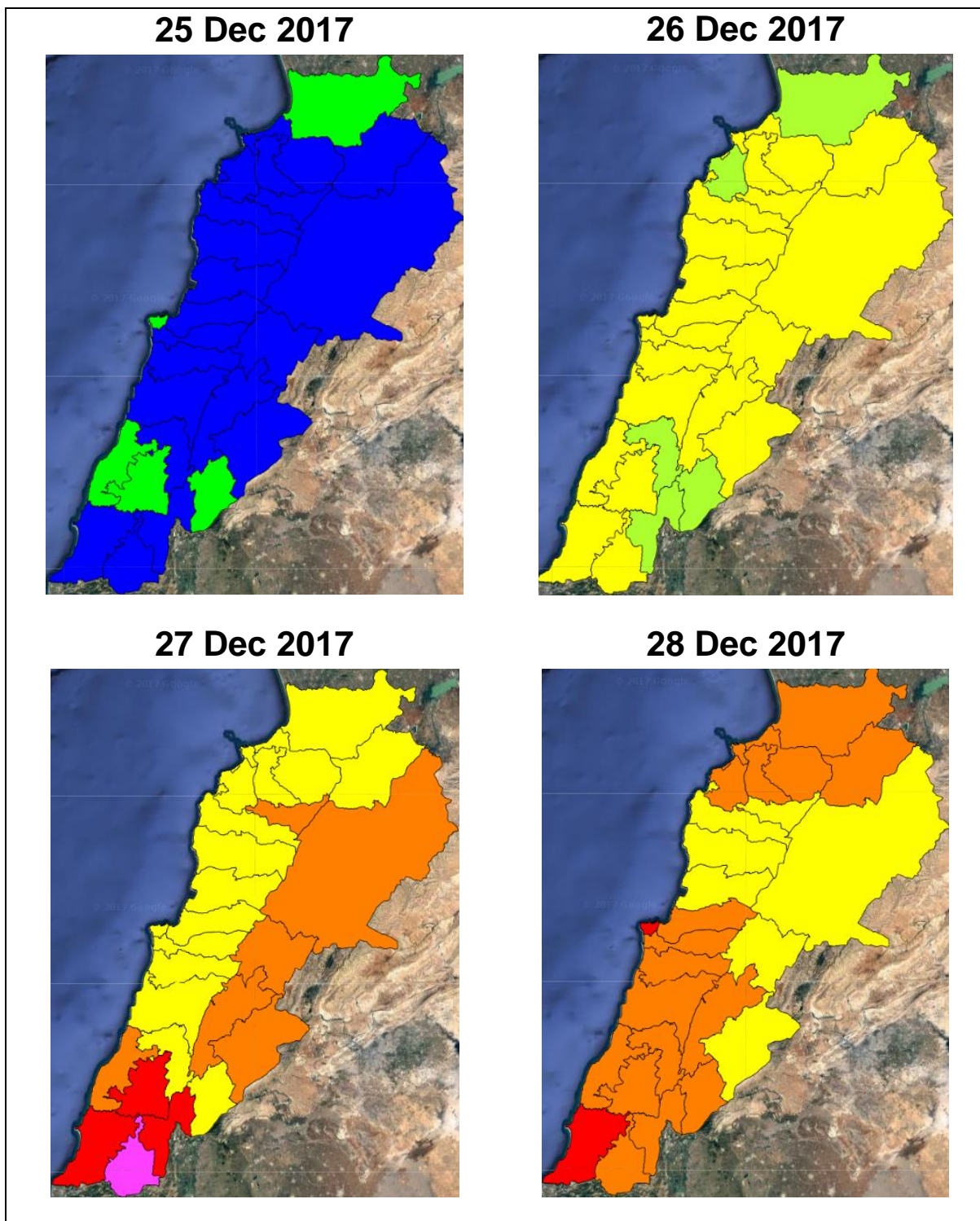
**Please note that the indicated temperature is at 2 meters height from the ground.**

General description of potential fire risk situation

Symbol	Level of risk	Meaning and actions
VL	Very low	Very low fire risk. Controlled burning operations can be hardly executed due to high fuel moisture content. Normally wildfires self-extinguish.
L	Low	Low fire risk. Controlled burning operations can be executed with a reasonable degree of safety.
ML	Medium low	Medium-low fire risk. Controlled burning operations can be executed in safety conditions. All the fires need to be extinguished.
M	Medium	Medium fire risk. Controlled burning operations would be avoided. All the fires need to be very well extinguished.
M	Medium high	Controlled burning is not recommended. Open flame will start fires. Cured grasslands and forest litter will burn readily. Spread is moderate in forests and fast in exposed areas. Patrolling and monitoring is suggested. Fight fires with direct attack and all available resources.
H	High	Ignition can occur easily with fast spread in grass, shrubs and forests. Fires will be very hot with crowning and short to medium spotting. Direct attack on the head may not be possible requiring indirect methods on flanks. Patrolling and monitoring the territory is highly suggested.
E	Extreme	Ignition can occur also from sparks. Fires will be extremely hot with fast rate of spread. Control may not be possible during day due to long range spotting and crowning. Suppression forces should limit efforts to limiting lateral spread. Damage potential total. Patrolling and monitoring the territory is highly suggested.

**Beirut, 26 December 2017**

# FIRE RISK INDEX

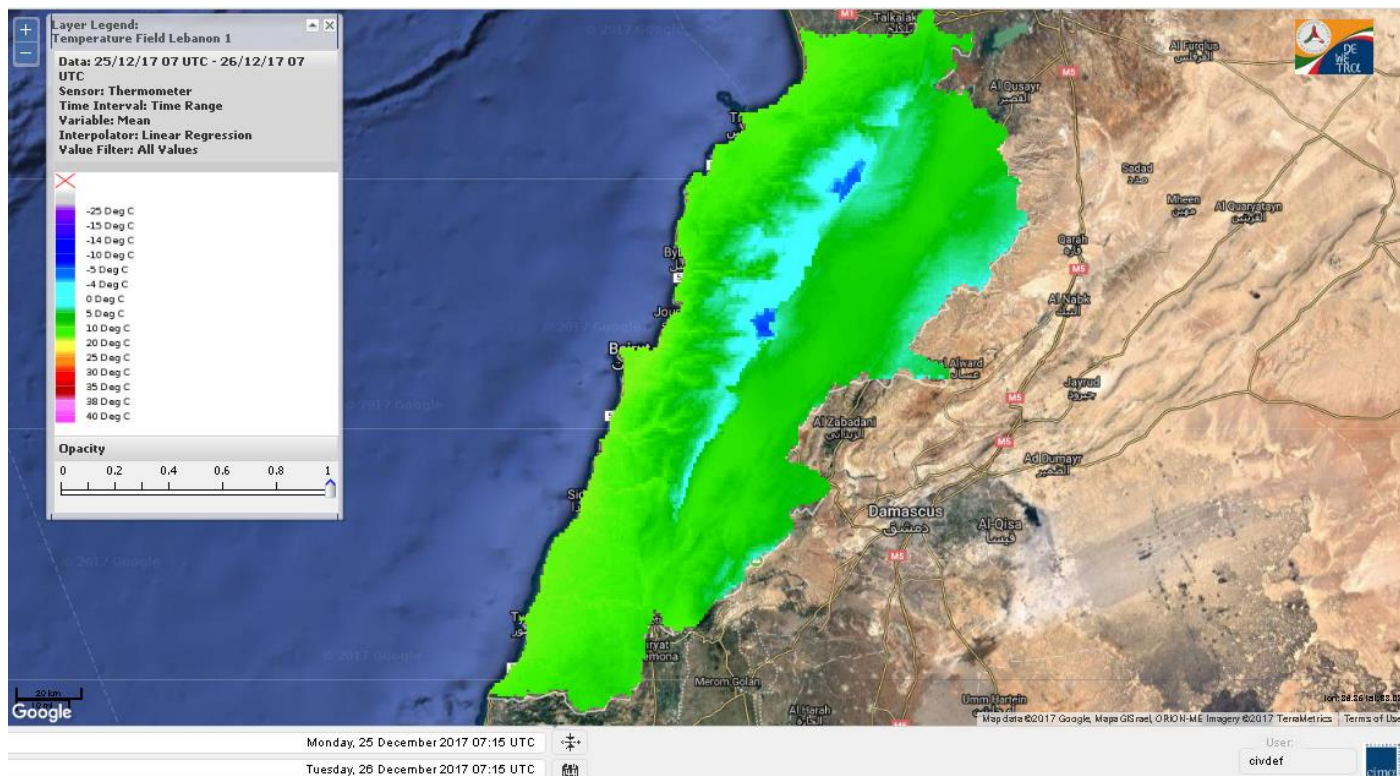


**Layer Legend:**  
Lebanon Wildfire Risk Index 1

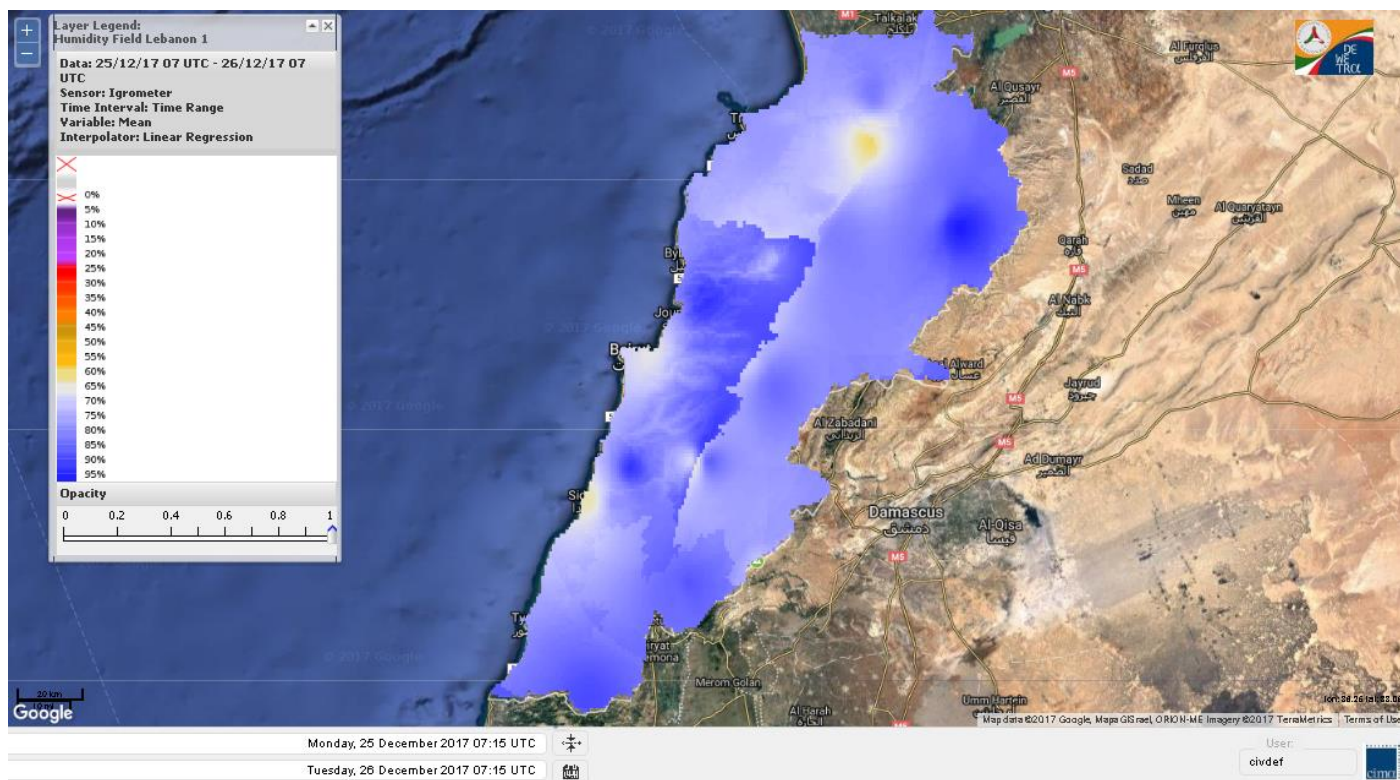
Data: Run: 26/12/2017 00:00. Forecast for 26  
Model: RISICO for the Republic of Lebanon  
Variable: Fire Weather Index  
Spatial Resolution: Caza

- VERY LOW
- LOW
- MEDIUM-LOW
- MEDIUM
- MEDIUM-HIGH
- HIGH
- EXTREME

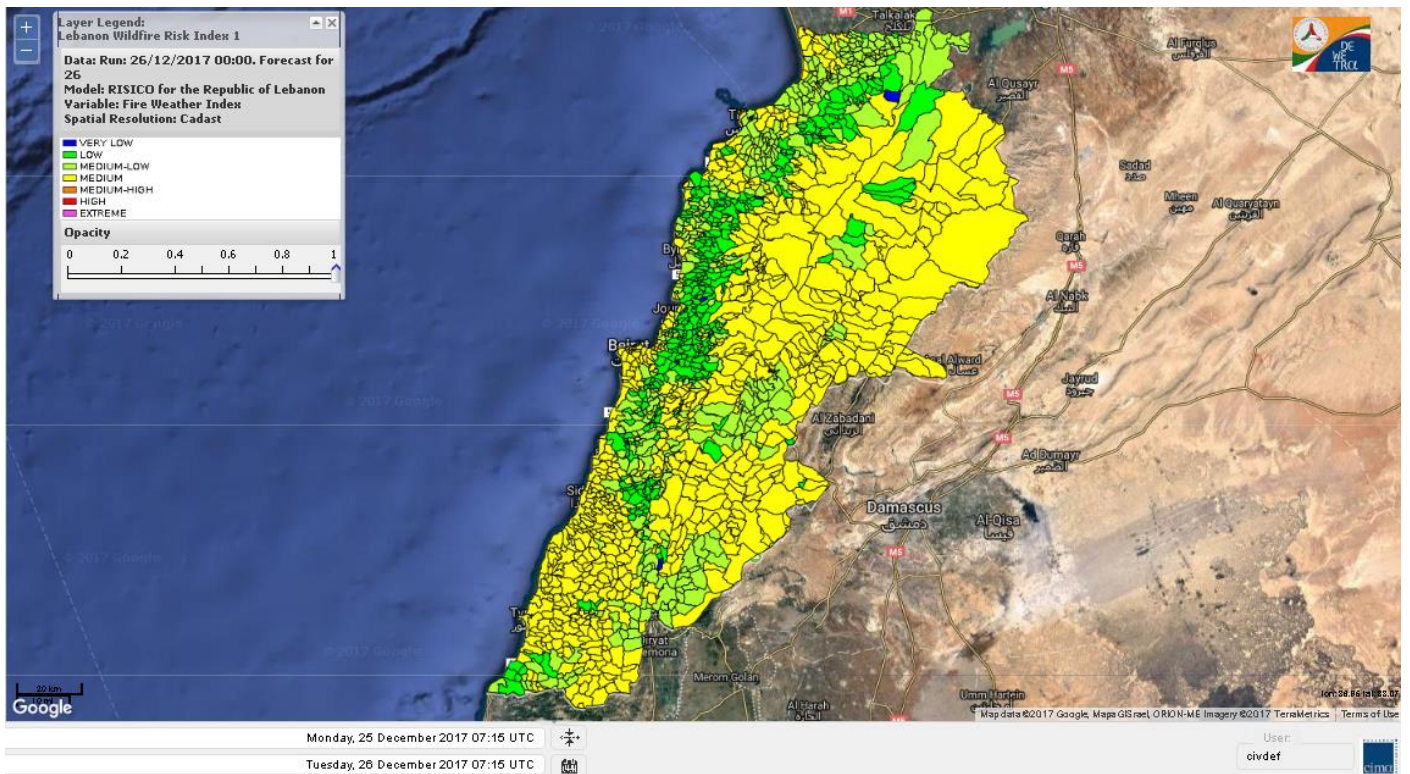
# Lebanon temperature for Lebanon for 26 Dec 2017



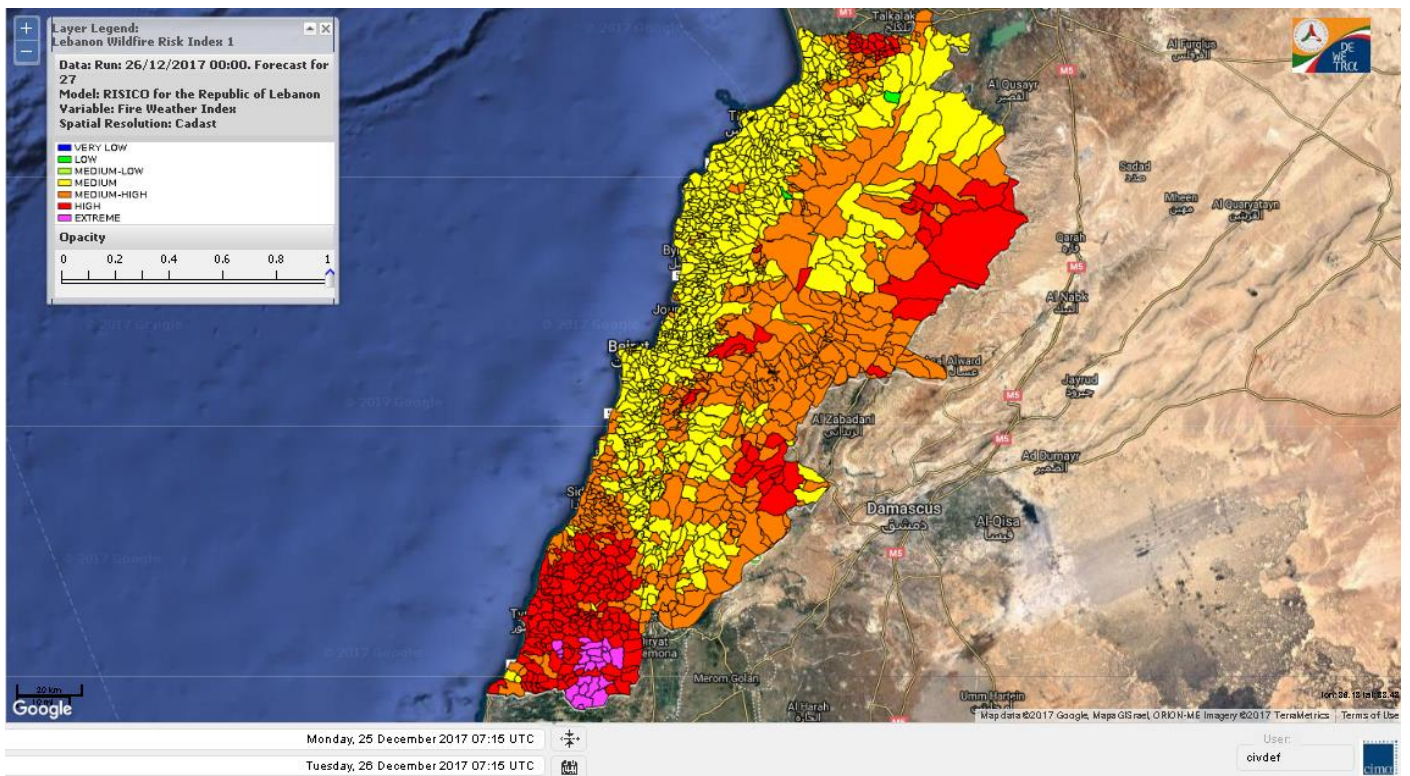
# Lebanon humidity for Lebanon for 26 Dec 2017



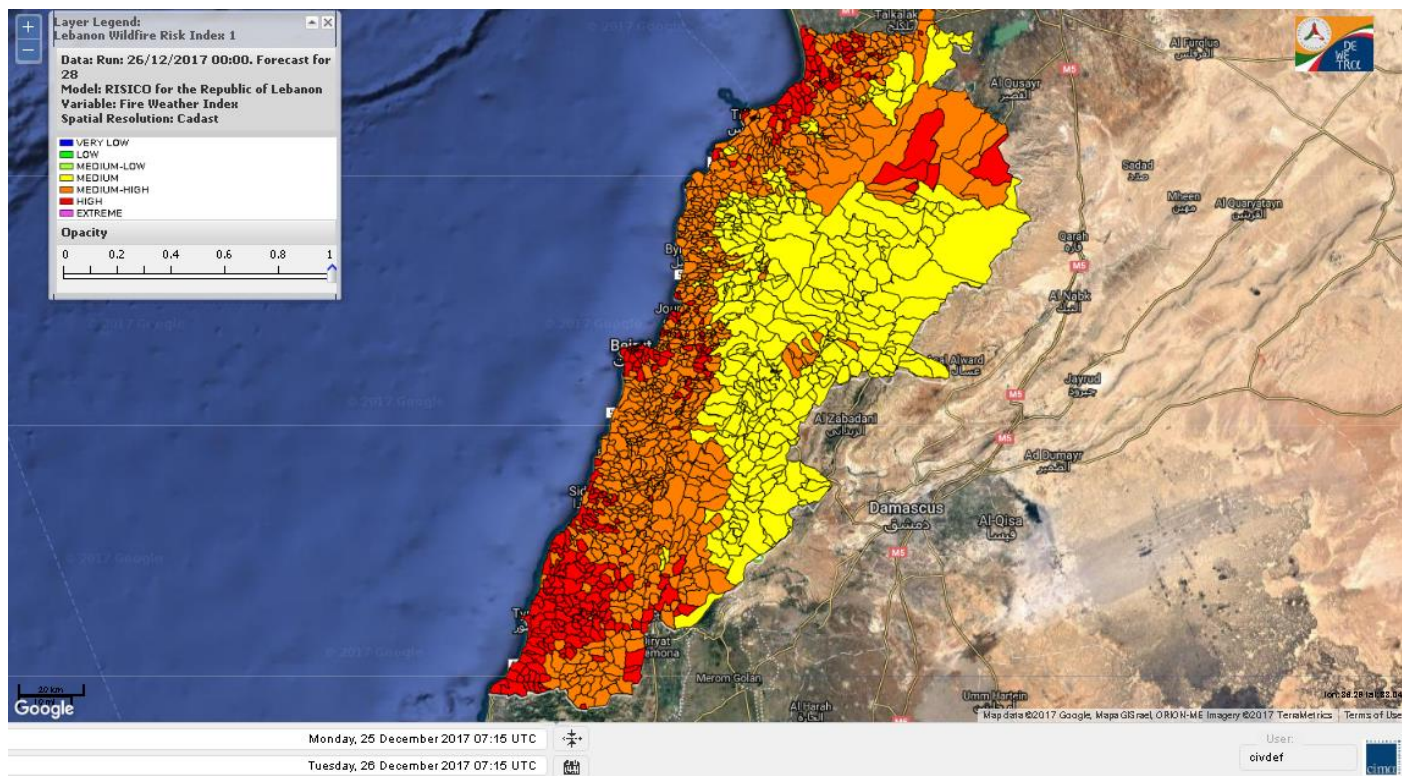
# Lebanon for 26 Dec 2017



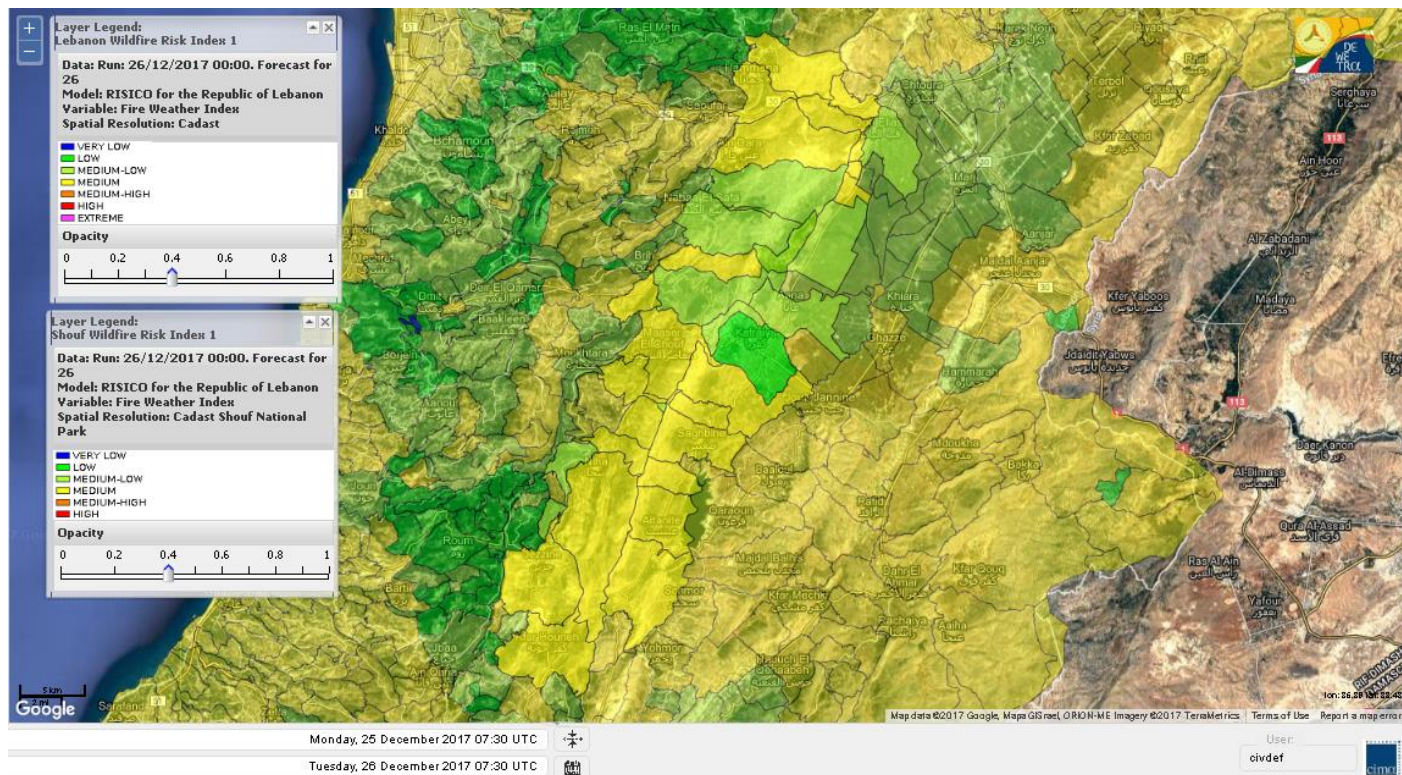
# Lebanon for 27 Dec 2017



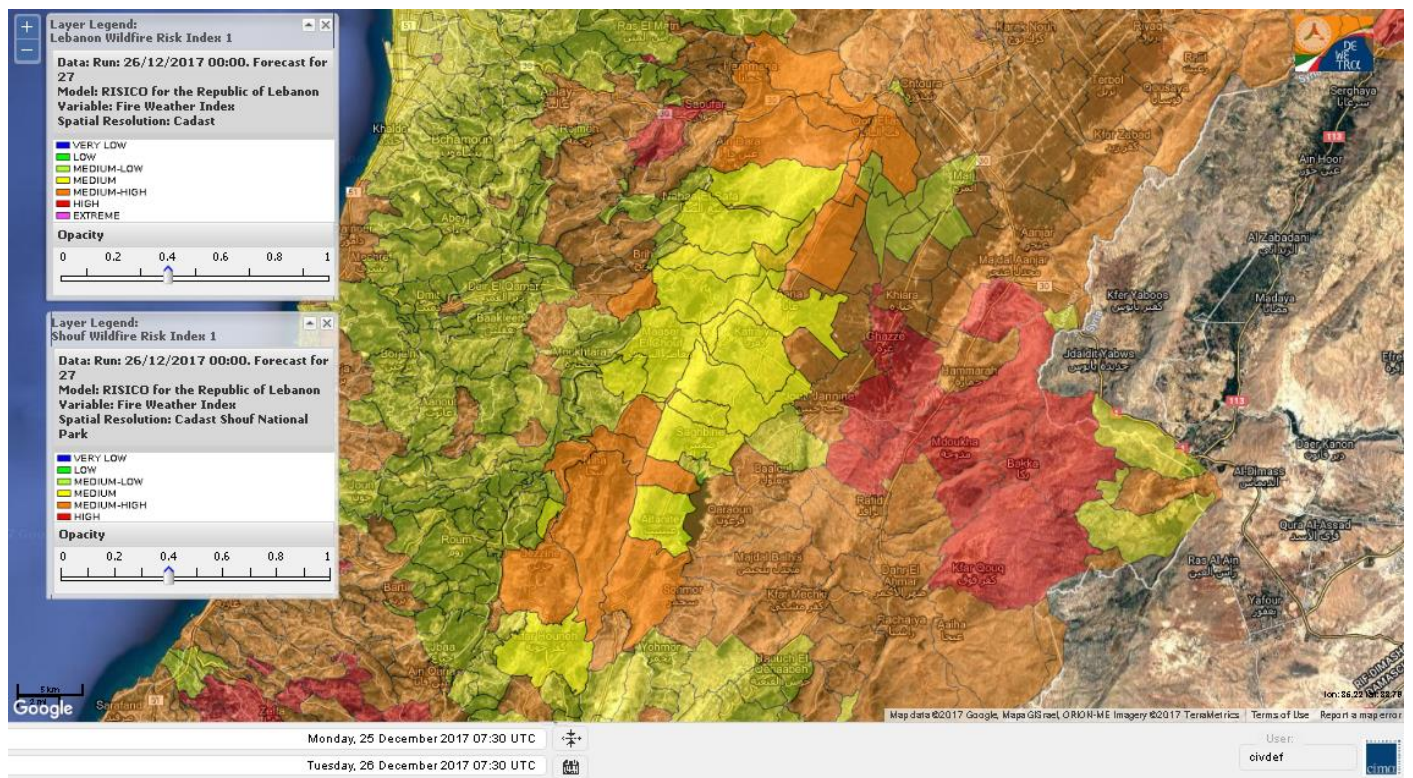
# Lebanon for 28 Dec 2017



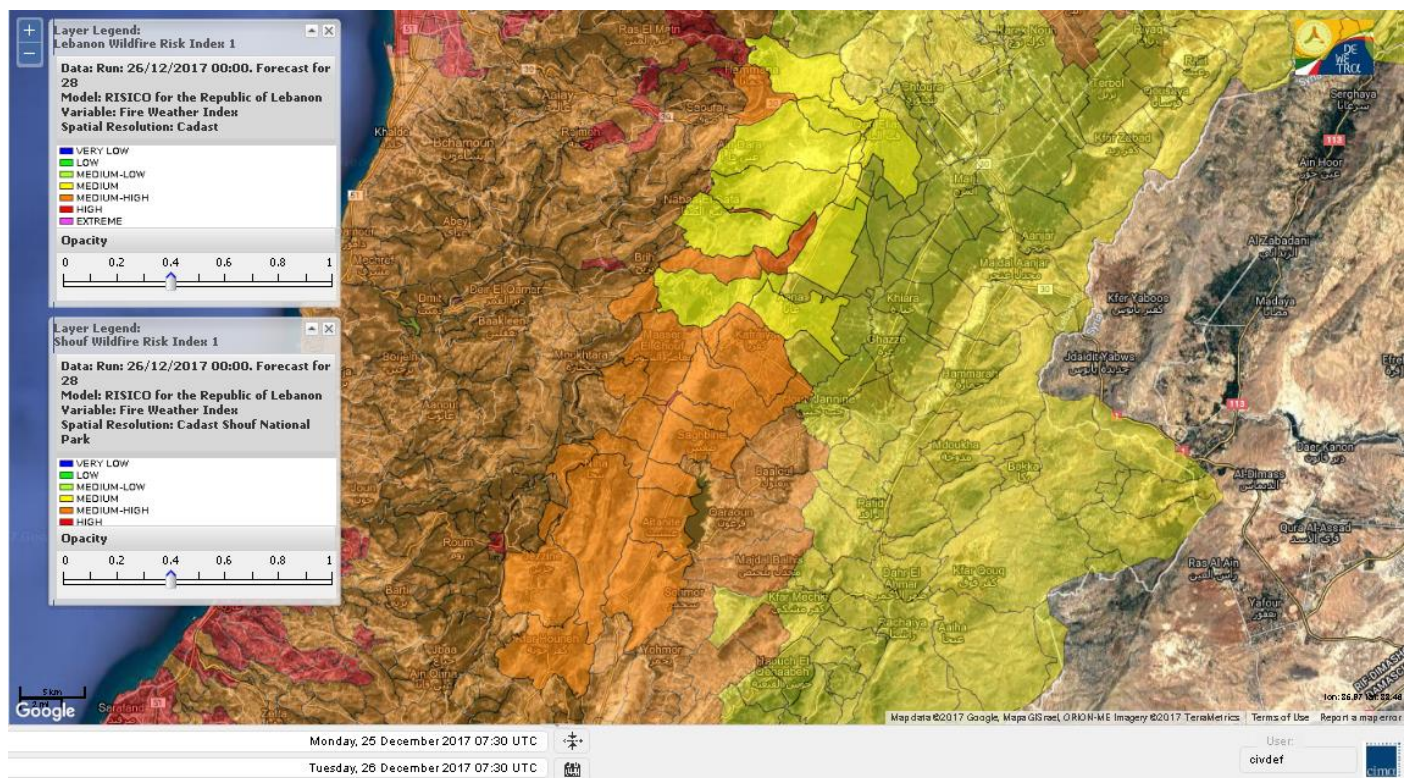
# Shouf Biosphere Reserve Forecast for 26 Dec 2017



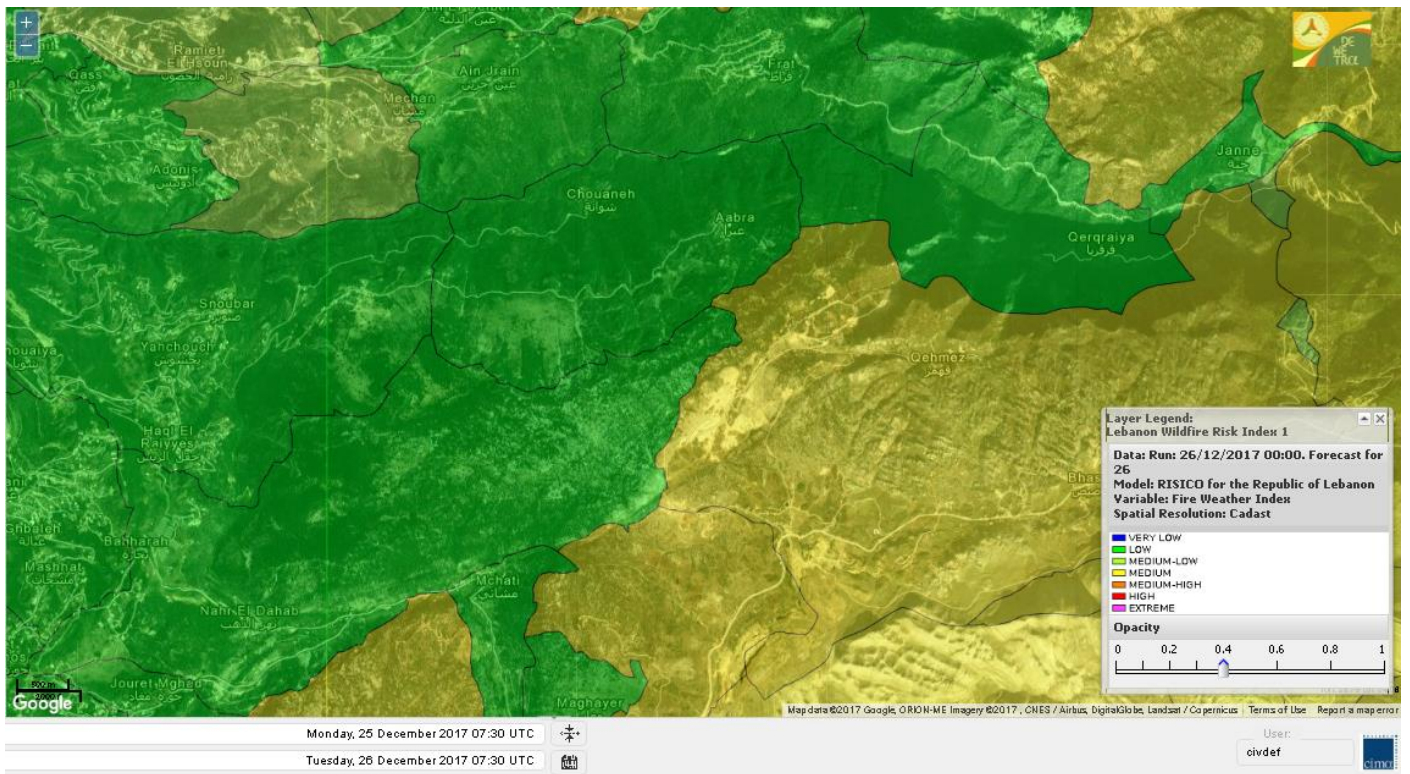
# Shouf Biosphere Reserve Forecast for 27 Dec 2017



# Shouf Biosphere Reserve Forecast for 28 Dec 2017



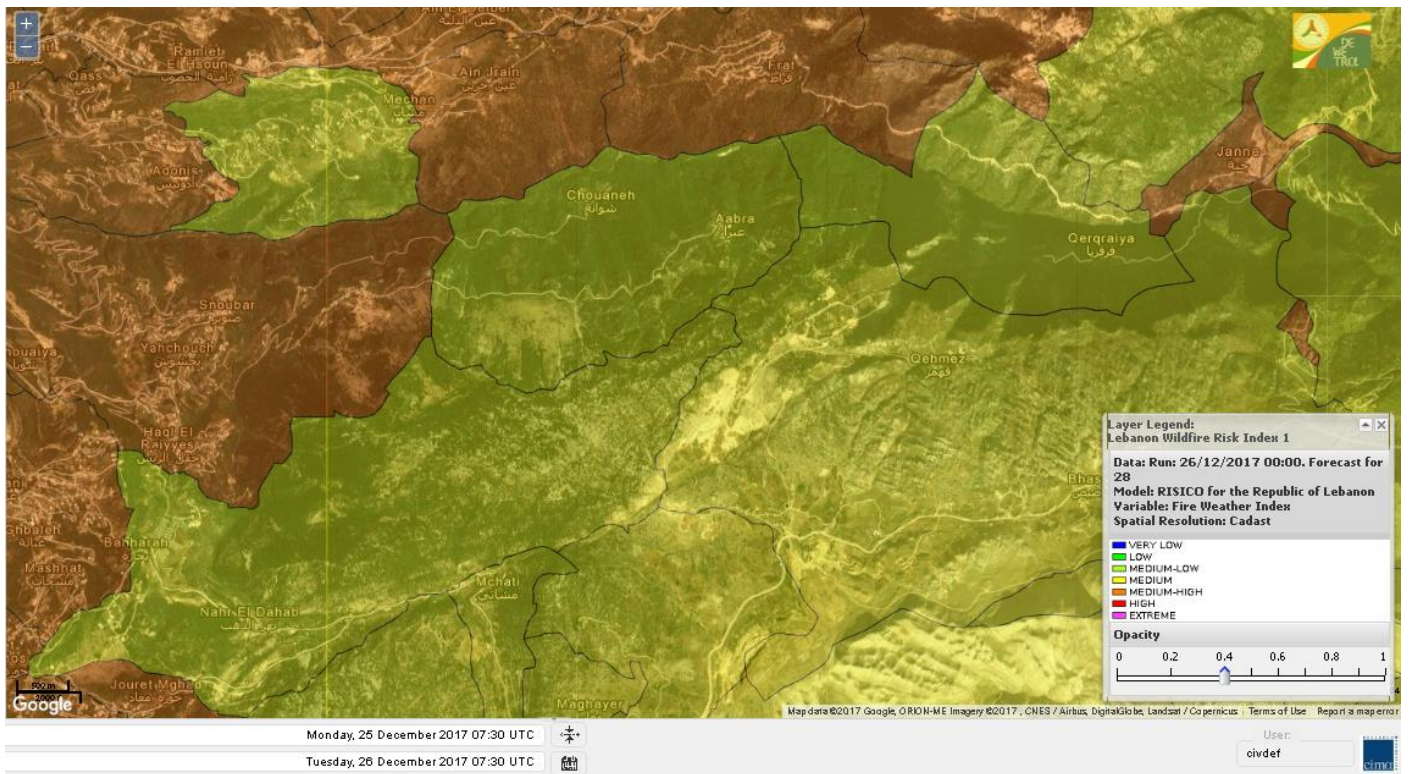
# Jabal Moussa Reserve Forecast for 26 Dec 2017



# Jabal Moussa Reserve Forecast for 27 Dec 2017



# Jabal Moussa Reserve Forecast for 28 Dec 2017





## Nord

### Koura

Municipality	26-Dec	27-Dec	28-Dec	Municipality	26-Dec	27-Dec	28-Dec	Municipality	26-Dec	27-Dec	28-Dec
Aaba	M	M	MH	Afsaddiq	M	M	MH	Ain Ekrene	M	M	MH
Amioun	M	M	MH	Anfeh	M	M	MH	Badbhoun	M	M	MH
Barghoun	M	M	MH	Barsa	ML	M	MH	Batroumine	M	M	MH
Bdebba	ML	M	MH	Bechmizine	M	M	MH	Bednaye El-Koura	ML	M	MH
Bhabbouch El-Koura	M	M	MH	Bkeftine	ML	M	MH	Bnehran	M	M	MH
Bqaiia El-Koura	M	M	MH	Bsarma	M	M	MH	Btaaboura	M	M	MH
Bttram	M	M	MH	Btouratij	M	M	MH	Bziza	M	MH	MH
Dar Beechtar	M	MH	MH	Dar Chmezzine	M	M	MH	Deddeh	M	M	MH
Deir El-Balamand	L	M	M	Fih	M	M	MH	Hraiche	M	M	MH
Ijdaabrine	ML	M	MH	Kaftoun	ML	MH	MH	Kefraya El-Koura	M	M	MH
Kfarakka	ML	M	MH	Kfarhata	ML	M	MH	Kfarhazir	M	M	MH
Kfarkahel	M	M	MH	Kfarsaroun	M	M	MH	Kosba	ML	M	MH
Mejdel el-Koura	ML	M	M	Nakhle	ML	M	MH	Qalhat	L	M	M
Ras Masqa	ML	M	MH	Rechdibbine	M	M	MH	Zakroun	ML	M	MH
Zgharta El-Mtaouile	L	M	MH								

### Bcharre

Municipality	26-Dec	27-Dec	28-Dec	Municipality	26-Dec	27-Dec	28-Dec	Municipality	26-Dec	27-Dec	28-Dec
Aabdine	M	M	MH	Bane	M	MH	MH	Barhelioun	ML	M	MH
Bazouone	M	MH	M	Becharre	M	MH	MH	Beit Menzer	M	M	MH
Billa	M	M	MH	Blaouza	M	MH	MH	Bqaa Kafra	M	MH	M
Bqerqacha	M	MH	M	Breissat	M	M	M	Dimane	M	M	M
Hadath El Jobbeh	M	M	M	Hadchit	M	M	M	Hasroun	M	MH	M
Mazraat Aassaf	VL	M	M	Mazraat Bani Saab	M	M	M	Mchaa El-Jobbeh	M	MH	M
Metrit	ML	M	MH	Moghr El-Ahoual	ML	M	MH	Ouadi Qannoubine	L	L	M
Qanat	M	M	M	Qnayouer	L	M	M	Tourza	M	M	M

### Batroun

Municipality	26-Dec	27-Dec	28-Dec	Municipality	26-Dec	27-Dec	28-Dec	Municipality	26-Dec	27-Dec	28-Dec
Aabrine	L	M	MH	Aalali	ML	M	M	Aartziz	L	M	M
Abdelli	L	M	MH	Ajdabra	L	M	MH	Assia	L	M	M
Basbina	ML	M	MH	Batroun	M	M	MH	Bcheleh	M	M	M
Bechtoudar	L	M	M	Beit Chlala	ML	M	M	Beit Kassab	L	M	M
Bijdarfil	ML	M	MH	Bqesmaya	L	M	MH	Chatine	M	M	M
Chebtin	L	M	M	Chekka	M	M	MH	Daael	L	M	M
Dahr Abi Yaghi	L	M	MH	Daraya El-Batroun	M	M	MH	Deir Billa	L	M	M
Deir Kfifane	ML	M	MH	Deir Mar Youhanna EL	L	M	M	Deir Mar Youssef Jra	L	M	MH
Douma	M	M	M	Douq	L	M	M	Eddeh El-Batroun	ML	M	MH
Ftihat El-Batroun	L	M	M	Ghouma	ML	M	MH	Hadtoun	L	M	M
Hamat	L	M	MH	Harbouna	L	M	MH	Hardine	L	M	M
Helta	L	M	M	Hery	M	M	MH	Jebbla	L	M	M
Jrabta El-Batroun	ML	M	MH	Jrane El-Batroun	ML	M	MH	Kfar Aabida	ML	M	MH
Kfar Halda	L	M	M	Kfarb Shlaimane	L	M	M	Kfarhatna	L	M	MH
Kfarhay	ML	M	MH	Kfarhelos	L	M	MH	Kfifane	ML	M	MH

Kfour El Arabi	M	M	M	Koubba	ML	M	MH	Kour	L	M	MH
Mar Mama	L	M	M	Masrah	L	M	MH	Mehmarch	M	M	M
Mrah Chdid	L	M	MH	Mrah El Ziyat	ML	M	MH	Mrah El-Hajj	L	M	M
Nahle El-Batroun	L	M	M	Niha El-Batroun	M	M	M	Ouahj El-Hajjar	ML	M	MH
Ouata Houb	M	M	M	Qatnaaoun	L	M	MH	Racha	ML	M	M
Rachana	L	M	MH	Rachkida	L	M	MH	Ram El-Batroun	L	M	M
Ras Nahhach	ML	M	MH	Selaata	M	M	MH	Sghar	ML	M	MH
Smar Jbayl	ML	M	MH	Sourat El-Batroun	L	M	M	Tannourine El-Faouqa	M	MH	M
Tannourine Et-Tahta	M	M	M	Thoum	L	M	MH	Toula El-Batroun	L	M	MH
Zan	L	M	M								

## Zgharta

Municipality	26-Dec	27-Dec	28-Dec	Municipality	26-Dec	27-Dec	28-Dec	Municipality	26-Dec	27-Dec	28-Dec
Aachach	M	M	MH	Aalma	M	M	MH	Aarde	ML	M	MH
Aintourine	ML	M	MH	Arabet Qozhaya	ML	M	M	Arde	M	M	MH
Arjis	M	M	MH	Asnoun	ML	M	MH	Ayto	L	M	M
Basloukit	M	MH	MH	Bchannine	M	M	MH	Besebeel	M	M	MH
Bhairret Toula	M	M	MH	Bnachee	ML	M	MH	Boussit	M	M	H
Danha	M	M	MH	Daraiya Zgharta	M	M	MH	Deir Jdeide	M	M	MH
Ehden	M	MH	MH	Halan	M	M	MH	Hariq Zgharta	ML	M	H
Houakir	L	M	MH	Hraiqis	M	M	H	laal	ML	M	MH
Ijbaa	L	M	MH	Karm Saddeh	L	M	M	Kfarchakhna	M	M	MH
Kfardlaqous	M	M	MH	Kfarfou	ML	M	MH	Kfarhata Zgharta	ML	M	MH
Kfarhoura	ML	M	MH	Kfarsghab	M	MH	MH	Kfaryachit	M	M	MH
Kfarzaina	M	M	MH	Khaldiye	ML	M	MH	Mazraat Ajbeaa	ML	M	MH
Mazraat Et-Teffah	L	M	MH	Mazraat Jneid	ML	M	MH	Mejdlaya Zgharta	M	M	MH
Merh Kfarsghab	ML	M	MH	Miryata	M	M	MH	Miziara	L	M	MH
Mzraat Kefraya	M	MH	MH	Qorah Bach	ML	M	MH	Rachiine	M	M	MH
Ras Kifa	ML	M	MH	Sakhra	ML	M	MH	Sebhel Zgharta	ML	M	MH
Serhel	L	M	M	Tallet Zgharta	ML	M	MH	Toula Zgharta	M	M	MH
Zgharta	M	M	MH								

## Minieh-Denniye

Municipality	26-Dec	27-Dec	28-Dec	Municipality	26-Dec	27-Dec	28-Dec	Municipality	26-Dec	27-Dec	28-Dec
Aasaymout	L	M	M	Aaymar	ML	M	MH	Aazki	ML	M	MH
Ain El-Tineh-Miniyeh	ML	M	MH	Assoun	L	M	MH	Bakhaaoun	L	M	M
Bchennata	M	MH	MH	Bechehhara	L	M	MH	Beddawi	M	M	MH
Behouaita	M	M	MH	Beit El Foqss	M	M	MH	Beit Haouik	ML	M	MH
Beit Zoud	L	M	MH	Bekaasafrine	M	MH	MH	Borj El Yahoudiyeh	M	M	MH
Bqarsouna	ML	M	MH	Btermaz	L	M	MH	Debaael	L	M	MH
Deir Ammar	M	M	H	Deir Nbouh	L	M	MH	Haouaret-Miniyeh	L	M	MH
Haql el Azimeh	L	M	M	Harf El Siyad	L	M	M	Hazmiye-Miniyeh	L	M	MH
Izal	ML	M	MH	Jarjour	L	M	M	Jayroun	L	M	MH
Kahf El-Malloul	L	M	MH	Karm El-Moher	ML	M	MH	Kfar Binine	ML	M	MH
Kfarchalane	ML	M	M	Kfarhabou	ML	M	MH	Kharroub-Miniyeh	ML	M	MH
Mazraat El-Kreme	L	M	M	Mazraat Ketrane	L	M	MH	Merkebta	M	M	MH
Minyeh	M	M	MH	Mrah El Sfirat	L	M	MH	Mrah Sraj	L	M	M
Mrebbine	M	MH	MH	Nabi Youcheaa	M	M	MH	Nemrine	M	M	MH

Qarhaiya	ML	M	MH	Qarne	L	M	MH	Qarsita	L	M	MH
Qattineh-Miniyeh	L	M	M	Qemmamine	L	M	MH	Qraine	L	M	M
Raouda-Aadoua	ML	M	MH	Rihaniyet-Miniyeh	M	M	H	Sfireh	L	M	MH
Sir Ed-Danniyeh	L	M	MH	Tarane	L	M	MH	Terbol-Miniyeh	M	M	MH
Zaghartaghriane	L	M	MH	Zouq Bhannine	M	M	MH				

## Nabatiye

### Nabatiye

Municipality	26-Dec	27-Dec	28-Dec	Municipality	26-Dec	27-Dec	28-Dec	Municipality	26-Dec	27-Dec	28-Dec
Aabba	M	H	MH	Aazzi	M	MH	MH	Adchit El-Chqif	M	H	MH
Ain Bou Swar	M	MH	MH	Ain Kana	M	MH	MH	Ali El-Taher	M	MH	MH
Ansar	M	H	MH	Arab Salim	M	H	MH	Arnoun	M	M	MH
Bfaroue	M	MH	MH	Breyqaah	M	H	MH	Charqiyeh	M	H	MH
Choukine	M	H	MH	Deir El Zahrani	M	H	MH	Doueir El-Nabatiyeh	M	H	MH
Habbouch El-Nabatiye	M	H	MH	Hamra El-Nabatiyeh	M	H	MH	Harouf El-Nabatiyeh	M	H	MH
Hmaile	M	H	MH	Houmin El Faouqa	M	H	MH	Houmin El Tahta	M	MH	MH
Jarjough	M	MH	MH	Jbaah El-Nabatiyeh	ML	M	MH	Jebchit	M	H	MH
Kfar Djal El-Nabatiy	M	H	MH	Kfar Remmane	M	MH	MH	Kfar Sir	M	H	MH
Kfar Tebnit	M	H	MH	Kfarfila	M	MH	MH	Kfour El-Nabatieh	M	H	MH
Mayfadoun	M	H	MH	Mazraat Bsaffour	M	H	MH	Mazraat Chalbaal	M	H	MH
Mazraat Dmoul	M	H	MH	Mazraat El Khreibeh	M	H	MH	Mazraat El-Bayad El-	M	H	MH
Mazraat Kfarjaouz	M	H	MH	Mazraat Qalaat Meiss	M	H	MH	Nabatiyeh El-Fawka	M	H	MH
Nabatiyeh Et-Tahta	M	H	MH	Namiriyeh	M	H	MH	Qaaqaaiyet El Jisr	M	H	MH
Qossaibeh El-Nabatiy	M	H	MH	Roumine	M	H	MH	Sarba El-Nabatieh	M	MH	MH
Sir El-Gharbiyeh	M	H	MH	Toul	M	H	MH	Yehmor El-Nabatiyeh	M	MH	MH
Zaoutar El Charkiyeh	M	H	MH	Zaoutar El-Gharbiyeh	M	H	MH	Zebdine El-Nabatiyeh	M	H	MH
Zefta	M	H	MH								

### Hasbaiya

Municipality	26-Dec	27-Dec	28-Dec	Municipality	26-Dec	27-Dec	28-Dec	Municipality	26-Dec	27-Dec	28-Dec
Ain Jarfa	ML	M	MH	Abou Qamha	ML	MH	MH	Ain Qania	M	M	MH
Bourghos	M	MH	MH	Chebaa	M	MH	MH	Chouaya Hasbaya	M	MH	MH
Dellafeh	M	MH	MH	Fardiss Hasbaiya	M	MH	MH	Hasbaya	M	M	MH
Hbariyeh	M	M	MH	Kaoukaba Hasbaiya	M	MH	MH	Kfar Chouba	M	MH	MH
Kfar Hamam	M	MH	MH	Kfeir El-Zait	ML	M	M	Khalwat Hasbaya	ML	M	M
Khreibet Hasbaiya	ML	M	MH	Majdiyyeh Hasbaiya	M	MH	MH	Marj Ez-Zhour (Haouc	ML	M	MH
Meri	ML	MH	MH	Mimass	ML	M	MH	Rachaiya El-Fokhar	ML	M	MH
Salaiyeb	M	MH	H								

### Marjayoun

Municipality	26-Dec	27-Dec	28-Dec	Municipality	26-Dec	27-Dec	28-Dec	Municipality	26-Dec	27-Dec	28-Dec
Aalmane Marjaayoun	ML	MH	MH	Aamra	M	MH	MH	Adayseh Marjaayoun	M	MH	H
Adchit El-Koussair	M	H	MH	Ain Aarab Marjaayoun	M	MH	MH	Bani Haiyann	M	H	MH
Blatt Marjaayoun	M	MH	MH	Blida	M	H	MH	Borj El-Moulouk	M	M	MH
Boueyda Marjaayoun	ML	MH	MH	Deir Mimass	ML	M	MH	Deir Siriane	M	MH	MH
Dibbine	M	MH	MH	Ebel El Saqi	M	MH	MH	Houla	M	H	MH
Houra	M	M	MH	Kfar Kila	M	MH	MH	Khiam Marjaayoun	M	MH	MH

Klayaa	M	M	MH	Majdel Selem	M	H	MH	Marjaayoun	M	MH	MH
Markaba	M	H	MH	Mays El-Jabal	M	H	MH	Mazraat Doumiat	M	MH	MH
Mazraat Sarada	M	MH	MH	Mhaibib	M	H	MH	Qabrikha	ML	H	MH
Qantara	M	H	MH	Rab El-Thalathine	M	H	H	Saouaneh Marjayoun	M	H	MH
Taloussa	ML	H	MH	Taybeh Matjaayoun	M	MH	MH	Touline	M	H	MH

## Bent Jbail

Municipality	26-Dec	27-Dec	28-Dec	Municipality	26-Dec	27-Dec	28-Dec	Municipality	26-Dec	27-Dec	28-Dec
Ain-Ebel	M	E	MH	Aitaroun	M	H	MH	Aynata Bint Jbeil	M	H	MH
Ayta El-Chaeb	M	E	MH	Ayta El-Jabal	M	E	MH	Beit Lif	ML	H	MH
Beit Yahoun	M	E	MH	Bint Jbeil	M	E	MH	Borj Qalaway	M	H	MH
Braachit	M	E	MH	Chakra	M	E	MH	Debel	M	E	MH
Deir Antar	M	E	MH	Froun	M	H	MH	Ghandouriyeh Bint Jb	M	H	MH
Hanine	M	E	MH	Hariss	M	E	MH	Hdatha	M	E	MH
Jmeymeh	M	E	MH	Kafra Bint Jbeil	ML	H	MH	Kfar Dounine	M	H	H
Khirbet Selm	M	H	H	Kounine	M	H	MH	Maroun El Ras	M	H	MH
Qalaway	M	H	MH	Qaouzah	ML	H	MH	Qatmoun	M	E	MH
Ramya Bint Jbeil	M	H	MH	Rchaf	M	H	MH	Rmeich	M	E	MH
Safad Al Battikh	M	E	MH	Salhaneh	ML	H	MH	Serbine	M	E	MH
Sultanieh Bint Jbeil	M	E	MH	Tibnine	M	E	MH	Tiri	M	H	MH
Yaroun	M	E	MH	Yater	M	H	MH				

## Mont Liban

### Jbail

Municipality	26-Dec	27-Dec	28-Dec	Municipality	26-Dec	27-Dec	28-Dec	Municipality	26-Dec	27-Dec	28-Dec
Aabeydat	L	M	MH	Aalita	L	M	MH	Aamchit	M	M	MH
Aarab El-Lahib	M	MH	M	Aarasta	ML	M	MH	Adonis Jbeil	L	M	MH
Afqa Jbeil	M	M	M	Ain El Delbeh Jbeil	ML	M	MH	Ain El-Ghouayba	M	M	M
Ain Jrain	ML	M	MH	Ain Kfah	ML	M	MH	Almat El Chemaliyat	ML	M	MH
Almat El-Jenoubiya	M	M	M	Aqoura	M	MH	M	Bayzoun	ML	M	MH
Bchille Jbeil	L	M	MH	Bechtlida	L	M	M	Behdaydat	L	M	MH
Beit Habbaq	ML	M	MH	Bejjeh	ML	M	MH	Bekhaaz	ML	M	MH
Berbara Jbeil	ML	M	MH	Bintael	L	M	MH	Birket Hjoula	L	M	MH
Blatt Jbeil	ML	M	MH	Boulhos	ML	M	MH	Breyj Jbeil	L	M	MH
Chamat	M	MH	MH	Chikhane	ML	M	MH	Chmout	L	M	MH
Eddeh Jbeil	ML	M	MH	Ehmej	M	M	M	Fatre	L	M	MH
Ferhet	M	M	MH	Fghal	L	M	MH	Frat	L	M	MH
Ghabat	M	MH	MH	Ghalboun	ML	M	MH	Gharzouz	M	M	MH
Ghofrine	ML	M	MH	Habil	L	M	MH	Halate	ML	M	MH
Haqel	L	M	M	Hbaline	ML	M	MH	Hboub	ML	M	MH
Hdeine	M	MH	M	Hema Er-Rehban	M	MH	M	Hema Mar Maroun Aann	M	MH	M
Hjoula	L	M	MH	Hosrayel	ML	M	MH	Hsarat	ML	M	MH
Hsoun	ML	M	MH	Jaj	M	M	M	Janne	L	M	MH
Jbeil	M	M	MH	Jeddeyl Jbeil	ML	M	MH	Jlisse	L	M	MH
Jouret El-Qattine	L	M	MH	Kfar Baal Annaya	L	M	MH	Kfar Kidde	L	M	MH
Kfar Kouas	L	M	MH	Kfar Mashoun	M	MH	MH	Kfoun	L	M	MH

Kharbe Jbeil	ML	M	M	Laqlouq	M	MH	M	Lassa	M	M	M
Lehfed	L	M	M	Maad	ML	M	MH	Mar Sarkis	M	MH	M
Mastita	M	M	MH	Mayfouq	L	M	M	Mazraat El Siyad	M	MH	M
Mazraat El-Maaden	L	M	MH	Mechane	ML	M	M	Mechmech Jbeil	L	M	M
Mehrin	ML	M	MH	Mejdel El-Akoura	M	M	M	Mghayreh Jbeil	M	MH	M
Mounsef	ML	M	MH	Nahr Ibrahim	M	M	MH	Qahmez	M	M	M
Qartaba	M	M	M	Qartaboun	M	M	MH	Qattara Jbeil	L	M	M
Qorqraya	L	M	M	Ramout	ML	M	MH	Ras Osta	L	M	MH
Rihane Jbeil	M	M	MH	Sakiet El-Khayt	L	M	MH	Saqi Richmaya	M	M	M
Sebrine	L	M	MH	Seraita	M	M	M	Souane Jbeil	M	M	MH
Tadmor	M	MH	M	Tartej	M	M	M	Torzaiya	ML	M	MH
Yanouh Jbeil	M	MH	MH	Zibdine Jbeil	L	M	MH				

## El Metn

Municipality	26-Dec	27-Dec	28-Dec	Municipality	26-Dec	27-Dec	28-Dec	Municipality	26-Dec	27-Dec	28-Dec
Aain El-Qabu	L	MH	MH	Aain El-Qach	ML	M	MH	Aain El-Teffaha	M	M	MH
Aain el-Safsaf El-M	L	M	MH	Abou Mizane	ML	M	MH	Ain Aar	ML	M	MH
Ain Alaq	L	M	MH	Ain El-Kharroube	M	M	MH	Ain El-Sendianeh	ML	MH	MH
Ain El-Zeitoune	ML	M	MH	Ain Saadeh	ML	M	H	Aintoura El-Matn	M	H	M
Amaret Chalhoub	M	M	MH	Antelias	M	M	MH	Atchaneh	L	M	MH
Ayroun	ML	MH	MH	Baabdat	L	M	MH	Baouchariyeh	M	M	MH
Baskinta	M	MH	M	Beit Chabab	L	M	MH	Beit El-Chaar	M	M	MH
Beit El-Kekko	M	M	MH	Beit Mery	ML	M	MH	Bhersaf	L	M	MH
Bikfaya	ML	M	MH	Biyakout	M	M	MH	Bnabil	L	M	MH
Bourj Hammoud	M	M	MH	Bqennaya	M	M	MH	Broummana El-Matn	L	M	MH
Bsalim	ML	M	H	Bsifrine	L	M	H	Bteghrine	ML	M	MH
Chaouiye	L	M	MH	Chouaya El-Matn	M	M	MH	Choueir	L	M	MH
Chrine	L	M	MH	Dahr El Sawan El-Mat	L	M	MH	Daychouniyeh	ML	M	MH
Dbayeh	M	M	MH	Deir Chamra	L	M	M	Deir Mar Abda el Mch	L	M	MH
Deir Mar Roukouz	M	M	MH	Deir Tamiche	L	M	MH	Dik El-Mehdi	ML	M	MH
Dikwaneh	M	M	MH	Douar El-Matn	ML	M	MH	Fanar	ML	M	MH
Fraike	L	M	MH	Haret El-Ballaneh	ML	M	MH	Hbous	ML	M	H
Himlaya	ML	M	MH	Jal El Did	M	M	MH	Jdeideh El-Metn	M	M	MH
Jouar El-Matn	L	M	MH	Jouret El-Ballout	L	M	MH	Kaaqour	L	M	H
Kfar Aaqab	L	M	MH	Kfertay El-Matn	M	MH	MH	Khenchara	ML	M	MH
Khillet El-Mtain	L	M	MH	Konnabat Broummana	L	M	MH	Konnabat Salima	L	M	MH
Machraah El-Matn	M	MH	MH	Majdel Tarchich	M	MH	M	Majzoub	M	M	MH
Mansouriyeh El-Metn	M	M	MH	Mar Boutros Karm Et-	L	M	MH	Mar Chaya et Mzekke	L	M	MH
Mar Moussa Ed-Douar	L	M	MH	Marjaba	M	M	M	Masqa	L	M	MH
Mayasse	L	M	MH	Mazraat Deir Aoukar	M	M	MH	Mazraat El-Hadirat	ML	M	MH
Mazraat Yachouh	ML	M	MH	Mchikha	M	MH	MH	Menqlet Mezher	M	M	MH
Mhaydseh Matn	ML	M	MH	Mkalles	M	M	MH	Mrouj	M	H	M
Mtain	M	H	M	Mtayleb	ML	M	MH	Nabay	L	M	MH
Naccache	ML	M	MH	Ouadi Chahine	L	M	MH	Ouadi El-Karm El-Mat	L	MH	MH
Ouata El-Mrouj	M	MH	MH	Ouyoun El-Matn	L	M	MH	Qornet Chehwan	L	M	MH
Qornet El-Hamra	L	M	MH	Roumieh	ML	M	MH	Sfeilet Bikfaya	L	M	MH
Sinn El-Fil	M	M	MH	Zabbougha	L	M	MH	Zalqa	M	M	MH

Zarouon	L	M	H	Zekrite	L	M	MH	Zigrine El-Matn	ML	M	MH
Zouk El-Khrab	M	M	MH								

## Chouf

Municipality	26-Dec	27-Dec	28-Dec	Municipality	26-Dec	27-Dec	28-Dec	Municipality	26-Dec	27-Dec	28-Dec
Aalmane El-Chouf	M	MH	MH	Aammq El-Chouf	ML	M	MH	Ain Ouzein	ML	M	MH
Ain Qani	ML	M	MH	Ain Zhalta	ML	M	M	Ainbal	ML	M	MH
Amatour	ML	M	MH	Anout	M	M	MH	Atrine	ML	M	MH
Baadarane	M	M	MH	Baaqline	ML	M	MH	Baasir	M	MH	MH
Barja	M	MH	MH	Barouk	ML	M	M	Bater	M	MH	MH
Batloun	M	MH	MH	Bayqoun	M	MH	MH	Bchetfine	ML	M	MH
Beiteddine	ML	M	MH	Benouati Ech-Chouf	ML	M	MH	Berjein	ML	M	MH
Bireh et Mtalleh	M	MH	MH	Biret El-Chouf	M	MH	MH	Bkechtine Ouel Mchei	L	M	MH
Bkifa El-Chouf	M	M	MH	Botme	ML	M	MH	Bqaiaa Ech-Chouf	L	M	MH
Bsaba El-Chouf	M	M	MH	Chammis El-Chouf	M	MH	MH	Chehim	ML	M	MH
Chemaarine	L	M	MH	Chourit	ML	M	MH	Daher El-Chouf	ML	M	MH
Dalhoun	M	M	MH	Damour	M	MH	MH	Daraya El-Chouf	ML	M	MH
Deir El-Moukhalles	L	M	MH	Deir Baba	ML	M	MH	Deir Dourit	ML	M	MH
Deir El-Qamar	ML	M	MH	Deir Kouche	L	M	MH	Dibbieh	L	M	MH
Dmit	ML	M	MH	Fouara Jaafar	ML	MH	H	Fraidis El-Chouf	M	M	MH
Ghabet Jaafar	ML	M	MH	Gharife	ML	M	MH	Haret Jandal	M	M	MH
Hasrout	M	MH	MH	Jadra	M	MH	MH	Jahlieh	ML	M	MH
Jbeih El-Chouf	M	MH	MH	Jdeidet El-Chouf	M	M	MH	Jiyeh	M	M	MH
Jleilyeh	M	MH	MH	Jmailiyeh	M	M	MH	Joun	ML	M	MH
Kahlounie El-Chouf	M	MH	MH	Ketermaya	M	MH	MH	Kfar Faqoud	ML	M	MH
Kfar Hamal	M	MH	MH	Kfar Him	M	MH	MH	Kfar Katra	ML	M	MH
Kfar Niss	M	MH	MH	Kfar hay	ML	MH	MH	Kfarnabrakh	M	MH	MH
Khirbet Bisri	ML	M	MH	Knayse El-Chouf	L	M	MH	Maaniyeh	M	MH	MH
Maasser Beiteddine	M	M	MH	Maasser El-Chouf	M	M	MH	Majdalouna	M	M	MH
Majdel El-Meouch	M	MH	MH	Mazboud	M	MH	MH	Mazmoura	M	M	MH
Mazraat El Chouf	M	M	MH	Mazraat El Daher	ML	M	MH	Mazraat El-Douair	L	M	MH
Mechref	ML	M	MH	Mghairie	M	MH	MH	Mghayrie El-Chouf	L	M	MH
Moukhtara	ML	M	MH	Mrusti	M	MH	MH	Mtolle	M	MH	MH
Naameh	M	MH	MH	Niha El-Chouf	M	MH	MH	Ouadi Abou Youssef	L	M	M
Ouadi Ed-Deir	M	MH	MH	Ouadi El-Sit	M	MH	MH	Ouadi bnehlay	L	M	MH
Qraibeh	M	M	MH	Qreiaa	L	M	MH	Rmayle El-Chouf	M	MH	MH
Semqaniyeh	M	MH	MH	Sibline	M	MH	MH	Sirjbeil	ML	M	MH
Warhanieh	M	M	MH	Werdaniyeh	M	MH	MH	Zaarourieh	M	M	MH

## Baabda

Municipality	26-Dec	27-Dec	28-Dec	Municipality	26-Dec	27-Dec	28-Dec	Municipality	26-Dec	27-Dec	28-Dec
Abadiyeh	ML	M	MH	Ain Mouaffaq	ML	M	MH	Araiya	L	M	MH
Arbaniyeh	L	M	MH	Arsoun	L	M	MH	Baabda	ML	M	MH
Baalchmey	M	MH	MH	Bmaryam	L	MH	MH	Bourj El-Brajneh	M	M	MH
Boutchay	ML	M	MH	Bsaba Baabda	ML	M	MH	Btekhney	L	MH	H
Btibyat	L	MH	MH	Bzebdine	ML	M	MH	Chbeniyeh	M	MH	MH
Chiyah	M	M	MH	Chmeisset Baabda	L	MH	MH	Chouit	L	M	MH
Deir El-harf	ML	MH	MH	Deir Khouna	ML	H	MH	Dlaybeh	L	M	MH

Falougha	M	MH	M	Furn El-Chebbak	M	M	MH	Hadath Beyrouth	M	M	MH
Halaliyeh Baabda	L	M	MH	Hammana	M	MH	MH	Haret El Sett	L	M	MH
Haret Hamze	ML	M	MH	Haret Hreik	M	M	MH	Hasbaiya El-Metn	L	M	H
Jouar El-Hoz	ML	M	M	Jouret Arsoun	L	M	MH	Kfar Chima	M	M	MH
Kfar Selouane	M	MH	M	Khalouat Baabda	M	H	MH	Kneisset Baabda	L	M	MH
Laylakeh	M	MH	MH	Louayzeh Baabda	ML	M	MH	Merdache	ML	M	MH
Mzairaa Baabda	L	M	MH	Ouadi Chahrour El Ol	ML	M	MH	Ouadi Chahrour El So	L	M	MH
Qalaa Baabda	L	H	H	Qhraybe Baabda	ML	MH	MH	Qobbayaa	M	MH	MH
Qornayel	L	M	MH	Qortada	L	M	MH	Qrayeh Baabda	M	M	MH
Qsaibeh Baabda	L	M	MH	Qtale Baabda	L	M	MH	Ras El Metn	L	M	MH
Ras El-Haref	M	MH	MH	Rouayset El-Ballout	L	M	MH	Salima Baabda	L	M	MH
Tahouitat El Ghadir	M	M	MH	Tarchich	M	MH	M	Zandouqa	VL	M	MH

## Aley

Municipality	26-Dec	27-Dec	28-Dec	Municipality	26-Dec	27-Dec	28-Dec	Municipality	26-Dec	27-Dec	28-Dec
Abey	ML	M	MH	Aghmid	ML	M	MH	Ain Dara	M	MH	M
Ain Drafil	L	M	MH	Ain El Halazoun	M	MH	MH	Ain El-Rmmaneh	L	M	MH
Ain Jedideh	M	MH	MH	Ain Ksour	L	M	MH	Ain Onoub	L	M	MH
Ain Traz	ML	M	MH	Ainab	L	M	MH	Aley	M	MH	MH
Aramoun	ML	M	MH	Aytat	ML	M	MH	Azouniyeh	M	MH	MH
Baawerta	ML	M	MH	Badghan Oua Wadi Bad	M	MH	MH	Bassatine	ML	M	MH
Bayssour	ML	M	MH	Bchamoun	ML	M	MH	Bdadoun	L	M	MH
Behouara	M	M	MH	Bennay	ML	M	MH	Bhamdoun El-Dayaa	M	MH	MH
Bhamdoun El-Mhatta	M	MH	MH	Bkhechthey	M	MH	MH	Bleibel	L	M	MH
Bmakine	ML	M	MH	Bmehray	ML	M	M	Bouzrid	L	M	MH
Bserrine	M	MH	MH	Bsous	L	M	MH	Btalloun	M	MH	MH
Btater	M	MH	MH	Chanay	M	H	MH	Charoun	M	MH	MH
Chartoun	L	M	MH	Chemlane	L	M	MH	Choueifat El-Aamrous	M	M	MH
Choueifat El-Oumara	M	M	MH	Choueifat El-Quoubbe	M	M	MH	Dakkoun	L	M	MH
Deir Qoubel	L	M	MH	Dfoun	M	MH	MH	Douair El Remmaneh	L	M	MH
Ghaboun	ML	M	MH	Habramoun	L	M	MH	Homs Oua Hama	M	MH	MH
Houmal	L	M	MH	Jisr El Qadi	ML	M	MH	Kehaleh	L	M	MH
Keyfoun	ML	M	MH	Kfar Aamey	M	MH	MH	Kommatyeh	ML	M	MH
Maasrati	M	MH	MH	Majdel Baana	M	H	MH	Mansourieh et Ain El	M	MH	MH
Mazraat El-Nahr	ML	M	MH	Mchakhte	L	M	MH	Mecherfeh	M	MH	MH
Mejdlaya	ML	M	MH	Mrayjat	M	M	MH	Ramliyah	ML	M	MH
Rechmaya	M	MH	MH	Rejmeh	M	M	MH	Remhala	ML	M	MH
Rouaysset El Neemane	M	MH	MH	Saoufar	M	H	MH	Selfaya	L	M	MH
Sirhmoul	L	M	MH	Souq El Ghareb	ML	M	MH	Taazanieh	M	MH	MH

## Kesrouane

Municipality	26-Dec	27-Dec	28-Dec	Municipality	26-Dec	27-Dec	28-Dec	Municipality	26-Dec	27-Dec	28-Dec
Achkout	L	M	MH	Adma Oua Dafneh	ML	M	MH	Ain Ed-Delbe Kesroua	L	M	M
Ain El-Rihane	L	M	MH	Aintoura Kesrouane	ML	M	H	Ajaltoun	L	M	MH
Akaybeh Kesrouane	M	M	MH	Aramoun Kesrouane	L	M	MH	Azra ouel Ozor	L	M	MH
Ballouneh	L	M	MH	Batha	L	M	MH	Bekaatat Achkout	ML	M	MH
Bekaatat Kanaan	ML	MH	M	Bizhel	L	M	MH	Bouar	ML	M	MH
Bqaatouta	M	MH	M	Bqaq Ed-Dine	ML	M	MH	Bzommar	L	M	MH

Chahtoul	L	M	MH	Chnaniir	L	M	MH	Chouan	L	M	M
Daraya Kesrouane	L	M	MH	Darououn	L	M	MH	Deir Baqlouch	L	M	MH
Dlebta	L	M	MH	Eghbeh	VL	M	MH	Faraya	M	MH	M
Fatka	L	M	MH	Feytroun	L	M	M	Ghazir	L	M	MH
Ghbaleh Kesrouane	L	M	MH	Ghedrass	L	M	M	Ghosta	L	M	MH
Ghyneh	L	M	MH	Harharaya w Kattine	L	M	MH	Harissa Kesrouane	L	M	H
Hayata	L	M	MH	Hosein	L	M	M	Hrajel	M	MH	M
Jdeideh Ghazir	L	M	MH	Jeita	L	M	MH	Jounieh Ghadir	ML	M	MH
Jounieh Haret Sakhr	M	M	MH	Jounieh Salel Alma	ML	M	MH	Jounieh Sarba	M	MH	MH
Jouret Bedrane	L	M	MH	Jouret Mhad	L	M	MH	Jouret Termos	L	M	MH
Kfar Debiane	M	M	M	Kfar Tay Kesrouane	L	M	MH	Kfar Yassine	M	MH	MH
Kfour Kesrouane	L	M	MH	Kharayeb Nahr Ibrahi	L	M	MH	Klayaat Kesrouane	L	M	MH
Maarab	L	M	MH	Maaysra Kesrouane	L	M	MH	Mayrouba	M	MH	M
Mazraat Er-Ras	ML	M	MH	Mazraat Mrah El-Mir	L	M	MH	Mchaa El Ftouh	M	MH	M
Mchaa Faraya	M	MH	M	Mchaa Kfar Dibiane	M	MH	M	Mghaer	L	M	M
Mradiyah	L	M	MH	Nahr Ed-Dahab	L	M	M	Nammoura Kesrouane	L	M	MH
Ouata El Jaouz	M	M	M	Ouata Sillam	M	MH	MH	Raachine	L	M	MH
Rayfoun	L	M	MH	Safra Kesrouane	ML	M	MH	Shayle Kesrouane	L	M	MH
Tabarja	ML	M	MH	Yahchouch	L	M	MH	Zaaytreh	L	M	MH
Zeytoun	L	M	MH	Zouk Mikael	M	M	MH	Zouk Mosbeh	M	M	MH

## Baalbek\_Hermel

### Baalbek

Municipality	26-Dec	27-Dec	28-Dec	Municipality	26-Dec	27-Dec	28-Dec	Municipality	26-Dec	27-Dec	28-Dec
Aadous	M	MH	M	Aamchki	MH	H	M	Aarsal	M	H	M
Ain Baalbek	M	MH	M	Ain Bourday	M	MH	M	Ain El-Benye	M	MH	M
Ain El-Jaouz Baalbek	M	MH	M	Ain El-Siya Chadoura	MH	MH	M	Al Khodr Baalbek	M	MH	MH
Al Nabi Chit	M	MH	M	Aynata Baalbek	M	MH	M	Baalbek	M	MH	M
Bachwat	L	M	M	Barqa	L	M	M	Bednayel Baalbak	M	MH	M
Beit Chama	M	MH	MH	Bijjaje	M	H	M	Bouday	M	M	M
Brital	M	MH	M	Btadi	M	M	M	Chaat	M	MH	M
Chaibe	MH	MH	M	Chlifa	M	M	M	Chmestar	M	MH	M
Dar El-Oussa	L	M	M	Deir El-Ahmar	ML	M	M	Deir Mar Maroun Baal	M	MH	MH
Douris	M	MH	M	Fakiha	M	H	M	Hadath Baalbek	M	MH	M
Ham	M	MH	M	Haour Taala	M	MH	M	Hizzine	M	MH	M
Hlebta	ML	MH	MH	Hosh Barada	M	MH	M	Hosh El Dahab	M	MH	M
Hosh El Snid	M	MH	M	Hosh El-Nabi	ML	MH	M	Hosh El-Rafiq	M	MH	M
Hosh Tal Safiya	M	MH	M	Hrebta	M	MH	M	laat	M	M	M
Jebaa	M	MH	M	Jenta	M	MH	M	Kfar Dabach	M	MH	M
Kfar Dane	M	MH	M	Khraibeh El-Hermel	M	H	M	Khreibet Baalbek	M	MH	M
Kneisset Baalbek	M	MH	M	Labueh	M	H	M	Maarboun	M	MH	M
Majdaloun	M	MH	M	Maqneh	M	MH	M	Mazraat Beit Mcheik	M	H	M
Misraya	ML	MH	M	Moqraq	M	H	M	Nabha El-Damdoum	M	MH	M
Nabi Chbay	M	MH	M	Nabi Osman	M	MH	M	Nahleh baalbek	M	H	M
Ouadi El-Oss	ML	MH	MH	Qaa Baayoun	M	MH	MH	Qaa Jouar Maqiye	M	M	MH
Qaa Ouadi El-Khanzir	M	M	MH	Qah Baalbek	M	MH	MH	Qarha Baalbek	M	MH	M



Qsarnaba	M	MH	MH	Ram Baalbek	M	M	M	Ras Baalbek El Sahl	M	MH	MH
Ras Baalbek El-Charq	M	H	MH	Riha	M	M	M	Saaide	M	MH	M
Sbouba	M	H	M	Seriine El-Tahta	M	MH	M	Slouqi	M	M	M
Taiba Baalbek	M	MH	M	Talia	M	MH	M	Taraiya	M	MH	M
Temnin El Fawqa	M	MH	M	Temnin El-Tahta	M	MH	MH	Tfail	M	MH	M
Yahfoufa	M	MH	M	Yammouneh	M	M	M	Younine	M	MH	M
Zboud	M	H	M								

## Hermel

Municipality	26-Dec	27-Dec	28-Dec	Municipality	26-Dec	27-Dec	28-Dec	Municipality	26-Dec	27-Dec	28-Dec
Charbine El-Hermel	ML	M	MH	Hermel Jbab	M	MH	MH	Hermel	M	M	MH
Maaysra El-Hermel	ML	MH	MH	Michaa Mrjihine	M	MH	MH	Ouadi Faara	M	MH	H
Ras Baalbek - Ouadi	M	MH	MH	Ras Baalbek El Gharb	M	MH	H	Zighrine	M	M	MH

## Akkar

### Akkar

Municipality	26-Dec	27-Dec	28-Dec	Municipality	26-Dec	27-Dec	28-Dec	Municipality	26-Dec	27-Dec	28-Dec
Aain Tinta	M	MH	MH	Aaiyat	ML	MH	MH	Aakkar El-Aatiqa	L	M	M
Aamar Akkar	M	M	MH	Aamar El Baykat	M	H	MH	Aamayer	ML	M	M
Aamriyet Akkar	M	H	MH	Aandqet	ML	M	MH	Aarmeh	ML	MH	MH
Aarqa	M	M	MH	Aawaynat	ML	MH	MH	Aayoun Akkar	ML	MH	MH
Abboudiye	M	H	MH	Ain El-Zeit	M	H	MH	Ain Yaaqoub	ML	M	MH
Akroum	ML	M	M	Aridet Cheikh Zennad	M	M	H	Baldek w Mazraat Bal	M	MH	MH
Barcha	M	H	MH	Bardeh	M	H	MH	Bebnine	M	M	MH
Beino	ML	MH	MH	Beit Ayoub	M	MH	MH	Beit El-Haouch	M	M	H
Beit Mellat	M	MH	MH	Beit Younes	ML	M	M	Berbara Akkar	M	MH	MH
Berqayel	M	M	MH	Bezbina	L	M	M	Bireh Akkar	M	H	MH
Borj	M	MH	H	Bqerezla	M	MH	MH	Bzal	L	M	MH
Chane	L	M	MH	Chaqdouf	M	H	H	Charbila	M	MH	MH
Cheikh Mohammad	M	M	MH	Cheikh Taba Es-Sahl	M	M	MH	Cheikh Taba	M	M	H
Cheikh Zennad	M	M	MH	Cheikhlar	ML	MH	MH	Chir Hmairine	M	MH	MH
Daghle	M	MH	MH	Dahr Laissine	M	MH	MH	Darine	M	MH	MH
Dawra	L	M	MH	Dawsa w Baghdadi	M	H	MH	Dayret Nahr El-Kabir	M	MH	MH
Deir Dalloum	M	M	MH	Deir Jennine	M	MH	MH	Denbou	L	M	MH
Dibbbiyeh	M	H	MH	Douair Aadwiyeh	M	MH	MH	Fassikine	M	MH	MH
Fnaydek	M	M	M	Fraydes Akkar	ML	MH	MH	Ghazayle	M	MH	MH
Habchit	L	M	MH	Hakour	M	MH	MH	Halba	M	M	MH
Haouchab	M	M	H	Hayssat	M	M	MH	Haytla	M	H	MH
Hayzouq	M	MH	MH	Hedd	M	MH	MH	Hmaira Akkar	M	MH	MH
Hmaiss Akkar	M	MH	MH	Hnaider	ML	M	M	Hokr Ed-Dahri	M	M	MH
Hokr Etti	M	M	MH	Hokr Jouret Srar	M	M	MH	Houaich	ML	M	MH
Hrar	M	M	MH	Idbil	M	M	MH	Ilal	M	MH	MH
Janine	M	H	MH	Jdeidet El-Joumeh	M	M	H	Jdeidet El-Kaiteh	M	M	MH
Jebayel	M	MH	MH	Kafr	L	M	MH	Kafr	M	H	MH
Karm Asfour	M	MH	MH	Kfar Melki Akkar	M	M	MH	Kfar Noun	ML	MH	MH
Kfarharra	M	MH	MH	Khalsa	ML	MH	MH	Kharnoubet Akkar	M	H	MH

Khirbet Daoud Aakkar	M	H	MH	Khirbet El Remmane	ML	M	MH	Khirbet Shar	M	MH	MH
Khoreybet El-Jindi	M	M	MH	Khreibet Aakkar	ML	MH	MH	Kneisset Aakkar	M	M	MH
Kneisset Hnaider	ML	M	M	Knisse	M	MH	MH	Kroum El-Aarab	M	M	MH
Kwachra	M	H	MH	Kweykhath	M	M	MH	Machta Hammoud	ML	MH	MH
Majdala	M	M	MH	Majdel Akkar	M	MH	MH	Mar Touma	M	M	MH
Marlaya Melhem	M	M	MH	Mashha	M	M	MH	Massoudiye	M	M	MH
Mazraat Beit Ghattas	M	MH	MH	Mazraat En-Nahriye	ML	MH	MH	Mechmech	M	M	MH
Memneh	L	M	M	Mhammara	M	M	MH	Mighraq Aakkar	M	M	MH
Minyara	M	M	MH	Moqayteh	M	M	MH	Mounjez	ML	H	MH
Msalla	M	H	MH	Mzeihmeh	M	H	MH	Nfaisheh	M	M	MH
Noura Et-Tahta	ML	H	MH	Ouadi El-Haour	M	H	MH	Ouadi El-Jamous	M	M	MH
Ouyoun El-Ghizlane	M	M	MH	Qaabarine	M	M	MH	Qabaait	L	M	MH
Qachlaq	M	H	MH	Qantara Aakkar	M	MH	MH	Qarha Aakkar	ML	M	M
Qarqaf	M	M	MH	Qboula	M	MH	MH	Qleiaat Aakkar	M	M	MH
Qloud El-Baqie	M	MH	MH	Qobaiyat Aakkar	ML	M	M	Qobbat Chamrat	M	M	MH
Qorayat	ML	M	M	Qornet Aakkar	ML	M	MH	Qsair Aakkar	M	H	MH
Rahbe	ML	MH	MH	Rihaniyet Aakkar	M	MH	MH	Rmah	ML	MH	MH
Rmoul	M	M	MH	Saadine	M	MH	MH	Sadaqa	M	MH	MH
Saidnaya	M	MH	MH	Sammouniye	M	M	MH	Sayssoq	M	MH	MH
Semmaqiye	M	M	MH	Semmaqli	M	M	MH	Sfinet El-Dreib	M	MH	MH
Sfinet El-Qaitaa	ML	M	MH	Sindyanet Zeidane	ML	M	MH	Souaisset Aakkar	M	MH	MH
Srar	M	H	MH	Tal Abbas El Gharby	M	M	MH	Tal Abbas El-Chargy	M	M	MH
Tal Biret	M	MH	MH	Tal Hmayra	M	MH	MH	Tal Maayan Tal Kiri	M	M	MH
Tal Sibel	M	M	MH	Tallet Chattaha	M	MH	MH	Tikrit	ML	MH	MH
Tleil	M	H	MH	Tshea	L	M	M	Zawarib	M	M	MH
Zouq El Hosniyeh	M	M	MH	Zouq El-Haddara	M	M	MH	Zouq El-Hbalsa	M	M	MH
Zouq El-Moqachrine	M	M	H								

## Sud

### Sour

Municipality	26-Dec	27-Dec	28-Dec	Municipality	26-Dec	27-Dec	28-Dec	Municipality	26-Dec	27-Dec	28-Dec
Aaiyeh	M	E	MH	Aalma El-Chaab	L	MH	H	Aaytit	M	H	MH
Abbassiyeh Sour	M	H	MH	Abou Chech	ML	H	H	Ain Abou Abdallah	M	H	MH
Ain Baal	M	H	H	Arzoun	M	H	MH	Aziyeh	ML	MH	H
Baflaya	M	H	MH	Barich	M	H	MH	Batouliyeh	M	H	H
Bayad	M	E	MH	Bazouriyeh	M	H	H	Bediass	M	H	MH
Bestiyat	M	H	H	Borj El Chemali	M	H	H	Borj En-Naqoura	M	H	H
Borj Rahhal	M	H	MH	Boustane	M	H	H	Btaychiyeh	ML	H	H
Chaaitiye	M	H	H	Chameh	L	H	H	Chehabiye	M	H	MH
Chhour	L	MH	H	Chihine	M	H	H	Debaal Sour	M	H	MH
Deir Amess	M	H	MH	Deir Kifa	M	H	MH	Deir Qanoun El-Ain	M	H	H
Deir Qanoun El-Naher	M	H	MH	Derdghaiya	M	H	MH	Dhayra	ML	H	H
Halloussiyeh	M	H	MH	Hamoul	L	MH	H	Hanaouey	M	H	MH
Henniye	M	H	H	Hmairi Sour	M	H	MH	Iskandarouna Sour	L	MH	H
Jbal El Botom	M	H	MH	Jebbin	M	H	H	Jennata	M	H	H
Jijim	L	MH	H	Jouaiya	M	H	MH	Kneisset Sour	M	H	H

Maarake	M	H	MH	Maaroub	M	H	H	Majadel	M	H	MH
Majdalzoun	M	H	H	Mansouri Sour	M	H	H	Marnba	L	MH	MH
Marouahine	ML	H	MH	Mazraat El-Zalloutiy	M	H	H	Mazraat Mechref	M	H	MH
Mazraat Tayr Semhat	L	M	MH	Mheilib	M	H	MH	Neffakhiyeh	M	H	MH
Niha Sour	M	H	H	Ouadi Jilo	M	H	MH	Qana	M	E	MH
Qolaileh Sour	M	H	H	Rechknany	M	H	MH	Rmadiyeh	M	H	MH
Selha Sour	M	H	MH	Siddiqine	M	E	MH	Sour	M	H	H
Srifa	M	H	MH	Tayr Debbe	M	H	H	Tayr Felsay	M	H	MH
Tayr Harfa	M	H	H	Touayri	ML	MH	MH	Toura	M	H	MH
Yanouh Sour	M	H	MH	Yarine	M	H	H	Zebqine	L	MH	MH

## Saida

Municipality	26-Dec	27-Dec	28-Dec	Municipality	26-Dec	27-Dec	28-Dec	Municipality	26-Dec	27-Dec	28-Dec
Aanqoun	M	MH	MH	Aaqtanit	M	MH	MH	Aarab Ej-Jall	M	MH	MH
Aarab Tabbaya	M	MH	MH	Abra Saida	M	MH	MH	Adloun	M	H	MH
Adousiyeh	M	M	MH	Ain-El-Deleb	M	MH	MH	Arzai	M	H	MH
Babliyah	M	H	MH	Barty	M	MH	MH	Bissariyeh	M	MH	MH
Bnaafoul	M	MH	MH	Bqosta	M	MH	MH	Bramiy	M	MH	H
Daoudiyeh	M	H	MH	Dareb El-Sim	M	MH	MH	Erkay	M	H	MH
Ghassanieh	M	H	H	Ghazieh	M	MH	MH	Hajjeh	M	MH	MH
Haret Saida	M	MH	MH	Hartiyeh	M	H	MH	Hlaliye Saida	M	MH	MH
Insariyat	M	MH	MH	Jazira Saida	M	H	MH	Kafar Bit	M	MH	MH
Kaoutariyet El-Siyad	M	H	MH	Kfar Chellal	M	MH	MH	Kfar Hatta Saida	M	MH	MH
Kfar Milke Saida	M	MH	MH	Khartoum	M	H	MH	Khaziz	M	MH	MH
Khirbet Ed-Douair Sa	M	MH	MH	Khirbet El-Bassal	M	MH	MH	Khrayeb Saida	M	H	MH
Loubieh	M	MH	MH	Maghdouche	M	MH	MH	Majdelyoun	M	MH	H
Matariyet El-Choumar	M	H	H	Matayriyeh	M	MH	MH	Mazraat 'Mseileh	M	M	MH
Mazraat 'Snaiber	M	MH	MH	Mazraat Aarab Soukka	M	MH	MH	Mazraat Deir Taqla	M	H	MH
Mazraat El Yahoudiye	M	H	MH	Mazraat El-Housseini	M	MH	MH	Mazraat El-Mhaydaleh	M	H	MH
Mazraat El-Ouasta	M	H	MH	Mazraat Jamjim	M	H	H	Mazraat Kaoutariyet	M	H	H
Mazraat Kfar Badda	M	H	H	Mazraat Oussamiyat	M	H	MH	Mazraat Sari	M	H	MH
Mazraat Sinai	M	H	MH	Meemariyeh	M	MH	MH	Merouaniyeh	M	H	MH
Miyeh ou Miyeh	M	MH	MH	Najjariyeh	M	M	H	Qaaqaiyat El-Snaouba	M	MH	MH
Qnarit	M	MH	MH	Qraiye Saida	M	MH	MH	Saida Ed-Dekermane	M	MH	MH
Saida El-Oustani	M	MH	MH	Saida El-Qadimeh	M	MH	MH	Saida Kefraya	M	MH	MH
Saksakiyeh	M	MH	MH	Salhie Saida	M	MH	H	Sarafand	M	MH	MH
Sfenta	M	M	MH	Tafahta	M	H	H	Tanbourit	M	MH	MH
Tebna	M	MH	MH	Zaghdraiya	M	MH	MH	Zeita	M	MH	MH
Zrariyeh	M	H	MH								

## Jezzine

Municipality	26-Dec	27-Dec	28-Dec	Municipality	26-Dec	27-Dec	28-Dec	Municipality	26-Dec	27-Dec	28-Dec
Ain El-Mir (El Estab	M	MH	MH	Anane	ML	M	MH	Aramta	M	MH	MH
Ariya	M	M	MH	Aychiyeh	ML	M	MH	Azour	L	M	MH
Baba	L	M	MH	Baysour Jezzine	M	MH	MH	Benoueteh Jezzine	ML	MH	MH
Bhannine	M	MH	MH	Bisri	L	M	MH	Bkassine	L	M	MH
Bouslaya	ML	M	MH	Btedine El-Leqech	L	M	MH	Chbail	L	M	M
Choualiq Jezzine	M	MH	MH	Dahr Ed-Deir	ML	M	MH	Deir El Qattine	ML	M	MH

Demachqiyeh	M	MH	MH	Ghabbatiyeh	ML	M	MH	Harf Jezzine	L	M	MH
Hassaniyeh	M	MH	MH	Haytouleh	M	MH	MH	Haytura	ML	M	MH
Hidab	M	M	MH	Homsiyeh	ML	M	MH	Jabal Toura	M	M	MH
Jarmaq	ML	MH	MH	Jensnaya	M	MH	MH	Jernaya	M	MH	MH
Jezzine	M	MH	MH	Karkha	ML	M	MH	Kfar Falous	M	MH	MH
Kfar Houna	M	M	MH	Kfar Jarrah	M	MH	MH	Lebaa	M	MH	MH
Louayzet Jezzine	ML	M	MH	Machmouche	L	M	MH	Mahmoudiyeh Jezzine	M	MH	MH
Maknounye Jezzine	L	M	MH	Maraat Ouazaiyeh	ML	M	MH	Mazraat Daraya	ML	M	MH
Mazraat El-Aarqoub	ML	M	MH	Mazraat El-Mathane	L	M	MH	Mazraat El-Rahbane	ML	M	MH
Mazraat Khallet Khaz	ML	M	MH	Mazraat Louzid (Loua	L	M	M	Mazraat Qrouh	M	MH	MH
Mazraat Tamra	M	MH	MH	Mazraat Zighrine Jez	ML	M	MH	Mazraat	ML	M	MH
Mharbiyeh	M	MH	MH	Midane Jezzine	ML	M	MH	Mjeydel Jezzine	M	MH	MH
Mlikh	ML	M	MH	Mrah El-Hbasse	M	MH	MH	Ouadi Baanqoudaine	M	MH	MH
Ouadi El-Laymoun	M	MH	MH	Ouardiyeh	VL	M	M	Qabaa Jezzine	L	M	MH
Qatrani	ML	M	MH	Qaytouleh	ML	M	MH	Qtaleh Jezzine	L	M	MH
Rihane Jezzine	M	M	MH	Rimat	ML	M	MH	Roum	ML	M	MH
Roummanet	M	MH	MH	Sabbah	ML	M	MH	Saydoun	ML	M	MH
Sfaray	L	M	MH	Snaya	L	M	MH	Sojoud	ML	M	MH
Srayri	M	M	MH	Taaid	L	M	MH	Wadi Jezzine	ML	M	MH
Zhalta	ML	M	MH								

## Bekaa

### West Bekaa

Municipality	26-Dec	27-Dec	28-Dec	Municipality	26-Dec	27-Dec	28-Dec	Municipality	26-Dec	27-Dec	28-Dec
Aammq BG	ML	MH	M	Ain El Tineh BG	M	MH	MH	Ain Zebdeh	M	M	MH
Ana	ML	M	M	Aytanit	M	M	MH	Baaloul BG	M	MH	MH
Bab Mareh	M	MH	MH	Chouberqiye Aammq	ML	MH	M	Dakoue	M	MH	M
Deir Ain El-Jaouze	M	M	MH	Deir Tahniche	ML	MH	M	Ghaza	M	H	M
Harime El-Soughra	ML	M	M	Hoch Harimeh	ML	MH	M	Jazira BG	ML	M	M
Jib Jennine	M	MH	M	Kamed-El-Laouz	M	H	M	Kefraya BG	ML	M	MH
Khiara El Atika	ML	MH	M	Khiara	ML	MH	M	Khirbet Qanafar	M	M	MH
Lala	M	M	MH	Lebbaya BG	M	M	MH	Loussa	M	M	MH
Machghara	M	MH	MH	Manara (Hammar) BG	M	MH	M	Mansoura BG	ML	MH	M
Marej BG	ML	M	M	Maydoun	M	M	MH	Ouaqf BG	ML	M	M
Qaraaoun	M	MH	MH	Qelya	M	MH	MH	Raouda (Istabel)	ML	MH	M
Saghbine	M	M	MH	Sohmor	M	MH	MH	Soltan Yacoub el Ara	ML	MH	M
Souairy	M	H	M	Sultan Yaacoub	M	H	M	Tal Znoun	M	MH	M
Yehmor BG	M	M	MH	Zilaya	ML	M	MH				

### Zahle

Municipality	26-Dec	27-Dec	28-Dec	Municipality	26-Dec	27-Dec	28-Dec	Municipality	26-Dec	27-Dec	28-Dec
Aanjar (Haouch Mouss	M	MH	M	Ablah	M	MH	MH	Ain Kfarzabad	M	MH	M
Ali-El-Nahri	M	MH	M	Bar Elias	ML	MH	M	Bouarej	M	MH	M
Cheberqiyet Tabet	ML	MH	M	Chtaura	ML	MH	M	Deir El Ghazal	M	MH	M
Delhamiyet Zahle	M	MH	M	Ferzol	M	MH	MH	Haouch El-Ghanam	M	MH	M
Haouch Es-Siyadeh	ML	M	M	Haouch Hala	M	MH	M	Haouch Mandara	ML	MH	M

Haouch Qayssar	ML	M	M	Hezerta	M	MH	M	Hosh Moussa	M	MH	M
Jdita	ML	MH	M	Kfarzabad	M	MH	M	Ksara	ML	MH	M
Majdel Aanjar	M	MH	M	Makssi	ML	MH	M	Massa	M	MH	M
Mazraat Er-Remtaniye	M	MH	M	Mrayjat Zahle	M	MH	M	Mzaraa Zahle	M	MH	M
Nabi Ayla	M	MH	MH	Nasriyet Rizk	M	MH	M	Nasriyet Zahle	ML	M	M
Niha Zahle	M	MH	MH	Ouadi Ed-Deloum	M	MH	M	Ouadi El-Arayech	M	MH	M
Qaa El Rim	M	MH	M	Qab Elias	ML	MH	M	Qousaya	M	MH	M
Rhit	M	MH	M	Riyak	M	MH	M	Saadnayel	ML	MH	M
Taal El-Akhdar	ML	M	M	Taalbeya	ML	MH	M	Taanayel	ML	MH	M
Talamara	M	MH	M	Tcheflik Edde Haouch	M	MH	M	Tcheflik Qiqano	ML	M	M
Terbol Zahle	M	MH	M	Touaite Zahle	M	MH	M	Zahle Aradi	M	MH	M
Zahle El-Berbara	M	MH	M	Zahle El-Maallaqa	M	MH	M	Zahle El-Midane	M	MH	M
Zahle Er-Rassiye	M	H	M	Zahle Haouch El-Ouma	ML	MH	M	Zahle Haouch El-Ouma	ML	MH	M
Zahle Haouch Ez-Zara	M	MH	M	Zahle Maalqa Aradi	M	MH	M	Zahle Mar Antonios	M	MH	M
Zahle Mar Elias	M	MH	M	Zahle Mar Gerios	M	MH	M	Zahle Saydet En-Naja	M	MH	M
Zebdoul	ML	M	M								

## Rachaiya

Municipality	26-Dec	27-Dec	28-Dec	Municipality	26-Dec	27-Dec	28-Dec	Municipality	26-Dec	27-Dec	28-Dec
Ain Arab Rachaiya	M	H	M	Ain Ata	M	M	M	Ain Harche	M	MH	M
Aqabe Rachaya	M	MH	M	Ayha	M	MH	M	Ayta El Fokhar	M	H	M
Bakifa Rachaya	M	MH	M	Bakka	M	H	M	Beit Lahya	M	MH	M
Bireh Rachaiya	M	H	M	Daher El Ahmar	M	MH	M	Deir El-Achayer	M	M	M
Heloua Rachaiya	M	M	M	Hoch El Qannabeh Rac	M	M	M	Kaoukaba Bou Arab	M	MH	M
Kfar Danis	M	MH	M	Kfar Mechki	M	MH	M	Kfar Qouq	M	H	M
Kherbet Rouha	M	MH	M	Majdel Balhiss	M	MH	MH	Mdoukha	M	H	M
Mhaydseh Rachaiya	M	MH	M	Nabi Safa	M	MH	MH	Rachaiya	M	MH	M
Rafid Rachaiya	M	MH	M	Selsata (Mazraat Dei	L	M	M	Tannoura	M	MH	M
Yanta	M	H	M								

## Beyrouth

### Beyrouth

Municipality	26-Dec	27-Dec	28-Dec	Municipality	26-Dec	27-Dec	28-Dec	Municipality	26-Dec	27-Dec	28-Dec
Achrafieh	M	M	MH	Ain el-Mreisse	M	M	H	Bachoura	M	M	MH
Beirut Central Distr	M	M	MH	Marfai	M	M	MH	Mazraa	M	M	MH
Medaouar	M	M	MH	Minet el-Hosn	M	M	MH	Mwssaitbeh	M	M	MH
Ras Beirut	M	M	H	Rmeil	M	M	MH	Saifi	M	M	MH
Zqaq el-Blat	M	M	MH								