

# Lebanon Fire Risk Bulletin



CIVIL DEDEFENCE

**Refer to cadast table condition.**

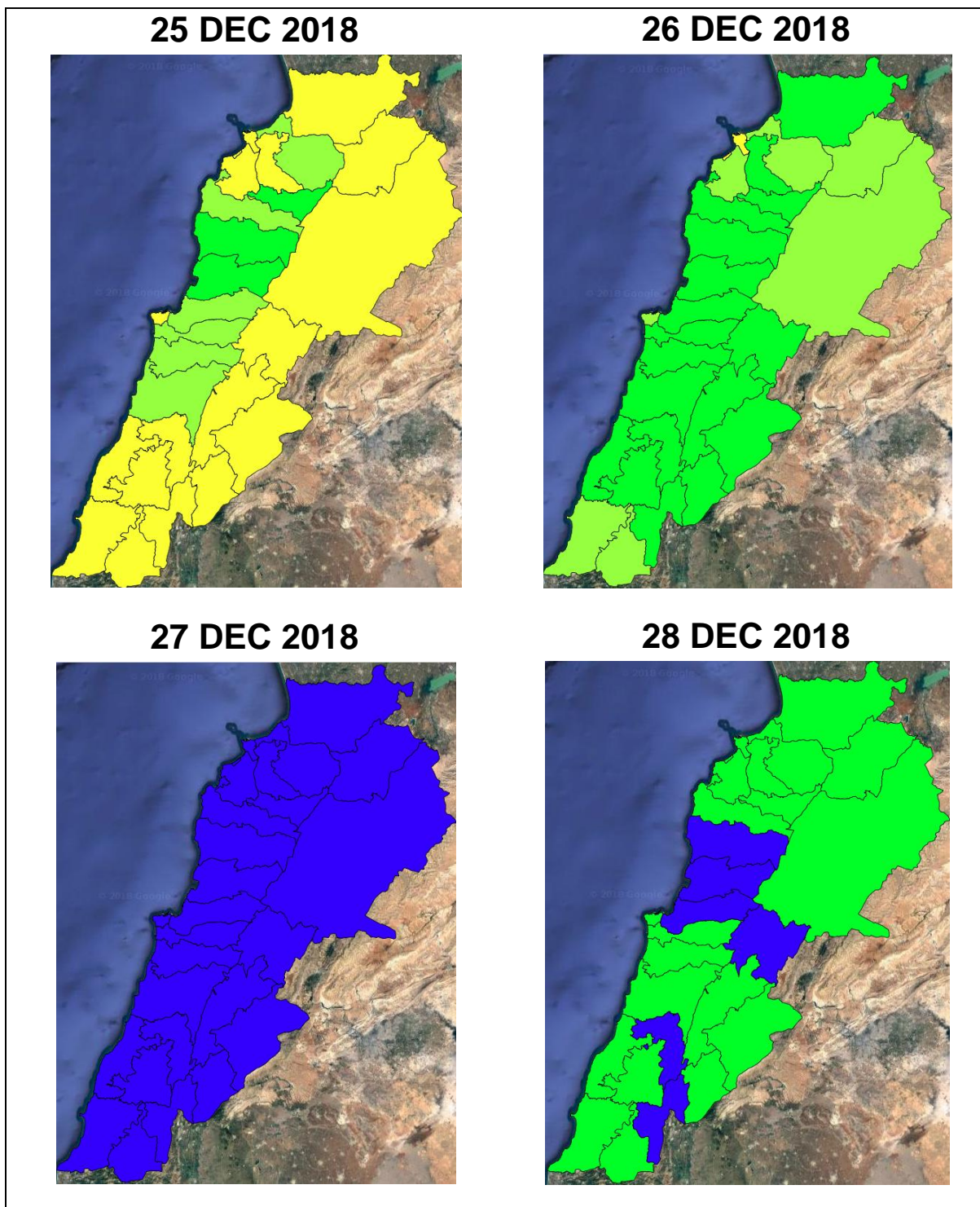
**Please note that the indicated temperature is at 2 meters height from the ground.**

*General description of potential fire risk situation*

Symbol	Level of risk	Meaning and actions
VL	<b>Very low</b>	Very low fire risk. Controlled burning operations can be hardly executed due to high fuel moisture content. Normally wildfires self-extinguish.
L	<b>Low</b>	Low fire risk. Controlled burning operations can be executed with a reasonable degree of safety.
ML	<b>Medium low</b>	Medium-low fire risk. Controlled burning operations can be executed in safety conditions. All the fires need to be extinguished.
M	<b>Medium</b>	Medium fire risk. Controlled burning operations would be avoided. All the fires need to be very well extinguished.
M	<b>Medium high</b>	Controlled burning is not recommended. Open flame will start fires. Cured grasslands and forest litter will burn readily. Spread is moderate in forests and fast in exposed areas. Patrolling and monitoring is suggested. Fight fires with direct attack and all available resources.
H	<b>High</b>	Ignition can occur easily with fast spread in grass, shrubs and forests. Fires will be very hot with crowning and short to medium spotting. Direct attack on the head may not be possible requiring indirect methods on flanks. Patrolling and monitoring the territory is highly suggested.
E	<b>Extreme</b>	Ignition can occur also from sparks. Fires will be extremely hot with fast rate of spread. Control may not be possible during day due to long range spotting and crowning. Suppression forces should limit efforts to limiting lateral spread. Damage potential total. Patrolling and monitoring the territory is highly suggested.

**Beirut, 26 December 2018**

# FIRE RISK INDEX

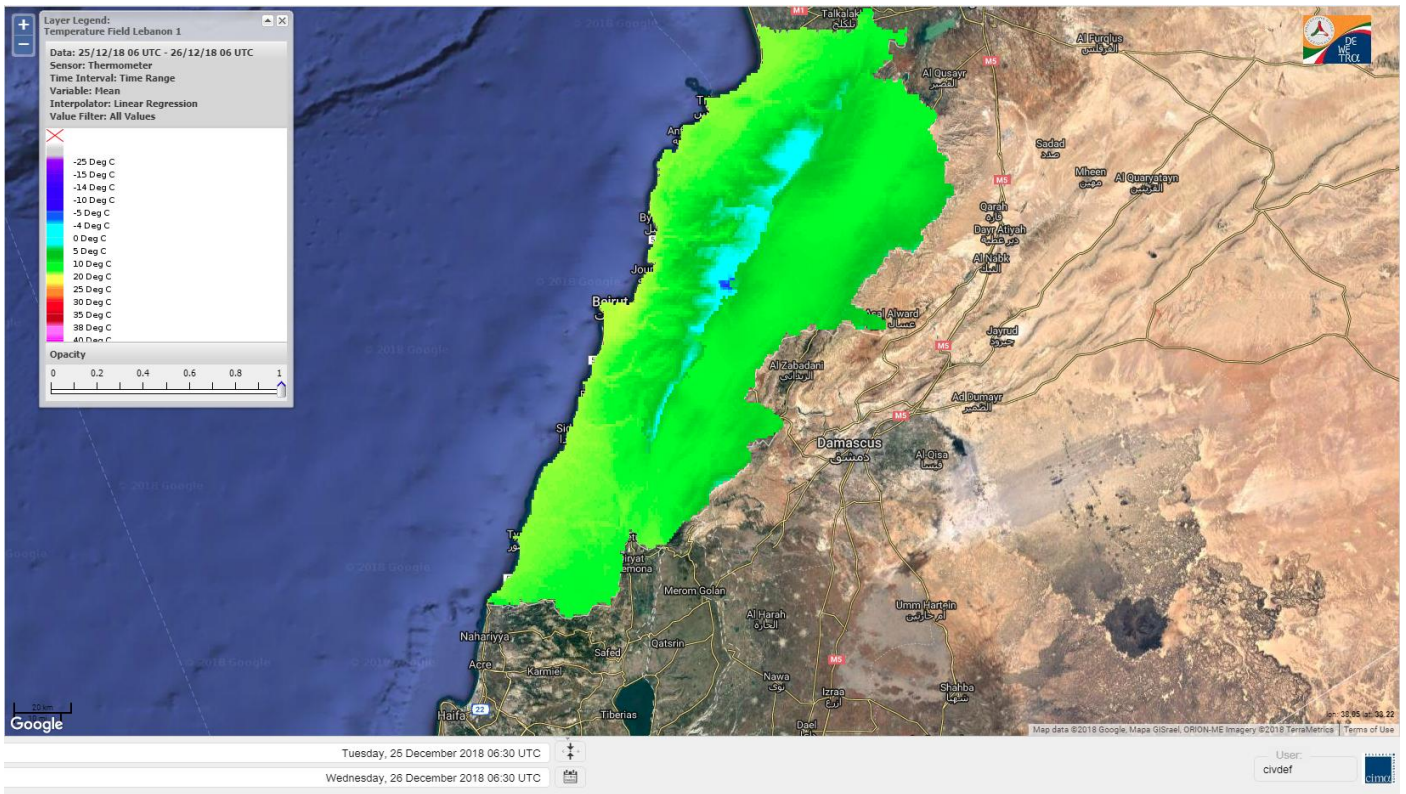


**Layer Legend:**  
**Lebanon Wildfire Risk Index 1**

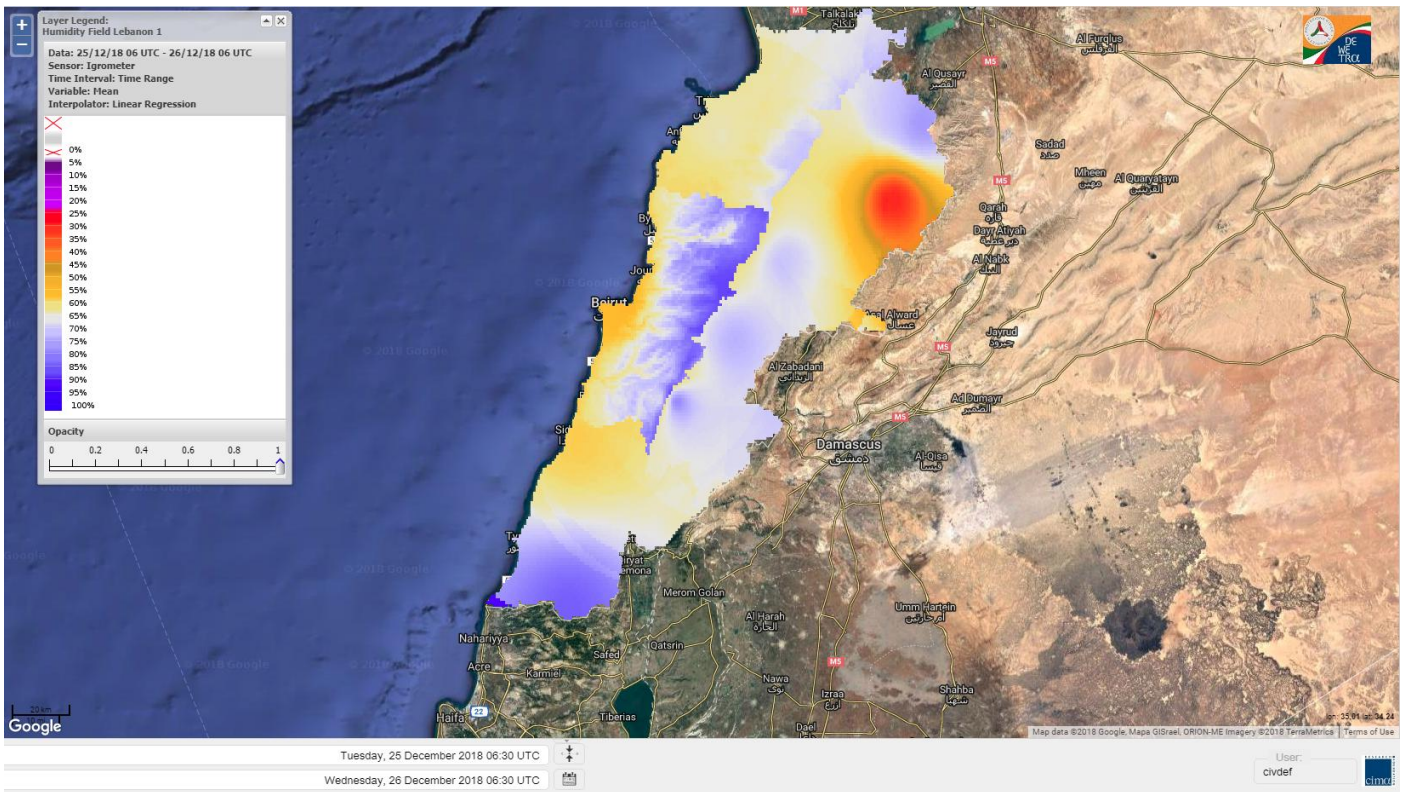
Data: Run: 26/12/2018 00:00. Forecast for 26  
Model: RISICO for the Republic of Lebanon  
Variable: Fire Weather Index  
Spatial Resolution: Caza

- VERY LOW
- LOW
- MEDIUM-LOW
- MEDIUM
- MEDIUM-HIGH
- HIGH
- EXTREME

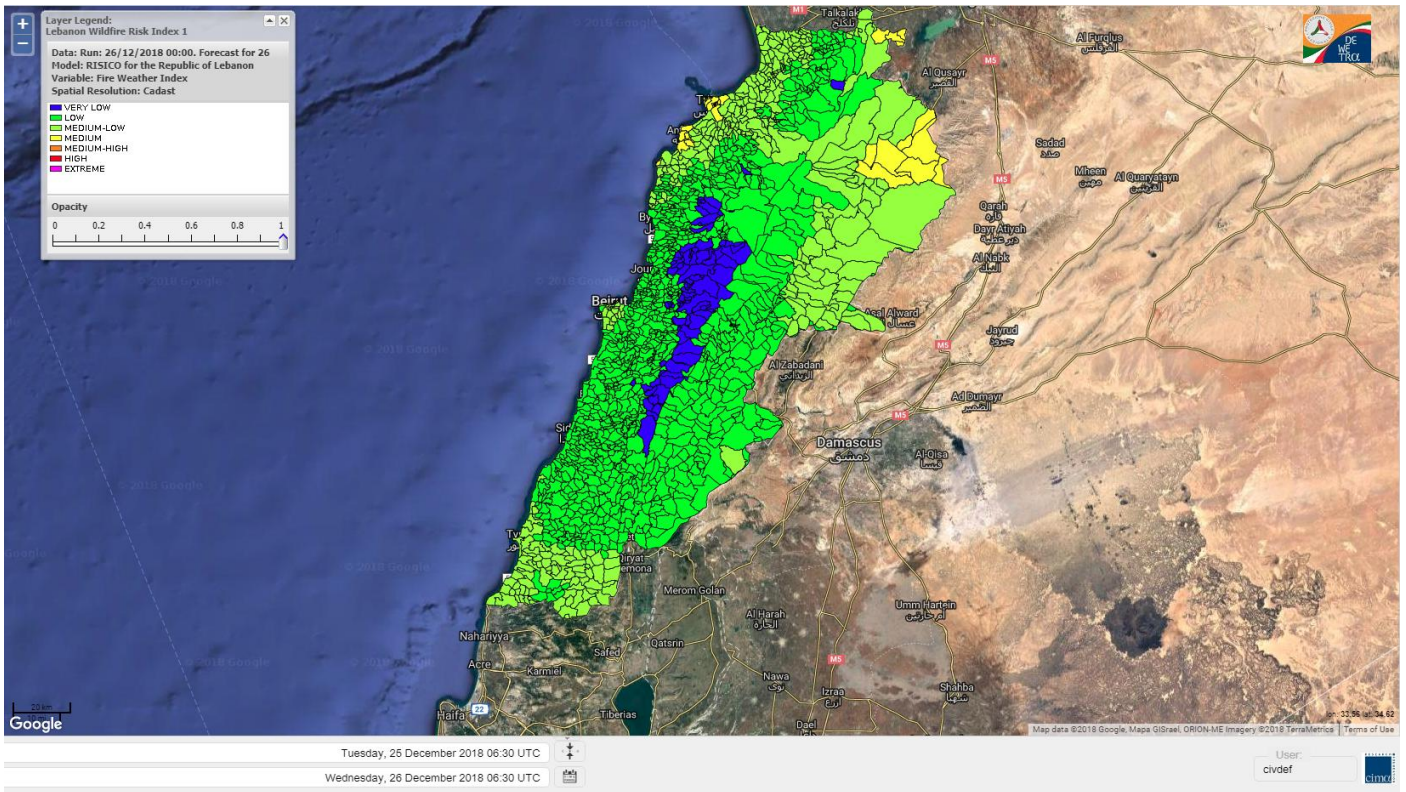
# Lebanon temperature for Lebanon 26 DEC 2018



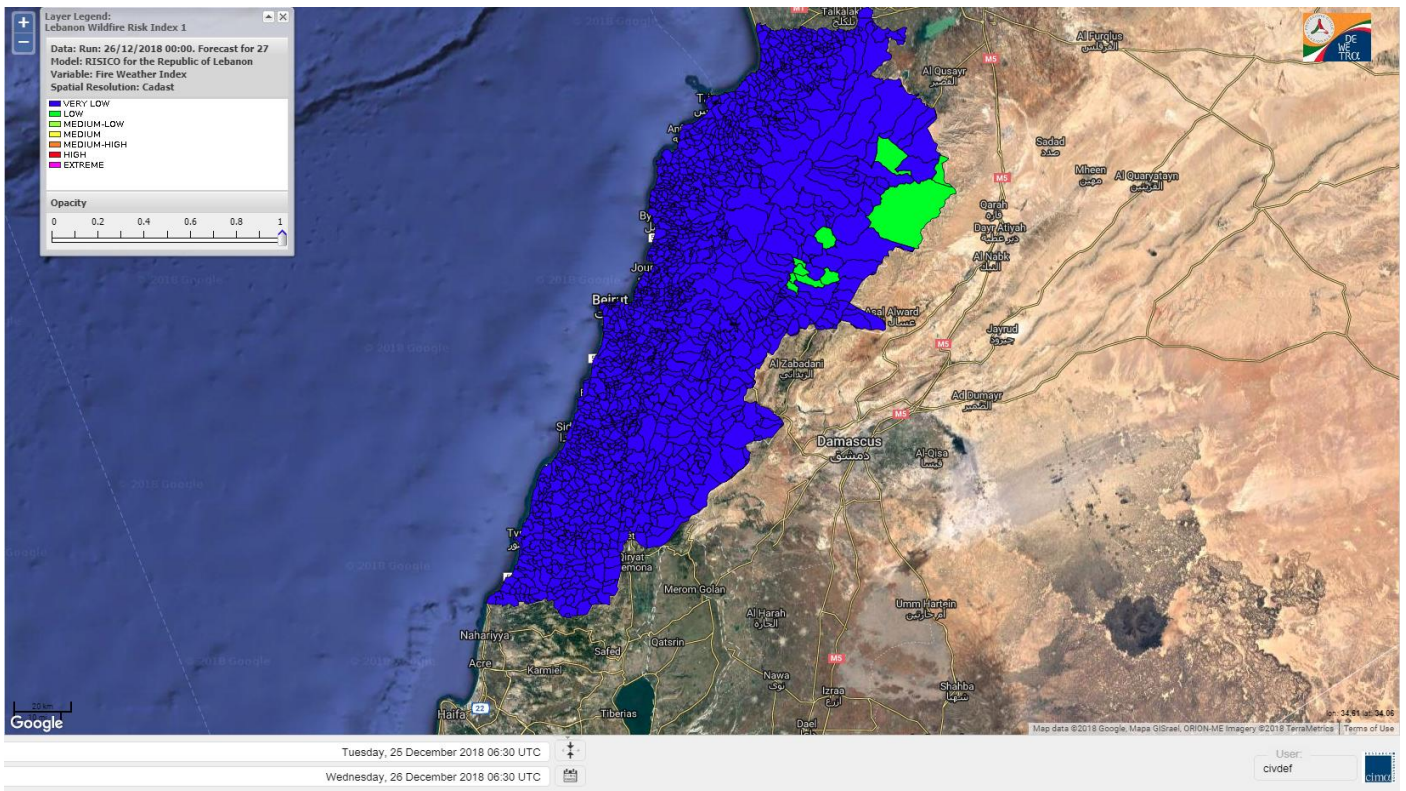
# Lebanon humidity for Lebanon 26 DEC 2018



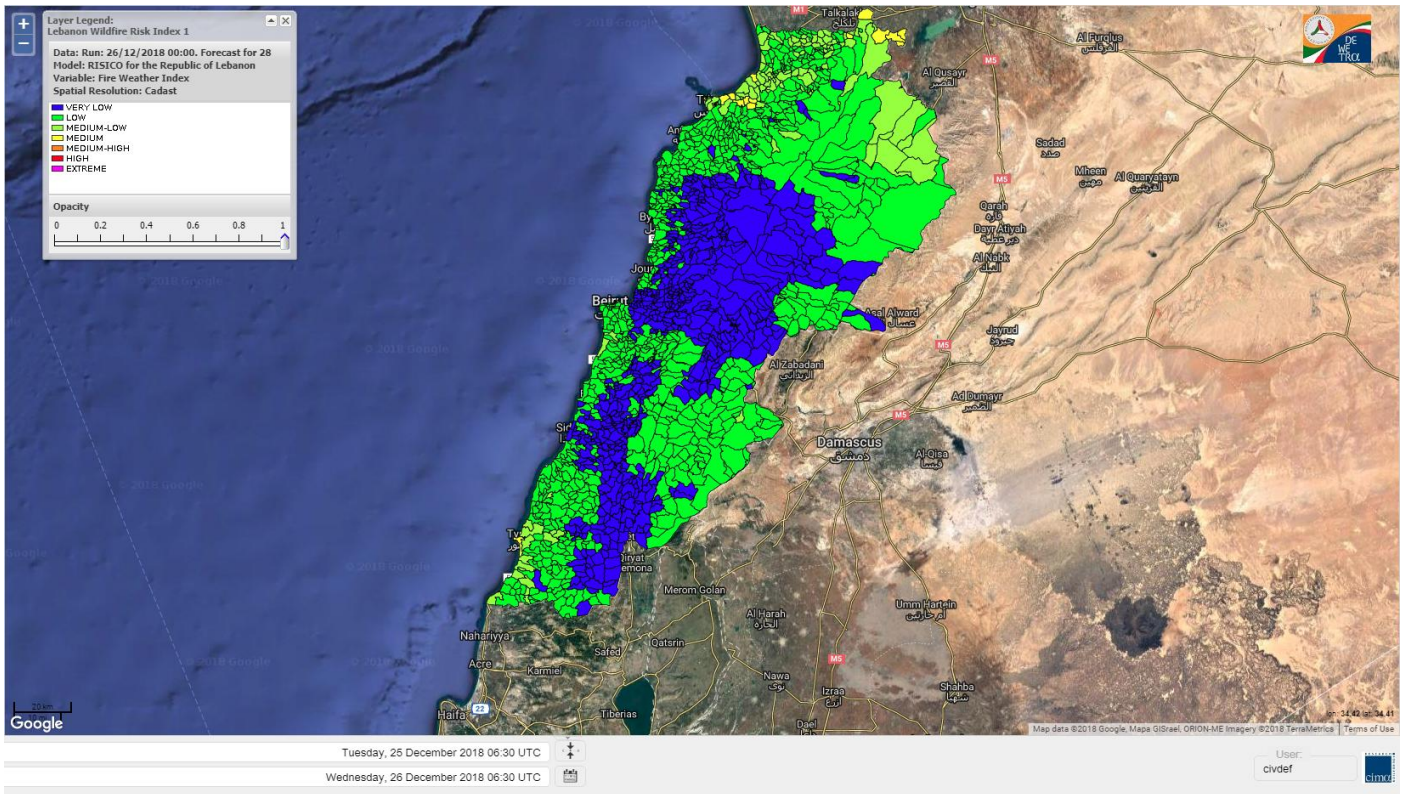
# Lebanon for 26 DEC 2018



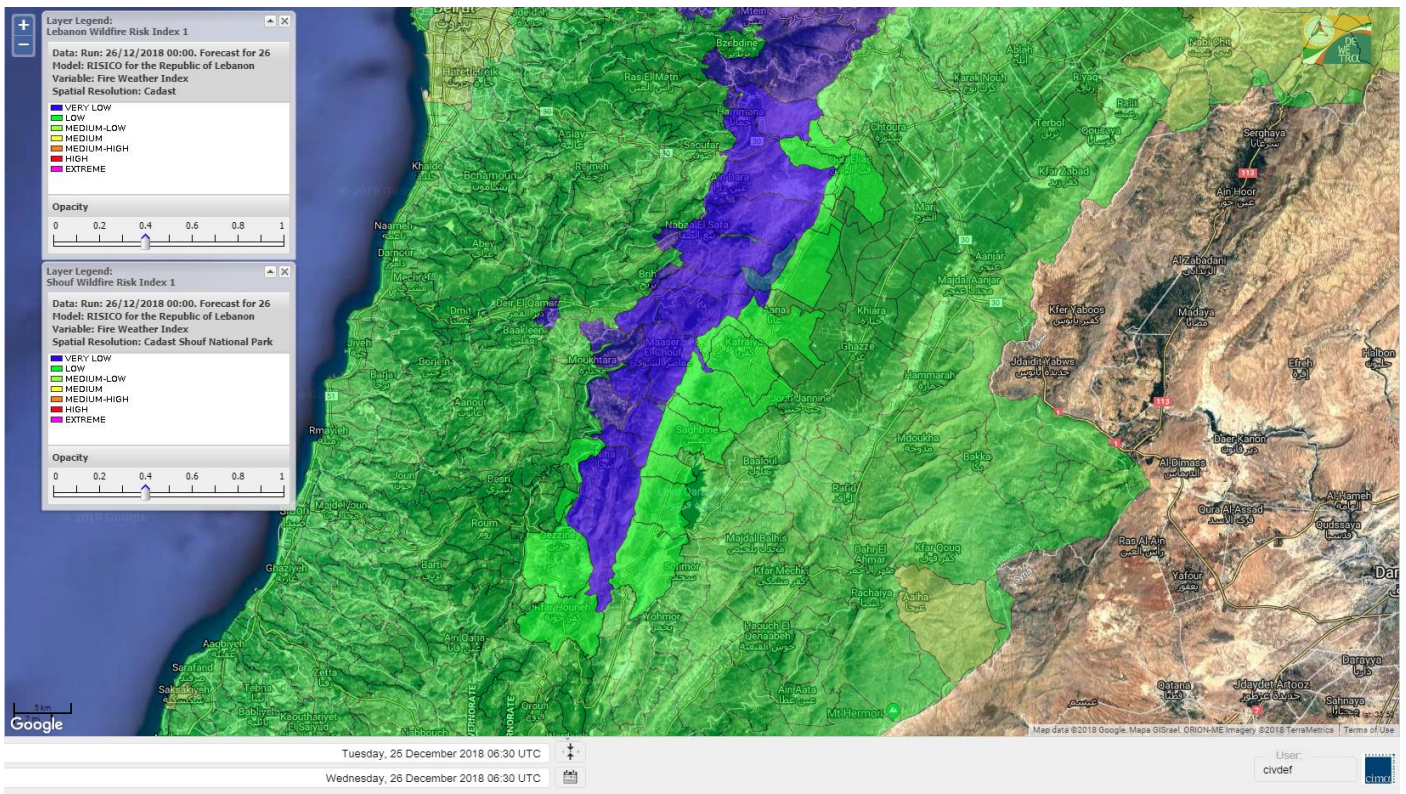
# Lebanon for 27 DEC 2018



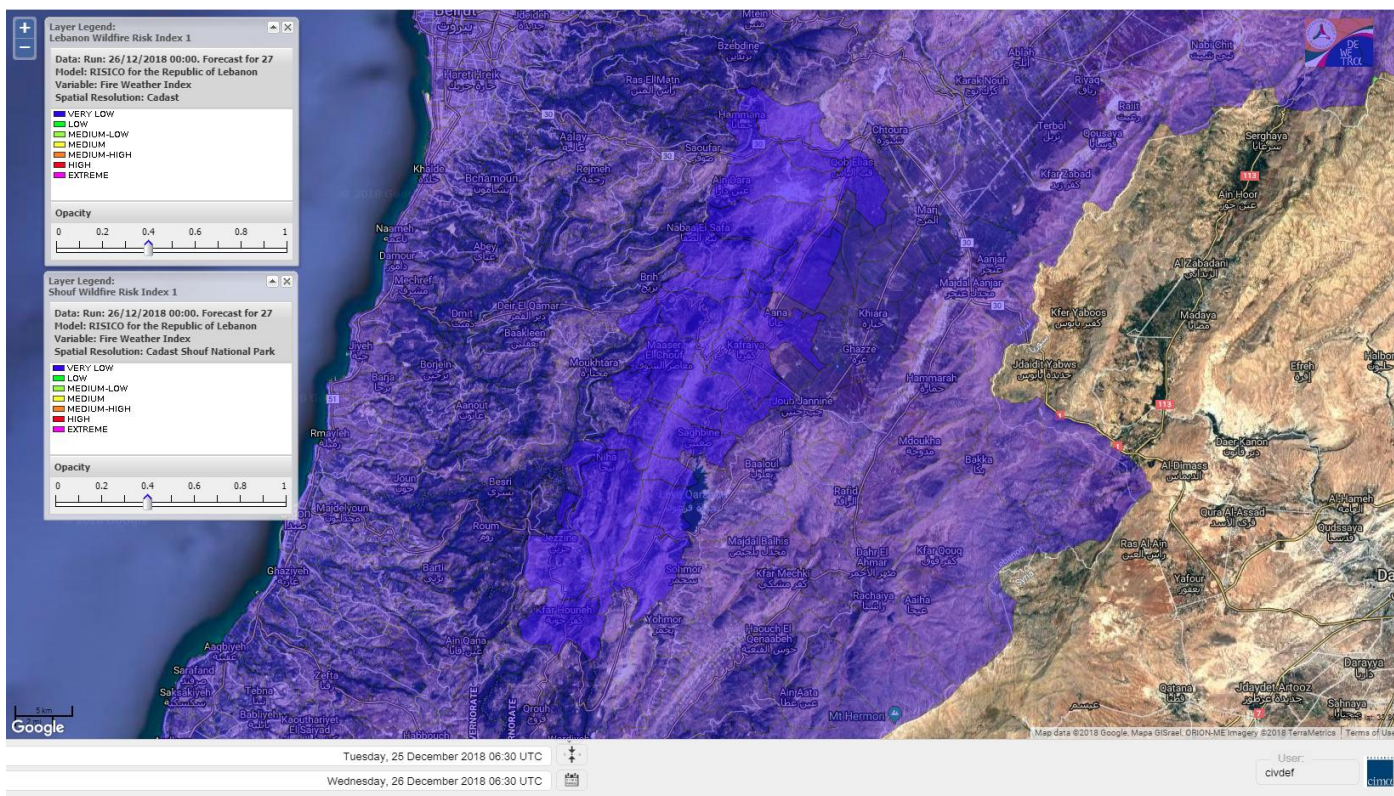
# Lebanon for 28 DEC 2018



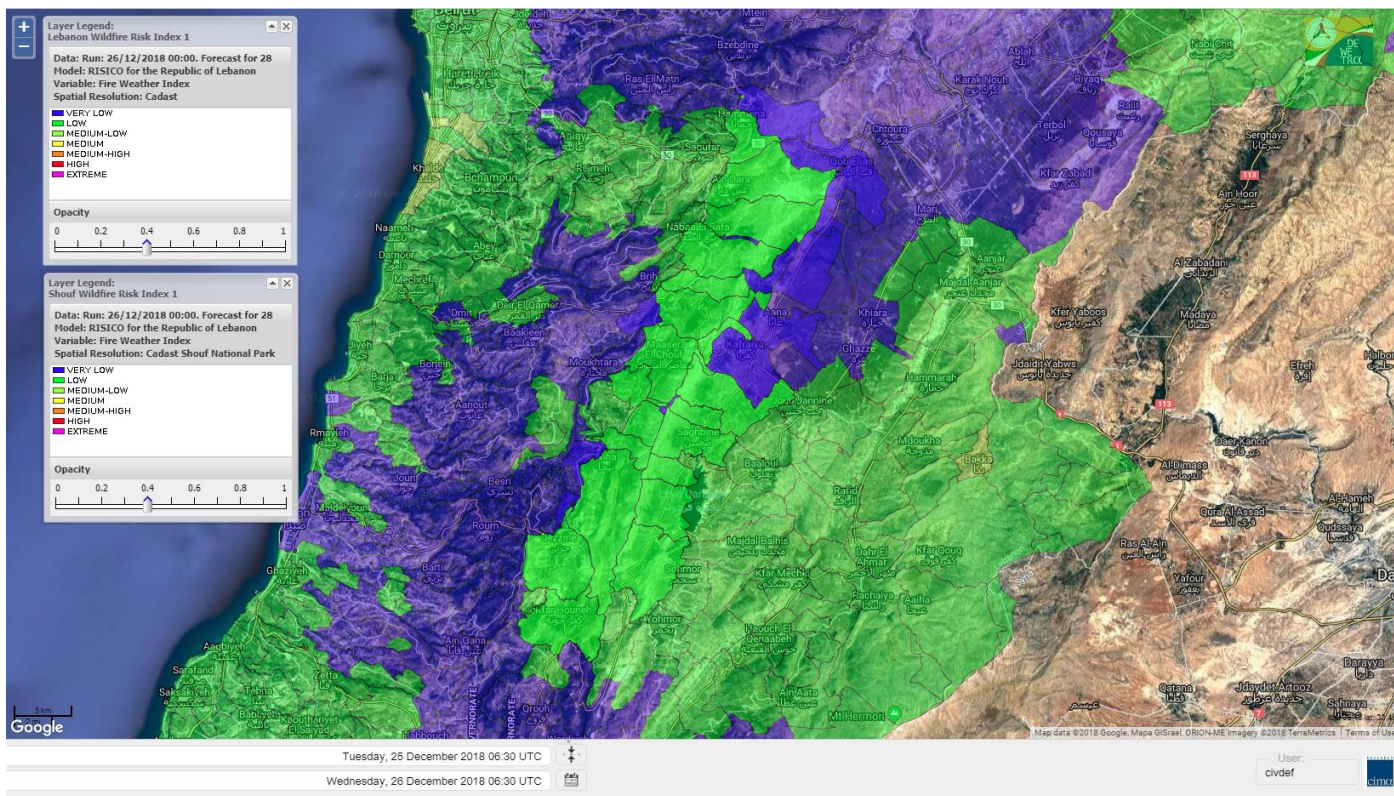
# Shouf Biosphere Reserve Forecast for 26 DEC 2018



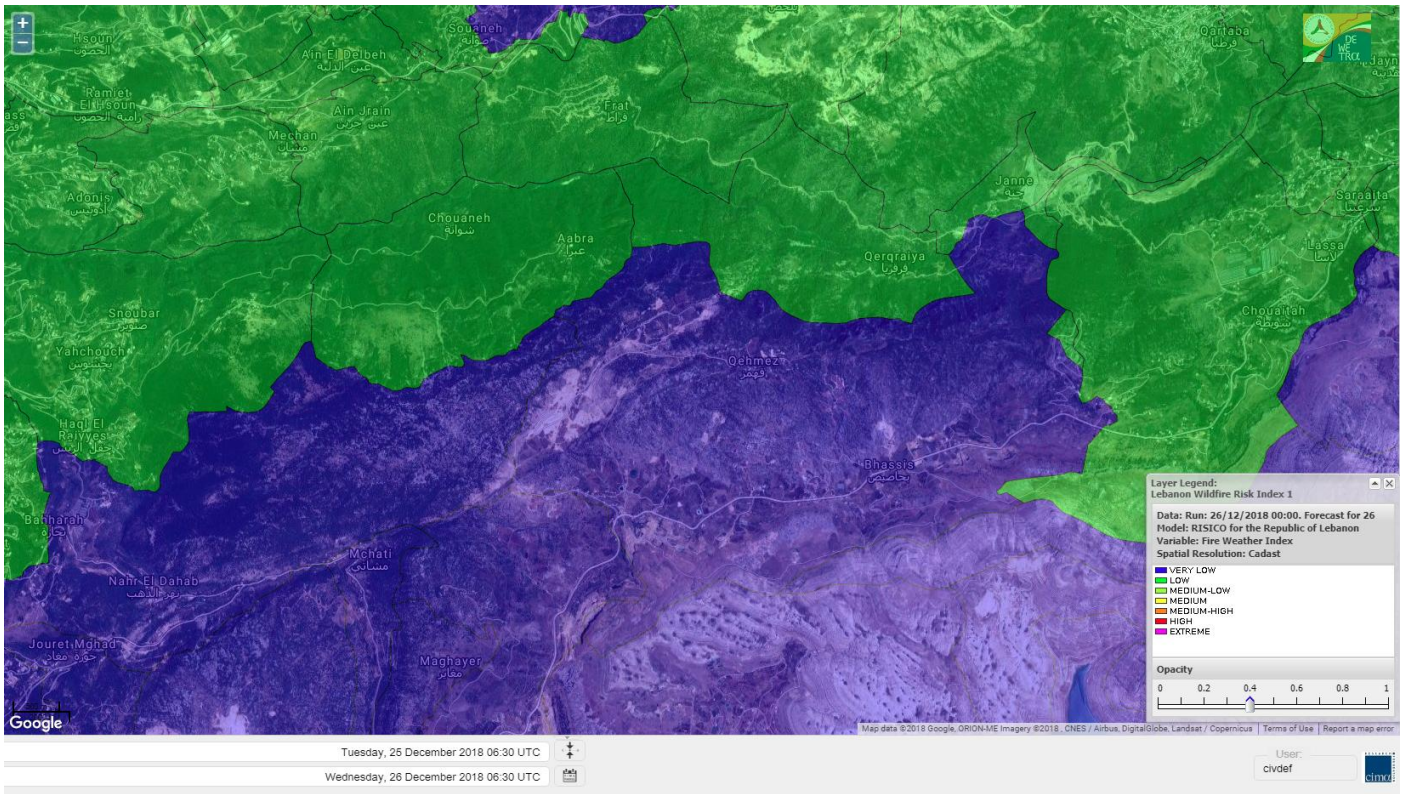
# Shouf Biosphere Reserve Forecast for 27 DEC 2018



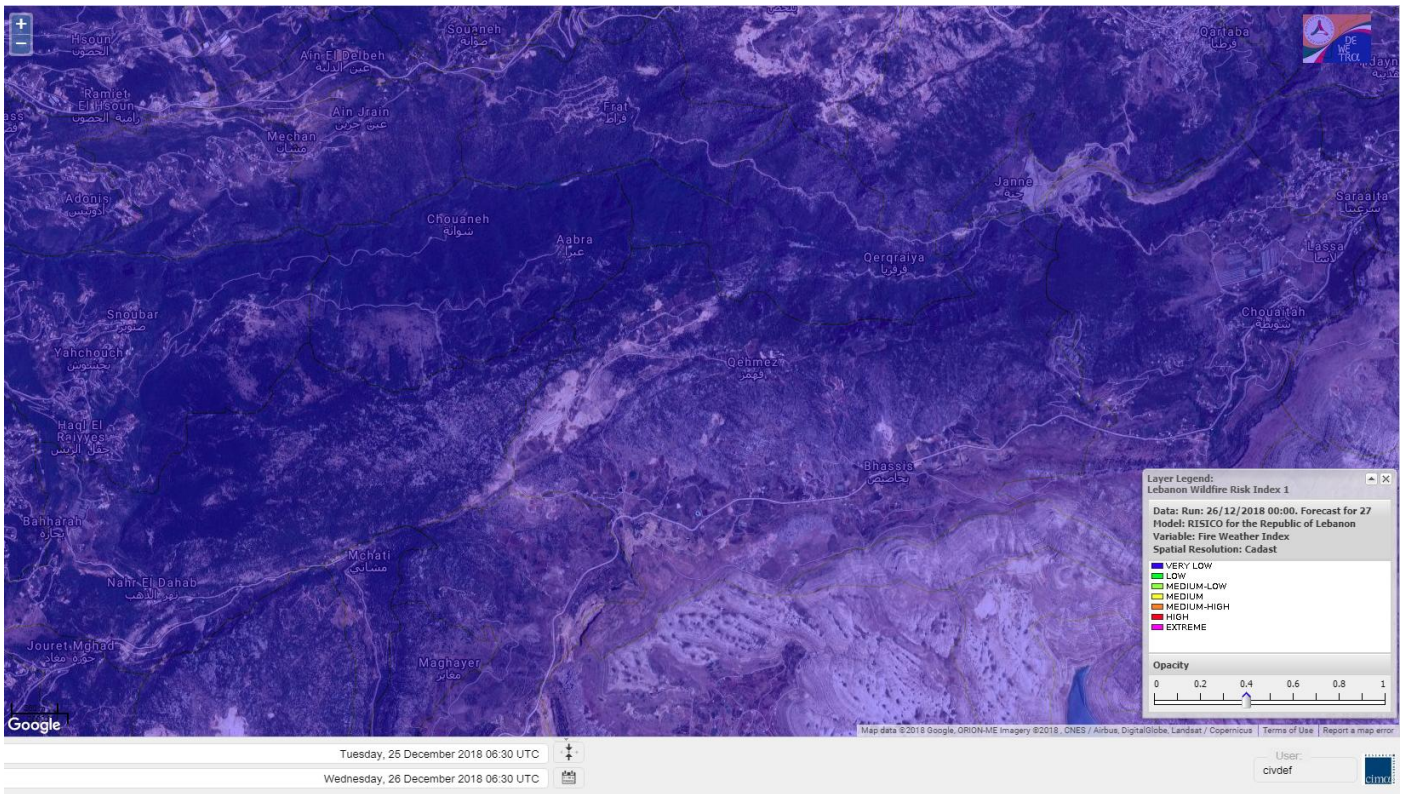
# Shouf Biosphere Reserve Forecast for 28 DEC 2018



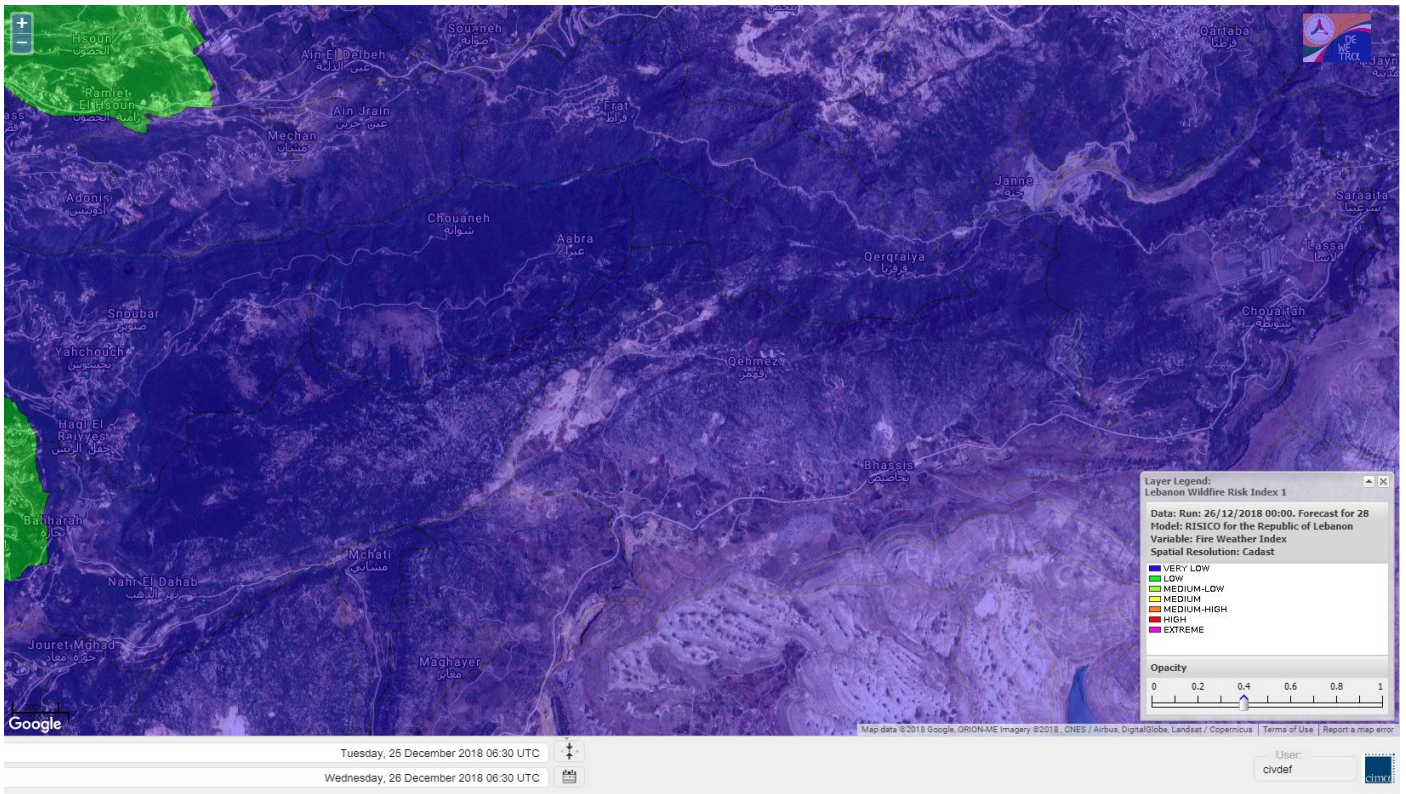
# Jabal Moussa Reserve Forecast for 26 DEC 2018



# Jabal Moussa Reserve Forecast for 27 DEC 2018



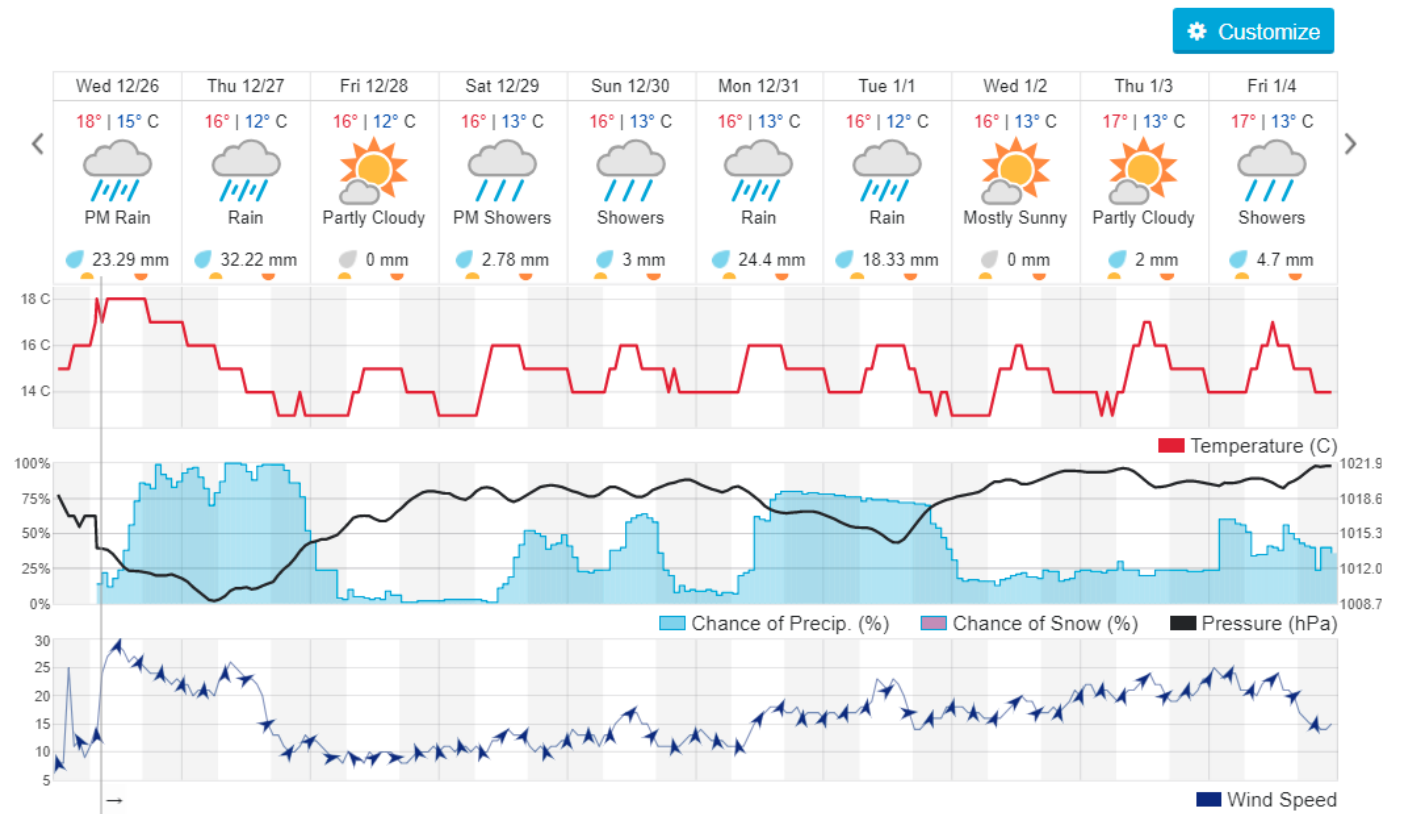
# Jabal Moussa Reserve Forecast for 28 DEC 2018



## Beirut, Lebanon

17° ACHRAFIEH,RIZK STATION | REPORT | CHANGE

TODAY HOURLY **10-DAY** CALENDAR HISTORY WUNDERMAP





## Nord

### Koura

Municipality	26-Dec	27-Dec	28-Dec	Municipality	26-Dec	27-Dec	28-Dec	Municipality	26-Dec	27-Dec	28-Dec
Aaba	ML	VL	L	Afsaddiq	ML	VL	L	Ain Ekrine	L	VL	L
Amioun	ML	VL	L	Anfeh	M	VL	L	Badbhoun	M	VL	L
Barghoun	M	VL	L	Barsa	ML	VL	L	Batroumine	ML	VL	L
Bdebba	ML	VL	L	Bechmizine	ML	VL	L	Bednaye El-Koura	ML	VL	L
Bhabbouch El-Koura	L	VL	L	Bkeftine	ML	VL	L	Bnehran	L	VL	L
Bqaiia El-Koura	ML	VL	L	Bsarma	ML	VL	L	Btaaboura	ML	VL	L
Bttram	ML	VL	L	Btouratij	ML	VL	L	Bziza	ML	VL	L
Dar Beehtar	L	VL	L	Dar Chmezzine	L	VL	L	Deddeh	ML	VL	L
Deir El-Balamand	ML	VL	L	Fih	ML	VL	L	Hraiche	M	VL	L
Ijdaabrine	ML	VL	L	Kaftoun	L	VL	L	Kefraya El-Koura	ML	VL	L
Kfarakka	ML	VL	VL	Kfarhata	ML	VL	L	Kfarhazir	ML	VL	L
Kfarkahel	ML	VL	L	Kfarsaroun	ML	VL	L	Kosba	L	VL	L
Mejdel el-Koura	L	VL	L	Nakhle	ML	VL	L	Qalhat	ML	VL	L
Ras Masqa	ML	VL	L	Rechdibbine	L	VL	L	Zakroun	M	VL	L
Zgharta El-Mtaouile	L	VL	L								

### Bcharre

Municipality	26-Dec	27-Dec	28-Dec	Municipality	26-Dec	27-Dec	28-Dec	Municipality	26-Dec	27-Dec	28-Dec
Aabdine	L	VL	L	Bane	L	VL	L	Barhelioun	L	VL	L
Bazouone	L	VL	VL	Becharre	L	VL	L	Beit Menzer	L	VL	L
Billa	L	VL	L	Blaouza	L	VL	L	Bqaa Kafra	L	VL	VL
Bqerqacha	L	VL	VL	Breissat	L	VL	VL	Dimane	L	VL	VL
Hadath El Jobbeh	L	VL	VL	Hadchit	L	VL	L	Hasroun	L	VL	VL
Mazraat Aassaf	L	VL	VL	Mazraat Bani Saab	L	VL	VL	Mchaa El-Jobbeh	L	VL	VL
Metrit	L	VL	L	Moghr El-Ahoual	L	VL	L	Ouadi Qannoubine	VL	VL	VL
Qanat	L	VL	L	Qnayouer	L	VL	VL	Tourza	L	VL	L

### Batroun

Municipality	26-Dec	27-Dec	28-Dec	Municipality	26-Dec	27-Dec	28-Dec	Municipality	26-Dec	27-Dec	28-Dec
Aabrine	ML	VL	L	Aalali	L	VL	VL	Aartiz	L	VL	VL
Abdelli	L	VL	VL	Ajdabra	L	VL	L	Assia	L	VL	VL
Basbina	ML	VL	L	Batroun	ML	VL	L	Bcheleh	L	VL	VL
Bechtoudar	L	VL	VL	Beit Chlala	L	VL	VL	Beit Kassab	L	VL	VL
Bijdarfil	ML	VL	L	Bqesmaya	L	VL	L	Chatine	L	VL	VL
Chebtein	L	VL	VL	Chekka	M	VL	L	Daael	L	VL	VL
Dahr Abi Yaghi	L	VL	VL	Daraya El-Batroun	ML	VL	L	Deir Billa	L	VL	L
Deir Kfifane	ML	VL	L	Deir Mar Youhanna EL	L	VL	VL	Deir Mar Youssef Jra	L	VL	VL
Douma	L	VL	VL	Douq	L	VL	VL	Eddeh El-Batroun	L	VL	L
Ftihat El-Batroun	L	VL	VL	Ghouma	L	VL	L	Hadtoun	L	VL	VL
Hamat	ML	VL	L	Harbouna	L	VL	VL	Hardine	L	VL	VL
Helta	L	VL	VL	Hery	ML	VL	L	Jebila	L	VL	VL
Jrabta El-Batroun	L	VL	L	Jrane El-Batroun	ML	VL	L	Kfar Aabida	ML	VL	L
Kfar Halda	L	VL	VL	Kfarb Shlaimane	L	VL	VL	Kfarhatna	L	VL	VL
Kfarhay	ML	VL	L	Kfarhelos	ML	VL	L	Kfifane	ML	VL	L

Kfour El Arabi	L	VL	VL	Koubba	ML	VL	L	Kour	L	VL	L
Mar Mama	L	VL	VL	Masrah	L	VL	VL	Mehmarch	L	VL	VL
Mrah Chdid	L	VL	L	Mrah El Ziyat	L	VL	VL	Mrah El-Hajj	L	VL	VL
Nahle El-Batroun	L	VL	VL	Niha El-Batroun	L	VL	VL	Ouahj El-Hajjar	ML	VL	L
Ouata Houb	L	VL	VL	Qatnaaoun	ML	VL	L	Racha	L	VL	VL
Rachana	L	VL	L	Rachkida	ML	VL	L	Ram El-Batroun	VL	VL	VL
Ras Nabhach	ML	VL	L	Selaata	M	VL	L	Sghar	L	VL	L
Smar Jbayl	L	VL	L	Sourat El-Batroun	L	VL	VL	Tannourine El-Fauouqa	L	VL	VL
Tannourine Et-Tahta	L	VL	VL	Thoum	L	VL	L	Toula El-Batroun	L	VL	L
Zan	L	VL	VL								

## Zgharta

Municipality	26-Dec	27-Dec	28-Dec	Municipality	26-Dec	27-Dec	28-Dec	Municipality	26-Dec	27-Dec	28-Dec
Aachach	ML	VL	L	Aalma	ML	VL	L	Aarde	ML	VL	L
Aintourine	L	VL	L	Arabet Qozhaya	L	VL	L	Arde	ML	VL	L
Arjis	L	VL	L	Asnoun	ML	VL	L	Ayto	L	VL	L
Basloukit	L	VL	L	Bchannine	ML	VL	L	Besebeel	ML	VL	L
Bhairat Toula	L	VL	VL	Bnachee	L	VL	L	Boussit	ML	VL	M
Danha	ML	VL	L	Daraiya Zgharta	L	VL	L	Deir Jdeide	ML	VL	L
Ehden	L	VL	L	Halan	ML	VL	M	Hariq Zgharta	ML	VL	L
Houakir	ML	VL	L	Hraiqis	ML	VL	ML	Iaal	ML	VL	L
Ijbaa	L	VL	L	Karm Saddeh	L	VL	L	Kfarchakhna	ML	VL	L
Kfardlaqous	ML	VL	L	Kfarfou	L	VL	L	Kfarhata Zgharta	ML	VL	L
Kfarhoura	ML	VL	L	Kfarsghab	L	VL	L	Kfaryachit	ML	VL	L
Kfarzaina	ML	VL	L	Khaldiye	ML	VL	L	Mazraat Ajbeaa	ML	VL	L
Mazraat Et-Teffah	L	VL	VL	Mazraat Jneid	ML	VL	L	Mejdlaya Zgharta	ML	VL	ML
Merh Kfarsghab	L	VL	L	Miryata	ML	VL	L	Miziara	L	VL	L
Mzraat Kefraya	ML	VL	M	Qorah Bach	ML	VL	L	Rachiine	ML	VL	L
Ras Kifa	L	VL	L	Sakhra	ML	VL	L	Sebhel Zgharta	L	VL	L
Serhel	L	VL	VL	Tallet Zgharta	ML	VL	L	Toula Zgharta	L	VL	L
Zgharta	ML	VL	L								

## Minieh-Denniye

Municipality	26-Dec	27-Dec	28-Dec	Municipality	26-Dec	27-Dec	28-Dec	Municipality	26-Dec	27-Dec	28-Dec
Aasaymout	L	VL	L	Aaymar	ML	VL	L	Aazki	ML	VL	ML
Ain El-Tineh-Miniyeh	ML	VL	L	Assoun	ML	VL	L	Bakhaaoun	L	VL	L
Bchennata	ML	VL	L	Bechehhara	ML	VL	L	Beddawi	M	VL	M
Behouaita	L	VL	L	Beit El Foqss	ML	VL	L	Beit Haouik	ML	VL	L
Beit Zoud	ML	VL	L	Bekaasafrine	ML	VL	L	Borj El Yahoudiyeh	ML	VL	ML
Bqarsouna	L	VL	L	Btermaz	ML	VL	L	Debaael	L	VL	L
Deir Ammar	ML	VL	M	Deir Nbouh	ML	VL	L	Haouaret-Miniyeh	L	VL	L
Haql el Azimeh	ML	VL	L	Harf El Siyad	L	VL	L	Hazmiye-Miniyeh	ML	VL	L
Izal	ML	VL	L	Jarjour	ML	VL	VL	Jayroun	L	VL	L
Kahf El-Malloul	L	VL	L	Karm El-Moher	ML	VL	L	Kfar Binine	L	VL	L
Kfarchalane	ML	VL	L	Kfarhabou	ML	VL	L	Kharroub-Miniyeh	ML	VL	L
Mazraat El-Kreme	ML	VL	L	Mazraat Ketrane	ML	VL	L	Merkebtta	ML	VL	ML
Minyeh	ML	VL	ML	Mrah El Sfirat	ML	VL	L	Mrah Sraj	L	VL	L
Mrebbine	L	VL	L	Nabi Youcheaa	ML	VL	ML	Nemrine	L	VL	L

Qarhaiya	ML	VL	L	Qarne	L	VL	VL	Qarsita	L	VL	L
Qattineh-Miniyeh	ML	VL	VL	Qemmamine	L	VL	VL	Qraine	ML	VL	L
Raouda-Aadoua	ML	VL	ML	Rihaniyet-Miniyeh	ML	VL	ML	Sfireh	L	VL	L
Sir Ed-Danniyeh	ML	VL	L	Tarane	ML	VL	L	Terbol-Miniyeh	ML	VL	M
Zaghartaghriane	ML	VL	L	Zouq Bhannine	ML	VL	ML				

## Nabatiye

### Nabatiye

Municipality	26-Dec	27-Dec	28-Dec	Municipality	26-Dec	27-Dec	28-Dec	Municipality	26-Dec	27-Dec	28-Dec
Aabba	L	VL	L	Aazzi	L	VL	L	Adchit El-Chqif	L	VL	L
Ain Bou Swar	L	VL	VL	Ain Kana	L	VL	VL	Ali El-Taher	L	VL	VL
Ansar	L	VL	L	Arab Salim	L	VL	VL	Arnoun	L	VL	VL
Bfaroue	L	VL	L	Breyqaah	L	VL	L	Charqiyeh	L	VL	L
Choukine	L	VL	L	Deir El Zahrani	L	VL	L	Doueir El-Nabatiyeh	L	VL	L
Habbouch El-Nabatiye	L	VL	VL	Hamra El-Nabatiyeh	L	VL	VL	Harouf El-Nabatiyeh	L	VL	L
Hmaile	L	VL	L	Houmin El Faouqa	L	VL	VL	Houmin El Tahta	L	VL	VL
Jarjough	L	VL	VL	Jbaah El-Nabatiyeh	L	VL	VL	Jebchit	L	VL	L
Kfar Djal El-Nabatiy	L	VL	L	Kfar Remmane	L	VL	VL	Kfar Sir	L	VL	VL
Kfar Tebnit	L	VL	VL	Kfarfila	L	VL	VL	Kfour El-Nabatieh	L	VL	L
Mayfadoun	L	VL	VL	Mazraat Bsaffour	L	VL	L	Mazraat Chalbaal	L	VL	L
Mazraat Dmoul	L	VL	L	Mazraat El Khreibeh	L	VL	L	Mazraat El-Bayad El-	L	VL	VL
Mazraat Kfarjaouz	L	VL	VL	Mazraat Qalaat Meiss	L	VL	L	Nabatiyeh El-Fawka	L	VL	VL
Nabatiyeh Et-Tahta	L	VL	VL	Namiriyeh	L	VL	L	Qaaqaaiyet El Jisr	L	VL	L
Qossaibeh El-Nabatiy	L	VL	L	Roumine	L	VL	VL	Sarba El-Nabatieh	L	VL	VL
Sir El-Gharbiyeh	L	VL	L	Toul	L	VL	L	Yehmor El-Nabatiyeh	L	VL	VL
Zaoutar El Charkiyeh	L	VL	VL	Zaoutar El-Gharbiyeh	L	VL	L	Zebdine El-Nabatiyeh	L	VL	L
Zefta	L	VL	L								

### Hasbaiya

Municipality	26-Dec	27-Dec	28-Dec	Municipality	26-Dec	27-Dec	28-Dec	Municipality	26-Dec	27-Dec	28-Dec
Aain Jarfa	L	VL	L	Abou Qamha	L	VL	VL	Ain Qania	L	VL	VL
Bourghos	L	VL	VL	Chebaa	L	VL	L	Chouaya Hasbaya	L	VL	VL
Dellafeh	L	VL	VL	Fardiss Hasbaiya	L	VL	VL	Hasbaya	L	VL	L
Hbariyeh	L	VL	L	Kaoukaba Hasbaiya	L	VL	VL	Kfar Chouba	L	VL	L
Kfar Hamam	L	VL	L	Kfeir El-Zait	L	VL	L	Khalwat Hasbaya	L	VL	VL
Khreibet Hasbaiya	L	VL	L	Majidiyeh Hasbaiya	L	VL	L	Marj Ez-Zhour (Haouc	L	VL	L
Meri	L	VL	L	Mimass	L	VL	L	Rachaiya El-Fokhar	L	VL	VL
Salaiyeb	L	VL	VL								

### Marjayoun

Municipality	26-Dec	27-Dec	28-Dec	Municipality	26-Dec	27-Dec	28-Dec	Municipality	26-Dec	27-Dec	28-Dec
Aalmane Marjaayoun	L	VL	VL	Aamra	L	VL	VL	Adayseh Marjaayoun	L	VL	VL
Adchit El-Koussair	L	VL	VL	Ain Aarab Marjaayoun	L	VL	VL	Bani Haiyann	L	VL	VL
Blatt Marjaayoun	L	VL	VL	Blida	ML	VL	VL	Borj El-Moulouk	L	VL	VL
Boueyda Marjaayoun	L	VL	VL	Deir Mimass	L	VL	VL	Deir Siriane	L	VL	VL
Dibbine	L	VL	VL	Ebel El Saqi	L	VL	VL	Houla	ML	VL	VL
Houra	L	VL	VL	Kfar Kila	L	VL	VL	Khiam Marjaayoun	L	VL	VL

Klayaa	L	VL	VL	Majdel Selem	ML	VL	VL	Marjaayoun	L	VL	VL
Markaba	ML	VL	VL	Mays El-Jabal	ML	VL	VL	Mazraat Doumiat	L	VL	VL
Mazraat Sarada	L	VL	VL	Mhaibib	ML	VL	VL	Qabrikha	L	VL	L
Qantara	L	VL	VL	Rab El-Thalathine	L	VL	VL	Saouaneh Marjayoun	ML	VL	VL
Talloussa	L	VL	VL	Taybeh Matjaayoun	L	VL	VL	Touline	L	VL	L

## Bent Jbail

Municipality	26-Dec	27-Dec	28-Dec	Municipality	26-Dec	27-Dec	28-Dec	Municipality	26-Dec	27-Dec	28-Dec
Ain-Ebel	ML	VL	L	Aitaroun	ML	VL	L	Aynata Bint Jbeil	ML	VL	VL
Ayta El-Chaeb	ML	VL	L	Ayta El-Jabal	ML	VL	VL	Beit Lif	L	VL	L
Beit Yahoun	ML	VL	VL	Bint Jbeil	ML	VL	L	Borj Qalaway	L	VL	L
Braachit	ML	VL	VL	Chakra	ML	VL	VL	Debel	ML	VL	L
Deir Antar	ML	VL	L	Froun	L	VL	VL	Ghandouriyeh Bint Jb	L	VL	L
Hanine	ML	VL	L	Hariss	ML	VL	L	Hdatha	ML	VL	VL
Jmeyjme	ML	VL	VL	Kafra Bint Jbeil	ML	VL	L	Kfar Dounine	ML	VL	VL
Khirbet Selm	ML	VL	VL	Kounine	ML	VL	VL	Maroun El Ras	ML	VL	L
Qalaway	L	VL	L	Qaouzah	L	VL	L	Qatmoun	ML	VL	L
Ramya Bint Jbeil	L	VL	L	Rchaf	L	VL	L	Rmeich	ML	VL	L
Safad Al Battikh	ML	VL	VL	Salhaneh	L	VL	L	Serbine	ML	VL	L
Sultanieh Bint Jbeil	ML	VL	VL	Tibnine	ML	VL	VL	Tiri	ML	VL	VL
Yaroun	ML	VL	VL	Yater	L	VL	L				

## Mont Liban

### Jbail

Municipality	26-Dec	27-Dec	28-Dec	Municipality	26-Dec	27-Dec	28-Dec	Municipality	26-Dec	27-Dec	28-Dec
Aabeydat	L	VL	L	Aalita	L	VL	VL	Aamchit	L	VL	L
Aarab El-Lahib	VL	VL	VL	Aarasta	L	VL	VL	Adonis Jbeil	L	VL	VL
Afqa Jbeil	VL	VL	VL	Ain El Delbeh Jbeil	L	VL	VL	Ain El-Ghouayba	L	VL	VL
Ain Jrain	L	VL	VL	Ain Kfah	ML	VL	L	Almat El Chemaliyat	L	VL	VL
Almat El-Jenoubiya	VL	VL	VL	Aqoura	L	VL	VL	Bayzoun	L	VL	VL
Bchille Jbeil	L	VL	L	Bechtida	L	VL	VL	Behdaydat	L	VL	L
Beit Habbaq	L	VL	L	Bejjeh	L	VL	L	Bekhaaz	L	VL	L
Berbara Jbeil	ML	VL	L	Bintael	L	VL	VL	Birket Hjoula	L	VL	VL
Blatt Jbeil	L	VL	L	Boulhos	L	VL	VL	Breyj Jbeil	L	VL	VL
Chamat	ML	VL	L	Chikhane	ML	VL	L	Chmout	L	VL	VL
Eddeh Jbeil	L	VL	L	Ehmej	VL	VL	VL	Fatre	L	VL	VL
Ferhet	L	VL	VL	Fghal	L	VL	VL	Frat	L	VL	VL
Ghabat	L	VL	VL	Ghalboun	L	VL	L	Gharzouz	ML	VL	L
Ghofrine	L	VL	L	Habil	L	VL	VL	Halate	L	VL	L
Haqel	L	VL	VL	Hbaline	L	VL	L	Hboub	L	VL	L
Hdeine	L	VL	VL	Hema Er-Rehban	VL	VL	VL	Hema Mar Maroun Aann	VL	VL	VL
Hjoula	L	VL	VL	Hosrayel	L	VL	L	Hsarat	L	VL	L
Hsoun	L	VL	L	Jaj	VL	VL	VL	Janne	L	VL	VL
Jbeil	L	VL	L	Jeddey Jbeil	ML	VL	L	Jlisse	L	VL	VL
Jouret El-Qattine	L	VL	L	Kfar Baal Annaya	L	VL	VL	Kfar Kidde	L	VL	L
Kfar Kouas	L	VL	L	Kfar Mashoun	L	VL	L	Kfoun	L	VL	VL

Kharbe Jbeil	L	VL	L	Laqlouq	L	VL	VL	Lassa	L	VL	VL
Lehfed	L	VL	VL	Maad	ML	VL	L	Mar Sarkis	L	VL	VL
Mastita	L	VL	L	Mayfouq	L	VL	VL	Mazraat El Siyad	L	VL	VL
Mazraat El-Maaden	VL	VL	VL	Mechane	L	VL	VL	Mechmech Jbeil	L	VL	VL
Mehrin	L	VL	L	Mejdel El-Akoura	L	VL	VL	Mghayreh Jbeil	L	VL	VL
Mounsef	ML	VL	L	Nahr Ibrahim	L	VL	L	Qahmez	VL	VL	VL
Qartaba	L	VL	VL	Qartaboun	L	VL	L	Qattara Jbeil	VL	VL	VL
Qorqraya	L	VL	VL	Ramout	ML	VL	L	Ras Osta	L	VL	L
Rihane Jbeil	ML	VL	L	Sakiet El-Khayt	L	VL	VL	Saqi Richmaya	VL	VL	VL
Sebrine	L	VL	VL	Seraita	L	VL	VL	Souane Jbeil	L	VL	VL
Tadmor	L	VL	VL	Tartej	VL	VL	VL	Torzaiya	L	VL	VL
Yanouh Jbeil	L	VL	VL	Zibdine Jbeil	L	VL	VL				

## El Metn

Municipality	26-Dec	27-Dec	28-Dec	Municipality	26-Dec	27-Dec	28-Dec	Municipality	26-Dec	27-Dec	28-Dec
Aain El-Qabu	VL	VL	VL	Aain El-Qach	VL	VL	VL	Aain El-Teffaha	L	VL	VL
Aain el-Safsaf El-M	VL	VL	VL	Abou Mizane	L	VL	VL	Ain Aar	L	VL	VL
Ain Alaq	L	VL	VL	Ain El-Kharroube	L	VL	VL	Ain El-Sendianeh	VL	VL	VL
Ain El-Zeitoune	VL	VL	VL	Ain Saadeh	L	VL	VL	Aintoura El-Matn	VL	VL	VL
Amaret Chalhoub	L	VL	VL	Antelias	L	VL	VL	Atchaneh	L	VL	VL
Ayroun	VL	VL	VL	Baabdat	L	VL	VL	Baouchariyeh	L	VL	L
Baskinta	VL	VL	VL	Beit Chabab	L	VL	VL	Beit El-Chaar	L	VL	VL
Beit El-Kekko	L	VL	VL	Beit Mery	L	VL	VL	Bhersaf	L	VL	VL
Bikfaya	L	VL	VL	Biyakout	L	VL	VL	Bnabil	VL	VL	VL
Bourj Hammoud	ML	VL	L	Bqennaya	L	VL	VL	Broummana El-Matn	L	VL	VL
Bsalim	L	VL	VL	Bsifrine	L	VL	VL	Btegrine	VL	VL	VL
Chaouiye	L	VL	VL	Chouaya El-Matn	L	VL	VL	Choueir	L	VL	VL
Chrine	L	VL	VL	Dahr El Sawan El-Mat	L	VL	VL	Daychouniyeh	L	VL	L
Dbayeh	L	VL	VL	Deir Chamra	L	VL	VL	Deir Mar Abda el Mch	L	VL	VL
Deir Mar Roukouz	L	VL	L	Deir Tamiche	L	VL	VL	Dik El-Mehdi	L	VL	VL
Dikwaneh	ML	VL	L	Douar El-Matn	VL	VL	VL	Fanar	L	VL	VL
Fraike	L	VL	VL	Haret El-Ballaneh	L	VL	VL	Hbous	L	VL	VL
Himlaya	L	VL	VL	Jal El Did	L	VL	VL	Jdeideh El-Metn	L	VL	VL
Jouar El-Matn	L	VL	VL	Jouret El-Ballout	L	VL	VL	Kaaqour	L	VL	VL
Kfar Aaqab	VL	VL	VL	Kfertay El-Matn	VL	VL	VL	Khenchara	VL	VL	VL
Khillet El-Mtain	L	VL	VL	Konnabat Broummana	L	VL	VL	Konnabat Salima	L	VL	VL
Machraah El-Matn	VL	VL	VL	Majdel Tarchich	VL	VL	VL	Majzoub	L	VL	VL
Mansouriyeh El-Metn	L	VL	L	Mar Boutros Karm Et-	L	VL	VL	Mar Chaya et Mzekke	L	VL	VL
Mar Moussa Ed-Douar	VL	VL	VL	Marjaba	VL	VL	VL	Masqa	L	VL	VL
Mayasse	L	VL	VL	Mazraat Deir Aoukar	L	VL	VL	Mazraat El-Hadirat	L	VL	VL
Mazraat Yachouh	L	VL	VL	Mchikha	L	VL	VL	Menqlet Mezher	L	VL	VL
Mhaydseh Matn	L	VL	VL	Mkalles	L	VL	L	Mrouj	VL	VL	VL
Mtain	VL	VL	VL	Mtayleb	L	VL	VL	Nabay	L	VL	VL
Naccache	L	VL	VL	Ouadi Chahine	L	VL	VL	Ouadi El-Karm El-Mat	VL	VL	VL
Ouata El-Mrouj	VL	VL	VL	Ouyoun El-Matn	L	VL	VL	Qornet Chehwan	L	VL	VL
Qornet El-Hamra	L	VL	VL	Roumieh	L	VL	VL	Sfeilet Bikfaya	L	VL	VL
Sinn El-Fil	ML	VL	L	Zabbougha	L	VL	VL	Zalqa	L	VL	VL

Zarououn	VL	VL	VL	Zekrite	L	VL	VL	Zighrine El-Matn	L	VL	VL
Zouk El-Khrab	L	VL	L								

## Chouf

Municipality	26-Dec	27-Dec	28-Dec	Municipality	26-Dec	27-Dec	28-Dec	Municipality	26-Dec	27-Dec	28-Dec
Aalmane El-Chouf	L	VL	VL	Aammqi El-Chouf	L	VL	VL	Ain Ouzein	VL	VL	VL
Ain Qani	L	VL	VL	Ain Zhalta	VL	VL	L	Ainbal	L	VL	VL
Amateur	L	VL	VL	Anout	L	VL	VL	Atrine	L	VL	VL
Baadarane	VL	VL	L	Baaqline	L	VL	VL	Baasir	L	VL	L
Barja	L	VL	L	Barouk	VL	VL	L	Bater	L	VL	VL
Batloun	VL	VL	VL	Bayqoun	L	VL	L	Bchetfine	L	VL	VL
Beiteddine	VL	VL	VL	Benouati Ech-Chouf	L	VL	L	Berjein	L	VL	VL
Bireh et Mtalleh	L	VL	VL	Biret El-Chouf	L	VL	L	Bkechtine Ouel Mchei	L	VL	VL
Bkifa El-Chouf	L	VL	VL	Botme	VL	VL	VL	Bqaiaa Ech-Chouf	L	VL	L
Bsaba El-Chouf	L	VL	VL	Chammis El-Chouf	L	VL	L	Chehim	L	VL	VL
Chemaarine	L	VL	VL	Chourit	L	VL	VL	Daher El-Chouf	L	VL	L
Dalhoun	L	VL	VL	Damour	L	VL	L	Daraya El-Chouf	L	VL	VL
Deir El-Moukhalles	L	VL	VL	Deir Baba	L	VL	L	Deir Dourit	L	VL	VL
Deir El-Qamar	L	VL	L	Deir Kouche	L	VL	VL	Dibbieh	L	VL	L
Dmit	L	VL	VL	Fouara Jaafar	L	VL	VL	Fraidis El-Chouf	VL	VL	L
Ghabet Jaafar	L	VL	VL	Gharife	L	VL	VL	Haret Jandal	L	VL	L
Hasrout	L	VL	VL	Jadra	L	VL	VL	Jahlieh	L	VL	VL
Jbeih El-Chouf	VL	VL	L	Jdeidet El-Chouf	L	VL	VL	Jiyeh	L	VL	L
Jleilyeh	L	VL	VL	Jmailiyeh	L	VL	VL	Joun	L	VL	VL
Kahlounie El-Chouf	L	VL	VL	Ketermaya	L	VL	L	Kfar Faqoud	L	VL	L
Kfar Hamal	L	VL	L	Kfar Him	L	VL	VL	Kfar Katra	L	VL	VL
Kfar Niss	L	VL	VL	Kfar hay	L	VL	VL	Kfarnabrakh	L	VL	VL
Khirbet Bisri	L	VL	VL	Knayse El-Chouf	L	VL	VL	Maaniyeh	L	VL	L
Maasser Beiteddine	L	VL	VL	Maasser El-Chouf	VL	VL	L	Majdalouna	L	VL	VL
Majdel El-Meouch	L	VL	VL	Mazboud	L	VL	VL	Mazmoura	L	VL	VL
Mazraat El Chouf	L	VL	L	Mazraat El Daher	L	VL	VL	Mazraat El-Douair	L	VL	VL
Mechref	L	VL	L	Mghairie	L	VL	L	Mghayrie El-Chouf	L	VL	L
Moukhtara	L	VL	VL	Mrusti	VL	VL	L	Mtolle	L	VL	VL
Naameh	L	VL	L	Niha El-Chouf	VL	VL	L	Ouadi Abou Youssef	L	VL	VL
Ouadi Ed-Deir	L	VL	VL	Ouadi El-Sit	L	VL	VL	Ouadi bnehlay	L	VL	VL
Qraibeh	VL	VL	L	Qreiaa	L	VL	VL	Rmayle El-Chouf	L	VL	L
Semqaniyeh	L	VL	VL	Sibline	L	VL	L	Sirjbeil	L	VL	L
Warhanieh	VL	VL	L	Werdaniyeh	L	VL	VL	Zaarourieh	L	VL	VL

## Baabda

Municipality	26-Dec	27-Dec	28-Dec	Municipality	26-Dec	27-Dec	28-Dec	Municipality	26-Dec	27-Dec	28-Dec
Abadiyeh	L	VL	L	Ain Mouaffaq	L	VL	L	Araiya	L	VL	VL
Arbaniyeh	L	VL	VL	Arsoun	L	VL	VL	Baabda	L	VL	L
Baalchmey	L	VL	L	Bmaryam	L	VL	L	Bourj El-Brajneh	ML	VL	L
Boutchay	L	VL	L	Bsaba Baabda	L	VL	L	Btekhney	L	VL	VL
Btibyat	L	VL	VL	Bzabdine	L	VL	VL	Chbeniyeh	L	VL	L
Chiyah	ML	VL	L	Chmeisset Baabda	L	VL	VL	Chouit	L	VL	VL
Deir El-harf	L	VL	VL	Deir Khouna	L	VL	L	Dlaybeh	L	VL	VL

Falougha	VL	VL	VL	Furn El-Chebbak	ML	VL	L	Hadath Beyrouth	L	VL	L
Halaliyeh Baabda	L	VL	VL	Hammana	VL	VL	L	Haret El Sett	L	VL	VL
Haret Hamze	L	VL	L	Haret Hreik	ML	VL	L	Hasbaiya El-Metn	L	VL	VL
Jouar El-Hoz	VL	VL	VL	Jouret Arsoun	VL	VL	VL	Kfar Chima	L	VL	L
Kfar Selouane	VL	VL	VL	Khalouat Baabda	L	VL	L	Kneisset Baabda	L	VL	VL
Laylakeh	ML	VL	L	Louayzeh Baabda	L	VL	L	Merdache	L	VL	L
Mzairaa Baabda	L	VL	VL	Ouadi Chahrour El Ol	L	VL	L	Ouadi Chahrour El So	L	VL	L
Qalaa Baabda	VL	VL	VL	Qhraybe Baabda	L	VL	L	Qobbayaa	L	VL	L
Qornayel	VL	VL	VL	Qortada	L	VL	VL	Qrayeh Baabda	L	VL	L
Qsaibeh Baabda	L	VL	VL	Qtale Baabda	L	VL	VL	Ras El Metn	L	VL	VL
Ras El-Haref	L	VL	L	Rouayset El-Ballout	L	VL	VL	Salima Baabda	L	VL	VL
Tahouitat El Ghadir	L	VL	L	Tarchich	VL	VL	VL	Zandouqa	L	VL	VL

## Aley

Municipality	26-Dec	27-Dec	28-Dec	Municipality	26-Dec	27-Dec	28-Dec	Municipality	26-Dec	27-Dec	28-Dec
Abey	L	VL	L	Aghmid	L	VL	L	Ain Dara	VL	VL	L
Ain Drafil	L	VL	L	Ain El Halazoun	L	VL	L	Ain El-Rmmaneh	L	VL	VL
Ain Jedideh	L	VL	L	Ain Ksour	L	VL	L	Ain Onoub	L	VL	L
Ain Traz	L	VL	VL	Ainab	L	VL	L	Aley	L	VL	L
Aramoun	L	VL	L	Aytat	L	VL	L	Azouniyeh	L	VL	L
Baawerta	L	VL	L	Badghan Oua Wadi Bad	L	VL	L	Bassatine	L	VL	L
Bayssour	L	VL	L	Bchamoun	L	VL	L	Bdadoun	L	VL	L
Behouara	L	VL	L	Bennay	L	VL	L	Bhamdoun El-Dayaa	L	VL	L
Bhamdoun El-Mhatta	L	VL	L	Bkhechthey	L	VL	L	Bleibel	L	VL	L
Bmakine	L	VL	L	Bmehray	VL	VL	L	Bouzrid	L	VL	VL
Bserrine	L	VL	L	Bsous	L	VL	VL	Btalloun	L	VL	L
Btater	L	VL	L	Chanay	L	VL	L	Charoun	L	VL	L
Chartoun	L	VL	VL	Chemlane	L	VL	L	Choueifat El-Aamrous	L	VL	ML
Choueifat El-Oumara	L	VL	L	Choueifat El-Quoubbe	L	VL	ML	Dakkoun	L	VL	L
Deir Qoubel	L	VL	L	Dfoun	L	VL	L	Douair El Remmaneh	L	VL	VL
Ghaboun	L	VL	L	Habramoun	L	VL	VL	Homs Oua Hama	L	VL	L
Houmal	L	VL	L	Jisr El Qadi	L	VL	L	Kehaleh	L	VL	L
Keyfoun	L	VL	L	Kfar Aamey	L	VL	L	Kommatyeh	L	VL	L
Maasrati	L	VL	L	Majdel Baana	L	VL	L	Mansourieh et Ain El	L	VL	L
Mazraat El-Nahr	L	VL	VL	Mchakhte	VL	VL	L	Mecherfeh	L	VL	L
Mejdaya	L	VL	L	Mrayjat	VL	VL	L	Ramliyah	L	VL	VL
Rechmaya	L	VL	VL	Rejmeh	L	VL	L	Remhala	L	VL	L
Rouayset El Neemane	L	VL	L	Saoufar	L	VL	L	Selfaya	L	VL	VL
Sirhmoul	L	VL	L	Souq El Ghareb	L	VL	L	Taazanieh	L	VL	L

## Kesrouane

Municipality	26-Dec	27-Dec	28-Dec	Municipality	26-Dec	27-Dec	28-Dec	Municipality	26-Dec	27-Dec	28-Dec
Achkout	VL	VL	VL	Adma Oua Dafneh	L	VL	L	Ain Ed-Delbe Kesroua	VL	VL	VL
Ain El-Rihane	L	VL	VL	Aintoura Kesrouane	L	VL	L	Ajaltoun	L	VL	VL
Akaybeh Kesrouane	L	VL	L	Aramoun Kesrouane	L	VL	VL	Azra ouel Ozor	L	VL	VL
Ballouneh	L	VL	VL	Batha	L	VL	VL	Bekaatat Achkout	VL	VL	L
Bekaatat Kanaan	VL	VL	VL	Bizhel	L	VL	VL	Bouar	L	VL	L
Bqaatouta	VL	VL	VL	Bqaq Ed-Dine	L	VL	L	Bzommar	L	VL	L

Chahtoul	VL	VL	VL	Chnaniir	L	VL	VL	Chouan	L	VL	VL
Daraya Kesrouane	L	VL	VL	Darououn	L	VL	VL	Deir Baqlouch	L	VL	VL
Dlebta	L	VL	VL	Eghbeh	VL	VL	VL	Faraya	VL	VL	VL
Fatka	L	VL	L	Feytroun	VL	VL	VL	Ghazir	L	VL	L
Ghbaleh Kesrouane	L	VL	L	Ghedrass	L	VL	VL	Ghosta	L	VL	VL
Ghynéh	L	VL	L	Harharaya w Kattine	L	VL	VL	Harissa Kesrouane	L	VL	VL
Hayata	VL	VL	VL	Hosein	L	VL	VL	Hrajel	VL	VL	VL
Jdeideh Ghazir	L	VL	VL	Jeita	L	VL	L	Jounieh Ghadir	L	VL	L
Jounieh Haret Sakhr	L	VL	L	Jounieh Salel Alma	L	VL	L	Jounieh Sarba	L	VL	L
Jouret Bedrane	L	VL	L	Jouret Mhad	VL	VL	VL	Jouret Termos	L	VL	L
Kfar Debiane	VL	VL	VL	Kfar Tay Kesrouane	VL	VL	VL	Kfar Yassine	L	VL	L
Kfour Kesrouane	L	VL	L	Kharayeb Nahr Ibrahi	L	VL	L	Klayaat Kesrouane	L	VL	VL
Maarab	L	VL	VL	Maaysra Kesrouane	L	VL	L	Mayrouba	VL	VL	VL
Mazraat Er-Ras	L	VL	L	Mazraat Mrah El-Mir	L	VL	VL	Mchaa El Ftouh	VL	VL	VL
Mchaa Faraya	VL	VL	VL	Mchaa Kfar Dibiane	VL	VL	VL	Mghaer	VL	VL	VL
Mradiyeh	L	VL	VL	Nahr Ed-Dahab	VL	VL	VL	Nammoura Kesrouane	L	VL	L
Ouata El Jaouz	VL	VL	VL	Ouata Sillam	L	VL	L	Raachine	VL	VL	VL
Rayfoun	L	VL	VL	Safra Kesrouane	L	VL	L	Shayle Kesrouane	L	VL	L
Tabarja	L	VL	L	Yahchouch	L	VL	VL	Zaaytreh	L	VL	VL
Zeytoun	L	VL	L	Zouk Mikael	L	VL	L	Zouk Mosbeh	L	VL	L

## Baalbek\_Hermel

### Baalbek

Municipality	26-Dec	27-Dec	28-Dec	Municipality	26-Dec	27-Dec	28-Dec	Municipality	26-Dec	27-Dec	28-Dec
Aadous	ML	VL	VL	Aamchki	ML	VL	VL	Aarsal	ML	L	L
Ain Baalbek	ML	VL	L	Ain Bourday	ML	VL	VL	Ain El-Benye	ML	VL	L
Ain El-Jaouz Baalbek	ML	VL	L	Ain El-Siya Chadoura	ML	VL	VL	Al Khodr Baalbek	ML	VL	L
Al Nabi Chit	ML	VL	L	Aynata Baalbek	L	VL	VL	Baalbek	ML	VL	VL
Bachwat	L	VL	VL	Barqa	L	VL	VL	Bednayel Baalbak	L	VL	VL
Beit Chama	L	VL	VL	Bijjaje	ML	VL	L	Bouday	L	VL	VL
Brital	ML	VL	L	Btadi	L	VL	VL	Chaat	ML	VL	L
Chaibe	ML	VL	L	Chlifa	L	VL	VL	Chmestar	L	VL	VL
Dar El-Oussa	L	VL	VL	Deir El-Ahmar	L	VL	VL	Deir Mar Maroun Baal	ML	VL	ML
Douris	ML	VL	VL	Fakiha	M	VL	L	Hadath Baalbek	L	VL	VL
Ham	ML	VL	L	Haour Taala	ML	VL	L	Hizzine	ML	VL	VL
Hlebta	ML	VL	L	Hosh Barada	ML	VL	VL	Hosh El Dahab	ML	VL	VL
Hosh El Snid	ML	VL	L	Hosh El-Nabi	L	VL	L	Hosh El-Rafiq	L	VL	L
Hosh Tal Safiya	ML	VL	VL	Hrebta	ML	VL	L	laat	ML	VL	VL
Jebaa	L	VL	VL	Jenta	ML	VL	L	Kfar Dabach	L	VL	VL
Kfar Dane	L	VL	VL	Khraibeh El-Hermel	ML	VL	VL	Khreibet Baalbek	ML	VL	L
Kneisset Baalbek	ML	VL	L	Labueh	ML	VL	L	Maarboun	ML	VL	L
Majdaloun	ML	VL	VL	Maqneh	ML	VL	VL	Mazraat Beit Mcheik	L	VL	VL
Misraya	L	VL	L	Moqraq	ML	VL	L	Nabha El-Damdoum	L	VL	L
Nabi Chbay	ML	VL	L	Nabi Osman	ML	VL	L	Nahleh baalbek	ML	VL	L
Ouadi El-Oss	ML	VL	VL	Qaa Baayoun	M	VL	ML	Qaa Jouar Maqiye	M	VL	L
Qaa Ouadi El-Khanzir	ML	VL	ML	Qah Baalbek	M	VL	ML	Qarha Baalbek	ML	VL	L



Qsarnaba	L	VL	VL	Ram Baalbek	ML	VL	L	Ras Baalbek El Sahl	M	L	ML
Ras Baalbek El-Charq	M	VL	ML	Riha	ML	VL	L	Saaide	ML	VL	VL
Sboubba	ML	VL	L	Seriine El-Tahta	L	VL	L	Slouqi	L	VL	VL
Taiba Baalbek	ML	VL	VL	Talia	ML	VL	L	Taraiya	L	VL	VL
Temnin El Fawqa	L	VL	VL	Temnin El-Tahta	L	VL	VL	Tfail	ML	VL	VL
Yahfoufa	ML	VL	L	Yammouneh	L	VL	VL	Younine	ML	VL	L
Zboud	ML	VL	L								

## Hermel

Municipality	26-Dec	27-Dec	28-Dec	Municipality	26-Dec	27-Dec	28-Dec	Municipality	26-Dec	27-Dec	28-Dec
Charbine El-Hermel	L	VL	L	Hermel Jbab	ML	VL	L	Hermel	ML	VL	ML
Maaysra El-Hermel	ML	VL	L	Michaa Mrjhine	L	VL	L	Ouadi Faara	ML	VL	L
Ras Baalbek - Ouadi	M	VL	ML	Ras Baalbek El Gharb	ML	VL	L	Zighrine	ML	VL	L

## Akkar

### Akkar

Municipality	26-Dec	27-Dec	28-Dec	Municipality	26-Dec	27-Dec	28-Dec	Municipality	26-Dec	27-Dec	28-Dec
Aain Tinta	L	VL	L	Aaiyat	L	VL	ML	Aakkar El-Aatiqa	L	VL	L
Aamar Akkar	ML	VL	L	Aamar El Baykat	L	VL	ML	Aamayer	M	VL	M
Aamriyet Akkar	L	VL	ML	Aandqet	L	VL	L	Aarmeh	L	VL	L
Aarqa	ML	VL	L	Aawaynat	ML	VL	ML	Aayoun Akkar	L	VL	L
Abboudiye	ML	VL	L	Ain El-Zeit	L	VL	ML	Ain Yaaqoub	L	VL	L
Akroum	ML	VL	ML	Aridet Cheikh Zennad	ML	VL	L	Baldeh w Mazraat Bal	ML	VL	L
Barcha	ML	VL	L	Bardeh	L	VL	ML	Bebnine	ML	VL	ML
Beino	L	VL	L	Beit Ayoub	L	VL	M	Beit El-Haouch	ML	VL	ML
Beit Mellat	L	VL	L	Beit Younes	L	VL	L	Berbara Akkar	L	VL	L
Berqayel	ML	VL	ML	Bezbina	L	VL	L	Bireh Akkar	L	VL	L
Borj	L	VL	L	Bqerezla	ML	VL	ML	Bzal	ML	VL	L
Chane	L	VL	L	Chaqdouf	L	VL	L	Charbila	ML	VL	L
Cheikh Mohammad	ML	VL	L	Cheikh Taba Es-Sahl	ML	VL	L	Cheikh Taba	L	VL	L
Cheikh Zennad	ML	VL	ML	Cheikhlar	ML	VL	M	Chir Hmairine	ML	VL	L
Daghle	L	VL	L	Dahr Laissine	ML	VL	L	Darine	ML	VL	ML
Dawra	L	VL	L	Dawsa w Baghdadi	L	VL	ML	Dayret Nahr El-Kabir	ML	VL	M
Deir Dalloum	ML	VL	ML	Deir Jennine	L	VL	L	Denbou	L	VL	L
Dibbabiyyeh	L	VL	ML	Douair Aadwiyeh	L	VL	ML	Fassikine	L	VL	ML
Fnaydek	L	VL	L	Fraydes Akkar	L	VL	L	Ghazayle	ML	VL	ML
Habchit	L	VL	L	Hakour	ML	VL	ML	Halba	ML	VL	L
Haouchab	ML	VL	L	Hayssat	ML	VL	L	Haytla	ML	VL	ML
Hayzouq	ML	VL	L	Hedd	ML	VL	L	Hmaira Akkar	ML	VL	ML
Hmaiss Akkar	ML	VL	ML	Hnaider	M	VL	M	Hokr Ed-Dahri	ML	VL	L
Hokr Etti	ML	VL	ML	Hokr Jouret Srar	ML	VL	L	Houaich	L	VL	L
Hrar	L	VL	L	Idbil	L	VL	L	Ilal	L	VL	ML
Janine	ML	VL	L	Jdeidet El-Joumeh	L	VL	L	Jdeidet El-Kaiteh	ML	VL	L
Jebayel	L	VL	ML	Kafr	L	VL	VL	Kafr	L	VL	ML
Karm Asfour	ML	VL	L	Kfar Melki Akkar	ML	VL	L	Kfar Noun	L	VL	L
Kfarharra	ML	VL	L	Khalsa	ML	VL	L	Kharnoubet Akkar	ML	VL	L

Khirbet Daoud Aakkar	L	VL	ML	Khirbet El Remmane	ML	VL	ML	Khirbet Shar	L	VL	L
Khoreybet El-Jindi	ML	VL	L	Khreibet Aakkar	L	VL	ML	Kneisset Aakkar	ML	VL	ML
Kneisset Hnaider	M	VL	M	Knisse	ML	VL	L	Kroum El-Aarab	ML	VL	L
Kwachra	L	VL	ML	Kweykhat	ML	VL	L	Machta Hammoud	ML	VL	ML
Majdala	ML	VL	ML	Majdel Akkar	L	VL	ML	Mar Touma	ML	VL	ML
Marlaya Melhem	ML	VL	L	Mashha	L	VL	L	Massouidiye	ML	VL	ML
Mazraat Beit Ghattas	ML	VL	ML	Mazraat En-Nahriye	L	VL	ML	Mechmech	L	VL	L
Memneh	L	VL	L	Mhammara	ML	VL	M	Mighraq Aakkar	ML	VL	ML
Minyara	ML	VL	L	Moqayteh	ML	VL	ML	Mounjez	L	VL	L
Msalla	L	VL	ML	Mzeihmeh	ML	VL	ML	Nfaiseh	L	VL	L
Noura Et-Tahta	L	VL	ML	Ouadi El-Haour	ML	VL	L	Ouadi El-Jamous	ML	VL	ML
Ouyoun El-Ghizlane	ML	VL	ML	Qaabarine	ML	VL	L	Qabaait	L	VL	L
Qachlaq	ML	VL	L	Qantara Aakkar	L	VL	ML	Qarha Aakkar	M	VL	M
Qarqaf	ML	VL	ML	Qboula	L	VL	L	Qleiaat Aakkar	ML	VL	ML
Qloud El-Baqie	ML	VL	ML	Qobaiyat Aakkar	L	VL	L	Qobbat Chamrat	ML	VL	ML
Qorayat	L	VL	L	Qornet Aakkar	L	VL	L	Qsair Aakkar	L	VL	L
Rahbe	L	VL	ML	Rihaniyet Aakkar	ML	VL	L	Rmah	L	VL	ML
Rmoul	ML	VL	L	Saadine	ML	VL	ML	Sadaqa	L	VL	ML
Saidnaya	ML	VL	ML	Sammouniye	ML	VL	L	Sayssouq	ML	VL	ML
Semmaqiye	ML	VL	L	Semmaqli	ML	VL	ML	Sfinet El-Dreib	L	VL	L
Sfinet El-Qaitaa	ML	VL	L	Sindyanet Zeidane	L	VL	L	Souaisset Aakkar	ML	VL	L
Srar	ML	VL	ML	Tal Abbas El Gharby	ML	VL	L	Tal Abbas El-Charqy	ML	VL	L
Tal Biret	ML	VL	L	Tal Hmayra	ML	VL	L	Tal Maayan Tal Kiri	ML	VL	L
Tal Sibel	ML	VL	ML	Tallet Chattaha	L	VL	ML	Tikrit	L	VL	ML
Tleil	ML	VL	ML	Tshea	L	VL	L	Zawarib	L	VL	L
Zouq El Hosniyeh	ML	VL	L	Zouq El-Haddara	ML	VL	ML	Zouq El-Hbalsa	ML	VL	L
Zouq El-Mogachrine	ML	VL	ML								

## Sud

### Sour

Municipality	26-Dec	27-Dec	28-Dec	Municipality	26-Dec	27-Dec	28-Dec	Municipality	26-Dec	27-Dec	28-Dec
Aaiyeh	ML	VL	L	Aalma El-Chaab	ML	VL	L	Aaytit	ML	VL	L
Abbassiyeh Sour	ML	VL	ML	Abou Chech	ML	VL	L	Ain Abou Abdallah	ML	VL	L
Ain Baal	ML	VL	L	Arzoun	L	VL	VL	Aziyeh	ML	VL	L
Baflaya	L	VL	L	Barich	L	VL	L	Batouliyah	ML	VL	L
Bayad	ML	VL	L	Bazouriyeh	ML	VL	L	Bediass	L	VL	L
Bestiyat	L	VL	L	Borj El Chemali	ML	VL	ML	Borj En-Naqoura	ML	VL	ML
Borj Rahhal	L	VL	L	Boustane	ML	VL	L	Btaychiyeh	ML	VL	L
Chaaitiye	ML	VL	L	Chameh	ML	VL	L	Chehabiye	ML	VL	L
Chehour	L	VL	VL	Chihine	ML	VL	L	Debaal Sour	L	VL	L
Deir Amess	ML	VL	L	Deir Kifa	L	VL	L	Deir Qanoun El-Ain	ML	VL	ML
Deir Qanoun El-Naher	L	VL	L	Derdghaiya	L	VL	L	Dhayra	ML	VL	L
Halloussiyeh	L	VL	L	Hamoul	ML	VL	L	Hanaouey	ML	VL	L
Henniye	ML	VL	ML	Hmairi Sour	L	VL	L	Iskandarouna Sour	ML	VL	L
Jbal El Botom	ML	VL	L	Jebbin	ML	VL	ML	Jennata	L	VL	ML
Jijim	ML	VL	L	Jouaiya	ML	VL	L	Kneisset Sour	ML	VL	L

Maarake	L	VL	ML	Maaroub	L	VL	ML	Majadel	ML	VL	L
Majdalzoun	ML	VL	ML	Mansouri Sour	ML	VL	ML	Marnba	L	VL	VL
Marouahine	L	VL	L	Mazraat El-Zalloutiy	ML	VL	L	Mazraat Mechref	ML	VL	L
Mazraat Tayr Semhat	L	VL	VL	Mheilib	ML	VL	ML	Neffakhiyeh	L	VL	VL
Niha Sour	L	VL	L	Ouadi Jilo	ML	VL	L	Qana	ML	VL	L
Qolaileh Sour	ML	VL	ML	Rechknanay	ML	VL	L	Rmadiyah	ML	VL	L
Selha Sour	L	VL	L	Siddiqine	ML	VL	L	Sour	ML	VL	M
Srifa	L	VL	VL	Tayr Debbe	L	VL	L	Tayr Felsay	L	VL	L
Tayr Harfa	ML	VL	L	Touayri	L	VL	VL	Toura	L	VL	L
Yanouh Sour	L	VL	L	Yarine	ML	VL	ML	Zebqine	L	VL	VL

## Saida

Municipality	26-Dec	27-Dec	28-Dec	Municipality	26-Dec	27-Dec	28-Dec	Municipality	26-Dec	27-Dec	28-Dec
Aanqoun	L	VL	VL	Aaqtanit	L	VL	L	Aarab Ej-Jall	L	VL	VL
Aarab Tabbaya	L	VL	VL	Abra Saida	L	VL	L	Adloun	L	VL	L
Adousiyeh	L	VL	L	Ain-El-Deleb	L	VL	VL	Arzai	L	VL	L
Babliyah	L	VL	L	Barty	L	VL	VL	Bissariyeh	L	VL	L
Bnaafoul	L	VL	VL	Bqosta	L	VL	L	Bramiy	L	VL	VL
Daoudiyeh	L	VL	L	Dareb El-Sim	L	VL	L	Erkay	L	VL	VL
Ghassanieh	L	VL	L	Ghazieh	L	VL	L	Hajjeh	L	VL	L
Haret Saida	L	VL	VL	Hartiyeh	L	VL	L	Hlaliye Saida	L	VL	VL
Insariyat	L	VL	L	Jazira Saida	ML	VL	L	Kafar Bit	L	VL	L
Kaoutariyet El-Siyad	L	VL	L	Kfar Chellal	L	VL	VL	Kfar Hatta Saida	L	VL	L
Kfar Milke Saida	L	VL	VL	Khartoum	L	VL	L	Khaziz	L	VL	VL
Khirbet Ed-Douair Sa	L	VL	L	Khirbet El-Bassal	L	VL	L	Khrayeb Saida	L	VL	L
Loubieh	L	VL	L	Maghdouche	L	VL	L	Majdelyoun	L	VL	VL
Matariyet El-Choumar	L	VL	L	Matayriyeh	L	VL	L	Mazraat 'Mseileh	L	VL	L
Mazraat 'Snaiber	L	VL	L	Mazraat Aarab Soukka	L	VL	VL	Mazraat Deir Taqla	L	VL	L
Mazraat El Yahoudiye	ML	VL	L	Mazraat El-Housseini	L	VL	L	Mazraat El-Mhaydaleh	L	VL	L
Mazraat El-Ouasta	ML	VL	L	Mazraat Jamjim	L	VL	L	Mazraat Kaoutariyet	L	VL	L
Mazraat Kfar Badda	L	VL	L	Mazraat Oussamiyat	L	VL	ML	Mazraat Sari	L	VL	L
Mazraat Sinai	L	VL	L	Meemariyeh	L	VL	L	Merouaniyeh	L	VL	L
Miyeh ou Miyeh	L	VL	VL	Najjariyeh	L	VL	L	Qaaqaiyat El-Snaouba	L	VL	L
Qnarit	L	VL	L	Qraiye Saida	L	VL	VL	Saida Ed-Dekermane	L	VL	VL
Saida El-Oustani	L	VL	VL	Saida El-Qadimeh	L	VL	VL	Saida Kefraya	L	VL	L
Saksakiyeh	ML	VL	L	Salhie Saida	L	VL	L	Sarafand	L	VL	L
Sfenta	L	VL	VL	Tafahta	L	VL	L	Tanbourit	L	VL	L
Tebna	L	VL	L	Zaghdraiya	L	VL	VL	Zeita	L	VL	VL
Zrariyeh	L	VL	L								

## Jezzine

Municipality	26-Dec	27-Dec	28-Dec	Municipality	26-Dec	27-Dec	28-Dec	Municipality	26-Dec	27-Dec	28-Dec
Ain El-Mir (El Estab)	L	VL	VL	Anane	L	VL	VL	Aramta	L	VL	L
Ariya	L	VL	VL	Aychiyeh	L	VL	VL	Azour	L	VL	VL
Baba	L	VL	VL	Bayssour Jezzine	L	VL	VL	Benoueteh Jezzine	L	VL	VL
Bhannine	L	VL	VL	Bisri	L	VL	VL	Bkassine	L	VL	VL
Bouslaya	L	VL	VL	Btedine El-Leqech	L	VL	VL	Chbail	L	VL	VL
Choualiq Jezzine	L	VL	L	Dahr Ed-Deir	L	VL	VL	Deir El Qattine	L	VL	VL

Demachqiyeh	L	VL	VL	Ghabbatiyeh	L	VL	VL	Harf Jezzine	L	VL	VL
Hassaniyeh	L	VL	L	Haytouleh	L	VL	VL	Haytura	L	VL	VL
Hidab	L	VL	VL	Homsiyeh	L	VL	VL	Jabal Toura	L	VL	L
Jarmaq	L	VL	VL	Jensnaya	L	VL	VL	Jernaya	L	VL	VL
Jezzine	L	VL	L	Karkha	L	VL	VL	Kfar Falous	L	VL	VL
Kfar Houna	L	VL	L	Kfar Jarrah	L	VL	VL	Lebaa	L	VL	VL
Louayzet Jezzine	L	VL	VL	Machmouche	L	VL	VL	Mahmoudiyeh Jezzine	L	VL	VL
Maknounye Jezzine	L	VL	VL	Maraat Ouazaiyeh	L	VL	VL	Mazraat Daraya	L	VL	VL
Mazraat El-Aarqoub	L	VL	VL	Mazraat El-Mathane	L	VL	VL	Mazraat El-Rahbane	L	VL	VL
Mazraat Khallet Khaz	L	VL	VL	Mazraat Louzid (Loua	L	VL	VL	Mazraat Qrouh	L	VL	VL
Mazraat Tamra	L	VL	VL	Mazraat Zighrine Jez	L	VL	VL	Mazraat	L	VL	VL
Mharbiyeh	L	VL	VL	Midane Jezzine	L	VL	VL	Mjeydel Jezzine	L	VL	VL
Mlikh	L	VL	VL	Mrah El-Hbasse	L	VL	VL	Ouadi Baanqoudaine	L	VL	VL
Ouadi El-Laymoun	L	VL	VL	Ouardiyeh	L	VL	VL	Qabaa Jezzine	L	VL	VL
Qatrani	L	VL	VL	Qaytouleh	L	VL	VL	Qtaleh Jezzine	L	VL	VL
Rihane Jezzine	L	VL	VL	Rimat	L	VL	VL	Roum	L	VL	VL
Roummanet	L	VL	VL	Sabbah	L	VL	VL	Saydoun	L	VL	VL
Sfaray	L	VL	VL	Snaya	L	VL	VL	Sojoud	L	VL	VL
Srayri	L	VL	VL	Taaid	L	VL	VL	Wadi Jezzine	L	VL	VL
Zhalta	L	VL	VL								

## Bekaa

### West Bekaa

Municipality	26-Dec	27-Dec	28-Dec	Municipality	26-Dec	27-Dec	28-Dec	Municipality	26-Dec	27-Dec	28-Dec
Aammiq BG	L	VL	VL	Ain El Tineh BG	L	VL	L	Ain Zebdeh	L	VL	L
Ana	L	VL	VL	Aytanit	L	VL	L	Baaloul BG	L	VL	L
Bab Mareh	L	VL	L	Chouberqiye Aammiq	L	VL	VL	Dakoue	L	VL	L
Deir Ain El-Jaouze	L	VL	L	Deir Tahniche	L	VL	VL	Ghaza	L	VL	VL
Harime El-Soughra	L	VL	L	Hoch Harimeh	L	VL	L	Jazira BG	L	VL	VL
Jib Jennine	L	VL	L	Kamed-El-Laouz	L	VL	L	Kefraya BG	L	VL	VL
Khiara El Atika	L	VL	VL	Khiara	L	VL	VL	Khirbet Qanafar	L	VL	L
Lala	L	VL	L	Lebbaya BG	L	VL	L	Loussa	L	VL	L
Machghara	L	VL	L	Manara (Hammara) BG	L	VL	L	Mansoura BG	L	VL	VL
Marej BG	L	VL	VL	Maydoun	L	VL	L	Ouaqf BG	L	VL	VL
Qaraaoun	L	VL	L	Qelya	L	VL	VL	Raouda (Istabel)	L	VL	L
Saghbine	L	VL	L	Sohmor	L	VL	L	Soltan Yacoub el Ara	L	VL	L
Souairy	L	VL	L	Sultan Yaacoub	L	VL	L	Tal Znoun	L	VL	VL
Yehmor BG	L	VL	L	Zilaya	L	VL	L				

### Zahle

Municipality	26-Dec	27-Dec	28-Dec	Municipality	26-Dec	27-Dec	28-Dec	Municipality	26-Dec	27-Dec	28-Dec
Aanjar (Haouch Mouss	L	VL	L	Ablah	L	VL	VL	Ain Kfarzabad	L	VL	VL
Ali-El-Nahri	L	VL	VL	Bar Elias	L	VL	VL	Bouarej	L	VL	VL
Cheberqiyet Tabet	L	VL	VL	Chtaura	L	VL	VL	Deir El Ghazal	L	VL	VL
Delhamiyet Zahle	L	VL	VL	Ferzol	L	VL	VL	Haouch El-Ghanam	L	VL	VL
Haouch Es-Siyadeh	L	VL	VL	Haouch Hala	L	VL	VL	Haouch Mandara	L	VL	VL

Haouch Qayssar	L	VL	VL	Hezerta	L	VL	VL	Hosh Moussa	L	VL	VL
Jdita	L	VL	VL	Kfarzabad	L	VL	VL	Ksara	L	VL	VL
Majdel Aanjar	L	VL	L	Makssi	L	VL	VL	Massa	L	VL	L
Mazraat Er-Remtaniye	L	VL	VL	Mrayjat Zahle	L	VL	VL	Mzaraa Zahle	L	VL	VL
Nabi Ayla	L	VL	VL	Nasriyet Rizk	ML	VL	L	Nasriyet Zahle	L	VL	VL
Niha Zahle	L	VL	VL	Ouadi Ed-Deloum	L	VL	VL	Ouadi El-Arayech	L	VL	VL
Qaa El Rim	L	VL	VL	Qab Elias	L	VL	VL	Qousaya	L	VL	VL
Rhit	L	VL	VL	Riyak	L	VL	VL	Saadnayel	L	VL	VL
Taal El-Akhdar	L	VL	VL	Taalbeya	L	VL	VL	Taanayel	L	VL	VL
Talamara	L	VL	VL	Tcheflik Edde Haouch	L	VL	VL	Tcheflik Qiqano	L	VL	VL
Terbol Zahle	L	VL	VL	Touaite Zahle	L	VL	VL	Zahle Aradi	L	VL	VL
Zahle El-Berbara	L	VL	VL	Zahle El-Maallaqa	L	VL	VL	Zahle El-Midane	L	VL	VL
Zahle Er-Rassiye	L	VL	VL	Zahle Haouch El-Ouma	L	VL	VL	Zahle Haouch El-Ouma	L	VL	VL
Zahle Haouch Ez-Zara	L	VL	VL	Zahle Maallaqa Aradi	L	VL	VL	Zahle Mar Antonios	L	VL	VL
Zahle Mar Elias	L	VL	VL	Zahle Mar Gerios	L	VL	VL	Zahle Saydet En-Naja	L	VL	VL
Zebdoul	L	VL	VL								

## Rachaiya

Municipality	26-Dec	27-Dec	28-Dec	Municipality	26-Dec	27-Dec	28-Dec	Municipality	26-Dec	27-Dec	28-Dec
Ain Arab Rachaiya	L	VL	L	Ain Ata	L	VL	L	Ain Harche	L	VL	L
Aqabe Rachaya	L	VL	L	Ayha	ML	VL	L	Ayta El Fokhar	L	VL	L
Bakifa Rachaya	L	VL	L	Bakka	L	VL	ML	Beit Lahya	L	VL	L
Bireh Rachaiya	L	VL	L	Daher El Ahmar	L	VL	L	Deir El-Achayer	L	VL	L
Heloua Rachaiya	L	VL	L	Hoch El Qannabeh Rac	L	VL	L	Kaoukaba Bou Arab	L	VL	L
Kfar Danis	L	VL	L	Kfar Mechki	L	VL	L	Kfar Qouq	L	VL	L
Kherbet Rouha	L	VL	L	Majdel Balhiss	L	VL	L	Mdoukha	L	VL	L
Mhaydseh Rachaiya	L	VL	L	Nabi Safa	L	VL	L	Rachaiya	L	VL	L
Rafid Rachaiya	L	VL	L	Selsata (Mazraat Dei	L	VL	L	Tannoura	L	VL	L
Yanta	L	VL	L								

## Beyrouth

### Beyrouth

Municipality	26-Dec	27-Dec	28-Dec	Municipality	26-Dec	27-Dec	28-Dec	Municipality	26-Dec	27-Dec	28-Dec
Achrafieh	ML	VL	L	Ain el-Mreisse	ML	VL	L	Bachoura	ML	VL	L
Beirut Central Distr	ML	VL	L	Marfai	ML	VL	L	Mazraa	ML	VL	L
Medaouar	ML	VL	L	Minet el-Hosn	ML	VL	L	Mwssaitbeh	ML	VL	L
Ras Beirut	L	VL	L	Rmeil	ML	VL	L	Saifi	ML	VL	L
Zqaq el-Blat	ML	VL	L								