

Lebanon Fire Risk Bulletin



CIVIL DEDEFENCE

Refer to cadast table condition.

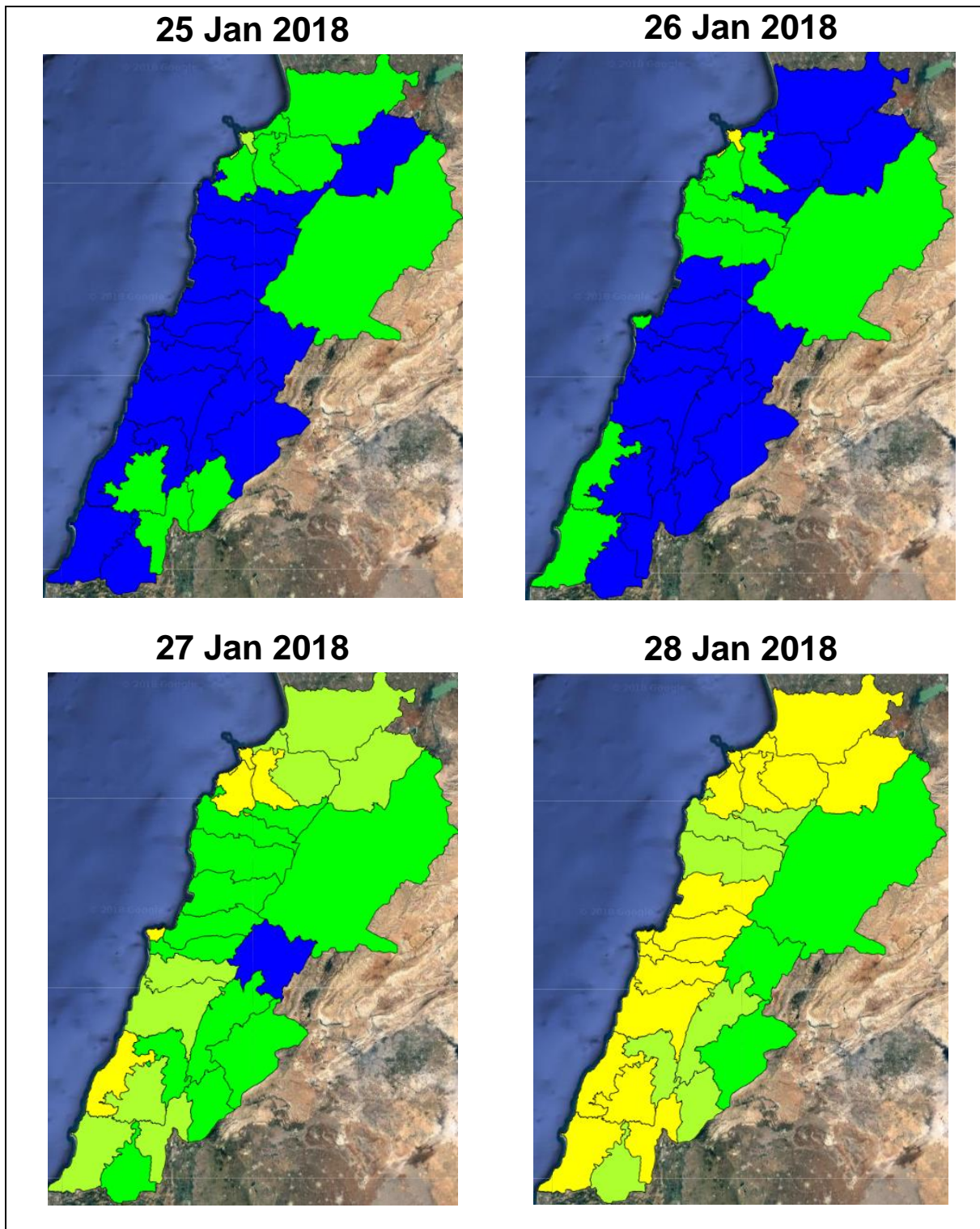
Please note that the indicated temperature is at 2 meters height from the ground.

General description of potential fire risk situation

Symbol	Level of risk	Meaning and actions
VL	Very low	Very low fire risk. Controlled burning operations can be hardly executed due to high fuel moisture content. Normally wildfires self-extinguish.
L	Low	Low fire risk. Controlled burning operations can be executed with a reasonable degree of safety.
ML	Medium low	Medium-low fire risk. Controlled burning operations can be executed in safety conditions. All the fires need to be extinguished.
M	Medium	Medium fire risk. Controlled burning operations would be avoided. All the fires need to be very well extinguished.
M	Medium high	Controlled burning is not recommended. Open flame will start fires. Cured grasslands and forest litter will burn readily. Spread is moderate in forests and fast in exposed areas. Patrolling and monitoring is suggested. Fight fires with direct attack and all available resources.
H	High	Ignition can occur easily with fast spread in grass, shrubs and forests. Fires will be very hot with crowning and short to medium spotting. Direct attack on the head may not be possible requiring indirect methods on flanks. Patrolling and monitoring the territory is highly suggested.
E	Extreme	Ignition can occur also from sparks. Fires will be extremely hot with fast rate of spread. Control may not be possible during day due to long range spotting and crowning. Suppression forces should limit efforts to limiting lateral spread. Damage potential total. Patrolling and monitoring the territory is highly suggested.

Beirut, 26 January 2018

FIRE RISK INDEX

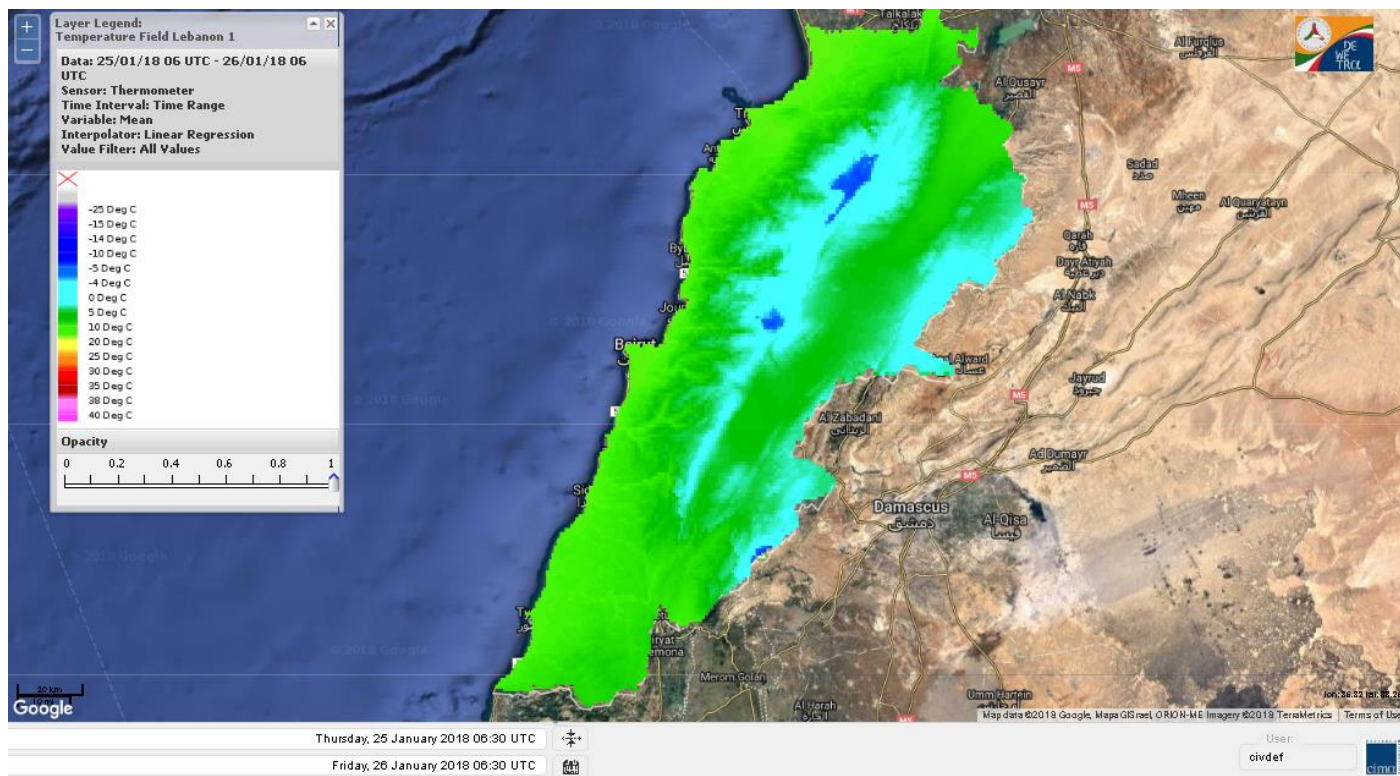


Layer Legend:
Lebanon Wildfire Risk Index 1

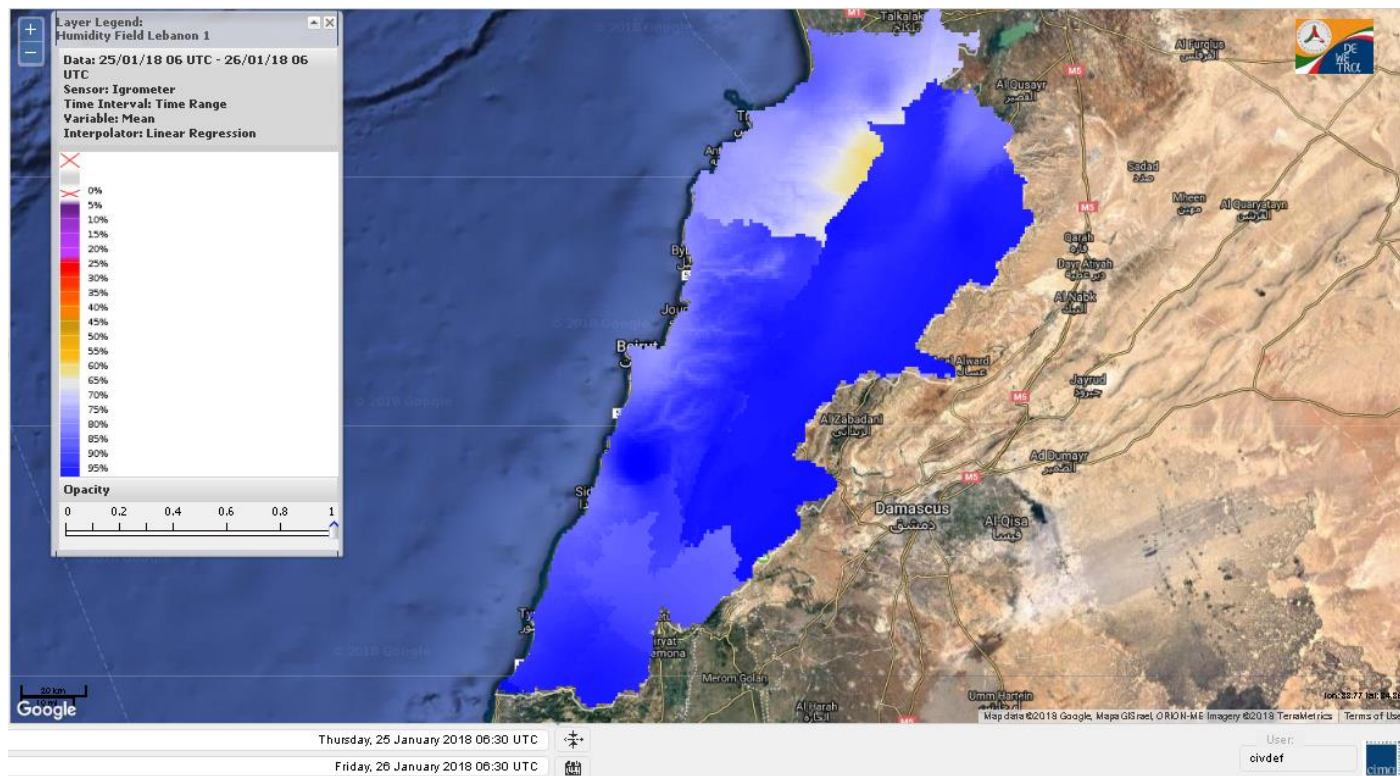
Data: Run: 26/01/2018 00:00. Forecast for 26
Model: RISICO for the Republic of Lebanon
Variable: Fire Weather Index
Spatial Resolution: Caza

- VERY LOW
- LOW
- MEDIUM-LOW
- MEDIUM
- MEDIUM-HIGH
- HIGH
- EXTREME

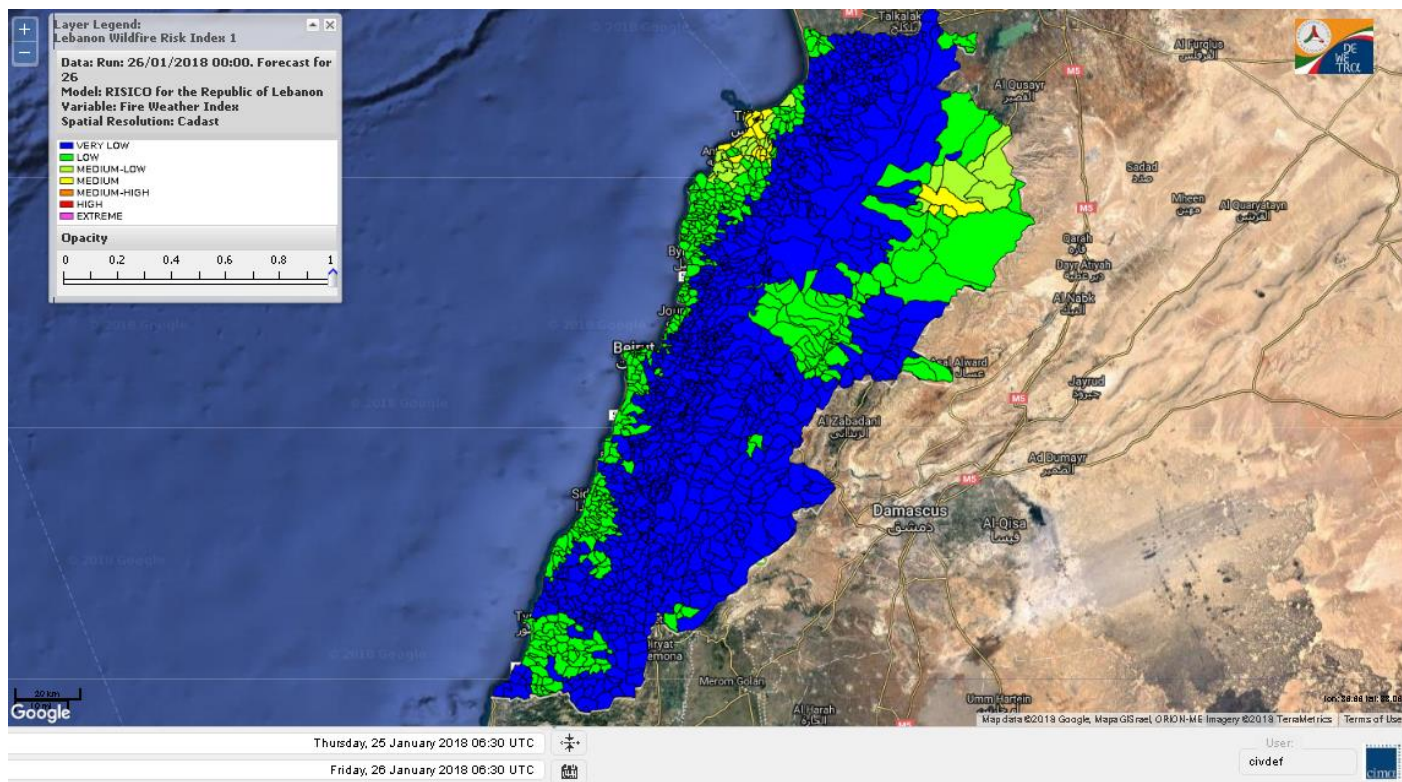
Lebanon temperature for Lebanon 26 Jan 2018



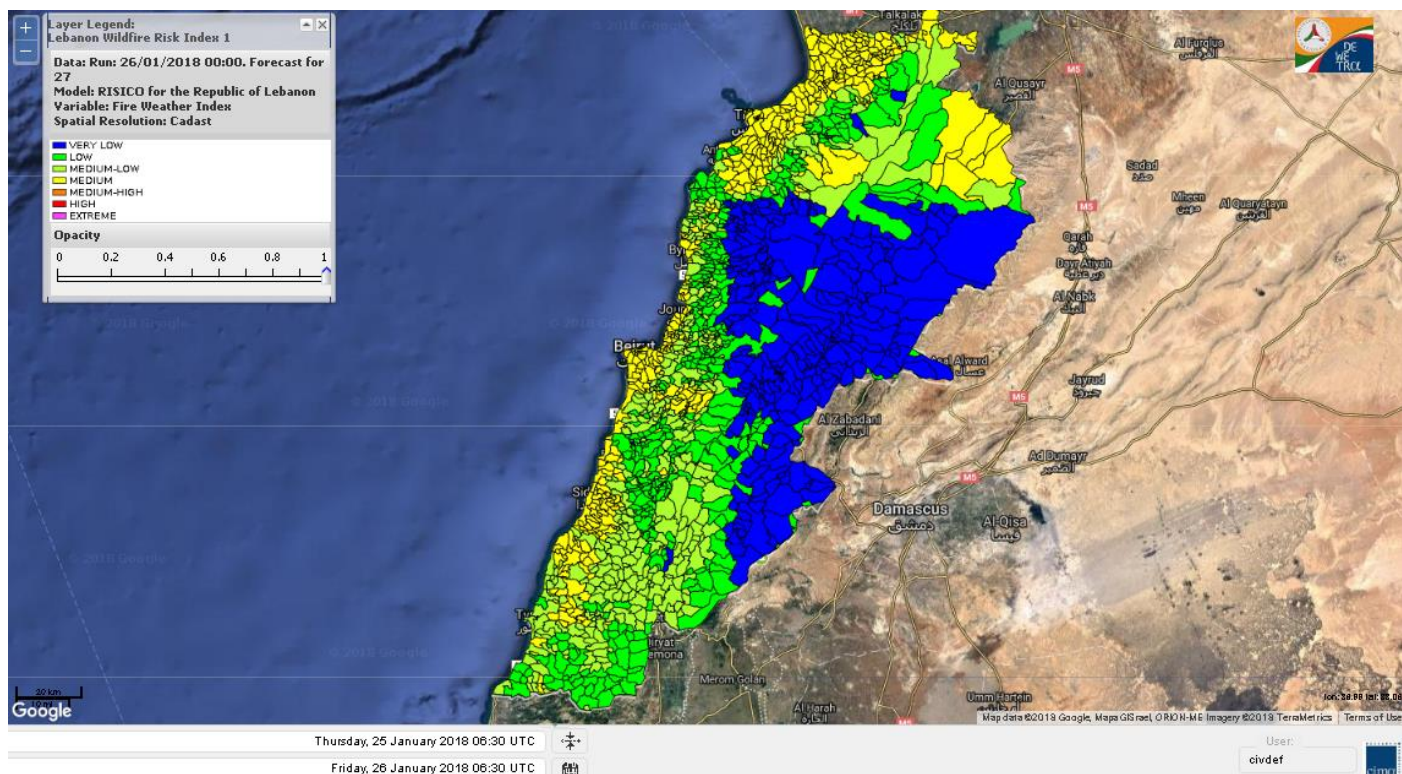
Lebanon humidity for Lebanon 26 Jan 2018



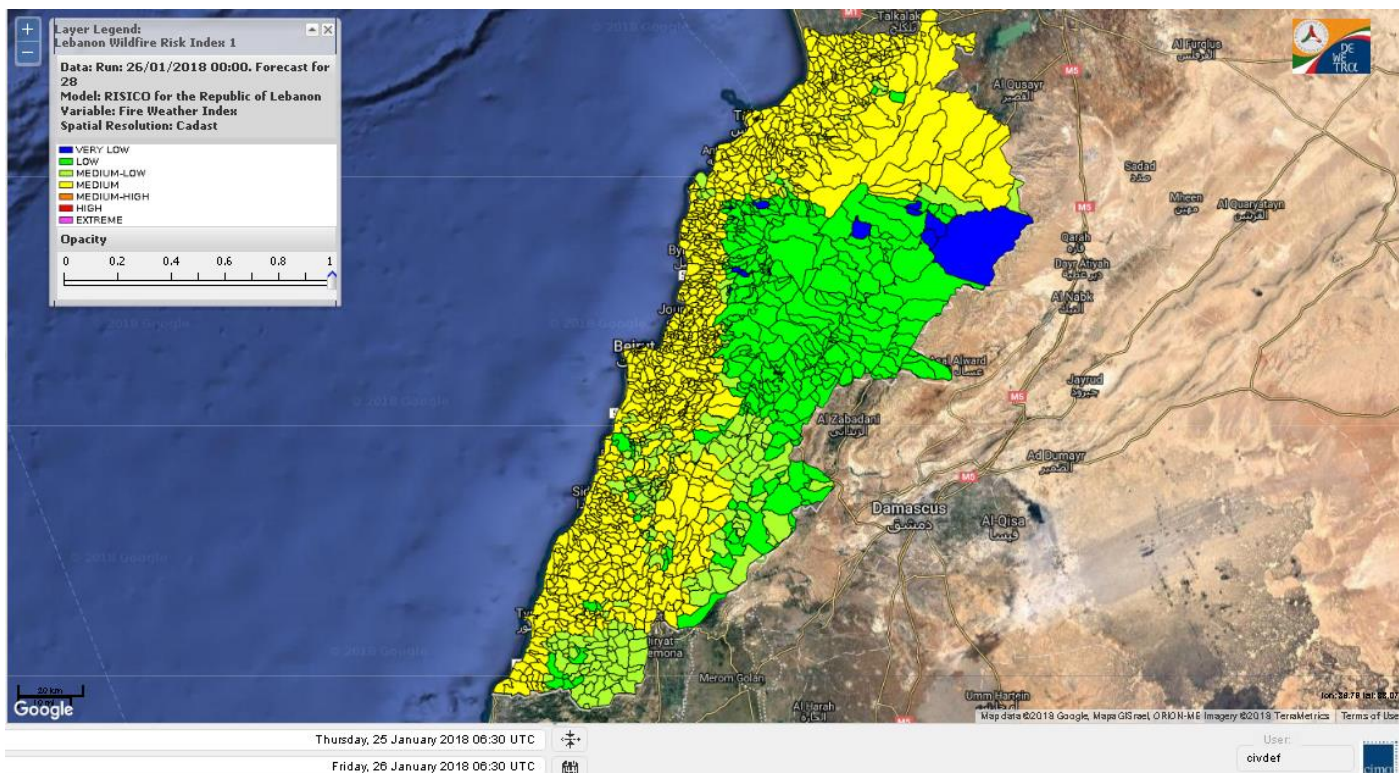
Lebanon for 26 Jan 2018



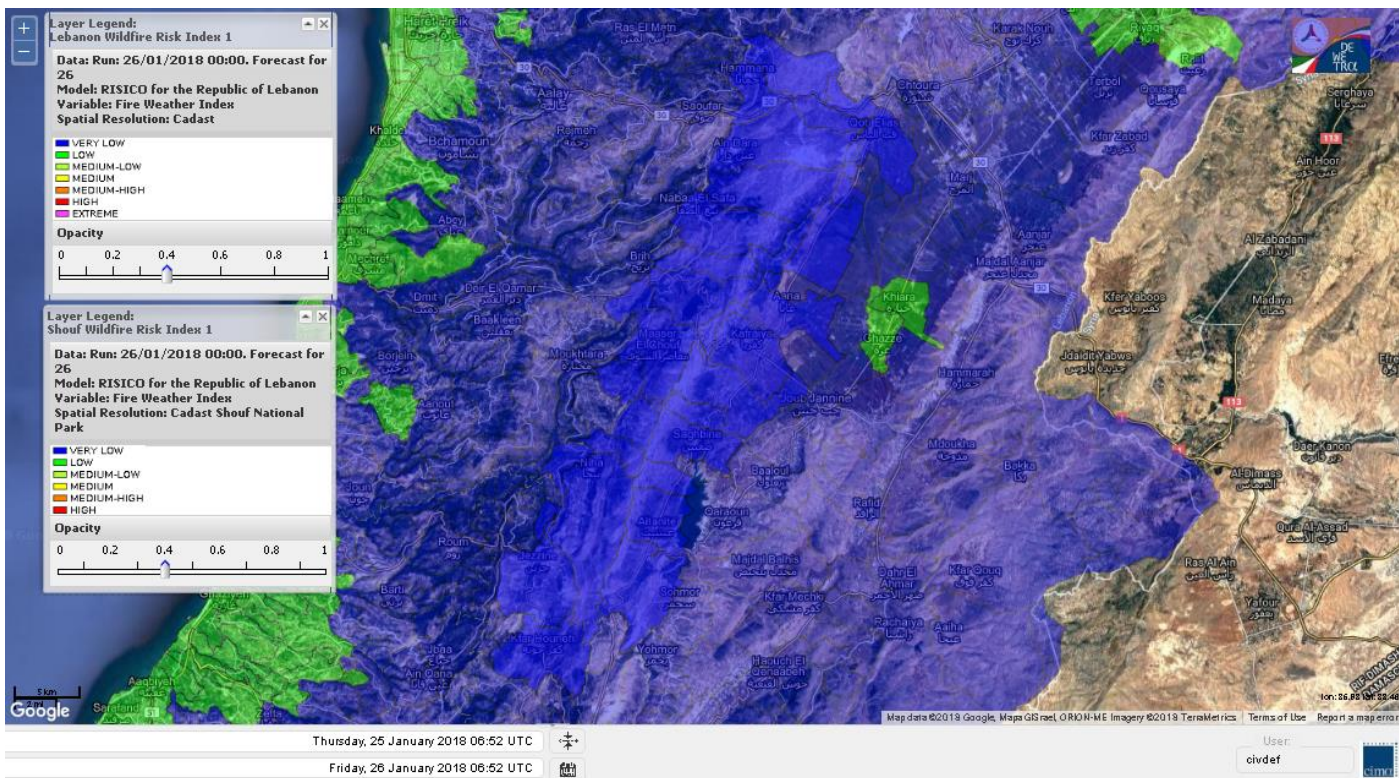
Lebanon for 27 2018



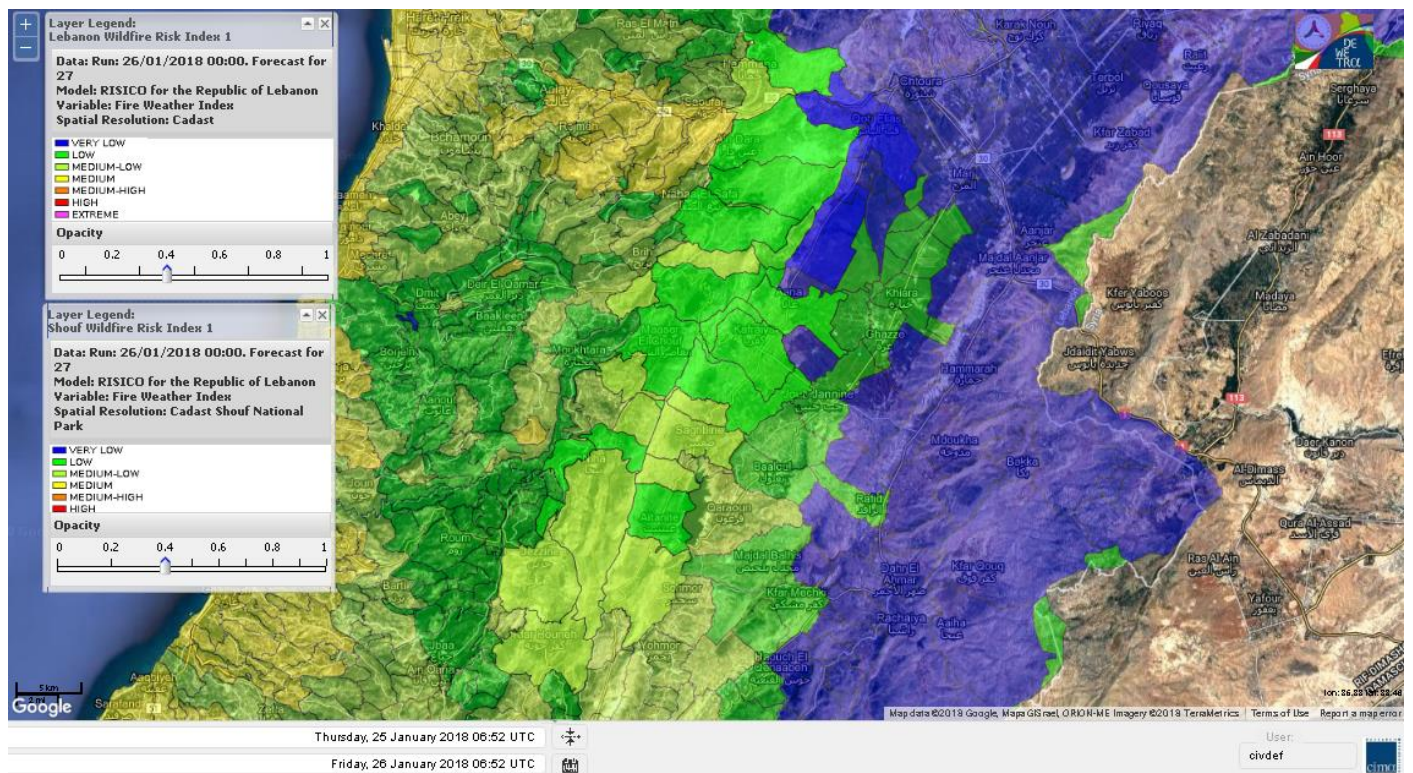
Lebanon for 28 Jan 2018



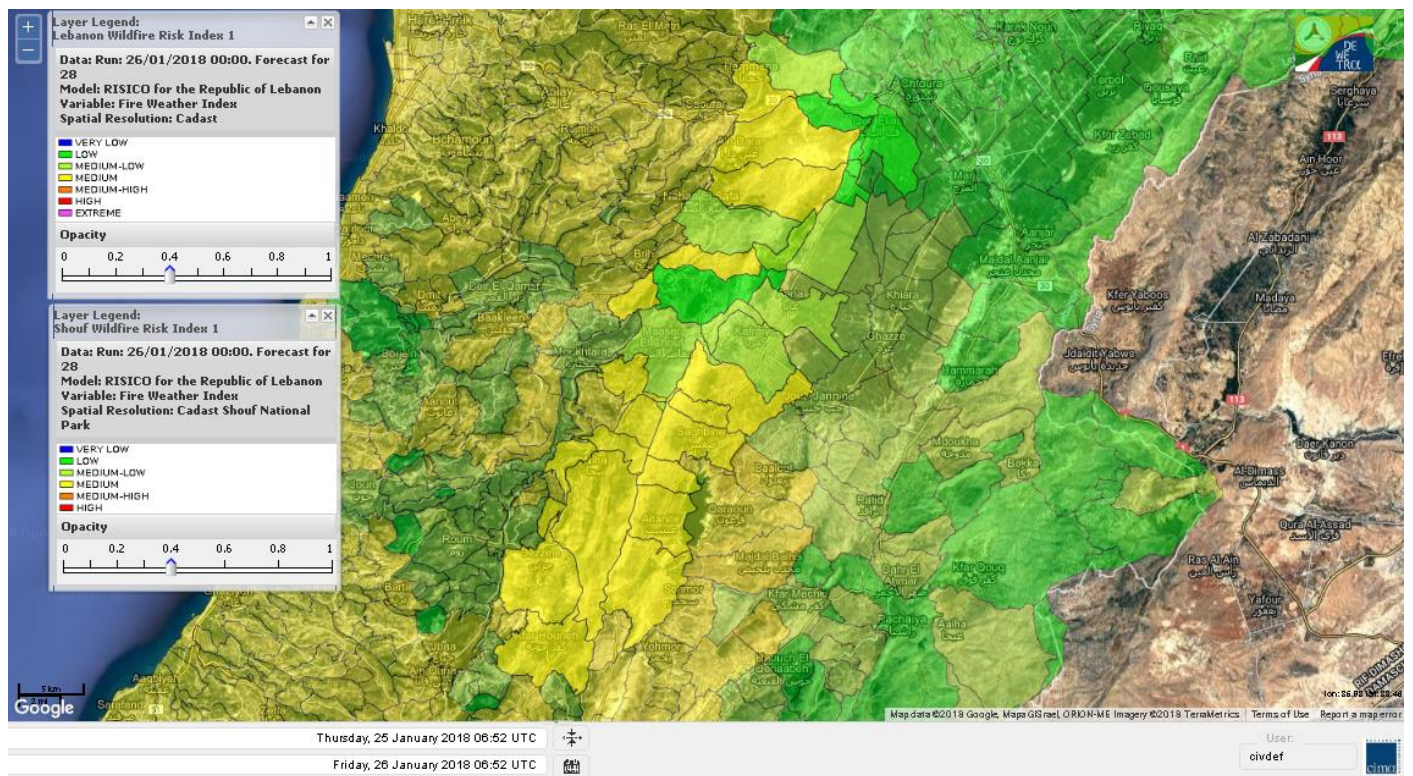
Shouf Biosphere Reserve Forecast for 26 Jan 2018



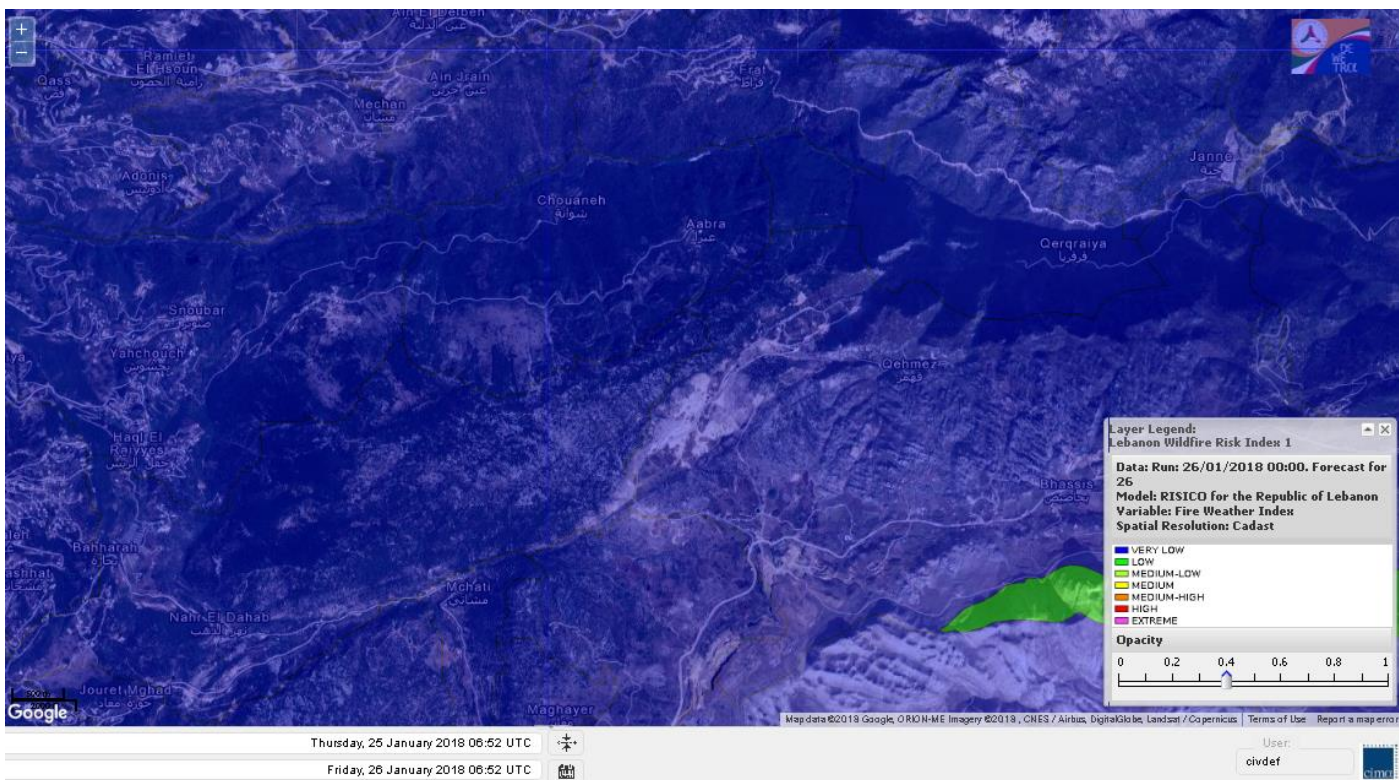
Shouf Biosphere Reserve Forecast for 27 Jan 2018



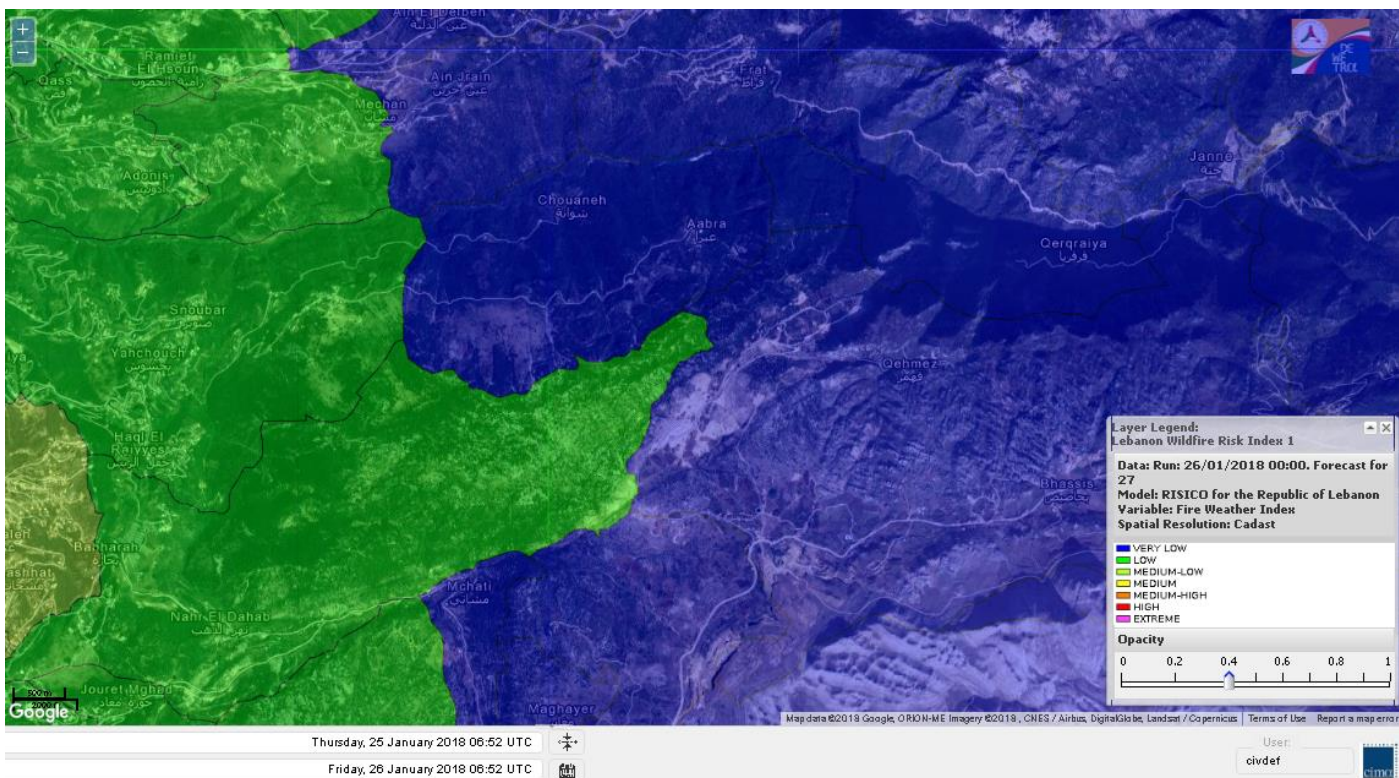
Shouf Biosphere Reserve Forecast for 28 Jan 2018



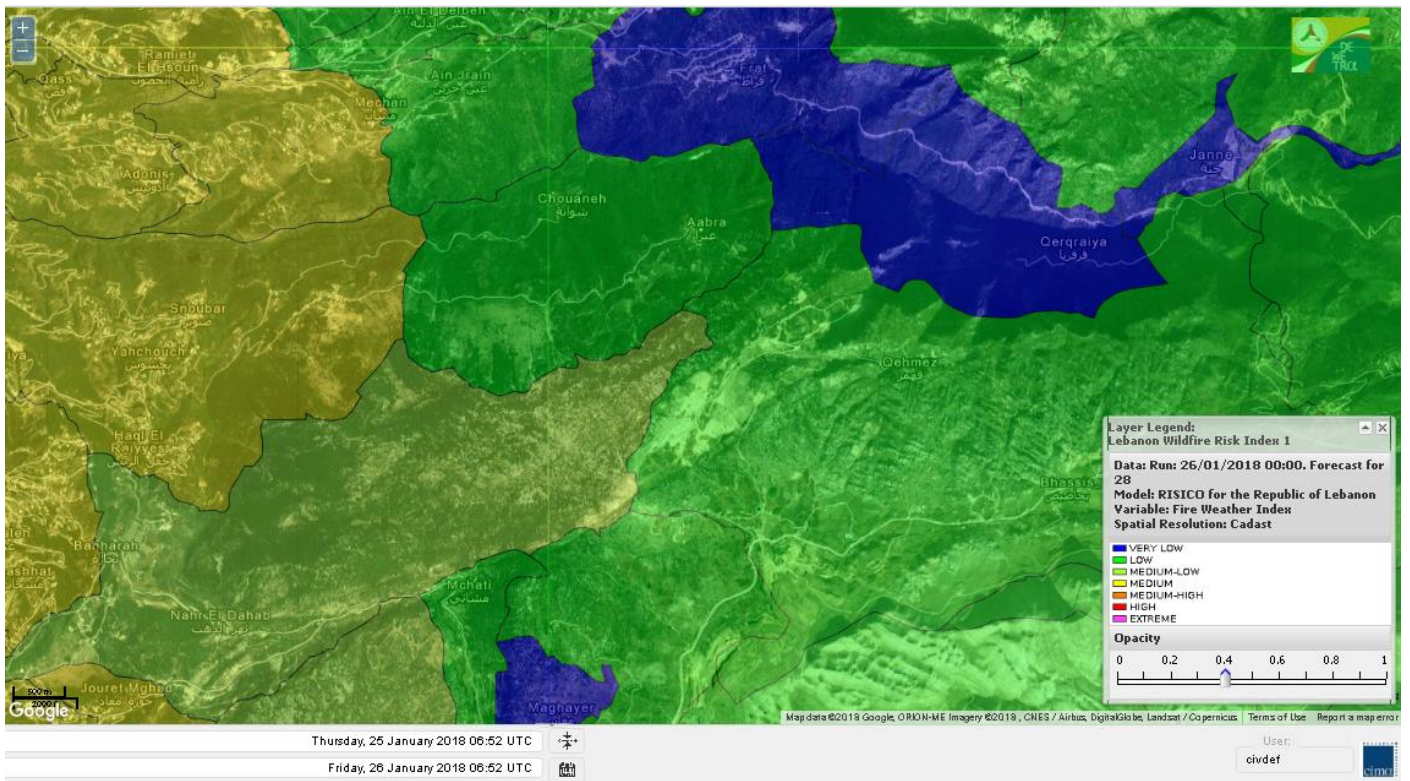
Jabal Moussa Reserve Forecast for 26 Jan 2018



Jabal Moussa Reserve Forecast for 27 Jan 2018



Jabal Moussa Reserve Forecast for 28 Jan 2018



Nord

Koura

Municipality	26-Jan	27-Jan	28-Jan	Municipality	26-Jan	27-Jan	28-Jan	Municipality	26-Jan	27-Jan	28-Jan
Aaba	ML	M	M	Afsaddiq	ML	M	M	Ain Ekrine	L	M	M
Amioun	L	M	M	Anfeh	ML	L	M	Badbhoun	ML	M	M
Barghoun	ML	M	M	Barsa	ML	M	M	Batroumine	ML	M	M
Bdebba	ML	M	M	Bechmizine	ML	M	M	Bednayeil-Koura	L	L	M
Bhabbouch El-Koura	L	M	M	Bkeftine	ML	M	M	Bnehran	L	ML	M
Bqaiia El-Koura	M	M	M	Bsarma	L	M	M	Btaaboura	L	M	M
Bttram	L	M	M	Btouratij	M	M	M	Bziza	L	M	M
Dar Beehtar	L	M	M	Dar Chmezzine	ML	M	M	Deddeh	ML	M	M
Deir El-Balamand	L	L	M	Fih	M	M	M	Hraiche	M	M	M
Ijdaabrine	L	L	M	Kaftoun	L	M	M	Kefraya El-Koura	ML	L	M
Kfarakka	L	M	M	Kfarhata	L	L	M	Kfarhazir	ML	M	M
Kfarkahel	M	M	M	Kfarsaroun	L	M	M	Kosba	L	M	M
Mejdel el-Koura	L	ML	M	Nakhle	ML	M	M	Qalhat	L	L	M
Ras Masqa	M	M	M	Rechdibbine	L	M	M	Zakroun	ML	ML	M
Zgharta El-Mtaouile	L	L	M								

Bcharre

Municipality	26-Jan	27-Jan	28-Jan	Municipality	26-Jan	27-Jan	28-Jan	Municipality	26-Jan	27-Jan	28-Jan
Aabdine	VL	ML	M	Bane	VL	M	M	Barhelioun	VL	L	M
Bazooune	VL	VL	L	Becharre	VL	ML	M	Beit Menzer	VL	L	M
Billa	VL	ML	M	Blaouza	VL	M	M	Bqaa Kafra	VL	VL	L
Bqerqacha	VL	VL	L	Breissat	VL	VL	L	Dimane	VL	VL	L
Hadath El Jobbeh	VL	VL	L	Hadchit	VL	ML	M	Hasroun	VL	VL	L
Mazraat Aassaf	VL	VL	L	Mazraat Bani Saab	VL	VL	L	Mchaa El-Jobbeh	VL	VL	L
Metrit	L	ML	M	Moghr El-Ahoual	L	ML	M	Ouadi Qannoubine	VL	VL	L
Qanat	VL	L	L	Qnayer	VL	L	ML	Tourza	VL	L	M

Batroun

Municipality	26-Jan	27-Jan	28-Jan	Municipality	26-Jan	27-Jan	28-Jan	Municipality	26-Jan	27-Jan	28-Jan
Aabrine	L	L	ML	Aalali	VL	VL	L	Aartiz	VL	L	ML
Abdelli	L	L	M	Ajdabra	L	L	M	Assia	L	VL	L
Basbina	L	M	M	Batroun	L	L	M	Bcheleh	VL	VL	L
Bechtoudar	L	VL	L	Beit Chlala	VL	VL	L	Beit Kassab	VL	VL	L
Bijdarfil	L	ML	M	Bqesmaya	L	L	M	Chatine	VL	VL	L
Chebtin	VL	L	M	Chekka	ML	ML	M	Daael	L	VL	L
Dahr Abi Yaghi	L	L	M	Daraya El-Batroun	L	M	M	Deir Billa	VL	L	L
Deir Kfifane	L	M	M	Deir Mar Youhanna EL	VL	VL	L	Deir Mar Youssef Jra	L	L	M
Douma	VL	VL	L	Douq	VL	L	M	Eddeh El-Batroun	L	ML	M
Ftahat El-Batroun	L	VL	L	Ghouma	L	ML	M	Hadtoun	VL	VL	L
Hamat	L	L	ML	Harbouna	L	L	M	Hardine	VL	VL	VL
Helta	L	VL	L	Hery	ML	ML	M	Jebbla	L	L	L
Jrabta El-Batroun	L	ML	M	Jrane El-Batroun	L	M	M	Kfar Aabida	L	ML	M
Kfar Halda	VL	VL	L	Kfarb Shlaimane	L	VL	VL	Kfarhatna	L	L	M
Kfarhay	L	L	M	Kfarhelos	L	L	ML	Kfifane	L	M	M

Kfour El Arabi	VL	VL	L	Koubba	L	L	M	Kour	L	ML	M
Mar Mama	VL	VL	L	Masrah	VL	L	M	Mehmarch	L	VL	L
Mrah Chdid	L	ML	M	Mrah El Ziyat	L	ML	M	Mrah El-Hajj	VL	VL	VL
Nahle El-Batroun	VL	VL	L	Niha El-Batroun	VL	VL	L	Oujah El-Hajjar	L	L	M
Ouata Houb	VL	VL	L	Qatnaaoun	L	L	ML	Racha	L	VL	L
Rachana	L	ML	M	Rachkida	L	L	ML	Ram El-Batroun	VL	VL	L
Ras Nahhach	L	L	M	Selaata	L	L	M	Sghar	L	ML	M
Smar Jbayl	L	ML	M	Sourat El-Batroun	L	VL	L	Tannourine El-Faouqa	VL	VL	L
Tannourine Et-Tahta	VL	VL	L	Thoum	L	ML	M	Toula El-Batroun	L	ML	M
Zan	L	L	L								

Zgharta

Municipality	26-Jan	27-Jan	28-Jan	Municipality	26-Jan	27-Jan	28-Jan	Municipality	26-Jan	27-Jan	28-Jan
Aachach	L	M	M	Aalma	L	M	M	Aarde	L	M	M
Aintourine	VL	ML	M	Arabet Qozhaya	VL	L	ML	Arde	L	M	M
Arjis	ML	M	M	Asnoun	VL	M	M	Ayto	VL	L	M
Basloukit	VL	M	M	Bchannine	M	M	M	Besebeel	M	M	M
Bhairret Toula	VL	L	M	Bnachee	VL	ML	M	Boussit	L	M	M
Danha	VL	M	M	Daraiya Zgharta	L	M	M	Deir Jdeide	L	M	M
Ehden	VL	ML	M	Halan	L	M	M	Hariq Zgharta	VL	M	M
Houakir	VL	L	M	Hraiqis	L	M	M	laal	VL	M	M
Ijbaa	VL	ML	M	Karm Saddeh	VL	L	ML	Kfarchakhna	M	M	M
Kfardlaqous	VL	M	M	Kfarfou	L	M	M	Kfarhata Zgharta	VL	M	M
Kfarhoura	ML	M	M	Kfarsghab	VL	ML	M	Kfaryachit	L	M	M
Kfarzaina	M	M	M	Khaldiye	VL	M	M	Mazraat Ajbeaa	ML	M	M
Mazraat Et-Teffah	VL	L	M	Mazraat Jneid	VL	M	M	Mejdlaiya Zgharta	ML	M	M
Merh Kfarsghab	VL	ML	M	Miryata	L	M	M	Miziara	VL	L	M
Mzraat Kefraya	L	M	M	Qorah Bach	VL	M	M	Rachiine	VL	M	M
Ras Kifa	L	M	M	Sakhra	VL	ML	M	Sebhel Zgharta	VL	ML	M
Serhel	VL	L	L	Tallet Zgharta	ML	M	M	Toula Zgharta	VL	L	M
Zgharta	L	M	M								

Minieh-Denniye

Municipality	26-Jan	27-Jan	28-Jan	Municipality	26-Jan	27-Jan	28-Jan	Municipality	26-Jan	27-Jan	28-Jan
Aasaymout	VL	L	ML	Aaymar	VL	ML	M	Aazki	VL	ML	M
Ain El-Tineh-Miniyeh	VL	L	M	Assoun	VL	ML	M	Bakhaaoun	VL	L	M
Bchennata	VL	M	M	Bechehhara	VL	L	M	Beddawi	M	M	M
Behouaita	VL	L	M	Beit El Foqss	VL	L	M	Beit Haouik	VL	ML	M
Beit Zoud	VL	L	M	Bekaasafrine	VL	M	M	Borj El Yahoudiyeh	L	M	M
Bqarsouna	VL	L	M	Btermaz	VL	L	M	Debaael	VL	L	M
Deir Ammar	L	M	M	Deir Nbouh	VL	ML	M	Haouaret-Miniyeh	VL	L	M
Haql el Azimeh	VL	L	M	Harf El Siyad	VL	L	ML	Hazmiye-Miniyeh	VL	L	M
Izal	VL	ML	M	Jarjour	VL	L	M	Jayroun	VL	L	M
Kahf El-Malloul	VL	L	M	Karm El-Moher	VL	ML	M	Kfar Binine	VL	L	M
Kfarchalane	VL	ML	M	Kfarhabou	VL	M	M	Kharroub-Miniyeh	VL	ML	M
Mazraat El-Kreme	VL	L	M	Mazraat Ketrane	VL	L	M	Merkebta	L	M	M
Minyeh	ML	M	M	Mrah El Sfirat	VL	L	M	Mrah Sraj	VL	L	M
Mrebbine	VL	ML	M	Nabi Youcheaa	L	M	M	Nemrine	VL	ML	M

Qarhaiya	VL	ML	M	Qarne	VL	VL	M	Qarsita	VL	L	M
Qattineh-Miniyeh	VL	L	ML	Qemmamine	VL	VL	M	Qraine	VL	L	M
Raouda-Aadoua	VL	M	M	Rihaniyet-Miniyeh	VL	M	M	Sfireh	VL	L	M
Sir Ed-Danniyeh	VL	L	M	Tarane	VL	L	M	Terbol-Miniyeh	L	M	M
Zaghartaghriine	VL	ML	M	Zouq Bhannine	L	M	M				

Nabatiye

Nabatiye

Municipality	26-Jan	27-Jan	28-Jan	Municipality	26-Jan	27-Jan	28-Jan	Municipality	26-Jan	27-Jan	28-Jan
Aabba	VL	ML	M	Aazzi	VL	ML	M	Adchit El-Chqif	VL	ML	M
Ain Bou Swar	VL	ML	M	Ain Kana	VL	ML	M	Ali El-TaHER	VL	ML	M
Ansar	VL	ML	M	Arab Salim	VL	ML	M	Arnoun	VL	ML	M
Bfaroue	VL	ML	M	Breyqaah	VL	ML	M	Charqiyeh	L	ML	M
Choukine	VL	ML	M	Deir El Zahrani	VL	ML	M	Doueir El-Nabatiyeh	L	ML	M
Habbouch El-Nabatiye	VL	ML	M	Hamra El-Nabatiyeh	VL	ML	M	Harouf El-Nabatiyeh	VL	ML	M
Hmaile	VL	ML	M	Houmin El Faouqa	VL	ML	M	Houmin El Tahta	L	M	M
Jarjough	VL	ML	M	Jbaah El-Nabatiyeh	VL	L	M	Jebchit	VL	ML	M
Kfar Djal El-Nabatiy	VL	ML	M	Kfar Remmane	VL	ML	M	Kfar Sir	VL	ML	M
Kfar Tebnit	VL	ML	M	Kfarfila	VL	ML	M	Kfour El-Nabatieh	VL	ML	M
Mayfadoun	VL	ML	M	Mazraat Bsaffour	VL	ML	M	Mazraat Chalbaal	L	ML	M
Mazraat Dmoul	VL	M	M	Mazraat El Khreibeh	VL	ML	M	Mazraat El-Bayad El-	VL	ML	M
Mazraat Kfarjaouz	VL	ML	M	Mazraat Qalaat Meiss	VL	ML	M	Nabatiyeh El-Fawka	VL	ML	M
Nabatiyeh Et-Tahta	VL	ML	M	Namiriyyeh	L	ML	M	Qaaqaaiyet El Jisr	VL	ML	M
Qossaibeh El-Nabatiy	VL	ML	M	Roumine	VL	ML	M	Sarba El-Nabatieh	VL	ML	M
Sir El-Gharbiyeh	VL	M	M	Toul	VL	ML	M	Yehmor El-Nabatiyeh	VL	ML	M
Zaoutar El Charkiyeh	VL	ML	M	Zaoutar El-Gharbiyeh	VL	ML	M	Zebdine El-Nabatiyeh	VL	ML	M
Zefta	VL	ML	M								

Hasbaiya

Municipality	26-Jan	27-Jan	28-Jan	Municipality	26-Jan	27-Jan	28-Jan	Municipality	26-Jan	27-Jan	28-Jan
Ain Jarfa	VL	L	M	Abou Qamha	VL	L	M	Ain Qania	VL	L	M
Bourghos	VL	ML	M	Chebaa	VL	L	ML	Chouaya Hasbaya	VL	L	ML
Dellafeh	VL	ML	M	Fardiss Hasbaiya	VL	ML	M	Hasbaya	VL	ML	M
Hbariyeh	VL	L	ML	Kaoukaba Hasbaiya	VL	ML	M	Kfar Chouba	VL	L	ML
Kfar Hamam	VL	L	ML	Kfeir El-Zait	VL	L	ML	Khalwat Hasbaya	VL	L	L
Khreibet Hasbaiya	VL	ML	M	Majidiyeh Hasbaiya	L	ML	M	Marj Ez-Zhour (Haouc	VL	L	ML
Meri	VL	ML	M	Mimass	VL	ML	M	Rachaiya El-Fokhar	VL	L	ML
Salaiyeb	L	ML	M								

Marjayoun

Municipality	26-Jan	27-Jan	28-Jan	Municipality	26-Jan	27-Jan	28-Jan	Municipality	26-Jan	27-Jan	28-Jan
Aalmane Marjaayoun	VL	L	ML	Aamra	L	ML	M	Adayseh Marjaayoun	VL	L	M
Adchit El-Koussair	VL	ML	M	Ain Arab Marjaayoun	L	ML	M	Bani Haiyann	VL	L	ML
Blatt Marjaayoun	VL	ML	M	Blida	VL	L	ML	Borj El-Moulouk	VL	ML	M
Boueyda Marjaayoun	VL	ML	M	Deir Mimass	VL	L	M	Deir Siriane	VL	ML	M
Dibbine	VL	ML	M	Ebel El Saqi	VL	ML	M	Houla	VL	L	ML
Houra	VL	ML	M	Kfar Kila	VL	ML	M	Khiam Marjaayoun	VL	ML	M

Klayaa	VL	ML	M	Majdel Selem	VL	L	ML	Marjaayoun	VL	ML	M
Markaba	VL	L	ML	Mays El-Jabal	VL	L	ML	Mazraat Doumiat	VL	ML	M
Mazraat Sarada	VL	ML	M	Mhaibib	VL	L	ML	Qabrikha	VL	L	ML
Qantara	VL	ML	M	Rab El-Thalathine	VL	ML	M	Saouaneh Marjayoun	VL	L	ML
Talloussa	VL	L	ML	Taybeh Matjaayoun	VL	ML	M	Touline	VL	L	ML

Bent Jbail

Municipality	26-Jan	27-Jan	28-Jan	Municipality	26-Jan	27-Jan	28-Jan	Municipality	26-Jan	27-Jan	28-Jan
Ain-Ebel	VL	L	ML	Aitaroun	VL	L	ML	Aynata Bint Jbeil	VL	L	ML
Ayta El-Chaeb	VL	L	ML	Ayta El-Jabal	L	ML	ML	Beit Lif	VL	L	ML
Beit Yahoun	L	ML	ML	Bint Jbeil	VL	L	ML	Borj Qalaway	VL	M	M
Braachit	VL	L	ML	Chakra	VL	L	ML	Debel	VL	L	ML
Deir Antar	L	ML	ML	Froun	VL	ML	M	Ghandouriyeh Bint Jb	VL	ML	M
Hanine	VL	L	ML	Hariss	L	ML	ML	Hdatha	L	ML	ML
Jmeymeh	VL	L	ML	Kafra Bint Jbeil	L	L	L	Kfar Dounine	L	ML	ML
Khirbet Selm	VL	L	ML	Kounine	VL	L	ML	Maroun El Ras	VL	L	ML
Qalaway	VL	ML	M	Qaouzah	VL	L	L	Qatmoun	VL	ML	ML
Ramya Bint Jbeil	VL	L	L	Rchaf	VL	L	ML	Rmeich	VL	L	ML
Safad Al Battikh	L	ML	ML	Salhaneh	VL	L	L	Serbine	L	ML	ML
Sultanieh Bint Jbeil	L	ML	ML	Tibnine	VL	ML	ML	Tiri	VL	L	ML
Yaroun	VL	L	ML	Yater	L	L	ML				

Mont Liban

Jbail

Municipality	26-Jan	27-Jan	28-Jan	Municipality	26-Jan	27-Jan	28-Jan	Municipality	26-Jan	27-Jan	28-Jan
Aabeydat	L	L	M	Aalita	VL	L	M	Aamchit	L	M	M
Aarab El-Lahib	VL	VL	L	Aarasta	VL	VL	VL	Adonis Jbeil	VL	L	M
Afqa Jbeil	VL	VL	L	Ain El Delbeh Jbeil	VL	VL	L	Ain El-Ghouyba	VL	VL	L
Ain Jrain	VL	VL	L	Ain Kfah	L	M	M	Almat El Chemaliyat	VL	VL	L
Almat El-Jenoubiya	VL	VL	L	Aqoura	VL	VL	L	Bayzoun	VL	L	L
Bchille Jbeil	L	L	M	Bechtida	VL	L	M	Behdaydat	L	ML	M
Beit Habbaq	L	ML	M	Bejjeh	L	ML	M	Bekhaaz	L	ML	M
Berbara Jbeil	L	ML	M	Bintael	VL	L	M	Birket Hjoula	VL	L	M
Blatt Jbeil	L	ML	M	Boulhos	VL	VL	L	Breyj Jbeil	VL	L	M
Chamat	L	M	M	Chikhane	L	ML	M	Chmout	L	L	M
Eddeh Jbeil	L	M	M	Ehmej	VL	VL	L	Fatre	VL	L	M
Ferhet	VL	L	ML	Fghal	L	L	M	Frat	VL	VL	VL
Ghabat	VL	VL	L	Ghalboun	L	ML	M	Gharzouz	L	M	M
Ghofrine	L	ML	M	Habil	VL	L	M	Halate	L	ML	M
Haqel	VL	L	M	Hbaline	L	ML	M	Hboub	L	ML	M
Hdeine	VL	VL	L	Hema Er-Rehban	VL	VL	L	Hema Mar Maroun Aann	VL	VL	L
Hjoula	VL	L	M	Hosrayel	L	ML	M	Hsarat	L	ML	M
Hsoun	VL	L	M	Jaj	VL	VL	L	Janne	VL	VL	VL
Jbeil	L	M	M	Jeddeyel Jbeil	L	M	M	Jlisse	VL	L	M
Jouret El-Qattine	L	L	M	Kfar Baal Annaya	VL	L	M	Kfar Kidde	L	ML	M
Kfar Kouas	L	L	M	Kfar Mashoun	L	M	M	Kfoun	L	L	M

Kharbe Jbeil	L	ML	M	Laqlouq	VL	VL	L	Lassa	VL	VL	L
Lehfed	VL	VL	L	Maad	L	ML	M	Mar Sarkis	VL	VL	L
Mastita	L	M	M	Mayfouq	VL	VL	L	Mazraat El Siyad	VL	VL	L
Mazraat El-Maaden	VL	VL	L	Mechane	VL	L	M	Mechmech Jbeil	VL	VL	L
Mehrin	L	ML	M	Mejdel El-Akoura	VL	VL	L	Mghayreh Jbeil	VL	VL	L
Mounsef	L	ML	M	Nahr Ibrahim	L	M	M	Qahmez	VL	VL	L
Qartaba	VL	VL	L	Qartaboun	L	M	M	Qattara Jbeil	VL	VL	L
Qorqraya	VL	VL	VL	Ramout	L	ML	M	Ras Osta	VL	L	M
Rihane Jbeil	L	M	M	Sakiet El-Khayt	L	ML	M	Saqi Richmaya	VL	VL	L
Sebrine	L	L	M	Seraita	VL	VL	L	Souane Jbeil	VL	VL	L
Tadmor	VL	VL	L	Tartej	VL	VL	L	Torzaiya	VL	L	ML
Yanouh Jbeil	VL	VL	L	Zibidine Jbeil	VL	L	M				

El Metn

Municipality	26-Jan	27-Jan	28-Jan	Municipality	26-Jan	27-Jan	28-Jan	Municipality	26-Jan	27-Jan	28-Jan
Aain El-Qabu	VL	VL	L	Aain El-Qach	VL	ML	M	Aain El-Teffaha	VL	ML	M
Aain el-Safssaf El-M	VL	L	M	Abou Mizane	VL	ML	M	Ain Aar	VL	M	M
Ain Alaq	VL	ML	M	Ain El-Kharroube	VL	ML	M	Ain El-Sendiane	VL	ML	M
Ain El-Zeitoune	VL	L	M	Ain Saadeh	VL	ML	M	Aintoura El-Matn	VL	VL	L
Amaret Chalhoub	VL	M	M	Antelias	L	M	M	Atchaneh	VL	ML	M
Ayroun	VL	ML	M	Baabdat	VL	L	M	Baouchariyeh	VL	M	M
Baskinta	VL	VL	L	Beit Chabab	VL	ML	M	Beit El-Chaar	VL	M	M
Beit El-Kekko	VL	M	M	Beit Mery	VL	ML	M	Bhersaf	VL	L	M
Bikfaya	VL	ML	M	Biyakout	VL	M	M	Bnabil	VL	L	M
Bourj Hammoud	VL	M	M	Bqennaya	VL	ML	M	Broummana El-Matn	VL	ML	M
Bsalim	VL	ML	M	Bsifrine	VL	L	M	Bteghrine	VL	L	L
Chaouiye	VL	ML	M	Chouaya El-Matn	VL	ML	M	Choueir	VL	ML	M
Chrine	VL	L	M	Dahr El Sawan El-Mat	VL	ML	M	Daychouniyeh	L	M	M
Dbayeh	L	M	M	Deir Chamra	VL	L	M	Deir Mar Abda el Mch	VL	ML	M
Deir Mar Roukouz	VL	M	M	Deir Tamiche	VL	ML	M	Dik El-Mehdi	VL	ML	M
Dikwaneh	L	M	M	Douar El-Matn	VL	L	M	Fanar	VL	M	M
Fraike	VL	L	M	Haret El-Ballaneh	VL	M	M	Hbous	VL	M	M
Himlaya	VL	ML	M	Jal El Did	VL	M	M	Jdeideh El-Metn	VL	M	M
Jouar El-Matn	VL	L	M	Jouret El-Ballout	VL	ML	M	Kaaqour	VL	L	M
Kfar Aaqab	VL	L	M	Kfertay El-Matn	VL	VL	L	Khenchara	VL	ML	M
Khillet El-Mtain	VL	L	M	Konnabat Broummana	VL	ML	M	Konnabat Salima	VL	L	M
Machraah El-Matn	VL	L	L	Majdel Tarchich	VL	VL	L	Majzoub	L	M	M
Mansouriyeh El-Metn	L	M	M	Mar Boutros Karm Et-	VL	L	M	Mar Chaya et Mzekke	VL	ML	M
Mar Moussa Ed-Douar	VL	L	M	Marjaba	VL	L	ML	Masqa	VL	L	M
Mayasse	VL	ML	M	Mazraat Deir Aoukar	VL	M	M	Mazraat El-Hadirat	VL	M	M
Mazraat Yachouh	VL	M	M	Mchikha	VL	ML	M	Menqlet Mezher	VL	M	M
Mhaydseh Matn	VL	ML	M	Mkalles	VL	M	M	Mrouj	VL	L	L
Mtain	VL	L	L	Mtaylor	VL	M	M	Nabay	VL	ML	M
Naccache	VL	M	M	Ouadi Chahine	VL	L	M	Ouadi El-Karm El-Mat	VL	L	ML
Ouata El-Mrouj	VL	ML	M	Ouyoun El-Matn	VL	L	M	Qornet Chehwan	VL	ML	M
Qornet El-Hamra	VL	ML	M	Roumieh	VL	ML	M	Sfeilet Bikfaya	VL	L	M
Sinn El-Fil	VL	M	M	Zabbougha	VL	L	M	Zalqa	VL	M	M

Zarouon	VL	L	M	Zekrite	VL	ML	M	Zighrine El-Matn	VL	ML	M
Zouk El-Khrab	L	M	M								

Chouf

Municipality	26-Jan	27-Jan	28-Jan	Municipality	26-Jan	27-Jan	28-Jan	Municipality	26-Jan	27-Jan	28-Jan
Aalmane El-Chouf	L	M	M	Aammq El-Chouf	VL	L	ML	Ain Ouzein	VL	L	L
Ain Qani	VL	L	ML	Ain Zhalta	VL	L	ML	Ainbal	VL	L	ML
Amatour	VL	L	ML	Anout	VL	L	M	Atrine	VL	L	ML
Baadarane	VL	ML	M	Baaqline	VL	L	M	Baasir	L	M	M
Barja	L	M	M	Barouk	VL	L	L	Bater	VL	L	M
Batloun	VL	ML	M	Bayqoun	VL	M	M	Bchetfine	VL	L	M
Beiteddine	VL	L	ML	Benouati Ech-Chouf	VL	L	ML	Berjein	VL	L	ML
Bireh et Mtalleh	VL	ML	M	Biret El-Chouf	VL	ML	M	Bkechtine Ouel Mchei	VL	L	L
Bkifa El-Chouf	VL	ML	ML	Botme	VL	L	ML	Bqaiaa Ech-Chouf	VL	L	ML
Bsaba El-Chouf	VL	L	M	Chammis El-Chouf	VL	M	M	Chehim	L	L	ML
Chemaarine	VL	L	L	Chourit	VL	L	ML	Daher El-Chouf	L	L	L
Dalhoun	VL	ML	ML	Damour	L	M	M	Daraya El-Chouf	VL	L	ML
Deir El-Moukhalles	VL	L	ML	Deir Baba	VL	L	M	Deir Dourit	VL	L	ML
Deir El-Qamar	VL	L	ML	Deir Kouche	VL	L	M	Dibbieh	VL	L	L
Dmit	VL	L	M	Fouara Jaafar	VL	L	M	Fraidis El-Chouf	VL	ML	M
Ghabet Jaafar	VL	L	M	Gharife	VL	L	ML	Haret Jandal	VL	ML	M
Hasrout	VL	ML	M	Jadra	VL	M	M	Jahlieh	VL	L	ML
Jbeih El-Chouf	VL	L	M	Jdeidet El-Chouf	VL	L	ML	Jiyeh	L	M	M
Jleilyeh	VL	ML	M	Jmailiyeh	VL	ML	M	Joun	VL	ML	ML
Kahlounie El-Chouf	VL	ML	M	Ketermaya	VL	M	M	Kfar Faqoud	VL	L	ML
Kfar Hamal	VL	M	M	Kfar Him	VL	ML	M	Kfar Katra	VL	L	ML
Kfar Niss	VL	ML	M	Kfar hay	VL	ML	M	Kfarnabrakh	VL	ML	M
Khirbet Bisri	VL	L	ML	Knayse El-Chouf	VL	L	ML	Maaniyeh	VL	ML	M
Maasser Beiteddine	VL	L	ML	Maasser El-Chouf	VL	L	ML	Majdalouna	VL	ML	M
Majdel El-Meouch	VL	ML	M	Mazboud	VL	ML	M	Mazmoura	VL	L	M
Mazraat El Chouf	VL	ML	M	Mazraat El Daher	VL	L	ML	Mazraat El-Douair	VL	L	ML
Mechref	L	ML	ML	Mghairie	VL	M	M	Mghayrie El-Chouf	VL	L	ML
Moukhtara	VL	L	ML	Mrusti	VL	ML	M	Mtolle	VL	ML	M
Naameh	L	M	M	Niha El-Chouf	VL	ML	M	Ouadi Abou Youssef	VL	VL	L
Ouadi Ed-Deir	VL	ML	M	Ouadi El-Sit	VL	L	M	Ouadi bnehlay	VL	L	ML
Qraibeh	VL	ML	M	Qreiaa	VL	L	L	Rmayle El-Chouf	L	M	M
Semqaniyeh	VL	ML	M	Sibline	VL	M	M	Sirjbeil	VL	L	M
Warhanieh	VL	ML	M	Werdaniyeh	VL	M	M	Zaarourieh	VL	L	M

Baabda

Municipality	26-Jan	27-Jan	28-Jan	Municipality	26-Jan	27-Jan	28-Jan	Municipality	26-Jan	27-Jan	28-Jan
Abadiyeh	VL	ML	M	Ain Mouaffaq	VL	ML	M	Araiya	VL	ML	M
Arbaniyeh	VL	L	M	Arsoun	VL	L	M	Baabda	VL	M	M
Baalchmey	VL	M	M	Bmaryam	VL	ML	M	Bourj El-Brajneh	L	M	M
Boutchay	VL	M	M	Bsaba Baabda	L	M	M	Btekhney	VL	L	M
Btibyat	VL	L	M	Bzebdine	VL	L	M	Chbeniyeh	VL	ML	M
Chiyah	L	M	M	Chmeisset Baabda	VL	L	M	Chouit	VL	L	M
Deir El-harf	VL	ML	M	Deir Khouna	VL	ML	M	Dlaybeh	VL	L	M

Falougha	VL	L	ML	Furn El-Chebbak	VL	M	M	Hadath Beyrouth	L	M	M
Halaliyeh Baabda	VL	L	M	Hammana	VL	ML	M	Haret El Sett	VL	L	M
Haret Hamze	VL	ML	M	Haret Hreik	L	M	M	Hasbaiya El-Metn	VL	L	M
Jouar El-Hoz	VL	VL	L	Jouret Arsoun	VL	L	M	Kfar Chima	L	M	M
Kfar Selouane	VL	VL	L	Khalouat Baabda	VL	M	M	Kneisset Baabda	VL	L	M
Laylakeh	L	M	M	Louayzeh Baabda	VL	ML	M	Merdache	VL	M	M
Mzairaa Baabda	VL	L	M	Ouadi Chahrour El Ol	VL	ML	M	Ouadi Chahrour El So	VL	ML	M
Qalaa Baabda	VL	ML	M	Qhraybe Baabda	VL	ML	M	Qobbayaa	VL	ML	M
Qornayel	VL	L	M	Qortada	VL	L	M	Qrayeh Baabda	VL	ML	M
Qsaibeh Baabda	VL	L	M	Qtale Baabda	VL	L	M	Ras El Metn	VL	ML	M
Ras El-Haref	VL	M	M	Rouayset El-Ballout	VL	L	M	Salima Baabda	VL	L	M
Tahouitat El Ghadir	L	M	M	Tarchich	VL	VL	L	Zandouqa	VL	L	M

Aley

Municipality	26-Jan	27-Jan	28-Jan	Municipality	26-Jan	27-Jan	28-Jan	Municipality	26-Jan	27-Jan	28-Jan
Abey	VL	ML	M	Aghmid	VL	ML	M	Ain Dara	VL	L	M
Ain Drafil	VL	L	M	Ain El Halazoun	VL	M	M	Ain El-Rmmaneh	VL	L	M
Ain Jedideh	VL	M	M	Ain Ksour	VL	L	M	Ain Onoub	VL	ML	M
Ain Traz	VL	L	M	Ainab	VL	ML	M	Aley	VL	M	M
Aramoun	L	ML	M	Aytat	VL	M	M	Azouniyeh	VL	M	M
Baawerta	L	ML	ML	Badghan Oua Wadi Bad	VL	M	M	Bassatine	VL	ML	M
Bayssour	VL	ML	M	Bchamoun	VL	ML	M	Bdadoun	VL	ML	M
Behouara	VL	ML	M	Bennay	VL	ML	M	Bhamdoun El-Dayaa	VL	M	M
Bhamdoun El-Mhatta	VL	M	M	Bkhechthey	VL	M	M	Bleibel	VL	ML	M
Bmakine	VL	M	M	Bmehray	VL	L	M	Bouzrid	VL	L	M
Bserrine	VL	M	M	Bsous	VL	L	M	Btalloun	VL	M	M
Btater	VL	M	M	Chanay	VL	M	M	Charoun	VL	M	M
Chartoun	VL	ML	M	Chemlane	VL	ML	M	Choueifat El-Aamrous	L	M	M
Choueifat El-Oumara	L	M	M	Choueifat El-Quoubbe	L	M	M	Dakkoun	VL	L	M
Deir Qoubel	VL	ML	M	Dfoun	VL	ML	M	Douair El Remmaneh	VL	L	M
Ghaboun	VL	ML	M	Habramoun	VL	L	M	Homs Oua Hama	VL	M	M
Houmal	VL	ML	M	Jisr El Qadi	VL	L	M	Kehaleh	VL	L	M
Keyfoun	VL	M	M	Kfar Aamey	VL	M	M	Kommatyeh	VL	ML	M
Maasrati	VL	ML	M	Majdel Baana	VL	M	M	Mansourieh et Ain El	VL	M	M
Mazraat El-Nahr	VL	ML	M	Mchakhte	VL	ML	M	Mecherfeh	VL	M	M
Mejdlaya	VL	ML	M	Mrayjat	VL	ML	M	Ramliyah	VL	L	M
Rechmaya	VL	ML	M	Rejmeh	VL	ML	M	Remhala	VL	ML	M
Rouaysset El Neemane	VL	ML	M	Saoufar	VL	M	M	Selfaya	VL	L	M
Sirhmoul	VL	ML	M	Souq El Ghareb	VL	M	M	Taazanieh	VL	M	M

Kesrouane

Municipality	26-Jan	27-Jan	28-Jan	Municipality	26-Jan	27-Jan	28-Jan	Municipality	26-Jan	27-Jan	28-Jan
Achkout	VL	L	M	Adma Oua Dafneh	L	M	M	Ain Ed-Delbe Kesroua	VL	VL	L
Ain El-Rihane	VL	ML	M	Aintoura Kesrouane	VL	M	M	Ajaltoun	VL	L	M
Akaybeh Kesrouane	L	M	M	Aramoun Kesrouane	VL	L	M	Azra ouel Ozor	VL	L	M
Ballouneh	VL	L	M	Batha	VL	L	M	Bekaatat Achkout	VL	ML	M
Bekaatat Kanaan	VL	VL	L	Bizhel	VL	L	M	Bouar	L	ML	M
Bqaatouta	VL	VL	L	Bqaq Ed-Dine	L	ML	M	Bzommar	VL	ML	M

Chahtoul	VL	L	M	Chnaniir	VL	L	M	Chouan	VL	VL	L
Daraya Kesrouane	VL	L	M	Darououn	VL	ML	M	Deir Baqlouch	VL	ML	M
Dlebta	VL	L	M	Eghbeh	VL	L	M	Faraya	VL	VL	L
Fatka	L	ML	M	Feytroun	VL	L	M	Ghazir	L	ML	M
Ghbaleh Kesrouane	VL	ML	M	Ghedrass	VL	L	M	Ghosta	VL	L	M
Ghynéh	VL	ML	M	Harharaya w Kattine	VL	L	M	Harissa Kesrouane	L	ML	M
Hayata	VL	L	M	Hosein	VL	L	M	Hrajel	VL	VL	L
Jdeideh Ghazir	VL	ML	M	Jeita	VL	ML	M	Jounieh Ghadir	L	M	M
Jounieh Haret Sakhr	L	M	M	Jounieh Salel Alma	L	M	M	Jounieh Sarba	L	M	M
Jouret Bedrane	VL	ML	M	Jouret Mhad	VL	L	M	Jouret Termos	VL	ML	M
Kfar Debiane	VL	VL	L	Kfar Tay Kesrouane	VL	L	ML	Kfar Yassine	L	M	M
Kfour Kesrouane	VL	ML	M	Kharayeb Nahr Ibrahi	L	L	M	Klayaat Kesrouane	VL	L	M
Maarab	VL	L	M	Maaysra Kesrouane	VL	L	M	Mayrouba	VL	VL	L
Mazraat Er-Ras	VL	ML	M	Mazraat Mrah El-Mir	VL	L	M	Mchaa El Ftouh	L	VL	L
Mchaa Faraya	VL	VL	L	Mchaa Kfar Dibiane	L	VL	L	Mghaer	VL	VL	VL
Mradiyah	VL	L	M	Nahr Ed-Dahab	VL	L	ML	Nammoura Kesrouane	VL	L	M
Ouata El Jaouz	VL	L	ML	Ouata Sillam	L	M	M	Raachine	VL	L	M
Rayfoun	VL	ML	M	Safra Kesrouane	L	M	M	Shayle Kesrouane	VL	ML	M
Tabarja	L	M	M	Yahchouch	VL	L	M	Zaaytreh	VL	L	M
Zeytoun	VL	ML	M	Zouk Mikael	L	M	M	Zouk Mosbeh	L	M	M

Baalbek_Hermel

Baalbek

Municipality	26-Jan	27-Jan	28-Jan	Municipality	26-Jan	27-Jan	28-Jan	Municipality	26-Jan	27-Jan	28-Jan
Aadous	L	VL	L	Aamchki	VL	VL	L	Aarsal	L	VL	VL
Ain Baalbek	M	VL	VL	Ain Bourday	VL	VL	L	Ain El-Benye	VL	VL	L
Ain El-Jaouz Baalbek	L	VL	L	Ain El-Siya Chadoura	VL	VL	L	Al Khodr Baalbek	L	VL	L
Al Nabi Chit	VL	VL	L	Aynata Baalbek	VL	VL	L	Baalbek	VL	VL	L
Bachwat	VL	VL	L	Barqa	VL	VL	VL	Bednayel Baalbak	L	VL	L
Beit Chama	L	VL	L	Bijjaje	M	VL	VL	Bouday	VL	VL	L
Brital	VL	VL	L	Btadi	VL	VL	L	Chaat	L	VL	L
Chaibe	VL	VL	L	Chlifa	L	VL	L	Chmestar	L	VL	L
Dar El-Oussa	VL	VL	L	Deir El-Ahmar	VL	VL	L	Deir Mar Maroun Baal	VL	M	M
Douris	VL	VL	L	Fakiha	M	L	ML	Hadath Baalbek	L	VL	L
Ham	VL	VL	L	Haour Taala	VL	VL	L	Hizzine	L	VL	L
Hlebta	VL	L	M	Hosh Barada	L	VL	L	Hosh El Dahab	L	VL	L
Hosh El Snid	L	VL	L	Hosh El-Nabi	L	VL	L	Hosh El-Rafiq	L	VL	L
Hosh Tal Safiya	L	VL	L	Hrebta	L	VL	L	laat	L	VL	L
Jebaa	L	VL	L	Jenta	VL	VL	L	Kfar Dabach	L	VL	L
Kfar Dane	L	VL	L	Khraibeh El-Hermel	L	VL	VL	Khreibet Baalbek	VL	VL	L
Kneisset Baalbek	VL	VL	L	Labueh	L	VL	VL	Maarboun	VL	VL	L
Majdaloun	L	VL	L	Maqneh	L	VL	L	Mazraat Beit Mcheik	L	VL	L
Misraya	L	VL	L	Moqraq	L	VL	VL	Nabha El-Damdoum	VL	L	L
Nabi Chbay	VL	VL	L	Nabi Osman	L	VL	VL	Nahleh baalbek	L	VL	L
Ouadi El-Oss	VL	L	L	Qaa Baayoun	ML	M	M	Qaa Jouar Maqiye	ML	M	M
Qaa Ouadi El-Khanzir	L	M	M	Qah Baalbek	ML	M	M	Qarha Baalbek	VL	VL	L

Qsarnaba	L	VL	L	Ram Baalbek	VL	VL	L	Ras Baalbek El Sahl	ML	M	M
Ras Baalbek El-Charq	ML	ML	M	Riha	VL	VL	L	Saaide	L	VL	L
Sbouba	L	VL	VL	Seriine El-Tahta	L	VL	L	Slouqi	L	VL	L
Taiba Baalbek	VL	VL	L	Talia	L	VL	L	Taraiya	L	VL	L
Temnin El Fawqa	L	VL	L	Temnin El-Tahta	L	VL	L	Tfail	L	VL	VL
Yahfoufa	VL	VL	L	Yammouneh	VL	VL	L	Younine	L	VL	L
Zboud	ML	L	L								

Hermel

Municipality	26-Jan	27-Jan	28-Jan	Municipality	26-Jan	27-Jan	28-Jan	Municipality	26-Jan	27-Jan	28-Jan
Charbine El-Hermel	VL	L	M	Hermel Jbab	VL	ML	M	Hermel	L	M	M
Maaysra El-Hermel	L	L	M	Michaa Mrajhine	VL	ML	M	Ouadi Faara	VL	L	M
Ras Baalbek - Ouadi	ML	M	M	Ras Baalbek El Gharb	L	ML	M	Zighrine	VL	L	M

Akkar

Akkar

Municipality	26-Jan	27-Jan	28-Jan	Municipality	26-Jan	27-Jan	28-Jan	Municipality	26-Jan	27-Jan	28-Jan
Aain Tinta	VL	M	M	Aaiyat	VL	M	M	Aakkar El-Aatiqa	VL	L	M
Aamar Akkar	VL	M	M	Aamar El Baykat	VL	M	M	Aamayer	L	M	M
Aamriyet Akkar	VL	M	M	Aandqet	VL	ML	M	Aarmeh	VL	ML	M
Aarqa	VL	M	M	Aawaynat	VL	M	M	Aayoun Akkar	VL	M	M
Abboudiye	VL	M	M	Ain El-Zeit	VL	M	M	Ain Yaaqoub	VL	L	M
Akroum	VL	ML	M	Aridet Cheikh Zennad	L	M	M	Baldeh w Mazraat Bal	VL	M	M
Barcha	VL	M	M	Bardeh	VL	M	M	Bebnine	VL	M	M
Beino	VL	M	M	Beit Ayoub	VL	M	M	Beit El-Haouch	VL	M	M
Beit Mellat	VL	M	M	Beit Younes	VL	ML	M	Berbara Akkar	VL	M	M
Berqayel	VL	M	M	Bezbina	VL	L	ML	Bireh Akkar	VL	M	M
Borj	VL	M	M	Bqerezla	VL	M	M	Bzal	VL	L	M
Chane	VL	L	M	Chaqdouf	VL	M	M	Charbila	VL	M	M
Cheikh Mohammad	VL	M	M	Cheikh Taba Es-Sahl	VL	M	M	Cheikh Taba	VL	M	M
Cheikh Zennad	L	M	M	Cheikhlar	VL	M	M	Chir Hmairine	VL	M	M
Daghle	VL	M	M	Dahr Laissine	VL	M	M	Darine	VL	M	M
Dawra	VL	L	M	Dawsa w Baghdadi	VL	M	M	Dayret Nahr El-Kabir	VL	M	M
Deir Dalloum	VL	M	M	Deir Jennine	VL	M	M	Denbou	VL	ML	M
Dibbabiyyeh	VL	M	M	Douair Aadwiyeh	VL	M	M	Fassikine	VL	M	M
Fnaydek	VL	L	M	Fraydes Akkar	VL	M	M	Ghazayle	VL	M	M
Habchit	VL	L	M	Hakour	VL	M	M	Halba	VL	M	M
Haouchab	VL	M	M	Hayssat	VL	M	M	Haytla	VL	M	M
Hayzouq	VL	M	M	Hedd	VL	M	M	Hmaira Akkar	VL	M	M
Hmaiss Akkar	VL	M	M	Hnaider	L	M	M	Hokr Ed-Dahri	L	M	M
Hokr Etti	VL	M	M	Hokr Jouret Srar	VL	M	M	Houaich	VL	ML	M
Hrar	VL	ML	M	Idbil	VL	M	M	llat	VL	M	M
Janine	VL	M	M	Jdeidet El-Joumeh	VL	M	M	Jdeidet El-Kaiteh	VL	M	M
Jebraïel	VL	M	M	Kafr	L	ML	M	Kafr	VL	M	M
Karm Asfour	VL	M	M	Kfar Melki Akkar	VL	M	M	Kfar Noun	VL	ML	M
Kfarharra	VL	M	M	Khalsa	VL	M	M	Kharnoubet Akkar	VL	M	M

Khirbet Daoud Aakkar	VL	M	M	Khirbet El Remmane	VL	M	M	Khirbet Shar	VL	M	M
Khoreybet El-Jindi	VL	M	M	Khreibet Aakkar	VL	M	M	Kneisset Aakkar	L	M	M
Kneisset Hnaider	L	M	M	Knisse	VL	M	M	Kroum El-Aarab	VL	M	M
Kwachra	VL	M	M	Kweykhat	VL	M	M	Machta Hammoud	VL	M	M
Majdala	VL	M	M	Majdel Akkar	VL	M	M	Mar Touma	VL	M	M
Marlaya Melhem	VL	M	M	Mashha	VL	M	M	Massoudiye	L	M	M
Mazraat Beit Ghattas	VL	M	M	Mazraat En-Nahriye	VL	ML	M	Mechmech	VL	L	M
Memneh	VL	L	L	Mhammara	L	M	M	Mighraq Aakkar	L	M	M
Minyara	VL	M	M	Moqayteh	VL	M	M	Mounjez	VL	ML	M
Msalla	VL	M	M	Mzeihmeh	VL	M	M	Nfaiseh	VL	M	M
Noura Et-Tahta	VL	M	M	Ouadi El-Haour	VL	M	M	Ouadi El-Jamous	VL	M	M
Ouyoun El-Ghizlane	VL	M	M	Qaabarine	VL	M	M	Qabaait	VL	L	M
Qachlaq	VL	M	M	Qantara Aakkar	VL	M	M	Qarha Aakkar	L	M	M
Qarqaf	VL	M	M	Qboula	VL	M	M	Qleiaat Aakkar	L	M	M
Qloud El-Baqie	VL	M	M	Qobaiyat Aakkar	VL	L	M	Qobbat Chamrat	VL	M	M
Qorayat	VL	ML	M	Qornet Aakkar	VL	M	M	Qsair Aakkar	VL	M	M
Rahbe	VL	M	M	Rihaniyet Aakkar	VL	M	M	Rmah	VL	M	M
Rmoul	VL	M	M	Saadine	VL	M	M	Sadaqa	VL	M	M
Saidnaya	VL	M	M	Sammouniye	VL	M	M	Sayssouq	VL	M	M
Semmaqiye	L	M	M	Semmaqli	VL	M	M	Sfinet El-Dreib	VL	M	M
Sfinet El-Qaitaa	VL	ML	M	Sindyanet Zeidane	VL	ML	M	Souaisset Aakkar	VL	M	M
Srar	VL	M	M	Tal Abbas El Gharby	VL	M	M	Tal Abbas El-Chargy	VL	M	M
Tal Biret	VL	M	M	Tal Hmayra	VL	M	M	Tal Maayan Tal Kiri	L	M	M
Tal Sibel	VL	M	M	Tallet Chattaha	VL	M	M	Tikrit	VL	M	M
Tleil	VL	M	M	Tshea	VL	L	ML	Zawarib	VL	M	M
Zouq El Hosniyeh	VL	M	M	Zouq El-Haddara	VL	M	M	Zouq El-Hbalsa	VL	M	M
Zouq El-Moqachrine	VL	M	M								

Sud

Sour

Municipality	26-Jan	27-Jan	28-Jan	Municipality	26-Jan	27-Jan	28-Jan	Municipality	26-Jan	27-Jan	28-Jan
Aaiyeh	L	ML	ML	Aalma El-Chaab	VL	L	M	Aaytit	L	L	ML
Abbassiyeh Sour	VL	ML	M	Abou Chech	VL	ML	M	Ain Abou Abdallah	VL	ML	M
Ain Baal	L	ML	M	Arzoun	VL	ML	M	Aziyeh	L	L	M
Baflaya	VL	M	M	Barich	VL	M	M	Batouliyah	L	ML	M
Bayad	L	L	ML	Bazouriyeh	L	ML	M	Bediass	VL	ML	M
Bestiyat	VL	M	M	Borj El Chemali	L	ML	M	Borj En-Naqoura	VL	ML	M
Borj Rahhal	VL	ML	M	Boustane	L	ML	ML	Btaychiyah	VL	ML	M
Chaaitiye	L	ML	ML	Chameh	VL	L	M	Chehabiye	VL	ML	M
Chehour	VL	L	L	Chihine	L	L	ML	Debaal Sour	VL	ML	M
Deir Amess	L	L	L	Deir Kifa	VL	ML	M	Deir Qanoun El-Ain	L	M	M
Deir Qanoun El-Naher	VL	M	M	Derdghaiya	VL	ML	M	Dhayra	L	ML	M
Halloussiyeh	VL	M	M	Hamoul	VL	L	M	Hanaouey	L	L	ML
Henniye	L	M	M	Hmairi Sour	VL	ML	M	Iskandarouna Sour	VL	L	M
Jbal El Botom	L	L	ML	Jebbin	L	M	M	Jennata	VL	M	M
Jijim	VL	L	M	Jouaiya	VL	ML	M	Kneisset Sour	L	L	ML

Maarake	L	M	M	Maaroub	VL	M	M	Majadel	VL	ML	ML
Majdalzoun	L	ML	M	Mansouri Sour	L	ML	M	Marnba	VL	L	ML
Marouahine	L	L	L	Mazraat El-Zalloutiy	L	ML	M	Mazraat Mechref	L	ML	ML
Mazraat Tayr Semhat	VL	L	L	Mheilib	VL	L	M	Neffakhiyeh	VL	ML	M
Niha Sour	VL	ML	M	Ouadi Jilo	L	ML	M	Qana	L	L	ML
Qolaileh Sour	L	ML	M	Rechknany	L	L	ML	Rmadiyah	L	ML	ML
Selha Sour	VL	ML	M	Siddiqine	L	ML	ML	Sour	L	ML	M
Srifa	VL	ML	M	Tayr Debbe	L	M	M	Tayr Felsay	VL	ML	M
Tayr Harfa	L	ML	M	Touayri	VL	L	ML	Toura	VL	M	M
Yanouh Sour	L	M	M	Yarine	L	M	M	Zebqine	VL	L	L

Saida

Municipality	26-Jan	27-Jan	28-Jan	Municipality	26-Jan	27-Jan	28-Jan	Municipality	26-Jan	27-Jan	28-Jan
Aanqoun	L	M	M	Aaqtanit	L	M	M	Aarab Ej-Jall	VL	ML	M
Aarab Tabbaya	L	M	M	Abra Saida	L	M	M	Adloun	L	ML	M
Adousiyeh	L	ML	M	Ain-El-Deleb	L	M	M	Arzai	VL	M	M
Babliyah	VL	M	M	Barty	VL	ML	M	Bissariyeh	L	M	M
Bnaafoul	L	M	M	Bqosta	L	M	M	Bramiy	VL	M	M
Daoudiyeh	VL	M	M	Dareb El-Sim	L	M	M	Erkay	L	M	M
Ghassanieh	VL	M	M	Ghazieh	L	M	M	Hajjeh	L	M	M
Haret Saida	L	M	M	Hartiyeh	VL	ML	M	Hlaliye Saida	L	M	M
Insariyat	L	M	M	Jazira Saida	VL	ML	M	Kafar Bit	VL	ML	M
Kaoutariyet El-Siyad	L	M	M	Kfar Chellal	VL	ML	M	Kfar Hatta Saida	VL	ML	M
Kfar Milke Saida	VL	ML	M	Khartoum	VL	M	M	Khaziz	L	M	M
Khirbet Ed-Douair Sa	VL	M	M	Khirbet El-Bassal	L	M	M	Khrayeb Saida	VL	ML	M
Loubieh	L	M	M	Maghdouche	L	M	M	Majdelyoun	L	M	M
Matariyet El-Choumar	VL	M	M	Matayriyeh	L	M	M	Mazraat 'Mseileh	L	M	M
Mazraat 'Snaiber	VL	M	M	Mazraat Aarab Soukka	VL	ML	M	Mazraat Deir Taqla	VL	ML	M
Mazraat El Yahoudiye	VL	ML	M	Mazraat El-Housseini	L	M	M	Mazraat El-Mhaydaleh	VL	M	M
Mazraat El-Ouasta	VL	ML	M	Mazraat Jamjim	VL	ML	M	Mazraat Kaoutariyet	VL	M	M
Mazraat Kfar Badda	VL	ML	M	Mazraat Oussamiyat	VL	M	M	Mazraat Sari	VL	ML	M
Mazraat Sinai	VL	M	M	Meemariyeh	L	M	M	Merouaniyeh	L	ML	M
Miyeh ou Miyeh	L	M	M	Najjariyeh	L	M	M	Qaaqiyat El-Snaouba	VL	M	M
Qnarit	L	M	M	Qraiye Saida	L	M	M	Saida Ed-Dekermane	L	M	M
Saida El-Oustani	L	M	M	Saida El-Qadimeh	L	M	M	Saida Kefraya	L	ML	M
Saksakiyeh	L	M	M	Salhie Saida	L	M	M	Sarafand	L	M	M
Sfenta	VL	L	M	Tafahta	VL	M	M	Tanbourit	L	M	M
Tebna	VL	M	M	Zaghdraiya	L	M	M	Zeita	L	M	M
Zrariyeh	VL	M	M								

Jezzine

Municipality	26-Jan	27-Jan	28-Jan	Municipality	26-Jan	27-Jan	28-Jan	Municipality	26-Jan	27-Jan	28-Jan
Ain El-Mir (El Estab	VL	M	M	Anane	VL	L	ML	Aramta	VL	ML	M
Ariya	VL	L	M	Aychiyeh	VL	L	ML	Azour	VL	L	ML
Baba	VL	L	ML	Baysour Jezzine	VL	M	M	Benoueteh Jezzine	VL	L	M
Bhannine	VL	L	M	Bisri	VL	L	ML	Bkassine	VL	L	ML
Bouslaya	VL	L	L	Btedine El-Leqech	VL	L	ML	Chbail	VL	VL	L
Choualiq Jezzine	L	M	M	Dahr Ed-Deir	VL	L	ML	Deir El Qattine	VL	L	ML

Demachqiyeh	VL	ML	M	Ghabbatiyeh	VL	L	M	Harf Jezzine	VL	L	ML
Hassaniyeh	VL	ML	M	Haytoupleh	VL	ML	M	Haytura	VL	L	ML
Hidab	VL	L	ML	Homsiyeh	VL	L	ML	Jabal Toura	VL	ML	M
Jarmaq	VL	ML	M	Jensnaya	L	M	M	Jernaya	VL	ML	M
Jezzine	VL	ML	M	Karkha	VL	ML	ML	Kfar Falous	VL	ML	M
Kfar Houna	VL	ML	M	Kfar Jarrah	L	M	M	Lebaa	VL	M	M
Louayzet Jezzine	VL	L	ML	Machmouche	VL	L	ML	Mahmoudiyeh Jezzine	VL	ML	M
Maknounye Jezzine	VL	L	ML	Maraat Ouzaïyeh	VL	L	M	Mazraat Daraya	VL	L	ML
Mazraat El-Aarqoub	VL	L	ML	Mazraat El-Mathane	VL	L	L	Mazraat El-Rahbane	VL	L	ML
Mazraat Khallet Khaz	VL	L	ML	Mazraat Louzid (Loua	VL	L	L	Mazraat Qrouh	VL	ML	M
Mazraat Tamra	VL	ML	M	Mazraat Zighrine Jez	VL	L	ML	Mazraat	VL	L	L
Mharbiyeh	L	M	M	Midane Jezzine	VL	L	ML	Mjeydel Jezzine	L	M	M
Mlikh	VL	L	ML	Mrah El-Hbasse	VL	M	M	Ouadi Baanquodaine	VL	M	M
Ouadi El-Laymoun	VL	ML	M	Ouardiyeh	VL	VL	L	Qabaa Jezzine	VL	L	ML
Qatrani	VL	L	ML	Qaytoupleh	VL	L	ML	Qtaleh Jezzine	VL	L	ML
Rihane Jezzine	VL	ML	M	Rimat	VL	L	ML	Roum	VL	L	ML
Roummanet	VL	ML	M	Sabbah	VL	L	ML	Saydoun	VL	L	ML
Sfaray	VL	L	L	Snaya	VL	L	ML	Sojoud	VL	L	ML
Srayri	VL	ML	M	Taaid	VL	L	ML	Wadi Jezzine	VL	L	ML
Zhalta	VL	L	ML								

Bekaa

West Bekaa

Municipality	26-Jan	27-Jan	28-Jan	Municipality	26-Jan	27-Jan	28-Jan	Municipality	26-Jan	27-Jan	28-Jan
Aammiq BG	VL	VL	ML	Ain El Tineh BG	VL	ML	M	Ain Zebdeh	VL	ML	M
Ana	VL	L	ML	Aytanit	VL	L	M	Baaloul BG	VL	L	M
Bab Mareh	VL	ML	M	Chouberqiye Aammiq	VL	VL	ML	Dakoue	VL	VL	ML
Deir Ain El-Jaouze	VL	ML	M	Deir Tahniche	VL	VL	ML	Ghaza	VL	VL	ML
Harime El-Soughra	VL	VL	ML	Hoch Harimeh	VL	VL	ML	Jazira BG	VL	VL	ML
Jib Jennine	VL	VL	ML	Kamed-El-Laouz	VL	VL	ML	Kefraya BG	VL	L	ML
Khiara El Atika	VL	VL	ML	Khiara	L	VL	ML	Khirbet Qanafar	VL	L	M
Lala	VL	L	ML	Lebbaya BG	VL	ML	M	Loussa	VL	ML	M
Machghara	VL	ML	M	Manara (Hammara) BG	VL	VL	L	Mansoura BG	VL	VL	ML
Marej BG	VL	VL	L	Maydoun	VL	ML	M	Ouaqf BG	VL	VL	ML
Qaraaoun	VL	ML	M	Qelya	VL	ML	M	Raouda (Istabel)	VL	VL	L
Saghbine	VL	ML	M	Sohmor	VL	ML	M	Soltan Yacoub el Ara	VL	VL	ML
Souairy	VL	VL	L	Sultan Yaacoub	VL	VL	ML	Tal Znoun	VL	VL	ML
Yehmor BG	VL	ML	M	Zilaya	VL	ML	M				

Zahle

Municipality	26-Jan	27-Jan	28-Jan	Municipality	26-Jan	27-Jan	28-Jan	Municipality	26-Jan	27-Jan	28-Jan
Aanjar (Haouch Mouss	VL	VL	L	Ablah	L	VL	L	Ain Kfarzabad	VL	VL	L
Ali-El-Nahri	L	VL	L	Bar Elias	VL	VL	L	Bouarej	VL	VL	L
Cheberqiyet Tabet	VL	VL	L	Chtaura	VL	VL	L	Deir El Ghazal	VL	VL	L
Delhamiyet Zahle	VL	VL	L	Ferzol	VL	VL	L	Haouch El-Ghanam	L	VL	L
Haouch Es-Siyadeh	VL	VL	L	Haouch Hala	L	VL	L	Haouch Mandara	VL	VL	L

Haouch Qayssar	VL	VL	L	Hezerta	VL	VL	L	Hosh Moussa	VL	VL	L
Jdita	VL	VL	L	Kfarzabad	VL	VL	L	Ksara	VL	VL	L
Majdel Aanjar	VL	VL	L	Makssi	VL	VL	L	Massa	L	VL	L
Mazraat Er-Remtaniye	VL	VL	L	Mrayjat Zahle	VL	VL	L	Mzaraa Zahle	VL	VL	L
Nabi Ayla	L	VL	L	Nasriyet Rizk	VL	VL	L	Nasriyet Zahle	VL	VL	L
Niha Zahle	L	VL	L	Ouadi Ed-Deloum	VL	VL	L	Ouadi El-Arayech	VL	VL	L
Qaa El Rim	VL	VL	L	Qab Elias	VL	VL	L	Qousaya	VL	VL	L
Rhit	L	VL	L	Riyak	L	VL	L	Saadnayel	VL	VL	L
Taal El-Akhdar	VL	VL	ML	Taalbeya	VL	VL	L	Taanayel	VL	VL	L
Talamara	L	VL	L	Tcheflik Edde Haouch	VL	VL	L	Tcheflik Qiqano	VL	VL	L
Terbol Zahle	VL	VL	L	Touaite Zahle	VL	VL	L	Zahle Aradi	VL	VL	L
Zahle El-Berbara	VL	VL	L	Zahle El-Maallaqa	VL	VL	L	Zahle El-Midane	VL	VL	L
Zahle Er-Rassiye	VL	VL	L	Zahle Haouch El-Ouma	VL	VL	L	Zahle Haouch El-Ouma	VL	VL	L
Zahle Haouch Ez-Zara	VL	VL	L	Zahle Maalaga Aradi	VL	VL	L	Zahle Mar Antonios	VL	VL	L
Zahle Mar Elias	VL	VL	L	Zahle Mar Gerios	VL	VL	L	Zahle Saydet En-Naja	VL	VL	L
Zebdoul	VL	VL	L								

Rachaiya

Municipality	26-Jan	27-Jan	28-Jan	Municipality	26-Jan	27-Jan	28-Jan	Municipality	26-Jan	27-Jan	28-Jan
Ain Arab Rachaiya	VL	VL	L	Ain Ata	VL	VL	L	Ain Harche	VL	VL	L
Aqabe Rachaya	VL	VL	ML	Ayha	VL	VL	ML	Ayta El Fokhar	VL	VL	ML
Bakifa Rachaya	VL	VL	ML	Bakka	VL	VL	ML	Beit Lahya	VL	VL	ML
Bireh Rachaiya	VL	VL	ML	Daher El Ahmar	VL	VL	ML	Deir El-Achayer	VL	VL	L
Heloua Rachaiya	VL	VL	L	Hoch El Qannabeh Rac	VL	VL	L	Kaoukaba Bou Arab	VL	VL	L
Kfar Danis	VL	VL	ML	Kfar Mechki	VL	L	ML	Kfar Qouq	VL	VL	L
Kherbet Rouha	VL	VL	L	Majdel Balhiss	VL	L	M	Mdoukha	VL	VL	ML
Mhaydseh Rachaiya	VL	VL	ML	Nabi Safa	VL	L	M	Rachaiya	VL	VL	L
Rafid Rachaiya	VL	VL	ML	Selsata (Mazraat Dei	VL	VL	L	Tannoura	VL	VL	ML
Yanta	VL	VL	L								

Beyrouth

Beyrouth

Municipality	26-Jan	27-Jan	28-Jan	Municipality	26-Jan	27-Jan	28-Jan	Municipality	26-Jan	27-Jan	28-Jan
Achrafieh	L	M	M	Ain el-Mreisse	L	M	M	Bachoura	L	M	M
Beirut Central Distr	L	M	M	Marfai	L	M	M	Mazraa	L	M	M
Medaouar	L	M	M	Minet el-Hosn	L	M	M	Mwssaitbeh	L	M	M
Ras Beirut	L	M	M	Rmeil	VL	M	M	Saifi	L	M	M
Zqaq el-Blat	L	M	M								