

# Lebanon Fire Risk Bulletin



CIVIL DEDEFENCE

**Refer to cadast table condition.**

**Please note that the indicated temperature is at 2 meters height from the ground.**

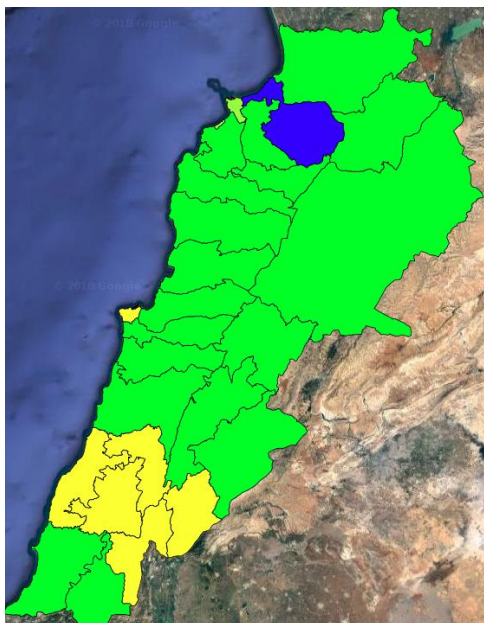
General description of potential fire risk situation

Symbol	Level of risk	Meaning and actions
VL	<b>Very low</b>	Very low fire risk. Controlled burning operations can be hardly executed due to high fuel moisture content. Normally wildfires self-extinguish.
L	<b>Low</b>	Low fire risk. Controlled burning operations can be executed with a reasonable degree of safety.
ML	<b>Medium low</b>	Medium-low fire risk. Controlled burning operations can be executed in safety conditions. All the fires need to be extinguished.
M	<b>Medium</b>	Medium fire risk. Controlled burning operations would be avoided. All the fires need to be very well extinguished.
M	<b>Medium high</b>	Controlled burning is not recommended. Open flame will start fires. Cured grasslands and forest litter will burn readily. Spread is moderate in forests and fast in exposed areas. Patrolling and monitoring is suggested. Fight fires with direct attack and all available resources.
H	<b>High</b>	Ignition can occur easily with fast spread in grass, shrubs and forests. Fires will be very hot with crowning and short to medium spotting. Direct attack on the head may not be possible requiring indirect methods on flanks. Patrolling and monitoring the territory is highly suggested.
E	<b>Extreme</b>	Ignition can occur also from sparks. Fires will be extremely hot with fast rate of spread. Control may not be possible during day due to long range spotting and crowning. Suppression forces should limit efforts to limiting lateral spread. Damage potential total. Patrolling and monitoring the territory is highly suggested.

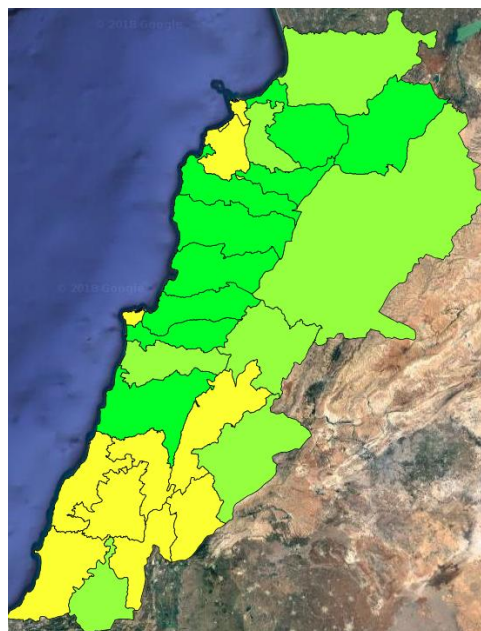
**Beirut, 26 November 2018**

# FIRE RISK INDEX

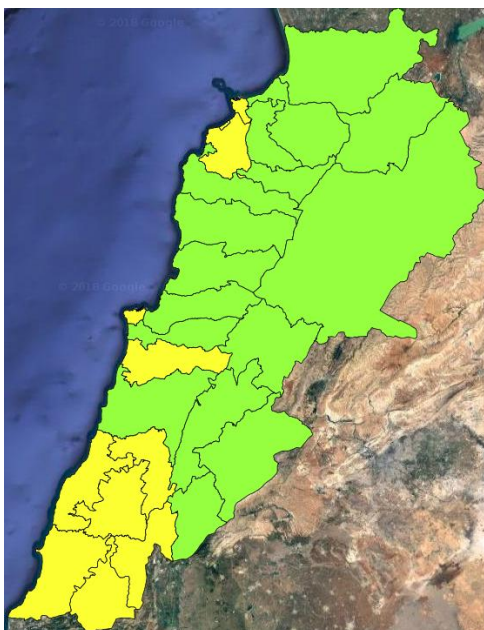
25 NOV 2018



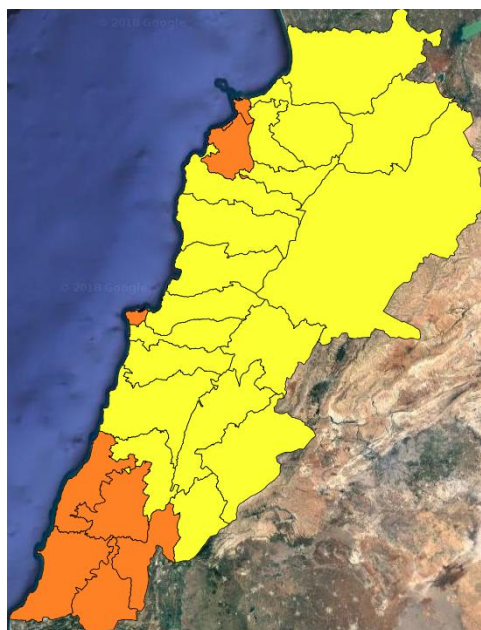
26 NOV 2018



27 NOV 2018



28 NOV 2018



**Layer Legend:**

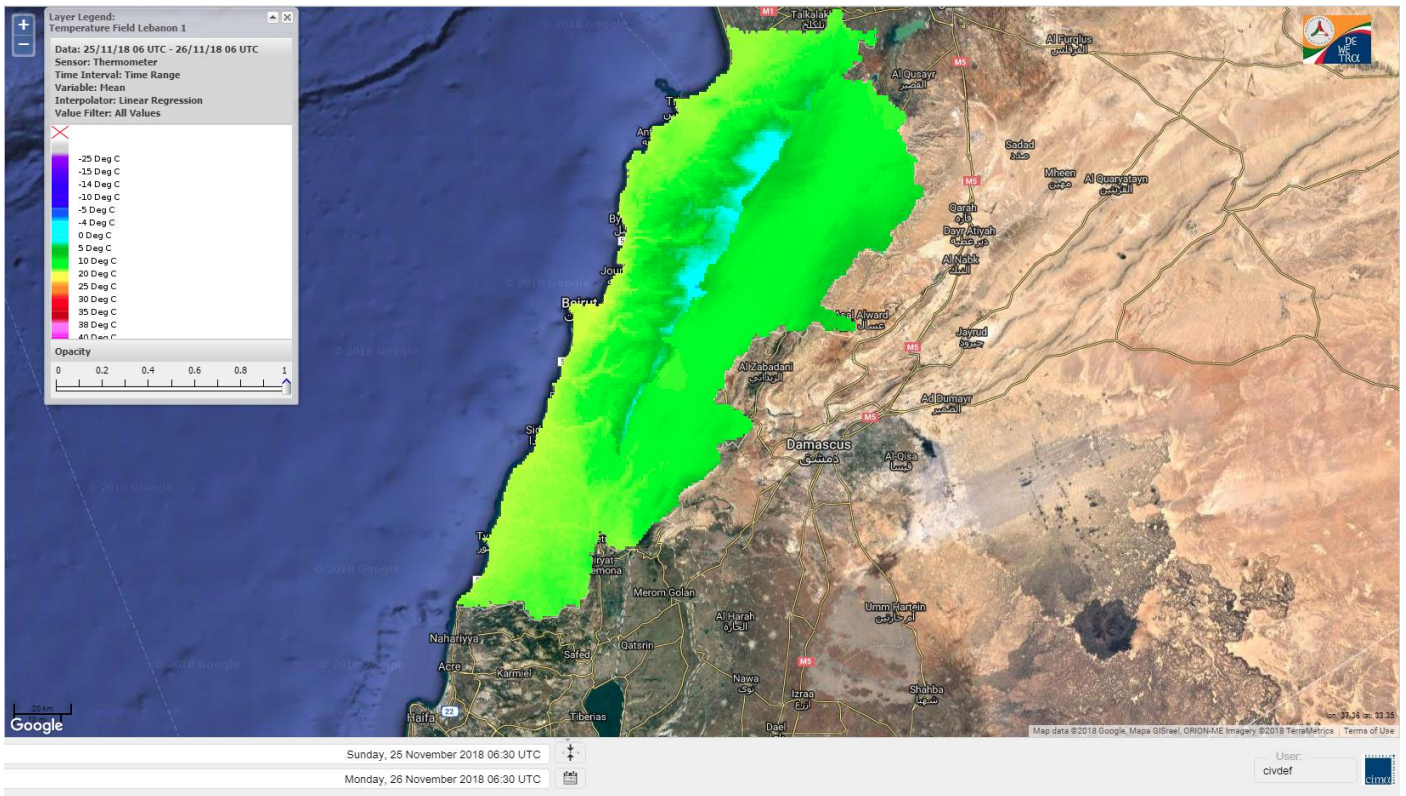
**Lebanon Wildfire Risk Index 1**

Data: Run: 26/11/2018 00:00. Forecast for 26  
Model: RISICO for the Republic of Lebanon  
Variable: Fire Weather Index  
Spatial Resolution: Caza

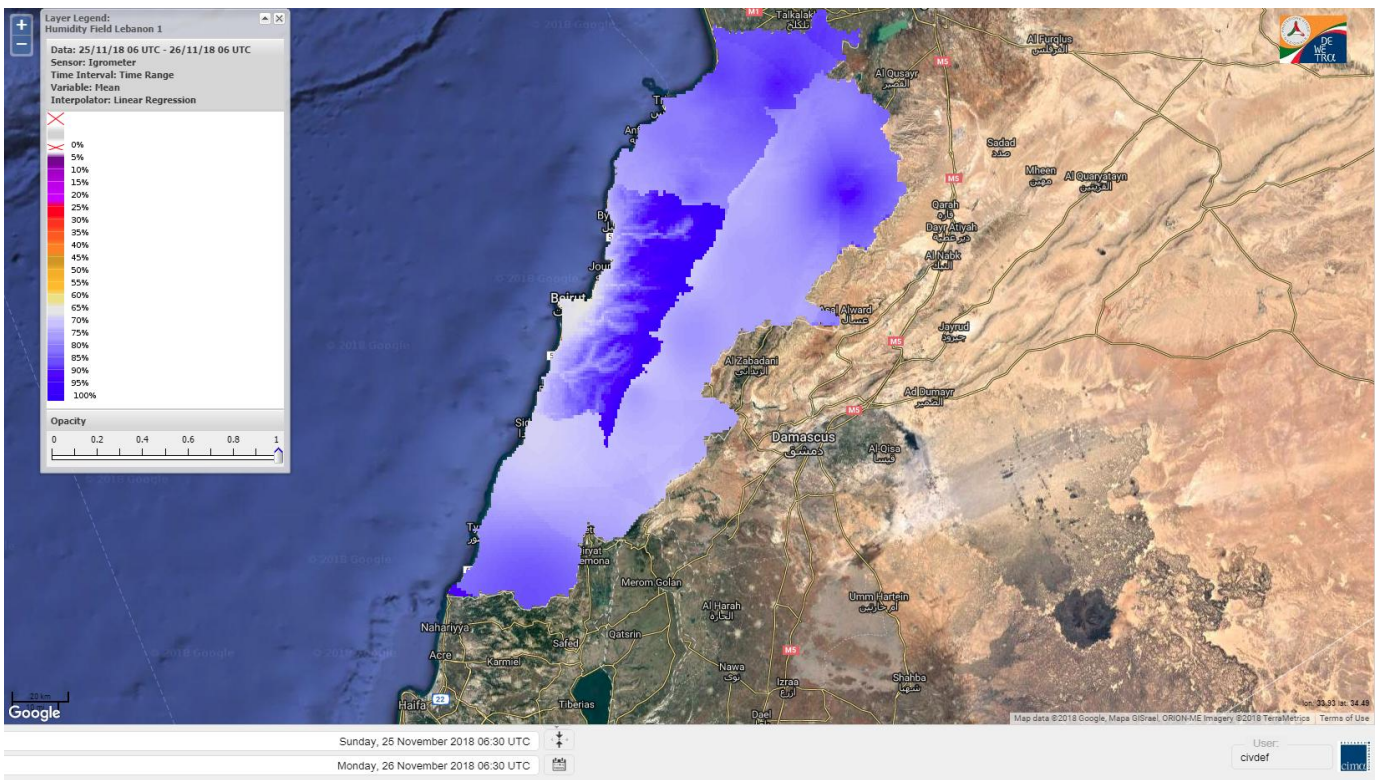
- VERY LOW
- LOW
- MEDIUM-LOW
- MEDIUM
- MEDIUM-HIGH
- HIGH
- EXTREME



# Lebanon temperature for Lebanon 26 NOV 2018

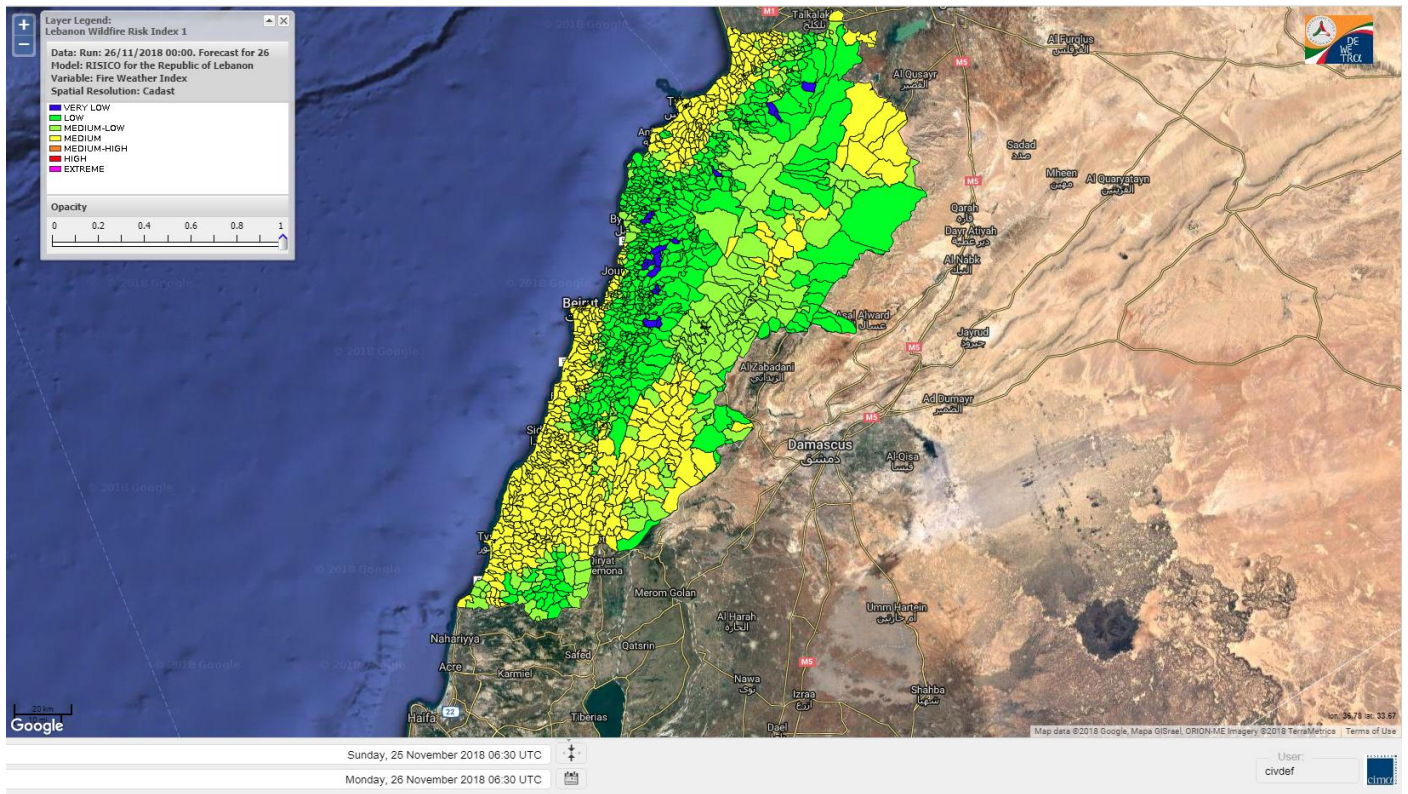


# Lebanon humidity for Lebanon 26 NOV 2018

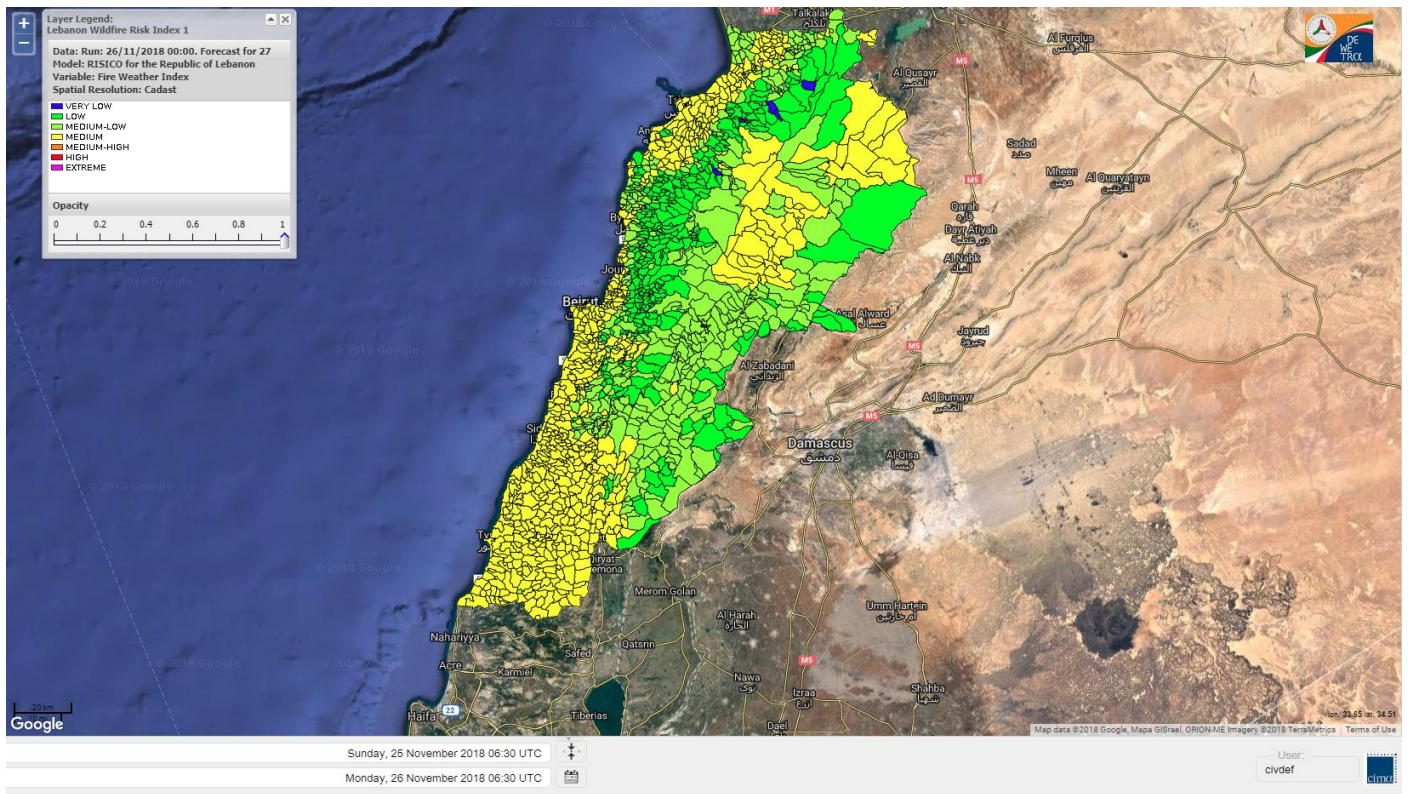




# Lebanon for 26 NOV 2018

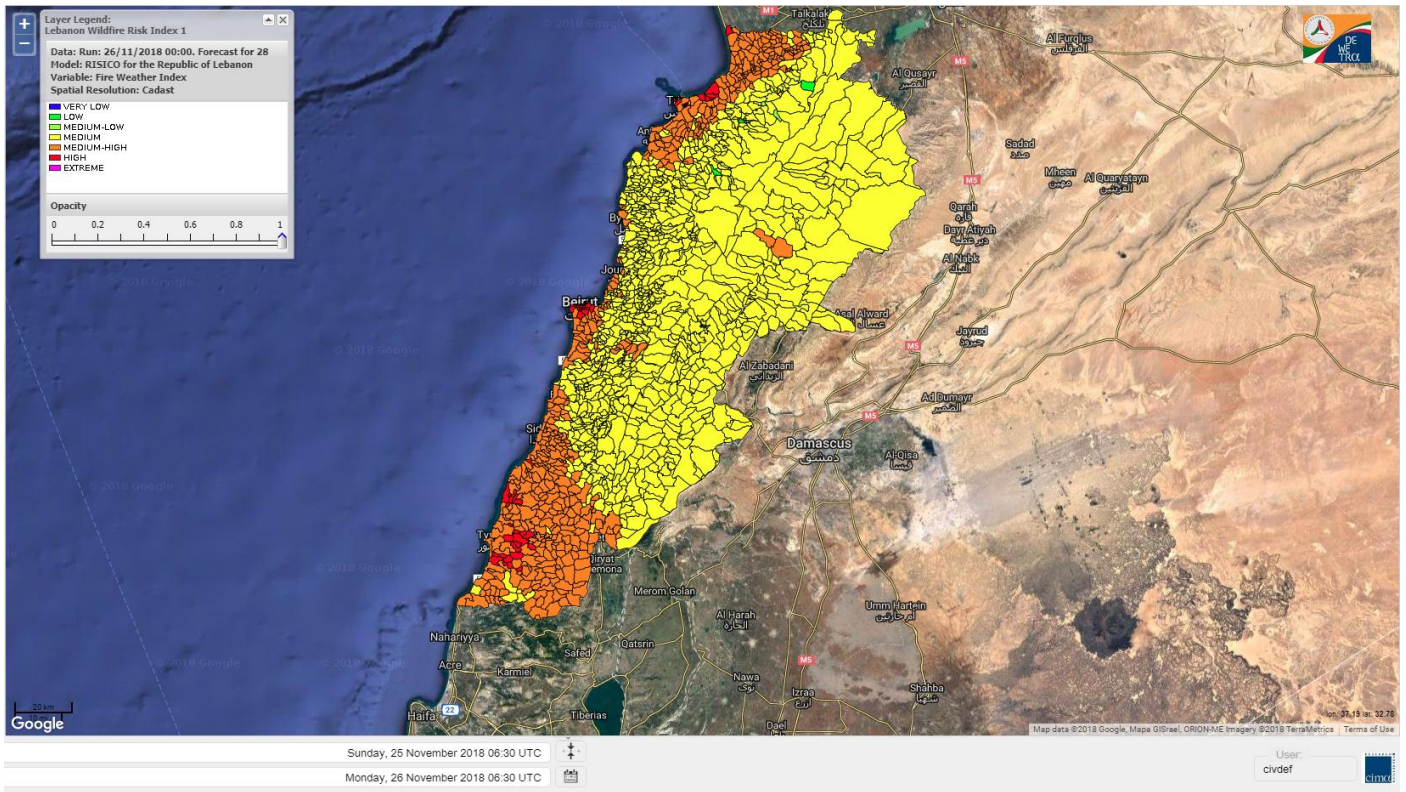


# Lebanon for 27 NOV 2018

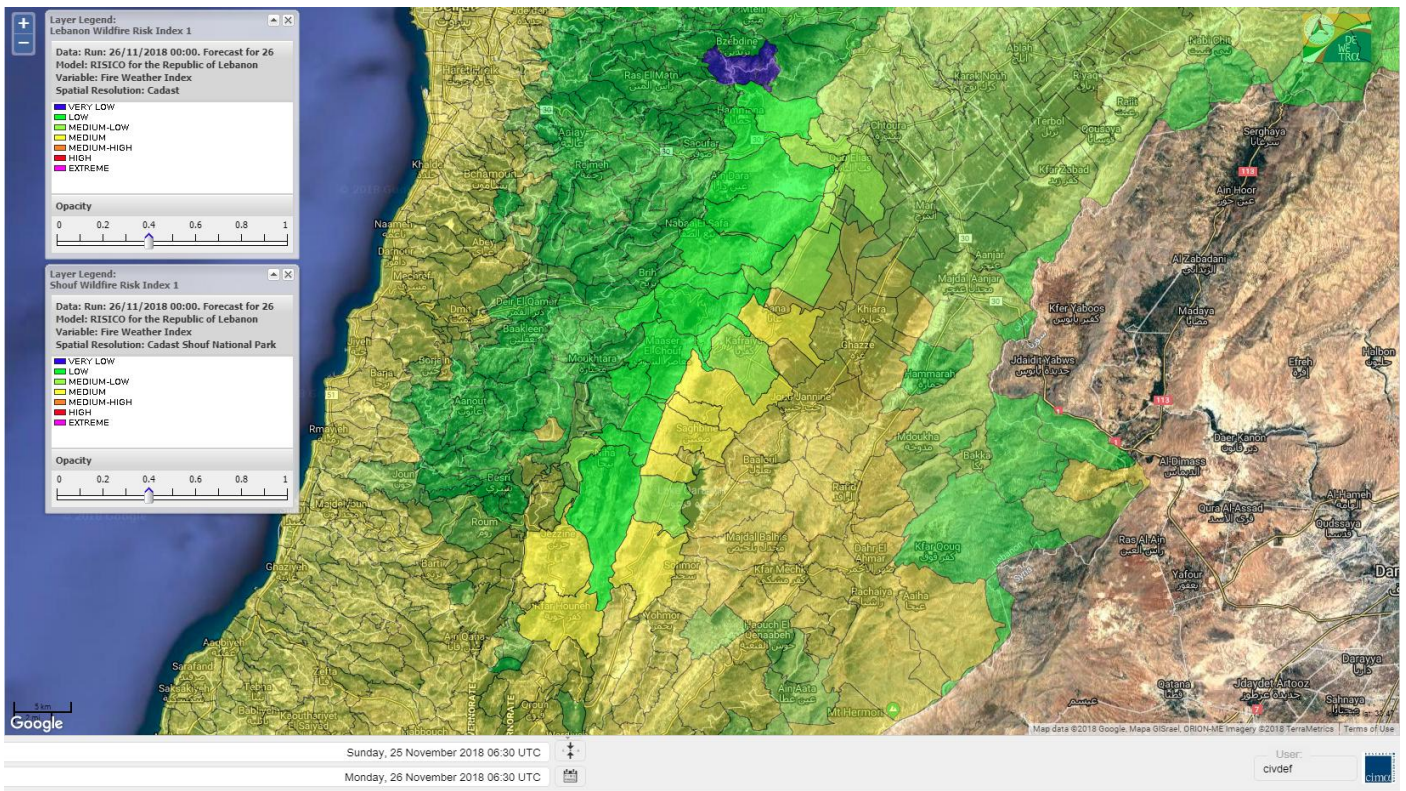




# Lebanon for 28 NOV 2018

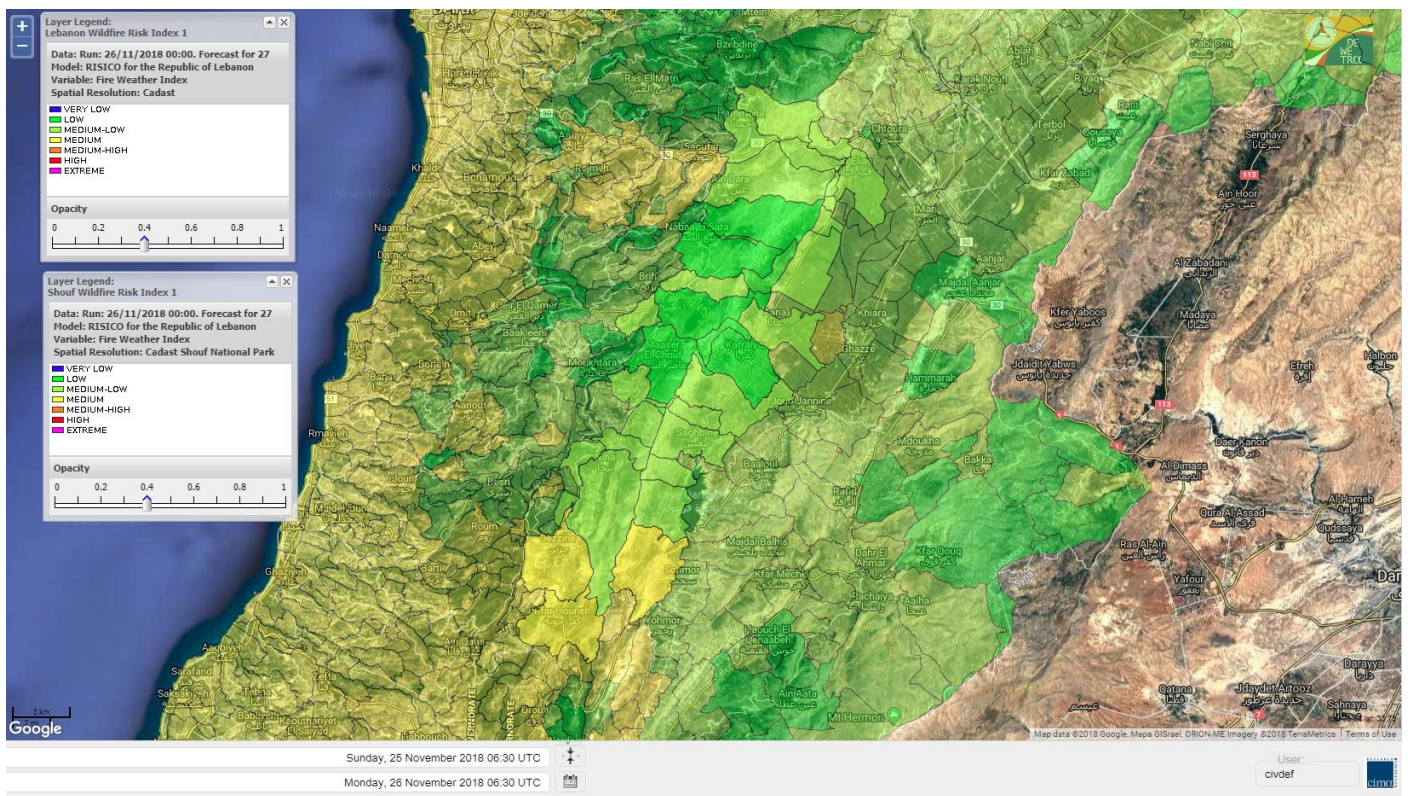


# Shouf Biosphere Reserve Forecast for 26 NOV 2018

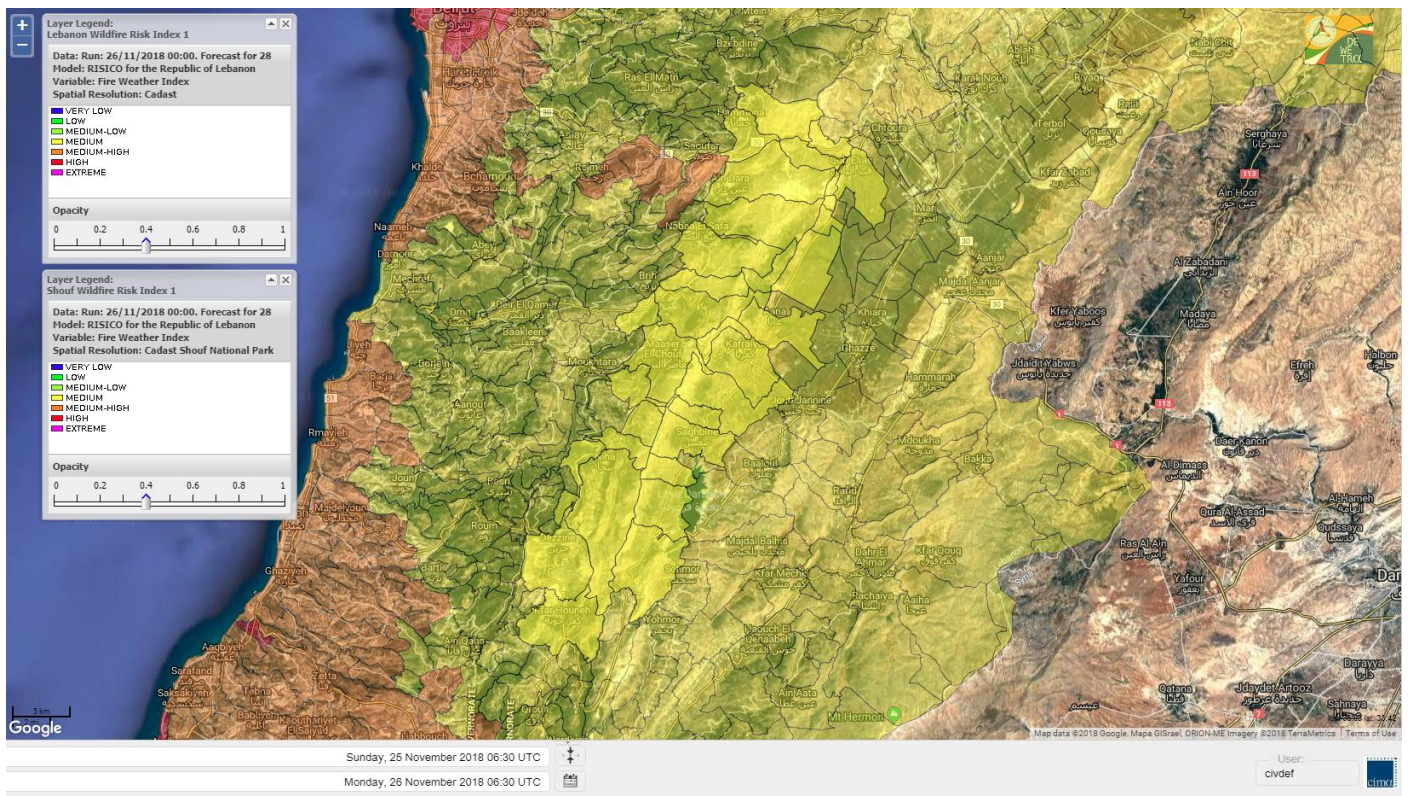




# Shouf Biosphere Reserve Forecast for 27 NOV 2018

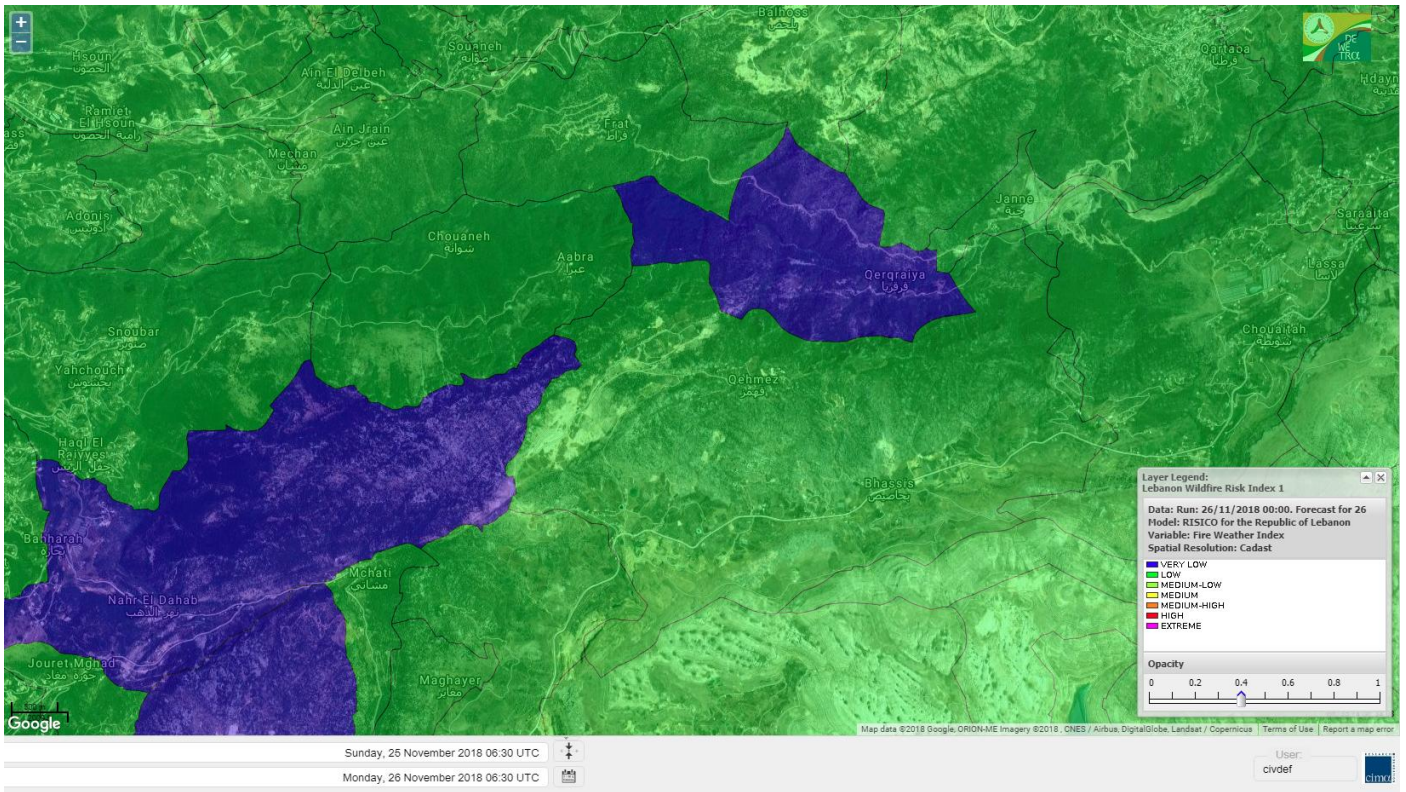


# Shouf Biosphere Reserve Forecast for 28 NOV 2018

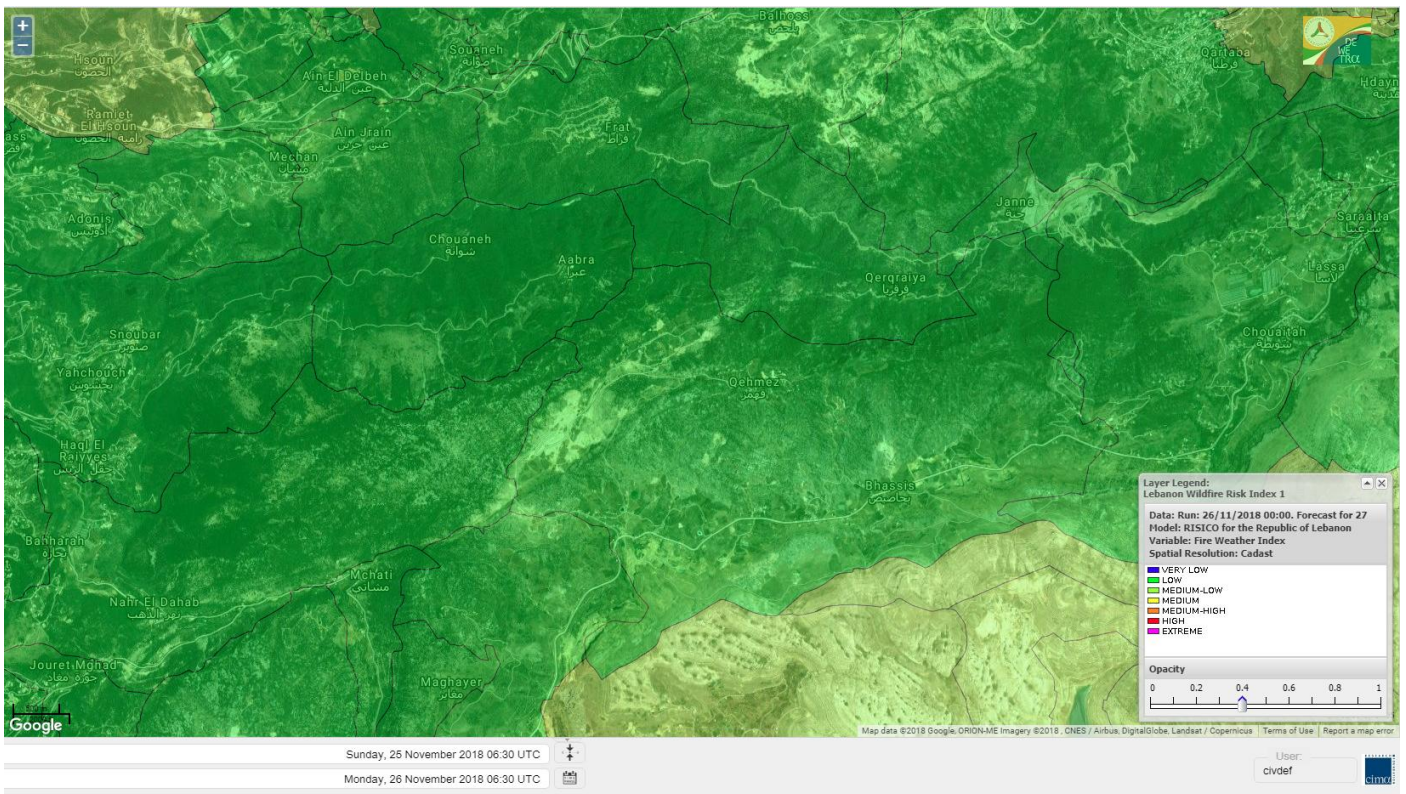




# Jabal Moussa Reserve Forecast for 26 NOV 2018

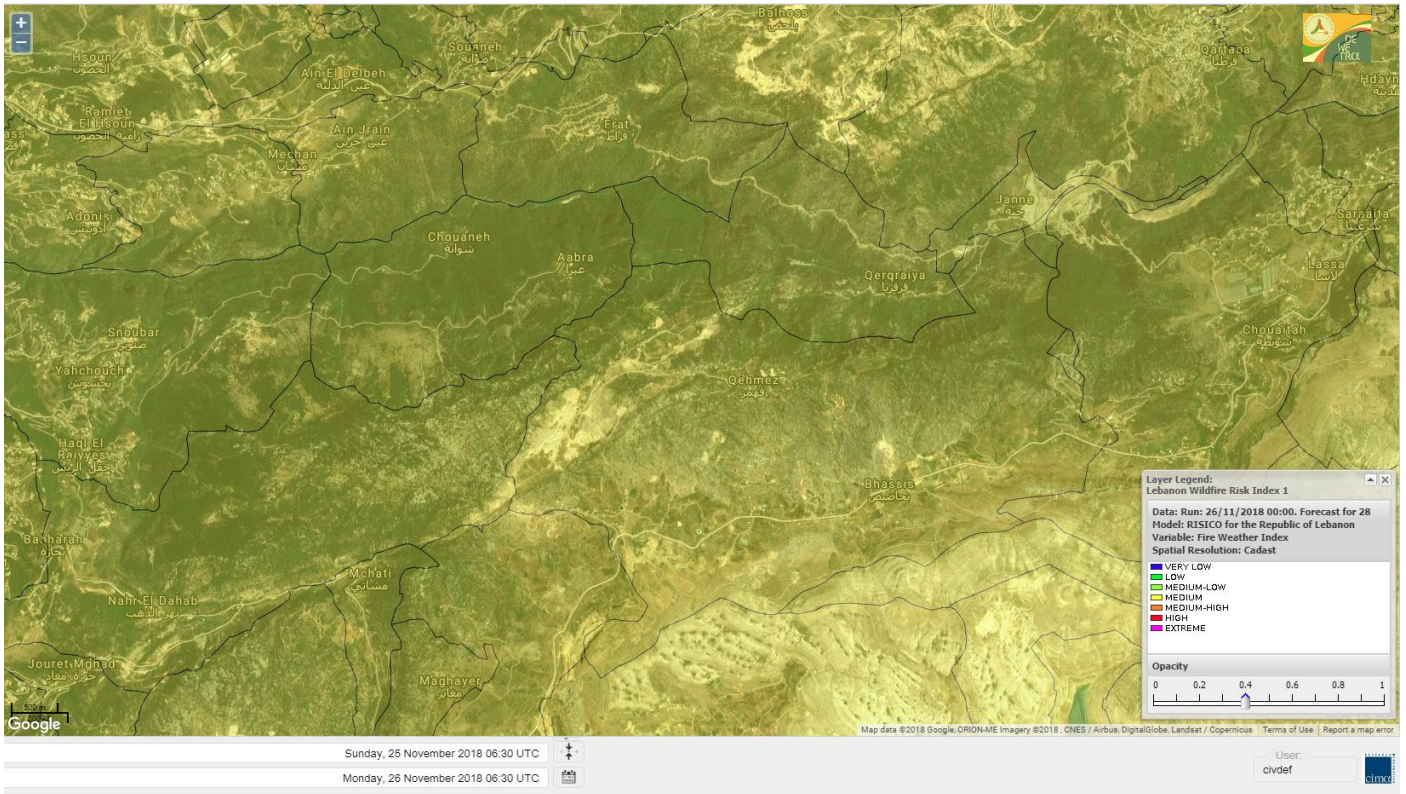


# Jabal Moussa Reserve Forecast for 27 NOV 2018





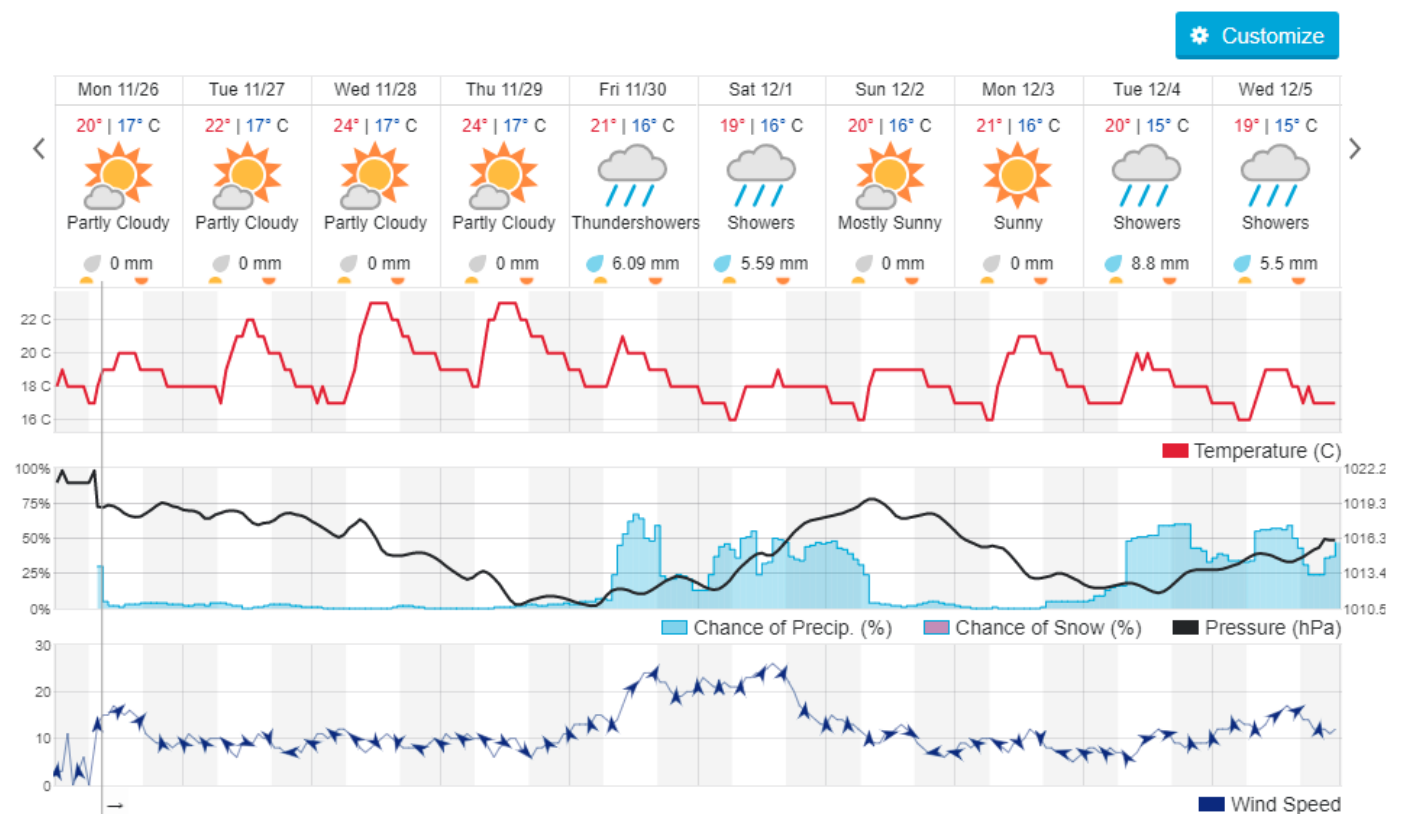
# Jabal Moussa Reserve Forecast for 28 NOV 2018



## Beirut, Lebanon

19° ACHRAFIEH,RIZK STATION | REPORT | CHANGE

TODAY   HOURLY   **10-DAY**   CALENDAR   HISTORY   WUNDERMAP





## Nord

### Koura

Municipality	26-Nov	27-Nov	28-Nov	Municipality	26-Nov	27-Nov	28-Nov	Municipality	26-Nov	27-Nov	28-Nov
Aaba	M	M	MH	Afsaddiq	M	M	MH	Ain Ekrine	M	M	MH
Amioun	M	M	MH	Anfeh	M	M	MH	Badbhoun	M	M	MH
Barghoun	M	M	MH	Barsa	M	M	MH	Batroumine	M	M	MH
Bdebba	M	M	MH	Bechmizzine	M	M	MH	Bednayet El-Koura	L	ML	M
Bhabbouch El-Koura	M	M	M	Bkeftine	M	M	MH	Bnehran	ML	ML	M
Bqaiaa El-Koura	M	M	MH	Bsarma	M	M	M	Btaaboura	ML	M	MH
Bterram	M	M	MH	Btouratij	M	M	MH	Bziza	M	M	M
Dar Beehtar	M	M	MH	Dar Chmezzine	M	M	MH	Deddeh	M	M	MH
Deir El-Balamand	L	L	M	Fih	M	M	MH	Hraiche	M	M	MH
Ijdaabrine	L	ML	M	Kaftoun	ML	M	M	Kefraya El-Koura	ML	M	MH
Kfarakka	M	M	M	Kfarhata	L	ML	M	Kfarhazir	ML	M	MH
Kfarkahel	M	M	MH	Kfarsaroun	M	M	M	Kosba	M	M	M
Mejdel el-Koura	ML	ML	M	Nakhle	M	M	MH	Qalhat	L	L	M
Ras Masqa	M	M	MH	Rechdibbine	M	M	MH	Zakroun	M	M	MH
Zgharta El-Mtaouile	L	L	M								

### Bcharre

Municipality	26-Nov	27-Nov	28-Nov	Municipality	26-Nov	27-Nov	28-Nov	Municipality	26-Nov	27-Nov	28-Nov
Aabdine	ML	ML	M	Bane	ML	M	M	Barhelioun	L	L	M
Bazouone	L	ML	M	Becharre	ML	M	M	Beit Menzer	L	L	M
Billa	L	L	M	Blaouza	ML	ML	M	Bqaa Kafra	L	ML	M
Bqerqacha	L	ML	M	Breissat	L	L	M	Dimane	L	L	M
Hadath El Jobbeh	L	L	M	Hadchit	L	ML	M	Hasroun	L	ML	M
Mazraat Aassaf	L	L	M	Mazraat Bani Saab	L	L	M	Mchaa El-Jobbeh	ML	ML	M
Metrit	ML	ML	M	Moghr El-Ahoual	ML	ML	M	Ouadi Qannoubine	VL	VL	L
Qanat	L	L	M	Qnayouer	L	L	M	Tourza	L	L	M

### Batroun

Municipality	26-Nov	27-Nov	28-Nov	Municipality	26-Nov	27-Nov	28-Nov	Municipality	26-Nov	27-Nov	28-Nov
Aabrine	L	L	M	Aalali	L	L	M	Aartiz	VL	L	M
Abdelli	L	L	M	Ajdabra	L	L	M	Assia	L	L	M
Basbina	L	M	M	Batroun	ML	M	M	Bcheleh	L	L	M
Bechtoudar	L	L	M	Beit Chlala	L	L	M	Beit Kassab	L	L	M
Bijdarfil	L	M	M	Bqesmaya	L	L	M	Chatine	L	L	M
Chebtein	L	L	M	Chekka	M	M	MH	Daael	L	L	M
Dahr Abi Yaghi	L	L	M	Daraya El-Batroun	L	M	M	Deir Billa	L	L	M
Deir Kfifane	L	ML	M	Deir Mar Youhanna EL	L	L	M	Deir Mar Youssef Jra	L	L	M
Douma	L	L	M	Douq	L	L	M	Eddeh El-Batroun	L	ML	M
Ftatah El-Batroun	VL	L	M	Ghouma	L	ML	M	Hadtoun	L	L	M
Hamat	L	L	M	Harbouna	L	L	M	Hardine	L	L	M
Helta	L	L	M	Hery	ML	M	MH	Jebbla	L	L	M
Jrabta El-Batroun	L	ML	M	Jrane El-Batroun	L	M	M	Kfar Aabida	L	ML	M
Kfar Halda	L	L	M	Kfarb Shlaimane	L	L	M	Kfarhatna	L	L	M
Kfarhay	L	M	M	Kfarhelos	L	L	M	Kfifane	L	M	M



Kfour El Arabi	L	L	M	Koubba	L	ML	M	Kour	L	ML	M
Mar Mama	VL	L	M	Masrah	L	L	M	Mehmarch	L	L	M
Mrah Chdid	L	L	M	Mrah El Ziyat	L	ML	M	Mrah El-Hajj	L	L	M
Nahle El-Batroun	L	L	M	Niha El-Batroun	L	L	M	Ouahj El-Hajjar	L	ML	M
Ouata Houb	L	L	M	Qatnaaoun	L	ML	M	Racha	L	L	M
Rachana	L	L	M	Rachkida	L	ML	M	Ram El-Batroun	L	L	M
Ras Nahnach	L	ML	M	Selaata	ML	M	M	Sghar	L	ML	M
Smar Jbayl	L	ML	M	Sourat El-Batroun	L	L	M	Tannourine El-Fauouqa	L	ML	M
Tannourine Et-Tahta	L	L	M	Thoum	L	ML	M	Toula El-Batroun	L	L	M
Zan	L	L	M								

## Zgharta

Municipality	26-Nov	27-Nov	28-Nov	Municipality	26-Nov	27-Nov	28-Nov	Municipality	26-Nov	27-Nov	28-Nov
Aachach	M	M	MH	Aalma	M	M	MH	Aarde	M	M	M
Aintourine	ML	ML	M	Arabet Qozhaya	L	L	M	Arde	M	M	MH
Arjis	M	M	M	Asnoun	M	M	MH	Ayto	L	L	M
Basloukit	ML	M	M	Bchannine	M	M	M	Besebeel	M	M	MH
Bhairret Toula	L	L	M	Bnachee	M	ML	M	Boussit	M	M	MH
Danha	M	M	MH	Daraiya Zgharta	M	M	M	Deir Jdeide	M	M	MH
Ehden	ML	ML	M	Halan	M	M	MH	Hariq Zgharta	M	M	MH
Houakir	L	ML	M	Hraiqis	M	M	H	Iaal	M	M	M
Ijbaa	L	ML	M	Karm Saddeh	L	L	M	Kfarchakhna	M	M	MH
Kfardlaqous	M	M	MH	Kfarfou	M	M	M	Kfarhata Zgharta	M	M	MH
Kfarhoura	M	M	M	Kfarsghab	ML	ML	M	Kfaryachit	M	M	MH
Kfarzaina	M	M	MH	Khaldiye	M	M	MH	Mazraat Ajbeaa	M	M	MH
Mazraat Et-Teffah	L	L	M	Mazraat Jneid	M	M	M	Mejdlaya Zgharta	M	M	MH
Merh Kfarsghab	M	M	M	Miryata	M	M	MH	Miziara	L	L	M
Mzraat Kefraya	M	M	MH	Qorah Bach	M	M	MH	Rachiine	M	M	MH
Ras Kifa	M	ML	M	Sakhra	ML	M	M	Sebhel Zgharta	ML	ML	M
Serhel	L	L	M	Tallet Zgharta	M	M	M	Toula Zgharta	L	L	M
Zgharta	M	M	MH								

## Minieh-Denniye

Municipality	26-Nov	27-Nov	28-Nov	Municipality	26-Nov	27-Nov	28-Nov	Municipality	26-Nov	27-Nov	28-Nov
Aasaymout	L	L	ML	Aaymar	L	L	M	Aazki	ML	L	M
Ain El-Tineh-Miniyeh	L	L	M	Assoun	L	L	M	Bakhaaoun	L	L	M
Bchennata	ML	ML	M	Bechehhara	L	L	M	Beddawi	M	M	MH
Behouaita	L	L	M	Beit El Foqss	L	L	M	Beit Haouik	ML	ML	M
Beit Zoud	L	L	M	Bekaasafrine	ML	M	M	Borj El Yahoudiyeh	M	M	MH
Bqarsouna	L	L	M	Btermaz	L	L	M	Debaael	L	L	M
Deir Ammar	M	M	H	Deir Nbouh	ML	ML	M	Haouaret-Miniyeh	L	L	M
Haql el Azimeh	L	L	M	Harf El Siyad	L	L	M	Hazmiye-Miniyeh	L	L	M
Izal	ML	L	M	Jarjour	L	L	M	Jayroun	L	L	M
Kahf El-Malloul	L	L	M	Karm El-Moher	L	L	M	Kfar Binine	L	L	M
Kfarchalane	ML	L	M	Kfarhabou	ML	ML	M	Kharroub-Miniyeh	ML	L	M
Mazraat El-Kreme	L	L	M	Mazraat Ketrane	L	L	M	Merkebtta	M	M	MH
Minyeh	M	M	MH	Mrah El Sfirat	L	L	M	Mrah Sraj	L	L	M
Mrebbine	L	L	M	Nabi Youcheaa	M	M	MH	Nemrine	L	L	M



Qarhaiya	L	L	M	Qarne	VL	VL	M	Qarsita	L	L	M
Qattineh-Miniyeh	L	VL	L	Qemmamine	VL	VL	ML	Qraine	L	L	M
Raouda-Aadoua	M	M	MH	Rihaniyet-Miniyeh	M	M	MH	Sfireh	L	L	M
Sir Ed-Danniyeh	L	L	M	Tarane	L	L	M	Terbol-Miniyeh	M	M	MH
Zaghartagraine	L	ML	M	Zouq Bhannine	M	M	MH				

## Nabatiye

### Nabatiye

Municipality	26-Nov	27-Nov	28-Nov	Municipality	26-Nov	27-Nov	28-Nov	Municipality	26-Nov	27-Nov	28-Nov
Aabba	M	M	MH	Aazzi	M	M	MH	Adchit El-Chqif	M	M	MH
Ain Bou Swar	M	M	M	Ain Kana	M	M	M	Ali El-Taher	M	M	M
Ansar	M	M	MH	Arab Salim	M	M	M	Arnoun	M	M	MH
Bfaroue	M	M	MH	Breyqaah	M	M	MH	Charqiyeh	M	M	MH
Choukine	M	M	MH	Deir El Zahrani	M	M	MH	Doueir El-Nabatiyeh	M	M	MH
Habbouch El-Nabatiye	M	M	MH	Hamra El-Nabatiyeh	M	M	MH	Harouf El-Nabatiyeh	M	M	MH
Hmaile	M	M	M	Houmin El Faouqa	M	M	MH	Houmin El Tahta	M	M	MH
Jarjough	M	M	M	Jbaah El-Nabatiyeh	M	M	M	Jebchit	M	M	MH
Kfar Djal El-Nabatiy	M	M	MH	Kfar Remmane	M	M	MH	Kfar Sir	M	M	MH
Kfar Tebnit	M	M	MH	Kfarfila	M	M	M	Kfour El-Nabatieh	M	M	MH
Mayfadoun	M	M	MH	Mazraat Bsaffour	M	M	MH	Mazraat Chalbaal	M	M	MH
Mazraat Dmoul	M	M	MH	Mazraat El Khreibeh	M	M	MH	Mazraat El-Bayad El-	M	M	MH
Mazraat Kfarjaouz	M	M	MH	Mazraat Qalaat Meiss	M	M	MH	Nabatiyeh El-Fawka	M	M	MH
Nabatiyeh Et-Tahta	M	M	MH	Namiriyeh	M	M	MH	Qaaqaaiyet El Jisr	M	M	MH
Qossaibeh El-Nabatiy	M	M	MH	Roumine	M	M	MH	Sarba El-Nabatieh	M	M	M
Sir El-Gharbiyeh	M	M	MH	Toul	M	M	MH	Yehmor El-Nabatiyeh	M	M	MH
Zaoutar El Charkiyeh	M	M	MH	Zaoutar El-Gharbiyeh	M	M	MH	Zebdine El-Nabatiyeh	M	M	MH
Zefta	M	M	MH								

### Hasbaiya

Municipality	26-Nov	27-Nov	28-Nov	Municipality	26-Nov	27-Nov	28-Nov	Municipality	26-Nov	27-Nov	28-Nov
Aain Jarfa	M	L	M	Abou Qamha	ML	ML	M	Ain Qania	M	ML	M
Bourghos	M	M	M	Chebaa	ML	ML	M	Chouaya Hasbaya	M	ML	M
Dellafeh	M	M	M	Fardiss Hasbaiya	ML	ML	M	Hasbaya	M	ML	M
Hbariyeh	ML	L	M	Kaoukaba Hasbaiya	M	M	M	Kfar Chouba	ML	ML	M
Kfar Hamam	ML	ML	M	Kfeir El-Zait	M	L	M	Khalwat Hasbaya	ML	L	M
Khreibet Hasbaiya	M	M	M	Majidiyeh Hasbaiya	M	M	M	Marj Ez-Zhour (Haouc	M	ML	M
Meri	M	M	M	Mimass	M	ML	M	Rachaiya El-Fokhar	ML	ML	M
Salaiyeb	M	M	MH								

### Marjayoun

Municipality	26-Nov	27-Nov	28-Nov	Municipality	26-Nov	27-Nov	28-Nov	Municipality	26-Nov	27-Nov	28-Nov
Aalmane Marjaayoun	M	M	MH	Aamra	M	M	MH	Adayseh Marjaayoun	M	M	MH
Adchit El-Koussair	M	M	MH	Ain Aarab Marjaayoun	M	M	MH	Bani Haiyann	M	M	MH
Blatt Marjaayoun	M	M	M	Blida	ML	M	MH	Borj El-Moulouk	M	M	MH
Boueyda Marjaayoun	M	M	M	Deir Mimass	M	M	M	Deir Siriane	M	M	MH
Dibbine	M	M	M	Ebel El Saqi	M	M	M	Houla	ML	M	MH
Houra	M	M	MH	Kfar Kila	M	M	MH	Khiam Marjaayoun	M	M	MH



Klayaa	M	M	MH	Majdel Selem	ML	M	MH	Marjaayoun	M	M	M
Markaba	M	M	MH	Mays El-Jabal	ML	M	MH	Mazraat Doumiat	M	M	MH
Mazraat Sarada	M	M	MH	Mhaibib	ML	M	MH	Qabrikha	M	M	MH
Qantara	M	M	MH	Rab El-Thalathine	M	M	MH	Saouaneh Marjayoun	L	M	MH
Talloussa	ML	M	MH	Taybeh Matjaayoun	M	M	MH	Touline	ML	M	MH

## Bent Jbail

Municipality	26-Nov	27-Nov	28-Nov	Municipality	26-Nov	27-Nov	28-Nov	Municipality	26-Nov	27-Nov	28-Nov
Ain-Ebel	L	M	MH	Aitaroun	ML	M	MH	Aynata Bint Jbeil	L	M	MH
Ayta El-Chaeb	ML	M	MH	Ayta El-Jabal	L	M	MH	Beit Lif	L	M	MH
Beit Yahoun	L	M	MH	Bint Jbeil	L	M	MH	Borj Qalaway	M	M	MH
Braachit	L	M	MH	Chakra	ML	M	MH	Debel	L	M	MH
Deir Antar	ML	M	MH	Froun	M	M	MH	Ghandouriyeh Bint Jb	M	M	MH
Hanine	L	M	MH	Hariss	ML	M	MH	Hdatha	L	M	MH
Jmeyjme	L	M	MH	Kafra Bint Jbeil	L	M	MH	Kfar Dounine	ML	M	MH
Khirbet Selm	L	M	MH	Kounine	L	M	MH	Maroun El Ras	L	M	MH
Qalaway	ML	M	MH	Qaouzah	L	M	M	Qatmoun	ML	M	MH
Ramya Bint Jbeil	ML	M	M	Rchaf	L	M	MH	Rmeich	ML	M	MH
Safad Al Battikh	L	M	MH	Salhaneh	L	ML	M	Serbine	ML	M	MH
Sultanieh Bint Jbeil	ML	M	MH	Tibnine	L	M	MH	Tiri	L	M	MH
Yaroun	L	M	MH	Yater	ML	M	MH				

## Mont Liban

### Jbail

Municipality	26-Nov	27-Nov	28-Nov	Municipality	26-Nov	27-Nov	28-Nov	Municipality	26-Nov	27-Nov	28-Nov
Aabeydat	L	L	M	Aalita	L	L	M	Aamchit	ML	M	MH
Aarab El-Lahib	L	ML	M	Aarasta	L	L	M	Adonis Jbeil	L	L	M
Afqa Jbeil	L	L	M	Ain El Delbeh Jbeil	L	L	M	Ain El-Ghouayba	L	L	M
Ain Jrain	L	L	M	Ain Kfah	L	ML	M	Almat El Chemaliyat	L	L	M
Almat El-Jenoubiya	L	L	M	Aqoura	ML	ML	M	Bayzoun	L	L	M
Bchille Jbeil	L	L	M	Bechtida	VL	L	M	Behdaydat	L	ML	M
Beit Habbaq	L	ML	M	Bejjeh	L	ML	M	Bekhaaz	L	ML	M
Berbara Jbeil	L	ML	M	Bintael	L	L	M	Birket Hjoula	VL	L	M
Blatt Jbeil	ML	ML	M	Boulhos	L	L	M	Breyj Jbeil	L	L	M
Chamat	L	M	M	Chikhane	L	ML	M	Chmout	L	L	M
Eddeh Jbeil	ML	M	M	Ehmej	L	L	M	Fatre	L	L	M
Ferhet	L	ML	M	Fghal	L	L	M	Frat	L	L	M
Ghabat	L	L	M	Ghalboun	L	ML	M	Gharzouz	L	ML	M
Ghofrine	L	ML	M	Habil	VL	L	M	Halate	ML	ML	M
Haqel	L	L	M	Hbaline	L	ML	M	Hboub	L	ML	M
Hdeine	L	L	M	Hema Er-Rehban	L	ML	M	Hema Mar Maroun Aann	L	ML	M
Hjoula	L	L	M	Hosrayel	L	ML	M	Hsarat	L	ML	M
Hsoun	L	ML	M	Jaj	L	L	M	Janne	L	L	M
Jbeil	ML	M	MH	Jeddey Jbeil	L	M	MH	Jlisse	L	L	M
Jouret El-Qattine	L	L	M	Kfar Baal Annaya	L	L	M	Kfar Kidde	L	ML	M
Kfar Kouas	L	L	M	Kfar Mashoun	ML	M	M	Kfoun	L	L	M



Kharbe Jbeil	L	ML	M	Laqlouq	L	ML	M	Lassa	L	L	M
Lehfed	L	L	M	Maad	L	ML	M	Mar Sarkis	L	ML	M
Mastita	ML	M	M	Mayfouq	L	L	M	Mazraat El Siyad	L	ML	M
Mazraat El-Maaden	L	L	M	Mechane	L	L	M	Mechmech Jbeil	L	L	M
Mehrin	ML	ML	M	Mejdel El-Akoura	L	L	M	Mghayreh Jbeil	L	L	M
Mounsef	L	ML	M	Nahr Ibrahim	M	M	M	Qahmez	L	L	M
Qartaba	L	L	M	Qartaboun	ML	M	MH	Qattara Jbeil	L	L	M
Qorqraya	VL	L	M	Ramout	L	ML	M	Ras Osta	L	L	M
Rihane Jbeil	L	M	MH	Sakiet El-Khayt	L	L	M	Saqi Richmaya	L	L	M
Sebrine	L	L	M	Seraita	L	L	M	Souane Jbeil	L	L	M
Tadmor	L	L	M	Tartej	L	L	M	Torzaiya	L	L	M
Yanouh Jbeil	L	L	M	Zibdine Jbeil	L	L	M				

## El Metn

Municipality	26-Nov	27-Nov	28-Nov	Municipality	26-Nov	27-Nov	28-Nov	Municipality	26-Nov	27-Nov	28-Nov
Aain El-Qabu	L	L	M	Aain El-Qach	L	L	M	Aain El-Teffaha	L	L	M
Aain el-Safssaf El-M	L	L	M	Abou Mizane	L	L	M	Ain Aar	ML	M	M
Ain Alaq	L	ML	M	Ain El-Kharroube	L	L	M	Ain El-Sendianeh	L	L	M
Ain El-Zeitoune	VL	L	M	Ain Saadeh	L	M	M	Aintoura El-Matn	L	ML	M
Amaret Chalhoub	M	M	MH	Antelias	M	M	MH	Atchaneh	L	ML	M
Ayroun	L	L	M	Baabdat	L	L	M	Baouchariyeh	M	M	MH
Baskinta	L	L	M	Beit Chabab	L	L	M	Beit El-Chaar	M	M	MH
Beit El-Kekko	ML	M	MH	Beit Mery	L	ML	M	Bhersaf	L	L	M
Bikfaya	L	L	M	Biyakout	M	M	MH	Bnabil	L	L	M
Bourj Hammoud	M	M	MH	Bqennaya	ML	M	M	Broummana El-Matn	L	ML	M
Bsalim	L	M	M	Bsifrine	L	L	M	Btegrine	L	L	M
Chaouiye	L	ML	M	Chouaya El-Matn	L	L	M	Choueir	L	L	M
Chrine	L	L	M	Dahr El Sawan El-Mat	L	L	M	Daychouniyeh	ML	M	M
Dbayeh	M	M	MH	Deir Chamra	L	L	M	Deir Mar Abda el Mch	ML	M	M
Deir Mar Roukouz	M	M	MH	Deir Tamiche	ML	M	M	Dik El-Mehdi	ML	M	M
Dikwaneh	M	M	MH	Douar El-Matn	L	L	M	Fanar	M	M	M
Fraike	L	ML	M	Haret El-Ballaneh	ML	M	M	Hbous	ML	M	M
Himlaya	L	L	M	Jal El Did	M	M	MH	Jdeideh El-Metn	M	M	MH
Jouar El-Matn	L	L	M	Jouret El-Ballout	L	M	M	Kaaqour	L	L	M
Kfar Aaqab	VL	L	M	Kfertay El-Matn	L	L	M	Khenchara	L	L	M
Khillet El-Mtain	L	L	M	Konnabat Broummana	L	ML	M	Konnabat Salima	L	L	M
Machraah El-Matn	VL	L	M	Majdel Tarchich	L	ML	M	Majzoub	ML	M	MH
Mansouriyeh El-Metn	M	M	MH	Mar Boutros Karm Et-	L	L	M	Mar Chaya et Mzekke	L	ML	M
Mar Moussa Ed-Douar	L	L	M	Marjaba	L	L	M	Masqa	L	ML	M
Mayasse	L	L	M	Mazraat Deir Aoukar	M	M	M	Mazraat El-Hadirat	ML	M	M
Mazraat Yachouh	ML	M	MH	Mchikha	L	L	M	Menqlet Mezher	M	M	M
Mhaydseh Matn	L	L	M	Mkalles	M	M	MH	Mrouj	L	L	M
Mtain	L	ML	M	Mtayleb	ML	M	M	Nabay	L	M	M
Naccache	M	M	M	Ouadi Chahine	L	L	M	Ouadi El-Karm El-Mat	VL	L	M
Ouata El-Mrouj	L	L	M	Ouyoun El-Matn	L	L	M	Qornet Chehwan	L	M	M
Qornet El-Hamra	L	M	M	Roumieh	L	M	M	Sfeilet Bikfaya	L	L	M
Sinn El-Fil	M	M	MH	Zabbougha	L	L	M	Zalqa	M	M	MH



Zarououn	L	L	M	Zekrite	ML	M	M	Zighrine El-Matn	L	L	M
Zouk El-Khrab	M	M	MH								

## Chouf

Municipality	26-Nov	27-Nov	28-Nov	Municipality	26-Nov	27-Nov	28-Nov	Municipality	26-Nov	27-Nov	28-Nov
Aalmane El-Chouf	M	M	MH	Aammqi El-Chouf	ML	L	M	Ain Ouzein	L	L	M
Ain Qani	L	L	M	Ain Zhalta	L	L	M	Ainbal	L	ML	M
Amatour	ML	ML	M	Anout	L	M	M	Atrine	L	L	M
Baadarane	L	ML	M	Baaqline	L	ML	M	Baasir	M	M	MH
Barja	M	M	MH	Barouk	L	L	M	Bater	ML	ML	M
Batloun	L	ML	M	Bayqoun	M	M	M	Bchetfine	ML	M	M
Beiteddine	L	L	M	Benouati Ech-Chouf	M	M	M	Berjein	ML	M	M
Bireh et Mtalleh	L	ML	M	Biret El-Chouf	L	ML	M	Bkechtine Ouel Mchei	M	ML	M
Bkifa El-Chouf	L	M	M	Botme	L	L	M	Bqaiia Ech-Chouf	M	M	M
Bsaba El-Chouf	L	ML	M	Chammis El-Chouf	ML	M	MH	Chehim	L	ML	M
Chemaarine	M	ML	M	Chourit	L	L	M	Daher El-Chouf	M	M	M
Dalhoun	ML	M	M	Damour	M	M	M	Daraya El-Chouf	L	ML	M
Deir El-Moukhalles	L	ML	M	Deir Baba	M	M	M	Deir Dourit	ML	ML	M
Deir El-Qamar	L	ML	M	Deir Kouche	ML	ML	M	Dibbieh	M	M	M
Dmit	M	M	M	Fouara Jaafar	L	L	M	Fraidis El-Chouf	L	ML	M
Ghabet Jaafar	M	M	M	Gharife	L	ML	M	Haret Jandal	ML	ML	M
Hasrout	L	M	M	Jadra	M	M	MH	Jahlieh	ML	M	M
Jbeih El-Chouf	L	ML	M	Jdeidet El-Chouf	L	ML	M	Jiyeh	M	M	MH
Jleilyeh	L	M	M	Jmailiyeh	M	M	MH	Joun	ML	M	M
Kahlounie El-Chouf	L	ML	M	Ketermaya	M	M	MH	Kfar Faqoud	ML	M	M
Kfar Hamal	ML	M	M	Kfar Him	M	M	M	Kfar Katra	L	L	M
Kfar Niss	L	ML	M	Kfar hay	L	ML	M	Kfarnabrakh	L	ML	M
Khirbet Bisri	L	ML	M	Knayse El-Chouf	ML	L	M	Maaniyeh	M	M	MH
Maasser Beiteddine	L	L	M	Maasser El-Chouf	L	L	M	Majdalouna	M	M	M
Majdel El-Meouch	L	ML	M	Mazboud	L	M	M	Mazmoura	L	M	M
Mazraat El Chouf	L	ML	M	Mazraat El Daher	L	ML	M	Mazraat El-Douair	L	L	M
Mechref	M	M	M	Mghairie	M	M	MH	Mghayrie El-Chouf	M	M	M
Moukhtara	L	L	M	Mrusti	L	ML	M	Mtolle	L	M	M
Naameh	M	M	MH	Niha El-Chouf	L	ML	M	Ouadi Abou Yousef	M	ML	M
Ouadi Ed-Deir	M	M	M	Ouadi El-Sit	L	ML	M	Ouadi bnehlay	ML	ML	M
Qraibeh	L	ML	M	Qreiaa	L	L	M	Rmayle El-Chouf	M	M	MH
Semqaniyeh	L	ML	M	Sibline	M	M	MH	Sirjbeil	M	M	M
Warhanieh	L	ML	M	Werdaniyeh	M	M	MH	Zaarourieh	L	M	M

## Baabda

Municipality	26-Nov	27-Nov	28-Nov	Municipality	26-Nov	27-Nov	28-Nov	Municipality	26-Nov	27-Nov	28-Nov
Abadiyeh	L	ML	M	Ain Mouaffaq	L	ML	M	Araiya	L	ML	M
Arbaniyeh	L	L	M	Arsoun	L	L	M	Baabda	M	M	MH
Baalchmey	L	M	M	Bmaryam	L	L	M	Bourj El-Brajneh	M	M	MH
Boutchay	M	M	MH	Bsaba Baabda	M	M	MH	Btekhney	L	L	M
Btibyat	L	L	M	Bzabdine	L	L	M	Chbeniyeh	L	ML	M
Chiyah	M	M	MH	Chmeisset Baabda	L	L	M	Chouit	L	L	M
Deir El-harf	L	L	M	Deir Khouna	L	ML	M	Dlaybeh	L	L	M



Falougha	L	ML	M	Furn El-Chebbak	M	M	MH	Hadath Beyrouth	M	M	MH
Halaliyeh Baabda	L	L	M	Hammana	L	ML	M	Haret El Sett	ML	ML	M
Haret Hamze	L	ML	M	Haret Hreik	M	M	MH	Hasbaiya El-Metn	L	L	M
Jouar El-Hoz	VL	L	M	Jouret Arsoun	L	L	M	Kfar Chima	M	M	MH
Kfar Selouane	L	L	M	Khalouat Baabda	L	ML	M	Kneisset Baabda	L	L	M
Laylakeh	M	M	MH	Louayzeh Baabda	ML	M	M	Merdache	M	M	MH
Mzairaa Baabda	L	L	M	Ouadi Chahrour El Ol	ML	ML	M	Ouadi Chahrour El So	ML	M	M
Qalaa Baabda	L	L	M	Qhraybe Baabda	L	L	M	Qobbayaa	L	ML	M
Qornayel	VL	L	M	Qortada	L	L	M	Qrayeh Baabda	L	ML	M
Qsaibeh Baabda	L	ML	M	Qtale Baabda	L	L	M	Ras El Metn	L	ML	M
Ras El-Haref	L	ML	M	Rouayset El-Ballout	L	L	M	Salima Baabda	L	L	M
Tahouitat El Ghadir	M	M	MH	Tarchich	L	L	M	Zandouqa	L	L	M

## Aley

Municipality	26-Nov	27-Nov	28-Nov	Municipality	26-Nov	27-Nov	28-Nov	Municipality	26-Nov	27-Nov	28-Nov
Abey	M	M	M	Aghmid	L	L	M	Ain Dara	L	ML	M
Ain Drafil	M	M	M	Ain El Halazoun	L	M	M	Ain El-Rmmaneh	L	L	M
Ain Jedideh	L	M	M	Ain Ksour	ML	M	M	Ain Onoub	M	M	M
Ain Traz	L	L	M	Ainab	L	M	M	Aley	L	M	M
Aramoun	M	M	MH	Aytat	M	M	MH	Azouniyeh	L	ML	M
Baawerta	M	M	M	Badghan Oua Wadi Bad	L	ML	M	Bassatine	M	M	MH
Bayssour	ML	M	M	Bchamoun	M	M	MH	Bdadoun	ML	ML	M
Behouara	L	ML	M	Bennay	M	M	M	Bhamdoun El-Dayaa	L	M	MH
Bhamdoun El-Mhatta	L	M	MH	Bkhechthey	L	M	M	Bleibel	M	M	M
Bmakine	ML	M	M	Bmehray	L	L	M	Bouzrid	L	L	M
Bserrine	ML	M	M	Bsous	L	L	M	Btalloun	L	M	MH
Btater	L	M	M	Chanay	L	M	MH	Charoun	L	M	MH
Chartoun	L	ML	M	Chemlane	ML	M	M	Choueifat El-Aamrous	M	M	MH
Choueifat El-Oumara	M	M	MH	Choueifat El-Quoubbe	M	M	MH	Dakkoun	M	M	M
Deir Qoubel	M	M	MH	Dfoun	M	M	MH	Douair El Remmaneh	L	L	M
Ghaboun	L	ML	M	Habramoun	L	L	M	Homs Oua Hama	L	M	M
Houmal	M	M	M	Jisr El Qadi	M	ML	M	Kehaleh	L	L	M
Keyfoun	M	M	MH	Kfar Aamey	L	M	M	Kommatyeh	ML	ML	M
Maasrati	L	ML	M	Majdel Baana	L	M	MH	Mansourieh et Ain El	L	M	MH
Mazraat El-Nahr	L	ML	M	Mchakhte	L	L	M	Mecherfeh	L	M	M
Mejdaya	L	ML	M	Mrayjat	L	ML	M	Ramliyah	L	L	M
Rechmaya	L	ML	M	Rejmeh	L	ML	M	Remhala	ML	M	M
Rouayset El Neemane	L	ML	M	Saoufar	L	M	M	Selfaya	ML	L	M
Sirhmoul	M	M	MH	Souq El Ghareb	ML	M	M	Taazanieh	L	M	MH

## Kesrouane

Municipality	26-Nov	27-Nov	28-Nov	Municipality	26-Nov	27-Nov	28-Nov	Municipality	26-Nov	27-Nov	28-Nov
Achkout	L	L	M	Adma Oua Dafneh	ML	M	M	Ain Ed-Delbe Kesroua	L	L	M
Ain El-Rihane	L	ML	M	Aintoura Kesrouane	ML	M	M	Ajaltoun	L	L	M
Akaybeh Kesrouane	M	M	MH	Aramoun Kesrouane	L	L	M	Azra ouel Ozor	L	L	M
Ballouneh	L	L	M	Batha	L	L	M	Bekaatat Achkout	L	ML	M
Bekaatat Kanaan	L	L	M	Bizhel	L	ML	M	Bouar	ML	M	M
Bqaatouta	L	L	M	Bqaq Ed-Dine	ML	M	M	Bzommar	L	L	M

Chahtoul	L	L	M	Chnaniir	L	L	M	Chouan	L	L	M
Daraya Kesrouane	L	L	M	Darououn	L	ML	M	Deir Baqlouch	L	ML	M
Dlebta	L	L	M	Eghbeh	VL	L	M	Faraya	L	ML	M
Fatka	L	ML	M	Feytroun	VL	L	M	Ghazir	L	ML	M
Ghbaleh Kesrouane	L	L	M	Ghedrass	L	L	M	Ghosta	L	L	M
Ghynéh	L	ML	M	Harharaya w Kattine	L	L	M	Harissa Kesrouane	L	ML	M
Hayata	VL	L	M	Hosein	L	L	M	Hrajel	L	ML	M
Jdeideh Ghazir	L	L	M	Jeita	L	M	M	Jounieh Ghadir	ML	M	M
Jounieh Haret Sakhr	M	M	MH	Jounieh Salel Alma	ML	M	M	Jounieh Sarba	M	M	MH
Jouret Bedrane	L	ML	M	Jouret Mhad	L	L	M	Jouret Termos	L	ML	M
Kfar Debiane	L	L	M	Kfar Tay Kesrouane	L	L	M	Kfar Yassine	M	M	MH
Kfour Kesrouane	L	L	M	Kharayeb Nahr Ibrahi	L	ML	M	Klayaat Kesrouane	L	L	M
Maarab	L	L	M	Maaysra Kesrouane	L	ML	M	Mayrouba	L	L	M
Mazraat Er-Ras	ML	M	M	Mazraat Mrah El-Mir	L	L	M	Mchaa El Ftouh	L	ML	M
Mchaa Faraya	L	ML	M	Mchaa Kfar Dibiane	L	ML	M	Mghaer	L	L	M
Mradiyah	L	L	M	Nahr Ed-Dahab	VL	L	M	Nammoura Kesrouane	L	L	M
Ouata El Jaouz	VL	L	M	Ouata Sillam	M	M	MH	Raachine	VL	L	M
Rayfoun	L	L	M	Safra Kesrouane	M	M	M	Shayle Kesrouane	L	ML	M
Tabarja	ML	M	M	Yahchouch	L	L	M	Zaaytreh	L	L	M
Zeytoun	L	ML	M	Zouk Mikael	M	M	MH	Zouk Mosbeh	M	M	MH

## Baalbek\_Hermel

### Baalbek

Municipality	26-Nov	27-Nov	28-Nov	Municipality	26-Nov	27-Nov	28-Nov	Municipality	26-Nov	27-Nov	28-Nov
Aadous	M	M	M	Aamchki	L	ML	M	Aarsal	L	L	M
Ain Baalbek	ML	ML	M	Ain Bourday	L	ML	M	Ain El-Benye	L	ML	M
Ain El-Jaouz Baalbek	L	L	M	Ain El-Siya Chadoura	L	ML	M	Al Khodr Baalbek	ML	L	M
Al Nabi Chit	ML	ML	M	Aynata Baalbek	ML	M	M	Baalbek	ML	ML	M
Bachwat	L	ML	M	Barqa	L	ML	M	Bednayel Baalbak	ML	ML	M
Beit Chama	ML	ML	M	Bijjaje	ML	ML	M	Bouday	ML	M	M
Brital	ML	ML	M	Btadi	M	M	M	Chaat	M	M	M
Chaibe	L	L	M	Chlifa	M	M	MH	Chmestar	ML	M	M
Dar El-Oussa	L	M	M	Deir El-Ahmar	ML	M	M	Deir Mar Maroun Baal	M	M	M
Douris	ML	M	M	Fakiha	ML	M	M	Hadath Baalbek	ML	M	M
Ham	L	ML	M	Haour Taala	ML	ML	M	Hizzine	M	M	M
Hlebta	L	ML	M	Hosh Barada	M	M	M	Hosh El Dahab	M	M	M
Hosh El Snid	ML	ML	M	Hosh El-Nabi	ML	ML	M	Hosh El-Rafiq	ML	ML	M
Hosh Tal Safiya	M	M	M	Hrebta	L	ML	M	laat	M	M	MH
Jebaa	ML	M	M	Jenta	L	L	M	Kfar Dabach	ML	ML	M
Kfar Dane	ML	M	M	Khraibeh El-Hermel	L	ML	M	Khreibet Baalbek	ML	ML	M
Kneisset Baalbek	M	M	M	Labueh	ML	ML	M	Maarboun	L	L	M
Majdaloun	M	M	M	Maqneh	M	M	M	Mazraat Beit Mcheik	M	M	M
Misraya	ML	ML	M	Moqraq	ML	ML	M	Nabha El-Damdoum	ML	M	M
Nabi Chbay	L	ML	M	Nabi Osman	ML	ML	M	Nahleh baalbek	L	L	M
Ouadi El-Oss	L	ML	M	Qaa Baayoun	M	M	M	Qaa Jouar Maqiye	M	M	M
Qaa Ouadi El-Khanzir	M	M	M	Qah Baalbek	M	M	M	Qarha Baalbek	ML	M	M



Qsarnaba	ML	ML	M	Ram Baalbek	L	M	M	Ras Baalbek El Sahl	M	M	M
Ras Baalbek El-Charq	M	M	M	Riha	ML	M	M	Saaide	M	M	M
Sboubba	L	ML	M	Seriine El-Tahta	ML	ML	M	Slouqi	ML	ML	M
Taiba Baalbek	ML	M	M	Talia	ML	ML	M	Taraiya	ML	M	M
Temnin El Fawqa	ML	ML	M	Temnin El-Tahta	ML	ML	M	Tfail	L	L	M
Yahfoufa	L	ML	M	Yammouneh	ML	M	M	Younine	ML	ML	M
Zboud	ML	M	M								

## Hermel

Municipality	26-Nov	27-Nov	28-Nov	Municipality	26-Nov	27-Nov	28-Nov	Municipality	26-Nov	27-Nov	28-Nov
Charbine El-Hermel	L	L	M	Hermel Jbab	ML	ML	M	Hermel	M	M	M
Maaysra El-Hermel	L	M	M	Michaa Mrjhine	L	L	M	Ouadi Faara	L	ML	M
Ras Baalbek - Ouadi	M	M	M	Ras Baalbek El Gharb	L	M	M	Zighrine	L	L	M

## Akkar

### Akkar

Municipality	26-Nov	27-Nov	28-Nov	Municipality	26-Nov	27-Nov	28-Nov	Municipality	26-Nov	27-Nov	28-Nov
Aain Tinta	ML	ML	MH	Aaiyat	ML	M	M	Aakkar El-Aatiqa	L	L	M
Aamar Akkar	M	M	MH	Aamar El Baykat	M	M	MH	Aamayer	M	ML	M
Aamriyet Akkar	L	ML	MH	Aandqet	L	L	M	Aarmeh	ML	ML	M
Aarqa	M	M	MH	Aawaynat	ML	M	M	Aayoun Akkar	ML	M	MH
Abboudiye	M	M	MH	Ain El-Zeit	ML	ML	MH	Ain Yaaqoub	L	ML	M
Akroum	L	L	M	Aridet Cheikh Zennad	M	ML	H	Baldeb w Mazraat Bal	ML	M	MH
Barcha	M	M	MH	Bardeh	L	ML	M	Bebnine	M	M	MH
Beino	L	ML	M	Beit Ayoub	M	M	MH	Beit El-Haouch	M	M	MH
Beit Mellat	ML	M	MH	Beit Younes	ML	L	M	Berbara Akkar	ML	ML	MH
Berqayel	M	M	MH	Bezbina	L	L	M	Bireh Akkar	L	ML	MH
Borj	ML	M	MH	Bqerezla	M	M	MH	Bzal	L	L	M
Chane	L	L	M	Chaqdouf	ML	M	MH	Charbila	ML	M	MH
Cheikh Mohammad	M	M	MH	Cheikh Taba Es-Sahl	M	M	MH	Cheikh Taba	ML	M	MH
Cheikh Zennad	M	ML	MH	Cheikhlar	ML	M	M	Chir Hmairine	M	M	MH
Daghle	L	ML	MH	Dahr Laissine	M	M	MH	Darine	M	M	MH
Dawra	L	L	M	Dawsa w Baghdadi	ML	ML	M	Dayret Nahr El-Kabir	M	ML	M
Deir Dalloum	M	M	MH	Deir Jennine	ML	ML	MH	Denbou	L	L	M
Dibbabiyyeh	ML	ML	MH	Douair Aadwiyeh	ML	ML	MH	Fassikine	ML	ML	MH
Fnaydek	L	L	M	Fraydes Akkar	L	ML	M	Ghazayle	M	M	MH
Habchit	L	L	M	Hakour	M	M	MH	Halba	M	M	MH
Haouchab	M	M	MH	Hayssat	M	ML	MH	Haytla	M	M	MH
Hayzouq	L	ML	MH	Hedd	ML	M	MH	Hmaira Akkar	M	M	MH
Hmaiss Akkar	M	M	MH	Hnaider	M	M	M	Hokr Ed-Dahri	M	ML	MH
Hokr Etti	M	M	MH	Hokr Jouret Srar	M	M	MH	Houaich	L	ML	M
Hrar	ML	ML	M	Idbil	ML	ML	MH	Ilal	ML	ML	MH
Janine	M	M	MH	Jdeidet El-Joumeh	M	M	MH	Jdeidet El-Kaiteh	M	M	MH
Jebayel	M	ML	MH	Kafr	L	ML	M	Kafr	ML	ML	MH
Karm Asfour	ML	ML	MH	Kfar Melki Akkar	M	ML	MH	Kfar Noun	L	L	M
Kfarharra	M	M	MH	Khalsa	M	M	M	Kharnoubet Akkar	M	M	MH

Khirbet Daoud Aakkar	L	ML	MH	Khirbet El Remmane	ML	ML	M	Khirbet Shar	ML	ML	MH
Khoreybet El-Jindi	M	M	MH	Khreibet Aakkar	ML	ML	M	Kneisset Aakkar	M	ML	MH
Kneisset Hnaider	M	M	M	Knisse	M	M	MH	Kroum El-Aarab	M	M	MH
Kwachra	ML	ML	MH	Kweykhat	M	M	MH	Machta Hammoud	ML	ML	M
Majdala	M	M	MH	Majdel Akkar	ML	ML	MH	Mar Touma	M	M	MH
Marlaya Melhem	M	M	MH	Mashha	ML	M	MH	Massoudiye	M	ML	MH
Mazraat Beit Ghattas	M	M	MH	Mazraat En-Nahriye	ML	ML	M	Mechmech	L	L	M
Memneh	L	L	M	Mhammara	M	M	MH	Mighraq Aakkar	M	ML	MH
Minyara	M	M	MH	Moqayteh	M	ML	MH	Mounjez	L	ML	M
Msalla	ML	M	MH	Mzeihmeh	M	M	MH	Nfaiseh	M	M	MH
Noura Et-Tahta	ML	ML	M	Ouadi El-Haour	M	M	MH	Ouadi El-Jamous	M	M	MH
Ouyoun El-Ghizlane	M	M	MH	Qaabarine	M	ML	MH	Qabaait	L	L	M
Qachlaq	M	M	MH	Qantara Aakkar	ML	ML	MH	Qarha Aakkar	M	M	M
Qarqaf	M	M	MH	Qboula	ML	M	MH	Qleiaat Aakkar	M	ML	MH
Qloud El-Baqie	M	M	MH	Qobaiyat Aakkar	L	L	M	Qobbat Chamrat	M	M	MH
Qorayat	ML	ML	M	Qornet Aakkar	L	ML	M	Qsair Aakkar	L	ML	M
Rahbe	ML	ML	M	Rihaniyet Aakkar	M	M	MH	Rmah	L	ML	M
Rmoul	M	ML	MH	Saadine	M	M	MH	Sadaqa	M	M	M
Saidnaya	M	M	MH	Sammouniye	M	ML	MH	Sayssouq	M	M	MH
Semmaqiye	M	ML	MH	Semmaqli	M	M	MH	Sfinet El-Dreib	ML	M	MH
Sfinet El-Qaitaa	ML	ML	M	Sindyanet Zeidane	L	L	M	Souaisset Aakkar	ML	M	MH
Srar	M	M	MH	Tal Abbas El Gharby	M	M	MH	Tal Abbas El-Charqy	ML	M	MH
Tal Biret	M	ML	MH	Tal Hmayra	M	M	MH	Tal Maayan Tal Kiri	M	ML	MH
Tal Sibel	M	ML	MH	Tallet Chattaha	ML	M	MH	Tikrit	ML	ML	M
Tleil	M	M	MH	Tshea	L	L	M	Zawarib	ML	ML	MH
Zouq El Hosniyeh	M	M	MH	Zouq El-Haddara	M	M	MH	Zouq El-Hbalsa	M	M	MH
Zouq El-Moqachrine	M	M	MH								

## Sud

### Sour

Municipality	26-Nov	27-Nov	28-Nov	Municipality	26-Nov	27-Nov	28-Nov	Municipality	26-Nov	27-Nov	28-Nov
Aaiyeh	M	M	MH	Aalma El-Chaab	ML	M	MH	Aaytit	M	M	MH
Abbassiyeh Sour	M	M	MH	Abou Chech	M	M	MH	Ain Abou Abdallah	M	M	MH
Ain Baal	M	M	MH	Arzoun	M	M	MH	Aziyeh	M	M	MH
Baflaya	M	M	MH	Barich	M	M	MH	Batouliyah	M	M	MH
Bayad	M	M	MH	Bazouriyeh	M	M	MH	Bediass	M	M	MH
Bestiyat	M	M	MH	Borj El Chemali	M	M	MH	Borj En-Naqoura	M	M	MH
Borj Rahhal	M	M	MH	Boustane	M	M	MH	Btaychiyeh	M	M	MH
Chaaitiye	M	M	MH	Chameh	ML	M	MH	Chehabiye	M	M	MH
Chehour	M	M	MH	Chihine	ML	M	MH	Debaal Sour	M	M	MH
Deir Amess	ML	M	MH	Deir Kifa	M	M	MH	Deir Qanoun El-Ain	M	M	MH
Deir Qanoun El-Naher	M	M	MH	Derdghaiya	M	M	MH	Dhayra	M	M	MH
Halloussiyeh	M	M	MH	Hamoul	ML	M	M	Hanaouey	M	M	MH
Henniye	M	M	MH	Hmairi Sour	M	M	MH	Iskandarouna Sour	ML	M	MH
Jbal El Botom	ML	M	MH	Jebbin	M	M	MH	Jennata	M	M	H
Jijim	ML	M	MH	Jouaiya	M	M	MH	Kneisset Sour	M	M	H



Maarake	M	M	MH	Maaroub	M	M	H	Majadel	M	M	MH
Majdalzoun	M	M	MH	Mansouri Sour	M	M	MH	Marnba	M	M	MH
Marouahine	L	M	M	Mazraat El-Zalloutiy	M	M	MH	Mazraat Mechref	M	M	MH
Mazraat Tayr Semhat	M	M	M	Mheilib	M	M	MH	Neffakhiyeh	M	M	MH
Niha Sour	M	M	MH	Ouadi Jilo	M	M	MH	Qana	M	M	MH
Qolaileh Sour	M	M	MH	Rechknanay	ML	M	MH	Rmadiyah	M	M	MH
Selha Sour	M	M	MH	Siddiqine	M	M	MH	Sour	M	M	MH
Srifa	M	M	MH	Tayr Debbe	M	M	H	Tayr Felsay	M	M	MH
Tayr Harfa	M	M	MH	Touayri	M	M	MH	Toura	M	M	MH
Yanouh Sour	M	M	MH	Yarine	M	M	MH	Zebqine	L	M	M

## Saida

Municipality	26-Nov	27-Nov	28-Nov	Municipality	26-Nov	27-Nov	28-Nov	Municipality	26-Nov	27-Nov	28-Nov
Aanqoun	M	M	MH	Aaqtanit	M	M	MH	Aarab Ej-Jall	M	M	MH
Aarab Tabbaya	M	M	MH	Abra Saida	M	M	MH	Adloun	M	M	MH
Adousiyeh	M	M	MH	Ain-El-Deleb	M	M	MH	Arzai	M	M	MH
Babliyah	M	M	MH	Barty	M	M	M	Bissariyeh	M	M	MH
Bnaafoul	M	M	MH	Bqosta	M	M	MH	Bramiy	M	M	MH
Daoudiyeh	M	M	MH	Dareb El-Sim	M	M	MH	Erkay	M	M	MH
Ghassanieh	M	M	MH	Ghazieh	M	M	MH	Hajjeh	M	M	MH
Haret Saida	M	M	MH	Hartiyeh	M	M	MH	Hlaliye Saida	M	M	MH
Insariyat	M	M	MH	Jazira Saida	M	M	MH	Kafar Bit	M	M	MH
Kaoutariyet El-Siyad	M	M	MH	Kfar Chellal	M	M	MH	Kfar Hatta Saida	M	M	MH
Kfar Milke Saida	M	M	MH	Khartoum	M	M	MH	Khaziz	M	M	MH
Khirbet Ed-Douair Sa	M	M	MH	Khirbet El-Bassal	M	M	MH	Khrayeb Saida	M	M	MH
Loubieh	M	M	MH	Maghdouche	M	M	MH	Majdelyoun	M	M	MH
Matariyet El-Choumar	M	M	MH	Matayriyeh	M	M	MH	Mazraat 'Mseileh	M	M	MH
Mazraat 'Snaiber	M	M	MH	Mazraat Aarab Soukka	M	M	MH	Mazraat Deir Taqla	M	M	MH
Mazraat El Yahoudiye	M	M	MH	Mazraat El-Housseini	M	M	MH	Mazraat El-Mhaydaleh	M	M	MH
Mazraat El-Ouasta	M	M	MH	Mazraat Jamjim	M	M	MH	Mazraat Kaoutariyet	M	M	H
Mazraat Kfar Badda	M	M	H	Mazraat Oussamiyat	M	M	MH	Mazraat Sari	M	M	MH
Mazraat Sinai	M	M	MH	Meemariyeh	M	M	MH	Merouaniyeh	M	M	MH
Miyeh ou Miyeh	M	M	MH	Najjariyeh	M	M	H	Qaaqaiyat El-Snaouba	M	M	MH
Qnarit	M	M	MH	Qraiye Saida	M	M	MH	Saida Ed-Dekermane	M	M	MH
Saida El-Oustani	M	M	MH	Saida El-Qadimeh	M	M	MH	Saida Kefraya	M	M	MH
Saksakiyeh	M	M	MH	Salhie Saida	M	M	MH	Sarafand	M	M	MH
Sfenta	M	M	M	Tafahta	M	M	MH	Tanbourit	M	M	MH
Tebna	M	M	MH	Zaghdraiya	M	M	MH	Zeita	M	M	MH
Zrariyeh	M	M	MH								

## Jezzine

Municipality	26-Nov	27-Nov	28-Nov	Municipality	26-Nov	27-Nov	28-Nov	Municipality	26-Nov	27-Nov	28-Nov
Ain El-Mir (El Estab	M	M	MH	Anane	ML	ML	M	Aramta	M	M	M
Ariya	ML	ML	M	Aychiyeh	M	M	M	Azour	L	ML	M
Baba	L	ML	M	Bayssour Jezzine	M	M	MH	Benoueteh Jezzine	M	M	M
Bhannine	ML	ML	M	Bisri	L	ML	M	Bkassine	M	ML	M
Bouslaya	ML	M	M	Btedine El-Leqech	L	ML	M	Chbail	ML	L	M
Choualiq Jezzine	M	M	MH	Dahr Ed-Deir	M	M	M	Deir El Qattine	M	M	M

Demachqiyeh	M	M	MH	Ghabbatiyeh	M	M	M	Harf Jezzine	ML	ML	M
Hassaniyeh	M	M	MH	Haytouleh	M	M	M	Haytoura	M	M	M
Hidab	M	M	M	Homsiyeh	ML	M	M	Jabal Toura	M	M	M
Jarmaq	M	M	M	Jensnaya	M	M	MH	Jernaya	M	M	MH
Jezzine	M	M	M	Karkha	M	M	M	Kfar Falous	M	M	M
Kfar Houna	M	M	M	Kfar Jarrah	M	M	MH	Lebaa	M	M	MH
Louayzet Jezzine	M	M	M	Machmouche	M	ML	M	Mahmoudiyeh Jezzine	M	M	MH
Maknounye Jezzine	M	M	M	Maraat Ouazaiyeh	M	ML	M	Mazraat Daraya	M	M	M
Mazraat El-Aarqoub	M	M	M	Mazraat El-Mathane	L	ML	M	Mazraat El-Rahbane	ML	M	M
Mazraat Khallet Khaz	M	ML	M	Mazraat Louzid (Loua	M	L	M	Mazraat Qrouh	M	M	M
Mazraat Tamra	M	M	MH	Mazraat Zighrine Jez	M	M	M	Mazraat	L	M	M
Mharbiyeh	M	M	MH	Midane Jezzine	M	ML	M	Mjeydel Jezzine	M	M	MH
Mlikh	ML	M	M	Mrah El-Hbasse	M	M	MH	Ouadi Baanqoudaine	M	M	MH
Ouadi El-Laymoun	M	M	MH	Ouardiyeh	ML	L	M	Qabaa Jezzine	M	M	M
Qatrani	M	ML	M	Qaytouleh	M	M	M	Qtaleh Jezzine	L	ML	M
Rihane Jezzine	M	M	M	Rimat	M	M	M	Roum	ML	M	M
Roummanet	M	M	M	Sabbah	M	ML	M	Saydoun	M	M	M
Sfaray	ML	ML	M	Snaya	M	M	M	Sojoud	M	M	M
Srayri	M	ML	M	Taaid	ML	ML	M	Wadi Jezzine	M	ML	M
Zhalta	M	M	M								

## Bekaa

### West Bekaa

Municipality	26-Nov	27-Nov	28-Nov	Municipality	26-Nov	27-Nov	28-Nov	Municipality	26-Nov	27-Nov	28-Nov
Aammiq BG	ML	ML	M	Ain El Tineh BG	M	M	M	Ain Zebdeh	M	ML	M
Ana	M	ML	M	Aytanit	ML	ML	M	Baaloul BG	M	ML	M
Bab Mareh	M	ML	M	Chouberqiye Aammiq	M	ML	M	Dakoue	M	ML	M
Deir Ain El-Jaouze	M	ML	M	Deir Tahniche	M	ML	M	Ghaza	M	ML	M
Harime El-Soughra	ML	ML	M	Hoch Harimeh	M	ML	M	Jazira BG	M	ML	M
Jib Jennine	M	ML	M	Kamed-El-Laouz	M	ML	M	Kefraya BG	ML	L	M
Khiara El Atika	M	ML	M	Khiara	M	ML	M	Khirbet Qanafar	M	ML	M
Lala	M	ML	M	Lebbaya BG	ML	ML	M	Loussa	M	M	M
Machghara	M	M	M	Manara (Hammara) BG	L	L	M	Mansoura BG	M	M	M
Marej BG	ML	ML	M	Maydoun	M	M	M	Ouaqf BG	ML	ML	M
Qaraaoun	M	ML	M	Qelya	M	M	M	Raouda (Istabel)	ML	ML	M
Saghbine	M	ML	M	Sohmor	M	ML	M	Soltan Yacoub el Ara	M	ML	M
Souairy	ML	ML	M	Sultan Yaacoub	M	ML	M	Tal Znoun	M	ML	M
Yehmor BG	M	ML	M	Zilaya	M	ML	M				

### Zahle

Municipality	26-Nov	27-Nov	28-Nov	Municipality	26-Nov	27-Nov	28-Nov	Municipality	26-Nov	27-Nov	28-Nov
Aanjar (Haouch Mouss	ML	ML	M	Ablah	ML	ML	M	Ain Kfarzabad	ML	L	M
Ali-El-Nahri	ML	ML	M	Bar Elias	ML	ML	M	Bouarej	ML	ML	M
Cheberqiyet Tabet	ML	ML	M	Chtaura	ML	ML	M	Deir El Ghazal	ML	L	M
Delhamiyet Zahle	ML	ML	M	Ferzol	ML	ML	M	Haouch El-Ghanam	ML	ML	M
Haouch Es-Siyadeh	ML	ML	M	Haouch Hala	ML	ML	M	Haouch Mandara	ML	ML	M



Haouch Qayssar	ML	ML	M	Hezerta	ML	ML	M	Hosh Moussa	ML	ML	M
Jdita	ML	ML	M	Kfarzabad	ML	ML	M	Ksara	ML	ML	M
Majdel Aanjar	ML	L	M	Makssi	ML	ML	M	Massa	ML	ML	M
Mazraat Er-Remtaniye	ML	ML	M	Mrayjat Zahle	ML	ML	M	Mzaraa Zahle	ML	ML	M
Nabi Ayla	ML	ML	M	Nasriyet Rizk	ML	ML	M	Nasriyet Zahle	ML	ML	M
Niha Zahle	ML	ML	M	Ouadi Ed-Deloum	ML	ML	M	Ouadi El-Arayech	ML	ML	M
Qaa El Rim	ML	ML	M	Qab Elias	ML	ML	M	Qousaya	ML	L	M
Rhit	ML	ML	M	Riyak	ML	ML	M	Saadnayel	ML	ML	M
Taal El-Akhdar	M	ML	M	Taalbeya	ML	ML	M	Taanayel	ML	ML	M
Talamara	ML	ML	M	Tcheflik Edde Haouch	ML	ML	M	Tcheflik Qiqano	ML	ML	M
Terbol Zahle	ML	ML	M	Touaite Zahle	ML	ML	M	Zahle Aradi	ML	ML	M
Zahle El-Berbara	ML	ML	M	Zahle El-Maallaqa	ML	ML	M	Zahle El-Midane	ML	ML	M
Zahle Er-Rassiye	ML	ML	M	Zahle Haouch El-Ouma	ML	ML	M	Zahle Haouch El-Ouma	ML	ML	M
Zahle Haouch Ez-Zara	ML	ML	M	Zahle Maalaqa Aradi	ML	ML	M	Zahle Mar Antonios	ML	ML	M
Zahle Mar Elias	ML	ML	M	Zahle Mar Gerios	ML	ML	M	Zahle Saydet En-Naja	ML	ML	M
Zebdoul	ML	L	M								

## Rachaiya

Municipality	26-Nov	27-Nov	28-Nov	Municipality	26-Nov	27-Nov	28-Nov	Municipality	26-Nov	27-Nov	28-Nov
Ain Arab Rachaiya	ML	L	M	Ain Ata	ML	L	M	Ain Harche	ML	L	M
Aqabe Rachaya	M	ML	M	Ayha	M	ML	M	Ayta El Fokhar	ML	ML	M
Bakifa Rachaya	M	ML	M	Bakka	ML	ML	M	Beit Lahya	M	ML	M
Bireh Rachaiya	M	ML	M	Daher El Ahmar	M	ML	M	Deir El-Achayer	ML	L	M
Heloua Rachaiya	L	L	M	Hoch El Qannabeh Rac	ML	L	M	Kaoukaba Bou Arab	M	ML	M
Kfar Danis	M	ML	M	Kfar Mechki	M	ML	M	Kfar Qouq	L	L	M
Kherbet Rouha	M	L	M	Majdel Balhiss	M	ML	M	Mdoukha	ML	ML	M
Mhaydseh Rachaiya	M	ML	M	Nabi Safa	M	ML	M	Rachaiya	M	ML	M
Rafid Rachaiya	M	ML	M	Selsata (Mazraat Dei	L	L	M	Tannoura	M	ML	M
Yanta	L	L	M								

## Beyrouth

### Beyrouth

Municipality	26-Nov	27-Nov	28-Nov	Municipality	26-Nov	27-Nov	28-Nov	Municipality	26-Nov	27-Nov	28-Nov
Achrafieh	M	M	MH	Ain el-Mreisse	M	M	H	Bachoura	M	M	MH
Beirut Central Distr	M	M	MH	Marfai	M	M	MH	Mazraa	M	M	MH
Medaouar	M	M	MH	Minet el-Hosn	M	M	MH	Mwssaitbeh	M	M	MH
Ras Beirut	M	M	H	Rmeil	M	M	MH	Saifi	M	M	MH
Zqaq el-Blat	M	M	MH								