

Lebanon Fire Risk Bulletin



CIVIL DEDEFENCE

Refer to cadast table condition.

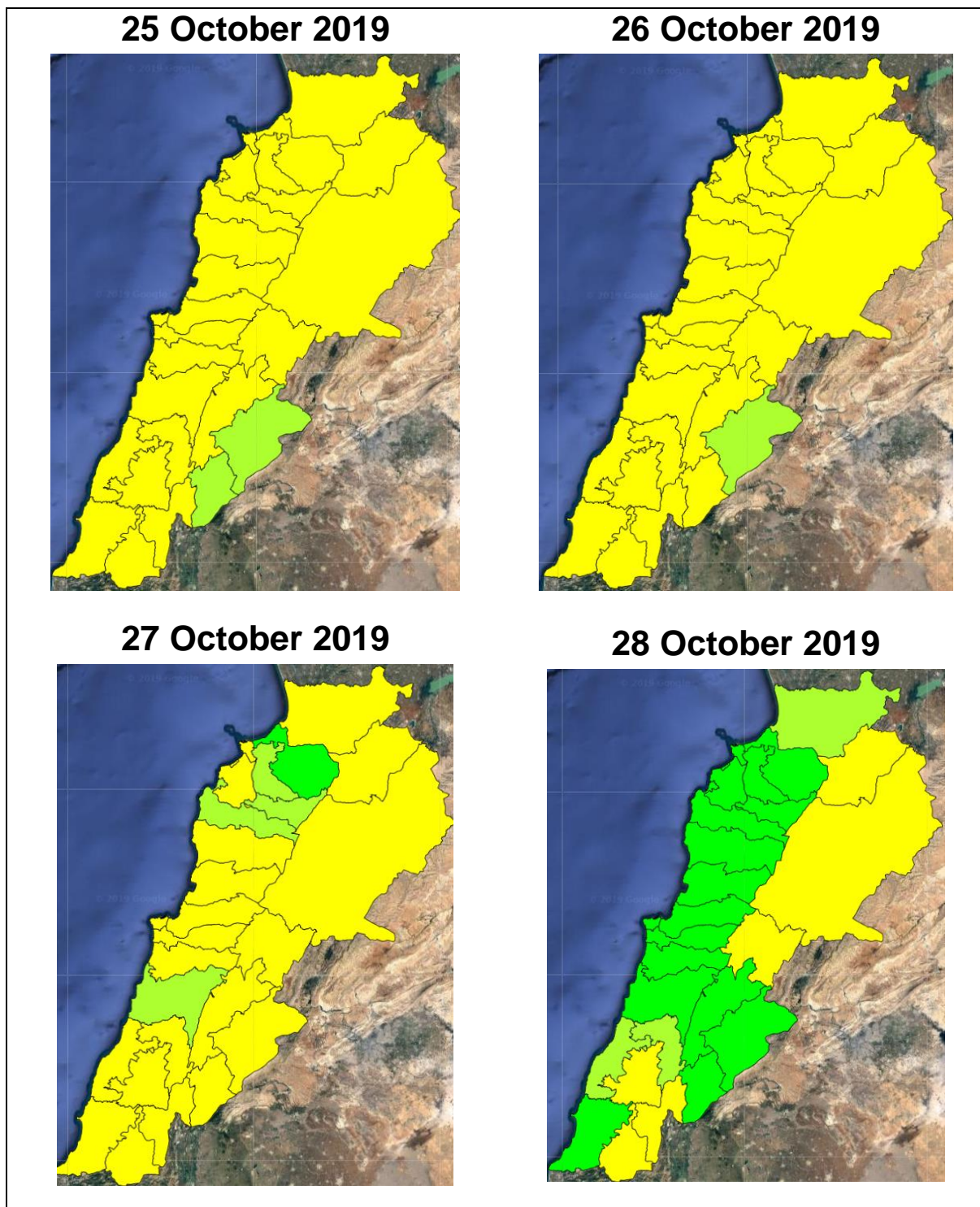
Please note that the indicated temperature is at 2 meters height from the ground.

General description of potential fire risk situation

Symbol	Level of risk	Meaning and actions
VL	Very low	Very low fire risk. Controlled burning operations can be hardly executed due to high fuel moisture content. Normally wildfires self-extinguish.
L	Low	Low fire risk. Controlled burning operations can be executed with a reasonable degree of safety.
ML	Medium low	Medium-low fire risk. Controlled burning operations can be executed in safety conditions. All the fires need to be extinguished.
M	Medium	Medium fire risk. Controlled burning operations would be avoided. All the fires need to be very well extinguished.
M	Medium high	Controlled burning is not recommended. Open flame will start fires. Cured grasslands and forest litter will burn readily. Spread is moderate in forests and fast in exposed areas. Patrolling and monitoring is suggested. Fight fires with direct attack and all available resources.
H	High	Ignition can occur easily with fast spread in grass, shrubs and forests. Fires will be very hot with crowning and short to medium spotting. Direct attack on the head may not be possible requiring indirect methods on flanks. Patrolling and monitoring the territory is highly suggested.
E	Extreme	Ignition can occur also from sparks. Fires will be extremely hot with fast rate of spread. Control may not be possible during day due to long range spotting and crowning. Suppression forces should limit efforts to limiting lateral spread. Damage potential total. Patrolling and monitoring the territory is highly suggested.

Beirut, 26 October 2019

FIRE RISK INDEX

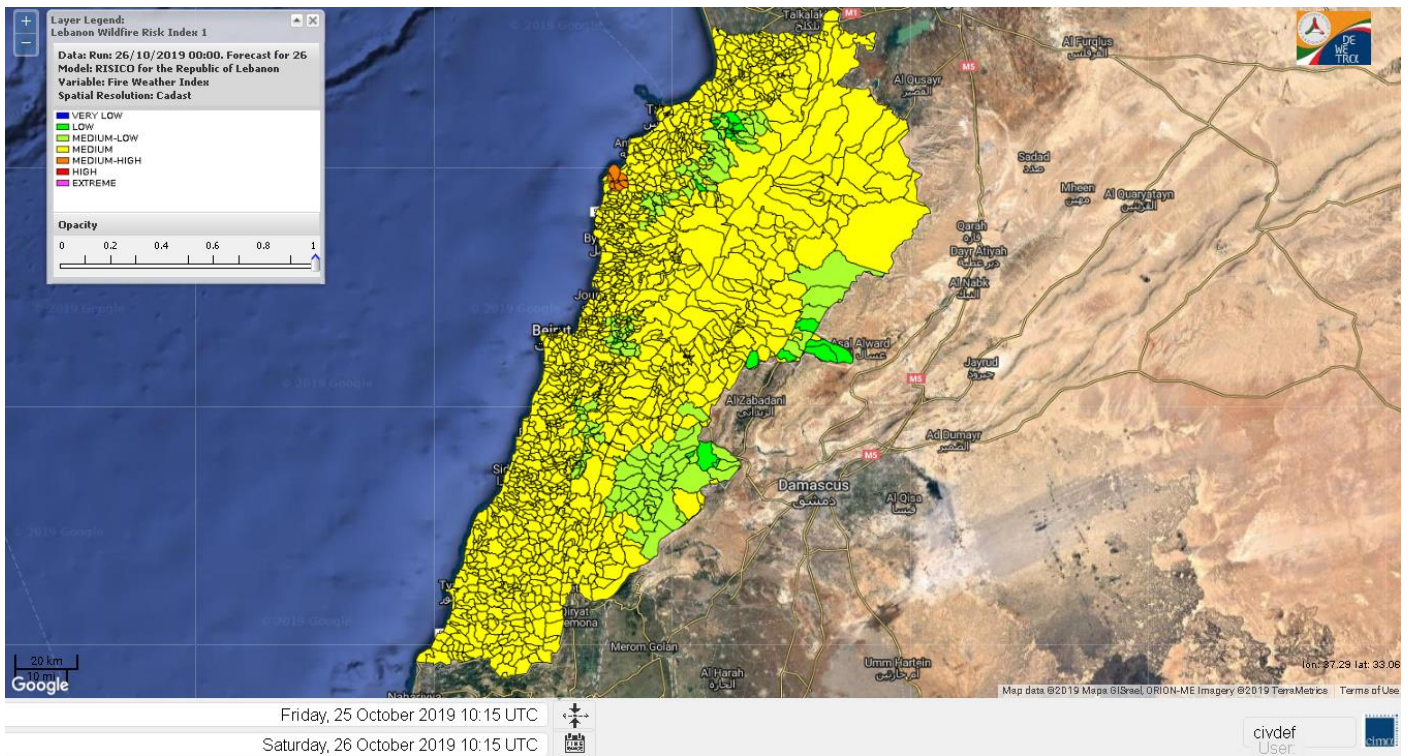


Layer Legend:
Lebanon Wildfire Risk Index 1

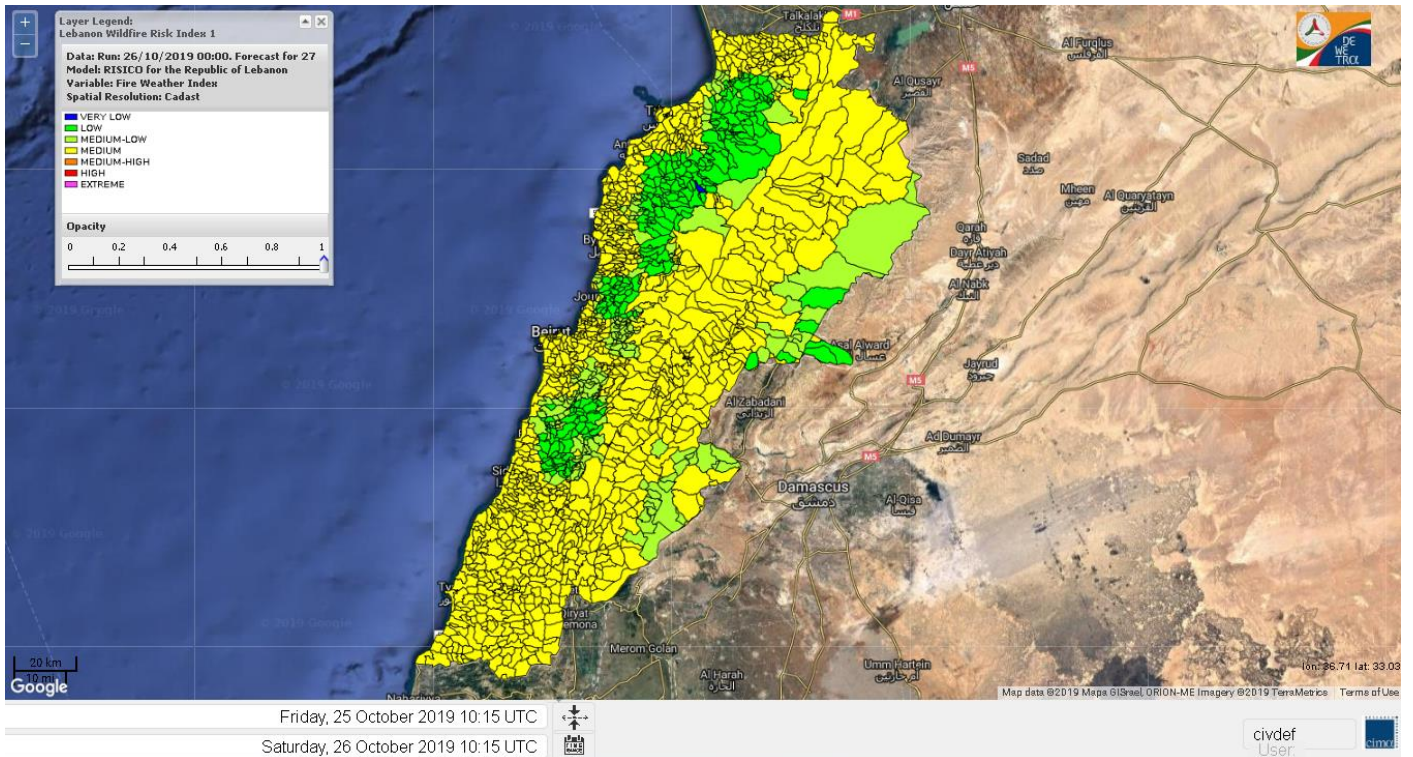
Data: Run: 26/10/2019 00:00. Forecast for 26
Model: RISICO for the Republic of Lebanon
Variable: Fire Weather Index
Spatial Resolution: Caza

- VERY LOW
- LOW
- MEDIUM-LOW
- MEDIUM
- MEDIUM-HIGH
- HIGH
- EXTREME

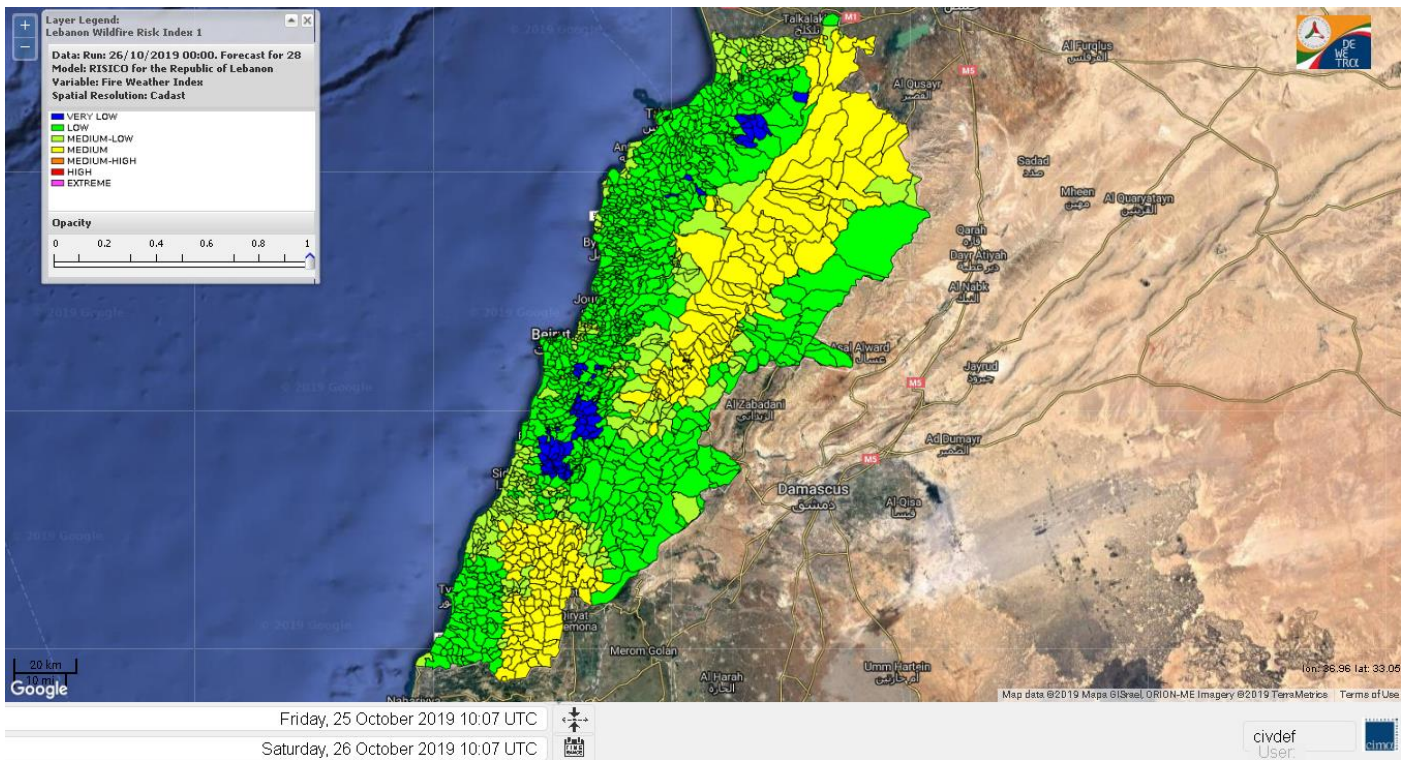
Lebanon for 26 October 2019



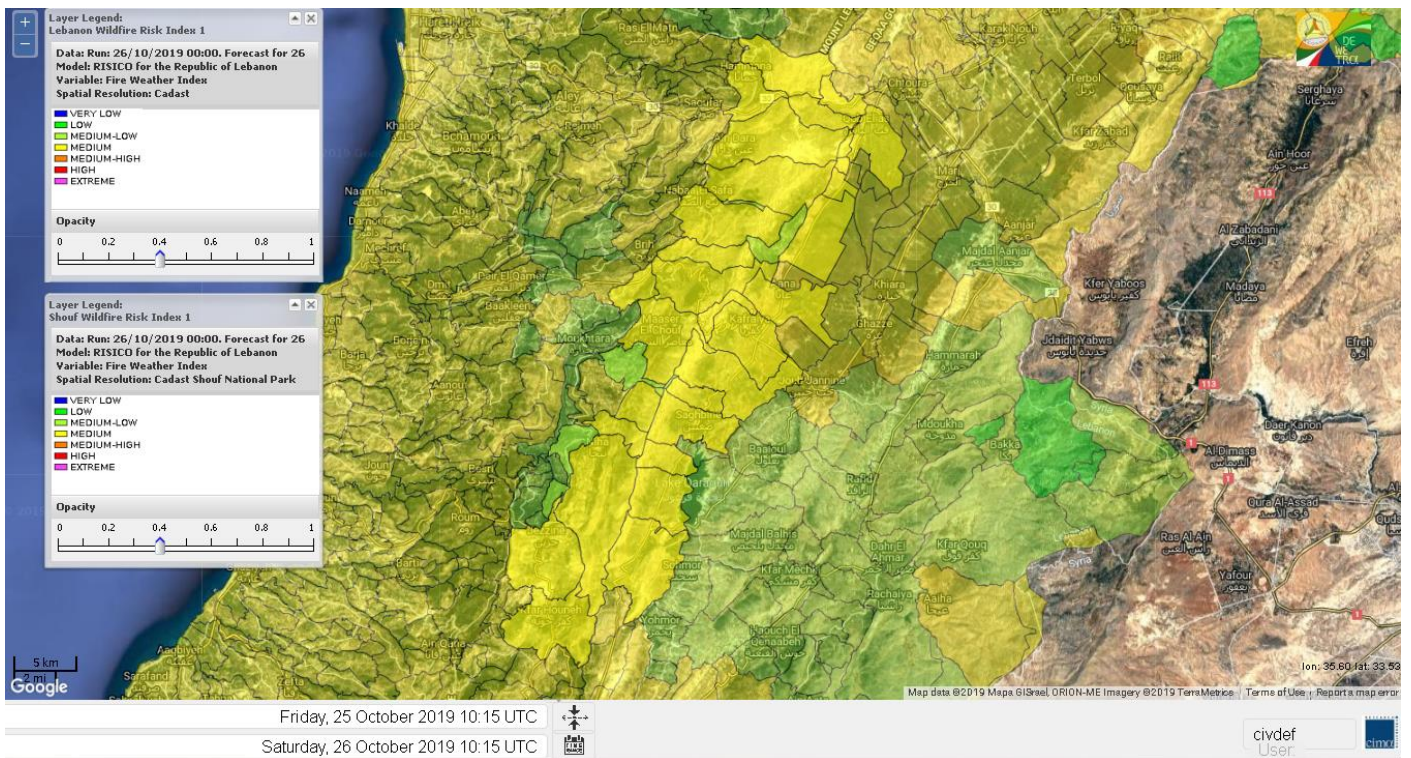
Lebanon for 27 October 2019



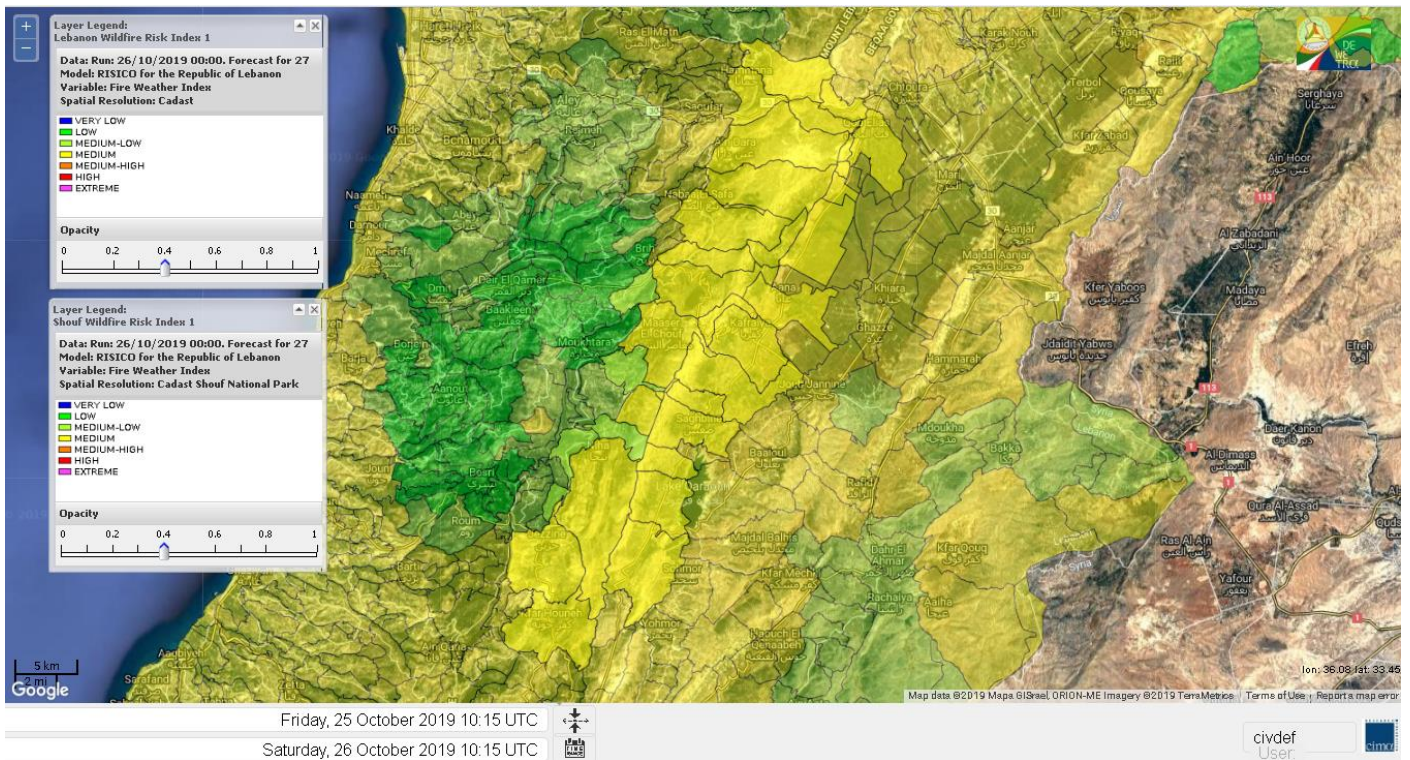
Lebanon for 28 October 2019



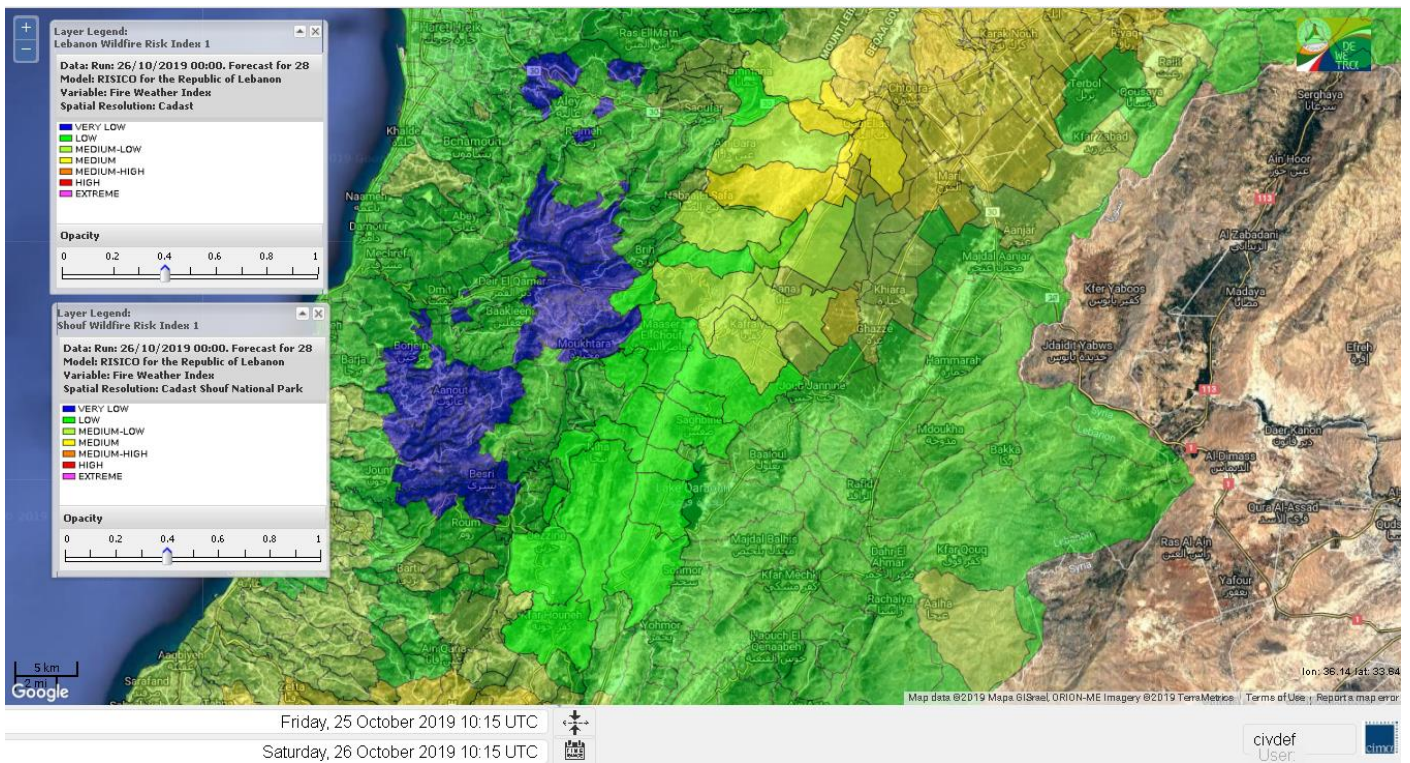
Shouf Biosphere Reserve Forecast for 26 October 2019



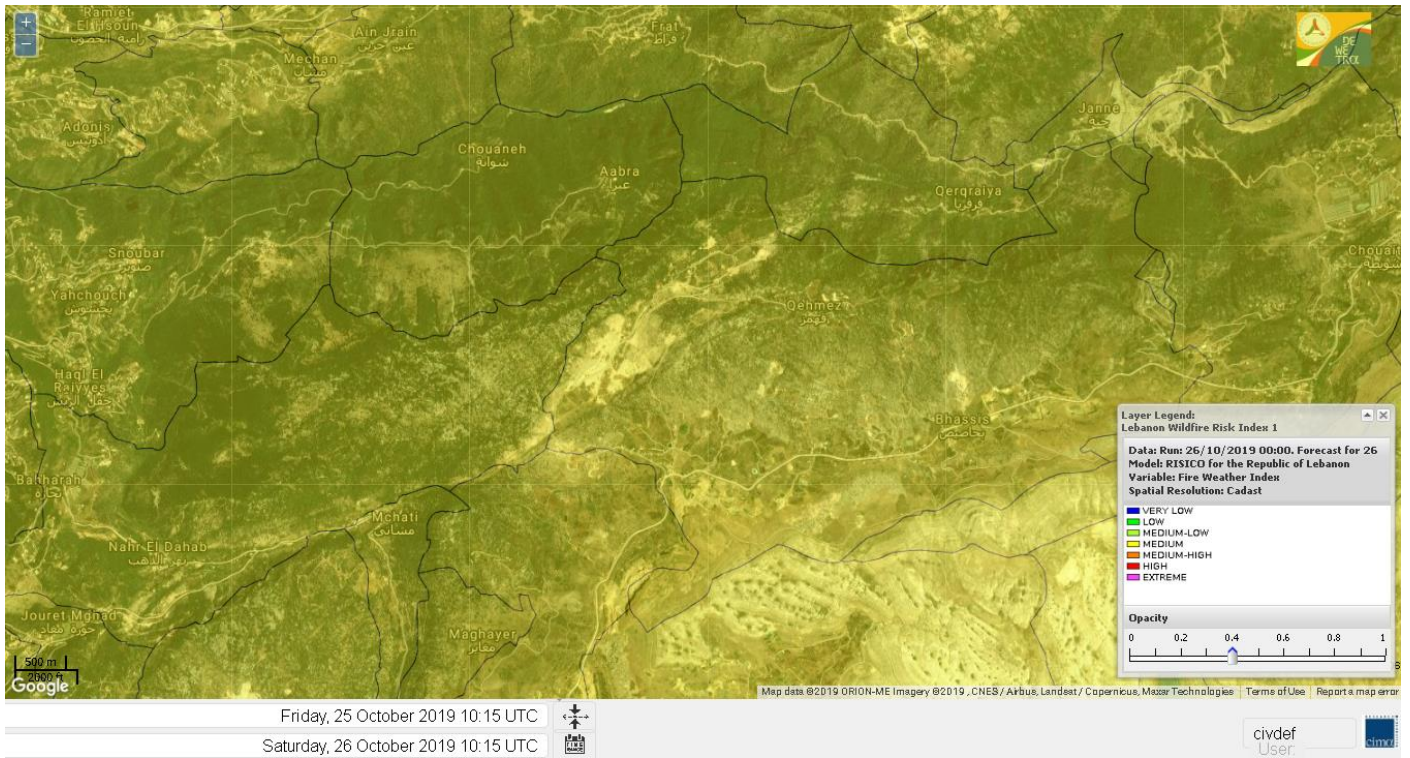
Shouf Biosphere Reserve Forecast for 27 October 2019



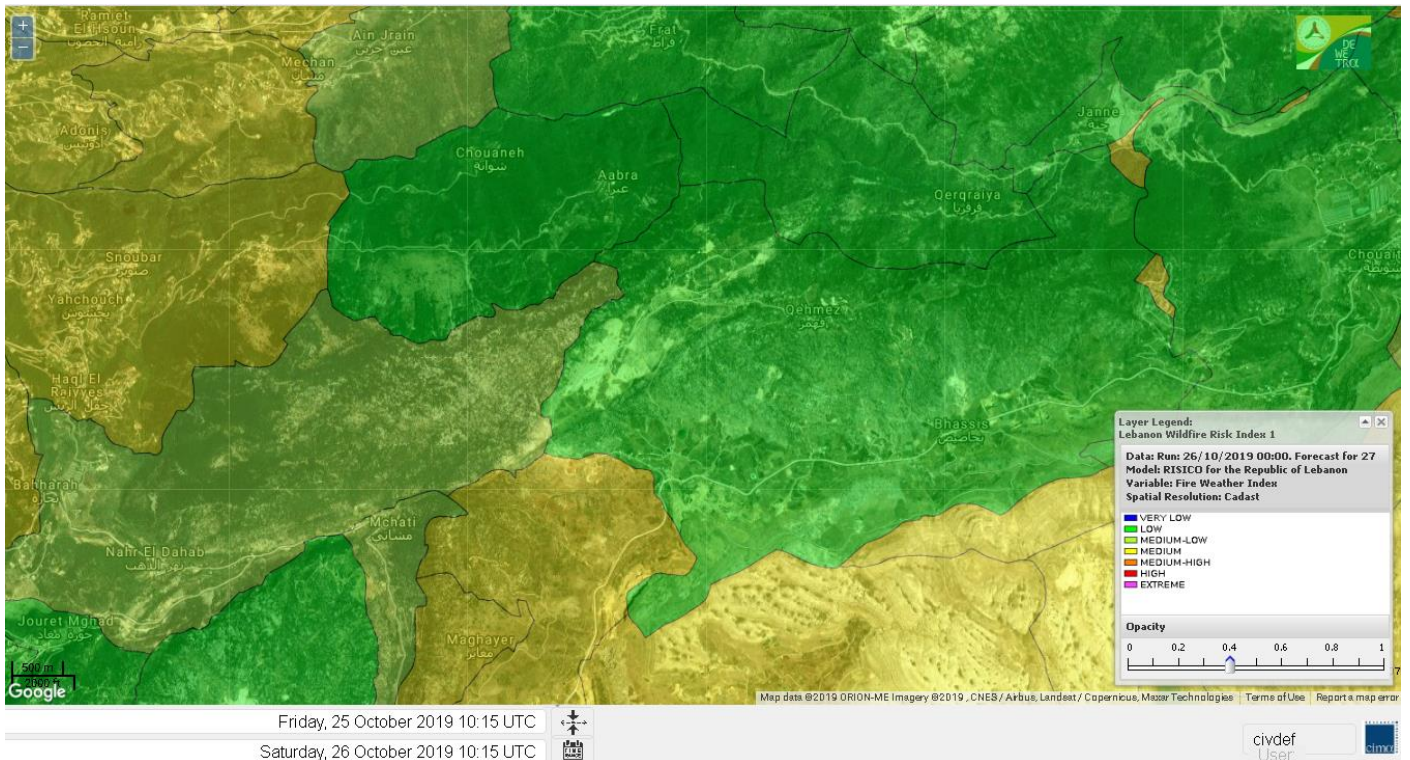
Shouf Biosphere Reserve Forecast for 28 October 2019



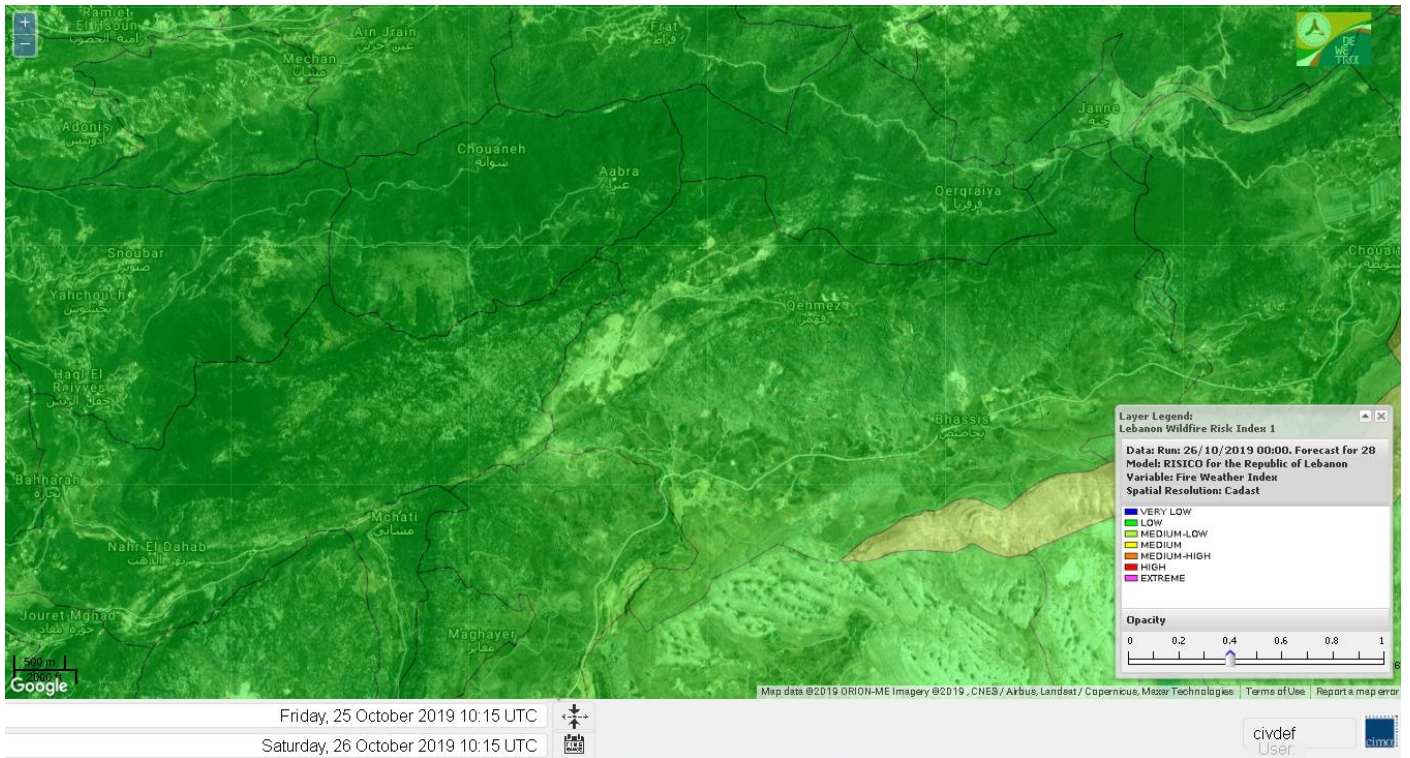
Jabal Moussa Reserve Forecast for 26 October 2019



Jabal Moussa Reserve Forecast for 27 October 2019



Jabal Moussa Reserve Forecast for 28 October 2019

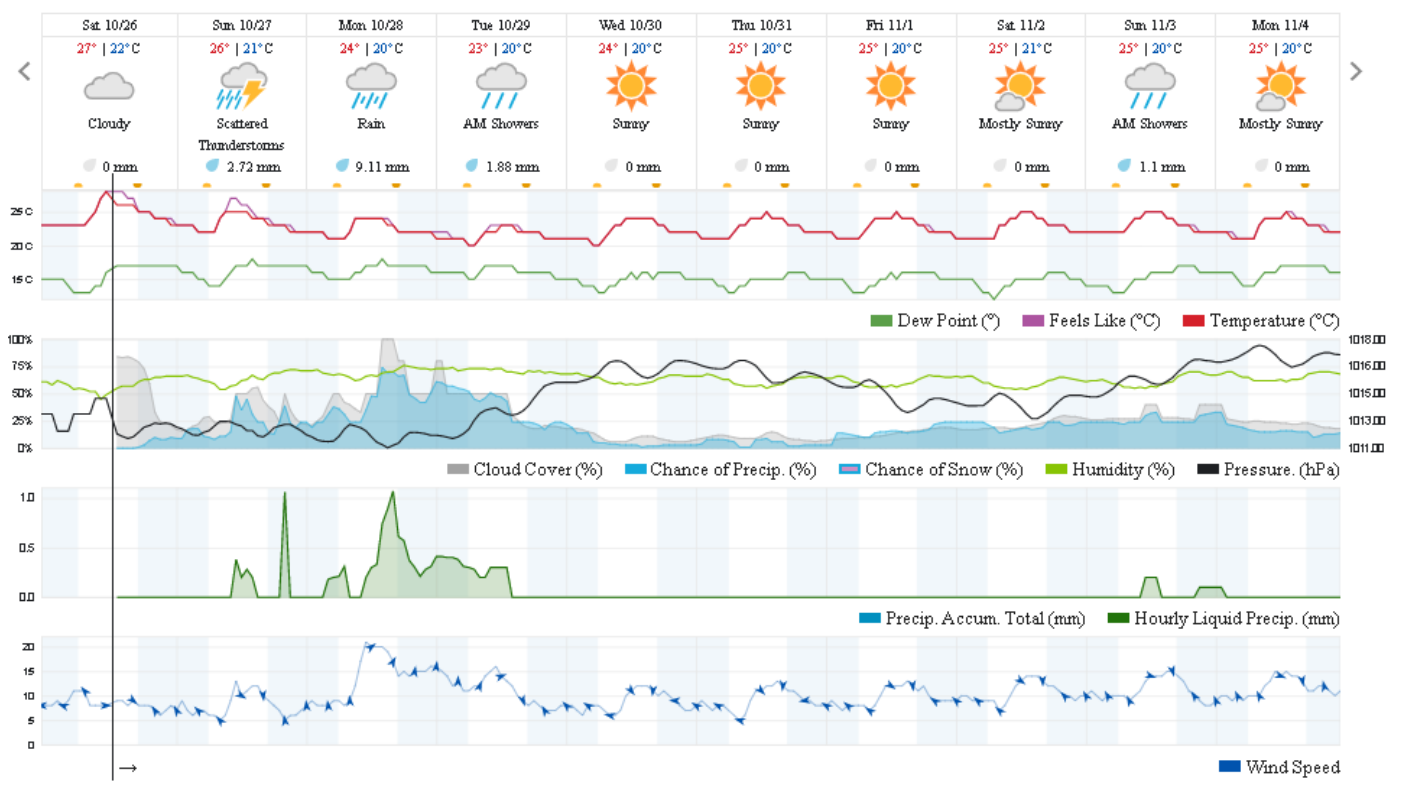


Beirut, Beirut Governorate, Lebanon 10-Day Weather Forecast

26° ACHRAFIEH,RIZK STATION | CHANGE

TODAY HOURLY **10-DAY** CALENDAR HISTORY WUNDERMAP

Customize



Nord

Koura

Municipality	26-Oct	27-Oct	28-Oct	Municipality	26-Oct	27-Oct	28-Oct	Municipality	26-Oct	27-Oct	28-Oct
Aaba	M	ML	L	Afsaddiq	M	L	L	Ain Ekrine	M	L	L
Amioun	M	L	L	Anfeh	M	M	ML	Badbhoun	M	M	L
Barghoun	M	M	L	Barsa	M	M	L	Batroumine	M	M	L
Bdebba	M	M	L	Bechmizine	M	L	L	BednayeI El-Koura	M	M	ML
Bhabbouch El-Koura	M	L	L	Bkeftine	M	M	L	Bnehran	M	L	L
Bqaiia El-Koura	M	M	L	Bsarma	M	L	L	Btaaboura	M	M	L
Bterram	M	L	L	Btouratij	M	M	L	Bziza	M	L	L
Dar Beechtar	M	L	L	Dar Chmezzine	M	L	L	Deddeh	M	M	L
Deir El-Balamand	M	M	L	Fih	M	M	L	Hraiche	M	M	ML
Ijdaabrine	M	M	L	Kaftoun	M	ML	L	Kefraya El-Koura	M	M	ML
Kfarakka	M	L	L	Kfarhata	M	M	L	Kfarhazir	M	M	L
Kfarkahel	M	M	L	Kfarsaroun	M	L	L	Kosba	M	L	L
Mejdel el-Koura	M	L	L	Nakhle	M	M	L	Qalhat	M	M	L
Ras Masqa	M	M	L	Rechdibbine	M	L	L	Zakroun	M	M	L
Zgharta El-Mtaouile	M	L	L								

Bcharre

Municipality	26-Oct	27-Oct	28-Oct	Municipality	26-Oct	27-Oct	28-Oct	Municipality	26-Oct	27-Oct	28-Oct
Aabdine	M	L	L	Bane	M	L	L	Barhelioun	M	L	L
Bazouone	M	M	M	Becharre	M	ML	ML	Beit Menzer	M	L	L
Billa	M	L	L	Blaouza	M	L	L	Bqaa Kafra	M	M	M
Bqerqacha	M	M	M	Breissat	M	L	L	Dimane	M	L	L
Hadath El Jobbeh	M	L	L	Hadchit	ML	L	L	Hasroun	M	M	M
Mazraat Aassaf	ML	L	VL	Mazraat Bani Saab	M	L	L	Mchaa El-Jobbeh	M	M	M
Metrit	M	L	L	Moghr El-Ahoual	ML	L	L	Ouadi Qannoubine	L	VL	VL
Qanat	ML	L	L	Qnayer	ML	L	L	Tourza	M	L	L

Batroun

Municipality	26-Oct	27-Oct	28-Oct	Municipality	26-Oct	27-Oct	28-Oct	Municipality	26-Oct	27-Oct	28-Oct
Aabrine	MH	M	L	Aalali	ML	L	L	Aartiz	M	ML	L
Abdelli	M	ML	L	Ajdabra	M	M	L	Assia	ML	L	L
Basbina	M	M	L	Batroun	M	M	ML	Bcheleh	ML	L	L
Bechtoudar	ML	L	L	Beit Chlala	ML	L	L	Beit Kassab	M	L	VL
Bijdarfil	M	M	L	Bqesmaya	M	M	L	Chatine	M	L	L
Chebtin	M	ML	L	Chekka	M	M	ML	Daael	ML	L	L
Dahr Abi Yaghi	M	ML	L	Daraya El-Batroun	M	M	L	Deir Billa	M	L	L
Deir Kfifane	M	M	L	Deir Mar Youhanna EL	ML	L	L	Deir Mar Youssef Jra	M	M	L
Douma	M	L	L	Douq	M	ML	L	Eddeh El-Batroun	M	M	L
Ftihat El-Batroun	M	ML	L	Ghouma	M	M	L	Hadtoun	ML	L	L
Hamat	MH	M	L	Harbouna	M	ML	L	Hardine	ML	L	L
Helta	ML	L	L	Hery	M	M	ML	Jebbla	M	L	L
Jrabta El-Batroun	M	M	L	Jrane El-Batroun	M	M	L	Kfar Aabida	M	M	L
Kfar Halda	ML	L	L	Kfarb Shlaimane	ML	L	L	Kfarhatna	M	ML	L
Kfarhay	M	M	L	Kfarhelos	MH	M	L	Kfifane	M	M	L

Kfour El Arabi	M	L	L	Koubba	M	M	ML	Kour	M	M	L
Mar Mama	M	ML	L	Masrah	M	ML	L	Mehmarch	M	ML	L
Mrah Chdid	M	M	L	Mrah El Ziyat	M	ML	L	Mrah El-Hajj	ML	L	L
Nahle El-Batroun	ML	L	L	Niha El-Batroun	M	L	L	Ouajh El-Hajjar	MH	M	L
Ouata Houb	M	L	L	Qatnaaoun	MH	M	L	Racha	M	L	L
Rachana	M	M	L	Rachkida	MH	M	L	Ram El-Batroun	ML	L	L
Ras Nahhach	MH	M	L	Selaata	M	M	ML	Sghar	M	M	L
Smar Jbayl	M	M	L	Sourat El-Batroun	M	ML	L	Tannourine El-Faouqa	M	ML	ML
Tannourine Et-Tahta	M	L	L	Thoum	M	M	L	Toula El-Batroun	M	M	L
Zan	M	ML	L								

Zgharta

Municipality	26-Oct	27-Oct	28-Oct	Municipality	26-Oct	27-Oct	28-Oct	Municipality	26-Oct	27-Oct	28-Oct
Aachach	M	M	L	Aalma	M	M	L	Aarde	M	M	L
Aintourine	M	L	L	Arabet Qozhaya	ML	L	L	Arde	M	M	L
Arjis	M	L	L	Asnoun	M	M	L	Ayto	ML	L	L
Basloukit	M	L	L	Bchannine	M	M	L	Besebeel	M	M	L
Bhairret Toula	ML	L	L	Bnachee	M	L	L	Boussit	M	M	L
Danha	M	M	L	Daraiya Zgharta	M	L	L	Deir Jdeide	M	M	L
Ehden	ML	L	L	Halan	M	ML	L	Hariq Zgharta	M	M	L
Houakir	M	M	L	Hraiqis	M	M	L	laal	M	M	L
Ijbaa	M	L	L	Karm Saddeh	ML	L	L	Kfarchakhna	M	M	L
Kfardlaqous	M	M	L	Kfarfou	M	L	L	Kfarhata Zgharta	M	M	L
Kfarhoura	M	M	L	Kfarsghab	ML	L	L	Kfaryachit	M	M	L
Kfarzaina	M	M	L	Khaldiye	M	M	L	Mazraat Ajbeaa	M	M	L
Mazraat Et-Teffah	ML	L	L	Mazraat Jneid	M	M	L	Mejdlaiya Zgharta	M	M	L
Merh Kfarsghab	M	ML	L	Miryata	M	M	L	Miziara	M	L	L
Mzraat Kefraya	M	ML	L	Qorah Bach	M	M	L	Rachiine	M	M	L
Ras Kifa	M	L	L	Sakhra	M	M	L	Sebhel Zgharta	M	L	L
Serhel	ML	L	VL	Tallet Zgharta	M	M	L	Toula Zgharta	ML	L	L
Zgharta	M	M	L								

Minieh-Denniye

Municipality	26-Oct	27-Oct	28-Oct	Municipality	26-Oct	27-Oct	28-Oct	Municipality	26-Oct	27-Oct	28-Oct
Aasaymout	ML	L	VL	Aaymar	ML	L	L	Aazki	ML	L	L
Ain El-Tineh-Miniyeh	L	L	L	Assoun	ML	L	L	Bakhaaoun	ML	L	L
Bchennata	ML	L	L	Bechehhara	M	M	L	Beddawi	M	M	L
Behouaita	ML	L	L	Beit El Foqss	L	L	L	Beit Haouik	ML	L	VL
Beit Zoud	L	L	L	Bekaasafrine	M	L	L	Borj El Yahoudiyeh	M	M	L
Bqarsouna	L	L	L	Btermaz	L	L	L	Debaael	ML	L	VL
Deir Ammar	M	M	L	Deir Nbouh	M	M	L	Haouaret-Miniyeh	ML	L	VL
Haql el Azimeh	L	L	L	Harf El Siyad	L	L	L	Hazmiye-Miniyeh	L	L	L
Izal	ML	L	L	Jarjour	M	M	L	Jayroun	ML	L	VL
Kahf El-Malloul	M	ML	L	Karm El-Moher	ML	L	L	Kfar Binine	ML	L	VL
Kfarchalane	ML	L	L	Kfarhabou	M	ML	L	Kharroub-Miniyeh	ML	L	L
Mazraat El-Kreme	M	ML	L	Mazraat Ketrane	L	L	L	Merkebta	M	ML	L
Minyeh	M	M	L	Mrah El Sfirat	L	L	L	Mrah Sraj	L	L	L
Mrebbine	M	L	L	Nabi Youcheaa	M	M	L	Nemrine	ML	L	VL

Qarhaiya	M	L	VL	Qarne	ML	L	VL	Qarsita	ML	L	VL
Qattineh-Miniyeh	L	L	L	Qemmamine	ML	L	VL	Qraine	L	L	L
Raouda-Aadoua	M	L	L	Rihaniyet-Miniyeh	M	ML	L	Sfireh	L	L	L
Sir Ed-Danniyeh	L	L	L	Tarane	L	L	L	Terbol-Miniyeh	M	M	L
Zaghartaghriane	M	M	L	Zouq Bhannine	M	M	L				

Nabatiye

Nabatiye

Municipality	26-Oct	27-Oct	28-Oct	Municipality	26-Oct	27-Oct	28-Oct	Municipality	26-Oct	27-Oct	28-Oct
Aabba	M	M	M	Aazzi	M	M	ML	Adchit El-Chqif	M	M	M
Ain Bou Swar	M	M	ML	Ain Kana	M	M	L	Ali El-TaHER	M	M	M
Ansar	M	M	ML	Arab Salim	M	M	M	Arnoun	M	M	M
Bfaroue	M	M	M	Breyqaah	M	M	M	Chargiyeh	M	M	M
Choukine	M	M	M	Deir El Zahrani	M	M	M	Doueir El-Nabatiyeh	M	M	M
Habbouch El-Nabatiye	M	M	M	Hamra El-Nabatiyeh	M	M	M	Harouf El-Nabatiyeh	M	M	M
Hmaile	M	M	M	Houmin El Faouqa	M	M	M	Houmin El Tahta	M	M	ML
Jarjough	M	M	M	Jbaah El-Nabatiyeh	M	M	ML	Jebchit	M	M	M
Kfar Djal El-Nabatiy	M	M	M	Kfar Remmane	M	M	M	Kfar Sir	M	M	M
Kfar Tebnit	M	M	M	Kfarfila	M	M	L	Kfour El-Nabatieh	M	M	M
Mayfadoun	M	M	M	Mazraat Bsaffour	M	M	M	Mazraat Chalbaal	M	M	M
Mazraat Dmoul	M	M	M	Mazraat El Khreibeh	M	M	ML	Mazraat El-Bayad El-	M	M	M
Mazraat Kfarjaouz	M	M	M	Mazraat Qalaat Meiss	M	M	M	Nabatiyeh El-Fawka	M	M	M
Nabatiyeh Et-Tahta	M	M	M	Namiriyyeh	M	M	M	Qaaqaaiyet El Jisr	M	M	ML
Qossaibeh El-Nabatiy	M	M	M	Roumine	M	M	ML	Sarba El-Nabatieh	M	M	L
Sir El-Gharbiyeh	M	M	L	Toul	M	M	M	Yehmor El-Nabatiyeh	M	M	M
Zaoutar El Charkiyeh	M	M	M	Zaoutar El-Gharbiyeh	M	M	M	Zebdine El-Nabatiyeh	M	M	M
Zefta	M	M	M								

Hasbaiya

Municipality	26-Oct	27-Oct	28-Oct	Municipality	26-Oct	27-Oct	28-Oct	Municipality	26-Oct	27-Oct	28-Oct
Ain Jarfa	M	M	L	Abou Qamha	M	M	M	Ain Qania	M	M	L
Bourghos	M	M	ML	Chebaa	M	M	L	Chouaya Hasbaya	M	M	L
Dellafeh	M	M	ML	Fardiss Hasbaiya	M	M	ML	Hasbaya	M	M	L
Hbariyeh	M	M	L	Kaoukaba Hasbaiya	M	M	ML	Kfar Chouba	M	M	L
Kfar Hamam	M	M	ML	Kfeir El-Zait	M	M	L	Khalwat Hasbaya	ML	ML	L
Khreibet Hasbaiya	M	M	M	Majidiyeh Hasbaiya	M	M	M	Marj Ez-Zhour (Haouc	ML	M	L
Meri	M	M	M	Mimass	M	M	L	Rachaiya El-Fokhar	M	M	ML
Salaiyeb	M	M	M								

Marjaayoun

Municipality	26-Oct	27-Oct	28-Oct	Municipality	26-Oct	27-Oct	28-Oct	Municipality	26-Oct	27-Oct	28-Oct
Aalmane Marjaayoun	M	M	M	Aamra	M	M	M	Adayseh Marjaayoun	M	M	M
Adchit El-Koussair	M	M	M	Ain Arab Marjaayoun	M	M	M	Bani Haiyann	M	M	M
Blatt Marjaayoun	M	M	ML	Blida	M	M	M	Borj El-Moulouk	M	M	M
Boueyda Marjaayoun	M	M	M	Deir Mimass	M	M	M	Deir Siriane	M	M	M
Dibbine	M	M	ML	Ebel El Saqi	M	M	ML	Houla	M	M	M
Houra	M	M	M	Kfar Kila	M	M	M	Khiam Marjaayoun	M	M	M

Klayaa	M	M	M	Majdel Selem	M	M	M	Marjaayoun	M	M	M
Markaba	M	M	M	Mays El-Jabal	M	M	M	Mazraat Doumiat	M	M	M
Mazraat Sarada	M	M	M	Mhaibib	M	M	M	Qabrikha	M	M	M
Qantara	M	M	M	Rab El-Thalathine	M	M	M	Saouaneh Marjayoun	M	M	M
Talloussa	M	M	M	Taybeh Matjaayoun	M	M	M	Touline	M	M	M

Bent Jbail

Municipality	26-Oct	27-Oct	28-Oct	Municipality	26-Oct	27-Oct	28-Oct	Municipality	26-Oct	27-Oct	28-Oct
Ain-Ebel	M	M	M	Aitaroun	M	M	M	Aynata Bint Jbeil	M	M	M
Ayta El-Chaeb	M	M	L	Ayta El-Jabal	M	M	M	Beit Lif	M	M	L
Beit Yahoun	M	M	M	Bint Jbeil	M	M	M	Borj Qalaway	M	M	M
Braachit	M	M	M	Chakra	M	M	M	Debel	M	M	M
Deir Antar	M	M	M	Froun	M	M	ML	Ghandouriyeh Bint Jb	M	M	ML
Hanine	M	M	M	Hariss	M	M	M	Hdatha	M	M	M
Jmeyjmeh	M	M	M	Kafra Bint Jbeil	M	M	L	Kfar Dounine	M	M	M
Khirbet Selm	M	M	M	Kounine	M	M	M	Maroun El Ras	M	M	M
Qalaway	M	M	M	Qaouzah	M	M	L	Qatmoun	M	M	M
Ramya Bint Jbeil	M	M	L	Rchaf	M	M	ML	Rmeich	M	M	M
Safad Al Battikh	M	M	M	Salhaneh	M	M	L	Serbine	M	M	ML
Sultanieh Bint Jbeil	M	M	M	Tibnine	M	M	M	Tiri	M	M	M
Yaroun	M	M	M	Yater	M	M	L				

Mont Liban

Jbail

Municipality	26-Oct	27-Oct	28-Oct	Municipality	26-Oct	27-Oct	28-Oct	Municipality	26-Oct	27-Oct	28-Oct
Aabeydat	M	M	L	Aalita	M	M	L	Aamchit	M	M	L
Aarab El-Lahib	M	L	L	Aarasta	M	ML	ML	Adonis Jbeil	M	M	L
Afqa Jbeil	M	M	ML	Ain El Delbeh Jbeil	M	M	L	Ain El-Ghouyba	M	L	L
Ain Jrain	M	ML	L	Ain Kfah	M	M	L	Almat El Chemaliyat	M	L	L
Almat El-Jenoubiya	M	L	L	Aqoura	M	M	M	Bayzoun	M	M	L
Bchille Jbeil	M	M	L	Bechtlida	M	M	L	Behdaydat	M	M	L
Beit Habbaq	M	M	L	Bejjeh	M	M	L	Bekhaaz	M	M	L
Berbara Jbeil	M	M	ML	Bintael	M	M	L	Birket Hjoula	M	M	L
Blatt Jbeil	M	M	L	Boulhos	M	L	L	Breyj Jbeil	M	M	L
Chamat	M	M	L	Chikhane	M	M	ML	Chmout	M	M	L
Eddeh Jbeil	M	M	L	Ehmej	M	L	L	Fatre	M	M	L
Ferhet	M	M	L	Fghal	M	M	L	Frat	M	L	L
Ghabat	M	M	ML	Ghalboun	M	M	L	Gharzouz	M	M	L
Ghofrine	M	M	L	Habil	M	M	L	Halate	M	M	L
Haqel	M	M	L	Hbaline	M	M	L	Hboub	M	M	L
Hdeine	M	M	ML	Hema Er-Rehban	M	ML	L	Hema Mar Maroun Aann	M	L	L
Hjoula	M	M	L	Hosrayel	M	M	L	Hsarat	M	M	L
Hsoun	M	M	L	Jaj	M	L	L	Janne	M	L	L
Jbeil	M	M	L	Jeddeyel Jbeil	M	M	ML	Jlisse	M	M	L
Jouret El-Qattine	M	M	L	Kfar Baal Annaya	M	M	L	Kfar Kidde	M	M	L
Kfar Kouas	M	M	L	Kfar Mashoun	M	M	L	Kfoun	M	ML	L

Kharbe Jbeil	M	M	L	Laqlouq	M	M	ML	Lassa	M	L	L
Lehfed	ML	L	L	Maad	M	M	L	Mar Sarkis	M	ML	L
Mastita	M	M	L	Mayfouq	M	L	L	Mazraat El Siyad	M	ML	L
Mazraat El-Maaden	M	L	L	Mechane	M	M	L	Mechmech Jbeil	M	ML	L
Mehrin	M	M	L	Mejdel El-Akoura	M	M	ML	Mghayreh Jbeil	M	M	ML
Mounsef	M	M	ML	Nahr Ibrahim	M	M	L	Qahmez	M	L	L
Qartaba	M	L	L	Qartaboun	M	M	L	Qattara Jbeil	ML	L	L
Qorqraya	M	L	L	Ramout	M	M	L	Ras Osta	M	M	L
Rihane Jbeil	M	M	ML	Sakiet El-Khayt	M	ML	L	Saqi Richmaya	M	L	L
Sebrine	M	M	L	Seraita	M	M	ML	Souane Jbeil	M	L	L
Tadmor	M	M	ML	Tartej	M	L	L	Torzaiya	M	M	L
Yanouh Jbeil	M	M	M	Zibidine Jbeil	M	M	L				

El Metn

Municipality	26-Oct	27-Oct	28-Oct	Municipality	26-Oct	27-Oct	28-Oct	Municipality	26-Oct	27-Oct	28-Oct
Aain El-Qabu	M	M	L	Aain El-Qach	ML	ML	L	Aain El-Teffaha	M	ML	L
Aain el-Safssaf El-M	ML	ML	L	Abou Mizane	ML	ML	L	Ain Aar	M	M	ML
Ain Alaq	M	M	L	Ain El-Kharroube	M	ML	L	Ain El-Sendiane	ML	ML	L
Ain El-Zeitoune	ML	ML	L	Ain Saadeh	M	M	L	Aintoura El-Matn	M	M	ML
Amaret Chalhoub	M	M	ML	Antelias	M	M	ML	Atchaneh	M	M	L
Ayroun	ML	ML	L	Baabdat	ML	ML	L	Baouchariyeh	M	M	L
Baskinta	M	M	L	Beit Chabab	ML	M	L	Beit El-Chaar	M	M	ML
Beit El-Kekko	M	M	ML	Beit Mery	M	M	L	Bhersaf	M	M	L
Bikfaya	ML	ML	L	Biyakout	M	M	ML	Bnabil	ML	ML	L
Bourj Hammoud	M	M	L	Bqennaya	M	M	ML	Broummana El-Matn	M	M	L
Bsalim	M	M	L	Bsifrine	L	ML	L	Bteghrine	M	M	L
Chaouiye	M	M	L	Chouaya El-Matn	M	ML	L	Choueir	ML	ML	L
Chrine	ML	ML	L	Dahr El Sawan El-Mat	M	M	L	Daychouniyeh	M	M	L
Dbayeh	M	M	ML	Deir Chamra	M	L	L	Deir Mar Abda el Mch	M	M	L
Deir Mar Roukouz	M	M	L	Deir Tamiche	M	M	L	Dik El-Mehdi	M	M	ML
Dikwaneh	M	M	L	Douar El-Matn	ML	ML	L	Fanar	M	M	ML
Fraike	M	M	L	Haret El-Ballaneh	M	M	ML	Hbous	M	M	ML
Himlaya	ML	ML	L	Jal El Did	M	M	ML	Jdeideh El-Metn	M	M	ML
Jouar El-Matn	ML	ML	L	Jouret El-Ballout	M	M	L	Kaaqour	ML	ML	L
Kfar Aaqab	ML	ML	L	Kfertay El-Matn	M	ML	L	Khenchara	ML	ML	L
Khillet El-Mtain	ML	ML	L	Konnabat Broummana	M	M	L	Konnabat Salima	L	ML	L
Machraah El-Matn	M	ML	L	Majdel Tarchich	M	M	ML	Majzoub	M	M	ML
Mansouriyeh El-Metn	M	M	L	Mar Boutros Karm Et-	ML	ML	L	Mar Chaya et Mzekke	M	M	L
Mar Moussa Ed-Douar	ML	ML	L	Marjaba	M	M	L	Masqa	M	M	L
Mayasse	ML	ML	L	Mazraat Deir Aoukar	M	M	ML	Mazraat El-Hadirat	M	M	ML
Mazraat Yachouh	M	M	ML	Mchikha	M	ML	L	Menqlet Mezher	M	M	ML
Mhaydseh Matn	ML	ML	L	Mkalles	M	M	L	Mrouj	M	ML	L
Mtain	M	M	ML	Mtayleb	M	M	ML	Nabay	M	M	L
Naccache	M	M	ML	Ouadi Chahine	ML	ML	L	Ouadi El-Karm El-Mat	M	L	L
Ouata El-Mrouj	ML	ML	L	Ouyoun El-Matn	M	M	L	Qornet Chehwan	M	M	ML
Qornet El-Hamra	M	M	L	Roumieh	M	M	L	Sfeilet Bikfaya	ML	ML	L
Sinn El-Fil	M	M	L	Zabbougha	M	L	L	Zalqa	M	M	ML

Zarouon	ML	ML	L	Zekrite	M	M	L	Zighrine El-Matn	M	ML	L
Zouk El-Khrab	M	M	L								

Chouf

Municipality	26-Oct	27-Oct	28-Oct	Municipality	26-Oct	27-Oct	28-Oct	Municipality	26-Oct	27-Oct	28-Oct
Aalmane El-Chouf	M	M	ML	Aammq El-Chouf	ML	L	VL	Ain Ouzein	ML	L	VL
Ain Qani	ML	L	L	Ain Zhalta	M	M	ML	Ainbal	M	L	L
Amatour	ML	ML	L	Anout	M	L	VL	Atrine	ML	L	VL
Baadarane	M	ML	L	Baaqline	M	L	L	Baasir	M	M	L
Barja	M	M	L	Barouk	M	M	ML	Bater	ML	ML	L
Batloun	M	ML	L	Bayqoun	M	M	L	Bchetfine	M	ML	L
Beiteddine	ML	L	VL	Benouati Ech-Chouf	M	ML	L	Berjein	M	L	VL
Bireh et Mtalleh	M	L	L	Biret El-Chouf	M	ML	L	Bkechtine Ouel Mchei	M	L	VL
Bkifa El-Chouf	M	L	VL	Botme	ML	L	VL	Bqaiaa Ech-Chouf	M	L	L
Bsaba El-Chouf	M	L	L	Chammis El-Chouf	M	M	L	Chehim	M	L	VL
Chemaarine	M	L	L	Chourit	ML	L	VL	Daher El-Chouf	M	M	L
Dalhoun	M	ML	L	Damour	M	M	L	Daraya El-Chouf	M	L	VL
Deir El-Moukhalles	M	L	VL	Deir Baba	M	ML	L	Deir Dourit	M	ML	L
Deir El-Qamar	M	L	L	Deir Kouche	M	L	VL	Dibbieh	M	ML	L
Dmit	M	L	L	Fouara Jaafar	ML	L	VL	Fraidis El-Chouf	M	M	L
Ghabet Jaafar	M	ML	VL	Gharife	M	L	VL	Haret Jandal	M	ML	L
Hasrout	M	L	VL	Jadra	M	M	ML	Jahlieh	M	L	L
Jbeih El-Chouf	M	ML	L	Jdeidet El-Chouf	ML	L	VL	Jiyeh	M	M	L
Jleilyeh	M	L	VL	Jmailiyeh	M	M	ML	Joun	M	M	L
Kahlounie El-Chouf	M	ML	L	Ketermaya	M	M	ML	Kfar Faqoud	M	ML	L
Kfar Hamal	M	L	L	Kfar Him	M	ML	L	Kfar Katra	ML	L	VL
Kfar Niss	M	L	L	Kfar hay	M	ML	VL	Kfarnabrakh	M	L	VL
Khirbet Bisri	M	L	VL	Knayse El-Chouf	ML	L	VL	Maaniyeh	M	M	ML
Maasser Beiteddine	ML	L	VL	Maasser El-Chouf	M	M	L	Majdalouna	M	M	ML
Majdel El-Meouch	ML	L	VL	Mazboud	M	L	VL	Mazmoura	M	L	VL
Mazraat El Chouf	M	ML	L	Mazraat El Daher	M	L	VL	Mazraat El-Douair	ML	L	VL
Mechref	M	ML	L	Mghairie	M	M	L	Mghayrie El-Chouf	M	L	L
Moukhtara	ML	L	VL	Mrusti	M	M	L	Mtolle	M	L	VL
Naameh	M	M	L	Niha El-Chouf	M	M	L	Ouadi Abou Youssef	M	L	VL
Ouadi Ed-Deir	M	ML	VL	Ouadi El-Sit	ML	L	VL	Ouadi bnehlay	M	ML	VL
Qraibeh	ML	ML	L	Qreiaa	M	L	VL	Rmayle El-Chouf	M	M	ML
Semqaniyeh	M	L	VL	Sibline	M	M	ML	Sirjbeil	M	ML	L
Warhanieh	M	M	L	Werdaniyeh	M	M	ML	Zaarourieh	M	L	VL

Baabda

Municipality	26-Oct	27-Oct	28-Oct	Municipality	26-Oct	27-Oct	28-Oct	Municipality	26-Oct	27-Oct	28-Oct
Abadiyeh	M	ML	L	Ain Mouaffaq	M	ML	VL	Araiya	M	M	VL
Arbaniyeh	ML	ML	L	Arsoun	ML	ML	L	Baabda	M	M	L
Baalchmey	M	ML	L	Bmaryam	M	M	ML	Bourj El-Brajneh	M	M	L
Boutchay	M	M	L	Bsaba Baabda	M	M	ML	Btekhney	M	M	ML
Btibyat	M	M	ML	Bzebdine	ML	ML	L	Chbeniyeh	M	M	ML
Chiyah	M	M	L	Chmeisset Baabda	M	M	ML	Chouit	M	M	VL
Deir El-harf	M	M	L	Deir Khouna	M	M	L	Dlaybeh	L	ML	L

Falougha	M	M	ML	Furn El-Chebbak	M	M	L	Hadath Beyrouth	M	M	L
Halaliyeh Baabda	M	M	VL	Hammana	M	M	L	Haret El Sett	M	M	L
Haret Hamze	M	M	L	Haret Hreik	M	M	L	Hasbaiya El-Metn	ML	ML	L
Jouar El-Hoz	ML	ML	L	Jouret Arsoun	ML	ML	L	Kfar Chima	M	M	L
Kfar Selouane	M	M	ML	Khalouat Baabda	M	M	ML	Kneisset Baabda	M	M	L
Laylakeh	M	M	L	Louayzeh Baabda	M	M	L	Merdache	M	M	L
Mzairaa Baabda	M	M	VL	Ouadi Chahrour El Ol	M	M	L	Ouadi Chahrour El So	M	M	L
Qalaa Baabda	M	M	ML	Qhraybe Baabda	M	M	ML	Qobbayaa	M	M	ML
Qornayel	ML	ML	L	Qortada	M	M	L	Qrayeh Baabda	M	M	ML
Qsaibeh Baabda	M	M	L	Qtale Baabda	M	M	ML	Ras El Metn	M	M	L
Ras El-Haref	M	M	ML	Rouayset El-Ballout	M	M	VL	Salima Baabda	ML	ML	L
Tahouitat El Ghadir	M	M	L	Tarchich	M	M	ML	Zandouqa	M	M	L

Aley

Municipality	26-Oct	27-Oct	28-Oct	Municipality	26-Oct	27-Oct	28-Oct	Municipality	26-Oct	27-Oct	28-Oct
Abey	M	ML	L	Aghmid	M	M	ML	Ain Dara	M	M	ML
Ain Drafil	M	M	L	Ain El Halazoun	M	ML	L	Ain El-Rmmaneh	M	M	VL
Ain Jedideh	M	ML	VL	Ain Ksour	M	ML	L	Ain Onoub	M	M	L
Ain Traz	ML	L	VL	Ainab	M	M	L	Aley	M	ML	L
Aramoun	M	M	ML	Aytat	M	M	L	Azouniyeh	M	M	L
Baawerta	M	ML	L	Badghan Oua Wadi Bad	M	M	L	Bassatine	M	M	L
Bayssour	M	M	L	Bchamoun	M	M	L	Bdadoun	M	M	L
Behouara	M	ML	L	Bennay	M	ML	L	Bhamdoun El-Dayaa	M	ML	L
Bhamdoun El-Mhatta	M	ML	L	Bkhechthey	M	ML	L	Bleibel	M	M	L
Bmakine	M	ML	L	Bmhay	M	M	M	Bouzrid	ML	L	VL
Bserrine	M	ML	L	Bsous	M	M	VL	Btalloun	M	ML	L
Btater	M	ML	L	Chanay	M	ML	L	Charoun	M	M	L
Chartoun	M	ML	VL	Chemlane	M	M	L	Chouifat El-Aamrous	M	M	L
Chouifat El-Oumara	M	M	L	Chouifat El-Quoubbe	M	M	L	Dakkoun	M	L	L
Deir Qoubel	M	M	L	Dfoun	M	ML	L	Douair El Remmaneh	M	M	VL
Ghaboun	M	ML	L	Habramoun	M	ML	VL	Homs Oua Hama	M	M	L
Houmal	M	M	L	Jisr El Qadi	M	L	L	Kehaleh	M	ML	VL
Keyfoun	M	M	L	Kfar Aamey	M	ML	L	Kommatyeh	M	ML	L
Maasrati	M	ML	L	Majdel Baana	M	M	L	Mansourieh et Ain El	M	ML	L
Mazraat El-Nahr	M	M	VL	Mchakhte	M	M	ML	Mecherfeh	M	M	L
Mejdaya	M	ML	L	Mrayjat	M	M	L	Ramliyah	M	ML	L
Rechmaya	M	L	VL	Rejmeh	M	ML	VL	Remhala	M	ML	L
Rouayset El Neemane	M	ML	L	Saoufar	M	M	L	Selfaya	ML	L	VL
Sirhmoul	M	M	L	Souq El Ghareb	M	ML	L	Taazanieh	M	ML	L

Kesrouane

Municipality	26-Oct	27-Oct	28-Oct	Municipality	26-Oct	27-Oct	28-Oct	Municipality	26-Oct	27-Oct	28-Oct
Achkout	M	L	L	Adma Oua Dafneh	M	ML	L	Ain Ed-Delbe Kesroua	M	ML	L
Ain El-Rihane	M	L	L	Aintoura Kesrouane	M	ML	L	Ajaltoun	M	L	L
Akaybeh Kesrouane	M	M	L	Aramoun Kesrouane	M	L	L	Azra ouel Ozor	M	M	L
Ballouneh	M	L	L	Batha	M	L	L	Bekaatat Achkout	M	L	L
Bekaatat Kanaan	M	ML	L	Bizhel	M	M	L	Bouar	M	ML	L
Bqaatouta	M	M	L	Bqaq Ed-Dine	M	M	L	Bzommar	M	L	L

Chahtoul	M	L	L	Chnaniir	M	L	L	Chouan	M	L	L
Daraya Kesrouane	M	L	L	Darououn	M	L	L	Deir Baqlouch	M	L	L
Dlebta	M	L	L	Eghbeh	M	L	L	Faraya	M	M	L
Fatka	M	L	L	Feytroun	M	L	L	Ghazir	M	L	L
Ghbaleh Kesrouane	M	M	L	Ghedrass	M	M	L	Ghosta	M	L	L
Ghynéh	M	L	L	Harharaya w Kattine	M	L	L	Harissa Kesrouane	M	L	L
Hayata	M	L	L	Hosein	M	M	L	Hrajel	M	M	L
Jdeideh Ghazir	M	L	L	Jeita	M	ML	L	Jounieh Ghadir	M	ML	L
Jounieh Haret Sakhr	M	M	L	Jounieh Salel Alma	M	ML	L	Jounieh Sarba	M	M	L
Jouret Bedrane	M	M	L	Jouret Mhad	M	L	L	Jouret Termos	M	ML	L
Kfar Debiane	M	M	L	Kfar Tay Kesrouane	M	ML	L	Kfar Yassine	M	M	L
Kfour Kesrouane	M	L	L	Kharayeb Nahr Ibrahi	M	M	L	Klayaat Kesrouane	M	L	L
Maarab	M	L	L	Maaysra Kesrouane	M	M	L	Mayrouba	M	M	L
Mazraat Er-Ras	M	ML	L	Mazraat Mrah El-Mir	M	L	L	Mchaa El Ftouh	M	M	ML
Mchaa Faraya	M	M	L	Mchaa Kfar Dibiane	M	M	L	Mghaer	M	M	L
Mradiyeh	M	M	L	Nahr Ed-Dahab	M	ML	L	Nammoura Kesrouane	M	M	L
Ouata El Jaouz	M	L	L	Ouata Sillam	M	M	L	Raachine	M	L	L
Rayfoun	M	L	L	Safra Kesrouane	M	ML	L	Shayle Kesrouane	M	L	L
Tabarja	M	ML	L	Yahchouch	M	M	L	Zaaytreh	M	M	L
Zeytoun	M	M	L	Zouk Mikael	M	M	L	Zouk Mosbeh	M	M	L

Baalbek_Hermel

Baalbek

Municipality	26-Oct	27-Oct	28-Oct	Municipality	26-Oct	27-Oct	28-Oct	Municipality	26-Oct	27-Oct	28-Oct
Aadous	M	M	M	Aamchki	ML	L	L	Aarsal	M	ML	L
Ain Baalbek	M	M	ML	Ain Bourday	M	ML	L	Ain El-Benye	ML	ML	L
Ain El-Jaouz Baalbek	L	L	L	Ain El-Siya Chadoura	ML	ML	L	Al Khodr Baalbek	M	M	L
Al Nabi Chit	M	M	L	Aynata Baalbek	M	M	M	Baalbek	M	ML	L
Bachwat	M	M	M	Barqa	M	M	M	Bednayel Baalbak	M	M	M
Beit Chama	M	M	M	Bijjaje	M	M	M	Bouday	M	M	M
Brital	M	M	L	Btadi	M	M	M	Chaat	M	M	M
Chaibe	L	L	L	Chlifa	M	M	M	Chmestar	M	M	M
Dar El-Oussa	M	M	M	Deir El-Ahmar	M	M	M	Deir Mar Maroun Baal	M	M	M
Douris	M	M	ML	Fakiha	M	M	M	Hadath Baalbek	M	M	M
Ham	ML	ML	L	Haour Taala	M	ML	L	Hizzine	M	M	M
Hlebta	M	M	M	Hosh Barada	M	M	M	Hosh El Dahab	M	M	M
Hosh El Snid	M	M	L	Hosh El-Nabi	M	M	ML	Hosh El-Rafiq	M	M	M
Hosh Tal Safiya	M	M	M	Hrebta	M	M	M	laat	M	M	M
Jebaa	M	M	M	Jenta	L	L	L	Kfar Dabach	M	M	M
Kfar Dane	M	M	M	Khraibeh El-Hermel	M	M	M	Khreibet Baalbek	M	ML	L
Kneisset Baalbek	M	M	M	Labueh	M	M	M	Maarboun	L	L	L
Majdaloun	M	M	M	Maqneh	M	M	M	Mazraat Beit Mcheik	M	M	M
Misraya	M	M	M	Moqraq	M	M	M	Nabha El-Damdoum	M	M	M
Nabi Chbay	ML	ML	L	Nabi Osman	M	M	M	Nahleh baalbek	ML	ML	L
Ouadi El-Oss	M	M	M	Qaa Baayoun	M	M	M	Qaa Jouar Maqiye	M	M	M
Qaa Ouadi El-Khanzir	M	M	M	Qah Baalbek	M	M	M	Qarha Baalbek	M	M	M

Qsarnaba	M	M	M	Ram Baalbek	M	M	M	Ras Baalbek El Sahl	M	M	M
Ras Baalbek El-Charq	M	M	ML	Riha	M	M	M	Saaide	M	M	M
Sbouba	M	M	M	Seriine El-Tahta	M	M	ML	Slouqi	M	M	M
Taiba Baalbek	M	M	M	Talia	M	M	ML	Taraiya	M	M	M
Temnin El Fawqa	M	M	M	Temnin El-Tahta	M	M	M	Tfail	L	L	L
Yahfoufa	M	ML	L	Yammouneh	M	M	M	Younine	M	M	M
Zboud	M	M	M								

Hermel

Municipality	26-Oct	27-Oct	28-Oct	Municipality	26-Oct	27-Oct	28-Oct	Municipality	26-Oct	27-Oct	28-Oct
Charbine El-Hermel	M	M	M	Hermel Jbab	M	M	M	Hermel	M	M	M
Maaysra El-Hermel	M	M	M	Michaa Mrajhine	M	M	L	Ouadi Faara	M	M	M
Ras Baalbek - Ouadi	M	M	M	Ras Baalbek El Gharb	M	M	M	Zighrine	M	M	M

Akkar

Akkar

Municipality	26-Oct	27-Oct	28-Oct	Municipality	26-Oct	27-Oct	28-Oct	Municipality	26-Oct	27-Oct	28-Oct
Aain Tinta	M	M	ML	Aaiyat	M	M	L	Aakkar El-Aatiqa	M	M	L
Aamar Akkar	M	ML	L	Aamar El Baykat	M	M	ML	Aamayer	M	M	M
Aamriyet Akkar	M	M	ML	Aandqet	M	M	M	Aarmeh	M	M	ML
Aarqa	M	M	ML	Aawaynat	M	M	M	Aayoun Akkar	M	M	L
Abboudiye	M	M	ML	Ain El-Zeit	M	M	ML	Ain Yaaqoub	M	M	L
Akroum	M	M	M	Aridet Cheikh Zennad	M	M	ML	Baldeh w Mazraat Bal	M	M	ML
Barcha	M	M	ML	Bardeh	M	M	ML	Bebnine	M	ML	L
Beino	M	M	L	Beit Ayoub	M	L	L	Beit El-Haouch	M	ML	L
Beit Mellat	M	M	L	Beit Younes	M	L	L	Berbara Akkar	M	M	ML
Berqayel	M	L	L	Bezrina	M	ML	L	Bireh Akkar	M	M	ML
Borj	M	M	L	Bqerezla	M	L	L	Bzal	M	L	L
Chane	M	L	L	Chaqdouf	M	M	L	Charbila	M	M	ML
Cheikh Mohammad	M	M	ML	Cheikh Taba Es-Sahl	M	M	ML	Cheikh Taba	M	L	L
Cheikh Zennad	M	M	ML	Cheikhlar	M	M	M	Chir Hmairine	M	M	ML
Daghle	M	M	ML	Dahr Laissine	M	ML	L	Darine	M	M	ML
Dawra	M	M	L	Dawsa w Baghdadi	M	M	ML	Dayret Nahr El-Kabir	M	M	L
Deir Dalloum	M	ML	L	Deir Jennine	M	M	ML	Denbou	M	L	L
Dibbabiyyeh	M	M	ML	Douair Aadwiyeh	M	M	ML	Fassikine	M	M	ML
Fnaydek	M	M	L	Fraydes Akkar	M	M	ML	Ghazayle	M	M	ML
Habchit	M	L	L	Hakour	M	L	L	Halba	M	M	L
Haouchab	M	M	ML	Hayssat	M	M	ML	Haytla	M	M	ML
Hayzouq	M	M	L	Hedd	M	M	ML	Hmaira Akkar	M	L	L
Hmaiss Akkar	M	M	ML	Hnaider	M	M	M	Hokr Ed-Dahri	M	M	ML
Hokr Etti	M	M	ML	Hokr Jouret Srar	M	M	ML	Houaich	M	L	L
Hrar	M	L	L	Idbil	M	L	L	Ilal	M	L	L
Janine	M	M	ML	Jdeidet El-Joumeh	M	ML	L	Jdeidet El-Kaiteh	M	L	L
Jebraïel	M	L	L	Kafr	M	M	L	Kafr	M	M	ML
Karm Asfour	M	L	L	Kfar Melki Akkar	M	M	ML	Kfar Noun	M	M	ML
Kfarharra	M	M	ML	Khalsa	M	M	M	Kharnoubet Akkar	M	M	ML

Khirbet Daoud Aakkar	M	M	ML	Khirbet El Remmane	M	M	M	Khirbet Shar	M	M	ML
Khoreybet El-Jindi	M	M	ML	Khreibet Aakkar	M	L	L	Kneisset Aakkar	M	M	ML
Kneisset Hnaider	M	M	M	Knisse	M	M	ML	Kroum El-Aarab	M	M	ML
Kwachra	M	M	ML	Kweykhat	M	M	ML	Machta Hammoud	M	M	ML
Majdala	M	ML	L	Majdel Akkar	M	M	ML	Mar Touma	M	L	L
Marlaya Melhem	M	ML	L	Mashha	M	M	L	Massoudiye	M	M	ML
Mazraat Beit Ghattas	M	ML	L	Mazraat En-Nahriye	M	M	M	Mechmech	M	ML	L
Memneh	M	ML	L	Mhammara	M	ML	L	Mighraq Aakkar	M	M	ML
Minyara	M	ML	L	Moqayteh	M	M	ML	Mounjez	M	M	ML
Msalla	M	M	ML	Mzeihmeh	M	M	ML	Nfaiseh	M	M	L
Noura Et-Tahta	M	M	ML	Ouadi El-Haour	M	M	ML	Ouadi El-Jamous	M	ML	L
Ouyoun El-Ghizlane	M	L	L	Qaabarine	M	M	ML	Qabaait	M	L	L
Qachlaq	M	M	ML	Qantara Aakkar	M	L	L	Qarha Aakkar	M	M	M
Qarqaf	M	L	L	Qboula	M	M	L	Qleiaat Aakkar	M	M	ML
Qloud El-Baqie	M	L	L	Qobaiyat Aakkar	M	M	M	Qobbat Chamrat	M	ML	L
Qorayat	M	L	L	Qornet Aakkar	M	M	L	Qsair Aakkar	M	M	ML
Rahbe	M	L	L	Rihaniyet Aakkar	M	M	ML	Rmah	M	M	ML
Rmoul	M	M	ML	Saadine	M	M	ML	Sadaqa	M	L	L
Saidnaya	M	M	ML	Sammouniye	M	M	ML	Sayssoq	M	ML	L
Semmaqiye	M	M	ML	Semmaqli	M	M	ML	Sfinet El-Dreib	M	M	ML
Sfinet El-Qaitaa	M	L	L	Sindyanet Zeidane	M	M	ML	Souaisset Aakkar	M	M	ML
Srar	M	M	ML	Tal Abbas El Gharby	M	M	ML	Tal Abbas El-Chargy	M	M	L
Tal Biret	M	M	ML	Tal Hmayra	M	M	ML	Tal Maayan Tal Kiri	M	M	ML
Tal Sibel	M	M	ML	Tallet Chattaha	M	M	L	Tikrit	M	ML	L
Tleil	M	M	ML	Tshea	M	M	L	Zawarib	M	L	L
Zouq El Hosniyeh	M	L	L	Zouq El-Haddara	M	ML	L	Zouq El-Hbalsa	M	L	L
Zouq El-Mogachrine	M	L	L								

Sud

Sour

Municipality	26-Oct	27-Oct	28-Oct	Municipality	26-Oct	27-Oct	28-Oct	Municipality	26-Oct	27-Oct	28-Oct
Aaiyeh	M	M	L	Aalma El-Chaab	M	M	L	Aaytit	M	M	L
Abbassiyeh Sour	M	M	L	Abou Chech	M	M	L	Ain Abou Abdallah	M	M	L
Ain Baal	M	M	L	Arzoun	M	M	ML	Aziyeh	M	M	L
Baflaya	M	M	ML	Barich	M	M	L	Batouliyah	M	M	L
Bayad	M	M	L	Bazouriyeh	M	M	L	Bediass	M	M	L
Bestiyat	M	M	L	Borj El Chemali	M	M	L	Borj En-Naqoura	M	M	ML
Borj Rahhal	M	M	L	Boustane	M	M	L	Btaychiyeh	M	M	L
Chaaitiye	M	M	L	Chameh	M	M	L	Chehabiye	M	M	M
Chehour	M	M	ML	Chihine	M	M	L	Debaal Sour	M	M	L
Deir Amess	M	M	L	Deir Kifa	M	M	M	Deir Qanoun El-Ain	M	M	L
Deir Qanoun El-Naher	M	M	L	Derdghaiya	M	M	ML	Dhayra	M	M	L
Halloussiyeh	M	M	L	Hamoul	M	M	L	Hanaouey	M	M	L
Henniye	M	M	L	Hmairi Sour	M	M	L	Iskandarouna Sour	M	M	L
Jbal El Botom	M	M	L	Jebbin	M	M	L	Jennata	M	M	L
Jijim	M	M	L	Jouaiya	M	M	L	Kneisset Sour	M	M	L

Maarake	M	M	L	Maaroub	M	M	L	Majadel	M	M	ML
Majdalzoun	M	M	L	Mansouri Sour	M	M	L	Marnba	M	M	ML
Marouahine	M	M	L	Mazraat El-Zalloutiy	M	M	L	Mazraat Mechref	M	M	L
Mazraat Tayr Semhat	M	M	ML	Mheilib	M	M	L	Neffakhiyeh	M	M	M
Niha Sour	M	M	M	Ouadi Jilo	M	M	L	Qana	M	M	L
Qolaileh Sour	M	M	L	Rechknay	M	M	L	Rmadiyah	M	M	L
Selha Sour	M	M	M	Siddiqine	M	M	L	Sour	M	M	L
Srifa	M	M	ML	Tayr Debbe	M	M	L	Tayr Felsay	M	M	L
Tayr Harfa	M	M	L	Touayri	M	M	ML	Toura	M	M	L
Yanouh Sour	M	M	L	Yarine	M	M	L	Zebqine	M	M	L

Saida

Municipality	26-Oct	27-Oct	28-Oct	Municipality	26-Oct	27-Oct	28-Oct	Municipality	26-Oct	27-Oct	28-Oct
Aanqoun	M	M	ML	Aaqtanit	M	M	ML	Aarab Ej-Jall	M	M	ML
Aarab Tabbaya	M	M	ML	Abra Saida	M	M	ML	Adloun	M	M	ML
Adousiyeh	M	M	ML	Ain-El-Deleb	M	M	ML	Arzai	M	M	L
Babliyah	M	M	ML	Barty	M	M	ML	Bissariyeh	M	M	ML
Bnaafoul	M	M	ML	Bqosta	M	M	ML	Bramiy	M	M	ML
Daoudiyeh	M	M	ML	Dareb El-Sim	M	M	ML	Erkay	M	M	ML
Ghassanieh	M	M	ML	Ghazieh	M	M	ML	Hajjeh	M	M	ML
Haret Saida	M	M	ML	Hartiyeh	M	M	ML	Hlaliye Saida	M	M	ML
Insariyat	M	M	ML	Jazira Saida	M	M	L	Kafar Bit	M	M	L
Kaoutariyet El-Siyad	M	M	M	Kfar Chellal	M	M	L	Kfar Hatta Saida	M	M	ML
Kfar Milke Saida	M	M	L	Khartoum	M	M	M	Khaziz	M	M	ML
Khirbet Ed-Douair Sa	M	M	ML	Khirbet El-Bassal	M	M	ML	Khrayeb Saida	M	M	L
Loubieh	M	M	ML	Maghdouche	M	M	L	Majdelyoun	M	M	ML
Matariyet El-Choumar	M	M	L	Matayriyeh	M	M	L	Mazraat 'Mseileh	M	M	ML
Mazraat 'Snaiber	M	M	ML	Mazraat Aarab Soukka	M	M	ML	Mazraat Deir Taqla	M	M	ML
Mazraat El Yahoudiye	M	M	L	Mazraat El-Housseini	M	M	ML	Mazraat El-Mhaydaleh	M	M	ML
Mazraat El-Ouasta	M	M	L	Mazraat Jamjim	M	M	ML	Mazraat Kaoutariyet	M	M	ML
Mazraat Kfar Badda	M	M	ML	Mazraat Oussamiyat	M	M	ML	Mazraat Sari	M	M	ML
Mazraat Sinai	M	M	M	Meemariyeh	M	M	ML	Merouaniyeh	M	M	ML
Miyeh ou Miyeh	M	M	ML	Najjariyeh	M	M	ML	Qaaqaiyat El-Snaouba	M	M	ML
Qnarit	M	M	ML	Qraiye Saida	M	M	ML	Saida Ed-Dekermane	M	M	ML
Saida El-Oustani	M	M	ML	Saida El-Qadimeh	M	M	ML	Saida Kefraya	M	M	ML
Saksakiyeh	M	M	ML	Salhie Saida	M	M	ML	Sarafand	M	M	ML
Sfenta	M	M	L	Tafahta	M	M	M	Tanbourit	M	M	L
Tebna	M	M	ML	Zaghdraiya	M	M	L	Zeita	M	M	ML
Zrariyeh	M	M	L								

Jezzine

Municipality	26-Oct	27-Oct	28-Oct	Municipality	26-Oct	27-Oct	28-Oct	Municipality	26-Oct	27-Oct	28-Oct
Ain El-Mir (El Estab	M	M	L	Anane	M	L	VL	Aramta	M	M	ML
Ariya	ML	ML	L	Aychiyeh	M	M	M	Azour	M	L	VL
Baba	M	L	VL	Bayssour Jezzine	M	M	ML	Benoueteh Jezzine	ML	ML	L
Bhannine	ML	ML	L	Bisri	M	L	VL	Bkassine	ML	ML	L
Bouslaya	M	M	L	Btedine El-Leqech	M	L	VL	Chbail	M	M	M
Choualiq Jezzine	M	M	ML	Dahr Ed-Deir	M	M	ML	Deir El Qattine	M	M	ML

Demachqiyeh	M	M	M	Ghabbatiyeh	ML	ML	L	Harf Jezzine	M	L	VL
Hassaniyeh	M	M	L	Haytouleh	M	M	L	Haytura	M	M	L
Hidab	M	M	L	Homsiyeh	M	ML	L	Jabal Toura	M	M	ML
Jarmaq	M	M	M	Jensnaya	M	M	ML	Jernaya	M	M	ML
Jezzine	M	M	L	Karkha	M	M	L	Kfar Falous	M	M	L
Kfar Houna	M	M	L	Kfar Jarrah	M	M	ML	Lebaa	M	M	ML
Louayzet Jezzine	M	M	ML	Machmouche	ML	ML	L	Mahmoudiyeh Jezzine	M	M	M
Maknounye Jezzine	M	M	ML	Maraat Ouzaïyeh	M	M	M	Mazraat Daraya	M	M	L
Mazraat El-Aarqoub	M	M	M	Mazraat El-Mathane	M	L	VL	Mazraat El-Rahbane	M	M	ML
Mazraat Khallet Khaz	M	M	M	Mazraat Louzid (Loua	M	M	M	Mazraat Qrouh	M	M	ML
Mazraat Tamra	M	M	M	Mazraat Zighrine Jez	M	M	M	Mazraat	M	M	ML
Mharbiyeh	M	M	ML	Midane Jezzine	M	L	L	Mjeydel Jezzine	M	M	ML
Mlikh	M	M	ML	Mrah El-Hbasse	M	M	L	Ouadi Baanquodaine	M	M	ML
Ouadi El-Laymoun	M	M	L	Ouardiyeh	M	M	M	Qabaa Jezzine	M	M	L
Qatrani	M	M	ML	Qaytouleh	M	M	L	Qtaleh Jezzine	M	L	VL
Rihane Jezzine	M	M	M	Rimat	M	M	ML	Roum	M	ML	L
Roummanet	M	M	ML	Sabbah	ML	ML	L	Saydoun	M	M	ML
Sfaray	M	ML	L	Snaya	M	M	L	Sojoud	M	M	M
Srayri	M	M	ML	Taaïd	M	L	VL	Wadi Jezzine	ML	ML	L
Zhalta	M	M	L								

Bekaa

West Bekaa

Municipality	26-Oct	27-Oct	28-Oct	Municipality	26-Oct	27-Oct	28-Oct	Municipality	26-Oct	27-Oct	28-Oct
Aammiq BG	M	M	ML	Ain El Tineh BG	M	M	L	Ain Zebdeh	M	M	L
Ana	M	M	ML	Aytanit	M	M	L	Baaloul BG	ML	M	L
Bab Mareh	M	M	L	Chouberqiye Aammiq	M	M	ML	Dakoue	M	M	L
Deir Ain El-Jaouze	ML	M	L	Deir Tahniche	M	M	ML	Ghaza	M	M	ML
Harime El-Soughra	M	M	L	Hoch Harimeh	M	M	ML	Jazira BG	M	M	ML
Jib Jennine	M	M	L	Kamed-El-Laouz	ML	ML	L	Kefraya BG	M	M	ML
Khiara El Atika	M	M	ML	Khiara	M	M	ML	Khirbet Qanafar	M	M	L
Lala	ML	M	L	Lebbaya BG	ML	M	L	Loussa	M	M	L
Machghara	M	M	L	Manara (Hammara) BG	ML	M	L	Mansoura BG	M	M	M
Marej BG	M	M	M	Maydoun	M	M	L	Ouaqf BG	M	M	ML
Qaraaoun	ML	M	L	Qelya	M	M	L	Raouda (Istabel)	M	M	M
Saghbine	M	M	L	Sohmor	ML	M	L	Soltan Yacoub el Ara	M	M	L
Souairy	M	M	L	Sultan Yaacoub	M	M	L	Tal Znoub	M	M	ML
Yehmor BG	ML	M	L	Zilaya	ML	M	L				

Zahle

Municipality	26-Oct	27-Oct	28-Oct	Municipality	26-Oct	27-Oct	28-Oct	Municipality	26-Oct	27-Oct	28-Oct
Aanjar (Haouch Mouss	M	M	ML	Ablah	M	M	M	Ain Kfarzabad	M	M	ML
Ali-El-Nahri	M	M	M	Bar Elias	M	M	M	Bouarej	M	M	M
Cheberqiyet Tabet	M	M	M	Chtaura	M	M	M	Deir El Ghazal	M	M	ML
Delhamiyet Zahle	M	M	M	Ferzol	M	M	M	Haouch El-Ghanam	M	M	M
Haouch Es-Siyadeh	M	M	M	Haouch Hala	M	M	M	Haouch Mandara	M	M	M

Haouch Qayssar	M	M	M	Hezerta	M	M	M	Hosh Moussa	M	M	L
Jdita	M	M	M	Kfarzabad	M	M	ML	Ksara	M	M	M
Majdel Aanjar	ML	M	L	Makssi	M	M	M	Massa	M	M	ML
Mazraat Er-Remtaniye	M	M	M	Mrayjat Zahle	M	M	M	Mzaraa Zahle	M	M	M
Nabi Ayla	M	M	M	Nasriyet Rizk	M	M	L	Nasriyet Zahle	M	M	M
Niha Zahle	M	M	M	Ouadi Ed-Deloum	M	M	M	Ouadi El-Arayech	M	M	M
Qaa El Rim	M	M	M	Qab Elias	M	M	M	Qousaya	M	M	L
Rhit	M	M	ML	Riyak	M	M	M	Saadnayel	M	M	M
Taal El-Akhdar	M	M	ML	Taalbeya	M	M	M	Taanayel	M	M	M
Talamara	M	M	M	Tcheflik Edde Haouch	M	M	M	Tcheflik Qiqano	M	M	M
Terbol Zahle	M	M	L	Touaite Zahle	M	M	ML	Zahle Aradi	M	M	M
Zahle El-Berbara	M	M	M	Zahle El-Maallaqa	M	M	M	Zahle El-Midane	M	M	M
Zahle Er-Rassiye	M	M	M	Zahle Haouch El-Ouma	M	M	M	Zahle Haouch El-Ouma	M	M	M
Zahle Haouch Ez-Zara	M	M	M	Zahle Maalaaqa Aradi	M	M	M	Zahle Mar Antonios	M	M	M
Zahle Mar Elias	M	M	M	Zahle Mar Gerios	M	M	M	Zahle Saydet En-Naja	M	M	M
Zebdoul	M	M	M								

Rachaiya

Municipality	26-Oct	27-Oct	28-Oct	Municipality	26-Oct	27-Oct	28-Oct	Municipality	26-Oct	27-Oct	28-Oct
Ain Arab Rachaiya	ML	ML	VL	Ain Ata	ML	ML	L	Ain Harche	ML	ML	L
Aqabe Rachaya	ML	ML	L	Ayha	M	M	ML	Ayta El Fokhar	ML	M	L
Bakifa Rachaya	ML	ML	L	Bakka	ML	ML	VL	Beit Lahya	ML	ML	L
Bireh Rachaiya	ML	M	VL	Daher El Ahmar	ML	ML	L	Deir El-Achayer	ML	M	L
Heloua Rachaiya	ML	ML	L	Hoch El Qannabeh Rac	ML	M	L	Kaoukaba Bou Arab	ML	ML	L
Kfar Danis	ML	ML	L	Kfar Mechki	ML	M	L	Kfar Qouq	ML	M	L
Kherbet Rouha	ML	M	L	Majdel Balhiss	ML	M	L	Mdoukha	ML	ML	VL
Mhaydseh Rachaiya	ML	M	L	Nabi Safa	ML	M	L	Rachaiya	ML	ML	L
Rafid Rachaiya	ML	M	VL	Selsata (Mazraat Dei	L	ML	L	Tannoura	ML	ML	L
Yanta	L	ML	L								

Beyrouth

Beyrouth

Municipality	26-Oct	27-Oct	28-Oct	Municipality	26-Oct	27-Oct	28-Oct	Municipality	26-Oct	27-Oct	28-Oct
Achrafieh	M	M	L	Ain el-Mreisse	M	M	L	Bachoura	M	M	L
Beirut Central Distr	M	M	L	Marfai	M	M	L	Mazraa	M	M	L
Medaouar	M	M	L	Minet el-Hosn	M	M	L	Mwssaitbeh	M	M	L
Ras Beirut	M	M	L	Rmeil	M	M	L	Saifi	M	M	L
Zqaq el-Blat	M	M	L								