

Lebanon Fire Risk Bulletin



CIVIL DEDEFENCE

Refer to cadast table condition.

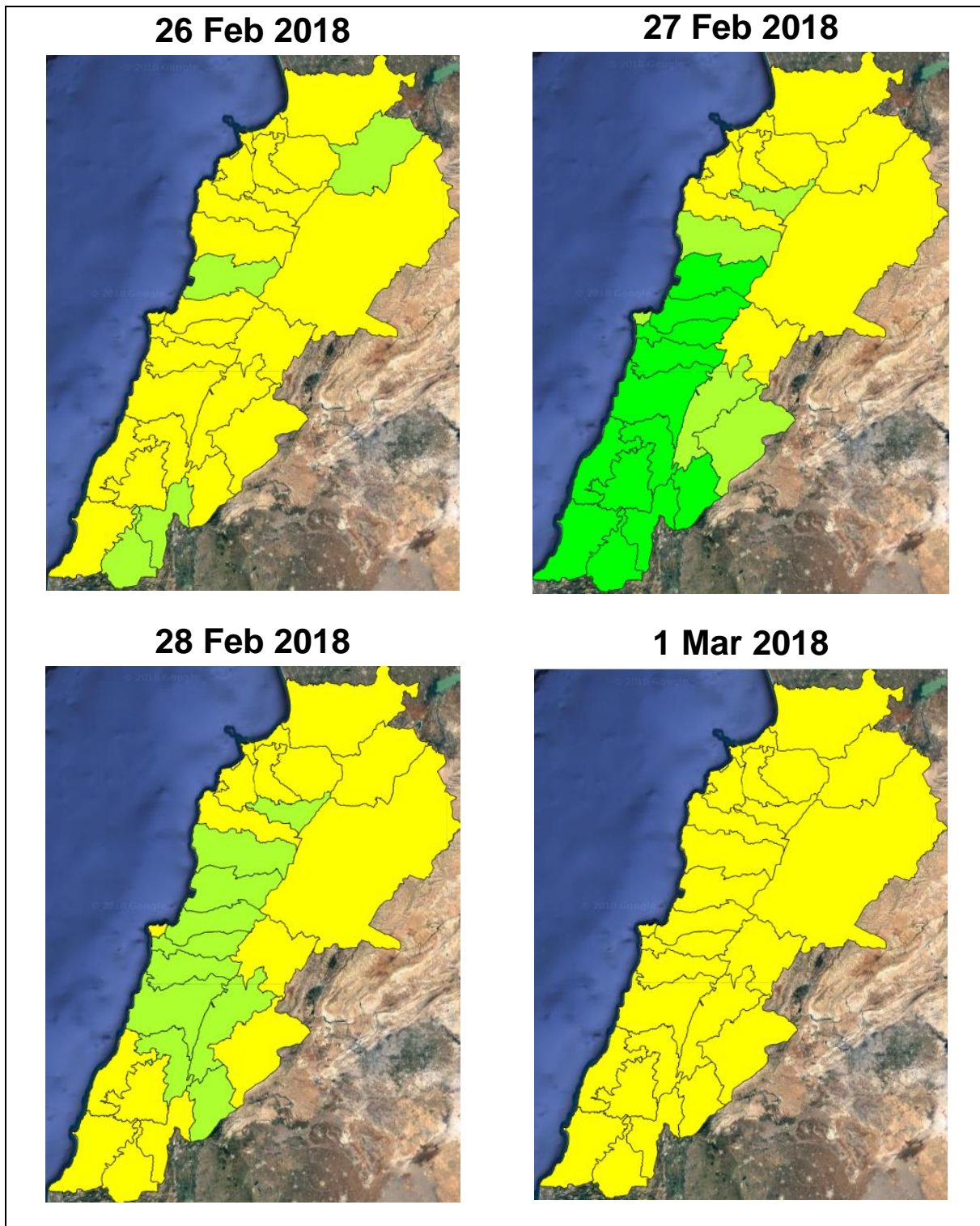
Please note that the indicated temperature is at 2 meters height from the ground.

General description of potential fire risk situation

Symbol	Level of risk	Meaning and actions
VL	Very low	Very low fire risk. Controlled burning operations can be hardly executed due to high fuel moisture content. Normally wildfires self-extinguish.
L	Low	Low fire risk. Controlled burning operations can be executed with a reasonable degree of safety.
ML	Medium low	Medium-low fire risk. Controlled burning operations can be executed in safety conditions. All the fires need to be extinguished.
M	Medium	Medium fire risk. Controlled burning operations would be avoided. All the fires need to be very well extinguished.
M	Medium high	Controlled burning is not recommended. Open flame will start fires. Cured grasslands and forest litter will burn readily. Spread is moderate in forests and fast in exposed areas. Patrolling and monitoring is suggested. Fight fires with direct attack and all available resources.
H	High	Ignition can occur easily with fast spread in grass, shrubs and forests. Fires will be very hot with crowning and short to medium spotting. Direct attack on the head may not be possible requiring indirect methods on flanks. Patrolling and monitoring the territory is highly suggested.
E	Extreme	Ignition can occur also from sparks. Fires will be extremely hot with fast rate of spread. Control may not be possible during day due to long range spotting and crowning. Suppression forces should limit efforts to limiting lateral spread. Damage potential total. Patrolling and monitoring the territory is highly suggested.

Beirut, 27 February 2018

FIRE RISK INDEX



Layer Legend:
Lebanon Wildfire Risk Index 1

Data: Run: 27/02/2018 00:00. Forecast for 27

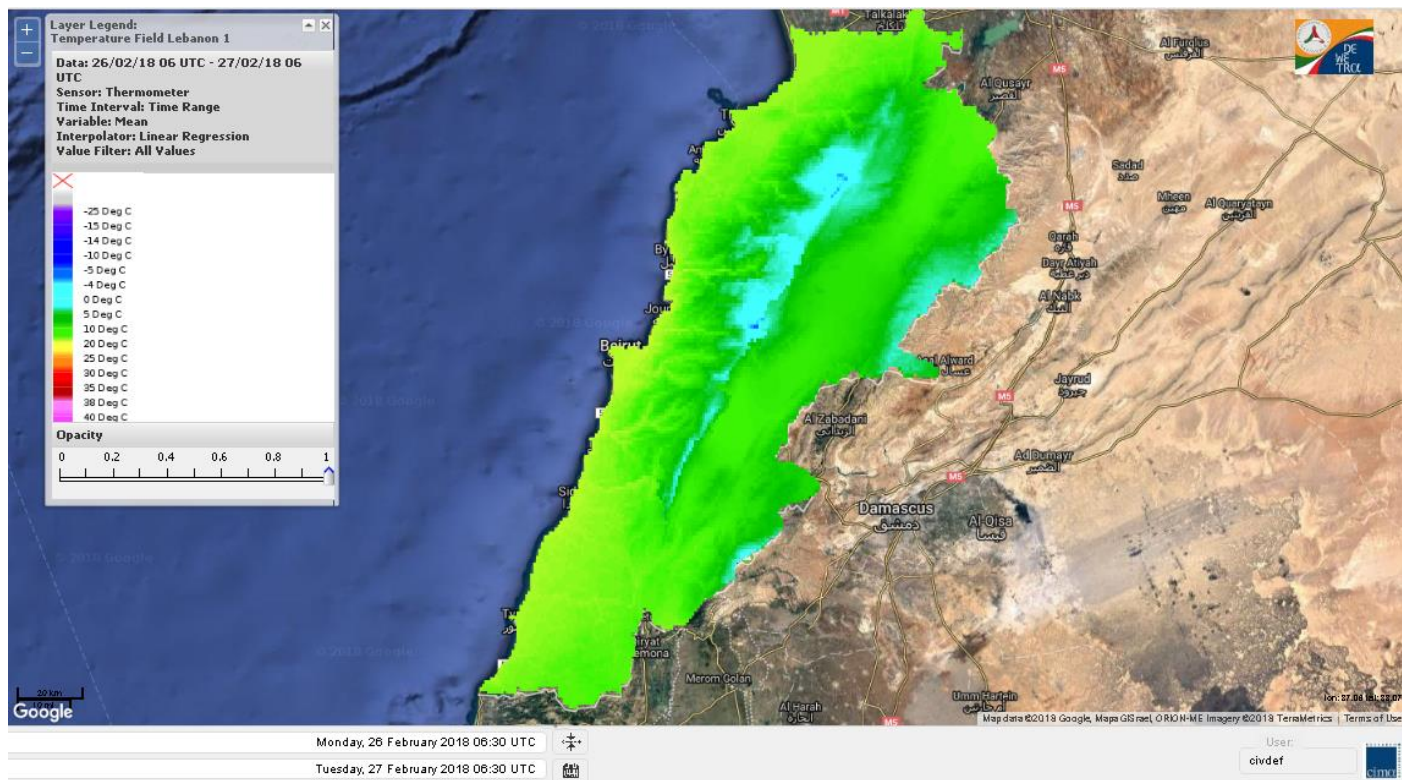
Model: RISICO for the Republic of Lebanon

Variable: Fire Weather Index

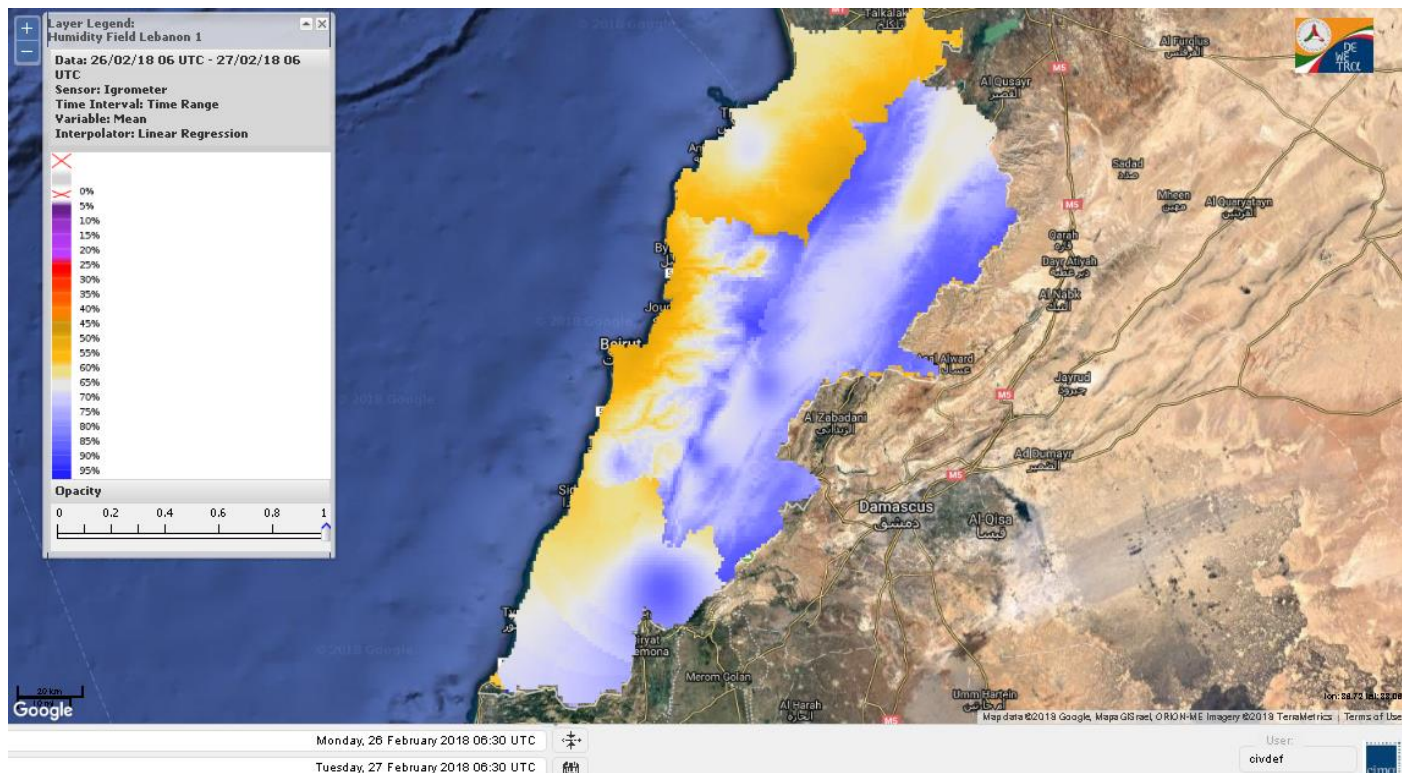
Spatial Resolution: Caza

- VERY LOW
- LOW
- MEDIUM-LOW
- MEDIUM
- MEDIUM-HIGH
- HIGH
- EXTREME

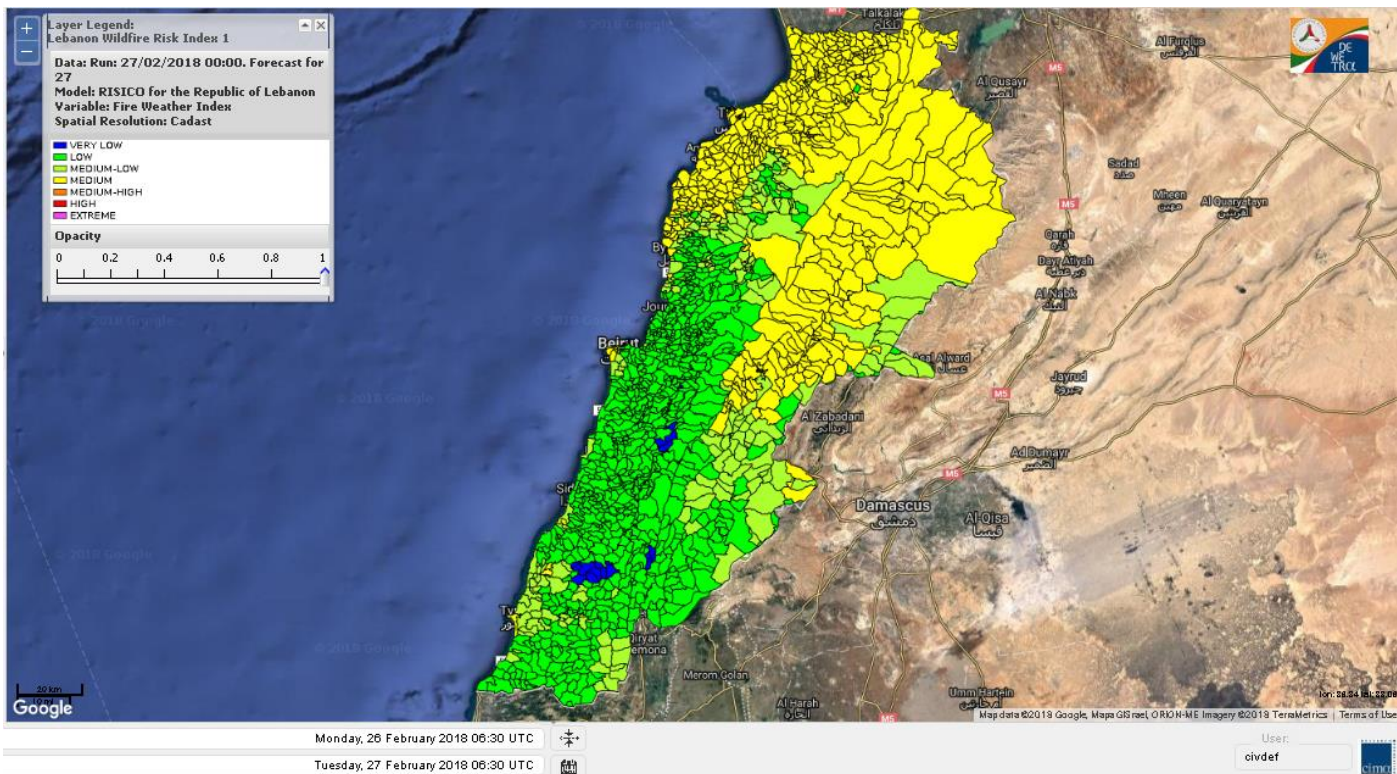
Lebanon temperature for Lebanon 27 Feb 2018



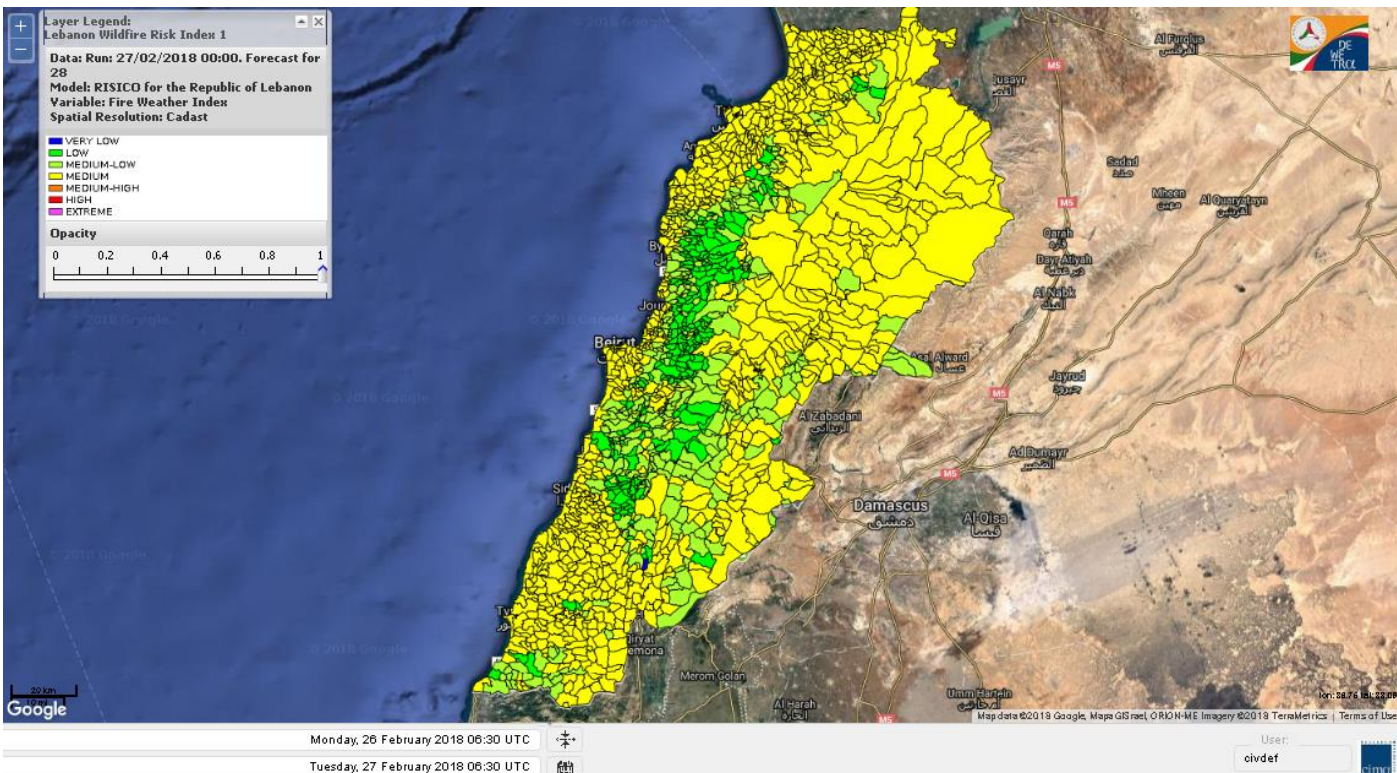
Lebanon humidity for Lebanon 27 Feb 2018



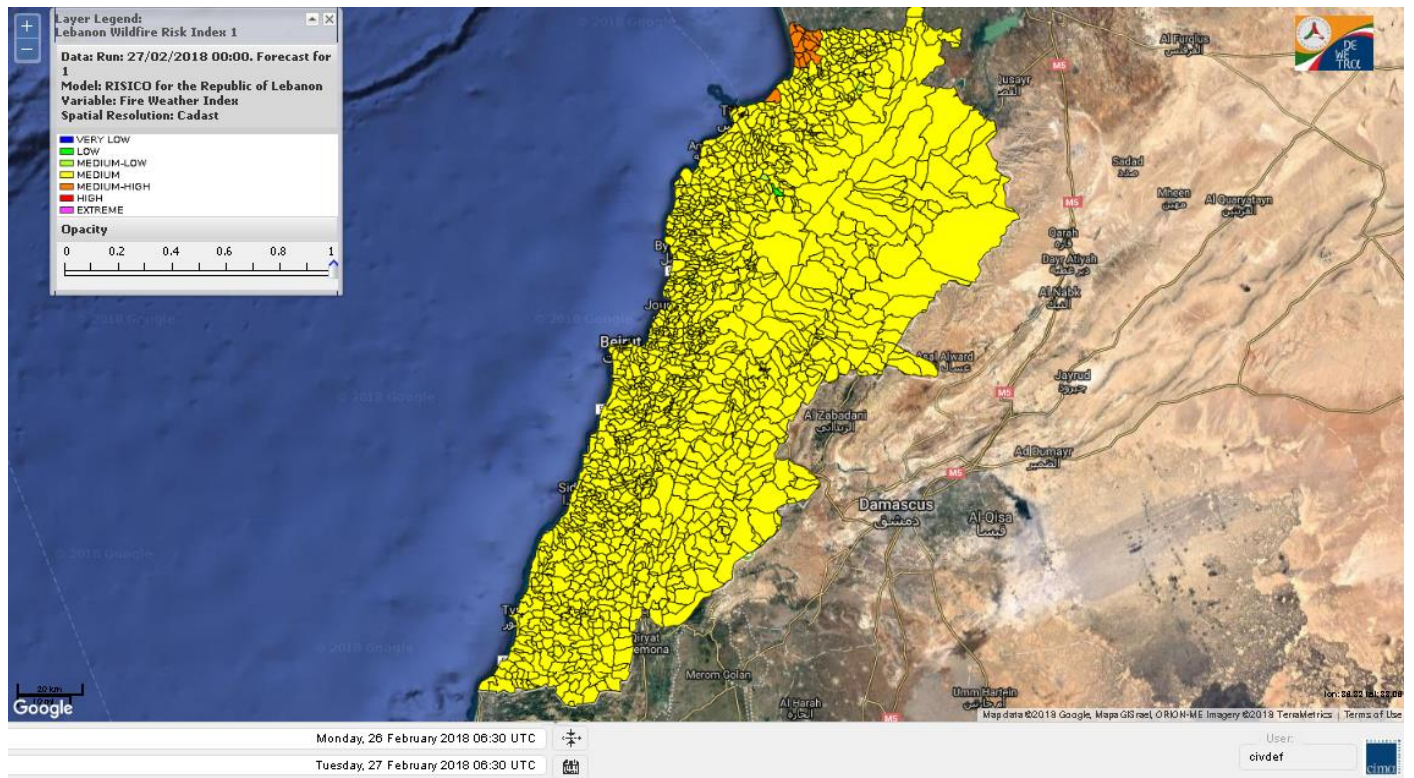
Lebanon for 27 Feb 2018



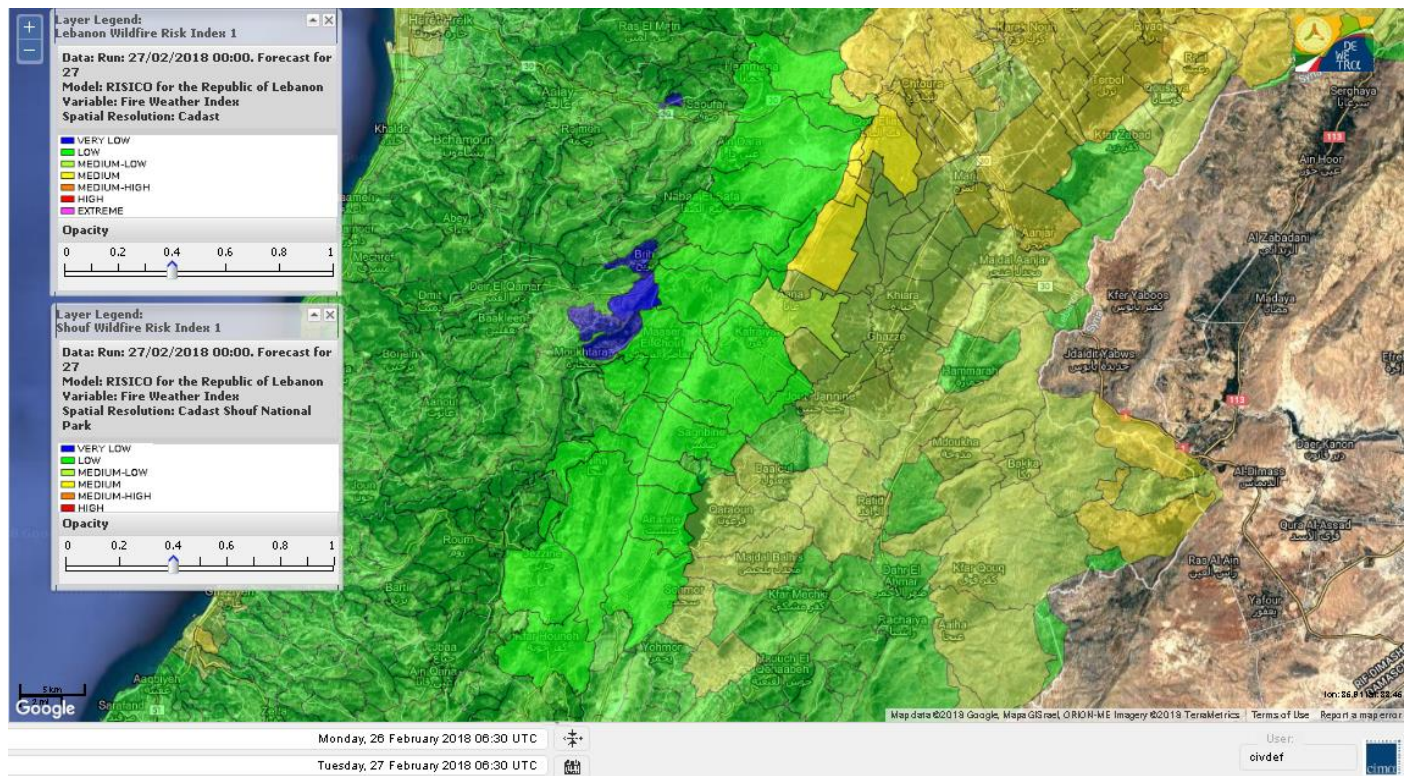
Lebanon for 28 Feb 2018



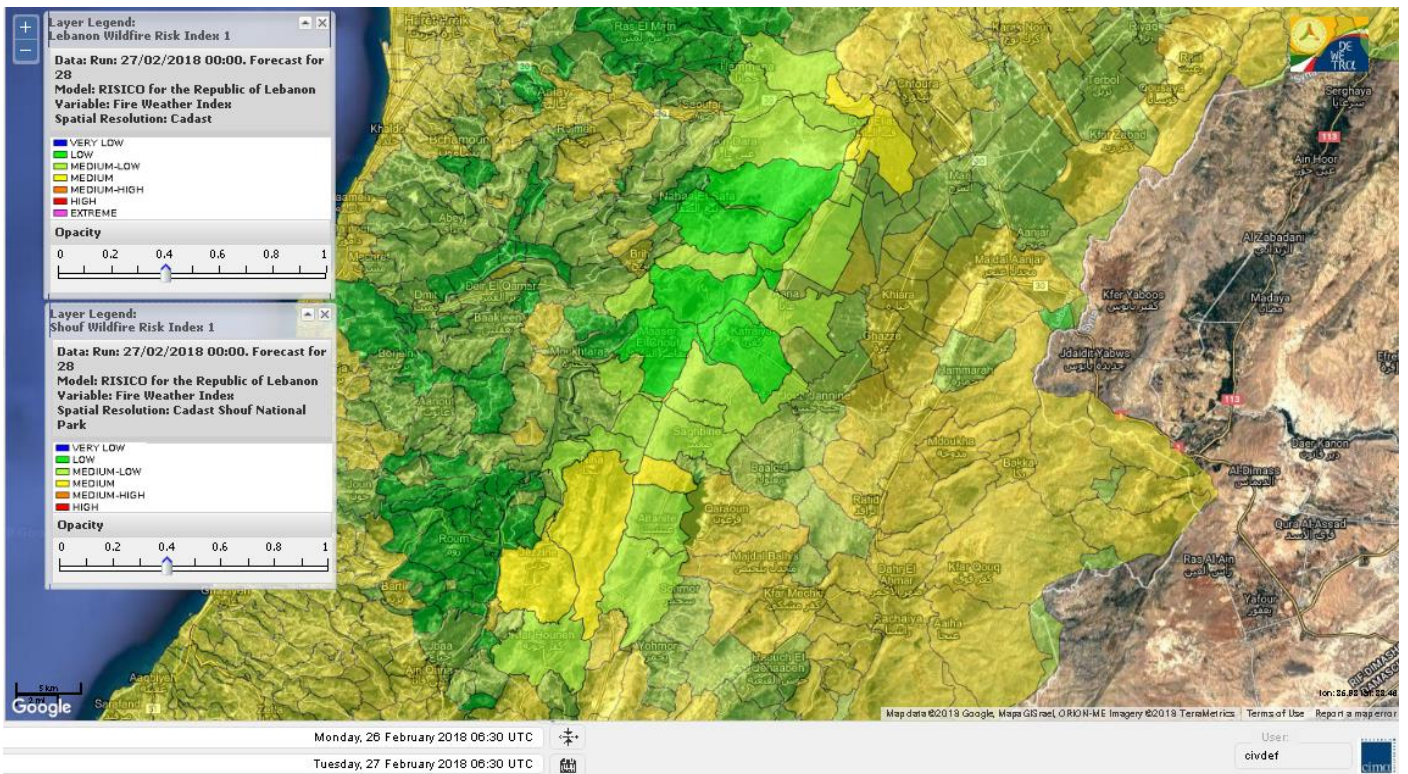
Lebanon for 1 Mar 2018



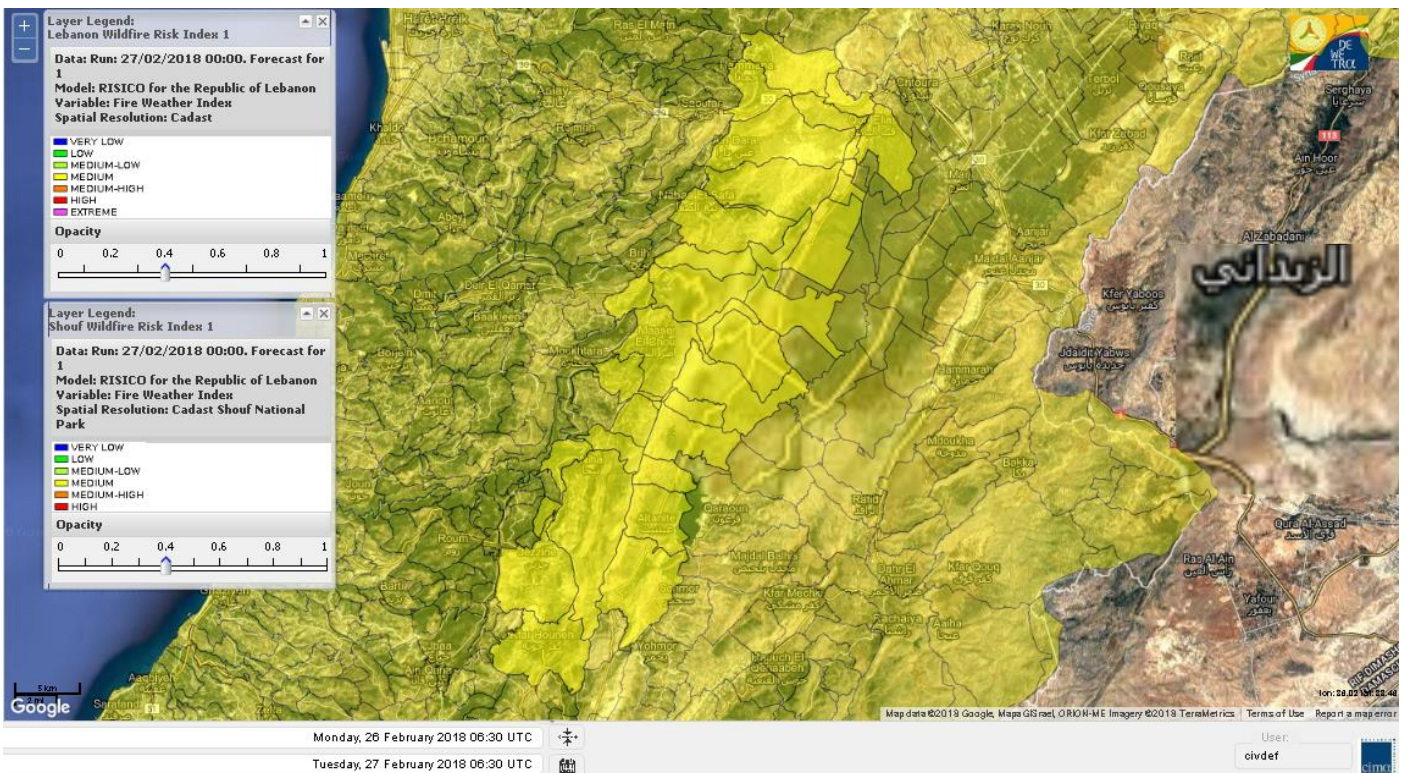
Shouf Biosphere Reserve Forecast for 27 Feb 2018



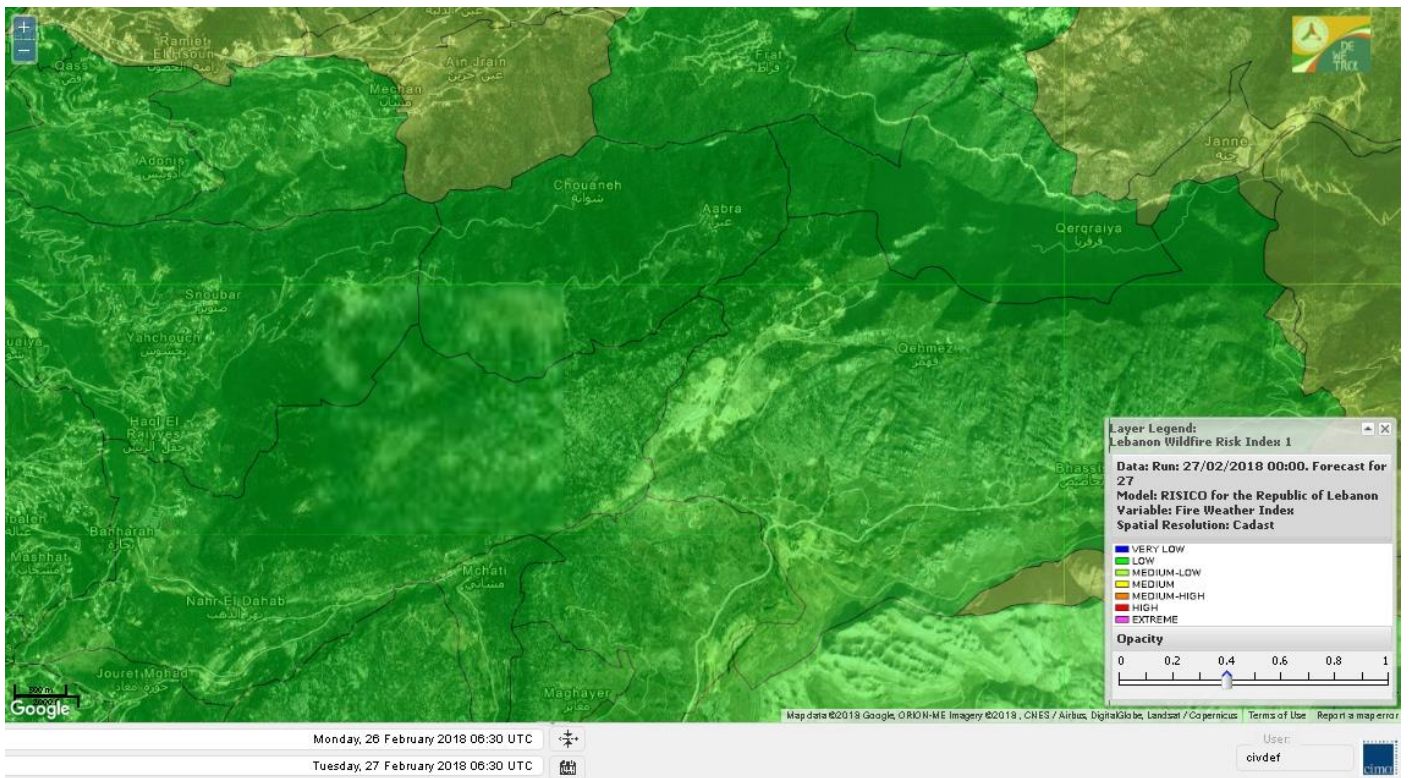
Shouf Biosphere Reserve Forecast for 28 Feb 2018



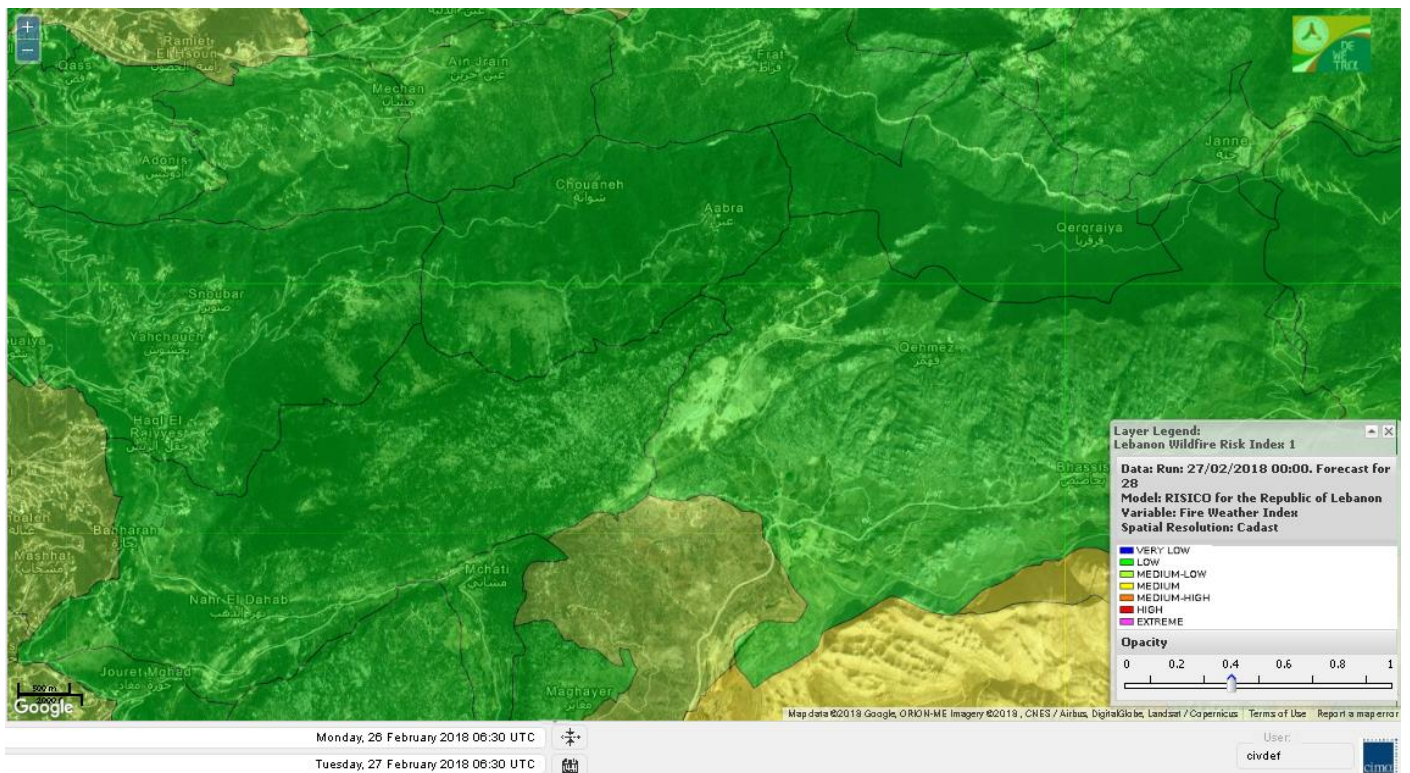
Shouf Biosphere Reserve Forecast for 1 Mar 2018



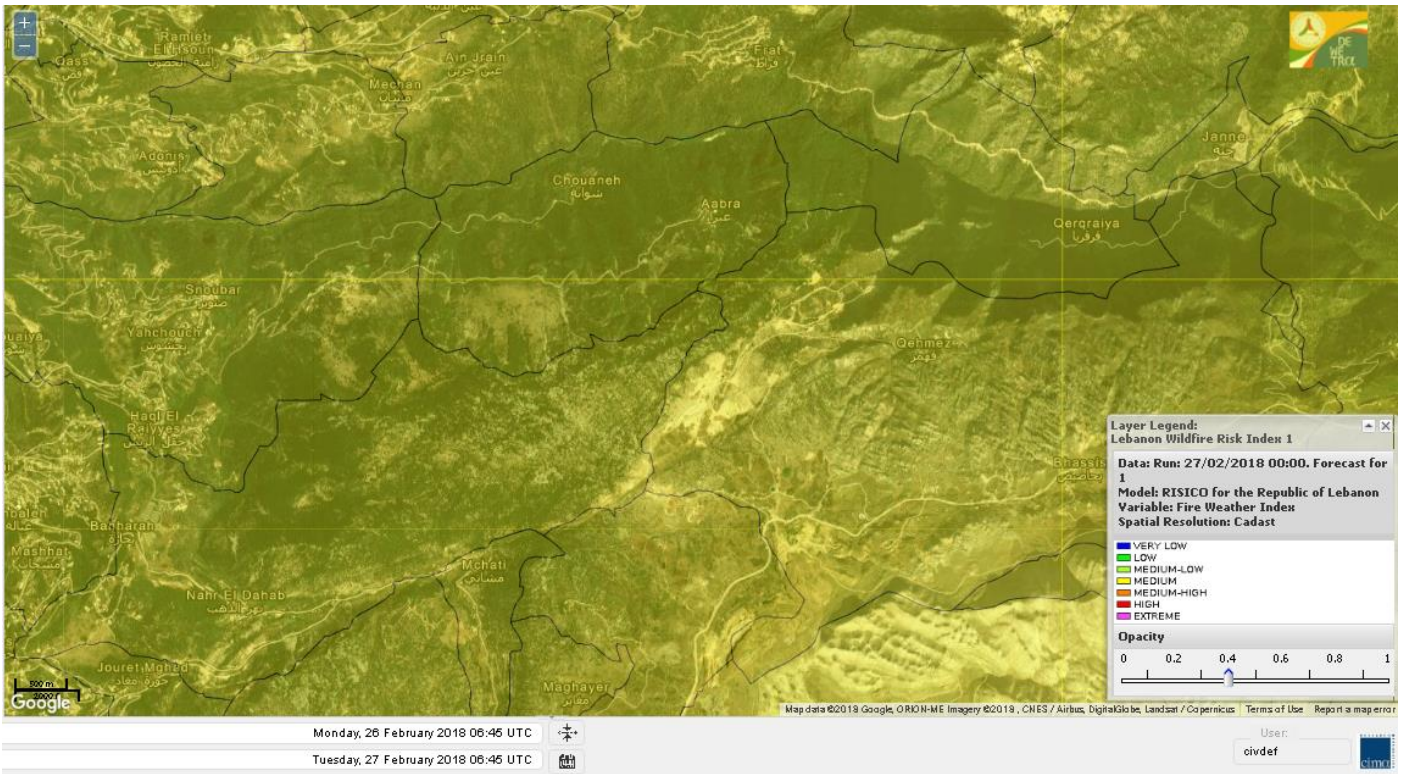
Jabal Moussa Reserve Forecast for 27 Feb 2018



Jabal Moussa Reserve Forecast for 28 Feb 2018



Jabal Moussa Reserve Forecast for 1 Mar 2018



Nord

Koura

Municipality	27-Feb	28-Feb	01-Mar	Municipality	27-Feb	28-Feb	01-Mar	Municipality	27-Feb	28-Feb	01-Mar
Aaba	M	M	M	Afsaddiq	M	M	M	Ain Ekrine	M	M	M
Amioun	M	M	M	Anfeh	M	M	M	Badbhoun	M	M	M
Barghoun	M	M	M	Barsa	M	M	M	Batroumine	M	M	M
Bdebba	M	M	M	Bechmizine	M	M	M	Bednaye El-Koura	M	M	M
Bhabbouch El-Koura	M	M	M	Bkeftine	M	M	M	Bnehran	M	M	M
Bqaiia El-Koura	M	M	M	Bsarma	M	M	M	Btaaboura	M	M	M
Bterram	M	M	M	Btouratij	M	M	M	Bziza	M	M	M
Dar Beechtar	M	M	M	Dar Chmezzine	M	M	M	Deddeh	M	M	M
Deir El-Balamand	M	M	M	Fih	M	M	M	Hraiche	M	M	M
Ijdaabrine	M	M	M	Kaftoun	M	M	M	Kefraya El-Koura	M	M	M
Kfarakka	M	M	M	Kfarhata	M	M	M	Kfarhazir	M	M	M
Kfarkahel	M	M	M	Kfarsaroun	M	M	M	Kosba	M	M	M
Mejdel el-Koura	M	M	M	Nakhle	M	M	M	Qalhat	M	M	M
Ras Masqa	M	M	M	Rechdibbine	M	M	M	Zakroun	M	M	M
Zgharta El-Mtaouile	M	ML	M								

Bcharre

Municipality	27-Feb	28-Feb	01-Mar	Municipality	27-Feb	28-Feb	01-Mar	Municipality	27-Feb	28-Feb	01-Mar
Aabdine	ML	ML	M	Bane	ML	M	M	Barhelioun	ML	ML	M
Bazouone	ML	M	M	Becharre	ML	ML	M	Beit Menzer	ML	ML	M
Billa	ML	L	M	Blaouza	ML	M	M	Bqaa Kafra	L	M	M
Bqerqacha	ML	M	M	Breissat	ML	ML	M	Dimane	ML	ML	M
Hadath El Jobbeh	ML	ML	M	Hadchit	L	ML	M	Hasroun	ML	M	M
Mazraat Aassaf	L	ML	M	Mazraat Bani Saab	M	ML	M	Mchaa El-Jobbeh	L	ML	M
Metrit	M	ML	M	Moghr El-Ahoual	M	M	M	Ouadi Qannoubine	L	L	L
Qanat	ML	L	M	Qnayouer	L	L	M	Tourza	ML	ML	M

Batroun

Municipality	27-Feb	28-Feb	01-Mar	Municipality	27-Feb	28-Feb	01-Mar	Municipality	27-Feb	28-Feb	01-Mar
Aabrine	M	M	M	Aalali	ML	L	M	Aartiz	M	M	M
Abdelli	L	ML	M	Ajdabra	M	M	M	Assia	M	ML	M
Basbina	M	M	M	Batroun	M	M	M	Bcheleh	ML	L	M
Bechtoudar	M	ML	M	Beit Chlala	M	ML	M	Beit Kassab	ML	ML	M
Bijdarfil	M	M	M	Bqesmaya	M	M	M	Chatine	ML	ML	M
Chebtin	ML	ML	M	Chekka	M	M	M	Daael	M	M	M
Dahr Abi Yaghi	L	L	M	Daraya El-Batroun	M	M	M	Deir Billa	M	ML	M
Deir Kfifane	M	M	M	Deir Mar Youhanna EL	M	ML	M	Deir Mar Youssef Jra	L	ML	M
Douma	ML	L	M	Douq	ML	L	M	Eddeh El-Batroun	M	M	M
Ftihat El-Batroun	M	M	M	Ghouma	ML	ML	M	Hadtoun	ML	L	M
Hamat	M	M	M	Harbouna	M	M	M	Hardine	ML	ML	M
Helta	M	M	M	Hery	M	M	M	Jebba	M	M	M
Jrabta El-Batroun	ML	ML	M	Jrane El-Batroun	M	M	M	Kfar Aabida	M	M	M
Kfar Halda	ML	ML	M	Kfarb Shlaimane	M	M	M	Kfarhatna	M	M	M
Kfarhay	M	M	M	Kfarhelos	M	M	M	Kfifane	M	M	M

Kfour El Arabi	ML	ML	M	Koubba	M	M	M	Kour	M	M	M
Mar Mama	ML	L	M	Masrah	ML	L	M	Mehmarch	M	ML	M
Mrah Chdid	M	M	M	Mrah El Ziyat	M	M	M	Mrah El-Hajj	ML	L	M
Nahle El-Batroun	ML	ML	M	Niha El-Batroun	M	ML	M	Oujh El-Hajjar	M	M	M
Ouata Houb	L	M	M	Qatnaaoun	M	M	M	Racha	M	ML	M
Rachana	M	M	M	Rachkida	M	M	M	Ram El-Batroun	ML	L	M
Ras Nahhach	M	M	M	Selaata	M	M	M	Sghar	ML	ML	M
Smar Jbayl	M	M	M	Sourat El-Batroun	M	M	M	Tannourine El-Faouqa	ML	M	M
Tannourine Et-Tahta	L	ML	M	Thoum	M	M	M	Toula El-Batroun	ML	ML	M
Zan	M	M	M								

Zgharta

Municipality	27-Feb	28-Feb	01-Mar	Municipality	27-Feb	28-Feb	01-Mar	Municipality	27-Feb	28-Feb	01-Mar
Aachach	M	M	M	Aalma	M	M	M	Aarde	M	M	M
Aintourine	ML	ML	M	Arabet Qozhaya	L	L	M	Arde	M	M	M
Arjis	M	M	M	Asnoun	M	M	M	Ayto	L	ML	M
Basloukit	M	M	M	Bchannine	M	M	M	Besebeel	M	M	M
Bhairret Toula	M	M	M	Bnachee	M	M	M	Boussit	M	M	M
Danha	M	M	M	Daraiya Zgharta	M	M	M	Deir Jdeide	M	M	M
Ehden	ML	M	M	Halan	M	M	M	Hariq Zgharta	M	M	M
Houakir	M	ML	M	Hraiqis	M	M	M	Iaal	M	M	M
Ijbaa	ML	ML	M	Karm Saddeh	ML	L	M	Kfarchakhna	M	M	M
Kfardlaqous	M	M	M	Kfarfou	M	M	M	Kfarhata Zgharta	M	M	M
Kfarhoura	M	M	M	Kfarsghab	ML	M	M	Kfaryachit	M	M	M
Kfarzaina	M	M	M	Khaldiye	M	M	M	Mazraat Ajbeaa	M	M	M
Mazraat Et-Teffah	L	ML	M	Mazraat Jneid	M	M	M	Mejdlaiya Zgharta	M	M	M
Merh Kfarsghab	M	M	M	Miryata	M	M	M	Miziara	ML	L	M
Mzraat Kefraya	M	M	M	Qorah Bach	M	M	M	Rachiine	M	M	M
Ras Kifa	M	M	M	Sakhra	M	M	M	Sebhel Zgharta	ML	M	M
Serhel	L	L	ML	Tallet Zgharta	M	M	M	Toula Zgharta	ML	M	M
Zgharta	M	M	M								

Minieh-Denniye

Municipality	27-Feb	28-Feb	01-Mar	Municipality	27-Feb	28-Feb	01-Mar	Municipality	27-Feb	28-Feb	01-Mar
Aasaymout	M	ML	M	Aaymar	M	M	M	Aazki	M	M	M
Ain El-Tineh-Miniyeh	M	M	M	Assoun	M	M	M	Bakhaaoun	M	M	M
Bchennata	M	M	M	Bechehhara	ML	L	M	Beddawi	M	M	M
Behouaita	ML	ML	M	Beit El Foqss	M	M	M	Beit Haouik	M	M	M
Beit Zoud	M	M	M	Bekaasafrine	M	M	M	Borj El Yahoudiyeh	M	M	M
Bqarsouna	M	M	M	Btermaz	M	M	M	Debaael	M	ML	M
Deir Ammar	M	M	M	Deir Nbouh	M	ML	M	Haouaret-Miniyeh	M	ML	M
Haql el Azimeh	M	M	M	Harf El Siyad	M	M	M	Hazmiye-Miniyeh	M	M	M
Izal	M	M	M	Jarjour	L	L	M	Jayroun	M	M	M
Kahf El-Malloul	ML	ML	M	Karm El-Moher	M	M	M	Kfar Binine	M	M	M
Kfarchalane	M	M	M	Kfarhabou	M	M	M	Kharroub-Miniyeh	M	M	M
Mazraat El-Kreme	M	ML	M	Mazraat Ketrane	M	M	M	Merkebtta	M	M	M
Minyeh	M	M	MH	Mrah El Sfirat	M	M	M	Mrah Sraj	M	M	M
Mrebbine	M	M	M	Nabi Youcheaa	M	M	M	Nemrine	M	M	M

Qarhaiya	M	M	M	Qarne	M	M	M	Qarsita	M	M	M
Qattineh-Miniyeh	M	M	M	Qemmamine	M	M	M	Qraine	M	M	M
Raouda-Aadoua	M	M	M	Rihaniyet-Miniyeh	M	M	M	Sfireh	M	M	M
Sir Ed-Danniyeh	M	M	M	Tarane	M	M	M	Terbol-Miniyeh	M	M	M
Zaghartaghriane	M	ML	M	Zouq Bhannine	M	M	M				

Nabatiye

Nabatiye

Municipality	27-Feb	28-Feb	01-Mar	Municipality	27-Feb	28-Feb	01-Mar	Municipality	27-Feb	28-Feb	01-Mar
Aabba	VL	M	M	Aazzi	L	M	M	Adchit El-Chqif	L	M	M
Ain Bou Swar	L	M	M	Ain Kana	L	M	M	Ali El-TaHER	L	M	M
Ansar	ML	M	M	Arab Salim	L	M	M	Arnoun	L	M	M
Bfaroue	L	M	M	Breyqaah	L	M	M	Charqiyeh	L	M	M
Choukine	L	M	M	Deir El Zahrani	L	M	M	Doueir El-Nabatiyeh	VL	M	M
Habbouch El-Nabatiye	L	M	M	Hamra El-Nabatiyeh	ML	M	M	Harouf El-Nabatiyeh	VL	M	M
Hmaile	L	M	M	Houmin El Faouqa	L	M	M	Houmin El Tahta	L	M	M
Jarjough	L	M	M	Jbaah El-Nabatiyeh	L	ML	M	Jebchit	VL	M	M
Kfar Djal El-Nabatiy	L	M	M	Kfar Remmane	L	M	M	Kfar Sir	ML	M	M
Kfar Tebnit	L	M	M	Kfarfila	L	M	M	Kfour El-Nabatieh	L	M	M
Mayfadoun	L	M	M	Mazraat Bsaffour	VL	M	M	Mazraat Chalbaal	VL	M	M
Mazraat Dmoul	L	M	M	Mazraat El Khreibeh	L	M	M	Mazraat El-Bayad El-	L	M	M
Mazraat Kfarjaouz	VL	M	M	Mazraat Qalaat Meiss	L	M	M	Nabatiyeh El-Fawka	L	M	M
Nabatiyeh Et-Tahta	VL	M	M	Namiriyeh	L	M	M	Qaaqaiyet El Jisr	L	M	M
Qossaibeh El-Nabatiy	ML	M	M	Roumine	L	M	M	Sarba El-Nabatieh	L	M	M
Sir El-Gharbiyeh	L	M	M	Toul	VL	M	M	Yehmor El-Nabatiyeh	L	M	M
Zaoutar El Charkiyeh	L	M	M	Zaoutar El-Gharbiyeh	L	M	M	Zebdine El-Nabatiyeh	VL	M	M
Zefta	L	M	M								

Hasbaiya

Municipality	27-Feb	28-Feb	01-Mar	Municipality	27-Feb	28-Feb	01-Mar	Municipality	27-Feb	28-Feb	01-Mar
Ain Jarfa	L	ML	M	Abou Qamha	L	M	M	Ain Qania	L	ML	M
Bourghos	L	M	M	Chebaa	L	M	M	Chouaya Hasbaya	L	M	M
Dellafeh	L	M	M	Fardiss Hasbaiya	L	M	M	Hasbaya	L	M	M
Hbariyeh	L	ML	M	Kaoukaba Hasbaiya	L	M	M	Kfar Chouba	L	ML	M
Kfar Hamam	L	ML	M	Kfeir El-Zait	L	ML	M	Khalwat Hasbaya	L	L	M
Khreibet Hasbaiya	L	M	M	Majidiyeh Hasbaiya	L	M	M	Marj Ez-Zhour (Haouc	L	ML	M
Meri	L	M	M	Mimass	L	M	M	Rachaiya El-Fokhar	L	ML	M
Salaiyeb	L	M	M								

Marjayoun

Municipality	27-Feb	28-Feb	01-Mar	Municipality	27-Feb	28-Feb	01-Mar	Municipality	27-Feb	28-Feb	01-Mar
Aalmane Marjaayoun	L	ML	M	Aamra	L	M	M	Adayseh Marjaayoun	L	M	M
Adchit El-Koussair	L	M	M	Ain Aarab Marjaayoun	L	M	M	Bani Haiyann	L	M	M
Blatt Marjaayoun	L	M	M	Blida	ML	M	M	Borj El-Moulouk	L	M	M
Boueyda Marjaayoun	L	M	M	Deir Mimass	L	M	M	Deir Siriane	L	M	M
Dibbine	L	M	M	Ebel El Saqi	L	M	M	Houla	ML	M	M
Houra	L	M	M	Kfar Kila	L	M	M	Khiam Marjaayoun	L	M	M

Klayaa	L	M	M	Majdel Selem	ML	M	M	Marjaayoun	L	M	M
Markaba	L	M	M	Mays El-Jabal	ML	M	M	Mazraat Doumiat	L	M	M
Mazraat Sarada	L	M	M	Mhaibib	ML	M	M	Qabrikha	L	M	M
Qantara	L	M	M	Rab El-Thalathine	L	M	M	Saouaneh Marjayoun	L	M	M
Talloussa	L	ML	M	Taybeh Matjaayoun	L	M	M	Touline	L	M	M

Bent Jbail

Municipality	27-Feb	28-Feb	01-Mar	Municipality	27-Feb	28-Feb	01-Mar	Municipality	27-Feb	28-Feb	01-Mar
Ain-Ebel	L	M	M	Aitaroun	ML	M	M	Aynata Bint Jbeil	L	M	M
Ayta El-Chaeb	L	ML	M	Ayta El-Jabal	L	M	M	Beit Lif	L	ML	M
Beit Yahoun	L	M	M	Bint Jbeil	L	M	M	Borj Qalaway	ML	M	M
Braachit	L	M	M	Chakra	ML	M	M	Debel	L	M	M
Deir Antar	L	M	M	Froun	L	M	M	Ghandouriyeh Bint Jb	L	M	M
Hanine	L	M	M	Hariss	L	M	M	Hdatha	L	M	M
Jmeymeh	L	M	M	Kafra Bint Jbeil	L	ML	M	Kfar Dounine	L	M	M
Khirbet Selm	L	M	M	Kounine	ML	M	M	Maroun El Ras	ML	M	M
Qalaway	L	M	M	Qaouzah	L	ML	M	Qatmoun	L	M	M
Ramya Bint Jbeil	L	ML	M	Rchaf	L	ML	M	Rmeich	L	M	M
Safad Al Battikh	L	M	M	Salhaneh	L	ML	M	Serbine	L	M	M
Sultanieh Bint Jbeil	L	M	M	Tibnine	L	M	M	Tiri	L	ML	M
Yaroun	L	M	M	Yater	L	M	M				

Mont Liban

Jbail

Municipality	27-Feb	28-Feb	01-Mar	Municipality	27-Feb	28-Feb	01-Mar	Municipality	27-Feb	28-Feb	01-Mar
Aabeydat	L	L	M	Aalita	L	L	M	Aamchit	M	M	M
Aarab El-Lahib	L	M	M	Aarasta	L	L	M	Adonis Jbeil	L	L	M
Afqa Jbeil	L	ML	M	Ain El Delbeh Jbeil	ML	L	M	Ain El-Ghouayba	ML	L	M
Ain Jrain	ML	L	M	Ain Kfah	M	M	M	Almat El Chemaliyat	L	L	M
Almat El-Jenoubiya	L	L	M	Aqoura	M	M	M	Bayzoun	ML	L	M
Bchille Jbeil	L	L	M	Bechtida	L	L	M	Behdaydat	L	ML	M
Beit Habbaq	ML	M	M	Bejjeh	ML	ML	M	Bekhaaz	M	M	M
Berbara Jbeil	M	M	M	Bintael	L	L	M	Birket Hjoula	L	L	M
Blatt Jbeil	L	ML	M	Boulhos	L	L	M	Breyj Jbeil	L	L	M
Chamat	M	M	M	Chikhane	M	M	M	Chmout	L	ML	M
Eddeh Jbeil	ML	M	M	Ehmej	L	L	M	Fatre	L	L	M
Ferhet	ML	ML	M	Fghal	ML	ML	M	Frat	L	L	M
Ghabat	ML	ML	M	Ghalboun	ML	ML	M	Gharzouz	M	M	M
Ghofrine	M	M	M	Habil	L	L	M	Halate	ML	ML	M
Haqel	ML	L	M	Hbaline	ML	M	M	Hboub	L	ML	M
Hdeine	ML	ML	M	Hema Er-Rehban	M	M	M	Hema Mar Maroun Aann	L	M	M
Hjoula	L	L	M	Hosrayel	M	M	M	Hsarat	ML	M	M
Hsoun	ML	ML	M	Jaj	ML	ML	M	Janne	ML	L	M
Jbeil	M	M	M	Jeddeyl Jbeil	M	M	M	Jlisse	L	L	M
Jouret El-Qattine	L	L	M	Kfar Baal Annaya	L	L	M	Kfar Kidde	M	M	M
Kfar Kouas	L	L	M	Kfar Mashoun	ML	M	M	Kfoun	L	L	M

Kharbe Jbeil	M	ML	M	Laqlouq	M	M	M	Lassa	ML	L	M
Lehfed	ML	L	M	Maad	M	M	M	Mar Sarkis	ML	M	M
Mastita	ML	M	M	Mayfouq	ML	L	M	Mazraat El Siyad	ML	M	M
Mazraat El-Maaden	L	L	M	Mechane	L	L	M	Mechmech Jbeil	L	L	M
Mehrin	ML	ML	M	Mejdel El-Akoura	L	ML	M	Mghayreh Jbeil	ML	ML	M
Mounsef	M	M	M	Nahr Ibrahim	M	M	M	Qahmez	L	L	M
Qartaba	ML	L	M	Qartaboun	ML	M	M	Qattara Jbeil	L	L	M
Qorqraya	L	L	M	Ramout	ML	ML	M	Ras Osta	L	L	M
Rihane Jbeil	M	M	M	Sakiet El-Khayt	L	ML	M	Saqi Richmaya	ML	L	M
Sebrine	L	L	M	Seraita	ML	ML	M	Souane Jbeil	ML	ML	M
Tadmor	ML	ML	M	Tartej	ML	L	M	Torzaiya	ML	L	M
Yanouh Jbeil	ML	ML	M	Zibdine Jbeil	L	L	M				

El Metn

Municipality	27-Feb	28-Feb	01-Mar	Municipality	27-Feb	28-Feb	01-Mar	Municipality	27-Feb	28-Feb	01-Mar
Aain El-Qabu	L	L	M	Aain El-Qach	L	L	M	Aain El-Teffaha	L	ML	M
Aain el-Safsaf El-M	L	L	M	Abou Mizane	L	ML	M	Ain Aar	L	M	M
Ain Alaq	L	ML	M	Ain El-Kharroube	L	ML	M	Ain El-Sendiane	L	L	M
Ain El-Zeitoune	L	L	M	Ain Saadeh	L	M	M	Aintoura El-Matn	L	M	M
Amaret Chalhoub	L	M	M	Antelias	L	M	M	Atchaneh	L	ML	M
Ayroun	L	L	M	Baabdat	L	L	M	Baouchariyeh	L	M	M
Baskinta	L	ML	M	Beit Chabab	L	L	M	Beit El-Chaar	L	M	M
Beit El-Kekko	L	M	M	Beit Mery	L	ML	M	Bhersaf	L	L	M
Bikfaya	L	L	M	Biyakout	L	M	M	Bnabil	L	L	M
Bourj Hammoud	L	M	M	Bqennaya	L	ML	M	Broummana El-Matn	L	ML	M
Bsalim	L	M	M	Bsifrine	L	L	M	Bteghrine	L	L	M
Chaouiye	L	ML	M	Chouaya El-Matn	L	ML	M	Choueir	L	L	M
Chrine	L	L	M	Dahr El Sawan El-Mat	L	L	M	Daychouniyeh	L	M	M
Dbayeh	L	M	M	Deir Chamra	L	L	M	Deir Mar Abda el Mch	L	ML	M
Deir Mar Roukouz	L	M	M	Deir Tamiche	L	ML	M	Dik El-Mehdi	L	M	M
Dikwaneh	L	M	M	Douar El-Matn	L	L	M	Fanar	L	M	M
Fraike	L	L	M	Haret El-Ballaneh	L	M	M	Hbous	L	M	M
Himlaya	L	L	M	Jal El Did	ML	M	M	Jdeideh El-Metn	L	M	M
Jouar El-Matn	L	L	M	Jouret El-Ballout	L	ML	M	Kaaqour	L	L	M
Kfar Aaqab	L	L	M	Kfertay El-Matn	L	ML	M	Khenchara	L	L	M
Khillet El-Mtain	L	L	M	Konnabat Broummana	L	ML	M	Konnabat Salima	L	L	M
Machraah El-Matn	L	L	M	Majdel Tarchich	L	M	M	Majzoub	L	M	M
Mansouriyeh El-Metn	L	M	M	Mar Boutros Karm Et-	L	L	M	Mar Chaya et Mzekke	L	ML	M
Mar Moussa Ed-Douar	L	L	M	Marjaba	L	L	M	Masqa	L	ML	M
Mayasse	L	L	M	Mazraat Deir Aoukar	L	M	M	Mazraat El-Hadirat	L	M	M
Mazraat Yachouh	L	M	M	Mchikha	L	ML	M	Menqlet Mezher	L	M	M
Mhaydseh Matn	L	L	M	Mkalles	L	M	M	Mrouj	L	ML	M
Mtain	L	M	M	Mtayleb	L	M	M	Nabay	L	ML	M
Naccache	L	M	M	Ouadi Chahine	L	L	M	Ouadi El-Karm El-Mat	L	L	M
Ouata El-Mrouj	L	L	M	Ouyoun El-Matn	L	L	M	Qornet Chehwan	L	M	M
Qornet El-Hamra	L	ML	M	Roumieh	L	ML	M	Sfeilet Bikfaya	L	L	M
Sinn El-Fil	L	M	M	Zabbougha	L	L	M	Zalqa	L	M	M

Zarouon	L	L	M	Zekrite	L	ML	M	Zighrine El-Matn	L	ML	M
Zouk El-Khrab	L	M	M								

Chouf

Municipality	27-Feb	28-Feb	01-Mar	Municipality	27-Feb	28-Feb	01-Mar	Municipality	27-Feb	28-Feb	01-Mar
Aalmane El-Chouf	L	M	M	Aammqi El-Chouf	L	L	M	Ain Ouzein	VL	L	M
Ain Qani	L	ML	M	Ain Zhalta	L	L	M	Ainbal	L	L	M
Amatour	L	ML	M	Anout	L	ML	M	Atrine	L	ML	M
Baadarane	L	ML	M	Baaqline	L	ML	M	Baasir	L	M	M
Barja	L	M	M	Barouk	L	L	M	Bater	L	ML	M
Batloun	VL	ML	M	Bayqoun	L	M	M	Bchetfine	L	L	M
Beiteddine	L	L	M	Benouati Ech-Chouf	L	ML	M	Berjein	L	ML	M
Bireh et Mtalleh	VL	M	M	Biret El-Chouf	L	M	M	Bkechtine Ouel Mchei	L	L	M
Bkifa El-Chouf	L	ML	M	Botme	VL	L	M	Bqaiia Ech-Chouf	L	L	M
Bsaba El-Chouf	L	ML	M	Chammis El-Chouf	L	M	M	Chehim	L	ML	M
Chemaarine	L	L	M	Chourit	L	ML	M	Daher El-Chouf	L	L	M
Dalhoun	L	ML	M	Damour	L	M	M	Daraya El-Chouf	L	L	M
Deir El-Moukhalles	L	L	M	Deir Baba	L	L	M	Deir Dourit	L	ML	M
Deir El-Qamar	L	ML	M	Deir Kouche	L	L	M	Dibbieh	L	L	M
Dmit	L	ML	M	Fouara Jaafar	VL	ML	M	Fraidis El-Chouf	L	ML	M
Ghabet Jaafar	L	ML	M	Gharife	L	L	M	Haret Jandal	L	ML	M
Hasrout	L	ML	M	Jadra	L	M	M	Jahlieh	L	ML	M
Jbeih El-Chouf	L	ML	M	Jdeidet El-Chouf	L	ML	M	Jiyeh	ML	M	M
Jleilyeh	L	ML	M	Jmailiyeh	L	M	M	Joun	L	ML	M
Kahlounie El-Chouf	L	M	M	Ketermaya	L	M	M	Kfar Faqoud	L	L	M
Kfar Hamal	L	M	M	Kfar Him	L	ML	M	Kfar Katra	L	ML	M
Kfar Niss	L	ML	M	Kfar hay	L	ML	M	Kfarnabrakh	L	ML	M
Khirbet Bisri	L	L	M	Knayse El-Chouf	L	L	M	Maaniyeh	L	M	M
Maasser Beiteddine	L	ML	M	Maasser El-Chouf	L	L	M	Majdalouna	L	ML	M
Majdel El-Meouch	L	ML	M	Mazboud	L	M	M	Mazmoura	L	ML	M
Mazraat El Chouf	L	ML	M	Mazraat El Daher	L	L	M	Mazraat El-Douair	L	L	M
Mechref	L	ML	M	Mghairie	L	M	M	Mghayrie El-Chouf	L	ML	M
Moukhtara	L	ML	M	Mrusti	L	ML	M	Mtolle	L	ML	M
Naameh	L	M	M	Niha El-Chouf	L	M	M	Ouadi Abou Youssef	L	L	M
Ouadi Ed-Deir	L	M	M	Ouadi El-Sit	L	ML	M	Ouadi bnehlai	L	L	M
Qraibeh	L	ML	M	Qreiaa	L	L	M	Rmayle El-Chouf	L	M	M
Semqaniyeh	L	M	M	Sibline	L	M	M	Sirjbeil	L	ML	M
Warhanieh	L	ML	M	Werdaniyeh	L	M	M	Zaarourieh	L	ML	M

Baabda

Municipality	27-Feb	28-Feb	01-Mar	Municipality	27-Feb	28-Feb	01-Mar	Municipality	27-Feb	28-Feb	01-Mar
Abadiyeh	L	ML	M	Ain Mouaffaq	L	ML	M	Araiya	L	ML	M
Arbaniyeh	L	L	M	Arsoun	L	L	M	Baabda	L	M	M
Baalchmey	L	M	M	Bmaryam	L	L	M	Bourj El-Brajneh	ML	M	M
Boutchay	L	M	M	Bsaba Baabda	L	M	M	Btekhney	L	L	M
Btibyat	L	L	M	Bzbeddine	L	L	M	Chbeniyeh	L	ML	M
Chiyah	ML	M	M	Chmeisset Baabda	L	L	M	Chouit	L	L	M
Deir El-harf	L	L	M	Deir Khouna	L	L	M	Dlaybeh	L	L	M

Falougha	L	ML	M	Furn El-Chebbak	L	M	M	Hadath Beyrouth	L	M	M
Halaliyeh Baabda	L	L	M	Hammana	L	ML	M	Haret El Sett	L	ML	M
Haret Hamze	L	L	M	Haret Hreik	ML	M	M	Hasbaiya El-Metn	L	L	M
Jouar El-Hoz	L	L	M	Jouret Arsoun	L	L	M	Kfar Chima	L	M	M
Kfar Selouane	L	ML	M	Khalouat Baabda	L	ML	M	Kneisset Baabda	L	L	M
Laylakeh	L	M	M	Louayzeh Baabda	L	M	M	Merdache	L	M	M
Mzairaa Baabda	L	L	M	Ouadi Chahrour El OI	L	M	M	Ouadi Chahrour El So	L	ML	M
Qalaa Baabda	L	L	M	Qhraybe Baabda	L	L	M	Qobbayaa	L	ML	M
Qornayel	L	L	M	Qortada	L	L	M	Qrayeh Baabda	VL	ML	M
Qsaibeh Baabda	L	ML	M	Qtale Baabda	L	L	M	Ras El Metn	L	L	M
Ras El-Haref	L	ML	M	Rouayset El-Ballout	L	L	M	Salima Baabda	L	L	M
Tahouitat El Ghadir	L	M	M	Tarchich	L	ML	M	Zandouqa	L	L	M

Aley

Municipality	27-Feb	28-Feb	01-Mar	Municipality	27-Feb	28-Feb	01-Mar	Municipality	27-Feb	28-Feb	01-Mar
Abey	L	ML	M	Aghmid	L	L	M	Ain Dara	L	ML	M
Ain Drafil	L	ML	M	Ain El Halazoun	L	M	M	Ain El-Rmmaneh	L	L	M
Ain Jedideh	L	M	M	Ain Ksour	L	ML	M	Ain Onoub	L	ML	M
Ain Traz	L	ML	M	Ainab	L	L	M	Aley	L	M	M
Aramoun	L	ML	M	Aytat	L	M	M	Azouniyeh	L	ML	M
Baawerta	L	ML	M	Badghan Oua Wadi Bad	L	ML	M	Bassatine	L	ML	M
Bayssour	L	ML	M	Bchamoun	L	M	M	Bdadoun	L	ML	M
Behouara	L	ML	M	Bennay	L	ML	M	Bhamdoun El-Dayaa	L	M	M
Bhamdoun El-Mhatta	L	M	M	Bkhechthey	L	M	M	Bleibel	L	ML	M
Bmakine	L	M	M	Bmehray	L	L	M	Bouzrid	L	L	M
Bserrine	L	M	M	Bsous	L	L	M	Btalloun	L	M	M
Btater	L	M	M	Chanay	L	M	M	Charoun	L	ML	M
Chartoun	L	L	M	Chemlane	L	ML	M	Choueifat El-Aamrous	L	M	M
Choueifat El-Oumara	L	M	M	Choueifat El-Quoubbe	L	M	M	Dakkoun	L	ML	M
Deir Qoubel	L	M	M	Dfoun	L	M	M	Douair El Remmaneh	L	L	M
Ghaboun	L	ML	M	Habramoun	L	L	M	Homs Oua Hama	L	ML	M
Houmal	L	ML	M	Jisr El Qadi	L	ML	M	Kehaleh	L	L	M
Keyfoun	L	M	M	Kfar Aamey	L	ML	M	Kommatyeh	L	M	M
Maasrati	L	ML	M	Majdel Baana	L	ML	M	Mansourieh et Ain El	L	M	M
Mazraat El-Nahr	L	ML	M	Mchakhte	L	L	M	Mecherfeh	L	ML	M
Mejdlaya	L	ML	M	Mrayjat	L	L	M	Ramliyah	L	ML	M
Rechmaya	L	ML	M	Rejmeh	L	ML	M	Remhala	L	ML	M
Rouaysset El Neemane	L	ML	M	Saoufar	L	M	M	Selfaya	L	L	M
Sirhmoul	L	L	M	Souq El Ghareb	L	M	M	Taazanieh	L	M	M

Kesrouane

Municipality	27-Feb	28-Feb	01-Mar	Municipality	27-Feb	28-Feb	01-Mar	Municipality	27-Feb	28-Feb	01-Mar
Achkout	L	L	M	Adma Oua Dafneh	L	M	M	Ain Ed-Delbe Kesroua	L	L	M
Ain El-Rihane	L	ML	M	Aintoura Kesrouane	L	M	M	Ajaltoun	L	L	M
Akaybeh Kesrouane	ML	M	M	Aramoun Kesrouane	L	ML	M	Azra ouel Ozor	L	ML	M
Ballouneh	L	L	M	Batha	L	ML	M	Bekaatat Achkout	L	ML	M
Bekaatat Kanaan	L	L	M	Bizhel	L	ML	M	Bouar	ML	M	M
Bqaatouta	L	ML	M	Bqaq Ed-Dine	ML	M	M	Bzommar	L	ML	M

Chahtoul	L	ML	M	Chnaniir	L	ML	M	Chouan	L	L	M
Daraya Kesrouane	L	L	M	Darououn	L	ML	M	Deir Baglouch	L	ML	M
Dlebta	L	L	M	Eghbeh	L	L	M	Faraya	L	M	M
Fatka	ML	ML	M	Feytroun	L	L	M	Ghazir	L	ML	M
Ghbaleh Kesrouane	L	ML	M	Ghedrass	L	L	M	Ghosta	L	L	M
Ghynéh	L	ML	M	Harharaya w Kattine	L	ML	M	Harissa Kesrouane	L	M	M
Hayata	L	L	M	Hosein	L	L	ML	Hrajel	L	M	M
Jdeideh Ghazir	L	ML	M	Jeita	L	ML	M	Jounieh Ghadir	L	M	M
Jounieh Haret Sakhr	L	M	M	Jounieh Salel Alma	L	M	M	Jounieh Sarba	L	M	M
Jouret Bedrane	L	ML	M	Jouret Mhad	L	L	M	Jouret Termos	L	ML	M
Kfar Debiane	L	ML	M	Kfar Tay Kesrouane	L	L	M	Kfar Yassine	L	M	M
Kfour Kesrouane	L	ML	M	Kharayeb Nahr Ibrahi	ML	ML	M	Klayaat Kesrouane	L	L	M
Maarab	L	L	M	Maaysra Kesrouane	L	ML	M	Mayrouba	L	ML	M
Mazraat Er-Ras	L	M	M	Mazraat Mrah El-Mir	L	L	M	Mchaa El Ftouh	ML	M	M
Mchaa Faraya	L	ML	M	Mchaa Kfar Dibiane	L	M	M	Mghaer	L	L	M
Mradiyah	L	ML	M	Nahr Ed-Dahab	L	L	M	Nammoura Kesrouane	L	L	M
Ouata El Jaouz	L	L	M	Ouata Sillam	L	M	M	Raachine	L	L	M
Rayfoun	L	ML	M	Safra Kesrouane	ML	M	M	Shayle Kesrouane	L	ML	M
Tabarja	L	M	M	Yahchouch	L	L	M	Zaaytreh	L	ML	M
Zeytoun	ML	ML	M	Zouk Mikael	L	M	M	Zouk Mosbeh	L	M	M

Baalbek_Hermel

Baalbek

Municipality	27-Feb	28-Feb	01-Mar	Municipality	27-Feb	28-Feb	01-Mar	Municipality	27-Feb	28-Feb	01-Mar
Aadous	M	M	M	Aamchki	ML	M	M	Aarsal	M	M	M
Ain Baalbek	M	M	M	Ain Bourday	M	M	M	Ain El-Benye	ML	M	M
Ain El-Jaouz Baalbek	ML	ML	M	Ain El-Siya Chadoura	ML	ML	M	Al Khodr Baalbek	M	M	M
Al Nabi Chit	M	M	M	Aynata Baalbek	M	M	M	Baalbek	M	M	M
Bachwat	M	M	M	Barqa	M	M	M	Bednayel Baalbak	M	M	M
Beit Chama	M	M	M	Bijjaje	M	M	M	Bouday	M	M	M
Brital	ML	M	M	Btadi	M	M	M	Chaat	M	M	M
Chaibe	ML	M	M	Chlifa	M	M	M	Chmestar	M	M	M
Dar El-Oussa	M	M	M	Deir El-Ahmar	M	M	M	Deir Mar Maroun Baal	M	M	M
Douris	M	M	M	Fakiha	M	M	M	Hadath Baalbek	M	M	M
Ham	ML	M	M	Haour Taala	M	M	M	Hizzine	M	M	M
Hlebta	M	M	M	Hosh Barada	M	M	M	Hosh El Dahab	M	M	M
Hosh El Snid	M	M	M	Hosh El-Nabi	M	M	M	Hosh El-Rafiq	M	M	M
Hosh Tal Safiya	M	M	M	Hrebta	M	M	M	laat	M	ML	M
Jebaa	M	M	M	Jenta	M	M	M	Kfar Dabach	M	M	M
Kfar Dane	M	M	M	Khraibeh El-Hermel	M	M	M	Khreibet Baalbek	M	M	M
Kneisset Baalbek	M	M	M	Labueh	M	M	M	Maarboun	ML	M	M
Majdaloun	M	M	M	Maqneh	M	M	M	Mazraat Beit Mcheik	M	M	M
Misraya	M	M	M	Moqraq	M	M	M	Nabha El-Damdoum	M	M	M
Nabi Chbay	ML	M	M	Nabi Osman	M	M	M	Nahleh baalbek	ML	M	M
Ouadi El-Oss	M	M	M	Qaa Baayoun	M	M	M	Qaa Jouar Maqiye	M	M	M
Qaa Ouadi El-Khanzir	M	M	M	Qah Baalbek	M	M	M	Qarha Baalbek	M	M	M

Qsarnaba	M	M	M	Ram Baalbek	M	M	M	Ras Baalbek El Sahl	M	M	M
Ras Baalbek El-Charq	M	M	M	Riha	M	M	M	Saaide	M	M	M
Sbouba	M	M	M	Seriine El-Tahta	M	M	M	Slouqi	M	M	M
Taiba Baalbek	M	M	M	Talia	M	M	M	Taraiya	M	M	M
Temnin El Fawqa	M	M	M	Temnin El-Tahta	M	ML	M	Tfail	ML	ML	M
Yahfoufa	M	M	M	Yammouneh	M	M	M	Younine	M	M	M
Zboud	M	M	M								

Hermel

Municipality	27-Feb	28-Feb	01-Mar	Municipality	27-Feb	28-Feb	01-Mar	Municipality	27-Feb	28-Feb	01-Mar
Charbine El-Hermel	M	M	M	Hermel Jbab	M	M	M	Hermel	M	M	M
Maaysra El-Hermel	M	M	M	Michaa Mrjhine	M	M	M	Ouadi Faara	M	M	M
Ras Baalbek - Ouadi	M	M	M	Ras Baalbek El Gharb	M	M	M	Zighrine	M	M	M

Akkar

Akkar

Municipality	27-Feb	28-Feb	01-Mar	Municipality	27-Feb	28-Feb	01-Mar	Municipality	27-Feb	28-Feb	01-Mar
Aain Tinta	M	M	M	Aaiyat	M	M	M	Aakkar El-Aatiqa	M	ML	M
Aamar Akkar	M	M	M	Aamar El Baykat	M	M	M	Aamayer	M	M	M
Aamriyet Akkar	M	M	M	Aandqet	M	M	M	Aarmeh	M	M	M
Aarqa	M	M	M	Aawaynat	M	M	M	Aayoun Akkar	M	M	M
Abboudiye	M	M	M	Ain El-Zeit	M	M	M	Ain Yaaqoub	M	M	M
Akroum	M	M	M	Aridet Cheikh Zennad	M	M	MH	Baldeh w Mazraat Bal	M	M	M
Barcha	M	M	M	Bardeh	M	M	M	Bebnine	M	M	M
Beino	M	M	M	Beit Ayoub	M	M	M	Beit El-Haouch	M	M	M
Beit Mellat	M	M	M	Beit Younes	M	ML	M	Berbara Akkar	M	M	M
Berqayel	M	M	M	Bezbina	M	L	M	Bireh Akkar	M	M	M
Borj	M	M	M	Bqerezla	M	M	M	Bzal	M	M	M
Chane	M	M	M	Chaqdouf	M	M	M	Charbila	M	M	M
Cheikh Mohammad	M	M	M	Cheikh Taba Es-Sahl	M	M	M	Cheikh Taba	M	M	M
Cheikh Zennad	M	M	MH	Cheikhlar	M	M	M	Chir Hmairine	M	M	M
Daghle	M	M	M	Dahr Laissine	M	M	M	Darine	M	M	M
Dawra	M	M	M	Dawsa w Baghdadi	M	M	M	Dayret Nahr El-Kabir	M	M	M
Deir Dalloum	M	M	M	Deir Jennine	M	M	M	Denbou	M	M	M
Dibbabiyyeh	M	M	M	Douair Aadwiyeh	M	M	M	Fassikine	M	M	M
Fnaydek	M	ML	M	Fraydes Akkar	M	M	M	Ghazayle	M	M	M
Habchit	M	M	M	Hakour	M	M	M	Halba	M	M	M
Haouchab	M	M	M	Hayssat	M	M	MH	Haytla	M	M	M
Hayzouq	M	M	M	Hedd	M	M	M	Hmaira Akkar	M	M	M
Hmaiss Akkar	M	M	M	Hnaider	M	M	M	Hokr Ed-Dahri	M	M	MH
Hokr Etti	M	M	M	Hokr Jouret Srar	M	M	M	Houaich	M	M	M
Hrar	M	M	M	Idbil	M	M	M	Ilal	M	M	M
Janine	M	M	M	Jdeidet El-Joumeh	M	M	M	Jdeidet El-Kaiteh	M	M	M
Jebayel	M	M	M	Kafr	L	ML	M	Kafr	M	M	M
Karm Asfour	M	M	M	Kfar Melki Akkar	M	M	MH	Kfar Noun	M	M	M
Kfarharra	M	M	M	Khalsa	M	M	M	Kharnoubet Akkar	M	M	M

Khirbet Daoud Aakkar	M	M	M	Khirbet El Remmane	M	M	M	Khirbet Shar	M	M	M
Khoreybet El-Jindi	M	M	M	Khreibet Aakkar	M	M	M	Kneisset Aakkar	M	M	MH
Kneisset Hnaider	M	M	M	Knisse	M	M	M	Kroum El-Aarab	M	M	M
Kwachra	M	M	M	Kweykhat	M	M	M	Machta Hammoud	M	M	M
Majdala	M	M	M	Majdel Akkar	M	M	M	Mar Touma	M	M	M
Marlaya Melhem	M	M	M	Mashha	M	M	M	Massoudiye	M	M	MH
Mazraat Beit Ghattas	M	M	M	Mazraat En-Nahriye	M	M	M	Mechmech	M	M	M
Memneh	L	L	ML	Mhammara	M	M	M	Mighraq Aakkar	M	M	MH
Minyara	M	M	M	Moqayteh	M	M	MH	Mounjez	M	M	M
Msalla	M	M	M	Mzeihmeh	M	M	M	Nfaiseh	M	M	M
Noura Et-Tahta	M	M	M	Ouadi El-Haour	M	M	M	Ouadi El-Jamous	M	M	M
Ouyoun El-Ghizlane	M	M	M	Qaabarine	M	M	MH	Qabaait	M	M	M
Qachlaq	M	M	M	Qantara Aakkar	M	M	M	Qarha Aakkar	M	M	M
Qarqaf	M	M	M	Qboula	M	M	M	Qleiaat Aakkar	M	M	MH
Qloud El-Baqie	M	M	M	Qobaiyat Aakkar	M	M	M	Qobbat Chamrat	M	M	M
Qorayat	M	ML	M	Qornet Aakkar	M	M	M	Qsair Aakkar	M	M	M
Rahbe	M	M	M	Rihaniyet Aakkar	M	M	M	Rmah	M	M	M
Rmoul	M	M	MH	Saadine	M	M	M	Sadaqa	M	M	M
Saidnaya	M	M	M	Sammouniye	M	M	MH	Sayssouq	M	M	M
Semmaqiye	M	M	MH	Semmaqli	M	M	M	Sfinet El-Dreib	M	M	M
Sfinet El-Qaitaa	M	M	M	Sindyanet Zeidane	M	M	M	Souaisset Aakkar	M	M	M
Srar	M	M	M	Tal Abbas El Gharby	M	M	M	Tal Abbas El-Charqy	M	M	M
Tal Biret	M	M	MH	Tal Hmayra	M	M	M	Tal Maayan Tal Kiri	M	M	MH
Tal Sibel	M	M	MH	Tallet Chattaha	M	M	M	Tikrit	M	M	M
Tleil	M	M	M	Tshea	M	L	M	Zawarib	M	M	M
Zouq El Hosniyeh	M	M	M	Zouq El-Haddara	M	M	M	Zouq El-Hbalsa	M	M	M
Zouq El-Moqachrine	M	M	M								

Sud

Sour

Municipality	27-Feb	28-Feb	01-Mar	Municipality	27-Feb	28-Feb	01-Mar	Municipality	27-Feb	28-Feb	01-Mar
Aaiyeh	L	M	M	Aalma El-Chaab	L	ML	M	Aaytit	L	M	M
Abbassiyeh Sour	ML	M	M	Abou Chech	L	ML	M	Ain Abou Abdallah	ML	M	M
Ain Baal	ML	M	M	Arzoun	L	M	M	Aziyeh	L	L	M
Baflaya	ML	M	M	Barich	ML	M	M	Batouliyah	ML	M	M
Bayad	L	M	M	Bazouriyeh	ML	M	M	Bediass	L	M	M
Bestiyat	L	M	M	Borj El Chemali	ML	M	M	Borj En-Naqoura	L	M	M
Borj Rahhal	ML	M	M	Boustane	L	M	M	Btaychiyeh	L	ML	M
Chaaitiye	L	M	M	Chameh	L	ML	M	Chehabiye	L	M	M
Chehour	L	L	M	Chihine	L	ML	M	Debaal Sour	ML	M	M
Deir Amess	L	ML	M	Deir Kifa	ML	M	M	Deir Qanoun El-Ain	L	M	M
Deir Qanoun El-Naher	L	M	M	Derdghaiya	L	M	M	Dhayra	L	ML	M
Halloussiyeh	L	M	M	Hamoul	L	L	M	Hanaouey	L	M	M
Henniye	ML	M	M	Hmairi Sour	L	M	M	Iskandarouna Sour	L	ML	M
Jbal El Botom	L	ML	M	Jebbin	L	M	M	Jennata	L	M	M
Jijim	L	ML	M	Jouaiya	L	M	M	Kneisset Sour	L	M	M

Maarake	ML	M	M	Maaroub	L	M	M	Majadel	L	M	M
Majdalzoun	L	ML	M	Mansouri Sour	ML	M	M	Marnba	L	ML	M
Marouahine	L	ML	M	Mazraat El-Zalloutiy	L	M	M	Mazraat Mechref	L	M	M
Mazraat Tayr Semhat	L	L	M	Mheilib	ML	M	M	Neffakhiyeh	ML	M	M
Niha Sour	ML	M	M	Ouadi Jilo	ML	M	M	Qana	L	M	M
Qolaileh Sour	L	M	M	Rechknanay	L	ML	M	Rmadiyah	L	M	M
Selha Sour	L	M	M	Siddiqine	L	M	M	Sour	M	M	M
Srifa	L	M	M	Tayr Debbe	ML	M	M	Tayr Felsay	L	M	M
Tayr Harfa	L	ML	M	Touayri	L	ML	M	Toura	L	M	M
Yanouh Sour	L	M	M	Yarine	L	M	M	Zebqine	L	L	M

Saida

Municipality	27-Feb	28-Feb	01-Mar	Municipality	27-Feb	28-Feb	01-Mar	Municipality	27-Feb	28-Feb	01-Mar
Aanqoun	L	M	M	Aaqtanit	L	M	M	Aarab Ej-Jall	L	M	M
Aarab Tabbaya	L	M	M	Abra Saida	L	M	M	Adloun	ML	M	M
Adousiyeh	L	M	M	Ain-El-Deleb	L	M	M	Arzai	L	M	M
Babliyah	L	M	M	Barty	L	M	M	Bissariyeh	L	M	M
Bnaafoul	L	M	M	Bqosta	L	M	M	Bramiy	L	M	M
Daoudiyeh	L	M	M	Dareb El-Sim	L	M	M	Erkay	L	M	M
Ghassanieh	L	M	M	Ghazieh	ML	M	M	Hajjeh	L	M	M
Haret Saida	L	M	M	Hartiyeh	ML	M	M	Hlaliye Saida	L	M	M
Insariyat	L	M	M	Jazira Saida	ML	M	M	Kafar Bit	L	M	M
Kaoutariyet El-Siyad	L	M	M	Kfar Chellal	L	M	M	Kfar Hatta Saida	L	M	M
Kfar Milke Saida	L	M	M	Khartoum	L	M	M	Khaziz	L	M	M
Khirbet Ed-Douair Sa	L	M	M	Khirbet El-Bassal	L	M	M	Khrayeb Saida	ML	M	M
Loubieh	L	M	M	Maghdouche	L	M	M	Majdelyoun	L	M	M
Matariyet El-Choumar	ML	M	M	Matayriyeh	L	M	M	Mazraat 'Mseileh	ML	M	M
Mazraat 'Snaiber	L	M	M	Mazraat Aarab Soukka	L	M	M	Mazraat Deir Taqla	ML	M	M
Mazraat El Yahoudiye	ML	M	M	Mazraat El-Housseini	M	M	M	Mazraat El-Mhaydaleh	ML	M	M
Mazraat El-Ouasta	ML	M	M	Mazraat Jamjim	ML	M	M	Mazraat Kaoutariyet	M	M	M
Mazraat Kfar Badda	ML	M	M	Mazraat Oussamiyat	M	M	M	Mazraat Sari	ML	M	M
Mazraat Sinai	ML	M	M	Meemariyeh	L	M	M	Merouaniyeh	L	M	M
Miyeh ou Miyeh	L	M	M	Najjariyeh	ML	M	M	Qaaqaiyat El-Snaouba	L	M	M
Qnarit	L	M	M	Qraiye Saida	L	M	M	Saida Ed-Dekermane	L	M	M
Saida El-Oustani	L	M	M	Saida El-Qadimeh	L	M	M	Saida Kefraya	L	M	M
Saksakiyeh	L	M	M	Salhie Saida	L	M	M	Sarafand	L	M	M
Sfenta	L	ML	M	Tafahta	L	M	M	Tanbourit	L	M	M
Tebna	L	M	M	Zaghdraiya	L	M	M	Zeita	L	M	M
Zrariyeh	ML	M	M								

Jezzine

Municipality	27-Feb	28-Feb	01-Mar	Municipality	27-Feb	28-Feb	01-Mar	Municipality	27-Feb	28-Feb	01-Mar
Ain El-Mir (El Estab	L	M	M	Anane	L	L	M	Aramta	L	M	M
Ariya	L	ML	M	Aychiyeh	L	ML	M	Azour	L	L	M
Baba	L	L	M	Bayssour Jezzine	L	M	M	Benoueteh Jezzine	L	ML	M
Bhannine	L	ML	M	Bisri	L	L	M	Bkassine	L	L	M
Bouslaya	L	L	M	Btedine El-Leqech	L	L	M	Chbail	VL	L	M
Choualiq Jezzine	L	M	M	Dahr Ed-Deir	L	L	M	Deir El Qattine	L	L	M

Demachqiyeh	L	M	M	Ghabbatiyeh	L	L	M	Harf Jezzine	L	L	M
Hassaniyeh	L	M	M	Haytouleh	L	ML	M	Haytura	L	L	M
Hidab	L	ML	M	Homsiyeh	L	L	M	Jabal Toura	L	ML	M
Jarmaq	L	M	M	Jensnaya	L	M	M	Jernaya	L	M	M
Jezzine	L	M	M	Karkha	L	ML	M	Kfar Falous	L	M	M
Kfar Houna	L	ML	M	Kfar Jarrah	L	M	M	Lebaa	L	M	M
Louayzet Jezzine	L	ML	M	Machmouche	L	L	M	Mahmoudiyeh Jezzine	L	M	M
Maknounye Jezzine	L	L	M	Maraat Ouazaiyeh	L	M	M	Mazraat Daraya	L	ML	M
Mazraat El-Aarqoub	L	ML	M	Mazraat El-Mathane	L	L	M	Mazraat El-Rahbane	L	L	M
Mazraat Khallet Khaz	L	ML	M	Mazraat Louzid (Loua	VL	L	M	Mazraat Qrouh	L	M	M
Mazraat Tamra	L	M	M	Mazraat Zighrine Jez	L	ML	M	Mazraat	L	L	M
Mharbiyeh	L	M	M	Midane Jezzine	L	L	M	Mjeydel Jezzine	L	M	M
Mlikh	L	ML	M	Mrah El-Hbasse	L	M	M	Ouadi Baanqoudaine	L	M	M
Ouadi El-Laymoun	L	M	M	Ouardiyeh	VL	VL	M	Qabaa Jezzine	L	L	M
Qatrani	L	ML	M	Qaytouleh	L	L	M	Qtaleh Jezzine	L	L	M
Rihane Jezzine	L	M	M	Rimat	L	L	M	Roum	L	L	M
Roummanet	L	M	M	Sabbah	L	L	M	Saydoun	L	L	M
Sfaray	L	L	M	Snaya	L	L	M	Sojoud	L	ML	M
Srayri	L	M	M	Taaid	L	L	M	Wadi Jezzine	L	L	M
Zhalta	L	L	M								

Bekaa

West Bekaa

Municipality	27-Feb	28-Feb	01-Mar	Municipality	27-Feb	28-Feb	01-Mar	Municipality	27-Feb	28-Feb	01-Mar
Aammiq BG	M	ML	M	Ain El Tineh BG	L	M	M	Ain Zebdeh	L	ML	M
Ana	ML	ML	M	Aytanit	L	ML	M	Baaloul BG	ML	ML	M
Bab Mareh	L	M	M	Chouberqiye Aammiq	ML	M	M	Dakoue	ML	M	M
Deir Ain El-Jaouze	L	ML	M	Deir Tahniche	ML	ML	M	Ghaza	ML	M	M
Harime El-Soughra	ML	ML	M	Hoch Harimeh	ML	M	M	Jazira BG	ML	M	M
Jib Jennine	ML	ML	M	Kamed-El-Laouz	ML	M	M	Kefraya BG	L	L	M
Khiara El Atika	ML	M	M	Khiara	ML	M	M	Khirbet Qanafar	L	ML	M
Lala	L	ML	M	Lebbaya BG	ML	ML	M	Loussa	L	M	M
Machghara	L	ML	M	Manara (Hammara) BG	L	ML	M	Mansoura BG	ML	ML	M
Marej BG	ML	ML	M	Maydoun	L	M	M	Ouaqf BG	ML	ML	M
Qaraaoun	ML	M	M	Qelya	L	M	M	Raouda (Istabel)	M	ML	M
Saghbine	L	ML	M	Sohmor	ML	ML	M	Soltan Yacoub el Ara	ML	M	M
Souairy	ML	M	M	Sultan Yaacoub	ML	M	M	Tal Znoub	ML	ML	M
Yehmor BG	L	ML	M	Zilaya	L	ML	M				

Zahle

Municipality	27-Feb	28-Feb	01-Mar	Municipality	27-Feb	28-Feb	01-Mar	Municipality	27-Feb	28-Feb	01-Mar
Aanjar (Haouch Mouss	M	ML	M	Ablah	M	M	M	Ain Kfarzabad	ML	ML	M
Ali-El-Nahri	M	ML	M	Bar Elias	M	ML	M	Bouarej	M	M	M
Cheberqiyet Tabet	M	M	M	Chtaura	M	M	M	Deir El Ghazal	M	M	M
Delhamiyet Zahle	M	ML	M	Ferzol	M	M	M	Haouch El-Ghanam	M	ML	M
Haouch Es-Siyadeh	ML	ML	M	Haouch Hala	M	ML	M	Haouch Mandara	M	M	M

Haouch Qayssar	M	ML	M	Hezerta	M	M	M	Hosh Moussa	M	ML	M
Jdita	M	M	M	Kfarzabad	L	M	M	Ksara	ML	ML	M
Majdel Aanjar	ML	M	M	Makssi	M	M	M	Massa	M	M	M
Mazraat Er-Remtaniye	M	M	M	Mrayjat Zahle	ML	M	M	Mzaraa Zahle	M	ML	M
Nabi Ayla	M	M	M	Nasriyet Rizk	M	M	M	Nasriyet Zahle	ML	ML	M
Niha Zahle	M	M	M	Ouadi Ed-Deloum	L	ML	M	Ouadi El-Arayech	M	M	M
Qaa El Rim	M	M	M	Qab Elias	M	M	M	Qousaya	ML	M	M
Rhit	M	M	M	Riyak	M	ML	M	Saadnayel	M	M	M
Taal El-Akhdar	ML	ML	M	Taalbeya	M	M	M	Taanayel	M	M	M
Talamara	M	ML	M	Tcheflik Edde Haouch	M	ML	M	Tcheflik Qiqano	ML	ML	M
Terbol Zahle	M	ML	M	Touaite Zahle	M	M	M	Zahle Aradi	M	M	M
Zahle El-Berbara	M	M	M	Zahle El-Maallaqa	M	M	M	Zahle El-Midane	M	M	M
Zahle Er-Rassiye	M	M	M	Zahle Haouch El-Ouma	ML	ML	M	Zahle Haouch El-Ouma	ML	ML	M
Zahle Haouch Ez-Zara	M	M	M	Zahle Maalaqa Aradi	M	M	M	Zahle Mar Antonios	M	M	M
Zahle Mar Elias	M	M	M	Zahle Mar Gerios	M	M	M	Zahle Saydet En-Naja	M	M	M
Zebdoul	M	M	M								

Rachaiya

Municipality	27-Feb	28-Feb	01-Mar	Municipality	27-Feb	28-Feb	01-Mar	Municipality	27-Feb	28-Feb	01-Mar
Ain Arab Rachaiya	ML	M	M	Ain Ata	L	ML	M	Ain Harche	L	M	M
Aqabe Rachaya	L	M	M	Ayha	ML	M	M	Ayta El Fokhar	ML	M	M
Bakifa Rachaya	L	M	M	Bakka	ML	M	M	Beit Lahya	L	M	M
Bireh Rachaiya	ML	M	M	Daher El Ahmar	L	M	M	Deir El-Achayer	M	M	M
Heloua Rachaiya	M	M	M	Hoch El Qannabeh Rac	L	ML	M	Kaoukaba Bou Arab	L	ML	M
Kfar Danis	ML	M	M	Kfar Mechki	L	M	M	Kfar Qouq	ML	M	M
Kherbet Rouha	L	M	M	Majdel Balhiss	ML	M	M	Mdoukha	ML	M	M
Mhaydseh Rachaiya	ML	ML	M	Nabi Safa	L	M	M	Rachaiya	L	M	M
Rafid Rachaiya	ML	M	M	Selsata (Mazraat Dei	M	ML	M	Tannoura	L	M	M
Yanta	ML	M	M								

Beyrouth

Beyrouth

Municipality	27-Feb	28-Feb	01-Mar	Municipality	27-Feb	28-Feb	01-Mar	Municipality	27-Feb	28-Feb	01-Mar
Achrafieh	L	M	M	Ain el-Mreisse	M	M	M	Bachoura	ML	M	M
Beirut Central Distr	ML	M	M	Marfai	ML	M	M	Mazraa	ML	M	M
Medaouar	L	M	M	Minet el-Hosn	M	M	M	Mwssaitbeh	M	M	M
Ras Beirut	M	M	M	Rmeil	L	M	M	Saifi	ML	M	M
Zqaq el-Blat	ML	M	M								