

# Lebanon Fire Risk Bulletin



CIVIL DEDEFENCE

**Refer to cadast table condition.**

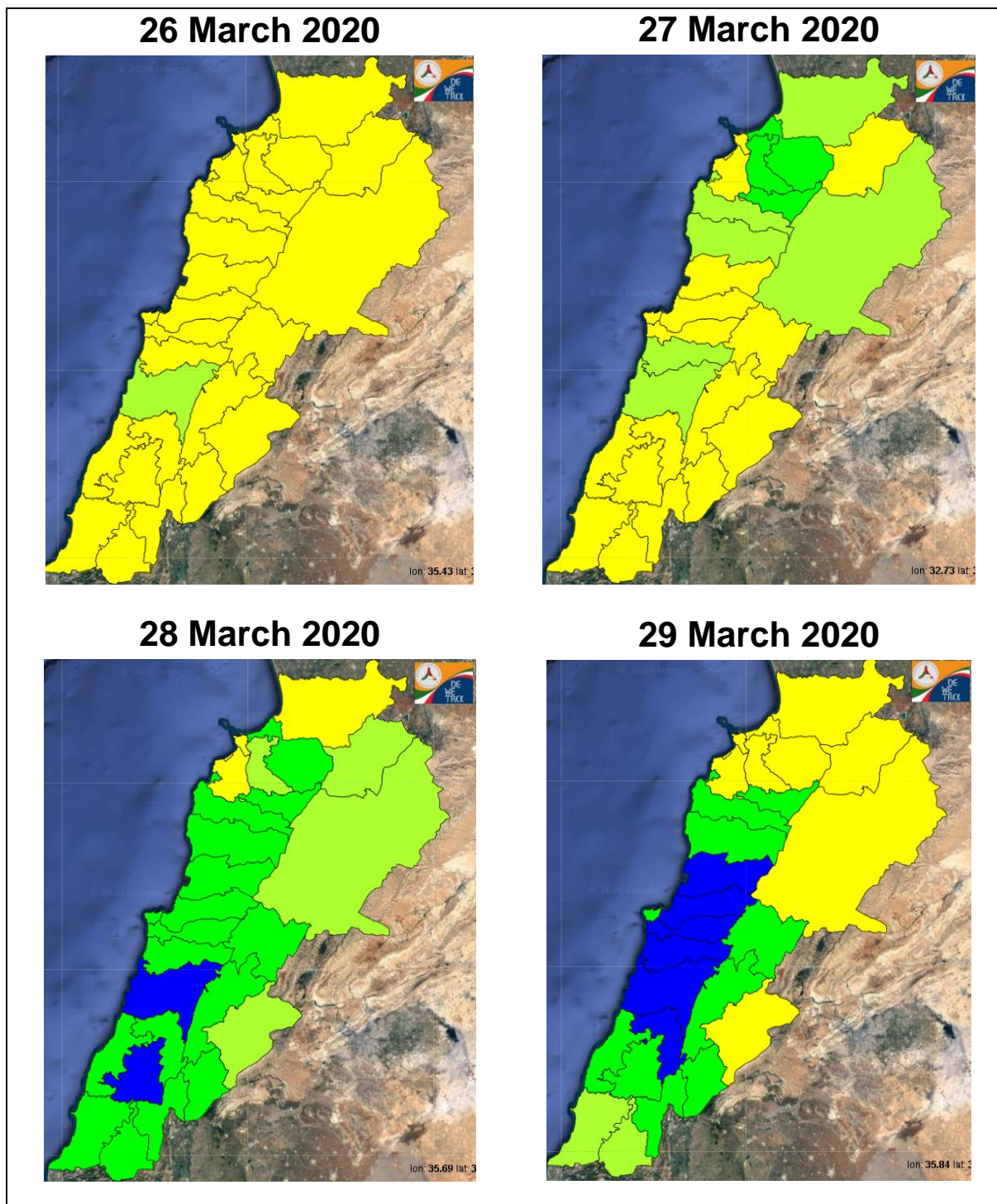
**Please note that the indicated temperature is at 2 meters height from the ground.**

General description of potential fire risk situation

Symbol	Level of risk	Meaning and actions
VL	Very low	Very low fire risk. Controlled burning operations can be hardly executed due to high fuel moisture content. Normally wildfires self-extinguish.
L	Low	Low fire risk. Controlled burning operations can be executed with a reasonable degree of safety.
ML	Medium low	Medium-low fire risk. Controlled burning operations can be executed in safety conditions. All the fires need to be extinguished.
M	Medium	Medium fire risk. Controlled burning operations would be avoided. All the fires need to be very well extinguished.
M	Medium high	Controlled burning is not recommended. Open flame will start fires. Cured grasslands and forest litter will burn readily. Spread is moderate in forests and fast in exposed areas. Patrolling and monitoring is suggested. Fight fires with direct attack and all available resources.
H	High	Ignition can occur easily with fast spread in grass, shrubs and forests. Fires will be very hot with crowning and short to medium spotting. Direct attack on the head may not be possible requiring indirect methods on flanks. Patrolling and monitoring the territory is highly suggested.
E	Extreme	Ignition can occur also from sparks. Fires will be extremely hot with fast rate of spread. Control may not be possible during day due to long range spotting and crowning. Suppression forces should limit efforts to limiting lateral spread. Damage potential total. Patrolling and monitoring the territory is highly suggested.

**Beirut, 27 March 2020**

# FIRE RISK INDEX



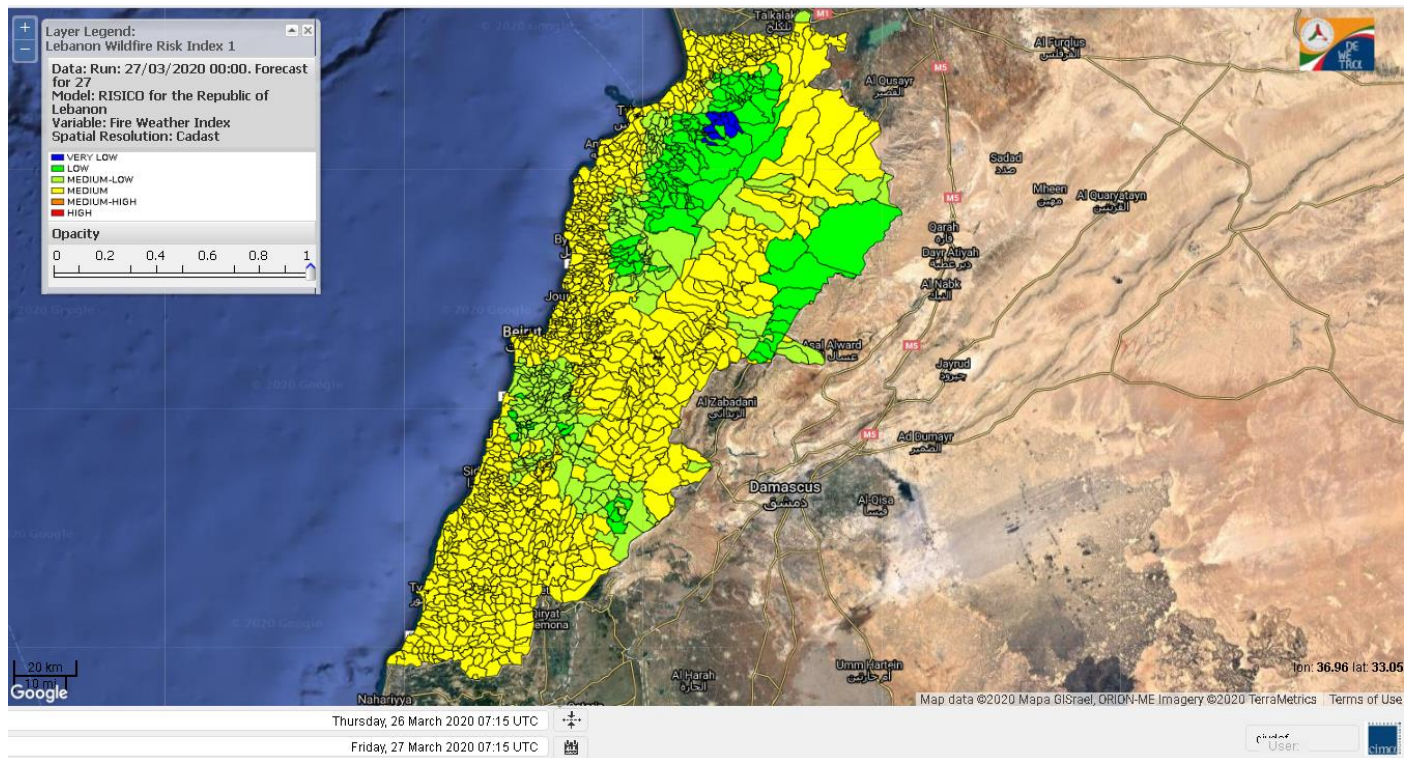
Layer Legend:  
Lebanon Wildfire Risk Index 1

Data: Run: 27/03/2020 00:00. Forecast for 27  
Model: RISICO for the Republic of Lebanon  
Variable: Fire Weather Index  
Spatial Resolution: Caza

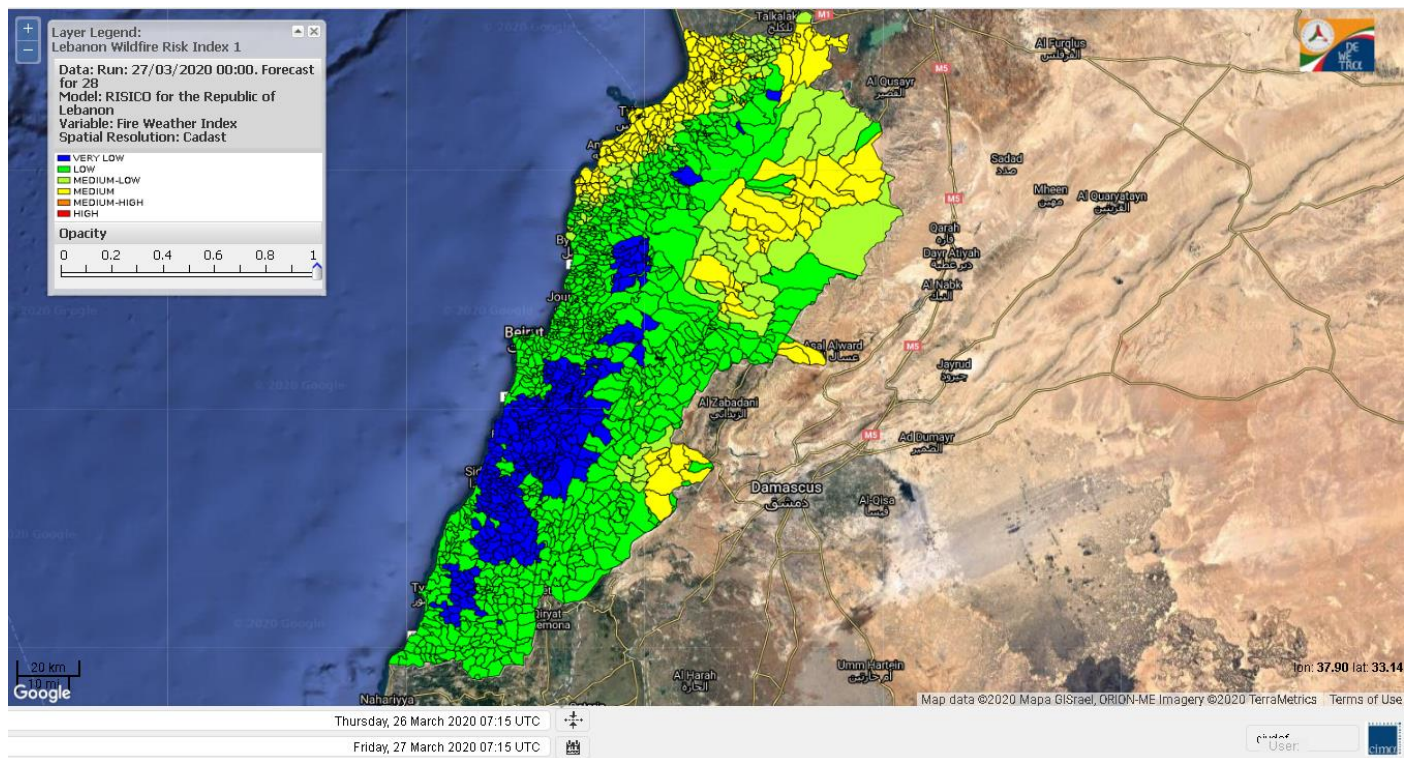
- VERY LOW
- LOW
- MEDIUM-LOW
- MEDIUM
- MEDIUM-HIGH
- HIGH
- EXTREME



# Lebanon for 27 March 2020

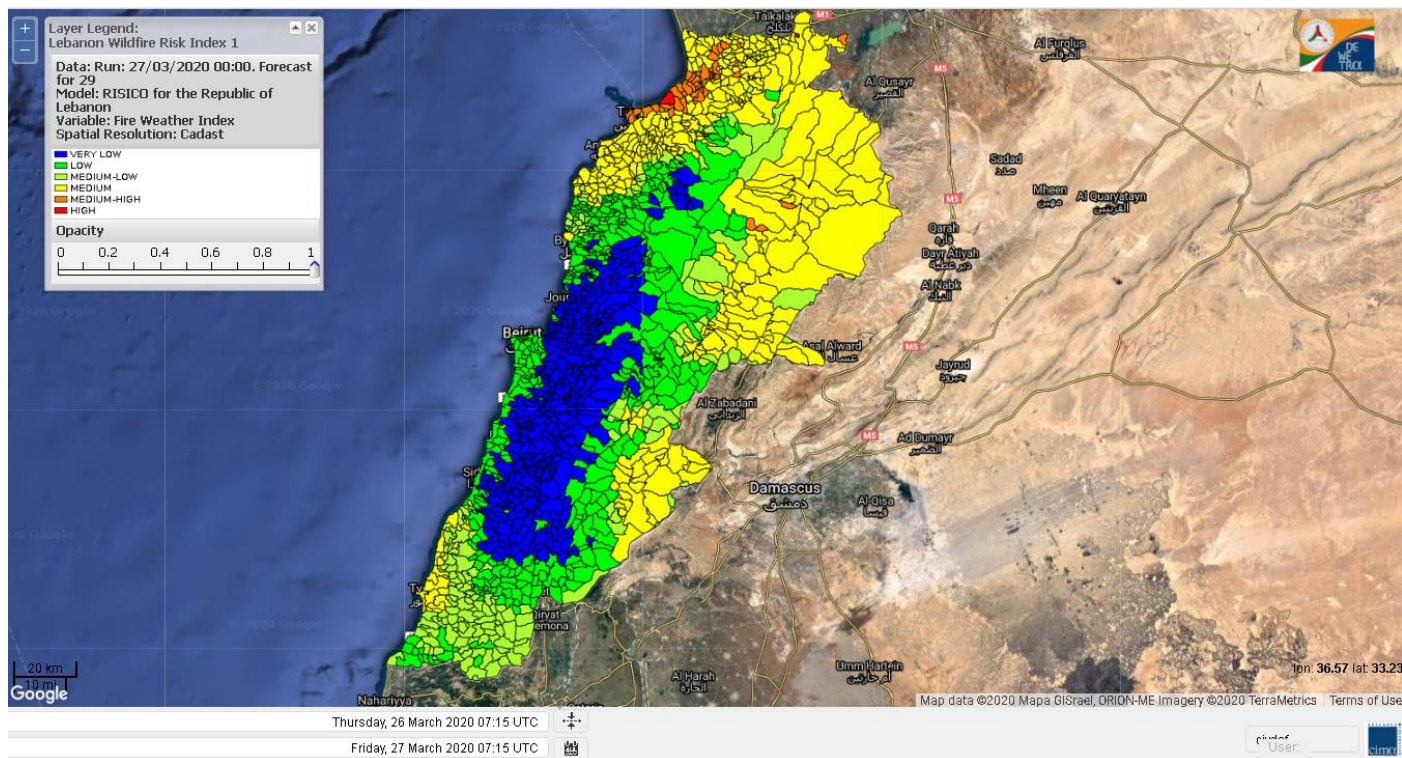


# Lebanon for 28 March 2020

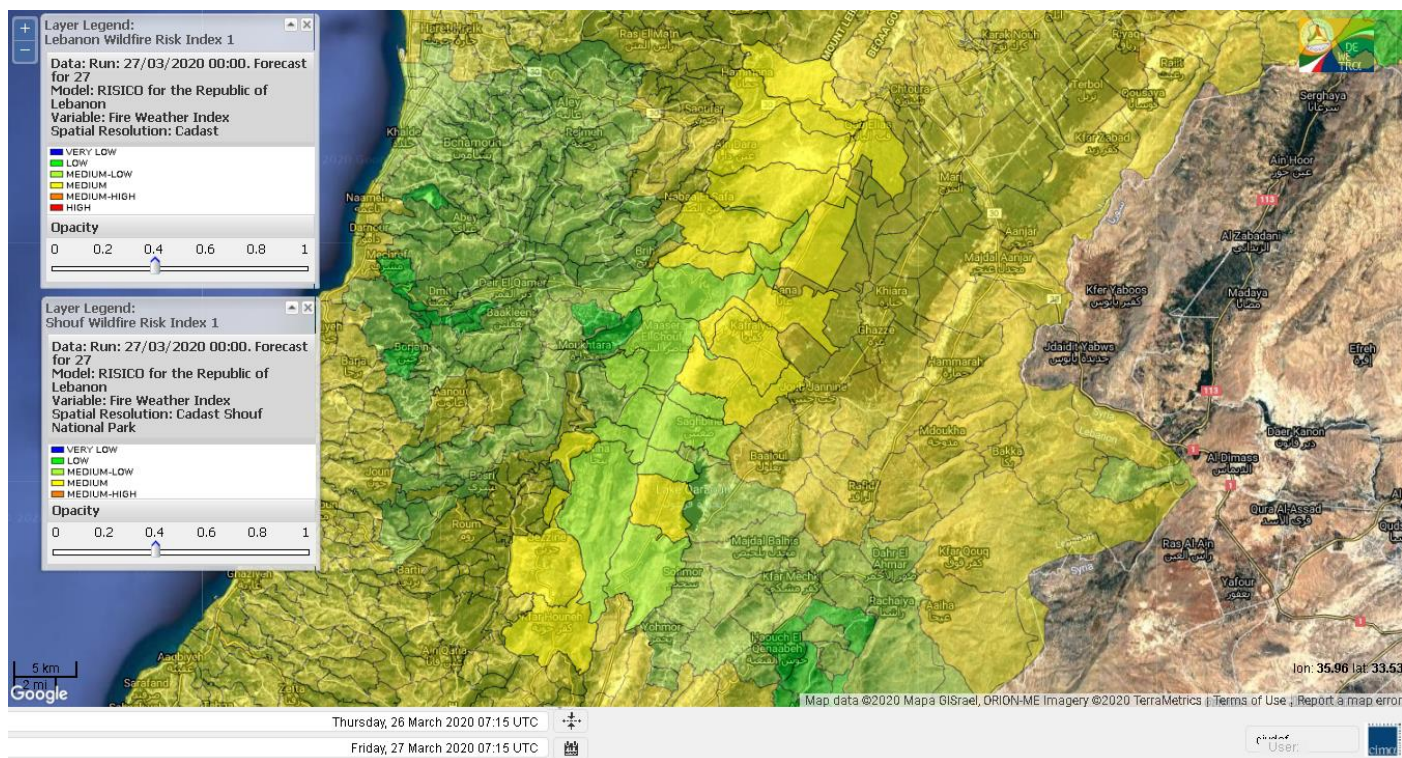




# Lebanon for 29 March 2020

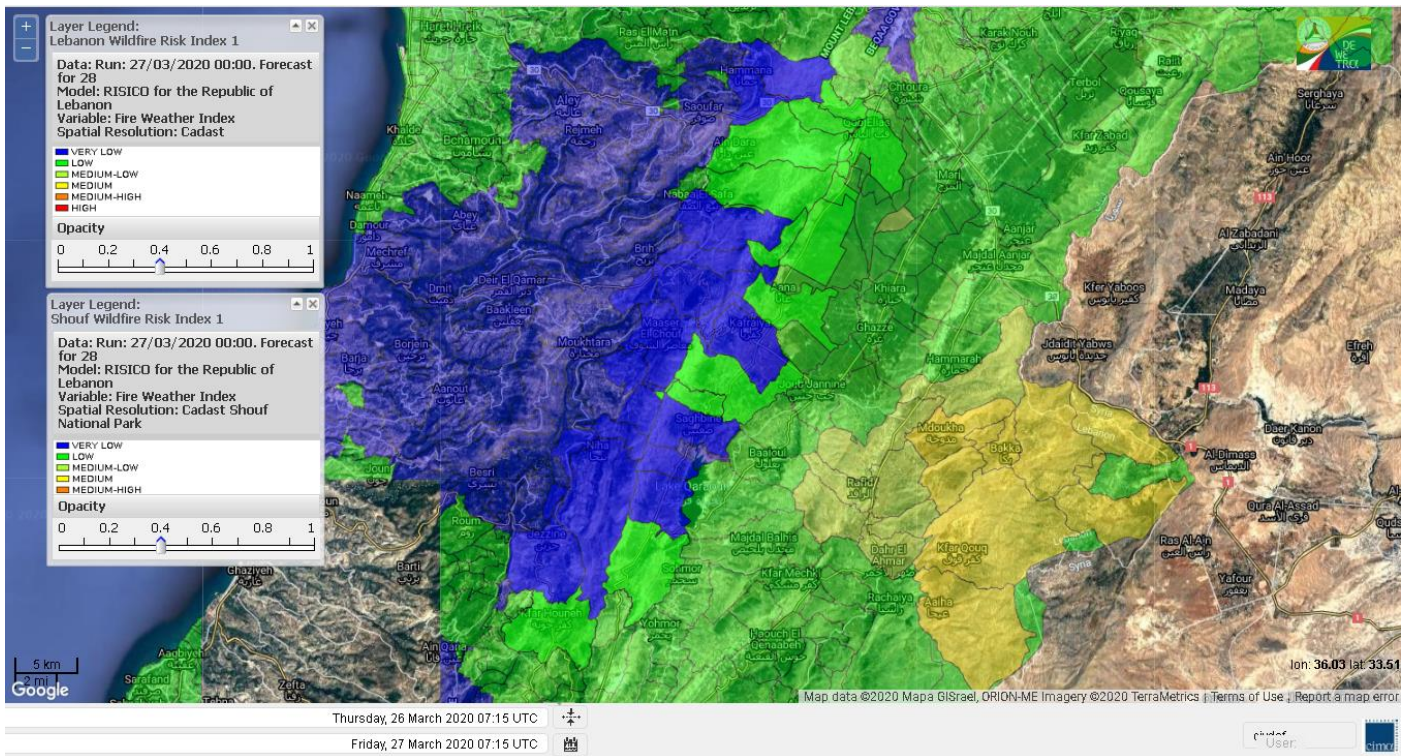


# Shouf Biosphere Reserve Forecast for 27 March 2020

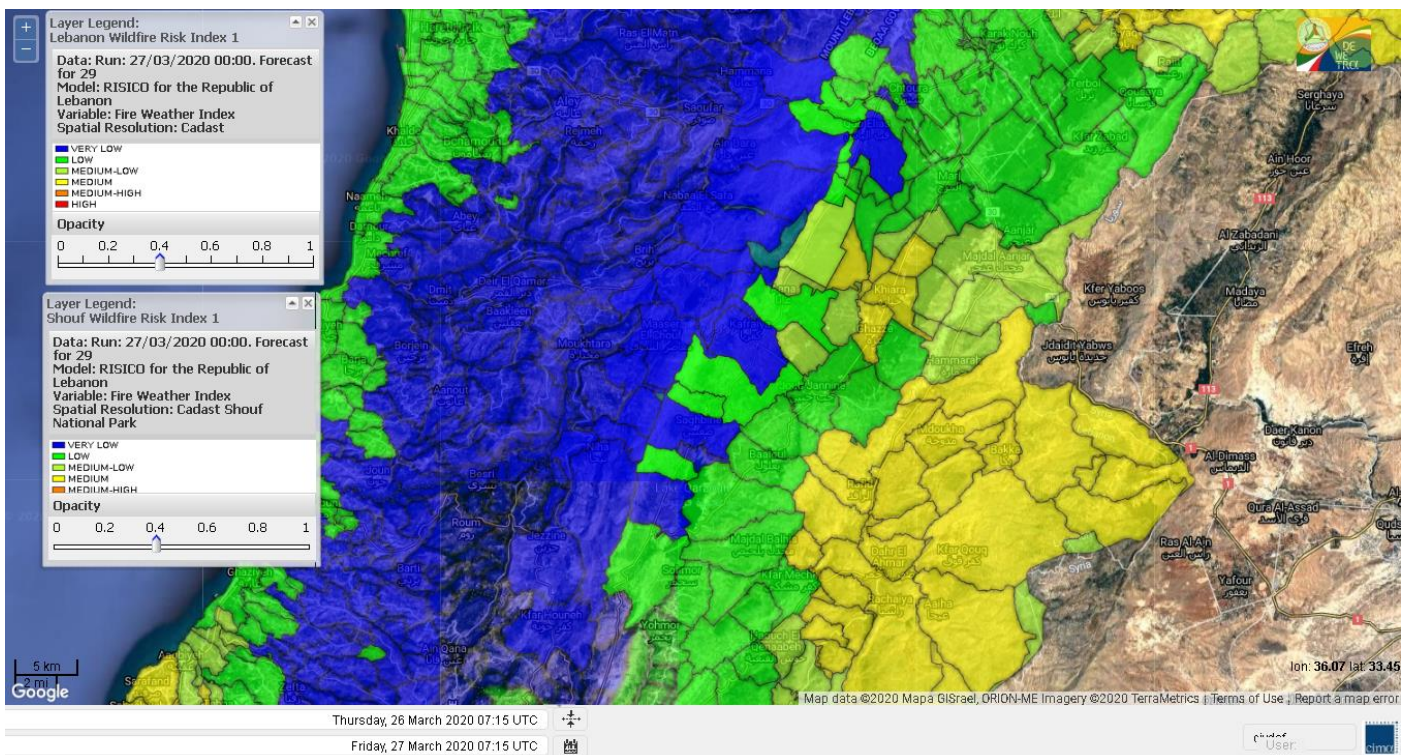




# Shouf Biosphere Reserve Forecast for 28 March 2020

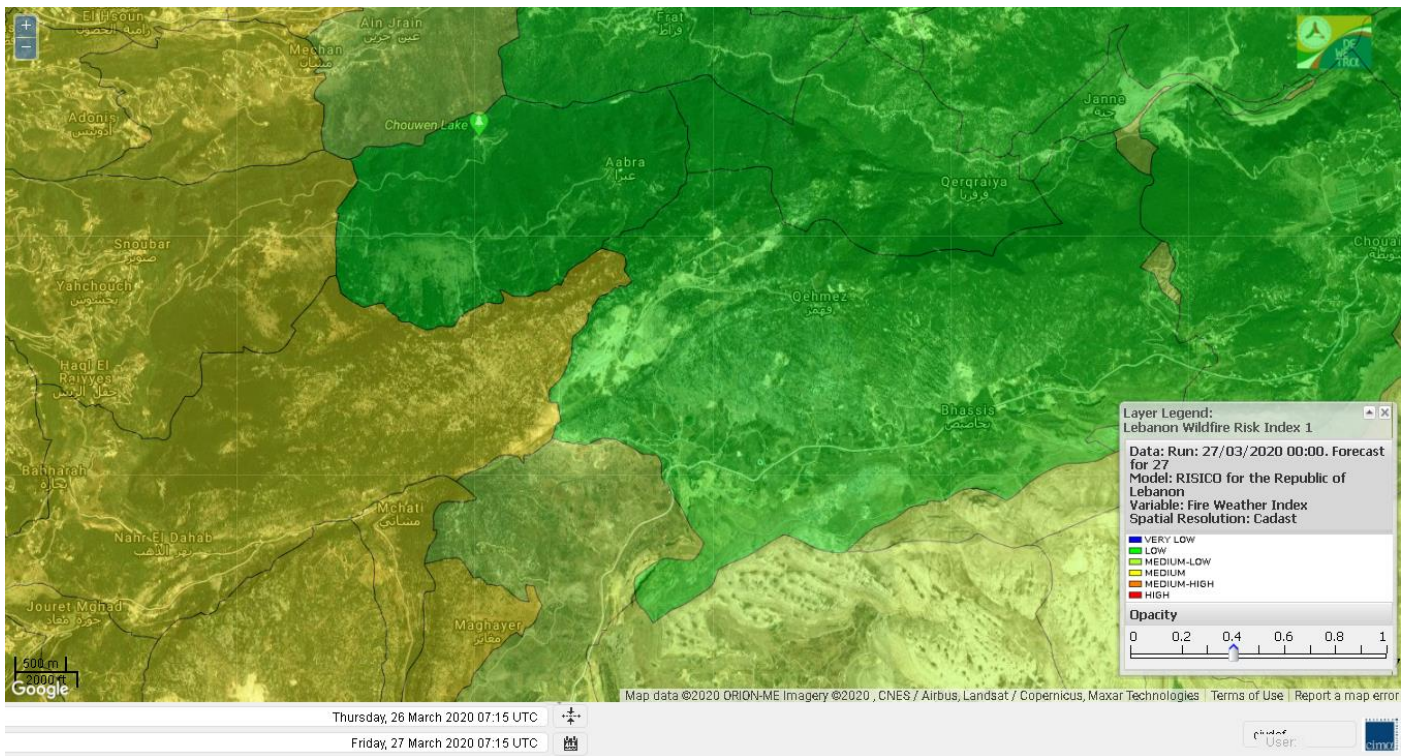


# Shouf Biosphere Reserve Forecast for 29 March 2020

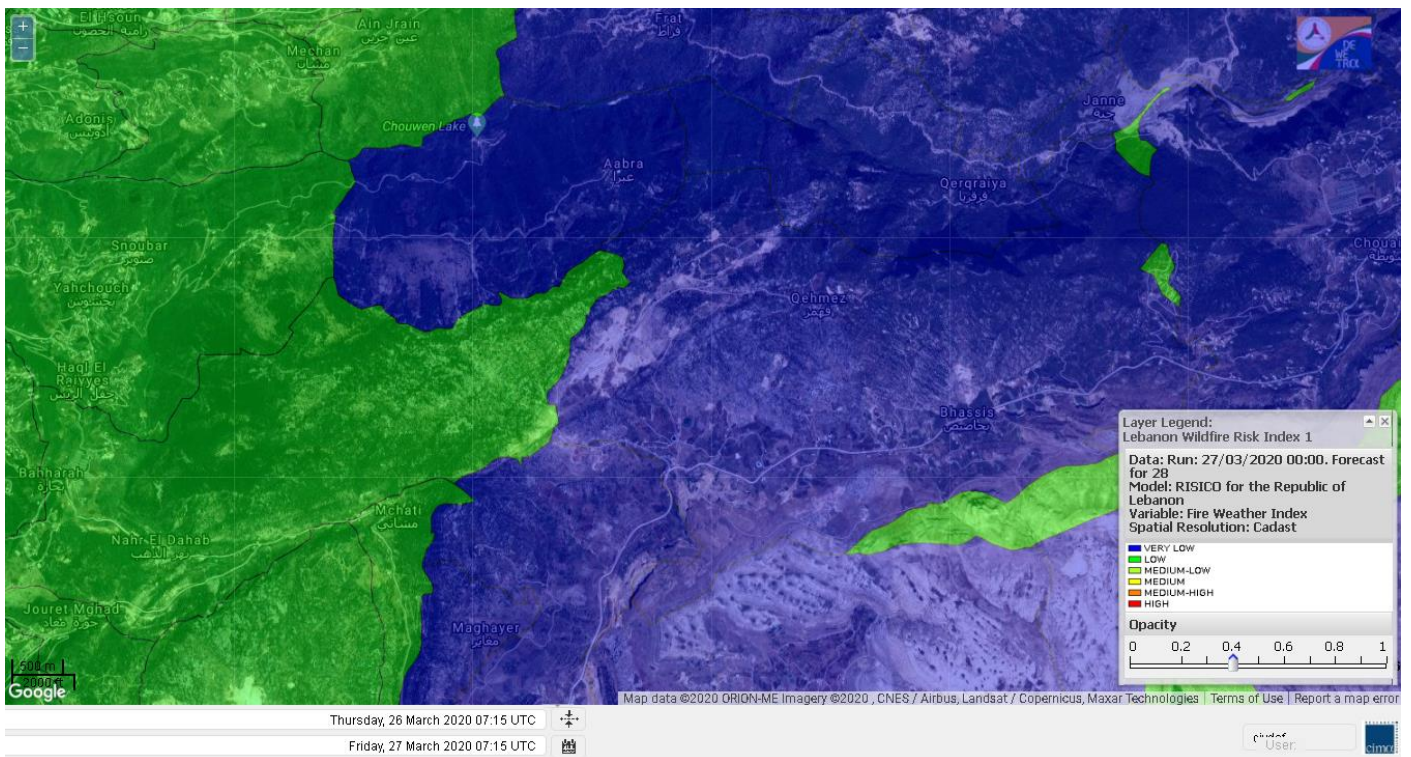




# Jabal Moussa Reserve Forecast for 27 March 2020

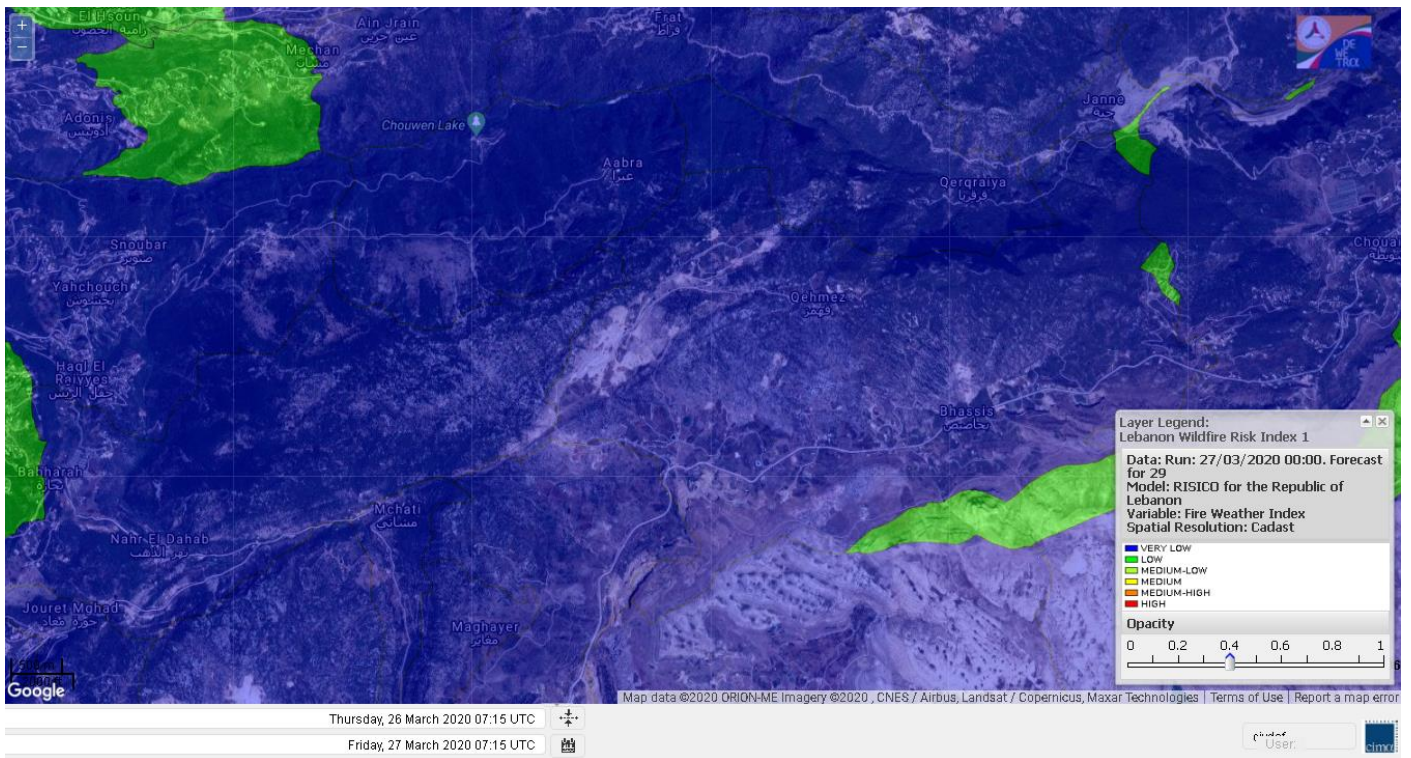


# Jabal Moussa Reserve Forecast for 28 March 2020





# Jabal Moussa Reserve Forecast for 29 March 2020

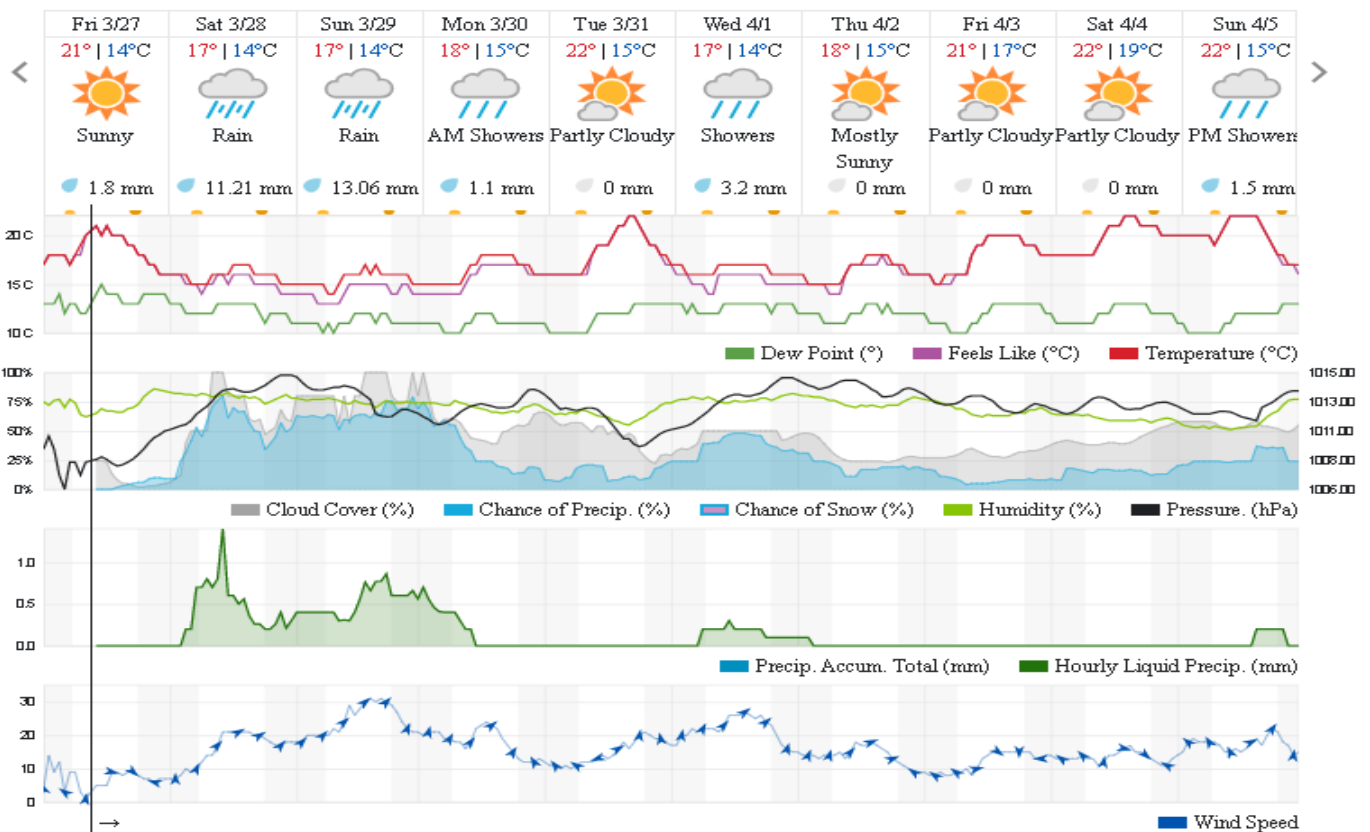


## Beirut, Beirut Governorate, Lebanon 10-Day Weather Forecast

21° ACHRAFIEH, RIZK STATION | CHANGE

TODAY HOURLY 10-DAY CALENDAR HISTORY WUNDERMAP

Customize



## Nord

### Koura

Municipality	27-Mar	28-Mar	29-Mar	Municipality	27-Mar	28-Mar	29-Mar	Municipality	27-Mar	28-Mar	29-Mar
Aaba	M	M	M	Afsaddiq	M	M	M	Ain Ekrene	M	L	ML
Amioun	M	ML	M	Anfeh	M	M	M	Badbhoun	M	M	M
Barghoun	M	M	M	Barsa	M	M	M	Batroumine	M	M	M
Bdebba	M	M	M	Bechmizine	M	ML	M	Bednaye El-Koura	M	M	M
Bhabbouch El-Koura	M	L	M	Bkeftine	M	M	M	Bnehran	M	L	ML
Bqaiia El-Koura	M	M	M	Bsarma	M	M	M	Btaaboura	M	ML	M
Bttram	M	M	M	Btouratij	M	M	M	Bziza	M	ML	M
Dar Beehtar	M	ML	M	Dar Chmezzine	M	L	M	Deddeh	M	M	M
Deir El-Balamand	M	M	M	Fih	M	M	M	Hraiche	M	M	M
Ijdaabrine	M	M	M	Kaftoun	M	ML	M	Kefraya El-Koura	M	M	M
Kfarakka	M	ML	M	Kfarhata	M	M	M	Kfarhazir	M	ML	M
Kfarkahel	M	M	M	Kfarsaroun	M	L	M	Kosba	M	L	M
Mejdel el-Koura	ML	L	M	Nakhle	M	M	M	Qalhat	M	M	M
Ras Masqa	M	M	M	Rechdibine	ML	L	ML	Zakroun	M	M	M
Zgharta El-Mtaouile	M	L	ML								

### Bcharre

Municipality	27-Mar	28-Mar	29-Mar	Municipality	27-Mar	28-Mar	29-Mar	Municipality	27-Mar	28-Mar	29-Mar
Aabdine	L	L	VL	Bane	L	L	VL	Barhelioun	ML	L	L
Bazooune	VL	L	VL	Becharre	L	L	L	Beit Menzer	L	L	L
Billa	L	L	L	Blaouza	L	L	VL	Bqaa Kafra	VL	L	VL
Bqerqacha	VL	L	VL	Breissat	L	L	VL	Dimane	L	L	VL
Hadath El Jobbeh	L	L	L	Hadchit	L	L	VL	Hasroun	L	L	VL
Mazraat Aassaf	ML	L	L	Mazraat Bani Saab	L	L	VL	Mchaa El-Jobbeh	VL	L	L
Metrit	M	L	ML	Moghr El-Ahoual	L	L	L	Ouadi Qannoubine	L	L	VL
Qanat	L	L	L	Qnayouer	L	L	L	Tourza	L	L	L

### Batroun

Municipality	27-Mar	28-Mar	29-Mar	Municipality	27-Mar	28-Mar	29-Mar	Municipality	27-Mar	28-Mar	29-Mar
Aabrine	M	M	M	Aalali	ML	L	L	Aartiz	M	ML	L
Abdelli	M	L	L	Ajdabra	M	ML	ML	Assia	ML	L	L
Basbina	M	M	M	Batroun	M	M	M	Bcheleh	ML	L	L
Bechtoudar	ML	L	L	Beit Chlala	ML	L	L	Beit Kassab	M	L	L
Bijdarfil	M	M	M	Bqesmaya	M	ML	M	Chatine	L	L	L
Chebtin	M	L	L	Chekka	M	M	M	Daael	ML	L	L
Dahr Abi Yaghi	M	L	L	Daraya El-Batroun	M	ML	ML	Deir Billa	M	L	ML
Deir Kfifane	M	ML	M	Deir Mar Youhanna EL	ML	L	L	Deir Mar Youssef Jra	M	L	L
Douma	ML	L	L	Douq	M	L	L	Eddeh El-Batroun	M	ML	ML
Ftahat El-Batroun	M	L	L	Ghouma	M	ML	L	Hadtoun	ML	L	L
Hamat	M	M	M	Harbouna	M	ML	L	Hardine	ML	L	L
Helta	ML	L	L	Hery	M	M	M	Jebbla	M	L	L
Jrabta El-Batroun	M	L	L	Jrane El-Batroun	M	ML	M	Kfar Aabida	M	ML	L
Kfar Halda	ML	L	L	Kfarb Shlaimane	ML	VL	L	Kfarhatna	M	ML	L
Kfarhay	M	M	M	Kfarhelos	M	M	ML	Kfifane	M	M	M



Kfour El Arabi	L	L	L	Koubba	M	M	M	Kour	M	ML	ML
Mar Mama	M	L	L	Masrah	M	L	L	Mehmarch	ML	L	L
Mrah Chdid	M	ML	L	Mrah El Ziyat	M	ML	L	Mrah El-Hajj	ML	L	L
Nahle El-Batroun	ML	L	L	Niha El-Batroun	L	L	VL	Ouajh El-Hajjar	M	M	M
Ouata Houb	L	L	VL	Qatnaaoun	M	M	M	Racha	ML	L	L
Rachana	M	L	L	Rachkida	M	M	M	Ram El-Batroun	ML	L	L
Ras Nahhach	M	M	M	Selaata	M	M	M	Sghar	M	L	L
Smar Jbayl	M	L	L	Sourat El-Batroun	M	L	L	Tannourine El-Faouqa	L	L	L
Tannourine Et-Tahta	L	L	VL	Thoum	M	L	L	Toula El-Batroun	M	L	L
Zan	M	L	L								

## Zgharta

Municipality	27-Mar	28-Mar	29-Mar	Municipality	27-Mar	28-Mar	29-Mar	Municipality	27-Mar	28-Mar	29-Mar
Aachach	ML	M	M	Aalma	ML	M	M	Aarde	ML	M	M
Aintourine	L	L	L	Arabet Qozhaya	L	L	L	Arde	ML	M	M
Arjis	ML	L	M	Asnoun	ML	M	M	Ayto	L	L	L
Basloukit	L	VL	VL	Bchannine	M	ML	M	Besebeel	ML	M	M
Bhairret Toula	VL	VL	VL	Bnachee	ML	L	ML	Boussit	ML	M	M
Danha	ML	M	M	Daraiya Zgharta	ML	L	M	Deir Jdeide	ML	M	M
Ehden	L	VL	VL	Halan	L	M	M	Hariq Zgharta	ML	M	M
Houakir	L	L	M	Hraiqis	M	M	M	laal	ML	ML	M
Ijbaa	L	L	L	Karm Saddeh	L	L	L	Kfarchakhna	M	M	M
Kfardlaqous	ML	M	M	Kfarfou	ML	L	L	Kfarhata Zgharta	ML	M	M
Kfarhoura	ML	ML	M	Kfarsghab	L	VL	VL	Kfaryachit	ML	M	M
Kfarzaina	ML	M	M	Khaldiye	ML	M	M	Mazraat Ajbeaa	ML	M	M
Mazraat Et-Teffah	L	L	L	Mazraat Jneid	ML	M	M	Mejdlaiya Zgharta	ML	M	M
Merh Kfarsghab	ML	L	M	Miryata	ML	M	M	Miziara	L	L	ML
Mzraat Kefraya	ML	M	M	Qorah Bach	ML	M	M	Rachiine	ML	M	M
Ras Kifa	ML	L	L	Sakhra	ML	ML	M	Sebhel Zgharta	L	L	L
Serhel	L	L	L	Tallet Zgharta	ML	ML	M	Toula Zgharta	L	L	L
Zgharta	ML	M	M								

## Minieh-Denniye

Municipality	27-Mar	28-Mar	29-Mar	Municipality	27-Mar	28-Mar	29-Mar	Municipality	27-Mar	28-Mar	29-Mar
Aasaymout	VL	L	M	Aaymar	L	L	M	Aazki	L	M	M
Ain El-Tineh-Miniyeh	VL	L	ML	Assoun	L	L	M	Bakhaaoun	L	L	M
Bchennata	L	L	L	Bechehhara	L	L	M	Beddawi	M	M	MH
Behouaita	L	L	ML	Beit El Foqss	VL	L	ML	Beit Haouik	VL	VL	M
Beit Zoud	L	L	M	Bekaasafrine	L	L	L	Borj El Yahoudiyeh	M	M	MH
Bqarsouna	VL	L	M	Btermaz	L	L	M	Debaael	VL	L	M
Deir Ammar	M	M	MH	Deir Nbouh	L	ML	M	Haouaret-Miniyeh	VL	L	L
Haql el Azimeh	L	L	M	Harf El Siyad	L	ML	M	Hazmiye-Miniyeh	VL	L	M
Izal	L	L	M	Jarjour	L	L	M	Jayroun	VL	L	L
Kahf El-Malloul	L	L	M	Karm El-Moher	L	L	M	Kfar Binine	L	L	L
Kfarchalane	L	L	M	Kfarhabou	L	ML	M	Kharroub-Miniyeh	L	L	M
Mazraat El-Kreme	L	L	M	Mazraat Ketrane	L	L	M	Merkebtta	M	M	MH
Minyeh	M	M	MH	Mrah El Sfirat	VL	L	ML	Mrah Sraj	L	L	M
Mrebbine	L	L	ML	Nabi Youcheaa	M	M	MH	Nemrine	L	L	L



Qarhaiya	VL	L	M	Qarne	VL	L	ML	Qarsita	VL	L	L
Qattineh-Miniyeh	L	L	M	Qemmamine	VL	VL	L	Qraïne	VL	L	M
Raouda-Aadoua	M	M	MH	Rihaniyet-Miniyeh	M	M	MH	Sfireh	VL	L	ML
Sir Ed-Danniyeh	L	L	M	Tarane	L	L	ML	Terbol-Miniyeh	M	M	MH
Zaghartaghriine	L	ML	M	Zouq Bhannine	M	M	MH				

## Nabatiye

### Nabatiye

Municipality	27-Mar	28-Mar	29-Mar	Municipality	27-Mar	28-Mar	29-Mar	Municipality	27-Mar	28-Mar	29-Mar
Aabba	M	VL	L	Aazzi	M	VL	VL	Adchit El-Chqif	M	VL	L
Ain Bou Swar	M	VL	VL	Ain Kana	M	VL	VL	Ali El-TaHER	M	VL	VL
Ansar	M	L	ML	Arab Salim	M	VL	VL	Arnoun	M	L	L
Bfaroue	M	L	VL	Breyqaah	M	L	L	Charqiyeh	M	VL	VL
Choukine	M	VL	L	Deir El Zahrani	M	VL	VL	Doueur El-Nabatiyeh	M	VL	VL
Habbouch El-Nabatiye	M	VL	VL	Hamra El-Nabatiyeh	M	L	L	Harouf El-Nabatiyeh	M	VL	VL
Hmaïle	M	VL	VL	Houmin El Faouqa	M	VL	VL	Houmin El Tahta	M	VL	VL
Jarjough	M	VL	VL	Jbaah El-Nabatiyeh	M	L	VL	Jebchit	M	VL	VL
Kfar Djal El-Nabatiy	M	L	L	Kfar Remmane	M	VL	VL	Kfar Sir	M	L	L
Kfar Tebnit	M	VL	L	Kfarfila	M	VL	VL	Kfour El-Nabatieh	M	VL	VL
Mayfadoun	M	L	L	Mazraat Bsaffour	M	VL	VL	Mazraat Chalbaal	M	VL	VL
Mazraat Dmoul	M	VL	L	Mazraat El Khreibeh	M	VL	L	Mazraat El-Bayad El-	M	VL	VL
Mazraat Kfarjaouz	M	VL	VL	Mazraat Qalaat Meiss	M	L	L	Nabatiyeh El-Fawka	M	VL	VL
Nabatiyeh Et-Tahta	M	VL	VL	Namiriyeh	M	VL	VL	Qaaqaaiyet El Jisr	M	L	L
Qossaibeh El-Nabatiy	M	L	ML	Roumine	M	VL	VL	Sarba El-Nabatieh	M	VL	VL
Sir El-Gharbiyeh	M	VL	ML	Toul	M	VL	VL	Yehmor El-Nabatiyeh	M	L	L
Zaoutar El Charkiyeh	M	L	L	Zaoutar El-Gharbiyeh	M	L	L	Zebdine El-Nabatiyeh	M	VL	VL
Zefta	M	VL	VL								

### Hasbaiya

Municipality	27-Mar	28-Mar	29-Mar	Municipality	27-Mar	28-Mar	29-Mar	Municipality	27-Mar	28-Mar	29-Mar
Ain Jarfa	M	L	L	Abou Qamha	M	L	VL	Ain Qania	M	L	VL
Bourghos	M	L	VL	Chebaa	M	L	L	Chouaya Hasbaya	M	L	L
Dellafeh	M	L	VL	Fardiss Hasbaiya	M	L	VL	Hasbaya	M	L	L
Hbariyeh	M	L	L	Kaoukaba Hasbaiya	M	L	VL	Kfar Chouba	M	L	L
Kfar Hamam	M	L	L	Kfeir El-Zait	M	L	L	Khalwat Hasbaya	ML	L	L
Khreibet Hasbaiya	M	L	L	Majidiyeh Hasbaiya	M	L	L	Marj Ez-Zhour (Haouc	ML	L	L
Meri	M	L	L	Mimass	M	L	L	Rachaiya El-Fokhar	M	L	L
Salaiyeb	M	L	L								

### Marjaayoun

Municipality	27-Mar	28-Mar	29-Mar	Municipality	27-Mar	28-Mar	29-Mar	Municipality	27-Mar	28-Mar	29-Mar
Aalmane Marjaayoun	M	L	L	Aamra	M	L	L	Adayseh Marjaayoun	M	L	L
Adchit El-Koussair	M	L	L	Ain Aarab Marjaayoun	M	L	L	Bani Haiyann	M	L	L
Blatt Marjaayoun	M	L	VL	Blida	M	L	ML	Borj El-Moulouk	M	L	L
Boueyda Marjaayoun	M	L	VL	Deir Mimass	M	L	L	Deir Siriane	M	L	L
Dibbine	M	L	VL	Ebel El Saqi	M	L	VL	Houla	M	L	ML
Houra	M	L	L	Kfar Kila	M	L	L	Khiam Marjaayoun	M	L	L



Klayaa	M	L	L	Majdel Selem	M	L	ML	Marjaayoun	M	L	L
Markaba	M	L	ML	Mays El-Jabal	M	L	ML	Mazraat Doumiat	M	VL	L
Mazraat Sarada	M	L	L	Mhaibib	M	L	ML	Qabrikha	M	L	L
Qantara	M	L	L	Rab El-Thalathine	M	L	L	Saouaneh Marjayoun	M	L	ML
Talloussa	M	L	L	Taybeh Matjaayoun	M	L	L	Touline	M	L	L

## Bent Jbail

Municipality	27-Mar	28-Mar	29-Mar	Municipality	27-Mar	28-Mar	29-Mar	Municipality	27-Mar	28-Mar	29-Mar
Ain-Ebel	M	L	ML	Aitaroun	M	L	ML	Aynata Bint Jbeil	M	L	ML
Ayta El-Chaeb	M	L	ML	Ayta El-Jabal	M	L	ML	Beit Lif	M	L	ML
Beit Yahoun	M	L	ML	Bint Jbeil	M	L	ML	Borj Qalaway	M	L	ML
Braachit	M	L	ML	Chakra	M	L	ML	Debel	M	L	ML
Deir Antar	M	VL	ML	Froun	M	L	L	Ghandouriyeh Bint Jb	M	L	L
Hanine	M	L	L	Hariss	M	L	ML	Hdatha	M	L	ML
Jmeymeh	M	L	ML	Kafra Bint Jbeil	M	L	ML	Kfar Dounine	M	L	ML
Khirbet Selm	M	L	ML	Kounine	M	L	ML	Maroun El Ras	M	L	ML
Qalaway	M	L	ML	Qaouzah	M	L	ML	Qatmoun	M	L	ML
Ramya Bint Jbeil	M	L	ML	Rchaf	M	L	L	Rmeich	M	L	ML
Safad Al Battikh	M	VL	ML	Salhaneh	M	L	L	Serbine	M	L	ML
Sultanieh Bint Jbeil	M	L	ML	Tibnine	M	L	ML	Tiri	M	L	L
Yaroun	M	L	ML	Yater	M	L	ML				

## Mont Liban

### Jbail

Municipality	27-Mar	28-Mar	29-Mar	Municipality	27-Mar	28-Mar	29-Mar	Municipality	27-Mar	28-Mar	29-Mar
Aabeydat	M	L	L	Aalita	M	L	L	Aamchit	M	ML	M
Aarab El-Lahib	L	VL	L	Aarasta	ML	VL	L	Adonis Jbeil	M	L	VL
Afqa Jbeil	L	VL	L	Ain El Delbeh Jbeil	M	L	VL	Ain El-Ghouyba	L	VL	VL
Ain Jrain	ML	L	VL	Ain Kfah	M	ML	ML	Almat El Chemaliyat	L	VL	VL
Almat El-Jenoubiya	L	VL	VL	Aqoura	ML	L	L	Bayzoun	M	L	L
Bchille Jbeil	M	L	L	Bechtlida	M	L	VL	Behdaydat	M	L	L
Beit Habbaq	M	L	L	Bejjeh	M	L	L	Bekhaaz	M	L	L
Berbara Jbeil	M	L	ML	Bintael	M	L	L	Birket Hjoula	M	L	L
Blatt Jbeil	M	L	L	Boulhos	L	VL	VL	Breyj Jbeil	M	L	VL
Chamat	M	ML	ML	Chikhane	M	L	ML	Chmout	M	L	L
Eddeh Jbeil	M	L	L	Ehmej	L	VL	VL	Fatre	M	L	VL
Ferhet	ML	L	L	Fghal	M	L	L	Frat	L	VL	VL
Ghabat	ML	VL	L	Ghalboun	M	L	L	Gharzouz	M	ML	ML
Ghofrine	M	L	ML	Habil	M	L	L	Halate	M	L	L
Haqel	M	L	L	Hbaline	M	L	ML	Hboub	M	L	L
Hdeine	ML	VL	L	Hema Er-Rehban	ML	L	L	Hema Mar Maroun Aann	L	VL	VL
Hjoula	M	L	L	Hosrayel	M	L	ML	Hsarat	M	L	ML
Hsoun	M	L	L	Jaj	ML	L	L	Janne	L	VL	VL
Jbeil	M	L	L	Jeddeyel Jbeil	M	ML	L	Jlisse	M	L	VL
Jouret El-Qattine	M	L	L	Kfar Baal Annaya	M	L	L	Kfar Kidde	M	L	L
Kfar Kouas	M	L	L	Kfar Mashoun	M	L	ML	Kfoun	M	L	L



Kharbe Jbeil	M	L	ML	Laqlouq	ML	VL	L	Lassa	L	VL	VL
Lehfed	ML	L	L	Maad	M	ML	ML	Mar Sarkis	L	VL	VL
Mastita	M	L	L	Mayfouq	ML	L	L	Mazraat El Siyad	ML	VL	VL
Mazraat El-Maaden	L	VL	VL	Mechane	M	L	L	Mechmech Jbeil	ML	L	L
Mehrin	M	L	L	Mejdel El-Akoura	ML	VL	L	Mghayreh Jbeil	ML	VL	L
Mounsef	M	L	ML	Nahr Ibrahim	M	L	L	Qahmez	L	VL	VL
Qartaba	L	VL	VL	Qartaboun	M	L	L	Qattara Jbeil	ML	L	L
Qorqraya	L	VL	VL	Ramout	M	ML	L	Ras Osta	M	L	L
Rihane Jbeil	M	ML	ML	Sakiet El-Khayt	M	L	L	Saqi Richmaya	ML	L	L
Sebrine	M	L	L	Seraita	ML	VL	L	Souane Jbeil	L	VL	VL
Tadmor	ML	VL	L	Tartej	ML	L	L	Torzaiya	M	L	L
Yanouh Jbeil	ML	VL	L	Zibdine Jbeil	M	L	L				

## El Metn

Municipality	27-Mar	28-Mar	29-Mar	Municipality	27-Mar	28-Mar	29-Mar	Municipality	27-Mar	28-Mar	29-Mar
Aain El-Qabu	M	L	VL	Aain El-Qach	M	L	VL	Aain El-Teffaha	M	L	VL
Aain el-Safssaf El-M	M	L	VL	Abou Mizane	M	L	VL	Ain Aar	M	L	VL
Ain Alaq	M	L	VL	Ain El-Kharroube	M	L	VL	Ain El-Sendianeh	M	L	VL
Ain El-Zeitoune	M	L	VL	Ain Saadeh	M	L	VL	Aintoura El-Matn	M	VL	VL
Amaret Chalhoub	M	L	VL	Antelias	M	L	VL	Atchaneh	M	L	VL
Ayroun	M	L	VL	Baabdat	M	L	VL	Baouchariyeh	M	L	L
Baskinta	M	L	VL	Beit Chabab	M	L	VL	Beit El-Chaar	M	L	VL
Beit El-Kekko	M	L	VL	Beit Mery	M	L	VL	Bhersaf	M	L	VL
Bikfaya	M	L	VL	Biyakout	M	L	VL	Bnabil	M	L	VL
Bourj Hammoud	M	L	L	Bqennaya	M	L	VL	Broummana El-Matn	M	L	VL
Bsalim	M	L	VL	Bsifrine	M	L	VL	Bteghrine	M	L	VL
Chaouiye	M	L	VL	Chouaya El-Matn	M	L	VL	Choueir	M	L	VL
Chrine	M	L	VL	Dahr El Sawan El-Mat	M	L	VL	Daychouniyeh	M	L	VL
Dbayeh	M	L	VL	Deir Chamra	M	L	VL	Deir Mar Abda el Mch	M	L	VL
Deir Mar Roukouz	M	L	L	Deir Tamiche	M	L	VL	Dik El-Mehdi	M	L	VL
Dikwaneh	M	L	L	Douar El-Matn	M	L	VL	Fanar	M	L	VL
Fraike	M	L	VL	Haret El-Ballaneh	M	L	L	Hbous	M	L	VL
Himlaya	M	L	VL	Jal El Did	M	L	VL	Jdeideh El-Metn	M	L	VL
Jouar El-Matn	M	L	VL	Jouret El-Ballout	M	L	VL	Kaaqour	M	L	VL
Kfar Aaqab	M	L	VL	Kfertay El-Matn	M	L	VL	Khenchara	M	L	VL
Khillet El-Mtain	M	L	VL	Konnabat Broummana	M	L	VL	Konnabat Salima	M	L	VL
Machraah El-Matn	M	L	VL	Majdel Tarchich	M	VL	VL	Majzoub	M	L	VL
Mansouriyeh El-Metn	M	L	L	Mar Boutros Karm Et-	M	L	VL	Mar Chaya et Mzekke	M	L	VL
Mar Moussa Ed-Douar	M	L	VL	Marjaba	M	L	VL	Masqa	M	L	VL
Mayasse	M	L	VL	Mazraat Deir Aoukar	M	L	VL	Mazraat El-Hadirat	M	L	VL
Mazraat Yachouh	M	L	VL	Mchikha	M	L	VL	Menqlet Mezher	M	L	VL
Mhaydseh Matn	M	L	VL	Mkalles	M	L	L	Mrouj	M	L	VL
Mtain	M	VL	L	Mtayleb	M	L	VL	Nabay	M	L	VL
Naccache	M	L	VL	Ouadi Chahine	M	L	VL	Ouadi El-Karm El-Mat	M	L	VL
Ouata El-Mrouj	M	L	VL	Ouyoun El-Matn	M	L	VL	Qornet Chehwan	M	L	VL
Qornet El-Hamra	M	L	VL	Roumieh	M	L	VL	Sfeilet Bikfaya	M	L	VL
Sinn El-Fil	M	L	L	Zabbougha	M	L	VL	Zalqa	M	L	VL

Zarouon	M	L	VL	Zekrite	M	L	VL	Zighrine El-Matn	M	L	VL
Zouk El-Khrab	M	L	L								

## Chouf

Municipality	27-Mar	28-Mar	29-Mar	Municipality	27-Mar	28-Mar	29-Mar	Municipality	27-Mar	28-Mar	29-Mar
Aalmane El-Chouf	M	VL	L	Aammiq El-Chouf	ML	VL	VL	Ain Ouzein	L	VL	VL
Ain Qani	ML	VL	VL	Ain Zhalta	M	VL	VL	Ainbal	ML	VL	VL
Amatour	M	VL	VL	Anout	M	VL	VL	Atrine	ML	VL	VL
Baadarane	ML	VL	VL	Baaqline	ML	VL	VL	Baasir	M	VL	L
Barja	M	VL	L	Barouk	ML	VL	VL	Bater	M	VL	VL
Batloun	ML	VL	VL	Bayqoun	ML	VL	VL	Bchetfine	ML	VL	VL
Beiteddine	ML	VL	VL	Benouati Ech-Chouf	L	VL	VL	Berjein	L	VL	VL
Bireh et Mtalleh	ML	VL	VL	Biret El-Chouf	ML	VL	VL	Bkechtine Ouel Mchei	L	VL	VL
Bkifa El-Chouf	ML	VL	VL	Botme	L	VL	VL	Bqaiaa Ech-Chouf	L	VL	VL
Bsaba El-Chouf	ML	VL	VL	Chammis El-Chouf	M	VL	L	Chehim	ML	VL	VL
Chemaarine	L	VL	VL	Chourit	ML	VL	VL	Daher El-Chouf	M	VL	L
Dalhoun	M	VL	VL	Damour	M	VL	L	Daraya El-Chouf	ML	VL	VL
Deir El-Moukhalles	ML	VL	VL	Deir Baba	ML	VL	VL	Deir Dourit	L	VL	VL
Deir El-Qamar	ML	VL	VL	Deir Kouche	ML	VL	VL	Dibbieh	ML	VL	VL
Dmit	ML	VL	VL	Fouara Jaafar	ML	VL	VL	Fraidis El-Chouf	M	VL	VL
Ghabet Jaafar	ML	VL	VL	Gharife	M	VL	VL	Haret Jandal	M	VL	VL
Hasrout	M	VL	VL	Jadra	M	VL	L	Jahlieh	L	VL	VL
Jbeih El-Chouf	ML	VL	VL	Jdeidet El-Chouf	ML	VL	VL	Jiyeh	M	VL	L
Jleilyeh	ML	VL	VL	Jmailiyeh	M	VL	VL	Joun	M	L	VL
Kahlounie El-Chouf	ML	VL	VL	Ketermaya	M	VL	L	Kfar Faqoud	ML	VL	VL
Kfar Hamal	ML	VL	VL	Kfar Him	ML	VL	VL	Kfar Katra	ML	VL	VL
Kfar Niss	ML	VL	VL	Kfar hay	ML	VL	VL	Kfarnabrakh	ML	VL	VL
Khirbet Bisri	ML	VL	VL	Knayse El-Chouf	ML	VL	VL	Maaniyeh	M	L	L
Maasser Beiteddine	ML	VL	VL	Maasser El-Chouf	ML	VL	VL	Majdalouna	M	L	VL
Majdel El-Meouch	ML	VL	VL	Mazboud	M	VL	VL	Mazmoura	M	VL	VL
Mazraat El Chouf	ML	VL	VL	Mazraat El Daher	ML	VL	VL	Mazraat El-Douair	ML	VL	VL
Mechref	L	VL	VL	Mghairie	M	VL	L	Mghayrie El-Chouf	L	VL	VL
Moukhtara	ML	VL	VL	Mrusti	ML	VL	VL	Mtolle	M	VL	VL
Naameh	M	L	L	Niha El-Chouf	ML	VL	VL	Ouadi Abou Youssef	L	VL	VL
Ouadi Ed-Deir	ML	VL	VL	Ouadi El-Sit	ML	VL	VL	Ouadi bnehlay	L	VL	VL
Qraibeh	ML	VL	VL	Qreiaa	ML	VL	VL	Rmayle El-Chouf	M	VL	L
Semqaniyeh	ML	VL	VL	Sibline	M	VL	L	Sirjbeil	ML	VL	VL
Warhanieh	M	VL	VL	Werdaniyeh	M	VL	VL	Zaarourieh	M	VL	VL

## Baabda

Municipality	27-Mar	28-Mar	29-Mar	Municipality	27-Mar	28-Mar	29-Mar	Municipality	27-Mar	28-Mar	29-Mar
Abadiyeh	ML	VL	VL	Ain Mouaffaq	ML	VL	VL	Araiya	ML	VL	VL
Arbaniyeh	M	L	VL	Arsoun	M	L	VL	Baabda	M	L	L
Baalchmey	ML	VL	VL	Bmaryam	M	VL	VL	Bourj El-Brajneh	ML	L	L
Boutchay	ML	L	L	Bsaba Baabda	ML	L	L	Btekhney	M	VL	VL
Btibyat	M	VL	VL	Bzebdine	M	L	VL	Chbeniyeh	M	VL	VL
Chiyah	M	L	L	Chmeisset Baabda	M	L	VL	Chouit	ML	VL	VL
Deir El-harf	M	L	VL	Deir Khouna	M	VL	VL	Dlaybeh	M	L	VL



Falougha	M	VL	VL	Furn El-Chebbak	M	L	L	Hadath Beyrouth	M	L	L
Halaliyeh Baabda	ML	VL	VL	Hammana	M	VL	VL	Haret El Sett	ML	VL	VL
Haret Hamze	M	VL	VL	Haret Hreik	M	L	L	Hasbaiya El-Metn	M	L	VL
Jouar El-Hoz	M	L	VL	Jouret Arsoun	M	L	VL	Kfar Chima	ML	L	L
Kfar Selouane	M	L	VL	Khalouat Baabda	M	VL	VL	Kneisset Baabda	M	L	VL
Laylakeh	ML	L	L	Louayzeh Baabda	ML	VL	VL	Merdache	ML	L	L
Mzairaa Baabda	ML	VL	VL	Ouadi Chahrour El Ol	ML	VL	VL	Ouadi Chahrour El So	ML	L	VL
Qalaa Baabda	M	VL	VL	Qhraybe Baabda	M	L	VL	Qobbayaa	M	VL	VL
Qornayel	M	L	VL	Qortada	M	L	VL	Qrayeh Baabda	M	L	VL
Qsaibeh Baabda	M	L	VL	Qtale Baabda	M	L	VL	Ras El Metn	M	L	VL
Ras El-Haref	M	VL	VL	Rouayset El-Ballout	ML	VL	VL	Salima Baabda	M	L	VL
Tahouitat El Ghadir	ML	L	L	Tarchich	M	L	VL	Zandouqa	M	L	VL

## Aley

Municipality	27-Mar	28-Mar	29-Mar	Municipality	27-Mar	28-Mar	29-Mar	Municipality	27-Mar	28-Mar	29-Mar
Abey	ML	VL	VL	Aghmid	M	L	VL	Ain Dara	M	L	VL
Ain Drafil	L	VL	VL	Ain El Halazoun	ML	VL	VL	Ain El-Rmmaneh	ML	VL	VL
Ain Jedideh	ML	VL	VL	Ain Ksour	ML	VL	VL	Ain Onoub	ML	L	L
Ain Traz	ML	VL	VL	Ainab	ML	L	VL	Aley	ML	VL	VL
Aramoun	ML	L	L	Aytat	ML	L	L	Azouniyeh	M	VL	VL
Baawerta	ML	VL	VL	Badghan Oua Wadi Bad	M	VL	VL	Bassatine	ML	L	L
Bayssour	ML	L	VL	Bchamoun	ML	L	L	Bdadoun	ML	VL	VL
Behouara	ML	VL	VL	Bennay	ML	VL	VL	Bhamdoun El-Dayaa	ML	VL	VL
Bhamdoun El-Mhatta	M	VL	VL	Bkhechtey	ML	VL	VL	Bleibel	ML	L	VL
Bmakine	ML	VL	VL	Bmehray	M	L	VL	Bouzrid	ML	VL	VL
Bserrine	ML	VL	VL	Bsous	ML	VL	VL	Btalloun	ML	VL	VL
Btater	ML	VL	VL	Chanay	M	VL	VL	Charoun	M	VL	VL
Chartoun	ML	VL	VL	Chemlane	ML	L	L	Choueifat El-Aamrous	ML	L	L
Choueifat El-Oumara	ML	L	L	Choueifat El-Quoubbe	ML	L	L	Dakkoun	ML	VL	VL
Deir Qoubel	ML	L	L	Dfoun	ML	L	L	Douair El Remmaneh	ML	VL	VL
Ghaboun	ML	VL	VL	Habramoun	ML	VL	VL	Homs Oua Hama	M	VL	VL
Houmal	ML	L	VL	Jisr El Qadi	ML	VL	VL	Kehaleh	ML	VL	VL
Keyfoun	ML	L	L	Kfar Aamey	ML	VL	VL	Kommatyeh	ML	VL	VL
Maasrati	ML	VL	VL	Majdel Baana	M	VL	VL	Mansourieh et Ain El	ML	VL	VL
Mazraat El-Nahr	ML	VL	VL	Mchakhte	M	L	VL	Mecherfeh	M	VL	VL
Mejdaya	ML	VL	VL	Mrayjat	M	VL	VL	Ramliyah	ML	VL	VL
Rechmaya	ML	VL	VL	Rejmeh	ML	VL	VL	Remhala	ML	VL	VL
Rouaysset El Neemane	ML	VL	VL	Saoufar	M	VL	VL	Selfaya	ML	VL	VL
Sirhmoul	ML	L	VL	Souq El Ghareb	ML	VL	VL	Taazanieh	ML	VL	VL

## Kesrouane

Municipality	27-Mar	28-Mar	29-Mar	Municipality	27-Mar	28-Mar	29-Mar	Municipality	27-Mar	28-Mar	29-Mar
Achkout	M	L	VL	Adma Oua Dafneh	M	L	VL	Ain Ed-Delbe Kesroua	M	L	VL
Ain El-Rihane	M	L	VL	Aintoura Kesrouane	M	L	VL	Ajaltoun	M	L	VL
Akaybeh Kesrouane	M	L	L	Aramoun Kesrouane	M	L	VL	Azra ouel Ozor	M	L	L
Ballouneh	M	L	VL	Batha	M	L	VL	Bekaatat Achkout	M	L	VL
Bekaatat Kanaan	M	L	VL	Bizhel	M	L	VL	Bouar	M	L	L
Bqaatouta	M	L	VL	Bqaq Ed-Dine	M	L	L	Bzommar	M	L	VL

Chahtoul	M	L	VL	Chnaniir	M	L	VL	Chouan	L	VL	VL
Daraya Kesrouane	M	L	VL	Daroun	M	L	VL	Deir Baqlouch	M	L	VL
Dlebta	M	L	VL	Eghbeh	M	L	VL	Faraya	ML	VL	VL
Fatka	M	L	L	Feytroun	M	L	VL	Ghazir	M	L	VL
Ghbaleh Kesrouane	M	L	L	Ghedrass	M	L	VL	Ghosta	M	L	VL
Ghynéh	M	L	L	Harharaya w Kattine	M	L	VL	Harissa Kesrouane	M	L	VL
Hayata	M	L	VL	Hosein	M	L	VL	Hrajel	ML	VL	VL
Jdeideh Ghazir	M	L	VL	Jeita	M	L	VL	Jounieh Ghadir	M	L	VL
Jounieh Haret Sakhr	M	L	VL	Jounieh Salel Alma	M	L	VL	Jounieh Sarba	M	L	VL
Jouret Bedrane	M	L	L	Jouret Mhad	M	L	VL	Jouret Termos	M	L	L
Kfar Debiane	M	L	VL	Kfar Tay Kesrouane	M	L	VL	Kfar Yassine	M	L	L
Kfour Kesrouane	M	L	VL	Kharayeb Nahr Ibrahi	M	L	L	Klayaat Kesrouane	M	L	VL
Maarab	M	L	VL	Maaysra Kesrouane	M	L	L	Mayrouba	ML	VL	VL
Mazraat Er-Ras	M	L	VL	Mazraat Mrah El-Mir	M	L	VL	Mchaa El Ftouh	ML	L	L
Mchaa Faraya	ML	VL	VL	Mchaa Kfar Dibiane	ML	VL	VL	Mghaer	M	VL	VL
Mradiyah	M	L	VL	Nahr Ed-Dahab	M	L	VL	Nammoura Kesrouane	M	L	L
Ouata El Jaouz	M	L	VL	Ouata Sillam	M	L	VL	Raachine	M	L	VL
Rayfoun	M	L	VL	Safra Kesrouane	M	L	L	Shayle Kesrouane	M	L	VL
Tabarja	M	L	L	Yahchouch	M	L	VL	Zaaytreh	M	L	L
Zeytoun	M	L	L	Zouk Mikael	M	L	VL	Zouk Mosbeh	M	L	VL

### Baalbek\_Hermel

#### Baalbek

Municipality	27-Mar	28-Mar	29-Mar	Municipality	27-Mar	28-Mar	29-Mar	Municipality	27-Mar	28-Mar	29-Mar
Aadous	M	M	M	Aamchki	L	L	ML	Aarsal	L	ML	M
Ain Baalbek	ML	ML	M	Ain Bourday	M	ML	M	Ain El-Benye	L	L	M
Ain El-Jaouz Baalbek	ML	M	M	Ain El-Siya Chadoura	L	L	M	Al Khodr Baalbek	M	L	M
Al Nabi Chit	M	L	M	Aynata Baalbek	ML	ML	L	Baalbek	M	ML	M
Bachwat	M	ML	L	Barqa	M	M	L	Bednayel Baalbak	M	L	L
Beit Chama	M	L	ML	Bijjaje	M	M	M	Bouday	M	M	ML
Brital	ML	ML	M	Btadi	M	ML	M	Chaat	M	M	M
Chaibe	L	L	M	Chlifa	M	ML	M	Chmestar	M	L	L
Dar El-Oussa	M	ML	L	Deir El-Ahmar	M	ML	ML	Deir Mar Maroun Baal	M	ML	M
Douris	M	ML	M	Fakiha	M	M	M	Hadath Baalbek	M	ML	ML
Ham	L	L	M	Haour Taala	ML	L	M	Hizzine	M	M	M
Hlebta	ML	L	M	Hosh Barada	M	M	M	Hosh El Dahab	M	M	M
Hosh El Snid	M	L	M	Hosh El-Nabi	M	L	M	Hosh El-Rafiq	M	L	M
Hosh Tal Safiya	M	M	M	Hrebta	M	M	M	laat	M	ML	M
Jebaa	M	L	ML	Jenta	M	L	ML	Kfar Dabach	M	L	ML
Kfar Dane	M	ML	M	Khraibeh El-Hermel	M	M	M	Khreibet Baalbek	ML	L	M
Kneisset Baalbek	M	M	M	Labueh	M	M	M	Maarboun	L	L	M
Majdaloun	M	M	M	Maqneh	M	ML	M	Mazraat Beit Mcheik	M	ML	ML
Misraya	M	L	M	Moqraq	M	M	M	Nabha El-Damdoum	ML	M	M
Nabi Chbay	L	L	ML	Nabi Osman	ML	M	M	Nahleh baalbek	L	L	M
Ouadi El-Oss	M	ML	M	Qaa Baayoun	M	M	M	Qaa Jouar Maqiye	M	L	M
Qaa Ouadi El-Khanzir	M	ML	M	Qah Baalbek	M	M	M	Qarha Baalbek	M	M	MH



Qsarnaba	M	L	M	Ram Baalbek	M	M	MH	Ras Baalbek El Sahl	M	M	M
Ras Baalbek El-Charq	ML	M	M	Riha	M	M	M	Saaide	M	M	M
Sbouba	M	M	MH	Seriine El-Tahta	M	L	M	Slouqi	M	L	L
Taiba Baalbek	M	M	M	Talia	M	ML	M	Taraiya	M	L	L
Temnin El Fawqa	M	L	ML	Temnin El-Tahta	M	L	M	Tfail	ML	M	M
Yahfoufa	M	L	ML	Yammouneh	ML	ML	L	Younine	L	ML	M
Zboud	M	M	M								

## Hermel

Municipality	27-Mar	28-Mar	29-Mar	Municipality	27-Mar	28-Mar	29-Mar	Municipality	27-Mar	28-Mar	29-Mar
Charbine El-Hermel	M	ML	M	Hermel Jbab	L	L	ML	Hermel	M	ML	M
Maaysra El-Hermel	M	M	M	Michaa Mrajhine	L	L	ML	Ouadi Faara	ML	L	M
Ras Baalbek - Ouadi	M	M	M	Ras Baalbek El Gharb	M	M	M	Zighrine	M	ML	M

## Akkar

### Akkar

Municipality	27-Mar	28-Mar	29-Mar	Municipality	27-Mar	28-Mar	29-Mar	Municipality	27-Mar	28-Mar	29-Mar
Aain Tinta	M	ML	M	Aaiyat	L	M	M	Aakkar El-Aatiqa	L	L	M
Aamar Akkar	M	M	MH	Aamar El Baykat	M	ML	M	Aamayer	M	M	M
Aamriyet Akkar	M	ML	M	Aandqet	M	M	M	Aarmeh	M	ML	M
Aarqa	M	M	MH	Aawaynat	M	M	M	Aayoun Akkar	L	ML	M
Abboudiye	M	ML	M	Ain El-Zeit	M	ML	M	Ain Yaaqoub	L	L	M
Akroum	M	M	M	Aridet Cheikh Zennad	M	M	M	Baldeh w Mazraat Bal	M	M	M
Barcha	M	ML	M	Bardeh	M	ML	M	Bebnine	M	M	MH
Beino	M	ML	M	Beit Ayoub	L	M	M	Beit El-Haouch	M	M	M
Beit Mellat	L	M	M	Beit Younes	L	L	M	Berbara Akkar	M	ML	M
Berqayel	M	M	MH	Bezbina	L	L	M	Bireh Akkar	M	ML	M
Borj	L	M	M	Bqerezla	ML	M	M	Bzal	ML	M	M
Chane	L	L	M	Chaqdouf	L	ML	M	Charbila	M	M	M
Cheikh Mohammad	M	M	M	Cheikh Taba Es-Sahl	M	M	MH	Cheikh Taba	L	M	MH
Cheikh Zennad	M	M	M	Cheikhlar	M	M	M	Chir Hmairine	M	ML	M
Daghle	M	ML	M	Dahr Laissine	L	M	MH	Darine	M	M	MH
Dawra	ML	ML	M	Dawsa w Baghdadi	M	ML	M	Dayret Nahr El-Kabir	ML	ML	M
Deir Dalloum	M	M	MH	Deir Jennine	M	ML	M	Denbou	L	ML	M
Dibbbiyeh	M	ML	M	Douair Aadwiyeh	M	ML	M	Fassikine	M	ML	M
Fnaydek	L	L	M	Fraydes Akkar	M	ML	M	Ghazayle	M	ML	M
Habchit	L	L	M	Hakour	M	M	MH	Halba	M	M	MH
Haouchab	M	M	M	Hayssat	M	M	M	Haytla	M	ML	M
Hayzouq	M	M	M	Hedd	M	M	M	Hmaira Akkar	M	M	MH
Hmaiss Akkar	M	ML	M	Hnaider	M	M	M	Hokr Ed-Dahri	M	M	M
Hokr Etti	M	ML	M	Hokr Jouret Srar	M	M	M	Houaich	L	ML	M
Hrar	L	ML	M	Idbil	L	M	M	Ilal	L	M	M
Janine	M	ML	M	Jdeidet El-Joumeh	ML	M	MH	Jdeidet El-Kaiteh	M	M	M
Jebraiel	L	M	M	Kafr	M	L	L	Kafr	M	ML	M
Karm Asfour	ML	M	M	Kfar Melki Akkar	M	M	M	Kfar Noun	M	ML	M
Kfarharra	M	M	MH	Khalsa	M	M	H	Kharnoubet Akkar	M	ML	M

Khirbet Daoud Aakkar	M	ML	M	Khirbet El Remmane	M	M	M	Khirbet Shar	M	ML	M
Khoreybet El-Jindi	M	M	M	Khreibet Aakkar	L	M	M	Kneisset Aakkar	M	M	M
Kneisset Hnaider	M	M	M	Knisse	M	M	M	Kroum El-Aarab	M	M	M
Kwachra	M	ML	M	Kweykhata	M	M	M	Machta Hammoud	M	M	M
Majdala	M	M	MH	Majdel Akkar	M	ML	M	Mar Touma	M	M	MH
Marlaya Melhem	M	M	MH	Mashha	ML	M	M	Massoudiye	M	M	M
Mazraat Beit Ghattas	M	M	M	Mazraat En-Nahriye	M	M	M	Mechmech	L	L	M
Memneh	L	L	ML	Mhammara	M	M	MH	Mighraq Aakkar	M	M	M
Minyara	M	M	MH	Moqayteh	M	M	M	Mounjez	M	ML	M
Msalla	M	ML	M	Mzeihmeh	M	ML	MH	Nfaiseh	ML	ML	M
Noura Et-Tahta	M	ML	M	Ouadi El-Haour	M	M	M	Ouadi El-Jamous	M	M	MH
Ouyoun El-Ghizlane	M	M	MH	Qaabarine	M	M	M	Qabaait	L	ML	M
Qachlaq	M	M	M	Qantara Aakkar	L	M	M	Qarha Aakkar	M	M	MH
Qarqaf	M	M	MH	Qboula	L	M	M	Qleiaat Aakkar	M	M	M
Qloud El-Baqie	M	M	M	Qobaiyat Aakkar	M	M	M	Qobbat Chamrat	M	M	MH
Qorayat	L	L	M	Qornet Aakkar	L	L	M	Qsair Aakkar	M	ML	M
Rahbe	L	ML	M	Rihaniyet Aakkar	M	M	M	Rmah	M	M	M
Rmoul	M	M	M	Saadine	M	M	MH	Sadaqa	L	M	M
Saidnaya	M	ML	M	Sammouniye	M	M	M	Sayssouq	M	M	M
Semmaqiye	M	M	M	Semmaqli	M	M	MH	Sfinet El-Dreib	M	M	M
Sfinet El-Qaitaa	ML	M	M	Sindyant Zeidane	M	ML	M	Souaisset Aakkar	M	M	M
Srar	M	ML	M	Tal Abbas El Gharby	M	M	MH	Tal Abbas El-Chargy	M	M	MH
Tal Biret	M	M	M	Tal Hmayra	M	M	M	Tal Maayan Tal Kiri	M	M	M
Tal Sibel	M	M	M	Tallet Chattaha	L	M	M	Tikrit	L	ML	M
Tleil	M	ML	M	Tshea	L	L	M	Zawarib	L	M	MH
Zouq El Hosniyeh	M	M	M	Zouq El-Haddara	M	M	MH	Zouq El-Hbalsa	M	M	M
Zouq El-Moqachrine	M	M	MH								

## Sud

### Sour

Municipality	27-Mar	28-Mar	29-Mar	Municipality	27-Mar	28-Mar	29-Mar	Municipality	27-Mar	28-Mar	29-Mar
Aaiyeh	M	L	ML	Aalma El-Chaab	M	L	L	Aaytit	M	VL	ML
Abbassiyeh Sour	M	L	M	Abou Chech	M	L	L	Ain Abou Abdallah	M	L	M
Ain Baal	M	VL	M	Arzoun	M	L	L	Aziyeh	M	L	ML
Baflaya	M	L	ML	Barich	M	VL	ML	Batouliyah	M	VL	M
Bayad	M	L	ML	Bazouriyeh	M	L	M	Bediass	M	VL	ML
Bestiyat	M	VL	ML	Borj El Chemali	M	L	M	Borj En-Naqoura	M	L	ML
Borj Rahhal	M	VL	ML	Boustane	M	L	L	Btaychiyeh	M	L	L
Chaaitiye	M	L	ML	Chameh	M	L	ML	Chehabiye	M	L	ML
Chehour	M	L	L	Chihine	M	L	ML	Debaal Sour	M	VL	ML
Deir Amess	M	L	ML	Deir Kifa	M	L	ML	Deir Qanoun El-Ain	M	VL	ML
Deir Qanoun El-Naher	M	VL	ML	Derdghaiya	M	L	L	Dhayra	M	L	L
Halloussiyeh	M	VL	ML	Hamoul	M	L	L	Hanaouey	M	VL	ML
Henniye	M	L	ML	Hmairi Sour	M	VL	ML	Iskandarouna Sour	M	L	L
Jbal El Botom	M	L	ML	Jebbin	M	L	ML	Jennata	M	VL	ML
Jijim	M	L	L	Jouaiya	M	VL	ML	Kneisset Sour	M	VL	ML



Maarake	M	VL	ML	Maaroub	M	VL	ML	Majadel	M	VL	ML
Majdalzoun	M	L	ML	Mansouri Sour	M	L	ML	Marnba	M	L	L
Marouahine	M	L	L	Mazraat El-Zalloutiy	M	L	ML	Mazraat Mechref	M	L	ML
Mazraat Tayr Semhat	M	L	L	Mheilib	M	L	M	Neffakhiyeh	M	L	L
Niha Sour	M	L	L	Ouadi Jilo	M	VL	ML	Qana	M	VL	ML
Qolaileh Sour	M	L	ML	Rechknay	M	L	ML	Rmadiyah	M	VL	ML
Selha Sour	M	L	L	Siddiqine	M	VL	ML	Sour	M	L	M
Srifa	M	L	L	Tayr Debbe	M	L	M	Tayr Felsay	M	VL	ML
Tayr Harfa	M	L	ML	Touayri	M	L	L	Toura	M	VL	ML
Yanouh Sour	M	VL	ML	Yarine	M	L	L	Zebqine	M	L	L

## Saida

Municipality	27-Mar	28-Mar	29-Mar	Municipality	27-Mar	28-Mar	29-Mar	Municipality	27-Mar	28-Mar	29-Mar
Aanqoun	M	VL	VL	Aaqtanit	M	VL	L	Aarab Ej-Jall	M	VL	VL
Aarab Tabbaya	M	VL	VL	Abra Saida	M	VL	L	Adloun	M	L	M
Adousiyeh	M	L	ML	Ain-El-Deleb	M	VL	VL	Arzai	M	VL	ML
Babliyah	M	L	ML	Barty	M	VL	VL	Bissariyeh	M	L	ML
Bnaafoul	M	VL	VL	Bqosta	M	VL	L	Bramiy	M	VL	VL
Daoudiyeh	M	L	ML	Dareb El-Sim	M	VL	VL	Erkay	M	VL	VL
Ghassanieh	M	L	ML	Ghazieh	M	L	L	Hajjeh	M	VL	VL
Haret Saida	M	VL	VL	Hartiyeh	M	L	ML	Hlaliye Saida	M	VL	VL
Insariyat	M	L	ML	Jazira Saida	M	L	M	Kafar Bit	M	VL	VL
Kaoutariyet El-Siyad	M	VL	L	Kfar Chellal	M	VL	VL	Kfar Hatta Saida	M	VL	VL
Kfar Milke Saida	M	VL	VL	Khartoum	M	VL	L	Khaziz	M	VL	VL
Khirbet Ed-Douair Sa	M	L	M	Khirbet El-Bassal	M	VL	L	Khrayeb Saida	M	L	ML
Loubieh	M	L	ML	Maghdouche	M	VL	L	Majdelyoun	M	VL	VL
Matariyet El-Choumar	M	VL	ML	Matayriyeh	M	VL	L	Mazraat 'Mseileh	M	L	ML
Mazraat 'Snaiber	M	L	ML	Mazraat Aarab Soukka	M	VL	VL	Mazraat Deir Taqla	M	L	ML
Mazraat El Yahoudiye	M	L	M	Mazraat El-Housseini	M	L	ML	Mazraat El-Mhaydaleh	M	L	M
Mazraat El-Ouasta	M	L	M	Mazraat Jamjim	M	L	ML	Mazraat Kaoutariyet	M	L	ML
Mazraat Kfar Badda	M	L	M	Mazraat Oussamiyat	M	L	M	Mazraat Sari	M	L	ML
Mazraat Sinai	M	VL	L	Meemariyeh	M	VL	L	Merouaniyeh	M	L	L
Miyeh ou Miyeh	M	VL	VL	Najjariyeh	M	L	ML	Qaaqaiyat El-Snaouba	M	L	M
Qnarit	M	VL	L	Qraie Saida	M	VL	VL	Saida Ed-Dekermane	M	VL	L
Saida El-Oustani	M	VL	L	Saida El-Qadimeh	M	VL	VL	Saida Kefraya	M	L	L
Saksakiyeh	M	L	M	Salhieh Saida	M	VL	L	Sarafand	M	L	M
Sfenta	M	L	VL	Tafahta	M	VL	L	Tanbourit	M	VL	VL
Tebna	M	L	ML	Zaghdraiya	M	VL	VL	Zeita	M	VL	VL
Zrariyeh	M	L	ML								

## Jezzine

Municipality	27-Mar	28-Mar	29-Mar	Municipality	27-Mar	28-Mar	29-Mar	Municipality	27-Mar	28-Mar	29-Mar
Ain El-Mir (El Estab	M	VL	VL	Anane	ML	VL	VL	Aramta	M	L	VL
Ariya	M	VL	VL	Aychiyeh	M	L	VL	Azour	M	VL	VL
Baba	M	VL	VL	Bayssour Jezzine	M	VL	VL	Benoueteh Jezzine	M	VL	VL
Bhannine	ML	VL	VL	Bisri	ML	VL	VL	Bkassine	M	VL	VL
Bouslaya	M	L	VL	Btedine El-Leqech	M	VL	VL	Chbail	M	L	VL
Choualiq Jezzine	M	VL	L	Dahr Ed-Deir	M	L	VL	Deir El Qattine	M	L	VL

Demachqiyeh	M	VL	VL	Ghabbatiyeh	M	VL	VL	Harf Jezzine	M	VL	VL
Hassaniyeh	M	VL	VL	Haytouleh	M	VL	VL	Haytura	M	L	VL
Hidab	M	L	VL	Homsiyeh	M	VL	VL	Jabal Toura	M	L	VL
Jarmaq	M	VL	VL	Jensnaya	M	VL	VL	Jernaya	M	VL	VL
Jezzine	M	VL	VL	Karkha	M	L	VL	Kfar Falous	ML	VL	VL
Kfar Houna	M	L	VL	Kfar Jarrah	M	VL	L	Lebaa	M	VL	VL
Louayzet Jezzine	M	L	VL	Machmouche	M	VL	VL	Mahmoudiyeh Jezzine	M	VL	VL
Maknounye Jezzine	M	L	VL	Maraat Ouazaiyeh	M	L	VL	Mazraat Daraya	M	L	VL
Mazraat El-Aarqoub	M	VL	VL	Mazraat El-Mathane	ML	VL	VL	Mazraat El-Rahbane	M	L	VL
Mazraat Khamlet Khaz	M	L	VL	Mazraat Louzid (Loua)	M	L	VL	Mazraat Qrouh	M	L	VL
Mazraat Tamra	M	VL	VL	Mazraat Zighrine Jez	M	L	VL	Mazraat	M	L	VL
Mharbiyeh	M	VL	VL	Midane Jezzine	M	VL	VL	Mjeydel Jezzine	M	VL	VL
Mlikh	M	L	VL	Mrah El-Hbasse	M	VL	VL	Ouadi Baanquodaine	M	VL	VL
Ouadi El-Laymoun	M	VL	VL	Ouardiyeh	M	L	VL	Qabaa Jezzine	M	L	VL
Qatrani	M	L	VL	Qaytouleh	M	L	VL	Qtaleh Jezzine	M	VL	VL
Rihane Jezzine	M	L	L	Rimat	M	L	VL	Roum	M	L	VL
Roummanet	M	VL	VL	Sabbah	M	VL	VL	Saydoun	M	L	VL
Sfaray	ML	VL	VL	Snaya	M	L	VL	Sojoud	M	VL	VL
Srayri	M	L	VL	Taaid	M	VL	VL	Wadi Jezzine	M	VL	VL
Zhalta	M	L	VL								

## Bekaa

### West Bekaa

Municipality	27-Mar	28-Mar	29-Mar	Municipality	27-Mar	28-Mar	29-Mar	Municipality	27-Mar	28-Mar	29-Mar
Aammiq BG	M	L	ML	Ain El Tineh BG	M	L	VL	Ain Zebdeh	ML	VL	L
Ana	M	L	L	Aytanit	M	VL	VL	Baaloul BG	M	L	L
Bab Mareh	ML	VL	L	Chouberqiye Aammiq	M	L	M	Dakoue	M	L	ML
Deir Ain El-Jaouze	ML	VL	VL	Deir Tahniche	M	L	ML	Ghaza	M	L	M
Harime El-Soughra	M	L	ML	Hoch Harimeh	M	L	M	Jazira BG	M	L	ML
Jib Jennine	M	L	L	Kamed-El-Laouz	M	L	L	Kefraya BG	M	VL	VL
Khiara El Atika	M	L	M	Khiara	M	L	M	Khirbet Qanafar	M	L	L
Lala	M	L	L	Lebbaya BG	ML	L	L	Loussa	M	L	L
Machghara	ML	L	L	Manara (Hammara) BG	M	L	ML	Mansoura BG	M	L	ML
Marej BG	M	L	L	Maydoun	M	L	VL	Ouaqf BG	M	ML	L
Qaraaoun	ML	L	L	Qelya	M	L	L	Raouda (Istabel)	M	L	L
Saghbine	ML	VL	VL	Sohmor	ML	L	L	Soltan Yacoub el Ara	M	L	ML
Souairy	M	L	ML	Sultan Yaacoub	M	L	L	Tal Znoun	M	L	ML
Yehmor BG	ML	L	L	Zilaya	ML	L	L				

### Zahle

Municipality	27-Mar	28-Mar	29-Mar	Municipality	27-Mar	28-Mar	29-Mar	Municipality	27-Mar	28-Mar	29-Mar
Aanjar (Haouch Mouss)	M	L	L	Ablah	M	L	ML	Ain Kfarzabad	M	L	L
Ali-El-Nahri	M	L	M	Bar Elias	M	L	L	Bouarej	M	L	L
Cheberqiyet Tabet	M	L	L	Chtaura	M	L	VL	Deir El Ghazal	M	L	L
Delhamiyet Zahle	M	L	L	Ferzol	M	L	L	Haouch El-Ghanam	M	L	M
Haouch Es-Siyadeh	M	L	VL	Haouch Hala	M	L	ML	Haouch Mandara	M	L	L

Haouch Qayssar	M	L	L	Hezerta	M	L	L	Hosh Moussa	M	L	L
Jdita	M	L	L	Kfarzabad	M	L	L	Ksara	M	L	L
Majdel Aanjar	M	L	ML	Makssi	M	L	L	Massa	M	L	ML
Mazraat Er-Remtaniye	M	L	L	Mrayjat Zahle	M	L	L	Mzaraa Zahle	M	L	L
Nabi Ayla	M	L	ML	Nasriyet Rizk	M	L	M	Nasriyet Zahle	M	L	L
Niha Zahle	M	L	ML	Ouadi Ed-Deloum	M	L	L	Ouadi El-Arayech	M	L	L
Qaa El Rim	M	L	L	Qab Elias	M	L	VL	Qousaya	M	L	L
Rhit	M	L	ML	Riyak	M	L	M	Saadnayel	M	L	L
Taal El-Akhdar	M	L	L	Taalbeya	M	L	L	Taanayel	M	L	L
Talamara	M	L	M	Tcheflik Edde Haouch	M	L	L	Tcheflik Qiqano	M	L	L
Terbol Zahle	M	L	L	Touaite Zahle	M	VL	VL	Zahle Aradi	M	L	L
Zahle El-Berbara	M	VL	L	Zahle El-Maallaqa	M	VL	L	Zahle El-Midane	M	VL	L
Zahle Er-Rassiye	M	VL	L	Zahle Haouch El-Ouma	M	L	L	Zahle Haouch El-Ouma	M	L	L
Zahle Haouch Ez-Zara	M	VL	L	Zahle Maalaaqa Aradi	M	L	L	Zahle Mar Antonios	M	VL	L
Zahle Mar Elias	M	VL	L	Zahle Mar Gerios	M	L	L	Zahle Saydet En-Naja	M	VL	L
Zebdoul	M	L	VL								

## Rachaiya

Municipality	27-Mar	28-Mar	29-Mar	Municipality	27-Mar	28-Mar	29-Mar	Municipality	27-Mar	28-Mar	29-Mar
Ain Arab Rachaiya	M	M	M	Ain Ata	L	L	ML	Ain Harche	L	L	ML
Aqabe Rachaya	ML	L	M	Ayha	M	M	M	Ayta El Fokhar	M	ML	M
Bakifa Rachaya	L	L	M	Bakka	M	M	M	Beit Lahya	ML	L	M
Bireh Rachaiya	M	ML	M	Daheer El Ahmar	ML	ML	M	Deir El-Achayer	M	M	M
Heloua Rachaiya	M	M	M	Hoch El Qannabeh Rac	L	L	ML	Kaoukaba Bou Arab	ML	L	M
Kfar Danis	M	ML	M	Kfar Mechki	ML	L	L	Kfar Qouq	M	M	M
Kherbet Rouha	M	ML	M	Majdel Balhiss	ML	L	L	Mdoukha	M	M	M
Mhaydseh Rachaiya	M	ML	M	Nabi Safa	ML	L	L	Rachaiya	ML	L	M
Rafid Rachaiya	M	ML	M	Selsata (Mazraat Dei	M	M	M	Tannoura	ML	L	M
Yanta	M	M	M								

## Beyrouth

### Beyrouth

Municipality	27-Mar	28-Mar	29-Mar	Municipality	27-Mar	28-Mar	29-Mar	Municipality	27-Mar	28-Mar	29-Mar
Achrafieh	M	L	L	Ain el-Mreisse	M	L	L	Bachoura	M	L	L
Beirut Central Distr	M	L	L	Marfai	M	L	L	Mazraa	M	L	L
Medaouar	M	L	L	Minet el-Hosn	M	L	L	Mwssaitbeh	M	L	L
Ras Beirut	M	L	L	Rmeil	M	L	L	Saifi	M	L	L
Zqaq el-Blat	M	L	L								