

# Lebanon Fire Risk Bulletin



CIVIL DEDEFENCE

**Refer to cadast table condition.**

**Please note that the indicated temperature is at 2 meters height from the ground.**

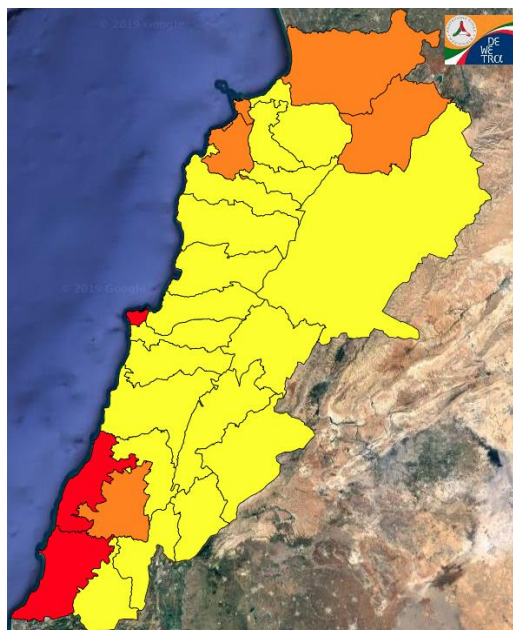
General description of potential fire risk situation

Symbol	Level of risk	Meaning and actions
VL	Very low	Very low fire risk. Controlled burning operations can be hardly executed due to high fuel moisture content. Normally wildfires self-extinguish.
L	Low	Low fire risk. Controlled burning operations can be executed with a reasonable degree of safety.
ML	Medium low	Medium-low fire risk. Controlled burning operations can be executed in safety conditions. All the fires need to be extinguished.
M	Medium	Medium fire risk. Controlled burning operations would be avoided. All the fires need to be very well extinguished.
M	Medium high	Controlled burning is not recommended. Open flame will start fires. Cured grasslands and forest litter will burn readily. Spread is moderate in forests and fast in exposed areas. Patrolling and monitoring is suggested. Fight fires with direct attack and all available resources.
H	High	Ignition can occur easily with fast spread in grass, shrubs and forests. Fires will be very hot with crowning and short to medium spotting. Direct attack on the head may not be possible requiring indirect methods on flanks. Patrolling and monitoring the territory is highly suggested.
E	Extreme	Ignition can occur also from sparks. Fires will be extremely hot with fast rate of spread. Control may not be possible during day due to long range spotting and crowning. Suppression forces should limit efforts to limiting lateral spread. Damage potential total. Patrolling and monitoring the territory is highly suggested.

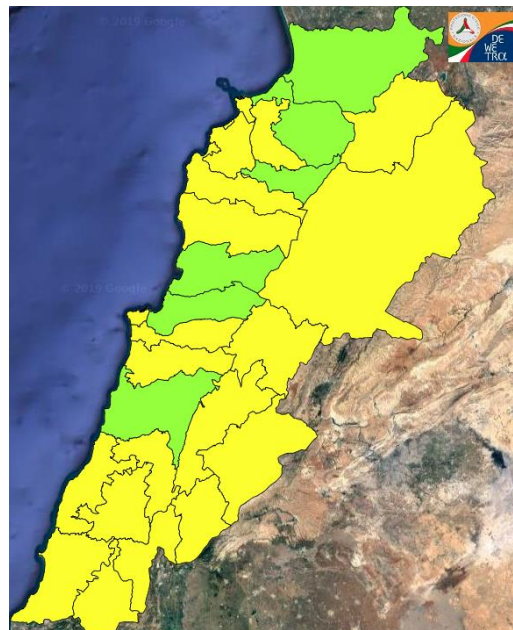
**Beirut, 27 November 2019**

# FIRE RISK INDEX

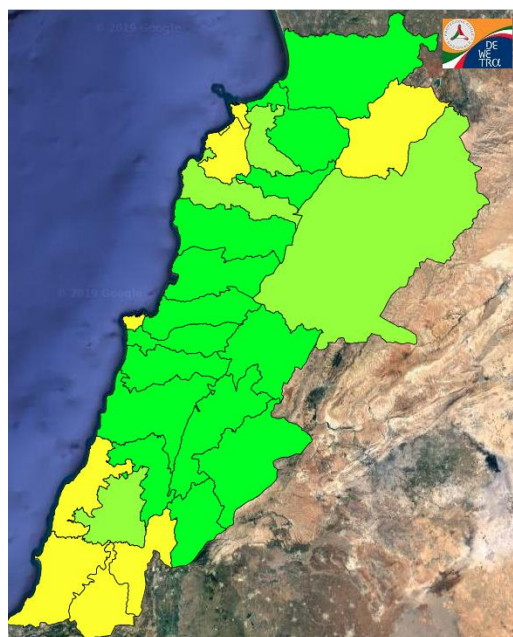
## 26 November 2019



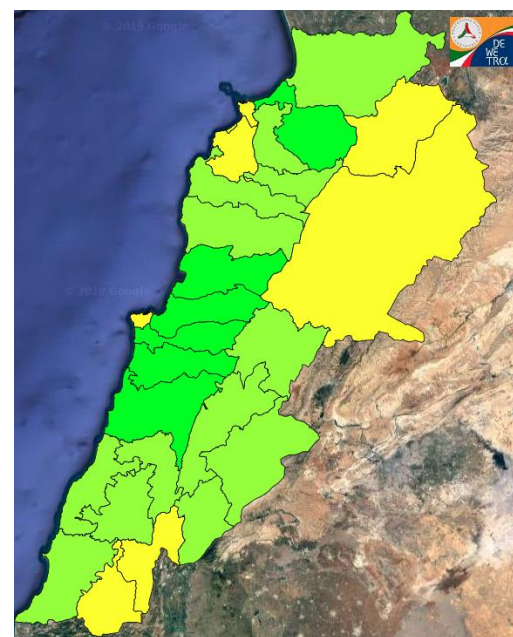
## 27 November 2019



## 28 November 2019



## 29 November 2019

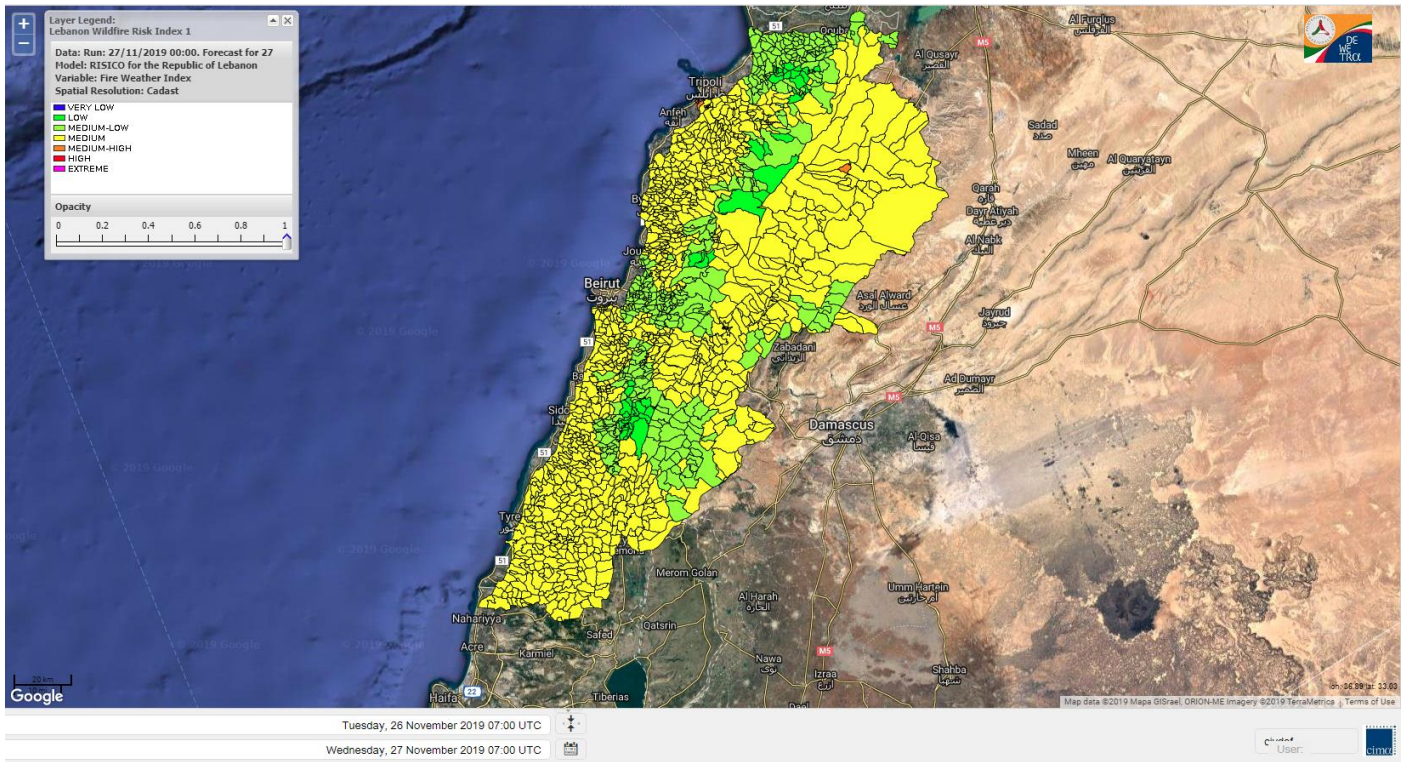


**Layer Legend:**  
Lebanon Wildfire Risk Index 1

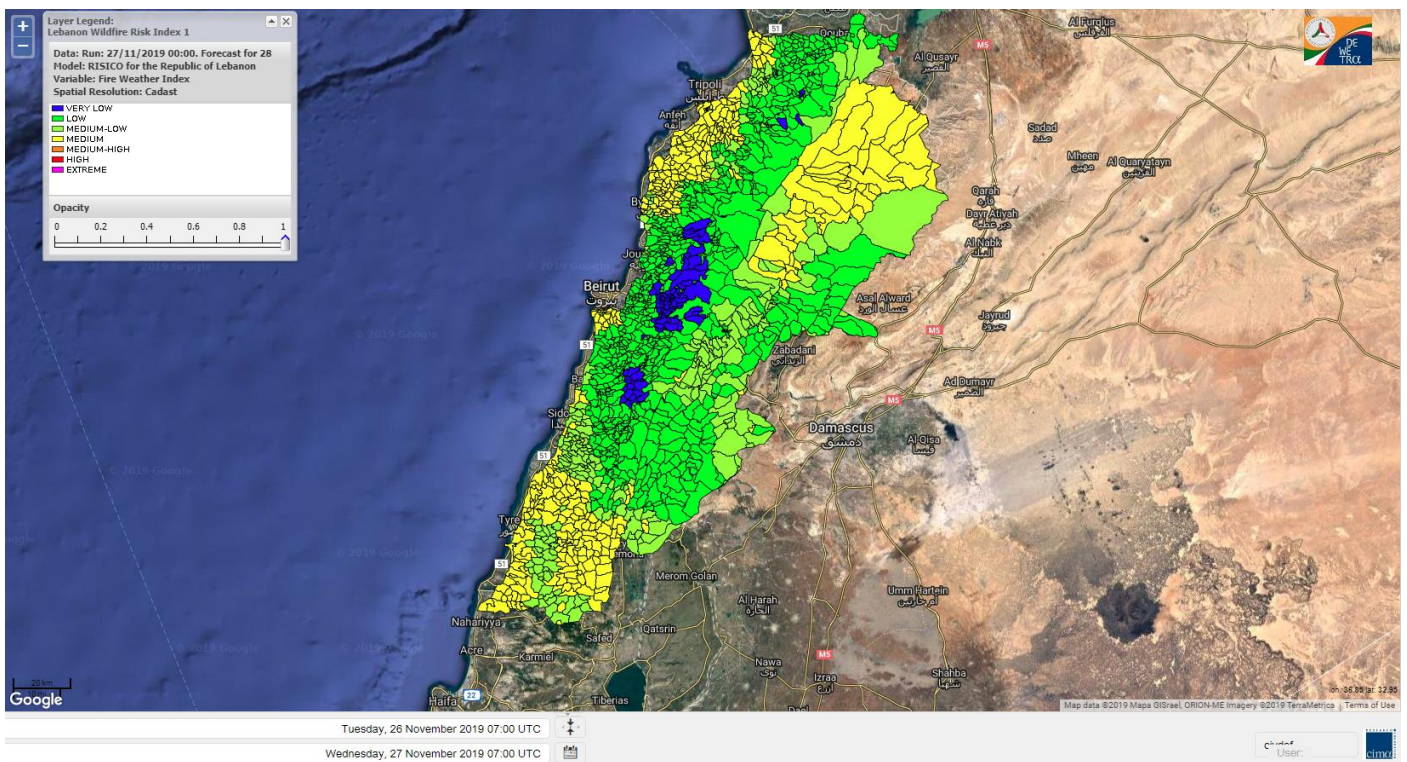
Data: Run: 27/11/2019 00:00. Forecast for 27  
Model: RISICO for the Republic of Lebanon  
Variable: Fire Weather Index  
Spatial Resolution: Caza

- VERY LOW
- LOW
- MEDIUM-LOW
- MEDIUM
- MEDIUM-HIGH
- HIGH
- EXTREME

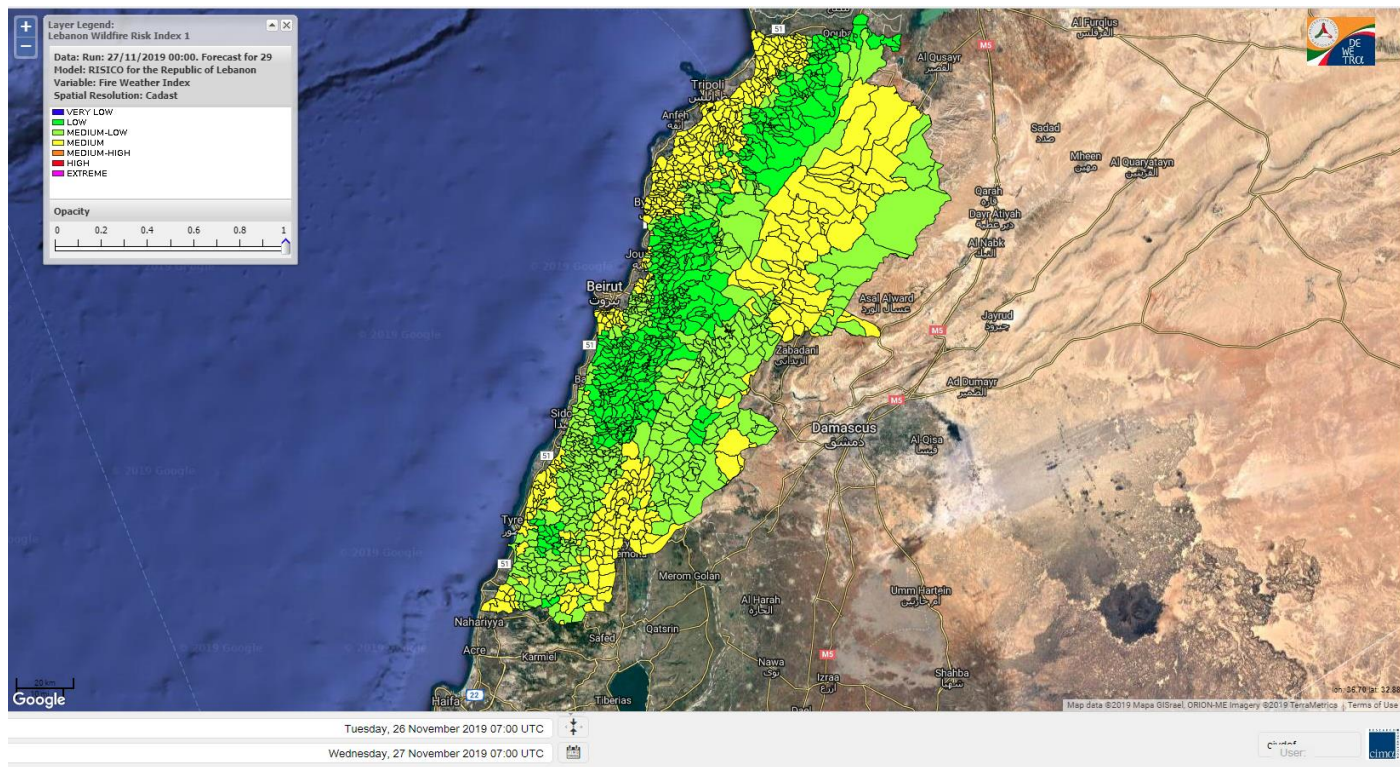
# Lebanon for 27 November 2019



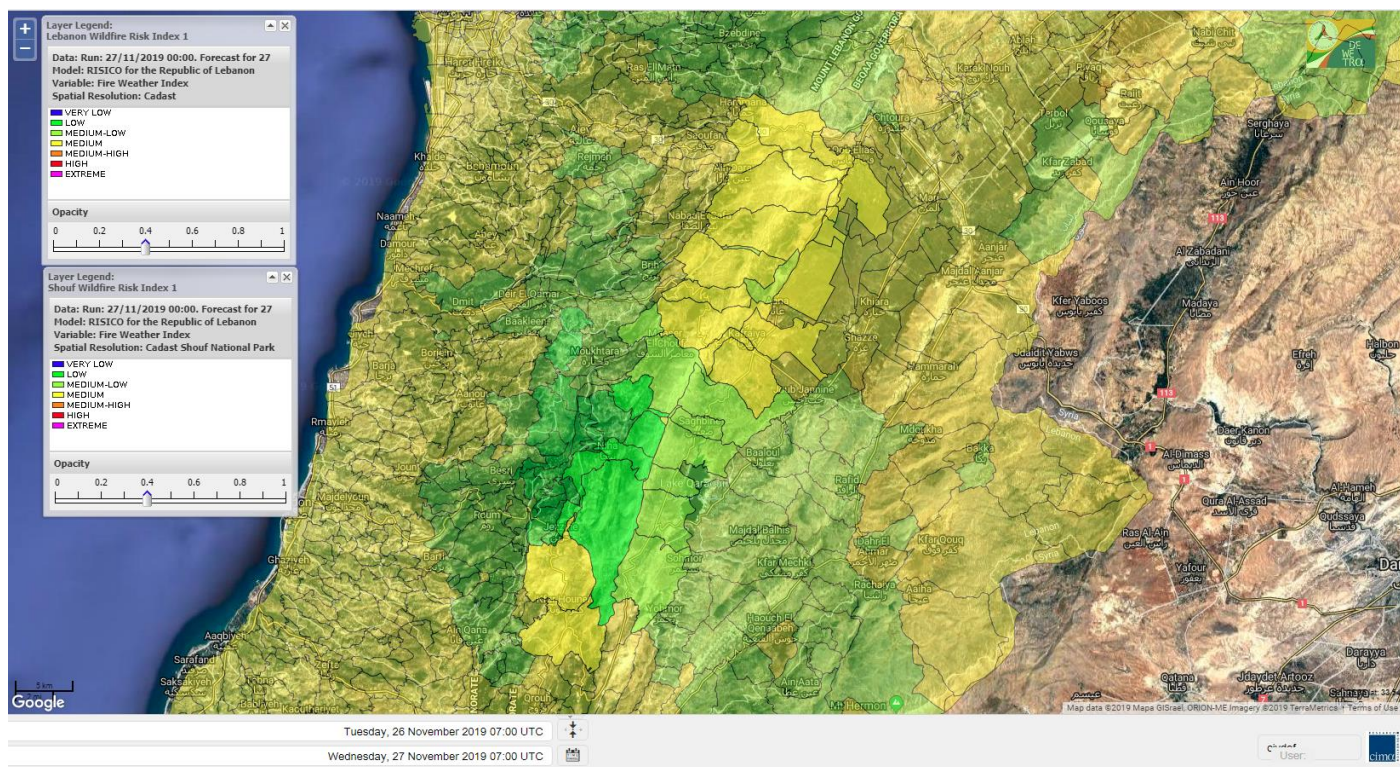
# Lebanon for 28 November 2019



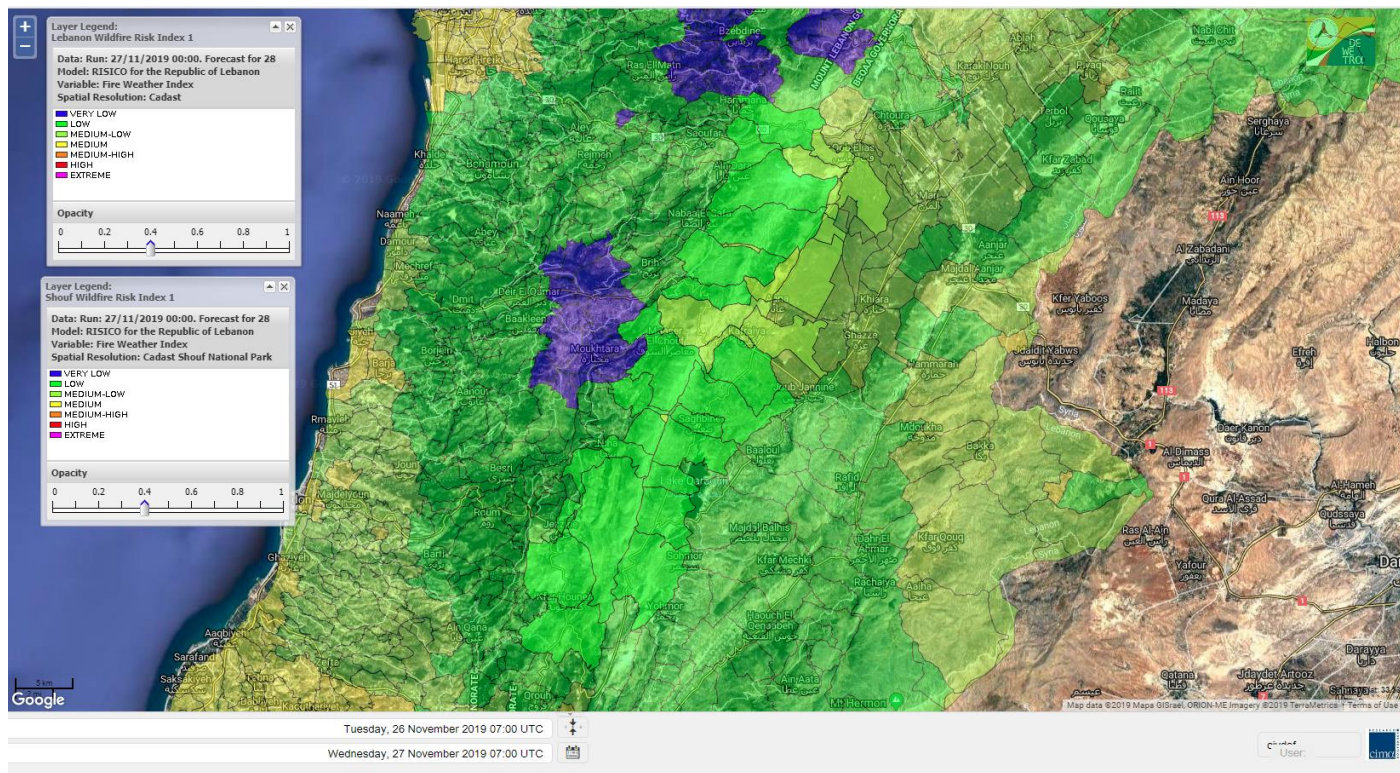
# Lebanon for 29 November 2019



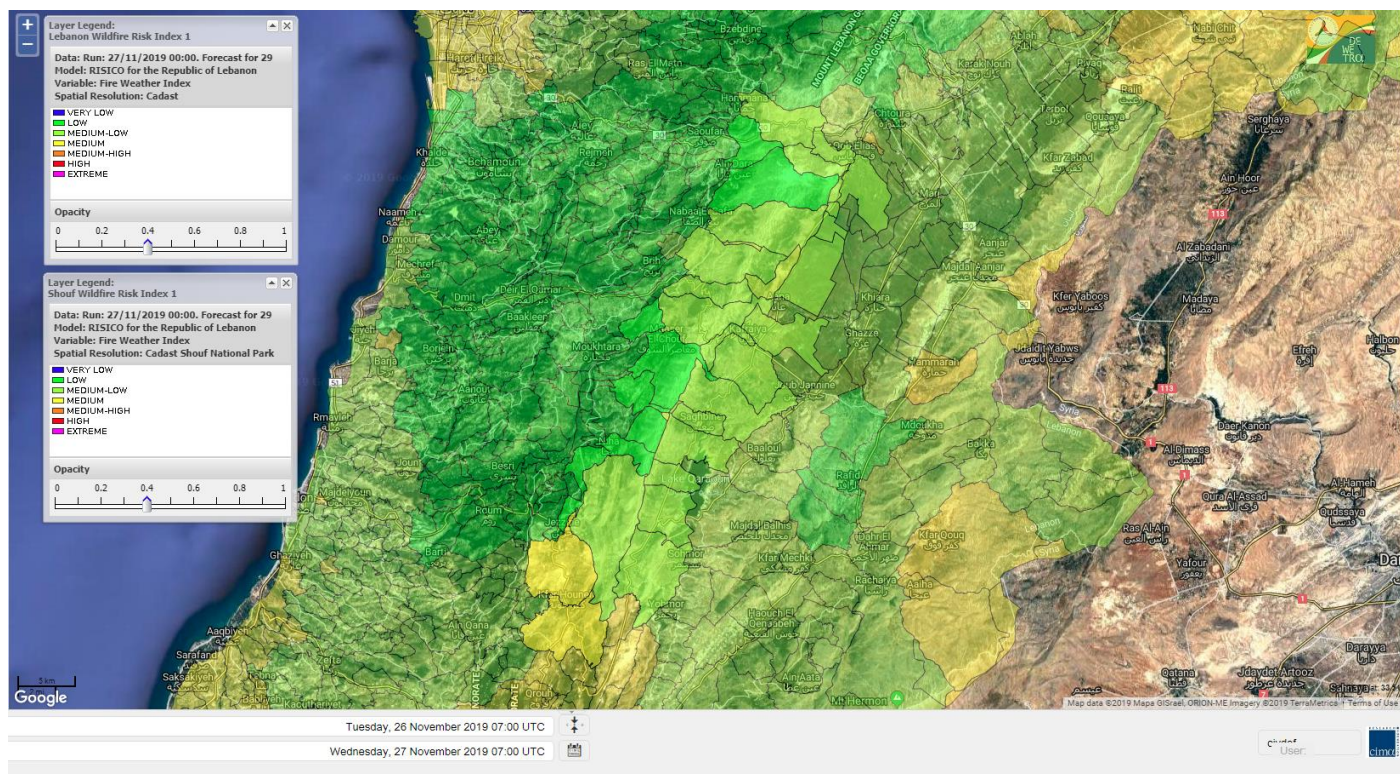
# Shouf Biosphere Reserve Forecast for 27 November 2019



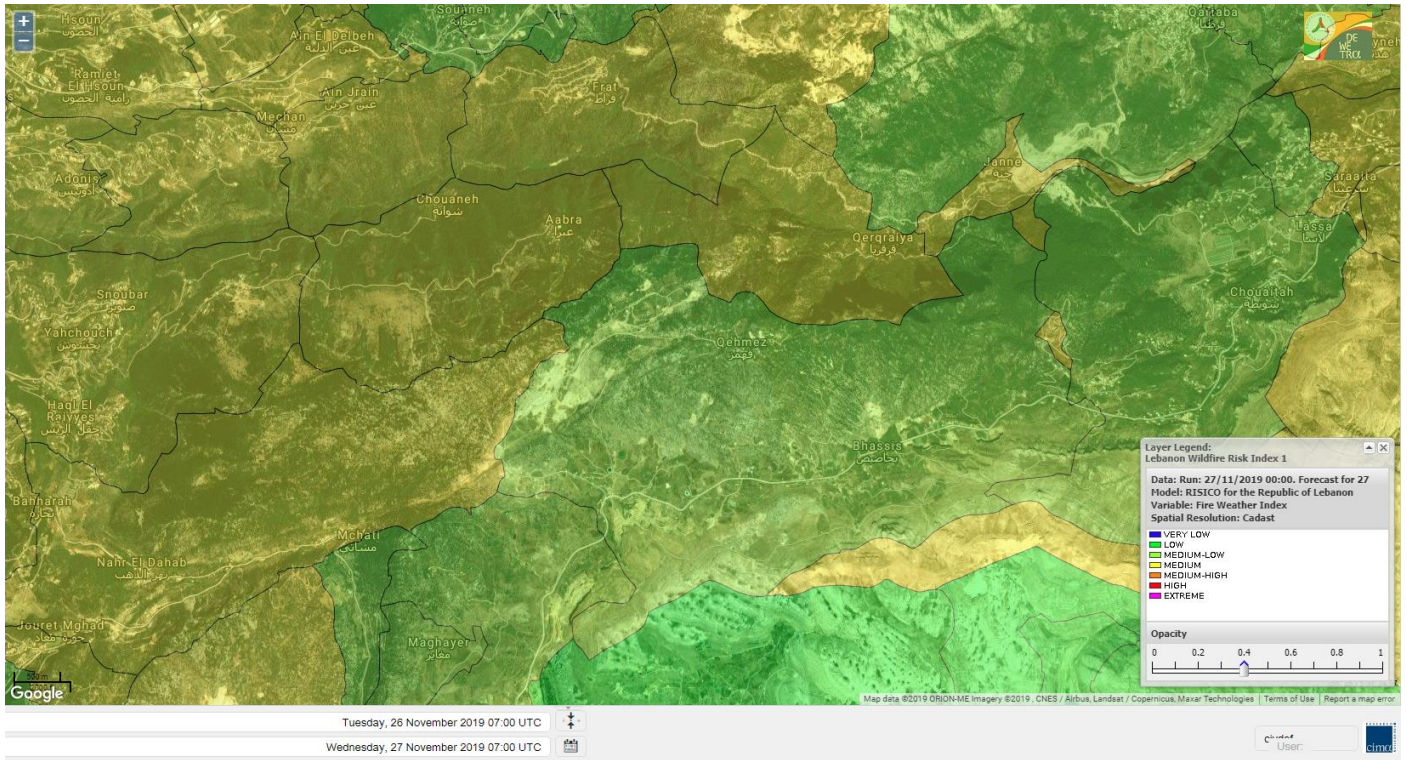
# Shouf Biosphere Reserve Forecast for 28 November 2019



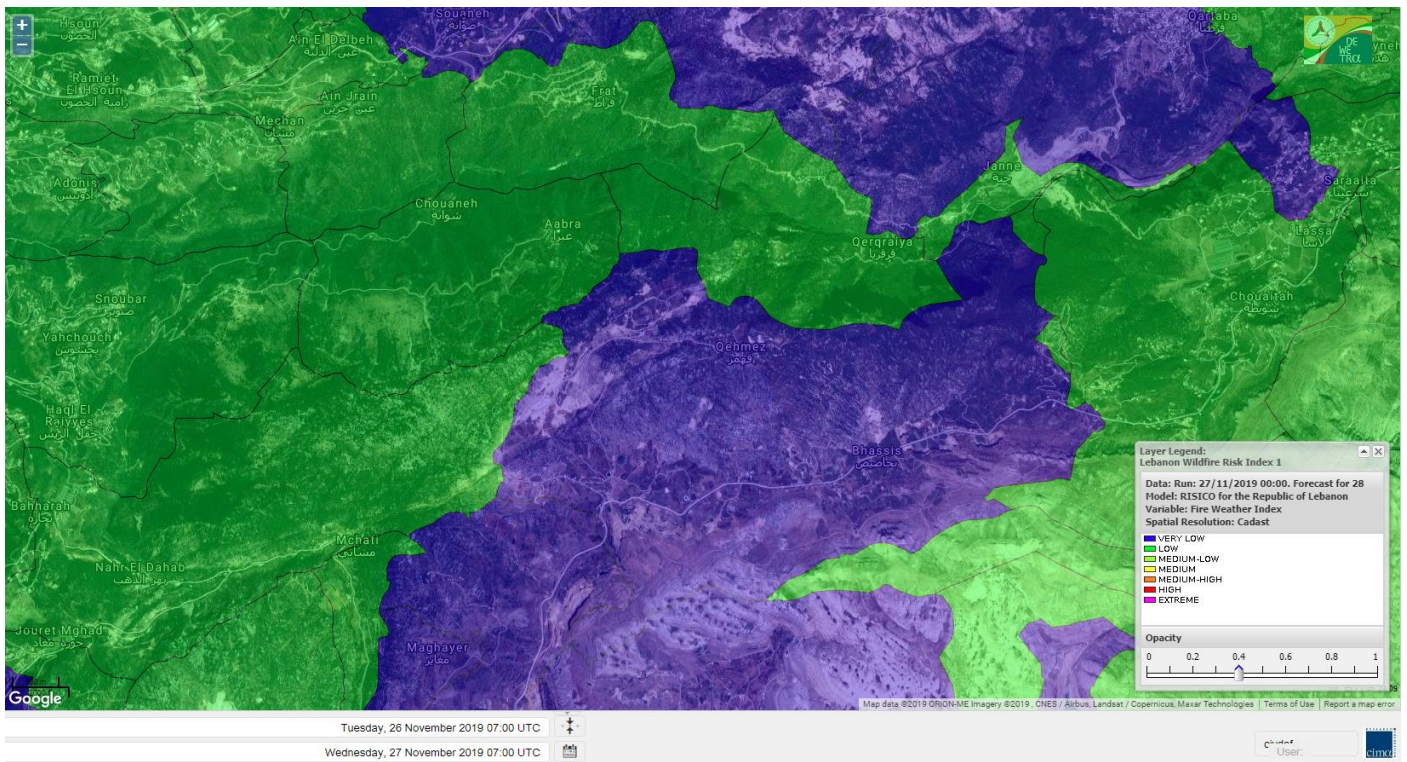
# Shouf Biosphere Reserve Forecast for 29 November 2019



# Jabal Moussa Reserve Forecast for 27 November 2019



# Jabal Moussa Reserve Forecast for 28 November 2019



# Jabal Moussa Reserve Forecast for 29 November 2019

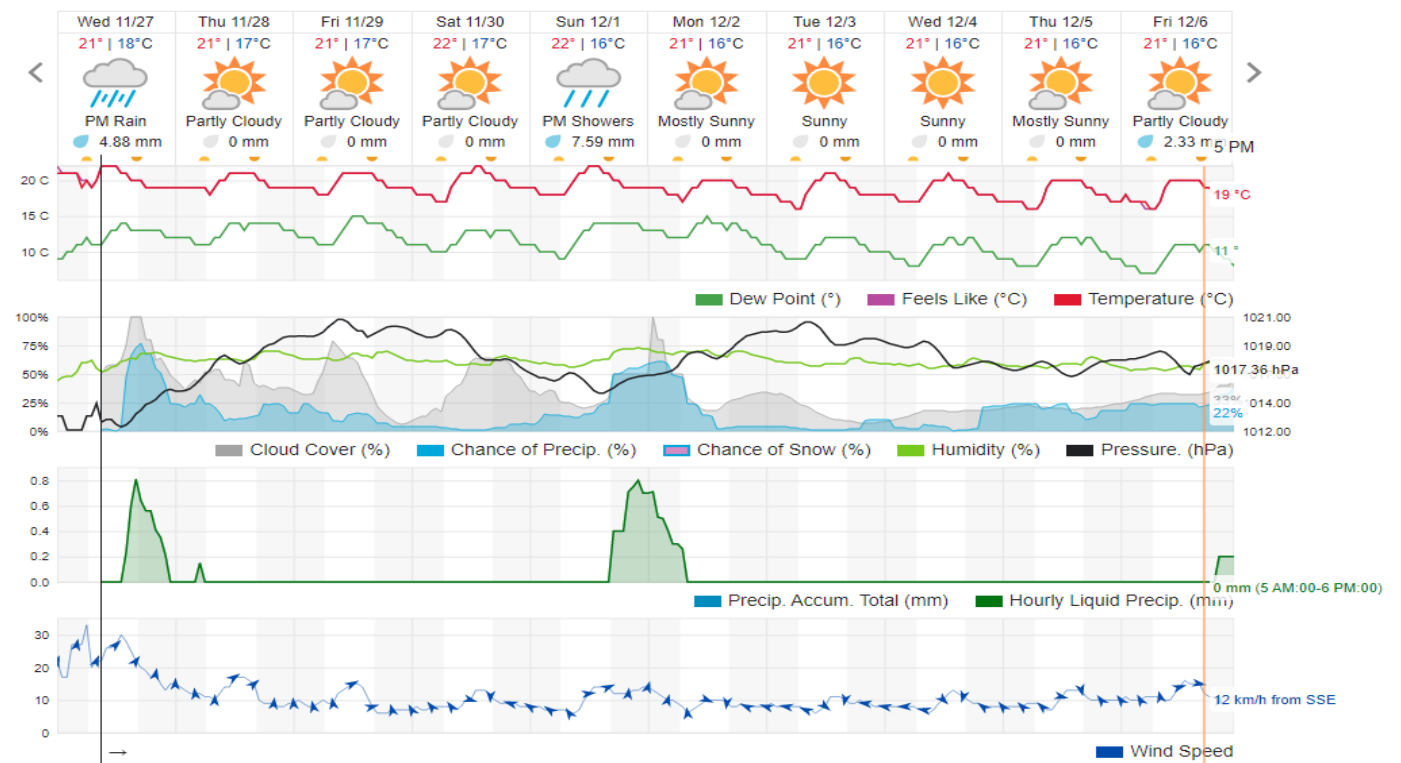


## Beirut, Beirut Governorate, Lebanon 10-Day Weather Forecast

21° ACHRAFIEH, RIZK STATION | CHANGE

TODAY HOURLY 10-DAY CALENDAR HISTORY WUNDERMAP

Customize



## Nord

### Koura

Municipality	27-Nov	28-Nov	29-Nov	Municipality	27-Nov	28-Nov	29-Nov	Municipality	27-Nov	28-Nov	29-Nov
Aaba	M	M	M	Afsaddiq	M	M	M	Ain Ekrine	M	M	M
Amioun	M	M	M	Anfeh	M	M	M	Badbhoun	M	M	M
Barghoun	M	M	M	Barsa	M	M	M	Batroumine	M	M	M
Bdebba	M	M	M	Bechmizine	M	M	M	Bednayet El-Koura	M	M	M
Bhabbouch El-Koura	M	M	M	Bkeftine	M	M	M	Bnehran	M	M	M
Bqaiia El-Koura	M	M	M	Bsarma	M	M	M	Btaaboura	M	M	M
Bterram	M	M	M	Btouratij	M	M	M	Bziza	M	M	M
Dar Beechtar	M	M	M	Dar Chmezzine	M	M	M	Deddeh	M	M	M
Deir El-Balamand	M	M	M	Fih	M	M	M	Hraiche	M	M	M
Ijdaabrine	M	M	M	Kaftoun	M	M	M	Kefraya El-Koura	M	M	M
Kfarakka	M	M	M	Kfarhata	M	M	M	Kfarhazir	M	M	M
Kfarkahel	M	M	M	Kfarsaroun	M	M	M	Kosba	M	M	M
Mejdel el-Koura	M	M	M	Nakhle	M	M	M	Qalhat	M	M	M
Ras Masqa	M	M	M	Rechdibbine	M	ML	M	Zakroun	M	M	M
Zgharta El-Mtaouile	M	M	M								

### Bcharre

Municipality	27-Nov	28-Nov	29-Nov	Municipality	27-Nov	28-Nov	29-Nov	Municipality	27-Nov	28-Nov	29-Nov
Aabdine	M	L	ML	Bane	ML	L	L	Barhelioun	M	ML	M
Bazooune	ML	L	ML	Becharre	L	L	L	Beit Menzer	M	L	ML
Billa	M	L	M	Blaouza	M	L	ML	Bqaa Kafra	ML	L	ML
Bqerqacha	ML	L	ML	Breissat	ML	L	L	Dimane	ML	L	ML
Hadath El Jobbeh	ML	L	M	Hadchit	ML	L	L	Hasroun	ML	L	ML
Mazraat Aassaf	M	M	M	Mazraat Bani Saab	M	L	L	Mchaa El-Jobbeh	L	L	ML
Metrit	M	M	M	Moghr El-Ahoual	M	L	ML	Ouadi Qannoubine	M	M	M
Qanat	M	L	ML	Qnayouer	M	M	M	Tourza	M	L	M

### Batroun

Municipality	27-Nov	28-Nov	29-Nov	Municipality	27-Nov	28-Nov	29-Nov	Municipality	27-Nov	28-Nov	29-Nov
Aabrine	M	M	M	Aalali	M	L	ML	Aartziz	M	M	M
Abdelli	M	M	M	Ajdabra	M	M	M	Assia	M	L	ML
Basbina	M	M	M	Batroun	M	M	M	Bcheleh	M	L	ML
Bechtoudar	M	L	ML	Beit Chlala	M	L	ML	Beit Kassab	M	ML	M
Bijdarfil	M	M	M	Bqesmaya	M	M	M	Chatine	ML	L	L
Chebtin	M	M	M	Chekka	M	M	M	Daael	M	L	ML
Dahr Abi Yaghi	M	M	M	Daraya El-Batroun	M	M	M	Deir Billa	M	M	M
Deir Kfifane	M	M	M	Deir Mar Youhanna EL	M	L	L	Deir Mar Youssef Jra	M	M	M
Douma	M	L	ML	Douq	M	M	M	Eddeh El-Batroun	M	M	M
Ftahat El-Batroun	M	ML	ML	Ghouma	M	M	M	Hadtoun	M	L	ML
Hamat	M	M	M	Harbouna	M	M	M	Hardine	M	L	L
Helta	M	L	ML	Hery	M	M	M	Jebbla	M	ML	M
Jrabta El-Batroun	M	M	M	Jrane El-Batroun	M	M	M	Kfar Aabida	M	M	M
Kfar Halda	M	L	ML	Kfarb Shlaimane	M	L	L	Kfarhatna	M	M	M



Kfarhay	M	M	M	Kfarhelos	M	M	M	Kfifane	M	M	M
Kfour El Arabi	ML	L	ML	Koubba	M	M	M	Kour	M	M	M
Mar Mama	M	M	M	Masrah	M	M	M	Mehmarch	M	L	ML
Mrah Chdid	M	M	M	Mrah El Ziyat	M	M	M	Mrah El-Hajj	M	L	L
Nahle El-Batroun	M	L	ML	Niha El-Batroun	ML	L	L	Oujh El-Hajjar	M	M	M
Ouata Houb	ML	L	L	Qatnaaoun	M	M	M	Racha	M	L	ML
Rachana	M	M	M	Rachkida	M	M	M	Ram El-Batroun	M	L	ML
Ras Nahhach	M	M	M	Selaata	M	M	M	Sghar	M	M	M
Smar Jbayl	M	M	M	Sourat El-Batroun	M	ML	ML	Tannourine El-Faouqa	L	L	ML
Tannourine Et-Tahta	M	L	L	Thoum	M	ML	M	Toula El-Batroun	M	M	M
Zan	M	ML	ML								

## Zgharta

Municipality	27-Nov	28-Nov	29-Nov	Municipality	27-Nov	28-Nov	29-Nov	Municipality	27-Nov	28-Nov	29-Nov
Aachach	M	M	M	Aalma	M	M	M	Aarde	M	M	M
Aintourine	M	L	ML	Arabet Qozhaya	M	ML	M	Arde	M	M	M
Arjis	M	L	L	Asnoun	M	M	M	Ayto	M	L	ML
Basloukit	ML	L	L	Bchannine	M	M	M	Besebeel	M	M	M
Bhairet Toula	ML	L	L	Bnachee	M	L	ML	Boussit	M	M	M
Danha	M	M	M	Daraiya Zgharta	M	L	ML	Deir Jdeide	M	M	M
Ehden	ML	L	L	Halan	M	L	ML	Hariq Zgharta	M	M	M
Houakir	M	M	M	Hraiqis	M	M	M	Iaal	M	M	M
Ijbaa	M	L	L	Karm Saddeh	M	ML	M	Kfarchakhna	M	M	M
Kfardlaqous	M	M	M	Kfarfou	M	L	L	Kfarhata Zgharta	M	M	M
Kfarhoura	M	M	M	Kfarsghab	ML	L	L	Kfaryachit	M	M	M
Kfarzaina	M	M	M	Khaldiye	M	M	M	Mazraat Ajbeaa	M	M	M
Mazraat Et-Teffah	M	L	L	Mazraat Jneid	M	M	M	Mejdlaya Zgharta	M	M	M
Merh Kfarsghab	M	ML	M	Miryata	M	M	M	Miziara	M	ML	M
Mzraat Kefraya	M	ML	ML	Qorah Bach	M	M	M	Rachiine	M	M	M
Ras Kifa	M	L	ML	Sakhra	M	M	M	Sebhel Zgharta	M	L	L
Serhel	M	ML	M	Tallet Zgharta	M	M	M	Toula Zgharta	M	L	L
Zgharta	M	M	M								

## Minieh-Denniye

Municipality	27-Nov	28-Nov	29-Nov	Municipality	27-Nov	28-Nov	29-Nov	Municipality	27-Nov	28-Nov	29-Nov
Aasaymout	M	VL	L	Aaymar	M	L	L	Aazki	M	L	L
Ain El-Tineh-Miniyeh	M	L	L	Assoun	M	L	L	Bakhaaoun	M	L	L
Bchennata	L	L	L	Bechehhara	M	M	M	Beddawi	M	M	M
Behouaita	M	L	L	Beit El Foqss	M	L	L	Beit Haouik	ML	VL	L
Beit Zoud	M	L	L	Bekaasafrine	ML	L	L	Borj El Yahoudiyeh	M	M	M
Bqarsouna	M	L	L	Btermaz	M	L	L	Debaael	M	L	L
Deir Ammar	M	M	M	Deir Nbouh	M	M	M	Haouaret-Miniyeh	ML	L	L
Haql el Azimeh	M	L	L	Harf El Siyad	M	ML	L	Hazmiye-Miniyeh	M	L	L
Izal	M	L	L	Jarjour	M	M	M	Jayroun	M	L	L
Kahf El-Malloul	M	M	M	Karm El-Moher	ML	L	L	Kfar Binine	ML	VL	L
Kfarchalane	M	L	L	Kfarhabou	M	ML	ML	Kharroub-Miniyeh	ML	L	L
Mazraat El-Kreme	M	M	ML	Mazraat Ketrane	M	L	L	Merkebta	M	ML	M

Minyeh	M	M	M	Mrah El Sfirat	M	L	L	Mrah Sraj	M	L	L
Mrebbine	ML	L	L	Nabi Youcheaa	M	M	M	Nemrine	ML	L	L
Qarhaiya	ML	VL	L	Qarne	ML	L	L	Qarsita	M	L	L
Qattineh-Miniyeh	M	ML	L	Qemmamine	M	VL	L	Qraine	M	L	L
Raouda-Aadoua	ML	L	M	Rihaniyet-Miniyeh	ML	ML	M	Sfireh	M	L	L
Sir Ed-Danniyeh	M	L	L	Tarane	M	L	L	Terbol-Miniyeh	M	M	M
Zaghartaghriine	M	M	M	Zouq Bhannine	M	M	M				

## Nabatiye

### Nabatiye

Municipality	27- Nov	28- Nov	29- Nov	Municipality	27- Nov	28- Nov	29- Nov	Municipality	27- Nov	28- Nov	29- Nov
Aabba	M	M	ML	Aazzi	M	ML	ML	Adchit El-Chqif	M	M	ML
Ain Bou Swar	M	L	ML	Ain Kana	M	L	ML	Ali El-Taher	M	L	M
Ansar	M	M	M	Arab Salim	M	ML	M	Arnoun	M	M	M
Bfaroue	M	M	ML	Breyqaah	M	M	ML	Charqiyeh	M	M	ML
Choukine	M	M	ML	Deir El Zahrani	M	M	ML	Doueir El-Nabatiyeh	M	M	ML
Habbouch El-Nabatiye	M	L	ML	Hamra El-Nabatiyeh	M	M	M	Harouf El-Nabatiyeh	M	M	ML
Hmaile	M	ML	ML	Houmin El Faouqa	M	ML	ML	Houmin El Tahta	M	ML	ML
Jarjough	M	L	ML	Jbaah El-Nabatiyeh	ML	L	ML	Jebchit	M	M	ML
Kfar Djal El-Nabatiy	M	M	ML	Kfar Remmane	M	L	M	Kfar Sir	M	M	ML
Kfar Tebnit	M	ML	M	Kfarfila	M	ML	ML	Kfour El-Nabatieh	M	M	ML
Mayfadoun	M	M	M	Mazraat Bsaffour	M	M	ML	Mazraat Chalbaal	M	M	ML
Mazraat Dmoul	M	ML	ML	Mazraat El Khreibeh	M	ML	ML	Mazraat El-Bayad El-	M	L	ML
Mazraat Kfarjaouz	M	L	ML	Mazraat Qalaat Meiss	M	M	ML	Nabatiyeh El-Fawka	M	ML	M
Nabatiyeh Et-Tahta	M	L	ML	Namiriyeh	M	M	ML	Qaaqaiyet El Jisr	M	M	ML
Qossaibeh El-Nabatiy	M	M	ML	Roumine	M	ML	ML	Sarba El-Nabatieh	M	ML	ML
Sir El-Gharbiyeh	M	ML	L	Toul	M	M	ML	Yehmor El-Nabatiyeh	M	M	M
Zaoutar El Charkiyeh	M	M	M	Zaoutar El-Gharbiyeh	M	M	ML	Zebdine El-Nabatiyeh	M	ML	ML
Zefta	M	M	ML								

### Hasbaiya

Municipality	27- Nov	28- Nov	29- Nov	Municipality	27- Nov	28- Nov	29- Nov	Municipality	27- Nov	28- Nov	29- Nov
Aain Jarfa	M	L	ML	Abou Qamha	M	L	M	Ain Qania	M	L	ML
Bourghos	M	L	M	Chebaa	ML	L	ML	Chouaya Hasbaya	ML	L	ML
Dellafeh	M	L	M	Fardiss Hasbaiya	M	L	ML	Hasbaya	M	L	ML
Hbariyeh	M	L	ML	Kaoukaba Hasbaiya	M	L	M	Kfar Chouba	M	ML	ML
Kfar Hamam	M	ML	M	Kfeir El-Zait	ML	L	ML	Khalwat Hasbaya	M	L	ML
Khreibet Hasbaiya	M	M	M	Majidiyeh Hasbaiya	M	ML	M	Marj Ez-Zhour (Haouc	ML	L	ML
Meri	M	M	M	Mimass	ML	L	ML	Rachaiya El-Fokhar	M	ML	M
Salaiyeb	M	ML	M								

### Marjayoun

Municipality	27- Nov	28- Nov	29- Nov	Municipality	27- Nov	28- Nov	29- Nov	Municipality	27- Nov	28- Nov	29- Nov
Aalmane Marjaayoun	M	M	M	Aamra	M	ML	M	Adayseh Marjaayoun	M	M	M
Adchit El-Koussair	M	M	M	Ain Aarab Marjaayoun	M	ML	M	Bani Haiyann	M	M	M
Blatt Marjaayoun	M	L	ML	Blida	M	M	M	Borj El-Moulouk	M	M	M

Boueyda Marjaayoun	M	ML	M	Deir Mimass	M	M	M	Deir Siriane	M	M	M
Dibbine	M	L	ML	Ebel El Saqi	M	ML	M	Houla	M	M	M
Houra	M	M	M	Kfar Kila	M	M	M	Khiam Marjaayoun	M	ML	M
Klayaa	M	M	M	Majdel Selem	M	M	M	Marjaayoun	M	ML	M
Markaba	M	M	M	Mays El-Jabal	M	M	M	Mazraat Doumiat	M	ML	M
Mazraat Sarada	M	ML	M	Mhaibib	M	M	M	Qabrikha	M	M	M
Qantara	M	M	M	Rab El-Thalathine	M	M	M	Saouaneh Marjayoun	M	M	M
Talloussa	M	M	M	Taybeh Matjaayoun	M	M	M	Touline	M	M	ML

## Bent Jbail

Municipality	27-Nov	28-Nov	29-Nov	Municipality	27-Nov	28-Nov	29-Nov	Municipality	27-Nov	28-Nov	29-Nov
Ain-Ebel	M	ML	M	Aitaroun	M	M	M	Aynata Bint Jbeil	M	ML	ML
Ayta El-Chaeb	M	ML	ML	Ayta El-Jabal	M	M	ML	Beit Lif	M	ML	ML
Beit Yahoun	M	M	M	Bint Jbeil	M	ML	ML	Borj Qalaway	M	M	ML
Braachit	M	M	ML	Chakra	M	M	M	Debel	M	ML	M
Deir Antar	M	M	ML	Froun	M	M	ML	Ghandouriyeh Bint Jb	M	M	ML
Hanine	M	M	M	Hariss	M	M	ML	Hdatha	M	M	M
Jmeyjmeh	M	M	ML	Kafra Bint Jbeil	M	M	ML	Kfar Dounine	M	M	ML
Khirbet Selm	M	M	M	Kounine	M	M	M	Maroun El Ras	M	ML	M
Qalaway	M	M	ML	Qaouzah	M	ML	L	Qatmoun	M	M	M
Ramya Bint Jbeil	M	ML	L	Rchaf	M	ML	ML	Rmeich	M	ML	ML
Safad Al Battikh	M	M	ML	Salhaneh	M	ML	ML	Serbine	M	M	ML
Sultanieh Bint Jbeil	M	M	M	Tibnine	M	M	ML	Tiri	M	M	M
Yaroun	M	ML	ML	Yater	M	ML	ML				

## Mont Liban

### Jbail

Municipality	27-Nov	28-Nov	29-Nov	Municipality	27-Nov	28-Nov	29-Nov	Municipality	27-Nov	28-Nov	29-Nov
Aabeydat	M	M	M	Aalita	M	L	L	Aamchit	M	ML	M
Aarab El-Lahib	L	VL	ML	Aarasta	M	L	ML	Adonis Jbeil	M	L	L
Afqa Jbeil	M	L	ML	Ain El Delbeh Jbeil	M	L	L	Ain El-Ghouayba	ML	VL	L
Ain Jrain	M	L	L	Ain Kfah	M	M	M	Almat El Chemaliyat	ML	VL	L
Almat El-Jenoubiya	ML	VL	L	Aqoura	M	L	ML	Bayzoun	M	L	L
Bchille Jbeil	M	L	L	Bechtlida	M	L	L	Behdaydat	M	ML	ML
Beit Habbaq	M	M	M	Bejjeh	M	M	M	Bekhaaz	M	ML	M
Berbara Jbeil	M	M	M	Bintael	M	L	L	Birket Hjoula	M	L	L
Blatt Jbeil	M	L	L	Boulhos	M	VL	L	Breyj Jbeil	M	L	L
Chamat	M	M	M	Chikhane	M	M	M	Chmout	M	ML	M
Eddeh Jbeil	M	L	ML	Ehmej	ML	VL	L	Fatre	M	L	L
Ferhet	M	L	L	Fghal	M	ML	M	Frat	M	L	L
Ghabat	M	L	ML	Ghalboun	M	M	M	Gharzouz	M	M	M
Ghofrine	M	ML	M	Habil	M	M	M	Halate	M	L	L
Haqel	M	M	M	Hbaline	M	M	M	Hboub	M	L	L
Hdeine	M	L	ML	Hema Er-Rehban	ML	L	ML	Hema Mar Maroun Aann	L	VL	L
Hjoula	M	L	L	Hosrayel	M	ML	M	Hsarat	M	M	M

Hsoun	M	L	L	Jaj	M	L	ML	Janne	M	L	L
Jbeil	M	ML	ML	Jeddeyl Jbeil	M	M	M	Jlisse	M	L	L
Jouret El-Qattine	M	L	L	Kfar Baal Annaya	M	L	L	Kfar Kidde	M	ML	M
Kfar Kouas	M	L	L	Kfar Mashoun	M	L	ML	Kfoun	M	M	M
Kharbe Jbeil	M	M	M	Laqlouq	ML	L	ML	Lassa	ML	L	L
Lehfed	M	L	ML	Maad	M	M	M	Mar Sarkis	ML	L	L
Mastita	M	ML	M	Mayfouq	M	L	ML	Mazraat El Siyad	ML	L	L
Mazraat El-Maaden	M	VL	L	Mechane	M	L	L	Mechmech Jbeil	M	L	L
Mehrin	M	L	L	Mejdel El-Akoura	M	L	ML	Mghayreh Jbeil	M	L	ML
Mounsef	M	M	M	Nahr Ibrahim	M	ML	M	Qahmez	ML	VL	L
Qartaba	ML	VL	L	Qartaboun	M	ML	M	Qattara Jbeil	M	L	L
Qorqraya	M	L	L	Ramout	M	M	M	Ras Osta	M	L	L
Rihane Jbeil	M	M	M	Sakiet El-Khayt	M	M	M	Saqi Richmaya	M	L	L
Sebrine	M	L	L	Seraita	M	L	ML	Souane Jbeil	ML	VL	L
Tadmor	M	L	ML	Tartej	M	L	ML	Torzaiya	M	L	L
Yanouh Jbeil	M	L	ML	Zibdine Jbeil	M	L	L				

## El Metn

Municipality	27- Nov	28- Nov	29- Nov	Municipality	27- Nov	28- Nov	29- Nov	Municipality	27- Nov	28- Nov	29- Nov
Aain El-Qabu	ML	VL	L	Aain El-Qach	ML	VL	L	Aain El-Teffaha	ML	VL	L
Aain el-Safsaf El-M	ML	VL	L	Abou Mizane	ML	VL	L	Ain Aar	ML	L	ML
Ain Alaq	ML	L	ML	Ain El-Kharroube	ML	VL	L	Ain El-Sendianeh	ML	VL	L
Ain El-Zeitoune	ML	VL	L	Ain Saadeh	ML	L	ML	Aintoura El-Matn	ML	VL	L
Amaret Chalhoub	ML	L	ML	Antelias	ML	L	ML	Atchaneh	ML	L	ML
Ayroun	ML	VL	L	Baabdat	ML	L	L	Baouchariyeh	M	M	M
Baskinta	ML	VL	L	Beit Chabab	ML	L	L	Beit El-Chaar	ML	L	ML
Beit El-Kekko	ML	L	ML	Beit Mery	M	L	ML	Bhersaf	ML	L	L
Bikfaya	ML	VL	L	Biyakout	ML	L	ML	Bnabil	ML	VL	L
Bourj Hammoud	M	M	M	Bqennaya	M	L	ML	Broummana El-Matn	M	L	ML
Bsalim	ML	L	ML	Bsifrine	ML	VL	L	Bteghrine	ML	VL	L
Chaouiye	ML	L	ML	Chouaya El-Matn	ML	VL	L	Choueir	ML	VL	L
Chrine	ML	VL	L	Dahr El Sawan El-Mat	ML	L	L	Daychouniyeh	M	L	L
Dbayeh	ML	L	ML	Deir Chamra	M	VL	L	Deir Mar Abda el Mch	ML	L	ML
Deir Mar Roukouz	M	M	M	Deir Tamiche	ML	L	ML	Dik El-Mehdi	ML	L	ML
Dikwaneh	M	M	M	Douar El-Matn	ML	VL	L	Fanar	ML	L	ML
Fraike	ML	L	ML	Haret El-Ballaneh	ML	L	ML	Hbous	ML	L	ML
Himlaya	ML	VL	L	Jal El Did	ML	L	ML	Jdeideh El-Metn	ML	L	ML
Jouar El-Matn	ML	VL	L	Jouret El-Ballout	ML	L	ML	Kaaqour	ML	VL	L
Kfar Aaqab	ML	VL	L	Kfertay El-Matn	ML	VL	L	Khenchara	ML	VL	L
Khillet El-Mtain	ML	VL	L	Konnabat Broummana	ML	L	ML	Konnabat Salima	ML	VL	L
Machraah El-Matn	ML	VL	L	Majdel Tarchich	ML	VL	L	Majzoub	ML	L	ML
Mansouriyeh El-Metn	M	L	M	Mar Boutros Karm Et-	ML	VL	L	Mar Chaya et Mzekke	ML	L	ML
Mar Moussa Ed-Douar	ML	VL	L	Marjaba	ML	VL	L	Masqa	M	L	ML
Mayasse	ML	VL	L	Mazraat Deir Aoukar	ML	L	ML	Mazraat El-Hadirat	ML	L	ML
Mazraat Yachouh	ML	L	ML	Mchikha	ML	VL	L	Menqlet Mezher	M	L	ML
Mhayseh Matn	ML	VL	L	Mkalles	M	M	M	Mrouj	ML	VL	L

Mtain	ML	L	L	Mtayleb	ML	L	ML	Nabay	ML	L	ML
Naccache	ML	L	ML	Ouadi Chahine	ML	VL	L	Ouadi El-Karm El-Mat	M	VL	L
Ouata El-Mrouj	ML	VL	L	Ouyoun El-Matn	M	L	L	Qornet Chehwan	ML	L	ML
Qornet El-Hamra	ML	L	ML	Roumieh	ML	L	ML	Sfeilet Bikfaya	ML	VL	L
Sinn El-Fil	M	M	M	Zabbougha	M	VL	L	Zalqa	M	L	ML
Zarououn	ML	VL	L	Zekrite	ML	L	ML	Zighrine El-Matn	ML	VL	L
Zouk El-Khrab	ML	L	ML								

## Chouf

Municipality	27-Nov	28-Nov	29-Nov	Municipality	27-Nov	28-Nov	29-Nov	Municipality	27-Nov	28-Nov	29-Nov
Aalmane El-Chouf	M	M	ML	Aammq El-Chouf	ML	VL	L	Ain Ouzein	ML	VL	L
Ain Qani	ML	L	L	Ain Zhalta	M	L	ML	Ainbal	M	L	L
Amatour	L	L	L	Anout	M	L	L	Atrine	ML	VL	L
Baadarane	L	L	L	Baaqline	M	L	L	Baasir	M	M	ML
Barja	M	ML	ML	Barouk	M	ML	ML	Bater	L	L	L
Batloun	ML	L	L	Bayqoun	L	L	L	Bchetfine	M	L	L
Beiteddine	ML	VL	L	Benouati Ech-Chouf	M	L	L	Berjein	M	L	L
Bireh et Mtalleh	ML	L	L	Biret El-Chouf	ML	L	L	Bkechtine Ouel Mchei	M	L	L
Bkifa El-Chouf	ML	L	L	Botme	ML	VL	L	Bqaiaa Ech-Chouf	ML	L	L
Bsaba El-Chouf	ML	L	L	Chammis El-Chouf	M	L	L	Chehim	M	L	L
Chemaarine	M	L	L	Chourit	ML	VL	L	Daher El-Chouf	M	ML	M
Dalhoun	M	L	L	Damour	M	ML	ML	Daraya El-Chouf	M	L	L
Deir El-Moukhalles	ML	L	L	Deir Baba	M	L	L	Deir Dourit	M	L	L
Deir El-Qamar	ML	L	L	Deir Kouche	ML	L	L	Dibbieh	M	L	L
Dmit	M	L	L	Fouara Jaafar	ML	VL	L	Fraidis El-Chouf	M	L	ML
Ghabet Jaafar	M	VL	L	Gharife	ML	L	L	Haret Jandal	L	L	L
Hasrout	M	L	L	Jadra	M	ML	ML	Jahlieh	M	L	L
Jbeih El-Chouf	L	L	L	Jdeidet El-Chouf	ML	VL	L	Jiyeh	M	M	ML
Jleiliyeh	ML	L	L	Jmailiyeh	M	ML	ML	Joun	M	ML	ML
Kahlounie El-Chouf	L	VL	L	Ketermaya	M	ML	ML	Kfar Faqoud	M	L	L
Kfar Hamal	ML	L	L	Kfar Him	M	L	L	Kfar Katra	ML	VL	L
Kfar Niss	ML	L	L	Kfar hay	M	VL	L	Kfarnabrakh	ML	VL	L
Khirbet Bisri	ML	L	L	Knayse El-Chouf	ML	VL	L	Maaniyeh	M	ML	ML
Maasser Beiteddine	L	VL	L	Maasser El-Chouf	ML	L	L	Majdalouna	M	ML	ML
Majdel El-Meouch	ML	VL	L	Mazboud	M	L	L	Mazmoura	ML	L	L
Mazraat El Chouf	L	L	L	Mazraat El Daher	ML	L	L	Mazraat El-Douair	ML	VL	L
Mechref	M	L	L	Mghairie	M	ML	ML	Mghayrie El-Chouf	M	L	L
Moukhtara	ML	VL	L	Mrusti	L	L	L	Mtolle	M	L	L
Naameh	M	ML	ML	Niha El-Chouf	L	L	ML	Ouadi Abou Youssef	M	VL	L
Ouadi Ed-Deir	M	VL	L	Ouadi El-Sit	ML	VL	L	Ouadi bnehlav	M	L	L
Qraibeh	L	L	L	Qreiaa	ML	L	L	Rmayle El-Chouf	M	ML	ML
Semqaniyeh	L	VL	L	Sibline	M	ML	ML	Sirjbeil	M	L	L
Warhanieh	M	L	L	Werdaniyeh	M	ML	ML	Zaarourieh	M	L	L

## Baabda

Municipality	27-Nov	28-Nov	29-Nov	Municipality	27-Nov	28-Nov	29-Nov	Municipality	27-Nov	28-Nov	29-Nov
Abadiyeh	M	L	L	Ain Mouaffaq	M	VL	L	Araiya	M	L	L

Arbaniyeh	ML	VL	L	Arsoun	ML	VL	L	Baabda	M	L	ML
Baalchmey	M	L	L	Bmaryam	M	L	L	Bourj El-Brajneh	M	L	L
Boutchay	M	L	L	Bsaba Baabda	M	L	L	Btekhney	M	L	L
Btibyat	M	L	L	Bzebdine	ML	VL	L	Chbeniyeh	M	L	L
Chiyah	M	M	M	Chmeisset Baabda	M	L	L	Chouit	M	L	L
Deir El-harf	ML	VL	L	Deir Khouna	M	L	L	Dlaybeh	ML	VL	L
Falougha	M	L	ML	Furn El-Chebbak	M	M	M	Hadath Beyrouth	M	L	ML
Halaliyeh Baabda	M	VL	L	Hammana	M	L	L	Haret El Sett	M	L	L
Haret Hamze	M	L	L	Haret Hreik	M	M	M	Hasbaiya El-Metn	ML	VL	L
Jouar El-Hoz	ML	VL	L	Jouret Arsoun	ML	VL	L	Kfar Chima	M	L	L
Kfar Selouane	ML	L	L	Khalouat Baabda	M	L	L	Kneisset Baabda	ML	L	L
Laylakeh	M	L	L	Louayzeh Baabda	M	L	L	Merdache	M	L	L
Mzairaa Baabda	M	L	L	Ouadi Chahrour El OI	M	L	L	Ouadi Chahrour El So	M	L	L
Qalaa Baabda	M	L	L	Qhraybe Baabda	M	L	L	Qobbayaa	M	L	L
Qornayel	ML	VL	L	Qortada	M	L	ML	Qrayeh Baabda	M	L	L
Qsaibeh Baabda	M	L	ML	Qtale Baabda	M	L	L	Ras El Metn	M	L	L
Ras El-Haref	M	L	L	Rouayset El-Ballout	M	L	L	Salima Baabda	ML	VL	L
Tahouitat El Ghadir	M	L	L	Tarchich	ML	VL	L	Zandouqa	M	L	ML

## Aley

Municipality	27-Nov	28-Nov	29-Nov	Municipality	27-Nov	28-Nov	29-Nov	Municipality	27-Nov	28-Nov	29-Nov
Abey	M	L	L	Aghmid	M	L	L	Ain Dara	M	L	L
Ain Drafil	M	L	L	Ain El Halazoun	M	L	L	Ain El-Rmmaneh	M	L	L
Ain Jedideh	ML	L	L	Ain Ksour	M	L	L	Ain Onoub	M	L	L
Ain Traz	ML	VL	L	Ainab	M	L	L	Aley	ML	L	L
Aramoun	M	L	L	Aytat	M	L	L	Azouniyeh	M	L	L
Baawerta	M	L	L	Badghan Oua Wadi Bad	M	L	L	Bassatine	M	L	L
Bayssour	M	L	L	Bchamoun	M	L	L	Bdadoun	M	L	L
Behouara	M	L	L	Bennay	M	L	L	Bhamdoun El-Dayaa	ML	L	L
Bhamdoun El-Mhatta	M	L	L	Bkhechtey	ML	L	L	Bleibel	M	L	L
Bmaknine	M	L	L	Bmehray	M	L	ML	Bouzrid	M	VL	L
Bserrine	ML	L	L	Bsous	M	L	L	Btalloun	ML	L	L
Btater	ML	L	L	Chanay	M	L	L	Charoun	M	L	L
Chartoun	M	L	L	Chemlane	M	L	L	Choueifat El-Aamrous	M	L	L
Choueifat El-Oumara	M	L	L	Choueifat El-Quoubbe	M	L	L	Dakkoun	M	L	L
Deir Qoubel	M	L	L	Dfoun	M	L	L	Douair El Remmaneh	M	L	L
Ghaboun	M	L	L	Habramoun	M	L	L	Homs Oua Hama	M	L	L
Houmal	M	L	L	Jisr El Qadi	ML	L	L	Kehaleh	M	L	L
Keyfoun	M	L	L	Kfar Aamey	M	L	L	Kommatyeh	M	L	L
Maasrati	ML	L	L	Majdel Baana	M	L	L	Mansourieh et Ain El	ML	L	L
Mazraat El-Nahr	M	L	L	Mchakhte	M	L	L	Mecherfeh	M	L	L
Mejdaya	M	L	L	Mrayjat	M	L	ML	Ramliyah	ML	L	L
Rechmaya	ML	VL	L	Rejmeh	M	L	L	Remhala	M	L	L
Rouayset El Neemane	ML	L	L	Saoufar	M	L	L	Selfaya	ML	VL	L
Sirhmoul	M	L	L	Souq El Ghareb	M	L	L	Taazanieh	ML	L	L

## Kesrouane

Municipality	27-Nov	28-Nov	29-Nov	Municipality	27-Nov	28-Nov	29-Nov	Municipality	27-Nov	28-Nov	29-Nov
Achkout	M	VL	L	Adma Oua Dafneh	ML	L	ML	Ain Ed-Delbe Kesroua	ML	L	L
Ain El-Rihane	ML	L	ML	Aintoura Kesrouane	ML	L	M	Ajaltoun	M	VL	L
Akaybeh Kesrouane	M	ML	M	Aramoun Kesrouane	M	VL	L	Azra ouel Ozor	M	L	L
Ballouneh	ML	VL	L	Batha	ML	L	L	Bekaatat Achkout	M	VL	L
Bekaatat Kanaan	M	VL	L	Bizhel	M	L	L	Bouar	M	L	ML
Bqaatouta	ML	VL	L	Bqaq Ed-Dine	M	ML	M	Bzommar	M	VL	L
Chahtoul	ML	VL	L	Chnaniir	M	L	L	Chouan	M	L	L
Daraya Kesrouane	M	VL	L	Daroun	ML	L	ML	Deir Baqlouch	ML	L	ML
Diebta	M	VL	L	Eghbeh	M	VL	L	Faraya	L	VL	L
Fatka	M	L	L	Feytroun	M	VL	L	Ghazir	ML	L	L
Ghbaleh Kesrouane	M	L	L	Ghedrass	M	L	L	Ghosta	M	L	L
Ghyneh	M	L	L	Harharaya w Kattine	M	VL	L	Harissa Kesrouane	ML	L	ML
Hayata	M	VL	L	Hosein	M	L	L	Hrajel	L	VL	L
Jdeideh Ghazir	M	VL	L	Jeita	ML	L	ML	Jounieh Ghadir	ML	L	M
Jounieh Haret Sakhr	ML	L	M	Jounieh Salel Alma	ML	L	M	Jounieh Sarba	ML	L	M
Jouret Bedrane	M	L	L	Jouret Mhad	M	VL	L	Jouret Termos	M	L	L
Kfar Debiane	ML	VL	L	Kfar Tay Kesrouane	M	VL	L	Kfar Yassine	ML	L	M
Kfour Kesrouane	M	L	L	Kharayeb Nahr Ibrahi	M	L	L	Klayaat Kesrouane	M	VL	L
Maarab	M	VL	L	Maaysra Kesrouane	M	L	L	Mayrouba	ML	VL	L
Mazraat Er-Ras	ML	L	M	Mazraat Mrah El-Mir	M	VL	L	Mchaa El Ftouh	M	L	ML
Mchaa Faraya	L	L	L	Mchaa Kfar Dibiane	ML	L	L	Mghaer	ML	VL	L
Mradiyah	M	L	L	Nahr Ed-Dahab	M	L	L	Nammoura Kesrouane	M	L	L
Ouata El Jaouz	M	L	L	Ouata Sillam	ML	L	M	Raachine	M	VL	L
Rayfoun	M	VL	L	Safra Kesrouane	ML	L	M	Shayle Kesrouane	ML	L	ML
Tabarja	ML	L	M	Yahchouch	M	L	L	Zaaytreh	M	L	L
Zeytoun	M	L	L	Zouk Mikael	ML	L	M	Zouk Mosbeh	ML	L	M

### Baalbek\_Hermel

#### Baalbek

Municipality	27-Nov	28-Nov	29-Nov	Municipality	27-Nov	28-Nov	29-Nov	Municipality	27-Nov	28-Nov	29-Nov
Aadous	M	M	M	Aamchki	M	L	ML	Aarsal	M	ML	ML
Ain Baalbek	M	M	M	Ain Bourday	M	L	ML	Ain El-Benye	ML	L	ML
Ain El-Jaouz Baalbek	M	L	ML	Ain El-Siya Chadoura	ML	L	ML	Al Khodr Baalbek	M	L	M
Al Nabi Chit	M	L	M	Aynata Baalbek	M	ML	M	Baalbek	M	L	ML
Bachwat	M	M	M	Barqa	M	M	M	Bednayel Baalbak	M	L	ML
Beit Chama	M	ML	ML	Bijjaje	M	M	M	Bouday	M	M	M
Brital	M	L	M	Btadi	M	M	M	Chaat	M	M	M
Chaibe	ML	L	ML	Chlifa	M	M	M	Chmestar	M	ML	M
Dar El-Oussa	M	M	M	Deir El-Ahmar	M	M	M	Deir Mar Maroun Baal	M	M	M
Douris	M	ML	M	Fakiha	M	M	M	Hadath Baalbek	M	M	M
Ham	ML	L	ML	Haour Taala	ML	L	M	Hizzine	M	M	M
Hlebta	M	M	M	Hosh Barada	M	M	M	Hosh El Dahab	M	M	M
Hosh El Snid	M	L	M	Hosh El-Nabi	M	L	M	Hosh El-Rafiq	M	ML	ML
Hosh Tal Safiya	M	M	M	Hrebta	M	M	M	laat	M	ML	M

Jebaa	M	ML	ML	Jenta	ML	L	M	Kfar Dabach	M	ML	ML
Kfar Dane	M	ML	M	Khraibeh El-Hermel	M	M	M	Khreibet Baalbek	ML	L	M
Kneisset Baalbek	M	ML	M	Labueh	M	M	M	Maarboun	ML	L	ML
Majdaloun	M	M	M	Maqneh	M	ML	M	Mazraat Beit Mcheik	M	ML	ML
Misraya	M	ML	ML	Moqraq	M	M	M	Nabha El-Damdoum	M	M	M
Nabi Chbay	M	L	M	Nabi Osman	M	M	M	Nahleh baalbek	M	L	ML
Ouadi El-Oss	M	M	M	Qaa Baayoun	M	M	ML	Qaa Jouar Maqiye	M	M	ML
Qaa Ouadi El-Khanzir	M	M	M	Qah Baalbek	M	M	M	Qarha Baalbek	M	M	M
Qsarnaba	M	ML	ML	Ram Baalbek	M	M	M	Ras Baalbek El Sahl	M	M	M
Ras Baalbek El-Charq	M	M	ML	Riha	M	M	M	Saaide	M	M	M
Sbouba	M	M	M	Seriine El-Tahta	M	L	M	Slouqi	M	L	M
Taiba Baalbek	M	ML	M	Talia	M	ML	M	Taraiya	M	ML	M
Temnin El Fawqa	M	ML	M	Temnin El-Tahta	M	ML	ML	Tfail	M	L	M
Yahfoufa	M	L	M	Yammouneh	M	ML	M	Younine	M	ML	M
Zboud	M	M	M								

## Hermel

Municipality	27-Nov	28-Nov	29-Nov	Municipality	27-Nov	28-Nov	29-Nov	Municipality	27-Nov	28-Nov	29-Nov
Charbine El-Hermel	M	M	M	Hermel Jbab	M	M	ML	Hermel	M	M	M
Maaysra El-Hermel	MH	M	M	Michaa Mrajhine	M	ML	L	Ouadi Faara	M	M	M
Ras Baalbek - Ouadi	M	M	M	Ras Baalbek El Gharb	M	M	M	Zighrine	M	M	M

## Akkar

### Akkar

Municipality	27-Nov	28-Nov	29-Nov	Municipality	27-Nov	28-Nov	29-Nov	Municipality	27-Nov	28-Nov	29-Nov
Aain Tinta	ML	L	L	Aaiyat	L	L	L	Aakkar El-Aatiga	ML	L	L
Aamar Akkar	ML	ML	M	Aamar El Baykat	ML	L	ML	Aamayer	M	L	L
Aamriyet Akkar	ML	L	L	Aandqet	M	ML	ML	Aarmeh	ML	L	ML
Aarqa	ML	ML	M	Aawaynat	ML	L	L	Aayoun Akkar	L	L	L
Abboudiye	ML	L	M	Ain El-Zeit	ML	L	L	Ain Yaaqoub	ML	L	L
Akroum	M	ML	ML	Aridet Cheikh Zennad	ML	M	M	Baldehy w Mazraat Bal	ML	L	M
Barcha	ML	L	M	Bardeh	ML	L	L	Bebnine	ML	ML	M
Beino	ML	L	L	Beit Ayoub	L	L	ML	Beit El-Haouch	ML	ML	M
Beit Mellat	L	L	L	Beit Younes	ML	VL	L	Berbara Akkar	ML	L	L
Berqayel	ML	ML	M	Bezbina	ML	L	L	Bireh Akkar	ML	L	L
Borj	L	L	L	Bqerezla	L	L	ML	Bzal	M	L	ML
Chane	ML	L	L	Chaqdouf	L	L	L	Charbila	ML	L	M
Cheikh Mohammad	ML	L	M	Cheikh Taba Es-Sahl	ML	ML	M	Cheikh Taba	L	L	L
Cheikh Zennad	ML	M	M	Cheikhlar	ML	L	L	Chir Hmairine	ML	L	M
Daghle	ML	L	L	Dahr Laissine	L	L	ML	Darine	ML	L	M
Dawra	ML	L	L	Dawsa w Baghdadi	ML	L	L	Dayret Nahr El-Kabir	ML	L	L
Deir Dalloum	ML	ML	M	Deir Jennine	ML	L	L	Denbou	ML	L	L
Dibbbiyeh	ML	L	L	Douair Aadwiyeh	ML	L	L	Fassikine	ML	L	L
Fnaydek	ML	L	L	Fraydes Akkar	ML	L	L	Ghazayle	ML	L	M
Habchit	M	L	L	Hakour	ML	ML	M	Halba	ML	L	M



Haouchab	ML	L	M	Hayssat	ML	M	M	Haytla	ML	L	M
Hayzouq	ML	L	M	Hedd	ML	L	M	Hmaira Aakkar	ML	ML	M
Hmaiss Aakkar	ML	L	M	Hnaider	ML	L	L	Hokr Ed-Dahri	ML	M	M
Hokr Etti	ML	L	M	Hokr Jouret Srar	ML	L	M	Houaich	ML	L	L
Hrar	L	L	L	Idbil	L	L	L	Ilal	L	L	L
Janine	ML	L	M	Jdeidet El-JoumeH	L	L	ML	Jdeidet El-Kaiteh	ML	L	M
Jebrayel	L	L	ML	Kafr	M	M	M	Kafr	ML	L	L
Karm Asfour	L	L	ML	Kfar Melki Aakkar	ML	M	M	Kfar Noun	ML	L	L
Kfarharra	ML	L	M	Khalsa	ML	L	L	Kharnoubet Aakkar	ML	L	M
Khirbet Daoud Aakkar	ML	L	L	Khirbet El Remmane	M	L	L	Khirbet Shar	ML	L	L
Khoreybet El-Jindi	ML	L	M	Khreibet Aakkar	L	L	L	Kneisset Aakkar	ML	M	M
Kneisset Hnaider	ML	L	L	Knisse	ML	L	M	Kroum El-Aarab	ML	L	M
Kwachra	ML	L	L	Kweykhata	ML	L	M	Machta Hammoud	ML	L	L
Majdala	ML	ML	M	Majdel Akkar	ML	L	L	Mar Touma	ML	ML	M
Marlaya Melhem	ML	ML	M	Mashha	L	L	ML	Massoudiye	ML	M	M
Mazraat Beit Ghattas	ML	ML	M	Mazraat En-Nahriye	M	L	L	Mechmech	M	L	L
Memneh	M	L	L	Mhammara	ML	ML	M	Mighraq Aakkar	ML	M	M
Minyara	L	L	M	Moqayteh	ML	M	M	Mounjez	ML	L	L
Msalla	ML	L	ML	Mzeihmeh	ML	L	M	Nfaisheh	L	L	ML
Noura Et-Tahta	ML	L	L	Ouadi El-Haour	ML	L	M	Ouadi El-Jamous	ML	ML	M
Ouyoun El-Ghizlane	ML	ML	M	Qaabarine	ML	M	M	Qabaait	M	L	L
Qachlaq	ML	L	M	Qantara Aakkar	L	L	L	Qarha Aakkar	ML	L	L
Qarqaf	ML	ML	M	Qboula	L	L	L	Qleiaat Aakkar	ML	M	M
Qloud El-Baqie	ML	ML	M	Qobaiyat Aakkar	M	ML	ML	Qobbat Chamrat	ML	ML	M
Qorayat	ML	VL	L	Qornet Aakkar	L	L	L	Qsair Aakkar	ML	L	L
Rahbe	L	L	L	Rihaniyet Aakkar	ML	L	M	Rmah	ML	L	L
Rmoul	ML	M	M	Saadine	ML	L	M	Sadaqa	L	L	ML
Saidnaya	ML	L	M	Sammouniye	ML	M	M	Sayssouq	ML	L	M
Semmaqiye	ML	M	M	Semmaqli	ML	ML	M	Sfinet El-Dreib	ML	L	ML
Sfinet El-Qaitaa	M	L	ML	Sindyanet Zeidane	ML	L	L	Souaisset Aakkar	ML	L	M
Srar	ML	L	M	Tal Abbas El Gharby	ML	L	M	Tal Abbas El-Charqy	ML	L	M
Tal Biret	ML	ML	M	Tal Hmayra	ML	L	M	Tal Maayan Tal Kiri	ML	M	M
Tal Sibel	ML	M	M	Tallet Chattaha	L	L	L	Tikrit	L	L	L
Tleil	ML	L	M	Tshea	ML	L	L	Zawarib	L	VL	L
Zouq El Hosniyeh	ML	ML	M	Zouq El-Haddara	ML	ML	M	Zouq El-Hbalsa	ML	ML	M
Zouq El-Moqachrine	ML	ML	M								

## Sud

### Sour

Municipality	27-Nov	28-Nov	29-Nov	Municipality	27-Nov	28-Nov	29-Nov	Municipality	27-Nov	28-Nov	29-Nov
Aaiyeh	M	ML	ML	Aalma El-Chaab	M	M	M	Aaytit	M	ML	ML
Abbassiyeh Sour	M	M	ML	Abou Chech	M	M	M	Ain Abou Abdallah	M	M	M
Ain Baal	M	M	ML	Arzoun	M	M	ML	Aziyeh	M	M	M
Baflaya	M	M	ML	Barich	M	ML	L	Batouliyeh	M	M	ML
Bayad	M	ML	ML	Bazouriyeh	M	M	ML	Bediass	M	ML	L

Bestiyat	M	ML	L	Borj El Chemali	M	M	M	Borj En-Naqoura	M	M	M
Borj Rahhal	M	ML	L	Boustane	M	M	ML	Btaychih	M	M	M
Chaaitiye	M	M	ML	Chameh	M	M	M	Chehabiye	M	M	ML
Chehour	M	M	M	Chihine	M	M	ML	Debaal Sour	M	ML	L
Deir Amess	M	ML	ML	Deir Kifa	M	M	ML	Deir Qanoun El-Ain	M	M	ML
Deir Qanoun El-Naher	M	ML	L	Derdghaiya	M	M	ML	Dhayra	M	M	M
Halloussiyeh	M	ML	L	Hamoul	M	M	M	Hanaouey	M	ML	ML
Henniye	M	M	ML	Hmairi Sour	M	ML	L	Iskandarouna Sour	M	M	M
Jbal El Botom	M	ML	ML	Jebbin	M	M	ML	Jennata	M	ML	L
Jijim	M	M	M	Jouaiya	M	ML	ML	Kneisset Sour	M	M	ML
Maarake	M	ML	L	Maaroub	M	ML	L	Majadel	M	M	ML
Majdalzoun	M	M	ML	Mansouri Sour	M	M	ML	Marnba	M	M	M
Marouahine	M	ML	ML	Mazraat El-Zalloutiy	M	M	ML	Mazraat Mechref	M	ML	ML
Mazraat Tayr Semhat	M	M	M	Mheilib	M	M	M	Neffakhiyeh	M	M	ML
Niha Sour	M	M	ML	Ouadi Jilo	M	ML	L	Qana	M	ML	ML
Qolaileh Sour	M	M	ML	Rechknany	M	ML	ML	Rmadiyah	M	ML	ML
Selha Sour	M	M	ML	Siddiqine	M	ML	ML	Sour	M	M	ML
Srifa	M	M	ML	Tayr Debbe	M	ML	ML	Tayr Felsay	M	ML	L
Tayr Harfa	M	M	ML	Touayri	M	M	M	Toura	M	ML	L
Yanouh Sour	M	ML	L	Yarine	M	M	ML	Zebqine	M	M	ML

## Saida

Municipality	27-Nov	28-Nov	29-Nov	Municipality	27-Nov	28-Nov	29-Nov	Municipality	27-Nov	28-Nov	29-Nov
Aanqoun	M	ML	ML	Aaqtanit	M	ML	ML	Aarab Ej-Jall	M	ML	ML
Aarab Tabbaya	M	ML	ML	Abra Saida	M	ML	ML	Adloun	M	M	M
Adousiyeh	M	M	M	Ain-El-Deleb	M	ML	ML	Arzai	M	ML	L
Babliyah	M	M	M	Barty	M	L	ML	Bissariyeh	M	M	M
Bnaafoul	M	ML	ML	Bqosta	M	ML	ML	Bramiy	M	M	M
Daoudiyeh	M	M	M	Dareb El-Sim	M	ML	ML	Erkay	M	ML	ML
Ghassanieh	M	M	ML	Ghazieh	M	M	M	Hajeh	M	ML	ML
Haret Saida	M	ML	ML	Hartiyeh	M	M	M	Hlaliye Saida	M	M	ML
Insariyat	M	M	M	Jazira Saida	M	M	ML	Kafar Bit	M	ML	ML
Kaoutariyet El-Siyad	M	M	ML	Kfar Chellal	M	ML	ML	Kfar Hatta Saida	M	ML	ML
Kfar Milke Saida	M	ML	ML	Khartoum	M	M	ML	Khaziz	M	ML	ML
Khirbet Ed-Douair Sa	M	M	M	Khirbet El-Bassal	M	ML	ML	Khrayeb Saida	M	M	ML
Loubieh	M	M	M	Maghdouche	M	ML	ML	Majdelyoun	M	ML	ML
Matariyet El-Choumar	M	ML	L	Matayriyeh	M	ML	ML	Mazraat 'Mseileh	M	M	M
Mazraat 'Snaiber	M	M	M	Mazraat Aarab Soukka	M	ML	ML	Mazraat Deir Taqla	M	M	M
Mazraat El Yahoudiye	M	M	M	Mazraat El-Housseini	M	M	M	Mazraat El-Mhaydaleh	M	M	M
Mazraat El-Ouasta	M	M	M	Mazraat Jamjim	M	M	M	Mazraat Kaoutariyet	M	M	M
Mazraat Kfar Badda	M	M	M	Mazraat Oussamiyat	M	M	ML	Mazraat Sari	M	M	M
Mazraat Sinai	M	M	ML	Meemariyeh	M	ML	M	Merouaniyeh	M	M	ML
Miyeh ou Miyeh	M	ML	ML	Najjariyeh	M	M	M	Qaaqiyat El-Snaouba	M	M	M
Qnarit	M	ML	ML	Qraiye Saida	M	ML	ML	Saida Ed-Dekermane	M	ML	ML
Saida El-Oustani	M	M	ML	Saida El-Qadimeh	M	ML	ML	Saida Kefraya	M	ML	ML
Saksakiyeh	M	M	M	Salhieh Saida	M	ML	ML	Sarafand	M	M	M

Sfenta	M	L	ML	Tafahta	M	M	ML	Tanbourit	M	ML	ML
Tebna	M	M	M	Zaghdraiya	M	ML	M	Zeita	M	ML	ML
Zrariyeh	M	M	ML								

## Jezzine

Municipality	27-Nov	28-Nov	29-Nov	Municipality	27-Nov	28-Nov	29-Nov	Municipality	27-Nov	28-Nov	29-Nov
Ain El-Mir (El Estab)	M	ML	ML	Anane	ML	L	L	Aramta	M	L	M
Ariya	L	L	L	Aychiyeh	M	ML	M	Azour	ML	L	L
Baba	ML	L	L	Bayssour Jezzine	M	ML	ML	Benoueteh Jezzine	L	L	L
Bhannine	L	L	L	Bisri	ML	L	L	Bkassine	L	L	L
Bouslaya	ML	L	ML	Btedine El-Leqech	ML	L	L	Chbail	M	M	M
Choualiq Jezzine	M	M	ML	Dahr Ed-Deir	ML	L	ML	Deir El Qattine	ML	L	ML
Demachqiyeh	M	L	M	Ghabbatiyeh	L	L	L	Harf Jezzine	ML	L	L
Hassaniyeh	M	ML	ML	Haytouleh	M	L	ML	Haytura	ML	L	ML
Hidab	M	L	ML	Homsiyeh	ML	L	L	Jabal Toura	M	L	ML
Jarmaq	M	L	M	Jensnaya	M	ML	ML	Jernaya	M	ML	ML
Jezzine	M	L	M	Karkha	M	ML	ML	Kfar Falous	M	L	L
Kfar Houna	M	L	M	Kfar Jarrah	M	ML	ML	Lebaa	M	ML	ML
Louayzet Jezzine	ML	L	ML	Machmouche	L	VL	L	Mahmoudiyeh Jezzine	M	L	M
Maknounye Jezzine	ML	L	ML	Maraat Ouazaiyeh	M	ML	M	Mazraat Daraya	M	L	M
Mazraat El-Aarqoub	M	ML	M	Mazraat El-Mathane	ML	L	L	Mazraat El-Rahbane	ML	L	ML
Mazraat Khallet Khaz	M	ML	M	Mazraat Louzid (Loua	M	M	M	Mazraat Qrouh	M	L	M
Mazraat Tamra	M	L	ML	Mazraat Zighrine Jez	M	ML	M	Mazraat	ML	L	ML
Mharbiyeh	M	ML	ML	Midane Jezzine	L	L	L	Mjeydel Jezzine	M	ML	ML
Mlikh	ML	L	ML	Mrach El-Hbasse	M	ML	ML	Ouadi Baanqoudaine	M	ML	ML
Ouadi El-Laymoun	M	ML	ML	Ouardiyeh	M	M	M	Qabaa Jezzine	ML	L	ML
Qatrani	M	ML	M	Qaytouleh	ML	L	ML	Qtaleh Jezzine	ML	L	L
Rihane Jezzine	M	L	M	Rimat	ML	L	ML	Roum	ML	L	L
Roummanet	M	L	ML	Sabbah	L	L	L	Saydoun	ML	L	ML
Sfaray	ML	L	L	Snaya	ML	L	ML	Sojoud	M	ML	M
Srayri	M	L	M	Taaid	M	L	L	Wadi Jezzine	L	L	L
Zhalta	ML	L	ML								

## Bekaa

### West Bekaa

Municipality	27-Nov	28-Nov	29-Nov	Municipality	27-Nov	28-Nov	29-Nov	Municipality	27-Nov	28-Nov	29-Nov
Aammiq BG	M	ML	ML	Ain El Tineh BG	M	L	M	Ain Zebdeh	ML	L	ML
Ana	M	ML	ML	Aytanit	ML	L	ML	Baaloul BG	ML	L	ML
Bab Mareh	ML	L	ML	Chouberqiye Aammiq	M	ML	ML	Dakoue	M	L	ML
Deir Ain El-Jaouze	ML	L	ML	Deir Tahniche	M	ML	ML	Ghaza	M	ML	ML
Harime El-Soughra	M	L	ML	Hoch Harimeh	M	ML	ML	Jazira BG	M	ML	ML
Jib Jennine	ML	L	ML	Kamed-El-Laouz	ML	L	L	Kefraya BG	M	L	ML
Khiara El Atika	M	ML	ML	Khiara	M	ML	ML	Khirbet Qanafar	ML	L	ML
Lala	ML	L	ML	Lebbaya BG	ML	L	ML	Loussa	M	L	M
Machghara	ML	L	ML	Manara (Hammara) BG	M	ML	M	Mansoura BG	M	ML	ML

Marej BG	M	ML	ML	Maydoun	M	L	M	Ouaqf BG	M	ML	ML
Qaraaoun	ML	L	ML	Qelya	M	L	ML	Raouda (Istabel)	M	L	ML
Saghbine	ML	L	ML	Sohmor	ML	L	ML	Soltan Yaacoub el Ara	M	L	ML
Souairy	M	L	ML	Sultan Yaacoub	M	L	ML	Tal Znoub	M	ML	ML
Yehmor BG	ML	L	ML	Zilaya	ML	L	ML				

## Zahle

Municipality	27- Nov	28- Nov	29- Nov	Municipality	27- Nov	28- Nov	29- Nov	Municipality	27- Nov	28- Nov	29- Nov
Aanjar (Haouch Mouss	M	L	ML	Ablah	M	ML	ML	Ain Kfarzabad	M	L	ML
Ali-El-Nahri	M	ML	ML	Bar Elias	M	ML	ML	Bouarej	M	ML	ML
Cheberqiyet Tabet	M	ML	ML	Chtaura	M	ML	ML	Deir El Ghazal	M	L	ML
Delhamiyet Zahle	M	L	ML	Ferzol	M	ML	ML	Haouch El-Ghanam	M	ML	ML
Haouch Es-Siyadeh	M	ML	ML	Haouch Hala	M	L	ML	Haouch Mandara	M	ML	ML
Haouch Qayssar	M	ML	ML	Hezerta	M	L	L	Hosh Moussa	ML	L	ML
Jdita	M	ML	ML	Kfarzabad	ML	L	ML	Ksara	M	ML	ML
Majdel Aanjar	M	ML	ML	Makssi	M	ML	ML	Massa	M	L	M
Mazraat Er-Remtaniye	ML	ML	ML	Mrayjat Zahle	M	ML	ML	Mzaraa Zahle	M	ML	ML
Nabi Ayla	M	ML	ML	Nasriyet Rizk	M	L	M	Nasriyet Zahle	M	ML	ML
Niha Zahle	M	ML	ML	Ouadi Ed-Deloum	M	ML	ML	Ouadi El-Arayech	M	ML	ML
Qaa El Rim	M	ML	L	Qab Elias	M	ML	ML	Qousaya	ML	L	ML
Rhit	M	L	ML	Riyak	M	ML	ML	Saadnayel	M	ML	ML
Taal El-Akhdar	M	ML	ML	Taalbeya	M	ML	ML	Taanayel	M	ML	ML
Talamara	M	ML	ML	Tcheflik Edde Haouch	M	ML	ML	Tcheflik Qiqano	M	ML	ML
Terbol Zahle	ML	L	ML	Touaite Zahle	ML	L	L	Zahle Aradi	M	L	ML
Zahle El-Berbara	M	ML	L	Zahle El-Maallaqa	M	L	ML	Zahle El-Midane	M	ML	ML
Zahle Er-Rassiyeh	M	ML	L	Zahle Haouch El-Ouma	M	ML	ML	Zahle Haouch El-Ouma	M	L	ML
Zahle Haouch Ez-Zara	M	L	ML	Zahle Maalaqa Aradi	M	ML	ML	Zahle Mar Antonios	M	ML	L
Zahle Mar Elias	M	L	ML	Zahle Mar Gerios	M	L	ML	Zahle Saydet En-Naja	M	ML	ML
Zebdoul	M	ML	M								

## Rachaiya

Municipality	27- Nov	28- Nov	29- Nov	Municipality	27- Nov	28- Nov	29- Nov	Municipality	27- Nov	28- Nov	29- Nov
Ain Arab Rachaiya	M	ML	ML	Ain Ata	ML	L	ML	Ain Harche	ML	L	ML
Aqabe Rachaya	ML	L	ML	Ayha	M	ML	M	Ayta El Fokhar	M	ML	ML
Bakifa Rachaya	ML	L	ML	Bakka	ML	ML	ML	Beit Lahya	ML	L	ML
Bireh Rachaiya	ML	L	L	Daher El Ahmar	M	L	ML	Deir El-Achayer	M	ML	ML
Heloua Rachaiya	M	ML	ML	Hoch El Qannabeh Rac	M	L	ML	Kaoukaba Bou Arab	ML	L	ML
Kfar Danis	ML	L	ML	Kfar Mechki	ML	L	ML	Kfar Qouq	M	ML	M
Kherbet Rouha	M	L	ML	Majdel Balhiss	ML	L	ML	Mdoukha	M	ML	ML
Mhaydseh Rachaiya	ML	L	L	Nabi Safa	ML	L	ML	Rachaiya	ML	L	ML
Rafid Rachaiya	ML	L	L	Selsata (Mazraat Dei	M	M	ML	Tannoura	ML	L	ML
Yanta	M	ML	ML								

## Beyrouth

### Beyrouth

Municipality	27- Nov	28- Nov	29- Nov	Municipality	27- Nov	28- Nov	29- Nov	Municipality	27- Nov	28- Nov	29- Nov
--------------	---------	---------	---------	--------------	---------	---------	---------	--------------	---------	---------	---------

Achrafieh	M	M	M	Ain el-Mreisse	M	M	M	Bachoura	M	M	M
Beirut Central Distr	M	M	M	Marfai	M	M	M	Mazraa	M	M	M
Medaouar	M	M	M	Minet el-Hosn	M	M	M	Mwssaitbeh	M	M	M
Ras Beirut	M	M	M	Rmeil	M	M	M	Saifi	M	M	M
Zqaq el-Blat	M	M	M								