

Lebanon Fire Risk Bulletin



CIVIL DEDEFENCE

Refer to cadast table condition.

Please note that the indicated temperature is at 2 meters height from the ground.

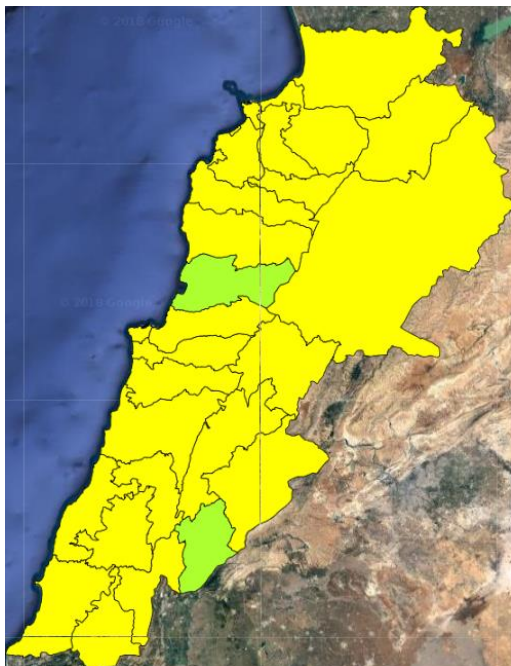
General description of potential fire risk situation

Symbol	Level of risk	Meaning and actions
VL	Very low	Very low fire risk. Controlled burning operations can be hardly executed due to high fuel moisture content. Normally wildfires self-extinguish.
L	Low	Low fire risk. Controlled burning operations can be executed with a reasonable degree of safety.
ML	Medium low	Medium-low fire risk. Controlled burning operations can be executed in safety conditions. All the fires need to be extinguished.
M	Medium	Medium fire risk. Controlled burning operations would be avoided. All the fires need to be very well extinguished.
M	Medium high	Controlled burning is not recommended. Open flame will start fires. Cured grasslands and forest litter will burn readily. Spread is moderate in forests and fast in exposed areas. Patrolling and monitoring is suggested. Fight fires with direct attack and all available resources.
H	High	Ignition can occur easily with fast spread in grass, shrubs and forests. Fires will be very hot with crowning and short to medium spotting. Direct attack on the head may not be possible requiring indirect methods on flanks. Patrolling and monitoring the territory is highly suggested.
E	Extreme	Ignition can occur also from sparks. Fires will be extremely hot with fast rate of spread. Control may not be possible during day due to long range spotting and crowning. Suppression forces should limit efforts to limiting lateral spread. Damage potential total. Patrolling and monitoring the territory is highly suggested.

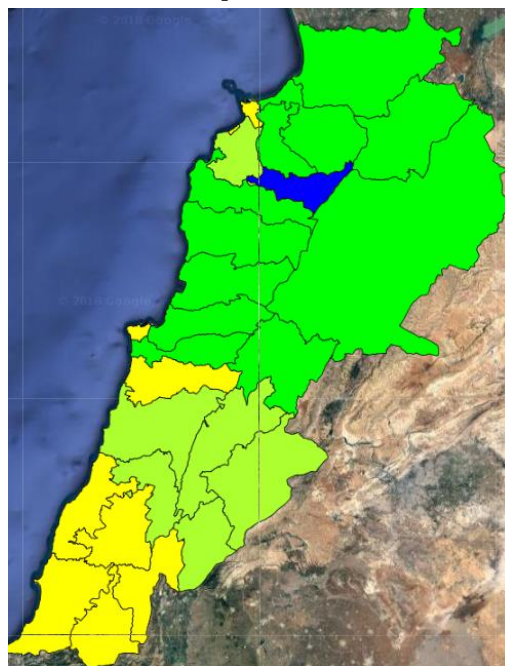
Beirut, 28 April 2018

FIRE RISK INDEX

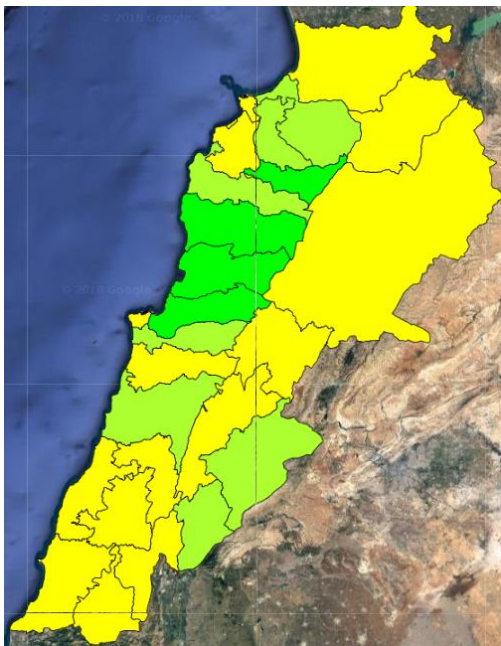
27 April 2018



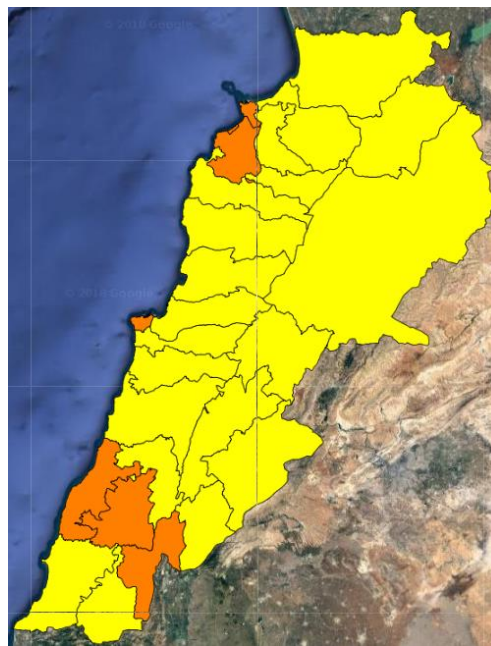
28 April 2018



29 April 2018



30 April 2018

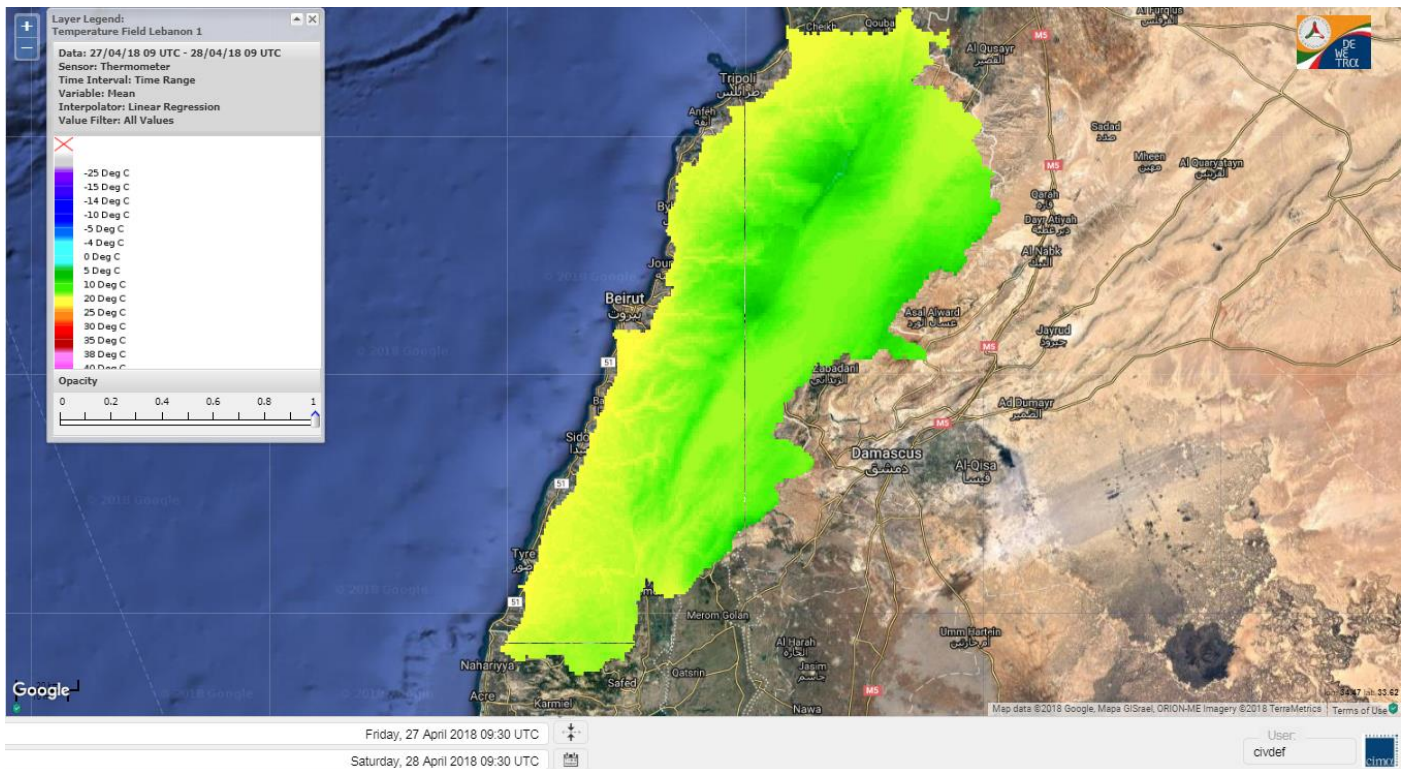


Layer Legend:
Lebanon Wildfire Risk Index 1

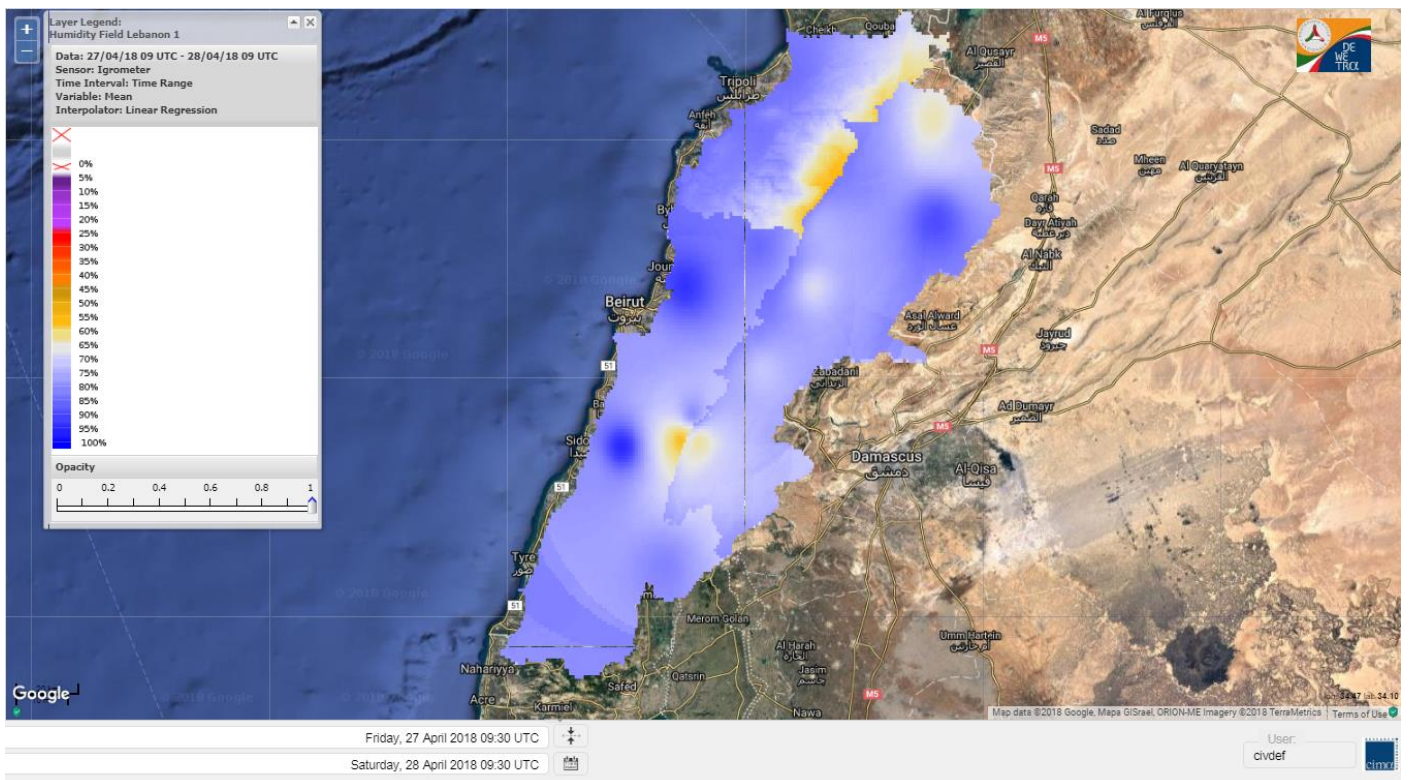
Data: Run: 28/04/2018 00:00. Forecast for 28
Model: RISICO for the Republic of Lebanon
Variable: Fire Weather Index
Spatial Resolution: Caza

- VERY LOW
- LOW
- MEDIUM-LOW
- MEDIUM
- MEDIUM-HIGH
- HIGH
- EXTREME

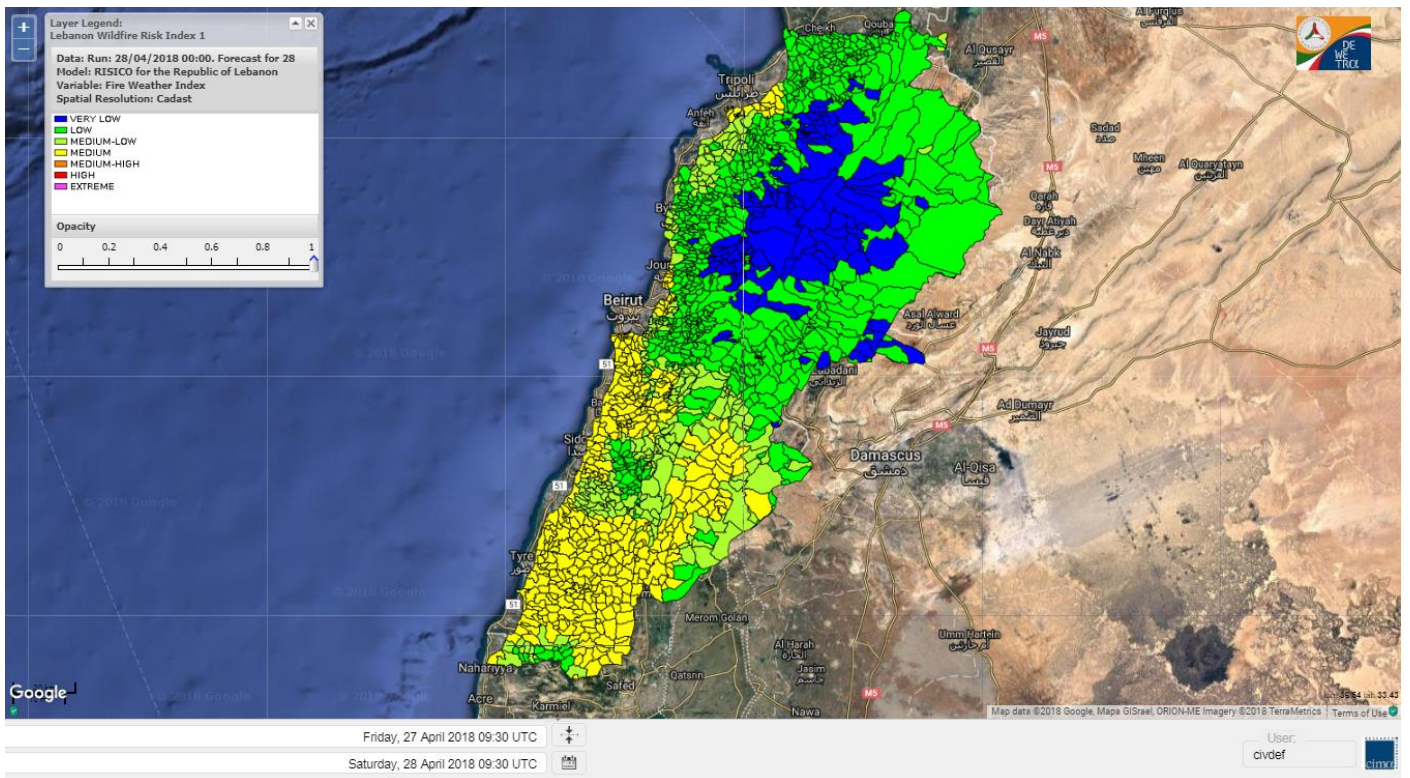
Lebanon temperature for 28 April 2018



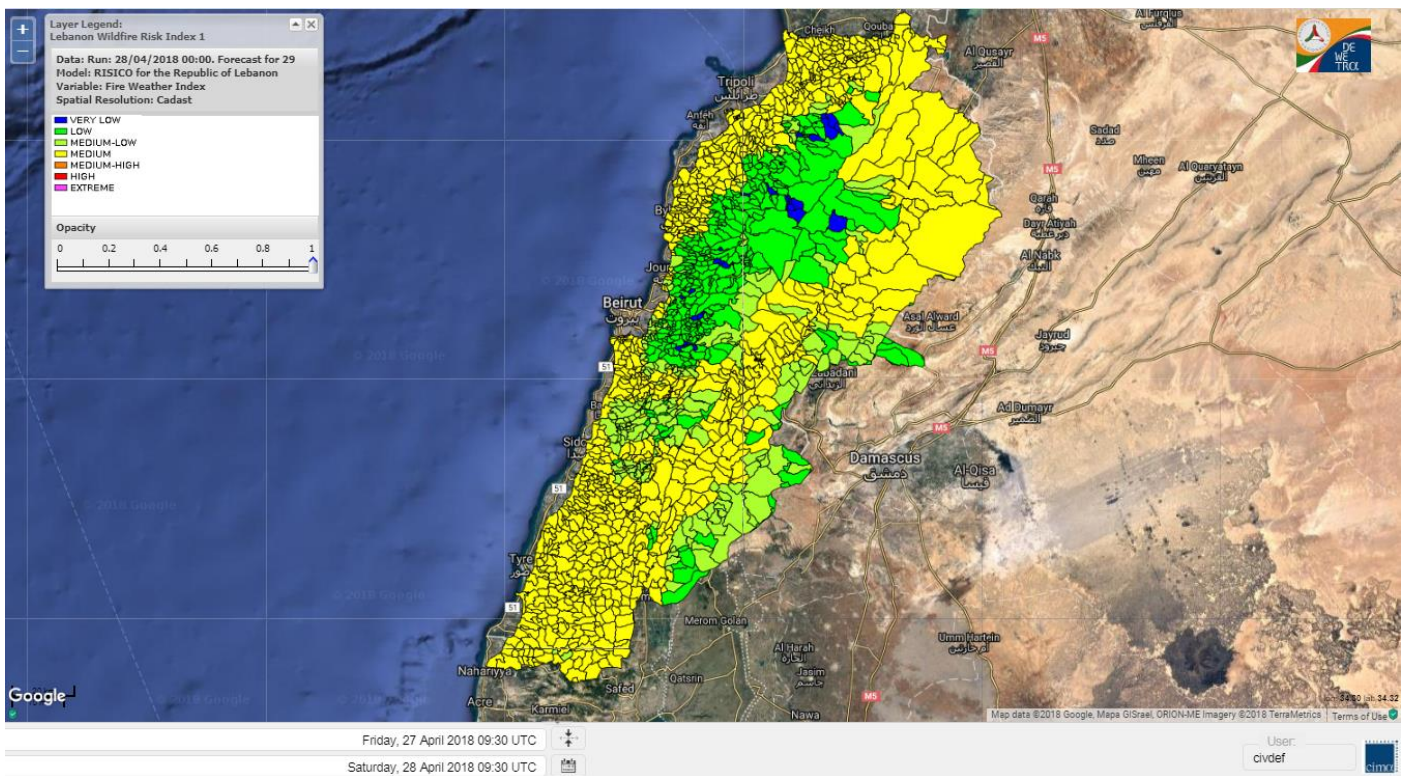
Lebanon humidity for 28 April 2018



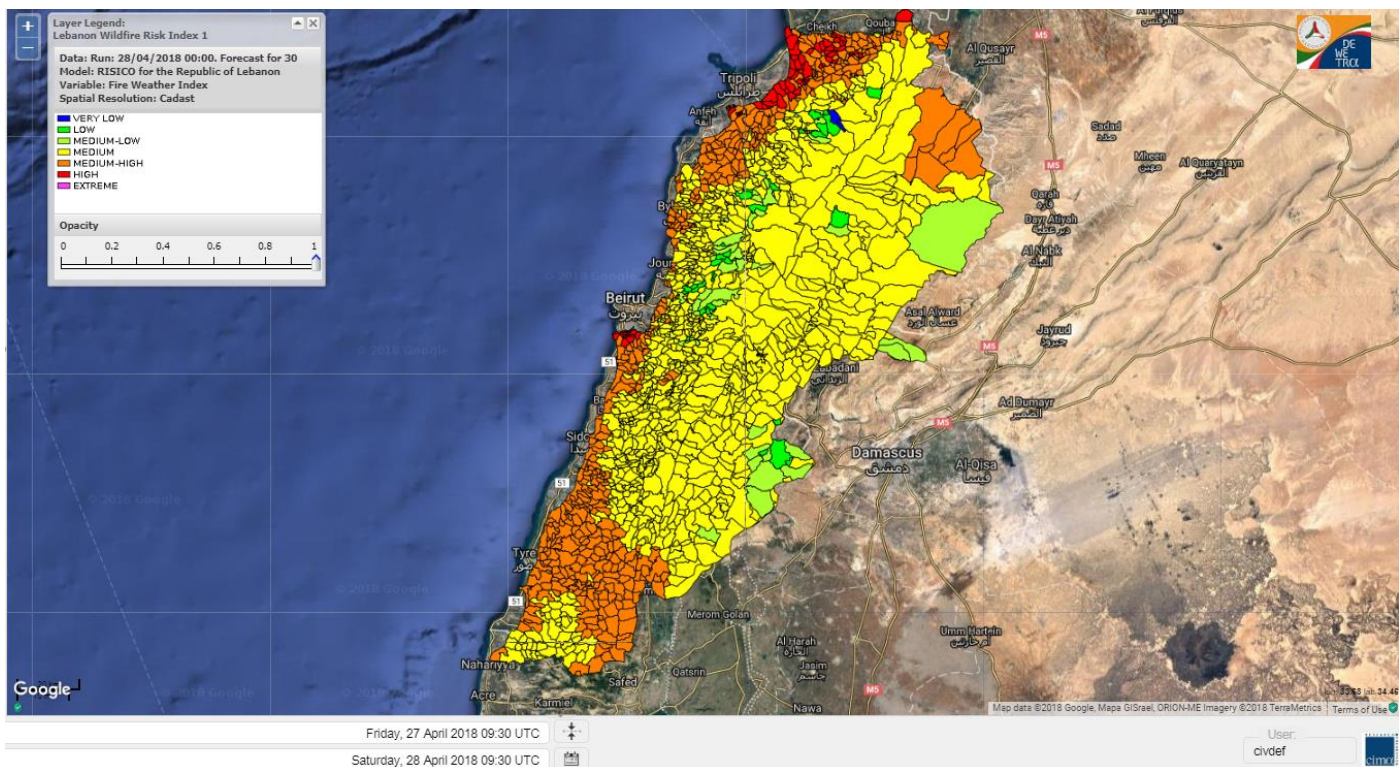
Lebanon for 28 April 2018



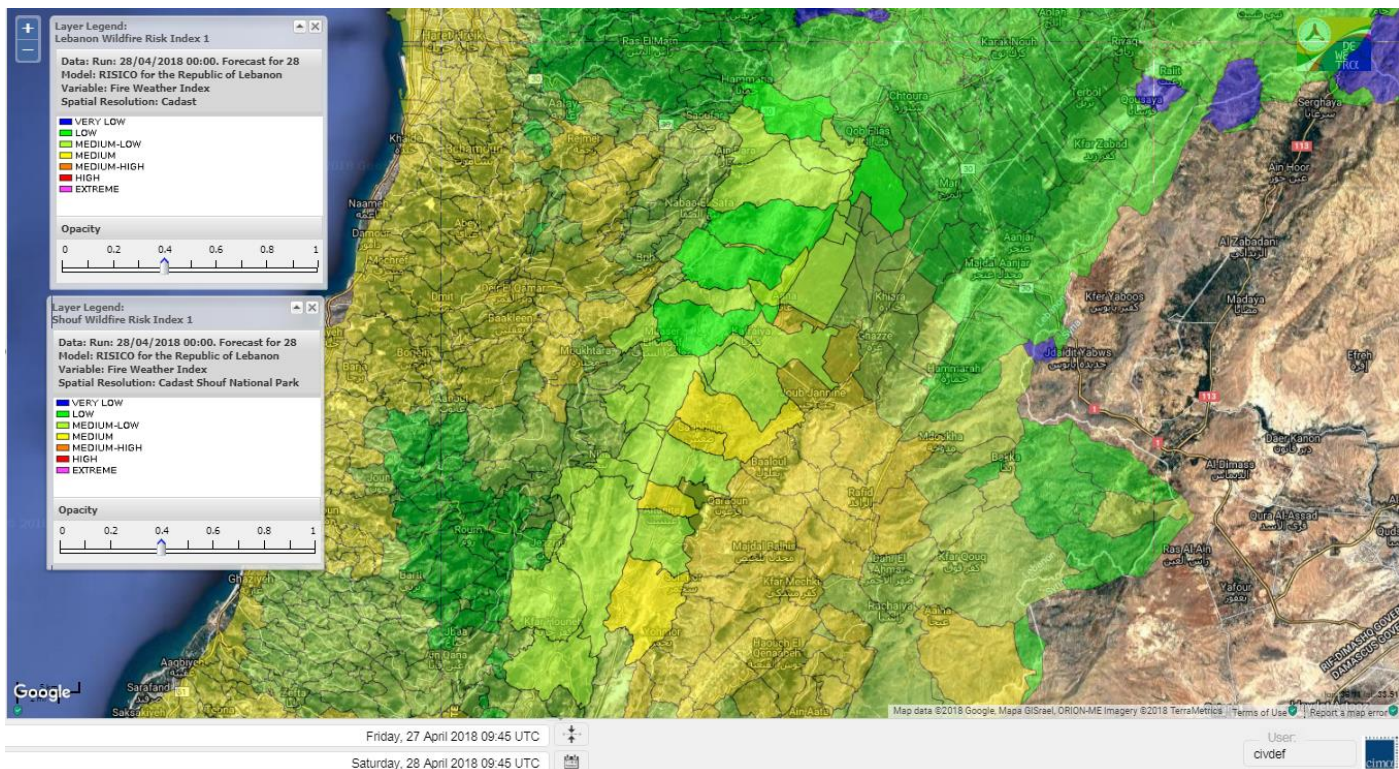
Lebanon for 29 April 2018



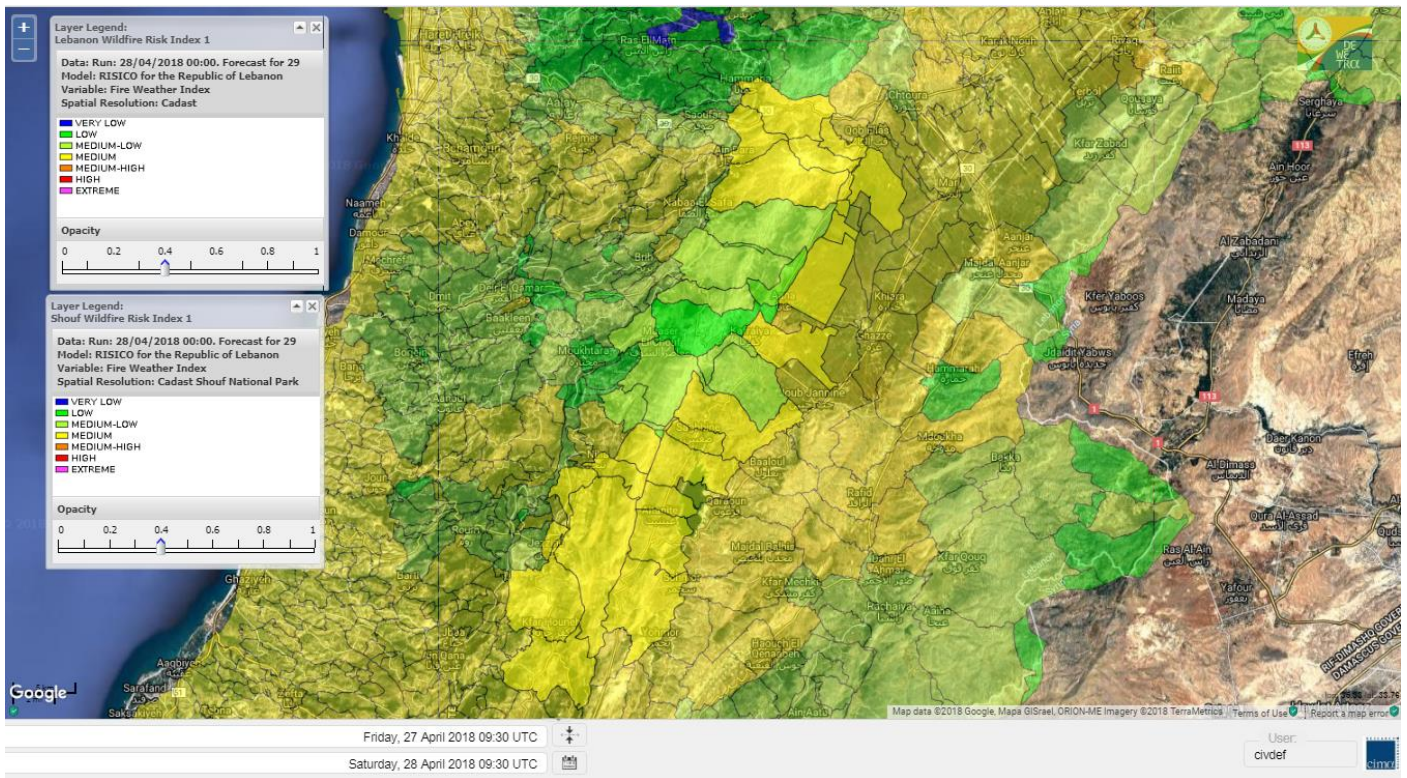
Lebanon for 30 April 2018



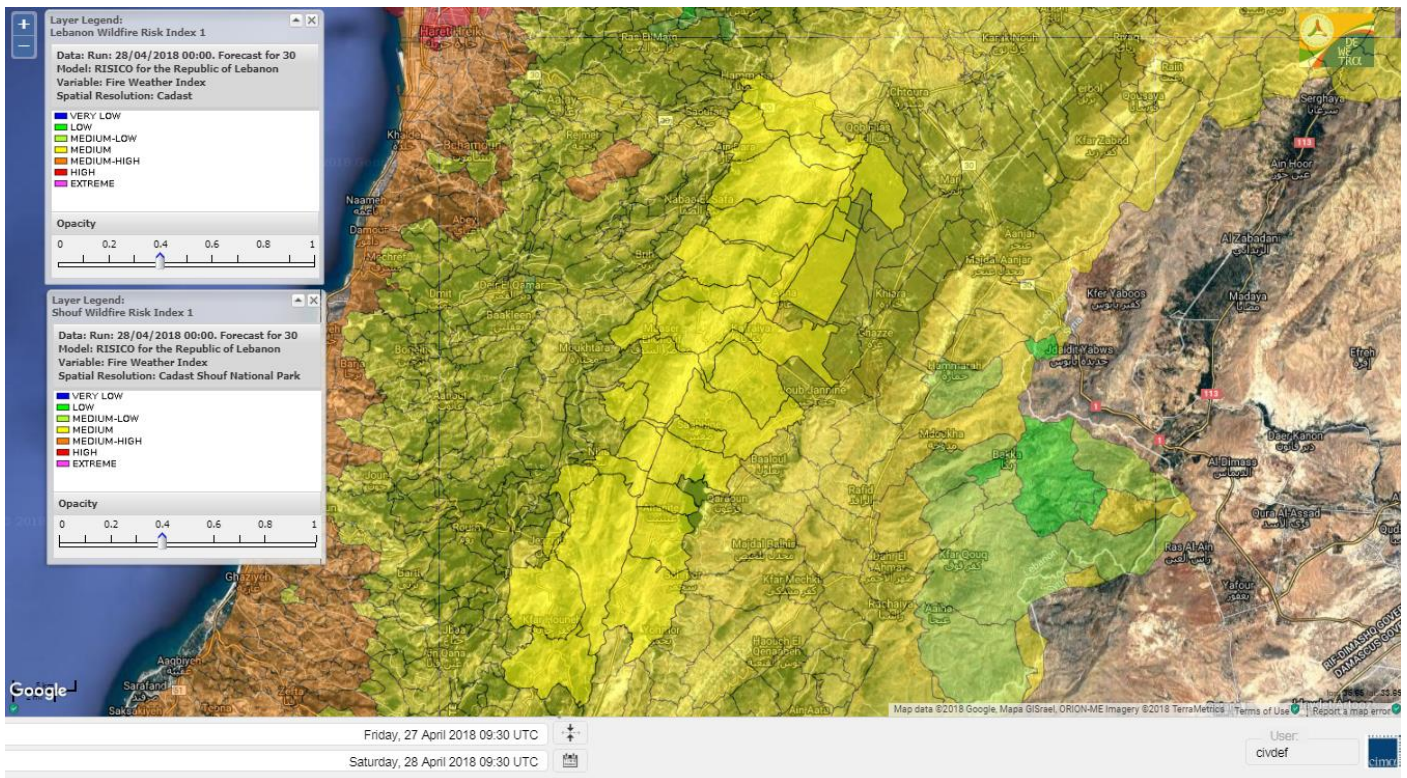
Shouf Biosphere Reserve Forecast for 28 April 2018



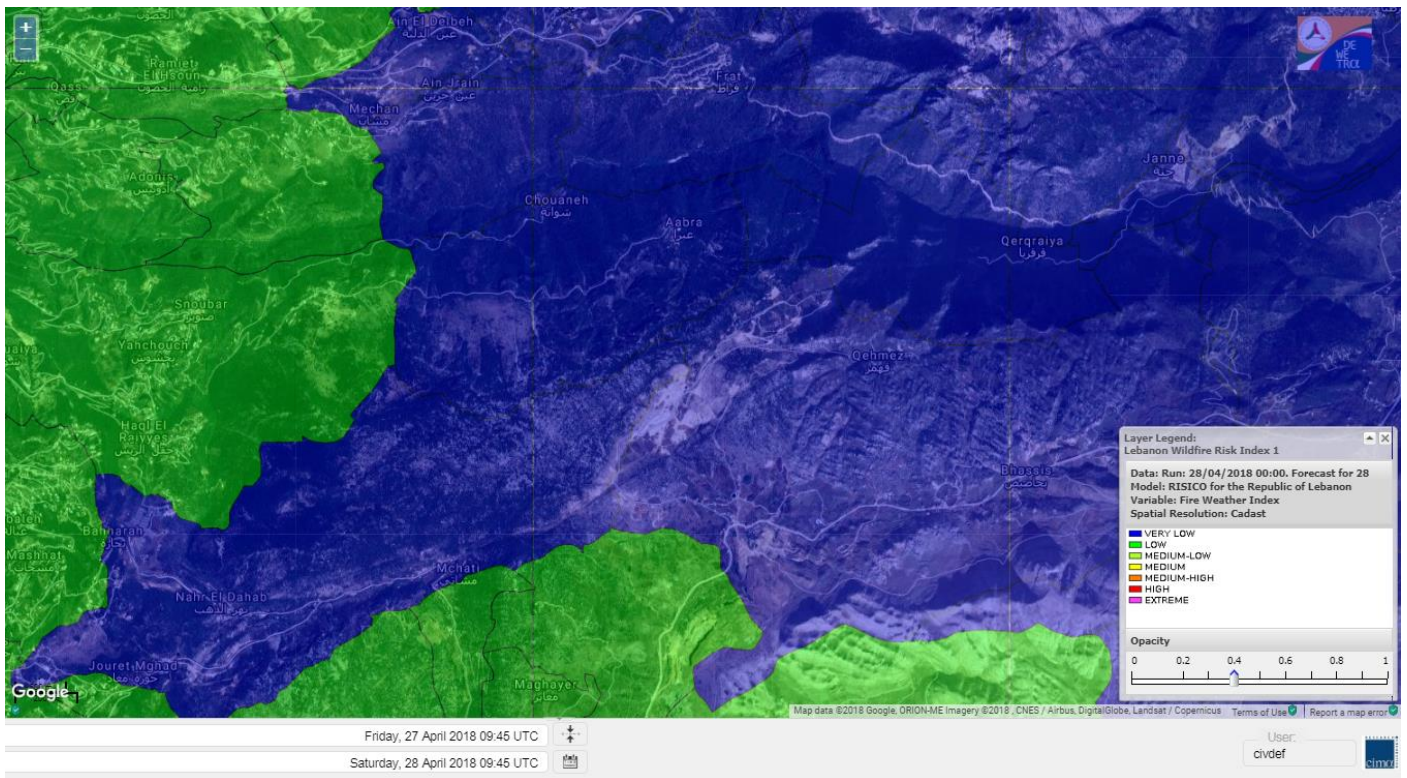
Shouf Biosphere Reserve Forecast for 29 April 2018



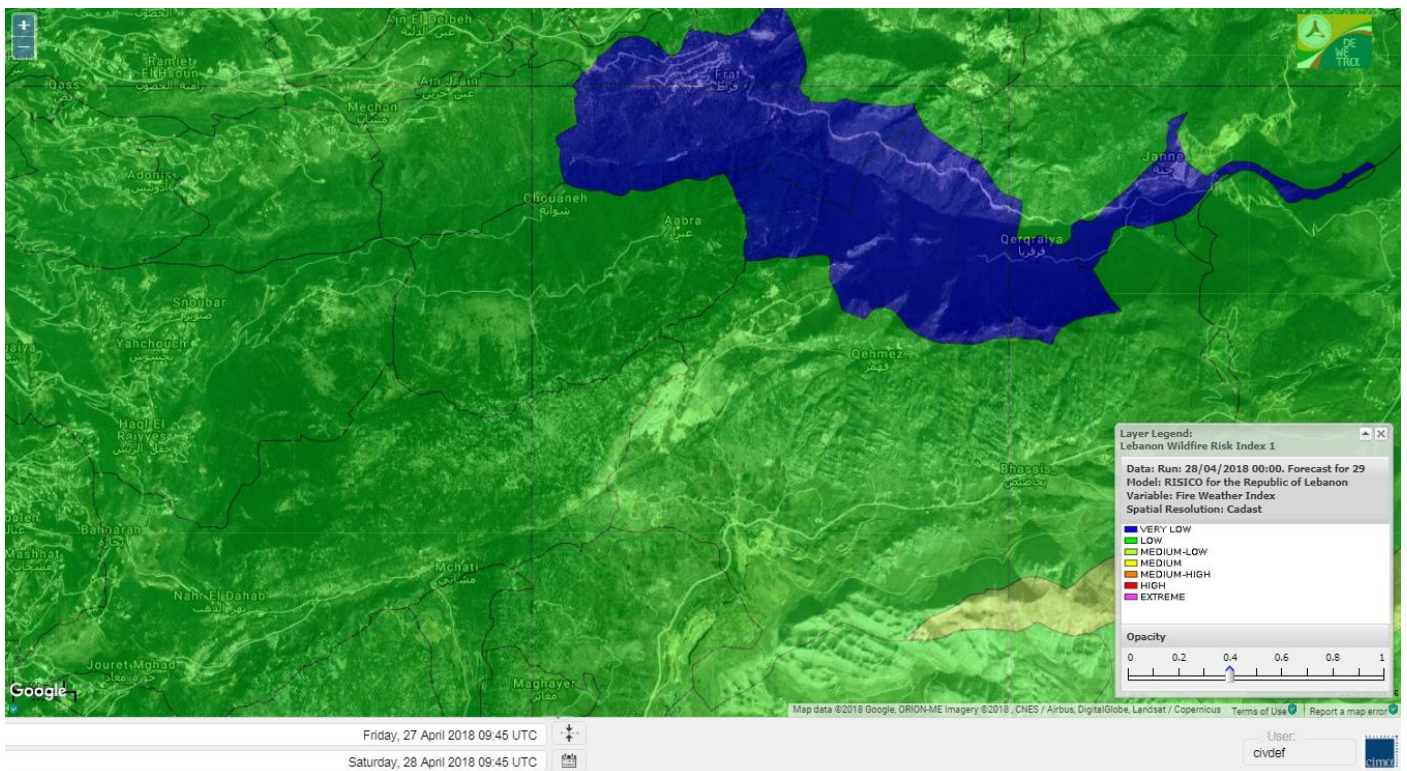
Shouf Biosphere Reserve Forecast for 30 April 2018



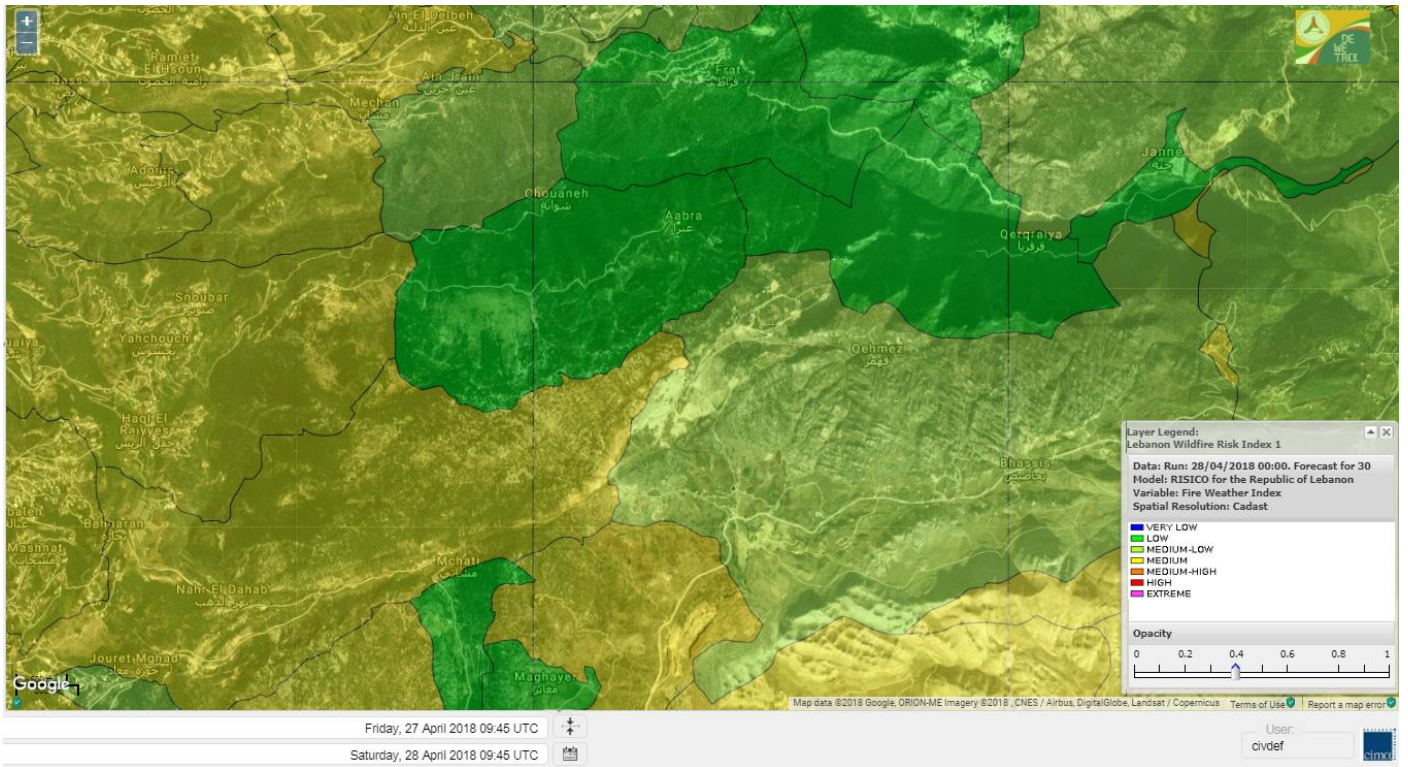
Jabal Moussa Reserve Forecast for 28 April 2018



Jabal Moussa Reserve Forecast for 29 April 2018



Jabal Moussa Reserve Forecast for 30 April 2018



Nord

Koura

Municipality	28-Apr	29-Apr	30-Apr	Municipality	28-Apr	29-Apr	30-Apr	Municipality	28-Apr	29-Apr	30-Apr
Aaba	ML	M	MH	Afsaddiq	ML	M	MH	Ain Ekryne	ML	M	MH
Amioun	L	M	MH	Anfeh	ML	M	MH	Badbhoun	ML	M	MH
Barghoun	ML	M	MH	Barsa	ML	M	MH	Batroumine	ML	M	MH
Bdebba	ML	M	MH	Bechmizzine	L	M	MH	Bednaye El-Koura	ML	M	M
Bhabbouch El-Koura	L	M	MH	Bkeftine	ML	M	MH	Bnehran	L	ML	M
Bqaiia El-Koura	ML	M	MH	Bsarma	L	M	MH	Btaaboura	ML	M	MH
Bterram	ML	M	MH	Btouratij	ML	M	MH	Bziza	L	M	MH
Dar Beechtar	L	M	MH	Dar Chmezzine	ML	M	MH	Deddeh	ML	M	MH
Deir El-Balamand	L	M	MH	Fih	ML	M	MH	Hraiche	ML	M	MH
Ijdaabrine	ML	M	MH	Kaftoun	ML	M	MH	Kefraya El-Koura	ML	M	MH
Kfarakka	L	M	MH	Kfarhata	ML	M	MH	Kfarhazir	ML	M	MH
Kfarkahel	ML	M	MH	Kfarsaroun	L	M	MH	Kosba	L	M	MH
Mejdel el-Koura	L	M	M	Nakhle	ML	M	MH	Qalhat	L	M	MH
Ras Masqa	ML	M	MH	Rechdibbine	L	M	MH	Zakroun	ML	M	MH
Zgharta El-Mtaouile	L	L	M								

Bcharre

Municipality	28-Apr	29-Apr	30-Apr	Municipality	28-Apr	29-Apr	30-Apr	Municipality	28-Apr	29-Apr	30-Apr
Aabdine	L	L	M	Bane	L	L	M	Barhelioun	L	L	M
Bazooune	VL	VL	M	Becharre	VL	L	M	Beit Menzer	L	L	M
Billa	L	L	M	Blaouza	L	L	M	Bqaa Kafra	VL	VL	M
Bqerqacha	VL	VL	M	Breissat	VL	L	ML	Dimane	VL	L	M
Hadath El Jobbeh	VL	L	ML	Hadchit	VL	L	M	Hasroun	VL	L	M
Mazraat Aassaf	VL	VL	L	Mazraat Bani Saab	VL	L	ML	Mchaa El-Jobbeh	VL	VL	M
Metrit	L	M	M	Moghr El-Ahoual	L	L	M	Ouadi Qannoubine	VL	VL	L
Qanat	L	L	M	Qnayer	VL	L	ML	Tourza	L	L	M

Batroun

Municipality	28-Apr	29-Apr	30-Apr	Municipality	28-Apr	29-Apr	30-Apr	Municipality	28-Apr	29-Apr	30-Apr
Aabrine	L	M	M	Aalali	L	L	M	Aartiz	L	M	M
Abdelli	L	M	M	Ajdabra	L	M	M	Assia	L	L	M
Basbina	L	M	MH	Batroun	ML	M	MH	Bcheleh	L	L	M
Bechtoudar	L	L	M	Beit Chlala	L	L	M	Beit Kassab	L	L	M
Bijdarfil	ML	M	MH	Bqesmaya	L	M	M	Chatine	VL	L	ML
Chebtin	L	M	M	Chekka	ML	M	MH	Daael	L	L	M
Dahr Abi Yaghi	L	M	M	Daraya El-Batroun	L	M	MH	Deir Billa	L	L	M
Deir Kfifane	L	M	MH	Deir Mar Youhanna EL	L	L	ML	Deir Mar Youssef Jra	L	M	M
Douma	L	L	M	Douq	L	M	M	Eddeh El-Batroun	L	M	M
Ftihat El-Batroun	L	ML	M	Ghouma	L	M	M	Hadtoun	L	L	M
Hamat	L	M	M	Harbouna	L	M	M	Hardine	VL	L	L
Helta	L	L	M	Hery	ML	M	MH	Jebbla	L	L	M
Jrabta El-Batroun	L	M	M	Jrane El-Batroun	L	M	MH	Kfar Aabida	L	M	M
Kfar Halda	L	L	M	Kfarb Shlaimane	L	L	M	Kfarhatna	L	M	M
Kfarhay	ML	M	MH	Kfarhelos	L	M	M	Kfifane	L	M	MH

Kfour El Arabi	VL	L	M	Koubba	ML	M	MH	Kour	L	M	M
Mar Mama	L	M	M	Masrah	L	M	M	Mehmarch	L	ML	M
Mrah Chdid	L	M	M	Mrah El Ziyat	L	M	M	Mrah El-Hajj	L	L	M
Nahle El-Batroun	L	L	M	Niha El-Batroun	VL	L	ML	Oujah El-Hajjar	L	M	M
Ouata Houb	VL	L	ML	Qatnaaoun	L	M	M	Racha	L	L	M
Rachana	L	M	M	Rachkida	ML	M	M	Ram El-Batroun	L	L	M
Ras Nahhach	ML	M	M	Selaata	ML	M	MH	Sghar	L	M	M
Smar Jbayl	L	M	M	Sourat El-Batroun	L	M	M	Tannourine El-Faouqa	VL	L	M
Tannourine Et-Tahta	VL	L	L	Thoum	ML	M	MH	Toula El-Batroun	L	M	M
Zan	L	M	M								

Zgharta

Municipality	28-Apr	29-Apr	30-Apr	Municipality	28-Apr	29-Apr	30-Apr	Municipality	28-Apr	29-Apr	30-Apr
Aachach	L	M	MH	Aalma	L	M	MH	Aarde	L	M	MH
Aintourine	L	L	M	Arabet Qozhaya	L	L	M	Arde	L	M	MH
Arjis	L	L	M	Asnoun	L	M	MH	Ayto	L	L	M
Basloukit	L	L	M	Bchannine	L	M	M	Besebeel	L	M	MH
Bhairret Toula	VL	VL	ML	Bnachee	L	L	M	Boussit	M	M	MH
Danha	L	M	MH	Daraiya Zgharta	L	L	M	Deir Jdeide	L	M	MH
Ehden	VL	L	M	Halan	L	M	MH	Hariq Zgharta	L	M	MH
Houakir	L	M	M	Hraiqis	M	M	H	laal	L	M	M
Ijbaa	L	L	M	Karm Saddeh	L	L	M	Kfarchakhna	ML	M	MH
Kfardlaqous	L	M	MH	Kfarfou	L	L	M	Kfarhata Zgharta	L	M	MH
Kfarhoura	L	M	M	Kfarsghab	VL	L	M	Kfaryachit	L	M	MH
Kfarzaina	L	M	MH	Khaldiye	L	M	MH	Mazraat Ajbeaa	L	M	MH
Mazraat Et-Teffah	VL	L	M	Mazraat Jneid	L	M	MH	Mejdlaiya Zgharta	ML	M	MH
Merh Kfarsghab	L	ML	M	Miryata	ML	M	MH	Miziara	L	L	M
Mzraat Kefraya	M	M	MH	Qorah Bach	L	M	MH	Rachiine	L	M	MH
Ras Kifa	L	L	M	Sakhra	L	M	MH	Sebhel Zgharta	L	L	M
Serhel	VL	L	ML	Tallet Zgharta	L	M	MH	Toula Zgharta	VL	L	M
Zgharta	L	M	MH								

Minieh-Denniye

Municipality	28-Apr	29-Apr	30-Apr	Municipality	28-Apr	29-Apr	30-Apr	Municipality	28-Apr	29-Apr	30-Apr
Aasaymout	VL	VL	L	Aaymar	L	ML	M	Aazki	L	ML	M
Ain El-Tineh-Miniyeh	VL	L	M	Assoun	L	ML	M	Bakhaaoun	L	ML	M
Bchennata	L	L	M	Bechehhara	L	ML	M	Beddawi	M	M	MH
Behouaita	VL	L	M	Beit El Foqss	VL	L	M	Beit Haouik	VL	L	M
Beit Zoud	L	L	M	Bekaasafrine	VL	L	M	Borj El Yahoudiyeh	M	M	MH
Bqarsouna	VL	L	M	Btermaz	VL	L	M	Debaael	VL	L	L
Deir Ammar	M	M	H	Deir Nbouh	L	M	M	Haouaret-Miniyeh	VL	L	ML
Haql el Azimeh	VL	L	ML	Harf El Siyad	VL	L	ML	Hazmiye-Miniyeh	VL	L	M
Izal	L	M	M	Jarjour	VL	ML	M	Jayroun	VL	VL	L
Kahf El-Malloul	L	ML	M	Karm El-Moher	L	L	M	Kfar Binine	VL	L	L
Kfarchalane	L	ML	M	Kfarhabou	L	M	M	Kharroub-Miniyeh	L	M	M
Mazraat El-Kreme	L	L	M	Mazraat Ketrane	L	ML	M	Merkebta	M	M	MH
Minyeh	M	M	MH	Mrah El Sfirat	VL	L	ML	Mrah Sraj	VL	L	M
Mrebbine	VL	L	M	Nabi Youcheaa	M	M	MH	Nemrine	VL	L	ML

Qarhaiya	VL	L	ML	Qarne	VL	VL	VL	Qarsita	VL	VL	L
Qattineh-Miniyeh	VL	VL	L	Qemmamine	VL	VL	VL	Qraine	VL	L	ML
Raouda-Aadoua	L	M	MH	Rihaniyet-Miniyeh	L	M	H	Sfireh	VL	L	M
Sir Ed-Danniyeh	VL	L	M	Tarane	VL	L	M	Terbol-Miniyeh	M	M	MH
Zaghartaghriane	L	M	M	Zouq Bhannine	M	M	MH				

Nabatiye

Nabatiye

Municipality	28-Apr	29-Apr	30-Apr	Municipality	28-Apr	29-Apr	30-Apr	Municipality	28-Apr	29-Apr	30-Apr
Aabba	M	M	MH	Aazzi	M	M	M	Adchit El-Chqif	M	M	MH
Ain Bou Swar	ML	M	M	Ain Kana	ML	M	M	Ali El-TaHER	M	M	M
Ansar	M	M	MH	Arab Salim	M	M	M	Arnoun	M	M	MH
Bfaroue	M	M	M	Breyqaah	M	M	MH	Charqiyeh	M	M	MH
Choukine	M	M	MH	Deir El Zahrani	M	M	MH	Doueir El-Nabatiyeh	M	M	MH
Habbouch El-Nabatiye	M	M	MH	Hamra El-Nabatiyeh	M	M	MH	Harouf El-Nabatiyeh	M	M	MH
Hmaile	M	M	M	Houmin El Faouqa	M	M	M	Houmin El Tahta	ML	M	MH
Jarjough	M	M	M	Jbaah El-Nabatiyeh	ML	M	M	Jebchit	M	M	MH
Kfar Djal El-Nabatiy	M	M	MH	Kfar Remmane	M	M	M	Kfar Sir	M	M	MH
Kfar Tebnit	M	M	MH	Kfarfila	ML	M	M	Kfour El-Nabatieh	M	M	MH
Mayfadoun	M	M	MH	Mazraat Bsaffour	M	M	MH	Mazraat Chalbaal	M	M	MH
Mazraat Dmoul	M	M	MH	Mazraat El Khreibeh	ML	M	M	Mazraat El-Bayad El-	M	M	MH
Mazraat Kfarjaouz	M	M	MH	Mazraat Qalaat Meiss	M	M	MH	Nabatiyeh El-Fawka	M	M	MH
Nabatiyeh Et-Tahta	M	M	MH	Namiriyyeh	M	M	MH	Qaaqaaiyet El Jisr	M	M	MH
Qossaibeh El-Nabatiy	M	M	MH	Roumine	ML	M	MH	Sarba El-Nabatieh	ML	M	M
Sir El-Gharbiyeh	M	M	MH	Toul	M	M	MH	Yehmor El-Nabatiyeh	M	M	MH
Zaoutar El Charkiyeh	M	M	MH	Zaoutar El-Gharbiyeh	M	M	MH	Zebdine El-Nabatiyeh	M	M	MH
Zefta	M	M	MH								

Hasbaiya

Municipality	28-Apr	29-Apr	30-Apr	Municipality	28-Apr	29-Apr	30-Apr	Municipality	28-Apr	29-Apr	30-Apr
Ain Jarfa	ML	L	M	Abou Qamha	M	ML	M	Ain Qania	ML	ML	M
Bourghos	M	M	M	Chebaa	ML	ML	M	Chouaya Hasbaya	ML	ML	M
Dellafeh	M	M	M	Fardiss Hasbaiya	M	ML	M	Hasbaya	M	ML	M
Hbariyeh	ML	L	M	Kaoukaba Hasbaiya	M	M	M	Kfar Chouba	L	L	M
Kfar Hamam	ML	L	M	Kfeir El-Zait	ML	ML	M	Khalwat Hasbaya	L	L	ML
Khreibet Hasbaiya	M	ML	M	Majidiyeh Hasbaiya	M	ML	M	Marj Ez-Zhour (Haouc	M	ML	M
Meri	M	M	M	Mimass	M	ML	M	Rachaiya El-Fokhar	M	ML	M
Salaiyeb	M	M	MH								

Marjayoun

Municipality	28-Apr	29-Apr	30-Apr	Municipality	28-Apr	29-Apr	30-Apr	Municipality	28-Apr	29-Apr	30-Apr
Aalmane Marjaayoun	M	M	MH	Aamra	M	M	MH	Adayseh Marjaayoun	M	M	MH
Adchit El-Koussair	M	M	MH	Ain Arab Marjaayoun	M	M	MH	Bani Haiyann	M	M	MH
Blatt Marjaayoun	M	M	M	Blida	M	M	MH	Borj El-Moulouk	M	M	MH
Boueyda Marjaayoun	M	M	M	Deir Mimass	M	M	MH	Deir Siriane	M	M	MH
Dibbine	M	M	MH	Ebel El Saqi	M	M	M	Houla	M	M	MH
Houra	M	M	MH	Kfar Kila	M	M	MH	Khiam Marjaayoun	M	M	MH

Klayaa	M	M	MH	Majdel Selem	M	M	MH	Marjaayoun	M	M	MH
Markaba	M	M	MH	Mays El-Jabal	M	M	MH	Mazraat Doumiat	M	M	MH
Mazraat Sarada	M	M	MH	Mhaibib	M	M	MH	Qabrikha	M	M	MH
Qantara	M	M	MH	Rab El-Thalathine	M	M	MH	Saouaneh Marjayoun	M	M	MH
Talloussa	M	M	MH	Taybeh Matjaayoun	M	M	MH	Touline	M	M	MH

Bent Jbail

Municipality	28-Apr	29-Apr	30-Apr	Municipality	28-Apr	29-Apr	30-Apr	Municipality	28-Apr	29-Apr	30-Apr
Ain-Ebel	M	M	M	Aitaroun	M	M	MH	Aynata Bint Jbeil	M	M	MH
Ayta El-Chaeb	L	M	M	Ayta El-Jabal	M	M	MH	Beit Lif	L	M	M
Beit Yahoun	M	M	MH	Bint Jbeil	M	M	MH	Borj Qalaway	M	M	MH
Braachit	M	M	MH	Chakra	M	M	MH	Debel	M	M	M
Deir Antar	M	M	MH	Froun	M	M	MH	Ghandouriyeh Bint Jb	M	M	MH
Hanine	M	M	M	Hariss	M	M	MH	Hdatha	M	M	MH
Jmeymeh	M	M	MH	Kafra Bint Jbeil	M	M	M	Kfar Dounine	M	M	MH
Khirbet Selm	M	M	MH	Kounine	M	M	MH	Maroun El Ras	M	M	MH
Qalaway	M	M	MH	Qaouzah	L	ML	M	Qatmoun	M	M	MH
Ramya Bint Jbeil	L	M	M	Rchaf	ML	M	M	Rmeich	ML	M	MH
Safad Al Battikh	M	M	MH	Salhaneh	L	ML	M	Serbine	M	M	M
Sultanieh Bint Jbeil	M	M	MH	Tibnine	M	M	MH	Tiri	M	M	M
Yaroun	M	M	MH	Yater	ML	M	M				

Mont Liban

Jbail

Municipality	28-Apr	29-Apr	30-Apr	Municipality	28-Apr	29-Apr	30-Apr	Municipality	28-Apr	29-Apr	30-Apr
Aabeydat	L	M	M	Aalita	L	L	M	Aamchit	ML	M	MH
Aarab El-Lahib	VL	ML	M	Aarasta	VL	L	ML	Adonis Jbeil	L	L	M
Afqa Jbeil	VL	L	ML	Ain El Delbeh Jbeil	VL	L	M	Ain El-Ghouyba	VL	L	ML
Ain Jrain	VL	L	ML	Ain Kfah	L	M	MH	Almat El Chemaliyat	VL	L	ML
Almat El-Jenoubiya	VL	L	ML	Aqoura	VL	L	M	Bayzoun	L	L	M
Bchille Jbeil	L	L	M	Bechtida	VL	L	M	Behdaydat	L	M	M
Beit Habbaq	L	M	MH	Bejjeh	L	M	M	Bekhaaz	ML	M	MH
Berbara Jbeil	ML	M	MH	Bintael	L	L	M	Birket Hjoula	L	L	M
Blatt Jbeil	L	L	M	Boulhos	VL	L	L	Breyj Jbeil	L	L	M
Chamat	L	M	MH	Chikhane	ML	M	MH	Chmout	L	M	M
Eddeh Jbeil	L	M	M	Ehmej	VL	L	ML	Fatre	L	L	M
Ferhet	L	ML	M	Fghal	L	M	M	Frat	VL	VL	L
Ghabat	L	L	M	Ghalboun	L	M	M	Gharzouz	L	M	MH
Ghofrine	ML	M	MH	Habil	L	M	M	Halate	ML	ML	M
Haqel	L	M	M	Hbaline	L	M	MH	Hboub	L	L	M
Hdeine	L	L	M	Hema Er-Rehban	L	ML	M	Hema Mar Maroun Aann	VL	L	M
Hjoula	L	L	M	Hosrayel	ML	M	MH	Hsarat	L	M	MH
Hsoun	L	L	M	Jaj	L	L	M	Janne	VL	VL	L
Jbeil	ML	M	MH	Jeddeyel Jbeil	ML	M	MH	Jlisse	L	L	M
Jouret El-Qattine	L	L	M	Kfar Baal Annaya	L	L	M	Kfar Kidde	ML	M	MH
Kfar Kouas	L	L	M	Kfar Mashoun	L	M	MH	Kfoun	L	M	M

Kharbe Jbeil	L	M	M	Laqlouq	VL	ML	M	Lassa	VL	L	ML
Lehfed	L	L	M	Maad	L	M	MH	Mar Sarkis	VL	L	M
Mastita	ML	M	MH	Mayfouq	L	L	M	Mazraat El Siyad	VL	L	M
Mazraat El-Maaden	VL	VL	L	Mechane	L	L	M	Mechmech Jbeil	L	L	M
Mehrin	L	ML	M	Mejdel El-Akoura	VL	L	M	Mghayreh Jbeil	VL	L	M
Mounsef	ML	M	MH	Nahr Ibrahim	M	M	MH	Qahmez	VL	L	ML
Qartaba	VL	L	ML	Qartaboun	M	M	MH	Qattara Jbeil	L	L	ML
Qorqraya	VL	VL	L	Ramout	L	M	MH	Ras Osta	L	L	M
Rihane Jbeil	M	M	MH	Sakiet El-Khayt	L	M	M	Saqi Richmaya	L	L	M
Sebrine	L	L	M	Seraita	L	L	M	Souane Jbeil	VL	L	ML
Tadmor	L	L	M	Tartej	L	L	M	Torzaiya	L	L	M
Yanouh Jbeil	VL	L	M	Zibidine Jbeil	L	L	M				

El Metn

Municipality	28-Apr	29-Apr	30-Apr	Municipality	28-Apr	29-Apr	30-Apr	Municipality	28-Apr	29-Apr	30-Apr
Aain El-Qabu	L	L	ML	Aain El-Qach	L	L	M	Aain El-Teffaha	L	L	M
Aain el-Safsaf El-M	L	L	M	Abou Mizane	L	L	M	Ain Aar	ML	ML	M
Ain Alaq	L	L	M	Ain El-Kharroube	L	L	M	Ain El-Sendiane	L	L	M
Ain El-Zeitoune	L	L	M	Ain Saadeh	L	L	M	Aintoura El-Matn	VL	ML	M
Amaret Chalhoub	ML	ML	MH	Antelias	ML	ML	MH	Atchaneh	L	L	M
Ayroun	L	L	M	Baabdat	L	L	M	Baouchariyeh	M	M	MH
Baskinta	L	L	M	Beit Chabab	L	L	M	Beit El-Charar	ML	ML	M
Beit El-Kekko	ML	ML	MH	Beit Mery	L	L	M	Bhersaf	L	L	M
Bikfaya	L	L	M	Biyakout	ML	ML	MH	Bnabil	L	L	M
Bourj Hammoud	M	M	MH	Bqennaya	ML	L	M	Broummana El-Matn	L	L	M
Bsalim	L	L	M	Bsifrine	L	VL	ML	Bteghrine	L	L	M
Chaouiye	L	L	M	Chouaya El-Matn	L	L	M	Choueir	L	L	M
Chrine	L	L	M	Dahr El Sawan El-Mat	L	L	M	Daychouniyeh	ML	ML	M
Dbayeh	ML	ML	MH	Deir Chamra	L	VL	ML	Deir Mar Abda el Mch	L	L	M
Deir Mar Roukouz	M	M	MH	Deir Tamiche	L	L	M	Dik El-Mehdi	ML	L	M
Dikwaneh	M	M	MH	Douar El-Matn	L	L	M	Fanar	ML	ML	M
Fraike	L	L	M	Haret El-Ballaneh	ML	ML	M	Hbous	ML	ML	M
Himlaya	L	L	M	Jal El Did	ML	ML	MH	Jdeideh El-Metn	ML	ML	MH
Jouar El-Matn	L	L	M	Jouret El-Ballout	L	L	M	Kaaqour	L	L	M
Kfar Aaqab	L	L	M	Kfertay El-Matn	L	L	ML	Khenchara	L	L	M
Khillet El-Mtain	L	L	M	Konnabat Broummana	L	L	M	Konnabat Salima	L	VL	L
Machraah El-Matn	L	L	M	Majdel Tarchich	VL	ML	M	Majzoub	ML	ML	M
Mansouriyeh El-Metn	ML	ML	MH	Mar Boutros Karm Et-	L	L	M	Mar Chaya et Mzekke	L	L	M
Mar Moussa Ed-Douar	L	L	M	Marjaba	L	L	M	Masqa	L	L	M
Mayasse	L	L	M	Mazraat Deir Aoukar	ML	ML	M	Mazraat El-Hadirat	ML	L	M
Mazraat Yachouh	ML	ML	MH	Mchikha	L	L	M	Menqlet Mezher	ML	ML	M
Mhaydseh Matn	L	L	M	Mkalles	M	M	MH	Mrouj	L	L	M
Mtain	L	ML	M	Mtayleb	ML	ML	M	Nabay	L	L	M
Naccache	ML	ML	M	Ouadi Chahine	L	L	M	Ouadi El-Karm El-Mat	L	L	L
Ouata El-Mrouj	L	L	M	Ouyoun El-Matn	L	L	M	Qornet Chehwan	ML	L	M
Qornet El-Hamra	L	L	M	Roumieh	L	L	M	Sfeilet Bikfaya	L	L	M
Sinn El-Fil	M	M	MH	Zabbougha	L	VL	L	Zalqa	ML	ML	MH

Zarouon	L	L	M	Zekrite	L	L	M	Zighrine El-Matn	L	L	M
Zouk El-Khrab	ML	ML	MH								

Chouf

Municipality	28-Apr	29-Apr	30-Apr	Municipality	28-Apr	29-Apr	30-Apr	Municipality	28-Apr	29-Apr	30-Apr
Aalmane El-Chouf	M	M	MH	Aammq El-Chouf	M	L	M	Ain Ouzein	ML	L	M
Ain Qani	ML	L	M	Ain Zhalta	L	ML	M	Ainbal	M	ML	M
Amatour	ML	ML	M	Anout	L	M	M	Atrine	ML	ML	M
Baadarane	ML	M	M	Baaqline	M	ML	M	Baasir	M	M	MH
Barja	M	M	MH	Barouk	L	L	M	Bater	ML	M	M
Batloun	ML	ML	M	Bayqoun	ML	M	M	Bchetfine	M	ML	M
Beiteddine	M	L	M	Benouati Ech-Chouf	M	ML	M	Berjein	M	ML	M
Bireh et Mtalleh	M	ML	M	Biret El-Chouf	M	ML	M	Bkechtine Ouel Mchei	M	ML	M
Bkifa El-Chouf	L	ML	M	Botme	ML	L	M	Bqaiaa Ech-Chouf	M	ML	M
Bsaba El-Chouf	ML	M	M	Chammis El-Chouf	ML	M	M	Chehim	L	ML	M
Chemaarine	M	ML	M	Chourit	ML	L	M	Daher El-Chouf	M	M	M
Dalhoun	ML	M	M	Damour	M	M	MH	Daraya El-Chouf	ML	ML	M
Deir El-Moukhalles	L	ML	M	Deir Baba	M	ML	M	Deir Dourit	M	ML	M
Deir El-Qamar	M	ML	M	Deir Kouche	M	ML	M	Dibbieh	M	ML	M
Dmit	M	ML	M	Fouara Jaafar	ML	L	M	Fraidis El-Chouf	ML	ML	M
Ghabet Jaafar	M	ML	M	Gharife	ML	M	M	Haret Jandal	ML	M	M
Hasrout	ML	M	M	Jadra	M	M	MH	Jahlieh	M	ML	M
Jbeih El-Chouf	ML	M	M	Jdeidet El-Chouf	M	ML	M	Jiyeh	M	M	MH
Jleilyeh	L	M	M	Jmailiyeh	M	M	M	Joun	M	M	M
Kahlounie El-Chouf	M	M	M	Ketermaya	M	M	MH	Kfar Faqoud	M	ML	M
Kfar Hamal	M	M	M	Kfar Him	M	ML	M	Kfar Katra	M	L	M
Kfar Niss	ML	ML	M	Kfar hay	M	ML	M	Kfarnabrakh	M	ML	M
Khirbet Bisri	L	ML	M	Knayse El-Chouf	M	L	ML	Maaniyeh	M	M	M
Maasser Beiteddine	M	ML	M	Maasser El-Chouf	ML	ML	M	Majdalouna	M	M	M
Majdel El-Meouch	M	ML	M	Mazboud	L	M	M	Mazmoura	L	M	M
Mazraat El Chouf	ML	M	M	Mazraat El Daher	L	ML	M	Mazraat El-Douair	ML	L	M
Mechref	M	ML	M	Mghairie	ML	M	M	Mghayrie El-Chouf	M	ML	M
Moukhtara	ML	L	M	Mrusti	ML	M	M	Mtolle	ML	M	M
Naameh	M	M	MH	Niha El-Chouf	ML	M	M	Ouadi Abou Youssef	M	L	M
Ouadi Ed-Deir	M	ML	M	Ouadi El-Sit	ML	L	M	Ouadi bnehlay	M	ML	M
Qraibeh	ML	ML	M	Qreiaa	L	L	M	Rmayle El-Chouf	M	M	MH
Semqaniyeh	M	ML	M	Sibline	M	M	MH	Sirjbeil	M	ML	M
Warhanieh	ML	ML	M	Werdaniyeh	M	M	MH	Zaarourieh	L	M	M

Baabda

Municipality	28-Apr	29-Apr	30-Apr	Municipality	28-Apr	29-Apr	30-Apr	Municipality	28-Apr	29-Apr	30-Apr
Abadiyeh	ML	ML	M	Ain Mouaffaq	ML	M	M	Araiya	ML	ML	M
Arbaniyeh	L	VL	ML	Arsoun	L	L	M	Baabda	M	M	MH
Baalchmey	ML	M	M	Bmaryam	L	L	M	Bourj El-Brajneh	M	M	MH
Boutchay	M	M	MH	Bsaba Baabda	M	M	MH	Btekhney	L	L	M
Btibyat	L	L	M	Bzebdine	L	L	M	Chbeniyeh	ML	ML	M
Chiyah	M	M	MH	Chmeisset Baabda	L	L	M	Chouit	L	ML	M
Deir El-harf	L	L	M	Deir Khouna	ML	ML	M	Dlaybeh	L	VL	ML

Falougha	L	M	M	Furn El-Chebbak	M	M	MH	Hadath Beyrouth	M	M	MH
Halaliyeh Baabda	L	ML	M	Hammana	ML	M	M	Haret El Sett	ML	ML	M
Haret Hamze	ML	ML	M	Haret Hreik	M	M	MH	Hasbaiya El-Metn	L	VL	ML
Jouar El-Hoz	L	L	M	Jouret Arsoun	L	L	M	Kfar Chima	M	M	MH
Kfar Selouane	L	L	M	Khalouat Baabda	ML	ML	M	Kneisset Baabda	L	L	M
Laylakeh	M	M	MH	Louayzeh Baabda	ML	M	M	Merdache	M	M	MH
Mzairaa Baabda	L	ML	M	Ouadi Chahrour El Ol	M	M	M	Ouadi Chahrour El So	M	M	M
Qalaa Baabda	L	ML	M	Qhraybe Baabda	L	ML	M	Qobbayaa	ML	ML	M
Qornayel	L	L	M	Qortada	L	L	M	Qrayeh Baabda	ML	ML	M
Qsaibeh Baabda	L	L	M	Qtale Baabda	L	ML	M	Ras El Metn	L	L	M
Ras El-Haref	ML	ML	M	Rouayset El-Ballout	L	ML	M	Salima Baabda	L	L	M
Tahouitat El Ghadir	M	M	MH	Tarchich	L	L	M	Zandouqa	L	L	M

Aley

Municipality	28-Apr	29-Apr	30-Apr	Municipality	28-Apr	29-Apr	30-Apr	Municipality	28-Apr	29-Apr	30-Apr
Abey	M	ML	M	Aghmid	ML	ML	M	Ain Dara	ML	M	M
Ain Drafil	M	M	M	Ain El Halazoun	M	M	M	Ain El-Rmmaneh	L	ML	M
Ain Jedideh	M	M	M	Ain Ksour	M	M	M	Ain Onoub	M	M	M
Ain Traz	M	ML	M	Ainab	M	M	MH	Aley	M	M	M
Aramoun	M	M	MH	Aytat	M	M	MH	Azouniyeh	ML	ML	M
Baawerta	M	ML	M	Badghan Oua Wadi Bad	ML	M	M	Bassatine	M	M	MH
Bayssour	M	M	M	Bchamoun	M	M	MH	Bdadoun	ML	M	M
Behouara	ML	M	M	Bennay	M	ML	M	Bhamdoun El-Dayaa	M	M	MH
Bhamdoun El-Mhatta	M	M	M	Bkhechey	M	M	M	Bleibel	M	M	M
Bmakine	M	M	M	Bmehray	L	ML	M	Bouzrid	ML	L	M
Bserrine	M	M	M	Bsous	L	ML	M	Btalloun	M	M	MH
Btater	M	M	M	Chanay	M	M	M	Charoun	ML	M	M
Chartoun	ML	ML	M	Chemlane	M	M	MH	Choueifat El-Aamrous	M	M	MH
Choueifat El-Oumara	M	M	MH	Choueifat El-Quoubbe	M	M	MH	Dakkoun	M	ML	M
Deir Qoubel	M	M	M	Dfoun	M	M	M	Douair El Remmaneh	L	ML	M
Ghaboun	ML	M	M	Habramoun	ML	ML	M	Homs Oua Hama	M	M	M
Houmal	M	M	M	Jisr El Qadi	M	ML	M	Kehaleh	ML	ML	M
Keyfoun	M	M	M	Kfar Aamey	ML	M	M	Kommatyeh	ML	M	M
Maasrati	M	ML	M	Majdel Baana	ML	M	M	Mansourieh et Ain El	M	M	MH
Mazraat El-Nahr	ML	ML	M	Mchakhte	L	ML	M	Mecherfeh	ML	M	M
Mejdlaya	ML	M	M	Mrayjat	ML	M	M	Ramliyah	ML	ML	M
Rechmaya	M	ML	M	Rejmeh	ML	ML	M	Remhala	M	ML	M
Rouaysset El Neemane	ML	M	M	Saoufar	ML	M	M	Selfaya	M	L	M
Sirhmoul	M	M	MH	Souq El Ghareb	ML	M	M	Taazanieh	M	M	MH

Kesrouane

Municipality	28-Apr	29-Apr	30-Apr	Municipality	28-Apr	29-Apr	30-Apr	Municipality	28-Apr	29-Apr	30-Apr
Achkout	L	L	M	Adma Oua Dafneh	M	ML	M	Ain Ed-Delbe Kesroua	L	L	L
Ain El-Rihane	M	L	M	Aintoura Kesrouane	M	ML	M	Ajaltoun	L	L	M
Akaybeh Kesrouane	M	M	MH	Aramoun Kesrouane	L	L	M	Azra ouel Ozor	L	L	M
Ballouneh	L	L	M	Batha	L	L	M	Bekaatat Achkout	L	L	M
Bekaatat Kanaan	L	L	L	Bizhel	L	L	M	Bouar	M	M	M
Bqaatouta	L	L	ML	Bqaq Ed-Dine	ML	M	MH	Bzommar	L	L	M

Chahtoul	L	L	M	Chnaniir	L	L	M	Chouan	VL	L	L
Daraya Kesrouane	L	L	M	Darououn	ML	L	M	Deir Baqlouch	ML	L	M
Dlebta	L	L	L	Eghbeh	VL	VL	L	Faraya	VL	L	M
Fatka	L	L	M	Feytroun	L	L	ML	Ghazir	L	L	M
Ghbaleh Kesrouane	L	L	M	Ghedrass	L	L	M	Ghosta	L	L	ML
Ghynéh	L	L	M	Harharaya w Kattine	L	L	M	Harissa Kesrouane	M	L	M
Hayata	L	L	ML	Hosein	L	L	M	Hrajel	L	L	M
Jdeideh Ghazir	L	L	M	Jeita	ML	L	M	Jounieh Ghadir	M	ML	M
Jounieh Haret Sakhr	M	M	MH	Jounieh Salel Alma	M	ML	M	Jounieh Sarba	M	M	MH
Jouret Bedrane	L	L	M	Jouret Mhad	L	L	ML	Jouret Termos	L	L	M
Kfar Debiane	L	L	ML	Kfar Tay Kesrouane	L	VL	L	Kfar Yassine	M	M	MH
Kfour Kesrouane	L	L	M	Kharayeb Nahr Ibrahi	L	ML	M	Klayaat Kesrouane	L	L	ML
Maarab	L	VL	L	Maaysra Kesrouane	L	L	M	Mayrouba	L	L	M
Mazraat Er-Ras	M	ML	M	Mazraat Mrah El-Mir	L	L	ML	Mchaa El Ftouh	VL	ML	M
Mchaa Faraya	VL	L	M	Mchaa Kfar Dibiane	VL	ML	M	Mghaer	L	L	L
Mradiyah	L	L	M	Nahr Ed-Dahab	VL	L	M	Nammoura Kesrouane	L	L	M
Ouata El Jaouz	L	L	M	Ouata Sillam	M	M	MH	Raachine	L	L	L
Rayfoun	L	L	M	Safra Kesrouane	M	ML	M	Shayle Kesrouane	ML	L	M
Tabarja	M	ML	M	Yahchouch	L	L	M	Zaaytreh	L	L	M
Zeytoun	L	ML	M	Zouk Mikael	M	M	MH	Zouk Mosbeh	M	M	MH

Baalbek_Hermel

Baalbek

Municipality	28-Apr	29-Apr	30-Apr	Municipality	28-Apr	29-Apr	30-Apr	Municipality	28-Apr	29-Apr	30-Apr
Aadous	L	M	M	Aamchki	L	M	M	Aarsal	L	M	ML
Ain Baalbek	VL	M	M	Ain Bourday	L	M	M	Ain El-Benye	VL	ML	M
Ain El-Jaouz Baalbek	L	L	ML	Ain El-Siya Chadoura	L	M	M	Al Khodr Baalbek	L	L	M
Al Nabi Chit	L	L	M	Aynata Baalbek	VL	L	M	Baalbek	L	M	M
Bachwat	VL	L	ML	Barqa	VL	VL	L	Bednayel Baalbak	L	M	M
Beit Chama	L	M	M	Bijjaje	L	M	M	Bouday	VL	L	M
Brital	L	M	M	Btadi	VL	L	M	Chaat	L	M	M
Chaibe	VL	ML	M	Chlifa	VL	ML	M	Chmestar	VL	ML	M
Dar El-Oussa	VL	L	M	Deir El-Ahmar	VL	L	M	Deir Mar Maroun Baal	ML	M	MH
Douris	L	M	M	Fakiha	L	M	M	Hadath Baalbek	L	M	M
Ham	VL	ML	M	Haour Taala	L	ML	M	Hizzine	L	M	M
Hlebta	VL	ML	M	Hosh Barada	L	M	M	Hosh El Dahab	L	M	M
Hosh El Snid	L	ML	M	Hosh El-Nabi	L	M	M	Hosh El-Rafiq	L	M	M
Hosh Tal Safiya	L	M	M	Hrebta	VL	L	M	laat	L	M	M
Jebaa	VL	M	M	Jenta	VL	ML	M	Kfar Dabach	L	M	M
Kfar Dane	L	M	M	Khraibeh El-Hermel	L	M	M	Khreibet Baalbek	L	ML	M
Kneisset Baalbek	VL	M	M	Labueh	L	M	M	Maarboun	VL	ML	M
Majdaloun	L	M	M	Maqneh	VL	M	M	Mazraat Beit Mcheik	VL	ML	M
Misraya	L	M	M	Moqraq	L	M	M	Nabha El-Damdoum	VL	L	M
Nabi Chbay	VL	M	M	Nabi Osman	L	M	M	Nahleh baalbek	L	M	M
Ouadi El-Oss	VL	L	M	Qaa Baayoun	L	M	MH	Qaa Jouar Maqiye	L	M	MH
Qaa Ouadi El-Khanzir	L	M	MH	Qah Baalbek	L	M	MH	Qarha Baalbek	VL	ML	M

Qsarnaba	L	M	M	Ram Baalbek	VL	L	M	Ras Baalbek El Sahl	L	M	MH
Ras Baalbek El-Charq	L	M	M	Riha	VL	ML	M	Saaide	L	M	M
Sbouba	L	M	M	Seriine El-Tahta	L	ML	M	Slouqi	VL	M	M
Taiba Baalbek	L	M	M	Talia	L	M	M	Taraiya	L	M	M
Temnin El Fawqa	L	M	M	Temnin El-Tahta	L	M	M	Tfail	VL	L	ML
Yahfoufa	L	ML	M	Yammouneh	VL	L	M	Younine	VL	M	M
Zboud	L	M	M								

Hermel

Municipality	28-Apr	29-Apr	30-Apr	Municipality	28-Apr	29-Apr	30-Apr	Municipality	28-Apr	29-Apr	30-Apr
Charbine El-Hermel	L	M	M	Hermel Jbab	L	M	M	Hermel	L	M	MH
Maaysra El-Hermel	L	M	M	Michaa Mrajhine	L	ML	M	Ouadi Faara	VL	ML	M
Ras Baalbek - Ouadi	L	M	MH	Ras Baalbek El Gharb	VL	M	M	Zighrine	L	M	M

Akkar

Akkar

Municipality	28-Apr	29-Apr	30-Apr	Municipality	28-Apr	29-Apr	30-Apr	Municipality	28-Apr	29-Apr	30-Apr
Aain Tinta	L	M	MH	Aaiyat	L	M	MH	Aakkar El-Aatiqa	L	M	M
Aamar Akkar	L	M	MH	Aamar El Baykat	L	M	MH	Aamayer	L	M	M
Aamriyet Akkar	L	M	MH	Aandqet	L	M	M	Aarmeh	L	M	MH
Aarqa	L	M	MH	Aawaynat	L	M	MH	Aayoun Akkar	L	M	MH
Abboudiye	L	M	MH	Ain El-Zeit	L	M	MH	Ain Yaaqoub	L	M	M
Akroum	L	M	M	Aridet Cheikh Zennad	L	M	H	Baldeh w Mazraat Bal	L	M	MH
Barcha	L	M	MH	Bardeh	L	M	MH	Bebnine	L	M	MH
Beino	L	M	MH	Beit Ayoub	L	M	MH	Beit El-Haouch	L	M	H
Beit Mellat	L	M	MH	Beit Younes	L	M	M	Berbara Akkar	L	M	MH
Berqayel	L	M	MH	Bezbina	VL	ML	M	Bireh Akkar	L	M	MH
Borj	L	M	MH	Bqerezla	L	M	MH	Bzal	L	M	M
Chane	L	ML	M	Chaqdouf	L	M	MH	Charbila	L	M	MH
Cheikh Mohammad	L	M	MH	Cheikh Taba Es-Sahl	L	M	MH	Cheikh Taba	L	M	MH
Cheikh Zennad	L	M	MH	Cheikhlar	L	M	MH	Chir Hmairine	L	M	MH
Daghle	L	M	MH	Dahr Laissine	L	M	MH	Darine	L	M	MH
Dawra	L	M	M	Dawsa w Baghdadi	L	M	MH	Dayret Nahr El-Kabir	L	M	MH
Deir Dalloum	L	M	MH	Deir Jennine	L	M	MH	Denbou	L	M	M
Dibbabiyyeh	L	M	MH	Douair Aadwiyeh	L	M	MH	Fassikine	L	M	MH
Fnaydek	L	M	M	Fraydes Akkar	L	M	MH	Ghazayle	L	M	MH
Habchit	VL	ML	M	Hakour	L	M	MH	Halba	L	M	MH
Haouchab	L	M	H	Hayssat	L	M	MH	Haytla	L	M	MH
Hayzouq	L	M	MH	Hedd	L	M	MH	Hmaira Akkar	L	M	MH
Hmaiss Akkar	L	M	MH	Hnaider	L	M	MH	Hokr Ed-Dahri	L	M	MH
Hokr Etti	L	M	MH	Hokr Jouret Srar	L	M	MH	Houaich	L	M	M
Hrar	L	M	M	Idbil	L	M	MH	Ilal	L	M	MH
Janine	L	M	MH	Jdeidet El-Joumeh	L	M	MH	Jdeidet El-Kaiteh	L	M	MH
Jebroyel	L	M	MH	Kafr	L	M	M	Kafr	L	M	MH
Karm Asfour	L	M	MH	Kfar Melki Akkar	L	M	MH	Kfar Noun	L	M	M
Kfarharra	L	M	MH	Khalsa	L	M	MH	Kharnoubet Akkar	L	M	MH

Khirbet Daoud Aakkar	L	M	MH	Khirbet El Remmane	L	M	MH	Khirbet Shar	L	M	MH
Khoreybet El-Jindi	L	M	MH	Khreibet Aakkar	L	M	MH	Kneisset Aakkar	L	M	MH
Kneisset Hnaider	ML	M	MH	Knisse	L	M	MH	Kroum El-Aarab	L	M	MH
Kwachra	L	M	MH	Kweykhat	L	M	MH	Machta Hammoud	L	M	MH
Majdala	L	M	MH	Majdel Akkar	L	M	MH	Mar Touma	L	M	MH
Marlaya Melhem	L	M	MH	Mashha	L	M	MH	Massoudiye	L	M	MH
Mazraat Beit Ghattas	L	M	MH	Mazraat En-Nahriye	L	M	M	Mechmech	VL	L	M
Memneh	VL	L	M	Mhammara	ML	M	MH	Mighraq Aakkar	L	M	MH
Minyara	L	M	MH	Moqayteh	L	M	MH	Mounjez	L	M	MH
Msalla	L	M	MH	Mzeihmeh	L	M	MH	Nfaiseh	L	M	MH
Noura Et-Tahta	L	M	MH	Ouadi El-Haour	L	M	MH	Ouadi El-Jamous	L	M	MH
Ouyoun El-Ghizlane	L	M	MH	Qaabarine	L	M	MH	Qabaait	VL	ML	M
Qachlaq	L	M	MH	Qantara Aakkar	L	M	MH	Qarha Aakkar	ML	M	MH
Qarqaf	L	M	MH	Qboula	L	M	MH	Qleiaat Aakkar	L	M	MH
Qloud El-Baqie	L	M	MH	Qobaiyat Aakkar	L	M	M	Qobbat Chamrat	L	M	MH
Qorayat	L	M	M	Qornet Aakkar	L	M	M	Qsair Aakkar	L	M	MH
Rahbe	L	M	M	Rihaniyet Aakkar	L	M	MH	Rmah	L	M	MH
Rmoul	L	M	MH	Saadine	L	M	MH	Sadaqa	L	M	MH
Saidnaya	L	M	MH	Sammouniye	L	M	MH	Saysouq	L	M	MH
Semmaqiye	L	M	MH	Semmaqli	L	M	MH	Sfinet El-Dreib	L	M	MH
Sfinet El-Qaitaa	L	M	M	Sindyanet Zeidane	L	M	MH	Souaisset Aakkar	L	M	MH
Srar	L	M	MH	Tal Abbas El Gharby	L	M	MH	Tal Abbas El-Chargy	L	M	MH
Tal Biret	L	M	MH	Tal Hmayra	L	M	MH	Tal Maayan Tal Kiri	L	M	MH
Tal Sibel	L	M	MH	Tallet Chattaha	L	M	MH	Tikrit	L	M	MH
Tleil	L	M	MH	Tshea	L	M	M	Zawarib	L	M	MH
Zouq El Hosniyeh	L	M	MH	Zouq El-Haddara	L	M	MH	Zouq El-Hbalsa	L	M	MH
Zouq El-Moqachrine	L	M	H								

Sud

Sour

Municipality	28-Apr	29-Apr	30-Apr	Municipality	28-Apr	29-Apr	30-Apr	Municipality	28-Apr	29-Apr	30-Apr
Aaiyeh	M	M	M	Aalma El-Chaab	ML	M	M	Aaytit	M	M	M
Abbassiyeh Sour	M	M	MH	Abou Chech	ML	M	M	Ain Abou Abdallah	M	M	MH
Ain Baal	M	M	M	Arzoun	M	M	MH	Aziyeh	M	M	MH
Baflaya	M	M	MH	Barich	M	M	MH	Batouliyeh	M	M	MH
Bayad	M	M	M	Bazouriyeh	M	M	MH	Bediass	M	M	MH
Bestiyat	M	M	MH	Borj El Chemali	M	M	MH	Borj En-Naqoura	M	M	MH
Borj Rahhal	M	M	MH	Boustane	L	M	M	Btaychiyeh	L	M	M
Chaaitiye	M	M	M	Chameh	ML	M	M	Chehabiye	M	M	MH
Chehour	M	M	MH	Chihine	L	M	M	Debaal Sour	M	M	M
Deir Amess	M	M	M	Deir Kifa	M	M	MH	Deir Qanoun El-Ain	M	M	MH
Deir Qanoun El-Naher	M	M	MH	Derdghaiya	M	M	MH	Dhayra	L	M	M
Halloussiyeh	M	M	MH	Hamoul	ML	M	M	Hanaouey	M	M	M
Henniye	M	M	MH	Hmairi Sour	M	M	MH	Iskandarouna Sour	M	M	M
Jbal El Botom	M	M	M	Jebbin	ML	M	M	Jennata	M	M	MH
Jijim	L	M	M	Jouaiya	M	M	M	Kneisset Sour	M	M	MH

Maarake	M	M	MH	Maaroub	M	M	MH	Majadel	M	M	M
Majdalzoun	M	M	M	Mansouri Sour	M	M	MH	Marnba	M	M	MH
Marouahine	L	M	M	Mazraat El-Zalloutiy	ML	M	M	Mazraat Mechref	M	M	M
Mazraat Tayr Semhat	M	M	M	Mheilib	M	M	MH	Neffakhiyeh	M	M	MH
Niha Sour	M	M	MH	Ouadi Jilo	M	M	M	Qana	M	M	M
Qolaileh Sour	M	M	MH	Rechknany	M	M	M	Rmadiyah	M	M	M
Selha Sour	M	M	MH	Siddiqine	M	M	M	Sour	M	M	MH
Srifa	M	M	MH	Tayr Debbe	M	M	MH	Tayr Felsay	M	M	MH
Tayr Harfa	ML	M	M	Touayri	M	M	MH	Toura	M	M	MH
Yanouh Sour	M	M	MH	Yarine	ML	M	M	Zebqine	ML	M	M

Saida

Municipality	28-Apr	29-Apr	30-Apr	Municipality	28-Apr	29-Apr	30-Apr	Municipality	28-Apr	29-Apr	30-Apr
Aanqoun	ML	M	MH	Aaqtanit	ML	M	MH	Aarab Ej-Jall	ML	M	MH
Aarab Tabbaya	ML	M	MH	Abra Saida	M	M	MH	Adloun	M	M	MH
Adousiyeh	M	M	MH	Ain-El-Deleb	ML	M	MH	Arzai	M	M	MH
Babliyah	M	M	MH	Barty	ML	M	M	Bissariyeh	M	M	MH
Bnaafoul	ML	M	MH	Bqosta	M	M	MH	Bramiy	M	M	MH
Daoudiyeh	M	M	MH	Dareb El-Sim	ML	M	MH	Erkay	ML	M	MH
Ghassanieh	M	M	MH	Ghazieh	M	M	MH	Hajjeh	ML	M	MH
Haret Saida	M	M	MH	Hartiyeh	M	M	MH	Hlaliye Saida	M	M	MH
Insariyat	M	M	MH	Jazira Saida	M	M	MH	Kafar Bit	ML	M	M
Kaoutariyet El-Siyad	M	M	MH	Kfar Chellal	ML	M	M	Kfar Hatta Saida	ML	M	MH
Kfar Milke Saida	ML	M	M	Khartoum	M	M	MH	Khaziz	ML	M	MH
Khirbet Ed-Douair Sa	M	M	MH	Khirbet El-Bassal	M	M	MH	Khrayeb Saida	M	M	MH
Loubieh	M	M	MH	Maghdouche	ML	M	MH	Majdelyoun	M	M	MH
Matariyet El-Choumar	M	M	MH	Matayriyeh	ML	M	MH	Mazraat 'Mseileh	M	M	MH
Mazraat 'Snaiber	M	M	MH	Mazraat Aarab Soukka	ML	M	MH	Mazraat Deir Taqla	M	M	MH
Mazraat El Yahoudiye	M	M	MH	Mazraat El-Housseini	M	M	MH	Mazraat El-Mhaydaleh	M	M	MH
Mazraat El-Ouasta	M	M	MH	Mazraat Jamjim	M	M	MH	Mazraat Kaoutariyet	M	M	MH
Mazraat Kfar Badda	M	M	MH	Mazraat Oussamiyat	M	M	MH	Mazraat Sari	M	M	MH
Mazraat Sinai	M	M	MH	Meemariyeh	ML	M	MH	Merouaniyeh	M	M	MH
Miyeh ou Miyeh	ML	M	MH	Najjariyeh	M	M	MH	Qaaqiyat El-Snaouba	M	M	MH
Qnarit	ML	M	MH	Qraiye Saida	ML	M	MH	Saida Ed-Dekermane	M	M	MH
Saida El-Oustani	M	M	MH	Saida El-Qadimeh	M	M	MH	Saida Kefraya	M	M	MH
Saksakiyeh	M	M	MH	Salhie Saida	M	M	MH	Sarafand	M	M	MH
Sfenta	ML	M	M	Tafahta	M	M	MH	Tanbourit	ML	M	MH
Tebna	M	M	MH	Zaghdraiya	ML	M	M	Zeita	ML	M	MH
Zrariyeh	M	M	MH								

Jezzine

Municipality	28-Apr	29-Apr	30-Apr	Municipality	28-Apr	29-Apr	30-Apr	Municipality	28-Apr	29-Apr	30-Apr
Ain El-Mir (El Estab	ML	M	M	Anane	L	ML	M	Aramta	ML	M	M
Ariya	ML	M	M	Aychiyeh	M	M	M	Azour	L	ML	M
Baba	L	ML	M	Bayssour Jezzine	ML	M	MH	Benoueteh Jezzine	ML	M	M
Bhannine	ML	M	M	Bisri	L	ML	M	Bkassine	L	ML	M
Bouslaya	L	M	M	Btedine El-Leqech	L	ML	M	Chbail	ML	L	M
Choualiq Jezzine	M	M	MH	Dahr Ed-Deir	ML	M	M	Deir El Qattine	L	M	M

Demachqiyeh	M	M	MH	Ghabbatiyeh	ML	ML	M	Harf Jezzine	L	ML	M
Hassaniyeh	ML	M	M	Haytouleh	ML	M	M	Haytura	L	M	M
Hidab	ML	M	M	Homsiyeh	L	ML	M	Jabal Toura	ML	M	M
Jarmaq	M	M	M	Jensnaya	ML	M	MH	Jernaya	ML	M	M
Jezzine	ML	M	M	Karkha	M	M	M	Kfar Falous	ML	M	M
Kfar Houna	ML	M	M	Kfar Jarrah	M	M	MH	Lebaa	M	M	MH
Louayzet Jezzine	ML	M	M	Machmouche	L	L	M	Mahmoudiyeh Jezzine	M	M	M
Maknounye Jezzine	L	M	M	Maraat Ouzaïyeh	M	M	M	Mazraat Daraya	ML	M	M
Mazraat El-Aarqoub	ML	M	M	Mazraat El-Mathane	L	ML	M	Mazraat El-Rahbane	L	M	M
Mazraat Khallet Khaz	M	ML	M	Mazraat Louzid (Loua	ML	L	M	Mazraat Qrouh	M	M	M
Mazraat Tamra	M	M	MH	Mazraat Zighrine Jez	ML	M	M	Mazraat	L	M	M
Mharbiyeh	ML	M	MH	Midane Jezzine	L	ML	M	Mjeydel Jezzine	ML	M	MH
Mlikh	ML	M	M	Mrah El-Hbasse	M	M	MH	Ouadi Baanquodaine	ML	M	MH
Ouadi El-Laymoun	ML	M	M	Ouardiyeh	ML	L	M	Qabaa Jezzine	L	M	M
Qatrani	ML	ML	M	Qaytouleh	L	M	M	Qtaleh Jezzine	L	ML	M
Rihane Jezzine	M	M	M	Rimat	L	M	M	Roum	L	M	M
Roummanet	ML	M	M	Sabbah	L	ML	M	Saydoun	L	M	M
Sfaray	L	ML	M	Snaya	L	M	M	Sojoud	M	M	M
Srayri	M	M	M	Taaid	ML	ML	M	Wadi Jezzine	L	ML	M
Zhalta	L	M	M								

Bekaa

West Bekaa

Municipality	28-Apr	29-Apr	30-Apr	Municipality	28-Apr	29-Apr	30-Apr	Municipality	28-Apr	29-Apr	30-Apr
Aammiq BG	ML	M	M	Ain El Tineh BG	ML	M	M	Ain Zebdeh	M	M	M
Ana	ML	M	M	Aytanit	ML	M	M	Baaloul BG	M	M	M
Bab Mareh	M	M	M	Chouberqiye Aammiq	ML	M	M	Dakoue	ML	M	M
Deir Ain El-Jaouze	M	M	M	Deir Tahniche	M	M	M	Ghaza	ML	M	M
Harime El-Soughra	L	M	M	Hoch Harimeh	ML	M	M	Jazira BG	ML	M	M
Jib Jennine	M	M	M	Kamed-El-Laouz	M	M	M	Kefraya BG	ML	ML	M
Khiara El Atika	ML	M	M	Khiara	ML	M	M	Khirbet Qanafar	M	M	M
Lala	M	M	M	Lebbaya BG	M	M	M	Loussa	M	M	M
Machghara	M	M	M	Manara (Hammara) BG	L	L	ML	Mansoura BG	M	M	M
Marej BG	L	M	M	Maydoun	ML	M	M	Ouaqf BG	ML	M	M
Qaraaoun	M	M	M	Qelya	M	M	M	Raouda (Istabel)	L	M	M
Saghbine	ML	M	M	Sohmor	M	M	M	Soltan Yacoub el Ara	ML	M	M
Souairy	L	M	M	Sultan Yaacoub	ML	M	M	Tal Znoun	M	M	M
Yehmor BG	M	M	M	Zilaya	ML	M	M				

Zahle

Municipality	28-Apr	29-Apr	30-Apr	Municipality	28-Apr	29-Apr	30-Apr	Municipality	28-Apr	29-Apr	30-Apr
Aanjar (Haouch Mouss	L	M	M	Ablah	L	M	M	Ain Kfarzabad	L	ML	M
Ali-El-Nahri	L	M	M	Bar Elias	L	M	M	Bouarej	L	M	M
Cheberqiyet Tabet	L	M	M	Chtaura	L	M	M	Deir El Ghazal	L	ML	M
Delhamiyet Zahle	L	M	M	Ferzol	L	M	M	Haouch El-Ghanam	L	M	M
Haouch Es-Siyadeh	ML	M	M	Haouch Hala	L	M	M	Haouch Mandara	L	M	M

Haouch Qayssar	ML	M	M	Hezerta	L	M	M	Hosh Moussa	L	ML	M
Jdita	L	M	M	Kfarzabad	L	ML	M	Ksara	L	M	M
Majdel Aanjar	L	ML	M	Makssi	L	M	M	Massa	L	M	M
Mazraat Er-Remtaniye	L	M	M	Mrayjat Zahle	ML	M	M	Mzaraa Zahle	ML	M	M
Nabi Ayla	L	M	M	Nasriyet Rizk	L	ML	M	Nasriyet Zahle	ML	M	M
Niha Zahle	L	M	M	Ouadi Ed-Deloum	ML	M	M	Ouadi El-Arayech	L	M	M
Qaa El Rim	L	M	M	Qab Elias	L	M	M	Qousaya	L	ML	M
Rhit	VL	ML	M	Riyak	L	M	M	Saadnayel	L	M	M
Taal El-Akhdar	ML	M	M	Taalbeya	L	M	M	Taanayel	L	M	M
Talamara	L	M	M	Tcheflik Edde Haouch	ML	M	M	Tcheflik Qiqano	ML	M	M
Terbol Zahle	L	ML	M	Touaite Zahle	L	ML	M	Zahle Aradi	L	M	M
Zahle El-Berbara	L	M	M	Zahle El-Maallaqa	L	M	M	Zahle El-Midane	L	M	M
Zahle Er-Rassiye	L	M	M	Zahle Haouch El-Ouma	L	M	M	Zahle Haouch El-Ouma	L	M	M
Zahle Haouch Ez-Zara	L	M	M	Zahle Maalaga Aradi	L	M	M	Zahle Mar Antonios	L	M	M
Zahle Mar Elias	L	M	M	Zahle Mar Gerios	L	M	M	Zahle Saydet En-Naja	L	M	M
Zebdoul	L	M	M								

Rachaiya

Municipality	28-Apr	29-Apr	30-Apr	Municipality	28-Apr	29-Apr	30-Apr	Municipality	28-Apr	29-Apr	30-Apr
Ain Arab Rachaiya	ML	ML	ML	Ain Ata	ML	ML	M	Ain Harche	M	ML	M
Aqabe Rachaya	M	ML	M	Ayha	M	ML	ML	Ayta El Fokhar	ML	M	M
Bakifa Rachaya	M	ML	M	Bakka	ML	ML	ML	Beit Lahya	M	ML	M
Bireh Rachaiya	M	M	M	Daheer El Ahmar	ML	ML	M	Deir El-Achayer	L	L	ML
Heloua Rachaiya	L	L	ML	Hoch El Qannabeh Rac	M	ML	M	Kaoukaba Bou Arab	M	ML	M
Kfar Danis	ML	M	M	Kfar Mechki	M	M	M	Kfar Qouq	ML	ML	ML
Kherbet Rouha	M	M	M	Majdel Balhiss	M	M	M	Mdoukha	ML	ML	ML
Mhaydseh Rachaiya	M	M	M	Nabi Safa	M	M	M	Rachaiya	ML	ML	M
Rafid Rachaiya	M	M	M	Selsata (Mazraat Dei	L	L	L	Tannoura	M	ML	M
Yanta	L	ML	L								

Beyrouth

Beyrouth

Municipality	28-Apr	29-Apr	30-Apr	Municipality	28-Apr	29-Apr	30-Apr	Municipality	28-Apr	29-Apr	30-Apr
Achrafieh	M	M	MH	Ain el-Mreisse	M	M	H	Bachoura	M	M	MH
Beirut Central Distr	M	M	MH	Marfai	M	M	MH	Mazraa	M	M	MH
Medaouar	M	M	MH	Minet el-Hosn	M	M	MH	Mwssaitbeh	M	M	MH
Ras Beirut	M	M	H	Rmeil	M	M	MH	Saifi	M	M	MH
Zqaq el-Blat	M	M	MH								