

Lebanon Fire Risk Bulletin



CIVIL DEDEFENCE

Refer to cadast table condition.

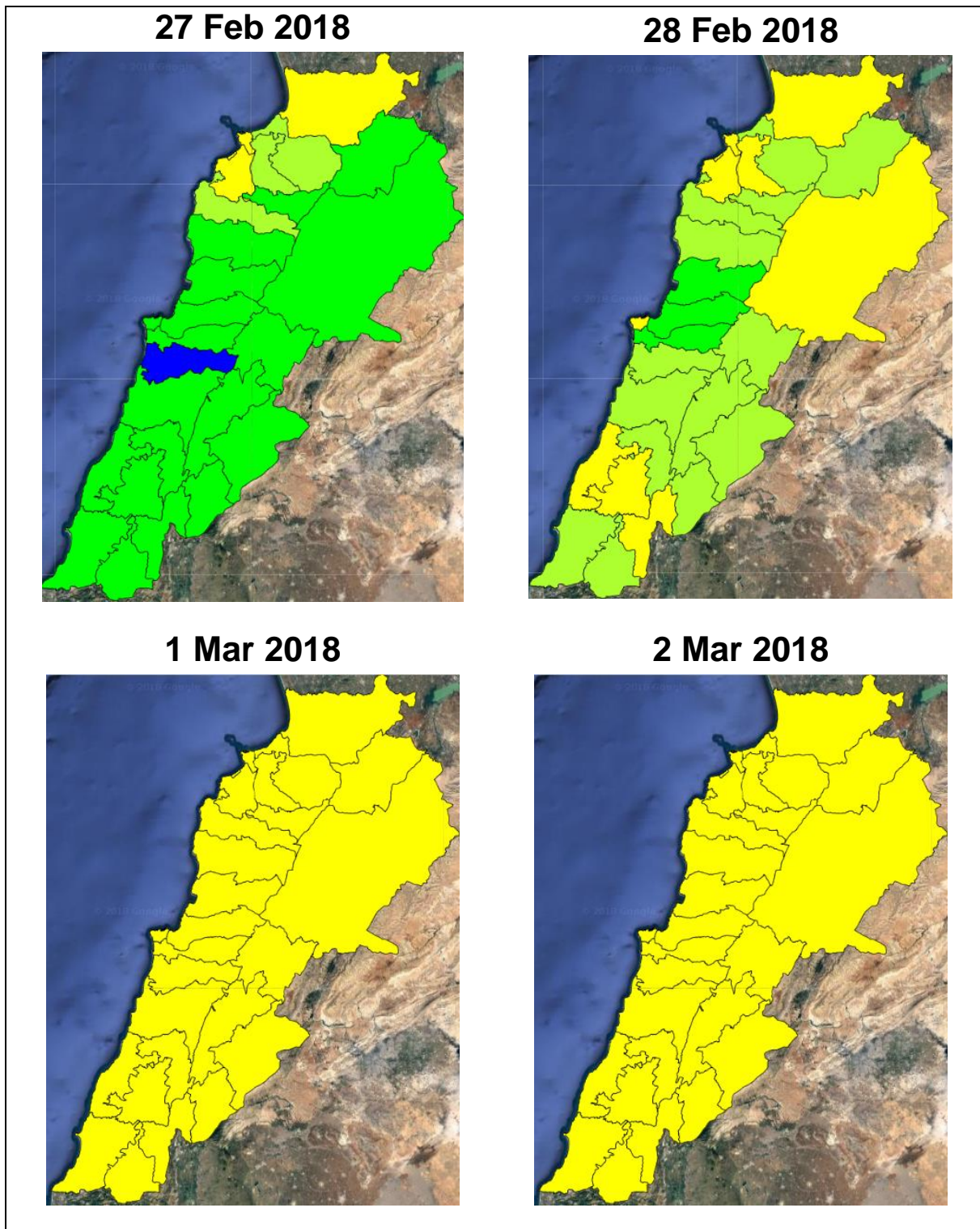
Please note that the indicated temperature is at 2 meters height from the ground.

General description of potential fire risk situation

Symbol	Level of risk	Meaning and actions
VL	Very low	Very low fire risk. Controlled burning operations can be hardly executed due to high fuel moisture content. Normally wildfires self-extinguish.
L	Low	Low fire risk. Controlled burning operations can be executed with a reasonable degree of safety.
ML	Medium low	Medium-low fire risk. Controlled burning operations can be executed in safety conditions. All the fires need to be extinguished.
M	Medium	Medium fire risk. Controlled burning operations would be avoided. All the fires need to be very well extinguished.
M	Medium high	Controlled burning is not recommended. Open flame will start fires. Cured grasslands and forest litter will burn readily. Spread is moderate in forests and fast in exposed areas. Patrolling and monitoring is suggested. Fight fires with direct attack and all available resources.
H	High	Ignition can occur easily with fast spread in grass, shrubs and forests. Fires will be very hot with crowning and short to medium spotting. Direct attack on the head may not be possible requiring indirect methods on flanks. Patrolling and monitoring the territory is highly suggested.
E	Extreme	Ignition can occur also from sparks. Fires will be extremely hot with fast rate of spread. Control may not be possible during day due to long range spotting and crowning. Suppression forces should limit efforts to limiting lateral spread. Damage potential total. Patrolling and monitoring the territory is highly suggested.

Beirut, 28 February 2018

FIRE RISK INDEX



Layer Legend:
Lebanon Wildfire Risk Index 1

Data: Run: 28/02/2018 00:00. Forecast for 28

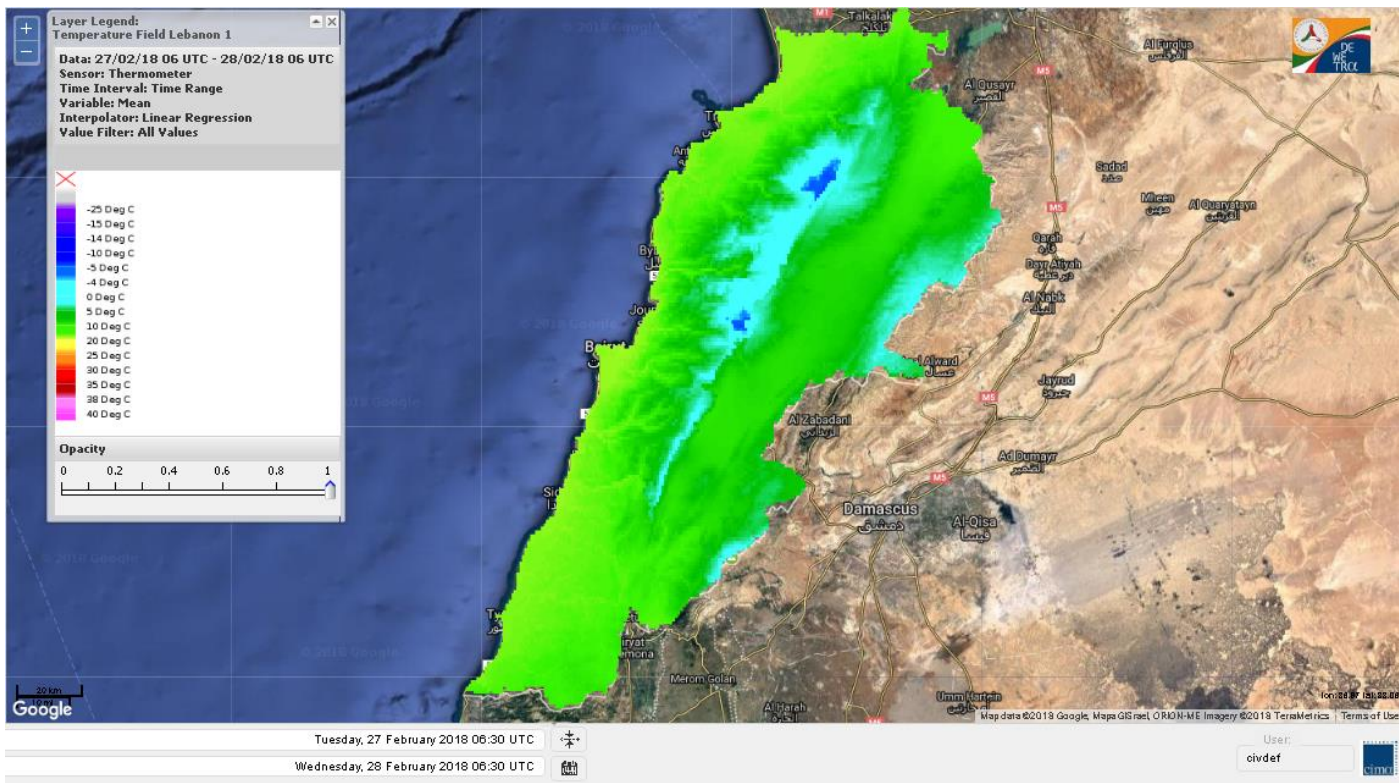
Model: RISICO for the Republic of Lebanon

Variable: Fire Weather Index

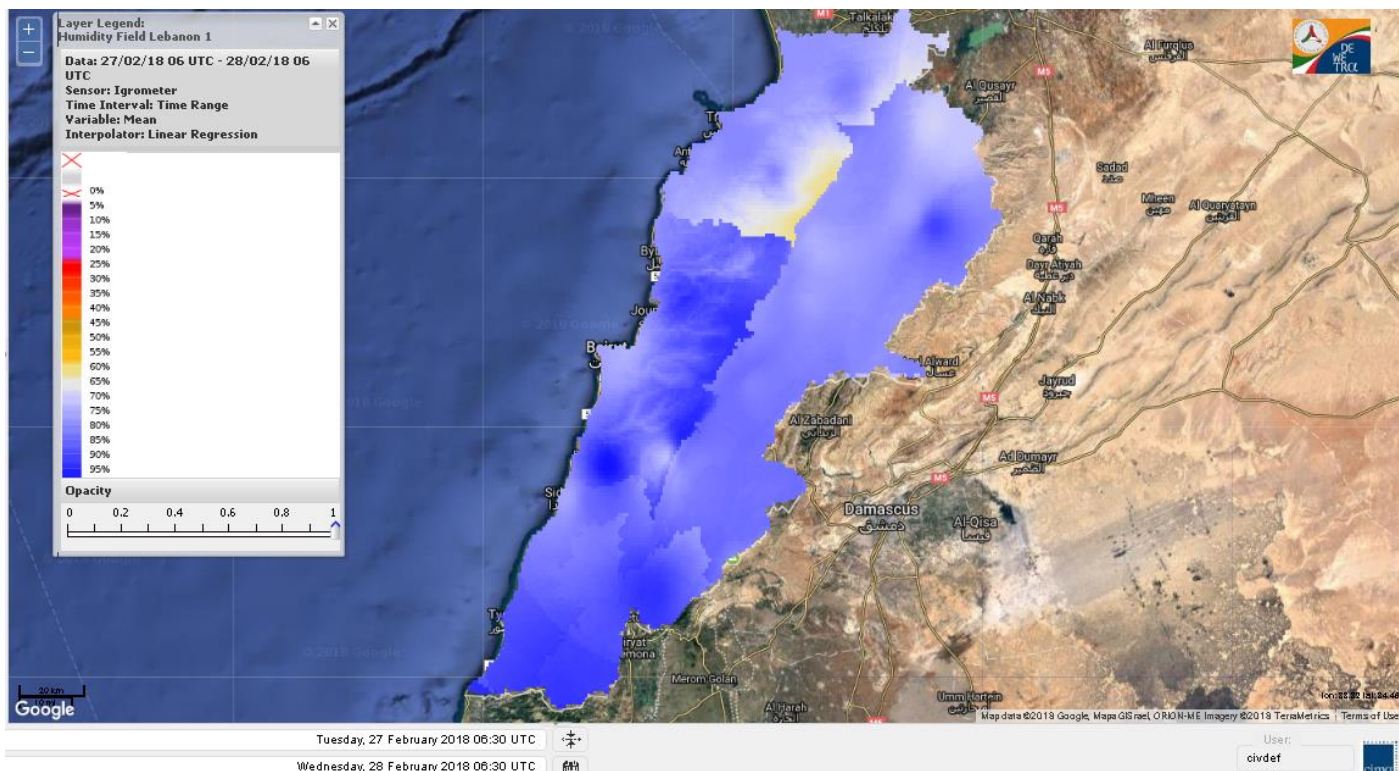
Spatial Resolution: Caza

- VERY LOW
- LOW
- MEDIUM-LOW
- MEDIUM
- MEDIUM-HIGH
- HIGH
- EXTREME

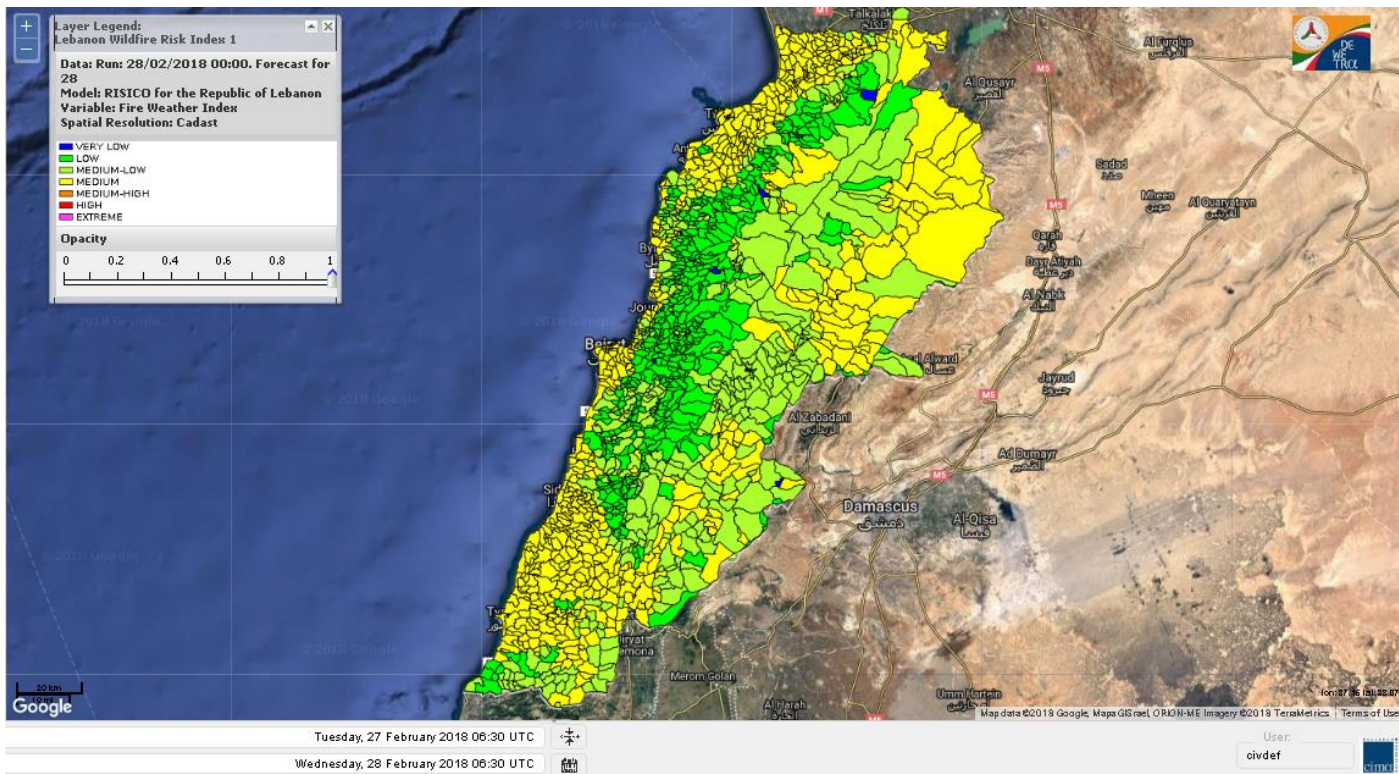
Lebanon temperature for Lebanon 28 Feb 2018



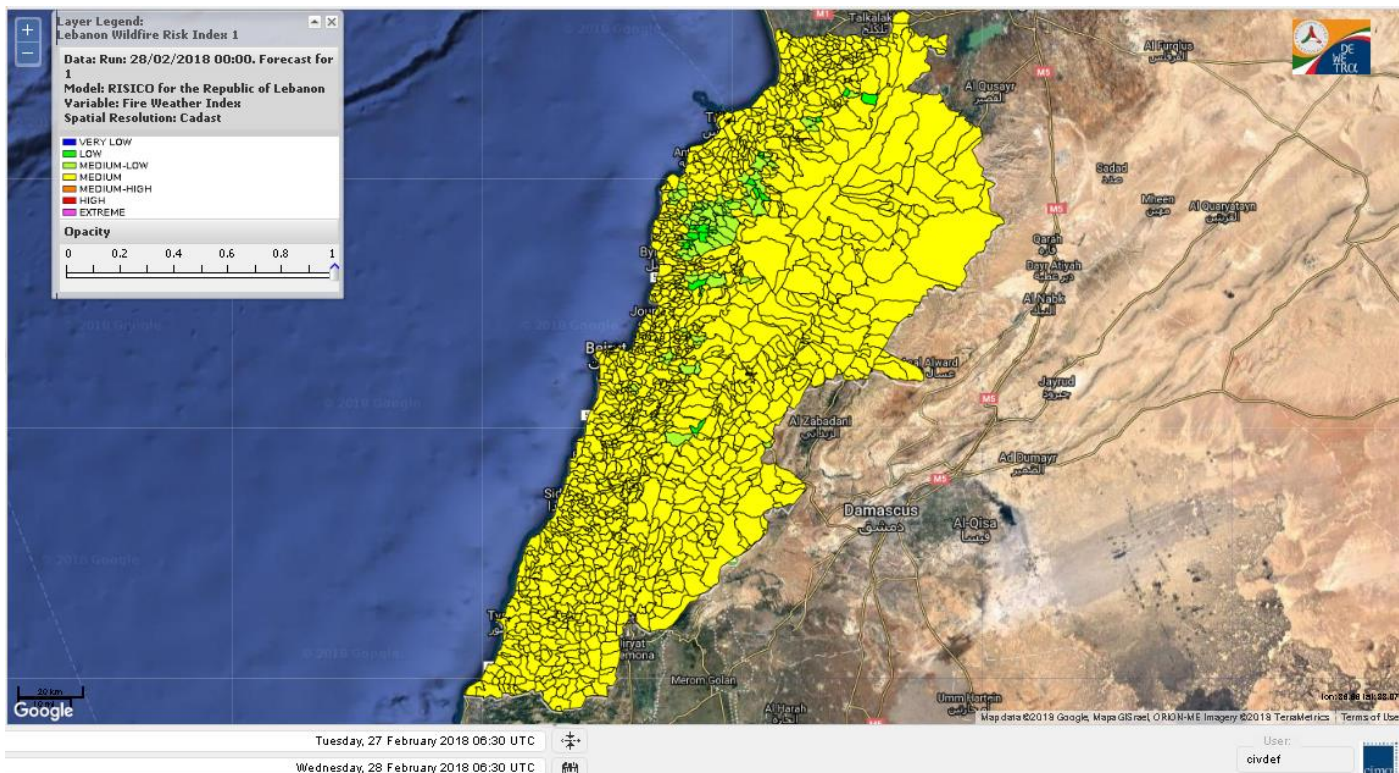
Lebanon humidity for Lebanon 28 Feb 2018



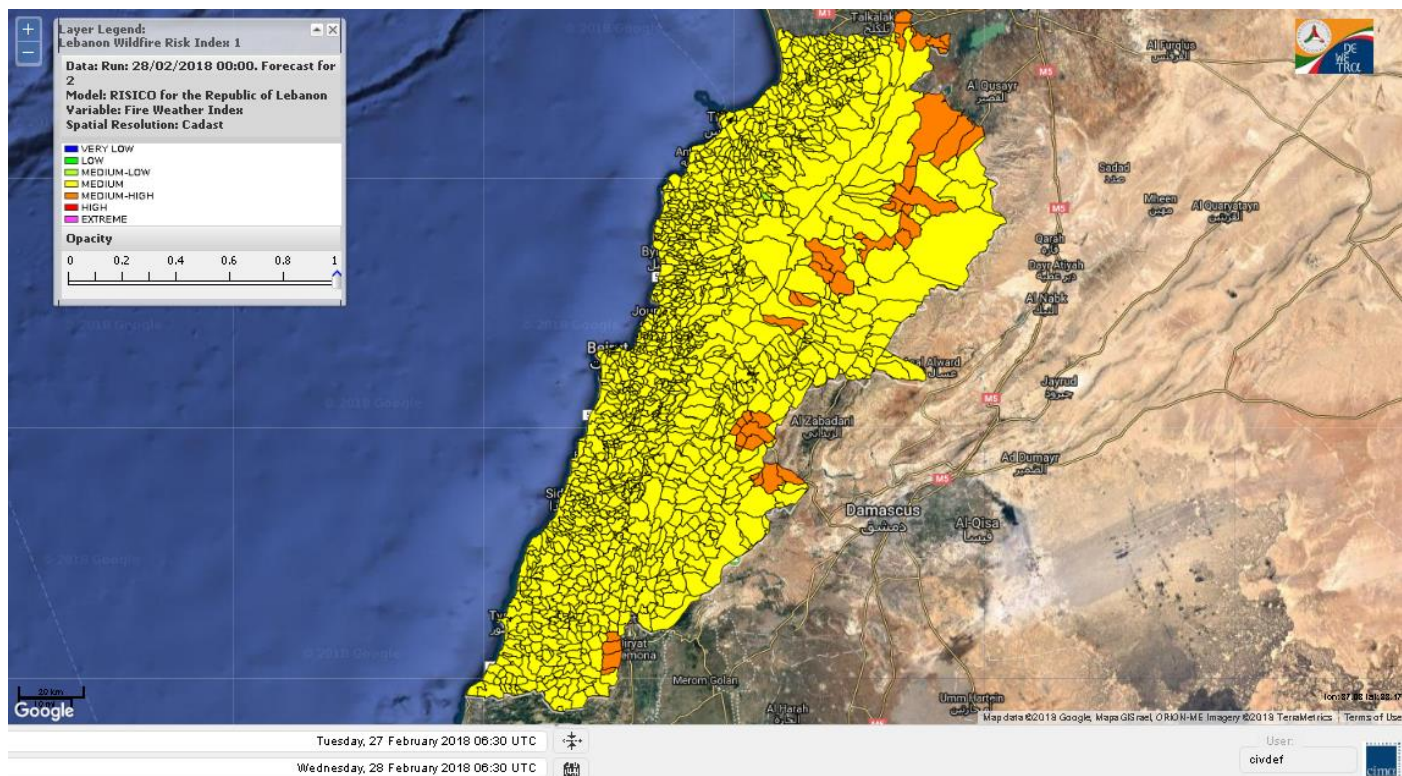
Lebanon for 28 Feb 2018



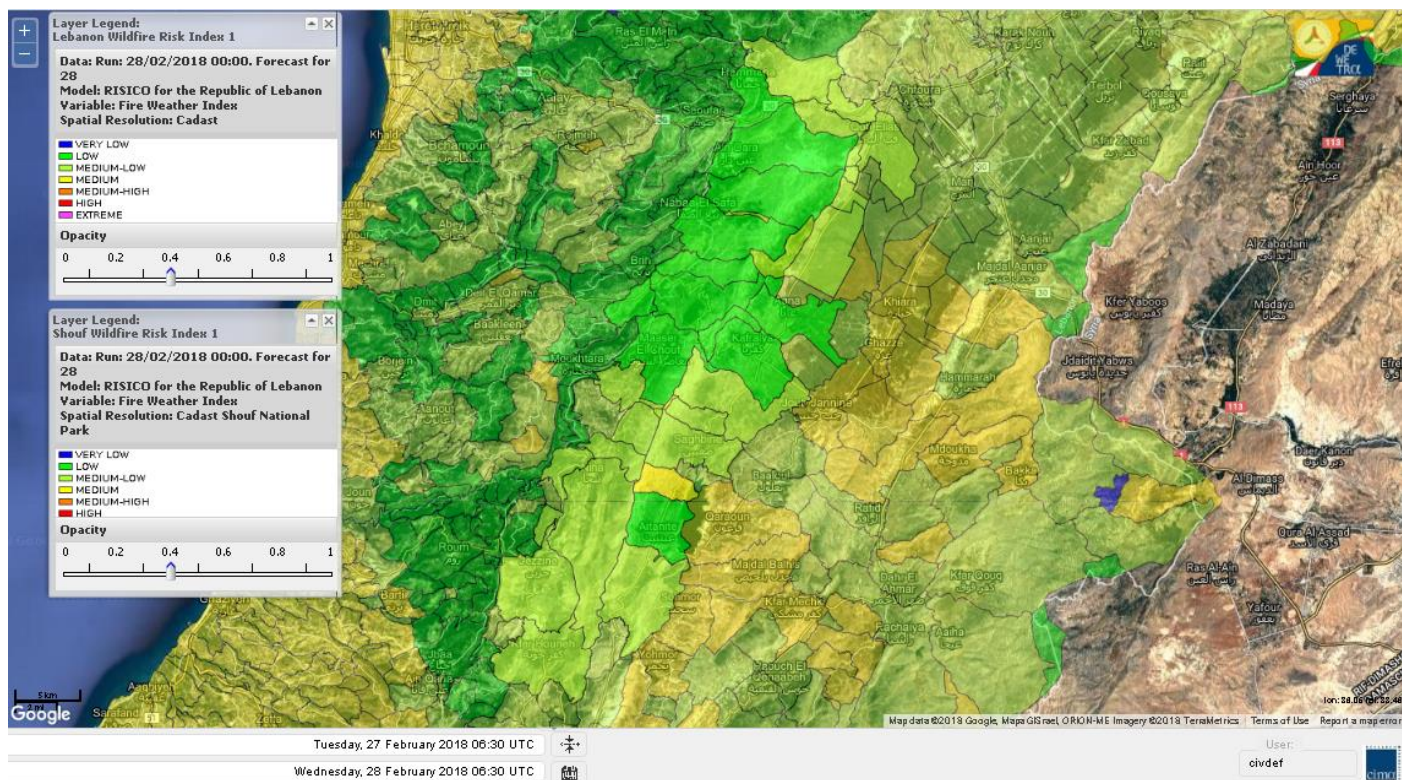
Lebanon for 1 Mar 2018



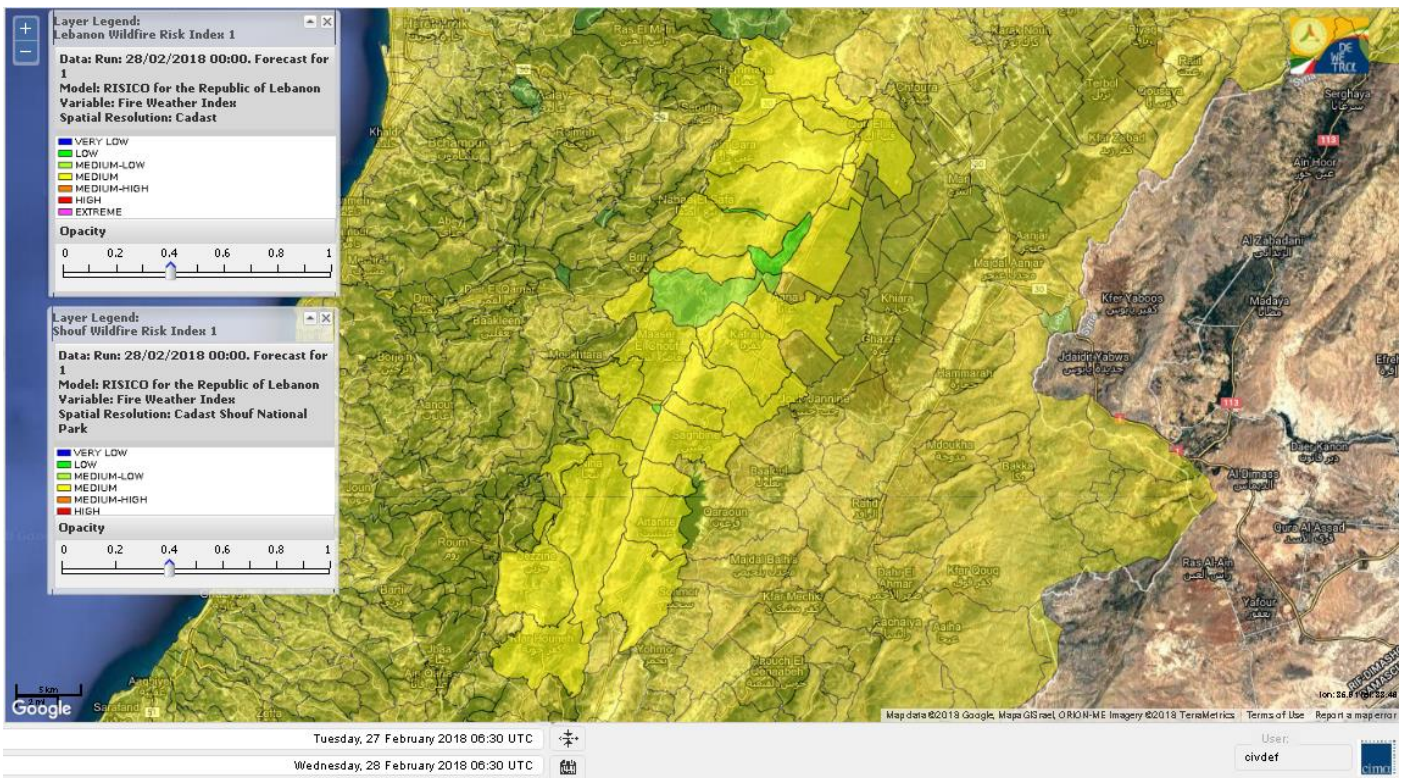
Lebanon for 2 Mar 2018



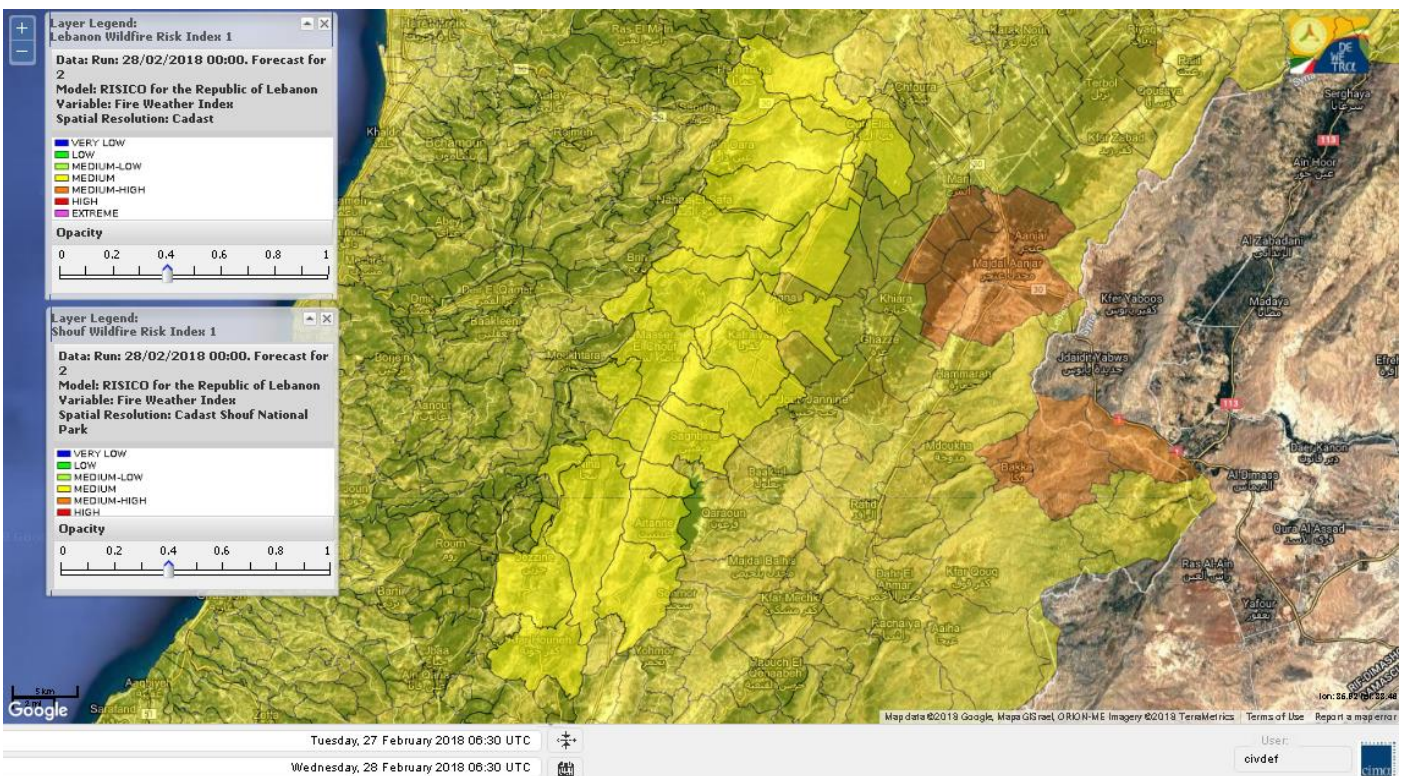
Shouf Biosphere Reserve Forecast for 28 Feb 2018



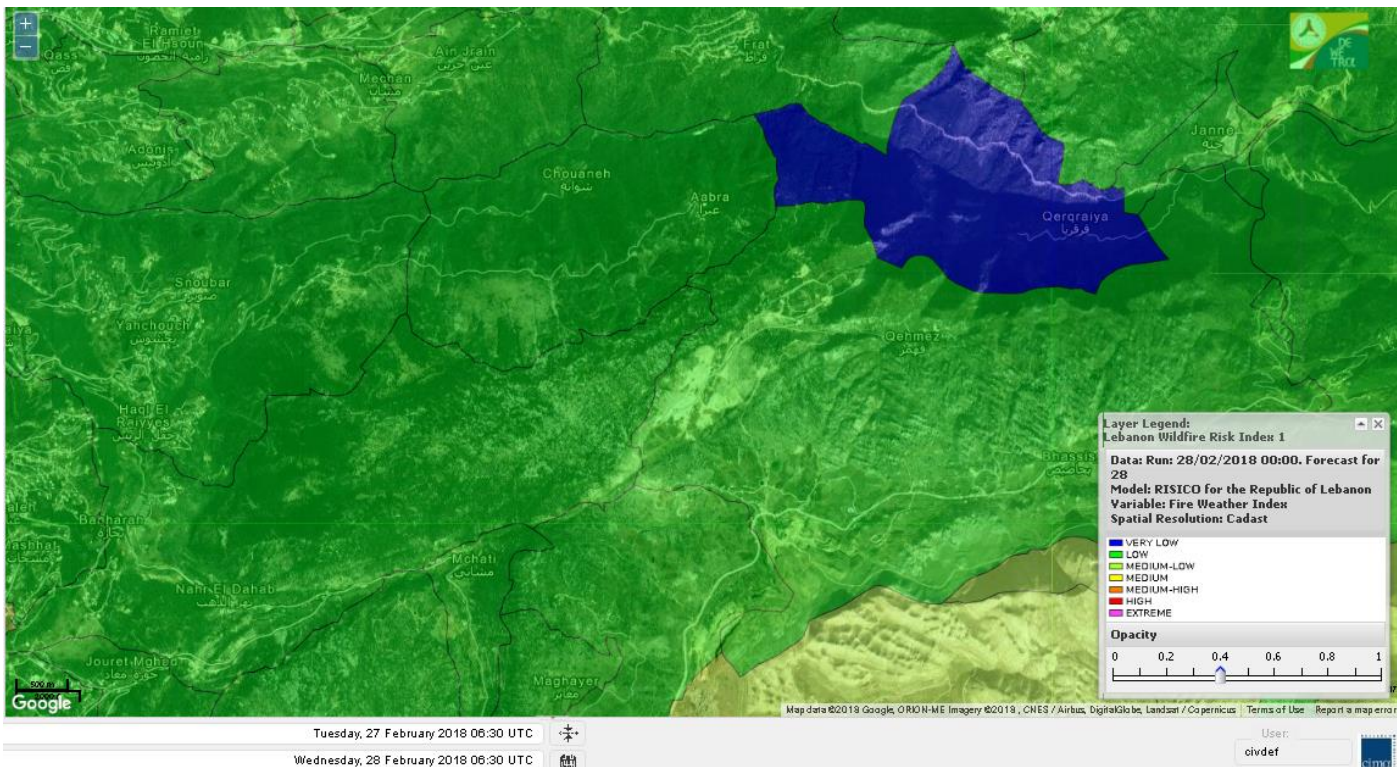
Shouf Biosphere Reserve Forecast for 1 Mar 2018



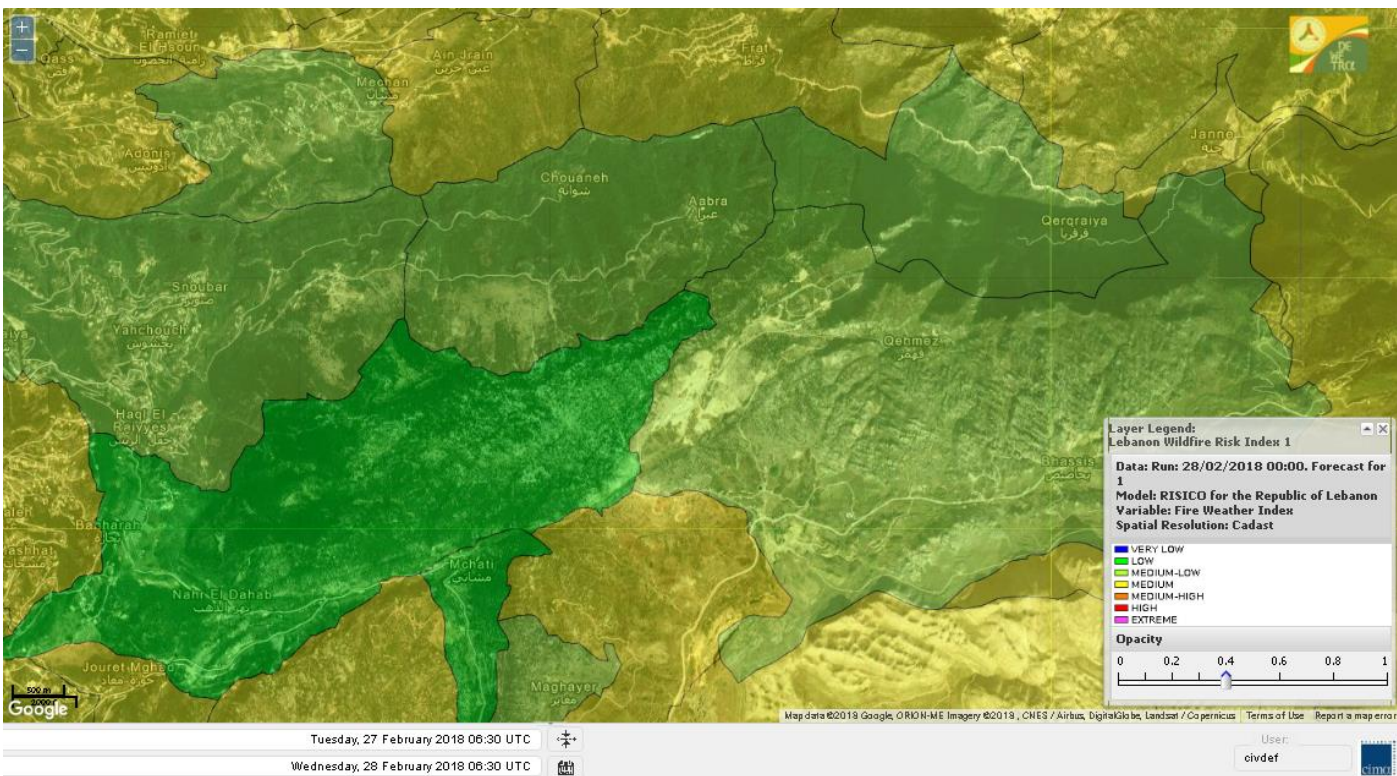
Shouf Biosphere Reserve Forecast for 2 Mar 2018



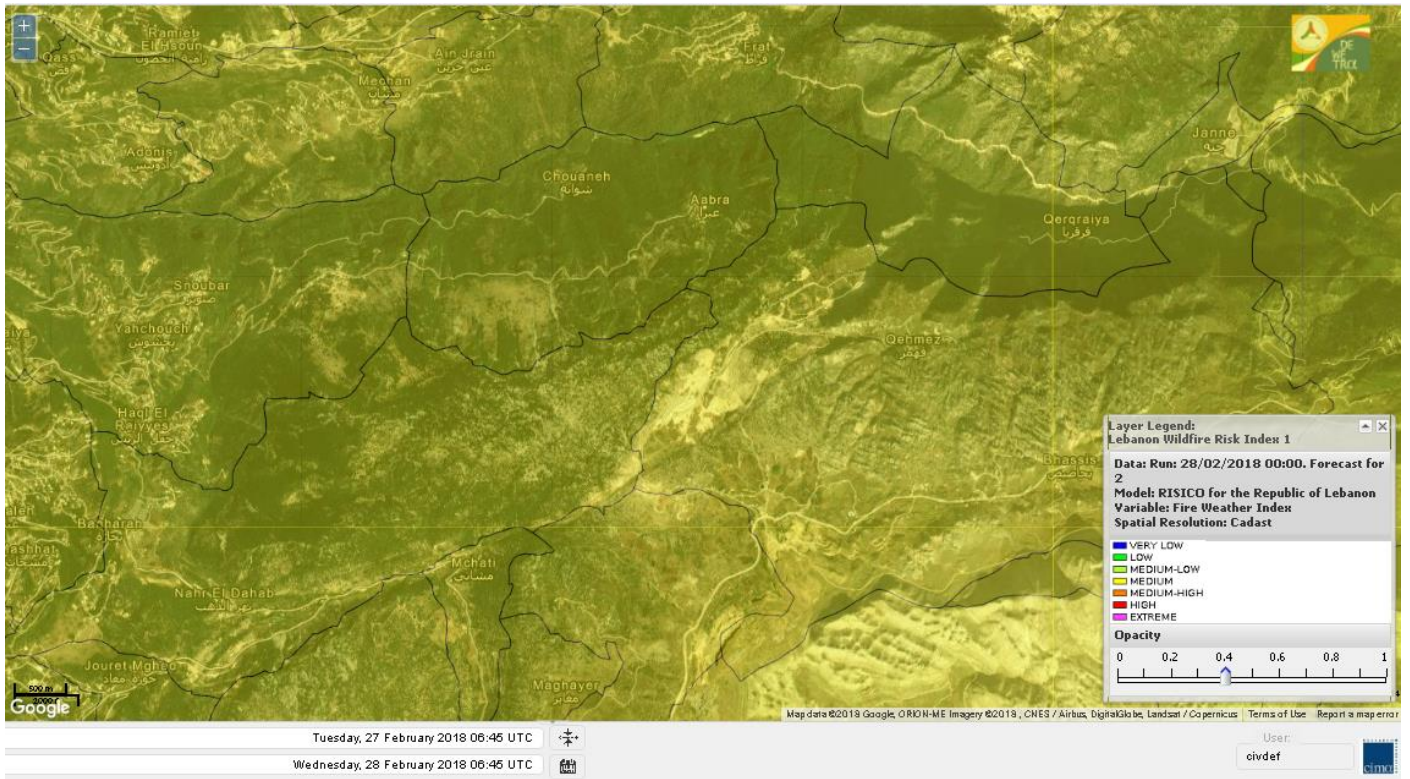
Jabal Moussa Reserve Forecast for 28 Feb 2018



Jabal Moussa Reserve Forecast for 1 Mar 2018



Jabal Moussa Reserve Forecast for 2 Mar 2018



Nord

Koura

Municipality	28-Feb	01-Mar	02-Mar	Municipality	28-Feb	01-Mar	02-Mar	Municipality	28-Feb	01-Mar	02-Mar
Aaba	M	M	M	Afsaddiq	M	M	M	Ain Ekriine	M	M	M
Amioun	M	M	M	Anfeh	M	M	M	Badbhoun	M	M	M
Barghoun	M	M	M	Barsa	M	M	M	Batroumine	M	M	M
Bdebba	M	M	M	Bechmizzine	M	M	M	Bednayet El-Koura	ML	M	M
Bhabbouch El-Koura	ML	M	M	Bkeftine	M	M	M	Bnehran	ML	M	M
Bqaiia El-Koura	M	M	M	Bsarma	M	M	M	Btaaboura	M	M	M
Bttram	M	M	M	Btouratij	M	M	M	Bziza	M	M	M
Dar Beechtar	M	M	M	Dar Chmezzine	M	M	M	Deddeh	M	M	M
Deir El-Balamand	L	M	M	Fih	M	M	M	Hraiche	M	M	M
Ijdaabrine	ML	M	M	Kaftoun	M	M	M	Kefraya El-Koura	M	M	M
Kfarakka	M	M	M	Kfarhata	ML	M	M	Kfarhazir	M	M	M
Kfarkahel	M	M	M	Kfarsaroun	M	M	M	Kosba	M	M	M
Mejdel el-Koura	ML	M	M	Nakhle	M	M	M	Qalhat	L	M	M
Ras Masqa	M	M	M	Rechdibbine	M	M	M	Zakroun	M	M	M
Zgharta El-Mtaouile	L	M	M								

Bcharre

Municipality	28-Feb	01-Mar	02-Mar	Municipality	28-Feb	01-Mar	02-Mar	Municipality	28-Feb	01-Mar	02-Mar
Aabdine	ML	M	M	Bane	M	M	M	Barhelion	L	M	M
Bazouone	M	M	M	Becharre	ML	M	M	Beit Menzer	L	M	M
Billa	L	ML	M	Blaouza	M	M	M	Bqaa Kafra	M	M	M
Bqerqacha	M	M	M	Breissat	ML	M	M	Dimane	ML	M	M
Hadath El Jobbeh	L	ML	M	Hadchit	ML	M	M	Hasroun	ML	M	M
Mazraat Aassaf	L	ML	M	Mazraat Bani Saab	L	M	M	Mchaa El-Jobbeh	ML	M	M
Metrit	L	M	M	Moghr El-Ahoual	ML	M	M	Ouadi Qannoubine	VL	L	ML
Qanat	L	ML	M	Qnayouer	L	L	M	Tourza	L	ML	M

Batroun

Municipality	28-Feb	01-Mar	02-Mar	Municipality	28-Feb	01-Mar	02-Mar	Municipality	28-Feb	01-Mar	02-Mar
Aabrine	L	ML	M	Aalali	L	ML	M	Aartziz	L	ML	M
Abdelli	L	ML	M	Ajdabra	L	ML	M	Assia	L	ML	M
Basbina	M	M	M	Batroun	M	M	M	Bcheleh	L	ML	M
Bechtoudar	L	ML	M	Beit Chlala	L	ML	M	Beit Kassab	L	L	M
Bijdarfil	M	M	M	Bqesmaya	ML	M	M	Chatine	L	M	M
Chebtin	L	ML	M	Chekka	M	M	M	Daael	L	ML	M
Dahr Abi Yaghi	L	ML	M	Daraya El-Batroun	M	M	M	Deir Billa	L	ML	M
Deir Kfifane	ML	M	M	Deir Mar Youhanna EL	L	L	M	Deir Mar Youssef Jra	L	ML	M
Douma	L	ML	M	Douq	L	ML	M	Eddeh El-Batroun	ML	M	M
Ftahat El-Batroun	L	ML	M	Ghouma	ML	M	M	Hadatoun	L	ML	M
Hamat	ML	M	M	Harbouna	L	ML	M	Hardine	L	ML	M
Helta	L	ML	M	Hery	M	M	M	Jebba	L	ML	M
Jrabta El-Batroun	ML	M	M	Jrane El-Batroun	M	M	M	Kfar Aabida	ML	M	M
Kfar Halda	L	ML	M	Kfarb Shlaimane	L	L	M	Kfarhatna	L	ML	M
Kfarhay	M	M	M	Kfarhelos	L	ML	M	Kfifane	M	M	M

Kfour El Arabi	ML	M	M	Koubba	M	M	M	Kour	ML	M	M
Mar Mama	L	L	M	Masrah	L	L	M	Mehmarch	ML	ML	M
Mrah Chdid	L	M	M	Mrah El Ziyat	ML	M	M	Mrah El-Hajj	L	L	M
Nahle El-Batroun	ML	ML	M	Niha El-Batroun	L	M	M	Ouahj El-Hajjar	ML	M	M
Ouata Houb	L	M	M	Qatnaaoun	ML	ML	M	Racha	ML	ML	M
Rachana	L	M	M	Rachkida	ML	ML	M	Ram El-Batroun	L	ML	M
Ras Nahhach	ML	ML	M	Selaata	M	M	M	Sghar	ML	M	M
Smar Jbayl	ML	M	M	Sourat El-Batroun	L	ML	M	Tannourine El-Faouqa	ML	M	M
Tannourine Et-Tahta	L	M	M	Thoum	ML	M	M	Toula El-Batroun	L	ML	M
Zan	ML	ML	M								

Zgharta

Municipality	28-Feb	01-Mar	02-Mar	Municipality	28-Feb	01-Mar	02-Mar	Municipality	28-Feb	01-Mar	02-Mar
Aachach	M	M	M	Aalma	M	M	M	Aarde	M	M	M
Aintourine	ML	M	M	Arabet Qozhaya	L	ML	M	Arde	M	M	M
Arjis	M	M	M	Asnoun	M	M	M	Ayto	L	ML	M
Basloukit	M	M	M	Bchannine	M	M	M	Besebeel	M	M	M
Bhairret Toula	ML	M	M	Bnachee	ML	M	M	Boussit	M	M	M
Danha	M	M	M	Daraiya Zgharta	M	M	M	Deir Jdeide	M	M	M
Ehden	M	M	M	Halan	M	M	M	Hariq Zgharta	M	M	M
Houakir	ML	ML	M	Hraiqis	M	M	M	laal	M	M	M
Ijbaa	ML	M	M	Karm Saddeh	L	ML	M	Kfarchakhna	M	M	M
Kfardlaqous	M	M	M	Kfarfou	M	M	M	Kfarhata Zgharta	M	M	M
Kfarhoura	M	M	M	Kfarsghab	M	M	M	Kfaryachit	M	M	M
Kfarzaina	M	M	M	Khaldiye	M	M	M	Mazraat Ajbeaa	M	M	M
Mazraat Et-Teffah	L	M	M	Mazraat Jneid	M	M	M	Mejdlaiya Zgharta	M	M	M
Merh Kfarsghab	ML	M	M	Miryata	M	M	M	Miziara	L	ML	M
Mzraat Kefraya	M	M	M	Qorah Bach	M	M	M	Rachiine	M	M	M
Ras Kifa	M	M	M	Sakhra	M	M	M	Sebhel Zgharta	ML	M	M
Serhel	L	L	M	Tallet Zgharta	M	M	M	Toula Zgharta	L	M	M
Zgharta	M	M	M								

Minieh-Denniye

Municipality	28-Feb	01-Mar	02-Mar	Municipality	28-Feb	01-Mar	02-Mar	Municipality	28-Feb	01-Mar	02-Mar
Aasaymout	L	L	M	Aaymar	L	M	M	Aazki	M	M	M
Ain El-Tineh-Miniyeh	L	M	M	Assoun	L	M	M	Bakhaaoun	L	M	M
Bchennata	ML	M	M	Bechehhara	L	L	M	Beddawi	M	M	M
Behouaita	L	ML	M	Beit El Foqss	L	M	M	Beit Haouik	ML	M	M
Beit Zoud	L	M	M	Bekaasafrine	M	M	M	Borj El Yahoudiyeh	M	M	M
Bqarsouna	L	M	M	Btermaz	L	M	M	Debaael	L	ML	M
Deir Ammar	M	M	M	Deir Nbouh	ML	M	M	Haouaret-Miniyeh	L	ML	M
Haql el Azimeh	L	M	M	Harf El Siyad	L	ML	M	Hazmiye-Miniyeh	L	M	M
Izal	ML	M	M	Jarjour	L	L	M	Jayroun	L	M	M
Kahf El-Malloul	L	ML	M	Karm El-Moher	L	M	M	Kfar Binine	L	M	M
Kfarchalane	ML	M	M	Kfarhabou	M	M	M	Kharroub-Miniyeh	ML	M	M
Mazraat El-Kreme	L	ML	M	Mazraat Ketrane	L	M	M	Merkebta	M	M	M
Minyeh	M	M	M	Mrah El Sfirat	L	M	M	Mrah Sraj	L	M	M
Mrebbine	ML	M	M	Nabi Youcheaa	M	M	M	Nemrine	L	M	M

Qarhaiya	L	ML	M	Qarne	L	M	M	Qarsita	L	M	M
Qattineh-Miniyeh	L	M	M	Qemmamine	L	M	M	Qraine	L	M	M
Raouda-Aadoua	M	M	M	Rihaniyet-Miniyeh	M	M	M	Sfireh	L	M	M
Sir Ed-Danniyeh	L	M	M	Tarane	L	M	M	Terbol-Miniyeh	M	M	M
Zaghartaghriane	L	M	M	Zouq Bhannine	M	M	M				

Nabatiye

Nabatiye

Municipality	28-Feb	01-Mar	02-Mar	Municipality	28-Feb	01-Mar	02-Mar	Municipality	28-Feb	01-Mar	02-Mar
Aabba	M	M	M	Aazzi	M	M	M	Adchit El-Chqif	M	M	M
Ain Bou Swar	ML	M	M	Ain Kana	ML	M	M	Ali El-Taher	M	M	M
Ansar	M	M	M	Arab Salim	M	M	M	Arnoun	M	M	M
Bfaroue	M	M	M	Breyqaah	M	M	M	Charqiyeh	M	M	M
Choukine	M	M	M	Deir El Zahrani	M	M	M	Doueir El-Nabatiyeh	M	M	M
Habbouch El-Nabatiye	M	M	M	Hamra El-Nabatiyeh	M	M	M	Harouf El-Nabatiyeh	M	M	M
Hmaile	M	M	M	Houmin El Faouqa	M	M	M	Houmin El Tahta	M	M	M
Jarjough	ML	M	M	Jbaah El-Nabatiyeh	L	M	M	Jebchit	M	M	M
Kfar Djal El-Nabatiy	M	M	M	Kfar Remmane	M	M	M	Kfar Sir	M	M	M
Kfar Tebnit	M	M	M	Kfarfila	M	M	M	Kfour El-Nabatieh	M	M	M
Mayfadoun	M	M	M	Mazraat Bsaffour	M	M	M	Mazraat Chalbaal	M	M	M
Mazraat Dmoul	M	M	M	Mazraat El Khreibeh	M	M	M	Mazraat El-Bayad El-	M	M	M
Mazraat Kfarjaouz	M	M	M	Mazraat Qalaat Meiss	M	M	M	Nabatiyeh El-Fawka	M	M	M
Nabatiyeh Et-Tahta	M	M	M	Namiriyeh	M	M	M	Qaaqaiyet El Jisr	M	M	M
Qossaibeh El-Nabatiy	M	M	M	Roumine	M	M	M	Sarba El-Nabatieh	M	M	M
Sir El-Gharbiyeh	M	M	M	Toul	M	M	M	Yehmor El-Nabatiyeh	M	M	M
Zaoutar El Charkiyeh	M	M	M	Zaoutar El-Gharbiyeh	M	M	M	Zebdine El-Nabatiyeh	M	M	M
Zefta	M	M	M								

Hasbaiya

Municipality	28-Feb	01-Mar	02-Mar	Municipality	28-Feb	01-Mar	02-Mar	Municipality	28-Feb	01-Mar	02-Mar
Ain Jarfa	ML	M	M	Abou Qamha	ML	M	M	Ain Qania	ML	M	M
Bourghos	M	M	M	Chebaa	ML	M	M	Chouaya Hasbaya	ML	M	M
Dellafeh	M	M	M	Fardiss Hasbaiya	M	M	M	Hasbaya	ML	M	M
Hbariyeh	ML	M	M	Kaoukaba Hasbaiya	M	M	M	Kfar Chouba	ML	M	M
Kfar Hamam	ML	M	M	Kfeir El-Zait	ML	M	M	Khalwat Hasbaya	L	M	M
Khreibet Hasbaiya	M	M	M	Majidiyeh Hasbaiya	ML	M	M	Marj Ez-Zhour (Haouc	ML	M	M
Meri	M	M	M	Mimass	M	M	M	Rachaiya El-Fokhar	ML	M	M
Salaiyeb	M	M	M								

Marjayoun

Municipality	28-Feb	01-Mar	02-Mar	Municipality	28-Feb	01-Mar	02-Mar	Municipality	28-Feb	01-Mar	02-Mar
Aalmane Marjaayoun	ML	M	M	Aamra	M	M	M	Adayseh Marjaayoun	M	M	M
Adchit El-Koussair	M	M	M	Ain Aarab Marjaayoun	M	M	M	Bani Haiyann	ML	M	M
Blatt Marjaayoun	M	M	M	Blida	ML	M	M	Borj El-Moulouk	M	M	M
Boueyda Marjaayoun	M	M	M	Deir Mimass	ML	M	M	Deir Siriane	ML	M	M
Dibbine	M	M	M	Ebel El Saqi	M	M	M	Houla	ML	M	MH
Houra	M	M	M	Kfar Kila	M	M	M	Khiam Marjaayoun	M	M	M

Klayaa	M	M	M	Majdel Selem	M	M	M	Marjaayoun	M	M	M
Markaba	M	M	MH	Mays El-Jabal	ML	M	MH	Mazraat Doumiat	M	M	M
Mazraat Sarada	M	M	M	Mhaibib	ML	M	MH	Qabrikha	ML	M	M
Qantara	ML	M	M	Rab El-Thalathine	M	M	M	Saouaneh Marjayoun	M	M	M
Talloussa	ML	M	M	Taybeh Matjaayoun	M	M	M	Touline	ML	M	M

Bent Jbail

Municipality	28-Feb	01-Mar	02-Mar	Municipality	28-Feb	01-Mar	02-Mar	Municipality	28-Feb	01-Mar	02-Mar
Ain-Ebel	ML	M	M	Aitaroun	ML	M	M	Aynata Bint Jbeil	M	M	M
Ayta El-Chaeb	ML	M	M	Ayta El-Jabal	M	M	M	Beit Lif	ML	M	M
Beit Yahoun	M	M	M	Bint Jbeil	M	M	M	Borj Qalaway	M	M	M
Braachit	M	M	M	Chakra	ML	M	M	Debel	ML	M	M
Deir Antar	M	M	M	Froun	M	M	M	Ghandouriyeh Bint Jb	M	M	M
Hanine	ML	M	M	Hariss	M	M	M	Hdatha	M	M	M
Jmeymeh	M	M	M	Kafra Bint Jbeil	L	M	M	Kfar Dounine	M	M	M
Khirbet Selm	ML	M	M	Kounine	M	M	M	Maroun El Ras	ML	M	M
Qalaway	M	M	M	Qaouzah	ML	M	M	Qatmoun	ML	M	M
Ramya Bint Jbeil	ML	M	M	Rchaf	ML	M	M	Rmeich	M	M	M
Safad Al Battikh	M	M	M	Salhaneh	L	M	M	Serbine	M	M	M
Sultanieh Bint Jbeil	M	M	M	Tibnine	M	M	M	Tiri	ML	M	M
Yaroun	M	M	M	Yater	ML	M	M				

Mont Liban

Jbail

Municipality	28-Feb	01-Mar	02-Mar	Municipality	28-Feb	01-Mar	02-Mar	Municipality	28-Feb	01-Mar	02-Mar
Aabeydat	L	ML	M	Aalita	L	M	M	Aamchit	M	M	M
Aarab El-Lahib	ML	M	M	Aarasta	L	M	M	Adonis Jbeil	L	M	M
Afqa Jbeil	L	ML	M	Ain El Delbeh Jbeil	L	M	M	Ain El-Ghouayba	L	M	M
Ain Jrain	L	M	M	Ain Kfah	ML	M	M	Almat El Chemaliyat	L	M	M
Almat El-Jenoubiya	L	M	M	Aqoura	ML	M	M	Bayzoun	L	M	M
Bchille Jbeil	L	M	M	Bechtlida	L	ML	M	Behdaydat	ML	ML	M
Beit Habbaq	ML	M	M	Bejjeh	ML	M	M	Bekhaaz	ML	M	M
Berbara Jbeil	M	M	M	Bintael	L	M	M	Birket Hjoula	L	L	M
Blatt Jbeil	ML	M	M	Boulhos	L	M	M	Breyj Jbeil	L	ML	M
Chamat	M	M	M	Chikhane	M	M	M	Chmout	L	M	M
Eddeh Jbeil	M	M	M	Ehmej	L	M	M	Fatre	L	M	M
Ferhet	ML	M	M	Fghal	L	M	M	Frat	L	M	M
Ghabat	ML	M	M	Ghalboun	ML	M	M	Gharzouz	ML	M	M
Ghofrine	ML	M	M	Habil	L	L	M	Halate	ML	M	M
Haqel	L	L	M	Hbaline	ML	M	M	Hboub	ML	M	M
Hdeine	ML	M	M	Hema Er-Rehban	M	M	M	Hema Mar Maroun Aann	M	M	M
Hjoula	L	ML	M	Hosrayel	ML	M	M	Hsarat	ML	M	M
Hsoun	L	M	M	Jaj	L	ML	M	Janne	L	M	M
Jbeil	M	M	M	Jeddeyl Jbeil	M	M	M	Jlisse	L	M	M
Jouret El-Qattine	L	M	M	Kfar Baal Annaya	L	M	M	Kfar Kidde	ML	M	M
Kfar Kouas	L	M	M	Kfar Mashoun	M	M	M	Kfoun	L	ML	M

Kharbe Jbeil	ML	ML	M	Laqlouq	M	M	M	Lassa	L	M	M
Lehfed	L	L	M	Maad	ML	M	M	Mar Sarkis	ML	M	M
Mastita	M	M	M	Mayfouq	L	L	M	Mazraat El Siyad	ML	M	M
Mazraat El-Maaden	L	M	M	Mechane	L	ML	M	Mechmech Jbeil	L	ML	M
Mehrin	ML	M	M	Mejdel El-Akoura	ML	M	M	Mghayreh Jbeil	ML	M	M
Mounsef	M	M	M	Nahr Ibrahim	M	M	M	Qahmez	L	ML	M
Qartaba	L	M	M	Qartaboun	M	M	M	Qattara Jbeil	L	L	M
Qorqraya	VL	ML	M	Ramout	ML	M	M	Ras Osta	L	ML	M
Rihane Jbeil	M	M	M	Sakiet El-Khayt	L	ML	M	Saqi Richmaya	L	ML	M
Sebrine	L	M	M	Seraita	ML	M	M	Souane Jbeil	L	M	M
Tadmor	ML	M	M	Tartej	L	ML	M	Torzaiya	L	M	M
Yanouh Jbeil	ML	M	M	Zibidine Jbeil	L	M	M				

El Metn

Municipality	28-Feb	01-Mar	02-Mar	Municipality	28-Feb	01-Mar	02-Mar	Municipality	28-Feb	01-Mar	02-Mar
Aain El-Qabu	L	M	M	Aain El-Qach	L	M	M	Aain El-Teffaha	ML	M	M
Aain el-Safssaf El-M	L	M	M	Abou Mizane	L	M	M	Ain Aar	ML	M	M
Ain Alaq	L	M	M	Ain El-Kharroube	ML	M	M	Ain El-Sendianeh	L	M	M
Ain El-Zeitoune	L	M	M	Ain Saadeh	L	M	M	Aintoura El-Matn	L	M	M
Amaret Chalhoub	M	M	M	Antelias	M	M	M	Atchaneh	L	M	M
Ayroun	L	M	M	Baabdat	L	ML	M	Baouchariyeh	M	M	M
Baskinta	L	M	M	Beit Chabab	L	M	M	Beit El-Chaar	ML	M	M
Beit El-Kekko	M	M	M	Beit Mery	L	M	M	Bhersaf	L	M	M
Bikfaya	L	M	M	Biyakout	M	M	M	Bnabil	L	M	M
Bourj Hammoud	M	M	M	Bqennaya	ML	M	M	Broummana El-Matn	L	M	M
Bsalim	L	M	M	Bsifrine	L	M	M	Btegrine	L	ML	M
Chaouiye	L	M	M	Chouaya El-Matn	L	M	M	Choueir	L	M	M
Chrine	L	ML	M	Dahr El Sawan El-Mat	L	M	M	Daychouniyeh	M	M	M
Dbayeh	M	M	M	Deir Chamra	L	ML	M	Deir Mar Abda el Mch	L	M	M
Deir Mar Roukouz	M	M	M	Deir Tamiche	L	M	M	Dik El-Mehdi	ML	M	M
Dikwaneh	M	M	M	Douar El-Matn	L	M	M	Fanar	M	M	M
Fraike	L	M	M	Haret El-Ballaneh	ML	M	M	Hbous	ML	M	M
Himlaya	L	M	M	Jal El Did	M	M	M	Jdeideh El-Metn	M	M	M
Jouar El-Matn	L	ML	M	Jouret El-Ballout	L	M	M	Kaaqour	L	M	M
Kfar Aaqab	L	M	M	Kfertay El-Matn	L	M	M	Khenchara	L	M	M
Khillet El-Mtain	L	M	M	Konnabat Broummana	L	M	M	Konnabat Salima	L	ML	M
Machraah El-Matn	L	M	M	Majdel Tarchich	ML	M	M	Majzoub	ML	M	M
Mansouriyeh El-Metn	M	M	M	Mar Boutros Karm Et-	L	M	M	Mar Chaya et Mzekke	L	M	M
Mar Moussa Ed-Douar	L	M	M	Marjaba	L	ML	M	Masqa	L	M	M
Mayasse	L	M	M	Mazraat Deir Aoukar	ML	M	M	Mazraat El-Hadirat	ML	M	M
Mazraat Yachouh	ML	M	M	Mchikha	L	M	M	Menqlet Mezher	ML	M	M
Mhaydseh Matn	L	M	M	Mkalles	M	M	M	Mrouj	L	M	M
Mtain	L	M	M	Mtayleb	ML	M	M	Nabay	L	M	M
Naccache	ML	M	M	Ouadi Chahine	L	M	M	Ouadi El-Karm El-Mat	L	M	M
Ouata El-Mrouj	L	M	M	Ouyoun El-Matn	L	ML	M	Qornet Chehwan	L	M	M
Qornet El-Hamra	L	M	M	Roumieh	L	M	M	Sfeilet Bikfaya	L	M	M
Sinn El-Fil	M	M	M	Zabbougha	L	M	M	Zalqa	M	M	M

Zarouon	L	M	M	Zekrite	L	M	M	Zighrine El-Matn	L	M	M
Zouk El-Khrab	ML	M	M								

Chouf

Municipality	28-Feb	01-Mar	02-Mar	Municipality	28-Feb	01-Mar	02-Mar	Municipality	28-Feb	01-Mar	02-Mar
Aalmane El-Chouf	M	M	M	Aammq El-Chouf	L	M	M	Ain Ouzein	L	M	M
Ain Qani	L	M	M	Ain Zhalta	L	M	M	Ainbal	L	M	M
Amatour	L	M	M	Anout	ML	M	M	Atrine	L	M	M
Baadarane	ML	M	M	Baaqline	ML	M	M	Baasir	M	M	M
Barja	M	M	M	Barouk	L	ML	M	Bater	ML	M	M
Batloun	L	M	M	Bayqoun	M	M	M	Bchetfine	L	M	M
Beiteddine	L	M	M	Benouati Ech-Chouf	L	M	M	Berjein	ML	M	M
Bireh et Mtalleh	L	M	M	Biret El-Chouf	L	M	M	Bkechtine Ouel Mchei	L	M	M
Bkifa El-Chouf	ML	M	M	Botme	L	M	M	Bqaiaa Ech-Chouf	L	M	M
Bsaba El-Chouf	ML	M	M	Chammis El-Chouf	M	M	M	Chehim	ML	M	M
Chemaarine	L	M	M	Chourit	L	ML	M	Daher El-Chouf	L	M	M
Dalhoun	M	M	M	Damour	M	M	M	Daraya El-Chouf	L	M	M
Deir El-Moukhalles	L	M	M	Deir Baba	L	M	M	Deir Dourit	L	M	M
Deir El-Qamar	ML	M	M	Deir Kouche	L	M	M	Dibbieh	L	M	M
Dmit	L	M	M	Fouara Jaafar	L	M	M	Fraidis El-Chouf	L	M	M
Ghabet Jaafar	L	M	M	Gharife	L	M	M	Haret Jandal	L	M	M
Hasrout	ML	M	M	Jadra	M	M	M	Jahlieh	L	M	M
Jbeih El-Chouf	ML	M	M	Jdeidet El-Chouf	L	M	M	Jiyeh	M	M	M
Jleilyeh	ML	M	M	Jmailiyeh	M	M	M	Joun	ML	M	M
Kahlounie El-Chouf	M	M	M	Ketermaya	M	M	M	Kfar Faqoud	L	M	M
Kfar Hamal	M	M	M	Kfar Him	ML	M	M	Kfar Katra	L	M	M
Kfar Niss	L	M	M	Kfar hay	L	M	M	Kfarnabrakh	L	M	M
Khirbet Bisri	L	M	M	Knayse El-Chouf	L	M	M	Maaniyeh	ML	M	M
Maasser Beiteddine	ML	M	M	Maasser El-Chouf	L	M	M	Majdalouna	ML	M	M
Majdel El-Meouch	ML	M	M	Mazboud	M	M	M	Mazmoura	ML	M	M
Mazraat El Chouf	ML	M	M	Mazraat El Daher	L	M	M	Mazraat El-Douair	L	ML	M
Mechref	ML	M	M	Mghairie	M	M	M	Mghayrie El-Chouf	L	M	M
Moukhtara	L	M	M	Mrusti	ML	M	M	Mtolle	ML	M	M
Naameh	M	M	M	Niha El-Chouf	ML	M	M	Ouadi Abou Youssef	L	M	M
Ouadi Ed-Deir	ML	M	M	Ouadi El-Sit	L	M	M	Ouadi bnehlay	L	M	M
Qraibeh	ML	M	M	Qreiaa	L	M	M	Rmayle El-Chouf	M	M	M
Semqaniyeh	ML	M	M	Sibline	M	M	M	Sirjbeil	ML	M	M
Warhanieh	L	M	M	Werdaniyeh	M	M	M	Zaarourieh	ML	M	M

Baabda

Municipality	28-Feb	01-Mar	02-Mar	Municipality	28-Feb	01-Mar	02-Mar	Municipality	28-Feb	01-Mar	02-Mar
Abadiyeh	L	M	M	Ain Mouaffaq	L	M	M	Araiya	L	M	M
Arbaniyeh	L	ML	M	Arsoun	L	M	M	Baabda	M	M	M
Baalchmey	ML	M	M	Bmaryam	L	M	M	Bourj El-Brajneh	M	M	M
Boutchay	ML	M	M	Bsaba Baabda	ML	M	M	Btekhney	L	M	M
Btibyat	L	M	M	Bzebdine	L	M	M	Chbeniyeh	L	M	M
Chiyah	M	M	M	Chmeisset Baabda	L	M	M	Chouit	L	M	M
Deir El-harf	L	M	M	Deir Khouna	L	M	M	Dlaybeh	L	M	M

Falougha	ML	M	M	Furn El-Chebbak	M	M	M	Hadath Beyrouth	M	M	M
Halaliyeh Baabda	L	M	M	Hammana	L	M	M	Haret El Sett	L	M	M
Haret Hamze	L	M	M	Haret Hreik	M	M	M	Hasbaiya El-Metn	L	M	M
Jouar El-Hoz	L	ML	M	Jouret Arsoun	L	M	M	Kfar Chima	M	M	M
Kfar Selouane	L	M	M	Khalouat Baabda	L	M	M	Kneisset Baabda	L	M	M
Laylakeh	M	M	M	Louayzeh Baabda	ML	M	M	Merdache	ML	M	M
Mzairaa Baabda	L	M	M	Ouadi Chahrour El Ol	ML	M	M	Ouadi Chahrour El So	L	M	M
Qalaa Baabda	L	M	M	Qhraybe Baabda	L	M	M	Qobbayaa	L	M	M
Qornayel	L	ML	M	Qortada	L	ML	M	Qrayeh Baabda	L	M	M
Qsaibeh Baabda	L	M	M	Qtale Baabda	L	M	M	Ras El Metn	L	M	M
Ras El-Haref	L	M	M	Rouayset El-Ballout	L	M	M	Salima Baabda	L	M	M
Tahouitat El Ghadir	M	M	M	Tarchich	L	M	M	Zandouqa	VL	M	M

Aley

Municipality	28-Feb	01-Mar	02-Mar	Municipality	28-Feb	01-Mar	02-Mar	Municipality	28-Feb	01-Mar	02-Mar
Abey	ML	M	M	Aghmid	L	M	M	Ain Dara	L	M	M
Ain Drafil	L	M	M	Ain El Halazoun	L	M	M	Ain El-Rmmaneh	L	ML	M
Ain Jedideh	ML	M	M	Ain Ksour	L	M	M	Ain Onoub	L	M	M
Ain Traz	L	M	M	Ainab	L	M	M	Aley	ML	M	M
Aramoun	ML	M	M	Aytat	ML	M	M	Azouniyeh	L	M	M
Baawerta	L	M	M	Badghan Oua Wadi Bad	L	M	M	Bassatine	ML	M	M
Bayssour	ML	M	M	Bchamoun	ML	M	M	Bdadoun	L	M	M
Behouara	ML	M	M	Bennay	ML	M	M	Bhamdoun El-Dayaa	ML	M	M
Bhamdoun El-Mhatta	ML	M	M	Bkhechthey	ML	M	M	Bleibel	L	M	M
Bmakine	ML	M	M	Bmehray	L	M	M	Bouzrid	L	M	M
Bserrine	ML	M	M	Bsous	L	ML	M	Btalloun	ML	M	M
Btater	ML	M	M	Chanay	ML	M	M	Charoun	L	M	M
Chartoun	L	M	M	Chemlane	L	M	M	Choueifat El-Aamrous	M	M	M
Choueifat El-Oumara	M	M	M	Choueifat El-Quoubbe	M	M	M	Dakkoun	L	M	M
Deir Qoubel	ML	M	M	Dfoun	ML	M	M	Douair El Remmaneh	L	M	M
Ghaboun	L	M	M	Habramoun	L	M	M	Homs Oua Hama	L	M	M
Houmal	L	M	M	Jisr El Qadi	L	M	M	Kehaleh	L	M	M
Keyfoun	ML	M	M	Kfar Aamey	L	M	M	Kommatyeh	ML	M	M
Maasrati	ML	M	M	Majdel Baana	L	M	M	Mansourieh et Ain El	ML	M	M
Mazraat El-Nahr	L	M	M	Mchakhte	L	M	M	Mecherfeh	L	M	M
Mejdaya	ML	M	M	Mrayjat	L	M	M	Ramliyah	L	M	M
Rechmaya	ML	M	M	Rejmeh	ML	M	M	Remhala	ML	M	M
Rouaysset El Neemane	L	M	M	Saoufar	L	M	M	Selfaya	L	M	M
Sirhmoul	L	M	M	Souq El Ghareb	ML	M	M	Taazanieh	M	M	M

Kesrouane

Municipality	28-Feb	01-Mar	02-Mar	Municipality	28-Feb	01-Mar	02-Mar	Municipality	28-Feb	01-Mar	02-Mar
Achkout	L	M	M	Adma Oua Dafneh	M	M	M	Ain Ed-Delbe Kesroua	L	L	M
Ain El-Rihane	L	M	M	Aintoura Kesrouane	ML	M	M	Ajaltoun	L	M	M
Akaybeh Kesrouane	M	M	M	Aramoun Kesrouane	L	M	M	Azra ouel Ozor	L	M	M
Ballouneh	L	M	M	Batha	L	M	M	Bekaatat Achkout	L	M	M
Bekaatat Kanaan	L	M	M	Bizhel	L	M	M	Bouar	M	M	M
Bqaatouta	L	M	M	Bqaq Ed-Dine	M	M	M	Bzommar	ML	M	M

Chahtoul	L	M	M	Chnaniir	ML	M	M	Chouan	L	ML	M
Daraya Kesrouane	L	M	M	Darououn	L	M	M	Deir Baqlouch	L	M	M
Dlebta	L	M	M	Eghbeh	L	M	M	Faraya	L	M	M
Fatka	ML	M	M	Feytroun	L	M	M	Ghazir	M	M	M
Ghbaleh Kesrouane	L	M	M	Ghedrass	L	M	M	Ghosta	L	M	M
Ghynéh	ML	M	M	Harharaya w Kattine	L	M	M	Harissa Kesrouane	ML	M	M
Hayata	L	M	M	Hosein	L	ML	M	Hrajel	ML	M	M
Jdeideh Ghazir	ML	M	M	Jeita	L	M	M	Jounieh Ghadir	M	M	M
Jounieh Haret Sakhr	M	M	M	Jounieh Salel Alma	M	M	M	Jounieh Sarba	M	M	M
Jouret Bedrane	L	M	M	Jouret Mhad	L	M	M	Jouret Termos	ML	M	M
Kfar Debiane	L	M	M	Kfar Tay Kesrouane	L	M	M	Kfar Yassine	M	M	M
Kfour Kesrouane	ML	M	M	Kharayeb Nahr Ibrahi	ML	M	M	Klayaat Kesrouane	L	M	M
Maarab	L	M	M	Maaysra Kesrouane	ML	M	M	Mayrouba	L	M	M
Mazraat Er-Ras	ML	M	M	Mazraat Mrah El-Mir	L	M	M	Mchaa El Ftouh	ML	M	M
Mchaa Faraya	ML	M	M	Mchaa Kfar Dibiane	L	M	M	Mghaer	L	ML	M
Mradiyah	L	M	M	Nahr Ed-Dahab	L	L	M	Nammoura Kesrouane	L	M	M
Ouata El Jaouz	L	M	M	Ouata Sillam	M	M	M	Raachine	L	M	M
Rayfoun	L	M	M	Safra Kesrouane	M	M	M	Shayle Kesrouane	L	M	M
Tabarja	M	M	M	Yahchouch	L	ML	M	Zaaytreh	L	M	M
Zeytoun	ML	M	M	Zouk Mikael	M	M	M	Zouk Mosbeh	ML	M	M

Baalbek_Hermel

Baalbek

Municipality	28-Feb	01-Mar	02-Mar	Municipality	28-Feb	01-Mar	02-Mar	Municipality	28-Feb	01-Mar	02-Mar
Aadous	M	M	M	Aamchki	M	M	M	Aarsal	M	M	M
Ain Baalbek	M	M	M	Ain Bourday	M	M	M	Ain El-Benye	M	M	M
Ain El-Jaouz Baalbek	ML	M	M	Ain El-Siya Chadoura	ML	M	M	Al Khodr Baalbek	M	M	M
Al Nabi Chit	M	M	M	Aynata Baalbek	ML	M	M	Baalbek	M	M	M
Bachwat	L	M	M	Barqa	L	M	M	Bednayel Baalbak	M	M	M
Beit Chama	ML	M	M	Bijjaje	M	M	MH	Bouday	ML	M	M
Brital	M	M	M	Btadi	ML	M	MH	Chaat	M	M	MH
Chaibe	M	M	M	Chlifa	M	M	MH	Chmestar	ML	M	MH
Dar El-Oussa	L	M	M	Deir El-Ahmar	ML	M	MH	Deir Mar Maroun Baal	M	M	M
Douris	M	M	M	Fakiha	M	M	MH	Hadath Baalbek	M	M	M
Ham	M	M	M	Haour Taala	M	M	M	Hizzine	M	M	M
Hlebta	ML	M	M	Hosh Barada	M	M	M	Hosh El Dahab	M	M	M
Hosh El Snid	ML	M	M	Hosh El-Nabi	ML	M	M	Hosh El-Rafiq	ML	M	M
Hosh Tal Safiya	M	M	M	Hrebta	ML	M	M	laat	M	M	MH
Jebaa	M	M	MH	Jenta	ML	M	M	Kfar Dabach	ML	M	M
Kfar Dane	M	M	MH	Khraibeh El-Hermel	M	M	MH	Khreibet Baalbek	M	M	M
Kneisset Baalbek	M	M	M	Labueh	M	M	MH	Maarboun	M	M	M
Majdaloun	M	M	M	Maqneh	M	M	M	Mazraat Beit Mcheik	M	M	M
Misraya	ML	M	M	Moqraq	M	M	MH	Nabha El-Damdoum	ML	M	M
Nabi Chbay	M	M	M	Nabi Osman	M	M	M	Nahleh baalbek	ML	M	M
Ouadi El-Oss	ML	M	M	Qaa Baayoun	M	M	M	Qaa Jouar Maqiye	M	M	MH
Qaa Ouadi El-Khanzir	M	M	MH	Qah Baalbek	M	M	M	Qarha Baalbek	M	M	MH

Qsarnaba	ML	M	M	Ram Baalbek	L	M	M	Ras Baalbek El Sahl	M	M	M
Ras Baalbek El-Charq	M	M	M	Riha	ML	M	M	Saaide	M	M	M
Sbouba	M	M	M	Seriine El-Tahta	ML	M	M	Slouqi	ML	M	M
Taiba Baalbek	M	M	M	Talia	M	M	M	Taraiya	ML	M	M
Temnin El Fawqa	ML	M	M	Temnin El-Tahta	ML	M	M	Tfail	ML	M	M
Yahfoufa	M	M	M	Yammouneh	ML	M	M	Younine	M	M	M
Zboud	M	M	MH								

Hermel

Municipality	28-Feb	01-Mar	02-Mar	Municipality	28-Feb	01-Mar	02-Mar	Municipality	28-Feb	01-Mar	02-Mar
Charbine El-Hermel	L	M	M	Hermel Jbab	ML	M	M	Hermel	M	M	MH
Maaysra El-Hermel	M	M	M	Michaa Mrajhine	ML	M	M	Ouadi Faara	L	M	M
Ras Baalbek - Ouadi	M	M	MH	Ras Baalbek El Gharb	ML	M	M	Zighrine	ML	M	M

Akkar

Akkar

Municipality	28-Feb	01-Mar	02-Mar	Municipality	28-Feb	01-Mar	02-Mar	Municipality	28-Feb	01-Mar	02-Mar
Aain Tinta	M	M	M	Aaiyat	ML	M	M	Aakkar El-Aatiqa	L	M	M
Aamar Akkar	M	M	M	Aamar El Baykat	M	M	M	Aamayer	M	M	MH
Aamriyet Akkar	M	M	M	Aandqet	ML	M	M	Aarmeh	ML	M	M
Aarqa	M	M	M	Aawaynat	M	M	M	Aayoun Akkar	M	M	M
Abboudiye	M	M	M	Ain El-Zeit	M	M	M	Ain Yaaqoub	L	M	M
Akroum	M	M	M	Aridet Cheikh Zennad	M	M	M	Baldeh w Mazraat Bal	M	M	M
Barcha	M	M	M	Bardeh	M	M	M	Bebnine	M	M	M
Beino	ML	M	M	Beit Ayoub	M	M	M	Beit El-Haouch	M	M	M
Beit Mellat	M	M	M	Beit Younes	ML	M	M	Berbara Akkar	M	M	M
Berqayel	M	M	M	Bezbina	L	M	M	Bireh Akkar	M	M	M
Borj	M	M	M	Bqerezla	M	M	M	Bzal	L	M	M
Chane	L	M	M	Chaqdouf	ML	M	M	Charbila	M	M	M
Cheikh Mohammad	M	M	M	Cheikh Taba Es-Sahl	M	M	M	Cheikh Taba	M	M	M
Cheikh Zennad	M	M	M	Cheikhlar	M	M	M	Chir Hmairine	M	M	M
Daghle	M	M	M	Dahr Laissine	M	M	M	Darine	M	M	M
Dawra	L	M	M	Dawsa w Baghdadadi	M	M	M	Dayret Nahr El-Kabir	ML	M	MH
Deir Dalloum	M	M	M	Deir Jennine	M	M	M	Denbou	ML	M	M
Dibbabiyyeh	M	M	M	Douair Aadwiyeh	M	M	M	Fassikine	M	M	M
Fnaydek	L	M	M	Fraydes Akkar	ML	M	M	Ghazayle	M	M	M
Habchit	L	M	M	Hakour	M	M	M	Halba	M	M	M
Haouchab	M	M	M	Hayssat	M	M	M	Haytla	M	M	M
Hayzouq	M	M	M	Hedd	M	M	M	Hmaira Akkar	M	M	M
Hmaiss Akkar	M	M	M	Hnaider	M	M	MH	Hokr Ed-Dahri	M	M	M
Hokr Etti	M	M	M	Hokr Jouret Srar	M	M	M	Houaich	ML	M	M
Hrar	ML	M	M	Idbil	M	M	M	Illat	M	M	M
Janine	M	M	M	Jdeidet El-Joumeh	M	M	M	Jdeidet El-Kaiteh	M	M	M
Jebraïel	M	M	M	Kafr	ML	M	M	Kafr	M	M	M
Karm Asfour	M	M	M	Kfar Melki Akkar	M	M	M	Kfar Noun	ML	M	M
Kfarharra	M	M	M	Khalsa	M	M	M	Kharnoubet Akkar	M	M	M

Khirbet Daoud Aakkar	M	M	M	Khirbet El Remmane	M	M	M	Khirbet Shar	M	M	M
Khoreybet El-Jindi	M	M	M	Khreibet Aakkar	ML	M	M	Kneisset Aakkar	M	M	M
Kneisset Hnaider	M	M	MH	Knisse	M	M	M	Kroum El-Aarab	M	M	M
Kwachra	M	M	M	Kweykhath	M	M	M	Machta Hammoud	M	M	MH
Majdala	M	M	M	Majdel Akkar	M	M	M	Mar Touma	M	M	M
Marlaya Melhem	M	M	M	Mashha	M	M	M	Massoudiye	M	M	M
Mazraat Beit Ghattas	M	M	M	Mazraat En-Nahriye	M	M	M	Mechmech	L	M	M
Memneh	L	L	M	Mhammara	M	M	M	Mighraq Aakkar	M	M	M
Minyara	M	M	M	Moqayteh	M	M	M	Mounjez	ML	M	M
Msalla	M	M	M	Mzeihmeh	M	M	M	Nfaisch	M	M	M
Noura Et-Tahta	ML	M	M	Ouadi El-Haour	M	M	M	Ouadi El-Jamous	M	M	M
Ouyoun El-Ghizlane	M	M	M	Qaabarine	M	M	M	Qabaait	L	M	M
Qachlaq	M	M	M	Qantara Aakkar	M	M	M	Qarha Aakkar	M	M	MH
Qarqaf	M	M	M	Qboula	M	M	M	Qleiaat Aakkar	M	M	M
Qloud El-Baqie	M	M	M	Qobaiyat Aakkar	ML	M	M	Qobbat Chamrat	M	M	M
Qorayat	ML	M	M	Qornet Aakkar	ML	M	M	Qsair Aakkar	M	M	M
Rahbe	ML	M	M	Rihaniyet Aakkar	M	M	M	Rmah	M	M	M
Rmoul	M	M	M	Saadine	M	M	M	Sadaqa	M	M	M
Saidnaya	M	M	M	Sammouniye	M	M	M	Sayssouq	M	M	M
Semmaqiye	M	M	M	Semmaqli	M	M	M	Sfinet El-Dreib	M	M	M
Sfinet El-Qaitaa	ML	M	M	Sindyanet Zeidane	ML	M	M	Souaisset Aakkar	M	M	M
Srar	M	M	M	Tal Abbas El Gharby	M	M	M	Tal Abbas El-Charqy	M	M	M
Tal Biret	M	M	M	Tal Hmayra	M	M	M	Tal Maayan Tal Kiri	M	M	M
Tal Sibel	M	M	M	Tallet Chattaha	M	M	M	Tikrit	ML	M	M
Tleil	M	M	M	Tshea	L	ML	M	Zawarib	M	M	M
Zouq El Hosniyeh	M	M	M	Zouq El-Haddara	M	M	M	Zouq El-Hbalsa	M	M	M
Zouq El-Moqachrine	M	M	M								

Sud

Sour

Municipality	28-Feb	01-Mar	02-Mar	Municipality	28-Feb	01-Mar	02-Mar	Municipality	28-Feb	01-Mar	02-Mar
Aaiyeh	M	M	M	Aalma El-Chaab	L	M	M	Aaytit	M	M	M
Abbassiyeh Sour	M	M	M	Abou Chech	ML	M	M	Ain Abou Abdallah	M	M	M
Ain Baal	M	M	M	Arzoun	M	M	M	Aziyeh	L	M	M
Baflaya	M	M	M	Barich	M	M	M	Batouliyeh	M	M	M
Bayad	M	M	M	Bazouriyeh	M	M	M	Bediass	M	M	M
Bestiyat	M	M	M	Borj El Chemali	M	M	M	Borj En-Naqoura	ML	M	M
Borj Rahhal	M	M	M	Boustane	ML	M	M	Btaychiyeh	ML	M	M
Chaaitiye	M	M	M	Chameh	L	M	M	Chehabiye	M	M	M
Chehour	L	M	M	Chihine	ML	M	M	Debaal Sour	M	M	M
Deir Amess	ML	M	M	Deir Kifa	M	M	M	Deir Qanoun El-Ain	M	M	M
Deir Qanoun El-Naher	M	M	M	Derdghaiya	M	M	M	Dhayra	ML	M	M
Halloussiyeh	M	M	M	Hamoul	L	M	M	Hanaouey	M	M	M
Henniye	M	M	M	Hmairi Sour	M	M	M	Iskandarouna Sour	L	M	M
Jbal El Botom	ML	M	M	Jebbin	ML	M	M	Jennata	M	M	M
Jijim	L	M	M	Jouaiya	M	M	M	Kneisset Sour	M	M	M

Maarake	M	M	M	Maaroub	M	M	M	Majadel	M	M	M
Majdalzoun	ML	M	M	Mansouri Sour	M	M	M	Marnba	L	M	M
Marouahine	ML	M	M	Mazraat El-Zalloutiy	ML	M	M	Mazraat Mechref	M	M	M
Mazraat Tayr Semhat	L	M	M	Mheilib	M	M	M	Neffakhiyeh	M	M	M
Niha Sour	M	M	M	Ouadi Jilo	M	M	M	Qana	M	M	M
Qolaileh Sour	M	M	M	Rechknayan	ML	M	M	Rmadiyah	M	M	M
Selha Sour	M	M	M	Siddiqine	M	M	M	Sour	M	M	M
Srifa	M	M	M	Tayr Debbe	M	M	M	Tayr Felsay	M	M	M
Tayr Harfa	ML	M	M	Touayri	ML	M	M	Toura	M	M	M
Yanouh Sour	M	M	M	Yarine	ML	M	M	Zebqine	L	M	M

Saida

Municipality	28-Feb	01-Mar	02-Mar	Municipality	28-Feb	01-Mar	02-Mar	Municipality	28-Feb	01-Mar	02-Mar
Aanqoun	M	M	M	Aaqtanit	M	M	M	Aarab Ej-Jall	M	M	M
Aarab Tabbaya	M	M	M	Abra Saida	M	M	M	Adloun	M	M	M
Adousiyeh	M	M	M	Ain-El-Deleb	M	M	M	Arzai	M	M	M
Babliyah	M	M	M	Barty	M	M	M	Bissariyeh	M	M	M
Bnaafoul	M	M	M	Bqosta	M	M	M	Bramiy	M	M	M
Daoudiyeh	M	M	M	Dareb El-Sim	M	M	M	Erkay	M	M	M
Ghassanieh	M	M	M	Ghazieh	M	M	M	Hajjeh	M	M	M
Haret Saida	M	M	M	Hartiyeh	M	M	M	Hlaliye Saida	M	M	M
Insariyat	M	M	M	Jazira Saida	M	M	M	Kafar Bit	M	M	M
Kaoutariyet El-Siyad	M	M	M	Kfar Chellal	M	M	M	Kfar Hatta Saida	M	M	M
Kfar Milke Saida	M	M	M	Khartoum	M	M	M	Khaziz	M	M	M
Khirbet Ed-Douair Sa	M	M	M	Khirbet El-Bassal	M	M	M	Khrayeb Saida	M	M	M
Loubieh	M	M	M	Maghdouche	M	M	M	Majdelyoun	M	M	M
Matariyet El-Choumar	M	M	M	Matayriyeh	M	M	M	Mazraat 'Mseileh	M	M	M
Mazraat 'Snaiber	M	M	M	Mazraat Aarab Soukka	M	M	M	Mazraat Deir Taqla	M	M	M
Mazraat El Yahoudiye	M	M	M	Mazraat El-Housseini	M	M	M	Mazraat El-Mhaydaleh	M	M	M
Mazraat El-Ouasta	M	M	M	Mazraat Jamjim	M	M	M	Mazraat Kaoutariyet	M	M	M
Mazraat Kfar Badda	M	M	M	Mazraat Oussamiyat	M	M	M	Mazraat Sari	M	M	M
Mazraat Sinai	M	M	M	Meemariyeh	M	M	M	Merouaniyeh	M	M	M
Miyeh ou Miyeh	M	M	M	Najjariyeh	M	M	M	Qaaqaiyat El-Snaouba	M	M	M
Qnarit	M	M	M	Qraiye Saida	M	M	M	Saida Ed-Dekermane	M	M	M
Saida El-Oustani	M	M	M	Saida El-Qadimeh	M	M	M	Saida Kefraya	M	M	M
Saksakiyeh	M	M	M	Salhieh Saida	M	M	M	Sarafand	M	M	M
Sfenta	ML	M	M	Tafahta	M	M	M	Tanbourit	M	M	M
Tebna	M	M	M	Zaghdraiya	M	M	M	Zeita	M	M	M
Zrariyeh	M	M	M								

Jezzine

Municipality	28-Feb	01-Mar	02-Mar	Municipality	28-Feb	01-Mar	02-Mar	Municipality	28-Feb	01-Mar	02-Mar
Ain El-Mir (El Estab	M	M	M	Anane	L	M	M	Aramta	ML	M	M
Ariya	ML	M	M	Aychiyeh	ML	M	M	Azour	L	M	M
Baba	L	M	M	Bayssour Jezzine	M	M	M	Benoueteh Jezzine	ML	M	M
Bhannine	ML	M	M	Bisri	L	M	M	Bkassine	L	M	M
Bouslaya	L	M	M	Btedine El-Leqech	L	M	M	Chbail	L	M	M
Choualiq Jezzine	M	M	M	Dahr Ed-Deir	L	M	M	Deir El Qattine	L	M	M

Demachqiyeh	M	M	M	Ghabbatiyeh	L	M	M	Harf Jezzine	L	M	M
Hassaniyeh	M	M	M	Haytouleh	ML	M	M	Haytura	L	M	M
Hidab	ML	M	M	Homsiyeh	L	M	M	Jabal Toura	ML	M	M
Jarmaq	M	M	M	Jensnaya	M	M	M	Jernaya	M	M	M
Jezzine	ML	M	M	Karkha	ML	M	M	Kfar Falous	ML	M	M
Kfar Houna	ML	M	M	Kfar Jarrah	M	M	M	Lebaa	M	M	M
Louayzet Jezzine	L	M	M	Machmouche	L	M	M	Mahmoudiyeh Jezzine	M	M	M
Maknounye Jezzine	L	M	M	Maraat Ouazaiyeh	M	M	M	Mazraat Daraya	ML	M	M
Mazraat El-Aarqoub	ML	M	M	Mazraat El-Mathane	L	M	M	Mazraat El-Rahbane	L	M	M
Mazraat Khallet Khaz	L	M	M	Mazraat Louzid (Loua	L	M	M	Mazraat Qrouh	ML	M	M
Mazraat Tamra	M	M	M	Mazraat Zighrine Jez	ML	M	M	Mazraat	L	M	M
Mharbiyeh	M	M	M	Midane Jezzine	L	M	M	Mjeydel Jezzine	M	M	M
Mlikh	L	M	M	Mrah El-Hbasse	M	M	M	Ouadi Baanqoudaine	M	M	M
Ouadi El-Laymoun	M	M	M	Ouardiyeh	L	M	M	Qabaa Jezzine	L	M	M
Qatrani	ML	M	M	Qaytouleh	L	M	M	Qtaleh Jezzine	L	M	M
Rihane Jezzine	ML	M	M	Rimat	L	M	M	Roum	L	M	M
Roummanet	ML	M	M	Sabbah	L	M	M	Saydoun	L	M	M
Sfaray	L	M	M	Snaya	L	M	M	Sojoud	ML	M	M
Srayri	ML	M	M	Taaid	L	M	M	Wadi Jezzine	L	M	M
Zhalta	L	M	M								

Bekaa

West Bekaa

Municipality	28-Feb	01-Mar	02-Mar	Municipality	28-Feb	01-Mar	02-Mar	Municipality	28-Feb	01-Mar	02-Mar
Aammq BG	ML	M	M	Ain El Tineh BG	ML	M	M	Ain Zebdeh	ML	M	M
Ana	L	M	M	Aytanit	L	M	M	Baaloul BG	ML	M	M
Bab Mareh	M	M	M	Chouberqiye Aammq	M	M	M	Dakoue	M	M	MH
Deir Ain El-Jaouze	ML	M	M	Deir Tahniche	ML	M	M	Ghaza	M	M	M
Harime El-Soughra	ML	M	MH	Hoch Harimeh	M	M	MH	Jazira BG	M	M	M
Jib Jennine	M	M	M	Kamed-El-Laouz	M	M	M	Kefraya BG	L	M	M
Khiara El Atika	M	M	M	Khiara	M	M	M	Khirket Qanafar	ML	M	M
Lala	ML	M	M	Lebbaya BG	ML	M	M	Loussa	M	M	M
Machghara	ML	M	M	Manara (Hammara) BG	ML	M	M	Mansoura BG	ML	M	M
Marej BG	ML	M	M	Maydoun	ML	M	M	Ouaqf BG	ML	M	M
Qaraaoun	M	M	M	Qelya	M	M	M	Raouda (Istabel)	ML	M	MH
Saghbine	ML	M	M	Sohmor	M	M	M	Soltan Yacoub el Ara	M	M	MH
Souairy	M	M	MH	Sultan Yaacoub	M	M	M	Tal Znoub	ML	M	M
Yehmor BG	M	M	M	Zilaya	ML	M	M				

Zahle

Municipality	28-Feb	01-Mar	02-Mar	Municipality	28-Feb	01-Mar	02-Mar	Municipality	28-Feb	01-Mar	02-Mar
Aanjar (Haouch Mouss	ML	M	MH	Ablah	ML	M	M	Ain Kfarzabad	ML	M	M
Ali-El-Nahri	ML	M	M	Bar Elias	ML	M	M	Bouarej	ML	M	M
Cheberqiyet Tabet	ML	M	M	Chtaura	ML	M	M	Deir El Ghazal	ML	M	M
Delhamiyet Zahle	ML	M	M	Ferzol	ML	M	M	Haouch El-Ghanam	ML	M	M
Haouch Es-Siyadeh	ML	M	M	Haouch Hala	ML	M	M	Haouch Mandara	ML	M	M

Haouch Qayssar	ML	M	M	Hezerta	ML	M	M	Hosh Moussa	ML	M	M
Jdita	ML	M	M	Kfarzabad	ML	M	M	Ksara	ML	M	M
Majdel Aanjar	ML	M	MH	Makssi	ML	M	M	Massa	ML	M	M
Mazraat Er-Remtaniye	ML	M	M	Mrayjat Zahle	ML	M	M	Mzaraa Zahle	ML	M	M
Nabi Ayla	ML	M	M	Nasriyet Rizk	ML	M	M	Nasriyet Zahle	ML	M	M
Niha Zahle	ML	M	M	Ouadi Ed-Deloum	ML	M	M	Ouadi El-Arayech	ML	M	M
Qaa El Rim	ML	M	M	Qab Elias	ML	M	M	Qousaya	ML	M	M
Rhit	ML	M	M	Riyak	ML	M	M	Saadnayel	ML	M	M
Taal El-Akhdar	ML	M	M	Taalbeya	ML	M	M	Taanayel	ML	M	M
Talamara	ML	M	M	Tcheflik Edde Haouch	ML	M	M	Tcheflik Qiqano	ML	M	M
Terbol Zahle	ML	M	M	Touaite Zahle	ML	M	M	Zahle Aradi	ML	M	M
Zahle El-Berbara	ML	M	M	Zahle El-Maallaqa	ML	M	M	Zahle El-Midane	ML	M	M
Zahle Er-Rassiye	ML	M	M	Zahle Haouch El-Ouma	ML	M	M	Zahle Haouch El-Ouma	ML	M	M
Zahle Haouch Ez-Zara	ML	M	M	Zahle Maalaqa Aradi	ML	M	M	Zahle Mar Antonios	ML	M	M
Zahle Mar Elias	ML	M	M	Zahle Mar Gerios	ML	M	M	Zahle Saydet En-Naja	ML	M	M
Zebdoul	ML	M	M								

Rachaiya

Municipality	28-Feb	01-Mar	02-Mar	Municipality	28-Feb	01-Mar	02-Mar	Municipality	28-Feb	01-Mar	02-Mar
Ain Arab Rachaiya	ML	M	M	Ain Ata	ML	M	M	Ain Harche	ML	M	M
Aqabe Rachaya	M	M	M	Ayha	ML	M	M	Ayta El Fokhar	M	M	M
Bakifa Rachaya	M	M	M	Bakka	M	M	MH	Beit Lahya	M	M	M
Bireh Rachaiya	M	M	M	Daher El Ahmar	ML	M	M	Deir El-Achayer	ML	M	M
Heloua Rachaiya	ML	M	MH	Hoch El Qannabeh Rac	ML	M	M	Kaoukaba Bou Arab	ML	M	M
Kfar Danis	M	M	M	Kfar Mechki	M	M	M	Kfar Qouq	ML	M	M
Kherbet Rouha	ML	M	M	Majdel Balhiss	M	M	M	Mdoukha	M	M	M
Mhaydseh Rachaiya	ML	M	M	Nabi Safa	ML	M	M	Rachaiya	ML	M	M
Rafid Rachaiya	ML	M	M	Selsata (Mazraat Dei	VL	M	M	Tannoura	M	M	M
Yanta	ML	M	MH								

Beyrouth

Beyrouth

Municipality	28-Feb	01-Mar	02-Mar	Municipality	28-Feb	01-Mar	02-Mar	Municipality	28-Feb	01-Mar	02-Mar
Achrafieh	M	M	M	Ain el-Mreisse	M	M	M	Bachoura	M	M	M
Beirut Central Distr	M	M	M	Marfai	M	M	M	Mazraa	M	M	M
Medaouar	M	M	M	Minet el-Hosn	M	M	M	Mwssaitbeh	M	M	M
Ras Beirut	M	M	M	Rmeil	M	M	M	Saifi	M	M	M
Zqaq el-Blat	M	M	M								