

Lebanon Fire Risk Bulletin



CIVIL DEDEFENCE

Refer to cadast table condition.

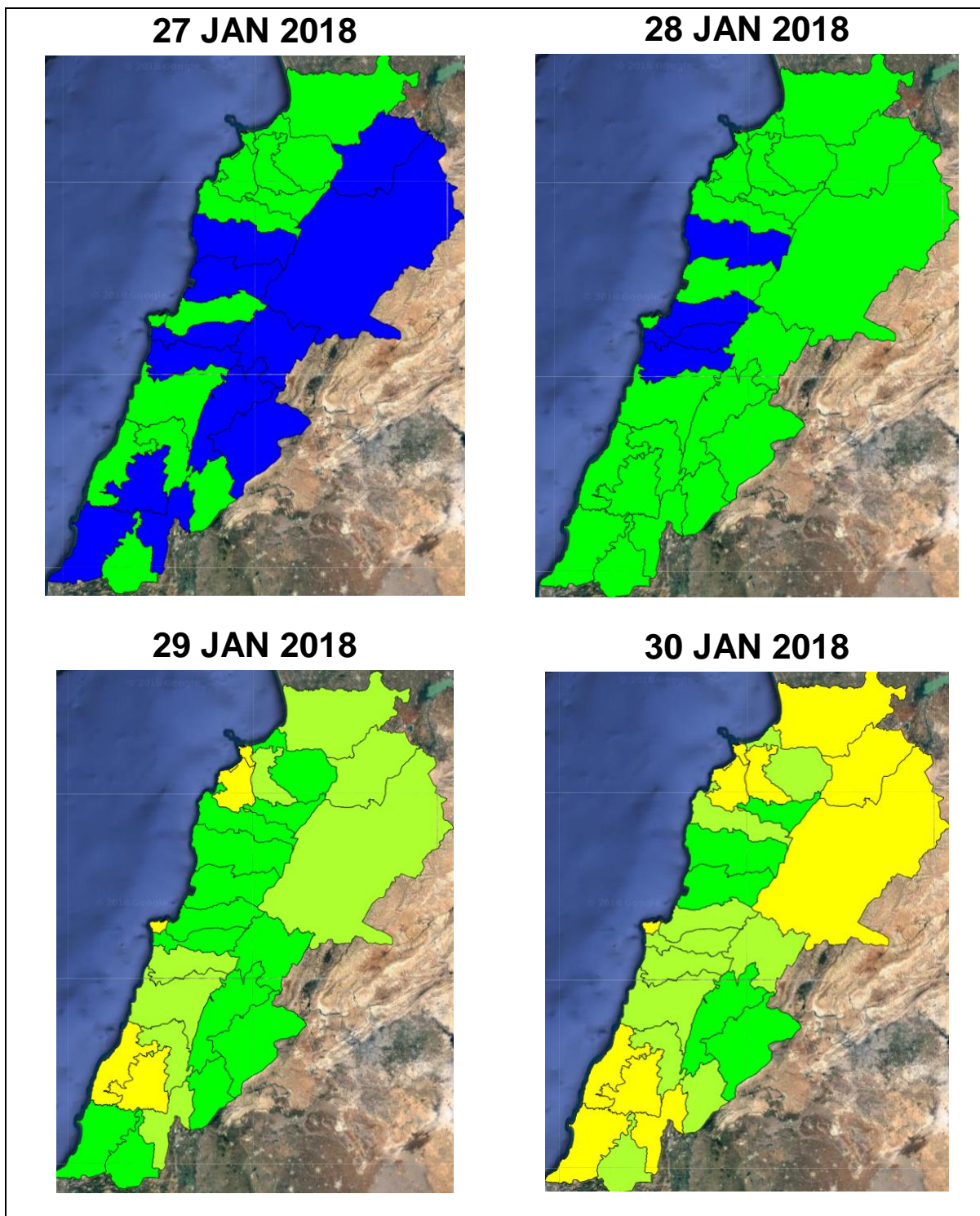
Please note that the indicated temperature is at 2 meters height from the ground.

General description of potential fire risk situation

Symbol	Level of risk	Meaning and actions
VL	Very low	Very low fire risk. Controlled burning operations can be hardly executed due to high fuel moisture content. Normally wildfires self-extinguish.
L	Low	Low fire risk. Controlled burning operations can be executed with a reasonable degree of safety.
ML	Medium low	Medium-low fire risk. Controlled burning operations can be executed in safety conditions. All the fires need to be extinguished.
M	Medium	Medium fire risk. Controlled burning operations would be avoided. All the fires need to be very well extinguished.
MH	Medium high	Controlled burning is not recommended. Open flame will start fires. Cured grasslands and forest litter will burn readily. Spread is moderate in forests and fast in exposed areas. Patrolling and monitoring is suggested. Fight fires with direct attack and all available resources.
H	High	Ignition can occur easily with fast spread in grass, shrubs and forests. Fires will be very hot with crowning and short to medium spotting. Direct attack on the head may not be possible requiring indirect methods on flanks. Patrolling and monitoring the territory is highly suggested.
E	Extreme	Ignition can occur also from sparks. Fires will be extremely hot with fast rate of spread. Control may not be possible during day due to long range spotting and crowning. Suppression forces should limit efforts to limiting lateral spread. Damage potential total. Patrolling and monitoring the territory is highly suggested.

Beirut, 28 January 2018

FIRE RISK INDEX

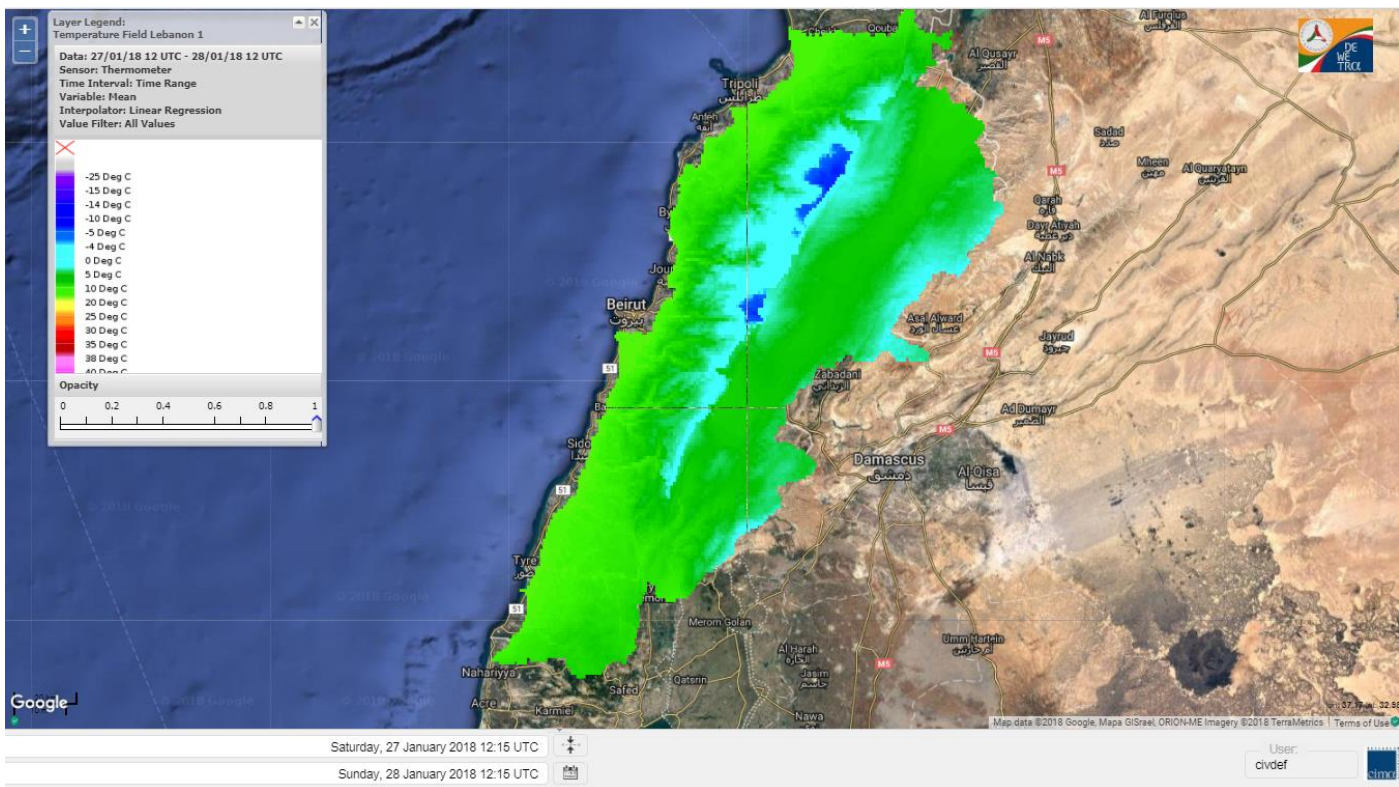


Layer Legend:
Lebanon Wildfire Risk Index 1

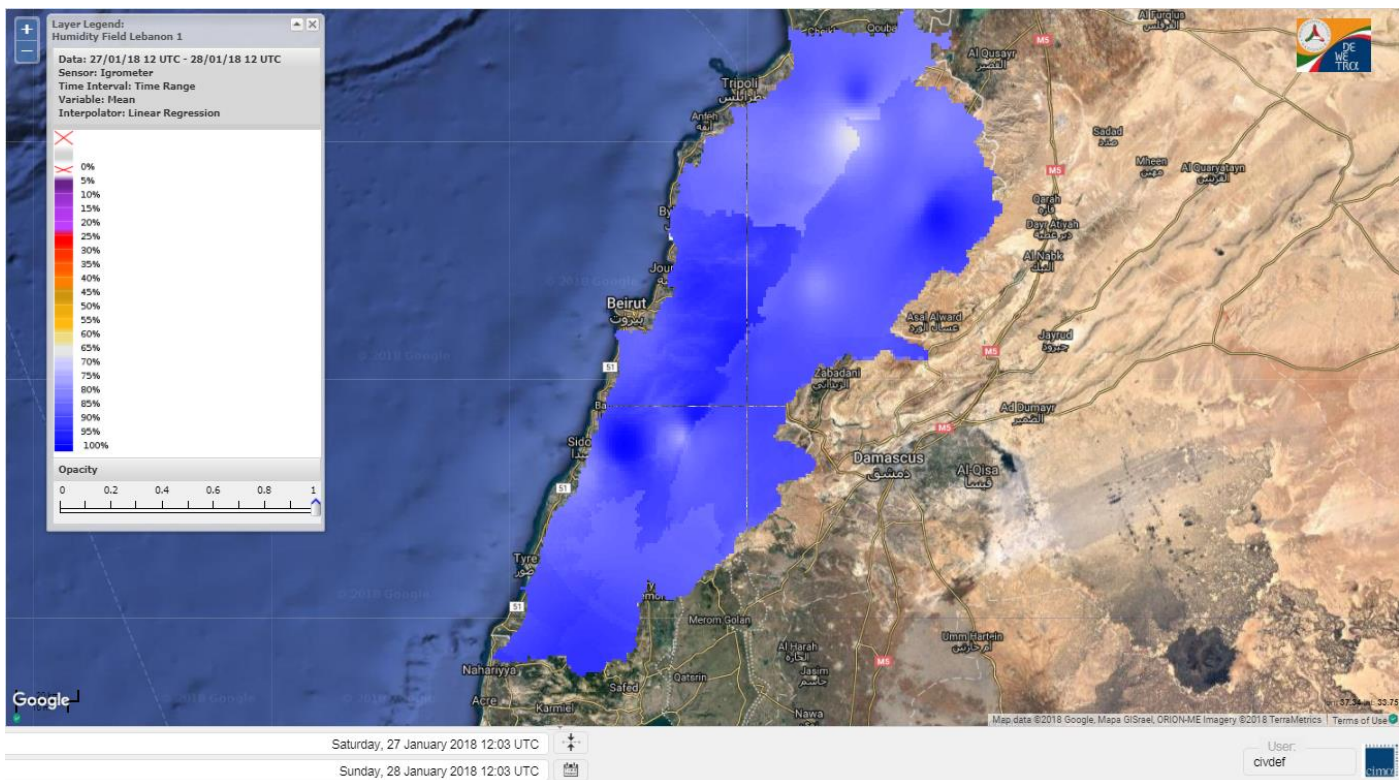
Data: Run: 28/01/2018 00:00. Forecast for 28
Model: RISICO for the Republic of Lebanon
Variable: Fire Weather Index
Spatial Resolution: Caza

- VERY LOW
- LOW
- MEDIUM-LOW
- MEDIUM
- MEDIUM-HIGH
- HIGH
- EXTREME

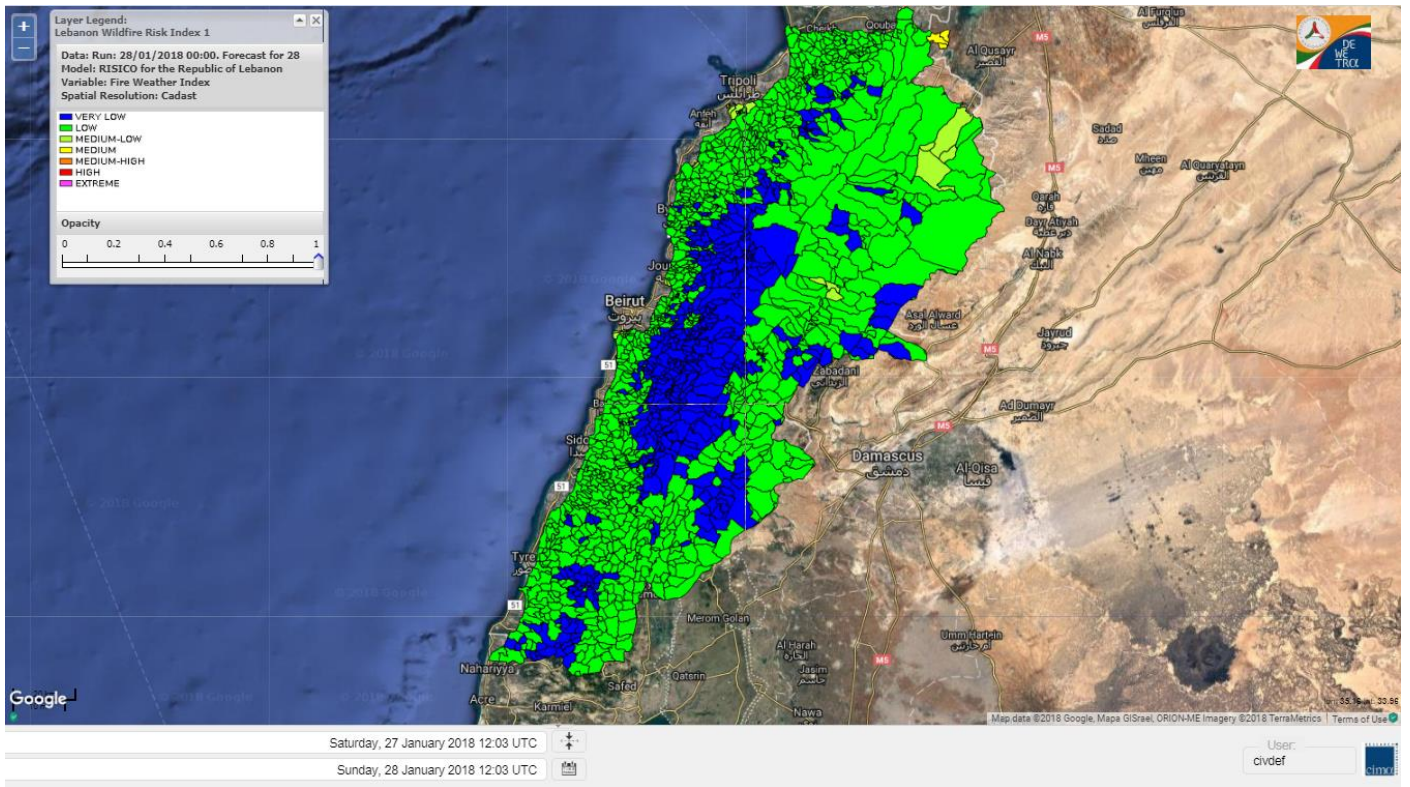
Lebanon temperature for 28 JAN 2018



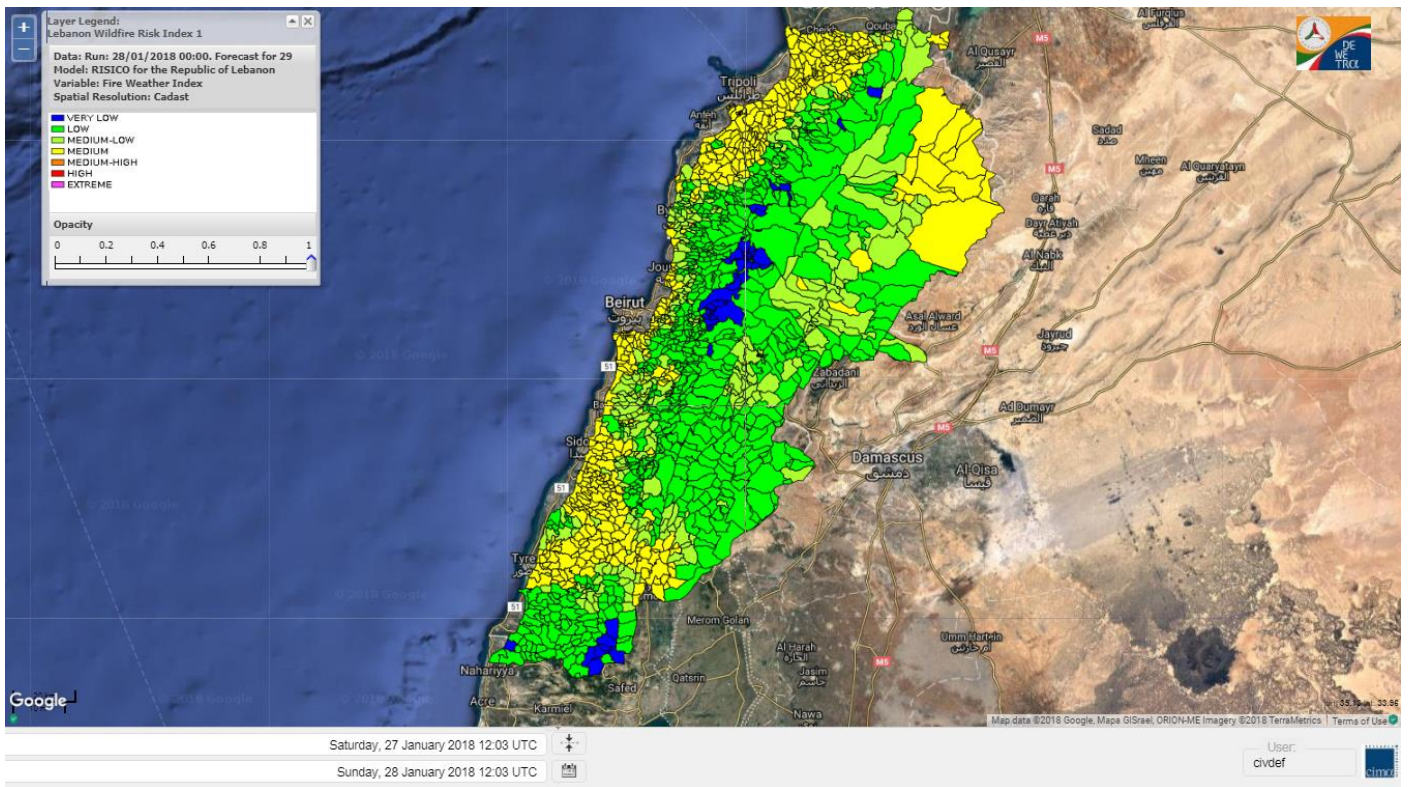
Lebanon humidity for 28 JAN 2018



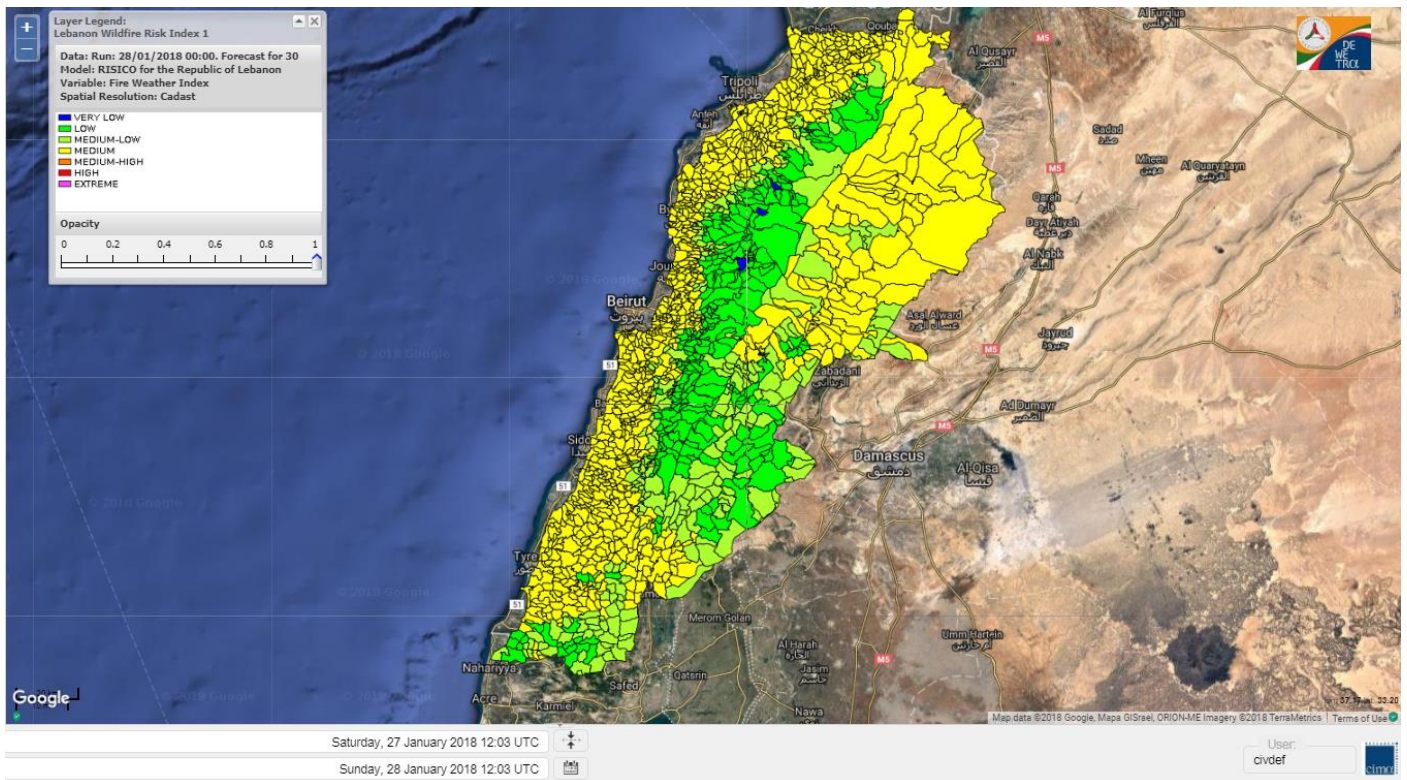
Lebanon for 28 JAN 2018



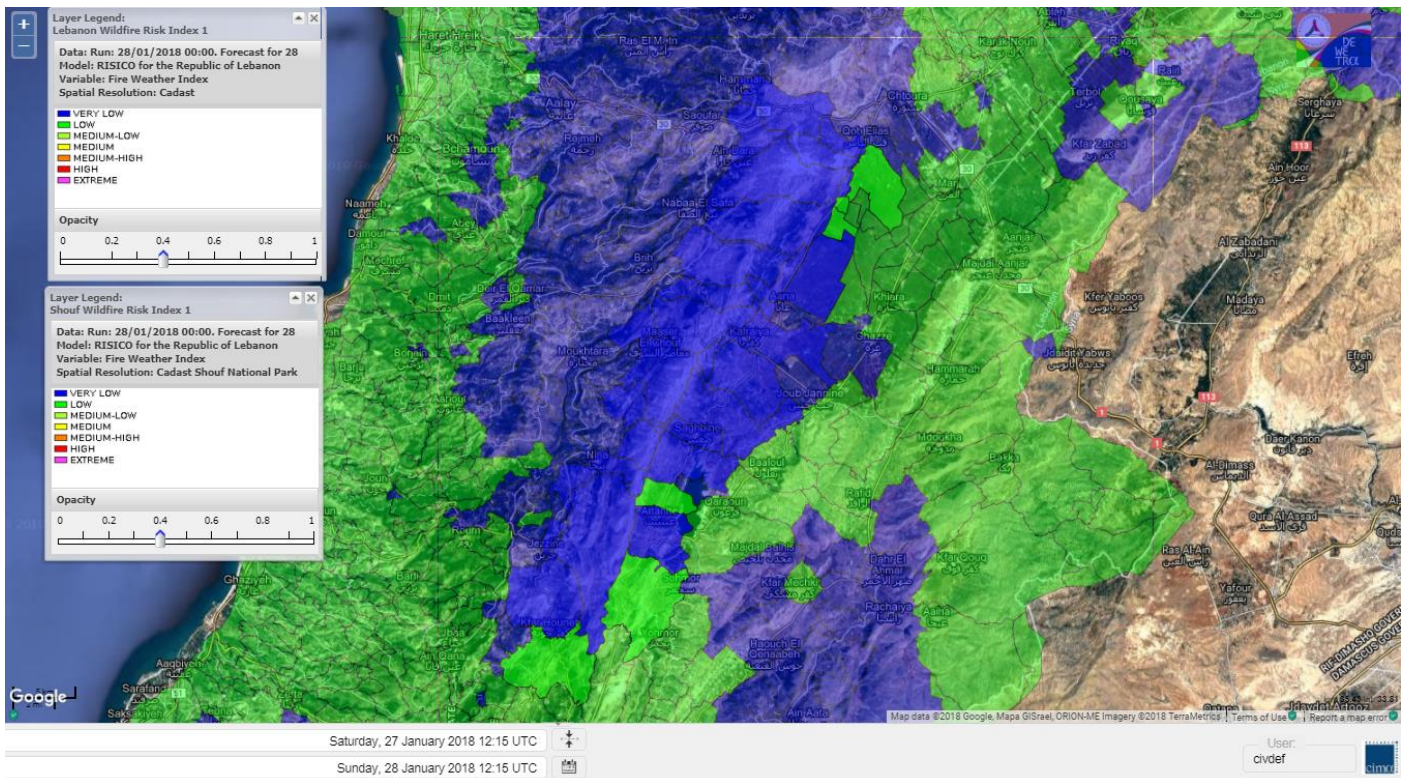
Lebanon for 29 JAN 2018



Lebanon for 30 JAN 2018



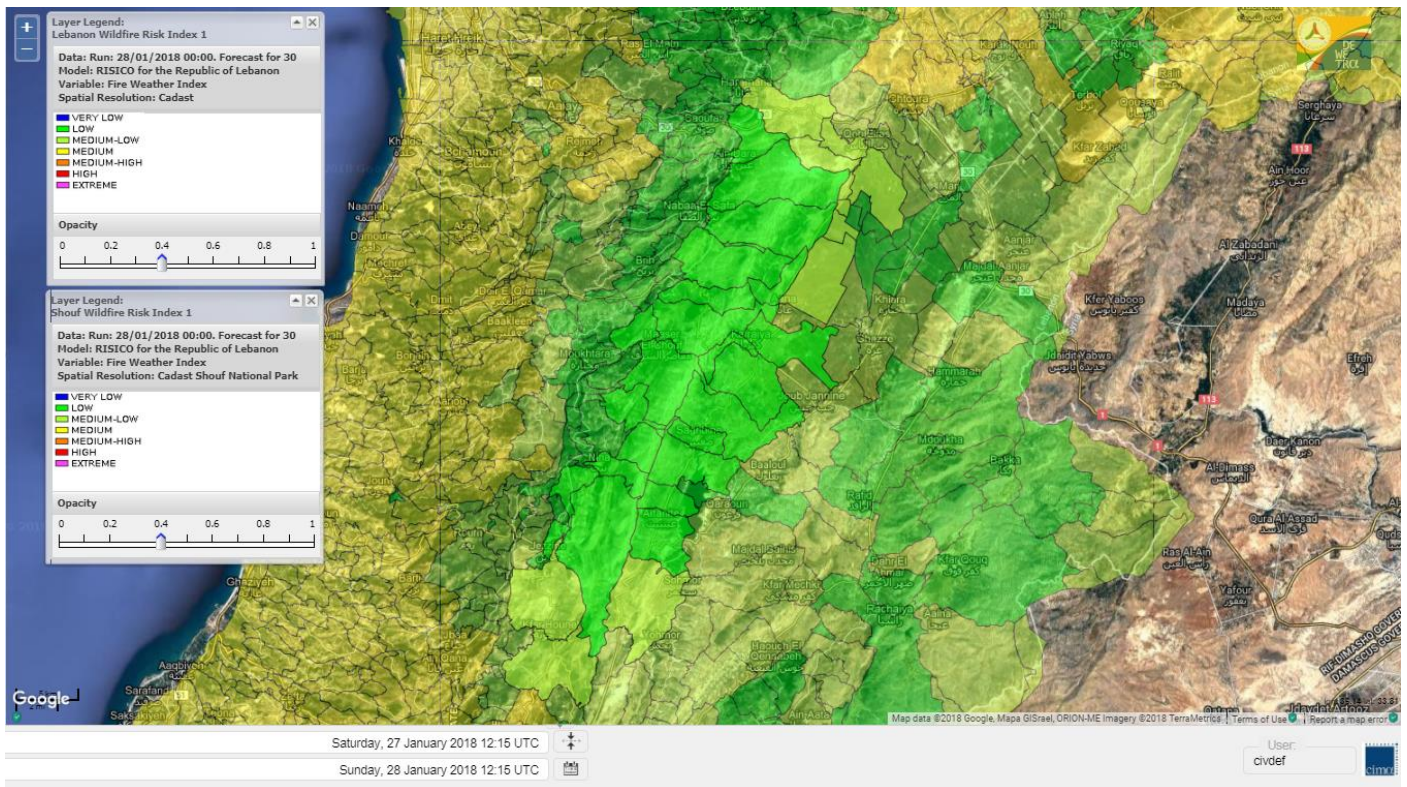
Shouf Biosphere Reserve Forecast for 28 JAN 2018



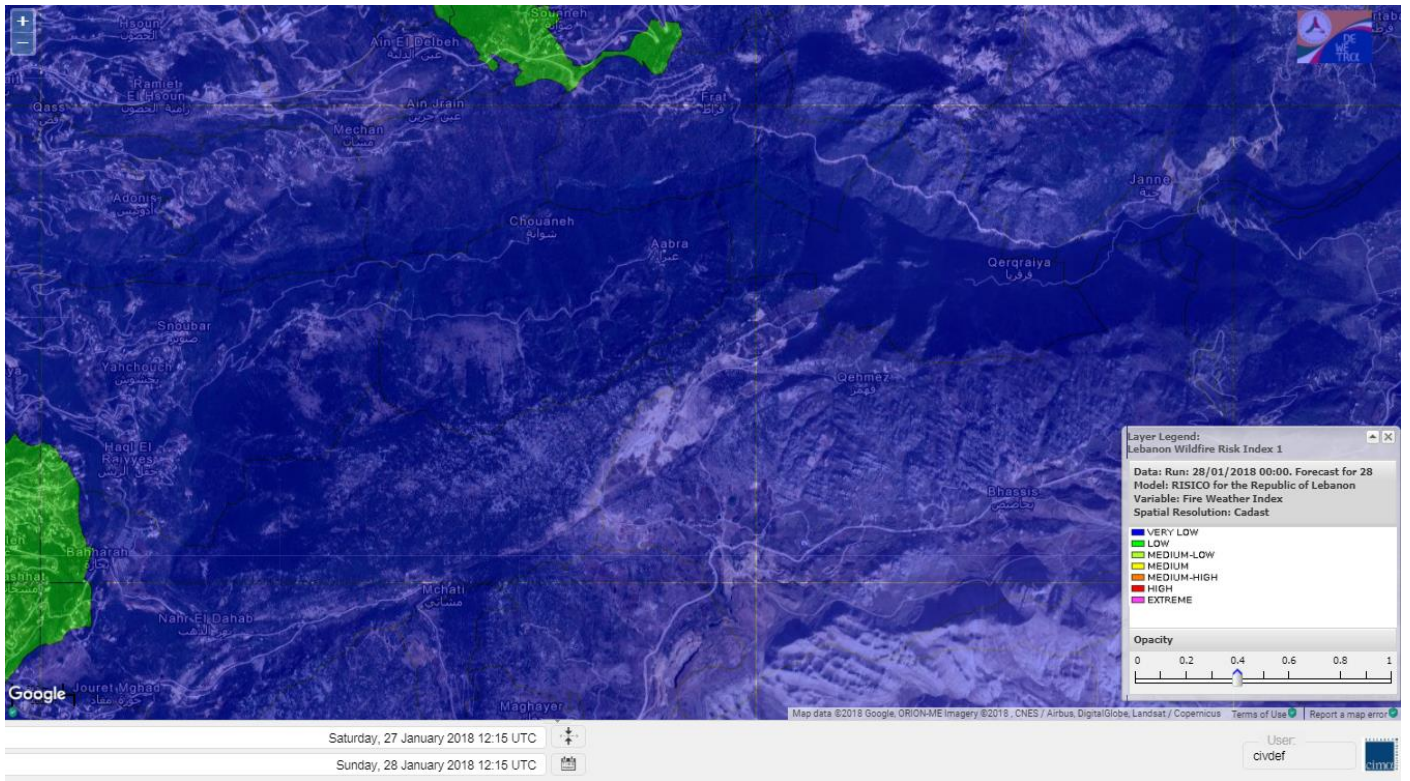
Shouf Biosphere Reserve Forecast for 29 JAN 2018



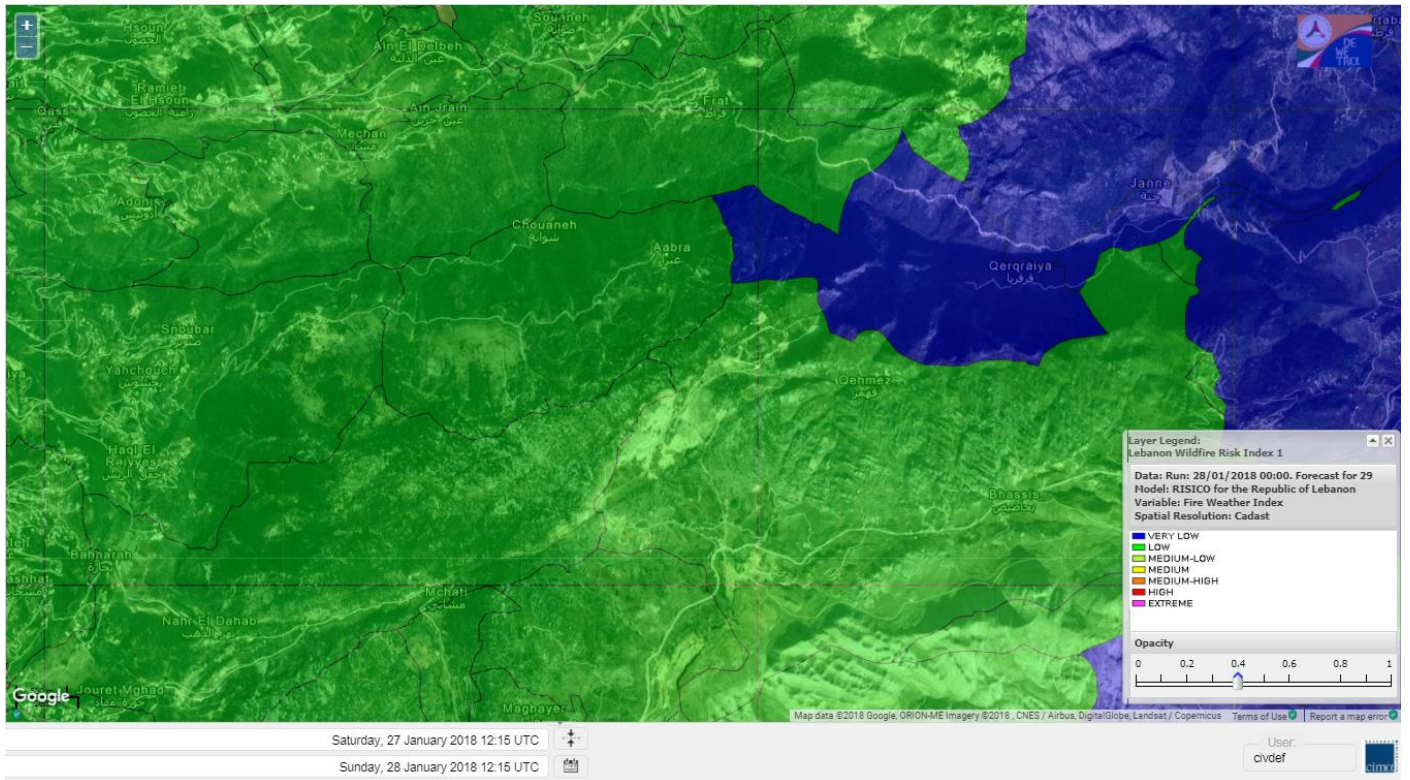
Shouf Biosphere Reserve Forecast for 30 JAN 2018



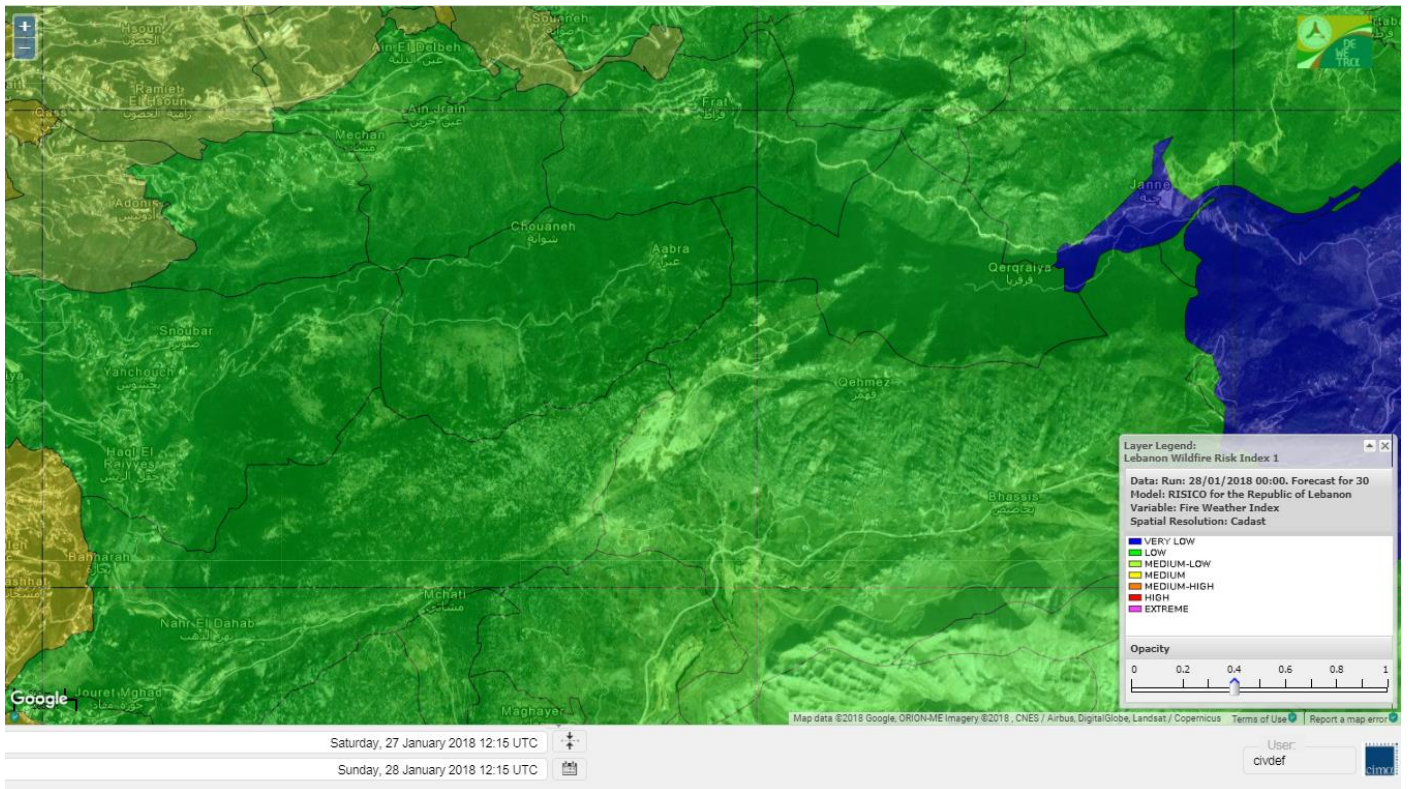
Jabal Moussa Reserve Forecast for 28 JAN 2018



Jabal Moussa Reserve Forecast for 29 JAN 2018



Jabal Moussa Reserve Forecast for 30 JAN 2018



Nord

Koura

Municipality	28-Jan	29-Jan	30-Jan	Municipality	28-Jan	29-Jan	30-Jan	Municipality	28-Jan	29-Jan	30-Jan
Aaba	L	M	M	Afsaddiq	L	M	M	Ain Ekrine	L	M	M
Amioun	L	M	M	Anfeh	L	M	M	Badbhoun	L	M	M
Barghoun	L	M	M	Barsa	L	M	M	Batroumine	L	M	M
Bdebba	L	M	M	Bechmizine	L	M	M	Bednaye El-Koura	L	M	M
Bhabbouch El-Koura	L	M	M	Bkeftine	L	M	M	Bnehran	L	ML	M
Bqaiia El-Koura	L	M	M	Bsarma	L	M	M	Btaaboura	L	M	M
Bterram	L	M	M	Btouratij	L	M	M	Bziza	L	M	M
Dar Beechtar	L	M	M	Dar Chmezzine	L	M	M	Deddeh	L	M	M
Deir El-Balamand	L	L	M	Fih	L	M	M	Hraiche	L	M	M
Ijdaabrine	L	ML	M	Kaftoun	L	M	M	Kefraya El-Koura	L	M	M
Kfarakka	L	M	M	Kfarhata	L	M	M	Kfarhazir	L	M	M
Kfarkahel	L	M	M	Kfarsaroun	L	M	M	Kosba	L	M	M
Mejdel el-Koura	L	ML	M	Nakhle	L	M	M	Qalhat	L	L	M
Ras Masqa	L	M	M	Rechdibbine	L	M	M	Zakroun	L	M	M
Zgharta El-Mtaouile	L	L	ML								

Bcharre

Municipality	28-Jan	29-Jan	30-Jan	Municipality	28-Jan	29-Jan	30-Jan	Municipality	28-Jan	29-Jan	30-Jan
Aabdine	L	L	ML	Bane	L	L	L	Barhelioun	L	L	ML
Bazouone	VL	VL	L	Becharre	L	L	ML	Beit Menzer	VL	L	L
Billa	L	L	L	Blaouza	VL	L	L	Bqaa Kafra	L	L	L
Bqerqacha	L	L	L	Breissat	VL	L	L	Dimane	VL	L	L
Hadath El Jobbeh	VL	L	L	Hadchit	VL	VL	L	Hasroun	L	L	L
Mazraat Aassaf	VL	L	L	Mazraat Bani Saab	L	L	L	Mchaa El-Jobbeh	L	L	L
Metrit	L	ML	ML	Moghr El-Ahoual	L	ML	M	Ouadi Qannoubine	VL	VL	VL
Qanat	VL	L	L	Qnayer	VL	L	L	Tourza	VL	L	ML

Batroun

Municipality	28-Jan	29-Jan	30-Jan	Municipality	28-Jan	29-Jan	30-Jan	Municipality	28-Jan	29-Jan	30-Jan
Aabrine	L	L	M	Aalali	L	ML	ML	Aartiz	L	L	M
Abdelli	VL	L	M	Ajdabra	L	L	M	Assia	L	L	ML
Basbina	L	M	M	Batroun	L	M	M	Bcheleh	VL	L	L
Bechtoudar	L	L	ML	Beit Chlala	L	L	L	Beit Kassab	VL	L	L
Bijdarfil	L	M	M	Bqesmaya	L	L	M	Chatine	VL	L	L
Chebtin	L	L	ML	Chekka	L	M	M	Daael	L	L	M
Dahr Abi Yaghi	VL	L	ML	Daraya El-Batroun	L	M	M	Deir Billa	L	L	ML
Deir Kfifane	L	ML	M	Deir Mar Youhanna EL	L	L	L	Deir Mar Youssef Jra	L	L	M
Douma	VL	L	L	Douq	L	L	ML	Eddeh El-Batroun	L	ML	M
Ftahat El-Batroun	L	L	M	Ghouma	L	ML	M	Hadtoun	L	L	ML
Hamat	L	ML	M	Harbouna	L	L	M	Hardine	VL	L	L
Helta	L	L	M	Hery	ML	M	M	Jebbla	L	L	M
Jrabta El-Batroun	L	ML	M	Jrane El-Batroun	L	M	M	Kfar Aabida	L	ML	M
Kfar Halda	L	L	ML	Kfarb Shlaimane	VL	L	M	Kfarhatna	L	L	M
Kfarhay	L	M	M	Kfarhelos	L	L	M	Kfifane	L	M	M

Kfour El Arabi	L	L	L	Koubba	L	M	M	Kour	L	ML	M
Mar Mama	VL	L	L	Masrah	VL	L	ML	Mehmarch	L	ML	ML
Mrah Chdid	L	L	M	Mrah El Ziyat	L	ML	M	Mrah El-Hajj	VL	L	ML
Nahle El-Batroun	L	ML	ML	Niha El-Batroun	L	L	L	Ouajh El-Hajjar	L	ML	M
Ouata Houb	VL	VL	VL	Qatnaaoun	L	ML	M	Racha	L	ML	ML
Rachana	L	L	M	Rachkida	L	ML	M	Ram El-Batroun	VL	L	L
Ras Nahhach	L	M	M	Selaata	L	M	M	Sghar	L	ML	M
Smar Jbayl	L	ML	M	Sourat El-Batroun	L	L	M	Tannourine El-Faouqa	L	L	L
Tannourine Et-Tahta	VL	VL	L	Thoum	L	ML	M	Toula El-Batroun	L	L	ML
Zan	L	ML	M								

Zgharta

Municipality	28-Jan	29-Jan	30-Jan	Municipality	28-Jan	29-Jan	30-Jan	Municipality	28-Jan	29-Jan	30-Jan
Aachach	L	M	M	Aalma	L	M	M	Aarde	L	M	M
Aintourine	L	ML	M	Arabet Qozhaya	L	L	L	Arde	L	M	M
Arjis	L	M	M	Asnoun	L	M	M	Ayto	L	L	ML
Basloukit	L	L	ML	Bchannine	L	M	M	Besebeel	L	M	M
Bhairret Toula	VL	L	L	Bnachee	L	M	M	Boussit	L	M	M
Danha	L	M	M	Daraiya Zgharta	L	M	M	Deir Jdeide	L	M	M
Ehden	L	L	L	Halan	L	M	M	Hariq Zgharta	L	M	M
Houakir	VL	ML	M	Hraiqis	L	M	M	laal	L	M	M
Ijbaa	L	ML	M	Karm Saddeh	L	L	ML	Kfarchakhna	L	M	M
Kfardlaqous	L	M	M	Kfarfou	L	M	M	Kfarhata Zgharta	L	M	M
Kfarhoura	L	M	M	Kfarsghab	L	L	L	Kfaryachit	L	M	M
Kfarzaina	L	M	M	Khaldiye	L	M	M	Mazraat Ajbeaa	L	M	M
Mazraat Et-Teffah	VL	L	M	Mazraat Jneid	VL	M	M	Mejdlaiya Zgharta	L	M	M
Merh Kfarsghab	L	M	M	Miryata	L	M	M	Miziara	L	L	M
Mzraat Kefraya	L	M	M	Qorah Bach	L	M	M	Rachiine	L	M	M
Ras Kifa	L	M	M	Sakhra	L	M	M	Sebhel Zgharta	L	M	M
Serhel	VL	L	L	Tallet Zgharta	L	M	M	Toula Zgharta	L	L	ML
Zgharta	L	M	M								

Minieh-Denniye

Municipality	28-Jan	29-Jan	30-Jan	Municipality	28-Jan	29-Jan	30-Jan	Municipality	28-Jan	29-Jan	30-Jan
Aasaymout	VL	L	M	Aaymar	L	ML	ML	Aazki	L	M	M
Ain El-Tineh-Miniyeh	VL	L	L	Assoun	L	ML	ML	Bakhaaoun	L	ML	ML
Bchennata	L	L	L	Bechehhara	VL	L	M	Beddawi	ML	M	M
Behouaita	VL	L	L	Beit El Foqss	VL	L	L	Beit Haouik	L	ML	M
Beit Zoud	L	L	M	Bekaasafrine	L	L	ML	Borj El Yahoudiyeh	L	M	M
Bqarsouna	VL	L	L	Btermaz	VL	L	M	Debaael	VL	L	M
Deir Ammar	L	M	M	Deir Nbouh	L	ML	M	Haouaret-Miniyeh	L	ML	M
Haql el Azimeh	VL	L	L	Harf El Siyad	L	L	L	Hazmiye-Miniyeh	VL	L	L
Izal	L	ML	M	Jarjour	VL	L	ML	Jayroun	L	L	ML
Kahf El-Malloul	L	L	M	Karm El-Moher	L	L	ML	Kfar Binine	L	L	L
Kfarchalane	L	ML	ML	Kfarhabou	L	M	M	Kharroub-Miniyeh	L	ML	M
Mazraat El-Kreme	VL	L	ML	Mazraat Ketrane	L	L	ML	Merkebta	L	M	M
Minyeh	L	M	M	Mrah El Sfirat	VL	L	L	Mrah Sraj	L	L	ML
Mrebbine	L	L	L	Nabi Youcheaa	L	M	M	Nemrine	L	L	L

Qarhaiya	L	ML	M	Qarne	VL	L	L	Qarsita	VL	L	L
Qattineh-Miniyeh	VL	L	L	Qemmamine	VL	VL	L	Qraine	VL	L	L
Raouda-Aadoua	L	M	M	Rihaniyet-Miniyeh	L	M	M	Sfireh	VL	L	L
Sir Ed-Danniyeh	VL	L	ML	Tarane	VL	L	M	Terbol-Miniyeh	L	M	M
Zaghartaghriane	L	ML	M	Zouq Bhannine	L	M	M				

Nabatiye

Nabatiye

Municipality	28-Jan	29-Jan	30-Jan	Municipality	28-Jan	29-Jan	30-Jan	Municipality	28-Jan	29-Jan	30-Jan
Aabba	L	M	M	Aazzi	L	M	M	Adchit El-Chqif	L	M	M
Ain Bou Swar	L	ML	M	Ain Kana	L	M	M	Ali El-TaHER	L	ML	M
Ansar	L	M	M	Arab Salim	L	M	M	Arnoun	L	M	M
Bfaroue	VL	ML	M	Breyqaah	L	M	M	Charqiyeh	L	M	M
Choukine	L	M	M	Deir El Zahrani	L	M	M	Doueir El-Nabatiyeh	L	M	M
Habbouch El-Nabatiye	L	M	M	Hamra El-Nabatiyeh	L	ML	ML	Harouf El-Nabatiyeh	L	M	M
Hmaile	L	M	M	Houmin El Faouqa	L	M	M	Houmin El Tahta	L	M	M
Jarjough	L	ML	M	Jbaah El-Nabatiyeh	L	L	M	Jebchit	L	M	M
Kfar Djal El-Nabatiy	L	M	M	Kfar Remmane	L	M	M	Kfar Sir	VL	M	M
Kfar Tebnit	L	M	M	Kfarfila	L	M	M	Kfour El-Nabatieh	L	M	M
Mayfadoun	L	M	M	Mazraat Bsaffour	VL	M	M	Mazraat Chalbaal	L	M	M
Mazraat Dmoul	L	M	M	Mazraat El Khreibeh	L	M	M	Mazraat El-Bayad El-	L	M	M
Mazraat Kfarjaouz	L	M	M	Mazraat Qalaat Meiss	L	M	M	Nabatiyeh El-Fawka	L	M	M
Nabatiyeh Et-Tahta	L	M	M	Namiriyyeh	L	M	M	Qaaqaaiyet El Jisr	L	ML	M
Qossaibeh El-Nabatiy	L	M	M	Roumine	L	M	M	Sarba El-Nabatieh	L	M	M
Sir El-Gharbiyeh	VL	M	M	Toul	L	M	M	Yehmor El-Nabatiyeh	L	ML	M
Zaoutar El Charkiyeh	L	ML	ML	Zaoutar El-Gharbiyeh	L	ML	ML	Zebdine El-Nabatiyeh	L	M	M
Zefta	VL	M	M								

Hasbaiya

Municipality	28-Jan	29-Jan	30-Jan	Municipality	28-Jan	29-Jan	30-Jan	Municipality	28-Jan	29-Jan	30-Jan
Ain Jarfa	VL	ML	M	Abou Qamha	L	M	M	Ain Qania	L	ML	M
Bourghos	L	ML	M	Chebaa	L	L	ML	Chouaya Hasbaya	L	L	ML
Dellafeh	L	ML	ML	Fardiss Hasbaiya	L	M	M	Hasbaya	L	ML	ML
Hbariyeh	L	ML	ML	Kaoukaba Hasbaiya	L	M	M	Kfar Chouba	L	L	M
Kfar Hamam	L	ML	M	Kfeir El-Zait	VL	L	L	Khalwat Hasbaya	VL	L	L
Khreibet Hasbaiya	L	M	M	Majidiyeh Hasbaiya	L	M	M	Marj Ez-Zhour (Haouc	VL	L	L
Meri	L	M	M	Mimass	L	L	ML	Rachaiya El-Fokhar	L	ML	M
Salaiyeb	L	M	M								

Marjayoun

Municipality	28-Jan	29-Jan	30-Jan	Municipality	28-Jan	29-Jan	30-Jan	Municipality	28-Jan	29-Jan	30-Jan
Aalmane Marjaayoun	VL	L	L	Aamra	L	M	M	Adayseh Marjaayoun	L	M	M
Adchit El-Koussair	L	L	ML	Ain Arab Marjaayoun	L	M	M	Bani Haiyann	L	L	ML
Blatt Marjaayoun	L	M	M	Blida	L	L	ML	Borj El-Moulouk	L	M	M
Boueyda Marjaayoun	L	M	M	Deir Mimass	L	ML	M	Deir Siriane	L	ML	ML
Dibbine	L	M	M	Ebel El Saqi	L	M	M	Houla	L	L	ML
Houra	L	M	M	Kfar Kila	L	M	M	Khiam Marjaayoun	L	M	M

Klayaa	L	M	M	Majdel Selem	L	L	ML	Marjaayoun	L	M	M
Markaba	L	ML	M	Mays El-Jabal	L	L	ML	Mazraat Doumiat	L	M	M
Mazraat Sarada	L	M	M	Mhaibib	L	L	ML	Qabrikha	L	L	ML
Qantara	L	L	ML	Rab El-Thalathine	L	ML	M	Saouaneh Marjayoun	L	L	M
Talloussa	L	L	ML	Taybeh Matjaayoun	L	ML	M	Touline	L	L	ML

Bent Jbail

Municipality	28-Jan	29-Jan	30-Jan	Municipality	28-Jan	29-Jan	30-Jan	Municipality	28-Jan	29-Jan	30-Jan
Ain-Ebel	L	VL	L	Aitaroun	L	VL	ML	Aynata Bint Jbeil	L	VL	ML
Ayta El-Chaeb	VL	L	L	Ayta El-Jabal	L	L	ML	Beit Lif	VL	L	L
Beit Yahoun	L	L	ML	Bint Jbeil	L	VL	ML	Borj Qalaway	VL	ML	M
Braachit	L	L	ML	Chakra	L	VL	ML	Debel	L	L	L
Deir Antar	L	L	M	Froun	VL	ML	M	Ghandouriyeh Bint Jb	L	ML	M
Hanine	L	L	ML	Hariss	VL	L	ML	Hdatha	L	L	ML
Jmeymeh	L	L	M	Kafra Bint Jbeil	VL	L	L	Kfar Dounine	L	ML	M
Khirbet Selm	VL	ML	M	Kounine	L	VL	ML	Maroun El Ras	L	L	ML
Qalaway	VL	ML	M	Qaouzah	VL	L	L	Qatmoun	L	L	ML
Ramya Bint Jbeil	VL	L	L	Rchaf	VL	L	L	Rmeich	L	L	ML
Safad Al Battikh	L	L	ML	Salhaneh	VL	L	L	Serbine	VL	L	ML
Sultanieh Bint Jbeil	L	L	ML	Tibnine	L	L	ML	Tiri	L	L	L
Yaroun	L	VL	ML	Yater	VL	L	ML				

Mont Liban

Jbail

Municipality	28-Jan	29-Jan	30-Jan	Municipality	28-Jan	29-Jan	30-Jan	Municipality	28-Jan	29-Jan	30-Jan
Aabeydat	VL	L	ML	Aalita	L	L	M	Aamchit	L	M	M
Aarab El-Lahib	VL	VL	L	Aarasta	VL	VL	VL	Adonis Jbeil	VL	L	ML
Afqa Jbeil	VL	VL	L	Ain El Delbeh Jbeil	VL	L	L	Ain El-Ghouyba	VL	VL	VL
Ain Jrain	VL	L	L	Ain Kfah	L	ML	M	Almat El Chemaliyat	VL	L	ML
Almat El-Jenoubiya	VL	L	L	Aqoura	VL	L	L	Bayzoun	VL	L	ML
Bchille Jbeil	L	L	M	Bechtida	VL	L	ML	Behdaydat	L	ML	M
Beit Habbaq	L	ML	M	Bejjeh	L	ML	M	Bekhaaz	L	ML	M
Berbara Jbeil	L	ML	M	Bintael	VL	L	M	Birket Hjoula	VL	L	ML
Blatt Jbeil	L	ML	M	Boulhos	VL	L	L	Breyj Jbeil	VL	L	M
Chamat	L	M	M	Chikhane	L	ML	M	Chmout	VL	L	ML
Eddeh Jbeil	L	ML	M	Ehmej	VL	L	L	Fatre	VL	L	M
Ferhet	L	ML	M	Fghal	VL	L	M	Frat	VL	L	L
Ghabat	VL	VL	VL	Ghalboun	L	ML	M	Gharzouz	L	ML	M
Ghofrine	L	ML	M	Habil	VL	L	L	Halate	L	ML	M
Haqel	L	L	L	Hbaline	L	ML	M	Hboub	L	ML	M
Hdeine	VL	VL	L	Hema Er-Rehban	VL	VL	L	Hema Mar Maroun Aann	VL	VL	L
Hjoula	VL	L	L	Hosrayel	L	ML	M	Hsarat	L	ML	M
Hsoun	VL	L	ML	Jaj	VL	L	L	Janne	VL	VL	VL
Jbeil	L	M	M	Jeddeyel Jbeil	L	M	M	Jlisse	VL	L	M
Jouret El-Qattine	L	L	M	Kfar Baal Annaya	VL	L	ML	Kfar Kidde	L	ML	M
Kfar Kouas	L	L	M	Kfar Mashoun	L	M	M	Kfoun	VL	L	ML

Kharbe Jbeil	L	ML	ML	Laqlouq	VL	VL	L	Lassa	VL	VL	VL
Lehfed	VL	L	L	Maad	L	ML	M	Mar Sarkis	VL	VL	L
Mastita	L	M	M	Mayfouq	L	L	L	Mazraat El Siyad	VL	VL	L
Mazraat El-Maaden	VL	L	ML	Mechane	VL	L	L	Mechmech Jbeil	VL	L	L
Mehrin	L	ML	M	Mejdel El-Akoura	VL	VL	L	Mghayreh Jbeil	VL	VL	L
Mounsef	L	ML	M	Nahr Ibrahim	L	M	M	Qahmez	VL	L	L
Qartaba	VL	VL	L	Qartaboun	L	M	M	Qattara Jbeil	VL	L	L
Qorqraya	VL	VL	L	Ramout	L	ML	M	Ras Osta	VL	L	ML
Rihane Jbeil	L	M	M	Sakiet El-Khayt	VL	L	M	Saqi Richmaya	VL	L	L
Sebrine	VL	L	M	Seraita	VL	VL	VL	Souane Jbeil	L	L	ML
Tadmor	VL	VL	L	Tartej	VL	L	L	Torzaiya	L	L	ML
Yanouh Jbeil	VL	VL	L	Zibidine Jbeil	VL	L	M				

El Metn

Municipality	28-Jan	29-Jan	30-Jan	Municipality	28-Jan	29-Jan	30-Jan	Municipality	28-Jan	29-Jan	30-Jan
Aain El-Qabu	VL	VL	L	Aain El-Qach	L	L	M	Aain El-Teffaha	L	ML	M
Aain el-Safssaf El-M	VL	L	ML	Abou Mizane	L	ML	M	Ain Aar	L	M	M
Ain Alaq	VL	L	M	Ain El-Kharroube	L	ML	M	Ain El-Sendiane	VL	L	L
Ain El-Zeitoune	VL	L	L	Ain Saadeh	VL	L	M	Aintoura El-Matn	VL	L	L
Amaret Chalhoub	L	M	M	Antelias	L	M	M	Atchaneh	VL	L	M
Ayroun	VL	L	ML	Baabdat	VL	L	L	Baouchariyeh	L	M	M
Baskinta	VL	VL	L	Beit Chabab	VL	L	M	Beit El-Char	L	M	M
Beit El-Kekko	L	M	M	Beit Mery	VL	L	M	Bhersaf	VL	L	M
Bikfaya	L	L	M	Biyakout	L	M	M	Bnabil	VL	L	L
Bourj Hammoud	L	M	M	Bqennaya	L	ML	M	Broummana El-Matn	VL	L	M
Bsalim	L	L	M	Bsifrine	VL	L	L	Bteghrine	VL	VL	L
Chaouiye	L	ML	M	Chouaya El-Matn	L	ML	M	Choueir	VL	L	M
Chrine	VL	L	ML	Dahr El Sawan El-Mat	VL	L	ML	Daychouniyeh	L	M	M
Dbayeh	L	M	M	Deir Chamra	VL	L	ML	Deir Mar Abda el Mch	VL	ML	M
Deir Mar Roukouz	L	M	M	Deir Tamiche	L	ML	M	Dik El-Mehdi	L	ML	M
Dikwaneh	L	M	M	Douar El-Matn	VL	L	ML	Fanar	L	ML	M
Fraike	VL	L	M	Haret El-Ballaneh	L	M	M	Hbous	L	M	M
Himlaya	L	L	M	Jal El Did	L	M	M	Jdeideh El-Metn	L	M	M
Jouar El-Matn	VL	L	ML	Jouret El-Ballout	VL	L	M	Kaaqour	VL	L	L
Kfar Aaqab	VL	VL	L	Kfertay El-Matn	VL	VL	L	Khenchara	VL	L	L
Khillet El-Mtain	VL	L	L	Konnabat Broummana	VL	L	M	Konnabat Salima	VL	L	L
Machraah El-Matn	VL	VL	L	Majdel Tarchich	VL	L	ML	Majzoub	L	ML	M
Mansouriyeh El-Metn	L	M	M	Mar Boutros Karm Et-	VL	L	M	Mar Chaya et Mzekke	VL	L	M
Mar Moussa Ed-Douar	VL	L	L	Marjaba	VL	VL	L	Masqa	VL	L	M
Mayasse	L	L	M	Mazraat Deir Aoukar	L	M	M	Mazraat El-Hadirat	L	ML	M
Mazraat Yachouh	L	M	M	Mchikha	VL	L	L	Menqlet Mezher	L	M	M
Mhaydseh Matn	L	L	M	Mkalles	L	M	M	Mrouj	VL	VL	L
Mtain	VL	L	L	Mtaylor	L	ML	M	Nabay	VL	L	M
Naccache	L	M	M	Ouadi Chahine	VL	L	M	Ouadi El-Karm El-Mat	VL	VL	L
Ouata El-Mrouj	VL	L	L	Ouyoun El-Matn	VL	L	ML	Qornet Chehwan	L	ML	M
Qornet El-Hamra	VL	ML	M	Roumieh	VL	L	M	Sfeilet Bikfaya	VL	L	M
Sinn El-Fil	L	M	M	Zabbougha	VL	L	L	Zalqa	L	M	M

Zarouon	VL	L	L	Zekrite	VL	ML	M	Zighrine El-Matn	L	ML	M
Zouk El-Khrab	L	M	M								

Chouf

Municipality	28-Jan	29-Jan	30-Jan	Municipality	28-Jan	29-Jan	30-Jan	Municipality	28-Jan	29-Jan	30-Jan
Aalmane El-Chouf	L	M	M	Aammq El-Chouf	VL	L	ML	Ain Ouzein	VL	L	L
Ain Qani	VL	L	L	Ain Zhalta	VL	L	L	Ainbal	VL	L	ML
Amatour	VL	L	L	Anout	L	M	M	Atrine	VL	ML	M
Baadarane	VL	L	L	Baaqline	VL	ML	M	Baasir	L	M	M
Barja	L	M	M	Barouk	VL	L	L	Bater	VL	L	L
Batloun	VL	L	L	Bayqoun	L	M	M	Bchetfine	VL	ML	M
Beiteddine	VL	L	ML	Benouati Ech-Chouf	L	ML	M	Berjein	L	ML	M
Bireh et Mtalleh	VL	L	L	Biret El-Chouf	VL	L	L	Bkechtine Ouel Mchei	L	L	M
Bkifa El-Chouf	L	ML	M	Botme	VL	L	L	Bqaiaa Ech-Chouf	L	ML	M
Bsaba El-Chouf	L	ML	M	Chammis El-Chouf	L	M	M	Chehim	L	M	M
Chemaarine	L	L	M	Chourit	VL	L	L	Daher El-Chouf	L	ML	M
Dalhoun	L	M	M	Damour	L	M	M	Daraya El-Chouf	L	ML	M
Deir El-Moukhalles	L	ML	M	Deir Baba	L	ML	M	Deir Dourit	L	ML	M
Deir El-Qamar	VL	ML	M	Deir Kouche	L	L	M	Dibbieh	L	L	M
Dmit	L	ML	M	Fouara Jaafar	VL	L	L	Fraidis El-Chouf	VL	L	L
Ghabet Jaafar	L	ML	M	Gharife	VL	L	M	Haret Jandal	VL	L	L
Hasrout	L	ML	M	Jadra	L	M	M	Jahlieh	L	ML	M
Jbeih El-Chouf	VL	L	L	Jdeidet El-Chouf	VL	L	L	Jiyeh	L	M	M
Jleilyeh	L	ML	M	Jmailiyeh	L	M	M	Joun	L	M	M
Kahlounie El-Chouf	VL	ML	ML	Ketermaya	L	M	M	Kfar Faqoud	L	ML	M
Kfar Hamal	L	M	M	Kfar Him	L	M	M	Kfar Katra	VL	L	ML
Kfar Niss	VL	L	L	Kfar hay	VL	L	ML	Kfarnabrakh	VL	L	L
Khirbet Bisri	L	L	ML	Knayse El-Chouf	VL	L	M	Maaniyeh	L	M	M
Maasser Beiteddine	VL	L	L	Maasser El-Chouf	VL	L	L	Majdalouna	L	M	M
Majdel El-Meouch	VL	L	ML	Mazboud	L	M	M	Mazmoura	L	M	M
Mazraat El Chouf	VL	ML	ML	Mazraat El Daher	L	L	M	Mazraat El-Douair	VL	L	L
Mechref	L	ML	M	Mghairie	L	M	M	Mghayrie El-Chouf	L	ML	M
Moukhtara	VL	L	L	Mrusti	VL	L	L	Mtolle	L	M	M
Naameh	L	M	M	Niha El-Chouf	VL	L	L	Ouadi Abou Youssef	VL	L	M
Ouadi Ed-Deir	L	M	M	Ouadi El-Sit	VL	L	L	Ouadi bnehlay	VL	ML	M
Qraibeh	VL	L	L	Qreiaa	L	ML	M	Rmayle El-Chouf	L	M	M
Semqaniyeh	VL	ML	ML	Sibline	L	M	M	Sirjbeil	L	M	M
Warhanieh	VL	L	L	Werdaniyeh	L	M	M	Zaarourieh	L	M	M

Baabda

Municipality	28-Jan	29-Jan	30-Jan	Municipality	28-Jan	29-Jan	30-Jan	Municipality	28-Jan	29-Jan	30-Jan
Abadiyeh	VL	ML	M	Ain Mouaffaq	VL	ML	M	Araiya	VL	L	M
Arbaniyeh	VL	L	L	Arsoun	VL	L	L	Baabda	L	ML	M
Baalchmey	VL	M	M	Bmaryam	VL	L	L	Bourj El-Brajneh	L	M	M
Boutchay	L	ML	M	Bsaba Baabda	L	ML	M	Btekhney	VL	L	L
Btibyat	VL	L	L	Bzebdine	VL	L	L	Chbeniyeh	VL	L	L
Chiyah	L	M	M	Chmeisset Baabda	VL	L	L	Chouit	VL	L	ML
Deir El-harf	VL	L	L	Deir Khouna	VL	L	L	Dlaybeh	VL	L	L

Falougha	VL	L	ML	Furn El-Chebbak	L	M	M	Hadath Beyrouth	L	M	M
Halaliyeh Baabda	VL	L	ML	Hammana	VL	L	L	Haret El Sett	VL	L	ML
Haret Hamze	VL	L	L	Haret Hreik	L	M	M	Hasbaiya El-Metn	VL	L	L
Jouar El-Hoz	VL	VL	L	Jouret Arsoun	VL	L	L	Kfar Chima	L	M	M
Kfar Selouane	VL	L	L	Khalouat Baabda	VL	L	L	Kneisset Baabda	VL	L	L
Laylakeh	L	M	M	Louayzeh Baabda	L	ML	M	Merdache	L	ML	M
Mzairaa Baabda	VL	L	ML	Ouadi Chahrour El Ol	L	ML	M	Ouadi Chahrour El So	VL	L	M
Qalaa Baabda	VL	L	L	Qhraybe Baabda	VL	L	L	Qobbayaa	VL	L	L
Qornayel	VL	L	L	Qortada	VL	L	ML	Qrayeh Baabda	VL	L	L
Qsaibeh Baabda	VL	L	M	Qtale Baabda	VL	L	L	Ras El Metn	VL	L	ML
Ras El-Haref	VL	L	L	Rouayset El-Ballout	VL	L	ML	Salima Baabda	VL	L	L
Tahouitat El Ghadir	L	M	M	Tarchich	VL	L	L	Zandouqa	VL	L	M

Aley

Municipality	28-Jan	29-Jan	30-Jan	Municipality	28-Jan	29-Jan	30-Jan	Municipality	28-Jan	29-Jan	30-Jan
Abey	L	ML	M	Aghmid	VL	L	L	Ain Dara	VL	L	L
Ain Drafil	VL	ML	M	Ain El Halazoun	VL	ML	ML	Ain El-Rmmaneh	VL	L	L
Ain Jedideh	VL	M	M	Ain Ksour	L	ML	M	Ain Onoub	VL	ML	M
Ain Traz	VL	ML	M	Ainab	VL	L	M	Aley	VL	M	M
Aramoun	L	ML	M	Aytat	L	ML	M	Azouniyeh	VL	L	L
Baawerta	L	ML	M	Badghan Oua Wadi Bad	VL	L	L	Bassatine	L	ML	M
Bayssour	L	ML	M	Bchamoun	L	ML	M	Bdadoun	VL	L	M
Behouara	VL	ML	ML	Bennay	L	ML	M	Bhamdoun El-Dayaa	VL	M	M
Bhamdoun El-Mhatta	VL	ML	M	Bkhechtey	VL	M	M	Bleibel	VL	L	M
Bmakine	VL	M	M	Bmehray	VL	L	L	Bouzrid	VL	L	M
Bserrine	VL	ML	ML	Bsous	VL	L	ML	Btalloun	VL	M	M
Btater	VL	ML	ML	Chanay	VL	ML	ML	Charoun	VL	L	L
Chartoun	VL	L	ML	Chemlane	VL	ML	M	Choueifat El-Aamrous	L	M	M
Choueifat El-Oumara	L	M	M	Choueifat El-Quoubbe	L	M	M	Dakkoun	L	ML	M
Deir Qoubel	L	ML	M	Dfoun	L	M	M	Douair El Remmaneh	VL	L	ML
Ghaboun	VL	ML	ML	Habramoun	VL	L	L	Homs Oua Hama	VL	L	ML
Houmal	VL	ML	M	Jisr El Qadi	L	ML	M	Kehaleh	VL	L	ML
Keyfoun	L	M	M	Kfar Aamey	VL	L	ML	Kommatyeh	VL	ML	M
Maasrati	VL	L	ML	Majdel Baana	VL	L	L	Mansourieh et Ain El	VL	M	M
Mazraat El-Nahr	VL	L	L	Mchakhte	VL	L	L	Mecherfeh	VL	L	L
Mejdaya	L	ML	M	Mrayjat	VL	L	L	Ramliyah	VL	L	L
Rechmaya	VL	ML	ML	Rejmeh	VL	ML	ML	Remhala	L	ML	M
Rouaysset El Neemane	VL	L	L	Saoufar	VL	L	L	Selfaya	VL	L	M
Sirhmoul	VL	ML	M	Souq El Ghareb	VL	ML	M	Taazanieh	VL	M	M

Kesrouane

Municipality	28-Jan	29-Jan	30-Jan	Municipality	28-Jan	29-Jan	30-Jan	Municipality	28-Jan	29-Jan	30-Jan
Achkout	L	L	M	Adma Oua Dafneh	L	M	M	Ain Ed-Delbe Kesroua	VL	L	L
Ain El-Rihane	VL	ML	M	Aintoura Kesrouane	L	ML	M	Ajaltoun	VL	L	M
Akaybeh Kesrouane	L	M	M	Aramoun Kesrouane	L	ML	M	Azra ouel Ozor	L	L	M
Ballouneh	VL	L	M	Batha	VL	ML	M	Bekaatat Achkout	L	L	ML
Bekaatat Kanaan	VL	VL	L	Bizhel	L	L	M	Bouar	L	M	M
Bqaatouta	VL	VL	L	Bqaq Ed-Dine	L	M	M	Bzommar	L	ML	M

Chahtoul	VL	L	M	Chnaniir	L	ML	M	Chouan	VL	L	L
Daraya Kesrouane	VL	L	M	Darououn	L	ML	M	Deir Baqlouch	L	ML	M
Dlebta	VL	ML	M	Eghbeh	VL	L	ML	Faraya	VL	VL	L
Fatka	L	ML	M	Feytroun	VL	L	L	Ghazir	L	M	M
Ghbaleh Kesrouane	L	L	M	Ghedrass	L	L	M	Ghosta	L	ML	M
Ghynéh	L	ML	M	Harharaya w Kattine	L	ML	M	Harissa Kesrouane	L	M	M
Hayata	VL	L	M	Hosein	L	L	ML	Hrajel	VL	L	L
Jdeideh Ghazir	L	ML	M	Jeita	L	ML	M	Jounieh Ghadir	L	M	M
Jounieh Haret Sakhr	L	M	M	Jounieh Salel Alma	L	M	M	Jounieh Sarba	L	M	M
Jouret Bedrane	L	ML	M	Jouret Mhad	VL	L	L	Jouret Termos	L	ML	M
Kfar Debiane	VL	VL	L	Kfar Tay Kesrouane	VL	VL	VL	Kfar Yassine	ML	M	M
Kfour Kesrouane	L	ML	M	Kharayeb Nahr Ibrahi	L	L	M	Klayaat Kesrouane	VL	L	M
Maarab	VL	ML	M	Maaysra Kesrouane	L	ML	M	Mayrouba	VL	L	L
Mazraat Er-Ras	L	M	M	Mazraat Mrah El-Mir	VL	L	M	Mchaa El Ftouh	VL	L	L
Mchaa Faraya	VL	VL	L	Mchaa Kfar Dibiane	VL	L	L	Mghaer	VL	L	L
Mradiyah	VL	L	M	Nahr Ed-Dahab	VL	L	L	Nammoura Kesrouane	L	L	M
Ouata El Jaouz	VL	L	L	Ouata Sillam	ML	M	M	Raachine	VL	L	ML
Rayfoun	L	ML	M	Safra Kesrouane	L	M	M	Shayle Kesrouane	L	L	M
Tabarja	L	M	M	Yahchouch	VL	L	L	Zaaytreh	L	L	M
Zeytoun	L	ML	M	Zouk Mikael	L	M	M	Zouk Mosbeh	L	M	M

Baalbek_Hermel

Baalbek

Municipality	28-Jan	29-Jan	30-Jan	Municipality	28-Jan	29-Jan	30-Jan	Municipality	28-Jan	29-Jan	30-Jan
Aadous	L	ML	M	Aamchki	VL	L	M	Aarsal	L	M	M
Ain Baalbek	L	ML	M	Ain Bourday	L	L	M	Ain El-Benye	VL	L	ML
Ain El-Jaouz Baalbek	VL	L	ML	Ain El-Siya Chadoura	VL	L	ML	Al Khodr Baalbek	L	ML	M
Al Nabi Chit	L	L	M	Aynata Baalbek	L	ML	M	Baalbek	L	L	M
Bachwat	VL	L	ML	Barqa	VL	L	M	Bednayel Baalbak	L	L	M
Beit Chama	L	ML	M	Bijjaje	L	M	M	Bouday	L	L	ML
Brital	L	ML	M	Btadi	L	ML	M	Chaat	L	ML	ML
Chaibe	VL	L	ML	Chlifa	L	ML	M	Chmestar	L	ML	M
Dar El-Oussa	L	L	M	Deir El-Ahmar	L	L	M	Deir Mar Maroun Baal	ML	M	M
Douris	L	ML	M	Fakiha	L	M	M	Hadath Baalbek	L	ML	M
Ham	VL	L	ML	Haour Taala	L	ML	M	Hizzine	L	ML	M
Hlebta	L	L	M	Hosh Barada	ML	ML	M	Hosh El Dahab	L	ML	M
Hosh El Snid	L	ML	M	Hosh El-Nabi	L	ML	M	Hosh El-Rafiq	L	ML	M
Hosh Tal Safiya	L	ML	M	Hrebta	L	ML	M	laat	L	ML	M
Jebaa	L	M	M	Jenta	VL	L	M	Kfar Dabach	L	ML	M
Kfar Dane	L	ML	M	Khraibeh El-Hermel	L	ML	M	Khreibet Baalbek	VL	L	M
Kneisset Baalbek	VL	ML	ML	Labueh	VL	ML	M	Maarboun	VL	L	M
Majdaloun	ML	ML	M	Maqneh	L	M	M	Mazraat Beit Mcheik	VL	ML	M
Misraya	L	ML	M	Moqraq	L	ML	M	Nabha El-Damdoum	L	L	M
Nabi Chbay	VL	L	ML	Nabi Osman	L	ML	M	Nahleh baalbek	L	L	M
Ouadi El-Oss	VL	L	M	Qaa Baayoun	L	M	M	Qaa Jouar Maqiye	L	M	M
Qaa Ouadi El-Khanzir	ML	M	M	Qah Baalbek	ML	M	M	Qarha Baalbek	L	L	ML

Qsarnaba	L	L	ML	Ram Baalbek	L	L	M	Ras Baalbek El Sahl	ML	M	M
Ras Baalbek El-Charq	L	M	M	Riha	L	L	ML	Saaide	ML	ML	M
Sbouba	L	ML	M	Seriine El-Tahta	L	ML	M	Slouqi	L	L	ML
Taiba Baalbek	L	M	M	Talia	L	ML	M	Taraiya	L	ML	ML
Temnin El Fawqa	L	L	ML	Temnin El-Tahta	VL	L	L	Tfail	L	ML	M
Yahfoufa	L	L	M	Yammouneh	L	L	ML	Younine	L	ML	M
Zboud	L	M	M								

Hermel

Municipality	28-Jan	29-Jan	30-Jan	Municipality	28-Jan	29-Jan	30-Jan	Municipality	28-Jan	29-Jan	30-Jan
Charbine El-Hermel	L	L	M	Hermel Jbab	L	ML	M	Hermel	L	M	M
Maaysra El-Hermel	L	L	M	Michaa Mrajhine	L	L	L	Ouadi Faara	L	ML	M
Ras Baalbek - Ouadi	L	M	M	Ras Baalbek El Gharb	L	ML	M	Zighrine	L	L	M

Akkar

Akkar

Municipality	28-Jan	29-Jan	30-Jan	Municipality	28-Jan	29-Jan	30-Jan	Municipality	28-Jan	29-Jan	30-Jan
Aain Tinta	L	M	M	Aaiyat	L	ML	M	Aakkar El-Aatiqa	L	L	ML
Aamar Akkar	L	M	M	Aamar El Baykat	L	M	M	Aamayer	L	ML	M
Aamriyet Akkar	L	M	M	Aandqet	L	L	M	Aarmeh	L	ML	M
Aarqa	L	M	M	Aawaynat	L	ML	M	Aayoun Akkar	L	M	M
Abboudiye	VL	M	M	Ain El-Zeit	L	M	M	Ain Yaaqoub	L	L	L
Akroum	L	ML	M	Aridet Cheikh Zennad	L	M	M	Baldeh w Mazraat Bal	L	M	M
Barcha	L	M	M	Bardeh	L	M	M	Bebnine	L	M	M
Beino	L	M	M	Beit Ayoub	VL	M	M	Beit El-Haouch	L	M	M
Beit Mellat	L	M	M	Beit Younes	VL	ML	ML	Berbara Akkar	L	M	M
Berqayel	L	M	M	Bezbina	VL	L	ML	Bireh Akkar	L	M	M
Borj	L	M	M	Bqerezla	L	M	M	Bzal	L	L	M
Chane	VL	L	M	Chaqdouf	L	L	ML	Charbila	L	M	M
Cheikh Mohammad	L	M	M	Cheikh Taba Es-Sahl	L	M	M	Cheikh Taba	L	M	M
Cheikh Zennad	L	M	M	Cheikhlar	L	M	M	Chir Hmairine	L	M	M
Daghle	L	M	M	Dahr Laissine	L	M	M	Darine	L	M	M
Dawra	L	L	M	Dawsa w Baghdadi	L	M	M	Dayret Nahr El-Kabir	L	ML	M
Deir Dalloum	L	M	M	Deir Jennine	L	M	M	Denbou	VL	ML	M
Dibbabiyyeh	L	M	M	Douair Aadwiyeh	L	M	M	Fassikine	L	M	M
Fnaydek	L	L	L	Fraydes Akkar	L	M	M	Ghazayle	L	M	M
Habchit	VL	L	M	Hakour	L	M	M	Halba	L	M	M
Haouchab	L	M	M	Hayssat	L	M	M	Haytla	L	M	M
Hayzouq	L	M	M	Hedd	L	M	M	Hmaira Akkar	VL	M	M
Hmaiss Akkar	L	M	M	Hnaider	M	M	M	Hokr Ed-Dahri	L	M	M
Hokr Etti	L	M	M	Hokr Jouret Srar	L	M	M	Houaich	L	ML	M
Hrar	L	L	ML	Idbil	L	M	M	Ilal	L	M	M
Janine	L	M	M	Jdeidet El-Joumeh	L	M	M	Jdeidet El-Kaiteh	L	M	M
Jebraïel	L	M	M	Kafr	VL	ML	M	Kafr	L	M	M
Karm Asfour	L	M	M	Kfar Melki Akkar	L	M	M	Kfar Noun	L	ML	M
Kfarharra	L	M	M	Khalsa	L	M	M	Kharnoubet Akkar	L	M	M

Khirbet Daoud Aakkar	L	M	M	Khirbet El Remmane	L	ML	M	Khirbet Shar	L	M	M
Khoreybet El-Jindi	L	M	M	Khreibet Aakkar	L	M	M	Kneisset Aakkar	L	M	M
Kneisset Hnaider	M	M	M	Knisse	L	M	M	Kroum El-Aarab	L	M	M
Kwachra	L	M	M	Kweykhat	L	M	M	Machta Hammoud	L	ML	M
Majdala	L	M	M	Majdel Akkar	L	M	M	Mar Touma	L	M	M
Marlaya Melhem	L	M	M	Mashha	L	M	M	Massoudiye	L	M	M
Mazraat Beit Ghattas	L	M	M	Mazraat En-Nahriye	L	ML	M	Mechmech	L	L	L
Memneh	VL	L	L	Mhammara	L	M	M	Mighraq Aakkar	L	M	M
Minyara	L	M	M	Moqayteh	L	M	M	Mounjez	L	ML	M
Msalla	L	M	M	Mzeihmeh	L	M	M	Nfaiseh	L	M	M
Noura Et-Tahta	L	M	M	Ouadi El-Haour	VL	M	M	Ouadi El-Jamous	L	M	M
Ouyoun El-Ghizlane	L	M	M	Qaabarine	L	M	M	Qabaait	L	ML	M
Qachlaq	L	M	M	Qantara Aakkar	L	M	M	Qarha Aakkar	M	M	M
Qarqaf	L	M	M	Qboula	L	M	M	Qleiaat Aakkar	L	M	M
Qloud El-Baqie	L	M	M	Qobaiyat Aakkar	L	L	M	Qobbat Chamrat	L	M	M
Qorayat	VL	ML	ML	Qornet Aakkar	VL	M	M	Qsair Aakkar	L	M	M
Rahbe	L	M	M	Rihaniyet Aakkar	L	M	M	Rmah	L	M	M
Rmoul	L	M	M	Saadine	L	M	M	Sadaqa	L	L	ML
Saidnaya	L	M	M	Sammouniye	L	M	M	Saysouq	L	M	M
Semmaqiye	L	M	M	Semmaqli	L	M	M	Sfinet El-Dreib	L	M	M
Sfinet El-Qaitaa	L	ML	M	Sindyanet Zeidane	L	ML	M	Souaisset Aakkar	L	M	M
Srar	VL	M	M	Tal Abbas El Gharby	L	M	M	Tal Abbas El-Chargy	L	M	M
Tal Biret	L	M	M	Tal Hmayra	L	M	M	Tal Maayan Tal Kiri	L	M	M
Tal Sibel	L	M	M	Tallet Chattaha	L	M	M	Tikrit	L	M	M
Tleil	L	M	M	Tshea	L	L	ML	Zawarib	L	M	M
Zouq El Hosniyeh	L	M	M	Zouq El-Haddara	L	M	M	Zouq El-Hbalsa	L	M	M
Zouq El-Moqachrine	L	M	M								

Sud

Sour

Municipality	28-Jan	29-Jan	30-Jan	Municipality	28-Jan	29-Jan	30-Jan	Municipality	28-Jan	29-Jan	30-Jan
Aaiyeh	L	L	M	Aalma El-Chaab	L	L	L	Aaytit	L	L	M
Abbassiyeh Sour	L	M	M	Abou Chech	L	L	ML	Ain Abou Abdallah	L	M	M
Ain Baal	L	L	M	Arzoun	VL	ML	M	Aziyeh	VL	L	L
Baflaya	VL	L	M	Barich	VL	L	M	Batouliyeh	L	L	M
Bayad	VL	L	ML	Bazouriyeh	L	L	M	Bediass	L	M	M
Bestiyat	VL	M	M	Borj El Chemali	L	L	M	Borj En-Naqoura	L	L	ML
Borj Rahhal	L	M	M	Boustane	VL	L	M	Btaychiyeh	L	L	ML
Chaaitiye	L	L	M	Chameh	VL	L	L	Chehabiye	VL	ML	M
Chehour	VL	L	L	Chihine	VL	L	ML	Debaal Sour	VL	L	M
Deir Amess	VL	L	ML	Deir Kifa	VL	ML	M	Deir Qanoun El-Ain	L	L	M
Deir Qanoun El-Naher	VL	M	M	Derdghaiya	VL	ML	M	Dhayra	VL	L	ML
Halloussiyeh	VL	M	M	Hamoul	VL	VL	L	Hanaouey	L	L	M
Henniye	L	L	M	Hmairi Sour	VL	M	M	Iskandarouna Sour	L	L	L
Jbal El Botom	L	L	ML	Jebbin	L	L	M	Jennata	VL	M	M
Jijim	VL	L	L	Jouaiya	L	L	M	Kneisset Sour	L	L	M

Maarake	L	L	M	Maaroub	VL	M	M	Majadel	VL	L	M
Majdalzoun	L	L	ML	Mansouri Sour	L	L	M	Marnba	VL	L	ML
Marouahine	VL	L	ML	Mazraat El-Zalloutiy	VL	L	M	Mazraat Mechref	L	L	M
Mazraat Tayr Semhat	VL	L	L	Mheilib	L	M	M	Neffakhiyeh	VL	ML	M
Niha Sour	VL	ML	M	Ouadi Jilo	L	L	M	Qana	L	L	M
Qolaileh Sour	L	L	M	Rechknany	VL	L	ML	Rmadiyah	L	L	M
Selha Sour	VL	ML	M	Siddiqine	VL	L	M	Sour	L	L	M
Srifa	VL	L	M	Tayr Debbe	L	ML	M	Tayr Felsay	VL	M	M
Tayr Harfa	L	L	ML	Touayri	VL	L	ML	Toura	L	M	M
Yanouh Sour	L	L	M	Yarine	VL	L	M	Zebqine	VL	L	L

Saida

Municipality	28-Jan	29-Jan	30-Jan	Municipality	28-Jan	29-Jan	30-Jan	Municipality	28-Jan	29-Jan	30-Jan
Aanqoun	L	M	M	Aaqtanit	L	M	M	Aarab Ej-Jall	L	M	M
Aarab Tabbaya	L	M	M	Abra Saida	L	M	M	Adloun	L	ML	M
Adousiyeh	L	M	M	Ain-El-Deleb	L	M	M	Arzai	L	M	M
Babliyah	L	ML	M	Barty	L	M	M	Bissariyeh	L	ML	M
Bnaafoul	L	M	M	Bqosta	L	M	M	Bramiy	L	M	M
Daoudiyeh	L	L	M	Dareb El-Sim	L	M	M	Erkay	L	M	M
Ghassanieh	L	ML	M	Ghazieh	L	M	M	Hajjeh	L	M	M
Haret Saida	L	M	M	Hartiyeh	L	M	M	Hlaliye Saida	L	M	M
Insariyat	L	ML	M	Jazira Saida	L	M	M	Kafar Bit	L	M	M
Kaoutariyet El-Siyad	L	M	M	Kfar Chellal	L	M	M	Kfar Hatta Saida	L	M	M
Kfar Milke Saida	L	M	M	Khartoum	L	M	M	Khaziz	L	M	M
Khirbet Ed-Douair Sa	L	L	M	Khirbet El-Bassal	L	M	M	Khrayeb Saida	L	M	M
Loubieh	L	L	M	Maghdouche	L	M	M	Majdelyoun	L	M	M
Matariyet El-Choumar	L	M	M	Matayriyeh	L	M	M	Mazraat 'Mseileh	L	M	M
Mazraat 'Snaiber	L	L	M	Mazraat Aarab Soukka	L	M	M	Mazraat Deir Taqla	VL	M	M
Mazraat El Yahoudiye	L	M	M	Mazraat El-Housseini	L	M	M	Mazraat El-Mhaydaleh	L	M	M
Mazraat El-Ouasta	L	M	M	Mazraat Jamjim	L	M	M	Mazraat Kaoutariyet	L	M	M
Mazraat Kfar Badda	L	M	M	Mazraat Oussamiyat	L	M	M	Mazraat Sari	L	M	M
Mazraat Sinai	L	M	M	Meemariyeh	L	M	M	Merouaniyeh	L	M	M
Miyeh ou Miyeh	L	M	M	Najjariyeh	L	M	M	Qaaqiyat El-Snaouba	VL	L	M
Qnarit	L	M	M	Qraiye Saida	L	M	M	Saida Ed-Dekermane	L	M	M
Saida El-Oustani	L	M	M	Saida El-Qadimeh	L	M	M	Saida Kefraya	L	M	M
Saksakiyeh	L	L	M	Salhie Saida	L	M	M	Sarafand	L	L	M
Sfenta	L	M	M	Tafahta	L	ML	M	Tanbourit	L	M	M
Tebna	VL	L	M	Zaghdraiya	L	M	M	Zeita	L	M	M
Zrariyeh	L	M	M								

Jezzine

Municipality	28-Jan	29-Jan	30-Jan	Municipality	28-Jan	29-Jan	30-Jan	Municipality	28-Jan	29-Jan	30-Jan
Ain El-Mir (El Estab	L	M	M	Anane	L	ML	M	Aramta	L	M	M
Ariya	VL	L	L	Aychiyeh	L	ML	M	Azour	L	L	ML
Baba	L	L	ML	Bayssour Jezzine	L	M	M	Benoueteh Jezzine	L	ML	ML
Bhannine	VL	L	L	Bisri	VL	L	ML	Bkassine	VL	L	ML
Bouslaya	L	L	M	Btedine El-Leqech	L	L	ML	Chbail	VL	L	L
Choualiq Jezzine	L	M	M	Dahr Ed-Deir	L	ML	M	Deir El Qattine	L	L	ML

Demachqiyeh	L	M	M	Ghabbatiyeh	VL	L	ML	Harf Jezzine	VL	L	ML
Hassaniyeh	L	M	M	Haytouleh	L	M	M	Haytura	VL	L	ML
Hidab	VL	ML	ML	Homsiyeh	L	L	ML	Jabal Toura	VL	ML	ML
Jarmaq	L	M	M	Jensnaya	L	M	M	Jernaya	L	M	M
Jezzine	VL	ML	ML	Karkha	L	ML	M	Kfar Falous	L	M	M
Kfar Houna	L	L	ML	Kfar Jarrah	L	M	M	Lebaa	L	M	M
Louayzet Jezzine	L	ML	M	Machmouche	VL	L	L	Mahmoudiyeh Jezzine	L	M	M
Maknounye Jezzine	L	L	ML	Maraat Ouzaïyeh	L	ML	M	Mazraat Daraya	L	L	ML
Mazraat El-Aarqoub	L	ML	ML	Mazraat El-Mathane	VL	L	ML	Mazraat El-Rahbane	VL	L	ML
Mazraat Khallet Khaz	L	ML	M	Mazraat Louzid (Loua	VL	L	L	Mazraat Qrouh	L	M	M
Mazraat Tamra	L	M	M	Mazraat Zighrine Jez	L	ML	ML	Mazraat	L	L	ML
Mharbiyeh	L	M	M	Midane Jezzine	VL	L	ML	Mjeydel Jezzine	L	M	M
Mlikh	L	L	ML	Mrah El-Hbasse	L	M	M	Ouadi Baanqoudaine	L	M	M
Ouadi El-Laymoun	L	M	M	Ouardiyeh	VL	L	ML	Qabaa Jezzine	L	L	ML
Qatrani	L	L	L	Qaytouleh	L	L	ML	Qtaleh Jezzine	L	ML	M
Rihane Jezzine	L	ML	M	Rimat	L	ML	M	Roum	L	L	ML
Roummanet	VL	ML	ML	Sabbah	VL	L	ML	Saydoun	L	L	M
Sfaray	L	ML	M	Snaya	VL	L	ML	Sojoud	L	ML	M
Srayri	L	ML	ML	Taaid	L	L	L	Wadi Jezzine	VL	L	L
Zhalta	VL	L	ML								

Bekaa

West Bekaa

Municipality	28-Jan	29-Jan	30-Jan	Municipality	28-Jan	29-Jan	30-Jan	Municipality	28-Jan	29-Jan	30-Jan
Aammîq BG	VL	L	ML	Ain El Tineh BG	L	L	ML	Ain Zebdeh	VL	L	L
Ana	VL	L	L	Aytanit	VL	L	L	Baaloul BG	L	L	L
Bab Mareh	L	L	L	Chouberqiye Aammîq	VL	L	ML	Dakoue	L	L	ML
Deir Ain El-Jaouze	VL	L	L	Deir Tahniche	VL	L	ML	Ghaza	VL	L	ML
Harime El-Soughra	L	ML	L	Hoch Harimeh	L	L	ML	Jazira BG	L	ML	L
Jib Jennine	L	L	ML	Kamed-El-Laouz	L	L	L	Kefraya BG	VL	L	L
Khiara El Atika	L	L	ML	Khiara	L	L	ML	Khirbet Qanafar	VL	L	L
Lala	L	L	ML	Lebbaya BG	L	L	ML	Loussa	L	ML	ML
Machghara	L	L	ML	Manara (Hammara) BG	L	L	L	Mansoura BG	VL	L	ML
Marej BG	L	ML	L	Maydoun	L	ML	ML	Ouaqf BG	L	ML	L
Qaraaoun	L	L	ML	Qelya	L	ML	ML	Raouda (Istabel)	L	ML	ML
Saghbine	VL	L	L	Sohmor	L	L	ML	Soltan Yacoub el Ara	L	L	ML
Souairy	L	L	ML	Sultan Yaacoub	L	L	L	Tal Znoun	VL	L	ML
Yehmor BG	L	L	ML	Zilaya	L	L	ML				

Zahle

Municipality	28-Jan	29-Jan	30-Jan	Municipality	28-Jan	29-Jan	30-Jan	Municipality	28-Jan	29-Jan	30-Jan
Aanjar (Haouch Mouss	L	ML	ML	Ablah	L	L	L	Ain Kfarzabad	VL	L	ML
Ali-El-Nahri	VL	L	L	Bar Elias	L	ML	ML	Bouarej	VL	L	ML
Cheberqiyet Tabet	L	ML	ML	Chtaura	VL	ML	ML	Deir El Ghazal	VL	L	ML
Delhamiyet Zahle	VL	L	ML	Ferzol	L	L	M	Haouch El-Ghanam	VL	L	L
Haouch Es-Siyadeh	L	ML	L	Haouch Hala	VL	L	L	Haouch Mandara	L	ML	ML

Haouch Qayssar	L	ML	L	Hezerta	L	ML	M	Hosh Moussa	L	ML	M
Jdita	VL	ML	ML	Kfarzabad	L	L	ML	Ksara	VL	L	L
Majdel Aanjar	L	L	L	Makssi	VL	ML	ML	Massa	VL	L	M
Mazraat Er-Remtaniye	VL	L	ML	Mrayjat Zahle	VL	L	ML	Mzaraa Zahle	L	ML	ML
Nabi Ayla	L	L	ML	Nasriyet Rizk	VL	ML	M	Nasriyet Zahle	L	ML	L
Niha Zahle	VL	L	ML	Ouadi Ed-Deloum	VL	L	ML	Ouadi El-Arayech	L	L	M
Qaa El Rim	L	L	M	Qab Elias	L	ML	ML	Qousaya	VL	L	ML
Rhit	VL	L	M	Riyak	VL	L	L	Saadnayel	VL	L	ML
Taal El-Akhdar	L	ML	L	Taalbeya	VL	ML	ML	Taanayel	L	ML	ML
Talamara	VL	L	L	Tcheflik Edde Haouch	L	ML	ML	Tcheflik Qiqano	L	ML	L
Terbol Zahle	VL	ML	M	Touaite Zahle	VL	ML	M	Zahle Aradi	L	ML	M
Zahle El-Berbara	L	ML	M	Zahle El-Maallaqa	L	ML	M	Zahle El-Midane	L	ML	M
Zahle Er-Rassiye	L	ML	M	Zahle Haouch El-Ouma	L	L	L	Zahle Haouch El-Ouma	VL	L	L
Zahle Haouch Ez-Zara	L	ML	M	Zahle Maalaga Aradi	L	L	ML	Zahle Mar Antonios	L	ML	M
Zahle Mar Elias	L	ML	M	Zahle Mar Gerios	L	L	M	Zahle Saydet En-Naja	L	ML	M
Zebdoul	VL	L	ML								

Rachaiya

Municipality	28-Jan	29-Jan	30-Jan	Municipality	28-Jan	29-Jan	30-Jan	Municipality	28-Jan	29-Jan	30-Jan
Ain Arab Rachaiya	L	L	L	Ain Ata	VL	L	L	Ain Harche	VL	L	ML
Aqabe Rachaya	VL	L	ML	Ayha	L	L	ML	Ayta El Fokhar	L	L	L
Bakifa Rachaya	VL	L	ML	Bakka	L	L	L	Beit Lahya	VL	ML	ML
Bireh Rachaiya	L	L	L	Daheer El Ahmar	VL	L	L	Deir El-Achayer	L	ML	ML
Heloua Rachaiya	L	L	ML	Hoch El Qannabeh Rac	VL	L	L	Kaoukaba Bou Arab	L	L	ML
Kfar Danis	VL	L	ML	Kfar Mechki	VL	L	ML	Kfar Qouq	L	L	L
Kherbet Rouha	VL	L	L	Majdel Balhiss	VL	L	ML	Mdoukha	L	L	L
Mhaydseh Rachaiya	VL	L	ML	Nabi Safa	VL	L	ML	Rachaiya	VL	L	L
Rafid Rachaiya	L	L	ML	Selsata (Mazraat Dei	L	L	L	Tannoura	VL	L	ML
Yanta	L	L	L								

Beyrouth

Beyrouth

Municipality	28-Jan	29-Jan	30-Jan	Municipality	28-Jan	29-Jan	30-Jan	Municipality	28-Jan	29-Jan	30-Jan
Achrafieh	L	M	M	Ain el-Mreisse	ML	M	M	Bachoura	L	M	M
Beirut Central Distr	ML	M	M	Marfai	L	M	M	Mazraa	L	M	M
Medaouar	L	M	M	Minet el-Hosn	ML	M	M	Mwssaitbeh	L	M	M
Ras Beirut	ML	M	M	Rmeil	L	M	M	Saifi	ML	M	M
Zqaq el-Blat	ML	M	M								