

Lebanon Fire Risk Bulletin



CIVIL DEDEFENCE

Refer to cadast table condition.

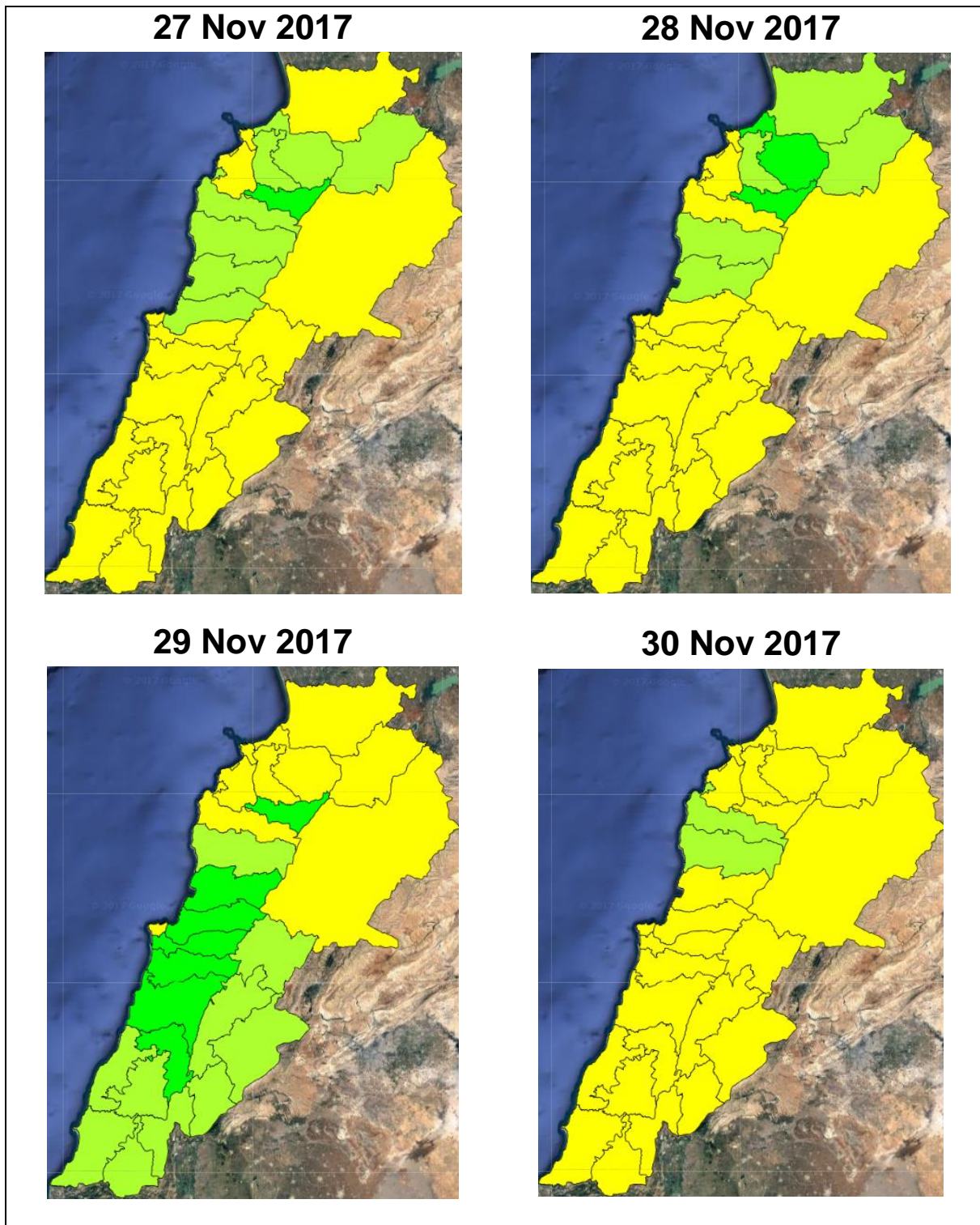
Please note that the indicated temperature is at 2 meters height from the ground.

General description of potential fire risk situation

Symbol	Level of risk	Meaning and actions
VL	Very low	Very low fire risk. Controlled burning operations can be hardly executed due to high fuel moisture content. Normally wildfires self-extinguish.
L	Low	Low fire risk. Controlled burning operations can be executed with a reasonable degree of safety.
ML	Medium low	Medium-low fire risk. Controlled burning operations can be executed in safety conditions. All the fires need to be extinguished.
M	Medium	Medium fire risk. Controlled burning operations would be avoided. All the fires need to be very well extinguished.
M	Medium high	Controlled burning is not recommended. Open flame will start fires. Cured grasslands and forest litter will burn readily. Spread is moderate in forests and fast in exposed areas. Patrolling and monitoring is suggested. Fight fires with direct attack and all available resources.
H	High	Ignition can occur easily with fast spread in grass, shrubs and forests. Fires will be very hot with crowning and short to medium spotting. Direct attack on the head may not be possible requiring indirect methods on flanks. Patrolling and monitoring the territory is highly suggested.
E	Extreme	Ignition can occur also from sparks. Fires will be extremely hot with fast rate of spread. Control may not be possible during day due to long range spotting and crowning. Suppression forces should limit efforts to limiting lateral spread. Damage potential total. Patrolling and monitoring the territory is highly suggested.

Beirut, 28 November 2017

FIRE RISK INDEX

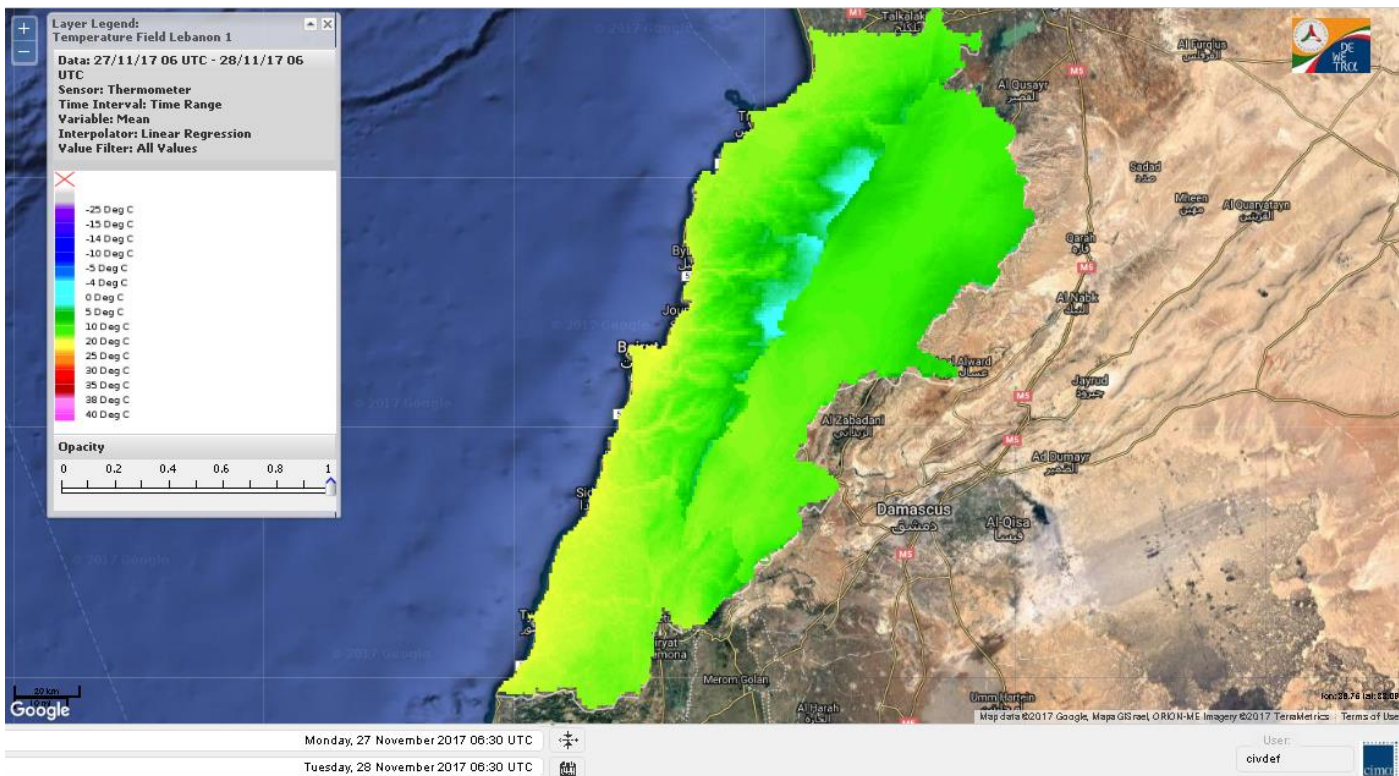


Layer Legend:
Lebanon Wildfire Risk Index 1

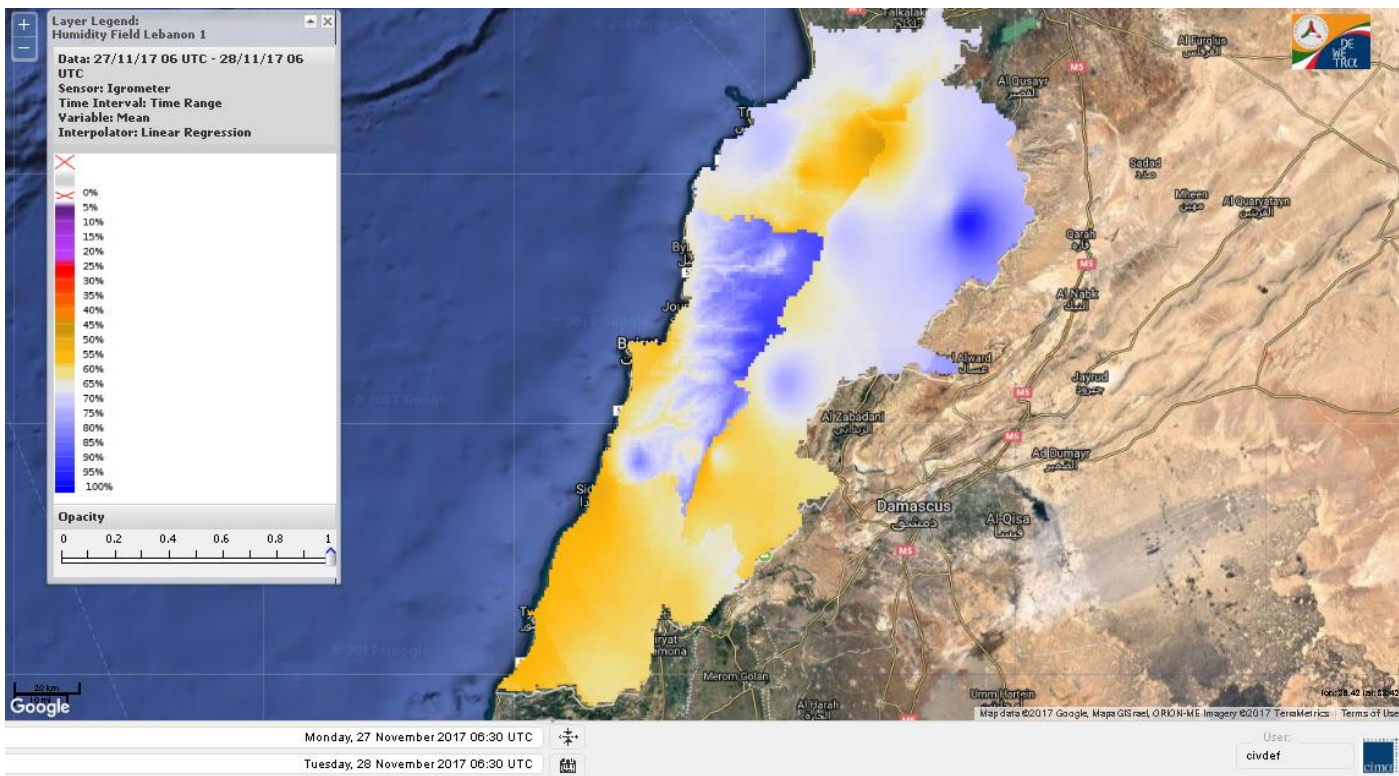
Data: Run: 28/11/2017 00:00. Forecast for 28
Model: RISICO for the Republic of Lebanon
Variable: Fire Weather Index
Spatial Resolution: Caza

- VERY LOW
- LOW
- MEDIUM-LOW
- MEDIUM
- MEDIUM-HIGH
- HIGH
- EXTREME

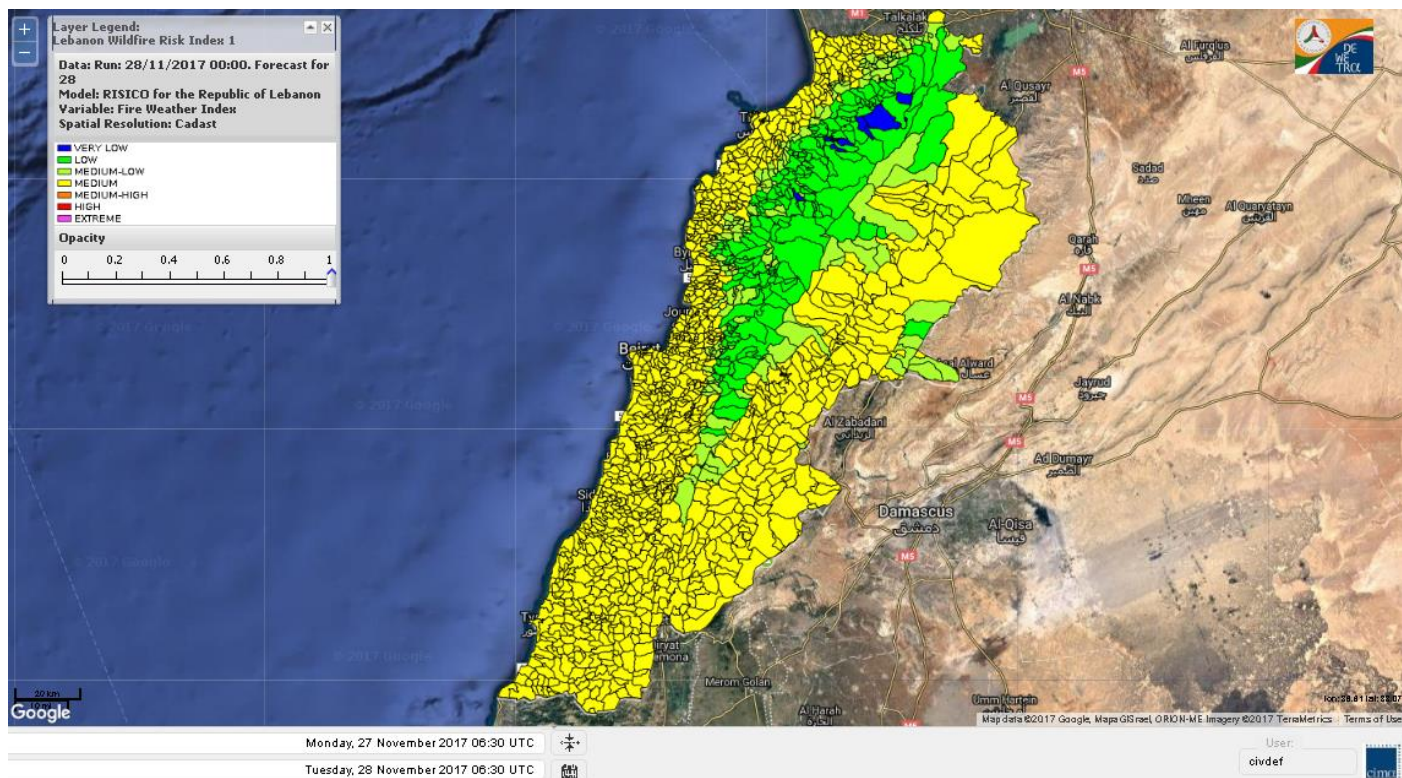
Lebanon temperature for Lebanon for 28 Nov 2017



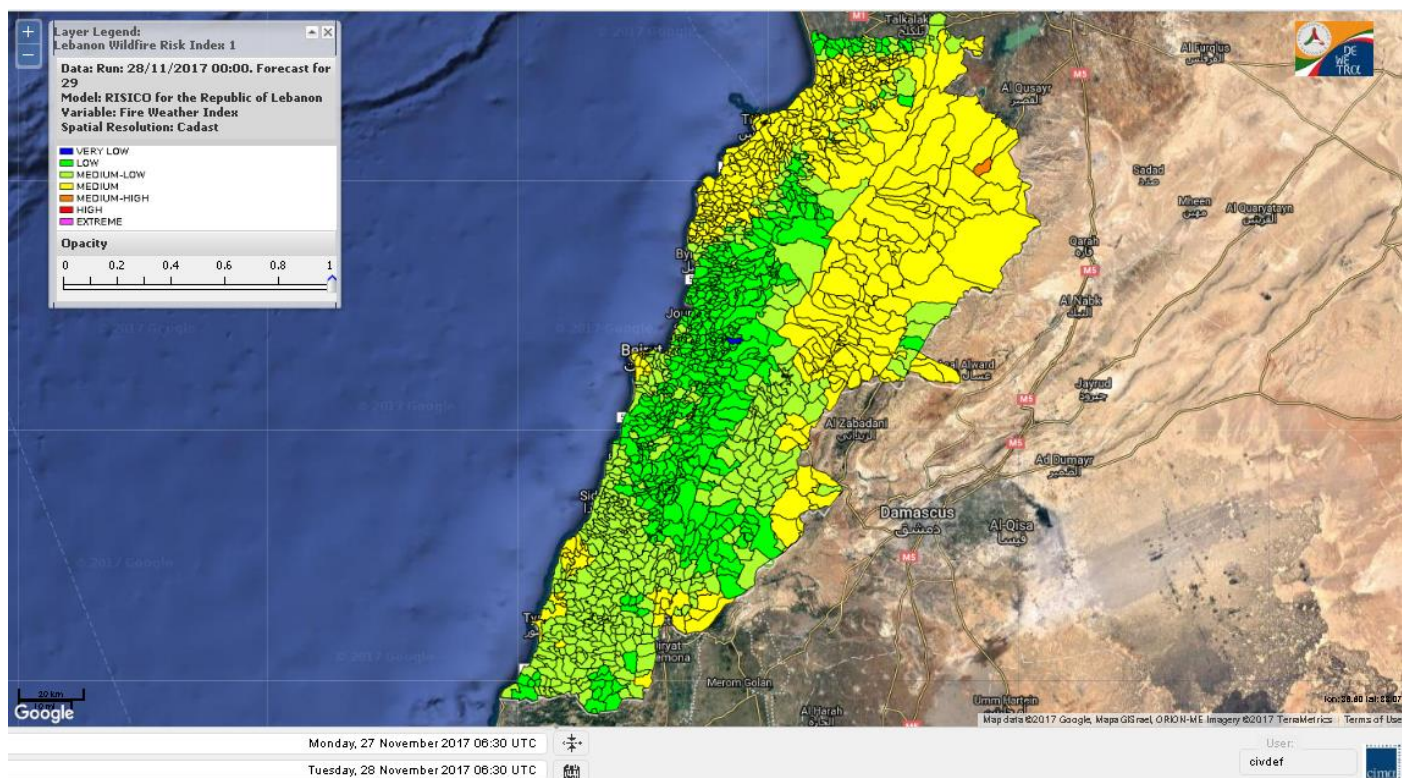
Lebanon humidity for Lebanon for 28 Nov 2017



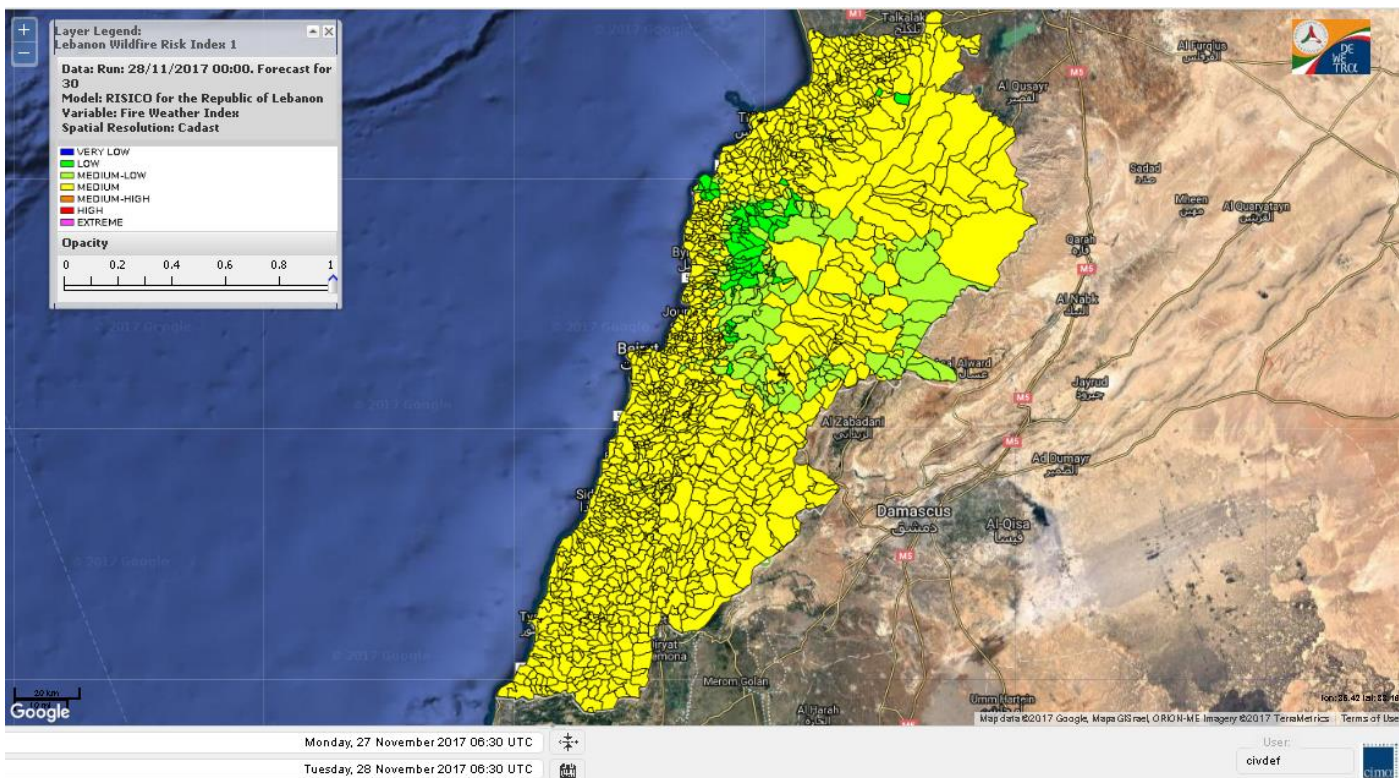
Lebanon for 28 Nov 2017



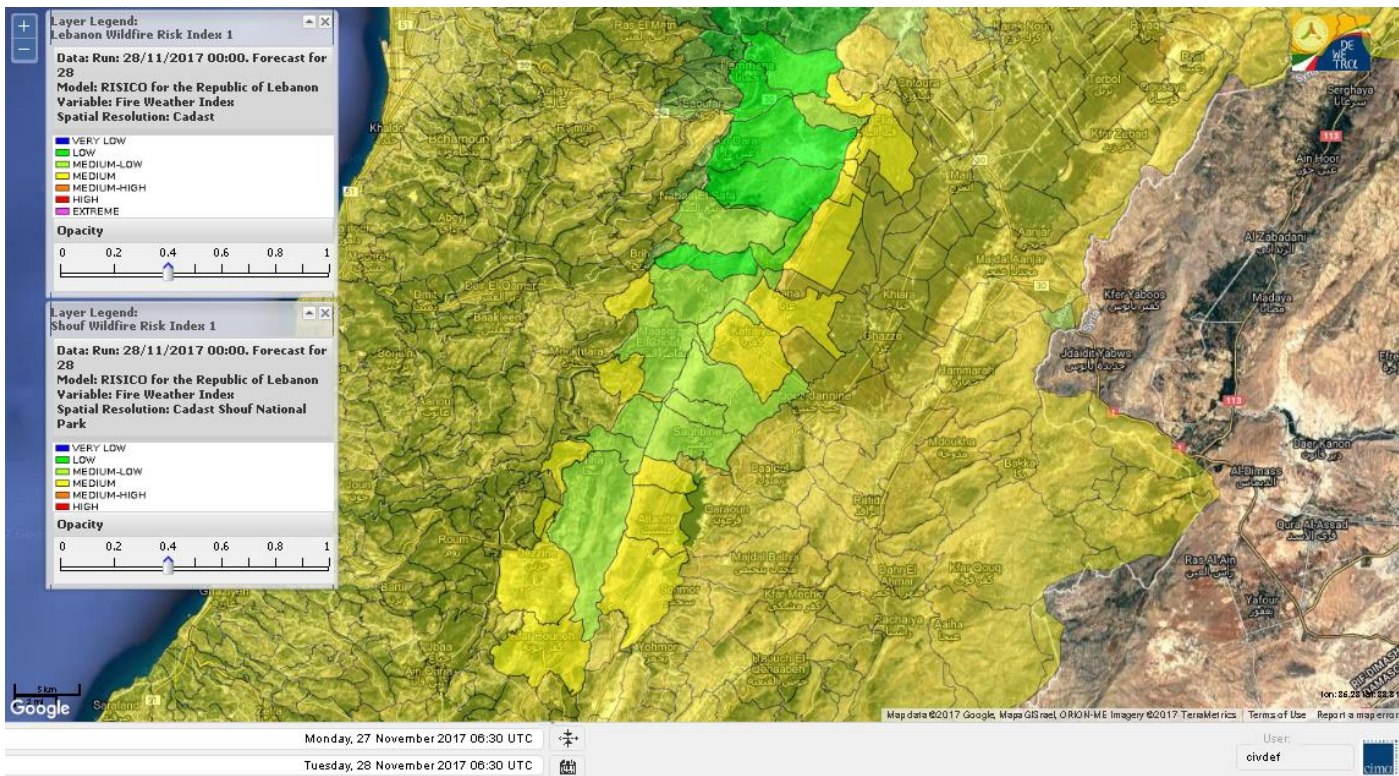
Lebanon for 29 Nov 2017



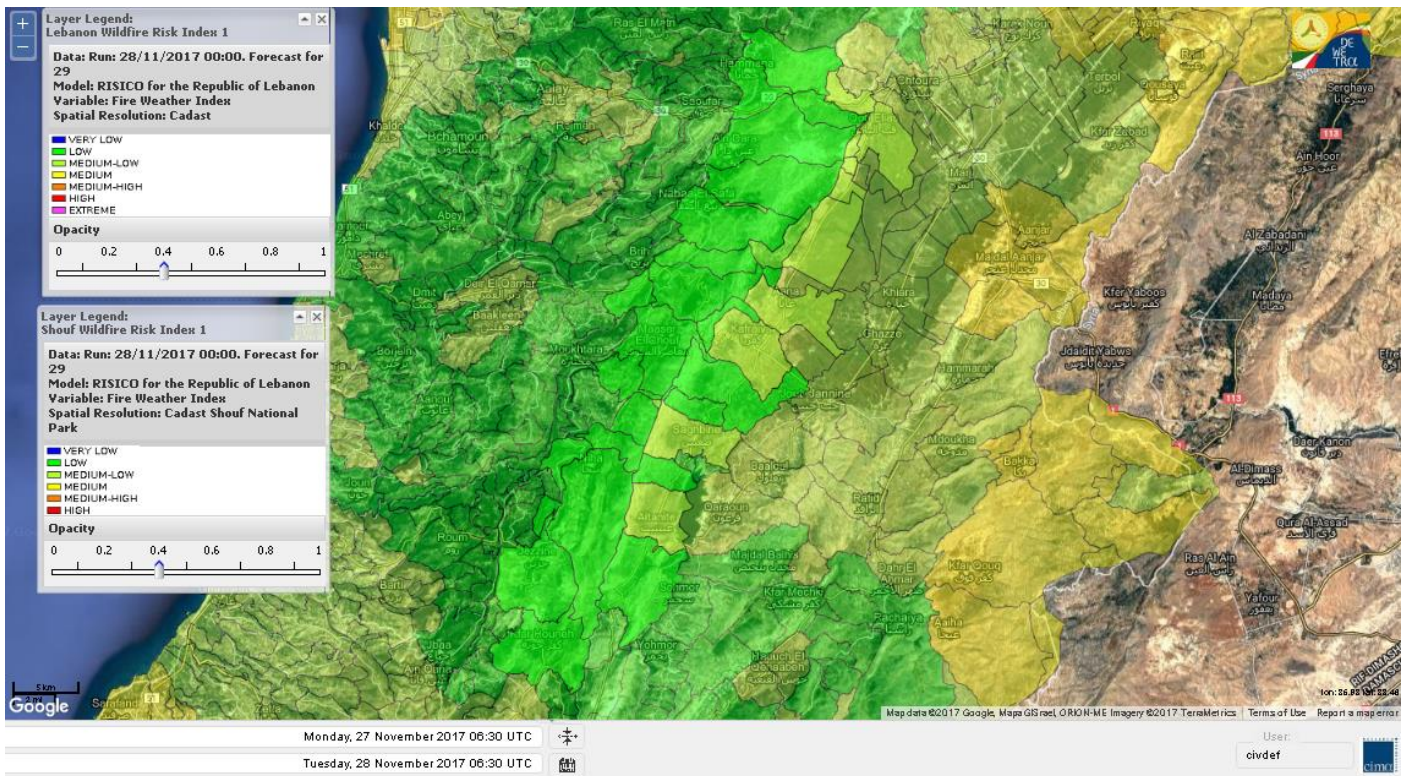
Lebanon for 30 Nov 2017



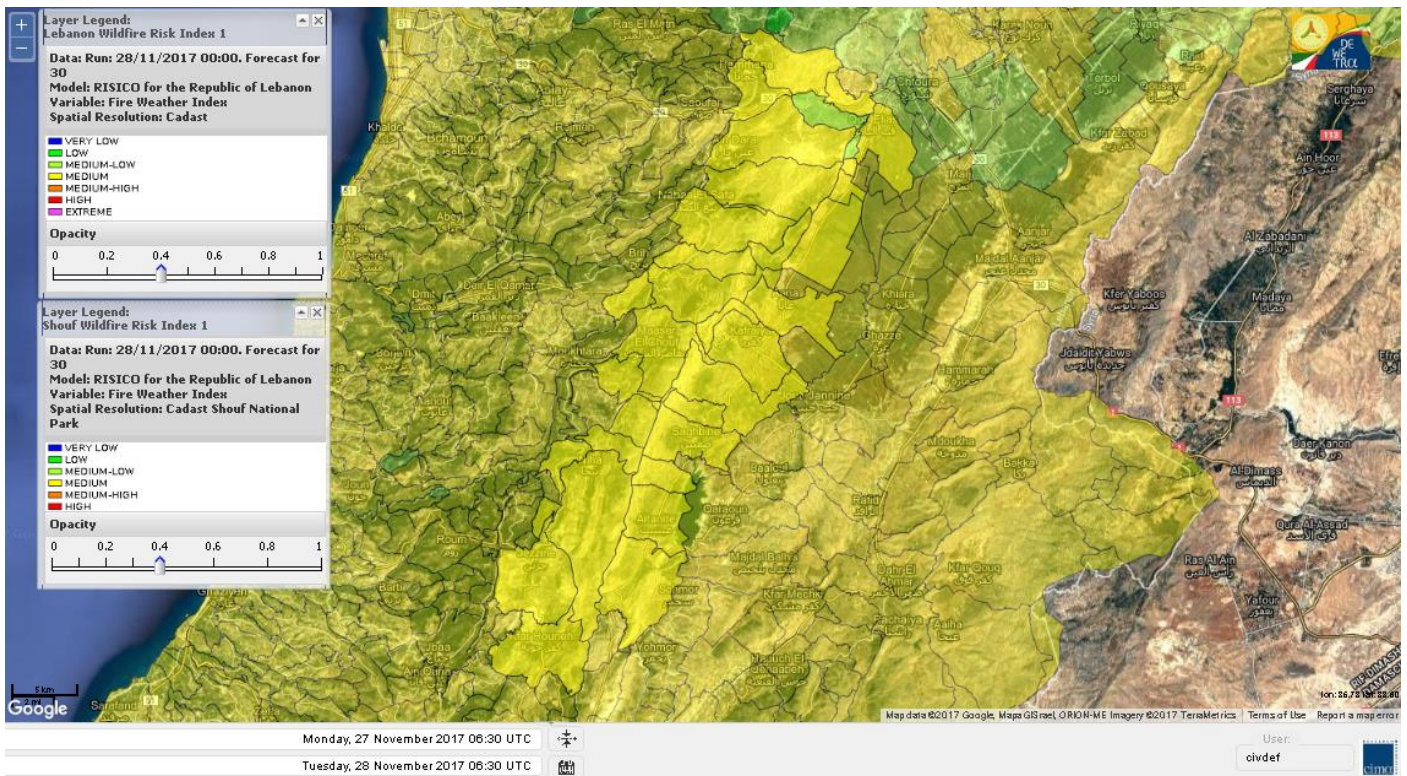
Shouf Biosphere Reserve Forecast for 28 Nov 2017



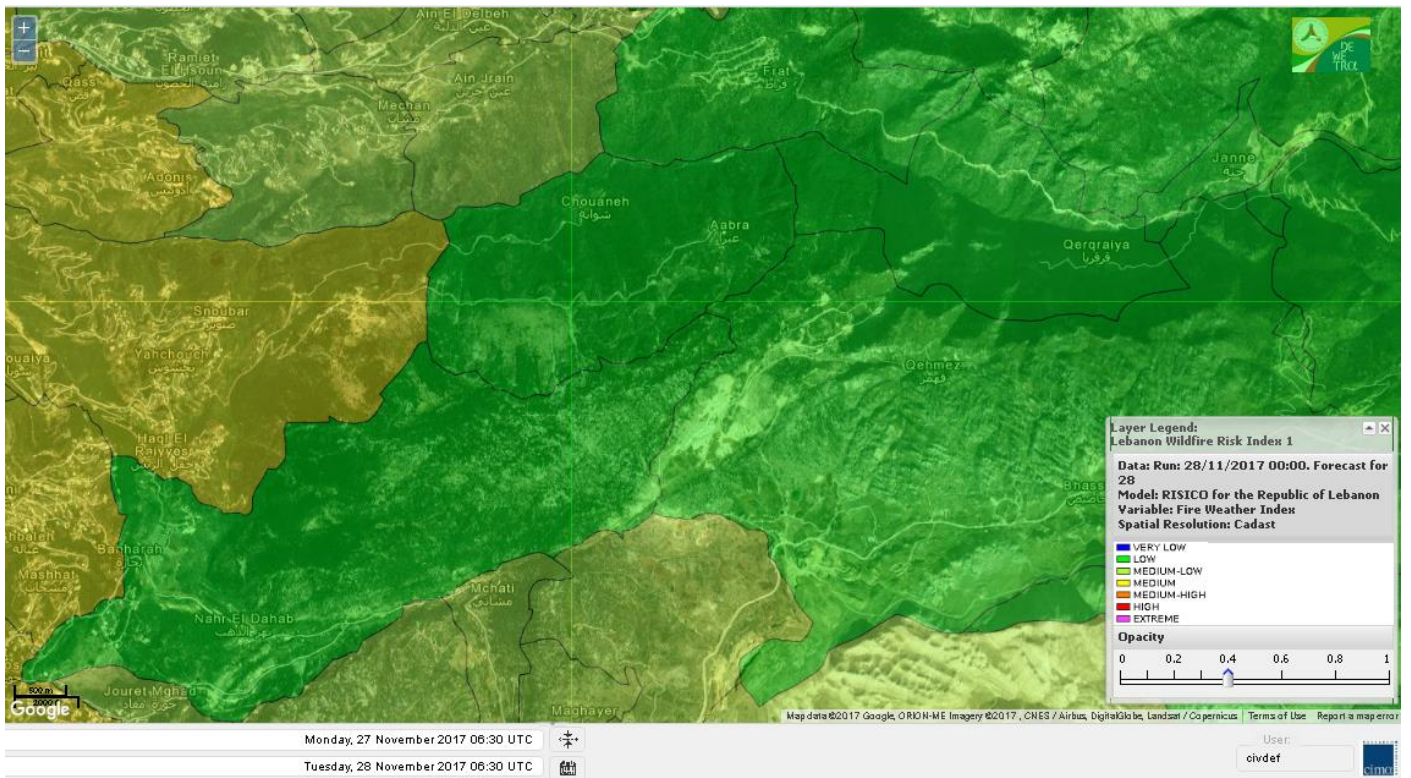
Shouf Biosphere Reserve Forecast for 29 Nov 2017



Shouf Biosphere Reserve Forecast for 30 Nov 2017



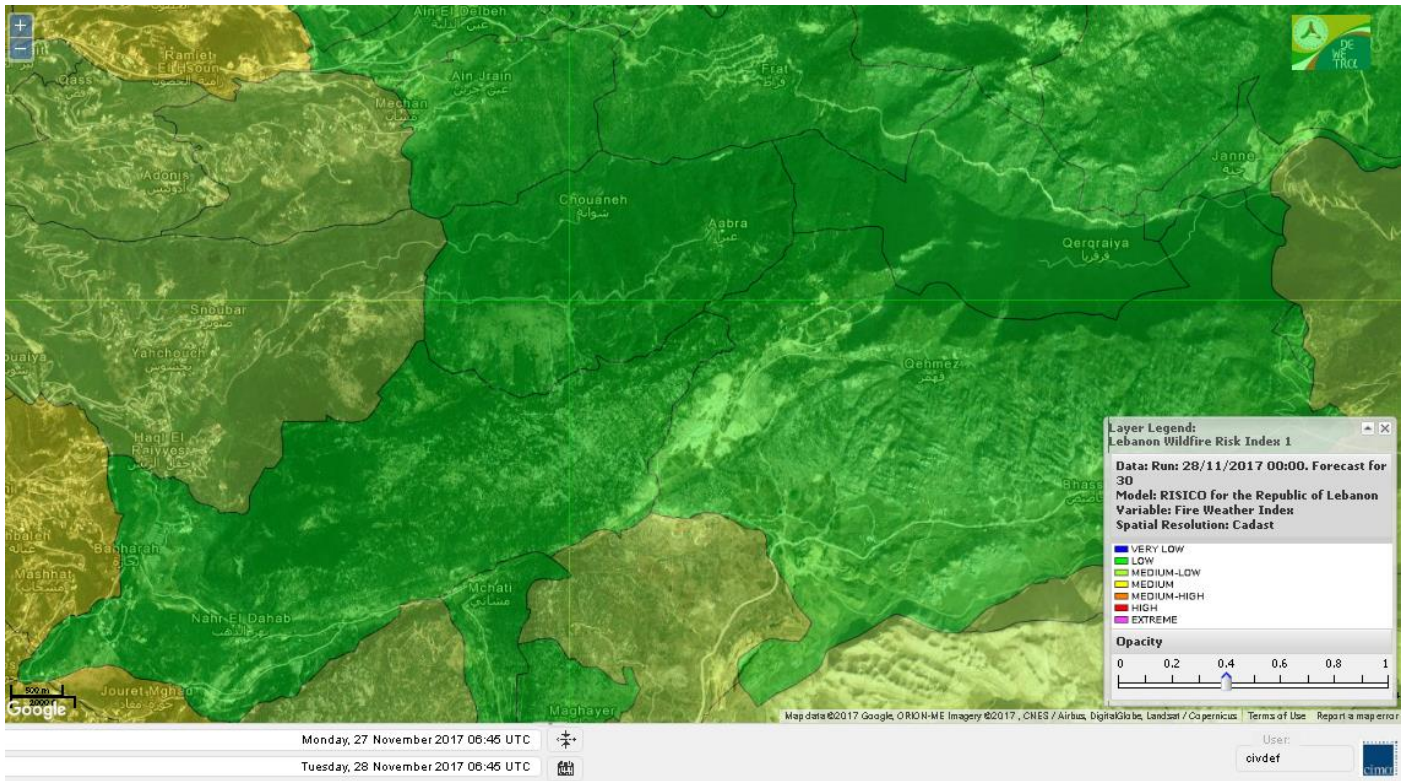
Jabal Moussa Reserve Forecast for 28 Nov 2017



Jabal Moussa Reserve Forecast for 29 Nov 2017



Jabal Moussa Reserve Forecast for 30 Nov 2017



Nord

Koura

Municipality	28-Nov	29-Nov	30-Nov	Municipality	28-Nov	29-Nov	30-Nov	Municipality	28-Nov	29-Nov	30-Nov
Aaba	M	M	M	Afsaddiq	M	M	M	Ain Ekrine	ML	M	M
Amioun	M	M	M	Anfeh	M	M	M	Badbhoun	M	M	M
Barghoun	M	M	M	Barsa	M	M	M	Batroumine	M	M	M
Bdebba	M	M	M	Bechmizine	M	M	M	Bednayet El-Koura	M	M	ML
Bhabbouch El-Koura	ML	M	M	Bkeftine	M	M	M	Bnehran	ML	M	M
Bqaiiaa El-Koura	M	M	M	Bsarma	M	M	M	Btaaboura	M	M	M
Bttram	M	M	M	Btouratij	M	M	M	Bziza	M	M	M
Dar Beechtar	M	M	M	Dar Chmezzine	M	M	M	Deddeh	M	M	M
Deir El-Balamand	M	M	M	Fih	M	M	M	Hraiche	M	M	M
Ijdaabrine	M	M	ML	Kaftoun	M	M	M	Kefraya El-Koura	M	M	ML
Kfarakka	ML	M	M	Kfarhata	M	M	M	Kfarhazir	M	M	M
Kfarkahel	M	M	M	Kfarsaroun	ML	M	M	Kosba	ML	M	M
Mejdel el-Koura	M	M	M	Nakhle	M	M	M	Qalhat	M	M	M
Ras Masqa	M	M	M	Rechdibbine	ML	M	M	Zakroun	M	M	M
Zgharta El-Mtaouile	L	ML	M								

Bcharre

Municipality	28-Nov	29-Nov	30-Nov	Municipality	28-Nov	29-Nov	30-Nov	Municipality	28-Nov	29-Nov	30-Nov
Aabdine	L	ML	M	Bane	L	L	M	Barhelioun	L	ML	M
Bazouone	L	L	ML	Becharre	L	ML	M	Beit Menzer	L	L	M
Billa	L	ML	M	Blaouza	ML	L	M	Bqaa Kafra	L	L	ML
Bqerqacha	L	L	ML	Breissat	L	L	ML	Dimane	L	L	ML
Hadath El Jobbeh	L	L	L	Hadchit	L	L	M	Hasroun	L	L	ML
Mazraat Aassaf	L	L	L	Mazraat Bani Saab	L	ML	ML	Mchaa El-Jobbeh	L	L	ML
Metrit	L	M	M	Moghr El-Ahoual	ML	M	M	Ouadi Qannoubine	VL	L	L
Qanat	L	L	ML	Qnayouer	L	L	ML	Tourza	L	L	M

Batroun

Municipality	28-Nov	29-Nov	30-Nov	Municipality	28-Nov	29-Nov	30-Nov	Municipality	28-Nov	29-Nov	30-Nov
Aabrine	M	M	L	Aalali	ML	ML	L	Aartziz	M	M	ML
Abdelli	M	M	M	Ajdabra	M	M	M	Assia	M	M	L
Basbina	M	M	M	Batroun	M	M	M	Bcheleh	L	L	L
Bechtoudar	ML	M	L	Beit Chlala	L	M	L	Beit Kassab	L	ML	L
Bijdarfil	M	M	M	Bqesmaya	M	M	M	Chatine	L	L	L
Chebtin	ML	M	ML	Chekka	M	M	M	Daael	M	M	ML
Dahr Abi Yaghi	ML	ML	M	Daraya El-Batroun	M	M	M	Deir Billa	L	ML	ML
Deir Kfifane	M	M	M	Deir Mar Youhanna EL	L	M	L	Deir Mar Youssef Jra	M	M	M
Douma	L	L	L	Douq	ML	ML	ML	Eddeh El-Batroun	M	M	M
Ftahat El-Batroun	M	M	ML	Ghouma	M	M	M	Hadtoun	ML	ML	L
Hamat	M	M	L	Harbouna	M	M	M	Hardine	L	ML	L
Helta	M	M	ML	Hery	M	M	M	Jebbla	M	M	ML
Jrabta El-Batroun	M	M	M	Jrane El-Batroun	M	M	M	Kfar Aabida	M	M	M
Kfar Halda	L	ML	L	Kfarb Shlaimane	M	M	L	Kfarhatna	M	M	M
Kfarhay	M	M	M	Kfarhelos	M	M	L	Kfifane	M	M	M

Kfour El Arabi	ML	L	ML	Koubba	M	M	ML	Kour	M	M	M
Mar Mama	ML	ML	L	Masrah	ML	L	M	Mehmarch	ML	ML	ML
Mrah Chdid	M	M	M	Mrah El Ziyat	M	M	M	Mrah El-Hajj	ML	ML	L
Nahle El-Batroun	ML	ML	L	Niha El-Batroun	ML	ML	ML	Ouahj El-Hajjar	M	M	L
Ouata Houb	L	L	L	Qatnaaoun	M	M	L	Racha	ML	M	L
Rachana	M	M	M	Rachkida	M	M	L	Ram El-Batroun	ML	ML	L
Ras Nahhach	M	M	L	Selaata	M	M	ML	Sghar	M	M	M
Smar Jbayl	M	M	M	Sourat El-Batroun	M	M	ML	Tannourine El-Faouqa	L	L	ML
Tannourine Et-Tahta	L	L	L	Thoum	M	M	M	Toula El-Batroun	M	M	M
Zan	M	M	ML								

Zgharta

Municipality	28-Nov	29-Nov	30-Nov	Municipality	28-Nov	29-Nov	30-Nov	Municipality	28-Nov	29-Nov	30-Nov
Aachach	M	M	M	Aalma	M	M	M	Aarde	M	M	M
Aintourine	ML	ML	M	Arabet Qozhaya	L	L	M	Arde	M	M	M
Arjis	M	M	M	Asnoun	ML	M	M	Ayto	L	L	M
Basloukit	L	M	M	Bchannine	M	M	M	Besebeel	M	M	M
Bhairret Toula	L	M	M	Bnachee	ML	ML	M	Boussit	M	M	M
Danha	ML	M	M	Daraiya Zgharta	ML	M	M	Deir Jdeide	M	M	M
Ehden	L	ML	M	Halan	M	M	M	Hariq Zgharta	ML	M	M
Houakir	L	ML	M	Hraiqis	M	M	M	laal	ML	M	M
Ijbaa	L	ML	M	Karm Saddeh	L	ML	M	Kfarchakhna	M	M	M
Kfardlaqous	M	M	M	Kfarfou	ML	M	M	Kfarhata Zgharta	ML	M	M
Kfarhoura	M	M	M	Kfarsghab	L	ML	M	Kfaryachit	ML	M	M
Kfarzaina	M	M	M	Khaldiye	ML	M	M	Mazraat Ajbeaa	M	M	M
Mazraat Et-Teffah	L	L	M	Mazraat Jneid	ML	M	M	Mejdlayia Zgharta	M	M	M
Merh Kfarsghab	ML	ML	M	Miryata	M	M	M	Miziara	L	L	M
Mzraat Kefraya	M	M	M	Qorah Bach	ML	M	M	Rachiine	ML	M	M
Ras Kifa	ML	M	M	Sakhra	L	ML	M	Sebhel Zgharta	L	ML	M
Serhel	L	L	L	Tallet Zgharta	M	M	M	Toula Zgharta	L	ML	M
Zgharta	M	M	M								

Minieh-Denniye

Municipality	28-Nov	29-Nov	30-Nov	Municipality	28-Nov	29-Nov	30-Nov	Municipality	28-Nov	29-Nov	30-Nov
Aasaymout	L	ML	ML	Aaymar	L	M	M	Aazki	ML	M	M
Ain El-Tineh-Miniyeh	VL	M	M	Assoun	L	M	M	Bakhaaoun	L	M	M
Bchennata	L	M	M	Bechehhara	L	L	M	Beddawi	M	M	M
Behouaita	L	ML	M	Beit El Foqss	VL	M	M	Beit Haouik	ML	M	M
Beit Zoud	L	M	M	Bekaasafrine	L	M	M	Borj El Yahoudiyeh	M	M	M
Bqarsouna	VL	M	M	Btermaz	L	M	M	Debaael	L	ML	M
Deir Ammar	M	M	M	Deir Nbouh	L	ML	M	Haouaret-Miniyeh	L	M	M
Haql el Azimeh	L	M	M	Harf El Siyad	L	ML	ML	Hazmiye-Miniyeh	VL	M	M
Izal	L	M	M	Jarjour	L	L	ML	Jayroun	L	M	M
Kahf El-Malloul	L	ML	M	Karm El-Moher	L	M	M	Kfar Binine	L	M	M
Kfarchalane	L	M	M	Kfarhabou	ML	M	M	Kharroub-Miniyeh	L	M	M
Mazraat El-Kreme	L	L	M	Mazraat Ketrane	L	M	M	Merkebta	M	M	M
Minyeh	M	M	M	Mrah El Sfirat	VL	ML	M	Mrah Sraj	L	M	M
Mrebbine	L	M	M	Nabi Youcheaa	M	M	M	Nemrine	L	M	M

Qarhaiya	L	M	M	Qarne	VL	ML	M	Qarsita	VL	M	M
Qattineh-Miniyeh	VL	ML	ML	Qemmamine	VL	ML	M	Qraine	L	ML	M
Raouda-Aadoua	M	M	M	Rihaniyet-Miniyeh	M	M	M	Sfireh	L	M	M
Sir Ed-Danniyeh	L	M	M	Tarane	L	ML	M	Terbol-Miniyeh	M	M	M
Zaghartaghriine	L	ML	M	Zouq Bhannine	M	M	M				

Nabatiye

Nabatiye

Municipality	28-Nov	29-Nov	30-Nov	Municipality	28-Nov	29-Nov	30-Nov	Municipality	28-Nov	29-Nov	30-Nov
Aabba	M	ML	M	Aazzi	M	ML	M	Adchit El-Chqif	M	ML	M
Ain Bou Swar	M	L	M	Ain Kana	M	ML	M	Ali El-Taher	M	ML	M
Ansar	M	ML	M	Arab Salim	M	ML	M	Arnoun	M	M	M
Bfaroue	M	ML	M	Breyqaah	M	ML	M	Charqiyeh	M	ML	M
Choukine	M	ML	M	Deir El Zahrani	M	ML	M	Doueir El-Nabatiyeh	M	ML	M
Habbouch El-Nabatiye	M	ML	M	Hamra El-Nabatiyeh	M	L	M	Harouf El-Nabatiyeh	M	ML	M
Hmaile	M	ML	M	Houmin El Faouqa	M	ML	M	Houmin El Tahta	M	ML	M
Jarjough	M	ML	M	Jbaah El-Nabatiyeh	M	L	M	Jebchit	M	ML	M
Kfar Djal El-Nabatiy	M	ML	M	Kfar Remmane	M	ML	M	Kfar Sir	M	ML	M
Kfar Tebnit	M	ML	M	Kfarfila	M	ML	M	Kfour El-Nabatieh	M	ML	M
Mayfadoun	M	ML	M	Mazraat Bsaffour	M	ML	M	Mazraat Chalbaal	M	ML	M
Mazraat Dmoul	M	ML	M	Mazraat El Khreibeh	M	ML	M	Mazraat El-Bayad El-	M	ML	M
Mazraat Kfarjaouz	M	ML	M	Mazraat Qalaat Meiss	M	ML	M	Nabatiyeh El-Fawka	M	ML	M
Nabatiyeh Et-Tahta	M	ML	M	Namiriyeh	M	ML	M	Qaaqaaiyet El Jisr	M	ML	M
Qossaibeh El-Nabatiy	M	ML	M	Roumine	M	ML	M	Sarba El-Nabatieh	M	ML	M
Sir El-Gharbiyeh	M	ML	M	Toul	M	ML	M	Yehmor El-Nabatiyeh	M	ML	M
Zaoutar El Charkiyeh	M	L	M	Zaoutar El-Gharbiyeh	M	L	M	Zebdine El-Nabatiyeh	M	ML	M
Zefta	M	ML	M								

Hasbaiya

Municipality	28-Nov	29-Nov	30-Nov	Municipality	28-Nov	29-Nov	30-Nov	Municipality	28-Nov	29-Nov	30-Nov
Ain Jarfa	M	ML	M	Abou Qamha	M	ML	M	Ain Qania	M	ML	M
Bourghos	M	L	M	Chebaa	M	L	M	Chouaya Hasbaya	M	L	M
Dellafeh	M	L	M	Fardiss Hasbaiya	M	ML	M	Hasbaya	M	L	M
Hbariyeh	M	ML	M	Kaoukaba Hasbaiya	M	ML	M	Kfar Chouba	M	M	M
Kfar Hamam	M	M	M	Kfeir El-Zait	M	L	M	Khalwat Hasbaya	M	L	M
Khreibet Hasbaiya	M	ML	M	Majdiyeh Hasbaiya	M	M	M	Marj Ez-Zhour (Haouc	M	ML	M
Meri	M	ML	M	Mimass	M	L	M	Rachaiya El-Fokhar	M	ML	M
Salaiyeb	M	M	M								

Marjayoun

Municipality	28-Nov	29-Nov	30-Nov	Municipality	28-Nov	29-Nov	30-Nov	Municipality	28-Nov	29-Nov	30-Nov
Aalmane Marjaayoun	M	L	M	Aamra	M	M	M	Adayseh Marjaayoun	M	ML	M
Adchit El-Koussair	M	ML	M	Ain Aarab Marjaayoun	M	ML	M	Bani Haiyann	M	ML	M
Blatt Marjaayoun	M	ML	M	Blida	M	M	M	Borj El-Moulouk	M	M	M
Boueyda Marjaayoun	M	ML	M	Deir Mimass	M	M	M	Deir Siriane	M	L	M
Dibbine	M	ML	M	Ebel El Saqi	M	ML	M	Houla	M	ML	M
Houra	M	M	M	Kfar Kila	M	M	M	Khiam Marjaayoun	M	M	M

Klayaa	M	M	M	Majdel Selem	M	ML	M	Marjaayoun	M	ML	M
Markaba	M	ML	M	Mays El-Jabal	M	ML	M	Mazraat Doumiat	M	ML	M
Mazraat Sarada	M	ML	M	Mhaibib	M	ML	M	Qabrikha	M	ML	M
Qantara	M	ML	M	Rab El-Thalathine	M	ML	M	Saouaneh Marjayoun	M	ML	M
Taloussa	M	ML	M	Taybeh Matjaayoun	M	ML	M	Touline	M	ML	M

Bent Jbail

Municipality	28-Nov	29-Nov	30-Nov	Municipality	28-Nov	29-Nov	30-Nov	Municipality	28-Nov	29-Nov	30-Nov
Ain-Ebel	M	L	M	Aitaroun	M	ML	M	Aynata Bint Jbeil	M	ML	M
Ayta El-Chaeb	M	ML	M	Ayta El-Jabal	M	ML	M	Beit Lif	M	ML	M
Beit Yahoun	M	ML	M	Bint Jbeil	M	L	M	Borj Qalaway	M	ML	M
Braachit	M	ML	M	Chakra	M	L	M	Debel	M	L	M
Deir Antar	M	ML	M	Froun	M	ML	M	Ghandouriyeh Bint Jb	M	ML	M
Hanine	M	L	M	Hariss	M	ML	M	Hdatha	M	L	M
Jmeymeh	M	ML	M	Kafra Bint Jbeil	M	ML	M	Kfar Dounine	M	ML	M
Khirbet Selm	M	ML	M	Kounine	M	ML	M	Maroun El Ras	M	ML	M
Qalaway	M	ML	M	Qaouzah	M	ML	M	Qatmoun	M	L	M
Ramya Bint Jbeil	M	ML	M	Rchaf	M	L	M	Rmeich	M	L	M
Safad Al Battikh	M	ML	M	Salhaneh	M	ML	M	Serbine	M	ML	M
Sultanieh Bint Jbeil	M	ML	M	Tibnine	M	ML	M	Tiri	M	L	M
Yaroun	M	L	M	Yater	M	ML	M				

Mont Liban

Jbail

Municipality	28-Nov	29-Nov	30-Nov	Municipality	28-Nov	29-Nov	30-Nov	Municipality	28-Nov	29-Nov	30-Nov
Aabeydat	ML	ML	M	Aalita	M	L	M	Aamchit	M	ML	M
Aarab El-Lahib	L	L	ML	Aarasta	L	L	L	Adonis Jbeil	M	L	ML
Afqa Jbeil	L	L	L	Ain El Delbeh Jbeil	ML	L	L	Ain El-Ghouayba	L	L	L
Ain Jrain	ML	L	L	Ain Kfah	M	M	M	Almat El Chemaliyat	L	L	L
Almat El-Jenoubiya	L	L	L	Aqoura	L	ML	M	Bayzoun	ML	L	L
Bchille Jbeil	M	L	M	Bechtlida	L	L	ML	Behdaydat	ML	L	M
Beit Habbaq	M	M	M	Bejjeh	M	M	M	Bekhaaz	M	M	M
Berbara Jbeil	M	M	M	Bintael	ML	L	M	Birket Hjoula	L	L	M
Blatt Jbeil	M	L	M	Boulhos	L	L	L	Breyj Jbeil	ML	L	M
Chamat	M	M	M	Chikhane	M	M	M	Chmout	M	ML	M
Eddeh Jbeil	M	ML	M	Ehmej	L	L	L	Fatre	M	L	ML
Ferhet	ML	ML	ML	Fghal	M	ML	M	Frat	L	L	L
Ghabat	L	L	ML	Ghalboun	M	M	M	Gharzouz	M	M	M
Ghofrine	M	ML	M	Habil	L	L	ML	Halate	M	L	M
Haqel	ML	ML	ML	Hbaline	M	M	M	Hboub	M	L	M
Hdeine	L	L	ML	Hema Er-Rehban	ML	L	ML	Hema Mar Maroun Aann	ML	L	ML
Hjoula	L	L	M	Hosrayel	M	M	M	Hsarat	M	M	M
Hsoun	ML	L	M	Jaj	L	L	L	Janne	L	L	L
Jbeil	M	ML	M	Jeddeyl Jbeil	M	M	M	Jlisse	ML	L	M
Jouret El-Qattine	ML	L	M	Kfar Baal Annaya	L	L	ML	Kfar Kidde	M	M	M
Kfar Kouas	ML	L	M	Kfar Mashoun	M	ML	M	Kfoun	ML	ML	M

Kharbe Jbeil	M	ML	M	Laqlouq	ML	L	M	Lassa	L	L	ML
Lehfed	ML	ML	L	Maad	M	M	M	Mar Sarkis	ML	L	M
Mastita	M	ML	M	Mayfouq	ML	ML	L	Mazraat El Siyad	ML	L	ML
Mazraat El-Maaden	L	L	L	Mechane	ML	L	ML	Mechmech Jbeil	L	L	L
Mehrin	M	ML	M	Mejdel El-Akoura	L	L	ML	Mghayreh Jbeil	ML	L	ML
Mounsef	M	M	M	Nahr Ibrahim	M	L	M	Qahmez	L	L	L
Qartaba	L	L	L	Qartaboun	M	ML	M	Qattara Jbeil	ML	L	L
Qorqraya	L	L	L	Ramout	M	M	M	Ras Osta	ML	L	M
Rihane Jbeil	M	M	M	Sakiet El-Khayt	M	ML	M	Saqi Richmaya	L	ML	L
Sebrine	M	L	M	Seraita	L	L	ML	Souane Jbeil	ML	L	L
Tadmor	ML	L	ML	Tartej	L	L	ML	Torzaiya	L	ML	ML
Yanouh Jbeil	L	L	ML	Zibdine Jbeil	M	L	M				

El Metn

Municipality	28-Nov	29-Nov	30-Nov	Municipality	28-Nov	29-Nov	30-Nov	Municipality	28-Nov	29-Nov	30-Nov
Aain El-Qabu	L	L	L	Aain El-Qach	M	L	M	Aain El-Teffaha	M	L	M
Aain el-Safsaf El-M	ML	L	M	Abou Mizane	M	L	M	Ain Aar	M	L	M
Ain Alaq	M	L	M	Ain El-Kharroube	M	L	M	Ain El-Sendianeh	ML	L	M
Ain El-Zeitoune	L	L	M	Ain Saadeh	M	L	M	Aintoura El-Matn	L	L	ML
Amaret Chalhoub	M	ML	M	Antelias	M	ML	M	Atchaneh	M	L	M
Ayroun	ML	L	M	Baabdat	M	L	M	Baouchariyeh	M	ML	M
Baskinta	L	L	ML	Beit Chabab	M	L	M	Beit El-Chaar	M	ML	M
Beit El-Kekko	M	ML	M	Beit Mery	M	L	M	Bhersaf	M	L	M
Bikfaya	M	L	M	Biyakout	M	ML	M	Bnabil	L	L	M
Bourj Hammoud	M	ML	M	Bqennaya	M	L	M	Broummana El-Matn	M	L	M
Bsalim	M	L	M	Bsifrine	ML	L	ML	Bteghrine	L	VL	L
Chaouiye	M	L	M	Chouaya El-Matn	M	L	M	Choueir	ML	L	M
Chrine	M	L	M	Dahr El Sawan El-Mat	M	L	M	Daychouniyeh	M	ML	M
Dbayeh	M	ML	M	Deir Chamra	M	L	ML	Deir Mar Abda el Mch	M	L	M
Deir Mar Roukouz	M	ML	M	Deir Tamiche	M	L	M	Dik El-Mehdi	M	L	M
Dikwaneh	M	ML	M	Douar El-Matn	ML	L	M	Fanar	M	L	M
Fraike	M	L	M	Haret El-Ballaneh	M	ML	M	Hbous	M	L	M
Himlaya	M	L	M	Jal El Did	M	ML	M	Jdeideh El-Metn	M	ML	M
Jouar El-Matn	ML	L	M	Jouret El-Ballout	M	L	M	Kaaqour	ML	L	M
Kfar Aaqab	L	L	ML	Kfertay El-Matn	L	L	L	Khenchara	L	L	M
Khillet El-Mtain	ML	L	M	Konnabat Broummana	M	L	M	Konnabat Salima	M	L	ML
Machraah El-Matn	L	L	L	Majdel Tarchich	L	L	M	Majzoub	M	ML	M
Mansouriyeh El-Metn	M	ML	M	Mar Boutros Karm Et-	M	L	M	Mar Chaya et Mzekke	M	L	M
Mar Moussa Ed-Douar	ML	L	M	Marjaba	L	L	ML	Masqa	M	L	M
Mayasse	M	L	M	Mazraat Deir Aoukar	M	L	M	Mazraat El-Hadirat	M	L	M
Mazraat Yachouh	M	ML	M	Mchikha	L	L	M	Menqlet Mezher	M	ML	M
Mhaydseh Matn	M	L	M	Mkalles	M	ML	M	Mrouj	ML	L	M
Mtain	L	L	ML	Mtayleb	M	L	M	Nabay	M	L	M
Naccache	M	L	M	Ouadi Chahine	M	L	M	Ouadi El-Karm El-Mat	L	L	L
Ouata El-Mrouj	ML	L	M	Ouyoun El-Matn	M	L	ML	Qornet Chehwan	M	L	M
Qornet El-Hamra	M	L	M	Roumieh	M	L	M	Sfeilet Bikfaya	M	L	M
Sinn El-Fil	M	ML	M	Zabbougha	ML	L	ML	Zalqa	M	ML	M

Zarouon	ML	L	M	Zekrite	M	L	M	Zighrine El-Matn	M	L	M
Zouk El-Khrab	M	ML	M								

Chouf

Municipality	28- Nov	29- Nov	30- Nov	Municipality	28- Nov	29- Nov	30- Nov	Municipality	28- Nov	29- Nov	30- Nov
Aalmane El-Chouf	M	ML	M	Aammq El-Chouf	M	L	M	Ain Ouzein	M	L	M
Ain Qani	M	L	M	Ain Zhalta	ML	L	M	Ainbal	M	L	M
Amatour	M	L	M	Anout	M	L	M	Atrine	M	L	M
Baadarane	M	L	M	Baaqline	M	ML	M	Baasir	M	ML	M
Barja	M	ML	M	Barouk	ML	L	M	Bater	M	L	M
Batloun	M	L	M	Bayqoun	M	L	M	Bchetfine	M	L	M
Beiteddine	M	ML	M	Benouati Ech-Chouf	M	L	M	Berjein	M	L	M
Bireh et Mtalleh	M	L	M	Biret El-Chouf	M	L	M	Bkechtine Ouel Mchei	M	L	M
Bkifa El-Chouf	M	ML	M	Botme	M	L	M	Bqaiaa Ech-Chouf	M	L	M
Bsaba El-Chouf	M	L	M	Chammis El-Chouf	M	ML	M	Chehim	M	L	M
Chemaarine	M	L	M	Chourit	M	L	M	Daher El-Chouf	M	ML	M
Dalhoun	M	L	M	Damour	M	L	M	Daraya El-Chouf	M	L	M
Deir El-Moukhalles	M	L	M	Deir Baba	M	L	M	Deir Dourit	M	L	M
Deir El-Qamar	M	ML	M	Deir Kouche	M	L	M	Dibbieh	M	L	M
Dmit	M	L	M	Fouara Jaafar	M	L	M	Fraidis El-Chouf	L	L	M
Ghabet Jaafar	M	L	M	Gharife	M	L	M	Haret Jandal	M	L	M
Hasrout	M	L	M	Jadra	M	ML	M	Jahlieh	M	L	M
Jbeih El-Chouf	ML	L	M	Jdeidet El-Chouf	M	L	M	Jiyeh	M	ML	M
Jleilyeh	M	L	M	Jmailiyeh	M	ML	M	Joun	M	L	M
Kahlounie El-Chouf	M	L	M	Ketermaya	M	ML	M	Kfar Faqoud	M	L	M
Kfar Hamal	M	ML	M	Kfar Him	M	ML	M	Kfar Katra	M	L	M
Kfar Niss	M	L	M	Kfar hay	M	L	M	Kfarnabrakh	M	L	M
Khirbet Bisri	M	L	M	Knayse El-Chouf	M	L	M	Maaniyeh	M	ML	M
Maasser Beiteddine	M	L	M	Maasser El-Chouf	ML	L	M	Majdalouna	M	L	M
Majdel El-Meouch	M	L	M	Mazboud	M	L	M	Mazmoura	M	L	M
Mazraat El Chouf	M	L	M	Mazraat El Daher	M	L	M	Mazraat El-Douair	M	L	M
Mechref	M	ML	M	Mghairie	M	ML	M	Mghayrie El-Chouf	M	L	M
Moukhtara	M	L	M	Mrusti	ML	L	M	Mtolle	M	L	M
Naameh	M	L	M	Niha El-Chouf	ML	L	M	Ouadi Abou Youssef	M	L	ML
Ouadi Ed-Deir	M	ML	M	Ouadi El-Sit	M	L	M	Ouadi bnehlay	M	L	M
Qraibeh	M	L	M	Qreiaa	M	L	ML	Rmayle El-Chouf	M	ML	M
Semqaniyeh	M	L	M	Sibline	M	ML	M	Sirjbeil	M	L	M
Warhanieh	ML	L	M	Werdaniyeh	M	ML	M	Zaarourieh	M	L	M

Baabda

Municipality	28- Nov	29- Nov	30- Nov	Municipality	28- Nov	29- Nov	30- Nov	Municipality	28- Nov	29- Nov	30- Nov
Abadiyeh	M	L	M	Ain Mouaffaq	M	L	M	Araiya	M	L	M
Arbaniyeh	M	L	ML	Arsoun	ML	L	M	Baabda	M	ML	M
Baalchmey	M	ML	M	Bmaryam	ML	L	M	Bourj El-Brajneh	M	ML	M
Boutchay	M	L	M	Bsaba Baabda	M	ML	M	Btekhney	L	L	M
Btibyat	ML	L	M	Bzebdine	L	L	M	Chbeniyeh	ML	L	M
Chiyah	M	M	M	Chmeisset Baabda	M	ML	M	Chouit	M	L	M
Deir El-harf	M	L	M	Deir Khouna	M	L	M	Dlaybeh	M	L	M

Falougha	L	L	M	Furn El-Chebbak	M	ML	M	Hadath Beyrouth	M	ML	M
Halaliyeh Baabda	M	L	M	Hammana	L	L	M	Haret El Sett	M	L	M
Haret Hamze	M	L	M	Haret Hreik	M	M	M	Hasbaiya El-Metn	L	L	ML
Jouar El-Hoz	L	L	L	Jouret Arsoun	ML	L	M	Kfar Chima	M	ML	M
Kfar Selouane	L	L	ML	Khalouat Baabda	L	L	M	Kneisset Baabda	M	L	M
Laylakeh	M	ML	M	Louayzeh Baabda	M	ML	M	Merdache	M	ML	M
Mzairaa Baabda	M	L	M	Ouadi Chahrour El Ol	M	L	M	Ouadi Chahrour El So	M	L	M
Qalaa Baabda	L	L	M	Qhraybe Baabda	ML	L	M	Qobbayaa	ML	L	M
Qornayel	L	L	ML	Qortada	M	L	ML	Qrayeh Baabda	ML	L	M
Qsaibeh Baabda	M	L	M	Qtale Baabda	M	L	M	Ras El Metn	M	L	M
Ras El-Haref	M	L	M	Rouayset El-Ballout	M	L	M	Salima Baabda	M	L	M
Tahouitat El Ghadir	M	ML	M	Tarchich	L	L	ML	Zandouqa	M	L	ML

Aley

Municipality	28-Nov	29-Nov	30-Nov	Municipality	28-Nov	29-Nov	30-Nov	Municipality	28-Nov	29-Nov	30-Nov
Abey	M	L	M	Aghmid	ML	L	M	Ain Dara	L	L	M
Ain Drafil	M	L	M	Ain El Halazoun	M	ML	M	Ain El-Rmmaneh	M	L	M
Ain Jedideh	M	ML	M	Ain Ksour	M	L	M	Ain Onoub	M	L	M
Ain Traz	M	L	M	Ainab	M	L	M	Aley	M	ML	M
Aramoun	M	L	M	Aytat	M	ML	M	Azouniyeh	ML	L	M
Baawerta	M	L	M	Badghan Oua Wadi Bad	M	L	M	Bassatine	M	L	M
Bayssour	M	L	M	Bchamoun	M	L	M	Bdadoun	M	L	M
Behouara	M	L	M	Bennay	M	L	M	Bhamdoun El-Dayaa	M	ML	M
Bhamdoun El-Mhatta	M	L	M	Bkhechthey	M	L	M	Bleibel	M	L	M
Bmakine	M	ML	M	Bmehray	L	L	M	Bouzrid	M	L	M
Bserrine	M	ML	M	Bsous	M	L	M	Btalloun	M	ML	M
Btater	M	L	M	Chanay	M	ML	M	Charoun	M	L	M
Chartoun	M	L	M	Chemlane	M	L	M	Choueifat El-Aamrous	M	ML	M
Choueifat El-Oumara	M	ML	M	Choueifat El-Quoubbe	M	ML	M	Dakkoun	M	L	M
Deir Qoubel	M	L	M	Dfoun	M	L	M	Douair El Remmaneh	M	L	ML
Ghaboun	M	L	M	Habramoun	M	ML	M	Homs Oua Hama	M	L	M
Houmal	M	L	M	Jisr El Qadi	M	L	M	Kehaleh	M	L	M
Keyfoun	M	L	M	Kfar Aamey	M	L	M	Kommatyeh	M	L	M
Maasrati	M	ML	M	Majdel Baana	M	L	M	Mansourieh et Ain El	M	L	M
Mazraat El-Nahr	M	L	M	Mchakhte	ML	L	M	Mecherfeh	M	L	M
Mejdaya	M	L	M	Mrayjat	M	L	M	Ramliyah	M	L	M
Rechmaya	M	ML	M	Rejmeh	M	L	M	Remhala	M	L	M
Rouaysset El Neemane	M	L	M	Saoufar	ML	L	M	Selfaya	M	L	M
Sirhmoul	M	L	M	Souq El Ghareb	M	L	M	Taazanieh	M	ML	M

Kesrouane

Municipality	28-Nov	29-Nov	30-Nov	Municipality	28-Nov	29-Nov	30-Nov	Municipality	28-Nov	29-Nov	30-Nov
Achkout	M	L	M	Adma Oua Dafneh	M	L	M	Ain Ed-Delbe Kesroua	ML	L	L
Ain El-Rihane	M	L	M	Aintoura Kesrouane	M	L	M	Ajaltoun	M	L	M
Akaybeh Kesrouane	M	L	M	Aramoun Kesrouane	M	L	M	Azra ouel Ozor	M	L	M
Ballouneh	M	L	M	Batha	M	L	ML	Bekaatat Achkout	M	L	M
Bekaatat Kanaan	L	L	L	Bizhel	M	L	M	Bouar	M	L	M
Bqaatouta	ML	L	ML	Bqaq Ed-Dine	M	L	M	Bzommar	M	L	M

Chahtoul	M	L	M	Chnaniir	M	L	M	Chouan	L	L	L
Daraya Kesrouane	M	L	M	Darououn	M	L	M	Deir Baqlouch	M	L	M
Dlebta	M	L	M	Eghbeh	M	L	ML	Faraya	L	L	ML
Fatka	M	L	M	Feytroun	ML	L	ML	Ghazir	M	L	M
Ghbaleh Kesrouane	M	L	M	Ghedrass	M	L	ML	Ghosta	M	L	M
Ghynéh	M	L	M	Harharaya w Kattine	M	L	M	Harissa Kesrouane	M	L	M
Hayata	M	L	M	Hosein	M	L	ML	Hrajel	ML	L	ML
Jdeideh Ghazir	M	L	M	Jeita	M	L	M	Jounieh Ghadir	M	L	M
Jounieh Haret Sakhr	M	L	M	Jounieh Salel Alma	M	L	M	Jounieh Sarba	M	L	M
Jouret Bedrane	M	L	M	Jouret Mhad	ML	L	M	Jouret Termos	M	L	M
Kfar Debiane	L	L	ML	Kfar Tay Kesrouane	L	L	ML	Kfar Yassine	M	L	M
Kfour Kesrouane	M	L	M	Kharayeb Nahr Ibrahi	M	L	M	Klayaat Kesrouane	M	L	M
Maarab	M	L	ML	Maaysra Kesrouane	M	L	M	Mayrouba	ML	L	ML
Mazraat Er-Ras	M	ML	M	Mazraat Mrah El-Mir	M	L	M	Mchaa El Ftouh	L	ML	ML
Mchaa Faraya	L	L	ML	Mchaa Kfar Dibiane	L	ML	ML	Mghaer	ML	L	L
Mradiyah	M	L	M	Nahr Ed-Dahab	L	L	L	Nammoura Kesrouane	M	L	M
Ouata El Jaouz	ML	L	ML	Ouata Sillam	M	L	M	Raachine	ML	L	ML
Rayfoun	M	L	M	Safra Kesrouane	M	L	M	Shayle Kesrouane	M	L	M
Tabarja	M	L	M	Yahchouch	M	L	ML	Zaaytreh	M	L	M
Zeytoun	M	L	M	Zouk Mikael	M	L	M	Zouk Mosbeh	M	ML	M

Baalbek_Hermel

Baalbek

Municipality	28-Nov	29-Nov	30-Nov	Municipality	28-Nov	29-Nov	30-Nov	Municipality	28-Nov	29-Nov	30-Nov
Aadous	M	M	M	Aamchki	ML	ML	ML	Aarsal	M	M	M
Ain Baalbek	M	M	M	Ain Bourday	M	M	ML	Ain El-Benye	ML	ML	ML
Ain El-Jaouz Baalbek	ML	M	ML	Ain El-Siya Chadoura	L	ML	ML	Al Khodr Baalbek	M	M	M
Al Nabi Chit	M	M	M	Aynata Baalbek	L	M	ML	Baalbek	M	M	M
Bachwat	ML	M	M	Barqa	L	M	M	Bednayel Baalbak	ML	M	M
Beit Chama	M	M	M	Bijjaje	M	M	M	Bouday	M	M	M
Brital	M	M	M	Btadi	M	M	M	Chaat	M	M	ML
Chaibe	ML	L	ML	Chlifa	M	M	M	Chmestar	M	M	M
Dar El-Oussa	ML	M	M	Deir El-Ahmar	ML	M	M	Deir Mar Maroun Baal	M	M	M
Douris	M	M	M	Fakiha	M	M	M	Hadath Baalbek	M	M	M
Ham	ML	ML	ML	Haour Taala	M	M	M	Hizzine	M	M	M
Hlebta	M	M	M	Hosh Barada	M	M	M	Hosh El Dahab	M	M	M
Hosh El Snid	M	M	M	Hosh El-Nabi	M	M	M	Hosh El-Rafiq	M	M	M
Hosh Tal Safiya	M	M	M	Hrebta	M	M	M	laat	M	M	ML
Jebaa	M	M	M	Jenta	M	M	M	Kfar Dabach	M	M	M
Kfar Dane	M	M	M	Khraibeh El-Hermel	M	M	M	Khreibet Baalbek	M	M	ML
Kneisset Baalbek	ML	M	ML	Labueh	M	M	M	Maarboun	M	M	ML
Majdaloun	M	M	M	Maqneh	M	M	M	Mazraat Beit Mcheik	M	M	ML
Misraya	M	M	M	Moqraq	M	M	ML	Nabha El-Damdoum	ML	M	M
Nabi Chbay	ML	ML	M	Nabi Osman	M	M	M	Nahleh baalbek	M	M	ML
Ouadi El-Oss	M	M	M	Qaa Baayoun	M	M	M	Qaa Jouar Maqiye	M	M	M
Qaa Ouadi El-Khanzir	M	M	M	Qah Baalbek	M	MH	M	Qarha Baalbek	M	M	M

Qsarnaba	M	M	M	Ram Baalbek	L	M	M	Ras Baalbek El Sahl	M	M	M
Ras Baalbek El-Charq	M	M	M	Riha	M	M	M	Saaide	M	M	ML
Sbouba	M	M	M	Seriine El-Tahta	M	M	M	Slouqi	ML	M	M
Taiba Baalbek	M	M	M	Talia	M	M	M	Taraiya	M	M	M
Temnin El Fawqa	M	M	M	Temnin El-Tahta	M	M	ML	Tfail	ML	M	ML
Yahfoufa	M	M	M	Yammouneh	ML	M	M	Younine	M	M	ML
Zboud	M	M	M								

Hermel

Municipality	28-Nov	29-Nov	30-Nov	Municipality	28-Nov	29-Nov	30-Nov	Municipality	28-Nov	29-Nov	30-Nov
Charbine El-Hermel	L	M	M	Hermel Jbab	ML	M	M	Hermel	M	M	M
Maaysra El-Hermel	M	M	M	Michaa Mrajhine	L	M	M	Ouadi Faara	M	M	M
Ras Baalbek - Ouadi	M	M	M	Ras Baalbek El Gharb	ML	M	M	Zighrine	L	M	M

Akkar

Akkar

Municipality	28-Nov	29-Nov	30-Nov	Municipality	28-Nov	29-Nov	30-Nov	Municipality	28-Nov	29-Nov	30-Nov
Aain Tinta	ML	M	M	Aaiyat	ML	M	M	Aakkar El-Aatiqa	L	ML	M
Aamar Akkar	M	M	M	Aamar El Baykat	M	L	M	Aamayer	ML	ML	M
Aamriyet Akkar	M	ML	M	Aandqet	L	M	M	Aarmeh	M	L	M
Aarqa	M	M	M	Aawaynat	ML	ML	M	Aayoun Akkar	L	M	M
Abboudiye	M	L	M	Ain El-Zeit	ML	M	M	Ain Yaaqoub	L	M	M
Akroum	L	M	M	Aridet Cheikh Zennad	M	L	M	Baldeh w Mazraat Bal	ML	M	M
Barcha	M	L	M	Bardeh	M	ML	M	Bebnine	M	M	M
Beino	ML	M	M	Beit Ayoub	ML	M	M	Beit El-Haouch	M	M	M
Beit Mellat	ML	M	M	Beit Younes	L	ML	M	Berbara Akkar	ML	M	M
Berqayel	M	M	M	Bezbina	L	ML	M	Bireh Akkar	ML	M	M
Borj	ML	M	M	Bqerezla	ML	M	M	Bzal	L	M	M
Chane	L	ML	M	Chaqdouf	L	M	M	Charbila	ML	M	M
Cheikh Mohammad	M	M	M	Cheikh Taba Es-Sahl	M	M	M	Cheikh Taba	M	M	M
Cheikh Zennad	M	L	M	Cheikhlar	ML	ML	M	Chir Hmairine	M	L	M
Daghle	L	M	M	Dahr Laissine	ML	M	M	Darine	M	L	M
Dawra	L	ML	M	Dawsa w Baghdadi	M	L	M	Dayret Nahr El-Kabir	M	ML	M
Deir Dalloum	M	M	M	Deir Jennine	ML	M	M	Denbou	L	M	M
Dibbbiyeh	M	ML	M	Douair Aadwiyeh	ML	M	M	Fassikine	ML	M	M
Fnaydek	L	M	M	Fraydes Akkar	ML	L	M	Ghazayle	M	ML	M
Habchit	L	ML	M	Hakour	ML	M	M	Halba	M	M	M
Haouchab	M	M	M	Hayssat	M	M	M	Haytla	M	ML	M
Hayzouq	ML	M	M	Hedd	ML	M	M	Hmaira Akkar	ML	M	M
Hmaiss Akkar	ML	M	M	Hnaider	M	M	M	Hokr Ed-Dahri	M	L	M
Hokr Etti	M	M	M	Hokr Jouret Srar	M	L	M	Houaich	L	M	M
Hrar	L	M	M	Idbil	M	M	M	Ilal	M	M	M
Janine	M	ML	M	Jdeidet El-Joumeh	M	M	M	Jdeidet El-Kaiteh	ML	M	M
Jebrayel	ML	M	M	Kafr	M	ML	M	Kafr	ML	M	M
Karm Asfour	ML	M	M	Kfar Melki Akkar	M	M	M	Kfar Noun	ML	L	M
Kfarharra	ML	M	M	Khalsa	ML	ML	M	Kharnoubet Akkar	M	ML	M

Khirbet Daoud Aakkar	ML	M	M	Khirbet El Remmane	ML	ML	M	Khirbet Shar	ML	M	M
Khoreybet El-Jindi	M	M	M	Khreibet Aakkar	L	M	M	Kneisset Aakkar	M	L	M
Kneisset Hnaider	M	M	M	Knisse	ML	M	M	Kroum El-Aarab	M	M	M
Kwachra	M	ML	M	Kweykhath	M	M	M	Machta Hammoud	ML	ML	M
Majdala	M	M	M	Majdel Akkar	ML	M	M	Mar Touma	M	M	M
Marlaya Melhem	M	M	M	Mashha	M	M	M	Massoudiye	M	L	M
Mazraat Beit Ghattas	M	M	M	Mazraat En-Nahriye	L	ML	M	Mechmech	VL	M	M
Memneh	L	L	L	Mhammara	M	M	M	Mighraq Aakkar	M	L	M
Minyara	M	M	M	Moqayteh	M	M	M	Mounjez	ML	L	M
Msalla	M	ML	M	Mzeihmeh	M	ML	M	Nfaisch	M	ML	M
Noura Et-Tahta	M	L	M	Ouadi El-Haour	M	ML	M	Ouadi El-Jamous	M	M	M
Ouyoun El-Ghizlane	M	M	M	Qaabarine	M	M	M	Qabaait	L	M	M
Qachlaq	M	ML	M	Qantara Aakkar	ML	M	M	Qarha Aakkar	M	M	M
Qarqaf	M	M	M	Qboula	ML	M	M	Qleiaat Aakkar	M	ML	M
Qloud El-Baqie	ML	M	M	Qobaiyat Aakkar	L	M	M	Qobbat Chamrat	M	M	M
Qorayat	L	ML	M	Qornet Aakkar	L	M	M	Qsair Aakkar	ML	L	M
Rahbe	L	M	M	Rihaniyet Aakkar	M	M	M	Rmah	ML	ML	M
Rmoul	M	M	M	Saadine	M	L	M	Sadaqa	L	M	M
Saidnaya	ML	M	M	Sammouniye	M	M	M	Sayssoq	M	M	M
Semmaqiye	M	L	M	Semmaqli	M	M	M	Sfinet El-Dreib	ML	M	M
Sfinet El-Qaitaa	ML	M	M	Sindyanet Zeidane	L	M	M	Souaisset Aakkar	M	M	M
Srar	M	ML	M	Tal Abbas El Gharby	M	M	M	Tal Abbas El-Chargy	M	ML	M
Tal Biret	M	L	M	Tal Hmayra	M	L	M	Tal Maayan Tal Kiri	M	L	M
Tal Sibel	M	M	M	Tallet Chattaha	ML	M	M	Tikrit	L	M	M
Tleil	M	ML	M	Tshea	L	ML	M	Zawarib	ML	M	M
Zouq El Hosniyeh	ML	M	M	Zouq El-Haddara	M	M	M	Zouq El-Hbalsa	ML	M	M
Zouq El-Moqachrine	M	M	M								

Sud

Sour

Municipality	28-Nov	29-Nov	30-Nov	Municipality	28-Nov	29-Nov	30-Nov	Municipality	28-Nov	29-Nov	30-Nov
Aaiyeh	M	ML	M	Aalma El-Chaab	M	L	M	Aaytit	M	ML	M
Abbassiyeh Sour	M	M	M	Abou Chech	M	L	M	Ain Abou Abdallah	M	M	M
Ain Baal	M	ML	M	Arzoun	M	ML	M	Aziyeh	M	ML	M
Baflaya	M	ML	M	Barich	M	ML	M	Batouliyeh	M	ML	M
Bayad	M	ML	M	Bazouriyeh	M	ML	M	Bediass	M	ML	M
Bestiyat	M	ML	M	Borj El Chemali	M	ML	M	Borj En-Naqoura	M	ML	M
Borj Rahhal	M	M	M	Boustane	M	ML	M	Btaychiyeh	M	ML	M
Chaaitiye	M	ML	M	Chameh	M	L	M	Chehabiye	M	ML	M
Chehour	M	ML	M	Chihine	M	ML	M	Debaal Sour	M	ML	M
Deir Amess	M	ML	M	Deir Kifa	M	ML	M	Deir Qanoun El-Ain	M	ML	M
Deir Qanoun El-Naher	M	ML	M	Derdghaiya	M	ML	M	Dhayra	M	ML	M
Halloussiyeh	M	ML	M	Hamoul	M	L	M	Hanaouey	M	M	M
Henniye	M	ML	M	Hmairi Sour	M	ML	M	Iskandarouna Sour	M	ML	M
Jbal El Botom	M	ML	M	Jebbin	M	ML	M	Jennata	M	ML	M
Jjim	M	L	M	Jouaiya	M	ML	M	Kneisset Sour	M	ML	M

Maarake	M	ML	M	Maaroub	M	ML	M	Majadel	M	ML	M
Majdalzoun	M	ML	M	Mansouri Sour	M	ML	M	Marnba	M	ML	M
Marouahine	M	ML	M	Mazraat El-Zalloutiy	M	ML	M	Mazraat Mechref	M	ML	M
Mazraat Tayr Semhat	M	ML	M	Mheilib	M	ML	M	Neffakhiyeh	M	ML	M
Niha Sour	M	ML	M	Ouadi Jilo	M	ML	M	Qana	M	ML	M
Qolaileh Sour	M	ML	M	Rechknany	M	ML	M	Rmadiyeh	M	ML	M
Selha Sour	M	ML	M	Siddiqine	M	ML	M	Sour	M	M	M
Srifa	M	ML	M	Tayr Debbe	M	ML	M	Tayr Felsay	M	ML	M
Tayr Harfa	M	ML	M	Touayri	M	ML	M	Toura	M	ML	M
Yanouh Sour	M	ML	M	Yarine	M	ML	M	Zebqine	M	ML	M

Saida

Municipality	28-Nov	29-Nov	30-Nov	Municipality	28-Nov	29-Nov	30-Nov	Municipality	28-Nov	29-Nov	30-Nov
Aanqoun	M	ML	M	Aaqtanit	M	ML	M	Aarab Ej-Jall	M	ML	M
Aarab Tabbaya	M	ML	M	Abra Saida	M	ML	M	Adloun	M	ML	M
Adousiyeh	M	ML	M	Ain-El-Deleb	M	ML	M	Arzai	M	ML	M
Babliyah	M	M	M	Barty	M	ML	M	Bissariyeh	M	M	M
Bnaafoul	M	ML	M	Bqosta	M	ML	M	Bramiy	M	ML	M
Daoudiyeh	M	M	M	Dareb El-Sim	M	ML	M	Erkay	M	ML	M
Ghassanieh	M	M	M	Ghazieh	M	ML	M	Hajeh	M	ML	M
Haret Saida	M	ML	M	Hartiyeh	M	ML	M	Hlaliye Saida	M	ML	M
Insariyat	M	M	M	Jazira Saida	M	M	M	Kafar Bit	M	ML	M
Kaoutariyet El-Siyad	M	ML	M	Kfar Chellal	M	ML	M	Kfar Hatta Saida	M	ML	M
Kfar Milke Saida	M	ML	M	Khartoum	M	ML	M	Khaziz	M	ML	M
Khirbet Ed-Douair Sa	M	M	M	Khirbet El-Bassal	M	ML	M	Khrayeb Saida	M	ML	M
Loubieh	M	M	M	Maghdouche	M	ML	M	Majdelyoun	M	ML	M
Matariyet El-Choumar	M	M	M	Matayriyeh	M	ML	M	Mazraat 'Mseileh	M	ML	M
Mazraat 'Snaiber	M	M	M	Mazraat Aarab Soukka	M	ML	M	Mazraat Deir Taqla	M	ML	M
Mazraat El Yahoudiye	M	ML	M	Mazraat El-Housseini	M	ML	M	Mazraat El-Mhaydaleh	M	M	M
Mazraat El-Ouasta	M	ML	M	Mazraat Jamjim	M	ML	M	Mazraat Kaoutariyet	M	ML	M
Mazraat Kfar Badda	M	ML	M	Mazraat Oussamiyat	M	M	M	Mazraat Sari	M	ML	M
Mazraat Sinai	M	ML	M	Meemariyeh	M	ML	M	Merouaniyeh	M	ML	M
Miyeh ou Miyeh	M	ML	M	Najjariyeh	M	ML	M	Qaaqiyat El-Snaouba	M	M	M
Qnarit	M	ML	M	Qraiye Saida	M	ML	M	Saida Ed-Dekermane	M	ML	M
Saida El-Oustani	M	ML	M	Saida El-Qadimeh	M	ML	M	Saida Kefraya	M	ML	M
Saksakiyeh	M	M	M	Salhie Saida	M	ML	M	Sarafand	M	M	M
Sfenta	M	ML	M	Tafahta	M	ML	M	Tanbourit	M	ML	M
Tebna	M	M	M	Zaghdraiya	M	ML	M	Zeita	M	ML	M
Zrariyeh	M	ML	M								

Jezzine

Municipality	28-Nov	29-Nov	30-Nov	Municipality	28-Nov	29-Nov	30-Nov	Municipality	28-Nov	29-Nov	30-Nov
Ain El-Mir (El Estab	M	ML	M	Anane	M	L	M	Aramta	M	ML	M
Ariya	M	L	M	Aychiyeh	M	ML	M	Azour	M	L	M
Baba	M	L	M	Baysour Jezzine	M	ML	M	Benoueteh Jezzine	M	L	M
Bhannine	M	L	M	Bisri	M	L	M	Bkassine	M	L	M
Bouslaya	M	ML	M	Btedine El-Leqech	M	L	M	Chbail	M	ML	M
Choualiq Jezzine	M	ML	M	Dahr Ed-Deir	M	ML	M	Deir El Qattine	M	L	M

Demachqiyeh	M	ML	M	Ghabbatiyeh	M	L	M	Harf Jezzine	M	L	M
Hassaniyeh	M	ML	M	Haytouleh	M	ML	M	Haytura	M	L	M
Hidab	M	L	M	Homsiyeh	M	L	M	Jabal Toura	M	L	M
Jarmaq	M	ML	M	Jensnaya	M	ML	M	Jernaya	M	ML	M
Jezzine	M	L	M	Karkha	M	ML	M	Kfar Falous	M	ML	M
Kfar Houna	M	L	M	Kfar Jarrah	M	ML	M	Lebaa	M	ML	M
Louayzet Jezzine	M	L	M	Machmouche	M	L	M	Mahmoudiyeh Jezzine	M	ML	M
Maknounye Jezzine	M	L	M	Maraat Ouazaiyeh	M	ML	M	Mazraat Daraya	M	L	M
Mazraat El-Aarqoub	M	ML	M	Mazraat El-Mathane	M	L	ML	Mazraat El-Rahbane	M	L	M
Mazraat Khallet Khaz	M	ML	M	Mazraat Louzid (Loua	M	ML	M	Mazraat Qrouh	M	ML	M
Mazraat Tamra	M	ML	M	Mazraat Zighrine Jez	M	ML	M	Mazraat	M	ML	M
Mharbiyeh	M	ML	M	Midane Jezzine	M	L	M	Mjeydel Jezzine	M	ML	M
Mlikh	M	L	M	Mrach El-Hbasse	M	ML	M	Ouadi Baanqoudaine	M	ML	M
Ouadi El-Laymoun	M	ML	M	Ouardiyeh	M	ML	M	Qabaa Jezzine	M	L	M
Qatrani	M	L	M	Qaytouleh	M	L	M	Qtaleh Jezzine	M	L	M
Rihane Jezzine	M	ML	M	Rimat	M	ML	M	Roum	M	L	M
Roummanet	M	L	M	Sabbah	M	L	M	Saydoun	M	ML	M
Sfaray	M	L	M	Snaya	M	L	M	Sojoud	M	ML	M
Srayri	M	L	M	Taaid	M	L	M	Wadi Jezzine	M	L	M
Zhalta	M	L	M								

Bekaa

West Bekaa

Municipality	28-Nov	29-Nov	30-Nov	Municipality	28-Nov	29-Nov	30-Nov	Municipality	28-Nov	29-Nov	30-Nov
Aammiq BG	M	ML	M	Ain El Tineh BG	M	L	M	Ain Zebdeh	ML	L	M
Ana	M	ML	M	Aytanit	M	ML	M	Baaloul BG	M	ML	M
Bab Mareh	M	L	M	Chouberqiye Aammiq	M	ML	M	Dakoue	M	ML	M
Deir Ain El-Jaouze	M	L	M	Deir Tahniche	M	ML	M	Ghaza	M	ML	M
Harime El-Soughra	M	ML	M	Hoch Harimeh	M	ML	M	Jazira BG	M	ML	M
Jib Jennine	M	ML	M	Kamed-El-Laouz	M	ML	M	Kefraya BG	M	ML	M
Khiara El Atika	M	ML	M	Khiara	M	ML	M	Khirbet Qanafar	ML	L	M
Lala	M	ML	M	Lebbaya BG	M	L	M	Loussa	M	L	M
Machghara	M	L	M	Manara (Hammar) BG	M	ML	M	Mansoura BG	M	ML	M
Marej BG	M	ML	M	Maydoun	M	L	M	Ouaqf BG	M	ML	M
Qaraaoun	M	ML	M	Qelya	M	L	M	Raouda (Istabel)	M	ML	M
Saghbine	ML	ML	M	Sohmor	M	L	M	Soltan Yacoub el Ara	M	ML	M
Souairy	M	M	M	Sultan Yaacoub	M	ML	M	Tal Znoub	M	ML	M
Yehmor BG	M	L	M	Zilaya	M	L	M				

Zahle

Municipality	28-Nov	29-Nov	30-Nov	Municipality	28-Nov	29-Nov	30-Nov	Municipality	28-Nov	29-Nov	30-Nov
Aanjar (Haouch Mouss	M	M	M	Ablah	M	M	M	Ain Kfarzabad	M	ML	M
Ali-El-Nahri	M	M	ML	Bar Elias	M	ML	ML	Bouarej	M	ML	M
Cheberqiyet Tabet	M	ML	ML	Chtaura	M	ML	ML	Deir El Ghazal	M	M	M
Delhamiyet Zahle	M	ML	M	Ferzol	M	M	M	Haouch El-Ghanam	M	M	ML
Haouch Es-Siyadeh	M	ML	M	Haouch Hala	M	M	ML	Haouch Mandara	M	ML	ML

Haouch Qayssar	M	ML	M	Hezerta	ML	L	ML	Hosh Moussa	M	ML	ML
Jdita	M	ML	ML	Kfarzabad	M	ML	M	Ksara	M	ML	ML
Majdel Aanjar	M	M	M	Makssi	M	ML	ML	Massa	M	M	ML
Mazraat Er-Remtaniye	M	ML	ML	Mrayjat Zahle	M	ML	M	Mzaraa Zahle	M	ML	M
Nabi Ayla	M	M	M	Nasriyet Rizk	M	M	ML	Nasriyet Zahle	M	ML	M
Niha Zahle	M	M	M	Ouadi Ed-Deloum	ML	L	ML	Ouadi El-Arayech	M	ML	M
Qaa El Rim	ML	ML	M	Qab Elias	M	ML	M	Qousaya	M	M	M
Rhit	M	M	ML	Riyak	M	M	ML	Saadnayel	M	ML	ML
Taal El-Akhdar	M	ML	M	Taalbeya	M	ML	M	Taanayel	M	ML	ML
Talamara	M	M	ML	Tcheflik Edde Haouch	M	ML	M	Tcheflik Qiqano	M	ML	M
Terbol Zahle	M	ML	ML	Touaite Zahle	ML	L	ML	Zahle Aradi	M	ML	M
Zahle El-Berbara	ML	ML	M	Zahle El-Maallaqa	M	ML	M	Zahle El-Midane	ML	ML	M
Zahle Er-Rassiye	ML	ML	M	Zahle Haouch El-Ouma	M	ML	ML	Zahle Haouch El-Ouma	M	ML	M
Zahle Haouch Ez-Zara	M	ML	M	Zahle Maalqa Aradi	M	ML	M	Zahle Mar Antonios	ML	ML	M
Zahle Mar Elias	M	ML	M	Zahle Mar Gerios	M	ML	M	Zahle Saydet En-Naja	M	ML	M
Zebdoul	M	ML	ML								

Rachaiya

Municipality	28-Nov	29-Nov	30-Nov	Municipality	28-Nov	29-Nov	30-Nov	Municipality	28-Nov	29-Nov	30-Nov
Ain Arab Rachaiya	M	ML	M	Ain Ata	M	ML	M	Ain Harche	M	L	M
Aqabe Rachaya	M	L	M	Ayha	M	M	M	Ayta El Fokhar	M	ML	M
Bakifa Rachaya	M	L	M	Bakka	M	M	M	Beit Lahya	M	L	M
Bireh Rachaiya	M	ML	M	Daher El Ahmar	M	ML	M	Deir El-Achayer	M	M	M
Heloua Rachaiya	M	M	M	Hoch El Qannabeh Rac	M	ML	M	Kaoukaba Bou Arab	M	ML	M
Kfar Danis	M	ML	M	Kfar Mechki	M	L	M	Kfar Qouq	M	M	M
Kherbet Rouha	M	ML	M	Majdel Balhiss	M	L	M	Mdoukha	M	ML	M
Mhaydseh Rachaiya	M	ML	M	Nabi Safa	M	L	M	Rachaiya	M	L	M
Rafid Rachaiya	M	ML	M	Selsata (Mazraat Dei	M	M	M	Tannoura	M	L	M
Yanta	M	M	M								

Beyrouth

Beyrouth

Municipality	28-Nov	29-Nov	30-Nov	Municipality	28-Nov	29-Nov	30-Nov	Municipality	28-Nov	29-Nov	30-Nov
Achrafieh	M	ML	M	Ain el-Mreisse	M	M	M	Bachoura	M	M	M
Beirut Central Distr	M	M	M	Marfai	M	M	M	Mazraa	M	M	M
Medaouar	M	ML	M	Minet el-Hosn	M	M	M	Mwssaitbeh	M	M	M
Ras Beirut	M	M	M	Rmeil	M	ML	M	Saifi	M	M	M
Zqaq el-Blat	M	M	M								