

Lebanon Fire Risk Bulletin



CIVIL DEDEFENCE

Refer to cadast table condition.

Please note that the indicated temperature is at 2 meters height from the ground.

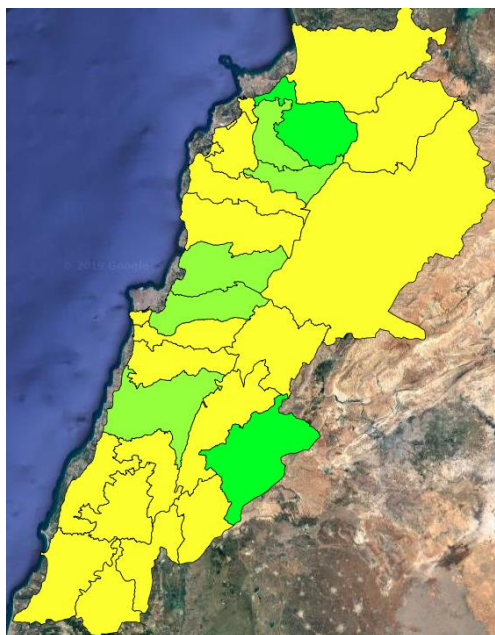
General description of potential fire risk situation

Symbol	Level of risk	Meaning and actions
VL	Very low	Very low fire risk. Controlled burning operations can be hardly executed due to high fuel moisture content. Normally wildfires self-extinguish.
L	Low	Low fire risk. Controlled burning operations can be executed with a reasonable degree of safety.
ML	Medium low	Medium-low fire risk. Controlled burning operations can be executed in safety conditions. All the fires need to be extinguished.
M	Medium	Medium fire risk. Controlled burning operations would be avoided. All the fires need to be very well extinguished.
M	Medium high	Controlled burning is not recommended. Open flame will start fires. Cured grasslands and forest litter will burn readily. Spread is moderate in forests and fast in exposed areas. Patrolling and monitoring is suggested. Fight fires with direct attack and all available resources.
H	High	Ignition can occur easily with fast spread in grass, shrubs and forests. Fires will be very hot with crowning and short to medium spotting. Direct attack on the head may not be possible requiring indirect methods on flanks. Patrolling and monitoring the territory is highly suggested.
E	Extreme	Ignition can occur also from sparks. Fires will be extremely hot with fast rate of spread. Control may not be possible during day due to long range spotting and crowning. Suppression forces should limit efforts to limiting lateral spread. Damage potential total. Patrolling and monitoring the territory is highly suggested.

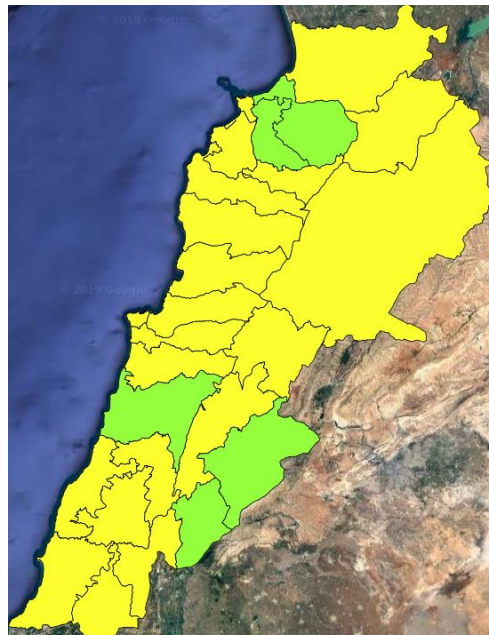
Beirut, 28 October 2019

FIRE RISK INDEX

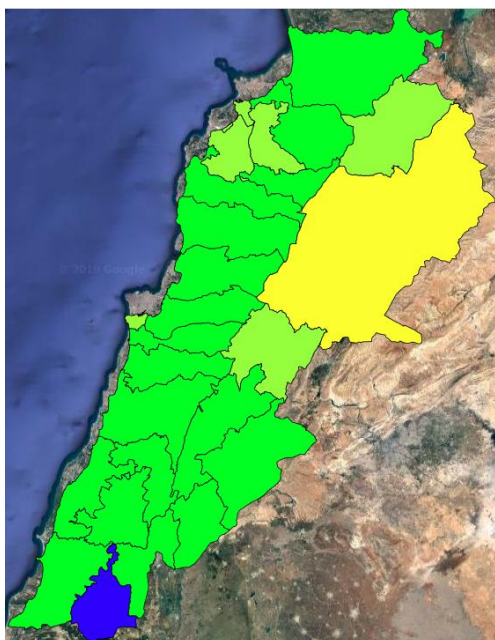
27 October 2019



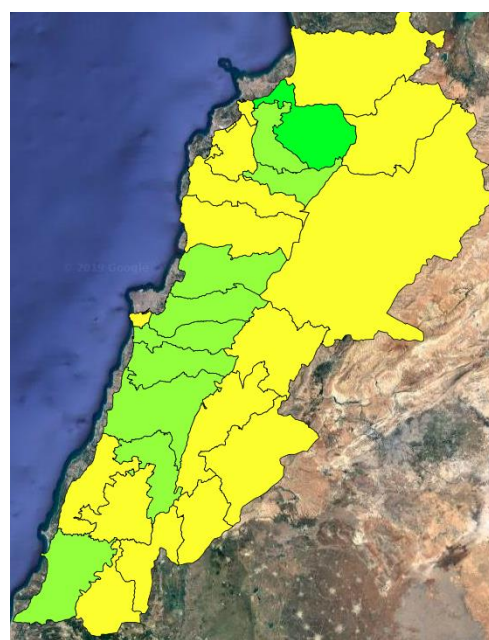
28 October 2019



29 October 2019



30 October 2019

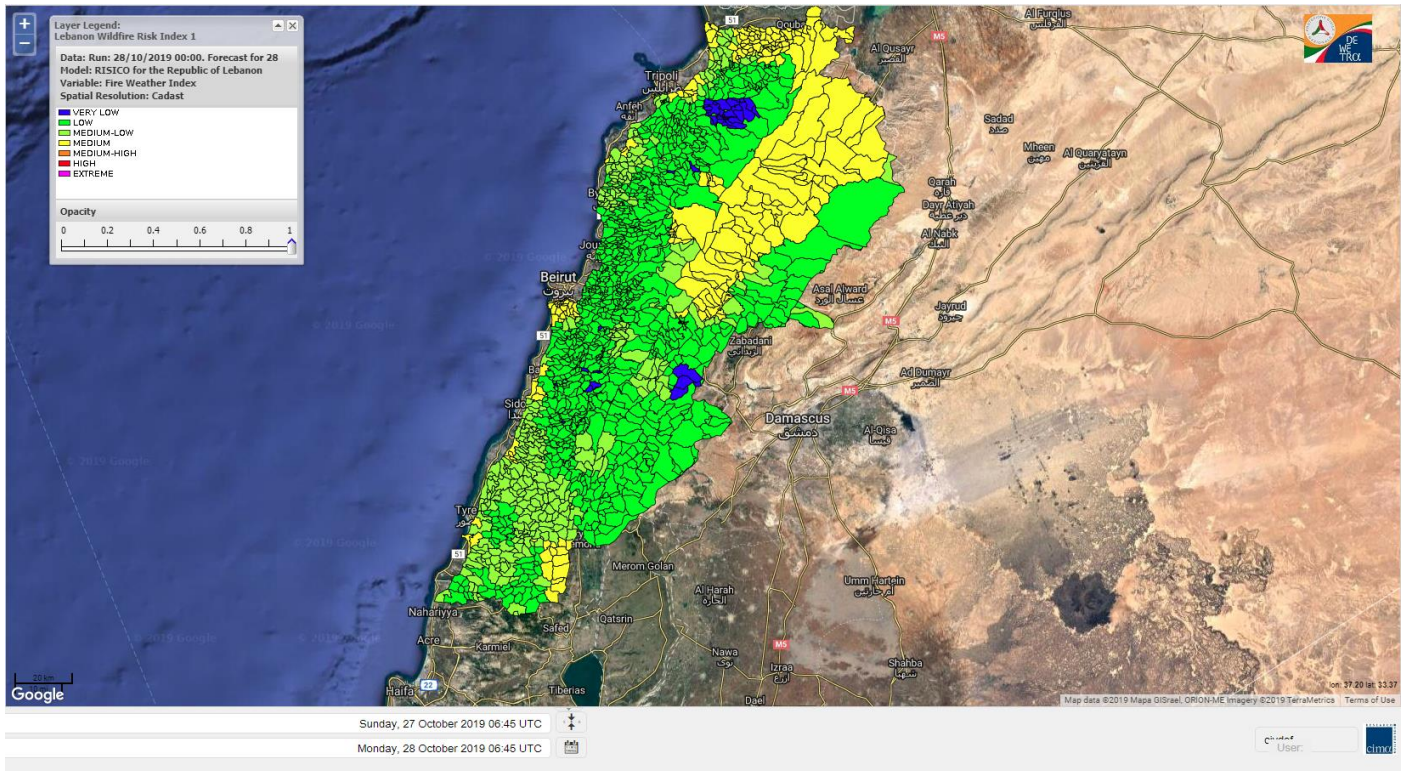


Layer Legend:
Lebanon Wildfire Risk Index 1

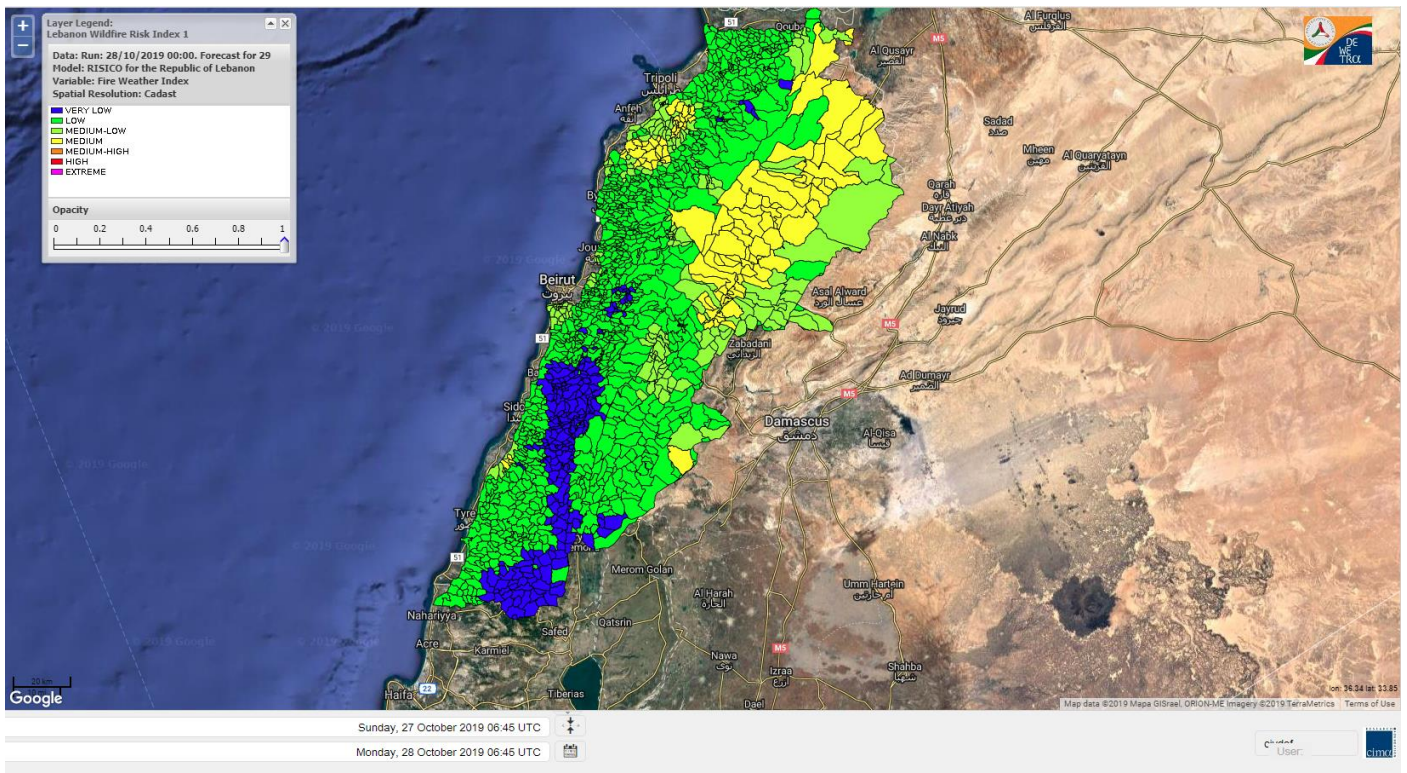
Data: Run: 28/10/2019 00:00. Forecast for 29
Model: RISICO for the Republic of Lebanon
Variable: Fire Weather Index
Spatial Resolution: Caza

- VERY LOW
- LOW
- MEDIUM-LOW
- MEDIUM
- MEDIUM-HIGH
- HIGH
- EXTREME

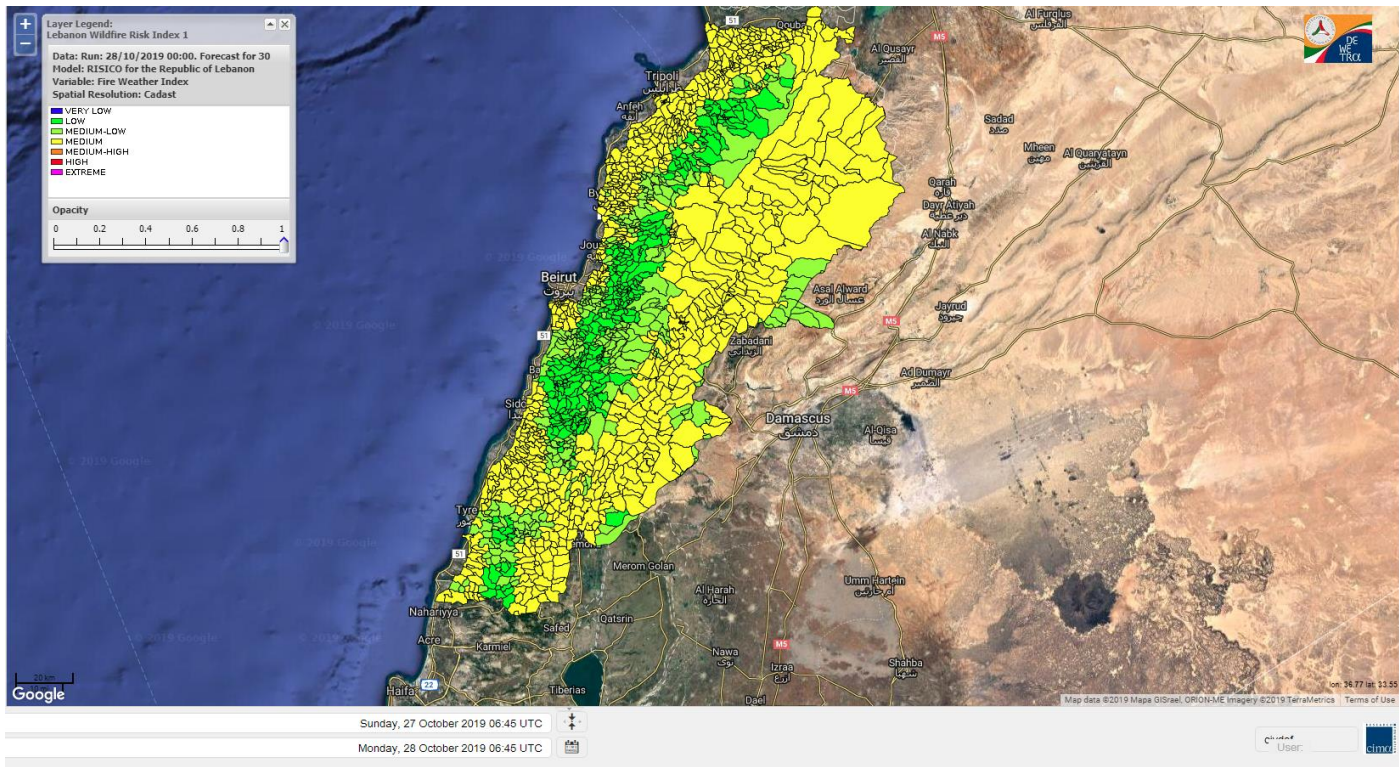
Lebanon for 28 October 2019



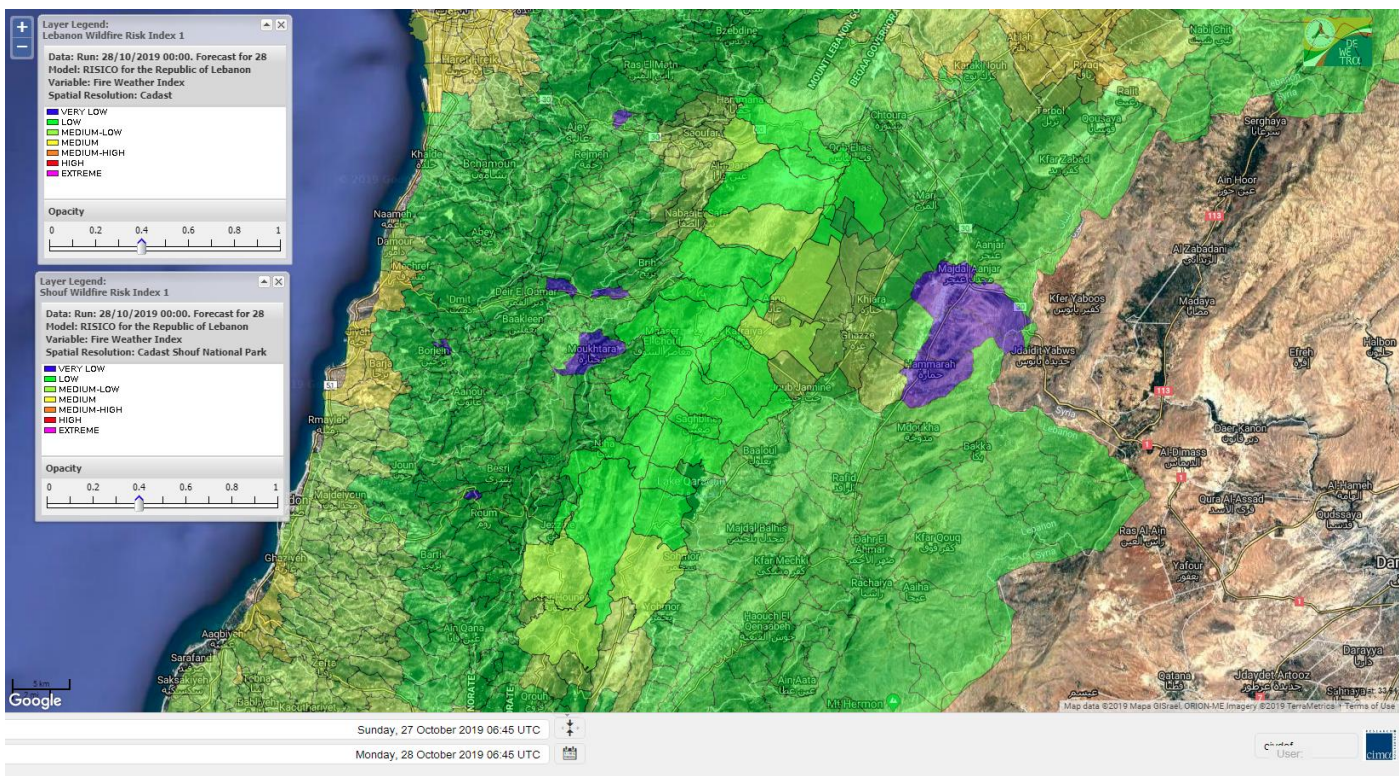
Lebanon for 29 October 2019



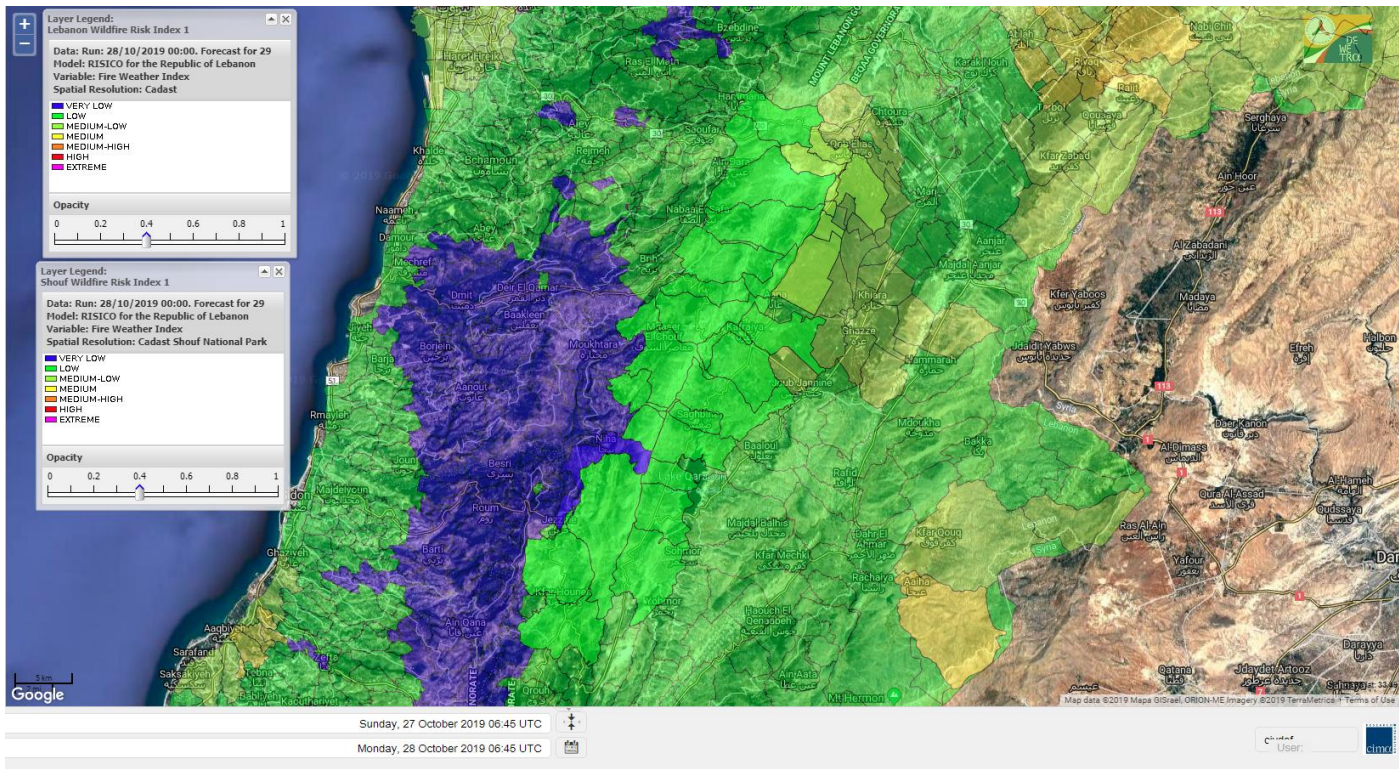
Lebanon for 30 October 2019



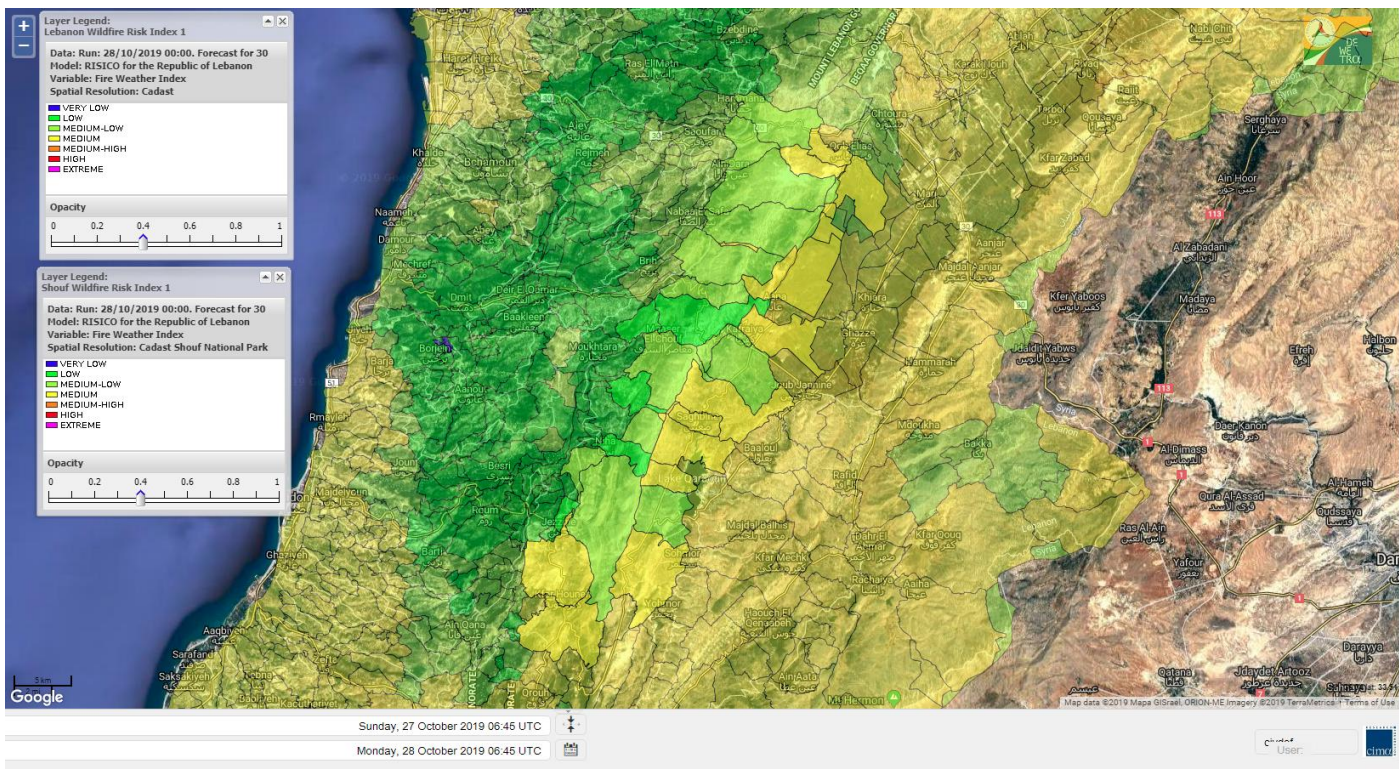
Shouf Biosphere Reserve Forecast for 28 October 2019



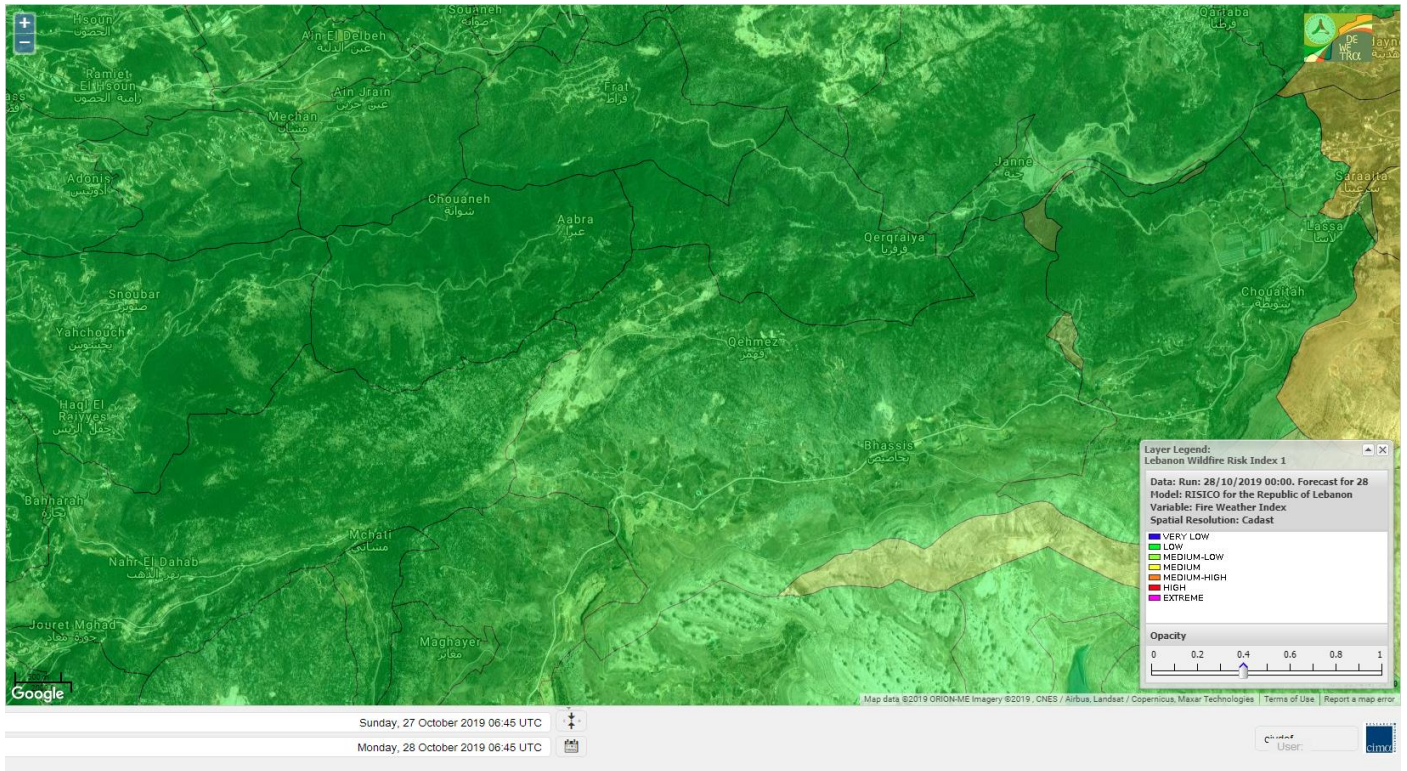
Shouf Biosphere Reserve Forecast for 29 October 2019



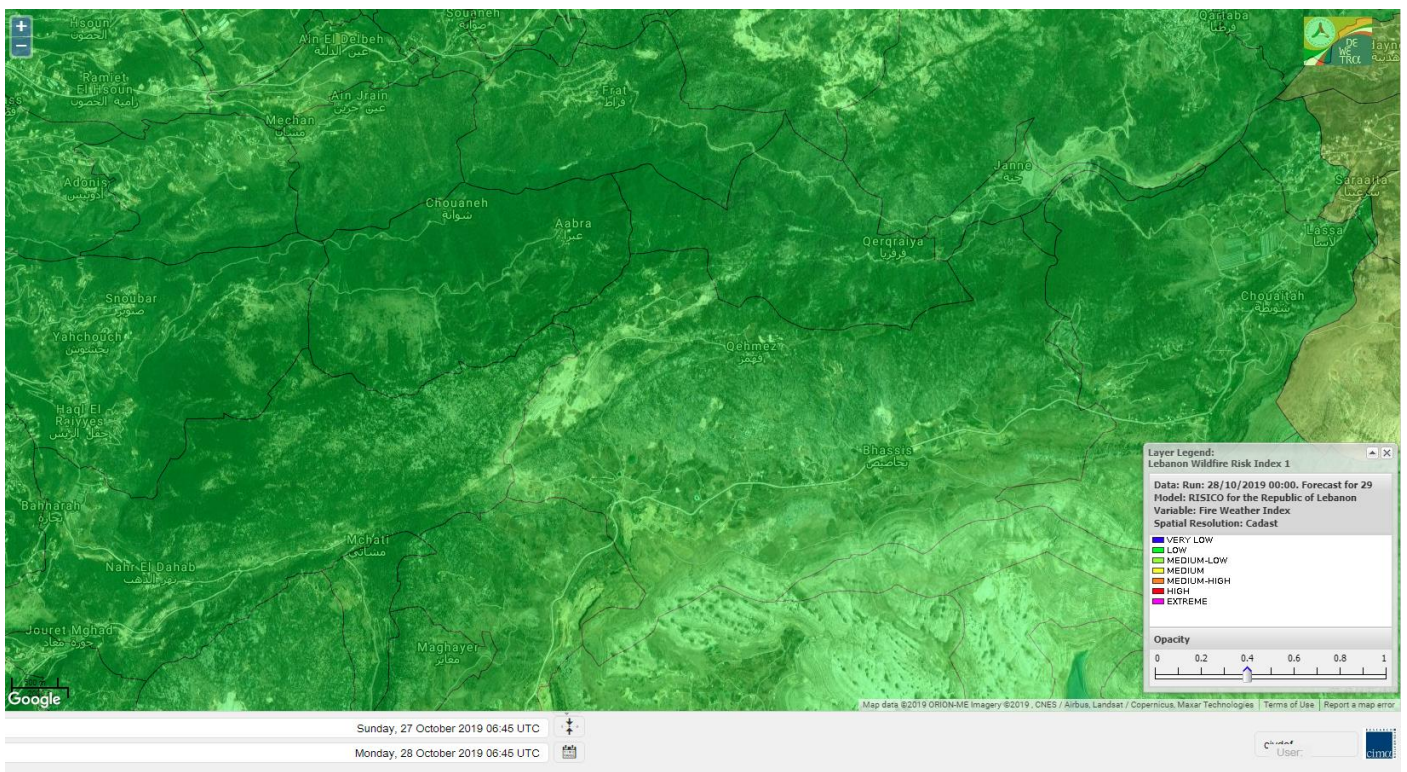
Shouf Biosphere Reserve Forecast for 30 October 2019



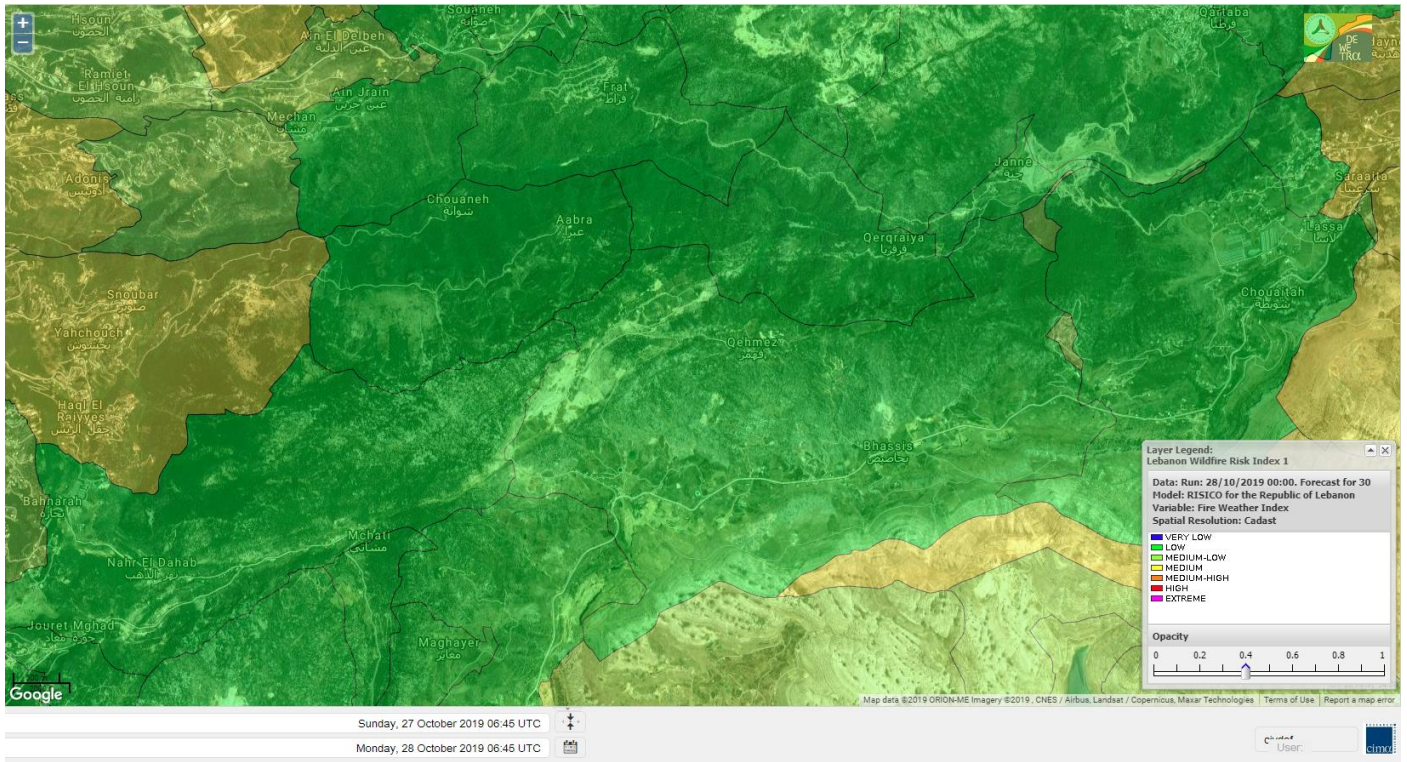
Jabal Moussa Reserve Forecast for 28 October 2019



Jabal Moussa Reserve Forecast for 29 October 2019



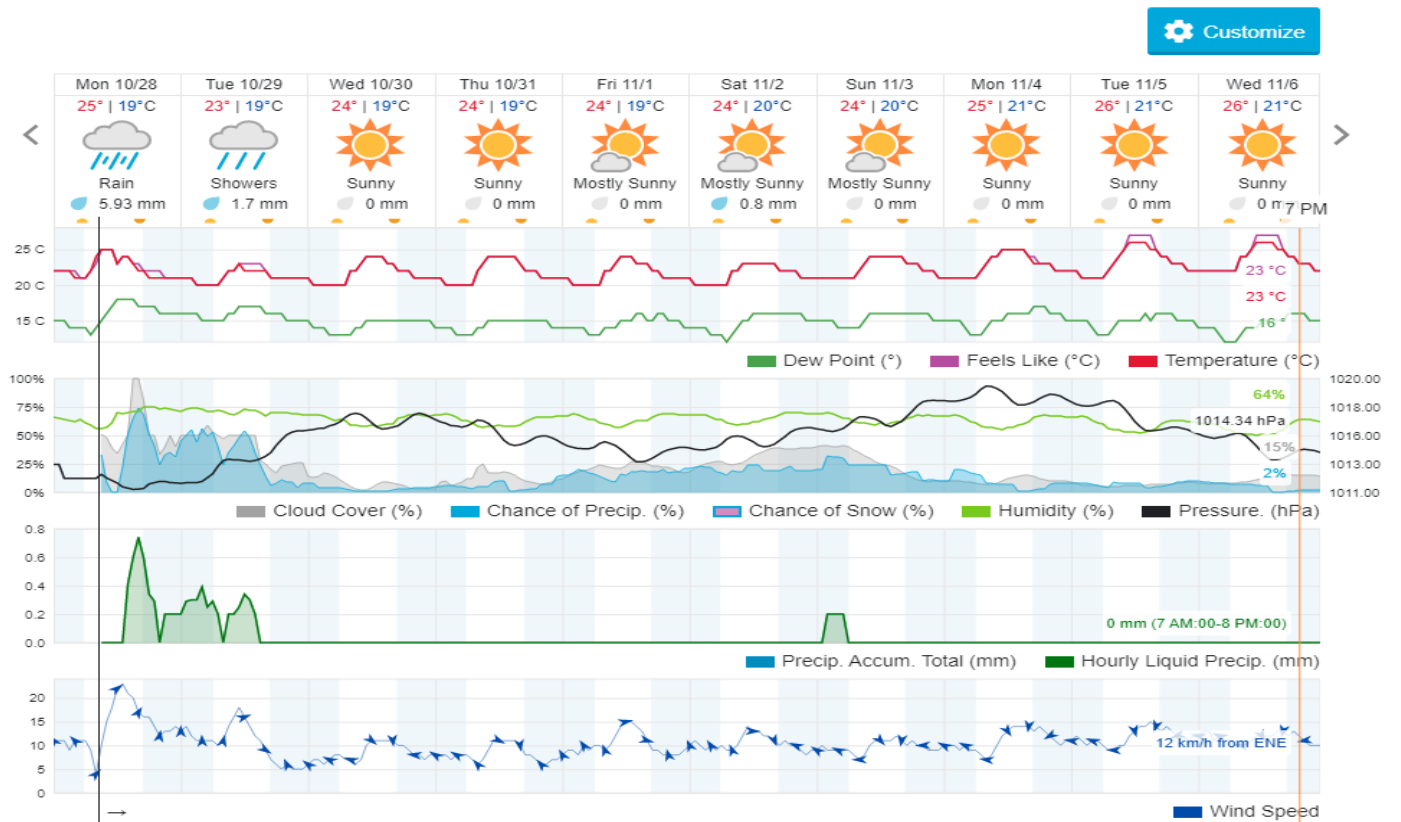
Jabal Moussa Reserve Forecast for 30 October 2019



Beirut, Beirut Governorate, Lebanon 10-Day Weather Forecast

24° ACHRAFIEH, RIZK STATION | CHANGE

TODAY HOURLY 10-DAY CALENDAR HISTORY WUNDERMAP



Nord

Koura

Municipality	28-Oct	29-Oct	30-Oct	Municipality	28-Oct	29-Oct	30-Oct	Municipality	28-Oct	29-Oct	30-Oct
Aaba	L	M	M	Afsaddiq	ML	M	M	Ain Ekrene	ML	M	M
Amioun	L	M	M	Anfeh	ML	ML	M	Badbhoun	ML	M	M
Barghoun	ML	M	M	Barsa	L	ML	M	Batroumine	L	ML	M
Bdebba	L	ML	M	Bechmizine	L	M	M	Bednayet El-Koura	ML	ML	M
Bhabbouch El-Koura	L	ML	M	Bkeftine	L	ML	M	Bnehran	L	ML	M
Bqaiia El-Koura	L	ML	M	Bsarma	L	M	M	Btaaboura	ML	M	M
Bterram	ML	M	M	Btouratij	L	ML	M	Bziza	L	M	M
Dar Beechtar	ML	M	M	Dar Chmezzine	ML	M	M	Deddeh	L	ML	M
Deir El-Balamand	L	L	M	Fih	L	ML	M	Hraiche	ML	ML	M
Ijdaabrine	ML	ML	M	Kaftoun	ML	ML	M	Kefraya El-Koura	M	M	M
Kfarakka	L	M	M	Kfarhata	ML	ML	M	Kfarhazir	ML	M	M
Kfarkahel	L	ML	M	Kfarsaroun	L	M	M	Kosba	L	M	M
Mejdel el-Koura	L	ML	M	Nakhle	L	ML	M	Qalhat	L	L	M
Ras Masqa	L	ML	M	Rechdibbine	L	M	M	Zakroun	ML	L	M
Zgharta El-Mtaouile	L	L	M								

Bcharre

Municipality	28-Oct	29-Oct	30-Oct	Municipality	28-Oct	29-Oct	30-Oct	Municipality	28-Oct	29-Oct	30-Oct
Aabdine	L	L	L	Bane	L	L	ML	Barhelioun	L	L	L
Bazooune	M	ML	M	Becharre	L	L	ML	Beit Menzer	L	L	L
Billa	L	L	L	Blaouza	L	ML	ML	Bqaa Kafra	M	ML	M
Bqerqacha	M	ML	M	Breissat	L	L	ML	Dimane	L	L	ML
Hadath El Jobbeh	L	L	ML	Hadchit	L	L	L	Hasroun	M	ML	M
Mazraat Aassaf	VL	L	L	Mazraat Bani Saab	L	L	ML	Mchaa El-Jobbeh	M	ML	M
Metrit	L	L	M	Moghr El-Ahoual	L	L	L	Ouadi Qannoubine	VL	L	L
Qanat	L	L	L	Qnayer	L	L	L	Tourza	L	L	L

Batroun

Municipality	28-Oct	29-Oct	30-Oct	Municipality	28-Oct	29-Oct	30-Oct	Municipality	28-Oct	29-Oct	30-Oct
Aabrine	ML	L	M	Aalali	L	L	ML	Aartiz	L	L	M
Abdelli	L	L	M	Ajdabra	ML	L	M	Assia	L	L	ML
Basbina	ML	L	M	Batroun	ML	ML	M	Bcheleh	L	L	ML
Bechtoudar	L	L	ML	Beit Chlala	L	L	ML	Beit Kassab	L	L	ML
Bijdarfil	ML	ML	M	Bqesmaya	L	L	M	Chatine	L	L	ML
Chebtin	L	L	M	Chekka	M	M	M	Daael	L	L	ML
Dahr Abi Yaghi	L	L	M	Daraya El-Batroun	ML	L	M	Deir Billa	L	L	ML
Deir Kfifane	ML	L	M	Deir Mar Youhanna EL	L	L	ML	Deir Mar Youssef Jra	L	L	M
Douma	L	L	ML	Douq	L	L	M	Eddeh El-Batroun	ML	L	M
Ftahat El-Batroun	L	L	ML	Ghouma	ML	L	M	Hadtoun	L	L	ML
Hamat	ML	L	M	Harbouna	L	L	M	Hardine	L	L	L
Helta	L	L	ML	Hery	M	M	M	Jebbla	L	L	ML
Jrabta El-Batroun	ML	L	M	Jrane El-Batroun	ML	L	M	Kfar Aabida	L	L	M
Kfar Halda	L	L	ML	Kfarb Shlaimane	L	L	ML	Kfarhatna	L	L	M

Kfarhay	ML	ML	M	Kfarhelos	ML	L	M	Kfifane	ML	ML	M
Kfour El Arabi	L	L	ML	Koubba	ML	ML	M	Kour	ML	L	M
Mar Mama	L	L	M	Masrah	L	L	M	Mehmarch	L	L	M
Mrah Chdid	ML	L	M	Mrah El Ziyat	L	L	M	Mrah El-Hajj	L	L	ML
Nahle El-Batroun	L	L	M	Niha El-Batroun	L	L	ML	Oujh El-Hajjar	ML	ML	M
Ouata Houb	L	L	ML	Qatnaaoun	ML	L	M	Racha	L	L	ML
Rachana	L	L	M	Rachkida	ML	L	M	Ram El-Batroun	L	L	ML
Ras Nahhach	ML	L	M	Selaata	M	ML	M	Sghar	ML	L	M
Smar Jbayl	ML	L	M	Sourat El-Batroun	L	L	M	Tannourine El-Faouqa	L	L	M
Tannourine Et-Tahta	L	L	L	Thoum	ML	L	M	Toula El-Batroun	L	L	M
Zan	L	L	M								

Zgharta

Municipality	28-Oct	29-Oct	30-Oct	Municipality	28-Oct	29-Oct	30-Oct	Municipality	28-Oct	29-Oct	30-Oct
Aachach	L	M	M	Aalma	L	M	M	Aarde	L	ML	M
Aintourine	L	ML	ML	Arabet Qozhaya	L	L	L	Arde	L	M	M
Arjis	L	ML	M	Asnoun	L	M	M	Ayto	L	L	ML
Basloukit	L	L	ML	Bchannine	L	ML	M	Besebeel	L	M	M
Bhairret Toula	L	L	L	Bnachee	L	ML	ML	Boussit	ML	ML	M
Danha	L	M	M	Daraiya Zgharta	L	ML	M	Deir Jdeide	L	M	M
Ehden	L	L	L	Halan	L	ML	M	Hariq Zgharta	L	M	M
Houakir	L	L	M	Hraiqis	M	L	M	Iaal	L	ML	M
Ijbaa	L	L	ML	Karm Saddeh	L	L	L	Kfarchakhna	L	ML	M
Kfardlaqous	L	M	M	Kfarfou	L	ML	M	Kfarhata Zgharta	L	M	M
Kfarhoura	L	ML	M	Kfarsghab	L	L	L	Kfaryachit	L	M	M
Kfarzaina	L	M	M	Khaldiye	L	M	M	Mazraat Ajbeaa	L	M	M
Mazraat Et-Teffah	L	L	M	Mazraat Jneid	L	M	M	Mejdlaia Zgharta	L	M	M
Merh Kfarsghab	L	ML	M	Miryata	L	M	M	Miziara	L	L	L
Mzraat Kefraya	L	L	M	Qorah Bach	L	M	M	Rachiine	L	M	M
Ras Kifa	L	ML	ML	Sakhra	L	ML	M	Sebhel Zgharta	L	L	M
Serhel	L	L	L	Tallet Zgharta	L	ML	M	Toula Zgharta	L	L	L
Zgharta	L	M	M								

Minieh-Denniye

Municipality	28-Oct	29-Oct	30-Oct	Municipality	28-Oct	29-Oct	30-Oct	Municipality	28-Oct	29-Oct	30-Oct
Aasaymout	VL	VL	L	Aaymar	L	L	L	Aazki	VL	L	L
Ain El-Tineh-Miniyeh	VL	L	L	Assoun	VL	L	L	Bakhaaoun	VL	L	L
Bchennata	L	L	L	Bechehhara	L	L	M	Beddawi	M	L	M
Behouaita	L	L	L	Beit El Foqss	VL	L	L	Beit Haouik	VL	L	L
Beit Zoud	VL	L	L	Bekaasafrine	L	L	ML	Borj El Yahoudiyeh	M	L	M
Bqarsouna	VL	L	L	Btermaz	VL	L	L	Debaael	VL	L	L
Deir Ammar	M	L	M	Deir Nbouh	L	ML	M	Haouaret-Miniyeh	VL	L	L
Haql el Azimeh	VL	L	L	Harf El Siyad	VL	L	L	Hazmiye-Miniyeh	VL	L	L
Izal	L	L	L	Jarjour	L	L	ML	Jayroun	VL	L	L
Kahf El-Malloul	L	L	ML	Karm El-Moher	L	L	L	Kfar Binine	VL	L	L
Kfarchalane	VL	L	L	Kfarhabou	L	L	ML	Kharroub-Miniyeh	L	L	L
Mazraat El-Kreme	L	L	L	Mazraat Ketrane	VL	L	L	Merkebta	ML	L	M

Minyeh	M	L	M	Mrah El Sfirat	VL	VL	L	Mrah Sraj	VL	L	L
Mrebbine	L	L	L	Nabi Youcheaa	M	L	M	Nemrine	VL	L	L
Qarhaiya	VL	L	L	Qarne	VL	VL	L	Qarsita	VL	L	L
Qattineh-Miniyeh	VL	VL	L	Qemmamine	VL	VL	L	Qraine	VL	VL	L
Raouda-Aadoua	L	L	M	Rihaniyet-Miniyeh	ML	L	M	Sfireh	VL	L	L
Sir Ed-Danniyeh	VL	L	L	Tarane	VL	L	L	Terbol-Miniyeh	M	L	M
Zaghartaghriine	L	L	M	Zouq Bhannine	M	L	M				

Nabatiye

Nabatiye

Municipality	28-Oct	29-Oct	30-Oct	Municipality	28-Oct	29-Oct	30-Oct	Municipality	28-Oct	29-Oct	30-Oct
Aabba	ML	L	M	Aazzi	ML	L	M	Adchit El-Chqif	ML	L	M
Ain Bou Swar	L	VL	ML	Ain Kana	L	VL	ML	Ali El-Taher	ML	VL	M
Ansar	ML	L	M	Arab Salim	ML	VL	M	Arnoun	ML	VL	M
Bfaroue	ML	L	M	Breyqaah	ML	L	M	Charqiyeh	ML	L	M
Choukine	ML	L	M	Deir El Zahrani	ML	L	M	Doueir El-Nabatiyeh	ML	L	M
Habbouch El-Nabatiye	ML	L	M	Hamra El-Nabatiyeh	ML	VL	M	Harouf El-Nabatiyeh	ML	L	M
Hmaile	L	L	ML	Houmin El Faouqa	L	VL	M	Houmin El Tahta	ML	VL	M
Jarjough	L	VL	ML	Jbaah El-Nabatiyeh	L	VL	ML	Jebchit	ML	L	M
Kfar Djal El-Nabatiy	ML	L	ML	Kfar Remmane	ML	VL	M	Kfar Sir	ML	L	ML
Kfar Tebnit	ML	VL	M	Kfarfila	L	VL	ML	Kfour El-Nabatieh	ML	L	M
Mayfadoun	ML	VL	M	Mazraat Bsaffour	ML	L	M	Mazraat Chalbaal	ML	L	M
Mazraat Dmoul	ML	L	M	Mazraat El Khreibeh	ML	VL	M	Mazraat El-Bayad El-	ML	VL	M
Mazraat Kfarjaouz	ML	VL	M	Mazraat Qalaat Meiss	ML	L	M	Nabatiyeh El-Fawka	ML	VL	M
Nabatiyeh Et-Tahta	ML	VL	M	Namiriyeh	ML	L	M	Qaaqaiyet El Jisr	ML	L	ML
Qossaibeh El-Nabatiy	ML	L	ML	Roumine	ML	L	M	Sarba El-Nabatieh	L	VL	ML
Sir El-Gharbiyeh	L	L	ML	Toul	ML	L	M	Yehmor El-Nabatiyeh	ML	VL	M
Zaoutar El Charkiyeh	ML	VL	M	Zaoutar El-Gharbiyeh	ML	L	ML	Zebdine El-Nabatiyeh	ML	L	M
Zefta	ML	L	M								

Hasbaiya

Municipality	28-Oct	29-Oct	30-Oct	Municipality	28-Oct	29-Oct	30-Oct	Municipality	28-Oct	29-Oct	30-Oct
Aain Jarfa	L	L	M	Abou Qamha	L	L	M	Ain Qania	L	L	M
Bourghos	L	L	M	Chebaa	L	L	M	Chouaya Hasbaya	L	L	M
Dellafeh	L	L	M	Fardiss Hasbaiya	L	L	M	Hasbaya	L	L	M
Hbariyeh	L	L	M	Kaoukaba Hasbaiya	L	L	M	Kfar Chouba	L	VL	L
Kfar Hamam	L	L	ML	Kfeir El-Zait	L	L	M	Khalwat Hasbaya	L	L	M
Khreibet Hasbaiya	L	VL	M	Majidiyeh Hasbaiya	L	VL	ML	Marj Ez-Zhour (Haouc	L	L	M
Meri	L	VL	M	Mimass	L	L	M	Rachaiya El-Fokhar	L	L	M
Salaiyeb	L	VL	M								

Marjayoun

Municipality	28-Oct	29-Oct	30-Oct	Municipality	28-Oct	29-Oct	30-Oct	Municipality	28-Oct	29-Oct	30-Oct
Aalmane Marjaayoun	ML	L	ML	Aamra	L	VL	M	Adayseh Marjaayoun	M	VL	M
Adchit El-Koussair	ML	L	M	Ain Aarab Marjaayoun	L	VL	M	Bani Haiyann	M	VL	M
Blatt Marjaayoun	L	L	M	Blida	M	VL	M	Borj El-Moulouk	L	VL	M

Boueyda Marjaayoun	L	L	M	Deir Mimass	ML	VL	M	Deir Siriane	ML	VL	M
Dibbine	L	L	M	Ebel El Saqi	L	L	M	Houla	M	VL	M
Houra	ML	VL	M	Kfar Kila	ML	VL	M	Khiam Marjaayoun	L	L	M
Klayaa	ML	VL	M	Majdel Selem	M	VL	M	Marjaayoun	L	L	M
Markaba	M	VL	M	Mays El-Jabal	M	VL	M	Mazraat Doumiat	ML	VL	M
Mazraat Sarada	L	VL	M	Mhaibib	M	VL	M	Qabrikha	M	L	M
Qantara	ML	L	M	Rab El-Thalathine	M	VL	M	Saouaneh Marjayoun	L	VL	M
Talloussa	M	VL	M	Taybeh Matjaayoun	ML	VL	M	Touline	ML	L	M

Bent Jbail

Municipality	28-Oct	29-Oct	30-Oct	Municipality	28-Oct	29-Oct	30-Oct	Municipality	28-Oct	29-Oct	30-Oct
Ain-Ebel	L	VL	M	Aitaroun	M	VL	M	Aynata Bint Jbeil	L	VL	M
Ayta El-Chaeb	L	VL	L	Ayta El-Jabal	L	VL	M	Beit Lif	L	VL	L
Beit Yahoun	L	VL	M	Bint Jbeil	L	VL	M	Borj Qalaway	M	L	M
Braachit	L	VL	M	Chakra	M	VL	M	Debel	L	VL	M
Deir Antar	ML	VL	M	Froun	ML	L	ML	Ghandouriyeh Bint Jb	ML	L	ML
Hanine	L	VL	M	Hariss	L	VL	M	Hdatha	L	VL	M
Jmeyjmeh	L	VL	M	Kafra Bint Jbeil	ML	VL	L	Kfar Dounine	ML	VL	M
Khirbet Selm	L	VL	M	Kounine	ML	VL	M	Maroun El Ras	L	VL	M
Qalaway	ML	L	M	Qaouzah	L	VL	L	Qatmoun	ML	VL	M
Ramya Bint Jbeil	L	VL	L	Rchaf	L	VL	ML	Rmeich	ML	VL	M
Safad Al Battikh	L	VL	M	Salhaneh	L	VL	L	Serbine	ML	VL	ML
Sultanieh Bint Jbeil	L	VL	M	Tibnine	L	VL	M	Tiri	L	VL	M
Yaroun	L	VL	M	Yater	ML	VL	ML				

Mont Liban

Jbail

Municipality	28-Oct	29-Oct	30-Oct	Municipality	28-Oct	29-Oct	30-Oct	Municipality	28-Oct	29-Oct	30-Oct
Aabeydat	L	L	M	Aalita	L	L	ML	Aamchit	L	L	M
Aarab El-Lahib	VL	L	M	Aarasta	M	ML	M	Adonis Jbeil	L	L	M
Afqa Jbeil	M	ML	M	Ain El Delbeh Jbeil	L	L	ML	Ain El-Ghouyba	L	L	L
Ain Jrain	L	L	L	Ain Kfah	ML	L	M	Almat El Chemaliyat	L	L	L
Almat El-Jenoubiya	L	L	L	Aqoura	M	M	M	Bayzoun	L	L	M
Bchille Jbeil	L	L	ML	Bechtlida	L	L	ML	Behdaydat	L	L	M
Beit Habbaq	ML	L	M	Bejjeh	ML	L	M	Bekhaaz	ML	L	ML
Berbara Jbeil	ML	L	M	Bintael	L	L	M	Birket Hjoula	L	L	M
Blatt Jbeil	L	L	M	Boulhos	L	L	L	Breyj Jbeil	L	L	ML
Chamat	ML	L	M	Chikhane	ML	L	M	Chmout	L	L	M
Eddeh Jbeil	L	L	M	Ehmej	L	L	L	Fatre	L	L	M
Ferhet	L	L	ML	Fghal	L	L	M	Frat	L	L	L
Ghabat	M	ML	M	Ghalboun	L	L	M	Gharzouz	ML	L	M
Ghofrine	ML	L	M	Habil	L	L	M	Halate	L	L	M
Haqel	ML	L	M	Hbaline	ML	L	M	Hboub	L	L	ML
Hdeine	M	ML	M	Hema Er-Rehban	L	L	M	Hema Mar Maroun Aann	L	L	ML
Hjoula	L	L	ML	Hosrayel	ML	L	M	Hsarat	ML	L	M

Hsoun	L	L	ML	Jaj	L	L	M	Janne	L	L	L
Jbeil	L	L	M	Jeddeyl Jbeil	ML	L	M	Jlisse	L	L	ML
Jouret El-Qattine	L	L	ML	Kfar Baal Annaya	L	L	ML	Kfar Kidde	ML	L	ML
Kfar Kouas	L	L	ML	Kfar Mashoun	ML	L	M	Kfoun	L	L	M
Kharbe Jbeil	ML	L	M	Laqlouq	ML	ML	ML	Lassa	L	L	L
Lehfed	L	L	ML	Maad	ML	L	M	Mar Sarkis	L	L	L
Mastita	L	L	M	Mayfouq	L	L	ML	Mazraat El Siyad	L	L	ML
Mazraat El-Maaden	L	L	L	Mechane	L	L	ML	Mechmech Jbeil	L	L	ML
Mehrin	L	L	ML	Mejdel El-Akoura	M	ML	M	Mghayreh Jbeil	M	ML	M
Mounsef	ML	L	M	Nahr Ibrahim	L	L	M	Qahmez	L	L	L
Qartaba	L	L	L	Qartaboun	L	L	M	Qattara Jbeil	L	L	ML
Qorqraya	L	L	L	Ramout	ML	L	M	Ras Osta	L	L	ML
Rihane Jbeil	ML	L	M	Sakiet El-Khayt	L	L	M	Saqi Richmaya	L	L	ML
Sebrine	L	L	ML	Seraita	M	ML	M	Souane Jbeil	L	L	L
Tadmor	M	ML	M	Tartej	L	L	ML	Torzaiya	L	L	ML
Yanouh Jbeil	M	ML	M	Zibidine Jbeil	L	L	M				

El Metn

Municipality	28-Oct	29-Oct	30-Oct	Municipality	28-Oct	29-Oct	30-Oct	Municipality	28-Oct	29-Oct	30-Oct
Aain El-Qabu	L	L	L	Aain El-Qach	L	L	L	Aain El-Teffaha	L	L	L
Aain el-Safssaf El-M	L	VL	L	Abou Mizane	L	VL	L	Ain Aar	L	L	ML
Ain Alaq	L	L	ML	Ain El-Kharroube	L	L	L	Ain El-Sendianeh	L	L	L
Ain El-Zeitoune	L	VL	L	Ain Saadeh	L	L	ML	Aintoura El-Matn	L	L	ML
Amaret Chalhoub	L	L	ML	Antelias	L	L	ML	Atchaneh	L	L	ML
Ayroun	L	L	L	Baabdat	L	VL	L	Baouchariyeh	M	L	M
Baskinta	L	L	ML	Beit Chabab	L	L	L	Beit El-Chaar	L	L	ML
Beit El-Kekko	L	L	ML	Beit Mery	L	L	L	Bhersaf	L	L	L
Bikfaya	L	L	L	Biyakout	L	L	ML	Bnabil	L	L	L
Bourj Hammoud	M	ML	M	Bqennaya	L	L	ML	Broummana El-Matn	L	L	ML
Bsalim	L	L	ML	Bsifrine	L	VL	L	Bteghrine	L	L	L
Chaouiye	L	L	ML	Chouaya El-Matn	L	L	L	Choueir	L	VL	L
Chrine	L	VL	L	Dahr El Sawan El-Mat	L	L	L	Daychouniyeh	L	L	L
Dbayeh	L	L	M	Deir Chamra	L	VL	L	Deir Mar Abda el Mch	L	L	ML
Deir Mar Roukouz	M	L	M	Deir Tamiche	L	L	ML	Dik El-Mehdi	L	L	ML
Dikwaneh	M	ML	M	Douar El-Matn	L	L	L	Fanar	L	L	ML
Fraike	L	L	ML	Haret El-Ballaneh	L	L	ML	Hbous	L	L	ML
Himlaya	L	VL	L	Jal El Did	L	L	ML	Jdeideh El-Metn	L	L	ML
Jouar El-Matn	L	VL	L	Jouret El-Ballout	L	L	ML	Kaaqour	L	L	L
Kfar Aaqab	L	VL	L	Kfertay El-Matn	L	L	L	Khenchara	L	VL	L
Khillet El-Mtain	L	L	L	Konnabat Broummana	L	L	ML	Konnabat Salima	L	VL	L
Machraah El-Matn	L	L	L	Majdel Tarchich	ML	L	ML	Majzoub	L	L	ML
Mansouriyeh El-Metn	ML	L	M	Mar Boutros Karm Et-	L	VL	L	Mar Chaya et Mzekke	L	L	ML
Mar Moussa Ed-Douar	L	VL	L	Marjaba	L	L	L	Masqa	L	L	L
Mayasse	L	VL	L	Mazraat Deir Aoukar	L	L	ML	Mazraat El-Hadirat	L	L	ML
Mazraat Yachouh	L	L	ML	Mchikha	L	L	L	Menqlet Mezher	L	L	ML
Mhayseh Matn	L	L	L	Mkalles	M	L	M	Mrouj	L	L	L

Mtain	L	L	ML	Mtayleb	L	L	ML	Nabay	L	L	ML
Naccache	L	L	ML	Ouadi Chahine	L	VL	L	Ouadi El-Karm El-Mat	L	L	L
Ouata El-Mrouj	L	VL	L	Ouyoun El-Matn	L	L	L	Qornet Chehwan	L	L	ML
Qornet El-Hamra	L	L	ML	Roumieh	L	L	ML	Sfeilet Bikfaya	L	VL	L
Sinn El-Fil	M	ML	M	Zabbougha	L	L	L	Zalqa	L	L	ML
Zarououn	L	L	L	Zekrite	L	L	ML	Zighrine El-Matn	L	L	L
Zouk El-Khrab	L	L	M								

Chouf

Municipality	28-Oct	29-Oct	30-Oct	Municipality	28-Oct	29-Oct	30-Oct	Municipality	28-Oct	29-Oct	30-Oct
Aalmane El-Chouf	ML	L	M	Aammq El-Chouf	VL	VL	L	Ain Ouzein	VL	VL	L
Ain Qani	L	VL	L	Ain Zhalta	L	L	ML	Ainbal	L	VL	L
Amatour	L	VL	L	Anout	L	VL	L	Atrine	L	VL	L
Baadarane	L	VL	L	Baaqline	L	VL	L	Baasir	M	L	M
Barja	M	L	M	Barouk	L	L	L	Bater	L	VL	ML
Batloun	L	L	L	Bayqoun	L	VL	ML	Bchetfine	L	VL	L
Beiteddine	VL	VL	L	Benouati Ech-Chouf	L	VL	L	Berjein	L	VL	L
Bireh et Mtalleh	L	L	ML	Biret El-Chouf	L	L	ML	Bkechtine Ouel Mchei	L	VL	L
Bkifa El-Chouf	L	VL	L	Botme	VL	VL	L	Bqaiaa Ech-Chouf	L	VL	L
Bsaba El-Chouf	L	VL	L	Chammis El-Chouf	L	L	ML	Chehim	L	VL	L
Chemaarine	L	VL	L	Chourit	VL	VL	L	Daher El-Chouf	L	L	ML
Dalhoun	L	L	ML	Damour	M	L	ML	Daraya El-Chouf	L	VL	L
Deir El-Moukhalles	L	VL	L	Deir Baba	L	VL	L	Deir Dourit	L	VL	L
Deir El-Qamar	L	VL	L	Deir Kouche	L	VL	L	Dibbieh	L	VL	L
Dmit	L	VL	L	Fouara Jaafar	VL	VL	L	Fraidis El-Chouf	L	L	ML
Ghabet Jaafar	L	VL	L	Gharife	L	VL	L	Haret Jandal	L	VL	L
Hasrout	L	VL	L	Jadra	ML	L	M	Jahlieh	L	VL	L
Jbeih El-Chouf	L	VL	L	Jdeidet El-Chouf	VL	VL	L	Jiyeh	M	L	M
Jleiliyeh	L	VL	L	Jmailiyeh	ML	L	M	Joun	L	L	ML
Kahlounie El-Chouf	L	VL	ML	Ketermaya	ML	L	M	Kfar Faqoud	L	VL	L
Kfar Hamal	L	VL	L	Kfar Him	L	VL	L	Kfar Katra	VL	VL	L
Kfar Niss	L	L	L	Kfar hay	VL	VL	L	Kfarnabrakh	VL	VL	L
Khirbet Bisri	L	VL	L	Knayse El-Chouf	VL	VL	L	Maaniyeh	ML	L	M
Maasser Beiteddine	VL	VL	L	Maasser El-Chouf	L	L	ML	Majdalouna	ML	L	M
Majdel El-Meouch	VL	VL	L	Mazboud	L	VL	L	Mazmoura	L	VL	L
Mazraat El Chouf	L	VL	L	Mazraat El Daher	L	VL	L	Mazraat El-Douair	VL	VL	L
Mechref	L	VL	L	Mghairie	L	L	ML	Mghayrie El-Chouf	L	VL	L
Moukhtara	VL	VL	L	Mrusti	L	L	ML	Mtolle	L	VL	L
Naameh	ML	L	ML	Niha El-Chouf	L	L	ML	Ouadi Abou Youssef	VL	VL	VL
Ouadi Ed-Deir	L	VL	ML	Ouadi El-Sit	VL	VL	L	Ouadi bnehlay	L	VL	L
Qraibeh	L	L	L	Qreiaa	L	VL	L	Rmayle El-Chouf	ML	L	M
Semqaniyeh	VL	VL	ML	Sibline	ML	L	M	Sirjbeil	L	VL	L
Warhanieh	L	L	ML	Werdaniyeh	ML	L	M	Zaarourieh	L	VL	L

Baabda

Municipality	28-Oct	29-Oct	30-Oct	Municipality	28-Oct	29-Oct	30-Oct	Municipality	28-Oct	29-Oct	30-Oct
Abadiyeh	L	VL	L	Ain Mouaffaq	VL	VL	L	Araiya	L	VL	L

Arbaniyeh	L	VL	L	Arsoun	L	L	L	Baabda	ML	L	M
Baalchmey	L	VL	L	Bmaryam	ML	L	ML	Bourj El-Brajneh	L	L	M
Boutchay	L	L	ML	Bsaba Baabda	L	L	ML	Btekhney	ML	L	ML
Btibyat	ML	L	ML	Bzbedine	L	L	L	Chbeniyeh	ML	L	ML
Chiyah	M	ML	M	Chmeisset Baabda	ML	L	ML	Chouit	L	VL	L
Deir El-harf	L	L	L	Deir Khouna	L	L	ML	Dlaybeh	L	VL	L
Falougha	L	L	ML	Furn El-Chebbak	M	ML	M	Hadath Beyrouth	ML	L	M
Halaliyeh Baabda	VL	VL	L	Hammana	ML	L	ML	Haret El Sett	L	L	L
Haret Hamze	L	L	ML	Haret Hreik	M	ML	M	Hasbaiya El-Metn	L	VL	L
Jouar El-Hoz	L	L	L	Jouret Arsoun	L	L	L	Kfar Chima	L	L	ML
Kfar Selouane	L	L	ML	Khalouat Baabda	ML	L	ML	Kneisset Baabda	L	L	L
Laylakeh	L	L	M	Louayzeh Baabda	L	L	L	Merdache	L	L	ML
Mzairaa Baabda	L	VL	L	Ouadi Chahrour El Ol	L	L	ML	Ouadi Chahrour El So	L	L	ML
Qalaa Baabda	ML	L	ML	Qhraybe Baabda	ML	L	ML	Qobbayaa	ML	L	ML
Qornayel	L	L	L	Qortada	L	L	L	Qrayeh Baabda	ML	L	ML
Qsaibeh Baabda	L	L	ML	Qtale Baabda	ML	L	ML	Ras El Metn	L	L	L
Ras El-Haref	ML	L	ML	Rouayset El-Ballout	L	VL	L	Salima Baabda	L	L	L
Tahouitat El Ghadir	L	L	M	Tarchich	L	L	ML	Zandouqa	L	L	L

Aley

Municipality	28-Oct	29-Oct	30-Oct	Municipality	28-Oct	29-Oct	30-Oct	Municipality	28-Oct	29-Oct	30-Oct
Abey	L	VL	L	Aghmid	ML	L	ML	Ain Dara	L	L	ML
Ain Drafil	L	L	ML	Ain El Halazoun	L	VL	L	Ain El-Rmmaneh	L	VL	L
Ain Jedideh	L	VL	ML	Ain Ksour	L	L	L	Ain Onoub	L	L	ML
Ain Traz	VL	VL	L	Ainab	L	L	ML	Aley	L	VL	L
Aramoun	L	L	ML	Aytat	L	L	ML	Azouniyeh	ML	L	ML
Baawerta	L	VL	L	Badghan Oua Wadi Bad	L	L	ML	Bassatine	L	L	ML
Bayssour	L	L	ML	Bchamoun	L	L	ML	Bdadoun	L	L	L
Behouara	L	VL	L	Bennay	L	VL	L	Bhamdoun El-Dayaa	L	L	ML
Bhamdoun El-Mhatta	L	L	ML	Bkhechthey	L	VL	ML	Bleibel	L	L	ML
Bmaknine	L	L	ML	Bmehray	ML	L	ML	Bouzrid	VL	VL	L
Bserrine	L	VL	L	Bsous	L	VL	L	Btalloun	L	VL	ML
Btater	L	VL	L	Chanay	L	L	ML	Charoun	ML	L	ML
Chartoun	L	VL	L	Chemlane	L	L	ML	Choueifat El-Aamrous	L	L	ML
Choueifat El-Oumara	L	L	ML	Choueifat El-Quoubbe	L	L	ML	Dakkoun	L	VL	L
Deir Qoubel	L	L	ML	Dfoun	L	L	ML	Douair El Remmaneh	L	VL	L
Ghaboun	L	VL	L	Habramoun	L	VL	L	Homs Oua Hama	L	VL	L
Houmal	L	L	ML	Jisr El Qadi	L	VL	L	Kehaleh	L	VL	L
Keyfoun	L	L	ML	Kfar Aamey	L	VL	L	Kommatyeh	L	VL	L
Maasrati	L	VL	L	Majdel Baana	L	L	ML	Mansourieh et Ain El	L	VL	L
Mazraat El-Nahr	L	VL	L	Mchakhte	ML	L	ML	Mecherfeh	L	L	ML
Mejdlaya	L	L	L	Mrayjat	L	L	ML	Ramliyah	L	L	L
Rechmaya	L	VL	L	Rejmeh	L	VL	L	Remhala	L	L	L
Rouayset El Neemane	L	VL	L	Saoufar	ML	L	ML	Selfaya	VL	VL	L
Sirhmoul	L	L	M	Souq El Ghareb	L	L	ML	Taazanieh	L	VL	ML

Kesrouane

Municipality	28-Oct	29-Oct	30-Oct	Municipality	28-Oct	29-Oct	30-Oct	Municipality	28-Oct	29-Oct	30-Oct
Achkout	L	L	L	Adma Oua Dafneh	L	L	M	Ain Ed-Delbe Kesroua	L	L	L
Ain El-Rihane	L	L	M	Aintoura Kesrouane	L	L	M	Ajaltoun	L	L	L
Akaybeh Kesrouane	L	L	M	Aramoun Kesrouane	L	L	L	Azra ouel Ozor	L	L	ML
Ballouneh	L	L	L	Batha	L	L	ML	Bekaatat Achkout	L	L	L
Bekaatat Kanaan	L	L	L	Bizhel	L	L	M	Bouar	L	L	M
Bqaatouta	L	L	L	Bqaq Ed-Dine	L	L	M	Bzommar	L	L	L
Chahtoul	L	L	L	Chnaniir	L	L	ML	Chouan	L	L	L
Daraya Kesrouane	L	L	L	Darououn	L	L	M	Deir Baqlouch	L	L	M
Diebta	L	L	L	Eghbeh	L	L	L	Faraya	L	L	ML
Fatka	L	L	L	Feytroun	L	L	L	Ghazir	L	L	ML
Ghbaleh Kesrouane	L	L	ML	Ghedrass	L	L	L	Ghosta	L	L	L
Ghyneh	L	L	L	Harharaya w Kattine	L	L	L	Harissa Kesrouane	L	L	M
Hayata	L	L	L	Hosein	L	L	L	Hrajel	L	L	ML
Jdeideh Ghazir	L	L	L	Jeita	L	L	M	Jounieh Ghadir	L	L	M
Jounieh Haret Sakhr	L	ML	M	Jounieh Salel Alma	L	L	M	Jounieh Sarba	L	ML	M
Jouret Bedrane	L	L	M	Jouret Mhad	L	L	L	Jouret Termos	L	L	ML
Kfar Debiane	L	L	L	Kfar Tay Kesrouane	L	L	L	Kfar Yassine	L	ML	M
Kfour Kesrouane	L	L	L	Kharayeb Nahr Ibrahi	L	L	M	Klayaat Kesrouane	L	L	L
Maarab	L	L	L	Maaysra Kesrouane	L	L	ML	Mayrouba	L	L	L
Mazraat Er-Ras	L	L	M	Mazraat Mrah El-Mir	L	L	L	Mchaa El Ftouh	ML	L	M
Mchaa Faraya	L	L	ML	Mchaa Kfar Dibiane	ML	L	M	Mghaer	L	L	L
Mradiyah	L	L	M	Nahr Ed-Dahab	L	L	L	Nammoura Kesrouane	L	L	ML
Ouata El Jaouz	L	L	L	Ouata Sillam	L	ML	M	Raachine	L	L	L
Rayfoun	L	L	L	Safra Kesrouane	L	ML	M	Shayle Kesrouane	L	L	ML
Tabarja	L	L	M	Yahchouch	L	L	M	Zaaytreh	L	L	M
Zeytoun	L	L	ML	Zouk Mikael	L	ML	M	Zouk Mosbeh	L	ML	M

Baalbek_Hermel

Baalbek

Municipality	28-Oct	29-Oct	30-Oct	Municipality	28-Oct	29-Oct	30-Oct	Municipality	28-Oct	29-Oct	30-Oct
Aadous	M	M	M	Aamchki	L	L	ML	Aarsal	L	ML	M
Ain Baalbek	M	M	M	Ain Bourday	L	ML	M	Ain El-Benye	L	ML	ML
Ain El-Jaouz Baalbek	L	ML	ML	Ain El-Siya Chadoura	L	ML	ML	Al Khodr Baalbek	L	ML	M
Al Nabi Chit	L	ML	M	Aynata Baalbek	M	M	M	Baalbek	L	M	M
Bachwat	M	M	M	Barqa	M	M	M	Bednayel Baalbak	M	ML	M
Beit Chama	M	M	M	Bijjaje	M	M	M	Bouday	M	M	M
Brital	L	ML	M	Btadi	M	M	M	Chaat	M	M	M
Chaibe	L	ML	ML	Chlifa	M	M	M	Chmestar	M	M	M
Dar El-Oussa	M	M	M	Deir El-Ahmar	M	M	M	Deir Mar Maroun Baal	M	M	M
Douris	ML	M	M	Fakiha	M	M	M	Hadath Baalbek	M	M	M
Ham	L	ML	ML	Haour Taala	L	ML	M	Hizzine	M	M	M
Hlebta	M	ML	M	Hosh Barada	M	M	M	Hosh El Dahab	M	M	M
Hosh El Snid	L	M	M	Hosh El-Nabi	ML	M	M	Hosh El-Rafiq	M	M	M
Hosh Tal Safiya	M	M	M	Hrebta	M	M	M	laat	M	M	M

Jebaa	M	M	M	Jenta	L	ML	M	Kfar Dabach	M	M	M
Kfar Dane	M	M	M	Khraibeh El-Hermel	M	M	M	Khreibet Baalbek	L	ML	M
Kneisset Baalbek	M	M	M	Labueh	M	M	M	Maarboun	L	ML	ML
Majdaloun	M	M	M	Maqneh	M	M	M	Mazraat Beit Mcheik	M	M	M
Misraya	M	M	M	Moqraq	M	M	M	Nabha El-Damdoum	M	M	M
Nabi Chbay	L	L	ML	Nabi Osman	M	M	M	Nahleh baalbek	L	ML	M
Ouadi El-Oss	M	M	M	Qaa Baayoun	M	M	M	Qaa Jouar Maqiye	M	M	M
Qaa Ouadi El-Khanzir	M	M	M	Qah Baalbek	M	M	M	Qarha Baalbek	M	M	M
Qsarnaba	M	M	M	Ram Baalbek	M	M	M	Ras Baalbek El Sahl	M	M	M
Ras Baalbek El-Charq	M	ML	M	Riha	M	M	M	Saaide	M	M	M
Sbouba	M	M	M	Seriine El-Tahta	ML	M	M	Slouqi	M	ML	M
Taiba Baalbek	ML	M	M	Talia	ML	M	M	Taraiya	M	M	M
Temnin El Fawqa	M	M	M	Temnin El-Tahta	M	M	M	Tfail	ML	ML	ML
Yahfoufa	L	ML	M	Yammouneh	M	M	M	Younine	M	M	M
Zboud	M	M	M								

Hermel

Municipality	28-Oct	29-Oct	30-Oct	Municipality	28-Oct	29-Oct	30-Oct	Municipality	28-Oct	29-Oct	30-Oct
Charbine El-Hermel	M	M	M	Hermel Jbab	M	L	M	Hermel	M	M	M
Maaysra El-Hermel	M	M	M	Michaa Mrajhine	L	L	ML	Ouadi Faara	M	ML	M
Ras Baalbek - Ouadi	M	M	M	Ras Baalbek El Gharb	M	M	M	Zighrine	M	L	M

Akkar

Akkar

Municipality	28-Oct	29-Oct	30-Oct	Municipality	28-Oct	29-Oct	30-Oct	Municipality	28-Oct	29-Oct	30-Oct
Aain Tinta	M	L	M	Aaiyat	L	L	M	Aakkar El-Aatiga	L	L	ML
Aamar Akkar	ML	L	M	Aamar El Baykat	M	L	M	Aamayer	M	ML	M
Aamriyet Akkar	M	L	M	Aandqet	M	ML	M	Aarmeh	M	L	M
Aarqa	ML	L	M	Aawaynat	M	ML	M	Aayoun Akkar	L	L	M
Abboudiye	M	L	M	Ain El-Zeit	M	L	M	Ain Yaaqoub	L	L	M
Akroum	M	M	M	Aridet Cheikh Zennad	M	L	M	Baldehy w Mazraat Bal	ML	L	M
Barcha	M	L	M	Bardeh	M	L	M	Bebnine	ML	L	M
Beino	M	L	M	Beit Ayoub	L	L	M	Beit El-Haouch	ML	L	M
Beit Mellat	L	L	M	Beit Younes	L	L	ML	Berbara Akkar	M	L	M
Berqayel	L	L	M	Bezbina	L	L	ML	Bireh Akkar	M	L	M
Borj	L	L	M	Bqerezla	L	L	M	Bzal	L	L	M
Chane	L	L	L	Chaqdouf	L	L	M	Charbila	M	L	M
Cheikh Mohammad	M	L	M	Cheikh Taba Es-Sahl	ML	L	M	Cheikh Taba	L	L	M
Cheikh Zennad	M	L	M	Cheikhlar	M	ML	M	Chir Hmairine	M	L	M
Daghle	M	L	M	Dahr Laissine	L	L	M	Darine	M	L	M
Dawra	M	L	M	Dawsa w Baghdadi	M	L	M	Dayret Nahr El-Kabir	M	L	M
Deir Dalloum	ML	L	M	Deir Jennine	M	L	M	Denbou	L	L	ML
Dibbabiyyeh	M	L	M	Douair Aadwiyeh	M	L	M	Fassikine	M	L	M
Fnaydek	L	L	ML	Fraydes Akkar	M	L	M	Ghazayle	M	L	M
Habchit	L	L	L	Hakour	L	L	M	Halba	M	L	M

Haouchab	M	L	M	Hayssat	ML	L	M	Haytla	M	L	M
Hayzouq	ML	L	M	Hedd	M	L	M	Hmaira Aakkar	L	L	M
Hmaiss Aakkar	M	L	M	Hnaider	M	ML	M	Hokr Ed-Dahri	M	L	M
Hokr Etti	M	L	M	Hokr Jouret Srar	M	L	M	Houaich	L	L	ML
Hrar	L	L	M	Idbil	L	L	M	Ilal	L	L	M
Janine	M	L	M	Jdeidet El-Joumeh	L	L	M	Jdeidet El-Kaiteh	L	L	M
Jebrayel	L	L	M	Kafr	L	L	M	Kafr	M	L	M
Karm Asfour	L	L	M	Kfar Melki Aakkar	ML	L	M	Kfar Noun	M	L	M
Kfarharra	M	L	M	Khalsa	M	ML	M	Kharnoubet Aakkar	M	L	M
Khirbet Daoud Aakkar	M	L	M	Khirbet El Remmane	M	ML	M	Khirbet Shar	M	L	M
Khoreybet El-Jindi	M	L	M	Khreibet Aakkar	L	L	M	Kneisset Aakkar	M	L	M
Kneisset Hnaider	M	M	M	Knisse	M	L	M	Kroum El-Aarab	M	L	M
Kwachra	M	L	M	Kweykhat	M	L	M	Machta Hammoud	M	L	M
Majdala	ML	L	M	Majdel Akkar	M	L	M	Mar Touma	L	L	M
Marlaya Melhem	ML	L	M	Mashha	ML	L	M	Massoudiye	ML	L	M
Mazraat Beit Ghattas	ML	L	M	Mazraat En-Nahriye	M	ML	M	Mechmech	L	L	L
Memneh	L	L	L	Mhammara	ML	L	M	Mighraq Aakkar	M	L	M
Minyara	L	L	M	Moqayteh	M	L	M	Mounjez	M	L	M
Msalla	M	L	M	Mzeihmeh	M	L	M	Nfaisch	ML	L	M
Noura Et-Tahta	M	L	M	Ouadi El-Haour	M	L	M	Ouadi El-Jamous	ML	L	M
Ouyoun El-Ghizlane	L	L	M	Qaabarine	ML	L	M	Qabaait	L	L	ML
Qachlaq	M	L	M	Qantara Aakkar	L	L	M	Qarha Aakkar	M	M	M
Qarqaf	L	L	M	Qboula	L	L	M	Qleiaat Aakkar	M	L	M
Qloud El-Baqie	L	L	M	Qobaiyat Aakkar	M	ML	M	Qobbat Chamrat	ML	L	M
Qorayat	L	L	ML	Qornet Aakkar	L	L	M	Qsair Aakkar	M	L	M
Rahbe	L	L	M	Rihaniyet Aakkar	M	L	M	Rmah	M	L	M
Rmoul	ML	L	M	Saadine	M	L	M	Sadaqa	L	L	M
Saidnaya	M	L	M	Sammouniye	ML	L	M	Sayssouq	L	L	M
Semmaqiye	M	L	M	Semmaqli	ML	L	M	Sfinet El-Dreib	M	L	M
Sfinet El-Qaitaa	L	L	M	Sindyanet Zeidane	M	L	M	Souaisset Aakkar	ML	L	M
Srar	M	L	M	Tal Abbas El Gharby	M	L	M	Tal Abbas El-Charqy	ML	L	M
Tal Biret	ML	L	M	Tal Hmayra	M	L	M	Tal Maayan Tal Kiri	ML	L	M
Tal Sibel	ML	L	M	Tallet Chattaha	L	L	M	Tikrit	L	L	M
Tleil	M	L	M	Tshea	L	L	ML	Zawarib	L	L	M
Zouq El Hosniyeh	L	L	M	Zouq El-Haddara	ML	L	M	Zouq El-Hbalsa	L	L	M
Zouq El-Moqachrine	L	L	M								

Sud

Sour

Municipality	28-Oct	29-Oct	30-Oct	Municipality	28-Oct	29-Oct	30-Oct	Municipality	28-Oct	29-Oct	30-Oct
Aaiyeh	ML	VL	ML	Aalma El-Chaab	L	L	M	Aaytit	ML	VL	ML
Abbassiyeh Sour	ML	L	ML	Abou Chech	L	L	M	Ain Abou Abdallah	ML	L	ML
Ain Baal	ML	L	M	Arzoun	ML	L	ML	Aziyeh	L	L	M
Baflaya	ML	L	ML	Barich	L	L	L	Batouliyeh	ML	L	M
Bayad	ML	VL	ML	Bazouriyeh	ML	L	ML	Bediass	L	L	L

Bestiyat	L	L	L	Borj El Chemali	M	L	M	Borj En-Naqoura	ML	L	M
Borj Rahhal	L	L	L	Boustane	ML	L	M	Btaychiyeh	L	L	M
Chaaitiye	ML	L	M	Chameh	L	L	ML	Chehabiye	ML	L	M
Chehour	ML	L	ML	Chihine	L	L	ML	Debaal Sour	L	L	L
Deir Amess	ML	VL	L	Deir Kifa	ML	L	M	Deir Qanoun El-Ain	ML	L	M
Deir Qanoun El-Naher	L	L	ML	Derdghaiya	ML	L	ML	Dhayra	L	L	M
Halloussiyeh	L	L	ML	Hamoul	L	L	ML	Hanaouey	ML	L	ML
Henniye	ML	L	M	Hmairi Sour	L	L	L	Iskandarouna Sour	L	L	M
Jbal El Botom	ML	VL	L	Jebbin	ML	L	M	Jennata	L	L	L
Jijim	L	L	ML	Jouaiya	ML	L	ML	Kneisset Sour	ML	L	M
Maarake	L	L	L	Maaroub	L	L	L	Majadel	ML	VL	ML
Majdalzoun	ML	L	M	Mansouri Sour	ML	L	M	Marnba	ML	L	ML
Marouahine	L	VL	L	Mazraat El-Zalloutiy	ML	L	M	Mazraat Mechref	ML	VL	ML
Mazraat Tayr Semhat	ML	VL	ML	Mheilib	M	L	M	Neffakhiyeh	ML	VL	ML
Niha Sour	ML	L	ML	Ouadi Jilo	L	L	ML	Qana	ML	VL	ML
Qolaileh Sour	ML	L	M	Rechknany	ML	VL	L	Rmadiyah	ML	VL	ML
Selha Sour	ML	L	ML	Siddiqine	ML	VL	L	Sour	M	L	M
Srifa	ML	L	ML	Tayr Debbe	L	L	ML	Tayr Felsay	L	L	L
Tayr Harfa	ML	L	M	Touayri	ML	VL	ML	Toura	L	L	ML
Yanouh Sour	L	L	L	Yarine	ML	L	M	Zebqine	L	VL	L

Saida

Municipality	28-Oct	29-Oct	30-Oct	Municipality	28-Oct	29-Oct	30-Oct	Municipality	28-Oct	29-Oct	30-Oct
Aanqoun	ML	VL	M	Aaqtanit	ML	L	M	Aarab Ej-Jall	ML	VL	M
Aarab Tabbaya	ML	VL	M	Abra Saida	ML	L	M	Adloun	ML	L	M
Adousiyeh	ML	M	M	Ain-El-Deleb	ML	L	M	Arzai	L	L	ML
Babliyah	ML	L	M	Barty	L	VL	ML	Bissariyeh	ML	ML	M
Bnaafoul	ML	VL	M	Bqosta	ML	L	M	Bramiy	ML	L	M
Daoudiyeh	ML	L	M	Dareb El-Sim	ML	VL	M	Erkay	ML	VL	M
Ghassanieh	ML	L	M	Ghazieh	M	ML	M	Hajjeh	ML	VL	M
Haret Saida	ML	L	M	Hartiyeh	ML	L	M	Hlaliye Saida	ML	L	M
Insariyat	ML	L	M	Jazira Saida	ML	L	M	Kafar Bit	ML	VL	M
Kaoutariyet El-Siyad	ML	L	M	Kfar Chellal	L	VL	M	Kfar Hatta Saida	ML	VL	M
Kfar Milke Saida	L	VL	ML	Khartoum	ML	L	M	Khaziz	ML	VL	M
Khirbet Ed-Douair Sa	ML	L	M	Khirbet El-Bassal	M	L	M	Khrayeb Saida	ML	L	ML
Loubieh	ML	L	M	Maghdouche	ML	VL	M	Majdelyoun	ML	L	M
Matariyet El-Choumar	L	L	ML	Matayriyeh	ML	VL	M	Mazraat 'Mseileh	M	M	M
Mazraat 'Snaiber	M	M	M	Mazraat Aarab Soukka	ML	VL	M	Mazraat Deir Taqla	ML	L	M
Mazraat El Yahoudiye	ML	L	M	Mazraat El-Housseini	M	M	M	Mazraat El-Mhaydaleh	ML	L	M
Mazraat El-Ouasta	ML	L	M	Mazraat Jamjim	ML	L	M	Mazraat Kaoutariyet	ML	L	M
Mazraat Kfar Badda	ML	L	M	Mazraat Oussamiyat	ML	L	M	Mazraat Sari	ML	L	M
Mazraat Sinai	ML	L	M	Meemariyeh	ML	L	M	Merouaniyeh	ML	L	M
Miyeh ou Miyeh	ML	L	M	Najjariyeh	M	M	M	Qaaqiyat El-Snaouba	ML	L	M
Qnarit	ML	L	M	Qraiye Saida	ML	L	M	Saida Ed-Dekermane	ML	L	M
Saida El-Oustani	ML	L	M	Saida El-Qadimeh	ML	L	M	Saida Kefraya	ML	L	M
Saksakiyeh	ML	L	M	Salhieh Saida	ML	L	M	Sarafand	ML	ML	M

Sfenta	L	VL	ML	Tafahta	ML	L	M	Tanbourit	ML	VL	M
Tebna	ML	L	M	Zaghdraiya	ML	VL	M	Zeita	ML	VL	M
Zrariyeh	L	L	ML								

Jezzine

Municipality	28-Oct	29-Oct	30-Oct	Municipality	28-Oct	29-Oct	30-Oct	Municipality	28-Oct	29-Oct	30-Oct
Ain El-Mir (El Estab)	ML	VL	M	Anane	L	VL	L	Aramta	ML	L	M
Ariya	L	VL	L	Aychiyeh	L	L	M	Azour	L	VL	L
Baba	L	VL	L	Bayssour Jezzine	ML	VL	M	Benoueteh Jezzine	L	VL	L
Bhannine	L	VL	L	Bisri	L	VL	L	Bkassine	L	VL	L
Bouslaya	L	VL	L	Btedine El-Leqech	L	VL	L	Chbail	L	L	ML
Choualiq Jezzine	ML	L	M	Dahr Ed-Deir	L	VL	L	Deir El Qattine	L	VL	ML
Demachqiyeh	ML	VL	M	Ghabbatiyeh	L	VL	L	Harf Jezzine	L	VL	L
Hassaniyeh	ML	VL	M	Haytouleh	L	VL	ML	Haytura	L	VL	ML
Hidab	L	VL	ML	Homsiyeh	L	VL	L	Jabal Toura	ML	L	M
Jarmaq	ML	VL	ML	Jensnaya	ML	VL	M	Jernaya	L	VL	ML
Jezzine	ML	L	M	Karkha	L	L	ML	Kfar Falous	L	VL	L
Kfar Houna	ML	L	M	Kfar Jarrah	ML	L	M	Lebaa	ML	L	M
Louayzet Jezzine	L	VL	ML	Machmouche	L	VL	L	Mahmoudiyeh Jezzine	ML	L	M
Maknounye Jezzine	L	VL	ML	Maraat Ouazaiyeh	L	L	M	Mazraat Daraya	ML	L	M
Mazraat El-Aarqoub	L	VL	ML	Mazraat El-Mathane	VL	VL	L	Mazraat El-Rahbane	L	VL	L
Mazraat Khallet Khaz	L	L	M	Mazraat Louzid (Loua	L	L	ML	Mazraat Qrouh	L	L	M
Mazraat Tamra	ML	VL	M	Mazraat Zighrine Jez	L	L	ML	Mazraat	L	VL	L
Mharbiyeh	ML	VL	M	Midane Jezzine	L	VL	L	Mjeydel Jezzine	ML	VL	M
Mlikh	L	VL	ML	Mrah El-Hbasse	ML	L	M	Ouadi Baanqoudaine	ML	L	M
Ouadi El-Laymoun	L	VL	ML	Ouardiyeh	L	L	ML	Qabaa Jezzine	L	VL	ML
Qatrani	L	L	M	Qaytouleh	L	VL	ML	Qtaleh Jezzine	L	VL	L
Rihane Jezzine	L	L	M	Rimat	L	VL	ML	Roum	L	VL	L
Roummanet	L	VL	ML	Sabbah	L	VL	L	Saydoun	L	VL	L
Sfaray	L	VL	L	Snaya	L	VL	ML	Sojoud	L	VL	M
Srayri	L	L	M	Taaid	L	VL	L	Wadi Jezzine	L	L	L
Zhalta	L	VL	ML								

Bekaa

West Bekaa

Municipality	28-Oct	29-Oct	30-Oct	Municipality	28-Oct	29-Oct	30-Oct	Municipality	28-Oct	29-Oct	30-Oct
Aammiq BG	ML	ML	M	Ain El Tineh BG	ML	L	M	Ain Zebdeh	L	L	M
Ana	ML	L	M	Aytanit	L	L	ML	Baaloul BG	L	L	M
Bab Mareh	L	L	M	Chouberqiye Aammiq	ML	ML	M	Dakoue	L	ML	M
Deir Ain El-Jaouze	L	L	M	Deir Tahniche	ML	L	M	Ghaza	ML	ML	M
Harime El-Soughra	L	L	M	Hoch Harimeh	L	ML	M	Jazira BG	ML	ML	M
Jib Jennine	L	L	M	Kamed-El-Laouz	L	L	M	Kefraya BG	L	L	ML
Khiara El Atika	ML	ML	M	Khiara	ML	ML	M	Khirbet Qanafar	L	L	M
Lala	L	L	M	Lebbaya BG	L	L	M	Loussa	ML	L	M
Machghara	ML	L	M	Manara (Hammara) BG	VL	L	M	Mansoura BG	ML	ML	M

Marej BG	L	L	M	Maydoun	ML	L	M	Ouaqf BG	ML	ML	M
Qaraaoun	L	L	M	Qelya	L	L	M	Raouda (Istabel)	L	L	M
Saghbine	L	L	M	Sohmor	L	L	M	Soltan Yacoub el Ara	L	ML	M
Souairy	VL	ML	M	Sultan Yaacoub	ML	ML	M	Tal Znoub	ML	ML	M
Yehmor BG	L	L	M	Zilaya	L	L	M				

Zahle

Municipality	28-Oct	29-Oct	30-Oct	Municipality	28-Oct	29-Oct	30-Oct	Municipality	28-Oct	29-Oct	30-Oct
Aanjar (Haouch Mouss)	L	L	M	Ablah	M	M	M	Ain Kfarzabad	L	ML	M
Ali-El-Nahri	M	M	M	Bar Elias	L	L	M	Bouarej	L	ML	M
Cheberqiyet Tabet	L	L	M	Chtaura	L	ML	ML	Deir El Ghazal	L	ML	M
Delhamiyet Zahle	L	ML	M	Ferzol	ML	L	M	Haouch El-Ghanam	M	M	M
Haouch Es-Siyadeh	L	ML	ML	Haouch Hala	ML	M	M	Haouch Mandara	L	ML	M
Haouch Qayssar	L	ML	ML	Hezerta	ML	L	M	Hosh Moussa	L	ML	M
Jdita	L	ML	ML	Kfarzabad	L	ML	M	Ksara	L	L	M
Majdel Aanjar	VL	L	M	Makssi	L	ML	ML	Massa	ML	M	M
Mazraat Er-Remtaniye	L	ML	ML	Mrayjat Zahle	L	ML	M	Mzaraa Zahle	L	ML	M
Nabi Ayla	M	ML	M	Nasriyet Rizk	L	ML	M	Nasriyet Zahle	L	ML	M
Niha Zahle	M	ML	M	Ouadi Ed-Deloum	L	ML	M	Ouadi El-Arayech	M	L	M
Qaa El Rim	ML	L	M	Qab Elias	L	ML	M	Qousaya	L	ML	M
Rhit	L	ML	M	Riyak	ML	M	M	Saadnayel	L	L	M
Taal El-Akhdar	ML	ML	M	Taalbeya	L	L	M	Taanayel	L	L	M
Talamara	M	M	M	Tcheflik Edde Haouch	L	ML	M	Tcheflik Qiqano	L	ML	ML
Terbol Zahle	L	ML	M	Touaite Zahle	L	L	ML	Zahle Aradi	L	L	M
Zahle El-Berbara	ML	L	M	Zahle El-Maallaqa	L	L	M	Zahle El-Midane	ML	L	M
Zahle Er-Rassiyeh	ML	L	M	Zahle Haouch El-Ouma	L	L	M	Zahle Haouch El-Ouma	L	L	M
Zahle Haouch Ez-Zara	L	L	M	Zahle Maallaqa Aradi	L	L	M	Zahle Mar Antonios	ML	L	M
Zahle Mar Elias	L	L	M	Zahle Mar Gerios	L	L	M	Zahle Saydet En-Naja	L	L	M
Zebdoul	L	L	ML								

Rachaiya

Municipality	28-Oct	29-Oct	30-Oct	Municipality	28-Oct	29-Oct	30-Oct	Municipality	28-Oct	29-Oct	30-Oct
Ain Arab Rachaiya	L	L	ML	Ain Ata	L	L	M	Ain Harche	L	L	M
Aqabe Rachaya	L	L	M	Ayha	L	M	M	Ayta El Fokhar	L	L	M
Bakifa Rachaya	L	L	M	Bakka	VL	L	ML	Beit Lahya	L	L	M
Bireh Rachaiya	L	L	M	Daheer El Ahmar	L	L	M	Deir El-Achayer	L	ML	M
Heloua Rachaiya	L	L	M	Hoch El Qannabeh Rac	L	L	M	Kaoukaba Bou Arab	L	L	M
Kfar Danis	L	L	M	Kfar Mechki	L	L	M	Kfar Qouq	L	ML	M
Kherbet Rouha	L	L	M	Majdel Balhiss	L	L	M	Mdoukha	L	L	ML
Mhaydseh Rachaiya	L	L	M	Nabi Safa	L	L	M	Rachaiya	L	L	M
Rafid Rachaiya	L	L	M	Selsata (Mazraat Dei	L	L	ML	Tannoura	L	L	M
Yanta	L	L	ML								

Beyrouth

Beyrouth

Municipality	28-Oct	29-Oct	30-Oct	Municipality	28-Oct	29-Oct	30-Oct	Municipality	28-Oct	29-Oct	30-Oct
--------------	--------	--------	--------	--------------	--------	--------	--------	--------------	--------	--------	--------

Achrafieh	M	ML	M	Ain el-Mreisse	M	ML	M	Bachoura	M	ML	M
Beirut Central Distr	M	ML	M	Marfai	M	ML	M	Mazraa	M	ML	M
Medaouar	M	ML	M	Minet el-Hosn	M	ML	M	Mwssaitbeh	M	ML	M
Ras Beirut	M	ML	M	Rmeil	M	ML	M	Saifi	M	ML	M
Zqaq el-Blat	M	ML	M								