

Lebanon Fire Risk Bulletin



CIVIL DEDEFENCE

Refer to cadast table condition.

Please note that the indicated temperature is at 2 meters height from the ground.

General description of potential fire risk situation

Symbol	Level of risk	Meaning and actions
VL	Very low	Very low fire risk. Controlled burning operations can be hardly executed due to high fuel moisture content. Normally wildfires self-extinguish.
L	Low	Low fire risk. Controlled burning operations can be executed with a reasonable degree of safety.
ML	Medium low	Medium-low fire risk. Controlled burning operations can be executed in safety conditions. All the fires need to be extinguished.
M	Medium	Medium fire risk. Controlled burning operations would be avoided. All the fires need to be very well extinguished.
M	Medium high	Controlled burning is not recommended. Open flame will start fires. Cured grasslands and forest litter will burn readily. Spread is moderate in forests and fast in exposed areas. Patrolling and monitoring is suggested. Fight fires with direct attack and all available resources.
H	High	Ignition can occur easily with fast spread in grass, shrubs and forests. Fires will be very hot with crowning and short to medium spotting. Direct attack on the head may not be possible requiring indirect methods on flanks. Patrolling and monitoring the territory is highly suggested.
E	Extreme	Ignition can occur also from sparks. Fires will be extremely hot with fast rate of spread. Control may not be possible during day due to long range spotting and crowning. Suppression forces should limit efforts to limiting lateral spread. Damage potential total. Patrolling and monitoring the territory is highly suggested.

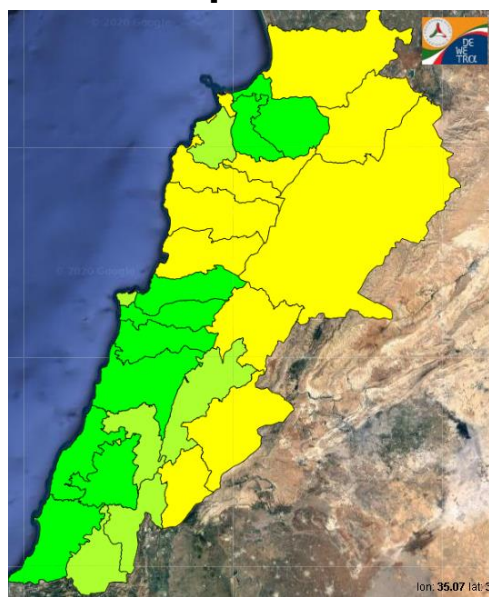
Beirut, 29 April 2020

FIRE RISK INDEX

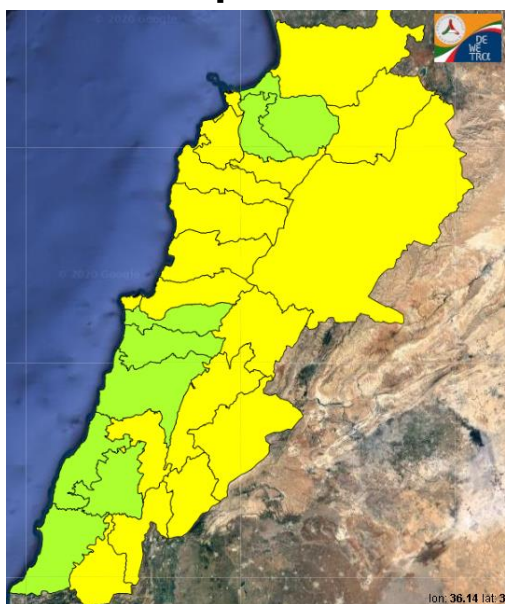
28 April 2020



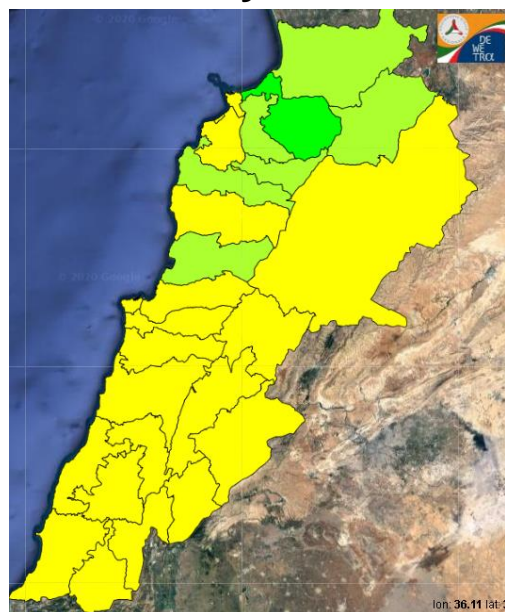
29 April 2020



30 April 2020



1 May 2020

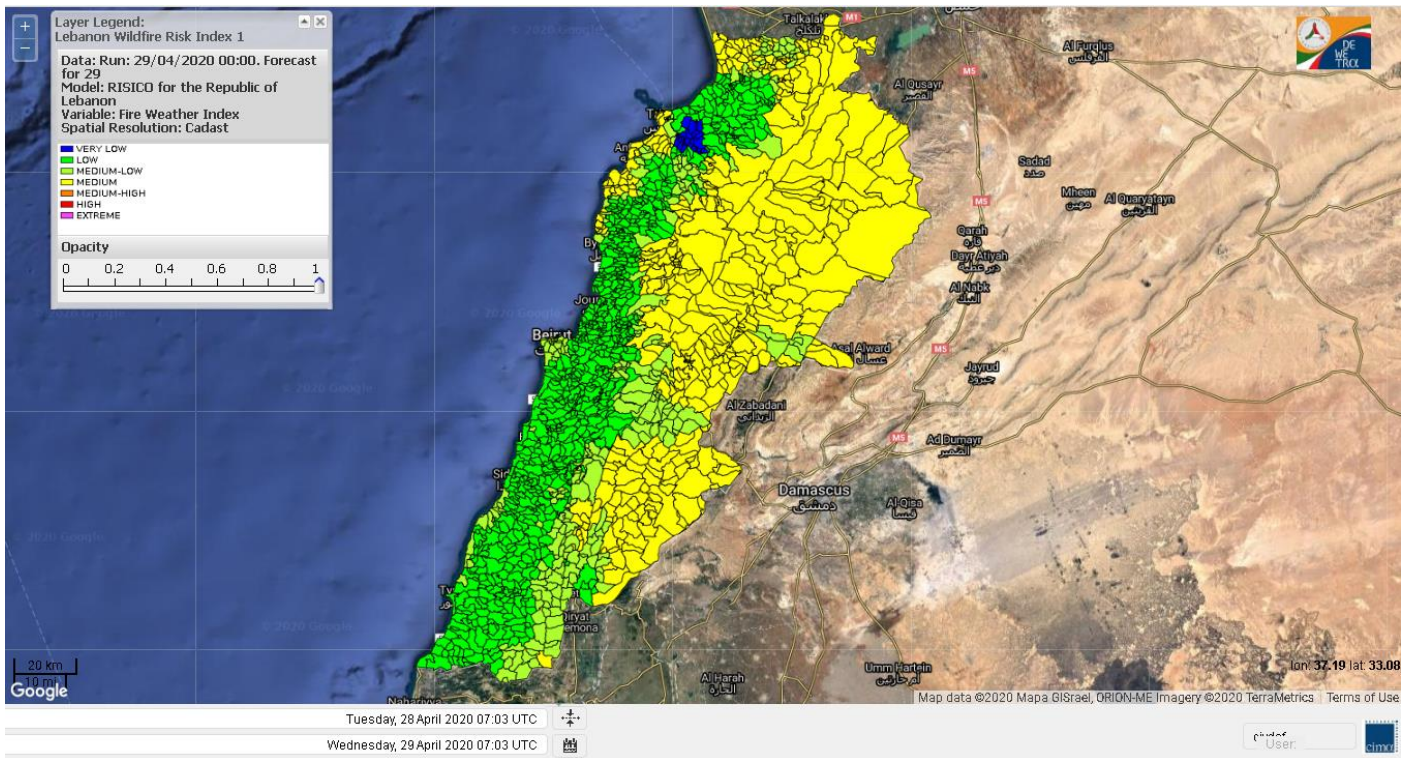


Layer Legend:
Lebanon Wildfire Risk Index 1

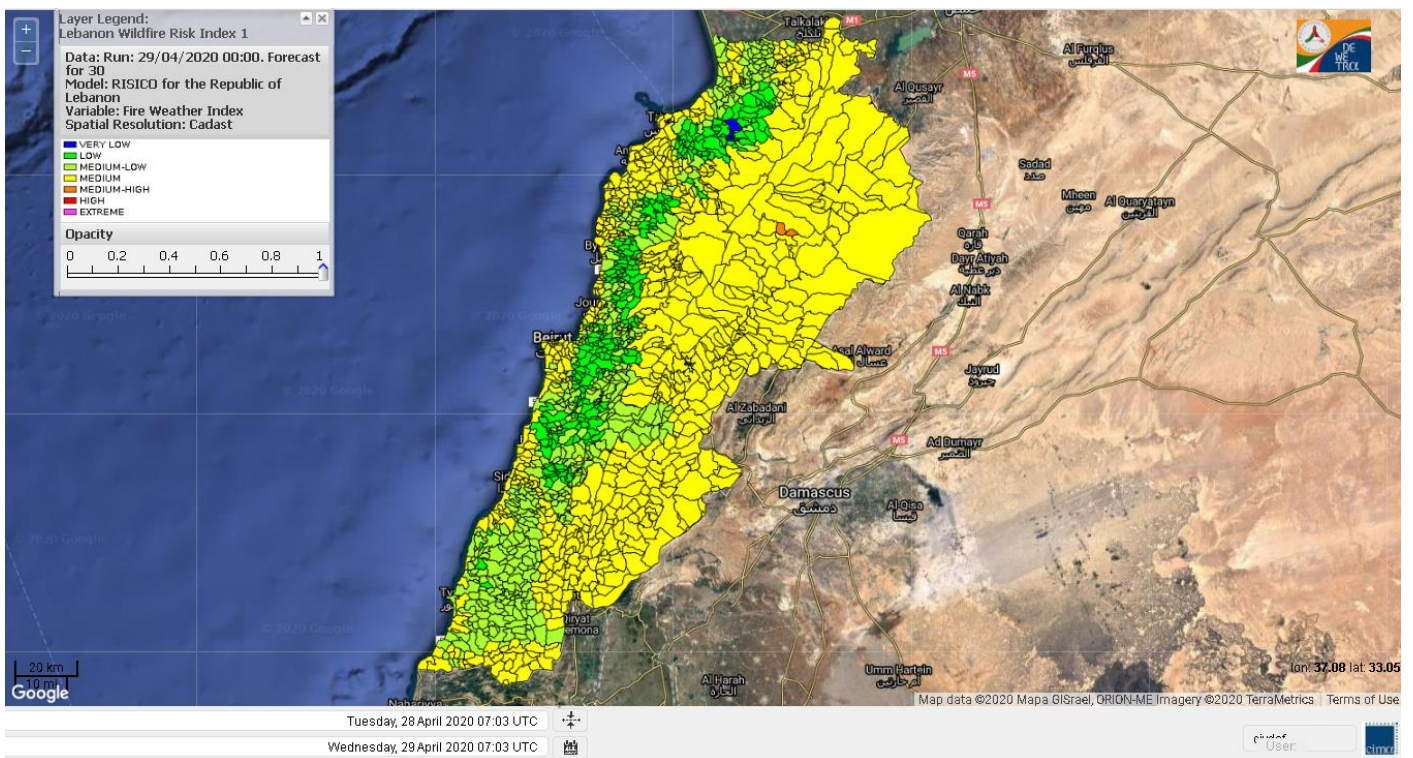
Data: Run: 29/04/2020 00:00. Forecast for 29
Model: RISICO for the Republic of Lebanon
Variable: Fire Weather Index
Spatial Resolution: Caza

- VERY LOW
- LOW
- MEDIUM-LOW
- MEDIUM
- MEDIUM-HIGH
- HIGH
- EXTREME

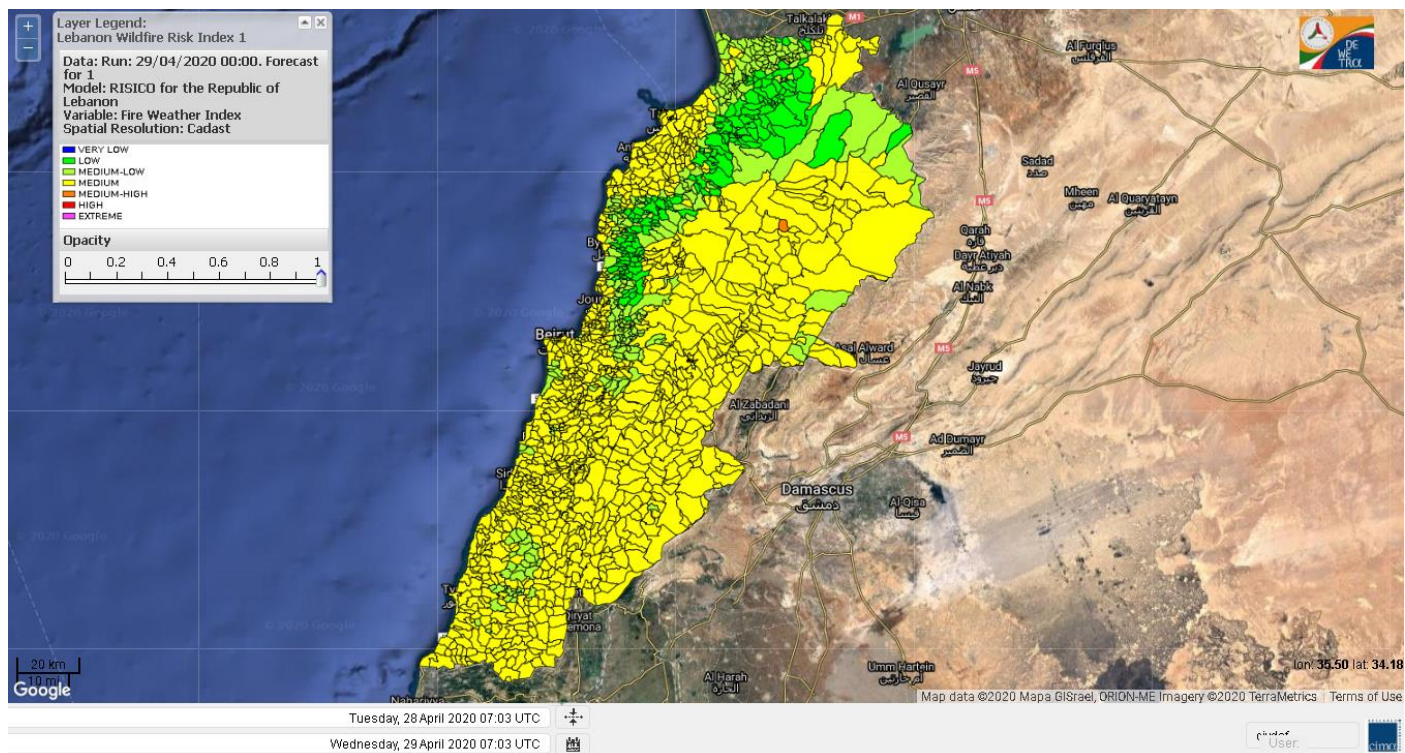
Lebanon for 29 April 2020



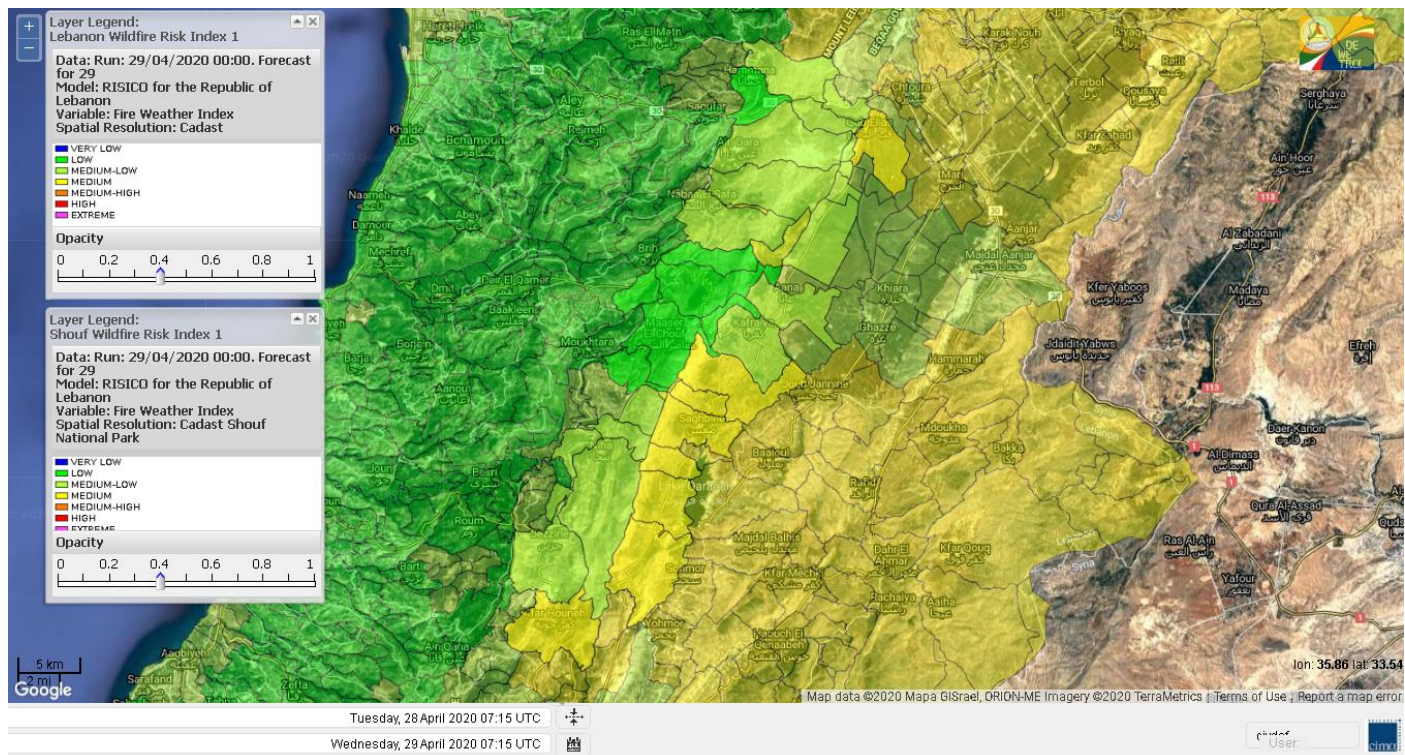
Lebanon for 30 April 2020



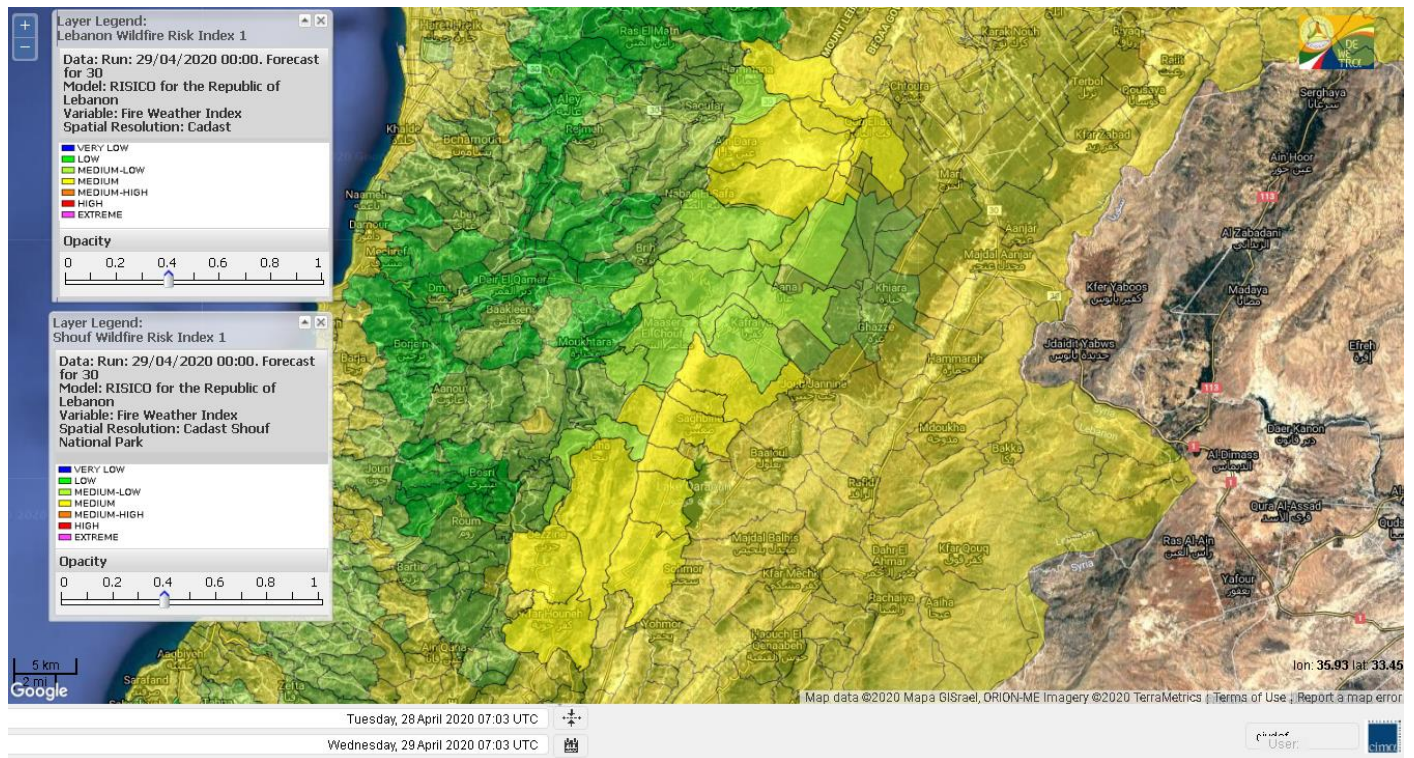
Lebanon for 1 May 2020



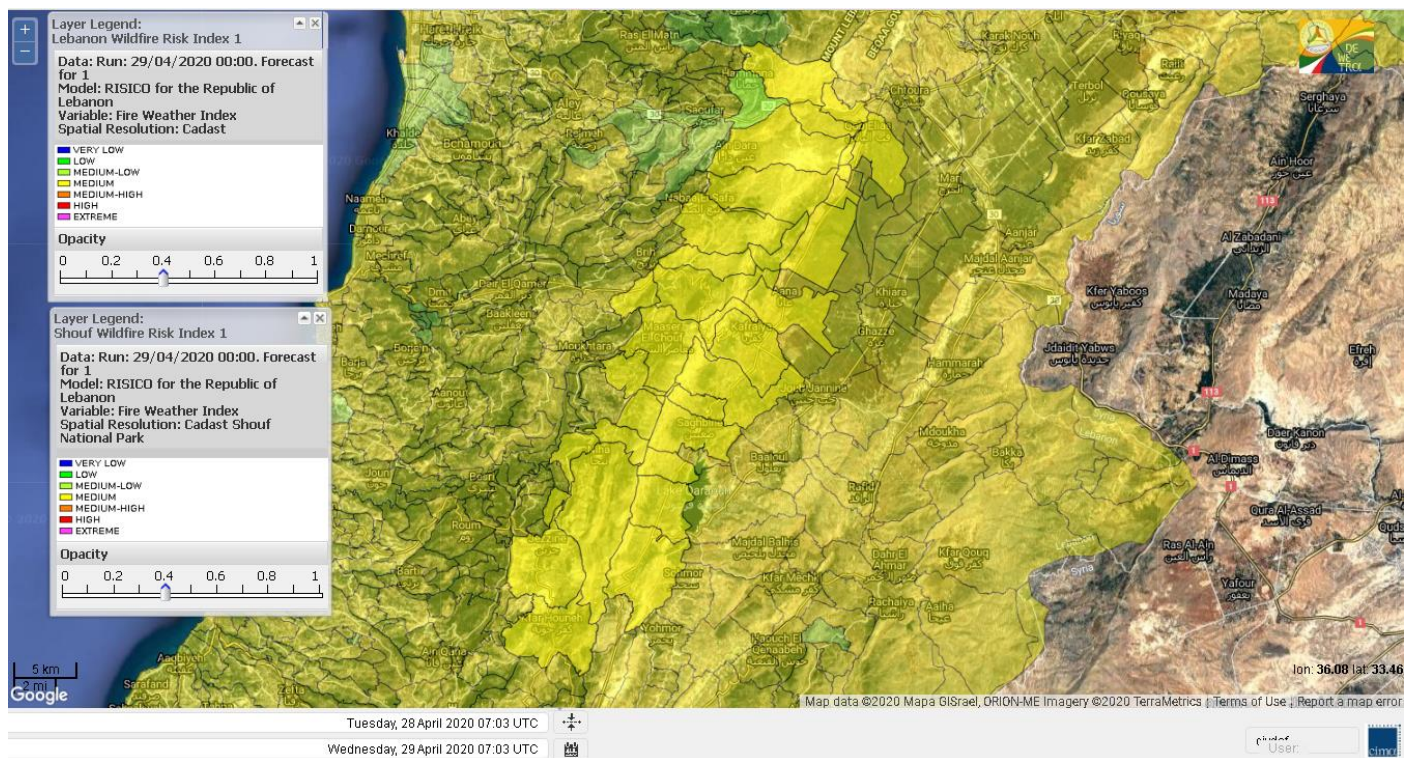
Shouf Biosphere Reserve Forecast for 29 April 2020



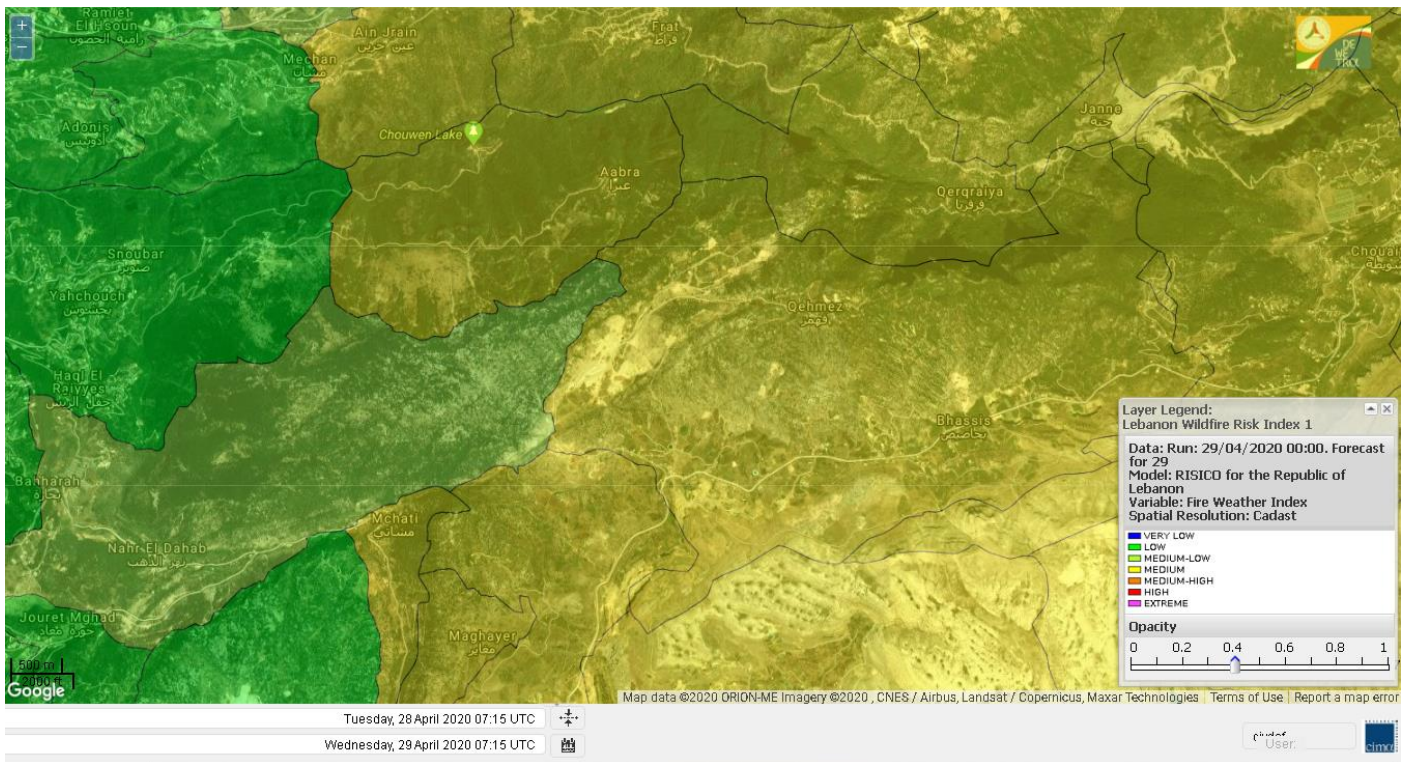
Shouf Biosphere Reserve Forecast for 30 April 2020



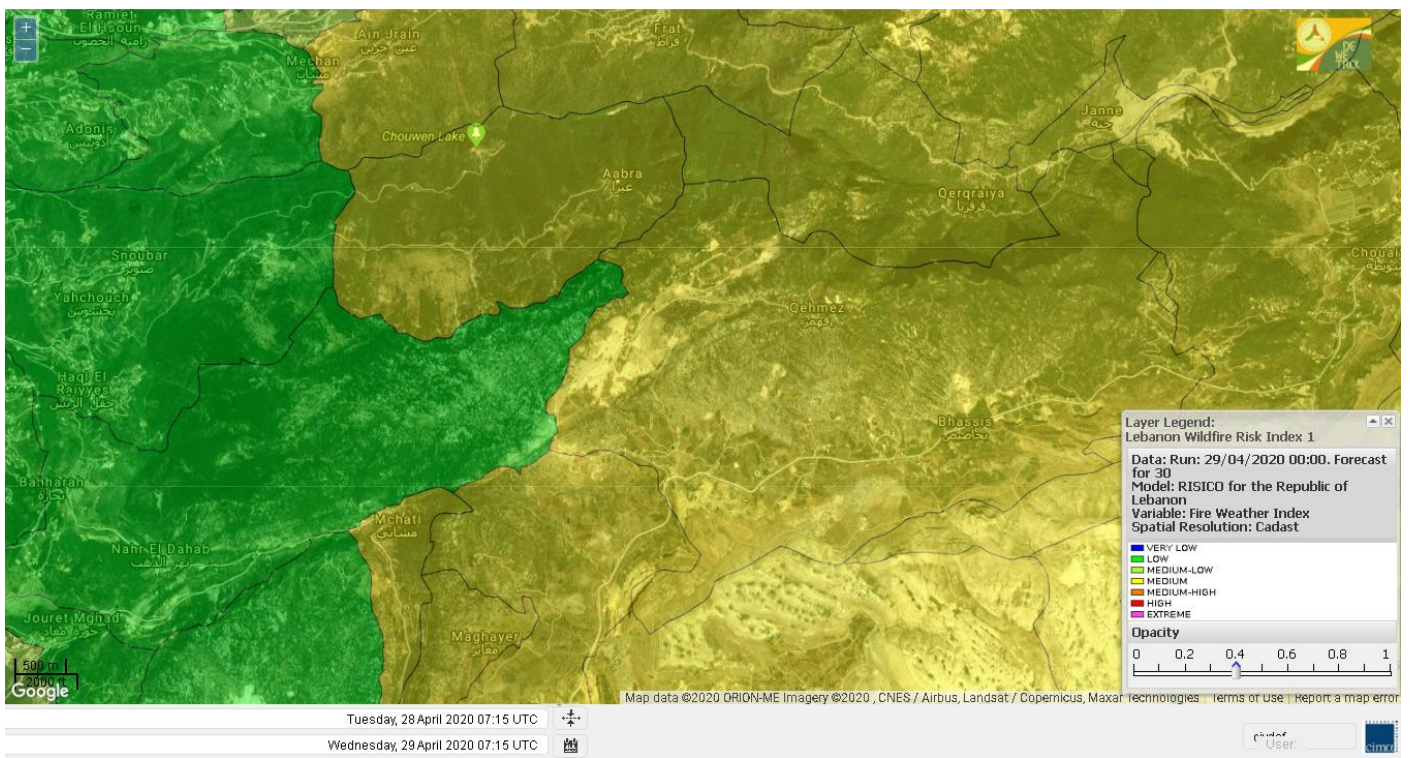
Shouf Biosphere Reserve Forecast for 1 May 2020



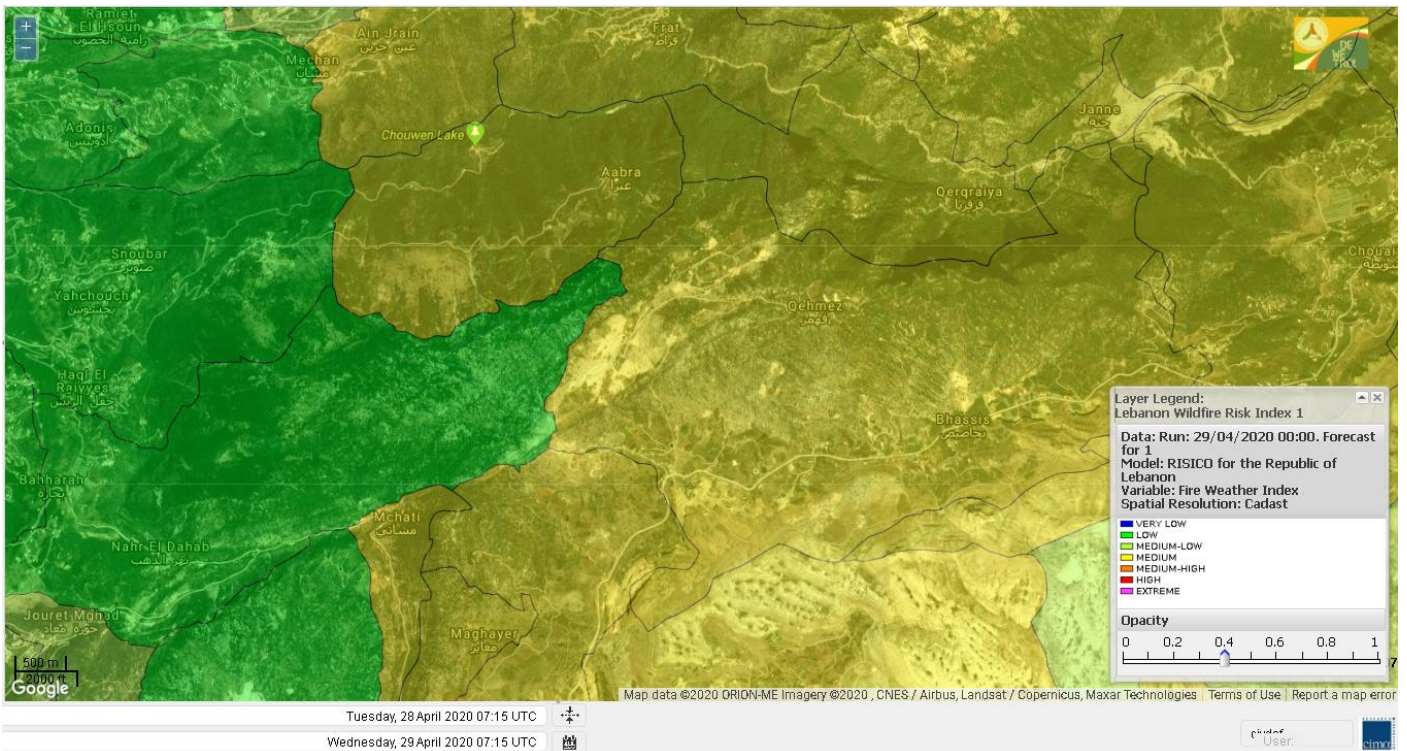
Jabal Moussa Reserve Forecast for 29 April 2020



Jabal Moussa Reserve Forecast for 30 April 2020



Jabal Moussa Reserve Forecast for 1 May 2020

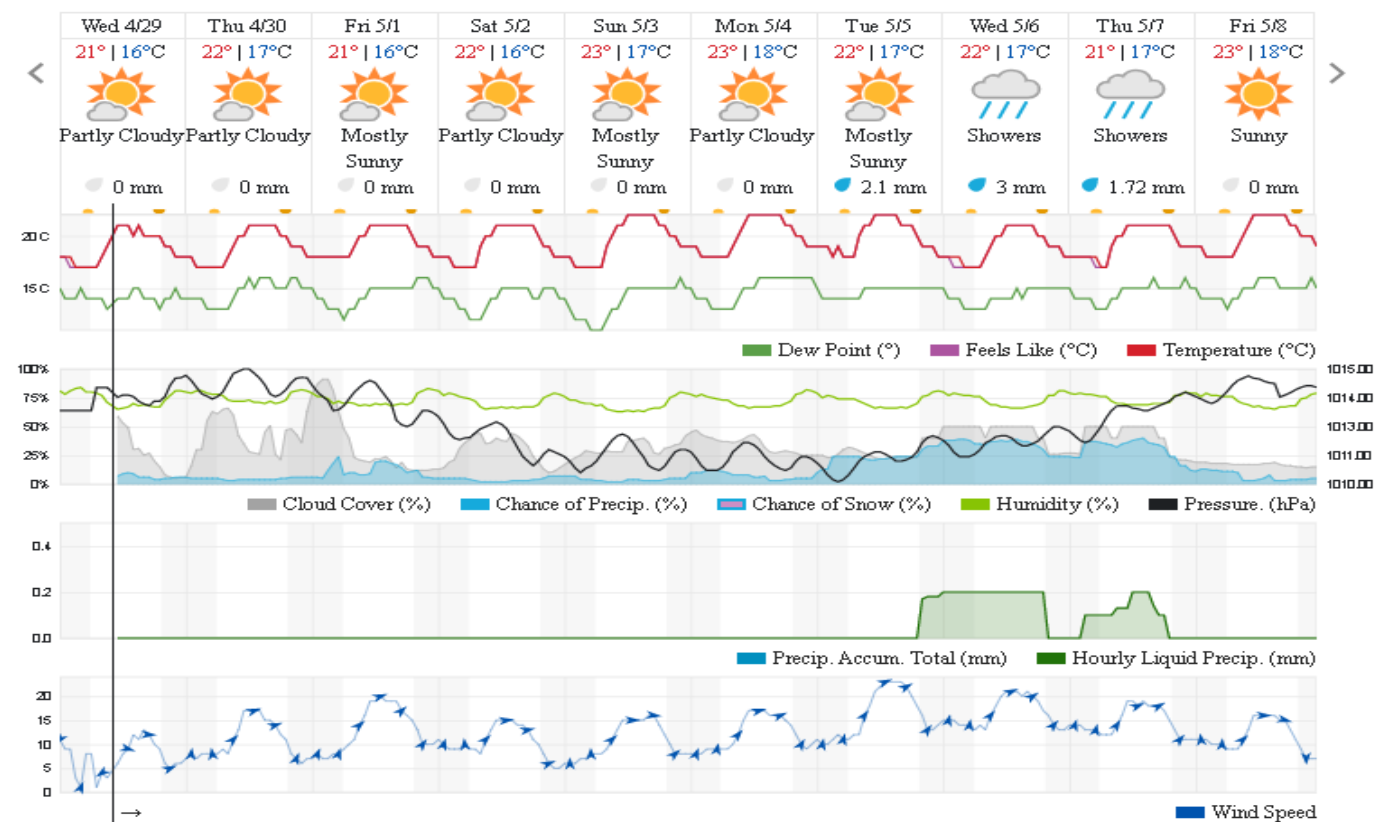


Beirut, Beirut Governorate, Lebanon 10-Day Weather Forecast

21° ACHRAFIEH, RIZK STATION | CHANGE

TODAY HOURLY 10-DAY CALENDAR HISTORY WUNDERMAP

Customize



Nord

Koura

Municipality	29-Apr	30-Apr	01-May	Municipality	29-Apr	30-Apr	01-May	Municipality	29-Apr	30-Apr	01-May
Aaba	ML	M	M	Afsaddiq	L	M	M	Ain Ekriane	L	M	M
Amioun	L	M	M	Anfeh	M	M	M	Badbhoun	ML	M	M
Barghoun	ML	M	M	Barsa	M	M	M	Batroumine	M	M	M
Bdebba	ML	M	M	Bechmizzine	L	M	M	Bednayel El-Koura	M	M	M
Bhabbouch El-Koura	L	M	M	Bkeftine	ML	ML	M	Bnehran	L	ML	M
Bqaiia El-Koura	M	M	M	Bsarma	L	M	M	Btaaboura	ML	M	M
Bterram	L	M	M	Btouratij	M	M	M	Bziza	L	M	M
Dar Beechtar	L	M	M	Dar Chmezzine	L	M	M	Deddeh	M	M	M
Deir El-Balamand	ML	M	M	Fih	ML	M	M	Hraiche	M	M	M
Ijdaabrine	M	M	M	Kaftoun	L	M	M	Kefraya El-Koura	M	M	M
Kfarakka	L	M	M	Kfarhata	M	M	M	Kfarhazir	ML	M	M
Kfarkahel	M	M	M	Kfarsaroun	L	M	M	Kosba	L	M	M
Mejdel el-Koura	L	ML	M	Nakhle	M	M	M	Qalhat	ML	M	M
Ras Masqa	M	M	M	Rechdibbine	L	M	M	Zakroun	M	M	M
Zgharta El-Mtaouile	L	L	M								

Bcharre

Municipality	29-Apr	30-Apr	01-May	Municipality	29-Apr	30-Apr	01-May	Municipality	29-Apr	30-Apr	01-May
Aabdine	ML	M	ML	Bane	M	M	ML	Barhelioun	ML	M	ML
Bazouone	M	M	M	Becharre	M	M	M	Beit Menzer	ML	M	ML
Billa	ML	M	ML	Blaouza	ML	M	M	Bqaa Kafra	M	M	M
Bqerqacha	M	M	M	Breissat	M	M	ML	Dimane	M	M	M
Hadath El Jobbeh	M	M	ML	Hadchit	M	M	L	Hasroun	M	M	M
Mazraat Aassaf	L	ML	L	Mazraat Bani Saab	M	M	ML	Mchaa El-Jobbeh	M	M	M
Metrit	L	ML	M	Moghr El-Ahoual	ML	M	ML	Ouadi Qannoubine	L	L	L
Qanat	ML	M	ML	Qnayouer	L	ML	L	Tourza	ML	M	ML

Batroun

Municipality	29-Apr	30-Apr	01-May	Municipality	29-Apr	30-Apr	01-May	Municipality	29-Apr	30-Apr	01-May
Aabrine	M	M	M	Aalali	L	L	L	Aartziz	L	ML	ML
Abdelli	L	ML	L	Ajdabra	ML	M	ML	Assia	L	L	L
Basbina	L	M	M	Batroun	M	M	M	Bcheleh	L	L	L
Bechtoudar	L	L	L	Beit Chlala	L	L	L	Beit Kassab	L	L	ML
Bijdarfil	ML	M	M	Bqesmaya	ML	ML	M	Chatine	M	M	ML
Chebtin	L	ML	L	Chekka	M	M	M	Daael	L	L	L
Dahr Abi Yaghi	L	ML	L	Daraya El-Batroun	L	M	M	Deir Billa	L	L	ML
Deir Kfifane	L	M	M	Deir Mar Youhanna EL	L	L	L	Deir Mar Youssef Jra	L	ML	L
Douma	ML	ML	ML	Douq	L	ML	L	Edeh El-Batroun	L	ML	ML
Ftahat El-Batroun	L	L	L	Ghouma	L	ML	ML	Hadtoun	L	L	L
Hamat	M	M	M	Harbouna	L	ML	L	Hardine	ML	L	L
Helta	L	L	L	Hery	M	M	M	Jebbla	L	L	ML
Jrabta El-Batroun	L	ML	ML	Jrane El-Batroun	L	M	M	Kfar Aabida	ML	M	ML
Kfar Halda	L	L	L	Kfarb Shlaimane	L	L	L	Kfarhatna	L	ML	ML
Kfarhay	M	M	M	Kfarhelos	M	M	M	Kfifane	L	M	M

Kfour El Arabi	M	M	ML	Koubba	M	M	M	Kour	L	ML	ML
Mar Mama	L	ML	L	Masrah	L	ML	L	Mehmarch	L	ML	ML
Mrah Chdid	L	ML	ML	Mrah El Ziyat	L	ML	ML	Mrah El-Hajj	L	L	L
Nahle El-Batroun	L	L	L	Niha El-Batroun	M	M	M	Ouahj El-Hajjar	M	M	M
Ouata Houb	M	M	ML	Qatnaaoun	M	M	M	Racha	L	ML	ML
Rachana	L	ML	ML	Rachkida	M	M	M	Ram El-Batroun	L	L	L
Ras Nahhach	M	M	M	Selaata	M	M	M	Sghar	L	ML	ML
Smar Jbayl	L	ML	ML	Sourat El-Batroun	L	ML	ML	Tannourine El-Faouqa	M	M	M
Tannourine Et-Tahta	M	M	L	Thoum	M	M	M	Toula El-Batroun	L	ML	L
Zan	L	ML	ML								

Zgharta

Municipality	29-Apr	30-Apr	01-May	Municipality	29-Apr	30-Apr	01-May	Municipality	29-Apr	30-Apr	01-May
Aachach	VL	ML	M	Aalma	VL	L	M	Aarde	L	L	M
Aintourine	ML	M	M	Arabet Qozhaya	ML	ML	L	Arde	VL	L	M
Arjis	ML	M	M	Asnoun	VL	L	M	Ayto	ML	ML	ML
Basloukit	M	M	L	Bchannine	L	M	M	Besebeel	L	L	M
Bhairret Toula	M	M	L	Bnachee	ML	M	M	Boussit	L	M	M
Danha	VL	L	M	Daraiya Zgharta	ML	M	M	Deir Jdeide	VL	L	M
Ehden	M	M	L	Halan	L	ML	M	Hariq Zgharta	VL	L	M
Houakir	VL	L	ML	Hraiqis	L	M	M	laal	L	L	M
Ijbaa	ML	M	M	Karm Saddeh	ML	ML	ML	Kfarchakhna	L	ML	M
Kfardlaqous	VL	L	M	Kfarfou	ML	M	M	Kfarhata Zgharta	VL	L	M
Kfarhoura	VL	L	M	Kfarsghab	M	M	L	Kfaryachit	L	L	M
Kfarzaina	VL	L	M	Khaldiye	VL	L	M	Mazraat Ajbeaa	VL	L	M
Mazraat Et-Teffah	L	M	M	Mazraat Jneid	VL	L	M	Mejdlaiya Zgharta	L	ML	M
Merh Kfarsghab	L	ML	M	Miryata	VL	L	M	Miziara	L	ML	L
Mzraat Kefraya	L	ML	ML	Qorah Bach	VL	L	M	Rachiine	VL	L	M
Ras Kifa	ML	M	M	Sakhra	VL	L	M	Sebhel Zgharta	ML	M	M
Serhel	L	L	L	Tallet Zgharta	VL	L	M	Toula Zgharta	M	M	L
Zgharta	VL	L	M								

Minieh-Denniye

Municipality	29-Apr	30-Apr	01-May	Municipality	29-Apr	30-Apr	01-May	Municipality	29-Apr	30-Apr	01-May
Aasaymout	L	L	L	Aaymar	L	L	L	Aazki	L	L	L
Ain El-Tineh-Miniyeh	L	L	L	Assoun	L	L	L	Bakhaaoun	L	L	L
Bchennata	M	M	L	Bechehhara	VL	L	L	Beddawi	L	M	M
Behouaita	M	M	L	Beit El Foqss	L	L	L	Beit Haouik	ML	ML	ML
Beit Zoud	L	L	L	Bekaasafrine	M	M	ML	Borj El Yahoudiyeh	L	M	M
Bqarsouna	L	L	L	Btermaz	L	VL	L	Debaael	L	L	L
Deir Ammar	L	M	M	Deir Nbouh	VL	L	ML	Haouaret-Miniyeh	L	ML	L
Haql el Azimeh	L	L	L	Harf El Siyad	L	L	L	Hazmiye-Miniyeh	L	L	L
Izal	L	L	L	Jarjour	VL	L	L	Jayroun	L	L	L
Kahf El-Malloul	L	L	L	Karm El-Moher	L	L	L	Kfar Binine	L	L	L
Kfarchalane	L	L	L	Kfarhabou	L	L	ML	Kharroub-Miniyeh	L	L	L
Mazraat El-Kreme	L	L	L	Mazraat Ketrane	L	L	L	Merkebtta	L	M	M
Minyeh	L	M	M	Mrah El Sfirat	L	VL	L	Mrah Sraj	L	L	L
Mrebbine	ML	M	L	Nabi Youcheaa	L	M	M	Nemrine	L	ML	L

Qarhaiya	L	ML	L	Qarne	L	L	L	Qarsita	L	L	L
Qattineh-Miniyeh	L	VL	L	Qemmamine	L	L	L	Qraine	L	VL	L
Raouda-Aadoua	L	ML	ML	Rihaniyet-Miniyeh	L	ML	ML	Sfireh	L	L	L
Sir Ed-Danniyeh	L	L	L	Tarane	L	VL	L	Terbol-Miniyeh	L	M	M
Zaghartaghriane	VL	L	ML	Zouq Bhannine	L	M	M				

Nabatiye

Nabatiye

Municipality	29-Apr	30-Apr	01-May	Municipality	29-Apr	30-Apr	01-May	Municipality	29-Apr	30-Apr	01-May
Aabba	L	ML	M	Aazzi	L	ML	M	Adchit El-Chqif	L	ML	ML
Ain Bou Swar	L	M	M	Ain Kana	L	M	M	Ali El-Taher	ML	M	M
Ansar	L	ML	M	Arab Salim	ML	M	M	Arnoun	ML	M	M
Bfaroue	L	ML	M	Breyqaah	L	ML	ML	Charqiyeh	L	ML	ML
Choukine	L	ML	ML	Deir El Zahrani	L	ML	M	Doueir El-Nabatiyeh	L	ML	ML
Habbouch El-Nabatiye	L	M	M	Hamra El-Nabatiyeh	ML	M	M	Harouf El-Nabatiyeh	L	ML	ML
Hmaile	ML	M	M	Houmin El Faouqa	L	M	M	Houmin El Tahta	L	ML	M
Jarjough	ML	M	M	Jbaah El-Nabatiyeh	L	ML	M	Jebchit	L	ML	ML
Kfar Djal El-Nabatiy	L	ML	ML	Kfar Remmane	ML	M	M	Kfar Sir	L	ML	ML
Kfar Tebnit	ML	M	M	Kfarfila	L	M	M	Kfour El-Nabatieh	L	ML	M
Mayfadoun	ML	M	M	Mazraat Bsaffour	L	ML	M	Mazraat Chalbaal	L	ML	M
Mazraat Dmoul	L	ML	ML	Mazraat El Khreibeh	L	ML	M	Mazraat El-Bayad El-	L	M	M
Mazraat Kfarjaouz	L	M	M	Mazraat Qalaat Meiss	L	ML	M	Nabatiyeh El-Fawka	L	M	M
Nabatiyeh Et-Tahta	L	M	M	Namiriyeh	L	ML	ML	Qaaqaaiyet El Jisr	L	ML	ML
Qossaibeh El-Nabatiy	L	ML	ML	Roumine	L	ML	M	Sarba El-Nabatieh	L	M	M
Sir El-Gharbiyeh	L	ML	ML	Toul	L	ML	ML	Yehmor El-Nabatiyeh	ML	M	M
Zaoutar El Charkiyeh	ML	M	M	Zaoutar El-Gharbiyeh	L	ML	M	Zebdine El-Nabatiyeh	L	ML	M
Zefta	L	ML	M								

Hasbaiya

Municipality	29-Apr	30-Apr	01-May	Municipality	29-Apr	30-Apr	01-May	Municipality	29-Apr	30-Apr	01-May
Ain Jarfa	M	M	M	Abou Qamha	M	M	M	Ain Qania	M	M	M
Bourghos	ML	M	M	Chebaa	M	M	M	Chouaya Hasbaya	M	M	M
Dellafeh	ML	M	M	Fardiss Hasbaiya	ML	M	M	Hasbaya	M	M	M
Hbariyeh	M	M	M	Kaoukaba Hasbaiya	ML	M	M	Kfar Chouba	M	M	M
Kfar Hamam	M	M	M	Kfeir El-Zait	M	M	M	Khalwat Hasbaya	M	M	M
Khreibet Hasbaiya	ML	M	M	Majidiyeh Hasbaiya	ML	M	M	Marj Ez-Zhour (Haouc	M	M	M
Meri	ML	M	M	Mimass	M	M	M	Rachaiya El-Fokhar	ML	M	M
Salaiyeb	L	M	M								

Marjayoun

Municipality	29-Apr	30-Apr	01-May	Municipality	29-Apr	30-Apr	01-May	Municipality	29-Apr	30-Apr	01-May
Aalmane Marjaayoun	ML	M	M	Aamra	L	M	M	Adayseh Marjaayoun	ML	M	M
Adchit El-Koussair	ML	M	M	Ain Aarab Marjaayoun	L	M	M	Bani Haiyann	ML	M	M
Blatt Marjaayoun	ML	M	M	Blida	ML	M	M	Borj El-Moulouk	ML	M	M
Boueyda Marjaayoun	ML	M	M	Deir Mimass	ML	M	M	Deir Siriane	ML	M	M
Dibbine	ML	M	M	Ebel El Saqi	ML	M	M	Houla	ML	M	M
Houra	ML	M	M	Kfar Kila	ML	M	M	Kham Marjaayoun	L	M	M

Klayaa	ML	M	M	Majdel Selem	ML	ML	M	Marjaayoun	ML	M	M
Markaba	ML	M	M	Mays El-Jabal	ML	ML	M	Mazraat Doumiat	L	M	M
Mazraat Sarada	L	M	M	Mhaibib	ML	M	M	Qabrikha	ML	M	M
Qantara	ML	M	M	Rab El-Thalathine	ML	M	M	Saouaneh Marjayoun	L	ML	M
Talloussa	ML	M	M	Taybeh Matjaayoun	ML	M	M	Touline	L	ML	M

Bent Jbail

Municipality	29-Apr	30-Apr	01-May	Municipality	29-Apr	30-Apr	01-May	Municipality	29-Apr	30-Apr	01-May
Ain-Ebel	ML	M	M	Aitaroun	M	M	M	Aynata Bint Jbeil	ML	M	M
Ayta El-Chaeb	L	M	M	Ayta El-Jabal	L	ML	M	Beit Lif	L	M	M
Beit Yahoun	L	ML	M	Bint Jbeil	ML	M	M	Borj Qalaway	L	ML	M
Braachit	L	ML	M	Chakra	ML	ML	M	Debel	ML	M	M
Deir Antar	L	ML	M	Froun	L	ML	M	Ghandouriyeh Bint Jb	L	ML	ML
Hanine	ML	M	M	Hariss	L	ML	M	Hdatha	L	M	M
Jmeymeh	L	ML	M	Kafra Bint Jbeil	L	ML	M	Kfar Dounine	L	ML	M
Khirbet Selm	L	ML	M	Kounine	ML	M	M	Maroun El Ras	ML	M	M
Qalaway	L	ML	M	Qaouzah	L	M	M	Qatmoun	ML	M	M
Ramya Bint Jbeil	L	M	M	Rchaf	ML	M	M	Rmeich	ML	M	M
Safad Al Battikh	L	ML	M	Salhaneh	L	M	M	Serbine	L	ML	M
Sultanieh Bint Jbeil	L	ML	M	Tibnine	L	ML	M	Tiri	ML	M	M
Yaroun	ML	M	M	Yater	L	M	M				

Mont Liban

Jbail

Municipality	29-Apr	30-Apr	01-May	Municipality	29-Apr	30-Apr	01-May	Municipality	29-Apr	30-Apr	01-May
Aabeydat	L	ML	L	Aalita	L	L	L	Aamchit	ML	M	M
Aarab El-Lahib	M	M	M	Aarasta	M	M	M	Adonis Jbeil	L	L	L
Afqa Jbeil	M	M	M	Ain El Delbeh Jbeil	ML	ML	ML	Ain El-Ghouayba	M	M	M
Ain Jrain	M	M	M	Ain Kfah	L	M	ML	Almat El Chemaliyat	M	M	M
Almat El-Jenoubiya	M	M	M	Aqoura	M	M	M	Bayzoun	L	L	L
Bchille Jbeil	L	L	L	Bechtlida	L	L	L	Behdaydat	L	ML	ML
Beit Habbaq	L	M	ML	Bejjeh	L	ML	ML	Bekhaaz	ML	M	M
Berbara Jbeil	M	M	M	Bintael	L	L	L	Birket Hjoula	L	L	L
Blatt Jbeil	L	ML	ML	Boulhos	M	M	M	Breyj Jbeil	L	L	L
Chamat	L	M	M	Chikhane	M	M	M	Chmout	L	ML	L
Eddeh Jbeil	L	ML	ML	Ehmej	M	M	M	Fatre	L	L	L
Ferhet	ML	ML	ML	Fghal	ML	M	ML	Frat	M	M	M
Ghabat	M	M	M	Ghalboun	L	ML	ML	Gharzouz	L	M	M
Ghofrine	ML	M	M	Habil	L	L	L	Halate	L	ML	ML
Haqel	L	ML	L	Hbaline	L	M	ML	Hboub	L	ML	L
Hdeine	M	M	M	Hema Er-Rehban	M	M	M	Hema Mar Maroun Aann	M	M	ML
Hjoula	L	L	L	Hosrayel	M	M	M	Hsarat	L	M	ML
Hsoun	L	L	L	Jaj	L	ML	ML	Janne	M	M	M
Jbeil	L	M	M	Jeddeyl Jbeil	M	M	M	Jlisse	L	L	L
Jouret El-Qattine	L	L	L	Kfar Baal Annaya	L	L	L	Kfar Kidde	M	M	M
Kfar Kouas	L	L	L	Kfar Mashoun	L	M	M	Kfoun	L	ML	L

Kharbe Jbeil	L	M	ML	Laqlouq	M	M	M	Lassa	M	M	M
Lehfed	L	L	L	Maad	L	M	ML	Mar Sarkis	M	M	M
Mastita	L	M	M	Mayfouq	L	L	L	Mazraat El Siyad	M	M	M
Mazraat El-Maaden	M	M	M	Mechane	L	L	L	Mechmech Jbeil	ML	ML	ML
Mehrin	L	ML	ML	Mejdel El-Akoura	M	M	M	Mghayreh Jbeil	M	M	M
Mounsef	M	M	M	Nahr Ibrahim	L	M	M	Qahmez	M	M	M
Qartaba	M	M	M	Qartaboun	L	M	M	Qattara Jbeil	L	L	L
Qorqraya	M	M	M	Ramout	L	M	ML	Ras Osta	L	L	L
Rihane Jbeil	M	M	M	Sakiet El-Khayt	L	ML	ML	Saqi Richmaya	L	ML	ML
Sebrine	L	L	L	Seraita	M	M	M	Souane Jbeil	M	M	M
Tadmor	M	M	M	Tartej	L	ML	ML	Torzaiya	L	ML	L
Yanouh Jbeil	M	M	M	Zibdine Jbeil	L	L	L				

El Metn

Municipality	29-Apr	30-Apr	01-May	Municipality	29-Apr	30-Apr	01-May	Municipality	29-Apr	30-Apr	01-May
Aain El-Qabu	M	M	M	Aain El-Qach	L	ML	ML	Aain El-Teffaha	L	ML	ML
Aain el-Safssaf El-M	L	L	ML	Abou Mizane	L	ML	ML	Ain Aar	L	ML	M
Ain Alaq	L	L	M	Ain El-Kharroube	L	ML	ML	Ain El-Sendianeh	L	ML	ML
Ain El-Zeitoune	L	L	ML	Ain Saadeh	L	L	M	Aintoura El-Matn	ML	M	ML
Amaret Chalhoub	L	ML	ML	Antelias	L	ML	M	Atchaneh	L	L	M
Ayroun	L	ML	ML	Baabdat	L	L	ML	Baouchariyeh	L	M	M
Baskinta	M	M	M	Beit Chabab	L	ML	ML	Beit El-Chaar	L	ML	M
Beit El-Kekko	L	ML	ML	Beit Mery	L	L	M	Bhersaf	L	L	M
Bikfaya	L	ML	ML	Biyakout	L	ML	M	Bnabil	L	L	ML
Bourj Hammoud	ML	M	M	Bqennaya	L	ML	M	Broummana El-Matn	L	L	M
Bsalim	L	L	M	Bsifrine	L	L	ML	Bteghrine	ML	ML	M
Chaouiye	L	ML	M	Chouaya El-Matn	L	ML	ML	Choueir	L	ML	ML
Chrine	L	L	ML	Dahr El Sawan El-Mat	L	L	M	Daychouniyeh	L	L	M
Dbayeh	L	M	M	Deir Chamra	L	L	L	Deir Mar Abda el Mch	L	L	M
Deir Mar Roukouz	L	M	M	Deir Tamiche	L	L	M	Dik El-Mehdi	L	ML	M
Dikwaneh	ML	M	M	Douar El-Matn	L	ML	ML	Fanar	L	ML	M
Fraike	L	L	M	Haret El-Ballaneh	L	ML	M	Hbous	L	ML	M
Himlaya	L	ML	ML	Jal El Did	L	ML	ML	Jdeideh El-Metn	L	ML	M
Jouar El-Matn	L	L	ML	Jouret El-Ballout	L	L	M	Kaaqour	L	ML	ML
Kfar Aaqab	L	L	ML	Kfertay El-Matn	ML	M	M	Khenchara	L	ML	ML
Khillet El-Mtain	L	L	ML	Konnabat Broummana	L	L	M	Konnabat Salima	L	L	ML
Machraah El-Matn	L	ML	ML	Majdel Tarchich	ML	M	ML	Majzoub	L	ML	M
Mansouriyeh El-Metn	L	ML	M	Mar Boutros Karm Et-	L	L	ML	Mar Chaya et Mzekke	L	L	M
Mar Moussa Ed-Douar	L	L	ML	Marjaba	ML	ML	ML	Masqa	L	L	M
Mayasse	L	ML	ML	Mazraat Deir Aoukar	L	ML	M	Mazraat El-Hadirat	L	ML	M
Mazraat Yachouh	L	ML	M	Mchikha	L	ML	ML	Menqlet Mezher	L	ML	M
Mhaydseh Matn	L	ML	ML	Mkalles	ML	M	M	Mrouj	ML	M	ML
Mtain	M	M	M	Mtayleb	L	ML	M	Nabay	L	L	M
Naccache	L	ML	M	Ouadi Chahine	L	ML	ML	Ouadi El-Karm El-Mat	L	L	ML
Ouata El-Mrouj	L	ML	ML	Ouyoun El-Matn	L	L	M	Qornet Chehwan	L	L	M
Qornet El-Hamra	L	L	M	Roumieh	L	L	M	Sfeilet Bikfaya	L	L	ML
Sinn El-Fil	ML	M	M	Zabbougha	L	L	ML	Zalqa	L	ML	M

Zarouon	L	L	ML	Zekrite	L	L	M	Zighrine El-Matn	L	ML	ML
Zouk El-Khrab	L	ML	M								

Chouf

Municipality	29-Apr	30-Apr	01-May	Municipality	29-Apr	30-Apr	01-May	Municipality	29-Apr	30-Apr	01-May
Aalmane El-Chouf	L	M	M	Aammqi El-Chouf	L	L	M	Ain Ouzein	L	L	M
Ain Qani	L	L	M	Ain Zhalta	ML	ML	M	Ainbal	L	L	M
Amatour	ML	ML	M	Anout	L	ML	M	Atrine	L	L	M
Baadarane	ML	ML	M	Baaqline	L	ML	M	Baasir	L	M	M
Barja	L	M	M	Barouk	L	ML	M	Bater	ML	ML	M
Batloun	L	ML	M	Bayqoun	L	M	M	Bchetfine	L	ML	M
Beiteddine	L	L	M	Benouati Ech-Chouf	L	L	M	Berjein	L	L	M
Bireh et Mtalleh	L	ML	M	Biret El-Chouf	L	ML	M	Bkechtine Ouel Mchei	L	L	ML
Bkifa El-Chouf	L	L	M	Botme	L	L	M	Bqaiaa Ech-Chouf	L	L	ML
Bsaba El-Chouf	L	ML	M	Chammis El-Chouf	L	ML	M	Chehim	L	L	M
Chemaarine	L	L	ML	Chourit	L	L	M	Daher El-Chouf	ML	M	M
Dalhoun	L	ML	M	Damour	L	M	M	Daraya El-Chouf	L	L	M
Deir El-Moukhalles	L	L	M	Deir Baba	L	ML	M	Deir Dourit	L	L	M
Deir El-Qamar	L	L	M	Deir Kouche	L	L	M	Dibbieh	L	L	M
Dmit	L	L	M	Fouara Jaafar	L	ML	M	Fraidis El-Chouf	L	ML	M
Ghabet Jaafar	L	ML	M	Gharife	L	ML	M	Haret Jandal	ML	ML	M
Hasrout	L	ML	M	Jadra	L	M	ML	Jahlieh	L	L	M
Jbeih El-Chouf	ML	ML	M	Jdeidet El-Chouf	L	L	M	Jiyeh	L	M	M
Jleilyeh	L	ML	M	Jmailiyeh	L	M	M	Joun	L	ML	M
Kahlounie El-Chouf	L	ML	M	Ketermaya	L	M	M	Kfar Faqoud	L	L	M
Kfar Hamal	L	ML	M	Kfar Him	L	ML	M	Kfar Katra	L	L	M
Kfar Niss	L	L	M	Kfar hay	L	ML	M	Kfarnabrakh	L	L	M
Khirbet Bisri	L	L	M	Knayse El-Chouf	L	L	M	Maaniyeh	L	M	M
Maasser Beiteddine	L	L	M	Maasser El-Chouf	L	ML	M	Majdalouna	L	M	M
Majdel El-Meouch	L	L	M	Mazboud	L	ML	M	Mazmoura	L	ML	M
Mazraat El Chouf	L	ML	M	Mazraat El Daher	L	L	M	Mazraat El-Douair	L	L	M
Mechref	L	L	M	Mghairie	L	ML	M	Mghayrie El-Chouf	L	L	M
Moukhtara	L	L	M	Mrusti	ML	M	M	Mtolle	L	ML	M
Naameh	L	ML	M	Niha El-Chouf	ML	M	M	Ouadi Abou Youssef	L	L	ML
Ouadi Ed-Deir	L	ML	M	Ouadi El-Sit	L	ML	M	Ouadi bnehlay	L	L	M
Qraibeh	L	ML	M	Qreiaa	L	L	M	Rmayle El-Chouf	L	M	M
Semqaniyeh	L	ML	M	Sibline	L	M	ML	Sirjbeil	L	ML	M
Warhanieh	L	ML	M	Werdaniyeh	L	M	M	Zaarourieh	L	ML	M

Baabda

Municipality	29-Apr	30-Apr	01-May	Municipality	29-Apr	30-Apr	01-May	Municipality	29-Apr	30-Apr	01-May
Abadiyeh	L	L	M	Ain Mouaffaq	L	L	M	Araiya	L	L	M
Arbaniyeh	L	L	ML	Arsoun	L	L	ML	Baabda	L	M	M
Baalchmey	L	L	M	Bmaryam	ML	ML	M	Bourj El-Brajneh	L	ML	ML
Boutchay	L	M	M	Bsaba Baabda	L	M	M	Btekhney	ML	ML	M
Btibyat	ML	ML	M	Bzebdine	L	L	ML	Chbeniyeh	ML	ML	M
Chiyah	ML	M	M	Chmeisset Baabda	ML	ML	M	Chouit	L	L	M
Deir El-harf	L	ML	ML	Deir Khouna	L	ML	M	Dlaybeh	L	L	ML

Falougha	ML	M	M	Furn El-Chebbak	ML	M	M	Hadath Beyrouth	L	M	M
Halaliyeh Baabda	L	L	M	Hammana	L	ML	ML	Haret El Sett	L	L	M
Haret Hamze	L	ML	M	Haret Hreik	ML	M	M	Hasbaiya El-Metn	L	L	ML
Jouar El-Hoz	L	L	ML	Jouret Arsoun	L	L	ML	Kfar Chima	L	M	M
Kfar Selouane	M	M	M	Khalouat Baabda	L	ML	M	Kneisset Baabda	L	L	M
Laylakeh	L	ML	ML	Louayzeh Baabda	L	L	M	Merdache	L	M	M
Mzairaa Baabda	L	L	M	Ouadi Chahrour El Ol	L	ML	M	Ouadi Chahrour El So	L	ML	M
Qalaa Baabda	ML	ML	M	Qhraybe Baabda	ML	ML	M	Qobbayaa	ML	ML	M
Qornayel	L	L	ML	Qortada	L	L	M	Qrayeh Baabda	ML	ML	M
Qsaibeh Baabda	L	L	M	Qtale Baabda	ML	ML	M	Ras El Metn	L	L	M
Ras El-Haref	L	ML	M	Rouayset El-Ballout	L	L	M	Salima Baabda	L	ML	ML
Tahouitat El Ghadir	L	M	ML	Tarchich	M	M	M	Zandouqa	L	L	M

Aley

Municipality	29-Apr	30-Apr	01-May	Municipality	29-Apr	30-Apr	01-May	Municipality	29-Apr	30-Apr	01-May
Abey	L	ML	M	Aghmid	ML	ML	M	Ain Dara	ML	M	M
Ain Drafil	L	ML	M	Ain El Halazoun	L	ML	M	Ain El-Rmmaneh	L	L	M
Ain Jedideh	L	ML	M	Ain Ksour	L	ML	M	Ain Onoub	L	ML	M
Ain Traz	L	ML	M	Ainab	L	ML	M	Aley	L	L	M
Aramoun	L	ML	M	Aytat	L	M	M	Azouniyeh	L	ML	ML
Baawerta	L	L	M	Badghan Oua Wadi Bad	L	ML	M	Bassatine	L	ML	M
Bayssour	L	ML	M	Bchamoun	L	M	M	Bdadoun	L	L	M
Behouara	L	L	M	Bennay	L	ML	M	Bhamdoun El-Dayaa	L	ML	ML
Bhamdoun El-Mhatta	L	ML	ML	Bkhechthey	L	ML	M	Bleibel	L	ML	M
Bmakine	L	ML	M	Bmehray	ML	M	M	Bouzrid	L	L	M
Bserrine	L	ML	M	Bsous	L	L	M	Btalloun	L	ML	M
Btater	L	ML	M	Chanay	L	ML	ML	Charoun	L	ML	ML
Chartoun	L	L	M	Chemlane	L	ML	M	Chouefat El-Aamrous	L	M	ML
Chouefat El-Oumara	L	M	ML	Chouefat El-Quoubbe	L	M	ML	Dakkoun	L	ML	M
Deir Qoubel	L	ML	M	Dfoun	L	ML	M	Douair El Remmaneh	L	L	M
Ghaboun	L	L	M	Habramoun	L	L	M	Homs Oua Hama	L	ML	M
Houmal	L	ML	M	Jisr El Qadi	L	L	M	Kehaleh	L	L	M
Keyfoun	L	ML	M	Kfar Aamey	L	L	M	Kommatyeh	L	L	M
Maasrati	L	L	M	Majdel Baana	L	ML	ML	Mansourieh et Ain El	L	ML	ML
Mazraat El-Nahr	L	L	M	Mchakhte	ML	ML	M	Mecherfeh	L	ML	M
Mejdlaya	L	L	M	Mrayjat	L	ML	M	Ramliyah	L	L	M
Rechmaya	L	L	M	Rejmeh	L	L	M	Remhala	L	ML	M
Rouaysset El Neemane	L	L	M	Saoufar	L	ML	ML	Selfaya	L	L	M
Sirhmoul	L	ML	M	Souq El Ghareb	L	L	M	Taazanieh	L	ML	M

Kesrouane

Municipality	29-Apr	30-Apr	01-May	Municipality	29-Apr	30-Apr	01-May	Municipality	29-Apr	30-Apr	01-May
Achkout	L	L	L	Adma Oua Dafneh	L	M	M	Ain Ed-Delbe Kesroua	M	M	M
Ain El-Rihane	L	M	M	Aintoura Kesrouane	L	M	M	Ajaltoun	L	ML	ML
Akaybeh Kesrouane	L	M	M	Aramoun Kesrouane	L	ML	ML	Azra ouel Ozor	L	L	L
Ballouneh	L	ML	ML	Batha	L	ML	M	Bekaatat Achkout	L	ML	L
Bekaatat Kanaan	ML	ML	ML	Bizhel	L	L	L	Bouar	L	M	M
Bqaatouta	M	M	M	Bqaq Ed-Dine	L	M	M	Bzommar	L	ML	ML

Chahtoul	L	ML	ML	Chnaniir	L	ML	M	Chouan	M	M	M
Daraya Kesrouane	L	ML	ML	Darououn	L	ML	M	Deir Baqlouch	L	ML	M
Dlebta	L	L	ML	Eghbeh	L	L	L	Faraya	M	M	M
Fatka	L	ML	ML	Feytroun	L	L	L	Ghazir	L	ML	M
Ghbaleh Kesrouane	L	L	L	Ghedrass	L	L	L	Ghosta	L	ML	ML
Ghynéh	L	ML	ML	Harharaya w Kattine	L	ML	ML	Harissa Kesrouane	L	M	M
Hayata	L	L	ML	Hosein	L	L	L	Hrajel	M	M	M
Jdeideh Ghazir	L	ML	ML	Jeita	L	ML	M	Jounieh Ghadir	L	M	M
Jounieh Haret Sakhr	L	M	M	Jounieh Salel Alma	L	M	M	Jounieh Sarba	L	M	M
Jouret Bedrane	L	L	L	Jouret Mhad	L	L	ML	Jouret Termos	L	ML	L
Kfar Debiane	ML	M	ML	Kfar Tay Kesrouane	ML	ML	ML	Kfar Yassine	L	M	M
Kfour Kesrouane	L	ML	ML	Kharayeb Nahr Ibrahi	L	ML	ML	Klayaat Kesrouane	L	L	ML
Maarab	L	L	ML	Maaysra Kesrouane	L	L	L	Mayrouba	M	M	M
Mazraat Er-Ras	L	M	M	Mazraat Mrah El-Mir	L	ML	ML	Mchaa El Ftouh	M	M	M
Mchaa Faraya	M	M	ML	Mchaa Kfar Dibiane	M	M	M	Mghaer	M	M	M
Mradiyah	L	L	L	Nahr Ed-Dahab	ML	L	L	Nammoura Kesrouane	L	L	ML
Ouata El Jaouz	L	L	L	Ouata Sillam	L	M	M	Raachine	L	L	L
Rayfoun	L	ML	ML	Safra Kesrouane	L	M	M	Shayle Kesrouane	L	ML	M
Tabarja	L	M	M	Yahchouch	L	L	L	Zaaytreh	L	L	L
Zeytoun	L	ML	ML	Zouk Mikael	L	M	M	Zouk Mosbeh	L	M	M

Baalbek_Hermel

Baalbek

Municipality	29-Apr	30-Apr	01-May	Municipality	29-Apr	30-Apr	01-May	Municipality	29-Apr	30-Apr	01-May
Aadous	M	M	M	Aamchki	M	M	ML	Aarsal	M	M	M
Ain Baalbek	M	M	M	Ain Bourday	M	M	M	Ain El-Benye	ML	M	ML
Ain El-Jaouz Baalbek	M	M	M	Ain El-Siya Chadoura	M	M	M	Al Khodr Baalbek	ML	M	M
Al Nabi Chit	M	M	M	Aynata Baalbek	M	M	M	Baalbek	M	M	M
Bachwat	M	M	M	Barqa	M	M	M	Bednayel Baalbak	M	M	M
Beit Chama	M	M	M	Bijjaje	M	M	M	Bouday	M	M	M
Brital	M	M	M	Btadi	M	M	M	Chaat	M	M	M
Chaibe	M	M	M	Chlifa	M	M	M	Chmestar	M	M	M
Dar El-Oussa	M	M	M	Deir El-Ahmar	M	M	M	Deir Mar Maroun Baal	M	M	ML
Douris	M	M	M	Fakiha	M	M	M	Hadath Baalbek	M	M	M
Ham	ML	M	ML	Haour Taala	ML	M	M	Hizzine	M	M	M
Hlebta	M	M	M	Hosh Barada	M	M	M	Hosh El Dahab	M	M	M
Hosh El Snid	M	M	M	Hosh El-Nabi	M	M	M	Hosh El-Rafiq	M	M	M
Hosh Tal Safiya	M	M	M	Hrebta	M	M	M	laat	M	M	M
Jebaa	M	M	M	Jenta	M	M	M	Kfar Dabach	M	M	M
Kfar Dane	M	M	M	Khraibeh El-Hermel	M	M	M	Khreibet Baalbek	ML	M	M
Kneisset Baalbek	M	M	M	Labueh	M	M	M	Maarboun	M	M	M
Majdaloun	M	M	M	Maqneh	M	M	M	Mazraat Beit Mcheik	M	M	M
Misraya	M	M	M	Moqraq	M	M	M	Nabha El-Damdoum	M	M	M
Nabi Chbay	ML	M	ML	Nabi Osman	M	M	M	Nahleh baalbek	M	M	M
Ouadi El-Oss	M	M	M	Qaa Baayoun	M	M	ML	Qaa Jouar Maqiye	M	M	L
Qaa Ouadi El-Khanzir	M	M	ML	Qah Baalbek	M	M	M	Qarha Baalbek	M	MH	M

Qsarnaba	M	M	M	Ram Baalbek	M	MH	MH	Ras Baalbek El Sahl	M	M	M
Ras Baalbek El-Charq	M	M	M	Riha	M	M	M	Saaide	M	M	M
Sbouba	M	M	M	Seriine El-Tahta	M	M	M	Slouqi	M	M	M
Taiba Baalbek	M	M	M	Talia	M	M	M	Taraiya	M	M	M
Temnin El Fawqa	M	M	M	Temnin El-Tahta	M	M	M	Tfail	M	M	M
Yahfoufa	M	M	M	Yammouneh	M	M	M	Younine	M	M	M
Zboud	M	M	M								

Hermel

Municipality	29-Apr	30-Apr	01-May	Municipality	29-Apr	30-Apr	01-May	Municipality	29-Apr	30-Apr	01-May
Charbine El-Hermel	M	M	ML	Hermel Jbab	M	M	ML	Hermel	M	M	ML
Maaysra El-Hermel	M	M	M	Michaa Mrajhine	M	M	L	Ouadi Faara	M	M	M
Ras Baalbek - Ouadi	M	M	M	Ras Baalbek El Gharb	M	M	M	Zighrine	M	M	L

Akkar

Akkar

Municipality	29-Apr	30-Apr	01-May	Municipality	29-Apr	30-Apr	01-May	Municipality	29-Apr	30-Apr	01-May
Aain Tinta	M	M	ML	Aaiyat	M	M	ML	Aakkar El-Aatiqa	M	M	L
Aamar Akkar	L	ML	ML	Aamar El Baykat	ML	M	ML	Aamayer	M	M	M
Aamriyet Akkar	ML	M	ML	Aandqet	M	M	M	Aarmeh	M	M	L
Aarqa	ML	M	ML	Aawaynat	M	M	M	Aayoun Akkar	M	M	ML
Abboudiye	M	M	ML	Ain El-Zeit	ML	M	ML	Ain Yaaqoub	M	M	L
Akroum	M	M	M	Aridet Cheikh Zennad	M	ML	ML	Baldeh w Mazraat Bal	M	ML	ML
Barcha	M	ML	ML	Bardeh	ML	M	ML	Bebnine	L	ML	ML
Beino	M	M	L	Beit Ayoub	L	ML	ML	Beit El-Haouch	L	ML	ML
Beit Mellat	ML	ML	ML	Beit Younes	L	L	L	Berbara Akkar	M	M	ML
Berqayel	L	ML	ML	Bezbina	M	M	L	Bireh Akkar	M	M	ML
Borj	M	M	ML	Bqerezla	L	ML	ML	Bzal	L	L	L
Chane	L	L	L	Chaqdouf	M	M	ML	Charbila	M	ML	ML
Cheikh Mohammad	M	ML	ML	Cheikh Taba Es-Sahl	M	M	ML	Cheikh Taba	L	ML	L
Cheikh Zennad	M	ML	ML	Cheikhlar	M	M	M	Chir Hmairine	M	ML	ML
Daghle	M	ML	ML	Dahr Laissine	L	ML	L	Darine	M	ML	ML
Dawra	M	M	L	Dawsa w Baghdadi	ML	M	ML	Dayret Nahr El-Kabir	M	M	M
Deir Dalloum	L	ML	ML	Deir Jennine	M	M	L	Denbou	L	L	L
Dibbbiyeh	ML	ML	ML	Douair Aadwiyeh	M	M	ML	Fassikine	M	ML	ML
Fnaydek	M	M	L	Fraydes Akkar	M	M	ML	Ghazayle	ML	ML	ML
Habchit	L	L	L	Hakour	L	ML	ML	Halba	ML	ML	ML
Haouchab	M	ML	ML	Hayssat	M	M	M	Haytla	ML	ML	ML
Hayzouq	M	ML	ML	Hedd	M	ML	ML	Hmaira Akkar	L	ML	ML
Hmaiss Akkar	ML	ML	ML	Hnaider	M	M	M	Hokr Ed-Dahri	M	ML	ML
Hokr Etti	ML	ML	ML	Hokr Jouret Srar	M	ML	ML	Houaich	L	L	L
Hrar	L	L	L	Idbil	L	L	L	Ilal	L	ML	L
Janine	ML	ML	ML	Jdeidet El-Joumeh	L	ML	L	Jdeidet El-Kaiteh	L	ML	ML
Jebayel	L	L	L	Kafr	L	ML	ML	Kafr	ML	M	ML
Karm Asfour	L	ML	L	Kfar Melki Akkar	M	M	M	Kfar Noun	M	M	L
Kfarharra	M	ML	ML	Khalsa	M	M	M	Kharnoubet Akkar	ML	ML	ML

Khirbet Daoud Aakkar	ML	ML	ML	Khirbet El Remmane	M	M	M	Khirbet Shar	M	M	ML
Khoreybet El-Jindi	M	ML	ML	Khreibet Aakkar	L	L	L	Kneisset Aakkar	M	ML	ML
Kneisset Hnaider	M	M	M	Knisse	M	ML	ML	Kroum El-Aarab	M	ML	ML
Kwachra	ML	M	ML	Kweykhath	M	ML	ML	Machta Hammoud	M	M	M
Majdala	L	ML	ML	Majdel Akkar	ML	M	ML	Mar Touma	L	ML	ML
Marlaya Melhem	L	ML	ML	Mashha	ML	ML	L	Massoudiye	M	M	ML
Mazraat Beit Ghattas	L	ML	ML	Mazraat En-Nahriye	M	M	M	Mechmech	M	M	L
Memneh	M	M	L	Mhammara	L	ML	ML	Mighraq Aakkar	M	ML	ML
Minyara	L	ML	ML	Moqayteh	M	ML	ML	Mounjez	M	M	L
Msalla	ML	M	ML	Mzeihmeh	ML	ML	ML	Nfaisch	ML	ML	L
Noura Et-Tahta	ML	M	L	Ouadi El-Haour	M	ML	ML	Ouadi El-Jamous	L	ML	ML
Ouyoun El-Ghizlane	L	ML	ML	Qaabarine	M	M	M	Qabaait	L	L	L
Qachlaq	M	ML	ML	Qantara Aakkar	L	ML	L	Qarha Aakkar	M	M	M
Qarqaf	L	ML	ML	Qboula	M	M	ML	Qleiaat Aakkar	M	ML	ML
Qloud El-Baqie	L	ML	ML	Qobaiyat Aakkar	M	M	M	Qobbat Chamrat	L	ML	ML
Qorayat	L	L	L	Qornet Aakkar	ML	ML	L	Qsair Aakkar	M	M	ML
Rahbe	L	L	L	Rihaniyet Aakkar	M	ML	ML	Rmah	M	M	M
Rmoul	M	M	M	Saadine	M	ML	ML	Sadaqa	L	L	L
Saidnaya	ML	ML	ML	Sammouniye	M	M	ML	Sayssoq	L	ML	ML
Semmaqiye	M	ML	ML	Semmaqli	L	ML	ML	Sfinet El-Dreib	M	M	ML
Sfinet El-Qaitaa	L	L	L	Sindyanet Zeidane	M	M	L	Souaisset Aakkar	M	ML	ML
Srar	ML	ML	ML	Tal Abbas El Gharby	M	ML	ML	Tal Abbas El-Chargy	M	ML	ML
Tal Biret	M	M	ML	Tal Hmayra	M	ML	ML	Tal Maayan Tal Kiri	M	M	M
Tal Sibel	M	M	ML	Tallet Chattaha	M	M	ML	Tikrit	ML	ML	L
Tleil	ML	ML	ML	Tshea	M	M	L	Zawarib	L	ML	L
Zouq El Hosniyeh	L	ML	ML	Zouq El-Haddara	L	ML	ML	Zouq El-Hbalsa	L	ML	ML
Zouq El-Moqachrine	L	ML	ML								

Sud

Sour

Municipality	29-Apr	30-Apr	01-May	Municipality	29-Apr	30-Apr	01-May	Municipality	29-Apr	30-Apr	01-May
Aaiyeh	L	ML	ML	Aalma El-Chaab	L	M	M	Aaytit	L	ML	M
Abbassiyeh Sour	L	ML	M	Abou Chech	L	M	M	Ain Abou Abdallah	L	ML	M
Ain Baal	L	ML	M	Arzoun	L	ML	ML	Aziyeh	L	ML	M
Baflaya	L	ML	ML	Barich	L	ML	M	Batouliyeh	L	M	M
Bayad	L	ML	M	Bazouriyeh	L	ML	M	Bediass	L	ML	M
Bestiyat	L	ML	ML	Borj El Chemali	L	M	M	Borj En-Naqoura	L	M	M
Borj Rahhal	L	ML	M	Boustane	L	M	M	Btaychiyeh	L	ML	M
Chaaitiye	L	ML	M	Chameh	L	M	M	Chehabiye	L	ML	M
Chehour	L	ML	M	Chihine	L	M	M	Debaal Sour	L	ML	M
Deir Amess	L	ML	M	Deir Kifa	L	ML	M	Deir Qanoun El-Ain	L	M	M
Deir Qanoun El-Naher	L	L	M	Derdghaiya	L	ML	ML	Dhayra	L	ML	M
Halloussiyeh	L	ML	M	Hamoul	L	M	M	Hanaouey	L	ML	M
Henniye	L	M	M	Hmairi Sour	L	ML	M	Iskandarouna Sour	L	ML	M
Jbal El Botom	L	ML	M	Jebbin	L	ML	M	Jennata	L	ML	ML
Jijim	L	ML	M	Jouaiya	L	ML	ML	Kneisset Sour	L	ML	M

Maarake	L	ML	M	Maaroub	L	ML	ML	Majadel	L	ML	M
Majdalzoun	L	ML	M	Mansouri Sour	L	ML	M	Marnba	L	ML	M
Marouahine	L	M	M	Mazraat El-Zalloutiy	L	M	M	Mazraat Mechref	L	ML	M
Mazraat Tayr Semhat	L	ML	M	Mheilib	ML	M	M	Neffakhiyeh	L	ML	ML
Niha Sour	L	ML	ML	Ouadi Jilo	L	ML	M	Qana	L	ML	M
Qolaileh Sour	L	M	M	Rechknany	L	ML	M	Rmadiyeh	L	ML	ML
Selha Sour	L	ML	ML	Siddiqine	L	ML	M	Sour	L	ML	M
Srifa	L	ML	ML	Tayr Debbe	L	ML	M	Tayr Felsay	L	ML	M
Tayr Harfa	L	M	M	Touayri	L	ML	M	Toura	L	ML	M
Yanouh Sour	L	ML	M	Yarine	L	M	M	Zebqine	L	ML	M

Saida

Municipality	29-Apr	30-Apr	01-May	Municipality	29-Apr	30-Apr	01-May	Municipality	29-Apr	30-Apr	01-May
Aanqoun	L	ML	M	Aaqtanit	L	ML	M	Aarab Ej-Jall	L	ML	M
Aarab Tabbaya	L	ML	M	Abra Saida	L	M	M	Adloun	ML	ML	M
Adousiyeh	ML	M	M	Ain-El-Deleb	L	M	M	Arzai	L	ML	M
Babliyah	L	ML	M	Barty	L	ML	M	Bissariyeh	ML	M	M
Bnaafoul	L	ML	M	Bqosta	L	M	M	Bramiy --	L	M	M
Daoudiyeh	L	ML	M	Dareb El-Sim	L	ML	M	Erkay	L	ML	M
Ghassanieh	L	ML	M	Ghazieh	ML	M	M	Hajjeh	L	ML	M
Haret Saida	L	M	M	Hartiyeh	L	ML	M	Hlaliye Saida	L	M	M
Insariyat	L	ML	M	Jazira Saida	L	ML	M	Kafar Bit	L	ML	M
Kaoutariyet El-Siyad	L	ML	ML	Kfar Chellal	L	M	M	Kfar Hatta Saida	L	ML	M
Kfar Milke Saida	L	M	M	Khartoum	L	ML	ML	Khaziz	L	ML	M
Khirbet Ed-Douair Sa	L	L	M	Khirbet El-Bassal	L	M	M	Khrayeb Saida	L	L	M
Loubieh	L	ML	M	Maghdouche	L	ML	M	Majdelyoun	L	M	M
Matariyet El-Choumar	L	ML	M	Matayriyeh	L	ML	M	Mazraat 'Mseileh	ML	M	M
Mazraat 'Snaiber	ML	M	M	Mazraat Aarab Soukka	L	ML	ML	Mazraat Deir Taqla	L	L	M
Mazraat El Yahoudiye	ML	M	M	Mazraat El-Housseini	ML	M	M	Mazraat El-Mhaydaleh	L	ML	M
Mazraat El-Ouasta	ML	ML	M	Mazraat Jamjim	L	ML	M	Mazraat Kaoutariyet	L	ML	M
Mazraat Kfar Badda	L	ML	M	Mazraat Oussamiyat	L	ML	M	Mazraat Sari	L	L	M
Mazraat Sinai	L	ML	M	Meemariyeh	L	M	M	Merouaniyeh	L	M	M
Miyeh ou Miyeh	L	ML	M	Najjariyeh	ML	M	M	Qaaqaiyat El-Snaouba	L	ML	M
Qnarit	L	ML	M	Qraiye Saida	L	ML	M	Saida Ed-Dekermane	L	M	M
Saida El-Oustani	L	M	M	Saida El-Qadimeh	L	M	ML	Saida Kefraya	L	M	M
Saksakiyeh	L	ML	M	Salhie Saida	L	M	M	Sarafand	ML	M	M
Sfenta	L	M	M	Tafahta	L	ML	M	Tanbourit	L	ML	M
Tebna	L	ML	M	Zaghdraiya	L	ML	M	Zeita	L	ML	M
Zrariyeh	L	ML	M								

Jezzine

Municipality	29-Apr	30-Apr	01-May	Municipality	29-Apr	30-Apr	01-May	Municipality	29-Apr	30-Apr	01-May
Ain El-Mir (El Estab	L	M	M	Anane	L	L	M	Aramta	M	M	M
Ariya	ML	ML	M	Aychiyeh	ML	M	M	Azour	L	L	M
Baba	L	L	M	Bayssour Jezzine	L	ML	M	Benoueteh Jezzine	ML	ML	M
Bhannine	L	ML	M	Bisri	L	L	M	Bkassine	ML	ML	M
Bouslaya	ML	ML	M	Btedine El-Leqech	L	L	M	Chbail	M	M	M
Choualiq Jezzine	L	M	M	Dahr Ed-Deir	ML	ML	M	Deir El Qattine	ML	ML	M

Demachqiyeh	ML	M	M	Ghabbatiyeh	ML	ML	M	Harf Jezzine	L	L	M
Hassaniyeh	L	ML	M	Haytouleh	L	M	M	Haytura	L	M	M
Hidab	ML	ML	M	Homsiyeh	L	ML	M	Jabal Toura	ML	M	M
Jarmaq	ML	M	M	Jensnaya	L	ML	M	Jernaya	L	ML	M
Jezzine	ML	M	M	Karkha	L	M	M	Kfar Falous	L	ML	M
Kfar Houna	M	M	M	Kfar Jarrah	L	M	M	Lebaa	L	M	M
Louayzet Jezzine	ML	ML	M	Machmouche	ML	ML	M	Mahmoudiyeh Jezzine	ML	M	M
Maknounye Jezzine	ML	ML	M	Maraat Ouazaiyeh	M	M	M	Mazraat Daraya	M	M	M
Mazraat El-Aarqoub	ML	M	M	Mazraat El-Mathane	L	L	M	Mazraat El-Rahbane	ML	ML	M
Mazraat Khallet Khaz	M	M	M	Mazraat Louzid (Loua	M	M	M	Mazraat Qrouh	M	M	M
Mazraat Tamra	L	M	M	Mazraat Zighrine Jez	ML	M	M	Mazraat	ML	ML	M
Mharbiyeh	L	ML	M	Midane Jezzine	L	ML	M	Mjeydel Jezzine	L	ML	M
Mlikh	ML	ML	M	Mrach El-Hbasse	L	ML	M	Ouadi Baanqoudaine	L	ML	M
Ouadi El-Laymoun	L	M	M	Ouardiyeh	M	M	M	Qabaa Jezzine	L	ML	M
Qatrani	M	M	M	Qaytouleh	L	ML	M	Qtaleh Jezzine	L	L	M
Rihane Jezzine	ML	M	M	Rimat	ML	ML	M	Roum	L	ML	M
Roummanet	L	ML	M	Sabbah	ML	ML	M	Saydoun	ML	ML	M
Sfaray	L	L	M	Snaya	ML	ML	M	Sojoud	ML	M	M
Srayri	ML	M	M	Taaid	L	L	M	Wadi Jezzine	ML	ML	M
Zhalta	L	M	M								

Bekaa

West Bekaa

Municipality	29-Apr	30-Apr	01-May	Municipality	29-Apr	30-Apr	01-May	Municipality	29-Apr	30-Apr	01-May
Aammiq BG	ML	ML	M	Ain El Tineh BG	M	M	M	Ain Zebdeh	M	M	M
Ana	ML	ML	M	Aytanit	M	M	M	Baaloul BG	M	M	M
Bab Mareh	M	M	M	Chouberqiye Aammiq	ML	ML	M	Dakoue	ML	M	M
Deir Ain El-Jaouze	M	M	M	Deir Tahniche	ML	ML	M	Ghaza	ML	ML	M
Harime El-Soughra	ML	M	M	Hoch Harimeh	ML	M	M	Jazira BG	ML	ML	M
Jib Jennine	M	M	M	Kamed-El-Laouz	M	M	M	Kefraya BG	ML	ML	M
Khiara El Atika	ML	ML	M	Khiara	ML	ML	M	Khirbet Qanafar	M	M	M
Lala	M	M	M	Lebbaya BG	M	M	M	Loussa	ML	M	M
Machghara	M	M	M	Manara (Hammar) BG	M	M	M	Mansoura BG	ML	ML	M
Marej BG	M	M	M	Maydoun	M	M	M	Ouaqf BG	ML	ML	M
Qaraaoun	M	M	M	Qelya	ML	M	M	Raouda (Istabel)	M	M	M
Saghbine	M	M	M	Sohmor	M	M	M	Soltan Yacoub el Ara	ML	M	M
Souairy	ML	M	M	Sultan Yaacoub	ML	M	M	Tal Znoun	ML	ML	M
Yehmor BG	M	M	M	Zilaya	M	M	M				

Zahle

Municipality	29-Apr	30-Apr	01-May	Municipality	29-Apr	30-Apr	01-May	Municipality	29-Apr	30-Apr	01-May
Aanjar (Haouch Mouss	M	M	M	Ablah	M	M	M	Ain Kfarzabad	M	M	M
Ali-El-Nahri	M	M	M	Bar Elias	M	M	M	Bouarej	ML	M	M
Cheberqiyet Tabet	M	M	M	Chtaura	ML	M	M	Deir El Ghazal	M	M	M
Delhamiyet Zahle	M	M	M	Ferzol	M	M	M	Haouch El-Ghanam	M	M	M
Haouch Es-Siyadeh	ML	M	M	Haouch Hala	M	M	M	Haouch Mandara	M	M	M

Haouch Qayssar	ML	M	M	Hezerta	M	M	M	Hosh Moussa	M	M	M
Jdita	M	M	M	Kfarzabad	M	M	M	Ksara	M	M	M
Majdel Aanjar	ML	M	M	Makssi	ML	M	M	Massa	M	M	M
Mazraat Er-Remtaniye	ML	M	M	Mrayjat Zahle	ML	M	M	Mzaraa Zahle	ML	M	M
Nabi Ayla	M	M	M	Nasriyet Rizk	M	M	M	Nasriyet Zahle	ML	M	M
Niha Zahle	M	M	M	Ouadi Ed-Deloum	ML	M	M	Ouadi El-Arayech	M	M	M
Qaa El Rim	M	M	M	Qab Elias	M	M	M	Qousaya	M	M	M
Rhit	M	M	M	Riyak	M	M	M	Saadnayel	M	M	M
Taal El-Akhdar	ML	ML	M	Taalbeya	M	M	M	Taanayel	M	M	M
Talamara	M	M	M	Tcheflik Edde Haouch	ML	M	M	Tcheflik Qiqano	ML	M	M
Terbol Zahle	M	M	M	Touaite Zahle	ML	M	M	Zahle Aradi	M	M	M
Zahle El-Berbara	M	M	M	Zahle El-Maallaqa	M	M	M	Zahle El-Midane	M	M	M
Zahle Er-Rassiye	M	M	M	Zahle Haouch El-Ouma	M	M	M	Zahle Haouch El-Ouma	M	M	M
Zahle Haouch Ez-Zara	M	M	M	Zahle Maalqa Aradi	M	M	M	Zahle Mar Antonios	M	M	M
Zahle Mar Elias	M	M	M	Zahle Mar Gerios	M	M	M	Zahle Saydet En-Naja	M	M	M
Zebdoul	M	M	M								

Rachaiya

Municipality	29-Apr	30-Apr	01-May	Municipality	29-Apr	30-Apr	01-May	Municipality	29-Apr	30-Apr	01-May
Ain Arab Rachaiya	M	M	M	Ain Ata	M	M	M	Ain Harche	M	M	M
Aqabe Rachaya	M	M	M	Ayha	M	M	M	Ayta El Fokhar	M	M	M
Bakifa Rachaya	M	M	M	Bakka	M	M	M	Beit Lahya	M	M	ML
Bireh Rachaiya	M	M	M	Daher El Ahmar	M	M	M	Deir El-Achayer	M	M	M
Heloua Rachaiya	M	M	M	Hoch El Qannabeh Rac	M	M	M	Kaoukaba Bou Arab	M	M	M
Kfar Danis	M	M	M	Kfar Mechki	M	M	M	Kfar Qouq	M	M	M
Kherbet Rouha	M	M	M	Majdel Balhiss	M	M	M	Mdoukha	M	M	M
Mhaydseh Rachaiya	M	M	M	Nabi Safa	M	M	M	Rachaiya	M	M	M
Rafid Rachaiya	M	M	M	Selsata (Mazraat Dei	M	M	M	Tannoura	M	M	M
Yanta	M	M	M								

Beyrouth

Beyrouth

Municipality	29-Apr	30-Apr	01-May	Municipality	29-Apr	30-Apr	01-May	Municipality	29-Apr	30-Apr	01-May
Achrafieh	ML	M	M	Ain el-Mreisse	ML	M	M	Bachoura	ML	M	M
Beirut Central Distr	ML	M	M	Marfai	ML	M	M	Mazraa	ML	M	M
Medaouar	ML	M	M	Minet el-Hosn	ML	M	M	Mwssaitbeh	ML	M	M
Ras Beirut	ML	M	M	Rmeil	ML	M	M	Saifi	ML	M	M
Zqaq el-Blat	ML	M	M								