

# Lebanon Fire Risk Bulletin



CIVIL DEDEFENCE

**Refer to cadast table condition.**

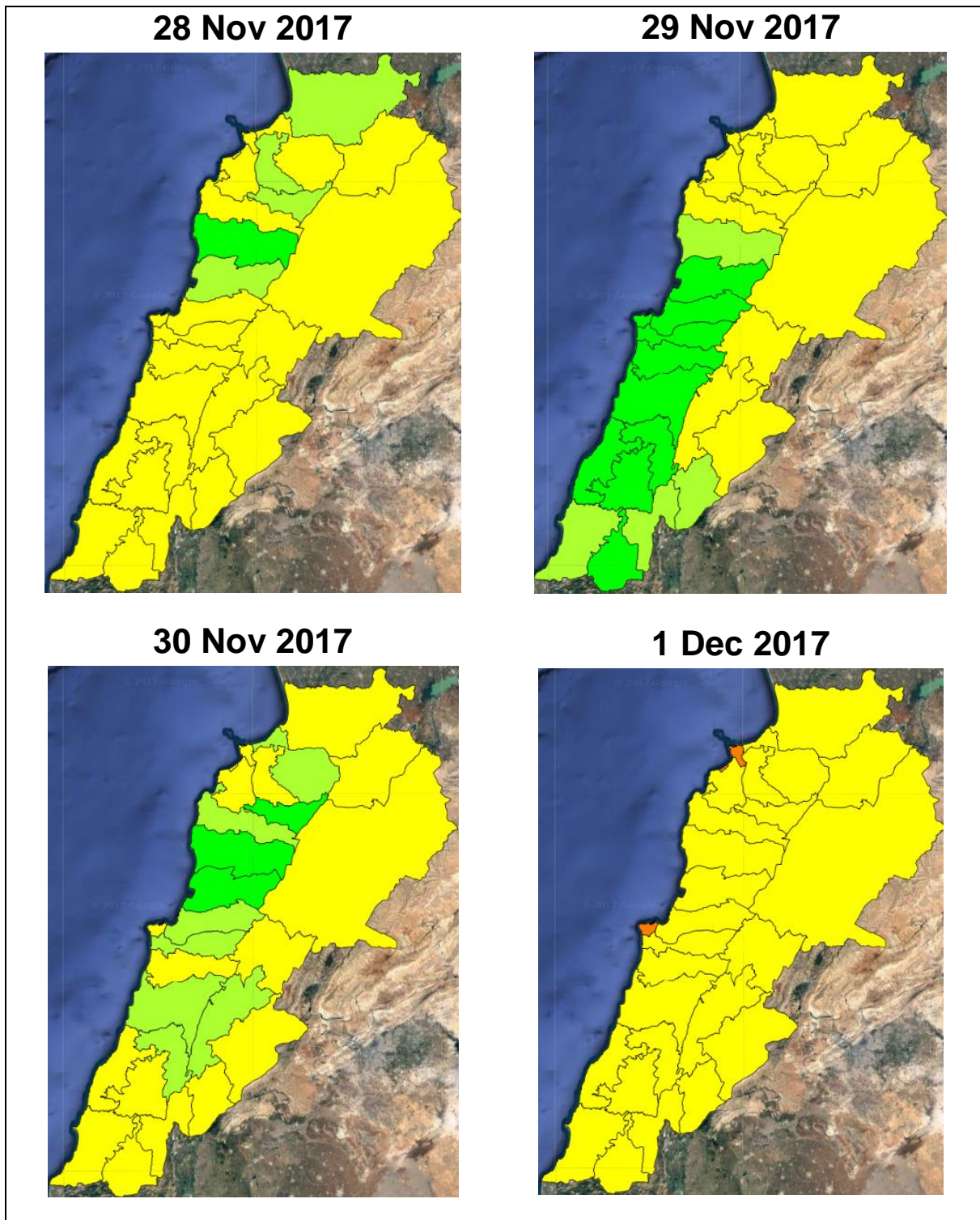
**Please note that the indicated temperature is at 2 meters height from the ground.**

General description of potential fire risk situation

Symbol	Level of risk	Meaning and actions
VL	Very low	Very low fire risk. Controlled burning operations can be hardly executed due to high fuel moisture content. Normally wildfires self-extinguish.
L	Low	Low fire risk. Controlled burning operations can be executed with a reasonable degree of safety.
ML	Medium low	Medium-low fire risk. Controlled burning operations can be executed in safety conditions. All the fires need to be extinguished.
M	Medium	Medium fire risk. Controlled burning operations would be avoided. All the fires need to be very well extinguished.
M	Medium high	Controlled burning is not recommended. Open flame will start fires. Cured grasslands and forest litter will burn readily. Spread is moderate in forests and fast in exposed areas. Patrolling and monitoring is suggested. Fight fires with direct attack and all available resources.
H	High	Ignition can occur easily with fast spread in grass, shrubs and forests. Fires will be very hot with crowning and short to medium spotting. Direct attack on the head may not be possible requiring indirect methods on flanks. Patrolling and monitoring the territory is highly suggested.
E	Extreme	Ignition can occur also from sparks. Fires will be extremely hot with fast rate of spread. Control may not be possible during day due to long range spotting and crowning. Suppression forces should limit efforts to limiting lateral spread. Damage potential total. Patrolling and monitoring the territory is highly suggested.

**Beirut, 29 November 2017**

# FIRE RISK INDEX



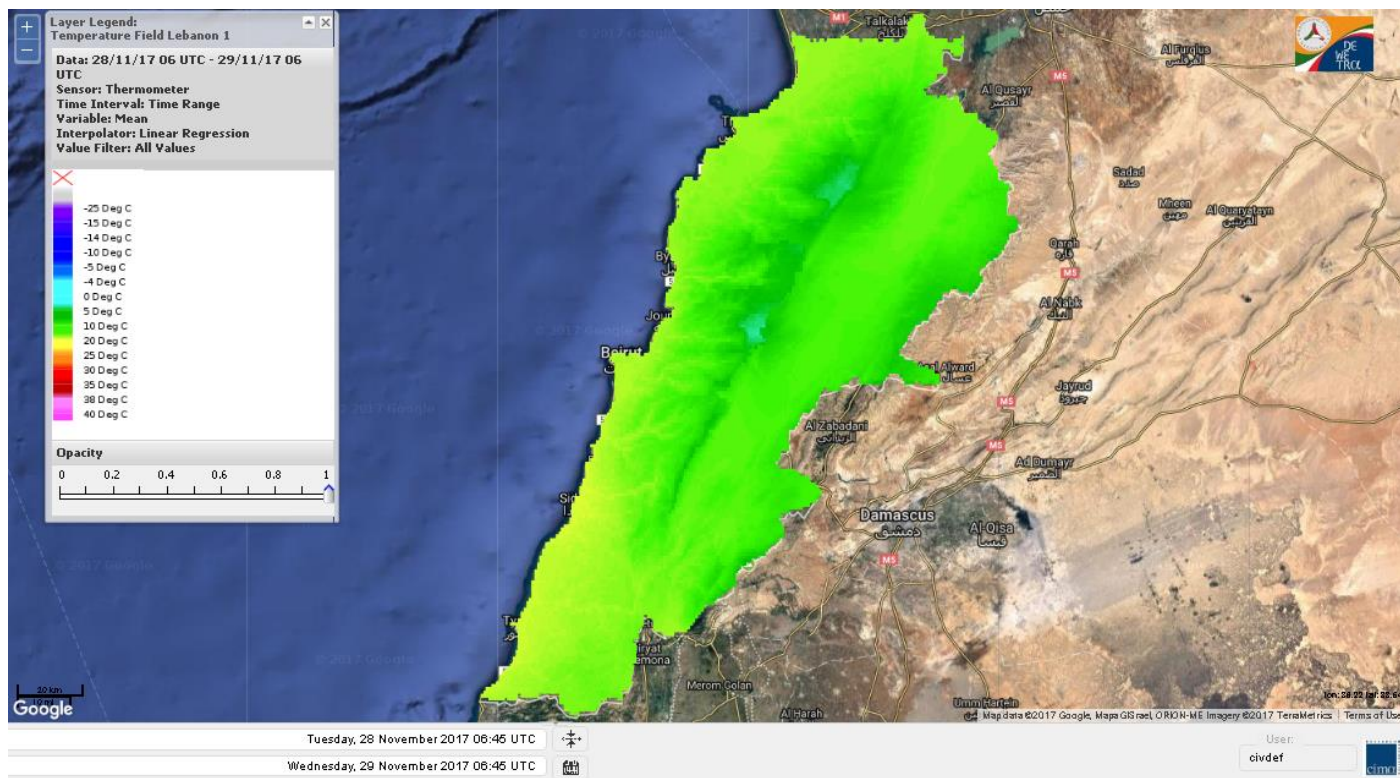
**Layer Legend:**  
**Lebanon Wildfire Risk Index 1**

Data: Run: 29/11/2017 00:00. Forecast for 29

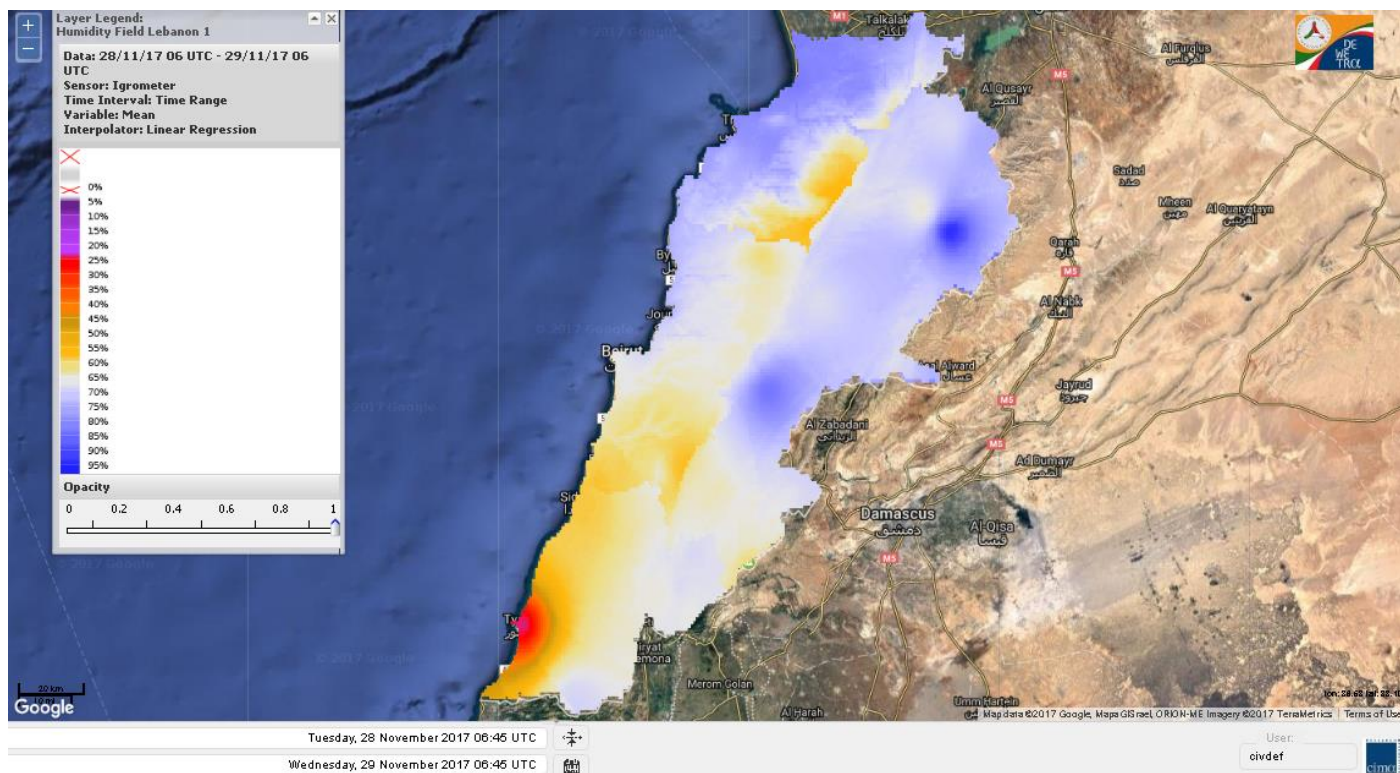
Model: RISICO for the Republic of Lebanon  
Variable: Fire Weather Index  
Spatial Resolution: Caza

- VERY LOW
- LOW
- MEDIUM-LOW
- MEDIUM
- MEDIUM-HIGH
- HIGH
- EXTREME

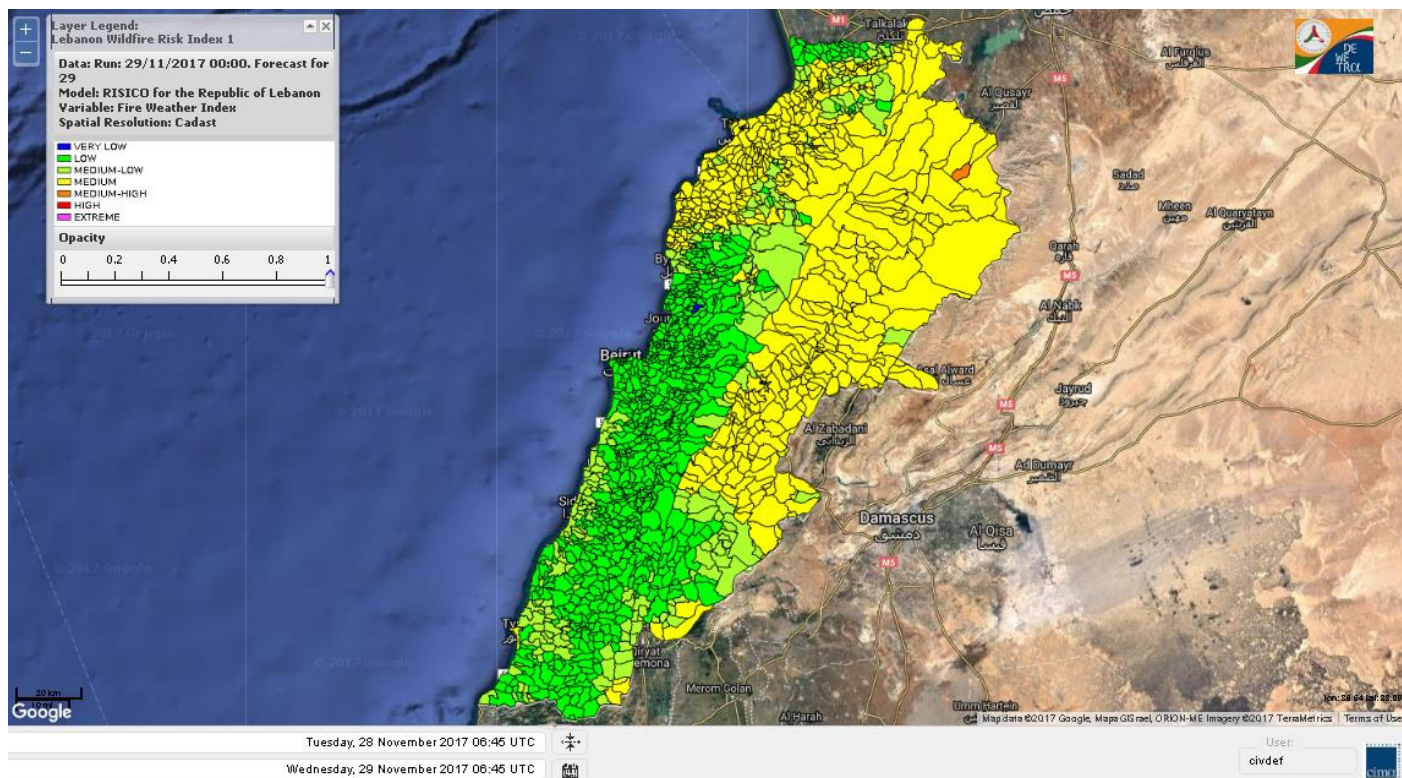
# Lebanon temperature for Lebanon for 29 Nov 2017



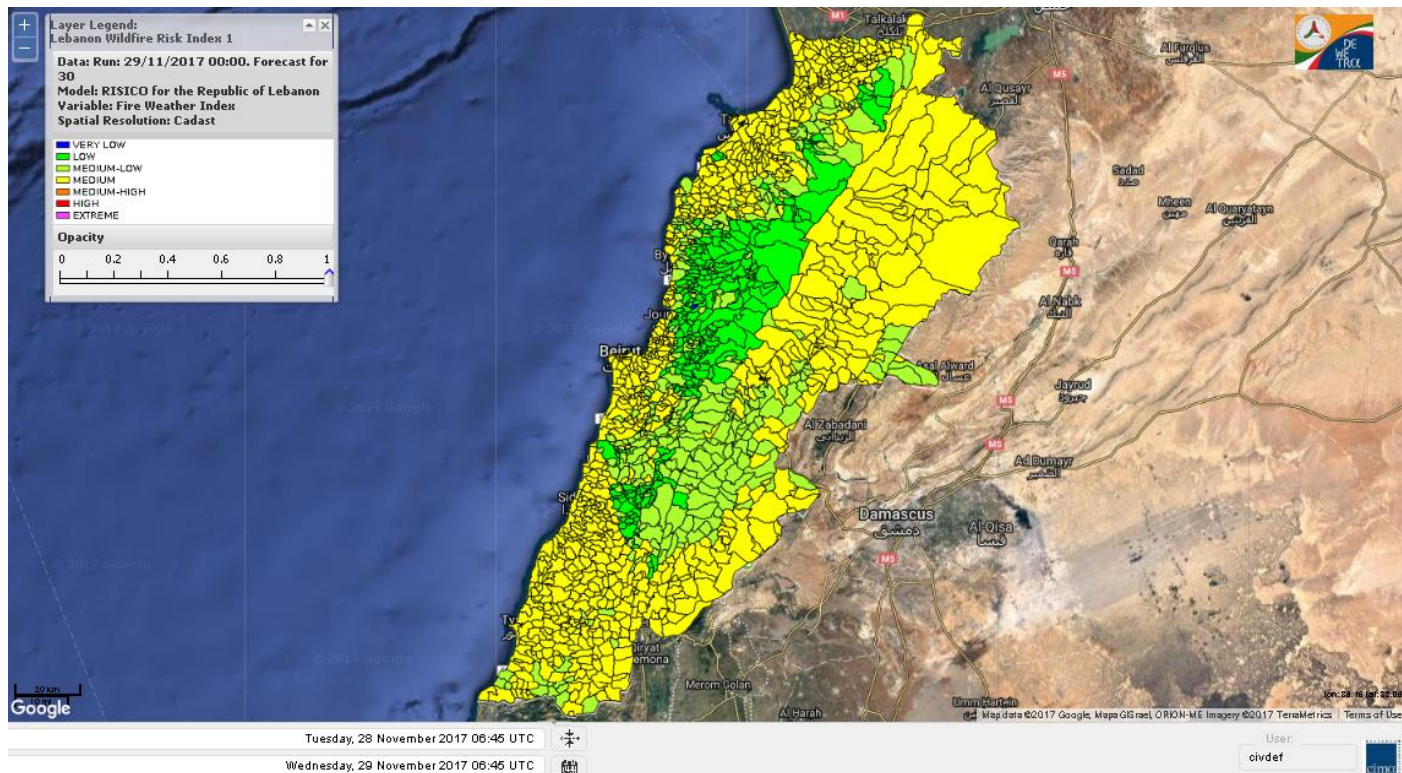
# Lebanon humidity for Lebanon for 29 Nov 2017



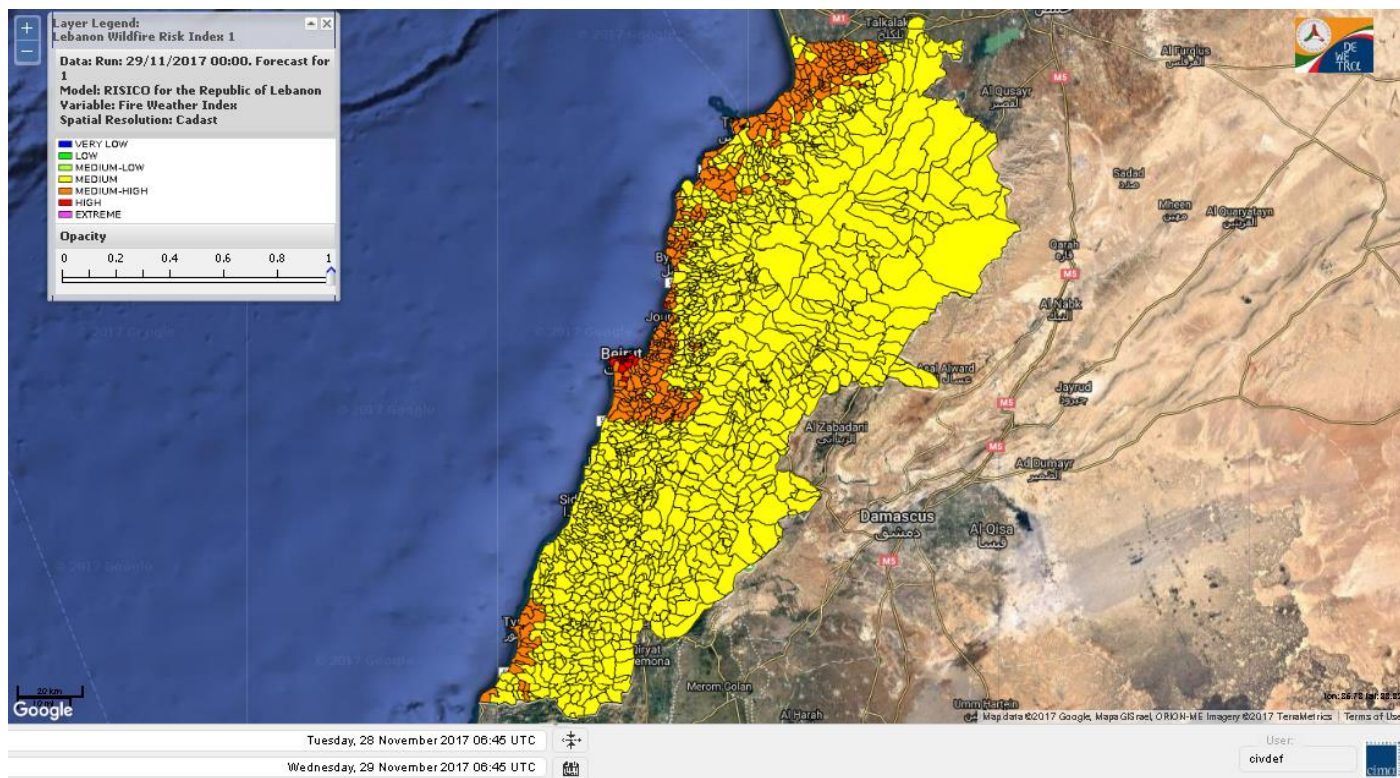
# Lebanon for 29 Nov 2017



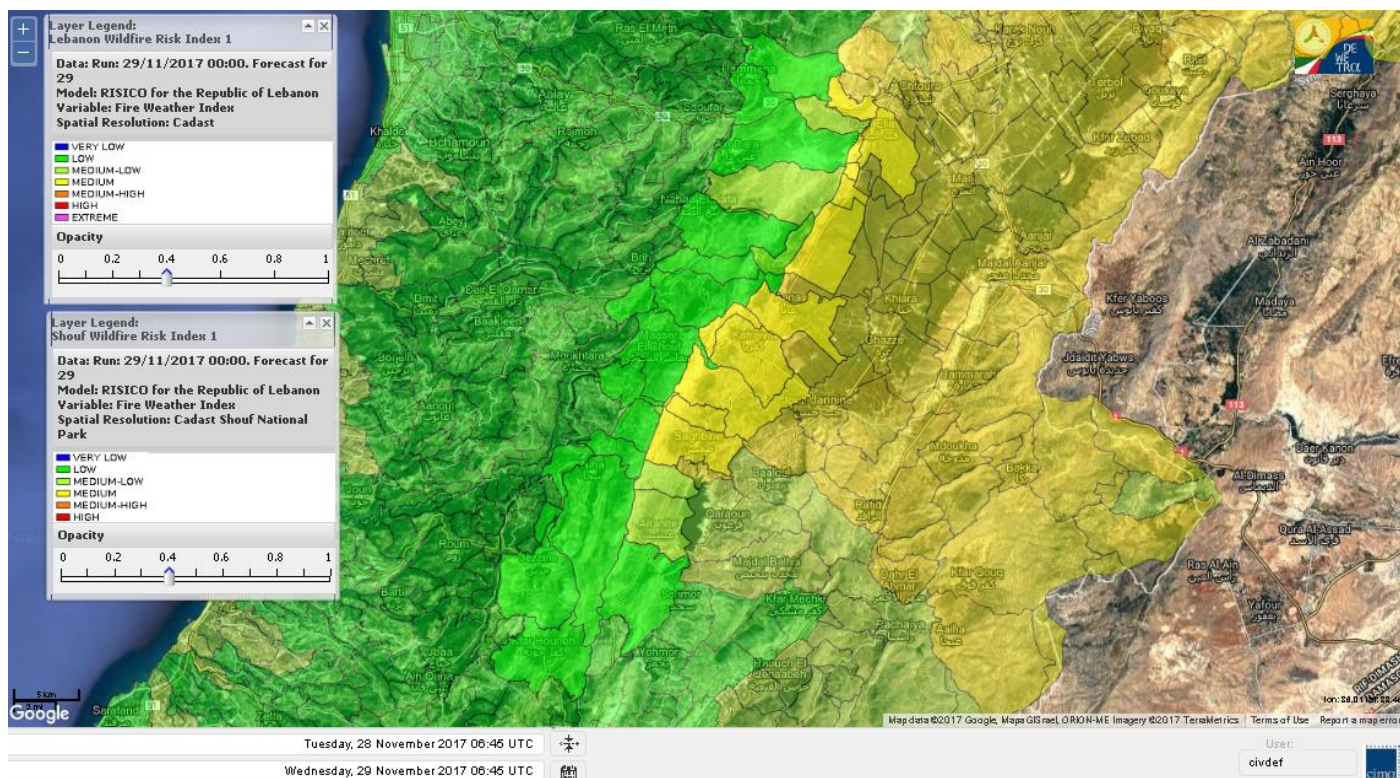
# Lebanon for 30 Nov 2017



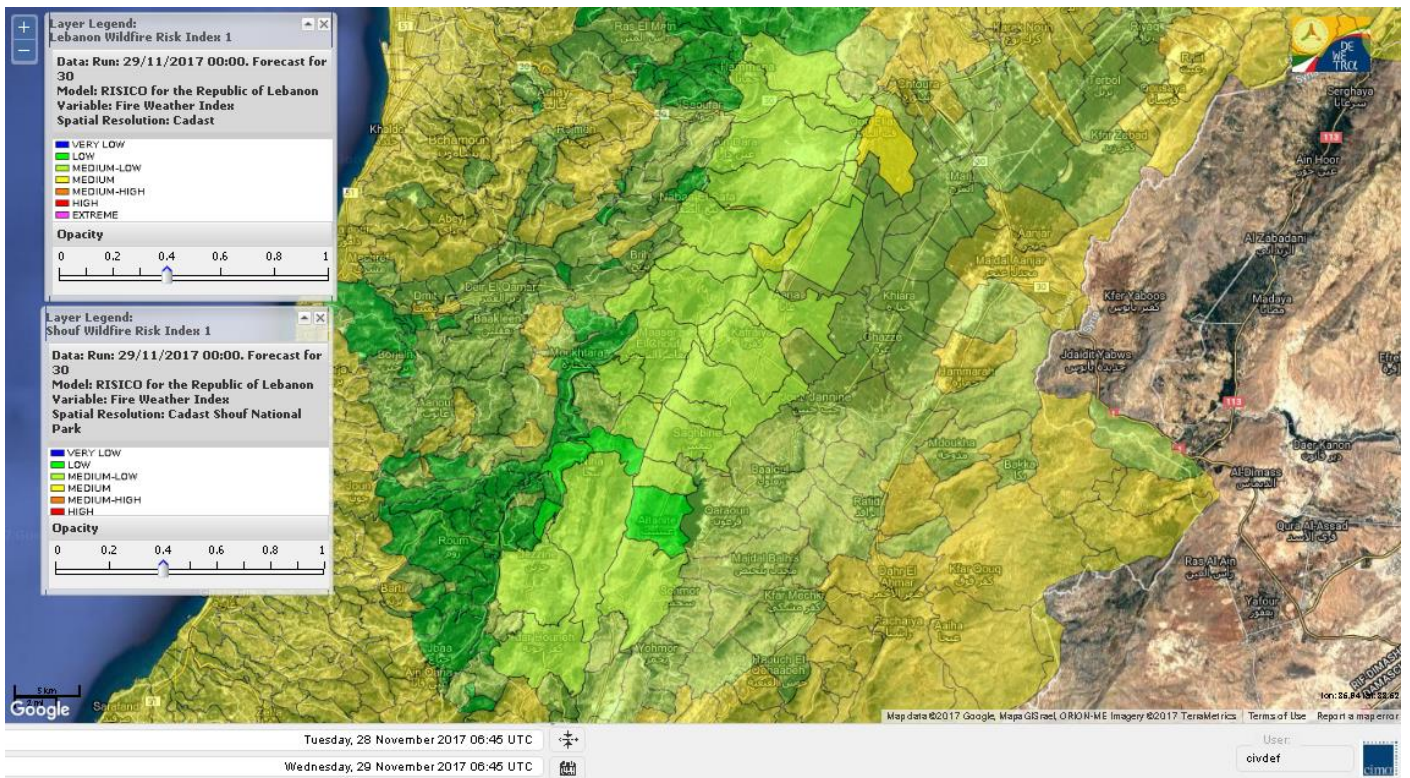
# Lebanon for 1 Dec 2017



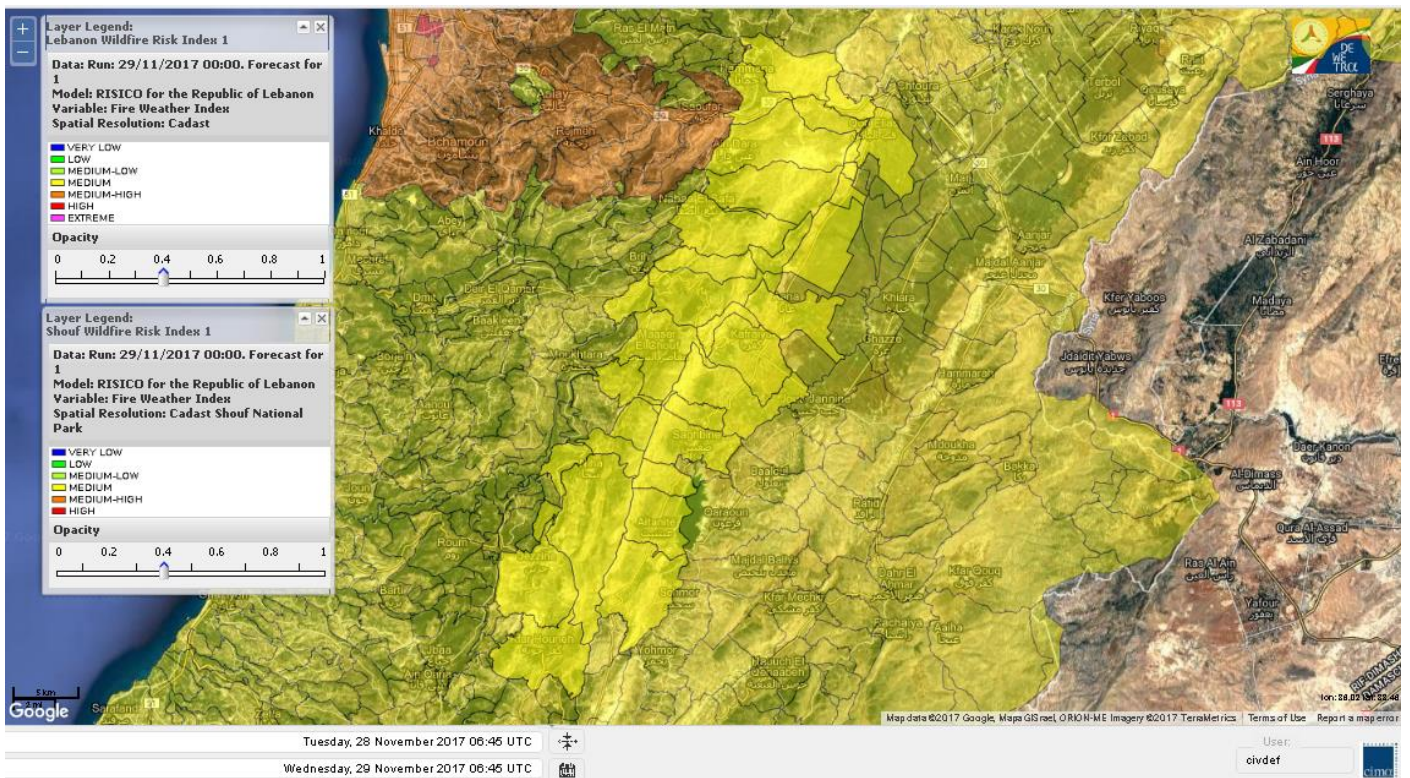
# Shouf Biosphere Reserve Forecast for 29 Nov 2017



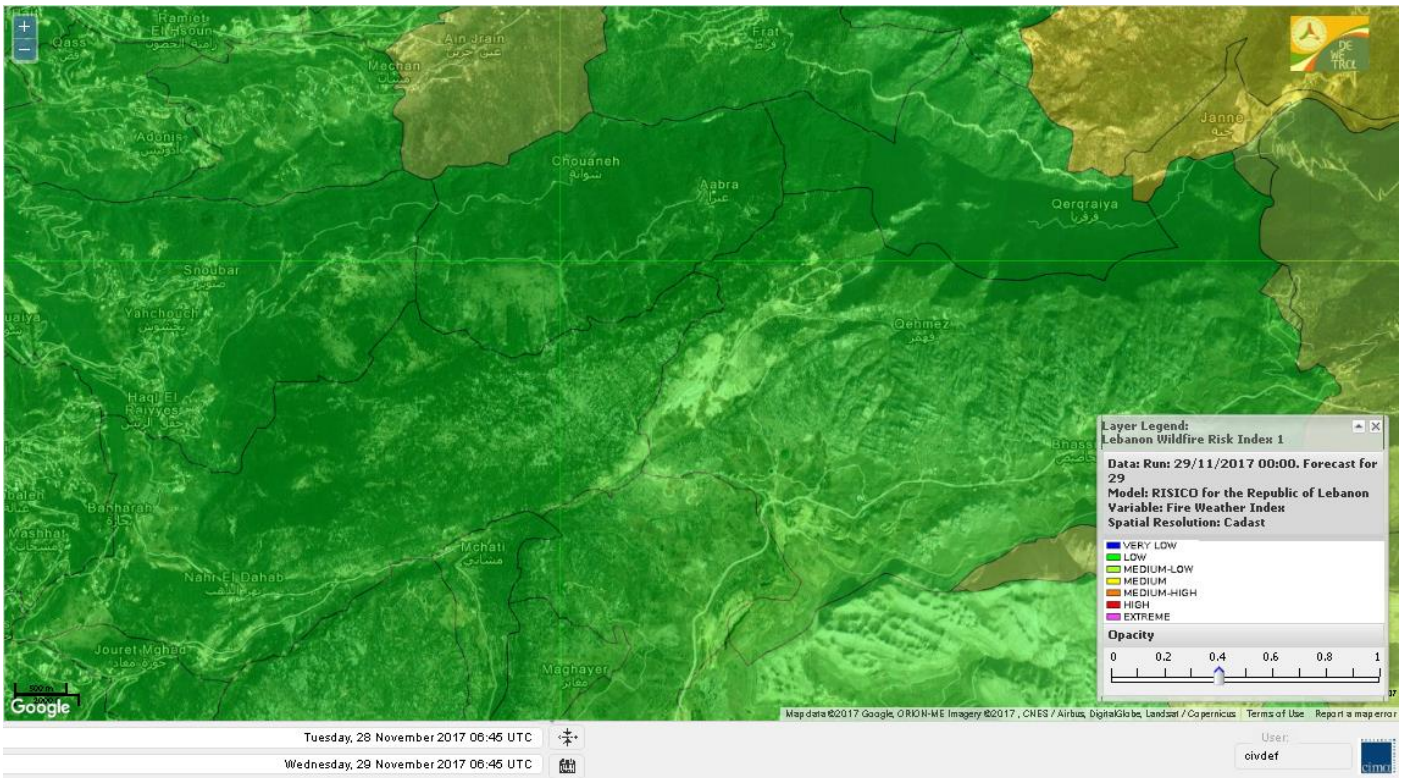
# Shouf Biosphere Reserve Forecast for 30 Nov 2017



# Shouf Biosphere Reserve Forecast for 1 Dec 2017



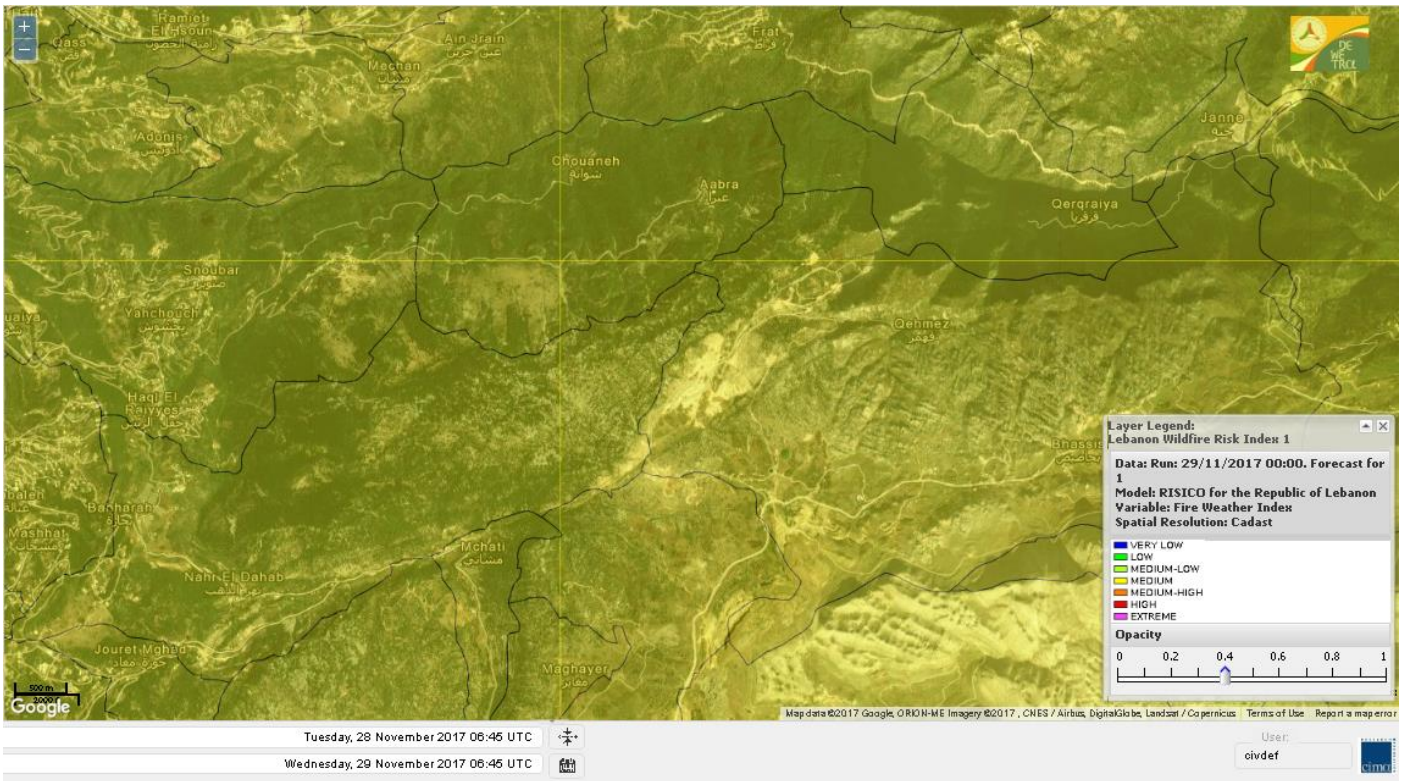
# Jabal Moussa Reserve Forecast for 29 Nov 2017



# Jabal Moussa Reserve Forecast for 30 Nov 2017



# Jabal Moussa Reserve Forecast for 1 Dec 2017





## Nord

### Koura

Municipality	29-Nov	30-Nov	01-Dec	Municipality	29-Nov	30-Nov	01-Dec	Municipality	29-Nov	30-Nov	01-Dec
Aaba	M	M	MH	Afsaddiq	M	M	MH	Ain Ekriane	M	M	MH
Amioun	M	M	MH	Anfeh	M	M	MH	Badbhoun	M	M	MH
Barghoun	M	M	MH	Barsa	M	M	M	Batroumine	M	M	M
Bdebba	M	M	M	Bechmizine	M	M	MH	Bednaye El-Koura	M	M	M
Bhabbouch El-Koura	M	M	M	Bkeftine	M	M	M	Bnehran	M	M	M
Bqaiia El-Koura	M	M	M	Bsarma	M	M	M	Btaaboura	M	M	M
Bttram	M	M	MH	Btouratij	M	M	MH	Bziza	M	M	MH
Dar Beehtar	M	M	MH	Dar Chmezzine	M	M	MH	Deddeh	M	M	M
Deir El-Balamand	ML	L	M	Fih	M	M	M	Hraiche	M	M	MH
Ijdaabrine	M	M	M	Kaftoun	M	M	M	Kefraya El-Koura	M	M	MH
Kfarakka	M	M	M	Kfarhata	M	M	M	Kfarhazir	M	M	MH
Kfarkahel	M	M	M	Kfarsaroun	M	M	M	Kosba	M	M	M
Mejdel el-Koura	M	M	M	Nakhle	M	M	M	Qalhat	ML	L	M
Ras Masqa	M	M	M	Rechdibbine	M	M	MH	Zakroun	M	M	M
Zgharta El-Mtaouile	M	M	M								

### Bcharre

Municipality	29-Nov	30-Nov	01-Dec	Municipality	29-Nov	30-Nov	01-Dec	Municipality	29-Nov	30-Nov	01-Dec
Aabdine	M	M	M	Bane	ML	ML	M	Barhelioun	ML	M	M
Bazouone	ML	L	M	Becharre	M	L	M	Beit Menzer	ML	ML	M
Billa	ML	ML	M	Blaouza	M	M	M	Bqaa Kafra	L	L	M
Bqerqacha	ML	L	M	Breissat	ML	M	M	Dimane	M	M	M
Hadath El Jobbeh	M	ML	M	Hadchit	ML	L	M	Hasroun	ML	L	M
Mazraat Aassaf	ML	M	M	Mazraat Bani Saab	M	M	M	Mchaa El-Jobbeh	M	L	M
Metrit	M	M	M	Moghr El-Ahoual	M	M	M	Ouadi Qannoubine	ML	L	M
Qanat	ML	ML	M	Qnayouer	L	ML	M	Tourza	ML	ML	M

### Batroun

Municipality	29-Nov	30-Nov	01-Dec	Municipality	29-Nov	30-Nov	01-Dec	Municipality	29-Nov	30-Nov	01-Dec
Aabrine	M	M	M	Aalali	ML	ML	M	Aartziz	M	M	M
Abdelli	ML	L	M	Ajdabra	M	ML	M	Assia	M	ML	M
Basbina	M	M	MH	Batroun	M	M	MH	Bcheleh	ML	L	M
Bechtoudar	M	M	M	Beit Chlala	M	ML	M	Beit Kassab	ML	M	M
Bijdarfil	M	M	MH	Bqesmaya	M	M	M	Chatine	ML	L	M
Chebtin	M	ML	M	Chekka	M	M	MH	Daael	M	M	M
Dahr Abi Yaghi	L	L	M	Daraya El-Batroun	M	M	MH	Deir Billa	M	ML	M
Deir Kfifane	M	M	MH	Deir Mar Youhanna EL	M	ML	M	Deir Mar Youssef Jra	ML	ML	M
Douma	ML	L	M	Douq	ML	L	M	Eddeh El-Batroun	M	M	MH
Ftihat El-Batroun	M	M	M	Ghouma	M	ML	M	Hadtoun	ML	ML	M
Hamat	M	ML	M	Harbouna	M	M	M	Hardine	ML	M	M
Helta	M	M	M	Hery	M	M	MH	Jebbla	M	M	M
Jrabta El-Batroun	M	ML	M	Jrane El-Batroun	M	M	MH	Kfar Aabida	M	M	MH
Kfar Halda	M	M	M	Kfarb Shlaimane	M	M	M	Kfarhatna	M	M	M
Kfarhay	M	M	M	Kfarhelos	M	ML	M	Kfifane	M	M	MH

Kfour El Arabi	M	ML	M	Koubba	M	M	M	Kour	M	M	MH
Mar Mama	ML	L	M	Masrah	L	L	M	Mehmarch	ML	ML	M
Mrah Chdid	M	M	M	Mrah El Ziyat	M	ML	M	Mrah El-Hajj	ML	L	M
Nahle El-Batroun	ML	ML	M	Niha El-Batroun	M	M	M	Ouahj El-Hajjar	M	M	M
Ouata Houb	ML	L	M	Qatnaaoun	M	M	M	Racha	M	ML	M
Rachana	M	ML	M	Rachkida	M	M	M	Ram El-Batroun	L	L	M
Ras Nahhach	M	M	M	Selaata	M	M	MH	Sghar	ML	ML	M
Smar Jbayl	M	M	MH	Sourat El-Batroun	M	M	M	Tannourine El-Faouqa	ML	L	M
Tannourine Et-Tahta	ML	L	M	Thoum	M	ML	M	Toula El-Batroun	M	ML	M
Zan	M	M	M								

## Zgharta

Municipality	29-Nov	30-Nov	01-Dec	Municipality	29-Nov	30-Nov	01-Dec	Municipality	29-Nov	30-Nov	01-Dec
Aachach	M	M	MH	Aalma	M	M	MH	Aarde	M	M	M
Aintourine	M	M	M	Arabet Qozhaya	ML	ML	M	Arde	M	M	M
Arjis	M	M	M	Asnoun	M	M	M	Ayto	ML	ML	M
Basloukit	M	M	MH	Bchannine	M	M	M	Besebeel	M	M	M
Bhairret Toula	M	M	M	Bnachee	M	M	M	Boussit	M	M	MH
Danha	M	M	MH	Daraiya Zgharta	M	M	M	Deir Jdeide	M	M	M
Ehden	M	ML	M	Halan	M	M	MH	Hariq Zgharta	M	M	M
Houakir	M	M	M	Hraiqis	M	M	MH	laal	M	M	M
Ijbaa	M	M	MH	Karm Saddeh	ML	ML	M	Kfarchakhna	M	M	M
Kfardlaqous	M	M	M	Kfarfou	M	M	M	Kfarhata Zgharta	M	M	M
Kfarhoura	M	M	M	Kfarsghab	M	L	M	Kfaryachit	M	M	M
Kfarzaina	M	M	M	Khaldiye	M	M	M	Mazraat Ajbeaa	M	M	M
Mazraat Et-Teffah	M	M	M	Mazraat Jneid	M	M	M	Mejdlayia Zgharta	M	M	MH
Merh Kfarsghab	M	M	M	Miryata	M	M	MH	Miziara	ML	M	M
Mzraat Kefraya	M	M	MH	Qorah Bach	M	M	M	Rachiine	M	M	MH
Ras Kifa	M	M	M	Sakhra	M	M	M	Sebhel Zgharta	M	M	MH
Serhel	L	L	M	Tallet Zgharta	M	M	M	Toula Zgharta	M	M	M
Zgharta	M	M	MH								

## Minieh-Denniye

Municipality	29-Nov	30-Nov	01-Dec	Municipality	29-Nov	30-Nov	01-Dec	Municipality	29-Nov	30-Nov	01-Dec
Aasaymout	M	ML	M	Aaymar	M	M	M	Aazki	M	M	M
Ain El-Tineh-Miniyeh	ML	L	M	Assoun	M	ML	M	Bakhaaoun	M	ML	M
Bchennata	M	M	M	Bechehhara	ML	M	M	Beddawi	M	M	MH
Behouaita	M	M	M	Beit El Foqss	M	L	M	Beit Haouik	M	M	M
Beit Zoud	M	ML	M	Bekaasafrine	M	L	M	Borj El Yahoudiyeh	M	M	MH
Bqarsouna	M	L	M	Btermaz	M	ML	M	Debaael	M	ML	M
Deir Ammar	M	M	MH	Deir Nbouh	M	M	M	Haouaret-Miniyeh	M	ML	M
Haql el Azimeh	M	L	M	Harf El Siyad	ML	L	M	Hazmiye-Miniyeh	M	L	M
Izal	M	M	M	Jarjour	L	M	M	Jayroun	M	M	M
Kahf El-Malloul	ML	M	M	Karm El-Moher	M	ML	M	Kfar Binine	M	ML	M
Kfarchalane	M	ML	M	Kfarhabou	M	M	M	Kharroub-Miniyeh	M	M	M
Mazraat El-Kreme	ML	ML	M	Mazraat Ketrane	M	L	M	Merkebeta	M	M	MH
Minyeh	M	M	MH	Mrah El Sfirat	ML	L	M	Mrah Sraj	M	ML	M
Mrebbine	M	ML	M	Nabi Youcheaa	M	M	MH	Nemrine	M	ML	M

Qarhaiya	M	M	M	Qarne	M	M	M	Qarsita	M	ML	M
Qattineh-Miniyeh	ML	L	M	Qemmamine	M	M	M	Qraine	M	L	M
Raouda-Aadoua	M	M	M	Rihaniyet-Miniyeh	M	M	MH	Sfireh	M	L	M
Sir Ed-Danniyeh	M	L	M	Tarane	ML	ML	M	Terbol-Miniyeh	M	M	MH
Zaghartaghriane	M	M	M	Zouq Bhannine	M	M	MH				

## Nabatiye

### Nabatiye

Municipality	29-Nov	30-Nov	01-Dec	Municipality	29-Nov	30-Nov	01-Dec	Municipality	29-Nov	30-Nov	01-Dec
Aabba	L	M	M	Aazzi	L	M	M	Adchit El-Chqif	L	M	M
Ain Bou Swar	L	ML	M	Ain Kana	L	M	M	Ali El-Taher	ML	M	M
Ansar	L	M	M	Arab Salim	L	M	M	Arnoun	ML	M	M
Bfaroue	L	M	M	Breyqaah	L	M	M	Charqiyeh	L	M	M
Choukine	L	M	M	Deir El Zahrani	L	M	M	Doueir El-Nabatiyeh	L	M	M
Habbouch El-Nabatiye	L	M	M	Hamra El-Nabatiyeh	L	M	M	Harouf El-Nabatiyeh	L	M	M
Hmaile	L	M	M	Houmin El Faouqa	L	M	M	Houmin El Tahta	L	M	M
Jarjough	L	M	M	Jbaah El-Nabatiyeh	L	L	M	Jebchit	L	M	M
Kfar Djal El-Nabatiy	L	M	M	Kfar Remmane	L	M	M	Kfar Sir	L	M	M
Kfar Tebnit	ML	M	M	Kfarfila	L	M	M	Kfour El-Nabatieh	L	M	M
Mayfadoun	L	M	M	Mazraat Bsaffour	L	M	M	Mazraat Chalbaal	L	M	M
Mazraat Dmoul	ML	M	M	Mazraat El Khreibeh	L	M	M	Mazraat El-Bayad El-	L	M	M
Mazraat Kfarjaouz	L	M	M	Mazraat Qalaat Meiss	L	M	M	Nabatiyeh El-Fawka	L	M	M
Nabatiyeh Et-Tahta	L	M	M	Namiriyeh	L	M	M	Qaaqaaiyet El Jisr	L	M	M
Qossaibeh El-Nabatiy	L	M	M	Roumine	L	M	M	Sarba El-Nabatieh	L	M	M
Sir El-Gharbiyeh	L	M	M	Toul	L	M	M	Yehmor El-Nabatiyeh	L	M	M
Zaoutar El Charkiyeh	L	M	M	Zaoutar El-Gharbiyeh	L	M	M	Zebdine El-Nabatiyeh	L	M	M
Zefta	L	M	M								

### Hasbaiya

Municipality	29-Nov	30-Nov	01-Dec	Municipality	29-Nov	30-Nov	01-Dec	Municipality	29-Nov	30-Nov	01-Dec
Ain Jarfa	ML	M	M	Abou Qamha	L	M	M	Ain Qania	ML	M	M
Bourghos	L	M	M	Chebaa	L	M	M	Chouaya Hasbaya	L	M	M
Dellafeh	L	M	M	Fardiss Hasbaiya	L	M	M	Hasbaya	L	M	M
Hbariyeh	L	M	M	Kaoukaba Hasbaiya	L	M	M	Kfar Chouba	M	M	M
Kfar Hamam	ML	M	M	Kfeir El-Zait	ML	M	M	Khalwat Hasbaya	ML	M	M
Khreibet Hasbaiya	ML	M	M	Majidiyeh Hasbaiya	ML	M	M	Marj Ez-Zhour (Haouc	ML	M	M
Meri	ML	M	M	Mimass	L	M	M	Rachaiya El-Fokhar	L	M	M
Salaiyeb	ML	M	M								

### Marjayoun

Municipality	29-Nov	30-Nov	01-Dec	Municipality	29-Nov	30-Nov	01-Dec	Municipality	29-Nov	30-Nov	01-Dec
Aalmane Marjaayoun	L	ML	M	Aamra	M	M	M	Adayseh Marjaayoun	ML	M	M
Adchit El-Koussair	L	M	M	Ain Aarab Marjaayoun	ML	M	M	Bani Haiyann	L	M	M
Blatt Marjaayoun	L	M	M	Blida	M	M	M	Borj El-Moulouk	ML	M	M
Boueyda Marjaayoun	L	M	M	Deir Mimass	ML	M	M	Deir Siriane	L	M	M
Dibbine	L	M	M	Ebel El Saqi	L	M	M	Houla	ML	M	M
Houra	ML	M	M	Kfar Kila	ML	M	M	Khiam Marjaayoun	L	M	M

Klayaa	ML	M	M	Majdel Selem	ML	M	M	Marjaayoun	L	M	M
Markaba	ML	M	M	Mays El-Jabal	ML	M	M	Mazraat Doumiat	L	M	M
Mazraat Sarada	ML	M	M	Mhaibib	M	M	M	Qabrikha	L	M	M
Qantara	L	M	M	Rab El-Thalathine	ML	M	M	Saouaneh Marjayoun	L	M	M
Taloussa	L	ML	M	Taybeh Matjaayoun	ML	M	M	Touline	L	M	M

## Bent Jbail

Municipality	29-Nov	30-Nov	01-Dec	Municipality	29-Nov	30-Nov	01-Dec	Municipality	29-Nov	30-Nov	01-Dec
Ain-Ebel	L	M	M	Aitaroun	M	M	M	Aynata Bint Jbeil	ML	M	M
Ayta El-Chaeb	L	ML	M	Ayta El-Jabal	L	M	M	Beit Lif	L	ML	M
Beit Yahoun	L	M	M	Bint Jbeil	L	M	M	Borj Qalaway	L	M	M
Braachit	L	M	M	Chakra	ML	M	M	Debel	L	M	M
Deir Antar	L	M	M	Froun	L	M	M	Ghandouriyeh Bint Jb	L	M	M
Hanine	L	M	M	Hariss	L	M	M	Hdatha	L	M	M
Jmeymeh	L	M	M	Kafra Bint Jbeil	L	ML	M	Kfar Dounine	L	M	M
Khirbet Selm	L	M	M	Kounine	ML	M	M	Maroun El Ras	ML	M	M
Qalaway	L	M	M	Qaouzah	L	ML	M	Qatmoun	L	M	M
Ramya Bint Jbeil	L	ML	M	Rchaf	L	ML	M	Rmeich	L	M	M
Safad Al Battikh	L	M	M	Salhaneh	L	ML	M	Serbine	L	M	M
Sultanieh Bint Jbeil	L	M	M	Tibnine	L	M	M	Tiri	L	M	M
Yaroun	L	ML	M	Yater	L	M	M				

## Mont Liban

### Jbail

Municipality	29-Nov	30-Nov	01-Dec	Municipality	29-Nov	30-Nov	01-Dec	Municipality	29-Nov	30-Nov	01-Dec
Aabeydat	L	L	M	Aalita	L	L	M	Aamchit	ML	M	MH
Aarab El-Lahib	ML	L	M	Aarasta	L	L	M	Adonis Jbeil	L	L	M
Afqa Jbeil	L	L	M	Ain El Delbeh Jbeil	L	L	M	Ain El-Ghouayba	ML	L	M
Ain Jrain	ML	L	M	Ain Kfah	M	M	MH	Almat El Chemaliyat	L	L	M
Almat El-Jenoubiya	L	L	M	Aqoura	ML	L	M	Bayzoun	L	L	M
Bchille Jbeil	ML	L	M	Bechtlida	L	L	M	Behdaydat	L	ML	M
Beit Habbaq	ML	ML	MH	Bejjeh	ML	ML	M	Bekhaaz	M	ML	M
Berbara Jbeil	M	M	MH	Bintael	L	L	M	Birket Hjoula	L	L	M
Blatt Jbeil	ML	ML	M	Boulhos	L	L	M	Breyj Jbeil	ML	L	M
Chamat	M	M	MH	Chikhane	M	M	MH	Chmout	ML	L	M
Eddeh Jbeil	ML	ML	MH	Ehmej	L	L	M	Fatre	L	L	M
Ferhet	ML	ML	M	Fghal	ML	ML	M	Frat	L	L	M
Ghabat	ML	L	M	Ghalboun	ML	ML	M	Gharzouz	M	M	MH
Ghofrine	M	ML	MH	Habil	L	L	M	Halate	L	ML	M
Haqel	L	L	M	Hbaline	M	ML	MH	Hboub	ML	ML	M
Hdeine	ML	L	M	Hema Er-Rehban	ML	L	M	Hema Mar Maroun Aann	L	L	M
Hjoula	L	L	M	Hosrayel	M	M	MH	Hsarat	M	ML	MH
Hsoun	L	L	M	Jaj	L	L	M	Janne	M	L	M
Jbeil	ML	M	MH	Jeddeyl Jbeil	M	M	MH	Jlisse	L	L	M
Jouret El-Qattine	ML	L	M	Kfar Baal Annaya	L	L	M	Kfar Kidde	ML	ML	MH
Kfar Kouas	L	L	M	Kfar Mashoun	ML	M	MH	Kfoun	L	L	M

Kharbe Jbeil	ML	ML	M	Laqlouq	ML	ML	M	Lassa	ML	L	M
Lehfed	ML	L	M	Maad	M	ML	MH	Mar Sarkis	M	L	M
Mastita	ML	M	MH	Mayfouq	L	L	M	Mazraat El Siyad	ML	L	M
Mazraat El-Maaden	L	L	M	Mechane	L	L	M	Mechmech Jbeil	L	L	M
Mehrin	ML	ML	MH	Mejdel El-Akoura	L	L	M	Mghayreh Jbeil	M	L	M
Mounsef	M	M	MH	Nahr Ibrahim	L	M	MH	Qahmez	L	L	M
Qartaba	M	L	M	Qartaboun	ML	M	MH	Qattara Jbeil	L	L	M
Qorqraya	L	L	M	Ramout	ML	ML	MH	Ras Osta	L	L	M
Rihane Jbeil	M	M	MH	Sakiet El-Khayt	ML	ML	M	Saqi Richmaya	L	L	M
Sebrine	L	L	M	Seraita	M	L	M	Souane Jbeil	L	L	M
Tadmor	ML	L	M	Tartej	L	L	M	Torzaiya	ML	L	M
Yanouh Jbeil	M	L	M	Zibdine Jbeil	L	L	M				

## El Metn

Municipality	29-Nov	30-Nov	01-Dec	Municipality	29-Nov	30-Nov	01-Dec	Municipality	29-Nov	30-Nov	01-Dec
Aain El-Qabu	L	L	M	Aain El-Qach	L	ML	M	Aain El-Teffaha	L	ML	M
Aain el-Safsaf El-M	L	L	M	Abou Mizane	L	ML	M	Ain Aar	L	M	MH
Ain Alaq	L	M	MH	Ain El-Kharroube	L	ML	MH	Ain El-Sendiane	L	L	M
Ain El-Zeitoune	L	L	M	Ain Saadeh	L	M	MH	Aintoura El-Matn	L	L	M
Amaret Chalhoub	L	M	MH	Antelias	L	M	MH	Atchaneh	L	ML	MH
Ayroun	L	L	MH	Baabdat	L	L	M	Baouchariyeh	L	M	MH
Baskinta	L	L	M	Beit Chabab	L	L	M	Beit El-Chaar	L	M	MH
Beit El-Kekko	L	M	MH	Beit Mery	L	M	MH	Bhersaf	L	L	M
Bikfaya	L	ML	M	Biyakout	L	M	MH	Bnabil	L	L	M
Bourj Hammoud	L	M	MH	Bqennaya	L	M	MH	Broummana El-Matn	L	M	MH
Bsalim	L	M	MH	Bsifrine	L	L	M	Bteghrine	L	L	M
Chaouiye	L	M	MH	Chouaya El-Matn	L	ML	MH	Choueir	L	L	M
Chrine	L	L	M	Dahr El Sawan El-Mat	L	ML	M	Daychouniyeh	L	M	MH
Dbayeh	L	M	MH	Deir Chamra	L	L	M	Deir Mar Abda el Mch	L	M	MH
Deir Mar Roukouz	L	M	MH	Deir Tamiche	L	M	MH	Dik El-Mehdi	L	M	MH
Dikwaneh	L	M	MH	Douar El-Matn	L	L	M	Fanar	L	M	MH
Fraike	L	ML	M	Haret El-Ballaneh	L	M	MH	Hbous	L	M	MH
Himlaya	L	L	M	Jal El Did	L	M	MH	Jdeideh El-Metn	L	M	MH
Jouar El-Matn	L	L	M	Jouret El-Ballout	L	M	MH	Kaaqour	L	L	M
Kfar Aaqab	L	L	M	Kfertay El-Matn	L	L	M	Khenchara	L	L	M
Khillet El-Mtain	L	L	M	Konnabat Broummana	L	M	MH	Konnabat Salima	L	L	M
Machraah El-Matn	L	L	M	Majdel Tarchich	L	ML	M	Majzoub	L	M	MH
Mansouriyeh El-Metn	L	M	MH	Mar Boutros Karm Et-	L	L	M	Mar Chaya et Mzekke	L	M	MH
Mar Moussa Ed-Douar	L	L	M	Marjaba	L	L	M	Masqa	L	ML	M
Mayasse	L	L	M	Mazraat Deir Aoukar	L	M	MH	Mazraat El-Hadirat	L	M	MH
Mazraat Yachouh	L	M	MH	Mchikha	L	L	M	Menqlet Mezher	L	M	MH
Mhaydseh Matn	L	ML	M	Mkalles	L	M	MH	Mrouj	L	L	M
Mtain	L	L	M	Mtayleb	L	M	MH	Nabay	L	M	MH
Naccache	L	M	MH	Ouadi Chahine	L	L	M	Ouadi El-Karm El-Mat	L	L	M
Ouata El-Mrouj	L	L	M	Ouyoun El-Matn	L	L	M	Qornet Chehwan	L	M	MH
Qornet El-Hamra	L	M	MH	Roumieh	L	M	MH	Sfeilet Bikfaya	L	L	M
Sinn El-Fil	L	M	MH	Zabbougha	L	L	M	Zalqa	L	M	MH

Zarouon	L	L	M	Zekrite	L	M	MH	Zighrine El-Matn	L	ML	MH
Zouk El-Khrab	L	M	MH								

## Chouf

Municipality	29- Nov	30- Nov	01- Dec	Municipality	29- Nov	30- Nov	01- Dec	Municipality	29- Nov	30- Nov	01- Dec
Aalmane El-Chouf	ML	M	M	Aammqi El-Chouf	L	ML	M	Ain Ouzein	L	L	M
Ain Qani	L	L	M	Ain Zhalta	L	ML	M	Ainbal	L	ML	M
Amatour	L	L	M	Anout	L	ML	M	Atrine	L	ML	M
Baadarane	L	ML	M	Baaqline	L	ML	M	Baasir	ML	M	M
Barja	ML	M	M	Barouk	L	ML	M	Bater	L	L	M
Batloun	L	ML	M	Bayqoun	L	M	M	Bchetfine	L	ML	M
Beiteddine	L	ML	M	Benouati Ech-Chouf	L	ML	M	Berjein	L	ML	M
Bireh et Mtalleh	L	ML	M	Biret El-Chouf	L	M	M	Bkechtine Ouel Mchei	L	L	M
Bkifa El-Chouf	L	ML	M	Botme	L	L	M	Bqaiaa Ech-Chouf	L	ML	M
Bsaba El-Chouf	L	ML	M	Chammis El-Chouf	ML	M	M	Chehim	L	ML	M
Chemaarine	L	L	M	Chourit	L	L	M	Daher El-Chouf	L	ML	M
Dalhoun	L	M	M	Damour	ML	M	M	Daraya El-Chouf	L	ML	M
Deir El-Moukhalles	L	L	M	Deir Baba	L	ML	M	Deir Dourit	L	ML	M
Deir El-Qamar	L	ML	M	Deir Kouche	L	ML	M	Dibbieh	L	L	M
Dmit	L	ML	M	Fouara Jaafar	L	L	M	Fraidis El-Chouf	L	ML	M
Ghabet Jaafar	L	ML	M	Gharife	L	ML	M	Haret Jandal	L	L	M
Hasrout	L	M	M	Jadra	ML	M	M	Jahlieh	L	ML	M
Jbeih El-Chouf	L	L	M	Jdeidet El-Chouf	L	ML	M	Jiyeh	ML	M	M
Jleilyeh	L	ML	M	Jmailiyeh	ML	M	M	Joun	L	M	M
Kahlounie El-Chouf	L	M	M	Ketermaya	ML	M	M	Kfar Faqoud	L	ML	M
Kfar Hamal	L	M	M	Kfar Him	L	M	M	Kfar Katra	L	ML	M
Kfar Niss	L	ML	M	Kfar hay	L	ML	M	Kfarnabrakh	L	ML	M
Khirbet Bisri	L	L	M	Knayse El-Chouf	L	ML	M	Maaniyeh	ML	M	M
Maasser Beiteddine	L	ML	M	Maasser El-Chouf	L	ML	M	Majdalouna	L	M	M
Majdel El-Meouch	L	ML	M	Mazboud	L	M	M	Mazmoura	L	M	M
Mazraat El Chouf	L	ML	M	Mazraat El Daher	L	L	M	Mazraat El-Douair	L	L	M
Mechref	ML	ML	M	Mghairie	ML	M	M	Mghayrie El-Chouf	L	ML	M
Moukhtara	L	L	M	Mrusti	L	ML	M	Mtolle	L	M	M
Naameh	ML	M	M	Niha El-Chouf	L	ML	M	Ouadi Abou Youssef	L	L	M
Ouadi Ed-Deir	L	M	M	Ouadi El-Sit	L	ML	M	Ouadi bnehlay	L	L	M
Qraibeh	L	ML	M	Qreiaa	L	L	M	Rmayle El-Chouf	ML	M	M
Semqaniyeh	L	M	M	Sibline	ML	M	M	Sirjbeil	L	M	M
Warhanieh	L	ML	M	Werdaniyeh	ML	M	M	Zaarourieh	L	M	M

## Baabda

Municipality	29- Nov	30- Nov	01- Dec	Municipality	29- Nov	30- Nov	01- Dec	Municipality	29- Nov	30- Nov	01- Dec
Abadiyeh	L	ML	MH	Ain Mouaffaq	L	ML	MH	Araiya	L	M	MH
Arbaniyeh	L	L	M	Arsoun	L	L	M	Baabda	L	M	MH
Baalchmey	L	M	MH	Bmaryam	L	L	M	Bourj El-Brajneh	L	M	MH
Boutchay	L	M	MH	Bsaba Baabda	L	M	MH	Btekhney	L	L	M
Btibyat	L	L	M	Bzebdine	L	L	M	Chbeniyeh	L	L	MH
Chiyah	L	M	MH	Chmeisset Baabda	L	L	M	Chouit	L	ML	MH
Deir El-harf	L	L	M	Deir Khouna	L	L	MH	Dlaybeh	L	L	M

Falougha	L	ML	M	Furn El-Chebbak	L	M	MH	Hadath Beyrouth	L	M	MH
Halaliyeh Baabda	L	ML	M	Hammana	L	ML	M	Haret El Sett	L	M	MH
Haret Hamze	L	L	MH	Haret Hreik	L	M	MH	Hasbaiya El-Metn	L	L	M
Jouar El-Hoz	L	L	M	Jouret Arsoun	L	L	M	Kfar Chima	L	M	MH
Kfar Selouane	L	L	M	Khalouat Baabda	L	ML	MH	Kneisset Baabda	L	L	M
Laylakeh	L	M	MH	Louayzeh Baabda	L	M	MH	Merdache	L	M	MH
Mzairaa Baabda	L	L	M	Ouadi Chahrour El Ol	L	M	MH	Ouadi Chahrour El So	L	M	MH
Qalaa Baabda	L	L	M	Qhraybe Baabda	L	L	M	Qobbayaa	L	L	M
Qornayel	L	L	M	Qortada	L	L	M	Qrayeh Baabda	L	L	M
Qsaibeh Baabda	L	ML	M	Qtale Baabda	L	L	M	Ras El Metn	L	ML	M
Ras El-Haref	L	ML	MH	Rouayset El-Ballout	L	ML	MH	Salima Baabda	L	L	M
Tahouitat El Ghadir	L	M	MH	Tarchich	L	ML	M	Zandouqa	L	L	M

## Aley

Municipality	29-Nov	30-Nov	01-Dec	Municipality	29-Nov	30-Nov	01-Dec	Municipality	29-Nov	30-Nov	01-Dec
Abey	L	M	M	Aghmid	L	L	M	Ain Dara	L	ML	M
Ain Drafil	L	ML	M	Ain El Halazoun	L	M	MH	Ain El-Rmmaneh	L	L	M
Ain Jedideh	L	M	MH	Ain Ksour	L	M	M	Ain Onoub	L	M	MH
Ain Traz	L	M	M	Ainab	L	ML	MH	Aley	L	M	MH
Aramoun	ML	M	MH	Aytat	L	M	MH	Azouniyeh	L	ML	MH
Baawerta	ML	M	M	Badghan Oua Wadi Bad	L	ML	MH	Bassatine	L	M	MH
Bayssour	L	M	MH	Bchamoun	L	M	MH	Bdadoun	L	M	MH
Behouara	L	ML	MH	Bennay	L	M	M	Bhamdoun El-Dayaa	L	M	MH
Bhamdoun El-Mhatta	L	M	MH	Bkhechthey	L	M	MH	Bleibel	L	M	MH
Bmakine	L	M	MH	Bmehray	ML	ML	M	Bouzrid	L	ML	M
Bserrine	L	M	MH	Bsous	L	ML	M	Btalloun	L	M	MH
Btater	L	M	MH	Chanay	L	M	MH	Charoun	L	ML	MH
Chartoun	L	ML	M	Chemlane	L	M	MH	Choueifat El-Aamrous	L	M	MH
Choueifat El-Oumara	L	M	MH	Choueifat El-Quoubbe	L	M	MH	Dakkoun	L	M	M
Deir Qoubel	L	M	MH	Dfoun	L	M	MH	Douair El Remmaneh	L	ML	M
Ghaboun	L	ML	MH	Habramoun	L	L	M	Homs Oua Hama	L	ML	MH
Houmal	L	M	MH	Jisr El Qadi	L	M	M	Kehaleh	L	ML	M
Keyfoun	L	M	MH	Kfar Aamey	L	ML	MH	Kommatyeh	L	M	MH
Maasrati	L	ML	M	Majdel Baana	L	ML	MH	Mansourieh et Ain El	L	M	MH
Mazraat El-Nahr	L	ML	M	Mchakhte	L	L	M	Mecherfeh	L	ML	MH
Mejdaya	L	M	MH	Mrayjat	L	ML	M	Ramliyah	L	ML	M
Rechmaya	L	M	M	Rejmeh	L	ML	MH	Remhala	L	M	M
Rouaysset El Neemane	L	ML	MH	Saoufar	L	ML	MH	Selfaya	L	ML	M
Sirhmoul	L	M	MH	Souq El Ghareb	L	M	MH	Taazanieh	L	M	MH

## Kesrouane

Municipality	29-Nov	30-Nov	01-Dec	Municipality	29-Nov	30-Nov	01-Dec	Municipality	29-Nov	30-Nov	01-Dec
Achkout	L	L	M	Adma Oua Dafneh	L	M	MH	Ain Ed-Delbe Kesroua	L	L	M
Ain El-Rihane	L	ML	MH	Aintoura Kesrouane	L	M	MH	Ajaltoun	L	L	M
Akaybeh Kesrouane	L	M	MH	Aramoun Kesrouane	L	L	M	Azra ouel Ozor	L	L	M
Ballouneh	L	L	M	Batha	L	L	M	Bekaatat Achkout	L	ML	M
Bekaatat Kanaan	L	L	M	Bizhel	L	L	M	Bouar	L	M	MH
Bqaatouta	L	L	M	Bqaq Ed-Dine	L	M	MH	Bzommar	L	L	M

Chahtoul	L	L	M	Chnaniir	L	L	M	Chouan	L	L	M
Daraya Kesrouane	L	L	M	Darououn	L	L	M	Deir Baqlouch	L	L	M
Dlebta	L	L	M	Eghbeh	VL	VL	M	Faraya	L	L	M
Fatka	L	ML	M	Feytroun	L	L	M	Ghazir	L	ML	M
Ghbaleh Kesrouane	L	L	M	Ghedrass	L	L	M	Ghosta	L	L	M
Ghynéh	L	ML	M	Harharaya w Kattine	L	L	M	Harissa Kesrouane	L	ML	MH
Hayata	VL	L	M	Hosein	L	L	M	Hrajel	L	ML	M
Jdeideh Ghazir	L	L	M	Jeita	L	M	MH	Jounieh Ghadir	L	M	MH
Jounieh Haret Sakhr	L	M	MH	Jounieh Salel Alma	L	M	MH	Jounieh Sarba	L	M	MH
Jouret Bedrane	L	L	M	Jouret Mhad	L	L	M	Jouret Termos	L	ML	M
Kfar Debiane	L	L	M	Kfar Tay Kesrouane	L	L	M	Kfar Yassine	L	M	MH
Kfour Kesrouane	L	L	M	Kharayeb Nahr Ibrahi	L	L	M	Klayaat Kesrouane	L	L	M
Maarab	L	L	M	Maaysra Kesrouane	L	L	M	Mayrouba	L	ML	M
Mazraat Er-Ras	L	M	MH	Mazraat Mrah El-Mir	L	L	M	Mchaa El Ftouh	ML	L	M
Mchaa Faraya	ML	L	M	Mchaa Kfar Dibiane	ML	L	M	Mghaer	L	L	M
Mradiyah	L	L	M	Nahr Ed-Dahab	L	L	M	Nammoura Kesrouane	L	L	M
Ouata El Jaouz	L	L	M	Ouata Sillam	L	M	MH	Raachine	L	L	M
Rayfoun	L	L	M	Safra Kesrouane	L	M	MH	Shayle Kesrouane	L	ML	M
Tabarja	L	M	MH	Yahchouch	L	L	M	Zaaytreh	L	L	M
Zeytoun	L	ML	M	Zouk Mikael	L	M	MH	Zouk Mosbeh	L	M	MH

## Baalbek\_Hermel

### Baalbek

Municipality	29-Nov	30-Nov	01-Dec	Municipality	29-Nov	30-Nov	01-Dec	Municipality	29-Nov	30-Nov	01-Dec
Aadous	M	M	M	Aamchki	M	M	M	Aarsal	M	M	M
Ain Baalbek	M	M	M	Ain Bourday	M	M	M	Ain El-Benye	M	ML	M
Ain El-Jaouz Baalbek	M	ML	M	Ain El-Siya Chadoura	ML	ML	M	Al Khodr Baalbek	M	M	M
Al Nabi Chit	M	M	M	Aynata Baalbek	M	M	M	Baalbek	M	M	M
Bachwat	M	M	M	Barqa	M	M	M	Bednayel Baalbak	M	M	M
Beit Chama	M	M	M	Bijjaje	M	M	M	Bouday	M	M	M
Brital	M	M	M	Btadi	M	M	M	Chaat	M	M	M
Chaibe	M	ML	M	Chlifa	M	M	M	Chmestar	M	M	M
Dar El-Oussa	M	M	M	Deir El-Ahmar	M	M	M	Deir Mar Maroun Baal	M	M	M
Douris	M	M	M	Fakiha	M	M	M	Hadath Baalbek	M	M	M
Ham	M	ML	M	Haour Taala	M	M	M	Hizzine	M	M	M
Hlebta	M	M	M	Hosh Barada	M	M	M	Hosh El Dahab	M	M	M
Hosh El Snid	M	M	M	Hosh El-Nabi	M	M	M	Hosh El-Rafiq	M	M	M
Hosh Tal Safiya	M	M	M	Hrebta	M	M	M	laat	M	ML	M
Jebaa	M	M	M	Jenta	M	M	M	Kfar Dabach	M	M	M
Kfar Dane	M	M	M	Khraibeh El-Hermel	M	M	M	Khreibet Baalbek	M	M	M
Kneisset Baalbek	M	M	M	Labueh	M	M	M	Maarboun	M	M	M
Majdaloun	M	M	M	Maqneh	M	M	M	Mazraat Beit Mcheik	M	M	M
Misraya	M	M	M	Moqraq	M	M	M	Nabha El-Damdoum	M	M	M
Nabi Chbay	M	M	M	Nabi Osman	M	M	M	Nahleh baalbek	M	M	M
Ouadi El-Oss	M	M	M	Qaa Baayoun	M	M	M	Qaa Jouar Maqiye	M	M	M
Qaa Ouadi El-Khanzir	M	M	M	Qah Baalbek	MH	M	M	Qarha Baalbek	M	M	M



Qsarnaba	M	M	M	Ram Baalbek	M	M	M	Ras Baalbek El Sahl	M	M	M
Ras Baalbek El-Charq	M	M	M	Riha	M	M	M	Saaide	M	M	M
Sbouba	M	M	M	Seriine El-Tahta	M	M	M	Slouqi	M	ML	M
Taiba Baalbek	M	M	M	Talia	M	M	M	Taraiya	M	M	M
Temnin El Fawqa	M	M	M	Temnin El-Tahta	M	ML	M	Tfail	M	ML	M
Yahfoufa	M	M	M	Yammouneh	M	M	M	Younine	M	M	M
Zboud	M	M	M								

## Hermel

Municipality	29-Nov	30-Nov	01-Dec	Municipality	29-Nov	30-Nov	01-Dec	Municipality	29-Nov	30-Nov	01-Dec
Charbine El-Hermel	M	M	M	Hermel Jbab	M	M	M	Hermel	M	M	M
Maaysra El-Hermel	M	M	M	Michaa Mrajhine	M	M	M	Ouadi Faara	M	M	M
Ras Baalbek - Ouadi	M	M	M	Ras Baalbek El Gharb	M	M	M	Zighrine	M	M	M

## Akkar

### Akkar

Municipality	29-Nov	30-Nov	01-Dec	Municipality	29-Nov	30-Nov	01-Dec	Municipality	29-Nov	30-Nov	01-Dec
Aain Tinta	M	M	MH	Aaiyat	M	M	M	Aakkar El-Aatiqa	ML	L	M
Aamar Akkar	M	M	MH	Aamar El Baykat	L	M	MH	Aamayer	M	M	M
Aamriyet Akkar	ML	M	MH	Aandqet	M	ML	M	Aarmeh	L	ML	M
Aarqa	M	M	MH	Aawaynat	M	M	M	Aayoun Akkar	M	M	M
Abboudiye	L	M	M	Ain El-Zeit	M	M	MH	Ain Yaaqoub	M	ML	M
Akroum	M	M	M	Aridet Cheikh Zennad	L	M	M	Baldeh w Mazraat Bal	M	M	MH
Barcha	L	M	MH	Bardeh	ML	M	M	Bebnine	M	M	MH
Beino	ML	M	M	Beit Ayoub	M	M	MH	Beit El-Haouch	M	M	MH
Beit Mellat	M	M	MH	Beit Younes	L	ML	M	Berbara Akkar	M	M	MH
Berqayel	M	M	MH	Bezbina	ML	L	M	Bireh Akkar	M	M	MH
Borj	M	M	MH	Bqerezla	M	M	MH	Bzal	M	ML	M
Chane	L	ML	M	Chaqdouf	M	ML	M	Charbila	M	M	MH
Cheikh Mohammad	ML	M	MH	Cheikh Taba Es-Sahl	M	M	MH	Cheikh Taba	ML	M	MH
Cheikh Zennad	L	M	M	Cheikhlar	M	M	M	Chir Hmairine	L	M	MH
Daghle	M	M	MH	Dahr Laissine	M	M	MH	Darine	L	M	MH
Dawra	ML	ML	M	Dawsa w Baghdadi	L	M	M	Dayret Nahr El-Kabir	M	M	M
Deir Dalloum	M	M	MH	Deir Jennine	M	M	MH	Denbou	ML	ML	M
Dibbabiyyeh	ML	M	MH	Douair Aadwiyeh	M	M	MH	Fassikine	M	M	MH
Fnaydek	ML	L	M	Fraydes Akkar	ML	M	M	Ghazayle	L	M	MH
Habchit	ML	ML	M	Hakour	M	M	MH	Halba	M	M	MH
Haouchab	ML	M	MH	Hayssat	M	M	MH	Haytla	L	M	MH
Hayzouq	ML	M	M	Hedd	M	M	MH	Hmaira Akkar	M	M	M
Hmaiss Akkar	M	M	MH	Hnaider	M	M	M	Hokr Ed-Dahri	L	M	M
Hokr Etti	ML	M	MH	Hokr Jouret Srar	L	M	MH	Houaich	ML	M	M
Hrar	M	M	M	Idbil	ML	M	M	Ilfat	M	M	MH
Janine	L	M	MH	Jdeidet El-Joumeh	M	M	MH	Jdeidet El-Kaiteh	M	M	MH
Jebayel	M	M	M	Kafr	ML	ML	M	Kafr	M	M	MH
Karm Asfour	M	M	MH	Kfar Melki Akkar	ML	M	MH	Kfar Noun	L	ML	M
Kfarharra	M	M	MH	Khalsa	M	M	M	Kharnoubet Akkar	L	M	MH

Khirbet Daoud Aakkar	M	M	MH	Khirbet El Remmane	M	M	M	Khirbet Shar	M	M	MH
Khoreybet El-Jindi	M	M	MH	Khreibet Aakkar	ML	M	MH	Kneisset Aakkar	L	M	M
Kneisset Hnaider	M	M	M	Knisse	M	M	MH	Kroum El-Aarab	ML	M	MH
Kwachra	ML	M	MH	Kweykhath	M	M	MH	Machta Hammoud	M	M	M
Majdala	M	M	MH	Majdel Akkar	M	M	MH	Mar Touma	M	M	MH
Marlaya Melhem	ML	M	MH	Mashha	ML	M	MH	Massoudiye	L	M	MH
Mazraat Beit Ghattas	M	M	MH	Mazraat En-Nahriye	M	M	M	Mechmech	M	ML	M
Memneh	L	L	M	Mhammara	M	M	MH	Mighraq Aakkar	L	M	M
Minyara	M	M	MH	Moqayteh	ML	M	MH	Mounjez	ML	M	M
Msalla	ML	M	MH	Mzeihmeh	L	M	MH	Nfaiseh	ML	M	MH
Noura Et-Tahta	L	M	M	Ouadi El-Haour	L	M	MH	Ouadi El-Jamous	M	M	MH
Ouyoun El-Ghizlane	M	M	M	Qaabarine	ML	M	MH	Qabaait	M	M	M
Qachlaq	L	M	MH	Qantara Aakkar	M	M	MH	Qarha Aakkar	M	M	M
Qarqaf	M	M	MH	Qboula	M	M	MH	Qleiaat Aakkar	L	M	MH
Qloud El-Baqie	M	M	MH	Qobaiyat Aakkar	M	ML	M	Qobbat Chamrat	ML	M	MH
Qorayat	L	ML	M	Qornet Aakkar	ML	M	M	Qsair Aakkar	ML	M	M
Rahbe	ML	M	M	Rihaniyet Aakkar	M	M	MH	Rmah	ML	M	M
Rmoul	ML	M	MH	Saadine	L	M	MH	Sadaqa	M	M	M
Saidnaya	M	M	MH	Sammouniye	M	M	MH	Sayssoq	M	M	MH
Semmaqiye	L	M	M	Semmaqli	ML	M	MH	Sfinet El-Dreib	M	M	MH
Sfinet El-Qaitaa	M	M	M	Sindyanet Zeidane	ML	ML	M	Souaisset Aakkar	M	M	MH
Srar	L	M	MH	Tal Abbas El Gharby	M	M	MH	Tal Abbas El-Chargy	L	M	MH
Tal Biret	L	M	MH	Tal Hmayra	L	M	MH	Tal Maayan Tal Kiri	L	M	M
Tal Sibel	ML	M	MH	Tallet Chattaha	M	M	MH	Tikrit	M	M	M
Tleil	ML	M	MH	Tshea	ML	L	M	Zawarib	M	M	MH
Zouq El Hosniyeh	ML	M	M	Zouq El-Haddara	M	M	MH	Zouq El-Hbalsa	M	M	M
Zouq El-Moqachrine	M	M	M								

## Sud

### Sour

Municipality	29-Nov	30-Nov	01-Dec	Municipality	29-Nov	30-Nov	01-Dec	Municipality	29-Nov	30-Nov	01-Dec
Aaiyeh	L	M	M	Aalma El-Chaab	L	M	M	Aaytit	ML	M	M
Abbassiyeh Sour	ML	M	MH	Abou Chech	L	M	M	Ain Abou Abdallah	ML	M	MH
Ain Baal	ML	M	MH	Arzoun	L	M	M	Aziyeh	L	M	M
Baflaya	L	M	M	Barich	ML	M	M	Batouliyah	L	M	MH
Bayad	L	M	M	Bazouriyeh	ML	M	M	Bediass	ML	M	M
Bestiyat	ML	M	M	Borj El Chemali	L	M	MH	Borj En-Naqoura	ML	M	MH
Borj Rahhal	ML	M	M	Boustane	ML	M	M	Btaychiyeh	ML	M	M
Chaaitiye	L	M	M	Chameh	L	M	M	Chehabiye	L	M	M
Chehour	L	M	M	Chihine	L	M	M	Debaal Sour	ML	M	M
Deir Amess	L	ML	M	Deir Kifa	L	M	M	Deir Qanoun El-Ain	L	M	MH
Deir Qanoun El-Naher	ML	M	M	Derdghaiya	L	M	M	Dhayra	L	M	M
Halloussiyeh	L	M	M	Hamoul	L	ML	M	Hanaouey	ML	M	M
Henniye	ML	M	MH	Hmairi Sour	L	M	M	Iskandarouna Sour	L	ML	M
Jbal El Botom	L	M	M	Jebbin	ML	M	MH	Jennata	L	M	M
Jijim	L	ML	M	Jouaiya	ML	M	M	Kneisset Sour	ML	M	M

Maarake	ML	M	M	Maaroub	ML	M	M	Majadel	ML	M	M
Majdalzoun	L	M	M	Mansouri Sour	ML	M	MH	Marnba	L	M	M
Marouahine	L	ML	M	Mazraat El-Zalloutiy	ML	M	M	Mazraat Mechref	ML	M	M
Mazraat Tayr Semhat	L	ML	M	Mheilib	ML	M	MH	Neffakhiyeh	L	M	M
Niha Sour	L	M	M	Ouadi Jilo	ML	M	M	Qana	L	M	M
Qolaileh Sour	L	M	MH	Rechknany	L	M	M	Rmadiyeh	ML	M	M
Selha Sour	L	M	M	Siddiqine	L	M	M	Sour	M	M	MH
Srifa	L	M	M	Tayr Debbe	ML	M	M	Tayr Felsay	L	M	M
Tayr Harfa	ML	M	MH	Touayri	L	ML	M	Toura	ML	M	M
Yanouh Sour	ML	M	M	Yarine	ML	M	MH	Zebqine	L	ML	M

## Saida

Municipality	29-Nov	30-Nov	01-Dec	Municipality	29-Nov	30-Nov	01-Dec	Municipality	29-Nov	30-Nov	01-Dec
Aanqoun	L	M	M	Aaqtanit	ML	M	M	Aarab Ej-Jall	L	M	M
Aarab Tabbaya	L	M	M	Abra Saida	ML	M	M	Adloun	L	M	M
Adousiyeh	L	M	M	Ain-El-Deleb	L	M	M	Arzai	ML	M	M
Babliyah	ML	M	M	Barty	L	M	M	Bissariyeh	ML	M	M
Bnaafoul	ML	M	M	Bqosta	ML	M	M	Bramiy --	L	M	M
Daoudiyeh	ML	M	M	Dareb El-Sim	ML	M	M	Erkay	L	M	M
Ghassanieh	ML	M	M	Ghazieh	ML	M	M	Hajjeh	L	M	M
Haret Saida	ML	M	M	Hartiyeh	ML	M	M	Hlaliye Saida	ML	M	M
Insariyat	L	M	M	Jazira Saida	ML	M	M	Kafar Bit	L	M	M
Kaoutariyet El-Siyad	L	M	M	Kfar Chellal	L	M	M	Kfar Hatta Saida	L	M	M
Kfar Milke Saida	L	M	M	Khartoum	L	M	M	Khaziz	L	M	M
Khirbet Ed-Douair Sa	L	M	M	Khirbet El-Bassal	ML	M	M	Khrayeb Saida	L	M	M
Loubieh	L	M	M	Maghdouche	L	M	M	Majdelyoun	ML	M	M
Matariyet El-Choumar	ML	M	M	Matayriyeh	L	M	M	Mazraat 'Mseileh	ML	M	M
Mazraat 'Snaiber	L	M	M	Mazraat Aarab Soukka	L	M	M	Mazraat Deir Taqla	L	M	M
Mazraat El Yahoudiye	L	M	M	Mazraat El-Housseini	ML	M	M	Mazraat El-Mhaydaleh	L	M	M
Mazraat El-Ouasta	L	M	M	Mazraat Jamjim	L	M	M	Mazraat Kaoutariyet	L	M	M
Mazraat Kfar Badda	L	M	M	Mazraat Oussamiyat	L	M	M	Mazraat Sari	L	M	M
Mazraat Sinai	L	M	M	Meemariyeh	L	M	M	Merouaniyeh	L	M	M
Miyeh ou Miyeh	ML	M	M	Najjariyeh	L	M	M	Qaaqaiyat El-Snaouba	ML	M	M
Qnarit	ML	M	M	Qraiye Saida	ML	M	M	Saida Ed-Dekermane	ML	M	M
Saida El-Oustani	ML	M	M	Saida El-Qadimeh	ML	M	M	Saida Kefraya	L	M	M
Saksakiyeh	L	M	M	Salhie Saida	ML	M	M	Sarafand	L	M	M
Sfenta	L	ML	M	Tafahta	L	M	M	Tanbourit	L	M	M
Tebna	ML	M	M	Zaghdraiya	L	M	M	Zeita	ML	M	M
Zrariyeh	L	M	M								

## Jezzine

Municipality	29-Nov	30-Nov	01-Dec	Municipality	29-Nov	30-Nov	01-Dec	Municipality	29-Nov	30-Nov	01-Dec
Ain El-Mir (El Estab	L	M	M	Anane	L	L	M	Aramta	L	M	M
Ariya	L	L	M	Aychiyeh	L	M	M	Azour	L	L	M
Baba	L	L	M	Baysour Jezzine	L	M	M	Benoueteh Jezzine	L	ML	M
Bhannine	L	L	M	Bisri	L	L	M	Bkassine	L	L	M
Bouslaya	L	L	M	Btedine El-Leqech	L	L	M	Chbail	L	L	M
Choualiq Jezzine	L	M	M	Dahr Ed-Deir	L	ML	M	Deir El Qattine	L	L	M

Demachqiyeh	L	M	M	Ghabbatiyeh	L	L	M	Harf Jezzine	L	L	M
Hassaniyeh	L	M	M	Haytouleh	L	M	M	Haytura	L	L	M
Hidab	L	ML	M	Homsiyeh	L	L	M	Jabal Toura	L	ML	M
Jarmaq	L	M	M	Jensnaya	L	M	M	Jernaya	L	M	M
Jezzine	L	ML	M	Karkha	L	M	M	Kfar Falous	L	M	M
Kfar Houna	L	ML	M	Kfar Jarrah	ML	M	M	Lebaa	L	M	M
Louayzet Jezzine	L	ML	M	Machmouche	L	L	M	Mahmoudiyeh Jezzine	L	M	M
Maknounye Jezzine	L	L	M	Maraat Ouazaiyeh	L	M	M	Mazraat Daraya	L	ML	M
Mazraat El-Aarqoub	L	ML	M	Mazraat El-Mathane	L	L	M	Mazraat El-Rahbane	L	L	M
Mazraat Khallet Khaz	L	ML	M	Mazraat Louzid (Loua	L	L	M	Mazraat Qrouh	L	M	M
Mazraat Tamra	L	M	M	Mazraat Zighrine Jez	L	ML	M	Mazraat	L	L	M
Mharbiyeh	L	M	M	Midane Jezzine	L	L	M	Mjeydel Jezzine	L	M	M
Mlikh	L	ML	M	Mrach El-Hbasse	L	M	M	Ouadi Baanqoudaine	L	M	M
Ouadi El-Laymoun	L	M	M	Ouardiyeh	ML	L	M	Qabaa Jezzine	L	L	M
Qatrani	L	ML	M	Qaytouleh	L	L	M	Qtaleh Jezzine	L	L	M
Rihane Jezzine	L	M	M	Rimat	L	ML	M	Roum	L	L	M
Roummanet	L	ML	M	Sabbah	L	L	M	Saydoun	L	L	M
Sfaray	L	L	M	Snaya	L	L	M	Sojoud	L	ML	M
Srayri	L	ML	M	Taaid	L	L	M	Wadi Jezzine	L	L	M
Zhalta	L	L	M								

## Bekaa

### West Bekaa

Municipality	29-Nov	30-Nov	01-Dec	Municipality	29-Nov	30-Nov	01-Dec	Municipality	29-Nov	30-Nov	01-Dec
Aammiq BG	M	ML	M	Ain El Tineh BG	L	ML	M	Ain Zebdeh	M	ML	M
Ana	M	ML	M	Aytanit	ML	L	M	Baaloul BG	ML	ML	M
Bab Mareh	ML	ML	M	Chouberqiye Aammiq	M	ML	M	Dakoue	M	ML	M
Deir Ain El-Jaouze	M	ML	M	Deir Tahniche	M	ML	M	Ghaza	M	ML	M
Harime El-Soughra	M	ML	M	Hoch Harimeh	M	ML	M	Jazira BG	M	ML	M
Jib Jennine	M	ML	M	Kamed-El-Laouz	M	ML	M	Kefraya BG	M	ML	M
Khiara El Atika	M	ML	M	Khiara	M	ML	M	Khirbet Qanafar	M	ML	M
Lala	M	ML	M	Lebbaya BG	L	ML	M	Loussa	L	ML	M
Machghara	L	ML	M	Manara (Hammar) BG	M	M	M	Mansoura BG	M	ML	M
Marej BG	M	ML	M	Maydoun	L	ML	M	Ouaqf BG	M	ML	M
Qaraaoun	ML	ML	M	Qelya	L	M	M	Raouda (Istabel)	M	ML	M
Saghbine	M	ML	M	Sohmor	L	ML	M	Soltan Yacoub el Ara	M	ML	M
Souairy	M	ML	M	Sultan Yaacoub	M	ML	M	Tal Znoun	M	ML	M
Yehmor BG	L	ML	M	Zilaya	L	ML	M				

### Zahle

Municipality	29-Nov	30-Nov	01-Dec	Municipality	29-Nov	30-Nov	01-Dec	Municipality	29-Nov	30-Nov	01-Dec
Aanjar (Haouch Mouss	M	M	M	Ablah	M	M	M	Ain Kfarzabad	M	M	M
Ali-El-Nahri	M	ML	M	Bar Elias	M	ML	M	Bouarej	M	ML	M
Cheberqiyet Tabet	M	ML	M	Chtaura	M	ML	M	Deir El Ghazal	M	M	M
Delhamiyet Zahle	M	ML	M	Ferzol	M	M	M	Haouch El-Ghanam	M	ML	M
Haouch Es-Siyadeh	M	ML	M	Haouch Hala	M	ML	M	Haouch Mandara	M	ML	M

Haouch Qayssar	M	ML	M	Hezerta	ML	M	M	Hosh Moussa	M	ML	M
Jdita	M	M	M	Kfarzabad	M	ML	M	Ksara	M	ML	M
Majdel Aanjar	M	M	M	Makssi	M	ML	M	Massa	M	M	M
Mazraat Er-Remtaniye	M	ML	M	Mrayjat Zahle	M	ML	M	Mzaraa Zahle	M	ML	M
Nabi Ayla	M	M	M	Nasriyet Rizk	M	M	M	Nasriyet Zahle	M	ML	M
Niha Zahle	M	M	M	Ouadi Ed-Deloum	ML	ML	M	Ouadi El-Arayech	M	M	M
Qaa El Rim	M	M	M	Qab Elias	M	M	M	Qousaya	M	M	M
Rhit	M	M	M	Riyak	M	ML	M	Saadnayel	M	ML	M
Taal El-Akhdar	M	ML	M	Taalbeya	M	M	M	Taanayel	M	ML	M
Talamara	M	ML	M	Tcheflik Edde Haouch	M	ML	M	Tcheflik Qiqano	M	ML	M
Terbol Zahle	M	ML	M	Touaite Zahle	ML	M	M	Zahle Aradi	M	M	M
Zahle El-Berbara	M	M	M	Zahle El-Maallaqa	M	M	M	Zahle El-Midane	M	M	M
Zahle Er-Rassiye	M	M	M	Zahle Haouch El-Ouma	M	ML	M	Zahle Haouch El-Ouma	M	ML	M
Zahle Haouch Ez-Zara	M	M	M	Zahle Maalqa Aradi	M	M	M	Zahle Mar Antonios	M	M	M
Zahle Mar Elias	M	M	M	Zahle Mar Gerios	M	M	M	Zahle Saydet En-Naja	M	M	M
Zebdoul	M	M	M								

## Rachaiya

Municipality	29-Nov	30-Nov	01-Dec	Municipality	29-Nov	30-Nov	01-Dec	Municipality	29-Nov	30-Nov	01-Dec
Ain Arab Rachaiya	M	M	M	Ain Ata	ML	M	M	Ain Harche	ML	M	M
Aqabe Rachaya	ML	M	M	Ayha	M	M	M	Ayta El Fokhar	M	ML	M
Bakifa Rachaya	ML	M	M	Bakka	M	ML	M	Beit Lahya	ML	M	M
Bireh Rachaiya	M	ML	M	Daher El Ahmar	M	M	M	Deir El-Achayer	M	M	M
Heloua Rachaiya	M	ML	M	Hoch El Qannabeh Rac	ML	ML	M	Kaoukaba Bou Arab	ML	ML	M
Kfar Danis	M	ML	M	Kfar Mechki	L	ML	M	Kfar Qouq	M	M	M
Kherbet Rouha	M	M	M	Majdel Balhiss	ML	ML	M	Mdoukha	M	ML	M
Mhaydseh Rachaiya	ML	ML	M	Nabi Safa	L	ML	M	Rachaiya	ML	M	M
Rafid Rachaiya	M	ML	M	Selsata (Mazraat Dei	M	M	M	Tannoura	ML	M	M
Yanta	M	M	M								

## Beyrouth

### Beyrouth

Municipality	29-Nov	30-Nov	01-Dec	Municipality	29-Nov	30-Nov	01-Dec	Municipality	29-Nov	30-Nov	01-Dec
Achrafieh	L	M	MH	Ain el-Mreisse	L	M	H	Bachoura	L	M	MH
Beirut Central Distr	L	M	MH	Marfai	L	M	MH	Mazraa	L	M	MH
Medaouar	L	M	MH	Minet el-Hosn	L	M	MH	Mwssaitbeh	L	M	MH
Ras Beirut	L	M	H	Rmeil	L	M	MH	Saifi	L	M	MH
Zqaq el-Blat	L	M	MH								