

Lebanon Fire Risk Bulletin



CIVIL DEDEFENCE

Refer to cadast table condition.

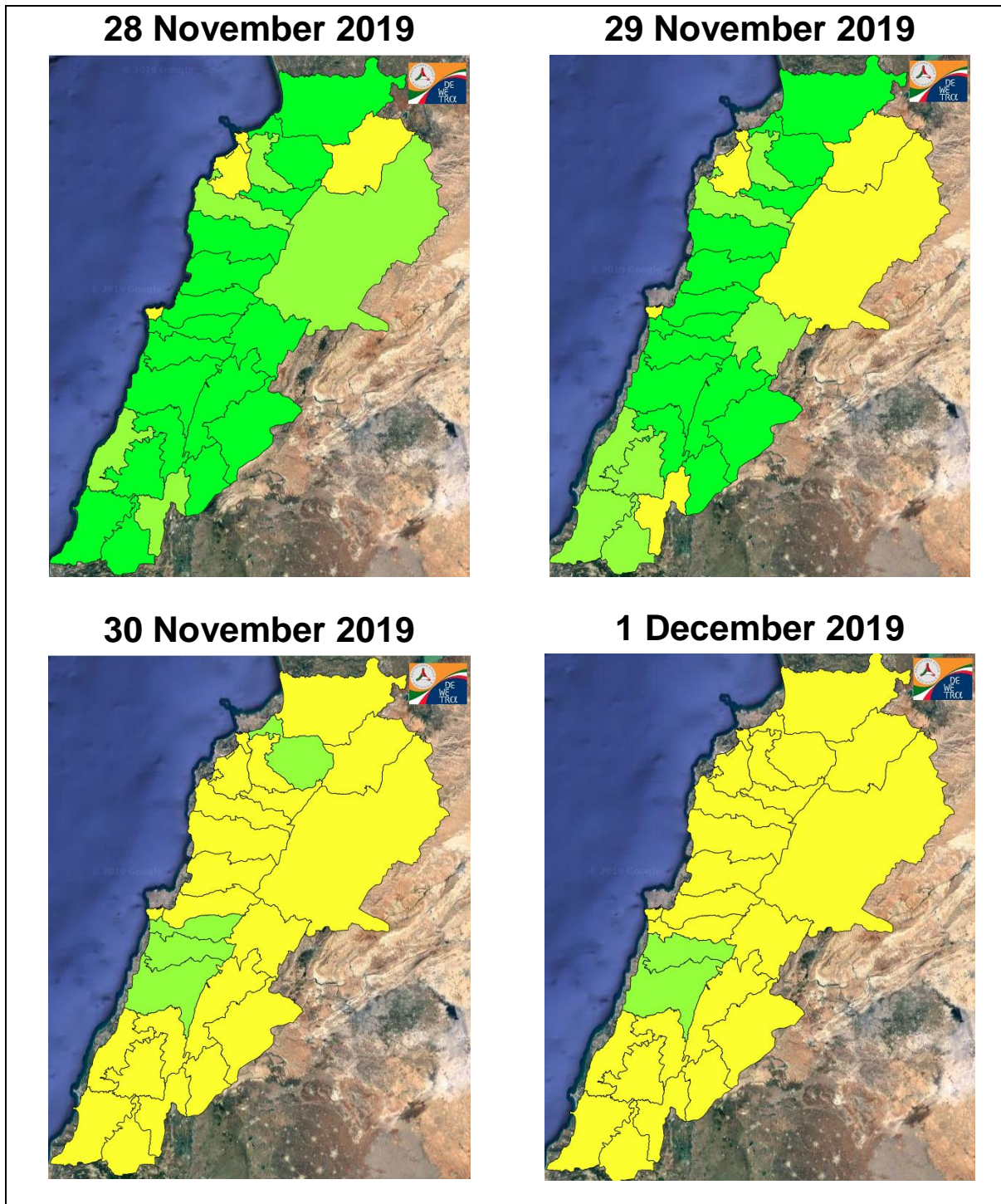
Please note that the indicated temperature is at 2 meters height from the ground.

General description of potential fire risk situation

Symbol	Level of risk	Meaning and actions
VL	Very low	Very low fire risk. Controlled burning operations can be hardly executed due to high fuel moisture content. Normally wildfires self-extinguish.
L	Low	Low fire risk. Controlled burning operations can be executed with a reasonable degree of safety.
ML	Medium low	Medium-low fire risk. Controlled burning operations can be executed in safety conditions. All the fires need to be extinguished.
M	Medium	Medium fire risk. Controlled burning operations would be avoided. All the fires need to be very well extinguished.
M	Medium high	Controlled burning is not recommended. Open flame will start fires. Cured grasslands and forest litter will burn readily. Spread is moderate in forests and fast in exposed areas. Patrolling and monitoring is suggested. Fight fires with direct attack and all available resources.
H	High	Ignition can occur easily with fast spread in grass, shrubs and forests. Fires will be very hot with crowning and short to medium spotting. Direct attack on the head may not be possible requiring indirect methods on flanks. Patrolling and monitoring the territory is highly suggested.
E	Extreme	Ignition can occur also from sparks. Fires will be extremely hot with fast rate of spread. Control may not be possible during day due to long range spotting and crowning. Suppression forces should limit efforts to limiting lateral spread. Damage potential total. Patrolling and monitoring the territory is highly suggested.

Beirut, 29 November 2019

FIRE RISK INDEX

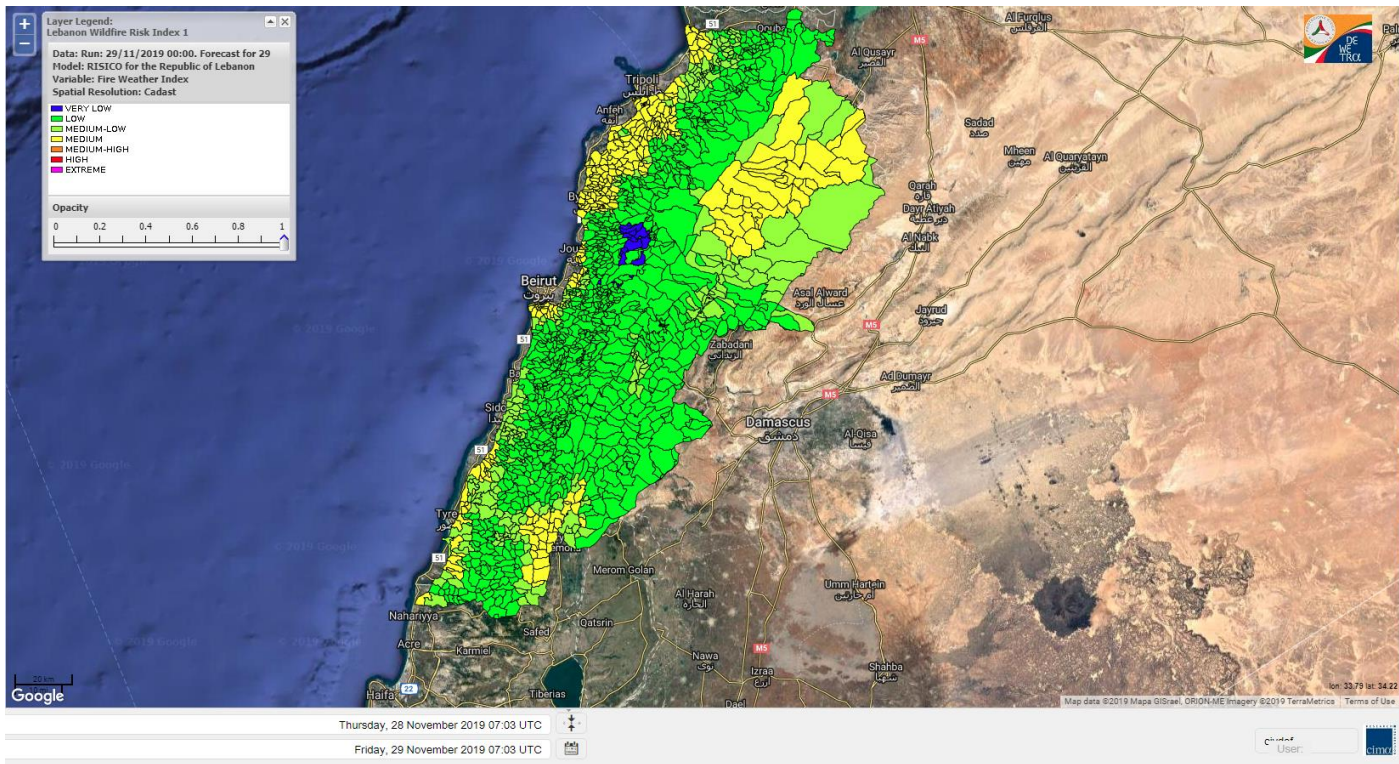


Layer Legend:
Lebanon Wildfire Risk Index 1

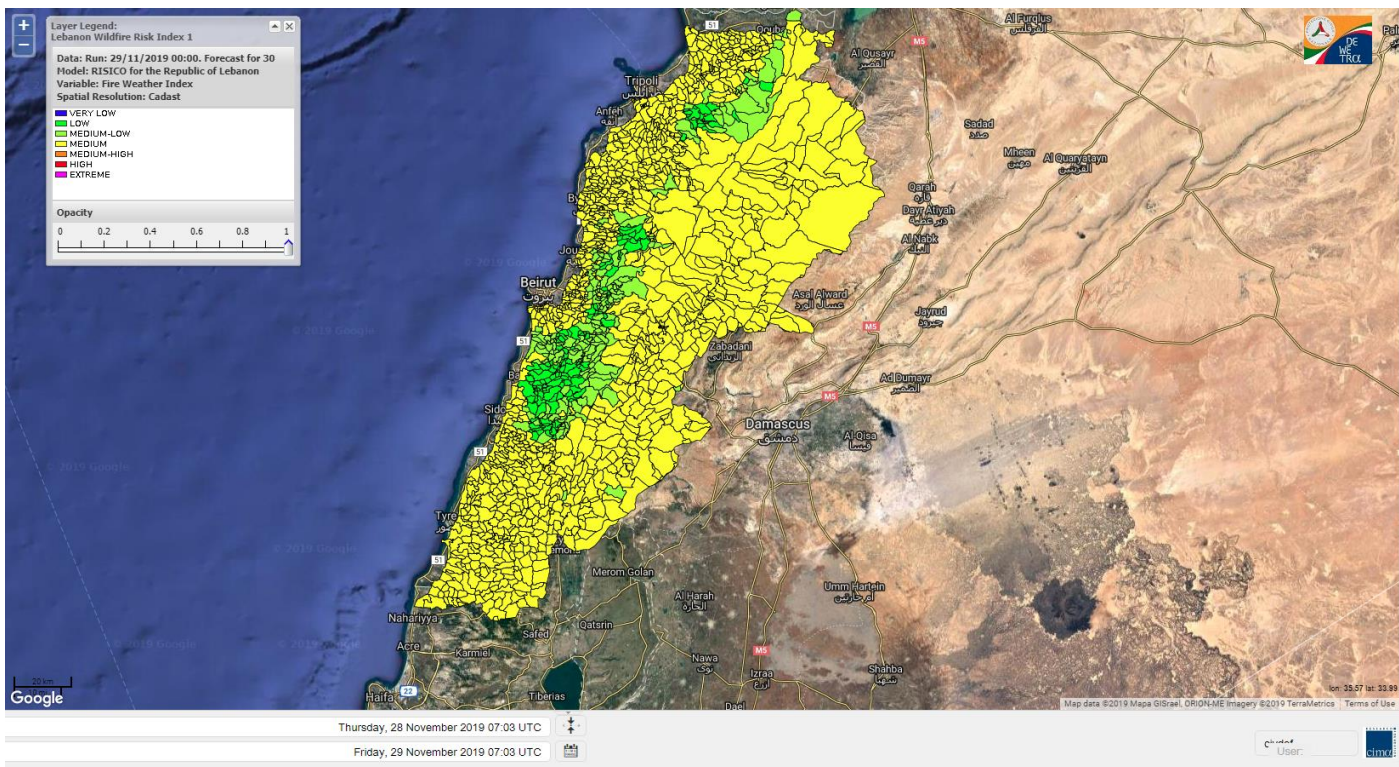
Data: Run: 29/11/2019 00:00. Forecast for 29
Model: RISICO for the Republic of Lebanon
Variable: Fire Weather Index
Spatial Resolution: Caza

- VERY LOW
- LOW
- MEDIUM-LOW
- MEDIUM
- MEDIUM-HIGH
- HIGH
- EXTREME

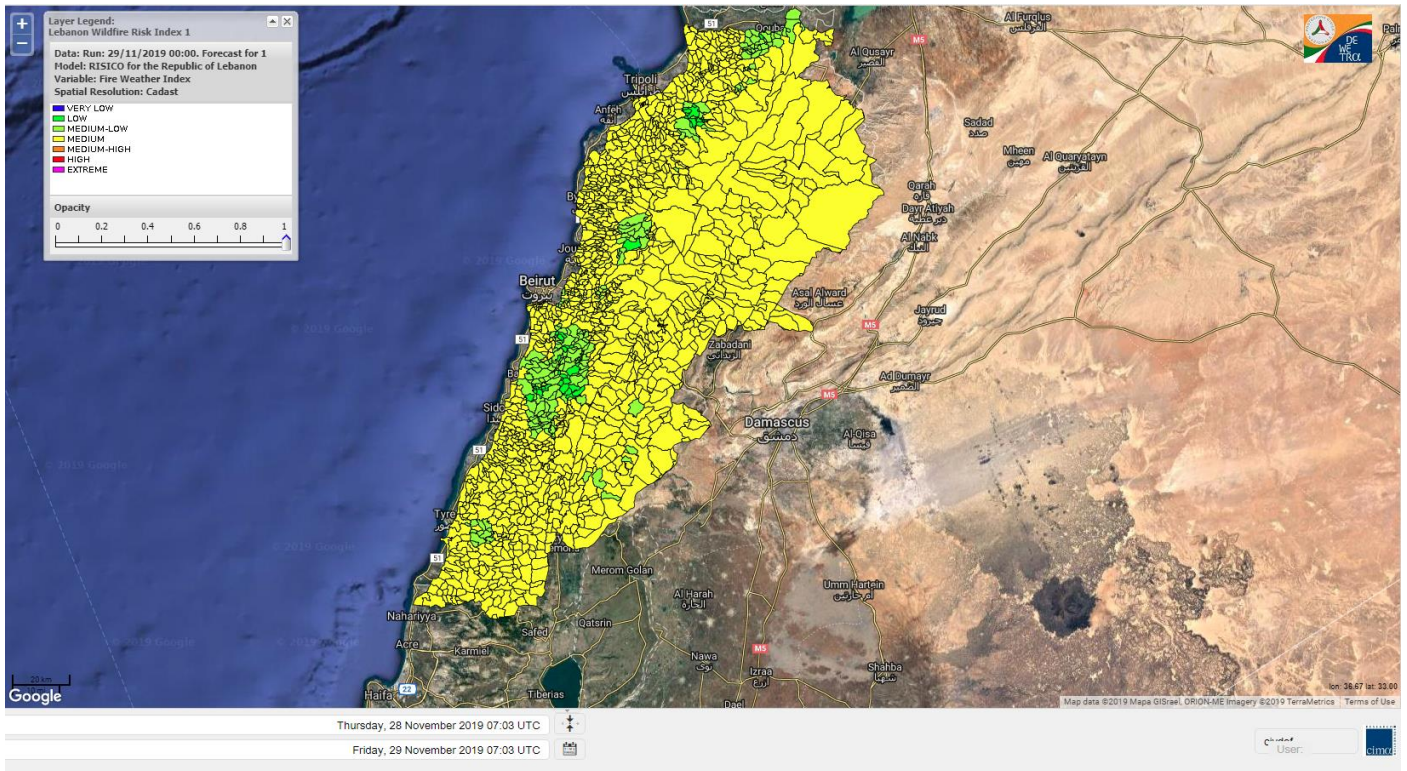
Lebanon for 29 November 2019



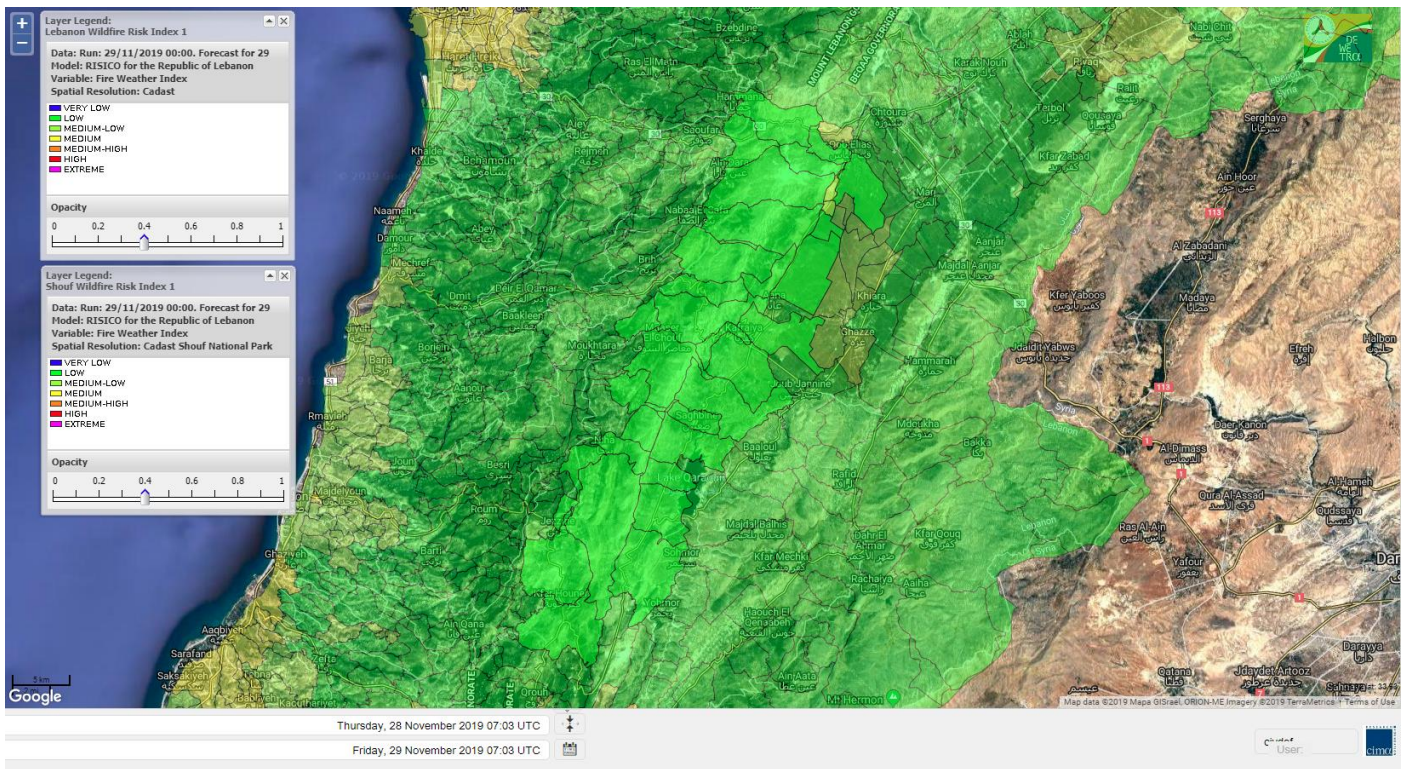
Lebanon for 30 November 2019



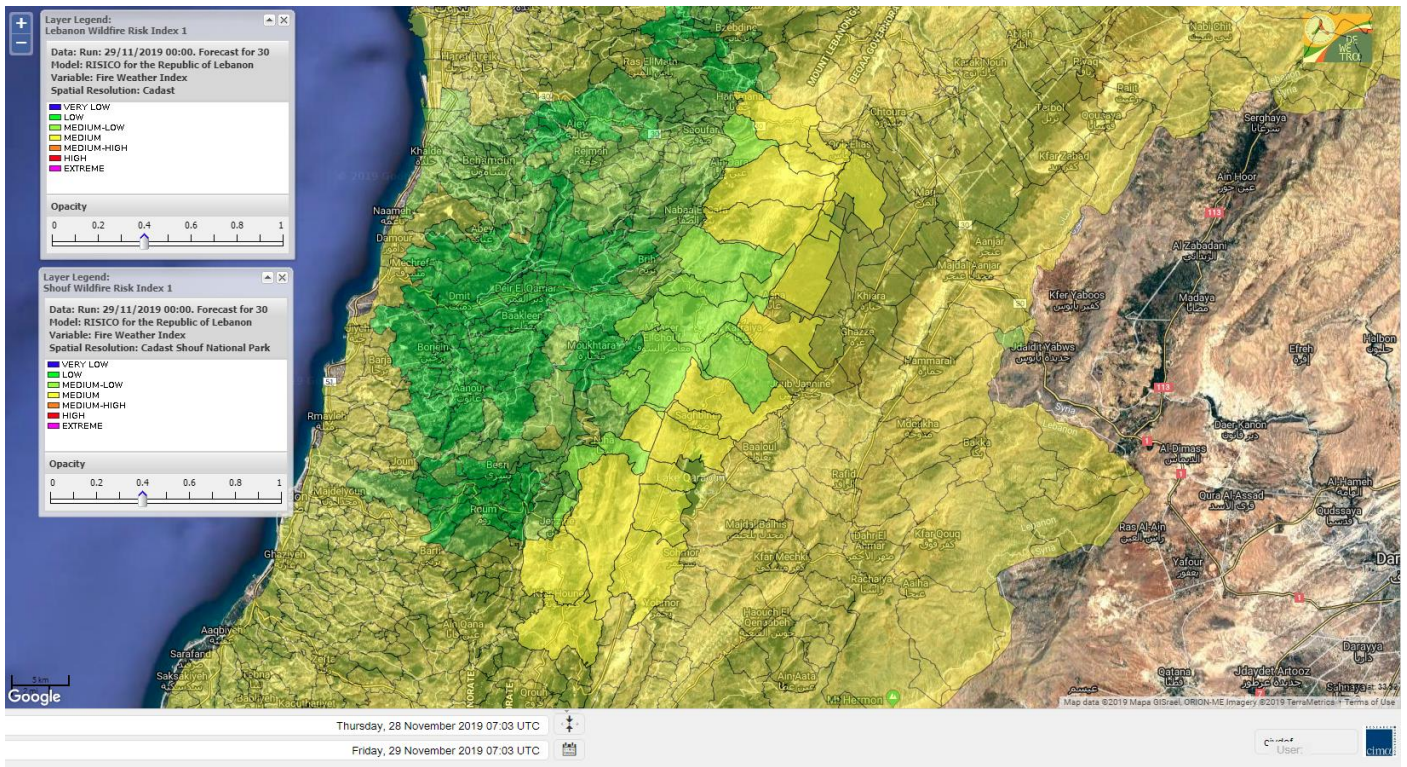
Lebanon for 1 December 2019



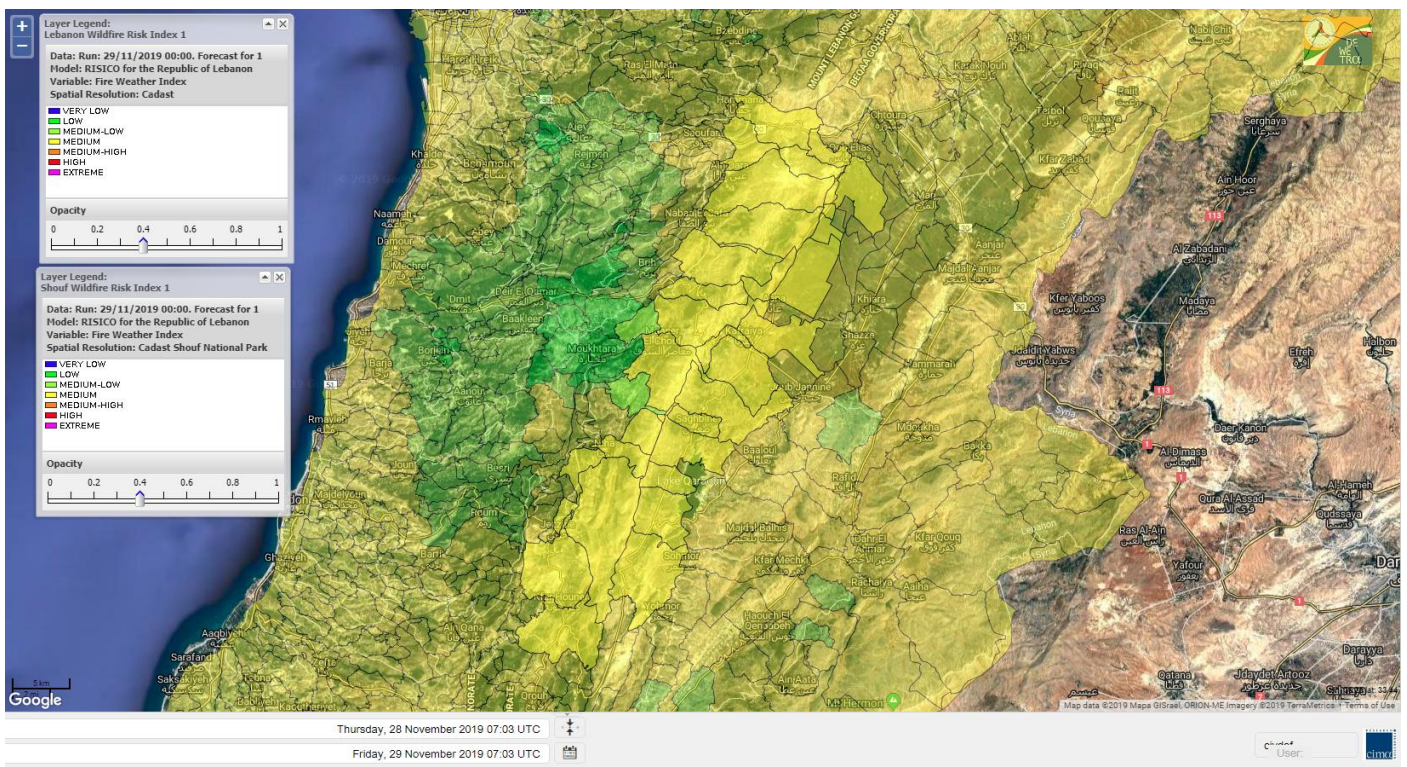
Shouf Biosphere Reserve Forecast for 29 November 2019



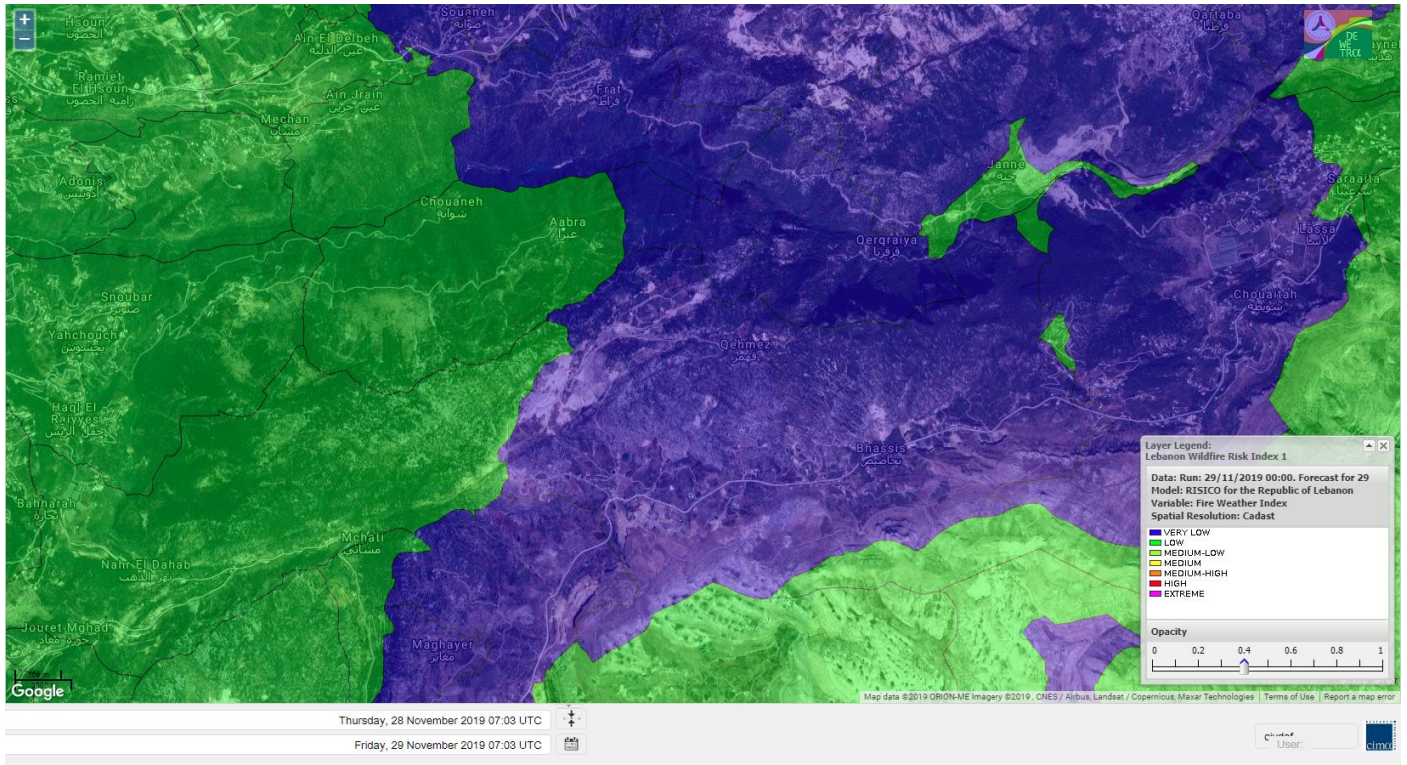
Shouf Biosphere Reserve Forecast for 30 November 2019



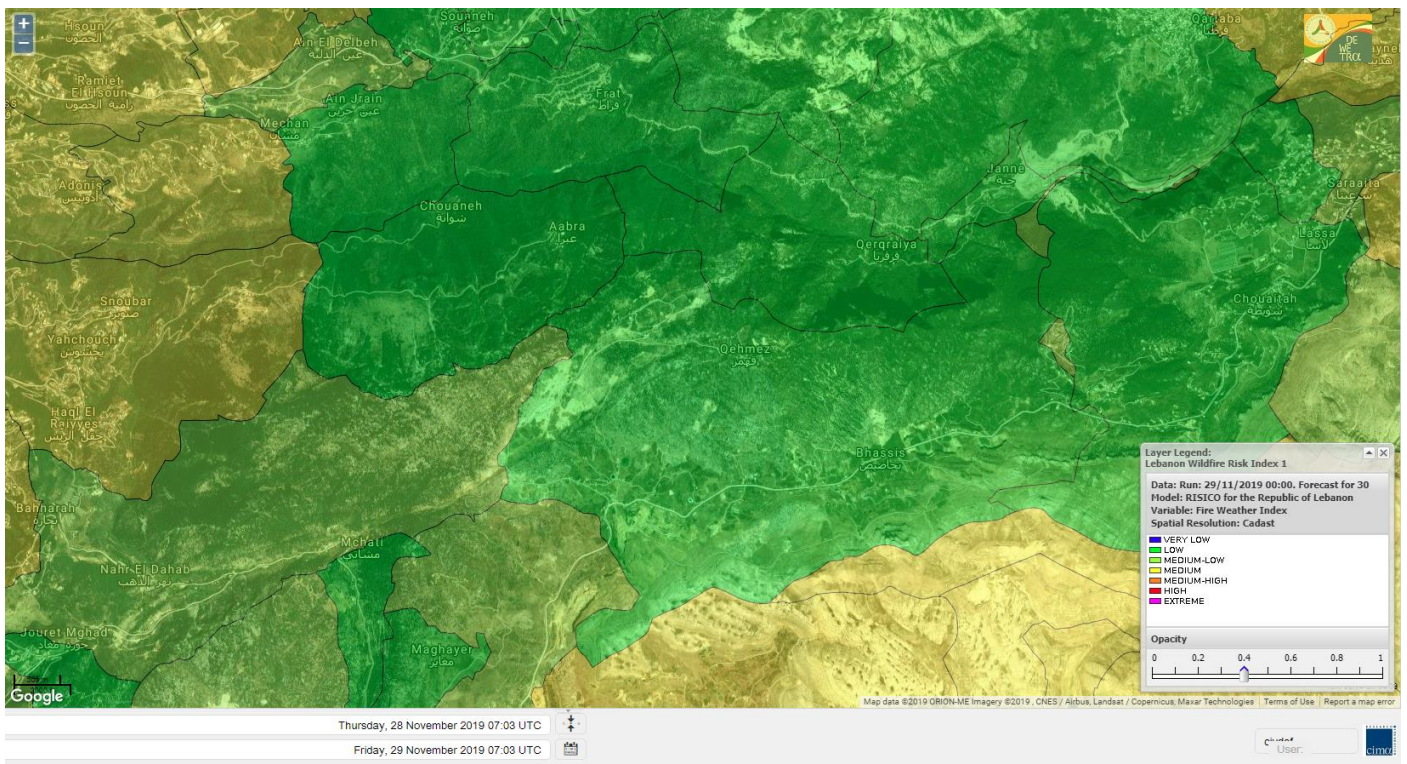
Shouf Biosphere Reserve Forecast for 1 December 2019



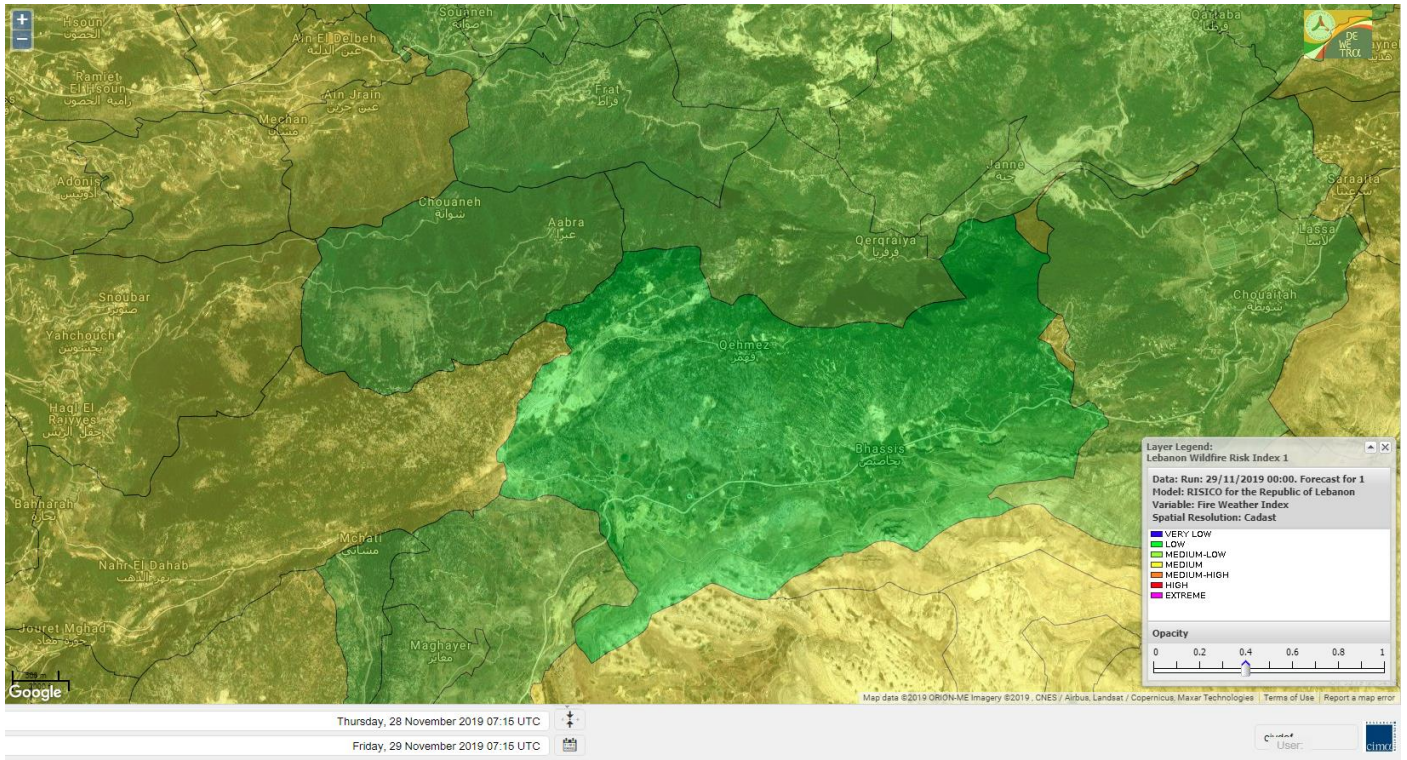
Jabal Moussa Reserve Forecast for 29 November 2019



Jabal Moussa Reserve Forecast for 30 November 2019



Jabal Moussa Reserve Forecast for 1 December 2019

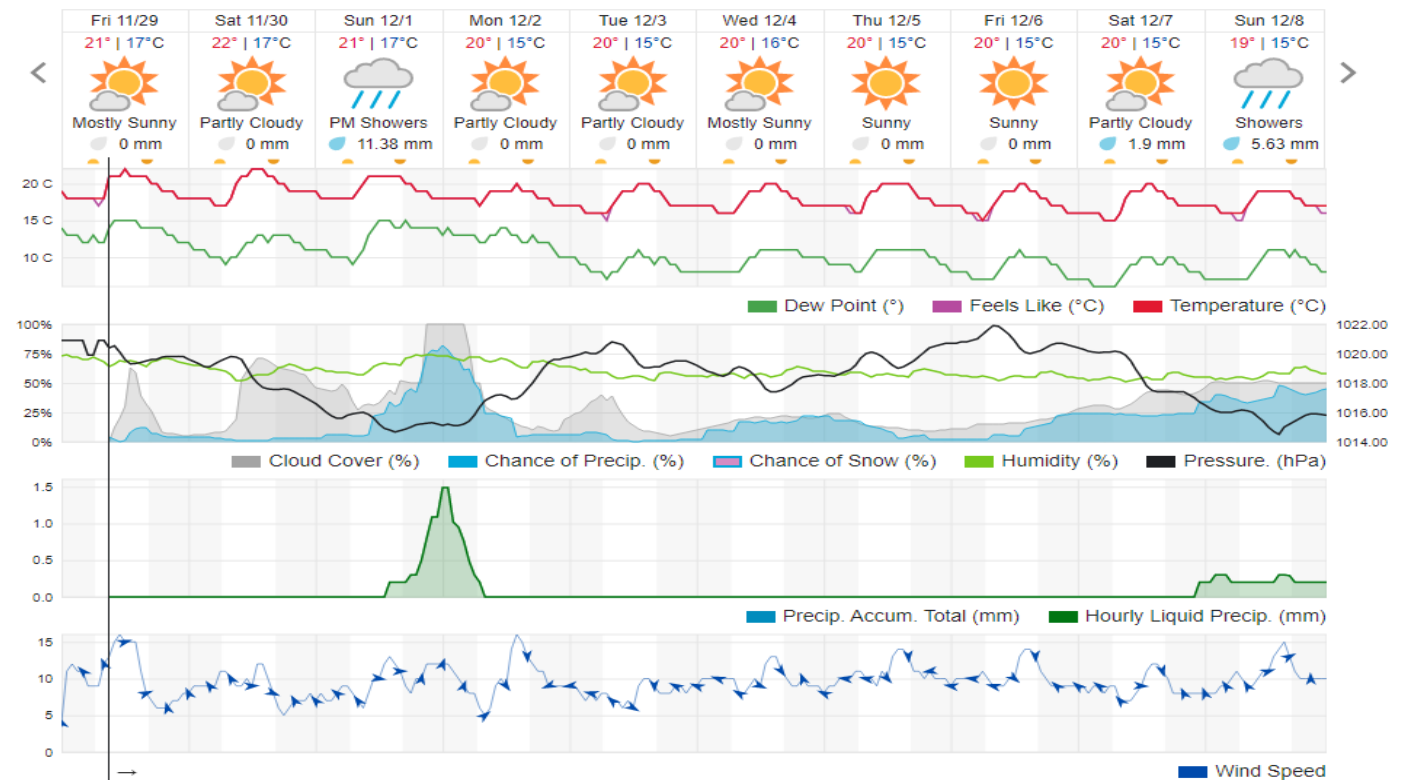


Beirut, Beirut Governorate, Lebanon 10-Day Weather Forecast

20° ACHRAFIEH, RIZK STATION | CHANGE

TODAY HOURLY 10-DAY CALENDAR HISTORY WUNDERMAP

Customize



Nord

Koura

Municipality	29-Nov	30-Nov	01-Dec	Municipality	29-Nov	30-Nov	01-Dec	Municipality	29-Nov	30-Nov	01-Dec
Aaba	M	M	M	Afsaddiq	M	M	M	Ain Ekrine	M	M	M
Amioun	M	M	M	Anfeh	M	M	M	Badbhoun	M	M	M
Barghoun	M	M	M	Barsa	M	M	M	Batroumine	M	M	M
Bdebba	M	M	M	Bechmizine	M	M	M	Bednayet El-Koura	M	M	M
Bhabbouch El-Koura	M	M	M	Bkeftine	M	M	M	Bnehran	M	M	M
Bqaiia El-Koura	M	M	M	Bsarma	M	M	M	Btaaboura	M	M	M
Bterram	M	M	M	Btouratij	M	M	M	Bziza	M	M	M
Dar Beechtar	M	M	M	Dar Chmezzine	M	M	M	Deddeh	M	M	M
Deir El-Balamand	ML	M	M	Fih	M	M	M	Hraiche	M	M	M
Ijdaabrine	M	M	M	Kaftoun	M	M	M	Kefraya El-Koura	M	M	M
Kfarakka	M	M	M	Kfarhata	M	M	M	Kfarhazir	M	M	M
Kfarkahel	M	M	M	Kfarsaroun	M	M	M	Kosba	M	M	M
Mejdel el-Koura	M	M	M	Nakhle	M	M	M	Qalhat	M	M	M
Ras Masqa	M	M	M	Rechdibbine	M	M	M	Zakroun	M	M	M
Zgharta El-Mtaouile	M	M	M								

Bcharre

Municipality	29-Nov	30-Nov	01-Dec	Municipality	29-Nov	30-Nov	01-Dec	Municipality	29-Nov	30-Nov	01-Dec
Aabdine	L	M	M	Bane	L	M	M	Barhelioun	L	M	M
Bazooune	ML	M	M	Becharre	L	M	M	Beit Menzer	L	M	M
Billa	L	M	M	Blaouza	L	M	ML	Bqaa Kafra	ML	M	M
Bqerqacha	ML	M	M	Breissat	L	M	M	Dimane	L	M	M
Hadath El Jobbeh	L	ML	M	Hadchit	L	M	M	Hasroun	L	M	M
Mazraat Aassaf	L	M	M	Mazraat Bani Saab	L	M	M	Mchaa El-Jobbeh	ML	M	M
Metrit	M	M	M	Moghr El-Ahoual	L	M	M	Ouadi Qannoubine	ML	M	M
Qanat	L	M	M	Qnayouer	L	M	M	Tourza	L	M	M

Batroun

Municipality	29-Nov	30-Nov	01-Dec	Municipality	29-Nov	30-Nov	01-Dec	Municipality	29-Nov	30-Nov	01-Dec
Aabrine	M	M	M	Aalali	L	M	M	Aartziz	M	M	M
Abdelli	M	M	M	Ajdabra	M	M	M	Assia	L	M	M
Basbina	M	M	M	Batroun	M	M	M	Bcheleh	L	M	M
Bechtoudar	L	M	M	Beit Chlala	L	M	M	Beit Kassab	ML	M	M
Bijdarfil	M	M	M	Bqesmaya	M	M	M	Chatine	L	M	M
Chebtin	M	M	M	Chekka	M	M	M	Daael	L	M	M
Dahr Abi Yaghi	M	M	M	Daraya El-Batroun	M	M	M	Deir Billa	ML	M	M
Deir Kfifane	M	M	M	Deir Mar Youhanna EL	L	M	M	Deir Mar Youssef Jra	M	M	M
Douma	L	M	M	Douq	M	M	M	Eddeh El-Batroun	M	M	M
Ftahat El-Batroun	ML	M	M	Ghouma	M	M	M	Hadtoun	L	M	M
Hamat	M	M	M	Harbouna	M	M	M	Hardine	L	M	M
Helta	L	M	M	Hery	M	M	M	Jebbla	ML	M	M
Jrabta El-Batroun	M	M	M	Jrane El-Batroun	M	M	M	Kfar Aabida	M	M	M
Kfar Halda	L	M	M	Kfarb Shlaimane	L	M	M	Kfarhatna	M	M	M

Kfarhay	M	M	M	Kfarhelos	M	M	M	Kfifane	M	M	M
Kfour El Arabi	L	M	M	Koubba	M	M	M	Kour	M	M	M
Mar Mama	M	M	M	Masrah	M	M	M	Mehmarch	L	M	M
Mrah Chdid	M	M	M	Mrah El Ziyat	M	M	M	Mrah El-Hajj	L	M	M
Nahle El-Batroun	L	M	M	Niha El-Batroun	L	M	M	Oujh El-Hajjar	M	M	M
Ouata Houb	L	M	M	Qatnaaoun	M	M	M	Racha	L	M	M
Rachana	M	M	M	Rachkida	M	M	M	Ram El-Batroun	L	M	M
Ras Nahhach	M	M	M	Selaata	M	M	M	Sghar	M	M	M
Smar Jbayl	M	M	M	Sourat El-Batroun	ML	M	M	Tannourine El-Faouqa	L	M	M
Tannourine Et-Tahta	L	M	M	Thoum	M	M	M	Toula El-Batroun	M	M	M
Zan	ML	M	M								

Zgharta

Municipality	29-Nov	30-Nov	01-Dec	Municipality	29-Nov	30-Nov	01-Dec	Municipality	29-Nov	30-Nov	01-Dec
Aachach	M	M	M	Aalma	M	M	M	Aarde	M	M	M
Aintourine	L	M	M	Arabet Qozhaya	L	M	M	Arde	M	M	M
Arjis	L	M	M	Asnoun	M	M	M	Ayto	L	M	M
Basloukit	L	M	M	Bchannine	M	M	M	Besebeel	M	M	M
Bhairet Toula	VL	M	M	Bnachee	L	M	M	Boussit	M	M	M
Danha	M	M	M	Daraiya Zgharta	L	M	M	Deir Jdeide	M	M	M
Ehden	L	M	M	Halan	ML	M	M	Hariq Zgharta	M	M	M
Houakir	M	M	M	Hraiqis	M	M	M	Iaal	M	M	M
Ijbaa	L	M	M	Karm Saddeh	ML	M	M	Kfarchakhna	M	M	M
Kfardlaqous	M	M	M	Kfarfou	L	M	M	Kfarhata Zgharta	M	M	M
Kfarhoura	M	M	M	Kfarsghab	L	M	M	Kfaryachit	M	M	M
Kfarzaina	M	M	M	Khaldiye	M	M	M	Mazraat Ajbeaa	M	M	M
Mazraat Et-Teffah	L	M	M	Mazraat Jneid	M	M	M	Mejdlaya Zgharta	M	M	M
Merh Kfarsghab	ML	M	M	Miryata	M	M	M	Miziara	L	M	M
Mzraat Kefraya	ML	M	M	Qorah Bach	M	M	M	Rachiine	M	M	M
Ras Kifa	L	M	M	Sakhra	M	M	M	Sebhel Zgharta	L	M	M
Serhel	L	M	M	Tallet Zgharta	M	M	M	Toula Zgharta	L	M	M
Zgharta	M	M	M								

Minieh-Denniye

Municipality	29-Nov	30-Nov	01-Dec	Municipality	29-Nov	30-Nov	01-Dec	Municipality	29-Nov	30-Nov	01-Dec
Aasaymout	L	ML	M	Aaymar	L	L	ML	Aazki	L	ML	ML
Ain El-Tineh-Miniyeh	L	L	L	Assoun	L	L	L	Bakhaaoun	L	L	L
Bchennata	L	M	M	Bechehhara	M	M	M	Beddawi	M	M	M
Behouaita	L	M	M	Beit El Foqss	L	L	L	Beit Haouik	VL	ML	M
Beit Zoud	L	L	L	Bekaasafrine	L	M	M	Borj El Yahoudiyeh	M	M	M
Bqarsouna	L	L	ML	Btermaz	L	L	ML	Debaael	L	L	M
Deir Ammar	M	M	M	Deir Nbouh	M	M	M	Haouaret-Miniyeh	L	ML	M
Haql el Azimeh	L	L	L	Harf El Siyad	L	L	L	Hazmiye-Miniyeh	L	L	L
Izal	L	ML	ML	Jarjour	M	M	M	Jayroun	L	ML	M
Kahf El-Malloul	ML	M	M	Karm El-Moher	L	L	ML	Kfar Binine	L	ML	M
Kfarchalane	L	L	L	Kfarhabou	L	ML	M	Kharroub-Miniyeh	L	ML	ML
Mazraat El-Kreme	ML	ML	ML	Mazraat Ketrane	L	L	L	Merkebtta	ML	M	M

Minyeh	M	M	M	Mrah El Sfirat	L	L	L	Mrah Sraj	L	L	L
Mrebbine	L	M	M	Nabi Youcheaa	M	M	M	Nemrine	L	ML	M
Qarhaiya	L	M	M	Qarne	L	ML	M	Qarsita	L	L	M
Qattineh-Miniyeh	L	L	L	Qemmamine	L	ML	M	Qraine	L	L	L
Raouda-Aadoua	L	M	M	Rihaniyet-Miniyeh	ML	M	M	Sfireh	L	L	M
Sir Ed-Danniyeh	L	L	L	Tarane	L	L	ML	Terbol-Miniyeh	M	M	M
Zaghartaghriine	M	M	M	Zouq Bhannine	M	M	M				

Nabatiye

Nabatiye

Municipality	29- Nov	30- Nov	01- Dec	Municipality	29- Nov	30- Nov	01- Dec	Municipality	29- Nov	30- Nov	01- Dec
Aabba	ML	M	M	Aazzi	ML	M	M	Adchit El-Chqif	ML	M	M
Ain Bou Swar	L	M	M	Ain Kana	L	M	M	Ali El-Taher	ML	M	M
Ansar	ML	M	M	Arab Salim	ML	M	M	Arnoun	M	M	M
Bfaroue	L	M	M	Breyqaah	ML	M	M	Charqiyeh	ML	M	M
Choukine	ML	M	M	Deir El Zahrani	ML	M	M	Doueir El-Nabatiyeh	ML	M	M
Habbouch El-Nabatiye	ML	M	M	Hamra El-Nabatiyeh	M	M	M	Harouf El-Nabatiyeh	ML	M	M
Hmaile	ML	M	M	Houmin El Faouqa	ML	M	M	Houmin El Tahta	ML	M	M
Jarjough	ML	M	M	Jbaah El-Nabatiyeh	L	M	M	Jebchit	ML	M	M
Kfar Djal El-Nabatiy	ML	M	M	Kfar Remmane	ML	M	M	Kfar Sir	ML	M	M
Kfar Tebnit	M	M	M	Kfarfila	L	M	M	Kfour El-Nabatieh	ML	M	M
Mayfadoun	M	M	M	Mazraat Bsaffour	ML	M	M	Mazraat Chalbaal	L	M	M
Mazraat Dmoul	ML	M	M	Mazraat El Khreibeh	ML	M	M	Mazraat El-Bayad El-	ML	M	M
Mazraat Kfarjaouz	ML	M	M	Mazraat Qalaat Meiss	ML	M	M	Nabatiyeh El-Fawka	ML	M	M
Nabatiyeh Et-Tahta	ML	M	M	Namiriyeh	ML	M	M	Qaaqaiyet El Jisr	ML	M	M
Qossaibeh El-Nabatiy	ML	M	M	Roumine	ML	M	M	Sarba El-Nabatieh	ML	M	M
Sir El-Gharbiyeh	ML	M	M	Toul	ML	M	M	Yehmor El-Nabatiyeh	M	M	M
Zaoutar El Charkiyeh	M	M	M	Zaoutar El-Gharbiyeh	ML	M	M	Zebdine El-Nabatiyeh	ML	M	M
Zefta	ML	M	M								

Hasbaiya

Municipality	29- Nov	30- Nov	01- Dec	Municipality	29- Nov	30- Nov	01- Dec	Municipality	29- Nov	30- Nov	01- Dec
Aain Jarfa	L	M	M	Abou Qamha	ML	M	M	Ain Qania	L	M	M
Bourghos	M	M	M	Chebaa	L	M	M	Chouaya Hasbaya	L	M	ML
Dellafeh	M	M	M	Fardiss Hasbaiya	ML	M	M	Hasbaya	L	M	M
Hbariyeh	L	M	M	Kaoukaba Hasbaiya	M	M	M	Kfar Chouba	L	M	M
Kfar Hamam	L	M	M	Kfeir El-Zait	L	M	M	Khalwat Hasbaya	L	M	M
Khreibet Hasbaiya	M	M	M	Majidiyeh Hasbaiya	ML	M	M	Marj Ez-Zhour (Haouc	L	M	M
Meri	M	M	M	Mimass	L	M	ML	Rachaiya El-Fokhar	ML	M	M
Salaiyeb	M	M	M								

Marjayoun

Municipality	29- Nov	30- Nov	01- Dec	Municipality	29- Nov	30- Nov	01- Dec	Municipality	29- Nov	30- Nov	01- Dec
Aalmane Marjaayoun	M	M	M	Aamra	M	M	M	Adayseh Marjaayoun	M	M	M
Adchit El-Koussair	M	M	M	Ain Aarab Marjaayoun	M	M	M	Bani Haiyann	M	M	M
Blatt Marjaayoun	M	M	M	Blida	M	M	M	Borj El-Moulouk	M	M	M

Boueyda Marjaayoun	ML	M	M	Deir Mimass	M	M	M	Deir Siriane	M	M	M
Dibbine	M	M	M	Ebel El Saqi	M	M	M	Houla	M	M	M
Houra	M	M	M	Kfar Kila	M	M	M	Khiam Marjaayoun	M	M	M
Klayaa	M	M	M	Majdel Selem	M	M	M	Marjaayoun	M	M	M
Markaba	M	M	M	Mays El-Jabal	M	M	M	Mazraat Doumiat	M	M	M
Mazraat Sarada	M	M	M	Mhaibib	M	M	M	Qabrikha	M	M	M
Qantara	M	M	M	Rab El-Thalathine	M	M	M	Saouaneh Marjayoun	ML	M	M
Talloussa	M	M	M	Taybeh Matjaayoun	M	M	M	Touline	ML	M	M

Bent Jbail

Municipality	29-Nov	30-Nov	01-Dec	Municipality	29-Nov	30-Nov	01-Dec	Municipality	29-Nov	30-Nov	01-Dec
Ain-Ebel	ML	M	M	Aitaroun	M	M	M	Aynata Bint Jbeil	ML	M	M
Ayta El-Chaeb	L	M	M	Ayta El-Jabal	L	M	M	Beit Lif	L	M	M
Beit Yahoun	ML	M	M	Bint Jbeil	ML	M	M	Borj Qalaway	ML	M	M
Braachit	L	M	M	Chakra	M	M	M	Debel	ML	M	M
Deir Antar	L	M	M	Froun	ML	M	M	Ghandouriyeh Bint Jb	ML	M	M
Hanine	ML	M	M	Hariss	L	M	M	Hdatha	ML	M	M
Jmeyjmeh	L	M	M	Kafra Bint Jbeil	L	M	M	Kfar Dounine	ML	M	M
Khirbet Selm	ML	M	M	Kounine	ML	M	M	Maroun El Ras	ML	M	M
Qalaway	ML	M	M	Qaouzah	L	M	M	Qatmoun	ML	M	M
Ramya Bint Jbeil	L	M	M	Rchaf	L	M	M	Rmeich	ML	M	M
Safad Al Battikh	L	M	M	Salhaneh	L	M	M	Serbine	L	M	M
Sultanieh Bint Jbeil	L	M	M	Tibnine	L	M	M	Tiri	ML	M	M
Yaroun	ML	M	M	Yater	L	M	M				

Mont Liban

Jbail

Municipality	29-Nov	30-Nov	01-Dec	Municipality	29-Nov	30-Nov	01-Dec	Municipality	29-Nov	30-Nov	01-Dec
Aabeydat	M	M	M	Aalita	L	M	M	Aamchit	M	M	M
Aarab El-Lahib	L	M	ML	Aarasta	L	M	M	Adonis Jbeil	L	M	M
Afqa Jbeil	L	ML	M	Ain El Delbeh Jbeil	L	ML	M	Ain El-Ghouayba	L	ML	ML
Ain Jrain	L	L	M	Ain Kfah	M	M	M	Almat El Chemaliyat	L	L	ML
Almat El-Jenoubiya	L	L	ML	Aqoura	L	M	M	Bayzoun	L	M	M
Bchille Jbeil	L	M	M	Bechtlida	L	M	M	Behdaydat	ML	M	M
Beit Habbaq	M	M	M	Bejjeh	M	M	M	Bekhaaz	M	M	M
Berbara Jbeil	M	M	M	Bintael	L	M	M	Birket Hjoula	L	M	M
Blatt Jbeil	L	M	M	Boulhos	L	L	ML	Breyj Jbeil	L	M	M
Chamat	M	M	M	Chikhane	M	M	M	Chmout	M	M	M
Eddeh Jbeil	ML	M	M	Ehmej	L	ML	ML	Fatre	L	M	M
Ferhet	L	M	M	Fghal	M	M	M	Frat	L	L	ML
Ghabat	L	M	M	Ghalboun	M	M	M	Gharzouz	M	M	M
Ghofrine	M	M	M	Habil	M	M	M	Halate	L	M	M
Haqel	M	M	M	Hbaline	M	M	M	Hboub	L	M	M
Hdeine	L	M	M	Hema Er-Rehban	L	M	M	Hema Mar Maroun Aann	VL	M	ML
Hjoula	L	M	M	Hosrayel	M	M	M	Hsarat	M	M	M

Hsoun	L	M	M	Jaj	L	M	M	Janne	VL	L	ML
Jbeil	M	M	M	Jeddeyl Jbeil	M	M	M	Jlisse	L	M	M
Jouret El-Qattine	L	M	M	Kfar Baal Annaya	L	M	M	Kfar Kidde	M	M	M
Kfar Kouas	L	M	M	Kfar Mashoun	ML	M	M	Kfoun	M	M	M
Kharbe Jbeil	M	M	M	Laqlouq	L	M	M	Lassa	L	ML	ML
Lehfed	L	M	M	Maad	M	M	M	Mar Sarkis	L	M	ML
Mastita	M	M	M	Mayfouq	L	M	M	Mazraat El Siyad	L	M	ML
Mazraat El-Maaden	L	L	ML	Mechane	L	M	M	Mechmech Jbeil	L	ML	M
Mehrin	L	M	M	Mejdel El-Akoura	L	M	M	Mghayreh Jbeil	L	M	M
Mounsef	M	M	M	Nahr Ibrahim	M	M	M	Qahmez	L	ML	L
Qartaba	L	L	ML	Qartaboun	M	M	M	Qattara Jbeil	L	M	M
Qorqraya	L	L	ML	Ramout	M	M	M	Ras Osta	L	M	M
Rihane Jbeil	M	M	M	Sakiet El-Khayt	M	M	M	Saqi Richmaya	L	M	M
Sebrine	L	M	M	Seraita	L	M	M	Souane Jbeil	L	ML	ML
Tadmor	L	M	M	Tartej	L	M	M	Torzaiya	L	M	M
Yanouh Jbeil	L	M	M	Zibdine Jbeil	L	M	M				

El Metn

Municipality	29-Nov	30-Nov	01-Dec	Municipality	29-Nov	30-Nov	01-Dec	Municipality	29-Nov	30-Nov	01-Dec
Aain El-Qabu	L	ML	M	Aain El-Qach	L	M	M	Aain El-Teffaha	L	ML	M
Aain el-Safssaf El-M	L	ML	M	Abou Mizane	L	ML	ML	Ain Aar	L	M	M
Ain Alaq	L	M	M	Ain El-Kharroube	L	M	ML	Ain El-Sendianeh	L	ML	M
Ain El-Zeitoune	VL	ML	M	Ain Saadeh	L	M	M	Aintoura El-Matn	L	M	M
Amaret Chalhoub	ML	M	ML	Antelias	ML	M	ML	Atchaneh	L	M	M
Ayroun	L	M	ML	Baabdat	L	ML	M	Baouchariyeh	ML	M	M
Baskinta	L	M	M	Beit Chabab	L	ML	M	Beit El-Chaar	L	M	M
Beit El-Kekko	ML	M	ML	Beit Mery	L	M	M	Bhersaf	L	M	M
Bikfaya	L	M	M	Biyakout	L	M	M	Bnabil	L	ML	M
Bourj Hammoud	M	M	M	Bqennaya	L	M	M	Broummana El-Matn	L	M	M
Bsalim	L	M	M	Bsifrine	L	ML	M	Bteghrine	L	ML	M
Chaouiye	L	M	M	Chouaya El-Matn	L	ML	M	Choueir	L	ML	M
Chrine	L	L	M	Dahr El Sawan El-Mat	L	M	M	Daychouniyeh	L	ML	ML
Dbayeh	L	M	ML	Deir Chamra	VL	L	ML	Deir Mar Abda el Mch	L	M	M
Deir Mar Roukouz	ML	M	M	Deir Tamiche	L	M	M	Dik El-Mehdi	L	M	M
Dikwaneh	M	M	M	Douar El-Matn	L	ML	M	Fanar	L	M	M
Fraike	L	M	M	Haret El-Ballaneh	L	M	M	Hbous	L	M	M
Himlaya	L	ML	M	Jal El Did	ML	M	ML	Jdeideh El-Metn	ML	M	M
Jouar El-Matn	L	L	M	Jouret El-Ballout	L	M	M	Kaaqour	L	ML	M
Kfar Aaqab	L	ML	M	Kfertay El-Matn	L	ML	M	Khenchara	L	ML	M
Khillet El-Mtain	L	ML	M	Konnabat Broummana	L	M	M	Konnabat Salima	L	L	M
Machraah El-Matn	L	M	M	Majdel Tarchich	L	M	M	Majzoub	L	M	M
Mansouriyeh El-Metn	ML	M	M	Mar Boutros Karm Et-	L	ML	M	Mar Chaya et Mzekke	L	M	M
Mar Moussa Ed-Douar	L	ML	M	Marjaba	L	ML	M	Masqa	L	M	M
Mayasse	L	ML	M	Mazraat Deir Aoukar	L	M	M	Mazraat El-Hadirat	L	M	M
Mazraat Yachouh	L	M	M	Mchikha	L	ML	M	Menqlet Mezher	L	M	M
Mhayseh Matn	L	M	M	Mkalles	M	M	M	Mrouj	L	M	M

Mtain	L	M	M	Mtayleb	L	M	M	Nabay	L	M	M
Naccache	L	M	M	Ouadi Chahine	VL	ML	M	Ouadi El-Karm El-Mat	L	ML	M
Ouata El-Mrouj	VL	M	ML	Ouyoun El-Matn	L	ML	M	Qornet Chehwan	L	M	M
Qornet El-Hamra	L	M	M	Roumieh	L	M	M	Sfeilet Bikfaya	L	ML	M
Sinn El-Fil	M	M	M	Zabbougha	L	ML	M	Zalqa	ML	M	ML
Zarououn	L	ML	M	Zekrite	L	M	M	Zighrine El-Matn	L	ML	ML
Zouk El-Khrab	ML	M	M								

Chouf

Municipality	29-Nov	30-Nov	01-Dec	Municipality	29-Nov	30-Nov	01-Dec	Municipality	29-Nov	30-Nov	01-Dec
Aalmane El-Chouf	ML	M	M	Aammiq El-Chouf	L	L	ML	Ain Ouzein	L	L	L
Ain Qani	L	L	ML	Ain Zhalta	L	ML	M	Ainbal	L	L	ML
Amatour	L	ML	M	Anout	L	ML	ML	Atrine	L	L	ML
Baadarane	L	M	M	Baaqline	L	L	ML	Baasir	ML	M	M
Barja	ML	M	M	Barouk	L	ML	M	Bater	L	ML	M
Batloun	L	L	ML	Bayqoun	L	M	M	Bchetfine	L	L	ML
Beiteddine	L	L	L	Benouati Ech-Chouf	L	L	L	Berjein	L	L	L
Bireh et Mtalleh	L	L	ML	Biret El-Chouf	L	L	ML	Bkechtine Ouel Mchei	L	L	L
Bkifa El-Chouf	L	ML	ML	Botme	L	L	L	Bqaiaa Ech-Chouf	L	L	L
Bsaba El-Chouf	L	ML	ML	Chammis El-Chouf	L	M	M	Chehim	L	L	ML
Chemaarine	L	L	L	Chourit	L	L	L	Daher El-Chouf	L	M	M
Dalhoun	L	ML	M	Damour	L	M	M	Daraya El-Chouf	L	L	ML
Deir El-Moukhalles	L	L	ML	Deir Baba	L	L	ML	Deir Dourit	L	L	L
Deir El-Qamar	L	L	ML	Deir Kouche	L	L	ML	Dibbieh	L	L	ML
Dmit	L	L	ML	Fouara Jaafar	L	L	ML	Fraidis El-Chouf	L	ML	M
Ghabet Jaafar	L	L	ML	Gharife	L	ML	ML	Haret Jandal	L	M	M
Hasrout	L	ML	ML	Jadra	ML	M	M	Jahlieh	L	L	L
Jbeih El-Chouf	L	M	M	Jdeidet El-Chouf	L	L	L	Jiyeh	ML	M	M
Jleiliyeh	L	ML	ML	Jmailiyeh	ML	M	M	Joun	L	ML	M
Kahlounie El-Chouf	L	ML	ML	Ketermaya	ML	M	M	Kfar Faqoud	L	L	ML
Kfar Hamal	L	L	ML	Kfar Him	L	L	ML	Kfar Katra	L	L	L
Kfar Niss	L	L	ML	Kfar hay	L	L	ML	Kfarnabrakh	L	L	ML
Khirbet Bisri	L	L	ML	Knayse El-Chouf	L	L	L	Maaniyeh	ML	M	M
Maasser Beiteddine	L	L	L	Maasser El-Chouf	L	ML	M	Majdalouna	ML	M	M
Majdel El-Meouch	L	L	L	Mazboud	L	ML	ML	Mazmoura	L	ML	ML
Mazraat El Chouf	L	ML	M	Mazraat El Daher	L	L	ML	Mazraat El-Douair	L	L	L
Mechref	L	L	ML	Mghairie	ML	M	M	Mghayrie El-Chouf	L	L	ML
Moukhtara	L	L	L	Mrusti	L	M	M	Mtolle	L	ML	ML
Naameh	L	ML	ML	Niha El-Chouf	L	M	M	Ouadi Abou Youssef	L	L	L
Ouadi Ed-Deir	L	L	ML	Ouadi El-Sit	L	L	ML	Ouadi bnehlav	L	L	L
Qraibeh	L	ML	ML	Qreiaa	L	L	ML	Rmayle El-Chouf	ML	M	M
Semqaniyeh	L	L	L	Sibline	ML	M	M	Sirjbeil	L	L	ML
Warhanieh	L	ML	M	Werdaniyeh	ML	M	M	Zaarourieh	L	ML	ML

Baabda

Municipality	29-Nov	30-Nov	01-Dec	Municipality	29-Nov	30-Nov	01-Dec	Municipality	29-Nov	30-Nov	01-Dec
Abadiyeh	L	L	ML	Ain Mouaffaq	L	L	ML	Araiya	L	L	ML

Arbaniyeh	L	L	M	Arsoun	L	ML	M	Baabda	L	M	M
Baalchmey	L	L	ML	Bmaryam	L	M	M	Bourj El-Brajneh	L	ML	M
Boutchay	L	ML	M	Bsaba Baabda	L	ML	M	Btekhney	L	ML	M
Btibyat	L	M	M	Bzebdine	L	ML	M	Chbeniyeh	L	M	M
Chiyah	ML	M	M	Chmeisset Baabda	L	ML	M	Chouit	L	L	ML
Deir El-harf	L	ML	M	Deir Khouna	L	ML	ML	Dlaybeh	L	ML	M
Falougha	ML	M	M	Furn El-Chebbak	M	M	M	Hadath Beyrouth	L	ML	M
Halaliyeh Baabda	L	L	ML	Hammana	L	ML	M	Haret El Sett	L	L	L
Haret Hamze	L	ML	ML	Haret Hreik	M	M	M	Hasbaiya El-Metn	VL	ML	M
Jouar El-Hoz	L	ML	M	Jouret Arsoun	L	ML	M	Kfar Chima	L	ML	M
Kfar Selouane	L	M	M	Khalouat Baabda	L	ML	M	Kneisset Baabda	L	ML	M
Laylakeh	L	ML	M	Louayzeh Baabda	L	L	ML	Merdache	L	ML	M
Mzairaa Baabda	L	L	ML	Ouadi Chahrour El OI	L	L	ML	Ouadi Chahrour El So	L	L	ML
Qalaa Baabda	L	ML	M	Qhraybe Baabda	L	M	M	Qobbayaa	L	ML	M
Qornayel	L	L	M	Qortada	L	M	M	Qrayeh Baabda	L	ML	M
Qsaibeh Baabda	L	M	M	Qtale Baabda	L	ML	M	Ras El Metn	L	ML	M
Ras El-Haref	L	M	M	Rouayset El-Ballout	L	L	ML	Salima Baabda	L	ML	M
Tahouitat El Ghadir	L	ML	M	Tarchich	L	M	M	Zandouqa	L	M	M

Aley

Municipality	29-Nov	30-Nov	01-Dec	Municipality	29-Nov	30-Nov	01-Dec	Municipality	29-Nov	30-Nov	01-Dec
Abey	L	L	ML	Aghmid	L	M	M	Ain Dara	L	M	M
Ain Drafil	L	L	ML	Ain El Halazoun	L	ML	ML	Ain El-Rmmaneh	L	L	L
Ain Jedideh	L	ML	ML	Ain Ksour	L	L	ML	Ain Onoub	L	ML	M
Ain Traz	L	L	ML	Ainab	L	ML	M	Aley	L	ML	ML
Aramoun	L	ML	ML	Aytat	L	ML	M	Azouniyeh	L	ML	M
Baawerta	L	L	ML	Badghan Oua Wadi Bad	L	ML	M	Bassatine	L	ML	M
Bayssour	L	ML	ML	Bchamoun	L	ML	M	Bdadoun	L	L	ML
Behouara	L	L	L	Bennay	L	L	ML	Bhamdoun El-Dayaa	L	ML	ML
Bhamdoun El-Mhatta	L	ML	ML	Bkhechtey	L	ML	ML	Bleibel	L	ML	M
Bmakine	L	ML	ML	Bmehray	L	M	M	Bouzrid	L	L	ML
Bserrine	L	ML	L	Bsous	L	L	L	Btalloun	L	ML	ML
Btater	L	ML	ML	Chanay	L	ML	ML	Charoun	L	ML	M
Chartoun	L	L	ML	Chemlane	L	ML	M	Choueifat El-Aamrous	L	ML	M
Choueifat El-Oumara	L	ML	M	Choueifat El-Quoubbe	L	ML	M	Dakkoun	L	L	ML
Deir Qoubel	L	ML	M	Dfoun	L	ML	ML	Douair El Remmaneh	L	L	ML
Ghaboun	L	L	L	Habramoun	L	L	L	Homs Oua Hama	L	ML	ML
Houmal	L	ML	M	Jisr El Qadi	L	L	ML	Kehaleh	L	L	L
Keyfoun	L	ML	ML	Kfar Aamey	L	L	ML	Kommatyeh	L	L	ML
Maasrati	L	L	ML	Majdel Baana	L	ML	ML	Mansourieh et Ain El	L	ML	ML
Mazraat El-Nahr	L	L	ML	Mchakhte	L	M	M	Mecherfeh	L	ML	ML
Mejdlaya	L	ML	L	Mrayjat	L	ML	M	Ramiyeh	L	L	ML
Rechmaya	L	L	ML	Rejmeh	L	L	L	Remhala	L	L	ML
Rouayset El Neemane	L	L	ML	Saoufar	L	ML	M	Selfaya	L	L	ML
Sirhmoul	L	ML	M	Souq El Ghareb	L	L	ML	Taazanieh	L	ML	ML

Kesrouane

Municipality	29-Nov	30-Nov	01-Dec	Municipality	29-Nov	30-Nov	01-Dec	Municipality	29-Nov	30-Nov	01-Dec
Achkout	L	ML	M	Adma Oua Dafneh	ML	M	M	Ain Ed-Delbe Kesroua	L	L	ML
Ain El-Rihane	ML	M	M	Aintoura Kesrouane	ML	M	M	Ajaltoun	L	ML	M
Akaybeh Kesrouane	M	M	M	Aramoun Kesrouane	L	M	M	Azra ouel Ozor	L	M	M
Ballouneh	L	ML	M	Batha	L	M	M	Bekaatat Achkout	L	ML	M
Bekaatat Kanaan	L	ML	M	Bizhel	L	M	M	Bouar	M	M	M
Bqaatouta	L	ML	M	Bqaq Ed-Dine	M	M	M	Bzommar	L	M	M
Chahtoul	L	M	M	Chnaniir	L	M	M	Chouan	L	L	ML
Daraya Kesrouane	VL	ML	M	Daroun	L	M	M	Deir Baqlouch	ML	M	M
Diebta	L	ML	M	Eghbeh	VL	L	M	Faraya	L	M	M
Fatka	L	M	M	Feytroun	L	L	M	Ghazir	L	M	M
Ghbaleh Kesrouane	L	M	M	Ghedrass	L	ML	M	Ghosta	L	M	M
Ghyneh	L	M	M	Harharaya w Kattine	L	ML	M	Harissa Kesrouane	ML	M	M
Hayata	L	ML	M	Hosein	L	ML	M	Hrajel	L	M	M
Jdeideh Ghazir	L	M	M	Jeita	L	M	M	Jounieh Ghadir	M	M	M
Jounieh Haret Sakhr	M	M	M	Jounieh Salel Alma	ML	M	M	Jounieh Sarba	M	M	M
Jouret Bedrane	L	M	M	Jouret Mhad	L	ML	M	Jouret Termos	L	M	M
Kfar Debiane	L	ML	M	Kfar Tay Kesrouane	L	ML	M	Kfar Yassine	M	M	M
Kfour Kesrouane	L	M	M	Kharayeb Nahr Ibrahi	ML	M	M	Klayaat Kesrouane	L	ML	M
Maarab	VL	ML	M	Maaysra Kesrouane	L	M	M	Mayrouba	L	ML	ML
Mazraat Er-Ras	ML	M	M	Mazraat Mrah El-Mir	VL	M	M	Mchaa El Ftouh	L	M	M
Mchaa Faraya	L	M	M	Mchaa Kfar Dibiane	L	M	M	Mghaer	VL	L	ML
Mradiyah	L	M	M	Nahr Ed-Dahab	L	ML	M	Nammoura Kesrouane	L	M	M
Ouata El Jaouz	L	ML	M	Ouata Sillam	M	M	M	Raachine	L	L	M
Rayfoun	L	M	M	Safra Kesrouane	M	M	M	Shayle Kesrouane	L	M	M
Tabarja	M	M	M	Yahchouch	L	M	M	Zaaytreh	L	M	M
Zeytoun	L	M	M	Zouk Mikael	M	M	M	Zouk Mosbeh	M	M	M

Baalbek_Hermel

Baalbek

Municipality	29-Nov	30-Nov	01-Dec	Municipality	29-Nov	30-Nov	01-Dec	Municipality	29-Nov	30-Nov	01-Dec
Aadous	M	M	M	Aamchki	ML	M	M	Aarsal	ML	M	M
Ain Baalbek	M	M	M	Ain Bourday	ML	M	M	Ain El-Benye	ML	M	M
Ain El-Jaouz Baalbek	ML	M	M	Ain El-Siya Chadoura	ML	M	M	Al Khodr Baalbek	ML	M	M
Al Nabi Chit	ML	M	M	Aynata Baalbek	M	M	M	Baalbek	ML	M	M
Bachwat	M	M	M	Barqa	M	M	M	Bednayel Baalbak	ML	M	M
Beit Chama	ML	M	M	Bijjaje	M	M	M	Bouday	M	M	M
Brital	ML	M	M	Btadi	M	M	M	Chaat	M	M	M
Chaibe	ML	M	M	Chlifa	M	M	M	Chmestar	ML	M	M
Dar El-Oussa	M	M	M	Deir El-Ahmar	M	M	M	Deir Mar Maroun Baal	M	M	M
Douris	ML	M	M	Fakiha	M	M	M	Hadath Baalbek	ML	M	M
Ham	ML	M	M	Haour Taala	ML	M	M	Hizzine	ML	M	M
Hlebta	M	M	M	Hosh Barada	ML	M	M	Hosh El Dahab	M	M	M
Hosh El Snid	ML	M	M	Hosh El-Nabi	ML	M	M	Hosh El-Rafiq	ML	M	M
Hosh Tal Safiya	M	M	M	Hrebta	M	M	M	laat	M	M	M

Jebaa	ML	M	M	Jenta	L	M	M	Kfar Dabach	ML	M	M
Kfar Dane	ML	M	M	Khraibeh El-Hermel	M	M	M	Khreibet Baalbek	ML	M	M
Kneisset Baalbek	M	M	M	Labueh	M	M	M	Maarboun	ML	M	M
Majdaloun	ML	M	M	Maqneh	M	M	M	Mazraat Beit Mcheik	ML	M	M
Misraya	ML	M	M	Moqraq	M	M	M	Nabha El-Damdoum	M	M	M
Nabi Chbay	ML	M	M	Nabi Osman	M	M	M	Nahleh baalbek	ML	M	M
Ouadi El-Oss	M	M	M	Qaa Baayoun	M	M	M	Qaa Jouar Maqiye	M	M	M
Qaa Ouadi El-Khanzir	M	M	M	Qah Baalbek	M	M	M	Qarha Baalbek	M	M	M
Qsarnaba	ML	M	M	Ram Baalbek	M	M	M	Ras Baalbek El Sahl	M	M	M
Ras Baalbek El-Charq	M	M	M	Riha	M	M	M	Saaide	ML	M	M
Sbouba	M	M	M	Seriine El-Tahta	ML	M	M	Slouqi	ML	M	M
Taiba Baalbek	ML	M	M	Talia	ML	M	M	Taraiya	ML	M	M
Temnin El-Fawqa	ML	M	M	Temnin El-Tahta	ML	M	M	Tfail	ML	M	M
Yahfoufa	ML	M	M	Yammouneh	ML	M	M	Younine	M	M	M
Zboud	M	M	M								

Hermel

Municipality	29-Nov	30-Nov	01-Dec	Municipality	29-Nov	30-Nov	01-Dec	Municipality	29-Nov	30-Nov	01-Dec
Charbine El-Hermel	M	M	M	Hermel Jbab	ML	M	M	Hermel	M	M	M
Maaysra El-Hermel	M	M	M	Michaa Mrajhine	ML	ML	M	Ouadi Faara	M	M	M
Ras Baalbek - Ouadi	M	M	M	Ras Baalbek El Gharb	M	M	M	Zighrine	M	M	M

Akkar

Akkar

Municipality	29-Nov	30-Nov	01-Dec	Municipality	29-Nov	30-Nov	01-Dec	Municipality	29-Nov	30-Nov	01-Dec
Aain Tinta	L	M	ML	Aaiyat	L	M	ML	Aakkar El-Aatiga	L	ML	M
Aamar Akkar	ML	M	M	Aamar El Baykat	ML	M	M	Aamayer	L	M	M
Aamriyet Akkar	ML	M	ML	Aandqet	L	M	M	Aarmeh	L	M	M
Aarqa	ML	M	M	Aawaynat	L	M	ML	Aayoun Akkar	L	M	M
Abboudiye	ML	M	M	Ain El-Zeit	ML	M	ML	Ain Yaaqoub	L	M	M
Akroum	L	M	M	Aridet Cheikh Zennad	M	M	M	Baldehy w Mazraat Bal	ML	M	M
Barcha	ML	M	M	Bardeh	L	M	ML	Bebnine	ML	M	M
Beino	L	M	M	Beit Ayoub	L	M	M	Beit El-Haouch	ML	M	M
Beit Mellat	L	M	M	Beit Younes	L	ML	ML	Berbara Akkar	L	M	ML
Berqayel	L	M	M	Bezbina	L	L	M	Bireh Akkar	L	M	ML
Borj	L	M	ML	Bqerezla	L	M	M	Bzal	L	ML	M
Chane	L	L	M	Chaqdouf	L	M	ML	Charbila	ML	M	M
Cheikh Mohammad	ML	M	M	Cheikh Taba Es-Sahl	ML	M	M	Cheikh Taba	L	M	M
Cheikh Zennad	M	M	M	Cheikhlar	L	M	ML	Chir Hmairine	ML	M	M
Daghle	L	M	ML	Dahr Laissine	L	M	M	Darine	ML	M	M
Dawra	L	M	M	Dawsa w Baghdadi	L	M	ML	Dayret Nahr El-Kabir	L	ML	ML
Deir Dalloum	ML	M	M	Deir Jennine	L	M	ML	Denbou	L	ML	M
Dibbabiye	ML	M	ML	Douair Aadwiyeh	L	M	ML	Fassikine	L	M	ML
Fnaydek	L	ML	M	Fraydes Akkar	L	M	L	Ghazayle	ML	M	M
Habchit	L	L	M	Hakour	L	M	M	Halba	ML	M	M

Haouchab	ML	M	M	Haysat	M	M	M	Haytla	ML	M	M
Hayzouq	L	M	M	Hedd	ML	M	M	Hmaira Aakkar	L	M	M
Hmaiss Aakkar	ML	M	M	Hnaider	L	M	M	Hokr Ed-Dahri	M	M	M
Hokr Etti	ML	M	M	Hokr Jouret Srar	ML	M	M	Houaich	L	ML	M
Hrar	L	M	M	Idbil	L	M	M	Ilal	L	M	M
Janine	ML	M	M	Jdeidet El-Joumeh	L	M	M	Jdeidet El-Kaiteh	L	M	M
Jebrayel	L	M	M	Kafr	M	M	M	Kafr	ML	M	ML
Karm Asfour	L	M	M	Kfar Melki Aakkar	M	M	M	Kfar Noun	L	M	ML
Kfarharra	ML	M	M	Khalsa	L	M	ML	Kharnoubet Aakkar	ML	M	M
Khirbet Daoud Aakkar	ML	M	ML	Khirbet El Remmane	L	ML	ML	Khirbet Shar	L	M	ML
Khoreybet El-Jindi	ML	M	M	Khreibet Aakkar	L	M	M	Kneisset Aakkar	M	M	M
Kneisset Hnaider	L	M	M	Knisse	ML	M	M	Kroum El-Aarab	ML	M	M
Kwachra	ML	M	ML	Kweykhata	ML	M	M	Machta Hammoud	L	M	ML
Majdala	ML	M	M	Majdel Akkar	ML	M	ML	Mar Touma	L	M	M
Marlaya Melhem	ML	M	M	Mashha	L	M	M	Massoudiye	M	M	M
Mazraat Beit Ghattas	ML	M	M	Mazraat En-Nahriye	L	ML	ML	Mechmech	L	ML	M
Memneh	L	L	M	Mhammara	ML	M	M	Mighraq Aakkar	M	M	M
Minyara	ML	M	M	Moqayteh	M	M	M	Mounjez	L	M	ML
Msalla	ML	M	ML	Mzeihmeh	ML	M	M	Nfaisch	L	M	M
Noura Et-Tahta	L	M	ML	Ouadi El-Haour	ML	M	M	Ouadi El-Jamous	ML	M	M
Ouyoun El-Ghizlane	L	M	M	Qaabarine	M	M	M	Qabaait	L	ML	M
Qachlaq	ML	M	M	Qantara Aakkar	L	M	M	Qarha Aakkar	L	M	M
Qarqaf	L	M	M	Qboula	L	M	ML	Qleiaat Aakkar	M	M	M
Qloud El-Baqie	L	M	M	Qobaiyat Aakkar	L	ML	M	Qobbat Chamrat	ML	M	M
Qorayat	L	ML	ML	Qornet Aakkar	L	M	ML	Qsair Aakkar	L	M	ML
Rahbe	L	M	M	Rihaniyet Aakkar	ML	M	M	Rmah	L	M	ML
Rmoul	M	M	M	Saadine	ML	M	M	Sadaqa	L	M	M
Saidnaya	ML	M	M	Sammouniye	M	M	M	Sayssouq	ML	M	M
Semmaqiye	M	M	M	Semmaqli	ML	M	M	Sfinet El-Dreib	ML	M	M
Sfinet El-Qaitaa	L	M	M	Sindyanet Zeidane	L	M	ML	Souaisset Aakkar	ML	M	M
Srar	ML	M	M	Tal Abbas El Gharby	ML	M	M	Tal Abbas El-Charqy	L	M	M
Tal Biret	M	M	M	Tal Hmayra	ML	M	M	Tal Maayan Tal Kiri	M	M	M
Tal Sibel	M	M	M	Tallet Chattaha	L	M	ML	Tikrit	L	M	M
Tleil	ML	M	M	Tshea	L	ML	ML	Zawarib	L	M	M
Zouq El Hosniyeh	L	M	M	Zouq El-Haddara	ML	M	M	Zouq El-Hbalsa	L	M	M
Zouq El-Moqachrine	L	M	M								

Sud

Sour

Municipality	29-Nov	30-Nov	01-Dec	Municipality	29-Nov	30-Nov	01-Dec	Municipality	29-Nov	30-Nov	01-Dec
Aaiyeh	L	M	M	Aalma El-Chaab	M	M	M	Aaytit	L	M	M
Abbassiyeh Sour	M	M	M	Abou Chech	ML	M	M	Ain Abou Abdallah	M	M	M
Ain Baal	ML	M	M	Arzoun	ML	M	M	Aziyeh	M	M	M
Baflaya	ML	M	M	Barich	ML	M	ML	Batouliyeh	ML	M	M
Bayad	L	M	M	Bazouriyeh	ML	M	M	Bediass	ML	M	ML

Bestiyat	ML	M	ML	Borj El Chemali	M	M	M	Borj En-Naqoura	M	M	M
Borj Rahhal	ML	M	ML	Boustane	ML	M	M	Btaychih	ML	M	M
Chaaitiye	ML	M	M	Chameh	ML	M	M	Chehabiye	ML	M	M
Chehour	ML	M	M	Chihine	ML	M	M	Debaal Sour	L	M	M
Deir Amess	L	M	M	Deir Kifa	ML	M	M	Deir Qanoun El-Ain	ML	M	M
Deir Qanoun El-Naher	L	M	M	Derdghaiya	ML	M	M	Dhayra	ML	M	M
Halloussiyeh	ML	M	ML	Hamoul	M	M	M	Hanaouey	L	M	M
Henniye	ML	M	M	Hmairi Sour	ML	M	ML	Iskandarouna Sour	M	M	M
Jbal El Botom	L	M	M	Jebbin	ML	M	M	Jennata	ML	M	ML
Jijim	ML	M	M	Jouaiya	L	M	M	Kneisset Sour	ML	M	M
Maarake	ML	M	ML	Maaroub	ML	M	ML	Majadel	L	M	M
Majdalzoun	ML	M	M	Mansouri Sour	ML	M	M	Marnba	ML	M	M
Marouahine	L	M	M	Mazraat El-Zalloutiy	ML	M	M	Mazraat Mechref	L	M	M
Mazraat Tayr Semhat	ML	M	M	Mheilib	M	M	M	Neffakhiyeh	ML	M	M
Niha Sour	ML	M	M	Ouadi Jilo	L	M	M	Qana	L	M	M
Qolaileh Sour	ML	M	M	Rechknany	L	M	M	Rmadiyah	L	M	M
Selha Sour	ML	M	M	Siddiqine	L	M	M	Sour	ML	M	M
Srifa	ML	M	M	Tayr Debbe	ML	M	M	Tayr Felsay	ML	M	ML
Tayr Harfa	ML	M	M	Touayri	ML	M	M	Toura	ML	M	ML
Yanouh Sour	ML	M	ML	Yarine	ML	M	M	Zebqine	L	M	M

Saida

Municipality	29-Nov	30-Nov	01-Dec	Municipality	29-Nov	30-Nov	01-Dec	Municipality	29-Nov	30-Nov	01-Dec
Aanqoun	ML	M	M	Aaqtanit	ML	M	M	Aarab Ej-Jall	ML	M	M
Aarab Tabbaya	ML	M	M	Abra Saida	ML	M	M	Adloun	M	M	M
Adousiyeh	M	M	M	Ain-El-Deleb	ML	M	M	Arzai	ML	M	M
Babliyah	M	M	M	Barty	L	M	M	Bissariyeh	M	M	M
Bnaafoul	ML	M	M	Bqosta	ML	M	M	Bramiy --	ML	M	M
Daoudiyeh	M	M	M	Dareb El-Sim	ML	M	M	Erkay	ML	M	M
Ghassanieh	ML	M	M	Ghazieh	M	M	M	Hajjeh	ML	M	M
Haret Saida	ML	M	M	Hartiyeh	M	M	M	Hlaliye Saida	ML	M	M
Insariyat	M	M	M	Jazira Saida	ML	M	M	Kafar Bit	ML	M	M
Kaoutariyet El-Siyad	ML	M	M	Kfar Chellal	ML	M	M	Kfar Hatta Saida	ML	M	M
Kfar Milke Saida	ML	M	M	Khartoum	ML	M	M	Khaziz	ML	M	M
Khirbet Ed-Douair Sa	M	M	M	Khirbet El-Bassal	ML	M	M	Khrayeb Saida	ML	M	M
Loubieh	M	M	M	Maghdouche	ML	M	M	Majdelyoun	ML	M	M
Matariyet El-Choumar	ML	M	M	Matayriyeh	ML	M	M	Mazraat 'Mseileh	M	M	M
Mazraat 'Snaiber	M	M	M	Mazraat Aarab Soukka	ML	M	M	Mazraat Deir Taqla	M	M	M
Mazraat El Yahoudiye	M	M	M	Mazraat El-Housseini	M	M	M	Mazraat El-Mhaydaleh	ML	M	M
Mazraat El-Ouasta	M	M	M	Mazraat Jamjim	M	M	M	Mazraat Kaoutariyet	M	M	M
Mazraat Kfar Badda	M	M	M	Mazraat Oussamiyat	ML	M	M	Mazraat Sari	M	M	M
Mazraat Sinai	ML	M	M	Meemariyeh	ML	M	M	Merouaniyeh	ML	M	M
Miyeh ou Miyeh	ML	M	M	Najjariyeh	M	M	M	Qaaqiyat El-Snaouba	M	M	M
Qnarit	ML	M	M	Qraiye Saida	ML	M	M	Saida Ed-Dekermane	ML	M	M
Saida El-Oustani	ML	M	M	Saida El-Qadimeh	ML	M	M	Saida Kefraya	ML	M	M
Saksakiyeh	M	M	M	Salhieh Saida	ML	M	M	Sarafand	M	M	M

Sfenta	L	M	M	Tafahta	ML	M	M	Tanbourit	ML	M	M
Tebna	M	M	M	Zaghdraiya	ML	M	M	Zeita	ML	M	M
Zrariyeh	ML	M	M								

Jezzine

Municipality	29-Nov	30-Nov	01-Dec	Municipality	29-Nov	30-Nov	01-Dec	Municipality	29-Nov	30-Nov	01-Dec
Ain El-Mir (El Estab)	ML	M	M	Anane	L	L	ML	Aramta	L	M	M
Ariya	L	ML	M	Aychiyeh	ML	M	M	Azour	L	L	ML
Baba	L	L	ML	Bayssour Jezzine	ML	M	M	Benoueteh Jezzine	L	ML	M
Bhannine	L	ML	M	Bisri	L	L	ML	Bkassine	L	ML	M
Bouslaya	L	M	M	Btedine El-Leqech	L	L	ML	Chbail	L	M	M
Choualiq Jezzine	ML	M	M	Dahr Ed-Deir	L	M	M	Deir El Qattine	L	M	M
Demachqiyeh	ML	M	M	Ghabbatiyeh	L	ML	M	Harf Jezzine	L	L	ML
Hassaniyeh	ML	M	M	Haytouleh	L	M	M	Haytura	L	M	M
Hidab	L	M	M	Homsiyeh	L	ML	ML	Jabal Toura	L	M	M
Jarmaq	ML	M	M	Jensnaya	ML	M	M	Jernaya	L	M	M
Jezzine	L	M	M	Karkha	L	M	M	Kfar Falous	L	M	M
Kfar Houna	L	M	M	Kfar Jarrah	ML	M	M	Lebaa	ML	M	M
Louayzet Jezzine	L	M	M	Machmouche	L	ML	M	Mahmoudiyeh Jezzine	ML	M	M
Maknounye Jezzine	L	M	M	Maraat Ouazaiyeh	ML	M	M	Mazraat Daraya	L	M	M
Mazraat El-Aarqoub	ML	M	M	Mazraat El-Mathane	L	L	ML	Mazraat El-Rahbane	L	M	M
Mazraat Khallet Khaz	ML	M	M	Mazraat Louzid (Loua	L	M	M	Mazraat Qrouh	M	M	M
Mazraat Tamra	ML	M	M	Mazraat Zighrine Jez	ML	M	M	Mazraat	L	M	M
Mharbiyeh	ML	M	M	Midane Jezzine	L	ML	M	Mjeydel Jezzine	ML	M	M
Mlikh	L	M	M	Mrah El-Hbasse	ML	M	M	Ouadi Baanqoudaine	ML	M	M
Ouadi El-Laymoun	ML	M	M	Ouardiyeh	L	M	M	Qabaa Jezzine	L	M	M
Qatrani	ML	M	M	Qaytouleh	L	M	M	Qtaleh Jezzine	L	L	ML
Rihane Jezzine	ML	M	M	Rimat	L	M	M	Roum	L	ML	M
Roummanet	L	M	M	Sabbah	L	ML	M	Saydoun	L	M	M
Sfaray	L	L	ML	Snaya	L	M	M	Sojoud	ML	M	M
Srayri	ML	M	M	Taaid	L	L	ML	Wadi Jezzine	L	ML	M
Zhalta	L	M	M								

Bekaa

West Bekaa

Municipality	29-Nov	30-Nov	01-Dec	Municipality	29-Nov	30-Nov	01-Dec	Municipality	29-Nov	30-Nov	01-Dec
Aammiq BG	ML	M	M	Ain El Tineh BG	L	M	M	Ain Zebdeh	L	M	M
Ana	L	M	M	Aytanit	L	M	M	Baaloul BG	L	M	M
Bab Mareh	L	M	M	Chouberqiye Aammiq	ML	M	M	Dakoue	ML	M	M
Deir Ain El-Jaouze	L	M	M	Deir Tahniche	ML	M	M	Ghaza	ML	M	M
Harime El-Soughra	ML	M	M	Hoch Harimeh	ML	M	M	Jazira BG	ML	M	M
Jib Jennine	L	M	M	Kamed-El-Laouz	L	M	ML	Kefraya BG	L	ML	M
Khiara El Atika	ML	M	M	Khiara	ML	M	M	Khirbet Qanafar	L	M	M
Lala	L	M	M	Lebbaya BG	L	M	M	Loussa	ML	M	M
Machghara	L	M	M	Manara (Hammara) BG	L	M	M	Mansoura BG	ML	M	M

Marej BG	ML	M	M	Maydoun	ML	M	M	Ouaqf BG	ML	M	M
Qaraaoun	L	M	M	Qelya	ML	M	ML	Raouda (Istabel)	ML	M	M
Saghbine	L	M	M	Sohmor	L	M	M	Soltan Yacoub el Ara	ML	M	M
Souairy	ML	M	M	Sultan Yaacoub	ML	M	M	Tal Znoub	ML	M	M
Yehmor BG	L	M	M	Zilaya	L	M	M				

Zahle

Municipality	29- Nov	30- Nov	01- Dec	Municipality	29- Nov	30- Nov	01- Dec	Municipality	29- Nov	30- Nov	01- Dec
Aanjar (Haouch Mouss	ML	M	M	Ablah	ML	M	M	Ain Kfarzabad	L	M	M
Ali-El-Nahri	ML	M	M	Bar Elias	ML	M	M	Bouarej	ML	M	M
Cheberqiyet Tabet	ML	M	M	Chtaura	ML	M	M	Deir El Ghazal	L	M	M
Delhamiyet Zahle	ML	M	M	Ferzol	ML	M	M	Haouch El-Ghanam	ML	M	M
Haouch Es-Siyadeh	ML	M	M	Haouch Hala	ML	M	M	Haouch Mandara	ML	M	M
Haouch Qayssar	ML	M	M	Hezerta	L	M	M	Hosh Moussa	L	M	M
Jdita	ML	M	M	Kfarzabad	L	M	M	Ksara	ML	M	M
Majdel Aanjar	ML	M	M	Makssi	ML	M	M	Massa	ML	M	M
Mazraat Er-Remtaniye	ML	M	M	Mrayjat Zahle	ML	M	M	Mzaraa Zahle	ML	M	M
Nabi Ayla	ML	M	M	Nasriyet Rizk	ML	M	M	Nasriyet Zahle	ML	M	M
Niha Zahle	ML	M	M	Ouadi Ed-Deloum	ML	M	M	Ouadi El-Arayech	L	M	M
Qaa El Rim	L	M	M	Qab Elias	ML	M	M	Qousaya	L	M	M
Rhit	L	M	M	Riyak	ML	M	M	Saadnayel	ML	M	M
Taal El-Akhdar	ML	M	M	Taalbeya	ML	M	M	Taanayel	ML	M	M
Talamara	ML	M	M	Tcheflik Edde Haouch	ML	M	M	Tcheflik Qiqano	ML	M	M
Terbol Zahle	L	M	M	Touaite Zahle	L	M	M	Zahle Aradi	ML	M	M
Zahle El-Berbara	L	M	M	Zahle El-Maallaqa	ML	M	M	Zahle El-Midane	L	M	M
Zahle Er-Rassiyeh	L	M	M	Zahle Haouch El-Ouma	ML	M	M	Zahle Haouch El-Ouma	ML	M	M
Zahle Haouch Ez-Zara	ML	M	M	Zahle Maalaqa Aradi	ML	M	M	Zahle Mar Antonios	L	M	M
Zahle Mar Elias	ML	M	M	Zahle Mar Gerios	ML	M	M	Zahle Saydet En-Naja	ML	M	M
Zebdoul	ML	M	M								

Rachaiya

Municipality	29- Nov	30- Nov	01- Dec	Municipality	29- Nov	30- Nov	01- Dec	Municipality	29- Nov	30- Nov	01- Dec
Ain Arab Rachaiya	L	M	M	Ain Ata	L	M	M	Ain Harche	L	M	M
Aqabe Rachaya	L	M	ML	Ayha	L	M	M	Ayta El Fokhar	L	M	M
Bakifa Rachaya	L	M	M	Bakka	L	M	M	Beit Lahya	L	M	ML
Bireh Rachaiya	L	M	M	Daher El Ahmar	L	M	M	Deir El-Achayer	ML	M	M
Heloua Rachaiya	ML	M	M	Hoch El Qannabeh Rac	L	M	M	Kaoukaba Bou Arab	L	M	M
Kfar Danis	L	M	M	Kfar Mechki	L	M	M	Kfar Qouq	L	M	M
Kherbet Rouha	L	M	M	Majdel Balhiss	L	M	M	Mdoukha	L	M	M
Mhaydseh Rachaiya	L	M	M	Nabi Safa	L	M	M	Rachaiya	L	M	M
Rafid Rachaiya	L	M	M	Selsata (Mazraat Dei	ML	M	M	Tannoura	L	M	M
Yanta	L	M	M								

Beyrouth

Beyrouth

Municipality	29- Nov	30- Nov	01- Dec	Municipality	29- Nov	30- Nov	01- Dec	Municipality	29- Nov	30- Nov	01- Dec
--------------	---------	---------	---------	--------------	---------	---------	---------	--------------	---------	---------	---------

Achrafieh	M	M	M	Ain el-Mreisse	M	M	M	Bachoura	M	M	M
Beirut Central Distr	M	M	M	Marfai	M	M	M	Mazraa	M	M	M
Medaouar	M	M	M	Minet el-Hosn	M	M	M	Mwssaitbeh	M	M	M
Ras Beirut	M	M	M	Rmeil	M	M	M	Saifi	M	M	M
Zqaq el-Blat	M	M	M								