

Lebanon Fire Risk Bulletin



CIVIL DEDEFENCE

Refer to cadast table condition.

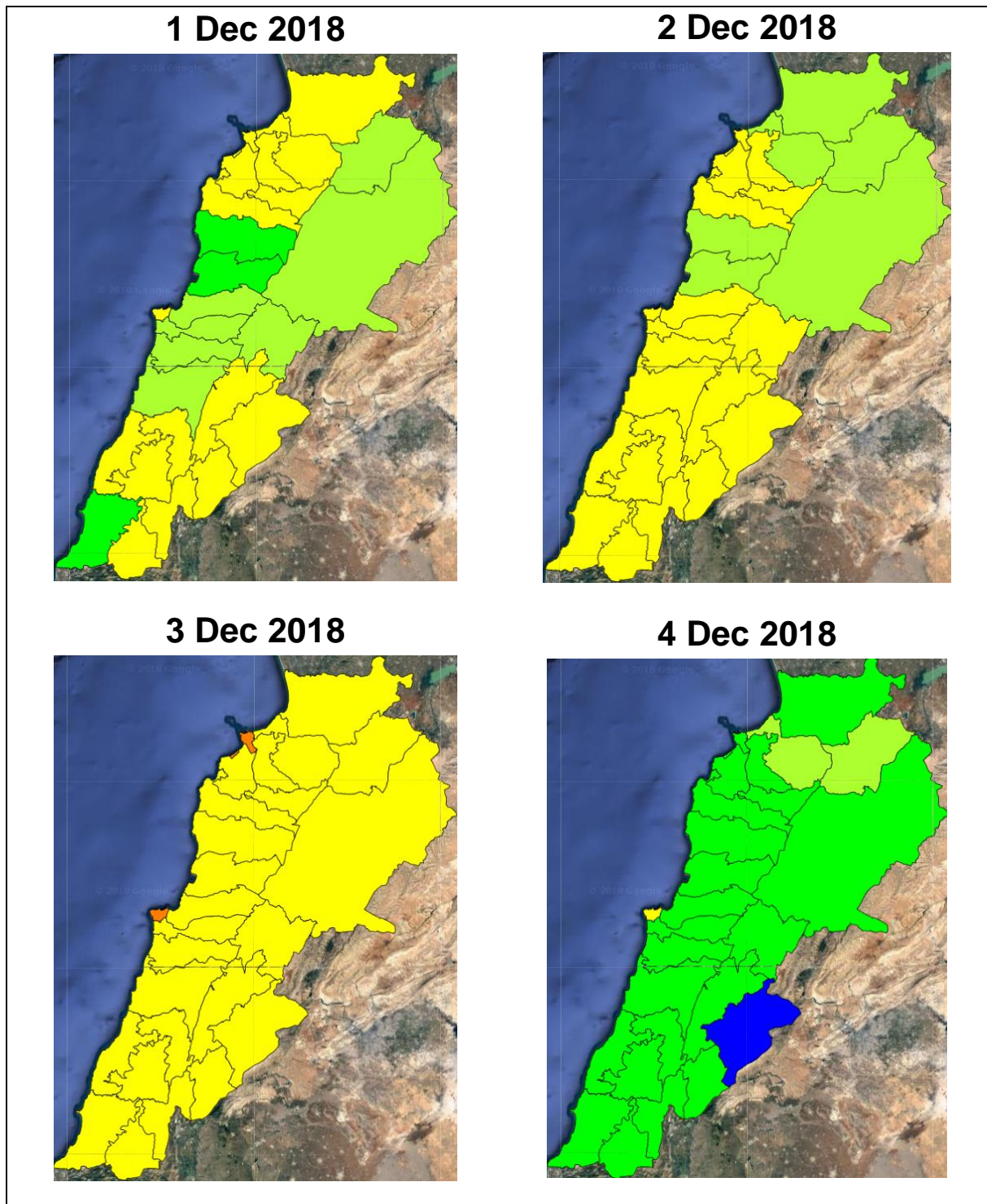
Please note that the indicated temperature is at 2 meters height from the ground.

General description of potential fire risk situation

Symbol	Level of risk	Meaning and actions
VL	Very low	Very low fire risk. Controlled burning operations can be hardly executed due to high fuel moisture content. Normally wildfires self-extinguish.
L	Low	Low fire risk. Controlled burning operations can be executed with a reasonable degree of safety.
ML	Medium low	Medium-low fire risk. Controlled burning operations can be executed in safety conditions. All the fires need to be extinguished.
M	Medium	Medium fire risk. Controlled burning operations would be avoided. All the fires need to be very well extinguished.
MH	Medium high	Controlled burning is not recommended. Open flame will start fires. Cured grasslands and forest litter will burn readily. Spread is moderate in forests and fast in exposed areas. Patrolling and monitoring is suggested. Fight fires with direct attack and all available resources.
H	High	Ignition can occur easily with fast spread in grass, shrubs and forests. Fires will be very hot with crowning and short to medium spotting. Direct attack on the head may not be possible requiring indirect methods on flanks. Patrolling and monitoring the territory is highly suggested.
E	Extreme	Ignition can occur also from sparks. Fires will be extremely hot with fast rate of spread. Control may not be possible during day due to long range spotting and crowning. Suppression forces should limit efforts to limiting lateral spread. Damage potential total. Patrolling and monitoring the territory is highly suggested.

Beirut, 2 December 2018

FIRE RISK INDEX

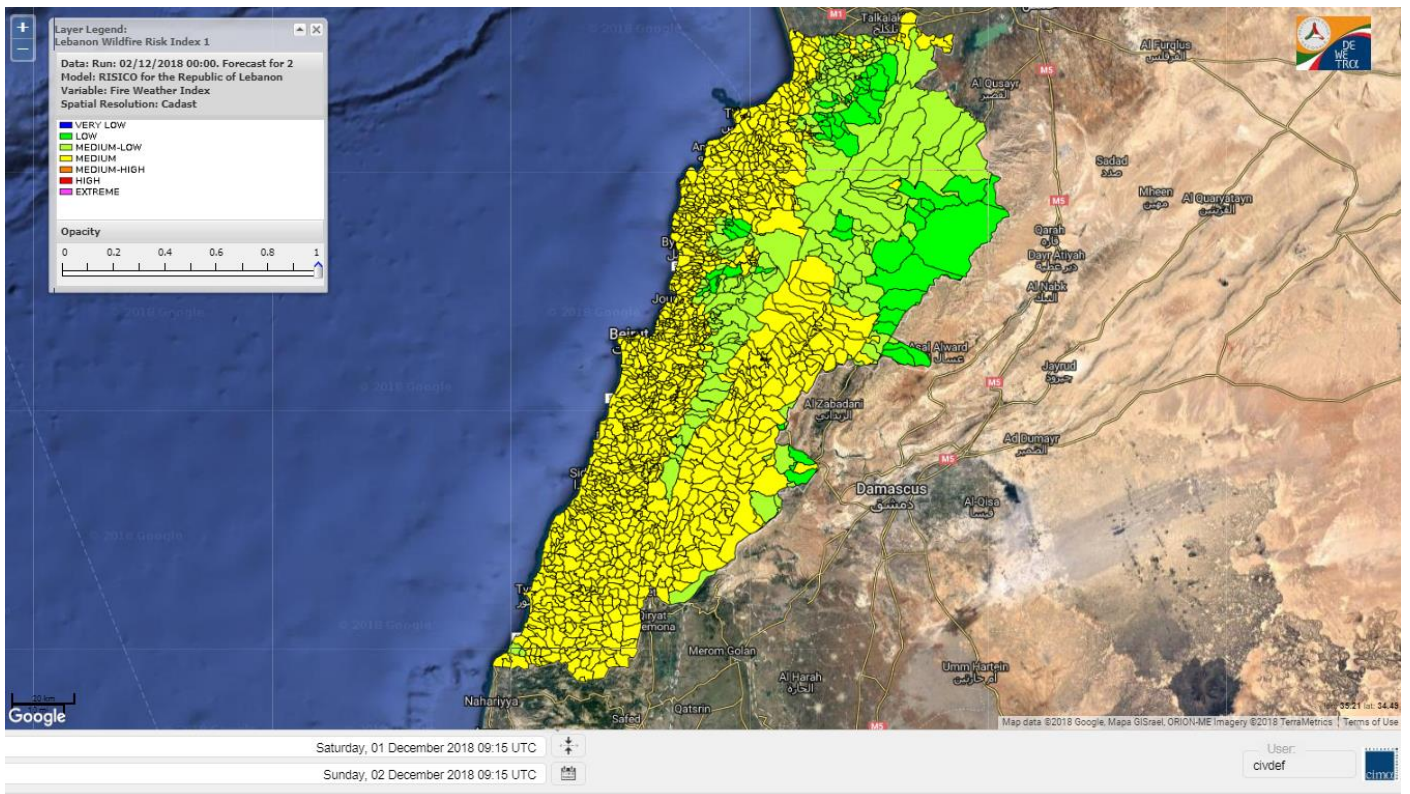


Layer Legend:
Lebanon Wildfire Risk Index 1

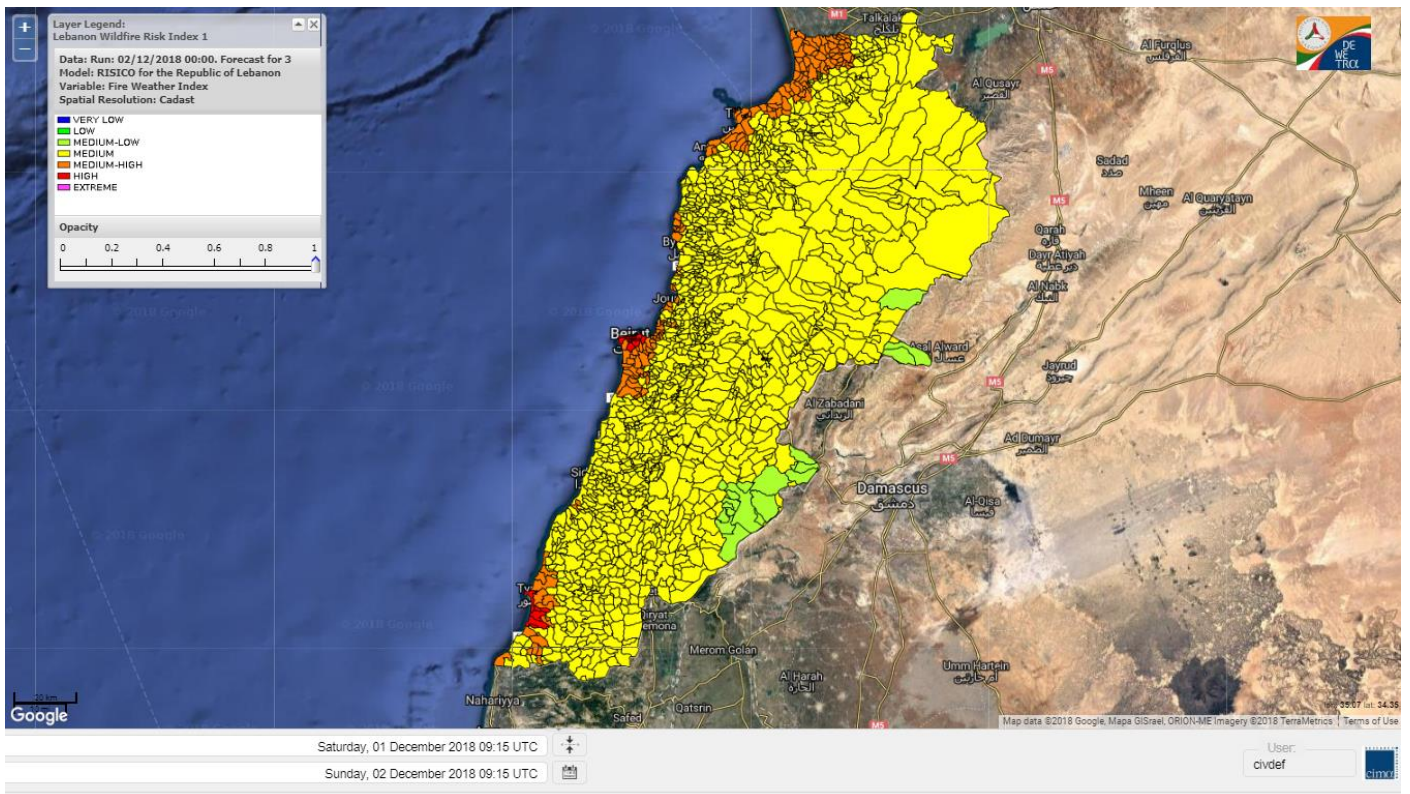
Data: Run: 02/12/2018 00:00. Forecast for 2
Model: RISICO for the Republic of Lebanon
Variable: Fire Weather Index
Spatial Resolution: Caza

- VERY LOW
- LOW
- MEDIUM-LOW
- MEDIUM
- MEDIUM-HIGH
- HIGH
- EXTREME

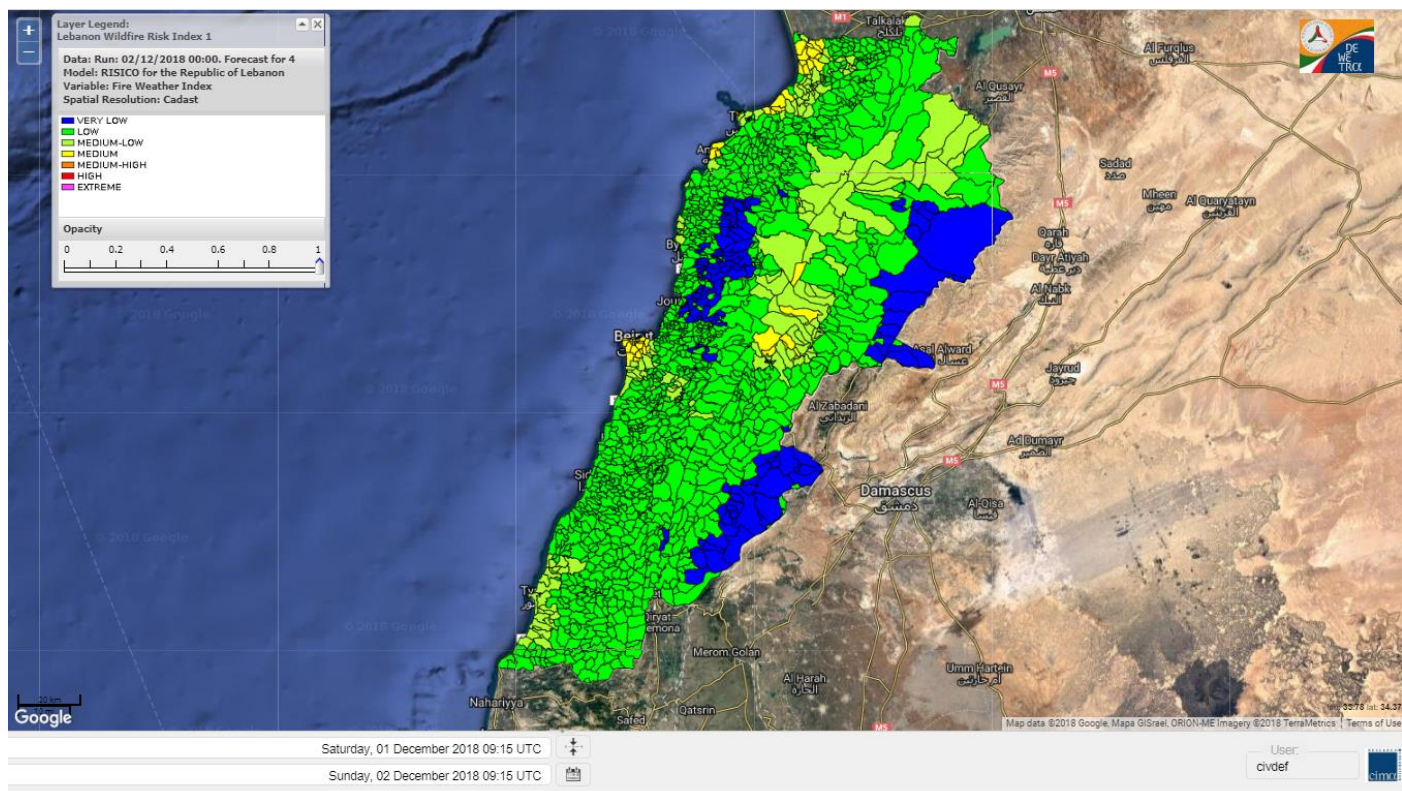
Lebanon for 2 Dec 2018



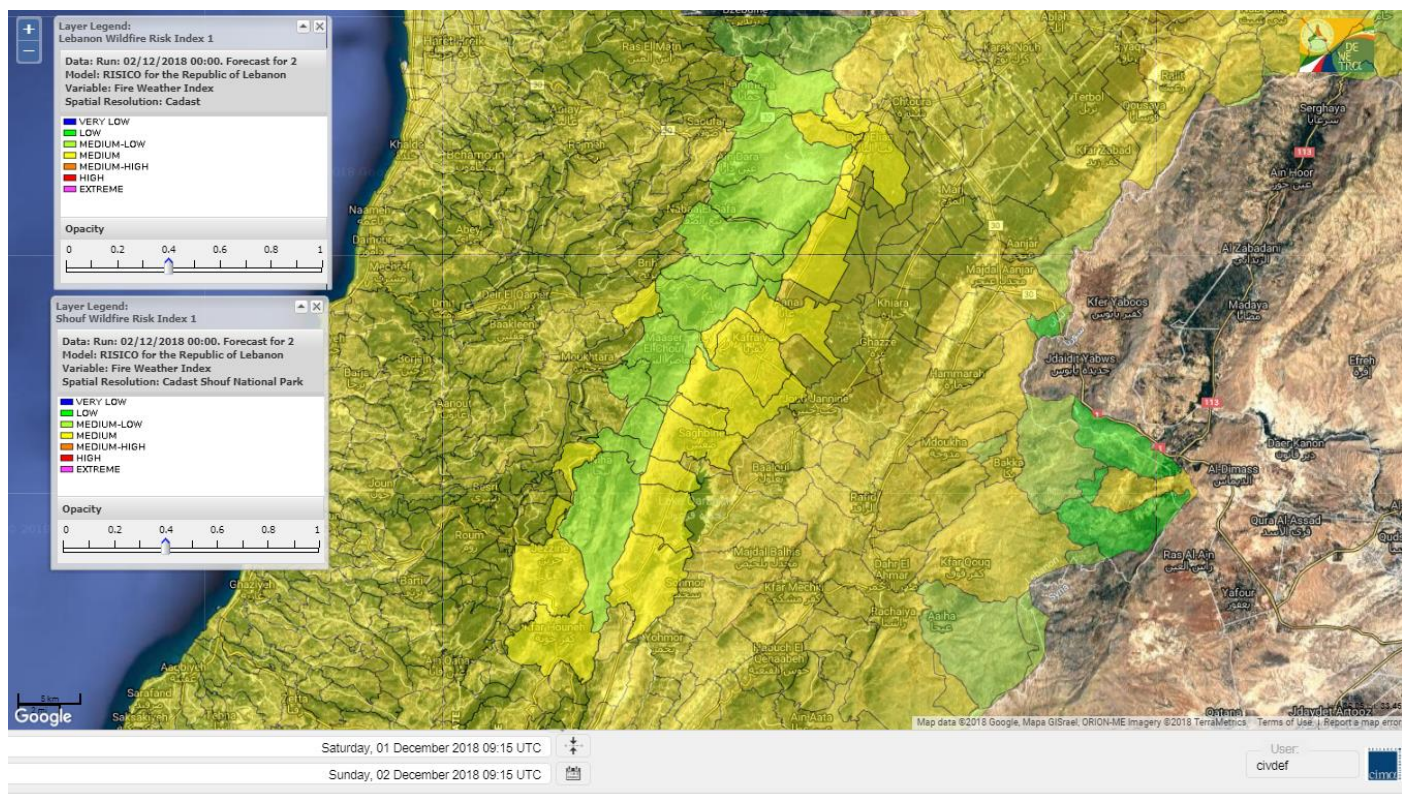
Lebanon for 3 Dec 2018



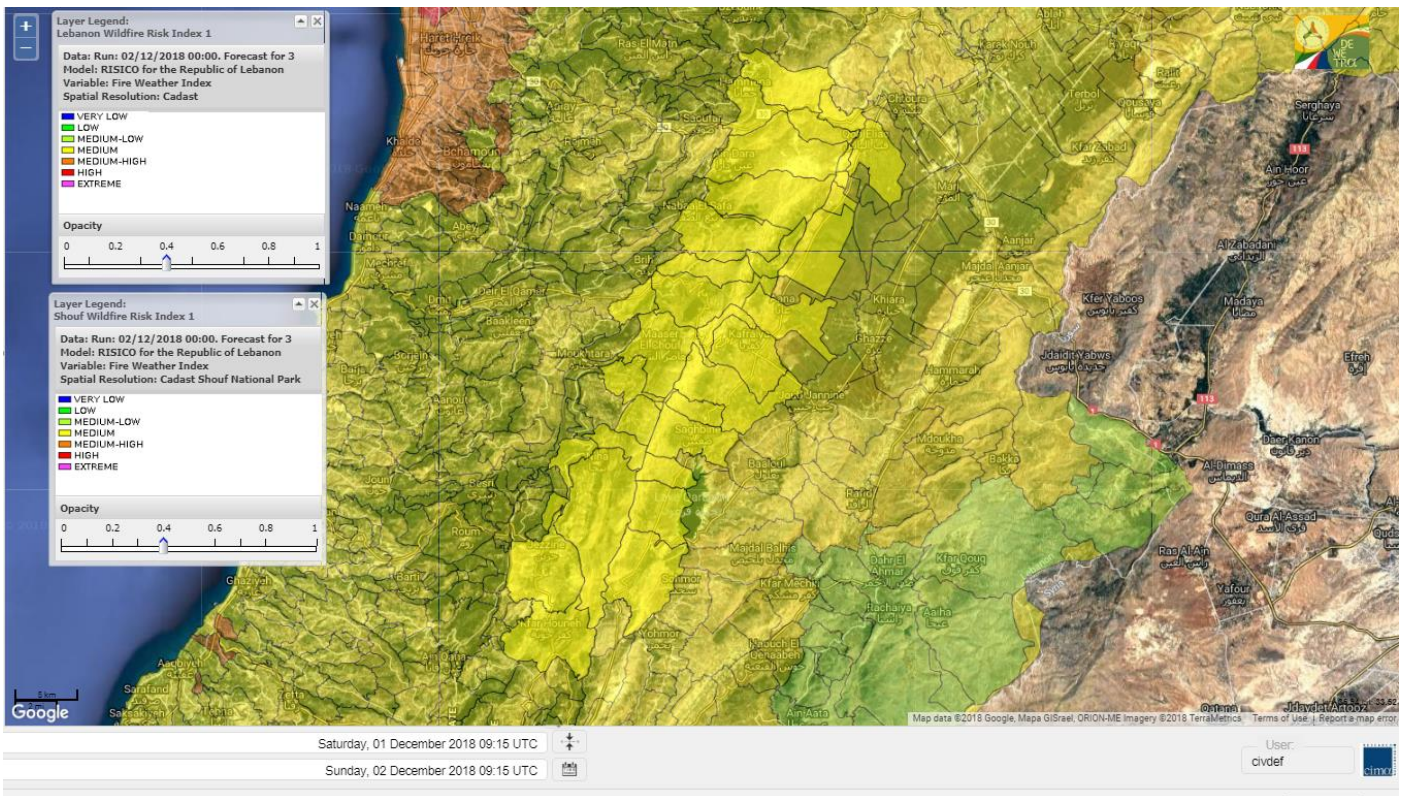
Lebanon for 4 Dec 2018



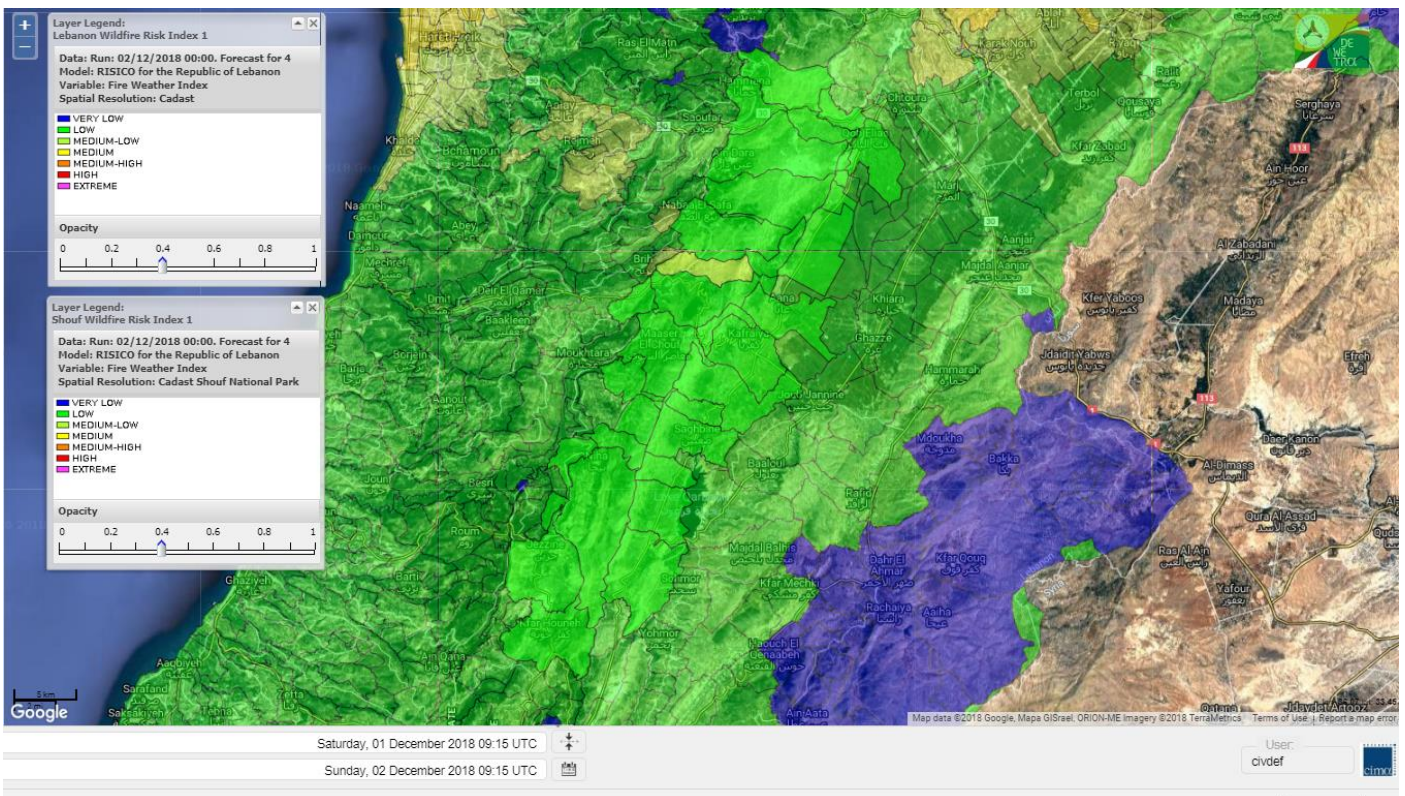
Shouf Biosphere Reserve Forecast for 2 Dec 2018



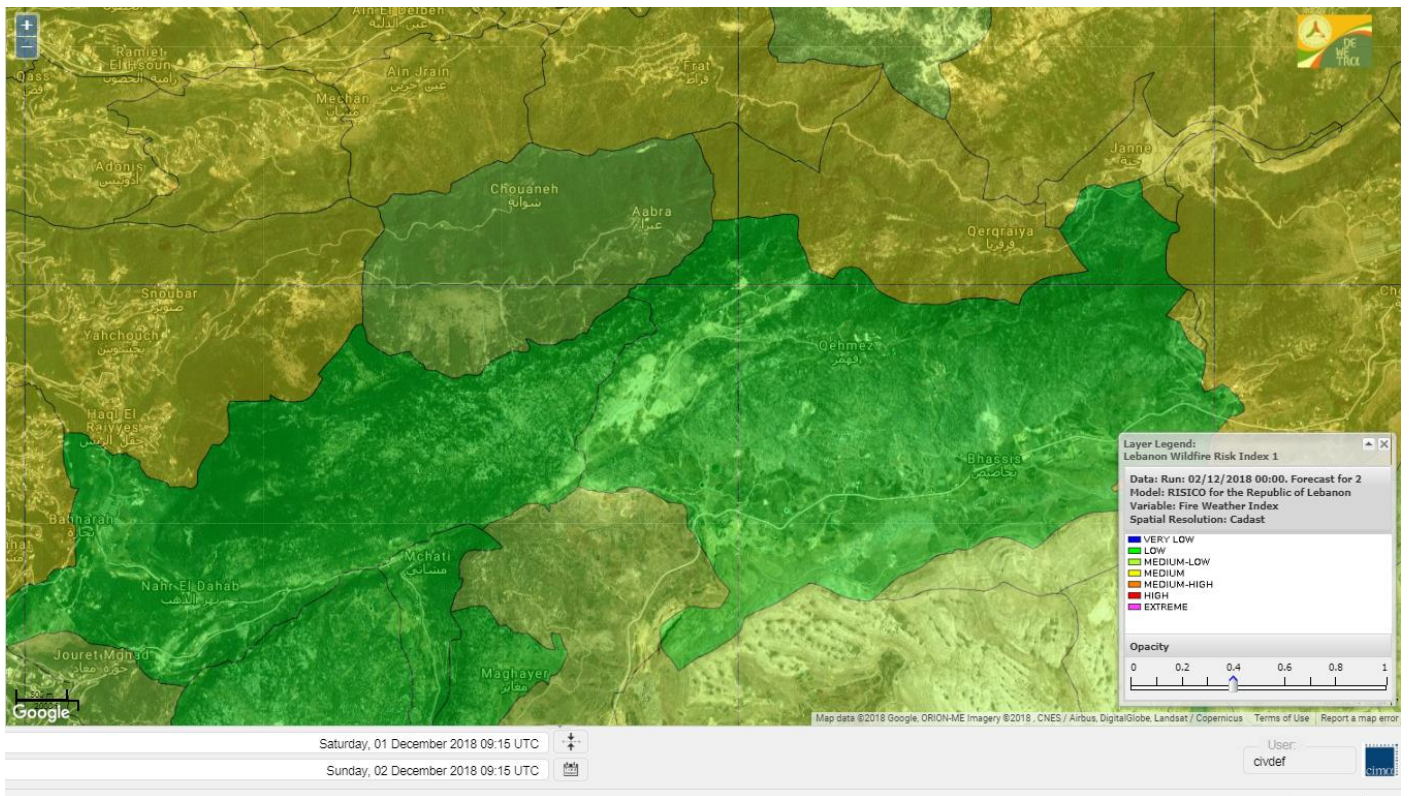
Shouf Biosphere Reserve Forecast for 3 Dec 2018



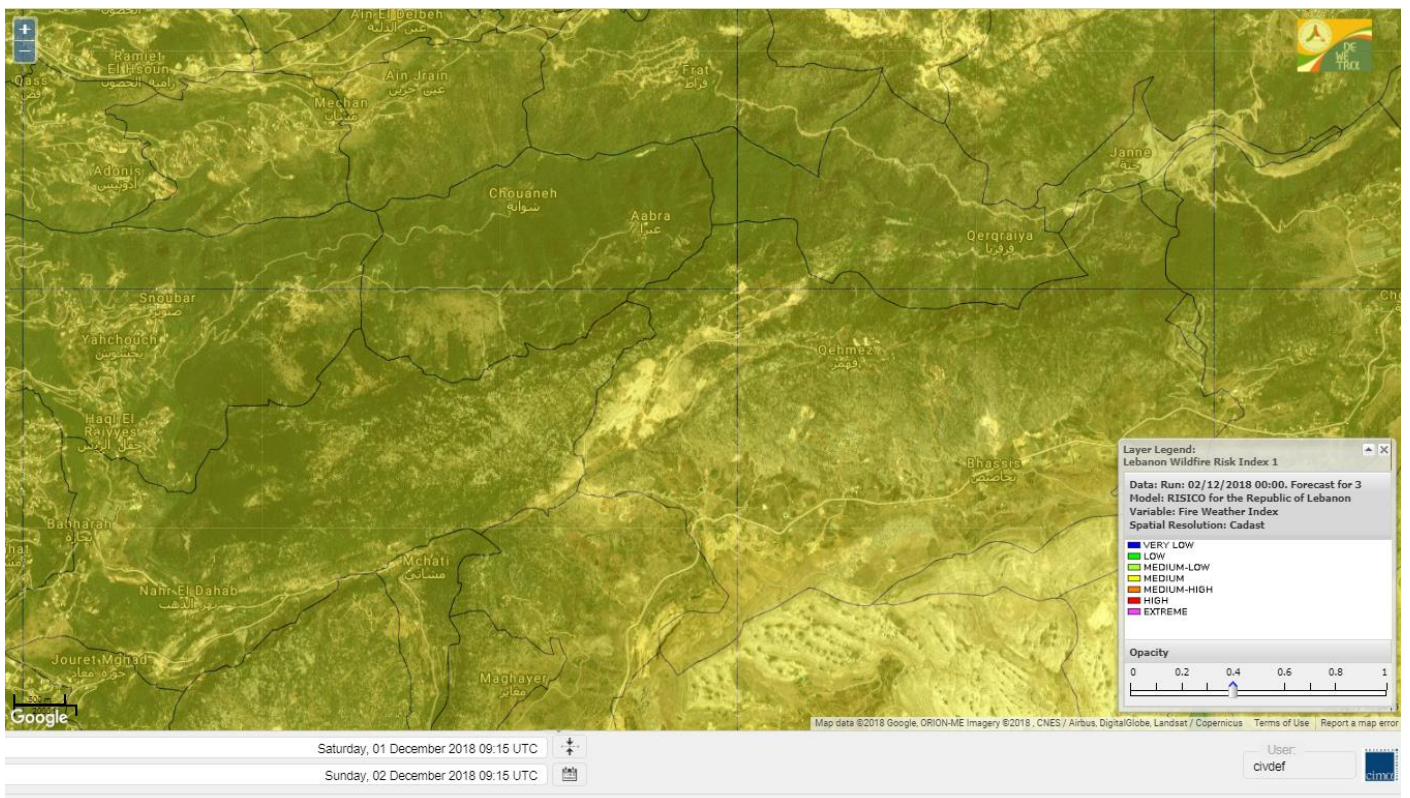
Shouf Biosphere Reserve Forecast for 4 Dec 2018



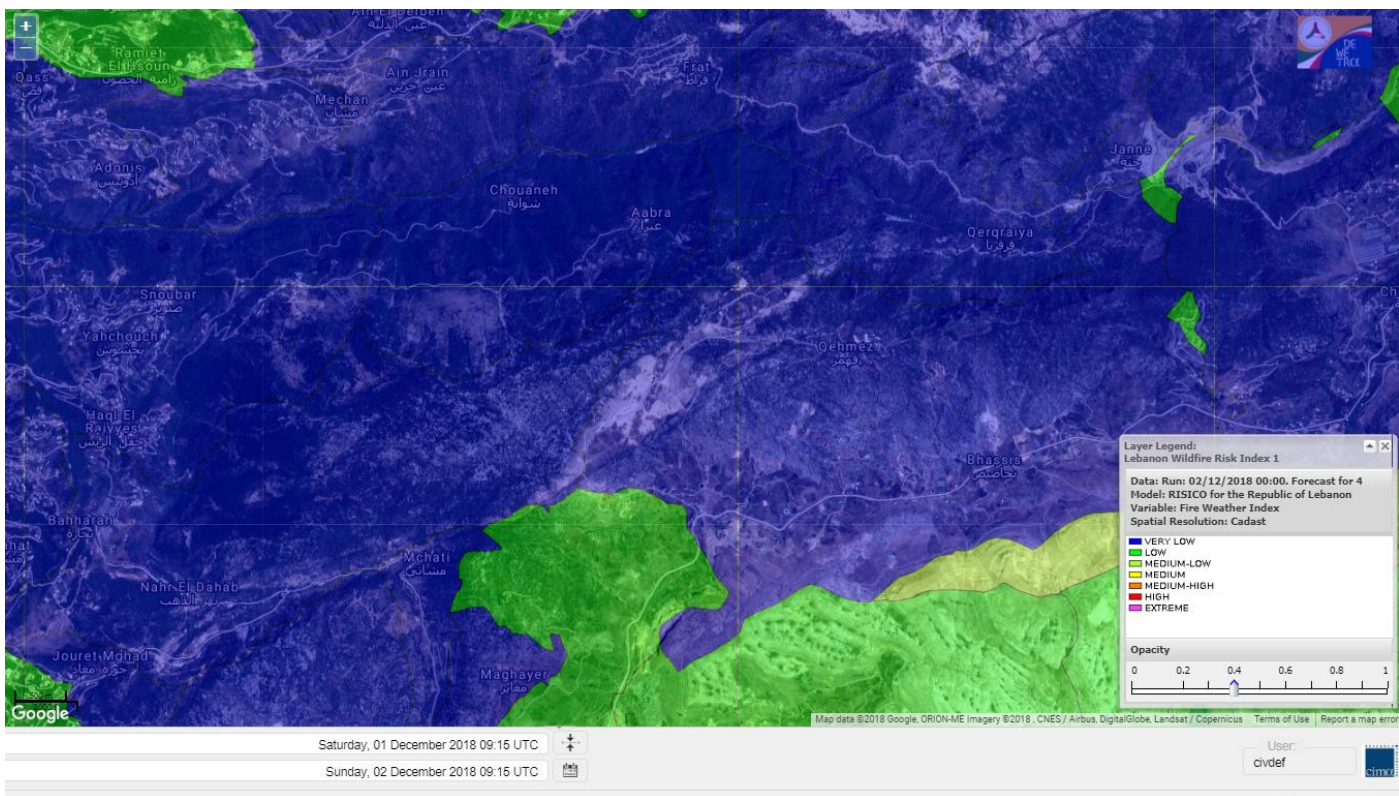
Jabal Moussa Reserve Forecast for 2 Dec 2018



Jabal Moussa Reserve Forecast for 3 Dec 2018



Jabal Moussa Reserve Forecast for 4 Dec 2018

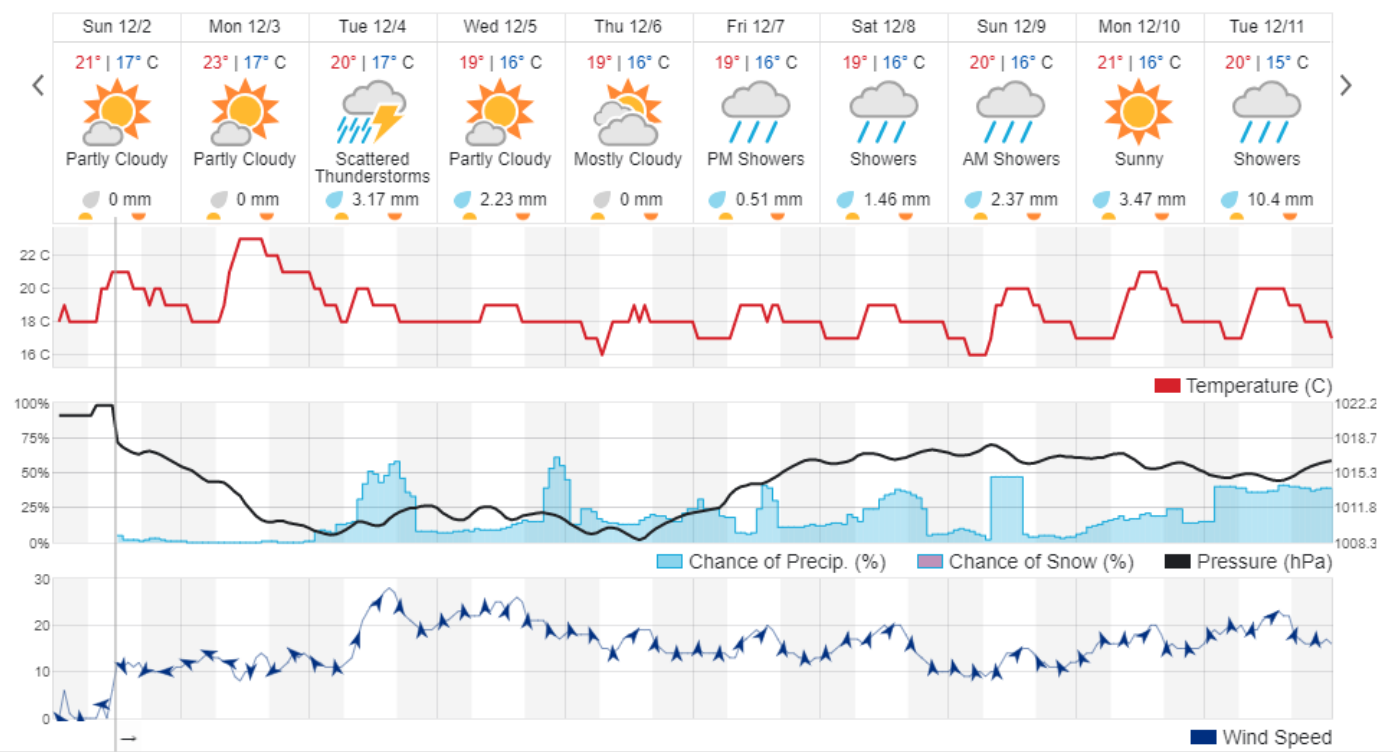


Beirut, Lebanon

21° ACHRAFIEH, RIZK STATION | REPORT | CHANGE

TODAY HOURLY 10-DAY CALENDAR HISTORY WUNDERMAP

Customize



Nord

Koura

Municipality	02-Dec	03-Dec	04-Dec	Municipality	02-Dec	03-Dec	04-Dec	Municipality	02-Dec	03-Dec	04-Dec
Aaba	M	M	L	Afsaddiq	M	M	L	Ain Ekriane	M	M	L
Amioun	M	M	L	Anfeh	M	MH	M	Badbhoun	M	M	L
Barghoun	M	M	ML	Barsa	M	MH	L	Batroumine	M	MH	L
Bdebba	M	M	L	Bechmizzine	M	M	L	Bednaye El-Koura	M	M	L
Bhabbouch El-Koura	M	M	L	Bkeftine	M	M	L	Bnehran	M	M	L
Bqaiia El-Koura	M	MH	L	Bsarma	M	M	L	Btaaboura	M	M	L
Bterram	M	M	L	Btouratij	M	MH	L	Bziza	M	M	L
Dar Beechtar	M	M	L	Dar Chmezzine	M	M	L	Deddeh	M	MH	L
Deir El-Balamand	M	M	L	Fih	M	M	L	Hraiche	M	MH	M
Ijdaabrine	M	M	L	Kaftoun	M	M	L	Kefraya El-Koura	M	M	L
Kfarakka	M	M	L	Kfarhata	M	M	L	Kfarhazir	M	M	L
Kfarkahel	M	MH	L	Kfarsaroun	M	M	L	Kosba	M	M	L
Mejdel el-Koura	M	M	L	Nakhle	M	MH	L	Qalhat	M	M	L
Ras Masqa	M	MH	L	Rechdibbine	M	M	L	Zakroun	M	MH	M
Zgharta El-Mtaouile	M	M	L								

Bcharre

Municipality	02-Dec	03-Dec	04-Dec	Municipality	02-Dec	03-Dec	04-Dec	Municipality	02-Dec	03-Dec	04-Dec
Aabdine	M	M	L	Bane	M	M	L	Barhelioun	M	M	L
Bazouone	M	M	ML	Becharre	ML	M	ML	Beit Menzer	M	M	L
Billa	M	M	L	Blaouza	M	M	L	Bqaa Kafra	ML	M	ML
Bqerqacha	M	M	ML	Breissat	M	M	L	Dimane	M	M	L
Hadath El Jobbeh	M	M	L	Hadchit	M	M	L	Hasroun	M	M	L
Mazraat Aassaf	M	M	L	Mazraat Bani Saab	M	M	L	Mchaa El-Jobbeh	ML	M	ML
Metrit	M	M	L	Moghr El-Ahoual	M	M	L	Ouadi Qannoubine	M	M	VL
Qanat	M	M	L	Qnayouer	M	M	L	Tourza	M	M	L

Batroun

Municipality	02-Dec	03-Dec	04-Dec	Municipality	02-Dec	03-Dec	04-Dec	Municipality	02-Dec	03-Dec	04-Dec
Aabrine	M	M	L	Aalali	M	M	VL	Aartziz	M	M	L
Abdelli	M	M	L	Ajdabra	M	M	L	Assia	M	M	VL
Basbina	M	M	L	Batroun	M	M	L	Bcheleh	M	M	VL
Bechtoudar	M	M	VL	Beit Chlala	M	M	VL	Beit Kassab	M	M	VL
Bijdarfil	M	M	L	Bqesmaya	M	M	L	Chatine	M	M	L
Chebtin	M	M	L	Chekka	M	M	ML	Daael	M	M	VL
Dahr Abi Yaghi	M	M	L	Daraya El-Batroun	M	M	L	Deir Billa	M	M	L
Deir Kfifane	M	M	L	Deir Mar Youhanna EL	M	M	VL	Deir Mar Youssef Jra	M	M	L
Douma	M	M	L	Douq	M	M	L	Eddeh El-Batroun	M	M	L
Ftihat El-Batroun	M	M	VL	Ghouma	M	M	L	Hadtoun	ML	M	VL
Hamat	M	M	L	Harbouna	M	M	L	Hardine	M	M	VL
Helta	M	M	VL	Hery	M	M	L	Jebila	M	M	VL
Jrabta El-Batroun	M	M	L	Jrane El-Batroun	M	M	L	Kfar Aabida	M	M	L
Kfar Halda	M	M	VL	Kfarb Shlaimane	M	M	VL	Kfarhatna	M	M	L
Kfarhay	M	M	L	Kfarhelos	M	M	L	Kfifane	M	M	L

Kfour El Arabi	M	M	L	Koubba	M	M	L	Kour	M	M	L
Mar Mama	M	M	L	Masrah	M	M	L	Mehmarch	M	M	VL
Mrah Chdid	M	M	L	Mrah El Ziyat	M	M	L	Mrah El-Hajj	M	M	VL
Nahle El-Batroun	M	M	VL	Niha El-Batroun	M	M	L	Ouahj El-Hajjar	M	M	L
Ouata Houb	M	M	L	Qatnaaoun	M	M	L	Racha	M	M	VL
Rachana	M	M	L	Rachkida	M	M	L	Ram El-Batroun	L	M	VL
Ras Nahhach	M	M	L	Selaata	M	M	ML	Sghar	M	M	L
Smar Jbayl	M	M	L	Sourat El-Batroun	M	M	L	Tannourine El-Faouqa	M	M	L
Tannourine Et-Tahta	M	M	L	Thoum	M	M	L	Toula El-Batroun	M	M	L
Zan	M	M	L								

Zgharta

Municipality	02-Dec	03-Dec	04-Dec	Municipality	02-Dec	03-Dec	04-Dec	Municipality	02-Dec	03-Dec	04-Dec
Aachach	M	M	L	Aalma	M	M	L	Aarde	M	M	L
Aintourine	M	M	L	Arabet Qozhaya	M	M	L	Arde	M	M	L
Arjis	M	M	L	Asnoun	M	M	L	Ayto	M	M	L
Basloukit	M	M	L	Bchannine	M	M	L	Besebeel	M	M	L
Bhairret Toula	M	M	L	Bnachee	M	M	L	Boussit	M	MH	L
Danha	M	M	L	Daraiya Zgharta	M	M	L	Deir Jdeide	M	M	L
Ehden	M	M	L	Halan	M	M	L	Hariq Zgharta	M	M	L
Houakir	M	M	L	Hraiqis	M	MH	M	laal	M	M	L
Ijbaa	M	M	L	Karm Saddeh	M	M	L	Kfarchakhna	M	M	L
Kfardlaqous	M	M	L	Kfarfou	M	M	L	Kfarhata Zgharta	M	M	L
Kfarhoura	M	M	L	Kfarsghab	M	M	L	Kfaryachit	M	M	L
Kfarzaina	M	M	L	Khaldiye	M	M	L	Mazraat Ajbeaa	M	M	L
Mazraat Et-Teffah	M	M	L	Mazraat Jneid	M	M	L	Mejdlaiya Zgharta	M	M	L
Merh Kfarsghab	M	M	L	Miryata	M	M	L	Miziara	M	M	L
Mzraat Kefraya	M	MH	L	Qorah Bach	M	M	L	Rachiine	M	M	L
Ras Kifa	M	M	L	Sakhra	M	M	L	Sebhel Zgharta	M	M	L
Serhel	M	M	L	Tallet Zgharta	M	M	L	Toula Zgharta	M	M	L
Zgharta	M	M	L								

Minieh-Denniye

Municipality	02-Dec	03-Dec	04-Dec	Municipality	02-Dec	03-Dec	04-Dec	Municipality	02-Dec	03-Dec	04-Dec
Aasaymout	L	M	L	Aaymar	M	M	L	Aazki	M	M	L
Ain El-Tineh-Miniyeh	M	M	L	Assoun	M	M	L	Bakhaaoun	ML	M	L
Bchennata	M	M	L	Bechehhara	M	M	L	Beddawi	M	MH	ML
Behouaita	M	M	L	Beit El Foqss	ML	M	L	Beit Haouik	L	M	L
Beit Zoud	M	M	L	Bekaasafrine	ML	M	ML	Borj El Yahoudiyeh	M	MH	M
Bqarsouna	M	M	L	Btermaz	ML	M	L	Debaael	L	M	L
Deir Ammar	M	MH	M	Deir Nbouh	M	M	L	Haouaret-Miniyeh	L	M	L
Haql el Azimeh	M	M	L	Harf El Siyad	L	M	L	Hazmiye-Miniyeh	M	M	L
Izal	M	M	L	Jarjour	M	M	L	Jayroun	L	M	L
Kahf El-Malloul	M	M	L	Karm El-Moher	M	M	L	Kfar Binine	L	M	L
Kfarchalane	ML	M	L	Kfarhabou	M	M	L	Kharroub-Miniyeh	M	M	L
Mazraat El-Kreme	M	M	L	Mazraat Ketrane	M	M	L	Merkebta	M	MH	ML
Minyeh	M	MH	M	Mrah El Sfirat	M	M	L	Mrah Sraj	M	M	L
Mrebbine	L	M	L	Nabi Youcheaa	M	MH	M	Nemrine	ML	M	L

Qarhaiya	L	M	L	Qarne	L	M	L	Qarsita	L	M	L
Qattineh-Miniyeh	M	M	L	Qemmamine	L	M	L	Qraine	M	M	L
Raouda-Aadoua	M	M	ML	Rihaniyet-Miniyeh	M	MH	ML	Sfireh	ML	M	L
Sir Ed-Danniyeh	M	M	L	Tarane	M	M	L	Terbol-Miniyeh	M	MH	ML
Zaghartaghriine	M	M	L	Zouq Bhannine	M	MH	M				

Nabatiye

Nabatiye

Municipality	02-Dec	03-Dec	04-Dec	Municipality	02-Dec	03-Dec	04-Dec	Municipality	02-Dec	03-Dec	04-Dec
Aabba	M	M	L	Aazzi	M	M	L	Adchit El-Chqif	M	M	L
Ain Bou Swar	M	M	L	Ain Kana	M	M	L	Ali El-Taher	M	M	L
Ansar	M	M	L	Arab Salim	M	M	L	Arnoun	M	M	L
Bfaroue	M	M	L	Breyqaah	M	M	L	Charqiyeh	M	M	L
Choukine	M	M	L	Deir El Zahrani	M	M	L	Doueir El-Nabatiyeh	M	M	L
Habbouch El-Nabatiye	M	M	L	Hamra El-Nabatiyeh	M	M	L	Harouf El-Nabatiyeh	M	M	L
Hmaile	M	M	L	Houmin El Faouqa	M	M	L	Houmin El Tahta	M	M	L
Jarjough	M	M	L	Jbaah El-Nabatiyeh	M	M	L	Jebchit	M	M	L
Kfar Djal El-Nabatiy	M	M	L	Kfar Remmane	M	M	L	Kfar Sir	M	M	L
Kfar Tebnit	M	M	L	Kfarfila	M	M	L	Kfour El-Nabatieh	M	M	L
Mayfadoun	M	M	L	Mazraat Bsaffour	M	M	L	Mazraat Chalbaal	M	M	L
Mazraat Dmoul	M	M	L	Mazraat El Khreibeh	M	M	L	Mazraat El-Bayad El-	M	M	L
Mazraat Kfarjaouz	M	M	L	Mazraat Qalaat Meiss	M	M	L	Nabatiyeh El-Fawka	M	M	L
Nabatiyeh Et-Tahta	M	M	L	Namiriyeh	M	M	L	Qaaqaaiyet El Jisr	M	M	L
Qossaibeh El-Nabatiy	M	M	L	Roumine	M	M	L	Sarba El-Nabatieh	M	M	L
Sir El-Gharbiyeh	M	M	L	Toul	M	M	L	Yehmor El-Nabatiyeh	M	M	L
Zaoutar El Charkiyeh	M	M	L	Zaoutar El-Gharbiyeh	M	M	L	Zebdine El-Nabatiyeh	M	M	L
Zefta	M	M	L								

Hasbaiya

Municipality	02-Dec	03-Dec	04-Dec	Municipality	02-Dec	03-Dec	04-Dec	Municipality	02-Dec	03-Dec	04-Dec
Ain Jarfa	M	M	VL	Abou Qamha	M	M	L	Ain Qania	M	M	VL
Bourghos	M	M	L	Chebaa	M	M	VL	Chouaya Hasbaya	M	M	VL
Dellafeh	M	M	L	Fardiss Hasbaiya	M	M	L	Hasbaya	M	M	L
Hbariyeh	M	M	VL	Kaoukaba Hasbaiya	M	M	L	Kfar Chouba	M	M	VL
Kfar Hamam	M	M	L	Kfeir El-Zait	M	M	L	Khalwat Hasbaya	M	M	VL
Khreibet Hasbaiya	M	M	L	Majidiyeh Hasbaiya	M	M	L	Marj Ez-Zhour (Haouc	M	M	L
Meri	M	M	L	Mimass	M	M	L	Rachaiya El-Fokhar	M	M	L
Salaiyeb	M	M	L								

Marjayoun

Municipality	02-Dec	03-Dec	04-Dec	Municipality	02-Dec	03-Dec	04-Dec	Municipality	02-Dec	03-Dec	04-Dec
Aalmane Marjaayoun	M	M	L	Aamra	M	M	L	Adayseh Marjaayoun	M	M	L
Adchit El-Koussair	M	M	L	Ain Aarab Marjaayoun	M	M	L	Bani Haiyann	M	M	L
Blatt Marjaayoun	M	M	L	Blida	M	M	L	Borj El-Moulouk	M	M	L
Boueyda Marjaayoun	M	M	L	Deir Mimass	M	M	L	Deir Siriane	M	M	L
Dibbine	M	M	L	Ebel El Saqi	M	M	L	Houla	M	M	L
Houra	M	M	L	Kfar Kila	M	M	L	Khiam Marjaayoun	M	M	L

Klayaa	M	M	L	Majdel Selem	M	M	L	Marjaayoun	M	M	L
Markaba	M	M	L	Mays El-Jabal	M	M	L	Mazraat Doumiat	M	M	L
Mazraat Sarada	M	M	L	Mhaibib	M	M	L	Qabrikha	M	M	L
Qantara	M	M	L	Rab El-Thalathine	M	M	L	Saouaneh Marjayoun	M	M	L
Talloussa	M	M	L	Taybeh Matjaayoun	M	M	L	Touline	M	M	L

Bent Jbail

Municipality	02-Dec	03-Dec	04-Dec	Municipality	02-Dec	03-Dec	04-Dec	Municipality	02-Dec	03-Dec	04-Dec
Ain-Ebel	M	M	L	Aitaroun	M	M	L	Aynata Bint Jbeil	M	M	L
Ayta El-Chaeb	M	M	L	Ayta El-Jabal	M	M	L	Beit Lif	M	M	L
Beit Yahoun	M	M	L	Bint Jbeil	M	M	L	Borj Qalaway	M	M	L
Braachit	M	M	L	Chakra	M	M	L	Debel	M	M	L
Deir Antar	M	M	L	Froun	M	M	L	Ghandouriyeh Bint Jb	M	M	L
Hanine	M	M	L	Hariss	M	M	L	Hdatha	M	M	L
Jmeymeh	M	M	L	Kafra Bint Jbeil	M	M	L	Kfar Dounine	M	M	L
Khirbet Selm	M	M	L	Kounine	M	M	L	Maroun El Ras	M	M	L
Qalaway	M	M	L	Qaouzah	M	M	L	Qatmoun	M	M	L
Ramya Bint Jbeil	M	M	L	Rchaf	M	M	L	Rmeich	M	M	L
Safad Al Battikh	M	M	L	Salhaneh	M	M	L	Serbine	M	M	L
Sultanieh Bint Jbeil	M	M	L	Tibnine	M	M	L	Tiri	M	M	L
Yaroun	M	M	L	Yater	M	M	L				

Mont Liban

Jbail

Municipality	02-Dec	03-Dec	04-Dec	Municipality	02-Dec	03-Dec	04-Dec	Municipality	02-Dec	03-Dec	04-Dec
Aabeydat	M	M	L	Aalita	M	M	VL	Aamchit	M	MH	ML
Aarab El-Lahib	ML	M	L	Aarasta	M	M	L	Adonis Jbeil	M	M	VL
Afqa Jbeil	L	M	L	Ain El Delbeh Jbeil	M	M	VL	Ain El-Ghouayba	M	M	L
Ain Jrain	M	M	VL	Ain Kfah	M	M	L	Almat El Chemaliyat	ML	M	VL
Almat El-Jenoubiya	ML	M	VL	Aqoura	ML	M	ML	Bayzoun	M	M	VL
Bchille Jbeil	M	M	L	Bechtlida	M	M	VL	Behdaydat	M	M	L
Beit Habbaq	M	M	L	Bejjeh	M	M	L	Bekhaaz	M	M	L
Berbara Jbeil	M	MH	ML	Bintael	M	M	L	Birket Hjoula	M	M	L
Blatt Jbeil	M	M	L	Boulhos	ML	M	VL	Breyj Jbeil	M	M	VL
Chamat	M	M	L	Chikhane	M	MH	ML	Chmout	M	M	L
Eddeh Jbeil	M	M	L	Ehmej	ML	M	VL	Fatre	M	M	VL
Ferhet	M	M	L	Fghal	M	M	L	Frat	M	M	VL
Ghabat	M	M	L	Ghalboun	M	M	L	Gharzouz	M	M	L
Ghofrine	M	M	L	Habil	M	M	L	Halate	M	M	L
Haqel	M	M	L	Hbaline	M	M	L	Hboub	M	M	L
Hdeine	M	M	L	Hema Er-Rehban	ML	M	L	Hema Mar Maroun Aann	ML	M	VL
Hjoula	ML	M	L	Hosrayel	M	MH	L	Hsarat	M	M	L
Hsoun	M	M	L	Jaj	L	M	VL	Janne	M	M	VL
Jbeil	M	M	L	Jeddeyl Jbeil	M	MH	ML	Jlisse	M	M	VL
Jouret El-Qattine	M	M	L	Kfar Baal Annaya	ML	M	VL	Kfar Kidde	M	M	L
Kfar Kouas	M	M	L	Kfar Mashoun	M	M	L	Kfoun	M	M	L

Kharbe Jbeil	M	M	L	Laqlouq	ML	M	L	Lassa	M	M	VL
Lehfed	ML	M	VL	Maad	M	M	L	Mar Sarkis	M	M	L
Mastita	M	M	L	Mayfouq	ML	M	VL	Mazraat El Siyad	M	M	L
Mazraat El-Maaden	ML	M	VL	Mechane	M	M	VL	Mechmech Jbeil	ML	M	VL
Mehrin	M	M	L	Mejdel El-Akoura	ML	M	L	Mghayreh Jbeil	M	M	L
Mounsef	M	MH	ML	Nahr Ibrahim	M	MH	L	Qahmez	L	M	VL
Qartaba	M	M	VL	Qartaboun	M	MH	L	Qattara Jbeil	L	M	VL
Qorqraya	M	M	VL	Ramout	M	M	L	Ras Osta	M	M	L
Rihane Jbeil	M	MH	L	Sakiet El-Khayt	M	M	L	Saqi Richmaya	L	M	VL
Sebrine	M	M	L	Seraita	M	M	L	Souane Jbeil	M	M	L
Tadmor	M	M	L	Tartej	L	M	VL	Torzaiya	M	M	VL
Yanouh Jbeil	M	M	L	Zibdine Jbeil	M	M	VL				

El Metn

Municipality	02-Dec	03-Dec	04-Dec	Municipality	02-Dec	03-Dec	04-Dec	Municipality	02-Dec	03-Dec	04-Dec
Aain El-Qabu	ML	M	VL	Aain El-Qach	M	M	L	Aain El-Teffaha	M	M	L
Aain el-Safsaf El-M	M	M	L	Abou Mizane	M	M	L	Ain Aar	M	MH	L
Ain Alaq	M	M	L	Ain El-Kharroube	M	M	L	Ain El-Sendianeh	M	M	L
Ain El-Zeitoune	ML	M	L	Ain Saadeh	M	M	L	Aintoura El-Matn	ML	M	L
Amaret Chalhoub	M	MH	L	Antelias	M	MH	L	Atchaneh	M	M	L
Ayroun	M	M	L	Baabdat	M	M	L	Baouchariyeh	M	MH	ML
Baskinta	ML	M	L	Beit Chabab	M	M	L	Beit El-Chaar	M	MH	L
Beit El-Kekko	M	MH	L	Beit Mery	M	M	L	Bhersaf	M	M	L
Bikfaya	M	M	L	Biyakout	M	MH	L	Bnabil	M	M	L
Bourj Hammoud	M	MH	M	Bqennaya	M	MH	L	Broummana El-Matn	M	M	L
Bsalim	M	M	L	Bsifrine	M	M	VL	Btegrine	ML	M	L
Chaouiye	M	M	L	Chouaya El-Matn	M	M	L	Choueir	M	M	L
Chrine	M	M	L	Dahr El Sawan El-Mat	M	M	L	Daychouniyeh	M	M	L
Dbayeh	M	MH	L	Deir Chamra	M	M	VL	Deir Mar Abda el Mch	M	M	L
Deir Mar Roukouz	M	MH	ML	Deir Tamiche	M	M	L	Dik El-Mehdi	M	M	L
Dikwaneh	M	MH	M	Douar El-Matn	M	M	L	Fanar	M	MH	L
Fraike	M	M	L	Haret El-Ballaneh	M	MH	L	Hbous	M	M	L
Himlaya	M	M	L	Jal El Did	M	MH	L	Jdeideh El-Metn	M	MH	L
Jouar El-Matn	M	M	L	Jouret El-Ballout	M	M	L	Kaaqour	M	M	L
Kfar Aaqab	ML	M	VL	Kfertay El-Matn	ML	M	L	Khenchara	M	M	L
Khillet El-Mtain	M	M	VL	Konnabat Broummana	M	M	L	Konnabat Salima	M	M	VL
Machraah El-Matn	ML	M	L	Majdel Tarchich	ML	M	L	Majzoub	M	MH	L
Mansouriyeh El-Metn	M	MH	L	Mar Boutros Karm Et-	M	M	L	Mar Chaya et Mzekke	M	M	L
Mar Moussa Ed-Douar	M	M	L	Marjaba	ML	M	L	Masqa	M	M	L
Mayasse	M	M	L	Mazraat Deir Aoukar	M	MH	L	Mazraat El-Hadirat	M	M	L
Mazraat Yachouh	M	MH	L	Mchikha	M	M	L	Menqlet Mezher	M	MH	L
Mhaydseh Matn	M	M	L	Mkalles	M	MH	ML	Mrouj	M	M	L
Mtain	ML	M	L	Mtayleb	M	M	L	Nabay	M	M	L
Naccache	M	MH	L	Ouadi Chahine	M	M	L	Ouadi El-Karm El-Mat	ML	M	VL
Ouata El-Mrouj	M	M	L	Ouyoun El-Matn	M	M	L	Qornet Chehwan	M	M	L
Qornet El-Hamra	M	M	L	Roumieh	M	M	L	Sfeilet Bikfaya	M	M	L
Sinn El-Fil	M	MH	M	Zabbougha	M	M	VL	Zalqa	M	MH	L

Zarouon	M	M	L	Zekrite	M	M	L	Zighrine El-Matn	M	M	L
Zouk El-Khrab	M	M	L								

Chouf

Municipality	02-Dec	03-Dec	04-Dec	Municipality	02-Dec	03-Dec	04-Dec	Municipality	02-Dec	03-Dec	04-Dec
Aalmane El-Chouf	M	M	L	Aammqi El-Chouf	M	M	L	Ain Ouzein	M	M	L
Ain Qani	M	M	L	Ain Zhalta	ML	M	L	Ainbal	M	M	L
Amatour	M	M	L	Anout	M	M	L	Atrine	M	M	L
Baadarane	M	M	L	Baaqline	M	M	L	Baasir	M	M	L
Barja	M	M	L	Barouk	ML	M	L	Bater	M	M	L
Batloun	M	M	L	Bayqoun	M	M	L	Bchetfine	M	M	L
Beiteddine	M	M	L	Benouati Ech-Chouf	M	M	L	Berjein	M	M	L
Bireh et Mtalleh	M	M	L	Biret El-Chouf	M	M	L	Bkechtine Ouel Mchei	M	M	L
Bkifa El-Chouf	M	M	L	Botme	M	M	L	Bqaiaa Ech-Chouf	M	M	L
Bsaba El-Chouf	M	M	L	Chammis El-Chouf	M	M	L	Chehim	M	M	L
Chemaarine	M	M	L	Chourit	M	M	L	Daher El-Chouf	M	M	L
Dalhoun	M	M	L	Damour	M	M	L	Daraya El-Chouf	M	M	L
Deir El-Moukhalles	M	M	L	Deir Baba	M	M	L	Deir Dourit	M	M	L
Deir El-Qamar	M	M	L	Deir Kouche	M	M	L	Dibbieh	M	M	L
Dmit	M	M	L	Fouara Jaafar	M	M	L	Fraidis El-Chouf	ML	M	ML
Ghabet Jaafar	M	M	L	Gharife	M	M	L	Haret Jandal	M	M	L
Hasrout	M	M	L	Jadra	M	M	L	Jahlieh	M	M	L
Jbeih El-Chouf	ML	M	L	Jdeidet El-Chouf	M	M	L	Jiyeh	M	M	L
Jleilyeh	M	M	L	Jmailiyeh	M	M	L	Joun	M	M	L
Kahlounie El-Chouf	M	M	L	Ketermaya	M	M	L	Kfar Faqoud	M	M	L
Kfar Hamal	M	M	L	Kfar Him	M	M	L	Kfar Katra	M	M	L
Kfar Niss	M	M	L	Kfar hay	M	M	L	Kfarnabrakh	M	M	L
Khirbet Bisri	M	M	L	Knayse El-Chouf	M	M	L	Maaniyeh	M	M	L
Maasser Beiteddine	M	M	L	Maasser El-Chouf	ML	M	L	Majdalouna	M	M	L
Majdel El-Meouch	M	M	L	Mazboud	M	M	L	Mazmoura	M	M	L
Mazraat El Chouf	M	M	L	Mazraat El Daher	M	M	L	Mazraat El-Douair	M	M	L
Mechref	M	M	L	Mghairie	M	M	L	Mghayrie El-Chouf	M	M	L
Moukhtara	M	M	L	Mrusti	ML	M	L	Mtolle	M	M	L
Naameh	M	M	L	Niha El-Chouf	ML	M	L	Ouadi Abou Youssef	M	M	L
Ouadi Ed-Deir	M	M	L	Ouadi El-Sit	M	M	L	Ouadi bnehlay	M	M	L
Qraibeh	ML	M	L	Qreiaa	M	M	L	Rmayle El-Chouf	M	M	L
Semqaniyeh	M	M	L	Sibline	M	M	L	Sirjbeil	M	M	L
Warhanieh	M	M	ML	Werdaniyeh	M	M	L	Zaarourieh	M	M	L

Baabda

Municipality	02-Dec	03-Dec	04-Dec	Municipality	02-Dec	03-Dec	04-Dec	Municipality	02-Dec	03-Dec	04-Dec
Abadiyeh	M	M	L	Ain Mouaffaq	M	M	L	Araiya	M	M	L
Arbaniyeh	M	M	VL	Arsoun	M	M	L	Baabda	M	MH	ML
Baalchmey	M	M	L	Bmaryam	M	M	L	Bourj El-Brajneh	M	MH	ML
Boutchay	M	MH	L	Bsaba Baabda	M	MH	ML	Btekhney	M	M	L
Btibyat	M	M	L	Bzebdine	M	M	L	Chbeniyeh	M	M	L
Chiyah	M	MH	M	Chmeisset Baabda	M	M	VL	Chouit	M	M	L
Deir El-harf	M	M	L	Deir Khouna	M	M	L	Dlaybeh	M	M	VL

Falougha	ML	M	L	Furn El-Chebbak	M	MH	M	Hadath Beyrouth	M	MH	ML
Halaliyeh Baabda	M	M	L	Hammana	ML	M	L	Haret El Sett	M	M	L
Haret Hamze	M	M	L	Haret Hreik	M	MH	M	Hasbaiya El-Metn	M	M	VL
Jouar El-Hoz	ML	M	L	Jouret Arsoun	M	M	L	Kfar Chima	M	MH	ML
Kfar Selouane	ML	M	L	Khalouat Baabda	M	M	L	Kneisset Baabda	M	M	L
Laylakeh	M	MH	ML	Louayzeh Baabda	M	M	ML	Merdache	M	MH	ML
Mzairaa Baabda	M	M	L	Ouadi Chahrour El OI	M	M	L	Ouadi Chahrour El So	M	M	L
Qalaa Baabda	M	M	L	Qhraybe Baabda	M	M	L	Qobbayaa	M	M	L
Qornayel	ML	M	VL	Qortada	M	M	L	Qrayeh Baabda	M	M	L
Qsaibeh Baabda	M	M	L	Qtale Baabda	M	M	L	Ras El Metn	M	M	L
Ras El-Haref	M	M	L	Rouayset El-Ballout	M	M	L	Salima Baabda	M	M	L
Tahouitat El Ghadir	M	MH	ML	Tarchich	ML	M	L	Zandouqa	M	M	L

Aley

Municipality	02-Dec	03-Dec	04-Dec	Municipality	02-Dec	03-Dec	04-Dec	Municipality	02-Dec	03-Dec	04-Dec
Abey	M	M	L	Aghmid	M	M	L	Ain Dara	ML	M	L
Ain Drafil	M	M	L	Ain El Halazoun	M	M	ML	Ain El-Rmmaneh	M	M	L
Ain Jedideh	M	M	ML	Ain Ksour	M	M	L	Ain Onoub	M	M	L
Ain Traz	M	M	L	Ainab	M	MH	L	Aley	M	M	ML
Aramoun	M	MH	L	Aytat	M	MH	L	Azouniyeh	M	M	L
Baawerta	M	M	L	Badghan Oua Wadi Bad	M	M	L	Bassatine	M	MH	L
Bayssour	M	M	L	Bchamoun	M	MH	L	Bdadoun	M	M	L
Behouara	M	M	L	Bennay	M	M	L	Bhamdoun El-Dayaa	M	M	ML
Bhamdoun El-Mhatta	M	M	L	Bkhechthey	M	M	L	Bleibel	M	MH	L
Bmakine	M	M	ML	Bmehray	ML	M	L	Bouzrid	M	M	L
Bserrine	M	M	ML	Bsous	M	M	L	Btalloun	M	M	ML
Btater	M	M	ML	Chanay	M	M	L	Charoun	M	M	L
Chartoun	M	M	L	Chemlane	M	M	L	Choueifat El-Aamrous	M	MH	ML
Choueifat El-Oumara	M	MH	ML	Choueifat El-Quoubbe	M	MH	ML	Dakkoun	M	M	L
Deir Qoubel	M	MH	L	Dfoun	M	M	L	Douair El Remmaneh	M	M	L
Ghaboun	M	M	L	Habramoun	M	M	L	Homs Oua Hama	M	M	L
Houmal	M	MH	L	Jisr El Qadi	M	M	L	Kehaleh	M	M	L
Keyfoun	M	M	ML	Kfar Aamey	M	M	L	Kommatyeh	M	M	L
Maasrati	M	M	L	Majdel Baana	M	M	L	Mansourieh et Ain El	M	M	ML
Mazraat El-Nahr	M	M	L	Mchakhte	M	M	L	Mecherfeh	M	M	L
Mejdlaya	M	M	L	Mrayjat	M	M	ML	Ramliyah	M	M	L
Rechmaya	M	M	L	Rejmeh	M	M	L	Remhala	M	M	L
Rouaysset El Neemane	M	M	L	Saoufar	M	M	L	Selfaya	M	M	L
Sirhmoul	M	MH	L	Souq El Ghareb	M	M	L	Taazanieh	M	M	ML

Kesrouane

Municipality	02-Dec	03-Dec	04-Dec	Municipality	02-Dec	03-Dec	04-Dec	Municipality	02-Dec	03-Dec	04-Dec
Achkout	ML	M	VL	Adma Oua Dafneh	M	M	L	Ain Ed-Delbe Kesroua	L	M	VL
Ain El-Rihane	M	M	VL	Aintoura Kesrouane	M	M	L	Ajaltoun	M	M	VL
Akaybeh Kesrouane	M	MH	L	Aramoun Kesrouane	M	M	VL	Azra ouel Ozor	M	M	VL
Ballouneh	M	M	VL	Batha	M	M	VL	Bekaatat Achkout	ML	M	L
Bekaatat Kanaan	ML	M	VL	Bizhel	M	M	VL	Bouar	M	M	L
Bqaatouta	ML	M	L	Bqaq Ed-Dine	M	M	L	Bzommar	M	M	L

Chahtoul	ML	M	L	Chnaniir	M	M	VL	Chouan	ML	M	VL
Daraya Kesrouane	M	M	VL	Darououn	M	M	VL	Deir Baqlouch	M	M	VL
Dlebta	M	M	VL	Eghbeh	ML	M	VL	Faraya	ML	M	L
Fatka	M	M	L	Feytroun	ML	M	VL	Ghazir	M	M	L
Ghbaleh Kesrouane	M	M	VL	Ghedrass	M	M	L	Ghosta	M	M	VL
Ghyneh	M	M	L	Harharaya w Kattine	M	M	VL	Harissa Kesrouane	M	M	VL
Hayata	ML	M	VL	Hosein	M	M	VL	Hrajel	ML	M	L
Jdeideh Ghazir	M	M	VL	Jeita	M	M	L	Jounieh Ghadir	M	M	L
Jounieh Haret Sakhr	M	MH	L	Jounieh Salel Alma	M	M	L	Jounieh Sarba	M	MH	L
Jouret Bedrane	M	M	L	Jouret Mhad	ML	M	VL	Jouret Termos	M	M	L
Kfar Debiane	ML	M	L	Kfar Tay Kesrouane	ML	M	VL	Kfar Yassine	M	MH	L
Kfour Kesrouane	M	M	L	Kharayeb Nahr Ibrahi	M	M	L	Klayaat Kesrouane	M	M	VL
Maarab	M	M	VL	Maaysra Kesrouane	M	M	L	Mayrouba	ML	M	L
Mazraat Er-Ras	M	M	L	Mazraat Mrah El-Mir	M	M	VL	Mchaa El Ftouh	ML	M	ML
Mchaa Faraya	ML	M	L	Mchaa Kfar Dibiane	ML	M	L	Mghaer	L	M	VL
Mradiyah	M	M	VL	Nahr Ed-Dahab	L	M	VL	Nammoura Kesrouane	M	M	L
Ouata El Jaouz	L	M	VL	Ouata Sillam	M	MH	L	Raachine	L	M	VL
Rayfoun	M	M	L	Safra Kesrouane	M	M	L	Shayle Kesrouane	M	M	L
Tabarja	M	M	L	Yahchouch	M	M	VL	Zaaytreh	M	M	VL
Zeytoun	M	M	L	Zouk Mikael	M	MH	L	Zouk Mosbeh	M	M	L

Baalbek_Hermel

Baalbek

Municipality	02-Dec	03-Dec	04-Dec	Municipality	02-Dec	03-Dec	04-Dec	Municipality	02-Dec	03-Dec	04-Dec
Aadous	ML	M	L	Aamchki	L	ML	VL	Aarsal	L	M	VL
Ain Baalbek	L	M	VL	Ain Bourday	ML	M	VL	Ain El-Benye	ML	M	VL
Ain El-Jaouz Baalbek	L	ML	VL	Ain El-Siya Chadoura	L	M	VL	Al Khodr Baalbek	M	M	L
Al Nabi Chit	M	M	L	Aynata Baalbek	ML	M	ML	Baalbek	ML	M	L
Bachwat	L	M	ML	Barqa	L	M	ML	Bednayel Baalbak	M	M	ML
Beit Chama	M	M	ML	Bijjaje	ML	M	VL	Bouday	M	M	L
Brital	M	M	L	Btadi	ML	M	L	Chaat	ML	M	L
Chaibe	L	M	VL	Chlifa	ML	M	ML	Chmestar	M	M	M
Dar El-Oussa	ML	M	L	Deir El-Ahmar	ML	M	L	Deir Mar Maroun Baal	ML	M	ML
Douris	ML	M	L	Fakiha	L	M	L	Hadath Baalbek	M	M	ML
Ham	ML	M	VL	Haour Taala	M	M	L	Hizzine	M	M	L
Hlebta	ML	M	ML	Hosh Barada	ML	M	L	Hosh El Dahab	ML	M	L
Hosh El Snid	M	M	L	Hosh El-Nabi	M	M	L	Hosh El-Rafiq	M	M	ML
Hosh Tal Safiya	ML	M	L	Hrebta	ML	M	L	laat	ML	M	L
Jebaa	M	M	ML	Jenta	M	M	L	Kfar Dabach	M	M	ML
Kfar Dane	M	M	ML	Khraibeh El-Hermel	ML	M	VL	Khreibet Baalbek	M	M	L
Kneisset Baalbek	ML	M	L	Labueh	L	M	VL	Maarboun	M	M	VL
Majdaloun	ML	M	L	Maqneh	ML	M	L	Mazraat Beit Mcheik	M	M	M
Misraya	M	M	ML	Moqraq	ML	M	VL	Nabha El-Damdoum	ML	M	ML
Nabi Chbay	ML	M	VL	Nabi Osman	L	M	VL	Nahleh baalbek	L	M	VL
Ouadi El-Oss	ML	M	L	Qaa Baayoun	ML	M	L	Qaa Jouar Maqiye	ML	M	ML
Qaa Ouadi El-Khanzir	ML	M	ML	Qah Baalbek	ML	M	ML	Qarha Baalbek	ML	M	L

Qsarnaba	M	M	ML	Ram Baalbek	ML	M	L	Ras Baalbek El Sahl	ML	M	ML
Ras Baalbek El-Charq	L	M	L	Riha	ML	M	L	Saaide	M	M	L
Sbouba	ML	M	VL	Seriine El-Tahta	M	M	L	Slouqi	M	M	ML
Taiba Baalbek	M	M	L	Talia	M	M	L	Taraiya	M	M	ML
Temnin El Fawqa	M	M	ML	Temnin El-Tahta	M	M	ML	Tfail	L	ML	VL
Yahfoufa	M	M	L	Yammouneh	ML	M	ML	Younine	L	M	L
Zboud	ML	M	L								

Hermel

Municipality	02-Dec	03-Dec	04-Dec	Municipality	02-Dec	03-Dec	04-Dec	Municipality	02-Dec	03-Dec	04-Dec
Charbine El-Hermel	ML	M	L	Hermel Jbab	ML	M	ML	Hermel	ML	M	ML
Maaysra El-Hermel	M	M	L	Michaa Mrjihine	ML	M	L	Ouadi Faara	ML	M	ML
Ras Baalbek - Ouadi	ML	M	ML	Ras Baalbek El Gharb	ML	M	ML	Zighrine	ML	M	L

Akkar

Akkar

Municipality	02-Dec	03-Dec	04-Dec	Municipality	02-Dec	03-Dec	04-Dec	Municipality	02-Dec	03-Dec	04-Dec
Aain Tinta	ML	M	L	Aaiyat	L	M	L	Aakkar El-Aatiqa	L	M	L
Aamar Akkar	M	MH	ML	Aamar El Baykat	M	M	L	Aamayer	M	M	L
Aamriyet Akkar	ML	M	L	Aandqet	ML	M	L	Aarmeh	M	M	L
Aarqa	M	MH	ML	Aawaynat	M	M	L	Aayoun Akkar	ML	M	L
Abboudiye	ML	MH	L	Ain El-Zeit	M	M	L	Ain Yaaqoub	L	M	L
Akroum	ML	M	L	Aridet Cheikh Zennad	M	MH	L	Baldeh w Mazraat Bal	ML	MH	ML
Barcha	ML	MH	L	Bardeh	ML	M	L	Bebnine	M	MH	ML
Beino	ML	M	L	Beit Ayoub	ML	M	L	Beit El-Haouch	M	MH	ML
Beit Mellat	ML	M	L	Beit Younes	L	M	L	Berbara Akkar	ML	M	L
Berqayel	M	MH	ML	Bezbina	L	M	L	Bireh Akkar	ML	M	L
Borj	ML	M	L	Bqerezla	ML	M	ML	Bzal	ML	M	L
Chane	L	M	L	Chaqdouf	ML	M	L	Charbila	ML	MH	ML
Cheikh Mohammad	ML	MH	ML	Cheikh Taba Es-Sahl	M	MH	ML	Cheikh Taba	ML	M	L
Cheikh Zennad	M	MH	M	Cheikhlar	M	M	L	Chir Hmairine	ML	MH	L
Daghle	ML	M	L	Dahr Laissine	ML	M	L	Darine	ML	MH	L
Dawra	L	M	L	Dawsa w Baghdadi	ML	M	L	Dayret Nahr El-Kabir	M	M	ML
Deir Dalloum	M	MH	ML	Deir Jennine	ML	M	L	Denbou	ML	M	L
Dibbbiyeh	ML	M	L	Douair Aadwiyeh	ML	M	L	Fassikine	ML	M	L
Fnaydek	L	M	L	Fraydes Akkar	ML	M	L	Ghazayle	ML	MH	L
Habchit	L	M	L	Hakour	ML	MH	ML	Halba	ML	MH	L
Haouchab	ML	MH	L	Hayssat	M	MH	M	Haytla	ML	MH	L
Hayzouq	ML	M	ML	Hedd	ML	MH	ML	Hmaira Akkar	ML	M	ML
Hmaiss Akkar	ML	MH	L	Hnaider	M	M	L	Hokr Ed-Dahri	M	MH	ML
Hokr Etti	ML	MH	L	Hokr Jouret Srar	ML	MH	L	Houaich	ML	M	L
Hrar	ML	M	L	Idbil	ML	M	L	Ilal	ML	M	L
Janine	M	MH	L	Jdeidet El-Joumeh	M	M	ML	Jdeidet El-Kaiteh	M	M	ML
Jebayel	ML	M	L	Kafr	M	M	L	Kafr	ML	M	L
Karm Asfour	ML	M	L	Kfar Melki Akkar	M	MH	M	Kfar Noun	ML	M	L
Kfarharra	ML	MH	ML	Khalsa	M	M	L	Kharnoubet Akkar	ML	MH	L

Khirbet Daoud Aakkar	ML	M	L	Khirbet El Remmane	M	M	L	Khirbet Shar	ML	M	L
Khoreybet El-Jindi	ML	MH	L	Khreibet Aakkar	ML	M	L	Kneisset Aakkar	M	MH	M
Kneisset Hnaider	M	M	L	Knisse	ML	MH	L	Kroum El-Aarab	ML	MH	ML
Kwachra	M	M	L	Kweykhath	ML	MH	ML	Machta Hammoud	M	M	L
Majdala	ML	MH	ML	Majdel Akkar	ML	M	L	Mar Touma	M	MH	ML
Marlaya Melhem	M	MH	ML	Mashha	ML	M	L	Massoudiye	M	MH	M
Mazraat Beit Ghattas	M	MH	ML	Mazraat En-Nahriye	ML	M	L	Mechmech	L	M	L
Memneh	L	M	L	Mhammara	M	MH	L	Mighraq Aakkar	M	MH	M
Minyara	ML	MH	ML	Moqayteh	M	MH	M	Mounjez	ML	M	L
Msalla	M	M	L	Mzeihmeh	ML	MH	L	Nfaisheh	ML	MH	L
Noura Et-Tahta	ML	M	L	Ouadi El-Haour	ML	MH	L	Ouadi El-Jamous	M	MH	ML
Ouyoun El-Ghizlane	M	M	ML	Qaabarine	M	MH	M	Qabaait	ML	M	L
Qachlaq	ML	MH	L	Qantara Aakkar	ML	M	L	Qarha Aakkar	M	M	L
Qarqaf	M	MH	ML	Qboula	ML	M	L	Qleiaat Aakkar	M	MH	M
Qloud El-Baqie	ML	MH	ML	Qobaiyat Aakkar	L	M	L	Qobbat Chamrat	M	MH	L
Qorayat	L	M	L	Qornet Aakkar	ML	M	L	Qsair Aakkar	ML	M	L
Rahbe	ML	M	L	Rihaniyet Aakkar	ML	MH	ML	Rmah	ML	M	L
Rmoul	M	MH	M	Saadine	ML	MH	L	Sadaqa	ML	M	L
Saidnaya	ML	MH	L	Sammouniye	M	MH	M	Sayssoq	ML	M	L
Semmaqiye	M	MH	ML	Semmaqli	M	MH	ML	Sfinet El-Dreib	ML	MH	L
Sfinet El-Qaitaa	M	M	ML	Sindyanet Zeidane	ML	M	L	Souaisset Aakkar	ML	MH	ML
Srar	ML	MH	L	Tal Abbas El Gharby	M	MH	ML	Tal Abbas El-Chargy	ML	MH	ML
Tal Biret	M	MH	M	Tal Hmayra	ML	MH	L	Tal Maayan Tal Kiri	M	MH	M
Tal Sibel	M	MH	M	Tallet Chattaha	ML	M	L	Tikrit	ML	M	L
Tleil	M	MH	L	Tshea	L	M	L	Zawarib	ML	M	L
Zouq El Hosniyeh	M	M	ML	Zouq El-Haddara	ML	MH	ML	Zouq El-Hbalsa	ML	M	ML
Zouq El-Moqachrine	M	M	ML								

Sud

Sour

Municipality	02-Dec	03-Dec	04-Dec	Municipality	02-Dec	03-Dec	04-Dec	Municipality	02-Dec	03-Dec	04-Dec
Aaiyeh	M	M	L	Aalma El-Chaab	M	M	L	Aaytit	M	M	L
Abbassiyeh Sour	M	MH	ML	Abou Chech	M	MH	L	Ain Abou Abdallah	M	MH	ML
Ain Baal	M	MH	ML	Arzoun	M	M	L	Aziyeh	M	M	ML
Baflaya	M	M	L	Barich	M	M	L	Batouliyeh	M	H	ML
Bayad	M	M	L	Bazouriyeh	M	MH	L	Bediass	M	M	L
Bestiyat	M	M	L	Borj El Chemali	M	MH	ML	Borj En-Naqoura	M	MH	L
Borj Rahhal	M	M	L	Boustane	M	M	L	Btaychiyeh	M	M	L
Chaaitiye	M	MH	ML	Chameh	M	M	L	Chehabiye	M	M	L
Chehour	M	M	L	Chihine	M	M	L	Debaal Sour	M	M	L
Deir Amess	M	M	L	Deir Kifa	M	M	L	Deir Qanoun El-Ain	M	H	ML
Deir Qanoun El-Naher	M	M	L	Derdghaiya	M	M	L	Dhayra	M	M	L
Halloussiyeh	M	M	L	Hamoul	ML	M	L	Hanaouey	M	M	ML
Henniye	M	H	ML	Hmairi Sour	M	M	L	Iskandarouna Sour	M	M	ML
Jbal El Botom	M	M	L	Jebbin	M	MH	L	Jennata	M	M	L
Jijim	ML	M	L	Jouaiya	M	M	L	Kneisset Sour	M	MH	ML

Maarake	M	M	L	Maaroub	M	M	L	Majadel	M	M	L
Majdalzoun	M	MH	ML	Mansouri Sour	M	MH	ML	Marnba	M	M	L
Marouahine	M	M	L	Mazraat El-Zalloutiy	M	M	L	Mazraat Mechref	M	M	L
Mazraat Tayr Semhat	M	M	L	Mheilib	M	MH	ML	Neffakhiyeh	M	M	L
Niha Sour	M	M	L	Ouadi Jilo	M	M	L	Qana	M	M	L
Qolaileh Sour	M	H	ML	Rechknany	M	M	L	Rmadiyeh	M	M	L
Selha Sour	M	M	L	Siddiqine	M	M	L	Sour	M	H	ML
Srifa	M	M	L	Tayr Debbe	M	M	L	Tayr Felsay	M	M	L
Tayr Harfa	M	MH	L	Touayri	M	M	L	Toura	M	M	L
Yanouh Sour	M	M	L	Yarine	M	MH	L	Zebqine	M	M	L

Saida

Municipality	02-Dec	03-Dec	04-Dec	Municipality	02-Dec	03-Dec	04-Dec	Municipality	02-Dec	03-Dec	04-Dec
Aanqoun	M	M	L	Aaqtanit	M	M	L	Aarab Ej-Jall	M	M	L
Aarab Tabbaya	M	M	L	Abra Saida	M	M	L	Adloun	M	M	L
Adousiyeh	M	M	L	Ain-El-Deleb	M	M	L	Arzai	M	M	ML
Babliyah	M	M	L	Barty	M	M	L	Bissariyeh	M	M	L
Bnaafoul	M	M	L	Bqosta	M	M	L	Bramiy --	M	M	L
Daoudiyeh	M	M	L	Dareb El-Sim	M	M	L	Erkay	M	M	L
Ghassanieh	M	M	L	Ghazieh	M	M	L	Hajeh	M	M	L
Haret Saida	M	M	L	Hartiyeh	M	M	L	Hlaliye Saida	M	M	L
Insariyat	M	M	L	Jazira Saida	M	M	ML	Kafar Bit	M	M	L
Kaoutariyet El-Siyad	M	M	L	Kfar Chellal	M	M	L	Kfar Hatta Saida	M	M	L
Kfar Milke Saida	M	M	L	Khartoum	M	M	L	Khaziz	M	M	L
Khirbet Ed-Douair Sa	M	M	L	Khirbet El-Bassal	M	M	L	Khrayeb Saida	M	M	ML
Loubieh	M	M	L	Maghdouche	M	M	L	Majdelyoun	M	M	L
Matariyet El-Choumar	M	M	ML	Matayriyeh	M	M	L	Mazraat 'Mseileh	M	M	L
Mazraat 'Snaiber	M	MH	L	Mazraat Aarab Soukka	M	M	L	Mazraat Deir Taqla	M	M	L
Mazraat El Yahoudiye	M	MH	ML	Mazraat El-Housseini	M	MH	L	Mazraat El-Mhaydaleh	M	M	L
Mazraat El-Ouasta	M	M	ML	Mazraat Jamjim	M	M	L	Mazraat Kaoutariyet	M	M	L
Mazraat Kfar Badda	M	M	L	Mazraat Oussamiyat	M	M	L	Mazraat Sari	M	M	L
Mazraat Sinai	M	M	L	Meemariyeh	M	M	L	Merouaniyeh	M	M	L
Miyeh ou Miyeh	M	M	L	Najjariyeh	M	MH	L	Qaaqiyat El-Snaouba	M	M	L
Qnarit	M	M	L	Qraiye Saida	M	M	L	Saida Ed-Dekermane	M	M	L
Saida El-Oustani	M	M	L	Saida El-Qadimeh	M	M	L	Saida Kefraya	M	M	L
Saksakiyeh	M	M	L	Salhie Saida	M	M	L	Sarafand	M	M	L
Sfenta	M	M	L	Tafahta	M	M	L	Tanbourit	M	M	L
Tebna	M	M	L	Zaghdraiya	M	M	L	Zeita	M	M	L
Zrariyeh	M	M	ML								

Jezzine

Municipality	02-Dec	03-Dec	04-Dec	Municipality	02-Dec	03-Dec	04-Dec	Municipality	02-Dec	03-Dec	04-Dec
Ain El-Mir (El Estab	M	M	L	Anane	M	M	L	Aramta	M	M	L
Ariya	M	M	L	Aychiyeh	M	M	L	Azour	M	M	L
Baba	M	M	L	Baysour Jezzine	M	M	L	Benoueteh Jezzine	M	M	L
Bhannine	M	M	L	Bisri	M	M	L	Bkassine	M	M	L
Bouslaya	M	M	L	Btedine El-Leqech	M	M	L	Chbail	M	M	VL
Choualiq Jezzine	M	M	L	Dahr Ed-Deir	M	M	L	Deir El Qattine	M	M	L

Demachqiyeh	M	M	L	Ghabbatiyeh	M	M	L	Harf Jezzine	M	M	L
Hassaniyeh	M	M	L	Haytouleh	M	M	L	Haytura	M	M	L
Hidab	M	M	L	Homsiyeh	M	M	L	Jabal Toura	M	M	L
Jarmaq	M	M	L	Jensnaya	M	M	L	Jernaya	M	M	L
Jezzine	M	M	L	Karkha	M	M	L	Kfar Falous	M	M	L
Kfar Houna	M	M	L	Kfar Jarrah	M	M	L	Lebaa	M	M	L
Louayzet Jezzine	M	M	L	Machmouche	M	M	VL	Mahmoudiyeh Jezzine	M	M	L
Maknounye Jezzine	M	M	L	Maraat Ouazaiyeh	M	M	L	Mazraat Daraya	M	M	L
Mazraat El-Aarqoub	M	M	L	Mazraat El-Mathane	M	M	L	Mazraat El-Rahbane	M	M	L
Mazraat Khallet Khaz	M	M	L	Mazraat Louzid (Loua	M	M	L	Mazraat Qrouh	M	M	L
Mazraat Tamra	M	M	L	Mazraat Zighrine Jez	M	M	L	Mazraat	M	M	L
Mharbiyeh	M	M	L	Midane Jezzine	M	M	L	Mjeydel Jezzine	M	M	L
Mlikh	M	M	L	Mrach El-Hbasse	M	M	L	Ouadi Baanqoudaine	M	M	L
Ouadi El-Laymoun	M	M	L	Ouardiyeh	M	M	VL	Qabaa Jezzine	M	M	L
Qatrani	M	M	L	Qaytouleh	M	M	L	Qtaleh Jezzine	M	M	L
Rihane Jezzine	M	M	L	Rimat	M	M	L	Roum	M	M	L
Roummanet	M	M	L	Sabbah	M	M	L	Saydoun	M	M	L
Sfaray	M	M	L	Snaya	M	M	L	Sojoud	M	M	L
Srayri	M	M	L	Taaid	M	M	L	Wadi Jezzine	M	M	L
Zhalta	M	M	L								

Bekaa

West Bekaa

Municipality	02-Dec	03-Dec	04-Dec	Municipality	02-Dec	03-Dec	04-Dec	Municipality	02-Dec	03-Dec	04-Dec
Aammq BG	M	M	L	Ain El Tineh BG	M	M	L	Ain Zebdeh	M	M	L
Ana	M	M	L	Aytanit	M	M	L	Baaloul BG	M	M	L
Bab Mareh	M	M	L	Chouberqiye Aammq	M	M	L	Dakoue	M	M	L
Deir Ain El-Jaouze	M	M	L	Deir Tahniche	M	M	L	Ghaza	M	M	L
Harime El-Soughra	M	M	L	Hoch Harimeh	M	M	L	Jazira BG	M	M	L
Jib Jennine	M	M	L	Kamed-El-Laouz	M	M	L	Kefraya BG	M	M	L
Khiara El Atika	M	M	L	Khiara	M	M	L	Khirbet Qanafar	M	M	L
Lala	M	M	L	Lebbaya BG	M	M	L	Loussa	M	M	L
Machghara	M	M	L	Manara (Hammar) BG	M	M	L	Mansoura BG	M	M	L
Marej BG	M	M	L	Maydoun	M	M	L	Ouaqf BG	M	M	L
Qaraaoun	M	M	L	Qelya	M	M	L	Raouda (Istabel)	M	M	L
Saghbine	M	M	L	Sohmor	M	M	L	Soltan Yacoub el Ara	M	M	L
Souairy	M	M	L	Sultan Yaacoub	M	M	L	Tal Znoun	M	M	L
Yehmor BG	M	M	L	Zilaya	M	M	L				

Zahle

Municipality	02-Dec	03-Dec	04-Dec	Municipality	02-Dec	03-Dec	04-Dec	Municipality	02-Dec	03-Dec	04-Dec
Aanjar (Haouch Mouss	M	M	L	Ablah	M	M	ML	Ain Kfarzabad	M	M	L
Ali-El-Nahri	M	M	ML	Bar Elias	M	M	L	Bouarej	M	M	L
Cheberqiyet Tabet	M	M	L	Chtaura	M	M	L	Deir El Ghazal	M	M	L
Delhamiyet Zahle	M	M	L	Ferzol	M	M	ML	Haouch El-Ghanam	M	M	ML
Haouch Es-Siyadeh	M	M	L	Haouch Hala	M	M	ML	Haouch Mandara	M	M	L

Haouch Qayssar	M	M	L	Hezerta	M	M	ML	Hosh Moussa	M	M	L
Jdita	M	M	L	Kfarzabad	M	M	L	Ksara	M	M	L
Majdel Aanjar	M	M	L	Makssi	M	M	L	Massa	M	M	L
Mazraat Er-Remtaniye	M	M	L	Mrayjat Zahle	M	M	L	Mzaraa Zahle	M	M	L
Nabi Ayla	M	M	M	Nasriyet Rizk	M	M	L	Nasriyet Zahle	M	M	L
Niha Zahle	M	M	M	Ouadi Ed-Deloum	M	M	L	Ouadi El-Arayech	M	M	M
Qaa El Rim	M	M	M	Qab Elias	M	M	L	Qousaya	M	M	L
Rhit	M	M	L	Riyak	M	M	ML	Saadnayel	M	M	L
Taal El-Akhdar	M	M	L	Taalbeya	M	M	L	Taanayel	M	M	L
Talamara	M	M	ML	Tcheflik Edde Haouch	M	M	L	Tcheflik Qiqano	M	M	L
Terbol Zahle	M	M	L	Touaite Zahle	M	M	L	Zahle Aradi	M	M	ML
Zahle El-Berbara	M	M	M	Zahle El-Maallaqa	M	M	ML	Zahle El-Midane	M	M	ML
Zahle Er-Rassiye	M	M	M	Zahle Haouch El-Ouma	M	M	L	Zahle Haouch El-Ouma	M	M	L
Zahle Haouch Ez-Zara	M	M	ML	Zahle Maalqa Aradi	M	M	ML	Zahle Mar Antonios	M	M	M
Zahle Mar Elias	M	M	L	Zahle Mar Gerios	M	M	L	Zahle Saydet En-Naja	M	M	ML
Zebdoul	M	M	L								

Rachaiya

Municipality	02-Dec	03-Dec	04-Dec	Municipality	02-Dec	03-Dec	04-Dec	Municipality	02-Dec	03-Dec	04-Dec
Ain Arab Rachaiya	M	M	VL	Ain Ata	M	ML	VL	Ain Harche	M	ML	VL
Aqabe Rachaya	M	ML	VL	Ayha	ML	ML	VL	Ayta El Fokhar	M	M	L
Bakifa Rachaya	M	ML	VL	Bakka	M	M	VL	Beit Lahya	M	ML	VL
Bireh Rachaiya	M	M	L	Daher El Ahmar	M	ML	VL	Deir El-Achayer	L	ML	VL
Heloua Rachaiya	L	ML	VL	Hoch El Qannabeh Rac	M	M	VL	Kaoukaba Bou Arab	M	ML	VL
Kfar Danis	M	M	VL	Kfar Mechki	M	M	L	Kfar Qouq	M	ML	VL
Kherbet Rouha	M	M	L	Majdel Balhiss	M	M	L	Mdoukha	M	M	VL
Mhaydseh Rachaiya	M	M	L	Nabi Safa	M	M	L	Rachaiya	M	ML	VL
Rafid Rachaiya	M	M	L	Selsata (Mazraat Dei	L	ML	VL	Tannoura	M	ML	VL
Yanta	ML	M	VL								

Beyrouth

Beyrouth

Municipality	02-Dec	03-Dec	04-Dec	Municipality	02-Dec	03-Dec	04-Dec	Municipality	02-Dec	03-Dec	04-Dec
Achrafieh	M	MH	M	Ain el-Mreisse	M	H	M	Bachoura	M	MH	M
Beirut Central Distr	M	MH	M	Marfai	M	MH	M	Mazraa	M	MH	M
Medaouar	M	MH	M	Minet el-Hosn	M	MH	M	Mwssaitbeh	M	MH	M
Ras Beirut	M	H	M	Rmeil	M	MH	M	Saifi	M	MH	M
Zqaq el-Blat	M	MH	M								