

Lebanon Fire Risk Bulletin



CIVIL DEDEFENCE

Refer to cadast table condition.

Please note that the indicated temperature is at 2 meters height from the ground.

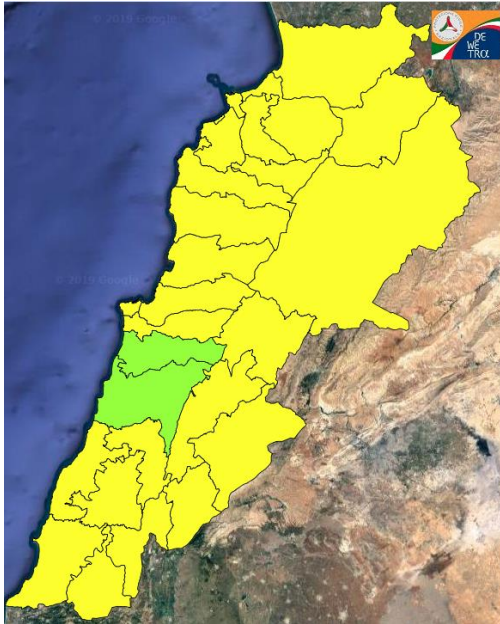
General description of potential fire risk situation

Symbol	Level of risk	Meaning and actions
VL	Very low	Very low fire risk. Controlled burning operations can be hardly executed due to high fuel moisture content. Normally wildfires self-extinguish.
L	Low	Low fire risk. Controlled burning operations can be executed with a reasonable degree of safety.
ML	Medium low	Medium-low fire risk. Controlled burning operations can be executed in safety conditions. All the fires need to be extinguished.
M	Medium	Medium fire risk. Controlled burning operations would be avoided. All the fires need to be very well extinguished.
M	Medium high	Controlled burning is not recommended. Open flame will start fires. Cured grasslands and forest litter will burn readily. Spread is moderate in forests and fast in exposed areas. Patrolling and monitoring is suggested. Fight fires with direct attack and all available resources.
H	High	Ignition can occur easily with fast spread in grass, shrubs and forests. Fires will be very hot with crowning and short to medium spotting. Direct attack on the head may not be possible requiring indirect methods on flanks. Patrolling and monitoring the territory is highly suggested.
E	Extreme	Ignition can occur also from sparks. Fires will be extremely hot with fast rate of spread. Control may not be possible during day due to long range spotting and crowning. Suppression forces should limit efforts to limiting lateral spread. Damage potential total. Patrolling and monitoring the territory is highly suggested.

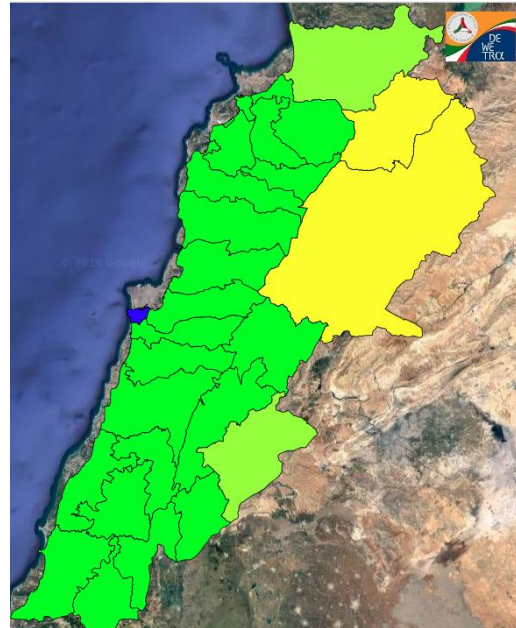
Beirut, 2 December 2019

FIRE RISK INDEX

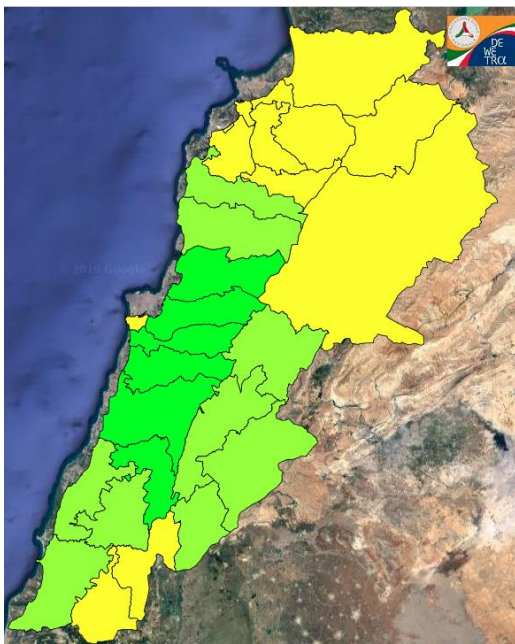
1 December 2019



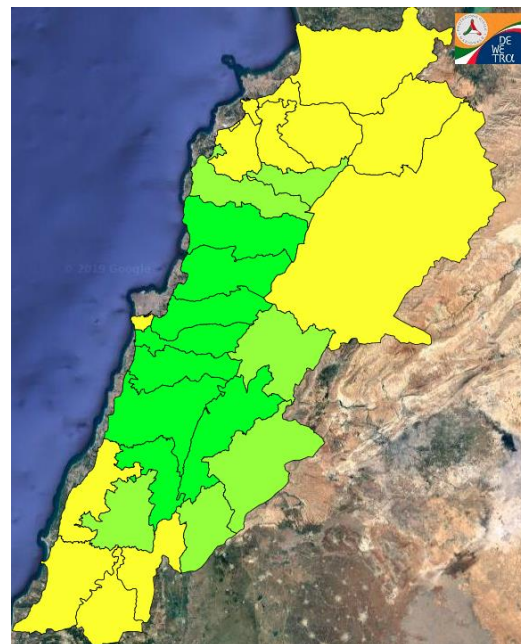
2 December 2019



3 December 2019



4 December 2019

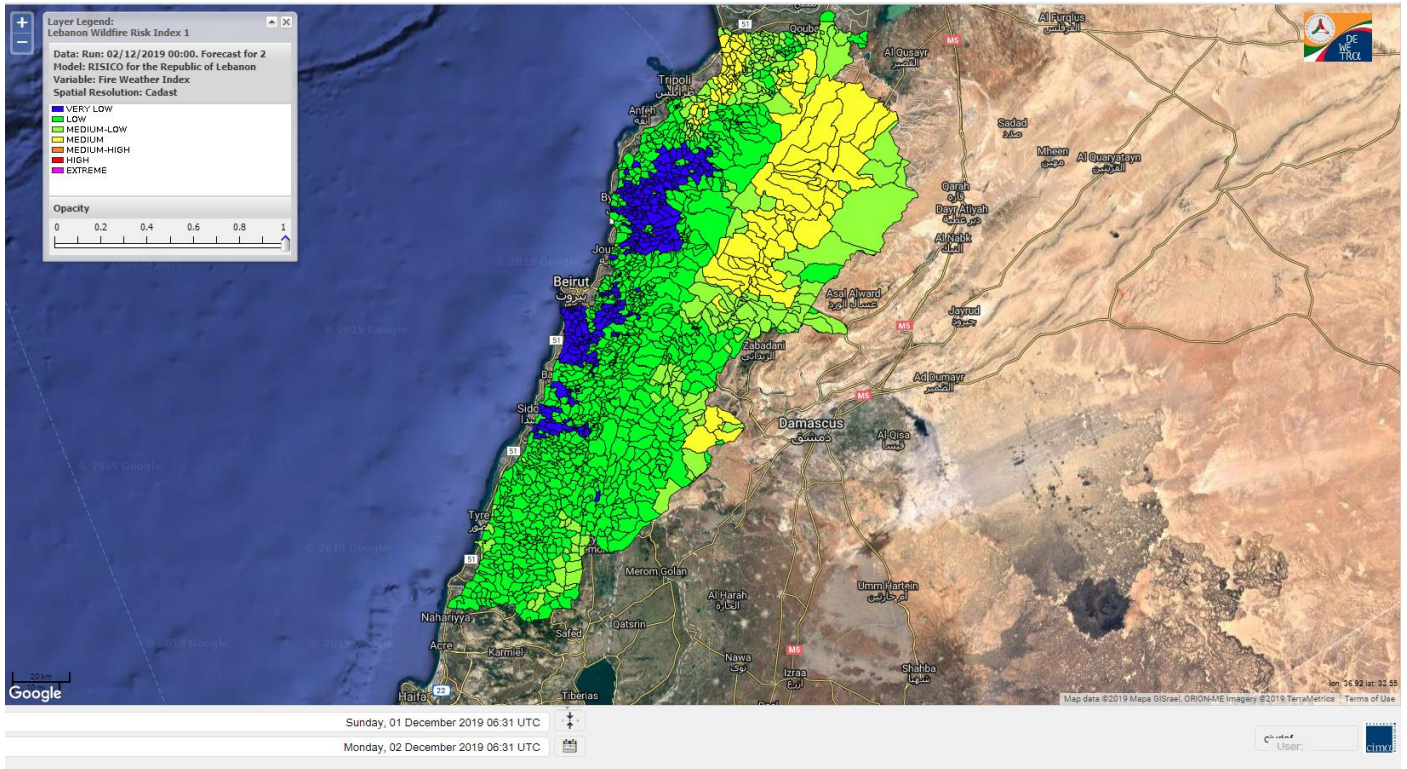


Layer Legend:
Lebanon Wildfire Risk Index 1

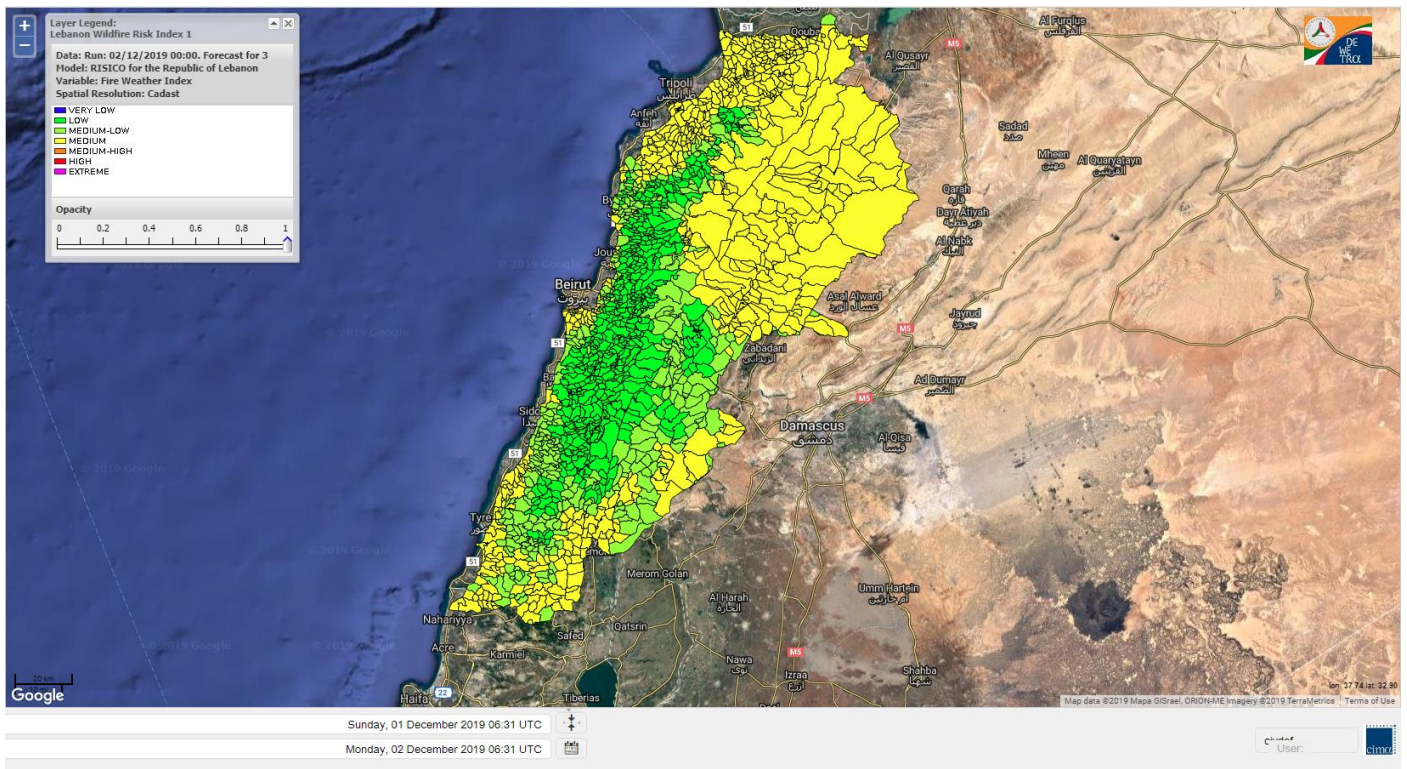
Data: Run: 02/12/2019 00:00. Forecast for 2
Model: RISICO for the Republic of Lebanon
Variable: Fire Weather Index
Spatial Resolution: Caza

- VERY LOW
- LOW
- MEDIUM-LOW
- MEDIUM
- MEDIUM-HIGH
- HIGH
- EXTREME

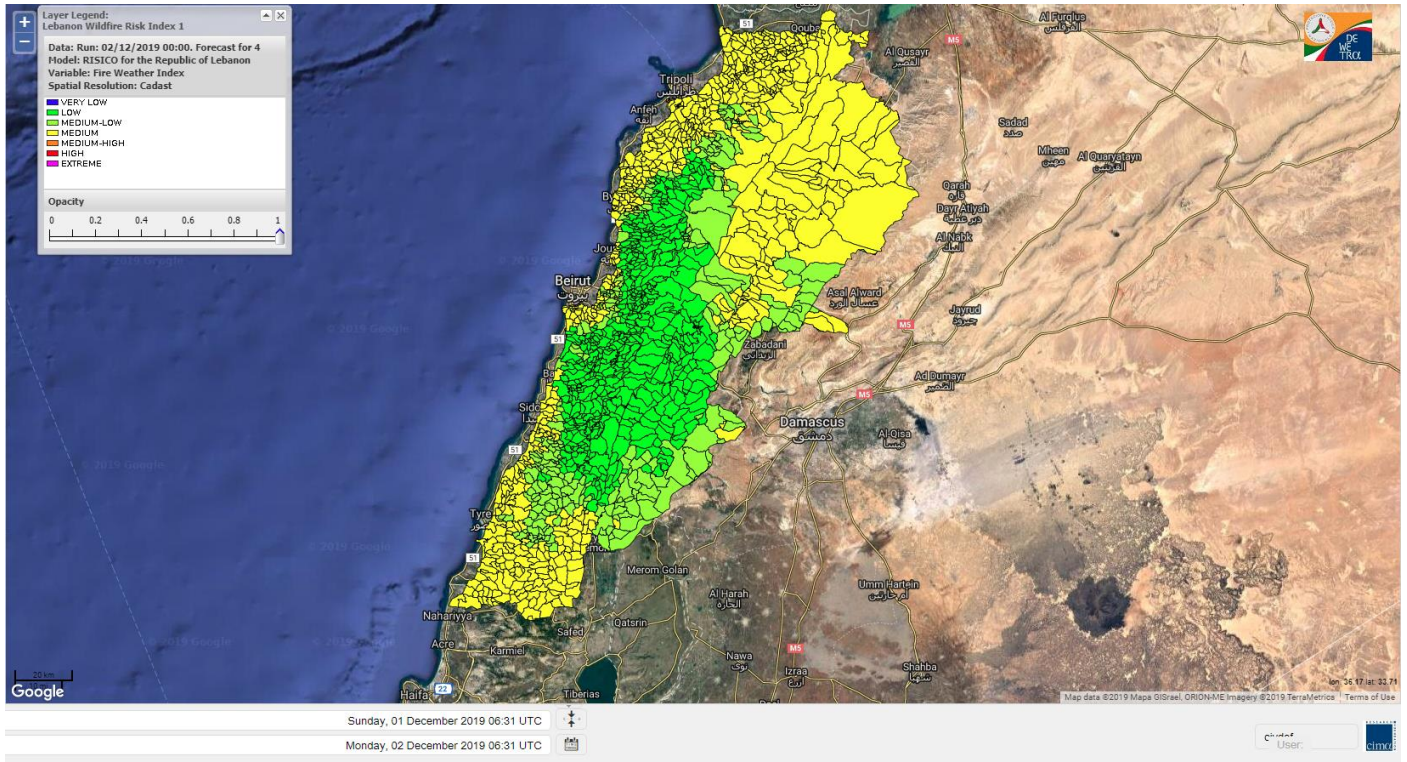
Lebanon for 2 December 2019



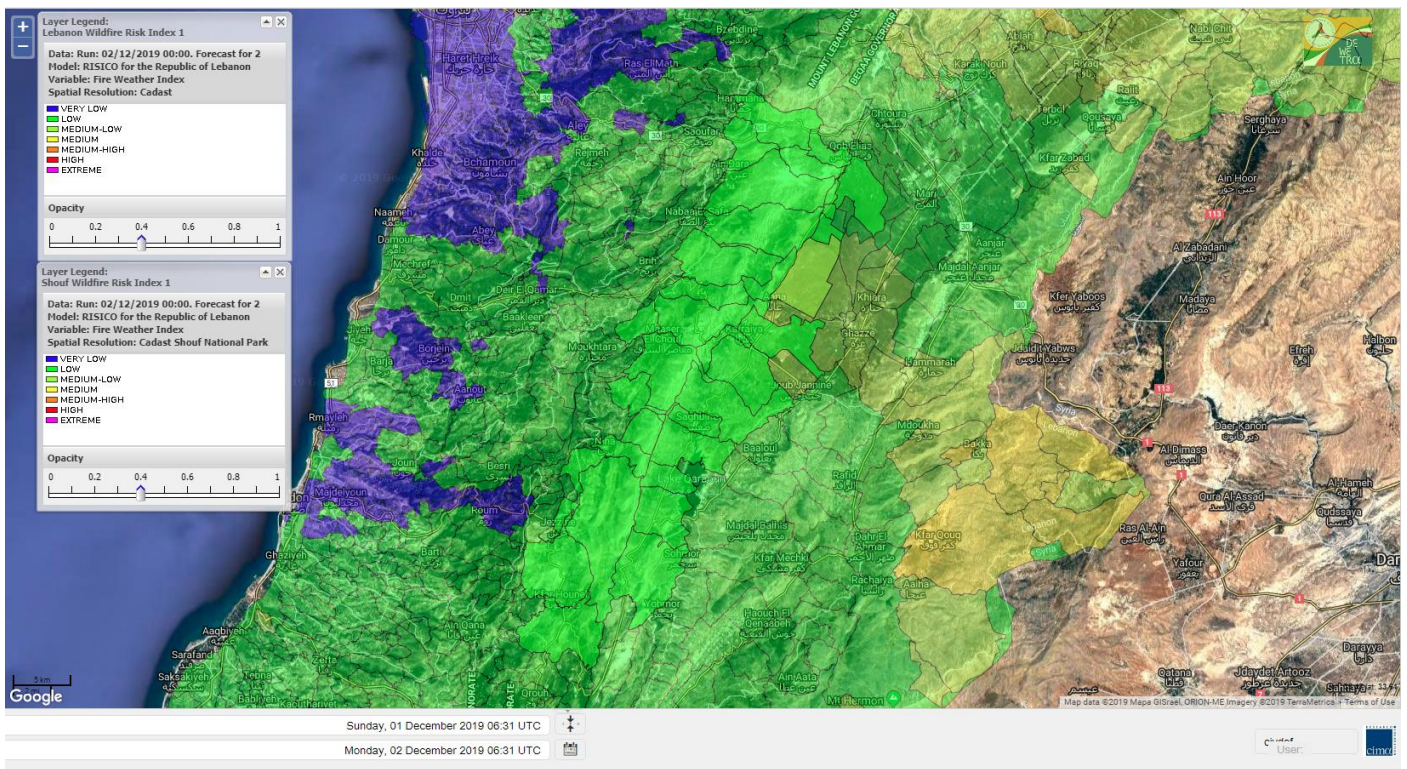
Lebanon for 3 December 2019



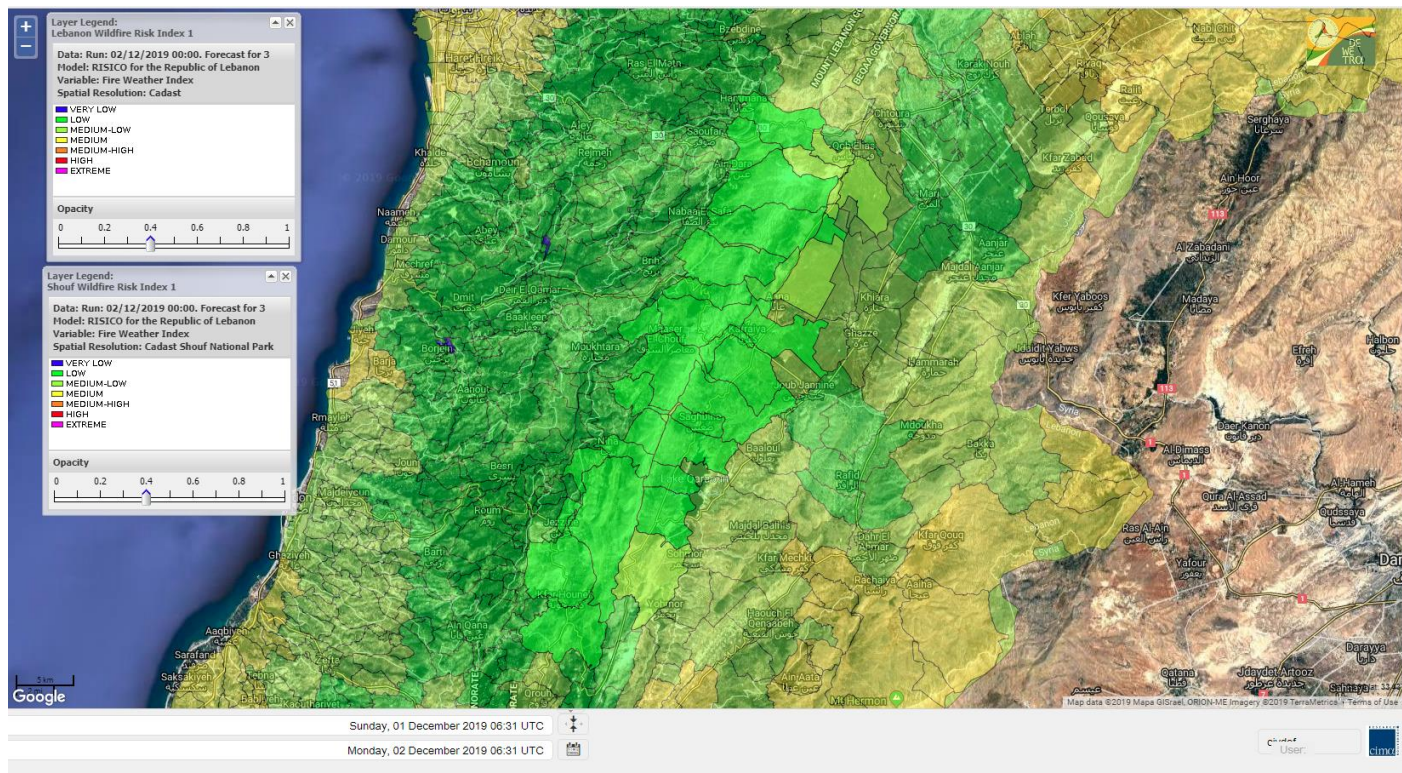
Lebanon for 4 December 2019



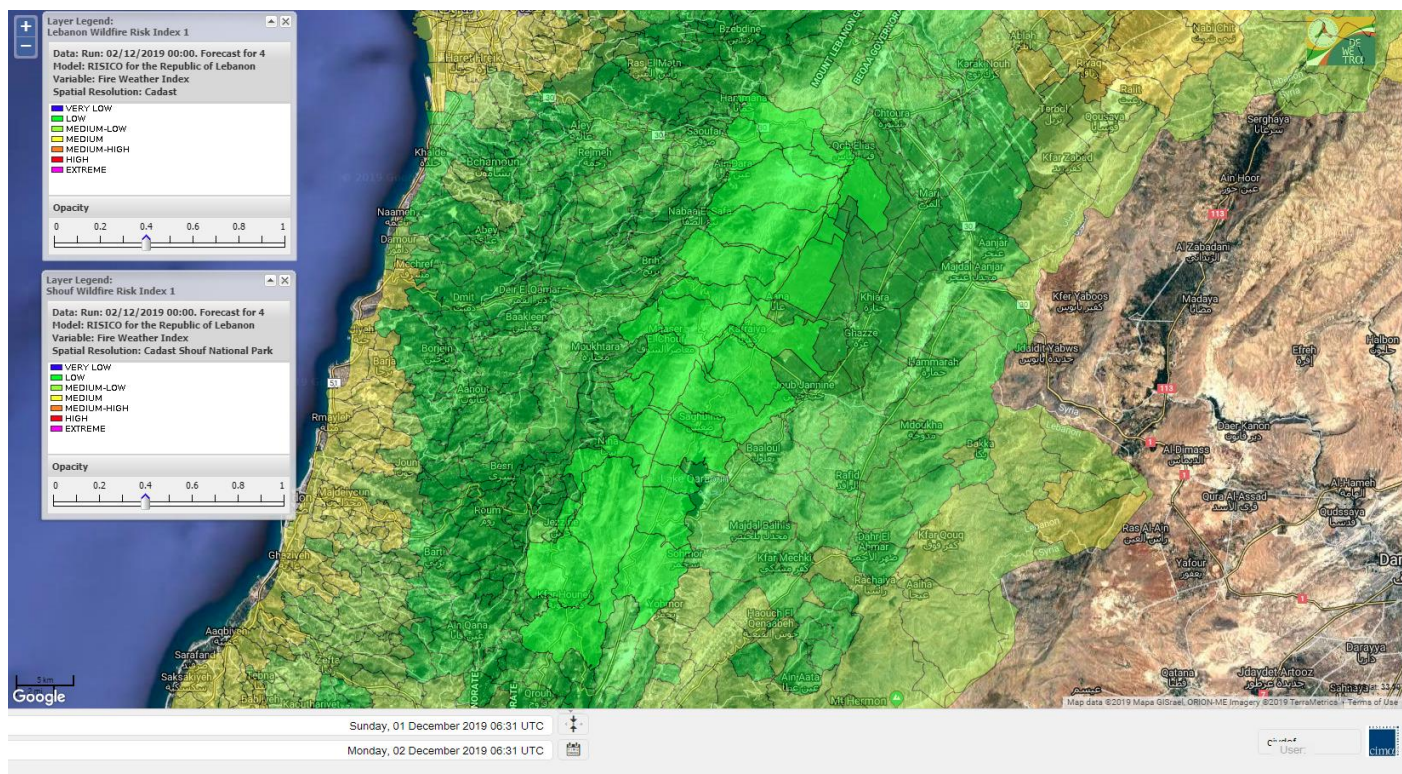
Shouf Biosphere Reserve Forecast for 2 December 2019



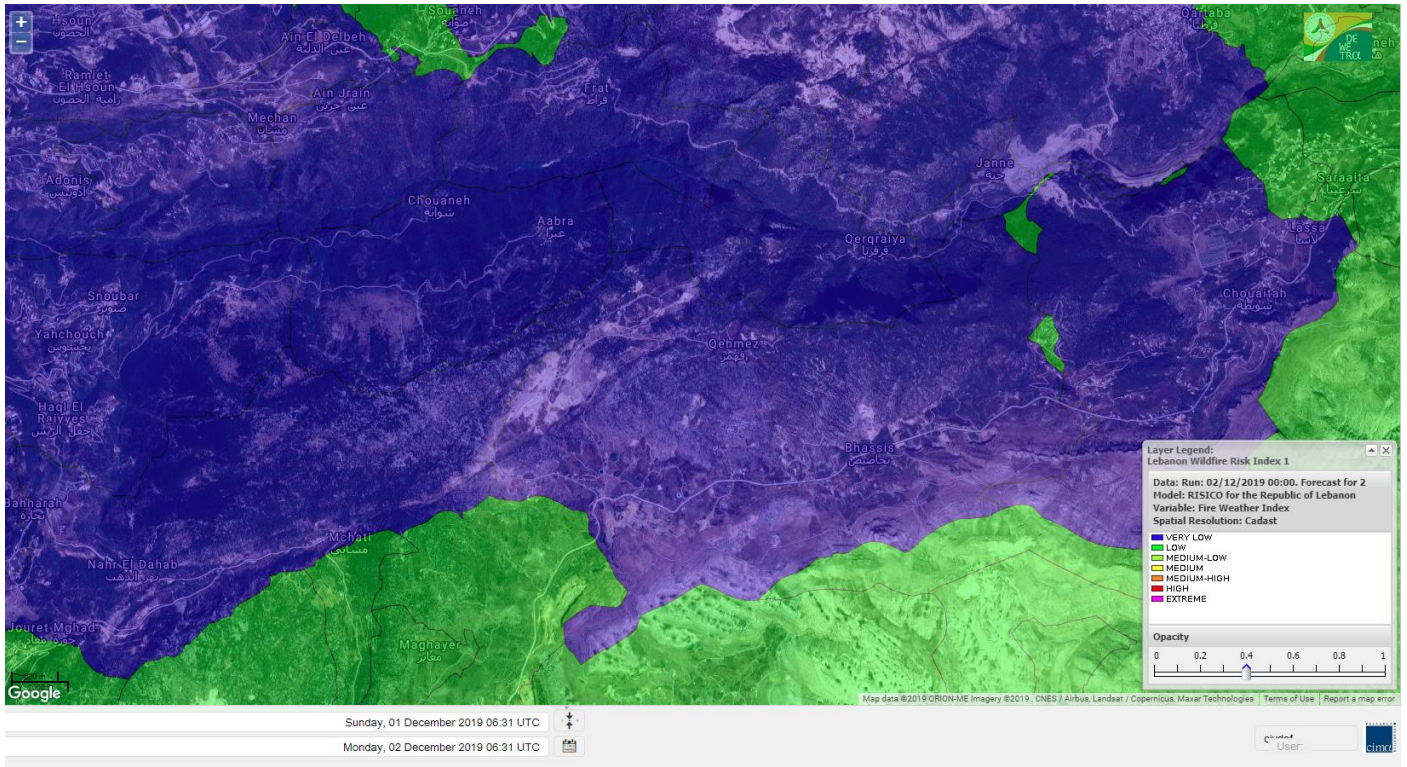
Shouf Biosphere Reserve Forecast for 3 December 2019



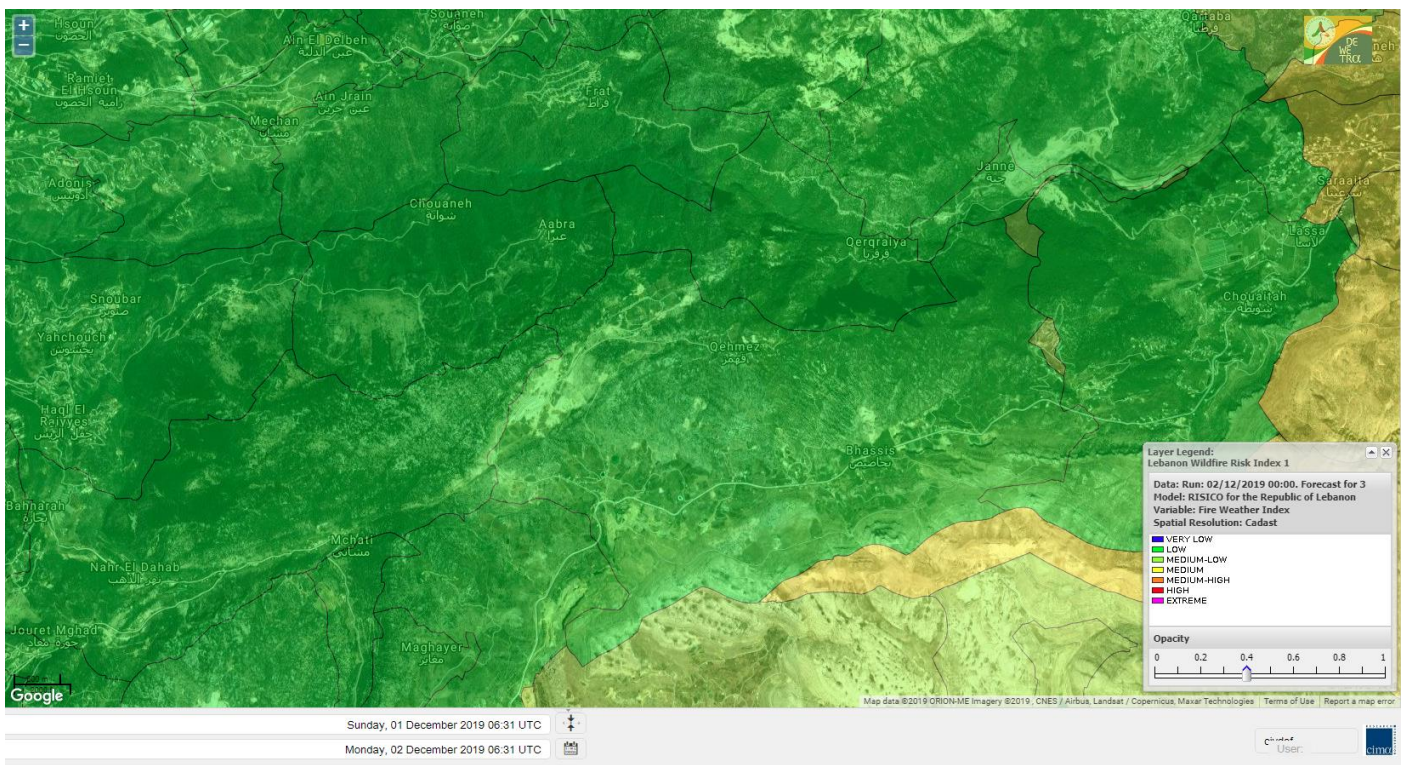
Shouf Biosphere Reserve Forecast for 4 December 2019



Jabal Moussa Reserve Forecast for 2 December 2019



Jabal Moussa Reserve Forecast for 3 December 2019



Jabal Moussa Reserve Forecast for 4 December 2019

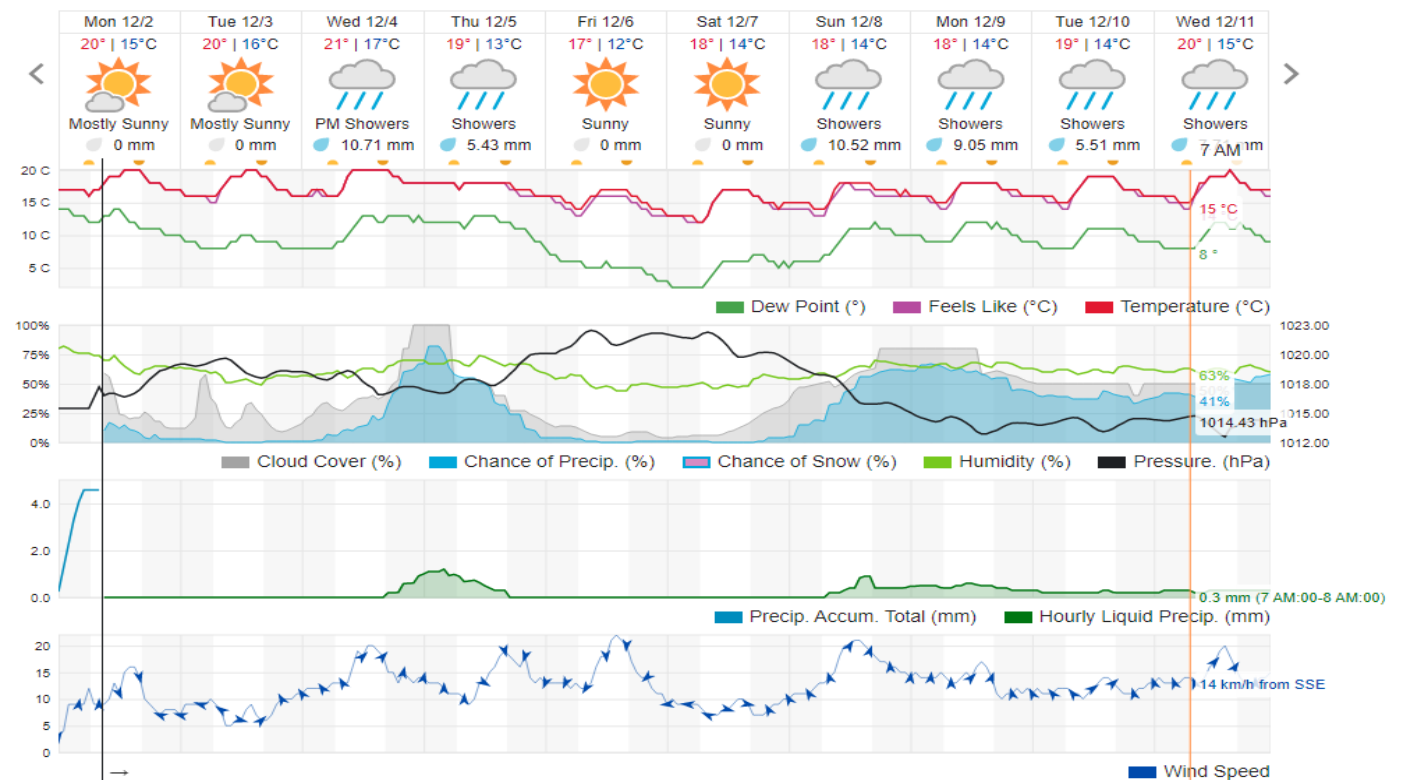


Beirut, Beirut Governorate, Lebanon 10-Day Weather Forecast

18° ACHRAFIEH, RIZK STATION | CHANGE

TODAY HOURLY 10-DAY CALENDAR HISTORY WUNDERMAP

Customize



Nord

Koura

Municipality	02-Dec	03-Dec	04-Dec	Municipality	02-Dec	03-Dec	04-Dec	Municipality	02-Dec	03-Dec	04-Dec
Aaba	L	M	M	Afsaddiq	VL	M	M	Ain Ekrine	VL	M	M
Amioun	VL	M	M	Anfeh	L	M	M	Badbhoun	L	M	M
Barghoun	L	M	M	Barsa	L	M	M	Batroumine	L	M	M
Bdebba	L	M	M	Bechmizine	VL	M	M	Bednayel El-Koura	L	M	M
Bhabbouch El-Koura	VL	M	M	Bkeftine	L	M	M	Bnehran	VL	ML	M
Bqaiia El-Koura	L	M	M	Bsarma	L	M	M	Btaaboura	L	M	M
Bterram	L	M	M	Btouratij	L	M	M	Bziza	VL	M	M
Dar Beechtar	VL	M	M	Dar Chmezzine	VL	M	M	Deddeh	L	M	M
Deir El-Balamand	L	M	M	Fih	L	M	M	Hraiche	L	M	M
Ijdaabrine	L	M	M	Kaftoun	L	M	M	Kefraya El-Koura	L	M	M
Kfarakka	VL	M	M	Kfarhata	L	M	M	Kfarhazir	L	M	M
Kfarkahel	L	M	M	Kfarsaroun	VL	M	M	Kosba	VL	M	M
Mejdel el-Koura	VL	ML	ML	Nakhle	L	M	M	Qalhat	L	M	M
Ras Masqa	L	M	M	Rechdibbine	L	M	M	Zakroun	L	M	M
Zgharta El-Mtaouile	VL	L	ML								

Bcharre

Municipality	02-Dec	03-Dec	04-Dec	Municipality	02-Dec	03-Dec	04-Dec	Municipality	02-Dec	03-Dec	04-Dec
Aabdine	VL	L	L	Bane	VL	M	M	Barhelioun	VL	L	L
Bazooune	L	M	ML	Becharre	L	M	M	Beit Menzer	VL	L	L
Billa	L	L	L	Blaouza	VL	M	ML	Bqaa Kafra	ML	M	ML
Bqerqacha	L	M	M	Breissat	L	ML	L	Dimane	L	M	L
Hadath El Jobbeh	L	ML	L	Hadchit	L	ML	ML	Hasroun	L	M	ML
Mazraat Aassaf	VL	L	L	Mazraat Bani Saab	L	ML	ML	Mchaa El-Jobbeh	ML	M	ML
Metrit	VL	ML	M	Moghr El-Ahoual	L	L	ML	Ouadi Qannoubine	VL	L	L
Qanat	VL	L	L	Qnayouer	VL	L	L	Tourza	VL	L	L

Batroun

Municipality	02-Dec	03-Dec	04-Dec	Municipality	02-Dec	03-Dec	04-Dec	Municipality	02-Dec	03-Dec	04-Dec
Aabrine	L	ML	M	Aalali	L	L	L	Aartziz	VL	L	ML
Abdelli	VL	L	ML	Ajdabra	L	L	M	Assia	VL	L	L
Basbina	L	ML	M	Batroun	L	M	M	Bcheleh	L	L	L
Bechtoudar	VL	L	L	Beit Chlala	VL	L	L	Beit Kassab	VL	L	L
Bijdarfil	L	M	M	Bqesmaya	VL	ML	M	Chatine	L	ML	L
Chebtin	VL	L	ML	Chekka	L	M	M	Daael	VL	L	L
Dahr Abi Yaghi	VL	L	ML	Daraya El-Batroun	VL	ML	M	Deir Billa	VL	L	ML
Deir Kfifane	VL	ML	M	Deir Mar Youhanna EL	VL	L	L	Deir Mar Youssef Jra	VL	L	ML
Douma	L	L	L	Douq	VL	L	ML	Eddeh El-Batroun	VL	ML	M
Ftahat El-Batroun	VL	L	ML	Ghouma	VL	ML	M	Hadtoun	VL	L	L
Hamat	L	ML	M	Harbouna	VL	L	ML	Hardine	VL	L	L
Helta	VL	L	L	Hery	L	M	M	Jebbla	VL	L	L
Jrabta El-Batroun	VL	L	M	Jrane El-Batroun	VL	ML	M	Kfar Aabida	L	ML	M
Kfar Halda	VL	L	L	Kfarb Shlaimane	VL	L	L	Kfarhatna	VL	L	M

Kfarhay	L	M	M	Kfarhelos	VL	L	M	Kfifane	L	M	M
Kfour El Arabi	L	ML	L	Koubba	L	M	M	Kour	VL	ML	M
Mar Mama	VL	L	ML	Masrah	VL	L	ML	Mehmarch	VL	ML	L
Mrah Chdid	VL	L	M	Mrah El Ziyat	VL	ML	M	Mrah El-Hajj	VL	L	L
Nahle El-Batroun	VL	L	L	Niha El-Batroun	L	ML	L	Oujh El-Hajjar	L	M	M
Ouata Houb	L	ML	L	Qatnaaoun	L	ML	M	Racha	VL	ML	L
Rachana	VL	L	M	Rachkida	L	M	M	Ram El-Batroun	VL	L	L
Ras Nahhach	VL	ML	M	Selaata	L	M	M	Sghar	VL	ML	M
Smar Jbayl	VL	ML	M	Sourat El-Batroun	VL	L	ML	Tannourine El-Faouqa	L	M	ML
Tannourine Et-Tahta	L	L	L	Thoum	VL	ML	M	Toula El-Batroun	VL	L	ML
Zan	VL	L	ML								

Zgharta

Municipality	02-Dec	03-Dec	04-Dec	Municipality	02-Dec	03-Dec	04-Dec	Municipality	02-Dec	03-Dec	04-Dec
Aachach	M	M	M	Aalma	M	M	M	Aarde	ML	M	M
Aintourine	VL	ML	ML	Arabet Qozhaya	VL	L	L	Arde	ML	M	M
Arjis	L	M	M	Asnoun	ML	M	M	Ayto	VL	L	ML
Basloukit	L	M	ML	Bchannine	L	M	M	Besebeel	ML	M	M
Bhairret Toula	VL	ML	M	Bnachee	L	ML	ML	Boussit	M	M	M
Danha	ML	M	M	Daraiya Zgharta	VL	M	M	Deir Jdeide	ML	M	M
Ehden	L	M	ML	Halan	ML	M	M	Hariq Zgharta	ML	M	M
Houakir	L	M	M	Hraiqis	ML	M	M	Iaal	ML	M	M
Ijbaa	VL	ML	ML	Karm Saddeh	VL	L	L	Kfarchakhna	L	M	M
Kfardlaqous	M	M	M	Kfarfou	VL	M	M	Kfarhata Zgharta	ML	M	M
Kfarhoura	ML	M	M	Kfarsghab	L	M	ML	Kfaryachit	ML	M	M
Kfarzaina	ML	M	M	Khaldiye	ML	M	M	Mazraat Ajbeaa	ML	M	M
Mazraat Et-Teffah	VL	L	ML	Mazraat Jneid	ML	M	M	Mejdlaya Zgharta	ML	M	M
Merh Kfarsghab	L	ML	M	Miryata	M	M	M	Miziara	L	ML	ML
Mzraat Kefraya	ML	M	M	Qorah Bach	ML	M	M	Rachiine	M	M	M
Ras Kifa	VL	ML	ML	Sakhra	ML	M	M	Sebhel Zgharta	L	ML	M
Serhel	VL	L	L	Tallet Zgharta	ML	M	M	Toula Zgharta	L	L	ML
Zgharta	M	M	M								

Minieh-Denniye

Municipality	02-Dec	03-Dec	04-Dec	Municipality	02-Dec	03-Dec	04-Dec	Municipality	02-Dec	03-Dec	04-Dec
Aasaymout	L	M	M	Aaymar	L	L	ML	Aazki	L	L	ML
Ain El-Tineh-Miniyeh	L	L	M	Assoun	L	L	ML	Bakhaaoun	L	L	ML
Bchennata	L	M	ML	Bechehhara	L	M	M	Beddawi	ML	M	M
Behouaita	L	ML	ML	Beit El Foqss	L	L	M	Beit Haouik	L	ML	M
Beit Zoud	L	L	M	Bekaasafrine	L	M	M	Borj El Yahoudiyeh	ML	M	M
Bqarsouna	L	L	M	Btermaz	L	L	ML	Debaael	L	ML	M
Deir Ammar	ML	M	M	Deir Nbouh	L	M	M	Haouaret-Miniyeh	L	ML	M
Haql el Azimeh	L	L	M	Harf El Siyad	L	L	L	Hazmiye-Miniyeh	L	L	M
Izal	L	ML	M	Jarjour	L	M	M	Jayroun	L	M	M
Kahf El-Malloul	L	ML	ML	Karm El-Moher	L	ML	ML	Kfar Binine	L	M	ML
Kfarchalane	L	L	ML	Kfarhabou	L	ML	M	Kharroub-Miniyeh	L	L	M
Mazraat El-Kreme	L	ML	M	Mazraat Ketrane	L	L	ML	Merkebtta	M	M	M

Minyeh	ML	M	M	Mrah El Sfirat	L	L	M	Mrah Sraj	L	L	ML
Mrebbine	L	M	M	Nabi Youcheaa	ML	M	M	Nemrine	L	ML	ML
Qarhaiya	L	ML	M	Qarne	L	M	M	Qarsita	L	ML	M
Qattineh-Miniyeh	L	L	ML	Qemmamine	L	M	ML	Qraine	L	L	ML
Raouda-Aadoua	M	M	M	Rihaniyet-Miniyeh	M	M	M	Sfireh	L	ML	M
Sir Ed-Danniyeh	L	L	M	Tarane	L	L	M	Terbol-Miniyeh	ML	M	M
Zaghartaghriine	L	M	M	Zouq Bhannine	ML	M	M				

Nabatiye

Nabatiye

Municipality	02-Dec	03-Dec	04-Dec	Municipality	02-Dec	03-Dec	04-Dec	Municipality	02-Dec	03-Dec	04-Dec
Aabba	L	L	ML	Aazzi	L	ML	ML	Adchit El-Chqif	L	ML	ML
Ain Bou Swar	L	L	L	Ain Kana	L	L	L	Ali El-Taher	L	ML	ML
Ansar	L	ML	M	Arab Salim	L	ML	ML	Arnoun	L	M	M
Bfaroue	L	L	L	Breyqaah	L	ML	ML	Charqiyeh	L	L	ML
Choukine	L	ML	ML	Deir El Zahrani	L	L	ML	Doueir El-Nabatiyeh	L	L	ML
Habbouch El-Nabatiye	L	ML	ML	Hamra El-Nabatiyeh	ML	M	M	Harouf El-Nabatiyeh	L	L	ML
Hmaile	L	L	ML	Houmin El Faouqa	L	ML	ML	Houmin El Tahta	L	ML	ML
Jarjough	L	L	L	Jbaah El-Nabatiyeh	L	L	L	Jebchit	L	L	ML
Kfar Djal El-Nabatiy	L	ML	ML	Kfar Remmane	L	ML	ML	Kfar Sir	L	ML	ML
Kfar Tebnit	L	M	M	Kfarfila	L	L	L	Kfour El-Nabatieh	L	L	ML
Mayfadoun	ML	M	M	Mazraat Bsaffour	L	L	ML	Mazraat Chalbaal	L	L	ML
Mazraat Dmoul	L	L	ML	Mazraat El Khreibeh	L	ML	ML	Mazraat El-Bayad El-	L	ML	ML
Mazraat Kfarjaouz	L	ML	ML	Mazraat Qalaat Meiss	L	L	M	Nabatiyeh El-Fawka	L	M	ML
Nabatiyeh Et-Tahta	L	ML	ML	Namiriyeh	L	L	ML	Qaaqaiyet El Jisr	L	ML	M
Qossaibeh El-Nabatiy	L	ML	ML	Roumine	L	ML	ML	Sarba El-Nabatieh	L	L	L
Sir El-Gharbiyeh	L	ML	ML	Toul	L	L	ML	Yehmor El-Nabatiyeh	ML	M	M
Zaoutar El Charkiyeh	ML	M	M	Zaoutar El-Gharbiyeh	L	ML	ML	Zebdine El-Nabatiyeh	L	ML	ML
Zefta	L	L	L								

Hasbaiya

Municipality	02-Dec	03-Dec	04-Dec	Municipality	02-Dec	03-Dec	04-Dec	Municipality	02-Dec	03-Dec	04-Dec
Aain Jarfa	L	M	ML	Abou Qamha	L	ML	ML	Ain Qania	L	M	ML
Bourghos	L	ML	L	Chebaa	L	ML	ML	Chouaya Hasbaya	L	ML	ML
Dellafeh	L	ML	L	Fardiss Hasbaiya	L	ML	ML	Hasbaya	L	M	ML
Hbariyeh	L	ML	ML	Kaoukaba Hasbaiya	L	M	ML	Kfar Chouba	L	ML	ML
Kfar Hamam	L	ML	ML	Kfeir El-Zait	L	ML	ML	Khalwat Hasbaya	L	ML	ML
Khreibet Hasbaiya	L	M	ML	Majidiyeh Hasbaiya	L	M	ML	Marj Ez-Zhour (Haouc	L	ML	L
Meri	L	M	M	Mimass	L	M	ML	Rachaiya El-Fokhar	L	ML	ML
Salaiyeb	L	M	ML								

Marjayoun

Municipality	02-Dec	03-Dec	04-Dec	Municipality	02-Dec	03-Dec	04-Dec	Municipality	02-Dec	03-Dec	04-Dec
Aalmane Marjaayoun	L	ML	M	Aamra	L	M	ML	Adayseh Marjaayoun	ML	M	M
Adchit El-Koussair	L	M	M	Ain Aarab Marjaayoun	L	M	ML	Bani Haiyann	ML	M	M
Blatt Marjaayoun	L	M	L	Blida	L	M	M	Borj El-Moulouk	L	M	M

Boueyda Marjaayoun	L	ML	L	Deir Mimass	L	M	M	Deir Siriane	L	M	M
Dibbine	L	M	L	Ebel El Saqi	L	M	ML	Houla	ML	M	M
Houra	ML	M	M	Kfar Kila	ML	M	M	Khiam Marjaayoun	L	M	ML
Klayaa	L	M	M	Majdel Selem	ML	M	M	Marjaayoun	L	M	ML
Markaba	ML	M	M	Mays El-Jabal	ML	M	M	Mazraat Doumiat	L	M	M
Mazraat Sarada	L	M	ML	Mhaibib	ML	M	M	Qabrikha	L	M	M
Qantara	L	ML	M	Rab El-Thalathine	ML	M	M	Saouaneh Marjayoun	L	M	M
Talloussa	L	M	M	Taybeh Matjaayoun	ML	M	M	Touline	L	ML	ML

Bent Jbail

Municipality	02-Dec	03-Dec	04-Dec	Municipality	02-Dec	03-Dec	04-Dec	Municipality	02-Dec	03-Dec	04-Dec
Ain-Ebel	ML	M	M	Aitaroun	L	M	M	Aynata Bint Jbeil	ML	M	M
Ayta El-Chaeb	L	M	M	Ayta El-Jabal	L	ML	M	Beit Lif	L	ML	M
Beit Yahoun	L	M	M	Bint Jbeil	L	M	M	Borj Qalaway	L	ML	ML
Braachit	L	ML	M	Chakra	ML	M	M	Debel	L	M	M
Deir Antar	L	M	M	Froun	L	L	ML	Ghandouriyeh Bint Jb	L	ML	ML
Hanine	ML	M	M	Hariss	L	M	M	Hdatha	L	M	M
Jmeyjmeh	L	ML	M	Kafra Bint Jbeil	L	ML	M	Kfar Dounine	L	M	M
Khirbet Selm	L	M	M	Kounine	ML	M	M	Maroun El Ras	L	M	M
Qalaway	L	ML	M	Qaouzah	L	ML	M	Qatmoun	L	M	M
Ramya Bint Jbeil	L	M	M	Rchaf	L	M	M	Rmeich	L	M	M
Safad Al Battikh	L	ML	M	Salhaneh	L	ML	M	Serbine	L	M	M
Sultanieh Bint Jbeil	L	M	M	Tibnine	L	ML	M	Tiri	ML	M	M
Yaroun	L	ML	M	Yater	L	M	M				

Mont Liban

Jbail

Municipality	02-Dec	03-Dec	04-Dec	Municipality	02-Dec	03-Dec	04-Dec	Municipality	02-Dec	03-Dec	04-Dec
Aabeydat	VL	L	ML	Aalita	VL	L	L	Aamchit	L	M	M
Aarab El-Lahib	L	M	ML	Aarasta	L	M	M	Adonis Jbeil	VL	L	L
Afqa Jbeil	L	ML	ML	Ain El Delbeh Jbeil	VL	L	L	Ain El-Ghouayba	L	L	L
Ain Jrain	VL	L	L	Ain Kfah	VL	ML	M	Almat El Chemaliyat	VL	L	L
Almat El-Jenoubiya	VL	L	L	Aqoura	L	M	ML	Bayzoun	VL	L	L
Bchille Jbeil	VL	L	L	Bechtlida	VL	L	L	Behdaydat	VL	ML	ML
Beit Habbaq	VL	ML	M	Bejjeh	VL	ML	M	Bekhaaz	L	L	M
Berbara Jbeil	L	ML	M	Bintael	VL	L	L	Birket Hjoula	VL	L	L
Blatt Jbeil	L	L	L	Boulhos	VL	L	L	Breyj Jbeil	VL	L	L
Chamat	VL	M	M	Chikhane	L	ML	M	Chmout	VL	L	M
Eddeh Jbeil	L	ML	ML	Ehmej	VL	L	L	Fatre	VL	L	L
Ferhet	L	L	L	Fghal	VL	L	M	Frat	VL	L	L
Ghabat	L	M	ML	Ghalboun	VL	ML	M	Gharzouz	L	ML	M
Ghofrine	VL	ML	M	Habil	VL	L	ML	Halate	L	ML	ML
Haqel	VL	L	ML	Hbaline	VL	ML	M	Hboub	L	L	L
Hdeine	L	M	L	Hema Er-Rehban	L	M	L	Hema Mar Maroun Aann	VL	ML	VL
Hjoula	VL	L	L	Hosrayel	VL	ML	M	Hsarat	VL	ML	M

Hsoun	VL	L	L	Jaj	VL	ML	L	Janne	VL	L	VL
Jbeil	L	M	M	Jeddeyl Jbeil	VL	M	M	Jlisse	VL	L	L
Jouret El-Qattine	VL	L	L	Kfar Baal Annaya	L	L	L	Kfar Kidde	L	ML	M
Kfar Kouas	VL	L	L	Kfar Mashoun	VL	ML	ML	Kfoun	VL	L	ML
Kharbe Jbeil	VL	ML	M	Laqlouq	L	M	L	Lassa	VL	L	L
Lehfed	VL	L	L	Maad	VL	ML	M	Mar Sarkis	L	ML	L
Mastita	L	M	M	Mayfouq	VL	L	L	Mazraat El Siyad	L	M	L
Mazraat El-Maaden	VL	L	L	Mechane	VL	L	L	Mechmech Jbeil	VL	L	L
Mehrin	VL	L	L	Mejdel El-Akoura	L	M	ML	Mghayreh Jbeil	L	M	ML
Mounsef	L	ML	M	Nahr Ibrahim	L	M	M	Qahmez	VL	L	L
Qartaba	VL	L	L	Qartaboun	L	M	M	Qattara Jbeil	VL	L	L
Qorqraya	VL	L	L	Ramout	VL	ML	M	Ras Osta	VL	L	L
Rihane Jbeil	VL	M	M	Sakiet El-Khayt	VL	L	M	Saqi Richmaya	VL	L	L
Sebrine	VL	L	L	Seraita	L	M	ML	Souane Jbeil	L	L	L
Tadmor	L	M	ML	Tartej	L	ML	L	Torzaiya	L	L	L
Yanouh Jbeil	L	M	ML	Zibdine Jbeil	VL	L	L				

El Metn

Municipality	02-Dec	03-Dec	04-Dec	Municipality	02-Dec	03-Dec	04-Dec	Municipality	02-Dec	03-Dec	04-Dec
Aain El-Qabu	L	L	L	Aain El-Qach	L	L	L	Aain El-Teffaha	L	L	L
Aain el-Safssaf El-M	L	L	L	Abou Mizane	L	L	L	Ain Aar	L	ML	M
Ain Alaq	VL	L	ML	Ain El-Kharroube	L	L	L	Ain El-Sendianeh	L	L	L
Ain El-Zeitoune	L	L	L	Ain Saadeh	VL	L	M	Aintoura El-Matn	L	ML	L
Amaret Chalhoub	L	M	M	Antelias	L	M	M	Atchaneh	VL	L	ML
Ayroun	L	L	L	Baabdat	L	L	L	Baouchariyeh	L	M	M
Baskinta	L	ML	L	Beit Chabab	L	L	L	Beit El-Chaar	L	ML	ML
Beit El-Kekko	L	M	M	Beit Mery	VL	L	ML	Bhersaf	VL	L	L
Bikfaya	L	L	L	Biyakout	L	M	M	Bnabil	L	L	L
Bourj Hammoud	VL	M	M	Bqennaya	L	ML	ML	Broummana El-Matn	VL	L	ML
Bsalim	VL	L	M	Bsifrine	VL	L	L	Bteghrine	L	L	L
Chaouiye	VL	L	ML	Chouaya El-Matn	L	L	L	Choueir	L	L	L
Chrine	L	L	L	Dahr El Sawan El-Mat	VL	L	L	Daychouniyeh	L	L	L
Dbayeh	L	M	M	Deir Chamra	VL	L	L	Deir Mar Abda el Mch	VL	L	ML
Deir Mar Roukouz	L	M	M	Deir Tamiche	VL	L	ML	Dik El-Mehdi	VL	ML	ML
Dikwaneh	VL	M	M	Douar El-Matn	L	L	L	Fanar	L	ML	M
Fraike	VL	L	ML	Haret El-Ballaneh	VL	ML	ML	Hbous	L	ML	M
Himlaya	L	L	L	Jal El Did	L	M	M	Jdeideh El-Metn	L	M	M
Jouar El-Matn	L	L	L	Jouret El-Ballout	VL	L	M	Kaaqour	L	L	L
Kfar Aaqab	L	L	L	Kfertay El-Matn	L	L	L	Khenchara	L	L	L
Khillet El-Mtain	L	L	L	Konnabat Broummana	VL	L	ML	Konnabat Salima	VL	L	L
Machraah El-Matn	L	L	L	Majdel Tarchich	L	ML	L	Majzoub	L	ML	ML
Mansouriyeh El-Metn	L	ML	M	Mar Boutros Karm Et-	L	L	L	Mar Chaya et Mzekke	VL	L	ML
Mar Moussa Ed-Douar	L	L	L	Marjaba	L	L	L	Masqa	VL	L	ML
Mayasse	L	L	L	Mazraat Deir Aoukar	VL	ML	ML	Mazraat El-Hadirat	VL	ML	ML
Mazraat Yachouh	L	ML	ML	Mchikha	L	L	L	Menqlet Mezher	L	ML	ML
Mhayseh Matn	L	L	L	Mkalles	VL	M	M	Mrouj	L	L	L

Mtain	L	ML	L	Mtayleb	L	ML	M	Nabay	VL	L	ML
Naccache	L	ML	M	Ouadi Chahine	L	L	L	Ouadi El-Karm El-Mat	L	L	L
Ouata El-Mrouj	L	L	L	Ouyoun El-Matn	VL	L	L	Qornet Chehwan	L	L	ML
Qornet El-Hamra	VL	L	ML	Roumieh	VL	L	M	Sfeilet Bikfaya	L	L	L
Sinn El-Fil	VL	M	M	Zabbougha	L	L	L	Zalqa	L	M	M
Zarououn	L	L	L	Zekrite	VL	L	ML	Zighrine El-Matn	L	L	L
Zouk El-Khrab	L	ML	ML								

Chouf

Municipality	02-Dec	03-Dec	04-Dec	Municipality	02-Dec	03-Dec	04-Dec	Municipality	02-Dec	03-Dec	04-Dec
Aalmane El-Chouf	VL	ML	M	Aammqi El-Chouf	L	L	L	Ain Ouzein	L	L	L
Ain Qani	L	L	L	Ain Zhalta	L	L	L	Ainbal	L	L	L
Amatour	L	L	L	Anout	L	L	L	Atrine	L	L	L
Baadarane	L	L	L	Baaqline	L	L	L	Baasir	L	M	M
Barja	L	ML	M	Barouk	L	L	L	Bater	L	L	L
Batloun	L	L	L	Bayqoun	L	L	L	Bchetfine	L	L	L
Beiteddine	L	L	L	Benouati Ech-Chouf	L	L	L	Berjein	L	L	L
Bireh et Mtalleh	L	L	L	Biret El-Chouf	L	L	L	Bkechtine Ouel Mchei	VL	L	L
Bkifa El-Chouf	L	L	L	Botme	L	L	L	Bqaiaa Ech-Chouf	L	L	L
Bsaba El-Chouf	L	L	L	Chammis El-Chouf	L	ML	ML	Chehim	L	L	L
Chemaarine	VL	L	L	Chourit	L	L	L	Daher El-Chouf	L	L	M
Dalhoun	VL	L	ML	Damour	L	ML	M	Daraya El-Chouf	VL	L	L
Deir El-Moukhalles	VL	L	L	Deir Baba	L	L	L	Deir Dourit	L	L	L
Deir El-Qamar	L	L	L	Deir Kouche	L	L	L	Dibbieh	VL	L	L
Dmit	L	L	L	Fouara Jaafar	L	L	L	Fraidis El-Chouf	L	L	L
Ghabet Jaafar	L	L	L	Gharife	L	L	L	Haret Jandal	L	L	L
Hasrout	L	L	L	Jadra	VL	ML	M	Jahlieh	L	L	L
Jbeih El-Chouf	L	L	L	Jdeidet El-Chouf	L	L	L	Jiyeh	L	M	M
Jleilyeh	L	L	L	Jmailiyeh	VL	ML	M	Joun	VL	L	ML
Kahlounie El-Chouf	L	L	L	Ketermaya	L	ML	M	Kfar Faqoud	L	L	L
Kfar Hamal	L	L	L	Kfar Him	L	L	L	Kfar Katra	L	L	L
Kfar Niss	L	L	L	Kfar hay	L	L	L	Kfarnabrakh	L	L	L
Khirbet Bisri	L	L	L	Knayse El-Chouf	VL	L	L	Maaniyeh	VL	ML	M
Maasser Beiteddine	L	L	L	Maasser El-Chouf	L	L	L	Majdalouna	VL	ML	M
Majdel El-Meouch	L	L	L	Mazboud	L	L	L	Mazmoura	L	L	L
Mazraat El Chouf	L	L	L	Mazraat El Daher	L	L	L	Mazraat El-Douair	L	L	L
Mechref	L	L	L	Mghairie	L	ML	ML	Mghayrie El-Chouf	L	L	L
Moukhtara	L	L	L	Mrusti	L	L	L	Mtolle	L	L	L
Naameh	L	ML	ML	Niha El-Chouf	L	L	L	Ouadi Abou Youssef	VL	VL	L
Ouadi Ed-Deir	L	L	L	Ouadi El-Sit	L	L	L	Ouadi bnehlav	VL	L	L
Qraibeh	L	L	L	Qreiaa	VL	L	L	Rmayle El-Chouf	L	ML	M
Semqaniyeh	L	L	L	Sibline	VL	ML	M	Sirjbeil	L	L	L
Warhanieh	L	L	L	Werdaniyeh	VL	ML	M	Zaarourieh	L	L	L

Baabda

Municipality	02-Dec	03-Dec	04-Dec	Municipality	02-Dec	03-Dec	04-Dec	Municipality	02-Dec	03-Dec	04-Dec
Abadiyeh	L	L	L	Ain Mouaffaq	VL	L	L	Araiya	VL	L	L

Arbaniyeh	VL	L	L	Arsoun	L	L	L	Baabda	VL	ML	ML
Baalchmey	L	L	L	Bmaryam	L	L	L	Bourj El-Brajneh	VL	ML	L
Boutchay	VL	L	ML	Bsaba Baabda	VL	L	L	Btekhney	L	L	L
Btibyat	L	L	L	Bzebdine	L	L	L	Chbeniyeh	L	L	L
Chiyah	VL	M	M	Chmeisset Baabda	VL	L	L	Chouit	VL	L	L
Deir El-harf	L	L	L	Deir Khouna	L	L	L	Dlaybeh	VL	L	L
Falougha	L	L	L	Furn El-Chebbak	VL	M	M	Hadath Beyrouth	VL	ML	ML
Halaliyeh Baabda	VL	L	L	Hammana	L	L	L	Haret El Sett	VL	L	L
Haret Hamze	L	L	L	Haret Hreik	VL	M	M	Hasbaiya El-Metn	VL	L	L
Jouar El-Hoz	L	L	L	Jouret Arsoun	L	L	L	Kfar Chima	VL	ML	L
Kfar Selouane	L	ML	L	Khalouat Baabda	L	L	L	Kneisset Baabda	VL	L	L
Laylakeh	VL	ML	L	Louayzeh Baabda	L	L	L	Merdache	VL	ML	L
Mzairaa Baabda	VL	L	L	Ouadi Chahrour El OI	VL	L	L	Ouadi Chahrour El So	VL	L	L
Qalaa Baabda	L	L	L	Qhraybe Baabda	L	L	L	Qobbayaa	L	L	L
Qornayel	L	L	L	Qortada	VL	L	L	Qrayeh Baabda	L	L	L
Qsaibeh Baabda	VL	L	ML	Qtale Baabda	L	L	L	Ras El Metn	L	L	L
Ras El-Haref	L	L	L	Rouayset El-Ballout	VL	L	L	Salima Baabda	L	L	L
Tahouitat El Ghadir	VL	ML	L	Tarchich	L	ML	L	Zandouqa	VL	L	L

Aley

Municipality	02-Dec	03-Dec	04-Dec	Municipality	02-Dec	03-Dec	04-Dec	Municipality	02-Dec	03-Dec	04-Dec
Abey	L	L	L	Aghmid	L	L	L	Ain Dara	L	L	L
Ain Drafil	VL	L	L	Ain El Halazoun	L	L	L	Ain El-Rmmaneh	VL	L	L
Ain Jedideh	L	L	L	Ain Ksour	VL	L	L	Ain Onoub	VL	L	L
Ain Traz	L	L	L	Ainab	VL	L	ML	Aley	L	L	L
Aramoun	VL	L	L	Aytat	VL	ML	L	Azouniyeh	L	L	L
Baawerta	L	L	L	Badghan Oua Wadi Bad	L	L	L	Bassatine	VL	L	L
Bayssour	VL	L	L	Bchamoun	VL	L	ML	Bdadoun	VL	L	L
Behouara	L	L	L	Bennay	L	L	L	Bhamdoun El-Dayaa	L	L	L
Bhamdoun El-Mhatta	L	L	L	Bkhechtey	L	L	L	Bleibel	VL	L	L
Bmakine	L	L	L	Bmehray	L	L	L	Bouzrid	VL	VL	L
Bserrine	L	L	L	Bsous	VL	L	L	Btalloun	L	L	L
Btater	L	L	L	Chanay	L	L	L	Charoun	L	L	L
Chartoun	VL	L	L	Chemlane	VL	L	L	Chouefat El-Aamrous	VL	ML	L
Chouefat El-Oumara	VL	ML	L	Chouefat El-Quoubbe	VL	ML	L	Dakkoun	L	L	L
Deir Qoubel	VL	L	ML	Dfoun	L	L	L	Douair El Remmaneh	VL	L	L
Ghaboun	L	L	L	Habramoun	VL	L	L	Homs Oua Hama	L	L	L
Houmal	VL	L	L	Jisr El Qadi	L	L	L	Kehaleh	VL	L	L
Keyfoun	L	L	L	Kfar Aamey	L	L	L	Kommatyeh	L	L	L
Maasrati	L	L	L	Majdel Baana	L	L	L	Mansourieh et Ain El	L	L	L
Mazraat El-Nahr	VL	L	L	Mchakhte	L	L	L	Mecherfeh	L	L	L
Mejdlaya	VL	L	L	Mrayjat	L	L	L	Ramiyeh	L	L	L
Rechmaya	L	L	L	Rejmeh	L	L	L	Remhala	L	L	L
Rouayset El Neemane	L	L	L	Saoufar	L	L	L	Selfaya	VL	L	L
Sirhmoul	VL	L	ML	Souq El Ghareb	L	L	L	Taazanieh	L	L	L

Kesrouane

Municipality	02-Dec	03-Dec	04-Dec	Municipality	02-Dec	03-Dec	04-Dec	Municipality	02-Dec	03-Dec	04-Dec
Achkout	L	L	L	Adma Oua Dafneh	VL	ML	M	Ain Ed-Delbe Kesroua	L	L	L
Ain El-Rihane	VL	L	M	Aintoura Kesrouane	VL	ML	M	Ajaltoun	L	L	L
Akaybeh Kesrouane	L	M	M	Aramoun Kesrouane	L	L	L	Azra ouel Ozor	VL	L	L
Ballouneh	L	L	L	Batha	VL	L	ML	Bekaatat Achkout	L	L	L
Bekaatat Kanaan	L	L	L	Bizhel	VL	L	L	Bouar	L	ML	M
Bqaatouta	L	L	L	Bqaq Ed-Dine	L	ML	M	Bzommar	L	L	L
Chahtoul	L	L	L	Chnaniir	L	L	L	Chouan	VL	L	L
Daraya Kesrouane	L	L	L	Darououn	L	L	ML	Deir Baqlouch	VL	L	M
Diebta	L	L	L	Eghbeh	L	L	L	Faraya	L	ML	L
Fatka	L	L	L	Feytroun	L	L	L	Ghazir	L	L	L
Ghbaleh Kesrouane	VL	L	L	Ghedrass	VL	L	L	Ghosta	L	L	L
Ghyneh	L	L	L	Harharaya w Kattine	L	L	L	Harissa Kesrouane	VL	L	M
Hayata	L	L	L	Hosein	VL	L	L	Hrajel	L	ML	L
Jdeideh Ghazir	L	L	L	Jeita	VL	L	ML	Jounieh Ghadir	VL	ML	M
Jounieh Haret Sakhr	VL	ML	M	Jounieh Salel Alma	VL	ML	M	Jounieh Sarba	VL	M	M
Jouret Bedrane	VL	L	L	Jouret Mhad	L	L	L	Jouret Termos	L	L	L
Kfar Debiane	L	L	L	Kfar Tay Kesrouane	L	L	L	Kfar Yassine	VL	M	M
Kfour Kesrouane	L	L	L	Kharayeb Nahr Ibrahi	L	L	ML	Klayaat Kesrouane	L	L	L
Maarab	L	L	L	Maaysra Kesrouane	VL	L	L	Mayrouba	L	L	L
Mazraat Er-Ras	L	ML	M	Mazraat Mrah El-Mir	L	L	L	Mchaa El Ftouh	L	M	L
Mchaa Faraya	L	ML	L	Mchaa Kfar Dibiane	L	ML	L	Mghaer	L	L	L
Mradiyah	VL	L	L	Nahr Ed-Dahab	VL	L	L	Nammoura Kesrouane	L	L	L
Ouata El Jaouz	L	L	L	Ouata Sillam	VL	M	M	Raachine	L	L	L
Rayfoun	L	L	L	Safra Kesrouane	VL	ML	M	Shayle Kesrouane	L	L	ML
Tabarja	VL	ML	M	Yahchouch	VL	L	L	Zaaytreh	VL	L	L
Zeytoun	L	L	L	Zouk Mikael	VL	M	M	Zouk Mosbeh	L	ML	M

Baalbek_Hermel

Baalbek

Municipality	02-Dec	03-Dec	04-Dec	Municipality	02-Dec	03-Dec	04-Dec	Municipality	02-Dec	03-Dec	04-Dec
Aadous	M	M	M	Aamchki	L	M	ML	Aarsal	ML	M	M
Ain Baalbek	ML	M	M	Ain Bourday	ML	M	ML	Ain El-Benye	ML	M	ML
Ain El-Jaouz Baalbek	ML	M	M	Ain El-Siya Chadoura	ML	M	ML	Al Khodr Baalbek	ML	M	M
Al Nabi Chit	ML	M	M	Aynata Baalbek	ML	M	M	Baalbek	ML	M	ML
Bachwat	M	M	M	Barqa	ML	M	M	Bednayel Baalbak	ML	M	ML
Beit Chama	ML	M	M	Bijjaje	M	M	M	Bouday	M	M	M
Brital	M	M	M	Btadi	M	M	M	Chaat	M	M	M
Chaibe	ML	M	ML	Chlifa	M	M	M	Chmestar	M	M	ML
Dar El-Oussa	ML	M	M	Deir El-Ahmar	M	M	M	Deir Mar Maroun Baal	M	M	M
Douris	M	M	M	Fakiha	M	M	M	Hadath Baalbek	M	M	M
Ham	ML	M	ML	Haour Taala	ML	M	ML	Hizzine	M	M	M
Hlebta	M	M	M	Hosh Barada	M	M	M	Hosh El Dahab	M	M	M
Hosh El Snid	ML	M	M	Hosh El-Nabi	ML	M	M	Hosh El-Rafiq	ML	M	M
Hosh Tal Safiya	M	M	M	Hrebta	M	M	M	laat	M	M	M

Jebaa	M	M	M	Jenta	ML	M	ML	Kfar Dabach	M	M	M
Kfar Dane	M	M	M	Khraibeh El-Hermel	M	M	M	Khreibet Baalbek	ML	M	ML
Kneisset Baalbek	M	M	M	Labueh	M	M	M	Maarboun	ML	M	ML
Majdaloun	M	M	M	Maqneh	M	M	M	Mazraat Beit Mcheik	M	M	M
Misraya	ML	M	M	Moqraq	M	M	M	Nabha El-Damdoum	M	M	M
Nabi Chbay	ML	M	ML	Nabi Osman	M	M	M	Nahleh baalbek	ML	M	M
Ouadi El-Oss	M	M	M	Qaa Baayoun	ML	M	M	Qaa Jouar Maqiye	M	M	M
Qaa Ouadi El-Khanzir	M	M	M	Qah Baalbek	M	M	M	Qarha Baalbek	M	M	M
Qsarnaba	ML	M	M	Ram Baalbek	M	M	M	Ras Baalbek El Sahl	M	M	M
Ras Baalbek El-Charq	ML	M	M	Riha	M	M	M	Saaide	M	M	M
Sbouba	M	M	M	Seriine El-Tahta	ML	M	M	Slouqi	ML	M	ML
Taiba Baalbek	M	M	M	Talia	M	M	M	Taraiya	M	M	ML
Temnin El Fawqa	M	M	M	Temnin El-Tahta	ML	M	M	Tfail	ML	M	M
Yahfoufa	ML	M	ML	Yammouneh	ML	M	M	Younine	M	M	M
Zboud	M	M	M								

Hermel

Municipality	02-Dec	03-Dec	04-Dec	Municipality	02-Dec	03-Dec	04-Dec	Municipality	02-Dec	03-Dec	04-Dec
Charbine El-Hermel	M	M	M	Hermel Jbab	M	M	M	Hermel	M	M	M
Maaysra El-Hermel	M	M	M	Michaa Mrajhine	M	M	M	Ouadi Faara	M	M	M
Ras Baalbek - Ouadi	M	M	M	Ras Baalbek El Gharb	M	M	M	Zighrine	M	M	M

Akkar

Akkar

Municipality	02-Dec	03-Dec	04-Dec	Municipality	02-Dec	03-Dec	04-Dec	Municipality	02-Dec	03-Dec	04-Dec
Aain Tinta	L	M	M	Aaiyat	ML	M	M	Aakkar El-Aatiga	M	M	M
Aamar Akkar	M	M	M	Aamar El Baykat	ML	M	M	Aamayer	ML	M	M
Aamriyet Akkar	L	M	M	Aandqet	ML	M	M	Aarmeh	ML	M	M
Aarqa	M	M	M	Aawaynat	ML	M	M	Aayoun Akkar	ML	M	M
Abboudiye	ML	M	M	Ain El-Zeit	L	M	M	Ain Yaaqoub	M	M	M
Akroum	ML	M	M	Aridet Cheikh Zennad	ML	M	M	Baldehy w Mazraat Bal	ML	M	M
Barcha	ML	M	M	Bardeh	L	M	M	Bebnine	M	M	M
Beino	ML	M	M	Beit Ayoub	L	M	M	Beit El-Haouch	M	M	M
Beit Mellat	ML	M	M	Beit Younes	L	M	M	Berbara Akkar	L	M	M
Berqayel	M	M	M	Bezina	M	M	M	Bireh Akkar	L	M	M
Borj	ML	M	M	Bqerezla	ML	M	M	Bzal	ML	M	M
Chane	ML	M	M	Chaqdouf	ML	M	M	Charbila	ML	M	M
Cheikh Mohammad	ML	M	M	Cheikh Taba Es-Sahl	M	M	M	Cheikh Taba	ML	M	M
Cheikh Zennad	M	M	M	Cheikhlar	ML	M	M	Chir Hmairine	ML	M	M
Daghle	L	M	M	Dahr Laissine	L	M	M	Darine	ML	M	M
Dawra	ML	M	M	Dawsa w Baghdadi	ML	M	M	Dayret Nahr El-Kabir	L	ML	M
Deir Dalloum	M	M	M	Deir Jennine	ML	M	M	Denbou	ML	M	M
Dibbbiyeh	L	M	M	Douair Aadwiyeh	L	M	M	Fassikine	L	M	M
Fnaydek	M	M	M	Fraydes Akkar	ML	M	M	Ghazayle	ML	M	M
Habchit	ML	M	M	Hakour	M	M	M	Halba	ML	M	M

Haouchab	ML	M	M	Haysat	M	M	M	Haytla	ML	M	M
Hayzouq	ML	M	M	Hedd	ML	M	M	Hmaira Aakkar	M	M	M
Hmaiss Aakkar	ML	M	M	Hnaider	L	M	M	Hokr Ed-Dahri	ML	M	M
Hokr Etti	ML	M	M	Hokr Jouret Srar	ML	M	M	Houaich	ML	M	M
Hrar	ML	M	M	Idbil	ML	M	M	Ilal	L	M	M
Janine	ML	M	M	Jdeidet El-JoumeH	ML	M	M	Jdeidet El-Kaiteh	M	M	M
Jebrayel	L	M	M	Kafr	VL	ML	M	Kafr	L	M	M
Karm Asfour	ML	M	M	Kfar Melki Aakkar	M	M	M	Kfar Noun	ML	M	M
Kfarharra	ML	M	M	Khalsa	ML	M	M	Kharnoubet Aakkar	ML	M	M
Khirbet Daoud Aakkar	L	M	M	Khirbet El Remmane	ML	M	M	Khirbet Shar	L	M	M
Khoreybet El-Jindi	ML	M	M	Khreibet Aakkar	ML	M	M	Kneisset Aakkar	M	M	M
Kneisset Hnaider	L	M	M	Knisse	ML	M	M	Kroum El-Aarab	ML	M	M
Kwachra	L	M	M	Kweykhat	ML	M	M	Machta Hammoud	ML	M	M
Majdala	M	M	M	Majdel Akkar	L	M	M	Mar Touma	M	M	M
Marlaya Melhem	M	M	M	Mashha	ML	M	M	Massoudiye	M	M	M
Mazraat Beit Ghattas	M	M	M	Mazraat En-Nahriye	ML	M	M	Mechmech	ML	M	M
Memneh	M	M	M	Mhammara	M	M	M	Mighraq Aakkar	M	M	M
Minyara	M	M	M	Moqayteh	M	M	M	Mounjez	ML	M	M
Msalla	L	M	M	Mzeihmeh	ML	M	M	Nfaisch	ML	M	M
Noura Et-Tahta	ML	M	M	Ouadi El-Haour	ML	M	M	Ouadi El-Jamous	M	M	M
Ouyoun El-Ghizlane	M	M	M	Qaabarine	M	M	M	Qabaait	ML	M	M
Qachlaq	ML	M	M	Qantara Aakkar	ML	M	M	Qarha Aakkar	L	M	M
Qarqaf	M	M	M	Qboula	ML	M	M	Qleiaat Aakkar	M	M	M
Qloud El-Baqie	M	M	M	Qobaiyat Aakkar	M	M	M	Qobbat Chamrat	M	M	M
Qorayat	L	M	M	Qornet Aakkar	ML	M	M	Qsair Aakkar	L	M	M
Rahbe	L	M	M	Rihaniyet Aakkar	ML	M	M	Rmah	ML	M	M
Rmoul	M	M	M	Saadine	ML	M	M	Sadaqa	L	M	M
Saidnaya	ML	M	M	Sammouniye	M	M	M	Sayssoouq	ML	M	M
Semmaqiye	ML	M	M	Semmaqli	M	M	M	Sfinet El-Dreib	ML	M	M
Sfinet El-Qaitaa	ML	M	M	Sindyanet Zeidane	ML	M	M	Souaisset Aakkar	ML	M	M
Srar	ML	M	M	Tal Abbas El Gharby	M	M	M	Tal Abbas El-Charqy	M	M	M
Tal Biret	M	M	M	Tal Hmayra	ML	M	M	Tal Maayan Tal Kiri	M	M	M
Tal Sibel	M	M	M	Tallet Chattaha	ML	M	M	Tikrit	ML	M	M
Tleil	ML	M	M	Tshea	ML	M	M	Zawarib	ML	M	M
Zouq El Hosniyeh	M	M	M	Zouq El-Haddara	M	M	M	Zouq El-Hbalsa	M	M	M
Zouq El-Moqachrine	M	M	M								

Sud

Sour

Municipality	02-Dec	03-Dec	04-Dec	Municipality	02-Dec	03-Dec	04-Dec	Municipality	02-Dec	03-Dec	04-Dec
Aaiyeh	L	ML	M	Aalma El-Chaab	L	M	M	Aaytit	L	M	M
Abbassiyeh Sour	L	M	M	Abou Chech	L	M	M	Ain Abou Abdallah	L	M	M
Ain Baal	L	M	M	Arzoun	L	ML	ML	Aziyeh	L	ML	M
Baflaya	L	ML	ML	Barich	L	ML	M	Batouliyeh	L	M	M
Bayad	L	ML	M	Bazouriyeh	L	M	M	Bediass	L	ML	M

Bestiyat	L	ML	M	Borj El Chemali	ML	M	M	Borj En-Naqoura	L	M	M
Borj Rahhal	L	ML	M	Boustane	L	M	M	Btaychih	L	M	M
Chaaitiye	L	M	M	Chameh	L	M	M	Chehabiye	L	ML	M
Chehour	L	L	ML	Chihine	L	M	M	Debaal Sour	L	ML	M
Deir Amess	L	ML	M	Deir Kifa	L	ML	M	Deir Qanoun El-Ain	L	M	M
Deir Qanoun El-Naher	L	ML	M	Derdghaiya	L	ML	ML	Dhayra	L	M	M
Halloussiyeh	L	ML	M	Hamoul	L	M	M	Hanaouey	L	M	M
Henniye	L	M	M	Hmairi Sour	L	ML	ML	Iskandarouna Sour	L	ML	M
Jbal El Botom	L	ML	M	Jebbin	L	M	M	Jennata	L	ML	ML
Jijim	L	M	M	Jouaiya	L	M	M	Kneisset Sour	L	M	M
Maarake	L	ML	M	Maaroub	L	ML	ML	Majadel	L	ML	M
Majdalzoun	L	M	M	Mansouri Sour	L	M	M	Marnba	L	L	ML
Marouahine	L	ML	M	Mazraat El-Zalloutiy	L	M	M	Mazraat Mechref	L	M	M
Mazraat Tayr Semhat	L	L	ML	Mheilib	ML	M	M	Neffakhiyeh	L	ML	ML
Niha Sour	L	ML	ML	Ouadi Jilo	L	ML	M	Qana	L	ML	M
Qolaileh Sour	L	M	M	Rechknany	L	ML	M	Rmadiyah	L	M	M
Selha Sour	L	ML	M	Siddiqine	L	ML	M	Sour	ML	M	M
Srifa	L	L	ML	Tayr Debbe	L	ML	M	Tayr Felsay	L	ML	M
Tayr Harfa	L	M	M	Touayri	L	L	ML	Toura	L	ML	M
Yanouh Sour	L	ML	M	Yarine	L	M	M	Zebqine	L	ML	M

Saida

Municipality	02-Dec	03-Dec	04-Dec	Municipality	02-Dec	03-Dec	04-Dec	Municipality	02-Dec	03-Dec	04-Dec
Aanqoun	L	ML	ML	Aaqtanit	L	ML	ML	Aarab Ej-Jall	L	ML	ML
Aarab Tabbaya	L	ML	ML	Abra Saida	L	ML	M	Adloun	L	M	M
Adousiyeh	L	M	M	Ain-El-Deleb	L	ML	M	Arzai	L	ML	ML
Babliyah	L	M	M	Barty	L	L	L	Bissariyeh	L	M	M
Bnaafoul	L	ML	ML	Bqosta	VL	ML	M	Bramiy --	VL	ML	M
Daoudiyeh	L	M	M	Dareb El-Sim	L	ML	M	Erkay	L	ML	ML
Ghassanieh	L	ML	M	Ghazieh	L	M	M	Hajjeh	L	ML	ML
Haret Saida	VL	ML	M	Hartiyeh	L	M	M	Hlaliye Saida	VL	ML	M
Insariyat	L	M	M	Jazira Saida	L	M	M	Kafar Bit	L	ML	ML
Kaoutariyet El-Siyad	L	L	ML	Kfar Chellal	L	L	ML	Kfar Hatta Saida	L	ML	ML
Kfar Milke Saida	L	L	L	Khartoum	L	ML	ML	Khaziz	L	ML	ML
Khirbet Ed-Douair Sa	L	M	M	Khirbet El-Bassal	L	M	M	Khrayeb Saida	L	ML	M
Loubieh	L	M	M	Maghdouche	L	ML	M	Majdelyoun	VL	ML	M
Matariyet El-Choumar	L	ML	ML	Matayriyeh	L	ML	M	Mazraat 'Mseileh	L	M	M
Mazraat 'Snaiber	L	M	M	Mazraat Aarab Soukka	L	ML	ML	Mazraat Deir Taqla	L	M	M
Mazraat El Yahoudiye	ML	M	M	Mazraat El-Housseini	ML	M	M	Mazraat El-Mhaydaleh	L	ML	M
Mazraat El-Ouasta	L	M	M	Mazraat Jamjim	L	ML	M	Mazraat Kaoutariyet	L	M	M
Mazraat Kfar Badda	L	M	M	Mazraat Oussamiyat	L	ML	M	Mazraat Sari	L	M	M
Mazraat Sinai	L	ML	ML	Meemariyeh	L	ML	M	Merouaniyeh	L	ML	ML
Miyeh ou Miyeh	L	ML	ML	Najjariyeh	L	M	M	Qaaqiyat El-Snaouba	L	M	M
Qnarit	L	ML	ML	Qraiye Saida	L	ML	ML	Saida Ed-Dekermane	L	ML	M
Saida El-Oustani	VL	ML	M	Saida El-Qadimeh	VL	ML	M	Saida Kefraya	L	ML	M
Saksakiyeh	L	M	M	Salhieh Saida	L	ML	M	Sarafand	L	M	M

Sfenta	L	L	L	Tafahta	L	ML	ML	Tanbourit	L	ML	M
Tebna	L	M	M	Zaghdraiya	L	ML	M	Zeita	L	ML	ML
Zrariyeh	L	ML	M								

Jezzine

Municipality	02-Dec	03-Dec	04-Dec	Municipality	02-Dec	03-Dec	04-Dec	Municipality	02-Dec	03-Dec	04-Dec
Ain El-Mir (El Estab)	L	ML	ML	Anane	L	L	L	Aramta	L	ML	L
Ariya	L	L	L	Aychiyeh	L	L	L	Azour	VL	L	L
Baba	VL	L	L	Bayssour Jezzine	L	ML	ML	Benoueteh Jezzine	L	L	L
Bhannine	L	L	L	Bisri	VL	L	L	Bkassine	L	L	L
Bouslaya	L	L	L	Btedine El-Leqech	VL	L	L	Chbail	L	L	L
Choualiq Jezzine	L	ML	M	Dahr Ed-Deir	L	L	L	Deir El Qattine	L	L	L
Demachqiyeh	L	ML	ML	Ghabbatiyeh	L	L	L	Harf Jezzine	VL	L	L
Hassaniyeh	L	ML	ML	Haytouleh	L	L	L	Haytura	L	L	L
Hidab	L	L	L	Homsiyeh	L	L	L	Jabal Toura	L	L	L
Jarmaq	L	ML	ML	Jensnaya	L	ML	ML	Jernaya	L	L	L
Jezzine	L	L	L	Karkha	VL	L	M	Kfar Falous	L	L	L
Kfar Houna	L	L	L	Kfar Jarrah	L	ML	M	Lebaa	L	ML	M
Louayzet Jezzine	L	L	L	Machmouche	L	L	L	Mahmoudiyeh Jezzine	L	ML	ML
Maknounye Jezzine	L	L	L	Maraat Ouazaiyeh	L	ML	L	Mazraat Daraya	L	L	L
Mazraat El-Aarqoub	L	L	ML	Mazraat El-Mathane	VL	L	L	Mazraat El-Rahbane	L	L	L
Mazraat Khallet Khaz	L	L	L	Mazraat Louzid (Loua	L	L	L	Mazraat Qrouh	L	ML	L
Mazraat Tamra	L	ML	ML	Mazraat Zighrine Jez	L	L	ML	Mazraat	L	L	L
Mharbiyeh	L	ML	ML	Midane Jezzine	L	L	L	Mjeydel Jezzine	L	ML	ML
Mlikh	L	L	L	Mrah El-Hbasse	L	ML	ML	Ouadi Baanqoudaine	L	ML	ML
Ouadi El-Laymoun	L	L	ML	Ouardiyeh	VL	L	L	Qabaa Jezzine	L	L	L
Qatrani	L	L	L	Qaytouleh	L	L	L	Qtaleh Jezzine	VL	L	L
Rihane Jezzine	L	ML	L	Rimat	L	L	L	Roum	L	L	L
Roummanet	L	L	L	Sabbah	L	L	L	Saydoun	L	L	L
Sfaray	L	L	L	Snaya	L	L	L	Sojoud	L	L	ML
Srayri	L	L	L	Taaid	VL	L	L	Wadi Jezzine	L	L	L
Zhalta	L	L	L								

Bekaa

West Bekaa

Municipality	02-Dec	03-Dec	04-Dec	Municipality	02-Dec	03-Dec	04-Dec	Municipality	02-Dec	03-Dec	04-Dec
Aammiq BG	ML	ML	L	Ain El Tineh BG	L	L	L	Ain Zebdeh	L	L	L
Ana	L	L	L	Aytanit	L	L	L	Baaloul BG	L	ML	L
Bab Mareh	L	L	L	Chouberqiye Aammiq	ML	ML	L	Dakoue	L	ML	L
Deir Ain El-Jaouze	L	ML	L	Deir Tahniche	ML	L	L	Ghaza	ML	ML	L
Harime El-Soughra	L	L	L	Hoch Harimeh	ML	ML	L	Jazira BG	ML	ML	L
Jib Jennine	L	L	L	Kamed-El-Laouz	L	L	L	Kefraya BG	L	L	L
Khiara El Atika	ML	ML	L	Khiara	ML	ML	L	Khirbet Qanafar	L	L	L
Lala	L	ML	L	Lebbaya BG	L	ML	ML	Loussa	L	ML	L
Machghara	L	ML	L	Manara (Hammara) BG	ML	ML	L	Mansoura BG	ML	ML	L

Marej BG	L	L	L	Maydoun	L	L	L	Ouaqf BG	ML	ML	L
Qaraaoun	L	ML	L	Qelya	L	M	ML	Raouda (Istabel)	L	L	L
Saghbine	L	L	L	Sohmor	L	ML	ML	Soltan Yaacoub el Ara	L	ML	L
Souairy	L	ML	L	Sultan Yaacoub	ML	ML	L	Tal Znoub	ML	ML	L
Yehmor BG	L	ML	ML	Zilaya	L	ML	L				

Zahle

Municipality	02-Dec	03-Dec	04-Dec	Municipality	02-Dec	03-Dec	04-Dec	Municipality	02-Dec	03-Dec	04-Dec
Aanjar (Haouch Mouss)	L	L	L	Ablah	ML	M	M	Ain Kfarzabad	ML	M	ML
Ali-El-Nahri	ML	M	M	Bar Elias	L	L	L	Bouarej	L	L	L
Cheberqiyet Tabet	L	L	L	Chtaura	L	ML	L	Deir El Ghazal	ML	M	ML
Delhamiyet Zahle	L	ML	L	Ferzol	ML	ML	ML	Haouch El-Ghanam	ML	M	M
Haouch Es-Siyadeh	L	ML	L	Haouch Hala	ML	M	ML	Haouch Mandara	L	ML	L
Haouch Qayssar	L	ML	L	Hezerta	ML	ML	L	Hosh Moussa	L	ML	ML
Jdita	L	ML	L	Kfarzabad	L	ML	ML	Ksara	L	L	L
Majdel Aanjar	L	ML	L	Makssi	L	ML	L	Massa	ML	M	M
Mazraat Er-Remtaniye	L	ML	L	Mrayjat Zahle	L	ML	L	Mzaraa Zahle	L	ML	L
Nabi Ayla	ML	M	ML	Nasriyet Rizk	ML	M	M	Nasriyet Zahle	L	ML	L
Niha Zahle	ML	ML	ML	Ouadi Ed-Deloum	L	ML	L	Ouadi El-Arayech	ML	L	L
Qaa El Rim	ML	L	L	Qab Elias	L	ML	L	Qousaya	L	ML	ML
Rhit	L	M	ML	Riyak	ML	M	M	Saadnayel	L	L	L
Taal El-Akhdar	ML	ML	L	Taalbeya	L	L	L	Taanayel	L	L	L
Talamara	ML	M	M	Tcheflik Edde Haouch	L	L	L	Tcheflik Qiqano	L	ML	L
Terbol Zahle	L	ML	ML	Touaite Zahle	L	ML	L	Zahle Aradi	L	L	L
Zahle El-Berbara	ML	L	L	Zahle El-Maallaqa	L	L	L	Zahle El-Midane	ML	L	L
Zahle Er-Rassiyeh	ML	L	L	Zahle Haouch El-Ouma	L	L	L	Zahle Haouch El-Ouma	L	L	L
Zahle Haouch Ez-Zara	L	L	L	Zahle Maalaqa Aradi	L	L	L	Zahle Mar Antonios	ML	L	L
Zahle Mar Elias	L	L	L	Zahle Mar Gerios	L	L	L	Zahle Saydet En-Naja	L	L	L
Zebdoul	L	L	L								

Rachaiya

Municipality	02-Dec	03-Dec	04-Dec	Municipality	02-Dec	03-Dec	04-Dec	Municipality	02-Dec	03-Dec	04-Dec
Ain Arab Rachaiya	ML	ML	L	Ain Ata	L	M	ML	Ain Harche	L	M	L
Aqabe Rachaya	L	M	L	Ayha	ML	M	ML	Ayta El Fokhar	ML	ML	L
Bakifa Rachaya	L	M	L	Bakka	ML	ML	L	Beit Lahya	L	ML	L
Bireh Rachaiya	L	L	L	Daher El Ahmar	L	ML	L	Deir El-Achayer	M	M	M
Heloua Rachaiya	M	M	ML	Hoch El Qannabeh Rac	L	ML	ML	Kaoukaba Bou Arab	L	M	L
Kfar Danis	L	ML	L	Kfar Mechki	L	ML	L	Kfar Qouq	M	M	ML
Kherbet Rouha	L	L	L	Majdel Balhiss	L	ML	L	Mdoukha	ML	ML	L
Mhaydseh Rachaiya	L	ML	L	Nabi Safa	L	ML	ML	Rachaiya	L	M	ML
Rafid Rachaiya	L	L	L	Selsata (Mazraat Dei	M	M	M	Tannoura	L	M	L
Yanta	M	ML	ML								

Beyrouth

Beyrouth

Municipality	02-Dec	03-Dec	04-Dec	Municipality	02-Dec	03-Dec	04-Dec	Municipality	02-Dec	03-Dec	04-Dec
--------------	--------	--------	--------	--------------	--------	--------	--------	--------------	--------	--------	--------

Achrafieh	VL	M	M	Ain el-Mreisse	VL	M	M	Bachoura	VL	M	M
Beirut Central Distr	VL	M	M	Marfai	VL	M	M	Mazraa	VL	M	M
Medaouar	VL	M	M	Minet el-Hosn	VL	M	M	Mwssaitbeh	VL	M	M
Ras Beirut	VL	M	M	Rmeil	VL	M	M	Saifi	VL	M	M
Zqaq el-Blat	VL	M	M								