

Lebanon Fire Risk Bulletin



CIVIL DEDEFENCE

Refer to cadast table condition.

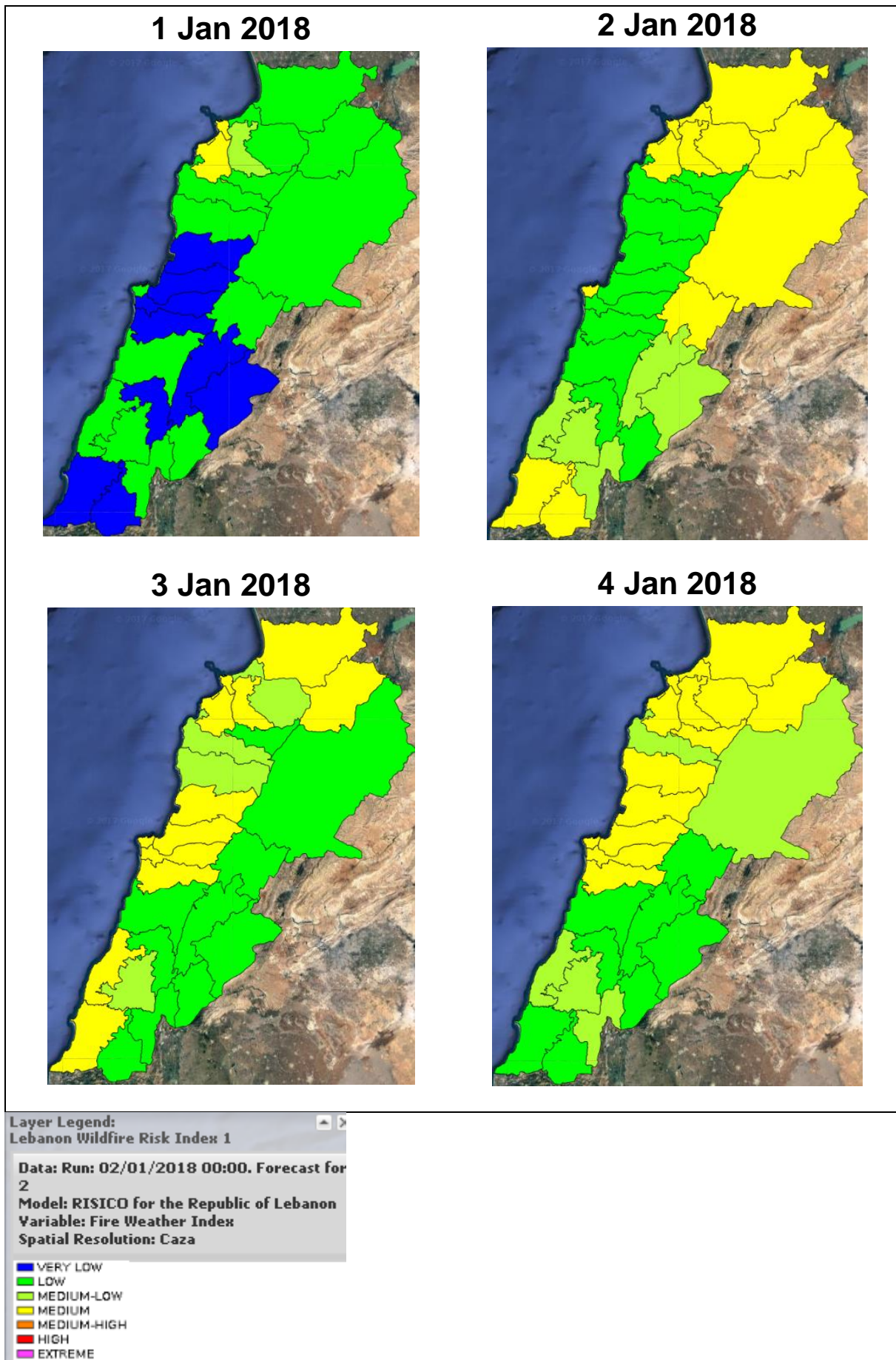
Please note that the indicated temperature is at 2 meters height from the ground.

General description of potential fire risk situation

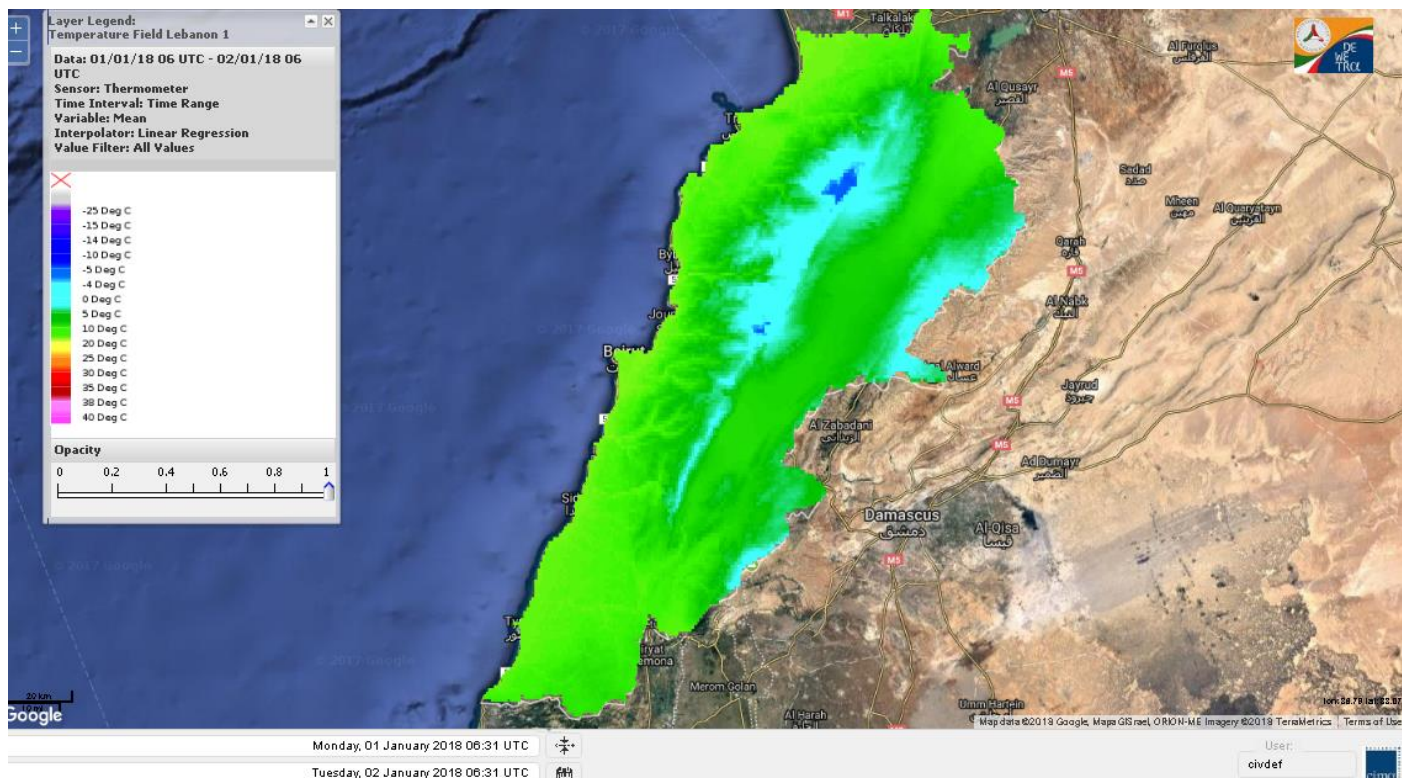
Symbol	Level of risk	Meaning and actions
VL	Very low	Very low fire risk. Controlled burning operations can be hardly executed due to high fuel moisture content. Normally wildfires self-extinguish.
L	Low	Low fire risk. Controlled burning operations can be executed with a reasonable degree of safety.
ML	Medium low	Medium-low fire risk. Controlled burning operations can be executed in safety conditions. All the fires need to be extinguished.
M	Medium	Medium fire risk. Controlled burning operations would be avoided. All the fires need to be very well extinguished.
M	Medium high	Controlled burning is not recommended. Open flame will start fires. Cured grasslands and forest litter will burn readily. Spread is moderate in forests and fast in exposed areas. Patrolling and monitoring is suggested. Fight fires with direct attack and all available resources.
H	High	Ignition can occur easily with fast spread in grass, shrubs and forests. Fires will be very hot with crowning and short to medium spotting. Direct attack on the head may not be possible requiring indirect methods on flanks. Patrolling and monitoring the territory is highly suggested.
E	Extreme	Ignition can occur also from sparks. Fires will be extremely hot with fast rate of spread. Control may not be possible during day due to long range spotting and crowning. Suppression forces should limit efforts to limiting lateral spread. Damage potential total. Patrolling and monitoring the territory is highly suggested.

Beirut, 2 January 2018

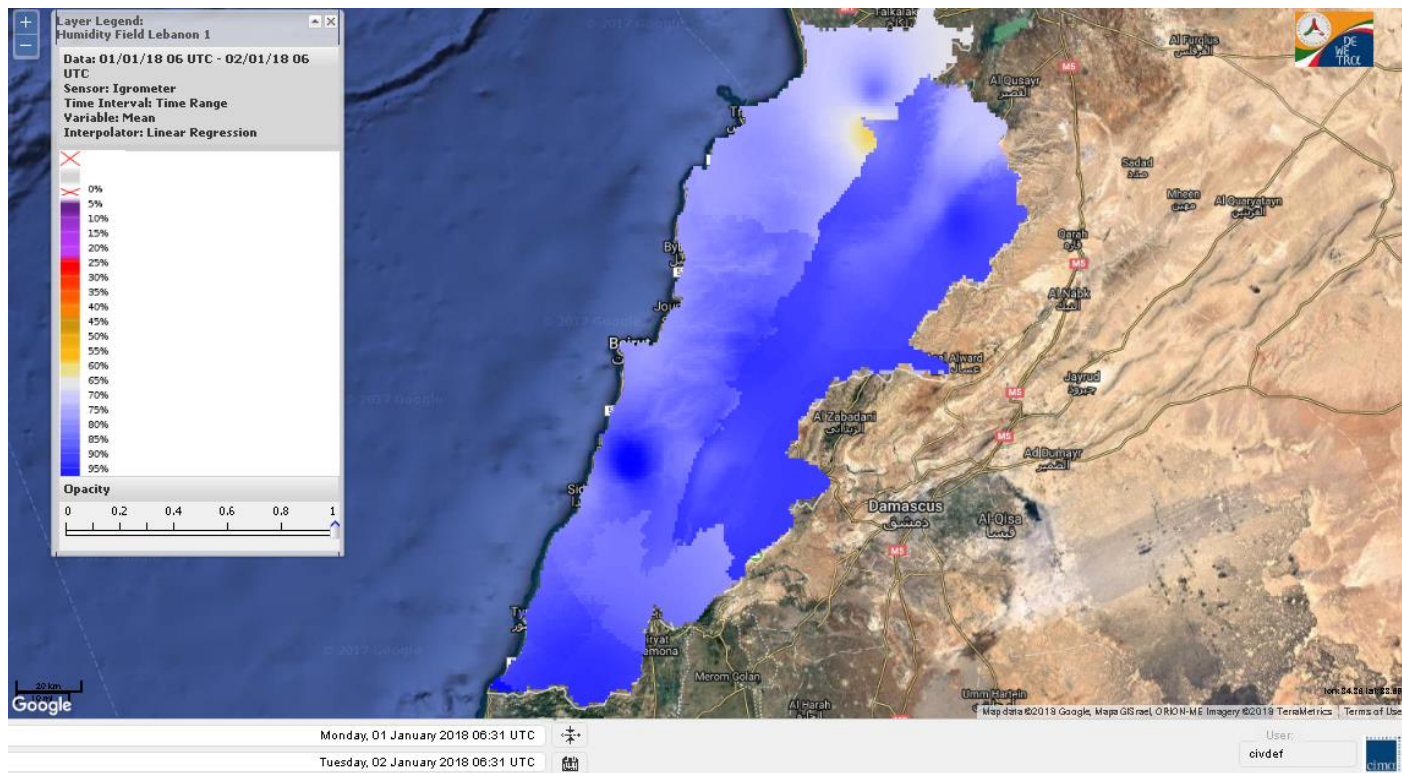
FIRE RISK INDEX



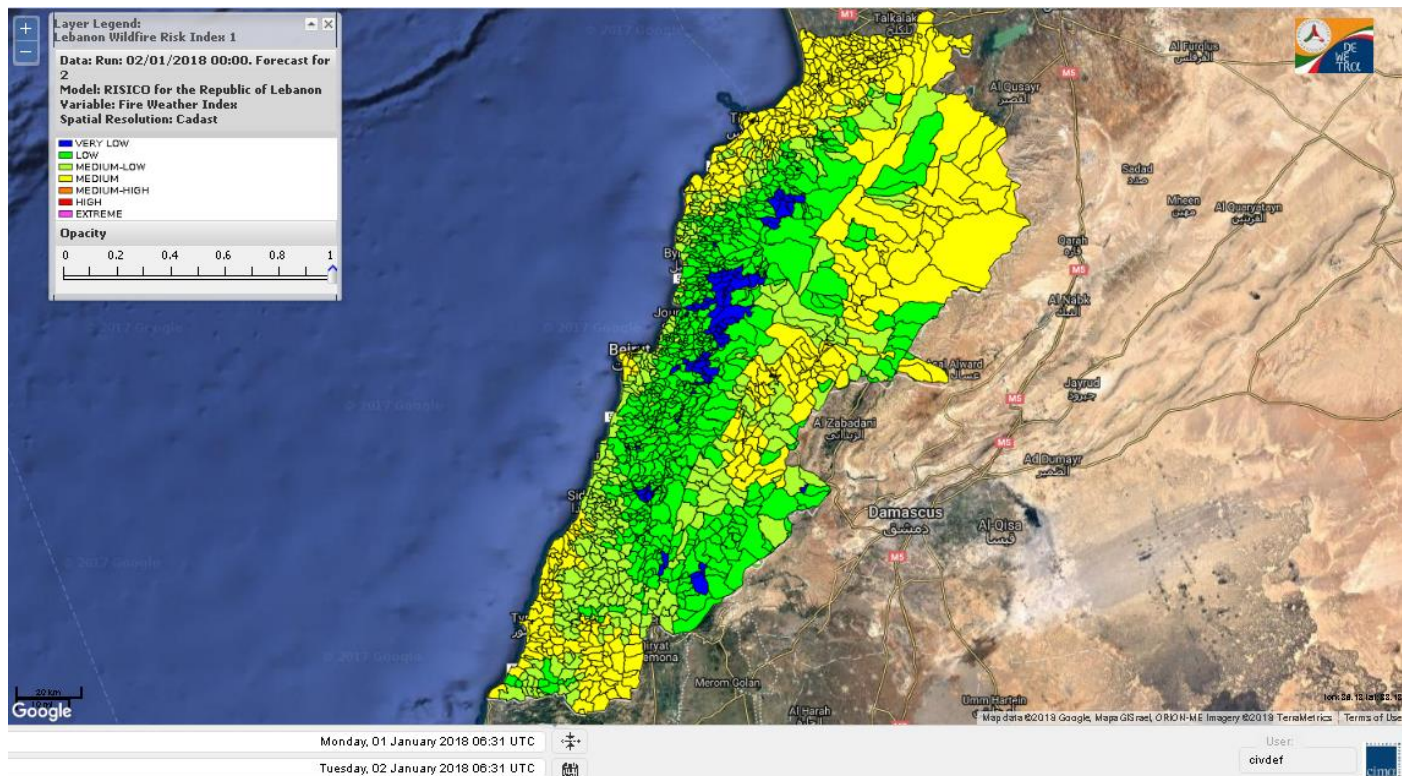
Lebanon temperature for Lebanon for 2 Jan 2018



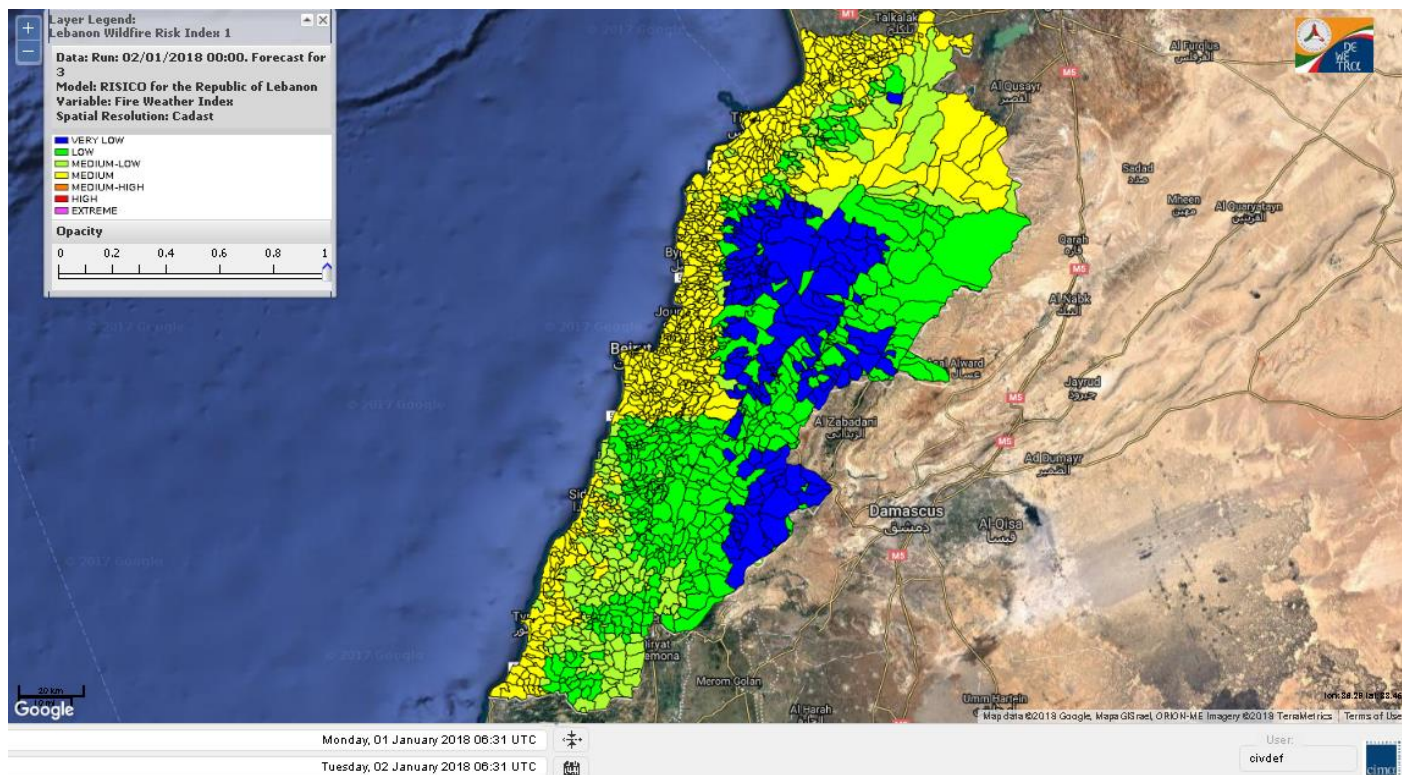
Lebanon humidity for Lebanon for 2 Jan 2018



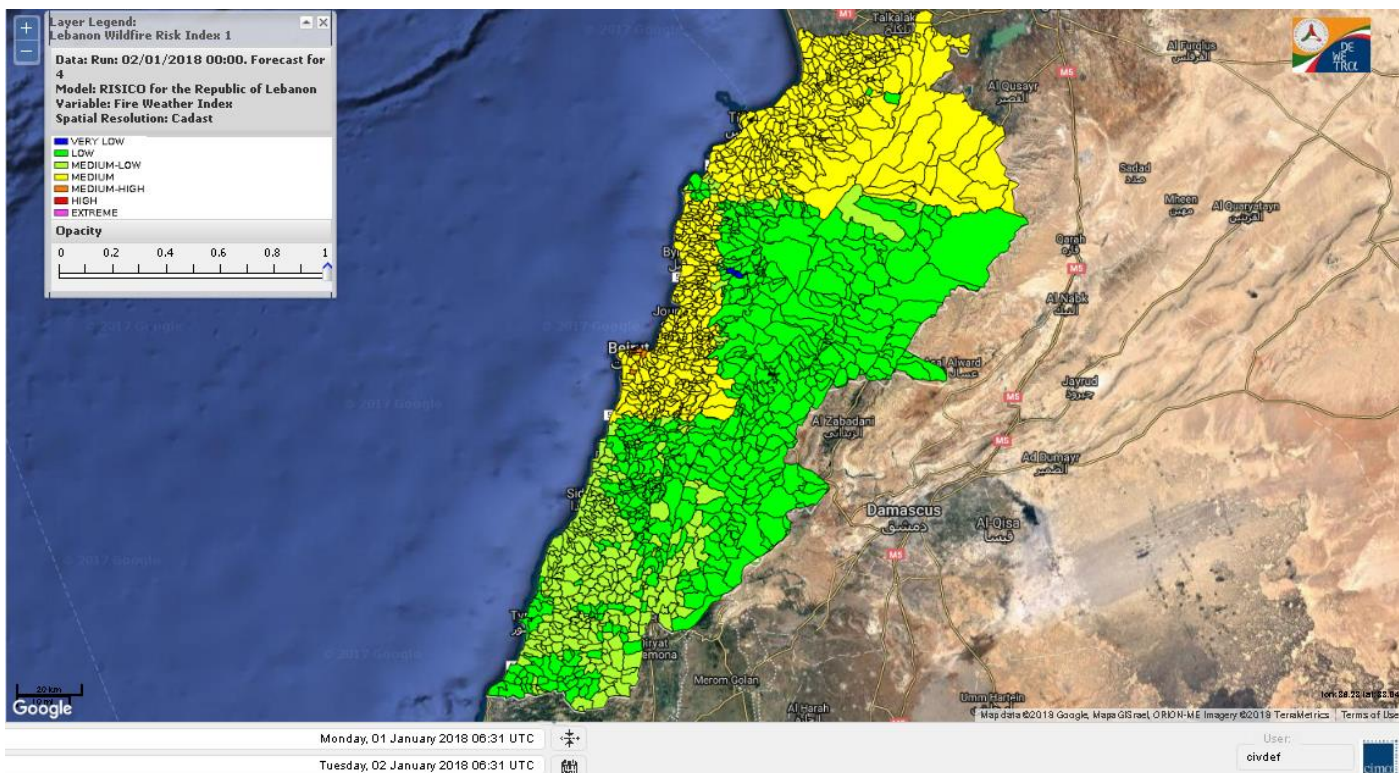
Lebanon for 2 Jan 2018



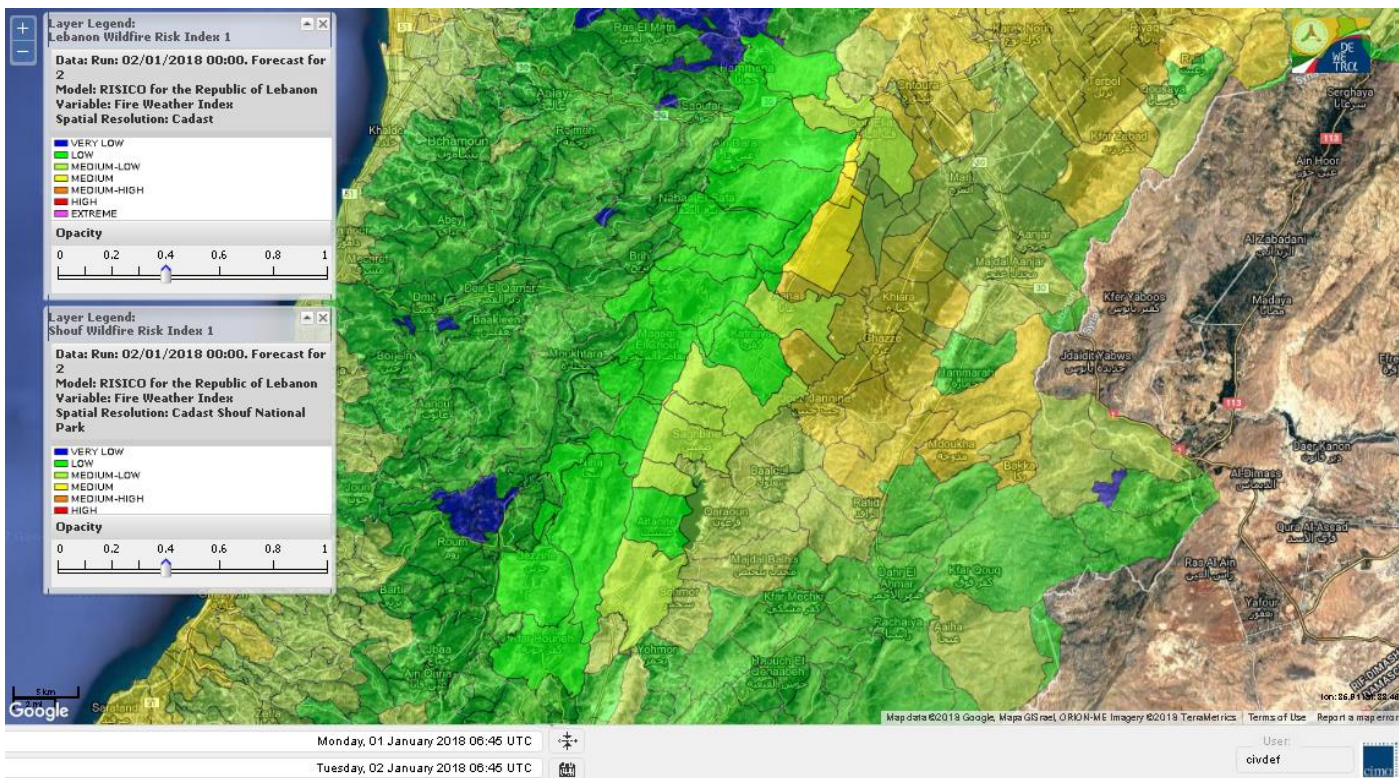
Lebanon for 3 Jan 2018



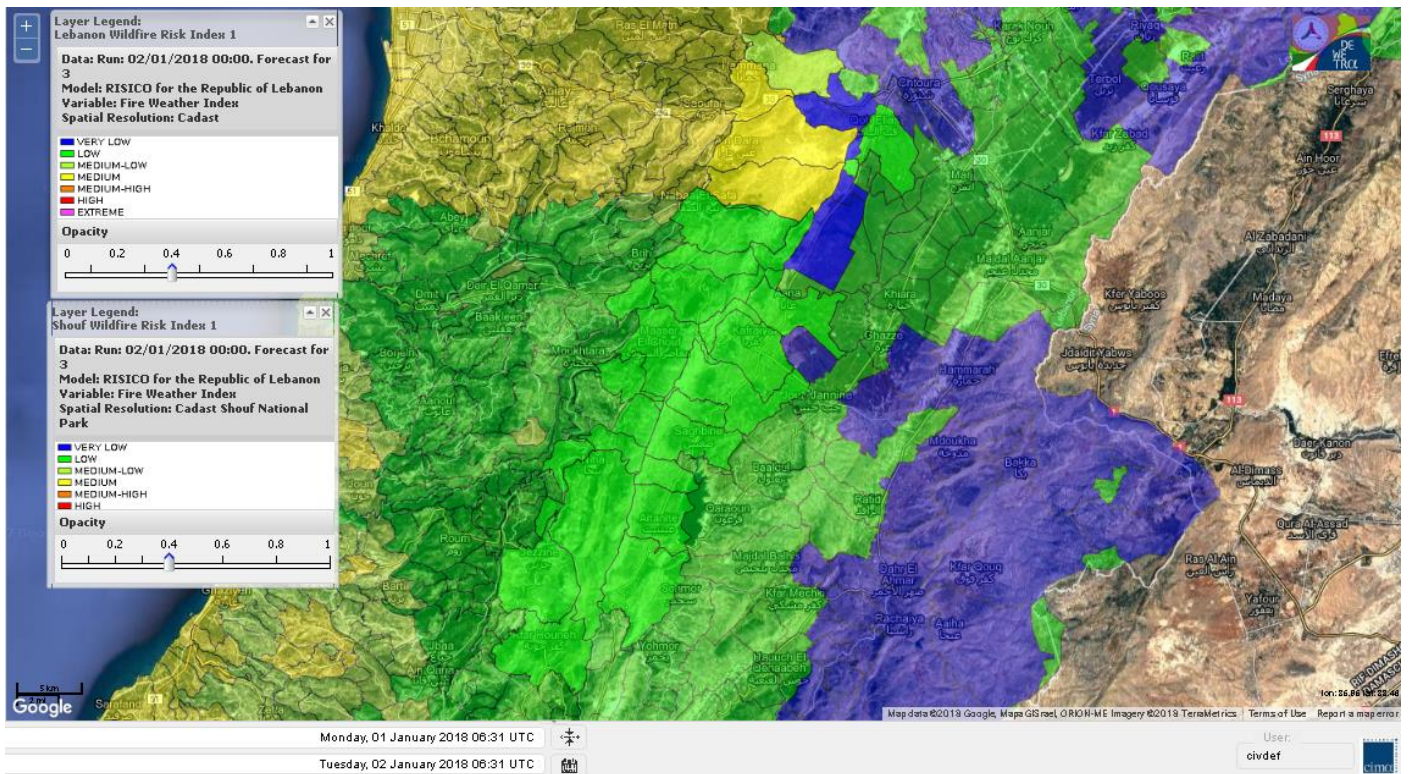
Lebanon for 4 Jan 2018



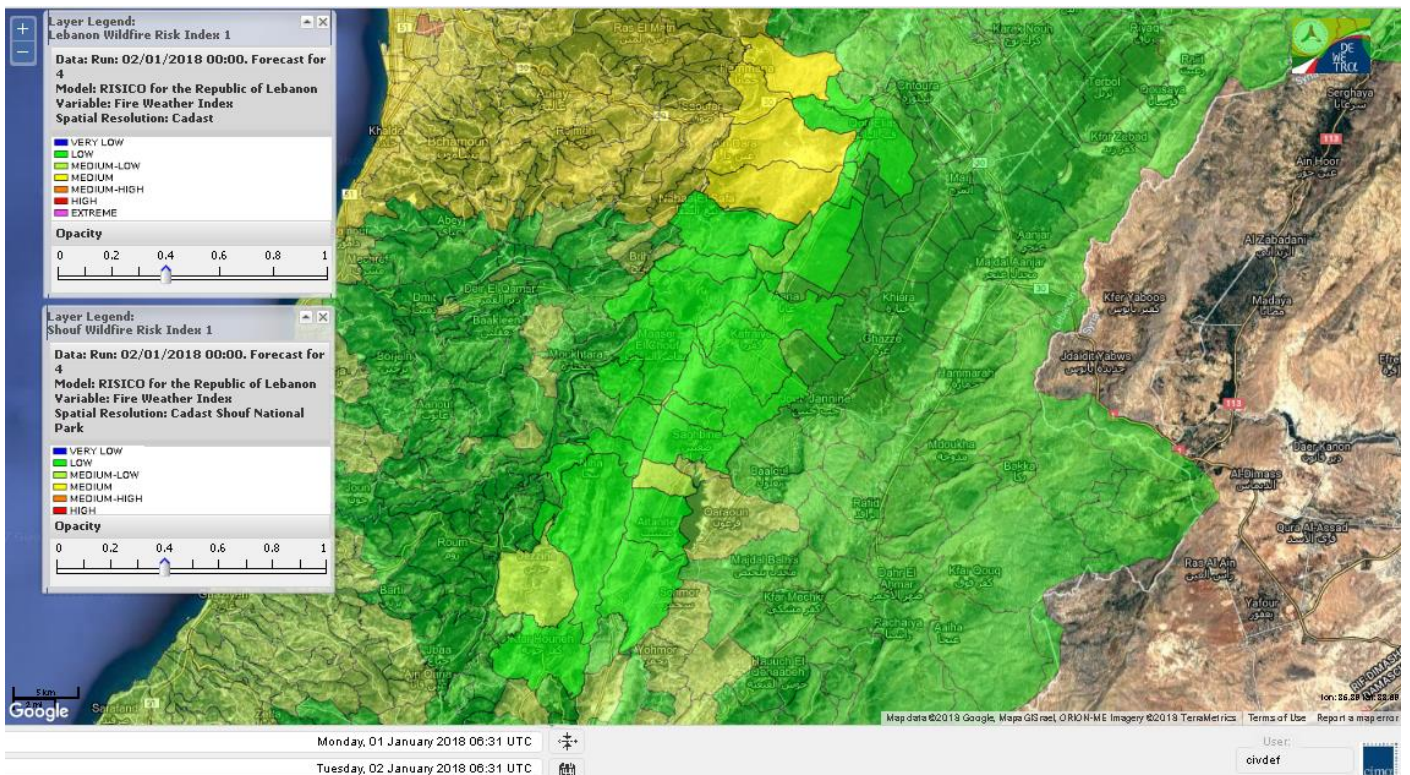
Shouf Biosphere Reserve Forecast for 2 Jan 2018



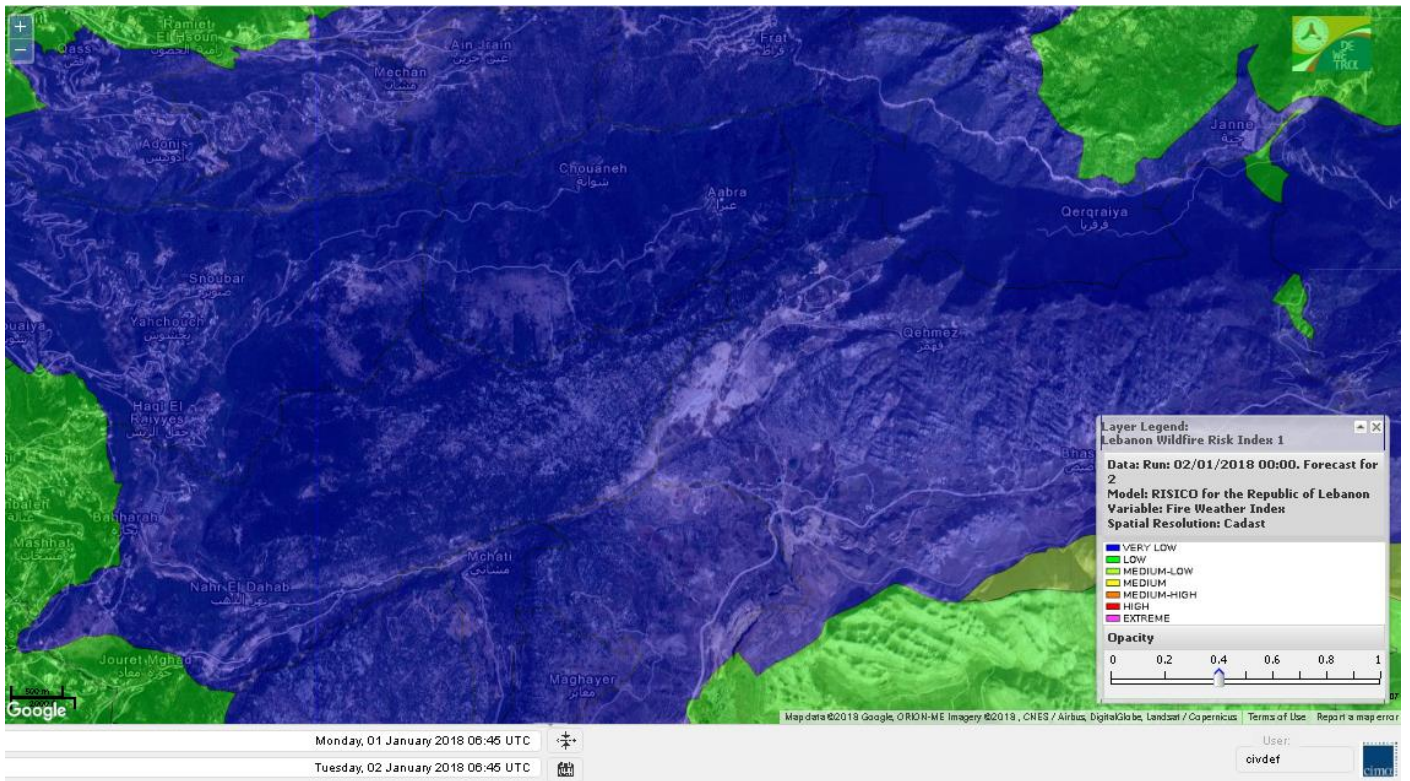
Shouf Biosphere Reserve Forecast for 3 Jan 2018



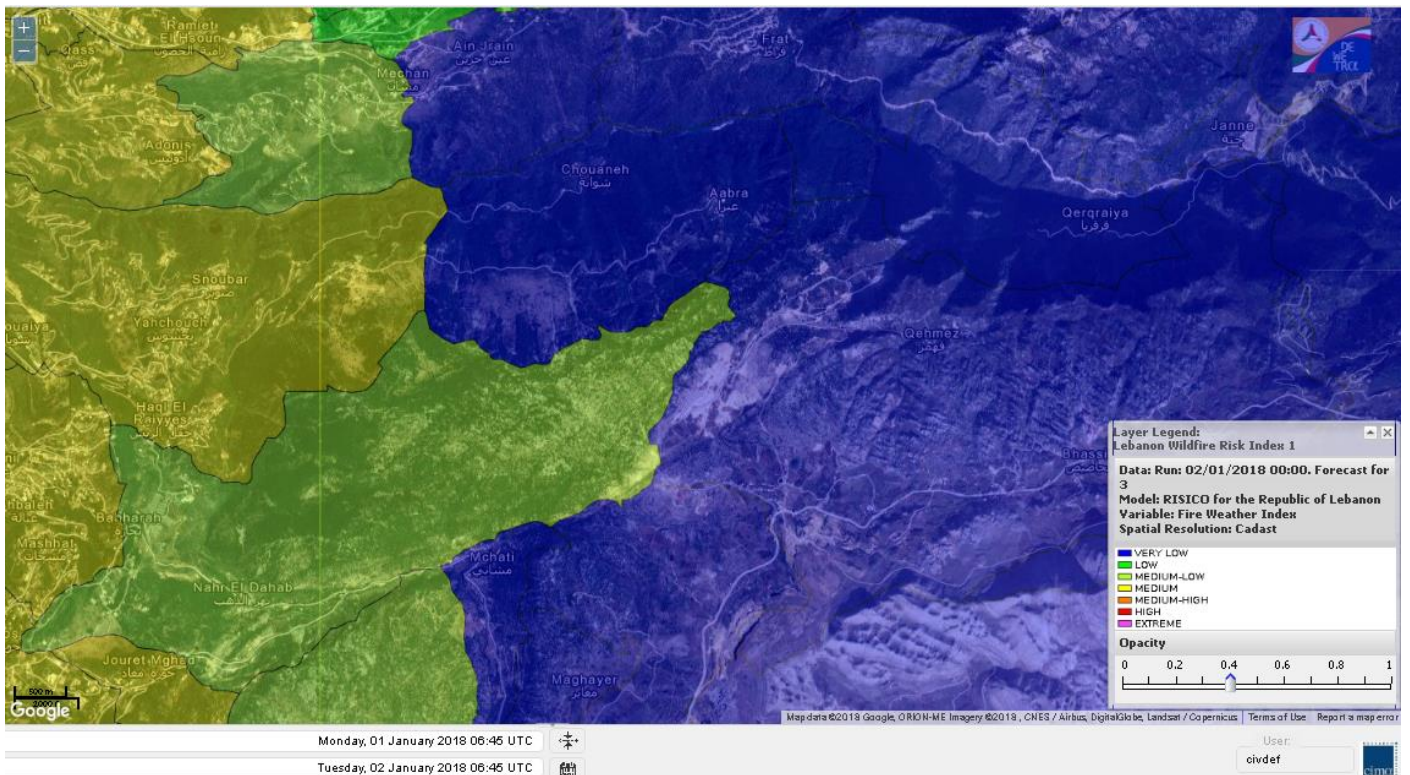
Shouf Biosphere Reserve Forecast for 4 Jan 2018



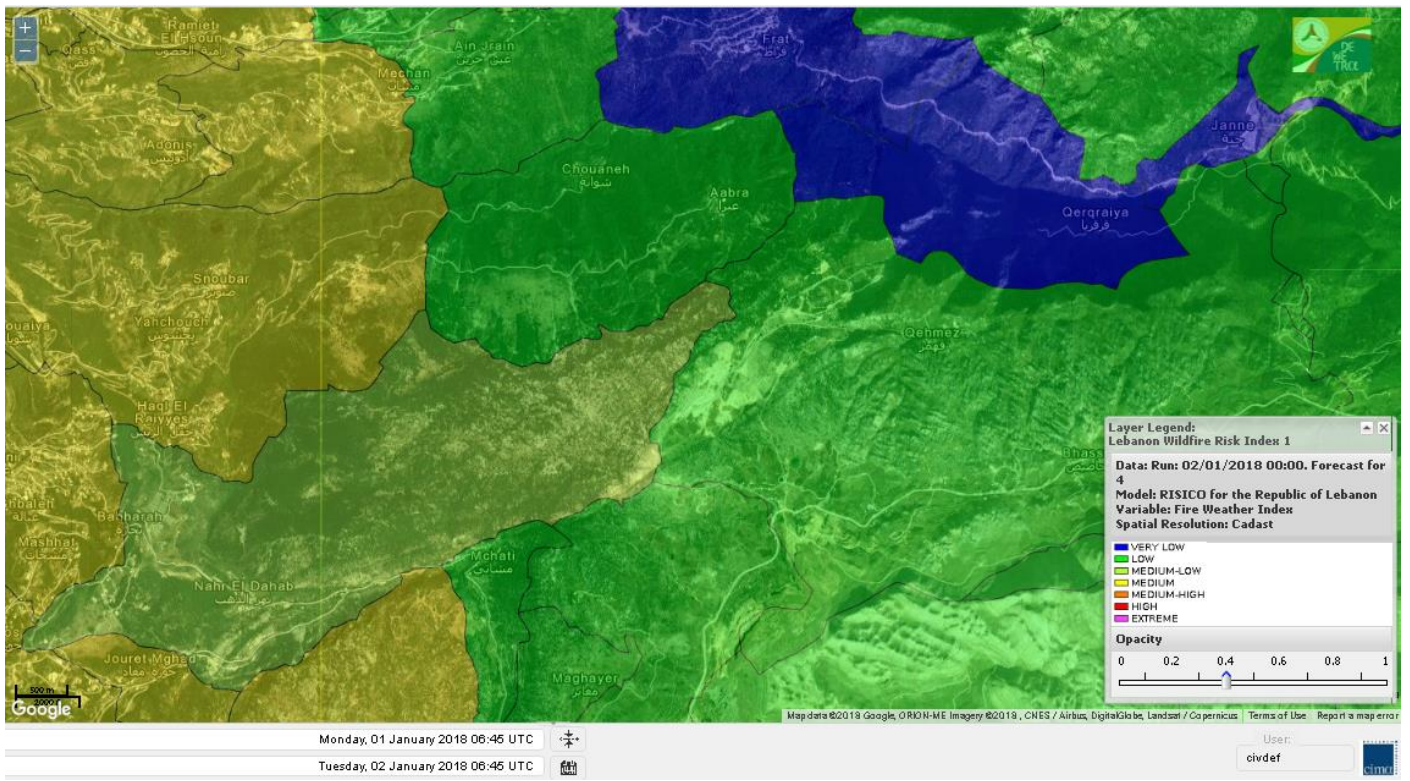
Jabal Moussa Reserve Forecast for 2 Jan 2018



Jabal Moussa Reserve Forecast for 3 Jan 2018



Jabal Moussa Reserve Forecast for 4 Jan 2018



Nord

Koura

Municipality	02-Jan	03-Jan	04-Jan	Municipality	02-Jan	03-Jan	04-Jan	Municipality	02-Jan	03-Jan	04-Jan
Aaba	M	M	M	Afsaddiq	M	M	M	Ain Ekrine	ML	M	M
Amioun	M	M	M	Anfeh	M	M	M	Badbhoun	M	M	M
Barghoun	M	M	M	Barsa	ML	M	M	Batroumine	M	M	M
Bdebba	M	M	M	Bechmizine	M	M	M	Bednayel El-Koura	M	M	ML
Bhabbouch El-Koura	ML	M	M	Bkeftine	ML	M	M	Bnehran	L	ML	M
Bqaiia El-Koura	ML	M	M	Bsarma	ML	M	M	Btaaboura	M	M	M
Bttram	M	M	M	Btouratij	M	M	M	Bziza	ML	M	M
Dar Beehtar	M	M	M	Dar Chmezzine	M	M	M	Deddeh	M	M	M
Deir El-Balamand	ML	ML	M	Fih	M	M	M	Hraiche	M	M	M
Ijdaabrine	ML	M	ML	Kaftoun	M	M	M	Kefraya El-Koura	M	M	ML
Kfarakka	ML	M	M	Kfarhata	M	M	ML	Kfarhazir	M	M	M
Kfarkahel	M	M	M	Kfarsaroun	ML	M	M	Kosba	ML	M	M
Mejdel el-Koura	ML	ML	M	Nakhle	ML	M	M	Qalhat	ML	ML	M
Ras Masqa	M	M	M	Rechdibbine	ML	M	M	Zakroun	ML	M	M
Zgharta El-Mtaouile	L	L	M								

Bcharre

Municipality	02-Jan	03-Jan	04-Jan	Municipality	02-Jan	03-Jan	04-Jan	Municipality	02-Jan	03-Jan	04-Jan
Aabdine	L	ML	M	Bane	L	M	M	Barhelioun	L	L	M
Bazouone	L	VL	L	Becharre	L	ML	M	Beit Menzer	VL	ML	M
Billa	L	ML	M	Blaouza	VL	M	M	Bqaa Kafra	L	VL	L
Bqerqacha	L	VL	L	Breissat	VL	VL	L	Dimane	VL	VL	L
Hadath El Jobbeh	VL	VL	L	Hadchit	VL	ML	M	Hasroun	L	VL	L
Mazraat Aassaf	L	VL	ML	Mazraat Bani Saab	L	L	L	Mchaa El-Jobbeh	L	VL	L
Metrit	L	ML	M	Moghr El-Ahoual	L	ML	M	Ouadi Qannoubine	VL	VL	L
Qanat	VL	L	ML	Qnayer	VL	L	M	Tourza	L	ML	M

Batroun

Municipality	02-Jan	03-Jan	04-Jan	Municipality	02-Jan	03-Jan	04-Jan	Municipality	02-Jan	03-Jan	04-Jan
Aabrine	ML	M	L	Aalali	L	VL	L	Aartiz	L	M	M
Abdelli	L	M	M	Ajdabra	ML	M	M	Assia	L	L	L
Basbina	M	M	M	Batroun	M	M	M	Bcheleh	L	VL	L
Bechtoudar	L	L	L	Beit Chlala	L	VL	L	Beit Kassab	L	L	L
Bijdarfil	M	M	M	Bqesmaya	ML	L	M	Chatine	L	VL	L
Chebtin	L	M	M	Chekka	M	M	M	Daael	L	L	L
Dahr Abi Yaghi	L	M	M	Daraya El-Batroun	ML	M	M	Deir Billa	L	L	ML
Deir Kfifane	M	M	M	Deir Mar Youhanna EL	L	VL	L	Deir Mar Youssef Jra	L	M	M
Douma	L	VL	L	Douq	L	M	M	Eddeh El-Batroun	ML	M	M
Ftahat El-Batroun	L	L	L	Ghouma	L	M	M	Hadtoun	L	VL	L
Hamat	M	M	L	Harbouna	L	M	M	Hardine	L	VL	L
Helta	L	L	L	Hery	M	M	M	Jebbla	L	L	L
Jrabta El-Batroun	L	M	M	Jrane El-Batroun	M	M	M	Kfar Aabida	M	M	M
Kfar Halda	L	L	L	Kfarb Shlaimane	L	L	L	Kfarhatna	ML	M	M
Kfarhay	M	M	M	Kfarhelos	ML	ML	L	Kfifane	M	M	M

Kfour El Arabi	L	VL	L	Koubba	M	M	ML	Kour	ML	M	M
Mar Mama	L	L	L	Masrah	L	M	M	Mehmarch	L	VL	L
Mrah Chdid	ML	M	M	Mrah El Ziyat	ML	M	M	Mrah El-Hajj	L	VL	VL
Nahle El-Batroun	L	L	L	Niha El-Batroun	L	VL	L	Ouajh El-Hajjar	M	M	L
Ouata Houb	VL	VL	L	Qatnaaoun	ML	M	L	Racha	L	VL	L
Rachana	L	M	M	Rachkida	ML	M	L	Ram El-Batroun	L	VL	L
Ras Nahhach	M	M	L	Selaata	M	M	ML	Sghar	L	M	M
Smar Jbayl	ML	M	M	Sourat El-Batroun	ML	L	L	Tannourine El-Faouqa	L	VL	L
Tannourine Et-Tahta	VL	VL	L	Thoum	ML	M	M	Toula El-Batroun	L	M	M
Zan	ML	ML	ML								

Zgharta

Municipality	02-Jan	03-Jan	04-Jan	Municipality	02-Jan	03-Jan	04-Jan	Municipality	02-Jan	03-Jan	04-Jan
Aachach	M	M	M	Aalma	M	M	M	Aarde	M	M	M
Aintourine	L	M	M	Arabet Qozhaya	L	L	M	Arde	M	M	M
Arjis	ML	M	M	Asnoun	M	M	M	Ayto	L	ML	M
Basloukit	L	M	M	Bchannine	ML	M	M	Besebeel	M	M	M
Bhairret Toula	VL	L	M	Bnachee	L	M	M	Boussit	M	M	M
Danha	M	M	M	Daraiya Zgharta	ML	M	M	Deir Jdeide	M	M	M
Ehden	L	M	M	Halan	M	M	M	Hariq Zgharta	M	M	M
Houakir	L	ML	M	Hraiqis	M	M	M	laal	ML	M	M
Ijbaa	L	M	M	Karm Saddeh	L	L	M	Kfarchakhna	ML	M	M
Kfardlaqous	M	M	M	Kfarfou	ML	M	M	Kfarhata Zgharta	M	M	M
Kfarhoura	ML	M	M	Kfarsghab	L	ML	M	Kfaryachit	M	M	M
Kfarzaina	M	M	M	Khaldiye	M	M	M	Mazraat Ajbeaa	M	M	M
Mazraat Et-Teffah	L	ML	M	Mazraat Jneid	M	M	M	Mejdlaiya Zgharta	M	M	M
Merh Kfarsghab	ML	M	M	Miryata	M	M	M	Miziara	L	L	M
Mzraat Kefraya	M	M	M	Qorah Bach	M	M	M	Rachiine	M	M	M
Ras Kifa	ML	M	M	Sakhra	ML	M	M	Sebhel Zgharta	L	M	M
Serhel	L	L	ML	Tallet Zgharta	ML	M	M	Toula Zgharta	L	ML	M
Zgharta	M	M	M								

Minieh-Denniye

Municipality	02-Jan	03-Jan	04-Jan	Municipality	02-Jan	03-Jan	04-Jan	Municipality	02-Jan	03-Jan	04-Jan
Aasaymout	L	L	M	Aaymar	ML	ML	M	Aazki	M	M	M
Ain El-Tineh-Miniyeh	L	L	M	Assoun	ML	ML	M	Bakhaaoun	M	ML	M
Bchennata	L	M	M	Bechehhara	L	L	M	Beddawi	M	M	M
Behouaita	L	L	M	Beit El Foqss	L	L	M	Beit Haouik	M	ML	M
Beit Zoud	M	L	M	Bekaasafrine	L	M	M	Borj El Yahoudiyeh	M	M	M
Bqarsouna	L	L	M	Btermaz	ML	L	M	Debaael	ML	L	M
Deir Ammar	M	M	M	Deir Nbouh	L	ML	M	Haouaret-Miniyeh	M	ML	M
Haql el Azimeh	L	L	M	Harf El Siyad	ML	L	M	Hazmiye-Miniyeh	L	L	M
Izal	ML	ML	M	Jarjour	L	L	M	Jayroun	L	L	M
Kahf El-Malloul	L	L	M	Karm El-Moher	ML	ML	M	Kfar Binine	ML	L	M
Kfarchalane	M	ML	M	Kfarhabou	M	M	M	Kharroub-Miniyeh	M	M	M
Mazraat El-Kreme	L	L	M	Mazraat Ketrane	ML	L	M	Merkebta	M	M	M
Minyeh	M	M	M	Mrah El Sfirat	L	L	M	Mrah Sraj	M	L	M
Mrebbine	M	ML	M	Nabi Youcheaa	M	M	M	Nemrine	L	ML	M

Qarhaiya	M	ML	M	Qarne	L	L	M	Qarsita	L	L	M
Qattineh-Miniyeh	L	L	M	Qemmamine	L	L	M	Qraine	L	L	M
Raouda-Aadoua	M	M	M	Rihaniyet-Miniyeh	M	M	M	Sfireh	L	L	M
Sir Ed-Danniyeh	ML	L	M	Tarane	L	ML	M	Terbol-Miniyeh	M	M	M
Zaghartaghriane	L	ML	M	Zouq Bhannine	M	M	M				

Nabatiye

Nabatiye

Municipality	02-Jan	03-Jan	04-Jan	Municipality	02-Jan	03-Jan	04-Jan	Municipality	02-Jan	03-Jan	04-Jan
Aabba	ML	ML	ML	Aazzi	L	ML	L	Adchit El-Chqif	ML	ML	ML
Ain Bou Swar	L	L	L	Ain Kana	L	L	ML	Ali El-Taher	L	L	L
Ansar	ML	ML	ML	Arab Salim	L	L	ML	Arnoun	L	L	L
Bfaroue	ML	ML	L	Breyqaah	ML	ML	ML	Chargiyeh	ML	M	ML
Choukine	ML	ML	ML	Deir El Zahrani	ML	ML	ML	Doueir El-Nabatiyeh	ML	M	ML
Habbouch El-Nabatiye	ML	ML	ML	Hamra El-Nabatiyeh	ML	L	ML	Harouf El-Nabatiyeh	ML	ML	ML
Hmaile	L	L	L	Houmin El Faouqa	ML	ML	ML	Houmin El Tahta	ML	M	ML
Jarjough	L	L	L	Jbaah El-Nabatiyeh	L	L	L	Jebchit	ML	ML	ML
Kfar Djal El-Nabatiy	ML	ML	ML	Kfar Remmane	L	ML	ML	Kfar Sir	ML	ML	ML
Kfar Tebnit	ML	ML	ML	Kfarfila	L	ML	ML	Kfour El-Nabatieh	ML	ML	ML
Mayfadoun	ML	ML	ML	Mazraat Bsaffour	ML	ML	ML	Mazraat Chalbaal	ML	ML	ML
Mazraat Dmoul	ML	ML	ML	Mazraat El Khreibeh	ML	ML	ML	Mazraat El-Bayad El-	ML	ML	ML
Mazraat Kfarjaouz	ML	ML	ML	Mazraat Qalaat Meiss	ML	ML	L	Nabatiyeh El-Fawka	ML	ML	ML
Nabatiyeh Et-Tahta	ML	ML	ML	Namiriyyeh	ML	ML	ML	Qaaqaaiyet El Jisr	ML	ML	ML
Qossaibeh El-Nabatiy	ML	ML	ML	Roumine	ML	ML	ML	Sarba El-Nabatieh	L	ML	ML
Sir El-Gharbiyeh	ML	ML	ML	Toul	ML	ML	ML	Yehmor El-Nabatiyeh	ML	L	ML
Zaoutar El Charkiyeh	ML	L	ML	Zaoutar El-Gharbiyeh	ML	L	ML	Zebdine El-Nabatiyeh	ML	ML	ML
Zefta	ML	ML	ML								

Hasbaiya

Municipality	02-Jan	03-Jan	04-Jan	Municipality	02-Jan	03-Jan	04-Jan	Municipality	02-Jan	03-Jan	04-Jan
Ain Jarfa	VL	L	L	Abou Qamha	L	L	L	Ain Qania	VL	L	L
Bourghos	ML	L	ML	Chebaa	L	L	L	Chouaya Hasbaya	L	L	L
Dellafeh	ML	L	ML	Fardiss Hasbaiya	L	L	L	Hasbaya	L	L	ML
Hbariyeh	VL	L	L	Kaoukaba Hasbaiya	L	ML	ML	Kfar Chouba	L	L	L
Kfar Hamam	L	L	L	Kfeir El-Zait	L	L	L	Khalwat Hasbaya	L	L	L
Khreibet Hasbaiya	L	ML	ML	Majidiyeh Hasbaiya	L	L	ML	Marj Ez-Zhour (Haouc	L	L	L
Meri	L	ML	ML	Mimass	L	L	ML	Rachaiya El-Fokhar	L	L	L
Salaiyeb	ML	ML	ML								

Marjayoun

Municipality	02-Jan	03-Jan	04-Jan	Municipality	02-Jan	03-Jan	04-Jan	Municipality	02-Jan	03-Jan	04-Jan
Aalmane Marjaayoun	L	L	L	Aamra	ML	L	ML	Adayseh Marjaayoun	ML	L	ML
Adchit El-Koussair	ML	L	ML	Ain Arab Marjaayoun	ML	ML	ML	Bani Haiyann	ML	L	L
Blatt Marjaayoun	L	ML	ML	Blida	M	ML	ML	Borj El-Moulouk	ML	L	ML
Boueyda Marjaayoun	L	L	L	Deir Mimass	L	L	L	Deir Siriane	ML	L	L
Dibbine	L	ML	ML	Ebel El Saqi	L	ML	ML	Houla	M	ML	L
Houra	ML	L	ML	Kfar Kila	ML	L	ML	Khiam Marjaayoun	ML	ML	ML

Klayaa	ML	L	ML	Majdel Selem	M	ML	ML	Marjaayoun	ML	ML	ML
Markaba	M	ML	ML	Mays El-Jabal	M	ML	ML	Mazraat Doumiat	ML	ML	ML
Mazraat Sarada	ML	ML	ML	Mhaibib	M	ML	ML	Qabrikha	M	L	L
Qantara	ML	L	ML	Rab El-Thalathine	M	L	ML	Saouaneh Marjayoun	M	ML	ML
Talloussa	ML	L	L	Taybeh Matjaayoun	ML	L	ML	Touline	ML	L	L

Bent Jbail

Municipality	02-Jan	03-Jan	04-Jan	Municipality	02-Jan	03-Jan	04-Jan	Municipality	02-Jan	03-Jan	04-Jan
Ain-Ebel	M	L	L	Aitaroun	M	ML	ML	Aynata Bint Jbeil	M	ML	ML
Ayta El-Chaeb	ML	L	L	Ayta El-Jabal	M	ML	ML	Beit Lif	L	L	L
Beit Yahoun	M	ML	ML	Bint Jbeil	M	ML	ML	Borj Qalaway	M	ML	ML
Braachit	M	ML	ML	Chakra	M	ML	ML	Debel	M	L	L
Deir Antar	M	ML	ML	Froun	ML	L	L	Ghandouriyeh Bint Jb	M	L	ML
Hanine	M	L	L	Hariss	M	ML	ML	Hdatha	M	ML	ML
Jmeymeh	M	ML	ML	Kafra Bint Jbeil	ML	L	L	Kfar Dounine	M	ML	ML
Khirbet Selm	ML	L	L	Kounine	M	ML	ML	Maroun El Ras	M	ML	ML
Qalaway	ML	L	ML	Qaouzah	ML	L	L	Qatmoun	M	ML	ML
Ramya Bint Jbeil	ML	L	L	Rchaf	ML	L	L	Rmeich	M	ML	ML
Safad Al Battikh	M	ML	ML	Salhaneh	L	L	L	Serbine	M	ML	L
Sultanieh Bint Jbeil	M	ML	ML	Tibnine	M	L	L	Tiri	M	L	L
Yaroun	M	ML	ML	Yater	ML	L	L				

Mont Liban

Jbail

Municipality	02-Jan	03-Jan	04-Jan	Municipality	02-Jan	03-Jan	04-Jan	Municipality	02-Jan	03-Jan	04-Jan
Aabeydat	L	M	M	Aalita	L	M	M	Aamchit	ML	M	M
Aarab El-Lahib	L	VL	L	Aarasta	VL	VL	L	Adonis Jbeil	VL	M	M
Afqa Jbeil	L	VL	L	Ain El Delbeh Jbeil	VL	L	L	Ain El-Ghouyba	VL	VL	L
Ain Jrain	VL	VL	L	Ain Kfah	ML	M	M	Almat El Chemaliyat	L	VL	L
Almat El-Jenoubiya	L	VL	L	Aqoura	L	VL	L	Bayzoun	L	L	L
Bchille Jbeil	L	M	M	Bechtida	L	M	M	Behdaydat	L	M	M
Beit Habbaq	L	M	M	Bejjeh	L	M	M	Bekhaaz	ML	M	M
Berbara Jbeil	ML	M	M	Bintael	L	M	M	Birket Hjoula	L	M	M
Blatt Jbeil	L	M	M	Boulhos	VL	VL	L	Breyj Jbeil	L	M	M
Chamat	ML	M	M	Chikhane	ML	M	M	Chmout	L	M	M
Eddeh Jbeil	L	M	M	Ehmej	L	VL	L	Fatre	L	M	M
Ferhet	L	L	ML	Fghal	L	M	M	Frat	VL	VL	VL
Ghabat	L	VL	L	Ghalboun	L	M	M	Gharzouz	ML	M	M
Ghofrine	ML	M	M	Habil	VL	M	M	Halate	L	M	M
Haqel	L	M	M	Hbaline	L	M	M	Hboub	L	M	M
Hdeine	L	VL	L	Hema Er-Rehban	L	VL	L	Hema Mar Maroun Aann	L	VL	L
Hjoula	L	M	M	Hosrayel	ML	M	M	Hsarat	ML	M	M
Hsoun	L	M	M	Jaj	L	VL	L	Janne	VL	VL	VL
Jbeil	ML	M	M	Jeddeyel Jbeil	M	M	M	Jlisse	L	M	M
Jouret El-Qattine	L	M	M	Kfar Baal Annaya	L	M	M	Kfar Kidde	ML	M	M
Kfar Kouas	L	M	M	Kfar Mashoun	ML	M	M	Kfoun	L	M	M

Kharbe Jbeil	L	M	M	Laqlouq	L	VL	L	Lassa	VL	VL	L
Lehfed	L	VL	L	Maad	ML	M	M	Mar Sarkis	L	VL	L
Mastita	ML	M	M	Mayfouq	L	L	L	Mazraat El Siyad	L	VL	L
Mazraat El-Maaden	L	VL	L	Mechane	VL	ML	M	Mechmech Jbeil	L	L	L
Mehrin	L	M	M	Mejdel El-Akoura	L	VL	L	Mghayreh Jbeil	L	VL	L
Mounsef	ML	M	M	Nahr Ibrahim	ML	M	M	Qahmez	VL	VL	L
Qartaba	L	VL	L	Qartaboun	ML	M	M	Qattara Jbeil	L	VL	L
Qorqraya	VL	VL	VL	Ramout	ML	M	M	Ras Osta	L	M	M
Rihane Jbeil	ML	M	M	Sakiet El-Khayt	L	M	M	Saqi Richmaya	L	VL	L
Sebrine	L	M	M	Seraita	L	VL	L	Souane Jbeil	L	VL	L
Tadmor	L	VL	L	Tartej	L	VL	L	Torzaiya	L	L	ML
Yanouh Jbeil	L	VL	L	Zibidine Jbeil	L	M	M				

El Metn

Municipality	02-Jan	03-Jan	04-Jan	Municipality	02-Jan	03-Jan	04-Jan	Municipality	02-Jan	03-Jan	04-Jan
Aain El-Qabu	VL	VL	L	Aain El-Qach	L	M	M	Aain El-Teffaha	L	M	M
Aain el-Safssaf El-M	L	M	M	Abou Mizane	L	M	M	Ain Aar	ML	M	M
Ain Alaq	L	M	M	Ain El-Kharroube	L	M	M	Ain El-Sendiane	L	M	M
Ain El-Zeitoune	L	M	M	Ain Saadeh	L	M	M	Aintoura El-Matn	L	VL	L
Amaret Chalhoub	ML	M	MH	Antelias	ML	M	M	Atchaneh	L	M	M
Ayroun	L	M	M	Baabdat	L	M	M	Baouchariyeh	ML	M	M
Baskinta	L	VL	L	Beit Chabab	L	M	M	Beit El-Chaar	ML	M	M
Beit El-Kekko	ML	M	M	Beit Mery	L	M	M	Bhersaf	L	M	M
Bikfaya	L	M	M	Biyakout	ML	M	M	Bnabil	L	M	M
Bourj Hammoud	ML	M	MH	Bqennaya	L	M	M	Broummana El-Matn	L	M	M
Bsalim	L	M	M	Bsifrine	VL	M	M	Bteghrine	VL	L	ML
Chaouiye	L	M	M	Chouaya El-Matn	L	M	M	Choueir	L	M	M
Chrine	L	M	M	Dahr El Sawan El-Mat	L	M	M	Daychouniyeh	ML	M	M
Dbayeh	ML	M	M	Deir Chamra	VL	M	M	Deir Mar Abda el Mch	L	M	M
Deir Mar Roukouz	ML	M	M	Deir Tamiche	L	M	M	Dik El-Mehdi	L	M	M
Dikwaneh	ML	M	M	Douar El-Matn	L	M	M	Fanar	L	M	M
Fraike	L	M	M	Haret El-Ballaneh	L	M	M	Hbous	L	M	M
Himlaya	L	M	M	Jal El Did	ML	M	M	Jdeideh El-Metn	ML	M	M
Jouar El-Matn	L	M	M	Jouret El-Ballout	L	M	M	Kaaqour	VL	M	M
Kfar Aaqab	VL	M	M	Kfertay El-Matn	VL	VL	L	Khenchara	L	M	M
Khillet El-Mtain	L	M	M	Konnabat Broummana	L	M	M	Konnabat Salima	VL	M	M
Machraah El-Matn	VL	L	L	Majdel Tarchich	ML	VL	L	Majzoub	L	M	M
Mansouriyeh El-Metn	ML	M	M	Mar Boutros Karm Et-	L	M	M	Mar Chaya et Mzekke	L	M	M
Mar Moussa Ed-Douar	L	M	M	Marjaba	VL	L	ML	Masqa	L	M	M
Mayasse	L	M	M	Mazraat Deir Aoukar	L	M	M	Mazraat El-Hadirat	L	M	M
Mazraat Yachouh	ML	M	M	Mchikha	L	M	M	Menqlet Mezher	L	M	M
Mhaydseh Matn	L	M	M	Mkalles	ML	M	M	Mrouj	L	L	L
Mtain	L	L	L	Mtayleb	L	M	M	Nabay	L	M	M
Naccache	L	M	M	Ouadi Chahine	L	M	M	Ouadi El-Karm El-Mat	VL	ML	M
Ouata El-Mrouj	VL	M	M	Ouyoun El-Matn	VL	M	M	Qornet Chehwan	L	M	M
Qornet El-Hamra	L	M	M	Roumieh	L	M	M	Sfeilet Bikfaya	L	M	M
Sinn El-Fil	ML	M	M	Zabbougha	VL	M	M	Zalqa	ML	M	M

Zarouon	VL	M	M	Zekrite	L	M	M	Zighrine El-Matn	L	M	M
Zouk El-Khrab	ML	M	M								

Chouf

Municipality	02-Jan	03-Jan	04-Jan	Municipality	02-Jan	03-Jan	04-Jan	Municipality	02-Jan	03-Jan	04-Jan
Aalmane El-Chouf	ML	M	ML	Aammq El-Chouf	L	L	L	Ain Ouzein	L	L	L
Ain Qani	L	L	L	Ain Zhalta	L	L	L	Ainbal	L	L	L
Amatour	L	L	L	Anout	L	L	L	Atrine	L	L	L
Baadarane	L	L	L	Baaqline	L	L	L	Baasir	ML	ML	ML
Barja	ML	ML	ML	Barouk	L	L	L	Bater	L	L	L
Batloun	L	L	L	Bayqoun	L	ML	ML	Bchetfine	L	L	L
Beiteddine	L	L	L	Benouati Ech-Chouf	L	L	L	Berjein	L	L	L
Bireh et Mtalleh	L	L	ML	Biret El-Chouf	L	L	ML	Bkechtine Ouel Mchei	L	L	L
Bkifa El-Chouf	L	L	L	Botme	L	L	L	Bqaiaa Ech-Chouf	L	L	L
Bsaba El-Chouf	L	L	L	Chammis El-Chouf	ML	ML	ML	Chehim	L	L	L
Chemaarine	L	L	L	Chourit	VL	L	L	Daher El-Chouf	L	L	L
Dalhoun	L	ML	L	Damour	ML	ML	ML	Daraya El-Chouf	L	L	L
Deir El-Moukhalles	L	L	L	Deir Baba	L	L	L	Deir Dourit	L	L	L
Deir El-Qamar	L	L	L	Deir Kouche	L	L	L	Dibbieh	L	L	L
Dmit	L	L	L	Fouara Jaafar	L	L	L	Fraidis El-Chouf	L	L	L
Ghabet Jaafar	L	L	L	Gharife	L	L	L	Haret Jandal	L	L	L
Hasrout	L	L	L	Jadra	ML	ML	ML	Jahlieh	L	L	L
Jbeih El-Chouf	L	L	L	Jdeidet El-Chouf	L	L	L	Jiyeh	ML	ML	ML
Jleilyeh	L	L	L	Jmailiyeh	ML	ML	L	Joun	L	ML	L
Kahlounie El-Chouf	L	L	ML	Ketermaya	ML	M	ML	Kfar Faqoud	L	L	L
Kfar Hamal	ML	ML	ML	Kfar Him	L	L	ML	Kfar Katra	L	L	L
Kfar Niss	L	L	L	Kfar hay	L	L	ML	Kfarnabrakh	L	L	L
Khirbet Bisri	L	L	L	Knayse El-Chouf	L	L	L	Maaniyeh	ML	ML	L
Maasser Beiteddine	L	L	L	Maasser El-Chouf	L	L	L	Majdalouna	L	ML	L
Majdel El-Meouch	L	L	L	Mazboud	ML	ML	ML	Mazmoura	L	L	L
Mazraat El Chouf	L	L	L	Mazraat El Daher	L	L	L	Mazraat El-Douair	L	L	L
Mechref	L	L	L	Mghairie	ML	M	ML	Mghayrie El-Chouf	L	L	L
Moukhtara	L	L	L	Mrusti	L	L	L	Mtolle	L	L	ML
Naameh	ML	M	M	Niha El-Chouf	L	L	L	Ouadi Abou Youssef	VL	L	L
Ouadi Ed-Deir	L	ML	ML	Ouadi El-Sit	L	L	L	Ouadi bnehlay	VL	L	L
Qraibeh	L	L	L	Qreiaa	L	L	L	Rmayle El-Chouf	ML	M	ML
Semqaniyeh	L	L	ML	Sibline	ML	ML	ML	Sirjbeil	L	L	L
Warhanieh	L	L	ML	Werdaniyeh	ML	ML	ML	Zaarourieh	L	L	L

Baabda

Municipality	02-Jan	03-Jan	04-Jan	Municipality	02-Jan	03-Jan	04-Jan	Municipality	02-Jan	03-Jan	04-Jan
Abadiyeh	L	M	M	Ain Mouaffaq	L	M	M	Araiya	L	M	M
Arbaniyeh	VL	M	M	Arsoun	VL	M	M	Baabda	ML	M	M
Baalchmey	L	M	M	Bmaryam	VL	M	M	Bourj El-Brajneh	ML	M	M
Boutchay	L	M	M	Bsaba Baabda	L	M	M	Btekhney	VL	M	M
Btibyat	L	M	M	Bzbeddine	L	M	M	Chbeniyeh	L	M	M
Chiyah	M	M	M	Chmeisset Baabda	VL	M	M	Chouit	L	M	M
Deir El-harf	L	M	M	Deir Khouna	L	M	M	Dlaybeh	VL	M	M

Falougha	L	ML	M	Furn El-Chebbak	ML	M	MH	Hadath Beyrouth	ML	M	M
Halaliyeh Baabda	L	M	M	Hammana	L	M	M	Haret El Sett	L	M	M
Haret Hamze	L	M	M	Haret Hreik	M	M	MH	Hasbaiya El-Metn	VL	M	M
Jouar El-Hoz	L	L	L	Jouret Arsoun	L	M	M	Kfar Chima	ML	M	M
Kfar Selouane	L	VL	L	Khalouat Baabda	L	M	M	Kneisset Baabda	VL	M	M
Laylakeh	ML	M	M	Louayzeh Baabda	L	M	M	Merdache	ML	M	M
Mzairaa Baabda	L	M	M	Ouadi Chahrour El Ol	L	M	M	Ouadi Chahrour El So	L	M	M
Qalaa Baabda	VL	M	M	Qhraybe Baabda	L	M	M	Qobbayaa	L	M	M
Qornayel	VL	M	M	Qortada	VL	M	M	Qrayeh Baabda	VL	M	M
Qsaibeh Baabda	L	M	M	Qtale Baabda	L	M	M	Ras El Metn	L	M	M
Ras El-Haref	L	M	M	Rouayset El-Ballout	L	M	M	Salima Baabda	VL	M	M
Tahouitat El Ghadir	ML	M	M	Tarchich	L	VL	L	Zandouqa	VL	M	M

Aley

Municipality	02-Jan	03-Jan	04-Jan	Municipality	02-Jan	03-Jan	04-Jan	Municipality	02-Jan	03-Jan	04-Jan
Abey	L	L	L	Aghmid	L	M	M	Ain Dara	L	M	M
Ain Drafil	L	M	M	Ain El Halazoun	L	M	M	Ain El-Rmmaneh	L	M	M
Ain Jedideh	L	M	M	Ain Ksour	L	M	M	Ain Onoub	L	M	M
Ain Traz	L	L	L	Ainab	L	M	M	Aley	L	M	M
Aramoun	L	M	M	Aytat	L	M	M	Azouniyeh	L	M	M
Baawerta	L	L	L	Badghan Oua Wadi Bad	L	M	M	Bassatine	L	M	M
Bayssour	L	M	M	Bchamoun	L	M	M	Bdadoun	L	M	M
Behouara	L	M	M	Bennay	L	ML	L	Bhamdoun El-Dayaa	L	M	M
Bhamdoun El-Mhatta	L	M	M	Bkhechey	L	M	M	Bleibel	L	M	M
Bmakine	ML	M	M	Bmhery	L	M	M	Bouzrid	L	ML	ML
Bserrine	L	M	M	Bsous	L	M	M	Btalloun	L	M	M
Btater	L	M	M	Chanay	L	M	M	Charoun	L	M	M
Chartoun	L	M	M	Chemlane	L	M	M	Choueifat El-Aamrous	ML	M	M
Choueifat El-Oumara	ML	M	M	Choueifat El-Quoubbe	ML	M	M	Dakkoun	L	L	L
Deir Qoubel	L	M	M	Dfoun	L	M	M	Douair El Remmaneh	L	M	M
Ghaboun	L	M	M	Habramoun	L	M	M	Homs Oua Hama	L	M	M
Houmal	L	M	M	Jisr El Qadi	L	L	L	Kehaleh	L	M	M
Keyfoun	ML	M	M	Kfar Aamey	L	M	M	Kommatyeh	L	M	M
Maasrati	L	M	M	Majdel Baana	L	M	M	Mansourieh et Ain El	L	M	M
Mazraat El-Nahr	L	M	M	Mchakhte	L	M	M	Mecherfeh	L	M	M
Mejdaya	L	M	M	Mrayjat	L	ML	M	Ramliyah	L	ML	M
Rechmaya	L	L	ML	Rejmeh	L	M	M	Remhala	L	M	M
Rouaysset El Neemane	L	M	M	Saoufar	L	M	M	Selfaya	L	L	L
Sirhmoul	L	M	M	Souq El Ghareb	L	M	M	Taazanieh	L	M	M

Kesrouane

Municipality	02-Jan	03-Jan	04-Jan	Municipality	02-Jan	03-Jan	04-Jan	Municipality	02-Jan	03-Jan	04-Jan
Achkout	L	M	M	Adma Oua Dafneh	L	M	M	Ain Ed-Delbe Kesroua	VL	VL	L
Ain El-Rihane	L	M	M	Aintoura Kesrouane	L	M	M	Ajaltoun	L	M	M
Akaybeh Kesrouane	ML	M	M	Aramoun Kesrouane	L	M	M	Azra ouel Ozor	L	M	M
Ballouneh	L	M	M	Batha	VL	M	M	Bekaatat Achkout	L	M	M
Bekaatat Kanaan	VL	L	L	Bizhel	L	M	M	Bouar	L	M	M
Bqaatouta	VL	VL	L	Bqaq Ed-Dine	ML	M	M	Bzommar	L	M	M

Chahtoul	L	M	M	Chnaniir	VL	M	M	Chouan	VL	VL	L
Daraya Kesrouane	L	M	M	Darououn	L	M	M	Deir Baqlouch	L	M	M
Dlebta	VL	M	M	Eghbeh	VL	M	M	Faraya	L	VL	L
Fatka	L	M	M	Feytroun	VL	M	M	Ghazir	L	M	M
Ghbaleh Kesrouane	L	M	M	Ghedrass	L	M	M	Ghosta	L	M	M
Ghynéh	L	M	M	Harharaya w Kattine	L	M	M	Harissa Kesrouane	L	M	M
Hayata	VL	M	M	Hosein	L	M	M	Hrajel	L	VL	L
Jdeideh Ghazir	L	M	M	Jeita	L	M	M	Jounieh Ghadir	L	M	M
Jounieh Haret Sakhr	L	M	M	Jounieh Salel Alma	L	M	M	Jounieh Sarba	ML	M	M
Jouret Bedrane	L	M	M	Jouret Mhad	L	M	M	Jouret Termos	L	M	M
Kfar Debiane	VL	L	L	Kfar Tay Kesrouane	VL	ML	M	Kfar Yassine	ML	M	M
Kfour Kesrouane	L	M	M	Kharayeb Nahr Ibrahi	L	M	M	Klayaat Kesrouane	L	M	M
Maarab	VL	M	M	Maaysra Kesrouane	L	M	M	Mayrouba	VL	VL	L
Mazraat Er-Ras	L	M	M	Mazraat Mrah El-Mir	L	M	M	Mchaa El Ftouh	ML	VL	L
Mchaa Faraya	L	VL	L	Mchaa Kfar Dibiane	L	VL	L	Mghaer	VL	VL	L
Mradiyah	L	M	M	Nahr Ed-Dahab	VL	ML	ML	Nammoura Kesrouane	L	M	M
Ouata El Jaouz	VL	ML	M	Ouata Sillam	ML	M	M	Raachine	VL	M	M
Rayfoun	L	M	M	Safra Kesrouane	ML	M	M	Shayle Kesrouane	L	M	M
Tabarja	L	M	M	Yahchouch	VL	M	M	Zaaytreh	L	M	M
Zeytoun	L	M	M	Zouk Mikael	ML	M	M	Zouk Mosbeh	ML	M	M

Baalbek_Hermel

Baalbek

Municipality	02-Jan	03-Jan	04-Jan	Municipality	02-Jan	03-Jan	04-Jan	Municipality	02-Jan	03-Jan	04-Jan
Aadous	M	VL	L	Aamchki	L	L	L	Aarsal	M	L	L
Ain Baalbek	M	L	L	Ain Bourday	L	VL	L	Ain El-Benye	L	L	L
Ain El-Jaouz Baalbek	M	L	L	Ain El-Siya Chadoura	L	L	L	Al Khodr Baalbek	ML	VL	L
Al Nabi Chit	M	VL	L	Aynata Baalbek	M	VL	L	Baalbek	M	L	L
Bachwat	L	VL	L	Barqa	L	VL	L	Bednayel Baalbak	M	VL	L
Beit Chama	ML	VL	L	Bijjaje	M	L	L	Bouday	L	VL	L
Brital	ML	VL	L	Btadi	M	VL	L	Chaat	M	L	L
Chaibe	L	L	L	Chlifa	M	VL	L	Chmestar	ML	VL	L
Dar El-Oussa	L	VL	L	Deir El-Ahmar	M	VL	L	Deir Mar Maroun Baal	ML	M	M
Douris	M	VL	L	Fakiha	M	ML	M	Hadath Baalbek	L	VL	L
Ham	L	VL	L	Haour Taala	M	VL	L	Hizzine	ML	VL	L
Hlebta	ML	ML	M	Hosh Barada	M	VL	L	Hosh El Dahab	M	VL	L
Hosh El Snid	ML	VL	L	Hosh El-Nabi	ML	VL	L	Hosh El-Rafiq	M	VL	L
Hosh Tal Safiya	M	VL	L	Hrebta	M	L	L	laat	M	VL	L
Jebaa	L	VL	L	Jenta	M	VL	L	Kfar Dabach	ML	VL	L
Kfar Dane	L	VL	L	Khraibeh El-Hermel	M	L	L	Khreibet Baalbek	ML	VL	L
Kneisset Baalbek	M	VL	L	Labueh	M	L	L	Maarboun	ML	VL	L
Majdaloun	M	VL	L	Maqneh	M	VL	L	Mazraat Beit Mcheik	ML	VL	L
Misraya	M	VL	L	Moqraq	M	L	L	Nabha El-Damdoum	M	L	ML
Nabi Chbay	L	VL	L	Nabi Osman	M	L	L	Nahleh baalbek	M	L	L
Ouadi El-Oss	ML	L	L	Qaa Baayoun	M	M	M	Qaa Jouar Maqiye	M	M	M
Qaa Ouadi El-Khanzir	M	M	M	Qah Baalbek	M	M	M	Qarha Baalbek	M	VL	L

Qsarnaba	M	VL	L	Ram Baalbek	L	VL	L	Ras Baalbek El Sahl	M	M	M
Ras Baalbek El-Charq	M	M	M	Riha	M	VL	L	Saaide	L	VL	L
Sbouba	M	L	L	Seriine El-Tahta	M	VL	L	Slouqi	ML	VL	L
Taiba Baalbek	M	VL	L	Talia	ML	VL	L	Taraiya	ML	VL	L
Temnin El Fawqa	M	VL	L	Temnin El-Tahta	M	VL	L	Tfail	M	L	L
Yahfoufa	ML	VL	L	Yammouneh	ML	VL	L	Younine	M	L	L
Zboud	M	L	ML								

Hermel

Municipality	02-Jan	03-Jan	04-Jan	Municipality	02-Jan	03-Jan	04-Jan	Municipality	02-Jan	03-Jan	04-Jan
Charbine El-Hermel	ML	ML	M	Hermel Jbab	M	M	M	Hermel	M	M	M
Maaysra El-Hermel	M	M	M	Michaa Mrajhine	M	M	M	Ouadi Faara	L	ML	M
Ras Baalbek - Ouadi	M	M	M	Ras Baalbek El Gharb	L	M	M	Zighrine	L	ML	M

Akkar

Akkar

Municipality	02-Jan	03-Jan	04-Jan	Municipality	02-Jan	03-Jan	04-Jan	Municipality	02-Jan	03-Jan	04-Jan
Aain Tinta	M	M	M	Aaiyat	M	M	M	Aakkar El-Aatiqa	M	L	M
Aamar Akkar	M	M	M	Aamar El Baykat	M	M	M	Aamayer	M	M	M
Aamriyet Akkar	M	M	M	Aandqet	M	ML	M	Aarmeh	M	ML	M
Aarqa	M	M	M	Aawaynat	M	M	M	Aayoun Akkar	M	M	M
Abboudiye	M	M	M	Ain El-Zeit	M	M	M	Ain Yaaqoub	M	ML	M
Akroum	M	ML	M	Aridet Cheikh Zennad	M	M	M	Baldeh w Mazraat Bal	M	M	M
Barcha	M	M	M	Bardeh	M	M	M	Bebnine	M	M	M
Beino	M	M	M	Beit Ayoub	M	M	M	Beit El-Haouch	M	M	M
Beit Mellat	M	M	M	Beit Younes	ML	ML	M	Berbara Akkar	M	M	M
Berqayel	M	M	M	Bezbina	ML	L	M	Bireh Akkar	M	M	M
Borj	M	M	M	Bqerezla	M	M	M	Bzal	M	ML	M
Chane	ML	ML	M	Chaqdouf	M	M	M	Charbila	M	M	M
Cheikh Mohammad	M	M	M	Cheikh Taba Es-Sahl	M	M	M	Cheikh Taba	M	M	M
Cheikh Zennad	M	M	M	Cheikhlar	M	M	M	Chir Hmairine	M	M	M
Daghle	M	M	M	Dahr Laissine	M	M	M	Darine	M	M	M
Dawra	M	ML	M	Dawsa w Baghdadi	M	M	M	Dayret Nahr El-Kabir	M	M	M
Deir Dalloum	M	M	M	Deir Jennine	M	M	M	Denbou	M	ML	M
Dibbabiyyeh	M	M	M	Douair Aadwiyeh	M	M	M	Fassikine	M	M	M
Fnaydek	ML	ML	M	Fraydes Akkar	M	M	M	Ghazayle	M	M	M
Habchit	ML	L	M	Hakour	M	M	M	Halba	M	M	M
Haouchab	M	M	M	Hayssat	M	M	M	Haytla	M	M	M
Hayzouq	M	M	M	Hedd	M	M	M	Hmaira Akkar	M	M	M
Hmaiss Akkar	M	M	M	Hnaider	M	M	M	Hokr Ed-Dahri	M	M	M
Hokr Etti	M	M	M	Hokr Jouret Srar	M	M	M	Houaich	M	ML	M
Hrar	M	M	M	Idbil	M	M	M	llat	M	M	M
Janine	M	M	M	Jdeidet El-JoumeH	M	M	M	Jdeidet El-Kaiteh	M	M	M
Jebraiel	M	M	M	Kafr	L	M	M	Kafr	M	M	M
Karm Asfour	M	M	M	Kfar Melki Akkar	M	M	M	Kfar Noun	M	ML	M
Kfarharra	M	M	M	Khalsa	M	M	M	Kharnoubet Akkar	M	M	M

Khirbet Daoud Aakkar	M	M	M	Khirbet El Remmane	M	M	M	Khirbet Shar	M	M	M
Khoreybet El-Jindi	M	M	M	Khreibet Aakkar	M	M	M	Kneisset Aakkar	M	M	M
Kneisset Hnaider	M	M	M	Knisse	M	M	M	Kroum El-Aarab	M	M	M
Kwachra	M	M	M	Kweykhat	M	M	M	Machta Hammoud	M	M	M
Majdala	M	M	M	Majdel Akkar	M	M	M	Mar Touma	M	M	M
Marlaya Melhem	M	M	M	Mashha	M	M	M	Massoudiye	M	M	M
Mazraat Beit Ghattas	M	M	M	Mazraat En-Nahriye	M	M	M	Mechmech	ML	ML	M
Memneh	L	L	L	Mhammara	M	M	M	Mighraq Aakkar	M	M	M
Minyara	M	M	M	Moqayteh	M	M	M	Mounjez	M	M	M
Msalla	M	M	M	Mzeihmeh	M	M	M	Nfaiseh	M	M	M
Noura Et-Tahta	M	M	M	Ouadi El-Haour	M	M	M	Ouadi El-Jamous	M	M	M
Ouyoun El-Ghizlane	M	M	M	Qaabarine	M	M	M	Qabaait	M	ML	M
Qachlaq	M	M	M	Qantara Aakkar	M	M	M	Qarha Aakkar	M	M	M
Qarqaf	M	M	M	Qboula	M	M	M	Qleiaat Aakkar	M	M	M
Qloud El-Baqie	M	M	M	Qobaiyat Aakkar	M	ML	M	Qobbat Chamrat	M	M	M
Qorayat	ML	ML	M	Qornet Aakkar	M	M	M	Qsair Aakkar	M	M	M
Rahbe	M	M	M	Rihaniyet Aakkar	M	M	M	Rmah	M	M	M
Rmoul	M	M	M	Saadine	M	M	M	Sadaqa	M	M	M
Saidnaya	M	M	M	Sammouniye	M	M	M	Sayssouq	M	M	M
Semmaqiye	M	M	M	Semmaqli	M	M	M	Sfinet El-Dreib	M	M	M
Sfinet El-Qaitaa	M	ML	M	Sindyanet Zeidane	M	M	M	Souaisset Aakkar	M	M	M
Srar	M	M	M	Tal Abbas El Gharby	M	M	M	Tal Abbas El-Chargy	M	M	M
Tal Biret	M	M	M	Tal Hmayra	M	M	M	Tal Maayan Tal Kiri	M	M	M
Tal Sibel	M	M	M	Tallet Chattaha	M	M	M	Tikrit	M	M	M
Tleil	M	M	M	Tshea	ML	ML	M	Zawarib	M	M	M
Zouq El Hosniyeh	M	M	M	Zouq El-Haddara	M	M	M	Zouq El-Hbalsa	M	M	M
Zouq El-Moqachrine	M	M	M								

Sud

Sour

Municipality	02-Jan	03-Jan	04-Jan	Municipality	02-Jan	03-Jan	04-Jan	Municipality	02-Jan	03-Jan	04-Jan
Aaiyeh	M	ML	ML	Aalma El-Chaab	ML	M	L	Aaytit	M	ML	ML
Abbassiyeh Sour	M	M	L	Abou Chech	ML	M	L	Ain Abou Abdallah	M	M	L
Ain Baal	M	M	ML	Arzoun	ML	ML	ML	Aziyeh	ML	M	L
Baflaya	M	ML	ML	Barich	ML	M	ML	Batouliyeh	M	M	ML
Bayad	M	ML	ML	Bazouriyeh	M	M	ML	Bediass	ML	M	ML
Bestiyat	ML	M	ML	Borj El Chemali	M	M	L	Borj En-Naqoura	M	M	L
Borj Rahhal	M	M	ML	Boustane	ML	M	ML	Btaychiyeh	ML	M	L
Chaaitiye	M	M	ML	Chameh	ML	M	L	Chehabiye	M	ML	ML
Chehour	L	L	L	Chihine	L	ML	L	Debaal Sour	ML	ML	ML
Deir Amess	ML	L	L	Deir Kifa	M	L	ML	Deir Qanoun El-Ain	M	M	ML
Deir Qanoun El-Naher	ML	M	ML	Derdghaiya	M	ML	ML	Dhayra	ML	M	L
Halloussiyeh	ML	M	ML	Hamoul	L	M	L	Hanaouey	M	ML	ML
Henniye	M	M	ML	Hmairi Sour	ML	ML	L	Iskandarouna Sour	M	M	L
Jbal El Botom	ML	L	L	Jebbin	ML	M	ML	Jennata	ML	M	ML
Jijim	L	M	L	Jouaiya	ML	ML	ML	Kneisset Sour	M	ML	ML

Maarake	ML	M	ML	Maaroub	ML	M	ML	Majadel	M	ML	ML
Majdalzoun	ML	M	L	Mansouri Sour	M	M	ML	Marnba	L	L	L
Marouahine	L	L	L	Mazraat El-Zalloutiy	ML	M	ML	Mazraat Mechref	M	ML	ML
Mazraat Tayr Semhat	L	L	L	Mheilib	M	ML	L	Neffakhiyeh	M	L	ML
Niha Sour	M	L	ML	Ouadi Jilo	M	ML	ML	Qana	M	ML	ML
Qolaileh Sour	M	M	ML	Rechknay	ML	L	L	Rmadiyah	M	ML	ML
Selha Sour	M	L	ML	Siddiqine	M	ML	ML	Sour	M	M	L
Srifa	ML	L	L	Tayr Debbe	M	M	ML	Tayr Felsay	ML	ML	ML
Tayr Harfa	ML	M	L	Touayri	L	L	L	Toura	ML	M	ML
Yanouh Sour	ML	M	ML	Yarine	ML	M	ML	Zebqine	L	L	L

Saida

Municipality	02-Jan	03-Jan	04-Jan	Municipality	02-Jan	03-Jan	04-Jan	Municipality	02-Jan	03-Jan	04-Jan
Aanqoun	ML	M	ML	Aaqtanit	M	ML	ML	Aarab Ej-Jall	ML	M	ML
Aarab Tabbaya	ML	ML	ML	Abra Saida	ML	M	ML	Adloun	M	M	ML
Adousiyeh	M	M	ML	Ain-El-Deleb	ML	M	ML	Arzai	M	M	ML
Babliyah	M	M	ML	Barty	L	ML	L	Bissariyeh	M	M	ML
Bnaafoul	ML	M	ML	Bqosta	ML	ML	ML	Bramiy	ML	M	ML
Daoudiyeh	M	M	ML	Dareb El-Sim	ML	ML	ML	Erkay	ML	ML	ML
Ghassanieh	M	M	ML	Ghazieh	M	M	ML	Hajjeh	ML	ML	ML
Haret Saida	ML	M	ML	Hartiyeh	M	M	ML	Hlaliye Saida	ML	ML	ML
Insariyat	M	M	ML	Jazira Saida	M	M	ML	Kafar Bit	ML	ML	ML
Kaoutariyet El-Siyad	ML	M	ML	Kfar Chellal	L	ML	ML	Kfar Hatta Saida	ML	ML	ML
Kfar Milke Saida	ML	ML	ML	Khartoum	M	ML	ML	Khaziz	ML	ML	ML
Khirbet Ed-Douair Sa	M	M	ML	Khirbet El-Bassal	M	M	ML	Khrayeb Saida	M	M	ML
Loubieh	M	M	ML	Maghdouche	ML	ML	ML	Majdelyoun	ML	M	ML
Matariyet El-Choumar	M	ML	ML	Matayriyeh	M	ML	ML	Mazraat 'Mseileh	M	M	ML
Mazraat 'Snaiber	ML	M	ML	Mazraat Aarab Soukka	ML	M	ML	Mazraat Deir Taqla	ML	M	ML
Mazraat El Yahoudiye	M	M	L	Mazraat El-Housseini	M	M	ML	Mazraat El-Mhaydaleh	M	M	ML
Mazraat El-Ouasta	M	M	ML	Mazraat Jamjim	M	M	ML	Mazraat Kaoutariyet	ML	M	ML
Mazraat Kfar Badda	M	M	ML	Mazraat Oussamiyat	ML	ML	ML	Mazraat Sari	M	M	ML
Mazraat Sinai	ML	ML	ML	Meemariyeh	ML	M	ML	Merouaniyeh	ML	ML	ML
Miyeh ou Miyeh	ML	M	ML	Najjariyeh	M	M	ML	Qaaqiyat El-Snaouba	M	M	ML
Qnarit	M	ML	ML	Qraiye Saida	ML	M	ML	Saida Ed-Dekermane	ML	M	ML
Saida El-Oustani	ML	M	ML	Saida El-Qadimeh	ML	M	ML	Saida Kefraya	ML	ML	ML
Saksakiyeh	M	M	ML	Salhie Saida	ML	ML	ML	Sarafand	M	M	ML
Sfenta	L	L	L	Tafahta	ML	M	ML	Tanbourit	ML	ML	ML
Tebna	ML	M	ML	Zaghdraiya	ML	ML	ML	Zeita	ML	ML	ML
Zrariyeh	ML	ML	ML								

Jezzine

Municipality	02-Jan	03-Jan	04-Jan	Municipality	02-Jan	03-Jan	04-Jan	Municipality	02-Jan	03-Jan	04-Jan
Ain El-Mir (El Estab)	ML	M	ML	Anane	L	L	L	Aramta	L	L	ML
Ariya	L	L	L	Aychiyeh	L	L	L	Azour	VL	L	L
Baba	VL	L	L	Bayssour Jezzine	ML	ML	ML	Benoueteh Jezzine	L	L	L
Bhannine	L	L	L	Bisri	VL	L	L	Bkassine	L	L	L
Bouslaya	L	L	L	Btedine El-Leqech	VL	L	L	Chbail	VL	L	L
Choualiq Jezzine	ML	ML	ML	Dahr Ed-Deir	L	L	L	Deir El Qattine	L	L	L

Demachqiyeh	L	ML	ML	Ghabbatiyeh	L	L	L	Harf Jezzine	VL	L	L
Hassaniyeh	ML	ML	ML	Haytouleh	L	ML	L	Haytura	L	L	L
Hidab	L	L	L	Homsiyeh	L	L	L	Jabal Toura	L	L	L
Jarmaq	L	ML	L	Jensnaya	ML	M	ML	Jernaya	ML	ML	ML
Jezzine	L	L	ML	Karkha	L	L	L	Kfar Falous	ML	ML	L
Kfar Houna	L	L	L	Kfar Jarrah	ML	M	ML	Lebaa	ML	ML	ML
Louayzet Jezzine	L	L	L	Machmouche	VL	L	L	Mahmoudiyeh Jezzine	L	ML	ML
Maknounye Jezzine	L	L	L	Maraat Ouzaïyeh	L	L	L	Mazraat Daraya	L	L	L
Mazraat El-Aarqoub	L	L	L	Mazraat El-Mathane	VL	L	L	Mazraat El-Rahbane	L	L	L
Mazraat Khallet Khaz	L	L	L	Mazraat Louzid (Loua	L	L	L	Mazraat Qrouh	L	L	ML
Mazraat Tamra	ML	ML	ML	Mazraat Zighrine Jez	L	L	L	Mazraat	L	L	L
Mharbiyeh	ML	M	ML	Midane Jezzine	L	L	L	Mjeydel Jezzine	ML	ML	ML
Mlikh	L	L	L	Mrah El-Hbasse	ML	ML	ML	Ouadi Baanquodaine	ML	M	ML
Ouadi El-Laymoun	ML	ML	ML	Ouardiyeh	VL	L	L	Qabaa Jezzine	L	L	L
Qatrani	L	L	L	Qaytouleh	L	L	L	Qtaleh Jezzine	L	L	L
Rihane Jezzine	L	L	L	Rimat	L	L	L	Roum	L	L	L
Roummanet	L	L	L	Sabbah	L	L	L	Saydoun	L	L	L
Sfaray	L	L	L	Snaya	L	L	L	Sojoud	L	L	L
Srayri	L	L	L	Taaid	VL	L	L	Wadi Jezzine	L	L	L
Zhalta	L	L	L								

Bekaa

West Bekaa

Municipality	02-Jan	03-Jan	04-Jan	Municipality	02-Jan	03-Jan	04-Jan	Municipality	02-Jan	03-Jan	04-Jan
Aammiq BG	M	VL	L	Ain El Tineh BG	ML	L	L	Ain Zebdeh	ML	L	L
Ana	ML	L	L	Aytanit	L	L	L	Baaloul BG	ML	L	L
Bab Mareh	ML	L	ML	Chouberqiye Aammiq	M	VL	L	Dakoue	M	VL	L
Deir Ain El-Jaouze	ML	L	ML	Deir Tahniche	M	VL	L	Ghaza	M	VL	L
Harime El-Soughra	ML	L	L	Hoch Harimeh	M	L	L	Jazira BG	M	VL	L
Jib Jennine	M	VL	L	Kamed-El-Laouz	M	VL	L	Kefraya BG	L	L	L
Khiara El Atika	M	VL	L	Khiara	M	VL	L	Khirbet Qanafar	ML	L	L
Lala	ML	L	L	Lebbaya BG	L	L	ML	Loussa	ML	L	L
Machghara	ML	L	L	Manara (Hammara) BG	L	VL	L	Mansoura BG	M	VL	L
Marej BG	ML	L	L	Maydoun	L	L	ML	Ouaqf BG	ML	VL	L
Qaraaoun	ML	L	ML	Qelya	L	L	ML	Raouda (Istabel)	ML	L	L
Saghbine	ML	L	L	Sohmor	ML	L	ML	Soltan Yacoub el Ara	ML	VL	L
Souairy	ML	VL	L	Sultan Yaacoub	M	VL	L	Tal Znoub	M	VL	L
Yehmor BG	L	L	ML	Zilaya	L	L	L				

Zahle

Municipality	02-Jan	03-Jan	04-Jan	Municipality	02-Jan	03-Jan	04-Jan	Municipality	02-Jan	03-Jan	04-Jan
Aanjar (Haouch Mouss	ML	L	L	Ablah	M	VL	L	Ain Kfarzabad	M	VL	L
Ali-El-Nahri	M	VL	L	Bar Elias	ML	L	L	Bouarej	ML	VL	L
Cheberqiyet Tabet	ML	VL	L	Chtaura	M	VL	L	Deir El Ghazal	L	VL	L
Delhamiyet Zahle	M	VL	L	Ferzol	M	VL	L	Haouch El-Ghanam	M	VL	L
Haouch Es-Siyadeh	ML	L	L	Haouch Hala	M	VL	L	Haouch Mandara	M	L	L

Haouch Qayssar	ML	L	L	Hezerta	M	VL	L	Hosh Moussa	M	VL	L
Jdita	M	VL	L	Kfarzabad	M	L	L	Ksara	ML	VL	L
Majdel Aanjar	ML	L	L	Makssi	M	VL	L	Massa	M	VL	L
Mazraat Er-Remtaniye	ML	VL	L	Mrayjat Zahle	ML	VL	L	Mzaraa Zahle	M	VL	L
Nabi Ayla	M	VL	L	Nasriyet Rizk	M	VL	L	Nasriyet Zahle	ML	VL	L
Niha Zahle	M	VL	L	Ouadi Ed-Deloum	ML	VL	L	Ouadi El-Arayech	M	VL	L
Qaa El Rim	ML	VL	L	Qab Elias	ML	L	L	Qousaya	ML	VL	L
Rhit	M	VL	L	Riyak	M	VL	L	Saadnayel	M	VL	L
Taal El-Akhdar	ML	L	L	Taalbeya	M	VL	L	Taanayel	M	VL	L
Talamara	M	VL	L	Tcheflik Edde Haouch	M	VL	L	Tcheflik Qiqano	ML	L	L
Terbol Zahle	M	VL	L	Touaite Zahle	M	VL	L	Zahle Aradi	M	VL	L
Zahle El-Berbara	M	VL	L	Zahle El-Maallaqa	M	VL	L	Zahle El-Midane	M	VL	L
Zahle Er-Rassiye	M	VL	L	Zahle Haouch El-Ouma	ML	L	L	Zahle Haouch El-Ouma	ML	VL	L
Zahle Haouch Ez-Zara	M	VL	L	Zahle Maalaga Aradi	M	VL	L	Zahle Mar Antonios	M	VL	L
Zahle Mar Elias	M	VL	L	Zahle Mar Gerios	M	VL	L	Zahle Saydet En-Naja	M	VL	L
Zebdoul	ML	VL	L								

Rachaiya

Municipality	02-Jan	03-Jan	04-Jan	Municipality	02-Jan	03-Jan	04-Jan	Municipality	02-Jan	03-Jan	04-Jan
Ain Arab Rachaiya	L	VL	L	Ain Ata	L	VL	L	Ain Harche	L	VL	L
Aqabe Rachaya	L	VL	L	Ayha	ML	VL	L	Ayta El Fokhar	M	VL	L
Bakifa Rachaya	L	VL	L	Bakka	M	VL	L	Beit Lahya	L	VL	L
Bireh Rachaiya	M	VL	L	Daher El Ahmar	L	VL	L	Deir El-Achayer	L	VL	L
Heloua Rachaiya	ML	VL	L	Hoch El Qannabeh Rac	L	L	L	Kaoukaba Bou Arab	L	VL	L
Kfar Danis	L	VL	L	Kfar Mechki	L	L	L	Kfar Qouq	L	VL	L
Kherbet Rouha	L	VL	L	Majdel Balhiss	ML	L	L	Mdoukha	M	VL	L
Mhaydseh Rachaiya	ML	VL	L	Nabi Safa	L	L	L	Rachaiya	L	VL	L
Rafid Rachaiya	ML	VL	L	Selsata (Mazraat Dei	VL	VL	L	Tannoura	L	VL	L
Yanta	ML	VL	L								

Beyrouth

Beyrouth

Municipality	02-Jan	03-Jan	04-Jan	Municipality	02-Jan	03-Jan	04-Jan	Municipality	02-Jan	03-Jan	04-Jan
Achrafieh	ML	M	M	Ain el-Mreisse	M	M	M	Bachoura	M	M	MH
Beirut Central Distr	M	M	MH	Marfai	M	M	MH	Mazraa	M	M	M
Medaouar	ML	M	MH	Minet el-Hosn	M	M	M	Mwssaitbeh	M	M	M
Ras Beirut	M	M	M	Rmeil	ML	M	M	Saifi	M	M	M
Zqaq el-Blat	M	M	M								