

Lebanon Fire Risk Bulletin



CIVIL DEDEFENCE

Refer to cadast table condition.

Please note that the indicated temperature is at 2 meters height from the ground.

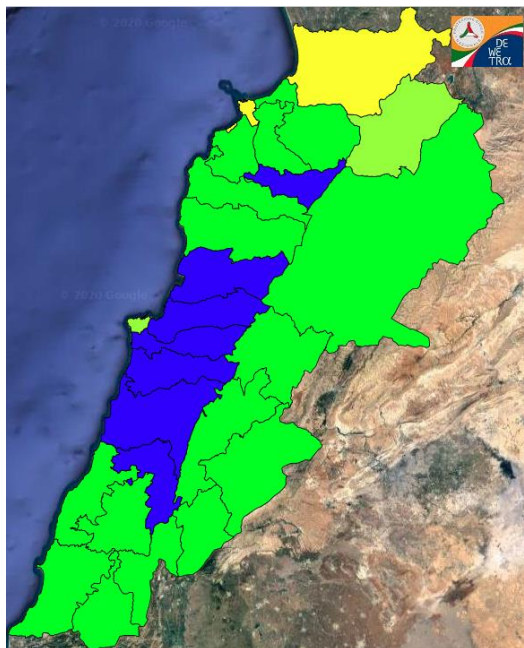
General description of potential fire risk situation

Symbol	Level of risk	Meaning and actions
VL	Very low	Very low fire risk. Controlled burning operations can be hardly executed due to high fuel moisture content. Normally wildfires self-extinguish.
L	Low	Low fire risk. Controlled burning operations can be executed with a reasonable degree of safety.
ML	Medium low	Medium-low fire risk. Controlled burning operations can be executed in safety conditions. All the fires need to be extinguished.
M	Medium	Medium fire risk. Controlled burning operations would be avoided. All the fires need to be very well extinguished.
M	Medium high	Controlled burning is not recommended. Open flame will start fires. Cured grasslands and forest litter will burn readily. Spread is moderate in forests and fast in exposed areas. Patrolling and monitoring is suggested. Fight fires with direct attack and all available resources.
H	High	Ignition can occur easily with fast spread in grass, shrubs and forests. Fires will be very hot with crowning and short to medium spotting. Direct attack on the head may not be possible requiring indirect methods on flanks. Patrolling and monitoring the territory is highly suggested.
E	Extreme	Ignition can occur also from sparks. Fires will be extremely hot with fast rate of spread. Control may not be possible during day due to long range spotting and crowning. Suppression forces should limit efforts to limiting lateral spread. Damage potential total. Patrolling and monitoring the territory is highly suggested.

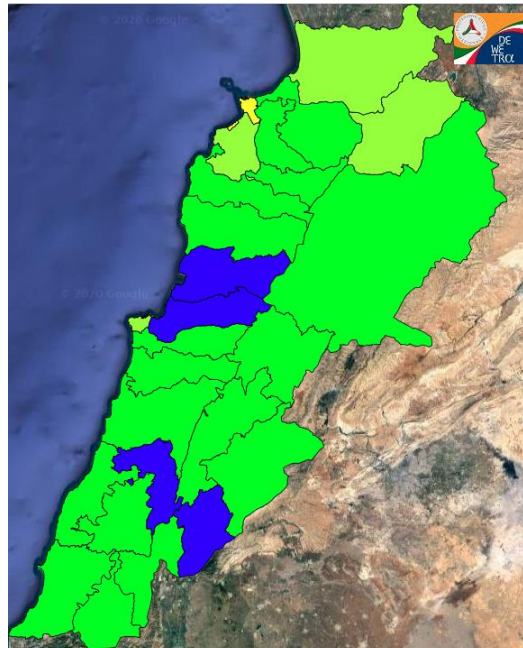
Beirut, 2 March 2020

FIRE RISK INDEX

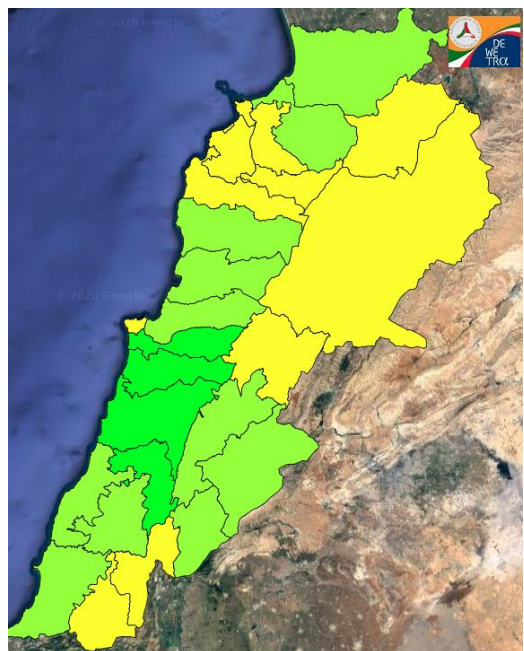
1 March 2020



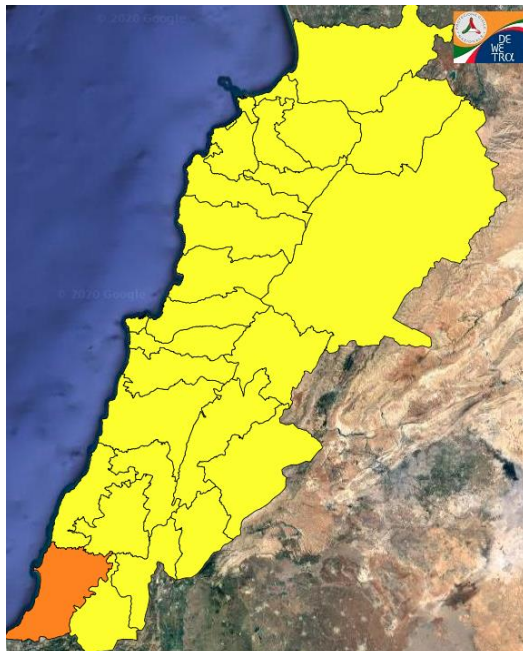
2 March 2020



3 March 2020



4 March 2020

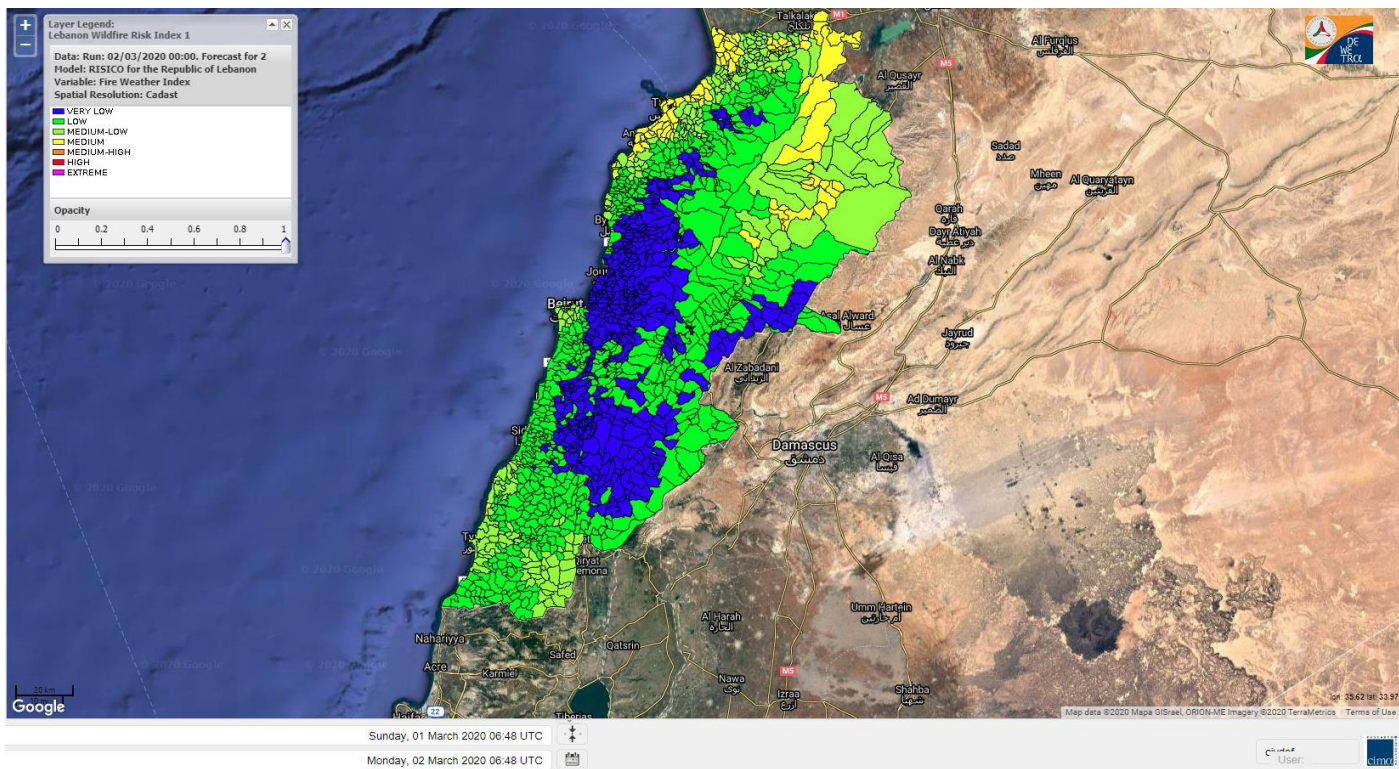


Layer Legend:
Lebanon Wildfire Risk Index 1

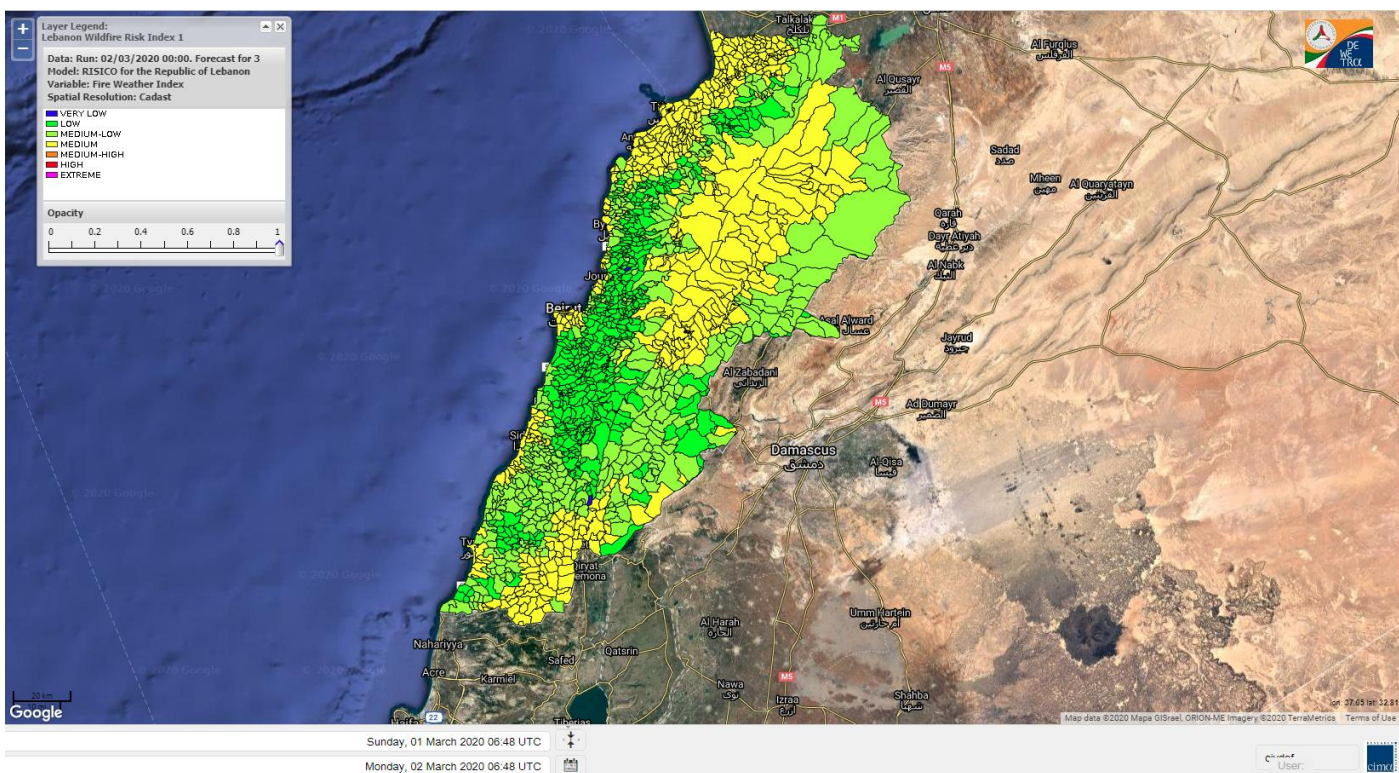
Data: Run: 02/03/2020 00:00. Forecast for 2
Model: RISICO for the Republic of Lebanon
Variable: Fire Weather Index
Spatial Resolution: Caza

- VERY LOW
- LOW
- MEDIUM-LOW
- MEDIUM
- MEDIUM-HIGH
- HIGH
- EXTREME

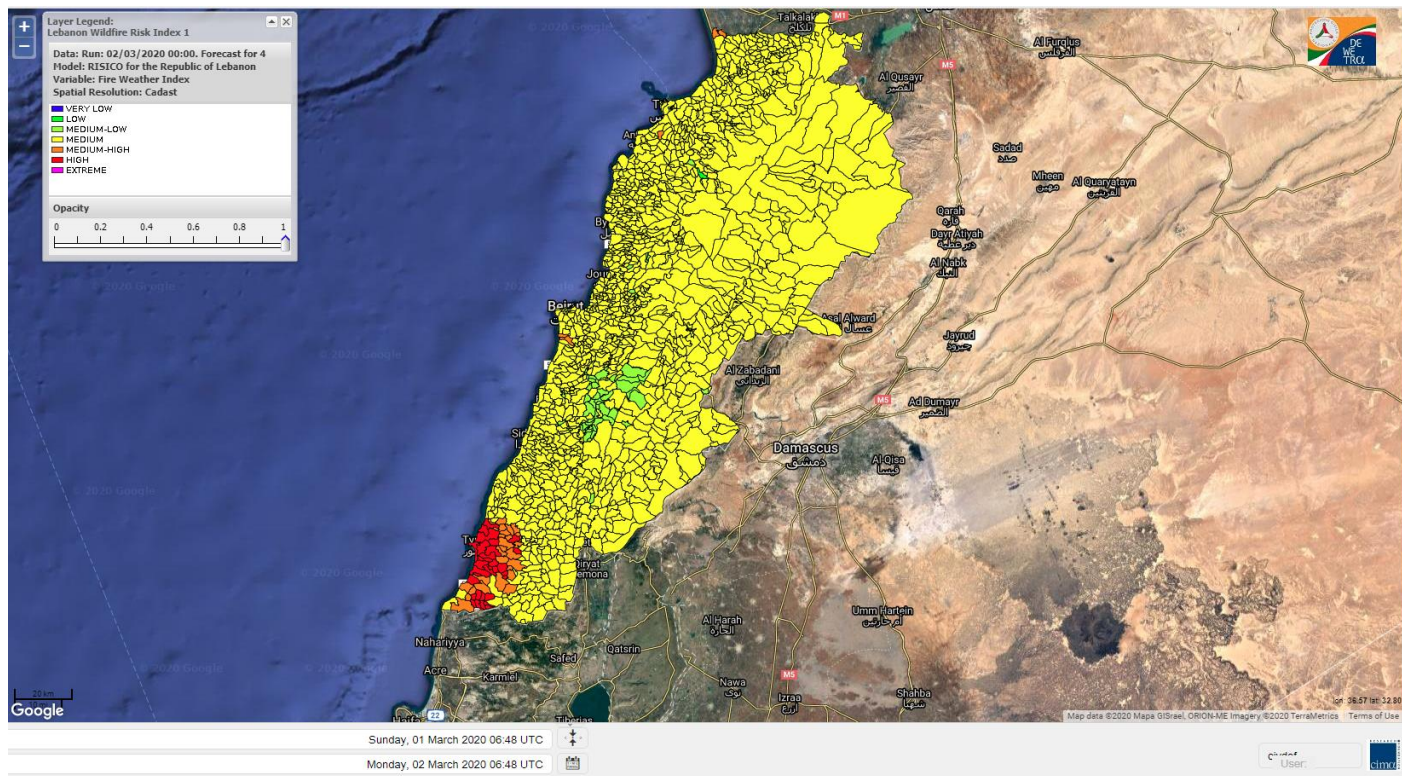
Lebanon for 2 March 2020



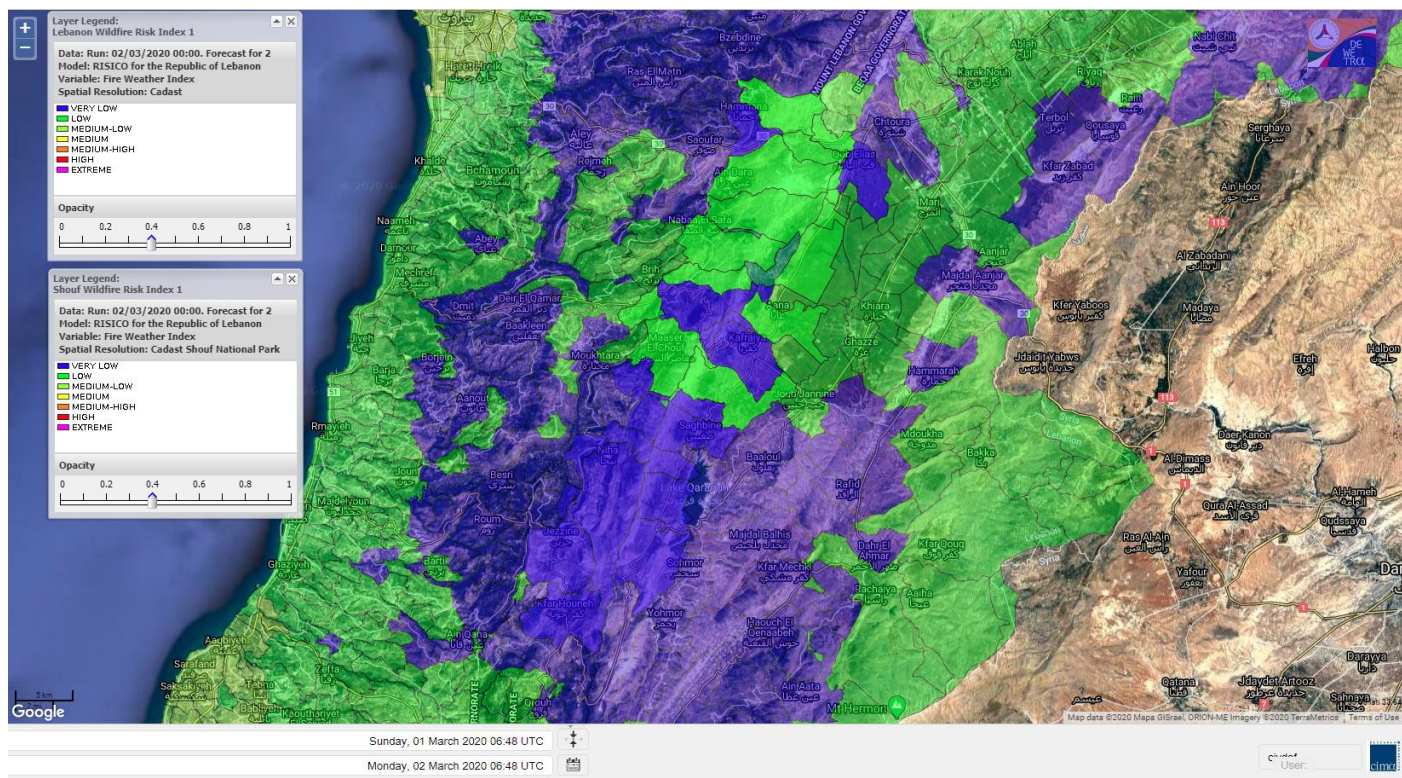
Lebanon for 3 March 2020



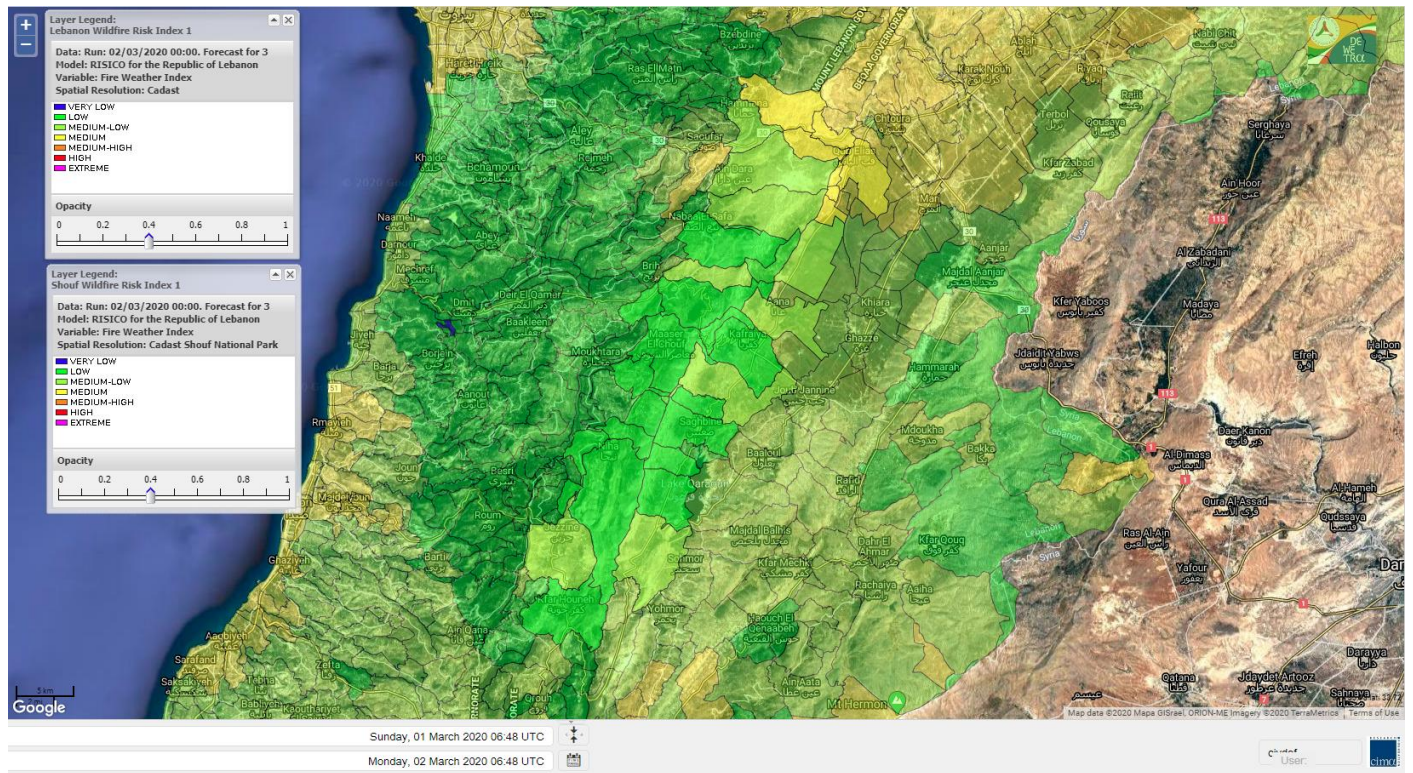
Lebanon for 4 March 2020



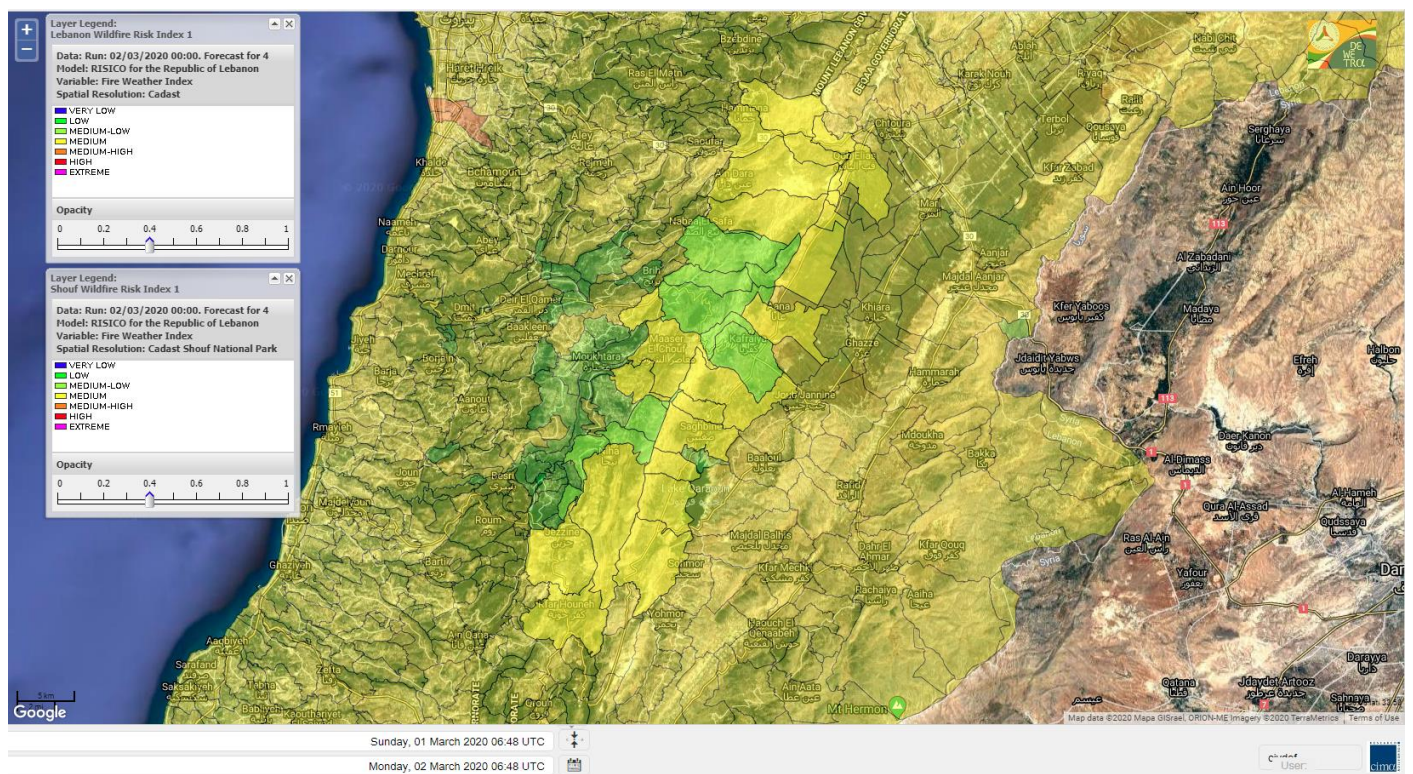
Shouf Biosphere Reserve Forecast for 2 March 2020



Shouf Biosphere Reserve Forecast for 3 March 2020



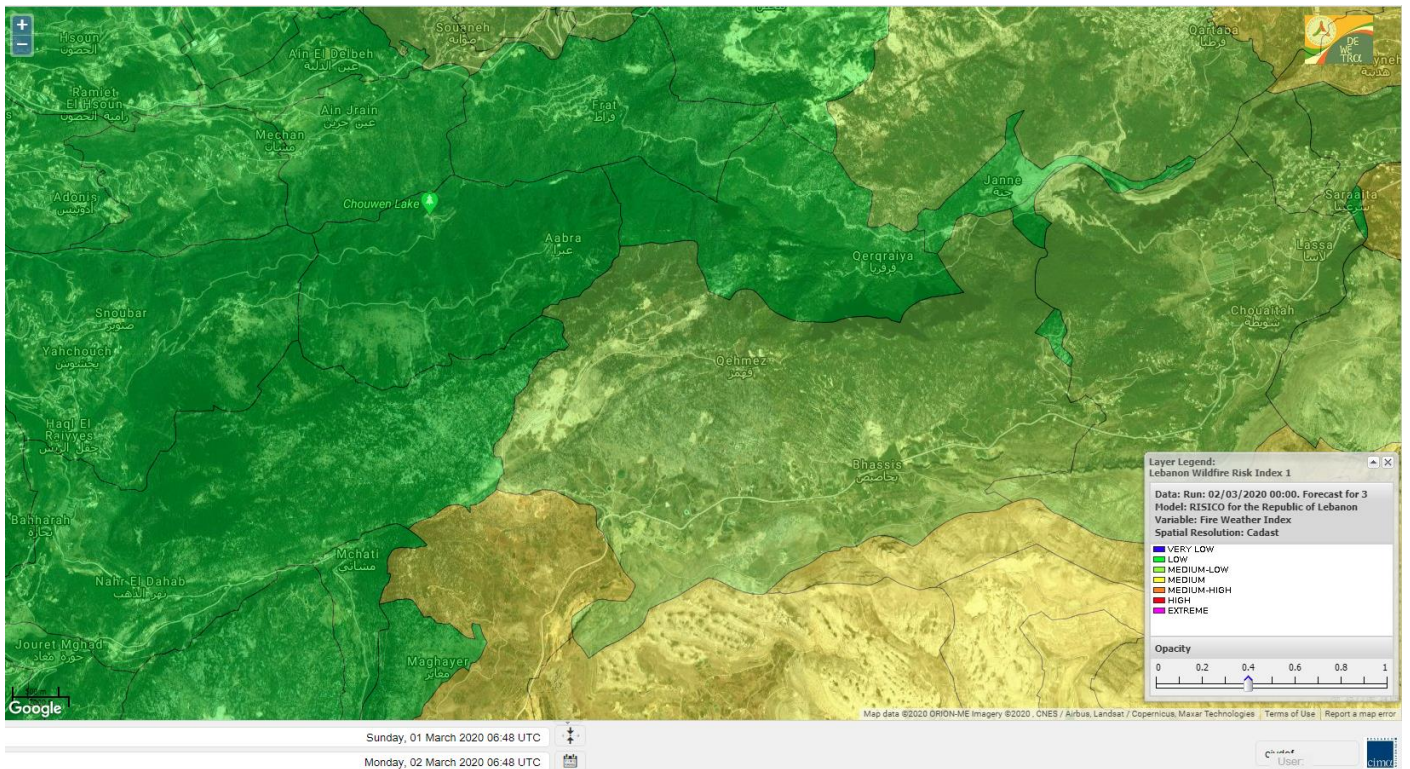
Shouf Biosphere Reserve Forecast for 4 March 2020



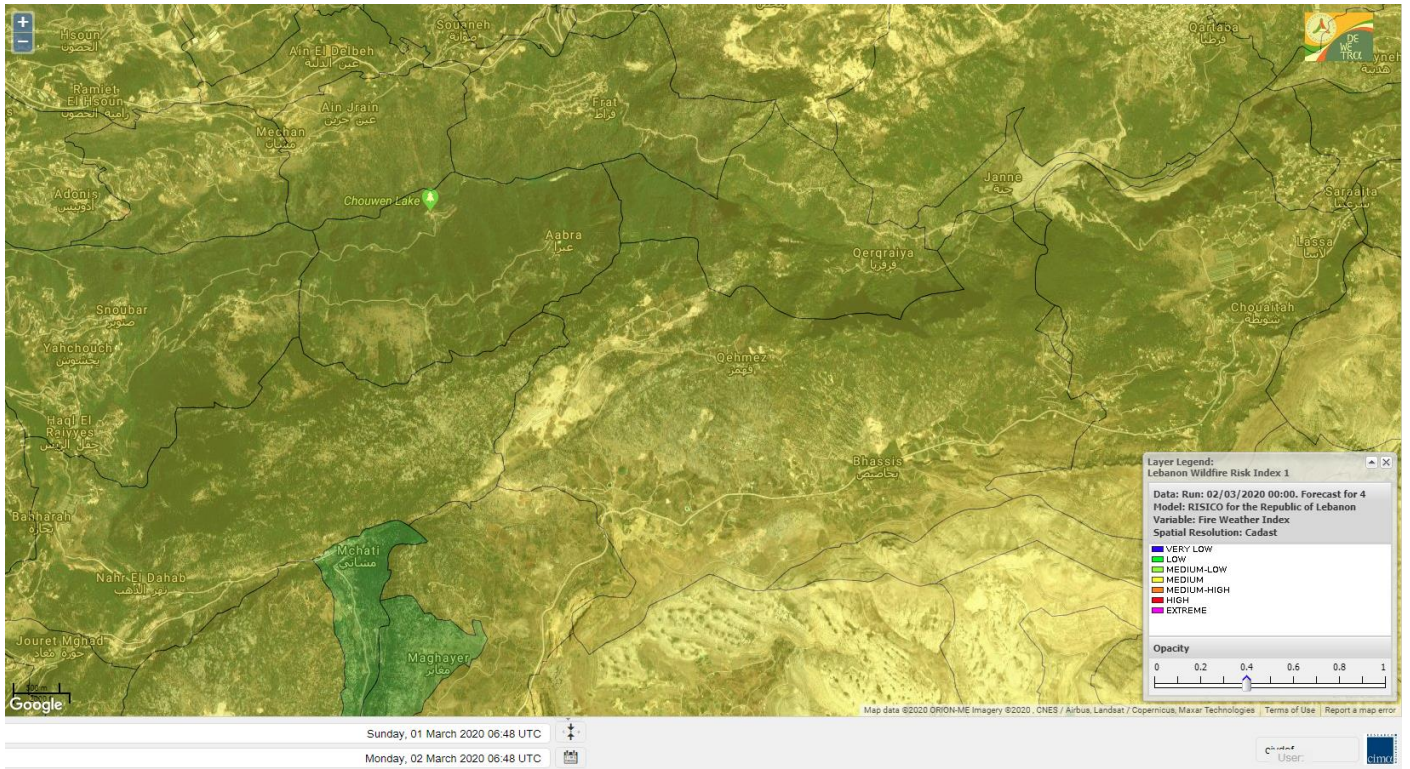
Jabal Moussa Reserve Forecast for 2 March 2020



Jabal Moussa Reserve Forecast for 3 March 2020



Jabal Moussa Reserve Forecast for 4 March 2020

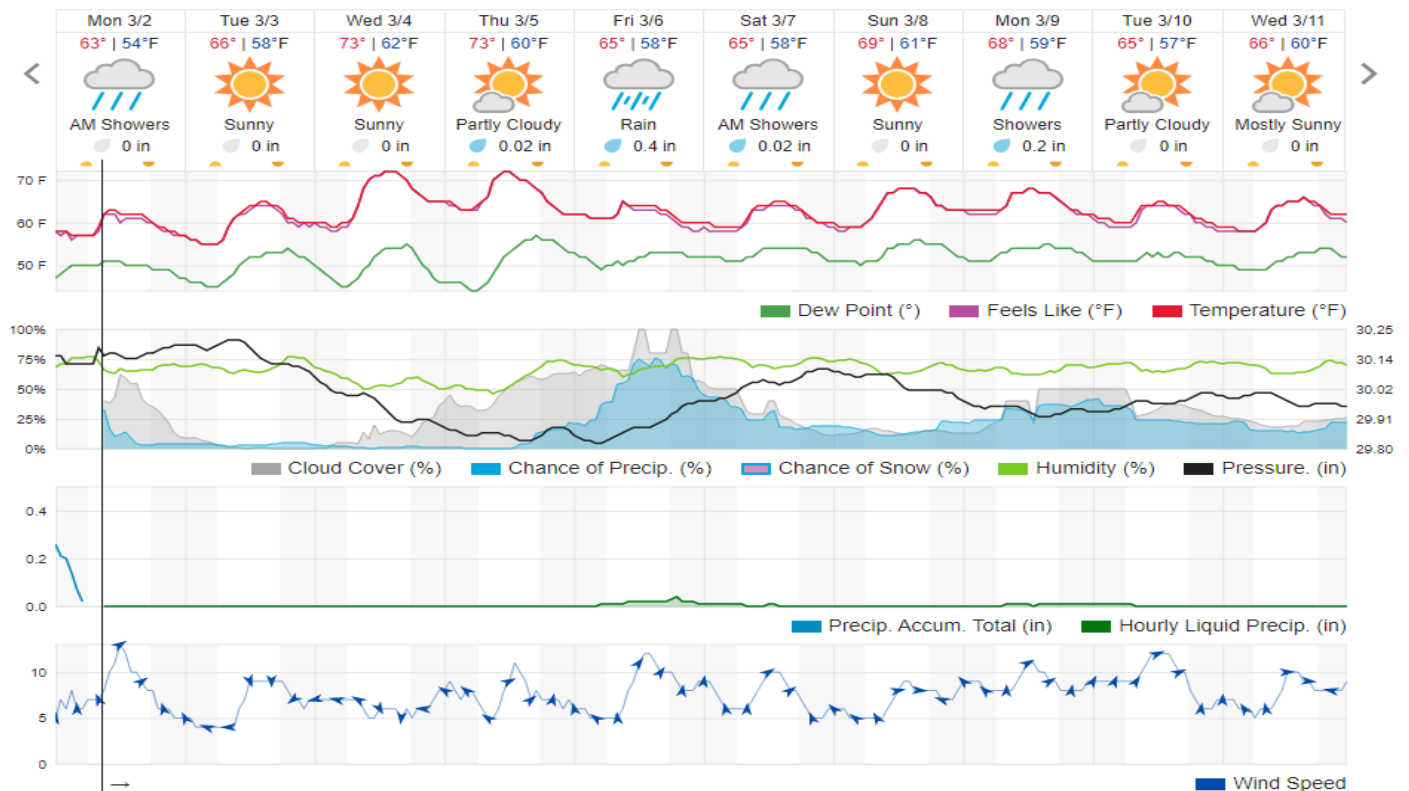


Beirut, Beirut Governorate, Lebanon 10-Day Weather Forecast

61° ACHRAFIEH, RIZK STATION | CHANGE

TODAY HOURLY 10-DAY CALENDAR HISTORY WUNDERMAP

Customize



Nord

Koura

Municipality	02-Mar	03-Mar	04-Mar	Municipality	02-Mar	03-Mar	04-Mar	Municipality	02-Mar	03-Mar	04-Mar
Aaba	ML	M	M	Afsaddiq	L	M	M	Ain Ekryne	L	M	M
Amioun	L	M	M	Anfeh	M	M	M	Badbhoun	M	M	M
Barghoun	M	M	M	Barsa	M	M	M	Batroumine	M	M	MH
Bdebba	M	M	M	Bechmizine	L	M	M	Bednayel El-Koura	ML	M	M
Bhabbouch El-Koura	L	M	M	Bkeftine	M	M	M	Bnehran	L	ML	M
Bqaiia El-Koura	M	M	M	Bsarma	L	M	M	Btaaboura	ML	M	M
Bttram	L	M	M	Btouratij	M	M	M	Bziza	L	M	M
Dar Beechtar	L	M	M	Dar Chmezzine	L	M	M	Deddeh	M	M	M
Deir El-Balamand	M	M	M	Fih	ML	M	M	Hraiche	M	M	M
Ijdaabrine	ML	M	M	Kaftoun	L	M	M	Kefraya El-Koura	M	M	M
Kfarakka	L	M	M	Kfarhata	ML	M	M	Kfarhazir	ML	M	M
Kfarkahel	M	M	M	Kfarsaroun	L	M	M	Kosba	L	M	M
Mejdel el-Koura	L	ML	M	Nakhle	M	M	M	Qalhat	M	M	M
Ras Masqa	M	M	M	Rechdibbine	L	M	M	Zakroun	M	M	M
Zgharta El-Mtaouile	L	L	M								

Bcharre

Municipality	02-Mar	03-Mar	04-Mar	Municipality	02-Mar	03-Mar	04-Mar	Municipality	02-Mar	03-Mar	04-Mar
Aabdine	L	ML	M	Bane	L	M	M	Barhelioun	L	L	M
Bazouone	L	M	M	Becharre	L	M	M	Beit Menzer	L	ML	M
Billa	L	ML	M	Blaouza	VL	M	M	Bqaa Kafra	L	M	M
Bqerqacha	L	M	M	Breissat	L	M	M	Dimane	L	M	M
Hadath El Jobbeh	L	ML	M	Hadchit	VL	ML	M	Hasroun	L	M	M
Mazraat Aassaf	VL	L	M	Mazraat Bani Saab	VL	M	M	Mchaa El-Jobbeh	L	M	M
Metrit	L	ML	M	Moghr El-Ahoual	L	ML	M	Ouadi Qannoubine	VL	L	L
Qanat	VL	ML	M	Qnayouer	VL	L	M	Tourza	VL	ML	M

Batroun

Municipality	02-Mar	03-Mar	04-Mar	Municipality	02-Mar	03-Mar	04-Mar	Municipality	02-Mar	03-Mar	04-Mar
Aabrine	L	ML	M	Aalali	VL	ML	M	Aartz	L	L	M
Abdelli	L	L	M	Ajdabra	L	L	M	Assia	VL	L	M
Basbina	L	M	M	Batroun	M	M	M	Bcheleh	VL	ML	M
Bechtoudar	VL	L	M	Beit Chlala	VL	L	M	Beit Kassab	L	L	M
Bijdarfil	ML	M	M	Bqesmaya	L	ML	M	Chatine	L	ML	M
Chebtin	L	L	M	Chekka	M	M	M	Daael	VL	L	M
Dahr Abi Yaghi	VL	L	M	Daraya El-Batroun	L	M	M	Deir Billa	L	L	M
Deir Kfifane	L	ML	M	Deir Mar Youhanna EL	VL	L	M	Deir Mar Youssef Jra	L	L	M
Douma	VL	M	M	Douq	L	L	M	Eddeh El-Batroun	L	ML	M
Ftahat El-Batroun	L	L	M	Ghouma	L	ML	M	Hadtoun	VL	ML	M
Hamat	ML	ML	M	Harbouna	L	L	M	Hardine	VL	L	M
Helta	VL	L	M	Hery	M	M	M	Jebbla	L	L	M
Jrabta El-Batroun	L	ML	M	Jrane El-Batroun	L	M	M	Kfar Aabida	L	ML	M
Kfar Halda	VL	L	M	Kfarb Shlaimane	VL	L	M	Kfarhatna	L	L	M

Kfarhay	ML	M	M	Kfarhelos	L	ML	M	Kfifane	L	M	M
Kfour El Arabi	L	M	M	Koubba	ML	M	M	Kour	L	ML	M
Mar Mama	VL	L	M	Masrah	VL	L	M	Mehmarch	L	ML	M
Mrah Chdid	L	L	M	Mrah El Ziyat	L	ML	M	Mrah El-Hajj	VL	L	M
Nahle El-Batroun	VL	ML	M	Niha El-Batroun	L	M	M	Ouahj El-Hajjar	ML	M	M
Ouata Houb	L	ML	M	Qatnaaoun	ML	ML	M	Racha	VL	ML	M
Rachana	L	L	M	Rachkida	ML	ML	M	Ram El-Batroun	VL	L	M
Ras Nahhach	ML	M	M	Selaata	M	M	M	Sghar	L	ML	M
Smar Jbayl	L	ML	M	Sourat El-Batroun	L	L	M	Tannourine El-Faouqa	L	M	M
Tannourine Et-Tahta	VL	ML	M	Thoum	L	ML	M	Toula El-Batroun	L	L	M
Zan	L	ML	M								

Zgharta

Municipality	02-Mar	03-Mar	04-Mar	Municipality	02-Mar	03-Mar	04-Mar	Municipality	02-Mar	03-Mar	04-Mar
Aachach	ML	M	M	Aalma	ML	M	M	Aarde	ML	M	M
Aintourine	L	M	M	Arabet Qozhaya	VL	L	M	Arde	ML	M	M
Arjis	L	M	M	Asnoun	ML	M	M	Ayto	VL	ML	M
Basloukit	L	M	M	Bchannine	L	M	M	Besebeel	ML	M	M
Bhairret Toula	VL	ML	M	Bnachee	L	M	M	Boussit	ML	M	M
Danha	ML	M	M	Daraiya Zgharta	L	M	M	Deir Jdeide	ML	M	M
Ehden	L	M	M	Halan	L	M	M	Hariq Zgharta	ML	M	M
Houakir	ML	M	M	Hraiqis	M	M	M	laal	L	M	M
Ijbaa	L	M	M	Karm Saddeh	VL	L	M	Kfarchakhna	ML	M	M
Kfardlaqous	ML	M	M	Kfarfou	L	M	M	Kfarhata Zgharta	ML	M	M
Kfarhoura	L	M	M	Kfarsghab	VL	M	M	Kfaryachit	ML	M	M
Kfarzaina	ML	M	M	Khaldiye	ML	M	M	Mazraat Ajbeaa	ML	M	M
Mazraat Et-Teffah	L	ML	M	Mazraat Jneid	ML	M	M	Mejdlaiya Zgharta	ML	M	M
Merh Kfarsghab	L	M	M	Miryata	ML	M	M	Miziara	L	ML	M
Mzraat Kefraya	ML	M	M	Qorah Bach	ML	M	M	Rachiine	ML	M	M
Ras Kifa	L	M	M	Sakhra	ML	M	M	Sebhel Zgharta	L	M	M
Serhel	VL	L	ML	Tallet Zgharta	ML	M	M	Toula Zgharta	L	ML	M
Zgharta	ML	M	M								

Minieh-Denniye

Municipality	02-Mar	03-Mar	04-Mar	Municipality	02-Mar	03-Mar	04-Mar	Municipality	02-Mar	03-Mar	04-Mar
Aasaymout	L	L	M	Aaymar	L	L	M	Aazki	L	ML	M
Ain El-Tineh-Miniyeh	VL	L	M	Assoun	VL	L	M	Bakhaaoun	VL	L	M
Bchennata	L	M	M	Bechehara	M	M	M	Beddawi	M	M	M
Behouaita	L	ML	M	Beit El Foqss	VL	L	M	Beit Haouik	VL	ML	M
Beit Zoud	VL	L	M	Bekaasafrine	L	M	M	Borj El Yahoudiyeh	M	M	M
Bqarsouna	VL	L	M	Btermaz	L	L	M	Debaael	L	L	M
Deir Ammar	M	M	M	Deir Nbouh	ML	M	M	Haouaret-Miniyeh	VL	L	M
Haql el Azimeh	VL	L	M	Harf El Siyad	VL	L	M	Hazmiye-Miniyeh	VL	L	M
Izal	L	ML	M	Jarjour	M	M	M	Jayroun	VL	L	M
Kahf El-Malloul	L	ML	M	Karm El-Moher	L	ML	M	Kfar Binine	VL	L	M
Kfarchalane	VL	ML	M	Kfarhabou	L	ML	M	Kharroub-Miniyeh	VL	ML	M
Mazraat El-Kreme	L	ML	M	Mazraat Ketrane	VL	L	M	Merkebta	M	M	M

Minyeh	M	M	M	Mrah El Sfirat	VL	L	M	Mrah Sraj	VL	L	M
Mrebbine	L	ML	M	Nabi Youcheaa	M	M	M	Nemrine	VL	L	M
Qarhaiya	L	L	M	Qarne	L	L	M	Qarsita	VL	L	M
Qattineh-Miniyeh	VL	L	M	Qemmamine	VL	L	M	Qraine	VL	L	M
Raouda-Aadoua	ML	M	M	Rihaniyet-Miniyeh	ML	M	M	Sfireh	VL	L	M
Sir Ed-Danniyeh	VL	L	M	Tarane	VL	L	M	Terbol-Miniyeh	M	M	M
Zaghartaghriine	ML	M	M	Zouq Bhannine	M	M	M				

Nabatiye

Nabatiye

Municipality	02-Mar	03-Mar	04-Mar	Municipality	02-Mar	03-Mar	04-Mar	Municipality	02-Mar	03-Mar	04-Mar
Aabba	L	ML	M	Aazzi	L	ML	M	Adchit El-Chqif	L	ML	M
Ain Bou Swar	L	L	M	Ain Kana	VL	ML	M	Ali El-Taher	L	ML	M
Ansar	L	ML	M	Arab Salim	L	ML	M	Arnoun	L	M	M
Bfaroue	L	L	M	Breyqaah	L	ML	M	Charqiyeh	L	ML	M
Choukine	L	ML	M	Deir El Zahrani	L	ML	M	Doueir El-Nabatiyeh	L	ML	M
Habbouch El-Nabatiye	L	ML	M	Hamra El-Nabatiyeh	ML	M	M	Harouf El-Nabatiyeh	L	ML	M
Hmaile	L	ML	M	Houmin El Faouqa	L	ML	M	Houmin El Tahta	L	ML	M
Jarjough	L	ML	M	Jbaah El-Nabatiyeh	VL	L	M	Jebchit	L	ML	M
Kfar Djal El-Nabatiy	L	ML	M	Kfar Remmane	L	ML	M	Kfar Sir	L	ML	M
Kfar Tebnit	L	M	M	Kfarfila	L	ML	M	Kfour El-Nabatieh	L	ML	M
Mayfadoun	L	M	M	Mazraat Bsaffour	L	ML	M	Mazraat Chalbaal	L	L	M
Mazraat Dmoul	L	ML	M	Mazraat El Khreibeh	L	ML	M	Mazraat El-Bayad El-	L	ML	M
Mazraat Kfarjaouz	L	ML	M	Mazraat Qalaat Meiss	L	L	M	Nabatiyeh El-Fawka	L	M	M
Nabatiyeh Et-Tahta	L	ML	M	Namiriyeh	L	ML	M	Qaaqaaiyet El Jisr	L	ML	M
Qossaibeh El-Nabatiy	L	ML	M	Roumine	L	ML	M	Sarba El-Nabatieh	VL	ML	M
Sir El-Gharbiyeh	L	L	M	Toul	L	ML	M	Yehmor El-Nabatiyeh	L	M	M
Zaoutar El Charkiyeh	ML	M	M	Zaoutar El-Gharbiyeh	L	ML	M	Zebdine El-Nabatiyeh	L	ML	M
Zefta	L	ML	M								

Hasbaiya

Municipality	02-Mar	03-Mar	04-Mar	Municipality	02-Mar	03-Mar	04-Mar	Municipality	02-Mar	03-Mar	04-Mar
Aain Jarfa	VL	ML	M	Abou Qamha	VL	ML	M	Ain Qania	VL	ML	M
Bourghos	VL	ML	M	Chebaa	L	M	M	Chouaya Hasbaya	VL	ML	M
Dellafeh	VL	M	M	Fardiss Hasbaiya	VL	ML	M	Hasbaya	VL	ML	M
Hbariyeh	VL	ML	M	Kaoukaba Hasbaiya	VL	M	M	Kfar Chouba	L	ML	M
Kfar Hamam	VL	ML	M	Kfeir El-Zait	VL	ML	M	Khalwat Hasbaya	VL	L	M
Khreibet Hasbaiya	L	M	M	Majidiyeh Hasbaiya	L	M	M	Marj Ez-Zhour (Haouc	VL	L	M
Meri	L	M	M	Mimass	VL	M	M	Rachaiya El-Fokhar	VL	ML	M
Salaiyeb	VL	M	M								

Marjayoun

Municipality	02-Mar	03-Mar	04-Mar	Municipality	02-Mar	03-Mar	04-Mar	Municipality	02-Mar	03-Mar	04-Mar
Aalmane Marjaayoun	L	ML	M	Aamra	L	M	M	Adayseh Marjaayoun	ML	M	M
Adchit El-Koussair	L	M	M	Ain Aarab Marjaayoun	VL	M	M	Bani Haiyann	ML	M	M
Blatt Marjaayoun	VL	M	M	Blida	ML	M	M	Borj El-Moulouk	L	M	M

Boueyda Marjaayoun	L	ML	M	Deir Mimass	L	M	M	Deir Siriane	L	M	M
Dibbine	VL	M	M	Ebel El Saqi	VL	M	M	Houla	ML	M	M
Houra	L	M	M	Kfar Kila	ML	M	M	Khiam Marjaayoun	L	M	M
Klayaa	L	M	M	Majdel Selem	ML	M	M	Marjaayoun	VL	M	M
Markaba	ML	M	M	Mays El-Jabal	ML	M	M	Mazraat Doumiat	L	M	M
Mazraat Sarada	VL	M	M	Mhaibib	ML	M	M	Qabrikha	L	M	M
Qantara	L	M	M	Rab El-Thalathine	ML	M	M	Saouaneh Marjayoun	ML	M	M
Talloussa	L	M	M	Taybeh Matjaayoun	ML	M	M	Touline	L	ML	M

Bent Jbail

Municipality	02-Mar	03-Mar	04-Mar	Municipality	02-Mar	03-Mar	04-Mar	Municipality	02-Mar	03-Mar	04-Mar
Ain-Ebel	L	M	M	Aitaroun	ML	ML	M	Aynata Bint Jbeil	ML	M	M
Ayta El-Chaeb	L	M	M	Ayta El-Jabal	ML	M	M	Beit Lif	L	M	M
Beit Yahoun	ML	M	M	Bint Jbeil	ML	M	M	Borj Qalaway	L	M	M
Braachit	ML	M	M	Chakra	ML	M	M	Debel	L	M	M
Deir Antar	ML	M	M	Froun	L	L	M	Ghandouriyeh Bint Jb	L	ML	M
Hanine	L	M	M	Hariss	ML	M	M	Hdatha	ML	M	M
Jmeyjmeh	ML	M	M	Kafra Bint Jbeil	L	L	M	Kfar Dounine	ML	M	M
Khirbet Selm	L	M	M	Kounine	ML	M	M	Maroun El Ras	ML	M	M
Qalaway	L	M	M	Qaouzah	L	M	M	Qatmoun	L	M	M
Ramya Bint Jbeil	L	M	M	Rchaf	L	M	M	Rmeich	L	M	M
Safad Al Battikh	ML	M	M	Salhaneh	L	M	M	Serbine	L	M	M
Sultanieh Bint Jbeil	ML	M	M	Tibnine	ML	M	M	Tiri	L	M	M
Yaroun	ML	M	M	Yater	L	M	MH				

Mont Liban

Jbail

Municipality	02-Mar	03-Mar	04-Mar	Municipality	02-Mar	03-Mar	04-Mar	Municipality	02-Mar	03-Mar	04-Mar
Aabeydat	L	L	M	Aalita	VL	L	M	Aamchit	ML	M	M
Aarab El-Lahib	L	M	M	Aarasta	VL	ML	M	Adonis Jbeil	VL	L	M
Afqa Jbeil	VL	ML	M	Ain El Delbeh Jbeil	VL	L	M	Ain El-Ghouyba	VL	ML	M
Ain Jrain	VL	L	M	Ain Kfah	L	ML	M	Almat El Chemaliyat	VL	L	M
Almat El-Jenoubiya	VL	ML	M	Aqoura	L	M	M	Bayzoun	VL	L	M
Bchille Jbeil	VL	L	M	Bechtlida	VL	L	M	Behdaydat	L	ML	M
Beit Habbaq	L	ML	M	Bejjeh	L	ML	M	Bekhaaz	L	ML	M
Berbara Jbeil	ML	M	M	Bintael	VL	L	M	Birket Hjoula	VL	L	M
Blatt Jbeil	VL	ML	M	Boulhos	VL	L	M	Breyj Jbeil	VL	L	M
Chamat	L	M	M	Chikhane	ML	M	M	Chmout	L	L	M
Eddeh Jbeil	L	ML	M	Ehmej	VL	ML	M	Fatre	VL	L	M
Ferhet	VL	ML	M	Fghal	L	L	M	Frat	VL	L	M
Ghabat	L	M	M	Ghalboun	L	ML	M	Gharzouz	L	ML	M
Ghofrine	L	ML	M	Habil	VL	L	M	Halate	L	ML	M
Haqel	L	L	M	Hbaline	L	ML	M	Hboub	VL	ML	M
Hdeine	VL	M	M	Hema Er-Rehban	L	M	M	Hema Mar Maroun Aann	VL	M	M
Hjoula	VL	L	M	Hosrayel	L	ML	M	Hsarat	L	ML	M

Hsoun	VL	L	M	Jaj	VL	ML	M	Janne	VL	L	M
Jbeil	L	M	M	Jeddeyl Jbeil	ML	M	M	Jlisse	VL	L	M
Jouret El-Qattine	VL	L	M	Kfar Baal Annaya	VL	L	M	Kfar Kidde	L	ML	M
Kfar Kouas	VL	L	M	Kfar Mashoun	L	M	M	Kfoun	L	L	M
Kharbe Jbeil	L	ML	M	Laqlouq	VL	M	M	Lassa	VL	ML	M
Lehfed	VL	L	M	Maad	L	ML	M	Mar Sarkis	VL	M	M
Mastita	L	M	M	Mayfouq	VL	L	M	Mazraat El Siyad	VL	M	M
Mazraat El-Maaden	VL	L	M	Mechane	VL	L	M	Mechmech Jbeil	VL	L	M
Mehrin	VL	ML	M	Mejdel El-Akoura	VL	ML	M	Mghayreh Jbeil	L	M	M
Mounsef	ML	M	M	Nahr Ibrahim	L	M	M	Qahmez	VL	ML	M
Qartaba	VL	ML	M	Qartaboun	L	M	M	Qattara Jbeil	VL	L	M
Qorqraya	VL	L	M	Ramout	L	ML	M	Ras Osta	VL	L	M
Rihane Jbeil	ML	M	M	Sakiet El-Khayt	L	L	M	Saqi Richmaya	VL	ML	M
Sebrine	VL	L	M	Seraita	VL	ML	M	Souane Jbeil	VL	ML	M
Tadmor	L	M	M	Tartej	L	ML	M	Torzaiya	VL	L	M
Yanouh Jbeil	L	M	M	Zibdine Jbeil	VL	L	M				

El Metn

Municipality	02-Mar	03-Mar	04-Mar	Municipality	02-Mar	03-Mar	04-Mar	Municipality	02-Mar	03-Mar	04-Mar
Aain El-Qabu	VL	L	M	Aain El-Qach	VL	L	M	Aain El-Teffaha	VL	ML	M
Aain el-Safsaf El-M	VL	L	M	Abou Mizane	VL	L	M	Ain Aar	VL	ML	M
Ain Alaq	VL	L	M	Ain El-Kharroube	VL	ML	M	Ain El-Sendianeh	VL	L	M
Ain El-Zeitoune	VL	L	M	Ain Saadeh	VL	L	M	Aintoura El-Matn	VL	M	M
Amaret Chalhoub	VL	ML	M	Antelias	VL	ML	M	Atchaneh	VL	L	M
Ayroun	VL	L	M	Baabdat	VL	L	M	Baouchariyeh	L	M	M
Baskinta	VL	ML	M	Beit Chabab	VL	L	M	Beit El-Chaar	VL	ML	M
Beit El-Kekko	VL	ML	M	Beit Mery	VL	L	M	Bhersaf	VL	L	M
Bikfaya	VL	L	M	Biyakout	VL	ML	M	Bnabil	VL	L	M
Bourj Hammoud	ML	M	M	Bqennaya	VL	L	M	Broummana El-Matn	VL	L	M
Bsalim	VL	L	M	Bsifrine	VL	L	M	Bteghrine	VL	L	M
Chaouiye	VL	L	M	Chouaya El-Matn	VL	ML	M	Choueir	VL	L	M
Chrine	VL	L	ML	Dahr El Sawan El-Mat	VL	L	M	Daychouniyeh	L	L	M
Dbayeh	VL	ML	M	Deir Chamra	VL	L	ML	Deir Mar Abda el Mch	VL	L	M
Deir Mar Roukouz	L	M	M	Deir Tamiche	VL	L	M	Dik El-Mehdi	VL	L	M
Dikwaneh	ML	M	M	Douar El-Matn	VL	L	M	Fanar	VL	L	M
Fraike	VL	L	M	Haret El-Ballaneh	VL	L	M	Hbous	VL	ML	M
Himlaya	VL	L	M	Jal El Did	VL	ML	M	Jdeideh El-Metn	L	ML	M
Jouar El-Matn	VL	L	M	Jouret El-Ballout	VL	L	M	Kaaqour	VL	L	M
Kfar Aaqab	VL	L	M	Kfertay El-Matn	VL	ML	M	Khenchara	VL	L	M
Khillet El-Mtain	VL	L	M	Konnabat Broummana	VL	L	M	Konnabat Salima	VL	L	M
Machraah El-Matn	VL	L	M	Majdel Tarchich	VL	M	M	Majzoub	VL	L	M
Mansouriyeh El-Metn	L	ML	M	Mar Boutros Karm Et-	VL	L	M	Mar Chaya et Mzekke	VL	L	M
Mar Moussa Ed-Douar	VL	L	M	Marjaba	VL	L	M	Masqa	VL	L	M
Mayasse	VL	L	M	Mazraat Deir Aoukar	VL	ML	M	Mazraat El-Hadirat	VL	L	M
Mazraat Yachouh	VL	ML	M	Mchikha	VL	ML	M	Menqlet Mezher	VL	ML	M
Mhayseh Matn	VL	L	M	Mkalles	L	M	M	Mrouj	VL	M	M

Mtain	VL	M	M	Mtayleb	VL	L	M	Nabay	VL	L	M
Naccache	VL	ML	M	Ouadi Chahine	VL	L	M	Ouadi El-Karm El-Mat	VL	L	M
Ouata El-Mrouj	VL	L	M	Ouyoun El-Matn	VL	L	M	Qornet Chehwan	VL	L	M
Qornet El-Hamra	VL	L	M	Roumieh	VL	L	M	Sfeilet Bikfaya	VL	L	M
Sinn El-Fil	ML	M	M	Zabbougha	VL	L	M	Zalqa	VL	ML	M
Zarououn	VL	L	M	Zekrite	VL	L	M	Zighrine El-Matn	VL	ML	M
Zouk El-Khrab	VL	ML	M								

Chouf

Municipality	02-Mar	03-Mar	04-Mar	Municipality	02-Mar	03-Mar	04-Mar	Municipality	02-Mar	03-Mar	04-Mar
Aalmane El-Chouf	L	M	M	Aammiaq El-Chouf	VL	L	ML	Ain Ouzein	VL	L	ML
Ain Qani	VL	L	ML	Ain Zhalta	L	L	ML	Ainbal	VL	L	M
Amatour	VL	L	ML	Anout	VL	L	M	Atrine	VL	L	ML
Baadarane	VL	L	ML	Baaqline	VL	L	M	Baasir	L	ML	M
Barja	L	ML	M	Barouk	VL	L	ML	Bater	VL	L	ML
Batloun	L	L	M	Bayqoun	L	L	M	Bchetfine	VL	L	M
Beiteddine	VL	L	ML	Benouati Ech-Chouf	VL	L	M	Berjein	VL	L	M
Bireh et Mtalleh	L	L	ML	Biret El-Chouf	L	L	M	Bkechtine Ouel Mchei	VL	L	ML
Bkifa El-Chouf	L	L	M	Botme	L	L	ML	Bqaiia Ech-Chouf	VL	L	M
Bsaba El-Chouf	VL	L	M	Chammis El-Chouf	L	ML	M	Chehim	VL	L	M
Chemaarine	VL	L	M	Chourit	VL	L	ML	Daher El-Chouf	L	L	M
Dalhoun	L	L	M	Damour	L	ML	M	Daraya El-Chouf	VL	L	M
Deir El-Moukhalles	VL	L	M	Deir Baba	VL	L	M	Deir Dourit	VL	L	M
Deir El-Qamar	VL	L	M	Deir Kouche	VL	L	M	Dibbieh	L	L	M
Dmit	VL	L	M	Fouara Jaafar	VL	L	ML	Fraidis El-Chouf	L	ML	ML
Ghabet Jaafar	VL	L	M	Gharife	VL	L	M	Haret Jandal	VL	L	M
Hasrout	L	L	M	Jadra	L	M	M	Jahlieh	VL	L	M
Jbeih El-Chouf	VL	L	ML	Jdeidet El-Chouf	VL	L	ML	Jiyeh	L	ML	M
Jleiliyeh	L	L	M	Jmailiyeh	L	ML	M	Joun	L	ML	M
Kahlounie El-Chouf	L	L	ML	Ketermaya	L	M	M	Kfar Faqoud	VL	L	M
Kfar Hamal	L	L	M	Kfar Him	VL	L	M	Kfar Katra	L	L	ML
Kfar Niss	L	L	M	Kfar hay	VL	L	M	Kfarnabrakh	L	L	M
Khirbet Bisri	VL	L	M	Knayse El-Chouf	VL	L	ML	Maaniyeh	L	ML	M
Maasser Beiteddine	L	L	ML	Maasser El-Chouf	L	L	M	Majdalouna	L	ML	M
Majdel El-Meouch	L	L	ML	Mazboud	VL	L	M	Mazmoura	L	L	M
Mazraat El Chouf	VL	L	ML	Mazraat El Daher	VL	L	M	Mazraat El-Douair	VL	L	ML
Mechref	L	L	M	Mghairie	L	ML	M	Mghayrie El-Chouf	VL	L	M
Moukhtara	VL	L	ML	Mrusti	VL	L	ML	Mtolle	VL	L	M
Naameh	L	ML	M	Niha El-Chouf	VL	L	M	Ouadi Abou Youssef	VL	VL	ML
Ouadi Ed-Deir	VL	L	M	Ouadi El-Sit	L	L	M	Ouadi bnehlay	VL	L	M
Qraibeh	VL	L	M	Qreiaa	VL	L	ML	Rmayle El-Chouf	L	M	M
Semqaniyeh	L	L	M	Sibline	L	M	M	Sirjbeil	VL	L	M
Warhanieh	L	ML	M	Werdaniyeh	L	M	M	Zaarourieh	L	L	M

Baabda

Municipality	02-Mar	03-Mar	04-Mar	Municipality	02-Mar	03-Mar	04-Mar	Municipality	02-Mar	03-Mar	04-Mar
Abadiyeh	VL	L	M	Ain Mouaffaq	VL	L	M	Araiya	VL	L	M

Arbaniyeh	VL	L	M	Arsoun	VL	L	M	Baabda	L	ML	M
Baalchmey	VL	L	M	Bmaryam	VL	L	M	Bourj El-Brajneh	L	L	M
Boutchay	L	L	M	Bsaba Baabda	L	L	M	Btekney	VL	L	M
Btibyat	VL	L	M	Bzabdine	VL	L	M	Chbeniyeh	VL	ML	M
Chiyah	ML	M	M	Chmeisset Baabda	VL	L	M	Chouit	VL	L	M
Deir El-harf	VL	L	M	Deir Khouna	VL	L	M	Dlaybeh	VL	L	M
Falougha	L	M	M	Furn El-Chebbak	ML	M	M	Hadath Beyrouth	L	L	M
Halaliyeh Baabda	VL	L	M	Hammana	VL	ML	M	Haret El Sett	VL	L	M
Haret Hamze	VL	L	M	Haret Hreik	ML	M	M	Hasbaiya El-Metn	VL	L	M
Jouar El-Hoz	VL	L	M	Jouret Arsoun	VL	L	M	Kfar Chima	L	L	M
Kfar Selouane	VL	ML	M	Khalouat Baabda	VL	ML	M	Kneisset Baabda	VL	L	M
Laylakeh	L	L	M	Louayzeh Baabda	L	L	M	Merdache	L	L	M
Mzairaa Baabda	VL	L	M	Ouadi Chahrour El Ol	L	L	M	Ouadi Chahrour El So	L	L	M
Qalaa Baabda	VL	L	M	Qhraybe Baabda	VL	L	M	Qobbayaa	VL	ML	M
Qornayel	VL	L	M	Qortada	VL	L	M	Qrayeh Baabda	VL	ML	M
Qsaibeh Baabda	VL	L	M	Qtale Baabda	VL	L	M	Ras El Metn	VL	L	M
Ras El-Haref	VL	ML	M	Rouayset El-Ballout	VL	L	M	Salima Baabda	VL	L	M
Tahouitat El Ghadir	L	L	MH	Tarchich	VL	ML	M	Zandouqa	VL	L	M

Aley

Municipality	02-Mar	03-Mar	04-Mar	Municipality	02-Mar	03-Mar	04-Mar	Municipality	02-Mar	03-Mar	04-Mar
Abey	VL	L	M	Aghmid	VL	L	M	Ain Dara	L	ML	M
Ain Drafil	L	L	M	Ain El Halazoun	L	L	M	Ain El-Rmmaneh	VL	L	M
Ain Jedideh	VL	L	M	Ain Ksour	L	L	M	Ain Onoub	L	L	M
Ain Traz	VL	L	M	Ainab	L	L	M	Aley	VL	L	M
Aramoun	L	L	M	Aytat	L	L	M	Azouniyeh	VL	ML	M
Baawerta	L	L	M	Badghan Oua Wadi Bad	VL	ML	M	Bassatine	L	L	M
Bayssour	L	L	M	Bchamoun	L	L	M	Bdadoun	VL	L	M
Behouara	VL	L	M	Bennay	L	L	M	Bhamdoun El-Dayaa	L	L	M
Bhamdoun El-Mhatta	L	L	M	Bkhechtey	VL	L	M	Bleibel	L	L	M
Bmaknine	L	L	M	Bmehray	L	ML	M	Bouzrid	VL	L	M
Bserrine	L	L	M	Bsous	VL	L	M	Btalloun	L	L	M
Btater	L	L	M	Chanay	L	ML	M	Charoun	VL	M	M
Chartoun	VL	L	M	Chemlane	L	L	M	Choueifat El-Aamrous	L	L	MH
Choueifat El-Oumara	L	L	M	Choueifat El-Quoubbe	L	L	M	Dakkoun	L	L	M
Deir Qoubel	L	L	M	Dfoun	L	L	M	Douair El Remmaneh	VL	L	M
Ghaboun	VL	L	M	Habramoun	VL	L	M	Homs Oua Hama	L	L	M
Houmal	L	L	M	Jisr El Qadi	L	L	M	Kehaleh	VL	L	M
Keyfoun	L	L	M	Kfar Aamey	VL	L	M	Kommatyeh	VL	L	M
Maasrati	VL	L	M	Majdel Baana	L	ML	M	Mansourieh et Ain El	L	L	M
Mazraat El-Nahr	VL	L	M	Mchakhte	VL	L	M	Mecherfeh	VL	L	M
Mejdlaya	VL	L	M	Mrayjat	L	ML	M	Ramliyeh	L	L	M
Rechmaya	L	L	M	Rejmeh	VL	L	M	Remhala	L	L	M
Rouayset El Neemane	L	L	M	Saoufar	VL	ML	M	Selfaya	VL	L	ML
Sirhmoul	L	L	M	Souq El Ghareb	L	L	M	Taazanieh	VL	L	M

Kesrouane

Municipality	02-Mar	03-Mar	04-Mar	Municipality	02-Mar	03-Mar	04-Mar	Municipality	02-Mar	03-Mar	04-Mar
Achkout	VL	L	M	Adma Oua Dafneh	VL	ML	M	Ain Ed-Delbe Kesroua	VL	L	ML
Ain El-Rihane	VL	L	M	Aintoura Kesrouane	VL	ML	M	Ajaltoun	VL	L	M
Akaybeh Kesrouane	L	M	M	Aramoun Kesrouane	VL	L	M	Azra ouel Ozor	VL	L	M
Ballouneh	VL	L	M	Batha	VL	L	M	Bekaatat Achkout	VL	ML	M
Bekaatat Kanaan	VL	L	M	Bizhel	VL	L	M	Bouar	L	ML	M
Bqaatouta	VL	ML	M	Bqaq Ed-Dine	L	ML	M	Bzommar	VL	L	M
Chahatoul	VL	L	M	Chnaniir	VL	L	M	Chouan	VL	L	M
Daraya Kesrouane	VL	L	M	Darououn	VL	L	M	Deir Baqlouch	VL	L	M
Diebta	VL	L	M	Eghbeh	VL	VL	ML	Faraya	VL	M	M
Fatka	VL	L	M	Feytroun	VL	L	M	Ghazir	VL	L	M
Ghbaleh Kesrouane	VL	L	M	Ghedrass	VL	L	M	Ghosta	VL	L	M
Ghyneh	VL	ML	M	Harharaya w Kattine	VL	L	M	Harissa Kesrouane	VL	L	M
Hayata	VL	L	M	Hosein	VL	L	M	Hrajel	VL	M	M
Jdeideh Ghazir	VL	L	M	Jeita	VL	L	M	Jounieh Ghadir	VL	ML	M
Jounieh Haret Sakhr	VL	M	M	Jounieh Salel Alma	VL	ML	M	Jounieh Sarba	VL	M	M
Jouret Bedrane	VL	L	M	Jouret Mhad	VL	L	M	Jouret Termos	VL	ML	M
Kfar Debiane	VL	ML	M	Kfar Tay Kesrouane	VL	L	M	Kfar Yassine	VL	M	M
Kfour Kesrouane	VL	L	M	Kharayeb Nahr Ibrahi	VL	L	M	Klayaat Kesrouane	VL	L	M
Maarab	VL	L	M	Maaysra Kesrouane	VL	L	M	Mayrouba	VL	M	M
Mazraat Er-Ras	VL	ML	M	Mazraat Mrah El-Mir	VL	L	M	Mchaa El Ftouh	L	M	M
Mchaa Faraya	VL	M	M	Mchaa Kfar Dibiane	VL	M	M	Mghaer	VL	L	ML
Mradiyah	VL	L	M	Nahr Ed-Dahab	VL	L	M	Nammoura Kesrouane	VL	L	M
Ouata El Jaouz	VL	L	M	Ouata Sillam	VL	M	M	Raachine	VL	L	M
Rayfoun	VL	L	M	Safra Kesrouane	VL	M	M	Shayle Kesrouane	VL	L	M
Tabarja	VL	ML	M	Yahchouch	VL	L	M	Zaaytreh	VL	L	M
Zeytoun	VL	L	M	Zouk Mikael	VL	M	M	Zouk Mosbeh	VL	M	M

Baalbek_Hermel

Baalbek

Municipality	02-Mar	03-Mar	04-Mar	Municipality	02-Mar	03-Mar	04-Mar	Municipality	02-Mar	03-Mar	04-Mar
Aadous	ML	M	M	Aamchki	L	ML	M	Aarsal	ML	ML	M
Ain Baalbek	M	M	M	Ain Bourday	VL	ML	M	Ain El-Benye	VL	ML	M
Ain El-Jaouz Baalbek	L	ML	M	Ain El-Siya Chadoura	VL	ML	M	Al Khodr Baalbek	VL	ML	M
Al Nabi Chit	VL	ML	M	Aynata Baalbek	L	M	M	Baalbek	L	ML	M
Bachwat	L	M	M	Barqa	L	M	M	Bednayel Baalbak	L	M	M
Beit Chama	L	M	M	Bijjaje	M	M	M	Bouday	L	M	M
Brital	L	ML	M	Btadi	ML	M	M	Chaat	M	M	M
Chaibe	VL	ML	M	Chlifa	M	M	M	Chmestar	L	M	M
Dar El-Oussa	L	M	M	Deir El-Ahmar	ML	M	M	Deir Mar Maroun Baal	ML	ML	M
Douris	L	M	M	Fakiha	ML	M	M	Hadath Baalbek	L	M	M
Ham	VL	ML	M	Haour Taala	VL	ML	M	Hizzine	ML	M	M
Hlebta	ML	M	M	Hosh Barada	ML	M	M	Hosh El Dahab	ML	M	M
Hosh El Snid	L	ML	M	Hosh El-Nabi	L	ML	M	Hosh El-Rafiq	L	M	M
Hosh Tal Safiya	ML	M	M	Hrebta	ML	M	M	laat	ML	M	M

Jebaa	L	M	M	Jenta	VL	ML	M	Kfar Dabach	L	M	M
Kfar Dane	ML	M	M	Khraibeh El-Hermel	M	M	M	Khreibet Baalbek	VL	ML	M
Kneisset Baalbek	ML	M	M	Labueh	M	M	M	Maarboun	VL	ML	M
Majdaloun	ML	M	M	Maqneh	ML	M	M	Mazraat Beit Mcheik	ML	M	M
Misraya	L	M	M	Moqraq	M	M	M	Nabha El-Damdoum	ML	M	M
Nabi Chbay	VL	ML	M	Nabi Osman	M	M	M	Nahleh baalbek	L	ML	M
Ouadi El-Oss	ML	M	M	Qaa Baayoun	ML	ML	M	Qaa Jouar Maqiye	ML	ML	M
Qaa Ouadi El-Khanzir	ML	ML	M	Qah Baalbek	ML	M	M	Qarha Baalbek	M	M	M
Qsarnaba	L	M	M	Ram Baalbek	M	M	M	Ras Baalbek El Sahl	ML	M	M
Ras Baalbek El-Charq	ML	ML	M	Riha	M	M	M	Saaide	ML	M	M
Sbouba	M	M	M	Seriine El-Tahta	L	M	M	Slouqi	L	M	M
Taiba Baalbek	L	M	M	Talia	L	M	M	Taraiya	L	M	M
Temnin El Fawqa	L	M	M	Temnin El-Tahta	L	M	M	Tfail	L	ML	M
Yahfoufa	VL	ML	M	Yammouneh	L	M	M	Younine	ML	ML	M
Zboud	M	M	M								

Hermel

Municipality	02-Mar	03-Mar	04-Mar	Municipality	02-Mar	03-Mar	04-Mar	Municipality	02-Mar	03-Mar	04-Mar
Charbine El-Hermel	M	M	M	Hermel Jbab	ML	M	M	Hermel	ML	ML	M
Maaysra El-Hermel	M	M	M	Michaa Mrajhine	L	ML	M	Ouadi Faara	ML	M	M
Ras Baalbek - Ouadi	ML	M	M	Ras Baalbek El Gharb	M	M	M	Zighrine	M	M	M

Akkar

Akkar

Municipality	02-Mar	03-Mar	04-Mar	Municipality	02-Mar	03-Mar	04-Mar	Municipality	02-Mar	03-Mar	04-Mar
Aain Tinta	M	M	M	Aaiyat	ML	M	M	Aakkar El-Aatiqa	L	ML	M
Aamar Akkar	ML	M	M	Aamar El Baykat	M	M	M	Aamayer	M	ML	M
Aamriyet Akkar	M	M	M	Aandqet	ML	ML	M	Aarmeh	ML	M	M
Aarqa	M	M	M	Aawaynat	M	ML	M	Aayoun Akkar	M	M	M
Abboudiye	ML	M	MH	Ain El-Zeit	M	M	M	Ain Yaaqoub	ML	M	M
Akroum	M	ML	M	Aridet Cheikh Zennad	M	M	MH	Baldeh w Mazraat Bal	ML	M	M
Barcha	ML	M	M	Bardeh	M	M	M	Bebnine	ML	M	M
Beino	ML	M	M	Beit Ayoub	L	M	M	Beit El-Haouch	ML	M	M
Beit Mellat	M	M	M	Beit Younes	L	ML	M	Berbara Akkar	ML	M	M
Berqayel	ML	M	M	Bezbina	L	L	M	Bireh Akkar	ML	M	M
Borj	M	M	M	Bqerezla	ML	M	M	Bzal	L	M	M
Chane	L	L	M	Chaqdouf	ML	M	M	Charbila	ML	M	M
Cheikh Mohammad	ML	M	M	Cheikh Taba Es-Sahl	M	M	M	Cheikh Taba	ML	M	M
Cheikh Zennad	M	M	M	Cheikhlar	M	ML	M	Chir Hmairine	ML	M	M
Daghle	ML	M	M	Dahr Laissine	ML	M	M	Darine	ML	M	M
Dawra	ML	M	M	Dawsa w Baghdadi	M	M	M	Dayret Nahr El-Kabir	M	ML	M
Deir Dalloum	ML	M	M	Deir Jennine	ML	M	M	Denbou	L	ML	M
Dibbbiyeh	ML	M	M	Douair Aadwiyeh	M	M	M	Fassikine	ML	M	M
Fnaydek	L	ML	M	Fraydes Akkar	ML	ML	M	Ghazayle	ML	M	M
Habchit	L	L	M	Hakour	ML	M	M	Halba	ML	M	M

Haouchab	ML	M	M	Hayssat	M	M	M	Haytla	ML	M	M
Hayzouq	ML	M	M	Hedd	ML	M	M	Hmaira Aakkar	ML	M	M
Hmaiss Aakkar	ML	M	M	Hnaider	M	ML	M	Hokr Ed-Dahri	M	M	MH
Hokr Etti	ML	M	M	Hokr Jouret Srar	ML	M	M	Houaich	L	ML	M
Hrar	L	ML	M	Idbil	ML	ML	M	llat	L	ML	M
Janine	ML	M	M	Jdeidet El-Joumeh	ML	M	M	Jdeidet El-Kaiteh	ML	M	M
Jebrayel	L	ML	M	Kafr	L	ML	M	Kafr	M	M	M
Karm Asfour	ML	M	M	Kfar Melki Aakkar	M	M	M	Kfar Noun	ML	ML	M
Kfarharra	ML	M	M	Khalsa	M	ML	M	Kharnoubet Aakkar	ML	M	M
Khirbet Daoud Aakkar	ML	M	M	Khirbet El Remmane	M	ML	M	Khirbet Shar	ML	M	M
Khoreybet El-Jindi	ML	M	M	Khreibet Aakkar	L	M	M	Kneisset Aakkar	M	M	M
Kneisset Hnaider	M	ML	M	Knisse	ML	M	M	Kroum El-Aarab	ML	M	M
Kwachra	M	M	M	Kweykhath	ML	M	M	Machta Hammoud	M	ML	M
Majdala	ML	M	M	Majdel Akkar	ML	M	M	Mar Touma	ML	M	M
Marlaya Melhem	ML	M	M	Mashha	ML	M	M	Massoudiye	M	M	M
Mazraat Beit Ghattas	ML	M	M	Mazraat En-Nahriye	M	ML	M	Mechmech	L	L	M
Memneh	L	L	M	Mhammara	ML	M	M	Mighraq Aakkar	M	M	M
Minyara	ML	M	M	Moqayteh	M	M	M	Mounjez	ML	ML	M
Msalla	M	M	M	Mzeihmeh	ML	M	M	Nfaisch	ML	M	M
Noura Et-Tahta	ML	M	M	Ouadi El-Haour	ML	M	M	Ouadi El-Jamous	ML	M	M
Ouyoun El-Ghizlane	ML	M	M	Qaabarine	M	M	M	Qabaait	L	ML	M
Qachlaq	ML	M	M	Qantara Aakkar	L	M	M	Qarha Aakkar	M	ML	M
Qarqaf	ML	M	M	Qboula	M	M	M	Qleiaat Aakkar	M	M	M
Qloud El-Baqie	ML	M	M	Qobaiyat Aakkar	ML	ML	M	Qobbat Chamrat	ML	M	M
Qorayat	L	ML	M	Qornet Aakkar	L	M	M	Qsair Aakkar	ML	M	M
Rahbe	L	ML	M	Rihaniyet Aakkar	ML	M	M	Rmah	M	ML	M
Rmoul	M	M	M	Saadine	ML	M	M	Sadaqa	L	ML	M
Saidnaya	ML	M	M	Sammouniye	M	M	M	Saysouq	ML	M	M
Semmaqiye	M	M	MH	Semmaqli	M	M	M	Sfinet El-Dreib	M	M	M
Sfinet El-Qaitaa	L	M	M	Sindyanet Zeidane	ML	ML	M	Souaisset Aakkar	ML	M	M
Srar	ML	M	M	Tal Abbas El Gharby	M	M	M	Tal Abbas El-Charqy	ML	M	M
Tal Biret	M	M	M	Tal Hmayra	ML	M	M	Tal Maayan Tal Kiri	M	M	M
Tal Sibel	M	M	M	Tallet Chattaha	M	M	M	Tikrit	L	M	M
Tleil	ML	M	M	Tshea	L	ML	M	Zawarib	ML	M	M
Zouq El Hosniyeh	ML	M	M	Zouq El-Haddara	ML	M	M	Zouq El-Hbalsa	ML	M	M
Zouq El-Moqachrine	ML	M	M								

Sud

Sour

Municipality	02-Mar	03-Mar	04-Mar	Municipality	02-Mar	03-Mar	04-Mar	Municipality	02-Mar	03-Mar	04-Mar
Aaiyeh	L	ML	H	Aalma El-Chaab	L	ML	MH	Aaytit	L	ML	MH
Abbasiyeh Sour	ML	ML	H	Abou Chech	L	ML	H	Ain Abou Abdallah	ML	ML	H
Ain Baal	ML	M	H	Arzoun	L	ML	M	Aziyeh	L	L	MH
Baflaya	L	ML	M	Barich	ML	L	MH	Batouliyeh	ML	M	H
Bayad	L	ML	MH	Bazouriyeh	ML	ML	H	Bediass	L	L	MH

Bestiyat	ML	L	MH	Borj El Chemali	ML	M	H	Borj En-Naqoura	L	ML	M
Borj Rahhal	ML	L	MH	Boustane	L	M	H	Btaychiyeh	L	ML	H
Chaaitiye	L	ML	H	Chameh	L	L	MH	Chehabiye	ML	M	M
Chehour	L	L	M	Chihine	L	ML	H	Debaal Sour	L	ML	H
Deir Amess	L	L	M	Deir Kifa	L	ML	M	Deir Qanoun El-Ain	ML	M	H
Deir Qanoun El-Naher	L	L	MH	Derdghaiya	L	ML	M	Dhayra	L	ML	H
Halloussiyeh	ML	L	MH	Hamoul	L	L	M	Hanaouey	L	ML	H
Henniye	ML	M	H	Hmairi Sour	L	L	MH	Iskandarouna Sour	L	L	MH
Jbal El Botom	L	ML	MH	Jebbin	L	ML	H	Jennata	ML	L	MH
Jijim	L	L	MH	Jouaiya	L	ML	MH	Kneisset Sour	ML	M	H
Maarake	ML	L	MH	Maaroub	ML	L	H	Majadel	L	M	M
Majdalzoun	L	ML	MH	Mansouri Sour	L	ML	H	Marnba	L	L	M
Marouahine	L	M	M	Mazraat El-Zalloutiy	L	M	H	Mazraat Mechref	L	ML	MH
Mazraat Tayr Semhat	L	L	M	Mheilb	ML	M	H	Neffakhiyeh	L	ML	M
Niha Sour	L	ML	M	Ouadi Jilo	L	ML	MH	Qana	L	ML	H
Qolaileh Sour	ML	M	H	Rechknay	L	ML	MH	Rmadiyah	L	ML	H
Selha Sour	L	ML	M	Siddiqine	L	ML	H	Sour	ML	M	H
Srifa	L	L	M	Tayr Debbe	ML	ML	H	Tayr Felsay	L	L	MH
Tayr Harfa	L	ML	H	Touayri	L	L	M	Toura	ML	L	MH
Yanouh Sour	ML	L	MH	Yarine	L	M	H	Zebqine	L	L	M

Saida

Municipality	02-Mar	03-Mar	04-Mar	Municipality	02-Mar	03-Mar	04-Mar	Municipality	02-Mar	03-Mar	04-Mar
Aanqoun	L	ML	M	Aaqtanit	L	ML	M	Aarab Ej-Jall	VL	ML	M
Aarab Tabbaya	VL	ML	M	Abra Saida	L	M	M	Adloun	ML	ML	M
Adousiyeh	ML	M	M	Ain-El-Deleb	L	M	M	Arzai	L	L	MH
Babliyah	ML	ML	M	Barty	L	ML	M	Bissariyeh	ML	M	M
Bnaafoul	L	ML	M	Bqosta	L	M	M	Bramiy	L	M	M
Daoudiyeh	ML	ML	M	Dareb El-Sim	L	ML	M	Erkay	L	ML	M
Ghassanieh	L	ML	M	Ghazieh	L	M	M	Hajjeh	L	ML	M
Haret Saida	L	M	M	Hartiyeh	L	ML	M	Hlaliye Saida	L	M	M
Insariyat	ML	ML	M	Jazira Saida	ML	ML	MH	Kafar Bit	L	ML	M
Kaoutariyet El-Siyad	L	ML	M	Kfar Chellal	L	ML	M	Kfar Hatta Saida	L	ML	M
Kfar Milke Saida	L	ML	M	Khartoum	L	ML	M	Khaziz	VL	ML	M
Khirbet Ed-Douair Sa	L	ML	M	Khirbet El-Bassal	L	M	M	Khrayeb Saida	L	ML	M
Loubieh	ML	ML	M	Maghdouche	L	ML	M	Majdelyoun	L	M	M
Matariyet El-Choumar	L	L	M	Matayriyeh	L	ML	M	Mazraat 'Mseileh	ML	M	M
Mazraat 'Snaiber	ML	M	M	Mazraat Aarab Soukka	VL	ML	M	Mazraat Deir Taqla	L	ML	M
Mazraat El Yahoudiye	M	ML	M	Mazraat El-Housseini	ML	M	M	Mazraat El-Mhaydaleh	L	ML	M
Mazraat El-Ouasta	ML	ML	M	Mazraat Jamjim	L	ML	M	Mazraat Kaoutariyet	L	ML	M
Mazraat Kfar Badda	ML	ML	M	Mazraat Oussamiyat	ML	ML	M	Mazraat Sari	L	ML	M
Mazraat Sinai	L	ML	M	Meemariyeh	L	M	M	Merouaniyeh	L	ML	M
Miyeh ou Miyeh	L	ML	M	Najjariyeh	ML	M	M	Qaaqaiyat El-Snaouba	ML	ML	M
Qnarit	L	ML	M	Qraiey Saida	L	ML	M	Saida Ed-Dekermane	L	M	M
Saida El-Oustani	L	M	M	Saida El-Qadimeh	L	M	M	Saida Kefraya	L	ML	M
Saksakiyeh	ML	ML	M	Salhieh Saida	L	M	M	Sarafand	ML	M	M

Sfenta	VL	L	M	Tafahta	L	ML	M	Tanbourit	L	ML	M
Tebna	ML	ML	M	Zaghdraiya	L	ML	M	Zeita	L	ML	M
Zrariyeh	L	L	M								

Jezzine

Municipality	02-Mar	03-Mar	04-Mar	Municipality	02-Mar	03-Mar	04-Mar	Municipality	02-Mar	03-Mar	04-Mar
Ain El-Mir (El Estab)	L	ML	M	Anane	VL	L	M	Aramta	VL	ML	M
Ariya	VL	L	ML	Aychiyeh	L	ML	M	Azour	VL	L	M
Baba	VL	L	M	Bayssour Jezzine	L	ML	M	Benoueteh Jezzine	VL	L	ML
Bhannine	VL	L	ML	Bisri	VL	L	M	Bkassine	VL	L	ML
Bouslaya	VL	L	M	Btedine El-Leqech	VL	L	M	Chbail	VL	L	M
Choualiq Jezzine	L	M	M	Dahr Ed-Deir	VL	L	M	Deir El Qattine	VL	L	M
Demachqiyeh	L	ML	M	Ghabbatiyeh	VL	L	ML	Harf Jezzine	VL	L	ML
Hassaniyeh	L	ML	M	Haytoupleh	VL	L	M	Haytura	VL	L	M
Hidab	VL	L	M	Homsiyeh	VL	L	M	Jabal Toura	VL	L	M
Jarmaq	L	ML	M	Jensnaya	L	ML	M	Jernaya	L	ML	M
Jezzine	VL	ML	M	Karkha	L	ML	M	Kfar Falous	VL	L	M
Kfar Houna	VL	L	M	Kfar Jarrah	L	M	M	Lebaa	L	M	M
Louayzet Jezzine	VL	L	M	Machmouche	VL	L	L	Mahmoudiyeh Jezzine	L	ML	M
Maknounye Jezzine	VL	L	M	Maraat Ouazaiyeh	L	ML	M	Mazraat Daraya	VL	L	M
Mazraat El-Aarqoub	L	L	M	Mazraat El-Mathane	VL	L	ML	Mazraat El-Rahbane	VL	L	M
Mazraat Khallet Khaz	VL	L	M	Mazraat Louzid (Loua	VL	L	M	Mazraat Qrouh	VL	ML	M
Mazraat Tamra	L	ML	M	Mazraat Zighrine Jez	L	L	M	Mazraat	VL	L	M
Mharbiyeh	VL	ML	M	Midane Jezzine	VL	L	ML	Mjeydel Jezzine	VL	ML	M
Mlikh	VL	L	M	Mrah El-Hbasse	L	ML	M	Ouadi Baanqoudaine	L	ML	M
Ouadi El-Laymoun	L	ML	M	Ouardiyeh	VL	VL	ML	Qabaa Jezzine	VL	L	M
Qatrani	VL	L	M	Qaytoupleh	VL	L	M	Qtaleh Jezzine	VL	L	M
Rihane Jezzine	L	ML	M	Rimat	VL	L	M	Roum	VL	L	M
Roummanet	L	ML	M	Sabbah	VL	L	ML	Saydoun	VL	L	M
Sfaray	VL	L	M	Snaya	VL	L	M	Sojoud	L	ML	M
Srayri	VL	ML	M	Taaid	VL	L	M	Wadi Jezzine	VL	L	ML
Zhalta	VL	L	M								

Bekaa

West Bekaa

Municipality	02-Mar	03-Mar	04-Mar	Municipality	02-Mar	03-Mar	04-Mar	Municipality	02-Mar	03-Mar	04-Mar
Aammiq BG	L	ML	M	Ain El Tineh BG	VL	ML	M	Ain Zebdeh	VL	L	M
Ana	L	ML	M	Aytanit	VL	L	M	Baaloul BG	VL	ML	M
Bab Mareh	VL	L	M	Chouberqiye Aammiq	L	ML	M	Dakoue	L	ML	M
Deir Ain El-Jaouze	VL	L	ML	Deir Tahniche	L	ML	M	Ghaza	L	ML	M
Harime El-Soughra	L	ML	M	Hoch Harimeh	L	ML	M	Jazira BG	L	ML	M
Jib Jennine	L	ML	M	Kamed-El-Laouz	VL	ML	M	Kefraya BG	VL	L	ML
Khiara El Atika	L	ML	M	Khiara	L	ML	M	Khirbet Qanafar	L	ML	M
Lala	VL	ML	M	Lebbaya BG	VL	ML	M	Loussa	VL	ML	M
Machghara	VL	ML	M	Manara (Hammara) BG	VL	L	M	Mansoura BG	L	ML	M

Marej BG	L	M	M	Maydoun	VL	ML	M	Ouaqf BG	L	ML	M
Qaraaoun	VL	ML	M	Qelya	VL	M	M	Raouda (Istabel)	VL	ML	M
Saghbine	VL	L	M	Sohmor	VL	ML	M	Soltan Yacoub el Ara	L	ML	M
Souairy	L	ML	M	Sultan Yaacoub	L	ML	M	Tal Znoub	L	ML	M
Yehmor BG	VL	ML	M	Zilaya	VL	ML	M				

Zahle

Municipality	02-Mar	03-Mar	04-Mar	Municipality	02-Mar	03-Mar	04-Mar	Municipality	02-Mar	03-Mar	04-Mar
Aanjar (Haouch Mouss)	L	ML	M	Ablah	L	M	M	Ain Kfarzabad	VL	ML	M
Ali-El-Nahri	L	M	M	Bar Elias	L	M	M	Bouarej	L	M	M
Cheberqiyet Tabet	VL	M	M	Chtaura	VL	M	M	Deir El Ghazal	VL	ML	M
Delhamiyet Zahle	VL	M	M	Ferzol	L	M	M	Haouch El-Ghanam	L	M	M
Haouch Es-Siyadeh	VL	M	M	Haouch Hala	L	M	M	Haouch Mandara	VL	M	M
Haouch Qayssar	L	M	M	Hezerta	VL	M	M	Hosh Moussa	VL	ML	M
Jdita	VL	M	M	Kfarzabad	VL	ML	M	Ksara	VL	M	M
Majdel Aanjar	VL	L	M	Makssi	VL	M	M	Massa	L	ML	M
Mazraat Er-Remtaniye	L	M	M	Mrayjat Zahle	L	M	M	Mzaraa Zahle	L	M	M
Nabi Ayla	L	M	M	Nasriyet Rizk	L	ML	M	Nasriyet Zahle	L	M	M
Niha Zahle	L	M	M	Ouadi Ed-Deloum	L	M	M	Ouadi El-Arayech	L	M	M
Qaa El Rim	L	M	M	Qab Elias	VL	M	M	Qousaya	VL	ML	M
Rhit	L	ML	M	Riyak	L	M	M	Saadnayel	VL	M	M
Taal El-Akhdar	L	ML	M	Taalbeya	VL	M	M	Taanayel	VL	M	M
Talamara	L	M	M	Tcheflik Edde Haouch	L	M	M	Tcheflik Qiqano	L	M	M
Terbol Zahle	VL	ML	M	Touaite Zahle	VL	M	M	Zahle Aradi	L	M	M
Zahle El-Berbara	VL	M	M	Zahle El-Maallaqa	VL	M	M	Zahle El-Midane	VL	M	M
Zahle Er-Rassiyeh	VL	M	M	Zahle Haouch El-Ouma	VL	M	M	Zahle Haouch El-Ouma	VL	M	M
Zahle Haouch Ez-Zara	VL	M	M	Zahle Maalaqa Aradi	L	M	M	Zahle Mar Antonios	VL	M	M
Zahle Mar Elias	VL	M	M	Zahle Mar Gerios	VL	M	M	Zahle Saydet En-Naja	VL	M	M
Zebdoul	VL	ML	M								

Rachaiya

Municipality	02-Mar	03-Mar	04-Mar	Municipality	02-Mar	03-Mar	04-Mar	Municipality	02-Mar	03-Mar	04-Mar
Ain Arab Rachaiya	L	L	M	Ain Ata	VL	ML	M	Ain Harche	VL	ML	M
Aqabe Rachaya	VL	ML	M	Ayha	L	ML	M	Ayta El Fokhar	L	L	M
Bakifa Rachaya	VL	ML	M	Bakka	L	ML	M	Beit Lahya	VL	ML	M
Bireh Rachaiya	VL	ML	M	Daher El Ahmar	VL	ML	M	Deir El-Achayer	L	ML	M
Heloua Rachaiya	L	L	M	Hoch El Qannabeh Rac	VL	L	M	Kaoukaba Bou Arab	VL	ML	M
Kfar Danis	L	ML	M	Kfar Mechki	VL	ML	M	Kfar Qouq	L	L	M
Kherbet Rouha	VL	L	M	Majdel Balhiss	VL	ML	M	Mdoukha	L	ML	M
Mhaydseh Rachaiya	VL	ML	M	Nabi Safa	VL	ML	M	Rachaiya	L	ML	M
Rafid Rachaiya	VL	ML	M	Selsata (Mazraat Dei	L	L	M	Tannoura	VL	ML	M
Yanta	L	L	M								

Beyrouth

Beyrouth

Municipality	02-Mar	03-Mar	04-Mar	Municipality	02-Mar	03-Mar	04-Mar	Municipality	02-Mar	03-Mar	04-Mar
--------------	--------	--------	--------	--------------	--------	--------	--------	--------------	--------	--------	--------

Achrafieh	ML	M	M	Ain el-Mreisse	ML	M	M	Bachoura	ML	M	M
Beirut Central Distr	ML	M	M	Marfai	ML	M	M	Mazraa	ML	M	M
Medaouar	ML	M	M	Minet el-Hosn	ML	M	M	Mwssaitbeh	ML	M	M
Ras Beirut	ML	M	M	Rmeil	ML	M	M	Saifi	ML	M	M
Zqaq el-Blat	ML	M	M								