

Lebanon Fire Risk Bulletin



CIVIL DEDEFENCE

Refer to cadast table condition.

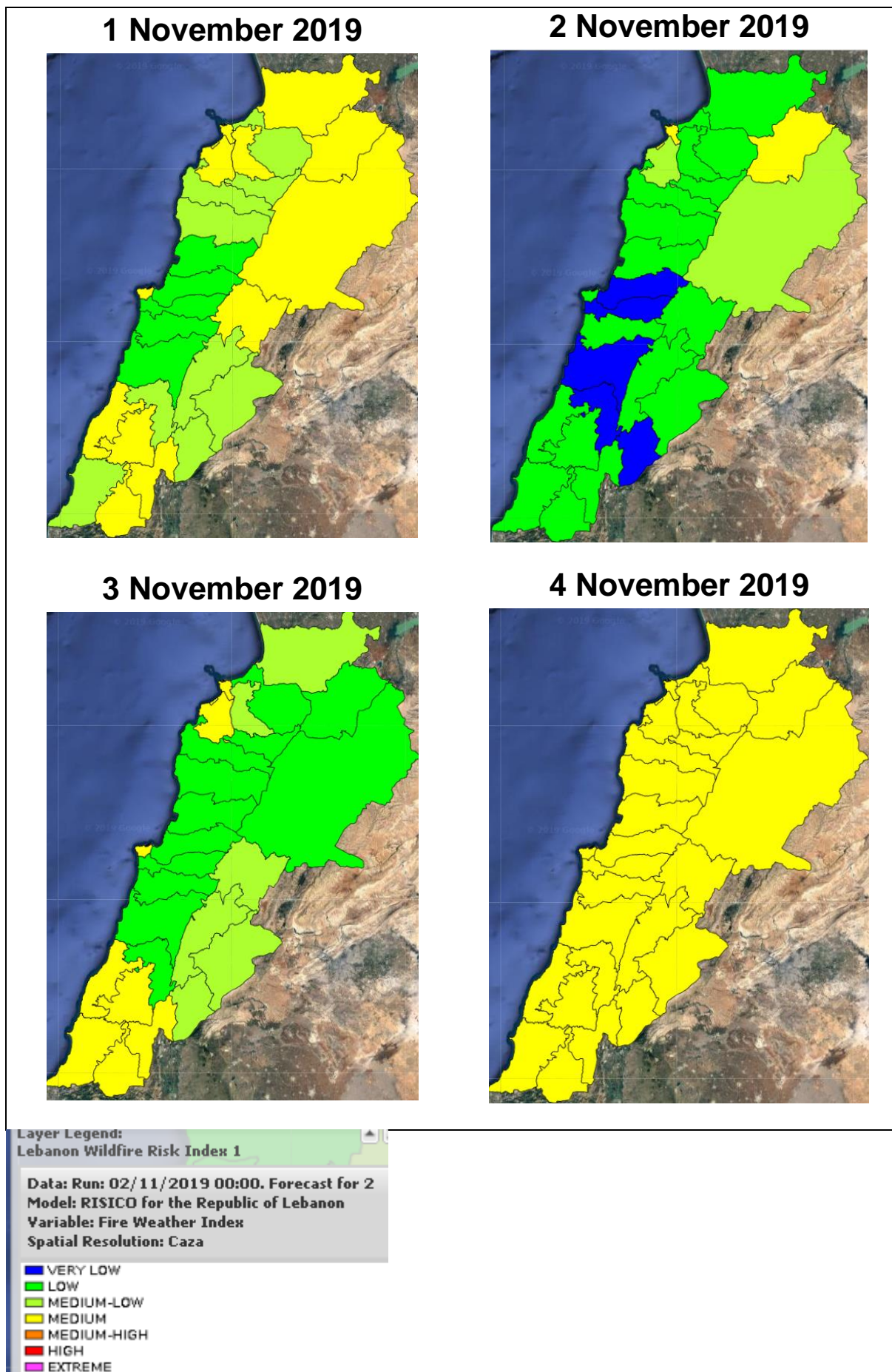
Please note that the indicated temperature is at 2 meters height from the ground.

General description of potential fire risk situation

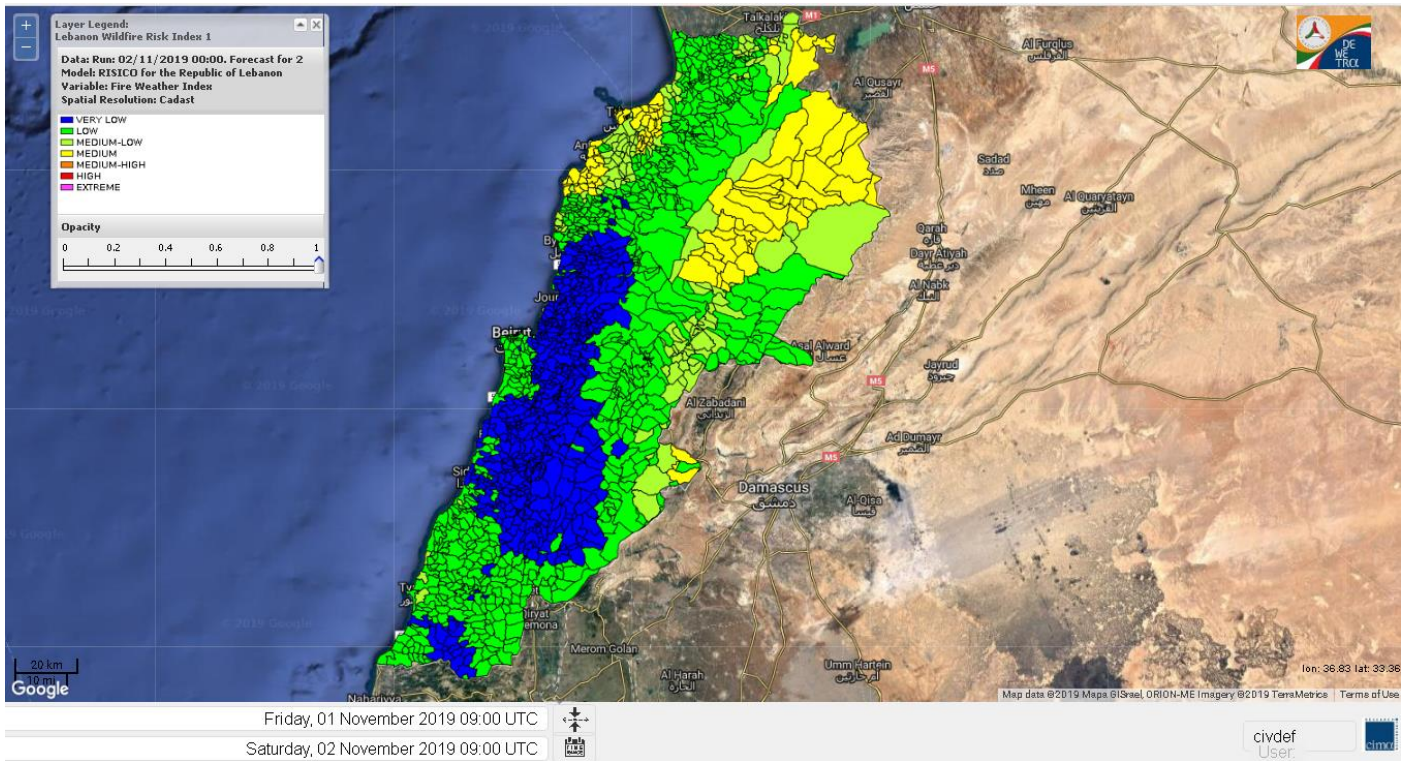
Symbol	Level of risk	Meaning and actions
VL	Very low	Very low fire risk. Controlled burning operations can be hardly executed due to high fuel moisture content. Normally wildfires self-extinguish.
L	Low	Low fire risk. Controlled burning operations can be executed with a reasonable degree of safety.
ML	Medium low	Medium-low fire risk. Controlled burning operations can be executed in safety conditions. All the fires need to be extinguished.
M	Medium	Medium fire risk. Controlled burning operations would be avoided. All the fires need to be very well extinguished.
M	Medium high	Controlled burning is not recommended. Open flame will start fires. Cured grasslands and forest litter will burn readily. Spread is moderate in forests and fast in exposed areas. Patrolling and monitoring is suggested. Fight fires with direct attack and all available resources.
H	High	Ignition can occur easily with fast spread in grass, shrubs and forests. Fires will be very hot with crowning and short to medium spotting. Direct attack on the head may not be possible requiring indirect methods on flanks. Patrolling and monitoring the territory is highly suggested.
E	Extreme	Ignition can occur also from sparks. Fires will be extremely hot with fast rate of spread. Control may not be possible during day due to long range spotting and crowning. Suppression forces should limit efforts to limiting lateral spread. Damage potential total. Patrolling and monitoring the territory is highly suggested.

Beirut, 2 November 2019

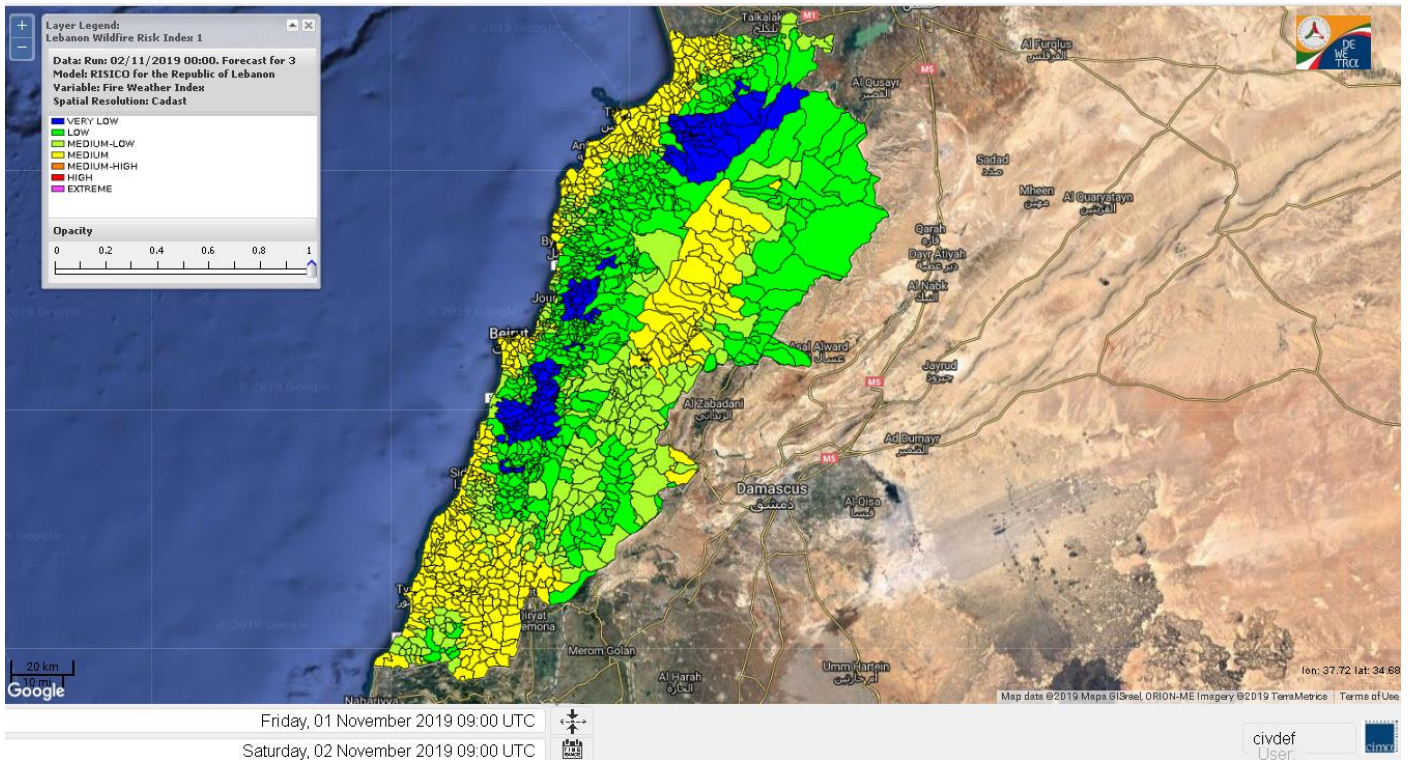
FIRE RISK INDEX



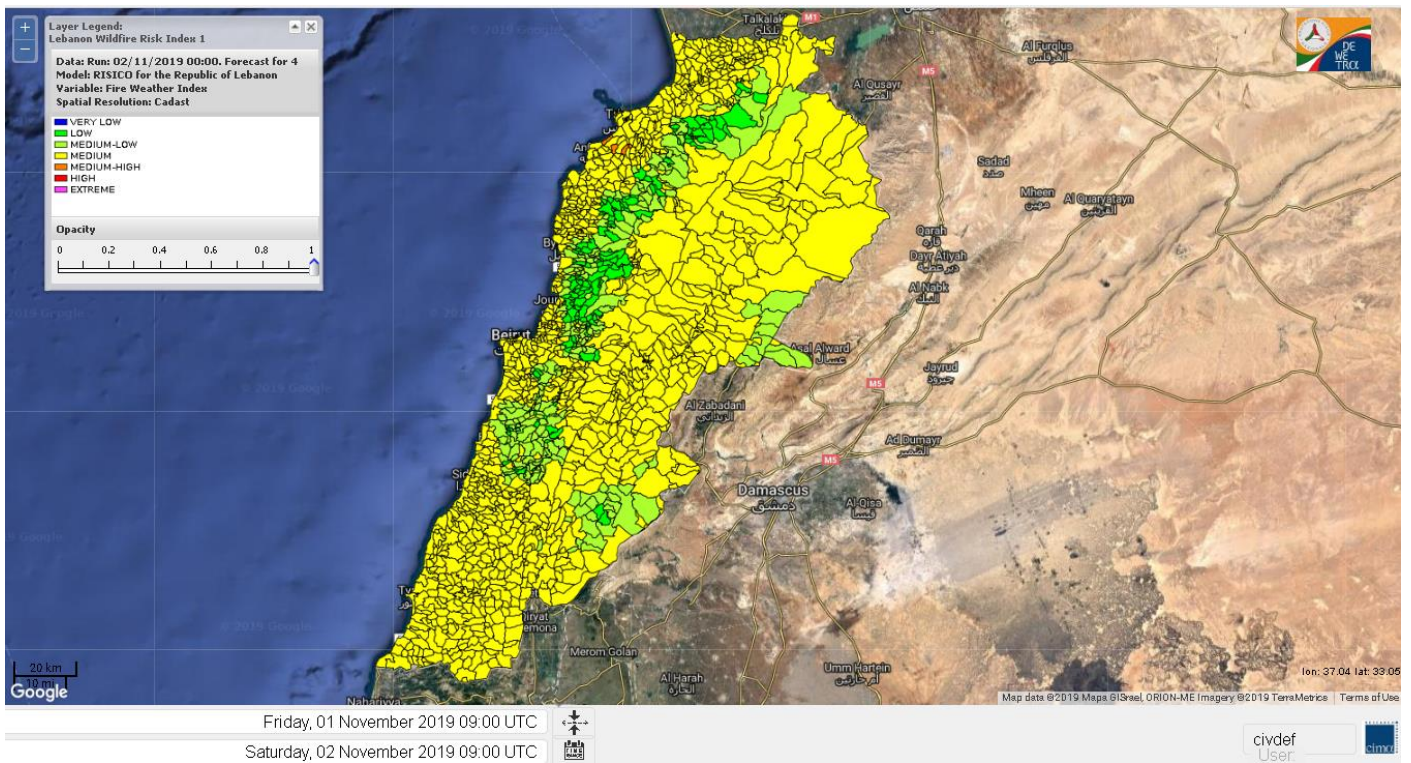
Lebanon for 2 November 2019



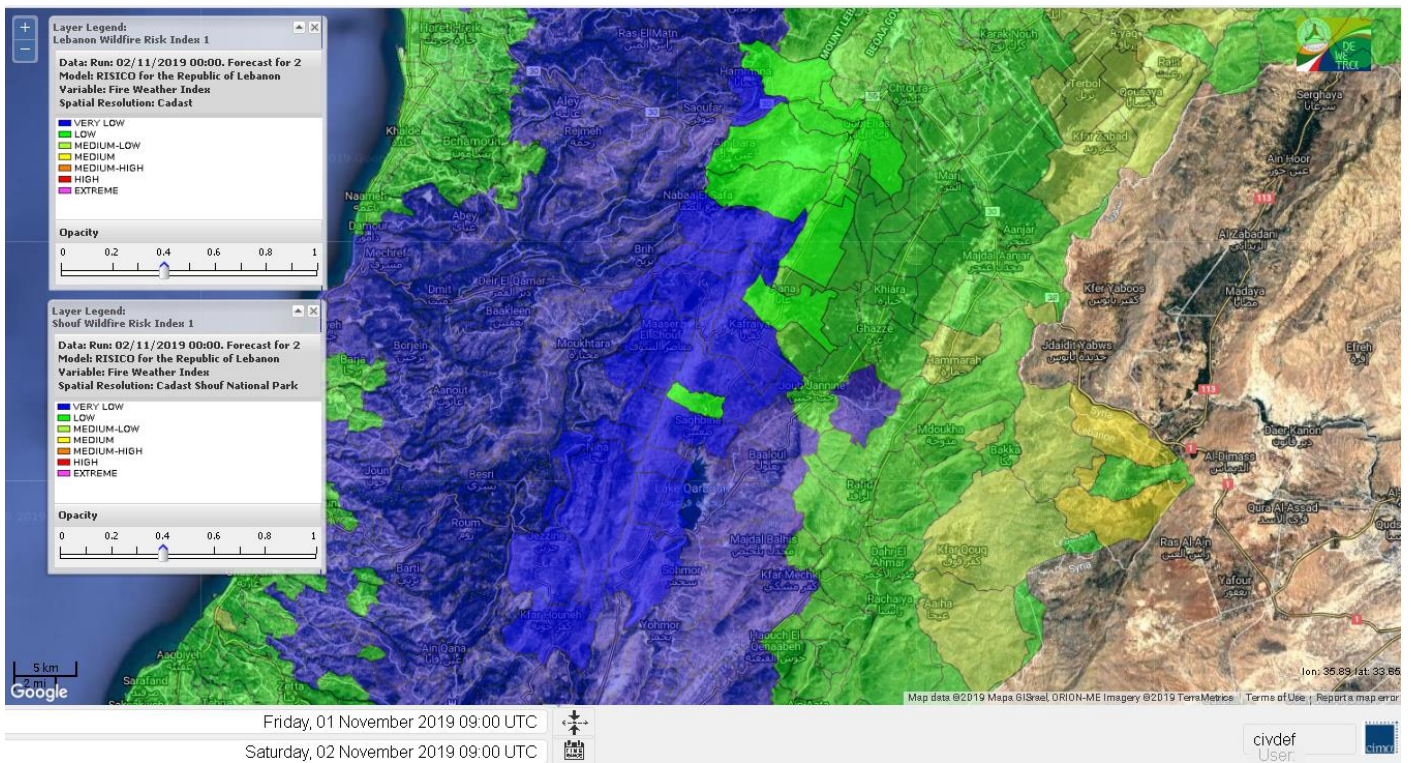
Lebanon for 3 November 2019



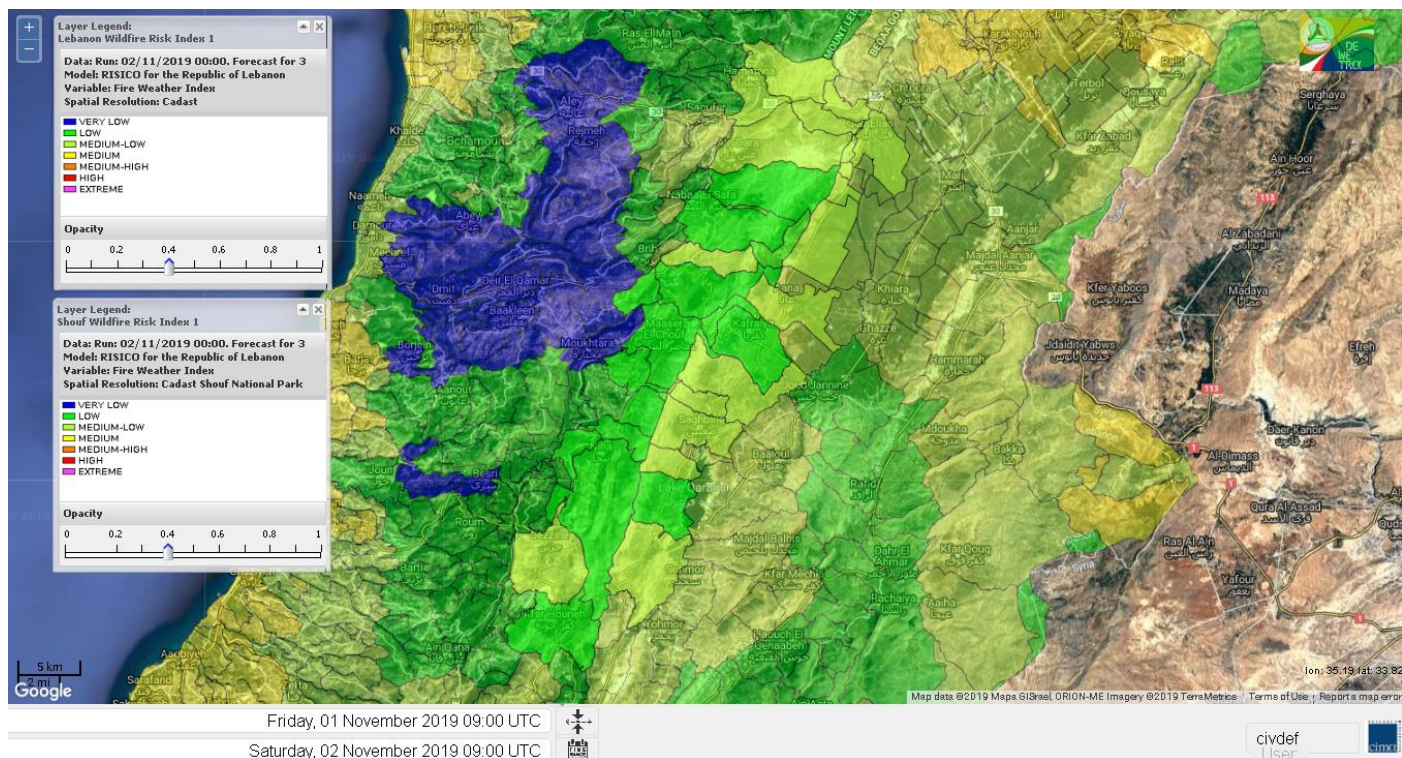
Lebanon for 4 November 2019



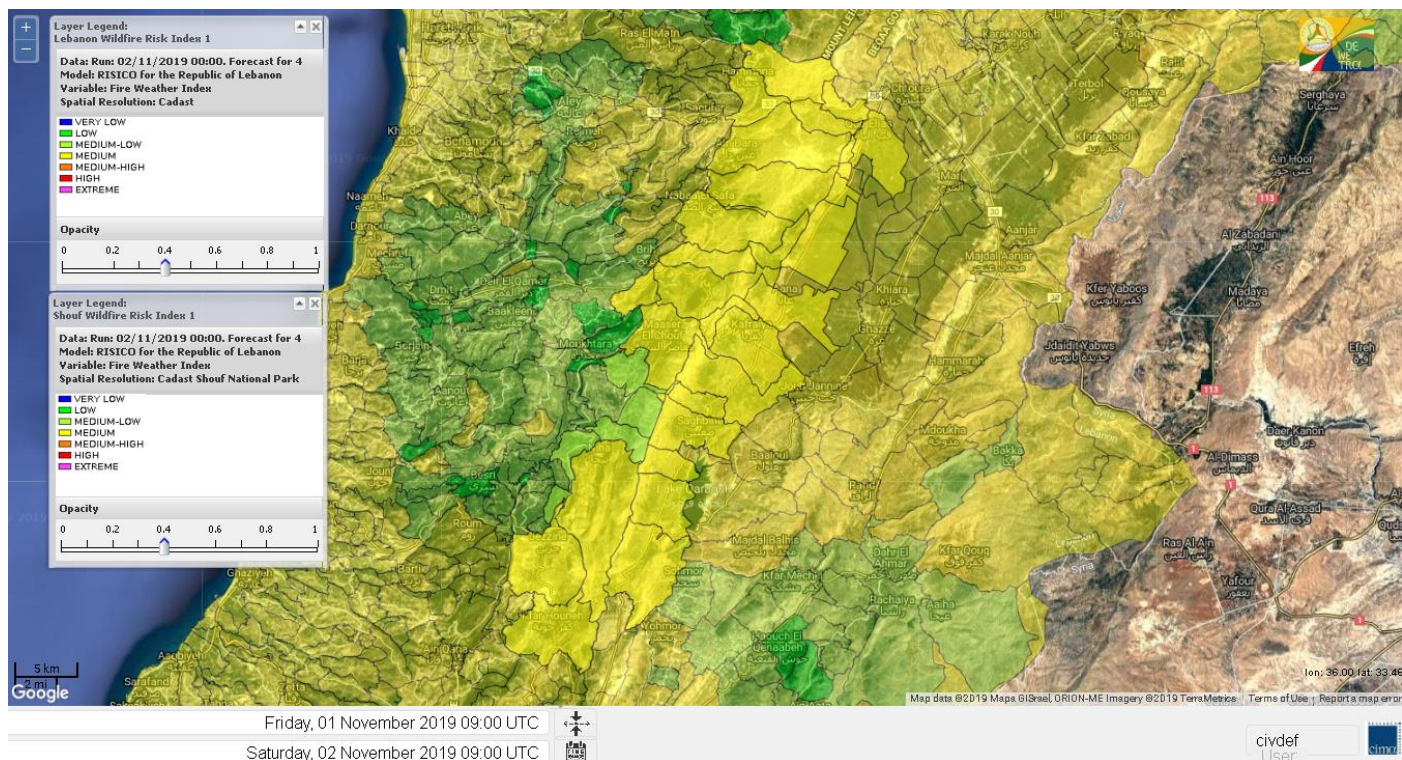
Shouf Biosphere Reserve Forecast for 2 November 2019



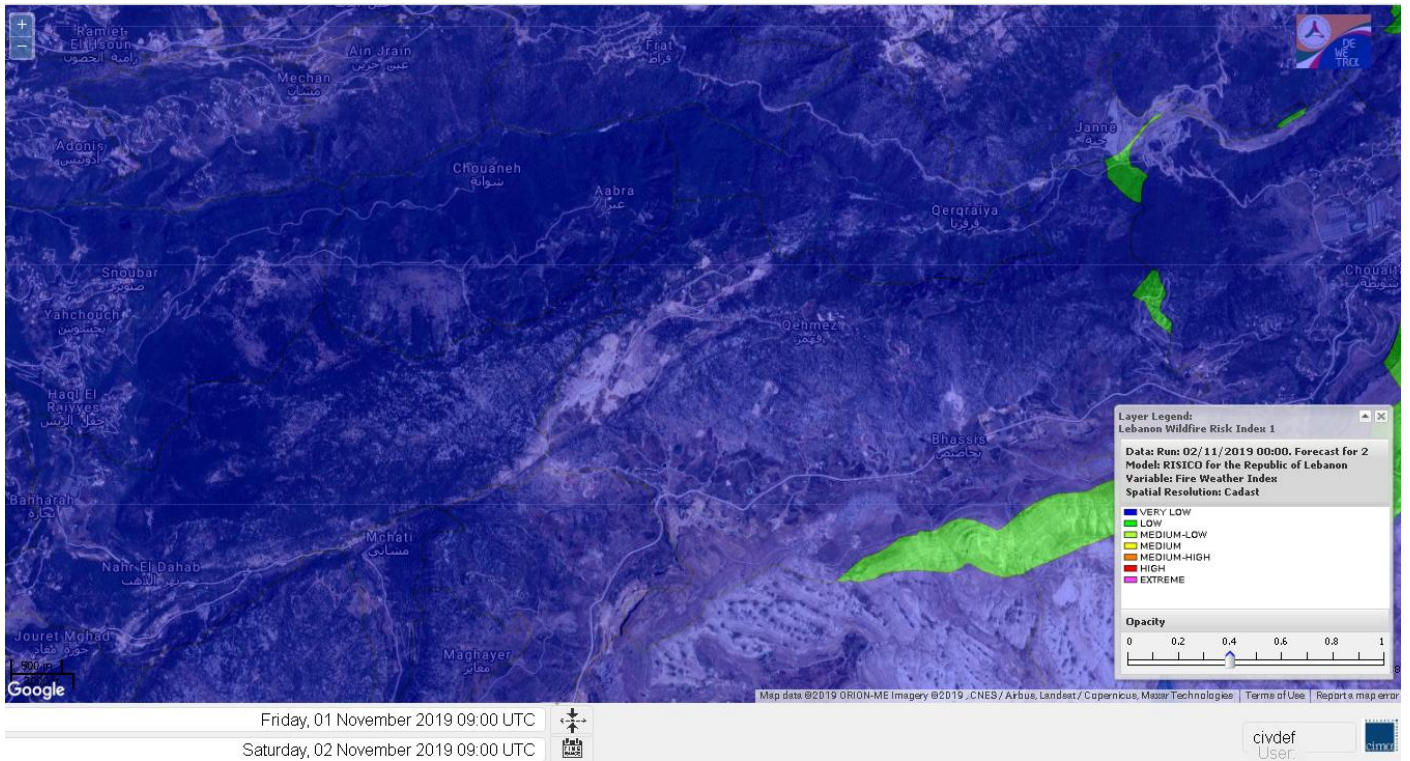
Shouf Biosphere Reserve Forecast for 3 November 2019



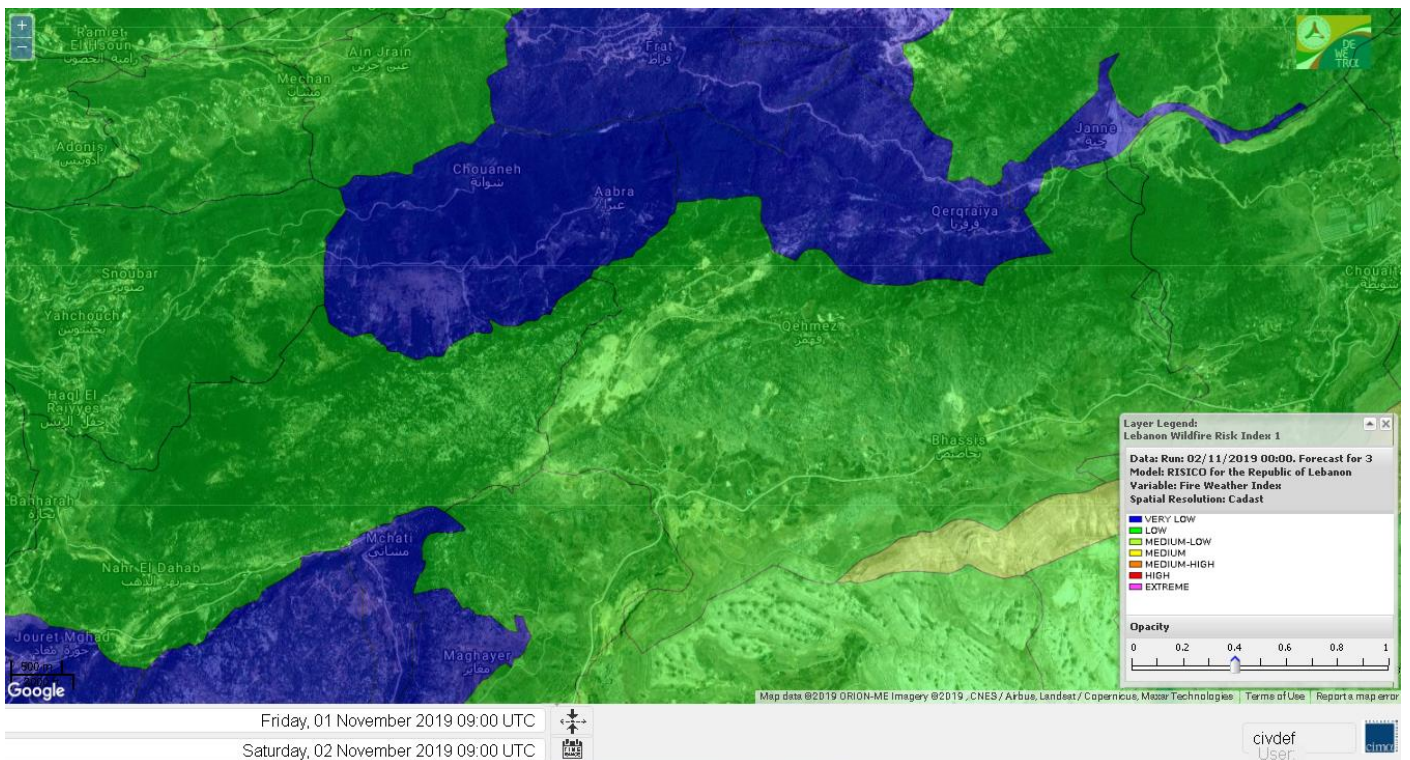
Shouf Biosphere Reserve Forecast for 4 November 2019



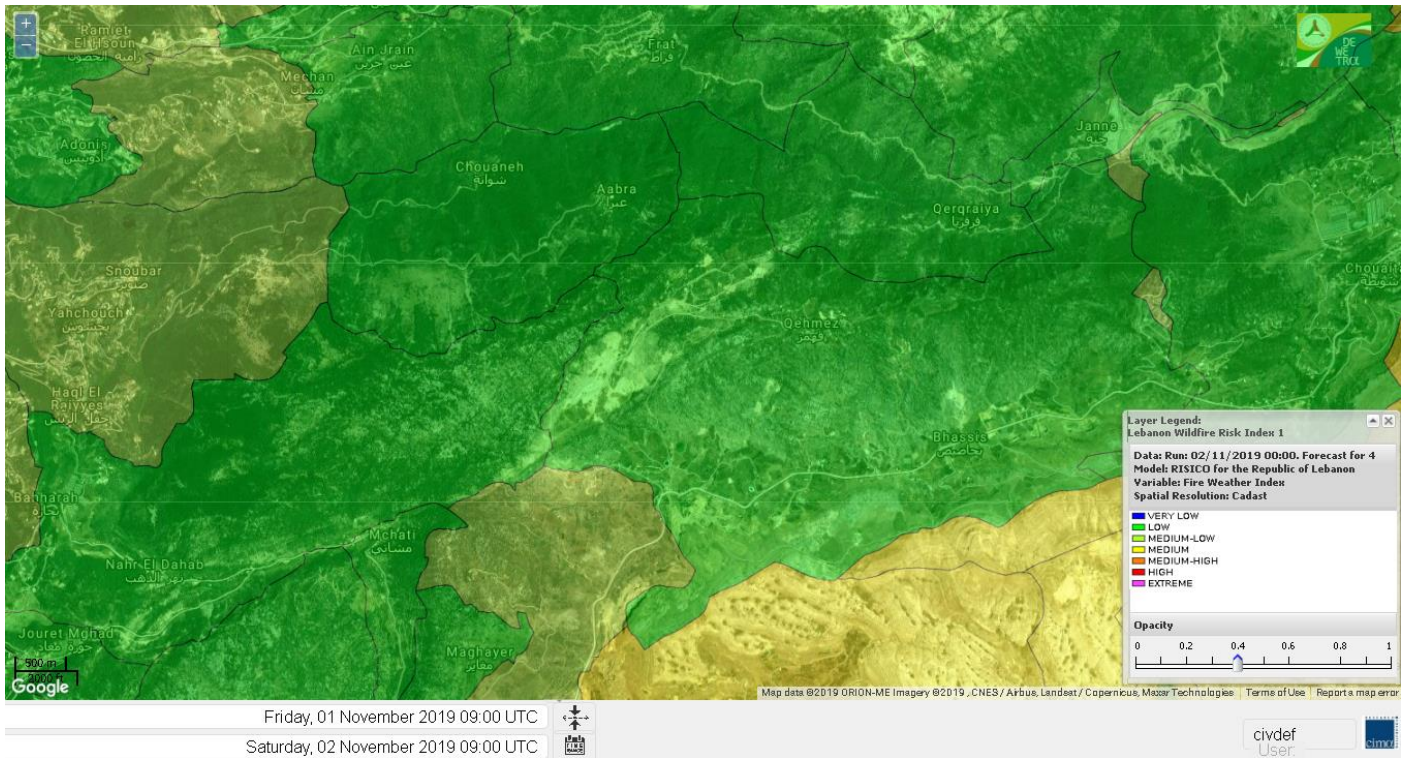
Jabal Moussa Reserve Forecast for 2 November 2019



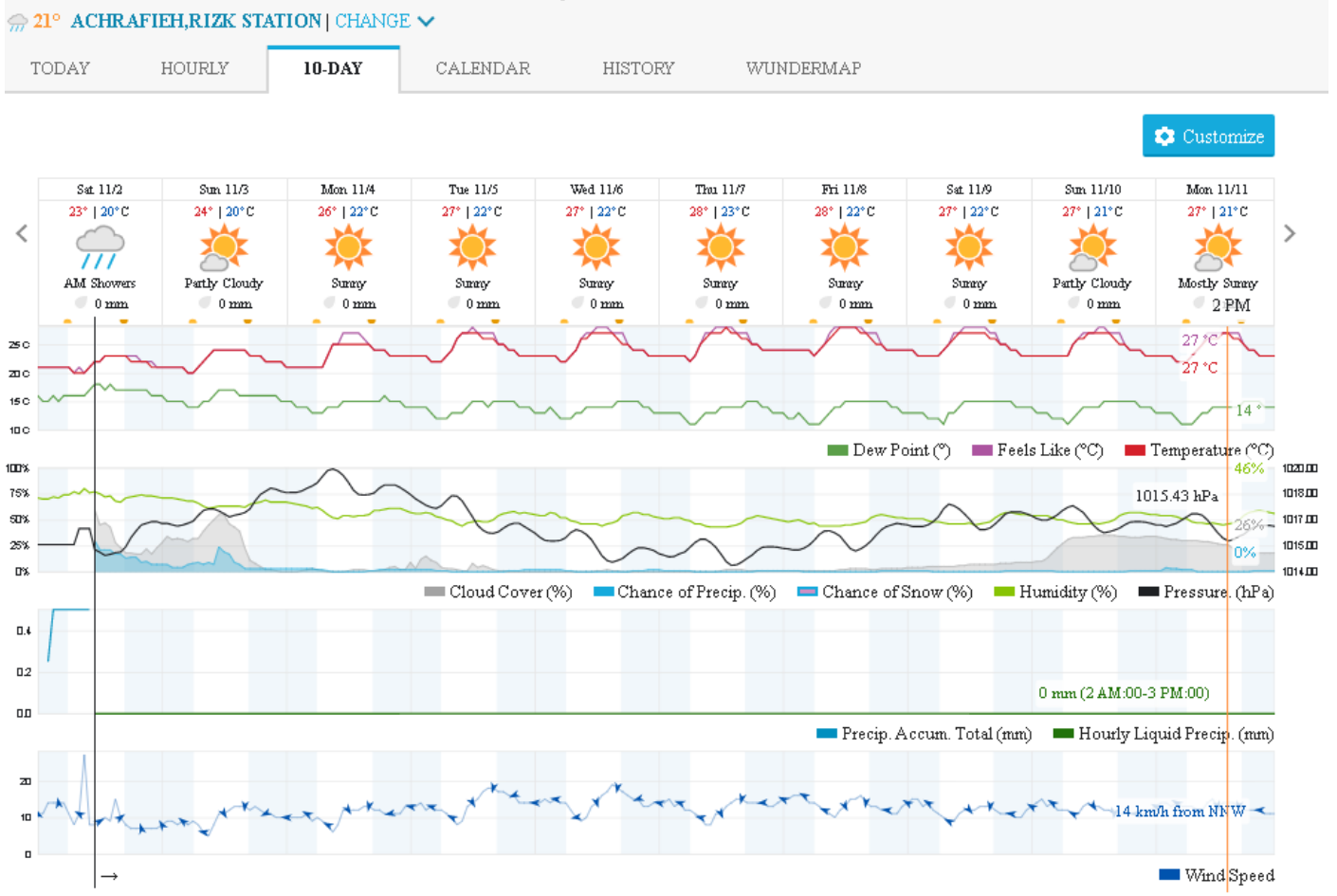
Jabal Moussa Reserve Forecast for 3 November 2019



Jabal Moussa Reserve Forecast for 4 November 2019



Beirut, Beirut Governorate, Lebanon 10-Day Weather Forecast



Nord

Koura

Municipality	02-Nov	03-Nov	04-Nov	Municipality	02-Nov	03-Nov	04-Nov	Municipality	02-Nov	03-Nov	04-Nov
Aaba	ML	M	M	Afsaddiq	ML	ML	M	Ain Ekriane	ML	ML	M
Amioun	ML	L	M	Anfeh	M	M	M	Badbhoun	M	M	M
Barghoun	M	M	M	Barsa	ML	M	M	Batroumine	ML	M	MH
Bdebba	ML	M	M	Bechmizzine	ML	L	M	Bednayet El-Koura	M	M	M
Bhabbouch El-Koura	ML	L	M	Bkeftine	ML	M	M	Bnehran	L	L	M
Bqaiaa El-Koura	ML	M	MH	Bsarma	ML	ML	M	Btaaboura	M	M	M
Bterram	ML	ML	M	Btouratij	ML	M	MH	Bziza	ML	L	M
Dar Beechtar	ML	ML	M	Dar Chmezzine	ML	ML	M	Deddeh	ML	M	M
Deir El-Balamand	L	M	M	Fih	ML	M	M	Hraiche	M	M	M
Ijdaabrine	M	M	M	Kaftoun	ML	ML	M	Kefraya El-Koura	M	M	M
Kfarakka	ML	L	M	Kfarhata	M	M	M	Kfarhazir	M	M	M
Kfarkahel	ML	M	M	Kfarsaroun	ML	L	M	Kosba	ML	L	M
Mejdel el-Koura	L	L	ML	Nakhle	ML	M	M	Qalhat	L	M	M
Ras Masqa	ML	M	M	Rechdibbine	ML	L	M	Zakroun	M	M	M
Zgharta El-Mtaouile	L	L	ML								

Bcharre

Municipality	02-Nov	03-Nov	04-Nov	Municipality	02-Nov	03-Nov	04-Nov	Municipality	02-Nov	03-Nov	04-Nov
Aabdine	L	L	ML	Bane	L	L	M	Barhelioun	L	L	ML
Bazouone	L	L	M	Becharre	L	L	M	Beit Menzer	L	L	ML
Billa	L	L	ML	Blaouza	L	L	M	Bqaa Kafra	L	L	M
Bqerqacha	L	L	M	Breissat	L	L	ML	Dimane	L	L	ML
Hadath El Jobbeh	L	L	ML	Hadchit	L	L	ML	Hasroun	L	L	M
Mazraat Aassaf	L	L	L	Mazraat Bani Saab	L	L	ML	Mchaa El-Jobbeh	L	L	M
Metrit	L	L	M	Moghr El-Ahoual	L	L	ML	Ouadi Qannoubine	L	L	L
Qanat	L	L	ML	Qnayouer	L	L	L	Tourza	L	L	ML

Batroun

Municipality	02-Nov	03-Nov	04-Nov	Municipality	02-Nov	03-Nov	04-Nov	Municipality	02-Nov	03-Nov	04-Nov
Aabrine	M	M	M	Aalali	L	L	L	Aartziz	L	L	M
Abdelli	L	L	M	Ajdabra	L	ML	M	Assia	L	L	L
Basbina	L	M	M	Batroun	M	M	M	Bcheleh	L	L	L
Bechtoudar	L	L	L	Beit Chlala	VL	L	L	Beit Kassab	L	L	L
Bijdarfil	ML	M	M	Bqesmaya	ML	ML	M	Chatine	L	L	ML
Chebtein	L	ML	M	Chekka	M	M	M	Daael	L	L	L
Dahr Abi Yaghi	L	L	M	Daraya El-Batroun	L	M	M	Deir Billa	L	L	ML
Deir Kfifane	L	ML	M	Deir Mar Youhanna EL	VL	L	L	Deir Mar Youssef Jra	L	L	M
Douma	L	L	ML	Douq	L	L	M	Eddeh El-Batroun	L	ML	M
Ftahat El-Batroun	L	L	M	Ghouma	L	ML	M	Hadtoun	L	L	L
Hamat	M	M	M	Harbouna	L	L	M	Hardine	L	L	L
Helta	VL	L	L	Hery	M	M	M	Jebbla	L	L	ML
Jrabta El-Batroun	L	ML	M	Jrane El-Batroun	L	M	M	Kfar Aabida	L	ML	M
Kfar Halda	VL	L	L	Kfarb Shlaimane	VL	L	L	Kfarhatna	L	ML	M
Kfarhay	M	M	M	Kfarhelos	ML	M	M	Kfifane	ML	M	M

Kfour El Arabi	L	L	ML	Koubba	M	M	M	Kour	L	ML	M
Mar Mama	L	L	M	Masrah	L	L	M	Mehmarch	L	L	M
Mrah Chdid	L	ML	M	Mrah El Ziyat	L	ML	M	Mrah El-Hajj	VL	VL	L
Nahle El-Batroun	VL	L	L	Niha El-Batroun	L	L	ML	Ouahj El-Hajjar	M	M	M
Ouata Houb	L	L	ML	Qatnaaoun	M	M	M	Racha	L	L	ML
Rachana	L	ML	M	Rachkida	M	M	M	Ram El-Batroun	VL	L	L
Ras Nahhach	M	M	M	Selaata	M	M	M	Sghar	L	ML	M
Smar Jbayl	L	ML	M	Sourat El-Batroun	L	L	M	Tannourine El-Faouqa	L	L	M
Tannourine Et-Tahta	L	L	L	Thoum	L	M	M	Toula El-Batroun	L	ML	M
Zan	L	L	M								

Zgharta

Municipality	02-Nov	03-Nov	04-Nov	Municipality	02-Nov	03-Nov	04-Nov	Municipality	02-Nov	03-Nov	04-Nov
Aachach	M	M	M	Aalma	M	M	M	Aarde	ML	M	M
Aintourine	L	L	M	Arabet Qozhaya	L	L	L	Arde	M	M	M
Arjis	L	L	M	Asnoun	M	M	M	Ayto	L	L	ML
Basloukit	L	L	ML	Bchannine	ML	M	M	Besebeel	M	M	M
Bhairret Toula	VL	VL	L	Bnachee	L	L	M	Boussit	M	M	M
Danha	M	M	M	Daraiya Zgharta	L	L	M	Deir Jdeide	M	M	M
Ehden	L	L	ML	Halan	ML	ML	M	Hariq Zgharta	M	M	M
Houakir	L	M	M	Hraiqis	M	M	M	laal	ML	M	M
Ijbaa	L	L	M	Karm Saddeh	L	L	L	Kfarchakhna	ML	M	M
Kfardlaqous	M	M	M	Kfarfou	L	L	M	Kfarhata Zgharta	M	M	M
Kfarhoura	ML	M	M	Kfarsghab	L	L	ML	Kfaryachit	M	M	M
Kfarzaina	M	M	M	Khaldiye	M	M	M	Mazraat Ajbeaa	M	M	M
Mazraat Et-Teffah	L	L	ML	Mazraat Jneid	M	M	M	Mejdlayia Zgharta	M	M	M
Merh Kfarsghab	L	ML	M	Miryata	M	M	M	Miziara	L	L	ML
Mzraat Kefraya	ML	M	M	Qorah Bach	M	M	M	Rachiine	M	M	M
Ras Kifa	L	L	ML	Sakhra	ML	M	M	Sebhel Zgharta	L	L	M
Serhel	L	L	L	Tallet Zgharta	ML	M	M	Toula Zgharta	L	L	ML
Zgharta	M	M	M								

Minieh-Denniye

Municipality	02-Nov	03-Nov	04-Nov	Municipality	02-Nov	03-Nov	04-Nov	Municipality	02-Nov	03-Nov	04-Nov
Aasaymout	L	VL	L	Aaymar	L	VL	ML	Aazki	L	VL	ML
Ain El-Tineh-Miniyeh	L	VL	L	Assoun	L	VL	ML	Bakhaaoun	L	VL	ML
Bchennata	L	VL	ML	Bechehhara	L	ML	M	Beddawi	M	M	M
Behouaita	L	VL	L	Beit El Foqss	L	VL	L	Beit Haouik	L	VL	ML
Beit Zoud	L	VL	L	Bekaasafrine	L	VL	M	Borj El Yahoudiyeh	M	M	M
Bqarsouna	L	VL	L	Btermaz	L	VL	L	Debaael	L	VL	L
Deir Ammar	M	M	M	Deir Nbouh	ML	M	M	Haouaret-Miniyeh	L	VL	L
Haql el Azimeh	L	VL	L	Harf El Siyad	L	VL	L	Hazmiye-Miniyeh	L	VL	L
Izal	L	L	ML	Jarjour	L	ML	M	Jayroun	L	VL	L
Kahf El-Malloul	L	ML	ML	Karm El-Moher	L	VL	ML	Kfar Binine	L	VL	L
Kfarchalane	L	VL	ML	Kfarhabou	L	L	M	Kharroub-Miniyeh	L	VL	ML
Mazraat El-Kreme	L	L	ML	Mazraat Ketrane	L	VL	L	Merkebtta	ML	M	M
Minyeh	M	M	M	Mrah El Sfirat	L	VL	L	Mrah Sraj	L	VL	L
Mrebbine	L	VL	ML	Nabi Youcheaa	M	M	M	Nemrine	L	VL	ML

Qarhaiya	L	VL	ML	Qarne	L	VL	L	Qarsita	L	VL	L
Qattineh-Miniyeh	L	VL	L	Qemmamine	L	VL	L	Qraine	L	VL	L
Raouda-Aadoua	L	M	M	Rihaniyet-Miniyeh	ML	M	M	Sfireh	L	VL	L
Sir Ed-Danniyeh	L	VL	L	Tarane	L	VL	L	Terbol-Miniyeh	M	M	M
Zaghartaghriine	L	ML	M	Zouq Bhannine	ML	M	M				

Nabatiye

Nabatiye

Municipality	02-Nov	03-Nov	04-Nov	Municipality	02-Nov	03-Nov	04-Nov	Municipality	02-Nov	03-Nov	04-Nov
Aabba	L	M	M	Aazzi	L	ML	M	Adchit El-Chqif	L	M	M
Ain Bou Swar	VL	L	M	Ain Kana	VL	L	M	Ali El-Taher	VL	ML	M
Ansar	L	M	M	Arab Salim	VL	M	M	Arnoun	L	M	M
Bfaroue	L	ML	M	Breyqaah	L	M	M	Charqiyeh	L	ML	M
Choukine	L	M	M	Deir El Zahrani	L	ML	M	Doueir El-Nabatiyeh	L	M	M
Habbouch El-Nabatiye	VL	M	M	Hamra El-Nabatiyeh	L	M	M	Harouf El-Nabatiyeh	L	ML	M
Hmaile	VL	ML	M	Houmin El Faouqa	VL	ML	M	Houmin El Tahta	VL	ML	M
Jarjough	VL	ML	M	Jbaah El-Nabatiyeh	VL	L	M	Jebchit	L	M	M
Kfar Djal El-Nabatiy	L	M	M	Kfar Remmane	VL	M	M	Kfar Sir	VL	M	M
Kfar Tebnit	L	M	M	Kfarfila	VL	L	M	Kfour El-Nabatieh	L	M	M
Mayfadoun	L	M	M	Mazraat Bsaffour	L	ML	M	Mazraat Chalbaal	L	M	M
Mazraat Dmoul	L	M	M	Mazraat El Khreibeh	L	ML	M	Mazraat El-Bayad El-	VL	M	M
Mazraat Kfarjaouz	VL	M	M	Mazraat Qalaat Meiss	L	M	M	Nabatiyeh El-Fawka	L	M	M
Nabatiyeh Et-Tahta	VL	M	M	Namiriyeh	L	M	M	Qaaqaaiyet El Jisr	VL	M	M
Qossaibeh El-Nabatiy	VL	M	M	Roumine	VL	ML	M	Sarba El-Nabatieh	VL	L	M
Sir El-Gharbiyeh	L	M	M	Toul	L	ML	M	Yehmor El-Nabatiyeh	L	M	M
Zaoutar El Charkiyeh	L	M	M	Zaoutar El-Gharbiyeh	L	M	M	Zebdine El-Nabatiyeh	L	M	M
Zefta	L	ML	M								

Hasbaiya

Municipality	02-Nov	03-Nov	04-Nov	Municipality	02-Nov	03-Nov	04-Nov	Municipality	02-Nov	03-Nov	04-Nov
Ain Jarfa	VL	L	ML	Abou Qamha	VL	ML	M	Ain Qania	VL	L	ML
Bourghos	VL	ML	M	Chebaa	L	ML	M	Chouaya Hasbaya	VL	L	ML
Dellafeh	VL	M	M	Fardiss Hasbaiya	VL	ML	M	Hasbaya	VL	L	M
Hbariyeh	VL	L	M	Kaoukaba Hasbaiya	VL	ML	M	Kfar Chouba	L	ML	M
Kfar Hamam	L	ML	M	Kfeir El-Zait	VL	L	ML	Khalwat Hasbaya	VL	L	ML
Khreibet Hasbaiya	VL	M	M	Majdiyeh Hasbaiya	L	M	M	Marj Ez-Zhour (Haouc	VL	L	ML
Meri	VL	M	M	Mimass	VL	L	M	Rachaiya El-Fokhar	VL	ML	M
Salaiyeb	VL	M	M								

Marjayoun

Municipality	02-Nov	03-Nov	04-Nov	Municipality	02-Nov	03-Nov	04-Nov	Municipality	02-Nov	03-Nov	04-Nov
Aalmane Marjaayoun	L	M	M	Aamra	L	M	M	Adayseh Marjaayoun	L	M	M
Adchit El-Koussair	L	M	M	Ain Aarab Marjaayoun	VL	M	M	Bani Haiyann	L	M	M
Blatt Marjaayoun	VL	ML	M	Blida	L	M	M	Borj El-Moulouk	L	M	M
Boueyda Marjaayoun	VL	ML	M	Deir Mimass	L	M	M	Deir Siriane	L	M	M
Dibbine	VL	ML	M	Ebel El Saqi	VL	ML	M	Houla	L	M	M
Houra	L	M	M	Kfar Kila	L	M	M	Khiam Marjaayoun	VL	M	M

Klayaa	L	M	M	Majdel Selem	L	M	M	Marjaayoun	VL	M	M
Markaba	L	M	M	Mays El-Jabal	L	M	M	Mazraat Doumiat	L	M	M
Mazraat Sarada	VL	M	M	Mhaibib	L	M	M	Qabrikha	L	M	M
Qantara	L	M	M	Rab El-Thalathine	L	M	M	Saouaneh Marjayoun	L	M	M
Talloussa	L	M	M	Taybeh Matjaayoun	L	M	M	Touline	L	M	M

Bent Jbail

Municipality	02-Nov	03-Nov	04-Nov	Municipality	02-Nov	03-Nov	04-Nov	Municipality	02-Nov	03-Nov	04-Nov
Ain-Ebel	VL	M	M	Aitaroun	L	M	M	Aynata Bint Jbeil	L	M	M
Ayta El-Chaeb	VL	ML	M	Ayta El-Jabal	L	M	M	Beit Lif	VL	L	M
Beit Yahoun	L	M	M	Bint Jbeil	VL	M	M	Borj Qalaway	VL	M	M
Braachit	L	M	M	Chakra	L	M	M	Debel	VL	M	M
Deir Antar	L	M	M	Froun	VL	M	M	Ghandouriyeh Bint Jb	VL	M	M
Hanine	VL	M	M	Hariss	L	M	M	Hdatha	L	M	M
Jmeyjmeh	L	M	M	Kafra Bint Jbeil	VL	L	M	Kfar Dounine	L	M	M
Khirbet Selm	L	M	M	Kounine	L	M	M	Maroun El Ras	L	M	M
Qalaway	L	M	M	Qaouzah	VL	L	M	Qatmoun	VL	M	M
Ramya Bint Jbeil	VL	ML	M	Rchaf	VL	ML	M	Rmeich	VL	M	M
Safad Al Battikh	L	M	M	Salhaneh	VL	L	M	Serbine	L	M	M
Sultanieh Bint Jbeil	L	M	M	Tibnine	L	M	M	Tiri	L	M	M
Yaroun	VL	M	M	Yater	VL	ML	M				

Mont Liban

Jbail

Municipality	02-Nov	03-Nov	04-Nov	Municipality	02-Nov	03-Nov	04-Nov	Municipality	02-Nov	03-Nov	04-Nov
Aabeydat	L	L	M	Aalita	VL	L	L	Aamchit	L	M	M
Aarab El-Lahib	L	L	M	Aarasta	L	L	M	Adonis Jbeil	VL	L	L
Afqa Jbeil	L	L	M	Ain El Delbeh Jbeil	VL	L	L	Ain El-Ghouayba	VL	L	L
Ain Jrain	VL	L	L	Ain Kfah	L	ML	M	Almat El Chemaliyat	VL	L	L
Almat El-Jenoubiya	VL	L	L	Aqoura	L	ML	M	Bayzoun	VL	L	ML
Bchille Jbeil	VL	L	ML	Bechtlida	VL	L	L	Behdaydat	L	ML	M
Beit Habbaq	L	ML	M	Bejjeh	L	ML	M	Bekhaaz	L	M	M
Berbara Jbeil	ML	M	M	Bintael	L	L	ML	Birket Hjoula	VL	L	ML
Blatt Jbeil	VL	L	ML	Boulhos	VL	VL	L	Breyj Jbeil	VL	L	L
Chamat	L	M	M	Chikhane	ML	M	M	Chmout	L	L	M
Edeh Jbeil	L	L	M	Ehmej	VL	L	ML	Fatre	VL	L	L
Ferhet	VL	L	ML	Fghal	L	ML	M	Frat	VL	VL	L
Ghabat	L	L	M	Ghalboun	L	ML	M	Gharzouz	L	M	M
Ghofrine	L	M	M	Habil	L	L	M	Halate	VL	L	M
Haqel	L	L	M	Hbaline	L	ML	M	Hboub	VL	L	ML
Hdeine	L	L	M	Hema Er-Rehban	L	L	M	Hema Mar Maroun Aann	VL	L	M
Hjoula	VL	L	L	Hosrayel	ML	M	M	Hsarat	L	ML	M
Hsoun	VL	L	ML	Jaj	L	L	ML	Janne	VL	VL	L
Jbeil	L	M	M	Jeddeyl Jbeil	ML	M	M	Jlisse	VL	L	L
Jouret El-Qattine	VL	L	ML	Kfar Baal Annaya	VL	L	ML	Kfar Kidde	ML	M	M
Kfar Kouas	VL	L	L	Kfar Mashoun	L	ML	M	Kfoun	L	L	M

Kharbe Jbeil	L	ML	M	Laqlouq	L	L	M	Lassa	VL	L	L
Lehfed	L	L	L	Maad	L	ML	M	Mar Sarkis	L	L	M
Mastita	VL	M	M	Mayfouq	L	L	ML	Mazraat El Siyad	L	L	M
Mazraat El-Maaden	VL	VL	L	Mechane	VL	L	ML	Mechmech Jbeil	VL	L	ML
Mehrin	VL	L	M	Mejdel El-Akoura	L	L	M	Mghayreh Jbeil	L	L	M
Mounsef	ML	M	M	Nahr Ibrahim	VL	M	M	Qahmez	VL	L	L
Qartaba	VL	L	L	Qartaboun	L	M	M	Qattara Jbeil	VL	L	L
Qorqraya	VL	VL	L	Ramout	L	ML	M	Ras Osta	VL	L	L
Rihane Jbeil	ML	M	M	Sakiet El-Khayt	L	ML	M	Saqi Richmaya	VL	L	L
Sebrine	VL	L	L	Seraita	L	L	M	Souane Jbeil	VL	L	L
Tadmor	L	L	M	Tartej	L	L	ML	Torzaiya	VL	L	ML
Yanouh Jbeil	L	L	M	Zibdine Jbeil	VL	L	ML				

El Metn

Municipality	02-Nov	03-Nov	04-Nov	Municipality	02-Nov	03-Nov	04-Nov	Municipality	02-Nov	03-Nov	04-Nov
Aain El-Qabu	VL	L	ML	Aain El-Qach	VL	L	M	Aain El-Teffaha	VL	L	ML
Aain el-Safssaf El-M	VL	L	L	Abou Mizane	VL	L	ML	Ain Aar	VL	M	M
Ain Alaq	VL	L	M	Ain El-Kharroube	VL	L	M	Ain El-Sendianeh	VL	L	M
Ain El-Zeitoune	VL	L	ML	Ain Saadeh	VL	L	M	Aintoura El-Matn	L	L	M
Amaret Chalhoub	VL	M	M	Antelias	VL	M	M	Atchaneh	VL	L	M
Ayroun	VL	L	ML	Baabdat	VL	L	L	Baouchariyeh	VL	M	M
Baskinta	VL	L	M	Beit Chabab	VL	L	ML	Beit El-Chaar	VL	M	M
Beit El-Kekko	VL	M	M	Beit Mery	VL	L	M	Bhersaf	VL	L	ML
Bikfaya	VL	L	ML	Biyakout	VL	M	M	Bnabil	VL	L	ML
Bourj Hammoud	VL	M	M	Bqennaya	VL	ML	M	Broummana El-Matn	VL	L	M
Bsalim	VL	L	M	Bsifrine	VL	VL	ML	Bteghrine	VL	L	ML
Chaouiye	VL	L	M	Chouaya El-Matn	VL	L	ML	Choueir	VL	L	ML
Chrine	VL	L	L	Dahr El Sawan El-Mat	VL	L	M	Daychouniyeh	VL	L	M
Dbayeh	VL	M	M	Deir Chamra	VL	VL	L	Deir Mar Abda el Mch	VL	L	M
Deir Mar Roukouz	L	M	M	Deir Tamiche	VL	L	M	Dik El-Mehdi	VL	ML	M
Dikwaneh	L	M	M	Douar El-Matn	VL	L	ML	Fanar	VL	ML	M
Fraike	VL	L	M	Haret El-Ballaneh	VL	ML	M	Hbous	VL	ML	M
Himlaya	VL	L	ML	Jal El Did	VL	M	M	Jdeideh El-Metn	VL	M	M
Jouar El-Matn	VL	L	L	Jouret El-Ballout	VL	L	M	Kaaqour	VL	L	ML
Kfar Aaqab	VL	VL	L	Kfertay El-Matn	VL	L	ML	Khenchara	VL	L	ML
Khillet El-Mtain	VL	L	ML	Konnabat Broummana	VL	L	M	Konnabat Salima	VL	VL	L
Machraah El-Matn	VL	L	ML	Majdel Tarchich	L	L	M	Majzoub	VL	ML	M
Mansouriyeh El-Metn	L	M	M	Mar Boutros Karm Et-	VL	L	ML	Mar Chaya et Mzekke	VL	L	M
Mar Moussa Ed-Douar	VL	L	L	Marjaba	VL	L	ML	Masqa	VL	L	M
Mayasse	VL	L	ML	Mazraat Deir Aoukar	VL	ML	M	Mazraat El-Hadirat	VL	ML	M
Mazraat Yachouh	VL	M	M	Mchikha	VL	L	ML	Menqlet Mezher	VL	ML	M
Mhaydseh Matn	VL	L	ML	Mkalles	L	M	M	Mrouj	VL	L	M
Mtain	L	L	M	Mtayleb	VL	ML	M	Nabay	VL	L	M
Naccache	VL	ML	M	Ouadi Chahine	VL	L	ML	Ouadi El-Karm El-Mat	VL	VL	L
Ouata El-Mrouj	VL	L	ML	Ouyoun El-Matn	VL	L	ML	Qornet Chehwan	VL	ML	M
Qornet El-Hamra	VL	L	M	Roumieh	VL	L	M	Sfeilet Bikfaya	VL	L	L
Sinn El-Fil	L	M	M	Zabbougha	VL	VL	L	Zalqa	VL	M	M

Zarouon	VL	L	ML	Zekrite	VL	L	M	Zighrine El-Matn	VL	L	ML
Zouk El-Khrab	VL	ML	M								

Chouf

Municipality	02-Nov	03-Nov	04-Nov	Municipality	02-Nov	03-Nov	04-Nov	Municipality	02-Nov	03-Nov	04-Nov
Aalmane El-Chouf	VL	M	M	Aammij El-Chouf	VL	VL	ML	Ain Ouzein	VL	VL	L
Ain Qani	VL	VL	L	Ain Zhalta	VL	L	M	Ainbal	VL	VL	ML
Amatour	VL	L	ML	Anout	VL	L	ML	Atrine	VL	VL	ML
Baadarane	VL	L	ML	Baaqline	VL	VL	ML	Baasir	VL	M	M
Barja	L	M	M	Barouk	VL	L	M	Bater	VL	L	ML
Batloun	VL	L	M	Bayqoun	VL	L	M	Bchetfine	VL	VL	ML
Beiteddine	VL	VL	L	Benouati Ech-Chouf	VL	VL	ML	Berjein	VL	VL	ML
Bireh et Mtalleh	VL	L	ML	Biret El-Chouf	VL	L	M	Bkechtine Ouel Mchei	VL	VL	L
Bkifa El-Chouf	VL	L	M	Botme	VL	VL	L	Bqaiaa Ech-Chouf	VL	VL	L
Bsaba El-Chouf	VL	L	ML	Chammis El-Chouf	L	ML	M	Chehim	VL	L	ML
Chemaarine	VL	VL	L	Chourit	VL	VL	L	Daher El-Chouf	VL	ML	M
Dalhoun	VL	L	M	Damour	VL	ML	M	Daraya El-Chouf	VL	VL	ML
Deir El-Moukhalles	VL	VL	ML	Deir Baba	VL	VL	ML	Deir Dourit	VL	VL	ML
Deir El-Qamar	VL	VL	ML	Deir Kouche	VL	VL	ML	Dibbieh	VL	L	ML
Dmit	VL	VL	ML	Fouara Jaafar	VL	VL	ML	Fraidis El-Chouf	VL	ML	M
Ghabet Jaafar	VL	VL	ML	Gharife	VL	L	ML	Haret Jandal	VL	L	ML
Hasrout	VL	L	M	Jadra	VL	M	M	Jahlieh	VL	VL	ML
Jbeih El-Chouf	VL	L	ML	Jdeidet El-Chouf	VL	VL	ML	Jiyeh	VL	M	M
Jleilyeh	VL	L	M	Jmailiyeh	VL	ML	M	Joun	VL	L	M
Kahlounie El-Chouf	VL	L	ML	Ketermaya	L	M	M	Kfar Faqoud	VL	VL	ML
Kfar Hamal	VL	VL	M	Kfar Him	VL	VL	ML	Kfar Katra	VL	VL	ML
Kfar Niss	VL	L	M	Kfar hay	VL	VL	ML	Kfarnabrakh	VL	VL	ML
Khirbet Bisri	VL	L	ML	Knayse El-Chouf	VL	VL	L	Maaniyeh	L	ML	M
Maasser Beiteddine	VL	VL	ML	Maasser El-Chouf	VL	L	M	Majdalouna	VL	ML	M
Majdel El-Meouch	VL	VL	ML	Mazboud	VL	L	ML	Mazmoura	VL	L	M
Mazraat El Chouf	VL	L	ML	Mazraat El Daher	VL	L	ML	Mazraat El-Douair	VL	VL	L
Mechref	VL	VL	ML	Mghairie	VL	ML	M	Mghayrie El-Chouf	VL	VL	ML
Moukhtara	VL	VL	ML	Mrusti	VL	L	ML	Mtolle	VL	L	ML
Naameh	L	ML	M	Niha El-Chouf	VL	L	M	Ouadi Abou Youssef	VL	VL	L
Ouadi Ed-Deir	VL	VL	ML	Ouadi El-Sit	VL	VL	ML	Ouadi bnehlay	VL	VL	L
Qraibeh	VL	L	ML	Qreiaa	VL	VL	L	Rmayle El-Chouf	L	M	M
Semqaniyeh	VL	VL	ML	Sibline	L	M	M	Sirjbeil	VL	VL	ML
Warhanieh	VL	ML	M	Werdaniyeh	VL	M	M	Zaarourieh	VL	L	ML

Baabda

Municipality	02-Nov	03-Nov	04-Nov	Municipality	02-Nov	03-Nov	04-Nov	Municipality	02-Nov	03-Nov	04-Nov
Abadiyeh	VL	VL	ML	Ain Mouaffaq	VL	VL	ML	Araiya	VL	VL	ML
Arbaniyeh	VL	VL	L	Arsoun	VL	L	ML	Baabda	L	ML	M
Baalchmey	VL	VL	ML	Bmaryam	VL	L	M	Bourj El-Brajneh	L	M	M
Boutchay	L	ML	M	Bsaba Baabda	L	ML	M	Btekhney	VL	L	M
Btibyat	VL	L	M	Bzebdine	VL	L	ML	Chbeniyeh	VL	L	M
Chiyah	L	M	M	Chmeisset Baabda	VL	L	M	Chouit	VL	VL	ML
Deir El-harf	VL	L	M	Deir Khouna	VL	L	M	Dlaybeh	VL	VL	ML

Falougha	L	ML	M	Furn El-Chebbak	VL	M	M	Hadath Beyrouth	L	M	M
Halaliyeh Baabda	VL	VL	ML	Hammana	VL	ML	M	Haret El Sett	VL	VL	ML
Haret Hamze	VL	L	M	Haret Hreik	L	M	M	Hasbaiya El-Metn	VL	VL	ML
Jouar El-Hoz	VL	L	L	Jouret Arsoun	VL	L	ML	Kfar Chima	L	ML	M
Kfar Selouane	L	L	M	Khalouat Baabda	VL	ML	M	Kneisset Baabda	VL	L	ML
Laylakeh	L	M	M	Louayzeh Baabda	VL	L	M	Merdache	L	ML	M
Mzairaa Baabda	VL	VL	ML	Ouadi Chahrour El OI	L	L	M	Ouadi Chahrour El So	L	L	M
Qalaa Baabda	VL	L	M	Qhraybe Baabda	VL	L	M	Qobbayaa	VL	L	M
Qornayel	VL	L	L	Qortada	VL	L	M	Qrayeh Baabda	VL	L	M
Qsaibeh Baabda	VL	L	M	Qtale Baabda	VL	L	M	Ras El Metn	VL	L	M
Ras El-Haref	VL	L	M	Rouayset El-Ballout	VL	VL	ML	Salima Baabda	VL	L	ML
Tahouitat El Ghadir	L	M	M	Tarchich	L	L	M	Zandouqa	VL	L	M

Aley

Municipality	02-Nov	03-Nov	04-Nov	Municipality	02-Nov	03-Nov	04-Nov	Municipality	02-Nov	03-Nov	04-Nov
Abey	VL	VL	ML	Aghmid	VL	L	M	Ain Dara	L	ML	M
Ain Drafil	VL	L	M	Ain El Halazoun	VL	VL	ML	Ain El-Rmmaneh	VL	VL	L
Ain Jedideh	VL	VL	M	Ain Ksour	VL	L	M	Ain Onoub	L	L	M
Ain Traz	VL	VL	ML	Ainab	L	L	M	Aley	VL	VL	ML
Aramoun	L	L	M	Aytat	L	ML	M	Azouniyeh	VL	ML	M
Baawerta	VL	VL	ML	Badghan Oua Wadi Bad	VL	ML	M	Bassatine	L	ML	M
Bayssour	L	L	M	Bchamoun	L	L	M	Bdadoun	VL	L	ML
Behouara	VL	VL	ML	Bennay	VL	VL	ML	Bhamdoun El-Dayaa	VL	L	M
Bhamdoun El-Mhatta	VL	L	M	Bkhechthey	VL	VL	M	Bleibel	L	L	M
Bmakine	VL	L	M	Bmehray	L	L	M	Bouzrid	VL	VL	ML
Bserrine	VL	VL	M	Bsous	VL	VL	L	Btalloun	VL	VL	M
Btater	VL	VL	M	Chanay	VL	L	M	Charoun	VL	ML	M
Chartoun	VL	VL	ML	Chemlane	L	L	M	Choueifat El-Aamrous	L	M	M
Choueifat El-Oumara	L	ML	M	Choueifat El-Quoubbe	L	ML	M	Dakkoun	VL	VL	ML
Deir Qoubel	L	L	M	Dfoun	L	L	M	Douair El Remmaneh	VL	VL	ML
Ghaboun	VL	VL	ML	Habramoun	VL	VL	L	Homs Oua Hama	VL	VL	ML
Houmal	L	L	M	Jisr El Qadi	VL	VL	ML	Kehaleh	VL	VL	L
Keyfoun	L	L	M	Kfar Aamey	VL	VL	ML	Kommatyeh	VL	VL	ML
Maasrati	VL	VL	ML	Majdel Baana	VL	ML	M	Mansourieh et Ain El	VL	VL	M
Mazraat El-Nahr	VL	VL	ML	Mchakhte	VL	L	M	Mecherfeh	VL	L	M
Mejdaya	VL	VL	ML	Mrayjat	VL	ML	M	Ramliyah	VL	L	M
Rechmaya	VL	VL	ML	Rejmeh	VL	VL	ML	Remhala	VL	L	M
Rouayset El Neemane	VL	VL	M	Saoufar	VL	ML	M	Selfaya	VL	VL	ML
Sirhmoul	L	L	M	Souq El Ghareb	VL	L	M	Taazanieh	VL	VL	M

Kesrouane

Municipality	02-Nov	03-Nov	04-Nov	Municipality	02-Nov	03-Nov	04-Nov	Municipality	02-Nov	03-Nov	04-Nov
Achkout	VL	VL	L	Adma Oua Dafneh	VL	L	M	Ain Ed-Delbe Kesroua	VL	VL	L
Ain El-Rihane	VL	L	M	Aintoura Kesrouane	VL	L	M	Ajaltoun	VL	VL	L
Akaybeh Kesrouane	L	M	M	Aramoun Kesrouane	VL	VL	L	Azra ouel Ozor	VL	L	ML
Ballouneh	VL	VL	L	Batha	VL	VL	ML	Bekaatat Achkout	VL	VL	ML
Bekaatat Kanaan	VL	VL	L	Bizhel	VL	L	ML	Bouar	VL	ML	M
Bqaatouta	VL	L	ML	Bqaq Ed-Dine	VL	ML	M	Bzommar	VL	VL	L

Chahtoul	VL	VL	L	Chnaniir	VL	VL	L	Chouan	VL	VL	L
Daraya Kesrouane	VL	VL	L	Darououn	VL	L	ML	Deir Baqlouch	VL	L	M
Dlebta	VL	VL	L	Eghbeh	VL	VL	L	Faraya	VL	L	M
Fatka	VL	L	ML	Feytroun	VL	VL	L	Ghazir	VL	L	ML
Ghbaleh Kesrouane	VL	L	ML	Ghedrass	VL	L	L	Ghosta	VL	VL	L
Ghyneh	VL	VL	L	Harharaya w Kattine	VL	VL	L	Harissa Kesrouane	VL	L	M
Hayata	VL	VL	L	Hosein	VL	L	L	Hrajel	VL	L	M
Jdeideh Ghazir	VL	VL	L	Jeita	VL	L	M	Jounieh Ghadir	VL	L	M
Jounieh Haret Sakhr	VL	ML	M	Jounieh Salel Alma	VL	L	M	Jounieh Sarba	VL	ML	M
Jouret Bedrane	VL	L	ML	Jouret Mhad	VL	VL	L	Jouret Termos	VL	L	ML
Kfar Debiane	VL	L	ML	Kfar Tay Kesrouane	VL	VL	L	Kfar Yassine	VL	ML	M
Kfour Kesrouane	VL	VL	L	Kharayeb Nahr Ibrahi	VL	L	M	Klayaat Kesrouane	VL	VL	L
Maarab	VL	VL	L	Maaysra Kesrouane	VL	L	ML	Mayrouba	VL	L	ML
Mazraat Er-Ras	VL	L	M	Mazraat Mrah El-Mir	VL	VL	L	Mchaa El Ftouh	L	ML	M
Mchaa Faraya	VL	L	M	Mchaa Kfar Dibiane	L	L	M	Mghaer	VL	VL	L
Mradiyah	VL	L	ML	Nahr Ed-Dahab	VL	L	L	Nammoura Kesrouane	VL	L	ML
Ouata El Jaouz	VL	VL	L	Ouata Sillam	VL	ML	M	Raachine	VL	VL	L
Rayfoun	VL	VL	L	Safra Kesrouane	VL	ML	M	Shayle Kesrouane	VL	L	ML
Tabarja	VL	L	M	Yahchouch	VL	L	ML	Zaaytreh	VL	L	ML
Zeytoun	L	L	M	Zouk Mikael	VL	ML	M	Zouk Mosbeh	VL	ML	M

Baalbek_Hermel

Baalbek

Municipality	02-Nov	03-Nov	04-Nov	Municipality	02-Nov	03-Nov	04-Nov	Municipality	02-Nov	03-Nov	04-Nov
Aadous	ML	M	M	Aamchki	L	L	ML	Aarsal	ML	L	M
Ain Baalbek	M	L	M	Ain Bourday	L	L	ML	Ain El-Benye	L	L	ML
Ain El-Jaouz Baalbek	L	L	ML	Ain El-Siya Chadoura	L	L	ML	Al Khodr Baalbek	L	ML	M
Al Nabi Chit	ML	ML	M	Aynata Baalbek	ML	M	M	Baalbek	L	L	M
Bachwat	M	M	M	Barqa	M	M	M	Bednayel Baalbak	L	M	M
Beit Chama	ML	M	M	Bijjaje	M	L	M	Bouday	M	M	M
Brital	L	ML	M	Btadi	M	M	M	Chaat	M	ML	M
Chaibe	L	L	ML	Chlifa	M	M	M	Chmestar	L	M	M
Dar El-Oussa	M	M	M	Deir El-Ahmar	M	M	M	Deir Mar Maroun Baal	M	L	M
Douris	L	M	M	Fakiha	M	L	M	Hadath Baalbek	L	M	M
Ham	L	L	ML	Haour Taala	L	L	M	Hizzine	ML	M	M
Hlebta	M	L	M	Hosh Barada	ML	M	M	Hosh El Dahab	M	M	M
Hosh El Snid	ML	ML	M	Hosh El-Nabi	ML	M	M	Hosh El-Rafiq	ML	M	M
Hosh Tal Safiya	M	M	M	Hrebta	M	ML	M	laat	M	M	M
Jebaa	L	M	M	Jenta	L	L	M	Kfar Dabach	ML	M	M
Kfar Dane	ML	M	M	Khraibeh El-Hermel	M	L	M	Khreibet Baalbek	L	L	M
Kneisset Baalbek	M	M	M	Labueh	M	L	M	Maarboun	L	L	ML
Majdaloun	ML	M	M	Maqneh	M	ML	M	Mazraat Beit Mcheik	ML	M	M
Misraya	ML	M	M	Moqraq	ML	L	M	Nabha El-Damdoum	M	M	M
Nabi Chbay	L	L	M	Nabi Osman	M	L	M	Nahleh baalbek	L	L	M
Ouadi El-Oss	M	L	M	Qaa Baayoun	M	L	M	Qaa Jouar Maqiye	M	L	M
Qaa Ouadi El-Khanzir	M	L	M	Qah Baalbek	M	L	M	Qarha Baalbek	M	M	M

Qsarnaba	ML	M	M	Ram Baalbek	M	M	M	Ras Baalbek El Sahl	M	L	M
Ras Baalbek El-Charq	M	L	M	Riha	M	M	M	Saaide	ML	M	M
Sbouba	M	L	M	Seriine El-Tahta	ML	M	M	Slouqi	L	M	M
Taiba Baalbek	ML	M	M	Talia	ML	M	M	Taraiya	L	M	M
Temnin El Fawqa	ML	M	M	Temnin El-Tahta	ML	M	M	Tfail	L	L	ML
Yahfoufa	L	ML	M	Yammouneh	ML	M	M	Younine	ML	L	M
Zboud	M	L	M								

Hermel

Municipality	02-Nov	03-Nov	04-Nov	Municipality	02-Nov	03-Nov	04-Nov	Municipality	02-Nov	03-Nov	04-Nov
Charbine El-Hermel	L	VL	ML	Hermel Jbab	ML	L	M	Hermel	M	L	M
Maaysra El-Hermel	M	M	M	Michaa Mrajhine	L	VL	ML	Ouadi Faara	M	L	M
Ras Baalbek - Ouadi	M	ML	M	Ras Baalbek El Gharb	M	ML	M	Zighrine	M	L	M

Akkar

Akkar

Municipality	02-Nov	03-Nov	04-Nov	Municipality	02-Nov	03-Nov	04-Nov	Municipality	02-Nov	03-Nov	04-Nov
Aain Tinta	ML	ML	M	Aaiyat	ML	L	M	Aakkar El-Aatiqa	L	L	ML
Aamar Akkar	L	M	M	Aamar El Baykat	L	ML	M	Aamayer	M	ML	M
Aamriyet Akkar	ML	ML	M	Aandqet	ML	L	M	Aarmeh	L	ML	M
Aarqa	L	M	M	Aawaynat	ML	L	M	Aayoun Akkar	ML	L	M
Abboudiye	VL	M	M	Ain El-Zeit	ML	ML	M	Ain Yaaqoub	L	L	M
Akroum	M	L	M	Aridet Cheikh Zennad	L	M	M	Baldeh w Mazraat Bal	L	M	M
Barcha	L	M	M	Bardeh	ML	ML	M	Bebnine	ML	M	M
Beino	L	L	M	Beit Ayoub	L	L	M	Beit El-Haouch	ML	M	M
Beit Mellat	ML	L	M	Beit Younes	L	L	ML	Berbara Akkar	L	ML	M
Berqayel	L	M	M	Bezbina	L	VL	L	Bireh Akkar	L	ML	M
Borj	ML	L	M	Bqerezla	L	ML	M	Bzal	L	L	M
Chane	L	L	M	Chaqdouf	ML	L	M	Charbila	L	M	M
Cheikh Mohammad	L	M	M	Cheikh Taba Es-Sahl	L	M	M	Cheikh Taba	L	L	M
Cheikh Zennad	L	M	M	Cheikhlar	M	L	M	Chir Hmairine	L	M	M
Daghle	L	ML	M	Dahr Laissine	L	L	M	Darine	L	M	M
Dawra	L	L	M	Dawsa w Baghdadi	ML	ML	M	Dayret Nahr El-Kabir	ML	ML	M
Deir Dalloum	L	M	M	Deir Jennine	L	ML	M	Denbou	L	L	M
Dibbabiyyeh	ML	ML	M	Douair Aadwiyeh	L	ML	M	Fassikine	L	ML	M
Fnaydek	L	VL	ML	Fraydes Akkar	L	L	M	Ghazayle	L	M	M
Habchit	L	L	ML	Hakour	L	M	M	Halba	L	ML	M
Haouchab	L	M	M	Hayssat	L	M	M	Haytla	L	M	M
Hayzouq	L	M	M	Hedd	L	M	M	Hmaira Akkar	L	M	M
Hmaiss Akkar	L	M	M	Hnaider	M	ML	M	Hokr Ed-Dahri	L	M	M
Hokr Etti	L	M	M	Hokr Jouret Srar	L	M	M	Houaich	L	L	M
Hrar	L	L	M	Idbil	L	L	M	Ilat	L	L	M
Janine	L	M	M	Jdeidet El-Joumeh	L	ML	M	Jdeidet El-Kaiteh	L	M	M
Jebraiyel	L	L	M	Kafr	L	ML	M	Kafr	ML	ML	M
Karm Asfour	L	L	M	Kfar Melki Akkar	L	M	M	Kfar Noun	L	L	M
Kfarharra	L	M	M	Khalsa	ML	L	M	Kharnoubet Akkar	L	M	M

Khirbet Daoud Aakkar	L	ML	M	Khirbet El Remmane	ML	L	M	Khirbet Shar	L	ML	M
Khoreybet El-Jindi	L	M	M	Khreibet Aakkar	L	L	M	Kneisset Aakkar	L	M	M
Kneisset Hnaider	M	ML	M	Knisse	L	M	M	Kroum El-Aarab	L	M	M
Kwachra	ML	ML	M	Kweykhath	L	M	M	Machta Hammoud	ML	ML	M
Majdala	L	M	M	Majdel Akkar	ML	ML	M	Mar Touma	L	M	M
Marlaya Melhem	L	M	M	Mashha	L	ML	M	Massoudiye	L	M	M
Mazraat Beit Ghattas	L	M	M	Mazraat En-Nahriye	M	L	M	Mechmech	L	VL	L
Memneh	L	VL	L	Mhammara	ML	M	M	Mighraq Aakkar	L	M	M
Minyara	L	M	M	Moqayteh	L	M	M	Mounjez	L	L	M
Msalla	ML	ML	M	Mzeihmeh	L	M	M	Nfaisheh	L	ML	M
Noura Et-Tahta	ML	L	M	Ouadi El-Haour	L	M	M	Ouadi El-Jamous	L	M	M
Ouyoun El-Ghizlane	L	M	M	Qaabarine	L	M	M	Qabaait	L	L	M
Qachlaq	L	M	M	Qantara Aakkar	L	L	M	Qarha Aakkar	M	ML	M
Qarqaf	L	M	M	Qboula	ML	L	M	Qleiaat Aakkar	L	M	M
Qloud El-Baqie	L	M	M	Qobaiyat Aakkar	ML	L	M	Qobbat Chamrat	ML	M	M
Qorayat	L	L	M	Qornet Aakkar	L	L	M	Qsair Aakkar	L	ML	M
Rahbe	L	L	M	Rihaniyet Aakkar	L	M	M	Rmah	ML	L	M
Rmoul	L	M	M	Saadine	L	M	M	Sadaqa	L	L	M
Saidnaya	L	M	M	Sammouniye	L	M	M	Sayssoouq	L	M	M
Semmaqiye	L	M	M	Semmaqli	ML	M	M	Sfinet El-Dreib	L	M	M
Sfinet El-Qaitaa	L	L	M	Sindyanet Zeidane	ML	L	M	Souaisset Aakkar	L	M	M
Srar	L	M	M	Tal Abbas El Gharby	L	M	M	Tal Abbas El-Chargy	L	M	M
Tal Biret	L	M	M	Tal Hmayra	L	M	M	Tal Maayan Tal Kiri	L	M	M
Tal Sibel	L	M	M	Tallet Chattaha	ML	L	M	Tikrit	L	L	M
Tleil	L	M	M	Tshea	L	L	ML	Zawarib	L	L	M
Zouq El Hosniyeh	L	M	M	Zouq El-Haddara	L	M	M	Zouq El-Hbalsa	L	M	M
Zouq El-Mogachrine	L	M	M								

Sud

Sour

Municipality	02-Nov	03-Nov	04-Nov	Municipality	02-Nov	03-Nov	04-Nov	Municipality	02-Nov	03-Nov	04-Nov
Aaiyeh	VL	ML	M	Aalma El-Chaab	L	M	M	Aaytit	VL	ML	M
Abbassiyeh Sour	L	M	M	Abou Chech	L	ML	M	Ain Abou Abdallah	L	M	M
Ain Baal	L	M	M	Arzoun	VL	M	M	Aziyeh	VL	ML	M
Baflaya	L	M	M	Barich	L	M	M	Batouliyeh	VL	M	M
Bayad	VL	ML	M	Bazouriyeh	L	M	M	Bediass	L	M	M
Bestiyat	L	M	M	Borj El Chemali	ML	M	M	Borj En-Naqoura	L	M	M
Borj Rahhal	L	M	M	Boustane	L	ML	M	Btaychiyeh	L	ML	M
Chaaitiye	VL	ML	M	Chameh	L	ML	M	Chehabiye	L	M	M
Chehour	L	M	M	Chihine	L	ML	M	Debaal Sour	L	M	M
Deir Amess	VL	L	M	Deir Kifa	L	M	M	Deir Qanoun El-Ain	VL	M	M
Deir Qanoun El-Naher	L	M	M	Derdghaiya	L	M	M	Dhayra	L	ML	M
Halloussiyeh	L	M	M	Hamoul	L	ML	M	Hanaouey	VL	M	M
Henniye	VL	M	M	Hmairi Sour	L	M	M	Iskandarouna Sour	L	ML	M
Jbal El Botom	VL	ML	M	Jebbin	L	ML	M	Jennata	L	M	M
Jijim	L	ML	M	Jouaiya	L	M	M	Kneisset Sour	VL	M	M

Maarake	L	M	M	Maaroub	L	M	M	Majadel	L	M	M
Majdalzoun	L	ML	M	Mansouri Sour	VL	M	M	Marnba	VL	M	M
Marouahine	VL	L	M	Mazraat El-Zalloutiy	L	ML	M	Mazraat Mechref	L	ML	M
Mazraat Tayr Semhat	VL	M	M	Mheilib	ML	M	M	Neffakhiyeh	VL	M	M
Niha Sour	VL	M	M	Ouadi Jilo	L	M	M	Qana	VL	ML	M
Qolaileh Sour	VL	M	M	Rechknany	VL	ML	M	Rmadiyeh	VL	ML	M
Selha Sour	VL	M	M	Siddiqine	VL	ML	M	Sour	L	M	M
Srifa	VL	M	M	Tayr Debbe	L	M	M	Tayr Felsay	L	M	M
Tayr Harfa	L	ML	M	Touayri	VL	M	M	Toura	L	M	M
Yanouh Sour	L	M	M	Yarine	L	M	M	Zebqine	VL	L	M

Saida

Municipality	02-Nov	03-Nov	04-Nov	Municipality	02-Nov	03-Nov	04-Nov	Municipality	02-Nov	03-Nov	04-Nov
Aanqoun	VL	ML	M	Aaqtanit	L	M	M	Aarab Ej-Jall	VL	ML	M
Aarab Tabbaya	VL	ML	M	Abra Saida	L	M	M	Adloun	L	M	M
Adousiyeh	L	M	M	Ain-El-Deleb	VL	M	M	Arzai	L	M	M
Babliyah	L	M	M	Barty	VL	L	M	Bissariyeh	L	M	M
Bnaafoul	VL	ML	M	Bqosta	L	M	M	Bramiy	VL	M	M
Daoudiyeh	L	M	M	Dareb El-Sim	L	ML	M	Erkay	VL	ML	M
Ghassanieh	L	M	M	Ghazieh	L	M	M	Hajjeh	L	ML	M
Haret Saida	VL	M	M	Hartiyeh	L	M	M	Hlaliye Saida	VL	M	M
Insariyat	L	M	M	Jazira Saida	L	M	M	Kafar Bit	VL	ML	M
Kaoutariyet El-Siyad	L	M	M	Kfar Chellal	VL	L	M	Kfar Hatta Saida	L	ML	M
Kfar Milke Saida	VL	L	M	Khartoum	L	M	M	Khaziz	VL	ML	M
Khirbet Ed-Douair Sa	L	M	M	Khirbet El-Bassal	L	M	M	Khrayeb Saida	L	M	M
Loubieh	L	M	M	Maghdouche	L	ML	M	Majdelyoun	VL	M	M
Matariyet El-Choumar	L	M	M	Matayriyeh	L	M	M	Mazraat 'Mseileh	L	M	M
Mazraat 'Snaiber	L	M	M	Mazraat Aarab Soukka	VL	ML	M	Mazraat Deir Taqla	L	M	M
Mazraat El Yahoudiye	ML	M	M	Mazraat El-Housseini	ML	M	M	Mazraat El-Mhaydaleh	L	M	M
Mazraat El-Ouasta	L	M	M	Mazraat Jamjim	L	M	M	Mazraat Kaoutariyet	L	M	M
Mazraat Kfar Badda	L	M	M	Mazraat Oussamiyat	L	M	M	Mazraat Sari	L	M	M
Mazraat Sinai	L	M	M	Meemariyeh	L	M	M	Merouaniyeh	L	M	M
Miyeh ou Miyeh	VL	ML	M	Najjariyeh	L	M	M	Qaaqiyat El-Snaouba	L	M	M
Qnarit	L	M	M	Qraiye Saida	VL	ML	M	Saida Ed-Dekermane	VL	M	M
Saida El-Oustani	VL	M	M	Saida El-Qadimeh	VL	M	M	Saida Kefraya	L	ML	M
Saksakiyeh	L	M	M	Salhie Saida	L	M	M	Sarafand	L	M	M
Sfenta	VL	L	M	Tafahta	L	M	M	Tanbourit	L	ML	M
Tebna	L	M	M	Zaghdraiya	VL	ML	M	Zeita	VL	ML	M
Zrariyeh	L	M	M								

Jezzine

Municipality	02-Nov	03-Nov	04-Nov	Municipality	02-Nov	03-Nov	04-Nov	Municipality	02-Nov	03-Nov	04-Nov
Ain El-Mir (El Estab	VL	ML	M	Anane	VL	L	ML	Aramta	VL	ML	M
Ariya	VL	L	ML	Aychiyeh	VL	ML	M	Azour	VL	L	ML
Baba	VL	L	ML	Baysour Jezzine	VL	ML	M	Benoueteh Jezzine	VL	L	ML
Bhannine	VL	L	ML	Bisri	VL	VL	L	Bkassine	VL	L	ML
Bouslaya	VL	L	M	Btedine El-Leqech	VL	L	ML	Chbail	VL	L	M
Choualiq Jezzine	L	M	M	Dahr Ed-Deir	VL	L	M	Deir El Qattine	VL	L	M

Demachqiyeh	VL	M	M	Ghabbatiyeh	VL	L	ML	Harf Jezzine	VL	L	ML
Hassaniyeh	L	ML	M	Haytouleh	VL	L	M	Haytura	VL	L	M
Hidab	VL	L	M	Homsiyeh	VL	L	ML	Jabal Toura	VL	L	M
Jarmaq	VL	ML	M	Jensnaya	VL	ML	M	Jernaya	VL	L	M
Jezzine	VL	ML	M	Karkha	VL	ML	M	Kfar Falous	VL	L	M
Kfar Houna	VL	L	M	Kfar Jarrah	VL	M	M	Lebaa	VL	M	M
Louayzet Jezzine	VL	L	M	Machmouche	VL	L	L	Mahmoudiyeh Jezzine	VL	M	M
Maknounye Jezzine	VL	L	M	Maraat Ouazaiyeh	VL	ML	M	Mazraat Daraya	VL	L	M
Mazraat El-Aarqoub	VL	L	M	Mazraat El-Mathane	VL	VL	L	Mazraat El-Rahbane	VL	L	M
Mazraat Khallet Khaz	VL	L	M	Mazraat Louzid (Loua	VL	L	M	Mazraat Qrouh	VL	ML	M
Mazraat Tamra	VL	M	M	Mazraat Zighrine Jez	VL	ML	M	Mazraat	VL	L	M
Mharbiyeh	VL	ML	M	Midane Jezzine	VL	L	ML	Mjeydel Jezzine	VL	ML	M
Mlikh	VL	L	M	Mrach El-Hbasse	VL	ML	M	Ouadi Baanqoudaine	VL	ML	M
Ouadi El-Laymoun	VL	ML	M	Ouardiyeh	VL	L	ML	Qabaa Jezzine	VL	L	M
Qatrani	VL	L	M	Qaytouleh	VL	L	M	Qtaleh Jezzine	VL	VL	ML
Rihane Jezzine	VL	ML	M	Rimat	VL	L	M	Roum	VL	L	M
Roummanet	VL	L	M	Sabbah	VL	L	ML	Saydoun	VL	L	M
Sfaray	VL	L	ML	Snaya	VL	L	M	Sojoud	VL	ML	M
Srayri	VL	ML	M	Taaïd	VL	VL	L	Wadi Jezzine	VL	L	ML
Zhalta	VL	L	M								

Bekaa

West Bekaa

Municipality	02-Nov	03-Nov	04-Nov	Municipality	02-Nov	03-Nov	04-Nov	Municipality	02-Nov	03-Nov	04-Nov
Aammiq BG	L	ML	M	Ain El Tineh BG	VL	ML	M	Ain Zebdeh	L	ML	M
Ana	L	ML	M	Aytanit	VL	L	M	Baaloul BG	VL	ML	M
Bab Mareh	VL	ML	M	Chouberqiye Aammiq	L	ML	M	Dakoue	L	ML	M
Deir Ain El-Jaouze	VL	ML	M	Deir Tahniche	L	ML	M	Ghaza	L	ML	M
Harime El-Soughra	L	ML	M	Hoch Harimeh	L	ML	M	Jazira BG	L	ML	M
Jib Jennine	L	L	M	Kamed-El-Laouz	VL	L	M	Kefraya BG	VL	L	M
Khiara El Atika	L	ML	M	Khiara	L	ML	M	Khirbet Qanafar	VL	ML	M
Lala	VL	ML	M	Lebbaya BG	VL	ML	ML	Loussa	VL	ML	M
Machghara	VL	ML	M	Manara (Hammar) BG	ML	ML	M	Mansoura BG	L	ML	M
Marej BG	L	ML	M	Maydoun	VL	ML	M	Ouaqf BG	L	ML	M
Qaraaoun	VL	ML	M	Qelya	VL	ML	M	Raouda (Istabel)	L	ML	M
Saghbine	VL	ML	M	Sohmor	VL	ML	ML	Soltan Yacoub el Ara	L	ML	M
Souairy	L	ML	M	Sultan Yaacoub	L	ML	M	Tal Znoun	L	ML	M
Yehmor BG	VL	ML	M	Zilaya	VL	ML	ML				

Zahle

Municipality	02-Nov	03-Nov	04-Nov	Municipality	02-Nov	03-Nov	04-Nov	Municipality	02-Nov	03-Nov	04-Nov
Aanjar (Haouch Mouss	L	ML	M	Ablah	ML	M	M	Ain Kfarzabad	ML	ML	M
Ali-El-Nahri	ML	M	M	Bar Elias	L	ML	M	Bouarej	L	ML	M
Cheberqiyet Tabet	L	ML	M	Chtaura	L	ML	M	Deir El Ghazal	ML	ML	M
Delhamiyet Zahle	ML	ML	M	Ferzol	L	M	M	Haouch El-Ghanam	ML	M	M
Haouch Es-Siyadeh	L	ML	M	Haouch Hala	ML	M	M	Haouch Mandara	L	ML	M

Haouch Qayssar	L	ML	M	Hezerta	L	ML	M	Hosh Moussa	ML	ML	M
Jdita	L	ML	M	Kfarzabad	ML	ML	M	Ksara	L	ML	M
Majdel Aanjar	L	ML	M	Makssi	L	ML	M	Massa	L	M	M
Mazraat Er-Remtaniye	L	ML	M	Mrayjat Zahle	L	ML	M	Mzaraa Zahle	L	ML	M
Nabi Ayla	ML	M	M	Nasriyet Rizk	ML	ML	M	Nasriyet Zahle	L	ML	M
Niha Zahle	L	M	M	Ouadi Ed-Deloum	L	ML	M	Ouadi El-Arayech	L	M	M
Qaa El Rim	L	M	M	Qab Elias	L	ML	M	Qousaya	ML	ML	M
Rhit	ML	M	M	Riyak	ML	M	M	Saadnayel	L	ML	M
Taal El-Akhdar	L	ML	M	Taalbeya	L	ML	M	Taanayel	L	ML	M
Talamara	ML	M	M	Tcheflik Edde Haouch	L	ML	M	Tcheflik Qiqano	L	ML	M
Terbol Zahle	ML	ML	M	Touaite Zahle	L	ML	M	Zahle Aradi	L	M	M
Zahle El-Berbara	L	M	M	Zahle El-Maallaqa	L	M	M	Zahle El-Midane	L	M	M
Zahle Er-Rassiye	L	M	M	Zahle Haouch El-Ouma	L	ML	M	Zahle Haouch El-Ouma	L	M	M
Zahle Haouch Ez-Zara	L	M	M	Zahle Maalqa Aradi	L	M	M	Zahle Mar Antonios	L	M	M
Zahle Mar Elias	L	M	M	Zahle Mar Gerios	L	M	M	Zahle Saydet En-Naja	L	M	M
Zebdoul	L	ML	M								

Rachaiya

Municipality	02-Nov	03-Nov	04-Nov	Municipality	02-Nov	03-Nov	04-Nov	Municipality	02-Nov	03-Nov	04-Nov
Ain Arab Rachaiya	L	ML	ML	Ain Ata	L	L	ML	Ain Harche	L	L	L
Aqabe Rachaya	L	L	ML	Ayha	ML	ML	ML	Ayta El Fokhar	L	ML	M
Bakifa Rachaya	L	L	ML	Bakka	L	ML	ML	Beit Lahya	L	L	ML
Bireh Rachaiya	L	L	M	Daher El Ahmar	L	L	ML	Deir El-Achayer	M	M	M
Heloua Rachaiya	M	M	M	Hoch El Qannabeh Rac	L	L	L	Kaoukaba Bou Arab	L	L	ML
Kfar Danis	L	L	M	Kfar Mechki	VL	ML	ML	Kfar Qouq	ML	ML	M
Kherbet Rouha	L	L	M	Majdel Balhiss	VL	ML	M	Mdoukha	L	ML	M
Mhaydseh Rachaiya	L	L	M	Nabi Safa	VL	ML	ML	Rachaiya	L	L	ML
Rafid Rachaiya	L	L	M	Selsata (Mazraat Dei	M	M	M	Tannoura	L	L	ML
Yanta	ML	ML	M								

Beyrouth

Beyrouth

Municipality	02-Nov	03-Nov	04-Nov	Municipality	02-Nov	03-Nov	04-Nov	Municipality	02-Nov	03-Nov	04-Nov
Achrafieh	L	M	M	Ain el-Mreisse	VL	M	M	Bachoura	VL	M	M
Beirut Central Distr	VL	M	M	Marfai	VL	M	M	Mazraa	L	M	M
Medaouar	L	M	M	Minet el-Hosn	VL	M	M	Mwssaitbeh	L	M	M
Ras Beirut	L	M	M	Rmeil	VL	M	M	Saifi	VL	M	M
Zqaq el-Blat	VL	M	M								