

# Lebanon Fire Risk Bulletin



CIVIL DEDEFENCE

**Refer to cadast table condition.**

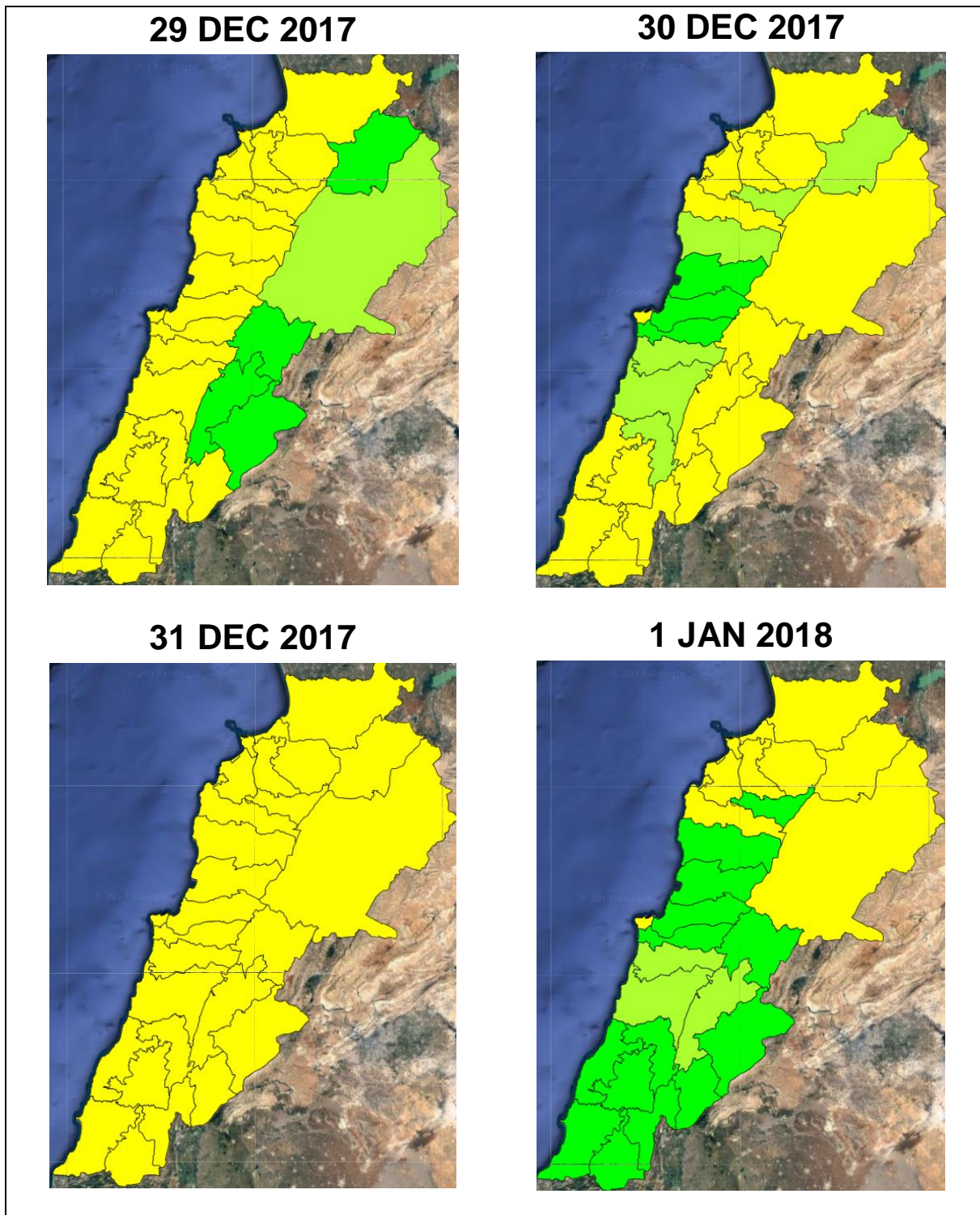
**Please note that the indicated temperature is at 2 meters height from the ground.**

General description of potential fire risk situation

Symbol	Level of risk	Meaning and actions
VL	Very low	Very low fire risk. Controlled burning operations can be hardly executed due to high fuel moisture content. Normally wildfires self-extinguish.
L	Low	Low fire risk. Controlled burning operations can be executed with a reasonable degree of safety.
ML	Medium low	Medium-low fire risk. Controlled burning operations can be executed in safety conditions. All the fires need to be extinguished.
M	Medium	Medium fire risk. Controlled burning operations would be avoided. All the fires need to be very well extinguished.
MH	Medium high	Controlled burning is not recommended. Open flame will start fires. Cured grasslands and forest litter will burn readily. Spread is moderate in forests and fast in exposed areas. Patrolling and monitoring is suggested. Fight fires with direct attack and all available resources.
H	High	Ignition can occur easily with fast spread in grass, shrubs and forests. Fires will be very hot with crowning and short to medium spotting. Direct attack on the head may not be possible requiring indirect methods on flanks. Patrolling and monitoring the territory is highly suggested.
E	Extreme	Ignition can occur also from sparks. Fires will be extremely hot with fast rate of spread. Control may not be possible during day due to long range spotting and crowning. Suppression forces should limit efforts to limiting lateral spread. Damage potential total. Patrolling and monitoring the territory is highly suggested.

**Beirut, 30 December 2017**

# FIRE RISK INDEX



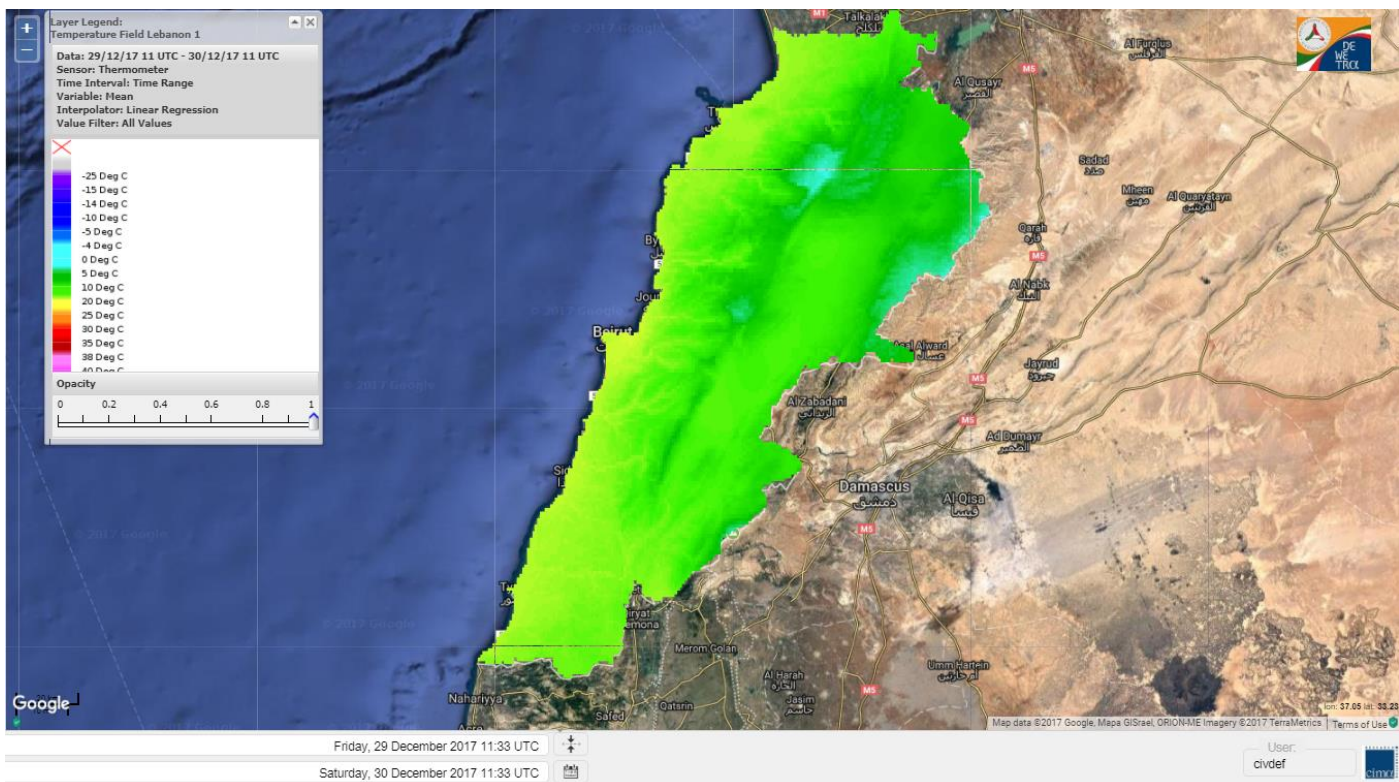
Layer Legend:  
Lebanon Wildfire Risk Index 1

Data: Run: 30/12/2017 00:00. Forecast for 30  
Model: RISICO for the Republic of Lebanon  
Variable: Fire Weather Index  
Spatial Resolution: Caza

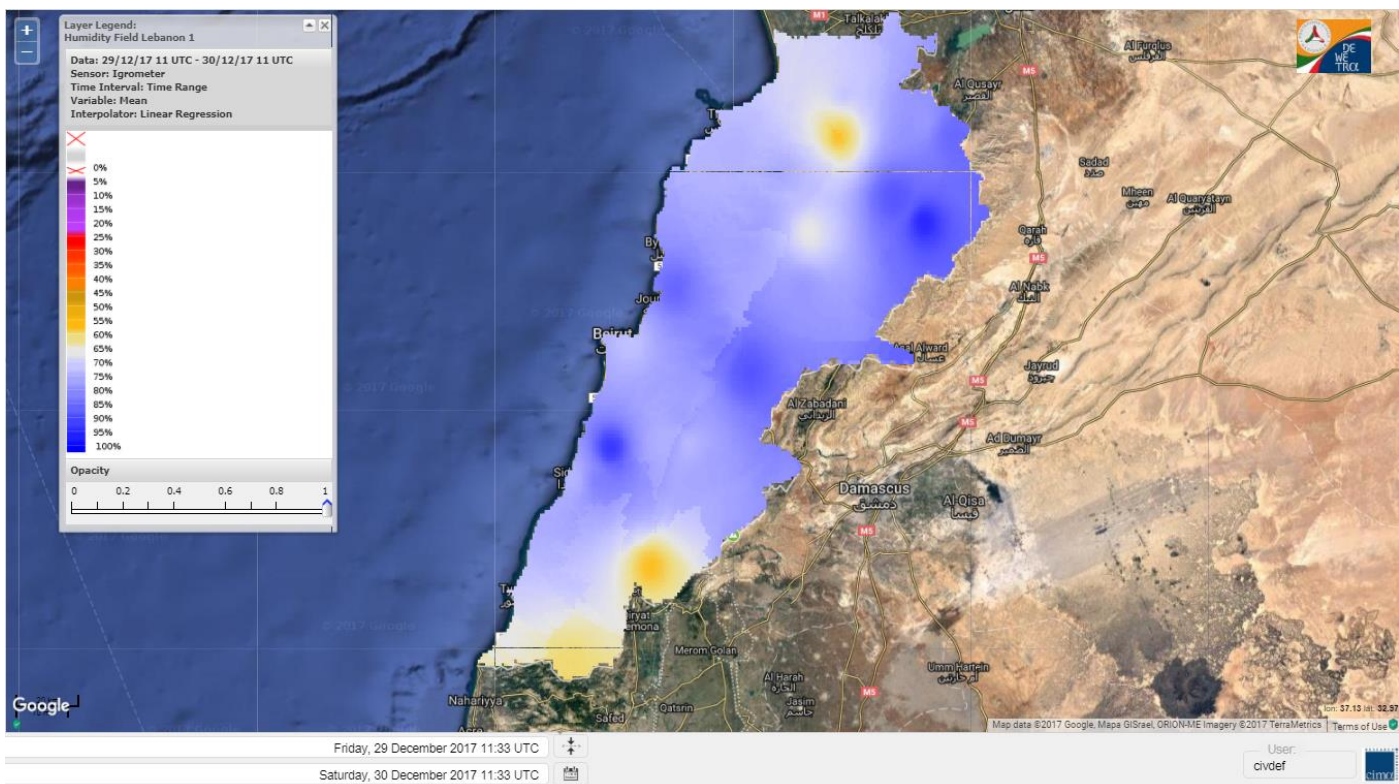
- VERY LOW
- LOW
- MEDIUM-LOW
- MEDIUM
- MEDIUM-HIGH
- HIGH
- EXTREME



# Lebanon temperature for 30 DEC 2017

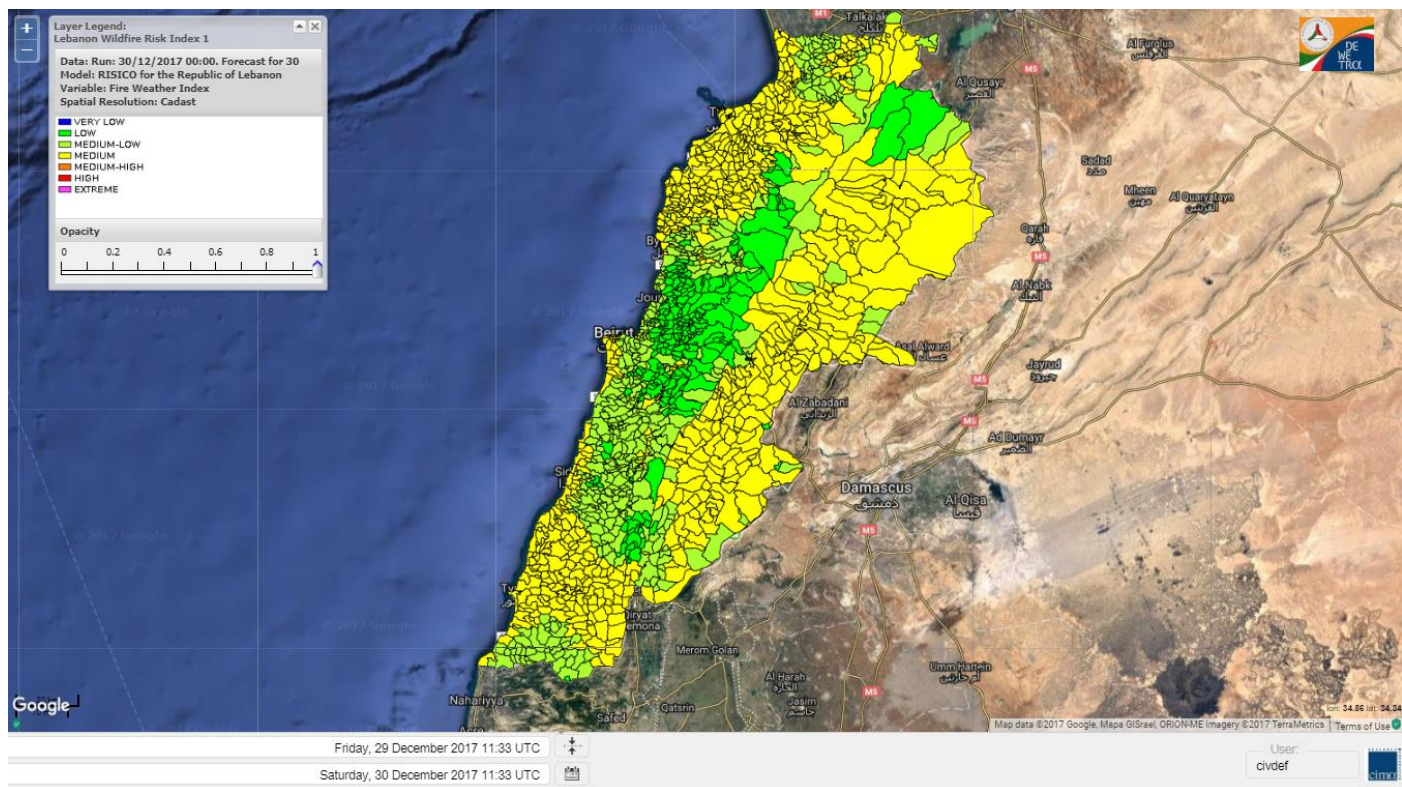


# Lebanon humidity for 30 DEC 2017

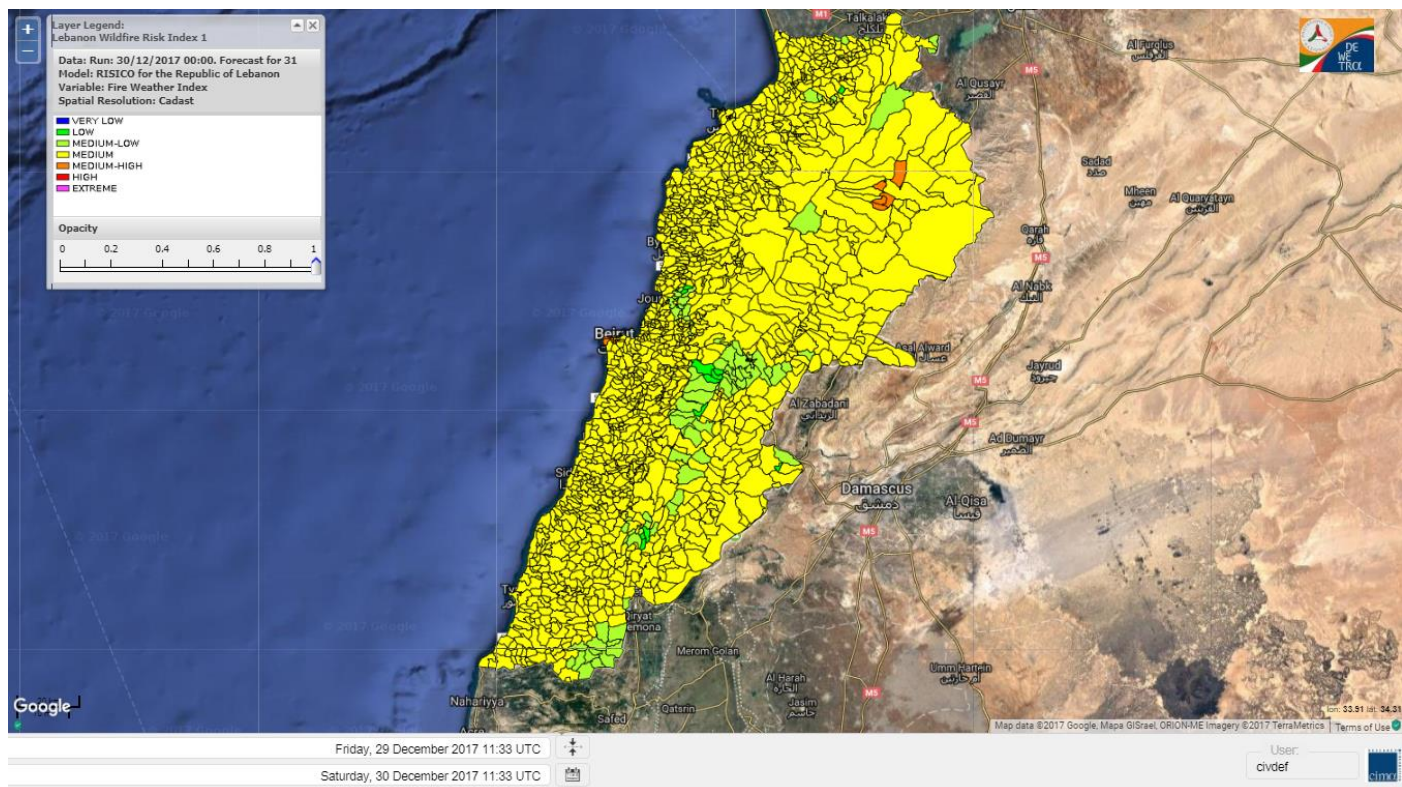




# Lebanon for 30 DEC 2017

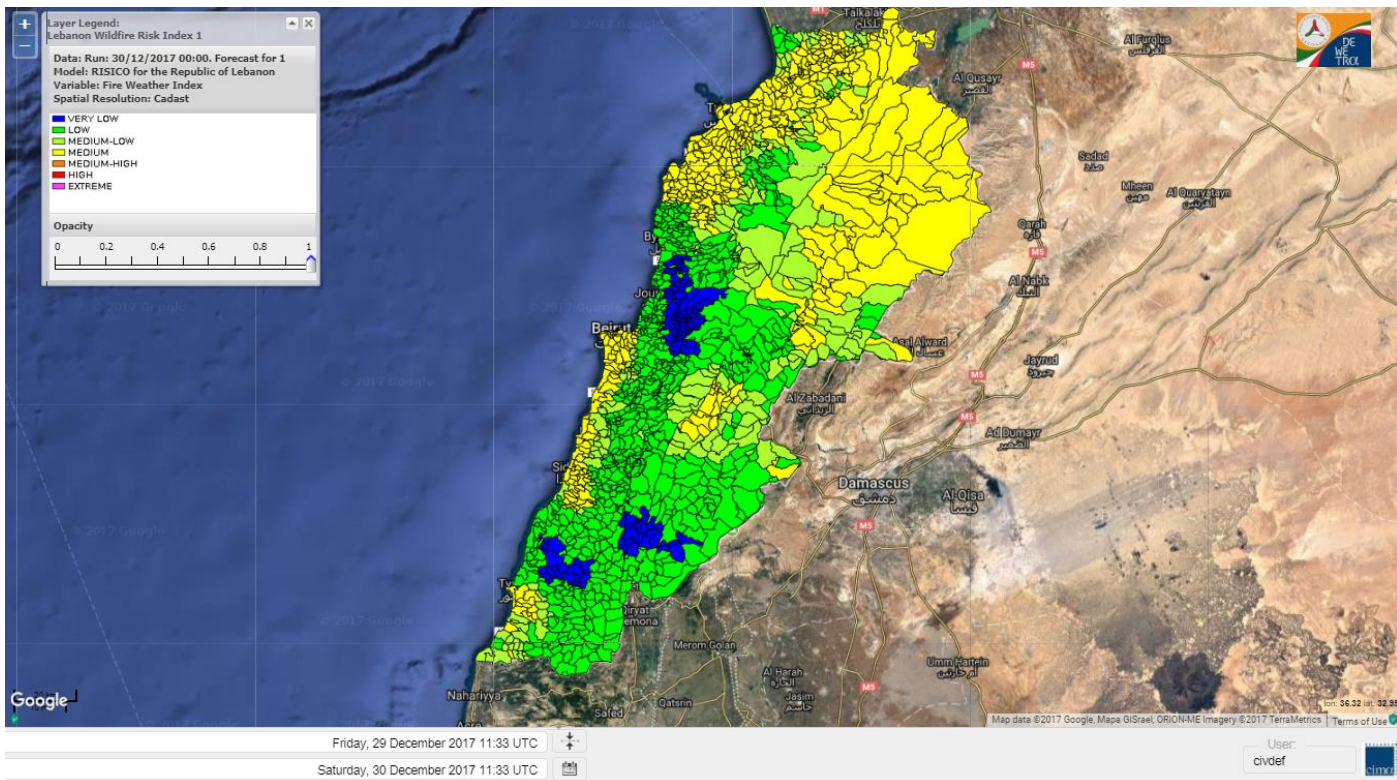


# Lebanon for 31 DEC 2017

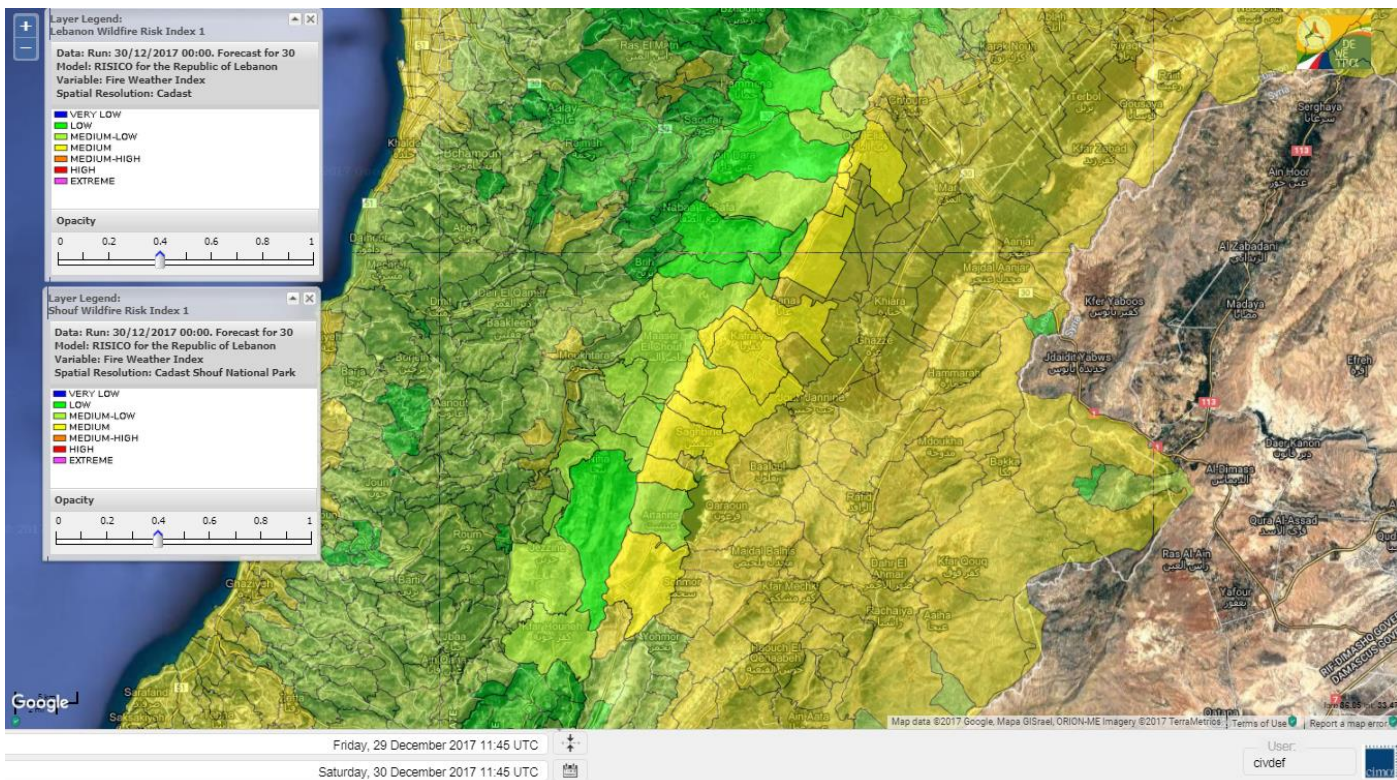




# Lebanon for 1 JAN 2018

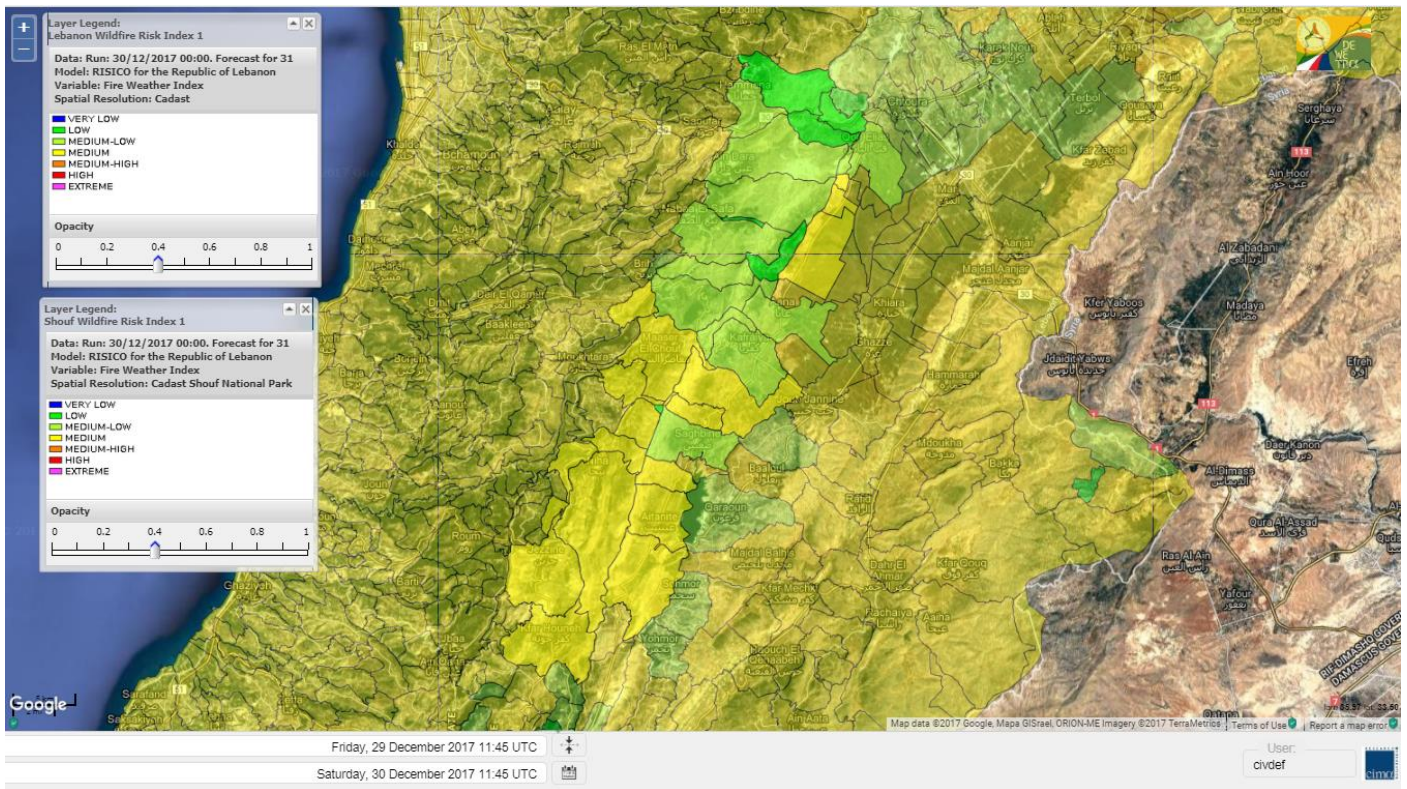


# Shouf Biosphere Reserve Forecast for 30 DEC 2017

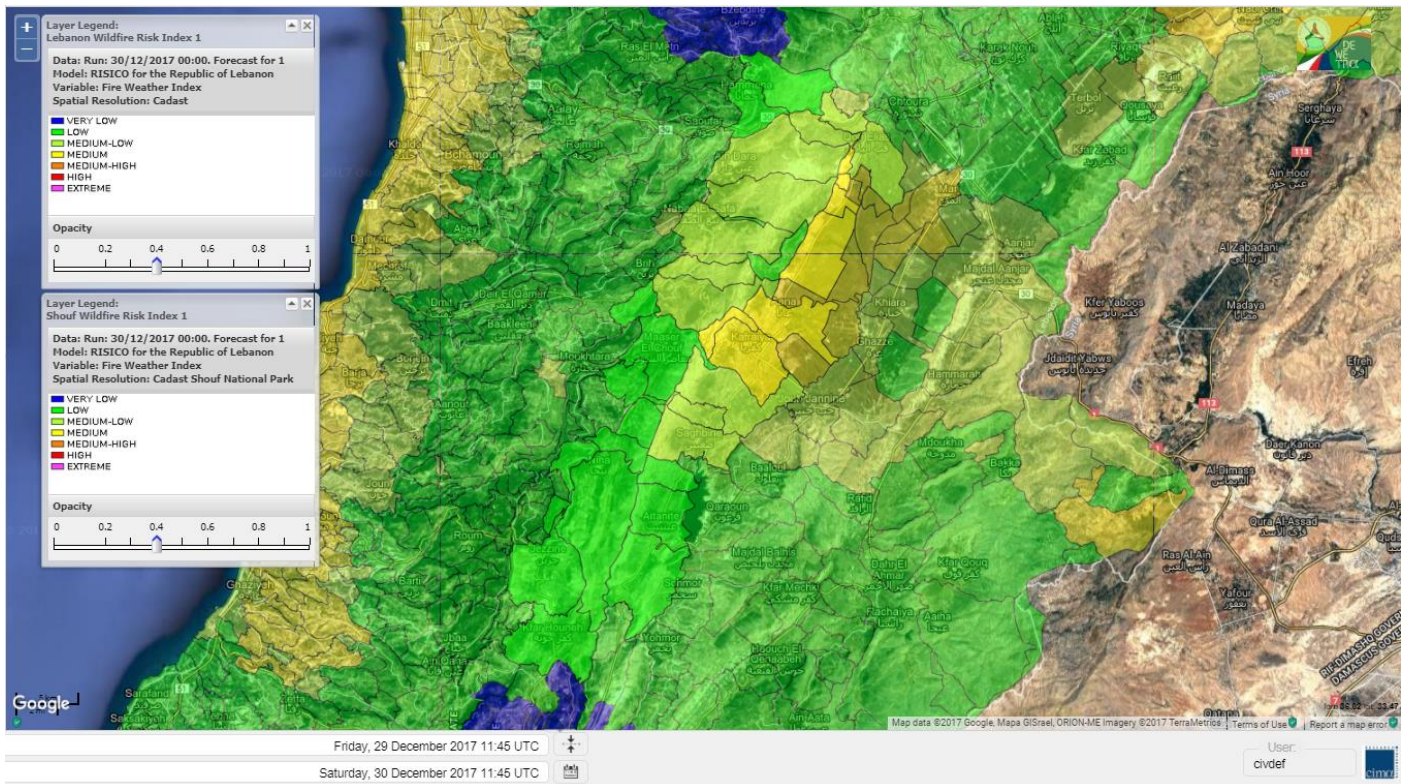




# Shouf Biosphere Reserve Forecast for 31 DEC 2017

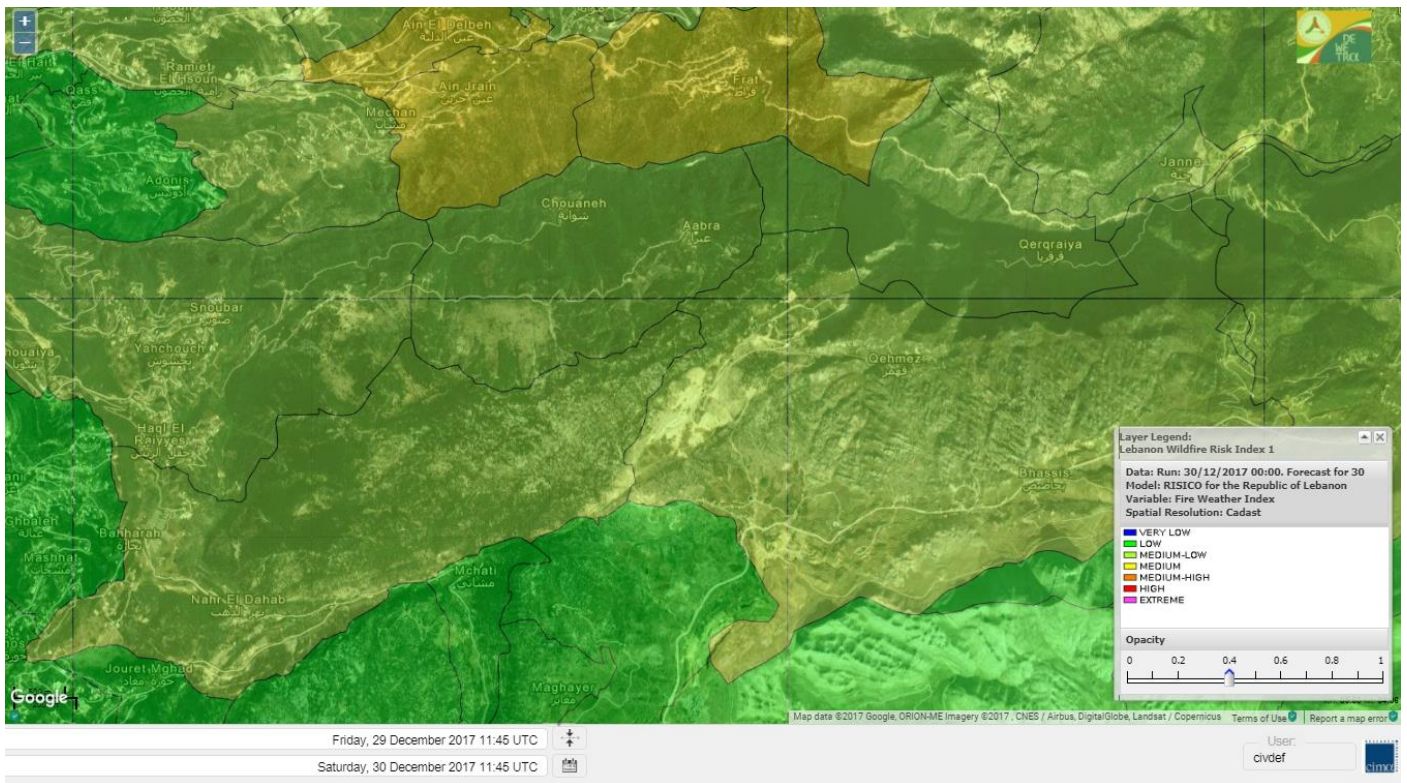


# Shouf Biosphere Reserve Forecast for 1 JAN 2018

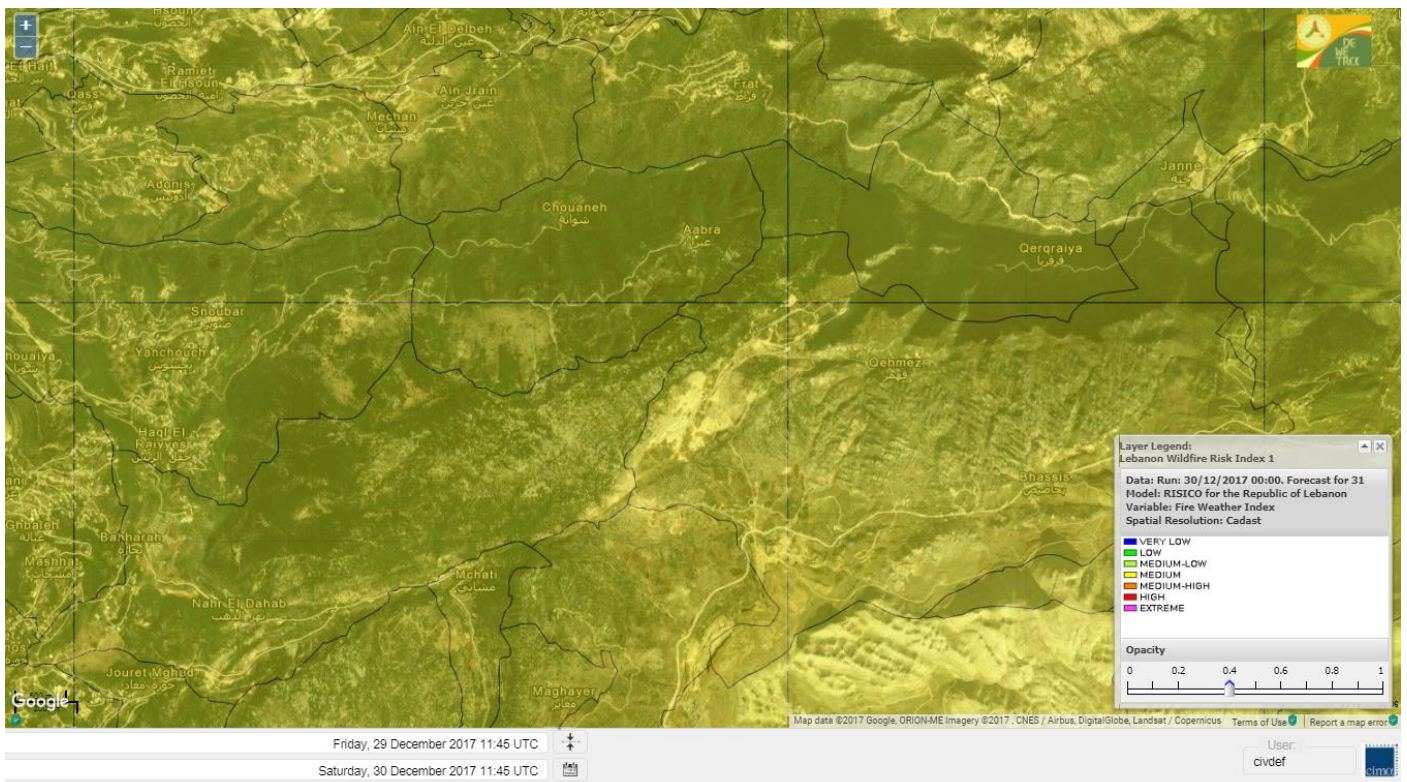




## Jabal Moussa Reserve Forecast for 30 DEC 2017



## Jabal Moussa Reserve Forecast for 31 DEC 2017









## Nord

### Koura

Municipality	30-Dec	31-Dec	01-Jan	Municipality	30-Dec	31-Dec	01-Jan	Municipality	30-Dec	31-Dec	01-Jan
Aaba	M	M	M	Afsaddiq	M	M	M	Ain Ekrine	M	M	M
Amioun	M	M	M	Anfeh	M	M	M	Badbhoun	M	M	M
Barghoun	M	M	M	Barsa	M	M	M	Batroumine	M	M	M
Bdebba	M	M	M	Bechmizine	M	M	M	Bednaye El-Koura	M	M	M
Bhabbouch El-Koura	M	M	M	Bkeftine	M	M	M	Bnehran	M	M	M
Bqaiia El-Koura	M	M	M	Bsarma	M	M	M	Btaaboura	M	M	M
Bterram	M	M	M	Btouratij	M	M	M	Bziza	M	M	M
Dar Beechtar	M	M	M	Dar Chmezzine	M	M	M	Deddeh	M	M	M
Deir El-Balamand	M	M	M	Fih	M	M	M	Hraiche	M	M	M
Ijdaabrine	M	M	M	Kaftoun	M	M	M	Kefraya El-Koura	M	M	M
Kfarakka	M	M	M	Kfarhata	M	M	M	Kfarhazir	M	M	M
Kfarkahel	M	M	M	Kfarsaroun	M	M	M	Kosba	M	M	M
Mejdel el-Koura	M	M	M	Nakhle	M	M	M	Qalhat	M	M	M
Ras Masqa	M	M	M	Rechdibbine	M	M	M	Zakroun	M	M	M
Zgharta El-Mtaouile	M	M	M								

### Bcharre

Municipality	30-Dec	31-Dec	01-Jan	Municipality	30-Dec	31-Dec	01-Jan	Municipality	30-Dec	31-Dec	01-Jan
Aabdine	M	M	M	Bane	ML	M	L	Barhelioun	M	M	M
Bazouone	L	M	L	Becharre	ML	M	ML	Beit Menzer	M	M	ML
Billa	M	M	ML	Blaouza	M	M	L	Bqaa Kafra	L	M	L
Bqerqacha	L	M	L	Breissat	ML	M	ML	Dimane	ML	M	ML
Hadath El Jobbeh	ML	M	ML	Hadchit	L	M	L	Hasroun	L	M	L
Mazraat Aassaf	M	M	M	Mazraat Bani Saab	M	M	M	Mchaa El-Jobbeh	L	M	L
Metrit	M	M	M	Moghr El-Ahoual	M	M	M	Ouadi Qannoubine	M	M	L
Qanat	M	M	ML	Qnayouer	M	M	ML	Tourza	M	M	L

### Batroun

Municipality	30-Dec	31-Dec	01-Jan	Municipality	30-Dec	31-Dec	01-Jan	Municipality	30-Dec	31-Dec	01-Jan
Aabrine	M	M	M	Aalali	M	M	M	Aartiz	M	M	M
Abdelli	M	M	L	Ajdabra	M	M	M	Assia	M	M	M
Basbina	M	M	M	Batroun	M	M	M	Bcheleh	M	M	ML
Bechtoudar	M	M	M	Beit Chlala	M	M	M	Beit Kassab	M	M	M
Bijdarfil	M	M	M	Bqesmaya	M	M	M	Chatine	ML	M	ML
Chebtin	M	M	M	Chekka	M	M	M	Daael	M	M	M
Dahr Abi Yaghi	ML	M	L	Daraya El-Batroun	M	M	L	Deir Billa	M	M	M
Deir Kfifane	M	M	M	Deir Mar Youhanna EL	M	M	M	Deir Mar Youssef Jra	M	M	L
Douma	M	M	ML	Douq	M	M	M	Eddeh El-Batroun	M	M	M
Ftihat El-Batroun	M	M	M	Ghouma	M	M	L	Hadtoun	M	M	M
Hamat	M	M	M	Harbouna	M	M	M	Hardine	M	M	M
Helta	M	M	M	Hery	M	M	M	Jebila	M	M	M
Jrabta El-Batroun	M	M	L	Jrane El-Batroun	M	M	M	Kfar Aabida	M	M	M
Kfar Halda	M	M	M	Kfarb Shlaimane	M	M	M	Kfarhatna	M	M	M
Kfarhay	M	M	M	Kfarhelos	M	M	M	Kfifane	M	M	M



Kfour El Arabi	M	M	ML	Koubba	M	M	M	Kour	M	M	M
Mar Mama	M	M	M	Masrah	ML	M	M	Mehmarch	M	M	M
Mrah Chdid	M	M	M	Mrah El Ziyat	M	M	ML	Mrah El-Hajj	M	M	M
Nahle El-Batroun	M	M	M	Niha El-Batroun	M	M	ML	Oujh El-Hajjar	M	M	M
Ouata Houb	ML	M	L	Qatnaaoun	M	M	M	Racha	M	M	M
Rachana	M	M	ML	Rachkida	M	M	M	Ram El-Batroun	ML	M	M
Ras Nahhach	M	M	M	Selaata	M	M	M	Sghar	M	M	L
Smar Jbayl	M	M	M	Sourat El-Batroun	M	M	M	Tannourine El-Faouqa	L	M	L
Tannourine Et-Tahta	M	M	L	Thoum	M	M	L	Toula El-Batroun	M	M	L
Zan	M	M	M								

## Zgharta

Municipality	30-Dec	31-Dec	01-Jan	Municipality	30-Dec	31-Dec	01-Jan	Municipality	30-Dec	31-Dec	01-Jan
Aachach	M	M	M	Aalma	M	M	M	Aarde	M	M	M
Aintourine	M	M	L	Arabet Qozhaya	M	M	L	Arde	M	M	M
Arjis	M	M	M	Asnoun	M	M	M	Ayto	M	M	L
Basloukit	L	M	L	Bchannine	M	M	M	Besebeel	M	M	M
Bhairret Toula	M	M	ML	Bnachee	M	M	ML	Boussit	M	M	M
Danha	M	M	M	Daraiya Zgharta	M	M	M	Deir Jdeide	M	M	M
Ehden	L	M	L	Halan	M	M	M	Hariq Zgharta	M	M	M
Houakir	M	M	ML	Hraiqis	M	M	M	Iaal	M	M	M
Ijbaa	M	M	L	Karm Saddeh	M	M	ML	Kfarchakhna	M	M	M
Kfardlaqous	M	M	M	Kfarfou	M	M	M	Kfarhata Zgharta	M	M	M
Kfarhoura	M	M	M	Kfarsghab	ML	M	L	Kfaryachit	M	M	M
Kfarzaina	M	M	M	Khaldiye	M	M	M	Mazraat Ajbeaa	M	M	M
Mazraat Et-Teffah	M	M	L	Mazraat Jneid	M	M	M	Mejdlaiya Zgharta	M	M	M
Merh Kfarsghab	M	M	ML	Miryata	M	M	M	Miziara	M	M	ML
Mzraat Kefraya	M	M	M	Qorah Bach	M	M	M	Rachiine	M	M	M
Ras Kifa	M	M	M	Sakhra	M	M	M	Sebhel Zgharta	M	M	L
Serhel	M	M	L	Tallet Zgharta	M	M	M	Toula Zgharta	M	M	L
Zgharta	M	M	M								

## Minieh-Denniye

Municipality	30-Dec	31-Dec	01-Jan	Municipality	30-Dec	31-Dec	01-Jan	Municipality	30-Dec	31-Dec	01-Jan
Aasaymout	M	M	ML	Aaymar	M	M	M	Aazki	M	M	M
Ain El-Tineh-Miniyeh	M	M	ML	Assoun	M	M	M	Bakhaaoun	M	M	M
Bchennata	L	M	L	Bechehhara	ML	M	ML	Beddawi	M	M	M
Behouaita	M	M	L	Beit El Foqss	M	M	ML	Beit Haouik	M	M	M
Beit Zoud	M	M	M	Bekaasafrine	M	M	ML	Borj El Yahoudiyeh	M	M	M
Bqarsouna	M	M	M	Btermaz	M	M	M	Debaael	M	M	ML
Deir Ammar	M	M	M	Deir Nbouh	M	M	ML	Haouaret-Miniyeh	M	M	M
Haql el Azimeh	M	M	M	Harf El Siyad	M	M	M	Hazmiye-Miniyeh	M	M	ML
Izal	M	M	M	Jarjour	ML	M	L	Jayroun	M	M	M
Kahf El-Malloul	ML	M	ML	Karm El-Moher	M	M	ML	Kfar Binine	M	M	ML
Kfarchalane	M	M	M	Kfarhabou	M	M	M	Kharroub-Miniyeh	M	M	M
Mazraat El-Kreme	M	M	ML	Mazraat Ketrane	M	M	M	Merkebtta	M	M	M
Minyeh	M	M	M	Mrah El Sfirat	M	M	L	Mrah Sraj	M	M	M
Mrebbine	M	M	M	Nabi Youcheaa	M	M	M	Nemrine	M	M	ML



Qarhaiya	M	M	M	Qarne	M	M	M	Qarsita	M	M	ML
Qattineh-Miniyeh	M	M	M	Qemmamine	M	M	M	Qraine	M	M	ML
Raouda-Aadoua	M	M	M	Rihaniyet-Miniyeh	M	M	M	Sfireh	M	M	M
Sir Ed-Danniyeh	M	M	M	Tarane	M	M	ML	Terbol-Miniyeh	M	M	M
Zaghartaghriane	M	M	ML	Zouq Bhannine	M	M	M				

## Nabatiye

### Nabatiye

Municipality	30-Dec	31-Dec	01-Jan	Municipality	30-Dec	31-Dec	01-Jan	Municipality	30-Dec	31-Dec	01-Jan
Aabba	M	M	L	Aazzi	ML	M	L	Adchit El-Chqif	M	M	L
Ain Bou Swar	ML	M	L	Ain Kana	ML	M	L	Ali El-TaHER	L	M	L
Ansar	M	M	VL	Arab Salim	ML	M	L	Arnoun	M	M	L
Bfaroue	ML	M	L	Breyqaah	M	M	L	Charqiyeh	M	M	L
Choukine	M	M	L	Deir El Zahrani	ML	M	L	Doueir El-Nabatiyeh	M	M	L
Habbouch El-Nabatiye	ML	M	L	Hamra El-Nabatiyeh	M	M	L	Harouf El-Nabatiyeh	M	M	L
Hmaile	ML	M	L	Houmin El Faouqa	ML	M	L	Houmin El Tahta	ML	M	M
Jarjough	ML	M	L	Jbaah El-Nabatiyeh	ML	M	L	Jebchit	M	M	L
Kfar Djal El-Nabatiy	M	M	L	Kfar Remmane	ML	M	L	Kfar Sir	M	M	VL
Kfar Tebnit	ML	M	L	Kfarfila	ML	M	L	Kfour El-Nabatieh	ML	M	L
Mayfadoun	M	M	L	Mazraat Bsaffour	M	M	L	Mazraat Chalbaal	M	M	L
Mazraat Dmoul	M	M	L	Mazraat El Khreibeh	ML	M	L	Mazraat El-Bayad El-	ML	M	L
Mazraat Kfarjaouz	ML	M	L	Mazraat Qalaat Meiss	M	M	L	Nabatiyeh El-Fawka	ML	M	L
Nabatiyeh Et-Tahta	ML	M	L	Namiriyeh	M	M	L	Qaaqaiyet El Jisr	M	M	VL
Qossaibeh El-Nabatiy	M	M	VL	Roumine	ML	M	L	Sarba El-Nabatieh	ML	M	L
Sir El-Gharbiyeh	M	M	VL	Toul	ML	M	L	Yehmor El-Nabatiyeh	M	M	L
Zaoutar El Charkiyeh	M	M	L	Zaoutar El-Gharbiyeh	M	M	L	Zebdine El-Nabatiyeh	ML	M	L
Zefta	M	M	L								

### Hasbaiya

Municipality	30-Dec	31-Dec	01-Jan	Municipality	30-Dec	31-Dec	01-Jan	Municipality	30-Dec	31-Dec	01-Jan
Ain Jarfa	M	M	VL	Abou Qamha	ML	M	VL	Ain Qania	M	M	VL
Bourghos	ML	M	VL	Chebaa	ML	M	L	Chouaya Hasbaya	M	M	VL
Dellafeh	ML	M	VL	Fardiss Hasbaiya	ML	M	VL	Hasbaya	M	M	L
Hbariyeh	M	M	VL	Kaoukaba Hasbaiya	ML	M	VL	Kfar Chouba	M	M	L
Kfar Hamam	M	M	L	Kfeir El-Zait	M	M	L	Khalwat Hasbaya	M	M	L
Khreibet Hasbaiya	ML	M	L	Majidiyeh Hasbaiya	ML	M	L	Marj Ez-Zhour (Haouc	M	M	L
Meri	ML	M	L	Mimass	M	M	L	Rachaiya El-Fokhar	ML	M	L
Salaiyeb	ML	M	L								

### Marjayoun

Municipality	30-Dec	31-Dec	01-Jan	Municipality	30-Dec	31-Dec	01-Jan	Municipality	30-Dec	31-Dec	01-Jan
Aalmane Marjaayoun	M	M	L	Aamra	M	M	L	Adayseh Marjaayoun	M	ML	L
Adchit El-Koussair	M	M	L	Ain Aarab Marjaayoun	ML	M	L	Bani Haiyann	M	M	L
Blatt Marjaayoun	ML	M	VL	Blida	M	ML	L	Borj El-Moulouk	M	M	L
Boueyda Marjaayoun	L	M	VL	Deir Mimass	M	M	L	Deir Siriane	M	M	L
Dibbine	ML	M	L	Ebel El Saqi	ML	M	L	Houla	M	M	L
Houra	M	M	L	Kfar Kila	M	M	L	Khiam Marjaayoun	ML	M	L



Klayaa	M	M	L	Majdel Selem	M	M	L	Marjaayoun	ML	M	L
Markaba	M	M	L	Mays El-Jabal	M	ML	L	Mazraat Doumiat	L	M	L
Mazraat Sarada	ML	M	L	Mhaibib	M	ML	L	Qabrikha	M	M	L
Qantara	M	M	L	Rab El-Thalathine	M	M	L	Saouaneh Marjayoun	M	M	L
Talloussa	M	M	L	Taybeh Matjaayoun	M	M	L	Touline	M	M	L

## Bent Jbail

Municipality	30-Dec	31-Dec	01-Jan	Municipality	30-Dec	31-Dec	01-Jan	Municipality	30-Dec	31-Dec	01-Jan
Ain-Ebel	ML	ML	L	Aitaroun	M	ML	L	Aynata Bint Jbeil	M	ML	L
Ayta El-Chaeb	ML	M	L	Ayta El-Jabal	M	M	L	Beit Lif	ML	M	L
Beit Yahoun	M	M	L	Bint Jbeil	ML	ML	L	Borj Qalaway	M	M	L
Braachit	M	M	L	Chakra	M	ML	L	Debel	ML	M	L
Deir Antar	M	M	L	Froun	M	M	VL	Ghandouriyeh Bint Jb	M	M	L
Hanine	ML	ML	L	Hariss	M	M	L	Hdatha	ML	M	L
Jmeymeh	M	M	L	Kafra Bint Jbeil	ML	M	L	Kfar Dounine	M	M	L
Khirbet Selm	M	M	L	Kounine	M	ML	L	Maroun El Ras	M	ML	L
Qalaway	M	M	L	Qaouzah	ML	M	L	Qatmoun	L	M	L
Ramya Bint Jbeil	ML	M	L	Rchaf	ML	M	L	Rmeich	ML	M	L
Safad Al Battikh	M	M	L	Salhaneh	ML	M	L	Serbine	ML	M	L
Sultanieh Bint Jbeil	M	M	L	Tibnine	M	M	L	Tiri	M	ML	L
Yaroun	ML	ML	L	Yater	ML	M	L				

## Mont Liban

### Jbail

Municipality	30-Dec	31-Dec	01-Jan	Municipality	30-Dec	31-Dec	01-Jan	Municipality	30-Dec	31-Dec	01-Jan
Aabeydat	ML	M	L	Aalita	L	M	L	Aamchit	M	M	L
Aarab El-Lahib	L	M	ML	Aarasta	ML	M	L	Adonis Jbeil	L	M	VL
Afqa Jbeil	ML	M	ML	Ain El Delbeh Jbeil	M	M	L	Ain El-Ghouayba	M	M	L
Ain Jrain	M	M	L	Ain Kfah	M	M	L	Almat El Chemaliyat	ML	M	L
Almat El-Jenoubiya	ML	M	L	Aqoura	L	M	ML	Bayzoun	ML	M	ML
Bchille Jbeil	ML	M	L	Bechtida	L	M	L	Behdaydat	ML	M	L
Beit Habbaq	M	M	L	Bejjeh	M	M	L	Bekhaaz	M	M	L
Berbara Jbeil	M	M	L	Bintael	ML	M	L	Birket Hjoula	ML	M	L
Blatt Jbeil	ML	M	L	Boulhos	ML	M	L	Breyj Jbeil	ML	M	L
Chamat	M	M	L	Chikhane	M	M	L	Chmout	ML	M	L
Eddeh Jbeil	ML	M	L	Ehmej	ML	M	L	Fatre	L	M	VL
Ferhet	M	M	L	Fghal	M	M	L	Frat	M	M	L
Ghabat	ML	M	ML	Ghalboun	M	M	L	Gharzouz	M	M	L
Ghofrine	M	M	L	Habil	M	M	L	Halate	ML	M	L
Haqel	ML	M	ML	Hbaline	M	M	L	Hboub	ML	M	L
Hdeine	ML	M	L	Hema Er-Rehban	L	M	ML	Hema Mar Maroun Aann	L	M	L
Hjoula	ML	M	L	Hosrayel	M	M	L	Hsarat	M	M	L
Hsoun	ML	M	L	Jaj	ML	M	ML	Janne	ML	M	L
Jbeil	M	M	L	Jeddeyl Jbeil	M	M	L	Jlisse	ML	M	L
Jouret El-Qattine	ML	M	L	Kfar Baal Annaya	ML	M	L	Kfar Kidde	M	M	L
Kfar Kouas	ML	M	L	Kfar Mashoun	ML	M	L	Kfoun	ML	M	L

Kharbe Jbeil	M	M	M	Laqlouq	L	M	ML	Lassa	ML	M	L
Lehfed	M	M	M	Maad	M	M	L	Mar Sarkis	L	M	L
Mastita	M	M	L	Mayfouq	ML	M	M	Mazraat El Siyad	L	M	L
Mazraat El-Maaden	ML	M	L	Mechane	ML	M	L	Mechmech Jbeil	M	M	ML
Mehrin	ML	M	L	Mejdel El-Akoura	L	M	ML	Mghayreh Jbeil	ML	M	ML
Mounsef	M	M	L	Nahr Ibrahim	ML	M	L	Qahmez	ML	M	L
Qartaba	ML	M	L	Qartaboun	M	M	L	Qattara Jbeil	ML	M	M
Qorqraya	ML	M	L	Ramout	M	M	L	Ras Osta	ML	M	L
Rihane Jbeil	M	M	L	Sakiet El-Khayt	ML	M	L	Saqi Richmaya	ML	M	M
Sebrine	ML	M	L	Seraita	ML	M	ML	Souane Jbeil	ML	M	L
Tadmor	ML	M	L	Tartej	ML	M	ML	Torzaiya	M	M	ML
Yanouh Jbeil	ML	M	ML	Zibdine Jbeil	ML	M	L				

## El Metn

Municipality	30-Dec	31-Dec	01-Jan	Municipality	30-Dec	31-Dec	01-Jan	Municipality	30-Dec	31-Dec	01-Jan
Aain El-Qabu	L	M	VL	Aain El-Qach	L	M	VL	Aain El-Teffaha	L	M	VL
Aain el-Safssaf El-M	L	ML	VL	Abou Mizane	L	M	VL	Ain Aar	L	M	L
Ain Alaq	L	M	L	Ain El-Kharroube	L	M	VL	Ain El-Sendiane	L	M	VL
Ain El-Zeitoune	ML	M	VL	Ain Saadeh	ML	M	L	Aintoura El-Matn	L	M	L
Amaret Chalhoub	ML	M	M	Antelias	ML	M	L	Atchaneh	L	M	L
Ayroun	L	M	VL	Baabdat	L	M	VL	Baouchariyeh	ML	M	M
Baskinta	L	M	L	Beit Chabab	L	M	VL	Beit El-Chaar	ML	M	L
Beit El-Kekko	L	M	L	Beit Mery	ML	M	L	Bhersaf	L	M	VL
Bikfaya	L	M	VL	Biyakout	ML	M	ML	Bnabil	L	M	VL
Bourj Hammoud	ML	M	M	Bqennaya	ML	M	L	Broummana El-Matn	L	M	L
Bsalim	ML	M	L	Bsifrine	L	M	VL	Bteghrine	L	M	VL
Chaouiye	L	M	L	Chouaya El-Matn	L	M	VL	Choueir	L	M	VL
Chrine	L	ML	VL	Dahr El Sawan El-Mat	L	M	L	Daychouniyeh	ML	M	ML
Dbayeh	ML	M	L	Deir Chamra	L	ML	VL	Deir Mar Abda el Mch	L	M	L
Deir Mar Roukouz	ML	M	M	Deir Tamiche	L	M	L	Dik El-Mehdi	ML	M	L
Dikwaneh	ML	M	M	Douar El-Matn	L	M	VL	Fanar	ML	M	M
Fraike	L	M	L	Haret El-Ballaneh	ML	M	L	Hbous	L	M	L
Himlaya	L	M	VL	Jal El Did	M	M	M	Jdeideh El-Metn	ML	M	M
Jouar El-Matn	L	M	VL	Jouret El-Ballout	L	M	L	Kaaqour	L	M	VL
Kfar Aaqab	L	M	VL	Kfertay El-Matn	L	M	VL	Khenchara	L	M	VL
Khillet El-Mtain	L	M	VL	Konnabat Broummana	L	M	L	Konnabat Salima	L	M	VL
Machraah El-Matn	L	M	VL	Majdel Tarchich	L	ML	L	Majzoub	ML	M	L
Mansouriyeh El-Metn	ML	M	ML	Mar Boutros Karm Et-	L	M	VL	Mar Chaya et Mzekke	L	M	L
Mar Moussa Ed-Douar	L	M	VL	Marjaba	L	M	VL	Masqa	L	M	L
Mayasse	L	M	VL	Mazraat Deir Aoukar	ML	M	L	Mazraat El-Hadirat	ML	M	L
Mazraat Yachouh	ML	M	L	Mchikha	L	M	L	Menqlet Mezher	ML	M	L
Mhaydseh Matn	L	M	VL	Mkalles	ML	M	M	Mrouj	L	M	VL
Mtain	L	M	L	Mtayleb	ML	M	L	Nabay	L	M	L
Naccache	ML	M	L	Ouadi Chahine	L	M	VL	Ouadi El-Karm El-Mat	L	M	VL
Ouata El-Mrouj	L	M	VL	Ouyoun El-Matn	L	M	L	Qornet Chehwan	L	M	L
Qornet El-Hamra	L	M	L	Roumieh	ML	M	L	Sfeilet Bikfaya	L	M	VL
Sinn El-Fil	ML	M	M	Zabbougha	L	M	VL	Zalqa	ML	M	M



Zarouon	L	M	VL	Zekrite	L	M	L	Zighrine El-Matn	L	M	VL
Zouk El-Khrab	ML	M	L								

## Chouf

Municipality	30-Dec	31-Dec	01-Jan	Municipality	30-Dec	31-Dec	01-Jan	Municipality	30-Dec	31-Dec	01-Jan
Aalmane El-Chouf	M	M	M	Aammqi El-Chouf	ML	M	L	Ain Ouzein	ML	M	L
Ain Qani	M	M	L	Ain Zhalta	L	ML	ML	Ainbal	ML	M	L
Amatour	M	M	L	Anout	ML	M	L	Atrine	ML	M	L
Baadarane	ML	M	L	Baaqline	ML	M	L	Baasir	ML	M	M
Barja	ML	M	M	Barouk	ML	ML	ML	Bater	ML	M	L
Batloun	ML	M	L	Bayqoun	M	M	L	Bchetfine	ML	M	L
Beiteddine	ML	M	L	Benouati Ech-Chouf	ML	M	L	Berjein	ML	M	ML
Bireh et Mtalleh	L	M	L	Biret El-Chouf	ML	M	L	Bkechtine Ouel Mchei	ML	M	L
Bkifa El-Chouf	ML	M	L	Botme	ML	M	L	Bqaiaa Ech-Chouf	ML	M	L
Bsaba El-Chouf	ML	M	L	Chammis El-Chouf	ML	M	ML	Chehim	L	M	ML
Chemaarine	ML	M	L	Chourit	ML	M	L	Daher El-Chouf	ML	M	ML
Dalhoun	ML	M	ML	Damour	ML	M	M	Daraya El-Chouf	ML	M	L
Deir El-Moukhalles	ML	M	L	Deir Baba	ML	M	L	Deir Dourit	ML	M	L
Deir El-Qamar	ML	M	L	Deir Kouche	ML	M	L	Dibbieh	ML	M	ML
Dmit	ML	M	L	Fouara Jaafar	ML	M	L	Fraidis El-Chouf	L	ML	ML
Ghabet Jaafar	ML	M	L	Gharife	ML	M	L	Haret Jandal	ML	M	L
Hasrout	ML	M	L	Jadra	M	M	M	Jahlieh	ML	M	L
Jbeih El-Chouf	ML	M	L	Jdeidet El-Chouf	M	M	L	Jiyeh	M	M	M
Jleilyeh	ML	M	L	Jmailiyeh	M	M	M	Joun	ML	M	ML
Kahlounie El-Chouf	ML	M	ML	Ketermaya	ML	M	ML	Kfar Faqoud	ML	M	L
Kfar Hamal	ML	M	L	Kfar Him	ML	M	L	Kfar Katra	ML	M	L
Kfar Niss	L	M	L	Kfar hay	ML	M	L	Kfarnabrakh	ML	M	L
Khirbet Bisri	ML	M	L	Knayse El-Chouf	ML	M	L	Maaniyeh	ML	M	ML
Maasser Beiteddine	ML	M	L	Maasser El-Chouf	ML	M	L	Majdalouna	ML	M	ML
Majdel El-Meouch	ML	M	L	Mazboud	L	M	ML	Mazmoura	ML	M	ML
Mazraat El Chouf	ML	M	L	Mazraat El Daher	ML	M	L	Mazraat El-Douair	ML	M	L
Mechref	ML	M	ML	Mghairie	ML	M	ML	Mghayrie El-Chouf	ML	M	L
Moukhtara	ML	M	L	Mrusti	ML	M	L	Mtolle	ML	M	L
Naameh	ML	M	M	Niha El-Chouf	L	M	L	Ouadi Abou Youssef	L	M	L
Ouadi Ed-Deir	ML	M	L	Ouadi El-Sit	ML	M	L	Ouadi bnehlav	ML	M	L
Qraibeh	ML	M	L	Qreiaa	ML	M	L	Rmayle El-Chouf	M	M	M
Semqaniyeh	ML	M	L	Sibline	M	M	M	Sirjbeil	ML	M	L
Warhanieh	L	ML	L	Werdaniyeh	M	M	M	Zaarourieh	ML	M	L

## Baabda

Municipality	30-Dec	31-Dec	01-Jan	Municipality	30-Dec	31-Dec	01-Jan	Municipality	30-Dec	31-Dec	01-Jan
Abadiyeh	L	M	L	Ain Mouaffaq	L	M	L	Araiya	ML	M	L
Arbaniyeh	L	M	VL	Arsoun	L	M	VL	Baabda	ML	M	M
Baalchmey	L	M	L	Bmaryam	ML	M	L	Bourj El-Brajneh	M	M	M
Boutchay	ML	M	ML	Bsaba Baabda	ML	M	ML	Btekhney	ML	M	L
Btibyat	M	M	L	Bzabdine	L	M	VL	Chbeniyeh	L	M	L
Chiyah	M	M	M	Chmeisset Baabda	M	M	L	Chouit	ML	M	L
Deir El-harf	L	M	VL	Deir Khouna	ML	M	L	Dlaybeh	L	M	VL

Falougha	L	L	L	Furn El-Chebbak	ML	M	M	Hadath Beyrouth	ML	M	M
Halaliyeh Baabda	L	M	L	Hammana	L	ML	L	Haret El Sett	ML	M	ML
Haret Hamze	ML	M	L	Haret Hreik	M	M	M	Hasbaiya El-Metn	L	M	VL
Jouar El-Hoz	ML	M	VL	Jouret Arsoun	L	M	VL	Kfar Chima	ML	M	M
Kfar Selouane	L	M	L	Khalouat Baabda	L	M	L	Kneisset Baabda	L	M	L
Laylakeh	ML	M	M	Louayzeh Baabda	ML	M	ML	Merdache	ML	M	ML
Mzairaa Baabda	ML	M	L	Ouadi Chahrour El OI	ML	M	ML	Ouadi Chahrour El So	ML	M	ML
Qalaa Baabda	L	M	L	Qhraybe Baabda	ML	M	L	Qobbayaa	L	M	L
Qornayel	L	M	VL	Qortada	L	M	L	Qrayeh Baabda	L	M	L
Qsaibeh Baabda	L	M	L	Qtale Baabda	M	M	L	Ras El Metn	ML	M	L
Ras El-Haref	ML	M	L	Rouayset El-Ballout	L	M	L	Salima Baabda	L	M	VL
Tahouitat El Ghadir	M	M	M	Tarchich	L	M	L	Zandouqa	L	M	L

## Aley

Municipality	30-Dec	31-Dec	01-Jan	Municipality	30-Dec	31-Dec	01-Jan	Municipality	30-Dec	31-Dec	01-Jan
Abey	ML	M	L	Aghmid	L	M	L	Ain Dara	L	ML	ML
Ain Drafil	ML	M	ML	Ain El Halazoun	ML	M	L	Ain El-Rmmaneh	L	M	L
Ain Jedideh	L	M	L	Ain Ksour	ML	M	L	Ain Onoub	ML	M	ML
Ain Traz	ML	M	L	Ainab	L	M	L	Aley	L	M	L
Aramoun	ML	M	M	Aytat	ML	M	ML	Azouniyeh	L	M	L
Baawerta	ML	M	M	Badghan Oua Wadi Bad	L	M	L	Bassatine	ML	M	L
Bayssour	ML	M	L	Bchamoun	ML	M	M	Bdadoun	L	M	ML
Behouara	ML	M	L	Bennay	ML	M	L	Bhamdoun El-Dayaa	L	M	L
Bhamdoun El-Mhatta	L	M	L	Bkhechthey	L	M	L	Bleibel	L	M	ML
Bmakine	ML	M	ML	Bmehray	ML	ML	ML	Bouzrid	L	M	L
Bserrine	ML	M	L	Bsous	L	M	L	Btalloun	L	M	L
Btater	L	M	L	Chanay	L	M	L	Charoun	L	M	L
Chartoun	L	M	L	Chemlane	ML	M	L	Choueifat El-Aamrous	M	M	M
Choueifat El-Oumara	M	M	M	Choueifat El-Quoubbe	M	M	M	Dakkoun	ML	M	ML
Deir Qoubel	ML	M	M	Dfoun	ML	M	L	Douair El Remmaneh	L	M	L
Ghaboun	ML	M	L	Habramoun	ML	M	L	Homs Oua Hama	ML	M	L
Houmal	ML	M	ML	Jisr El Qadi	ML	M	L	Kehaleh	L	M	L
Keyfoun	ML	M	ML	Kfar Aamey	L	M	L	Kommatyeh	ML	M	ML
Maasrati	M	M	L	Majdel Baana	L	M	L	Mansourieh et Ain El	L	M	L
Mazraat El-Nahr	ML	M	L	Mchakhte	ML	M	ML	Mecherfeh	L	M	L
Mejdaya	ML	M	L	Mrayjat	L	M	ML	Ramliyah	L	M	L
Rechmaya	M	M	L	Rejmeh	L	M	L	Remhala	ML	M	L
Rouaysset El Neemane	ML	M	L	Saoufar	L	M	L	Selfaya	ML	M	L
Sirhmoul	ML	M	L	Souq El Ghareb	ML	M	ML	Taazanieh	L	M	L

## Kesrouane

Municipality	30-Dec	31-Dec	01-Jan	Municipality	30-Dec	31-Dec	01-Jan	Municipality	30-Dec	31-Dec	01-Jan
Achkout	L	ML	VL	Adma Oua Dafneh	ML	M	L	Ain Ed-Delbe Kesroua	L	M	L
Ain El-Rihane	L	M	L	Aintoura Kesrouane	ML	M	L	Ajaltoun	L	ML	VL
Akaybeh Kesrouane	ML	M	L	Aramoun Kesrouane	L	ML	VL	Azra ouel Ozor	L	M	VL
Ballouneh	L	M	VL	Batha	L	ML	VL	Bekaatat Achkout	L	M	L
Bekaatat Kanaan	L	M	VL	Bizhel	L	M	VL	Bouar	ML	M	L
Bqaatouta	L	M	VL	Bqaq Ed-Dine	ML	M	L	Bzommar	L	M	VL



Chahtoul	L	M	VL	Chnaniir	L	M	VL	Chouan	ML	M	L
Daraya Kesrouane	L	M	VL	Darououn	L	M	L	Deir Baglouch	L	M	L
Dlebta	L	ML	VL	Eghbeh	L	L	VL	Faraya	L	M	L
Fatka	L	M	L	Feytroun	L	M	VL	Ghazir	L	M	L
Ghbaleh Kesrouane	L	M	VL	Ghedrass	L	M	VL	Ghosta	L	ML	VL
Ghynéh	L	M	L	Harharaya w Kattine	L	M	VL	Harissa Kesrouane	L	M	L
Hayata	L	L	VL	Hosein	L	M	VL	Hrajel	L	M	L
Jdeideh Ghazir	L	ML	VL	Jeita	L	M	L	Jounieh Ghadir	ML	M	L
Jounieh Haret Sakhr	ML	M	L	Jounieh Salel Alma	ML	M	L	Jounieh Sarba	ML	M	L
Jouret Bedrane	L	M	VL	Jouret Mhad	L	M	L	Jouret Termos	L	M	L
Kfar Debiane	L	M	VL	Kfar Tay Kesrouane	L	M	VL	Kfar Yassine	ML	M	L
Kfour Kesrouane	L	M	VL	Kharayeb Nahr Ibrahi	ML	M	VL	Klayaat Kesrouane	L	ML	VL
Maarab	L	ML	VL	Maaysra Kesrouane	L	M	VL	Mayrouba	L	M	L
Mazraat Er-Ras	ML	M	L	Mazraat Mrah El-Mir	L	ML	VL	Mchaa El Ftouh	L	M	ML
Mchaa Faraya	L	M	L	Mchaa Kfar Dibiane	L	M	L	Mghaer	L	M	L
Mradiyah	L	M	VL	Nahr Ed-Dahab	ML	M	L	Nammoura Kesrouane	L	M	VL
Ouata El Jaouz	L	M	L	Ouata Sillam	ML	M	L	Raachine	L	ML	VL
Rayfoun	L	ML	VL	Safra Kesrouane	ML	M	L	Shayle Kesrouane	L	M	L
Tabarja	ML	M	L	Yahchouch	ML	M	L	Zaaytreh	L	M	VL
Zeytoun	L	M	L	Zouk Mikael	ML	M	L	Zouk Mosbeh	ML	M	L

### Baalbek\_Hermel

#### Baalbek

Municipality	30-Dec	31-Dec	01-Jan	Municipality	30-Dec	31-Dec	01-Jan	Municipality	30-Dec	31-Dec	01-Jan
Aadous	M	M	M	Aamchki	M	M	ML	Aarsal	M	M	M
Ain Baalbek	M	M	M	Ain Bourday	M	M	ML	Ain El-Benye	M	M	ML
Ain El-Jaouz Baalbek	M	M	ML	Ain El-Siya Chadoura	ML	M	L	Al Khodr Baalbek	M	M	ML
Al Nabi Chit	M	M	M	Aynata Baalbek	ML	ML	ML	Baalbek	M	M	M
Bachwat	M	M	M	Barqa	M	M	ML	Bednayel Baalbak	M	M	L
Beit Chama	M	M	L	Bijjaje	M	M	M	Bouday	M	M	ML
Brital	M	M	ML	Btadi	M	M	M	Chaat	M	M	M
Chaibe	ML	M	L	Chlifa	M	M	M	Chmestar	M	M	L
Dar El-Oussa	M	M	ML	Deir El-Ahmar	M	M	M	Deir Mar Maroun Baal	ML	M	M
Douris	M	M	M	Fakiha	M	M	M	Hadath Baalbek	M	M	ML
Ham	M	M	ML	Haour Taala	M	M	ML	Hizzine	M	M	M
Hlebta	M	M	M	Hosh Barada	M	M	M	Hosh El Dahab	M	M	M
Hosh El Snid	M	M	M	Hosh El-Nabi	M	M	M	Hosh El-Rafiq	M	M	ML
Hosh Tal Safiya	M	M	M	Hrebta	M	M	M	laat	ML	M	M
Jebaa	M	M	M	Jenta	M	M	ML	Kfar Dabach	M	M	ML
Kfar Dane	ML	M	ML	Khraibeh El-Hermel	M	MH	M	Khreibet Baalbek	M	M	ML
Kneisset Baalbek	M	M	M	Labueh	M	M	M	Maarboun	M	M	ML
Majdaloun	M	M	M	Maqneh	M	M	M	Mazraat Beit Mcheik	M	M	ML
Misraya	M	M	M	Moqraq	M	M	M	Nabha El-Damdoum	M	M	M
Nabi Chbay	M	M	ML	Nabi Osman	M	M	M	Nahleh baalbek	M	M	M
Ouadi El-Oss	M	M	M	Qaa Baayoun	M	M	M	Qaa Jouar Maqiye	ML	M	M
Qaa Ouadi El-Khanzir	ML	M	M	Qah Baalbek	M	M	M	Qarha Baalbek	M	M	M

Qsarnaba	M	M	L	Ram Baalbek	M	M	ML	Ras Baalbek El Sahl	M	M	M
Ras Baalbek El-Charq	M	M	M	Riha	M	M	M	Saaide	ML	M	ML
Sbouba	M	MH	M	Seriine El-Tahta	M	M	M	Slouqi	M	M	ML
Taiba Baalbek	M	M	M	Talia	M	M	M	Taraiya	M	M	M
Temnin El Fawqa	M	M	L	Temnin El-Tahta	M	M	L	Tfail	M	M	M
Yahfoufa	M	M	ML	Yammouneh	ML	M	ML	Younine	M	M	M
Zboud	M	MH	M								

## Hermel

Municipality	30-Dec	31-Dec	01-Jan	Municipality	30-Dec	31-Dec	01-Jan	Municipality	30-Dec	31-Dec	01-Jan
Charbine El-Hermel	L	ML	M	Hermel Jbab	M	M	M	Hermel	L	M	M
Maaysra El-Hermel	M	MH	M	Michaa Mrajhine	ML	M	M	Ouadi Faara	M	M	M
Ras Baalbek - Ouadi	M	MH	M	Ras Baalbek El Gharb	M	M	M	Zighrine	L	M	M

## Akkar

### Akkar

Municipality	30-Dec	31-Dec	01-Jan	Municipality	30-Dec	31-Dec	01-Jan	Municipality	30-Dec	31-Dec	01-Jan
Aain Tinta	M	M	M	Aaiyat	M	M	M	Aakkar El-Aatiqa	ML	M	M
Aamar Akkar	M	M	M	Aamar El Baykat	ML	M	M	Aamayer	M	M	M
Aamriyet Akkar	M	M	ML	Aandqet	M	M	M	Aarmeh	ML	ML	M
Aarqa	M	M	M	Aawaynat	M	M	M	Aayoun Akkar	ML	M	M
Abboudiye	M	M	M	Ain El-Zeit	M	M	M	Ain Yaaqoub	ML	M	M
Akroum	M	M	M	Aridet Cheikh Zennad	M	M	L	Baldeh w Mazraat Bal	M	M	M
Barcha	ML	M	M	Bardeh	ML	M	ML	Bebnine	M	M	M
Beino	M	M	M	Beit Ayoub	ML	M	M	Beit El-Haouch	M	M	M
Beit Mellat	M	M	M	Beit Younes	ML	ML	L	Berbara Akkar	M	M	M
Berqayel	M	M	M	Bezgina	M	M	ML	Bireh Akkar	ML	M	M
Borj	ML	M	M	Bqerezla	ML	M	M	Bzal	M	M	M
Chane	ML	ML	ML	Chaqdouf	M	M	M	Charbila	M	M	M
Cheikh Mohammad	ML	M	M	Cheikh Taba Es-Sahl	ML	M	M	Cheikh Taba	ML	M	M
Cheikh Zennad	M	M	L	Cheikhlar	M	M	M	Chir Hmairine	ML	M	ML
Daghle	M	M	M	Dahr Laissine	M	M	M	Darine	ML	M	ML
Dawra	ML	M	M	Dawsa w Baghdadi	M	M	M	Dayret Nahr El-Kabir	ML	M	M
Deir Dalloum	M	M	M	Deir Jennine	M	M	M	Denbou	ML	ML	M
Dibbabiyyeh	M	M	ML	Douair Aadwiyeh	ML	M	M	Fassikine	M	M	M
Fnaydek	ML	M	M	Fraydes Akkar	M	M	ML	Ghazayle	ML	M	M
Habchit	M	M	M	Hakour	ML	M	M	Halba	ML	M	M
Haouchab	ML	M	M	Hayssat	ML	M	M	Haytla	ML	M	M
Hayzouq	ML	M	M	Hedd	ML	M	M	Hmaira Akkar	ML	M	M
Hmaiss Akkar	M	M	M	Hnaider	ML	M	M	Hokr Ed-Dahri	M	M	L
Hokr Etti	ML	M	M	Hokr Jouret Srar	ML	M	ML	Houaich	ML	M	M
Hrar	M	M	M	Idbil	ML	M	M	Ilal	ML	M	M
Janine	ML	M	M	Jdeidet El-Joumeh	ML	M	M	Jdeidet El-Kaiteh	M	M	M
Jebayel	ML	M	M	Kafr	ML	M	L	Kafr	M	M	M
Karm Asfour	ML	M	M	Kfar Melki Akkar	M	M	ML	Kfar Noun	M	ML	ML
Kfarharra	M	M	M	Khalsa	M	M	M	Kharnoubet Akkar	ML	M	M



Khirbet Daoud Aakkar	ML	M	M	Khirbet El Remmane	M	M	M	Khirbet Shar	M	M	M
Khoreybet El-Jindi	ML	M	M	Khreibet Aakkar	ML	M	ML	Kneisset Aakkar	M	M	L
Kneisset Hnaider	M	ML	M	Knisse	M	M	M	Kroum El-Aarab	ML	M	M
Kwachra	M	M	ML	Kweykhat	ML	M	M	Machta Hammoud	M	M	M
Majdala	M	M	M	Majdel Akkar	M	M	M	Mar Touma	M	M	M
Marlaya Melhem	M	M	ML	Mashha	ML	M	M	Massoudiye	M	M	L
Mazraat Beit Ghattas	ML	M	M	Mazraat En-Nahriye	M	M	M	Mechmech	M	M	M
Memneh	ML	L	L	Mhammara	M	M	M	Mighraq Aakkar	M	M	L
Minyara	ML	M	M	Moqayteh	M	M	ML	Mounjez	M	M	ML
Msalla	M	M	M	Mzeihmeh	ML	M	M	Nfaisseh	ML	M	M
Noura Et-Tahta	M	ML	M	Ouadi El-Haour	ML	M	M	Ouadi El-Jamous	M	M	M
Ouyoun El-Ghizlane	M	M	M	Qaabarine	M	M	ML	Qabaait	M	M	M
Qachlaq	ML	M	M	Qantara Aakkar	ML	M	M	Qarha Aakkar	ML	ML	M
Qarqaf	M	M	M	Qboula	ML	M	M	Qleiaat Aakkar	M	M	L
Qloud El-Baqie	ML	M	M	Qobaiyat Aakkar	M	M	M	Qobbat Chamrat	M	M	ML
Qorayat	ML	ML	L	Qornet Aakkar	ML	M	ML	Qsair Aakkar	M	M	ML
Rahbe	ML	M	ML	Rihaniyet Aakkar	ML	M	M	Rmah	ML	M	M
Rmoul	M	M	ML	Saadine	ML	M	ML	Sadaqa	ML	M	M
Saidnaya	M	M	M	Sammouniye	ML	M	M	Sayssouq	ML	M	M
Semmaqiye	M	M	L	Semmaqli	M	M	ML	Sfinet El-Dreib	M	M	M
Sfinet El-Qaitaa	M	M	M	Sindyanet Zeidane	ML	M	M	Souaisset Aakkar	ML	M	M
Srar	ML	M	M	Tal Abbas El Gharby	ML	M	M	Tal Abbas El-Charqy	ML	M	M
Tal Biret	ML	M	ML	Tal Hmayra	ML	M	ML	Tal Maayan Tal Kiri	M	M	L
Tal Sibel	M	M	ML	Tallet Chattaha	ML	M	M	Tikrit	ML	M	M
Tleil	ML	M	M	Tshea	M	M	ML	Zawarib	ML	M	M
Zouq El Hosniyeh	M	M	M	Zouq El-Haddara	M	M	M	Zouq El-Hbalsa	M	M	M
Zouq El-Moqachrine	M	M	M								

## Sud

### Sour

Municipality	30-Dec	31-Dec	01-Jan	Municipality	30-Dec	31-Dec	01-Jan	Municipality	30-Dec	31-Dec	01-Jan
Aaiyeh	ML	M	ML	Aalma El-Chaab	ML	M	ML	Aaytit	M	M	ML
Abbassiyeh Sour	M	M	L	Abou Chech	ML	M	ML	Ain Abou Abdallah	M	M	L
Ain Baal	M	M	M	Arzoun	M	M	VL	Aziyeh	ML	M	ML
Baflaya	M	M	L	Barich	M	M	L	Batouliyah	M	M	M
Bayad	ML	M	ML	Bazouriyeh	M	M	M	Bediass	M	M	VL
Bestiyat	M	M	L	Borj El Chemali	M	M	M	Borj En-Naqoura	M	M	ML
Borj Rahhal	M	M	L	Boustane	ML	M	ML	Btaychiyeh	ML	M	M
Chaaitiye	M	M	M	Chameh	ML	M	ML	Chehabiye	M	M	L
Chehour	M	M	VL	Chihine	ML	M	L	Debaal Sour	M	M	L
Deir Amess	ML	M	L	Deir Kifa	M	M	L	Deir Qanoun El-Ain	M	M	M
Deir Qanoun El-Naher	M	M	VL	Derdghaiya	M	M	L	Dhayra	ML	M	ML
Halloussiyeh	M	M	VL	Hamoul	ML	M	L	Hanaouey	M	M	M
Henniye	M	M	ML	Hmairi Sour	M	M	VL	Iskandarouna Sour	M	M	ML
Jbal El Botom	ML	M	ML	Jebbin	ML	M	ML	Jennata	M	M	VL
Jijim	ML	M	ML	Jouaiya	M	M	L	Kneisset Sour	M	M	M

Maarake	M	M	L	Maaroub	M	M	L	Majadel	M	M	L
Majdalzoun	ML	M	ML	Mansouri Sour	M	M	M	Marnba	M	M	VL
Marouahine	ML	M	L	Mazraat El-Zalloutiy	ML	M	ML	Mazraat Mechref	M	M	L
Mazraat Tayr Semhat	M	M	VL	Mheilib	M	M	L	Neffakhiyeh	M	M	L
Niha Sour	M	M	L	Ouadi Jilo	M	M	ML	Qana	ML	M	ML
Qolaileh Sour	M	M	ML	Rechknanay	ML	M	L	Rmadiyah	M	M	M
Selha Sour	M	M	L	Siddiqine	ML	M	ML	Sour	M	M	M
Srifa	M	M	VL	Tayr Debbe	M	M	ML	Tayr Felsay	M	M	VL
Tayr Harfa	ML	M	ML	Touayri	M	M	VL	Toura	M	M	L
Yanouh Sour	M	M	L	Yarine	ML	M	ML	Zebqine	ML	M	L

## Saida

Municipality	30-Dec	31-Dec	01-Jan	Municipality	30-Dec	31-Dec	01-Jan	Municipality	30-Dec	31-Dec	01-Jan
Aanqoun	ML	M	M	Aaqtanit	ML	M	M	Aarab Ej-Jall	ML	M	L
Aarab Tabbaya	ML	M	ML	Abra Saida	ML	M	M	Adloun	M	M	L
Adousiyeh	M	M	L	Ain-El-Deleb	M	M	M	Arzai	M	M	L
Babliyah	M	M	L	Barty	ML	M	L	Bissariyeh	M	M	L
Bnaafoul	ML	M	M	Bqosta	M	M	M	Bramiy	M	M	M
Daoudiyeh	M	M	L	Dareb El-Sim	M	M	M	Erkay	ML	M	ML
Ghassanieh	M	M	L	Ghazieh	M	M	ML	Hajjeh	ML	M	M
Haret Saida	M	M	M	Hartiyeh	M	M	L	Hlaliye Saida	M	M	M
Insariyat	M	M	L	Jazira Saida	M	M	L	Kafar Bit	ML	M	L
Kaoutariyet El-Siyad	M	M	L	Kfar Chellal	ML	M	L	Kfar Hatta Saida	ML	M	L
Kfar Milke Saida	ML	M	L	Khartoum	M	M	L	Khaziz	ML	M	M
Khirbet Ed-Douair Sa	M	M	L	Khirbet El-Bassal	M	M	M	Khrayeb Saida	M	M	L
Loubieh	M	M	L	Maghdouche	M	M	M	Majdelyoun	ML	M	M
Matariyet El-Choumar	M	M	L	Matayriyeh	ML	M	M	Mazraat 'Mseileh	M	M	L
Mazraat 'Snaiber	M	M	L	Mazraat Aarab Soukka	ML	M	L	Mazraat Deir Taqla	M	M	VL
Mazraat El Yahoudiye	M	M	L	Mazraat El-Housseini	M	M	L	Mazraat El-Mhaydaleh	M	M	L
Mazraat El-Ouasta	M	M	L	Mazraat Jamjim	M	M	L	Mazraat Kaoutariyet	M	M	VL
Mazraat Kfar Badda	M	M	L	Mazraat Oussamiyat	M	M	VL	Mazraat Sari	M	M	L
Mazraat Sinai	M	M	L	Meemariyeh	M	M	M	Merouaniyeh	M	M	L
Miyeh ou Miyeh	M	M	M	Najjariyeh	M	M	L	Qaaqaiyat El-Snaouba	M	M	L
Qnarit	M	M	M	Qraiye Saida	ML	M	M	Saida Ed-Dekermane	M	M	M
Saida El-Oustani	M	M	M	Saida El-Qadimeh	M	M	M	Saida Kefraya	ML	M	M
Saksakiyeh	M	M	L	Salhie Saida	ML	M	M	Sarafand	M	M	L
Sfenta	ML	M	L	Tafahta	M	M	L	Tanbourit	ML	M	M
Tebna	M	M	L	Zaghdraiya	M	M	M	Zeita	ML	M	M
Zrariyeh	M	M	VL								

## Jezzine

Municipality	30-Dec	31-Dec	01-Jan	Municipality	30-Dec	31-Dec	01-Jan	Municipality	30-Dec	31-Dec	01-Jan
Ain El-Mir (El Estab	L	M	L	Anane	ML	M	L	Aramta	L	M	L
Ariya	ML	M	L	Aychiyeh	L	ML	VL	Azour	ML	M	L
Baba	ML	M	L	Bayssour Jezzine	L	M	L	Benoueteh Jezzine	ML	M	L
Bhannine	ML	M	L	Bisri	ML	M	L	Bkassine	ML	M	L
Bouslaya	ML	M	L	Btedine El-Leqech	ML	M	L	Chbail	ML	L	VL
Choualiq Jezzine	ML	M	ML	Dahr Ed-Deir	ML	M	L	Deir El Qattine	ML	M	L

Demachqiyeh	L	M	VL	Ghabbatiyeh	M	M	L	Harf Jezzine	ML	M	L
Hassaniyeh	ML	M	L	Haytouleh	ML	M	L	Haytura	ML	M	L
Hidab	ML	M	L	Homsiyeh	L	M	L	Jabal Toura	ML	M	L
Jarmaq	L	M	VL	Jensnaya	L	M	M	Jernaya	ML	M	L
Jezzine	ML	M	L	Karkha	ML	M	L	Kfar Falous	ML	M	L
Kfar Houna	ML	M	L	Kfar Jarrah	ML	M	M	Lebaa	L	M	L
Louayzet Jezzine	ML	M	L	Machmouche	ML	M	L	Mahmoudiyeh Jezzine	L	M	VL
Maknounye Jezzine	ML	M	L	Maraat Ouazaiyeh	L	M	VL	Mazraat Daraya	L	ML	VL
Mazraat El-Aarqoub	L	ML	VL	Mazraat El-Mathane	ML	M	L	Mazraat El-Rahbane	ML	M	L
Mazraat Khallet Khaz	L	ML	VL	Mazraat Louzid (Loua	ML	L	VL	Mazraat Qrouh	L	M	VL
Mazraat Tamra	L	M	VL	Mazraat Zighrine Jez	L	ML	VL	Mazraat	L	ML	VL
Mharbiyeh	ML	M	ML	Midane Jezzine	ML	M	L	Mjeydel Jezzine	ML	M	ML
Mlikh	ML	M	L	Mrah El-Hbasse	L	M	L	Ouadi Baanqoudaine	L	M	ML
Ouadi El-Laymoun	ML	M	L	Ouardiyeh	L	L	VL	Qabaa Jezzine	L	M	L
Qatrani	L	ML	VL	Qaytouleh	ML	M	L	Qtaleh Jezzine	ML	M	L
Rihane Jezzine	L	M	VL	Rimat	ML	M	L	Roum	ML	M	L
Roummanet	ML	M	L	Sabbah	ML	M	L	Saydoun	ML	M	L
Sfaray	ML	M	L	Snaya	ML	M	L	Sojoud	L	ML	VL
Srayri	L	ML	VL	Taaid	ML	M	L	Wadi Jezzine	ML	M	L
Zhalta	ML	M	L								

## Bekaa

### West Bekaa

Municipality	30-Dec	31-Dec	01-Jan	Municipality	30-Dec	31-Dec	01-Jan	Municipality	30-Dec	31-Dec	01-Jan
Aammiq BG	M	M	M	Ain El Tineh BG	M	M	L	Ain Zebdeh	M	M	ML
Ana	M	ML	M	Aytanit	ML	M	L	Baaloul BG	M	M	L
Bab Mareh	M	M	L	Chouberqiye Aammiq	M	M	M	Dakoue	M	M	L
Deir Ain El-Jaouze	M	M	L	Deir Tahniche	M	M	M	Ghaza	M	M	ML
Harime El-Soughra	M	M	M	Hoch Harimeh	M	M	ML	Jazira BG	M	M	M
Jib Jennine	M	M	ML	Kamed-El-Laouz	M	M	ML	Kefraya BG	M	ML	M
Khiara El Atika	M	M	ML	Khiara	M	M	ML	Khirbet Qanafar	M	M	ML
Lala	M	ML	ML	Lebbaya BG	M	M	L	Loussa	ML	M	L
Machghara	M	M	L	Manara (Hammara) BG	M	M	ML	Mansoura BG	M	M	M
Marej BG	M	M	M	Maydoun	ML	M	L	Ouaqf BG	M	M	M
Qaraaoun	M	ML	L	Qelya	ML	M	L	Raouda (Istabel)	M	M	ML
Saghbine	M	ML	ML	Sohmor	M	ML	L	Soltan Yacoub el Ara	M	M	L
Souairy	M	M	ML	Sultan Yaacoub	M	M	L	Tal Znoub	M	M	M
Yehmor BG	ML	ML	L	Zilaya	ML	M	L				

### Zahle

Municipality	30-Dec	31-Dec	01-Jan	Municipality	30-Dec	31-Dec	01-Jan	Municipality	30-Dec	31-Dec	01-Jan
Aanjar (Haouch Mouss	M	M	ML	Ablah	M	M	L	Ain Kfarzabad	M	M	L
Ali-El-Nahri	M	M	L	Bar Elias	M	M	L	Bouarej	ML	L	ML
Cheberqiyet Tabet	M	ML	ML	Chtaura	M	ML	L	Deir El Ghazal	M	M	ML
Delhamiyet Zahle	M	ML	L	Ferzol	M	M	L	Haouch El-Ghanam	M	M	L
Haouch Es-Siyadeh	M	M	M	Haouch Hala	M	M	L	Haouch Mandara	M	ML	ML



Haouch Qayssar	M	M	M	Hezerta	L	ML	L	Hosh Moussa	M	ML	ML
Jdita	M	ML	L	Kfarzabad	M	M	L	Ksara	M	ML	L
Majdel Aanjar	M	M	ML	Makssi	M	ML	L	Massa	M	M	ML
Mazraat Er-Remtaniye	ML	ML	L	Mrayjat Zahle	ML	L	ML	Mzaraa Zahle	M	M	M
Nabi Ayla	M	M	L	Nasriyet Rizk	M	ML	M	Nasriyet Zahle	M	M	M
Niha Zahle	M	M	L	Ouadi Ed-Deloum	ML	L	ML	Ouadi El-Arayech	ML	M	L
Qaa El Rim	ML	M	L	Qab Elias	M	ML	ML	Qousaya	M	M	L
Rhit	M	M	ML	Riyak	M	M	L	Saadnayel	M	ML	L
Taal El-Akhdar	M	M	M	Taalbeya	M	ML	L	Taanayel	M	ML	L
Talamara	M	M	L	Tcheflik Edde Haouch	M	M	M	Tcheflik Qiqano	M	M	M
Terbol Zahle	M	ML	ML	Touaite Zahle	L	ML	L	Zahle Aradi	ML	ML	L
Zahle El-Berbara	ML	ML	L	Zahle El-Maallaga	M	M	L	Zahle El-Midane	ML	M	L
Zahle Er-Rassiye	ML	ML	L	Zahle Haouch El-Ouma	M	ML	L	Zahle Haouch El-Ouma	M	ML	L
Zahle Haouch Ez-Zara	ML	M	L	Zahle Maalaga Aradi	M	ML	L	Zahle Mar Antonios	M	ML	L
Zahle Mar Elias	M	ML	L	Zahle Mar Gerios	M	ML	L	Zahle Saydet En-Naja	ML	ML	L
Zebdoul	M	ML	L								

## Rachaiya

Municipality	30-Dec	31-Dec	01-Jan	Municipality	30-Dec	31-Dec	01-Jan	Municipality	30-Dec	31-Dec	01-Jan
Ain Arab Rachaiya	M	M	L	Ain Ata	M	M	L	Ain Harche	M	M	L
Aqabe Rachaya	M	M	L	Ayha	M	M	L	Ayta El Fokhar	M	M	ML
Bakifa Rachaya	M	M	L	Bakka	M	M	L	Beit Lahya	M	M	L
Bireh Rachaiya	M	M	ML	Daher El Ahmar	M	M	L	Deir El-Achayer	M	M	M
Heloua Rachaiya	M	ML	ML	Hoch El Qannabeh Rac	M	M	L	Kaoukaba Bou Arab	M	M	L
Kfar Danis	M	M	L	Kfar Mechki	M	M	L	Kfar Qouq	M	M	L
Kherbet Rouha	M	M	L	Majdel Balhiss	M	M	L	Mdoukha	M	M	L
Mhaydseh Rachaiya	M	M	L	Nabi Safa	M	M	L	Rachaiya	M	M	L
Rafid Rachaiya	M	M	L	Selsata (Mazraat Dei	L	L	M	Tannoura	M	M	L
Yanta	M	M	ML								

## Beyrouth

### Beyrouth

Municipality	30-Dec	31-Dec	01-Jan	Municipality	30-Dec	31-Dec	01-Jan	Municipality	30-Dec	31-Dec	01-Jan
Achrafieh	ML	M	M	Ain el-Mreisse	M	MH	M	Bachoura	M	MH	M
Beirut Central Distr	M	MH	M	Marfai	M	M	M	Mazraa	M	M	M
Medaouar	ML	M	M	Minet el-Hosn	M	MH	M	Mwssaitbeh	M	M	M
Ras Beirut	M	MH	M	Rmeil	ML	M	M	Saifi	M	MH	M
Zqaq el-Blat	M	MH	M								