

Lebanon Fire Risk Bulletin



CIVIL DEDEFENCE

Refer to cadast table condition.

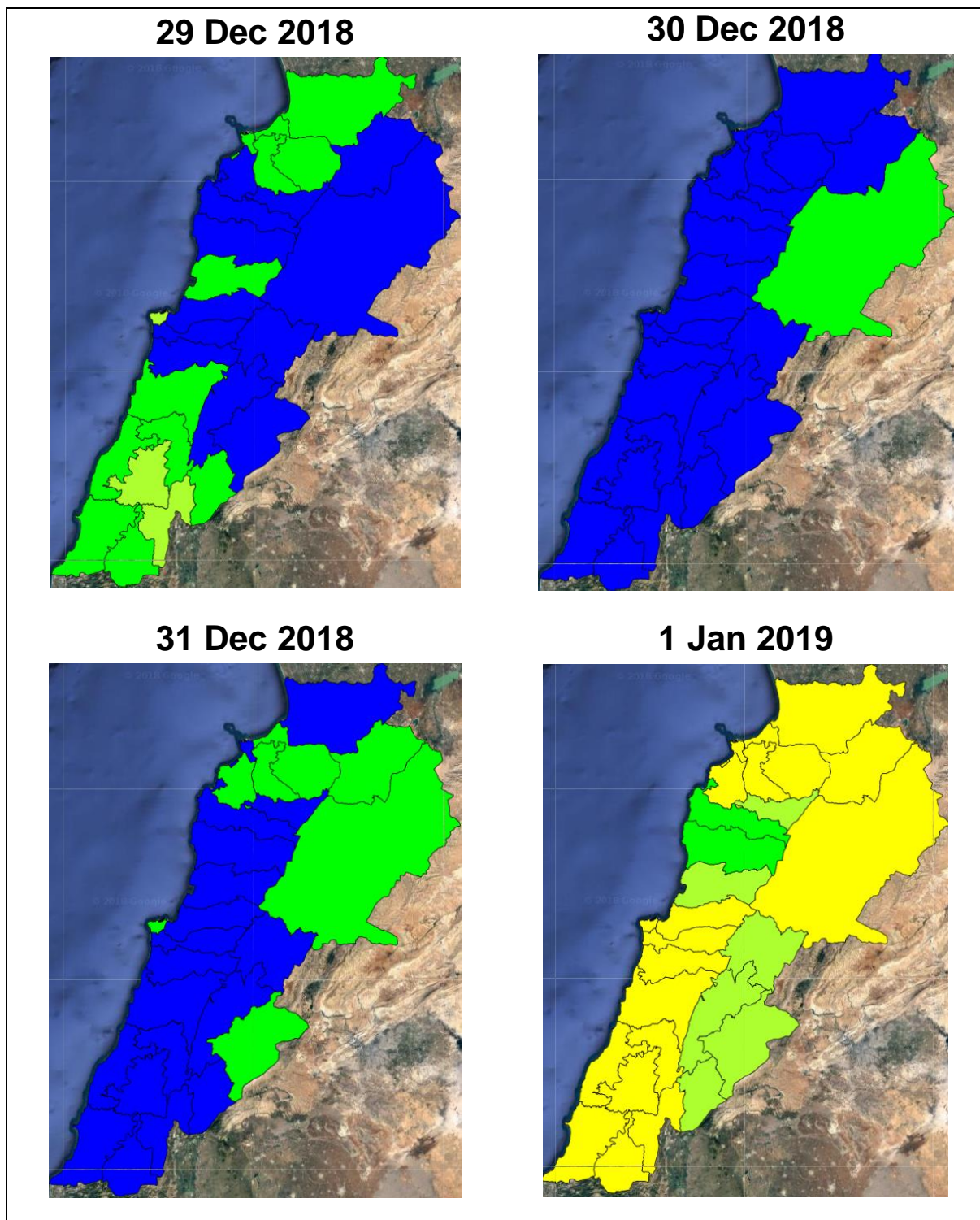
Please note that the indicated temperature is at 2 meters height from the ground.

General description of potential fire risk situation

Symbol	Level of risk	Meaning and actions
VL	Very low	Very low fire risk. Controlled burning operations can be hardly executed due to high fuel moisture content. Normally wildfires self-extinguish.
L	Low	Low fire risk. Controlled burning operations can be executed with a reasonable degree of safety.
ML	Medium low	Medium-low fire risk. Controlled burning operations can be executed in safety conditions. All the fires need to be extinguished.
M	Medium	Medium fire risk. Controlled burning operations would be avoided. All the fires need to be very well extinguished.
MH	Medium high	Controlled burning is not recommended. Open flame will start fires. Cured grasslands and forest litter will burn readily. Spread is moderate in forests and fast in exposed areas. Patrolling and monitoring is suggested. Fight fires with direct attack and all available resources.
H	High	Ignition can occur easily with fast spread in grass, shrubs and forests. Fires will be very hot with crowning and short to medium spotting. Direct attack on the head may not be possible requiring indirect methods on flanks. Patrolling and monitoring the territory is highly suggested.
E	Extreme	Ignition can occur also from sparks. Fires will be extremely hot with fast rate of spread. Control may not be possible during day due to long range spotting and crowning. Suppression forces should limit efforts to limiting lateral spread. Damage potential total. Patrolling and monitoring the territory is highly suggested.

Beirut, 30 December 2018

FIRE RISK INDEX

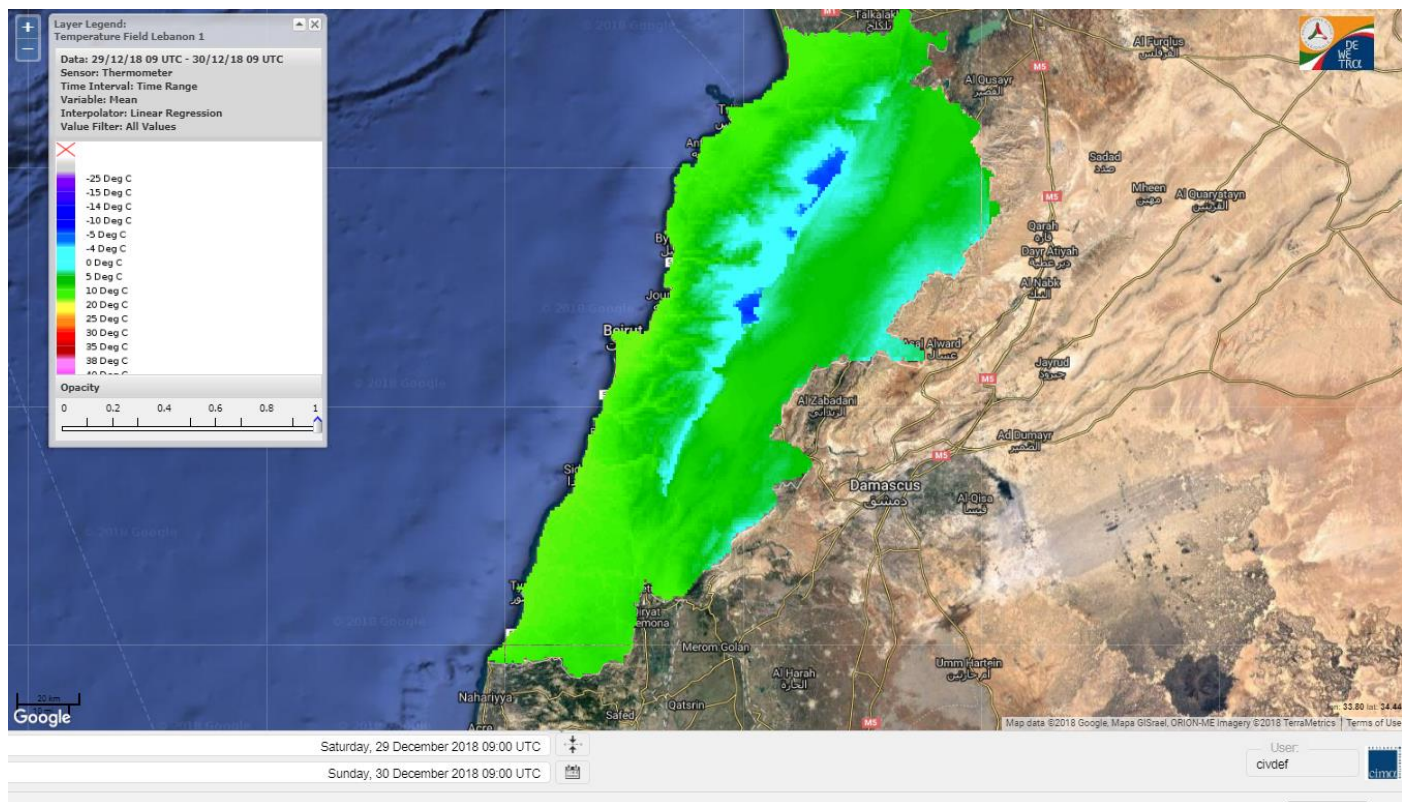


Layer Legend:
Lebanon Wildfire Risk Index 1

Data: Run: 30/12/2018 00:00. Forecast for 30
Model: RISICO for the Republic of Lebanon
Variable: Fire Weather Index
Spatial Resolution: Caza

- VERY LOW
- LOW
- MEDIUM-LOW
- MEDIUM
- MEDIUM-HIGH
- HIGH
- EXTREME

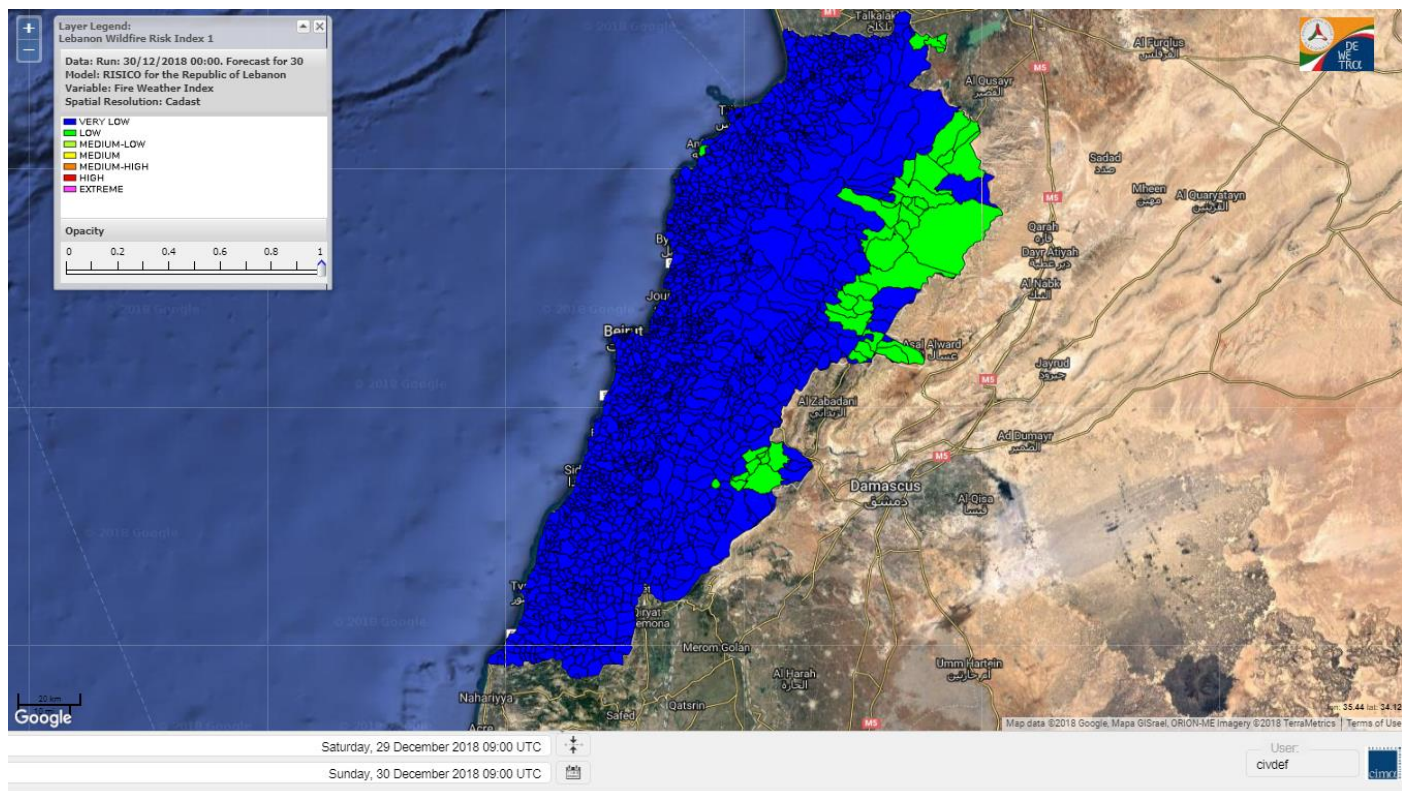
Lebanon temperature for 30 Dec 2018



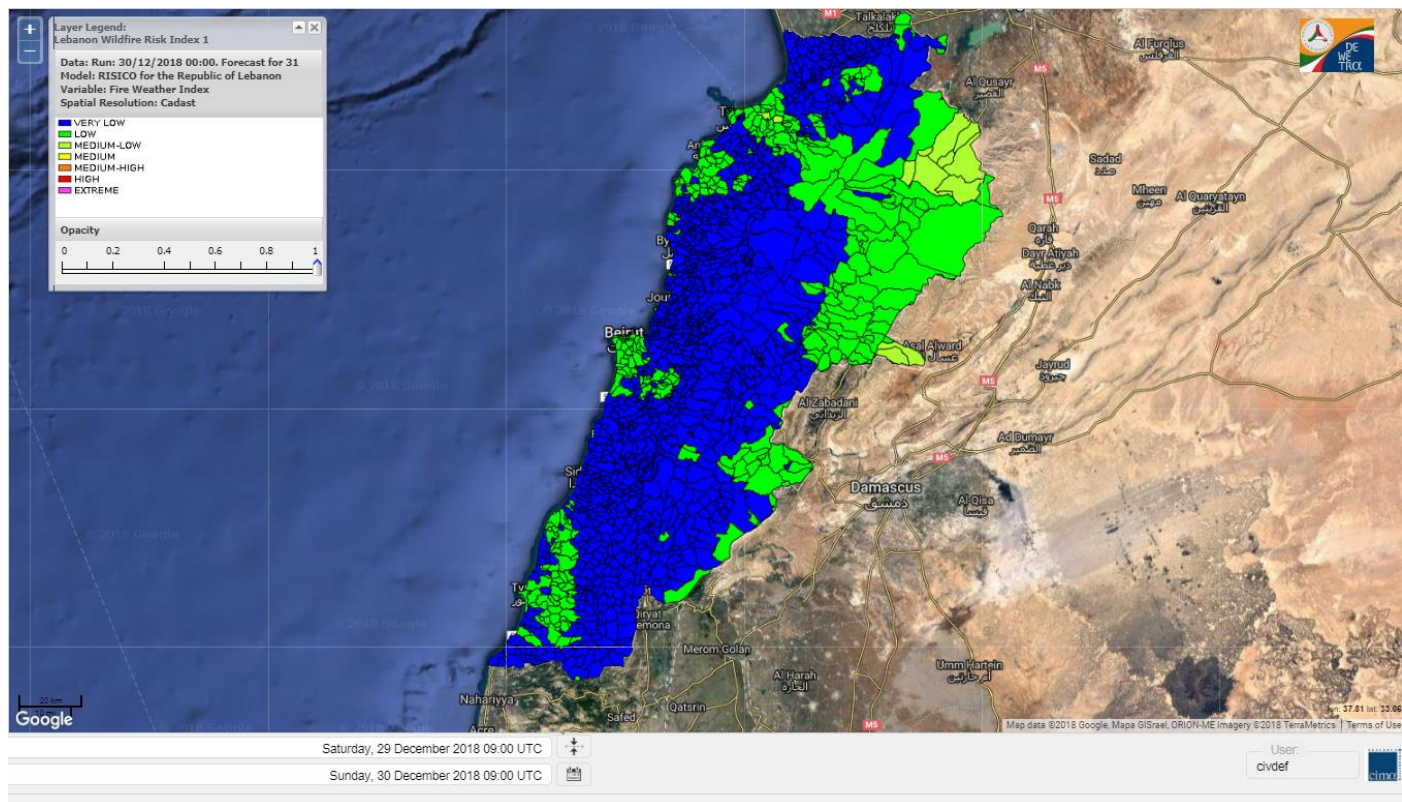
Lebanon humidity for 30 Dec 2018



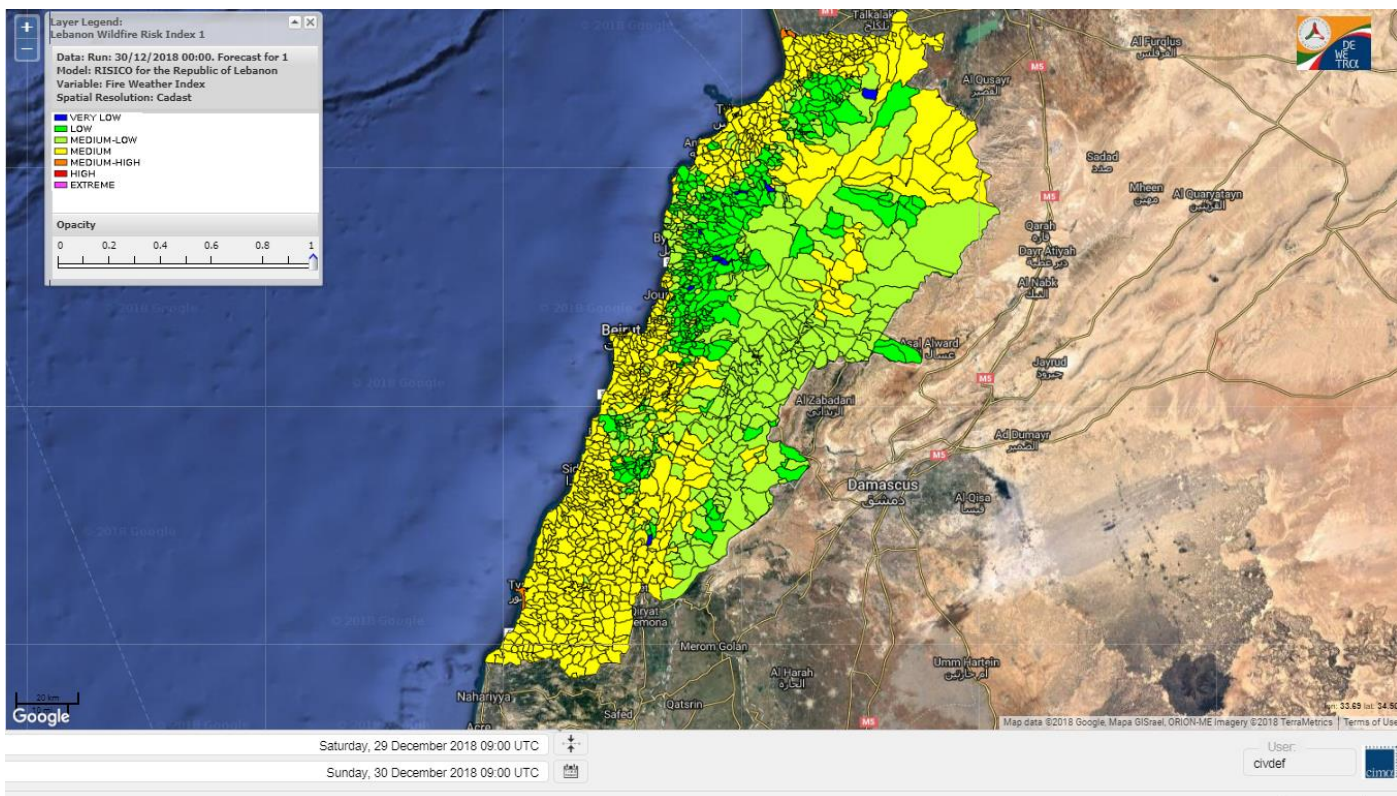
Lebanon for 30 Dec 2018



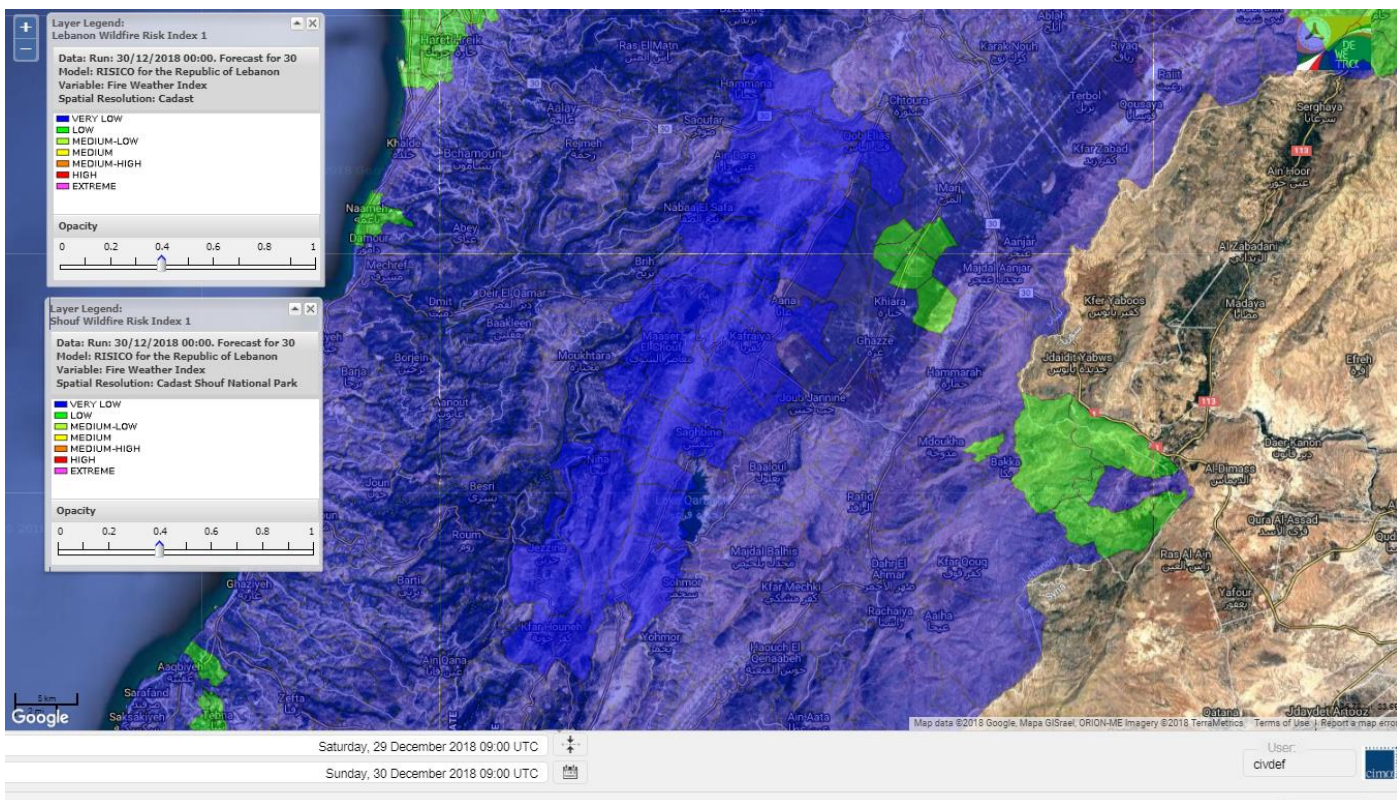
Lebanon for 31 Dec 2018



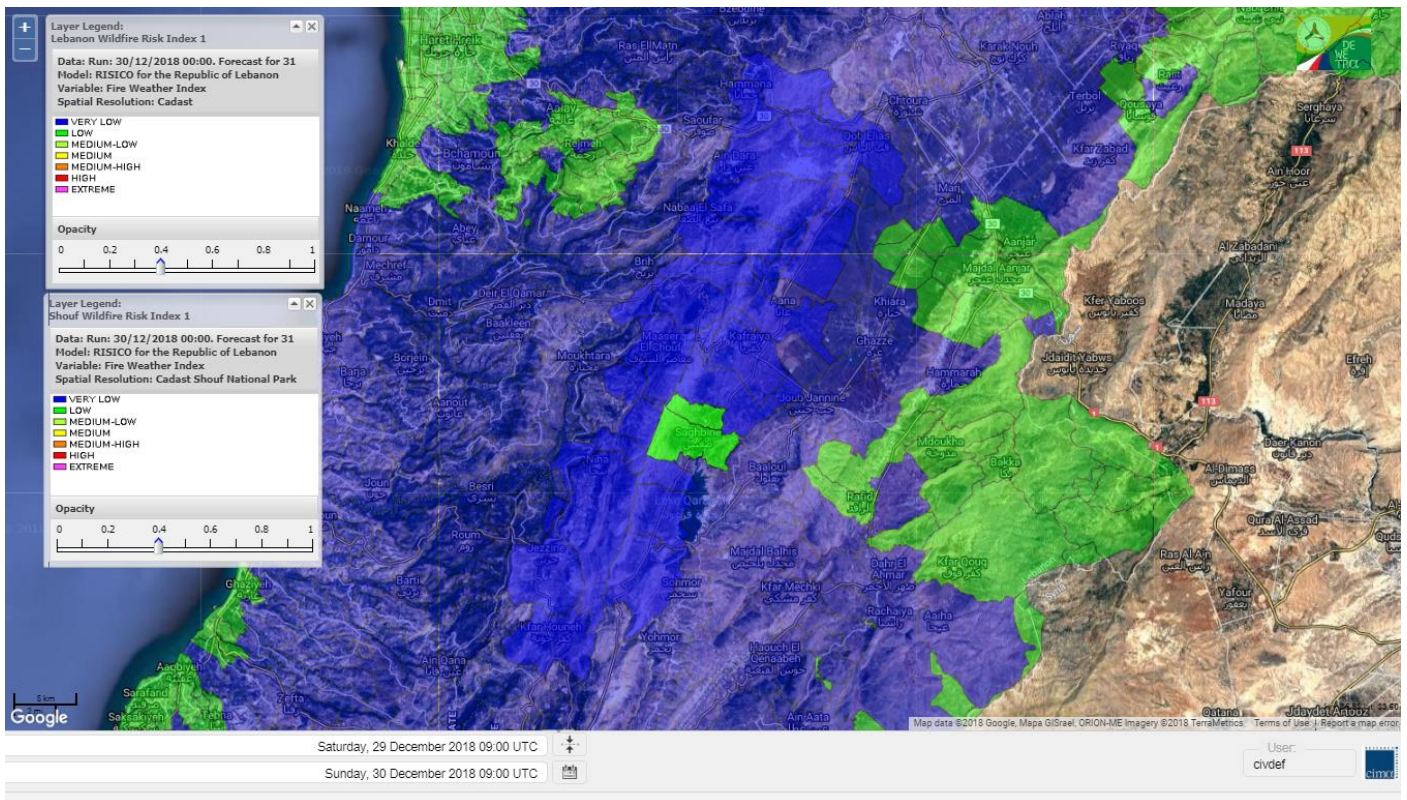
Lebanon for 1 Jan 2019



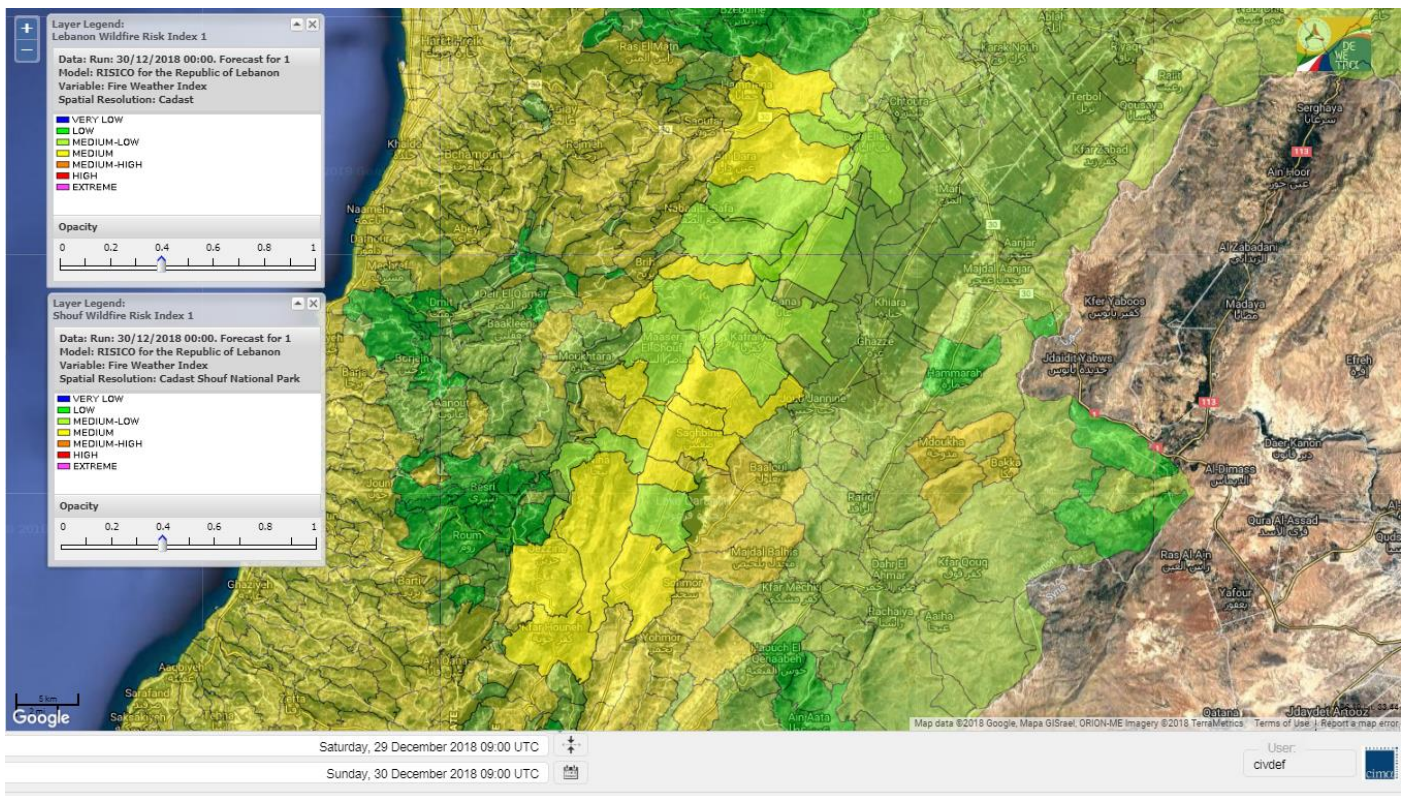
Shouf Biosphere Reserve Forecast for 30 Dec 2018



Shouf Biosphere Reserve Forecast for 31 Dec 2018



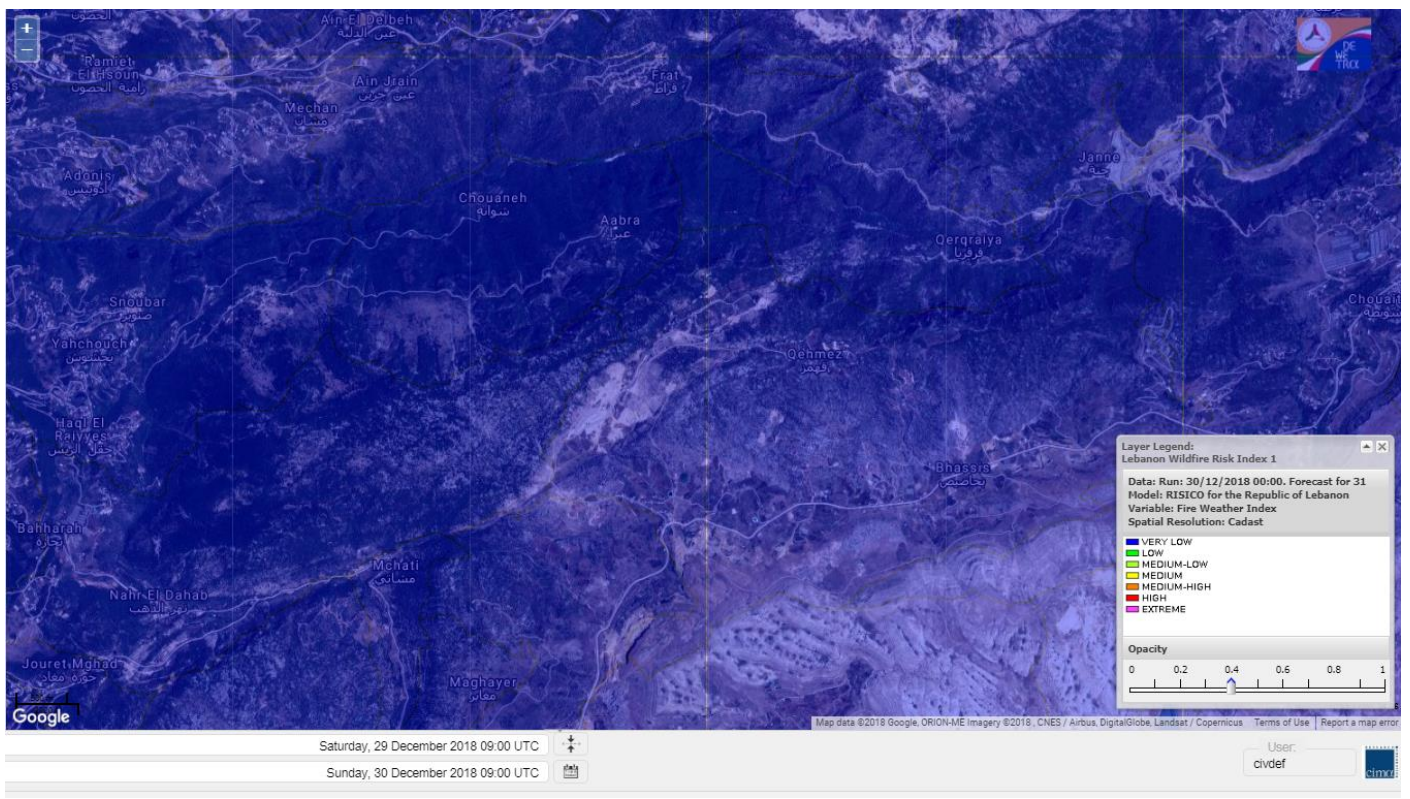
Shouf Biosphere Reserve Forecast for 1 Jan 2019



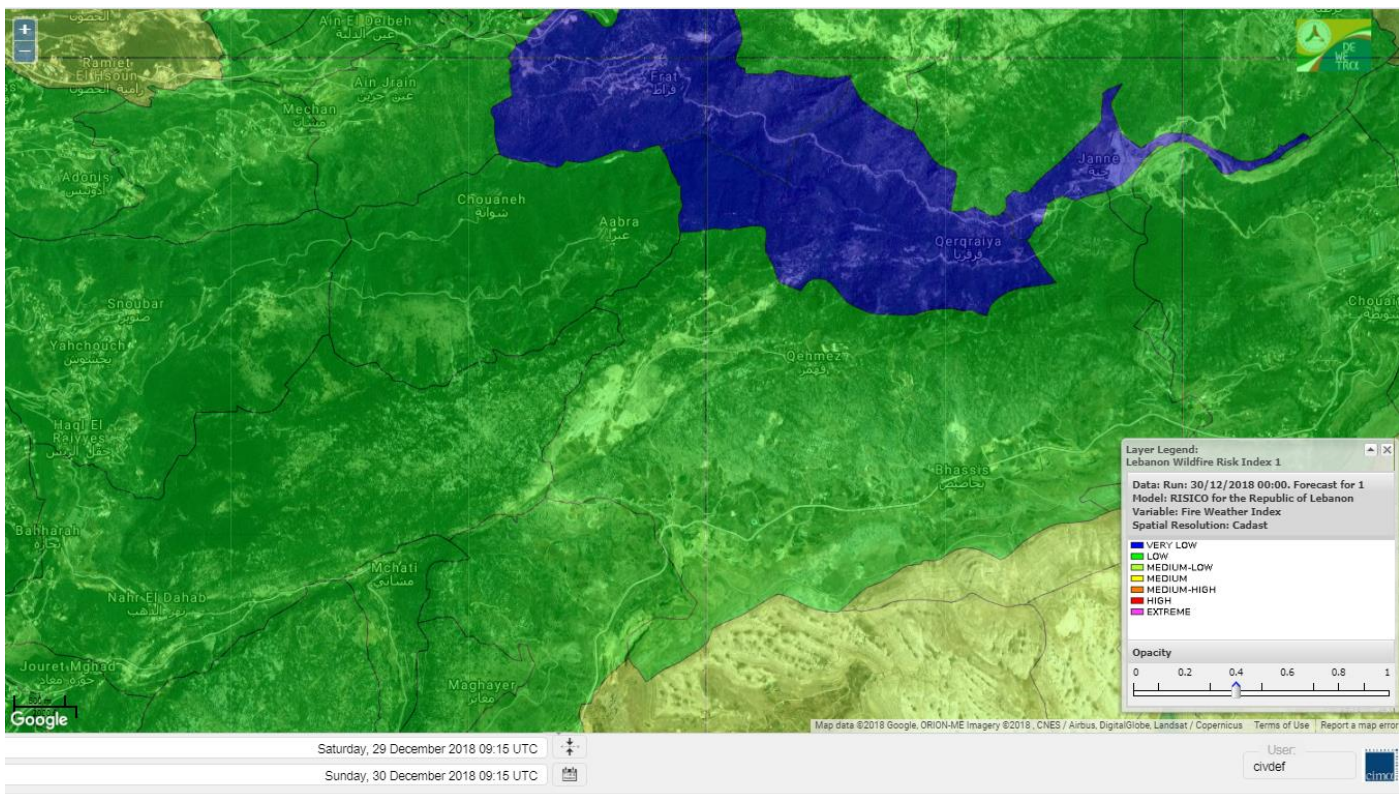
Jabal Moussa Reserve Forecast for 30 Dec 2018



Jabal Moussa Reserve Forecast for 31 Dec 2018



Jabal Moussa Reserve Forecast for 1 Jan 2019

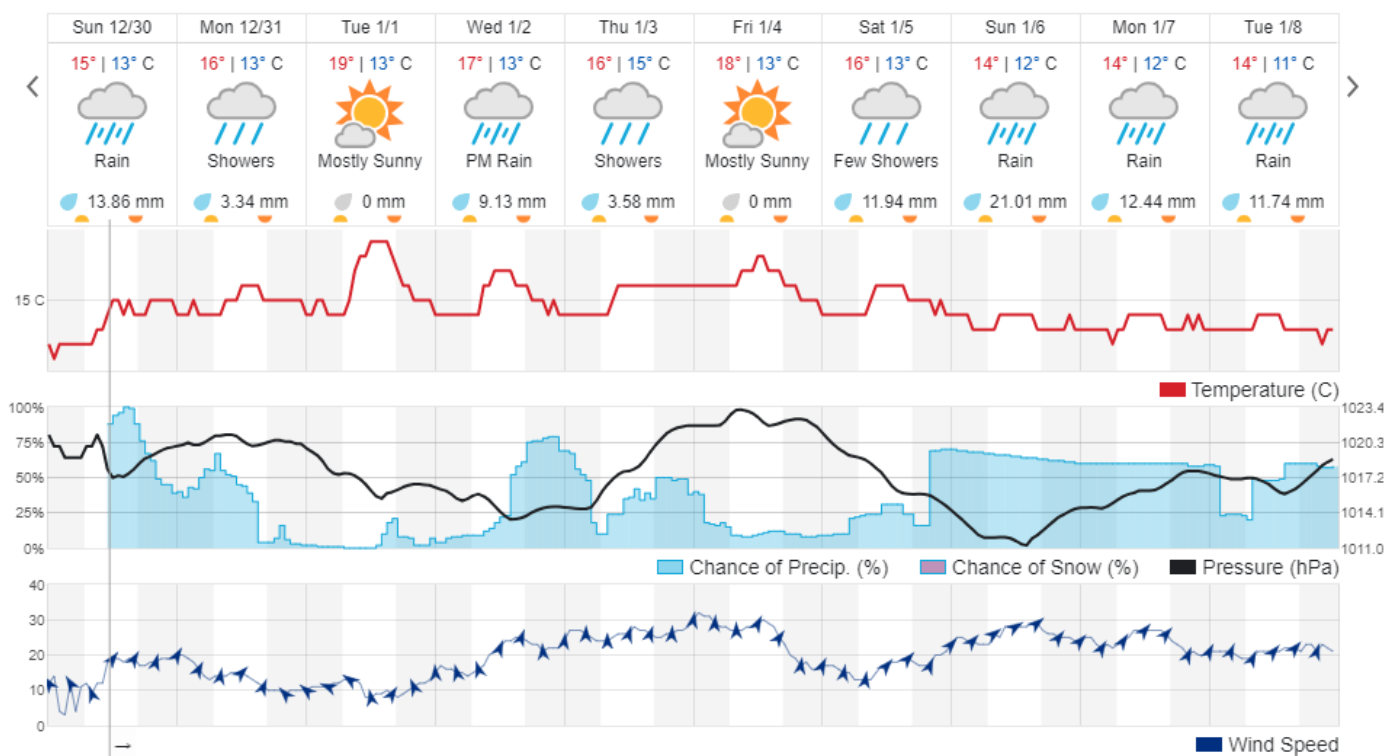


Beirut, Lebanon

14° ACHRAFIEH, RIZK STATION | REPORT | CHANGE

TODAY HOURLY **10-DAY** CALENDAR HISTORY WUNDERMAP

Customize



Nord

Koura

Municipality	30-Dec	31-Dec	01-Jan	Municipality	30-Dec	31-Dec	01-Jan	Municipality	30-Dec	31-Dec	01-Jan
Aaba	VL	VL	M	Afsaddiq	VL	L	M	Ain Ekrine	VL	L	M
Amioun	VL	VL	M	Anfeh	VL	L	M	Badbhoun	VL	L	M
Barghoun	VL	L	M	Barsa	VL	VL	ML	Batroumine	VL	VL	M
Bdebba	VL	VL	M	Bechmizine	VL	L	M	Bednaye El-Koura	VL	L	L
Bhabbouch El-Koura	VL	L	ML	Bkeftine	VL	VL	M	Bnehran	VL	L	ML
Bqaiia El-Koura	VL	VL	ML	Bsarma	VL	VL	M	Btaaboura	VL	L	M
Bterram	VL	L	M	Btouratij	VL	VL	M	Bziza	VL	VL	M
Dar Beechtar	VL	L	M	Dar Chmezzine	VL	L	M	Deddeh	VL	VL	M
Deir El-Balamand	VL	VL	L	Fih	VL	L	M	Hraiche	VL	L	M
Ijdaabrine	VL	L	L	Kaftoun	VL	L	M	Kefraya El-Koura	VL	L	ML
Kfarakka	VL	VL	M	Kfarhata	VL	L	L	Kfarhazir	VL	L	M
Kfarkahel	VL	VL	ML	Kfarsaroun	VL	VL	M	Kosba	VL	VL	M
Mejdel el-Koura	VL	L	ML	Nakhle	VL	VL	ML	Qalhat	VL	VL	L
Ras Masqa	VL	VL	M	Rechdibbine	VL	L	M	Zakroun	VL	L	M
Zgharta El-Mtaouile	VL	VL	L								

Bcharre

Municipality	30-Dec	31-Dec	01-Jan	Municipality	30-Dec	31-Dec	01-Jan	Municipality	30-Dec	31-Dec	01-Jan
Aabdine	VL	VL	ML	Bane	VL	VL	M	Barhelioun	VL	VL	L
Bazooune	VL	VL	ML	Becharre	VL	L	M	Beit Menzer	VL	VL	L
Billa	VL	VL	ML	Blaouza	VL	VL	M	Bqaa Kafra	VL	VL	ML
Bqerqacha	VL	VL	ML	Breissat	VL	VL	L	Dimane	VL	VL	L
Hadath El Jobbeh	VL	VL	L	Hadchit	VL	VL	ML	Hasroun	VL	VL	ML
Mazraat Aassaf	VL	VL	VL	Mazraat Bani Saab	VL	VL	L	Mchaa El-Jobbeh	VL	VL	ML
Metrit	VL	L	L	Moghr El-Ahoual	VL	L	ML	Ouadi Qannoubine	VL	VL	VL
Qanat	VL	VL	L	Qnayouer	VL	VL	L	Tourza	VL	VL	L

Batroun

Municipality	30-Dec	31-Dec	01-Jan	Municipality	30-Dec	31-Dec	01-Jan	Municipality	30-Dec	31-Dec	01-Jan
Aabrine	VL	L	L	Aalali	VL	VL	L	Aartiz	VL	VL	VL
Abdelli	VL	VL	L	Ajdabra	VL	VL	L	Assia	VL	VL	L
Basbina	VL	L	M	Batroun	VL	L	M	Bcheleh	VL	VL	L
Bechtoudar	VL	VL	L	Beit Chlala	VL	VL	L	Beit Kassab	VL	VL	VL
Bijdarfil	VL	L	ML	Bqesmaya	VL	L	L	Chatine	VL	VL	L
Chebtin	VL	VL	L	Chekka	VL	L	M	Daael	VL	VL	L
Dahr Abi Yaghi	VL	VL	L	Daraya El-Batroun	VL	VL	ML	Deir Billa	VL	VL	L
Deir Kfifane	VL	VL	ML	Deir Mar Youhanna EL	VL	VL	L	Deir Mar Youssef Jra	VL	VL	L
Douma	VL	VL	L	Douq	VL	VL	L	Eddeh El-Batroun	VL	VL	L
Ftahat El-Batroun	VL	VL	L	Ghouma	VL	VL	L	Hadtoun	VL	VL	L
Hamat	VL	L	L	Harbouna	VL	VL	L	Hardine	VL	VL	L
Helta	VL	VL	L	Hery	VL	L	M	Jebba	VL	VL	L
Jrabta El-Batroun	VL	VL	L	Jrane El-Batroun	VL	VL	ML	Kfar Aabida	VL	VL	ML
Kfar Halda	VL	VL	L	Kfarb Shlaimane	VL	VL	L	Kfarhatna	VL	VL	L
Kfarhay	VL	L	ML	Kfarhelos	VL	VL	L	Kfifane	VL	VL	ML

Kfour El Arabi	VL	VL	L	Koubba	VL	L	ML	Kour	VL	VL	L
Mar Mama	VL	VL	L	Masrah	VL	VL	L	Mehmarch	VL	VL	L
Mrah Chdid	VL	VL	L	Mrah El Ziyat	VL	VL	L	Mrah El-Hajj	VL	VL	L
Nahle El-Batroun	VL	VL	L	Niha El-Batroun	VL	VL	L	Oujh El-Hajjar	VL	L	L
Ouata Houb	VL	VL	L	Qatnaaoun	VL	L	L	Racha	VL	VL	L
Rachana	VL	VL	L	Rachkida	VL	L	L	Ram El-Batroun	VL	VL	L
Ras Nahhach	VL	VL	L	Selaata	VL	L	M	Sghar	VL	VL	ML
Smar Jbayl	VL	VL	ML	Sourat El-Batroun	VL	VL	L	Tannourine El-Faouqa	VL	VL	ML
Tannourine Et-Tahta	VL	VL	L	Thoum	VL	VL	L	Toula El-Batroun	VL	VL	L
Zan	VL	VL	L								

Zgharta

Municipality	30-Dec	31-Dec	01-Jan	Municipality	30-Dec	31-Dec	01-Jan	Municipality	30-Dec	31-Dec	01-Jan
Aachach	VL	L	M	Aalma	VL	L	M	Aarde	VL	L	M
Aintourine	VL	VL	ML	Arabet Qozhaya	VL	VL	L	Arde	VL	L	M
Arjis	VL	VL	M	Asnoun	VL	VL	M	Ayto	VL	VL	L
Basloukit	VL	VL	M	Bchannine	VL	VL	M	Besebeel	VL	L	M
Bhairret Toula	VL	VL	L	Bnachee	VL	VL	ML	Boussit	VL	ML	M
Danha	VL	L	M	Daraiya Zgharta	VL	VL	M	Deir Jdeide	VL	VL	M
Ehden	VL	VL	M	Halan	VL	ML	M	Hariq Zgharta	VL	VL	M
Houakir	VL	L	ML	Hraiqis	VL	L	M	Iaal	VL	VL	M
Ijbaa	VL	VL	ML	Karm Saddeh	VL	VL	L	Kfarchakhna	VL	VL	M
Kfardlaqous	VL	L	M	Kfarfou	VL	VL	M	Kfarhata Zgharta	VL	L	M
Kfarhoura	VL	VL	M	Kfarsghab	VL	VL	ML	Kfaryachit	VL	VL	M
Kfarzaina	VL	VL	M	Khaldiye	VL	VL	M	Mazraat Ajbeaa	VL	VL	M
Mazraat Et-Teffah	VL	VL	L	Mazraat Jneid	VL	VL	M	Mejdlaiya Zgharta	VL	L	M
Merh Kfarsghab	VL	VL	M	Miryata	VL	L	M	Miziara	VL	VL	L
Mzraat Kefraya	VL	L	M	Qorah Bach	VL	VL	M	Rachiine	VL	L	M
Ras Kifa	VL	VL	ML	Sakhra	VL	VL	M	Sebhel Zgharta	VL	VL	ML
Serhel	VL	VL	L	Tallet Zgharta	VL	L	M	Toula Zgharta	VL	VL	L
Zgharta	VL	L	M								

Minieh-Denniye

Municipality	30-Dec	31-Dec	01-Jan	Municipality	30-Dec	31-Dec	01-Jan	Municipality	30-Dec	31-Dec	01-Jan
Aasaymout	VL	VL	L	Aaymar	VL	L	ML	Aazki	VL	L	M
Ain El-Tineh-Miniyeh	VL	L	L	Assoun	VL	L	ML	Bakhaaoun	VL	L	ML
Bchennata	VL	VL	M	Bechehhara	VL	VL	L	Beddawi	VL	L	M
Behouaita	VL	VL	L	Beit El Foqss	VL	L	L	Beit Haouik	VL	L	ML
Beit Zoud	VL	L	L	Bekaasafrine	VL	L	M	Borj El Yahoudiyeh	VL	L	M
Bqarsouna	VL	L	L	Btermaz	VL	VL	L	Debaael	VL	L	L
Deir Ammar	VL	L	M	Deir Nbouh	VL	L	M	Haouaret-Miniyeh	VL	L	ML
Haql el Azimeh	VL	VL	L	Harf El Siyad	VL	L	L	Hazmiye-Miniyeh	VL	VL	L
Izal	VL	L	M	Jarjour	VL	VL	L	Jayroun	VL	VL	L
Kahf El-Malloul	VL	L	ML	Karm El-Moher	VL	L	ML	Kfar Binine	VL	L	ML
Kfarchalane	VL	L	ML	Kfarhabou	VL	L	M	Kharroub-Miniyeh	VL	L	ML
Mazraat El-Kreme	VL	VL	L	Mazraat Ketrane	VL	L	L	Merkebtta	VL	L	M
Minyeh	VL	L	M	Mrah El Sfirat	VL	VL	L	Mrah Sraj	VL	L	L
Mrebbine	VL	L	ML	Nabi Youcheaa	VL	L	M	Nemrine	VL	L	ML

Qarhaiya	VL	L	ML	Qarne	VL	VL	L	Qarsita	VL	VL	L
Qattineh-Miniyeh	VL	VL	L	Qemmamine	VL	VL	L	Qraine	VL	VL	L
Raouda-Aadoua	VL	VL	ML	Rihaniyet-Miniyeh	VL	VL	M	Sfireh	VL	VL	L
Sir Ed-Danniyeh	VL	L	L	Tarane	VL	VL	L	Terbol-Miniyeh	VL	L	M
Zaghartaghriane	VL	L	M	Zouq Bhannine	VL	L	M				

Nabatiye

Nabatiye

Municipality	30-Dec	31-Dec	01-Jan	Municipality	30-Dec	31-Dec	01-Jan	Municipality	30-Dec	31-Dec	01-Jan
Aabba	VL	VL	M	Aazzi	VL	VL	M	Adchit El-Chqif	VL	VL	M
Ain Bou Swar	VL	VL	M	Ain Kana	VL	VL	M	Ali El-Tafer	VL	VL	M
Ansar	VL	L	M	Arab Salim	VL	VL	M	Arnoun	VL	VL	M
Bfaroue	VL	VL	M	Breyqaah	VL	VL	M	Charqiyeh	VL	VL	M
Choukine	VL	VL	M	Deir El Zahrani	VL	VL	M	Doueir El-Nabatiyeh	VL	VL	M
Habbouch El-Nabatiye	VL	VL	M	Hamra El-Nabatiyeh	VL	VL	M	Harouf El-Nabatiyeh	VL	VL	M
Hmaile	VL	VL	M	Houmin El Faouqa	VL	VL	M	Houmin El Tahta	VL	VL	M
Jarjough	VL	VL	M	Jbaah El-Nabatiyeh	VL	VL	M	Jebchit	VL	VL	M
Kfar Djal El-Nabatiy	VL	VL	M	Kfar Remmane	VL	VL	M	Kfar Sir	VL	VL	M
Kfar Tebnit	VL	VL	M	Kfarfila	VL	VL	M	Kfour El-Nabatieh	VL	VL	M
Mayfadoun	VL	VL	M	Mazraat Bsaffour	VL	VL	M	Mazraat Chalbaal	VL	VL	M
Mazraat Dmoul	VL	VL	M	Mazraat El Khreibeh	VL	VL	M	Mazraat El-Bayad El-	VL	VL	M
Mazraat Kfarjaouz	VL	VL	M	Mazraat Qalaat Meiss	VL	L	M	Nabatiyeh El-Fawka	VL	VL	M
Nabatiyeh Et-Tahta	VL	VL	M	Namiriyeh	VL	VL	M	Qaaqaiyet El Jisr	VL	VL	M
Qossaibeh El-Nabatiy	VL	VL	M	Roumine	VL	VL	M	Sarba El-Nabatieh	VL	VL	M
Sir El-Gharbiyeh	VL	VL	M	Toul	VL	VL	M	Yehmor El-Nabatiyeh	VL	VL	M
Zaoutar El Charkiyeh	VL	VL	M	Zaoutar El-Gharbiyeh	VL	VL	M	Zebdine El-Nabatiyeh	VL	VL	M
Zefta	VL	VL	M								

Hasbaiya

Municipality	30-Dec	31-Dec	01-Jan	Municipality	30-Dec	31-Dec	01-Jan	Municipality	30-Dec	31-Dec	01-Jan
Aain Jarfa	VL	VL	ML	Abou Qamha	VL	VL	ML	Ain Qania	VL	VL	ML
Bourghos	VL	L	M	Chebaa	VL	VL	ML	Chouaya Hasbaya	VL	VL	ML
Dellafeh	VL	VL	M	Fardiss Hasbaiya	VL	VL	M	Hasbaya	VL	VL	ML
Hbariyeh	VL	VL	ML	Kaoukaba Hasbaiya	VL	VL	M	Kfar Chouba	VL	VL	ML
Kfar Hamam	VL	VL	ML	Kfeir El-Zait	VL	VL	ML	Khalwat Hasbaya	VL	VL	L
Khreibet Hasbaiya	VL	VL	M	Majidiyeh Hasbaiya	VL	VL	M	Marj Ez-Zhour (Haouc	VL	VL	ML
Meri	VL	VL	M	Mimass	VL	VL	M	Rachaiya El-Fokhar	VL	VL	ML
Salaiyeb	VL	VL	M								

Marjayoun

Municipality	30-Dec	31-Dec	01-Jan	Municipality	30-Dec	31-Dec	01-Jan	Municipality	30-Dec	31-Dec	01-Jan
Aalmane Marjaayoun	VL	VL	M	Aamra	VL	VL	M	Adayseh Marjaayoun	VL	VL	M
Adchit El-Koussair	VL	VL	M	Ain Aarab Marjaayoun	VL	VL	M	Bani Haiyann	VL	VL	M
Blatt Marjaayoun	VL	VL	M	Blida	VL	VL	M	Borj El-Moulouk	VL	VL	M
Boueyda Marjaayoun	VL	VL	M	Deir Mimass	VL	VL	M	Deir Siriane	VL	VL	M
Dibbine	VL	VL	M	Ebel El Saqi	VL	VL	M	Houla	VL	VL	M
Houra	VL	VL	M	Kfar Kila	VL	VL	M	Khiam Marjaayoun	VL	VL	M

Klayaa	VL	VL	M	Majdel Selem	VL	VL	M	Marjaayoun	VL	VL	M
Markaba	VL	VL	M	Mays El-Jabal	VL	VL	M	Mazraat Doumiat	VL	VL	M
Mazraat Sarada	VL	VL	M	Mhaibib	VL	VL	M	Qabrikha	VL	VL	M
Qantara	VL	VL	M	Rab El-Thalathine	VL	VL	M	Saouaneh Marjayoun	VL	VL	M
Talloussa	VL	VL	M	Taybeh Matjaayoun	VL	VL	M	Touline	VL	VL	M

Bent Jbail

Municipality	30-Dec	31-Dec	01-Jan	Municipality	30-Dec	31-Dec	01-Jan	Municipality	30-Dec	31-Dec	01-Jan
Ain-Ebel	VL	VL	M	Aitaroun	VL	VL	M	Aynata Bint Jbeil	VL	VL	M
Ayta El-Chaeb	VL	VL	M	Ayta El-Jabal	VL	VL	M	Beit Lif	VL	VL	M
Beit Yahoun	VL	VL	M	Bint Jbeil	VL	VL	M	Borj Qalaway	VL	VL	M
Braachit	VL	VL	M	Chakra	VL	VL	M	Debel	VL	VL	M
Deir Antar	VL	VL	M	Froun	VL	VL	M	Ghandouriyeh Bint Jb	VL	VL	M
Hanine	VL	VL	M	Hariss	VL	VL	M	Hdatha	VL	VL	M
Jmeymeh	VL	VL	M	Kafra Bint Jbeil	VL	VL	M	Kfar Dounine	VL	VL	M
Khirbet Selm	VL	VL	M	Kounine	VL	VL	M	Maroun El Ras	VL	VL	M
Qalaway	VL	VL	M	Qaouzah	VL	VL	M	Qatmoun	VL	L	M
Ramya Bint Jbeil	VL	VL	M	Rchaf	VL	VL	M	Rmeich	VL	VL	M
Safad Al Battikh	VL	VL	M	Salhaneh	VL	VL	M	Serbine	VL	L	M
Sultanieh Bint Jbeil	VL	VL	M	Tibnine	VL	VL	M	Tiri	VL	VL	M
Yaroun	VL	VL	M	Yater	VL	L	M				

Mont Liban

Jbail

Municipality	30-Dec	31-Dec	01-Jan	Municipality	30-Dec	31-Dec	01-Jan	Municipality	30-Dec	31-Dec	01-Jan
Aabeydat	VL	VL	L	Aalita	VL	VL	L	Aamchit	VL	VL	ML
Aarab El-Lahib	VL	VL	ML	Aarasta	VL	VL	L	Adonis Jbeil	VL	VL	L
Afqa Jbeil	VL	VL	L	Ain El Delbeh Jbeil	VL	VL	L	Ain El-Ghouayba	VL	VL	L
Ain Jrain	VL	VL	L	Ain Kfah	VL	VL	ML	Almat El Chemaliyat	VL	VL	L
Almat El-Jenoubiya	VL	VL	L	Aqoura	VL	VL	ML	Bayzoun	VL	VL	L
Bchille Jbeil	VL	VL	L	Bechtida	VL	VL	L	Behdaydat	VL	VL	L
Beit Habbaq	VL	VL	ML	Bejjeh	VL	VL	ML	Bekhaaz	VL	L	ML
Berbara Jbeil	VL	L	M	Bintael	VL	VL	L	Birket Hjoula	VL	VL	L
Blatt Jbeil	VL	VL	ML	Boulhos	VL	VL	L	Breyj Jbeil	VL	VL	L
Chamat	VL	VL	ML	Chikhane	VL	VL	ML	Chmout	VL	VL	L
Eddeh Jbeil	VL	VL	ML	Ehmej	VL	VL	L	Fatre	VL	VL	L
Ferhet	VL	VL	ML	Fghal	VL	VL	L	Frat	VL	VL	VL
Ghabat	VL	VL	L	Ghalboun	VL	VL	L	Gharzouz	VL	VL	M
Ghofrine	VL	L	ML	Habil	VL	VL	VL	Halate	VL	VL	ML
Haqel	VL	VL	L	Hbaline	VL	VL	ML	Hboub	VL	VL	ML
Hdeine	VL	VL	ML	Hema Er-Rehban	VL	VL	ML	Hema Mar Maroun Aann	VL	VL	ML
Hjoula	VL	VL	L	Hosrayel	VL	VL	ML	Hsarat	VL	VL	ML
Hsoun	VL	VL	ML	Jaj	VL	VL	L	Janne	VL	VL	VL
Jbeil	VL	VL	ML	Jeddeyl Jbeil	VL	VL	ML	Jlisse	VL	VL	L
Jouret El-Qattine	VL	VL	ML	Kfar Baal Annaya	VL	VL	L	Kfar Kidde	VL	L	L
Kfar Kouas	VL	VL	ML	Kfar Mashoun	VL	VL	M	Kfoun	VL	VL	L

Kharbe Jbeil	VL	VL	ML	Laqlouq	VL	VL	ML	Lassa	VL	VL	L
Lehfed	VL	VL	L	Maad	VL	VL	ML	Mar Sarkis	VL	VL	ML
Mastita	VL	VL	ML	Mayfouq	VL	VL	L	Mazraat El Siyad	VL	VL	ML
Mazraat El-Maaden	VL	VL	L	Mechane	VL	VL	L	Mechmech Jbeil	VL	VL	L
Mehrin	VL	VL	M	Mejdel El-Akoura	VL	VL	L	Mghayreh Jbeil	VL	VL	ML
Mounsef	VL	L	ML	Nahr Ibrahim	VL	VL	ML	Qahmez	VL	VL	L
Qartaba	VL	VL	L	Qartaboun	VL	VL	ML	Qattara Jbeil	VL	VL	L
Qorqraya	VL	VL	VL	Ramout	VL	VL	ML	Ras Osta	VL	VL	L
Rihane Jbeil	VL	VL	ML	Sakiet El-Khayt	VL	VL	L	Saqi Richmaya	VL	VL	L
Sebrine	VL	VL	L	Seraita	VL	VL	L	Souane Jbeil	VL	VL	L
Tadmor	VL	VL	ML	Tartej	VL	VL	L	Torzaiya	VL	VL	L
Yanouh Jbeil	VL	VL	L	Zibdine Jbeil	VL	VL	L				

El Metn

Municipality	30-Dec	31-Dec	01-Jan	Municipality	30-Dec	31-Dec	01-Jan	Municipality	30-Dec	31-Dec	01-Jan
Aain El-Qabu	VL	VL	L	Aain El-Qach	VL	VL	ML	Aain El-Teffaha	VL	VL	ML
Aain el-Safssaf El-M	VL	VL	L	Abou Mizane	VL	VL	ML	Ain Aar	VL	VL	M
Ain Alaq	VL	VL	M	Ain El-Kharroube	VL	VL	ML	Ain El-Sendiane	VL	VL	ML
Ain El-Zeitoune	VL	VL	L	Ain Saadeh	VL	VL	M	Aintoura El-Matn	VL	VL	ML
Amaret Chalhoub	VL	VL	M	Antelias	VL	VL	M	Atchaneh	VL	VL	M
Ayroun	VL	VL	ML	Baabdat	VL	VL	L	Baouchariyeh	VL	L	M
Baskinta	VL	VL	L	Beit Chabab	VL	VL	L	Beit El-Char	VL	VL	M
Beit El-Kekko	VL	VL	M	Beit Mery	VL	VL	M	Bhersaf	VL	VL	L
Bikfaya	VL	VL	L	Biyakout	VL	VL	M	Bnabil	VL	VL	L
Bourj Hammoud	VL	L	M	Bqennaya	VL	VL	M	Broummana El-Matn	VL	VL	M
Bsalim	VL	VL	M	Bsifrine	VL	VL	L	Bteghrine	VL	VL	L
Chaouiye	VL	VL	M	Chouaya El-Matn	VL	VL	ML	Choueir	VL	VL	L
Chrine	VL	VL	L	Dahr El Sawan El-Mat	VL	VL	ML	Daychouniyeh	VL	L	M
Dbayeh	VL	VL	M	Deir Chamra	VL	VL	L	Deir Mar Abda el Mch	VL	VL	L
Deir Mar Roukouz	VL	L	M	Deir Tamiche	VL	VL	ML	Dik El-Mehdi	VL	VL	M
Dikwaneh	VL	L	M	Douar El-Matn	VL	VL	L	Fanar	VL	VL	M
Fraike	VL	VL	ML	Haret El-Ballaneh	VL	VL	M	Hbous	VL	VL	M
Himlaya	VL	VL	L	Jal El Did	VL	VL	M	Jdeideh El-Metn	VL	VL	M
Jouar El-Matn	VL	VL	L	Jouret El-Ballout	VL	VL	M	Kaaqour	VL	VL	L
Kfar Aaqab	VL	VL	L	Kfertay El-Matn	VL	VL	L	Khenchara	VL	VL	L
Khillet El-Mtain	VL	VL	L	Konnabat Broummana	VL	VL	M	Konnabat Salima	VL	VL	L
Machraah El-Matn	VL	VL	L	Majdel Tarchich	VL	VL	ML	Majzoub	VL	VL	M
Mansouriyeh El-Metn	VL	VL	M	Mar Boutros Karm Et-	VL	VL	L	Mar Chaya et Mzekke	VL	VL	M
Mar Moussa Ed-Douar	VL	VL	L	Marjaba	VL	VL	L	Masqa	VL	VL	ML
Mayasse	VL	VL	L	Mazraat Deir Aoukar	VL	VL	M	Mazraat El-Hadirat	VL	VL	M
Mazraat Yachouh	VL	VL	M	Mchikha	VL	VL	ML	Menqlet Mezher	VL	VL	M
Mhaydseh Matn	VL	VL	L	Mkalles	VL	L	M	Mrouj	VL	VL	ML
Mtain	VL	VL	ML	Mtayleb	VL	VL	M	Nabay	VL	VL	M
Naccache	VL	VL	M	Ouadi Chahine	VL	VL	L	Ouadi El-Karm El-Mat	VL	VL	L
Ouata El-Mrouj	VL	VL	ML	Ouyoun El-Matn	VL	VL	L	Qornet Chehwan	VL	VL	M
Qornet El-Hamra	VL	VL	ML	Roumieh	VL	VL	M	Sfeilet Bikfaya	VL	VL	L
Sinn El-Fil	VL	L	M	Zabbougha	VL	VL	L	Zalqa	VL	VL	M

Zarouon	VL	VL	L	Zekrite	VL	VL	ML	Zighrine El-Matn	VL	VL	ML
Zouk El-Khrab	VL	VL	M								

Chouf

Municipality	30-Dec	31-Dec	01-Jan	Municipality	30-Dec	31-Dec	01-Jan	Municipality	30-Dec	31-Dec	01-Jan
Aalmane El-Chouf	VL	VL	M	Aammqi El-Chouf	VL	VL	ML	Ain Ouzein	VL	VL	ML
Ain Qani	VL	VL	ML	Ain Zhalta	VL	VL	ML	Ainbal	VL	VL	ML
Amatour	VL	VL	L	Anout	VL	VL	ML	Atrine	VL	VL	ML
Baadarane	VL	VL	M	Baaqline	VL	VL	ML	Baasir	VL	VL	M
Barja	VL	VL	M	Barouk	VL	VL	ML	Bater	VL	VL	ML
Batloun	VL	VL	M	Bayqoun	VL	VL	M	Bchetfine	VL	VL	ML
Beiteddine	VL	VL	L	Benouati Ech-Chouf	VL	VL	ML	Berjein	VL	VL	ML
Bireh et Mtalleh	VL	VL	M	Biret El-Chouf	VL	VL	M	Bkechtine Ouel Mchei	VL	VL	L
Bkifa El-Chouf	VL	VL	M	Botme	VL	VL	ML	Bqaiia Ech-Chouf	VL	VL	L
Bsaba El-Chouf	VL	VL	ML	Chammis El-Chouf	VL	VL	M	Chehim	VL	VL	ML
Chemaarine	VL	VL	L	Chourit	VL	VL	ML	Daher El-Chouf	VL	VL	ML
Dalhoun	VL	VL	M	Damour	VL	VL	M	Daraya El-Chouf	VL	VL	L
Deir El-Moukhalles	VL	VL	L	Deir Baba	VL	VL	ML	Deir Dourit	VL	VL	ML
Deir El-Qamar	VL	VL	ML	Deir Kouche	VL	VL	L	Dibbieh	VL	VL	L
Dmit	VL	VL	L	Fouara Jaafar	VL	VL	L	Fraidis El-Chouf	VL	VL	M
Ghabet Jaafar	VL	VL	ML	Gharife	VL	VL	ML	Haret Jandal	VL	VL	ML
Hasrout	VL	VL	M	Jadra	VL	VL	M	Jahlieh	VL	VL	ML
Jbeih El-Chouf	VL	VL	ML	Jdeidet El-Chouf	VL	VL	ML	Jiyeh	VL	VL	M
Jleilyeh	VL	VL	M	Jmailiyeh	VL	VL	M	Joun	VL	VL	M
Kahlounie El-Chouf	VL	VL	M	Ketermaya	VL	VL	M	Kfar Faqoud	VL	VL	ML
Kfar Hamal	VL	VL	M	Kfar Him	VL	VL	ML	Kfar Katra	VL	VL	ML
Kfar Niss	VL	VL	M	Kfar hay	VL	VL	M	Kfarnabrakh	VL	VL	M
Khirbet Bisri	VL	VL	L	Knayse El-Chouf	VL	VL	L	Maaniyeh	VL	VL	M
Maasser Beiteddine	VL	VL	ML	Maasser El-Chouf	VL	VL	ML	Majdalouna	VL	VL	M
Majdel El-Meouch	VL	VL	M	Mazboud	VL	VL	M	Mazmoura	VL	VL	ML
Mazraat El Chouf	VL	VL	ML	Mazraat El Daher	VL	VL	L	Mazraat El-Douair	VL	VL	L
Mechref	VL	VL	ML	Mghairie	VL	VL	M	Mghayrie El-Chouf	VL	VL	L
Moukhtara	VL	VL	ML	Mrusti	VL	VL	M	Mtolle	VL	VL	M
Naameh	VL	VL	M	Niha El-Chouf	VL	VL	M	Ouadi Abou Youssef	VL	VL	L
Ouadi Ed-Deir	VL	VL	M	Ouadi El-Sit	VL	VL	ML	Ouadi bnehlay	VL	VL	L
Qraibeh	VL	VL	M	Qreiaa	VL	VL	L	Rmayle El-Chouf	VL	VL	M
Semqaniyeh	VL	VL	M	Sibline	VL	VL	M	Sirjbeil	VL	VL	ML
Warhanieh	VL	VL	M	Werdaniyeh	VL	VL	M	Zaarourieh	VL	VL	ML

Baabda

Municipality	30-Dec	31-Dec	01-Jan	Municipality	30-Dec	31-Dec	01-Jan	Municipality	30-Dec	31-Dec	01-Jan
Abadiyeh	VL	VL	M	Ain Mouaffaq	VL	VL	M	Araiya	VL	VL	M
Arbaniyeh	VL	VL	L	Arsoun	VL	VL	L	Baabda	VL	L	M
Baalchmey	VL	L	M	Bmaryam	VL	VL	ML	Bourj El-Brajneh	VL	L	M
Boutchay	VL	VL	M	Bsaba Baabda	VL	L	M	Btekhney	VL	VL	ML
Btibyat	VL	VL	L	Bzbeddine	VL	VL	L	Chbeniyeh	VL	VL	M
Chiyah	VL	L	M	Chmeisset Baabda	VL	VL	L	Chouit	VL	VL	M
Deir El-harf	VL	VL	ML	Deir Khouna	VL	VL	M	Dlaybeh	VL	VL	L

Falougha	VL	VL	M	Furn El-Chebbak	VL	L	M	Hadath Beyrouth	VL	L	M
Halaliyeh Baabda	VL	VL	M	Hammana	VL	VL	M	Haret El Sett	VL	VL	M
Haret Hamze	VL	VL	M	Haret Hreik	VL	L	M	Hasbaiya El-Metn	VL	VL	L
Jouar El-Hoz	VL	VL	L	Jouret Arsoun	VL	VL	L	Kfar Chima	VL	L	M
Kfar Selouane	VL	VL	L	Khalouat Baabda	VL	VL	M	Kneisset Baabda	VL	VL	L
Laylakeh	VL	L	M	Louayzeh Baabda	VL	L	M	Merdache	VL	L	M
Mzairaa Baabda	VL	VL	M	Ouadi Chahrour El OI	VL	VL	M	Ouadi Chahrour El So	VL	VL	M
Qalaa Baabda	VL	VL	M	Qhraybe Baabda	VL	VL	ML	Qobbayaa	VL	VL	M
Qornayel	VL	VL	L	Qortada	VL	VL	L	Qrayeh Baabda	VL	VL	M
Qsaibeh Baabda	VL	VL	ML	Qtale Baabda	VL	VL	L	Ras El Metn	VL	VL	M
Ras El-Haref	VL	VL	M	Rouayset El-Ballout	VL	VL	M	Salima Baabda	VL	VL	L
Tahouitat El Ghadir	VL	L	M	Tarchich	VL	VL	L	Zandouqa	VL	VL	L

Aley

Municipality	30-Dec	31-Dec	01-Jan	Municipality	30-Dec	31-Dec	01-Jan	Municipality	30-Dec	31-Dec	01-Jan
Abey	VL	VL	M	Aghmid	VL	VL	M	Ain Dara	VL	VL	M
Ain Drafil	VL	VL	M	Ain El Halazoun	VL	L	M	Ain El-Rmmaneh	VL	VL	ML
Ain Jedideh	VL	L	M	Ain Ksour	VL	VL	M	Ain Onoub	VL	VL	M
Ain Traz	VL	VL	ML	Ainab	VL	VL	M	Aley	VL	L	M
Aramoun	VL	L	M	Aytat	VL	L	M	Azouniyeh	VL	VL	M
Baawerta	VL	VL	M	Badghan Oua Wadi Bad	VL	VL	M	Bassatine	VL	VL	M
Bayssour	VL	L	M	Bchamoun	VL	VL	M	Bdadoun	VL	VL	M
Behouara	VL	L	M	Bennay	VL	VL	M	Bhamdoun El-Dayaa	VL	L	M
Bhamdoun El-Mhatta	VL	L	M	Bkhechthey	VL	L	M	Bleibel	VL	VL	M
Bmakine	VL	L	M	Bmehray	VL	VL	ML	Bouzrid	VL	VL	ML
Bserrine	VL	L	M	Bsous	VL	VL	ML	Btalloun	VL	L	M
Btater	VL	L	M	Chanay	VL	L	M	Charoun	VL	VL	M
Chartoun	VL	VL	M	Chemlane	VL	VL	M	Choueifat El-Aamrous	VL	L	M
Choueifat El-Oumara	VL	L	M	Choueifat El-Quoubbe	VL	L	M	Dakkoun	VL	VL	ML
Deir Qoubel	VL	VL	M	Dfoun	VL	L	M	Douair El Remmaneh	VL	VL	M
Ghaboun	VL	VL	M	Habramoun	VL	VL	M	Homs Oua Hama	VL	VL	M
Houmal	VL	VL	M	Jisr El Qadi	VL	VL	ML	Kehaleh	VL	VL	M
Keyfoun	VL	L	M	Kfar Aamey	VL	L	M	Kommatyeh	VL	L	M
Maasrati	VL	VL	M	Majdel Baana	VL	VL	M	Mansourieh et Ain El	VL	L	M
Mazraat El-Nahr	VL	VL	M	Mchakhte	VL	VL	ML	Mecherfeh	VL	VL	M
Mejdlaya	VL	VL	M	Mrayjat	VL	VL	M	Ramliyah	VL	VL	M
Rechmaya	VL	VL	M	Rejmeh	VL	VL	M	Remhala	VL	VL	M
Rouaysset El Neemane	VL	L	M	Saoufar	VL	VL	M	Selfaya	VL	VL	L
Sirhmoul	VL	VL	M	Souq El Ghareb	VL	L	M	Taazanieh	VL	L	M

Kesrouane

Municipality	30-Dec	31-Dec	01-Jan	Municipality	30-Dec	31-Dec	01-Jan	Municipality	30-Dec	31-Dec	01-Jan
Achkout	VL	VL	L	Adma Oua Dafneh	VL	VL	M	Ain Ed-Delbe Kesroua	VL	VL	L
Ain El-Rihane	VL	VL	L	Aintoura Kesrouane	VL	VL	M	Ajaltoun	VL	VL	L
Akaybeh Kesrouane	VL	L	ML	Aramoun Kesrouane	VL	VL	L	Azra ouel Ozor	VL	VL	L
Ballouneh	VL	VL	L	Batha	VL	VL	L	Bekaatat Achkout	VL	VL	ML
Bekaatat Kanaan	VL	VL	L	Bizhel	VL	VL	L	Bouar	VL	VL	M
Bqaatouta	VL	VL	L	Bqaq Ed-Dine	VL	VL	L	Bzommar	VL	VL	L

Chahtoul	VL	VL	L	Chnaniir	VL	VL	L	Chouan	VL	VL	L
Daraya Kesrouane	VL	VL	L	Darououn	VL	VL	L	Deir Baglouch	VL	VL	L
Dlebta	VL	VL	L	Eghbeh	VL	VL	VL	Faraya	VL	VL	ML
Fatka	VL	VL	ML	Feytroun	VL	VL	L	Ghazir	VL	VL	ML
Ghbaleh Kesrouane	VL	VL	L	Ghedrass	VL	VL	L	Ghosta	VL	VL	L
Ghyneh	VL	VL	ML	Harharaya w Kattine	VL	VL	L	Harissa Kesrouane	VL	VL	L
Hayata	VL	VL	L	Hosein	VL	VL	L	Hrajel	VL	VL	ML
Jdeideh Ghazir	VL	VL	L	Jeita	VL	VL	ML	Jounieh Ghadir	VL	VL	M
Jounieh Haret Sakhr	VL	VL	M	Jounieh Salel Alma	VL	VL	M	Jounieh Sarba	VL	VL	M
Jouret Bedrane	VL	VL	ML	Jouret Mhad	VL	VL	L	Jouret Termos	VL	VL	ML
Kfar Debiane	VL	VL	L	Kfar Tay Kesrouane	VL	VL	L	Kfar Yassine	VL	VL	M
Kfour Kesrouane	VL	VL	L	Kharayeb Nahr Ibrahi	VL	VL	L	Klayaat Kesrouane	VL	VL	L
Maarab	VL	VL	L	Maaysra Kesrouane	VL	VL	ML	Mayrouba	VL	VL	L
Mazraat Er-Ras	VL	VL	M	Mazraat Mrah El-Mir	VL	VL	L	Mchaa El Ftouh	VL	VL	ML
Mchaa Faraya	VL	VL	ML	Mchaa Kfar Dibiane	VL	VL	ML	Mghaer	VL	VL	L
Mradiyah	VL	VL	L	Nahr Ed-Dahab	VL	VL	L	Nammoura Kesrouane	VL	VL	L
Ouata El Jaouz	VL	VL	L	Ouata Sillam	VL	VL	M	Raachine	VL	VL	L
Rayfoun	VL	VL	L	Safra Kesrouane	VL	VL	M	Shayle Kesrouane	VL	VL	ML
Tabarja	VL	VL	M	Yahchouch	VL	VL	L	Zaaytreh	VL	VL	L
Zeytoun	VL	VL	ML	Zouk Mikael	VL	VL	M	Zouk Mosbeh	VL	VL	M

Baalbek_Hermel

Baalbek

Municipality	30-Dec	31-Dec	01-Jan	Municipality	30-Dec	31-Dec	01-Jan	Municipality	30-Dec	31-Dec	01-Jan
Aadous	VL	L	M	Aamchki	VL	L	ML	Aarsal	L	L	ML
Ain Baalbek	L	L	L	Ain Bourday	L	L	ML	Ain El-Benye	L	L	ML
Ain El-Jaouz Baalbek	L	ML	L	Ain El-Siya Chadoura	VL	L	ML	Al Khodr Baalbek	VL	L	ML
Al Nabi Chit	VL	L	ML	Aynata Baalbek	VL	VL	ML	Baalbek	L	L	ML
Bachwat	VL	VL	L	Barqa	VL	VL	L	Bednayel Baalbak	VL	VL	ML
Beit Chama	VL	VL	ML	Bijjaje	L	L	L	Bouday	VL	VL	ML
Brital	L	L	ML	Btadi	VL	VL	ML	Chaat	L	L	ML
Chaibe	VL	L	ML	Chlifa	VL	VL	M	Chmestar	VL	VL	ML
Dar El-Oussa	VL	VL	L	Deir El-Ahmar	VL	VL	ML	Deir Mar Maroun Baal	VL	ML	M
Douris	L	L	M	Fakiha	L	L	M	Hadath Baalbek	VL	VL	ML
Ham	L	L	ML	Haour Taala	VL	L	ML	Hizzine	VL	L	M
Hlebta	VL	L	ML	Hosh Barada	VL	L	M	Hosh El Dahab	VL	L	M
Hosh El Snid	VL	L	ML	Hosh El-Nabi	VL	VL	ML	Hosh El-Rafiq	VL	L	ML
Hosh Tal Safiya	VL	L	M	Hrebta	L	L	L	laat	VL	L	M
Jebaa	VL	VL	ML	Jenta	VL	L	ML	Kfar Dabach	VL	VL	ML
Kfar Dane	VL	L	M	Khraibeh El-Hermel	VL	L	L	Khreibet Baalbek	VL	L	ML
Kneisset Baalbek	VL	L	M	Labueh	L	L	L	Maarboun	L	L	ML
Majdaloun	VL	L	M	Maqneh	VL	L	M	Mazraat Beit Mcheik	VL	VL	ML
Misraya	VL	L	ML	Moqraq	L	L	ML	Nabha El-Damdoum	VL	L	ML
Nabi Chbay	L	L	ML	Nabi Osman	L	L	L	Nahleh baalbek	L	L	ML
Ouadi El-Oss	VL	VL	L	Qaa Baayoun	L	ML	M	Qaa Jouar Maqiye	L	ML	M
Qaa Ouadi El-Khanzir	L	ML	M	Qah Baalbek	L	ML	M	Qarha Baalbek	VL	L	M

Qsarnaba	VL	VL	ML	Ram Baalbek	VL	L	ML	Ras Baalbek El Sahl	L	ML	M
Ras Baalbek El-Charq	VL	ML	M	Riha	VL	L	M	Saaide	VL	L	M
Sbouba	L	L	L	Seriine El-Tahta	VL	L	ML	Slouqi	VL	VL	ML
Taiba Baalbek	L	L	M	Talia	VL	L	M	Taraiya	VL	VL	ML
Temnin El Fawqa	VL	L	ML	Temnin El-Tahta	VL	VL	ML	Tfail	L	ML	L
Yahfoufa	VL	L	ML	Yammouneh	VL	VL	L	Younine	L	L	ML
Zboud	L	L	ML								

Hermel

Municipality	30-Dec	31-Dec	01-Jan	Municipality	30-Dec	31-Dec	01-Jan	Municipality	30-Dec	31-Dec	01-Jan
Charbine El-Hermel	VL	VL	L	Hermel Jbab	VL	L	M	Hermel	VL	L	M
Maaysra El-Hermel	VL	L	M	Michaa Mrjhine	VL	VL	ML	Ouadi Faara	VL	L	M
Ras Baalbek - Ouadi	L	ML	M	Ras Baalbek El Gharb	VL	L	M	Zighrine	VL	VL	ML

Akkar

Akkar

Municipality	30-Dec	31-Dec	01-Jan	Municipality	30-Dec	31-Dec	01-Jan	Municipality	30-Dec	31-Dec	01-Jan
Aain Tinta	VL	VL	M	Aaiyat	VL	L	M	Aakkar El-Aatiqa	VL	L	ML
Aamar Akkar	VL	VL	M	Aamar El Baykat	VL	VL	M	Aamayer	L	VL	M
Aamriyet Akkar	VL	VL	M	Aandqet	VL	VL	M	Aarmeh	VL	VL	M
Aarqa	VL	VL	M	Aawaynat	VL	VL	M	Aayoun Akkar	VL	L	M
Abboudiye	VL	VL	M	Ain El-Zeit	VL	VL	M	Ain Yaaqoub	VL	L	ML
Akroum	VL	VL	M	Aridet Cheikh Zennad	VL	VL	MH	Baldeh w Mazraat Bal	VL	VL	M
Barcha	VL	VL	M	Bardeh	VL	VL	M	Bebnine	VL	VL	M
Beino	VL	L	M	Beit Ayoub	VL	VL	L	Beit El-Haouch	VL	VL	M
Beit Mellat	VL	L	M	Beit Younes	VL	VL	L	Berbara Akkar	VL	VL	M
Berqayel	VL	VL	ML	Bezbina	VL	VL	L	Bireh Akkar	VL	VL	M
Borj	VL	L	M	Bqerezla	VL	VL	L	Bzal	VL	VL	L
Chane	VL	VL	L	Chaqdouf	VL	L	M	Charbila	VL	VL	M
Cheikh Mohammad	VL	VL	M	Cheikh Taba Es-Sahl	VL	VL	M	Cheikh Taba	VL	VL	L
Cheikh Zennad	VL	VL	M	Cheikhlar	VL	VL	M	Chir Hmairine	VL	VL	M
Daghle	VL	VL	M	Dahr Laissine	VL	VL	ML	Darine	VL	VL	M
Dawra	VL	L	M	Dawsa w Baghdadi	VL	VL	M	Dayret Nahr El-Kabir	VL	L	M
Deir Dalloum	VL	VL	M	Deir Jennine	VL	VL	M	Denbou	VL	VL	L
Dibbabiyyeh	VL	VL	M	Douair Aadwiyeh	VL	VL	M	Fassikine	VL	VL	M
Fnaydek	VL	VL	ML	Fraydes Akkar	VL	VL	M	Ghazayle	VL	VL	M
Habchit	VL	VL	L	Hakour	VL	VL	M	Halba	VL	VL	M
Haouchab	VL	VL	M	Hayssat	VL	VL	M	Haytla	VL	VL	M
Hayzouq	VL	VL	M	Hedd	VL	VL	M	Hmaira Akkar	VL	VL	ML
Hmaiss Akkar	VL	VL	M	Hnaider	L	VL	M	Hokr Ed-Dahri	VL	VL	MH
Hokr Etti	VL	VL	M	Hokr Jouret Srar	VL	VL	M	Houaich	VL	VL	L
Hrar	VL	VL	L	Idbil	VL	VL	L	Ilat	VL	L	L
Janine	VL	VL	M	Jdeidet El-Joumeh	VL	VL	M	Jdeidet El-Kaiteh	VL	VL	ML
Jebayel	VL	VL	L	Kafr	VL	VL	L	Kafr	VL	VL	M
Karm Asfour	VL	VL	ML	Kfar Melki Akkar	VL	VL	M	Kfar Noun	VL	VL	M
Kfarharra	VL	VL	M	Khalsa	VL	VL	M	Kharnoubet Akkar	VL	VL	M

Khirbet Daoud Aakkar	VL	VL	M	Khirbet El Remmane	VL	VL	M	Khirbet Shar	VL	VL	M
Khoreybet El-Jindi	VL	VL	M	Khreibet Aakkar	VL	VL	L	Kneisset Aakkar	VL	VL	M
Kneisset Hnaider	L	VL	M	Knisse	VL	VL	M	Kroum El-Aarab	VL	VL	M
Kwachra	VL	VL	M	Kweykhat	VL	VL	M	Machta Hammoud	VL	L	M
Majdala	VL	VL	M	Majdel Akkar	VL	VL	M	Mar Touma	VL	VL	ML
Marlaya Melhem	VL	VL	M	Mashha	VL	VL	M	Massoudiye	VL	VL	M
Mazraat Beit Ghattas	VL	VL	M	Mazraat En-Nahriye	VL	VL	M	Mechmech	VL	VL	L
Memneh	VL	VL	L	Mhammara	VL	VL	M	Mighraq Aakkar	VL	VL	M
Minyara	VL	VL	M	Moqayteh	VL	VL	M	Mounjez	VL	VL	M
Msalla	VL	VL	M	Mzeihmeh	VL	VL	M	Nfaiseh	VL	VL	M
Noura Et-Tahta	VL	VL	M	Ouadi El-Haour	VL	VL	M	Ouadi El-Jamous	VL	VL	M
Ouyoun El-Ghizlane	VL	VL	ML	Qaabarine	VL	VL	M	Qabaait	VL	VL	L
Qachlaq	VL	VL	M	Qantara Aakkar	VL	VL	L	Qarha Aakkar	L	L	M
Qarqaf	VL	VL	ML	Qboula	VL	L	M	Qleiaat Aakkar	VL	VL	M
Qloud El-Baqie	VL	VL	ML	Qobaiyat Aakkar	VL	VL	M	Qobbat Chamrat	VL	VL	M
Qorayat	VL	VL	L	Qornet Aakkar	VL	L	ML	Qsair Aakkar	VL	VL	M
Rahbe	VL	VL	L	Rihaniyet Aakkar	VL	VL	M	Rmah	VL	VL	M
Rmoul	VL	VL	M	Saadine	VL	VL	M	Sadaqa	VL	VL	L
Saidnaya	VL	VL	M	Sammouniye	VL	VL	M	Sayssouq	VL	VL	M
Semmaqiye	VL	VL	MH	Semmaqli	VL	VL	M	Sfinet El-Dreib	VL	VL	M
Sfinet El-Qaitaa	VL	VL	L	Sindyanet Zeidane	VL	VL	M	Souaisset Aakkar	VL	VL	M
Srar	VL	VL	M	Tal Abbas El Gharby	VL	VL	M	Tal Abbas El-Charqy	VL	VL	M
Tal Biret	VL	VL	M	Tal Hmayra	VL	VL	M	Tal Maayan Tal Kiri	VL	VL	M
Tal Sibel	VL	VL	M	Tallet Chattaha	VL	L	M	Tikrit	VL	L	L
Tleil	VL	VL	M	Tshea	VL	L	ML	Zawarib	VL	VL	L
Zouq El Hosniyeh	VL	VL	ML	Zouq El-Haddara	VL	VL	M	Zouq El-Hbalsa	VL	VL	ML
Zouq El-Moqachrine	VL	VL	ML								

Sud

Sour

Municipality	30-Dec	31-Dec	01-Jan	Municipality	30-Dec	31-Dec	01-Jan	Municipality	30-Dec	31-Dec	01-Jan
Aaiyeh	VL	L	M	Aalma El-Chaab	VL	VL	M	Aaytit	VL	L	M
Abbassiyeh Sour	VL	L	M	Abou Chech	VL	VL	M	Ain Abou Abdallah	VL	VL	M
Ain Baal	VL	L	M	Arzoun	VL	VL	M	Aziyeh	VL	VL	M
Baflaya	VL	VL	M	Barich	VL	L	M	Batouliyah	VL	VL	M
Bayad	VL	L	M	Bazouriyeh	VL	L	M	Bediass	VL	L	M
Bestiyat	VL	L	M	Borj El Chemali	VL	L	M	Borj En-Naqoura	VL	VL	M
Borj Rahhal	VL	L	M	Boustane	VL	VL	M	Btaychiyeh	VL	VL	M
Chaaitiye	VL	L	M	Chameh	VL	VL	M	Chehabiye	VL	VL	M
Chehour	VL	VL	M	Chihine	VL	VL	M	Debaal Sour	VL	L	M
Deir Amess	VL	L	M	Deir Kifa	VL	VL	M	Deir Qanoun El-Ain	VL	VL	M
Deir Qanoun El-Naher	VL	L	M	Derdghaiya	VL	VL	M	Dhayra	VL	VL	M
Halloussiyeh	VL	L	M	Hamoul	VL	VL	M	Hanaouey	VL	L	M
Henniye	VL	VL	M	Hmairi Sour	VL	L	M	Iskandarouna Sour	VL	VL	M
Jbal El Botom	VL	L	M	Jebbin	VL	VL	M	Jennata	VL	L	M
Jijim	VL	VL	M	Jouaiya	VL	L	M	Kneisset Sour	VL	L	M

Maarake	VL	L	M	Maaroub	VL	L	M	Majadel	VL	VL	M
Majdalzoun	VL	L	M	Mansouri Sour	VL	L	M	Marnba	VL	VL	M
Marouahine	VL	VL	M	Mazraat El-Zalloutiy	VL	VL	M	Mazraat Mechref	VL	L	M
Mazraat Tayr Semhat	VL	VL	ML	Mheilib	VL	VL	M	Neffakhiyeh	VL	VL	M
Niha Sour	VL	VL	M	Ouadi Jilo	VL	L	M	Qana	VL	L	M
Qolaileh Sour	VL	VL	M	Rechknanay	VL	L	M	Rmadiyah	VL	L	M
Selha Sour	VL	VL	M	Siddiqine	VL	L	M	Sour	VL	L	MH
Srifa	VL	VL	M	Tayr Debbe	VL	VL	M	Tayr Felsay	VL	L	M
Tayr Harfa	VL	VL	M	Touayri	VL	VL	M	Toura	VL	L	M
Yanouh Sour	VL	L	M	Yarine	VL	VL	M	Zebqine	VL	VL	M

Saida

Municipality	30-Dec	31-Dec	01-Jan	Municipality	30-Dec	31-Dec	01-Jan	Municipality	30-Dec	31-Dec	01-Jan
Aanqoun	VL	VL	M	Aaqtanit	VL	VL	M	Aarab Ej-Jall	VL	VL	M
Aarab Tabbaya	VL	VL	M	Abra Saida	VL	VL	M	Adloun	VL	VL	M
Adousiyeh	VL	VL	M	Ain-El-Deleb	VL	VL	M	Arzai	VL	L	M
Babliyah	VL	L	M	Barty	VL	VL	M	Bissariyeh	VL	L	M
Bnaafoul	VL	VL	M	Bqosta	VL	VL	M	Bramiy	VL	VL	M
Daoudiyeh	VL	L	M	Dareb El-Sim	VL	VL	M	Erkay	VL	VL	M
Ghassanieh	VL	L	M	Ghazieh	VL	VL	M	Hajjeh	VL	VL	M
Haret Saida	VL	VL	M	Hartiyeh	VL	VL	M	Hlaliye Saida	VL	VL	M
Insariyat	VL	L	M	Jazira Saida	VL	L	M	Kafar Bit	VL	VL	M
Kaoutariyet El-Siyad	VL	VL	M	Kfar Chellal	VL	VL	M	Kfar Hatta Saida	VL	VL	M
Kfar Milke Saida	VL	VL	M	Khartoum	VL	VL	M	Khaziz	VL	VL	M
Khirbet Ed-Douair Sa	VL	VL	M	Khirbet El-Bassal	VL	VL	M	Khrayeb Saida	VL	VL	M
Loubieh	VL	L	M	Maghdouche	VL	VL	M	Majdelyoun	VL	VL	M
Matariyet El-Choumar	VL	L	M	Matayriyeh	VL	VL	M	Mazraat 'Mseileh	VL	VL	M
Mazraat 'Snaiber	VL	L	M	Mazraat Aarab Soukka	VL	VL	M	Mazraat Deir Taqla	VL	VL	M
Mazraat El Yahoudiye	VL	VL	M	Mazraat El-Housseini	VL	L	M	Mazraat El-Mhaydaleh	VL	L	M
Mazraat El-Ouasta	VL	VL	M	Mazraat Jamjim	VL	VL	M	Mazraat Kaoutariyet	VL	L	M
Mazraat Kfar Badda	VL	VL	M	Mazraat Oussamiyat	VL	L	M	Mazraat Sari	VL	VL	M
Mazraat Sinai	VL	VL	M	Meemariyeh	VL	VL	M	Merouaniyeh	VL	VL	M
Miyeh ou Miyeh	VL	VL	M	Najjariyeh	VL	L	M	Qaaqaiyat El-Snaouba	VL	L	M
Qnarit	VL	VL	M	Qraiye Saida	VL	VL	M	Saida Ed-Dekermane	VL	VL	M
Saida El-Oustani	VL	VL	M	Saida El-Qadimeh	VL	VL	M	Saida Kefraya	VL	VL	M
Saksakiyeh	VL	L	M	Salhie Saida	VL	VL	M	Sarafand	VL	L	M
Sfenta	VL	VL	M	Tafahta	VL	VL	M	Tanbourit	VL	VL	M
Tebna	VL	L	M	Zaghdraiya	VL	VL	M	Zeita	VL	VL	M
Zrariyeh	VL	L	M								

Jezzine

Municipality	30-Dec	31-Dec	01-Jan	Municipality	30-Dec	31-Dec	01-Jan	Municipality	30-Dec	31-Dec	01-Jan
Ain El-Mir (El Estab	VL	VL	M	Anane	VL	VL	L	Aramta	VL	VL	M
Ariya	VL	VL	ML	Aychiyeh	VL	VL	ML	Azour	VL	VL	L
Baba	VL	VL	L	Bayssour Jezzine	VL	VL	M	Benoueteh Jezzine	VL	VL	ML
Bhannine	VL	VL	ML	Bisri	VL	VL	L	Bkassine	VL	VL	L
Bouslaya	VL	VL	ML	Btedine El-Leqech	VL	VL	L	Chbail	VL	VL	L
Choualiq Jezzine	VL	VL	M	Dahr Ed-Deir	VL	VL	M	Deir El Qattine	VL	VL	ML

Demachqiyeh	VL	VL	M	Ghabbatiyeh	VL	VL	L	Harf Jezzine	VL	VL	L
Hassaniyeh	VL	VL	M	Haytouleh	VL	VL	M	Haytura	VL	VL	ML
Hidab	VL	VL	M	Homsiyeh	VL	VL	L	Jabal Toura	VL	VL	M
Jarmaq	VL	VL	M	Jensnaya	VL	VL	M	Jernaya	VL	VL	M
Jezzine	VL	VL	M	Karkha	VL	VL	M	Kfar Falous	VL	VL	M
Kfar Houna	VL	VL	M	Kfar Jarrah	VL	VL	M	Lebaa	VL	VL	M
Louayzet Jezzine	VL	VL	M	Machmouche	VL	VL	L	Mahmoudiyeh Jezzine	VL	VL	M
Maknounye Jezzine	VL	VL	ML	Maraat Ouazaiyeh	VL	VL	M	Mazraat Daraya	VL	VL	ML
Mazraat El-Aarqoub	VL	VL	ML	Mazraat El-Mathane	VL	VL	L	Mazraat El-Rahbane	VL	VL	ML
Mazraat Khallet Khaz	VL	VL	ML	Mazraat Louzid (Loua	VL	VL	L	Mazraat Qrouh	VL	VL	ML
Mazraat Tamra	VL	VL	M	Mazraat Zighrine Jez	VL	VL	ML	Mazraat	VL	VL	ML
Mharbiyeh	VL	VL	M	Midane Jezzine	VL	VL	L	Mjeydel Jezzine	VL	VL	M
Mlikh	VL	VL	M	Mrah El-Hbasse	VL	VL	M	Ouadi Baanqoudaine	VL	VL	M
Ouadi El-Laymoun	VL	VL	M	Ouardiyeh	VL	VL	VL	Qabaa Jezzine	VL	VL	L
Qatrani	VL	VL	ML	Qaytouleh	VL	VL	ML	Qtaleh Jezzine	VL	VL	L
Rihane Jezzine	VL	VL	M	Rimat	VL	VL	M	Roum	VL	VL	L
Roummanet	VL	VL	M	Sabbah	VL	VL	L	Saydoun	VL	VL	ML
Sfaray	VL	VL	L	Snaya	VL	VL	L	Sojoud	VL	VL	ML
Srayri	VL	VL	M	Taaid	VL	VL	L	Wadi Jezzine	VL	VL	L
Zhalta	VL	VL	ML								

Bekaa

West Bekaa

Municipality	30-Dec	31-Dec	01-Jan	Municipality	30-Dec	31-Dec	01-Jan	Municipality	30-Dec	31-Dec	01-Jan
Aammiq BG	VL	VL	ML	Ain El Tineh BG	VL	VL	M	Ain Zebdeh	VL	L	M
Ana	VL	VL	ML	Aytanit	VL	VL	ML	Baaloul BG	VL	VL	M
Bab Mareh	VL	VL	M	Chouberqiye Aammiq	VL	VL	ML	Dakoue	VL	VL	ML
Deir Ain El-Jaouze	VL	VL	M	Deir Tahniche	VL	VL	ML	Ghaza	VL	VL	ML
Harime El-Soughra	VL	L	ML	Hoch Harimeh	VL	VL	ML	Jazira BG	VL	VL	ML
Jib Jennine	VL	VL	ML	Kamed-El-Laouz	VL	VL	ML	Kefraya BG	VL	VL	ML
Khiara El Atika	VL	VL	ML	Khiara	VL	VL	ML	Khirbet Qanafar	VL	VL	M
Lala	VL	VL	ML	Lebbaya BG	VL	VL	M	Loussa	VL	VL	M
Machghara	VL	VL	M	Manara (Hammara) BG	VL	VL	L	Mansoura BG	VL	VL	ML
Marej BG	VL	VL	ML	Maydoun	VL	VL	M	Ouaqf BG	VL	VL	ML
Qaraaoun	VL	VL	M	Qelya	VL	VL	M	Raouda (Istabel)	VL	VL	ML
Saghbine	VL	L	M	Sohmor	VL	VL	M	Soltan Yacoub el Ara	VL	VL	ML
Souairy	VL	VL	ML	Sultan Yaacoub	VL	VL	ML	Tal Znoub	VL	VL	ML
Yehmor BG	VL	VL	M	Zilaya	VL	VL	M				

Zahle

Municipality	30-Dec	31-Dec	01-Jan	Municipality	30-Dec	31-Dec	01-Jan	Municipality	30-Dec	31-Dec	01-Jan
Aanjar (Haouch Mouss	VL	VL	ML	Ablah	VL	VL	ML	Ain Kfarzabad	VL	VL	ML
Ali-El-Nahri	VL	VL	ML	Bar Elias	VL	VL	ML	Bouarej	VL	VL	ML
Cheberqiyet Tabet	VL	VL	ML	Chtaura	VL	VL	ML	Deir El Ghazal	VL	VL	ML
Delhamiyet Zahle	VL	VL	ML	Ferzol	VL	VL	ML	Haouch El-Ghanam	VL	VL	ML
Haouch Es-Siyadeh	VL	VL	ML	Haouch Hala	VL	VL	ML	Haouch Mandara	VL	VL	ML

Haouch Qayssar	VL	VL	ML	Hezerta	VL	VL	ML	Hosh Moussa	VL	VL	ML
Jdita	VL	VL	ML	Kfarzabad	VL	VL	ML	Ksara	VL	VL	ML
Majdel Aanjar	VL	VL	ML	Makssi	VL	VL	ML	Massa	VL	L	ML
Mazraat Er-Remtaniye	VL	VL	ML	Mrayjat Zahle	VL	VL	ML	Mzaraa Zahle	VL	VL	ML
Nabi Ayla	VL	VL	ML	Nasriyet Rizk	VL	L	ML	Nasriyet Zahle	VL	VL	ML
Niha Zahle	VL	VL	ML	Ouadi Ed-Deloum	VL	VL	ML	Ouadi El-Arayech	VL	VL	ML
Qaa El Rim	VL	VL	ML	Qab Elias	VL	VL	ML	Qousaya	VL	VL	ML
Rhit	VL	VL	ML	Riyak	VL	VL	ML	Saadnayel	VL	VL	ML
Taal El-Akhdar	VL	VL	ML	Taalbeya	VL	VL	ML	Taanayel	VL	VL	ML
Talamara	VL	VL	ML	Tcheflik Edde Haouch	VL	VL	ML	Tcheflik Qiqano	VL	VL	ML
Terbol Zahle	VL	VL	ML	Touaite Zahle	VL	VL	ML	Zahle Aradi	VL	VL	ML
Zahle El-Berbara	VL	VL	ML	Zahle El-Maallaqa	VL	VL	ML	Zahle El-Midane	VL	VL	ML
Zahle Er-Rassiye	VL	VL	ML	Zahle Haouch El-Ouma	VL	VL	ML	Zahle Haouch El-Ouma	VL	VL	ML
Zahle Haouch Ez-Zara	VL	VL	ML	Zahle Maallaqa Aradi	VL	VL	ML	Zahle Mar Antonios	VL	VL	ML
Zahle Mar Elias	VL	VL	ML	Zahle Mar Gerios	VL	VL	ML	Zahle Saydet En-Naja	VL	VL	ML
Zebdoul	VL	VL	ML								

Rachaiya

Municipality	30-Dec	31-Dec	01-Jan	Municipality	30-Dec	31-Dec	01-Jan	Municipality	30-Dec	31-Dec	01-Jan
Ain Arab Rachaiya	L	L	M	Ain Ata	VL	VL	L	Ain Harche	VL	VL	L
Aqabe Rachaya	VL	VL	ML	Ayha	VL	VL	ML	Ayta El Fokhar	VL	L	ML
Bakifa Rachaya	VL	VL	ML	Bakka	L	L	M	Beit Lahya	VL	VL	ML
Bireh Rachaiya	VL	L	ML	Daher El Ahmar	L	VL	ML	Deir El-Achayer	VL	L	L
Heloua Rachaiya	VL	L	L	Hoch El Qannabeh Rac	VL	VL	L	Kaoukaba Bou Arab	L	VL	ML
Kfar Danis	L	L	ML	Kfar Mechki	VL	VL	ML	Kfar Qouq	L	L	ML
Kherbet Rouha	VL	L	ML	Majdel Balhiss	VL	VL	M	Mdoukha	L	L	M
Mhaydseh Rachaiya	VL	VL	ML	Nabi Safa	VL	VL	ML	Rachaiya	VL	VL	ML
Rafid Rachaiya	VL	L	ML	Selsata (Mazraat Dei	VL	VL	L	Tannoura	VL	VL	ML
Yanta	L	L	ML								

Beyrouth

Beyrouth

Municipality	30-Dec	31-Dec	01-Jan	Municipality	30-Dec	31-Dec	01-Jan	Municipality	30-Dec	31-Dec	01-Jan
Achrafieh	VL	L	M	Ain el-Mreisse	VL	L	M	Bachoura	VL	L	M
Beirut Central Distr	VL	L	M	Marfai	VL	L	M	Mazraa	VL	L	M
Medaouar	VL	L	M	Minet el-Hosn	VL	L	M	Mwssaitbeh	VL	L	M
Ras Beirut	VL	L	M	Rmeil	VL	L	M	Saifi	VL	L	M
Zqaq el-Blat	VL	L	M								