

Lebanon Fire Risk Bulletin



CIVIL DEDEFENCE

Refer to cadast table condition.

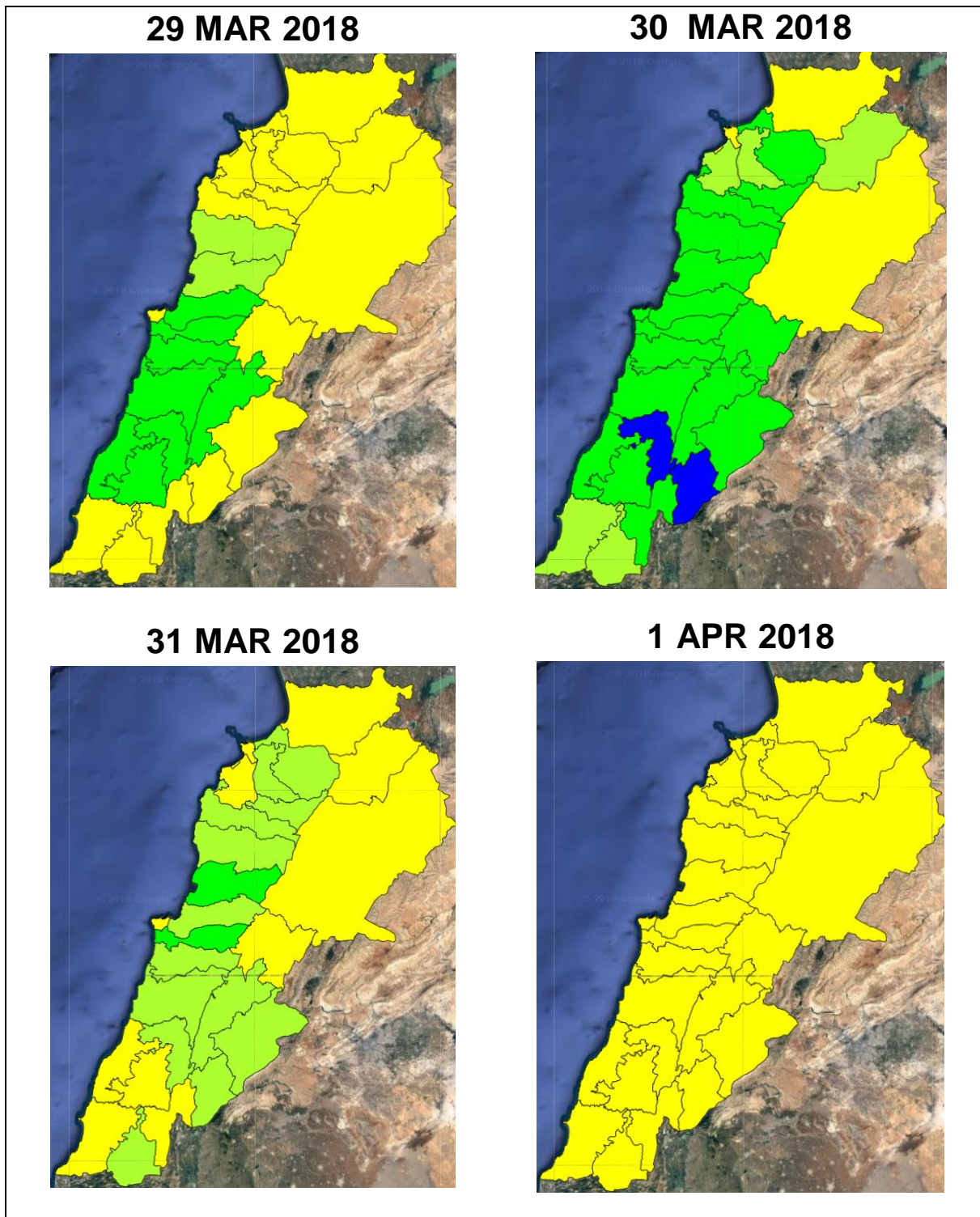
Please note that the indicated temperature is at 2 meters height from the ground.

General description of potential fire risk situation

Symbol	Level of risk	Meaning and actions
VL	Very low	Very low fire risk. Controlled burning operations can be hardly executed due to high fuel moisture content. Normally wildfires self-extinguish.
L	Low	Low fire risk. Controlled burning operations can be executed with a reasonable degree of safety.
ML	Medium low	Medium-low fire risk. Controlled burning operations can be executed in safety conditions. All the fires need to be extinguished.
M	Medium	Medium fire risk. Controlled burning operations would be avoided. All the fires need to be very well extinguished.
MH	Medium high	Controlled burning is not recommended. Open flame will start fires. Cured grasslands and forest litter will burn readily. Spread is moderate in forests and fast in exposed areas. Patrolling and monitoring is suggested. Fight fires with direct attack and all available resources.
H	High	Ignition can occur easily with fast spread in grass, shrubs and forests. Fires will be very hot with crowning and short to medium spotting. Direct attack on the head may not be possible requiring indirect methods on flanks. Patrolling and monitoring the territory is highly suggested.
E	Extreme	Ignition can occur also from sparks. Fires will be extremely hot with fast rate of spread. Control may not be possible during day due to long range spotting and crowning. Suppression forces should limit efforts to limiting lateral spread. Damage potential total. Patrolling and monitoring the territory is highly suggested.

Beirut, 30 March 2018

FIRE RISK INDEX

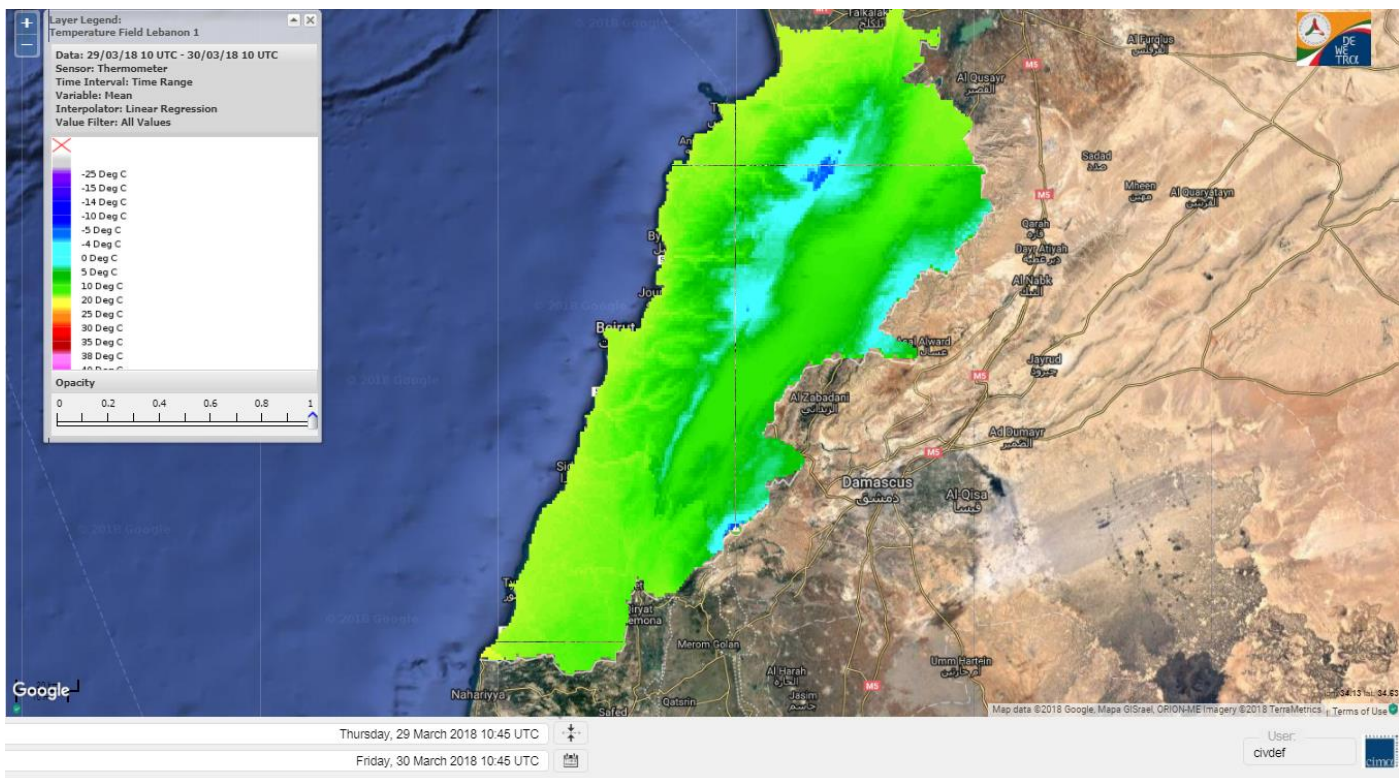


Layer Legend:
Lebanon Wildfire Risk Index 1

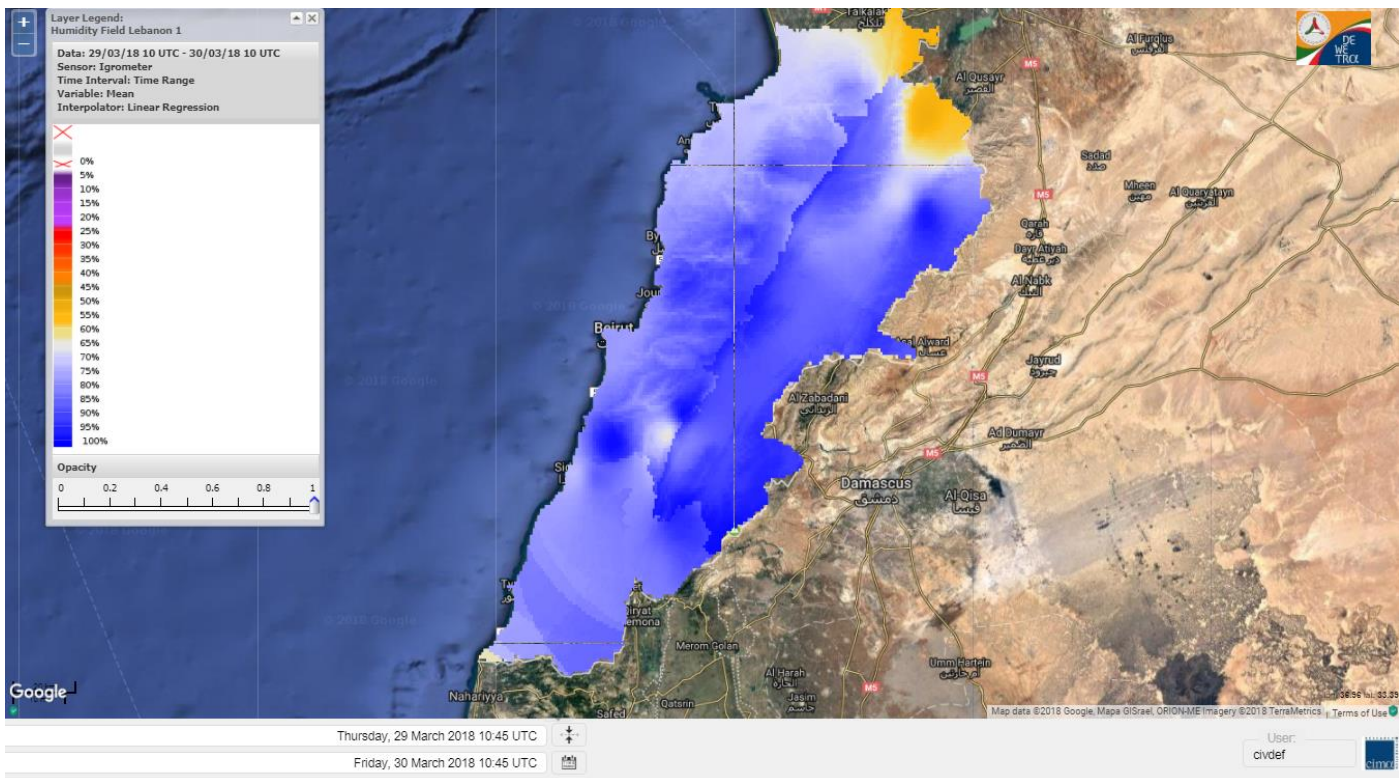
Data: Run: 30/03/2018 00:00. Forecast for 30
Model: RISICO for the Republic of Lebanon
Variable: Fire Weather Index
Spatial Resolution: Caza

- VERY LOW
- LOW
- MEDIUM-LOW
- MEDIUM
- MEDIUM-HIGH
- HIGH
- EXTREME

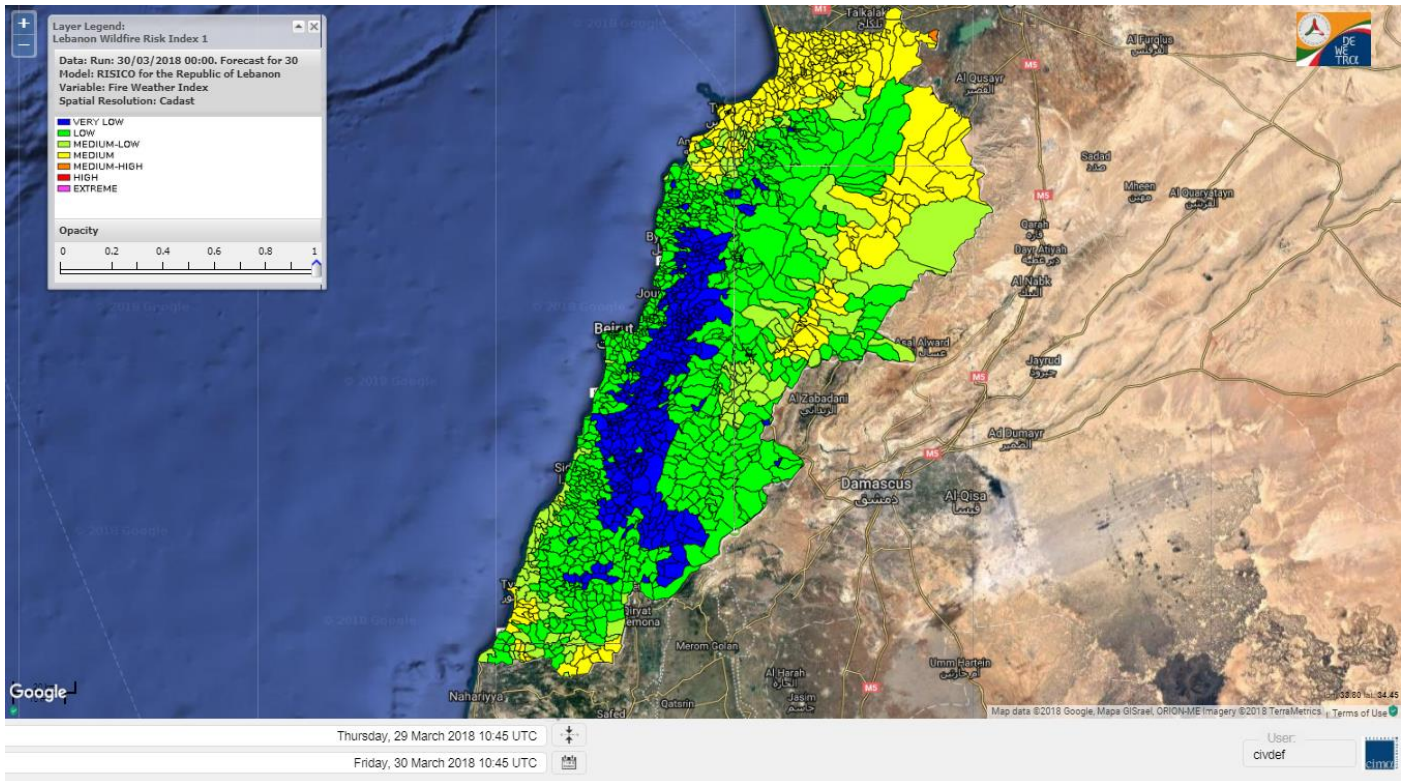
Lebanon temperature for 30 MAR 2018



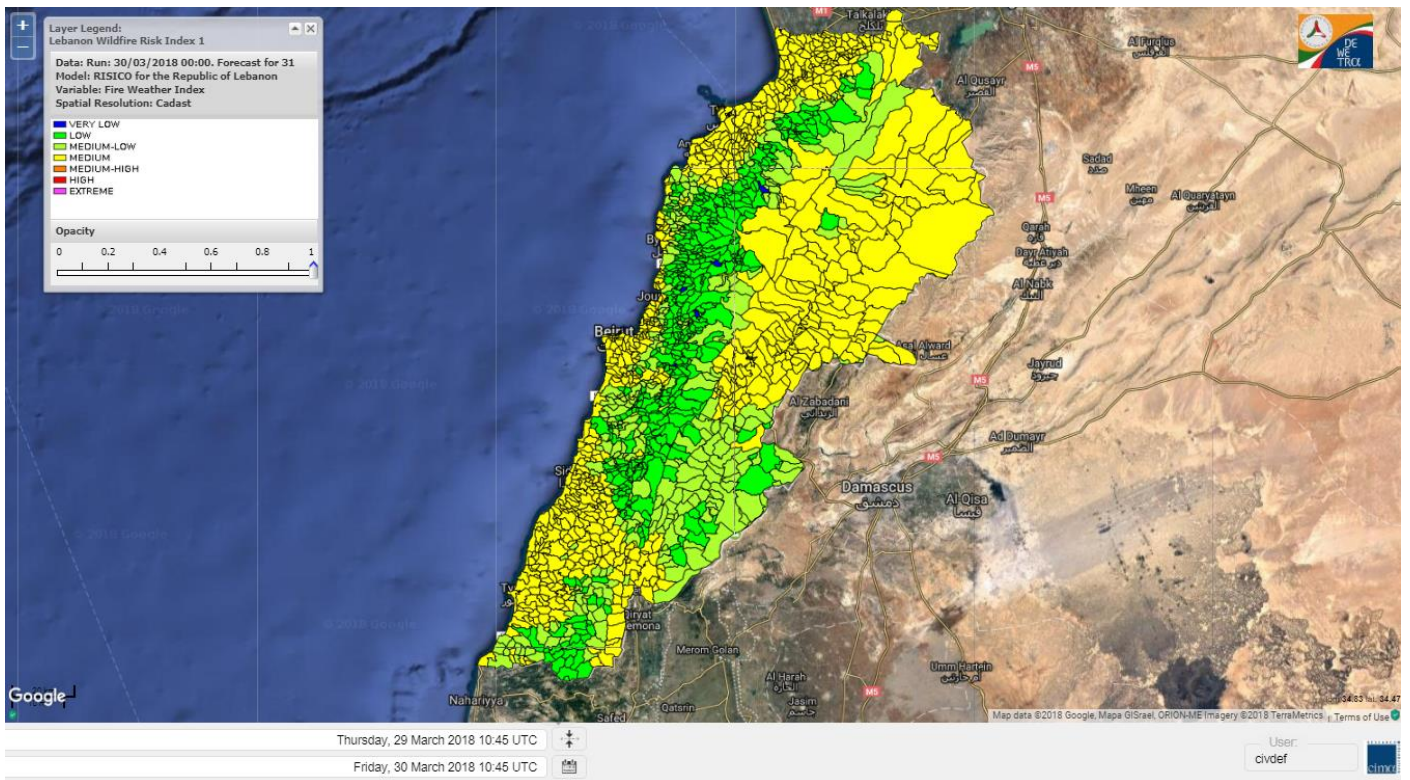
Lebanon humidity for 30 MAR 2018



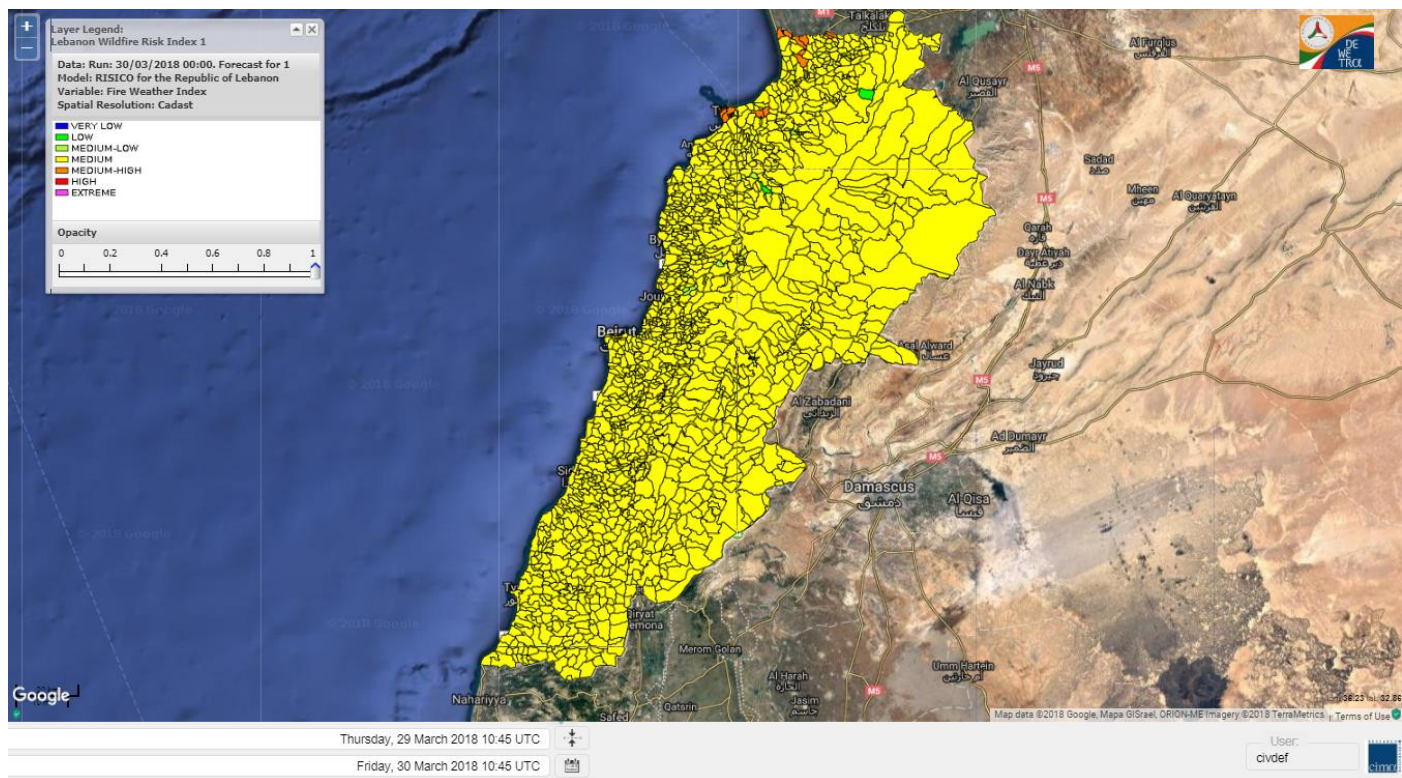
Lebanon for 30 MAR 2018



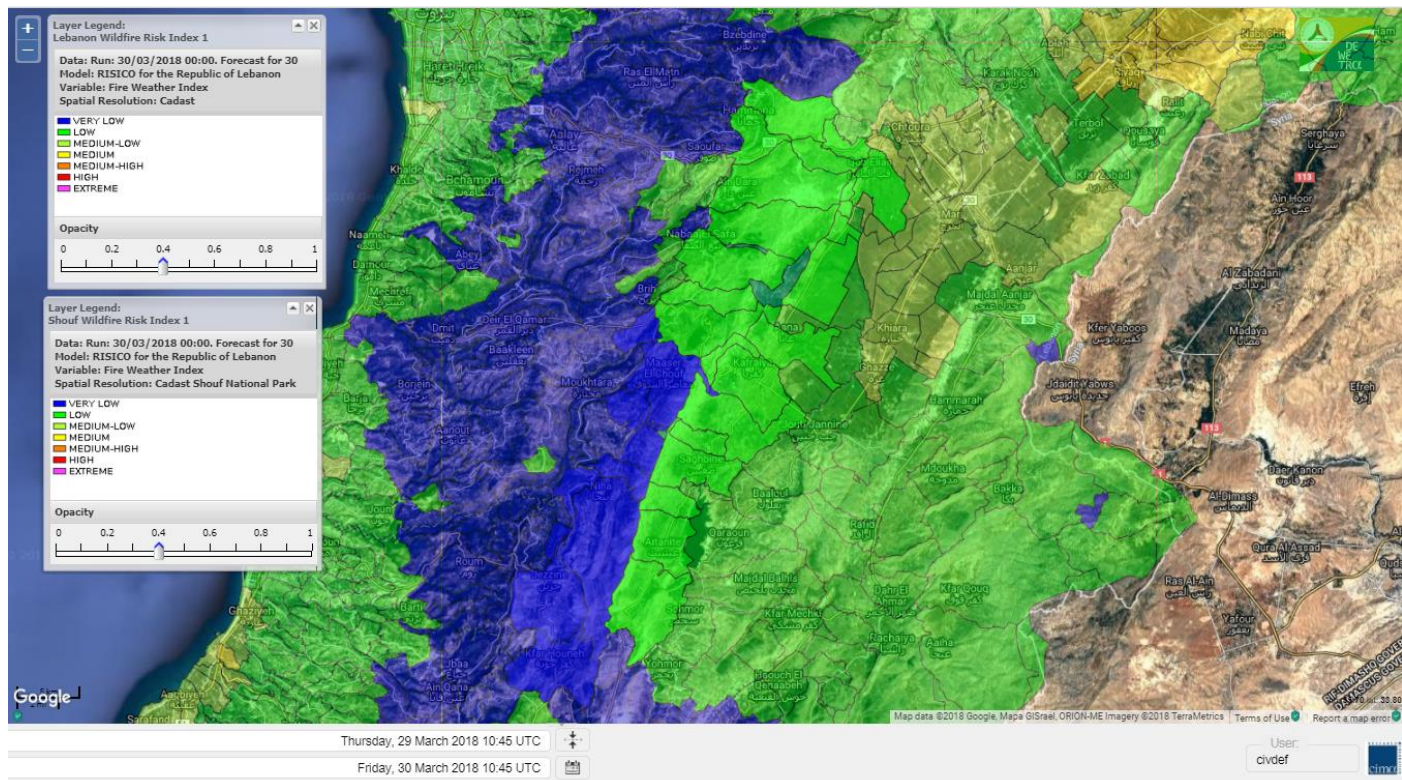
Lebanon for 31 MAR 2018



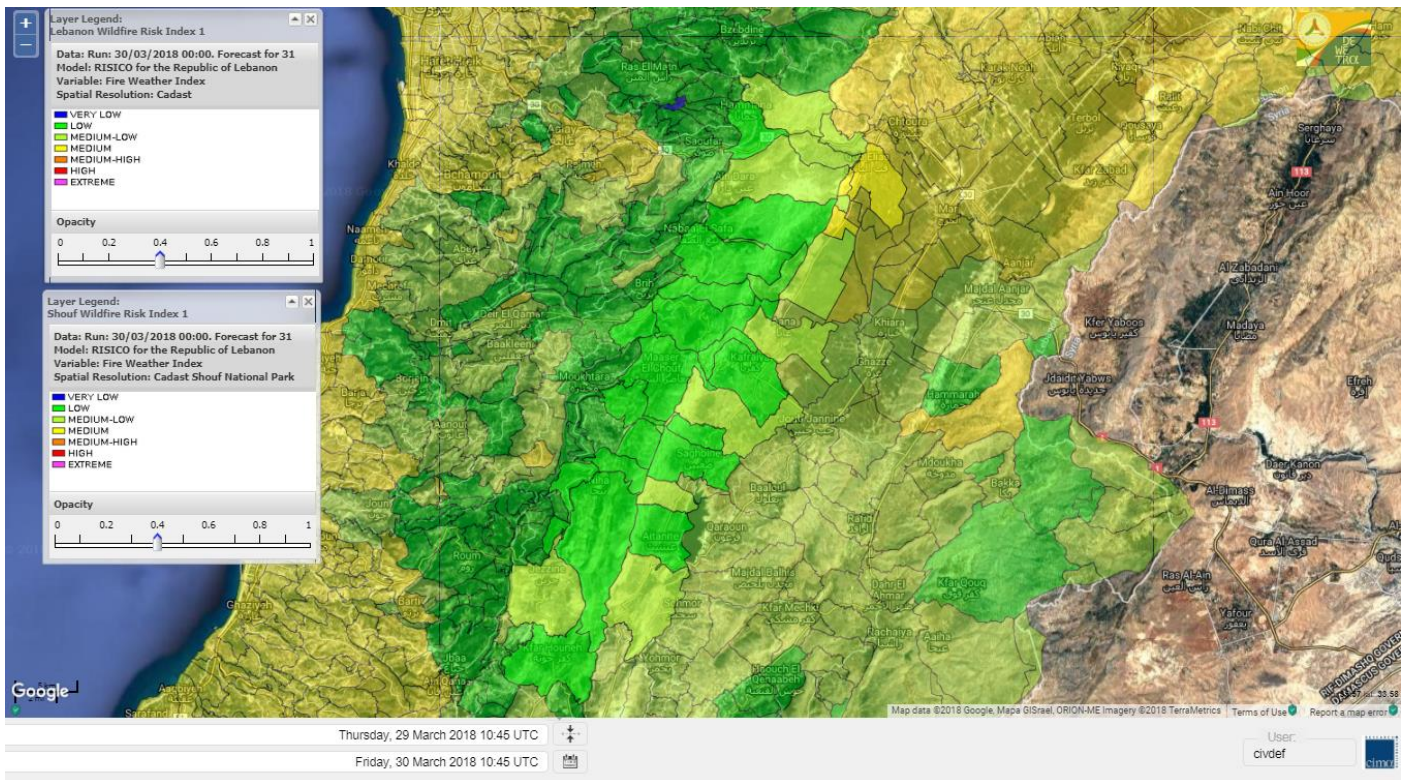
Lebanon for 1 APR 2018



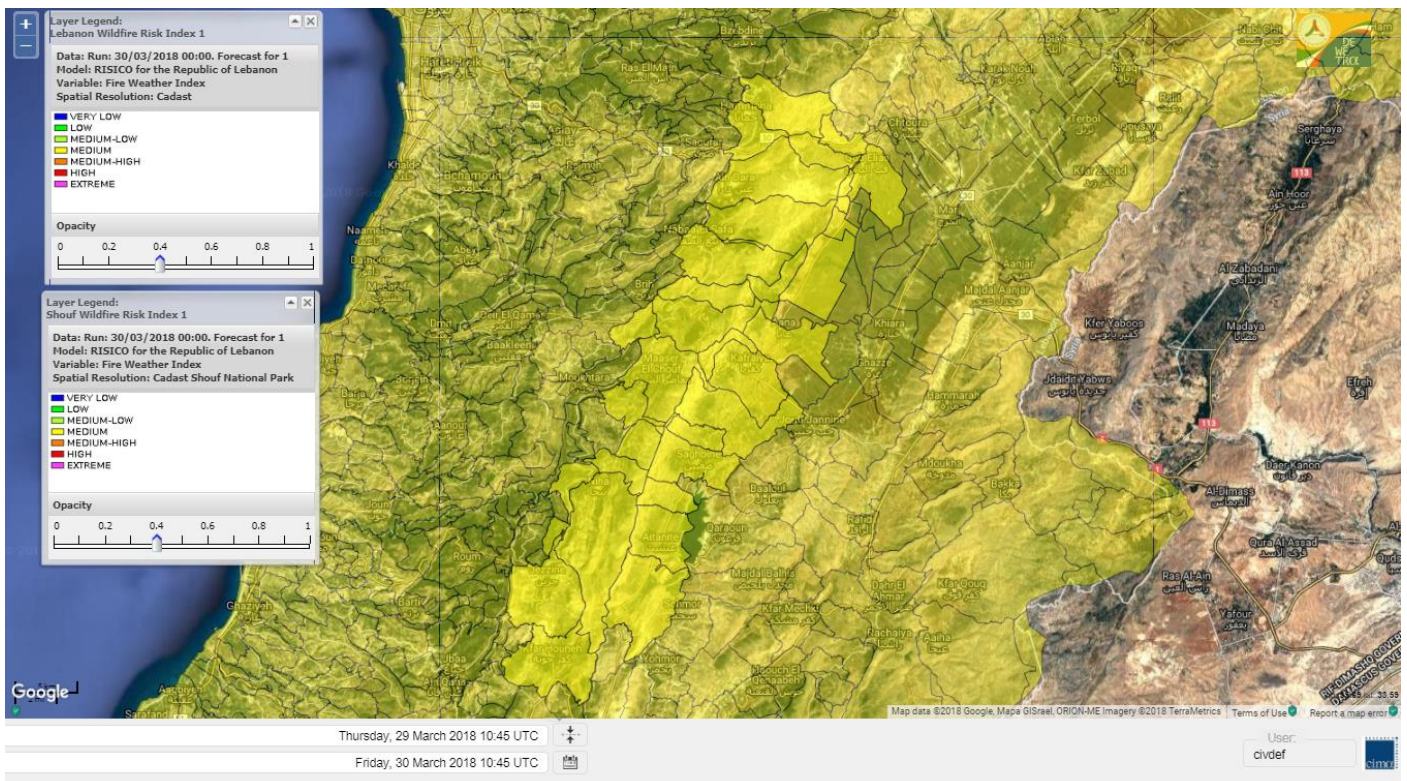
Shouf Biosphere Reserve Forecast for 30 MAR 2018



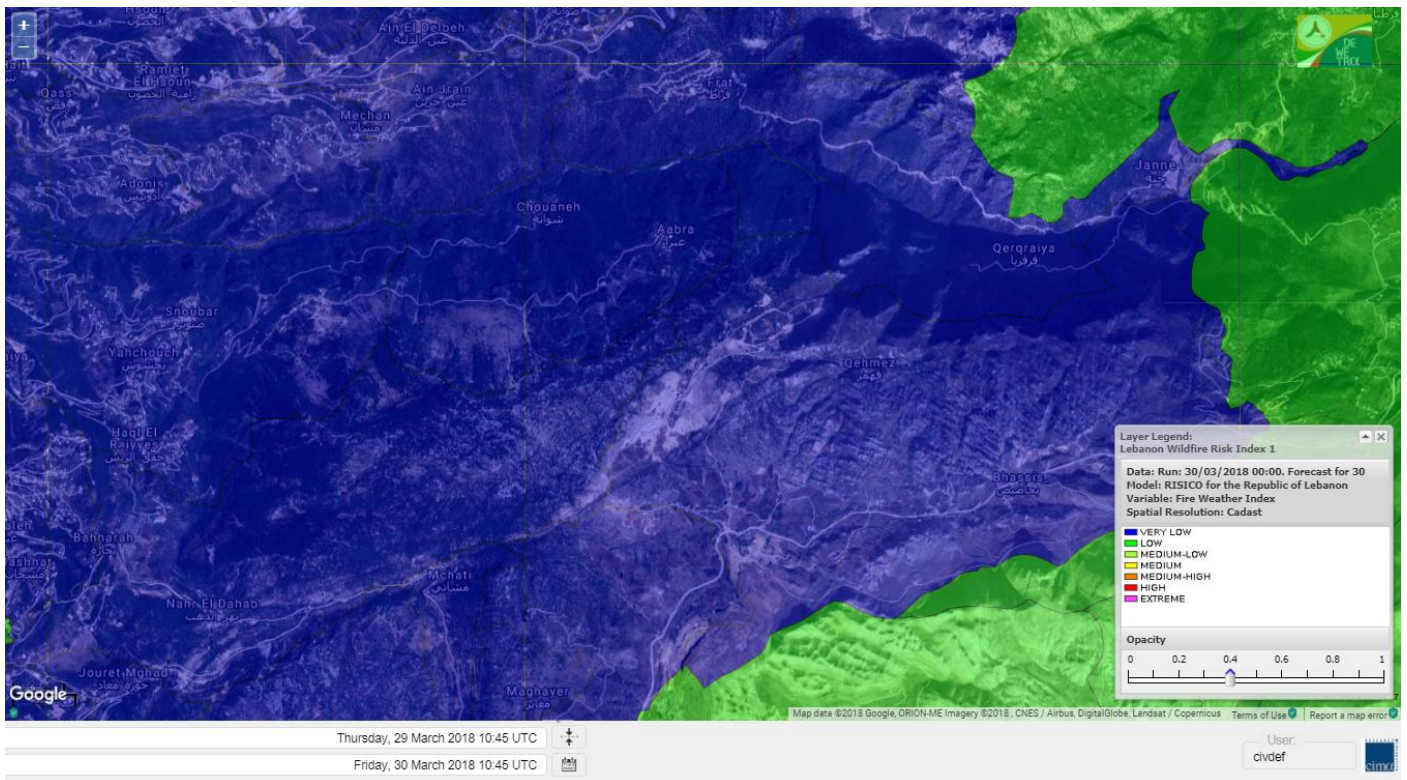
Shouf Biosphere Reserve Forecast for 31 MAR 2018



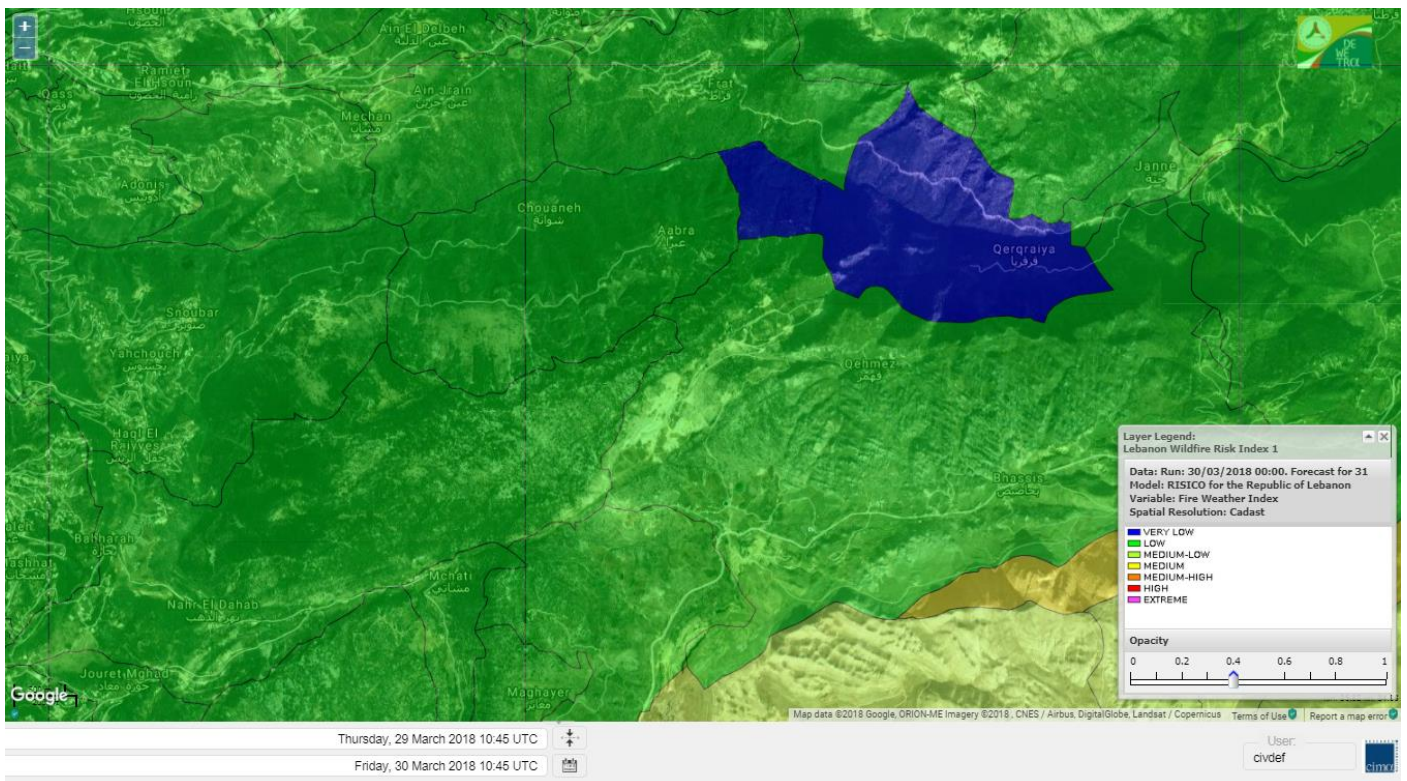
Shouf Biosphere Reserve Forecast for 1 APR 2018



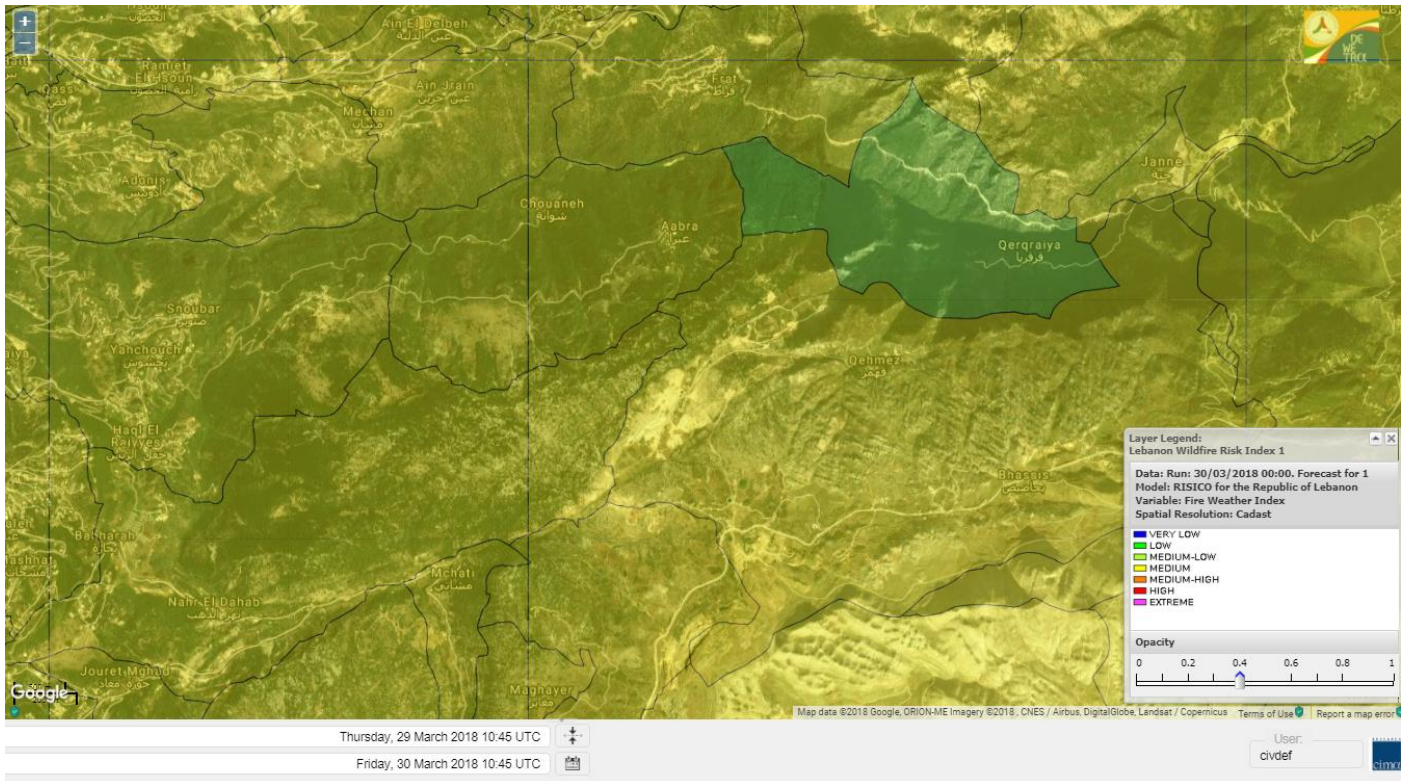
Jabal Moussa Reserve Forecast for 30 MAR 2018



Jabal Moussa Reserve Forecast for 31 MAR 2018



Jabal Moussa Reserve Forecast for 1 APR 2018



Nord

Koura

Municipality	30-Mar	31-Mar	01-Apr	Municipality	30-Mar	31-Mar	01-Apr	Municipality	30-Mar	31-Mar	01-Apr
Aaba	ML	M	M	Afsaddiq	M	M	M	Ain Ekriine	ML	M	M
Amioun	M	M	M	Anfeh	M	M	M	Badbhoun	M	M	M
Barghoun	M	M	M	Barsa	ML	M	M	Batroumine	M	M	M
Bdebba	ML	M	M	Bechmizzine	M	M	M	Bednayet El-Koura	L	ML	M
Bhabbouch El-Koura	L	ML	M	Bkeftine	ML	M	M	Bnehran	L	ML	M
Bqaiia El-Koura	M	M	M	Bsarma	M	M	M	Btaaboura	ML	M	M
Bterram	M	M	M	Btouratij	M	M	M	Bziza	ML	M	M
Dar Beechtar	ML	M	M	Dar Chmezzine	M	M	M	Deddeh	M	M	M
Deir El-Balamand	L	M	M	Fih	M	M	M	Hraiche	M	M	M
Ijdaabrine	L	ML	M	Kaftoun	ML	ML	M	Kefraya El-Koura	L	M	M
Kfarakka	ML	M	M	Kfarhata	L	ML	M	Kfarhazir	M	M	M
Kfarkahel	M	M	M	Kfarsaroun	ML	M	M	Kosba	ML	M	M
Mejdel el-Koura	L	ML	M	Nakhle	ML	M	M	Qalhat	L	M	M
Ras Masqa	M	M	M	Rechdibbine	ML	M	M	Zakroun	ML	M	M
Zgharta El-Mtaouile	L	L	M								

Bcharre

Municipality	30-Mar	31-Mar	01-Apr	Municipality	30-Mar	31-Mar	01-Apr	Municipality	30-Mar	31-Mar	01-Apr
Aabdine	L	L	M	Bane	L	ML	M	Barhelion	L	L	M
Bazouone	L	ML	M	Becharre	L	M	M	Beit Menzer	L	L	M
Billa	L	L	M	Blaouza	L	ML	M	Bqaa Kafra	L	M	M
Bqerqacha	L	M	M	Breissat	L	L	M	Dimane	L	ML	M
Hadath El Jobbeh	L	L	M	Hadchit	L	ML	M	Hasroun	L	ML	M
Mazraat Aassaf	VL	L	M	Mazraat Bani Saab	L	L	M	Mchaa El-Jobbeh	L	M	M
Metrit	L	L	M	Moghr El-Ahoual	L	ML	M	Ouadi Qannoubine	VL	VL	L
Qanat	L	L	M	Qnayouer	VL	L	M	Tourza	L	L	M

Batroun

Municipality	30-Mar	31-Mar	01-Apr	Municipality	30-Mar	31-Mar	01-Apr	Municipality	30-Mar	31-Mar	01-Apr
Aabrine	L	L	M	Aalali	L	L	M	Aartziz	L	L	M
Abdelli	VL	L	M	Ajdabra	L	L	M	Assia	L	L	M
Basbina	L	ML	M	Batroun	L	M	M	Bcheleh	L	L	M
Bechtoudar	L	L	M	Beit Chlala	L	L	M	Beit Kassab	VL	L	M
Bijdarfil	L	ML	M	Bqesmaya	L	L	M	Chatine	L	L	M
Chebtin	L	L	M	Chekka	ML	M	M	Daael	L	L	M
Dahr Abi Yaghi	VL	L	M	Daraya El-Batroun	L	M	M	Deir Billa	L	L	M
Deir Kfifane	L	ML	M	Deir Mar Youhanna EL	L	L	M	Deir Mar Youssef Jra	VL	L	M
Douma	L	L	M	Douq	L	L	M	Eddeh El-Batroun	L	ML	M
Ftatah El-Batroun	L	L	M	Ghouma	L	ML	M	Hadatoun	L	L	M
Hamat	L	ML	M	Harbouna	L	L	M	Hardine	VL	L	M
Helta	L	L	M	Hery	L	M	M	Jebba	L	L	M
Jrabta El-Batroun	L	ML	M	Jrane El-Batroun	L	M	M	Kfar Aabida	L	ML	M
Kfar Halda	L	L	M	Kfarb Shlaimane	L	L	M	Kfarhatna	L	L	M
Kfarhay	L	ML	M	Kfarhelos	VL	L	M	Kfifane	L	M	M

Kfour El Arabi	L	L	M	Koubba	L	M	M	Kour	L	ML	M
Mar Mama	L	L	M	Masrah	L	L	M	Mehmarch	L	L	M
Mrah Chdid	L	L	M	Mrah El Ziyat	L	ML	M	Mrah El-Hajj	L	L	M
Nahle El-Batroun	L	L	M	Niha El-Batroun	L	L	M	Ouajh El-Hajjar	L	ML	M
Ouata Houb	VL	L	M	Qatnaaoun	L	ML	M	Racha	L	L	M
Rachana	L	L	M	Rachkida	L	ML	M	Ram El-Batroun	L	L	M
Ras Nahhach	L	ML	M	Selaata	ML	M	M	Sghar	L	ML	M
Smar Jbayl	L	ML	M	Sourat El-Batroun	L	L	M	Tannourine El-Faouqa	L	M	M
Tannourine Et-Tahta	VL	L	M	Thoum	L	ML	M	Toula El-Batroun	L	L	M
Zan	L	L	M								

Zgharta

Municipality	30-Mar	31-Mar	01-Apr	Municipality	30-Mar	31-Mar	01-Apr	Municipality	30-Mar	31-Mar	01-Apr
Aachach	M	M	M	Aalma	M	M	M	Aarde	M	M	M
Aintourine	L	ML	M	Arabet Qozhaya	L	L	M	Arde	M	M	M
Arjis	M	M	M	Asnoun	ML	M	M	Ayto	L	L	M
Basloukit	L	ML	M	Bchannine	M	M	M	Besebeel	M	M	M
Bhairret Toula	L	L	M	Bnachee	L	ML	M	Boussit	M	M	MH
Danha	ML	M	M	Daraiya Zgharta	M	M	M	Deir Jdeide	ML	M	M
Ehden	L	ML	M	Halan	M	M	M	Hariq Zgharta	ML	M	M
Houakir	L	L	M	Hraiqis	M	M	M	Iaal	ML	M	M
Ijbaa	L	L	M	Karm Saddeh	L	L	M	Kfarchakhna	M	M	M
Kfardlaqous	M	M	M	Kfarfou	ML	M	M	Kfarhata Zgharta	ML	M	M
Kfarhoura	ML	M	M	Kfarsghab	L	ML	M	Kfaryachit	M	M	M
Kfarzaina	ML	M	M	Khaldiye	ML	M	M	Mazraat Ajbeaa	ML	M	M
Mazraat Et-Teffah	L	L	M	Mazraat Jneid	ML	M	M	Mejdlaiya Zgharta	M	M	M
Merh Kfarsghab	L	ML	M	Miryata	M	M	M	Miziara	L	L	M
Mzraat Kefraya	M	M	M	Qorah Bach	ML	M	M	Rachiine	M	M	M
Ras Kifa	ML	ML	M	Sakhra	L	M	M	Sebhel Zgharta	L	ML	M
Serhel	L	L	ML	Tallet Zgharta	ML	M	M	Toula Zgharta	L	L	M
Zgharta	ML	M	M								

Minieh-Denniye

Municipality	30-Mar	31-Mar	01-Apr	Municipality	30-Mar	31-Mar	01-Apr	Municipality	30-Mar	31-Mar	01-Apr
Aasaymout	L	L	M	Aaymar	L	L	M	Aazki	M	ML	M
Ain El-Tineh-Miniyeh	L	L	M	Assoun	L	L	M	Bakhaaoun	ML	L	M
Bchennata	L	ML	M	Bechehhara	L	L	M	Beddawi	M	M	M
Behouaita	L	L	M	Beit El Foqss	L	L	M	Beit Haouik	M	ML	M
Beit Zoud	L	L	M	Bekaasafrine	L	M	M	Borj El Yahoudiyeh	M	M	M
Bqarsouna	L	L	M	Btermaz	L	L	M	Debaael	L	L	M
Deir Ammar	M	M	M	Deir Nbouh	L	ML	M	Haouaret-Miniyeh	L	L	M
Haql el Azimeh	L	L	M	Harf El Siyad	L	L	M	Hazmiye-Miniyeh	L	L	M
Izal	L	ML	M	Jarjour	VL	L	M	Jayroun	L	L	M
Kahf El-Malloul	L	L	M	Karm El-Moher	L	L	M	Kfar Binine	L	L	M
Kfarchalane	M	ML	M	Kfarhabou	ML	ML	M	Kharroub-Miniyeh	ML	ML	M
Mazraat El-Kreme	L	L	M	Mazraat Ketrane	L	L	M	Merkebta	M	M	M
Minyeh	M	M	M	Mrah El Sfirat	L	L	M	Mrah Sraj	L	L	M
Mrebbine	L	ML	M	Nabi Youcheaa	M	M	M	Nemrine	L	L	M

Qarhaiya	M	L	M	Qarne	L	L	M	Qarsita	L	L	M
Qattineh-Miniyeh	VL	L	ML	Qemmamine	L	L	M	Qraine	L	L	M
Raouda-Aadoua	M	M	M	Rihaniyet-Miniyeh	M	M	M	Sfireh	L	L	M
Sir Ed-Danniyeh	L	L	M	Tarane	L	L	M	Terbol-Miniyeh	M	M	MH
Zaghartaghriane	L	L	M	Zouq Bhannine	M	M	M				

Nabatiye

Nabatiye

Municipality	30-Mar	31-Mar	01-Apr	Municipality	30-Mar	31-Mar	01-Apr	Municipality	30-Mar	31-Mar	01-Apr
Aabba	L	M	M	Aazzi	L	M	M	Adchit El-Chqif	L	M	M
Ain Bou Swar	VL	ML	M	Ain Kana	VL	M	M	Ali El-Taher	L	M	M
Ansar	L	M	M	Arab Salim	VL	M	M	Arnoun	L	M	M
Bfaroue	L	M	M	Breyqaah	L	M	M	Charqiyeh	L	M	M
Choukine	L	M	M	Deir El Zahrani	L	M	M	Doueir El-Nabatiyeh	L	M	M
Habbouch El-Nabatiye	L	M	M	Hamra El-Nabatiyeh	VL	ML	M	Harouf El-Nabatiyeh	L	M	M
Hmaile	VL	M	M	Houmin El Faouqa	VL	M	M	Houmin El Tahta	L	M	M
Jarjough	VL	ML	M	Jbaah El-Nabatiyeh	VL	L	M	Jebchit	L	M	M
Kfar Djal El-Nabatiy	L	M	M	Kfar Remmane	L	M	M	Kfar Sir	L	M	M
Kfar Tebnit	L	M	M	Kfarfila	VL	M	M	Kfour El-Nabatieh	L	M	M
Mayfadoun	L	M	M	Mazraat Bsaffour	VL	M	M	Mazraat Chalbaal	L	ML	M
Mazraat Dmoul	L	M	M	Mazraat El Khreibeh	L	M	M	Mazraat El-Bayad El-	VL	M	M
Mazraat Kfarjaouz	L	M	M	Mazraat Qalaat Meiss	L	ML	M	Nabatiyeh El-Fawka	L	M	M
Nabatiyeh Et-Tahta	L	M	M	Namiriyeh	L	M	M	Qaaqaiyet El Jisr	L	M	M
Qossaibeh El-Nabatiy	L	M	M	Roumine	L	M	M	Sarba El-Nabatieh	VL	M	M
Sir El-Gharbiyeh	L	M	M	Toul	L	M	M	Yehmor El-Nabatiyeh	L	M	M
Zaoutar El Charkiyeh	VL	ML	M	Zaoutar El-Gharbiyeh	VL	ML	M	Zebdine El-Nabatiyeh	L	M	M
Zefta	L	M	M								

Hasbaiya

Municipality	30-Mar	31-Mar	01-Apr	Municipality	30-Mar	31-Mar	01-Apr	Municipality	30-Mar	31-Mar	01-Apr
Ain Jarfa	VL	L	M	Abou Qamha	VL	ML	M	Ain Qania	VL	L	M
Bourghos	VL	M	M	Chebaa	L	ML	M	Chouaya Hasbaya	VL	ML	M
Dellafeh	VL	ML	M	Fardiss Hasbaiya	L	ML	M	Hasbaya	VL	ML	M
Hbariyeh	VL	L	M	Kaoukaba Hasbaiya	VL	M	M	Kfar Chouba	VL	ML	M
Kfar Hamam	VL	ML	M	Kfeir El-Zait	VL	L	M	Khalwat Hasbaya	VL	L	M
Khreibet Hasbaiya	VL	M	M	Majidiyeh Hasbaiya	VL	M	M	Marj Ez-Zhour (Haouc	L	L	M
Meri	VL	M	M	Mimass	VL	ML	M	Rachaiya El-Fokhar	L	ML	M
Salaiyeb	L	M	M								

Marjayoun

Municipality	30-Mar	31-Mar	01-Apr	Municipality	30-Mar	31-Mar	01-Apr	Municipality	30-Mar	31-Mar	01-Apr
Aalmane Marjaayoun	VL	L	M	Aamra	L	M	M	Adayseh Marjaayoun	ML	M	M
Adchit El-Koussair	L	ML	M	Ain Aarab Marjaayoun	VL	M	M	Bani Haiyann	L	ML	M
Blatt Marjaayoun	VL	M	M	Blida	M	M	M	Borj El-Moulouk	L	M	M
Boueyda Marjaayoun	L	M	M	Deir Mimass	L	ML	M	Deir Siriane	VL	ML	M
Dibbine	L	M	M	Ebel El Saqi	L	M	M	Houla	L	M	M
Houra	L	M	M	Kfar Kila	L	M	M	Khiam Marjaayoun	L	M	M

Klayaa	L	M	M	Majdel Selem	L	ML	M	Marjaayoun	L	M	M
Markaba	L	M	M	Mays El-Jabal	ML	M	M	Mazraat Doumiat	L	M	M
Mazraat Sarada	VL	M	M	Mhaibib	ML	M	M	Qabrikha	L	L	M
Qantara	L	ML	M	Rab El-Thalathine	L	M	M	Saouaneh Marjayoun	L	ML	M
Talloussa	L	L	M	Taybeh Matjaayoun	L	M	M	Touline	L	L	M

Bent Jbail

Municipality	30-Mar	31-Mar	01-Apr	Municipality	30-Mar	31-Mar	01-Apr	Municipality	30-Mar	31-Mar	01-Apr
Ain-Ebel	M	L	M	Aitaroun	M	M	M	Aynata Bint Jbeil	ML	M	M
Ayta El-Chaeb	L	L	M	Ayta El-Jabal	L	L	M	Beit Lif	L	L	M
Beit Yahoun	L	L	M	Bint Jbeil	M	ML	M	Borj Qalaway	L	ML	M
Braachit	L	L	M	Chakra	L	ML	M	Debel	ML	L	M
Deir Antar	L	ML	M	Froun	VL	ML	M	Ghandouriyeh Bint Jb	L	ML	M
Hanine	ML	L	M	Hariss	L	ML	M	Hdatha	ML	L	M
Jmeymeh	L	ML	M	Kafra Bint Jbeil	L	L	M	Kfar Dounine	L	ML	M
Khirbet Selm	L	ML	M	Kounine	L	ML	M	Maroun El Ras	M	M	M
Qalaway	L	ML	M	Qaouzah	L	L	M	Qatmoun	ML	L	M
Ramya Bint Jbeil	L	L	M	Rchaf	L	L	M	Rmeich	M	L	M
Safad Al Battikh	L	L	M	Salhaneh	L	L	M	Serbine	ML	ML	M
Sultanieh Bint Jbeil	L	L	M	Tibnine	L	L	M	Tiri	ML	L	M
Yaroun	M	L	M	Yater	ML	ML	M				

Mont Liban

Jbail

Municipality	30-Mar	31-Mar	01-Apr	Municipality	30-Mar	31-Mar	01-Apr	Municipality	30-Mar	31-Mar	01-Apr
Aabeydat	L	L	M	Aalita	VL	L	M	Aamchit	L	M	M
Aarab El-Lahib	L	ML	M	Aarasta	VL	L	M	Adonis Jbeil	VL	L	M
Afqa Jbeil	L	L	M	Ain El Delbeh Jbeil	VL	L	M	Ain El-Ghouayba	L	L	M
Ain Jrain	VL	L	M	Ain Kfah	L	ML	M	Almat El Chemaliyat	VL	L	M
Almat El-Jenoubiya	VL	L	M	Aqoura	L	M	M	Bayzoun	VL	L	M
Bchille Jbeil	L	L	M	Bechtlida	VL	L	M	Behdaydat	L	ML	M
Beit Habbaq	L	ML	M	Bejjeh	L	ML	M	Bekhaaz	L	ML	M
Berbara Jbeil	L	M	M	Bintael	VL	L	M	Birket Hjoula	VL	L	M
Blatt Jbeil	L	ML	M	Boulhos	VL	L	M	Breyj Jbeil	VL	L	M
Chamat	L	M	M	Chikhane	L	M	M	Chmout	VL	L	M
Eddeh Jbeil	L	M	M	Ehmej	VL	L	M	Fatre	VL	L	M
Ferhet	VL	ML	M	Fghal	L	L	M	Frat	VL	L	M
Ghabat	L	L	M	Ghalboun	L	ML	M	Gharzouz	L	ML	M
Ghofrine	L	ML	M	Habil	VL	L	M	Halate	L	ML	M
Haqel	L	L	M	Hbaline	L	ML	M	Hboub	L	ML	M
Hdeine	L	L	M	Hema Er-Rehban	L	L	M	Hema Mar Maroun Aann	L	L	M
Hjoula	VL	L	M	Hosrayel	L	M	M	Hsarat	L	ML	M
Hsoun	VL	L	M	Jaj	L	L	M	Janne	VL	L	M
Jbeil	L	M	M	Jeddeyl Jbeil	L	M	M	Jlisse	VL	L	M
Jouret El-Qattine	L	L	M	Kfar Baal Annaya	VL	L	M	Kfar Kidde	L	ML	M
Kfar Kouas	L	L	M	Kfar Mashoun	L	M	M	Kfoun	VL	L	M

Kharbe Jbeil	L	ML	M	Laqlouq	L	L	M	Lassa	L	L	M
Lehfed	L	L	M	Maad	L	ML	M	Mar Sarkis	L	L	M
Mastita	L	M	M	Mayfouq	L	L	M	Mazraat El Siyad	L	L	M
Mazraat El-Maaden	VL	L	M	Mechane	VL	L	M	Mechmech Jbeil	VL	L	M
Mehrin	L	ML	M	Mejdel El-Akoura	L	L	M	Mghayreh Jbeil	L	L	M
Mounsef	L	M	M	Nahr Ibrahim	L	M	M	Qahmez	VL	L	M
Qartaba	L	L	M	Qartaboun	L	M	M	Qattara Jbeil	L	L	M
Qorqraya	VL	VL	ML	Ramout	L	ML	M	Ras Osta	VL	L	M
Rihane Jbeil	L	M	M	Sakiet El-Khayt	VL	L	M	Saqi Richmaya	L	L	M
Sebrine	VL	L	M	Seraita	L	L	M	Souane Jbeil	VL	L	M
Tadmor	L	L	M	Tartej	L	L	M	Torzaiya	VL	L	M
Yanouh Jbeil	L	L	M	Zibdine Jbeil	VL	L	M				

El Metn

Municipality	30-Mar	31-Mar	01-Apr	Municipality	30-Mar	31-Mar	01-Apr	Municipality	30-Mar	31-Mar	01-Apr
Aain El-Qabu	VL	L	M	Aain El-Qach	VL	L	M	Aain El-Teffaha	VL	ML	M
Aain el-Safssaf El-M	VL	L	M	Abou Mizane	VL	ML	M	Ain Aar	L	M	M
Ain Alaq	L	ML	M	Ain El-Kharroube	VL	ML	M	Ain El-Sendianeh	VL	L	M
Ain El-Zeitoune	VL	L	M	Ain Saadeh	L	M	M	Aintoura El-Matn	L	L	M
Amaret Chalhoub	L	M	M	Antelias	L	M	M	Atchaneh	VL	ML	M
Ayroun	VL	L	M	Baabdat	VL	L	M	Baouchariyeh	L	M	M
Baskinta	VL	L	M	Beit Chabab	VL	L	M	Beit El-Chaar	L	M	M
Beit El-Kekko	L	M	M	Beit Mery	VL	ML	M	Bhersaf	VL	L	M
Bikfaya	VL	L	M	Biyakout	L	M	M	Bnabil	VL	L	M
Bourj Hammoud	L	M	M	Bqennaya	L	M	M	Broummana El-Matn	VL	ML	M
Bsalim	L	M	M	Bsifrine	VL	L	M	Btegrine	VL	L	M
Chaouiye	L	ML	M	Chouaya El-Matn	VL	ML	M	Choueir	VL	L	M
Chrine	VL	L	M	Dahr El Sawan El-Mat	VL	L	M	Daychouniyeh	L	M	M
Dbayeh	L	M	M	Deir Chamra	VL	L	M	Deir Mar Abda el Mch	VL	ML	M
Deir Mar Roukouz	L	M	M	Deir Tamiche	L	M	M	Dik El-Mehdi	L	M	M
Dikwaneh	L	M	M	Douar El-Matn	VL	L	M	Fanar	L	M	M
Fraike	VL	L	M	Haret El-Ballaneh	L	M	M	Hbous	L	M	M
Himlaya	VL	L	M	Jal El Did	L	M	M	Jdeideh El-Metn	L	M	M
Jouar El-Matn	VL	L	M	Jouret El-Ballout	VL	ML	M	Kaaqour	VL	L	M
Kfar Aaqab	VL	L	M	Kfertay El-Matn	VL	L	M	Khenchara	VL	L	M
Khillet El-Mtain	VL	L	M	Konnabat Broummana	VL	ML	M	Konnabat Salima	VL	L	M
Machraah El-Matn	VL	L	M	Majdel Tarchich	L	ML	M	Majzoub	L	M	M
Mansouriyeh El-Metn	L	M	M	Mar Boutros Karm Et-	VL	L	M	Mar Chaya et Mzekke	VL	ML	M
Mar Moussa Ed-Douar	VL	L	M	Marjaba	VL	L	M	Masqa	VL	ML	M
Mayasse	VL	L	M	Mazraat Deir Aoukar	L	M	M	Mazraat El-Hadirat	L	M	M
Mazraat Yachouh	L	M	M	Mchikha	VL	L	M	Menqlet Mezher	L	M	M
Mhaydseh Matn	VL	L	M	Mkalles	L	M	M	Mrouj	VL	L	M
Mtain	L	ML	M	Mtayleb	L	M	M	Nabay	VL	ML	M
Naccache	L	M	M	Ouadi Chahine	VL	L	M	Ouadi El-Karm El-Mat	VL	VL	M
Ouata El-Mrouj	VL	L	M	Ouyoun El-Matn	VL	L	M	Qornet Chehwan	L	M	M
Qornet El-Hamra	L	ML	M	Roumieh	L	M	M	Sfeilet Bikfaya	VL	L	M
Sinn El-Fil	L	M	M	Zabbougha	VL	L	M	Zalqa	L	M	M

Zarouon	VL	L	M	Zekrite	L	ML	M	Zighrine El-Matn	VL	ML	M
Zouk El-Khrab	L	M	M								

Chouf

Municipality	30-Mar	31-Mar	01-Apr	Municipality	30-Mar	31-Mar	01-Apr	Municipality	30-Mar	31-Mar	01-Apr
Aalmane El-Chouf	L	M	M	Aammq El-Chouf	VL	L	M	Ain Ouzein	VL	L	M
Ain Qani	VL	L	M	Ain Zhalta	L	L	M	Ainbal	VL	L	M
Amatour	VL	L	M	Anout	VL	ML	M	Atrine	VL	ML	M
Baadarane	VL	L	M	Baaqline	VL	ML	M	Baasir	L	M	M
Barja	L	M	M	Barouk	L	L	M	Bater	VL	L	M
Batloun	VL	L	M	Bayqoun	L	M	M	Bchetfine	VL	L	M
Beiteddine	VL	L	M	Benouati Ech-Chouf	VL	ML	M	Berjein	VL	ML	M
Bireh et Mtalleh	VL	L	M	Biret El-Chouf	L	ML	M	Bkechtine Ouel Mchei	VL	L	M
Bkifa El-Chouf	L	ML	M	Botme	VL	L	M	Bqaiaa Ech-Chouf	VL	ML	M
Bsaba El-Chouf	VL	ML	M	Chammis El-Chouf	L	M	M	Chehim	VL	ML	M
Chemaarine	VL	L	M	Chourit	VL	L	M	Daher El-Chouf	L	L	M
Dalhoun	VL	ML	M	Damour	L	M	M	Daraya El-Chouf	VL	L	M
Deir El-Moukhalles	VL	L	M	Deir Baba	VL	L	M	Deir Dourit	VL	ML	M
Deir El-Qamar	VL	ML	M	Deir Kouche	VL	L	M	Dibbieh	VL	L	M
Dmit	VL	ML	M	Fouara Jaafar	VL	L	M	Fraidis El-Chouf	L	L	M
Ghabet Jaafar	VL	ML	M	Gharife	VL	L	M	Haret Jandal	VL	L	M
Hasrout	VL	ML	M	Jadra	L	M	M	Jahlieh	VL	ML	M
Jbeih El-Chouf	VL	L	M	Jdeidet El-Chouf	VL	L	M	Jiyeh	L	M	M
Jleilyeh	VL	ML	M	Jmailiyeh	L	M	M	Joun	L	ML	M
Kahlounie El-Chouf	VL	ML	M	Ketermaya	L	M	M	Kfar Faqoud	VL	L	M
Kfar Hamal	VL	M	M	Kfar Him	VL	ML	M	Kfar Katra	VL	L	M
Kfar Niss	VL	L	M	Kfar hay	VL	L	M	Kfarnabrakh	VL	L	M
Khirbet Bisri	VL	L	M	Knayse El-Chouf	VL	L	M	Maaniyeh	L	M	M
Maasser Beiteddine	VL	L	M	Maasser El-Chouf	VL	L	M	Majdalouna	L	M	M
Majdel El-Meouch	VL	L	M	Mazboud	VL	M	M	Mazmoura	VL	M	M
Mazraat El Chouf	VL	ML	M	Mazraat El Daher	VL	L	M	Mazraat El-Douair	VL	L	M
Mechref	L	ML	M	Mghairie	L	M	M	Mghayrie El-Chouf	VL	ML	M
Moukhtara	VL	L	M	Mrusti	VL	L	M	Mtolle	VL	ML	M
Naameh	L	M	M	Niha El-Chouf	VL	L	M	Ouadi Abou Youssef	VL	L	M
Ouadi Ed-Deir	VL	ML	M	Ouadi El-Sit	VL	L	M	Ouadi bnehlay	VL	L	M
Qraibeh	VL	L	M	Qreiaa	VL	L	M	Rmayle El-Chouf	ML	M	M
Semqaniyeh	VL	ML	M	Sibline	L	M	M	Sirjbeil	VL	ML	M
Warhanieh	L	L	M	Werdaniyeh	ML	M	M	Zaarourieh	VL	ML	M

Baabda

Municipality	30-Mar	31-Mar	01-Apr	Municipality	30-Mar	31-Mar	01-Apr	Municipality	30-Mar	31-Mar	01-Apr
Abadiyeh	VL	ML	M	Ain Mouaffaq	VL	ML	M	Araiya	VL	ML	M
Arbaniyeh	VL	L	M	Arsoun	VL	L	M	Baabda	L	M	M
Baalchmey	VL	M	M	Bmaryam	VL	L	M	Bourj El-Brajneh	L	M	M
Boutchay	L	M	M	Bsaba Baabda	L	M	M	Btekhney	VL	L	M
Btibyat	VL	L	M	Bzebdine	VL	L	M	Chbeniyeh	VL	L	M
Chiyah	L	M	M	Chmeisset Baabda	VL	VL	M	Chouit	VL	L	M
Deir El-harf	VL	L	M	Deir Khouna	VL	L	M	Dlaybeh	VL	L	M

Falougha	L	ML	M	Furn El-Chebbak	L	M	M	Hadath Beyrouth	L	M	M
Halaliyeh Baabda	VL	L	M	Hammana	L	L	M	Haret El Sett	VL	ML	M
Haret Hamze	VL	L	M	Haret Hreik	L	M	M	Hasbaiya El-Metn	VL	L	M
Jouar El-Hoz	VL	L	M	Jouret Arsoun	VL	L	M	Kfar Chima	L	M	M
Kfar Selouane	VL	L	M	Khalouat Baabda	VL	L	M	Kneisset Baabda	VL	L	M
Laylakeh	L	M	M	Louayzeh Baabda	L	M	M	Merdache	L	M	M
Mzairaa Baabda	VL	L	M	Ouadi Chahrour El Ol	L	M	M	Ouadi Chahrour El So	VL	ML	M
Qalaa Baabda	VL	L	M	Qhraybe Baabda	VL	L	M	Qobbayaa	VL	L	M
Qornayel	VL	L	M	Qortada	VL	L	M	Qrayeh Baabda	VL	L	M
Qsaibeh Baabda	VL	ML	M	Qtale Baabda	VL	L	M	Ras El Metn	VL	L	M
Ras El-Haref	VL	L	M	Rouayset El-Ballout	VL	L	M	Salima Baabda	VL	L	M
Tahouitat El Ghadir	ML	M	M	Tarchich	L	L	M	Zandouqa	VL	L	M

Aley

Municipality	30-Mar	31-Mar	01-Apr	Municipality	30-Mar	31-Mar	01-Apr	Municipality	30-Mar	31-Mar	01-Apr
Abey	VL	ML	M	Aghmid	VL	L	M	Ain Dara	L	ML	M
Ain Drafil	VL	ML	M	Ain El Halazoun	VL	ML	M	Ain El-Rmmaneh	VL	L	M
Ain Jedideh	VL	M	M	Ain Ksour	VL	ML	M	Ain Onoub	L	M	M
Ain Traz	VL	L	M	Ainab	VL	L	M	Aley	VL	M	M
Aramoun	L	ML	M	Aytat	L	M	M	Azouniyeh	VL	L	M
Baawerta	L	ML	M	Badghan Oua Wadi Bad	L	L	M	Bassatine	VL	ML	M
Bayssour	VL	ML	M	Bchamoun	L	M	M	Bdadoun	VL	M	M
Behouara	VL	ML	M	Bennay	VL	ML	M	Bhamdoun El-Dayaa	VL	M	M
Bhamdoun El-Mhatta	VL	M	M	Bkhechthey	VL	M	M	Bleibel	VL	M	M
Bmakine	L	M	M	Bmehray	L	L	M	Bouzrid	VL	L	M
Bserrine	VL	ML	M	Bsous	VL	L	M	Btalloun	VL	M	M
Btater	VL	ML	M	Chanay	VL	M	M	Charoun	L	L	M
Chartoun	VL	L	M	Chemlane	VL	ML	M	Choueifat El-Aamrous	L	M	M
Choueifat El-Oumara	L	M	M	Choueifat El-Quoubbe	L	M	M	Dakkoun	L	ML	M
Deir Qoubel	L	M	M	Dfoun	L	M	M	Douair El Remmaneh	VL	L	M
Ghaboun	VL	ML	M	Habramoun	VL	L	M	Homs Oua Hama	VL	ML	M
Houmal	L	M	M	Jisr El Qadi	VL	ML	M	Kehaleh	VL	ML	M
Keyfoun	L	M	M	Kfar Aamey	VL	L	M	Kommatyeh	L	M	M
Maasrati	VL	L	M	Majdel Baana	L	ML	M	Mansourieh et Ain El	VL	ML	M
Mazraat El-Nahr	VL	L	M	Mchakhte	VL	L	M	Mecherfeh	VL	L	M
Mejdaya	VL	ML	M	Mrayjat	L	L	M	Ramliyah	VL	L	M
Rechmaya	VL	L	M	Rejmeh	VL	ML	M	Remhala	VL	ML	M
Rouaysset El Neemane	VL	L	M	Saoufar	VL	L	M	Selfaya	VL	L	M
Sirhmoul	VL	L	M	Souq El Ghareb	L	M	M	Taazanieh	VL	M	M

Kesrouane

Municipality	30-Mar	31-Mar	01-Apr	Municipality	30-Mar	31-Mar	01-Apr	Municipality	30-Mar	31-Mar	01-Apr
Achkout	VL	L	M	Adma Oua Dafneh	L	M	M	Ain Ed-Delbe Kesroua	VL	L	M
Ain El-Rihane	VL	ML	M	Aintoura Kesrouane	L	M	M	Ajaltoun	VL	L	M
Akaybeh Kesrouane	L	M	M	Aramoun Kesrouane	VL	L	M	Azra ouel Ozor	VL	L	M
Ballouneh	VL	L	M	Batha	VL	L	M	Bekaatat Achkout	VL	L	M
Bekaatat Kanaan	VL	L	M	Bizhel	VL	L	M	Bouar	L	ML	M
Bqaatouta	VL	L	M	Bqaq Ed-Dine	L	M	M	Bzommar	VL	L	M

Chahtoul	VL	L	M	Chnaniir	VL	L	M	Chouan	VL	L	M
Daraya Kesrouane	VL	L	M	Darououn	VL	ML	M	Deir Baqlouch	VL	ML	M
Dlebta	VL	L	M	Eghbeh	VL	VL	ML	Faraya	L	ML	M
Fatka	L	L	M	Feytroun	VL	L	M	Ghazir	L	ML	M
Ghbaleh Kesrouane	VL	L	M	Ghedrass	VL	L	M	Ghosta	VL	L	M
Ghynéh	L	L	M	Harharaya w Kattine	VL	L	M	Harissa Kesrouane	VL	M	M
Hayata	VL	L	M	Hosein	VL	L	M	Hrajel	L	ML	M
Jdeideh Ghazir	VL	L	M	Jeita	L	ML	M	Jounieh Ghadir	L	M	M
Jounieh Haret Sakhr	L	M	M	Jounieh Salel Alma	L	M	M	Jounieh Sarba	L	M	M
Jouret Bedrane	L	L	M	Jouret Mhad	VL	L	M	Jouret Termos	L	L	M
Kfar Debiane	VL	L	M	Kfar Tay Kesrouane	VL	VL	M	Kfar Yassine	L	M	M
Kfour Kesrouane	L	L	M	Kharayeb Nahr Ibrahi	L	L	M	Klayaat Kesrouane	VL	L	M
Maarab	VL	L	M	Maaysra Kesrouane	L	L	M	Mayrouba	VL	L	M
Mazraat Er-Ras	L	M	M	Mazraat Mrah El-Mir	VL	L	M	Mchaa El Ftouh	L	M	M
Mchaa Faraya	L	ML	M	Mchaa Kfar Dibiane	L	ML	M	Mghaer	VL	L	M
Mradiyah	VL	L	M	Nahr Ed-Dahab	VL	L	M	Nammoura Kesrouane	L	L	M
Ouata El Jaouz	VL	L	M	Ouata Sillam	L	M	M	Raachine	VL	L	ML
Rayfoun	VL	L	M	Safra Kesrouane	L	M	M	Shayle Kesrouane	L	ML	M
Tabarja	L	M	M	Yahchouch	VL	L	M	Zaaytreh	VL	L	M
Zeytoun	L	L	M	Zouk Mikael	L	M	M	Zouk Mosbeh	L	M	M

Baalbek_Hermel

Baalbek

Municipality	30-Mar	31-Mar	01-Apr	Municipality	30-Mar	31-Mar	01-Apr	Municipality	30-Mar	31-Mar	01-Apr
Aadous	M	M	M	Aamchki	L	M	M	Aarsal	ML	M	M
Ain Baalbek	M	M	M	Ain Bourday	L	M	M	Ain El-Benye	L	M	M
Ain El-Jaouz Baalbek	L	M	M	Ain El-Siya Chadoura	L	M	M	Al Khodr Baalbek	M	M	M
Al Nabi Chit	M	M	M	Aynata Baalbek	L	M	M	Baalbek	ML	M	M
Bachwat	L	ML	M	Barqa	L	L	M	Bednayel Baalbak	ML	M	M
Beit Chama	ML	M	M	Bijjaje	M	M	M	Bouday	L	M	M
Brital	ML	M	M	Btadi	ML	M	M	Chaat	M	M	M
Chaibe	L	M	M	Chlifa	L	M	M	Chmestar	ML	M	M
Dar El-Oussa	L	M	M	Deir El-Ahmar	ML	M	M	Deir Mar Maroun Baal	M	M	M
Douris	M	M	M	Fakiha	M	M	M	Hadath Baalbek	L	M	M
Ham	L	M	M	Haour Taala	ML	M	M	Hizzine	M	M	M
Hlebta	L	ML	M	Hosh Barada	M	M	M	Hosh El Dahab	ML	M	M
Hosh El Snid	M	M	M	Hosh El-Nabi	M	M	M	Hosh El-Rafiq	M	M	M
Hosh Tal Safiya	M	M	M	Hrebta	M	M	M	laat	ML	M	M
Jebaa	L	M	M	Jenta	ML	M	M	Kfar Dabach	M	M	M
Kfar Dane	ML	M	M	Khraibeh El-Hermel	M	M	M	Khreibet Baalbek	L	M	M
Kneisset Baalbek	M	M	M	Labueh	M	M	M	Maarboun	L	M	M
Majdaloun	M	M	M	Maqneh	M	M	M	Mazraat Beit Mcheik	L	M	M
Misraya	M	M	M	Moqraq	M	M	M	Nabha El-Damdoum	ML	M	M
Nabi Chbay	L	M	M	Nabi Osman	M	M	M	Nahleh baalbek	ML	M	M
Ouadi El-Oss	L	ML	M	Qaa Baayoun	M	M	M	Qaa Jouar Maqiye	M	M	M
Qaa Ouadi El-Khanzir	M	M	M	Qah Baalbek	M	M	M	Qarha Baalbek	M	M	M

Qsarnaba	ML	M	M	Ram Baalbek	L	ML	M	Ras Baalbek El Sahl	M	M	M
Ras Baalbek El-Charq	M	M	M	Riha	M	M	M	Saaide	ML	M	M
Sbouba	M	M	M	Seriine El-Tahta	M	M	M	Slouqi	L	M	M
Taiba Baalbek	M	M	M	Talia	M	M	M	Taraiya	L	M	M
Temnin El Fawqa	ML	M	M	Temnin El-Tahta	M	M	M	Tfail	ML	M	M
Yahfoufa	L	M	M	Yammouneh	L	M	M	Younine	M	M	M
Zboud	M	M	M								

Hermel

Municipality	30-Mar	31-Mar	01-Apr	Municipality	30-Mar	31-Mar	01-Apr	Municipality	30-Mar	31-Mar	01-Apr
Charbine El-Hermel	L	ML	M	Hermel Jbab	L	ML	M	Hermel	M	M	M
Maaysra El-Hermel	L	M	M	Michaa Mrajhine	L	ML	M	Ouadi Faara	L	ML	M
Ras Baalbek - Ouadi	M	M	M	Ras Baalbek El Gharb	L	M	M	Zighrine	L	M	M

Akkar

Akkar

Municipality	30-Mar	31-Mar	01-Apr	Municipality	30-Mar	31-Mar	01-Apr	Municipality	30-Mar	31-Mar	01-Apr
Aain Tinta	M	M	M	Aaiyat	M	M	M	Aakkar El-Aatiqa	M	L	M
Aamar Akkar	M	M	M	Aamar El Baykat	M	M	M	Aamayer	M	M	M
Aamriyet Akkar	M	M	M	Aandqet	M	M	M	Aarmeh	M	M	M
Aarqa	M	M	M	Aawaynat	M	M	M	Aayoun Akkar	M	M	M
Abboudiye	M	M	M	Ain El-Zeit	M	M	M	Ain Yaaqoub	M	ML	M
Akroum	M	M	M	Aridet Cheikh Zennad	M	M	MH	Baldeh w Mazraat Bal	M	M	M
Barcha	M	M	M	Bardeh	M	M	M	Bebnine	M	M	M
Beino	M	M	M	Beit Ayoub	M	M	M	Beit El-Haouch	M	M	M
Beit Mellat	M	M	M	Beit Younes	M	ML	M	Berbara Akkar	M	M	M
Berqayel	M	M	M	Bezbina	M	L	M	Bireh Akkar	M	M	M
Borj	M	M	M	Bqerezla	M	M	M	Bzal	M	ML	M
Chane	M	M	M	Chaqdouf	M	M	M	Charbila	M	M	M
Cheikh Mohammad	M	M	M	Cheikh Taba Es-Sahl	M	M	M	Cheikh Taba	M	M	M
Cheikh Zennad	M	M	M	Cheikhlar	M	M	M	Chir Hmairine	M	M	M
Daghle	M	M	M	Dahr Laissine	M	M	M	Darine	M	M	M
Dawra	M	M	M	Dawsa w Baghdadi	M	M	M	Dayret Nahr El-Kabir	M	M	M
Deir Dalloum	M	M	M	Deir Jennine	M	M	M	Denbou	M	M	M
Dibbabiyyeh	M	M	M	Douair Aadwiyeh	M	M	M	Fassikine	M	M	M
Fnaydek	ML	ML	M	Fraydes Akkar	M	M	M	Ghazayle	M	M	M
Habchit	ML	ML	M	Hakour	M	M	M	Halba	M	M	M
Haouchab	M	M	M	Hayssat	M	M	MH	Haytla	M	M	M
Hayzouq	M	M	M	Hedd	M	M	M	Hmaira Akkar	M	M	M
Hmaiss Akkar	M	M	M	Hnaider	M	M	M	Hokr Ed-Dahri	M	M	MH
Hokr Etti	M	M	M	Hokr Jouret Srar	M	M	M	Houaich	M	M	M
Hrar	M	ML	M	Idbil	M	M	M	Illat	M	M	M
Janine	M	M	MH	Jdeidet El-Joumeh	M	M	M	Jdeidet El-Kaiteh	M	M	M
Jebrayel	M	M	M	Kafr	L	ML	M	Kafr	M	M	M
Karm Asfour	M	M	M	Kfar Melki Akkar	M	M	M	Kfar Noun	M	M	M
Kfarharra	M	M	M	Khalsa	M	M	M	Kharnoubet Akkar	M	M	MH

Khirbet Daoud Aakkar	M	M	M	Khirbet El Remmane	M	M	M	Khirbet Shar	M	M	M
Khoreybet El-Jindi	M	M	M	Khreibet Aakkar	M	M	M	Kneisset Aakkar	M	M	M
Kneisset Hnaider	M	M	M	Knisse	M	M	M	Kroum El-Aarab	M	M	M
Kwachra	M	M	M	Kweykhath	M	M	M	Machta Hammoud	M	M	M
Majdala	M	M	M	Majdel Akkar	M	M	M	Mar Touma	M	M	M
Marlaya Melhem	M	M	M	Mashha	M	M	M	Massoudiye	M	M	MH
Mazraat Beit Ghattas	M	M	MH	Mazraat En-Nahriye	M	M	M	Mechmech	ML	L	M
Memneh	L	L	M	Mhammara	M	M	M	Mighraq Aakkar	M	M	M
Minyara	M	M	M	Moqayteh	M	M	M	Mounjez	M	M	M
Msalla	M	M	M	Mzeihmeh	M	M	M	Nfaisheh	M	M	M
Noura Et-Tahta	M	M	M	Ouadi El-Haour	M	M	M	Ouadi El-Jamous	M	M	M
Ouyoun El-Ghizlane	M	M	M	Qaabarine	M	M	M	Qabaait	M	L	M
Qachlaq	M	M	M	Qantara Aakkar	M	M	M	Qarha Aakkar	MH	M	M
Qarqaf	M	M	M	Qboula	M	M	M	Qleiaat Aakkar	M	M	M
Qloud El-Baqie	M	M	M	Qobaiyat Aakkar	M	ML	M	Qobbat Chamrat	M	M	M
Qorayat	M	ML	M	Qornet Aakkar	M	M	M	Qsair Aakkar	M	M	M
Rahbe	M	M	M	Rihaniyet Aakkar	M	M	M	Rmah	M	M	M
Rmoul	M	M	M	Saadine	M	M	M	Sadaqa	M	ML	M
Saidnaya	M	M	M	Sammouniye	M	M	MH	Sayssoouq	M	M	M
Semmaqiye	M	M	MH	Semmaqli	M	M	M	Sfinet El-Dreib	M	M	M
Sfinet El-Qaitaa	M	M	M	Sindyanet Zeidane	M	ML	M	Souaisset Aakkar	M	M	M
Srar	M	M	M	Tal Abbas El Gharby	M	M	M	Tal Abbas El-Charqy	M	M	M
Tal Biret	M	M	MH	Tal Hmayra	M	M	M	Tal Maayan Tal Kiri	M	M	M
Tal Sibel	M	M	M	Tallet Chattaha	M	M	M	Tikrit	M	M	M
Tleil	M	M	M	Tshea	M	L	M	Zawarib	M	M	M
Zouq El Hosniyeh	M	M	M	Zouq El-Haddara	M	M	M	Zouq El-Hbalsa	M	M	M
Zouq El-Moqachrine	M	M	M								

Sud

Sour

Municipality	30-Mar	31-Mar	01-Apr	Municipality	30-Mar	31-Mar	01-Apr	Municipality	30-Mar	31-Mar	01-Apr
Aaiyeh	ML	M	M	Aalma El-Chaab	L	ML	M	Aaytit	ML	M	M
Abbassiyeh Sour	ML	M	M	Abou Chech	ML	M	M	Ain Abou Abdallah	ML	M	M
Ain Baal	M	M	M	Arzoun	L	M	M	Aziyeh	L	L	M
Baflaya	L	M	M	Barich	L	M	M	Batouliyeh	M	M	M
Bayad	L	M	M	Bazouriyeh	ML	M	M	Bediass	L	M	M
Bestiyat	L	M	M	Borj El Chemali	ML	M	M	Borj En-Naqoura	ML	M	M
Borj Rahhal	ML	M	M	Boustane	M	M	M	Btaychiyeh	ML	M	M
Chaaitiye	M	M	M	Chameh	L	ML	M	Chehabiye	L	M	M
Chehour	VL	L	M	Chihine	ML	ML	M	Debaal Sour	L	M	M
Deir Amess	L	ML	M	Deir Kifa	L	ML	M	Deir Qanoun El-Ain	M	M	M
Deir Qanoun El-Naher	L	M	M	Derdghaiya	L	M	M	Dhayra	ML	ML	M
Halloussiyeh	L	M	M	Hamoul	L	ML	M	Hanaouey	M	M	M
Henniye	M	M	M	Hmairi Sour	L	M	M	Iskandarouna Sour	L	ML	M
Jbal El Botom	L	ML	M	Jebbin	M	ML	M	Jennata	L	M	M
Jijim	L	ML	M	Jouaiya	ML	M	M	Kneisset Sour	M	M	M

Maarake	L	M	M	Maaroub	L	M	M	Majadel	ML	M	M
Majdzoun	ML	ML	M	Mansouri Sour	M	M	M	Marnba	VL	L	M
Marouahine	ML	ML	M	Mazraat El-Zalloutiy	M	M	M	Mazraat Mechref	ML	M	M
Mazraat Tayr Semhat	VL	L	M	Mheilib	ML	M	M	Neffakhiyeh	L	ML	M
Niha Sour	L	ML	M	Ouadi Jilo	L	M	M	Qana	ML	M	M
Qolaileh Sour	M	M	M	Rechknayan	L	ML	M	Rmadiyah	M	M	M
Selha Sour	L	ML	M	Siddiqine	L	M	M	Sour	M	M	M
Srifa	L	ML	M	Tayr Debbe	L	M	M	Tayr Felsay	L	M	M
Tayr Harfa	M	ML	M	Touayri	VL	L	M	Toura	L	M	M
Yanouh Sour	L	M	M	Yarine	M	M	M	Zebqine	L	L	M

Saida

Municipality	30-Mar	31-Mar	01-Apr	Municipality	30-Mar	31-Mar	01-Apr	Municipality	30-Mar	31-Mar	01-Apr
Aanqoun	L	M	M	Aaqtanit	L	M	M	Aarab Ej-Jall	L	M	M
Aarab Tabbaya	L	M	M	Abra Saida	L	M	M	Adloun	ML	M	M
Adousiyeh	ML	M	M	Ain-El-Deleb	L	M	M	Arzai	L	M	M
Babliyah	L	M	M	Barty	L	M	M	Bissariyeh	ML	M	M
Bnaafoul	L	M	M	Bqosta	L	M	M	Bramiy	L	M	M
Daoudiyeh	ML	M	M	Dareb El-Sim	L	M	M	Erkay	L	M	M
Ghassanieh	L	M	M	Ghazieh	ML	M	M	Hajjeh	L	M	M
Haret Saida	L	M	M	Hartiyeh	ML	M	M	Hlaliye Saida	L	M	M
Insariyat	ML	M	M	Jazira Saida	ML	M	M	Kafar Bit	L	M	M
Kaoutariyet El-Siyad	L	M	M	Kfar Chellal	L	M	M	Kfar Hatta Saida	L	M	M
Kfar Milke Saida	L	M	M	Khartoum	L	M	M	Khaziz	L	M	M
Khirbet Ed-Douair Sa	ML	M	M	Khirbet El-Bassal	L	M	M	Khrayeb Saida	L	M	M
Loubieh	ML	M	M	Maghdouche	L	M	M	Majdelyoun	L	M	M
Matariyet El-Choumar	ML	M	M	Matayriyeh	L	M	M	Mazraat 'Mseileh	ML	M	M
Mazraat 'Snaiber	L	M	M	Mazraat Aarab Soukka	L	M	M	Mazraat Deir Taqla	L	M	M
Mazraat El Yahoudiye	ML	M	M	Mazraat El-Housseini	M	M	M	Mazraat El-Mhaydaleh	L	M	M
Mazraat El-Ouasta	ML	M	M	Mazraat Jamjim	L	M	M	Mazraat Kaoutariyet	L	M	M
Mazraat Kfar Badda	ML	M	M	Mazraat Oussamiyat	L	M	M	Mazraat Sari	ML	M	M
Mazraat Sinai	L	M	M	Meemariyeh	L	M	M	Merouaniyeh	L	M	M
Miyeh ou Miyeh	L	M	M	Najjariyeh	ML	M	M	Qaaqaiyat El-Snaouba	ML	M	M
Qnarit	L	M	M	Qraiye Saida	L	M	M	Saida Ed-Dekermane	L	M	M
Saida El-Oustani	L	M	M	Saida El-Qadimeh	L	M	M	Saida Kefraya	L	M	M
Saksakiyeh	ML	M	M	Salhieh Saida	L	M	M	Sarafand	ML	M	M
Sfenta	VL	ML	M	Tafahta	L	M	M	Tanbourit	L	M	M
Tebna	L	M	M	Zaghdraiya	L	M	M	Zeita	L	M	M
Zrariyeh	L	M	M								

Jezzine

Municipality	30-Mar	31-Mar	01-Apr	Municipality	30-Mar	31-Mar	01-Apr	Municipality	30-Mar	31-Mar	01-Apr
Ain El-Mir (El Estab	L	M	M	Anane	VL	L	M	Aramta	L	ML	M
Ariya	VL	L	M	Aychiyeh	L	ML	M	Azour	VL	L	M
Baba	VL	L	M	Baysour Jezzine	L	M	M	Benoueteh Jezzine	VL	L	M
Bhannine	VL	L	M	Bisri	VL	L	M	Bkassine	VL	L	M
Bouslaya	VL	L	M	Btedine El-Leqech	VL	L	M	Chbail	VL	L	M
Choualiq Jezzine	L	M	M	Dahr Ed-Deir	VL	ML	M	Deir El Qattine	VL	L	M

Demachqiyeh	L	M	M	Ghabbatiyeh	VL	L	M	Harf Jezzine	VL	L	M
Hassaniyeh	L	M	M	Haytouleh	L	ML	M	Haytura	VL	L	M
Hidab	VL	L	M	Homsiyeh	VL	L	M	Jabal Toura	VL	L	M
Jarmaq	L	M	M	Jensnaya	L	M	M	Jernaya	VL	M	M
Jezzine	VL	ML	M	Karkha	L	ML	M	Kfar Falous	L	M	M
Kfar Houna	VL	L	M	Kfar Jarrah	L	M	M	Lebaa	L	M	M
Louayzet Jezzine	VL	L	M	Machmouche	VL	L	M	Mahmoudiyeh Jezzine	L	M	M
Maknounye Jezzine	VL	L	M	Maraat Ouazaiyeh	L	M	M	Mazraat Daraya	VL	L	M
Mazraat El-Aarqoub	VL	ML	M	Mazraat El-Mathane	VL	L	M	Mazraat El-Rahbane	VL	L	M
Mazraat Khallet Khaz	VL	L	M	Mazraat Louzid (Loua	VL	L	M	Mazraat Qrouh	L	ML	M
Mazraat Tamra	L	M	M	Mazraat Zighrine Jez	VL	L	M	Mazraat	VL	L	M
Mharbiyeh	L	M	M	Midane Jezzine	VL	L	M	Mjeydel Jezzine	L	M	M
Mlikh	VL	L	M	Mrah El-Hbasse	L	M	M	Ouadi Baanqoudaine	L	M	M
Ouadi El-Laymoun	L	M	M	Ouardiyeh	VL	L	M	Qabaa Jezzine	VL	L	M
Qatrani	VL	L	M	Qaytouleh	VL	L	M	Qtaleh Jezzine	VL	L	M
Rihane Jezzine	L	ML	M	Rimat	VL	ML	M	Roum	VL	L	M
Roummanet	VL	ML	M	Sabbah	VL	L	M	Saydoun	VL	L	M
Sfaray	VL	L	M	Snaya	VL	L	M	Sojoud	VL	ML	M
Srayri	VL	ML	M	Taaid	VL	L	M	Wadi Jezzine	VL	L	M
Zhalta	VL	L	M								

Bekaa

West Bekaa

Municipality	30-Mar	31-Mar	01-Apr	Municipality	30-Mar	31-Mar	01-Apr	Municipality	30-Mar	31-Mar	01-Apr
Aammiq BG	L	ML	M	Ain El Tineh BG	VL	ML	M	Ain Zebdeh	L	L	M
Ana	L	ML	M	Aytanit	L	L	M	Baaloul BG	L	ML	M
Bab Mareh	L	ML	M	Chouberqiye Aammiq	L	M	M	Dakoue	ML	ML	M
Deir Ain El-Jaouze	L	ML	M	Deir Tahniche	L	ML	M	Ghaza	ML	ML	M
Harime El-Soughra	ML	M	M	Hoch Harimeh	ML	M	M	Jazira BG	ML	M	M
Jib Jennine	L	ML	M	Kamed-El-Laouz	L	ML	M	Kefraya BG	L	L	M
Khiara El Atika	ML	ML	M	Khiara	ML	ML	M	Khirbet Qanafar	L	ML	M
Lala	L	ML	M	Lebbaya BG	L	ML	M	Loussa	VL	ML	M
Machghara	L	ML	M	Manara (Hammara) BG	L	L	M	Mansoura BG	L	ML	M
Marej BG	ML	M	M	Maydoun	VL	ML	M	Ouaqf BG	ML	M	M
Qaraaoun	L	ML	M	Qelya	VL	ML	M	Raouda (Istabel)	ML	M	M
Saghbine	L	L	M	Sohmor	L	ML	M	Soltan Yacoub el Ara	ML	ML	M
Souairy	L	ML	M	Sultan Yaacoub	L	ML	M	Tal Znoub	L	ML	M
Yehmor BG	L	ML	M	Zilaya	VL	ML	M				

Zahle

Municipality	30-Mar	31-Mar	01-Apr	Municipality	30-Mar	31-Mar	01-Apr	Municipality	30-Mar	31-Mar	01-Apr
Aanjar (Haouch Mouss	ML	M	M	Ablah	ML	M	M	Ain Kfarzabad	L	M	M
Ali-El-Nahri	M	M	M	Bar Elias	ML	M	M	Bouarej	L	M	M
Cheberqiyet Tabet	ML	M	M	Chtaura	ML	M	M	Deir El Ghazal	L	M	M
Delhamiyet Zahle	ML	M	M	Ferzol	L	M	M	Haouch El-Ghanam	M	M	M
Haouch Es-Siyadeh	ML	M	M	Haouch Hala	M	M	M	Haouch Mandara	ML	M	M

Haouch Qayssar	L	M	M	Hezerta	L	M	M	Hosh Moussa	L	M	M
Jdita	ML	M	M	Kfarzabad	ML	M	M	Ksara	ML	M	M
Majdel Aanjar	L	ML	M	Makssi	ML	M	M	Massa	M	M	M
Mazraat Er-Remtaniye	L	M	M	Mrayjat Zahle	L	ML	M	Mzaraa Zahle	L	ML	M
Nabi Ayla	ML	M	M	Nasriyet Rizk	M	M	M	Nasriyet Zahle	ML	M	M
Niha Zahle	L	M	M	Ouadi Ed-Deloum	L	ML	M	Ouadi El-Arayech	L	M	M
Qaa El Rim	L	M	M	Qab Elias	L	M	M	Qousaya	L	M	M
Rhit	ML	M	M	Riyak	M	M	M	Saadnayel	ML	M	M
Taal El-Akhdar	ML	M	M	Taalbeya	ML	M	M	Taanayel	ML	M	M
Talamara	M	M	M	Tcheflik Edde Haouch	L	M	M	Tcheflik Qiqano	ML	M	M
Terbol Zahle	L	M	M	Touaite Zahle	L	M	M	Zahle Aradi	L	M	M
Zahle El-Berbara	L	M	M	Zahle El-Maallaqa	L	M	M	Zahle El-Midane	L	M	M
Zahle Er-Rassiye	L	M	M	Zahle Haouch El-Ouma	ML	M	M	Zahle Haouch El-Ouma	ML	M	M
Zahle Haouch Ez-Zara	L	M	M	Zahle Maalaqa Aradi	L	M	M	Zahle Mar Antonios	L	M	M
Zahle Mar Elias	L	M	M	Zahle Mar Gerios	L	M	M	Zahle Saydet En-Naja	L	M	M
Zebdoul	L	M	M								

Rachaiya

Municipality	30-Mar	31-Mar	01-Apr	Municipality	30-Mar	31-Mar	01-Apr	Municipality	30-Mar	31-Mar	01-Apr
Ain Arab Rachaiya	L	ML	M	Ain Ata	L	L	M	Ain Harche	L	ML	M
Aqabe Rachaya	L	ML	M	Ayha	L	ML	M	Ayta El Fokhar	L	M	M
Bakifa Rachaya	L	ML	M	Bakka	L	ML	M	Beit Lahya	L	ML	M
Bireh Rachaiya	L	ML	M	Daher El Ahmar	L	ML	M	Deir El-Achayer	L	ML	M
Heloua Rachaiya	L	ML	M	Hoch El Qannabeh Rac	L	L	M	Kaoukaba Bou Arab	L	ML	M
Kfar Danis	L	ML	M	Kfar Mechki	L	ML	M	Kfar Qouq	L	L	M
Kherbet Rouha	L	ML	M	Majdel Balhiss	L	ML	M	Mdoukha	L	ML	M
Mhaydseh Rachaiya	L	ML	M	Nabi Safa	L	ML	M	Rachaiya	L	ML	M
Rafid Rachaiya	L	ML	M	Selsata (Mazraat Dei	VL	L	M	Tannoura	L	ML	M
Yanta	L	L	M								

Beyrouth

Beyrouth

Municipality	30-Mar	31-Mar	01-Apr	Municipality	30-Mar	31-Mar	01-Apr	Municipality	30-Mar	31-Mar	01-Apr
Achrafieh	L	M	M	Ain el-Mreisse	L	M	M	Bachoura	L	M	M
Beirut Central Distr	L	M	M	Marfai	L	M	M	Mazraa	L	M	M
Medaouar	L	M	M	Minet el-Hosn	L	M	M	Mwssaitbeh	L	M	M
Ras Beirut	L	M	M	Rmeil	L	M	M	Saifi	L	M	M
Zqaq el-Blat	L	M	M								