

Lebanon Fire Risk Bulletin



CIVIL DEDEFENCE

Refer to cadast table condition.

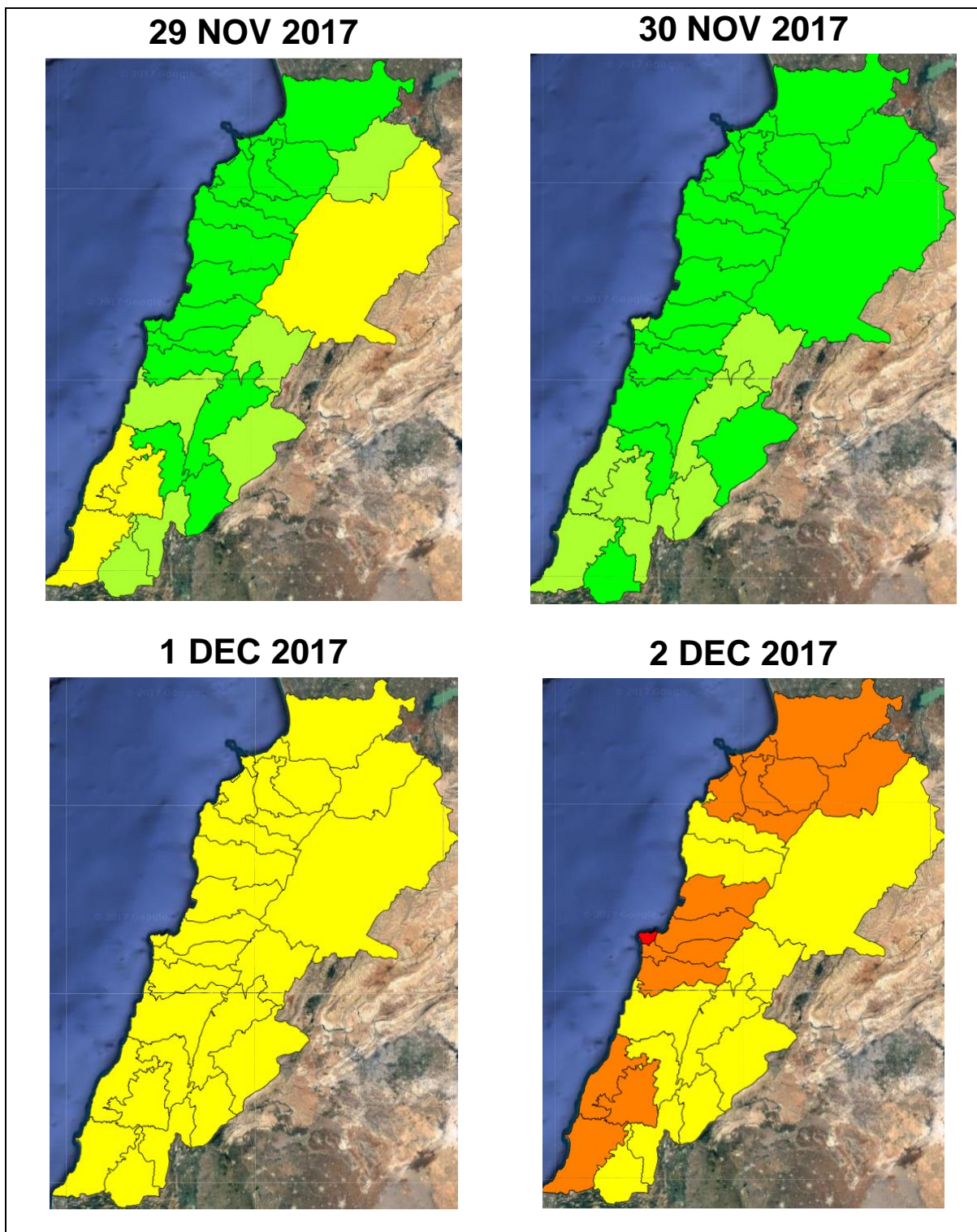
Please note that the indicated temperature is at 2 meters height from the ground.

General description of potential fire risk situation

Symbol	Level of risk	Meaning and actions
VL	Very low	Very low fire risk. Controlled burning operations can be hardly executed due to high fuel moisture content. Normally wildfires self-extinguish.
L	Low	Low fire risk. Controlled burning operations can be executed with a reasonable degree of safety.
ML	Medium low	Medium-low fire risk. Controlled burning operations can be executed in safety conditions. All the fires need to be extinguished.
M	Medium	Medium fire risk. Controlled burning operations would be avoided. All the fires need to be very well extinguished.
M	Medium high	Controlled burning is not recommended. Open flame will start fires. Cured grasslands and forest litter will burn readily. Spread is moderate in forests and fast in exposed areas. Patrolling and monitoring is suggested. Fight fires with direct attack and all available resources.
H	High	Ignition can occur easily with fast spread in grass, shrubs and forests. Fires will be very hot with crowning and short to medium spotting. Direct attack on the head may not be possible requiring indirect methods on flanks. Patrolling and monitoring the territory is highly suggested.
E	Extreme	Ignition can occur also from sparks. Fires will be extremely hot with fast rate of spread. Control may not be possible during day due to long range spotting and crowning. Suppression forces should limit efforts to limiting lateral spread. Damage potential total. Patrolling and monitoring the territory is highly suggested.

Beirut, 30 November 2017

FIRE RISK INDEX

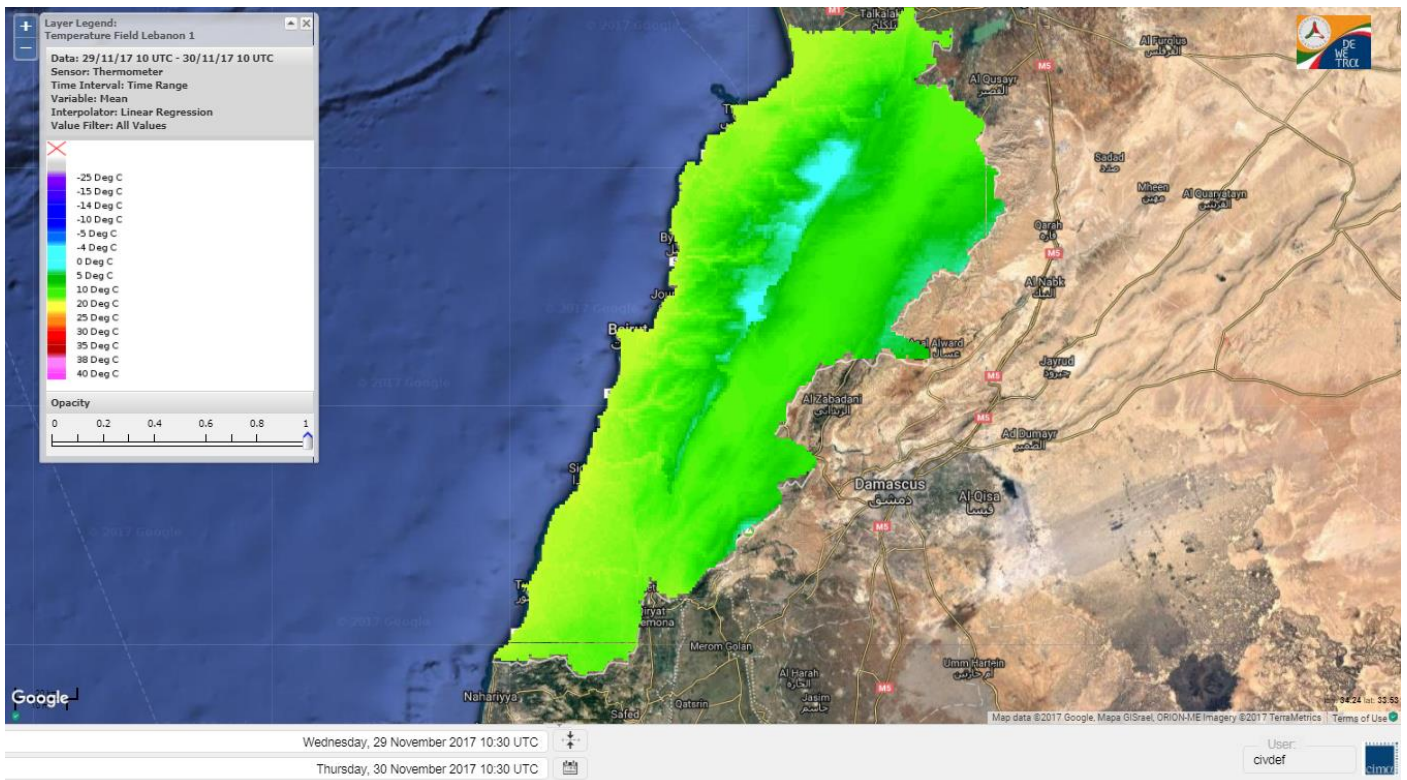


Layer Legend:
Lebanon Wildfire Risk Index 1

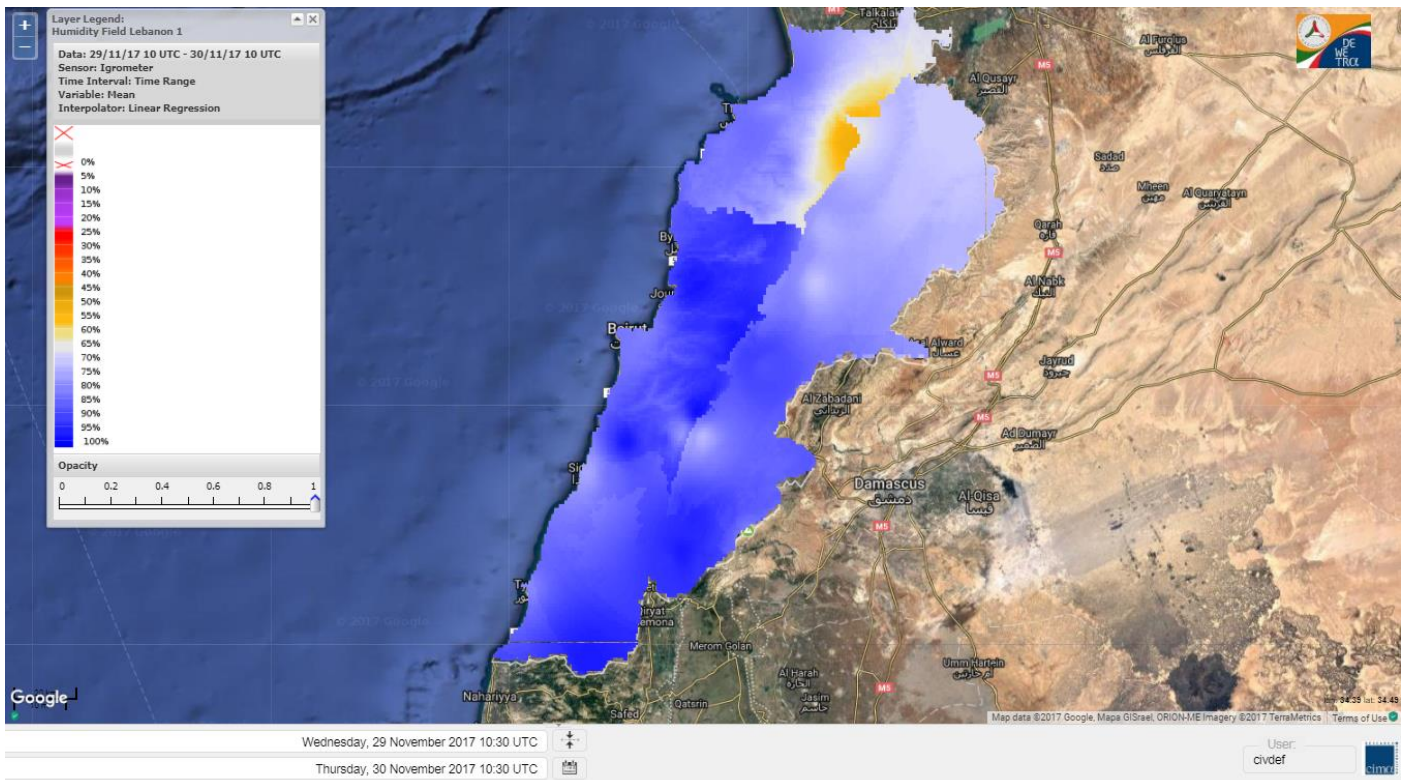
Data: Run: 30/11/2017 00:00. Forecast for 30
Model: RISICO for the Republic of Lebanon
Variable: Fire Weather Index
Spatial Resolution: Caza

- VERY LOW
- LOW
- MEDIUM-LOW
- MEDIUM
- MEDIUM-HIGH
- HIGH
- EXTREME

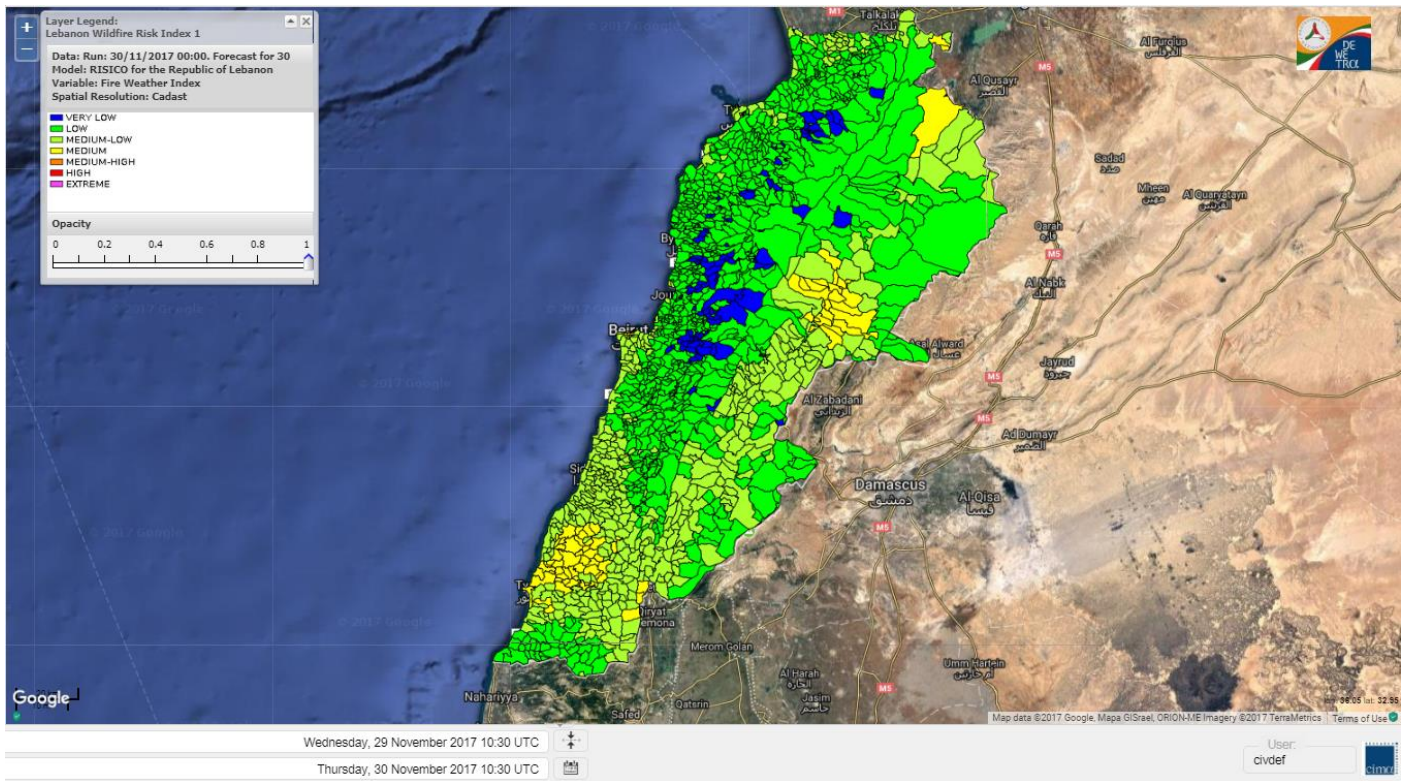
Lebanon temperature for 30 NOV 2017



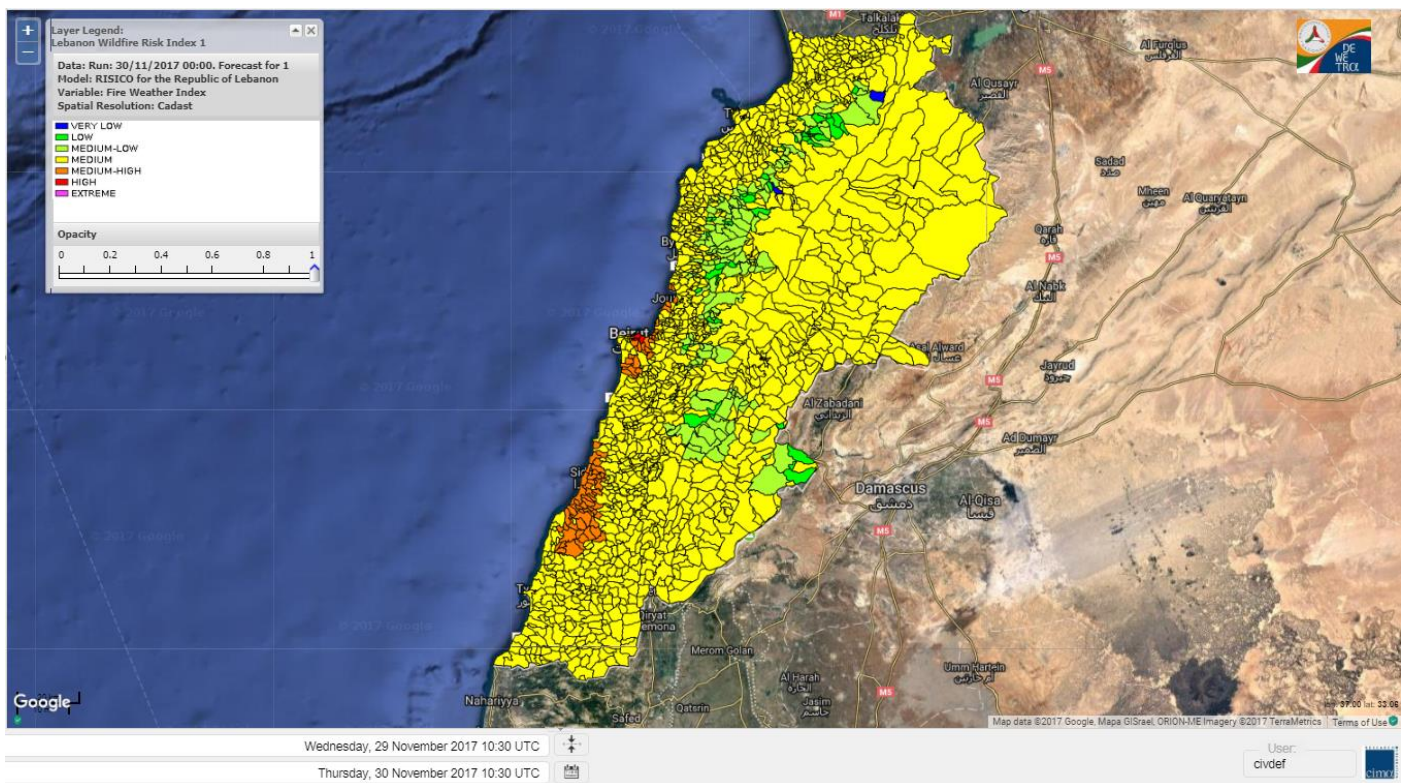
Lebanon humidity for 30 NOV 2017



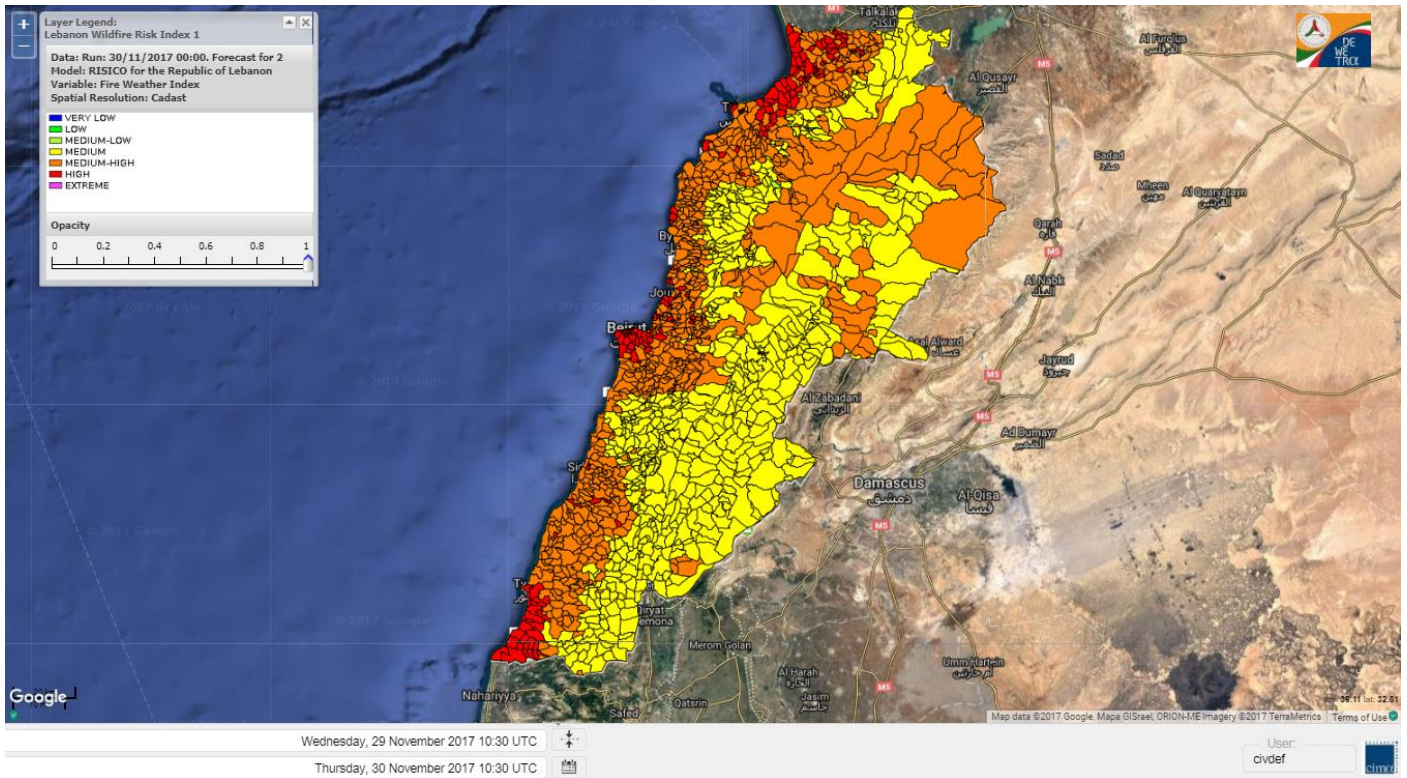
Lebanon for 30 NOV 2017



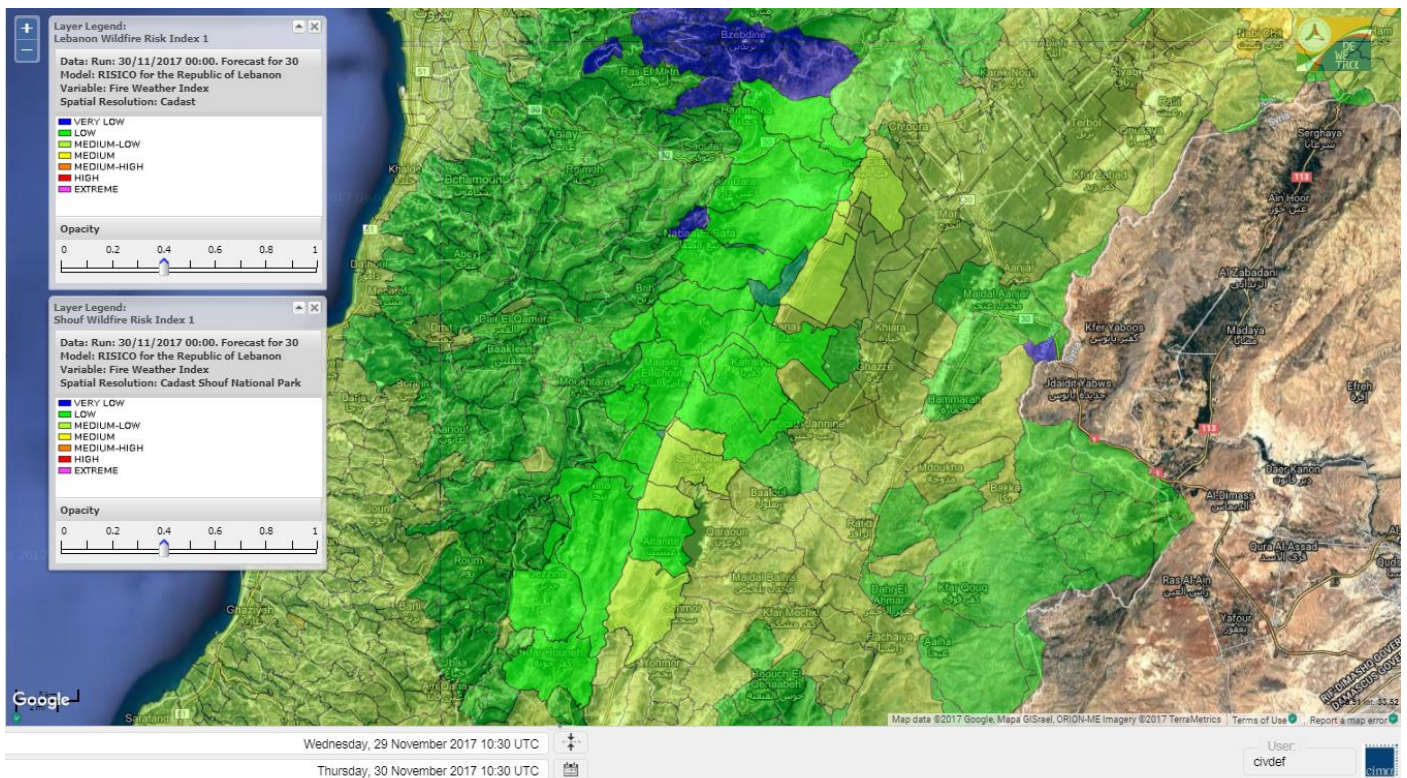
Lebanon for 1 DEC 2017



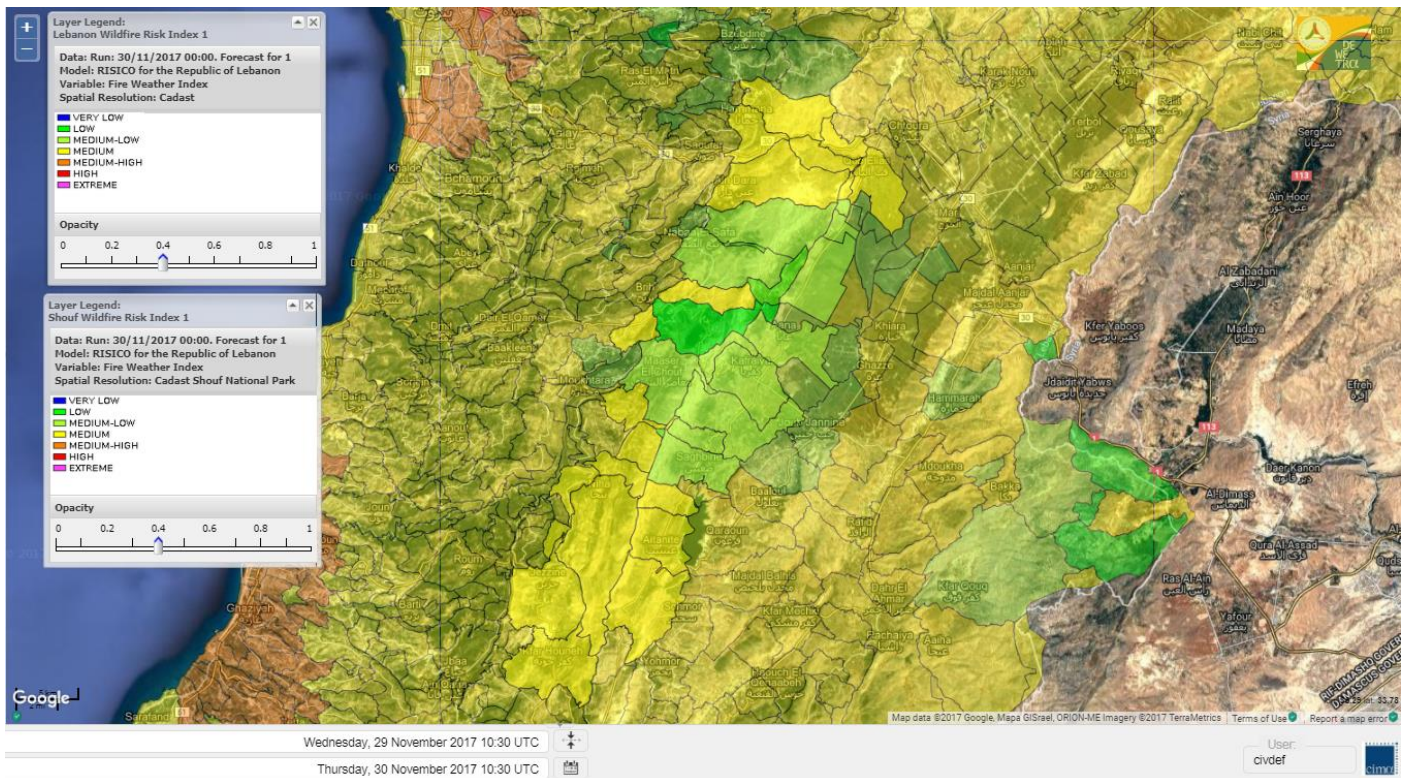
Lebanon for 2 DEC 2017



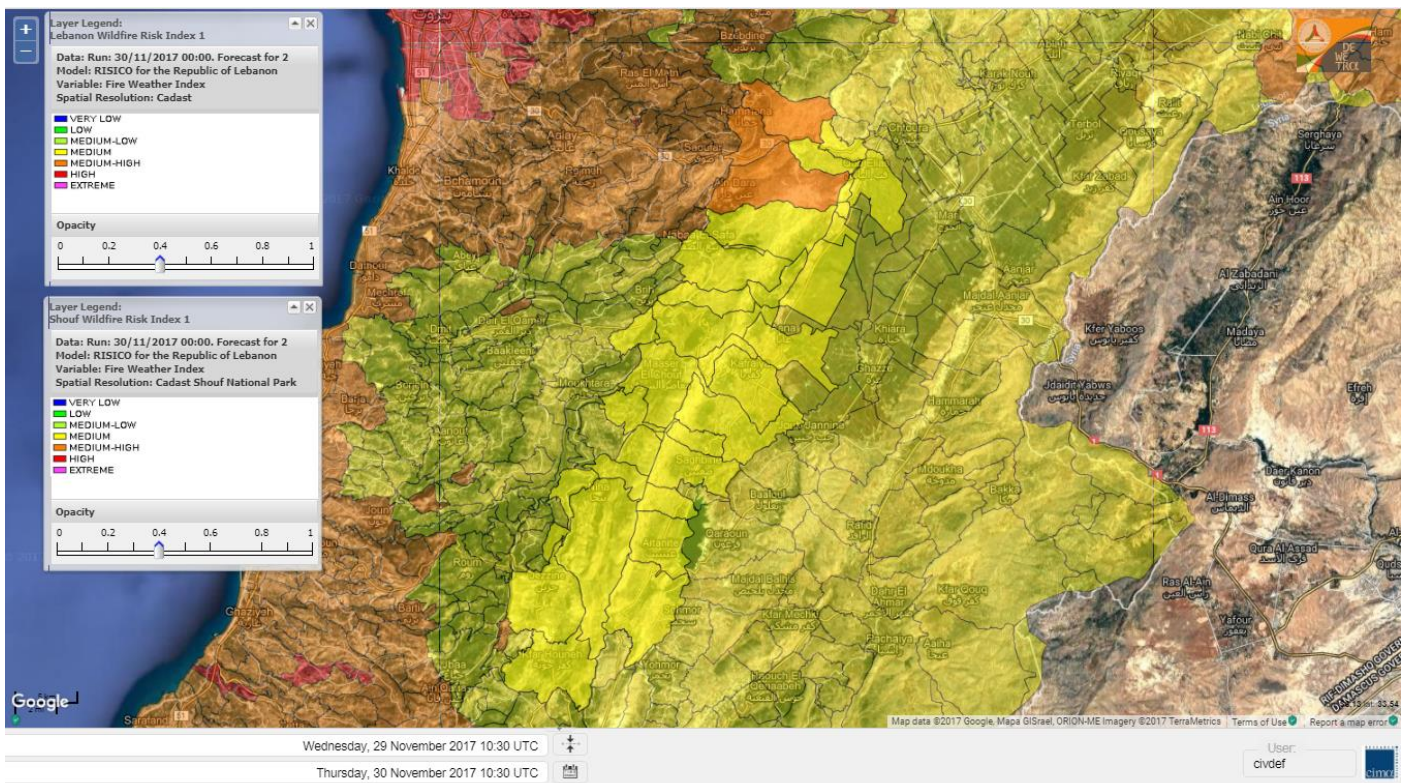
Shouf Biosphere Reserve Forecast for 30 NOV 2017



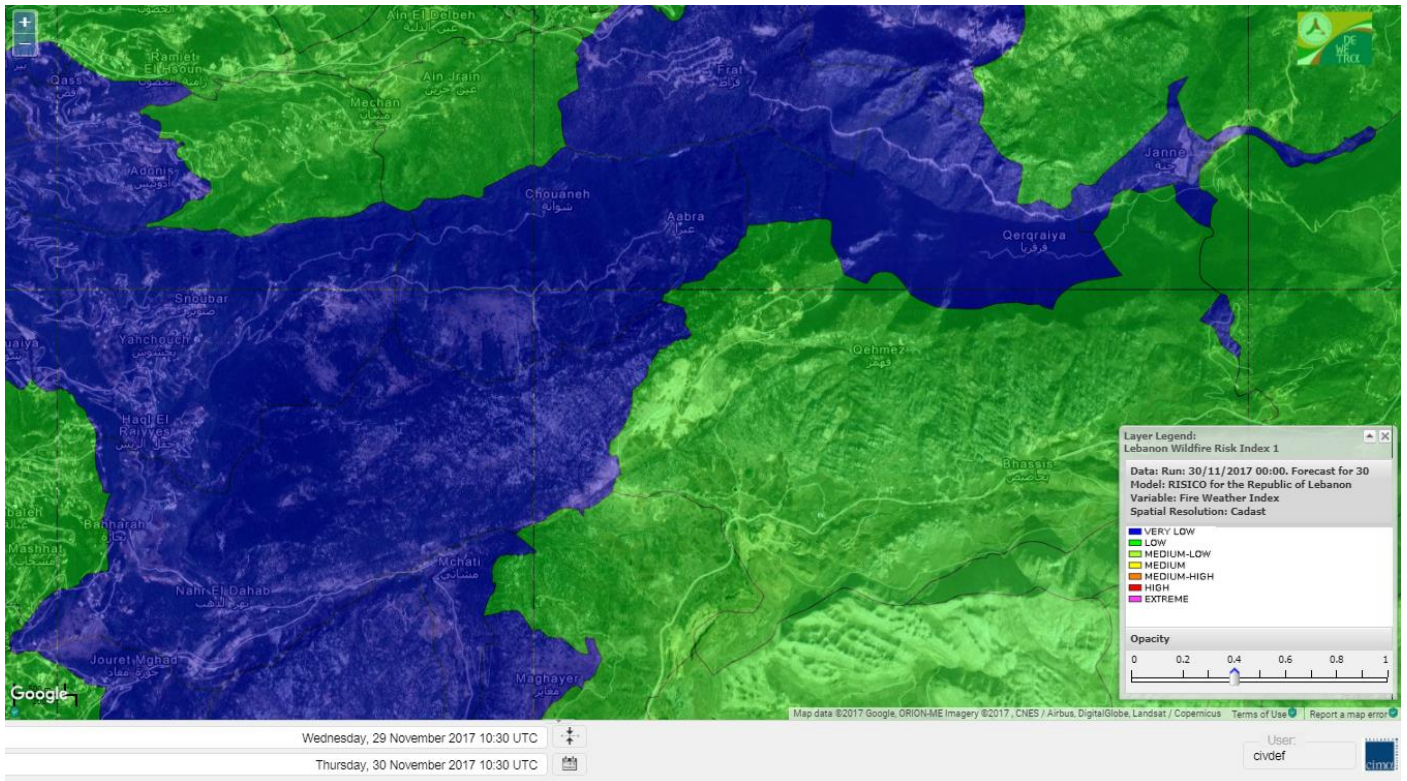
Shouf Biosphere Reserve Forecast for 1 DEC 2017



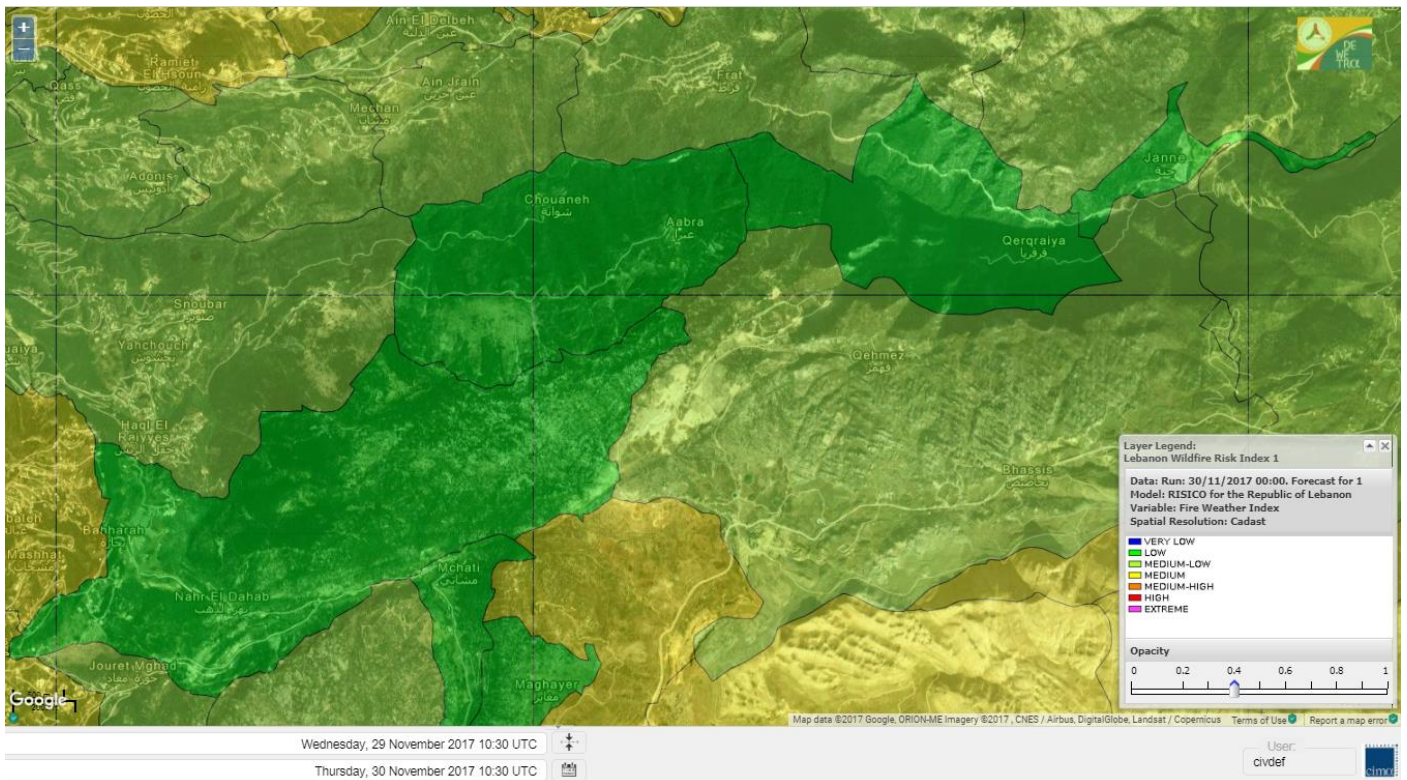
Shouf Biosphere Reserve Forecast for 2 DEC 2017



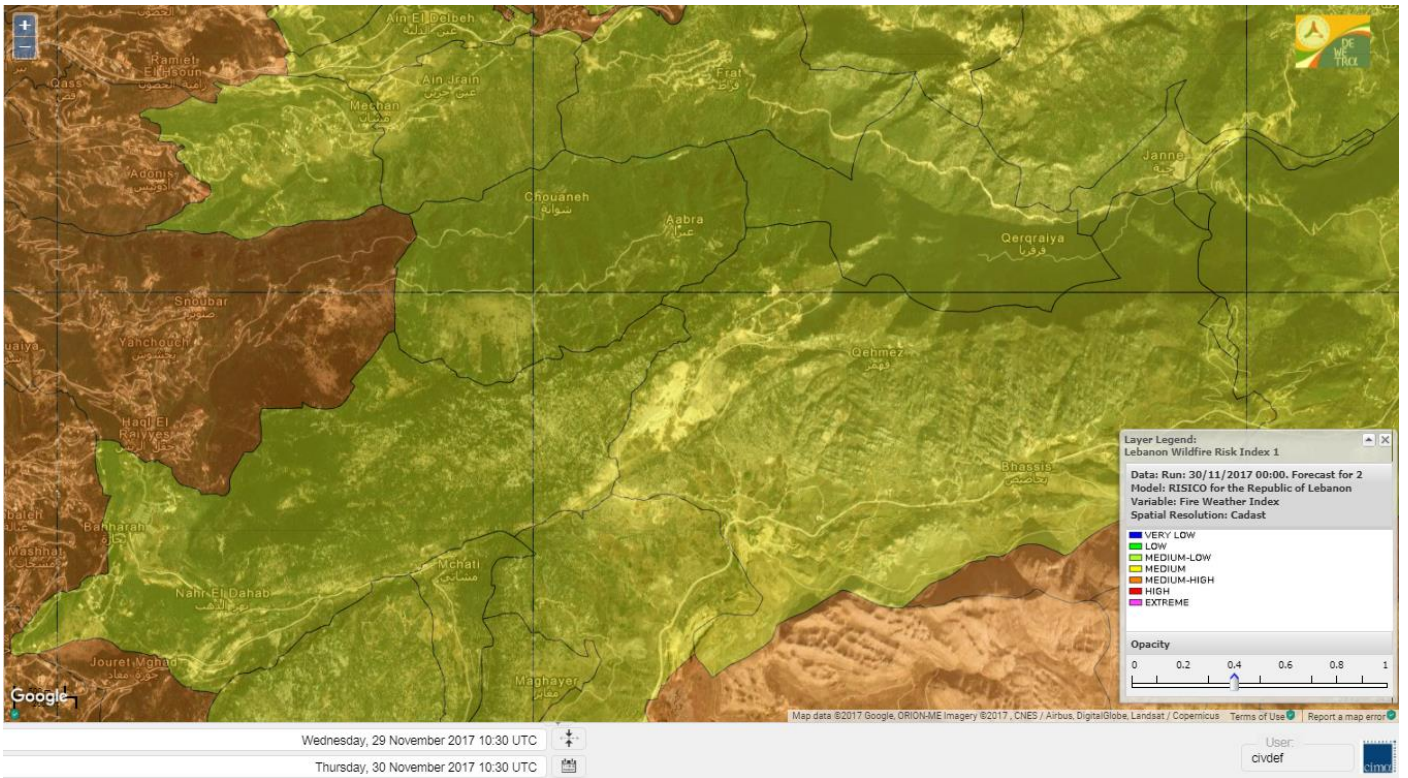
Jabal Moussa Reserve Forecast for 30 NOV 2017



Jabal Moussa Reserve Forecast for 1 DEC 2017



Jabal Moussa Reserve Forecast for 2 DEC 2017



Nord

Koura

Municipality	30-Nov	01-Dec	02-Dec	Municipality	30-Nov	01-Dec	02-Dec	Municipality	30-Nov	01-Dec	02-Dec
Aaba	L	M	MH	Afsaddiq	ML	M	MH	Ain Ekrine	L	M	MH
Amioun	L	M	MH	Anfeh	ML	M	MH	Badbhoun	L	M	MH
Barghoun	L	M	MH	Barsa	L	M	MH	Batroumine	L	M	MH
Bdebba	L	M	MH	Bechmizine	L	M	MH	Bednayet El-Koura	L	M	MH
Bhabbouch El-Koura	L	M	MH	Bkeftine	L	M	MH	Bnehran	L	M	MH
Bqaiia El-Koura	L	M	MH	Bsarma	L	M	MH	Btaaboura	L	M	MH
Bttram	L	M	MH	Btouratij	L	M	MH	Bziza	L	M	MH
Dar Beechtar	L	M	MH	Dar Chmezzine	ML	M	MH	Deddeh	L	M	MH
Deir El-Balamand	L	M	MH	Fih	L	M	MH	Hraiche	L	M	MH
Ijdaabrine	L	M	MH	Kaftoun	L	M	MH	Kefraya El-Koura	L	M	MH
Kfarakka	L	M	MH	Kfarhata	L	M	MH	Kfarhazir	L	M	MH
Kfarkahel	L	M	MH	Kfarsaroun	L	M	MH	Kosba	L	M	MH
Mejdel el-Koura	L	M	M	Nakhle	L	M	MH	Qalhat	L	M	MH
Ras Masqa	L	M	MH	Rechdibbine	L	M	MH	Zakroun	L	M	MH
Zgharta El-Mtaouile	L	ML	M								

Bcharre

Municipality	30-Nov	01-Dec	02-Dec	Municipality	30-Nov	01-Dec	02-Dec	Municipality	30-Nov	01-Dec	02-Dec
Aabdine	L	M	MH	Bane	L	M	MH	Barhelioun	L	ML	MH
Bazouone	L	M	MH	Becharre	L	M	MH	Beit Menzer	L	ML	M
Billa	L	ML	MH	Blaouza	L	M	MH	Bqaa Kafra	L	M	MH
Bqerqacha	L	M	MH	Breissat	L	M	M	Dimane	L	M	M
Hadath El Jobbeh	L	M	M	Hadchit	L	M	M	Hasroun	L	M	MH
Mazraat Aassaf	VL	L	M	Mazraat Bani Saab	L	M	M	Mchaa El-Jobbeh	VL	M	MH
Metrit	L	ML	MH	Moghr El-Ahoual	L	M	MH	Ouadi Qannoubine	VL	VL	ML
Qanat	L	ML	M	Qnayouer	VL	L	M	Tourza	L	ML	M

Batroun

Municipality	30-Nov	01-Dec	02-Dec	Municipality	30-Nov	01-Dec	02-Dec	Municipality	30-Nov	01-Dec	02-Dec
Aabrine	L	M	MH	Aalali	L	M	M	Aartziz	L	ML	M
Abdelli	L	M	MH	Ajdabra	L	M	MH	Assia	L	ML	M
Basbina	L	M	MH	Batroun	L	M	MH	Bcheleh	L	ML	M
Bechtoudar	L	ML	M	Beit Chlala	L	ML	M	Beit Kassab	VL	L	M
Bijdarfil	L	M	MH	Bqesmaya	L	M	MH	Chatine	L	ML	M
Chebtin	L	ML	M	Chekka	ML	M	MH	Daael	L	M	M
Dahr Abi Yaghi	L	M	MH	Daraya El-Batroun	L	M	MH	Deir Billa	L	ML	M
Deir Kfifane	L	M	MH	Deir Mar Youhanna EL	L	ML	M	Deir Mar Youssef Jra	L	M	MH
Douma	L	ML	M	Douq	L	ML	M	Eddeh El-Batroun	L	M	MH
Ftahat El-Batroun	L	ML	M	Ghouma	L	M	MH	Hadoutoun	L	ML	M
Hamat	L	M	MH	Harbouna	L	ML	MH	Hardine	VL	L	M
Helta	L	ML	M	Hery	ML	M	MH	Jebbla	L	ML	M
Jrabta El-Batroun	L	M	MH	Jrane El-Batroun	L	M	MH	Kfar Aabida	L	M	MH
Kfar Halda	L	ML	M	Kfarb Shlaimane	VL	ML	M	Kfarhatna	L	ML	MH
Kfarhay	L	M	MH	Kfarhelos	L	M	MH	Kfifane	L	M	MH

Kfour El Arabi	L	M	M	Koubba	L	M	MH	Kour	L	M	MH
Mar Mama	VL	L	M	Masrah	VL	L	M	Mehmarch	L	M	M
Mrah Chdid	L	M	MH	Mrah El Ziyat	L	M	MH	Mrah El-Hajj	VL	L	M
Nahle El-Batroun	L	ML	M	Niha El-Batroun	L	M	M	Ouahj El-Hajjar	L	M	MH
Ouata Houb	L	ML	M	Qatnaaoun	L	M	MH	Racha	L	M	M
Rachana	L	M	MH	Rachkida	L	M	MH	Ram El-Batroun	L	ML	M
Ras Nahhach	L	M	MH	Selaata	L	M	MH	Sghar	L	M	MH
Smar Jbayl	L	M	MH	Sourat El-Batroun	L	M	M	Tannourine El-Faouqa	L	M	MH
Tannourine Et-Tahta	L	L	M	Thoum	L	M	MH	Toula El-Batroun	L	M	MH
Zan	L	M	M								

Zgharta

Municipality	30-Nov	01-Dec	02-Dec	Municipality	30-Nov	01-Dec	02-Dec	Municipality	30-Nov	01-Dec	02-Dec
Aachach	ML	M	MH	Aalma	L	M	MH	Aarde	L	M	MH
Aintourine	L	M	MH	Arabet Qozhaya	L	ML	M	Arde	L	M	MH
Arjis	L	M	MH	Asnoun	L	M	MH	Ayto	L	ML	M
Basloukit	L	M	MH	Bchannine	L	M	MH	Besebeel	L	M	MH
Bhairret Toula	VL	ML	MH	Bnachee	L	M	MH	Boussit	ML	M	H
Danha	L	M	MH	Daraiya Zgharta	L	M	MH	Deir Jdeide	L	M	MH
Ehden	L	M	MH	Halan	ML	M	MH	Hariq Zgharta	L	M	H
Houakir	L	M	MH	Hraiqis	L	M	H	laal	L	M	MH
Ijbaa	L	M	MH	Karm Saddeh	L	M	M	Kfarchakhna	L	M	MH
Kfardlaqous	L	M	MH	Kfarfou	L	M	MH	Kfarhata Zgharta	L	M	MH
Kfarhoura	L	M	MH	Kfarsghab	L	M	MH	Kfaryachit	L	M	MH
Kfarzaina	L	M	MH	Khaldiye	L	M	MH	Mazraat Ajbeaa	L	M	MH
Mazraat Et-Teffah	VL	ML	MH	Mazraat Jneid	L	M	MH	Mejdlayia Zgharta	L	M	MH
Merh Kfarsghab	L	M	MH	Miryata	L	M	MH	Miziara	L	M	MH
Mzraat Kefraya	L	M	MH	Qorah Bach	L	M	MH	Rachiine	L	M	MH
Ras Kifa	L	M	MH	Sakhra	L	M	MH	Sebhel Zgharta	L	M	MH
Serhel	VL	L	M	Tallet Zgharta	L	M	MH	Toula Zgharta	L	ML	MH
Zgharta	L	M	MH								

Minieh-Denniye

Municipality	30-Nov	01-Dec	02-Dec	Municipality	30-Nov	01-Dec	02-Dec	Municipality	30-Nov	01-Dec	02-Dec
Aasaymout	VL	L	M	Aaymar	L	ML	M	Aazki	L	M	MH
Ain El-Tineh-Miniyeh	VL	L	M	Assoun	L	ML	M	Bakhaaoun	L	M	M
Bchennata	L	M	MH	Bechehhara	L	ML	M	Beddawi	ML	M	MH
Behouaita	L	ML	M	Beit El Foqss	VL	L	M	Beit Haouik	L	M	MH
Beit Zoud	L	ML	M	Bekaasafrine	L	M	MH	Borj El Yahoudiyeh	L	M	MH
Bqarsouna	VL	L	M	Btermaz	VL	ML	M	Debaael	VL	L	M
Deir Ammar	ML	M	H	Deir Nbouh	L	M	MH	Haouaret-Miniyeh	L	ML	MH
Haql el Azimeh	VL	L	M	Harf El Siyad	L	L	M	Hazmiye-Miniyeh	VL	L	M
Izal	L	M	MH	Jarjour	VL	L	M	Jayroun	VL	L	M
Kahf El-Malloul	L	M	M	Karm El-Moher	L	ML	MH	Kfar Binine	L	ML	MH
Kfarchalane	L	M	M	Kfarhabou	L	M	MH	Kharroub-Miniyeh	L	M	MH
Mazraat El-Kreme	VL	L	M	Mazraat Ketrane	L	L	M	Merkebta	L	M	MH
Minyeh	L	M	MH	Mrah El Sfirat	VL	L	M	Mrah Sraj	L	M	M
Mrebbine	L	M	MH	Nabi Youcheaa	L	M	MH	Nemrine	L	ML	M

Qarhaiya	L	ML	MH	Qarne	VL	L	M	Qarsita	VL	L	M
Qattineh-Miniyeh	VL	L	M	Qemmamine	VL	L	M	Qraine	VL	L	M
Raouda-Aadoua	L	M	MH	Rihaniyet-Miniyeh	L	M	H	Sfireh	VL	L	M
Sir Ed-Danniyeh	VL	L	M	Tarane	VL	ML	M	Terbol-Miniyeh	L	M	MH
Zaghartaghriine	L	M	MH	Zouq Bhannine	L	M	MH				

Nabatiye

Nabatiye

Municipality	30-Nov	01-Dec	02-Dec	Municipality	30-Nov	01-Dec	02-Dec	Municipality	30-Nov	01-Dec	02-Dec
Aabba	M	M	MH	Aazzi	ML	M	MH	Adchit El-Chqif	M	M	MH
Ain Bou Swar	ML	M	M	Ain Kana	ML	M	MH	Ali El-TaHER	ML	M	M
Ansar	M	MH	MH	Arab Salim	ML	M	MH	Arnoun	ML	M	M
Bfaroue	ML	M	MH	Breyqaah	M	M	MH	Charqiyeh	ML	MH	MH
Choukine	ML	M	M	Deir El Zahrani	ML	M	MH	Doueir El-Nabatiyeh	M	M	MH
Habbouch El-Nabatiye	ML	M	MH	Hamra El-Nabatiyeh	ML	M	M	Harouf El-Nabatiyeh	ML	M	MH
Hmaile	ML	M	MH	Houmin El Faouqa	ML	M	MH	Houmin El Tahta	ML	M	MH
Jarjough	ML	M	MH	Jbaah El-Nabatiyeh	L	M	M	Jebchit	ML	M	MH
Kfar Djal El-Nabatiy	ML	M	MH	Kfar Remmane	ML	M	M	Kfar Sir	M	M	M
Kfar Tebnit	ML	M	M	Kfarfila	ML	M	MH	Kfour El-Nabatieh	ML	M	MH
Mayfadoun	ML	M	M	Mazraat Bsaffour	ML	M	MH	Mazraat Chalbaal	M	M	MH
Mazraat Dmoul	M	M	MH	Mazraat El Khreibeh	ML	M	MH	Mazraat El-Bayad El-	ML	M	MH
Mazraat Kfarjaouz	M	M	M	Mazraat Qalaat Meiss	M	M	MH	Nabatiyeh El-Fawka	ML	M	M
Nabatiyeh Et-Tahta	ML	M	M	Namiriyeh	M	MH	MH	Qaaqaaiyet El Jisr	M	M	MH
Qossaibeh El-Nabatiy	M	M	MH	Roumine	ML	M	MH	Sarba El-Nabatieh	ML	M	MH
Sir El-Gharbiyeh	M	M	MH	Toul	ML	M	M	Yehmor El-Nabatiyeh	ML	M	M
Zaoutar El Charkiyeh	ML	M	M	Zaoutar El-Gharbiyeh	ML	M	M	Zebdine El-Nabatiyeh	M	M	M
Zefta	ML	MH	MH								

Hasbaiya

Municipality	30-Nov	01-Dec	02-Dec	Municipality	30-Nov	01-Dec	02-Dec	Municipality	30-Nov	01-Dec	02-Dec
Ain Jarfa	L	M	M	Abou Qamha	ML	M	M	Ain Qania	L	M	M
Bourghos	ML	M	M	Chebaa	ML	M	M	Chouaya Hasbaya	L	M	M
Dellafeh	ML	M	M	Fardiss Hasbaiya	ML	M	M	Hasbaya	ML	M	M
Hbariyeh	L	M	M	Kaoukaba Hasbaiya	ML	M	M	Kfar Chouba	L	M	MH
Kfar Hamam	ML	M	MH	Kfeir El-Zait	L	M	M	Khalwat Hasbaya	L	M	M
Khreibet Hasbaiya	ML	M	MH	Majdiyyeh Hasbaiya	ML	M	M	Marj Ez-Zhour (Haouc	L	M	M
Meri	ML	M	MH	Mimass	ML	M	M	Rachaiya El-Fokhar	ML	M	M
Salaiyeb	ML	M	M								

Marjayoun

Municipality	30-Nov	01-Dec	02-Dec	Municipality	30-Nov	01-Dec	02-Dec	Municipality	30-Nov	01-Dec	02-Dec
Aalmane Marjaayoun	ML	M	M	Aamra	ML	M	M	Adayseh Marjaayoun	M	M	M
Adchit El-Koussair	ML	M	M	Ain Aarab Marjaayoun	ML	M	M	Bani Haiyann	ML	M	M
Blatt Marjaayoun	ML	M	M	Blida	ML	M	M	Borj El-Moulouk	ML	M	M
Boueyda Marjaayoun	ML	M	M	Deir Mimass	ML	M	M	Deir Siriane	ML	M	M
Dibbine	ML	M	M	Ebel El Saqi	ML	M	M	Houla	M	M	M
Houra	ML	M	M	Kfar Kila	M	M	M	Khiam Marjaayoun	ML	M	M

Klayaa	ML	M	M	Majdel Selem	ML	M	M	Marjaayoun	ML	M	M
Markaba	ML	M	M	Mays El-Jabal	ML	M	M	Mazraat Doumiat	ML	M	M
Mazraat Sarada	ML	M	M	Mhaibib	ML	M	M	Qabrikha	ML	M	M
Qantara	ML	M	M	Rab El-Thalathine	ML	M	M	Saouaneh Marjayoun	ML	M	M
Talloussa	ML	M	M	Taybeh Matjaayoun	ML	M	M	Touline	ML	M	M

Bent Jbail

Municipality	30-Nov	01-Dec	02-Dec	Municipality	30-Nov	01-Dec	02-Dec	Municipality	30-Nov	01-Dec	02-Dec
Ain-Ebel	L	M	M	Aitaroun	ML	M	M	Aynata Bint Jbeil	ML	M	M
Ayta El-Chaeb	L	M	M	Ayta El-Jabal	ML	M	M	Beit Lif	L	M	M
Beit Yahoun	ML	M	M	Bint Jbeil	L	M	M	Borj Qalaway	ML	M	MH
Braachit	ML	M	M	Chakra	ML	M	M	Debel	L	M	M
Deir Antar	ML	M	MH	Froun	M	M	MH	Ghandouriyeh Bint Jb	ML	M	M
Hanine	L	M	M	Hariss	ML	M	M	Hdatha	ML	M	M
Jmeyjmech	ML	M	M	Kafra Bint Jbeil	L	M	MH	Kfar Dounine	ML	M	M
Khirbet Selm	ML	M	M	Kounine	ML	M	M	Maroun El Ras	ML	M	M
Qalaway	ML	M	M	Qaouzah	L	M	M	Qatmoun	ML	M	MH
Ramya Bint Jbeil	L	M	M	Rchaf	L	M	M	Rmeich	L	M	M
Safad Al Battikh	ML	M	M	Salhaneh	L	M	M	Serbine	ML	M	MH
Sultanieh Bint Jbeil	ML	M	M	Tibnine	ML	M	M	Tiri	L	M	M
Yaroun	L	M	M	Yater	L	M	M				

Mont Liban

Jbail

Municipality	30-Nov	01-Dec	02-Dec	Municipality	30-Nov	01-Dec	02-Dec	Municipality	30-Nov	01-Dec	02-Dec
Aabeydat	L	M	MH	Aalita	L	ML	MH	Aamchit	L	M	MH
Aarab El-Lahib	VL	M	MH	Aarasta	VL	ML	M	Adonis Jbeil	VL	ML	MH
Afqa Jbeil	VL	ML	M	Ain El Delbeh Jbeil	L	ML	M	Ain El-Ghouayba	L	ML	M
Ain Jrain	L	ML	M	Ain Kfah	L	M	MH	Almat El Chemaliyat	L	ML	M
Almat El-Jenoubiya	L	ML	M	Aqoura	L	M	MH	Bayzoun	L	M	M
Bchille Jbeil	L	M	MH	Bechtlida	VL	ML	M	Behdaydat	L	M	MH
Beit Habbaq	L	M	MH	Bejjeh	L	M	MH	Bekhaaz	L	M	MH
Berbara Jbeil	L	M	MH	Bintael	L	M	MH	Birket Hjoula	VL	ML	MH
Blatt Jbeil	L	M	MH	Boulhos	VL	ML	M	Breyj Jbeil	L	M	MH
Chamat	L	M	MH	Chikhane	L	M	MH	Chmout	L	M	MH
Eddeh Jbeil	L	M	MH	Ehmej	L	ML	M	Fatre	VL	ML	MH
Ferhet	L	M	MH	Fghal	L	M	MH	Frat	VL	ML	M
Ghabat	L	M	M	Ghalboun	L	M	MH	Gharzouz	L	M	MH
Ghofrine	L	M	MH	Habil	VL	L	M	Halate	L	M	MH
Haqel	L	ML	M	Hbaline	L	M	MH	Hboub	L	M	MH
Hdeine	L	M	M	Hema Er-Rehban	L	M	MH	Hema Mar Maroun Aann	L	M	MH
Hjoula	L	ML	M	Hosrayel	L	M	MH	Hsarat	L	M	MH
Hsoun	L	M	MH	Jaj	L	ML	M	Janne	VL	L	M
Jbeil	L	M	MH	Jeddeyl Jbeil	L	M	MH	Jlisse	L	M	MH
Jouret El-Qattine	L	M	MH	Kfar Baal Annaya	L	ML	M	Kfar Kidde	L	M	MH
Kfar Kouas	L	M	MH	Kfar Mashoun	L	M	MH	Kfoun	L	M	MH

Kharbe Jbeil	L	M	M	Laqlouq	L	M	MH	Lassa	L	ML	M
Lehfed	L	ML	M	Maad	L	M	MH	Mar Sarkis	L	M	MH
Mastita	L	M	MH	Mayfouq	L	ML	M	Mazraat El Siyad	L	M	MH
Mazraat El-Maaden	VL	ML	M	Mechane	L	ML	M	Mechmech Jbeil	L	ML	M
Mehrin	L	M	MH	Mejdel El-Akoura	VL	ML	M	Mghayreh Jbeil	L	M	M
Mounsef	L	M	MH	Nahr Ibrahim	L	M	MH	Qahmez	L	ML	M
Qartaba	L	ML	M	Qartaboun	ML	M	MH	Qattara Jbeil	VL	L	M
Qorqraya	VL	L	M	Ramout	L	M	MH	Ras Osta	L	M	MH
Rihane Jbeil	L	M	MH	Sakiet El-Khayt	L	M	MH	Saqi Richmaya	L	ML	M
Sebrine	L	M	MH	Seraita	L	ML	M	Souane Jbeil	L	M	MH
Tadmor	L	M	MH	Tartej	L	ML	M	Torzaiya	L	ML	M
Yanouh Jbeil	L	M	M	Zibdine Jbeil	L	M	MH				

El Metn

Municipality	30-Nov	01-Dec	02-Dec	Municipality	30-Nov	01-Dec	02-Dec	Municipality	30-Nov	01-Dec	02-Dec
Aain El-Qabu	VL	L	M	Aain El-Qach	L	M	MH	Aain El-Teffaha	L	M	MH
Aain el-Safsaf El-M	L	M	MH	Abou Mizane	L	M	MH	Ain Aar	L	M	MH
Ain Alaq	L	M	MH	Ain El-Kharroube	L	M	MH	Ain El-Sendianeh	L	M	MH
Ain El-Zeitoune	VL	ML	MH	Ain Saadeh	L	M	MH	Aintoura El-Matn	L	M	M
Amaret Chalhoub	ML	MH	MH	Antelias	ML	MH	MH	Atchaneh	L	M	MH
Ayroun	L	M	MH	Baabdat	VL	ML	MH	Baouchariyeh	ML	MH	MH
Baskinta	VL	M	M	Beit Chabab	L	M	MH	Beit El-Chaar	L	M	MH
Beit El-Kekko	L	MH	MH	Beit Mery	L	M	MH	Bhersaf	L	M	MH
Bikfaya	L	M	MH	Biyakout	ML	MH	MH	Bnabil	VL	ML	MH
Bourj Hammoud	ML	MH	MH	Bqennaya	L	M	MH	Broummana El-Matn	L	M	MH
Bsalim	L	M	H	Bsifrine	VL	ML	MH	Bteghrine	VL	ML	M
Chaouiye	L	M	MH	Chouaya El-Matn	L	M	MH	Choueir	L	M	MH
Chrine	L	M	MH	Dahr El Sawan El-Mat	L	M	MH	Daychouniyeh	L	M	MH
Dbayeh	ML	MH	MH	Deir Chamra	VL	ML	M	Deir Mar Abda el Mch	L	M	MH
Deir Mar Roukouz	ML	MH	H	Deir Tamiche	L	M	MH	Dik El-Mehdi	L	M	MH
Dikwaneh	ML	MH	MH	Douar El-Matn	L	M	MH	Fanar	L	M	MH
Fraike	L	M	MH	Haret El-Ballaneh	L	M	MH	Hbous	L	M	H
Himlaya	L	M	MH	Jal El Did	ML	MH	MH	Jdeideh El-Metn	ML	MH	MH
Jouar El-Matn	L	M	MH	Jouret El-Ballout	L	M	MH	Kaaqour	VL	M	MH
Kfar Aaqab	VL	L	M	Kfertay El-Matn	VL	M	M	Khenchara	L	M	MH
Khillet El-Mtain	VL	ML	MH	Konnabat Broummana	L	M	MH	Konnabat Salima	VL	ML	M
Machraah El-Matn	L	ML	M	Majdel Tarchich	L	M	M	Majzoub	L	M	MH
Mansouriyeh El-Metn	ML	MH	MH	Mar Boutros Karm Et-	L	M	MH	Mar Chaya et Mzekke	L	M	MH
Mar Moussa Ed-Douar	VL	ML	MH	Marjaba	L	ML	M	Masqa	L	M	MH
Mayasse	L	M	MH	Mazraat Deir Aoukar	L	M	MH	Mazraat El-Hadirat	L	M	MH
Mazraat Yachouh	L	M	MH	Mchikha	L	ML	MH	Menqlet Mezher	L	M	MH
Mhaydseh Matn	L	M	MH	Mkalles	ML	MH	MH	Mrouj	L	M	MH
Mtain	L	M	MH	Mtayleb	L	M	MH	Nabay	L	M	MH
Naccache	L	M	MH	Ouadi Chahine	L	M	MH	Ouadi El-Karm El-Mat	VL	ML	M
Ouata El-Mrouj	L	M	MH	Ouyoun El-Matn	VL	M	MH	Qornet Chehwan	L	M	MH
Qornet El-Hamra	L	M	MH	Roumieh	L	M	MH	Sfeilet Bikfaya	L	M	MH
Sinn El-Fil	ML	MH	MH	Zabbougha	VL	ML	MH	Zalqa	ML	MH	MH

Zarouon	VL	M	MH	Zekrite	L	M	MH	Zighrine El-Matn	L	M	MH
Zouk El-Khrab	L	M	MH								

Chouf

Municipality	30-Nov	01-Dec	02-Dec	Municipality	30-Nov	01-Dec	02-Dec	Municipality	30-Nov	01-Dec	02-Dec
Aalmane El-Chouf	ML	MH	MH	Aammiq El-Chouf	L	M	M	Ain Ouzein	L	ML	M
Ain Qani	L	M	M	Ain Zhalta	L	ML	M	Ainbal	L	M	M
Amatour	L	M	M	Anout	L	M	M	Atrine	L	M	M
Baadarane	L	M	M	Baaqline	L	M	M	Baasir	ML	M	MH
Barja	ML	M	MH	Barouk	L	L	M	Bater	L	M	M
Batloun	L	M	M	Bayqoun	ML	M	M	Bchetfine	L	M	M
Beiteddine	L	M	M	Benouati Ech-Chouf	L	M	M	Berjein	ML	M	M
Bireh et Mtalleh	L	M	M	Biret El-Chouf	L	M	M	Bkechtine Ouel Mchei	L	M	M
Bkifa El-Chouf	ML	M	MH	Botme	L	ML	M	Bqaiaa Ech-Chouf	L	M	M
Bsaba El-Chouf	L	M	M	Chammis El-Chouf	ML	M	MH	Chehim	ML	M	M
Chemaarine	L	M	M	Chourit	L	ML	M	Daher El-Chouf	L	M	M
Dalhoun	ML	M	M	Damour	ML	M	MH	Daraya El-Chouf	L	M	M
Deir El-Moukhalles	ML	M	M	Deir Baba	L	M	M	Deir Dourit	L	M	M
Deir El-Qamar	L	M	M	Deir Kouche	L	M	M	Dibbieh	L	M	M
Dmit	ML	M	M	Fouara Jaafar	L	M	M	Fraidis El-Chouf	L	M	M
Ghabet Jaafar	L	M	M	Gharife	L	M	M	Haret Jandal	L	M	M
Hasrout	L	M	M	Jadra	ML	MH	MH	Jahlieh	L	M	M
Jbeih El-Chouf	L	M	M	Jdeidet El-Chouf	L	M	M	Jiyeh	ML	M	MH
Jleilyeh	L	M	MH	Jmailiyeh	ML	M	MH	Joun	ML	M	MH
Kahlounie El-Chouf	L	M	M	Ketermaya	ML	M	M	Kfar Faqoud	L	M	M
Kfar Hamal	ML	M	MH	Kfar Him	ML	M	M	Kfar Katra	L	M	M
Kfar Niss	L	M	M	Kfar hay	L	M	M	Kfarnabrakh	L	M	M
Khirbet Bisri	L	M	M	Knayse El-Chouf	L	M	M	Maaniyeh	ML	M	M
Maasser Beiteddine	L	M	M	Maasser El-Chouf	L	ML	M	Majdalouna	ML	M	M
Majdel El-Meouch	L	M	M	Mazboud	ML	M	M	Mazmoura	ML	M	M
Mazraat El Chouf	L	M	M	Mazraat El Daher	L	M	M	Mazraat El-Douair	L	M	M
Mechref	L	M	MH	Mghairie	ML	M	M	Mghayrie El-Chouf	L	M	M
Moukhtara	L	M	M	Mrusti	L	M	M	Mtolle	ML	M	M
Naameh	ML	M	MH	Niha El-Chouf	L	M	M	Ouadi Abou Youssef	L	M	M
Ouadi Ed-Deir	ML	M	M	Ouadi El-Sit	L	M	M	Ouadi bnehlay	L	M	M
Qraibeh	L	M	M	Qreiaa	ML	M	M	Rmayle El-Chouf	ML	MH	MH
Semqaniyeh	L	M	M	Sibline	ML	M	MH	Sirjbeil	ML	M	M
Warhanieh	L	M	M	Werdaniyeh	ML	MH	MH	Zaarourieh	ML	M	M

Baabda

Municipality	30-Nov	01-Dec	02-Dec	Municipality	30-Nov	01-Dec	02-Dec	Municipality	30-Nov	01-Dec	02-Dec
Abadiyeh	L	M	MH	Ain Mouaffaq	L	M	MH	Araiya	L	M	MH
Arbaniyeh	VL	L	M	Arsoun	VL	M	MH	Baabda	L	M	MH
Baalchmey	L	M	MH	Bmaryam	L	ML	MH	Bourj El-Brajneh	ML	MH	MH
Boutchay	L	M	MH	Bsaba Baabda	L	M	MH	Btekhney	VL	ML	MH
Btibyat	VL	ML	MH	Bzebdine	VL	ML	MH	Chbeniyeh	L	M	MH
Chiyah	ML	M	MH	Chmeisset Baabda	VL	ML	MH	Chouit	L	M	MH
Deir El-harf	L	M	MH	Deir Khouna	L	M	MH	Dlaybeh	VL	ML	MH

Falougha	L	M	MH	Furn El-Chebbak	ML	MH	MH	Hadath Beyrouth	ML	MH	MH
Halaliyeh Baabda	L	M	MH	Hammana	L	M	MH	Haret El Sett	L	M	MH
Haret Hamze	L	M	MH	Haret Hreik	ML	MH	MH	Hasbaiya El-Metn	VL	ML	MH
Jouar El-Hoz	VL	ML	M	Jouret Arsoun	VL	ML	MH	Kfar Chima	ML	MH	MH
Kfar Selouane	VL	ML	M	Khalouat Baabda	L	M	MH	Kneisset Baabda	VL	ML	MH
Laylakeh	ML	MH	MH	Louayzeh Baabda	L	M	MH	Merdache	L	M	MH
Mzairaa Baabda	L	M	MH	Ouadi Chahrour El Ol	L	M	MH	Ouadi Chahrour El So	L	M	MH
Qalaa Baabda	L	M	MH	Qhraybe Baabda	L	M	MH	Qobbayaa	L	M	MH
Qornayel	VL	ML	M	Qortada	VL	M	MH	Qrayeh Baabda	L	M	MH
Qsaibeh Baabda	L	M	MH	Qtale Baabda	L	ML	MH	Ras El Metn	L	M	MH
Ras El-Haref	L	M	MH	Rouayset El-Ballout	L	M	MH	Salima Baabda	VL	M	MH
Tahouitat El Ghadir	ML	MH	MH	Tarchich	L	M	M	Zandouqa	VL	M	MH

Aley

Municipality	30-Nov	01-Dec	02-Dec	Municipality	30-Nov	01-Dec	02-Dec	Municipality	30-Nov	01-Dec	02-Dec
Abey	L	M	M	Aghmid	VL	ML	MH	Ain Dara	L	M	MH
Ain Drafil	L	M	MH	Ain El Halazoun	L	M	MH	Ain El-Rmmaneh	L	M	MH
Ain Jedideh	L	M	MH	Ain Ksour	L	M	MH	Ain Onoub	L	M	MH
Ain Traz	L	M	M	Ainab	L	M	MH	Aley	L	M	MH
Aramoun	L	M	MH	Aytat	L	M	MH	Azouniyeh	L	M	MH
Baawerta	L	M	MH	Badghan Oua Wadi Bad	L	M	MH	Bassatine	L	M	MH
Bayssour	L	M	MH	Bchamoun	L	M	MH	Bdadoun	L	M	MH
Behouara	L	M	MH	Bennay	L	M	M	Bhamdoun El-Dayaa	L	M	MH
Bhamdoun El-Mhatta	L	M	MH	Bkhechthey	L	M	MH	Bleibel	L	M	MH
Bmakine	L	M	MH	Bmehray	L	ML	M	Bouzrid	L	M	M
Bserrine	L	M	MH	Bsous	L	M	MH	Btalloun	L	M	MH
Btater	L	M	MH	Chanay	L	M	MH	Charoun	L	M	MH
Chartoun	L	M	MH	Chemlane	L	M	MH	Chouefat El-Aamrous	ML	MH	MH
Chouefat El-Oumara	ML	MH	MH	Chouefat El-Quoubbe	ML	M	MH	Dakkoun	L	M	M
Deir Qoubel	L	M	MH	Dfoun	L	M	MH	Douair El Remmaneh	L	M	MH
Ghaboun	L	M	MH	Habramoun	L	ML	MH	Homs Oua Hama	L	M	MH
Houmal	L	M	MH	Jisr El Qadi	L	M	M	Kehaleh	L	M	MH
Keyfoun	L	M	MH	Kfar Aamey	L	M	MH	Kommatyeh	L	M	MH
Maasrati	L	M	MH	Majdel Baana	L	M	MH	Mansourieh et Ain El	L	M	MH
Mazraat El-Nahr	L	M	MH	Mchakhte	VL	ML	MH	Mecherfeh	L	M	MH
Mejdaya	L	M	MH	Mrayjat	L	M	M	Ramliyah	L	M	M
Rechmaya	L	M	M	Rejmeh	L	M	MH	Remhala	L	M	MH
Rouaysset El Neemane	L	M	MH	Saoufar	L	M	MH	Selfaya	L	M	M
Sirhmoul	L	M	MH	Souq El Ghareb	L	M	MH	Taazanieh	L	M	MH

Kesrouane

Municipality	30-Nov	01-Dec	02-Dec	Municipality	30-Nov	01-Dec	02-Dec	Municipality	30-Nov	01-Dec	02-Dec
Achkout	L	M	MH	Adma Oua Dafneh	L	M	MH	Ain Ed-Delbe Kesroua	VL	L	M
Ain El-Rihane	L	M	MH	Aintoura Kesrouane	L	M	H	Ajaltoun	L	M	MH
Akaybeh Kesrouane	L	M	H	Aramoun Kesrouane	L	M	MH	Azra ouel Ozor	L	M	MH
Ballouneh	L	M	MH	Batha	VL	M	MH	Bekaatat Achkout	L	M	MH
Bekaatat Kanaan	L	ML	M	Bizhel	VL	M	MH	Bouar	L	M	MH
Bqaatouta	L	M	M	Bqaq Ed-Dine	L	M	MH	Bzommar	L	M	MH

Chahtoul	L	M	MH	Chnaniir	L	M	MH	Chouan	VL	L	M
Daraya Kesrouane	L	M	MH	Darououn	L	M	MH	Deir Baqlouch	L	M	MH
Dlebta	VL	M	MH	Eghbeh	VL	L	MH	Faraya	L	M	MH
Fatka	L	M	MH	Feytroun	L	ML	M	Ghazir	L	M	MH
Ghbaleh Kesrouane	L	M	MH	Ghedrass	L	ML	M	Ghosta	L	M	MH
Ghyneh	L	M	MH	Harharaya w Kattine	L	M	MH	Harissa Kesrouane	L	M	H
Hayata	VL	M	MH	Hosein	L	ML	M	Hrajel	L	M	MH
Jdeideh Ghazir	L	M	MH	Jeita	L	M	MH	Jounieh Ghadir	L	M	MH
Jounieh Haret Sakhr	L	MH	MH	Jounieh Salel Alma	L	M	MH	Jounieh Sarba	ML	MH	MH
Jouret Bedrane	L	M	MH	Jouret Mhad	VL	ML	MH	Jouret Termos	L	M	MH
Kfar Debiane	VL	ML	M	Kfar Tay Kesrouane	VL	L	M	Kfar Yassine	ML	MH	MH
Kfour Kesrouane	L	M	MH	Kharayeb Nahr Ibrahi	L	M	MH	Klayaat Kesrouane	L	M	MH
Maarab	VL	M	MH	Maaysra Kesrouane	L	M	MH	Mayrouba	L	M	M
Mazraat Er-Ras	L	M	MH	Mazraat Mrah El-Mir	VL	M	MH	Mchaa El Ftouh	L	M	MH
Mchaa Faraya	L	M	MH	Mchaa Kfar Dibiane	VL	M	MH	Mghaer	VL	L	M
Mradiyah	VL	M	MH	Nahr Ed-Dahab	VL	L	M	Nammoura Kesrouane	L	M	MH
Ouata El Jaouz	VL	ML	M	Ouata Sillam	ML	MH	MH	Raachine	VL	ML	MH
Rayfoun	L	M	MH	Safra Kesrouane	L	M	MH	Shayle Kesrouane	L	M	MH
Tabarja	L	M	MH	Yahchouch	VL	ML	MH	Zaaytreh	L	M	MH
Zeytoun	L	M	MH	Zouk Mikael	L	MH	MH	Zouk Mosbeh	L	M	MH

Baalbek_Hermel

Baalbek

Municipality	30-Nov	01-Dec	02-Dec	Municipality	30-Nov	01-Dec	02-Dec	Municipality	30-Nov	01-Dec	02-Dec
Aadous	M	M	M	Aamchki	L	M	M	Aarsal	L	M	MH
Ain Baalbek	L	M	M	Ain Bourday	ML	M	MH	Ain El-Benye	L	M	M
Ain El-Jaouz Baalbek	L	M	M	Ain El-Siya Chadoura	L	M	M	Al Khodr Baalbek	M	M	M
Al Nabi Chit	M	M	M	Aynata Baalbek	L	M	MH	Baalbek	ML	M	MH
Bachwat	L	M	M	Barqa	VL	M	M	Bednayel Baalbak	L	M	M
Beit Chama	ML	M	M	Bijjaje	ML	M	M	Bouday	ML	M	M
Brital	M	M	MH	Btadi	ML	M	M	Chaat	ML	M	M
Chaibe	L	M	M	Chlifa	M	M	MH	Chmestar	ML	M	M
Dar El-Oussa	L	M	M	Deir El-Ahmar	L	M	M	Deir Mar Maroun Baal	ML	M	MH
Douris	M	M	M	Fakiha	L	M	M	Hadath Baalbek	M	M	M
Ham	ML	M	MH	Haour Taala	M	M	MH	Hizzine	M	M	MH
Hlebta	L	M	MH	Hosh Barada	M	M	MH	Hosh El Dahab	M	M	M
Hosh El Snid	M	M	M	Hosh El-Nabi	M	M	M	Hosh El-Rafiq	ML	M	M
Hosh Tal Safiya	M	M	M	Hrebta	L	M	M	laat	ML	M	M
Jebaa	M	M	MH	Jenta	ML	M	M	Kfar Dabach	M	M	M
Kfar Dane	M	M	MH	Khraibeh El-Hermel	L	M	M	Khreibet Baalbek	ML	M	MH
Kneisset Baalbek	ML	M	M	Labueh	L	M	M	Maarboun	ML	M	MH
Majdaloun	M	M	MH	Maqneh	ML	M	MH	Mazraat Beit Mcheik	ML	M	MH
Misraya	M	M	M	Moqraq	L	M	M	Nabha El-Damdoum	L	M	MH
Nabi Chbay	ML	M	MH	Nabi Osman	L	M	M	Nahleh baalbek	L	M	M
Ouadi El-Oss	L	M	M	Qaa Baayoun	ML	M	MH	Qaa Jouar Maqiye	ML	M	MH
Qaa Ouadi El-Khanzir	ML	M	MH	Qah Baalbek	ML	M	MH	Qarha Baalbek	L	M	M

Qsarnaba	ML	M	M	Ram Baalbek	L	M	MH	Ras Baalbek El Sahl	ML	M	MH
Ras Baalbek El-Charq	L	M	MH	Riha	L	M	M	Saaide	M	M	MH
Sbouba	L	M	M	Seriine El-Tahta	ML	M	M	Slouqi	L	M	M
Taiba Baalbek	M	M	MH	Talia	M	M	M	Taraiya	ML	M	M
Temnin El Fawqa	ML	M	M	Temnin El-Tahta	ML	M	M	Tfail	L	M	M
Yahfoufa	ML	M	MH	Yammouneh	L	M	M	Younine	L	M	M
Zboud	ML	M	M								

Hermel

Municipality	30-Nov	01-Dec	02-Dec	Municipality	30-Nov	01-Dec	02-Dec	Municipality	30-Nov	01-Dec	02-Dec
Charbine El-Hermel	L	M	M	Hermel Jbab	L	M	MH	Hermel	M	M	MH
Maaysra El-Hermel	L	M	M	Michaa Mrajhine	L	M	MH	Ouadi Faara	L	M	MH
Ras Baalbek - Ouadi	ML	M	MH	Ras Baalbek El Gharb	L	M	MH	Zighrine	L	M	MH

Akkar

Akkar

Municipality	30-Nov	01-Dec	02-Dec	Municipality	30-Nov	01-Dec	02-Dec	Municipality	30-Nov	01-Dec	02-Dec
Aain Tinta	L	M	MH	Aaiyat	L	M	MH	Aakkar El-Aatiqa	L	M	M
Aamar Akkar	L	M	MH	Aamar El Baykat	ML	M	MH	Aamayer	ML	M	M
Aamriyet Akkar	L	M	MH	Aandqet	L	M	M	Aarmeh	L	M	MH
Aarqa	L	M	MH	Aawaynat	ML	M	M	Aayoun Akkar	L	M	MH
Abboudiye	L	M	MH	Ain El-Zeit	ML	M	MH	Ain Yaaqoub	L	M	MH
Akroum	L	M	M	Aridet Cheikh Zennad	ML	M	H	Baldeh w Mazraat Bal	L	M	MH
Barcha	ML	M	MH	Bardeh	L	M	MH	Bebnine	L	M	MH
Beino	L	M	MH	Beit Ayoub	L	M	MH	Beit El-Haouch	L	M	H
Beit Mellat	L	M	MH	Beit Younes	L	M	M	Berbara Akkar	L	M	MH
Berqayel	L	M	MH	Bezbina	L	ML	M	Bireh Akkar	L	M	MH
Borj	L	M	H	Bqerezla	L	M	MH	Bzal	L	M	MH
Chane	L	M	MH	Chaqdouf	L	M	H	Charbila	L	M	MH
Cheikh Mohammad	L	M	MH	Cheikh Taba Es-Sahl	L	M	MH	Cheikh Taba	L	M	H
Cheikh Zennad	L	M	MH	Cheikhlar	ML	M	M	Chir Hmairine	ML	M	MH
Daghle	L	M	MH	Dahr Laissine	L	M	MH	Darine	ML	M	MH
Dawra	L	M	MH	Dawsa w Baghdadi	L	M	MH	Dayret Nahr El-Kabir	ML	M	M
Deir Dalloum	L	M	MH	Deir Jennine	L	M	MH	Denbou	L	M	MH
Dibbbiyeh	ML	M	MH	Douair Aadwiyeh	L	M	MH	Fassikine	L	M	MH
Fnaydek	L	ML	M	Fraydes Akkar	L	M	MH	Ghazayle	ML	M	MH
Habchit	L	ML	MH	Hakour	L	M	MH	Halba	L	M	MH
Haouchab	ML	M	H	Hayssat	L	M	MH	Haytla	ML	M	MH
Hayzouq	L	M	MH	Hedd	L	M	MH	Hmaira Akkar	L	M	MH
Hmaiss Akkar	ML	M	MH	Hnaider	M	M	M	Hokr Ed-Dahri	ML	M	MH
Hokr Etti	ML	M	MH	Hokr Jouret Srar	L	M	MH	Houaich	L	M	MH
Hrar	L	M	MH	Idbil	L	M	MH	Ilat	L	M	MH
Janine	ML	M	MH	Jdeidet El-Joumeh	L	M	H	Jdeidet El-Kaiteh	L	M	MH
Jebrayel	L	M	MH	Kafr	L	M	MH	Kafr	ML	M	MH
Karm Asfour	L	M	MH	Kfar Melki Akkar	L	M	MH	Kfar Noun	L	M	M
Kfarharra	L	M	MH	Khalsa	ML	M	M	Kharnoubet Akkar	ML	M	MH

Khirbet Daoud Aakkar	L	M	MH	Khirbet El Remmane	ML	M	M	Khirbet Shar	L	M	MH
Khoreybet El-Jindi	ML	M	MH	Khreibet Aakkar	L	M	MH	Kneisset Aakkar	ML	M	MH
Kneisset Hnaider	M	M	M	Knisse	L	M	MH	Kroum El-Aarab	L	M	MH
Kwachra	ML	M	MH	Kweykhath	L	M	MH	Machta Hammoud	ML	M	M
Majdala	L	M	MH	Majdel Akkar	L	M	MH	Mar Touma	L	M	MH
Marlaya Melhem	L	M	MH	Mashha	L	M	MH	Massoudiye	ML	M	MH
Mazraat Beit Ghattas	L	M	MH	Mazraat En-Nahriye	L	M	M	Mechmech	L	ML	M
Memneh	L	L	M	Mhammara	L	M	MH	Mighraq Aakkar	L	M	MH
Minyara	L	M	MH	Moqayteh	ML	M	MH	Mounjez	L	M	MH
Msalla	ML	M	MH	Mzeihmeh	ML	M	MH	Nfaisch	L	M	MH
Noura Et-Tahta	L	M	MH	Ouadi El-Haour	ML	M	MH	Ouadi El-Jamous	L	M	MH
Ouyoun El-Ghizlane	L	M	MH	Qaabarine	L	M	MH	Qabaait	L	ML	MH
Qachlaq	ML	M	MH	Qantara Aakkar	L	M	MH	Qarha Aakkar	ML	M	M
Qarqaf	L	M	MH	Qboula	L	M	MH	Qleiaat Aakkar	L	M	MH
Qloud El-Baqie	L	M	MH	Qobaiyat Aakkar	L	M	M	Qobbat Chamrat	ML	M	MH
Qorayat	L	M	M	Qornet Aakkar	L	M	MH	Qsair Aakkar	L	M	MH
Rahbe	L	M	MH	Rihaniyet Aakkar	L	M	MH	Rmah	L	M	M
Rmoul	L	M	MH	Saadine	ML	M	MH	Sadaqa	L	M	MH
Saidnaya	ML	M	MH	Sammouniye	L	M	MH	Sayssoq	L	M	MH
Semmaqiye	ML	M	MH	Semmaqli	ML	M	MH	Sfinet El-Dreib	L	M	MH
Sfinet El-Qaitaa	L	M	MH	Sindyanet Zeidane	L	M	MH	Souaisset Aakkar	L	M	MH
Srar	ML	M	MH	Tal Abbas El Gharby	L	M	MH	Tal Abbas El-Chargy	L	M	MH
Tal Biret	L	M	MH	Tal Hmayra	L	M	MH	Tal Maayan Tal Kiri	L	M	MH
Tal Sibel	L	M	MH	Tallet Chattaha	L	M	MH	Tikrit	L	M	MH
Tleil	ML	M	MH	Tshea	L	ML	M	Zawarib	L	M	MH
Zouq El Hosniyeh	L	M	MH	Zouq El-Haddara	L	M	MH	Zouq El-Hbalsa	L	M	MH
Zouq El-Moqachrine	L	M	H								

Sud

Sour

Municipality	30-Nov	01-Dec	02-Dec	Municipality	30-Nov	01-Dec	02-Dec	Municipality	30-Nov	01-Dec	02-Dec
Aaiyeh	ML	M	MH	Aalma El-Chaab	L	M	H	Aaytit	ML	M	MH
Abbassiyeh Sour	M	M	MH	Abou Chech	L	M	H	Ain Abou Abdallah	M	M	MH
Ain Baal	M	M	H	Arzoun	M	M	MH	Aziyeh	L	M	H
Baflaya	ML	M	MH	Barich	ML	M	MH	Batouliyeh	ML	M	H
Bayad	ML	M	MH	Bazouriyeh	ML	M	MH	Bediass	M	M	MH
Bestiyat	M	M	MH	Borj El Chemali	ML	M	H	Borj En-Naqoura	L	M	H
Borj Rahhal	M	M	MH	Boustane	L	M	MH	Btaychiyeh	L	M	H
Chaaitiye	ML	M	H	Chameh	L	M	H	Chehabiye	ML	M	M
Chehour	ML	M	MH	Chihine	L	M	MH	Debaal Sour	ML	M	MH
Deir Amess	L	M	MH	Deir Kifa	ML	M	M	Deir Qanoun El-Ain	ML	M	H
Deir Qanoun El-Naher	M	M	MH	Derdghaiya	M	M	MH	Dhayra	L	M	H
Halloussiyeh	M	M	MH	Hamoul	L	M	H	Hanaouey	M	M	MH
Henniye	ML	M	H	Hmairi Sour	M	M	MH	Iskandarouna Sour	L	M	H
Jbal El Botom	L	M	MH	Jebbin	L	M	H	Jennata	M	M	MH
Jijim	L	M	H	Jouaiya	ML	M	MH	Kneisset Sour	ML	M	MH

Maarake	M	M	MH	Maaroub	M	M	MH	Majadel	ML	M	MH
Majdalzoun	L	M	H	Mansouri Sour	ML	M	H	Marnba	M	M	M
Marouahine	L	M	MH	Mazraat El-Zalloutiy	L	M	H	Mazraat Mechref	ML	M	MH
Mazraat Tayr Semhat	ML	M	M	Mheilib	M	M	MH	Neffakhiyeh	ML	M	M
Niha Sour	ML	M	M	Ouadi Jilo	ML	M	MH	Qana	ML	M	MH
Qolaileh Sour	ML	M	H	Rechknany	L	M	MH	Rmadiyeh	ML	M	MH
Selha Sour	ML	M	M	Siddiqine	ML	M	MH	Sour	M	M	H
Srifa	M	M	MH	Tayr Debbe	ML	M	MH	Tayr Felsay	M	M	MH
Tayr Harfa	L	M	H	Touayri	ML	M	M	Toura	M	M	MH
Yanouh Sour	ML	M	MH	Yarine	L	M	H	Zebqine	L	M	M

Saida

Municipality	30-Nov	01-Dec	02-Dec	Municipality	30-Nov	01-Dec	02-Dec	Municipality	30-Nov	01-Dec	02-Dec
Aanqoun	ML	M	MH	Aaqtanit	ML	MH	MH	Aarab Ej-Jall	ML	M	MH
Aarab Tabbaya	ML	M	MH	Abra Saida	ML	MH	MH	Adloun	ML	M	MH
Adousiyeh	ML	MH	MH	Ain-El-Deleb	ML	MH	MH	Arzai	M	M	MH
Babliyah	M	MH	MH	Barty	ML	M	MH	Bissariyeh	ML	MH	MH
Bnaafoul	ML	MH	MH	Bqosta	ML	MH	MH	Bramiy	ML	MH	H
Daoudiyeh	ML	MH	MH	Dareb El-Sim	ML	MH	MH	Erkay	ML	MH	MH
Ghassanieh	M	MH	MH	Ghazieh	ML	MH	MH	Hajjeh	ML	MH	MH
Haret Saida	ML	MH	MH	Hartiyeh	ML	M	MH	Hlaliye Saida	ML	MH	MH
Insariyat	ML	M	MH	Jazira Saida	M	M	MH	Kafar Bit	ML	M	MH
Kaoutariyet El-Siyad	M	MH	MH	Kfar Chellal	ML	M	MH	Kfar Hatta Saida	ML	M	MH
Kfar Milke Saida	ML	M	MH	Khartoum	M	MH	MH	Khaziz	ML	MH	MH
Khirbet Ed-Douair Sa	ML	MH	MH	Khirbet El-Bassal	ML	MH	MH	Khrayeb Saida	M	M	MH
Loubieh	ML	M	MH	Maghdouche	ML	MH	MH	Majdelyoun	ML	MH	MH
Matariyet El-Choumar	M	M	MH	Matayriyeh	M	MH	MH	Mazraat 'Mseileh	ML	MH	MH
Mazraat 'Snaiber	ML	MH	MH	Mazraat Aarab Soukka	ML	M	MH	Mazraat Deir Taqla	M	M	MH
Mazraat El Yahoudiye	ML	M	MH	Mazraat El-Housseini	ML	MH	MH	Mazraat El-Mhaydaleh	M	MH	MH
Mazraat El-Ouasta	ML	M	MH	Mazraat Jamjim	ML	M	MH	Mazraat Kaoutariyet	M	MH	MH
Mazraat Kfar Badda	ML	M	MH	Mazraat Oussamiyat	M	MH	MH	Mazraat Sari	ML	M	MH
Mazraat Sinai	M	MH	MH	Meemariyeh	ML	MH	MH	Merouaniyeh	ML	MH	MH
Miyeh ou Miyeh	ML	MH	MH	Najjariyeh	ML	MH	H	Qaaqiyat El-Snaouba	ML	MH	MH
Qnarit	ML	MH	MH	Qraiye Saida	ML	MH	MH	Saida Ed-Dekermane	ML	MH	MH
Saida El-Oustani	ML	MH	MH	Saida El-Qadimeh	ML	MH	MH	Saida Kefraya	ML	M	MH
Saksakiyeh	ML	M	MH	Salhie Saida	ML	MH	MH	Sarafand	ML	M	MH
Sfenta	ML	M	MH	Tafahta	ML	MH	MH	Tanbourit	ML	MH	MH
Tebna	ML	M	MH	Zaghdraiya	ML	M	MH	Zeita	ML	MH	MH
Zrariyeh	M	M	MH								

Jezzine

Municipality	30-Nov	01-Dec	02-Dec	Municipality	30-Nov	01-Dec	02-Dec	Municipality	30-Nov	01-Dec	02-Dec
Ain El-Mir (El Estab	ML	M	MH	Anane	ML	M	MH	Aramta	ML	M	M
Ariya	L	M	M	Aychiyeh	ML	M	M	Azour	L	M	M
Baba	L	M	M	Bayssour Jezzine	ML	M	MH	Benoueteh Jezzine	L	M	M
Bhannine	L	M	M	Bisri	L	M	M	Bkassine	L	M	M
Bouslaya	L	M	M	Btedine El-Leqech	L	M	M	Chbail	L	M	M
Choualiq Jezzine	ML	M	MH	Dahr Ed-Deir	L	M	MH	Deir El Qattine	L	M	M

Demachqiyeh	ML	M	M	Ghabbatiyeh	L	M	M	Harf Jezzine	L	M	M
Hassaniyeh	ML	M	MH	Haytouleh	ML	M	MH	Haytura	L	M	M
Hidab	L	M	M	Homsiyeh	L	M	M	Jabal Toura	L	M	M
Jarmaq	ML	M	M	Jensnaya	ML	M	MH	Jernaya	ML	M	MH
Jezzine	L	M	M	Karkha	ML	M	MH	Kfar Falous	ML	M	MH
Kfar Houna	L	M	M	Kfar Jarrah	ML	MH	MH	Lebaa	ML	M	MH
Louayzet Jezzine	L	M	M	Machmouche	L	M	M	Mahmoudiyeh Jezzine	ML	M	M
Maknounye Jezzine	L	M	M	Maraat Ouazaiyeh	ML	M	M	Mazraat Daraya	L	M	M
Mazraat El-Aarqoub	L	M	M	Mazraat El-Mathane	L	M	M	Mazraat El-Rahbane	L	M	M
Mazraat Khallet Khaz	L	M	M	Mazraat Louzid (Loua	L	M	M	Mazraat Qrouh	ML	M	M
Mazraat Tamra	ML	M	M	Mazraat Zighrine Jez	L	M	M	Mazraat	L	M	M
Mharbiyeh	ML	M	MH	Midane Jezzine	L	M	M	Mjeydel Jezzine	ML	M	MH
Mlikh	L	M	M	Mrach El-Hbasse	ML	M	MH	Ouadi Baanqoudaine	ML	M	MH
Ouadi El-Laymoun	ML	M	MH	Ouardiyeh	L	M	M	Qabaa Jezzine	L	M	M
Qatrani	L	M	M	Qaytouleh	L	M	M	Qtaleh Jezzine	L	M	M
Rihane Jezzine	ML	M	M	Rimat	L	M	M	Roum	L	M	M
Roummanet	ML	M	MH	Sabbah	L	M	M	Saydoun	L	M	M
Sfaray	ML	M	MH	Snaya	L	M	M	Sojoud	L	M	M
Srayri	ML	M	M	Taaïd	L	M	M	Wadi Jezzine	L	M	M
Zhalta	L	M	M								

Bekaa

West Bekaa

Municipality	30-Nov	01-Dec	02-Dec	Municipality	30-Nov	01-Dec	02-Dec	Municipality	30-Nov	01-Dec	02-Dec
Aammiq BG	ML	ML	M	Ain El Tineh BG	ML	M	M	Ain Zebdeh	ML	ML	M
Ana	L	ML	M	Aytanit	L	M	M	Baaloul BG	ML	M	M
Bab Mareh	ML	M	M	Chouberqiye Aammiq	ML	M	M	Dakoue	ML	M	M
Deir Ain El-Jaouze	ML	M	M	Deir Tahniche	ML	ML	M	Ghaza	ML	M	M
Harime El-Soughra	ML	ML	M	Hoch Harimeh	ML	M	M	Jazira BG	ML	ML	M
Jib Jennine	ML	ML	M	Kamed-El-Laouz	ML	M	M	Kefraya BG	L	ML	M
Khiara El Atika	ML	M	M	Khiara	ML	M	M	Khirbet Qanafar	L	ML	M
Lala	L	ML	M	Lebbaya BG	ML	M	M	Loussa	ML	M	M
Machghara	ML	M	M	Manara (Hammar) BG	L	ML	M	Mansoura BG	L	ML	M
Marej BG	ML	M	M	Maydoun	ML	M	M	Ouaqf BG	ML	ML	M
Qaraaoun	ML	M	M	Qelya	ML	M	M	Raouda (Istabel)	ML	M	M
Saghbine	ML	ML	M	Sohmor	ML	M	M	Soltan Yacoub el Ara	ML	M	M
Souairy	L	M	M	Sultan Yaacoub	ML	M	M	Tal Znoun	ML	ML	M
Yehmor BG	ML	M	M	Zilaya	ML	M	M				

Zahle

Municipality	30-Nov	01-Dec	02-Dec	Municipality	30-Nov	01-Dec	02-Dec	Municipality	30-Nov	01-Dec	02-Dec
Aanjar (Haouch Mouss	ML	M	M	Ablah	ML	M	M	Ain Kfarzabad	ML	M	M
Ali-El-Nahri	ML	M	M	Bar Elias	ML	M	M	Bouarej	L	M	M
Cheberqiyet Tabet	ML	M	M	Chtaura	ML	M	M	Deir El Ghazal	ML	M	M
Delhamiyet Zahle	ML	M	M	Ferzol	ML	M	M	Haouch El-Ghanam	ML	M	M
Haouch Es-Siyadeh	ML	ML	M	Haouch Hala	ML	M	M	Haouch Mandara	ML	M	M

Haouch Qayssar	ML	ML	M	Hezerta	L	M	M	Hosh Moussa	ML	M	M
Jdita	ML	M	M	Kfarzabad	ML	M	M	Ksara	ML	M	M
Majdel Aanjar	L	M	M	Makssi	ML	M	M	Massa	ML	M	M
Mazraat Er-Remtaniye	L	M	M	Mrayjat Zahle	L	M	M	Mzaraa Zahle	ML	ML	M
Nabi Ayla	ML	M	M	Nasriyet Rizk	ML	M	M	Nasriyet Zahle	ML	ML	M
Niha Zahle	ML	M	M	Ouadi Ed-Deloum	L	M	M	Ouadi El-Arayech	L	M	M
Qaa El Rim	L	M	M	Qab Elias	ML	M	M	Qousaya	ML	M	M
Rhit	ML	M	M	Riyak	ML	M	M	Saadnayel	ML	M	M
Taal El-Akhdar	ML	ML	M	Taalbeya	ML	M	M	Taanayel	ML	M	M
Talamara	ML	M	M	Tcheflik Edde Haouch	ML	ML	M	Tcheflik Qiqano	ML	ML	M
Terbol Zahle	ML	M	M	Touaite Zahle	L	M	M	Zahle Aradi	L	M	M
Zahle El-Berbara	ML	M	M	Zahle El-Maallaqa	ML	M	M	Zahle El-Midane	ML	M	M
Zahle Er-Rassiye	ML	M	M	Zahle Haouch El-Ouma	ML	M	M	Zahle Haouch El-Ouma	ML	M	M
Zahle Haouch Ez-Zara	ML	M	M	Zahle Maalaqa Aradi	ML	M	M	Zahle Mar Antonios	ML	M	M
Zahle Mar Elias	ML	M	M	Zahle Mar Gerios	ML	M	M	Zahle Saydet En-Naja	ML	M	M
Zebdoul	L	M	M								

Rachaiya

Municipality	30-Nov	01-Dec	02-Dec	Municipality	30-Nov	01-Dec	02-Dec	Municipality	30-Nov	01-Dec	02-Dec
Ain Arab Rachaiya	L	M	M	Ain Ata	L	M	M	Ain Harche	L	M	M
Aqabe Rachaya	ML	M	M	Ayha	L	M	M	Ayta El Fokhar	ML	M	M
Bakifa Rachaya	ML	M	M	Bakka	ML	M	M	Beit Lahya	ML	M	M
Bireh Rachaiya	ML	M	M	Daher El Ahmar	L	M	M	Deir El-Achayer	L	L	M
Heloua Rachaiya	L	L	M	Hoch El Qannabeh Rac	L	M	M	Kaoukaba Bou Arab	ML	M	M
Kfar Danis	ML	M	M	Kfar Mechki	ML	M	M	Kfar Qouq	L	ML	M
Kherbet Rouha	L	M	M	Majdel Balhiss	ML	M	M	Mdoukha	ML	M	M
Mhaydseh Rachaiya	ML	M	M	Nabi Safa	L	M	M	Rachaiya	ML	M	M
Rafid Rachaiya	ML	M	M	Selsata (Mazraat Dei	L	L	M	Tannoura	ML	M	M
Yanta	L	ML	M								

Beyrouth

Beyrouth

Municipality	30-Nov	01-Dec	02-Dec	Municipality	30-Nov	01-Dec	02-Dec	Municipality	30-Nov	01-Dec	02-Dec
Achrafieh	ML	MH	MH	Ain el-Mreisse	ML	M	H	Bachoura	ML	M	MH
Beirut Central Distr	M	M	MH	Marfai	M	MH	MH	Mazraa	ML	M	MH
Medaouar	ML	MH	MH	Minet el-Hosn	M	M	MH	Mwssaitbeh	ML	M	MH
Ras Beirut	ML	M	H	Rmeil	ML	MH	MH	Saifi	M	M	MH
Zqaq el-Blat	M	M	MH								