

# Lebanon Fire Risk Bulletin



CIVIL DEDEFENCE

**Refer to cadast table condition.**

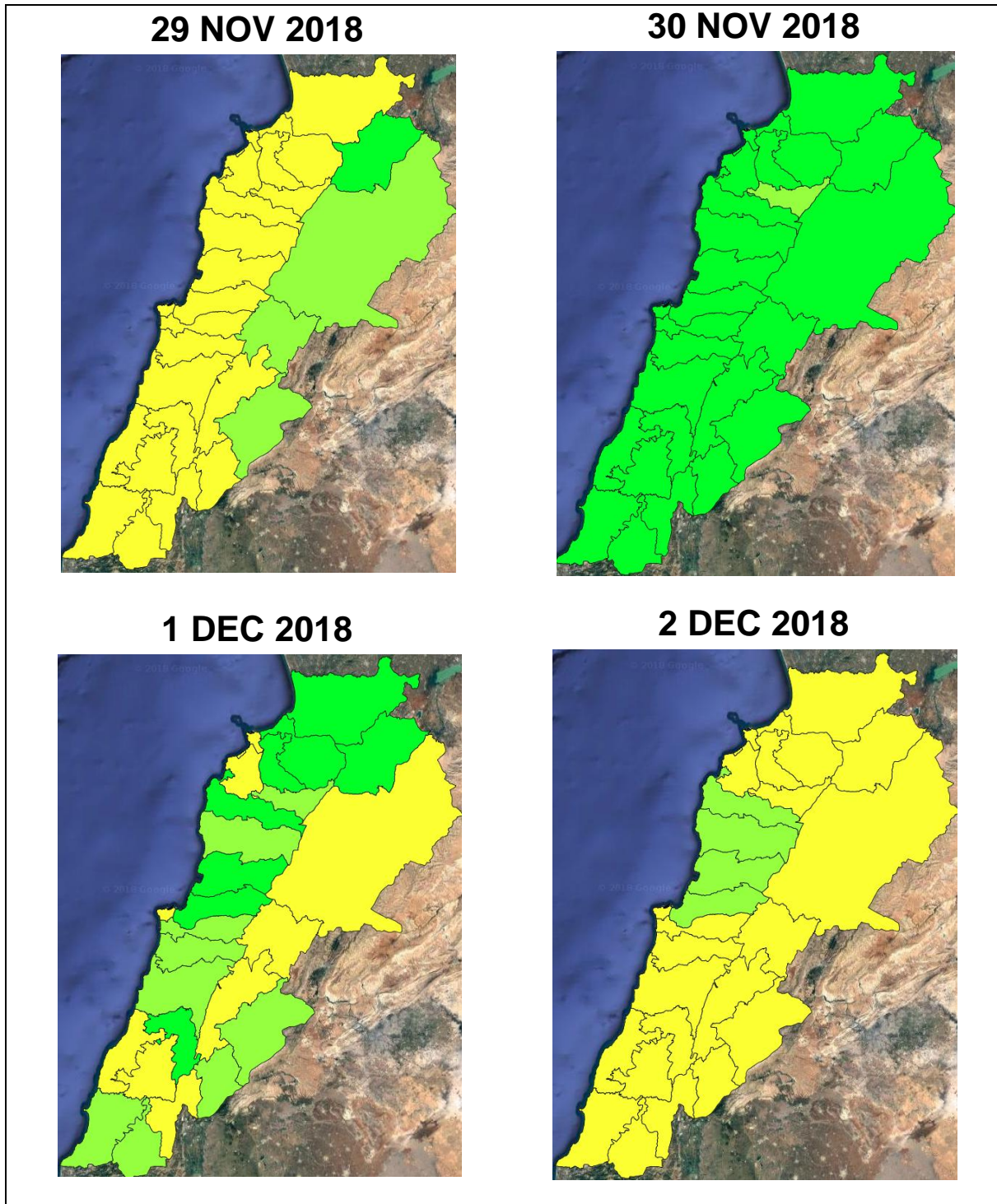
**Please note that the indicated temperature is at 2 meters height from the ground.**

General description of potential fire risk situation

Symbol	Level of risk	Meaning and actions
VL	Very low	Very low fire risk. Controlled burning operations can be hardly executed due to high fuel moisture content. Normally wildfires self-extinguish.
L	Low	Low fire risk. Controlled burning operations can be executed with a reasonable degree of safety.
ML	Medium low	Medium-low fire risk. Controlled burning operations can be executed in safety conditions. All the fires need to be extinguished.
M	Medium	Medium fire risk. Controlled burning operations would be avoided. All the fires need to be very well extinguished.
M	Medium high	Controlled burning is not recommended. Open flame will start fires. Cured grasslands and forest litter will burn readily. Spread is moderate in forests and fast in exposed areas. Patrolling and monitoring is suggested. Fight fires with direct attack and all available resources.
H	High	Ignition can occur easily with fast spread in grass, shrubs and forests. Fires will be very hot with crowning and short to medium spotting. Direct attack on the head may not be possible requiring indirect methods on flanks. Patrolling and monitoring the territory is highly suggested.
E	Extreme	Ignition can occur also from sparks. Fires will be extremely hot with fast rate of spread. Control may not be possible during day due to long range spotting and crowning. Suppression forces should limit efforts to limiting lateral spread. Damage potential total. Patrolling and monitoring the territory is highly suggested.

Beirut, 30 November 2018

# FIRE RISK INDEX



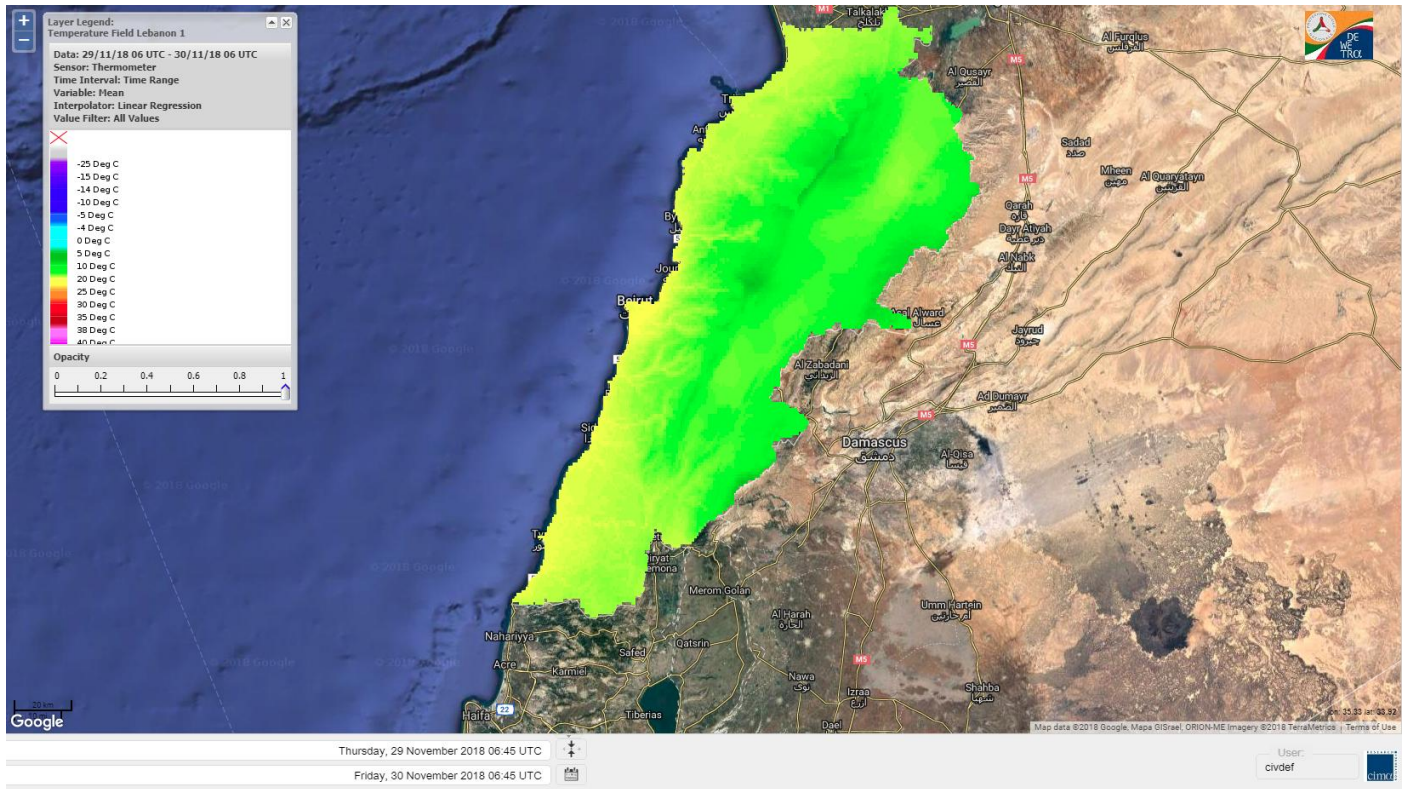
**Layer Legend:**  
**Lebanon Wildfire Risk Index 1**

Data: Run: 30/11/2018 00:00. Forecast for 30  
Model: RISICO for the Republic of Lebanon  
Variable: Fire Weather Index  
Spatial Resolution: Caza

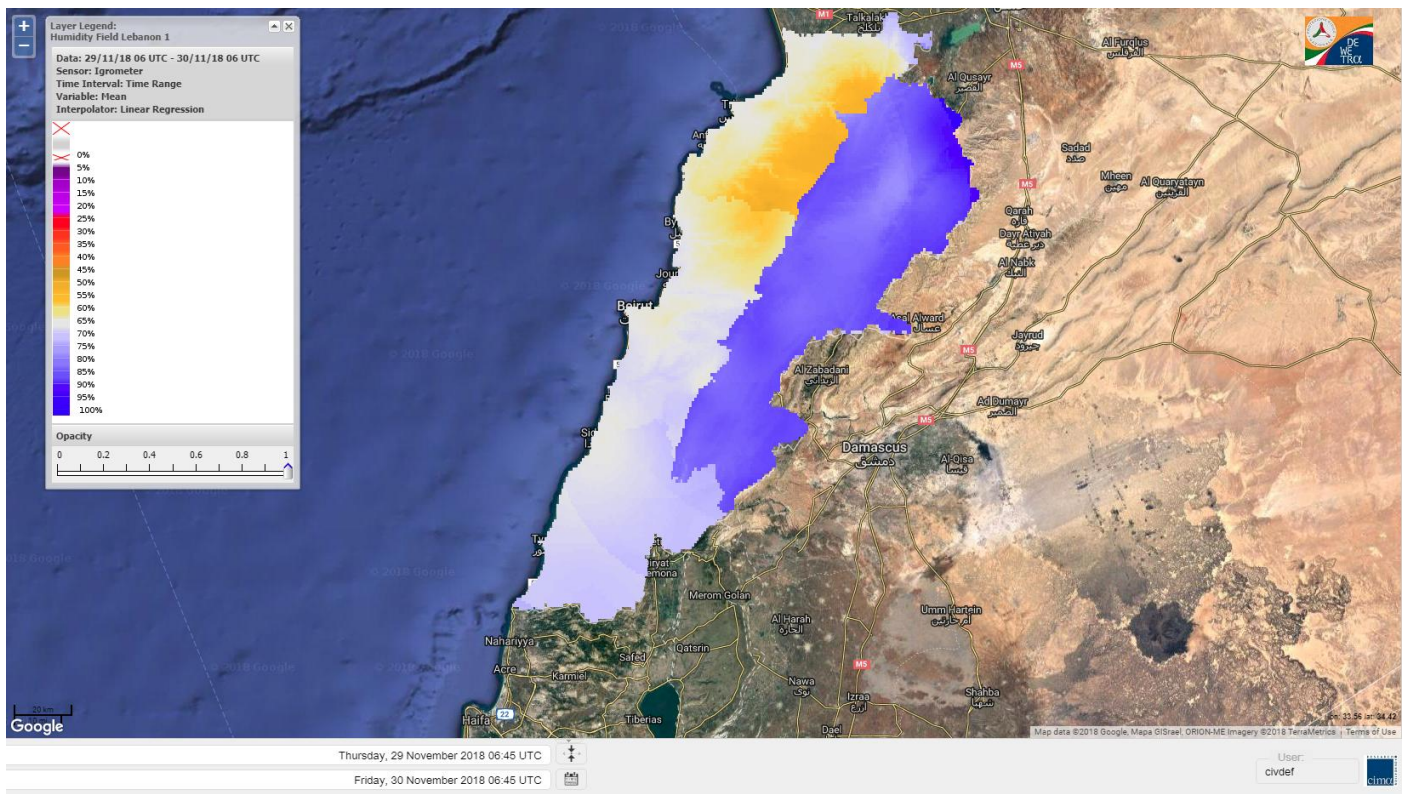
- VERY LOW
- LOW
- MEDIUM-LOW
- MEDIUM
- MEDIUM-HIGH
- HIGH
- EXTREME



# Lebanon temperature for Lebanon 30 NOV 2018

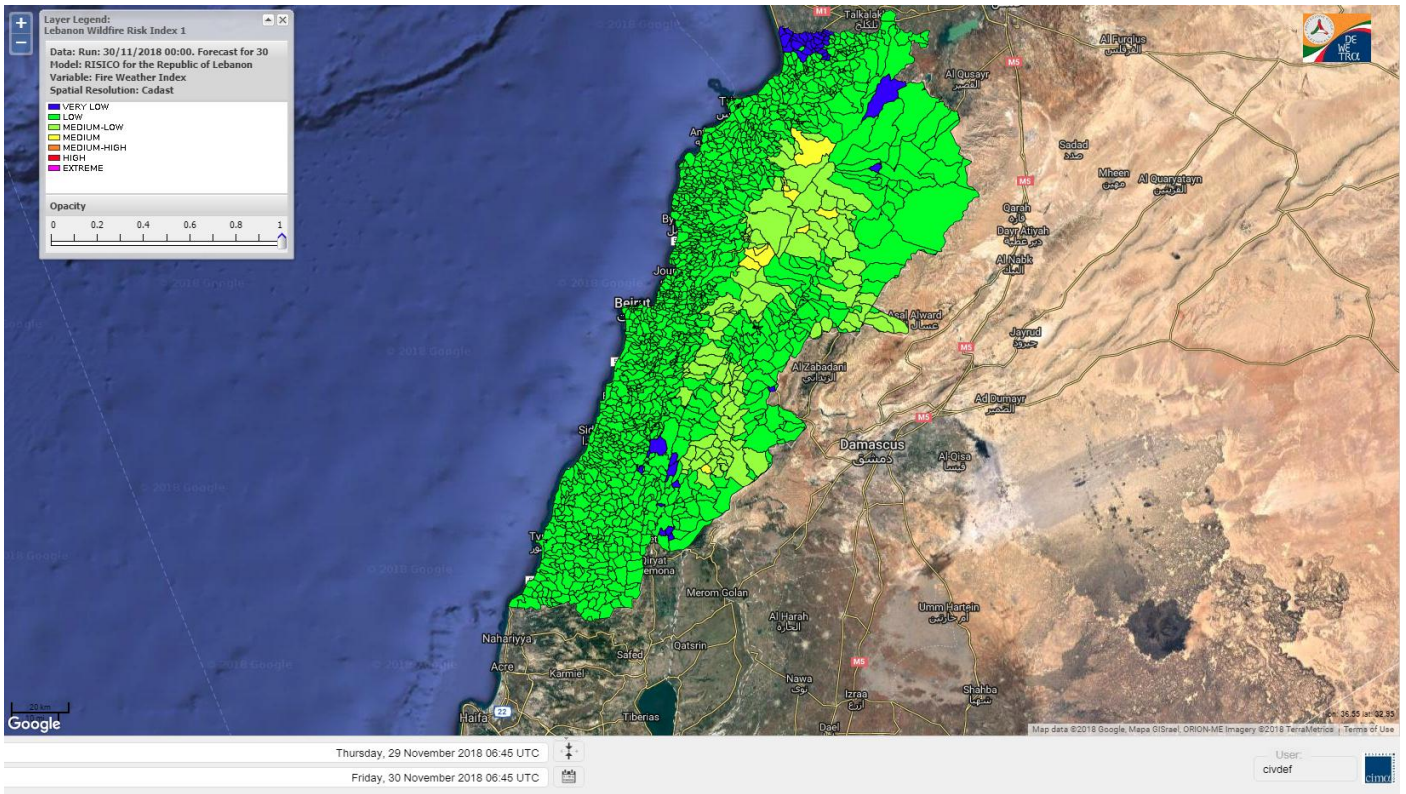


# Lebanon humidity for Lebanon 30 NOV 2018

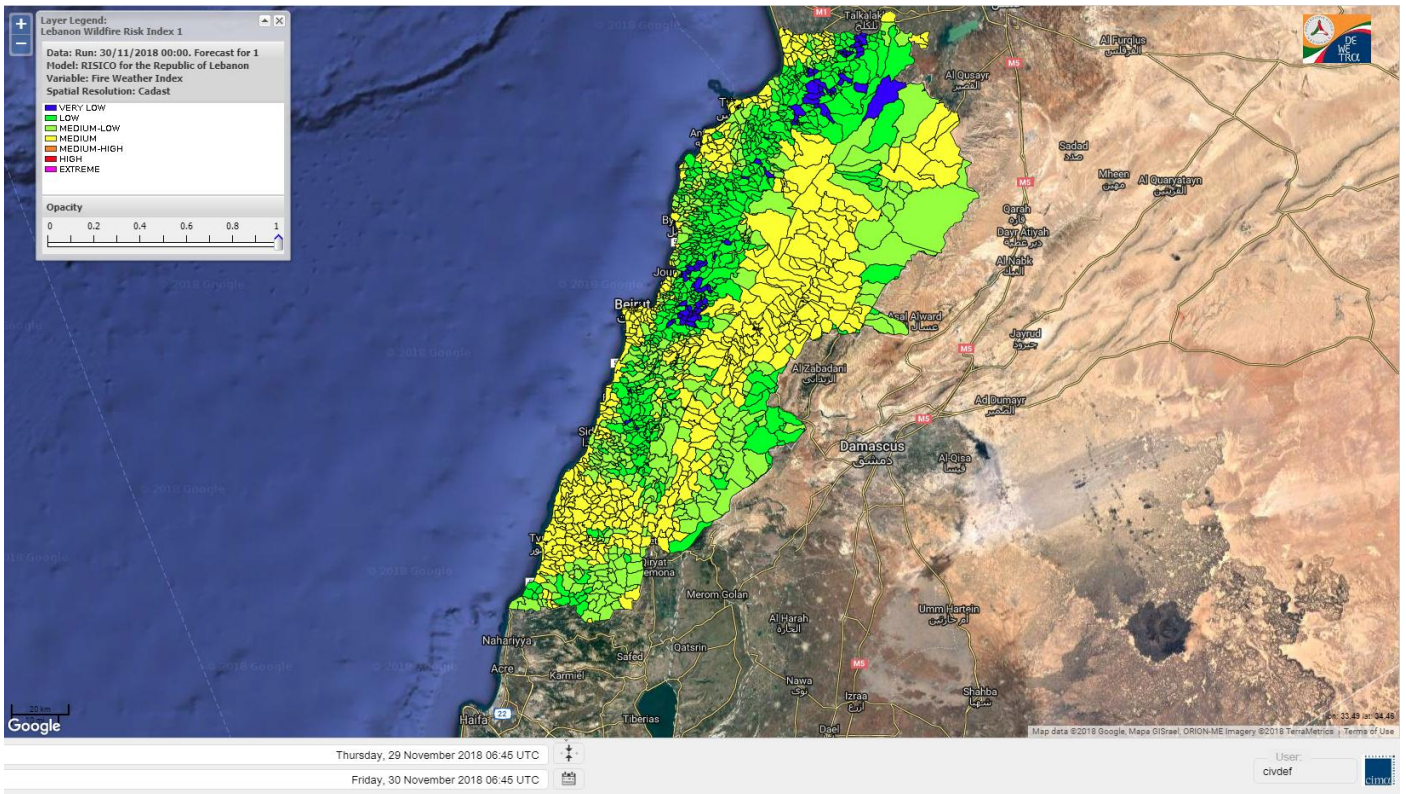




# Lebanon for 30 NOV 2018

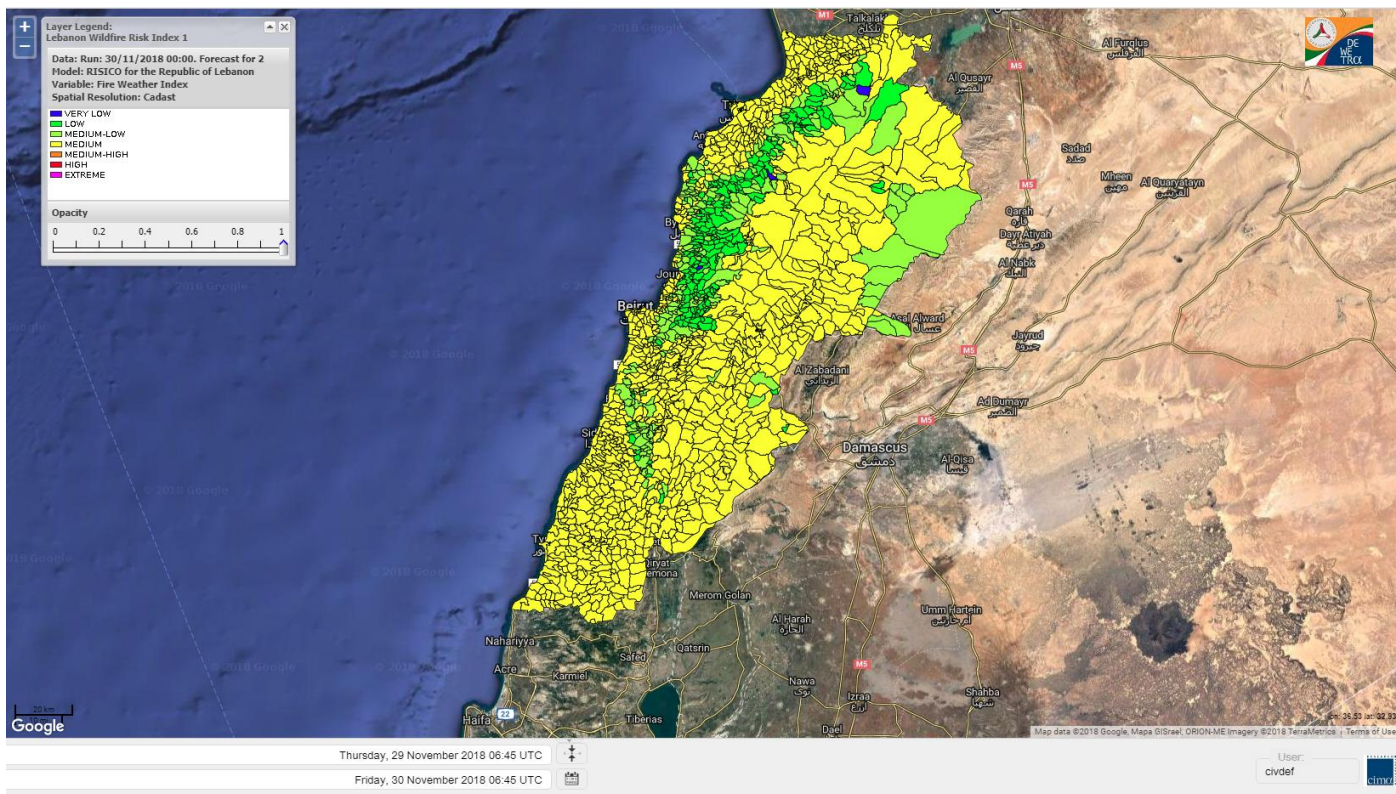


# Lebanon for 1 DEC 2018

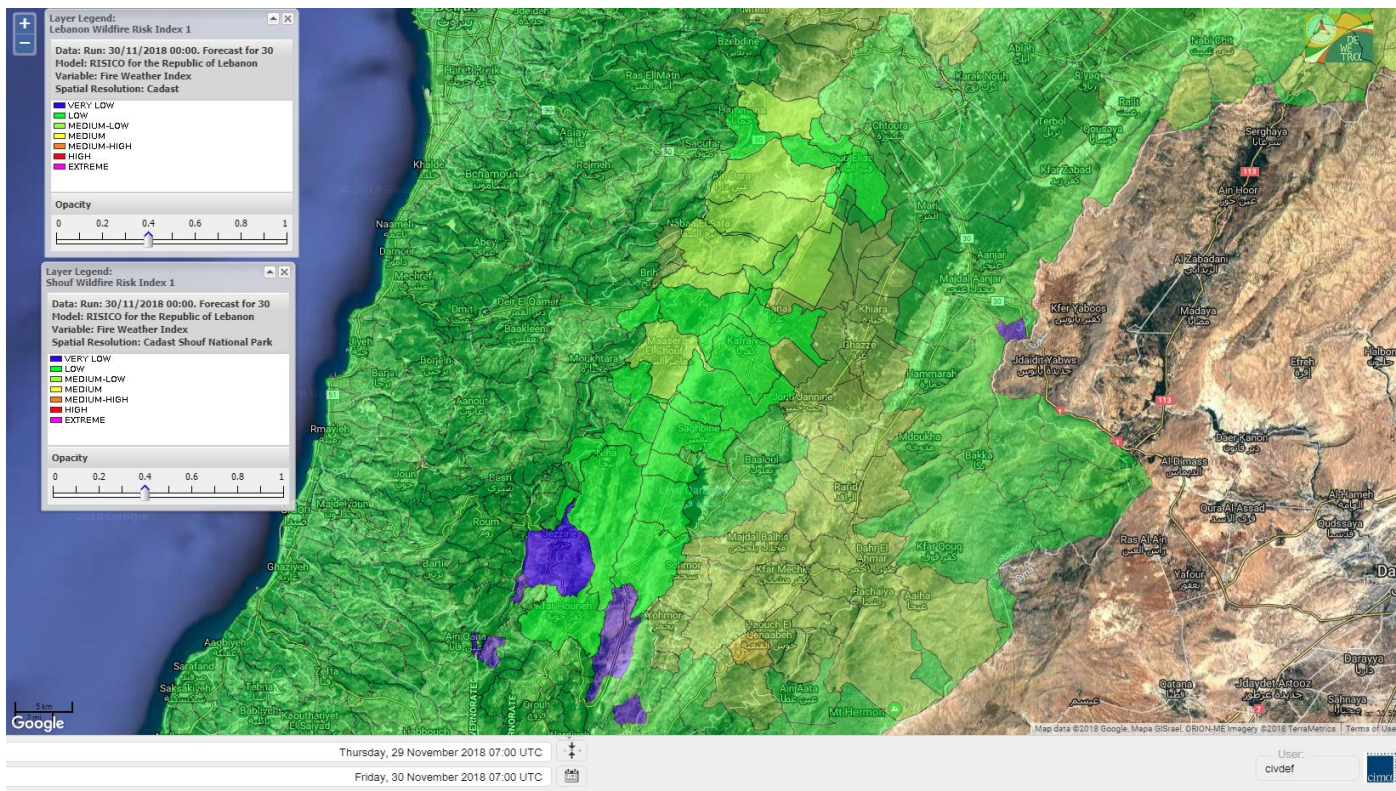




# Lebanon for 2 DEC 2018

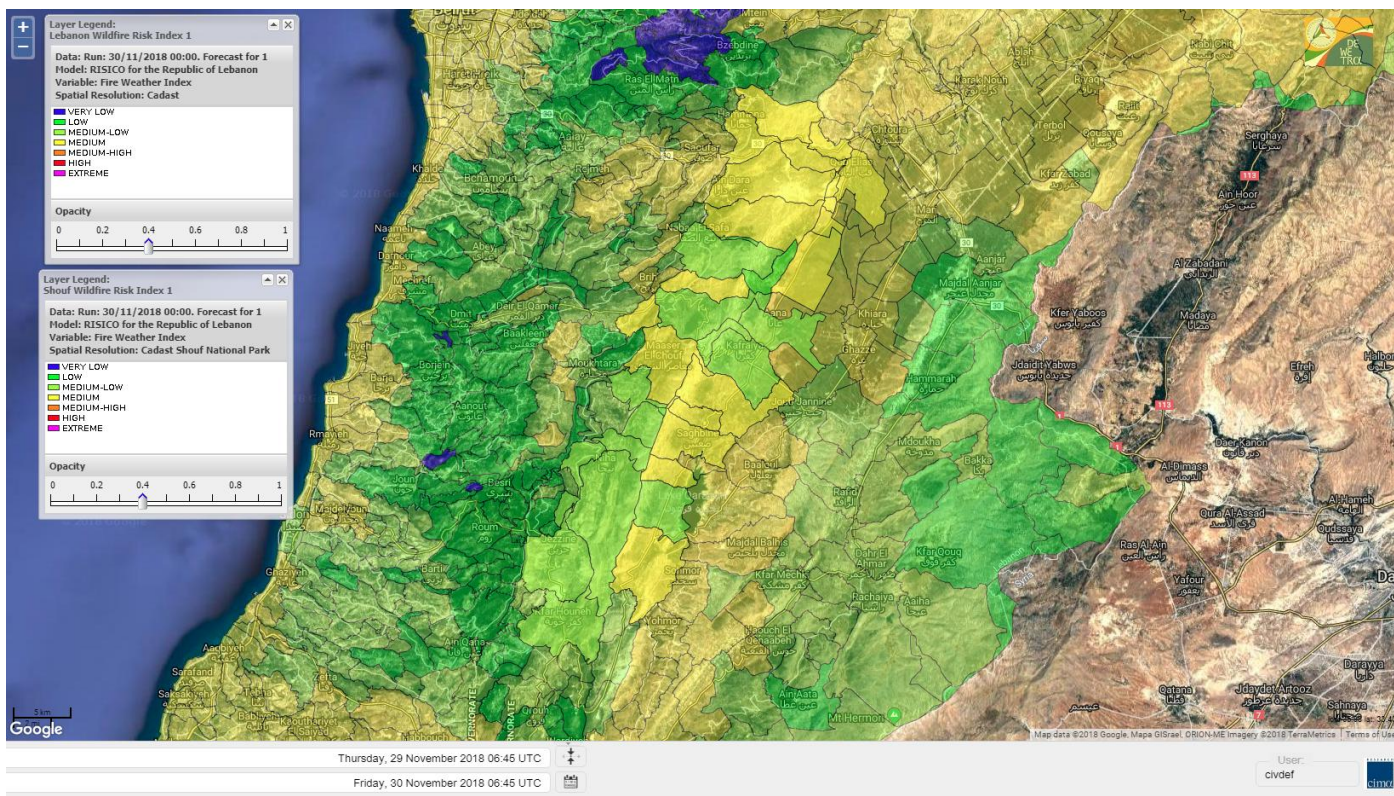


# Shouf Biosphere Reserve Forecast for 30 NOV 2018

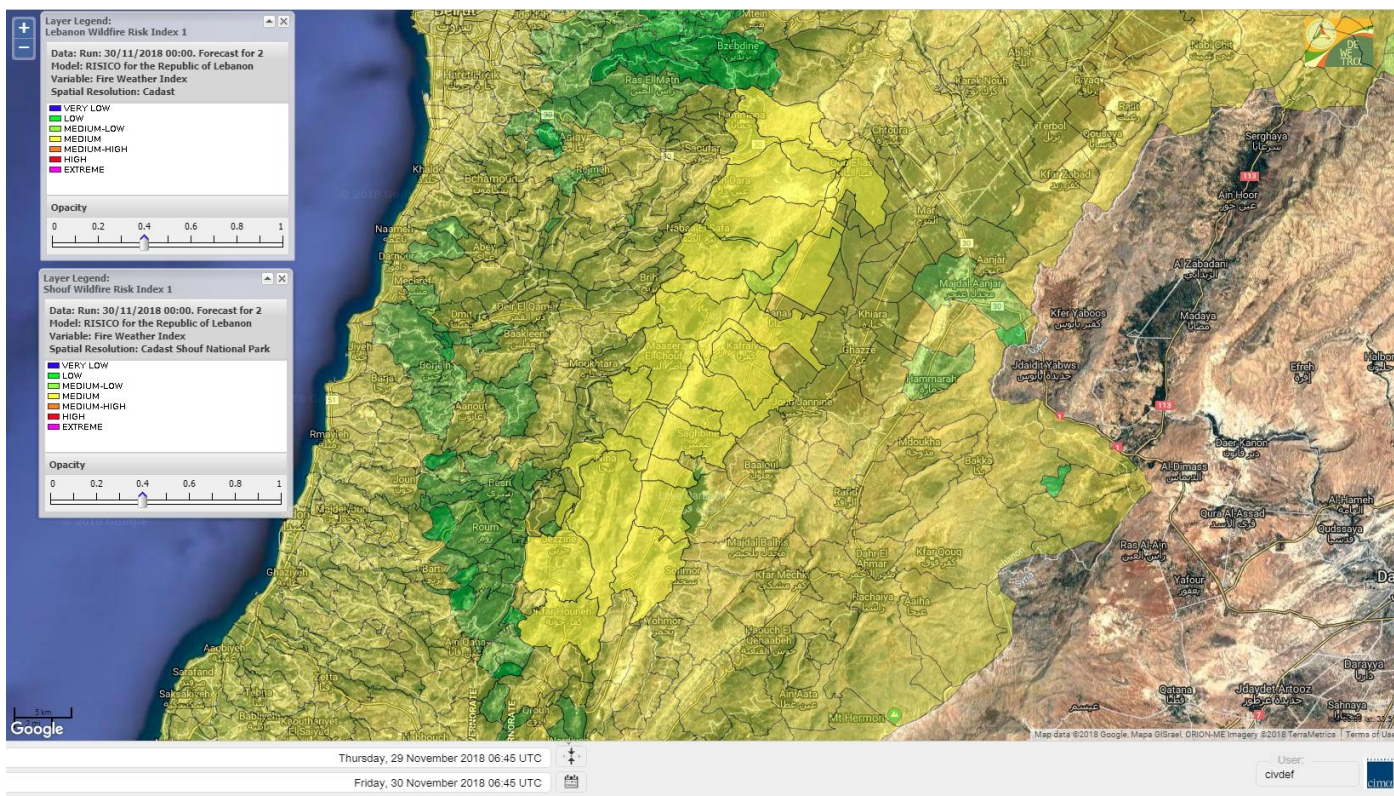




# Shouf Biosphere Reserve Forecast for 1 DEC 2018



# Shouf Biosphere Reserve Forecast for 2 DEC 2018

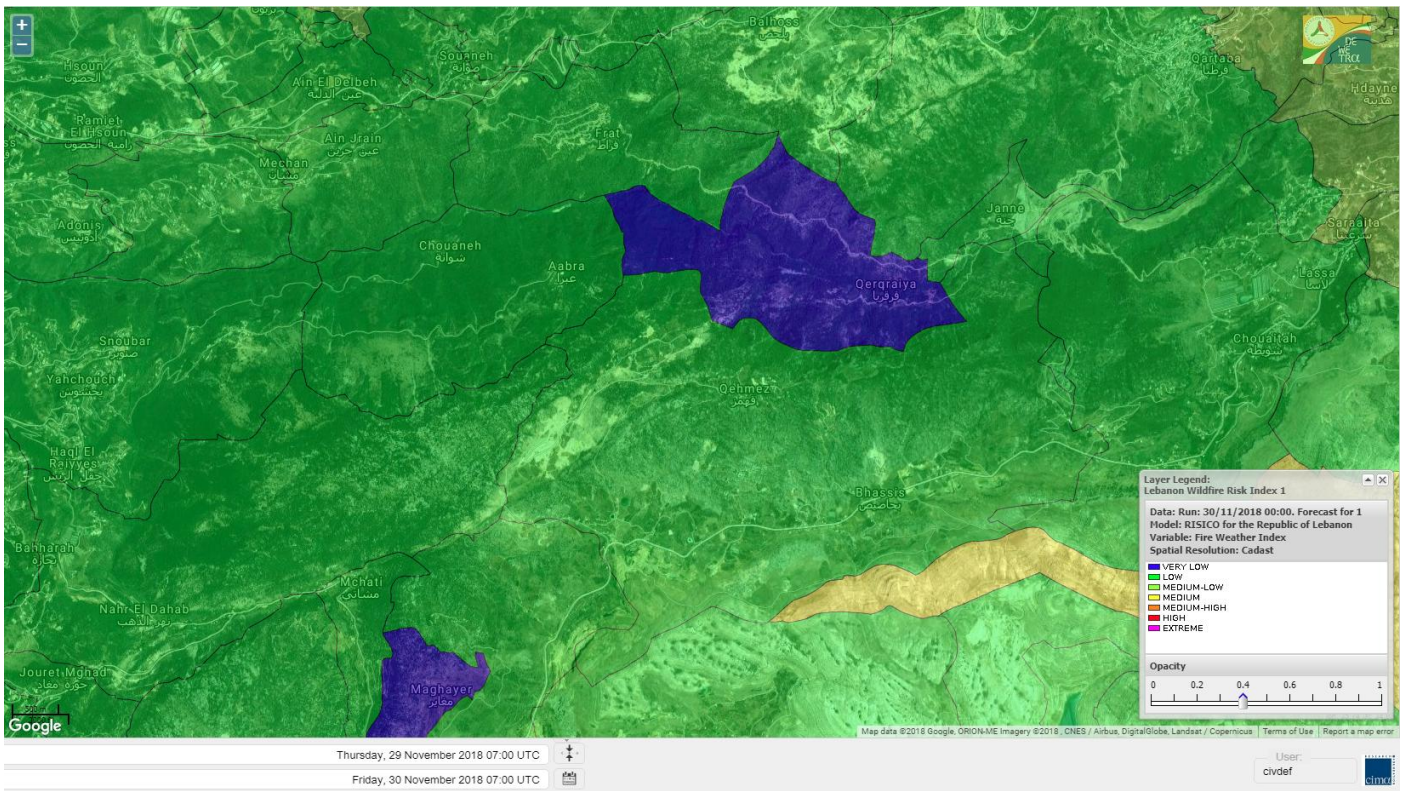




# Jabal Moussa Reserve Forecast for 30 NOV 2018

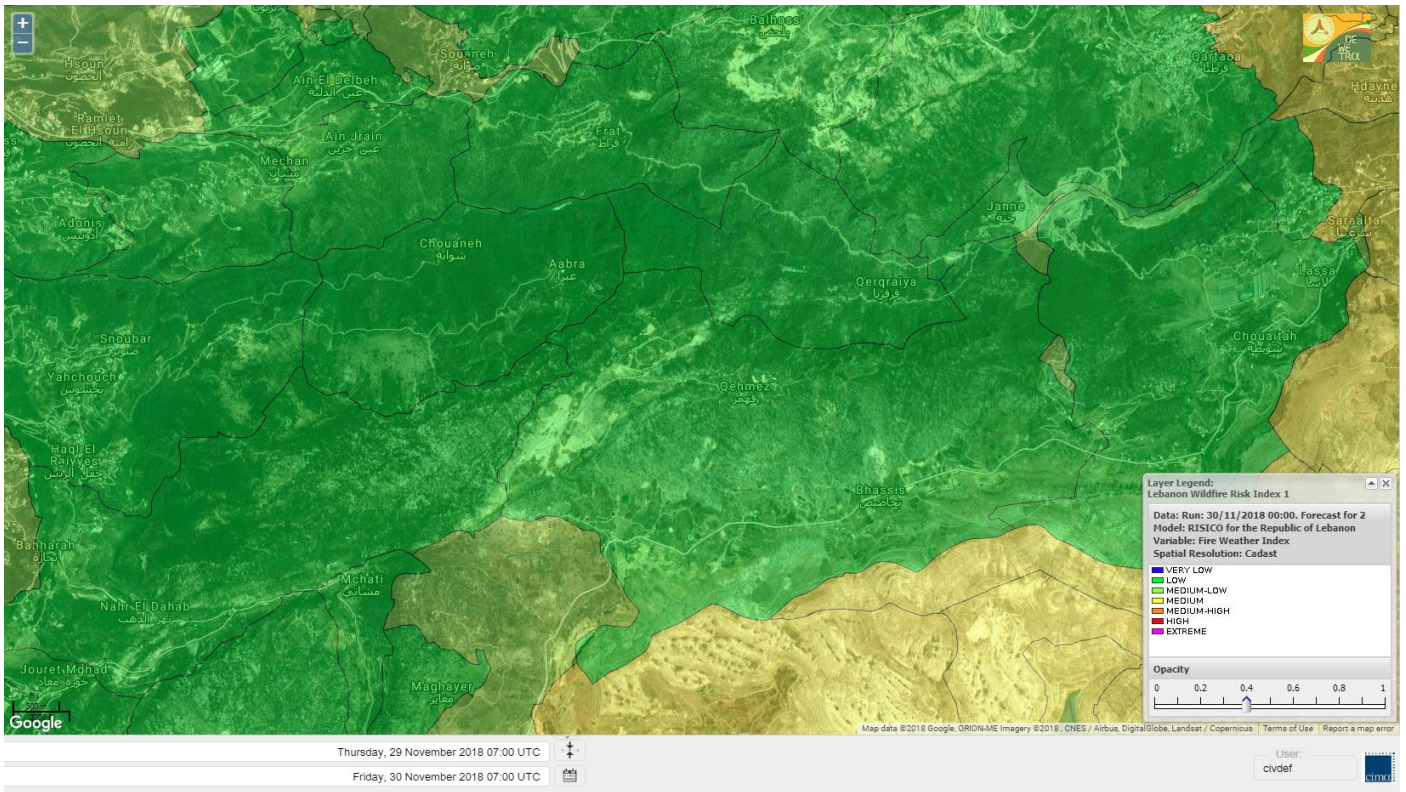


# Jabal Moussa Reserve Forecast for 1 DEC 2018





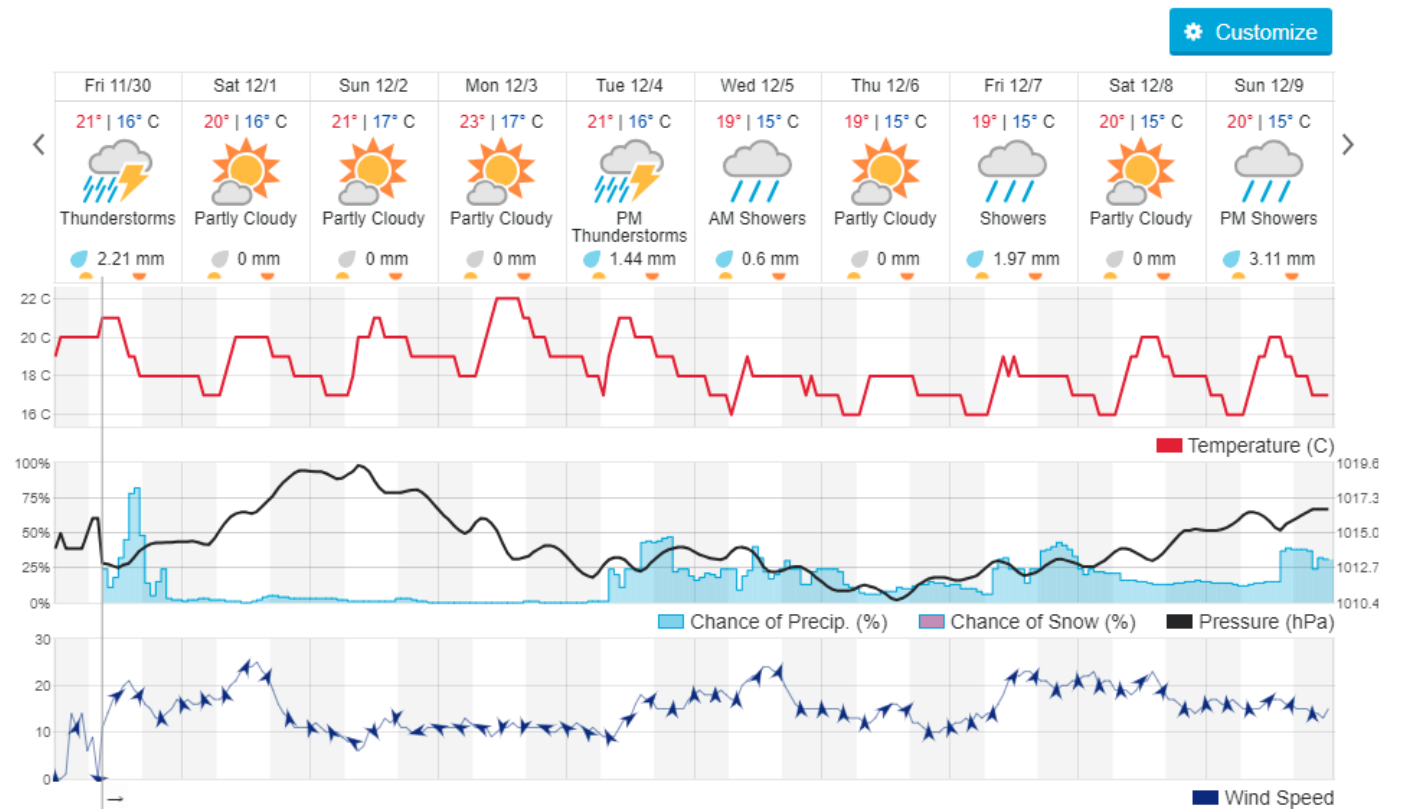
# Jabal Moussa Reserve Forecast for 2 DEC 2018



## Beirut, Lebanon

21° ACHRAFIEH, RIZK STATION | REPORT | CHANGE

TODAY HOURLY **10-DAY** CALENDAR HISTORY WUNDERMAP





## Nord

### Koura

Municipality	30-Nov	01-Dec	02-Dec	Municipality	30-Nov	01-Dec	02-Dec	Municipality	30-Nov	01-Dec	02-Dec
Aaba	L	ML	M	Afsaddiq	L	M	M	Ain Ekrine	L	M	M
Amioun	L	M	M	Anfeh	L	M	M	Badbhoun	L	M	M
Barghoun	L	M	M	Barsa	L	ML	M	Batroumine	L	M	M
Bdebba	L	M	M	Bechmizzine	L	M	M	Bednayet El-Koura	L	ML	ML
Bhabbouch El-Koura	L	ML	M	Bkeftine	L	ML	M	Bnehran	L	ML	ML
Bqaiaa El-Koura	L	ML	M	Bsarma	L	ML	M	Btaaboura	L	M	M
Bterram	L	M	M	Btouratij	L	M	M	Bziza	L	M	M
Dar Beehtar	L	M	M	Dar Chmezzine	L	M	M	Deddeh	L	M	M
Deir El-Balamand	L	L	M	Fih	L	M	M	Hraiche	L	M	M
Ijdaabrine	L	ML	ML	Kaftoun	L	ML	M	Kefraya El-Koura	L	M	M
Kfarakka	L	ML	M	Kfarhata	L	ML	M	Kfarhazir	L	M	M
Kfarkahel	L	ML	M	Kfarsaroun	L	ML	M	Kosba	L	ML	M
Mejdel el-Koura	L	ML	ML	Nakhle	L	ML	M	Qalhat	L	L	M
Ras Masqa	L	ML	M	Rechdibbine	L	ML	M	Zakroun	L	M	M
Zgharta El-Mtaouile	L	L	L								

### Bcharre

Municipality	30-Nov	01-Dec	02-Dec	Municipality	30-Nov	01-Dec	02-Dec	Municipality	30-Nov	01-Dec	02-Dec
Aabdine	L	L	ML	Bane	L	ML	M	Barhelioun	L	L	L
Bazouone	ML	M	M	Becharre	ML	M	M	Beit Menzer	L	L	L
Billa	L	L	ML	Blaouza	L	ML	M	Bqaa Kafra	ML	M	M
Bqerqacha	M	M	M	Breissat	L	L	ML	Dimane	L	L	ML
Hadath El Jobbeh	L	L	ML	Hadchit	L	ML	ML	Hasroun	ML	M	M
Mazraat Aassaf	L	VL	L	Mazraat Bani Saab	L	L	ML	Mchaa El-Jobbeh	M	M	M
Metrit	L	L	ML	Moghr El-Ahoual	L	L	ML	Ouadi Qannoubine	L	VL	VL
Qanat	L	L	L	Qnayouer	L	L	L	Tourza	L	L	L

### Batroun

Municipality	30-Nov	01-Dec	02-Dec	Municipality	30-Nov	01-Dec	02-Dec	Municipality	30-Nov	01-Dec	02-Dec
Aabrine	L	L	ML	Aalali	L	L	ML	Aartiz	L	L	L
Abdelli	L	L	L	Ajdabra	L	L	L	Assia	L	L	L
Basbina	L	ML	M	Batroun	L	M	M	Bcheleh	L	L	ML
Bechtoudar	L	L	L	Beit Chlala	L	L	L	Beit Kassab	L	L	L
Bijdarfil	L	ML	M	Bqesmaya	L	L	ML	Chatine	L	L	ML
Chebtin	L	L	ML	Chekka	L	M	M	Daael	L	L	L
Dahr Abi Yaghi	L	L	L	Daraya El-Batroun	L	ML	M	Deir Billa	L	L	L
Deir Kfifane	L	ML	M	Deir Mar Youhanna EL	L	L	L	Deir Mar Youssef Jra	L	L	ML
Douma	L	L	ML	Douq	L	L	L	Eddeh El-Batroun	L	ML	ML
Ftatah El-Batroun	L	L	L	Ghouma	L	ML	ML	Hadtoun	L	L	L
Hamat	L	L	ML	Harbouna	L	L	L	Hardine	L	L	L
Helta	L	L	L	Hery	L	M	M	Jebila	L	L	L
Jrabta El-Batroun	L	L	ML	Jrane El-Batroun	L	M	M	Kfar Aabida	L	ML	ML
Kfar Halda	L	L	L	Kfarb Shlaimane	L	L	L	Kfarhatna	L	L	L
Kfarhay	L	ML	M	Kfarhelos	L	L	L	Kfifane	L	M	M



Kfour El Arabi	L	L	ML	Koubba	L	ML	M	Kour	L	ML	ML
Mar Mama	L	L	L	Masrah	L	L	L	Mehmarch	L	L	ML
Mrah Chdid	L	L	ML	Mrah El Ziyat	L	ML	ML	Mrah El-Hajj	L	L	L
Nahle El-Batroun	L	L	ML	Niha El-Batroun	L	L	ML	Ouahj El-Hajjar	L	ML	ML
Ouata Houb	L	L	L	Qatnaaoun	L	L	ML	Racha	L	L	ML
Rachana	L	L	ML	Rachkida	L	L	ML	Ram El-Batroun	L	L	L
Ras Nabhach	L	L	ML	Selaata	L	M	M	Sghar	L	ML	ML
Smar Jbayl	L	ML	ML	Sourat El-Batroun	L	L	L	Tannourine El-Faouqa	ML	ML	M
Tannourine Et-Tahta	L	L	L	Thoum	L	L	ML	Toula El-Batroun	L	L	ML
Zan	L	L	ML								

## Zgharta

Municipality	30-Nov	01-Dec	02-Dec	Municipality	30-Nov	01-Dec	02-Dec	Municipality	30-Nov	01-Dec	02-Dec
Aachach	L	L	M	Aalma	L	L	M	Aarde	L	L	M
Aintourine	L	L	ML	Arabet Qozhaya	L	L	L	Arde	L	L	M
Arjis	L	L	M	Asnoun	L	L	M	Ayto	L	L	L
Basloukit	L	ML	M	Bchannine	L	ML	M	Besebeel	L	L	M
Bhairret Toula	L	L	ML	Bnachee	L	L	ML	Boussit	L	M	M
Danha	L	L	M	Daraiya Zgharta	L	L	M	Deir Jdeide	L	L	M
Ehden	ML	ML	M	Halan	L	ML	M	Hariq Zgharta	L	L	M
Houakir	L	L	L	Hraiqis	L	M	M	Iaal	L	L	M
Ijbaa	L	L	ML	Karm Saddeh	L	L	L	Kfarchakhna	L	L	M
Kfardlaqous	L	L	M	Kfarfou	L	L	M	Kfarhata Zgharta	L	L	M
Kfarhoura	L	L	M	Kfarsghab	L	L	M	Kfaryachit	L	L	M
Kfarzaina	L	L	M	Khaldiye	L	L	M	Mazraat Ajbeaa	L	L	M
Mazraat Et-Teffah	L	L	L	Mazraat Jneid	L	L	M	Mejdlaya Zgharta	L	ML	M
Merh Kfarsghab	L	L	ML	Miryata	L	L	M	Miziara	L	L	L
Mzraat Kefraya	L	ML	M	Qorah Bach	L	L	M	Rachiine	L	L	M
Ras Kifa	L	L	ML	Sakhra	L	L	M	Sebhel Zgharta	L	L	ML
Serhel	L	VL	L	Tallet Zgharta	L	L	M	Toula Zgharta	L	L	ML
Zgharta	L	L	M								

## Minieh-Denniye

Municipality	30-Nov	01-Dec	02-Dec	Municipality	30-Nov	01-Dec	02-Dec	Municipality	30-Nov	01-Dec	02-Dec
Aasaymout	L	VL	L	Aaymar	L	L	ML	Aazki	L	L	ML
Ain El-Tineh-Miniyeh	L	L	L	Assoun	L	L	ML	Bakhaaoun	L	L	L
Bchennata	ML	M	M	Bechehhara	L	L	L	Beddawi	L	M	M
Behouaita	L	L	L	Beit El Foqss	L	L	L	Beit Haouik	L	ML	ML
Beit Zoud	L	L	L	Bekaasafrine	M	M	M	Borj El Yahoudiyeh	L	M	M
Bqarsouna	L	L	L	Btermaz	L	VL	L	Debaael	L	L	L
Deir Ammar	L	M	M	Deir Nbouh	L	L	ML	Haouaret-Miniyeh	L	L	ML
Haql el Azimeh	L	L	L	Harf El Siyad	L	L	L	Hazmiye-Miniyeh	L	L	L
Izal	L	L	ML	Jarjour	L	VL	L	Jayroun	L	L	L
Kahf El-Malloul	L	L	L	Karm El-Moher	L	L	ML	Kfar Binine	L	L	ML
Kfarchalane	L	L	ML	Kfarhabou	L	L	ML	Kharroub-Miniyeh	L	L	ML
Mazraat El-Kreme	L	L	L	Mazraat Ketrane	L	L	L	Merkebeta	L	L	M
Minyeh	L	M	M	Mrah El Sfirat	L	VL	L	Mrah Sraj	L	L	L
Mrebbine	L	L	M	Nabi Youcheaa	L	M	M	Nemrine	L	L	ML



Qarhaiya	L	L	ML	Qarne	L	VL	L	Qarsita	L	L	L
Qattineh-Miniyeh	L	VL	L	Qemmamine	L	VL	L	Qraine	L	L	L
Raouda-Aadoua	L	L	M	Rihaniyet-Miniyeh	L	L	M	Sfireh	L	L	L
Sir Ed-Danniyeh	L	L	L	Tarane	L	VL	L	Terbol-Miniyeh	L	M	M
Zaghartaghriine	L	L	ML	Zouq Bhannine	L	ML	M				

## Nabatiye

### Nabatiye

Municipality	30-Nov	01-Dec	02-Dec	Municipality	30-Nov	01-Dec	02-Dec	Municipality	30-Nov	01-Dec	02-Dec
Aabba	L	M	M	Aazzi	L	ML	M	Adchit El-Chqif	L	M	M
Ain Bou Swar	VL	ML	M	Ain Kana	L	L	M	Ali El-Taher	L	ML	M
Ansar	L	M	M	Arab Salim	L	ML	M	Arnoun	L	M	M
Bfaroue	L	ML	M	Breyqaah	L	M	M	Charqiyeh	L	M	M
Choukine	L	M	M	Deir El Zahrani	L	M	M	Doueir El-Nabatiyeh	L	M	M
Habbouch El-Nabatiye	L	M	M	Hamra El-Nabatiyeh	L	M	M	Harouf El-Nabatiyeh	L	M	M
Hmaile	L	ML	M	Houmin El Faouqa	L	ML	M	Houmin El Tahta	L	ML	M
Jarjough	L	ML	M	Jbaah El-Nabatiyeh	L	L	ML	Jebchit	L	M	M
Kfar Djal El-Nabatiy	L	M	M	Kfar Remmane	L	M	M	Kfar Sir	L	M	M
Kfar Tebnit	L	M	M	Kfarfila	L	ML	M	Kfour El-Nabatieh	L	M	M
Mayfadoun	L	M	M	Mazraat Bsaffour	L	M	M	Mazraat Chalbaal	L	M	M
Mazraat Dmoul	L	M	M	Mazraat El Khreibeh	L	ML	M	Mazraat El-Bayad El-	L	M	M
Mazraat Kfarjaouz	L	M	M	Mazraat Qalaat Meiss	L	M	M	Nabatiyeh El-Fawka	L	M	M
Nabatiyeh Et-Tahta	L	M	M	Namiriyeh	L	M	M	Qaaqaaiyet El Jisr	L	M	M
Qossaibeh El-Nabatiy	L	M	M	Roumine	L	L	M	Sarba El-Nabatieh	L	L	M
Sir El-Gharbiyeh	L	M	M	Toul	L	M	M	Yehmor El-Nabatiyeh	L	M	M
Zaoutar El Charkiyeh	L	M	M	Zaoutar El-Gharbiyeh	L	M	M	Zebdine El-Nabatiyeh	L	M	M
Zefta	L	M	M								

### Hasbaiya

Municipality	30-Nov	01-Dec	02-Dec	Municipality	30-Nov	01-Dec	02-Dec	Municipality	30-Nov	01-Dec	02-Dec
Aain Jarfa	L	ML	M	Abou Qamha	L	ML	M	Ain Qania	L	ML	M
Bourghos	L	M	M	Chebaa	L	ML	M	Chouaya Hasbaya	L	ML	M
Dellafeh	VL	M	M	Fardiss Hasbaiya	L	ML	M	Hasbaya	L	M	M
Hbariyeh	L	ML	M	Kaoukaba Hasbaiya	L	M	M	Kfar Chouba	L	ML	M
Kfar Hamam	L	ML	M	Kfeir El-Zait	ML	ML	M	Khalwat Hasbaya	L	ML	M
Khreibet Hasbaiya	L	M	M	Majidiyeh Hasbaiya	L	M	M	Marj Ez-Zhour (Haouc	M	M	M
Meri	L	M	M	Mimass	L	M	M	Rachaiya El-Fokhar	L	ML	M
Salaiyeb	VL	M	M								

### Marjayoun

Municipality	30-Nov	01-Dec	02-Dec	Municipality	30-Nov	01-Dec	02-Dec	Municipality	30-Nov	01-Dec	02-Dec
Aalmane Marjaayoun	L	ML	M	Aamra	L	M	M	Adayseh Marjaayoun	L	ML	M
Adchit El-Koussair	L	M	M	Ain Aarab Marjaayoun	VL	M	M	Bani Haiyann	L	ML	M
Blatt Marjaayoun	L	M	M	Blida	L	M	M	Borj El-Moulouk	L	M	M
Boueyda Marjaayoun	L	ML	M	Deir Mimass	L	ML	M	Deir Siriane	L	M	M
Dibbine	VL	M	M	Ebel El Saqi	L	M	M	Houla	L	ML	M
Houra	L	ML	M	Kfar Kila	L	M	M	Khiam Marjaayoun	L	M	M



Klayaa	L	M	M	Majdel Selem	L	ML	M	Marjaayoun	L	M	M
Markaba	L	ML	M	Mays El-Jabal	L	ML	M	Mazraat Doumiat	L	M	M
Mazraat Sarada	VL	M	M	Mhaibib	L	ML	M	Qabrikha	L	ML	M
Qantara	L	M	M	Rab El-Thalathine	L	M	M	Saouaneh Marjayoun	L	ML	M
Talloussa	L	L	M	Taybeh Matjaayoun	L	M	M	Touline	L	ML	M

## Bent Jbail

Municipality	30-Nov	01-Dec	02-Dec	Municipality	30-Nov	01-Dec	02-Dec	Municipality	30-Nov	01-Dec	02-Dec
Ain-Ebel	L	ML	M	Aitaroun	L	M	M	Aynata Bint Jbeil	L	ML	M
Ayta El-Chaeb	L	L	M	Ayta El-Jabal	L	ML	M	Beit Lif	L	L	M
Beit Yahoun	L	ML	M	Bint Jbeil	L	ML	M	Borj Qalaway	L	M	M
Braachit	L	ML	M	Chakra	L	ML	M	Debel	L	ML	M
Deir Antar	L	M	M	Froun	L	ML	M	Ghandouriyeh Bint Jb	L	M	M
Hanine	L	ML	M	Hariss	L	ML	M	Hdatha	L	ML	M
Jmeyjme	L	ML	M	Kafra Bint Jbeil	L	L	M	Kfar Dounine	L	M	M
Khirbet Selm	L	ML	M	Kounine	L	ML	M	Maroun El Ras	L	ML	M
Qalaway	L	M	M	Qaouzah	L	L	M	Qatmoun	L	M	M
Ramya Bint Jbeil	L	L	M	Rchaf	L	L	M	Rmeich	L	ML	M
Safad Al Battikh	L	ML	M	Salhaneh	L	L	M	Serbine	L	ML	M
Sultanieh Bint Jbeil	L	ML	M	Tibnine	L	ML	M	Tiri	L	ML	M
Yaroun	L	ML	M	Yater	L	ML	M				

## Mont Liban

### Jbail

Municipality	30-Nov	01-Dec	02-Dec	Municipality	30-Nov	01-Dec	02-Dec	Municipality	30-Nov	01-Dec	02-Dec
Aabeydat	L	L	L	Aalita	L	L	L	Aamchit	L	M	M
Aarab El-Lahib	L	ML	M	Aarasta	ML	L	M	Adonis Jbeil	L	L	L
Afqa Jbeil	ML	L	ML	Ain El Delbeh Jbeil	L	L	L	Ain El-Ghouayba	L	L	L
Ain Jrain	L	L	L	Ain Kfah	L	ML	M	Almat El Chemaliyat	L	L	L
Almat El-Jenoubiya	L	L	L	Aqoura	ML	M	M	Bayzoun	L	L	L
Bchille Jbeil	L	L	L	Bechtida	L	L	L	Behdaydat	L	ML	ML
Beit Habbaq	L	ML	ML	Bejjeh	L	ML	ML	Bekhaaz	L	L	ML
Berbara Jbeil	L	ML	M	Bintael	L	L	L	Birket Hjoula	L	L	L
Blatt Jbeil	L	ML	ML	Boulhos	L	L	L	Breyj Jbeil	L	L	L
Chamat	L	M	M	Chikhane	L	ML	M	Chmout	L	L	L
Eddeh Jbeil	L	ML	M	Ehmej	L	L	ML	Fatre	L	L	L
Ferhet	L	ML	ML	Fghal	L	L	ML	Frat	L	L	L
Ghabat	ML	ML	M	Ghalboun	L	ML	ML	Gharzouz	L	ML	M
Ghofrine	L	ML	M	Habil	L	L	L	Halate	L	ML	ML
Haqel	L	L	L	Hbaline	L	ML	ML	Hboub	L	ML	ML
Hdeine	ML	ML	M	Hema Er-Rehban	L	ML	M	Hema Mar Maroun Aann	L	ML	M
Hjoula	L	L	L	Hosrayel	L	ML	M	Hsarat	L	ML	ML
Hsoun	L	L	ML	Jaj	L	L	ML	Janne	L	L	L
Jbeil	L	M	M	Jeddey Jbeil	L	M	M	Jlisse	L	L	L
Jouret El-Qattine	L	L	L	Kfar Baal Annaya	L	L	L	Kfar Kidde	L	L	M
Kfar Kouas	L	L	L	Kfar Mashoun	L	M	M	Kfoun	L	L	L

Kharbe Jbeil	L	ML	ML	Laqlouq	ML	M	M	Lassa	L	L	L
Lehfed	L	L	L	Maad	L	ML	ML	Mar Sarkis	L	ML	M
Mastita	L	M	M	Mayfouq	L	L	L	Mazraat El Siyad	L	ML	M
Mazraat El-Maaden	L	L	L	Mechane	L	L	L	Mechmech Jbeil	L	L	L
Mehrin	L	ML	ML	Mejdel El-Akoura	ML	ML	M	Mghayreh Jbeil	ML	ML	M
Mounsef	L	ML	M	Nahr Ibrahim	L	M	M	Qahmez	L	L	L
Qartaba	L	L	L	Qartaboun	L	M	M	Qattara Jbeil	L	L	L
Qorqraya	L	VL	L	Ramout	L	ML	ML	Ras Osta	L	L	L
Rihane Jbeil	L	ML	M	Sakiet El-Khayt	L	L	ML	Saqi Richmaya	L	L	L
Sebrine	L	L	L	Seraita	ML	ML	M	Souane Jbeil	L	L	ML
Tadmor	ML	ML	M	Tartej	L	L	ML	Torzaiya	L	L	L
Yanouh Jbeil	ML	ML	M	Zibdine Jbeil	L	L	L				

## El Metn

Municipality	30-Nov	01-Dec	02-Dec	Municipality	30-Nov	01-Dec	02-Dec	Municipality	30-Nov	01-Dec	02-Dec
Aain El-Qabu	L	L	ML	Aain El-Qach	L	L	ML	Aain El-Teffaha	L	L	ML
Aain el-Safssaf El-M	L	VL	L	Abou Mizane	L	L	ML	Ain Aar	L	ML	M
Ain Alaq	L	L	ML	Ain El-Kharroube	L	L	ML	Ain El-Sendianeh	L	L	L
Ain El-Zeitoune	L	VL	L	Ain Saadeh	L	L	ML	Aintoura El-Matn	ML	M	M
Amaret Chalhoub	L	M	M	Antelias	L	M	M	Atchaneh	L	L	L
Ayroun	L	L	ML	Baabdat	L	VL	L	Baouchariyeh	L	M	M
Baskinta	L	L	M	Beit Chabab	L	L	L	Beit El-Chaar	L	M	M
Beit El-Kekko	L	M	M	Beit Mery	L	L	ML	Bhersaf	L	VL	L
Bikfaya	L	L	ML	Biyakout	L	M	M	Bnabil	L	VL	L
Bourj Hammoud	L	M	M	Bqennaya	L	ML	ML	Broummana El-Matn	L	L	ML
Bsalim	L	L	ML	Bsifrine	L	VL	L	Bteghrine	L	L	ML
Chaouiye	L	L	ML	Chouaya El-Matn	L	L	ML	Choueir	L	VL	L
Chrine	L	L	L	Dahr El Sawan El-Mat	L	L	L	Daychouniyeh	L	ML	M
Dbayeh	L	M	M	Deir Chamra	L	VL	L	Deir Mar Abda el Mch	L	L	L
Deir Mar Roukouz	L	M	M	Deir Tamiche	L	L	ML	Dik El-Mehdi	L	ML	ML
Dikwaneh	L	M	M	Douar El-Matn	L	L	L	Fanar	L	ML	ML
Fraike	L	L	L	Haret El-Ballaneh	L	ML	M	Hbous	L	ML	M
Himlaya	L	L	L	Jal El Did	L	M	M	Jdeideh El-Metn	L	M	M
Jouar El-Matn	L	L	L	Jouret El-Ballout	L	L	ML	Kaaqour	L	VL	L
Kfar Aaqab	L	L	L	Kfertay El-Matn	L	L	L	Khenchara	L	VL	L
Khillet El-Mtain	L	VL	L	Konnabat Broummana	L	L	ML	Konnabat Salima	L	VL	L
Machraah El-Matn	L	VL	L	Majdel Tarchich	ML	M	M	Majzoub	L	ML	M
Mansouriyeh El-Metn	L	M	M	Mar Boutros Karm Et-	L	L	L	Mar Chaya et Mzekke	L	L	ML
Mar Moussa Ed-Douar	L	VL	L	Marjaba	L	L	ML	Masqa	L	L	L
Mayasse	L	L	L	Mazraat Deir Aoukar	L	ML	M	Mazraat El-Hadirat	L	ML	ML
Mazraat Yachouh	L	M	M	Mchikha	L	L	ML	Menqlet Mezher	L	ML	M
Mhaydseh Matn	L	L	ML	Mkalles	L	M	M	Mrouj	L	L	M
Mtain	ML	M	M	Mtayleb	L	ML	M	Nabay	L	L	ML
Naccache	L	ML	M	Ouadi Chahine	L	VL	L	Ouadi El-Karm El-Mat	L	VL	L
Ouata El-Mrouj	L	L	ML	Ouyoun El-Matn	L	VL	L	Qornet Chehwan	L	L	ML
Qornet El-Hamra	L	L	ML	Roumieh	L	L	ML	Sfeilet Bikfaya	L	L	L
Sinn El-Fil	L	M	M	Zabbougha	L	VL	L	Zalqa	L	M	M



Zarououn	L	VL	L	Zekrite	L	L	ML	Zighrine El-Matn	L	L	ML
Zouk El-Khrab	L	M	M								

## Chouf

Municipality	30-Nov	01-Dec	02-Dec	Municipality	30-Nov	01-Dec	02-Dec	Municipality	30-Nov	01-Dec	02-Dec
Aalmane El-Chouf	L	ML	M	Aammqi El-Chouf	L	L	M	Ain Ouzein	L	L	M
Ain Qani	L	ML	M	Ain Zhalta	ML	ML	M	Ainbal	L	L	ML
Amatour	L	L	M	Anout	L	L	M	Atrine	L	ML	M
Baadarane	L	ML	M	Baaqline	L	L	M	Baasir	L	M	M
Barja	L	M	M	Barouk	L	ML	M	Bater	L	ML	M
Batloun	L	M	M	Bayqoun	L	M	M	Bchetfine	L	L	M
Beiteddine	L	L	M	Benouati Ech-Chouf	L	L	ML	Berjein	L	L	ML
Bireh et Mtalleh	L	M	M	Biret El-Chouf	L	M	M	Bkechtine Ouel Mchei	L	L	L
Bkifa El-Chouf	L	L	ML	Botme	L	L	M	Bqaiaa Ech-Chouf	L	L	ML
Bsaba El-Chouf	L	L	M	Chammis El-Chouf	L	ML	M	Chehim	L	L	ML
Chemaarine	L	L	ML	Chourit	L	L	M	Daher El-Chouf	L	L	ML
Dalhoun	L	L	M	Damour	L	M	M	Daraya El-Chouf	L	L	ML
Deir El-Moukhalles	L	L	ML	Deir Baba	L	L	M	Deir Dourit	L	L	ML
Deir El-Qamar	L	ML	M	Deir Kouche	L	L	M	Dibbieh	L	L	ML
Dmit	L	L	M	Fouara Jaafar	L	L	M	Fraidis El-Chouf	ML	M	M
Ghabet Jaafar	L	L	M	Gharife	L	L	ML	Haret Jandal	L	ML	M
Hasrout	L	L	M	Jadra	L	M	M	Jahlieh	L	L	M
Jbeih El-Chouf	L	ML	M	Jdeidet El-Chouf	L	ML	M	Jiyeh	L	M	M
Jleilyeh	L	L	M	Jmailiyeh	L	ML	M	Joun	L	L	M
Kahlounie El-Chouf	L	M	M	Ketermaya	L	M	M	Kfar Faqoud	L	L	M
Kfar Hamal	L	M	M	Kfar Him	L	ML	M	Kfar Katra	L	ML	M
Kfar Niss	L	ML	M	Kfar hay	L	ML	M	Kfarnabrakh	L	ML	M
Khirbet Bisri	L	L	ML	Knayse El-Chouf	L	L	M	Maaniyeh	L	ML	M
Maasser Beiteddine	L	ML	M	Maasser El-Chouf	ML	M	M	Majdalouna	L	ML	M
Majdel El-Meouch	L	ML	M	Mazboud	L	L	M	Mazmoura	L	L	M
Mazraat El Chouf	L	ML	M	Mazraat El Daher	L	L	ML	Mazraat El-Douair	L	L	M
Mechref	L	L	ML	Mghairie	L	ML	M	Mghayrie El-Chouf	L	L	ML
Moukhtara	L	ML	M	Mrusti	L	ML	M	Mtolle	L	L	M
Naameh	L	M	M	Niha El-Chouf	L	ML	M	Ouadi Abou Youssef	L	VL	L
Ouadi Ed-Deir	L	ML	M	Ouadi El-Sit	L	ML	M	Ouadi bnehlay	L	L	ML
Qraibeh	L	ML	M	Qreiaa	L	VL	L	Rmayle El-Chouf	L	M	M
Semqaniyeh	L	M	M	Sibline	L	M	M	Sirjbeil	L	L	M
Warhanieh	ML	M	M	Werdaniyeh	L	M	M	Zaarourieh	L	L	M

## Baabda

Municipality	30-Nov	01-Dec	02-Dec	Municipality	30-Nov	01-Dec	02-Dec	Municipality	30-Nov	01-Dec	02-Dec
Abadiyeh	L	L	ML	Ain Mouaffaq	L	L	M	Araiya	L	L	ML
Arbaniyeh	L	VL	L	Arsoun	L	VL	L	Baabda	L	ML	M
Baalchmey	L	ML	M	Bmaryam	L	ML	M	Bourj El-Brajneh	L	M	M
Boutchay	L	ML	M	Bsaba Baabda	L	ML	M	Btekhney	L	L	M
Btibyat	L	ML	M	Bzabdine	L	L	L	Chbeniyeh	L	M	M
Chiyah	L	M	M	Chmeisset Baabda	L	L	M	Chouit	L	L	ML
Deir El-harf	L	L	ML	Deir Khouna	L	ML	M	Dlaybeh	L	VL	L

Falougha	ML	M	M	Furn El-Chebbak	L	M	M	Hadath Beyrouth	L	M	M
Halaliyeh Baabda	L	L	ML	Hammana	L	M	M	Haret El Sett	L	L	ML
Haret Hamze	L	ML	M	Haret Hreik	L	M	M	Hasbaiya El-Metn	L	VL	L
Jouar El-Hoz	L	L	L	Jouret Arsoun	L	VL	L	Kfar Chima	L	M	M
Kfar Selouane	ML	ML	M	Khalouat Baabda	L	M	M	Kneisset Baabda	L	VL	L
Laylakeh	L	M	M	Louayzeh Baabda	L	ML	M	Merdache	L	ML	M
Mzairaa Baabda	L	L	ML	Ouadi Chahrour El OI	L	ML	M	Ouadi Chahrour El So	L	L	ML
Qalaa Baabda	L	ML	M	Qhraybe Baabda	L	ML	M	Qobbayaa	L	M	M
Qornayel	L	L	L	Qortada	L	VL	L	Qrayeh Baabda	L	ML	M
Qsaibeh Baabda	L	L	L	Qtale Baabda	L	ML	M	Ras El Metn	L	L	ML
Ras El-Haref	L	M	M	Rouayset El-Ballout	L	L	ML	Salima Baabda	L	VL	L
Tahouitat El Ghadir	L	M	M	Tarchich	ML	ML	M	Zandouqa	L	VL	L

## Aley

Municipality	30-Nov	01-Dec	02-Dec	Municipality	30-Nov	01-Dec	02-Dec	Municipality	30-Nov	01-Dec	02-Dec
Abey	L	ML	M	Aghmid	L	ML	M	Ain Dara	ML	M	M
Ain Drafil	L	L	ML	Ain El Halazoun	L	ML	M	Ain El-Rmmaneh	L	L	L
Ain Jedideh	L	ML	M	Ain Ksour	L	L	M	Ain Onoub	L	ML	M
Ain Traz	L	ML	M	Ainab	L	L	M	Aley	L	ML	M
Aramoun	L	ML	M	Aytat	L	ML	M	Azouniyeh	L	M	M
Baawerta	L	L	ML	Badghan Oua Wadi Bad	L	M	M	Bassatine	L	ML	M
Bayssour	L	ML	M	Bchamoun	L	ML	M	Bdadoun	L	L	ML
Behouara	L	ML	ML	Bennay	L	ML	M	Bhamdoun El-Dayaa	L	M	M
Bhamdoun El-Mhatta	L	M	M	Bkhechthey	L	ML	M	Bleibel	L	L	M
Bmakine	L	ML	M	Bmehray	ML	M	M	Bouzrid	L	L	M
Bserrine	L	M	M	Bsous	L	L	L	Btalloun	L	M	M
Btater	L	M	M	Chanay	L	M	M	Charoun	L	M	M
Chartoun	L	L	M	Chemlane	L	ML	M	Choueifat El-Aamrous	L	M	M
Choueifat El-Oumara	L	M	M	Choueifat El-Quoubbe	L	M	M	Dakkoun	L	L	M
Deir Qoubel	L	L	M	Dfoun	L	ML	M	Douair El Remmaneh	L	L	ML
Ghaboun	L	ML	ML	Habramoun	L	L	ML	Homs Oua Hama	L	ML	M
Houmal	L	ML	M	Jisr El Qadi	L	L	M	Kehaleh	L	L	ML
Keyfoun	L	ML	M	Kfar Aamey	L	ML	M	Kommatyeh	L	ML	M
Maasrati	L	ML	M	Majdel Baana	L	M	M	Mansourieh et Ain El	L	M	M
Mazraat El-Nahr	L	L	M	Mchakhte	L	ML	M	Mecherfeh	L	ML	M
Mejdlaya	L	ML	M	Mrayjat	ML	M	M	Ramliyah	L	ML	M
Rechmaya	L	ML	M	Rejmeh	L	ML	ML	Remhala	L	ML	M
Rouayset El Neemane	L	ML	M	Saoufar	L	M	M	Selfaya	L	L	M
Sirhmoul	L	L	M	Souq El Ghareb	L	ML	M	Taazanieh	L	M	M

## Kesrouane

Municipality	30-Nov	01-Dec	02-Dec	Municipality	30-Nov	01-Dec	02-Dec	Municipality	30-Nov	01-Dec	02-Dec
Achkout	L	L	L	Adma Oua Dafneh	L	ML	ML	Ain Ed-Delbe Kesroua	L	L	L
Ain El-Rihane	L	L	ML	Aintoura Kesrouane	L	ML	M	Ajaltoun	L	L	L
Akaybeh Kesrouane	L	M	M	Aramoun Kesrouane	L	L	L	Azra ouel Ozor	L	L	ML
Ballouneh	L	L	L	Batha	L	VL	L	Bekaatat Achkout	L	L	ML
Bekaatat Kanaan	L	L	L	Bizhel	L	L	L	Bouar	L	ML	ML
Bqaatouta	L	L	ML	Bqaq Ed-Dine	L	ML	ML	Bzommar	L	L	L



Chahtoul	L	L	L	Chnaniir	L	L	L	Chouan	L	L	L
Daraya Kesrouane	L	L	L	Darououn	L	L	L	Deir Baqlouch	L	L	ML
Dlebta	L	VL	L	Eghbeh	L	VL	VL	Faraya	L	L	M
Fatka	L	L	ML	Feytroun	L	L	L	Ghazir	L	L	ML
Ghbaleh Kesrouane	L	L	ML	Ghedrass	L	L	L	Ghosta	L	VL	L
Ghynéh	L	L	ML	Harharaya w Kattine	L	L	L	Harissa Kesrouane	L	L	ML
Hayata	L	VL	L	Hosein	L	L	L	Hrajel	L	L	M
Jdeideh Ghazir	L	L	L	Jeita	L	L	ML	Jounieh Ghadir	L	ML	M
Jounieh Haret Sakhr	L	M	M	Jounieh Salel Alma	L	ML	M	Jounieh Sarba	L	M	M
Jouret Bedrane	L	L	ML	Jouret Mhad	L	L	L	Jouret Termos	L	L	ML
Kfar Debiane	L	L	ML	Kfar Tay Kesrouane	L	VL	L	Kfar Yassine	L	M	M
Kfour Kesrouane	L	L	L	Kharayeb Nahr Ibrahi	L	L	L	Klayaat Kesrouane	L	VL	L
Maarab	L	VL	L	Maaysra Kesrouane	L	L	ML	Mayrouba	L	L	ML
Mazraat Er-Ras	L	ML	M	Mazraat Mrah El-Mir	L	VL	L	Mchaa El Ftouh	M	M	M
Mchaa Faraya	L	L	M	Mchaa Kfar Dibiane	ML	ML	M	Mghaer	L	VL	L
Mradiyeh	L	L	L	Nahr Ed-Dahab	L	L	L	Nammoura Kesrouane	L	L	L
Ouata El Jaouz	L	L	L	Ouata Sillam	L	M	M	Raachine	L	VL	L
Rayfoun	L	L	L	Safra Kesrouane	L	ML	M	Shayle Kesrouane	L	L	ML
Tabarja	L	ML	M	Yahchouch	L	L	L	Zaaytreh	L	L	L
Zeytoun	L	ML	ML	Zouk Mikael	L	M	M	Zouk Mosbeh	L	M	M

## Baalbek\_Hermel

### Baalbek

Municipality	30-Nov	01-Dec	02-Dec	Municipality	30-Nov	01-Dec	02-Dec	Municipality	30-Nov	01-Dec	02-Dec
Aadous	L	M	M	Aamchki	L	L	ML	Aarsal	L	ML	ML
Ain Baalbek	L	ML	ML	Ain Bourday	ML	M	M	Ain El-Benye	ML	M	M
Ain El-Jaouz Baalbek	ML	ML	ML	Ain El-Siya Chadoura	L	ML	ML	Al Khodr Baalbek	L	M	M
Al Nabi Chit	L	M	M	Aynata Baalbek	ML	M	M	Baalbek	ML	M	M
Bachwat	M	M	M	Barqa	ML	M	M	Bednayel Baalbak	ML	M	M
Beit Chama	L	M	M	Bijjaje	L	ML	ML	Bouday	ML	M	M
Brital	ML	M	M	Btadi	ML	M	M	Chaat	L	M	M
Chaibe	ML	ML	ML	Chlifa	ML	M	M	Chmestar	L	M	M
Dar El-Oussa	M	M	M	Deir El-Ahmar	ML	M	M	Deir Mar Maroun Baal	L	ML	M
Douris	ML	M	M	Fakiha	L	M	M	Hadath Baalbek	L	M	M
Ham	ML	M	M	Haour Taala	L	M	M	Hizzine	L	M	M
Hlebta	L	L	M	Hosh Barada	L	M	M	Hosh El Dahab	L	M	M
Hosh El Snid	L	M	M	Hosh El-Nabi	L	M	M	Hosh El-Rafiq	L	M	M
Hosh Tal Safiya	L	M	M	Hrebta	L	ML	M	laat	ML	M	M
Jebaa	L	M	M	Jenta	ML	M	M	Kfar Dabach	L	M	M
Kfar Dane	L	M	M	Khraibeh El-Hermel	L	L	L	Khreibet Baalbek	L	M	M
Kneisset Baalbek	ML	M	M	Labueh	L	ML	ML	Maarboun	ML	M	M
Majdaloun	L	M	M	Maqneh	ML	M	M	Mazraat Beit Mcheik	ML	M	M
Misraya	L	M	M	Moqraq	L	ML	ML	Nabha El-Damdoum	ML	M	M
Nabi Chbay	ML	M	M	Nabi Osman	L	ML	ML	Nahleh baalbek	L	ML	ML
Ouadi El-Oss	L	L	M	Qaa Baayoun	L	M	M	Qaa Jouar Maqiye	L	M	M
Qaa Ouadi El-Khanzir	L	M	M	Qah Baalbek	L	M	M	Qarha Baalbek	ML	M	M

Qsarnaba	L	M	M	Ram Baalbek	ML	M	M	Ras Baalbek El Sahl	L	M	M
Ras Baalbek El-Charq	L	M	M	Riha	ML	M	M	Saaide	L	M	M
Sboubba	L	L	L	Seriine El-Tahta	L	M	M	Slouqi	ML	M	M
Taiba Baalbek	L	M	M	Talia	L	M	M	Taraiya	L	M	M
Temnin El Fawqa	L	M	M	Temnin El-Tahta	L	M	M	Tfail	ML	ML	ML
Yahfoufa	ML	M	M	Yammouneh	ML	M	M	Younine	L	ML	M
Zboud	L	ML	M								

## Hermel

Municipality	30-Nov	01-Dec	02-Dec	Municipality	30-Nov	01-Dec	02-Dec	Municipality	30-Nov	01-Dec	02-Dec
Charbine El-Hermel	VL	VL	L	Hermel Jbab	L	ML	M	Hermel	L	ML	M
Maaysra El-Hermel	VL	L	M	Michaa Mrjhine	L	L	ML	Ouadi Faara	L	ML	M
Ras Baalbek - Ouadi	L	M	M	Ras Baalbek El Gharb	L	ML	M	Zighrine	L	L	ML

## Akkar

### Akkar

Municipality	30-Nov	01-Dec	02-Dec	Municipality	30-Nov	01-Dec	02-Dec	Municipality	30-Nov	01-Dec	02-Dec
Aain Tinta	L	VL	M	Aaiyat	L	L	M	Aakkar El-Aatiqa	L	L	L
Aamar Akkar	L	L	M	Aamar El Baykat	L	L	M	Aamayer	L	ML	M
Aamriyet Akkar	L	VL	M	Aandqet	L	L	M	Aarmeh	L	L	M
Aarqa	L	L	M	Aawaynat	L	L	M	Aayoun Akkar	L	L	M
Abboudiye	VL	M	M	Ain El-Zeit	L	L	M	Ain Yaaqoub	L	L	ML
Akroum	L	L	M	Aridet Cheikh Zennad	VL	M	M	Baldeh w Mazraat Bal	L	ML	M
Barcha	VL	M	M	Bardeh	L	L	M	Bebnine	L	L	M
Beino	L	L	M	Beit Ayoub	L	L	M	Beit El-Haouch	L	L	M
Beit Mellat	L	L	M	Beit Younes	L	VL	ML	Berbara Akkar	L	VL	M
Berqayel	L	L	M	Bezbinna	L	VL	L	Bireh Akkar	L	VL	M
Borj	L	L	M	Bqerezla	L	L	M	Bzal	L	L	ML
Chane	L	VL	L	Chaqdouf	L	L	M	Charbila	L	ML	M
Cheikh Mohammad	L	ML	M	Cheikh Taba Es-Sahl	L	ML	M	Cheikh Taba	L	VL	M
Cheikh Zennad	VL	M	M	Cheikhlar	L	L	M	Chir Hmairine	VL	M	M
Daghle	L	VL	M	Dahr Laissine	L	L	M	Darine	VL	ML	M
Dawra	L	L	ML	Dawsa w Baghdadi	L	L	M	Dayret Nahr El-Kabir	L	M	M
Deir Dalloum	L	L	M	Deir Jennine	L	L	M	Denbou	L	VL	L
Dibbabiyyeh	L	L	M	Douair Aadwiyeh	L	L	M	Fassikine	L	VL	M
Fnaydek	L	L	ML	Fraydes Akkar	L	VL	M	Ghazayle	VL	M	M
Habchit	L	VL	L	Hakour	L	L	M	Halba	L	ML	M
Haouchab	VL	ML	M	Hayssat	L	M	M	Haytla	VL	M	M
Hayzouq	L	L	M	Hedd	L	L	M	Hmaira Akkar	L	L	M
Hmaiss Akkar	VL	M	M	Hnaider	L	M	M	Hokr Ed-Dahri	VL	M	M
Hokr Etti	L	M	M	Hokr Jouret Srar	VL	ML	M	Houaich	L	VL	ML
Hrar	L	L	ML	Idbil	L	VL	M	Ilal	L	L	M
Janine	VL	M	M	Jdeidet El-Joumeh	L	L	M	Jdeidet El-Kaiteh	L	L	M
Jebayel	L	L	M	Kafr	L	ML	ML	Kafr	L	L	M
Karm Asfour	L	L	M	Kfar Melki Akkar	L	M	M	Kfar Noun	L	VL	M
Kfarharra	VL	ML	M	Khalsa	L	L	M	Kharnoubet Akkar	VL	M	M



Khirbet Daoud Aakkar	L	L	M	Khirbet El Remmane	L	L	M	Khirbet Shar	L	VL	M
Khoreybet El-Jindi	L	ML	M	Khreibet Aakkar	L	L	ML	Kneisset Aakkar	VL	M	M
Kneisset Hnaider	L	M	M	Knisse	VL	ML	M	Kroum El-Aarab	L	ML	M
Kwachra	L	L	M	Kweykhat	VL	ML	M	Machta Hammoud	L	ML	M
Majdala	L	L	M	Majdel Akkar	L	L	M	Mar Touma	L	L	M
Marlaya Melhem	L	L	M	Mashha	L	L	M	Massouidiye	VL	M	M
Mazraat Beit Ghattas	L	L	M	Mazraat En-Nahriye	L	L	M	Mechmech	L	L	ML
Memneh	L	VL	L	Mhammara	L	ML	M	Mighraq Aakkar	VL	M	M
Minyara	L	L	M	Moqayteh	L	M	M	Mounjez	L	VL	M
Msalla	L	L	M	Mzeihmeh	L	M	M	Nfaiseh	L	L	M
Noura Et-Tahta	L	L	M	Ouadi El-Haour	L	ML	M	Ouadi El-Jamous	L	L	M
Ouyoun El-Ghizlane	L	L	M	Qaabarine	L	M	M	Qabaait	L	VL	L
Qachlaq	L	ML	M	Qantara Aakkar	L	VL	M	Qarha Aakkar	L	M	M
Qarqaf	L	L	M	Qboula	L	L	M	Qleiaat Aakkar	VL	M	M
Qloud El-Baqie	L	L	M	Qobaiyat Aakkar	L	L	M	Qobbat Chamrat	L	L	M
Qorayat	L	VL	ML	Qornet Aakkar	L	L	M	Qsair Aakkar	L	VL	M
Rahbe	L	L	ML	Rihaniyet Aakkar	VL	ML	M	Rmah	L	L	M
Rmoul	L	M	M	Saadine	VL	ML	M	Sadaqa	L	L	M
Saidnaya	L	M	M	Sammouniye	VL	M	M	Sayssouq	L	L	M
Semmaqiye	VL	M	M	Semmaqli	L	L	M	Sfinet El-Dreib	L	L	M
Sfinet El-Qaitaa	L	L	ML	Sindyanet Zeidane	L	VL	ML	Souaisset Aakkar	L	L	M
Srar	VL	M	M	Tal Abbas El Gharby	VL	M	M	Tal Abbas El-Charqy	VL	L	M
Tal Biret	VL	M	M	Tal Hmayra	VL	ML	M	Tal Maayan Tal Kiri	VL	M	M
Tal Sibel	L	M	M	Tallet Chattaha	L	L	M	Tikrit	L	L	M
Tleil	L	M	M	Tshea	L	L	L	Zawarib	L	VL	M
Zouq El Hosniyeh	L	L	M	Zouq El-Haddara	L	L	M	Zouq El-Hbalsa	L	L	M
Zouq El-Moqachrine	L	L	M								

## Sud

### Sour

Municipality	30-Nov	01-Dec	02-Dec	Municipality	30-Nov	01-Dec	02-Dec	Municipality	30-Nov	01-Dec	02-Dec
Aaiyeh	L	M	M	Aalma El-Chaab	L	ML	M	Aaytit	L	M	M
Abbassiyeh Sour	L	M	M	Abou Chech	L	ML	M	Ain Abou Abdallah	L	M	M
Ain Baal	L	M	M	Arzoun	L	M	M	Aziyeh	L	ML	M
Baflaya	L	M	M	Barich	L	M	M	Batouliyah	L	M	M
Bayad	L	ML	M	Bazouriyeh	L	M	M	Bediass	L	M	M
Bestiyat	L	M	M	Borj El Chemali	L	M	M	Borj En-Naqoura	L	ML	M
Borj Rahhal	L	M	M	Boustane	L	M	M	Btaychiyeh	L	ML	M
Chaaitiye	L	M	M	Chameh	L	L	M	Chehabiye	L	M	M
Chehour	L	L	M	Chihine	L	ML	M	Debaal Sour	L	M	M
Deir Amess	L	ML	M	Deir Kifa	L	M	M	Deir Qanoun El-Ain	L	M	M
Deir Qanoun El-Naher	L	M	M	Derdghaiya	L	M	M	Dhayra	L	ML	M
Halloussiyeh	L	M	M	Hamoul	L	L	M	Hanaouey	L	M	M
Henniye	L	M	M	Hmairi Sour	L	M	M	Iskandarouna Sour	L	L	M
Jbal El Botom	L	ML	M	Jebbin	L	M	M	Jennata	L	M	M
Jijim	L	L	M	Jouaiya	L	M	M	Kneisset Sour	L	M	M

Maarake	L	M	M	Maaroub	L	M	M	Majadel	L	ML	M
Majdalzoun	L	ML	M	Mansouri Sour	L	M	M	Marnba	L	L	M
Marouahine	L	L	M	Mazraat El-Zalloutiy	L	M	M	Mazraat Mechref	L	ML	M
Mazraat Tayr Semhat	L	L	M	Mheilib	L	M	M	Neffakhiyeh	L	M	M
Niha Sour	L	M	M	Ouadi Jilo	L	M	M	Qana	L	ML	M
Qolaileh Sour	L	M	M	Rechknanay	L	ML	M	Rmadiyeh	L	M	M
Selha Sour	L	M	M	Siddiqine	L	ML	M	Sour	L	M	M
Srifa	L	ML	M	Tayr Debbe	L	M	M	Tayr Felsay	L	M	M
Tayr Harfa	L	M	M	Touayri	L	ML	M	Toura	L	M	M
Yanouh Sour	L	M	M	Yarine	L	M	M	Zebqine	L	L	M

## Saida

Municipality	30-Nov	01-Dec	02-Dec	Municipality	30-Nov	01-Dec	02-Dec	Municipality	30-Nov	01-Dec	02-Dec
Aanqoun	L	ML	M	Aaqtanit	L	ML	M	Aarab Ej-Jall	L	ML	M
Aarab Tabbaya	L	ML	M	Abra Saida	L	M	M	Adloun	L	M	M
Adousiyeh	L	M	M	Ain-El-Deleb	L	ML	M	Arzai	L	M	M
Babliyah	L	M	M	Barty	L	ML	M	Bissariyeh	L	M	M
Bnaafoul	L	ML	M	Bqosta	L	M	M	Bramiy	L	ML	M
Daoudiyeh	L	M	M	Dareb El-Sim	L	ML	M	Erkay	L	ML	M
Ghassanieh	L	M	M	Ghazieh	L	M	M	Hajjeh	L	ML	M
Haret Saida	L	M	M	Hartiyeh	L	M	M	Hlaliye Saida	L	M	M
Insariyat	L	M	M	Jazira Saida	L	M	M	Kafar Bit	L	ML	M
Kaoutariyet El-Siyad	L	M	M	Kfar Chellal	L	L	M	Kfar Hatta Saida	L	ML	M
Kfar Milke Saida	L	ML	M	Khartoum	L	M	M	Khaziz	L	ML	M
Khirbet Ed-Douair Sa	L	M	M	Khirbet El-Bassal	L	M	M	Khrayeb Saida	L	M	M
Loubieh	L	M	M	Maghdouche	L	ML	M	Majdelyoun	L	M	M
Matariyet El-Choumar	L	M	M	Matayriyeh	L	ML	M	Mazraat 'Mseileh	L	M	M
Mazraat 'Snaiber	L	M	M	Mazraat Aarab Soukka	L	ML	M	Mazraat Deir Taqla	L	M	M
Mazraat El Yahouidiye	L	M	M	Mazraat El-Housseini	L	M	M	Mazraat El-Mhaydaleh	L	M	M
Mazraat El-Ouasta	L	M	M	Mazraat Jamjim	L	M	M	Mazraat Kaoutariyet	L	M	M
Mazraat Kfar Badda	L	M	M	Mazraat Oussamiyat	L	M	M	Mazraat Sari	L	M	M
Mazraat Sinai	L	M	M	Meemariyeh	L	ML	M	Merouaniyeh	L	ML	M
Miyeh ou Miyeh	L	ML	M	Najjariyeh	L	M	M	Qaaqaiyat El-Snaouba	L	M	M
Qnarit	L	ML	M	Qraiye Saida	L	ML	M	Saida Ed-Dekermane	L	ML	M
Saida El-Oustani	L	M	M	Saida El-Qadimeh	L	M	M	Saida Kefraya	L	ML	M
Saksakiyeh	L	M	M	Salhie Saida	L	M	M	Sarafand	L	M	M
Sfenta	L	L	ML	Tafahta	L	M	M	Tanbourit	L	L	M
Tebna	L	M	M	Zaghdraiya	L	L	M	Zeita	L	ML	M
Zrariyeh	L	M	M								

## Jezzine

Municipality	30-Nov	01-Dec	02-Dec	Municipality	30-Nov	01-Dec	02-Dec	Municipality	30-Nov	01-Dec	02-Dec
Ain El-Mir (El Estab)	L	ML	M	Anane	L	L	ML	Aramta	L	ML	M
Ariya	L	ML	M	Aychiyeh	L	ML	M	Azour	L	L	ML
Baba	L	L	ML	Bayssour Jezzine	L	ML	M	Benoueteh Jezzine	L	ML	M
Bhannine	L	ML	M	Bisri	L	L	ML	Bkassine	L	L	M
Bouslaya	L	L	L	Btedine El-Leqech	L	L	ML	Chbail	L	L	ML
Choualiq Jezzine	L	ML	M	Dahr Ed-Deir	L	L	ML	Deir El Qattine	L	L	ML



Demachqiyeh	L	M	M	Ghabbatiyeh	L	L	M	Harf Jezzine	L	L	ML
Hassaniyeh	L	L	M	Haytouleh	L	L	M	Haytura	L	L	ML
Hidab	L	L	ML	Homsiyeh	L	L	ML	Jabal Toura	L	ML	M
Jarmaq	L	ML	M	Jensnaya	L	ML	M	Jernaya	L	ML	M
Jezzine	VL	ML	M	Karkha	L	ML	M	Kfar Falous	L	ML	M
Kfar Houna	L	ML	M	Kfar Jarrah	L	M	M	Lebaa	L	ML	M
Louayzet Jezzine	VL	L	ML	Machmouche	L	L	M	Mahmoudiyeh Jezzine	L	ML	M
Maknounye Jezzine	L	L	ML	Maraat Ouazaiyeh	L	ML	M	Mazraat Daraya	L	ML	M
Mazraat El-Aarqoub	L	L	ML	Mazraat El-Mathane	L	VL	ML	Mazraat El-Rahbane	L	L	L
Mazraat Khallet Khaz	L	L	M	Mazraat Louzid (Loua	L	L	ML	Mazraat Qrouh	L	ML	M
Mazraat Tamra	L	M	M	Mazraat Zighrine Jez	L	L	ML	Mazraat	L	L	L
Mharbiyeh	L	ML	M	Midane Jezzine	L	L	ML	Mjeydel Jezzine	L	ML	M
Mlikh	L	L	ML	Mrah El-Hbasse	L	ML	M	Ouadi Baanqoudaine	L	ML	M
Ouadi El-Laymoun	L	ML	M	Ouardiyeh	L	L	L	Qabaa Jezzine	L	L	ML
Qatrani	L	ML	M	Qaytouleh	L	L	ML	Qtaleh Jezzine	L	L	ML
Rihane Jezzine	L	ML	M	Rimat	L	L	ML	Roum	L	L	ML
Roummanet	VL	ML	M	Sabbah	L	L	M	Saydoun	L	L	L
Sfaray	L	L	L	Snaya	L	L	ML	Sojoud	L	L	ML
Srayri	L	ML	M	Taaid	L	L	ML	Wadi Jezzine	L	L	ML
Zhalta	L	L	ML								

## Bekaa

### West Bekaa

Municipality	30-Nov	01-Dec	02-Dec	Municipality	30-Nov	01-Dec	02-Dec	Municipality	30-Nov	01-Dec	02-Dec
Aammiq BG	ML	M	M	Ain El Tineh BG	VL	ML	M	Ain Zebdeh	L	M	M
Ana	L	ML	M	Aytanit	L	ML	M	Baaloul BG	L	M	M
Bab Mareh	L	M	M	Chouberqiye Aammiq	ML	M	M	Dakoue	L	ML	M
Deir Ain El-Jaouze	L	M	M	Deir Tahniche	ML	M	M	Ghaza	ML	M	M
Harime El-Soughra	L	ML	M	Hoch Harimeh	ML	M	M	Jazira BG	ML	M	M
Jib Jennine	ML	ML	M	Kamed-El-Laouz	ML	ML	M	Kefraya BG	L	ML	M
Khiara El Atika	ML	M	M	Khiara	ML	M	M	Khirbet Qanafar	L	M	M
Lala	L	M	M	Lebbaya BG	ML	M	M	Loussa	L	M	M
Machghara	L	M	M	Manara (Hammara) BG	L	L	ML	Mansoura BG	ML	M	M
Marej BG	L	M	M	Maydoun	VL	ML	M	Ouaqf BG	ML	M	M
Qaraaoun	L	M	M	Qelya	L	M	M	Raouda (Istabel)	L	ML	M
Saghbine	L	M	M	Sohmor	ML	M	M	Soltan Yacoub el Ara	L	ML	M
Souairy	L	L	M	Sultan Yaacoub	ML	M	M	Tal Znoun	ML	M	M
Yehmor BG	ML	M	M	Zilaya	ML	M	M				

### Zahle

Municipality	30-Nov	01-Dec	02-Dec	Municipality	30-Nov	01-Dec	02-Dec	Municipality	30-Nov	01-Dec	02-Dec
Aanjar (Haouch Mouss	L	ML	M	Ablah	L	M	M	Ain Kfarzabad	L	ML	M
Ali-El-Nahri	L	M	M	Bar Elias	L	M	M	Bouarej	L	M	M
Cheberqiyet Tabet	L	M	M	Chtaura	L	M	M	Deir El Ghazal	L	M	M
Delhamiyet Zahle	L	M	M	Ferzol	L	M	M	Haouch El-Ghanam	L	M	M
Haouch Es-Siyadeh	L	M	M	Haouch Hala	L	M	M	Haouch Mandara	L	M	M

Haouch Qayssar	L	M	M	Hezerta	L	M	M	Hosh Moussa	L	M	M
Jdita	L	M	M	Kfarzabad	L	M	M	Ksara	L	M	M
Majdel Aanjar	L	L	ML	Makssi	L	M	M	Massa	L	M	M
Mazraat Er-Remtaniye	L	M	M	Mrayjat Zahle	L	M	M	Mzaraa Zahle	L	M	M
Nabi Ayla	L	M	M	Nasriyet Rizk	L	M	M	Nasriyet Zahle	ML	M	M
Niha Zahle	L	M	M	Ouadi Ed-Deloum	L	M	M	Ouadi El-Arayech	ML	M	M
Qaa El Rim	ML	M	M	Qab Elias	L	M	M	Qousaya	L	M	M
Rhit	L	M	M	Riyak	L	M	M	Saadnayel	L	M	M
Taal El-Akhdar	ML	M	M	Taalbeya	L	M	M	Taanayel	L	M	M
Talamara	L	M	M	Tcheflik Edde Haouch	ML	M	M	Tcheflik Qiqano	L	M	M
Terbol Zahle	L	M	M	Touaite Zahle	L	M	M	Zahle Aradi	L	M	M
Zahle El-Berbara	ML	M	M	Zahle El-Maallaqa	L	M	M	Zahle El-Midane	L	M	M
Zahle Er-Rassiye	ML	M	M	Zahle Haouch El-Ouma	L	M	M	Zahle Haouch El-Ouma	L	M	M
Zahle Haouch Ez-Zara	L	M	M	Zahle Maallaqa Aradi	L	M	M	Zahle Mar Antonios	ML	M	M
Zahle Mar Elias	L	M	M	Zahle Mar Gerios	L	M	M	Zahle Saydet En-Naja	L	M	M
Zebdoul	L	M	M								

## Rachaiya

Municipality	30-Nov	01-Dec	02-Dec	Municipality	30-Nov	01-Dec	02-Dec	Municipality	30-Nov	01-Dec	02-Dec
Ain Arab Rachaiya	L	L	M	Ain Ata	L	L	M	Ain Harche	ML	ML	M
Aqabe Rachaya	ML	ML	M	Ayha	ML	ML	M	Ayta El Fokhar	L	L	M
Bakifa Rachaya	ML	ML	M	Bakka	L	ML	M	Beit Lahya	ML	ML	M
Bireh Rachaiya	ML	ML	M	Daher El Ahmar	ML	ML	M	Deir El-Achayer	L	L	M
Heloua Rachaiya	L	L	M	Hoch El Qannabeh Rac	ML	ML	M	Kaoukaba Bou Arab	ML	ML	M
Kfar Danis	L	ML	M	Kfar Mechki	ML	ML	M	Kfar Qouq	L	L	M
Kherbet Rouha	ML	ML	M	Majdel Balhiss	ML	M	M	Mdoukha	L	ML	M
Mhaydseh Rachaiya	ML	ML	M	Nabi Safa	ML	M	M	Rachaiya	ML	ML	M
Rafid Rachaiya	ML	ML	M	Selsata (Mazraat Dei	L	L	L	Tannoura	ML	ML	M
Yanta	L	L	M								

## Beyrouth

### Beyrouth

Municipality	30-Nov	01-Dec	02-Dec	Municipality	30-Nov	01-Dec	02-Dec	Municipality	30-Nov	01-Dec	02-Dec
Achrafieh	L	M	M	Ain el-Mreisse	L	M	M	Bachoura	L	M	M
Beirut Central Distr	L	M	M	Marfai	L	M	M	Mazraa	L	M	M
Medaouar	L	M	M	Minet el-Hosn	L	M	M	Mwssaitbeh	L	M	M
Ras Beirut	L	M	M	Rmeil	L	M	M	Saifi	L	M	M
Zqaq el-Blat	L	M	M								