

Lebanon Fire Risk Bulletin



CIVIL DEDEFENCE

Refer to cadast table condition.

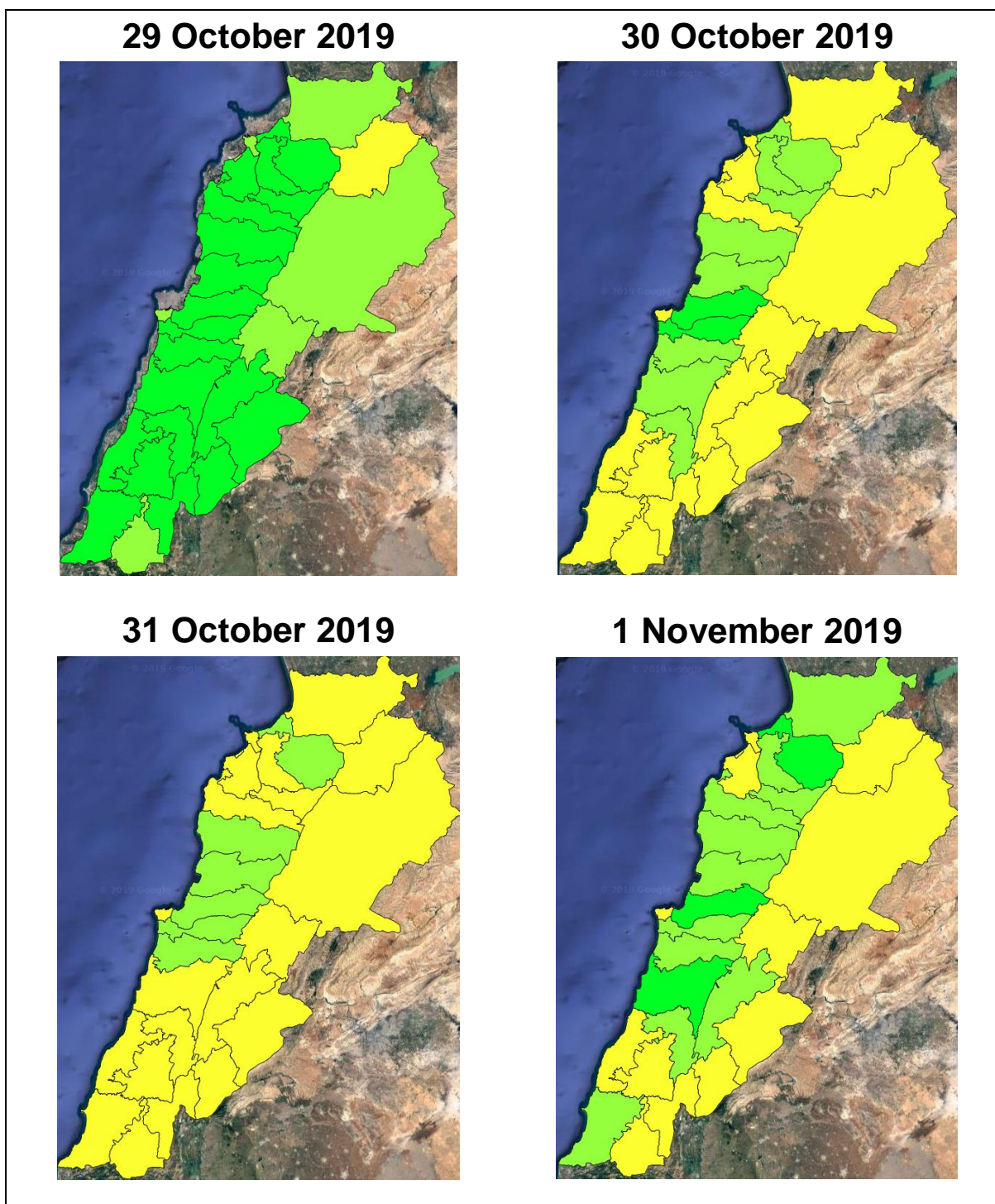
Please note that the indicated temperature is at 2 meters height from the ground.

General description of potential fire risk situation

Symbol	Level of risk	Meaning and actions
VL	Very low	Very low fire risk. Controlled burning operations can be hardly executed due to high fuel moisture content. Normally wildfires self-extinguish.
L	Low	Low fire risk. Controlled burning operations can be executed with a reasonable degree of safety.
ML	Medium low	Medium-low fire risk. Controlled burning operations can be executed in safety conditions. All the fires need to be extinguished.
M	Medium	Medium fire risk. Controlled burning operations would be avoided. All the fires need to be very well extinguished.
M	Medium high	Controlled burning is not recommended. Open flame will start fires. Cured grasslands and forest litter will burn readily. Spread is moderate in forests and fast in exposed areas. Patrolling and monitoring is suggested. Fight fires with direct attack and all available resources.
H	High	Ignition can occur easily with fast spread in grass, shrubs and forests. Fires will be very hot with crowning and short to medium spotting. Direct attack on the head may not be possible requiring indirect methods on flanks. Patrolling and monitoring the territory is highly suggested.
E	Extreme	Ignition can occur also from sparks. Fires will be extremely hot with fast rate of spread. Control may not be possible during day due to long range spotting and crowning. Suppression forces should limit efforts to limiting lateral spread. Damage potential total. Patrolling and monitoring the territory is highly suggested.

Beirut, 30 October 2019

FIRE RISK INDEX

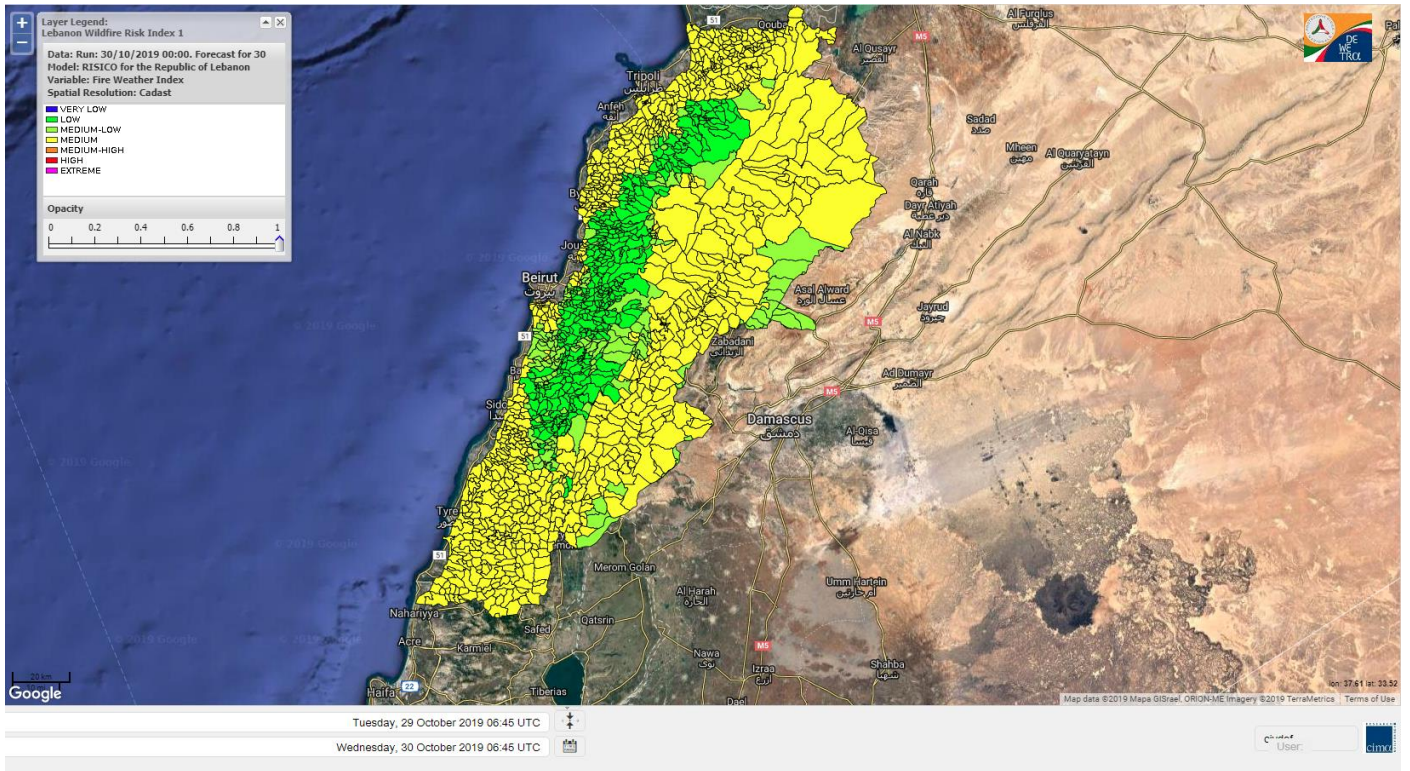


Layer Legend:
Lebanon Wildfire Risk Index 1

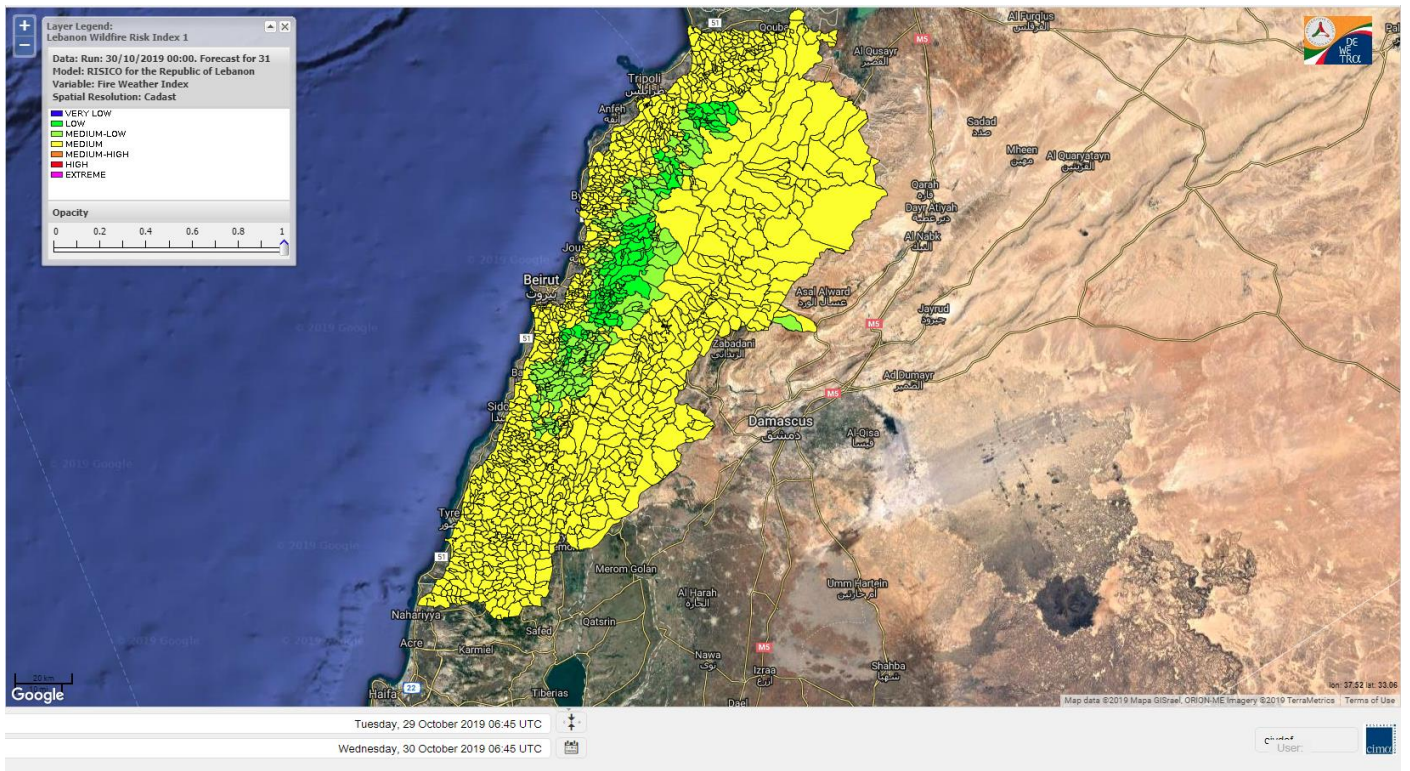
Data: Run: 30/10/2019 00:00. Forecast for 30
Model: RISICO for the Republic of Lebanon
Variable: Fire Weather Index
Spatial Resolution: Caza

- VERY LOW
- LOW
- MEDIUM-LOW
- MEDIUM
- MEDIUM-HIGH
- HIGH
- EXTREME

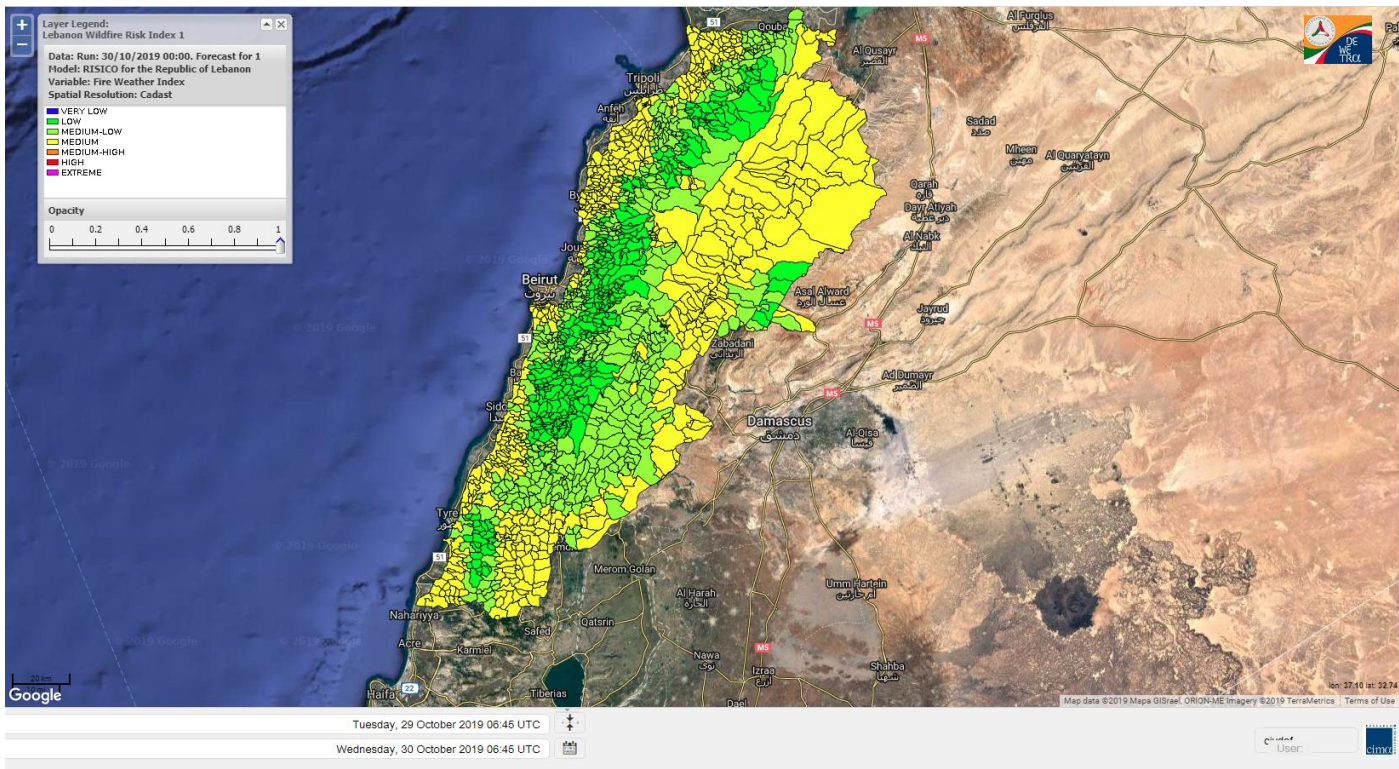
Lebanon for 30 October 2019



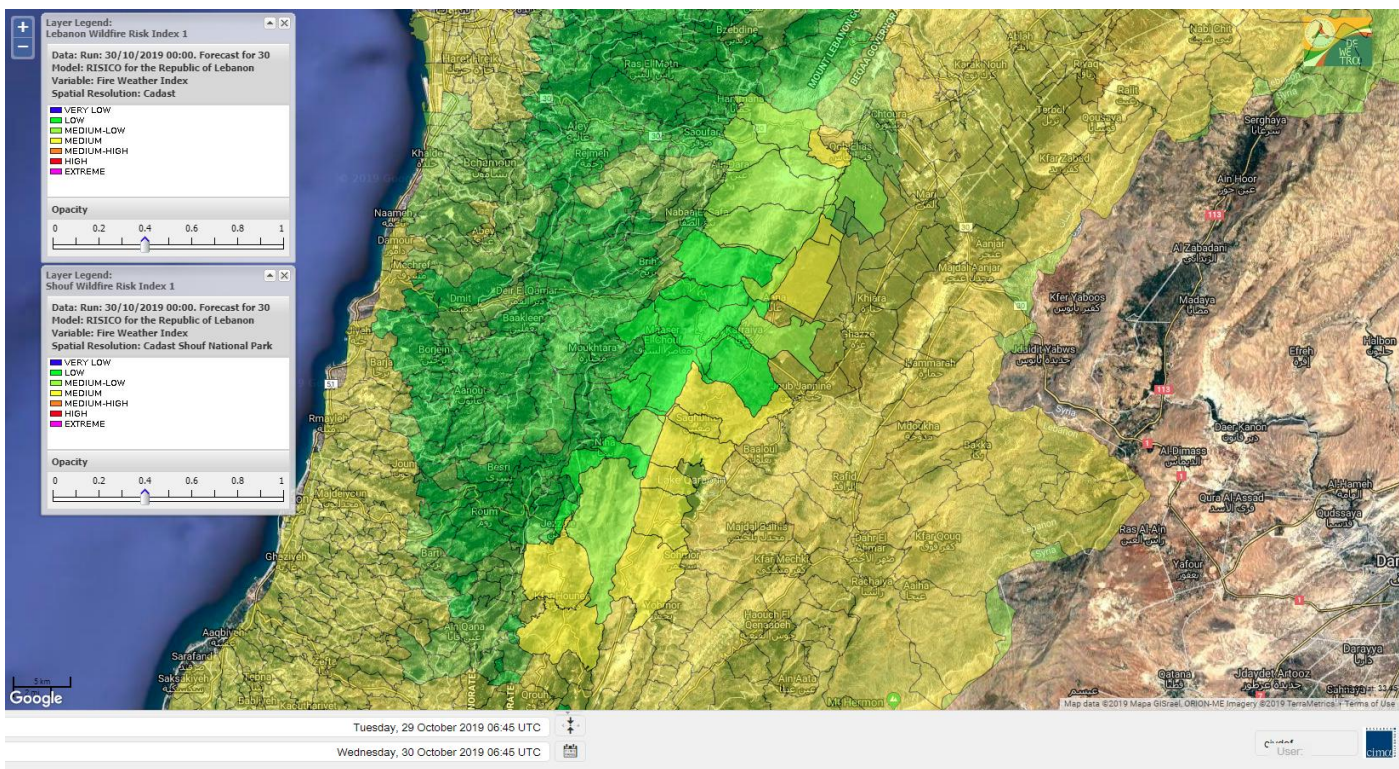
Lebanon for 31 October 2019



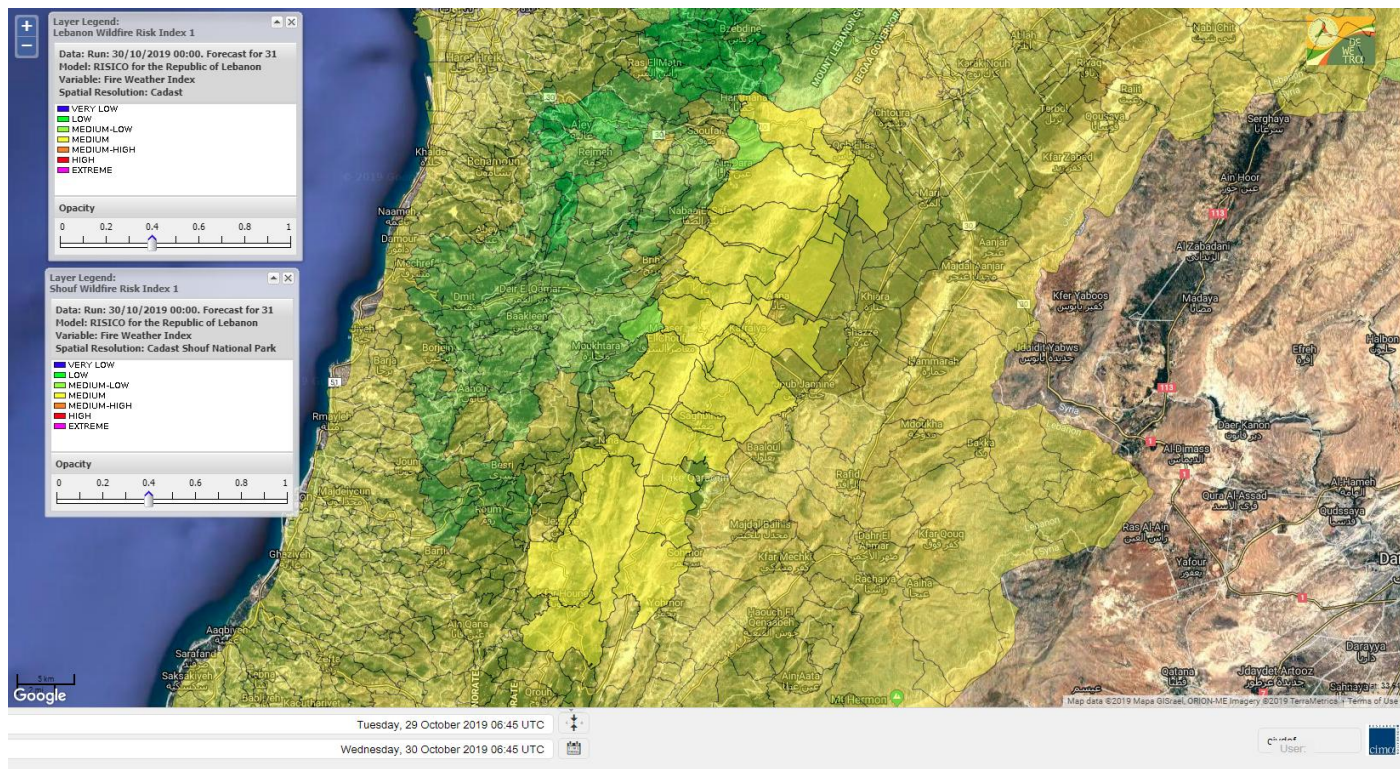
Lebanon for 1 November 2019



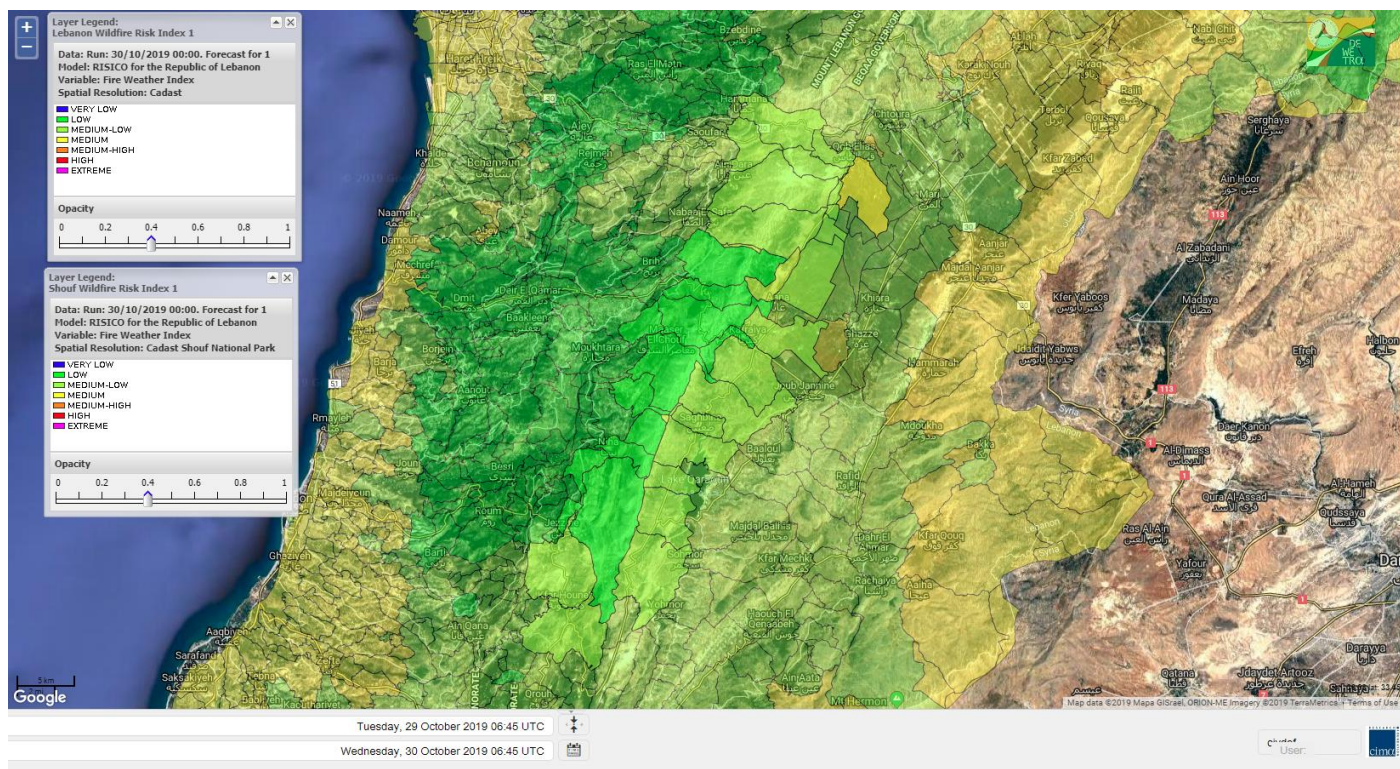
Shouf Biosphere Reserve Forecast for 30 October 2019



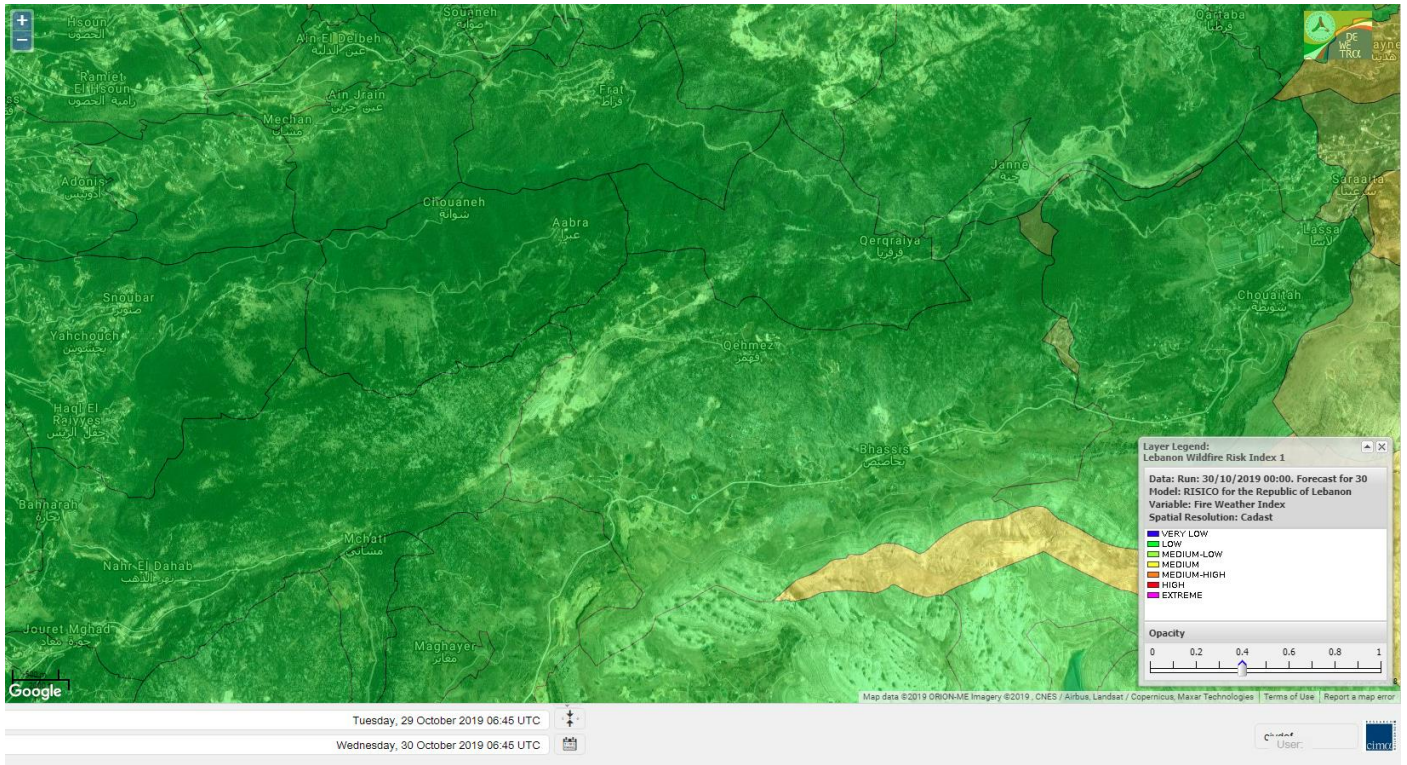
Shouf Biosphere Reserve Forecast for 31 October 2019



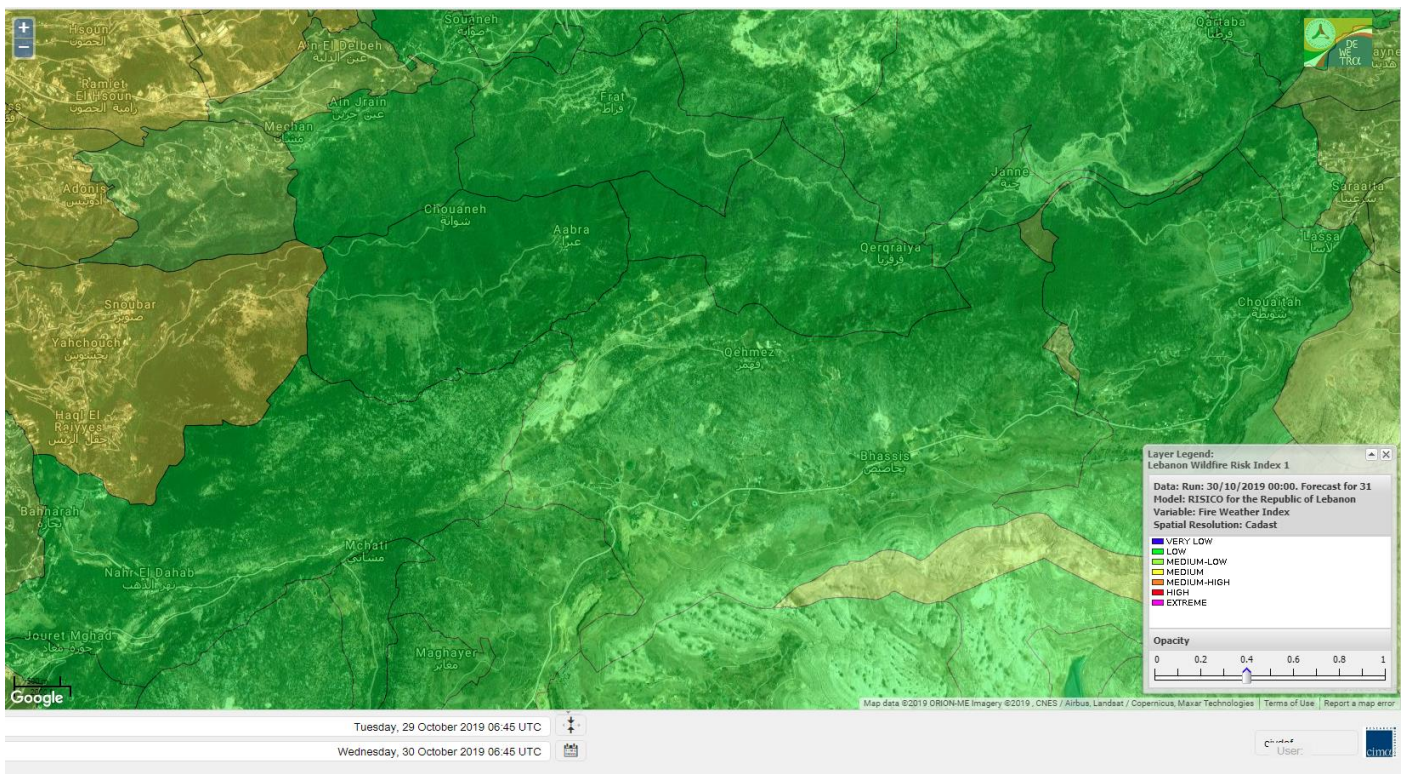
Shouf Biosphere Reserve Forecast for 1 November 2019



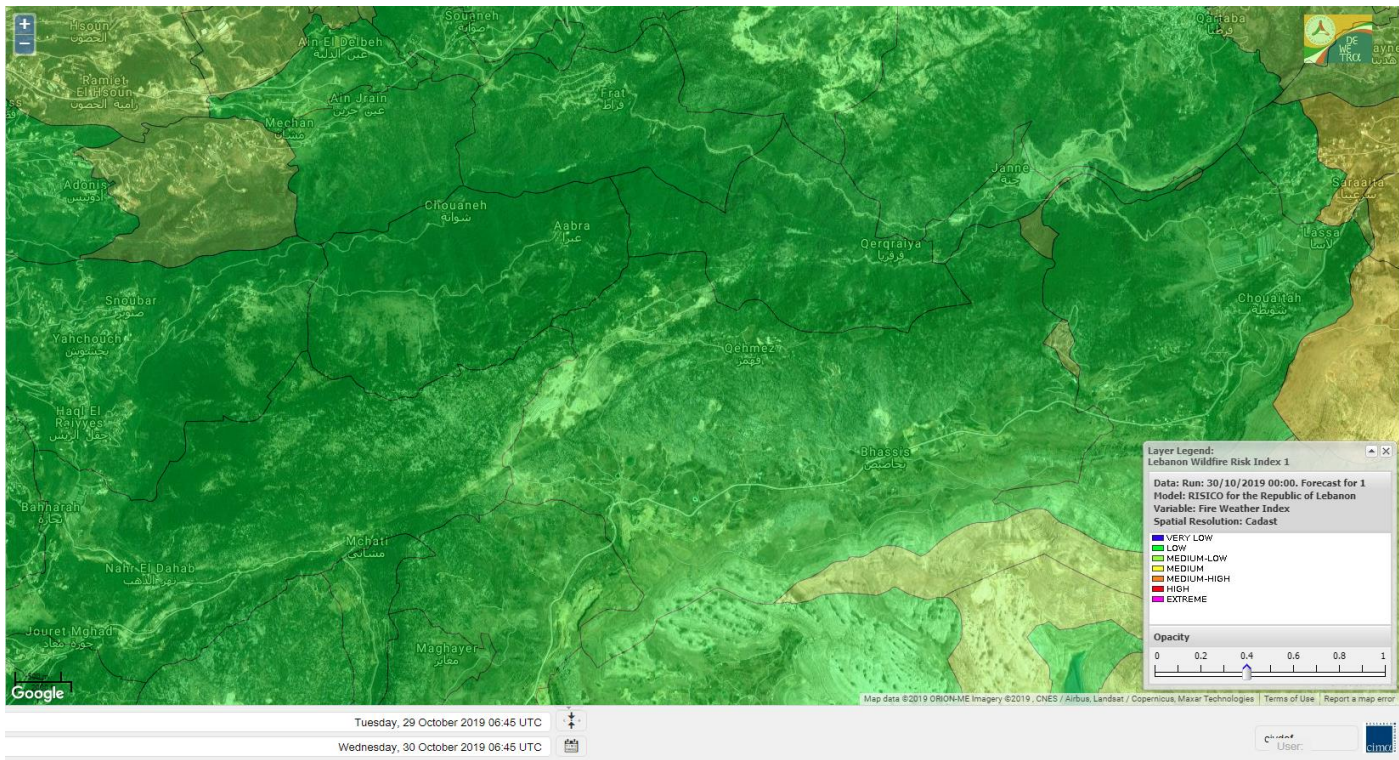
Jabal Moussa Reserve Forecast for 30 October 2019



Jabal Moussa Reserve Forecast for 31 October 2019



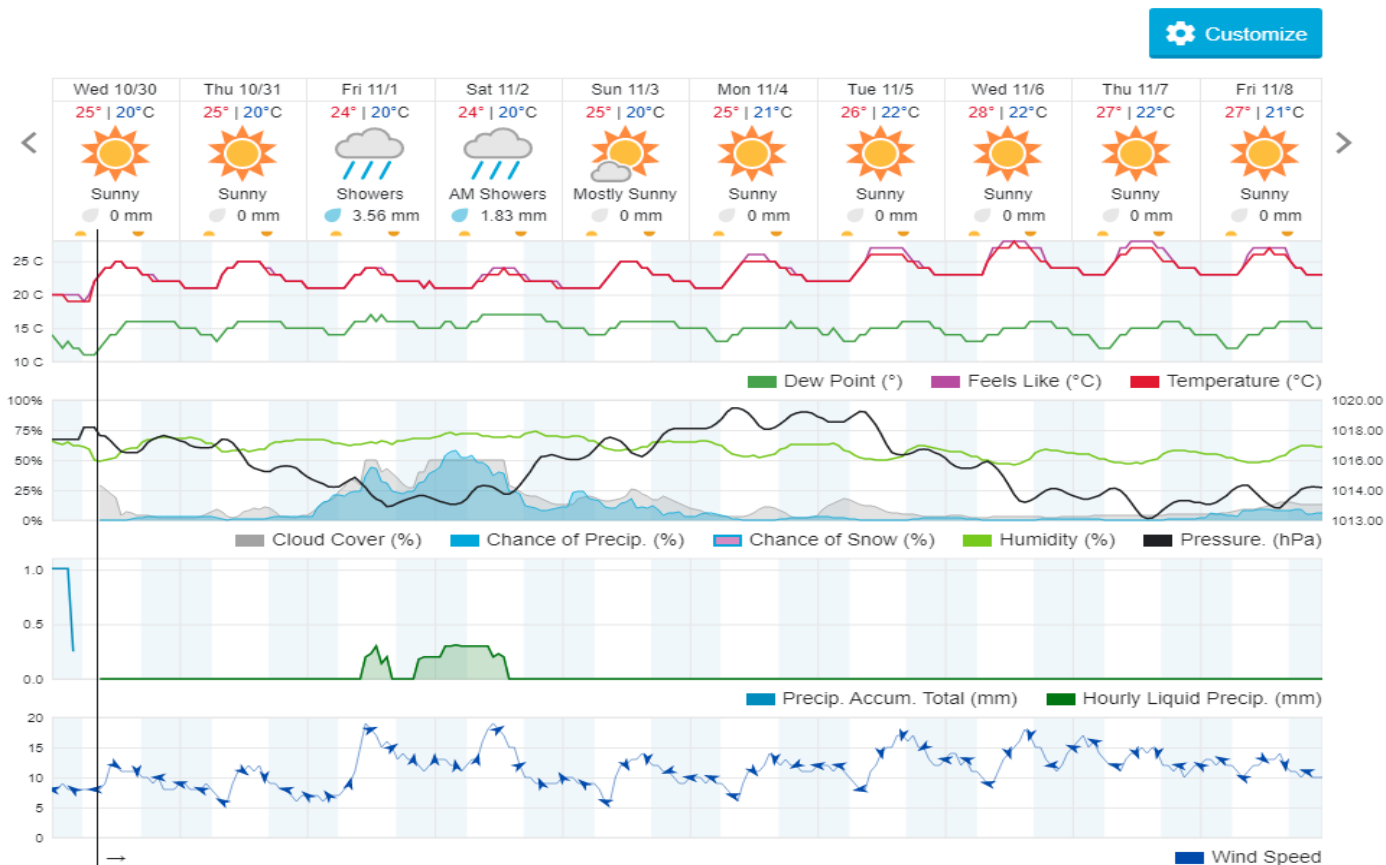
Jabal Moussa Reserve Forecast for 1 November 2019



Beirut, Beirut Governorate, Lebanon 10-Day Weather Forecast

25° ACHRAFIEH, RIZK STATION | CHANGE

TODAY HOURLY 10-DAY CALENDAR HISTORY WUNDERMAP



Nord

Koura

Municipality	30-Oct	31-Oct	01-Nov	Municipality	30-Oct	31-Oct	01-Nov	Municipality	30-Oct	31-Oct	01-Nov
Aaba	M	M	M	Afsaddiq	M	M	M	Ain Ekrine	M	M	M
Amioun	M	M	M	Anfeh	M	M	M	Badbhoun	M	M	M
Barghoun	M	M	M	Barsa	M	M	M	Batroumine	M	M	M
Bdebba	M	M	M	Bechmizine	M	M	M	Bednayel El-Koura	M	M	M
Bhabbouch El-Koura	M	M	M	Bkeftine	M	M	M	Bnehran	M	M	ML
Bqaiia El-Koura	M	M	M	Bsarma	M	M	M	Btaaboura	M	M	M
Bttram	M	M	M	Btouratij	M	M	M	Bziza	M	M	M
Dar Beechtar	M	M	M	Dar Chmezzine	M	M	M	Deddeh	M	M	M
Deir El-Balamand	M	M	M	Fih	M	M	M	Hraiche	M	M	M
Ijdaabrine	M	M	M	Kaftoun	M	M	M	Kefraya El-Koura	M	M	M
Kfarakka	M	M	M	Kfarhata	M	M	M	Kfarhazir	M	M	M
Kfarkahel	M	M	M	Kfarsaroun	M	M	M	Kosba	M	M	M
Mejdel el-Koura	M	M	M	Nakhle	M	M	M	Qalhat	M	M	M
Ras Masqa	M	M	M	Rechdibbine	M	M	M	Zakroun	M	M	M
Zgharta El-Mtaouile	M	M	ML								

Bcharre

Municipality	30-Oct	31-Oct	01-Nov	Municipality	30-Oct	31-Oct	01-Nov	Municipality	30-Oct	31-Oct	01-Nov
Aabdine	L	ML	ML	Bane	L	M	ML	Barhelioun	L	M	ML
Bazooune	M	M	M	Becharre	ML	M	ML	Beit Menzer	L	ML	L
Billa	L	ML	L	Blaouza	L	ML	ML	Bqaa Kafra	M	M	M
Bqerqacha	M	M	M	Breissat	ML	L	ML	Dimane	ML	ML	ML
Hadath El Jobbeh	ML	L	L	Hadchit	L	ML	L	Hasroun	M	M	M
Mazraat Aassaf	L	M	L	Mazraat Bani Saab	ML	ML	ML	Mchaa El-Jobbeh	M	M	ML
Metrit	M	M	ML	Moghr El-Ahoual	L	ML	ML	Ouadi Qannoubine	L	L	L
Qanat	L	L	L	Qnayouer	L	ML	L	Tourza	L	ML	L

Batroun

Municipality	30-Oct	31-Oct	01-Nov	Municipality	30-Oct	31-Oct	01-Nov	Municipality	30-Oct	31-Oct	01-Nov
Aabrine	M	M	M	Aalali	L	ML	ML	Aartiz	M	M	ML
Abdelli	M	M	M	Ajdabra	M	M	M	Assia	L	ML	L
Basbina	M	M	M	Batroun	M	M	M	Bcheleh	L	ML	ML
Bechtoudar	L	ML	L	Beit Chlala	L	ML	L	Beit Kassab	ML	M	L
Bijdarfil	M	M	M	Bqesmaya	M	M	M	Chatine	ML	ML	ML
Chebtein	M	M	M	Chekka	M	M	M	Daael	L	ML	ML
Dahr Abi Yaghi	M	M	M	Daraya El-Batroun	M	M	M	Deir Billa	ML	M	ML
Deir Kfifane	M	M	M	Deir Mar Youhanna EL	L	M	L	Deir Mar Youssef Jra	M	M	M
Douma	L	ML	ML	Douq	M	M	M	Eddeh El-Batroun	M	M	M
Ftihat El-Batroun	ML	M	ML	Ghouma	M	M	M	Hadtoun	L	ML	L
Hamat	M	M	M	Harbouna	M	M	ML	Hardine	L	ML	ML
Helta	L	M	L	Hery	M	M	M	Jebbla	ML	M	ML
Jrabta El-Batroun	M	M	M	Jrane El-Batroun	M	M	M	Kfar Aabida	M	M	M
Kfar Halda	L	ML	L	Kfarb Shlaimane	L	M	L	Kfarhatna	M	M	M

Kfarhay	M	M	M	Kfarhelos	M	M	M	Kfifane	M	M	M
Kfour El Arabi	ML	ML	ML	Koubba	M	M	M	Kour	M	M	M
Mar Mama	M	M	M	Masrah	M	M	M	Mehmarch	ML	ML	ML
Mrah Chdid	M	M	M	Mrah El Ziyat	M	M	M	Mrah El-Hajj	L	M	L
Nahle El-Batroun	L	M	ML	Niha El-Batroun	ML	ML	ML	Ouajh El-Hajjar	M	M	M
Ouata Houb	L	ML	ML	Qatnaaoun	M	M	M	Racha	L	ML	ML
Rachana	M	M	M	Rachkida	M	M	M	Ram El-Batroun	L	ML	L
Ras Nahhach	M	M	M	Selaata	M	M	M	Sghar	M	M	M
Smar Jbayl	M	M	M	Sourat El-Batroun	M	M	ML	Tannourine El-Faouqa	M	M	ML
Tannourine Et-Tahta	L	L	ML	Thoum	M	M	M	Toula El-Batroun	M	M	M
Zan	M	M	M								

Zgharta

Municipality	30-Oct	31-Oct	01-Nov	Municipality	30-Oct	31-Oct	01-Nov	Municipality	30-Oct	31-Oct	01-Nov
Aachach	M	M	M	Aalma	M	M	ML	Aarde	M	M	ML
Aintourine	L	ML	L	Arabet Qozhaya	L	L	L	Arde	M	M	ML
Arjis	ML	M	ML	Asnoun	M	M	ML	Ayto	L	ML	L
Basloukit	L	ML	L	Bchannine	M	M	M	Besebeel	M	M	ML
Bhairret Toula	L	L	L	Bnachee	L	M	ML	Boussit	M	M	M
Danha	M	M	ML	Daraiya Zgharta	ML	M	ML	Deir Jdeide	M	M	ML
Ehden	L	ML	L	Halan	M	M	ML	Hariq Zgharta	M	M	ML
Houakir	M	M	ML	Hraiqis	M	M	ML	Iaal	M	M	ML
Ijbaa	L	M	ML	Karm Saddeh	L	L	L	Kfarchakhna	M	M	M
Kfardlaqous	M	M	ML	Kfarfou	ML	M	ML	Kfarhata Zgharta	M	M	ML
Kfarhoura	M	M	ML	Kfarsghab	L	M	L	Kfaryachit	M	M	ML
Kfarzaina	M	M	ML	Khaldiye	M	M	ML	Mazraat Ajbeaa	M	M	ML
Mazraat Et-Teffah	L	M	ML	Mazraat Jneid	M	M	ML	Mejdlaiya Zgharta	M	M	ML
Merh Kfarsghab	ML	M	ML	Miryata	M	M	ML	Miziara	L	ML	ML
Mzraat Kefraya	M	M	ML	Qorah Bach	M	M	ML	Rachiine	M	M	ML
Ras Kifa	ML	ML	ML	Sakhra	M	M	ML	Sebhel Zgharta	ML	M	ML
Serhel	L	L	L	Tallet Zgharta	M	M	ML	Toula Zgharta	L	ML	L
Zgharta	M	M	ML								

Minieh-Denniye

Municipality	30-Oct	31-Oct	01-Nov	Municipality	30-Oct	31-Oct	01-Nov	Municipality	30-Oct	31-Oct	01-Nov
Aasaymout	L	L	L	Aaymar	L	L	L	Aazki	L	L	L
Ain El-Tineh-Miniyeh	L	L	L	Assoun	L	L	L	Bakhaaoun	L	L	L
Bchennata	L	ML	L	Bechehhara	M	M	ML	Beddawi	M	M	M
Behouaita	L	ML	L	Beit El Foqss	L	L	L	Beit Haouik	L	ML	L
Beit Zoud	L	L	L	Bekaasafrine	L	M	ML	Borj El Yahoudiyeh	M	M	ML
Bqarsouna	L	L	L	Btermaz	L	L	L	Debaael	L	L	L
Deir Ammar	M	M	ML	Deir Nbouh	M	M	ML	Haouaret-Miniyeh	L	L	L
Haql el Azimeh	L	L	L	Harf El Siyad	L	L	L	Hazmiye-Miniyeh	L	L	L
Izal	L	ML	ML	Jarjour	M	M	L	Jayroun	L	L	L
Kahf El-Malloul	ML	M	ML	Karm El-Moher	L	ML	L	Kfar Binine	L	ML	L
Kfarchalane	L	L	L	Kfarhabou	ML	ML	ML	Kharroub-Miniyeh	L	L	L
Mazraat El-Kreme	ML	ML	L	Mazraat Ketrane	L	L	L	Merkebta	M	M	M

Minyeh	M	M	ML	Mrah El Sfirat	L	L	L	Mrah Sraj	L	L	L
Mrebbine	L	M	L	Nabi Youcheaa	M	M	ML	Nemrine	L	L	L
Qarhaiya	L	L	L	Qarne	L	L	L	Qarsita	L	L	L
Qattineh-Miniyeh	L	L	L	Qemmamine	L	ML	L	Qraine	L	L	L
Raouda-Aadoua	M	M	M	Rihaniyet-Miniyeh	M	M	M	Sfireh	L	L	L
Sir Ed-Danniyeh	L	L	L	Tarane	L	L	L	Terbol-Miniyeh	M	M	M
Zaghartaghriine	M	M	ML	Zouq Bhannine	M	M	M				

Nabatiye

Nabatiye

Municipality	30-Oct	31-Oct	01-Nov	Municipality	30-Oct	31-Oct	01-Nov	Municipality	30-Oct	31-Oct	01-Nov
Aabba	M	M	ML	Aazzi	M	M	M	Adchit El-Chqif	M	M	M
Ain Bou Swar	ML	M	ML	Ain Kana	ML	M	ML	Ali El-TaHER	M	M	ML
Ansar	M	M	M	Arab Salim	M	M	ML	Arnoun	M	M	M
Bfaroue	M	M	M	Breyqaah	M	M	M	Charqiyeh	M	M	ML
Choukine	M	M	M	Deir El Zahrani	M	M	ML	Doueir El-Nabatiyeh	M	M	ML
Habbouch El-Nabatiye	M	M	ML	Hamra El-Nabatiyeh	M	M	M	Harouf El-Nabatiyeh	M	M	ML
Hmaile	M	M	ML	Houmin El Faouqa	M	M	ML	Houmin El Tahta	M	M	M
Jarjough	M	M	ML	Jbaah El-Nabatiyeh	ML	M	ML	Jebchit	M	M	ML
Kfar Djal El-Nabatiy	M	M	M	Kfar Remmane	M	M	ML	Kfar Sir	M	M	M
Kfar Tebnit	M	M	M	Kfarfila	ML	M	ML	Kfour El-Nabatieh	M	M	ML
Mayfadoun	M	M	M	Mazraat Bsaffour	M	M	ML	Mazraat Chalbaal	M	M	ML
Mazraat Dmoul	M	M	M	Mazraat El Khreibeh	M	M	M	Mazraat El-Bayad El-	M	M	ML
Mazraat Kfarjaouz	M	M	ML	Mazraat Qalaat Meiss	M	M	M	Nabatiyeh El-Fawka	M	M	ML
Nabatiyeh Et-Tahta	M	M	ML	Namiriyeh	M	M	ML	Qaaqaiyet El Jisr	M	M	M
Qossaibeh El-Nabatiy	M	M	M	Roumine	M	M	M	Sarba El-Nabatieh	ML	M	ML
Sir El-Gharbiyeh	M	M	ML	Toul	M	M	ML	Yehmor El-Nabatiyeh	M	M	M
Zaoutar El Charkiyeh	M	M	M	Zaoutar El-Gharbiyeh	M	M	M	Zebdine El-Nabatiyeh	M	M	ML
Zefta	M	M	ML								

Hasbaiya

Municipality	30-Oct	31-Oct	01-Nov	Municipality	30-Oct	31-Oct	01-Nov	Municipality	30-Oct	31-Oct	01-Nov
Aain Jarfa	M	M	M	Abou Qamha	M	M	ML	Ain Qania	M	M	M
Bourghos	M	M	ML	Chebaa	M	M	ML	Chouaya Hasbaya	M	M	ML
Dellafeh	M	M	ML	Fardiss Hasbaiya	M	M	ML	Hasbaya	M	M	ML
Hbariyeh	ML	M	M	Kaoukaba Hasbaiya	M	M	ML	Kfar Chouba	ML	M	M
Kfar Hamam	ML	M	M	Kfeir El-Zait	M	M	ML	Khalwat Hasbaya	ML	M	M
Khreibet Hasbaiya	M	M	M	Majidiyeh Hasbaiya	M	M	M	Marj Ez-Zhour (Haouc	M	M	ML
Meri	M	M	M	Mimass	M	M	ML	Rachaiya El-Fokhar	M	M	M
Salaiyeb	M	M	ML								

Marjayoun

Municipality	30-Oct	31-Oct	01-Nov	Municipality	30-Oct	31-Oct	01-Nov	Municipality	30-Oct	31-Oct	01-Nov
Aalmane Marjaayoun	M	M	M	Aamra	M	M	ML	Adayseh Marjaayoun	M	M	M
Adchit El-Koussair	M	M	M	Ain Aarab Marjaayoun	M	M	ML	Bani Haiyann	M	M	M
Blatt Marjaayoun	M	M	ML	Blida	M	M	M	Borj El-Moulouk	M	M	M

Boueyda Marjaayoun	M	M	ML	Deir Mimass	M	M	M	Deir Siriane	M	M	M
Dibbine	M	M	ML	Ebel El Saqi	M	M	ML	Houla	M	M	M
Houra	M	M	M	Kfar Kila	M	M	M	Khiam Marjaayoun	M	M	M
Klayaa	M	M	M	Majdel Selem	M	M	M	Marjaayoun	M	M	ML
Markaba	M	M	M	Mays El-Jabal	M	M	M	Mazraat Doumiat	M	M	M
Mazraat Sarada	M	M	ML	Mhaibib	M	M	M	Qabrikha	M	M	M
Qantara	M	M	M	Rab El-Thalathine	M	M	M	Saouaneh Marjayoun	M	M	M
Talloussa	M	M	M	Taybeh Matjaayoun	M	M	M	Touline	M	M	M

Bent Jbail

Municipality	30-Oct	31-Oct	01-Nov	Municipality	30-Oct	31-Oct	01-Nov	Municipality	30-Oct	31-Oct	01-Nov
Ain-Ebel	M	M	M	Aitaroun	M	M	M	Aynata Bint Jbeil	M	M	M
Ayta El-Chaeb	M	M	ML	Ayta El-Jabal	M	M	M	Beit Lif	M	M	ML
Beit Yahoun	M	M	M	Bint Jbeil	M	M	M	Borj Qalaway	M	M	M
Braachit	M	M	M	Chakra	M	M	M	Debel	M	M	M
Deir Antar	M	M	M	Froun	M	M	M	Ghandouriyeh Bint Jb	M	M	M
Hanine	M	M	M	Hariss	M	M	M	Hdatha	M	M	M
Jmeyjmeh	M	M	M	Kafra Bint Jbeil	M	M	ML	Kfar Dounine	M	M	M
Khirbet Selm	M	M	M	Kounine	M	M	M	Maroun El Ras	M	M	M
Qalaway	M	M	M	Qaouzah	M	M	ML	Qatmoun	M	M	M
Ramya Bint Jbeil	M	M	ML	Rchaf	M	M	ML	Rmeich	M	M	M
Safad Al Battikh	M	M	M	Salhaneh	M	M	ML	Serbine	M	M	ML
Sultanieh Bint Jbeil	M	M	M	Tibnine	M	M	M	Tiri	M	M	M
Yaroun	M	M	M	Yater	M	M	ML				

Mont Liban

Jbail

Municipality	30-Oct	31-Oct	01-Nov	Municipality	30-Oct	31-Oct	01-Nov	Municipality	30-Oct	31-Oct	01-Nov
Aabeydat	M	M	M	Aalita	L	ML	ML	Aamchit	M	M	M
Aarab El-Lahib	M	ML	ML	Aarasta	M	M	M	Adonis Jbeil	L	M	L
Afqa Jbeil	ML	ML	M	Ain El Delbeh Jbeil	L	ML	L	Ain El-Ghouayba	L	L	L
Ain Jrain	L	L	L	Ain Kfah	M	M	M	Almat El Chemaliyat	L	L	L
Almat El-Jenoubiya	L	L	L	Aqoura	M	M	M	Bayzoun	L	M	ML
Bchille Jbeil	L	ML	ML	Bechtlida	L	ML	L	Behdaydat	M	M	M
Beit Habbaq	M	M	M	Bejjeh	M	M	M	Bekhaaz	M	M	M
Berbara Jbeil	M	M	M	Bintael	L	M	ML	Birket Hjoula	L	M	ML
Blatt Jbeil	L	M	ML	Boulhos	L	L	L	Breyj Jbeil	L	ML	L
Chamat	M	M	M	Chikhane	M	M	M	Chmout	M	M	M
Eddeh Jbeil	M	M	M	Ehmej	L	L	L	Fatre	L	M	L
Ferhet	L	ML	ML	Fghal	M	M	M	Frat	L	L	L
Ghabat	M	ML	M	Ghalboun	M	M	M	Gharzouz	M	M	M
Ghofrine	M	M	M	Habil	M	M	ML	Halate	ML	M	ML
Haqel	M	M	M	Hbaline	M	M	M	Hboub	L	ML	ML
Hdeine	M	ML	ML	Hema Er-Rehban	M	ML	ML	Hema Mar Maroun Aann	ML	L	ML
Hjoula	L	ML	ML	Hosrayel	M	M	M	Hsarat	M	M	M

Hsoun	L	M	ML	Jaj	L	ML	ML	Janne	L	L	L
Jbeil	M	M	M	Jeddeyel Jbeil	M	M	M	Jlisse	L	ML	L
Jouret El-Qattine	L	ML	ML	Kfar Baal Annaya	L	ML	ML	Kfar Kidde	M	M	M
Kfar Kouas	L	ML	ML	Kfar Mashoun	M	M	M	Kfoun	M	M	M
Kharbe Jbeil	M	M	M	Laqlouq	ML	ML	ML	Lassa	L	L	L
Lehfed	L	M	L	Maad	M	M	M	Mar Sarkis	L	L	ML
Mastita	M	M	M	Mayfouq	L	M	ML	Mazraat El Siyad	ML	L	ML
Mazraat El-Maaden	L	L	L	Mechane	L	ML	ML	Mechmech Jbeil	L	ML	L
Mehrin	L	ML	ML	Mejdel El-Akoura	M	ML	M	Mghayreh Jbeil	M	ML	M
Mounsef	M	M	M	Nahr Ibrahim	M	M	M	Qahmez	L	L	L
Qartaba	L	L	L	Qartaboun	M	M	M	Qattara Jbeil	L	M	L
Qorqraya	L	L	L	Ramout	M	M	M	Ras Osta	L	ML	ML
Rihane Jbeil	M	M	M	Sakiet El-Khayt	M	M	M	Saqi Richmaya	L	ML	L
Sebrine	L	ML	ML	Seraita	ML	ML	M	Souane Jbeil	L	L	L
Tadmor	M	ML	M	Tartej	L	ML	ML	Torzaiya	L	ML	ML
Yanouh Jbeil	M	M	M	Zibdine Jbeil	L	M	ML				

El Metn

Municipality	30-Oct	31-Oct	01-Nov	Municipality	30-Oct	31-Oct	01-Nov	Municipality	30-Oct	31-Oct	01-Nov
Aain El-Qabu	L	L	L	Aain El-Qach	L	L	L	Aain El-Teffaha	L	L	L
Aain el-Safssaf El-M	L	L	L	Abou Mizane	L	L	L	Ain Aar	ML	M	ML
Ain Alaq	L	M	ML	Ain El-Kharroube	L	L	L	Ain El-Sendianeh	L	L	L
Ain El-Zeitoune	L	L	L	Ain Saadeh	L	M	ML	Aintoura El-Matn	L	ML	ML
Amaret Chalhoub	ML	M	ML	Antelias	ML	M	ML	Atchaneh	L	M	L
Ayroun	L	L	L	Baabdat	L	L	L	Baouchariyeh	M	M	M
Baskinta	L	L	L	Beit Chabab	L	L	L	Beit El-Char	ML	M	ML
Beit El-Kekko	ML	M	ML	Beit Mery	L	M	L	Bhersaf	L	L	L
Bikfaya	L	L	L	Biyakout	ML	M	ML	Bnabil	L	L	L
Bourj Hammoud	M	M	M	Bqennaya	L	M	ML	Broummana El-Matn	L	M	ML
Bsalim	L	M	ML	Bsifrine	L	L	L	Bteghrine	L	L	L
Chaouiye	L	M	ML	Chouaya El-Matn	L	L	L	Choueir	L	L	L
Chrine	L	L	L	Dahr El Sawan El-Mat	L	ML	L	Daychouniyeh	L	ML	ML
Dbayeh	ML	M	ML	Deir Chamra	L	L	L	Deir Mar Abda el Mch	L	M	L
Deir Mar Roukouz	M	M	M	Deir Tamiche	L	M	ML	Dik El-Mehdi	L	M	ML
Dikwaneh	M	M	M	Douar El-Matn	L	L	L	Fanar	L	M	ML
Fraike	L	M	L	Haret El-Ballaneh	ML	M	ML	Hbous	ML	M	ML
Himlaya	L	L	L	Jal El Did	ML	M	ML	Jdeideh El-Metn	ML	M	ML
Jouar El-Matn	L	L	L	Jouret El-Ballout	L	M	ML	Kaaqour	L	L	L
Kfar Aaqab	L	L	L	Kfertay El-Matn	L	L	L	Khenchara	L	L	L
Khillet El-Mtain	L	L	L	Konnabat Broummana	L	M	ML	Konnabat Salima	L	L	L
Machraah El-Matn	L	L	L	Majdel Tarchich	L	ML	ML	Majzoub	L	M	ML
Mansouriyeh El-Metn	ML	M	ML	Mar Boutros Karm Et-	L	L	L	Mar Chaya et Mzekke	L	M	ML
Mar Moussa Ed-Douar	L	L	L	Marjaba	L	L	L	Masqa	L	M	L
Mayasse	L	L	L	Mazraat Deir Aoukar	ML	M	ML	Mazraat El-Hadirat	L	M	ML
Mazraat Yachouh	ML	M	ML	Mchikha	L	L	L	Menqlet Mezher	ML	M	ML
Mhayseh Matn	L	L	L	Mkalles	M	M	M	Mrouj	L	ML	L

Mtain	ML	ML	ML	Mtayleb	L	M	ML	Nabay	L	M	ML
Naccache	ML	M	ML	Ouadi Chahine	L	L	L	Ouadi El-Karm El-Mat	L	ML	L
Ouata El-Mrouj	L	L	L	Ouyoun El-Matn	L	ML	L	Qornet Chehwan	L	M	ML
Qornet El-Hamra	L	M	ML	Roumieh	L	M	ML	Sfeilet Bikfaya	L	L	L
Sinn El-Fil	M	M	M	Zabbougha	L	L	L	Zalqa	ML	M	ML
Zarououn	L	L	L	Zekrite	L	M	ML	Zighrine El-Matn	L	L	L
Zouk El-Khrab	ML	M	ML								

Chouf

Municipality	30-Oct	31-Oct	01-Nov	Municipality	30-Oct	31-Oct	01-Nov	Municipality	30-Oct	31-Oct	01-Nov
Aalmane El-Chouf	M	M	M	Aammij El-Chouf	L	ML	L	Ain Ouzein	L	ML	L
Ain Qani	L	ML	L	Ain Zhalta	L	M	L	Ainbal	L	ML	L
Amatour	L	M	L	Anout	L	M	L	Atrine	L	ML	L
Baadarane	L	M	L	Baaqline	L	ML	L	Baasir	M	M	M
Barja	M	M	M	Barouk	L	M	L	Bater	L	M	L
Batloun	L	ML	L	Bayqoun	ML	M	L	Bchetfine	ML	ML	L
Beiteddine	L	ML	L	Benouati Ech-Chouf	L	ML	L	Berjein	L	ML	L
Bireh et Mtalleh	L	ML	L	Biret El-Chouf	L	M	L	Bkechtine Ouel Mchei	L	ML	L
Bkifa El-Chouf	ML	M	L	Botme	L	ML	L	Bqaiaa Ech-Chouf	L	ML	L
Bsaba El-Chouf	L	M	L	Chammis El-Chouf	M	M	ML	Chehim	L	ML	L
Chemaarine	L	ML	L	Chourit	L	ML	L	Daher El-Chouf	M	M	M
Dalhoun	ML	M	ML	Damour	M	M	M	Daraya El-Chouf	L	ML	L
Deir El-Moukhalles	L	ML	L	Deir Baba	ML	ML	L	Deir Dourit	L	ML	L
Deir El-Qamar	L	ML	L	Deir Kouche	L	ML	L	Dibbieh	L	M	ML
Dmit	ML	ML	L	Fouara Jaafar	L	ML	L	Fraidis El-Chouf	L	M	L
Ghabet Jaafar	ML	ML	L	Gharife	L	ML	L	Haret Jandal	L	M	L
Hasrout	L	M	L	Jadra	M	M	ML	Jahlieh	L	ML	L
Jbeih El-Chouf	L	M	L	Jdeidet El-Chouf	L	ML	L	Jiyeh	M	M	M
Jleiliyeh	ML	M	L	Jmailiyeh	M	M	M	Joun	M	M	ML
Kahlounie El-Chouf	L	M	L	Ketermaya	M	M	M	Kfar Faqoud	ML	ML	L
Kfar Hamal	L	ML	L	Kfar Him	ML	ML	L	Kfar Katra	L	ML	L
Kfar Niss	L	M	L	Kfar hay	L	ML	L	Kfarnabrakh	L	ML	L
Khirbet Bisri	L	ML	L	Knayse El-Chouf	L	ML	L	Maaniyeh	M	M	M
Maasser Beiteddine	L	ML	L	Maasser El-Chouf	L	M	L	Majdalouna	M	M	M
Majdel El-Meouch	L	ML	L	Mazboud	L	ML	L	Mazmoura	L	M	L
Mazraat El Chouf	L	M	L	Mazraat El Daher	L	ML	L	Mazraat El-Douair	L	ML	L
Mechref	L	ML	L	Mghairie	M	M	ML	Mghayrie El-Chouf	L	ML	L
Moukhtara	L	ML	L	Mrusti	ML	M	L	Mtolle	L	ML	L
Naameh	M	M	M	Niha El-Chouf	ML	M	L	Ouadi Abou Youssef	L	ML	L
Ouadi Ed-Deir	ML	ML	L	Ouadi El-Sit	L	ML	L	Ouadi bnehlay	L	ML	L
Qraibeh	L	M	L	Qreiaa	L	ML	L	Rmayle El-Chouf	M	M	M
Semqaniyeh	L	ML	L	Sibline	M	M	ML	Sirjbeil	ML	ML	L
Warhanieh	ML	M	L	Werdaniyeh	M	M	M	Zaarourieh	L	M	L

Baabda

Municipality	30-Oct	31-Oct	01-Nov	Municipality	30-Oct	31-Oct	01-Nov	Municipality	30-Oct	31-Oct	01-Nov
Abadiyeh	L	L	L	Ain Mouaffaq	L	L	L	Araiya	L	L	L

Arbaniyeh	L	L	L	Arsoun	L	L	L	Baabda	M	M	M
Baalchmey	L	L	L	Bmaryam	L	M	ML	Bourj El-Brajneh	ML	M	ML
Boutchay	ML	M	ML	Bsaba Baabda	ML	M	ML	Btekhney	L	ML	L
Btibyat	L	M	L	Bzabdine	L	L	L	Chbeniyeh	L	M	ML
Chiyah	M	M	M	Chmeisset Baabda	L	ML	L	Chouit	L	L	L
Deir El-harf	L	L	L	Deir Khouna	L	ML	L	Dlaybeh	L	L	L
Falougha	ML	M	ML	Furn El-Chebbak	M	M	M	Hadath Beyrouth	M	M	ML
Halaliyeh Baabda	L	L	L	Hammana	ML	ML	ML	Haret El Sett	L	L	L
Haret Hamze	L	ML	L	Haret Hreik	M	M	M	Hasbaiya El-Metn	L	L	L
Jouar El-Hoz	L	L	L	Jouret Arsoun	L	L	L	Kfar Chima	ML	M	ML
Kfar Selouane	L	ML	ML	Khalouat Baabda	ML	M	ML	Kneisset Baabda	L	L	L
Laylakeh	ML	M	ML	Louayzeh Baabda	L	ML	L	Merdache	ML	M	ML
Mzairaa Baabda	L	L	L	Ouadi Chahrour El OI	L	ML	ML	Ouadi Chahrour El So	ML	M	ML
Qalaa Baabda	L	ML	ML	Qhraybe Baabda	L	M	ML	Qobbayaa	L	ML	ML
Qornayel	L	L	L	Qortada	L	M	L	Qrayeh Baabda	L	ML	ML
Qsaibeh Baabda	L	M	L	Qtale Baabda	L	ML	L	Ras El Metn	L	ML	L
Ras El-Haref	L	M	ML	Rouayset El-Ballout	L	L	L	Salima Baabda	L	L	L
Tahouitat El Ghadir	ML	M	ML	Tarchich	L	ML	ML	Zandouqa	L	M	L

Aley

Municipality	30-Oct	31-Oct	01-Nov	Municipality	30-Oct	31-Oct	01-Nov	Municipality	30-Oct	31-Oct	01-Nov
Abey	ML	ML	L	Aghmid	L	M	ML	Ain Dara	ML	M	ML
Ain Drafil	ML	M	ML	Ain El Halazoun	L	ML	L	Ain El-Rmmaneh	L	L	L
Ain Jedideh	L	ML	ML	Ain Ksour	ML	ML	L	Ain Onoub	ML	M	ML
Ain Traz	L	ML	L	Ainab	ML	M	ML	Aley	L	ML	L
Aramoun	ML	M	ML	Aytat	ML	M	ML	Azouniyeh	ML	ML	ML
Baawerta	ML	ML	L	Badghan Oua Wadi Bad	ML	ML	ML	Bassatine	M	M	M
Bayssour	ML	ML	ML	Bchamoun	ML	M	ML	Bdadoun	L	ML	L
Behouara	L	L	L	Bennay	ML	ML	L	Bhamdoun El-Dayaa	ML	ML	ML
Bhamdoun El-Mhatta	ML	ML	ML	Bkhechthey	L	ML	L	Bleibel	ML	M	ML
Bmaknine	L	ML	ML	Bmehray	ML	M	ML	Bouzirid	L	ML	L
Bserrine	L	ML	ML	Bsous	L	L	L	Btalloun	ML	ML	ML
Btater	L	ML	ML	Chanay	ML	ML	ML	Charoun	ML	ML	ML
Chartoun	L	L	L	Chemlane	ML	M	ML	Choueifat El-Aamrous	ML	M	ML
Choueifat El-Oumara	ML	M	ML	Choueifat El-Quoubbe	ML	M	ML	Dakkoun	ML	ML	L
Deir Qoubel	ML	M	ML	Dfoun	ML	M	ML	Douair El Remmaneh	L	L	L
Ghaboun	L	L	L	Habramoun	L	L	L	Homs Oua Hama	L	ML	L
Houmal	ML	M	M	Jisr El Qadi	L	ML	L	Kehaleh	L	L	L
Keyfoun	ML	ML	ML	Kfar Aamey	L	L	L	Kommatyeh	L	L	L
Maasrati	L	ML	L	Majdel Baana	ML	ML	ML	Mansourieh et Ain El	ML	ML	ML
Mazraat El-Nahr	L	L	L	Mchakhte	L	M	ML	Mecherfeh	L	ML	ML
Mejdaya	L	ML	L	Mrayjat	ML	M	L	Ramliyah	L	ML	L
Rechmaya	L	ML	L	Rejmeh	L	L	L	Remhala	ML	ML	L
Rouayset El Neemane	L	ML	L	Saoufar	ML	ML	ML	Selfaya	L	ML	L
Sirhmoul	M	M	M	Souq El Ghareb	L	ML	L	Taazanieh	ML	ML	ML

Kesrouane

Municipality	30-Oct	31-Oct	01-Nov	Municipality	30-Oct	31-Oct	01-Nov	Municipality	30-Oct	31-Oct	01-Nov
Achkout	L	L	L	Adma Oua Dafneh	M	M	ML	Ain Ed-Delbe Kesroua	L	L	L
Ain El-Rihane	ML	M	ML	Aintoura Kesrouane	M	M	ML	Ajaltoun	L	ML	L
Akaybeh Kesrouane	M	M	M	Aramoun Kesrouane	L	ML	L	Azra ouel Ozor	L	ML	L
Ballouneh	L	ML	L	Batha	ML	M	ML	Bekaatah Achkout	L	L	L
Bekaatah Kanaan	L	L	L	Bizhel	L	M	L	Bouar	M	M	M
Bqaatouta	L	L	L	Bqaq Ed-Dine	M	M	M	Bzommar	L	ML	L
Chahtoul	L	ML	L	Chnaniir	L	ML	L	Chouan	L	L	L
Daraya Kesrouane	L	ML	L	Daroun	ML	M	ML	Deir Baqlouch	M	M	ML
Diebta	L	ML	L	Eghbeh	L	L	L	Faraya	L	L	L
Fatka	L	ML	L	Feytroun	L	L	L	Ghazir	L	M	ML
Ghbaleh Kesrouane	L	ML	L	Ghedrass	L	ML	L	Ghosta	L	ML	L
Ghyneh	L	ML	L	Harharaya w Kattine	L	ML	L	Harissa Kesrouane	M	M	ML
Hayata	L	ML	L	Hosein	L	L	L	Hrajel	L	L	L
Jdeideh Ghazir	L	ML	L	Jeita	ML	M	ML	Jounieh Ghadir	M	M	M
Jounieh Haret Sakhr	M	M	M	Jounieh Salel Alma	M	M	ML	Jounieh Sarba	M	M	M
Jouret Bedrane	L	M	ML	Jouret Mhad	L	L	L	Jouret Termos	L	ML	L
Kfar Debiane	L	L	L	Kfar Tay Kesrouane	L	L	L	Kfar Yassine	M	M	M
Kfour Kesrouane	L	ML	L	Kharayeb Nahr Ibrahi	ML	M	M	Klayaat Kesrouane	L	L	L
Maarab	L	ML	L	Maaysra Kesrouane	L	M	ML	Mayrouba	L	L	L
Mazraat Er-Ras	M	M	ML	Mazraat Mrah El-Mir	L	ML	L	Mchaa El Ftouh	M	ML	ML
Mchaa Faraya	L	L	ML	Mchaa Kfar Dibiane	M	ML	ML	Mghaer	L	L	L
Mradiyah	L	M	L	Nahr Ed-Dahab	L	L	L	Nammoura Kesrouane	L	M	ML
Ouata El Jaouz	L	L	L	Ouata Sillam	M	M	M	Raachine	L	L	L
Rayfoun	L	ML	L	Safra Kesrouane	M	M	M	Shayle Kesrouane	ML	M	ML
Tabarja	M	M	M	Yahchouch	L	M	L	Zaaytreh	L	M	ML
Zeytoun	ML	M	ML	Zouk Mikael	M	M	M	Zouk Mosbeh	M	M	M

Baalbek_Hermel

Baalbek

Municipality	30-Oct	31-Oct	01-Nov	Municipality	30-Oct	31-Oct	01-Nov	Municipality	30-Oct	31-Oct	01-Nov
Aadous	M	M	M	Aamchki	ML	M	L	Aarsal	M	M	M
Ain Baalbek	M	M	M	Ain Bourday	M	M	ML	Ain El-Benye	ML	M	L
Ain El-Jaouz Baalbek	ML	ML	ML	Ain El-Siya Chadoura	ML	M	L	Al Khodr Baalbek	M	M	M
Al Nabi Chit	M	M	M	Aynata Baalbek	M	M	M	Baalbek	M	M	M
Bachwat	M	M	M	Barqa	M	M	M	Bednayel Baalbak	M	M	M
Beit Chama	M	M	M	Bijjaje	M	M	M	Bouday	M	M	M
Brital	M	M	ML	Btadi	M	M	M	Chaat	M	M	M
Chaibe	ML	M	ML	Chlifa	M	M	M	Chmestar	M	M	M
Dar El-Oussa	M	M	M	Deir El-Ahmar	M	M	M	Deir Mar Maroun Baal	M	M	M
Douris	M	M	M	Fakiha	M	M	M	Hadath Baalbek	M	M	M
Ham	ML	M	L	Haour Taala	M	M	ML	Hizzine	M	M	M
Hlebta	M	M	M	Hosh Barada	M	M	M	Hosh El Dahab	M	M	M
Hosh El Snid	M	M	M	Hosh El-Nabi	M	M	M	Hosh El-Rafiq	M	M	M
Hosh Tal Safiya	M	M	M	Hrebta	M	M	M	laat	M	M	M

Jebaa	M	M	M	Jenta	M	M	ML	Kfar Dabach	M	M	M
Kfar Dane	M	M	M	Khraibeh El-Hermel	M	M	M	Khreibet Baalbek	M	M	ML
Kneisset Baalbek	M	M	M	Labueh	M	M	M	Maarboun	ML	M	ML
Majdaloun	M	M	M	Maqneh	M	M	M	Mazraat Beit Mcheik	M	M	M
Misraya	M	M	M	Moqraq	M	M	M	Nabha El-Damdoum	M	M	M
Nabi Chbay	ML	M	L	Nabi Osman	M	M	M	Nahleh baalbek	ML	M	M
Ouadi El-Oss	M	M	M	Qaa Baayoun	M	M	M	Qaa Jouar Maqiye	M	M	M
Qaa Ouadi El-Khanzir	M	M	M	Qah Baalbek	M	M	M	Qarha Baalbek	M	M	M
Qsarnaba	M	M	M	Ram Baalbek	M	M	M	Ras Baalbek El Sahl	M	M	M
Ras Baalbek El-Charq	M	M	M	Riha	M	M	M	Saaide	M	M	M
Sbouba	M	M	M	Seriine El-Tahta	M	M	M	Slouqi	M	M	M
Taiba Baalbek	M	M	M	Talia	M	M	M	Taraiya	M	M	M
Temnin El Fawqa	M	M	M	Temnin El-Tahta	M	M	M	Tfail	ML	M	M
Yahfoufa	M	M	ML	Yammouneh	M	M	M	Younine	M	M	M
Zboud	M	M	M								

Hermel

Municipality	30-Oct	31-Oct	01-Nov	Municipality	30-Oct	31-Oct	01-Nov	Municipality	30-Oct	31-Oct	01-Nov
Charbine El-Hermel	M	M	M	Hermel Jbab	M	M	M	Hermel	M	M	M
Maaysra El-Hermel	M	M	M	Michaa Mrajhine	M	M	L	Ouadi Faara	M	M	M
Ras Baalbek - Ouadi	M	M	M	Ras Baalbek El Gharb	M	M	M	Zighrine	M	M	M

Akkar

Akkar

Municipality	30-Oct	31-Oct	01-Nov	Municipality	30-Oct	31-Oct	01-Nov	Municipality	30-Oct	31-Oct	01-Nov
Aain Tinta	M	M	ML	Aaiyat	M	M	L	Aakkar El-Aatiqa	M	M	L
Aamar Akkar	M	M	M	Aamar El Baykat	M	M	ML	Aamayer	M	M	M
Aamriyet Akkar	M	M	ML	Aandqet	M	M	ML	Aarmeh	M	M	ML
Aarqa	M	M	M	Aawaynat	M	M	ML	Aayoun Akkar	M	M	L
Abboudiye	M	M	M	Ain El-Zeit	M	M	ML	Ain Yaaqoub	M	M	L
Akroum	M	M	M	Aridet Cheikh Zennad	M	M	M	Baldeb w Mazraat Bal	M	M	M
Barcha	M	M	M	Bardeh	M	M	ML	Bebnine	M	M	M
Beino	M	M	ML	Beit Ayoub	M	ML	ML	Beit El-Haouch	M	M	M
Beit Mellat	M	M	L	Beit Younes	M	M	L	Berbara Akkar	M	M	ML
Berqayel	M	M	M	Bezbina	M	M	L	Bireh Akkar	M	M	ML
Borj	M	M	L	Bqerezla	M	M	ML	Bzal	M	M	ML
Chane	M	M	ML	Chaqdouf	M	M	L	Charbila	M	M	M
Cheikh Mohammad	M	M	M	Cheikh Taba Es-Sahl	M	M	M	Cheikh Taba	M	M	L
Cheikh Zennad	M	M	M	Cheikhlar	M	M	ML	Chir Hmairine	M	M	M
Daghle	M	M	ML	Dahr Laissine	M	M	ML	Darine	M	M	M
Dawra	M	M	L	Dawsa w Baghdadi	M	M	ML	Dayret Nahr El-Kabir	M	M	ML
Deir Dalloum	M	M	M	Deir Jennine	M	M	ML	Denbou	M	M	ML
Dibbbiyeh	M	M	ML	Douair Aadwiyeh	M	M	ML	Fassikine	M	M	ML
Fnaydek	M	M	L	Fraydes Akkar	M	M	ML	Ghazayle	M	M	M
Habchit	M	M	L	Hakour	M	M	M	Halba	M	M	M

Haouchab	M	M	M	Hayssat	M	M	M	Haytla	M	M	M
Hayzouq	M	M	ML	Hedd	M	M	M	Hmaira Aakkar	M	M	M
Hmaiss Aakkar	M	M	M	Hnaider	M	M	M	Hokr Ed-Dahri	M	M	M
Hokr Etti	M	M	M	Hokr Jouret Srar	M	M	M	Houaich	M	M	ML
Hrar	M	M	ML	Idbil	M	M	ML	Ilal	M	M	ML
Janine	M	M	M	Jdeidet El-JoumeH	M	M	ML	Jdeidet El-Kaiteh	M	M	M
Jebrayel	M	M	ML	Kafr	M	M	M	Kafr	M	M	ML
Karm Asfour	M	M	ML	Kfar Melki Aakkar	M	M	M	Kfar Noun	M	M	ML
Kfarharra	M	M	M	Khalsa	M	M	ML	Kharnoubet Aakkar	M	M	M
Khirbet Daoud Aakkar	M	M	ML	Khirbet El Remmane	M	M	ML	Khirbet Shar	M	M	ML
Khoreybet El-Jindi	M	M	M	Khreibet Aakkar	M	M	ML	Kneisset Aakkar	M	M	M
Kneisset Hnaider	M	M	M	Knisse	M	M	M	Kroum El-Aarab	M	M	M
Kwachra	M	M	ML	Kweykhat	M	M	M	Machta Hammoud	M	M	ML
Majdala	M	M	M	Majdel Akkar	M	M	ML	Mar Touma	M	M	M
Marlaya Melhem	M	M	M	Mashha	M	M	ML	Massoudiye	M	M	M
Mazraat Beit Ghattas	M	M	M	Mazraat En-Nahriye	M	M	ML	Mechmech	ML	M	L
Memneh	M	M	L	Mhammara	M	M	M	Mighraq Aakkar	M	M	M
Minyara	M	M	M	Moqayteh	M	M	M	Mounjez	M	M	ML
Msalla	M	M	ML	Mzeihmeh	M	M	M	Nfaiseh	M	M	ML
Noura Et-Tahta	M	M	ML	Ouadi El-Haour	M	M	M	Ouadi El-Jamous	M	M	M
Ouyoun El-Ghizlane	M	M	M	Qaabarine	M	M	M	Qabaait	M	M	L
Qachlaq	M	M	M	Qantara Aakkar	M	M	ML	Qarha Aakkar	M	M	M
Qarqaf	M	M	M	Qboula	M	M	L	Qjeiaat Aakkar	M	M	M
Qloud El-Baqie	M	M	M	Qobaiyat Aakkar	M	M	ML	Qobbat Chamrat	M	M	M
Qorayat	M	M	L	Qornet Aakkar	M	M	L	Qsair Aakkar	M	M	ML
Rahbe	M	M	ML	Rihaniyet Aakkar	M	M	M	Rmah	M	M	ML
Rmoul	M	M	M	Saadine	M	M	M	Sadaqa	M	M	ML
Saidnaya	M	M	M	Sammouniye	M	M	M	Sayssouq	M	M	M
Semmaqiye	M	M	M	Semmaqli	M	M	M	Sfinet El-Dreib	M	M	ML
Sfinet El-Qaitaa	M	M	ML	Sindyanet Zeidane	M	M	ML	Souaisset Aakkar	M	M	M
Srar	M	M	M	Tal Abbas El Gharby	M	M	M	Tal Abbas El-Charqy	M	M	M
Tal Biret	M	M	M	Tal Hmayra	M	M	M	Tal Maayan Tal Kiri	M	M	M
Tal Sibel	M	M	M	Tallet Chattaha	M	M	L	Tikrit	M	M	L
Tleil	M	M	M	Tshea	M	M	L	Zawarib	M	M	L
Zouq El Hosniyeh	M	M	M	Zouq El-Haddara	M	M	M	Zouq El-Hbalsa	M	M	M
Zouq El-Moqachrine	M	M	M								

Sud

Sour

Municipality	30-Oct	31-Oct	01-Nov	Municipality	30-Oct	31-Oct	01-Nov	Municipality	30-Oct	31-Oct	01-Nov
Aaiyeh	M	M	L	Aalma El-Chaab	M	M	M	Aaytit	M	M	L
Abbassiyeh Sour	M	M	ML	Abou Chech	M	M	M	Ain Abou Abdallah	M	M	ML
Ain Baal	M	M	M	Arzoun	M	M	M	Aziyeh	M	M	M
Baflaya	M	M	ML	Barich	M	M	L	Batouliyeh	M	M	M
Bayad	M	M	L	Bazouriyeh	M	M	ML	Bediass	M	M	L

Bestiyat	M	M	L	Borj El Chemali	M	M	M	Borj En-Naqoura	M	M	M
Borj Rahhal	M	M	L	Boustane	M	M	M	Btaychiyeh	M	M	M
Chaaitiye	M	M	M	Chameh	M	M	M	Chehabiye	M	M	M
Chehour	M	M	M	Chihine	M	M	M	Debaal Sour	M	M	L
Deir Amess	M	M	L	Deir Kifa	M	M	M	Deir Qanoun El-Ain	M	M	M
Deir Qanoun El-Naher	M	M	L	Derdghaiya	M	M	M	Dhayra	M	M	M
Halloussiyeh	M	M	L	Hamoul	M	M	M	Hanaouey	M	M	ML
Henniye	M	M	M	Hmairi Sour	M	M	L	Iskandarouna Sour	M	M	M
Jbal El Botom	M	M	L	Jebbin	M	M	M	Jennata	M	M	L
Jijim	M	M	M	Jouaiya	M	M	L	Kneisset Sour	M	M	M
Maarake	M	M	L	Maaroub	M	M	L	Majadel	M	M	ML
Majdalzoun	M	M	M	Mansouri Sour	M	M	M	Marnba	M	M	M
Marouahine	M	M	ML	Mazraat El-Zalloutiy	M	M	M	Mazraat Mechref	M	M	ML
Mazraat Tayr Semhat	M	M	M	Mheilib	M	M	M	Neffakhiyeh	M	M	M
Niha Sour	M	M	M	Ouadi Jilo	M	M	L	Qana	M	M	L
Qolaileh Sour	M	M	M	Rechknany	M	M	L	Rmadiyeh	M	M	L
Selha Sour	M	M	M	Siddiqine	M	M	L	Sour	M	M	M
Srifa	M	M	M	Tayr Debbe	M	M	L	Tayr Felsay	M	M	L
Tayr Harfa	M	M	M	Touayri	M	M	M	Toura	M	M	L
Yanouh Sour	M	M	L	Yarine	M	M	M	Zebqine	M	M	ML

Saida

Municipality	30-Oct	31-Oct	01-Nov	Municipality	30-Oct	31-Oct	01-Nov	Municipality	30-Oct	31-Oct	01-Nov
Aanqoun	M	M	M	Aaqtanit	M	M	M	Aarab Ej-Jall	M	M	M
Aarab Tabbaya	M	M	M	Abra Saida	M	M	M	Adloun	M	M	M
Adousiyeh	M	M	M	Ain-El-Deleb	M	M	M	Arzai	M	M	L
Babliyeh	M	M	M	Barty	ML	M	ML	Bissariyeh	M	M	M
Bnaafoul	M	M	M	Bqosta	M	M	M	Bramiyeh	M	M	M
Daoudiyeh	M	M	M	Dareb El-Sim	M	M	M	Erkay	M	M	M
Ghassanieh	M	M	ML	Ghazieh	M	M	M	Hajjeh	M	M	M
Haret Saida	M	M	M	Hartiyeh	M	M	M	Hlaliye Saida	M	M	M
Insariyat	M	M	M	Jazira Saida	M	M	ML	Kafar Bit	M	M	ML
Kaoutariyet El-Siyad	M	M	ML	Kfar Chellal	M	M	ML	Kfar Hatta Saida	M	M	M
Kfar Milke Saida	M	M	ML	Khartoum	M	M	ML	Khaziz	M	M	M
Khirbet Ed-Douair Sa	M	M	M	Khirbet El-Bassal	M	M	M	Khrayeb Saida	M	M	ML
Loubieh	M	M	M	Maghdouche	M	M	M	Majdelyoun	M	M	M
Matariyet El-Choumar	M	M	L	Matayriyeh	M	M	M	Mazraat 'Mseileh	M	M	M
Mazraat 'Snaiber	M	M	M	Mazraat Aarab Soukka	M	M	ML	Mazraat Deir Taqla	M	M	M
Mazraat El Yahoudiye	M	M	M	Mazraat El-Housseini	M	M	M	Mazraat El-Mhaydaleh	M	M	M
Mazraat El-Ouasta	M	M	M	Mazraat Jamjim	M	M	M	Mazraat Kaoutariyet	M	M	M
Mazraat Kfar Badda	M	M	M	Mazraat Oussamiyat	M	M	ML	Mazraat Sari	M	M	M
Mazraat Sinai	M	M	ML	Meemariyeh	M	M	M	Merouaniyeh	M	M	M
Miyeh ou Miyeh	M	M	M	Najjariyeh	M	M	M	Qaaqaiyat El-Snaouba	M	M	M
Qnarit	M	M	M	Qraiye Saida	M	M	M	Saida Ed-Dekermane	M	M	M
Saida El-Oustani	M	M	M	Saida El-Qadimeh	M	M	ML	Saida Kefraya	M	M	M
Saksakiyeh	M	M	M	Salhieh Saida	M	M	M	Sarafand	M	M	M

Sfenta	ML	M	ML	Tafahta	M	M	ML	Tanbourit	M	M	M
Tebna	M	M	M	Zaghdraiya	M	M	M	Zeita	M	M	M
Zrariyeh	M	M	ML								

Jezzine

Municipality	30-Oct	31-Oct	01-Nov	Municipality	30-Oct	31-Oct	01-Nov	Municipality	30-Oct	31-Oct	01-Nov
Ain El-Mir (El Estab)	M	M	ML	Anane	L	ML	L	Aramta	M	M	ML
Ariya	L	M	L	Aychiyeh	M	M	ML	Azour	L	ML	L
Baba	L	ML	L	Bayssour Jezzine	M	M	ML	Benoueteh Jezzine	L	M	L
Bhannine	L	M	L	Bisri	L	ML	L	Bkassine	L	M	L
Bouslaya	L	M	L	Btedine El-Leqech	L	ML	L	Chbail	L	M	ML
Choualiq Jezzine	M	M	M	Dahr Ed-Deir	L	M	ML	Deir El Qattine	ML	M	ML
Demachqiyeh	M	M	ML	Ghabbatiyeh	L	M	L	Harf Jezzine	L	ML	L
Hassaniyeh	M	M	M	Haytouleh	ML	M	ML	Haytoura	ML	M	ML
Hidab	ML	M	ML	Homsiyeh	L	M	L	Jabal Toura	M	M	ML
Jarmaq	M	M	ML	Jensnaya	M	M	M	Jernaya	M	M	ML
Jezzine	M	M	ML	Karkha	M	M	M	Kfar Falous	ML	M	L
Kfar Houna	M	M	ML	Kfar Jarrah	M	M	ML	Lebaa	M	M	M
Louayzet Jezzine	ML	M	ML	Machmouche	L	M	L	Mahmoudiyeh Jezzine	M	M	ML
Maknounye Jezzine	ML	M	ML	Maraat Ouazaiyeh	M	M	ML	Mazraat Daraya	M	M	ML
Mazraat El-Aarqoub	ML	M	ML	Mazraat El-Mathane	L	ML	L	Mazraat El-Rahbane	L	M	ML
Mazraat Khallet Khaz	M	M	ML	Mazraat Louzid (Loua	ML	M	ML	Mazraat Qrouh	M	M	ML
Mazraat Tamra	M	M	ML	Mazraat Zighrine Jez	ML	M	ML	Mazraat	L	M	L
Mharbiyeh	M	M	M	Midane Jezzine	L	M	L	Mjeydel Jezzine	M	M	M
Mlikh	ML	M	ML	Mrah El-Hbasse	M	M	ML	Ouadi Baanquodaine	M	M	ML
Ouadi El-Laymoun	M	M	ML	Ouardiyeh	L	M	ML	Qabaa Jezzine	ML	M	ML
Qatrani	M	M	ML	Qaytouleh	ML	M	ML	Qtaleh Jezzine	L	ML	L
Rihane Jezzine	M	M	ML	Rimat	ML	M	ML	Roum	L	M	L
Roummanet	ML	M	ML	Sabbah	L	M	L	Saydoun	L	M	ML
Sfaray	L	ML	L	Snaya	ML	M	ML	Sojoud	M	M	ML
Srayri	M	M	ML	Taaid	L	ML	L	Wadi Jezzine	L	M	L
Zhalta	ML	M	ML								

Bekaa

West Bekaa

Municipality	30-Oct	31-Oct	01-Nov	Municipality	30-Oct	31-Oct	01-Nov	Municipality	30-Oct	31-Oct	01-Nov
Aammiq BG	M	M	ML	Ain El Tineh BG	M	M	ML	Ain Zebdeh	M	M	ML
Ana	ML	M	ML	Aytanit	M	M	ML	Baaloul BG	M	M	ML
Bab Mareh	M	M	ML	Chouberqiye Aammiq	M	M	ML	Dakoue	M	M	ML
Deir Ain El-Jaouze	M	M	ML	Deir Tahniche	M	M	ML	Ghaza	M	M	ML
Harime El-Soughra	M	M	ML	Hoch Harimeh	M	M	ML	Jazira BG	M	M	ML
Jib Jennine	M	M	ML	Kamed-El-Laouz	M	M	ML	Kefraya BG	L	M	ML
Khiara El Atika	M	M	ML	Khiara	M	M	ML	Khirbet Qanafar	M	M	ML
Lala	M	M	ML	Lebbaya BG	M	M	ML	Loussa	M	M	ML
Machghara	M	M	ML	Manara (Hammara) BG	M	M	M	Mansoura BG	M	M	M

Marej BG	M	M	ML	Maydoun	M	M	ML	Ouaqf BG	M	M	ML
Qaraaoun	M	M	ML	Qelya	M	M	ML	Raouda (Istabel)	M	M	ML
Saghbine	M	M	ML	Sohmor	M	M	ML	Soltan Yaacoub el Ara	M	M	ML
Souairy	M	M	M	Sultan Yaacoub	M	M	ML	Tal Znoub	M	M	ML
Yehmor BG	M	M	ML	Zilaya	M	M	ML				

Zahle

Municipality	30-Oct	31-Oct	01-Nov	Municipality	30-Oct	31-Oct	01-Nov	Municipality	30-Oct	31-Oct	01-Nov
Aanjar (Haouch Mouss)	M	M	M	Ablah	M	M	M	Ain Kfarzabad	M	M	M
Ali-El-Nahri	M	M	M	Bar Elias	M	M	ML	Bouarej	M	M	ML
Cheberqiyet Tabet	M	M	ML	Chtaura	ML	M	ML	Deir El Ghazal	M	M	M
Delhamiyet Zahle	M	M	M	Ferzol	M	M	M	Haouch El-Ghanam	M	M	M
Haouch Es-Siyadeh	ML	M	ML	Haouch Hala	M	M	M	Haouch Mandara	M	M	ML
Haouch Qayssar	ML	M	ML	Hezerta	M	M	ML	Hosh Moussa	M	M	M
Jdita	ML	M	ML	Kfarzabad	M	M	M	Ksara	M	M	ML
Majdel Aanjar	M	M	M	Makssi	ML	M	ML	Massa	M	M	M
Mazraat Er-Remtaniye	ML	M	ML	Mrayjat Zahle	M	M	ML	Mzaraa Zahle	ML	M	ML
Nabi Ayla	M	M	M	Nasriyet Rizk	M	M	M	Nasriyet Zahle	M	M	ML
Niha Zahle	M	M	M	Ouadi Ed-Deloum	ML	M	ML	Ouadi El-Arayech	M	M	M
Qaa El Rim	M	M	ML	Qab Elias	ML	M	M	Qousaya	M	M	M
Rhit	M	M	M	Riyak	M	M	M	Saadnayel	M	M	ML
Taal El-Akhdar	M	M	ML	Taalbeya	M	M	ML	Taanayel	M	M	ML
Talamara	M	M	M	Tcheflik Edde Haouch	M	M	ML	Tcheflik Qiqano	ML	M	ML
Terbol Zahle	M	M	M	Touaite Zahle	ML	M	ML	Zahle Aradi	M	M	ML
Zahle El-Berbara	M	M	ML	Zahle El-Maallaqa	M	M	ML	Zahle El-Midane	M	M	ML
Zahle Er-Rassiye	M	M	ML	Zahle Haouch El-Ouma	M	M	ML	Zahle Haouch El-Ouma	M	M	ML
Zahle Haouch Ez-Zara	M	M	ML	Zahle Maalaqa Aradi	M	M	M	Zahle Mar Antonios	M	M	ML
Zahle Mar Elias	M	M	ML	Zahle Mar Gerios	M	M	ML	Zahle Saydet En-Naja	M	M	M
Zebdoul	ML	M	M								

Rachaiya

Municipality	30-Oct	31-Oct	01-Nov	Municipality	30-Oct	31-Oct	01-Nov	Municipality	30-Oct	31-Oct	01-Nov
Ain Arab Rachaiya	M	M	M	Ain Ata	M	M	M	Ain Harche	M	M	ML
Aqabe Rachaya	M	M	ML	Ayha	M	M	M	Ayta El Fokhar	M	M	M
Bakifa Rachaya	M	M	ML	Bakka	M	M	ML	Beit Lahya	M	M	ML
Bireh Rachaiya	M	M	ML	Daher El Ahmar	M	M	ML	Deir El-Achayer	M	M	M
Heloua Rachaiya	M	M	M	Hoch El Qannabeh Rac	M	M	ML	Kaoukaba Bou Arab	M	M	ML
Kfar Danis	M	M	ML	Kfar Mechki	M	M	ML	Kfar Qouq	M	M	M
Kherbet Rouha	M	M	ML	Majdel Balhiss	M	M	ML	Mdoukha	M	M	ML
Mhaydseh Rachaiya	M	M	ML	Nabi Safa	M	M	ML	Rachaiya	M	M	ML
Rafid Rachaiya	M	M	ML	Selsata (Mazraat Dei	M	M	M	Tannoura	M	M	ML
Yanta	M	M	M								

Beyrouth

Beyrouth

Municipality	30-Oct	31-Oct	01-Nov	Municipality	30-Oct	31-Oct	01-Nov	Municipality	30-Oct	31-Oct	01-Nov
--------------	--------	--------	--------	--------------	--------	--------	--------	--------------	--------	--------	--------

Achrafieh	M	M	M	Ain el-Mreisse	M	M	M	Bachoura	M	M	M
Beirut Central Distr	M	M	M	Marfai	M	M	M	Mazraa	M	M	M
Medaouar	M	M	M	Minet el-Hosn	M	M	M	Mwssaitbeh	M	M	M
Ras Beirut	M	M	M	Rmeil	M	M	M	Saifi	M	M	M
Zqaq el-Blat	M	M	M								