

Lebanon Fire Risk Bulletin



CIVIL DEDEFENCE

Refer to cadast table condition.

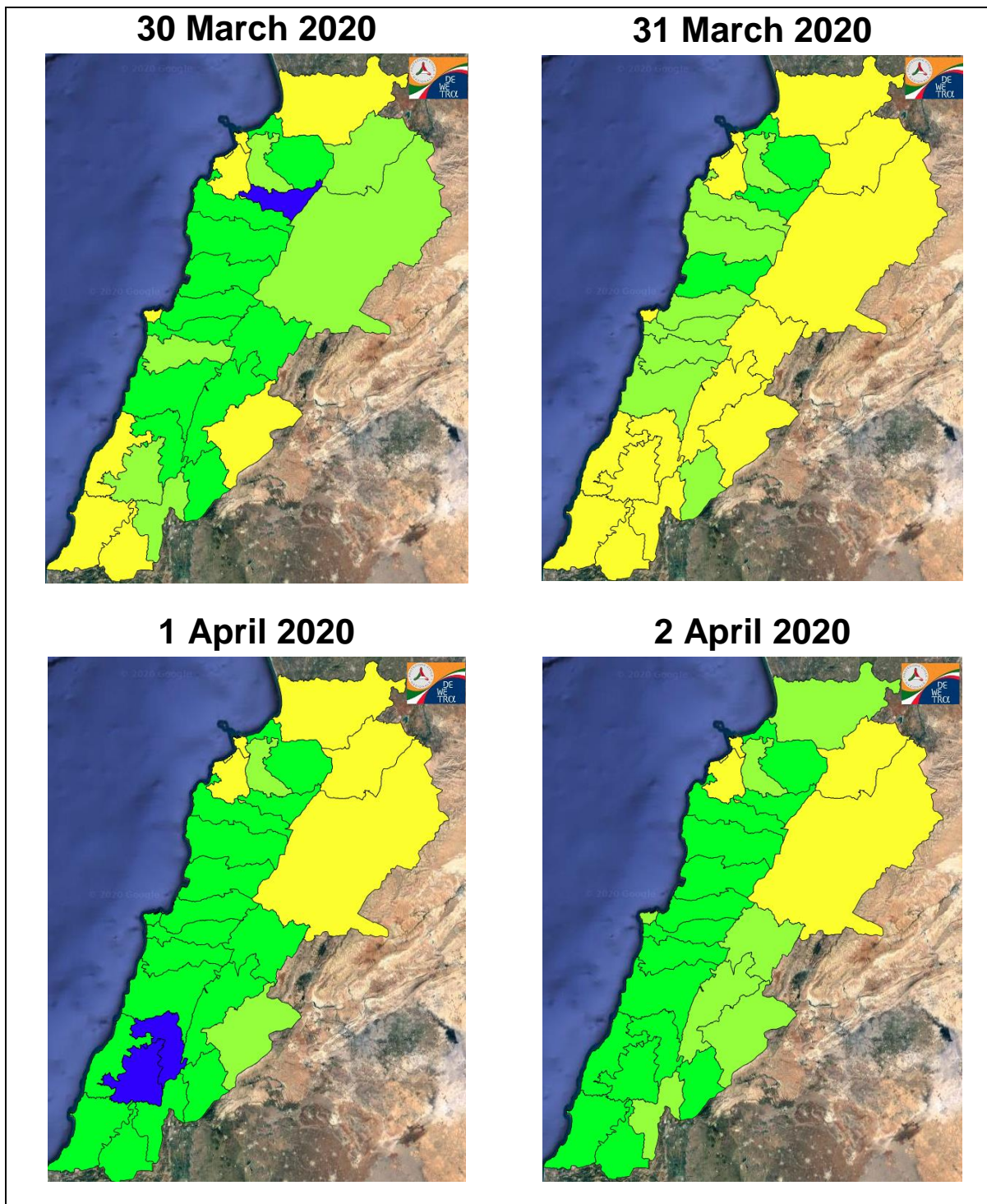
Please note that the indicated temperature is at 2 meters height from the ground.

General description of potential fire risk situation

Symbol	Level of risk	Meaning and actions
VL	Very low	Very low fire risk. Controlled burning operations can be hardly executed due to high fuel moisture content. Normally wildfires self-extinguish.
L	Low	Low fire risk. Controlled burning operations can be executed with a reasonable degree of safety.
ML	Medium low	Medium-low fire risk. Controlled burning operations can be executed in safety conditions. All the fires need to be extinguished.
M	Medium	Medium fire risk. Controlled burning operations would be avoided. All the fires need to be very well extinguished.
M	Medium high	Controlled burning is not recommended. Open flame will start fires. Cured grasslands and forest litter will burn readily. Spread is moderate in forests and fast in exposed areas. Patrolling and monitoring is suggested. Fight fires with direct attack and all available resources.
H	High	Ignition can occur easily with fast spread in grass, shrubs and forests. Fires will be very hot with crowning and short to medium spotting. Direct attack on the head may not be possible requiring indirect methods on flanks. Patrolling and monitoring the territory is highly suggested.
E	Extreme	Ignition can occur also from sparks. Fires will be extremely hot with fast rate of spread. Control may not be possible during day due to long range spotting and crowning. Suppression forces should limit efforts to limiting lateral spread. Damage potential total. Patrolling and monitoring the territory is highly suggested.

Beirut, 31 March 2020

FIRE RISK INDEX

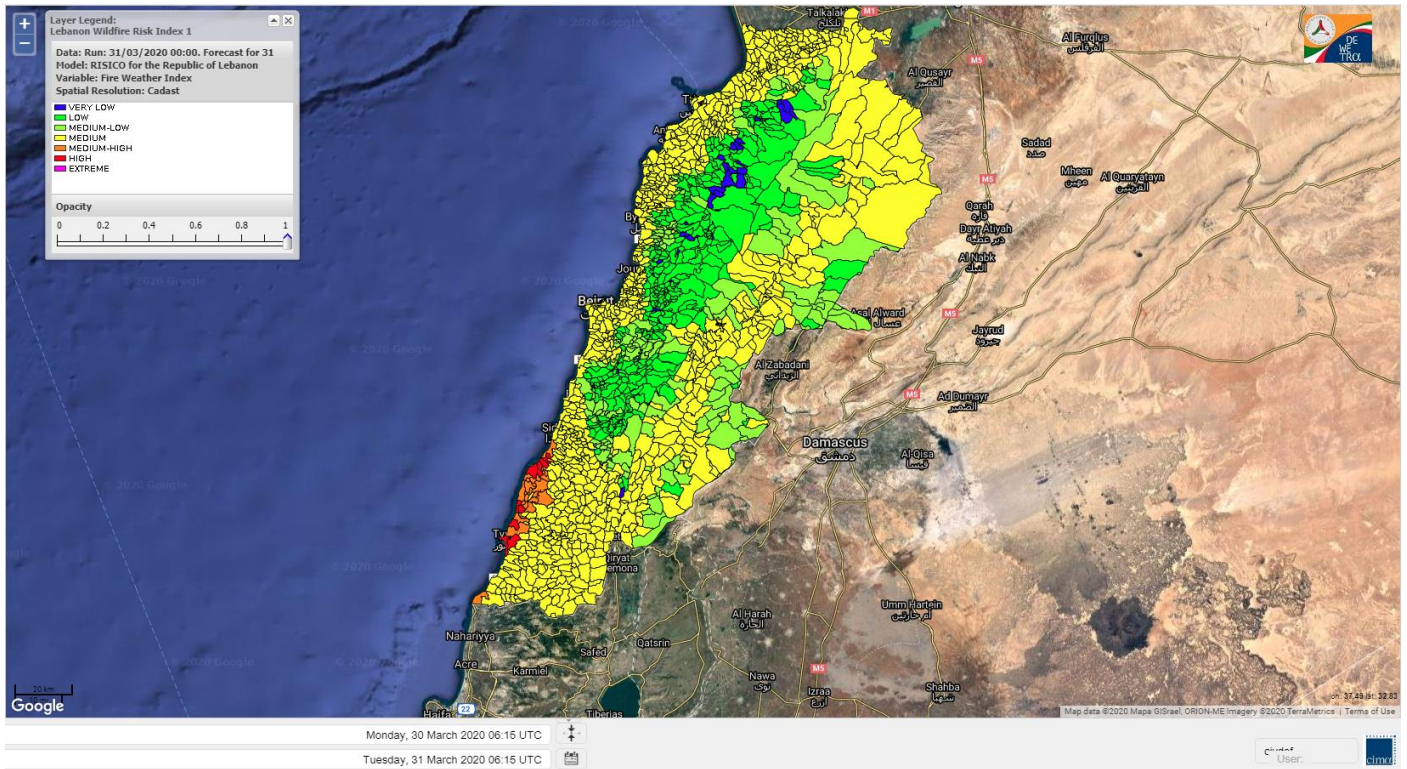


Layer Legend:
Lebanon Wildfire Risk Index 1

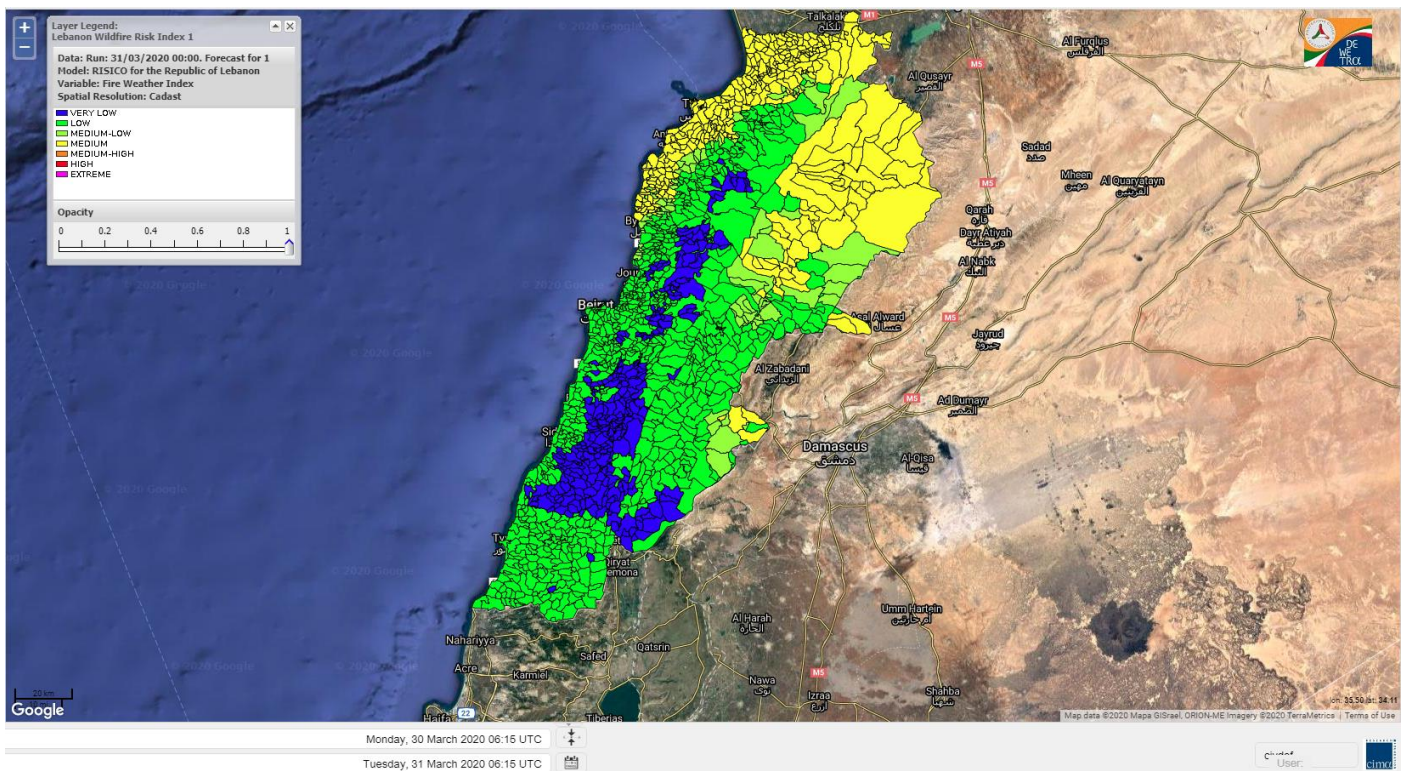
Data: Run: 31/03/2020 00:00. Forecast for 31
Model: RISICO for the Republic of Lebanon
Variable: Fire Weather Index
Spatial Resolution: Caza

- VERY LOW
- LOW
- MEDIUM-LOW
- MEDIUM
- MEDIUM-HIGH
- HIGH
- EXTREME

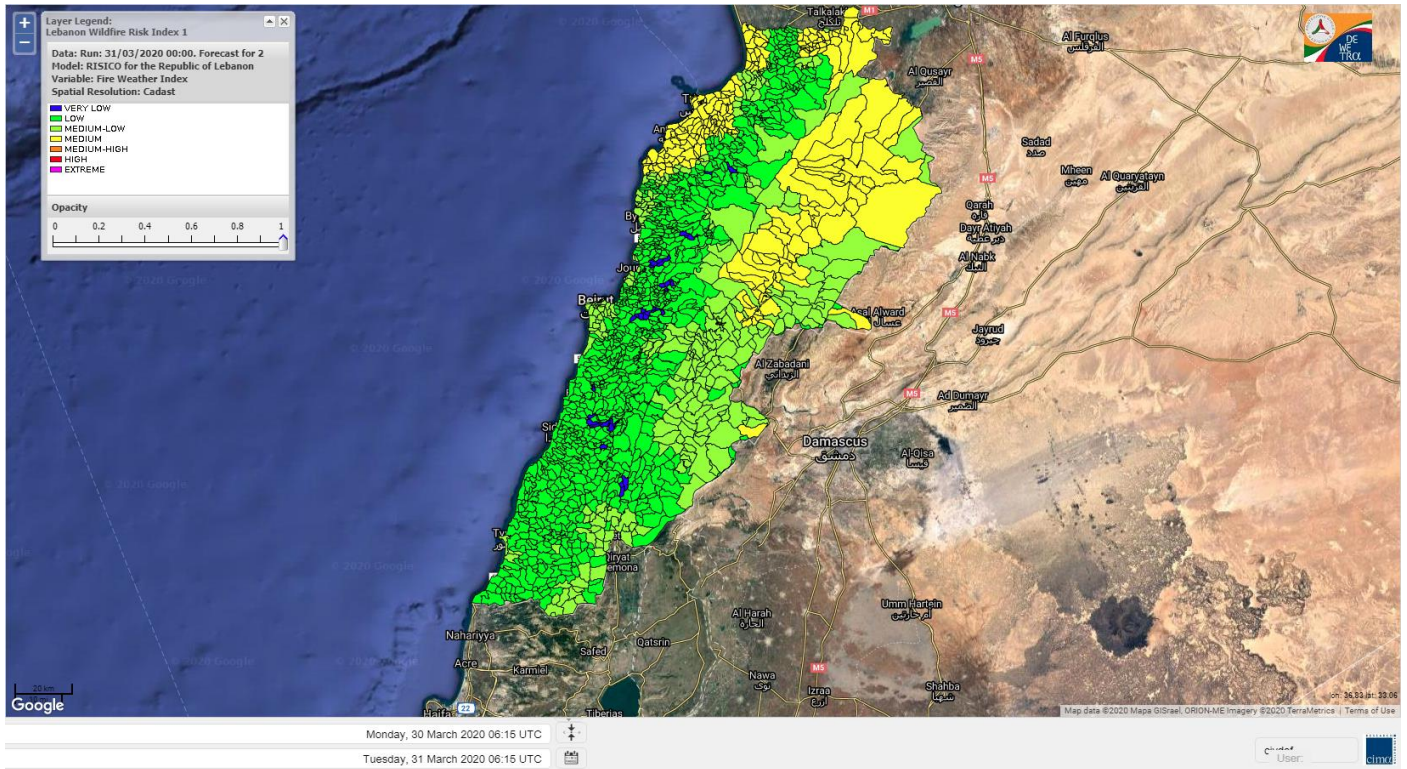
Lebanon for 31 March 2020



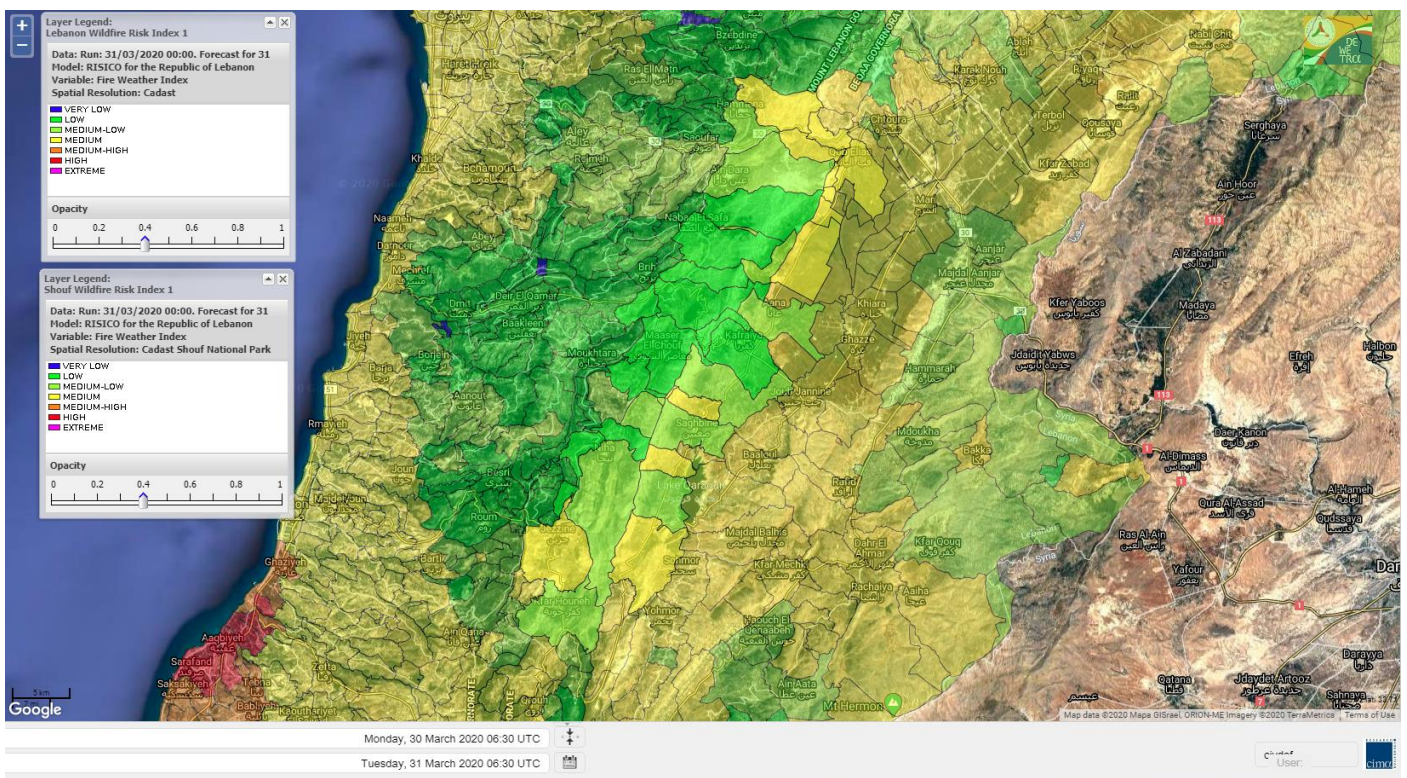
Lebanon for 1 April 2020



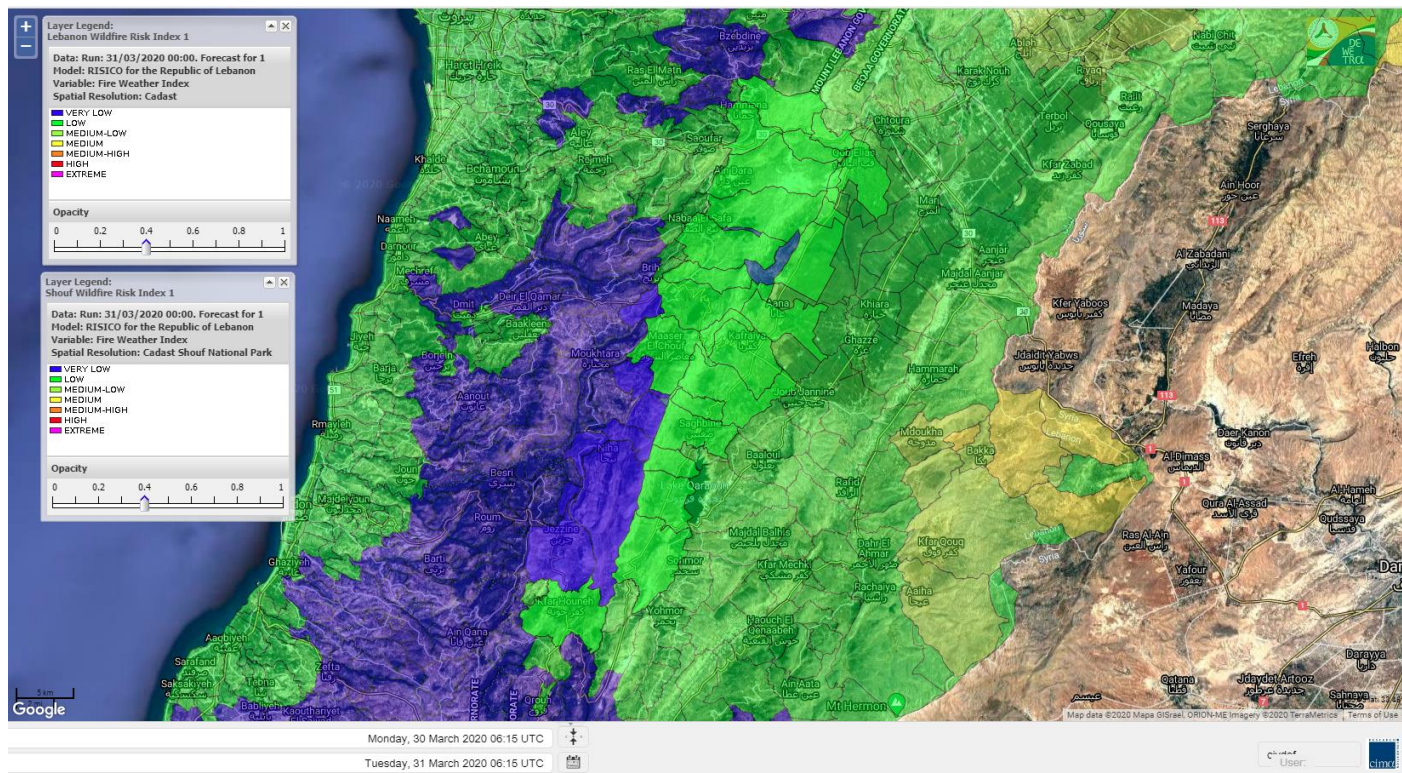
Lebanon for 2 April 2020



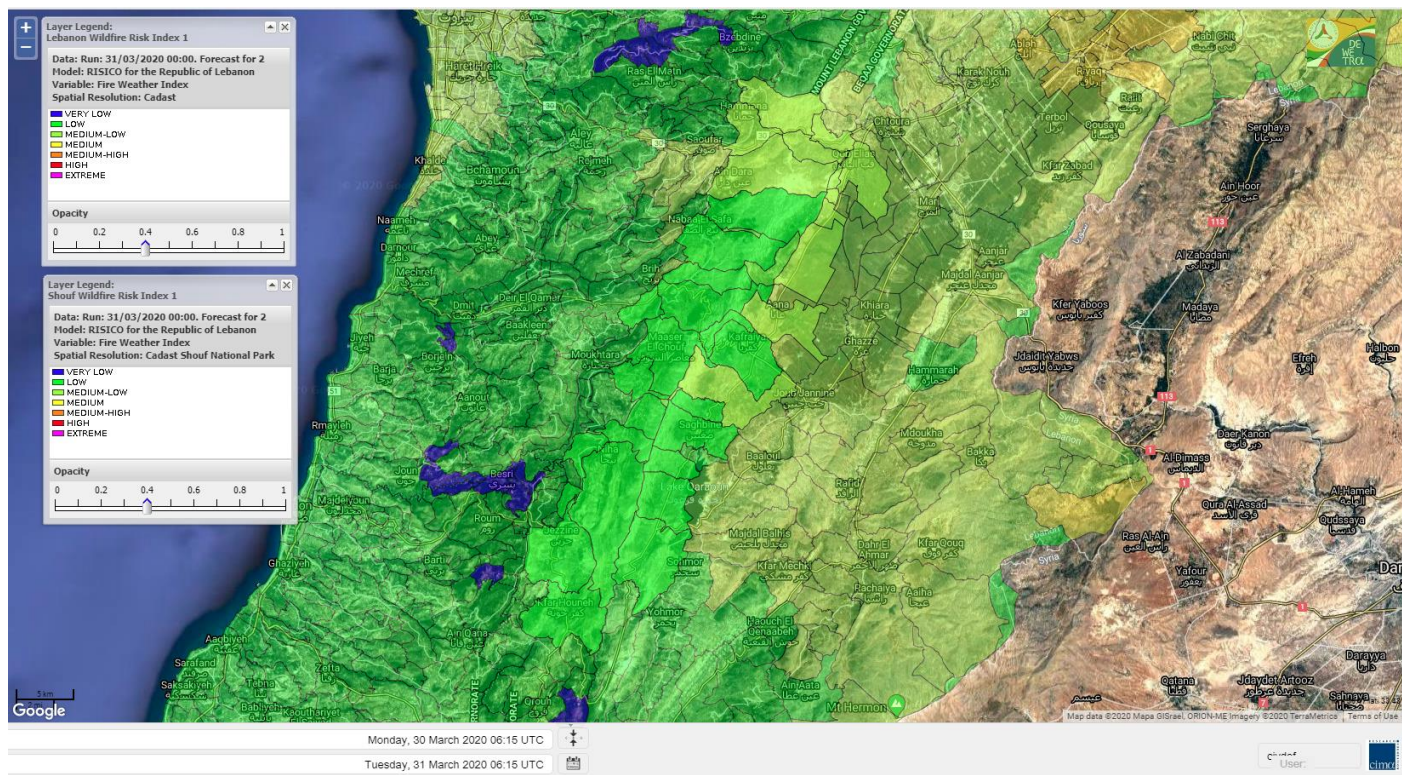
Shouf Biosphere Reserve Forecast for 31 March 2020



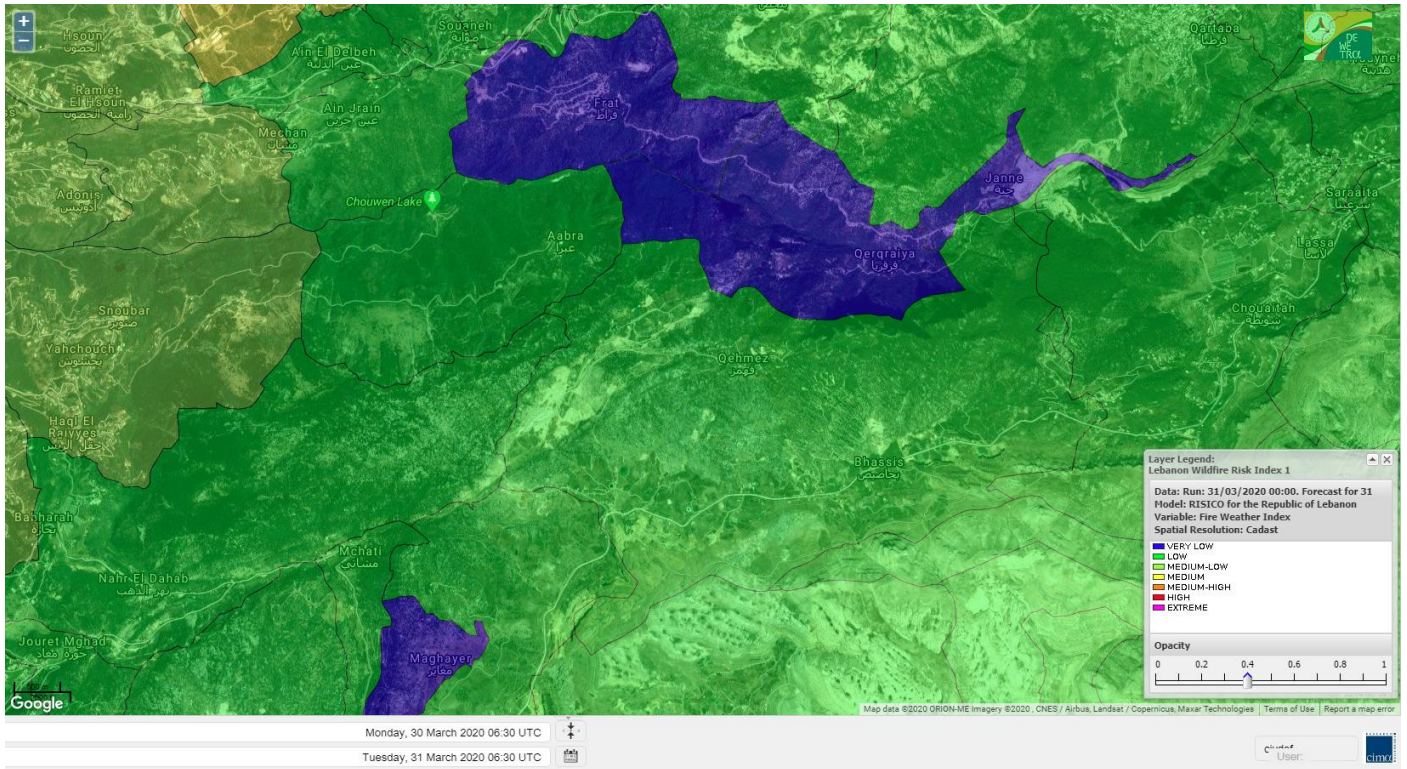
Shouf Biosphere Reserve Forecast for 1 April 2020



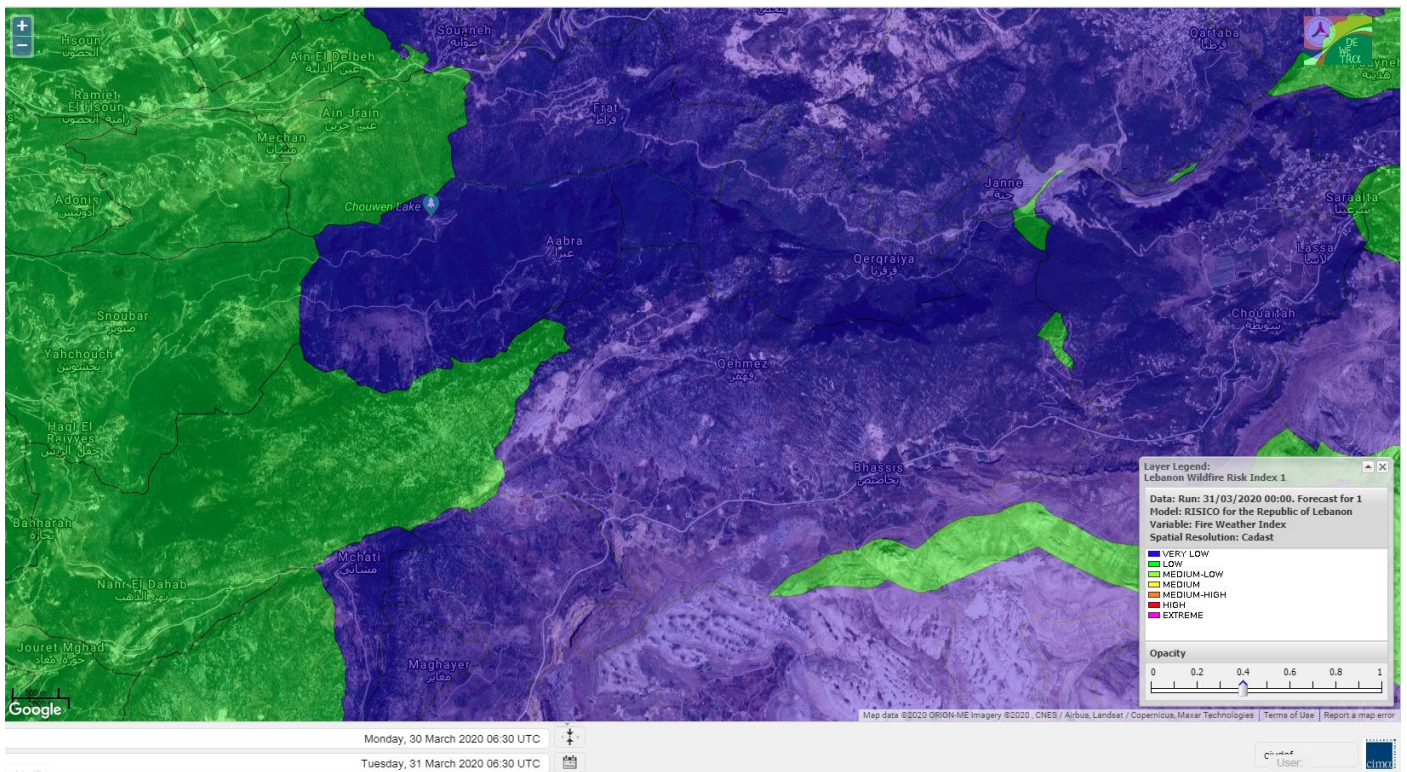
Shouf Biosphere Reserve Forecast for 2 April 2020



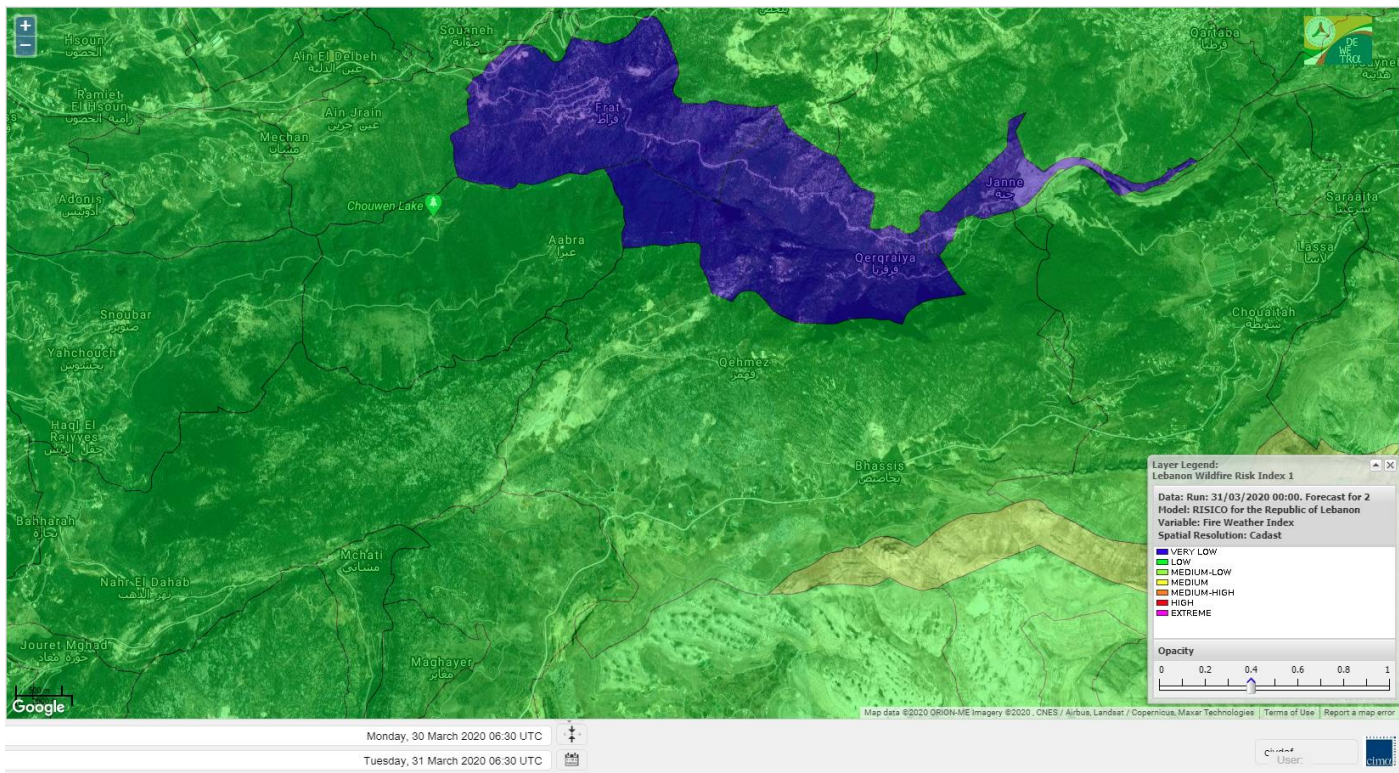
Jabal Moussa Reserve Forecast for 31 March 2020



Jabal Moussa Reserve Forecast for 1 April 2020



Jabal Moussa Reserve Forecast for 2 April 2020

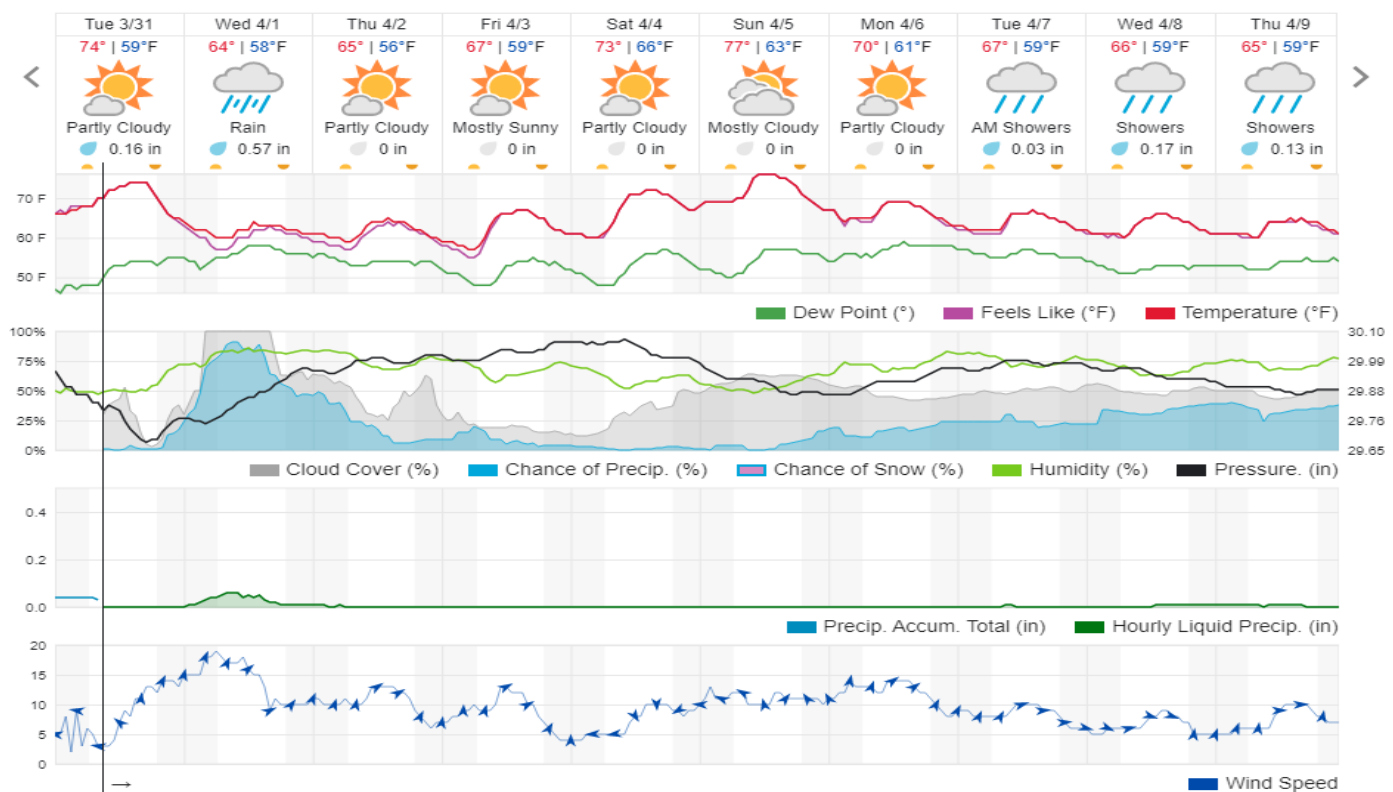


Beirut, Beirut Governorate, Lebanon 10-Day Weather Forecast

70° ACHRAFIEH, RIZK STATION | CHANGE

TODAY HOURLY 10-DAY CALENDAR HISTORY WUNDERMAP

Customize



Nord

Koura

Municipality	31-Mar	01-Apr	02-Apr	Municipality	31-Mar	01-Apr	02-Apr	Municipality	31-Mar	01-Apr	02-Apr
Aaba	M	M	M	Afsaddiq	M	M	M	Ain Ekrine	M	L	M
Amioun	M	ML	M	Anfeh	M	M	M	Badbhoun	M	M	M
Barghoun	M	M	M	Barsa	M	M	M	Batroumine	M	M	M
Bdebba	M	M	M	Bechmizine	M	M	M	Bednayel El-Koura	M	M	M
Bhabbouch El-Koura	M	L	ML	Bkeftine	M	M	M	Bnehran	M	L	ML
Bqaiia El-Koura	M	M	M	Bsarma	M	M	M	Btaaboura	M	M	M
Bterram	M	M	M	Btouratij	M	M	M	Bziza	M	ML	M
Dar Beechtar	M	ML	M	Dar Chmezzine	M	ML	M	Deddeh	M	M	M
Deir El-Balamand	M	M	M	Fih	M	M	M	Hraiche	M	M	M
Ijdaabrine	M	M	M	Kaftoun	M	ML	ML	Kefraya El-Koura	M	M	M
Kfarakka	M	ML	M	Kfarhata	M	M	M	Kfarhazir	M	M	M
Kfarkahel	M	M	M	Kfarsaroun	M	ML	M	Kosba	M	ML	M
Mejdel el-Koura	M	L	ML	Nakhle	M	M	M	Qalhat	M	M	M
Ras Masqa	M	M	M	Rechdibbine	M	L	ML	Zakroun	M	M	M
Zgharta El-Mtaouile	M	L	L								

Bcharre

Municipality	31-Mar	01-Apr	02-Apr	Municipality	31-Mar	01-Apr	02-Apr	Municipality	31-Mar	01-Apr	02-Apr
Aabdine	L	L	L	Bane	L	L	L	Barhelioun	L	L	L
Bazooune	L	VL	ML	Becharre	L	L	L	Beit Menzer	L	L	L
Billa	L	L	L	Blaouza	L	L	L	Bqaa Kafra	L	VL	ML
Bqerqacha	L	VL	ML	Breissat	L	VL	L	Dimane	L	VL	L
Hadath El Jobbeh	VL	VL	L	Hadchit	VL	VL	L	Hasroun	VL	VL	L
Mazraat Aassaf	L	L	VL	Mazraat Bani Saab	L	VL	L	Mchaa El-Jobbeh	L	VL	ML
Metrit	M	L	L	Moghr El-Ahoual	L	L	L	Ouadi Qannoubine	VL	VL	VL
Qanat	L	L	L	Qnayouer	VL	L	L	Tourza	L	L	L

Batroun

Municipality	31-Mar	01-Apr	02-Apr	Municipality	31-Mar	01-Apr	02-Apr	Municipality	31-Mar	01-Apr	02-Apr
Aabrine	M	M	M	Aalali	L	L	L	Aartiz	ML	M	L
Abdelli	M	M	L	Ajdabra	M	M	ML	Assia	L	L	L
Basbina	M	M	ML	Batroun	M	M	M	Bcheleh	L	L	L
Bechtoudar	L	L	L	Beit Chlala	L	L	L	Beit Kassab	L	L	L
Bijdarfil	M	M	M	Bqesmaya	M	M	ML	Chatine	VL	VL	L
Chebtein	M	M	L	Chekka	M	M	M	Daael	L	L	L
Dahr Abi Yaghi	M	ML	L	Daraya El-Batroun	M	M	ML	Deir Billa	ML	L	L
Deir Kfifane	M	M	ML	Deir Mar Youhanna EL	L	L	L	Deir Mar Youssef Jra	M	ML	L
Douma	L	L	L	Douq	M	M	L	Eddeh El-Batroun	M	M	ML
Ftahat El-Batroun	ML	ML	L	Ghouma	M	M	L	Hadtoun	L	L	L
Hamat	M	M	M	Harbouna	ML	M	L	Hardine	L	L	L
Helta	L	L	L	Hery	M	M	M	Jebba	ML	L	L
Jrabta El-Batroun	M	M	L	Jrane El-Batroun	M	M	ML	Kfar Aabida	M	M	ML
Kfar Halda	L	L	L	Kfarb Shlaimane	L	L	L	Kfarhatna	M	M	L

Kfarhay	M	M	M	Kfarhelos	M	M	M	Kfifane	M	M	ML
Kfour El Arabi	L	L	L	Koubba	M	M	M	Kour	M	M	ML
Mar Mama	ML	M	L	Masrah	ML	ML	L	Mehmarch	ML	L	L
Mrah Chdid	M	M	L	Mrah El Ziyat	M	M	ML	Mrah El-Hajj	L	L	L
Nahle El-Batroun	L	L	L	Niha El-Batroun	L	VL	L	Ouahj El-Hajjar	M	M	M
Ouata Houb	VL	VL	L	Qatnaaoun	M	M	M	Racha	ML	L	L
Rachana	M	M	L	Rachkida	M	M	M	Ram El-Batroun	L	L	L
Ras Nahhach	M	M	M	Selaata	M	M	M	Sghar	M	ML	L
Smar Jbayl	M	ML	L	Sourat El-Batroun	ML	ML	L	Tannourine El-Faouqa	L	L	L
Tannourine Et-Tahta	VL	VL	L	Thoum	M	M	L	Toula El-Batroun	M	M	L
Zan	M	ML	L								

Zgharta

Municipality	31-Mar	01-Apr	02-Apr	Municipality	31-Mar	01-Apr	02-Apr	Municipality	31-Mar	01-Apr	02-Apr
Aachach	M	M	M	Aalma	M	M	M	Aarde	M	M	M
Aintourine	L	L	L	Arabet Qozhaya	L	L	L	Arde	M	M	M
Arjis	L	ML	L	Asnoun	M	M	M	Ayto	L	L	L
Basloukit	L	L	L	Bchannine	M	M	M	Besebeel	M	M	M
Bhairret Toula	VL	VL	L	Bnachee	L	L	L	Boussit	M	M	M
Danha	M	M	M	Daraiya Zgharta	L	L	L	Deir Jdeide	M	M	M
Ehden	L	L	L	Halan	M	M	ML	Hariq Zgharta	M	M	M
Houakir	M	M	M	Hraiqis	M	M	M	Iaal	M	M	M
Ijbaa	L	L	L	Karm Saddeh	L	L	L	Kfarchakhna	M	M	M
Kfardlaqous	M	M	M	Kfarfou	L	L	L	Kfarhata Zgharta	M	M	M
Kfarhoura	M	M	M	Kfarsghab	VL	L	L	Kfaryachit	M	M	M
Kfarzaina	M	M	M	Khaldiye	M	M	M	Mazraat Ajbeaa	M	M	M
Mazraat Et-Teffah	VL	L	L	Mazraat Jneid	M	M	M	Mejdlaiya Zgharta	M	M	M
Merh Kfarsghab	ML	ML	ML	Miryata	M	M	M	Miziara	L	L	L
Mzraat Kefraya	M	M	ML	Qorah Bach	M	M	M	Rachiine	M	M	M
Ras Kifa	L	L	L	Sakhra	M	M	M	Sebhel Zgharta	L	L	L
Serhel	VL	VL	L	Tallet Zgharta	M	M	M	Toula Zgharta	VL	L	L
Zgharta	M	M	M								

Minieh-Denniye

Municipality	31-Mar	01-Apr	02-Apr	Municipality	31-Mar	01-Apr	02-Apr	Municipality	31-Mar	01-Apr	02-Apr
Aasaymout	VL	L	L	Aaymar	L	L	L	Aazki	L	M	L
Ain El-Tineh-Miniyeh	L	L	L	Assoun	L	L	L	Bakhaaoun	L	L	L
Bchennata	L	L	L	Bechehhara	M	M	M	Beddawi	M	M	M
Behouaita	VL	L	L	Beit El Foqss	L	L	L	Beit Haouik	L	L	ML
Beit Zoud	L	L	L	Bekaasafrine	L	L	ML	Borj El Yahoudiyeh	M	M	M
Bqarsouna	L	L	L	Btermaz	L	L	L	Debaael	L	L	L
Deir Ammar	M	M	M	Deir Nbouh	M	M	M	Haouaret-Miniyeh	L	L	L
Haql el Azimeh	L	L	L	Harf El Siyad	L	L	L	Hazmiye-Miniyeh	L	L	L
Izal	ML	L	L	Jarjour	M	M	M	Jayroun	VL	L	L
Kahf El-Malloul	ML	ML	ML	Karm El-Moher	L	L	L	Kfar Binine	L	L	L
Kfarchalane	L	L	L	Kfarhabou	ML	ML	ML	Kharroub-Miniyeh	L	L	L
Mazraat El-Kreme	ML	ML	ML	Mazraat Ketrane	L	L	L	Merkebt	M	M	M

Minyeh	M	M	M	Mrah El Sfirat	L	L	L	Mrah Sraj	L	L	L
Mrebbine	L	L	L	Nabi Youcheaa	M	M	M	Nemrine	L	L	L
Qarhaiya	L	ML	L	Qarne	VL	L	L	Qarsita	L	L	L
Qattineh-Miniyeh	VL	L	L	Qemmamine	VL	L	L	Qraine	L	L	L
Raouda-Aadoua	M	M	ML	Rihaniyet-Miniyeh	M	M	ML	Sfireh	L	L	L
Sir Ed-Danniyeh	L	L	L	Tarane	L	L	L	Terbol-Miniyeh	M	M	M
Zaghartaghriine	M	M	M	Zouq Bhannine	M	M	M				

Nabatiye

Nabatiye

Municipality	31-Mar	01-Apr	02-Apr	Municipality	31-Mar	01-Apr	02-Apr	Municipality	31-Mar	01-Apr	02-Apr
Aabba	M	VL	L	Aazzi	M	VL	L	Adchit El-Chqif	M	VL	L
Ain Bou Swar	M	VL	L	Ain Kana	M	VL	L	Ali El-Taher	M	VL	L
Ansar	MH	VL	L	Arab Salim	M	VL	L	Arnoun	M	L	ML
Bfaroue	M	VL	L	Breyqaah	M	L	L	Charqiyeh	M	VL	L
Choukine	M	VL	L	Deir El Zahrani	M	VL	L	Doueir El-Nabatiyeh	M	VL	L
Habbouch El-Nabatiye	M	VL	L	Hamra El-Nabatiyeh	M	L	ML	Harouf El-Nabatiyeh	M	VL	L
Hmaile	M	VL	L	Houmin El Faouqa	M	VL	L	Houmin El Tahta	M	VL	L
Jarjough	M	VL	L	Jbaah El-Nabatiyeh	ML	VL	L	Jebchit	M	VL	L
Kfar Djal El-Nabatiy	M	L	L	Kfar Remmane	M	VL	L	Kfar Sir	M	L	L
Kfar Tebnit	M	VL	ML	Kfarfila	M	VL	L	Kfour El-Nabatieh	M	VL	L
Mayfadoun	M	L	ML	Mazraat Bsaffour	M	VL	L	Mazraat Chalbaal	M	VL	L
Mazraat Dmoul	M	VL	L	Mazraat El Khreibeh	M	VL	L	Mazraat El-Bayad El-	M	VL	L
Mazraat Kfarjaouz	M	VL	L	Mazraat Qalaat Meiss	M	VL	L	Nabatiyeh El-Fawka	M	VL	L
Nabatiyeh Et-Tahta	M	VL	L	Namiriyeh	M	VL	L	Qaaqaiyet El Jisr	M	L	L
Qossaibeh El-Nabatiy	M	L	L	Roumine	M	VL	L	Sarba El-Nabatieh	M	VL	L
Sir El-Gharbiyeh	M	L	L	Toul	M	VL	L	Yehmor El-Nabatiyeh	M	L	ML
Zaoutar El Charkiyeh	M	L	ML	Zaoutar El-Gharbiyeh	M	L	L	Zebdine El-Nabatiyeh	M	VL	L
Zefta	M	VL	L								

Hasbaiya

Municipality	31-Mar	01-Apr	02-Apr	Municipality	31-Mar	01-Apr	02-Apr	Municipality	31-Mar	01-Apr	02-Apr
Aain Jarfa	ML	L	L	Abou Qamha	M	L	L	Ain Qania	ML	VL	L
Bourghos	M	VL	L	Chebaa	M	VL	L	Chouaya Hasbaya	M	VL	L
Dellafeh	M	L	L	Fardiss Hasbaiya	M	L	L	Hasbaya	M	L	L
Hbariyeh	ML	VL	L	Kaoukaba Hasbaiya	M	L	L	Kfar Chouba	ML	VL	L
Kfar Hamam	ML	VL	L	Kfeir El-Zait	ML	L	L	Khalwat Hasbaya	L	VL	L
Khreibet Hasbaiya	M	VL	L	Majidiyeh Hasbaiya	M	VL	ML	Marj Ez-Zhour (Haouc	ML	L	L
Meri	M	VL	L	Mimass	M	L	L	Rachaiya El-Fokhar	M	VL	L
Salaiyeb	M	VL	ML								

Marjayoun

Municipality	31-Mar	01-Apr	02-Apr	Municipality	31-Mar	01-Apr	02-Apr	Municipality	31-Mar	01-Apr	02-Apr
Aalmane Marjaayoun	M	L	L	Aamra	M	VL	ML	Adayseh Marjaayoun	M	L	ML
Adchit El-Koussair	M	L	ML	Ain Aarab Marjaayoun	M	VL	ML	Bani Haiyann	M	L	L
Blatt Marjaayoun	M	L	L	Blida	M	L	L	Borj El-Moulouk	M	VL	ML

Boueyda Marjaayoun	M	VL	L	Deir Mimass	M	L	L	Deir Siriane	M	L	ML
Dibbine	M	L	L	Ebel El Saqi	M	L	L	Houla	M	L	L
Houra	M	L	ML	Kfar Kila	M	L	ML	Khiam Marjaayoun	M	VL	ML
Klayaa	M	VL	ML	Majdel Selem	M	L	L	Marjaayoun	M	L	L
Markaba	M	L	ML	Mays El-Jabal	M	L	ML	Mazraat Doumiat	M	VL	ML
Mazraat Sarada	M	VL	ML	Mhaibib	M	L	L	Qabrikha	M	L	L
Qantara	M	L	L	Rab El-Thalathine	M	L	ML	Saouaneh Marjayoun	M	L	L
Talloussa	M	VL	L	Taybeh Matjaayoun	M	L	ML	Touline	M	L	L

Bent Jbail

Municipality	31-Mar	01-Apr	02-Apr	Municipality	31-Mar	01-Apr	02-Apr	Municipality	31-Mar	01-Apr	02-Apr
Ain-Ebel	M	L	ML	Aitaroun	M	L	L	Aynata Bint Jbeil	M	L	ML
Ayta El-Chaeb	M	L	L	Ayta El-Jabal	M	L	L	Beit Lif	M	L	L
Beit Yahoun	M	L	L	Bint Jbeil	M	L	ML	Borj Qalaway	M	L	L
Braachit	M	L	L	Chakra	M	L	ML	Debel	M	L	L
Deir Antar	M	L	L	Froun	M	L	L	Ghandouriyeh Bint Jb	M	L	L
Hanine	M	L	ML	Hariss	M	L	L	Hdatha	M	L	L
Jmeyjmeh	M	L	L	Kafra Bint Jbeil	M	L	L	Kfar Dounine	M	L	L
Khirbet Selm	M	L	L	Kounine	M	L	ML	Maroun El Ras	M	L	ML
Qalaway	M	L	L	Qaouzah	M	L	L	Qatmoun	M	L	ML
Ramya Bint Jbeil	M	L	L	Rchaf	M	VL	L	Rmeich	M	L	ML
Safad Al Battikh	M	L	L	Salhaneh	M	L	L	Serbine	M	L	L
Sultanieh Bint Jbeil	M	L	L	Tibnine	M	L	L	Tiri	M	L	ML
Yaroun	M	L	ML	Yater	M	L	L				

Mont Liban

Jbail

Municipality	31-Mar	01-Apr	02-Apr	Municipality	31-Mar	01-Apr	02-Apr	Municipality	31-Mar	01-Apr	02-Apr
Aabeydat	M	ML	L	Aalita	L	L	L	Aamchit	M	M	ML
Aarab El-Lahib	VL	VL	L	Aarasta	VL	VL	L	Adonis Jbeil	ML	L	L
Afqa Jbeil	L	VL	L	Ain El Delbeh Jbeil	L	L	L	Ain El-Ghouayba	L	VL	L
Ain Jrain	L	L	L	Ain Kfah	M	M	ML	Almat El Chemaliyat	L	VL	L
Almat El-Jenoubiya	L	VL	L	Aqoura	L	L	ML	Bayzoun	M	L	L
Bchille Jbeil	ML	L	L	Bechtida	L	L	L	Behdaydat	M	ML	L
Beit Habbaq	M	ML	L	Bejjeh	M	ML	L	Bekhaaz	M	M	L
Berbara Jbeil	M	M	ML	Bintael	L	L	L	Birket Hjoula	L	L	L
Blatt Jbeil	M	L	L	Boulhos	L	VL	L	Breyj Jbeil	L	L	L
Chamat	M	M	ML	Chikhane	M	M	ML	Chmout	M	ML	L
Eddeh Jbeil	M	ML	ML	Ehmej	L	L	L	Fatre	ML	L	L
Ferhet	ML	L	L	Fghal	M	M	L	Frat	VL	VL	VL
Ghabat	L	L	L	Ghalboun	M	M	L	Gharzouz	M	M	ML
Ghofrine	M	M	ML	Habil	ML	ML	L	Halate	M	L	L
Haqel	M	ML	L	Hbaline	M	M	ML	Hboub	ML	L	L
Hdeine	L	L	L	Hema Er-Rehban	L	L	ML	Hema Mar Maroun Aann	L	VL	ML
Hjoula	L	L	L	Hosrayel	M	M	ML	Hsarat	M	M	ML

Hsoun	ML	L	L	Jaj	L	L	L	Janne	VL	VL	VL
Jbeil	M	ML	ML	Jeddeyel Jbeil	M	M	ML	Jlisse	L	L	L
Jouret El-Qattine	ML	L	L	Kfar Baal Annaya	ML	L	L	Kfar Kidde	M	M	L
Kfar Kouas	L	L	L	Kfar Mashoun	M	ML	ML	Kfoun	M	ML	L
Kharbe Jbeil	M	ML	ML	Laqlouq	L	L	ML	Lassa	L	VL	L
Lehfed	L	L	L	Maad	M	M	ML	Mar Sarkis	L	VL	L
Mastita	M	ML	ML	Mayfouq	L	L	L	Mazraat El Siyad	L	VL	L
Mazraat El-Maaden	VL	VL	L	Mechane	ML	L	L	Mechmech Jbeil	L	L	L
Mehrin	M	L	L	Mejdel El-Akoura	L	VL	L	Mghayreh Jbeil	L	L	ML
Mounsef	M	M	ML	Nahr Ibrahim	M	ML	ML	Qahmez	L	VL	L
Qartaba	L	VL	L	Qartaboun	M	ML	ML	Qattara Jbeil	L	L	L
Qorqraya	VL	VL	VL	Ramout	M	M	L	Ras Osta	L	L	L
Rihane Jbeil	M	M	ML	Sakiet El-Khayt	M	ML	L	Saqi Richmaya	L	L	L
Sebrine	L	L	L	Seraita	L	VL	L	Souane Jbeil	L	VL	L
Tadmor	L	L	ML	Tartej	ML	L	L	Torzaiya	ML	L	L
Yanouh Jbeil	L	L	L	Zibdine Jbeil	ML	L	L				

El Metn

Municipality	31-Mar	01-Apr	02-Apr	Municipality	31-Mar	01-Apr	02-Apr	Municipality	31-Mar	01-Apr	02-Apr
Aain El-Qabu	L	VL	L	Aain El-Qach	L	L	L	Aain El-Teffaha	L	L	L
Aain el-Safssaf El-M	L	VL	L	Abou Mizane	L	L	L	Ain Aar	M	L	L
Ain Alaq	M	L	L	Ain El-Kharroube	L	L	L	Ain El-Sendiane	L	L	L
Ain El-Zeitoune	L	L	L	Ain Saadeh	M	L	L	Aintoura El-Matn	L	VL	L
Amaret Chalhoub	M	L	L	Antelias	M	L	L	Atchaneh	M	L	L
Ayroun	L	L	L	Baabdat	L	L	L	Baouchariyeh	M	L	ML
Baskinta	L	VL	L	Beit Chabab	L	L	L	Beit El-Chaar	M	L	L
Beit El-Kekko	M	L	L	Beit Mery	M	L	L	Bhersaf	ML	L	L
Bikfaya	L	L	L	Biyakout	M	L	L	Bnabil	L	L	L
Bourj Hammoud	M	L	ML	Bqennaya	M	L	L	Broummana El-Matn	M	L	L
Bsalim	M	L	L	Bsifrine	VL	VL	VL	Bteghrine	L	VL	L
Chaouiye	M	L	L	Chouaya El-Matn	L	L	L	Choueir	L	L	L
Chrine	L	L	VL	Dahr El Sawan El-Mat	M	L	L	Daychouniyeh	M	L	L
Dbayeh	M	L	L	Deir Chamra	L	VL	VL	Deir Mar Abda el Mch	M	L	L
Deir Mar Roukouz	M	L	ML	Deir Tamiche	M	L	L	Dik El-Mehdi	M	L	L
Dikwaneh	M	L	ML	Douar El-Matn	L	L	L	Fanar	M	L	L
Fraike	M	L	L	Haret El-Ballaneh	M	L	L	Hbous	M	L	L
Himlaya	L	L	L	Jal El Did	M	L	L	Jdeideh El-Metn	M	L	L
Jouar El-Matn	L	L	L	Jouret El-Ballout	M	L	L	Kaaqour	L	VL	L
Kfar Aaqab	L	VL	L	Kfertay El-Matn	L	VL	L	Khenchara	L	L	L
Khillet El-Mtain	L	VL	L	Konnabat Broummana	M	L	L	Konnabat Salima	VL	VL	VL
Machraah El-Matn	L	L	L	Majdel Tarchich	L	VL	L	Majzoub	M	L	L
Mansouriyeh El-Metn	M	L	L	Mar Boutros Karm Et-	L	VL	L	Mar Chaya et Mzekke	M	L	L
Mar Moussa Ed-Douar	L	VL	L	Marjaba	L	L	L	Masqa	M	L	L
Mayasse	L	L	L	Mazraat Deir Aoukar	M	L	L	Mazraat El-Hadirat	M	L	L
Mazraat Yachouh	M	L	L	Mchikha	L	L	L	Menqlet Mezher	M	L	L
Mhayseh Matn	L	L	L	Mkalles	M	L	ML	Mrouj	L	L	L

Mtain	L	L	L	Mtayleb	M	L	L	Nabay	M	L	L
Naccache	M	L	L	Ouadi Chahine	L	L	VL	Ouadi El-Karm El-Mat	L	VL	VL
Ouata El-Mrouj	L	L	L	Ouyoun El-Matn	M	L	VL	Qornet Chehwan	M	L	L
Qornet El-Hamra	M	L	L	Roumieh	M	L	L	Sfeilet Bikfaya	L	VL	L
Sinn El-Fil	M	L	ML	Zabbougha	L	VL	VL	Zalqa	M	L	L
Zarououn	L	VL	L	Zekrite	M	L	L	Zighrine El-Matn	L	L	L
Zouk El-Khrab	M	L	L								

Chouf

Municipality	31-Mar	01-Apr	02-Apr	Municipality	31-Mar	01-Apr	02-Apr	Municipality	31-Mar	01-Apr	02-Apr
Aalmane El-Chouf	M	L	L	Aammqi El-Chouf	L	VL	L	Ain Ouzein	L	VL	L
Ain Qani	L	VL	L	Ain Zhalta	L	L	L	Ainbal	L	VL	L
Amatour	L	VL	L	Anout	ML	VL	L	Atrine	L	VL	L
Baadarane	ML	VL	L	Baaqline	L	L	L	Baasir	M	L	L
Barja	M	L	L	Barouk	L	L	L	Bater	L	VL	L
Batloun	L	VL	L	Bayqoun	ML	VL	L	Bchetfine	L	VL	L
Beiteddine	L	VL	L	Benouati Ech-Chouf	L	VL	L	Berjein	L	VL	L
Bireh et Mtalleh	L	VL	L	Biret El-Chouf	L	VL	L	Bkechtine Ouel Mchei	L	VL	VL
Bkifa El-Chouf	ML	VL	L	Botme	L	VL	L	Bqaiaa Ech-Chouf	L	VL	L
Bsaba El-Chouf	ML	VL	L	Chammis El-Chouf	M	L	L	Chehim	ML	VL	L
Chemaarine	L	VL	L	Chourit	L	VL	L	Daher El-Chouf	M	L	L
Dalhoun	M	L	L	Damour	M	L	L	Daraya El-Chouf	L	VL	L
Deir El-Moukhalles	L	VL	VL	Deir Baba	L	VL	L	Deir Dourit	L	L	L
Deir El-Qamar	L	VL	L	Deir Kouche	L	VL	L	Dibbieh	ML	L	L
Dmit	L	VL	L	Fouara Jaafar	L	VL	L	Fraidis El-Chouf	L	L	L
Ghabet Jaafar	L	L	L	Gharife	L	VL	L	Haret Jandal	L	VL	L
Hasrout	ML	VL	L	Jadra	M	L	L	Jahlieh	L	L	L
Jbeih El-Chouf	L	VL	L	Jdeidet El-Chouf	L	VL	L	Jiyeh	M	L	L
Jleiliyeh	ML	VL	L	Jmailiyeh	M	L	L	Joun	M	L	L
Kahlounie El-Chouf	L	VL	L	Ketermaya	M	L	L	Kfar Faqoud	L	VL	L
Kfar Hamal	L	VL	L	Kfar Him	L	L	L	Kfar Katra	L	VL	L
Kfar Niss	L	VL	L	Kfar hay	L	VL	L	Kfarnabrakh	L	VL	L
Khirbet Bisri	L	VL	L	Knayse El-Chouf	VL	VL	L	Maaniyeh	M	L	L
Maasser Beiteddine	L	VL	L	Maasser El-Chouf	L	L	L	Majdalouna	M	L	L
Majdel El-Meouch	L	VL	L	Mazboud	ML	VL	L	Mazmoura	ML	VL	L
Mazraat El Chouf	L	VL	L	Mazraat El Daher	L	VL	L	Mazraat El-Douair	L	VL	L
Mechref	L	VL	L	Mghairie	M	L	L	Mghayrie El-Chouf	L	VL	L
Moukhtara	L	VL	L	Mrusti	ML	VL	L	Mtolle	ML	VL	L
Naameh	M	L	L	Niha El-Chouf	ML	VL	L	Ouadi Abou Youssef	VL	VL	VL
Ouadi Ed-Deir	L	L	L	Ouadi El-Sit	L	VL	L	Ouadi bnehlav	L	L	L
Qraibeh	L	VL	L	Qreiaa	L	VL	VL	Rmayle El-Chouf	M	L	L
Semqaniyeh	L	VL	L	Sibline	M	L	L	Sirjbeil	L	L	L
Warhanieh	L	L	ML	Werdaniyeh	M	L	L	Zaarourieh	ML	VL	L

Baabda

Municipality	31-Mar	01-Apr	02-Apr	Municipality	31-Mar	01-Apr	02-Apr	Municipality	31-Mar	01-Apr	02-Apr
Abadiyeh	ML	L	L	Ain Mouaffaq	L	L	L	Araiya	L	VL	L

Arbaniyeh	L	VL	VL	Arsoun	L	VL	L	Baabda	M	L	L
Baalchmey	ML	L	L	Bmaryam	L	VL	L	Bourj El-Brajneh	M	L	ML
Boutchay	M	L	L	Bsaba Baabda	M	L	L	Btekhney	L	VL	L
Btibyat	L	VL	L	Bzabdine	L	VL	L	Chbeniyeh	L	L	L
Chiyah	M	L	ML	Chmeisset Baabda	L	VL	L	Chouit	L	VL	L
Deir El-harf	L	L	L	Deir Khouna	L	VL	L	Dlaybeh	L	VL	VL
Falougha	M	L	ML	Furn El-Chebbak	M	L	ML	Hadath Beyrouth	M	L	ML
Halaliyeh Baabda	L	VL	L	Hammana	ML	L	ML	Haret El Sett	ML	L	L
Haret Hamze	L	VL	L	Haret Hreik	M	L	ML	Hasbaiya El-Metn	L	VL	VL
Jouar El-Hoz	L	L	L	Jouret Arsoun	L	VL	L	Kfar Chima	M	L	ML
Kfar Selouane	L	L	L	Khalouat Baabda	ML	L	L	Kneisset Baabda	L	L	VL
Laylakeh	M	L	ML	Louayzeh Baabda	ML	L	L	Merdache	M	L	L
Mzairaa Baabda	L	VL	L	Ouadi Chahrour El OI	ML	L	L	Ouadi Chahrour El So	M	L	L
Qalaa Baabda	L	L	L	Qhraybe Baabda	L	L	L	Qobbayaa	L	L	L
Qornayel	L	VL	L	Qortada	M	L	VL	Qrayeh Baabda	L	L	L
Qsaibeh Baabda	M	L	VL	Qtale Baabda	L	VL	L	Ras El Metn	ML	L	L
Ras El-Haref	L	L	L	Rouayset El-Ballout	L	VL	L	Salima Baabda	L	VL	L
Tahouitat El Ghadir	M	L	ML	Tarchich	L	VL	L	Zandouqa	M	L	VL

Aley

Municipality	31-Mar	01-Apr	02-Apr	Municipality	31-Mar	01-Apr	02-Apr	Municipality	31-Mar	01-Apr	02-Apr
Abey	ML	L	L	Aghmid	L	L	L	Ain Dara	ML	L	ML
Ain Drafil	M	VL	L	Ain El Halazoun	ML	L	L	Ain El-Rmmaneh	L	VL	L
Ain Jedideh	ML	L	L	Ain Ksour	M	L	L	Ain Onoub	M	L	L
Ain Traz	L	VL	L	Ainab	M	L	L	Aley	ML	L	L
Aramoun	M	L	L	Aytat	M	L	L	Azouniyeh	ML	L	ML
Baawerta	ML	L	L	Badghan Oua Wadi Bad	ML	L	ML	Bassatine	M	L	L
Bayssour	M	L	L	Bchamoun	M	L	L	Bdadoun	ML	L	L
Behouara	ML	L	L	Bennay	L	L	L	Bhamdoun El-Dayaa	ML	L	L
Bhamdoun El-Mhatta	ML	L	ML	Bkhechthey	ML	L	L	Bleibel	M	L	L
Bmaknine	ML	L	L	Bmehrday	L	L	L	Bouzrid	L	VL	L
Bserrine	ML	VL	L	Bsous	L	VL	L	Btalloun	ML	L	L
Btater	ML	L	L	Chanay	ML	L	ML	Charoun	ML	L	ML
Chartoun	L	VL	L	Chemlane	M	L	L	Choueifat El-Aamrous	M	L	ML
Choueifat El-Oumara	M	L	L	Choueifat El-Quoubbe	M	L	ML	Dakkoun	L	VL	L
Deir Qoubel	M	L	L	Dfoun	M	L	L	Douair El Remmaneh	L	VL	L
Ghaboun	L	L	L	Habramoun	L	VL	L	Homs Oua Hama	ML	L	L
Houmal	M	L	L	Jisr El Qadi	L	VL	L	Kehaleh	L	VL	L
Keyfoun	M	L	L	Kfar Aamey	ML	L	L	Kommatyeh	ML	L	L
Maasrati	L	VL	L	Majdel Baana	ML	L	ML	Mansourieh et Ain El	ML	L	L
Mazraat El-Nahr	L	L	L	Mchakhte	L	L	L	Mecherfeh	ML	L	L
Mejdaya	ML	L	L	Mrayjat	L	L	ML	Ramliyah	L	VL	L
Rechmaya	L	VL	L	Rejmeh	ML	L	L	Remhala	ML	L	L
Rouayset El Neemane	ML	L	L	Saoufar	ML	L	ML	Selfaya	L	VL	L
Sirhmoul	M	L	L	Souq El Ghareb	ML	L	L	Taazanieh	ML	L	L

Kesrouane

Municipality	31-Mar	01-Apr	02-Apr	Municipality	31-Mar	01-Apr	02-Apr	Municipality	31-Mar	01-Apr	02-Apr
Achkout	L	L	L	Adma Oua Dafneh	M	L	L	Ain Ed-Delbe Kesroua	L	VL	L
Ain El-Rihane	M	L	L	Aintoura Kesrouane	M	L	L	Ajaltoun	L	L	L
Akaybeh Kesrouane	M	ML	ML	Aramoun Kesrouane	L	VL	L	Azra ouel Ozor	ML	L	L
Ballouneh	L	L	L	Batha	ML	L	VL	Bekaatat Achkout	L	L	L
Bekaatat Kanaan	L	VL	L	Bizhel	ML	L	L	Bouar	M	ML	L
Bqaatouta	L	VL	L	Bqaq Ed-Dine	M	ML	L	Bzommar	L	L	L
Chahtoul	L	L	L	Chnaniir	ML	L	L	Chouan	L	VL	L
Daraya Kesrouane	L	L	L	Darououn	M	L	L	Deir Baqlouch	M	L	L
Diebta	L	VL	VL	Eghbeh	VL	VL	VL	Faraya	L	VL	L
Fatka	ML	L	L	Feytroun	L	L	L	Ghazir	M	L	L
Ghbaleh Kesrouane	ML	L	L	Ghedrass	L	L	L	Ghosta	L	VL	L
Ghyneh	L	L	L	Harharaya w Kattine	L	L	L	Harissa Kesrouane	M	L	L
Hayata	L	VL	L	Hosein	L	L	L	Hrajel	L	VL	L
Jdeideh Ghazir	L	L	L	Jeita	M	L	L	Jounieh Ghadir	M	L	L
Jounieh Haret Sakhr	M	L	ML	Jounieh Salel Alma	M	L	L	Jounieh Sarba	M	L	ML
Jouret Bedrane	ML	L	L	Jouret Mhad	L	L	L	Jouret Termos	ML	L	L
Kfar Debiane	L	VL	L	Kfar Tay Kesrouane	VL	VL	VL	Kfar Yassine	M	L	ML
Kfour Kesrouane	L	L	L	Kharayeb Nahr Ibrahi	M	ML	L	Klayaat Kesrouane	L	L	L
Maarab	L	VL	VL	Maaysra Kesrouane	M	L	L	Mayrouba	L	VL	L
Mazraat Er-Ras	M	L	L	Mazraat Mrah El-Mir	L	L	L	Mchaa El Ftouh	L	L	ML
Mchaa Faraya	L	VL	L	Mchaa Kfar Dibiane	L	L	ML	Mghaer	VL	VL	L
Mradiyah	ML	L	L	Nahr Ed-Dahab	L	L	L	Nammoura Kesrouane	ML	L	L
Ouata El Jaouz	L	L	L	Ouata Sillam	M	L	ML	Raachine	L	VL	VL
Rayfoun	L	L	L	Safra Kesrouane	M	ML	L	Shayle Kesrouane	M	L	L
Tabarja	M	L	L	Yahchouch	ML	L	L	Zaaytreh	ML	L	L
Zeytoun	M	L	L	Zouk Mikael	M	L	ML	Zouk Mosbeh	M	L	ML

Baalbek_Hermel

Baalbek

Municipality	31-Mar	01-Apr	02-Apr	Municipality	31-Mar	01-Apr	02-Apr	Municipality	31-Mar	01-Apr	02-Apr
Aadous	M	M	M	Aamchki	L	ML	ML	Aarsal	M	M	M
Ain Baalbek	ML	M	M	Ain Bourday	M	L	ML	Ain El-Benye	ML	L	ML
Ain El-Jaouz Baalbek	ML	M	ML	Ain El-Siya Chadoura	L	ML	ML	Al Khodr Baalbek	M	L	ML
Al Nabi Chit	M	L	ML	Aynata Baalbek	L	L	ML	Baalbek	M	L	ML
Bachwat	L	ML	ML	Barqa	L	L	ML	Bednayel Baalbak	ML	L	ML
Beit Chama	M	ML	M	Bijjaje	M	M	M	Bouday	ML	ML	M
Brital	ML	ML	ML	Btadi	ML	M	M	Chaat	M	M	M
Chaibe	ML	ML	ML	Chlifa	ML	M	M	Chmestar	M	ML	M
Dar El-Oussa	L	ML	M	Deir El-Ahmar	ML	M	M	Deir Mar Maroun Baal	M	M	M
Douris	M	M	M	Fakiha	M	M	M	Hadath Baalbek	M	M	M
Ham	ML	L	ML	Haour Taala	ML	L	ML	Hizzine	M	M	M
Hlebta	L	M	M	Hosh Barada	M	M	M	Hosh El Dahab	M	M	M
Hosh El Snid	M	L	ML	Hosh El-Nabi	M	ML	M	Hosh El-Rafiq	M	ML	M
Hosh Tal Safiya	M	M	M	Hrebta	ML	M	M	laat	M	M	M

Jebaa	M	M	M	Jenta	ML	L	ML	Kfar Dabach	M	M	M
Kfar Dane	M	M	M	Khraibeh El-Hermel	M	M	M	Khreibet Baalbek	ML	L	ML
Kneisset Baalbek	M	M	M	Labueh	M	M	M	Maarboun	L	L	ML
Majdaloun	M	M	M	Maqneh	M	M	M	Mazraat Beit Mcheik	M	M	M
Misraya	M	ML	M	Moqraq	M	M	M	Nabha El-Damdoum	ML	M	M
Nabi Chbay	ML	L	ML	Nabi Osman	M	M	M	Nahleh baalbek	ML	ML	ML
Ouadi El-Oss	L	M	M	Qaa Baayoun	M	M	ML	Qaa Jouar Maqiye	M	M	M
Qaa Ouadi El-Khanzir	M	M	M	Qah Baalbek	M	M	M	Qarha Baalbek	M	M	M
Qsarnaba	M	ML	M	Ram Baalbek	M	M	M	Ras Baalbek El Sahl	M	M	M
Ras Baalbek El-Charq	M	M	M	Riha	M	M	M	Saaide	M	M	M
Sbouba	M	M	M	Seriine El-Tahta	M	ML	M	Slouqi	L	L	M
Taiba Baalbek	M	M	M	Talia	M	M	M	Taraiya	M	ML	M
Temnin El Fawqa	M	ML	M	Temnin El-Tahta	M	ML	M	Tfail	ML	M	M
Yahfoufa	M	L	ML	Yammouneh	L	ML	ML	Younine	M	M	M
Zboud	M	M	M								

Hermel

Municipality	31-Mar	01-Apr	02-Apr	Municipality	31-Mar	01-Apr	02-Apr	Municipality	31-Mar	01-Apr	02-Apr
Charbine El-Hermel	M	ML	ML	Hermel Jbab	ML	M	M	Hermel	M	M	M
Maaysra El-Hermel	M	M	M	Michaa Mrajhine	ML	ML	ML	Ouadi Faara	L	M	M
Ras Baalbek - Ouadi	M	M	M	Ras Baalbek El Gharb	M	M	M	Zighrine	M	M	M

Akkar

Akkar

Municipality	31-Mar	01-Apr	02-Apr	Municipality	31-Mar	01-Apr	02-Apr	Municipality	31-Mar	01-Apr	02-Apr
Aain Tinta	M	M	M	Aaiyat	ML	M	ML	Aakkar El-Aatiqa	ML	M	L
Aamar Akkar	M	M	M	Aamar El Baykat	M	M	M	Aamayer	M	M	M
Aamriyet Akkar	M	M	M	Aandqet	M	M	M	Aarmeh	M	M	ML
Aarqa	M	M	M	Aawaynat	M	M	M	Aayoun Akkar	M	M	ML
Abboudiye	M	M	L	Ain El-Zeit	M	M	M	Ain Yaaqoub	ML	M	L
Akroum	M	M	M	Aridet Cheikh Zennad	M	M	M	Baldeh w Mazraat Bal	M	M	L
Barcha	M	M	L	Bardeh	M	M	M	Bebnine	M	M	ML
Beino	M	M	ML	Beit Ayoub	M	M	L	Beit El-Haouch	M	M	ML
Beit Mellat	M	M	ML	Beit Younes	ML	ML	L	Berbara Akkar	M	M	M
Berqayel	M	M	ML	Bezbina	L	ML	L	Bireh Akkar	M	M	M
Borj	M	M	M	Bqerezla	M	M	L	Bzal	M	M	L
Chane	ML	ML	L	Chaqdouf	M	M	ML	Charbila	M	M	L
Cheikh Mohammad	M	M	L	Cheikh Taba Es-Sahl	M	M	ML	Cheikh Taba	M	M	L
Cheikh Zennad	M	M	M	Cheikhlar	M	M	M	Chir Hmairine	M	M	L
Daghle	M	M	M	Dahr Laissine	M	M	L	Darine	M	M	L
Dawra	M	M	ML	Dawsa w Baghdadi	M	M	M	Dayret Nahr El-Kabir	M	M	M
Deir Dalloum	M	M	M	Deir Jennine	M	M	M	Denbou	ML	M	L
Dibbabiyyeh	M	M	M	Douair Aadwiyyeh	M	M	M	Fassikine	M	M	M
Fnaydek	ML	ML	L	Fraydes Akkar	M	M	M	Ghazayle	M	M	L
Habchit	L	ML	L	Hakour	M	M	ML	Halba	M	M	L

Haouchab	M	M	L	Hayssat	M	M	M	Haytla	M	M	L
Hayzouq	M	M	L	Hedd	M	M	L	Hmaira Aakkar	M	M	ML
Hmaiss Aakkar	M	M	L	Hnaider	M	M	M	Hokr Ed-Dahri	M	M	M
Hokr Etti	M	M	L	Hokr Jouret Srar	M	M	L	Houaich	ML	M	L
Hrar	M	M	L	Idbil	M	M	L	Ilal	M	M	L
Janine	M	M	L	Jdeidet El-Joumeh	M	M	ML	Jdeidet El-Kaiteh	M	M	ML
Jebrayel	M	M	L	Kafr	M	M	L	Kafr	M	M	M
Karm Asfour	M	M	L	Kfar Melki Aakkar	M	M	M	Kfar Noun	M	M	ML
Kfarharra	M	M	L	Khalsa	M	M	M	Kharnoubet Aakkar	M	M	L
Khirbet Daoud Aakkar	M	M	M	Khirbet El Remmane	M	M	M	Khirbet Shar	M	M	M
Khoreybet El-Jindi	M	M	L	Khreibet Aakkar	M	M	L	Kneisset Aakkar	M	M	M
Kneisset Hnaider	M	M	M	Knisse	M	M	L	Kroum El-Aarab	M	M	L
Kwachra	M	M	M	Kweykhat	M	M	L	Machta Hammoud	M	M	M
Majdala	M	M	ML	Majdel Akkar	M	M	M	Mar Touma	M	M	ML
Marlaya Melhem	M	M	M	Mashha	M	M	L	Massoudiye	M	M	M
Mazraat Beit Ghattas	M	M	ML	Mazraat En-Nahriye	M	M	M	Mechmech	L	L	L
Memneh	L	L	L	Mhammara	M	M	ML	Mighraq Aakkar	M	M	M
Minyara	M	M	ML	Moqayteh	M	M	M	Mounjez	M	M	M
Msalla	M	M	M	Mzeihmeh	M	M	L	Nfaisheh	M	M	L
Noura Et-Tahta	M	M	M	Ouadi El-Haour	M	M	L	Ouadi El-Jamous	M	M	ML
Ouyoun El-Ghizlane	M	M	ML	Qaabarine	M	M	M	Qabaait	ML	M	L
Qachlaq	M	M	L	Qantara Aakkar	M	M	L	Qarha Aakkar	M	M	M
Qarqaf	M	M	ML	Qboula	M	M	M	Qleiaat Aakkar	M	M	M
Qloud El-Baqie	M	M	ML	Qobaiyat Aakkar	M	M	M	Qobbat Chamrat	M	M	M
Qorayat	ML	ML	L	Qornet Aakkar	M	M	L	Qsair Aakkar	M	M	M
Rahbe	M	M	L	Rihaniyet Aakkar	M	M	L	Rmah	M	M	M
Rmoul	M	M	M	Saadine	M	M	L	Sadaqa	M	M	L
Saidnaya	M	M	L	Sammouniye	M	M	M	Sayssouq	M	M	ML
Semmaqiye	M	M	M	Semmaqli	M	M	M	Sfinet El-Dreib	M	M	ML
Sfinet El-Qaitaa	M	M	ML	Sindyanet Zeidane	M	M	M	Souaisset Aakkar	M	M	L
Srar	M	M	L	Tal Abbas El Gharby	M	M	L	Tal Abbas El-Charqy	M	M	L
Tal Biret	M	M	ML	Tal Hmayra	M	M	L	Tal Maayan Tal Kiri	M	M	M
Tal Sibel	M	M	M	Tallet Chattaha	M	M	M	Tikrit	M	M	L
Tleil	M	M	L	Tshea	L	ML	L	Zawarib	M	M	L
Zouq El Hosniyeh	M	M	ML	Zouq El-Haddara	M	M	ML	Zouq El-Hbalsa	M	M	ML
Zouq El-Moqachrine	M	M	ML								

Sud

Sour

Municipality	31-Mar	01-Apr	02-Apr	Municipality	31-Mar	01-Apr	02-Apr	Municipality	31-Mar	01-Apr	02-Apr
Aaiyeh	M	L	L	Aalma El-Chaab	M	L	L	Aaytit	M	L	L
Abbassiyeh Sour	MH	L	L	Abou Chech	M	L	L	Ain Abou Abdallah	MH	L	L
Ain Baal	M	L	L	Arzoun	M	L	L	Aziyeh	M	L	L
Baflaya	M	L	L	Barich	M	L	L	Batouliyeh	M	L	ML
Bayad	M	L	L	Bazouriyeh	M	L	L	Bediass	M	L	L

Bestiyat	M	L	L	Borj El Chemali	H	L	L	Borj En-Naqoura	MH	L	L
Borj Rahhal	M	L	L	Boustane	M	L	L	Btaychiyeh	M	L	L
Chaaitiye	M	L	L	Chameh	M	L	L	Chehabiye	M	L	ML
Chehour	M	L	L	Chihine	M	L	L	Debaal Sour	M	L	L
Deir Amess	M	L	L	Deir Kifa	M	L	L	Deir Qanoun El-Ain	M	L	ML
Deir Qanoun El-Naher	M	L	L	Derdghaiya	M	L	L	Dhayra	M	L	L
Halloussiyeh	M	L	L	Hamoul	M	L	L	Hanaouey	M	L	L
Henniye	M	L	ML	Hmairi Sour	M	L	L	Iskandarouna Sour	M	L	L
Jbal El Botom	M	L	L	Jebbin	M	L	L	Jennata	M	L	L
Jijim	M	L	L	Jouaiya	M	L	L	Kneisset Sour	M	L	L
Maarake	M	L	L	Maaroub	M	L	L	Majadel	M	L	L
Majdalzoun	M	L	L	Mansouri Sour	M	L	L	Marnba	M	L	L
Marouahine	M	L	L	Mazraat El-Zalloutiy	M	L	L	Mazraat Mechref	M	L	L
Mazraat Tayr Semhat	M	L	L	Mheilib	H	L	L	Neffakhiyeh	M	L	L
Niha Sour	M	L	L	Ouadi Jilo	M	L	L	Qana	M	L	L
Qolaileh Sour	M	L	L	Rechknanay	M	L	L	Rmadiyeh	M	L	L
Selha Sour	M	L	L	Siddiqine	M	L	L	Sour	H	L	ML
Srifa	M	L	L	Tayr Debbe	M	L	L	Tayr Felsay	M	L	L
Tayr Harfa	M	L	L	Touayri	M	L	L	Toura	M	L	L
Yanouh Sour	M	L	L	Yarine	M	L	L	Zebqine	M	L	L

Saida

Municipality	31-Mar	01-Apr	02-Apr	Municipality	31-Mar	01-Apr	02-Apr	Municipality	31-Mar	01-Apr	02-Apr
Aanqoun	M	VL	L	Aaqtanit	M	VL	L	Aarab Ej-Jall	M	VL	L
Aarab Tabbaya	M	VL	L	Abra Saida	M	L	L	Adloun	MH	L	L
Adousiyeh	H	L	L	Ain-El-Deleb	M	L	L	Arzai	M	L	L
Babliyeh	MH	VL	L	Barty	M	VL	L	Bissariyeh	H	L	L
Bnaafoul	M	VL	L	Bqosta	M	L	L	Bramiy	M	L	L
Daoudiyeh	MH	L	L	Dareb El-Sim	M	L	L	Erkay	M	VL	L
Ghassanieh	M	VL	L	Ghazieh	MH	L	L	Hajjeh	M	VL	L
Haret Saida	M	L	L	Hartiyeh	MH	L	L	Hlaliye Saida	M	L	L
Insariyat	MH	VL	L	Jazira Saida	MH	L	L	Kafar Bit	M	VL	L
Kaoutariyet El-Siyad	M	VL	L	Kfar Chellal	M	VL	L	Kfar Hatta Saida	M	VL	L
Kfar Milke Saida	M	VL	L	Khartoum	M	VL	L	Khaziz	M	VL	L
Khirbet Ed-Douair Sa	MH	L	L	Khirbet El-Bassal	M	L	L	Khrayeb Saida	MH	L	L
Loubieh	MH	L	L	Maghdouche	M	VL	L	Majdelyoun	M	L	L
Matariyet El-Choumar	M	L	L	Matayriyeh	M	L	L	Mazraat 'Mseileh	MH	L	L
Mazraat 'Snaiber	MH	L	L	Mazraat Aarab Soukka	M	VL	L	Mazraat Deir Taqla	MH	L	L
Mazraat El Yahoudiye	H	L	L	Mazraat El-Housseini	H	L	L	Mazraat El-Mhaydaleh	M	VL	L
Mazraat El-Ouasta	H	L	L	Mazraat Jamjim	MH	L	L	Mazraat Kaoutariyet	MH	VL	L
Mazraat Kfar Badda	MH	L	L	Mazraat Oussamiyat	MH	VL	L	Mazraat Sari	MH	L	L
Mazraat Sinai	M	VL	L	Meemariyeh	M	L	L	Merouaniyeh	M	L	L
Miyeh ou Miyeh	M	L	L	Najjariyeh	H	L	L	Qaaqaiyat El-Snaouba	MH	L	L
Qnarit	M	VL	L	Qraiye Saida	M	L	L	Saida Ed-Dekermane	M	L	L
Saida El-Oustani	M	L	L	Saida El-Qadimeh	M	L	L	Saida Kefraya	M	L	L
Saksakiyeh	MH	L	L	Salhie Saida	M	L	L	Sarafand	H	L	L

Sfenta	ML	VL	L	Tafahta	M	L	L	Tanbourit	M	L	L
Tebna	MH	L	L	Zaghdraiya	M	L	L	Zeita	M	VL	L
Zrariyeh	M	L	L								

Jezzine

Municipality	31-Mar	01-Apr	02-Apr	Municipality	31-Mar	01-Apr	02-Apr	Municipality	31-Mar	01-Apr	02-Apr
Ain El-Mir (El Estab)	M	VL	L	Anane	L	VL	L	Aramta	M	L	L
Ariya	L	VL	L	Aychiyeh	M	VL	L	Azour	L	VL	L
Baba	L	VL	VL	Bayssour Jezzine	M	VL	L	Benoueteh Jezzine	L	VL	L
Bhannine	L	VL	L	Bisri	L	VL	VL	Bkassine	L	VL	L
Bouslaya	L	VL	L	Btedine El-Leqech	L	VL	VL	Chbail	L	VL	VL
Choualiq Jezzine	M	L	L	Dahr Ed-Deir	ML	VL	L	Deir El Qattine	ML	VL	L
Demachqiyeh	M	VL	L	Ghabbatiyeh	L	VL	L	Harf Jezzine	L	VL	VL
Hassaniyeh	M	VL	L	Haytouleh	M	VL	L	Haytoura	ML	VL	L
Hidab	M	VL	L	Homsiyeh	L	VL	L	Jabal Toura	M	L	L
Jarmaq	M	VL	L	Jensnaya	M	L	L	Jernaya	M	VL	L
Jezzine	M	VL	L	Karkha	M	L	L	Kfar Falous	M	VL	L
Kfar Houna	ML	L	L	Kfar Jarrah	M	L	L	Lebaa	M	L	L
Louayzet Jezzine	M	VL	L	Machmouche	L	VL	VL	Mahmoudiyeh Jezzine	M	VL	L
Maknounye Jezzine	ML	VL	L	Maraat Ouazaiyeh	M	VL	L	Mazraat Daraya	ML	VL	L
Mazraat El-Aarqoub	M	VL	L	Mazraat El-Mathane	L	VL	VL	Mazraat El-Rahbane	ML	VL	L
Mazraat Khallet Khaz	ML	VL	L	Mazraat Louzid (Loua	L	VL	VL	Mazraat Qrouh	M	L	L
Mazraat Tamra	M	VL	L	Mazraat Zighrine Jez	M	VL	L	Mazraat	ML	VL	L
Mharbiyeh	M	VL	L	Midane Jezzine	L	VL	L	Mjeydel Jezzine	M	VL	L
Mlikh	ML	VL	L	Mrah El-Hbasse	M	L	L	Ouadi Baanqoudaine	M	L	L
Ouadi El-Laymoun	M	VL	L	Ouardiyeh	VL	VL	VL	Qabaa Jezzine	ML	VL	L
Qatrani	ML	VL	L	Qaytouleh	ML	VL	L	Qtaleh Jezzine	L	VL	VL
Rihane Jezzine	M	VL	L	Rimat	ML	VL	L	Roum	L	VL	L
Roummanet	M	VL	L	Sabbah	L	VL	L	Saydoun	ML	VL	L
Sfaray	L	VL	L	Snaya	ML	VL	VL	Sojoud	M	VL	L
Srayri	M	VL	L	Taaid	L	VL	VL	Wadi Jezzine	L	VL	L
Zhalta	ML	VL	L								

Bekaa

West Bekaa

Municipality	31-Mar	01-Apr	02-Apr	Municipality	31-Mar	01-Apr	02-Apr	Municipality	31-Mar	01-Apr	02-Apr
Aammiq BG	M	L	ML	Ain El Tineh BG	M	L	L	Ain Zebdeh	M	L	L
Ana	ML	L	ML	Aytanit	ML	L	L	Baaloul BG	M	L	ML
Bab Mareh	M	L	L	Chouberqiye Aammiq	M	L	ML	Dakoue	M	L	ML
Deir Ain El-Jaouze	M	L	L	Deir Tahniche	M	L	ML	Ghaza	M	L	ML
Harime El-Soughra	M	L	ML	Hoch Harimeh	M	L	ML	Jazira BG	M	L	ML
Jib Jennine	M	L	ML	Kamed-El-Laouz	M	L	ML	Kefraya BG	L	L	L
Khiara El Atika	M	L	ML	Khiara	M	L	ML	Khirbet Qanafar	ML	L	ML
Lala	M	L	ML	Lebbaya BG	M	L	L	Loussa	M	L	L
Machghara	M	L	L	Manara (Hammara) BG	ML	L	L	Mansoura BG	M	L	ML

Marej BG	M	L	ML	Maydoun	M	L	L	Ouaqf BG	M	L	ML
Qaraaoun	M	L	ML	Qelya	M	L	L	Raouda (Istabel)	M	L	ML
Saghbine	ML	L	L	Sohmor	M	L	L	Soltan Yaacoub el Ara	M	L	ML
Souairy	ML	L	ML	Sultan Yaacoub	M	L	ML	Tal Znoub	M	L	ML
Yehmor BG	M	L	L	Zilaya	ML	L	L				

Zahle

Municipality	31-Mar	01-Apr	02-Apr	Municipality	31-Mar	01-Apr	02-Apr	Municipality	31-Mar	01-Apr	02-Apr
Aanjar (Haouch Mouss)	ML	L	ML	Ablah	M	ML	M	Ain Kfarzabad	M	L	ML
Ali-El-Nahri	M	ML	M	Bar Elias	M	L	ML	Bouarej	M	L	ML
Cheberqiyet Tabet	M	L	ML	Chtaura	M	L	ML	Deir El Ghazal	M	L	ML
Delhamiyet Zahle	M	L	ML	Ferzol	ML	L	ML	Haouch El-Ghanam	M	ML	M
Haouch Es-Siyadeh	M	L	ML	Haouch Hala	M	L	M	Haouch Mandara	M	L	ML
Haouch Qayssar	M	L	ML	Hezerta	ML	L	ML	Hosh Moussa	M	L	ML
Jdita	M	L	ML	Kfarzabad	M	L	ML	Ksara	M	L	ML
Majdel Aanjar	ML	L	ML	Makssi	M	L	ML	Massa	M	L	M
Mazraat Er-Remtaniye	M	L	ML	Mrayjat Zahle	M	L	ML	Mzaraa Zahle	M	L	ML
Nabi Ayla	M	ML	ML	Nasriyet Rizk	M	L	ML	Nasriyet Zahle	M	L	ML
Niha Zahle	M	ML	ML	Ouadi Ed-Deloum	M	L	ML	Ouadi El-Arayech	ML	L	ML
Qaa El Rim	ML	L	ML	Qab Elias	M	L	ML	Qousaya	M	L	ML
Rhit	M	L	ML	Riyak	M	ML	M	Saadnayel	M	L	ML
Taal El-Akhdar	M	L	ML	Taalbeya	M	L	ML	Taanayel	M	L	ML
Talamara	M	ML	M	Tcheflik Edde Haouch	M	L	ML	Tcheflik Qiqano	M	L	ML
Terbol Zahle	M	L	ML	Touaite Zahle	L	L	L	Zahle Aradi	M	L	ML
Zahle El-Berbara	ML	L	ML	Zahle El-Maallaqa	M	L	ML	Zahle El-Midane	M	L	ML
Zahle Er-Rassiye	ML	L	ML	Zahle Haouch El-Ouma	M	L	ML	Zahle Haouch El-Ouma	M	L	ML
Zahle Haouch Ez-Zara	M	L	ML	Zahle Maallaqa Aradi	M	L	ML	Zahle Mar Antonios	ML	L	ML
Zahle Mar Elias	M	L	ML	Zahle Mar Gerios	M	L	ML	Zahle Saydet En-Naja	M	L	ML
Zebdoul	ML	L	ML								

Rachaiya

Municipality	31-Mar	01-Apr	02-Apr	Municipality	31-Mar	01-Apr	02-Apr	Municipality	31-Mar	01-Apr	02-Apr
Ain Arab Rachaiya	ML	ML	ML	Ain Ata	ML	L	L	Ain Harche	M	L	ML
Aqabe Rachaya	M	L	ML	Ayha	M	ML	ML	Ayta El Fokhar	ML	L	ML
Bakifa Rachaya	M	L	ML	Bakka	M	ML	ML	Beit Lahya	M	L	ML
Bireh Rachaiya	M	L	ML	Daher El Ahmar	M	L	ML	Deir El-Achayer	ML	M	M
Heloua Rachaiya	ML	M	ML	Hoch El Qannabeh Rac	ML	L	L	Kaoukaba Bou Arab	M	L	ML
Kfar Danis	M	L	ML	Kfar Mechki	M	L	ML	Kfar Qouq	ML	ML	ML
Kherbet Rouha	ML	L	ML	Majdel Balhiss	M	L	ML	Mdoukha	ML	ML	ML
Mhaydseh Rachaiya	M	L	ML	Nabi Safa	M	L	L	Rachaiya	M	L	ML
Rafid Rachaiya	M	L	ML	Selsata (Mazraat Dei	L	ML	ML	Tannoura	M	L	ML
Yanta	ML	M	ML								

Beyrouth

Beyrouth

Municipality	31-Mar	01-Apr	02-Apr	Municipality	31-Mar	01-Apr	02-Apr	Municipality	31-Mar	01-Apr	02-Apr
--------------	--------	--------	--------	--------------	--------	--------	--------	--------------	--------	--------	--------

Achrafieh	M	L	ML	Ain el-Mreisse	M	L	ML	Bachoura	M	L	ML
Beirut Central Distr	M	L	ML	Marfai	M	L	ML	Mazraa	M	L	ML
Medaouar	M	L	ML	Minet el-Hosn	M	L	ML	Mwssaitbeh	M	L	ML
Ras Beirut	M	L	ML	Rmeil	M	L	ML	Saifi	M	L	ML
Zqaq el-Blat	M	L	ML								