

# Lebanon Fire Risk Bulletin



CIVIL DEDEFENCE

**Refer to cadast table condition.**

**Please note that the indicated temperature is at 2 meters height from the ground.**

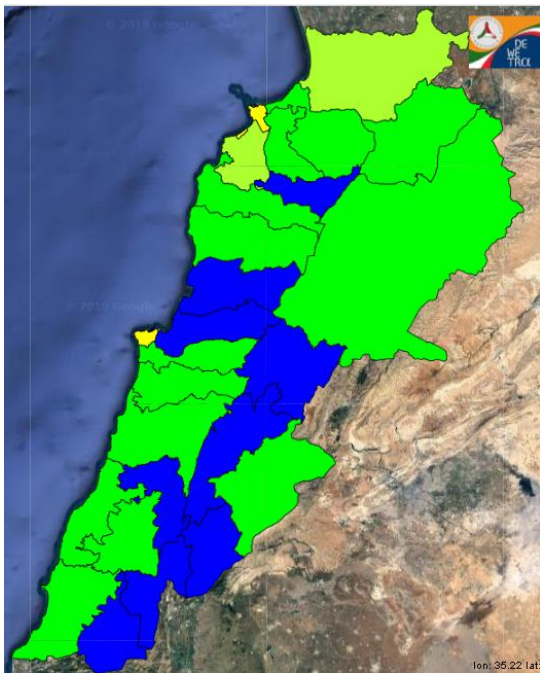
General description of potential fire risk situation

Symbol	Level of risk	Meaning and actions
VL	Very low	Very low fire risk. Controlled burning operations can be hardly executed due to high fuel moisture content. Normally wildfires self-extinguish.
L	Low	Low fire risk. Controlled burning operations can be executed with a reasonable degree of safety.
ML	Medium low	Medium-low fire risk. Controlled burning operations can be executed in safety conditions. All the fires need to be extinguished.
M	Medium	Medium fire risk. Controlled burning operations would be avoided. All the fires need to be very well extinguished.
M	Medium high	Controlled burning is not recommended. Open flame will start fires. Cured grasslands and forest litter will burn readily. Spread is moderate in forests and fast in exposed areas. Patrolling and monitoring is suggested. Fight fires with direct attack and all available resources.
H	High	Ignition can occur easily with fast spread in grass, shrubs and forests. Fires will be very hot with crowning and short to medium spotting. Direct attack on the head may not be possible requiring indirect methods on flanks. Patrolling and monitoring the territory is highly suggested.
E	Extreme	Ignition can occur also from sparks. Fires will be extremely hot with fast rate of spread. Control may not be possible during day due to long range spotting and crowning. Suppression forces should limit efforts to limiting lateral spread. Damage potential total. Patrolling and monitoring the territory is highly suggested.

**Beirut, 5 January 2020**

# FIRE RISK INDEX

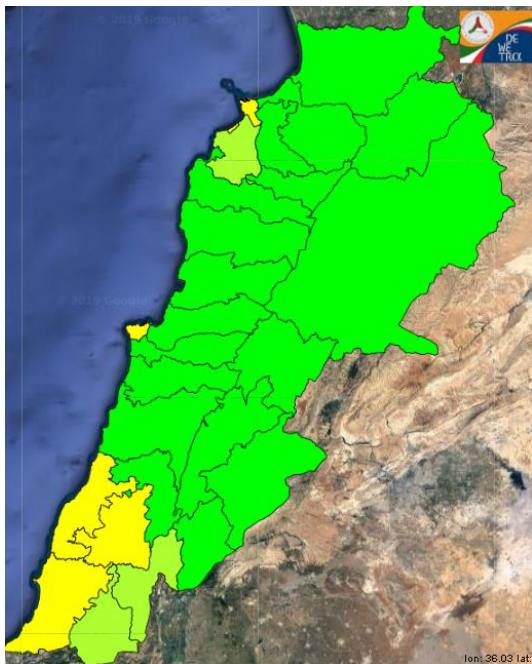
## 4 January 2020



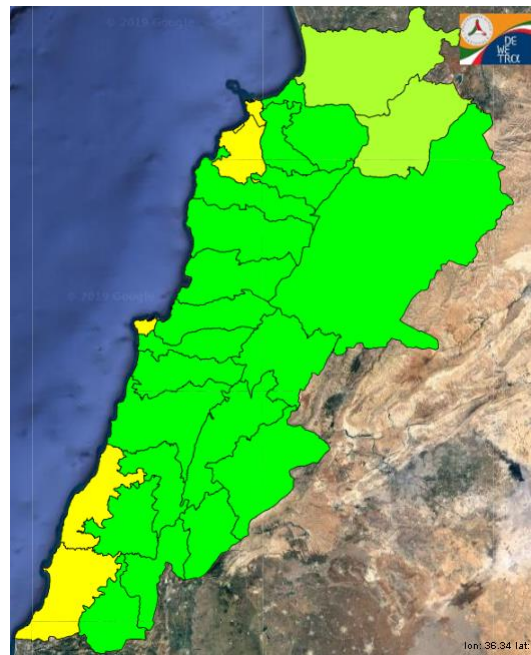
## 5 January 2020



## 6 January 2020



## 7 January 2020

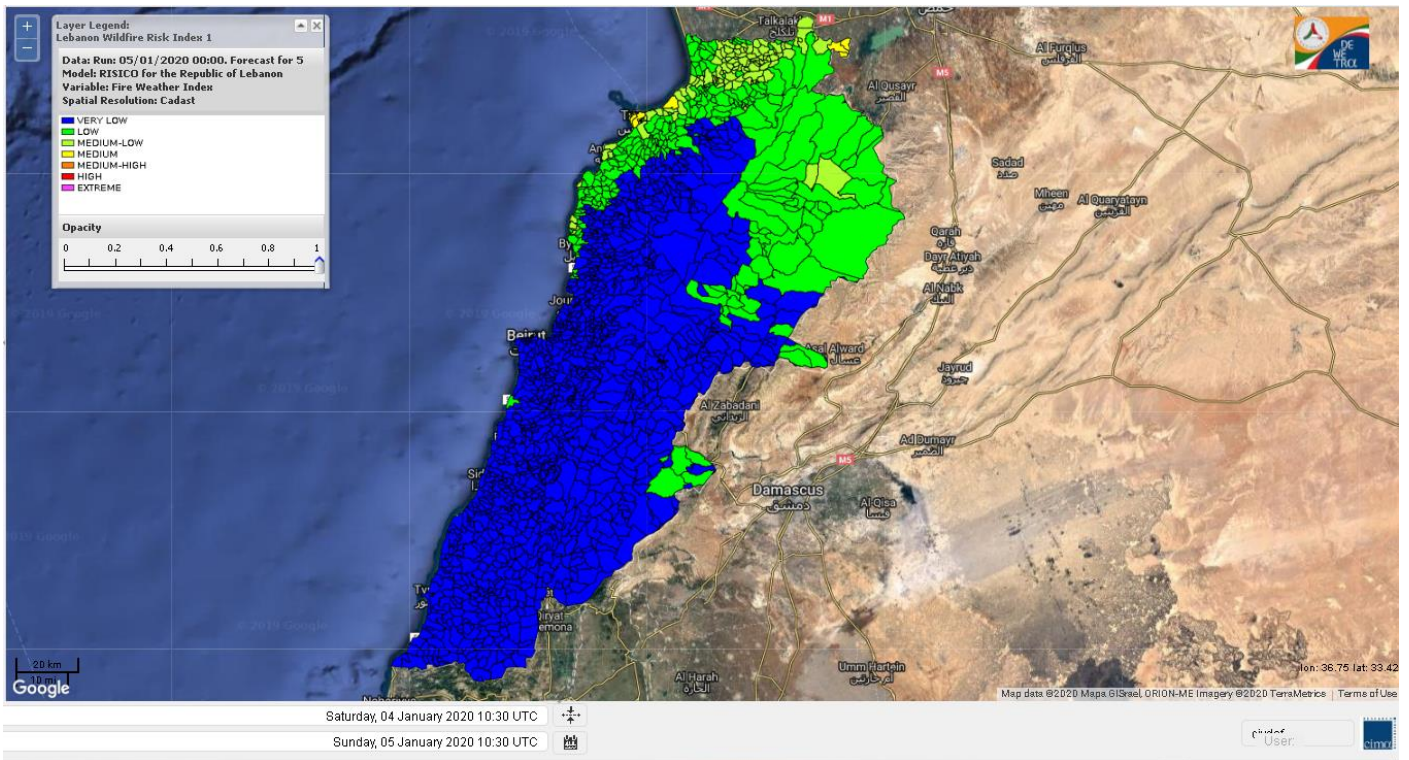


**Layer Legend:**  
**Lebanon Wildfire Risk Index 1**

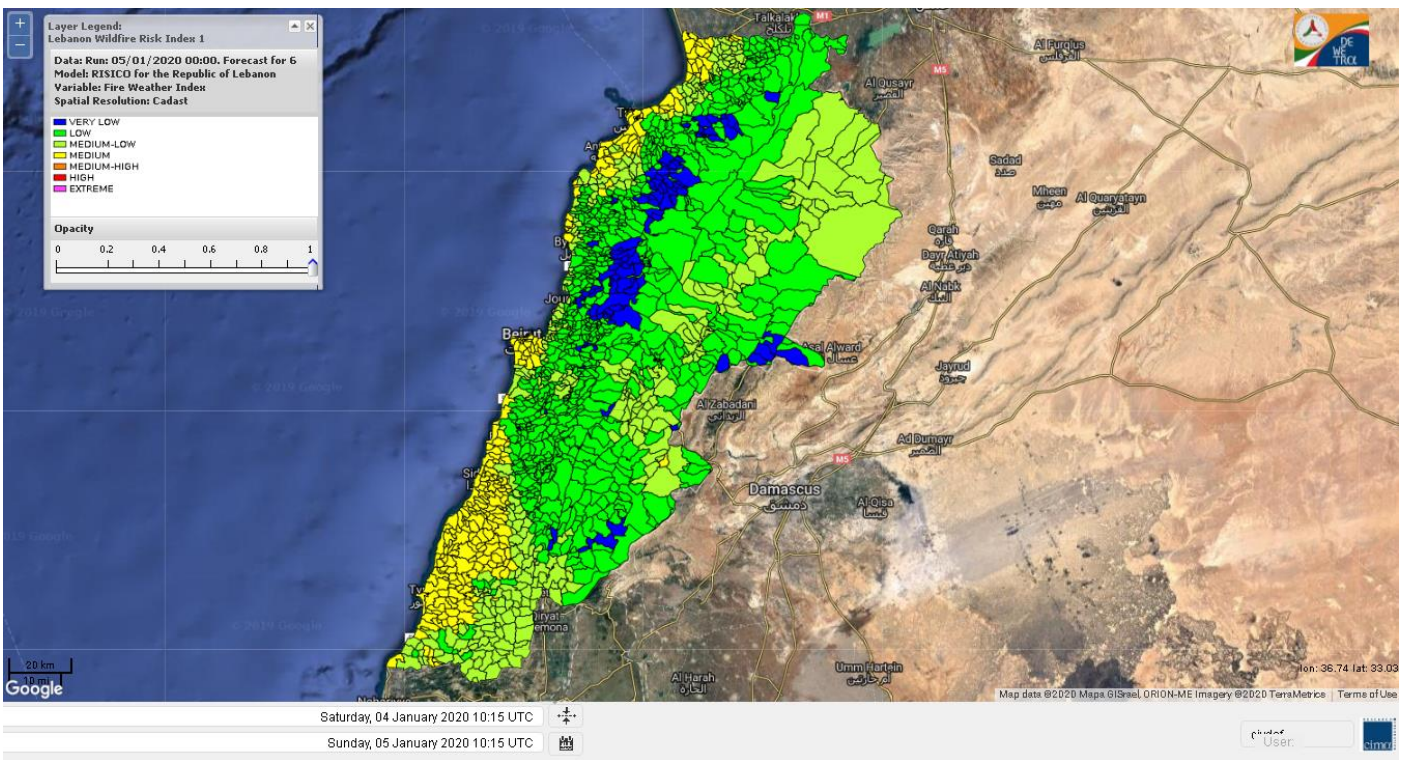
**Data:** Run: 05/01/2020 00:00. Forecast for 5  
**Model:** RISICO for the Republic of Lebanon  
**Variable:** Fire Weather Index  
**Spatial Resolution:** Caza

- VERY LOW
- LOW
- MEDIUM-LOW
- MEDIUM
- MEDIUM-HIGH
- HIGH
- EXTREME

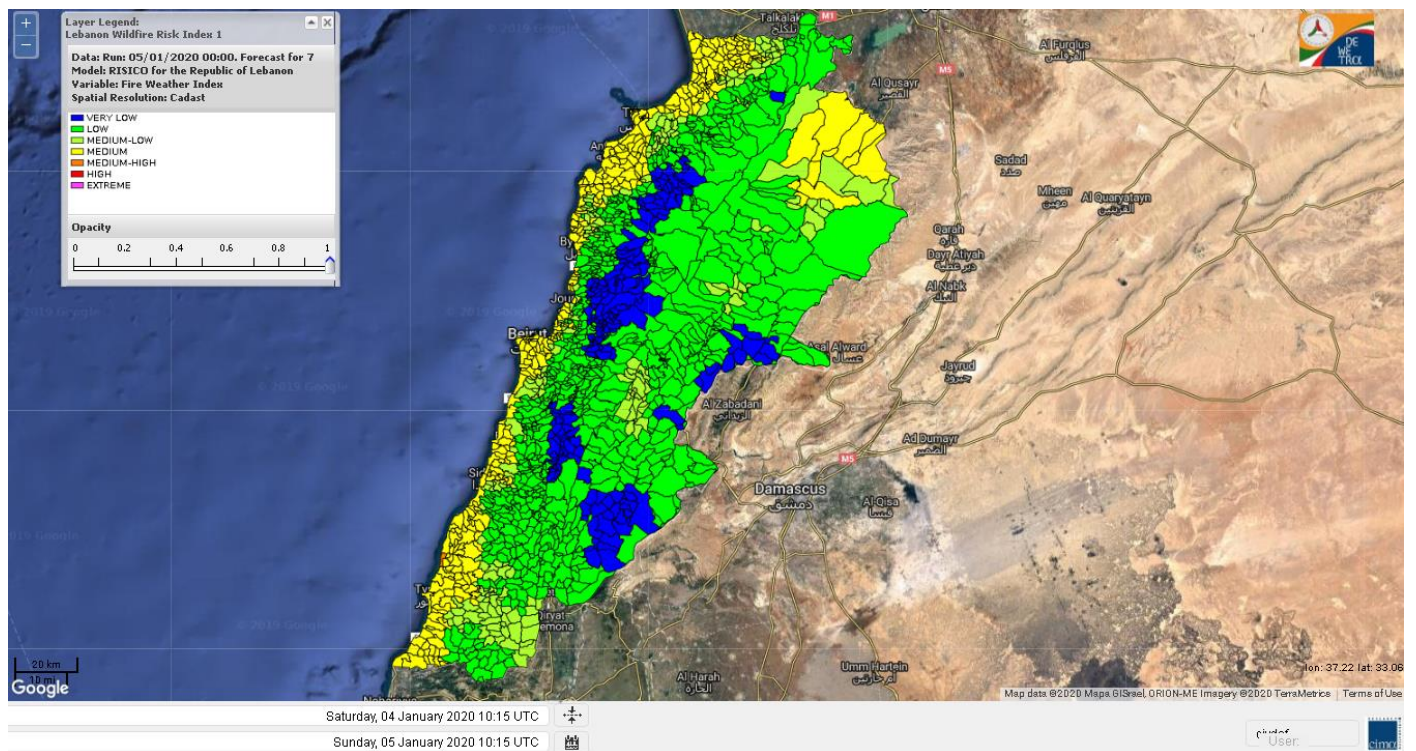
# Lebanon for 5 January 2020



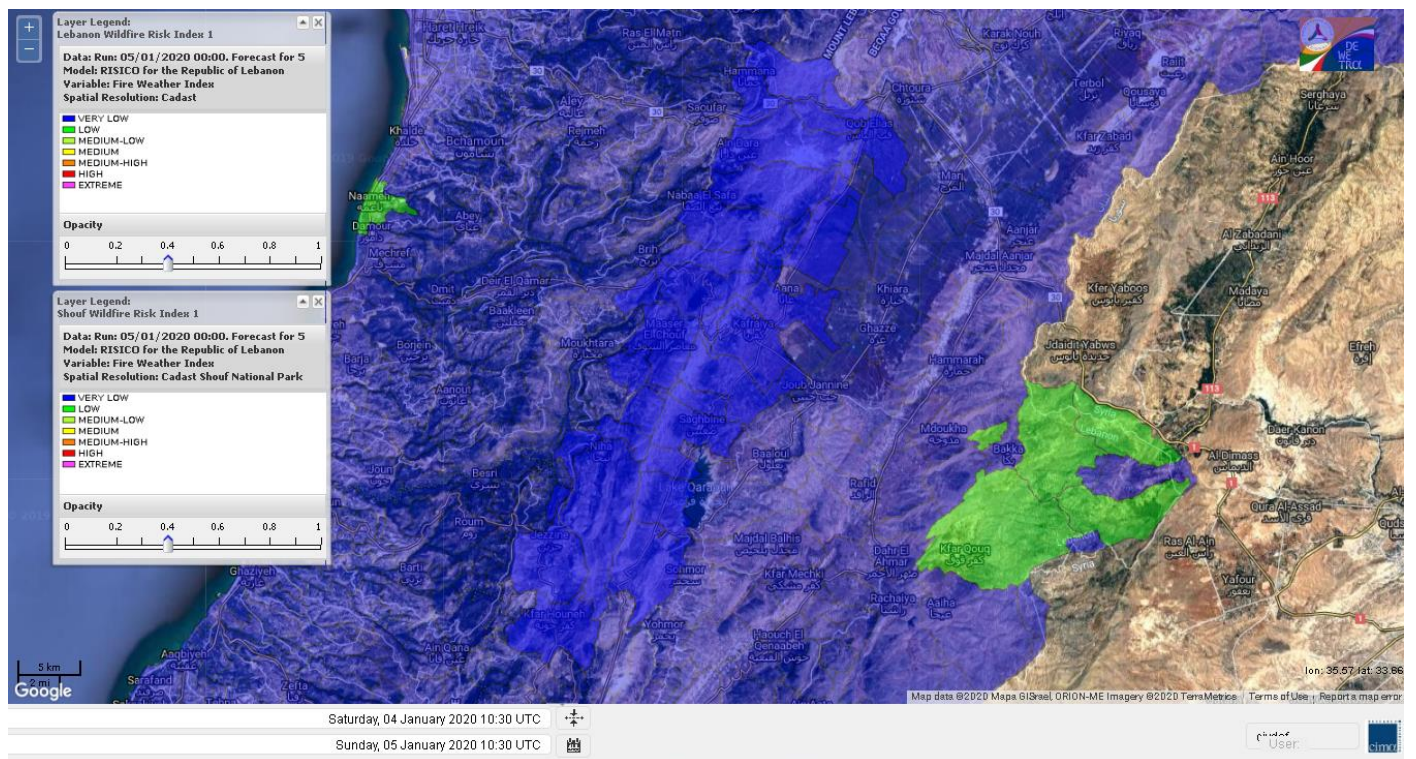
# Lebanon for 6 January 2020



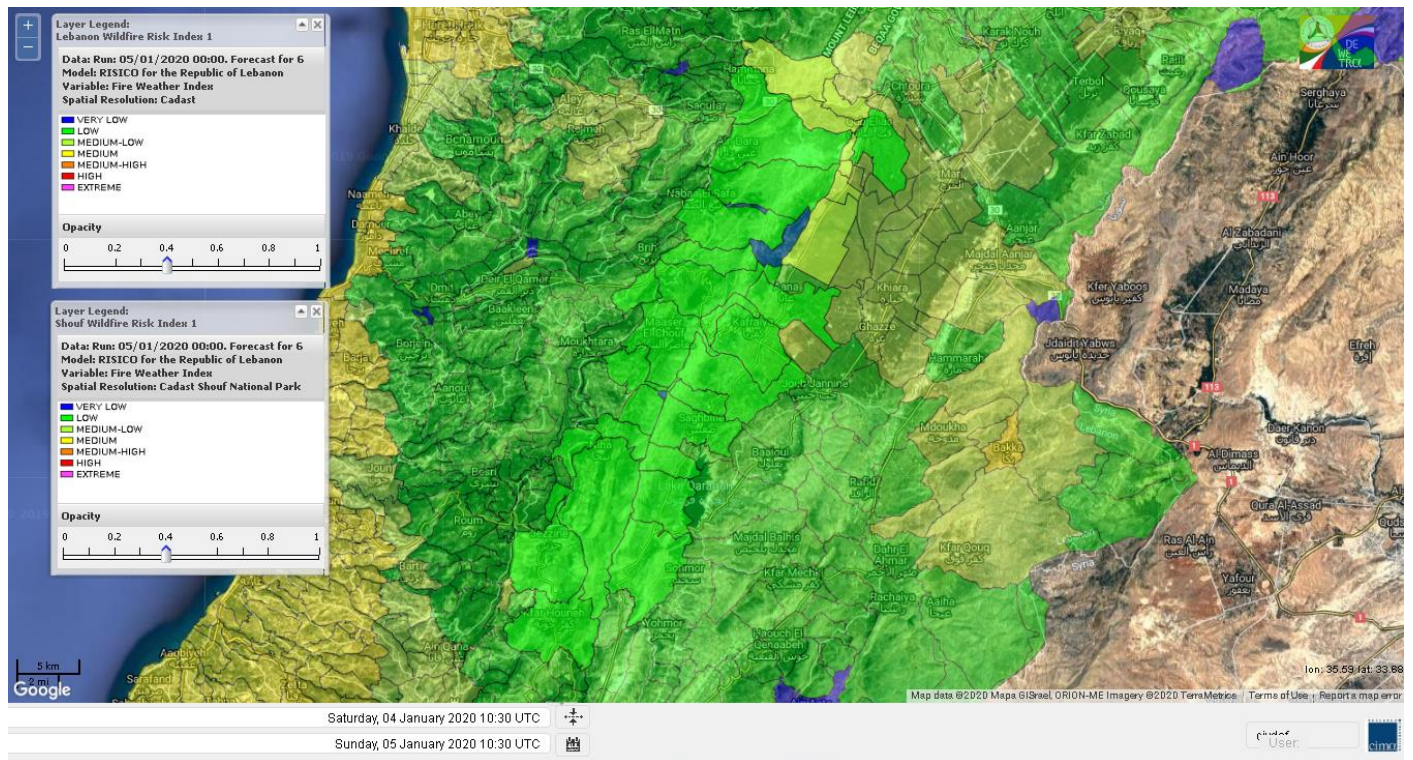
# Lebanon for 7 January 2020



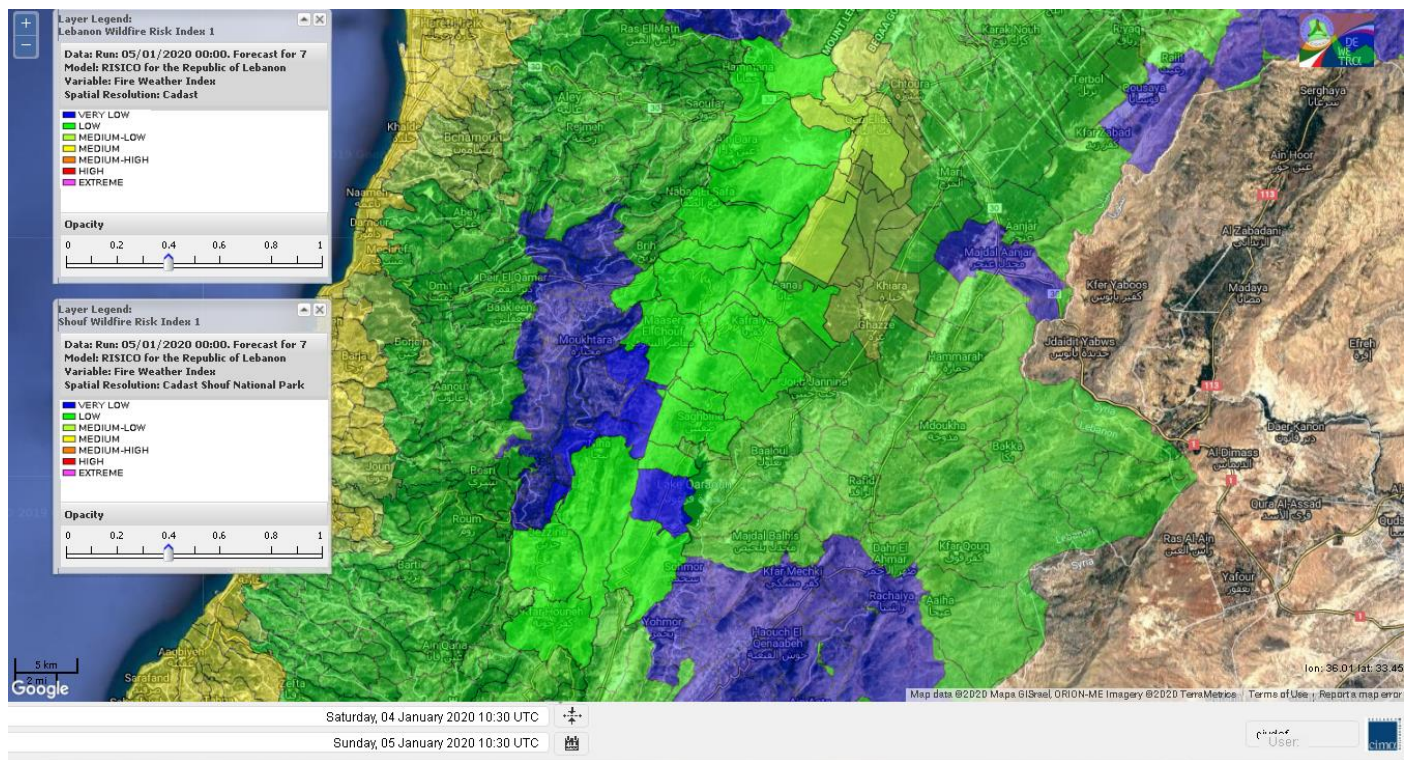
# Shouf Biosphere Reserve Forecast for 5 January 2020



# Shouf Biosphere Reserve Forecast for 6 January 2020



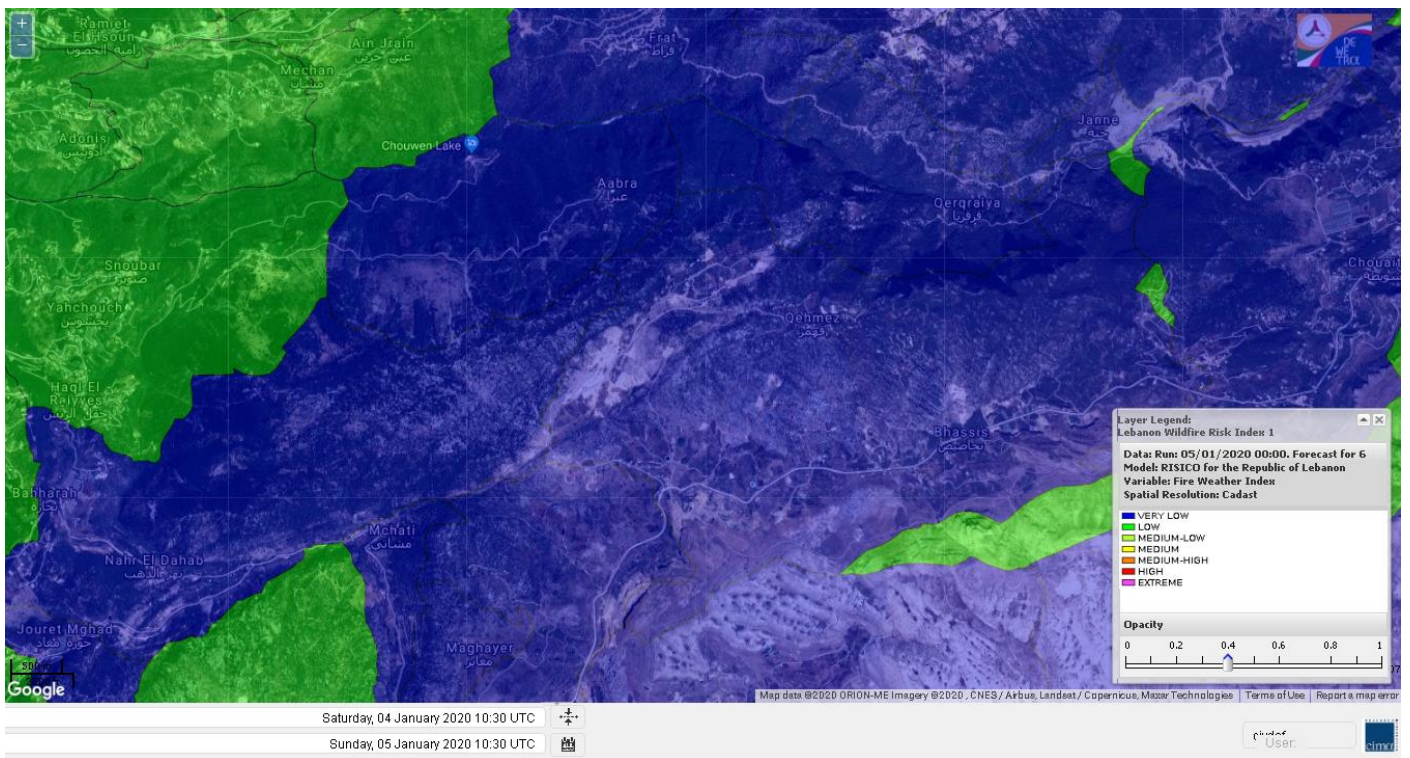
# Shouf Biosphere Reserve Forecast for 7 January 2020



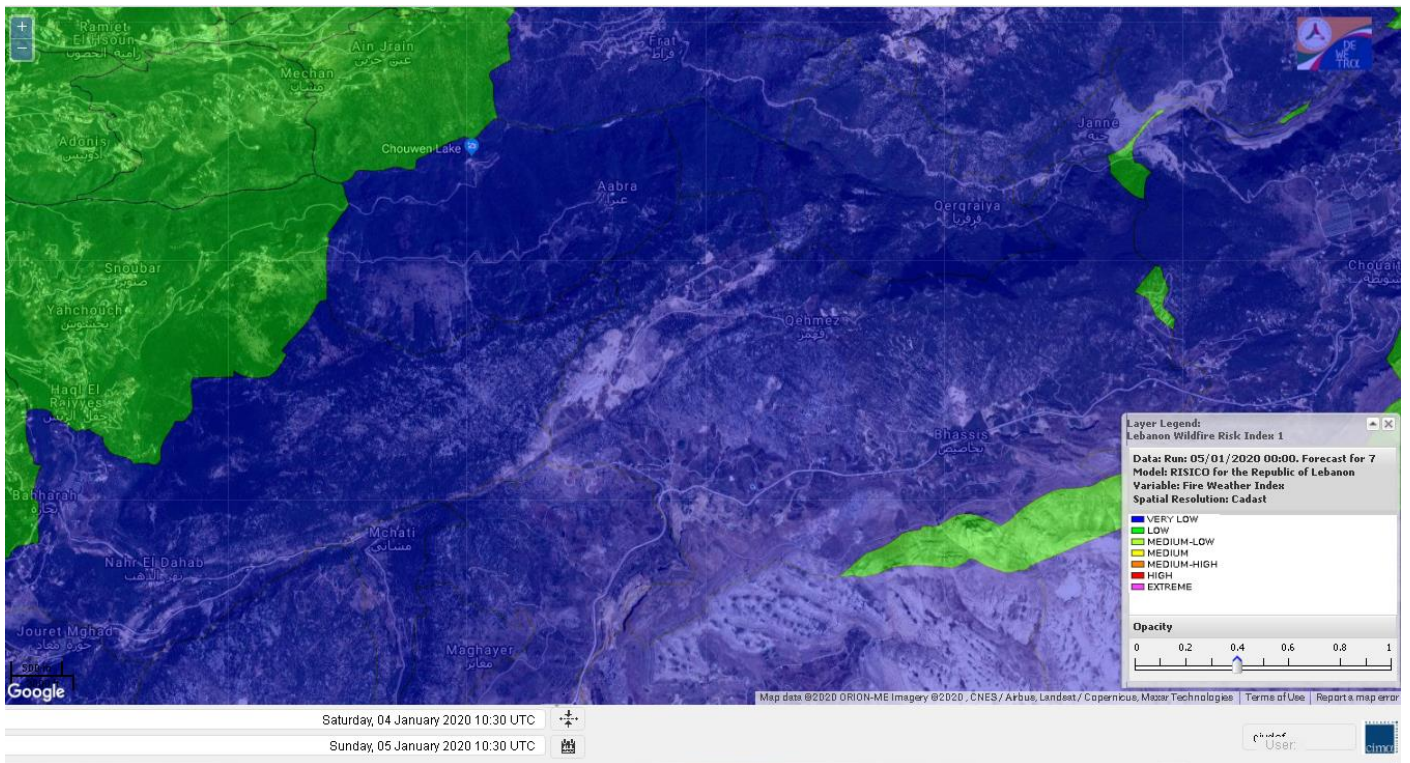
# Jabal Moussa Reserve Forecast for 5 January 2020



# Jabal Moussa Reserve Forecast for 6 January 2020



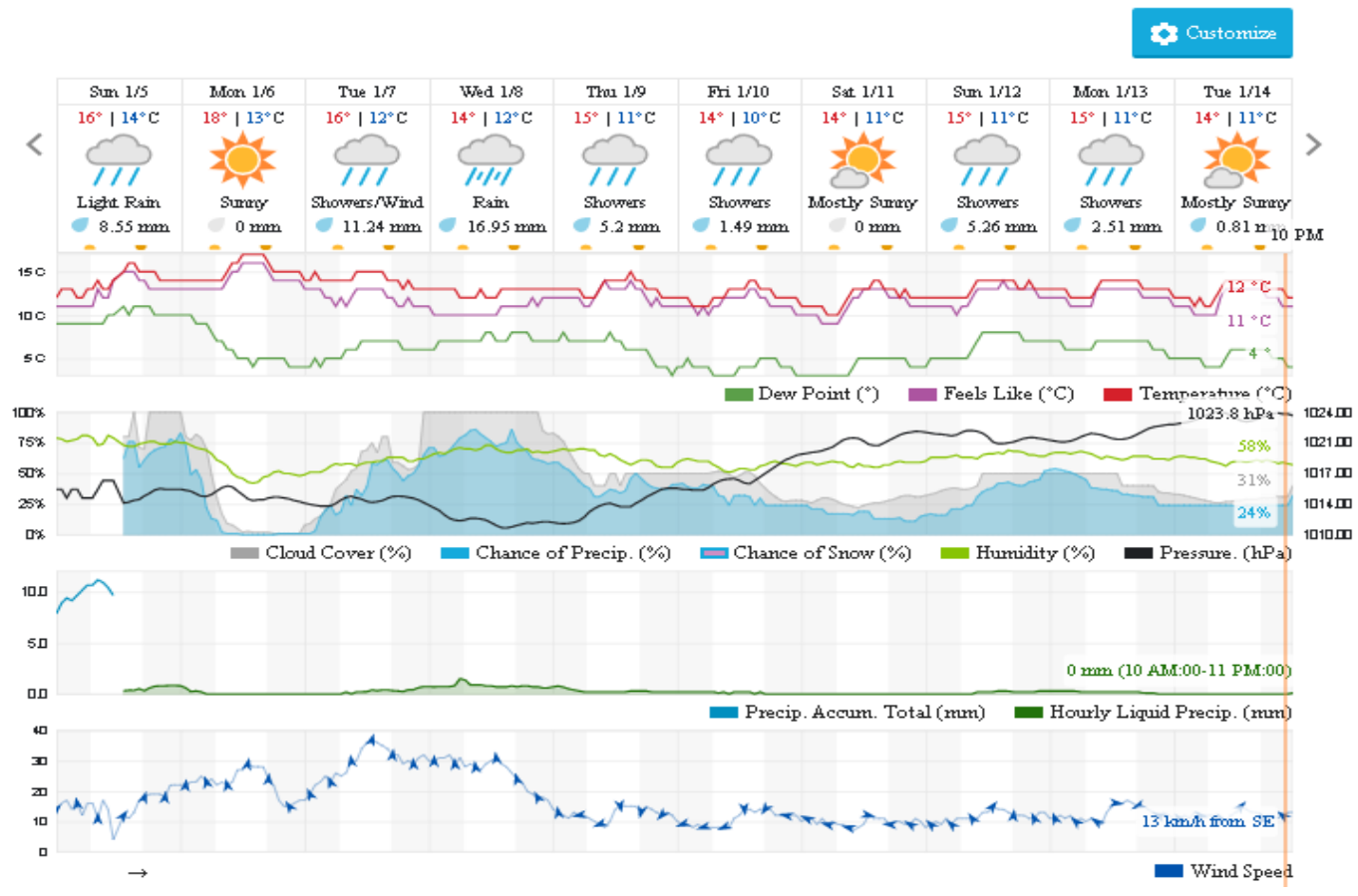
# Jabal Moussa Reserve Forecast for 7 January 2020



## Beirut, Beirut Governorate, Lebanon 10-Day Weather Forecast

15° ACHRAFIEH, RIZK STATION | CHANGE

TODAY    HOURLY    **10-DAY**    CALENDAR    HISTORY    WUNDERMAP



## Nord

### Koura

Municipality	05-Jan	06-Jan	07-Jan	Municipality	05-Jan	06-Jan	07-Jan	Municipality	05-Jan	06-Jan	07-Jan
Aaba	L	ML	M	Afsaddiq	L	ML	M	Ain Ekrine	VL	ML	M
Amioun	VL	ML	M	Anfeh	ML	M	M	Badbhoun	L	M	M
Barghoun	L	M	M	Barsa	L	M	M	Batroumine	L	M	M
Bdebba	L	M	M	Bechmizzine	L	ML	M	Bednayel El-Koura	L	ML	M
Bhabbouch El-Koura	VL	ML	M	Bkeftine	L	ML	M	Bnehran	VL	L	L
Bqaiia El-Koura	L	M	M	Bsarma	L	ML	M	Btaaboura	L	M	M
Bttram	L	ML	M	Btouratij	L	M	M	Bziza	VL	ML	M
Dar Beechtar	VL	ML	M	Dar Chmezzine	VL	ML	M	Deddeh	L	M	M
Deir El-Balamand	L	ML	M	Fih	L	M	M	Hraiche	ML	M	M
Ijdaabrine	L	ML	M	Kaftoun	L	ML	M	Kefraya El-Koura	L	M	M
Kfarakka	L	ML	M	Kfarhata	L	ML	M	Kfarhazir	L	M	M
Kfarkahel	L	M	M	Kfarsaroun	VL	ML	M	Kosba	VL	ML	M
Mejdel el-Koura	VL	L	ML	Nakhle	L	M	M	Qalhat	L	ML	M
Ras Masqa	L	M	M	Rechdibbine	VL	L	ML	Zakroun	ML	M	M
Zgharta El-Mtaouile	VL	L	L								

### Bcharre

Municipality	05-Jan	06-Jan	07-Jan	Municipality	05-Jan	06-Jan	07-Jan	Municipality	05-Jan	06-Jan	07-Jan
Aabdine	VL	VL	VL	Bane	VL	VL	VL	Barhelioun	VL	L	L
Bazooune	VL	L	L	Becharre	VL	L	L	Beit Menzer	VL	VL	VL
Billa	VL	VL	VL	Blaouza	VL	VL	VL	Bqaa Kafra	VL	L	L
Bqerqacha	VL	L	L	Breissat	VL	VL	VL	Dimane	VL	VL	VL
Hadath El Jobbeh	VL	VL	VL	Hadchit	VL	VL	VL	Hasroun	VL	L	L
Mazraat Aassaf	VL	VL	VL	Mazraat Bani Saab	VL	VL	VL	Mchaa El-Jobbeh	VL	L	L
Metrit	VL	L	L	Moghr El-Ahoual	VL	L	VL	Ouadi Qannoubine	VL	VL	VL
Qanat	VL	VL	VL	Qnayer	VL	VL	VL	Tourza	VL	VL	VL

### Batroun

Municipality	05-Jan	06-Jan	07-Jan	Municipality	05-Jan	06-Jan	07-Jan	Municipality	05-Jan	06-Jan	07-Jan
Aabrine	L	L	M	Aalali	VL	L	L	Aartiz	L	L	L
Abdelli	VL	L	L	Ajdabra	L	L	ML	Assia	VL	L	L
Basbina	L	ML	M	Batroun	L	M	M	Bcheleh	VL	L	VL
Bechtoudar	VL	L	VL	Beit Chlala	VL	L	VL	Beit Kassab	VL	L	L
Bijdarfil	L	ML	M	Bqesmaya	L	L	ML	Chatine	VL	VL	VL
Chebtin	VL	L	L	Chekka	L	M	M	Daael	VL	L	L
Dahr Abi Yaghi	VL	L	L	Daraya El-Batroun	VL	L	M	Deir Billa	VL	L	L
Deir Kfifane	L	L	M	Deir Mar Youhanna EL	VL	L	VL	Deir Mar Youssef Jra	VL	L	L
Douma	VL	L	VL	Douq	VL	L	L	Eddeh El-Batroun	L	L	ML
Ftahat El-Batroun	VL	L	L	Ghouma	VL	L	ML	Hadtoun	VL	L	VL
Hamat	L	ML	M	Harbouna	L	L	L	Hardine	VL	VL	VL
Helta	VL	VL	L	Hery	L	M	M	Jebbla	VL	L	L
Jrabta El-Batroun	VL	L	ML	Jrane El-Batroun	L	ML	M	Kfar Aabida	L	ML	M
Kfar Halda	VL	L	VL	Kfarb Shlaimane	VL	VL	VL	Kfarhatna	L	L	L
Kfarhay	L	M	M	Kfarhelos	L	L	M	Kfifane	L	ML	M



Kfour El Arabi	VL	L	VL	Koubba	L	M	M	Kour	L	L	ML
Mar Mama	VL	L	L	Masrah	VL	L	L	Mehmarch	VL	L	L
Mrah Chdid	VL	L	L	Mrah El Ziyat	VL	L	ML	Mrah El-Hajj	VL	VL	VL
Nahle El-Batroun	VL	L	VL	Niha El-Batroun	VL	VL	VL	Ouahj El-Hajjar	L	ML	M
Ouata Houb	VL	VL	VL	Qatnaaoun	L	ML	M	Racha	VL	L	VL
Rachana	L	L	ML	Rachkida	L	ML	M	Ram El-Batroun	VL	L	VL
Ras Nahhach	L	ML	M	Selaata	ML	M	M	Sghar	VL	L	ML
Smar Jbayl	VL	L	ML	Sourat El-Batroun	VL	L	L	Tannourine El-Faouqa	VL	L	L
Tannourine Et-Tahta	VL	VL	VL	Thoum	L	ML	M	Toula El-Batroun	VL	L	L
Zan	VL	L	L								

## Zgharta

Municipality	05-Jan	06-Jan	07-Jan	Municipality	05-Jan	06-Jan	07-Jan	Municipality	05-Jan	06-Jan	07-Jan
Aachach	L	L	ML	Aalma	L	L	ML	Aarde	L	L	L
Aintourine	VL	L	VL	Arabet Qozhaya	VL	VL	VL	Arde	L	L	ML
Arjis	VL	L	L	Asnoun	L	L	ML	Ayto	VL	VL	VL
Basloukit	VL	L	VL	Bchannine	L	L	ML	Besebeel	L	L	ML
Bhairret Toula	VL	VL	VL	Bnachee	VL	L	L	Boussit	L	ML	ML
Danha	L	L	ML	Daraiya Zgharta	VL	L	L	Deir Jdeide	L	L	ML
Ehden	VL	VL	VL	Halan	L	L	ML	Hariq Zgharta	L	L	ML
Houakir	L	L	L	Hraiqis	L	M	M	laal	L	L	L
Ijbaa	VL	VL	VL	Karm Saddeh	VL	VL	VL	Kfarchakhna	L	L	ML
Kfardlaqous	L	L	ML	Kfarfou	VL	L	VL	Kfarhata Zgharta	L	L	ML
Kfarhoura	L	L	L	Kfarsghab	VL	VL	VL	Kfaryachit	L	L	L
Kfarzaina	L	L	ML	Khaldiye	L	L	ML	Mazraat Ajbeaa	L	L	ML
Mazraat Et-Teffah	VL	VL	VL	Mazraat Jneid	VL	VL	ML	Mejdlaiya Zgharta	L	L	ML
Merh Kfarsghab	VL	L	L	Miryata	L	L	ML	Miziara	VL	VL	L
Mzraat Kefraya	L	ML	M	Qorah Bach	L	L	ML	Rachiine	L	L	ML
Ras Kifa	VL	L	L	Sakhra	L	L	L	Sebhel Zgharta	VL	L	VL
Serhel	VL	VL	VL	Tallet Zgharta	L	L	L	Toula Zgharta	VL	VL	VL
Zgharta	L	L	ML								

## Minieh-Denniye

Municipality	05-Jan	06-Jan	07-Jan	Municipality	05-Jan	06-Jan	07-Jan	Municipality	05-Jan	06-Jan	07-Jan
Aasaymout	L	VL	L	Aaymar	VL	L	L	Aazki	L	L	L
Ain El-Tineh-Miniyeh	VL	VL	L	Assoun	VL	L	L	Bakhaaoun	VL	L	L
Bchennata	VL	L	L	Bechehhara	VL	L	L	Beddawi	ML	M	M
Behouaita	VL	VL	VL	Beit El Foqss	VL	L	L	Beit Haouik	VL	L	L
Beit Zoud	VL	L	L	Bekaasafrine	VL	L	L	Borj El Yahoudiyeh	ML	M	M
Bqarsouna	VL	L	L	Btermaz	VL	VL	L	Debaael	L	VL	L
Deir Ammar	ML	M	M	Deir Nbouh	L	L	L	Haouaret-Miniyeh	VL	L	L
Haql el Azimeh	VL	VL	L	Harf El Siyad	VL	VL	L	Hazmiye-Miniyeh	VL	VL	L
Izal	L	L	L	Jarjour	VL	L	VL	Jayroun	VL	VL	L
Kahf El-Malloul	VL	L	L	Karm El-Moher	VL	L	L	Kfar Binine	VL	L	L
Kfarchalane	L	L	L	Kfarhabou	L	L	L	Kharroub-Miniyeh	L	L	L
Mazraat El-Kreme	VL	L	L	Mazraat Ketrane	VL	L	L	Merkebta	ML	M	M
Minyeh	M	M	M	Mrah El Sfirat	VL	VL	L	Mrah Sraj	VL	VL	L
Mrebbine	VL	L	L	Nabi Youcheaa	ML	M	M	Nemrine	VL	L	L

Qarhaiya	L	L	L	Qarne	VL	VL	L	Qarsita	VL	VL	L
Qattineh-Miniyeh	VL	VL	L	Qemmamine	VL	VL	L	Qraine	VL	VL	L
Raouda-Aadoua	L	ML	M	Rihaniyet-Miniyeh	L	ML	M	Sfireh	VL	VL	L
Sir Ed-Danniyeh	VL	L	L	Tarane	VL	VL	L	Terbol-Miniyeh	ML	M	M
Zaghartaghriine	L	L	L	Zouq Bhannine	ML	M	M				

## Nabatiye

### Nabatiye

Municipality	05-Jan	06-Jan	07-Jan	Municipality	05-Jan	06-Jan	07-Jan	Municipality	05-Jan	06-Jan	07-Jan
Aabba	VL	M	L	Aazzi	VL	M	L	Adchit El-Chqif	VL	M	ML
Ain Bou Swar	VL	ML	L	Ain Kana	VL	ML	L	Ali El-TaHER	VL	ML	L
Ansar	VL	M	M	Arab Salim	VL	ML	L	Arnoun	VL	ML	L
Bfaroue	VL	M	L	Breyqaah	VL	M	ML	Chargiyeh	VL	M	L
Choukine	VL	M	L	Deir El Zahrani	VL	M	L	Doueir El-Nabatiyeh	VL	M	L
Habbouch El-Nabatiye	VL	ML	L	Hamra El-Nabatiyeh	VL	ML	L	Harouf El-Nabatiyeh	VL	M	L
Hmaile	VL	ML	L	Houmin El Faouqa	VL	ML	L	Houmin El Tahta	VL	M	L
Jarjough	VL	ML	L	Jbaah El-Nabatiyeh	VL	L	L	Jebchit	VL	M	L
Kfar Djal El-Nabatiy	VL	M	ML	Kfar Remmane	VL	ML	L	Kfar Sir	VL	ML	ML
Kfar Tebnit	VL	ML	L	Kfarfila	VL	ML	L	Kfour El-Nabatieh	VL	M	L
Mayfadoun	VL	M	L	Mazraat Bsaffour	VL	M	L	Mazraat Chalbaal	VL	M	L
Mazraat Dmoul	VL	M	L	Mazraat El Khreibeh	VL	M	L	Mazraat El-Bayad El-	VL	ML	L
Mazraat Kfarjaouz	VL	ML	L	Mazraat Qalaat Meiss	VL	M	ML	Nabatiyeh El-Fawka	VL	ML	L
Nabatiyeh Et-Tahta	VL	ML	L	Namiriyyeh	VL	M	L	Qaaqaaiyet El Jisr	VL	M	ML
Qossaibeh El-Nabatiy	VL	M	ML	Roumine	VL	M	L	Sarba El-Nabatieh	VL	ML	L
Sir El-Gharbiyeh	VL	M	M	Toul	VL	M	L	Yehmor El-Nabatiyeh	VL	ML	L
Zaoutar El Charkiyeh	VL	ML	L	Zaoutar El-Gharbiyeh	VL	M	ML	Zebdine El-Nabatiyeh	VL	M	L
Zefta	VL	M	L								

### Hasbaiya

Municipality	05-Jan	06-Jan	07-Jan	Municipality	05-Jan	06-Jan	07-Jan	Municipality	05-Jan	06-Jan	07-Jan
Ain Jarfa	VL	VL	VL	Abou Qamha	VL	L	L	Ain Qania	VL	VL	VL
Bourghos	VL	ML	L	Chebaa	VL	L	VL	Chouaya Hasbaya	VL	L	VL
Dellafeh	VL	ML	L	Fardiss Hasbaiya	VL	L	L	Hasbaya	VL	L	L
Hbariyeh	VL	L	VL	Kaoukaba Hasbaiya	VL	L	L	Kfar Chouba	VL	L	L
Kfar Hamam	VL	L	L	Kfeir El-Zait	VL	L	VL	Khalwat Hasbaya	VL	VL	VL
Khreibet Hasbaiya	VL	ML	L	Majidiyeh Hasbaiya	VL	ML	L	Marj Ez-Zhour (Haouc	VL	L	VL
Meri	VL	ML	L	Mimass	VL	L	VL	Rachaiya El-Fokhar	VL	L	L
Salaiyeb	VL	ML	L								

### Marjayoun

Municipality	05-Jan	06-Jan	07-Jan	Municipality	05-Jan	06-Jan	07-Jan	Municipality	05-Jan	06-Jan	07-Jan
Aalmane Marjaayoun	VL	L	L	Aamra	VL	ML	L	Adayseh Marjaayoun	VL	ML	ML
Adchit El-Koussair	VL	ML	L	Ain Arab Marjaayoun	VL	ML	L	Bani Haiyann	VL	ML	L
Blatt Marjaayoun	VL	L	L	Blida	VL	ML	ML	Borj El-Moulouk	VL	ML	L
Boueyda Marjaayoun	VL	L	L	Deir Mimass	VL	ML	L	Deir Siriane	VL	ML	L
Dibbine	VL	L	L	Ebel El Saqi	VL	ML	L	Houla	VL	ML	ML
Houra	VL	ML	L	Kfar Kila	VL	ML	L	Kham Marjaayoun	VL	ML	L

Klayaa	VL	ML	L	Majdel Selem	VL	ML	ML	Marjaayoun	VL	ML	L
Markaba	VL	ML	ML	Mays El-Jabal	VL	ML	ML	Mazraat Doumiat	VL	ML	L
Mazraat Sarada	VL	ML	L	Mhaibib	VL	ML	ML	Qabrikha	VL	ML	L
Qantara	VL	ML	L	Rab El-Thalathine	VL	ML	ML	Saouaneh Marjayoun	VL	ML	ML
Talloussa	VL	ML	L	Taybeh Matjaayoun	VL	ML	L	Touline	VL	ML	L

## Bent Jbail

Municipality	05-Jan	06-Jan	07-Jan	Municipality	05-Jan	06-Jan	07-Jan	Municipality	05-Jan	06-Jan	07-Jan
Ain-Ebel	VL	ML	L	Aitaroun	VL	ML	ML	Aynata Bint Jbeil	VL	ML	L
Ayta El-Chaeb	VL	ML	L	Ayta El-Jabal	VL	ML	ML	Beit Lif	VL	ML	L
Beit Yahoun	VL	ML	ML	Bint Jbeil	VL	ML	L	Borj Qalaway	VL	M	ML
Braachit	VL	ML	ML	Chakra	VL	ML	ML	Debel	VL	ML	L
Deir Antar	VL	ML	ML	Froun	VL	ML	L	Ghandouriyeh Bint Jb	VL	ML	ML
Hanine	VL	ML	L	Hariss	VL	ML	ML	Hdatha	VL	ML	ML
Jmeymeh	VL	ML	ML	Kafra Bint Jbeil	VL	L	L	Kfar Dounine	VL	ML	ML
Khirbet Selm	VL	ML	ML	Kounine	VL	ML	ML	Maroun El Ras	VL	ML	L
Qalaway	VL	ML	ML	Qaouzah	VL	L	L	Qatmoun	VL	ML	L
Ramya Bint Jbeil	VL	ML	L	Rchaf	VL	ML	L	Rmeich	VL	ML	L
Safad Al Battikh	VL	ML	ML	Salhaneh	VL	L	L	Serbine	VL	ML	L
Sultanieh Bint Jbeil	VL	ML	ML	Tibnine	VL	ML	ML	Tiri	VL	ML	L
Yaroun	VL	ML	L	Yater	VL	ML	L				

## Mont Liban

### Jbail

Municipality	05-Jan	06-Jan	07-Jan	Municipality	05-Jan	06-Jan	07-Jan	Municipality	05-Jan	06-Jan	07-Jan
Aabeydat	VL	L	L	Aalita	VL	L	L	Aamchit	L	M	M
Aarab El-Lahib	VL	VL	VL	Aarasta	VL	VL	L	Adonis Jbeil	VL	L	L
Afqa Jbeil	VL	L	L	Ain El Delbeh Jbeil	VL	L	L	Ain El-Ghouyba	VL	VL	VL
Ain Jrain	VL	L	L	Ain Kfah	VL	L	M	Almat El Chemaliyat	VL	VL	VL
Almat El-Jenoubiya	VL	VL	VL	Aqoura	VL	L	L	Bayzoun	VL	L	L
Bchille Jbeil	VL	L	L	Bechtlida	VL	VL	L	Behdaydat	VL	L	ML
Beit Habbaq	VL	L	ML	Bejjeh	VL	L	ML	Bekhaaz	L	ML	M
Berbara Jbeil	ML	M	M	Bintael	VL	L	L	Birket Hjoula	VL	L	L
Blatt Jbeil	VL	L	L	Boulhos	VL	VL	VL	Breyj Jbeil	VL	L	L
Chamat	VL	ML	M	Chikhane	ML	M	M	Chmout	VL	L	L
Eddeh Jbeil	L	ML	M	Ehmej	VL	VL	VL	Fatre	VL	L	L
Ferhet	VL	L	L	Fghal	L	L	M	Frat	VL	VL	VL
Ghabat	VL	L	L	Ghalboun	VL	L	ML	Gharzouz	L	ML	M
Ghofrine	L	ML	M	Habil	VL	L	L	Halate	VL	L	L
Haqel	VL	L	L	Hbaline	VL	L	ML	Hboub	VL	L	L
Hdeine	VL	L	L	Hema Er-Rehban	VL	L	VL	Hema Mar Maroun Aann	VL	VL	VL
Hjoula	VL	L	L	Hosrayel	L	ML	M	Hsarat	VL	L	ML
Hsoun	VL	L	L	Jaj	VL	L	VL	Janne	VL	VL	VL
Jbeil	L	ML	M	Jeddeyel Jbeil	ML	M	M	Jlisse	VL	L	L
Jouret El-Qattine	VL	L	L	Kfar Baal Annaya	VL	L	L	Kfar Kidde	L	ML	M
Kfar Kouas	VL	L	L	Kfar Mashoun	VL	ML	ML	Kfoun	VL	L	L

Kharbe Jbeil	VL	L	ML	Laqlouq	VL	L	L	Lassa	VL	VL	VL
Lehfed	VL	L	L	Maad	VL	L	ML	Mar Sarkis	VL	L	L
Mastita	L	ML	M	Mayfouq	VL	L	L	Mazraat El Siyad	VL	L	L
Mazraat El-Maaden	VL	VL	VL	Mechane	VL	L	L	Mechmech Jbeil	VL	L	L
Mehrin	VL	L	L	Mejdel El-Akoura	VL	L	L	Mghayreh Jbeil	VL	L	L
Mounsef	ML	M	M	Nahr Ibrahim	L	ML	M	Qahmez	VL	VL	VL
Qartaba	VL	VL	VL	Qartaboun	L	ML	M	Qattara Jbeil	VL	L	VL
Qorqraya	VL	VL	VL	Ramout	VL	L	ML	Ras Osta	VL	L	L
Rihane Jbeil	L	M	M	Sakiet El-Khayt	VL	L	ML	Saqi Richmaya	VL	L	VL
Sebrine	VL	L	L	Seraita	VL	L	L	Souane Jbeil	VL	VL	VL
Tadmor	VL	L	L	Tartej	VL	L	VL	Torzaiya	VL	L	L
Yanouh Jbeil	VL	L	L	Zibidine Jbeil	VL	L	L				

## El Metn

Municipality	05-Jan	06-Jan	07-Jan	Municipality	05-Jan	06-Jan	07-Jan	Municipality	05-Jan	06-Jan	07-Jan
Aain El-Qabu	VL	VL	VL	Aain El-Qach	VL	L	VL	Aain El-Teffaha	VL	L	VL
Aain el-Safssaf El-M	VL	L	VL	Abou Mizane	VL	L	VL	Ain Aar	VL	ML	M
Ain Alaq	VL	L	L	Ain El-Kharroube	VL	L	VL	Ain El-Sendiane	VL	L	VL
Ain El-Zeitoune	VL	L	VL	Ain Saadeh	VL	L	ML	Aintoura El-Matn	VL	L	L
Amaret Chalhoub	VL	ML	M	Antelias	VL	ML	M	Atchaneh	VL	L	L
Ayroun	VL	L	VL	Baabdat	VL	L	L	Baouchariyeh	VL	M	M
Baskinta	VL	VL	VL	Beit Chabab	VL	L	L	Beit El-Char	VL	ML	M
Beit El-Kekko	VL	ML	M	Beit Mery	VL	L	L	Bhersaf	VL	L	L
Bikfaya	VL	L	VL	Biyakout	VL	ML	M	Bnabil	VL	L	VL
Bourj Hammoud	VL	M	M	Bqennaya	VL	ML	ML	Broummana El-Matn	VL	L	L
Bsalim	VL	L	ML	Bsifrine	VL	VL	VL	Bteghrine	VL	L	VL
Chaouiye	VL	L	ML	Chouaya El-Matn	VL	L	VL	Choueir	VL	L	VL
Chrine	VL	L	VL	Dahr El Sawan El-Mat	VL	L	L	Daychouniyeh	VL	ML	L
Dbayeh	VL	ML	M	Deir Chamra	VL	VL	VL	Deir Mar Abda el Mch	VL	L	L
Deir Mar Roukouz	VL	M	M	Deir Tamiche	VL	L	L	Dik El-Mehdi	VL	L	ML
Dikwaneh	VL	M	M	Douar El-Matn	VL	L	VL	Fanar	VL	ML	ML
Fraike	VL	L	L	Haret El-Ballaneh	VL	L	ML	Hbous	VL	ML	M
Himlaya	VL	L	VL	Jal El Did	VL	ML	M	Jdeideh El-Metn	VL	ML	M
Jouar El-Matn	VL	L	VL	Jouret El-Ballout	VL	L	L	Kaaqour	VL	L	VL
Kfar Aaqab	VL	L	VL	Kfertay El-Matn	VL	VL	VL	Khenchara	VL	L	VL
Khillat El-Mtain	VL	L	VL	Konnabat Broummana	VL	L	L	Konnabat Salima	VL	VL	VL
Machraah El-Matn	VL	L	VL	Majdel Tarchich	VL	L	L	Majzoub	VL	ML	ML
Mansouriyeh El-Metn	VL	ML	M	Mar Boutros Karm Et-	VL	L	VL	Mar Chaya et Mzekke	VL	L	L
Mar Moussa Ed-Douar	VL	L	VL	Marjaba	VL	L	VL	Masqa	VL	L	L
Mayasse	VL	L	VL	Mazraat Deir Aoukar	VL	ML	M	Mazraat El-Hadirat	VL	L	ML
Mazraat Yachouh	VL	ML	M	Mchikha	VL	L	VL	Menqlet Mezher	VL	ML	M
Mhaydseh Matn	VL	L	VL	Mkalles	VL	M	M	Mrouj	VL	L	L
Mtain	VL	L	L	Mtaylor	VL	ML	ML	Nabay	VL	L	L
Naccache	VL	ML	M	Ouadi Chahine	VL	VL	VL	Ouadi El-Karm El-Mat	VL	VL	VL
Ouata El-Mrouj	VL	L	VL	Ouyoun El-Matn	VL	L	L	Qornet Chehwan	VL	L	ML
Qornet El-Hamra	VL	L	L	Roumieh	VL	L	L	Sfeilet Bikfaya	VL	L	VL
Sinn El-Fil	VL	M	M	Zabbougha	VL	VL	VL	Zalqa	VL	ML	M

Zarouon	VL	L	VL	Zekrite	VL	L	L	Zighrine El-Matn	VL	L	VL
Zouk El-Khrab	VL	ML	M								

## Chouf

Municipality	05-Jan	06-Jan	07-Jan	Municipality	05-Jan	06-Jan	07-Jan	Municipality	05-Jan	06-Jan	07-Jan
Aalmane El-Chouf	VL	M	M	Aammq El-Chouf	VL	L	VL	Ain Ouzein	VL	L	VL
Ain Qani	VL	L	VL	Ain Zhalta	VL	L	L	Ainbal	VL	L	L
Amatour	VL	L	VL	Anout	VL	L	L	Atrine	VL	L	VL
Baadarane	VL	L	VL	Baaqline	VL	L	L	Baasir	VL	M	M
Barja	VL	M	M	Barouk	VL	L	L	Bater	VL	L	VL
Batloun	VL	L	L	Bayqoun	VL	L	VL	Bchetfine	VL	L	L
Beiteddine	VL	L	VL	Benouati Ech-Chouf	VL	L	L	Berjein	VL	L	L
Bireh et Mtalleh	VL	L	L	Biret El-Chouf	VL	L	L	Bkechtine Ouel Mchei	VL	L	L
Bkifa El-Chouf	VL	L	L	Botme	VL	L	VL	Bqaiaa Ech-Chouf	VL	L	L
Bsaba El-Chouf	VL	L	L	Chammis El-Chouf	VL	M	M	Chehim	VL	L	L
Chemaarine	VL	L	L	Chourit	VL	L	VL	Daher El-Chouf	VL	ML	M
Dalhoun	VL	ML	ML	Damour	VL	M	M	Daraya El-Chouf	VL	L	L
Deir El-Moukhalles	VL	L	L	Deir Baba	VL	L	L	Deir Dourit	VL	L	L
Deir El-Qamar	VL	L	L	Deir Kouche	VL	L	L	Dibbieh	VL	L	ML
Dmit	VL	L	L	Fouara Jaafar	VL	L	VL	Fraidis El-Chouf	VL	L	L
Ghabet Jaafar	VL	L	L	Gharife	VL	L	L	Haret Jandal	VL	L	VL
Hasrout	VL	L	L	Jadra	VL	M	M	Jahlieh	VL	L	L
Jbeih El-Chouf	VL	L	VL	Jdeidet El-Chouf	VL	L	VL	Jiyeh	VL	M	M
Jleilyeh	VL	L	L	Jmailiyeh	VL	M	M	Joun	VL	ML	ML
Kahlounie El-Chouf	VL	L	VL	Ketermaya	VL	M	M	Kfar Faqoud	VL	L	L
Kfar Hamal	VL	ML	L	Kfar Him	VL	L	L	Kfar Katra	VL	L	VL
Kfar Niss	VL	L	L	Kfar hay	VL	L	L	Kfarnabrakh	VL	L	VL
Khirbet Bisri	VL	L	L	Knayse El-Chouf	VL	VL	VL	Maaniyeh	VL	M	M
Maasser Beiteddine	VL	L	VL	Maasser El-Chouf	VL	L	L	Majdalouna	VL	M	M
Majdel El-Meouch	VL	L	VL	Mazboud	VL	L	L	Mazmoura	VL	L	L
Mazraat El Chouf	VL	L	VL	Mazraat El Daher	VL	L	L	Mazraat El-Douair	VL	L	VL
Mechref	VL	L	L	Mghairie	VL	M	M	Mghayrie El-Chouf	VL	L	L
Moukhtara	VL	L	VL	Mrusti	VL	L	VL	Mtolle	VL	L	L
Naameh	L	M	M	Niha El-Chouf	VL	L	L	Ouadi Abou Youssef	VL	VL	L
Ouadi Ed-Deir	VL	ML	L	Ouadi El-Sit	VL	L	VL	Ouadi bnehlay	VL	L	L
Qraibeh	VL	L	VL	Qreiaa	VL	L	L	Rmayle El-Chouf	VL	M	M
Semqaniyeh	VL	L	VL	Sibline	VL	M	M	Sirjbeil	VL	L	L
Warhanieh	VL	L	L	Werdaniyeh	VL	M	M	Zaarourieh	VL	L	L

## Baabda

Municipality	05-Jan	06-Jan	07-Jan	Municipality	05-Jan	06-Jan	07-Jan	Municipality	05-Jan	06-Jan	07-Jan
Abadiyeh	VL	L	L	Ain Mouaffaq	VL	L	L	Araiya	VL	L	L
Arbaniyeh	VL	VL	VL	Arsoun	VL	L	VL	Baabda	VL	M	M
Baalchmey	VL	ML	L	Bmaryam	VL	L	L	Bourj El-Brajneh	VL	M	M
Boutchay	VL	L	ML	Bsaba Baabda	VL	ML	ML	Btekhney	VL	L	L
Btibyat	VL	L	L	Bzbedine	VL	L	VL	Chbeniyeh	VL	L	L
Chiyah	VL	M	M	Chmeisset Baabda	VL	VL	L	Chouit	VL	L	L
Deir El-harf	VL	L	L	Deir Khouna	VL	L	L	Dlaybeh	VL	VL	VL

Falougha	VL	ML	L	Furn El-Chebbak	VL	M	M	Hadath Beyrouth	VL	M	M
Halaliyeh Baabda	VL	L	L	Hammana	VL	L	L	Haret El Sett	VL	L	L
Haret Hamze	VL	L	L	Haret Hreik	VL	M	M	Hasbaiya El-Metn	VL	VL	VL
Jouar El-Hoz	VL	L	VL	Jouret Arsoun	VL	L	VL	Kfar Chima	VL	ML	M
Kfar Selouane	VL	L	L	Khalouat Baabda	VL	L	L	Kneisset Baabda	VL	L	L
Laylakeh	VL	ML	M	Louayzeh Baabda	VL	L	L	Merdache	VL	ML	ML
Mzairaa Baabda	VL	L	L	Ouadi Chahrour El Ol	VL	L	L	Ouadi Chahrour El So	VL	L	ML
Qalaa Baabda	VL	L	L	Qhraybe Baabda	VL	L	L	Qobbayaa	VL	L	L
Qornayel	VL	L	VL	Qortada	VL	L	L	Qrayeh Baabda	VL	L	L
Qsaibeh Baabda	VL	L	L	Qtale Baabda	VL	L	L	Ras El Metn	VL	L	L
Ras El-Haref	VL	L	L	Rouayset El-Ballout	VL	L	L	Salima Baabda	VL	L	VL
Tahouitat El Ghadir	VL	ML	M	Tarchich	VL	L	L	Zandouqa	VL	L	L

## Aley

Municipality	05-Jan	06-Jan	07-Jan	Municipality	05-Jan	06-Jan	07-Jan	Municipality	05-Jan	06-Jan	07-Jan
Abey	VL	L	L	Aghmid	VL	L	L	Ain Dara	VL	L	L
Ain Drafil	VL	L	L	Ain El Halazoun	VL	ML	L	Ain El-Rmmaneh	VL	L	L
Ain Jedideh	VL	ML	L	Ain Ksour	VL	L	L	Ain Onoub	VL	L	ML
Ain Traz	VL	L	VL	Ainab	VL	L	ML	Aley	VL	ML	L
Aramoun	VL	ML	ML	Aytat	VL	ML	ML	Azouniyeh	VL	L	L
Baawerta	VL	L	L	Badghan Oua Wadi Bad	VL	L	L	Bassatine	VL	ML	ML
Bayssour	VL	L	L	Bchamoun	VL	L	ML	Bdadoun	VL	L	L
Behouara	VL	L	L	Bennay	VL	L	L	Bhamdoun El-Dayaa	VL	ML	L
Bhamdoun El-Mhatta	VL	ML	L	Bkhechtey	VL	ML	L	Bleibel	VL	L	ML
Bmakine	VL	ML	L	Bmehray	VL	L	L	Bouzrid	VL	L	L
Bserrine	VL	ML	L	Bsous	VL	L	L	Btalloun	VL	ML	L
Btater	VL	ML	L	Chanay	VL	ML	L	Charoun	VL	L	L
Chartoun	VL	L	L	Chemlane	VL	L	ML	Choueifat El-Aamrous	VL	ML	M
Choueifat El-Oumara	VL	ML	M	Choueifat El-Quoubbe	VL	ML	M	Dakkoun	VL	L	L
Deir Qoubel	VL	L	ML	Dfoun	VL	ML	ML	Douair El Remmaneh	VL	L	L
Ghaboun	VL	L	L	Habramoun	VL	L	L	Homs Oua Hama	VL	L	L
Houmal	VL	L	ML	Jisr El Qadi	VL	L	L	Kehaleh	VL	L	L
Keyfoun	VL	ML	L	Kfar Aamey	VL	L	L	Kommatyeh	VL	L	L
Maasrati	VL	L	L	Majdel Baana	VL	L	L	Mansourieh et Ain El	VL	ML	L
Mazraat El-Nahr	VL	L	L	Mchakhte	VL	L	L	Mecherfeh	VL	L	L
Mejdlaya	VL	L	L	Mrayjat	VL	L	L	Ramliyah	VL	L	L
Rechmaya	VL	L	L	Rejmeh	VL	L	L	Remhala	VL	L	L
Rouaysset El Neemane	VL	L	L	Saoufar	VL	L	L	Selfaya	VL	L	VL
Sirhmoul	VL	L	ML	Souq El Ghareb	VL	L	L	Taazanieh	VL	ML	L

## Kesrouane

Municipality	05-Jan	06-Jan	07-Jan	Municipality	05-Jan	06-Jan	07-Jan	Municipality	05-Jan	06-Jan	07-Jan
Achkout	VL	L	VL	Adma Oua Dafneh	VL	L	ML	Ain Ed-Delbe Kesroua	VL	VL	VL
Ain El-Rihane	VL	L	L	Aintoura Kesrouane	VL	L	ML	Ajaltoun	VL	L	VL
Akaybeh Kesrouane	L	ML	M	Aramoun Kesrouane	VL	L	VL	Azra ouel Ozor	VL	L	L
Ballouneh	VL	L	L	Batha	VL	VL	L	Bekaatat Achkout	VL	L	VL
Bekaatat Kanaan	VL	VL	VL	Bizhel	VL	L	L	Bouar	VL	L	M
Bqaatouta	VL	VL	VL	Bqaq Ed-Dine	L	ML	M	Bzommar	VL	L	VL

Chahtoul	VL	L	VL	Chnaniir	VL	L	L	Chouan	VL	VL	VL
Daraya Kesrouane	VL	L	VL	Darououn	VL	L	L	Deir Baqlouch	VL	L	L
Dlebta	VL	VL	VL	Eghbeh	VL	VL	VL	Faraya	VL	VL	VL
Fatka	VL	L	L	Feytroun	VL	L	VL	Ghazir	VL	L	L
Ghbaleh Kesrouane	VL	L	L	Ghedrass	VL	L	L	Ghosta	VL	VL	L
Ghyneh	VL	L	VL	Harharaya w Kattine	VL	L	VL	Harissa Kesrouane	VL	L	L
Hayata	VL	VL	VL	Hosein	VL	L	L	Hrajel	VL	VL	VL
Jdeideh Ghazir	VL	L	VL	Jeita	VL	L	ML	Jounieh Ghadir	VL	L	ML
Jounieh Haret Sakhr	VL	ML	M	Jounieh Salel Alma	VL	L	ML	Jounieh Sarba	VL	ML	M
Jouret Bedrane	VL	L	L	Jouret Mhad	VL	VL	VL	Jouret Termos	VL	L	L
Kfar Debiane	VL	VL	VL	Kfar Tay Kesrouane	VL	VL	VL	Kfar Yassine	VL	ML	M
Kfour Kesrouane	VL	L	VL	Kharayeb Nahr Ibrahi	VL	L	L	Klayaat Kesrouane	VL	VL	VL
Maarab	VL	VL	VL	Maaysra Kesrouane	VL	L	L	Mayrouba	VL	VL	VL
Mazraat Er-Ras	VL	L	ML	Mazraat Mrah El-Mir	VL	VL	VL	Mchaa El Ftouh	VL	L	L
Mchaa Faraya	VL	VL	VL	Mchaa Kfar Dibiane	VL	L	VL	Mghaer	VL	VL	VL
Mradiyah	VL	L	L	Nahr Ed-Dahab	VL	VL	VL	Nammoura Kesrouane	VL	L	L
Ouata El Jaouz	VL	L	VL	Ouata Sillam	VL	ML	M	Raachine	VL	VL	VL
Rayfoun	VL	L	VL	Safra Kesrouane	VL	ML	M	Shayle Kesrouane	VL	L	L
Tabarja	VL	L	M	Yahchouch	VL	L	L	Zaaytreh	VL	L	L
Zeytoun	VL	L	L	Zouk Mikael	VL	ML	M	Zouk Mosbeh	VL	ML	M

### Baalbek\_Hermel

#### Baalbek

Municipality	05-Jan	06-Jan	07-Jan	Municipality	05-Jan	06-Jan	07-Jan	Municipality	05-Jan	06-Jan	07-Jan
Aadous	L	ML	ML	Aamchki	VL	L	L	Aarsal	L	ML	L
Ain Baalbek	L	ML	ML	Ain Bourday	VL	L	VL	Ain El-Benye	VL	VL	L
Ain El-Jaouz Baalbek	L	VL	L	Ain El-Siya Chadoura	VL	L	L	Al Khodr Baalbek	VL	L	VL
Al Nabi Chit	VL	L	VL	Aynata Baalbek	VL	L	L	Baalbek	VL	L	L
Bachwat	VL	L	L	Barqa	VL	L	L	Bednayel Baalbak	VL	ML	L
Beit Chama	VL	ML	L	Bijjaje	L	ML	ML	Bouday	VL	L	L
Brital	VL	L	L	Btadi	VL	L	L	Chaat	L	ML	L
Chaibe	L	L	L	Chlifa	VL	ML	L	Chmestar	VL	ML	L
Dar El-Oussa	VL	L	L	Deir El-Ahmar	VL	L	L	Deir Mar Maroun Baal	L	ML	M
Douris	L	L	L	Fakiha	L	ML	M	Hadath Baalbek	L	ML	L
Ham	VL	VL	VL	Haour Taala	VL	L	VL	Hizzine	L	ML	ML
Hlebta	L	L	L	Hosh Barada	L	ML	ML	Hosh El Dahab	L	ML	ML
Hosh El Snid	VL	L	L	Hosh El-Nabi	VL	L	L	Hosh El-Rafiq	VL	ML	L
Hosh Tal Safiya	L	ML	ML	Hrebta	L	L	L	laat	L	ML	L
Jebaa	VL	ML	L	Jenta	VL	VL	VL	Kfar Dabach	VL	ML	L
Kfar Dane	L	ML	ML	Khraibeh El-Hermel	L	ML	ML	Khreibet Baalbek	VL	L	VL
Kneisset Baalbek	L	ML	L	Labueh	L	ML	ML	Maarboun	VL	VL	VL
Majdaloun	L	ML	ML	Maqneh	L	ML	L	Mazraat Beit Mcheik	VL	ML	L
Misraya	VL	ML	L	Moqraq	L	ML	ML	Nabha El-Damdoum	L	L	L
Nabi Chbay	VL	L	VL	Nabi Osman	L	ML	ML	Nahleh baalbek	L	L	L
Ouadi El-Oss	L	L	L	Qaa Baayoun	L	ML	M	Qaa Jouar Maqiye	L	ML	M
Qaa Ouadi El-Khanzir	L	ML	M	Qah Baalbek	L	ML	M	Qarha Baalbek	L	ML	ML

Qsarnaba	VL	ML	L	Ram Baalbek	L	ML	ML	Ras Baalbek El Sahl	ML	ML	ML
Ras Baalbek El-Charq	L	ML	ML	Riha	L	ML	L	Saaide	L	ML	ML
Sbouba	L	ML	ML	Seriine El-Tahta	VL	L	L	Slouqi	VL	L	L
Taiba Baalbek	L	ML	L	Talia	L	L	L	Taraiya	VL	L	L
Temnin El Fawqa	VL	ML	L	Temnin El-Tahta	VL	ML	L	Tfail	L	L	L
Yahfoufa	VL	L	VL	Yammouneh	VL	L	L	Younine	L	L	L
Zboud	L	ML	M								

## Hermel

Municipality	05-Jan	06-Jan	07-Jan	Municipality	05-Jan	06-Jan	07-Jan	Municipality	05-Jan	06-Jan	07-Jan
Charbine El-Hermel	L	L	ML	Hermel Jbab	L	L	L	Hermel	L	ML	M
Maaysra El-Hermel	L	ML	M	Michaa Mrajhine	L	L	L	Ouadi Faara	L	L	L
Ras Baalbek - Ouadi	ML	ML	M	Ras Baalbek El Gharb	L	ML	ML	Zighrine	L	ML	M

## Akkar

### Akkar

Municipality	05-Jan	06-Jan	07-Jan	Municipality	05-Jan	06-Jan	07-Jan	Municipality	05-Jan	06-Jan	07-Jan
Aain Tinta	ML	L	M	Aaiyat	ML	L	L	Aakkar El-Aatiqa	L	L	L
Aamar Akkar	ML	ML	M	Aamar El Baykat	ML	L	M	Aamayer	ML	L	L
Aamriyet Akkar	ML	L	ML	Aandqet	L	L	L	Aarmeh	L	L	ML
Aarqa	ML	M	M	Aawaynat	ML	L	L	Aayoun Akkar	ML	L	L
Abboudiye	L	M	M	Ain El-Zeit	ML	L	ML	Ain Yaaqoub	L	L	L
Akroum	L	L	L	Aridet Cheikh Zennad	L	M	M	Baldeh w Mazraat Bal	ML	ML	M
Barcha	L	M	M	Bardeh	ML	L	ML	Bebnine	ML	ML	M
Beino	ML	L	ML	Beit Ayoub	ML	L	ML	Beit El-Haouch	L	ML	M
Beit Mellat	ML	L	L	Beit Younes	L	L	L	Berbara Akkar	ML	L	M
Berqayel	L	ML	M	Bezbina	L	L	L	Bireh Akkar	ML	L	ML
Borj	ML	L	L	Bqerezla	L	L	M	Bzal	L	L	L
Chane	L	L	L	Chaqdouf	L	L	L	Charbila	ML	ML	M
Cheikh Mohammad	ML	ML	M	Cheikh Taba Es-Sahl	ML	ML	M	Cheikh Taba	ML	L	ML
Cheikh Zennad	L	M	M	Cheikhlar	ML	L	L	Chir Hmairine	ML	ML	M
Daghle	ML	L	M	Dahr Laissine	ML	L	ML	Darine	ML	ML	M
Dawra	ML	L	L	Dawsa w Baghdadi	ML	L	ML	Dayret Nahr El-Kabir	ML	L	L
Deir Dalloum	ML	ML	M	Deir Jennine	ML	L	ML	Denbou	L	L	L
Dibbabiyyeh	ML	L	ML	Douair Aadwiyeh	ML	L	M	Fassikine	ML	L	M
Fnaydek	L	L	L	Fraydes Akkar	L	L	ML	Ghazayle	ML	ML	M
Habchit	L	L	L	Hakour	L	ML	M	Halba	ML	ML	M
Haouchab	ML	ML	M	Hayssat	L	M	M	Haytla	ML	ML	M
Hayzouq	L	ML	M	Hedd	ML	ML	M	Hmaira Akkar	L	ML	M
Hmaiss Akkar	ML	ML	M	Hnaider	M	L	L	Hokr Ed-Dahri	L	M	M
Hokr Etti	ML	ML	M	Hokr Jouret Srar	L	M	M	Houaich	L	L	L
Hrar	L	L	L	Idbil	ML	L	ML	Ilal	ML	L	ML
Janine	L	M	M	Jdeidet El-Joumeh	ML	L	ML	Jdeidet El-Kaiteh	L	ML	M
Jebraiel	ML	L	ML	Kafr	VL	L	ML	Kafr	ML	L	ML
Karm Asfour	L	L	ML	Kfar Melki Akkar	L	M	M	Kfar Noun	L	L	ML
Kfarharra	ML	ML	M	Khalsa	ML	L	L	Kharnoubet Akkar	L	M	M



Khirbet Daoud Aakkar	ML	L	ML	Khirbet El Remmane	L	L	L	Khirbet Shar	ML	L	M
Khoreybet El-Jindi	ML	ML	M	Khreibet Aakkar	L	L	ML	Kneisset Aakkar	L	M	M
Kneisset Hnaider	M	L	L	Knisse	ML	ML	M	Kroum El-Aarab	ML	ML	M
Kwachra	ML	L	ML	Kweykhat	ML	ML	M	Machta Hammoud	ML	L	L
Majdala	L	ML	M	Majdel Akkar	ML	L	ML	Mar Touma	L	ML	M
Marlaya Melhem	ML	M	M	Mashha	ML	L	ML	Massoudiye	L	M	M
Mazraat Beit Ghattas	L	ML	M	Mazraat En-Nahriye	ML	L	L	Mechmech	L	L	L
Memneh	L	L	L	Mhammara	ML	ML	M	Mighraq Aakkar	L	M	M
Minyara	ML	ML	M	Moqayteh	L	M	M	Mounjez	ML	L	ML
Msalla	ML	L	M	Mzeihmeh	ML	ML	M	Nfaiseh	L	ML	M
Noura Et-Tahta	ML	L	ML	Ouadi El-Haour	ML	ML	M	Ouadi El-Jamous	L	ML	M
Ouyoun El-Ghizlane	L	ML	M	Qaabarine	L	M	M	Qabaait	L	L	L
Qachlaq	ML	ML	M	Qantara Aakkar	ML	L	ML	Qarha Aakkar	M	L	L
Qarqaf	L	ML	M	Qboula	ML	L	L	Qleiaat Aakkar	L	M	M
Qloud El-Baqie	L	ML	M	Qobaiyat Aakkar	L	L	L	Qobbat Chamrat	ML	M	M
Qorayat	L	L	L	Qornet Aakkar	L	L	L	Qsair Aakkar	ML	L	ML
Rahbe	L	L	L	Rihaniyet Aakkar	ML	ML	M	Rmah	ML	L	L
Rmoul	L	M	M	Saadine	ML	ML	M	Sadaqa	ML	L	ML
Saidnaya	ML	ML	M	Sammouniye	L	M	M	Saysouq	L	ML	M
Semmaqiye	L	M	M	Semmaqli	ML	M	M	Sfinet El-Dreib	ML	ML	M
Sfinet El-Qaitaa	L	L	ML	Sindyanet Zeidane	ML	L	ML	Souaisset Aakkar	ML	ML	M
Srar	ML	ML	M	Tal Abbas El Gharby	ML	ML	M	Tal Abbas El-Chargy	ML	ML	M
Tal Biret	L	M	M	Tal Hmayra	ML	ML	M	Tal Maayan Tal Kiri	L	M	M
Tal Sibel	L	M	M	Tallet Chattaha	ML	L	L	Tikrit	L	L	L
Tleil	ML	ML	M	Tshea	L	L	L	Zawarib	ML	L	ML
Zouq El Hosniyeh	L	ML	M	Zouq El-Haddara	L	ML	M	Zouq El-Hbalsa	L	ML	M
Zouq El-Moqachrine	L	ML	M								

## Sud

### Sour

Municipality	05-Jan	06-Jan	07-Jan	Municipality	05-Jan	06-Jan	07-Jan	Municipality	05-Jan	06-Jan	07-Jan
Aaiyeh	VL	M	ML	Aalma El-Chaab	VL	ML	M	Aaytit	VL	M	ML
Abbassiyeh Sour	VL	M	M	Abou Chech	VL	ML	M	Ain Abou Abdallah	VL	M	M
Ain Baal	VL	M	M	Arzoun	VL	ML	ML	Aziyeh	VL	ML	M
Baflaya	VL	M	ML	Barich	VL	M	M	Batouliyah	VL	M	M
Bayad	VL	M	ML	Bazouriyeh	VL	M	M	Bediass	VL	M	M
Bestiyat	VL	M	M	Borj El Chemali	VL	M	M	Borj En-Naqoura	VL	M	M
Borj Rahhal	VL	M	M	Boustane	VL	M	M	Btaychiyeh	VL	ML	M
Chaaitiye	VL	M	M	Chameh	VL	ML	M	Chehabiye	VL	ML	ML
Chehour	VL	L	L	Chihine	VL	ML	M	Debaal Sour	VL	M	M
Deir Amess	VL	ML	L	Deir Kifa	VL	ML	ML	Deir Qanoun El-Ain	VL	M	M
Deir Qanoun El-Naher	VL	M	M	Derdghaiya	VL	ML	ML	Dhayra	VL	ML	M
Halloussiyeh	VL	M	M	Hamoul	VL	ML	M	Hanaouey	VL	M	ML
Henniye	VL	M	M	Hmairi Sour	VL	M	ML	Iskandarouna Sour	VL	ML	M
Jbal El Botom	VL	ML	L	Jebbin	VL	M	M	Jennata	VL	M	M
Jijim	VL	L	M	Jouaiya	VL	M	ML	Kneisset Sour	VL	M	M

Maarake	VL	M	M	Maaroub	VL	M	M	Majadel	VL	M	ML
Majdalzoun	VL	ML	M	Mansouri Sour	VL	M	M	Marnba	VL	L	L
Marouahine	VL	ML	L	Mazraat El-Zalloutiy	VL	M	M	Mazraat Mechref	VL	M	ML
Mazraat Tayr Semhat	VL	L	L	Mheilib	VL	M	M	Neffakhiyeh	VL	ML	ML
Niha Sour	VL	ML	ML	Ouadi Jilo	VL	M	ML	Qana	VL	M	ML
Qolaileh Sour	VL	M	M	Rechknany	VL	ML	L	Rmadiyah	VL	M	ML
Selha Sour	VL	ML	ML	Siddiqine	VL	M	ML	Sour	VL	M	M
Srifa	VL	ML	ML	Tayr Debbe	VL	M	M	Tayr Felsay	VL	M	M
Tayr Harfa	VL	M	M	Touayri	VL	L	L	Toura	VL	M	M
Yanouh Sour	VL	M	M	Yarine	VL	M	M	Zebqine	VL	L	L

## Saida

Municipality	05-Jan	06-Jan	07-Jan	Municipality	05-Jan	06-Jan	07-Jan	Municipality	05-Jan	06-Jan	07-Jan
Aanqoun	VL	M	L	Aaqtanit	VL	M	L	Aarab Ej-Jall	VL	M	L
Aarab Tabbaya	VL	M	L	Abra Saida	VL	M	M	Adloun	VL	M	M
Adousiyeh	VL	M	M	Ain-El-Deleb	VL	M	M	Arzai	VL	M	M
Babliyah	VL	M	M	Barty	VL	ML	L	Bissariyeh	VL	M	M
Bnaafoul	VL	M	L	Bqosta	VL	M	M	Bramiy	VL	M	M
Daoudiyeh	VL	M	M	Dareb El-Sim	VL	M	ML	Erkay	VL	M	L
Ghassanieh	VL	M	M	Ghazieh	VL	M	M	Hajjeh	VL	M	L
Haret Saida	VL	M	M	Hartiyeh	VL	M	M	Hlaliye Saida	VL	M	M
Insariyat	VL	M	M	Jazira Saida	VL	M	M	Kafar Bit	VL	M	L
Kaoutariyet El-Siyad	VL	M	L	Kfar Chellal	VL	ML	L	Kfar Hatta Saida	VL	M	L
Kfar Milke Saida	VL	ML	L	Khartoum	VL	M	ML	Khaziz	VL	M	L
Khirbet Ed-Douair Sa	VL	M	M	Khirbet El-Bassal	VL	M	M	Khrayeb Saida	VL	M	M
Loubieh	VL	M	M	Maghdouche	VL	M	L	Majdelyoun	VL	M	M
Matariyet El-Choumar	VL	M	M	Matayriyeh	VL	M	L	Mazraat 'Mseileh	VL	M	M
Mazraat 'Snaiber	VL	M	M	Mazraat Aarab Soukka	VL	M	L	Mazraat Deir Taqla	VL	M	M
Mazraat El Yahoudiye	VL	M	MH	Mazraat El-Housseini	VL	M	M	Mazraat El-Mhaydaleh	VL	M	M
Mazraat El-Ouasta	VL	M	M	Mazraat Jamjim	VL	M	M	Mazraat Kaoutariyet	VL	M	M
Mazraat Kfar Badda	VL	M	M	Mazraat Oussamiyat	VL	M	M	Mazraat Sari	VL	M	M
Mazraat Sinai	VL	M	M	Meemariyeh	VL	M	ML	Merouaniyeh	VL	M	M
Miyeh ou Miyeh	VL	M	ML	Najjariyeh	VL	M	M	Qaaqaiyat El-Snaouba	VL	M	M
Qnarit	VL	M	L	Qraiye Saida	VL	M	ML	Saida Ed-Dekermane	VL	M	M
Saida El-Oustani	VL	M	M	Saida El-Qadimeh	VL	M	M	Saida Kefraya	VL	M	M
Saksakiyeh	VL	M	M	Salhie Saida	VL	M	M	Sarafand	VL	M	M
Sfenta	VL	L	L	Tafahta	VL	M	M	Tanbourit	VL	M	L
Tebna	VL	M	M	Zaghdraiya	VL	M	ML	Zeita	VL	M	L
Zrariyeh	VL	M	M								

## Jezzine

Municipality	05-Jan	06-Jan	07-Jan	Municipality	05-Jan	06-Jan	07-Jan	Municipality	05-Jan	06-Jan	07-Jan
Ain El-Mir (El Estab	VL	M	ML	Anane	VL	L	L	Aramta	VL	L	L
Ariya	VL	L	VL	Aychiyeh	VL	L	L	Azour	VL	L	L
Baba	VL	L	L	Bayssour Jezzine	VL	M	ML	Benoueteh Jezzine	VL	L	VL
Bhannine	VL	L	VL	Bisri	VL	L	L	Bkassine	VL	L	VL
Bouslaya	VL	L	L	Btedine El-Leqech	VL	L	L	Chbail	VL	VL	L
Choualiq Jezzine	VL	M	M	Dahr Ed-Deir	VL	L	L	Deir El Qattine	VL	L	L

Demachqiyeh	VL	ML	L	Ghabbatiyeh	VL	L	VL	Harf Jezzine	VL	L	L
Hassaniyeh	VL	M	L	Haytouleh	VL	L	L	Haytura	VL	L	L
Hidab	VL	L	L	Homsiyeh	VL	L	L	Jabal Toura	VL	L	L
Jarmaq	VL	ML	L	Jensnaya	VL	M	ML	Jernaya	VL	ML	L
Jezzine	VL	L	L	Karkha	VL	ML	ML	Kfar Falous	VL	ML	L
Kfar Houna	VL	L	L	Kfar Jarrah	VL	M	M	Lebaa	VL	M	M
Louayzet Jezzine	VL	L	L	Machmouche	VL	L	VL	Mahmoudiyeh Jezzine	VL	ML	L
Maknounye Jezzine	VL	L	L	Maraat Ouzaïyeh	VL	L	L	Mazraat Daraya	VL	L	L
Mazraat El-Aarqoub	VL	L	L	Mazraat El-Mathane	VL	L	L	Mazraat El-Rahbane	VL	L	L
Mazraat Khallet Khaz	VL	L	L	Mazraat Louzid (Loua	VL	L	L	Mazraat Qrouh	VL	L	L
Mazraat Tamra	VL	ML	L	Mazraat Zighrine Jez	VL	L	L	Mazraat	VL	L	L
Mharbiyeh	VL	M	L	Midane Jezzine	VL	L	L	Mjeydel Jezzine	VL	M	L
Mlikh	VL	L	L	Mrah El-Hbasse	VL	M	ML	Ouadi Baanqoudaine	VL	M	ML
Ouadi El-Laymoun	VL	M	L	Ouardiyeh	VL	VL	L	Qabaa Jezzine	VL	L	L
Qatrani	VL	L	L	Qaytouleh	VL	L	L	Qtaleh Jezzine	VL	L	L
Rihane Jezzine	VL	L	L	Rimat	VL	L	L	Roum	VL	L	L
Roummanet	VL	ML	L	Sabbah	VL	L	VL	Saydoun	VL	L	L
Sfaray	VL	L	L	Snaya	VL	L	L	Sojoud	VL	L	L
Srayri	VL	L	L	Taaid	VL	L	L	Wadi Jezzine	VL	L	VL
Zhalta	VL	L	L								

## Bekaa

### West Bekaa

Municipality	05-Jan	06-Jan	07-Jan	Municipality	05-Jan	06-Jan	07-Jan	Municipality	05-Jan	06-Jan	07-Jan
Aammiq BG	VL	ML	ML	Ain El Tineh BG	VL	L	L	Ain Zebdeh	VL	L	L
Ana	VL	L	L	Aytanit	VL	L	VL	Baaloul BG	VL	L	L
Bab Mareh	VL	L	L	Chouberqiye Aammiq	VL	ML	ML	Dakoue	VL	ML	L
Deir Ain El-Jaouze	VL	L	L	Deir Tahniche	VL	L	L	Ghaza	VL	ML	ML
Harime El-Soughra	VL	ML	L	Hoch Harimeh	VL	ML	L	Jazira BG	VL	ML	ML
Jib Jennine	VL	L	L	Kamed-El-Laouz	VL	L	L	Kefraya BG	VL	L	L
Khiara El Atika	VL	ML	ML	Khiara	VL	ML	ML	Khirbet Qanafar	VL	L	L
Lala	VL	L	L	Lebbaya BG	VL	L	VL	Loussa	VL	L	L
Machghara	VL	L	L	Manara (Hammara) BG	VL	L	L	Mansoura BG	VL	ML	ML
Marej BG	VL	ML	L	Maydoun	VL	L	L	Ouaqf BG	VL	ML	ML
Qaraaoun	VL	L	L	Qelya	VL	L	L	Raouda (Istabel)	VL	ML	L
Saghbine	VL	L	L	Sohmor	VL	L	VL	Soltan Yacoub el Ara	VL	ML	L
Souairy	VL	ML	VL	Sultan Yaacoub	VL	ML	L	Tal Znoun	VL	ML	L
Yehmor BG	VL	L	VL	Zilaya	VL	L	VL				

### Zahle

Municipality	05-Jan	06-Jan	07-Jan	Municipality	05-Jan	06-Jan	07-Jan	Municipality	05-Jan	06-Jan	07-Jan
Aanjar (Haouch Mouss)	VL	L	L	Ablah	VL	L	L	Ain Kfarzabad	VL	L	VL
Ali-El-Nahri	VL	ML	L	Bar Elias	VL	ML	L	Bouarej	VL	ML	ML
Cheberqiyet Tabet	VL	ML	L	Chtaura	VL	ML	ML	Deir El Ghazal	VL	L	VL
Delhamiyet Zahle	VL	L	L	Ferzol	VL	L	L	Haouch El-Ghanam	VL	ML	L
Haouch Es-Siyadeh	VL	ML	ML	Haouch Hala	VL	ML	L	Haouch Mandara	VL	ML	ML

Haouch Qayssar	VL	ML	ML	Hezerta	VL	L	L	Hosh Moussa	VL	L	VL
Jdita	VL	L	ML	Kfarzabad	VL	L	L	Ksara	VL	ML	L
Majdel Aanjar	VL	ML	VL	Makssi	VL	ML	ML	Massa	VL	L	L
Mazraat Er-Remtaniye	VL	ML	ML	Mrayjat Zahle	VL	ML	ML	Mzaraa Zahle	VL	ML	ML
Nabi Ayla	VL	L	L	Nasriyet Rizk	VL	L	L	Nasriyet Zahle	VL	ML	ML
Niha Zahle	VL	L	L	Ouadi Ed-Deloum	VL	ML	ML	Ouadi El-Arayech	VL	L	L
Qaa El Rim	VL	L	L	Qab Elias	VL	L	ML	Qousaya	VL	L	VL
Rhit	VL	L	L	Riyak	VL	ML	L	Saadnayel	VL	ML	L
Taal El-Akhdar	VL	ML	ML	Taalbeya	VL	L	L	Taanayel	VL	L	L
Talamara	VL	ML	L	Tcheflik Edde Haouch	VL	ML	ML	Tcheflik Qiqano	VL	ML	ML
Terbol Zahle	VL	L	L	Touaite Zahle	VL	L	L	Zahle Aradi	VL	L	L
Zahle El-Berbara	VL	ML	L	Zahle El-Maallaqa	VL	ML	L	Zahle El-Midane	VL	ML	L
Zahle Er-Rassiye	VL	ML	L	Zahle Haouch El-Ouma	VL	ML	L	Zahle Haouch El-Ouma	VL	L	L
Zahle Haouch Ez-Zara	VL	ML	L	Zahle Maalqa Aradi	VL	L	L	Zahle Mar Antonios	VL	ML	L
Zahle Mar Elias	VL	L	L	Zahle Mar Gerios	VL	L	L	Zahle Saydet En-Naja	VL	L	L
Zebdoul	VL	L	L								

## Rachaiya

Municipality	05-Jan	06-Jan	07-Jan	Municipality	05-Jan	06-Jan	07-Jan	Municipality	05-Jan	06-Jan	07-Jan
Ain Arab Rachaiya	VL	ML	L	Ain Ata	VL	VL	VL	Ain Harche	VL	L	VL
Aqabe Rachaya	VL	L	VL	Ayha	VL	L	L	Ayta El Fokhar	VL	ML	L
Bakifa Rachaya	VL	L	VL	Bakka	VL	M	L	Beit Lahya	VL	L	VL
Bireh Rachaiya	VL	L	L	Daher El Ahmar	VL	L	L	Deir El-Achayer	L	L	L
Heloua Rachaiya	L	L	L	Hoch El Qannabeh Rac	VL	L	VL	Kaoukaba Bou Arab	VL	L	L
Kfar Danis	VL	ML	L	Kfar Mechki	VL	L	VL	Kfar Qouq	L	ML	L
Kherbet Rouha	VL	L	L	Majdel Balhiss	VL	L	L	Mdoukha	VL	ML	L
Mhaydseh Rachaiya	VL	L	L	Nabi Safa	VL	L	VL	Rachaiya	VL	L	VL
Rafid Rachaiya	VL	L	L	Selsata (Mazraat Dei	VL	L	L	Tannoura	VL	L	VL
Yanta	L	ML	L								

## Beyrouth

### Beyrouth

Municipality	05-Jan	06-Jan	07-Jan	Municipality	05-Jan	06-Jan	07-Jan	Municipality	05-Jan	06-Jan	07-Jan
Achrafieh	VL	M	M	Ain el-Mreisse	VL	M	M	Bachoura	VL	M	M
Beirut Central Distr	VL	M	M	Marfai	VL	M	M	Mazraa	VL	M	M
Medaouar	VL	M	M	Minet el-Hosn	VL	M	M	Mwssaitbeh	VL	M	M
Ras Beirut	VL	M	M	Rmeil	VL	M	M	Saifi	VL	M	M
Zqaq el-Blat	VL	M	M								