

# Lebanon Fire Risk Bulletin



CIVIL DEDEFENCE

**Refer to cadast table condition.**

**Please note that the indicated temperature is at 2 meters height from the ground.**

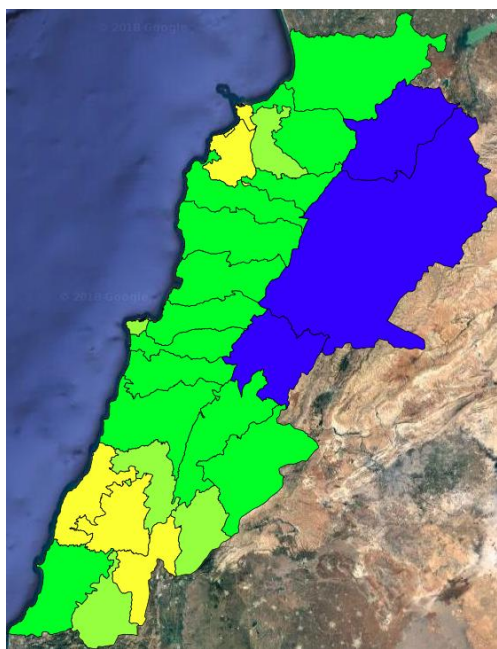
General description of potential fire risk situation

Symbol	Level of risk	Meaning and actions
VL	<b>Very low</b>	Very low fire risk. Controlled burning operations can be hardly executed due to high fuel moisture content. Normally wildfires self-extinguish.
L	<b>Low</b>	Low fire risk. Controlled burning operations can be executed with a reasonable degree of safety.
ML	<b>Medium low</b>	Medium-low fire risk. Controlled burning operations can be executed in safety conditions. All the fires need to be extinguished.
M	<b>Medium</b>	Medium fire risk. Controlled burning operations would be avoided. All the fires need to be very well extinguished.
M	<b>Medium high</b>	Controlled burning is not recommended. Open flame will start fires. Cured grasslands and forest litter will burn readily. Spread is moderate in forests and fast in exposed areas. Patrolling and monitoring is suggested. Fight fires with direct attack and all available resources.
H	<b>High</b>	Ignition can occur easily with fast spread in grass, shrubs and forests. Fires will be very hot with crowning and short to medium spotting. Direct attack on the head may not be possible requiring indirect methods on flanks. Patrolling and monitoring the territory is highly suggested.
E	<b>Extreme</b>	Ignition can occur also from sparks. Fires will be extremely hot with fast rate of spread. Control may not be possible during day due to long range spotting and crowning. Suppression forces should limit efforts to limiting lateral spread. Damage potential total. Patrolling and monitoring the territory is highly suggested.

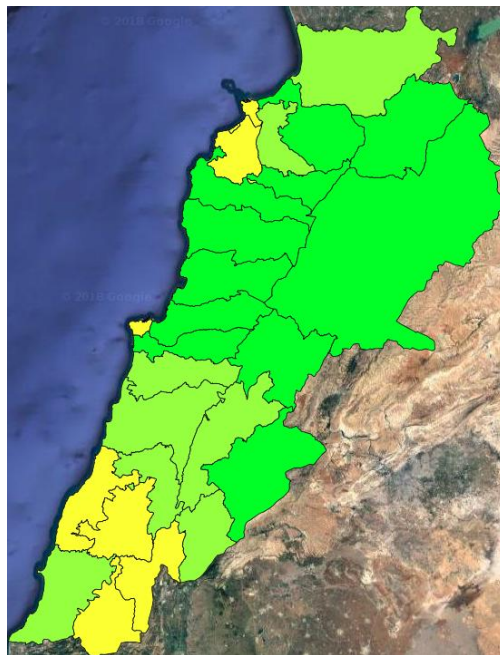
**Beirut, 6 November 2018**

# FIRE RISK INDEX

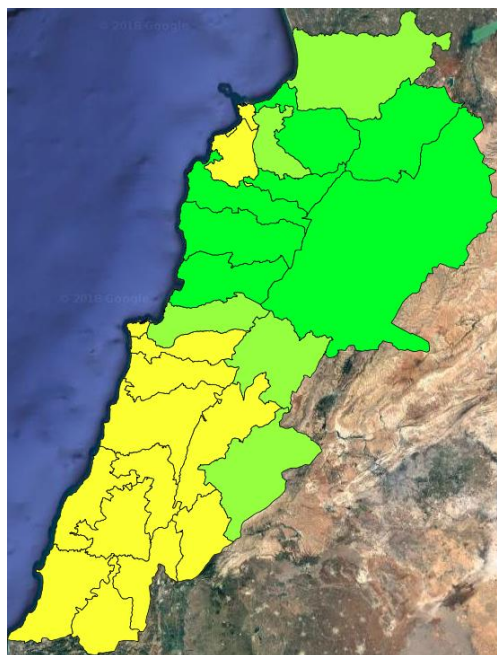
5 NOV 2018



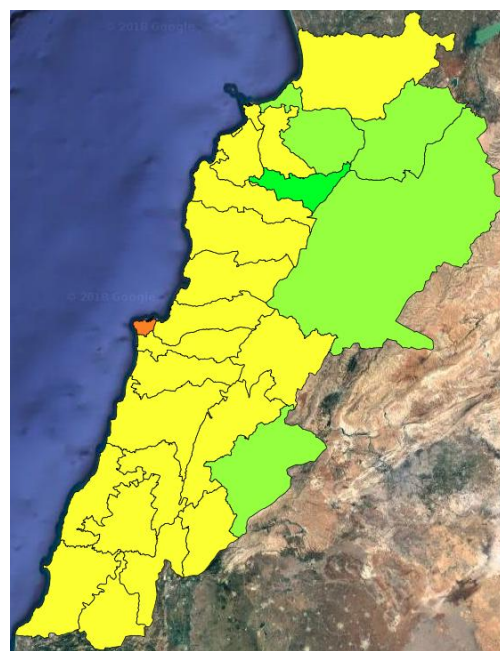
6 NOV 2018



7 NOV 2018



8 NOV 2018



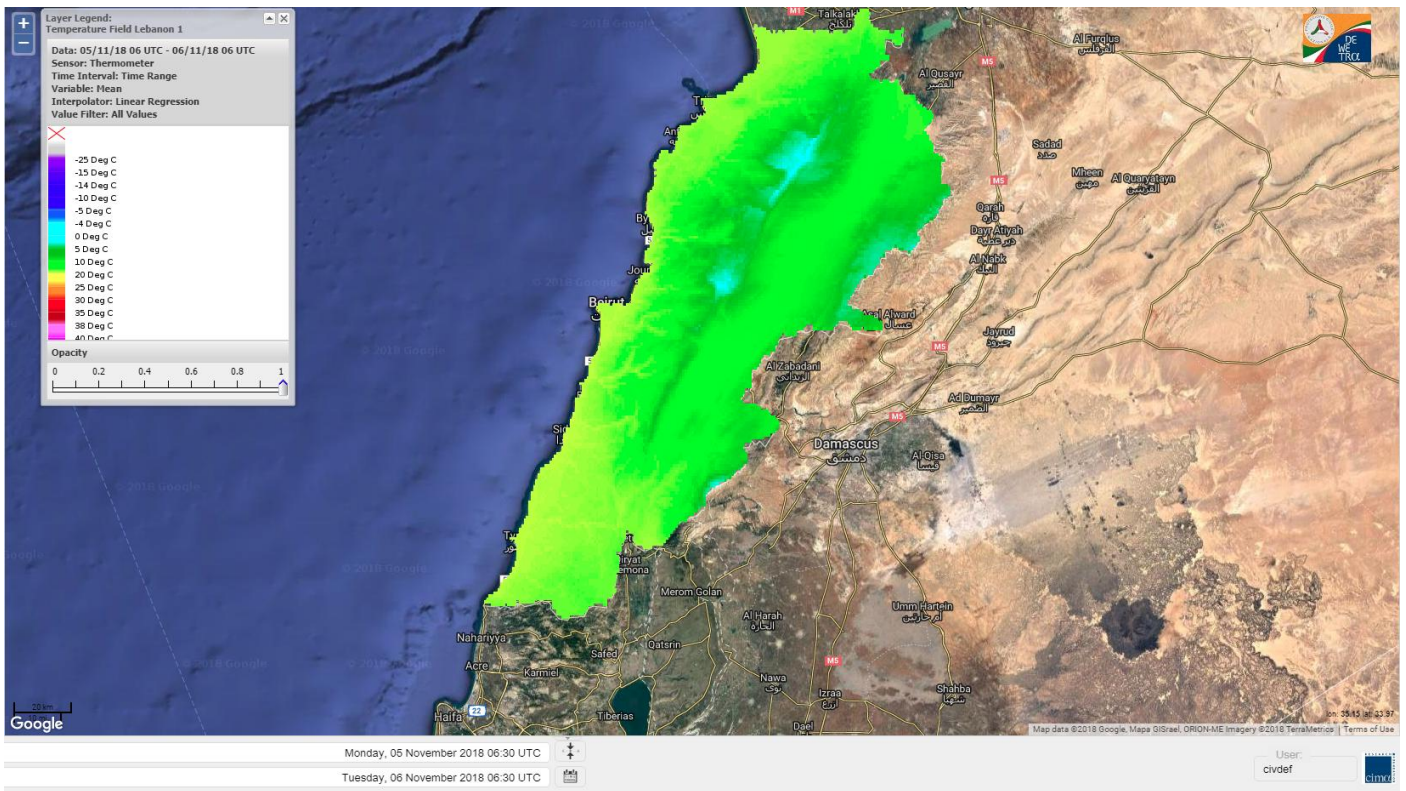
Layer Legend:  
Lebanon Wildfire Risk Index 1

Data: Run: 06/11/2018 00:00. Forecast for 6  
Model: RISICO for the Republic of Lebanon  
Variable: Fire Weather Index  
Spatial Resolution: Caza

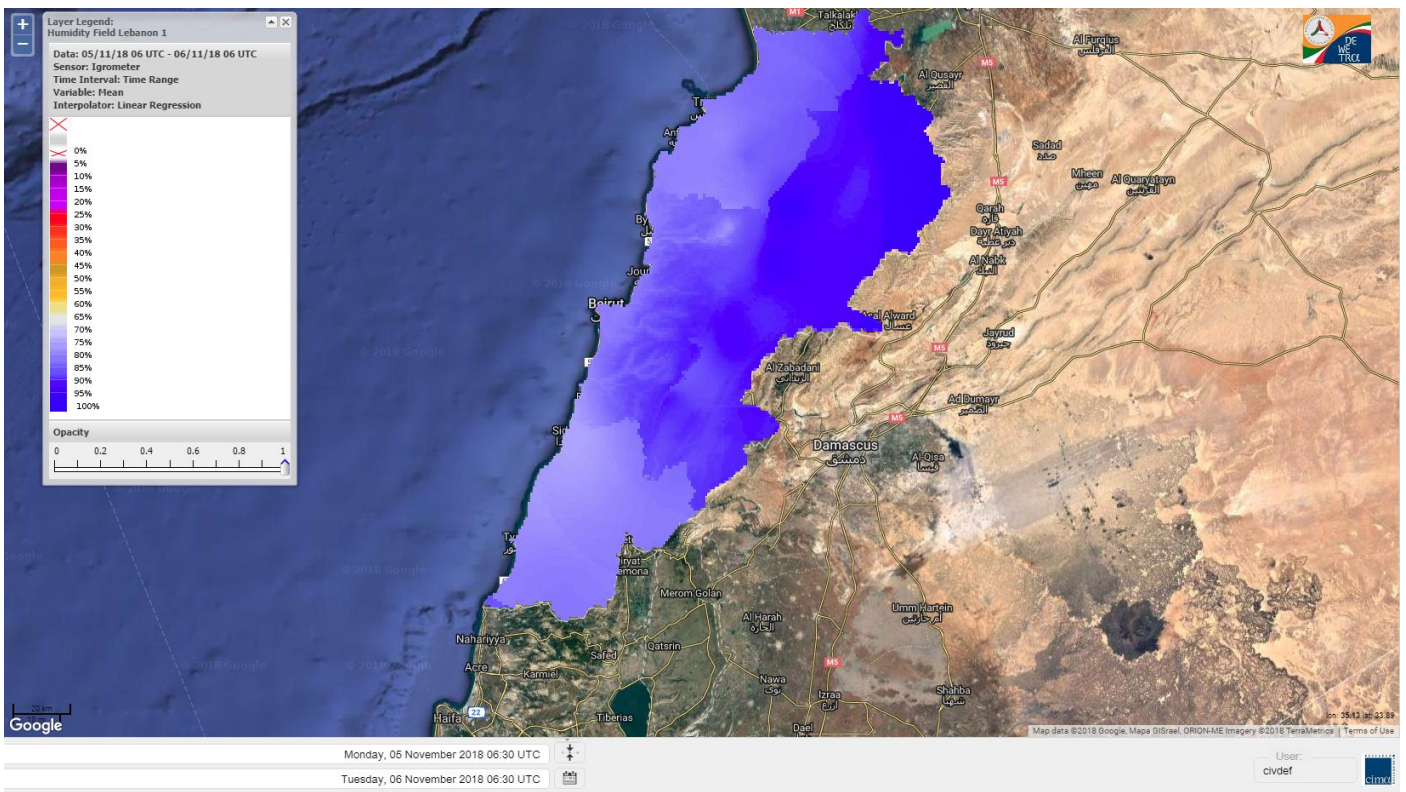
- VERY LOW
- LOW
- MEDIUM-LOW
- MEDIUM
- MEDIUM-HIGH
- HIGH
- EXTREME



# Lebanon temperature for Lebanon 6 NOV 2018

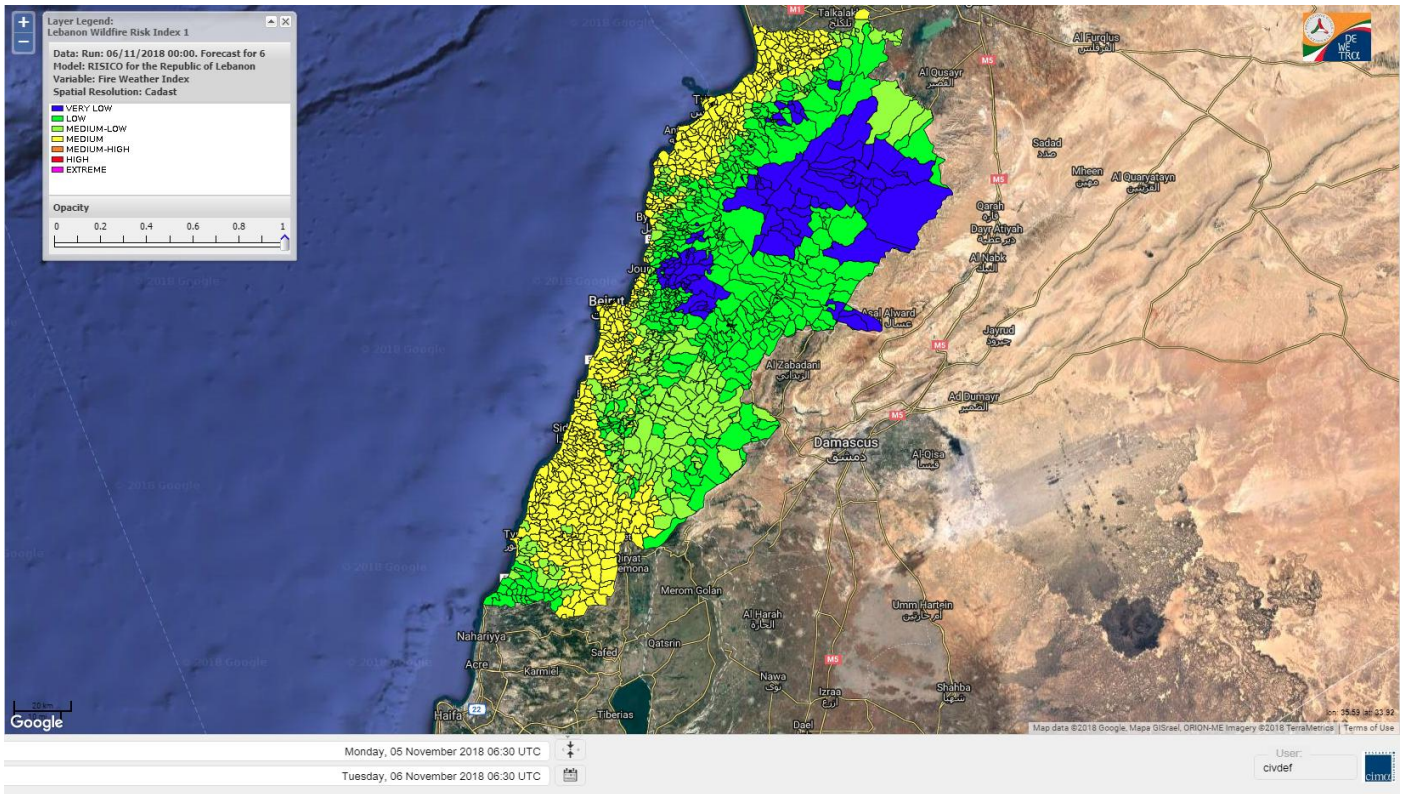


# Lebanon humidity for Lebanon 6 NOV 2018

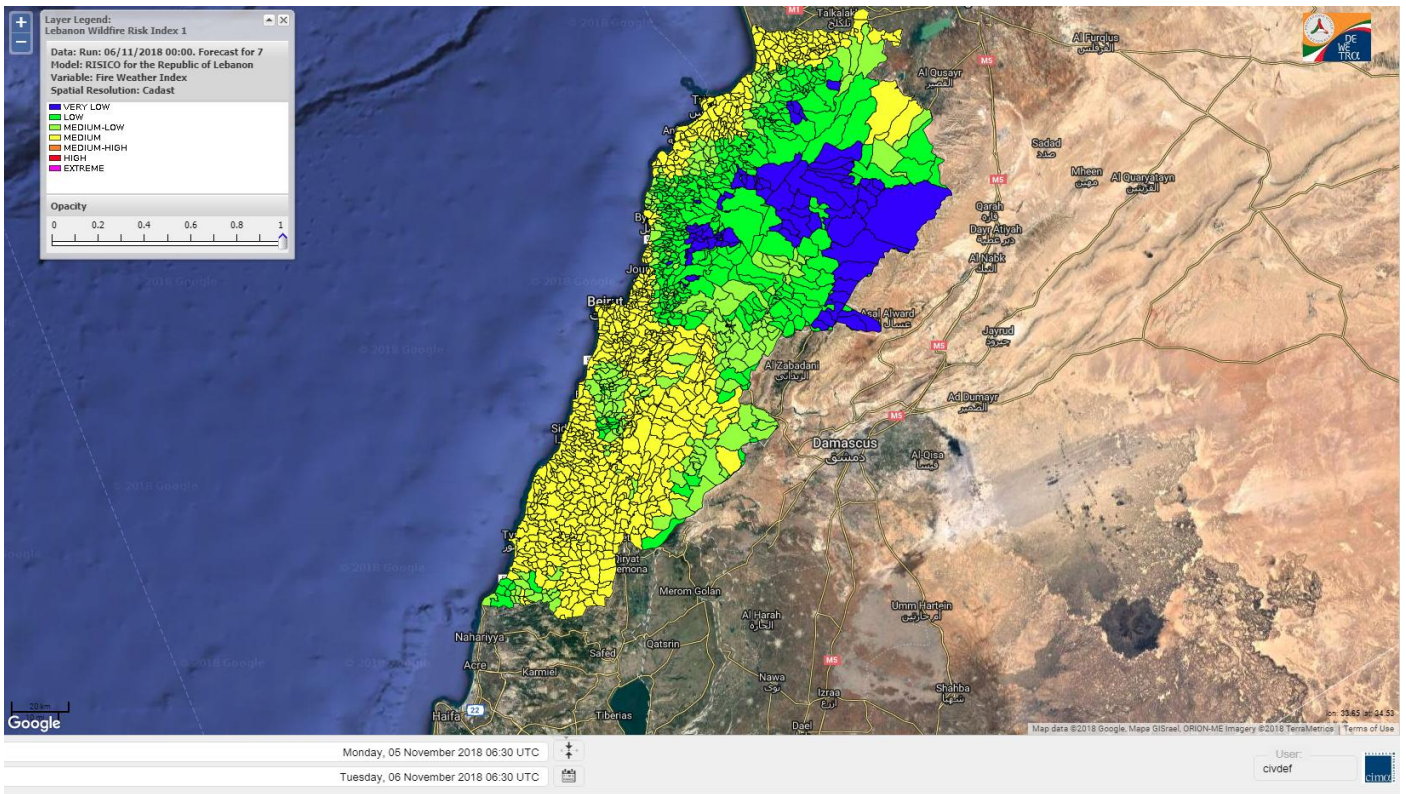




# Lebanon for 6 NOV 2018

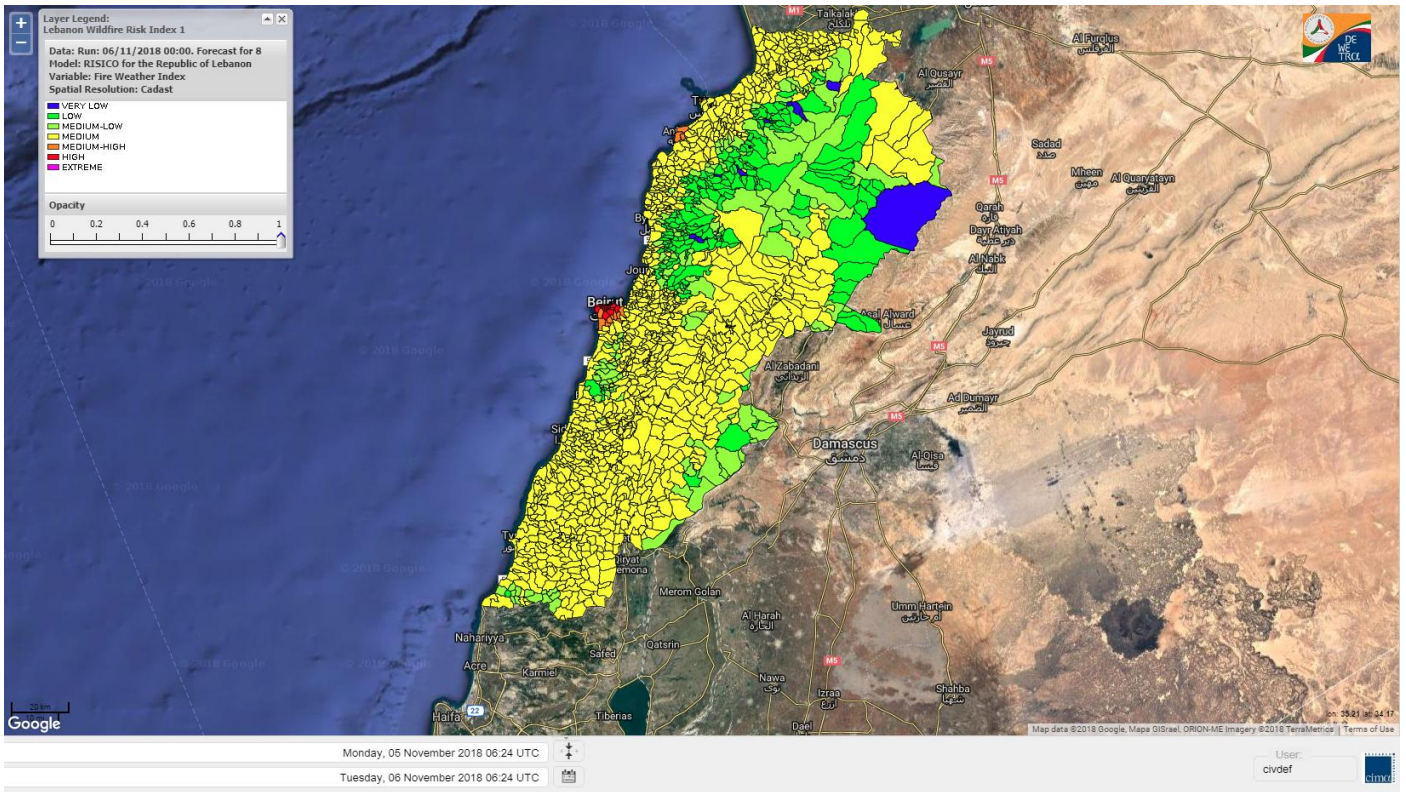


# Lebanon for 7 NOV 2018

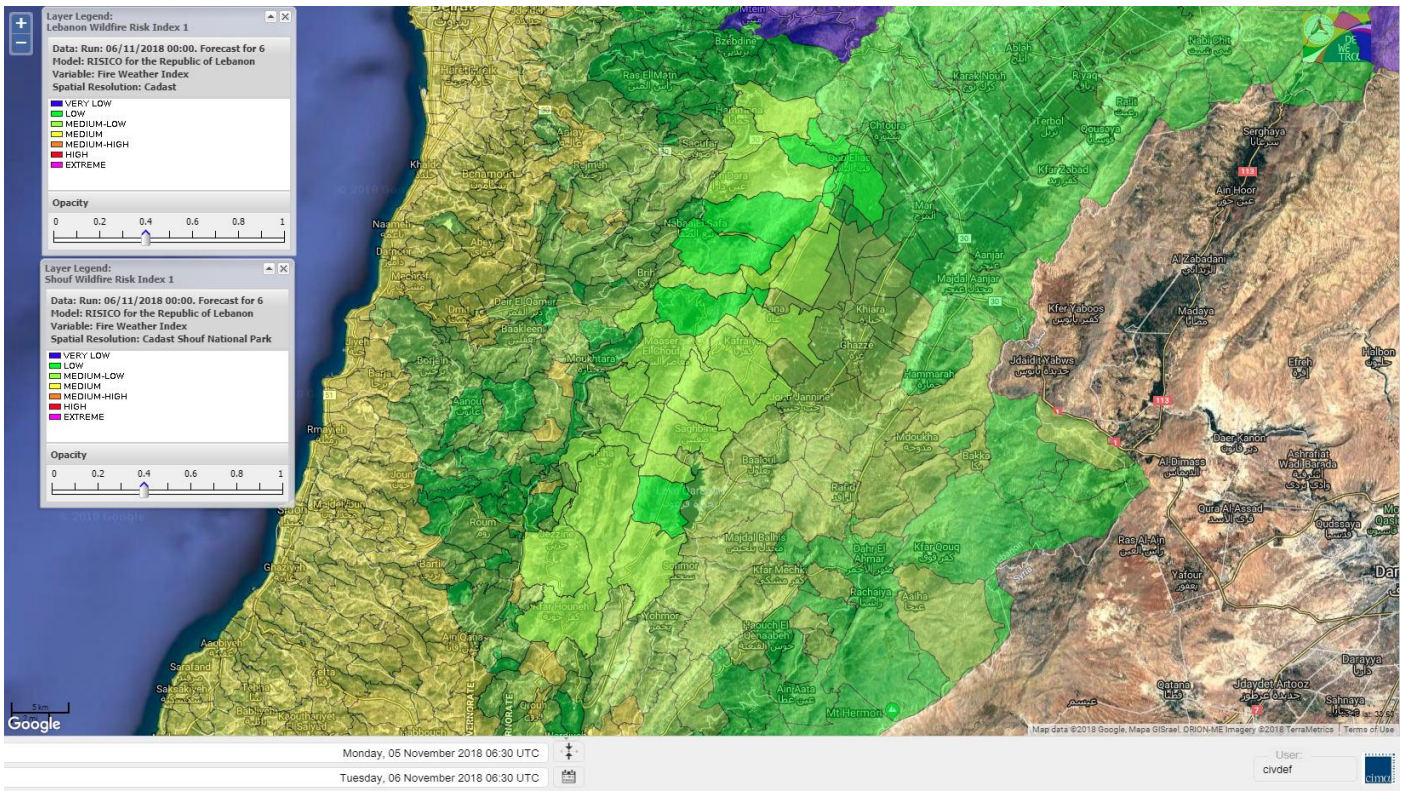




# Lebanon for 8 NOV 2018

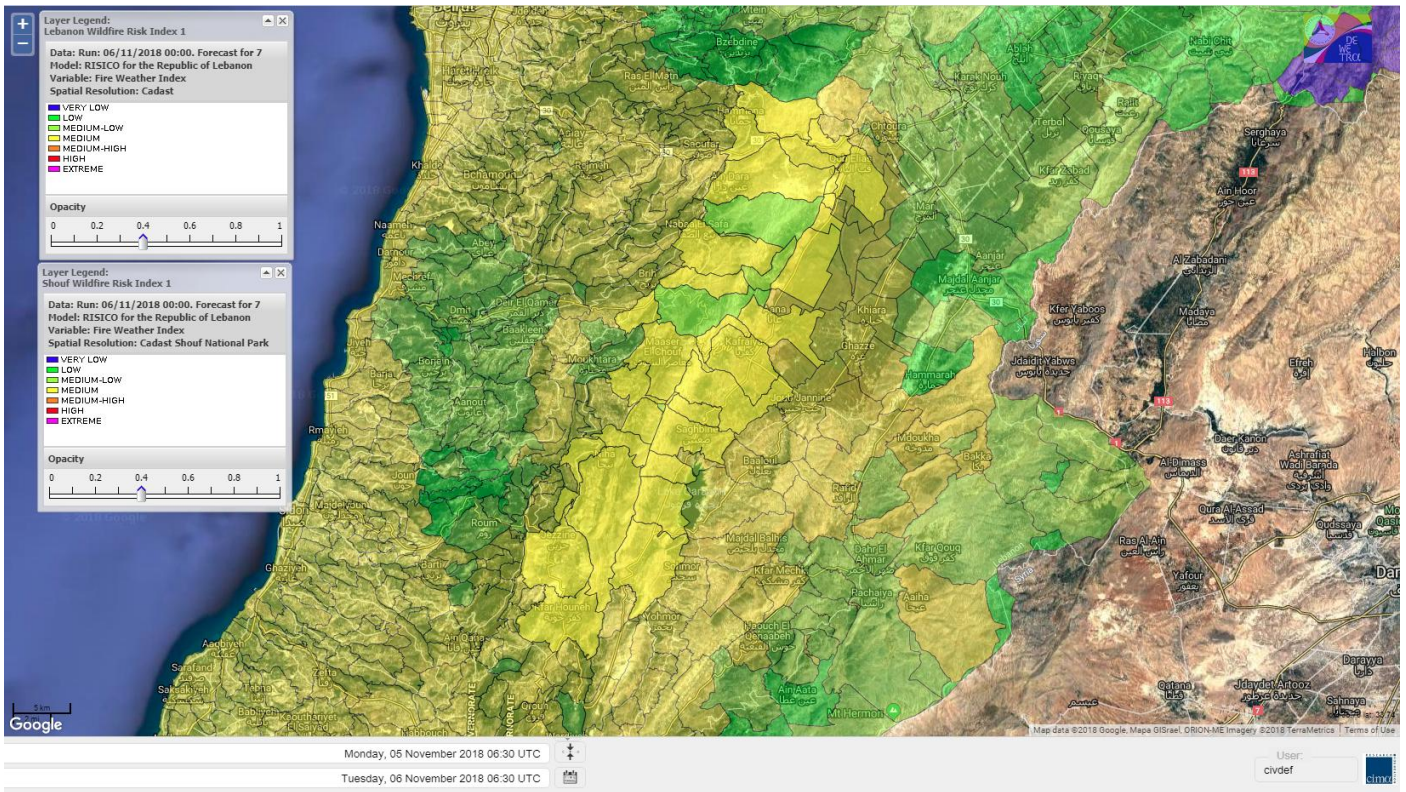


# Shouf Biosphere Reserve Forecast for 6 NOV 2018

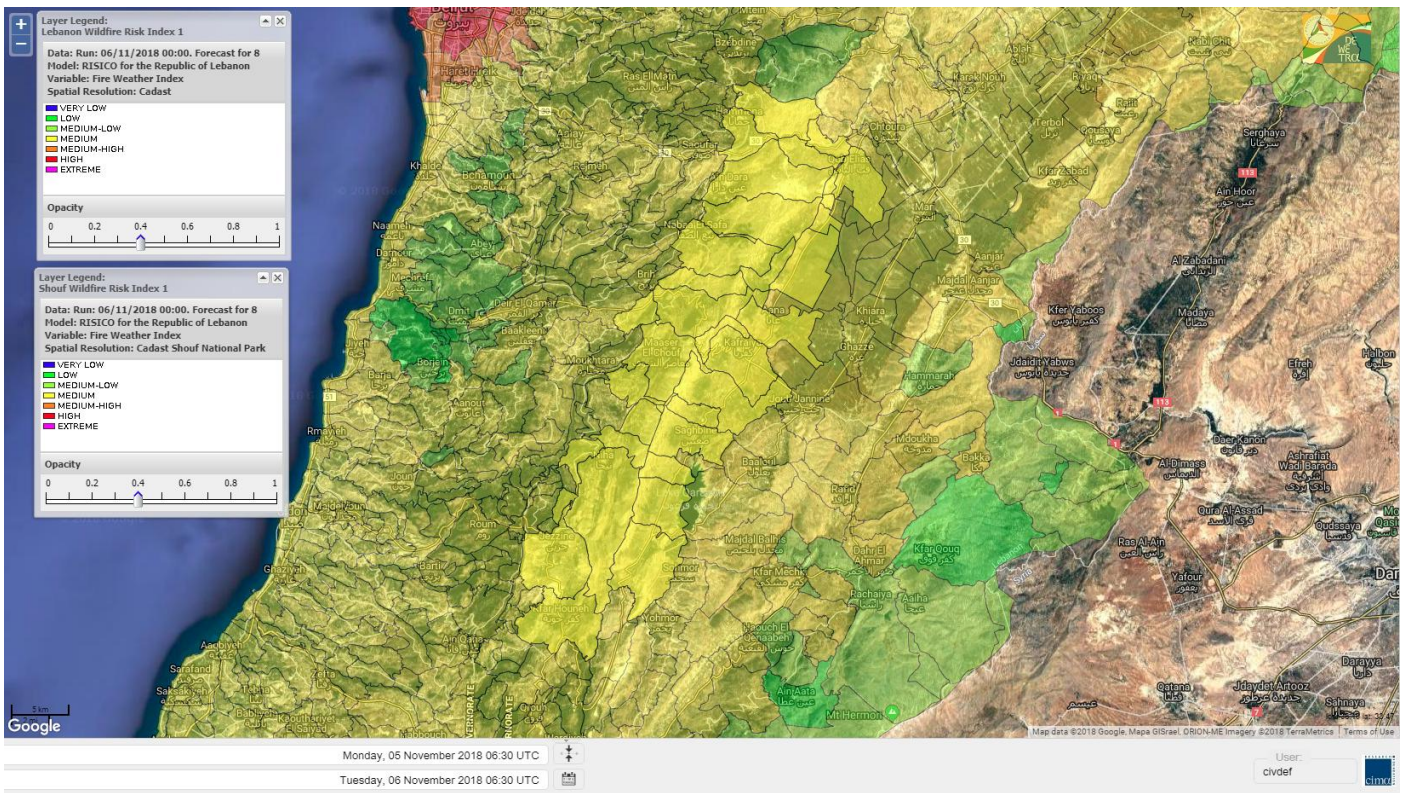




# Shouf Biosphere Reserve Forecast for 7 NOV 2018

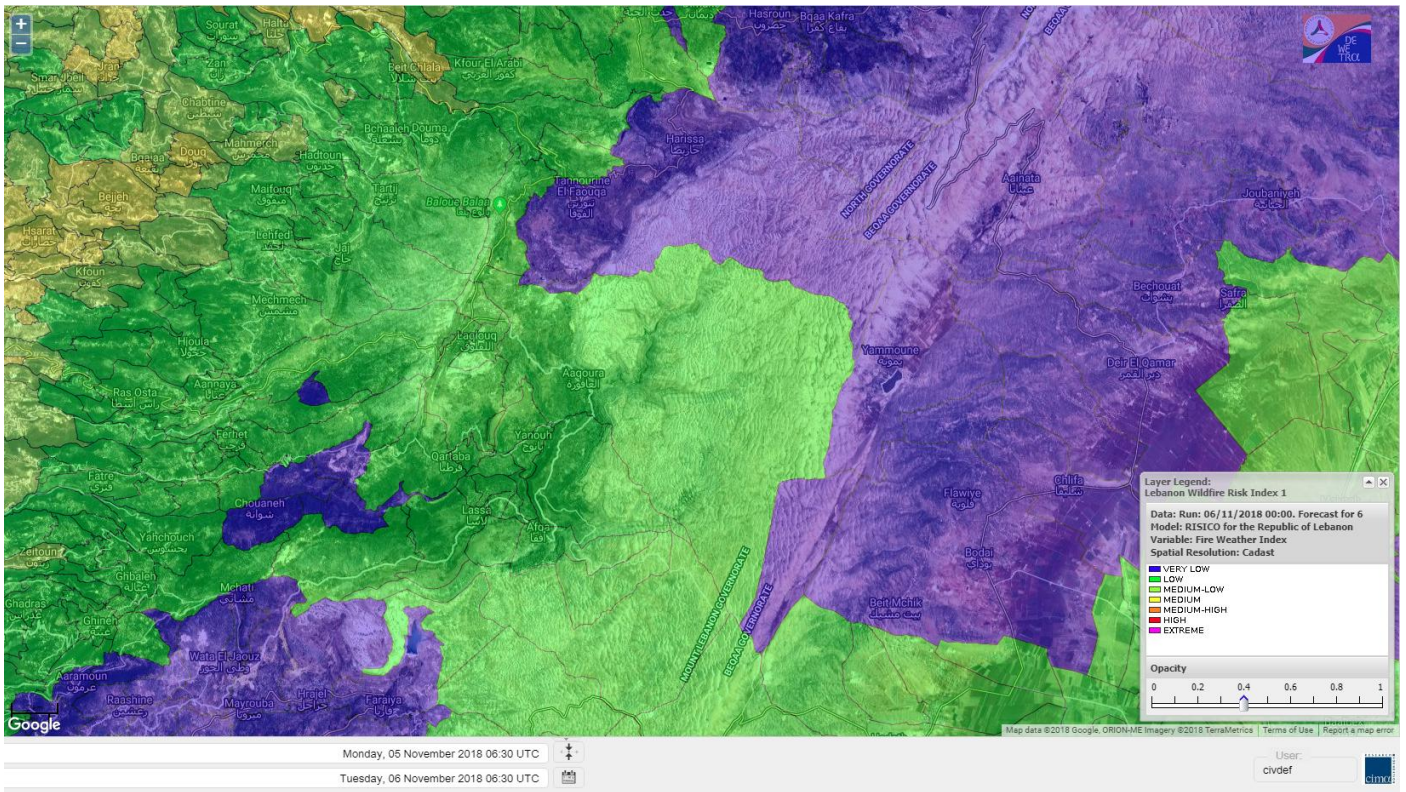


# Shouf Biosphere Reserve Forecast for 8 NOV 2018

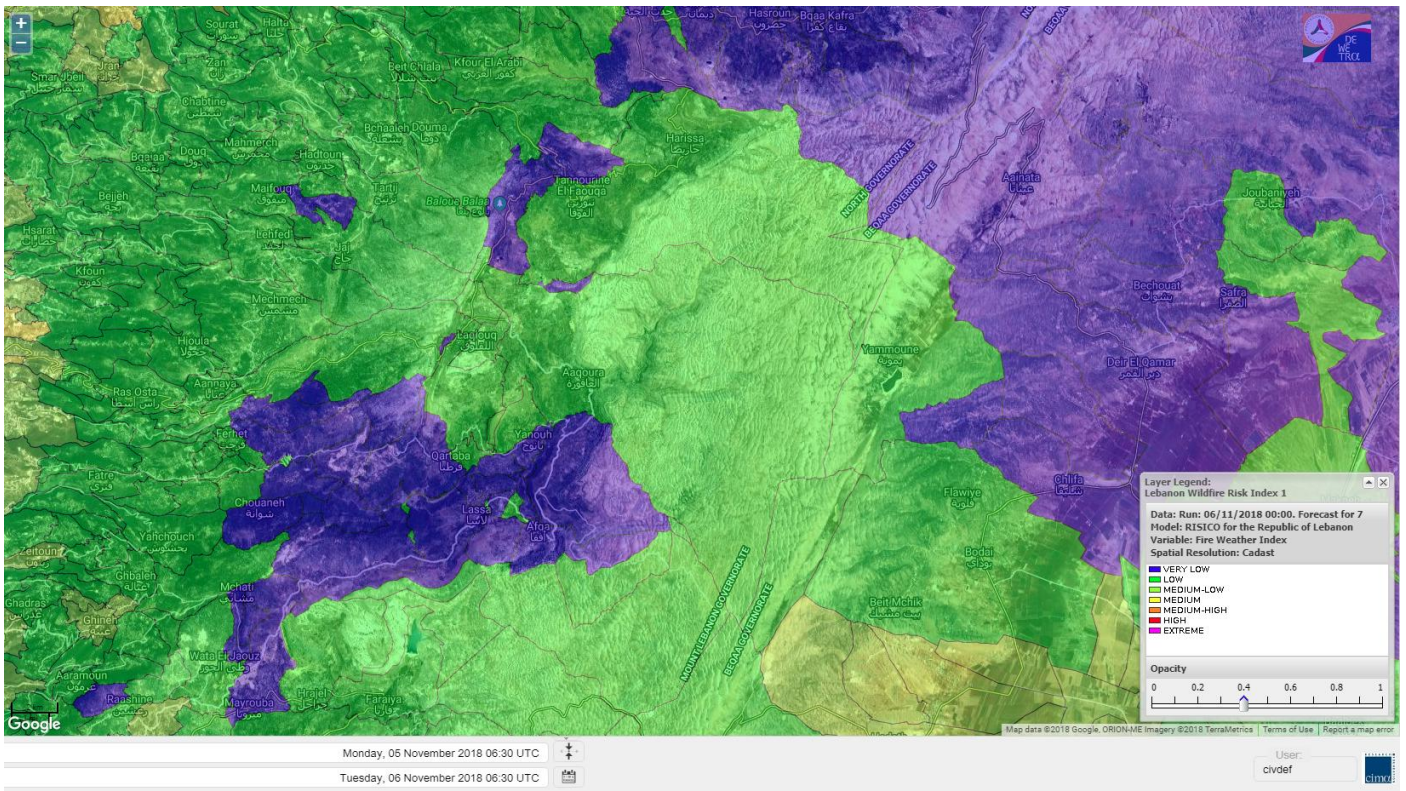




# Jabal Moussa Reserve Forecast for 6 NOV 2018

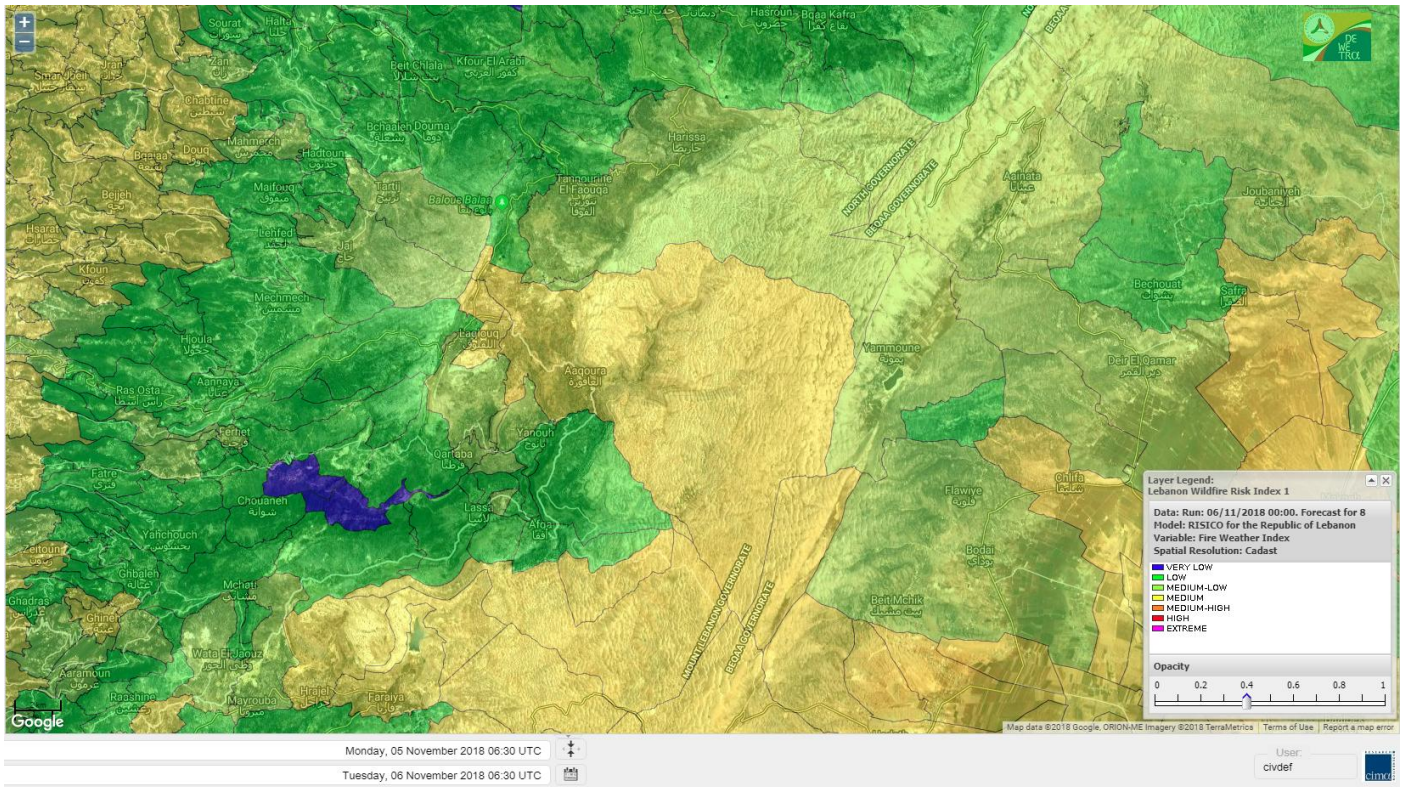


# Jabal Moussa Reserve Forecast for 7 NOV 2018





# Jabal Moussa Reserve Forecast for 8 NOV 2018

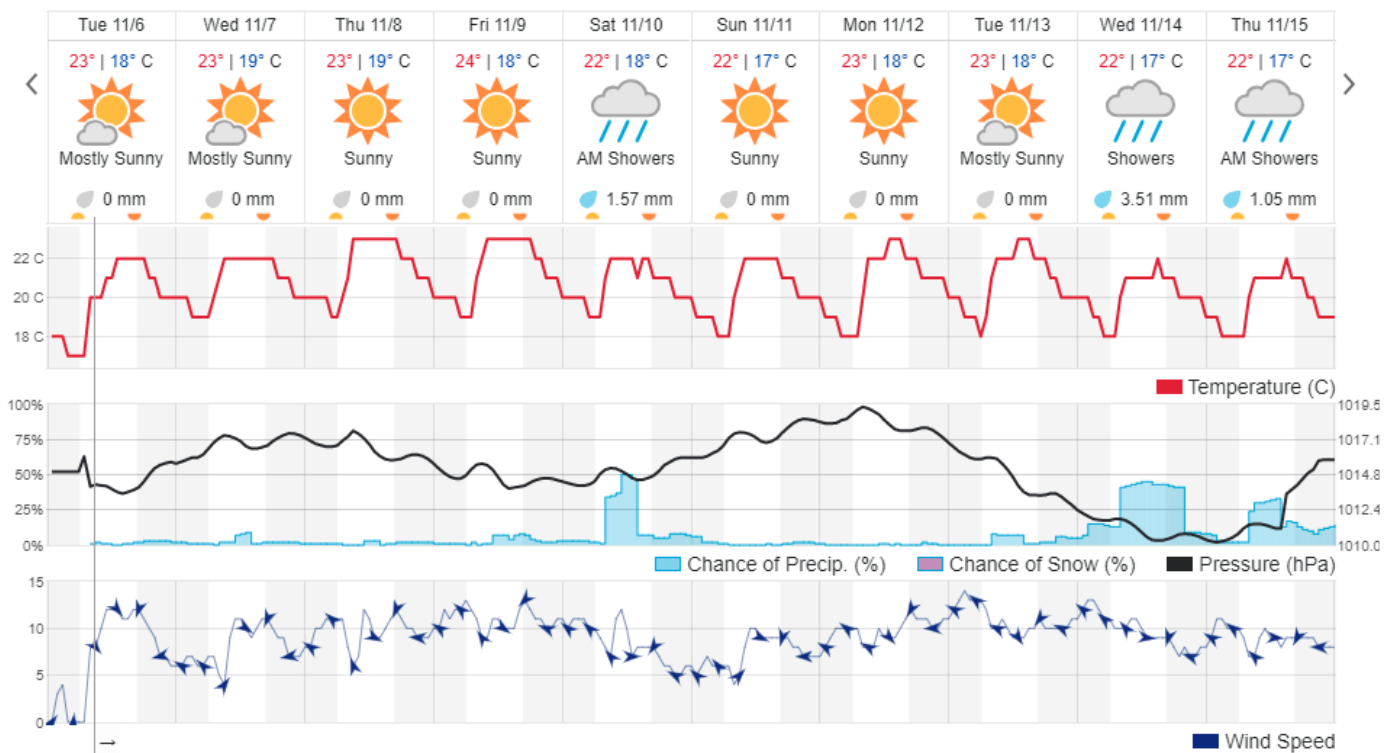


## Beirut, Lebanon

22° ACHRAFIEH, RIZK STATION | REPORT | CHANGE

TODAY HOURLY 10-DAY CALENDAR HISTORY WUNDERMAP

Customize





## Nord

### Koura

Municipality	06-Nov	07-Nov	08-Nov	Municipality	06-Nov	07-Nov	08-Nov	Municipality	06-Nov	07-Nov	08-Nov
Aaba	M	M	M	Afsaddiq	M	ML	M	Ain Ekrine	M	ML	M
Amioun	M	ML	M	Anfeh	M	M	MH	Badbhoun	M	M	M
Barghoun	M	M	M	Barsa	M	M	M	Batroumine	M	M	M
Bdebba	M	M	M	Bechmizzine	M	ML	M	Bednayel El-Koura	M	M	M
Bhabbouch El-Koura	M	ML	ML	Bkeftine	M	M	M	Bnehran	M	ML	ML
Bqaiaa El-Koura	M	M	M	Bsarma	M	ML	M	Btaaboura	M	M	M
Bterram	M	ML	M	Btouratij	M	M	M	Bziza	M	ML	M
Dar Beehtar	M	ML	M	Dar Chmezzine	M	ML	M	Deddeh	M	M	M
Deir El-Balamand	M	M	M	Fih	M	M	M	Hraiche	M	M	MH
Ijdaabrine	M	M	M	Kaftoun	M	ML	M	Kefraya El-Koura	M	M	M
Kfarakka	M	ML	M	Kfarhata	M	M	M	Kfarhazir	M	M	M
Kfarkahel	M	M	M	Kfarsaroun	M	ML	M	Kosba	M	ML	M
Mejdel el-Koura	M	ML	ML	Nakhle	M	M	M	Qalhat	M	M	M
Ras Masqa	M	M	M	Rechdibbine	M	ML	M	Zakroun	M	M	MH
Zgharta El-Mtaouile	M	ML	L								

### Bcharre

Municipality	06-Nov	07-Nov	08-Nov	Municipality	06-Nov	07-Nov	08-Nov	Municipality	06-Nov	07-Nov	08-Nov
Aabdine	L	L	ML	Bane	L	L	L	Barhelioun	L	L	L
Bazouone	VL	VL	L	Becharre	VL	VL	L	Beit Menzer	L	L	L
Billa	L	L	ML	Blaouza	ML	L	M	Bqaa Kafra	VL	VL	L
Bqerqacha	VL	VL	L	Breissat	VL	L	ML	Dimane	L	VL	L
Hadath El Jobbeh	L	VL	L	Hadchit	L	L	L	Hasroun	VL	VL	L
Mazraat Aassaf	L	L	VL	Mazraat Bani Saab	L	L	L	Mchaa El-Jobbeh	VL	VL	ML
Metrit	M	ML	ML	Moghr El-Ahoual	L	L	ML	Ouadi Qannoubine	L	VL	VL
Qanat	L	L	L	Qnayouer	L	L	L	Tourza	L	L	L

### Batroun

Municipality	06-Nov	07-Nov	08-Nov	Municipality	06-Nov	07-Nov	08-Nov	Municipality	06-Nov	07-Nov	08-Nov
Aabrine	ML	M	M	Aalali	L	L	L	Aartz	L	L	L
Abdelli	L	L	ML	Ajdabra	ML	ML	M	Assia	L	L	L
Basbina	ML	ML	M	Batroun	M	M	M	Bcheleh	L	L	L
Bechtoudar	L	L	L	Beit Chlala	ML	L	L	Beit Kassab	ML	L	L
Bijdarfil	M	M	M	Bqesmaya	M	ML	M	Chatine	VL	VL	L
Chebtin	ML	L	M	Chekka	M	M	M	Daael	M	L	L
Dahr Abi Yaghi	M	L	M	Daraya El-Batroun	ML	L	M	Deir Billa	M	L	L
Deir Kfifane	ML	ML	M	Deir Mar Youhanna EL	L	L	L	Deir Mar Youssef Jra	L	L	M
Douma	L	L	L	Douq	M	L	M	Eddeh El-Batroun	ML	L	M
Ftihat El-Batroun	L	L	L	Ghouma	L	L	M	Hadtoun	L	L	L
Hamat	M	M	M	Harbouna	L	L	M	Hardine	L	L	L
Helta	ML	L	L	Hery	M	M	M	Jebila	M	L	L
Jrabta El-Batroun	L	L	M	Jrane El-Batroun	M	ML	M	Kfar Aabida	ML	ML	M
Kfar Halda	M	L	L	Kfarb Shlaimane	L	L	L	Kfarhatna	L	L	M
Kfarhay	M	M	M	Kfarhelos	ML	ML	M	Kfifane	M	L	M



Kfour El Arabi	L	L	L	Koubba	M	M	M	Kour	ML	L	M
Mar Mama	ML	L	L	Masrah	M	L	ML	Mehmarch	ML	L	ML
Mrah Chdid	L	L	M	Mrah El Ziyat	ML	L	M	Mrah El-Hajj	L	L	L
Nahle El-Batroun	ML	L	L	Niha El-Batroun	L	L	L	Ouahj El-Hajjar	M	M	M
Ouata Houb	VL	VL	L	Qatnaaoun	M	M	M	Racha	ML	L	ML
Rachana	L	L	M	Rachkida	M	M	M	Ram El-Batroun	L	L	L
Ras Nakhach	M	M	M	Selaata	M	M	M	Sghar	L	L	M
Smar Jbayl	ML	L	M	Sourat El-Batroun	L	L	L	Tannourine El-Faouqa	VL	L	ML
Tannourine Et-Tahta	L	L	L	Thoum	ML	ML	M	Toula El-Batroun	ML	L	M
Zan	L	L	ML								

## Zgharta

Municipality	06-Nov	07-Nov	08-Nov	Municipality	06-Nov	07-Nov	08-Nov	Municipality	06-Nov	07-Nov	08-Nov
Aachach	M	M	M	Aalma	M	M	M	Aarde	M	M	M
Aintourine	L	L	ML	Arabet Qozhaya	L	L	L	Arde	M	M	M
Arjis	M	L	ML	Asnoun	M	M	M	Ayto	L	L	L
Basloukit	L	L	L	Bchannine	M	M	M	Besebeel	M	M	M
Bhairret Toula	VL	VL	VL	Bnachee	ML	L	ML	Boussit	M	M	M
Danha	M	M	M	Daraiya Zgharta	M	L	ML	Deir Jdeide	M	M	M
Ehden	L	L	L	Halan	ML	M	M	Hariq Zgharta	M	M	M
Houakir	M	M	M	Hraiqis	M	M	M	Iaal	M	M	M
Ijbaa	L	L	ML	Karm Saddeh	ML	L	L	Kfarchakhna	M	M	M
Kfardlaqous	M	M	M	Kfarfou	ML	L	ML	Kfarhata Zgharta	M	M	M
Kfarhoura	M	M	M	Kfarsghab	L	L	L	Kfaryachit	M	M	M
Kfarzaina	M	M	M	Khaldiye	M	M	M	Mazraat Ajbeaa	M	M	M
Mazraat Et-Teffah	L	L	L	Mazraat Jneid	M	M	M	Mejdlaya Zgharta	M	M	M
Merh Kfarsghab	ML	ML	ML	Miryata	M	M	M	Miziara	L	L	ML
Mzraat Kefraya	M	M	M	Qorah Bach	M	M	M	Rachiine	M	M	M
Ras Kifa	ML	L	ML	Sakhra	M	M	M	Sebhel Zgharta	ML	L	ML
Serhel	L	L	L	Tallet Zgharta	M	M	M	Toula Zgharta	L	L	L
Zgharta	M	M	M								

## Minieh-Denniye

Municipality	06-Nov	07-Nov	08-Nov	Municipality	06-Nov	07-Nov	08-Nov	Municipality	06-Nov	07-Nov	08-Nov
Aasaymout	VL	VL	VL	Aaymar	L	L	L	Aazki	L	ML	ML
Ain El-Tineh-Miniyeh	L	L	L	Assoun	L	L	L	Bakhaaoun	L	L	L
Bchennata	L	L	L	Bechehhara	ML	M	M	Beddawi	M	M	M
Behouaita	L	L	L	Beit El Foqss	L	L	L	Beit Haouik	L	L	ML
Beit Zoud	L	L	L	Bekaasafrine	L	L	ML	Borj El Yahoudiyeh	M	M	M
Bqarsouna	L	L	L	Btermaz	L	L	L	Debaael	VL	L	L
Deir Ammar	M	M	M	Deir Nbouh	M	M	M	Haouaret-Miniyeh	L	L	L
Haql el Azimeh	L	L	L	Harf El Siyad	L	L	L	Hazmiye-Miniyeh	L	L	L
Izal	L	ML	ML	Jarjour	ML	M	M	Jayroun	VL	VL	L
Kahf El-Malloul	ML	ML	M	Karm El-Moher	L	L	L	Kfar Binine	L	L	L
Kfarchalane	L	ML	ML	Kfarhabou	ML	ML	M	Kharroub-Miniyeh	L	ML	ML
Mazraat El-Kreme	L	ML	ML	Mazraat Ketrane	L	L	L	Merkebtta	M	M	M
Minyeh	M	M	M	Mrah El Sfirat	L	L	L	Mrah Sraj	L	L	L
Mrebbine	L	L	ML	Nabi Youcheaa	M	M	M	Nemrine	L	L	L



Qarhaiya	L	L	L	Qarne	VL	VL	VL	Qarsita	VL	L	L
Qattineh-Miniyeh	VL	L	VL	Qemmamine	VL	VL	VL	Qraine	L	L	L
Raouda-Aadoua	M	ML	M	Rihaniyet-Miniyeh	M	ML	M	Sfireh	VL	L	L
Sir Ed-Danniyeh	L	L	L	Tarane	L	L	L	Terbol-Miniyeh	M	M	M
Zaghartaghriine	ML	M	M	Zouq Bhannine	M	M	M				

## Nabatiye

### Nabatiye

Municipality	06-Nov	07-Nov	08-Nov	Municipality	06-Nov	07-Nov	08-Nov	Municipality	06-Nov	07-Nov	08-Nov
Aabba	M	M	M	Aazzi	M	M	M	Adchit El-Chqif	M	M	M
Ain Bou Swar	M	M	M	Ain Kana	M	M	M	Ali El-Taher	M	M	M
Ansar	M	M	M	Arab Salim	M	M	M	Arnoun	M	M	M
Bfaroue	M	M	M	Breyqaah	M	M	M	Charqiyeh	M	M	M
Choukine	M	M	M	Deir El Zahrani	M	M	M	Doueir El-Nabatiyeh	M	M	M
Habbouch El-Nabatiye	M	M	M	Hamra El-Nabatiyeh	M	M	M	Harouf El-Nabatiyeh	M	M	M
Hmaile	M	M	M	Houmin El Faouqa	M	M	M	Houmin El Tahta	M	M	M
Jarjough	M	M	M	Jbaah El-Nabatiyeh	ML	M	M	Jebchit	M	M	M
Kfar Djal El-Nabatiy	M	M	M	Kfar Remmane	M	M	M	Kfar Sir	M	M	M
Kfar Tebnit	M	M	M	Kfarfila	M	M	M	Kfour El-Nabatieh	M	M	M
Mayfadoun	M	M	M	Mazraat Bsaffour	M	M	M	Mazraat Chalbaal	M	M	M
Mazraat Dmoul	M	M	M	Mazraat El Khreibeh	M	M	M	Mazraat El-Bayad El-	M	M	M
Mazraat Kfarjaouz	M	M	M	Mazraat Qalaat Meiss	M	M	M	Nabatiyeh El-Fawka	M	M	M
Nabatiyeh Et-Tahta	M	M	M	Namiriyeh	M	M	M	Qaaqaaiyet El Jisr	M	M	M
Qossaibeh El-Nabatiy	M	M	M	Roumine	M	M	M	Sarba El-Nabatieh	M	M	M
Sir El-Gharbiyeh	M	M	M	Toul	M	M	M	Yehmor El-Nabatiyeh	M	M	M
Zaoutar El Charkiyeh	M	M	M	Zaoutar El-Gharbiyeh	M	M	M	Zebdine El-Nabatiyeh	M	M	M
Zefta	M	M	M								

### Hasbaiya

Municipality	06-Nov	07-Nov	08-Nov	Municipality	06-Nov	07-Nov	08-Nov	Municipality	06-Nov	07-Nov	08-Nov
Aain Jarfa	ML	M	M	Abou Qamha	M	M	M	Ain Qania	L	M	M
Bourghos	M	M	M	Chebaa	ML	ML	M	Chouaya Hasbaya	ML	M	M
Dellafeh	M	M	M	Fardiss Hasbaiya	M	M	M	Hasbaya	ML	M	M
Hbariyeh	ML	M	M	Kaoukaba Hasbaiya	M	M	M	Kfar Chouba	ML	ML	M
Kfar Hamam	M	M	M	Kfeir El-Zait	L	ML	M	Khalwat Hasbaya	L	L	ML
Khreibet Hasbaiya	M	M	M	Majidiyeh Hasbaiya	M	M	M	Marj Ez-Zhour (Haouc	ML	M	M
Meri	M	M	M	Mimass	ML	M	M	Rachaiya El-Fokhar	M	M	M
Salaiyeb	M	M	M								

### Marjayoun

Municipality	06-Nov	07-Nov	08-Nov	Municipality	06-Nov	07-Nov	08-Nov	Municipality	06-Nov	07-Nov	08-Nov
Aalmane Marjaayoun	M	M	M	Aamra	M	M	M	Adayseh Marjaayoun	M	M	M
Adchit El-Koussair	M	M	M	Ain Aarab Marjaayoun	M	M	M	Bani Haiyann	M	M	M
Blatt Marjaayoun	M	M	M	Blida	M	M	M	Borj El-Moulouk	M	M	M
Boueyda Marjaayoun	M	M	M	Deir Mimass	M	M	M	Deir Siriane	M	M	M
Dibbine	M	M	M	Ebel El Saqi	M	M	M	Houla	M	M	M
Houra	M	M	M	Kfar Kila	M	M	M	Khiam Marjaayoun	M	M	M



Klayaa	M	M	M	Majdel Selem	M	M	M	Marjaayoun	M	M	M
Markaba	M	M	M	Mays El-Jabal	M	M	M	Mazraat Doumiat	M	M	M
Mazraat Sarada	M	M	M	Mhaibib	M	M	M	Qabrikha	M	M	M
Qantara	M	M	M	Rab El-Thalathine	M	M	M	Saouaneh Marjayoun	M	M	M
Talloussa	M	M	M	Taybeh Matjaayoun	M	M	M	Touline	M	M	M

## Bent Jbail

Municipality	06-Nov	07-Nov	08-Nov	Municipality	06-Nov	07-Nov	08-Nov	Municipality	06-Nov	07-Nov	08-Nov
Ain-Ebel	M	M	M	Aitaroun	M	M	M	Aynata Bint Jbeil	M	M	M
Ayta El-Chaeb	L	ML	ML	Ayta El-Jabal	M	M	M	Beit Lif	L	ML	ML
Beit Yahoun	M	M	M	Bint Jbeil	M	M	M	Borj Qalaway	M	M	M
Braachit	M	M	M	Chakra	M	M	M	Debel	ML	M	M
Deir Antar	M	M	M	Froun	M	M	M	Ghandouriyeh Bint Jb	M	M	M
Hanine	M	M	M	Hariss	M	M	M	Hdatha	M	M	M
Jmeyjmech	M	M	M	Kafra Bint Jbeil	ML	ML	M	Kfar Dounine	M	M	M
Khirbet Selm	M	M	M	Kounine	M	M	M	Maroun El Ras	M	M	M
Qalaway	M	M	M	Qaouzah	L	ML	ML	Qatmoun	M	M	M
Ramya Bint Jbeil	L	ML	ML	Rchaf	ML	M	M	Rmeich	M	M	M
Safad Al Battikh	M	M	M	Salhaneh	L	ML	ML	Serbine	M	M	M
Sultanieh Bint Jbeil	M	M	M	Tibnine	M	M	M	Tiri	ML	M	M
Yaroun	M	M	M	Yater	ML	M	M				

## Mont Liban

### Jbail

Municipality	06-Nov	07-Nov	08-Nov	Municipality	06-Nov	07-Nov	08-Nov	Municipality	06-Nov	07-Nov	08-Nov
Aabeydat	ML	L	M	Aalita	L	L	L	Aamchit	M	M	M
Aarab El-Lahib	VL	VL	ML	Aarasta	L	VL	L	Adonis Jbeil	L	L	L
Afqa Jbeil	L	VL	L	Ain El Delbeh Jbeil	L	L	L	Ain El-Ghouayba	L	VL	L
Ain Jrain	L	L	L	Ain Kfah	M	L	M	Almat El Chemaliyat	L	VL	L
Almat El-Jenoubiya	L	VL	L	Aqoura	L	L	M	Bayzoun	L	L	L
Bchille Jbeil	L	L	L	Bechtida	L	L	L	Behdaydat	ML	L	M
Beit Habbaq	M	L	M	Bejjeh	M	L	M	Bekhaaz	M	ML	M
Berbara Jbeil	M	ML	M	Bintael	L	L	ML	Birket Hjoula	L	L	L
Blatt Jbeil	ML	ML	M	Boulhos	VL	VL	L	Breyj Jbeil	L	L	L
Chamat	M	L	M	Chikhane	M	ML	M	Chmout	L	L	M
Eddeh Jbeil	ML	M	M	Ehmej	L	L	L	Fatre	L	L	L
Ferhet	L	L	ML	Fghal	L	L	M	Frat	VL	VL	VL
Ghabat	L	VL	ML	Ghalboun	M	L	M	Gharzouz	M	ML	M
Ghofrine	M	ML	M	Habil	L	L	L	Halate	ML	ML	M
Haqel	ML	L	M	Hbaline	M	L	M	Hboub	ML	ML	ML
Hdeine	L	VL	ML	Hema Er-Rehban	L	L	M	Hema Mar Maroun Aann	L	VL	ML
Hjoula	L	L	L	Hosrayel	M	ML	M	Hsarat	M	L	M
Hsoun	L	L	ML	Jaj	L	L	ML	Janne	VL	VL	VL
Jbeil	M	M	M	Jeddeyeh Jbeil	M	ML	M	Jlisse	L	L	L
Jouret El-Qattine	L	L	ML	Kfar Baal Annaya	L	L	L	Kfar Kidde	ML	ML	M
Kfar Kouas	L	L	L	Kfar Mashoun	M	ML	M	Kfoun	ML	L	M



Kharbe Jbeil	ML	L	M	Laqlouq	L	L	M	Lassa	L	VL	L
Lehfed	L	L	L	Maad	ML	L	M	Mar Sarkis	L	L	ML
Mastita	M	M	M	Mayfouq	L	L	L	Mazraat El Siyad	L	L	ML
Mazraat El-Maaden	VL	VL	L	Mechane	L	L	L	Mechmech Jbeil	L	L	L
Mehrin	ML	ML	M	Mejdel El-Akoura	L	VL	L	Mghayreh Jbeil	L	L	ML
Mounsef	M	ML	M	Nahr Ibrahim	M	M	M	Qahmez	L	VL	L
Qartaba	L	VL	L	Qartaboun	M	M	M	Qattara Jbeil	L	VL	L
Qorqraya	VL	VL	VL	Ramout	ML	L	M	Ras Osta	L	L	L
Rihane Jbeil	M	ML	M	Sakiet El-Khayt	ML	L	M	Saqi Richmaya	L	L	L
Sebrine	L	L	L	Seraita	L	VL	L	Souane Jbeil	L	L	L
Tadmor	L	L	ML	Tartej	L	L	ML	Torzaiya	L	L	L
Yanouh Jbeil	L	VL	L	Zibdine Jbeil	L	L	L				

## El Metn

Municipality	06-Nov	07-Nov	08-Nov	Municipality	06-Nov	07-Nov	08-Nov	Municipality	06-Nov	07-Nov	08-Nov
Aain El-Qabu	VL	L	L	Aain El-Qach	L	L	M	Aain El-Teffaha	L	ML	M
Aain el-Safsaf El-M	L	L	M	Abou Mizane	L	ML	M	Ain Aar	ML	M	M
Ain Alaq	L	M	M	Ain El-Kharroube	L	ML	M	Ain El-Sendianeh	L	L	M
Ain El-Zeitoune	L	L	M	Ain Saadeh	ML	M	M	Aintoura El-Matn	VL	ML	M
Amaret Chalhoub	M	M	M	Antelias	M	M	M	Atchaneh	L	M	M
Ayroun	L	L	M	Baabdat	L	L	M	Baouchariyeh	M	M	MH
Baskinta	VL	L	ML	Beit Chabab	L	L	M	Beit El-Chaar	M	M	M
Beit El-Kekko	M	M	M	Beit Mery	ML	M	M	Bhersaf	L	ML	M
Bikfaya	L	L	M	Biyakout	M	M	M	Bnabil	L	L	M
Bourj Hammoud	M	M	MH	Bqennaya	ML	M	M	Broummana El-Matn	ML	M	M
Bsalim	ML	M	M	Bsifrine	L	L	M	Btegrine	L	L	L
Chaouiye	L	M	M	Chouaya El-Matn	L	ML	M	Choueir	L	L	M
Chrine	L	L	ML	Dahr El Sawan El-Mat	L	ML	M	Daychouniyeh	M	M	M
Dbayeh	M	M	M	Deir Chamra	VL	L	L	Deir Mar Abda el Mch	ML	M	M
Deir Mar Roukouz	M	M	M	Deir Tamiche	ML	M	M	Dik El-Mehdi	ML	M	M
Dikwaneh	M	M	MH	Douar El-Matn	L	L	M	Fanar	M	M	M
Fraike	L	M	M	Haret El-Ballaneh	M	M	M	Hbous	ML	M	M
Himlaya	L	L	M	Jal El Did	M	M	M	Jdeideh El-Metn	M	M	M
Jouar El-Matn	L	L	ML	Jouret El-Ballout	ML	M	M	Kaaqour	L	L	M
Kfar Aaqab	L	L	ML	Kfertay El-Matn	VL	VL	L	Khenchara	L	L	M
Khillet El-Mtain	L	L	M	Konnabat Broummana	ML	M	M	Konnabat Salima	L	L	M
Machraah El-Matn	VL	L	ML	Majdel Tarchich	VL	ML	M	Majzoub	M	M	M
Mansouriyeh El-Metn	M	M	M	Mar Boutros Karm Et-	L	L	M	Mar Chaya et Mzekke	L	M	M
Mar Moussa Ed-Douar	L	L	M	Marjaba	L	L	ML	Masqa	L	M	M
Mayasse	L	L	M	Mazraat Deir Aoukar	M	M	M	Mazraat El-Hadirat	ML	M	M
Mazraat Yachouh	M	M	M	Mchikha	L	ML	M	Menqlet Mezher	ML	M	M
Mhaydseh Matn	L	L	M	Mkalles	M	M	MH	Mrouj	L	ML	M
Mtain	VL	ML	M	Mtayleb	ML	M	M	Nabay	ML	M	M
Naccache	M	M	M	Ouadi Chahine	L	L	M	Ouadi El-Karm El-Mat	VL	L	L
Ouata El-Mrouj	L	ML	M	Ouyoun El-Matn	L	M	M	Qornet Chehwan	ML	M	M
Qornet El-Hamra	ML	M	M	Roumieh	ML	M	M	Sfeilet Bikfaya	L	L	M
Sinn El-Fil	M	M	MH	Zabbougha	VL	L	L	Zalqa	M	M	M



Zarououn	L	L	M	Zekrite	ML	M	M	Zighrine El-Matn	L	ML	M
Zouk El-Khrab	M	M	M								

## Chouf

Municipality	06-Nov	07-Nov	08-Nov	Municipality	06-Nov	07-Nov	08-Nov	Municipality	06-Nov	07-Nov	08-Nov
Aalmane El-Chouf	M	M	M	Aammqi El-Chouf	ML	M	M	Ain Ouzein	L	ML	M
Ain Qani	L	ML	M	Ain Zhalta	L	M	M	Ainbal	ML	ML	ML
Amateur	L	M	M	Anout	L	ML	M	Atrine	ML	M	M
Baadarane	ML	M	M	Baaqline	ML	ML	M	Baasir	M	M	M
Barja	M	M	M	Barouk	L	ML	M	Bater	ML	M	M
Batloun	ML	M	M	Bayqoun	M	M	M	Bchetfine	M	ML	ML
Beiteddine	L	ML	M	Benouati Ech-Chouf	M	ML	ML	Berjein	ML	ML	ML
Bireh et Mtalleh	ML	M	M	Biret El-Chouf	ML	M	M	Bkechtine Ouel Mchei	ML	L	L
Bkifa El-Chouf	ML	ML	M	Botme	L	ML	M	Bqaiia Ech-Chouf	M	ML	ML
Bsaba El-Chouf	ML	ML	M	Chammis El-Chouf	M	M	M	Chehim	ML	ML	M
Chemaarine	ML	L	L	Chourit	ML	M	M	Daher El-Chouf	M	ML	ML
Dalhoun	ML	M	M	Damour	M	M	M	Daraya El-Chouf	ML	ML	M
Deir El-Moukhalles	L	L	M	Deir Baba	M	ML	ML	Deir Dourit	M	ML	ML
Deir El-Qamar	ML	ML	M	Deir Kouche	M	M	M	Dibbieh	ML	ML	L
Dmit	M	ML	ML	Fouara Jaafar	L	M	M	Fraidis El-Chouf	ML	M	M
Ghabet Jaafar	M	ML	ML	Gharife	L	ML	M	Haret Jandal	ML	M	M
Hasrout	ML	ML	M	Jadra	M	M	M	Jahlieh	ML	ML	ML
Jbeih El-Chouf	ML	M	M	Jdeidet El-Chouf	ML	M	M	Jiyeh	M	M	M
Jleilyeh	ML	ML	M	Jmailiyeh	M	M	M	Joun	M	M	M
Kahlounie El-Chouf	M	M	M	Ketermaya	M	M	M	Kfar Faqoud	M	ML	ML
Kfar Hamal	M	M	M	Kfar Him	M	ML	M	Kfar Katra	ML	M	M
Kfar Niss	ML	M	M	Kfar hay	ML	M	M	Kfarnabrakh	ML	M	M
Khirbet Bisri	L	L	M	Knayse El-Chouf	M	M	M	Maaniyeh	M	M	M
Maasser Beiteddine	ML	M	M	Maasser El-Chouf	ML	M	M	Majdalouna	M	M	M
Majdel El-Meouch	ML	M	M	Mazboud	ML	ML	M	Mazmoura	L	ML	M
Mazraat El Chouf	ML	M	M	Mazraat El Daher	L	L	M	Mazraat El-Douair	L	ML	M
Mechref	M	ML	ML	Mghairie	M	M	M	Mghayrie El-Chouf	M	ML	ML
Moukhtara	ML	ML	M	Mrusti	ML	M	M	Mtolle	ML	ML	M
Naameh	M	M	M	Niha El-Chouf	ML	M	M	Ouadi Abou Yousef	ML	L	L
Ouadi Ed-Deir	M	ML	M	Ouadi El-Sit	ML	M	M	Ouadi bnehlay	M	ML	ML
Qraibeh	ML	M	M	Qreiaa	L	L	ML	Rmayle El-Chouf	M	M	M
Semqaniyeh	ML	M	M	Sibline	M	M	M	Sirjbeil	M	ML	ML
Warhanieh	ML	M	M	Werdaniyeh	M	M	M	Zaarourieh	ML	ML	M

## Baabda

Municipality	06-Nov	07-Nov	08-Nov	Municipality	06-Nov	07-Nov	08-Nov	Municipality	06-Nov	07-Nov	08-Nov
Abadiyeh	ML	M	M	Ain Mouaffaq	ML	M	M	Araiya	M	M	M
Arbaniyeh	L	L	M	Arsoun	L	L	M	Baabda	M	M	M
Baalchmey	ML	M	M	Bmaryam	L	M	M	Bourj El-Brajneh	M	M	M
Boutchay	M	M	M	Bsaba Baabda	M	M	M	Btekhney	L	M	M
Btibyat	L	M	M	Bzabdine	L	L	M	Chbeniyeh	ML	M	M
Chiyah	M	M	MH	Chmeisset Baabda	L	M	M	Chouit	ML	M	M
Deir El-harf	L	ML	M	Deir Khouna	ML	M	M	Dlaybeh	L	L	M



Falougha	ML	M	M	Furn El-Chebbak	M	M	MH	Hadath Beyrouth	M	M	M
Halaliyeh Baabda	ML	M	M	Hammana	ML	M	M	Haret El Sett	M	M	M
Haret Hamze	ML	M	M	Haret Hreik	M	M	MH	Hasbaiya El-Metn	L	L	M
Jouar El-Hoz	L	L	ML	Jouret Arsoun	L	L	M	Kfar Chima	M	M	M
Kfar Selouane	L	L	ML	Khalouat Baabda	ML	M	M	Kneisset Baabda	L	ML	M
Laylakeh	M	M	M	Louayzeh Baabda	M	M	M	Merdache	M	M	M
Mzairaa Baabda	ML	M	M	Ouadi Chahrour El Ol	M	M	M	Ouadi Chahrour El So	M	M	ML
Qalaa Baabda	L	M	M	Qhraybe Baabda	L	M	M	Qobbayaa	ML	M	M
Qornayel	L	L	M	Qortada	L	M	M	Qrayeh Baabda	L	M	M
Qsaibeh Baabda	L	M	M	Qtale Baabda	L	M	M	Ras El Metn	L	M	M
Ras El-Haref	ML	M	M	Rouayset El-Ballout	ML	M	M	Salima Baabda	L	L	M
Tahouitat El Ghadir	M	M	M	Tarchich	VL	L	ML	Zandouqa	L	M	M

## Aley

Municipality	06-Nov	07-Nov	08-Nov	Municipality	06-Nov	07-Nov	08-Nov	Municipality	06-Nov	07-Nov	08-Nov
Abey	M	ML	ML	Aghmid	L	M	M	Ain Dara	ML	M	M
Ain Drafil	ML	M	ML	Ain El Halazoun	ML	M	M	Ain El-Rmmaneh	ML	ML	M
Ain Jedideh	ML	M	M	Ain Ksour	M	ML	ML	Ain Onoub	M	M	ML
Ain Traz	ML	M	M	Ainab	M	M	ML	Aley	M	M	M
Aramoun	M	M	M	Aytat	M	M	M	Azouniyeh	ML	M	M
Baawerta	M	ML	ML	Badghan Oua Wadi Bad	ML	M	M	Bassatine	M	M	M
Bayssour	M	M	M	Bchamoun	M	M	M	Bdadoun	M	M	M
Behouara	ML	M	M	Bennay	M	ML	M	Bhamdoun El-Dayaa	ML	M	M
Bhamdoun El-Mhatta	ML	M	M	Bkhechthey	ML	M	M	Bleibel	M	M	ML
Bmakine	M	M	M	Bmehray	L	ML	M	Bouzrid	ML	M	M
Bserrine	M	M	M	Bsous	ML	M	M	Btalloun	ML	M	M
Btater	ML	M	M	Chanay	ML	M	M	Charoun	ML	M	M
Chartoun	ML	M	M	Chemlane	M	M	M	Choueifat El-Aamrous	M	M	M
Choueifat El-Oumara	M	M	M	Choueifat El-Quoubbe	M	M	M	Dakkoun	M	ML	ML
Deir Qoubel	M	M	ML	Dfoun	M	M	M	Douair El Remmaneh	ML	M	M
Ghaboun	ML	M	M	Habramoun	ML	M	M	Homs Oua Hama	ML	M	M
Houmal	M	M	ML	Jisr El Qadi	M	ML	M	Kehaleh	ML	M	M
Keyfoun	M	M	M	Kfar Aamey	M	M	M	Kommatyeh	ML	M	M
Maasrati	M	M	M	Majdel Baana	ML	M	M	Mansourieh et Ain El	ML	M	M
Mazraat El-Nahr	ML	M	M	Mchakhte	L	M	M	Mecherfeh	ML	M	M
Mejdlaya	ML	M	M	Mrayjat	ML	M	M	Ramliyah	ML	M	M
Rechmaya	ML	M	M	Rejmeh	ML	M	M	Remhala	M	M	M
Rouayset El Neemane	M	M	M	Saoufar	ML	M	M	Selfaya	M	M	M
Sirmoul	M	M	ML	Souq El Ghareb	M	M	M	Taazanieh	ML	M	M

## Kesrouane

Municipality	06-Nov	07-Nov	08-Nov	Municipality	06-Nov	07-Nov	08-Nov	Municipality	06-Nov	07-Nov	08-Nov
Achkout	VL	L	ML	Adma Oua Dafneh	ML	M	M	Ain Ed-Delbe Kesroua	VL	VL	L
Ain El-Rihane	L	M	M	Aintoura Kesrouane	ML	M	M	Ajaltoun	VL	L	ML
Akaybeh Kesrouane	M	M	M	Aramoun Kesrouane	VL	L	ML	Azra ouel Ozor	L	L	L
Ballouneh	L	ML	M	Batha	L	ML	ML	Bekaatat Achkout	VL	ML	M
Bekaatat Kanaan	VL	L	L	Bizhel	L	L	L	Bouar	ML	M	M
Bqaatouta	VL	VL	ML	Bqaq Ed-Dine	ML	M	M	Bzommar	L	L	ML

Chahtoul	L	L	ML	Chnaniir	L	L	ML	Chouan	VL	VL	L
Daraya Kesrouane	VL	L	ML	Darououn	L	M	M	Deir Baqlouch	L	M	M
Dlebta	VL	L	L	Eghbeh	VL	VL	L	Faraya	VL	L	M
Fatka	L	ML	M	Feytroun	VL	L	L	Ghazir	L	ML	M
Ghbaleh Kesrouane	L	L	L	Ghedrass	L	L	L	Ghosta	VL	L	L
Ghynéh	L	ML	M	Harharaya w Kattine	L	L	ML	Harissa Kesrouane	L	M	M
Hayata	VL	L	L	Hosein	L	L	L	Hrajel	VL	L	M
Jdeideh Ghazir	L	L	ML	Jeita	ML	M	M	Jounieh Ghadir	ML	M	M
Jounieh Haret Sakhr	ML	M	M	Jounieh Salel Alma	ML	M	M	Jounieh Sarba	M	M	M
Jouret Bedrane	L	L	L	Jouret Mhad	VL	L	L	Jouret Termos	L	ML	M
Kfar Debiane	VL	L	L	Kfar Tay Kesrouane	VL	VL	L	Kfar Yassine	M	M	M
Kfour Kesrouane	L	L	ML	Kharayeb Nahr Ibrahi	L	ML	M	Klayaat Kesrouane	VL	L	L
Maarab	VL	L	L	Maaysra Kesrouane	L	L	ML	Mayrouba	VL	VL	ML
Mazraat Er-Ras	ML	M	M	Mazraat Mrah El-Mir	VL	L	L	Mchaa El Ftouh	L	L	M
Mchaa Faraya	L	L	M	Mchaa Kfar Dibiane	L	L	M	Mghaer	VL	VL	L
Mradiyeh	L	L	L	Nahr Ed-Dahab	L	L	L	Nammoura Kesrouane	L	L	M
Ouata El Jaouz	VL	L	ML	Ouata Sillam	M	M	M	Raachine	VL	L	L
Rayfoun	VL	L	ML	Safra Kesrouane	ML	M	M	Shayle Kesrouane	L	ML	M
Tabarja	ML	M	M	Yahchouch	L	L	L	Zaaytreh	L	L	L
Zeytoun	ML	ML	M	Zouk Mikael	M	M	M	Zouk Mosbeh	M	M	M

## Baalbek\_Hermel

### Baalbek

Municipality	06-Nov	07-Nov	08-Nov	Municipality	06-Nov	07-Nov	08-Nov	Municipality	06-Nov	07-Nov	08-Nov
Aadous	L	ML	M	Aamchki	L	VL	L	Aarsal	VL	VL	VL
Ain Baalbek	VL	VL	L	Ain Bourday	L	VL	M	Ain El-Benye	VL	VL	ML
Ain El-Jaouz Baalbek	VL	VL	L	Ain El-Siya Chadoura	L	VL	L	Al Khodr Baalbek	L	L	M
Al Nabi Chit	L	L	M	Aynata Baalbek	VL	VL	ML	Baalbek	L	L	M
Bachwat	VL	VL	L	Barqa	VL	VL	L	Bednayel Baalbak	L	ML	M
Beit Chama	L	L	M	Bijjaje	VL	VL	L	Bouday	VL	L	ML
Brital	L	L	M	Btadi	VL	VL	ML	Chaat	L	VL	ML
Chaibe	L	VL	L	Chlifa	VL	VL	M	Chmestar	L	L	M
Dar El-Oussa	VL	VL	L	Deir El-Ahmar	VL	VL	ML	Deir Mar Maroun Baal	L	M	M
Douris	L	L	M	Fakiha	VL	L	ML	Hadath Baalbek	L	ML	M
Ham	L	VL	M	Haour Taala	L	L	M	Hizzine	L	ML	M
Hlebta	VL	VL	L	Hosh Barada	L	ML	M	Hosh El Dahab	L	ML	M
Hosh El Snid	L	L	M	Hosh El-Nabi	L	L	M	Hosh El-Rafiq	L	L	M
Hosh Tal Safiya	L	ML	M	Hrebta	VL	VL	L	laat	L	L	M
Jebaa	L	ML	M	Jenta	L	L	M	Kfar Dabach	L	ML	M
Kfar Dane	L	ML	M	Khraibeh El-Hermel	VL	VL	L	Khreibet Baalbek	L	L	M
Kneisset Baalbek	L	VL	M	Labueh	VL	VL	L	Maarboun	L	VL	ML
Majdaloun	L	ML	M	Maqneh	L	L	M	Mazraat Beit Mcheik	VL	L	M
Misraya	L	L	M	Moqraq	VL	VL	L	Nabha El-Damdoum	VL	VL	ML
Nabi Chbay	L	VL	M	Nabi Osman	VL	VL	L	Nahleh baalbek	VL	VL	L
Ouadi El-Oss	VL	VL	L	Qaa Baayoun	L	L	M	Qaa Jouar Maqiye	ML	ML	M
Qaa Ouadi El-Khanzir	ML	M	M	Qah Baalbek	L	ML	M	Qarha Baalbek	VL	L	M



Qsarnaba	L	L	M	Ram Baalbek	VL	L	ML	Ras Baalbek El Sahl	VL	ML	M
Ras Baalbek El-Charq	VL	L	M	Riha	L	L	M	Saaide	L	ML	M
Sboubba	VL	VL	L	Seriine El-Tahta	L	L	M	Slouqi	L	L	M
Taiba Baalbek	L	L	M	Talia	L	L	M	Taraiya	L	L	M
Temnin El Fawqa	L	L	M	Temnin El-Tahta	L	L	M	Tfail	VL	VL	L
Yahfoufa	L	L	M	Yammouneh	VL	L	ML	Younine	L	VL	L
Zboud	VL	L	ML								

## Hermel

Municipality	06-Nov	07-Nov	08-Nov	Municipality	06-Nov	07-Nov	08-Nov	Municipality	06-Nov	07-Nov	08-Nov
Charbine El-Hermel	L	L	L	Hermel Jbab	VL	L	ML	Hermel	ML	M	M
Maaysra El-Hermel	VL	VL	L	Michaa Mrjhine	L	L	ML	Ouadi Faara	VL	VL	L
Ras Baalbek - Ouadi	VL	L	M	Ras Baalbek El Gharb	VL	VL	L	Zighrine	VL	L	L

## Akkar

### Akkar

Municipality	06-Nov	07-Nov	08-Nov	Municipality	06-Nov	07-Nov	08-Nov	Municipality	06-Nov	07-Nov	08-Nov
Aain Tinta	M	M	M	Aaiyat	ML	L	M	Aakkar El-Aatiqa	L	L	ML
Aamar Akkar	M	ML	M	Aamar El Baykat	M	M	M	Aamayer	ML	M	M
Aamriyet Akkar	M	M	M	Aandqet	L	ML	M	Aarmeh	M	M	M
Aarqa	M	M	M	Aawaynat	ML	M	M	Aayoun Akkar	ML	L	M
Abboudiye	M	M	M	Ain El-Zeit	M	M	M	Ain Yaaqoub	L	L	ML
Akroum	L	ML	M	Aridet Cheikh Zennad	M	M	M	Baldeb w Mazraat Bal	M	M	M
Barcha	M	M	M	Bardeh	M	M	M	Bebnine	M	ML	M
Beino	M	M	M	Beit Ayoub	ML	L	M	Beit El-Haouch	M	ML	M
Beit Mellat	M	L	M	Beit Younes	L	L	ML	Berbara Akkar	M	M	M
Berqayel	M	ML	M	Bezgina	L	L	L	Bireh Akkar	M	M	M
Borj	ML	L	M	Bqerezla	M	ML	M	Bzal	ML	L	M
Chane	L	L	ML	Chaqdouf	ML	L	M	Charbila	M	M	M
Cheikh Mohammad	M	M	M	Cheikh Taba Es-Sahl	M	M	M	Cheikh Taba	M	L	M
Cheikh Zennad	M	M	M	Cheikhlar	ML	M	M	Chir Hmairine	M	M	M
Daghle	M	M	M	Dahr Laissine	M	ML	M	Darine	M	M	M
Dawra	L	ML	M	Dawsa w Baghdadi	M	M	M	Dayret Nahr El-Kabir	M	M	M
Deir Dalloum	M	ML	M	Deir Jennine	M	M	M	Denbou	L	L	ML
Dibbabiyyeh	M	M	M	Douair Aadwiyeh	M	M	M	Fassikine	M	M	M
Fnaydek	L	L	ML	Fraydes Akkar	ML	M	M	Ghazayle	M	M	M
Habchit	L	L	L	Hakour	M	ML	M	Halba	M	M	M
Haouchab	M	M	M	Hayssat	M	M	M	Haytla	M	M	M
Hayzouq	M	M	M	Hedd	M	M	M	Hmaira Akkar	M	ML	M
Hmaiss Akkar	M	M	M	Hnaider	ML	M	M	Hokr Ed-Dahri	M	M	M
Hokr Etti	M	M	M	Hokr Jouret Srar	M	M	M	Houaich	ML	L	ML
Hrar	ML	L	M	Idbil	ML	L	M	Ilal	M	L	M
Janine	M	M	M	Jdeidet El-Joumeh	M	ML	M	Jdeidet El-Kaiteh	M	ML	M
Jebayel	M	L	M	Kafr	ML	L	M	Kafr	M	M	M
Karm Asfour	M	L	M	Kfar Melki Akkar	M	M	M	Kfar Noun	ML	M	M
Kfarharra	M	M	M	Khalsa	ML	M	M	Kharnoubet Akkar	M	M	M

Khirbet Daoud Aakkar	M	M	M	Khirbet El Remmane	ML	M	M	Khirbet Shar	M	M	M
Khoreybet El-Jindi	M	M	M	Khreibet Aakkar	ML	L	M	Kneisset Aakkar	M	M	M
Kneisset Hnaider	ML	M	M	Knisse	M	M	M	Kroum El-Aarab	M	M	M
Kwachra	M	M	M	Kweykhat	M	M	M	Machta Hammoud	ML	M	M
Majdala	M	ML	M	Majdel Akkar	M	M	M	Mar Touma	M	ML	M
Marlaya Melhem	M	ML	M	Mashha	M	ML	M	Massoudiye	M	M	M
Mazraat Beit Ghattas	M	ML	M	Mazraat En-Nahriye	ML	M	M	Mechmech	L	L	L
Memneh	L	L	L	Mhammara	M	M	M	Mighraq Aakkar	M	M	M
Minyara	M	ML	M	Moqayteh	M	M	M	Mounjez	ML	M	M
Msalla	M	M	M	Mzeihmeh	M	M	M	Nfaiseh	M	M	M
Noura Et-Tahta	M	M	M	Ouadi El-Haour	M	M	M	Ouadi El-Jamous	M	ML	M
Ouyoun El-Ghizlane	M	ML	M	Qaabarine	M	M	M	Qabaait	L	L	ML
Qachlaq	M	M	M	Qantara Aakkar	M	L	M	Qarha Aakkar	ML	M	M
Qarqaf	M	ML	M	Qboula	ML	L	M	Qleiaat Aakkar	M	M	M
Qloud El-Baqie	M	ML	M	Qobaiyat Aakkar	L	ML	ML	Qobbat Chamrat	M	M	M
Qorayat	L	L	ML	Qornet Aakkar	L	L	M	Qsair Aakkar	M	M	M
Rahbe	ML	L	M	Rihaniyet Aakkar	M	M	M	Rmah	ML	M	M
Rmoul	M	M	M	Saadine	M	M	M	Sadaqa	ML	L	M
Saidnaya	M	M	M	Sammouniye	M	M	M	Sayssouq	M	ML	M
Semmaqiye	M	M	M	Semmaqli	M	M	M	Sfinet El-Dreib	M	M	M
Sfinet El-Qaitaa	ML	ML	M	Sindyanet Zeidane	ML	M	M	Souaisset Aakkar	M	M	M
Srar	M	M	M	Tal Abbas El Gharby	M	M	M	Tal Abbas El-Charqy	M	M	M
Tal Biret	M	M	M	Tal Hmayra	M	M	M	Tal Maayan Tal Kiri	M	M	M
Tal Sibel	M	M	M	Tallet Chattaha	ML	L	M	Tikrit	ML	L	M
Tleil	M	M	M	Tshea	L	L	ML	Zawarib	M	L	M
Zouq El Hosniyeh	M	ML	M	Zouq El-Haddara	M	ML	M	Zouq El-Hbalsa	M	ML	M
Zouq El-Moqachrine	M	ML	M								

## Sud

### Sour

Municipality	06-Nov	07-Nov	08-Nov	Municipality	06-Nov	07-Nov	08-Nov	Municipality	06-Nov	07-Nov	08-Nov
Aaiyeh	M	M	M	Aalma El-Chaab	L	L	M	Aaytit	M	M	M
Abbassiyeh Sour	M	M	M	Abou Chech	L	ML	ML	Ain Abou Abdallah	M	M	M
Ain Baal	ML	M	M	Arzoun	M	M	M	Aziyeh	L	ML	M
Baflaya	M	M	M	Barich	M	M	M	Batouliyeh	ML	M	M
Bayad	ML	M	M	Bazouriyeh	ML	M	M	Bediass	M	M	M
Bestiyat	M	M	M	Borj El Chemali	ML	M	M	Borj En-Naqoura	L	ML	M
Borj Rahhal	M	M	M	Boustane	L	M	M	Btaychiyeh	L	ML	ML
Chaaitiye	ML	M	M	Chameh	L	L	ML	Chehabiye	M	M	M
Chehour	ML	M	M	Chihine	L	ML	ML	Debaal Sour	M	M	M
Deir Amess	ML	M	M	Deir Kifa	M	M	M	Deir Qanoun El-Ain	ML	M	M
Deir Qanoun El-Naher	M	M	M	Derdghaiya	M	M	M	Dhayra	L	ML	ML
Halloussiyeh	M	M	M	Hamoul	L	L	ML	Hanaouey	M	M	M
Henniye	ML	M	M	Hmairi Sour	M	M	M	Iskandarouna Sour	L	L	M
Jbal El Botom	ML	M	M	Jebbin	L	M	M	Jennata	M	M	M
Jijim	L	L	L	Jouaiya	M	M	M	Kneisset Sour	ML	M	M



Maarake	M	M	M	Maaroub	M	M	M	Majadel	M	M	M
Majdalzoun	L	ML	M	Mansouri Sour	ML	M	M	Marnba	M	M	M
Marouahine	L	ML	ML	Mazraat El-Zalloutiy	L	M	M	Mazraat Mechref	M	M	M
Mazraat Tayr Semhat	M	M	M	Mheilib	ML	M	M	Neffakhiyeh	M	M	M
Niha Sour	M	M	M	Ouadi Jilo	M	M	M	Qana	ML	M	M
Qolaileh Sour	L	M	M	Rechknanay	ML	M	M	Rmadiyeh	M	M	M
Selha Sour	M	M	M	Siddiqine	M	M	M	Sour	M	M	M
Srifa	M	M	M	Tayr Debbe	M	M	M	Tayr Felsay	M	M	M
Tayr Harfa	L	ML	ML	Touayri	M	M	M	Toura	M	M	M
Yanouh Sour	M	M	M	Yarine	L	M	M	Zebqine	L	L	M

## Saida

Municipality	06-Nov	07-Nov	08-Nov	Municipality	06-Nov	07-Nov	08-Nov	Municipality	06-Nov	07-Nov	08-Nov
Aanqoun	M	M	M	Aaqtanit	M	M	M	Aarab Ej-Jall	M	M	M
Aarab Tabbaya	M	M	M	Abra Saida	M	M	M	Adloun	M	M	M
Adousiyeh	M	M	M	Ain-El-Deleb	M	M	M	Arzai	M	M	M
Babliyeh	M	M	M	Barty	M	M	M	Bissariyeh	M	M	M
Bnaafoul	M	M	M	Bqosta	M	M	M	Bramiy	M	M	M
Daoudiyeh	M	M	M	Dareb El-Sim	M	M	M	Erkay	M	M	M
Ghassanieh	M	M	M	Ghazieh	M	M	M	Hajjeh	M	M	M
Haret Saida	M	M	M	Hartiyeh	M	M	M	Hlaliye Saida	M	M	M
Insariyat	M	M	M	Jazira Saida	M	M	M	Kafar Bit	M	M	M
Kaoutariyet El-Siyad	M	M	M	Kfar Chellal	M	M	M	Kfar Hatta Saida	M	M	M
Kfar Milke Saida	M	M	M	Khartoum	M	M	M	Khaziz	M	M	M
Khirbet Ed-Douair Sa	M	M	M	Khirbet El-Bassal	M	M	M	Khrayeb Saida	M	M	M
Loubieh	M	M	M	Maghdouche	M	M	M	Majdelyoun	M	M	M
Matariyet El-Choumar	M	M	M	Matayriyeh	M	M	M	Mazraat 'Mseileh	M	M	M
Mazraat 'Snaiber	M	M	M	Mazraat Aarab Soukka	M	M	M	Mazraat Deir Taqla	M	M	M
Mazraat El Yahouidiye	M	M	M	Mazraat El-Housseini	M	M	M	Mazraat El-Mhaydaleh	M	M	M
Mazraat El-Ouasta	M	M	M	Mazraat Jamjim	M	M	M	Mazraat Kaoutariyet	M	M	M
Mazraat Kfar Badda	M	M	M	Mazraat Oussamiyat	M	M	M	Mazraat Sari	M	M	M
Mazraat Sinai	M	M	M	Meemariyeh	M	M	M	Merouaniyeh	M	M	M
Miyeh ou Miyeh	M	M	M	Najjariyeh	M	M	M	Qaaqaiyat El-Snaouba	M	M	M
Qnarit	M	M	M	Qraiye Saida	M	M	M	Saida Ed-Dekermane	M	M	M
Saida El-Oustani	M	M	M	Saida El-Qadimeh	M	M	M	Saida Kefraya	M	M	M
Saksakiyeh	M	M	M	Salhie Saida	M	M	M	Sarafand	M	M	M
Sfenta	ML	M	M	Tafahta	M	M	M	Tanbourit	M	M	M
Tebna	M	M	M	Zaghdraiya	M	M	M	Zeita	M	M	M
Zrariyeh	M	M	M								

## Jezzine

Municipality	06-Nov	07-Nov	08-Nov	Municipality	06-Nov	07-Nov	08-Nov	Municipality	06-Nov	07-Nov	08-Nov
Ain El-Mir (El Estab	M	M	M	Anane	L	L	M	Aramta	M	M	M
Ariya	ML	M	M	Aychiyeh	ML	M	M	Azour	L	ML	M
Baba	L	L	M	Bayssour Jezzine	M	M	M	Benoueteh Jezzine	M	M	M
Bhannine	ML	M	M	Bisri	L	L	M	Bkassine	L	M	M
Bouslaya	L	ML	M	Btedine El-Leqech	L	ML	M	Chbail	L	ML	M
Choualiq Jezzine	M	M	M	Dahr Ed-Deir	ML	ML	M	Deir El Qattine	ML	M	M

Demachqiyeh	M	M	M	Ghabbatiyeh	ML	M	M	Harf Jezzine	L	ML	M
Hassaniyeh	M	M	M	Haytouleh	M	M	M	Haytura	ML	M	M
Hidab	ML	M	M	Homsiyeh	ML	ML	M	Jabal Toura	ML	M	M
Jarmaq	M	M	M	Jensnaya	M	M	M	Jernaya	M	M	M
Jezzine	ML	M	M	Karkha	M	M	M	Kfar Falous	M	M	M
Kfar Houna	ML	M	M	Kfar Jarrah	M	M	M	Lebaa	M	M	M
Louayzet Jezzine	ML	M	M	Machmouche	L	M	M	Mahmoudiyeh Jezzine	M	M	M
Maknounye Jezzine	L	M	M	Maraat Ouazaiyeh	M	M	M	Mazraat Daraya	ML	M	M
Mazraat El-Aarqoub	ML	M	M	Mazraat El-Mathane	L	L	M	Mazraat El-Rahbane	L	M	M
Mazraat Khallet Khaz	ML	M	M	Mazraat Louzid (Loua	L	M	M	Mazraat Qrouh	M	M	M
Mazraat Tamra	M	M	M	Mazraat Zighrine Jez	ML	M	M	Mazraat	L	ML	M
Mharbiyeh	M	M	M	Midane Jezzine	ML	ML	M	Mjeydel Jezzine	M	M	M
Mlikh	ML	M	M	Mrah El-Hbasse	M	M	M	Ouadi Baanqoudaine	M	M	M
Ouadi El-Laymoun	M	M	M	Ouardiyeh	L	ML	M	Qabaa Jezzine	L	M	M
Qatrani	ML	M	M	Qaytouleh	ML	M	M	Qtaleh Jezzine	L	L	M
Rihane Jezzine	ML	M	M	Rimat	ML	M	M	Roum	ML	ML	M
Roummanet	M	M	M	Sabbah	L	M	M	Saydoun	ML	ML	M
Sfaray	L	L	M	Snaya	ML	M	M	Sojoud	ML	M	M
Srayri	ML	M	M	Taaid	ML	ML	M	Wadi Jezzine	ML	M	M
Zhalta	ML	M	M								

## Bekaa

### West Bekaa

Municipality	06-Nov	07-Nov	08-Nov	Municipality	06-Nov	07-Nov	08-Nov	Municipality	06-Nov	07-Nov	08-Nov
Aammiq BG	ML	M	M	Ain El Tineh BG	ML	M	M	Ain Zebdeh	ML	M	M
Ana	ML	M	M	Aytanit	L	M	M	Baaloul BG	ML	M	M
Bab Mareh	ML	M	M	Chouberqiye Aammiq	ML	M	M	Dakoue	ML	ML	M
Deir Ain El-Jaouze	ML	M	M	Deir Tahniche	ML	M	M	Ghaza	ML	M	M
Harime El-Soughra	L	ML	M	Hoch Harimeh	ML	M	M	Jazira BG	ML	M	M
Jib Jennine	ML	M	M	Kamed-El-Laouz	ML	M	M	Kefraya BG	ML	M	M
Khiara El Atika	ML	M	M	Khiara	ML	M	M	Khirbet Qanafar	ML	M	M
Lala	ML	M	M	Lebbaya BG	ML	M	M	Loussa	ML	M	M
Machghara	ML	M	M	Manara (Hammara) BG	L	L	ML	Mansoura BG	ML	M	M
Marej BG	L	ML	M	Maydoun	ML	M	M	Ouaqf BG	ML	M	M
Qaraaoun	ML	M	M	Qelya	ML	M	M	Raouda (Istabel)	L	ML	M
Saghbine	ML	M	M	Sohmor	ML	M	M	Soltan Yacoub el Ara	ML	ML	M
Souairy	L	ML	M	Sultan Yaacoub	ML	M	M	Tal Znoun	ML	M	M
Yehmor BG	ML	M	M	Zilaya	ML	M	M				

### Zahle

Municipality	06-Nov	07-Nov	08-Nov	Municipality	06-Nov	07-Nov	08-Nov	Municipality	06-Nov	07-Nov	08-Nov
Aanjar (Haouch Mouss	L	ML	M	Ablah	L	L	M	Ain Kfarzabad	L	ML	M
Ali-El-Nahri	L	ML	M	Bar Elias	L	ML	M	Bouarej	L	M	M
Cheberqiyet Tabet	L	ML	M	Chtaura	L	M	M	Deir El Ghazal	L	ML	M
Delhamiyet Zahle	L	ML	M	Ferzol	L	L	M	Haouch El-Ghanam	L	ML	M
Haouch Es-Siyadeh	L	M	M	Haouch Hala	L	ML	M	Haouch Mandara	L	M	M



Haouch Qayssar	L	M	M	Hezerta	L	ML	M	Hosh Moussa	L	ML	M
Jdita	L	M	M	Kfarzabad	L	ML	M	Ksara	L	ML	M
Majdel Aanjar	L	L	M	Makssi	L	M	M	Massa	L	L	M
Mazraat Er-Remtaniye	L	M	M	Mrayjat Zahle	L	M	M	Mzaraa Zahle	L	M	M
Nabi Ayla	L	L	M	Nasriyet Rizk	L	L	M	Nasriyet Zahle	L	M	M
Niha Zahle	L	L	M	Ouadi Ed-Deloum	L	M	M	Ouadi El-Arayech	L	L	M
Qaa El Rim	L	ML	M	Qab Elias	L	M	M	Qousaya	L	ML	M
Rhit	L	ML	M	Riyak	L	ML	M	Saadnayel	L	ML	M
Taal El-Akhdar	ML	M	M	Taalbeya	L	ML	M	Taanayel	L	ML	M
Talamara	L	ML	M	Tcheflik Edde Haouch	ML	M	M	Tcheflik Qiqano	L	M	M
Terbol Zahle	L	ML	M	Touaite Zahle	L	ML	M	Zahle Aradi	L	ML	M
Zahle El-Berbara	L	ML	M	Zahle El-Maallaqa	L	ML	M	Zahle El-Midane	L	ML	M
Zahle Er-Rassiye	L	ML	M	Zahle Haouch El-Ouma	L	ML	M	Zahle Haouch El-Ouma	L	ML	M
Zahle Haouch Ez-Zara	L	ML	M	Zahle Maalaqa Aradi	L	ML	M	Zahle Mar Antonios	L	ML	M
Zahle Mar Elias	L	ML	M	Zahle Mar Gerios	L	ML	M	Zahle Saydet En-Naja	L	ML	M
Zebdoul	L	ML	M								

## Rachaiya

Municipality	06-Nov	07-Nov	08-Nov	Municipality	06-Nov	07-Nov	08-Nov	Municipality	06-Nov	07-Nov	08-Nov
Ain Arab Rachaiya	ML	M	ML	Ain Ata	L	L	L	Ain Harche	L	ML	ML
Aqabe Rachaya	ML	ML	M	Ayha	ML	M	ML	Ayta El Fokhar	ML	M	M
Bakifa Rachaya	L	ML	M	Bakka	ML	M	M	Beit Lahya	ML	ML	M
Bireh Rachaiya	ML	M	M	Daher El Ahmar	L	ML	M	Deir El-Achayer	L	ML	ML
Heloua Rachaiya	ML	ML	ML	Hoch El Qannabeh Rac	L	ML	ML	Kaoukaba Bou Arab	L	ML	ML
Kfar Danis	ML	M	M	Kfar Mechki	ML	M	M	Kfar Qouq	L	ML	L
Kherbet Rouha	ML	ML	M	Majdel Balhiss	ML	M	M	Mdoukha	ML	M	M
Mhaydseh Rachaiya	ML	M	M	Nabi Safa	ML	M	M	Rachaiya	L	ML	ML
Rafid Rachaiya	ML	M	M	Selsata (Mazraat Dei	L	L	L	Tannoura	ML	ML	M
Yanta	L	ML	ML								

## Beyrouth

### Beyrouth

Municipality	06-Nov	07-Nov	08-Nov	Municipality	06-Nov	07-Nov	08-Nov	Municipality	06-Nov	07-Nov	08-Nov
Achrafieh	M	M	MH	Ain el-Mreisse	M	M	H	Bachoura	M	M	MH
Beirut Central Distr	M	M	MH	Marfai	M	M	MH	Mazraa	M	M	MH
Medaouar	M	M	MH	Minet el-Hosn	M	M	MH	Mwssaitbeh	M	M	MH
Ras Beirut	M	M	H	Rmeil	M	M	MH	Saifi	M	M	MH
Zqaq el-Blat	M	M	MH								