

# Lebanon Fire Risk Bulletin



CIVIL DEDEFENCE

**Refer to cadast table condition.**

**Please note that the indicated temperature is at 2 meters height from the ground.**

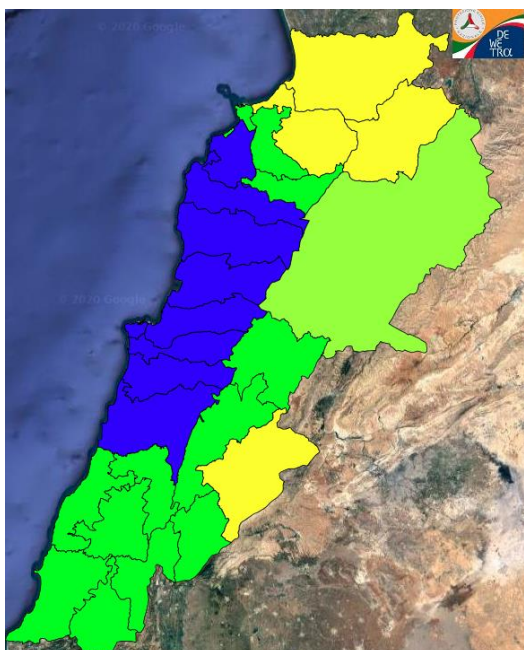
*General description of potential fire risk situation*

Symbol	Level of risk	Meaning and actions
VL	<b>Very low</b>	Very low fire risk. Controlled burning operations can be hardly executed due to high fuel moisture content. Normally wildfires self-extinguish.
L	<b>Low</b>	Low fire risk. Controlled burning operations can be executed with a reasonable degree of safety.
ML	<b>Medium low</b>	Medium-low fire risk. Controlled burning operations can be executed in safety conditions. All the fires need to be extinguished.
M	<b>Medium</b>	Medium fire risk. Controlled burning operations would be avoided. All the fires need to be very well extinguished.
M	<b>Medium high</b>	Controlled burning is not recommended. Open flame will start fires. Cured grasslands and forest litter will burn readily. Spread is moderate in forests and fast in exposed areas. Patrolling and monitoring is suggested. Fight fires with direct attack and all available resources.
H	<b>High</b>	Ignition can occur easily with fast spread in grass, shrubs and forests. Fires will be very hot with crowning and short to medium spotting. Direct attack on the head may not be possible requiring indirect methods on flanks. Patrolling and monitoring the territory is highly suggested.
E	<b>Extreme</b>	Ignition can occur also from sparks. Fires will be extremely hot with fast rate of spread. Control may not be possible during day due to long range spotting and crowning. Suppression forces should limit efforts to limiting lateral spread. Damage potential total. Patrolling and monitoring the territory is highly suggested.

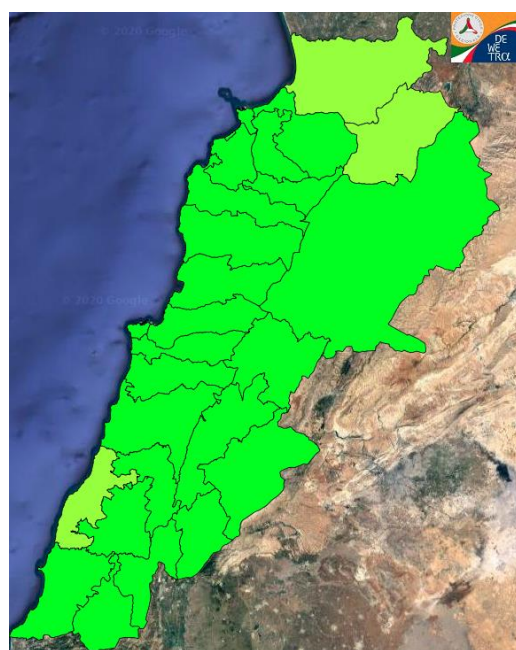
**Beirut, 6 November 2020**

# FIRE RISK INDEX

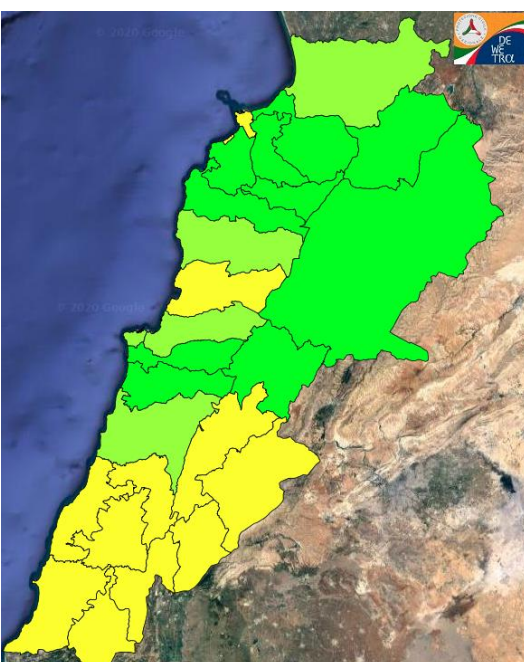
## 5 November 2020



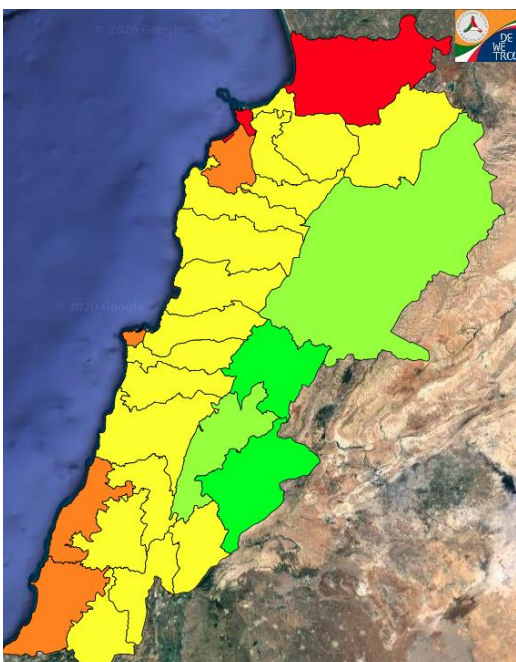
## 6 November 2020



## 7 November 2020



## 8 November 2020

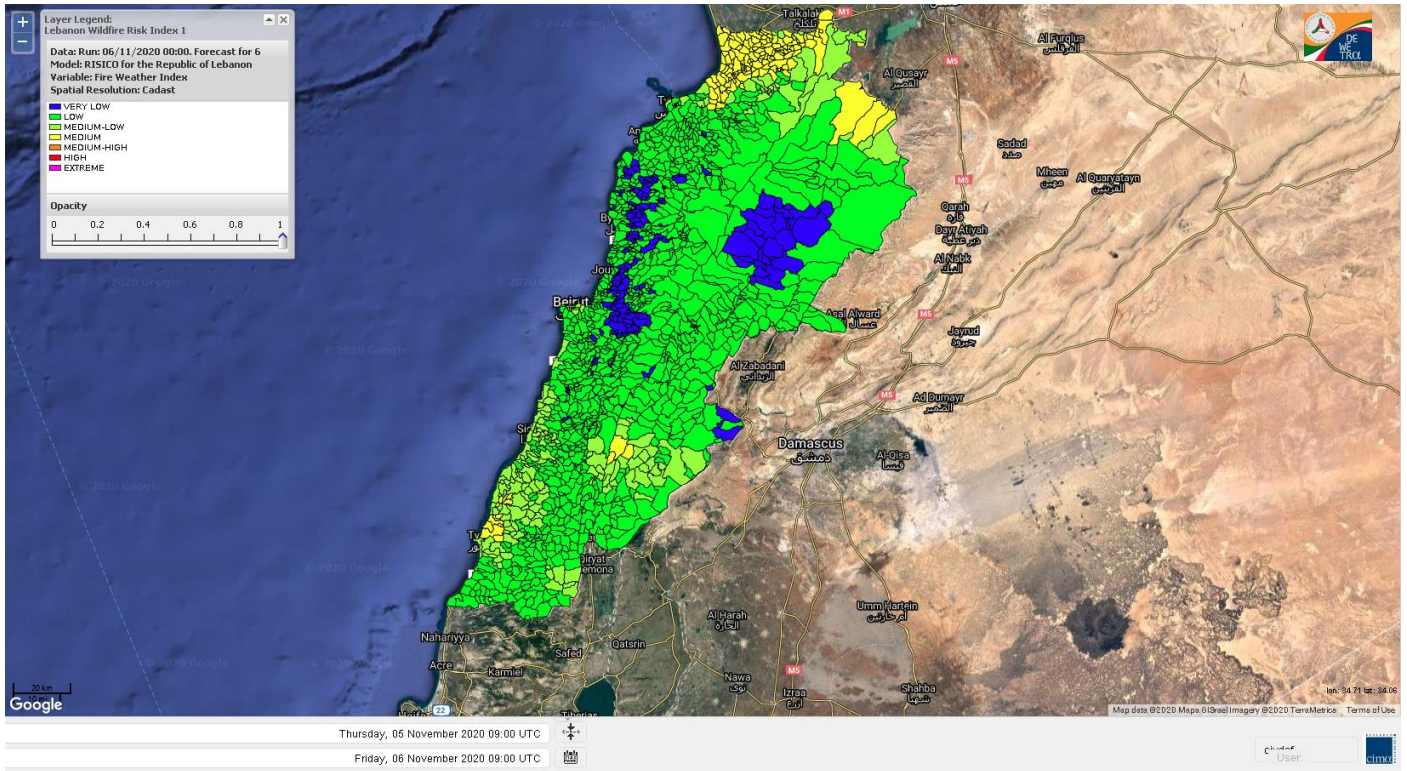


Layer Legend:  
Lebanon Wildfire Risk Index 1

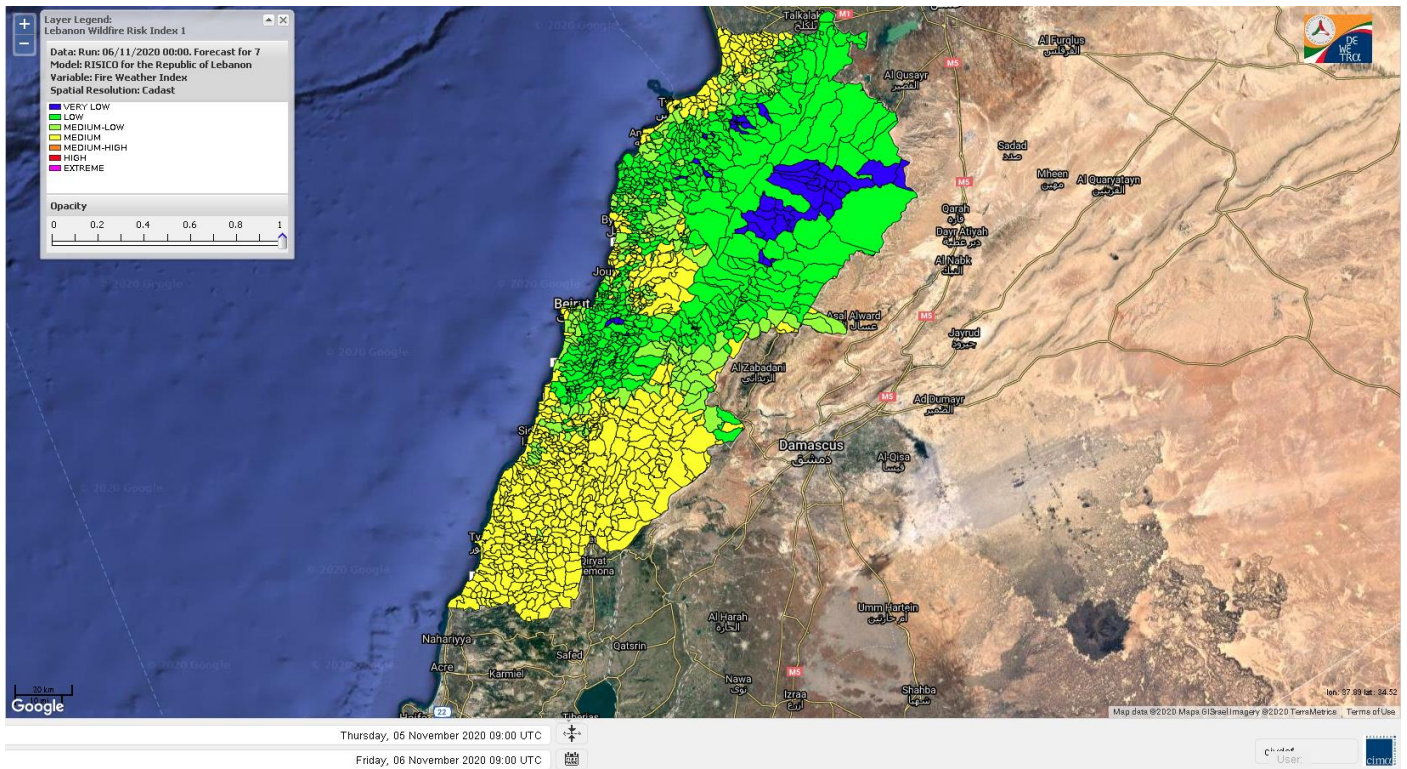
Data: Run: 06/11/2020 00:00. Forecast for 6  
Model: RISICO for the Republic of Lebanon  
Variable: Fire Weather Index  
Spatial Resolution: Caza

- VERY LOW
- LOW
- MEDIUM-LOW
- MEDIUM
- MEDIUM-HIGH
- HIGH
- EXTREME

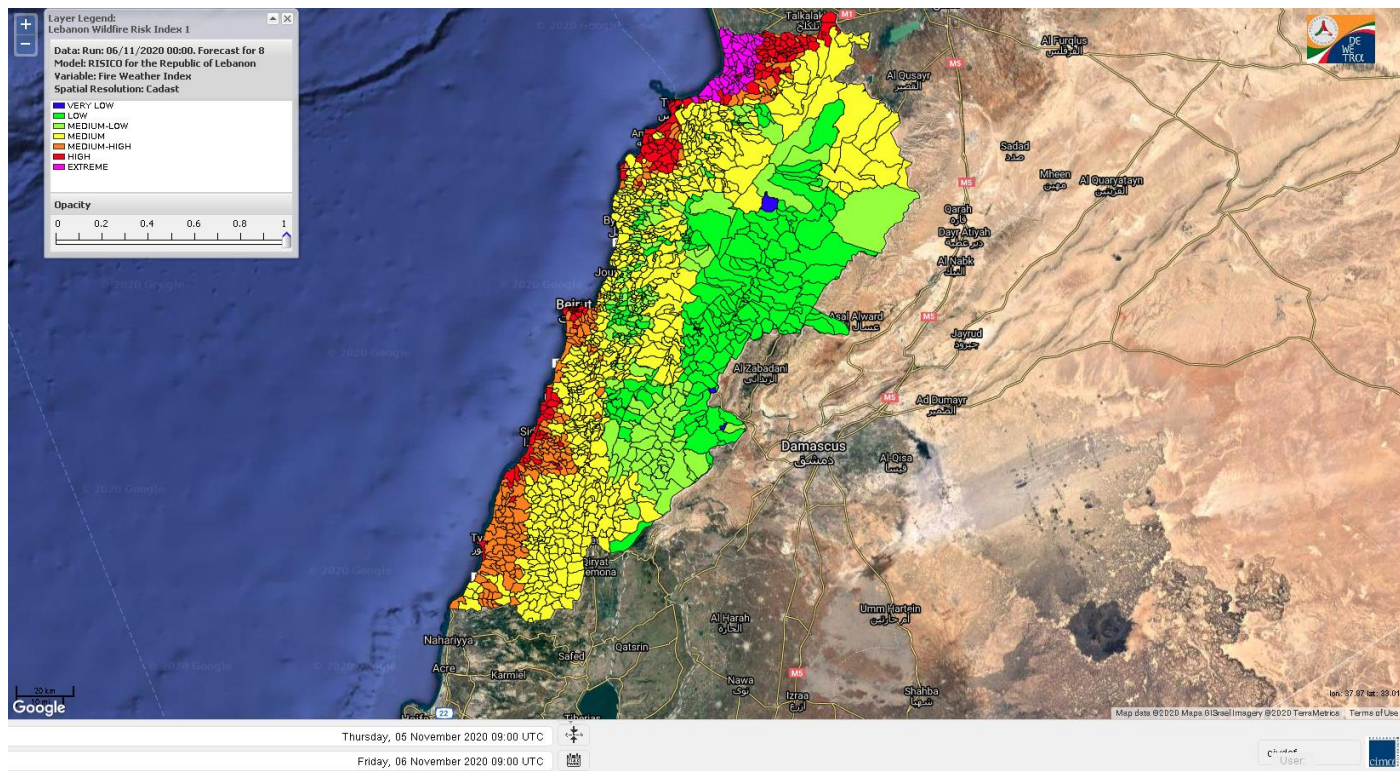
# Lebanon for 6 November 2020



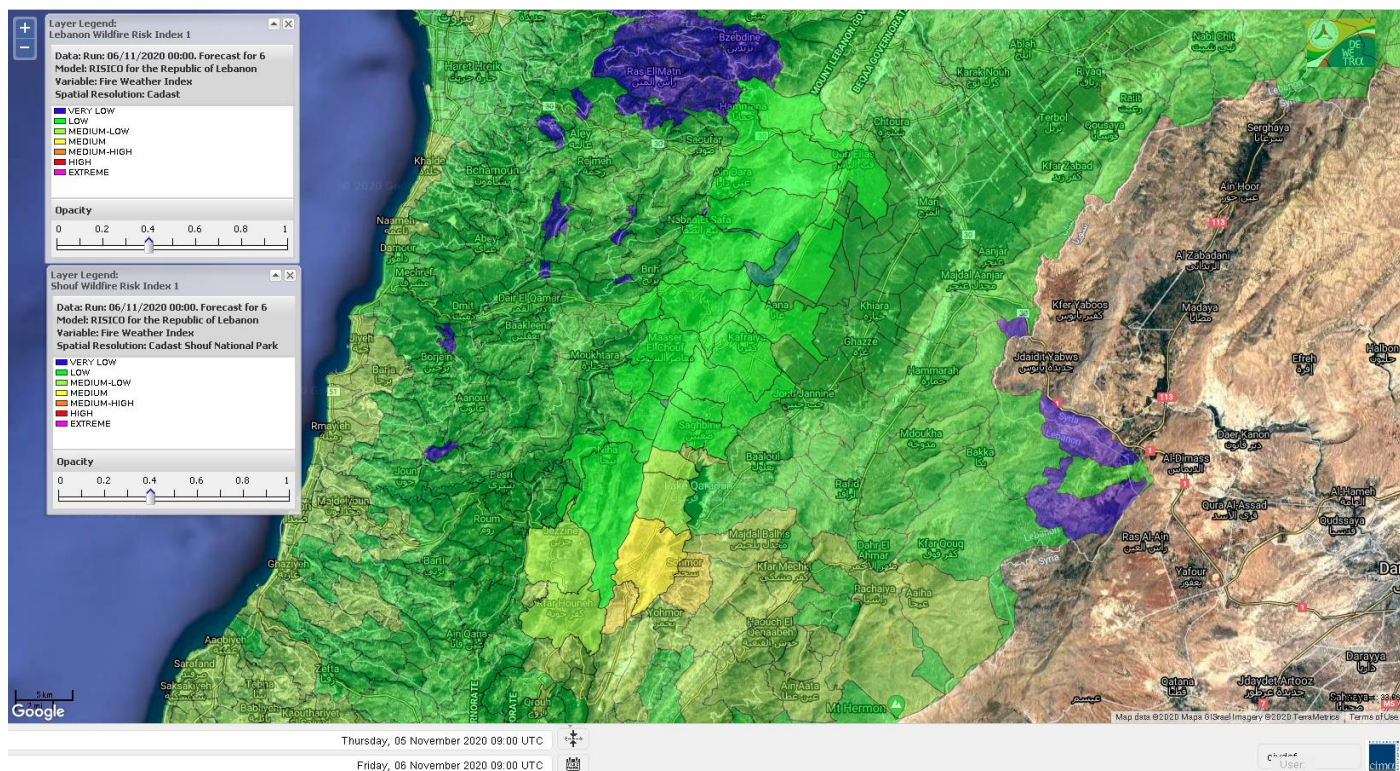
# Lebanon for 7 November 2020



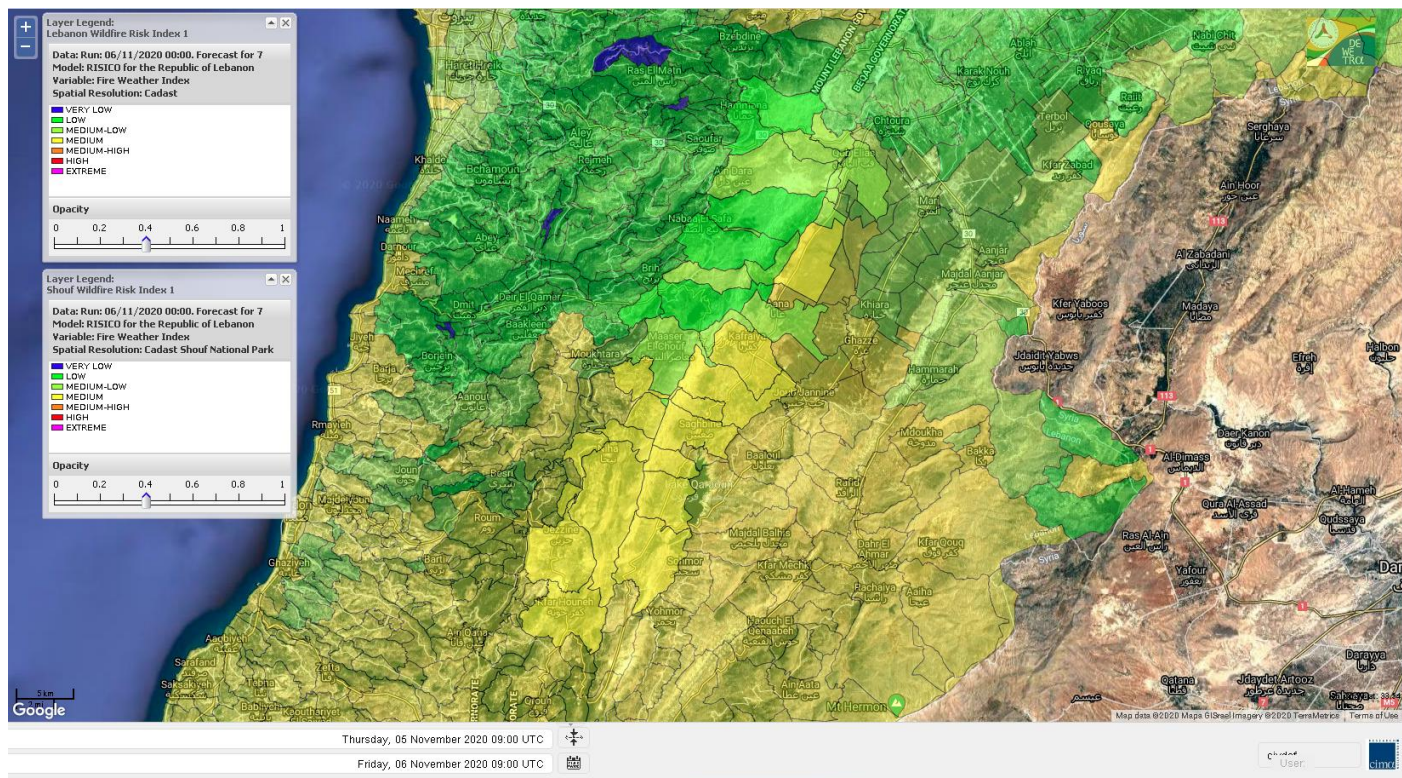
# Lebanon for 8 November 2020



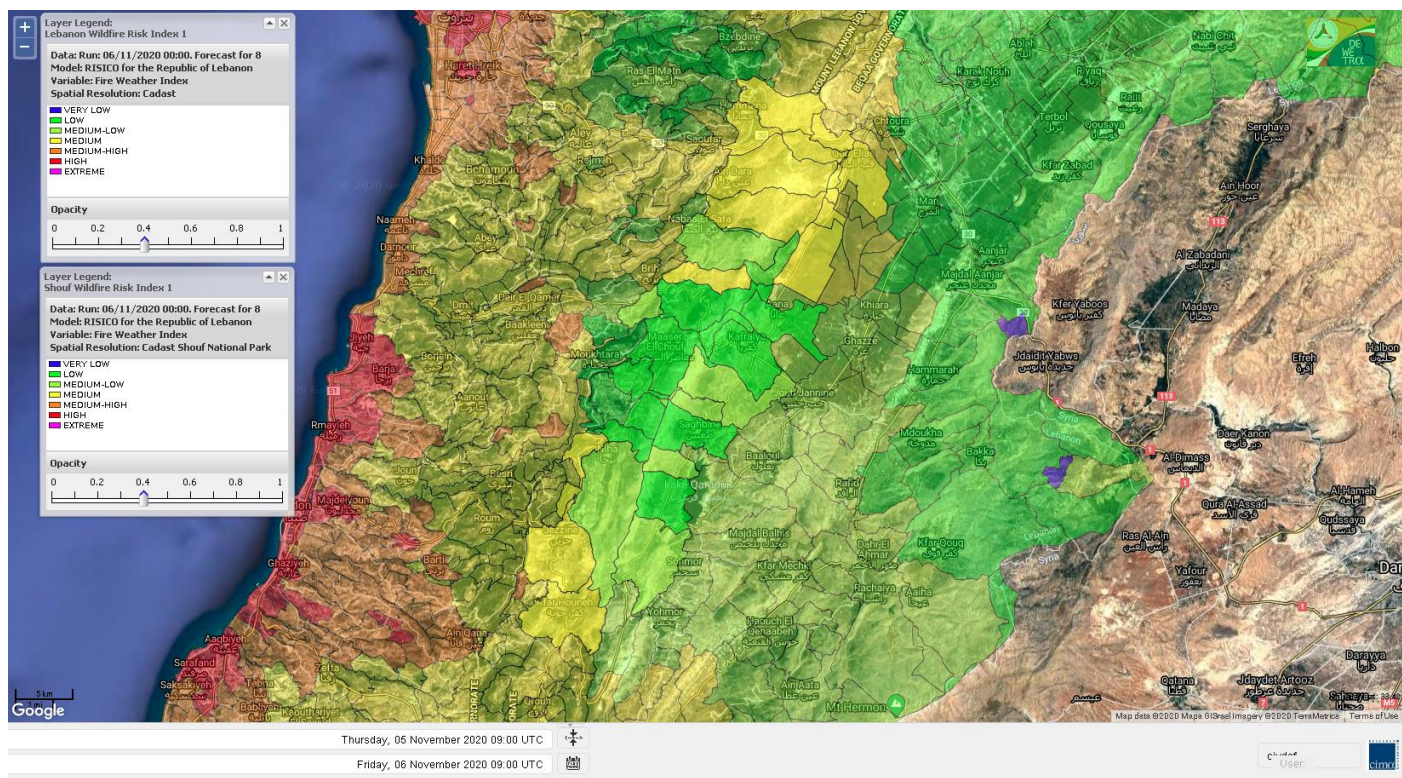
# Shouf Biosphere Reserve Forecast for 6 November 2020



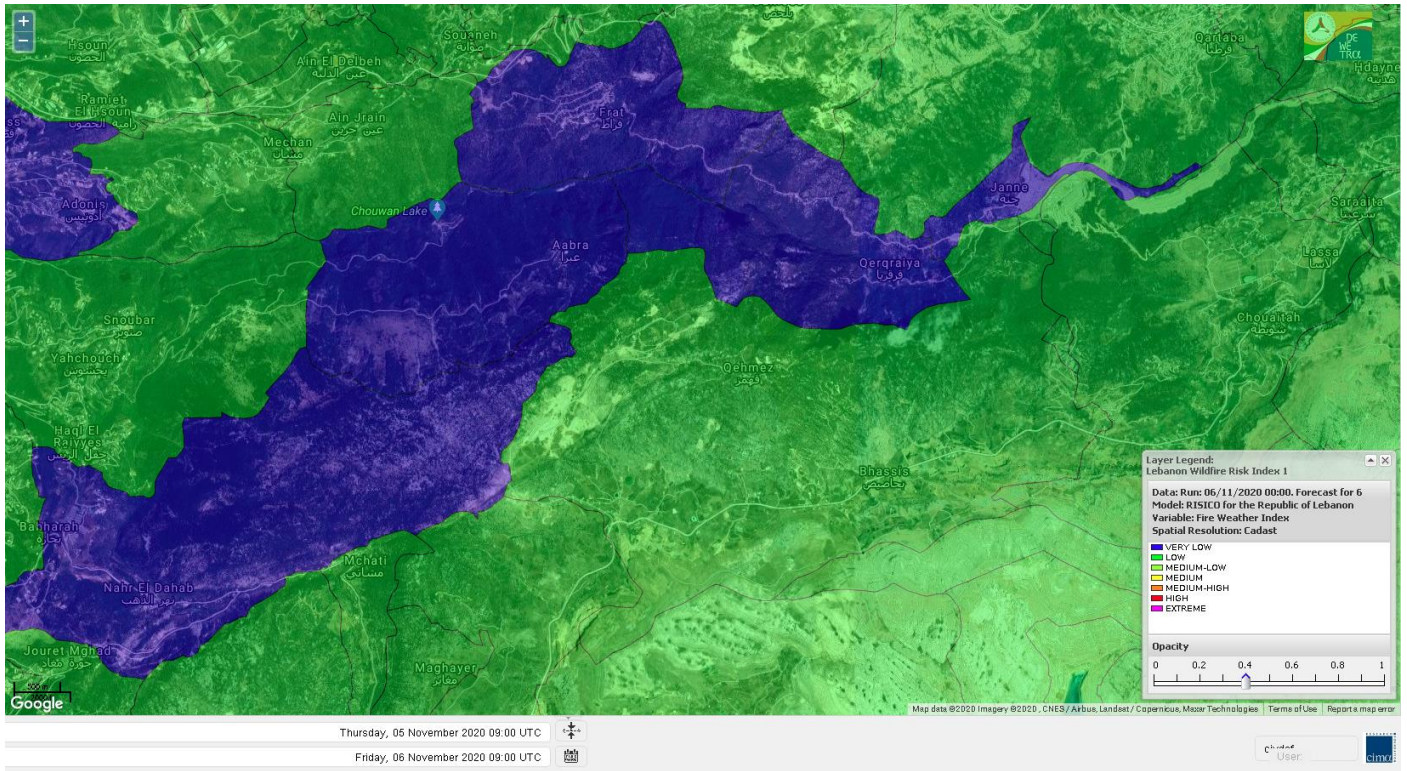
# Shouf Biosphere Reserve Forecast for 7 November 2020



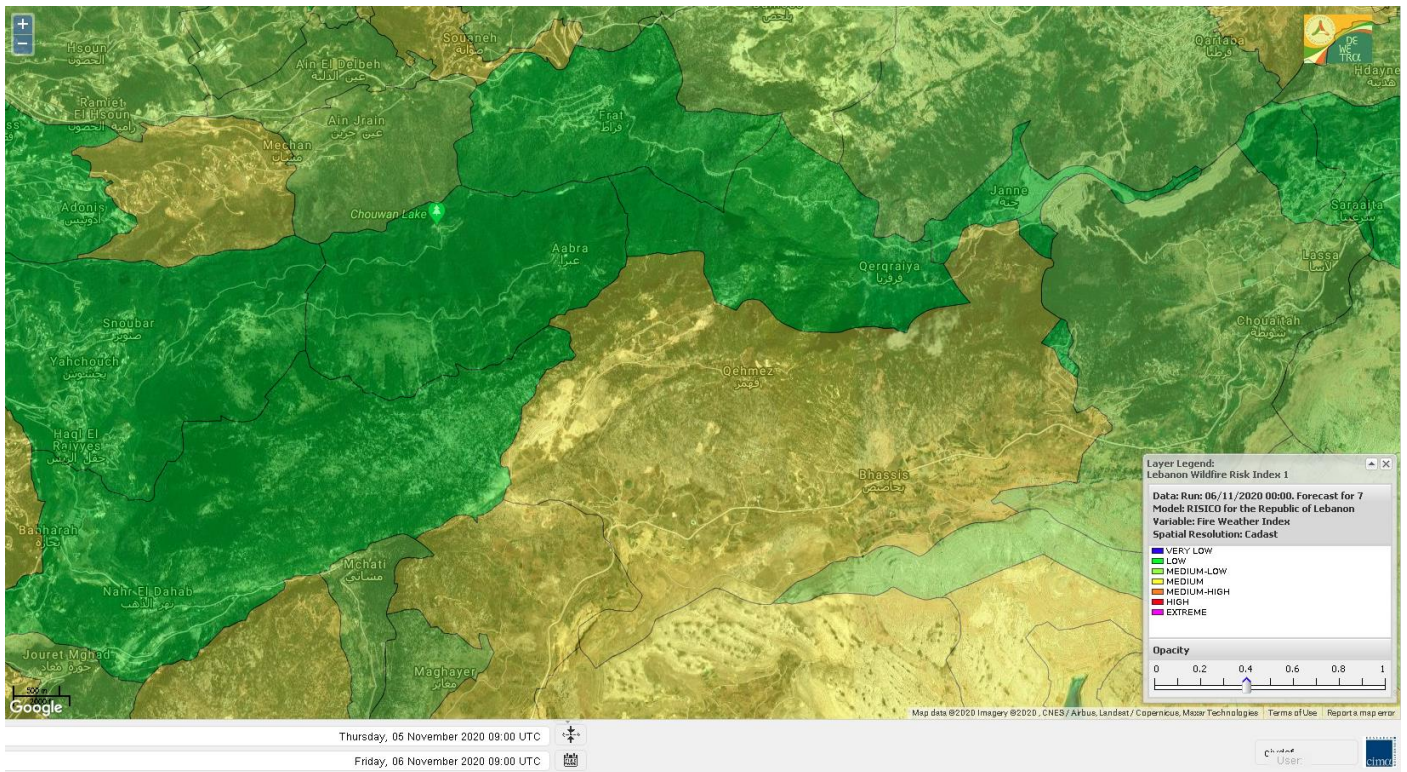
# Shouf Biosphere Reserve Forecast for 8 November 2020



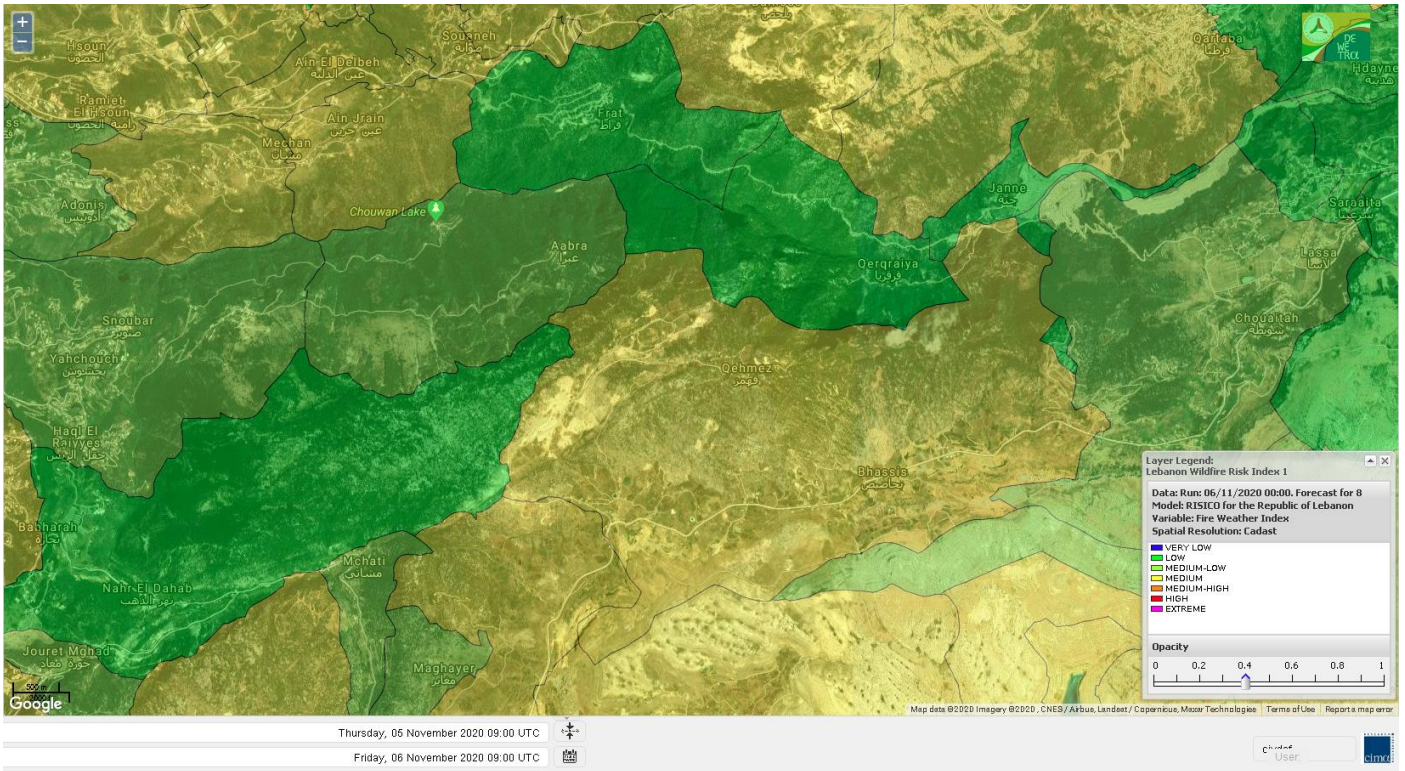
# Jabal Moussa Reserve Forecast for 6 November 2020



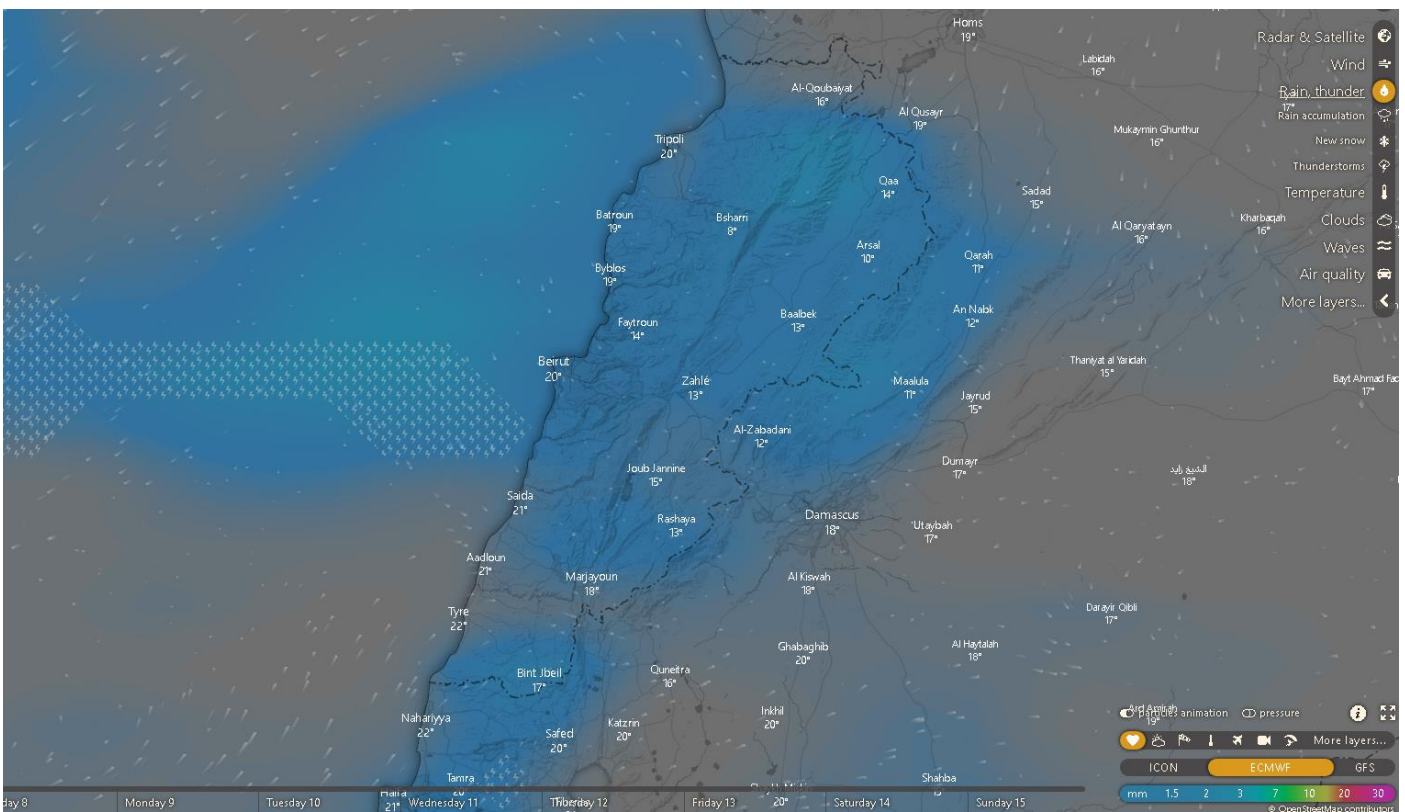
# Jabal Moussa Reserve Forecast for 7 November 2020



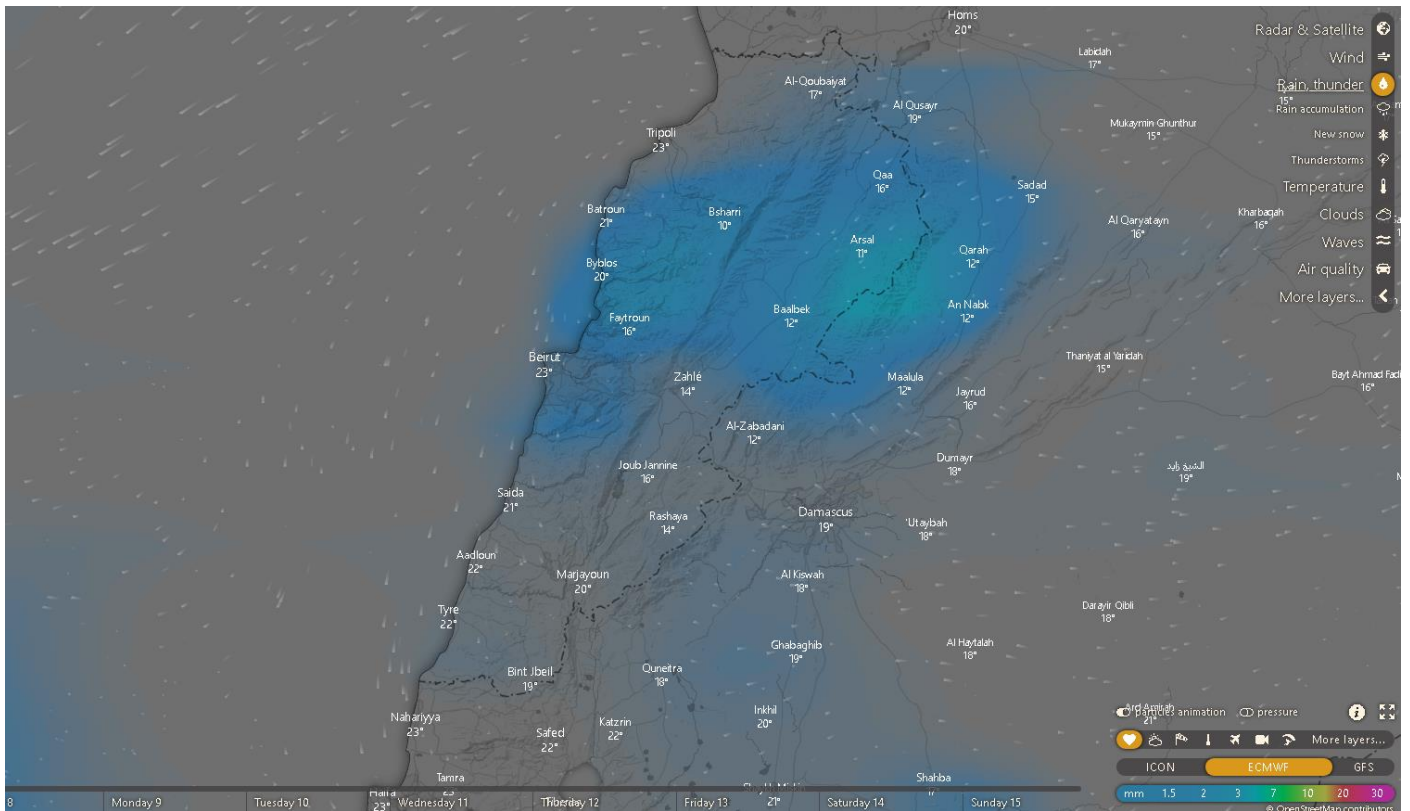
# Jabal Moussa Reserve Forecast for 8 November 2020



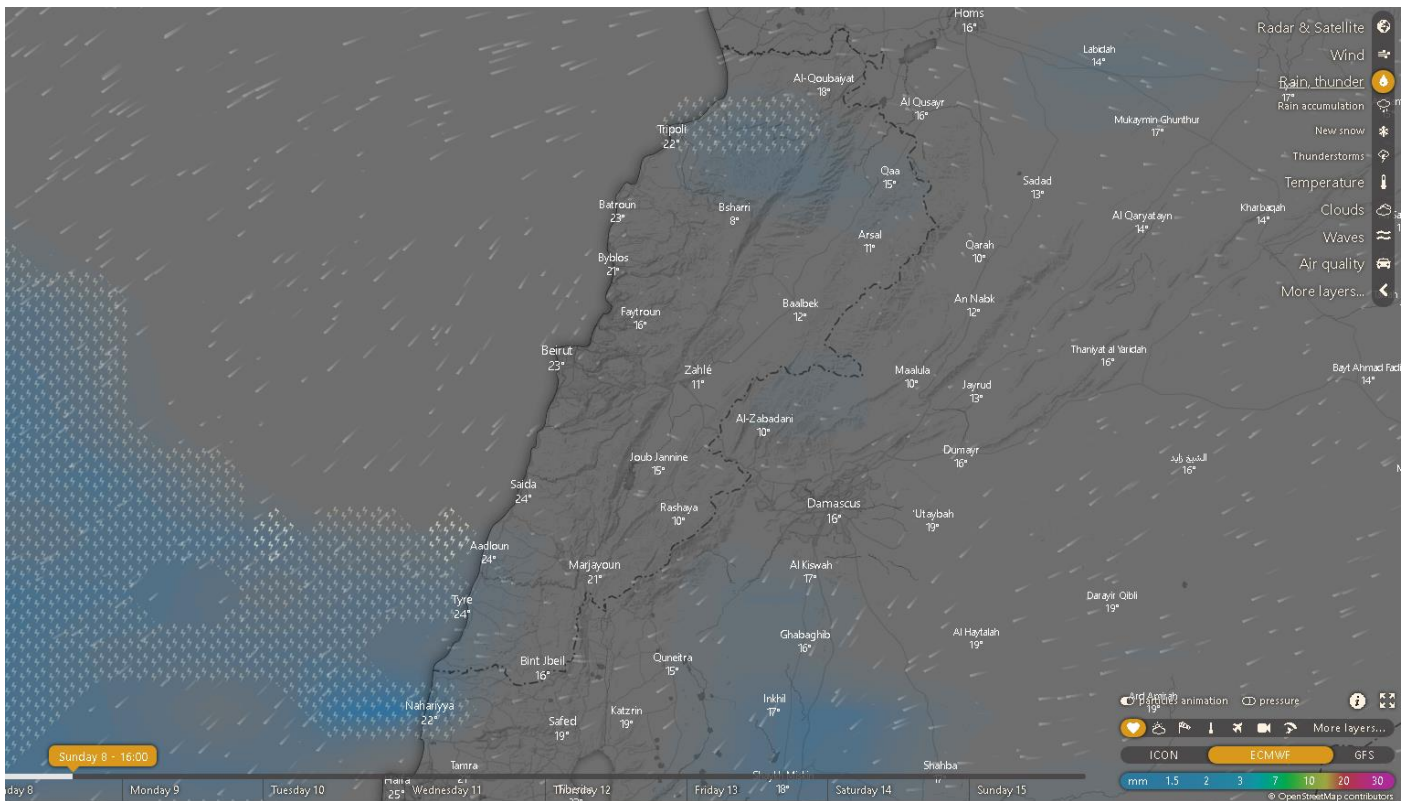
# Lebanon for 6 November 2020



# Lebanon for 7 November 2020



# Lebanon for 8 November 2020



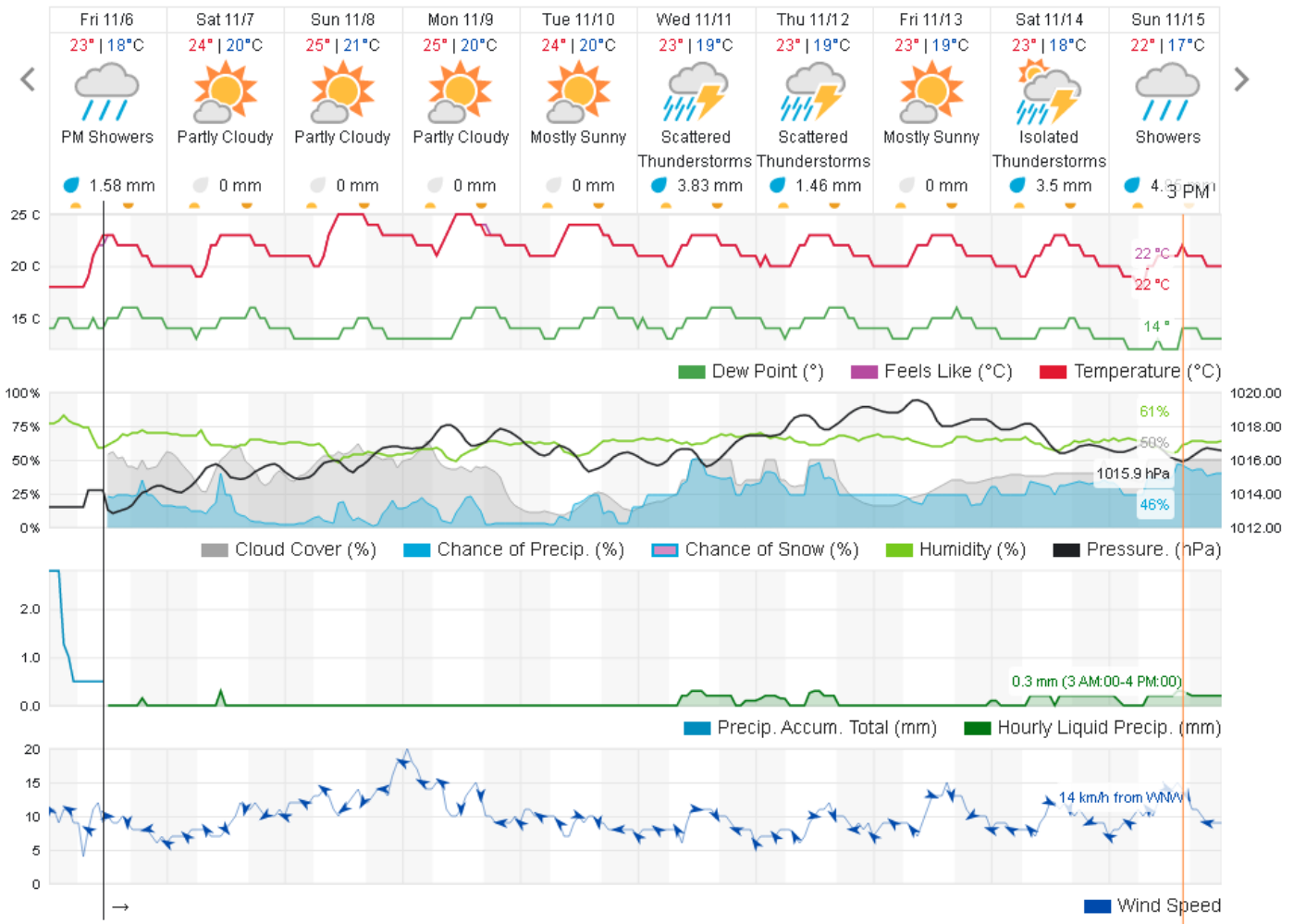


# Beirut, Beirut, Lebanon 10-Day Weather Forecast ★ 🏠

☀️ 21° **ACHRAFIEH,RIZK STATION** | [CHANGE](#) ▼

- TODAY
- HOURLY
- 10-DAY
- CALENDAR
- HISTORY
- WUNDERMAP

⚙️ Customize



## Nord

### Koura

Municipality	06-Nov	07-Nov	08-Nov	Municipality	06-Nov	07-Nov	08-Nov	Municipality	06-Nov	07-Nov	08-Nov
Aaba	L	L	H	Afsaddiq	L	ML	H	Ain Ekrine	L	ML	H
Amioun	L	L	H	Anfeh	L	M	H	Badbhoun	L	ML	H
Barghoun	L	L	H	Barsa	L	L	MH	Batroumine	L	ML	H
Bdebba	L	ML	H	Bechmizine	L	L	H	Bednayel El-Koura	L	L	M
Bhabbouch El-Koura	L	L	MH	Bkeftine	L	L	M	Bnehran	L	L	M
Bqaiia El-Koura	L	L	M	Bsarma	L	L	H	Btaaboura	L	L	H
Bterram	L	L	H	Btouratij	L	L	MH	Bziza	L	L	H
Dar Beehtar	L	L	H	Dar Chmezzine	L	ML	H	Deddeh	L	ML	H
Deir El-Balamand	L	L	M	Fih	L	ML	H	Hraiche	L	M	H
Ijdaabrine	L	L	MH	Kaftoun	L	L	MH	Kefraya El-Koura	L	L	H
Kfarakka	L	L	H	Kfarhata	L	L	MH	Kfarhazir	L	ML	H

Kfarkahel	L	L	M	Kfarsaroun	L	L	H	Kosba	L	L	MH
Mejdel el-Koura	L	L	M	Nakhle	L	L	MH	Qalhat	L	L	M
Ras Masqa	L	ML	H	Rechdibbine	L	ML	M	Zakroun	L	M	H
Zgharta El-Mtaouile	L	L	M								

## Bcharre

Municipality	06-Nov	07-Nov	08-Nov	Municipality	06-Nov	07-Nov	08-Nov	Municipality	06-Nov	07-Nov	08-Nov
Aabdine	L	L	M	Bane	L	L	M	Barhelioun	L	L	M
Bazouone	L	L	M	Becharre	L	L	M	Beit Menzer	L	L	M
Billa	L	L	M	Blaouza	L	L	M	Bqaa Kafra	L	L	M
Bqerqacha	L	L	M	Breissat	L	L	M	Dimane	L	L	M
Hadath El Jobbeh	L	L	M	Hadchit	L	L	M	Hasroun	L	L	M
Mazraat Aassaf	VL	VL	L	Mazraat Bani Saab	L	L	M	Mchaa El-Jobbeh	L	L	M
Metrit	L	L	M	Moghr El-Ahoual	L	L	M	Ouadi Qannoubine	VL	VL	L
Qanat	L	L	M	Qnayouer	L	L	ML	Tourza	L	L	M

## Batroun

Municipality	06-Nov	07-Nov	08-Nov	Municipality	06-Nov	07-Nov	08-Nov	Municipality	06-Nov	07-Nov	08-Nov
Aabrine	VL	L	M	Aalali	L	ML	M	Aartziz	VL	VL	M
Abdelli	VL	L	M	Ajdabra	VL	L	M	Assia	L	L	M
Basbina	L	L	MH	Batroun	L	L	H	Bcheleh	L	ML	M
Bechtoudar	L	L	M	Beit Chlala	L	L	M	Beit Kassab	VL	VL	M
Bijdarfil	L	L	MH	Bqesmaya	L	L	M	Chatine	L	L	L
Chebtin	VL	L	M	Chekka	L	ML	H	Daael	L	L	M
Dahr Abi Yaghi	VL	L	ML	Daraya El-Batroun	L	L	MH	Deir Billa	L	L	M
Deir Kfifane	L	L	MH	Deir Mar Youhanna EL	L	L	M	Deir Mar Youssef Jra	VL	L	M
Douma	L	L	M	Douq	VL	L	M	Eddeh El-Batroun	L	L	M
Ftahat El-Batroun	VL	L	M	Ghouma	L	L	M	Hadoutoun	L	L	M
Hamat	L	L	M	Harbouna	VL	L	M	Hardine	VL	L	M
Helta	VL	L	M	Hery	L	ML	H	Jebbla	VL	L	M
Jrabta El-Batroun	L	ML	M	Jrane El-Batroun	L	L	MH	Kfar Aabida	L	L	MH
Kfar Halda	L	L	M	Kfarb Shlaimane	VL	L	M	Kfarhatna	VL	L	M
Kfarhay	L	L	MH	Kfarhelos	VL	L	M	Kfifane	L	L	H
Kfour El Arabi	L	L	M	Koubba	L	L	MH	Kour	VL	L	M
Mar Mama	VL	L	L	Masrah	VL	L	L	Mehmarch	L	M	M
Mrah Chdid	L	L	M	Mrah El Ziyat	VL	L	M	Mrah El-Hajj	VL	L	M
Nahle El-Batroun	VL	L	M	Niha El-Batroun	L	L	M	Ouahj El-Hajjar	L	L	MH
Ouata Houb	L	L	L	Qatnaaoun	L	L	M	Racha	L	ML	M
Rachana	L	L	M	Rachkida	VL	L	M	Ram El-Batroun	VL	L	ML
Ras Nahhach	VL	L	M	Selaata	L	L	H	Sghar	L	ML	M
Smar Jbayl	L	L	M	Sourat El-Batroun	VL	L	M	Tannourine El-Faouqa	L	L	ML
Tannourine Et-Tahta	L	L	M	Thoum	L	L	M	Toula El-Batroun	VL	L	M
Zan	VL	L	M								

## Zgharta

Municipality	06-Nov	07-Nov	08-Nov	Municipality	06-Nov	07-Nov	08-Nov	Municipality	06-Nov	07-Nov	08-Nov
Aachach	L	M	M	Aalma	L	M	M	Aarde	L	L	M

Aintourine	L	L	M	Arabet Qozhaya	L	L	M	Arde	L	ML	M
Arjis	L	L	M	Asnoun	L	L	M	Ayto	L	L	M
Basloukit	L	L	M	Bchannine	L	L	M	Besebeel	L	L	M
Bhairret Toula	L	L	M	Bnachee	L	L	M	Boussit	ML	M	M
Danha	L	L	M	Daraiya Zgharta	L	L	M	Deir Jdeide	L	L	M
Ehden	L	L	M	Halan	M	M	M	Hariq Zgharta	L	L	M
Houakir	L	L	M	Hraiqis	L	M	MH	Iaal	L	L	M
Ijbaa	L	L	M	Karm Saddeh	L	L	M	Kfarchakhna	L	L	M
Kfardlaqous	L	L	M	Kfarfou	L	L	M	Kfarhata Zgharta	L	L	M
Kfarhoura	L	L	M	Kfarsghab	L	L	M	Kfaryachit	L	L	M
Kfarzaina	L	L	M	Khaldiye	L	L	M	Mazraat Ajbeaa	L	L	M
Mazraat Et-Teffah	L	L	M	Mazraat Jneid	L	L	M	Mejdlaiya Zgharta	L	M	M
Merh Kfarsghab	L	L	M	Miryata	L	M	M	Miziara	L	L	M
Mzraat Kefraya	M	M	M	Qorah Bach	L	L	M	Rachiine	L	L	M
Ras Kifa	L	L	M	Sakhra	L	L	M	Sebhel Zgharta	L	L	M
Serhel	L	VL	ML	Tallet Zgharta	L	L	M	Toula Zgharta	L	L	M
Zgharta	L	L	M								

## Minieh-Denniye

Municipality	06-Nov	07-Nov	08-Nov	Municipality	06-Nov	07-Nov	08-Nov	Municipality	06-Nov	07-Nov	08-Nov
Aasaymout	L	L	L	Aaymar	L	L	M	Aazki	M	ML	M
Ain El-Tineh-Miniyeh	L	VL	M	Assoun	L	L	M	Bakhaaoun	L	L	M
Bchennata	L	L	M	Bechehhara	VL	VL	L	Beddawi	ML	M	H
Behouaita	L	L	M	Beit El Foqss	L	L	M	Beit Haouik	M	ML	M
Beit Zoud	L	L	M	Bekaasafrine	L	L	M	Borj El Yahoudiyeh	L	M	H
Bqarsouna	L	VL	M	Btermaz	L	L	ML	Debaael	L	L	ML
Deir Ammar	L	M	E	Deir Nbouh	L	L	M	Haouaret-Miniyeh	ML	L	M
Haql el Azimeh	L	VL	ML	Harf El Siyad	L	L	ML	Hazmiye-Miniyeh	L	VL	ML
Izal	L	L	M	Jarjour	VL	VL	L	Jayroun	L	L	L
Kahf El-Malloul	L	L	M	Karm El-Moher	L	L	M	Kfar Binine	L	L	M
Kfarchalane	M	L	M	Kfarhabou	L	L	M	Kharroub-Miniyeh	L	L	M
Mazraat El-Kreme	L	VL	L	Mazraat Ketrane	L	L	M	Merkebt	M	M	E
Minyeh	ML	M	E	Mrah El Sfirat	L	VL	ML	Mrah Sraj	L	L	M
Mrebbine	L	L	ML	Nabi Youcheaa	L	M	E	Nemrine	L	L	M
Qarhaiya	ML	L	M	Qarne	L	VL	L	Qarsita	L	VL	ML
Qattineh-Miniyeh	L	VL	L	Qemmamine	L	VL	L	Qraine	L	VL	ML
Raouda-Aadoua	M	ML	H	Rihaniyet-Miniyeh	M	M	E	Sfireh	L	VL	ML
Sir Ed-Danniyeh	L	VL	M	Tarane	L	VL	ML	Terbol-Miniyeh	ML	M	M
Zaghartaghriine	L	L	M	Zouq Bhannine	M	M	E				

## Nabatiye

### Nabatiye

Municipality	06-Nov	07-Nov	08-Nov	Municipality	06-Nov	07-Nov	08-Nov	Municipality	06-Nov	07-Nov	08-Nov
Aabba	ML	M	M	Aazzi	L	M	M	Adchit El-Chqif	ML	M	M
Ain Bou Swar	L	M	MH	Ain Kana	L	M	MH	Ali El-Taher	L	M	M

Ansar	ML	M	MH	Arab Salim	L	M	M	Arnoun	L	M	M
Bfaroue	L	M	M	Breyqaah	ML	M	M	Charqiyeh	ML	M	M
Choukine	L	M	M	Deir El Zahrani	L	M	M	Doueir El-Nabatiyeh	ML	M	M
Habbouch El-Nabatiye	L	M	M	Hamra El-Nabatiyeh	L	M	M	Harouf El-Nabatiyeh	L	M	M
Hmaile	L	M	M	Houmin El Faouqa	L	M	M	Houmin El Tahta	L	M	MH
Jarjough	L	M	M	Jbaah El-Nabatiyeh	L	M	M	Jebchit	L	M	M
Kfar Djal El-Nabatiy	L	M	M	Kfar Remmane	L	M	M	Kfar Sir	ML	M	M
Kfar Tebnit	L	M	M	Kfarfila	L	M	MH	Kfour El-Nabatieh	L	M	M
Mayfadoun	L	M	M	Mazraat Bsaffour	L	M	M	Mazraat Chalbaal	L	M	M
Mazraat Dmoul	ML	M	M	Mazraat El Khreibeh	L	M	H	Mazraat El-Bayad El-	L	M	M
Mazraat Kfarjaouz	L	M	M	Mazraat Qalaat Meiss	ML	M	M	Nabatiyeh El-Fawka	L	M	M
Nabatiyeh Et-Tahta	L	M	M	Namiriyeh	ML	M	M	Qaaqaaiyet El Jisr	L	M	M
Qossaibeh El-Nabatiy	ML	M	M	Roumine	L	M	MH	Sarba El-Nabatieh	L	M	MH
Sir El-Gharbiyeh	ML	M	M	Toul	L	M	M	Yehmor El-Nabatiyeh	L	M	M
Zaoutar El Charkiyeh	L	M	M	Zaoutar El-Gharbiyeh	L	M	M	Zebdine El-Nabatiyeh	L	M	M
Zefta	L	M	M								

## Hasbaila

Municipality	06-Nov	07-Nov	08-Nov	Municipality	06-Nov	07-Nov	08-Nov	Municipality	06-Nov	07-Nov	08-Nov
Aain Jarfa	L	M	M	Abou Qamha	L	M	M	Ain Qania	L	M	ML
Bourghos	ML	M	M	Chebaa	L	M	M	Chouaya Hasbaya	ML	M	M
Dellafeh	ML	M	M	Fardiss Hasbaila	L	M	M	Hasbaya	L	M	M
Hbariyeh	L	M	ML	Kaoukaba Hasbaila	L	M	M	Kfar Chouba	L	M	M
Kfar Hamam	L	M	M	Kfeir El-Zait	ML	M	ML	Khalwat Hasbaya	L	M	ML
Khreibet Hasbaila	L	M	M	Majidiyeh Hasbaila	L	M	M	Marj Ez-Zhour (Haouc	ML	M	ML
Meri	L	M	M	Mimass	ML	M	M	Rachaiya El-Fokhar	L	M	M
Salaiyeb	L	M	M								

## Marjayoun

Municipality	06-Nov	07-Nov	08-Nov	Municipality	06-Nov	07-Nov	08-Nov	Municipality	06-Nov	07-Nov	08-Nov
Aalmane Marjaayoun	L	M	M	Aamra	L	M	M	Adayseh Marjaayoun	L	M	M
Adchit El-Koussair	L	M	M	Ain Aarab Marjaayoun	L	M	M	Bani Haiyann	L	M	M
Blatt Marjaayoun	L	M	M	Blida	ML	M	M	Borj El-Moulouk	L	M	M
Boueyda Marjaayoun	L	M	M	Deir Mimass	L	M	M	Deir Siriane	L	M	M
Dibbine	L	M	M	Ebel El Saqi	L	M	M	Houla	L	M	M
Houra	L	M	M	Kfar Kila	L	M	M	Khiam Marjaayoun	L	M	M
Klayaa	L	M	M	Majdel Selem	L	M	M	Marjaayoun	L	M	M
Markaba	L	M	M	Mays El-Jabal	ML	M	M	Mazraat Doumiat	L	M	M
Mazraat Sarada	L	M	M	Mhaibib	ML	M	M	Qabrikha	L	M	M
Qantara	L	M	M	Rab El-Thalathine	L	M	M	Saouaneh Marjayoun	L	M	M
Talloussa	L	M	M	Taybeh Matjaayoun	L	M	M	Touline	L	M	M

## Bent Jbail

Municipality	06-Nov	07-Nov	08-Nov	Municipality	06-Nov	07-Nov	08-Nov	Municipality	06-Nov	07-Nov	08-Nov
Ain-Ebel	L	M	M	Aitaroun	L	M	M	Aynata Bint Jbeil	L	M	M
Ayta El-Chaeb	L	M	M	Ayta El-Jabal	L	M	M	Beit Lif	L	M	M
Beit Yahoun	L	M	M	Bint Jbeil	L	M	M	Borj Qalaway	L	M	M

Braachit	ML	M	M	Chakra	ML	M	M	Debel	L	M	M
Deir Antar	L	M	M	Froun	L	M	M	Ghandouriyeh Bint Jb	L	M	M
Hanine	L	M	M	Hariss	L	M	M	Hdatha	L	M	M
Jmeyjmeh	L	M	M	Kafra Bint Jbeil	L	M	M	Kfar Dounine	L	M	M
Khirbet Selm	L	M	M	Kounine	ML	M	M	Maroun El Ras	L	M	M
Qalaway	L	M	M	Qaouzah	L	M	M	Qatmoun	L	M	M
Ramya Bint Jbeil	L	M	MH	Rchaf	L	M	M	Rmeich	L	M	M
Safad Al Battikh	ML	M	M	Salhaneh	L	M	M	Serbine	L	M	M
Sultanieh Bint Jbeil	L	M	M	Tibnine	L	M	M	Tiri	L	M	M
Yaroun	L	M	M	Yater	L	M	MH				

## Mont Liban

### Jbail

Municipality	06-Nov	07-Nov	08-Nov	Municipality	06-Nov	07-Nov	08-Nov	Municipality	06-Nov	07-Nov	08-Nov
Aabeydat	VL	L	ML	Aalita	VL	L	ML	Aamchit	L	M	M
Aarab El-Lahib	L	L	ML	Aarasta	L	L	L	Adonis Jbeil	VL	L	ML
Afqa Jbeil	L	L	L	Ain El Delbeh Jbeil	L	ML	M	Ain El-Ghouayba	L	L	L
Ain Jrain	L	ML	M	Ain Kfah	L	ML	M	Almat El Chemaliyat	L	ML	M
Almat El-Jenoubiya	L	ML	M	Aqoura	L	L	L	Bayzoun	L	ML	M
Bchille Jbeil	L	ML	M	Bechtida	VL	L	L	Behdaydat	VL	L	M
Beit Habbaq	L	ML	M	Bejjeh	L	ML	M	Bekhaaz	L	L	M
Berbara Jbeil	L	ML	M	Bintael	VL	L	M	Birket Hjoula	VL	L	L
Blatt Jbeil	L	M	M	Boulhos	L	ML	M	Breyj Jbeil	VL	L	L
Chamat	L	ML	M	Chikhane	L	L	M	Chmout	VL	L	M
Eddah Jbeil	L	M	M	Ehmej	L	ML	M	Fatre	VL	L	ML
Ferhet	L	M	M	Fghal	VL	L	M	Frat	VL	L	L
Ghabat	L	L	L	Ghalboun	VL	L	M	Gharzouz	L	ML	M
Ghofrine	L	ML	M	Habil	VL	L	L	Halate	L	ML	M
Haqel	VL	L	ML	Hbaline	L	ML	M	Hboub	L	M	M
Hdeine	L	ML	L	Hema Er-Rehban	L	M	ML	Hema Mar Maroun Aann	L	M	M
Hjoula	VL	ML	ML	Hosrayel	L	L	M	Hsarat	L	L	M
Hsoun	L	ML	M	Jaj	L	ML	M	Janne	VL	L	L
Jbeil	L	M	M	Jeddey Jbeil	VL	L	M	Jlisse	VL	L	L
Jouret El-Qattine	L	ML	M	Kfar Baal Annaya	L	ML	M	Kfar Kidde	L	L	M
Kfar Kouas	L	ML	ML	Kfar Mashoun	L	ML	M	Kfoun	VL	L	ML
Kharbe Jbeil	L	ML	M	Laqlouq	L	M	ML	Lassa	L	ML	ML
Lehfed	VL	L	ML	Maad	L	ML	M	Mar Sarkis	L	M	L
Mastita	L	M	M	Mayfouq	L	L	ML	Mazraat El Siyad	L	M	M
Mazraat El-Maaden	VL	L	ML	Mechane	L	M	M	Mechmech Jbeil	L	ML	ML
Mehrin	L	M	M	Mejdel El-Akoura	L	L	L	Mghayreh Jbeil	L	ML	L
Mounsef	L	ML	M	Nahr Ibrahim	L	M	M	Qahmez	L	M	M
Qartaba	L	ML	M	Qartaboun	L	M	M	Qattara Jbeil	VL	L	L
Qorqraya	VL	L	L	Ramout	L	ML	M	Ras Osta	VL	L	ML
Rihane Jbeil	L	ML	M	Sakiet El-Khayt	VL	L	M	Saqi Richmaya	L	ML	M
Sebrine	VL	L	ML	Seraita	L	L	L	Souane Jbeil	L	M	M

Tadmor	L	M	L	Tartej	L	ML	ML	Torzaiya	L	ML	M
Yanouh Jbeil	L	ML	L	Zibidine Jbeil	VL	L	ML				

## El Metn

Municipality	06-Nov	07-Nov	08-Nov	Municipality	06-Nov	07-Nov	08-Nov	Municipality	06-Nov	07-Nov	08-Nov
Aain El-Qabu	VL	ML	ML	Aain El-Qach	L	M	M	Aain El-Teffaha	L	M	ML
Aain el-Safssaf El-M	L	ML	ML	Abou Mizane	L	M	ML	Ain Aar	L	ML	M
Ain Alaq	VL	L	ML	Ain El-Kharroube	L	M	M	Ain El-Sendianeh	L	M	M
Ain El-Zeitoune	L	ML	ML	Ain Saadeh	L	L	M	Aintoura El-Matn	L	M	M
Amaret Chalhoub	L	ML	MH	Antelias	L	L	M	Atchaneh	VL	L	L
Ayroun	L	M	M	Baabdat	VL	L	L	Baouchariyeh	L	L	MH
Baskinta	L	M	M	Beit Chabab	VL	L	ML	Beit El-Chaar	L	L	M
Beit El-Kekko	L	M	M	Beit Mery	L	L	M	Bhersaf	VL	L	L
Bikfaya	L	ML	ML	Biyakout	L	L	MH	Bnabil	L	ML	ML
Bourj Hammoud	ML	ML	MH	Bqennaya	L	L	M	Broummana El-Matn	L	L	ML
Bsalim	L	L	M	Bsifrine	VL	ML	ML	Bteghrine	L	ML	ML
Chaouiye	L	L	ML	Chouaya El-Matn	L	M	M	Choueir	L	M	ML
Chrine	L	ML	L	Dahr El Sawan El-Mat	VL	L	ML	Daychouniyeh	L	L	MH
Dbayeh	L	ML	MH	Deir Chamra	VL	L	L	Deir Mar Abda el Mch	VL	L	ML
Deir Mar Roukouz	L	L	MH	Deir Tamiche	L	L	ML	Dik El-Mehdi	L	L	M
Dikwaneh	L	ML	MH	Douar El-Matn	L	M	ML	Fanar	L	L	MH
Fraike	VL	L	L	Haret El-Ballaneh	L	L	M	Hbous	L	M	M
Himlaya	L	M	M	Jal El Did	L	ML	MH	Jdeideh El-Metn	L	L	MH
Jouar El-Matn	L	ML	L	Jouret El-Ballout	VL	L	ML	Kaaqour	L	ML	ML
Kfar Aaqab	L	ML	ML	Kfertay El-Matn	L	M	M	Khenchara	L	M	ML
Khillet El-Mtain	L	ML	ML	Konnabat Broummana	L	L	ML	Konnabat Salima	VL	L	L
Machraah El-Matn	L	M	M	Majdel Tarchich	L	M	M	Majzoub	L	L	M
Mansouriyeh El-Metn	L	L	MH	Mar Boutros Karm Et-	VL	L	L	Mar Chaya et Mzekke	VL	L	L
Mar Moussa Ed-Douar	VL	L	ML	Marjaba	L	M	ML	Masqa	VL	L	L
Mayasse	L	ML	ML	Mazraat Deir Aoukar	L	L	M	Mazraat El-Hadirat	L	L	M
Mazraat Yachouh	L	M	M	Mchikha	L	M	M	Menqlet Mezher	L	L	M
Mhaydseh Matn	L	ML	ML	Mkalles	L	L	MH	Mrouj	L	M	M
Mtain	L	M	M	Mtayleb	L	L	M	Nabay	VL	L	L
Naccache	L	L	M	Ouadi Chahine	VL	L	ML	Ouadi El-Karm El-Mat	L	ML	ML
Ouata El-Mrouj	L	M	M	Ouyoun El-Matn	VL	L	L	Qornet Chehwan	L	L	ML
Qornet El-Hamra	VL	L	ML	Roumieh	L	L	M	Sfeilet Bikfaya	L	ML	ML
Sinn El-Fil	L	ML	MH	Zabbougha	VL	ML	ML	Zalqa	L	L	MH
Zarououn	L	ML	ML	Zekrite	VL	L	ML	Zighrine El-Matn	L	M	M
Zouk El-Khrab	L	L	M								

## Chouf

Municipality	06-Nov	07-Nov	08-Nov	Municipality	06-Nov	07-Nov	08-Nov	Municipality	06-Nov	07-Nov	08-Nov
Aalmane El-Chouf	ML	ML	MH	Aammq El-Chouf	L	L	M	Ain Ouzein	L	L	L
Ain Qani	L	ML	L	Ain Zhalta	L	L	ML	Ainbal	L	ML	M
Amateur	L	M	M	Anout	L	ML	M	Atrine	L	M	M
Baadarane	L	M	L	Baaqline	L	L	M	Baasir	ML	M	H
Barja	ML	M	H	Barouk	L	L	L	Bater	L	M	M

Batloun	L	L	ML	Bayqoun	L	M	MH	Bchetfine	L	L	M
Beiteddine	L	L	M	Benouati Ech-Chouf	L	L	M	Berjein	L	L	M
Bireh et Mtalleh	L	L	M	Biret El-Chouf	L	L	M	Bkechtine Ouel Mchei	VL	L	M
Bkifa El-Chouf	L	M	M	Botme	L	ML	L	Bqaiaa Ech-Chouf	L	L	M
Bsaba El-Chouf	L	M	M	Chammis El-Chouf	L	M	MH	Chehim	L	ML	M
Chemaarine	L	L	M	Chourit	VL	L	ML	Daher El-Chouf	L	L	M
Dalhoun	L	ML	M	Damour	L	M	MH	Daraya El-Chouf	L	L	M
Deir El-Moukhalles	L	ML	M	Deir Baba	L	L	M	Deir Dourit	L	L	M
Deir El-Qamar	L	L	M	Deir Kouche	L	L	M	Dibbieh	L	L	M
Dmit	L	L	M	Fouara Jaafar	VL	L	ML	Fraidis El-Chouf	L	ML	M
Ghabet Jaafar	L	L	M	Gharife	L	ML	M	Haret Jandal	L	M	L
Hasrout	L	ML	M	Jadra	ML	M	H	Jahlieh	L	L	M
Jbeih El-Chouf	L	M	L	Jdeidet El-Chouf	L	M	M	Jiyeh	ML	M	H
Jleiliyeh	L	M	M	Jmailiyeh	L	M	MH	Joun	L	ML	M
Kahlounie El-Chouf	L	M	M	Ketermaya	L	M	MH	Kfar Faqoud	L	L	M
Kfar Hamal	L	L	MH	Kfar Him	L	L	M	Kfar Katra	L	L	M
Kfar Niss	L	L	M	Kfar hay	L	L	M	Kfarnabrakh	L	L	ML
Khirbet Bisri	L	M	M	Knayse El-Chouf	VL	L	M	Maaniyeh	L	ML	MH
Maasser Beiteddine	L	L	M	Maasser El-Chouf	L	ML	L	Majdalouna	L	ML	M
Majdel El-Meouch	L	L	M	Mazboud	L	M	MH	Mazmoura	L	M	M
Mazraat El Chouf	L	M	M	Mazraat El Daher	L	M	M	Mazraat El-Douair	L	L	ML
Mechref	L	ML	M	Mghairie	L	M	MH	Mghayrie El-Chouf	L	L	M
Moukhtara	L	ML	ML	Mrusti	L	M	L	Mtolle	L	M	MH
Naameh	ML	ML	MH	Niha El-Chouf	L	M	ML	Ouadi Abou Youssef	VL	VL	M
Ouadi Ed-Deir	L	L	M	Ouadi El-Sit	L	L	M	Ouadi bnehlay	L	L	M
Qraibeh	L	M	L	Qreiaa	VL	L	M	Rmayle El-Chouf	ML	M	H
Semqaniyeh	L	M	MH	Sibline	ML	M	H	Sirjbeil	L	L	M
Warhanieh	L	L	M	Werdaniyeh	ML	M	H	Zaarourieh	L	M	M

## Baabda

Municipality	06-Nov	07-Nov	08-Nov	Municipality	06-Nov	07-Nov	08-Nov	Municipality	06-Nov	07-Nov	08-Nov
Abadiyeh	L	L	ML	Ain Mouaffaq	VL	L	ML	Araiya	L	L	M
Arbaniyeh	VL	L	L	Arsoun	VL	L	L	Baabda	L	L	MH
Baalchmey	L	L	M	Bmaryam	VL	L	ML	Bourj El-Brajneh	L	ML	MH
Boutchay	L	L	MH	Bsaba Baabda	L	L	MH	Btekhney	VL	L	ML
Btibyat	VL	L	L	Bzebdine	VL	L	ML	Chbeniyeh	L	L	M
Chiyah	L	ML	MH	Chmeisset Baabda	VL	VL	L	Chouit	VL	L	M
Deir El-harf	VL	L	ML	Deir Khouna	L	L	M	Dlaybeh	VL	L	L
Falougha	L	L	M	Furn El-Chebbak	L	ML	MH	Hadath Beyrouth	L	ML	MH
Halaliyeh Baabda	VL	L	L	Hammana	L	L	M	Haret El Sett	L	L	M
Haret Hamze	VL	L	ML	Haret Hreik	L	ML	MH	Hasbaiya El-Metn	VL	L	L
Jouar El-Hoz	VL	L	ML	Jouret Arsoun	VL	L	L	Kfar Chima	L	L	MH
Kfar Selouane	L	L	M	Khalouat Baabda	L	L	M	Kneisset Baabda	VL	VL	L
Laylakeh	L	ML	MH	Louayzeh Baabda	L	L	M	Merdache	L	L	MH
Mzairaa Baabda	VL	L	L	Ouadi Chahrour El OI	L	L	M	Ouadi Chahrour El So	L	L	M
Qalaa Baabda	VL	L	ML	Qhraybe Baabda	VL	L	ML	Qobbayaa	L	L	ML

Qornayel	VL	L	L	Qortada	VL	VL	L	Qrayeh Baabda	L	L	ML
Qsaibeh Baabda	VL	VL	L	Qtale Baabda	VL	L	L	Ras El Metn	VL	L	ML
Ras El-Haref	L	L	ML	Rouayset El-Ballout	VL	L	L	Salima Baabda	VL	L	ML
Tahouitat El Ghadir	L	M	MH	Tarchich	L	ML	M	Zandouqa	VL	VL	L

## Aley

Municipality	06-Nov	07-Nov	08-Nov	Municipality	06-Nov	07-Nov	08-Nov	Municipality	06-Nov	07-Nov	08-Nov
Abey	L	L	M	Aghmid	L	L	ML	Ain Dara	L	ML	M
Ain Drafil	L	L	M	Ain El Halazoun	L	L	M	Ain El-Rmmaneh	VL	L	M
Ain Jedideh	L	L	M	Ain Ksour	L	L	M	Ain Onoub	L	L	M
Ain Traz	L	L	M	Ainab	L	L	M	Aley	L	L	M
Aramoun	L	L	M	Aytat	L	L	MH	Azouniyeh	L	L	M
Baawerta	L	L	M	Badghan Oua Wadi Bad	L	L	M	Bassatine	L	L	M
Bayssour	L	L	M	Bchamoun	L	L	M	Bdadoun	L	L	M
Behouara	L	L	M	Bennay	L	L	M	Bhamdoun El-Dayaa	L	L	M
Bhamdoun El-Mhatta	L	L	M	Bkhechtey	L	L	M	Bleibel	L	L	M
Bmaknine	L	L	MH	Bmehray	L	L	M	Bouzrid	VL	VL	M
Bserrine	L	L	M	Bsous	VL	L	M	Btalloun	L	L	M
Btater	L	L	M	Chanay	L	L	M	Charoun	L	L	M
Chartoun	VL	L	M	Chemlane	L	L	M	Chouefat El-Aamrous	L	ML	MH
Chouefat El-Oumara	L	ML	MH	Chouefat El-Quoubbe	ML	ML	MH	Dakkoun	L	L	M
Deir Qoubel	L	L	M	Dfoun	L	L	MH	Douair El Remmaneh	VL	VL	M
Ghaboun	L	L	M	Habramoun	VL	L	L	Homs Oua Hama	VL	L	M
Houmal	L	L	M	Jisr El Qadi	L	L	M	Kehaleh	L	L	M
Keyfoun	L	L	MH	Kfar Aamey	L	L	MH	Kommatyeh	L	L	M
Maasrati	L	L	ML	Majdel Baana	L	L	M	Mansourieh et Ain El	L	L	M
Mazraat El-Nahr	VL	L	ML	Mchakhte	VL	L	ML	Mecherfeh	L	L	M
Mejdaya	L	L	M	Mrayjat	L	L	M	Ramiyeh	L	L	ML
Rechmaya	L	L	M	Rejmech	L	L	ML	Remhala	L	L	M
Rouayset El Neemane	L	L	M	Saoufar	L	L	M	Selfaya	L	L	M
Sirhmoul	L	L	M	Souq El Ghareb	L	L	MH	Taazanieh	L	L	M

## Kesrouane

Municipality	06-Nov	07-Nov	08-Nov	Municipality	06-Nov	07-Nov	08-Nov	Municipality	06-Nov	07-Nov	08-Nov
Achkout	L	M	M	Adma Oua Dafneh	L	M	M	Ain Ed-Delbe Kesroua	L	ML	ML
Ain El-Rihane	VL	L	M	Aintoura Kesrouane	L	M	M	Ajaltoun	VL	ML	M
Akaybeh Kesrouane	L	M	M	Aramoun Kesrouane	L	M	M	Azra ouel Ozor	L	M	M
Ballouneh	VL	L	ML	Batha	VL	L	L	Bekaatat Achkout	L	M	M
Bekaatat Kanaan	L	M	M	Bizhel	VL	L	ML	Bouar	L	M	M
Bqaatouta	L	M	M	Bqaq Ed-Dine	L	M	M	Bzommar	L	ML	M
Chahtoul	L	M	M	Chnaniir	VL	L	ML	Chouan	VL	L	ML
Daraya Kesrouane	L	M	M	Daroun	VL	L	ML	Deir Baqlouch	VL	L	ML
Dlebta	VL	L	ML	Eghbeh	VL	L	L	Faraya	L	M	M
Fatka	L	ML	M	Feytroun	L	M	M	Ghazir	L	M	M
Ghbaleh Kesrouane	L	M	M	Ghedrass	VL	L	ML	Ghosta	VL	L	ML
Ghyneh	L	M	M	Harharaya w Kattine	L	M	M	Harissa Kesrouane	VL	L	ML
Hayata	VL	ML	ML	Hosein	L	ML	ML	Hrajel	L	M	M



Jdeideh Ghazir	L	ML	M	Jeita	VL	ML	M	Jounieh Ghadir	L	M	M
Jounieh Haret Sakhr	L	M	M	Jounieh Salel Alma	L	M	M	Jounieh Sarba	L	ML	M
Jouret Bedrane	L	M	M	Jouret Mhad	L	ML	ML	Jouret Termos	L	M	M
Kfar Debiane	L	M	M	Kfar Tay Kesrouane	L	ML	ML	Kfar Yassine	L	M	M
Kfour Kesrouane	L	M	M	Kharayeb Nahr Ibrahi	L	L	M	Klayaat Kesrouane	L	M	M
Maarab	VL	L	L	Maaysra Kesrouane	L	ML	M	Mayrouba	L	M	M
Mazraat Er-Ras	L	ML	M	Mazraat Mrah El-Mir	L	M	M	Mchaa El Ftouh	L	ML	ML
Mchaa Faraya	L	M	M	Mchaa Kfar Dibiane	L	M	M	Mghaer	L	ML	ML
Mradiyah	VL	L	ML	Nahr Ed-Dahab	VL	L	L	Nammoura Kesrouane	L	ML	M
Ouata El Jaouz	L	M	M	Ouata Sillam	L	M	M	Raachine	L	ML	ML
Rayfoun	L	M	M	Safra Kesrouane	L	M	M	Shayle Kesrouane	VL	ML	M
Tabarja	L	M	M	Yahchouch	L	L	ML	Zaaytreh	L	ML	M
Zeytoun	L	M	M	Zouk Mikael	L	ML	M	Zouk Mosbeh	L	L	M

## Baalbek\_Hermel

### Baalbek

Municipality	06-Nov	07-Nov	08-Nov	Municipality	06-Nov	07-Nov	08-Nov	Municipality	06-Nov	07-Nov	08-Nov
Aadous	VL	VL	L	Aamchki	L	L	L	Aarsal	L	L	ML
Ain Baalbek	L	VL	M	Ain Bourday	L	L	L	Ain El-Benye	L	L	L
Ain El-Jaouz Baalbek	L	ML	L	Ain El-Siya Chadoura	L	L	L	Al Khodr Baalbek	L	L	L
Al Nabi Chit	L	L	L	Aynata Baalbek	L	L	M	Baalbek	VL	L	L
Bachwat	VL	VL	L	Barqa	VL	VL	VL	Bednayel Baalbak	L	L	L
Beit Chama	L	L	L	Bijjaje	L	VL	M	Bouday	VL	L	L
Brital	L	L	L	Btadi	VL	VL	L	Chaat	VL	VL	L
Chaibe	L	L	L	Chlifa	VL	L	L	Chmestar	L	L	L
Dar El-Oussa	VL	VL	L	Deir El-Ahmar	VL	VL	L	Deir Mar Maroun Baal	ML	L	M
Douris	VL	L	L	Fakiha	L	VL	M	Hadath Baalbek	L	L	L
Ham	L	ML	L	Haour Taala	L	L	L	Hizzine	VL	L	L
Hlebta	L	VL	L	Hosh Barada	VL	L	L	Hosh El Dahab	VL	VL	L
Hosh El Snid	L	L	L	Hosh El-Nabi	L	L	L	Hosh El-Rafiq	L	L	L
Hosh Tal Safiya	VL	VL	L	Hrebta	L	VL	L	laat	VL	L	L
Jebaa	L	L	L	Jenta	L	ML	L	Kfar Dabach	L	L	L
Kfar Dane	VL	L	L	Khraibeh El-Hermel	L	VL	L	Khreibet Baalbek	L	ML	L
Kneisset Baalbek	VL	VL	L	Labueh	L	VL	L	Maarboun	L	M	L
Majdaloun	VL	L	L	Maqneh	VL	L	L	Mazraat Beit Mcheik	L	L	L
Misraya	L	L	L	Moqraq	VL	VL	L	Nabha El-Damdoum	L	L	ML
Nabi Chbay	L	L	L	Nabi Osman	L	VL	M	Nahleh baalbek	L	L	L
Ouadi El-Oss	L	VL	L	Qaa Baayoun	ML	L	M	Qaa Jouar Maqiye	M	L	M
Qaa Ouadi El-Khanzir	M	L	M	Qah Baalbek	ML	L	M	Qarha Baalbek	VL	VL	L
Qsarnaba	L	VL	L	Ram Baalbek	VL	VL	L	Ras Baalbek El Sahl	L	L	M
Ras Baalbek El-Charq	L	VL	M	Riha	VL	VL	L	Saaide	VL	L	L
Sbouba	L	VL	ML	Seriine El-Tahta	L	L	L	Slouqi	L	L	L
Taiba Baalbek	VL	L	L	Talia	L	L	L	Taraiya	L	L	L
Temnin El Fawqa	L	L	L	Temnin El-Tahta	L	L	L	Tfail	L	ML	L
Yahfoufa	L	ML	L	Yammouneh	L	L	L	Younine	VL	L	L

Zboud	L	VL	ML								
-------	---	----	----	--	--	--	--	--	--	--	--

## Hermel

Municipality	06-Nov	07-Nov	08-Nov	Municipality	06-Nov	07-Nov	08-Nov	Municipality	06-Nov	07-Nov	08-Nov
Charbine El-Hermel	ML	L	M	Hermel Jbab	L	L	ML	Hermel	M	L	M
Maaysra El-Hermel	L	VL	L	Michaa Mrajhine	ML	L	M	Ouadi Faara	L	VL	L
Ras Baalbek - Ouadi	L	L	M	Ras Baalbek El Gharb	L	L	ML	Zighrine	L	L	L

## Akkar

### Akkar

Municipality	06-Nov	07-Nov	08-Nov	Municipality	06-Nov	07-Nov	08-Nov	Municipality	06-Nov	07-Nov	08-Nov
Aain Tinta	M	L	H	Aaiyat	M	L	H	Aakkar El-Aatiqa	ML	L	M
Aamar Aakkar	M	ML	E	Aamar El Baykat	M	M	H	Aamayer	ML	L	M
Aamriyet Aakkar	M	L	H	Aandqet	M	L	M	Aarmeh	ML	M	MH
Aarqa	M	M	E	Aawaynat	M	L	H	Aayoun Aakkar	M	L	H
Abboudiye	M	M	H	Ain El-Zeit	M	ML	H	Ain Yaaqoub	M	L	MH
Akroum	ML	L	M	Aridet Cheikh Zennad	M	M	E	Baldeb w Mazraat Bal	M	ML	MH
Barcha	M	M	H	Bardeh	M	L	H	Bebnine	M	ML	E
Beino	M	ML	MH	Beit Ayoub	M	ML	H	Beit El-Haouch	M	M	E
Beit Mellat	M	ML	H	Beit Younes	ML	L	M	Berbara Aakkar	M	L	H
Berqayel	M	ML	E	Bezbina	L	L	M	Bireh Aakkar	M	L	H
Borj	M	L	H	Bqerezla	M	M	E	Bzal	L	L	MH
Chane	L	ML	M	Chaqdouf	M	L	H	Charbila	M	ML	H
Cheikh Mohammad	M	M	E	Cheikh Taba Es-Sahl	M	M	E	Cheikh Taba	M	ML	E
Cheikh Zennad	M	M	E	Cheikhlar	M	L	H	Chir Hmairine	M	M	E
Daghle	M	L	H	Dahr Laissine	M	ML	H	Darine	M	M	E
Dawra	M	L	M	Dawsa w Baghdadi	M	L	H	Dayret Nahr El-Kabir	M	L	H
Deir Dalloum	M	ML	E	Deir Jennine	M	L	H	Denbou	ML	ML	H
Dibbbiyeh	M	M	H	Douair Aadwiyeh	M	L	H	Fassikine	M	L	H
Fnaydek	ML	L	M	Fraydes Aakkar	ML	ML	MH	Ghazayle	M	M	H
Habchit	L	L	MH	Hakour	M	M	E	Halba	M	M	E
Haouchab	M	M	H	Hayssat	M	M	E	Haytla	M	M	H
Hayzouq	M	ML	MH	Hedd	M	ML	H	Hmaira Aakkar	M	ML	E
Hmaiss Aakkar	M	M	H	Hnaider	ML	L	M	Hokr Ed-Dahri	M	M	E
Hokr Etti	M	M	H	Hokr Jouret Srar	M	M	H	Houaich	ML	ML	MH
Hrar	ML	L	MH	Idbil	M	ML	H	Ilal	M	M	H
Janine	M	M	H	Jdeidet El-Joumeh	M	ML	E	Jdeidet El-Kaiteh	M	ML	H
Jebrayel	M	ML	H	Kafr	VL	L	M	Kafr	M	L	H
Karm Asfour	M	M	E	Kfar Melki Aakkar	M	M	E	Kfar Noun	ML	L	MH
Kfarharra	M	ML	H	Khalsa	M	L	H	Kharnoubet Aakkar	M	M	H
Khirbet Daoud Aakkar	M	L	H	Khirbet El Remmane	M	L	MH	Khirbet Shar	M	L	H
Khoreybet El-Jindi	M	M	E	Khreibet Aakkar	ML	ML	MH	Kneisset Aakkar	M	M	E
Kneisset Hnaider	M	L	M	Knisse	M	ML	H	Kroum El-Aarab	M	M	E
Kwachra	M	ML	H	Kweykhat	M	M	E	Machta Hammoud	M	L	H
Majdala	M	ML	E	Majdel Akkar	M	L	H	Mar Touma	M	ML	E

Marlaya Melhem	M	ML	E	Mashha	M	ML	H	Massoudiye	M	M	E
Mazraat Beit Ghattas	M	M	E	Mazraat En-Nahriye	M	L	H	Mechmech	L	L	M
Memneh	L	L	M	Mhammara	M	M	E	Mighraq Aakkar	M	M	E
Minyara	M	ML	E	Moqayteh	M	M	E	Mounjez	M	L	H
Msalla	M	ML	H	Mzeihmeh	M	M	H	Nfaiseh	M	M	E
Noura Et-Tahta	ML	M	H	Ouadi El-Haour	M	M	H	Ouadi El-Jamous	M	ML	E
Ouyoun El-Ghizlane	M	ML	E	Qaabarine	M	M	E	Qabaait	L	L	M
Qachlaq	M	M	H	Qantara Aakkar	M	M	E	Qarha Aakkar	ML	L	M
Qarqaf	M	M	E	Qboula	M	L	H	Qleiaat Aakkar	M	M	E
Qloud El-Baqie	M	M	E	Qobaiyat Aakkar	ML	L	M	Qobbat Chamrat	M	M	E
Qorayat	ML	ML	M	Qornet Aakkar	ML	ML	MH	Qsair Aakkar	M	L	H
Rahbe	ML	ML	MH	Rihaniyet Aakkar	M	ML	H	Rmah	M	L	H
Rmoul	M	M	E	Saadine	M	M	E	Sadaqa	ML	ML	MH
Saidnaya	M	M	H	Sammouniye	M	M	E	Sayssoq	M	M	E
Semmaqiye	M	M	E	Semmaqli	M	ML	E	Sfinet El-Dreib	M	ML	H
Sfinet El-Qaitaa	ML	ML	MH	Sindyanet Zeidane	M	L	MH	Souaisset Aakkar	M	ML	H
Srar	M	M	H	Tal Abbas El Gharby	M	M	E	Tal Abbas El-Charqy	M	M	E
Tal Biret	M	M	E	Tal Hmayra	M	M	E	Tal Maayan Tal Kiri	M	M	E
Tal Sibel	M	M	E	Tallet Chattaha	M	L	H	Tikrit	M	ML	H
Tleil	M	M	H	Tshea	L	L	M	Zawarib	M	ML	E
Zouq El Hosniyeh	M	ML	H	Zouq El-Haddara	M	ML	E	Zouq El-Hbalsa	M	ML	E
Zouq El-Moqachrine	M	ML	E								

## Sud

### Sour

Municipality	06-Nov	07-Nov	08-Nov	Municipality	06-Nov	07-Nov	08-Nov	Municipality	06-Nov	07-Nov	08-Nov
Aaiyeh	L	M	MH	Aalma El-Chaab	L	M	M	Aaytit	ML	M	MH
Abbassiyeh Sour	M	M	MH	Abou Chech	L	M	MH	Ain Abou Abdallah	M	M	MH
Ain Baal	ML	M	MH	Arzoun	L	M	M	Aziyeh	L	M	M
Baflaya	L	M	M	Barich	L	M	M	Batouliyeh	ML	M	MH
Bayad	L	M	MH	Bazouriyeh	ML	M	MH	Bediass	ML	M	MH
Bestiyat	ML	M	M	Borj El Chemali	ML	M	MH	Borj En-Naqoura	L	M	MH
Borj Rahhal	M	M	MH	Boustane	L	M	MH	Btaychiyeh	L	M	MH
Chaaitiye	L	M	MH	Chameh	L	M	M	Chehabiye	L	M	M
Chehour	L	M	M	Chihine	L	M	MH	Debaal Sour	L	M	MH
Deir Amess	L	M	M	Deir Kifa	L	M	M	Deir Qanoun El-Ain	L	M	MH
Deir Qanoun El-Naher	ML	M	MH	Derdghaiya	L	M	M	Dhayra	L	M	MH
Halloussiyeh	ML	M	MH	Hamoul	L	M	M	Hanaouey	ML	M	MH
Henniye	L	M	MH	Hmairi Sour	L	M	M	Iskandarouna Sour	L	M	M
Jbal El Botom	L	M	MH	Jebbin	L	M	MH	Jennata	ML	M	MH
Jijim	L	M	M	Jouaiya	L	M	MH	Kneisset Sour	ML	M	MH
Maarake	ML	M	MH	Maaroub	ML	M	MH	Majadel	L	M	M
Majdalzoun	L	M	MH	Mansouri Sour	L	M	MH	Marnba	L	M	M
Marouahine	L	M	M	Mazraat El-Zalloutiy	ML	M	MH	Mazraat Mechref	L	M	M
Mazraat Tayr Semhat	L	ML	M	Mheilib	M	M	MH	Neffakhiyeh	L	M	M

Niha Sour	L	M	M	Ouadi Jilo	L	M	MH	Qana	L	M	MH
Qolaileh Sour	L	M	MH	Rechknany	L	M	MH	Rmadiyah	ML	M	MH
Selha Sour	L	M	M	Siddiqine	L	M	MH	Sour	ML	M	H
Srifa	L	M	M	Tayr Debbe	M	M	MH	Tayr Felsay	L	M	MH
Tayr Harfa	L	M	MH	Touayri	L	M	M	Toura	ML	M	MH
Yanouh Sour	L	M	MH	Yarine	L	M	MH	Zebqine	L	M	M

## Saida

Municipality	06-Nov	07-Nov	08-Nov	Municipality	06-Nov	07-Nov	08-Nov	Municipality	06-Nov	07-Nov	08-Nov
Aanqoun	ML	M	MH	Aaqtanit	ML	ML	H	Aarab Ej-Jall	ML	M	H
Aarab Tabbaya	ML	M	H	Abra Saida	ML	M	H	Adloun	ML	M	MH
Adousiyeh	L	M	MH	Ain-El-Deleb	ML	ML	MH	Arzai	ML	M	MH
Babliyah	ML	M	MH	Barty	L	M	MH	Bissariyah	ML	M	H
Bnaafoul	ML	M	MH	Bqosta	ML	M	MH	Bramiy	ML	ML	MH
Daoudiyeh	ML	M	H	Dareb El-Sim	L	ML	MH	Erkay	L	M	MH
Ghassanieh	ML	M	M	Ghazieh	ML	M	H	Hajeh	L	M	MH
Haret Saida	ML	M	H	Hartiyeh	M	M	MH	Hlaliye Saida	ML	M	H
Insariyat	ML	M	MH	Jazira Saida	M	M	MH	Kafar Bit	L	M	MH
Kaoutariyet El-Siyad	ML	M	M	Kfar Chellal	L	M	MH	Kfar Hatta Saida	L	M	MH
Kfar Milke Saida	L	M	MH	Khartoum	ML	M	M	Khaziz	L	M	MH
Khirbet Ed-Douair Sa	ML	M	MH	Khirbet El-Bassal	ML	M	MH	Khrayeb Saida	ML	M	MH
Loubieh	ML	M	MH	Maghdouche	L	ML	MH	Majdelyoun	ML	M	H
Matariyet El-Choumar	M	M	MH	Matayriyah	L	ML	MH	Mazraat 'Mseileh	ML	M	MH
Mazraat 'Snaiber	ML	M	MH	Mazraat Aarab Soukka	ML	M	H	Mazraat Deir Taqla	ML	M	MH
Mazraat El Yahoudiye	ML	M	MH	Mazraat El-Housseini	ML	M	H	Mazraat El-Mhaydaleh	ML	M	MH
Mazraat El-Ouasta	ML	M	MH	Mazraat Jamjim	ML	M	MH	Mazraat Kaoutariyet	M	M	MH
Mazraat Kfar Badda	M	M	MH	Mazraat Oussamiyat	M	M	H	Mazraat Sari	M	M	MH
Mazraat Sinai	ML	M	M	Meemariyah	L	ML	MH	Merouaniyah	ML	M	MH
Miyeh ou Miyeh	ML	M	MH	Najjariyah	ML	M	H	Qaaqiyat El-Snaouba	ML	M	MH
Qnarit	ML	ML	MH	Qraiye Saida	ML	M	MH	Saida Ed-Dekermane	ML	M	H
Saida El-Oustani	ML	M	H	Saida El-Qadimeh	ML	M	H	Saida Kefraya	L	ML	M
Saksakiyah	ML	M	MH	Salhieh Saida	ML	M	MH	Sarafand	ML	M	H
Sfenta	L	M	M	Tafahta	ML	M	M	Tanbourit	L	ML	MH
Tebna	ML	M	MH	Zaghdraiya	L	ML	MH	Zeita	L	ML	MH
Zrariyah	ML	M	MH								

## Jezzine

Municipality	06-Nov	07-Nov	08-Nov	Municipality	06-Nov	07-Nov	08-Nov	Municipality	06-Nov	07-Nov	08-Nov
Ain El-Mir (El Estab	ML	M	H	Anane	L	M	M	Aramta	ML	M	M
Ariya	L	M	M	Aychiyeh	L	M	M	Azour	L	ML	M
Baba	L	ML	M	Baysour Jezzine	ML	M	MH	Benoueteh Jezzine	L	M	M
Bhannine	L	M	M	Bisri	L	ML	M	Bkassine	L	M	M
Bouslaya	L	M	M	Btedine El-Leqech	L	ML	M	Chbail	L	M	M
Choualiq Jezzine	L	M	MH	Dahr Ed-Deir	L	M	M	Deir El Qattine	L	M	M
Demachqiyeh	L	M	M	Ghabbatiyah	L	M	M	Harf Jezzine	L	ML	M
Hassaniyah	L	M	MH	Haytoulah	L	ML	M	Haytoura	L	M	M
Hidab	L	M	M	Homsiyah	L	M	M	Jabal Toura	ML	M	M

Jarmaq	L	M	M	Jensnaya	L	M	MH	Jernaya	L	M	MH
Jezzine	ML	M	M	Karkha	L	ML	M	Kfar Falous	L	M	MH
Kfar Houna	ML	M	M	Kfar Jarrah	ML	M	MH	Lebaa	ML	M	MH
Louayzet Jezzine	L	M	M	Machmouche	L	M	M	Mahmoudiyeh Jezzine	L	M	M
Maknounye Jezzine	L	M	M	Maraat Ouazaiyeh	L	M	M	Mazraat Daraya	ML	M	M
Mazraat El-Aarqoub	L	M	M	Mazraat El-Mathane	L	L	M	Mazraat El-Rahbane	L	M	M
Mazraat Khallet Khaz	L	M	M	Mazraat Louzid (Loua	L	M	M	Mazraat Qrouh	ML	M	M
Mazraat Tamra	L	M	M	Mazraat Zighrine Jez	L	M	M	Mazraat	L	M	M
Mharbiyeh	ML	M	MH	Midane Jezzine	L	M	M	Mjeydel Jezzine	L	M	MH
Mlikh	L	M	M	Mrach El-Hbasse	ML	M	MH	Ouadi Baanqoudaine	ML	M	MH
Ouadi El-Laymoun	L	M	MH	Ouardiyeh	L	M	M	Qabaa Jezzine	L	M	M
Qatrani	ML	M	M	Qaytouleh	L	M	M	Qtaleh Jezzine	L	L	M
Rihane Jezzine	L	M	M	Rimat	L	M	M	Roum	L	M	M
Roummanet	L	M	MH	Sabbah	L	M	M	Saydoun	L	M	M
Sfaray	L	ML	M	Snaya	L	M	M	Sojoud	L	M	M
Srayri	ML	M	M	Taaid	L	ML	M	Wadi Jezzine	L	M	M
Zhalta	L	M	M								

## Bekaa

### West Bekaa

Municipality	06-Nov	07-Nov	08-Nov	Municipality	06-Nov	07-Nov	08-Nov	Municipality	06-Nov	07-Nov	08-Nov
Aammiq BG	L	M	M	Ain El Tineh BG	M	M	ML	Ain Zebdeh	L	M	ML
Ana	L	ML	L	Aytanit	ML	M	L	Baaloul BG	L	M	ML
Bab Mareh	ML	M	ML	Chouberqiye Aammiq	L	M	M	Dakoue	L	ML	ML
Deir Ain El-Jaouze	ML	M	ML	Deir Tahniche	L	M	ML	Ghaza	L	M	ML
Harime El-Soughra	L	ML	L	Hoch Harimeh	L	ML	L	Jazira BG	L	ML	M
Jib Jennine	L	M	ML	Kamed-El-Laouz	L	M	ML	Kefraya BG	L	M	L
Khiara El Atika	L	ML	M	Khiara	L	ML	ML	Khirbet Qanafar	L	M	ML
Lala	L	M	ML	Lebbaya BG	ML	M	ML	Loussa	ML	M	ML
Machghara	M	M	ML	Manara (Hammara) BG	L	ML	L	Mansoura BG	L	M	ML
Marej BG	L	ML	L	Maydoun	ML	M	ML	Ouaqf BG	L	ML	M
Qaraaoun	L	M	ML	Qelya	L	M	M	Raouda (Istabel)	L	ML	L
Saghbine	L	M	L	Sohmor	M	M	ML	Soltan Yacoub el Ara	L	M	ML
Souairy	L	ML	L	Sultan Yaacoub	L	M	ML	Tal Znoub	L	M	ML
Yehmor BG	ML	M	ML	Zilaya	L	M	ML				

### Zahle

Municipality	06-Nov	07-Nov	08-Nov	Municipality	06-Nov	07-Nov	08-Nov	Municipality	06-Nov	07-Nov	08-Nov
Aanjar (Haouch Mouss	L	ML	L	Ablah	L	L	L	Ain Kfarzabad	L	L	L
Ali-El-Nahri	L	L	L	Bar Elias	L	ML	L	Bouarej	L	L	M
Cheberqiyet Tabet	L	ML	L	Chtaura	L	L	L	Deir El Ghazal	L	L	L
Delhamiyet Zahle	L	L	L	Ferzol	L	L	L	Haouch El-Ghanam	L	L	L
Haouch Es-Siyadeh	L	ML	M	Haouch Hala	L	L	L	Haouch Mandara	L	ML	L
Haouch Qayssar	L	ML	M	Hezerta	L	L	L	Hosh Moussa	L	L	L
Jdita	L	L	M	Kfarzabad	L	ML	L	Ksara	L	L	L

Majdel Aanjar	L	ML	L	Makssi	L	ML	M	Massa	L	ML	L
Mazraat Er-Remtaniye	L	L	M	Mrayjat Zahle	L	ML	M	Mzaraa Zahle	L	ML	M
Nabi Ayla	L	L	L	Nasriyet Rizk	L	ML	L	Nasriyet Zahle	L	ML	ML
Niha Zahle	L	L	L	Ouadi Ed-Deloum	L	ML	M	Ouadi El-Arayech	L	L	L
Qaa El Rim	L	L	L	Qab Elias	L	ML	M	Qousaya	L	M	L
Rhit	L	L	L	Riyak	L	L	L	Saadnayel	L	L	L
Taal El-Akhdar	L	M	M	Taalbeya	L	L	L	Taanayel	L	ML	L
Talamara	L	L	L	Tcheflik Edde Haouch	L	ML	M	Tcheflik Qiqano	L	ML	M
Terbol Zahle	L	ML	L	Touaite Zahle	L	L	M	Zahle Aradi	L	L	L
Zahle El-Berbara	L	L	L	Zahle El-Maallaqa	L	L	L	Zahle El-Midane	L	L	L
Zahle Er-Rassiye	L	L	L	Zahle Haouch El-Ouma	L	L	L	Zahle Haouch El-Ouma	L	L	L
Zahle Haouch Ez-Zara	L	L	L	Zahle Maallaqa Aradi	L	L	L	Zahle Mar Antonios	L	L	L
Zahle Mar Elias	L	L	L	Zahle Mar Gerios	L	L	L	Zahle Saydet En-Naja	L	L	L
Zebdoul	L	L	M								

## Rachaiya

Municipality	06-Nov	07-Nov	08-Nov	Municipality	06-Nov	07-Nov	08-Nov	Municipality	06-Nov	07-Nov	08-Nov
Ain Arab Rachaiya	L	M	L	Ain Ata	ML	M	ML	Ain Harche	ML	M	ML
Aqabe Rachaya	L	M	ML	Ayha	ML	M	ML	Ayta El Fokhar	L	ML	L
Bakifa Rachaya	L	M	ML	Bakka	L	M	L	Beit Lahya	L	M	ML
Bireh Rachaiya	L	M	ML	Daher El Ahmar	L	M	ML	Deir El-Achayer	VL	L	L
Heloua Rachaiya	VL	L	L	Hoch El Qannabeh Rac	ML	M	ML	Kaoukaba Bou Arab	L	M	ML
Kfar Danis	L	M	ML	Kfar Mechki	ML	M	ML	Kfar Qouq	L	M	L
Kherbet Rouha	L	M	L	Majdel Balhiss	ML	M	ML	Mdoukha	L	M	L
Mhaydseh Rachaiya	L	M	ML	Nabi Safa	ML	M	ML	Rachaiya	ML	M	ML
Rafid Rachaiya	L	M	ML	Selsata (Mazraat Dei	VL	L	VL	Tannoura	ML	M	ML
Yanta	L	ML	L								

## Beyrouth

### Beyrouth

Municipality	06-Nov	07-Nov	08-Nov	Municipality	06-Nov	07-Nov	08-Nov	Municipality	06-Nov	07-Nov	08-Nov
Achrafieh	ML	ML	MH	Ain el-Mreisse	L	M	H	Bachoura	ML	ML	MH
Beirut Central Distr	ML	ML	MH	Marfai	ML	ML	MH	Mazraa	L	ML	MH
Medaouar	ML	ML	MH	Minet el-Hosn	ML	ML	MH	Mwssaitbeh	L	M	MH
Ras Beirut	L	M	H	Rmeil	ML	ML	MH	Saifi	ML	ML	MH
Zqaq el-Blat	ML	ML	MH								