

Lebanon Fire Risk Bulletin



CIVIL DEDEFENCE

Refer to cadast table condition.

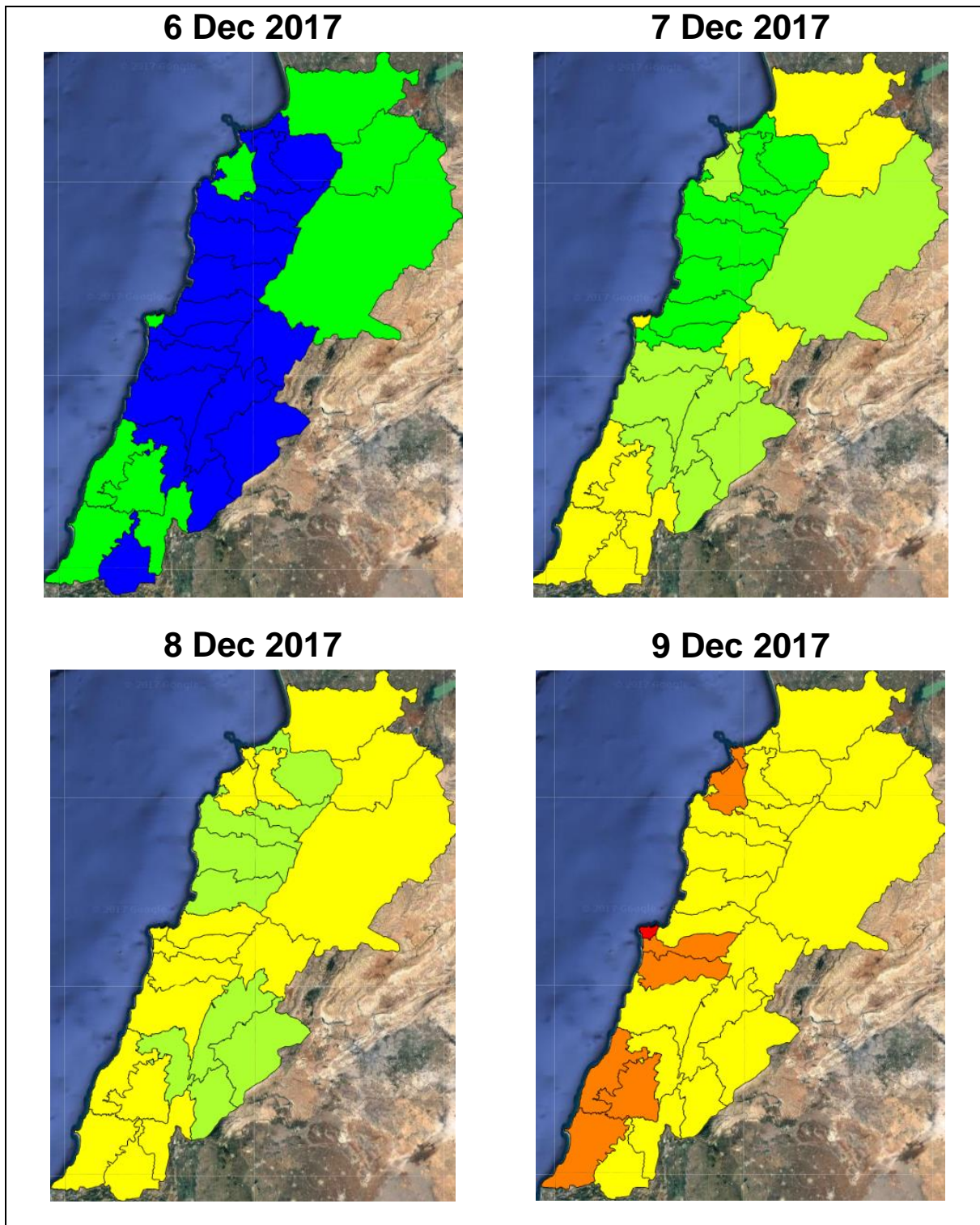
Please note that the indicated temperature is at 2 meters height from the ground.

General description of potential fire risk situation

Symbol	Level of risk	Meaning and actions
VL	Very low	Very low fire risk. Controlled burning operations can be hardly executed due to high fuel moisture content. Normally wildfires self-extinguish.
L	Low	Low fire risk. Controlled burning operations can be executed with a reasonable degree of safety.
ML	Medium low	Medium-low fire risk. Controlled burning operations can be executed in safety conditions. All the fires need to be extinguished.
M	Medium	Medium fire risk. Controlled burning operations would be avoided. All the fires need to be very well extinguished.
M	Medium high	Controlled burning is not recommended. Open flame will start fires. Cured grasslands and forest litter will burn readily. Spread is moderate in forests and fast in exposed areas. Patrolling and monitoring is suggested. Fight fires with direct attack and all available resources.
H	High	Ignition can occur easily with fast spread in grass, shrubs and forests. Fires will be very hot with crowning and short to medium spotting. Direct attack on the head may not be possible requiring indirect methods on flanks. Patrolling and monitoring the territory is highly suggested.
E	Extreme	Ignition can occur also from sparks. Fires will be extremely hot with fast rate of spread. Control may not be possible during day due to long range spotting and crowning. Suppression forces should limit efforts to limiting lateral spread. Damage potential total. Patrolling and monitoring the territory is highly suggested.

Beirut, 7 December 2017

FIRE RISK INDEX

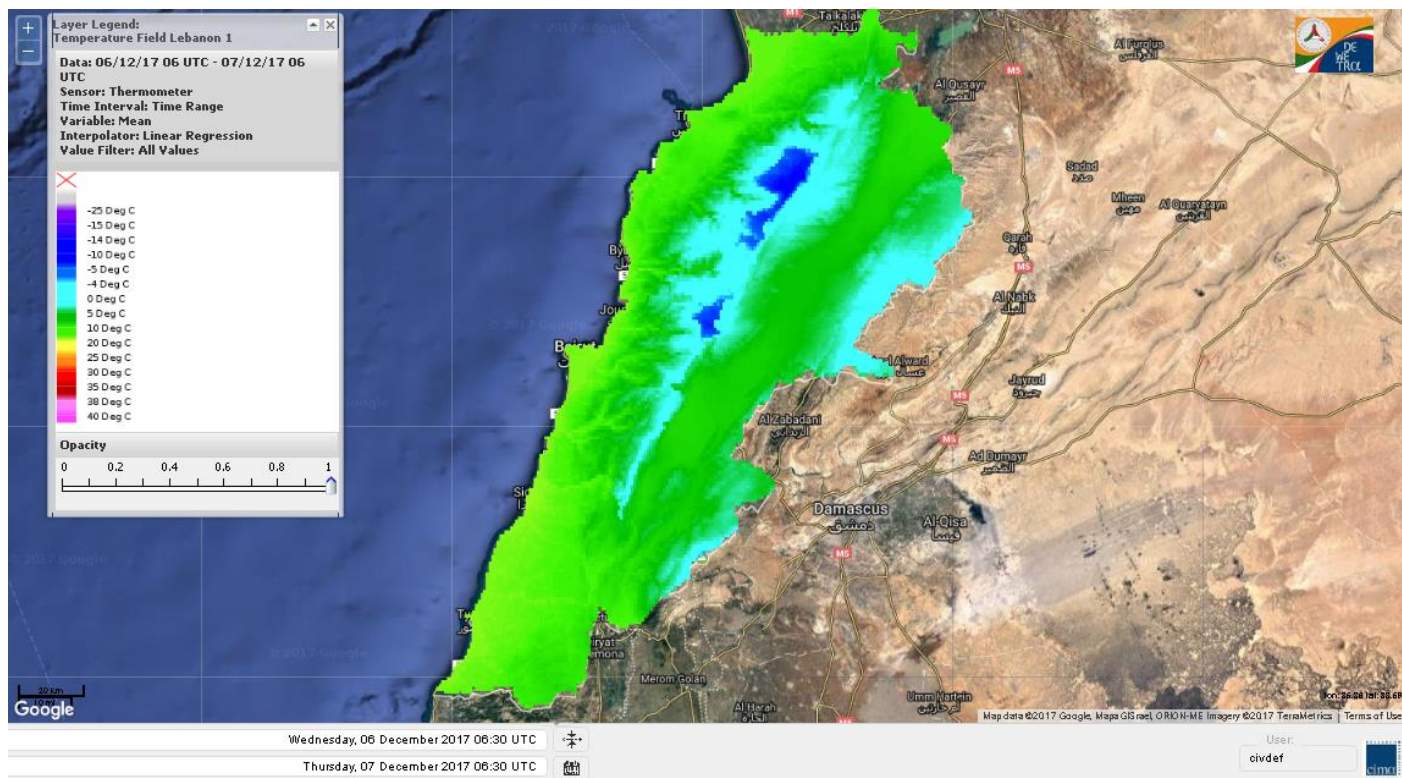


Layer Legend:
Lebanon Wildfire Risk Index 1

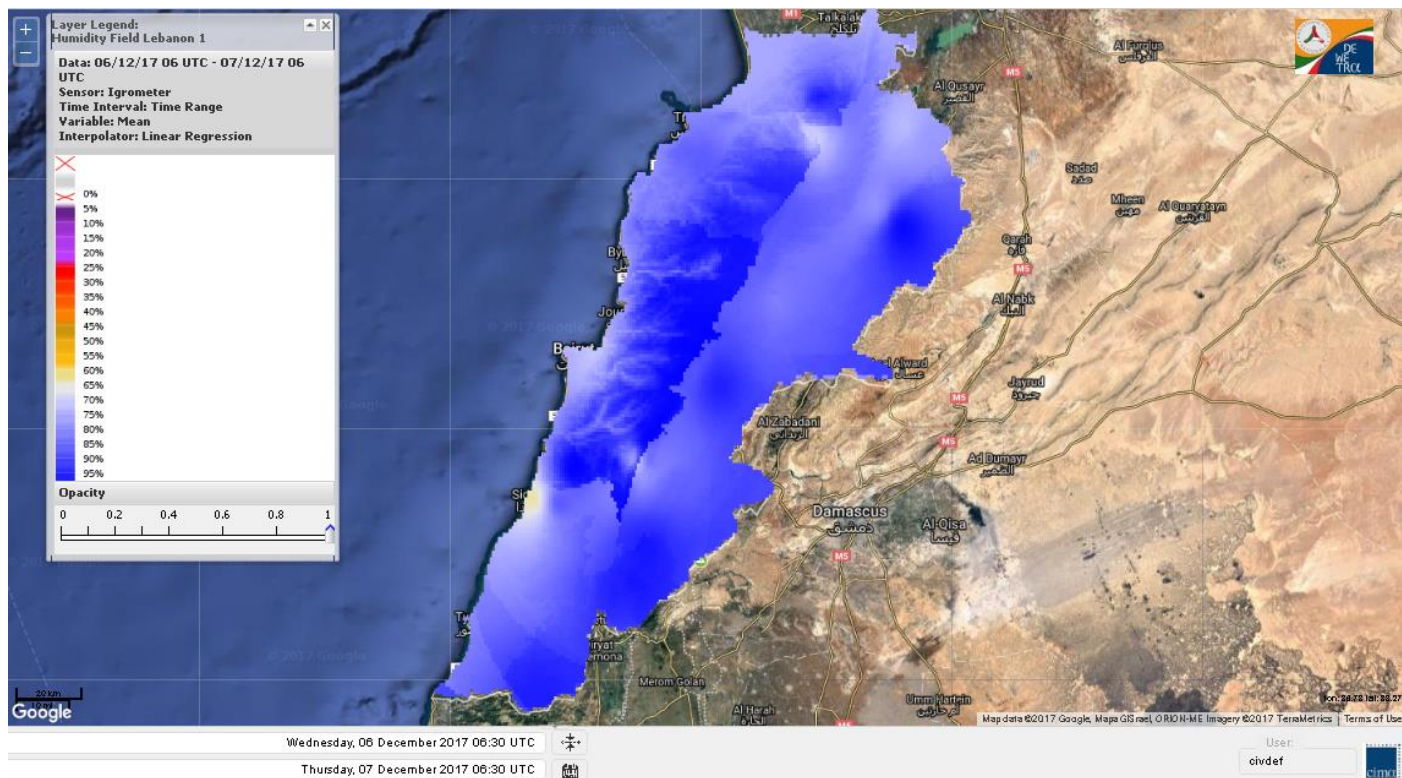
Data: Run: 07/12/2017 00:00. Forecast for 7
Model: RISICO for the Republic of Lebanon
Variable: Fire Weather Index
Spatial Resolution: Caza

- VERY LOW
- LOW
- MEDIUM-LOW
- MEDIUM
- MEDIUM-HIGH
- HIGH
- EXTREME

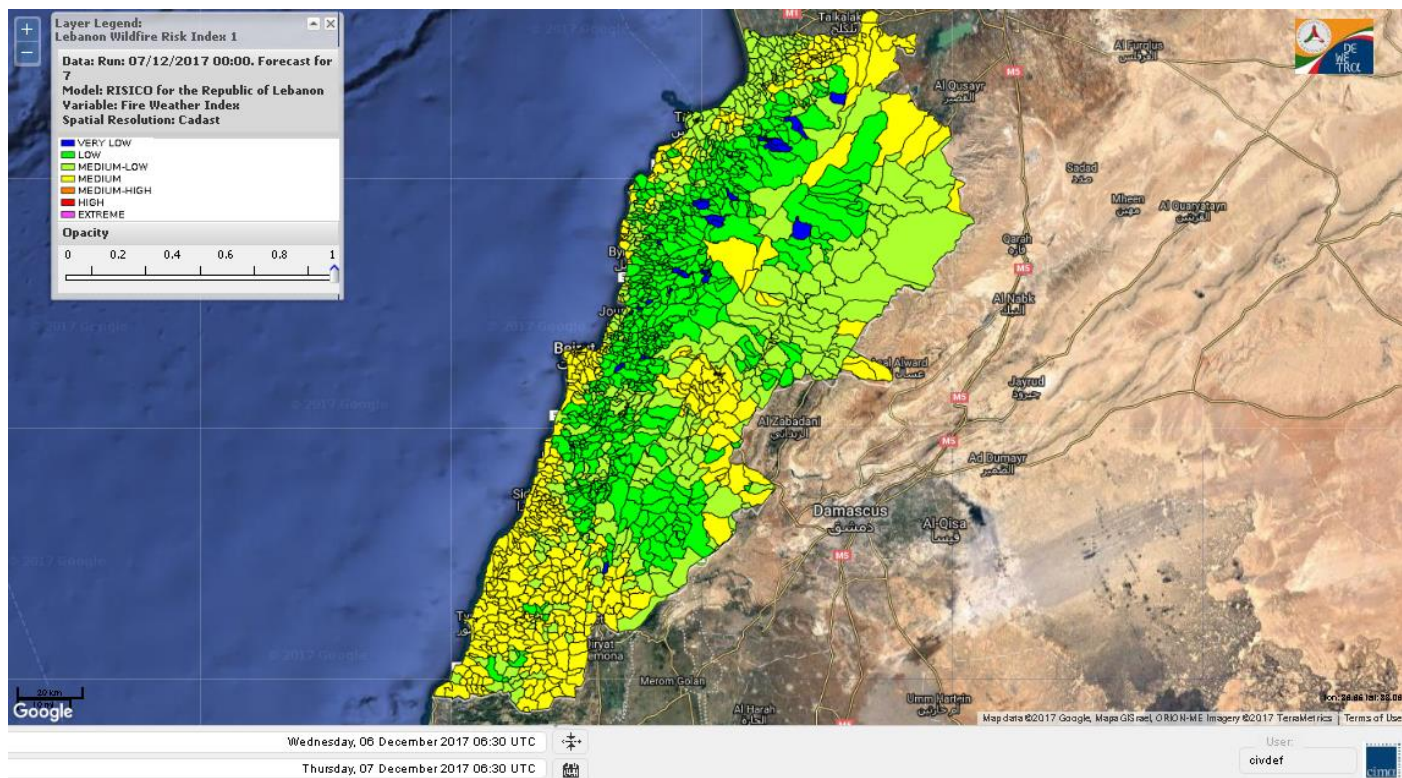
Lebanon temperature for Lebanon for 7 Dec 2017



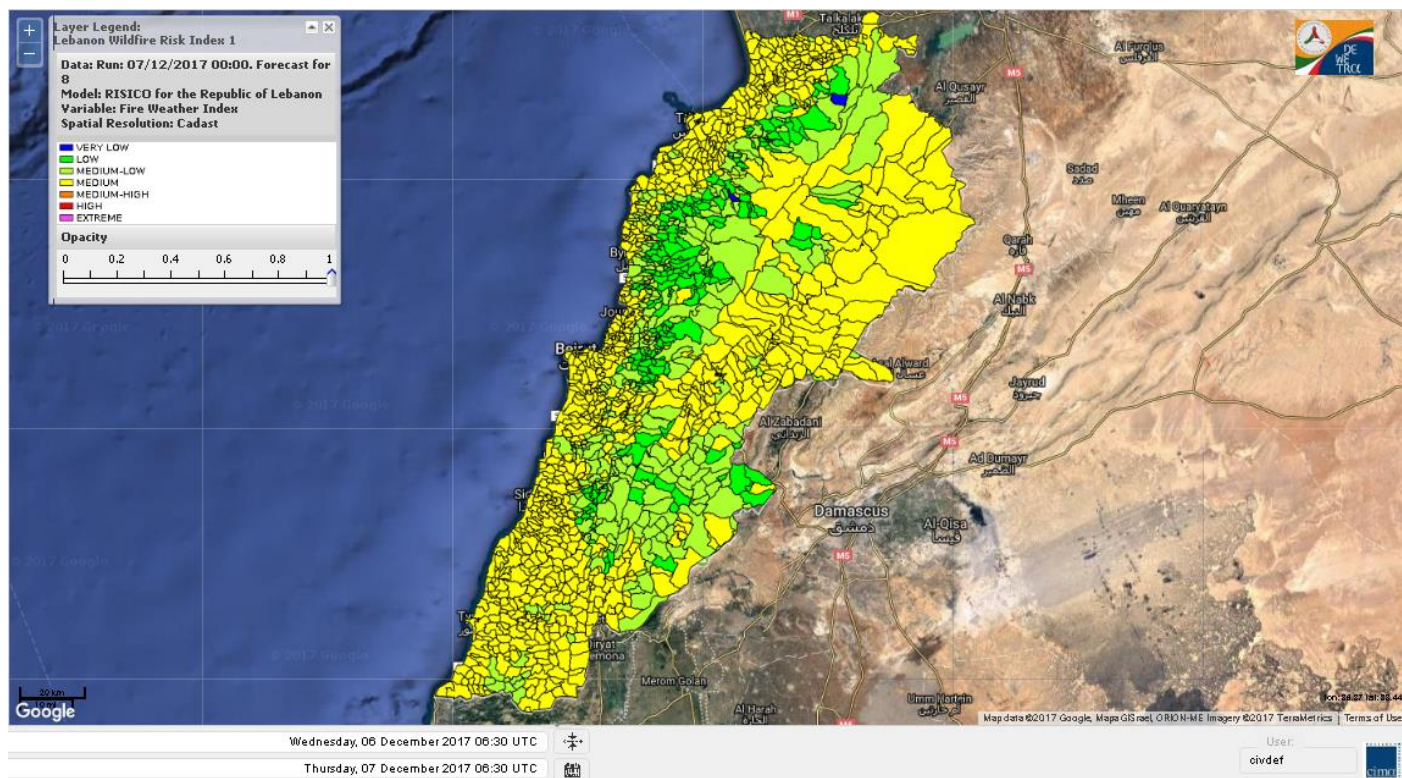
Lebanon humidity for Lebanon for 7 Dec 2017



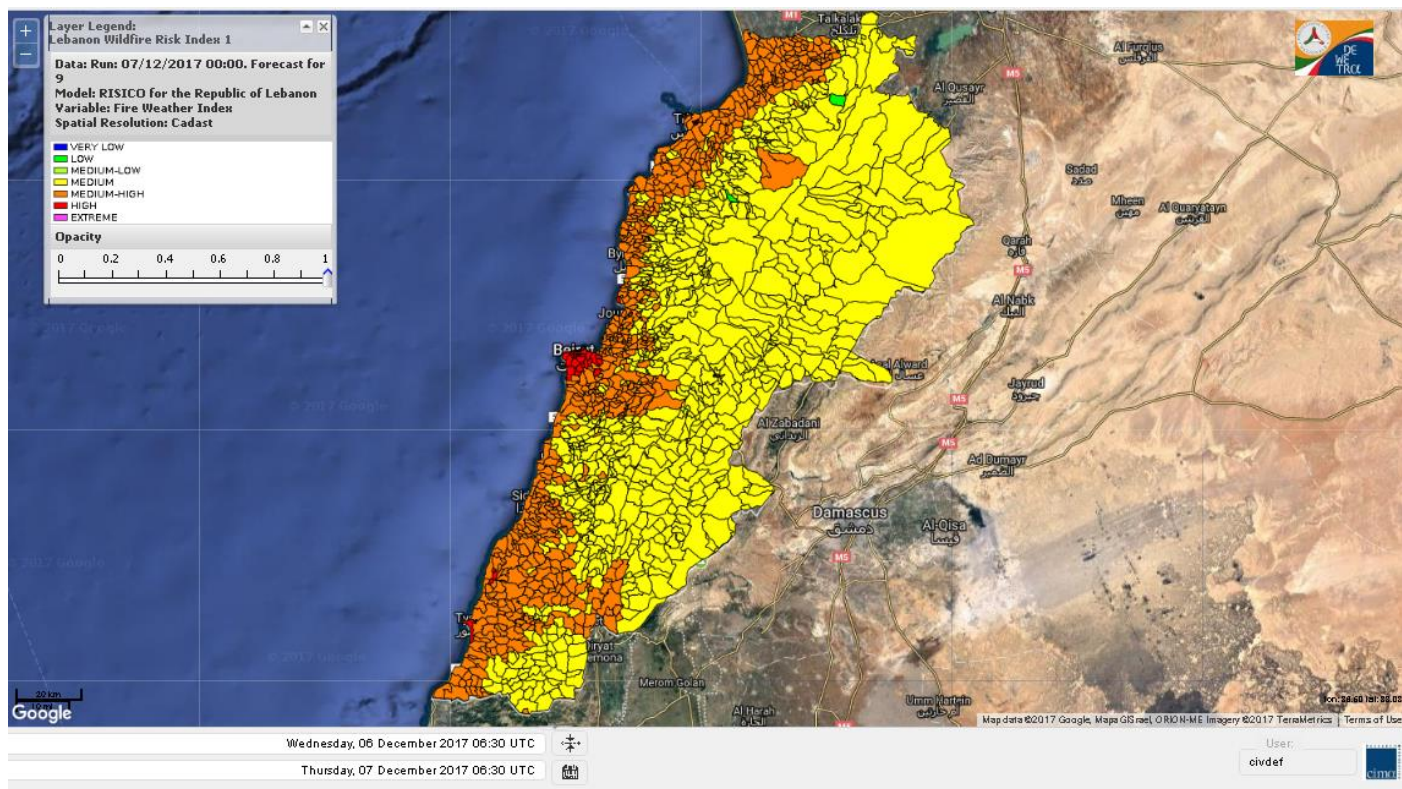
Lebanon for 7 Dec 2017



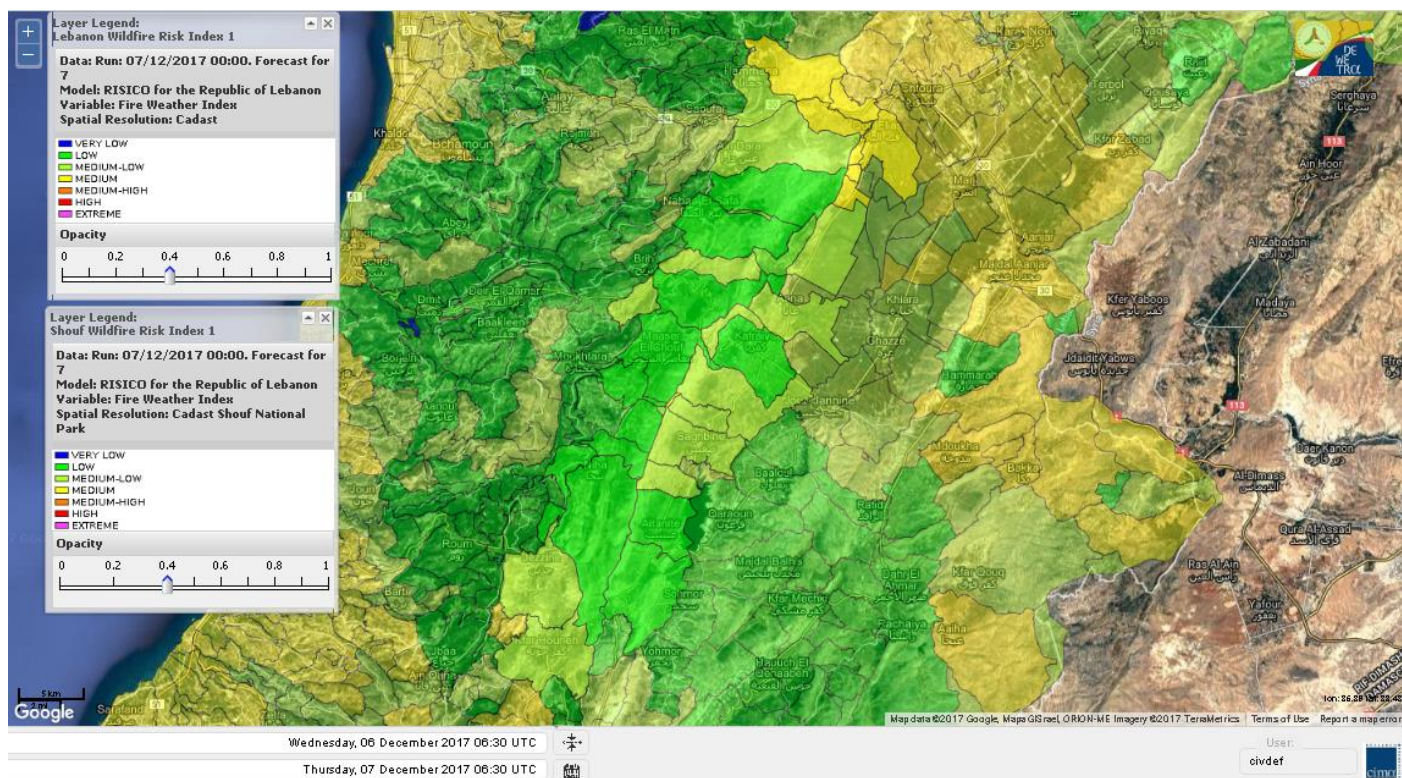
Lebanon for 8 Dec 2017



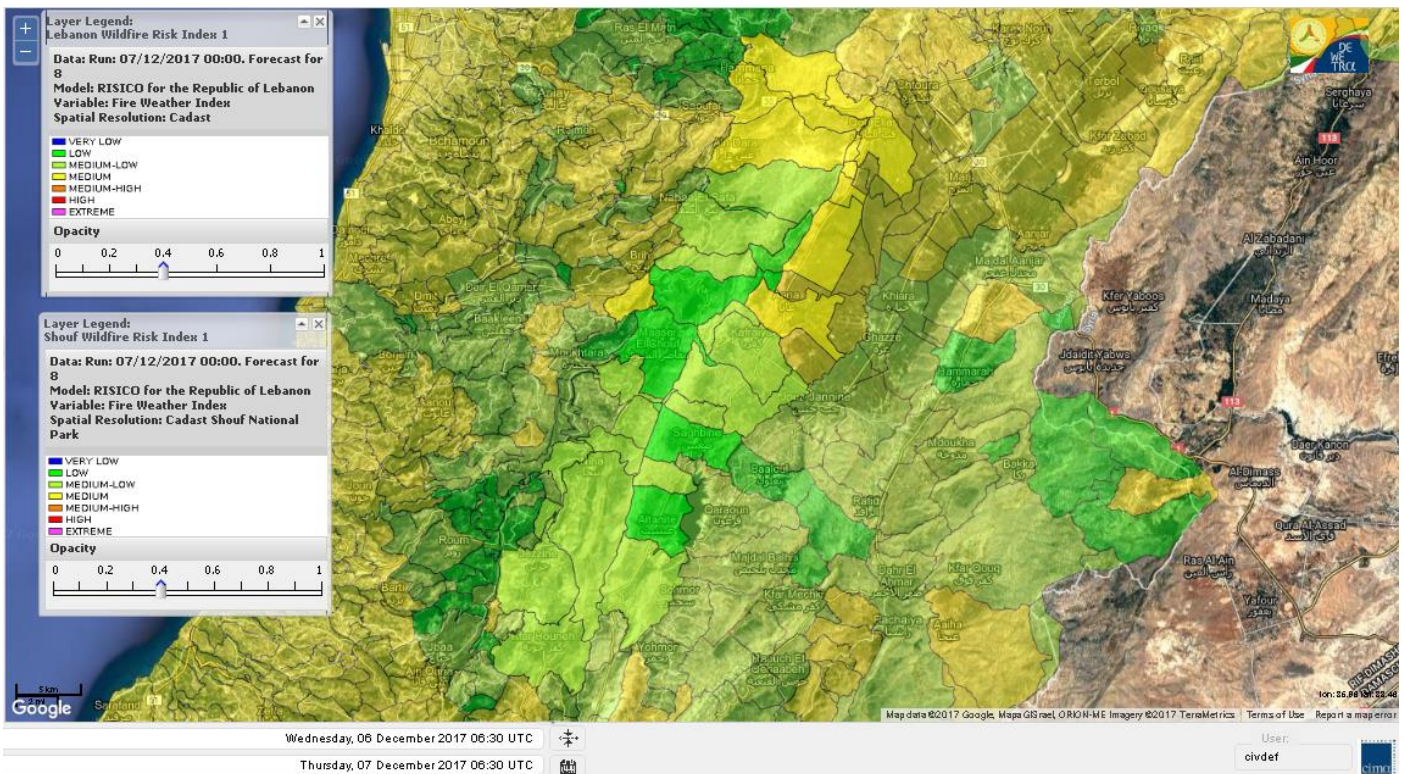
Lebanon for 9 Dec 2017



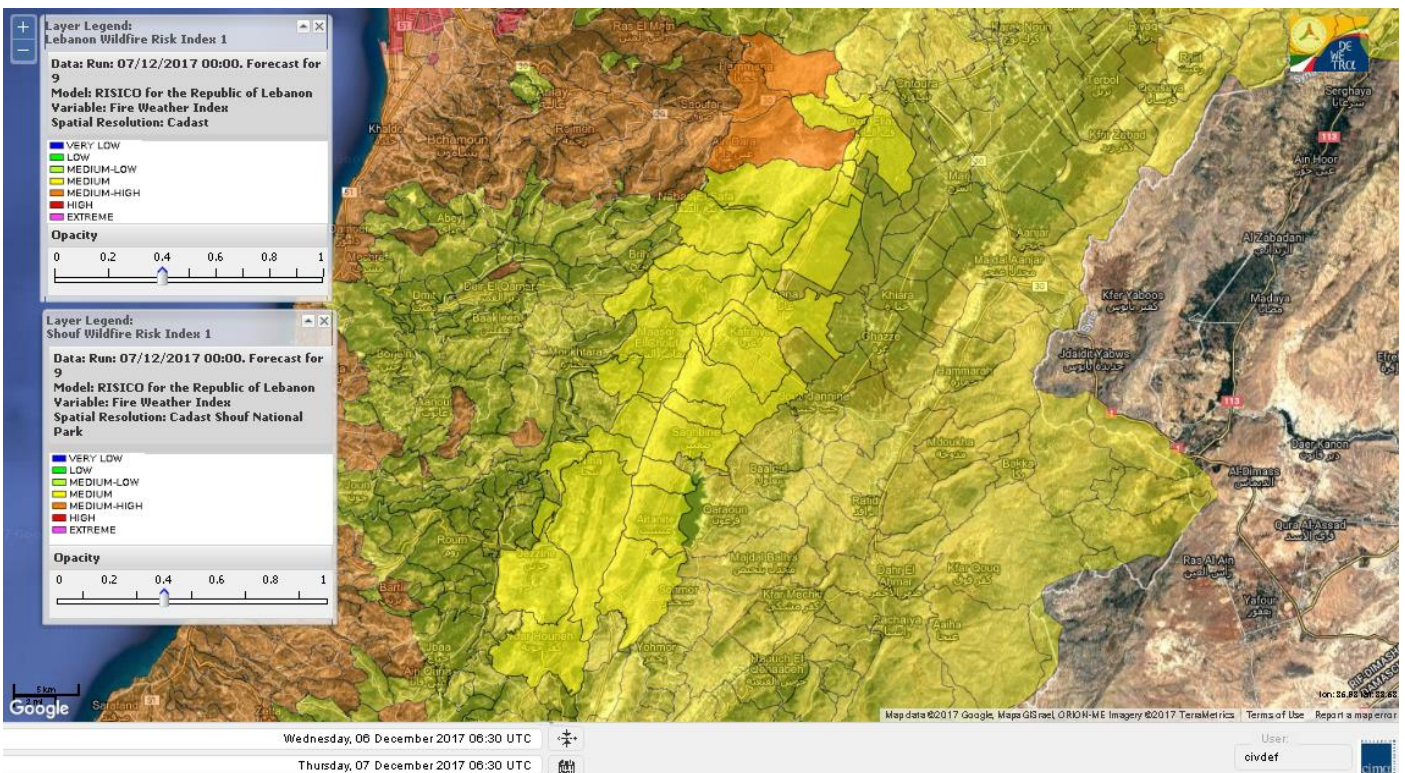
Shouf Biosphere Reserve Forecast for 7 Dec 2017



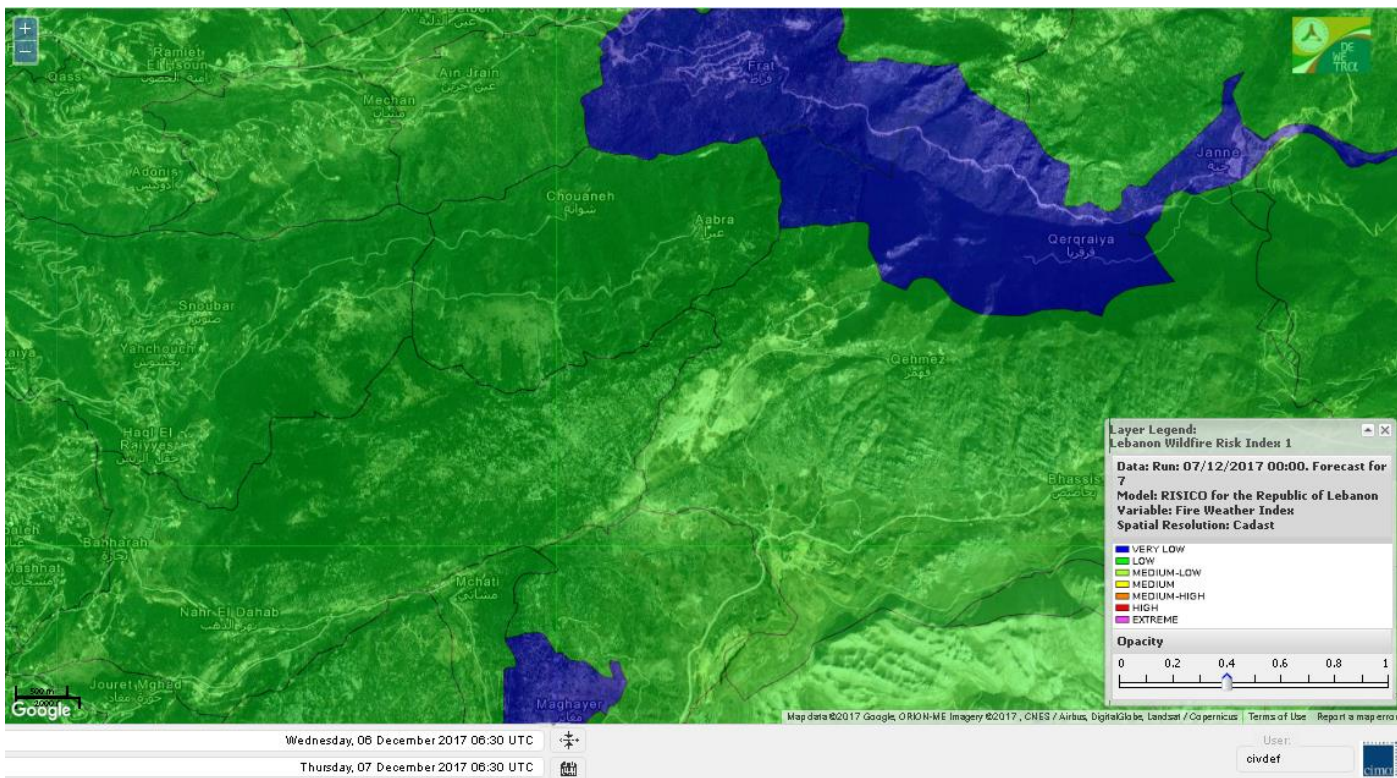
Shouf Biosphere Reserve Forecast for 8 Dec 2017



Shouf Biosphere Reserve Forecast for 9 Dec 2017



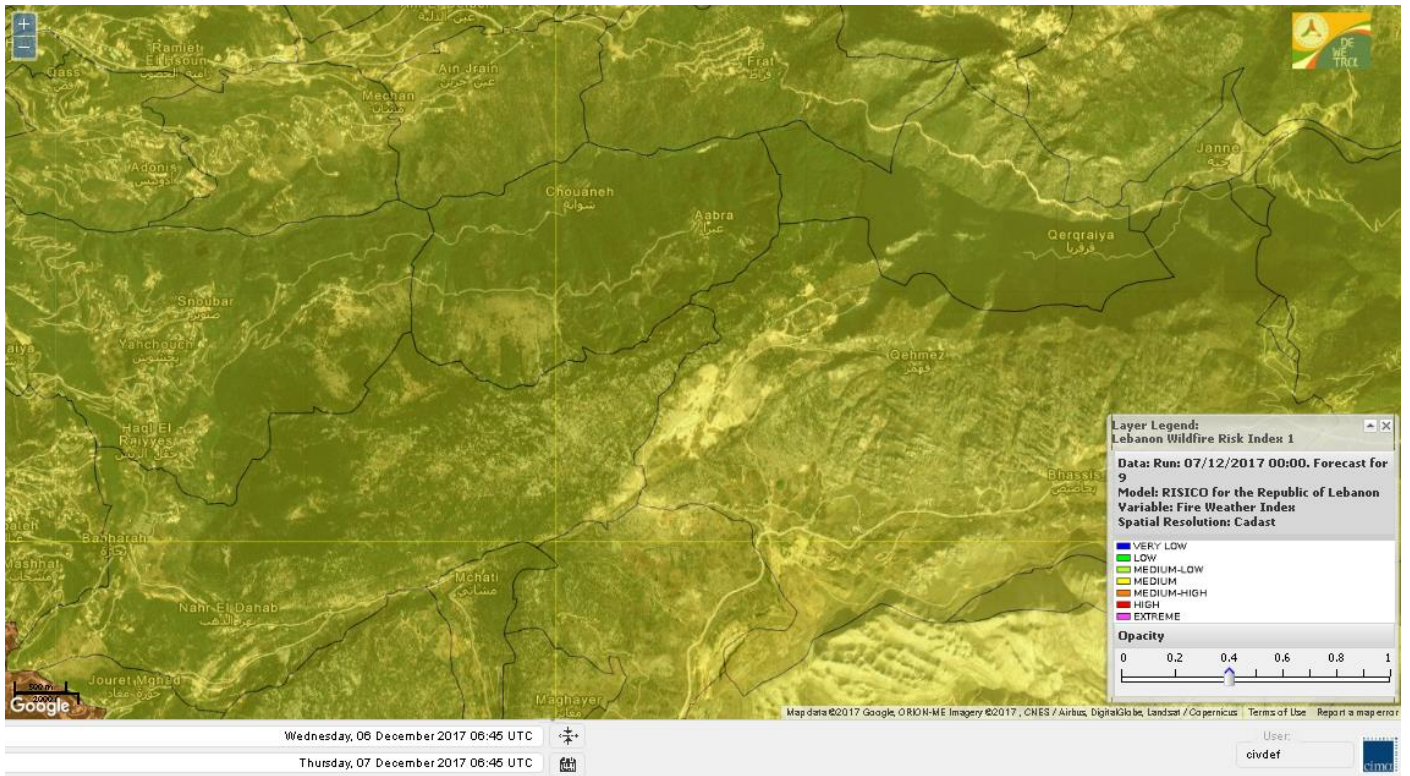
Jabal Moussa Reserve Forecast for 7 Dec 2017



Jabal Moussa Reserve Forecast for 8 Dec 2017



Jabal Moussa Reserve Forecast for 9 Dec 2017



Nord

Koura

Municipality	07-Dec	08-Dec	09-Dec	Municipality	07-Dec	08-Dec	09-Dec	Municipality	07-Dec	08-Dec	09-Dec
Aaba	ML	M	MH	Afsaddiq	M	M	MH	Ain Ekriane	ML	M	MH
Amioun	ML	M	MH	Anfeh	M	M	MH	Badbhoun	ML	M	MH
Barghoun	M	M	MH	Barsa	ML	M	MH	Batroumine	M	M	MH
Bdebba	M	M	MH	Bechmizine	ML	M	MH	Bednayet El-Koura	ML	M	MH
Bhabbouch El-Koura	L	M	M	Bkeftine	ML	M	MH	Bnehran	L	ML	M
Bqaiia El-Koura	ML	M	M	Bsarma	L	M	MH	Btaaboura	ML	M	MH
Bttram	M	M	MH	Btouratij	M	M	MH	Bziza	L	M	MH
Dar Beechtar	ML	M	MH	Dar Chmezzine	M	M	MH	Deddeh	M	M	MH
Deir El-Balamand	L	ML	M	Fih	M	M	MH	Hraiche	M	M	MH
Ijdaabrine	L	ML	MH	Kaftoun	ML	M	MH	Kefraya El-Koura	M	M	MH
Kfarakka	L	M	MH	Kfarhata	L	M	MH	Kfarhazir	ML	M	MH
Kfarkahel	ML	M	MH	Kfarsaroun	L	M	MH	Kosba	L	M	MH
Mejdel el-Koura	L	ML	M	Nakhle	ML	M	MH	Qalhat	L	ML	M
Ras Masqa	ML	M	MH	Rechdibbine	ML	M	MH	Zakroun	ML	M	MH
Zgharta El-Mtaouile	L	L	M								

Bcharre

Municipality	07-Dec	08-Dec	09-Dec	Municipality	07-Dec	08-Dec	09-Dec	Municipality	07-Dec	08-Dec	09-Dec
Aabdine	L	ML	M	Bane	L	ML	M	Barhelioun	L	L	M
Bazouone	L	L	M	Becharre	ML	M	M	Beit Menzer	L	ML	M
Billa	L	ML	M	Blaouza	L	M	M	Bqaa Kafra	L	L	M
Bqerqacha	L	L	M	Breissat	L	ML	M	Dimane	L	ML	M
Hadath El Jobbeh	L	ML	M	Hadchit	L	L	M	Hasroun	L	L	M
Mazraat Aassaf	VL	L	M	Mazraat Bani Saab	L	ML	M	Mchaa El-Jobbeh	ML	M	M
Metrit	L	ML	M	Moghr El-Ahoual	L	ML	M	Ouadi Qannoubine	VL	VL	L
Qanat	L	L	M	Qnayouer	L	L	M	Tourza	L	ML	M

Batroun

Municipality	07-Dec	08-Dec	09-Dec	Municipality	07-Dec	08-Dec	09-Dec	Municipality	07-Dec	08-Dec	09-Dec
Aabrine	L	ML	M	Aalali	L	ML	M	Aartziz	L	L	M
Abdelli	L	ML	M	Ajdabra	L	ML	M	Assia	L	L	M
Basbina	M	M	MH	Batroun	M	M	MH	Bcheleh	L	ML	M
Bechtoudar	L	L	M	Beit Chlala	L	L	M	Beit Kassab	VL	L	M
Bijdarfil	M	M	MH	Bqesmaya	L	ML	M	Chatine	L	ML	M
Chebtin	L	L	M	Chekka	M	M	MH	Daael	L	L	M
Dahr Abi Yaghi	L	ML	M	Daraya El-Batroun	ML	M	MH	Deir Billa	L	L	M
Deir Kfifane	ML	M	MH	Deir Mar Youhanna EL	L	L	M	Deir Mar Youssef Jra	L	ML	M
Douma	L	ML	M	Douq	L	L	M	Eddeh El-Batroun	ML	M	MH
Ftahat El-Batroun	L	L	M	Ghouma	L	ML	MH	Hadtoun	L	ML	M
Hamat	L	M	MH	Harbouna	L	L	M	Hardine	VL	L	M
Helta	L	L	M	Hery	M	M	MH	Jebbla	L	L	M
Jrabta El-Batroun	L	ML	MH	Jrane El-Batroun	M	M	MH	Kfar Aabida	ML	M	MH
Kfar Halda	L	L	M	Kfarb Shlaimane	L	L	M	Kfarhatna	L	L	M
Kfarhay	ML	M	MH	Kfarhelos	L	ML	M	Kfifane	ML	M	MH

Kfour El Arabi	L	ML	M	Koubba	ML	M	MH	Kour	ML	ML	MH
Mar Mama	L	L	M	Masrah	L	L	M	Mehmarch	L	ML	M
Mrah Chdid	L	ML	MH	Mrah El Ziyat	L	ML	MH	Mrah El-Hajj	L	L	M
Nahle El-Batroun	L	ML	M	Niha El-Batroun	L	ML	M	Ouahj El-Hajjar	L	M	MH
Ouata Houb	VL	L	M	Qatnaaoun	L	ML	MH	Racha	L	ML	M
Rachana	L	ML	MH	Rachkida	L	ML	MH	Ram El-Batroun	L	L	M
Ras Nahhach	L	M	MH	Selaata	M	M	MH	Sghar	L	ML	MH
Smar Jbayl	ML	M	MH	Sourat El-Batroun	L	L	M	Tannourine El-Faouqa	L	ML	M
Tannourine Et-Tahta	VL	L	M	Thoum	ML	M	MH	Toula El-Batroun	L	ML	M
Zan	L	ML	M								

Zgharta

Municipality	07-Dec	08-Dec	09-Dec	Municipality	07-Dec	08-Dec	09-Dec	Municipality	07-Dec	08-Dec	09-Dec
Aachach	M	M	MH	Aalma	M	M	MH	Aarde	ML	M	M
Aintourine	L	M	M	Arabet Qozhaya	L	L	M	Arde	ML	M	MH
Arjis	L	M	MH	Asnoun	L	M	MH	Ayto	L	ML	M
Basloukit	L	M	M	Bchannine	ML	M	MH	Besebeel	ML	M	MH
Bhairret Toula	VL	L	M	Bnachee	L	M	M	Boussit	M	M	MH
Danha	ML	M	MH	Daraiya Zgharta	L	M	MH	Deir Jdeide	L	M	MH
Ehden	L	ML	M	Halan	M	M	MH	Hariq Zgharta	L	M	MH
Houakir	L	ML	M	Hraiqis	M	M	MH	laal	L	M	MH
Ijbaa	L	M	M	Karm Saddeh	L	L	M	Kfarchakhna	ML	M	MH
Kfardlaqous	ML	M	MH	Kfarfou	L	M	MH	Kfarhata Zgharta	L	M	MH
Kfarhoura	L	M	M	Kfarsghab	L	L	M	Kfaryachit	L	M	MH
Kfarzaina	ML	M	MH	Khaldiye	L	M	MH	Mazraat Ajbeaa	ML	M	MH
Mazraat Et-Teffah	L	ML	M	Mazraat Jneid	L	M	M	Mejdlaya Zgharta	ML	M	MH
Merh Kfarsghab	L	M	M	Miryata	ML	M	MH	Miziara	L	ML	M
Mzraat Kefraya	M	M	MH	Qorah Bach	L	M	MH	Rachiine	ML	M	MH
Ras Kifa	L	M	M	Sakhra	L	M	M	Sebhel Zgharta	L	M	M
Serhel	L	L	M	Tallet Zgharta	ML	M	MH	Toula Zgharta	L	ML	M
Zgharta	ML	M	MH								

Minieh-Denniye

Municipality	07-Dec	08-Dec	09-Dec	Municipality	07-Dec	08-Dec	09-Dec	Municipality	07-Dec	08-Dec	09-Dec
Aasaymout	VL	L	M	Aaymar	L	ML	M	Aazki	ML	M	M
Ain El-Tineh-Miniyeh	VL	L	M	Assoun	L	ML	M	Bakhaaoun	L	ML	M
Bchennata	L	M	M	Bechehhara	L	L	M	Beddawi	ML	M	MH
Behouaita	L	L	M	Beit El Foqss	VL	L	M	Beit Haouik	L	ML	M
Beit Zoud	L	L	M	Bekaasafrine	L	M	MH	Borj El Yahoudiyeh	M	M	MH
Bqarsouna	VL	L	M	Btermaz	L	L	M	Debaael	L	L	M
Deir Ammar	ML	M	MH	Deir Nbouh	L	ML	M	Haouaret-Miniyeh	L	ML	M
Haql el Azimeh	L	L	M	Harf El Siyad	L	L	M	Hazmiye-Miniyeh	VL	L	M
Izal	L	ML	M	Jarjour	VL	L	M	Jayroun	L	L	M
Kahf El-Malloul	L	L	M	Karm El-Moher	L	ML	M	Kfar Binine	L	L	M
Kfarchalane	ML	ML	M	Kfarhabou	ML	M	M	Kharroub-Miniyeh	L	M	M
Mazraat El-Kreme	L	L	M	Mazraat Ketrane	L	L	M	Merkebeta	ML	M	MH
Minyeh	ML	M	MH	Mrah El Sfirat	VL	L	M	Mrah Sraj	L	L	M
Mrebbine	L	ML	M	Nabi Youcheaa	ML	M	MH	Nemrine	VL	ML	M

Qarhaiya	L	ML	M	Qarne	VL	L	M	Qarsita	VL	L	M
Qattineh-Miniyeh	VL	L	M	Qemmamine	VL	L	M	Qraine	L	L	M
Raouda-Aadoua	ML	M	MH	Rihaniyet-Miniyeh	ML	M	MH	Sfireh	L	L	M
Sir Ed-Danniyeh	L	L	M	Tarane	L	ML	M	Terbol-Miniyeh	M	M	MH
Zaghartaghriane	L	ML	M	Zouq Bhannine	ML	M	MH				

Nabatiye

Nabatiye

Municipality	07-Dec	08-Dec	09-Dec	Municipality	07-Dec	08-Dec	09-Dec	Municipality	07-Dec	08-Dec	09-Dec
Aabba	ML	M	MH	Aazzi	ML	M	M	Adchit El-Chqif	M	M	MH
Ain Bou Swar	ML	M	M	Ain Kana	ML	M	M	Ali El-Taher	ML	M	M
Ansar	M	M	MH	Arab Salim	M	M	M	Arnoun	M	M	M
Bfaroue	ML	M	M	Breyqaah	M	M	MH	Charqiyeh	M	M	MH
Choukine	M	M	MH	Deir El Zahrani	M	M	MH	Doueir El-Nabatiyeh	M	M	MH
Habbouch El-Nabatiye	M	M	MH	Hamra El-Nabatiyeh	M	M	MH	Harouf El-Nabatiyeh	M	M	MH
Hmaile	ML	M	M	Houmin El Faouqa	M	M	MH	Houmin El Tahta	M	M	MH
Jarjough	ML	M	M	Jbaah El-Nabatiyeh	L	ML	M	Jebchit	M	M	MH
Kfar Djal El-Nabatiy	M	M	MH	Kfar Remmane	M	M	M	Kfar Sir	M	M	MH
Kfar Tebnit	M	M	MH	Kfarfila	M	M	MH	Kfour El-Nabatieh	M	M	MH
Mayfadoun	M	M	MH	Mazraat Bsaffour	ML	M	M	Mazraat Chalbaal	M	M	MH
Mazraat Dmoul	M	M	MH	Mazraat El Khreibeh	M	M	MH	Mazraat El-Bayad El-	M	M	MH
Mazraat Kfarjaouz	M	M	MH	Mazraat Qalaat Meiss	M	M	MH	Nabatiyeh El-Fawka	M	M	MH
Nabatiyeh Et-Tahta	M	M	MH	Namiriyeh	ML	M	MH	Qaaqaaiyet El Jisr	M	M	MH
Qossaibeh El-Nabatiy	M	M	MH	Roumine	M	M	MH	Sarba El-Nabatieh	ML	M	M
Sir El-Gharbiyeh	M	M	MH	Toul	M	M	MH	Yehmor El-Nabatiyeh	M	M	MH
Zaoutar El Charkiyeh	M	M	MH	Zaoutar El-Gharbiyeh	M	M	MH	Zebdine El-Nabatiyeh	M	M	MH
Zefta	ML	M	MH								

Hasbaiya

Municipality	07-Dec	08-Dec	09-Dec	Municipality	07-Dec	08-Dec	09-Dec	Municipality	07-Dec	08-Dec	09-Dec
Ain Jarfa	L	ML	M	Abou Qamha	ML	M	M	Ain Qania	L	ML	M
Bourghos	ML	M	MH	Chebaa	ML	M	M	Chouaya Hasbaya	ML	M	M
Dellafeh	M	M	M	Fardiss Hasbaiya	M	M	M	Hasbaya	ML	M	M
Hbariyeh	ML	ML	M	Kaoukaba Hasbaiya	M	M	MH	Kfar Chouba	M	ML	M
Kfar Hamam	M	ML	M	Kfeir El-Zait	L	ML	M	Khalwat Hasbaya	L	L	M
Khreibet Hasbaiya	M	M	M	Majdiyeh Hasbaiya	M	M	M	Marj Ez-Zhour (Haouc	L	ML	M
Meri	M	M	M	Mimass	L	ML	M	Rachaiya El-Fokhar	ML	ML	M
Salaiyeb	M	M	MH								

Marjayoun

Municipality	07-Dec	08-Dec	09-Dec	Municipality	07-Dec	08-Dec	09-Dec	Municipality	07-Dec	08-Dec	09-Dec
Aalmane Marjaayoun	ML	ML	M	Aamra	M	M	MH	Adayseh Marjaayoun	M	M	MH
Adchit El-Koussair	M	M	MH	Ain Aarab Marjaayoun	M	M	MH	Bani Haiyann	M	M	M
Blatt Marjaayoun	M	M	MH	Blida	M	M	M	Borj El-Moulouk	M	M	MH
Boueyda Marjaayoun	ML	M	M	Deir Mimass	ML	M	M	Deir Siriane	M	M	M
Dibbine	M	M	MH	Ebel El Saqi	M	M	MH	Houla	M	M	M
Houra	M	M	MH	Kfar Kila	M	M	MH	Khiam Marjaayoun	M	M	MH

Klayaa	M	M	MH	Majdel Selem	M	M	M	Marjaayoun	M	M	MH
Markaba	M	M	M	Mays El-Jabal	M	M	M	Mazraat Doumiat	M	M	MH
Mazraat Sarada	M	M	MH	Mhaibib	M	M	M	Qabrikha	M	M	M
Qantara	M	M	M	Rab El-Thalathine	M	M	MH	Saouaneh Marjayoun	M	M	M
Talloussa	ML	ML	M	Taybeh Matjaayoun	M	M	MH	Touline	ML	M	M

Bent Jbail

Municipality	07-Dec	08-Dec	09-Dec	Municipality	07-Dec	08-Dec	09-Dec	Municipality	07-Dec	08-Dec	09-Dec
Ain-Ebel	M	M	M	Aitaroun	M	M	M	Aynata Bint Jbeil	M	M	M
Ayta El-Chaeb	ML	ML	M	Ayta El-Jabal	M	M	M	Beit Lif	ML	ML	M
Beit Yahoun	M	M	M	Bint Jbeil	M	M	M	Borj Qalaway	M	M	MH
Braachit	M	M	M	Chakra	M	M	M	Debel	M	M	M
Deir Antar	M	M	MH	Froun	ML	M	M	Ghandouriyeh Bint Jb	M	M	MH
Hanine	M	M	M	Hariss	M	M	M	Hdatha	M	M	M
Jmeymeh	M	M	M	Kafra Bint Jbeil	L	ML	M	Kfar Dounine	M	M	M
Khirbet Selm	ML	M	M	Kounine	M	M	M	Maroun El Ras	M	M	M
Qalaway	ML	M	M	Qaouzah	ML	ML	M	Qatmoun	M	M	MH
Ramya Bint Jbeil	ML	ML	M	Rchaf	ML	ML	M	Rmeich	M	M	M
Safad Al Battikh	M	M	M	Salhaneh	L	ML	M	Serbine	M	M	M
Sultanieh Bint Jbeil	M	M	M	Tibnine	M	M	M	Tiri	ML	M	M
Yaroun	M	M	M	Yater	ML	M	M				

Mont Liban

Jbail

Municipality	07-Dec	08-Dec	09-Dec	Municipality	07-Dec	08-Dec	09-Dec	Municipality	07-Dec	08-Dec	09-Dec
Aabeydat	L	ML	M	Aalita	L	L	M	Aamchit	M	M	MH
Aarab El-Lahib	L	L	M	Aarasta	VL	L	M	Adonis Jbeil	L	L	M
Afqa Jbeil	L	L	M	Ain El Delbeh Jbeil	L	L	M	Ain El-Ghouayba	VL	L	M
Ain Jrain	L	L	M	Ain Kfah	ML	M	MH	Almat El Chemaliyat	L	L	M
Almat El-Jenoubiya	L	L	M	Aqoura	M	ML	M	Bayzoun	L	L	M
Bchille Jbeil	L	ML	MH	Bechtlida	L	L	M	Behdaydat	L	ML	MH
Beit Habbaq	L	M	MH	Bejjeh	L	ML	MH	Bekhaaz	ML	M	MH
Berbara Jbeil	M	M	MH	Bintael	L	ML	MH	Birket Hjoula	L	L	M
Blatt Jbeil	L	ML	MH	Boulhos	L	L	M	Breyj Jbeil	L	L	M
Chamat	ML	M	MH	Chikhane	M	M	MH	Chmout	L	ML	M
Eddeh Jbeil	ML	M	MH	Ehmej	L	L	M	Fatre	L	L	M
Ferhet	L	ML	M	Fghal	L	ML	MH	Frat	VL	L	M
Ghabat	VL	L	M	Ghalboun	L	ML	MH	Gharzouz	ML	M	MH
Ghofrine	ML	M	MH	Habil	VL	L	M	Halate	L	ML	MH
Haqel	L	L	M	Hbaline	ML	M	MH	Hboub	L	ML	MH
Hdeine	L	L	M	Hema Er-Rehban	L	ML	M	Hema Mar Maroun Aann	L	ML	M
Hjoula	L	L	M	Hosrayel	ML	M	MH	Hsarat	ML	M	MH
Hsoun	L	ML	M	Jaj	L	ML	M	Janne	VL	L	M
Jbeil	M	M	MH	Jeddeyl Jbeil	M	M	MH	Jlisse	L	L	M
Jouret El-Qattine	L	ML	M	Kfar Baal Annaya	L	L	M	Kfar Kidde	ML	M	MH
Kfar Kouas	L	L	M	Kfar Mashoun	ML	M	MH	Kfoun	L	ML	M

Kharbe Jbeil	L	ML	M	Laqlouq	L	ML	M	Lassa	L	L	M
Lehfed	L	L	M	Maad	ML	M	MH	Mar Sarkis	L	ML	M
Mastita	M	M	MH	Mayfouq	L	L	M	Mazraat El Siyad	L	ML	M
Mazraat El-Maaden	L	L	M	Mechane	L	L	M	Mechmech Jbeil	L	L	M
Mehrin	ML	M	MH	Mejdel El-Akoura	L	L	M	Mghayreh Jbeil	L	ML	M
Mounsef	M	M	MH	Nahr Ibrahim	ML	M	MH	Qahmez	L	L	M
Qartaba	L	L	M	Qartaboun	M	M	MH	Qattara Jbeil	L	L	M
Qorqraya	VL	L	M	Ramout	L	ML	MH	Ras Osta	L	L	M
Rihane Jbeil	M	M	MH	Sakiet El-Khayt	L	ML	MH	Saqi Richmaya	L	L	M
Sebrine	L	L	M	Seraita	VL	L	M	Souane Jbeil	L	ML	M
Tadmor	L	ML	M	Tartej	L	ML	M	Torzaiya	L	ML	M
Yanouh Jbeil	L	L	M	Zibdine Jbeil	L	ML	M				

El Metn

Municipality	07-Dec	08-Dec	09-Dec	Municipality	07-Dec	08-Dec	09-Dec	Municipality	07-Dec	08-Dec	09-Dec
Aain El-Qabu	L	L	M	Aain El-Qach	L	ML	MH	Aain El-Teffaha	L	ML	MH
Aain el-Safsaf El-M	L	L	M	Abou Mizane	L	ML	M	Ain Aar	ML	M	MH
Ain Alaq	L	M	MH	Ain El-Kharroube	L	M	MH	Ain El-Sendianeh	L	ML	MH
Ain El-Zeitoune	L	L	M	Ain Saadeh	L	M	MH	Aintoura El-Matn	M	ML	M
Amaret Chalhoub	M	M	MH	Antelias	M	M	MH	Atchaneh	L	M	MH
Ayroun	L	ML	MH	Baabdat	L	L	M	Baouchariyeh	M	M	MH
Baskinta	L	L	M	Beit Chabab	L	ML	MH	Beit El-Chaar	ML	M	MH
Beit El-Kekko	ML	M	MH	Beit Mery	L	M	MH	Bhersaf	L	ML	MH
Bikfaya	L	ML	MH	Biyakout	M	M	MH	Bnabil	L	L	M
Bourj Hammoud	M	M	MH	Bqennaya	ML	M	MH	Broummana El-Matn	L	M	MH
Bsalim	L	M	MH	Bsifrine	VL	L	M	Bteghrine	L	L	M
Chaouiye	L	M	MH	Chouaya El-Matn	L	ML	MH	Choueir	L	ML	MH
Chrine	L	L	M	Dahr El Sawan El-Mat	L	ML	MH	Daychouniyeh	M	M	MH
Dbayeh	ML	M	MH	Deir Chamra	L	L	M	Deir Mar Abda el Mch	L	M	MH
Deir Mar Roukouz	M	M	MH	Deir Tamiche	L	M	MH	Dik El-Mehdi	L	M	MH
Dikwaneh	M	M	MH	Douar El-Matn	L	ML	M	Fanar	ML	M	MH
Fraike	L	ML	MH	Haret El-Ballaneh	ML	M	MH	Hbous	ML	M	MH
Himlaya	L	ML	MH	Jal El Did	M	M	MH	Jdeideh El-Metn	M	M	MH
Jouar El-Matn	L	L	M	Jouret El-Ballout	L	M	MH	Kaaqour	L	L	M
Kfar Aaqab	L	L	M	Kfertay El-Matn	L	ML	M	Khenchara	L	L	M
Khillet El-Mtain	L	L	M	Konnabat Broummana	L	M	MH	Konnabat Salima	VL	L	M
Machraah El-Matn	L	L	M	Majdel Tarchich	M	M	M	Majzoub	ML	M	MH
Mansouriyeh El-Metn	M	M	MH	Mar Boutros Karm Et-	L	ML	M	Mar Chaya et Mzekke	L	M	MH
Mar Moussa Ed-Douar	L	L	M	Marjaba	L	L	M	Masqa	L	ML	MH
Mayasse	L	ML	MH	Mazraat Deir Aoukar	ML	M	MH	Mazraat El-Hadirat	L	M	MH
Mazraat Yachouh	ML	M	MH	Mchikha	ML	L	M	Menqlet Mezher	ML	M	MH
Mhaydseh Matn	L	ML	MH	Mkalles	M	M	MH	Mrouj	L	M	M
Mtain	ML	ML	M	Mtayleb	L	M	MH	Nabay	L	M	MH
Naccache	ML	M	MH	Ouadi Chahine	L	ML	MH	Ouadi El-Karm El-Mat	L	L	M
Ouata El-Mrouj	L	ML	MH	Ouyoun El-Matn	L	L	M	Qornet Chehwan	L	M	MH
Qornet El-Hamra	L	M	MH	Roumieh	L	M	MH	Sfeilet Bikfaya	L	ML	M
Sinn El-Fil	M	M	MH	Zabbougha	L	L	M	Zalqa	M	M	MH

Zarouon	L	L	M	Zekrite	L	M	MH	Zighrine El-Matn	L	ML	MH
Zouk El-Khrab	M	M	MH								

Chouf

Municipality	07-Dec	08-Dec	09-Dec	Municipality	07-Dec	08-Dec	09-Dec	Municipality	07-Dec	08-Dec	09-Dec
Aalmane El-Chouf	M	M	MH	Aammqi El-Chouf	L	ML	M	Ain Ouzein	L	L	M
Ain Qani	L	ML	M	Ain Zhalta	L	ML	M	Ainbal	L	ML	M
Amatour	L	ML	M	Anout	L	M	M	Atrine	L	ML	M
Baadarane	L	ML	M	Baaqline	L	ML	M	Baasir	M	M	MH
Barja	M	M	MH	Barouk	L	L	M	Bater	L	ML	M
Batloun	ML	M	M	Bayqoun	ML	M	MH	Bchetfine	L	M	M
Beiteddine	L	ML	M	Benouati Ech-Chouf	L	ML	M	Berjein	L	M	M
Bireh et Mtalleh	L	M	M	Biret El-Chouf	ML	M	M	Bkechtine Ouel Mchei	L	ML	M
Bkifa El-Chouf	ML	M	M	Botme	L	L	M	Bqaiaa Ech-Chouf	L	M	M
Bsaba El-Chouf	ML	ML	M	Chammis El-Chouf	M	M	MH	Chehim	ML	M	M
Chemaarine	L	ML	M	Chourit	L	ML	M	Daher El-Chouf	L	ML	M
Dalhoun	ML	M	M	Damour	M	M	MH	Daraya El-Chouf	L	M	M
Deir El-Moukhalles	L	M	M	Deir Baba	L	M	M	Deir Dourit	L	ML	M
Deir El-Qamar	L	ML	M	Deir Kouche	L	M	M	Dibbieh	L	ML	M
Dmit	L	M	M	Fouara Jaafar	L	ML	M	Fraidis El-Chouf	ML	ML	M
Ghabet Jaafar	L	M	M	Gharife	L	ML	M	Haret Jandal	L	ML	M
Hasrout	ML	M	MH	Jadra	M	M	MH	Jahlieh	L	ML	M
Jbeih El-Chouf	L	ML	M	Jdeidet El-Chouf	L	ML	M	Jiyeh	M	M	MH
Jleilyeh	ML	M	MH	Jmailiyeh	M	M	MH	Joun	ML	M	M
Kahlounie El-Chouf	ML	M	M	Ketermaya	M	M	MH	Kfar Faqoud	L	ML	M
Kfar Hamal	ML	M	MH	Kfar Him	L	M	M	Kfar Katra	L	ML	M
Kfar Niss	L	M	M	Kfar hay	L	M	M	Kfarnabrakh	L	M	M
Khirbet Bisri	L	ML	M	Knayse El-Chouf	L	ML	M	Maaniyeh	M	M	MH
Maasser Beiteddine	L	ML	M	Maasser El-Chouf	L	L	M	Majdalouna	ML	M	M
Majdel El-Meouch	L	M	M	Mazboud	ML	M	MH	Mazmoura	ML	M	MH
Mazraat El Chouf	ML	ML	M	Mazraat El Daher	L	ML	M	Mazraat El-Douair	L	L	M
Mechref	L	M	M	Mghairie	M	M	MH	Mghayrie El-Chouf	L	M	M
Moukhtara	L	ML	M	Mrusti	L	ML	M	Mtolle	ML	M	M
Naameh	ML	M	MH	Niha El-Chouf	L	ML	M	Ouadi Abou Youssef	VL	L	M
Ouadi Ed-Deir	ML	M	M	Ouadi El-Sit	L	ML	M	Ouadi bnehlay	L	ML	M
Qraibeh	L	ML	M	Qreiaa	L	M	M	Rmayle El-Chouf	M	M	MH
Semqaniyeh	ML	M	M	Sibline	M	M	MH	Sirjbeil	L	M	M
Warhanieh	L	M	M	Werdaniyeh	M	M	MH	Zaarourieh	ML	M	M

Baabda

Municipality	07-Dec	08-Dec	09-Dec	Municipality	07-Dec	08-Dec	09-Dec	Municipality	07-Dec	08-Dec	09-Dec
Abadiyeh	L	ML	MH	Ain Mouaffaq	L	ML	MH	Araiya	L	M	MH
Arbaniyeh	L	L	M	Arsoun	L	L	M	Baabda	M	M	MH
Baalchmey	ML	M	MH	Bmaryam	L	L	MH	Bourj El-Brajneh	M	M	MH
Boutchay	L	M	MH	Bsaba Baabda	ML	M	MH	Btekhney	L	L	MH
Btibyat	L	L	MH	Bzebdine	L	L	M	Chbeniyeh	L	ML	MH
Chiyah	M	M	MH	Chmeisset Baabda	L	L	M	Chouit	L	ML	MH
Deir El-harf	L	L	MH	Deir Khouna	L	ML	MH	Dlaybeh	L	L	M

Falougha	M	M	MH	Furn El-Chebbak	M	M	MH	Hadath Beyrouth	M	M	MH
Halaliyeh Baabda	L	ML	M	Hammana	ML	M	MH	Haret El Sett	L	M	MH
Haret Hamze	L	ML	MH	Haret Hreik	M	M	MH	Hasbaiya El-Metn	L	L	M
Jouar El-Hoz	L	L	M	Jouret Arsoun	L	L	M	Kfar Chima	ML	M	MH
Kfar Selouane	ML	ML	M	Khalouat Baabda	ML	ML	MH	Kneisset Baabda	L	L	M
Laylakeh	M	M	MH	Louayzeh Baabda	ML	M	MH	Merdache	ML	M	MH
Mzairaa Baabda	L	L	M	Ouadi Chahrour El OI	L	M	MH	Ouadi Chahrour El So	L	M	MH
Qalaa Baabda	L	L	MH	Qhraybe Baabda	L	L	MH	Qobbayaa	L	ML	MH
Qornayel	L	L	M	Qortada	VL	L	M	Qrayeh Baabda	L	ML	MH
Qsaibeh Baabda	L	ML	MH	Qtale Baabda	L	L	MH	Ras El Metn	L	ML	MH
Ras El-Haref	L	ML	MH	Rouayset El-Ballout	L	ML	MH	Salima Baabda	L	L	MH
Tahouitat El Ghadir	M	M	MH	Tarchich	ML	ML	M	Zandouqa	VL	ML	M

Aley

Municipality	07-Dec	08-Dec	09-Dec	Municipality	07-Dec	08-Dec	09-Dec	Municipality	07-Dec	08-Dec	09-Dec
Abey	L	M	M	Aghmid	L	ML	MH	Ain Dara	ML	M	MH
Ain Drafil	L	M	M	Ain El Halazoun	L	M	MH	Ain El-Rmmaneh	L	ML	M
Ain Jedideh	ML	M	MH	Ain Ksour	L	M	M	Ain Onoub	L	M	MH
Ain Traz	L	M	M	Ainab	L	M	MH	Aley	ML	M	MH
Aramoun	L	M	MH	Aytat	ML	M	MH	Azouniyeh	ML	M	MH
Baawerta	L	M	M	Badghan Oua Wadi Bad	ML	M	MH	Bassatine	L	M	MH
Bayssour	L	M	MH	Bchamoun	M	M	MH	Bdadoun	L	M	MH
Behouara	L	ML	MH	Bennay	L	M	M	Bhamdoun El-Dayaa	ML	M	MH
Bhamdoun El-Mhatta	ML	M	MH	Bkhechthey	ML	M	MH	Bleibel	L	M	MH
Bmakine	ML	M	MH	Bmehray	L	ML	M	Bouzrid	L	M	M
Bserrine	ML	M	MH	Bsous	L	ML	M	Btalloun	ML	M	MH
Btater	ML	M	MH	Chanay	ML	M	MH	Charoun	ML	M	MH
Chartoun	L	ML	M	Chemlane	L	M	MH	Choueifat El-Aamrous	M	M	MH
Choueifat El-Oumara	M	M	MH	Choueifat El-Quoubbe	M	M	MH	Dakkoun	L	M	MH
Deir Qoubel	ML	M	MH	Dfoun	ML	M	MH	Douair El Remmaneh	L	ML	M
Ghaboun	L	M	MH	Habramoun	L	L	M	Homs Oua Hama	L	M	MH
Houmal	L	M	MH	Jisr El Qadi	L	M	M	Kehaleh	L	ML	M
Keyfoun	ML	M	MH	Kfar Aamey	L	ML	MH	Kommatyeh	ML	M	MH
Maasrati	L	M	MH	Majdel Baana	ML	M	MH	Mansourieh et Ain El	ML	M	MH
Mazraat El-Nahr	L	ML	MH	Mchakhte	L	L	M	Mecherfeh	L	M	MH
Mejdlaya	L	M	MH	Mrayjat	ML	M	M	Ramliyah	L	ML	M
Rechmaya	L	M	M	Rejmeh	L	ML	MH	Remhala	L	M	M
Rouaysset El Neemane	L	ML	MH	Saoufar	ML	M	MH	Selfaya	L	M	M
Sirhmoul	L	M	MH	Souq El Ghareb	L	M	MH	Taazanieh	ML	M	MH

Kesrouane

Municipality	07-Dec	08-Dec	09-Dec	Municipality	07-Dec	08-Dec	09-Dec	Municipality	07-Dec	08-Dec	09-Dec
Achkout	L	ML	M	Adma Oua Dafneh	ML	M	MH	Ain Ed-Delbe Kesroua	L	L	M
Ain El-Rihane	L	M	MH	Aintoura Kesrouane	L	M	MH	Ajaltoun	L	ML	M
Akaybeh Kesrouane	M	M	MH	Aramoun Kesrouane	L	M	MH	Azra ouel Ozor	L	ML	M
Ballouneh	L	ML	M	Batha	VL	M	MH	Bekaatat Achkout	L	ML	MH
Bekaatat Kanaan	L	L	M	Bizhel	L	ML	M	Bouar	ML	M	MH
Bqaatouta	L	ML	M	Bqaq Ed-Dine	ML	M	MH	Bzommar	L	M	MH

Chahtoul	L	ML	MH	Chnaniir	L	M	MH	Chouan	L	L	M
Daraya Kesrouane	L	ML	MH	Darououn	L	M	MH	Deir Baqlouch	L	M	MH
Dlebta	L	ML	M	Eghbeh	VL	L	M	Faraya	L	L	M
Fatka	L	ML	MH	Feytroun	L	L	M	Ghazir	L	M	MH
Ghbaleh Kesrouane	L	ML	M	Ghedrass	L	L	M	Ghosta	L	M	MH
Ghynéh	L	ML	MH	Harharaya w Kattine	L	ML	M	Harissa Kesrouane	L	M	MH
Hayata	L	ML	M	Hosein	L	L	M	Hrajel	L	M	M
Jdeideh Ghazir	L	M	MH	Jeita	L	M	MH	Jounieh Ghadir	ML	M	MH
Jounieh Haret Sakhr	ML	M	MH	Jounieh Salel Alma	ML	M	MH	Jounieh Sarba	ML	M	MH
Jouret Bedrane	L	M	MH	Jouret Mhad	L	L	M	Jouret Termos	L	ML	MH
Kfar Debiane	L	ML	M	Kfar Tay Kesrouane	L	L	M	Kfar Yassine	M	M	MH
Kfour Kesrouane	L	M	MH	Kharayeb Nahr Ibrahi	L	ML	M	Klayaat Kesrouane	L	ML	M
Maarab	VL	ML	M	Maaysra Kesrouane	L	ML	M	Mayrouba	L	ML	M
Mazraat Er-Ras	ML	M	MH	Mazraat Mrah El-Mir	L	ML	MH	Mchaa El Ftouh	L	ML	M
Mchaa Faraya	L	L	M	Mchaa Kfar Dibiane	L	ML	M	Mghaer	VL	L	M
Mradiyah	L	ML	M	Nahr Ed-Dahab	L	L	M	Nammoura Kesrouane	L	L	M
Ouata El Jaouz	L	ML	M	Ouata Sillam	ML	M	MH	Raachine	L	L	M
Rayfoun	L	M	MH	Safra Kesrouane	ML	M	MH	Shayle Kesrouane	L	M	MH
Tabarja	ML	M	MH	Yahchouch	L	L	M	Zaaytreh	L	ML	M
Zeytoun	L	ML	MH	Zouk Mikael	ML	M	MH	Zouk Mosbeh	ML	M	MH

Baalbek_Hermel

Baalbek

Municipality	07-Dec	08-Dec	09-Dec	Municipality	07-Dec	08-Dec	09-Dec	Municipality	07-Dec	08-Dec	09-Dec
Aadous	ML	M	M	Aamchki	ML	M	M	Aarsal	ML	M	M
Ain Baalbek	ML	M	M	Ain Bourday	ML	M	M	Ain El-Benye	ML	M	M
Ain El-Jaouz Baalbek	M	M	M	Ain El-Siya Chadoura	M	M	M	Al Khodr Baalbek	L	M	M
Al Nabi Chit	L	M	M	Aynata Baalbek	ML	M	M	Baalbek	ML	M	M
Bachwat	L	L	M	Barqa	VL	L	M	Bednayel Baalbak	ML	M	M
Beit Chama	L	M	M	Bijjaje	ML	M	M	Bouday	ML	ML	M
Brital	ML	M	M	Btadi	L	M	M	Chaat	ML	M	M
Chaibe	ML	M	M	Chlifa	ML	M	M	Chmestar	ML	M	M
Dar El-Oussa	L	ML	M	Deir El-Ahmar	L	ML	M	Deir Mar Maroun Baal	ML	M	M
Douris	ML	M	M	Fakiha	ML	M	M	Hadath Baalbek	ML	M	M
Ham	ML	M	M	Haour Taala	ML	M	M	Hizzine	ML	M	M
Hlebta	L	ML	M	Hosh Barada	ML	M	M	Hosh El Dahab	ML	M	M
Hosh El Snid	ML	M	M	Hosh El-Nabi	ML	M	M	Hosh El-Rafiq	ML	M	M
Hosh Tal Safiya	ML	M	M	Hrebta	L	M	M	laat	ML	M	M
Jebaa	M	M	M	Jenta	L	M	M	Kfar Dabach	ML	M	M
Kfar Dane	M	M	M	Khraibeh El-Hermel	L	M	M	Khreibet Baalbek	ML	M	M
Kneisset Baalbek	ML	ML	M	Labueh	ML	M	M	Maarboun	ML	M	M
Majdaloun	ML	M	M	Maqneh	ML	M	M	Mazraat Beit Mcheik	M	M	M
Misraya	ML	M	M	Moqraq	ML	M	M	Nabha El-Damdoum	L	M	M
Nabi Chbay	ML	M	M	Nabi Osman	ML	M	M	Nahleh baalbek	ML	M	M
Ouadi El-Oss	L	L	M	Qaa Baayoun	ML	M	M	Qaa Jouar Maqiye	M	M	M
Qaa Ouadi El-Khanzir	M	M	M	Qah Baalbek	ML	M	M	Qarha Baalbek	L	M	M

Qsarnaba	L	M	M	Ram Baalbek	L	L	M	Ras Baalbek El Sahl	ML	M	M
Ras Baalbek El-Charq	ML	M	M	Riha	L	ML	M	Saaide	ML	M	M
Sbouba	L	M	M	Seriine El-Tahta	ML	M	M	Slouqi	L	M	M
Taiba Baalbek	ML	M	M	Talia	ML	M	M	Taraiya	ML	M	M
Temnin El Fawqa	L	M	M	Temnin El-Tahta	L	ML	M	Tfail	M	M	M
Yahfoufa	ML	M	M	Yammouneh	M	M	M	Younine	ML	M	M
Zboud	L	M	M								

Hermel

Municipality	07-Dec	08-Dec	09-Dec	Municipality	07-Dec	08-Dec	09-Dec	Municipality	07-Dec	08-Dec	09-Dec
Charbine El-Hermel	ML	ML	M	Hermel Jbab	M	M	M	Hermel	M	M	M
Maaysra El-Hermel	L	ML	M	Michaa Mrajhine	ML	ML	M	Ouadi Faara	L	ML	M
Ras Baalbek - Ouadi	ML	M	M	Ras Baalbek El Gharb	L	M	M	Zighrine	L	ML	M

Akkar

Akkar

Municipality	07-Dec	08-Dec	09-Dec	Municipality	07-Dec	08-Dec	09-Dec	Municipality	07-Dec	08-Dec	09-Dec
Aain Tinta	M	M	MH	Aaiyat	M	M	MH	Aakkar El-Aatiqa	L	L	M
Aamar Akkar	ML	M	MH	Aamar El Baykat	M	M	MH	Aamayer	M	M	M
Aamriyet Akkar	M	M	MH	Aandqet	M	ML	M	Aarmeh	ML	ML	M
Aarqa	ML	M	MH	Aawaynat	M	M	M	Aayoun Akkar	M	M	MH
Abboudiye	ML	M	M	Ain El-Zeit	M	M	MH	Ain Yaaqoub	ML	ML	M
Akroum	M	ML	M	Aridet Cheikh Zennad	ML	M	MH	Baldech w Mazraat Bal	M	M	MH
Barcha	ML	M	MH	Bardeh	M	M	M	Bebnine	ML	M	MH
Beino	ML	M	MH	Beit Ayoub	M	M	MH	Beit El-Haouch	ML	M	MH
Beit Mellat	M	M	MH	Beit Younes	L	ML	M	Berbara Akkar	M	M	MH
Berqayel	ML	M	MH	Bezbina	L	L	M	Bireh Akkar	M	M	MH
Borj	M	M	MH	Bqerezla	M	M	MH	Bzal	L	ML	M
Chane	L	ML	M	Chaqdouf	M	M	MH	Charbila	M	M	MH
Cheikh Mohammad	ML	M	MH	Cheikh Taba Es-Sahl	ML	M	MH	Cheikh Taba	ML	M	MH
Cheikh Zennad	ML	M	MH	Cheikhlar	M	M	M	Chir Hmairine	ML	M	MH
Daghle	M	M	MH	Dahr Laissine	M	M	MH	Darine	ML	M	MH
Dawra	ML	ML	M	Dawsa w Baghdadi	M	M	MH	Dayret Nahr El-Kabir	M	M	M
Deir Dalloum	ML	M	MH	Deir Jennine	M	M	MH	Denbou	L	ML	M
Dibbbiyeh	M	M	MH	Douair Aadwiyeh	M	M	MH	Fassikine	M	M	MH
Fnaydek	ML	ML	M	Fraydes Akkar	M	M	M	Ghazayle	ML	M	MH
Habchit	L	L	M	Hakour	M	M	MH	Halba	ML	M	MH
Haouchab	ML	M	MH	Hayssat	ML	M	MH	Haytla	ML	M	MH
Hayzouq	M	M	MH	Hedd	M	M	MH	Hmaira Akkar	ML	M	MH
Hmaiss Akkar	M	M	MH	Hnaider	M	M	M	Hokr Ed-Dahri	ML	M	MH
Hokr Etti	ML	M	MH	Hokr Jouret Srar	ML	M	MH	Houaich	ML	M	M
Hrar	ML	M	M	Idbil	ML	M	MH	Ilal	M	M	MH
Janine	M	M	MH	Jdeidet El-Joumeh	ML	M	MH	Jdeidet El-Kaiteh	ML	M	MH
Jebayel	M	M	MH	Kafr	L	ML	MH	Kafr	M	M	MH
Karm Asfour	M	M	MH	Kfar Melki Akkar	ML	M	MH	Kfar Noun	M	ML	M
Kfarharra	M	M	MH	Khalsa	M	M	M	Kharnoubet Akkar	ML	M	MH

Khirbet Daoud Aakkar	M	M	MH	Khirbet El Remmane	M	M	M	Khirbet Shar	M	M	MH
Khoreybet El-Jindi	ML	M	MH	Khreibet Aakkar	ML	M	MH	Kneisset Aakkar	ML	M	MH
Kneisset Hnaider	M	M	M	Knisse	M	M	MH	Kroum El-Aarab	ML	M	MH
Kwachra	M	M	MH	Kweykhath	ML	M	MH	Machta Hammoud	M	M	M
Majdala	ML	M	MH	Majdel Akkar	M	M	MH	Mar Touma	ML	M	MH
Marlaya Melhem	ML	M	MH	Mashha	ML	M	MH	Massoudiye	ML	M	MH
Mazraat Beit Ghattas	M	M	MH	Mazraat En-Nahriye	M	M	M	Mechmech	L	L	M
Memneh	L	L	M	Mhammara	ML	M	MH	Mighraq Aakkar	ML	M	MH
Minyara	ML	M	MH	Moqayteh	ML	M	MH	Mounjez	M	M	M
Msalla	M	M	MH	Mzeihmeh	ML	M	MH	Nfaisheh	M	M	MH
Noura Et-Tahta	M	M	MH	Ouadi El-Haour	ML	M	MH	Ouadi El-Jamous	ML	M	MH
Ouyoun El-Ghizlane	ML	M	MH	Qaabarine	ML	M	MH	Qabaait	L	ML	M
Qachlaq	ML	M	MH	Qantara Aakkar	ML	M	MH	Qarha Aakkar	M	M	M
Qarqaf	ML	M	MH	Qboula	M	M	MH	Qleiaat Aakkar	ML	M	MH
Qloud El-Baqie	M	M	MH	Qobaiyat Aakkar	M	ML	M	Qobbat Chamrat	ML	M	MH
Qorayat	L	ML	M	Qornet Aakkar	ML	M	M	Qsair Aakkar	M	M	MH
Rahbe	ML	M	M	Rihaniyet Aakkar	M	M	MH	Rmah	M	M	M
Rmoul	ML	M	MH	Saadine	ML	M	MH	Sadaqa	ML	M	M
Saidnaya	M	M	MH	Sammouniye	ML	M	MH	Sayssoq	M	M	MH
Semmaqiye	ML	M	MH	Semmaqli	ML	M	MH	Sfinet El-Dreib	M	M	MH
Sfinet El-Qaitaa	ML	M	M	Sindyanet Zeidane	M	M	M	Souaisset Aakkar	M	M	MH
Srar	ML	M	MH	Tal Abbas El Gharby	ML	M	MH	Tal Abbas El-Chargy	ML	M	MH
Tal Biret	ML	M	MH	Tal Hmayra	ML	M	MH	Tal Maayan Tal Kiri	ML	M	MH
Tal Sibel	ML	M	MH	Tallet Chattaha	M	M	MH	Tikrit	ML	M	M
Tleil	M	M	MH	Tshea	L	ML	M	Zawarib	ML	M	MH
Zouq El Hosniyeh	ML	M	MH	Zouq El-Haddara	ML	M	MH	Zouq El-Hbalsa	ML	M	MH
Zouq El-Moqachrine	ML	M	MH								

Sud

Sour

Municipality	07-Dec	08-Dec	09-Dec	Municipality	07-Dec	08-Dec	09-Dec	Municipality	07-Dec	08-Dec	09-Dec
Aaiyeh	M	M	MH	Aalma El-Chaab	M	M	MH	Aaytit	M	M	MH
Abbassiyeh Sour	M	M	MH	Abou Chech	M	M	MH	Ain Abou Abdallah	M	M	MH
Ain Baal	M	M	MH	Arzoun	M	M	MH	Aziyeh	ML	M	MH
Baflaya	M	M	MH	Barich	M	M	MH	Batouliyeh	M	M	MH
Bayad	ML	M	MH	Bazouriyeh	M	M	MH	Bediass	M	M	MH
Bestiyat	M	M	MH	Borj El Chemali	M	M	MH	Borj En-Naqoura	M	M	MH
Borj Rahhal	M	M	MH	Boustane	M	M	MH	Btaychiyeh	M	M	MH
Chaaitiye	M	M	MH	Chameh	M	M	MH	Chehabiye	M	M	M
Chehour	L	ML	M	Chihine	M	ML	M	Debaal Sour	M	M	MH
Deir Amess	L	ML	M	Deir Kifa	M	M	MH	Deir Qanoun El-Ain	M	M	MH
Deir Qanoun El-Naher	M	M	MH	Derdghaiya	M	M	MH	Dhayra	M	M	MH
Halloussiyeh	M	M	MH	Hamoul	ML	M	MH	Hanaouey	M	M	MH
Henniye	M	M	MH	Hmairi Sour	M	M	MH	Iskandarouna Sour	M	M	MH
Jbal El Botom	ML	M	M	Jebbin	M	M	MH	Jennata	M	M	MH
Jijim	M	M	MH	Jouaiya	M	M	MH	Kneisset Sour	M	M	MH

Maarake	M	M	MH	Maaroub	M	M	MH	Majadel	M	M	MH
Majdalzoun	M	M	MH	Mansouri Sour	M	M	MH	Marnba	L	ML	M
Marouahine	ML	ML	M	Mazraat El-Zalloutiy	M	M	MH	Mazraat Mechref	M	M	MH
Mazraat Tayr Semhat	L	ML	M	Mheilib	M	M	MH	Neffakhiyeh	M	M	MH
Niha Sour	M	M	MH	Ouadi Jilo	M	M	MH	Qana	M	M	MH
Qolaileh Sour	M	M	MH	Rechknany	ML	M	M	Rmadiyeh	M	M	MH
Selha Sour	ML	M	MH	Siddiqine	M	M	MH	Sour	M	M	H
Srifa	ML	M	M	Tayr Debbe	M	M	MH	Tayr Felsay	M	M	MH
Tayr Harfa	M	M	MH	Touayri	L	ML	M	Toura	M	M	MH
Yanouh Sour	M	M	MH	Yarine	M	M	MH	Zebqine	L	ML	M

Saida

Municipality	07-Dec	08-Dec	09-Dec	Municipality	07-Dec	08-Dec	09-Dec	Municipality	07-Dec	08-Dec	09-Dec
Aanqoun	M	M	MH	Aaqtanit	M	M	MH	Aarab Ej-Jall	M	M	MH
Aarab Tabbaya	M	M	MH	Abra Saida	M	M	MH	Adloun	M	M	MH
Adousiyeh	M	M	MH	Ain-El-Deleb	M	M	MH	Arzai	M	M	MH
Babliyah	M	M	MH	Barty	ML	M	MH	Bissariyeh	M	M	MH
Bnaafoul	M	M	MH	Bqosta	M	M	MH	Bramiy --	M	M	MH
Daoudiyeh	M	M	MH	Dareb El-Sim	M	M	MH	Erkay	ML	M	MH
Ghassanieh	M	M	MH	Ghazieh	M	M	MH	Hajjeh	ML	M	MH
Haret Saida	M	M	MH	Hartiyeh	M	M	MH	Hlaliye Saida	M	M	MH
Insariyat	M	M	MH	Jazira Saida	M	M	MH	Kafar Bit	M	M	MH
Kaoutariyet El-Siyad	M	M	MH	Kfar Chellal	M	M	MH	Kfar Hatta Saida	M	M	MH
Kfar Milke Saida	M	M	MH	Khartoum	M	M	MH	Khaziz	ML	M	MH
Khirbet Ed-Douair Sa	M	M	MH	Khirbet El-Bassal	M	M	MH	Khrayeb Saida	M	M	MH
Loubieh	M	M	MH	Maghdouche	M	M	MH	Majdelyoun	M	M	MH
Matariyet El-Choumar	M	M	MH	Matayriyeh	M	M	MH	Mazraat 'Mseileh	M	M	MH
Mazraat 'Snaiber	M	M	MH	Mazraat Aarab Soukka	M	M	MH	Mazraat Deir Taqla	M	M	MH
Mazraat El Yahoudiye	M	M	MH	Mazraat El-Housseini	M	M	MH	Mazraat El-Mhaydaleh	M	M	MH
Mazraat El-Ouasta	M	M	MH	Mazraat Jamjim	M	M	MH	Mazraat Kaoutariyet	M	M	MH
Mazraat Kfar Badda	M	M	H	Mazraat Oussamiyat	M	M	MH	Mazraat Sari	M	M	MH
Mazraat Sinai	M	M	MH	Meemariyeh	M	M	MH	Merouaniyeh	M	M	MH
Miyeh ou Miyeh	M	M	MH	Najjariyeh	M	M	MH	Qaaqaiyat El-Snaouba	M	M	MH
Qnarit	M	M	MH	Qraiye Saida	M	M	MH	Saida Ed-Dekermane	M	M	MH
Saida El-Oustani	M	M	MH	Saida El-Qadimeh	M	M	MH	Saida Kefraya	M	M	MH
Saksakiyeh	M	M	MH	Salhie Saida	M	M	MH	Sarafand	M	M	MH
Sfenta	ML	M	M	Tafahta	M	M	MH	Tanbourit	M	M	MH
Tebna	M	M	MH	Zaghdraiya	M	M	MH	Zeita	M	M	MH
Zrariyeh	M	M	MH								

Jezzine

Municipality	07-Dec	08-Dec	09-Dec	Municipality	07-Dec	08-Dec	09-Dec	Municipality	07-Dec	08-Dec	09-Dec
Ain El-Mir (El Estab	M	M	MH	Anane	L	ML	M	Aramta	M	M	M
Ariya	L	ML	M	Aychiyeh	ML	ML	M	Azour	L	L	M
Baba	L	L	M	Baysour Jezzine	M	M	MH	Benoueteh Jezzine	L	ML	M
Bhannine	L	ML	M	Bisri	L	L	M	Bkassine	L	L	M
Bouslaya	L	L	M	Btedine El-Leqech	L	L	M	Chbail	L	L	M
Choualiq Jezzine	M	M	MH	Dahr Ed-Deir	L	ML	M	Deir El Qattine	L	L	M

Demachqiyeh	M	M	MH	Ghabbatiyeh	L	L	M	Harf Jezzine	L	L	M
Hassaniyeh	M	M	MH	Haytouleh	ML	M	M	Haytura	L	ML	M
Hidab	ML	ML	M	Homsiyeh	L	L	M	Jabal Toura	M	ML	M
Jarmaq	M	M	M	Jensnaya	M	M	MH	Jernaya	M	M	MH
Jezzine	ML	ML	M	Karkha	ML	M	M	Kfar Falous	ML	M	M
Kfar Houna	ML	ML	M	Kfar Jarrah	M	M	MH	Lebaa	M	M	MH
Louayzet Jezzine	ML	ML	M	Machmouche	L	L	M	Mahmoudiyeh Jezzine	M	M	M
Maknounye Jezzine	L	L	M	Maraat Ouazaiyeh	ML	M	M	Mazraat Daraya	L	ML	M
Mazraat El-Aarqoub	L	ML	M	Mazraat El-Mathane	L	L	M	Mazraat El-Rahbane	L	L	M
Mazraat Khallet Khaz	ML	ML	M	Mazraat Louzid (Loua	L	L	M	Mazraat Qrouh	M	M	M
Mazraat Tamra	M	M	MH	Mazraat Zighrine Jez	ML	ML	M	Mazraat	L	L	M
Mharbiyeh	M	M	MH	Midane Jezzine	L	ML	M	Mjeydel Jezzine	M	M	MH
Mlikh	ML	ML	M	Mrach El-Hbasse	M	M	MH	Ouadi Baanquodaine	M	M	MH
Ouadi El-Laymoun	M	M	MH	Ouardiyeh	VL	L	M	Qabaa Jezzine	L	L	M
Qatrani	L	ML	M	Qaytouleh	L	L	M	Qtaleh Jezzine	L	M	M
Rihane Jezzine	M	M	M	Rimat	L	ML	M	Roum	L	ML	M
Roummanet	M	M	M	Sabbah	L	L	M	Saydoun	ML	ML	M
Sfaray	L	ML	M	Snaya	L	L	M	Sojoud	ML	ML	M
Srayri	ML	ML	M	Taaid	L	ML	M	Wadi Jezzine	L	ML	M
Zhalta	L	L	M								

Bekaa

West Bekaa

Municipality	07-Dec	08-Dec	09-Dec	Municipality	07-Dec	08-Dec	09-Dec	Municipality	07-Dec	08-Dec	09-Dec
Aammq BG	ML	M	M	Ain El Tineh BG	L	ML	M	Ain Zebdeh	ML	ML	M
Ana	ML	M	M	Aytanit	L	L	M	Baaloul BG	L	L	M
Bab Mareh	ML	ML	M	Chouberqiye Aammq	ML	M	M	Dakoue	ML	ML	M
Deir Ain El-Jaouze	ML	ML	M	Deir Tahniche	ML	M	M	Ghaza	ML	ML	M
Harime El-Soughra	ML	M	M	Hoch Harimeh	M	M	M	Jazira BG	ML	M	M
Jib Jennine	ML	ML	M	Kamed-El-Laouz	ML	ML	M	Kefraya BG	L	ML	M
Khiara El Atika	M	ML	M	Khiara	ML	ML	M	Khirbet Qanafar	ML	ML	M
Lala	L	ML	M	Lebbaya BG	L	ML	M	Loussa	ML	M	M
Machghara	L	ML	M	Manara (Hammar) BG	L	L	M	Mansoura BG	ML	M	M
Marej BG	M	M	M	Maydoun	ML	ML	M	Ouaqf BG	ML	M	M
Qaraaoun	L	ML	M	Qelya	ML	M	M	Raouda (Istabel)	M	M	M
Saghbine	ML	L	M	Sohmor	L	ML	M	Soltan Yacoub el Ara	ML	ML	M
Souairy	M	M	M	Sultan Yaacoub	ML	ML	M	Tal Znoun	ML	M	M
Yehmor BG	L	ML	M	Zilaya	L	ML	M				

Zahle

Municipality	07-Dec	08-Dec	09-Dec	Municipality	07-Dec	08-Dec	09-Dec	Municipality	07-Dec	08-Dec	09-Dec
Aanjar (Haouch Mouss	M	M	M	Ablah	L	M	M	Ain Kfarzabad	ML	M	M
Ali-El-Nahri	ML	M	M	Bar Elias	M	M	M	Bouarej	M	M	M
Cheberqiyet Tabet	M	M	M	Chtaura	M	M	M	Deir El Ghazal	L	M	M
Delhamiyet Zahle	M	M	M	Ferzol	ML	M	M	Haouch El-Ghanam	ML	M	M
Haouch Es-Siyadeh	ML	M	M	Haouch Hala	ML	M	M	Haouch Mandara	M	M	M

Haouch Qayssar	ML	M	M	Hezerta	M	M	M	Hosh Moussa	ML	M	M
Jdita	M	M	M	Kfarzabad	M	M	M	Ksara	M	ML	M
Majdel Aanjar	M	ML	M	Makssi	M	M	M	Massa	L	M	M
Mazraat Er-Remtaniye	M	M	M	Mrayjat Zahle	M	M	M	Mzaraa Zahle	M	M	M
Nabi Ayla	L	M	M	Nasriyet Rizk	ML	M	M	Nasriyet Zahle	ML	M	M
Niha Zahle	ML	M	M	Ouadi Ed-Deloum	M	M	M	Ouadi El-Arayech	ML	M	M
Qaa El Rim	ML	M	M	Qab Elias	M	M	M	Qousaya	ML	M	M
Rhit	L	M	M	Riyak	ML	ML	M	Saadnayel	M	M	M
Taal El-Akhdar	ML	M	M	Taalbeya	M	M	M	Taanayel	M	M	M
Talamara	ML	ML	M	Tcheflik Edde Haouch	M	M	M	Tcheflik Qiqano	ML	M	M
Terbol Zahle	ML	M	M	Touaite Zahle	M	M	M	Zahle Aradi	M	M	M
Zahle El-Berbara	ML	M	M	Zahle El-Maallaqa	ML	M	M	Zahle El-Midane	ML	M	M
Zahle Er-Rassiye	ML	M	M	Zahle Haouch El-Ouma	M	ML	M	Zahle Haouch El-Ouma	M	ML	M
Zahle Haouch Ez-Zara	ML	M	M	Zahle Maalqa Aradi	M	M	M	Zahle Mar Antonios	ML	M	M
Zahle Mar Elias	ML	M	M	Zahle Mar Gerios	ML	M	M	Zahle Saydet En-Naja	ML	M	M
Zebdoul	M	M	M								

Rachaiya

Municipality	07-Dec	08-Dec	09-Dec	Municipality	07-Dec	08-Dec	09-Dec	Municipality	07-Dec	08-Dec	09-Dec
Ain Arab Rachaiya	ML	ML	M	Ain Ata	L	ML	M	Ain Harche	L	M	M
Aqabe Rachaya	L	M	M	Ayha	M	M	M	Ayta El Fokhar	M	ML	M
Bakifa Rachaya	L	M	M	Bakka	M	ML	M	Beit Lahya	L	M	M
Bireh Rachaiya	ML	ML	M	Daher El Ahmar	L	ML	M	Deir El-Achayer	M	L	M
Heloua Rachaiya	M	L	M	Hoch El Qannabeh Rac	L	ML	M	Kaoukaba Bou Arab	L	L	M
Kfar Danis	L	ML	M	Kfar Mechki	L	ML	M	Kfar Qouq	ML	ML	M
Kherbet Rouha	L	ML	M	Majdel Balhiss	L	ML	M	Mdoukha	M	ML	M
Mhaydseh Rachaiya	L	L	M	Nabi Safa	L	ML	M	Rachaiya	L	ML	M
Rafid Rachaiya	L	ML	M	Selsata (Mazraat Dei	L	L	M	Tannoura	L	M	M
Yanta	M	L	M								

Beyrouth

Beyrouth

Municipality	07-Dec	08-Dec	09-Dec	Municipality	07-Dec	08-Dec	09-Dec	Municipality	07-Dec	08-Dec	09-Dec
Achrafieh	M	M	MH	Ain el-Mreisse	M	M	H	Bachoura	M	M	MH
Beirut Central Distr	M	M	MH	Marfai	M	M	MH	Mazraa	M	M	MH
Medaouar	M	M	MH	Minet el-Hosn	M	M	MH	Mwssaitbeh	M	M	MH
Ras Beirut	M	M	H	Rmeil	M	M	MH	Saifi	M	M	MH
Zqaq el-Blat	M	M	MH								