

Lebanon Fire Risk Bulletin



CIVIL DEDEFENCE

Refer to cadast table condition.

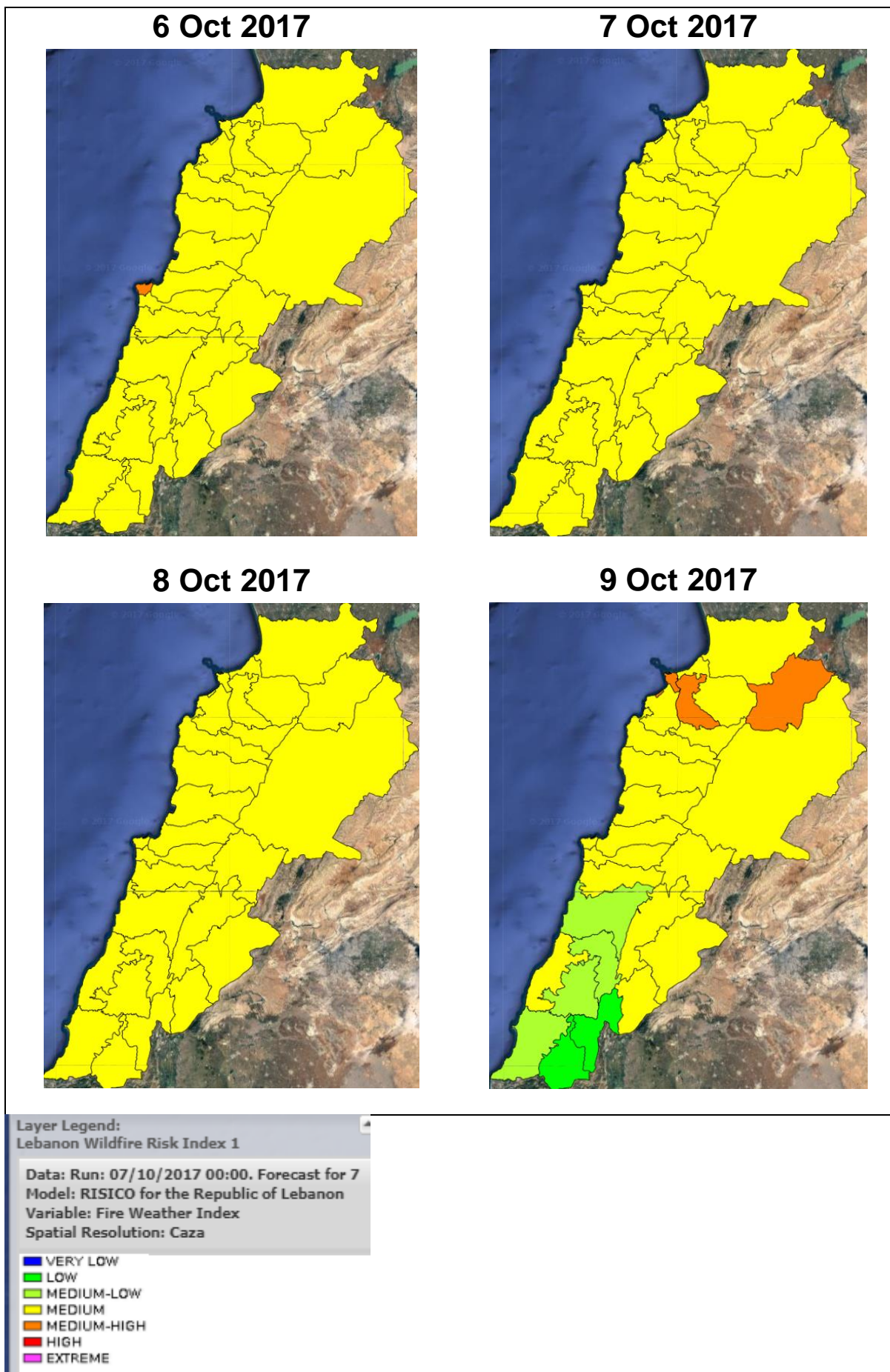
Please note that the indicated temperature is at 2 meters height from the ground.

General description of potential fire risk situation

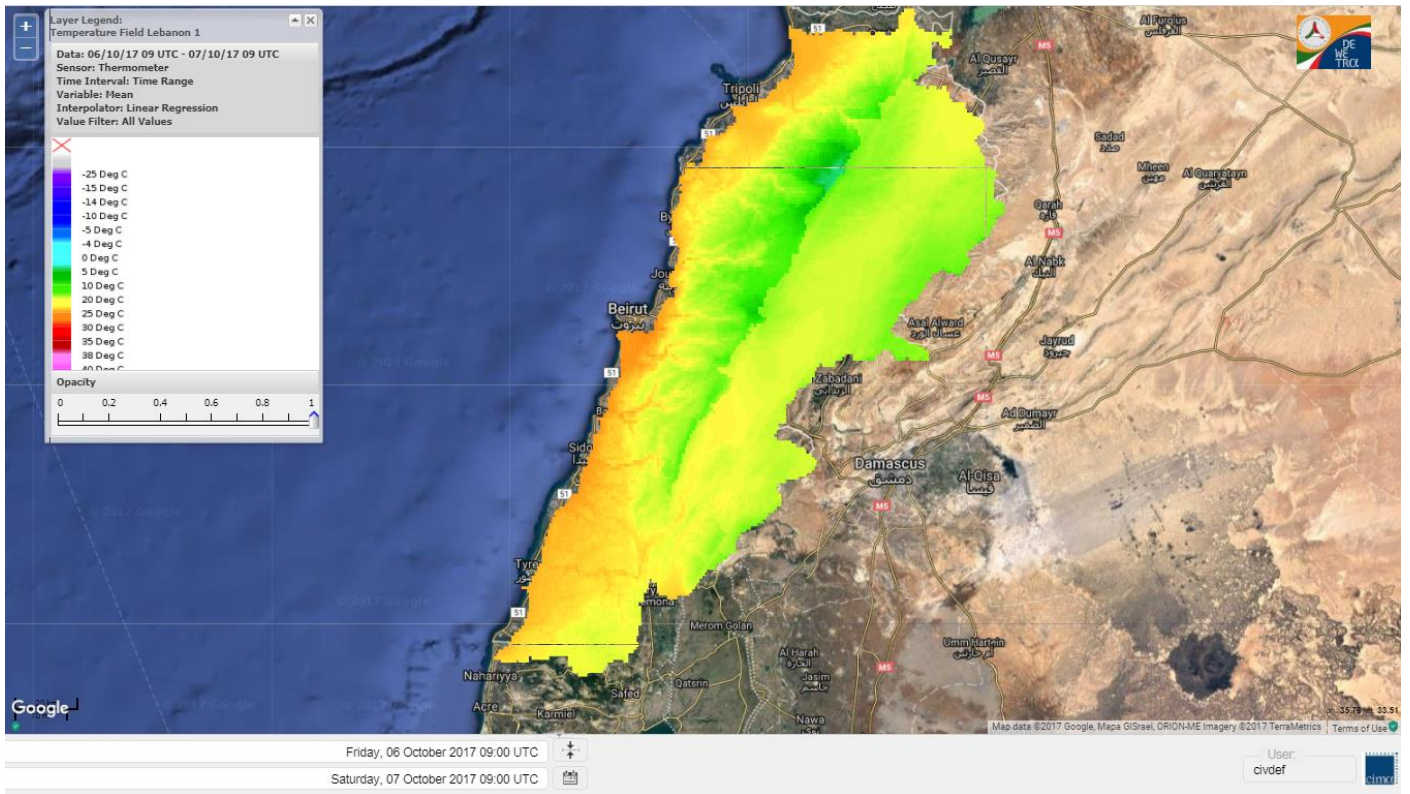
| Symbol | Level of risk | Meaning and actions |
|--------|--------------------|---|
| VL | Very low | Very low fire risk. Controlled burning operations can be hardly executed due to high fuel moisture content. Normally wildfires self-extinguish. |
| L | Low | Low fire risk. Controlled burning operations can be executed with a reasonable degree of safety. |
| ML | Medium low | Medium-low fire risk. Controlled burning operations can be executed in safety conditions. All the fires need to be extinguished. |
| M | Medium | Medium fire risk. Controlled burning operations would be avoided. All the fires need to be very well extinguished. |
| M | Medium high | Controlled burning is not recommended. Open flame will start fires. Cured grasslands and forest litter will burn readily. Spread is moderate in forests and fast in exposed areas. Patrolling and monitoring is suggested. Fight fires with direct attack and all available resources. |
| H | High | Ignition can occur easily with fast spread in grass, shrubs and forests. Fires will be very hot with crowning and short to medium spotting. Direct attack on the head may not be possible requiring indirect methods on flanks. Patrolling and monitoring the territory is highly suggested. |
| E | Extreme | Ignition can occur also from sparks. Fires will be extremely hot with fast rate of spread. Control may not be possible during day due to long range spotting and crowning. Suppression forces should limit efforts to limiting lateral spread. Damage potential total. Patrolling and monitoring the territory is highly suggested. |

Beirut, 7 October 2017

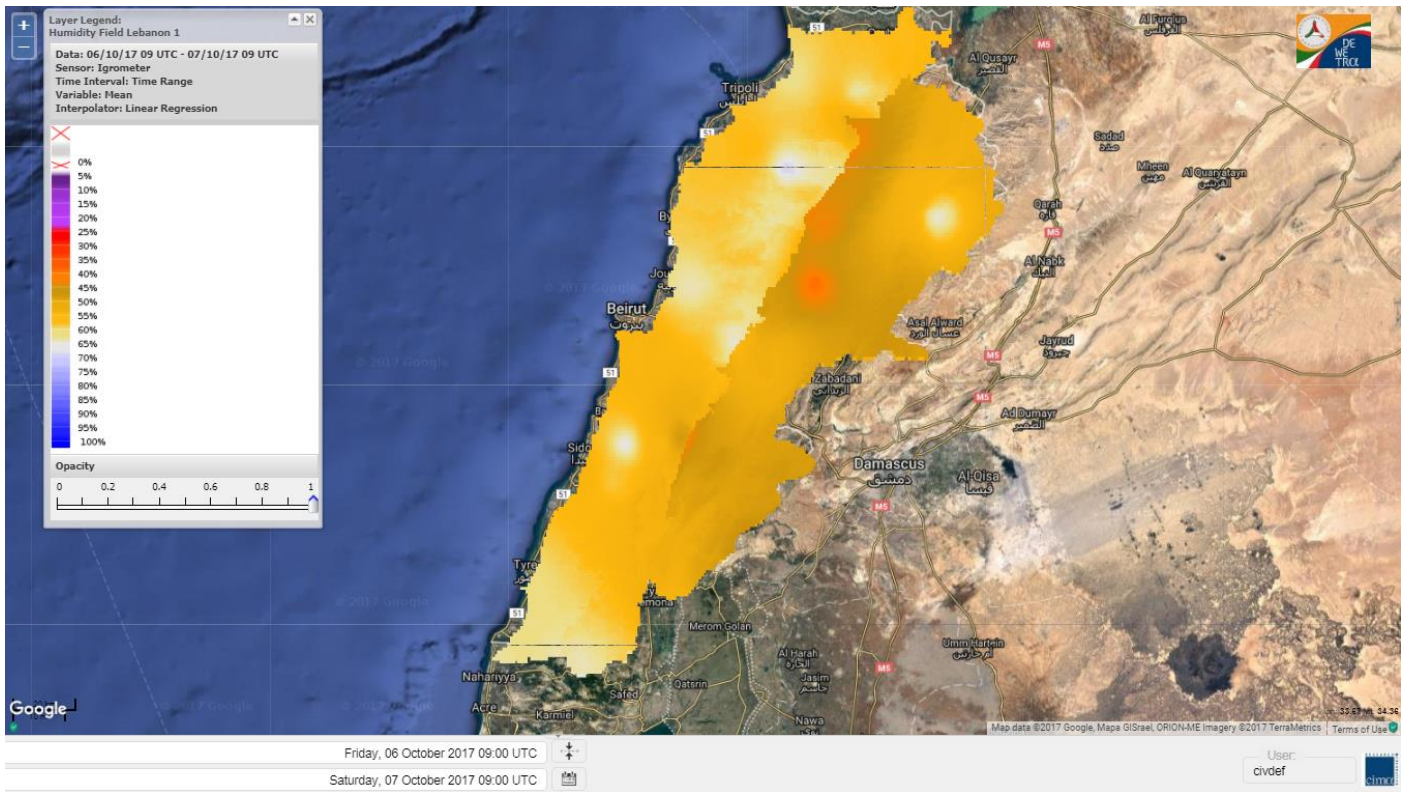
FIRE RISK INDEX



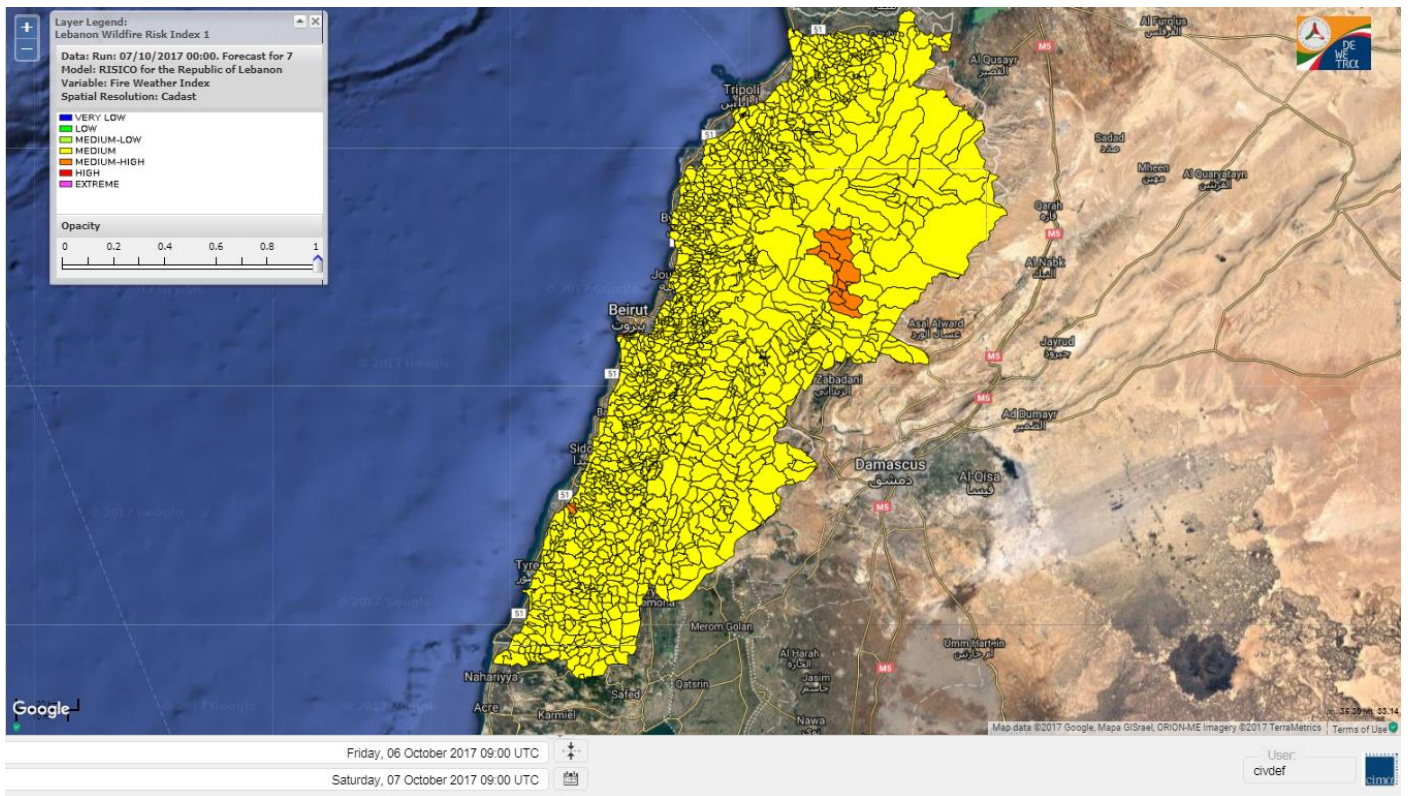
Lebanon temperature for 7 Oct 2017



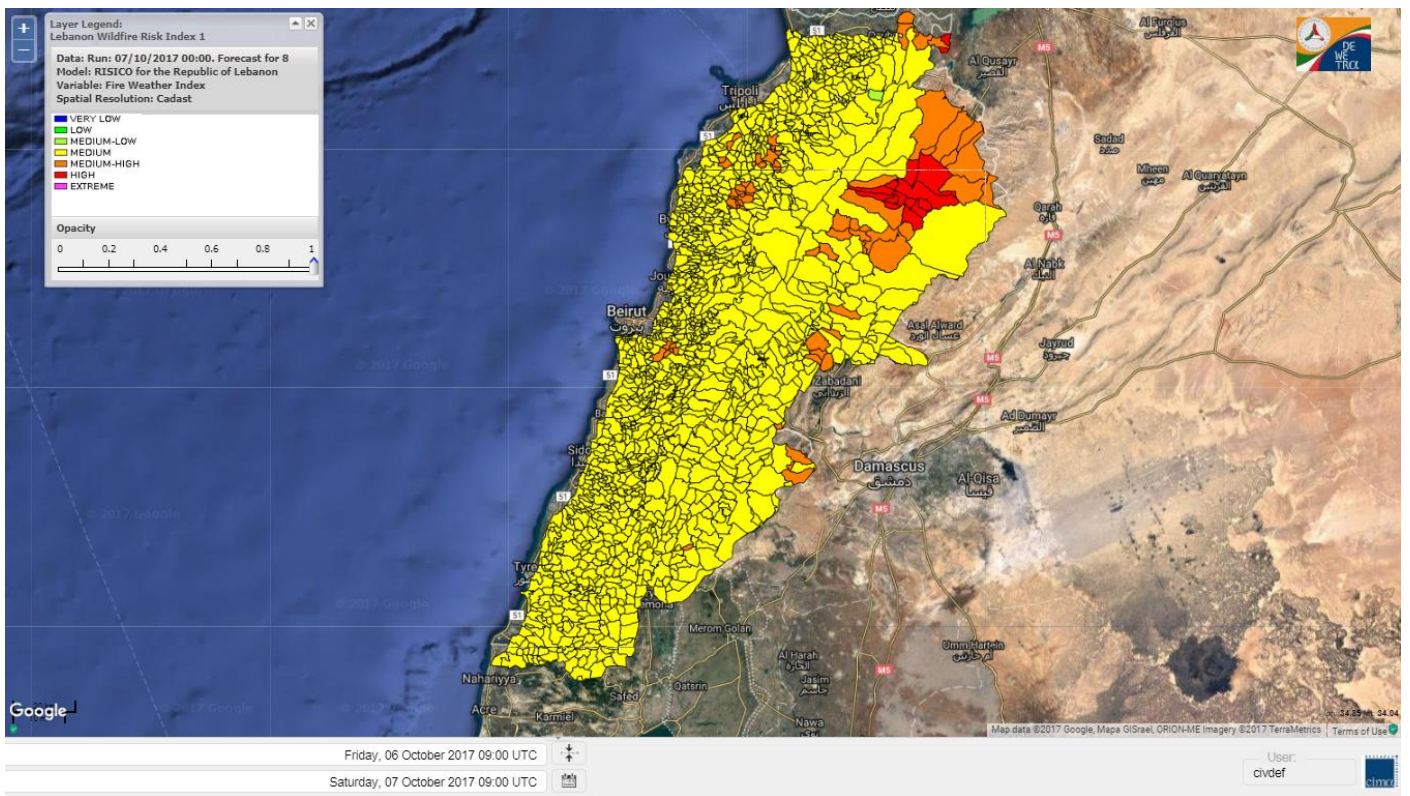
Lebanon humidity for 7 Oct 2017



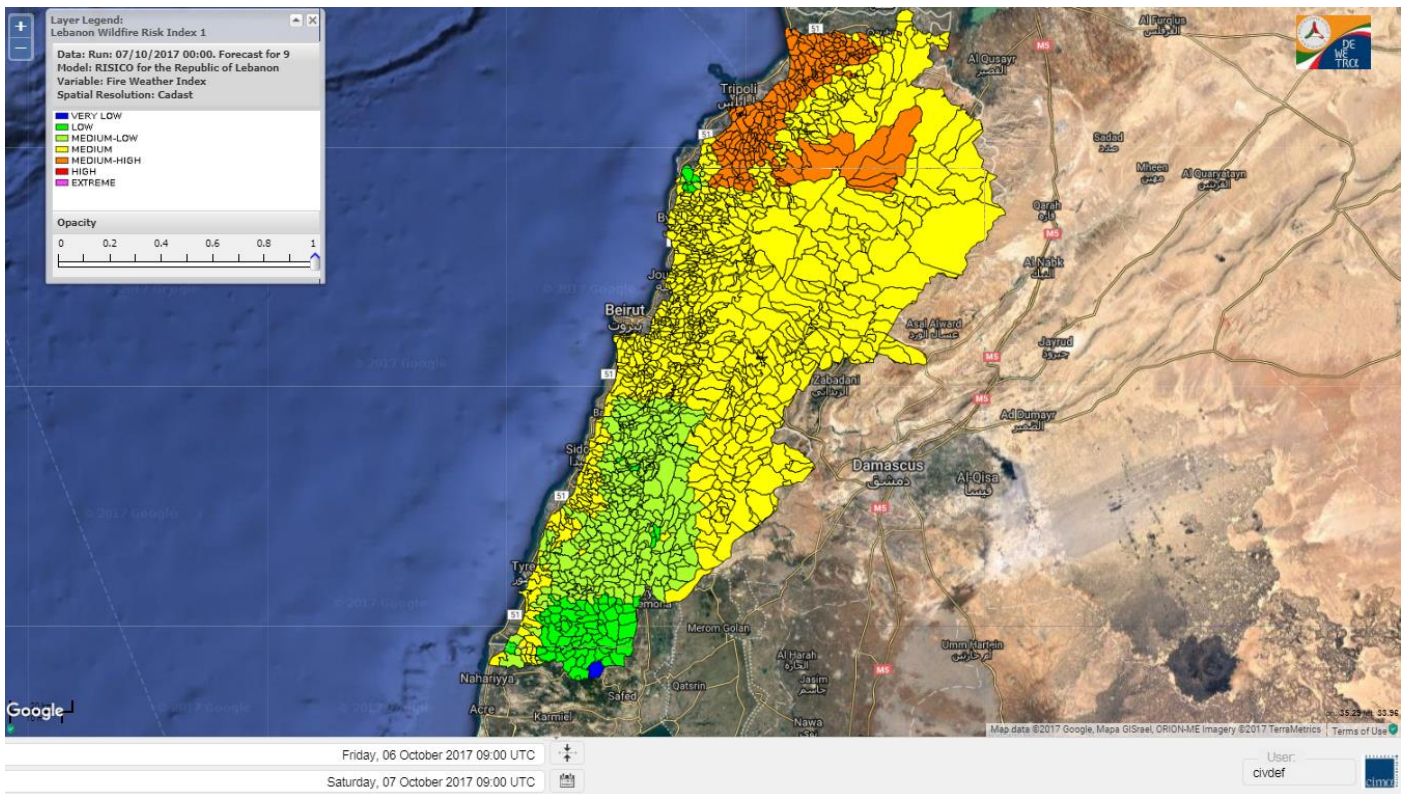
Lebanon for 7 Oct 2017



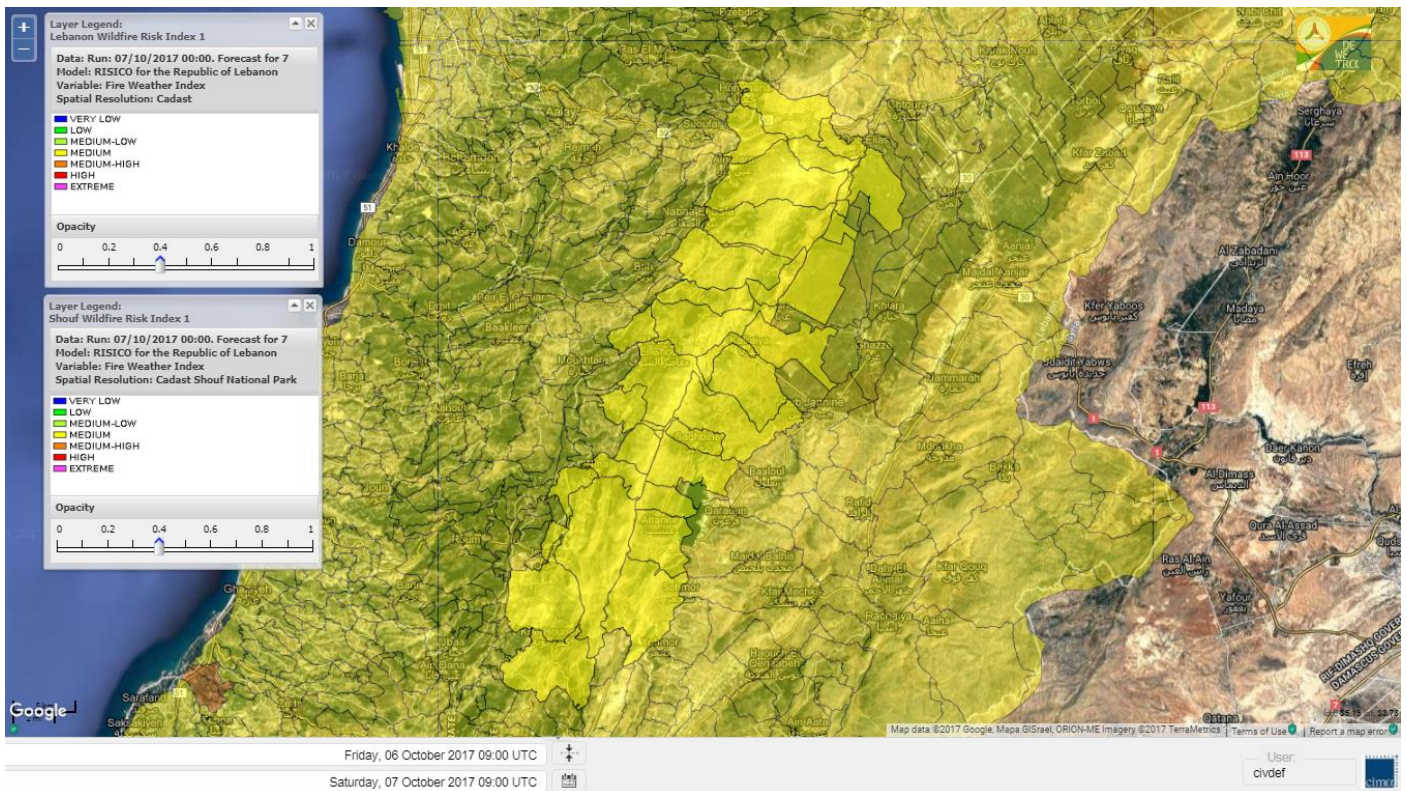
Lebanon for 8 Oct 2017



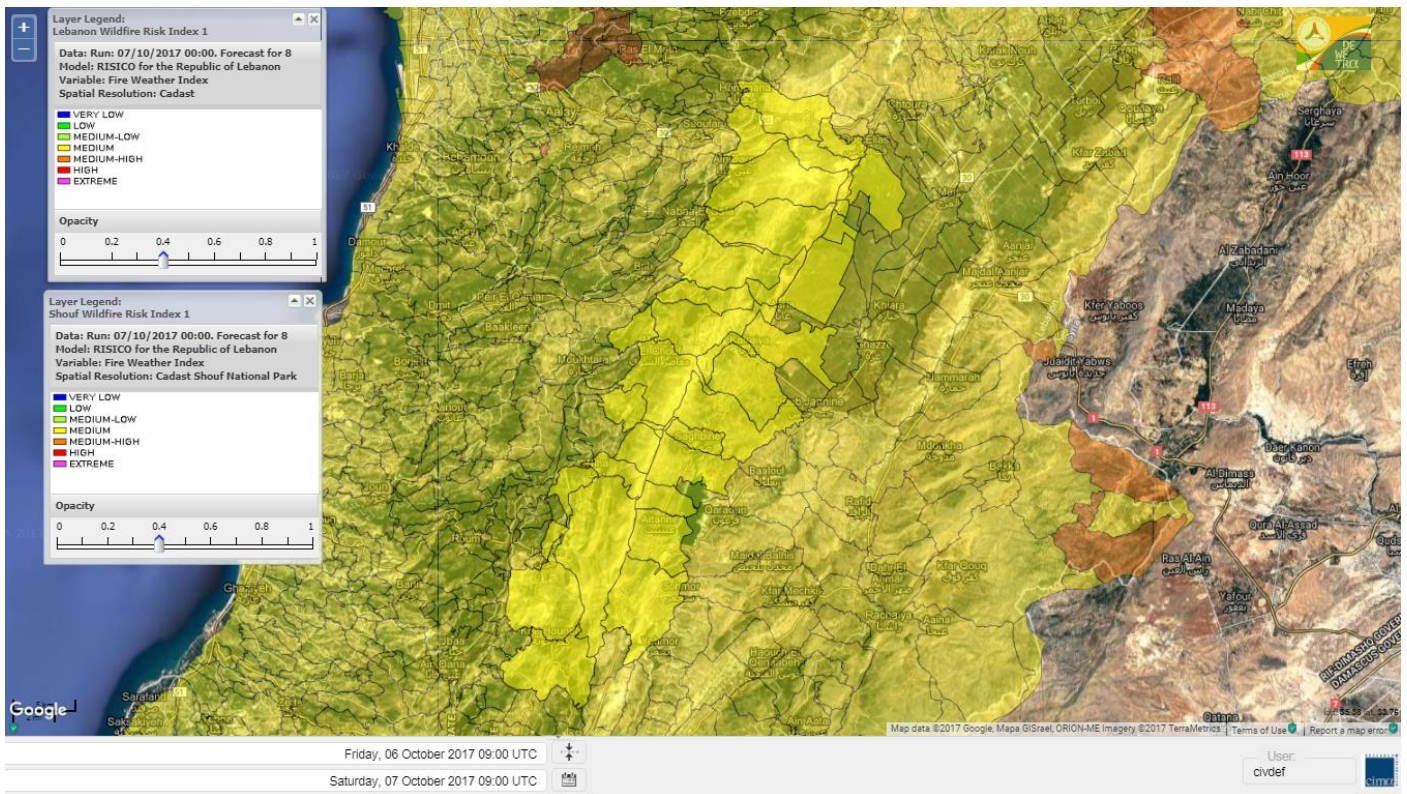
Lebanon for 9 Oct 2017



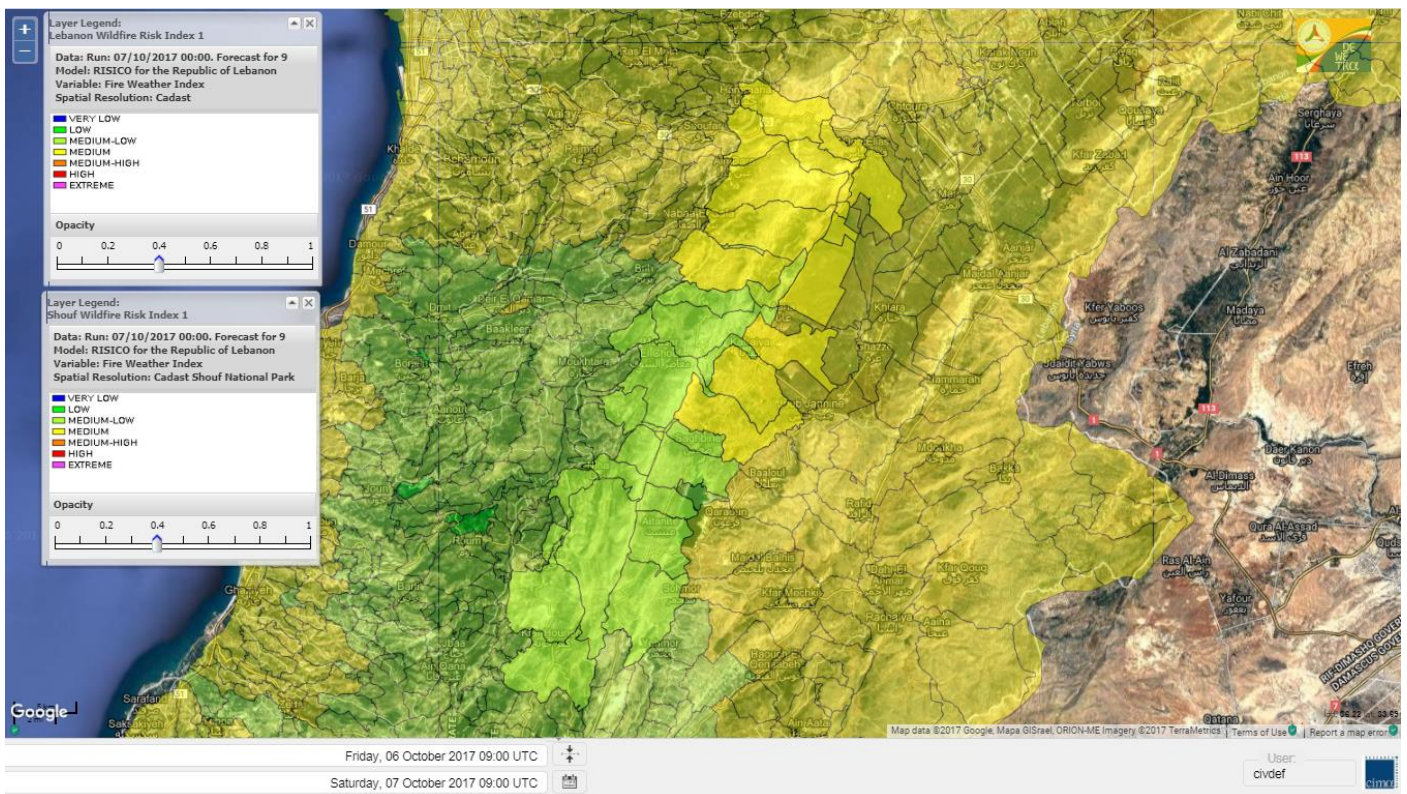
Shouf Biosphere Reserve Forecast for 7 Oct 2017



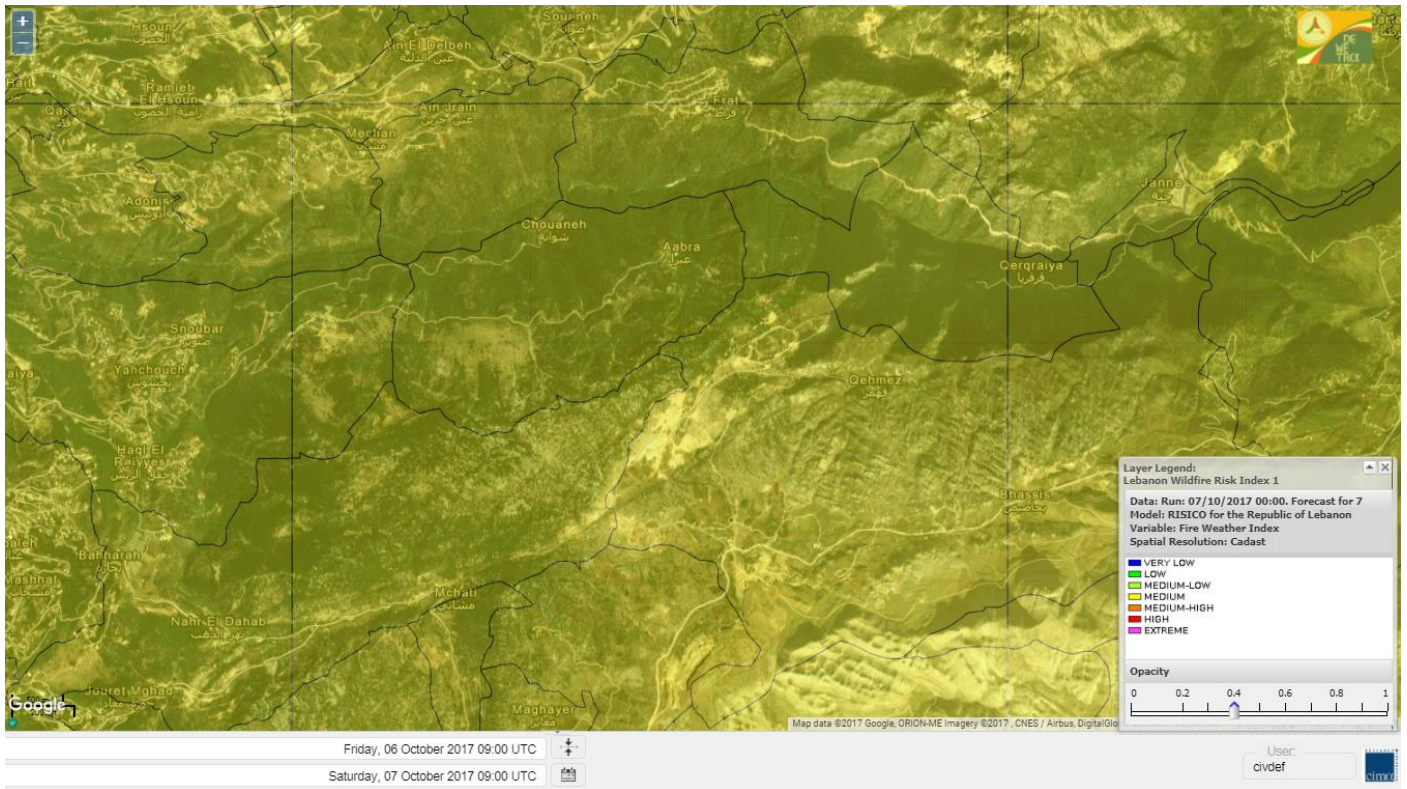
Shouf Biosphere Reserve Forecast for 8 Oct 2017



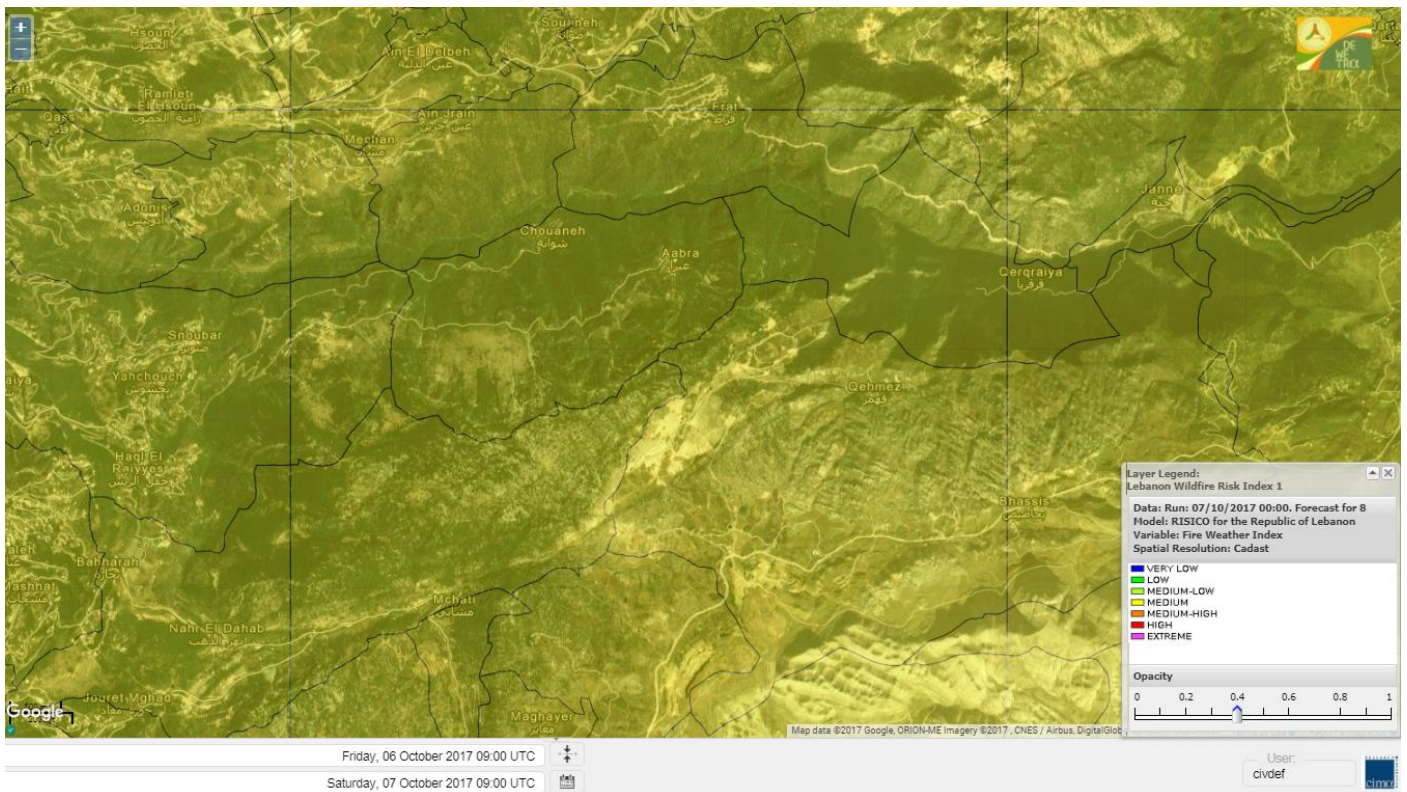
Shouf Biosphere Reserve Forecast for 9 Oct 2017



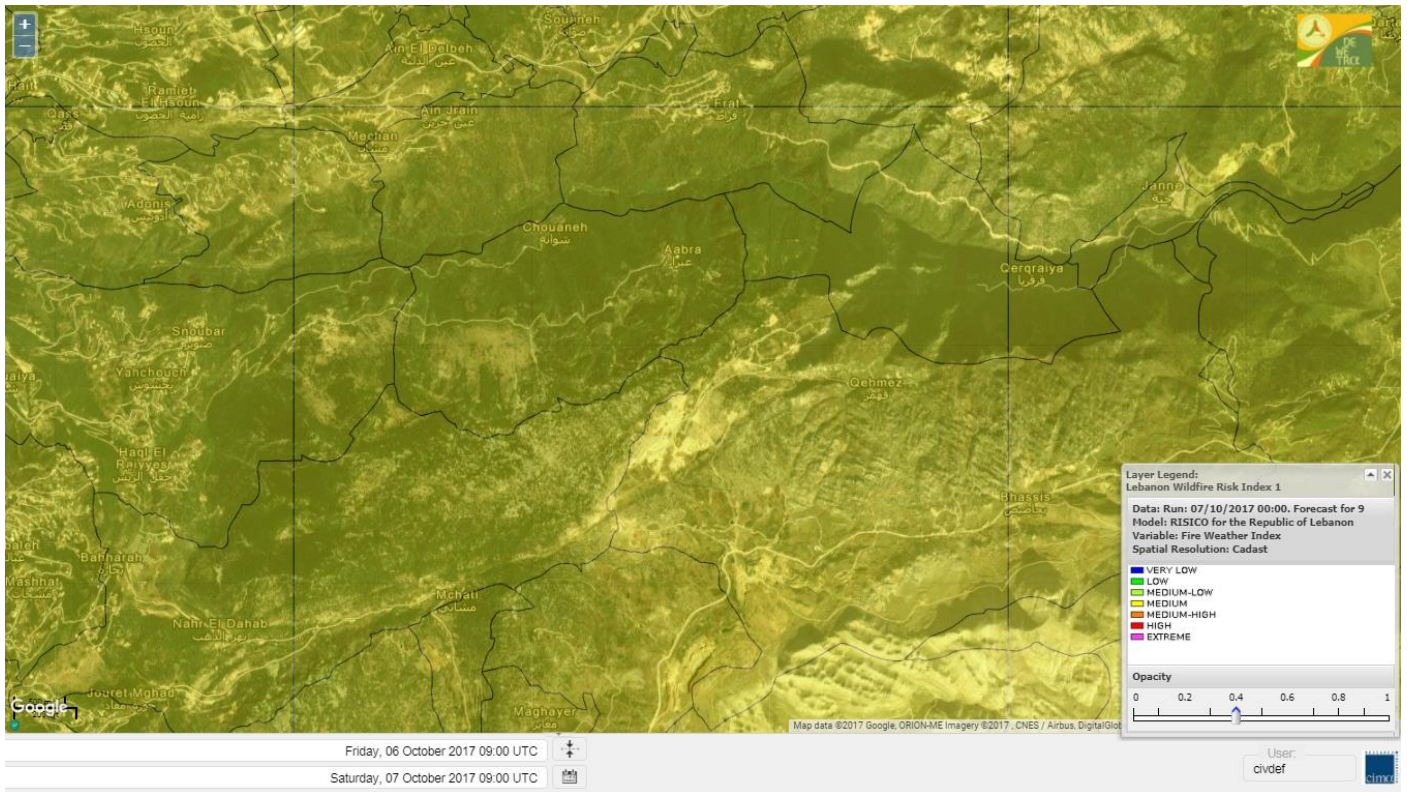
Jabal Moussa Reserve Forecast for 7 Oct 2017



Jabal Moussa Reserve Forecast for 8 Oct 2017



Jabal Moussa Reserve Forecast for 9 Oct 2017



Nord

Koura

| Municipality | 07-Oct | 08-Oct | 09-Oct | Municipality | 07-Oct | 08-Oct | 09-Oct | Municipality | 07-Oct | 08-Oct | 09-Oct |
|---------------------|--------|--------|--------|---------------|--------|--------|--------|------------------|--------|--------|--------|
| Aaba | M | M | MH | Afsaddiq | M | MH | MH | Ain Ekryne | M | M | MH |
| Amioun | M | M | MH | Anfeh | M | M | M | Badbhoun | M | M | M |
| Barghoun | M | M | M | Barsa | M | MH | MH | Batroumine | M | MH | MH |
| Bdebba | M | M | MH | Bechmizzine | M | MH | MH | Bednaye El-Koura | M | M | ML |
| Bhabbouch El-Koura | M | M | MH | Bkeftine | M | M | MH | Bnehran | M | MH | MH |
| Bqaiia El-Koura | M | M | MH | Bsarma | M | M | MH | Btaaboura | M | M | MH |
| Bterram | M | M | MH | Btouratij | M | M | MH | Bziza | M | M | MH |
| Dar Beehtar | M | M | MH | Dar Chmezzine | M | M | MH | Deddeh | M | M | MH |
| Deir El-Balamand | M | M | MH | Fih | M | M | MH | Hraiche | M | M | M |
| Ijdaabrine | M | M | ML | Kaftoun | M | M | MH | Kefraya El-Koura | M | M | M |
| Kfarakka | M | M | MH | Kfarhata | M | M | M | Kfarhazir | M | M | M |
| Kfarkahel | M | M | MH | Kfarsaroun | M | M | MH | Kosba | M | M | MH |
| Mejdel el-Koura | M | M | M | Nakhle | M | M | MH | Qalhat | M | M | MH |
| Ras Masqa | M | M | MH | Rechdibbine | M | M | MH | Zakroun | M | M | M |
| Zgharta El-Mtaouile | M | MH | M | | | | | | | | |

Bcharre

| Municipality | 07-Oct | 08-Oct | 09-Oct | Municipality | 07-Oct | 08-Oct | 09-Oct | Municipality | 07-Oct | 08-Oct | 09-Oct |
|------------------|--------|--------|--------|-------------------|--------|--------|--------|------------------|--------|--------|--------|
| Aabdine | M | M | MH | Bane | M | M | MH | Barhelioun | M | MH | MH |
| Bazooune | M | M | M | Becharre | M | M | M | Beit Menzer | M | M | M |
| Billa | M | M | M | Blaouza | M | M | MH | Bqaa Kafra | M | M | M |
| Bqerqacha | M | M | M | Breissat | M | M | M | Dimane | M | M | M |
| Hadath El Jobbeh | M | M | M | Hadchit | M | M | M | Hasroun | M | M | M |
| Mazraat Aassaf | M | MH | M | Mazraat Bani Saab | M | M | M | Mchaa El-Jobbeh | M | M | M |
| Metrit | M | MH | MH | Moghr El-Ahoual | M | M | MH | Ouadi Qannoubine | M | M | M |
| Qanat | M | M | M | Qnayer | M | M | M | Tourza | M | M | M |

Batroun

| Municipality | 07-Oct | 08-Oct | 09-Oct | Municipality | 07-Oct | 08-Oct | 09-Oct | Municipality | 07-Oct | 08-Oct | 09-Oct |
|-------------------|--------|--------|--------|----------------------|--------|--------|--------|----------------------|--------|--------|--------|
| Aabrine | M | M | L | Aalali | M | M | M | Aartiz | M | M | M |
| Abdelli | M | M | M | Ajdabra | M | M | M | Assia | M | M | M |
| Basbina | M | M | M | Batroun | M | M | M | Bcheleh | M | M | M |
| Bechtoudar | M | MH | M | Beit Chlala | M | MH | M | Beit Kassab | M | MH | M |
| Bijdarfil | M | M | M | Bqesmaya | M | M | M | Chatine | M | M | M |
| Chebtin | M | M | M | Chekka | M | M | M | Daael | M | M | M |
| Dahr Abi Yaghi | M | M | M | Daraya El-Batroun | M | M | M | Deir Billa | M | MH | M |
| Deir Kfifane | M | M | M | Deir Mar Youhanna EL | M | MH | M | Deir Mar Youssef Jra | M | M | M |
| Douma | M | M | M | Douq | M | M | M | Eddeh El-Batroun | M | M | M |
| Ftihat El-Batroun | M | M | M | Ghouma | M | M | M | Hadtoun | M | M | M |
| Hamat | M | M | L | Harbouna | M | M | M | Hardine | M | MH | M |
| Helta | M | M | M | Hery | M | M | M | Jebbla | M | M | M |
| Jrabta El-Batroun | M | M | M | Jrane El-Batroun | M | M | M | Kfar Aabida | M | M | M |
| Kfar Halda | M | MH | M | Kfarb Shlaimane | M | M | M | Kfarhatna | M | M | M |
| Kfarhay | M | M | M | Kfarhelos | M | M | L | Kfifane | M | M | M |

| | | | | | | | | | | | |
|---------------------|---|---|---|-------------------|---|---|----|----------------------|---|---|----|
| Kfour El Arabi | M | M | M | Koubba | M | M | ML | Kour | M | M | M |
| Mar Mama | M | M | M | Masrah | M | M | M | Mehmarch | M | M | M |
| Mrah Chdid | M | M | M | Mrah El Ziyat | M | M | M | Mrah El-Hajj | M | M | M |
| Nahle El-Batroun | M | M | M | Niha El-Batroun | M | M | M | Ouajh El-Hajjar | M | M | ML |
| Ouata Houb | M | M | M | Qatnaaoun | M | M | ML | Racha | M | M | M |
| Rachana | M | M | M | Rachkida | M | M | ML | Ram El-Batroun | M | M | M |
| Ras Nahhach | M | M | L | Selaata | M | M | M | Sghar | M | M | M |
| Smar Jbayl | M | M | M | Sourat El-Batroun | M | M | M | Tannourine El-Faouqa | M | M | M |
| Tannourine Et-Tahta | M | M | M | Thoum | M | M | M | Toula El-Batroun | M | M | M |
| Zan | M | M | M | | | | | | | | |

Zgharta

| Municipality | 07-Oct | 08-Oct | 09-Oct | Municipality | 07-Oct | 08-Oct | 09-Oct | Municipality | 07-Oct | 08-Oct | 09-Oct |
|-------------------|--------|--------|--------|-----------------|--------|--------|--------|-------------------|--------|--------|--------|
| Aachach | M | M | MH | Aalma | M | M | MH | Aarde | M | M | MH |
| Aintourine | M | M | MH | Arabet Qozhaya | M | M | M | Arde | M | M | MH |
| Arjis | M | M | MH | Asnoun | M | M | MH | Ayto | M | M | M |
| Basloukit | M | M | MH | Bchannine | M | M | MH | Besebeel | M | M | MH |
| Bhairret Toula | M | M | MH | Bnachee | M | MH | MH | Boussit | M | M | MH |
| Danha | M | M | MH | Daraiya Zgharta | M | M | MH | Deir Jdeide | M | M | MH |
| Ehden | M | M | MH | Halan | M | M | MH | Hariq Zgharta | M | M | MH |
| Houakir | M | MH | MH | Hraiqis | M | M | MH | laal | M | M | MH |
| Ijbaa | M | MH | MH | Karm Saddeh | M | M | M | Kfarchakhna | M | M | MH |
| Kfardlaqous | M | M | MH | Kfarfou | M | MH | MH | Kfarhata Zgharta | M | M | MH |
| Kfarhoura | M | M | MH | Kfarsghab | M | M | MH | Kfaryachit | M | M | MH |
| Kfarzaina | M | M | MH | Khaldiye | M | M | MH | Mazraat Ajbeaa | M | M | MH |
| Mazraat Et-Teffah | M | MH | MH | Mazraat Jneid | M | M | MH | Mejdlaiya Zgharta | M | M | MH |
| Merh Kfarsghab | M | M | MH | Miryata | M | M | MH | Miziara | M | MH | MH |
| Mzraat Kefraya | M | M | MH | Qorah Bach | M | M | MH | Rachiine | M | M | MH |
| Ras Kifa | M | M | MH | Sakhra | M | M | MH | Sebhel Zgharta | M | MH | MH |
| Serhel | M | M | M | Tallet Zgharta | M | MH | MH | Toula Zgharta | M | M | M |
| Zgharta | M | M | MH | | | | | | | | |

Minieh-Denniye

| Municipality | 07-Oct | 08-Oct | 09-Oct | Municipality | 07-Oct | 08-Oct | 09-Oct | Municipality | 07-Oct | 08-Oct | 09-Oct |
|----------------------|--------|--------|--------|-----------------|--------|--------|--------|--------------------|--------|--------|--------|
| Aasaymout | M | M | M | Aaymar | M | M | M | Aazki | M | M | M |
| Ain El-Tineh-Miniyeh | M | M | M | Assoun | M | M | M | Bakhaaoun | M | M | M |
| Bchennata | M | M | MH | Bechehhara | M | MH | M | Beddawi | M | M | MH |
| Behouaita | M | M | M | Beit El Foqss | M | M | M | Beit Haouik | M | M | M |
| Beit Zoud | M | M | M | Bekaasafrine | M | M | MH | Borj El Yahoudiyeh | M | M | MH |
| Bqarsouna | M | M | M | Btermaz | M | M | M | Debaael | M | M | M |
| Deir Ammar | M | M | MH | Deir Nbouh | M | MH | MH | Haouaret-Miniyeh | M | M | M |
| Haql el Azimeh | M | M | M | Harf El Siyad | M | M | M | Hazmiye-Miniyeh | M | M | M |
| Izal | M | M | M | Jarjour | M | MH | M | Jayroun | M | M | M |
| Kahf El-Malloul | M | MH | M | Karm El-Moher | M | M | M | Kfar Binine | M | M | M |
| Kfarchalane | M | M | M | Kfarhabou | M | M | MH | Kharroub-Miniyeh | M | M | M |
| Mazraat El-Kreme | M | M | M | Mazraat Ketrane | M | M | M | Merkebta | M | M | MH |
| Minyeh | M | M | MH | Mrah El Sfirat | M | M | M | Mrah Sraj | M | M | M |
| Mrebbine | M | M | MH | Nabi Youcheaa | M | M | MH | Nemrine | M | M | M |

| | | | | | | | | | | | |
|------------------|---|---|----|-------------------|---|---|----|----------------|---|---|----|
| Qarhaiya | M | M | M | Qarne | M | M | M | Qarsita | M | M | M |
| Qattineh-Miniyeh | M | M | M | Qemmamine | M | M | M | Qraine | M | M | M |
| Raouda-Aadoua | M | M | MH | Rihaniyet-Miniyeh | M | M | MH | Sfireh | M | M | M |
| Sir Ed-Danniyeh | M | M | M | Tarane | M | M | M | Terbol-Miniyeh | M | M | MH |
| Zaghartaghriane | M | M | MH | Zouq Bhannine | M | M | MH | | | | |

Nabatiye

Nabatiye

| Municipality | 07-Oct | 08-Oct | 09-Oct | Municipality | 07-Oct | 08-Oct | 09-Oct | Municipality | 07-Oct | 08-Oct | 09-Oct |
|----------------------|--------|--------|--------|----------------------|--------|--------|--------|----------------------|--------|--------|--------|
| Aabba | M | M | ML | Aazzi | M | M | ML | Adchit El-Chqif | M | M | ML |
| Ain Bou Swar | M | M | ML | Ain Kana | M | M | ML | Ali El-TaHER | M | M | ML |
| Ansar | M | M | ML | Arab Salim | M | M | ML | Arnoun | M | M | ML |
| Bfaroue | M | M | ML | Breyqaah | M | M | ML | Charqiyeh | M | M | ML |
| Choukine | M | M | ML | Deir El Zahrani | M | M | ML | Doueir El-Nabatiyeh | M | M | ML |
| Habbouch El-Nabatiye | M | M | ML | Hamra El-Nabatiyeh | M | M | ML | Harouf El-Nabatiyeh | M | M | ML |
| Hmaile | M | M | ML | Houmin El Faouqa | M | M | ML | Houmin El Tahta | M | M | M |
| Jarjough | M | M | ML | Jbaah El-Nabatiyeh | M | M | ML | Jebchit | M | M | ML |
| Kfar Djal El-Nabatiy | M | M | ML | Kfar Remmane | M | M | ML | Kfar Sir | M | M | ML |
| Kfar Tebnit | M | M | ML | Kfarfila | M | M | ML | Kfour El-Nabatieh | M | M | ML |
| Mayfadoun | M | M | ML | Mazraat Bsaffour | M | M | ML | Mazraat Chalbaal | M | M | ML |
| Mazraat Dmoul | M | M | M | Mazraat El Khreibeh | M | M | ML | Mazraat El-Bayad El- | M | M | ML |
| Mazraat Kfarjaouz | M | M | ML | Mazraat Qalaat Meiss | M | M | ML | Nabatiyeh El-Fawka | M | M | ML |
| Nabatiyeh Et-Tahta | M | M | ML | Namiriyyeh | M | M | ML | Qaaqaaiyet El Jisr | M | M | ML |
| Qossaibeh El-Nabatiy | M | M | ML | Roumine | M | M | ML | Sarba El-Nabatieh | M | M | ML |
| Sir El-Gharbiyeh | M | M | ML | Toul | M | M | ML | Yehmor El-Nabatiyeh | M | M | ML |
| Zaoutar El Charkiyeh | M | M | ML | Zaoutar El-Gharbiyeh | M | M | ML | Zebdine El-Nabatiyeh | M | M | ML |
| Zefta | M | M | ML | | | | | | | | |

Hasbaiya

| Municipality | 07-Oct | 08-Oct | 09-Oct | Municipality | 07-Oct | 08-Oct | 09-Oct | Municipality | 07-Oct | 08-Oct | 09-Oct |
|-------------------|--------|--------|--------|--------------------|--------|--------|--------|----------------------|--------|--------|--------|
| Ain Jarfa | M | MH | ML | Abou Qamha | M | M | ML | Ain Qania | M | M | ML |
| Bourghos | M | M | M | Chebaa | M | M | M | Chouaya Hasbaya | M | M | M |
| Dellafeh | M | M | ML | Fardiss Hasbaiya | M | M | ML | Hasbaya | M | M | ML |
| Hbariyeh | M | M | ML | Kaoukaba Hasbaiya | M | M | ML | Kfar Chouba | M | M | ML |
| Kfar Hamam | M | M | ML | Kfeir El-Zait | M | M | M | Khalwat Hasbaya | M | M | M |
| Khreibet Hasbaiya | M | M | ML | Majidiyeh Hasbaiya | M | M | ML | Marj Ez-Zhour (Haouc | M | M | M |
| Meri | M | M | ML | Mimass | M | M | ML | Rachaiya El-Fokhar | M | M | ML |
| Salaiyeb | M | M | ML | | | | | | | | |

Marjayoun

| Municipality | 07-Oct | 08-Oct | 09-Oct | Municipality | 07-Oct | 08-Oct | 09-Oct | Municipality | 07-Oct | 08-Oct | 09-Oct |
|--------------------|--------|--------|--------|---------------------|--------|--------|--------|--------------------|--------|--------|--------|
| Aalmane Marjaayoun | M | M | ML | Aamra | M | M | ML | Adayseh Marjaayoun | M | M | L |
| Adchit El-Koussair | M | M | ML | Ain Arab Marjaayoun | M | M | ML | Bani Haiyann | M | M | L |
| Blatt Marjaayoun | M | M | ML | Blida | M | M | L | Borj El-Moulouk | M | M | ML |
| Boueyda Marjaayoun | M | M | ML | Deir Mimass | M | M | ML | Deir Siriane | M | M | ML |
| Dibbine | M | M | ML | Ebel El Saqi | M | M | ML | Houla | M | M | L |
| Houra | M | M | ML | Kfar Kila | M | M | ML | Khiam Marjaayoun | M | M | ML |

| | | | | | | | | | | | |
|----------------|---|---|----|-------------------|---|---|----|--------------------|---|---|----|
| Klayaa | M | M | ML | Majdel Selem | M | M | L | Marjaayoun | M | M | ML |
| Markaba | M | M | L | Mays El-Jabal | M | M | L | Mazraat Doumiat | M | M | ML |
| Mazraat Sarada | M | M | ML | Mhaibib | M | M | L | Qabrikha | M | M | L |
| Qantara | M | M | ML | Rab El-Thalathine | M | M | ML | Saouaneh Marjayoun | M | M | L |
| Talloussa | M | M | L | Taybeh Matjaayoun | M | M | ML | Touline | M | M | L |

Bent Jbail

| Municipality | 07-Oct | 08-Oct | 09-Oct | Municipality | 07-Oct | 08-Oct | 09-Oct | Municipality | 07-Oct | 08-Oct | 09-Oct |
|----------------------|--------|--------|--------|------------------|--------|--------|--------|----------------------|--------|--------|--------|
| Ain-Ebel | M | M | L | Aitaroun | M | M | L | Aynata Bint Jbeil | M | M | L |
| Ayta El-Chaeb | M | M | L | Ayta El-Jabal | M | M | L | Beit Lif | M | M | L |
| Beit Yahoun | M | M | L | Bint Jbeil | M | M | L | Borj Qalaway | M | M | M |
| Braachit | M | M | L | Chakra | M | M | L | Debel | M | M | L |
| Deir Antar | M | M | L | Froun | M | M | ML | Ghandouriyeh Bint Jb | M | M | ML |
| Hanine | M | M | L | Hariss | M | M | L | Hdatha | M | M | L |
| Jmeymeh | M | M | L | Kafra Bint Jbeil | M | M | L | Kfar Dounine | M | M | L |
| Khirbet Selm | M | M | L | Kounine | M | M | L | Maroun El Ras | M | M | L |
| Qalaway | M | M | L | Qaouzah | M | M | L | Qatmoun | M | M | L |
| Ramya Bint Jbeil | M | M | L | Rchaf | M | M | L | Rmeich | M | M | L |
| Safad Al Battikh | M | M | L | Salhaneh | M | M | L | Serbine | M | M | L |
| Sultanieh Bint Jbeil | M | M | L | Tibnine | M | M | L | Tiri | M | M | L |
| Yaroun | M | M | VL | Yater | M | M | L | | | | |
| | | | | | | | | | | | |

Mont Liban

Jbail

| Municipality | 07-Oct | 08-Oct | 09-Oct | Municipality | 07-Oct | 08-Oct | 09-Oct | Municipality | 07-Oct | 08-Oct | 09-Oct |
|--------------------|--------|--------|--------|---------------------|--------|--------|--------|----------------------|--------|--------|--------|
| Aabeydat | M | M | M | Aalita | M | M | M | Aamchit | M | M | M |
| Aarab El-Lahib | M | M | M | Aarasta | M | M | M | Adonis Jbeil | M | M | M |
| Afqa Jbeil | M | M | M | Ain El Delbeh Jbeil | M | M | M | Ain El-Ghouyba | M | M | M |
| Ain Jrain | M | M | M | Ain Kfah | M | M | M | Almat El Chemaliyat | M | M | M |
| Almat El-Jenoubiya | M | M | M | Aqoura | M | M | M | Bayzoun | M | M | M |
| Bchille Jbeil | M | M | M | Bechtida | M | M | M | Behdaydat | M | M | M |
| Beit Habbaq | M | M | M | Bejjeh | M | M | M | Bekhaaz | M | M | M |
| Berbara Jbeil | M | M | M | Bintael | M | M | M | Birket Hjoula | M | M | M |
| Blatt Jbeil | M | M | M | Boulhos | M | M | M | Breyj Jbeil | M | M | M |
| Chamat | M | M | M | Chikhane | M | M | M | Chmout | M | M | M |
| Eddeh Jbeil | M | M | M | Ehmej | M | M | M | Fatre | M | M | M |
| Ferhet | M | M | M | Fghal | M | M | M | Frat | M | M | M |
| Ghabat | M | M | M | Ghalboun | M | M | M | Gharzouz | M | M | M |
| Ghofrine | M | M | M | Habil | M | M | M | Halate | M | M | M |
| Haqel | M | M | M | Hbaline | M | M | M | Hboub | M | M | M |
| Hdeine | M | M | M | Hema Er-Rehban | M | M | M | Hema Mar Maroun Aann | M | M | M |
| Hjoula | M | M | M | Hosrayel | M | M | M | Hsarat | M | M | M |
| Hsoun | M | M | M | Jaj | M | M | M | Janne | M | M | M |
| Jbeil | M | M | M | Jeddeyel Jbeil | M | M | M | Jlisse | M | M | M |
| Jouret El-Qattine | M | M | M | Kfar Baal Annaya | M | M | M | Kfar Kidde | M | M | M |
| Kfar Kouas | M | M | M | Kfar Mashoun | M | M | M | Kfoun | M | M | M |

| | | | | | | | | | | | |
|-------------------|---|---|---|------------------|---|---|---|------------------|---|---|---|
| Kharbe Jbeil | M | M | M | Laqlouq | M | M | M | Lassa | M | M | M |
| Lehfed | M | M | M | Maad | M | M | M | Mar Sarkis | M | M | M |
| Mastita | M | M | M | Mayfouq | M | M | M | Mazraat El Siyad | M | M | M |
| Mazraat El-Maaden | M | M | M | Mechane | M | M | M | Mechmech Jbeil | M | M | M |
| Mehrin | M | M | M | Mejdel El-Akoura | M | M | M | Mghayreh Jbeil | M | M | M |
| Mounsef | M | M | M | Nahr Ibrahim | M | M | M | Qahmez | M | M | M |
| Qartaba | M | M | M | Qartaboun | M | M | M | Qattara Jbeil | M | M | M |
| Qorqraya | M | M | M | Ramout | M | M | M | Ras Osta | M | M | M |
| Rihane Jbeil | M | M | M | Sakiet El-Khayt | M | M | M | Saqi Richmaya | M | M | M |
| Sebrine | M | M | M | Seraita | M | M | M | Souane Jbeil | M | M | M |
| Tadmor | M | M | M | Tartej | M | M | M | Torzaiya | M | M | M |
| Yanouh Jbeil | M | M | M | Zibidine Jbeil | M | M | M | | | | |

El Metn

| Municipality | 07- Oct | 08- Oct | 09- Oct | Municipality | 07- Oct | 08- Oct | 09- Oct | Municipality | 07- Oct | 08- Oct | 09- Oct |
|----------------------|------------|------------|------------|----------------------|------------|------------|------------|----------------------|------------|------------|------------|
| Aain El-Qabu | M | M | M | Aain El-Qach | M | M | M | Aain El-Teffaha | M | M | M |
| Aain el-Safssaf El-M | M | M | M | Abou Mizane | M | M | M | Ain Aar | M | M | M |
| Ain Alaq | M | M | M | Ain El-Kharroube | M | M | M | Ain El-Sendiane | M | M | M |
| Ain El-Zeitoune | M | M | M | Ain Saadeh | M | M | M | Aintoura El-Matn | M | M | M |
| Amaret Chalhoub | M | M | M | Antelias | M | M | M | Atchaneh | M | M | M |
| Ayroun | M | M | M | Baabdat | M | M | M | Baouchariyeh | M | M | M |
| Baskinta | M | M | M | Beit Chabab | M | M | M | Beit El-Chaar | M | M | M |
| Beit El-Kekko | M | M | M | Beit Mery | M | MH | M | Bhersaf | M | M | M |
| Bikfaya | M | M | M | Biyakout | M | M | M | Bnabil | M | M | M |
| Bourj Hammoud | M | M | M | Bqennaya | M | M | M | Broummana El-Matn | M | MH | M |
| Bsalim | M | M | M | Bsifrine | M | M | M | Bteghrine | M | M | M |
| Chaouiye | M | M | M | Chouaya El-Matn | M | M | M | Choueir | M | M | M |
| Chrine | M | M | M | Dahr El Sawan El-Mat | M | M | M | Daychouniyeh | M | M | M |
| Dbayeh | M | M | M | Deir Chamra | M | M | M | Deir Mar Abda el Mch | M | M | M |
| Deir Mar Roukouz | M | M | M | Deir Tamiche | M | M | M | Dik El-Mehdi | M | M | M |
| Dikwaneh | M | M | M | Douar El-Matn | M | M | M | Fanar | M | M | M |
| Fraike | M | M | M | Haret El-Ballaneh | M | M | M | Hbous | M | M | M |
| Himlaya | M | M | M | Jal El Did | M | M | M | Jdeideh El-Metn | M | M | M |
| Jouar El-Matn | M | M | M | Jouret El-Ballout | M | M | M | Kaaqour | M | M | M |
| Kfar Aaqab | M | M | M | Kfertay El-Matn | M | M | M | Khenchara | M | M | M |
| Khillet El-Mtain | M | M | M | Konnabat Broummana | M | MH | M | Konnabat Salima | M | M | M |
| Machraah El-Matn | M | M | M | Majdel Tarchich | M | M | M | Majzoub | M | M | M |
| Mansouriyeh El-Metn | M | M | M | Mar Boutros Karm Et- | M | M | M | Mar Chaya et Mzekke | M | M | M |
| Mar Moussa Ed-Douar | M | M | M | Marjaba | M | M | M | Masqa | M | MH | M |
| Mayasse | M | M | M | Mazraat Deir Aoukar | M | M | M | Mazraat El-Hadirat | M | M | M |
| Mazraat Yachouh | M | M | M | Mchikha | M | M | M | Menqlet Mezher | M | M | M |
| Mhaydseh Matn | M | M | M | Mkalles | M | M | M | Mrouj | M | M | M |
| Mtain | M | M | M | Mtayleb | M | M | M | Nabay | M | M | M |
| Naccache | M | M | M | Ouadi Chahine | M | M | M | Ouadi El-Karm El-Mat | M | M | M |
| Ouata El-Mrouj | M | M | M | Ouyoun El-Matn | M | M | M | Qornet Chehwan | M | M | M |
| Qornet El-Hamra | M | M | M | Roumieh | M | M | M | Sfeilet Bikfaya | M | M | M |
| Sinn El-Fil | M | M | M | Zabbougha | M | M | M | Zalqa | M | M | M |

| | | | | | | | | | | | |
|---------------|---|---|---|---------|---|---|---|------------------|---|---|---|
| Zarouon | M | M | M | Zekrite | M | M | M | Zighrine El-Matn | M | M | M |
| Zouk El-Khrab | M | M | M | | | | | | | | |

Chouf

| Municipality | 07-Oct | 08-Oct | 09-Oct | Municipality | 07-Oct | 08-Oct | 09-Oct | Municipality | 07-Oct | 08-Oct | 09-Oct |
|--------------------|--------|--------|--------|--------------------|--------|--------|--------|----------------------|--------|--------|--------|
| Aalmane El-Chouf | M | M | M | Aammq El-Chouf | M | M | ML | Ain Ouzein | M | M | ML |
| Ain Qani | M | M | ML | Ain Zhalta | M | M | M | Ainbal | M | M | ML |
| Amatour | M | M | ML | Anout | M | M | ML | Atrine | M | M | ML |
| Baadarane | M | M | ML | Baaqline | M | M | ML | Baasir | M | M | M |
| Barja | M | M | M | Barouk | M | M | ML | Bater | M | M | ML |
| Batloun | M | M | ML | Bayqoun | M | M | ML | Bchetfine | M | M | ML |
| Beiteddine | M | M | ML | Benouati Ech-Chouf | M | M | ML | Berjein | M | M | ML |
| Bireh et Mtalleh | M | M | ML | Biret El-Chouf | M | M | ML | Bkechtine Ouel Mchei | M | M | ML |
| Bkifa El-Chouf | M | M | ML | Botme | M | M | ML | Bqaiaa Ech-Chouf | M | M | ML |
| Bsaba El-Chouf | M | M | ML | Chammis El-Chouf | M | M | M | Chehim | M | M | ML |
| Chemaarine | M | M | ML | Chourit | M | M | ML | Daher El-Chouf | M | M | ML |
| Dalhoun | M | M | ML | Damour | M | M | M | Daraya El-Chouf | M | M | ML |
| Deir El-Moukhalles | M | M | ML | Deir Baba | M | M | ML | Deir Dourit | M | M | ML |
| Deir El-Qamar | M | M | ML | Deir Kouche | M | M | ML | Dibbieh | M | M | ML |
| Dmit | M | M | ML | Fouara Jaafar | M | M | ML | Fraidis El-Chouf | M | M | ML |
| Ghabet Jaafar | M | M | ML | Gharife | M | M | ML | Haret Jandal | M | M | ML |
| Hasrout | M | M | ML | Jadra | M | M | M | Jahlieh | M | M | ML |
| Jbeih El-Chouf | M | M | ML | Jdeidet El-Chouf | M | M | ML | Jiyeh | M | M | M |
| Jleilyeh | M | M | ML | Jmailiyeh | M | M | M | Joun | M | M | ML |
| Kahlounie El-Chouf | M | M | ML | Ketermaya | M | M | ML | Kfar Faqoud | M | M | ML |
| Kfar Hamal | M | M | M | Kfar Him | M | M | ML | Kfar Katra | M | M | ML |
| Kfar Niss | M | M | ML | Kfar hay | M | M | ML | Kfarnabrakh | M | M | ML |
| Khirbet Bisri | M | M | ML | Knayse El-Chouf | M | M | ML | Maaniyeh | M | M | ML |
| Maasser Beiteddine | M | M | ML | Maasser El-Chouf | M | M | ML | Majdalouna | M | M | ML |
| Majdel El-Meouch | M | M | ML | Mazboud | M | M | ML | Mazmoura | M | M | ML |
| Mazraat El Chouf | M | M | ML | Mazraat El Daher | M | M | ML | Mazraat El-Douair | M | M | ML |
| Mechref | M | M | ML | Mghairie | M | M | ML | Mghayrie El-Chouf | M | M | ML |
| Moukhtara | M | M | ML | Mrusti | M | M | ML | Mtolle | M | M | ML |
| Naameh | M | M | M | Niha El-Chouf | M | M | ML | Ouadi Abou Youssef | M | M | L |
| Ouadi Ed-Deir | M | M | ML | Ouadi El-Sit | M | M | ML | Ouadi bnehlay | M | M | ML |
| Qraibeh | M | M | ML | Qreiaa | M | M | L | Rmayle El-Chouf | M | M | M |
| Semqaniyeh | M | M | ML | Sibline | M | M | M | Sirjbeil | M | M | ML |
| Warhanieh | M | M | ML | Werdaniyeh | M | M | M | Zaarourieh | M | M | ML |

Baabda

| Municipality | 07-Oct | 08-Oct | 09-Oct | Municipality | 07-Oct | 08-Oct | 09-Oct | Municipality | 07-Oct | 08-Oct | 09-Oct |
|--------------|--------|--------|--------|------------------|--------|--------|--------|------------------|--------|--------|--------|
| Abadiyeh | M | M | M | Ain Mouaffaq | M | M | M | Araiya | M | M | M |
| Arbaniyeh | M | M | M | Arsoun | M | M | M | Baabda | M | M | M |
| Baalchmey | M | M | M | Bmaryam | M | M | M | Bourj El-Brajneh | M | M | M |
| Boutchay | M | M | M | Bsaba Baabda | M | M | M | Btekhney | M | M | M |
| Btibyat | M | M | M | Bzbeddine | M | M | M | Chbeniyeh | M | M | M |
| Chiyah | M | M | M | Chmeisset Baabda | M | M | M | Chouit | M | M | M |
| Deir El-harf | M | M | M | Deir Khouna | M | M | M | Dlaybeh | M | M | M |

| | | | | | | | | | | | |
|---------------------|---|----|---|----------------------|---|----|---|----------------------|---|----|---|
| Falougha | M | M | M | Furn El-Chebbak | M | M | M | Hadath Beyrouth | M | M | M |
| Halaliyeh Baabda | M | M | M | Hammana | M | M | M | Haret El Sett | M | M | M |
| Haret Hamze | M | M | M | Haret Hreik | M | M | M | Hasbaiya El-Metn | M | M | M |
| Jouar El-Hoz | M | M | M | Jouret Arsoun | M | M | M | Kfar Chima | M | M | M |
| Kfar Selouane | M | M | M | Khalouat Baabda | M | M | M | Kneisset Baabda | M | M | M |
| Laylakeh | M | M | M | Louayzeh Baabda | M | M | M | Merdache | M | M | M |
| Mzairaa Baabda | M | M | M | Ouadi Chahrour El Ol | M | M | M | Ouadi Chahrour El So | M | M | M |
| Qalaa Baabda | M | M | M | Qhraybe Baabda | M | M | M | Qobbayaa | M | M | M |
| Qornayel | M | M | M | Qortada | M | MH | M | Qrayeh Baabda | M | M | M |
| Qsaibeh Baabda | M | MH | M | Qtale Baabda | M | M | M | Ras El Metn | M | M | M |
| Ras El-Haref | M | M | M | Rouayset El-Ballout | M | M | M | Salima Baabda | M | M | M |
| Tahouitat El Ghadir | M | M | M | Tarchich | M | M | M | Zandouqa | M | MH | M |

Aley

| Municipality | 07-Oct | 08-Oct | 09-Oct | Municipality | 07-Oct | 08-Oct | 09-Oct | Municipality | 07-Oct | 08-Oct | 09-Oct |
|----------------------|--------|--------|--------|----------------------|--------|--------|--------|----------------------|--------|--------|--------|
| Abey | M | M | ML | Aghmid | M | M | M | Ain Dara | M | M | M |
| Ain Drafil | M | M | M | Ain El Halazoun | M | M | M | Ain El-Rmmaneh | M | MH | M |
| Ain Jedideh | M | M | M | Ain Ksour | M | M | M | Ain Onoub | M | M | M |
| Ain Traz | M | M | ML | Ainab | M | M | M | Aley | M | M | M |
| Aramoun | M | M | M | Aytat | M | M | M | Azouniyeh | M | M | M |
| Baawerta | M | M | ML | Badghan Oua Wadi Bad | M | M | M | Bassatine | M | M | M |
| Bayssour | M | M | M | Bchamoun | M | M | M | Bdadoun | M | M | M |
| Behouara | M | M | M | Bennay | M | M | ML | Bhamdoun El-Dayaa | M | M | M |
| Bhamdoun El-Mhatta | M | M | M | Bkhechtey | M | M | M | Bleibel | M | M | M |
| Bmakine | M | M | M | Bmehray | M | M | M | Bouzrid | M | M | ML |
| Bserrine | M | M | M | Bsous | M | M | M | Btalloun | M | M | M |
| Btater | M | M | M | Chanay | M | M | M | Charoun | M | M | M |
| Chartoun | M | M | M | Chemlane | M | M | M | Choueifat El-Aamrous | M | M | M |
| Choueifat El-Oumara | M | M | M | Choueifat El-Quoubbe | M | M | M | Dakkoun | M | M | ML |
| Deir Qoubel | M | M | M | Dfoun | M | M | M | Douair El Remmaneh | M | M | M |
| Ghaboun | M | M | M | Habramoun | M | M | M | Homs Oua Hama | M | M | M |
| Houmal | M | M | M | Jisr El Qadi | M | M | ML | Kehaleh | M | M | M |
| Keyfoun | M | M | M | Kfar Aamey | M | M | M | Kommatyeh | M | M | M |
| Maasrati | M | M | M | Majdel Baana | M | M | M | Mansourieh et Ain El | M | M | M |
| Mazraat El-Nahr | M | M | M | Mchakhte | M | M | M | Mecherfeh | M | M | M |
| Mejdlaya | M | M | M | Mrayjat | M | M | M | Ramliyah | M | M | M |
| Rechmaya | M | M | ML | Rejmeh | M | M | M | Remhala | M | M | M |
| Rouaysset El Neemane | M | M | M | Saoufar | M | M | M | Selfaya | M | M | ML |
| Sirhmoul | M | M | M | Souq El Ghareb | M | M | M | Taazanieh | M | M | M |

Kesrouane

| Municipality | 07-Oct | 08-Oct | 09-Oct | Municipality | 07-Oct | 08-Oct | 09-Oct | Municipality | 07-Oct | 08-Oct | 09-Oct |
|-------------------|--------|--------|--------|--------------------|--------|--------|--------|----------------------|--------|--------|--------|
| Achkout | M | M | M | Adma Oua Dafneh | M | M | M | Ain Ed-Delbe Kesroua | M | M | M |
| Ain El-Rihane | M | M | M | Aintoura Kesrouane | M | M | M | Ajaltoun | M | M | M |
| Akaybeh Kesrouane | M | M | M | Aramoun Kesrouane | M | M | M | Azra ouel Ozor | M | M | M |
| Ballouneh | M | M | M | Batha | M | M | M | Bekaatat Achkout | M | M | M |
| Bekaatat Kanaan | M | M | M | Bizhel | M | M | M | Bouar | M | M | M |
| Bqaatouta | M | M | M | Bqaq Ed-Dine | M | M | M | Bzommar | M | M | M |

| | | | | | | | | | | | |
|---------------------|---|---|---|----------------------|---|---|---|--------------------|---|---|---|
| Chahtoul | M | M | M | Chnaniir | M | M | M | Chouan | M | M | M |
| Daraya Kesrouane | M | M | M | Darououn | M | M | M | Deir Baqlouch | M | M | M |
| Dlebta | M | M | M | Eghbeh | M | M | M | Faraya | M | M | M |
| Fatka | M | M | M | Feytroun | M | M | M | Ghazir | M | M | M |
| Ghbaleh Kesrouane | M | M | M | Ghedrass | M | M | M | Ghosta | M | M | M |
| Ghynéh | M | M | M | Harharaya w Kattine | M | M | M | Harissa Kesrouane | M | M | M |
| Hayata | M | M | M | Hosein | M | M | M | Hrajel | M | M | M |
| Jdeideh Ghazir | M | M | M | Jeita | M | M | M | Jounieh Ghadir | M | M | M |
| Jounieh Haret Sakhr | M | M | M | Jounieh Salel Alma | M | M | M | Jounieh Sarba | M | M | M |
| Jouret Bedrane | M | M | M | Jouret Mhad | M | M | M | Jouret Termos | M | M | M |
| Kfar Debiane | M | M | M | Kfar Tay Kesrouane | M | M | M | Kfar Yassine | M | M | M |
| Kfour Kesrouane | M | M | M | Kharayeb Nahr Ibrahi | M | M | M | Klayaat Kesrouane | M | M | M |
| Maarab | M | M | M | Maaysra Kesrouane | M | M | M | Mayrouba | M | M | M |
| Mazraat Er-Ras | M | M | M | Mazraat Mrah El-Mir | M | M | M | Mchaa El Ftouh | M | M | M |
| Mchaa Faraya | M | M | M | Mchaa Kfar Dibiane | M | M | M | Mghaer | M | M | M |
| Mradiyah | M | M | M | Nahr Ed-Dahab | M | M | M | Nammoura Kesrouane | M | M | M |
| Ouata El Jaouz | M | M | M | Ouata Sillam | M | M | M | Raachine | M | M | M |
| Rayfoun | M | M | M | Safra Kesrouane | M | M | M | Shayle Kesrouane | M | M | M |
| Tabarja | M | M | M | Yahchouch | M | M | M | Zaaytreh | M | M | M |
| Zeytoun | M | M | M | Zouk Mikael | M | M | M | Zouk Mosbeh | M | M | M |
| | | | | | | | | | | | |

Baalbek_Hermel

Baalbek

| Municipality | 07-Oct | 08-Oct | 09-Oct | Municipality | 07-Oct | 08-Oct | 09-Oct | Municipality | 07-Oct | 08-Oct | 09-Oct |
|----------------------|--------|--------|--------|----------------------|--------|--------|--------|----------------------|--------|--------|--------|
| Aadous | MH | M | M | Aamchki | M | M | M | Aarsal | M | M | M |
| Ain Baalbek | M | H | M | Ain Bourday | M | M | M | Ain El-Benye | M | M | M |
| Ain El-Jaouz Baalbek | M | M | M | Ain El-Siya Chadoura | M | M | M | Al Khodr Baalbek | M | MH | M |
| Al Nabi Chit | M | M | M | Aynata Baalbek | M | M | M | Baalbek | M | M | M |
| Bachwat | MH | MH | M | Barqa | M | MH | M | Bednayel Baalbak | M | M | M |
| Beit Chama | M | M | M | Bijjaje | M | H | M | Bouday | M | M | M |
| Brital | M | M | M | Btadi | MH | MH | M | Chaat | M | MH | M |
| Chaibe | M | M | M | Chlifa | MH | M | M | Chmestar | M | M | M |
| Dar El-Oussa | MH | MH | M | Deir El-Ahmar | MH | M | M | Deir Mar Maroun Baal | M | MH | M |
| Douris | MH | M | M | Fakiha | M | H | M | Hadath Baalbek | M | M | M |
| Ham | M | M | M | Haour Taala | M | M | M | Hizzine | M | M | M |
| Hlebta | M | H | MH | Hosh Barada | MH | M | M | Hosh El Dahab | MH | M | M |
| Hosh El Snid | M | M | M | Hosh El-Nabi | M | M | M | Hosh El-Rafiq | M | M | M |
| Hosh Tal Safiya | MH | M | M | Hrebta | M | MH | M | laat | MH | M | M |
| Jebaa | M | M | M | Jenta | M | MH | M | Kfar Dabach | M | M | M |
| Kfar Dane | M | M | M | Khraibeh El-Hermel | M | H | M | Khreibet Baalbek | M | M | M |
| Kneisset Baalbek | M | M | M | Labueh | M | H | M | Maarboun | M | M | M |
| Majdaloun | MH | M | M | Maqneh | M | M | M | Mazraat Beit Mcheik | M | M | M |
| Misraya | M | M | M | Moqraq | M | MH | M | Nabha El-Damdoum | M | M | M |
| Nabi Chbay | M | M | M | Nabi Osman | M | H | M | Nahleh baalbek | M | M | M |
| Ouadi El-Oss | M | H | M | Qaa Baayoun | M | MH | M | Qaa Jouar Maqiye | M | MH | M |
| Qaa Ouadi El-Khanzir | M | MH | M | Qah Baalbek | M | MH | M | Qarha Baalbek | M | MH | M |

| | | | | | | | | | | | |
|----------------------|----|----|---|------------------|---|----|---|---------------------|---|----|---|
| Qsarnaba | M | M | M | Ram Baalbek | M | MH | M | Ras Baalbek El Sahl | M | H | M |
| Ras Baalbek El-Charq | M | MH | M | Riha | M | MH | M | Saaide | M | M | M |
| Sbouba | M | H | M | Seriine El-Tahta | M | MH | M | Slouqi | M | M | M |
| Taiba Baalbek | MH | MH | M | Talia | M | M | M | Taraiya | M | M | M |
| Temnin El Fawqa | M | M | M | Temnin El-Tahta | M | M | M | Tfail | M | M | M |
| Yahfoufa | M | M | M | Yammouneh | M | M | M | Younine | M | MH | M |
| Zboud | M | H | M | | | | | | | | |

Hermel

| Municipality | 07-Oct | 08-Oct | 09-Oct | Municipality | 07-Oct | 08-Oct | 09-Oct | Municipality | 07-Oct | 08-Oct | 09-Oct |
|---------------------|--------|--------|--------|----------------------|--------|--------|--------|--------------|--------|--------|--------|
| Charbine El-Hermel | M | M | M | Hermel Jbab | M | M | MH | Hermel | M | MH | M |
| Maaysra El-Hermel | M | H | MH | Michaa Mrajhine | M | M | M | Ouadi Faara | M | MH | MH |
| Ras Baalbek - Ouadi | M | H | M | Ras Baalbek El Gharb | M | M | MH | Zighrine | M | M | MH |
| | | | | | | | | | | | |

Akkar

Akkar

| Municipality | 07-Oct | 08-Oct | 09-Oct | Municipality | 07-Oct | 08-Oct | 09-Oct | Municipality | 07-Oct | 08-Oct | 09-Oct |
|-----------------|--------|--------|--------|----------------------|--------|--------|--------|----------------------|--------|--------|--------|
| Aain Tinta | M | M | MH | Aaiyat | M | M | M | Aakkar El-Aatiqa | M | M | M |
| Aamar Akkar | M | M | MH | Aamar El Baykat | M | M | MH | Aamayer | M | MH | M |
| Aamriyet Akkar | M | M | MH | Aandqet | M | M | M | Aarmeh | M | M | M |
| Aarqa | M | M | MH | Aawaynat | M | M | M | Aayoun Akkar | M | M | M |
| Abboudiye | M | M | M | Ain El-Zeit | M | M | MH | Ain Yaaqoub | M | M | M |
| Akroum | M | M | M | Aridet Cheikh Zennad | M | M | MH | Baldeh w Mazraat Bal | M | M | MH |
| Barcha | M | M | MH | Bardeh | M | M | MH | Bebnine | M | M | MH |
| Beino | M | M | M | Beit Ayoub | M | M | MH | Beit El-Haouch | M | M | MH |
| Beit Mellat | M | M | MH | Beit Younes | M | M | M | Berbara Akkar | M | M | MH |
| Berqayel | M | M | MH | Bezbina | M | M | M | Bireh Akkar | M | M | MH |
| Borj | M | M | MH | Bqerezla | M | M | MH | Bzal | M | M | M |
| Chane | M | M | M | Chaqdouf | M | M | MH | Charbila | M | M | MH |
| Cheikh Mohammad | M | M | MH | Cheikh Taba Es-Sahl | M | M | MH | Cheikh Taba | M | M | MH |
| Cheikh Zennad | M | M | MH | Cheikhlar | M | M | M | Chir Hmairine | M | M | MH |
| Daghle | M | M | MH | Dahr Laissine | M | M | MH | Darine | M | M | MH |
| Dawra | M | M | M | Dawsa w Baghdadi | M | M | MH | Dayret Nahr El-Kabir | M | MH | M |
| Deir Dalloum | M | M | MH | Deir Jennine | M | M | MH | Denbou | M | M | M |
| Dibbabiyyeh | M | M | MH | Douair Aadwiyeh | M | M | MH | Fassikine | M | M | MH |
| Fnaydek | M | M | M | Fraydes Akkar | M | M | M | Ghazayle | M | M | MH |
| Habchit | M | M | M | Hakour | M | M | MH | Halba | M | M | MH |
| Haouchab | M | M | MH | Hayssat | M | M | MH | Haytla | M | M | MH |
| Hayzouq | M | M | M | Hedd | M | M | MH | Hmaira Akkar | M | M | MH |
| Hmaiss Akkar | M | M | MH | Hnaider | M | MH | M | Hokr Ed-Dahri | M | M | MH |
| Hokr Etti | M | M | MH | Hokr Jouret Srar | M | M | MH | Houaich | M | M | M |
| Hrar | M | M | M | Idbil | M | M | MH | llat | M | M | MH |
| Janine | M | M | MH | Jdeidet El-Joumeh | M | M | MH | Jdeidet El-Kaiteh | M | M | MH |
| Jebroyel | M | M | M | Kafr | M | M | M | Kafr | M | M | MH |
| Karm Asfour | M | M | MH | Kfar Melki Akkar | M | M | MH | Kfar Noun | M | M | M |
| Kfarharra | M | M | MH | Khalsa | M | M | MH | Kharnoubet Akkar | M | M | MH |

| | | | | | | | | | | | |
|----------------------|---|---|----|---------------------|---|---|----|---------------------|---|----|----|
| Khirbet Daoud Aakkar | M | M | MH | Khirbet El Remmane | M | M | M | Khirbet Shar | M | M | MH |
| Khoreybet El-Jindi | M | M | MH | Khreibet Aakkar | M | M | M | Kneisset Aakkar | M | M | MH |
| Kneisset Hnaider | M | H | M | Knisse | M | M | MH | Kroum El-Aarab | M | M | MH |
| Kwachra | M | M | MH | Kweykhat | M | M | MH | Machta Hammoud | M | MH | M |
| Majdala | M | M | MH | Majdel Akkar | M | M | MH | Mar Touma | M | M | MH |
| Marlaya Melhem | M | M | MH | Mashha | M | M | MH | Massoudiye | M | M | MH |
| Mazraat Beit Ghattas | M | M | MH | Mazraat En-Nahriye | M | M | M | Mechmech | M | M | M |
| Memneh | M | M | M | Mhammara | M | M | MH | Mighraq Aakkar | M | M | MH |
| Minyara | M | M | MH | Moqayteh | M | M | MH | Mounjez | M | M | M |
| Msalla | M | M | MH | Mzeihmeh | M | M | MH | Nfaiseh | M | M | MH |
| Noura Et-Tahta | M | M | M | Ouadi El-Haour | M | M | MH | Ouadi El-Jamous | M | M | MH |
| Ouyoun El-Ghizlane | M | M | MH | Qaabarine | M | M | MH | Qabaait | M | M | M |
| Qachlaq | M | M | MH | Qantara Aakkar | M | M | MH | Qarha Aakkar | M | H | M |
| Qarqaf | M | M | MH | Qboula | M | M | MH | Qleiaat Aakkar | M | M | MH |
| Qloud El-Baqie | M | M | MH | Qobaiyat Aakkar | M | M | M | Qobbat Chamrat | M | M | MH |
| Qorayat | M | M | M | Qornet Aakkar | M | M | M | Qsair Aakkar | M | M | MH |
| Rahbe | M | M | M | Rihaniyet Aakkar | M | M | MH | Rmah | M | M | M |
| Rmoul | M | M | MH | Saadine | M | M | MH | Sadaqa | M | M | M |
| Saidnaya | M | M | MH | Sammouniye | M | M | MH | Sayssouq | M | M | MH |
| Semmaqiye | M | M | MH | Semmaqli | M | M | MH | Sfinet El-Dreib | M | M | MH |
| Sfinet El-Qaitaa | M | M | M | Sindyanet Zeidane | M | M | M | Souaisset Aakkar | M | M | MH |
| Srar | M | M | MH | Tal Abbas El Gharby | M | M | MH | Tal Abbas El-Chargy | M | M | MH |
| Tal Biret | M | M | MH | Tal Hmayra | M | M | MH | Tal Maayan Tal Kiri | M | M | MH |
| Tal Sibel | M | M | MH | Tallet Chattaha | M | M | MH | Tikrit | M | M | M |
| Tleil | M | M | MH | Tshea | M | M | M | Zawarib | M | M | MH |
| Zouq El Hosniyeh | M | M | MH | Zouq El-Haddara | M | M | MH | Zouq El-Hbalsa | M | M | MH |
| Zouq El-Moqachrine | M | M | MH | | | | | | | | |
| | | | | | | | | | | | |

Sud

Sour

| Municipality | 07-Oct | 08-Oct | 09-Oct | Municipality | 07-Oct | 08-Oct | 09-Oct | Municipality | 07-Oct | 08-Oct | 09-Oct |
|----------------------|--------|--------|--------|-----------------|--------|--------|--------|--------------------|--------|--------|--------|
| Aaiyeh | M | M | L | Aalma El-Chaab | M | M | ML | Aaytit | M | M | L |
| Abbassiyeh Sour | M | M | M | Abou Chech | M | M | M | Ain Abou Abdallah | M | M | M |
| Ain Baal | M | M | ML | Arzoun | M | M | ML | Aziyeh | M | M | ML |
| Baflaya | M | M | ML | Barich | M | M | ML | Batouliyeh | M | M | M |
| Bayad | M | M | L | Bazouriyeh | M | M | ML | Bediass | M | M | ML |
| Bestiyat | M | M | ML | Borj El Chemali | M | M | M | Borj En-Naqoura | M | M | M |
| Borj Rahhal | M | M | ML | Boustane | M | M | ML | Btaychiyeh | M | M | M |
| Chaaitiye | M | M | L | Chameh | M | M | M | Chehabiye | M | M | L |
| Chehour | M | M | ML | Chihine | M | M | L | Debaal Sour | M | M | ML |
| Deir Amess | M | M | L | Deir Kifa | M | M | ML | Deir Qanoun El-Ain | M | M | M |
| Deir Qanoun El-Naher | M | M | ML | Derdghaiya | M | M | ML | Dhayra | M | M | M |
| Halloussiyeh | M | M | ML | Hamoul | M | M | L | Hanaouey | M | M | L |
| Henniye | M | M | M | Hmairi Sour | M | M | ML | Iskandarouna Sour | M | M | ML |
| Jbal El Botom | M | M | L | Jebbin | M | M | M | Jennata | M | M | ML |
| Jijim | M | M | ML | Jouaiya | M | M | L | Kneisset Sour | M | M | L |

| | | | | | | | | | | | |
|---------------------|---|---|----|----------------------|---|---|----|-----------------|---|---|----|
| Maarake | M | M | ML | Maaroub | M | M | ML | Majadel | M | M | L |
| Majdalzoun | M | M | M | Mansouri Sour | M | M | M | Marnba | M | M | ML |
| Marouahine | M | M | L | Mazraat El-Zalloutiy | M | M | ML | Mazraat Mechref | M | M | L |
| Mazraat Tayr Semhat | M | M | ML | Mheilib | M | M | M | Neffakhiyeh | M | M | ML |
| Niha Sour | M | M | ML | Ouadi Jilo | M | M | L | Qana | M | M | L |
| Qolaileh Sour | M | M | M | Rechknany | M | M | L | Rmadiyah | M | M | L |
| Selha Sour | M | M | ML | Siddiqine | M | M | L | Sour | M | M | M |
| Srifa | M | M | ML | Tayr Debbe | M | M | ML | Tayr Felsay | M | M | ML |
| Tayr Harfa | M | M | M | Touayri | M | M | ML | Toura | M | M | ML |
| Yanouh Sour | M | M | ML | Yarine | M | M | M | Zebqine | M | M | L |

Saida

| Municipality | 07-Oct | 08-Oct | 09-Oct | Municipality | 07-Oct | 08-Oct | 09-Oct | Municipality | 07-Oct | 08-Oct | 09-Oct |
|----------------------|--------|--------|--------|----------------------|--------|--------|--------|----------------------|--------|--------|--------|
| Aanqoun | M | M | M | Aaqtanit | M | M | M | Aarab Ej-Jall | M | M | ML |
| Aarab Tabbaya | M | M | ML | Abra Saida | M | M | M | Adloun | M | M | ML |
| Adousiyeh | MH | M | ML | Ain-El-Deleb | M | M | M | Arzai | M | M | ML |
| Babliyah | M | M | M | Barty | M | M | ML | Bissariyeh | M | M | M |
| Bnaafoul | M | M | M | Bqosta | M | M | M | Bramiy | M | M | M |
| Daoudiyeh | M | M | M | Dareb El-Sim | M | M | M | Erkay | M | M | M |
| Ghassanieh | M | M | M | Ghazieh | M | M | M | Hajjeh | M | M | M |
| Haret Saida | M | M | M | Hartiyeh | M | M | ML | Hlaliye Saida | M | M | M |
| Insariyat | M | M | ML | Jazira Saida | M | M | ML | Kafar Bit | M | M | ML |
| Kaoutariyet El-Siyad | M | M | ML | Kfar Chellal | M | M | ML | Kfar Hatta Saida | M | M | ML |
| Kfar Milke Saida | M | M | ML | Khartoum | M | M | ML | Khaziz | M | M | M |
| Khirbet Ed-Douair Sa | M | M | M | Khirbet El-Bassal | M | M | M | Khrayeb Saida | M | M | ML |
| Loubieh | M | M | M | Maghdouche | M | M | M | Majdelyoun | M | M | M |
| Matariyet El-Choumar | M | M | M | Matayriyeh | M | M | M | Mazraat 'Mseileh | M | M | M |
| Mazraat 'Snaiber | M | M | M | Mazraat Aarab Soukka | M | M | ML | Mazraat Deir Taqla | M | M | ML |
| Mazraat El Yahoudiye | M | M | M | Mazraat El-Housseini | M | M | M | Mazraat El-Mhaydaleh | M | M | M |
| Mazraat El-Ouasta | M | M | ML | Mazraat Jamjim | M | M | ML | Mazraat Kaoutariyet | M | M | ML |
| Mazraat Kfar Badda | M | M | ML | Mazraat Oussamiyat | M | M | M | Mazraat Sari | M | M | ML |
| Mazraat Sinai | M | M | ML | Meemariyeh | M | M | M | Merouaniyeh | M | M | ML |
| Miyeh ou Miyeh | M | M | M | Najjariyeh | MH | M | M | Qaaqiyat El-Snaouba | M | M | M |
| Qnarit | M | M | M | Qraiye Saida | M | M | M | Saida Ed-Dekermane | M | M | M |
| Saida El-Oustani | M | M | M | Saida El-Qadimeh | M | M | M | Saida Kefraya | M | M | ML |
| Saksakiyeh | M | M | M | Salhie Saida | M | M | M | Sarafand | M | M | M |
| Sfenta | M | M | ML | Tafahta | M | M | M | Tanbourit | M | M | M |
| Tebna | M | M | M | Zaghdraiya | M | M | ML | Zeita | M | M | M |
| Zrariyeh | M | M | ML | | | | | | | | |

Jezzine

| Municipality | 07-Oct | 08-Oct | 09-Oct | Municipality | 07-Oct | 08-Oct | 09-Oct | Municipality | 07-Oct | 08-Oct | 09-Oct |
|----------------------|--------|--------|--------|-------------------|--------|--------|--------|-------------------|--------|--------|--------|
| Ain El-Mir (El Estab | M | M | ML | Anane | M | M | ML | Aramta | M | M | ML |
| Ariya | M | M | ML | Aychiyeh | M | M | ML | Azour | M | M | ML |
| Baba | M | M | ML | Bayssour Jezzine | M | M | ML | Benoueteh Jezzine | M | M | ML |
| Bhannine | M | M | ML | Bisri | M | M | L | Bkassine | M | M | ML |
| Bouslaya | M | M | ML | Btedine El-Leqech | M | M | ML | Chbail | M | M | L |
| Choualiq Jezzine | M | M | ML | Dahr Ed-Deir | M | M | ML | Deir El Qattine | M | M | ML |

| | | | | | | | | | | | |
|----------------------|---|---|----|----------------------|---|---|----|---------------------|---|---|----|
| Demachqiyeh | M | M | ML | Ghabbatiyeh | M | M | ML | Harf Jezzine | M | M | ML |
| Hassaniyeh | M | M | ML | Haytouleh | M | M | ML | Haytura | M | M | ML |
| Hidab | M | M | ML | Homsiyeh | M | M | ML | Jabal Toura | M | M | ML |
| Jarmaq | M | M | ML | Jensnaya | M | M | M | Jernaya | M | M | ML |
| Jezzine | M | M | ML | Karkha | M | M | ML | Kfar Falous | M | M | ML |
| Kfar Houna | M | M | ML | Kfar Jarrah | M | M | M | Lebaa | M | M | ML |
| Louayzet Jezzine | M | M | ML | Machmouche | M | M | ML | Mahmoudiyeh Jezzine | M | M | ML |
| Maknounye Jezzine | M | M | ML | Maraat Ouzaïyeh | M | M | ML | Mazraat Daraya | M | M | ML |
| Mazraat El-Aarqoub | M | M | ML | Mazraat El-Mathane | M | M | L | Mazraat El-Rahbane | M | M | ML |
| Mazraat Khallet Khaz | M | M | ML | Mazraat Louzid (Loua | M | M | L | Mazraat Qrouh | M | M | ML |
| Mazraat Tamra | M | M | ML | Mazraat Zighrine Jez | M | M | ML | Mazraat | M | M | ML |
| Mharbiyeh | M | M | ML | Midane Jezzine | M | M | ML | Mjeydel Jezzine | M | M | ML |
| Mlikh | M | M | ML | Mrah El-Hbasse | M | M | ML | Ouadi Baanqoudaine | M | M | ML |
| Ouadi El-Laymoun | M | M | ML | Ouardiyeh | M | M | L | Qabaa Jezzine | M | M | ML |
| Qatrani | M | M | ML | Qaytouleh | M | M | ML | Qtaleh Jezzine | M | M | ML |
| Rihane Jezzine | M | M | ML | Rimat | M | M | ML | Roum | M | M | ML |
| Roummanet | M | M | ML | Sabbah | M | M | ML | Saydoun | M | M | ML |
| Sfaray | M | M | ML | Snaya | M | M | ML | Sojoud | M | M | ML |
| Srayri | M | M | ML | Taaid | M | M | ML | Wadi Jezzine | M | M | ML |
| Zhalta | M | M | ML | | | | | | | | |

Bekaa

West Bekaa

| Municipality | 07-Oct | 08-Oct | 09-Oct | Municipality | 07-Oct | 08-Oct | 09-Oct | Municipality | 07-Oct | 08-Oct | 09-Oct |
|--------------------|--------|--------|--------|---------------------|--------|--------|--------|----------------------|--------|--------|--------|
| Aammiq BG | M | M | M | Ain El Tineh BG | M | M | ML | Ain Zebdeh | M | M | ML |
| Ana | M | M | M | Aytanit | M | M | ML | Baaloul BG | M | M | M |
| Bab Mareh | M | M | ML | Chouberqiye Aammiq | M | M | M | Dakoue | M | M | M |
| Deir Ain El-Jaouze | M | M | ML | Deir Tahniche | M | M | M | Ghaza | M | M | M |
| Harime El-Soughra | M | M | M | Hoch Harimeh | M | M | M | Jazira BG | M | M | M |
| Jib Jennine | M | M | M | Kamed-El-Laouz | M | M | M | Kefraya BG | M | M | M |
| Khiara El Atika | M | M | M | Khiara | M | M | M | Khirbet Qanafar | M | M | M |
| Lala | M | M | M | Lebbaya BG | M | M | ML | Loussa | M | M | ML |
| Machghara | M | M | ML | Manara (Hammara) BG | M | M | M | Mansoura BG | M | M | M |
| Marej BG | M | M | M | Maydoun | M | M | ML | Ouaqf BG | M | M | M |
| Qaraaoun | M | M | M | Qelya | M | M | ML | Raouda (Istabel) | M | M | M |
| Saghbine | M | M | ML | Sohmor | M | M | ML | Soltan Yacoub el Ara | M | M | M |
| Souairy | M | M | M | Sultan Yaacoub | M | M | M | Tal Znoun | M | M | M |
| Yehmor BG | M | M | ML | Zilaya | M | M | ML | | | | |

Zahle

| Municipality | 07-Oct | 08-Oct | 09-Oct | Municipality | 07-Oct | 08-Oct | 09-Oct | Municipality | 07-Oct | 08-Oct | 09-Oct |
|----------------------|--------|--------|--------|--------------|--------|--------|--------|------------------|--------|--------|--------|
| Aanjar (Haouch Mouss | M | M | M | Ablah | M | M | M | Ain Kfarzabad | M | M | M |
| Ali-El-Nahri | M | M | M | Bar Elias | M | M | M | Bouarej | M | M | M |
| Cheberqiyet Tabet | M | M | M | Chtaura | M | M | M | Deir El Ghazal | M | M | M |
| Delhamiyet Zahle | M | M | M | Ferzol | M | M | M | Haouch El-Ghanam | M | M | M |
| Haouch Es-Siyadeh | M | M | M | Haouch Hala | M | M | M | Haouch Mandara | M | M | M |

| | | | | | | | | | | | |
|----------------------|---|---|---|----------------------|---|----|---|----------------------|---|----|---|
| Haouch Qayssar | M | M | M | Hezerta | M | M | M | Hosh Moussa | M | M | M |
| Jdita | M | M | M | Kfarzabad | M | M | M | Ksara | M | M | M |
| Majdel Aanjar | M | M | M | Makssi | M | M | M | Massa | M | MH | M |
| Mazraat Er-Remtaniye | M | M | M | Mrayjat Zahle | M | M | M | Mzaraa Zahle | M | M | M |
| Nabi Ayla | M | M | M | Nasriyet Rizk | M | MH | M | Nasriyet Zahle | M | M | M |
| Niha Zahle | M | M | M | Ouadi Ed-Deloum | M | M | M | Ouadi El-Arayech | M | M | M |
| Qaa El Rim | M | M | M | Qab Elias | M | M | M | Qousaya | M | M | M |
| Rhit | M | M | M | Riyak | M | M | M | Saadnayel | M | M | M |
| Taal El-Akhdar | M | M | M | Taalbeya | M | M | M | Taanayel | M | M | M |
| Talamara | M | M | M | Tcheflik Edde Haouch | M | M | M | Tcheflik Qiqano | M | M | M |
| Terbol Zahle | M | M | M | Touaite Zahle | M | M | M | Zahle Aradi | M | M | M |
| Zahle El-Berbara | M | M | M | Zahle El-Maallaqa | M | M | M | Zahle El-Midane | M | M | M |
| Zahle Er-Rassiye | M | M | M | Zahle Haouch El-Ouma | M | M | M | Zahle Haouch El-Ouma | M | M | M |
| Zahle Haouch Ez-Zara | M | M | M | Zahle Maalaga Aradi | M | M | M | Zahle Mar Antonios | M | M | M |
| Zahle Mar Elias | M | M | M | Zahle Mar Gerios | M | M | M | Zahle Saydet En-Naja | M | M | M |
| Zebdoul | M | M | M | | | | | | | | |

Rachaiya

| Municipality | 07-Oct | 08-Oct | 09-Oct | Municipality | 07-Oct | 08-Oct | 09-Oct | Municipality | 07-Oct | 08-Oct | 09-Oct |
|-------------------|--------|--------|--------|----------------------|--------|--------|--------|-------------------|--------|--------|--------|
| Ain Arab Rachaiya | M | M | M | Ain Ata | M | M | M | Ain Harche | M | M | M |
| Aqabe Rachaya | M | M | M | Ayha | M | M | M | Ayta El Fokhar | M | M | M |
| Bakifa Rachaya | M | M | M | Bakka | M | M | M | Beit Lahya | M | M | M |
| Bireh Rachaiya | M | M | M | Daheer El Ahmar | M | M | M | Deir El-Achayer | M | MH | M |
| Heloua Rachaiya | M | MH | M | Hoch El Qannabeh Rac | M | M | M | Kaoukaba Bou Arab | M | M | M |
| Kfar Danis | M | M | M | Kfar Mechki | M | M | M | Kfar Qouq | M | M | M |
| Kherbet Rouha | M | M | M | Majdel Balhiss | M | M | M | Mdoukha | M | M | M |
| Mhaydseh Rachaiya | M | M | M | Nabi Safa | M | M | M | Rachaiya | M | M | M |
| Rafid Rachaiya | M | M | M | Selsata (Mazraat Dei | M | MH | M | Tannoura | M | M | M |
| Yanta | M | M | M | | | | | | | | |
| | | | | | | | | | | | |

Beyrouth

Beyrouth

| Municipality | 07-Oct | 08-Oct | 09-Oct | Municipality | 07-Oct | 08-Oct | 09-Oct | Municipality | 07-Oct | 08-Oct | 09-Oct |
|----------------------|--------|--------|--------|----------------|--------|--------|--------|--------------|--------|--------|--------|
| Achrafieh | M | M | M | Ain el-Mreisse | MH | M | M | Bachoura | M | M | M |
| Beirut Central Distr | MH | M | M | Marfai | M | M | M | Mazraa | M | M | M |
| Medaouar | M | M | M | Minet el-Hosn | MH | M | M | Mwssaitbeh | M | M | M |
| Ras Beirut | M | M | M | Rmeil | M | M | M | Saifi | M | M | M |
| Zqaq el-Blat | M | M | M | | | | | | | | |