

# Lebanon Fire Risk Bulletin



CIVIL DEDEFENCE

**Refer to cadast table condition.**

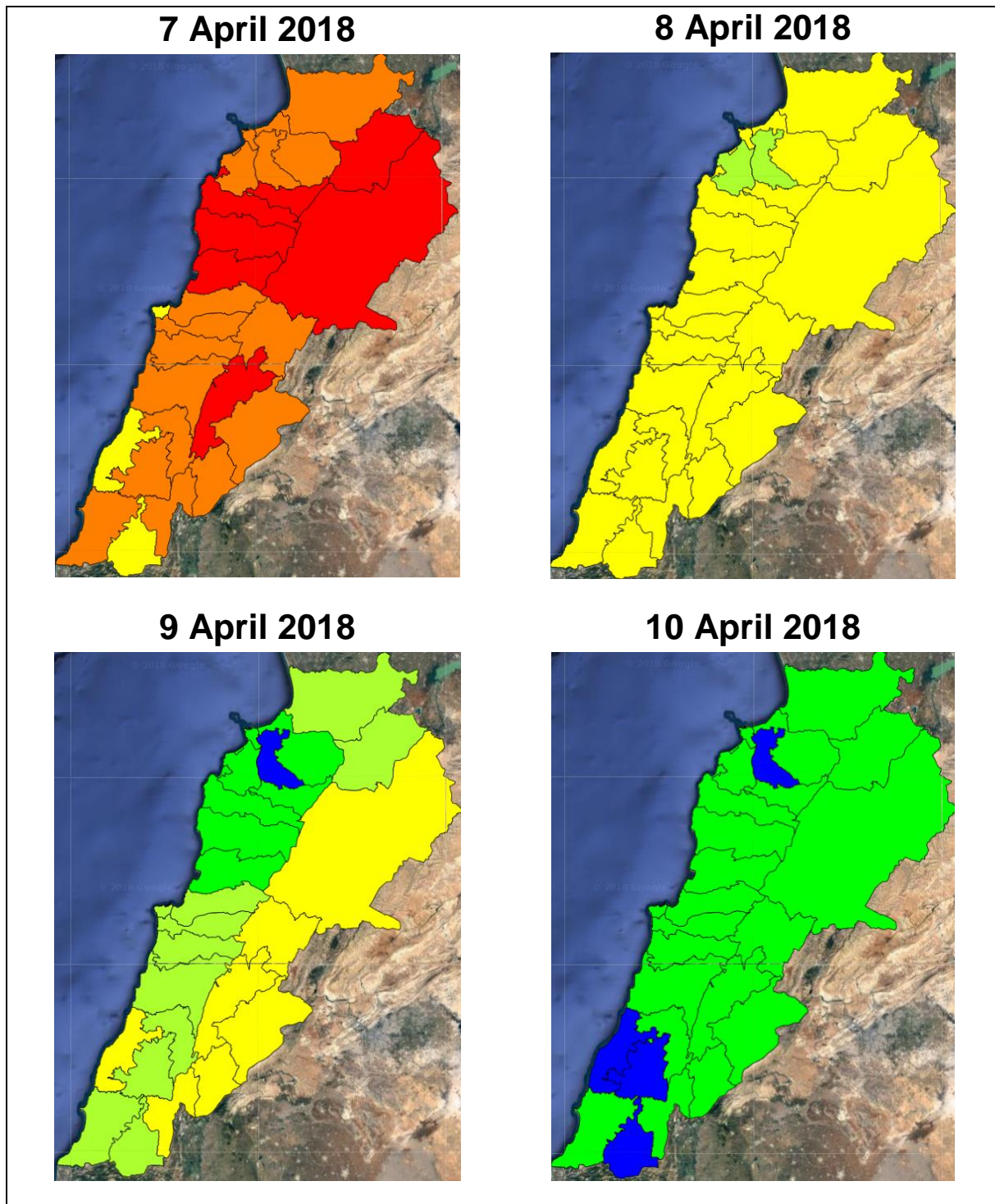
**Please note that the indicated temperature is at 2 meters height from the ground.**

General description of potential fire risk situation

Symbol	Level of risk	Meaning and actions
VL	Very low	Very low fire risk. Controlled burning operations can be hardly executed due to high fuel moisture content. Normally wildfires self-extinguish.
L	Low	Low fire risk. Controlled burning operations can be executed with a reasonable degree of safety.
ML	Medium low	Medium-low fire risk. Controlled burning operations can be executed in safety conditions. All the fires need to be extinguished.
M	Medium	Medium fire risk. Controlled burning operations would be avoided. All the fires need to be very well extinguished.
M	Medium high	Controlled burning is not recommended. Open flame will start fires. Cured grasslands and forest litter will burn readily. Spread is moderate in forests and fast in exposed areas. Patrolling and monitoring is suggested. Fight fires with direct attack and all available resources.
H	High	Ignition can occur easily with fast spread in grass, shrubs and forests. Fires will be very hot with crowning and short to medium spotting. Direct attack on the head may not be possible requiring indirect methods on flanks. Patrolling and monitoring the territory is highly suggested.
E	Extreme	Ignition can occur also from sparks. Fires will be extremely hot with fast rate of spread. Control may not be possible during day due to long range spotting and crowning. Suppression forces should limit efforts to limiting lateral spread. Damage potential total. Patrolling and monitoring the territory is highly suggested.

**Beirut, 8 April 2018**

# FIRE RISK INDEX

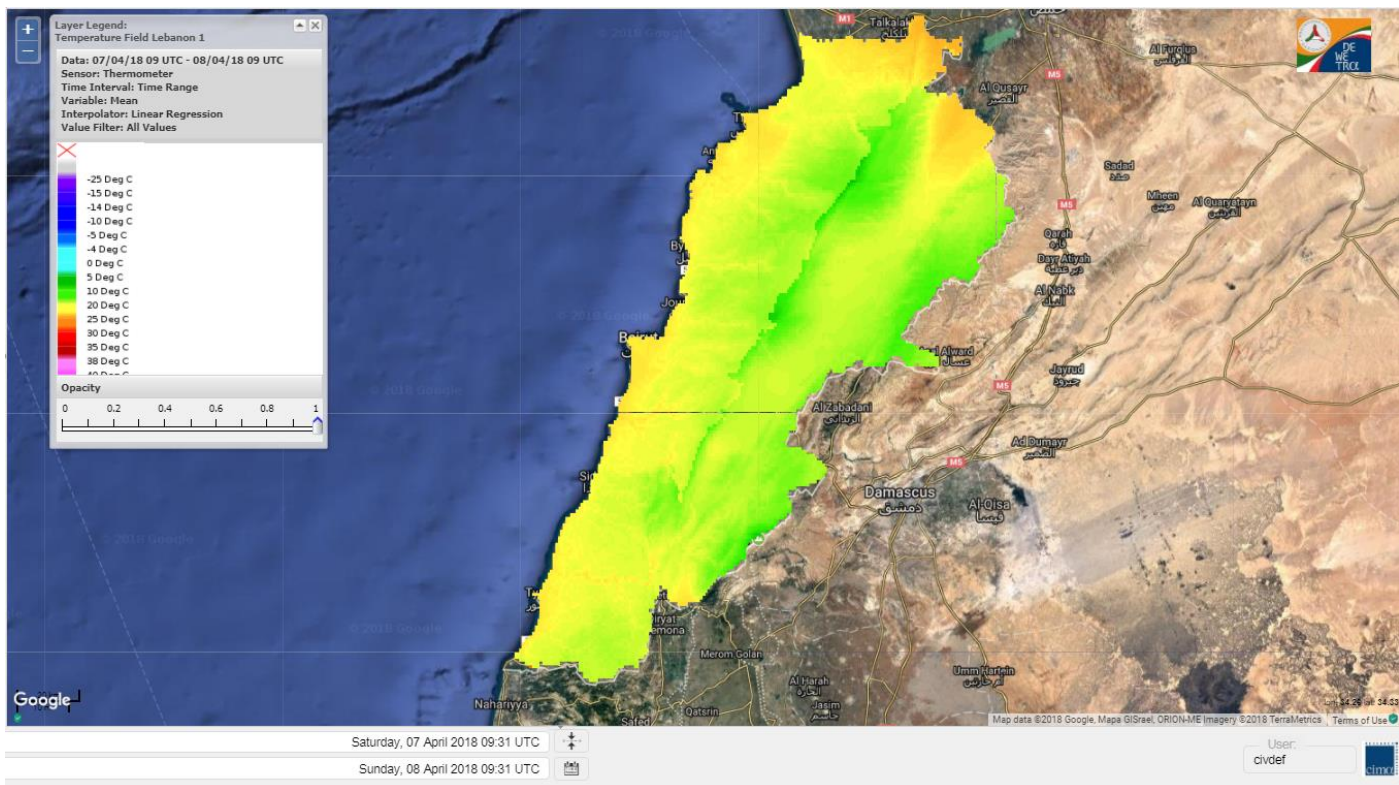


Layer Legend:  
Lebanon Wildfire Risk Index 1

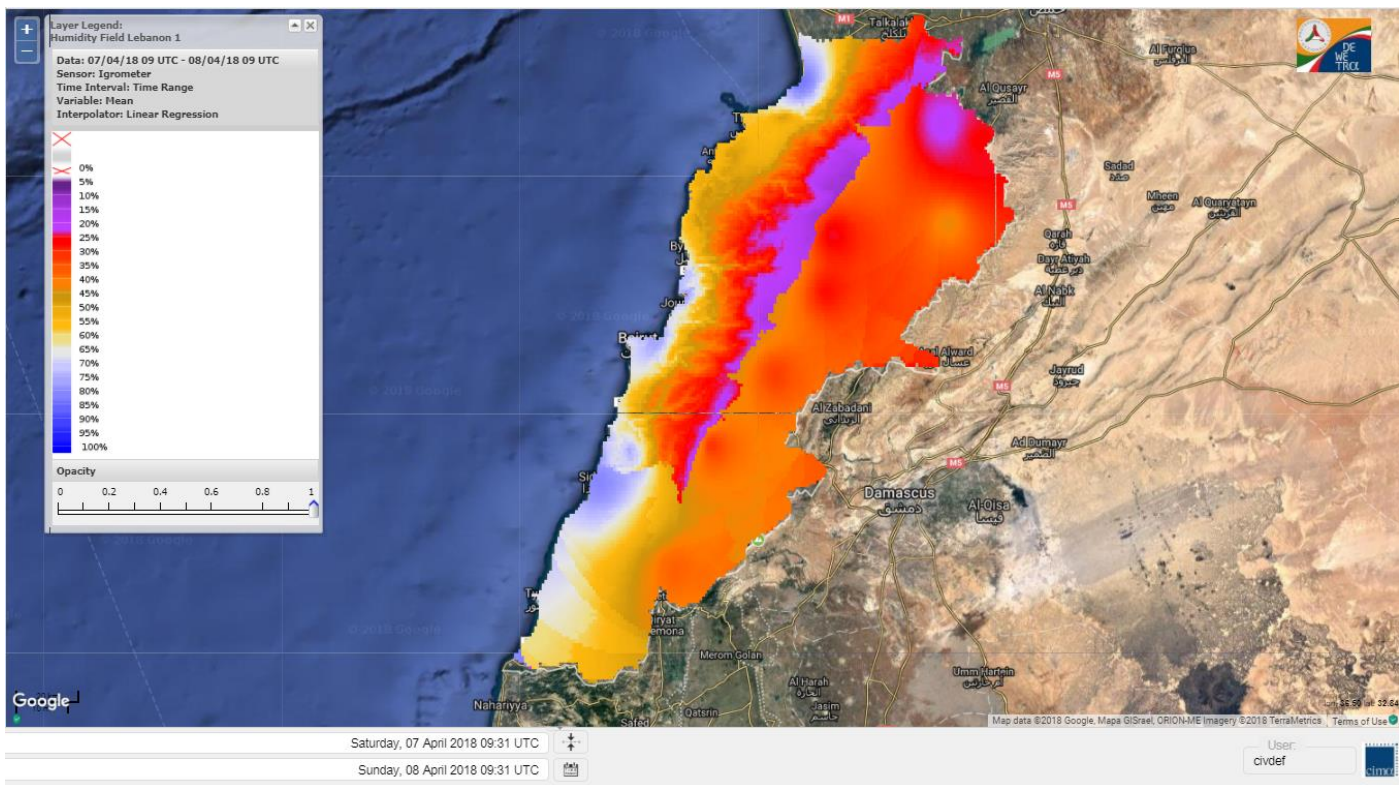
Data: Run: 08/04/2018 00:00, Forecast for 8  
Model: RISICO for the Republic of Lebanon  
Variable: Fire Weather Index  
Spatial Resolution: Caza

- VERY LOW
- LOW
- MEDIUM-LOW
- MEDIUM
- MEDIUM-HIGH
- HIGH
- EXTREME

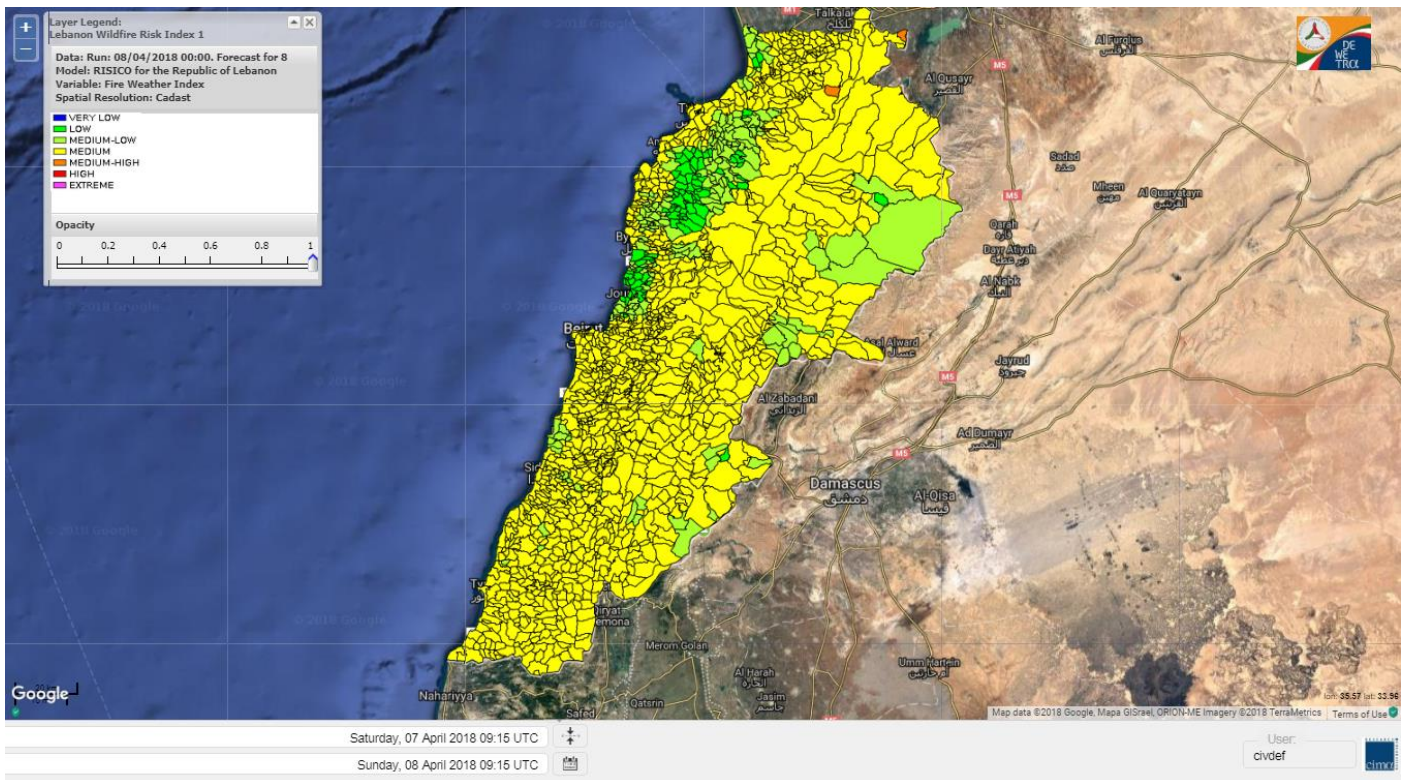
# Lebanon temperature for 8 April 2018



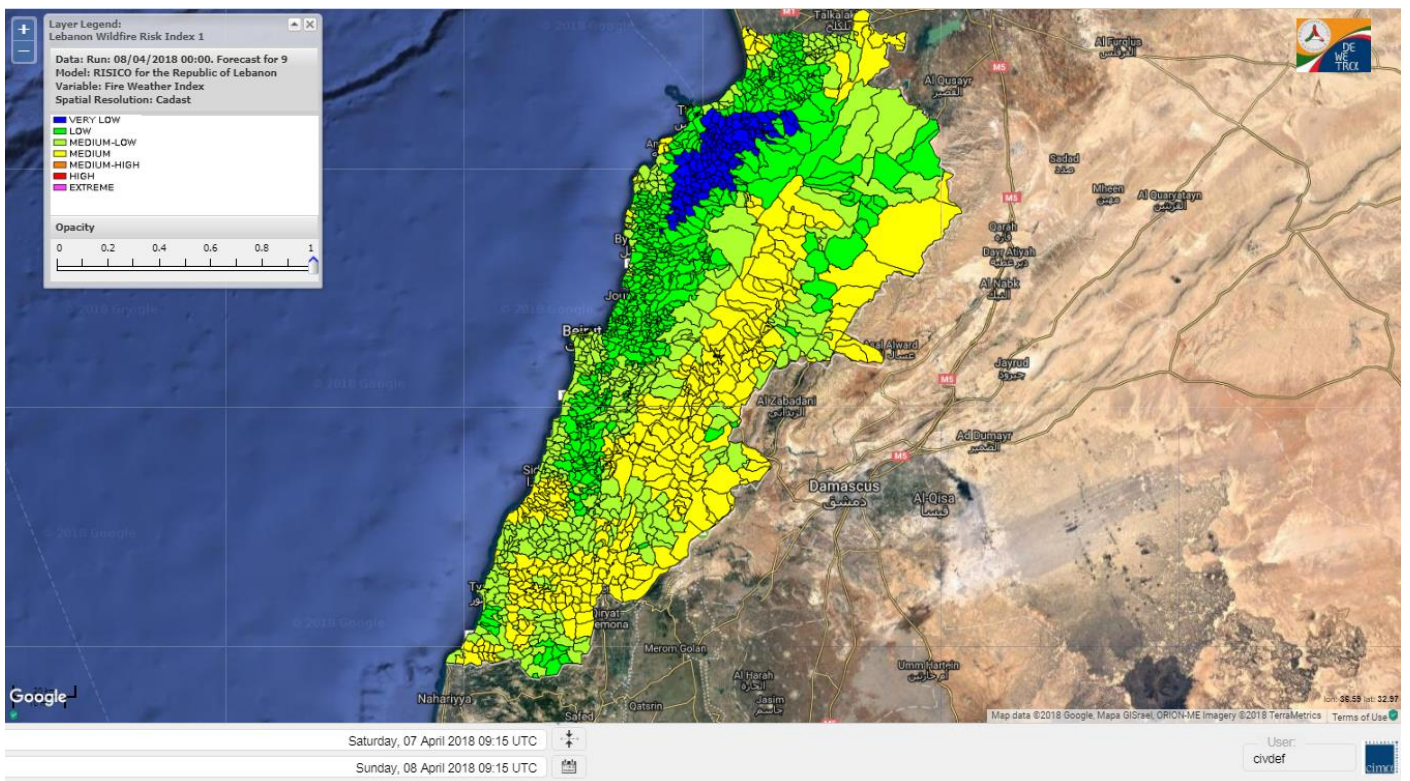
# Lebanon humidity for 8 April 2018



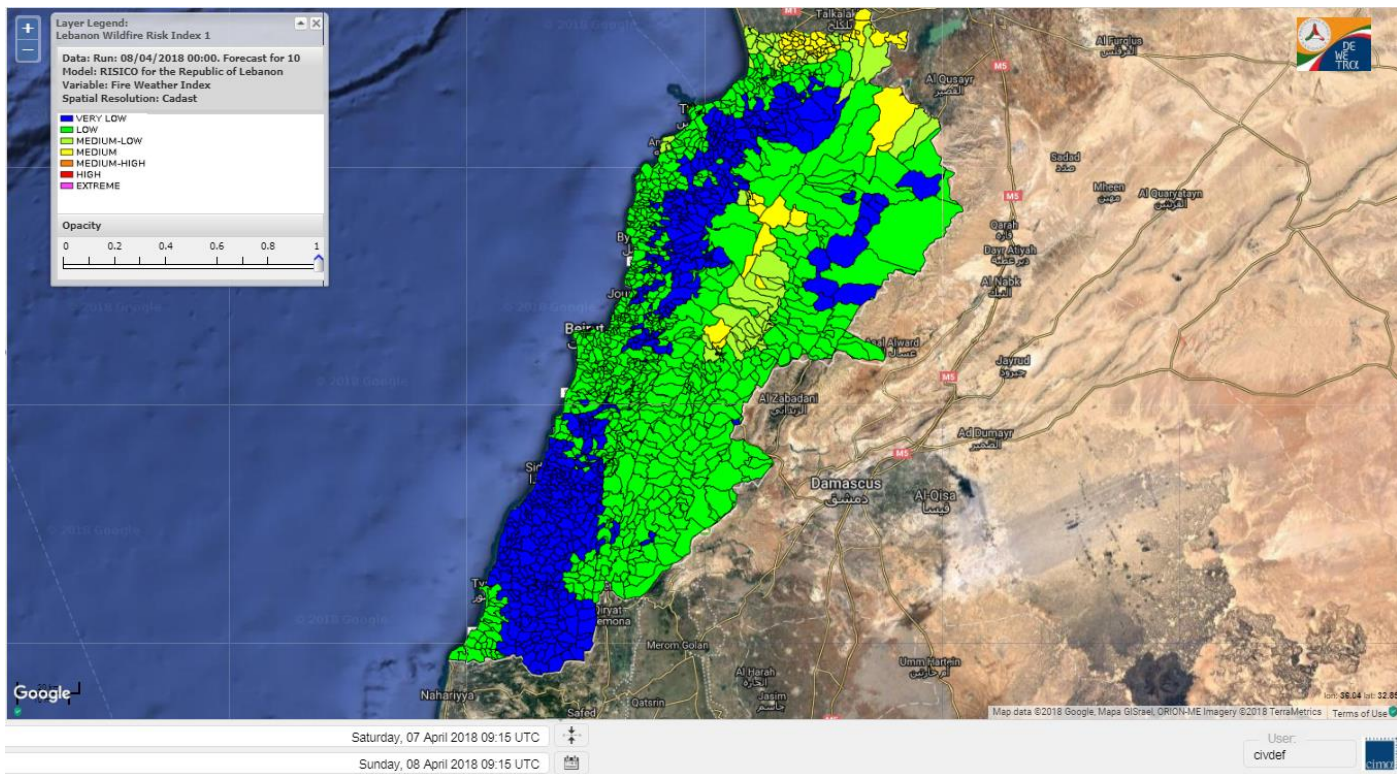
# Lebanon for 8 April 2018



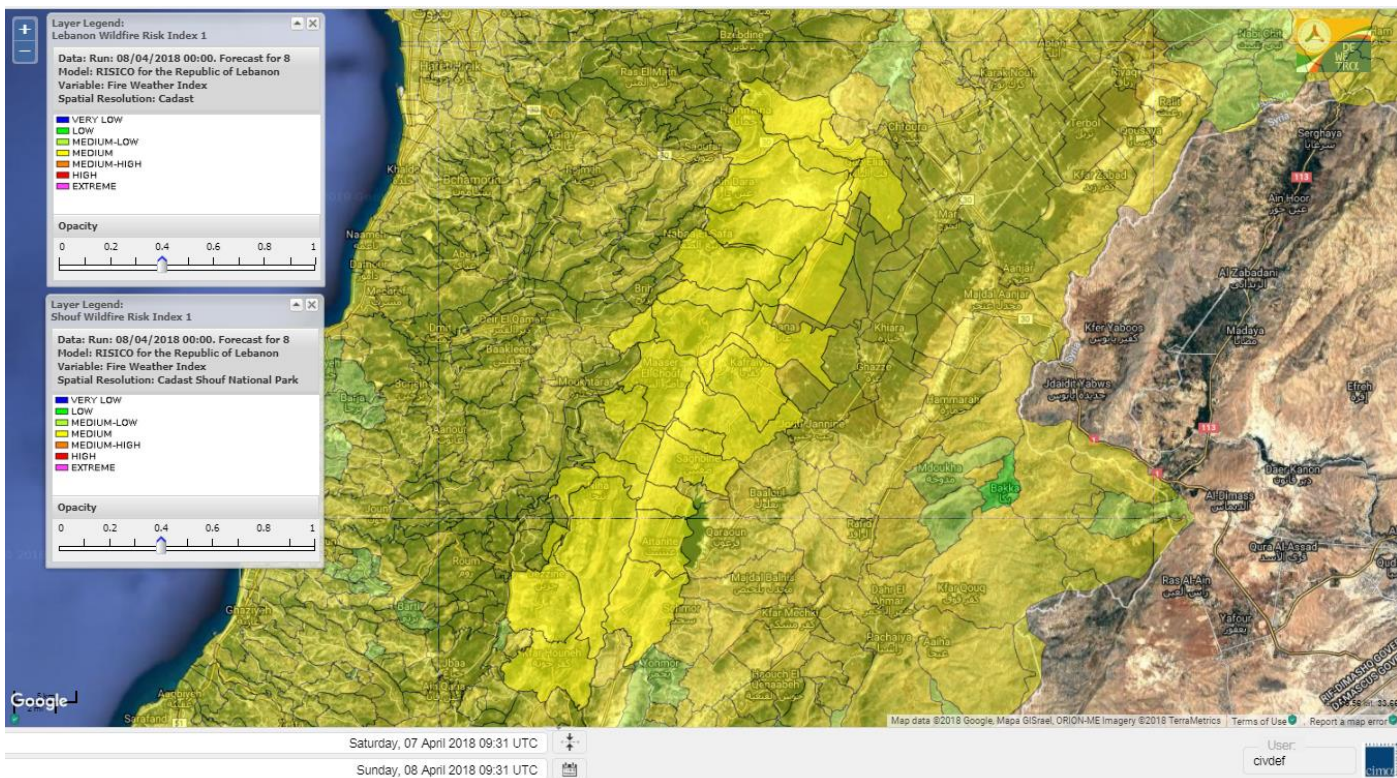
# Lebanon for 9 April 2018



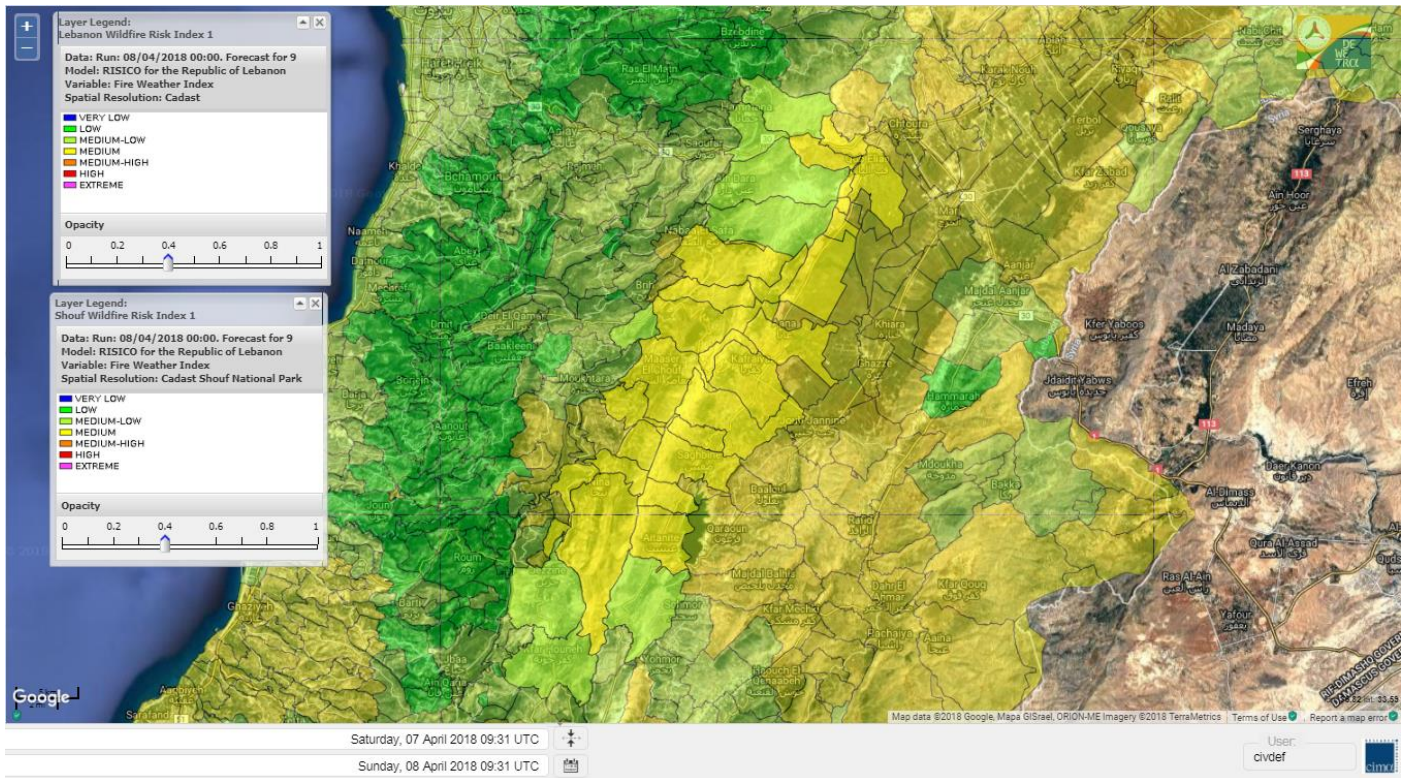
# Lebanon for 10 April 2018



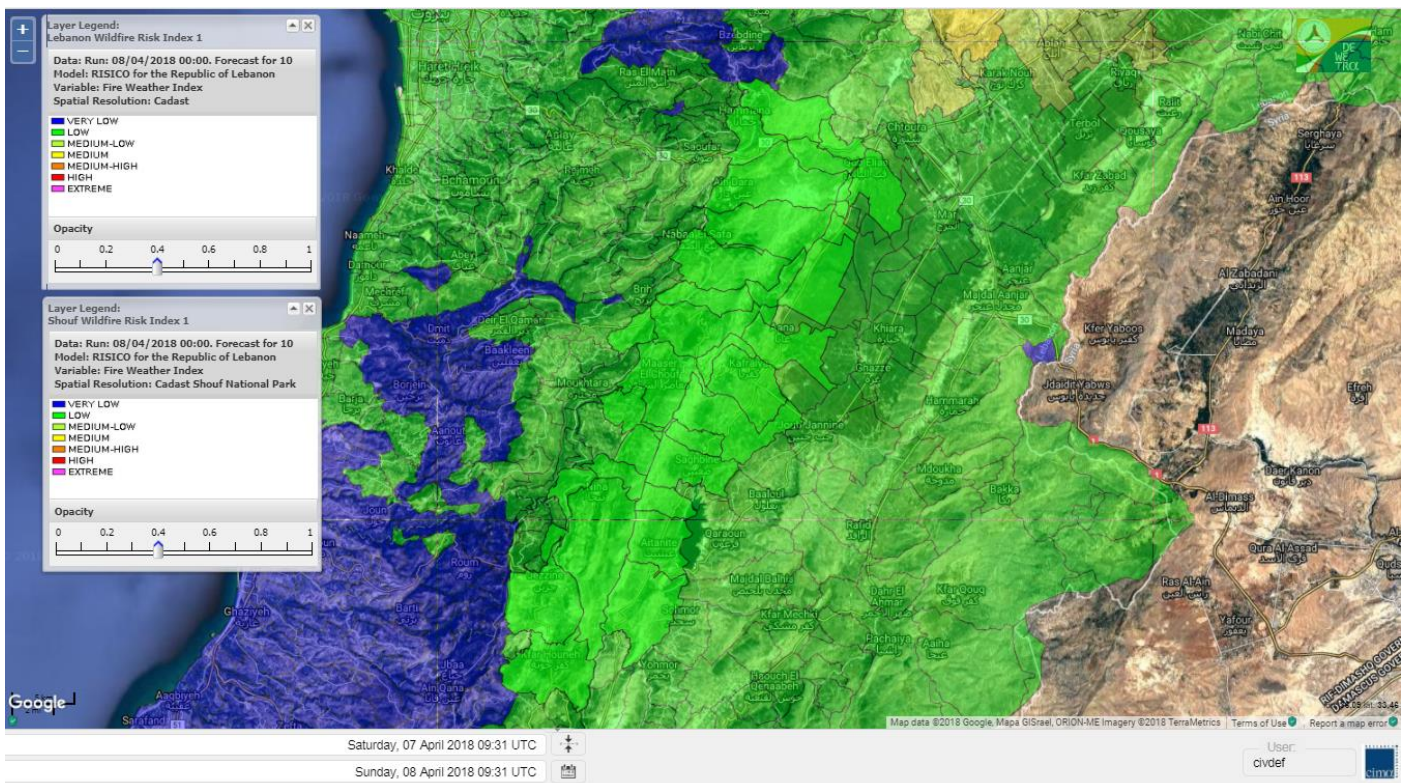
# Shouf Biosphere Reserve Forecast for 8 April 2018



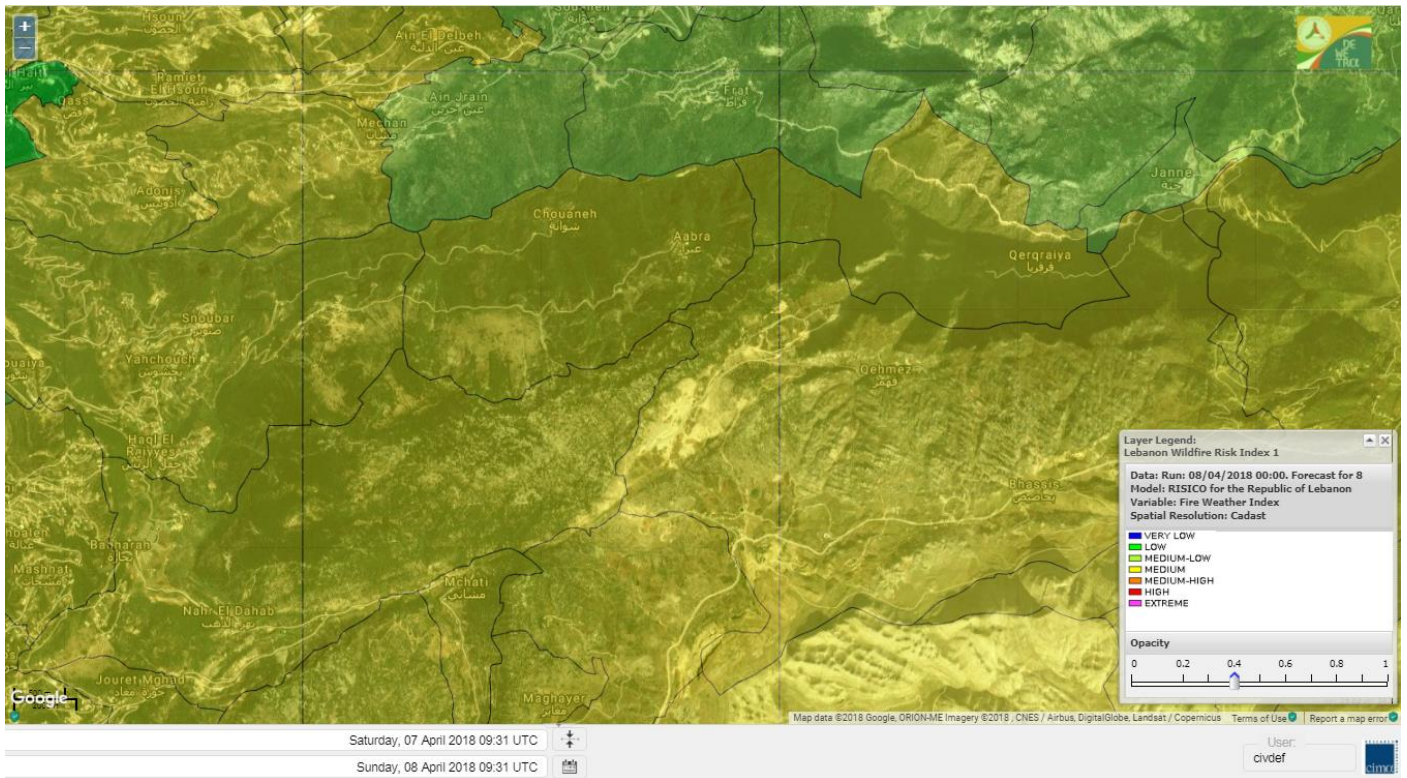
# Shouf Biosphere Reserve Forecast for 9 April 2018



# Shouf Biosphere Reserve Forecast for 10 April 2018



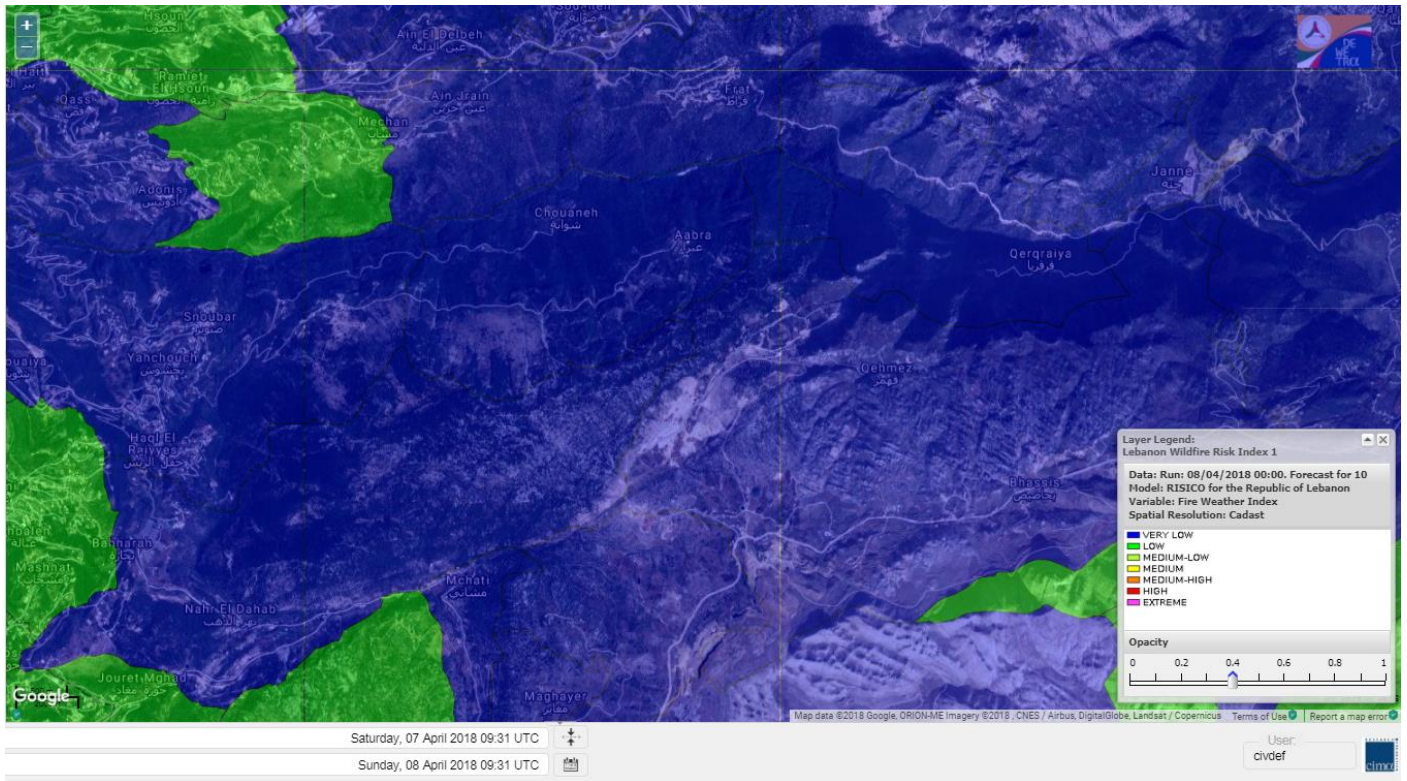
# Jabal Moussa Reserve Forecast for 8 April 2018



# Jabal Moussa Reserve Forecast for 9 April 2018



# Jabal Moussa Reserve Forecast for 10 April 2018





## Nord

### Koura

Municipality	08-Apr	09-Apr	10-Apr	Municipality	08-Apr	09-Apr	10-Apr	Municipality	08-Apr	09-Apr	10-Apr
Aaba	L	VL	L	Afsaddiq	L	VL	L	Ain Ekrine	L	VL	L
Amioun	L	VL	VL	Anfeh	M	M	ML	Badbhoun	ML	L	L
Barghoun	ML	L	L	Barsa	M	L	L	Batroumine	M	L	L
Bdebba	ML	L	L	Bechmizine	L	VL	VL	Bednaye El-Koura	M	ML	L
Bhabbouch El-Koura	L	VL	L	Bkeftine	M	VL	L	Bnehran	L	VL	L
Bqaiaa El-Koura	M	L	L	Bsarma	L	VL	VL	Btaaboura	M	L	L
Bterram	L	VL	L	Btouratij	M	L	L	Bziza	L	VL	VL
Dar Beehtar	L	VL	L	Dar Chmezzine	L	VL	L	Deddeh	M	L	L
Deir El-Balamand	M	L	L	Fih	ML	L	L	Hraiche	M	M	ML
Ijdaabrine	M	ML	L	Kaftoun	ML	L	L	Kefraya El-Koura	M	ML	L
Kfarakka	L	VL	VL	Kfarhata	M	ML	L	Kfarhazir	ML	L	L
Kfarkahel	ML	L	L	Kfarsaroun	L	VL	VL	Kosba	L	VL	VL
Mejdel el-Koura	L	VL	L	Nakhle	M	L	L	Qalhat	M	L	L
Ras Masqa	M	L	L	Rechdibbine	ML	VL	L	Zakroun	M	M	ML
Zgharta El-Mtaouile	L	VL	VL								

### Bcharre

Municipality	08-Apr	09-Apr	10-Apr	Municipality	08-Apr	09-Apr	10-Apr	Municipality	08-Apr	09-Apr	10-Apr
Aabdine	ML	VL	L	Bane	ML	L	VL	Barhelioun	ML	VL	VL
Bazouone	M	ML	ML	Becharre	M	L	L	Beit Menzer	ML	VL	VL
Billa	ML	VL	L	Blaouza	M	VL	L	Bqaa Kafra	M	M	M
Bqerqacha	M	M	M	Breissat	ML	L	VL	Dimane	M	L	VL
Hadath El Jobbeh	ML	L	VL	Hadchit	L	L	VL	Hasroun	M	ML	ML
Mazraat Aassaf	L	VL	VL	Mazraat Bani Saab	ML	L	VL	Mchaa El-Jobbeh	M	M	M
Metrit	L	VL	L	Moghr El-Ahoual	ML	VL	L	Ouadi Qannoubine	L	VL	VL
Qanat	ML	L	VL	Qnayer	ML	VL	VL	Tourza	ML	VL	VL

### Batroun

Municipality	08-Apr	09-Apr	10-Apr	Municipality	08-Apr	09-Apr	10-Apr	Municipality	08-Apr	09-Apr	10-Apr
Aabrine	M	ML	L	Aalali	L	VL	VL	Aartiz	M	L	VL
Abdelli	ML	L	VL	Ajdabra	M	L	L	Assia	L	VL	VL
Basbina	ML	L	L	Batroun	M	ML	L	Bcheleh	L	VL	VL
Bechtoudar	L	VL	VL	Beit Chlala	L	VL	VL	Beit Kassab	L	VL	VL
Bijdarfil	M	ML	L	Bqesmaya	M	L	L	Chatine	ML	L	VL
Chebtin	ML	L	VL	Chekka	M	ML	L	Daael	L	VL	VL
Dahr Abi Yaghi	ML	L	VL	Daraya El-Batroun	ML	L	L	Deir Billa	L	VL	VL
Deir Kfifane	M	L	L	Deir Mar Youhanna EL	L	VL	VL	Deir Mar Youssef Jra	ML	L	VL
Douma	L	L	VL	Douq	L	L	VL	Eddeh El-Batroun	ML	L	L
Ftihat El-Batroun	L	VL	VL	Ghouma	ML	L	L	Hadtoun	L	VL	VL
Hamat	M	ML	L	Harbouna	M	L	VL	Hardine	L	VL	VL
Helta	L	VL	VL	Hery	M	ML	L	Jebbla	L	VL	VL
Jrabta El-Batroun	ML	L	L	Jrane El-Batroun	ML	L	L	Kfar Aabida	M	L	L
Kfar Halda	L	VL	VL	Kfarb Shlaimane	L	VL	VL	Kfarhatna	ML	L	VL
Kfarhay	M	ML	L	Kfarhelos	M	ML	L	Kfifane	ML	L	L

Kfour El Arabi	ML	L	VL	Koubba	M	M	L	Kour	M	L	L
Mar Mama	L	VL	VL	Masrah	ML	L	VL	Mehmarch	L	L	VL
Mrah Chdid	M	L	L	Mrah El Ziyat	M	L	VL	Mrah El-Hajj	L	VL	VL
Nahle El-Batroun	L	VL	VL	Niha El-Batroun	ML	L	VL	Ouahj El-Hajjar	M	ML	L
Ouata Houb	ML	L	VL	Qatnaaoun	M	ML	L	Racha	L	VL	VL
Rachana	M	L	L	Rachkida	M	ML	L	Ram El-Batroun	L	VL	VL
Ras Nahhach	M	ML	L	Selaata	M	M	L	Sghar	ML	L	L
Smar Jbayl	M	L	L	Sourat El-Batroun	ML	L	VL	Tannourine El-Faouqa	M	ML	L
Tannourine Et-Tahta	ML	L	VL	Thoum	M	ML	L	Toula El-Batroun	ML	L	L
Zan	ML	L	VL								

## Zgharta

Municipality	08-Apr	09-Apr	10-Apr	Municipality	08-Apr	09-Apr	10-Apr	Municipality	08-Apr	09-Apr	10-Apr
Aachach	ML	VL	VL	Aalma	ML	VL	VL	Aarde	M	VL	VL
Aintourine	ML	VL	L	Arabet Qozhaya	ML	VL	VL	Arde	ML	VL	VL
Arjis	L	VL	VL	Asnoun	M	VL	VL	Ayto	ML	VL	VL
Basloukit	L	L	L	Bchannine	ML	VL	L	Besebeel	ML	VL	VL
Bhairret Toula	L	VL	VL	Bnachee	ML	VL	VL	Boussit	M	L	L
Danha	ML	VL	VL	Daraiya Zgharta	L	VL	VL	Deir Jdeide	ML	VL	VL
Ehden	ML	L	L	Halan	ML	VL	L	Hariq Zgharta	ML	VL	VL
Houakir	ML	VL	VL	Hraiqis	M	ML	L	laal	ML	VL	VL
Ijbaa	ML	VL	VL	Karm Saddeh	ML	VL	VL	Kfarchakhna	M	VL	L
Kfardlaqous	ML	VL	VL	Kfarfou	ML	VL	VL	Kfarhata Zgharta	ML	VL	VL
Kfarhoura	M	VL	VL	Kfarsghab	L	L	VL	Kfaryachit	ML	VL	VL
Kfarzaina	ML	VL	VL	Khaldiye	ML	VL	VL	Mazraat Ajbeaa	ML	VL	VL
Mazraat Et-Teffah	L	VL	VL	Mazraat Jneid	M	VL	VL	Mejdlaiya Zgharta	M	VL	VL
Merh Kfarsghab	ML	VL	VL	Miryata	ML	VL	VL	Miziara	ML	VL	VL
Mzraat Kefraya	M	L	L	Qorah Bach	ML	VL	VL	Rachiine	ML	VL	VL
Ras Kifa	ML	VL	VL	Sakhra	ML	VL	VL	Sebhel Zgharta	ML	VL	L
Serhel	L	VL	VL	Tallet Zgharta	ML	VL	VL	Toula Zgharta	L	VL	VL
Zgharta	ML	VL	VL								

## Minieh-Denniye

Municipality	08-Apr	09-Apr	10-Apr	Municipality	08-Apr	09-Apr	10-Apr	Municipality	08-Apr	09-Apr	10-Apr
Aasaymout	M	VL	VL	Aaymar	ML	VL	VL	Aazki	L	VL	VL
Ain El-Tineh-Miniyeh	M	VL	VL	Assoun	ML	VL	VL	Bakhaaoun	ML	VL	VL
Bchennata	ML	L	L	Bechehhara	ML	VL	VL	Beddawi	M	ML	L
Behouaita	L	L	VL	Beit El Foqss	M	VL	VL	Beit Haouik	L	L	VL
Beit Zoud	ML	VL	VL	Bekaasafrine	M	L	L	Borj El Yahoudiyeh	M	ML	L
Bqarsouna	M	VL	VL	Btermaz	ML	VL	VL	Debaael	ML	VL	VL
Deir Ammar	M	ML	L	Deir Nbouh	ML	VL	VL	Haouaret-Miniyeh	M	L	VL
Haql el Azimeh	ML	VL	VL	Harf El Siyad	ML	VL	VL	Hazmiye-Miniyeh	M	VL	VL
Izal	ML	VL	VL	Jarjour	ML	VL	VL	Jayroun	M	VL	VL
Kahf El-Malloul	ML	VL	VL	Karm El-Moher	ML	VL	VL	Kfar Binine	M	L	VL
Kfarchalane	L	VL	VL	Kfarhabou	ML	VL	VL	Kharroub-Miniyeh	ML	VL	VL
Mazraat El-Kreme	ML	VL	VL	Mazraat Ketrane	ML	VL	VL	Merkebta	M	L	L
Minyeh	M	ML	L	Mrah El Sfirat	M	VL	VL	Mrah Sraj	ML	VL	VL
Mrebbine	M	L	VL	Nabi Youcheaa	M	ML	L	Nemrine	M	L	VL

Qarhaiya	ML	L	VL	Qarne	M	VL	VL	Qarsita	M	VL	VL
Qattineh-Miniyeh	ML	VL	VL	Qemmamine	M	VL	VL	Qraine	ML	VL	VL
Raouda-Aadoua	M	L	VL	Rihaniyet-Miniyeh	ML	L	L	Sfireh	M	VL	VL
Sir Ed-Danniyeh	ML	VL	VL	Tarane	ML	VL	VL	Terbol-Miniyeh	M	L	L
Zaghartaghriane	ML	VL	VL	Zouq Bhannine	M	ML	L				

## Nabatiye

### Nabatiye

Municipality	08-Apr	09-Apr	10-Apr	Municipality	08-Apr	09-Apr	10-Apr	Municipality	08-Apr	09-Apr	10-Apr
Aabba	M	ML	VL	Aazzi	M	M	VL	Adchit El-Chqif	M	M	VL
Ain Bou Swar	M	ML	VL	Ain Kana	M	L	VL	Ali El-TaHER	M	ML	VL
Ansar	M	ML	VL	Arab Salim	M	ML	VL	Arnoun	M	M	L
Bfaroue	M	ML	VL	Breyqaah	M	M	VL	Chargiyeh	M	ML	VL
Choukine	M	ML	VL	Deir El Zahrani	M	ML	VL	Doueir El-Nabatiyeh	M	ML	VL
Habbouch El-Nabatiye	M	ML	VL	Hamra El-Nabatiyeh	M	M	L	Harouf El-Nabatiyeh	M	ML	VL
Hmaile	M	ML	VL	Houmin El Faouqa	M	ML	VL	Houmin El Tahta	M	M	VL
Jarjough	M	ML	VL	Jbaah El-Nabatiyeh	M	ML	VL	Jebchit	M	ML	VL
Kfar Djal El-Nabatiy	M	M	VL	Kfar Remmane	M	ML	VL	Kfar Sir	M	M	VL
Kfar Tebnit	M	M	L	Kfarfila	M	L	VL	Kfour El-Nabatieh	M	ML	VL
Mayfadoun	M	M	L	Mazraat Bsaffour	M	ML	VL	Mazraat Chalbaal	M	ML	VL
Mazraat Dmoul	ML	ML	VL	Mazraat El Khreibeh	M	M	VL	Mazraat El-Bayad El-	M	ML	VL
Mazraat Kfarjaouz	M	ML	VL	Mazraat Qalaat Meiss	M	ML	VL	Nabatiyeh El-Fawka	M	M	VL
Nabatiyeh Et-Tahta	M	ML	VL	Namiriyyeh	M	ML	VL	Qaaqaaiyet El Jisr	M	M	VL
Qossaibeh El-Nabatiy	M	M	VL	Roumine	M	M	VL	Sarba El-Nabatieh	M	ML	VL
Sir El-Gharbiyeh	M	M	VL	Toul	M	ML	VL	Yehmor El-Nabatiyeh	M	M	L
Zaoutar El Charkiyeh	M	M	L	Zaoutar El-Gharbiyeh	M	M	VL	Zebdine El-Nabatiyeh	M	ML	VL
Zefta	M	ML	VL								

### Hasbaiya

Municipality	08-Apr	09-Apr	10-Apr	Municipality	08-Apr	09-Apr	10-Apr	Municipality	08-Apr	09-Apr	10-Apr
Ain Jarfa	M	L	VL	Abou Qamha	M	ML	L	Ain Qania	M	ML	VL
Bourghos	M	M	L	Chebaa	M	M	L	Chouaya Hasbaya	M	ML	L
Dellafeh	M	M	L	Fardiss Hasbaiya	M	ML	L	Hasbaya	M	ML	L
Hbariyeh	M	ML	L	Kaoukaba Hasbaiya	M	M	L	Kfar Chouba	M	M	L
Kfar Hamam	M	M	L	Kfeir El-Zait	M	ML	L	Khalwat Hasbaya	M	ML	L
Khreibet Hasbaiya	M	M	L	Majidiyeh Hasbaiya	M	M	L	Marj Ez-Zhour (Haouc	M	ML	L
Meri	M	M	L	Mimass	M	ML	L	Rachaiya El-Fokhar	M	M	L
Salaiyeb	M	M	L								

### Marjayoun

Municipality	08-Apr	09-Apr	10-Apr	Municipality	08-Apr	09-Apr	10-Apr	Municipality	08-Apr	09-Apr	10-Apr
Aalmane Marjaayoun	M	M	L	Aamra	M	M	L	Adayseh Marjaayoun	M	M	L
Adchit El-Koussair	M	M	L	Ain Arab Marjaayoun	M	M	L	Bani Haiyann	M	M	L
Blatt Marjaayoun	M	M	L	Blida	M	ML	VL	Borj El-Moulouk	M	M	L
Boueyda Marjaayoun	M	M	L	Deir Mimass	M	M	L	Deir Siriane	M	M	L
Dibbine	M	M	L	Ebel El Saqi	M	M	L	Houla	M	M	VL
Houra	M	M	L	Kfar Kila	M	M	L	Khiam Marjaayoun	M	M	L

Klayaa	M	M	L	Majdel Selem	M	M	VL	Marjaayoun	M	M	L
Markaba	M	M	VL	Mays El-Jabal	M	M	VL	Mazraat Doumiat	M	M	L
Mazraat Sarada	M	M	L	Mhaibib	M	ML	VL	Qabrikha	M	M	VL
Qantara	M	M	L	Rab El-Thalathine	M	M	L	Saouaneh Marjayoun	M	M	VL
Talloussa	M	M	VL	Taybeh Matjaayoun	M	M	L	Touline	M	M	VL

## Bent Jbail

Municipality	08-Apr	09-Apr	10-Apr	Municipality	08-Apr	09-Apr	10-Apr	Municipality	08-Apr	09-Apr	10-Apr
Ain-Ebel	M	L	VL	Aitaroun	M	ML	VL	Aynata Bint Jbeil	M	L	VL
Ayta El-Chaeb	M	ML	VL	Ayta El-Jabal	M	ML	VL	Beit Lif	M	M	VL
Beit Yahoun	M	ML	VL	Bint Jbeil	M	L	VL	Borj Qalaway	M	M	VL
Braachit	M	ML	VL	Chakra	M	M	VL	Debel	M	ML	VL
Deir Antar	M	ML	VL	Froun	M	M	VL	Ghandouriyeh Bint Jb	M	M	VL
Hanine	M	L	VL	Hariss	M	ML	VL	Hdatha	M	ML	VL
Jmeymeh	M	ML	VL	Kafra Bint Jbeil	M	M	VL	Kfar Dounine	M	M	VL
Khirbet Selm	M	M	VL	Kounine	M	ML	VL	Maroun El Ras	M	L	VL
Qalaway	M	M	VL	Qaouzah	M	ML	VL	Qatmoun	M	L	VL
Ramya Bint Jbeil	M	ML	VL	Rchaf	M	ML	VL	Rmeich	M	ML	VL
Safad Al Battikh	M	ML	VL	Salhaneh	M	M	VL	Serbine	M	ML	VL
Sultanieh Bint Jbeil	M	ML	VL	Tibnine	M	ML	VL	Tiri	M	L	VL
Yaroun	M	L	VL	Yater	M	M	VL				

## Mont Liban

### Jbail

Municipality	08-Apr	09-Apr	10-Apr	Municipality	08-Apr	09-Apr	10-Apr	Municipality	08-Apr	09-Apr	10-Apr
Aabeydat	ML	L	L	Aalita	L	L	VL	Aamchit	M	ML	L
Aarab El-Lahib	M	L	VL	Aarasta	ML	L	VL	Adonis Jbeil	M	L	VL
Afqa Jbeil	M	L	VL	Ain El Delbeh Jbeil	M	L	VL	Ain El-Ghouyba	ML	L	VL
Ain Jrain	ML	L	VL	Ain Kfah	ML	L	L	Almat El Chemaliyat	ML	L	VL
Almat El-Jenoubiya	ML	L	VL	Aqoura	M	ML	L	Bayzoun	M	L	VL
Bchille Jbeil	M	L	L	Bechtida	M	L	VL	Behdaydat	ML	L	L
Beit Habbaq	ML	L	L	Bejjeh	ML	L	L	Bekhaaz	M	ML	L
Berbara Jbeil	M	M	L	Bintael	M	L	L	Birket Hjoula	M	L	VL
Blatt Jbeil	ML	L	L	Boulhos	ML	L	VL	Breyj Jbeil	M	L	VL
Chamat	ML	L	L	Chikhane	M	ML	L	Chmout	M	L	L
Eddeh Jbeil	M	L	L	Ehmej	M	L	VL	Fatre	L	L	VL
Ferhet	M	L	L	Fghal	M	L	L	Frat	ML	L	VL
Ghabat	M	L	VL	Ghalboun	ML	L	L	Gharzouz	ML	L	L
Ghofrine	M	L	L	Habil	M	VL	VL	Halate	L	L	L
Haqel	ML	L	VL	Hbaline	ML	L	L	Hboub	ML	L	L
Hdeine	M	L	VL	Hema Er-Rehban	M	L	VL	Hema Mar Maroun Aann	M	L	VL
Hjoula	M	L	L	Hosrayel	M	ML	L	Hsarat	ML	L	L
Hsoun	M	L	L	Jaj	L	L	VL	Janne	ML	L	VL
Jbeil	M	ML	L	Jeddeyel Jbeil	M	ML	L	Jlisse	M	L	VL
Jouret El-Qattine	M	L	L	Kfar Baal Annaya	M	L	VL	Kfar Kidde	M	ML	L
Kfar Kouas	M	L	L	Kfar Mashoun	ML	L	L	Kfoun	ML	L	VL

Kharbe Jbeil	ML	L	L	Laqlouq	M	L	L	Lassa	M	L	VL
Lehfed	L	VL	VL	Maad	ML	L	L	Mar Sarkis	M	L	L
Mastita	M	ML	L	Mayfouq	L	VL	VL	Mazraat El Siyad	M	L	VL
Mazraat El-Maaden	ML	L	VL	Mechane	M	L	L	Mechmech Jbeil	ML	L	VL
Mehrin	ML	L	L	Mejdel El-Akoura	M	L	VL	Mghayreh Jbeil	M	L	L
Mounsef	M	ML	L	Nahr Ibrahim	ML	ML	L	Qahmez	M	L	VL
Qartaba	ML	L	VL	Qartaboun	M	ML	L	Qattara Jbeil	L	VL	VL
Qorqraya	M	L	VL	Ramout	ML	L	L	Ras Osta	M	L	L
Rihane Jbeil	M	M	L	Sakiet El-Khayt	ML	L	VL	Saqi Richmaya	L	L	VL
Sebrine	M	L	VL	Seraita	M	L	VL	Souane Jbeil	ML	L	VL
Tadmor	M	L	L	Tartej	L	L	VL	Torzaiya	M	L	VL
Yanouh Jbeil	M	L	VL	Zibidine Jbeil	M	L	L				

## El Metn

Municipality	08-Apr	09-Apr	10-Apr	Municipality	08-Apr	09-Apr	10-Apr	Municipality	08-Apr	09-Apr	10-Apr
Aain El-Qabu	M	L	L	Aain El-Qach	M	L	L	Aain El-Teffaha	M	L	L
Aain el-Safssaf El-M	M	L	L	Abou Mizane	M	L	L	Ain Aar	M	L	L
Ain Alaq	M	L	L	Ain El-Kharroube	M	L	L	Ain El-Sendiane	M	L	L
Ain El-Zeitoune	M	L	VL	Ain Saadeh	M	L	L	Aintoura El-Matn	M	ML	L
Amaret Chalhoub	ML	L	L	Antelias	M	L	L	Atchaneh	M	L	VL
Ayroun	M	L	L	Baabdat	M	L	VL	Baouchariyeh	M	ML	L
Baskinta	M	ML	L	Beit Chabab	M	L	L	Beit El-Char	M	L	L
Beit El-Kekko	M	L	L	Beit Mery	M	L	L	Bhersaf	M	L	VL
Bikfaya	M	L	L	Biyakout	M	L	L	Bnabil	M	L	VL
Bourj Hammoud	M	ML	L	Bqennaya	M	L	L	Broummana El-Matn	M	L	L
Bsalim	M	L	L	Bsifrine	M	L	VL	Bteghrine	M	L	L
Chaouiye	M	L	L	Chouaya El-Matn	M	L	L	Choueir	M	L	L
Chrine	M	L	VL	Dahr El Sawan El-Mat	M	L	L	Daychouniyeh	M	ML	L
Dbayeh	ML	L	L	Deir Chamra	M	L	VL	Deir Mar Abda el Mch	L	L	L
Deir Mar Roukouz	M	ML	L	Deir Tamiche	ML	L	L	Dik El-Mehdi	M	L	L
Dikwaneh	M	ML	L	Douar El-Matn	M	L	L	Fanar	M	L	L
Fraike	ML	L	L	Haret El-Ballaneh	ML	L	L	Hbous	M	L	L
Himlaya	M	L	L	Jal El Did	M	L	L	Jdeideh El-Metn	M	L	L
Jouar El-Matn	M	L	L	Jouret El-Ballout	M	L	L	Kaaqour	M	L	VL
Kfar Aaqab	M	L	VL	Kfertay El-Matn	M	L	VL	Khenchara	M	L	L
Khillet El-Mtain	M	L	L	Konnabat Broummana	M	L	L	Konnabat Salima	M	L	VL
Machraah El-Matn	M	L	VL	Majdel Tarchich	M	ML	L	Majzoub	M	L	L
Mansouriyeh El-Metn	M	ML	L	Mar Boutros Karm Et-	ML	L	VL	Mar Chaya et Mzekke	M	L	L
Mar Moussa Ed-Douar	M	L	VL	Marjaba	M	L	L	Masqa	M	L	VL
Mayasse	ML	L	L	Mazraat Deir Aoukar	ML	L	L	Mazraat El-Hadirat	M	L	L
Mazraat Yachouh	M	L	L	Mchikha	M	L	L	Menqlet Mezher	M	L	L
Mhaydseh Matn	M	L	L	Mkalles	M	ML	L	Mrouj	M	L	L
Mtain	M	ML	L	Mtayleb	M	L	L	Nabay	M	L	L
Naccache	M	L	L	Ouadi Chahine	M	L	VL	Ouadi El-Karm El-Mat	M	L	VL
Ouata El-Mrouj	M	L	L	Ouyoun El-Matn	M	L	VL	Qornet Chehwan	M	L	L
Qornet El-Hamra	ML	L	L	Roumieh	M	L	L	Sfeilet Bikfaya	M	L	VL
Sinn El-Fil	M	ML	L	Zabbougha	M	L	VL	Zalqa	M	L	L

Zarouon	M	L	VL	Zekrite	L	L	L	Zighrine El-Matn	M	L	L
Zouk El-Khrab	ML	L	L								

## Chouf

Municipality	08-Apr	09-Apr	10-Apr	Municipality	08-Apr	09-Apr	10-Apr	Municipality	08-Apr	09-Apr	10-Apr
Aalmane El-Chouf	M	ML	VL	Aammq El-Chouf	M	ML	VL	Ain Ouzein	M	ML	L
Ain Qani	M	ML	L	Ain Zhalta	M	M	L	Ainbal	M	L	VL
Amatour	M	M	L	Anout	M	L	VL	Atrine	M	ML	L
Baadarane	M	M	L	Baaqline	M	L	VL	Baasir	ML	ML	L
Barja	ML	ML	L	Barouk	M	M	L	Bater	M	M	L
Batloun	M	ML	L	Bayqoun	M	M	L	Bchetfine	M	L	VL
Beiteddine	M	ML	L	Benouati Ech-Chouf	M	L	VL	Berjein	M	L	VL
Bireh et Mtalleh	M	ML	L	Biret El-Chouf	M	ML	L	Bkechtine Ouel Mchei	M	L	VL
Bkifa El-Chouf	M	L	L	Botme	M	ML	L	Bqaiaa Ech-Chouf	M	L	VL
Bsaba El-Chouf	M	L	L	Chammis El-Chouf	ML	ML	L	Chehim	M	L	L
Chemaarine	M	L	VL	Chourit	M	L	L	Daher El-Chouf	M	ML	L
Dalhoun	M	L	VL	Damour	M	ML	L	Daraya El-Chouf	M	L	VL
Deir El-Moukhalles	M	L	VL	Deir Baba	M	L	VL	Deir Dourit	M	L	VL
Deir El-Qamar	M	ML	L	Deir Kouche	M	L	VL	Dibbieh	M	L	VL
Dmit	M	L	VL	Fouara Jaafar	M	L	VL	Fraidis El-Chouf	M	M	L
Ghabet Jaafar	M	L	VL	Gharife	M	L	VL	Haret Jandal	M	M	L
Hasrout	M	L	L	Jadra	ML	ML	VL	Jahlieh	M	L	VL
Jbeih El-Chouf	M	M	L	Jdeidet El-Chouf	M	ML	L	Jiyeh	ML	ML	L
Jleilyeh	M	L	L	Jmailiyeh	M	ML	VL	Joun	M	L	VL
Kahlounie El-Chouf	M	ML	L	Ketermaya	M	ML	VL	Kfar Faqoud	M	L	VL
Kfar Hamal	M	ML	L	Kfar Him	M	L	VL	Kfar Katra	M	ML	L
Kfar Niss	M	ML	L	Kfar hay	M	L	L	Kfarnabrakh	M	ML	L
Khirbet Bisri	M	L	L	Knayse El-Chouf	M	L	VL	Maaniyeh	M	ML	VL
Maasser Beiteddine	M	ML	L	Maasser El-Chouf	M	M	L	Majdalouna	M	ML	VL
Majdel El-Meouch	M	ML	L	Mazboud	M	L	L	Mazmoura	M	L	L
Mazraat El Chouf	M	M	L	Mazraat El Daher	M	L	VL	Mazraat El-Douair	M	ML	VL
Mechref	M	L	L	Mghairie	M	L	L	Mghayrie El-Chouf	M	L	VL
Moukhtara	M	ML	L	Mrusti	M	M	L	Mtolle	M	L	L
Naameh	M	ML	L	Niha El-Chouf	M	M	L	Ouadi Abou Youssef	M	L	VL
Ouadi Ed-Deir	M	L	VL	Ouadi El-Sit	M	ML	L	Ouadi bnehlay	M	L	VL
Qraibeh	M	M	L	Qreiaa	M	L	VL	Rmayle El-Chouf	M	ML	VL
Semqaniyeh	M	L	L	Sibline	ML	ML	VL	Sirjbeil	M	L	VL
Warhanieh	M	M	L	Werdaniyeh	ML	ML	VL	Zaarourieh	M	L	VL

## Baabda

Municipality	08-Apr	09-Apr	10-Apr	Municipality	08-Apr	09-Apr	10-Apr	Municipality	08-Apr	09-Apr	10-Apr
Abadiyeh	M	ML	L	Ain Mouaffaq	M	L	L	Araiya	M	L	L
Arbaniyeh	M	L	VL	Arsoun	M	L	L	Baabda	M	ML	L
Baalchmey	M	ML	L	Bmaryam	M	ML	L	Bourj El-Brajneh	M	ML	L
Boutchay	M	ML	L	Bsaba Baabda	M	ML	L	Btekhney	M	L	L
Btibyat	M	L	L	Bzbeddine	M	L	L	Chbeniyeh	M	ML	L
Chiyah	M	ML	L	Chmeisset Baabda	M	L	VL	Chouit	M	L	L
Deir El-harf	M	L	L	Deir Khouna	M	ML	L	Dlaybeh	M	L	VL

Falougha	M	ML	L	Furn El-Chebbak	M	ML	L	Hadath Beyrouth	M	ML	L
Halaliyeh Baabda	M	L	L	Hammana	M	ML	L	Haret El Sett	M	L	L
Haret Hamze	M	ML	L	Haret Hreik	M	ML	L	Hasbaiya El-Metn	M	L	VL
Jouar El-Hoz	M	L	VL	Jouret Arsoun	M	L	L	Kfar Chima	M	ML	L
Kfar Selouane	M	ML	L	Khalouat Baabda	M	ML	L	Kneisset Baabda	M	L	VL
Laylakeh	M	ML	L	Louayzeh Baabda	M	ML	L	Merdache	M	ML	L
Mzairaa Baabda	M	L	L	Ouadi Chahrour El Ol	M	L	L	Ouadi Chahrour El So	M	L	L
Qalaa Baabda	M	ML	L	Qhraybe Baabda	M	ML	L	Qobbayaa	M	ML	L
Qornayel	M	L	VL	Qortada	M	L	VL	Qrayeh Baabda	M	ML	L
Qsaibeh Baabda	M	L	VL	Qtale Baabda	M	L	L	Ras El Metn	M	L	L
Ras El-Haref	M	ML	L	Rouayset El-Ballout	M	L	L	Salima Baabda	M	L	VL
Tahouitat El Ghadir	M	ML	L	Tarchich	M	ML	L	Zandouqa	M	L	VL

## Aley

Municipality	08-Apr	09-Apr	10-Apr	Municipality	08-Apr	09-Apr	10-Apr	Municipality	08-Apr	09-Apr	10-Apr
Abey	M	L	L	Aghmid	M	ML	L	Ain Dara	M	ML	L
Ain Drafil	M	L	L	Ain El Halazoun	M	ML	L	Ain El-Rmmaneh	M	L	L
Ain Jedideh	M	ML	L	Ain Ksour	M	L	L	Ain Onoub	M	L	L
Ain Traz	M	L	L	Ainab	M	L	L	Aley	M	ML	L
Aramoun	M	ML	L	Aytat	M	ML	L	Azouniyeh	M	ML	L
Baawerta	M	L	L	Badghan Oua Wadi Bad	M	ML	L	Bassatine	M	L	L
Bayssour	M	ML	L	Bchamoun	M	L	L	Bdadoun	M	L	L
Behouara	M	ML	L	Bennay	M	L	L	Bhamdoun El-Dayaa	M	ML	L
Bhamdoun El-Mhatta	M	ML	L	Bkhechtey	M	ML	L	Bleibel	M	L	L
Bmakine	M	ML	L	Bmehray	M	ML	L	Bouzrid	M	L	VL
Bserrine	M	ML	L	Bsous	M	L	L	Btalloun	M	ML	L
Btater	M	ML	L	Chanay	M	ML	L	Charoun	M	ML	L
Chartoun	M	L	L	Chemlane	M	L	L	Choueifat El-Aamrous	M	ML	L
Choueifat El-Oumara	M	ML	L	Choueifat El-Quoubbe	M	ML	L	Dakkoun	M	L	VL
Deir Qoubel	M	L	L	Dfoun	M	ML	L	Douair El Remmaneh	M	L	L
Ghaboun	M	ML	L	Habramoun	M	L	L	Homs Oua Hama	M	L	L
Houmal	M	L	L	Jisr El Qadi	M	L	L	Kehaleh	M	L	L
Keyfoun	M	ML	L	Kfar Aamey	M	ML	L	Kommatyeh	M	ML	L
Maasrati	M	L	L	Majdel Baana	M	ML	L	Mansourieh et Ain El	M	ML	L
Mazraat El-Nahr	M	L	L	Mchakhte	M	ML	L	Mecherfeh	M	ML	L
Mejdlaya	M	L	L	Mrayjat	M	M	L	Ramliyah	M	ML	L
Rechmaya	M	ML	L	Rejmeh	M	ML	L	Remhala	M	L	L
Rouaysset El Neemane	M	ML	L	Saoufar	M	ML	L	Selfaya	M	L	VL
Sirhmoul	M	L	L	Souq El Ghareb	M	ML	L	Taazanieh	M	ML	L

## Kesrouane

Municipality	08-Apr	09-Apr	10-Apr	Municipality	08-Apr	09-Apr	10-Apr	Municipality	08-Apr	09-Apr	10-Apr
Achkout	M	L	L	Adma Oua Dafneh	L	L	L	Ain Ed-Delbe Kesroua	M	L	VL
Ain El-Rihane	ML	L	L	Aintoura Kesrouane	ML	L	L	Ajaltoun	ML	L	L
Akaybeh Kesrouane	ML	ML	L	Aramoun Kesrouane	L	L	L	Azra ouel Ozor	M	L	VL
Ballouneh	ML	L	L	Batha	ML	L	VL	Bekaatat Achkout	M	L	L
Bekaatat Kanaan	M	L	VL	Bizhel	L	L	VL	Bouar	L	ML	L
Bqaatouta	M	L	VL	Bqaq Ed-Dine	ML	ML	L	Bzommar	L	L	L

Chahtoul	M	L	L	Chnaniir	L	L	VL	Chouan	M	L	VL
Daraya Kesrouane	M	L	L	Darououn	ML	L	VL	Deir Baqlouch	ML	L	VL
Dlebta	ML	L	VL	Eghbeh	M	L	VL	Faraya	M	L	VL
Fatka	L	L	L	Feytroun	M	L	L	Ghazir	L	L	L
Ghbaleh Kesrouane	M	L	L	Ghedrass	ML	L	VL	Ghosta	L	L	VL
Ghyneh	ML	ML	L	Harharaya w Kattine	ML	L	L	Harissa Kesrouane	L	L	VL
Hayata	M	L	VL	Hosein	M	L	VL	Hrajel	M	L	VL
Jdeideh Ghazir	L	L	L	Jeita	ML	L	L	Jounieh Ghadir	L	L	L
Jounieh Haret Sakhr	L	L	L	Jounieh Salel Alma	L	L	L	Jounieh Sarba	L	L	L
Jouret Bedrane	ML	L	L	Jouret Mhad	M	L	L	Jouret Termos	M	L	L
Kfar Debiane	M	L	VL	Kfar Tay Kesrouane	M	L	VL	Kfar Yassine	L	L	L
Kfour Kesrouane	L	L	L	Kharayeb Nahr Ibrahi	ML	L	L	Klayaat Kesrouane	M	L	L
Maarab	L	L	VL	Maaysra Kesrouane	L	L	L	Mayrouba	M	L	VL
Mazraat Er-Ras	ML	L	L	Mazraat Mrah El-Mir	M	L	VL	Mchaa El Ftouh	M	ML	L
Mchaa Faraya	M	L	L	Mchaa Kfar Dibiane	M	ML	L	Mghaer	M	L	VL
Mradiyah	L	L	VL	Nahr Ed-Dahab	M	L	VL	Nammoura Kesrouane	L	L	L
Ouata El Jaouz	M	L	L	Ouata Sillam	L	L	L	Raachine	M	L	VL
Rayfoun	M	L	L	Safra Kesrouane	L	L	L	Shayle Kesrouane	ML	L	L
Tabarja	L	L	L	Yahchouch	M	L	VL	Zaaytreh	ML	L	L
Zeytoun	ML	L	L	Zouk Mikael	ML	L	L	Zouk Mosbeh	ML	L	L

## Baalbek\_Hermel

### Baalbek

Municipality	08-Apr	09-Apr	10-Apr	Municipality	08-Apr	09-Apr	10-Apr	Municipality	08-Apr	09-Apr	10-Apr
Aadous	M	M	L	Aamchki	M	M	VL	Aarsal	ML	M	L
Ain Baalbek	L	L	VL	Ain Bourday	M	L	VL	Ain El-Benye	M	M	VL
Ain El-Jaouz Baalbek	M	M	L	Ain El-Siya Chadoura	M	M	L	Al Khodr Baalbek	ML	L	L
Al Nabi Chit	ML	ML	L	Aynata Baalbek	M	M	M	Baalbek	M	L	VL
Bachwat	M	M	ML	Barqa	M	M	M	Bednayel Baalbak	M	M	ML
Beit Chama	M	M	ML	Bijjaje	M	L	VL	Bouday	M	M	ML
Brital	M	ML	L	Btadi	M	M	L	Chaat	M	ML	L
Chaibe	M	M	L	Chlifa	M	M	L	Chmestar	M	M	ML
Dar El-Oussa	M	M	ML	Deir El-Ahmar	M	M	L	Deir Mar Maroun Baal	M	ML	M
Douris	M	ML	L	Fakiha	ML	ML	L	Hadath Baalbek	M	M	ML
Ham	M	ML	L	Haour Taala	ML	ML	L	Hizzine	M	M	L
Hlebta	M	L	L	Hosh Barada	M	M	L	Hosh El Dahab	M	M	L
Hosh El Snid	ML	ML	L	Hosh El-Nabi	M	ML	L	Hosh El-Rafiq	M	M	ML
Hosh Tal Safiya	M	M	L	Hrebta	M	ML	L	laat	M	ML	L
Jebaa	M	M	M	Jenta	ML	ML	L	Kfar Dabach	M	M	ML
Kfar Dane	M	M	ML	Khraibeh El-Hermel	M	L	VL	Khreibet Baalbek	M	ML	L
Kneisset Baalbek	ML	L	L	Labueh	M	L	VL	Maarboun	M	ML	L
Majdaloun	M	M	L	Maqneh	ML	L	VL	Mazraat Beit Mcheik	M	M	M
Misraya	M	M	ML	Moqraq	M	L	VL	Nabha El-Damdoum	M	M	L
Nabi Chbay	M	ML	L	Nabi Osman	ML	L	VL	Nahleh baalbek	ML	M	L
Ouadi El-Oss	M	ML	L	Qaa Baayoun	M	L	L	Qaa Jouar Maqiye	M	L	ML
Qaa Ouadi El-Khanzir	M	ML	ML	Qah Baalbek	M	L	L	Qarha Baalbek	M	M	L



Qsarnaba	M	M	ML	Ram Baalbek	M	M	L	Ras Baalbek El Sahl	M	L	L
Ras Baalbek El-Charq	M	ML	VL	Riha	M	ML	L	Saaide	M	M	ML
Sbouba	M	L	VL	Seriine El-Tahta	ML	M	L	Slouqi	M	M	L
Taiba Baalbek	M	ML	L	Talia	M	ML	L	Taraiya	M	M	ML
Temnin El Fawqa	M	M	ML	Temnin El-Tahta	M	M	ML	Tfail	M	M	L
Yahfoufa	ML	ML	L	Yammouneh	M	M	M	Younine	ML	L	VL
Zboud	M	L	L								

## Hermel

Municipality	08-Apr	09-Apr	10-Apr	Municipality	08-Apr	09-Apr	10-Apr	Municipality	08-Apr	09-Apr	10-Apr
Charbine El-Hermel	M	ML	L	Hermel Jbab	M	L	L	Hermel	M	ML	M
Maaysra El-Hermel	M	L	L	Michaa Mrajhine	M	L	VL	Ouadi Faara	M	L	L
Ras Baalbek - Ouadi	M	ML	L	Ras Baalbek El Gharb	M	L	L	Zighrine	M	ML	L

## Akkar

### Akkar

Municipality	08-Apr	09-Apr	10-Apr	Municipality	08-Apr	09-Apr	10-Apr	Municipality	08-Apr	09-Apr	10-Apr
Aain Tinta	M	ML	M	Aaiyat	M	L	L	Aakkar El-Aatiqa	M	ML	L
Aamar Akkar	ML	L	L	Aamar El Baykat	M	ML	M	Aamayer	M	M	M
Aamriyet Akkar	M	ML	M	Aandqet	M	ML	ML	Aarmeh	M	ML	ML
Aarqa	M	L	L	Aawaynat	M	ML	M	Aayoun Akkar	M	L	L
Abboudiye	M	L	ML	Ain El-Zeit	M	ML	M	Ain Yaaqoub	M	L	L
Akroum	M	M	ML	Aridet Cheikh Zennad	ML	M	ML	Baldeh w Mazraat Bal	M	L	ML
Barcha	M	L	M	Bardeh	M	ML	M	Bebnine	ML	L	L
Beino	M	L	L	Beit Ayoub	M	L	VL	Beit El-Haouch	M	L	L
Beit Mellat	M	L	L	Beit Younes	M	L	VL	Berbara Akkar	M	ML	M
Berqayel	M	L	L	Bezbina	M	L	VL	Bireh Akkar	M	ML	M
Borj	M	ML	L	Bqerezla	M	L	L	Bzal	M	L	L
Chane	M	L	VL	Chaqdouf	M	L	L	Charbila	M	L	ML
Cheikh Mohammad	M	L	ML	Cheikh Taba Es-Sahl	M	ML	ML	Cheikh Taba	M	L	L
Cheikh Zennad	ML	M	ML	Cheikhlar	M	ML	M	Chir Hmairine	M	L	M
Daghle	M	ML	ML	Dahr Laissine	M	L	L	Darine	M	L	M
Dawra	M	L	L	Dawsa w Baghdadi	M	ML	M	Dayret Nahr El-Kabir	M	M	M
Deir Dalloum	M	L	L	Deir Jennine	M	ML	ML	Denbou	M	L	VL
Dibbabiyyeh	M	ML	M	Douair Aadwiyeh	M	ML	M	Fassikine	M	ML	M
Fnaydek	M	L	VL	Fraydes Akkar	M	ML	ML	Ghazayle	M	L	M
Habchit	M	L	VL	Hakour	M	L	L	Halba	M	L	ML
Haouchab	M	L	M	Hayssat	ML	ML	L	Haytla	M	L	M
Hayzouq	M	L	L	Hedd	M	L	ML	Hmaira Akkar	M	L	L
Hmaiss Akkar	M	L	M	Hnaider	M	M	M	Hokr Ed-Dahri	ML	M	ML
Hokr Etti	M	L	M	Hokr Jouret Srar	M	L	ML	Houaich	M	L	VL
Hrar	M	L	VL	Idbil	M	L	L	Ilal	M	L	L
Janine	M	L	M	Jdeidet El-Joumeh	M	L	L	Jdeidet El-Kaiteh	M	L	L
Jebraiel	M	L	L	Kafr	ML	L	L	Kafr	M	ML	M
Karm Asfour	M	L	L	Kfar Melki Akkar	L	ML	L	Kfar Noun	M	ML	ML
Kfarharra	M	L	ML	Khalsa	M	M	M	Kharnoubet Akkar	M	L	M

Khirbet Daoud Aakkar	M	ML	M	Khirbet El Remmane	M	ML	M	Khirbet Shar	M	ML	M
Khoreybet El-Jindi	M	L	M	Khreibet Aakkar	M	L	VL	Kneisset Aakkar	ML	M	ML
Kneisset Hnaider	M	M	M	Knisse	M	L	ML	Kroum El-Aarab	M	L	ML
Kwachra	M	ML	M	Kweykhat	M	L	ML	Machta Hammoud	M	M	M
Majdala	M	L	L	Majdel Akkar	M	ML	M	Mar Touma	M	L	L
Marlaya Melhem	ML	L	L	Mashha	M	L	L	Massoudiye	M	M	ML
Mazraat Beit Ghattas	M	L	L	Mazraat En-Nahriye	M	ML	ML	Mechmech	M	L	VL
Memneh	M	L	VL	Mhammara	ML	L	L	Mighraq Aakkar	L	M	ML
Minyara	M	L	L	Moqayteh	M	M	ML	Mounjez	M	ML	ML
Msalla	M	ML	M	Mzeihmeh	M	L	M	Nfaiseh	M	L	L
Noura Et-Tahta	M	ML	M	Ouadi El-Haour	M	L	ML	Ouadi El-Jamous	M	L	L
Ouyoun El-Ghizlane	M	L	VL	Qaabarine	L	ML	L	Qabaait	M	L	VL
Qachlaq	M	L	M	Qantara Aakkar	M	L	L	Qarha Aakkar	MH	M	M
Qarqaf	M	L	L	Qboula	M	L	L	Qleiaat Aakkar	ML	M	ML
Qloud El-Baqie	M	L	L	Qobaiyat Aakkar	M	M	L	Qobbat Chamrat	M	L	L
Qorayat	M	L	VL	Qornet Aakkar	M	L	L	Qsair Aakkar	M	ML	M
Rahbe	M	L	L	Rihaniyet Aakkar	M	L	ML	Rmah	M	ML	ML
Rmoul	ML	ML	L	Saadine	M	L	M	Sadaqa	M	L	L
Saidnaya	M	L	M	Sammouniye	ML	ML	ML	Sayssoq	M	L	L
Semmaqiye	ML	M	ML	Semmaqli	ML	L	L	Sfinet El-Dreib	M	L	M
Sfinet El-Qaitaa	M	L	VL	Sindyanet Zeidane	M	ML	ML	Souaisset Aakkar	M	L	ML
Srar	M	L	M	Tal Abbas El Gharby	M	ML	ML	Tal Abbas El-Chargy	M	L	ML
Tal Biret	M	ML	ML	Tal Hmayra	M	L	ML	Tal Maayan Tal Kiri	ML	M	ML
Tal Sibel	L	M	ML	Tallet Chattaha	M	L	L	Tikrit	M	L	L
Tleil	M	L	M	Tshea	M	L	L	Zawarib	M	L	L
Zouq El Hosniyeh	M	L	VL	Zouq El-Haddara	M	L	L	Zouq El-Hbalsa	M	L	L
Zouq El-Moqachrine	M	L	L								

## Sud

### Sour

Municipality	08-Apr	09-Apr	10-Apr	Municipality	08-Apr	09-Apr	10-Apr	Municipality	08-Apr	09-Apr	10-Apr
Aaiyeh	M	ML	VL	Aalma El-Chaab	M	M	L	Aaytit	M	M	VL
Abbassiyeh Sour	M	ML	VL	Abou Chech	M	M	L	Ain Abou Abdallah	M	ML	VL
Ain Baal	M	ML	L	Arzoun	M	M	VL	Aziyeh	M	L	L
Baflaya	M	M	VL	Barich	M	M	VL	Batouliyah	M	L	L
Bayad	M	M	VL	Bazouriyeh	M	ML	VL	Bediass	M	M	VL
Bestiyat	M	M	VL	Borj El Chemali	M	ML	L	Borj En-Naqoura	M	ML	L
Borj Rahhal	M	M	VL	Boustane	M	M	L	Btaychiyeh	M	M	L
Chaaitiye	M	ML	L	Chameh	M	M	L	Chehabiye	M	M	VL
Chehour	M	ML	VL	Chihine	M	M	VL	Debaal Sour	M	M	VL
Deir Amess	M	M	VL	Deir Kifa	M	M	VL	Deir Qanoun El-Ain	M	L	L
Deir Qanoun El-Naher	M	M	VL	Derdghaiya	M	M	VL	Dhayra	M	M	L
Halloussiyeh	M	M	VL	Hamoul	M	M	L	Hanaouey	M	ML	VL
Henniye	M	L	L	Hmairi Sour	M	M	VL	Iskandarouna Sour	M	ML	L
Jbal El Botom	M	M	VL	Jebbin	M	M	L	Jennata	M	M	VL
Jijim	M	M	L	Jouaiya	M	M	VL	Kneisset Sour	M	L	VL

Maarake	M	M	VL	Maaroub	M	M	VL	Majadel	M	M	VL
Majdalzoun	M	ML	L	Mansouri Sour	M	ML	L	Marnba	M	ML	VL
Marouahine	M	ML	VL	Mazraat El-Zalloutiy	M	M	L	Mazraat Mechref	M	ML	VL
Mazraat Tayr Semhat	M	ML	VL	Mheilib	M	ML	VL	Neffakhiyeh	M	M	VL
Niha Sour	M	M	VL	Ouadi Jilo	M	M	VL	Qana	M	M	VL
Qolaileh Sour	M	L	L	Rechknany	M	M	VL	Rmadiyah	M	ML	VL
Selha Sour	M	M	VL	Siddiqine	M	M	VL	Sour	M	ML	L
Srifa	M	ML	VL	Tayr Debbe	M	ML	VL	Tayr Felsay	M	M	VL
Tayr Harfa	M	M	L	Touayri	M	ML	VL	Toura	M	M	VL
Yanouh Sour	M	M	VL	Yarine	M	M	L	Zebqine	M	ML	VL

## Saida

Municipality	08-Apr	09-Apr	10-Apr	Municipality	08-Apr	09-Apr	10-Apr	Municipality	08-Apr	09-Apr	10-Apr
Aanqoun	M	M	VL	Aaqtanit	M	M	VL	Aarab Ej-Jall	M	M	VL
Aarab Tabbaya	M	M	VL	Abra Saida	M	ML	VL	Adloun	M	ML	VL
Adousiyeh	M	M	VL	Ain-El-Deleb	M	M	VL	Arzai	M	M	VL
Babliyah	M	ML	VL	Barty	ML	ML	VL	Bissariyeh	M	M	VL
Bnaafoul	M	M	VL	Bqosta	M	ML	VL	Bramiy	M	L	VL
Daoudiyeh	M	ML	VL	Dareb El-Sim	M	M	VL	Erkay	M	M	VL
Ghassanieh	M	ML	VL	Ghazieh	M	M	VL	Hajjeh	M	M	VL
Haret Saida	M	ML	VL	Hartiyeh	M	ML	VL	Hlaliye Saida	M	ML	VL
Insariyat	M	ML	VL	Jazira Saida	M	ML	VL	Kafar Bit	ML	M	VL
Kaoutariyet El-Siyad	ML	ML	VL	Kfar Chellal	M	ML	VL	Kfar Hatta Saida	M	M	VL
Kfar Milke Saida	M	L	VL	Khartoum	M	ML	VL	Khaziz	M	M	VL
Khirbet Ed-Douair Sa	M	ML	VL	Khirbet El-Bassal	M	M	VL	Khrayeb Saida	M	ML	VL
Loubieh	M	ML	VL	Maghdouche	M	M	VL	Majdelyoun	M	ML	VL
Matariyet El-Choumar	ML	M	VL	Matayriyeh	M	M	VL	Mazraat 'Mseileh	M	M	VL
Mazraat 'Snaiber	M	M	VL	Mazraat Aarab Soukka	ML	M	VL	Mazraat Deir Taqla	M	ML	VL
Mazraat El Yahoudiye	M	M	VL	Mazraat El-Housseini	M	M	VL	Mazraat El-Mhaydaleh	M	ML	VL
Mazraat El-Ouasta	M	ML	VL	Mazraat Jamjim	M	ML	VL	Mazraat Kaoutariyet	M	ML	VL
Mazraat Kfar Badda	M	ML	VL	Mazraat Oussamiyat	M	ML	VL	Mazraat Sari	M	ML	VL
Mazraat Sinai	M	ML	VL	Meemariyeh	M	M	VL	Merouaniyeh	M	M	VL
Miyeh ou Miyeh	M	M	VL	Najjariyeh	M	M	VL	Qaaqiyat El-Snaouba	M	ML	VL
Qnarit	M	M	VL	Qraiye Saida	M	M	VL	Saida Ed-Dekermane	M	ML	VL
Saida El-Oustani	M	ML	VL	Saida El-Qadimeh	M	ML	VL	Saida Kefraya	M	ML	VL
Saksakiyeh	M	ML	VL	Salhie Saida	M	ML	VL	Sarafand	M	M	VL
Sfenta	M	L	VL	Tafahta	M	ML	VL	Tanbourit	M	M	VL
Tebna	M	M	VL	Zaghdraiya	M	M	VL	Zeita	M	M	VL
Zrariyeh	M	M	VL								

## Jezzine

Municipality	08-Apr	09-Apr	10-Apr	Municipality	08-Apr	09-Apr	10-Apr	Municipality	08-Apr	09-Apr	10-Apr
Ain El-Mir (El Estab	ML	M	VL	Anane	M	L	L	Aramta	M	ML	L
Ariya	M	M	L	Aychiyeh	M	M	L	Azour	M	L	VL
Baba	M	L	VL	Bayssour Jezzine	ML	M	VL	Benoueteh Jezzine	M	M	L
Bhannine	M	M	L	Bisri	M	L	VL	Bkassine	M	ML	L
Bouslaya	M	L	VL	Btedine El-Leqech	M	L	VL	Chbail	M	ML	VL
Choualiq Jezzine	M	ML	VL	Dahr Ed-Deir	M	ML	VL	Deir El Qattine	M	L	VL

Demachqiyeh	M	ML	VL	Ghabbatiyeh	M	M	L	Harf Jezzine	M	L	VL
Hassaniyeh	M	M	VL	Haytouleh	M	L	VL	Haytura	M	L	VL
Hidab	M	L	VL	Homsiyeh	M	L	VL	Jabal Toura	M	ML	L
Jarmaq	M	ML	VL	Jensnaya	M	M	VL	Jernaya	M	ML	VL
Jezzine	M	ML	L	Karkha	M	ML	VL	Kfar Falous	M	L	VL
Kfar Houna	M	ML	L	Kfar Jarrah	ML	M	VL	Lebaa	ML	ML	VL
Louayzet Jezzine	M	ML	VL	Machmouche	M	ML	L	Mahmoudiyeh Jezzine	M	ML	VL
Maknounye Jezzine	M	ML	VL	Maraat Ouzaïyeh	M	M	L	Mazraat Daraya	M	ML	L
Mazraat El-Aarqoub	M	ML	VL	Mazraat El-Mathane	M	L	VL	Mazraat El-Rahbane	M	ML	VL
Mazraat Khallet Khaz	M	M	L	Mazraat Louzid (Loua	M	ML	VL	Mazraat Qrouh	M	M	L
Mazraat Tamra	M	ML	VL	Mazraat Zighrine Jez	M	ML	VL	Mazraat	M	ML	VL
Mharbiyeh	M	M	VL	Midane Jezzine	M	ML	L	Mjeydel Jezzine	M	M	VL
Mlikh	M	ML	VL	Mrah El-Hbasse	ML	ML	VL	Ouadi Baanquodaine	ML	M	VL
Ouadi El-Laymoun	M	ML	VL	Ouardiyeh	M	ML	VL	Qabaa Jezzine	M	L	VL
Qatrani	M	M	L	Qaytouleh	M	L	VL	Qtaleh Jezzine	M	L	VL
Rihane Jezzine	M	M	L	Rimat	M	ML	VL	Roum	M	L	VL
Roummanet	ML	ML	VL	Sabbah	M	ML	L	Saydoun	M	L	VL
Sfaray	M	L	VL	Snaya	M	L	VL	Sojoud	M	ML	VL
Srayri	M	M	L	Taaïd	M	L	VL	Wadi Jezzine	M	M	L
Zhalta	M	L	VL								

## Bekaa

### West Bekaa

Municipality	08-Apr	09-Apr	10-Apr	Municipality	08-Apr	09-Apr	10-Apr	Municipality	08-Apr	09-Apr	10-Apr
Aammiq BG	M	M	L	Ain El Tineh BG	M	ML	L	Ain Zebdeh	M	M	L
Ana	M	M	L	Aytanit	M	M	L	Baaloul BG	M	M	L
Bab Mareh	M	M	L	Chouberqiye Aammiq	M	M	L	Dakoue	M	M	L
Deir Ain El-Jaouze	M	M	L	Deir Tahniche	M	M	L	Ghaza	M	M	L
Harime El-Soughra	M	M	L	Hoch Harimeh	M	M	L	Jazira BG	M	M	L
Jib Jennine	M	M	L	Kamed-El-Laouz	M	M	L	Kefraya BG	M	M	L
Khiara El Atika	M	M	L	Khiara	M	M	L	Khirbet Qanafar	M	M	L
Lala	M	M	L	Lebbaya BG	M	ML	L	Loussa	ML	M	L
Machghara	M	ML	L	Manara (Hammara) BG	M	L	L	Mansoura BG	M	M	L
Marej BG	M	M	L	Maydoun	M	ML	L	Ouaqf BG	M	M	L
Qaraaoun	M	M	L	Qelya	ML	M	L	Raouda (Istabel)	M	M	L
Saghbine	M	M	L	Sohmor	M	ML	L	Soltan Yacoub el Ara	M	M	L
Souairy	M	ML	L	Sultan Yaacoub	M	M	L	Tal Znoub	M	M	L
Yehmor BG	ML	ML	L	Zilaya	M	ML	L				

### Zahle

Municipality	08-Apr	09-Apr	10-Apr	Municipality	08-Apr	09-Apr	10-Apr	Municipality	08-Apr	09-Apr	10-Apr
Aanjar (Haouch Mouss	M	M	L	Ablah	M	M	ML	Ain Kfarzabad	M	M	L
Ali-El-Nahri	M	M	ML	Bar Elias	M	M	L	Bouarej	M	M	L
Cheberqiyet Tabet	M	M	L	Chtaura	M	M	L	Deir El Ghazal	M	M	L
Delhamiyet Zahle	M	M	L	Ferzol	M	M	ML	Haouch El-Ghanam	M	M	ML
Haouch Es-Siyadeh	M	M	L	Haouch Hala	M	M	L	Haouch Mandara	M	M	L

Haouch Qayssar	M	M	L	Hezerta	M	M	ML	Hosh Moussa	M	M	L
Jdita	M	M	L	Kfarzabad	M	M	L	Ksara	M	M	L
Majdel Aanjar	M	ML	L	Makssi	M	M	L	Massa	M	M	L
Mazraat Er-Remtaniye	M	M	L	Mrayjat Zahle	M	M	L	Mzaraa Zahle	M	M	L
Nabi Ayla	M	M	ML	Nasriyet Rizk	ML	ML	L	Nasriyet Zahle	M	M	L
Niha Zahle	M	M	ML	Ouadi Ed-Deloum	M	M	L	Ouadi El-Arayech	M	M	M
Qaa El Rim	M	M	M	Qab Elias	M	M	L	Qousaya	M	ML	L
Rhit	M	M	L	Riyak	M	M	L	Saadnayel	M	M	L
Taal El-Akhdar	M	M	L	Taalbeya	M	M	L	Taanayel	M	M	L
Talamara	M	M	ML	Tcheflik Edde Haouch	M	M	L	Tcheflik Qiqano	M	M	L
Terbol Zahle	M	M	L	Touaite Zahle	ML	ML	L	Zahle Aradi	M	M	ML
Zahle El-Berbara	M	M	M	Zahle El-Maallaqa	M	M	L	Zahle El-Midane	M	M	ML
Zahle Er-Rassiye	M	M	M	Zahle Haouch El-Ouma	M	M	L	Zahle Haouch El-Ouma	M	M	L
Zahle Haouch Ez-Zara	M	M	L	Zahle Maalaga Aradi	M	M	L	Zahle Mar Antonios	M	M	M
Zahle Mar Elias	M	M	L	Zahle Mar Gerios	M	M	L	Zahle Saydet En-Naja	M	M	L
Zebdoul	M	M	L								

## Rachaiya

Municipality	08-Apr	09-Apr	10-Apr	Municipality	08-Apr	09-Apr	10-Apr	Municipality	08-Apr	09-Apr	10-Apr
Ain Arab Rachaiya	ML	ML	L	Ain Ata	ML	ML	L	Ain Harche	M	M	L
Aqabe Rachaya	M	M	L	Ayha	M	M	L	Ayta El Fokhar	M	M	L
Bakifa Rachaya	M	M	L	Bakka	L	ML	L	Beit Lahya	M	M	L
Bireh Rachaiya	M	M	L	Daheer El Ahmar	M	M	L	Deir El-Achayer	M	M	L
Heloua Rachaiya	M	M	L	Hoch El Qannabeh Rac	M	M	L	Kaoukaba Bou Arab	M	M	L
Kfar Danis	M	M	L	Kfar Mechki	M	M	L	Kfar Qouq	M	M	L
Kherbet Rouha	M	M	L	Majdel Balhiss	M	M	L	Mdoukha	ML	ML	L
Mhaydseh Rachaiya	M	M	L	Nabi Safa	M	ML	L	Rachaiya	M	M	L
Rafid Rachaiya	M	M	L	Selsata (Mazraat Dei	M	ML	L	Tannoura	M	M	L
Yanta	M	ML	L								

## Beyrouth

### Beyrouth

Municipality	08-Apr	09-Apr	10-Apr	Municipality	08-Apr	09-Apr	10-Apr	Municipality	08-Apr	09-Apr	10-Apr
Achrafieh	M	ML	L	Ain el-Mreisse	M	ML	L	Bachoura	M	ML	L
Beirut Central Distr	M	ML	L	Marfai	M	ML	L	Mazraa	M	ML	L
Medaouar	M	ML	L	Minet el-Hosn	M	ML	L	Mwssaitbeh	M	ML	L
Ras Beirut	M	ML	L	Rmeil	M	ML	L	Saifi	M	ML	L
Zqaq el-Blat	M	ML	L								