

# Lebanon Fire Risk Bulletin



CIVIL DEDEFENCE

**Refer to cadast table condition.**

**Please note that the indicated temperature is at 2 meters height from the ground.**

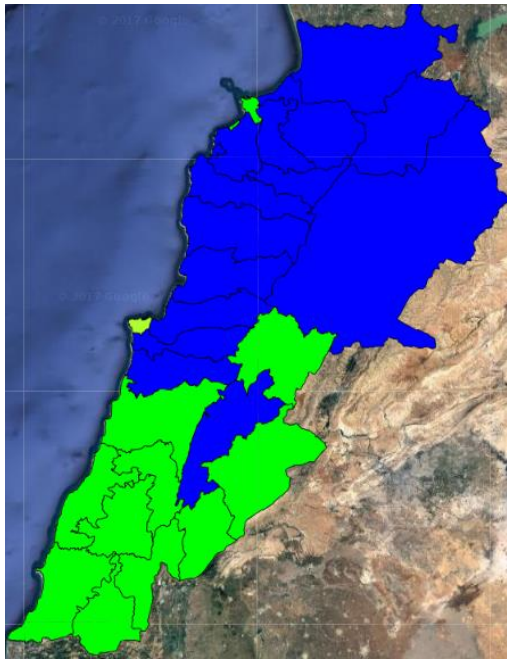
General description of potential fire risk situation

Symbol	Level of risk	Meaning and actions
VL	Very low	Very low fire risk. Controlled burning operations can be hardly executed due to high fuel moisture content. Normally wildfires self-extinguish.
L	Low	Low fire risk. Controlled burning operations can be executed with a reasonable degree of safety.
ML	Medium low	Medium-low fire risk. Controlled burning operations can be executed in safety conditions. All the fires need to be extinguished.
M	Medium	Medium fire risk. Controlled burning operations would be avoided. All the fires need to be very well extinguished.
M	Medium high	Controlled burning is not recommended. Open flame will start fires. Cured grasslands and forest litter will burn readily. Spread is moderate in forests and fast in exposed areas. Patrolling and monitoring is suggested. Fight fires with direct attack and all available resources.
H	High	Ignition can occur easily with fast spread in grass, shrubs and forests. Fires will be very hot with crowning and short to medium spotting. Direct attack on the head may not be possible requiring indirect methods on flanks. Patrolling and monitoring the territory is highly suggested.
E	Extreme	Ignition can occur also from sparks. Fires will be extremely hot with fast rate of spread. Control may not be possible during day due to long range spotting and crowning. Suppression forces should limit efforts to limiting lateral spread. Damage potential total. Patrolling and monitoring the territory is highly suggested.

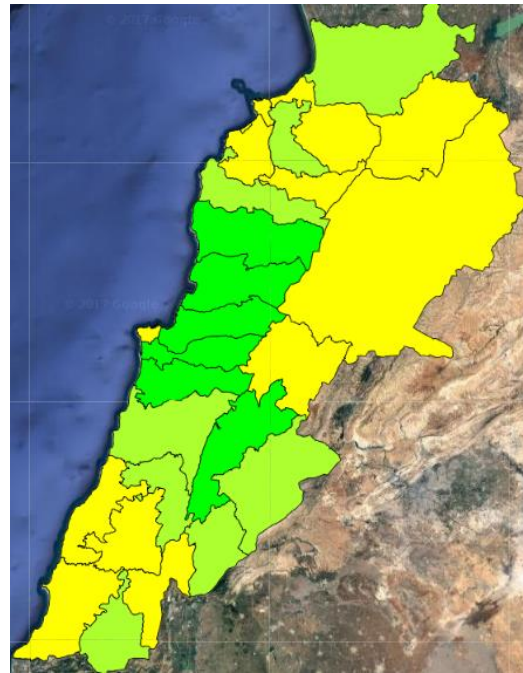
**Beirut, 8 December 2017**

# FIRE RISK INDEX

7 Dec 2017



8 Dec 2017



9 Dec 2017



10 Dec 2017

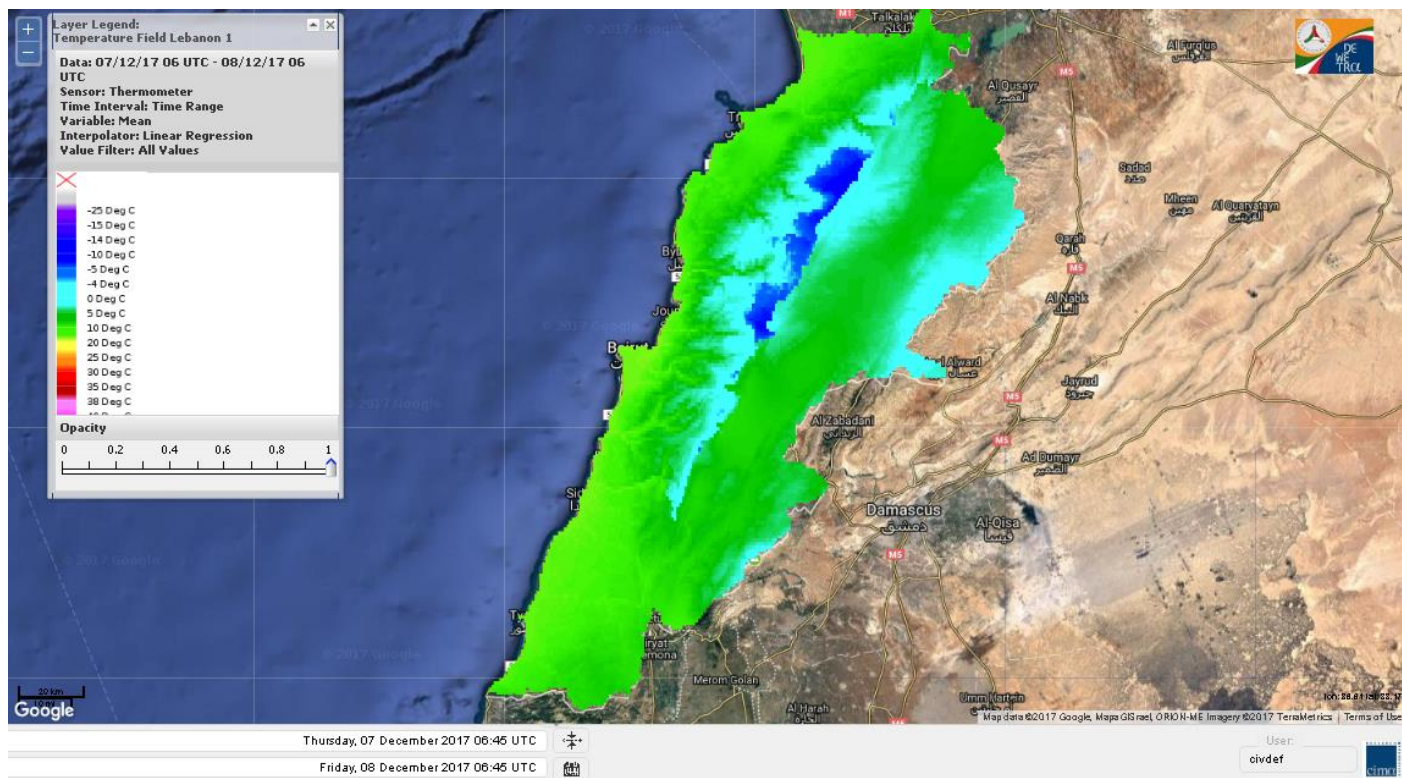


Layer Legend:  
Lebanon Wildfire Risk Index 1

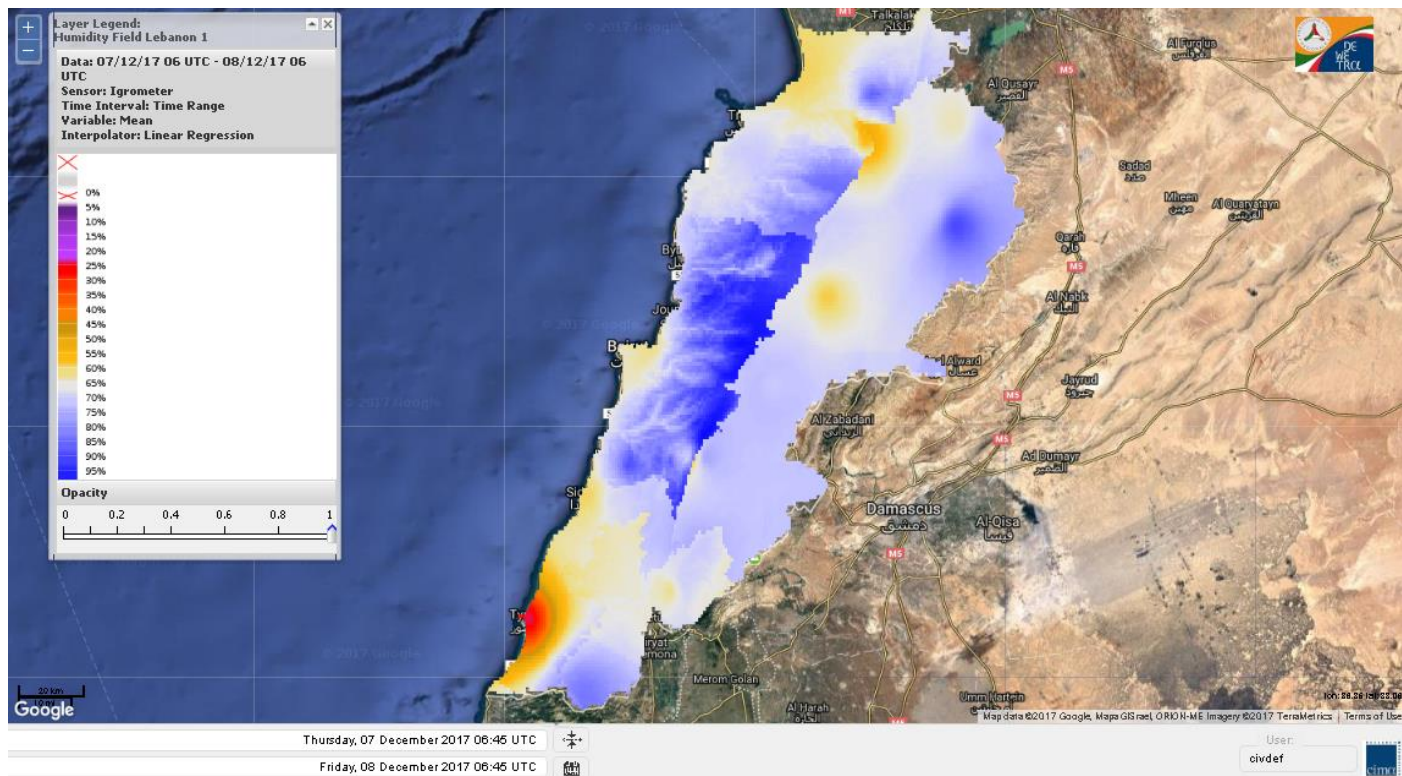
Data: Run: 08/12/2017 00:00. Forecast for 8  
Model: RISICO for the Republic of Lebanon  
Variable: Fire Weather Index  
Spatial Resolution: Caza

- VERY LOW
- LOW
- MEDIUM-LOW
- MEDIUM
- MEDIUM-HIGH
- HIGH
- EXTREME

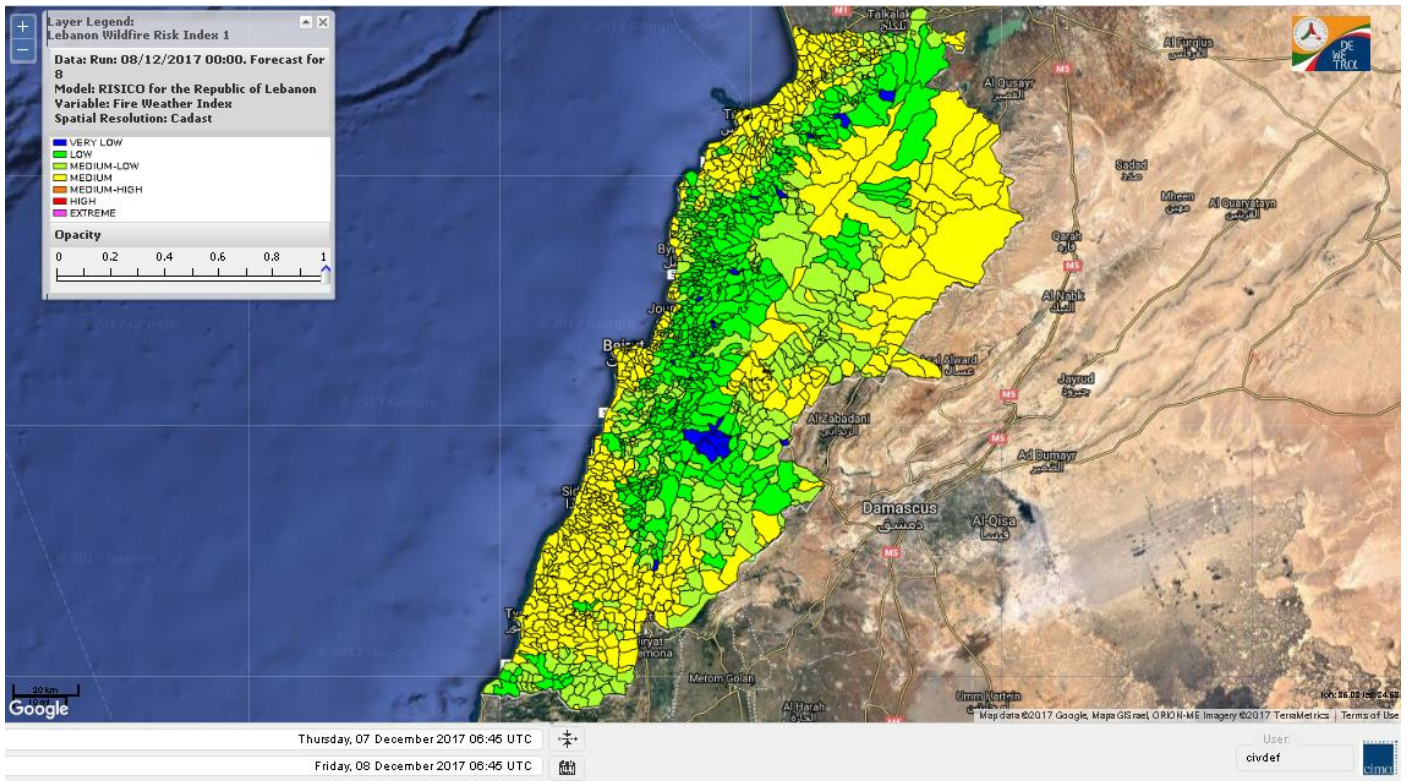
# Lebanon temperature for Lebanon for 8 Dec 2017



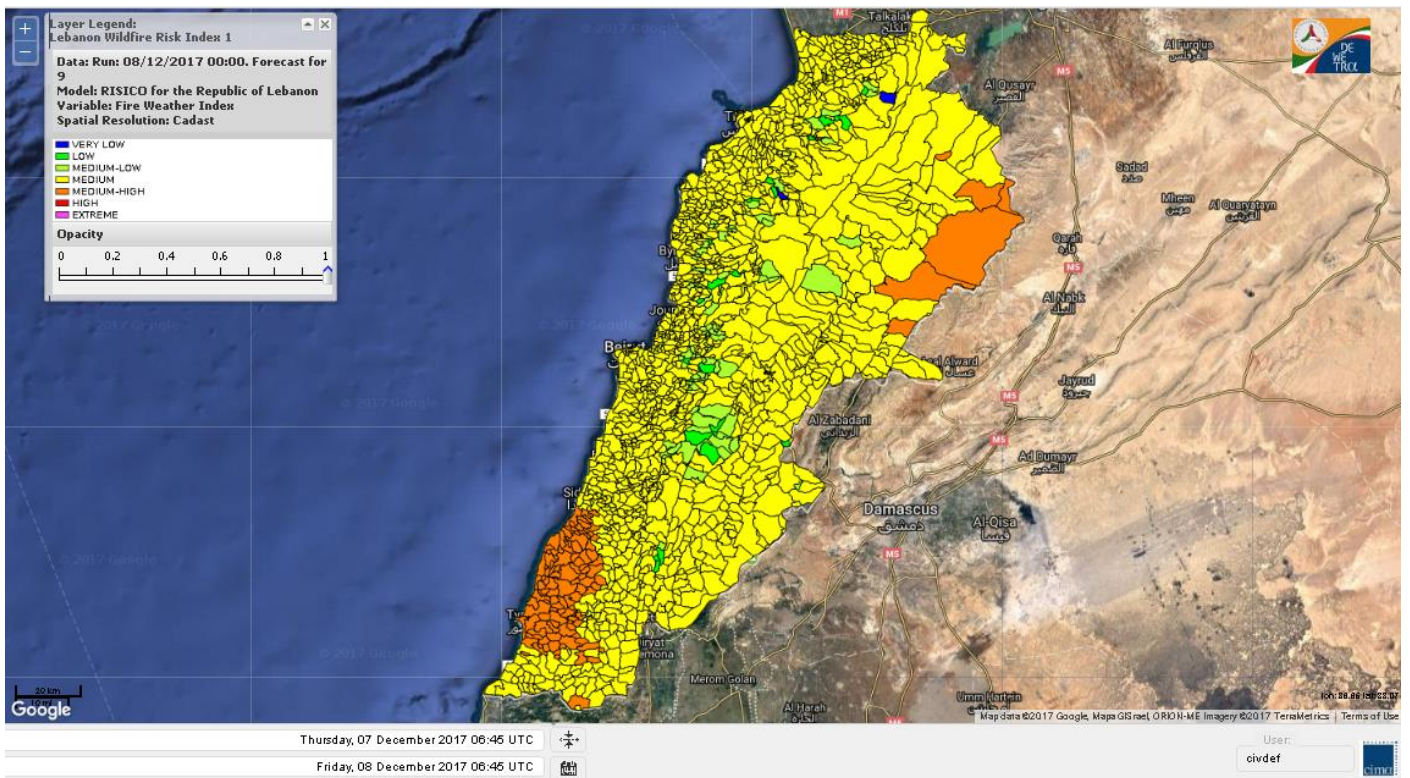
# Lebanon humidity for Lebanon for 8 Dec 2017



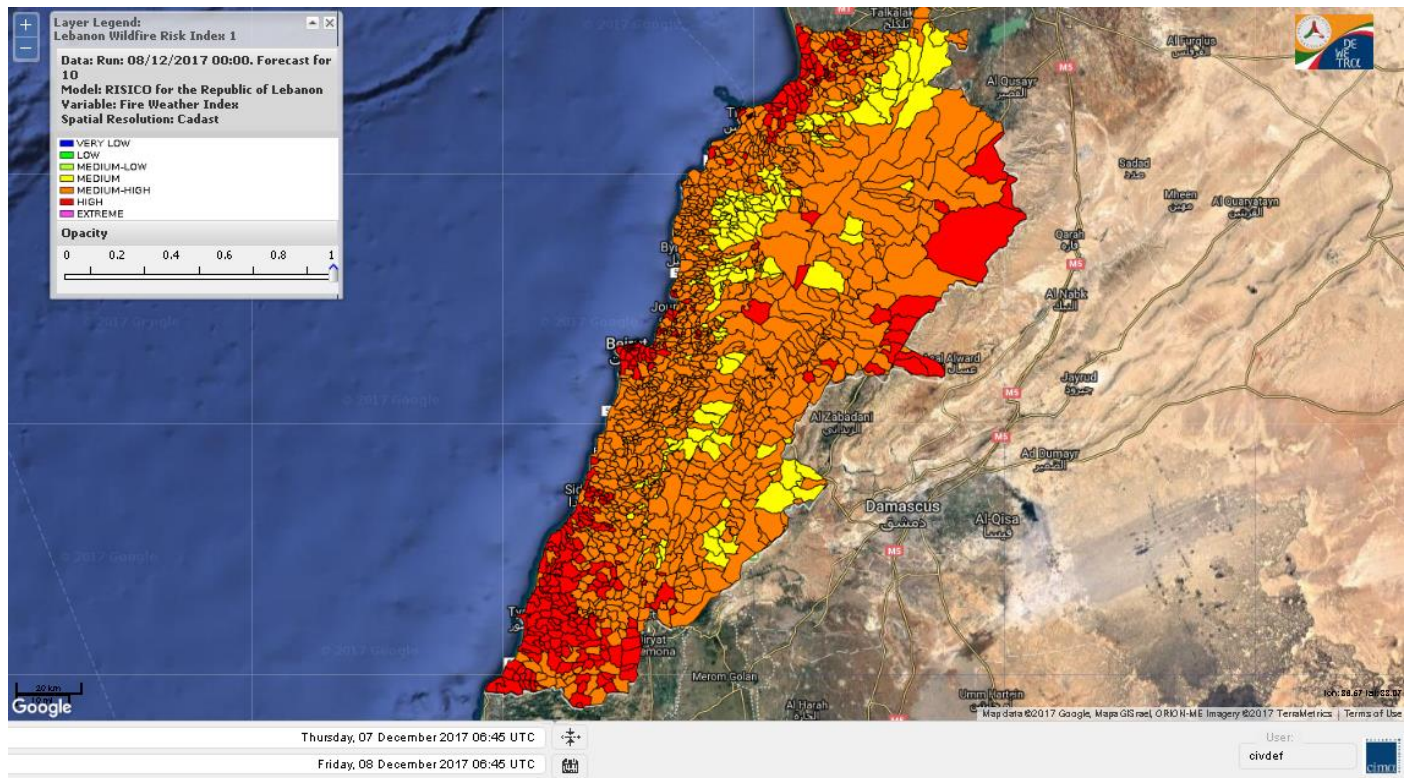
# Lebanon for 8 Dec 2017



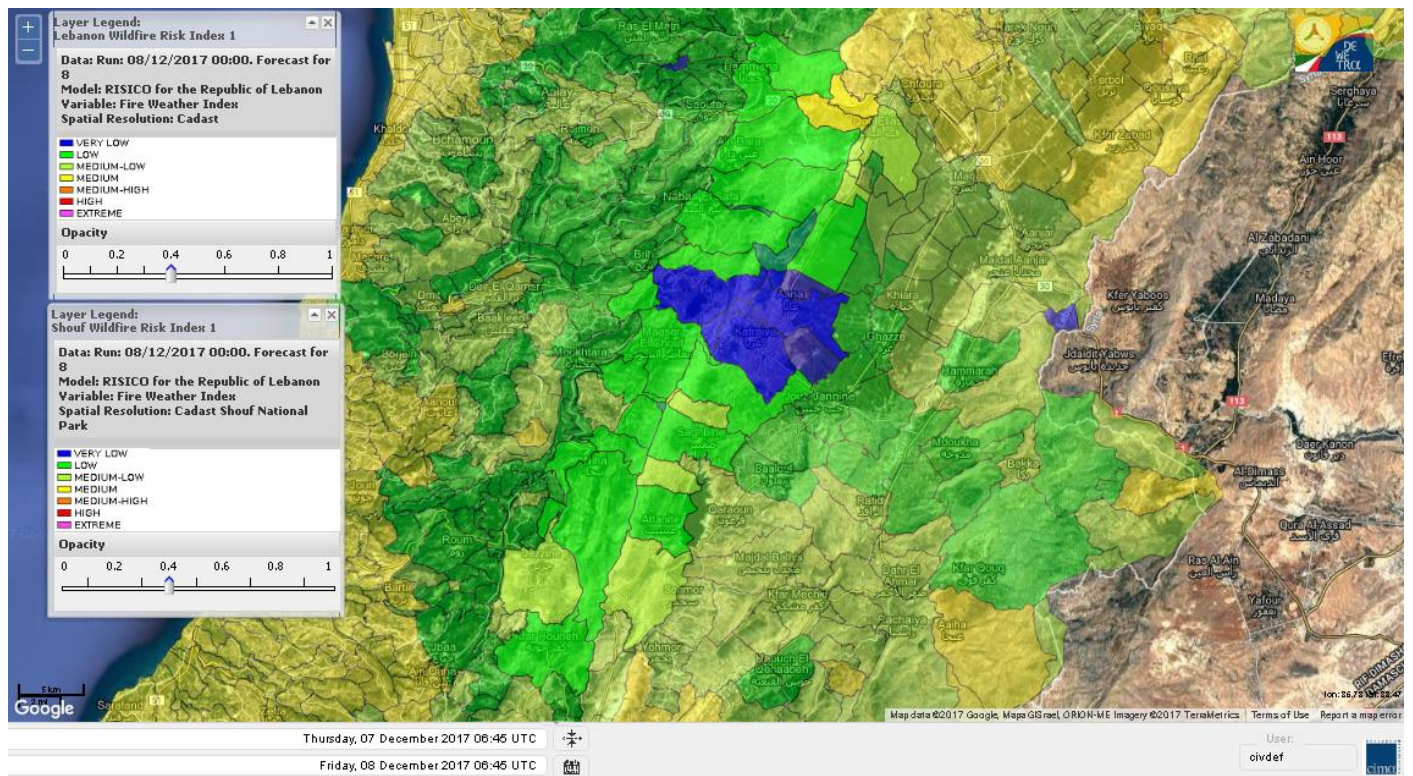
# Lebanon for 9 Dec 2017



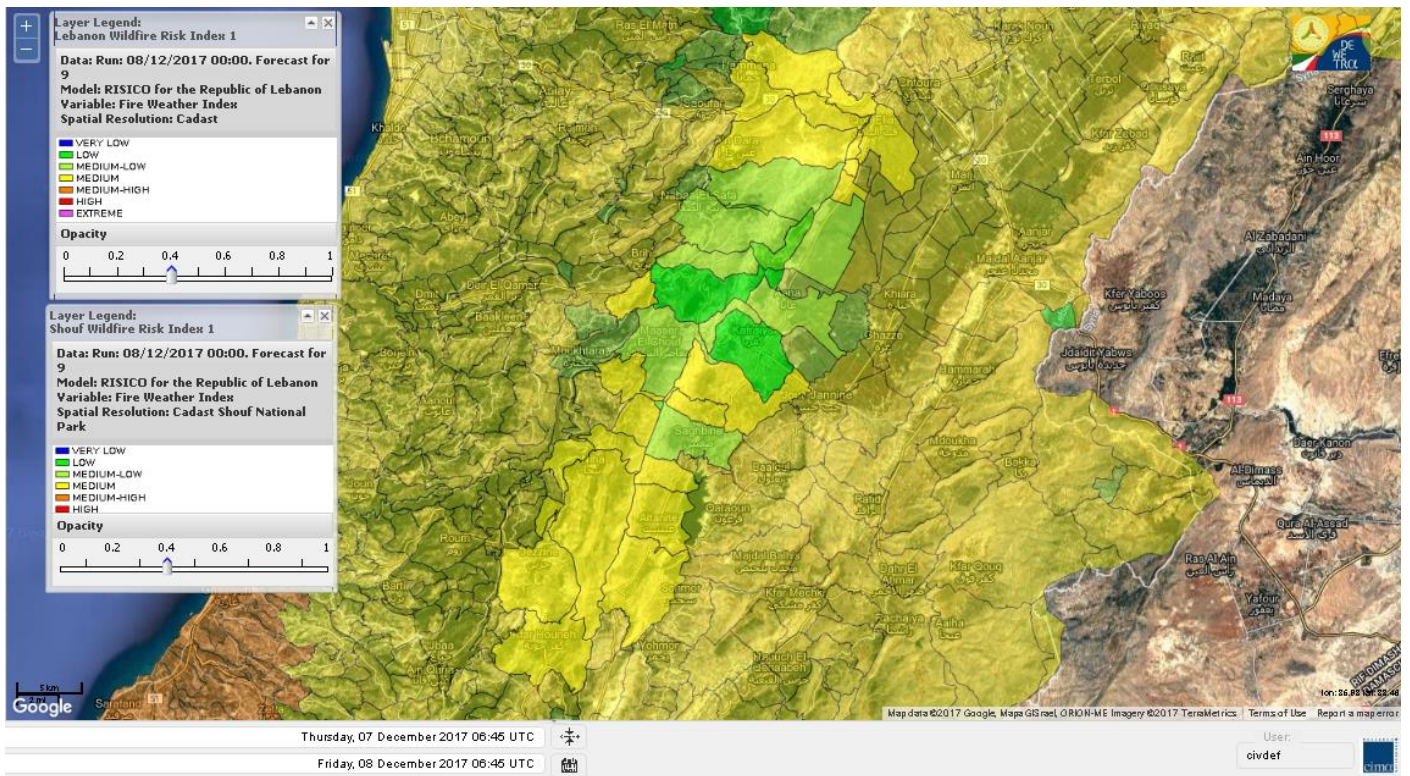
# Lebanon for 10 Dec 2017



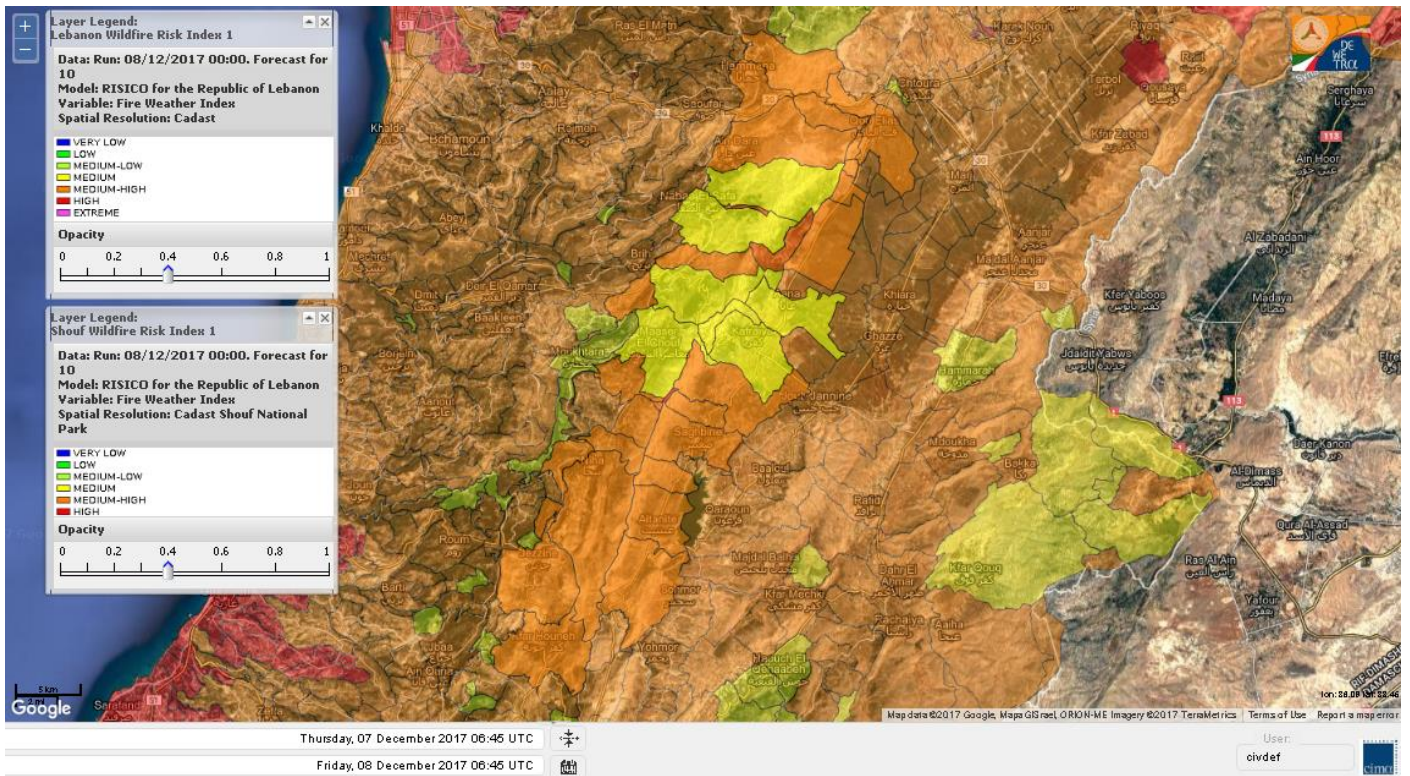
# Shouf Biosphere Reserve Forecast for 8 Dec 2017



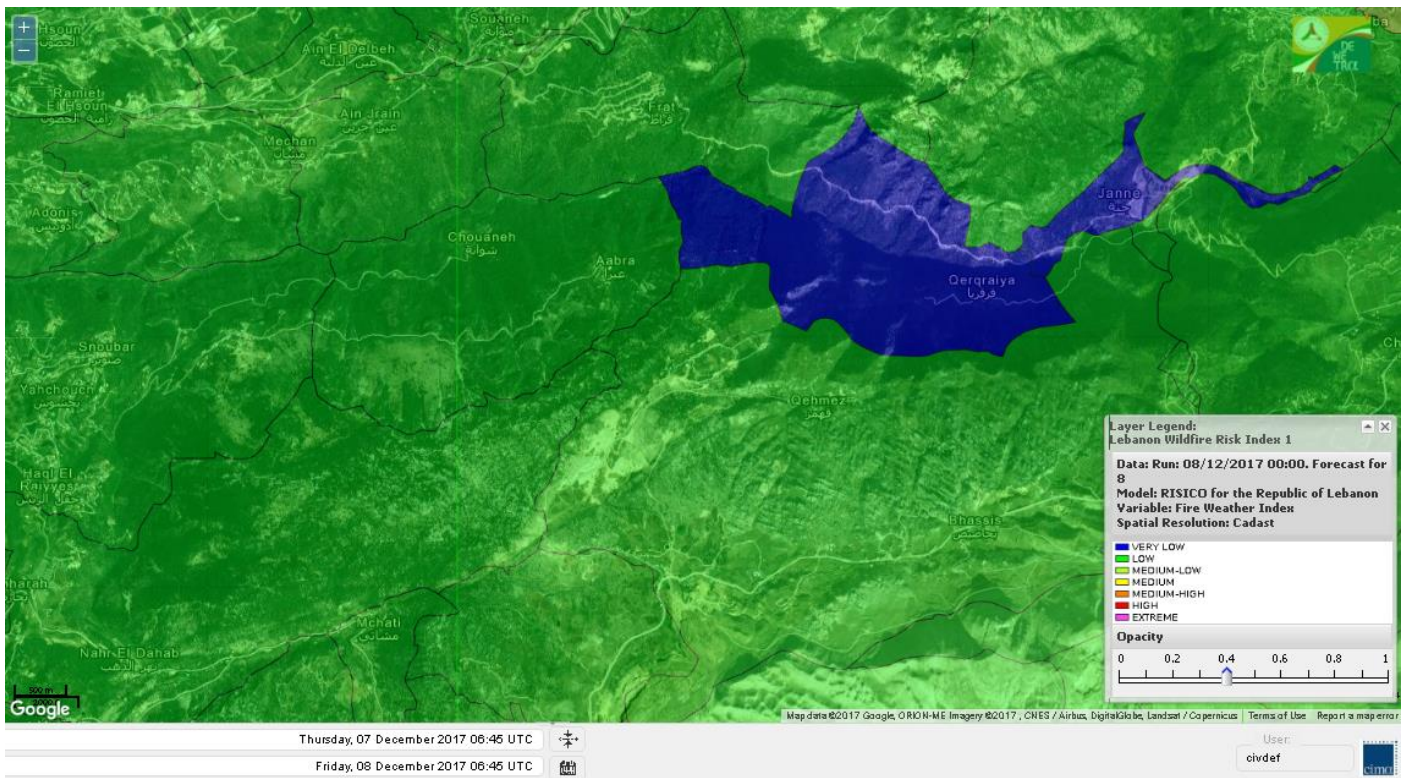
# Shouf Biosphere Reserve Forecast for 9 Dec 2017



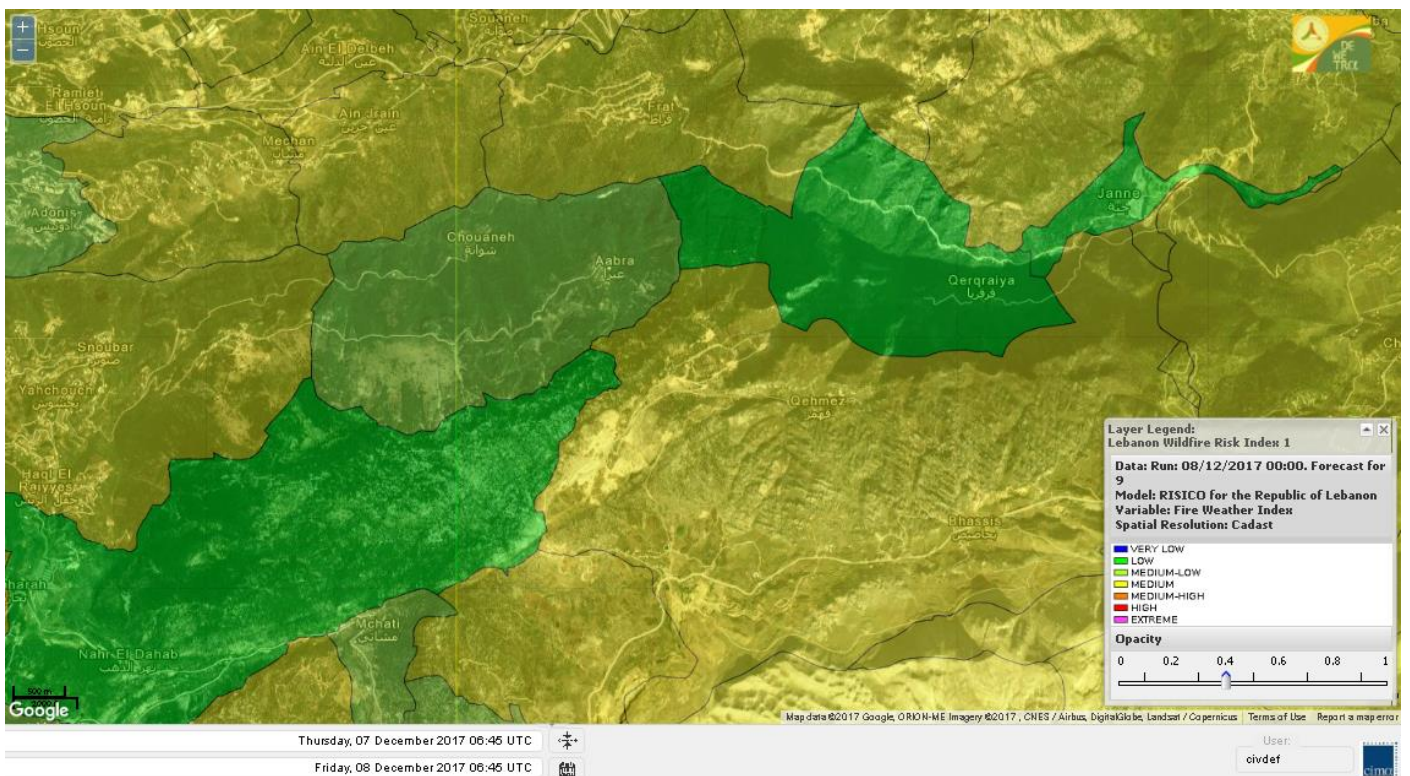
# Shouf Biosphere Reserve Forecast for 10 Dec 2017



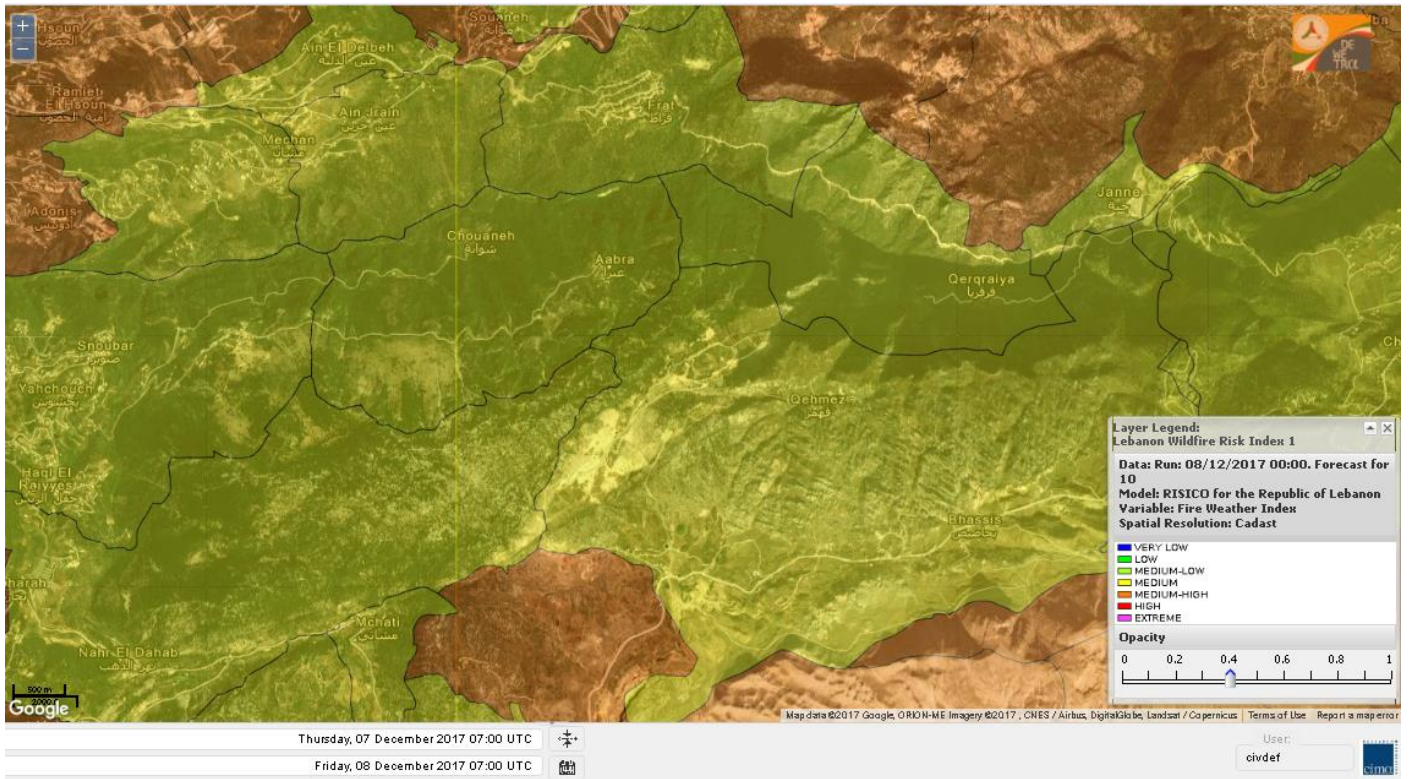
## Jabal Moussa Reserve Forecast for 8 Dec 2017



## Jabal Moussa Reserve Forecast for 9 Dec 2017



# Jabal Moussa Reserve Forecast for 10 Dec 2017





## Nord

### Koura

Municipality	08-Dec	09-Dec	10-Dec	Municipality	08-Dec	09-Dec	10-Dec	Municipality	08-Dec	09-Dec	10-Dec
Aaba	M	M	MH	Afsaddiq	M	M	MH	Ain Ekriane	M	M	MH
Amioun	M	M	MH	Anfeh	M	M	MH	Badbhoun	M	M	MH
Barghoun	M	M	MH	Barsa	ML	M	MH	Batroumine	M	M	MH
Bdebba	M	M	MH	Bechmizine	M	M	MH	Bednaye El-Koura	ML	M	MH
Bhabbouch El-Koura	ML	M	MH	Bkeftine	M	M	MH	Bnehran	ML	M	MH
Bqaiia El-Koura	M	M	MH	Bsarma	M	M	MH	Btaaboura	M	M	MH
Bttram	M	M	MH	Btouratij	M	M	MH	Bziza	M	M	MH
Dar Beehtar	M	M	MH	Dar Chmezzine	M	M	MH	Deddeh	M	M	MH
Deir El-Balamand	L	M	MH	Fih	M	M	MH	Hraiche	M	M	MH
Ijdaabrine	ML	M	MH	Kaftoun	M	M	MH	Kefraya El-Koura	M	M	MH
Kfarakka	M	M	MH	Kfarhata	ML	M	MH	Kfarhazir	M	M	MH
Kfarkahel	M	M	MH	Kfarsaroun	M	M	MH	Kosba	M	M	MH
Mejdel el-Koura	ML	M	M	Nakhle	ML	M	MH	Qalhat	L	M	MH
Ras Masqa	M	M	MH	Rechdibbine	M	M	MH	Zakroun	ML	M	MH
Zgharta El-Mtaouile	L	M	M								

### Bcharre

Municipality	08-Dec	09-Dec	10-Dec	Municipality	08-Dec	09-Dec	10-Dec	Municipality	08-Dec	09-Dec	10-Dec
Aabdine	L	M	MH	Bane	ML	M	MH	Barhelioun	L	M	MH
Bazouone	ML	M	MH	Becharre	M	M	MH	Beit Menzer	L	M	MH
Billa	L	M	MH	Blaouza	ML	M	MH	Bqaa Kafra	ML	M	MH
Bqerqacha	ML	M	MH	Breissat	ML	M	M	Dimane	ML	M	M
Hadath El Jobbeh	L	M	M	Hadchit	ML	M	M	Hasroun	ML	M	MH
Mazraat Aassaf	VL	L	M	Mazraat Bani Saab	L	M	M	Mchaa El-Jobbeh	ML	M	H
Metrit	L	M	MH	Moghr El-Ahoual	L	M	MH	Ouadi Qannoubine	VL	VL	M
Qanat	L	M	M	Qnayouer	L	L	M	Tourza	L	M	M

### Batroun

Municipality	08-Dec	09-Dec	10-Dec	Municipality	08-Dec	09-Dec	10-Dec	Municipality	08-Dec	09-Dec	10-Dec
Aabrine	L	M	MH	Aalali	L	M	M	Aartziz	L	ML	M
Abdelli	L	M	MH	Ajdabra	L	M	MH	Assia	L	M	M
Basbina	M	M	MH	Batroun	M	M	MH	Bcheleh	L	M	M
Bechtoudar	L	M	M	Beit Chlala	L	M	M	Beit Kassab	L	L	M
Bijdarfil	M	M	MH	Bqesmaya	L	M	MH	Chatine	L	M	M
Chebtin	L	M	M	Chekka	M	M	MH	Daael	L	M	M
Dahr Abi Yaghi	L	M	MH	Daraya El-Batroun	ML	M	MH	Deir Billa	L	M	M
Deir Kfifane	ML	M	MH	Deir Mar Youhanna EL	L	ML	M	Deir Mar Youssef Jra	L	M	MH
Douma	L	M	M	Douq	L	ML	M	Eddeh El-Batroun	ML	M	MH
Ftihat El-Batroun	L	M	M	Ghouma	L	M	MH	Hadtoun	L	M	M
Hamat	L	M	MH	Harbouna	L	ML	MH	Hardine	L	ML	M
Helta	L	M	M	Hery	M	M	MH	Jebbla	L	M	M
Jrabta El-Batroun	L	M	MH	Jrane El-Batroun	M	M	MH	Kfar Aabida	ML	M	MH
Kfar Halda	L	M	M	Kfarb Shlaimane	L	M	M	Kfarhatna	L	M	MH
Kfarhay	ML	M	MH	Kfarhelos	L	M	MH	Kfifane	M	M	MH

Kfour El Arabi	L	M	M	Koubba	ML	M	MH	Kour	ML	M	MH
Mar Mama	L	ML	M	Masrah	L	ML	MH	Mehmarch	ML	M	M
Mrah Chdid	L	M	MH	Mrah El Ziyat	ML	M	MH	Mrah El-Hajj	L	ML	M
Nahle El-Batroun	L	M	M	Niha El-Batroun	L	M	M	Oujh El-Hajjar	ML	M	MH
Ouata Houb	L	ML	M	Qatnaaoun	ML	M	MH	Racha	L	M	M
Rachana	L	M	MH	Rachkida	ML	M	MH	Ram El-Batroun	L	ML	M
Ras Nahhach	ML	M	MH	Selaata	M	M	MH	Sghar	L	M	MH
Smar Jbayl	ML	M	MH	Sourat El-Batroun	L	M	M	Tannourine El-Faouqa	ML	M	MH
Tannourine Et-Tahta	L	ML	M	Thoum	ML	M	MH	Toula El-Batroun	L	M	MH
Zan	L	M	M								

## Zgharta

Municipality	08-Dec	09-Dec	10-Dec	Municipality	08-Dec	09-Dec	10-Dec	Municipality	08-Dec	09-Dec	10-Dec
Aachach	M	M	MH	Aalma	M	M	MH	Aarde	ML	M	MH
Aintourine	ML	M	MH	Arabet Qozhaya	L	ML	M	Arde	M	M	MH
Arjis	M	M	MH	Asnoun	M	M	MH	Ayto	L	M	M
Basloukit	M	M	MH	Bchannine	M	M	MH	Besebeel	M	M	MH
Bhairret Toula	L	M	MH	Bnachee	ML	M	MH	Boussit	M	M	H
Danha	M	M	MH	Daraiya Zgharta	M	M	MH	Deir Jdeide	M	M	MH
Ehden	ML	M	MH	Halan	M	M	MH	Hariq Zgharta	ML	M	H
Houakir	L	M	MH	Hraiqis	M	M	H	laal	ML	M	MH
Ijbaa	L	M	MH	Karm Saddeh	L	M	M	Kfarchakhna	M	M	MH
Kfardlaqous	M	M	MH	Kfarfou	M	M	MH	Kfarhata Zgharta	M	M	MH
Kfarhoura	ML	M	MH	Kfarsghab	ML	M	MH	Kfaryachit	M	M	MH
Kfarzaina	M	M	MH	Khaldiye	ML	M	MH	Mazraat Ajbeaa	M	M	MH
Mazraat Et-Teffah	L	M	MH	Mazraat Jneid	M	M	MH	Mejdlaiya Zgharta	M	M	MH
Merh Kfarsghab	ML	M	MH	Miryata	M	M	MH	Miziara	L	M	MH
Mzraat Kefraya	M	M	MH	Qorah Bach	M	M	MH	Rachiine	M	M	MH
Ras Kifa	ML	M	MH	Sakhra	ML	M	MH	Sebhel Zgharta	ML	M	MH
Serhel	L	L	M	Tallet Zgharta	ML	M	MH	Toula Zgharta	L	M	MH
Zgharta	M	M	MH								

## Minieh-Denniye

Municipality	08-Dec	09-Dec	10-Dec	Municipality	08-Dec	09-Dec	10-Dec	Municipality	08-Dec	09-Dec	10-Dec
Aasaymout	VL	L	M	Aaymar	L	M	MH	Aazki	ML	M	MH
Ain El-Tineh-Miniyeh	L	ML	M	Assoun	L	M	MH	Bakhaaoun	L	M	M
Bchennata	M	M	MH	Bechehhara	L	M	MH	Beddawi	M	M	MH
Behouaita	L	M	MH	Beit El Foqss	L	M	M	Beit Haouik	ML	M	MH
Beit Zoud	L	M	M	Bekaasafrine	M	M	MH	Borj El Yahoudiyeh	M	M	MH
Bqarsouna	L	M	M	Btermaz	L	ML	M	Debaael	L	L	M
Deir Ammar	M	M	H	Deir Nbouh	L	M	MH	Haouaret-Miniyeh	L	M	MH
Haql el Azimeh	L	ML	M	Harf El Siyad	L	L	M	Hazmiye-Miniyeh	L	ML	M
Izal	ML	M	MH	Jarjour	VL	ML	M	Jayroun	L	M	MH
Kahf El-Malloul	L	M	MH	Karm El-Moher	L	M	MH	Kfar Binine	L	M	MH
Kfarchalane	ML	M	M	Kfarhabou	ML	M	MH	Kharroub-Miniyeh	ML	M	MH
Mazraat El-Kreme	L	ML	M	Mazraat Ketrane	L	M	MH	Merkebtta	M	M	MH
Minyeh	M	M	MH	Mrah El Sfirat	L	ML	M	Mrah Sraj	L	M	M
Mrebbine	M	M	MH	Nabi Youcheaa	M	M	MH	Nemrine	L	M	MH

Qarhaiya	L	M	MH	Qarne	VL	L	M	Qarsita	L	ML	M
Qattineh-Miniyeh	VL	L	M	Qemmamine	L	M	MH	Qraine	L	ML	M
Raouda-Aadoua	M	M	MH	Rihaniyet-Miniyeh	M	M	H	Sfireh	L	M	MH
Sir Ed-Danniyeh	L	M	M	Tarane	L	M	MH	Terbol-Miniyeh	M	M	MH
Zaghartaghriane	L	M	MH	Zouq Bhannine	M	M	MH				

## Nabatiye

### Nabatiye

Municipality	08-Dec	09-Dec	10-Dec	Municipality	08-Dec	09-Dec	10-Dec	Municipality	08-Dec	09-Dec	10-Dec
Aabba	M	MH	MH	Aazzi	M	M	MH	Adchit El-Chqif	M	MH	MH
Ain Bou Swar	M	M	MH	Ain Kana	M	M	MH	Ali El-Taher	M	M	MH
Ansar	M	MH	MH	Arab Salim	M	M	MH	Arnoun	M	M	MH
Bfaroue	M	M	MH	Breyqaah	M	MH	MH	Charqiyeh	M	MH	MH
Choukine	M	M	MH	Deir El Zahrani	M	M	MH	Doueir El-Nabatiyeh	M	MH	MH
Habbouch El-Nabatiye	M	M	MH	Hamra El-Nabatiyeh	M	M	MH	Harouf El-Nabatiyeh	M	M	MH
Hmaile	ML	M	MH	Houmin El Faouqa	M	M	MH	Houmin El Tahta	M	M	MH
Jarjough	ML	M	MH	Jbaah El-Nabatiyeh	L	M	MH	Jebchit	M	MH	MH
Kfar Djal El-Nabatiy	M	M	MH	Kfar Remmane	M	M	MH	Kfar Sir	M	M	MH
Kfar Tebnit	M	M	MH	Kfarfila	M	M	MH	Kfour El-Nabatieh	M	M	MH
Mayfadoun	M	M	MH	Mazraat Bsaffour	M	MH	MH	Mazraat Chalbaal	M	MH	MH
Mazraat Dmoul	M	MH	MH	Mazraat El Khreibeh	M	M	MH	Mazraat El-Bayad El-	M	M	MH
Mazraat Kfarjaouz	M	M	MH	Mazraat Qalaat Meiss	M	MH	MH	Nabatiyeh El-Fawka	M	M	MH
Nabatiyeh Et-Tahta	M	M	MH	Namiriyeh	M	MH	MH	Qaaqaaiyet El Jisr	M	M	MH
Qossaibeh El-Nabatiy	M	MH	MH	Roumine	M	M	MH	Sarba El-Nabatieh	M	M	MH
Sir El-Gharbiyeh	M	MH	MH	Toul	M	M	MH	Yehmor El-Nabatiyeh	M	M	MH
Zaoutar El Charkiyeh	M	M	MH	Zaoutar El-Gharbiyeh	M	M	MH	Zebdine El-Nabatiyeh	M	M	MH
Zefta	M	MH	MH								

### Hasbaiya

Municipality	08-Dec	09-Dec	10-Dec	Municipality	08-Dec	09-Dec	10-Dec	Municipality	08-Dec	09-Dec	10-Dec
Ain Jarfa	ML	M	MH	Abou Qamha	M	M	MH	Ain Qania	M	M	MH
Bourghos	M	M	MH	Chebaa	M	M	MH	Chouaya Hasbaya	ML	M	MH
Dellafeh	M	M	MH	Fardiss Hasbaiya	M	M	MH	Hasbaya	M	M	MH
Hbariyeh	ML	M	MH	Kaoukaba Hasbaiya	M	M	MH	Kfar Chouba	ML	M	MH
Kfar Hamam	ML	M	MH	Kfeir El-Zait	ML	M	M	Khalwat Hasbaya	L	M	M
Khreibet Hasbaiya	M	M	MH	Majdiyeh Hasbaiya	M	M	MH	Marj Ez-Zhour (Haouc	L	M	M
Meri	M	M	MH	Mimass	M	M	MH	Rachaiya El-Fokhar	M	M	MH
Salaiyeb	M	M	H								

### Marjayoun

Municipality	08-Dec	09-Dec	10-Dec	Municipality	08-Dec	09-Dec	10-Dec	Municipality	08-Dec	09-Dec	10-Dec
Aalmane Marjaayoun	ML	M	MH	Aamra	M	M	MH	Adayseh Marjaayoun	M	M	MH
Adchit El-Koussair	M	M	MH	Ain Aarab Marjaayoun	M	M	MH	Bani Haiyann	M	M	MH
Blatt Marjaayoun	M	M	MH	Blida	ML	M	H	Borj El-Moulouk	M	M	MH
Boueyda Marjaayoun	M	M	MH	Deir Mimass	ML	M	MH	Deir Siriane	M	M	MH
Dibbine	M	M	MH	Ebel El Saqi	M	M	MH	Houla	M	M	H
Houra	M	M	MH	Kfar Kila	M	M	MH	Khiam Marjaayoun	M	M	MH

Klayaa	M	M	MH	Majdel Selem	M	M	MH	Marjaayoun	M	M	MH
Markaba	M	M	H	Mays El-Jabal	M	M	H	Mazraat Doumiat	M	M	MH
Mazraat Sarada	M	M	MH	Mhaibib	M	M	H	Qabrikha	ML	M	MH
Qantara	M	M	MH	Rab El-Thalathine	M	M	H	Saouaneh Marjayoun	M	M	H
Talloussa	ML	M	MH	Taybeh Matjaayoun	M	M	MH	Touline	ML	M	MH

## Bent Jbail

Municipality	08-Dec	09-Dec	10-Dec	Municipality	08-Dec	09-Dec	10-Dec	Municipality	08-Dec	09-Dec	10-Dec
Ain-Ebel	ML	M	MH	Aitaroun	ML	M	MH	Aynata Bint Jbeil	ML	M	H
Ayta El-Chaeb	ML	M	MH	Ayta El-Jabal	ML	MH	H	Beit Lif	L	M	MH
Beit Yahoun	ML	M	H	Bint Jbeil	ML	M	H	Borj Qalaway	M	M	MH
Braachit	M	M	H	Chakra	M	M	H	Debel	ML	M	H
Deir Antar	M	MH	H	Froun	M	M	MH	Ghandouriyeh Bint Jb	M	M	MH
Hanine	ML	M	H	Hariss	M	MH	H	Hdatha	ML	M	H
Jmeymeh	M	M	H	Kafra Bint Jbeil	ML	M	MH	Kfar Dounine	M	M	H
Khirbet Selm	M	M	MH	Kounine	ML	M	MH	Maroun El Ras	ML	M	H
Qalaway	M	M	MH	Qaouzah	L	M	MH	Qatmoun	M	M	H
Ramya Bint Jbeil	L	M	MH	Rchaf	ML	M	MH	Rmeich	ML	MH	H
Safad Al Battikh	M	MH	H	Salhaneh	L	M	MH	Serbine	ML	M	H
Sultanieh Bint Jbeil	M	MH	H	Tibnine	M	M	MH	Tiri	ML	M	MH
Yaroun	ML	M	MH	Yater	ML	M	H				

## Mont Liban

### Jbail

Municipality	08-Dec	09-Dec	10-Dec	Municipality	08-Dec	09-Dec	10-Dec	Municipality	08-Dec	09-Dec	10-Dec
Aabeydat	L	M	MH	Aalita	L	ML	MH	Aamchit	M	M	MH
Aarab El-Lahib	L	M	MH	Aarasta	L	ML	M	Adonis Jbeil	L	ML	MH
Afqa Jbeil	L	ML	M	Ain El Delbeh Jbeil	L	M	M	Ain El-Ghouayba	L	M	M
Ain Jrain	L	M	M	Ain Kfah	ML	M	MH	Almat El Chemaliyat	L	M	MH
Almat El-Jenoubiya	L	M	M	Aqoura	ML	M	MH	Bayzoun	L	M	MH
Bchille Jbeil	L	M	MH	Bechtlida	L	ML	M	Behdaydat	L	M	MH
Beit Habbaq	ML	M	MH	Bejjeh	L	M	MH	Bekhaaz	L	M	MH
Berbara Jbeil	M	M	MH	Bintael	L	M	MH	Birket Hjoula	L	ML	MH
Blatt Jbeil	ML	M	MH	Boulhos	L	M	MH	Breyj Jbeil	L	ML	MH
Chamat	ML	M	MH	Chikhane	ML	M	MH	Chmout	L	M	MH
Eddeh Jbeil	ML	M	MH	Ehmej	L	M	MH	Fatre	L	ML	MH
Ferhet	ML	M	MH	Fghal	L	M	MH	Frat	L	M	M
Ghabat	ML	M	MH	Ghalboun	L	M	MH	Gharzouz	ML	M	MH
Ghofrine	ML	M	MH	Habil	L	L	M	Halate	ML	M	MH
Haqel	L	M	M	Hbaline	ML	M	MH	Hboub	ML	M	MH
Hdeine	ML	M	MH	Hema Er-Rehban	ML	M	MH	Hema Mar Maroun Aann	ML	M	MH
Hjoula	L	M	MH	Hosrayel	ML	M	MH	Hsarat	ML	M	MH
Hsoun	L	M	MH	Jaj	L	M	M	Janne	VL	L	M
Jbeil	M	M	MH	Jeddeyl Jbeil	M	M	MH	Jlisse	L	ML	MH
Jouret El-Qattine	L	M	MH	Kfar Baal Annaya	L	M	MH	Kfar Kidde	ML	M	MH
Kfar Kouas	L	M	MH	Kfar Mashoun	M	M	MH	Kfoun	L	M	MH

Kharbe Jbeil	ML	M	MH	Laqlouq	M	M	MH	Lassa	L	M	M
Lehfed	L	ML	M	Maad	ML	M	MH	Mar Sarkis	ML	M	MH
Mastita	M	M	MH	Mayfouq	L	M	M	Mazraat El Siyad	ML	M	MH
Mazraat El-Maaden	L	M	M	Mechane	L	M	M	Mechmech Jbeil	L	M	M
Mehrin	ML	M	MH	Mejdel El-Akoura	L	ML	M	Mghayreh Jbeil	ML	M	MH
Mounsef	M	M	MH	Nahr Ibrahim	M	M	MH	Qahmez	L	M	M
Qartaba	L	M	MH	Qartaboun	M	M	MH	Qattara Jbeil	L	ML	M
Qorqraya	VL	L	M	Ramout	L	M	MH	Ras Osta	L	M	MH
Rihane Jbeil	ML	M	MH	Sakiet El-Khayt	L	M	MH	Saqi Richmaya	L	M	M
Sebrine	L	M	MH	Seraita	L	M	M	Souane Jbeil	L	M	MH
Tadmor	ML	M	MH	Tartej	L	M	M	Torzaiya	L	M	MH
Yanouh Jbeil	L	M	MH	Zibdine Jbeil	L	M	MH				

## El Metn

Municipality	08-Dec	09-Dec	10-Dec	Municipality	08-Dec	09-Dec	10-Dec	Municipality	08-Dec	09-Dec	10-Dec
Aain El-Qabu	L	ML	M	Aain El-Qach	L	M	MH	Aain El-Teffaha	L	M	MH
Aain el-Safsaf El-M	L	ML	MH	Abou Mizane	L	M	MH	Ain Aar	ML	M	MH
Ain Alaq	L	M	MH	Ain El-Kharroube	L	M	MH	Ain El-Sendiane	L	M	MH
Ain El-Zeitoune	L	ML	MH	Ain Saadeh	ML	M	MH	Aintoura El-Matn	L	M	MH
Amaret Chalhoub	M	M	MH	Antelias	M	M	MH	Atchaneh	L	M	MH
Ayroun	L	M	MH	Baabdat	L	ML	MH	Baouchariyeh	M	M	MH
Baskinta	L	M	MH	Beit Chabab	L	M	MH	Beit El-Chaar	M	M	MH
Beit El-Kekko	M	M	MH	Beit Mery	L	M	MH	Bhersaf	L	M	MH
Bikfaya	L	M	MH	Biyakout	M	M	MH	Bnabil	L	ML	MH
Bourj Hammoud	M	M	MH	Bqennaya	M	M	MH	Broummana El-Matn	L	M	MH
Bsalim	L	M	H	Bsifrine	L	ML	MH	Bteghrine	L	ML	M
Chaouiye	L	M	MH	Chouaya El-Matn	L	M	MH	Choueir	L	M	MH
Chrine	L	ML	MH	Dahr El Sawan El-Mat	L	M	MH	Daychouniyeh	M	M	MH
Dbayeh	M	M	MH	Deir Chamra	L	ML	M	Deir Mar Abda el Mch	L	M	MH
Deir Mar Roukouz	M	M	H	Deir Tamiche	L	M	MH	Dik El-Mehdi	ML	M	MH
Dikwaneh	M	M	MH	Douar El-Matn	L	M	MH	Fanar	M	M	MH
Fraike	L	M	MH	Haret El-Ballaneh	ML	M	MH	Hbous	ML	M	H
Himlaya	L	M	MH	Jal El Did	M	M	MH	Jdeideh El-Metn	M	M	MH
Jouar El-Matn	L	ML	MH	Jouret El-Ballout	L	M	MH	Kaaqour	L	M	MH
Kfar Aaqab	L	ML	MH	Kfertay El-Matn	L	M	MH	Khenchara	L	M	MH
Khillet El-Mtain	L	ML	MH	Konnabat Broummana	L	M	MH	Konnabat Salima	VL	ML	MH
Machraah El-Matn	L	M	MH	Majdel Tarchich	ML	M	MH	Majzoub	ML	M	MH
Mansouriyeh El-Metn	M	M	MH	Mar Boutros Karm Et-	L	M	MH	Mar Chaya et Mzekke	L	M	MH
Mar Moussa Ed-Douar	L	ML	MH	Marjaba	L	M	M	Masqa	L	M	MH
Mayasse	L	M	MH	Mazraat Deir Aoukar	M	M	MH	Mazraat El-Hadirat	ML	M	MH
Mazraat Yachouh	M	M	MH	Mchikha	L	M	MH	Menqlet Mezher	M	M	MH
Mhaydseh Matn	L	M	MH	Mkalles	M	M	MH	Mrouj	L	M	MH
Mtain	ML	M	MH	Mtayleb	ML	M	MH	Nabay	L	M	MH
Naccache	M	M	MH	Ouadi Chahine	L	M	MH	Ouadi El-Karm El-Mat	VL	ML	MH
Ouata El-Mrouj	L	M	MH	Ouyoun El-Matn	L	ML	MH	Qornet Chehwan	L	M	MH
Qornet El-Hamra	L	M	MH	Roumieh	L	M	MH	Sfeilet Bikfaya	L	M	MH
Sinn El-Fil	M	M	MH	Zabbougha	L	ML	MH	Zalqa	M	M	MH

Zarouon	L	M	MH	Zekrite	L	M	MH	Zighrine El-Matn	L	M	MH
Zouk El-Khrab	M	M	MH								

## Chouf

Municipality	08-Dec	09-Dec	10-Dec	Municipality	08-Dec	09-Dec	10-Dec	Municipality	08-Dec	09-Dec	10-Dec
Aalmane El-Chouf	M	M	MH	Aammqi El-Chouf	L	M	MH	Ain Ouzein	L	ML	M
Ain Qani	L	ML	M	Ain Zhalta	L	ML	M	Ainbal	L	M	MH
Amatour	L	M	M	Anout	M	M	MH	Atrine	L	M	MH
Baadarane	ML	M	MH	Baaqline	ML	M	MH	Baasir	M	M	MH
Barja	M	M	MH	Barouk	VL	L	M	Bater	L	M	MH
Batloun	L	M	MH	Bayqoun	M	M	MH	Bchetfine	L	M	MH
Beiteddine	L	M	MH	Benouati Ech-Chouf	ML	M	MH	Berjein	ML	M	MH
Bireh et Mtalleh	L	M	MH	Biret El-Chouf	L	M	MH	Bkechtine Ouel Mchei	L	M	MH
Bkifa El-Chouf	M	M	MH	Botme	L	ML	M	Bqaiaa Ech-Chouf	L	M	MH
Bsaba El-Chouf	ML	M	MH	Chammis El-Chouf	M	M	MH	Chehim	M	M	MH
Chemaarine	L	M	MH	Chourit	L	ML	M	Daher El-Chouf	L	M	MH
Dalhoun	M	M	MH	Damour	M	M	MH	Daraya El-Chouf	ML	M	MH
Deir El-Moukhalles	L	M	MH	Deir Baba	L	M	MH	Deir Dourit	ML	M	MH
Deir El-Qamar	ML	M	MH	Deir Kouche	L	M	MH	Dibbieh	L	M	MH
Dmit	ML	M	MH	Fouara Jaafar	L	M	MH	Fraidis El-Chouf	L	ML	MH
Ghabet Jaafar	ML	M	MH	Gharife	L	M	MH	Haret Jandal	L	M	MH
Hasrout	ML	M	MH	Jadra	M	M	MH	Jahlieh	ML	M	MH
Jbeih El-Chouf	L	M	MH	Jdeidet El-Chouf	L	M	MH	Jiyeh	M	M	MH
Jleilyeh	ML	M	MH	Jmailiyeh	M	M	MH	Joun	M	M	MH
Kahlounie El-Chouf	ML	M	MH	Ketermaya	M	M	MH	Kfar Faqoud	L	M	MH
Kfar Hamal	M	M	MH	Kfar Him	M	M	MH	Kfar Katra	L	M	MH
Kfar Niss	L	M	MH	Kfar hay	L	M	MH	Kfarnabrakh	L	M	MH
Khirbet Bisri	L	M	MH	Knayse El-Chouf	L	M	MH	Maaniyeh	M	M	MH
Maasser Beiteddine	L	M	MH	Maasser El-Chouf	L	ML	M	Majdalouna	M	M	MH
Majdel El-Meouch	L	M	MH	Mazboud	M	M	MH	Mazmoura	M	M	MH
Mazraat El Chouf	ML	M	MH	Mazraat El Daher	L	M	MH	Mazraat El-Douair	L	ML	M
Mechref	ML	M	MH	Mghairie	M	M	MH	Mghayrie El-Chouf	L	M	MH
Moukhtara	L	ML	M	Mrusti	L	M	MH	Mtolle	ML	M	MH
Naameh	M	M	MH	Niha El-Chouf	L	M	MH	Ouadi Abou Youssef	L	M	M
Ouadi Ed-Deir	M	M	MH	Ouadi El-Sit	L	M	MH	Ouadi bnehlay	ML	M	MH
Qraibeh	L	M	MH	Qreiaa	M	M	MH	Rmayle El-Chouf	M	M	MH
Semqaniyeh	ML	M	MH	Sibline	M	M	MH	Sirjbeil	ML	M	MH
Warhanieh	L	M	MH	Werdaniyeh	M	M	MH	Zaarourieh	M	M	MH

## Baabda

Municipality	08-Dec	09-Dec	10-Dec	Municipality	08-Dec	09-Dec	10-Dec	Municipality	08-Dec	09-Dec	10-Dec
Abadiyeh	L	M	MH	Ain Mouaffaq	L	M	MH	Araiya	L	M	MH
Arbaniyeh	L	L	M	Arsoun	L	M	MH	Baabda	M	M	MH
Baalchmey	ML	M	MH	Bmaryam	L	ML	MH	Bourj El-Brajneh	M	M	MH
Boutchay	ML	M	MH	Bsaba Baabda	M	M	MH	Btekhney	L	ML	MH
Btibyat	L	ML	MH	Bzebdine	L	ML	MH	Chbeniyeh	L	M	MH
Chiyah	M	M	MH	Chmeisset Baabda	VL	L	MH	Chouit	L	M	MH
Deir El-harf	L	M	MH	Deir Khouna	L	M	MH	Dlaybeh	L	ML	MH

Falougha	L	M	MH	Furn El-Chebbak	M	M	MH	Hadath Beyrouth	M	M	MH
Halaliyeh Baabda	L	M	MH	Hammana	L	M	MH	Haret El Sett	L	M	MH
Haret Hamze	L	M	MH	Haret Hreik	M	M	MH	Hasbaiya El-Metn	L	ML	MH
Jouar El-Hoz	L	ML	M	Jouret Arsoun	L	ML	MH	Kfar Chima	M	M	MH
Kfar Selouane	L	ML	M	Khalouat Baabda	L	M	MH	Kneisset Baabda	L	ML	MH
Laylakeh	M	M	MH	Louayzeh Baabda	M	M	MH	Merdache	M	M	MH
Mzairaa Baabda	L	M	MH	Ouadi Chahrour El OI	ML	M	MH	Ouadi Chahrour El So	L	M	MH
Qalaa Baabda	L	ML	MH	Qhraybe Baabda	L	ML	MH	Qobbayaa	L	ML	MH
Qornayel	L	L	MH	Qortada	L	M	MH	Qrayeh Baabda	L	ML	MH
Qsaibeh Baabda	L	M	MH	Qtale Baabda	L	ML	MH	Ras El Metn	L	M	MH
Ras El-Haref	L	M	MH	Rouayset El-Ballout	L	M	MH	Salima Baabda	L	M	MH
Tahouitat El Ghadir	M	M	MH	Tarchich	L	M	M	Zandouqa	VL	M	MH

## Aley

Municipality	08-Dec	09-Dec	10-Dec	Municipality	08-Dec	09-Dec	10-Dec	Municipality	08-Dec	09-Dec	10-Dec
Abey	ML	M	MH	Aghmid	L	ML	MH	Ain Dara	L	M	MH
Ain Drafil	L	M	MH	Ain El Halazoun	L	M	MH	Ain El-Rmmaneh	L	M	MH
Ain Jedideh	ML	M	MH	Ain Ksour	L	M	MH	Ain Onoub	ML	M	MH
Ain Traz	L	M	MH	Ainab	L	M	MH	Aley	ML	M	MH
Aramoun	ML	M	MH	Aytat	ML	M	MH	Azouniyeh	L	M	MH
Baawerta	ML	M	MH	Badghan Oua Wadi Bad	L	M	MH	Bassatine	ML	M	MH
Bayssour	ML	M	MH	Bchamoun	ML	M	MH	Bdadoun	L	M	MH
Behouara	ML	M	MH	Bennay	ML	M	MH	Bhamdoun El-Dayaa	ML	M	MH
Bhamdoun El-Mhatta	ML	M	MH	Bkhechthey	ML	M	MH	Bleibel	L	M	MH
Bmakine	ML	M	MH	Bmehray	L	ML	M	Bouzrid	L	M	MH
Bserrine	L	M	MH	Bsous	L	M	MH	Btalloun	ML	M	MH
Btater	L	M	MH	Chanay	ML	M	MH	Charoun	L	M	MH
Chartoun	L	M	MH	Chemlane	L	M	MH	Choueifat El-Aamrous	M	M	MH
Choueifat El-Oumara	M	M	MH	Choueifat El-Quoubbe	M	M	MH	Dakkoun	L	M	MH
Deir Qoubel	ML	M	MH	Dfoun	ML	M	MH	Douair El Remmaneh	L	M	MH
Ghaboun	L	M	MH	Habramoun	L	ML	MH	Homs Oua Hama	L	M	MH
Houmal	L	M	MH	Jisr El Qadi	ML	M	MH	Kehaleh	L	M	MH
Keyfoun	ML	M	MH	Kfar Aamey	L	M	MH	Kommatyeh	ML	M	MH
Maasrati	L	M	MH	Majdel Baana	L	M	MH	Mansourieh et Ain El	ML	M	MH
Mazraat El-Nahr	L	M	MH	Mchakhte	L	ML	MH	Mecherfeh	L	M	MH
Mejdaya	ML	M	MH	Mrayjat	L	M	MH	Ramliyah	L	M	MH
Rechmaya	L	M	MH	Rejmeh	L	M	MH	Remhala	ML	M	MH
Rouaysset El Neemane	L	M	MH	Saoufar	L	M	MH	Selfaya	L	M	MH
Sirhmoul	L	M	MH	Souq El Ghareb	ML	M	MH	Taazanieh	L	M	MH

## Kesrouane

Municipality	08-Dec	09-Dec	10-Dec	Municipality	08-Dec	09-Dec	10-Dec	Municipality	08-Dec	09-Dec	10-Dec
Achkout	L	M	MH	Adma Oua Dafneh	M	M	MH	Ain Ed-Delbe Kesroua	L	ML	M
Ain El-Rihane	L	M	MH	Aintoura Kesrouane	ML	M	H	Ajaltoun	L	M	MH
Akaybeh Kesrouane	M	M	MH	Aramoun Kesrouane	L	M	MH	Azra ouel Ozor	L	M	MH
Ballouneh	L	M	MH	Batha	L	M	MH	Bekaatat Achkout	L	M	MH
Bekaatat Kanaan	L	M	M	Bizhel	L	M	MH	Bouar	ML	M	MH
Bqaatouta	L	M	MH	Bqaq Ed-Dine	ML	M	MH	Bzommar	L	M	MH

Chahtoul	L	M	MH	Chnaniir	L	M	MH	Chouan	L	ML	M
Daraya Kesrouane	L	M	MH	Darououn	L	M	MH	Deir Baqlouch	L	M	MH
Dlebta	L	M	MH	Eghbeh	VL	L	MH	Faraya	L	M	MH
Fatka	L	M	MH	Feytroun	L	ML	M	Ghazir	ML	M	MH
Ghbaleh Kesrouane	L	M	MH	Ghedrass	L	ML	M	Ghosta	L	M	MH
Ghynéh	L	M	MH	Harharaya w Kattine	L	M	MH	Harissa Kesrouane	L	M	H
Hayata	L	M	MH	Hosein	L	ML	M	Hrajel	L	M	MH
Jdeideh Ghazir	L	M	MH	Jeita	L	M	MH	Jounieh Ghadir	ML	M	MH
Jounieh Haret Sakhr	M	M	MH	Jounieh Salel Alma	M	M	MH	Jounieh Sarba	M	M	MH
Jouret Bedrane	L	M	MH	Jouret Mhad	L	ML	MH	Jouret Termos	L	M	MH
Kfar Debiane	L	M	MH	Kfar Tay Kesrouane	VL	ML	MH	Kfar Yassine	M	M	MH
Kfour Kesrouane	L	M	MH	Kharayeb Nahr Ibrahi	L	M	MH	Klayaat Kesrouane	L	M	MH
Maarab	L	M	MH	Maaysra Kesrouane	L	M	MH	Mayrouba	L	M	MH
Mazraat Er-Ras	ML	M	MH	Mazraat Mrah El-Mir	L	M	MH	Mchaa El Ftouh	L	M	MH
Mchaa Faraya	L	M	MH	Mchaa Kfar Dibiane	L	M	MH	Mghaer	L	ML	M
Mradiyah	L	M	MH	Nahr Ed-Dahab	L	L	M	Nammoura Kesrouane	L	M	MH
Ouata El Jaouz	L	M	M	Ouata Sillam	M	M	MH	Raachine	L	ML	MH
Rayfoun	L	M	MH	Safra Kesrouane	M	M	MH	Shayle Kesrouane	L	M	MH
Tabarja	M	M	MH	Yahchouch	L	M	M	Zaaytreh	L	M	MH
Zeytoun	L	M	MH	Zouk Mikael	M	M	MH	Zouk Mosbeh	M	M	MH

## Baalbek\_Hermel

### Baalbek

Municipality	08-Dec	09-Dec	10-Dec	Municipality	08-Dec	09-Dec	10-Dec	Municipality	08-Dec	09-Dec	10-Dec
Aadous	ML	M	MH	Aamchki	M	M	MH	Aarsal	M	MH	MH
Ain Baalbek	M	M	MH	Ain Bourday	M	M	MH	Ain El-Benye	M	M	MH
Ain El-Jaouz Baalbek	M	M	H	Ain El-Siya Chadoura	M	MH	MH	Al Khodr Baalbek	ML	M	MH
Al Nabi Chit	ML	M	MH	Aynata Baalbek	M	M	MH	Baalbek	M	M	MH
Bachwat	L	ML	M	Barqa	L	M	M	Bednayel Baalbak	M	M	MH
Beit Chama	ML	M	MH	Bijjaje	M	M	MH	Bouday	ML	ML	M
Brital	M	M	MH	Btadi	L	M	MH	Chaat	M	M	MH
Chaibe	M	M	MH	Chlifa	ML	M	MH	Chmestar	ML	M	MH
Dar El-Oussa	L	M	MH	Deir El-Ahmar	L	M	MH	Deir Mar Maroun Baal	M	MH	MH
Douris	ML	M	MH	Fakiha	M	M	MH	Hadath Baalbek	ML	M	MH
Ham	M	M	MH	Haour Taala	ML	M	MH	Hizzine	ML	M	MH
Hlebta	L	M	MH	Hosh Barada	ML	M	MH	Hosh El Dahab	ML	M	MH
Hosh El Snid	ML	M	MH	Hosh El-Nabi	ML	M	MH	Hosh El-Rafiq	ML	M	MH
Hosh Tal Safiya	ML	M	MH	Hrebta	ML	M	MH	laat	ML	M	MH
Jebaa	M	M	MH	Jenta	ML	M	MH	Kfar Dabach	ML	M	MH
Kfar Dane	ML	M	MH	Khraibeh El-Hermel	L	M	MH	Khreibet Baalbek	ML	M	MH
Kneisset Baalbek	ML	M	MH	Labueh	M	M	MH	Maarboun	M	M	MH
Majdaloun	ML	M	MH	Maqneh	ML	M	MH	Mazraat Beit Mcheik	M	M	H
Misraya	ML	M	MH	Moqraq	M	M	MH	Nabha El-Damdoum	M	M	MH
Nabi Chbay	M	M	MH	Nabi Osman	M	M	MH	Nahleh baalbek	M	MH	MH
Ouadi El-Oss	L	M	MH	Qaa Baayoun	M	M	MH	Qaa Jouar Maqiye	M	M	MH
Qaa Ouadi El-Khanzir	M	M	MH	Qah Baalbek	M	M	MH	Qarha Baalbek	ML	M	MH



Qsarnaba	ML	M	MH	Ram Baalbek	L	M	MH	Ras Baalbek El Sahl	M	M	MH
Ras Baalbek El-Charq	M	MH	MH	Riha	ML	M	MH	Saaide	ML	M	MH
Sbouba	ML	M	MH	Seriine El-Tahta	ML	M	MH	Slouqi	M	M	MH
Taiba Baalbek	ML	M	MH	Talia	ML	M	MH	Taraiya	ML	M	MH
Temnin El Fawqa	ML	M	MH	Temnin El-Tahta	ML	M	MH	Tfail	M	M	MH
Yahfoufa	M	M	MH	Yammouneh	ML	M	MH	Younine	M	M	MH
Zboud	M	M	MH								

## Hermel

Municipality	08-Dec	09-Dec	10-Dec	Municipality	08-Dec	09-Dec	10-Dec	Municipality	08-Dec	09-Dec	10-Dec
Charbine El-Hermel	L	M	M	Hermel Jbab	M	M	MH	Hermel	M	M	MH
Maaysra El-Hermel	L	M	M	Michaa Mrajhine	M	M	MH	Ouadi Faara	L	M	MH
Ras Baalbek - Ouadi	M	M	MH	Ras Baalbek El Gharb	M	M	MH	Zighrine	L	M	MH

## Akkar

### Akkar

Municipality	08-Dec	09-Dec	10-Dec	Municipality	08-Dec	09-Dec	10-Dec	Municipality	08-Dec	09-Dec	10-Dec
Aain Tinta	M	M	MH	Aaiyat	ML	M	MH	Aakkar El-Aatiqa	L	M	M
Aamar Akkar	M	M	MH	Aamar El Baykat	M	M	MH	Aamayer	ML	M	M
Aamriyet Akkar	ML	M	MH	Aandqet	L	M	M	Aarmeh	ML	M	MH
Aarqa	M	M	MH	Aawaynat	ML	M	MH	Aayoun Akkar	ML	M	MH
Abboudiye	ML	M	MH	Ain El-Zeit	M	M	MH	Ain Yaaqoub	L	M	MH
Akroum	L	M	M	Aridet Cheikh Zennad	M	M	H	Baldech w Mazraat Bal	ML	M	MH
Barcha	M	M	MH	Bardeh	ML	M	MH	Bebnine	M	M	MH
Beino	ML	M	MH	Beit Ayoub	ML	M	MH	Beit El-Haouch	M	M	H
Beit Mellat	ML	M	MH	Beit Younes	L	M	M	Berbara Akkar	M	M	MH
Berqayel	M	M	MH	Bezbina	L	ML	M	Bireh Akkar	ML	M	MH
Borj	ML	M	H	Bqerezla	M	M	MH	Bzal	L	M	MH
Chane	L	M	MH	Chaqdouf	ML	M	H	Charbila	ML	M	MH
Cheikh Mohammad	M	M	MH	Cheikh Taba Es-Sahl	M	M	MH	Cheikh Taba	ML	M	H
Cheikh Zennad	M	M	MH	Cheikhlar	ML	M	MH	Chir Hmairine	M	M	MH
Daghle	ML	M	MH	Dahr Laissine	M	M	MH	Darine	M	M	MH
Dawra	L	M	MH	Dawsa w Baghdadi	ML	M	MH	Dayret Nahr El-Kabir	ML	M	MH
Deir Dalloum	M	M	MH	Deir Jennine	ML	M	MH	Denbou	L	M	MH
Dibbabiyyeh	ML	M	MH	Douair Aadwiyeh	M	M	MH	Fassikine	M	M	MH
Fnaydek	L	M	M	Fraydes Akkar	ML	M	MH	Ghazayle	M	M	MH
Habchit	L	M	M	Hakour	M	M	MH	Halba	M	M	MH
Haouchab	M	M	H	Hayssat	M	M	MH	Haytla	M	M	MH
Hayzouq	ML	M	MH	Hedd	ML	M	MH	Hmaira Akkar	M	M	MH
Hmaiss Akkar	M	M	MH	Hnaider	M	M	MH	Hokr Ed-Dahri	M	M	MH
Hokr Etti	M	M	MH	Hokr Jouret Srar	M	M	MH	Houaich	L	M	MH
Hrar	ML	M	MH	Idbil	ML	M	MH	Ilal	M	M	MH
Janine	M	M	MH	Jdeidet El-Joumeh	M	M	H	Jdeidet El-Kaiteh	M	M	MH
Jebayel	M	M	MH	Kafr	L	M	MH	Kafr	M	M	MH
Karm Asfour	ML	M	MH	Kfar Melki Akkar	M	M	MH	Kfar Noun	L	M	MH
Kfarharra	M	M	MH	Khalsa	ML	M	MH	Kharnoubet Akkar	M	M	MH

Khirbet Daoud Aakkar	ML	M	MH	Khirbet El Remmane	ML	M	M	Khirbet Shar	ML	M	MH
Khoreybet El-Jindi	M	M	MH	Khreibet Aakkar	ML	M	MH	Kneisset Aakkar	M	M	MH
Kneisset Hnaider	M	M	MH	Knisse	M	M	MH	Kroum El-Aarab	M	M	MH
Kwachra	ML	M	MH	Kweykhath	M	M	MH	Machta Hammoud	ML	M	MH
Majdala	M	M	MH	Majdel Akkar	M	M	MH	Mar Touma	M	M	MH
Marlaya Melhem	M	M	MH	Mashha	ML	M	MH	Massoudiye	M	M	MH
Mazraat Beit Ghattas	M	M	MH	Mazraat En-Nahriye	ML	M	M	Mechmech	L	M	M
Memneh	L	L	M	Mhammara	M	M	MH	Mighraq Aakkar	M	M	MH
Minyara	M	M	MH	Moqayteh	M	M	MH	Mounjez	ML	M	MH
Msalla	M	M	MH	Mzeihmeh	ML	M	MH	Nfaiseh	M	M	MH
Noura Et-Tahta	ML	M	MH	Ouadi El-Haour	ML	M	MH	Ouadi El-Jamous	M	M	MH
Ouyoun El-Ghizlane	M	M	MH	Qaabarine	M	M	MH	Qabaait	L	ML	MH
Qachlaq	M	M	MH	Qantara Aakkar	ML	M	MH	Qarha Aakkar	M	M	MH
Qarqaf	M	M	MH	Qboula	ML	M	MH	Qleiaat Aakkar	M	M	MH
Qloud El-Baqie	M	M	MH	Qobaiyat Aakkar	L	M	M	Qobbat Chamrat	M	M	MH
Qorayat	L	M	M	Qornet Aakkar	L	M	MH	Qsair Aakkar	ML	M	MH
Rahbe	ML	M	MH	Rihaniyet Aakkar	M	M	MH	Rmah	ML	M	MH
Rmoul	M	M	MH	Saadine	M	M	MH	Sadaqa	ML	M	MH
Saidnaya	M	M	MH	Sammouniye	M	M	MH	Sayssoq	M	M	MH
Semmaqiye	M	M	MH	Semmaqli	M	M	MH	Sfinet El-Dreib	M	M	MH
Sfinet El-Qaitaa	ML	M	MH	Sindyanet Zeidane	L	M	MH	Souaisset Aakkar	ML	M	MH
Srar	M	M	MH	Tal Abbas El Gharby	M	M	MH	Tal Abbas El-Chargy	ML	M	MH
Tal Biret	M	M	MH	Tal Hmayra	M	M	MH	Tal Maayan Tal Kiri	M	M	MH
Tal Sibel	M	M	MH	Tallet Chattaha	ML	M	MH	Tikrit	ML	M	MH
Tleil	M	M	MH	Tshea	L	ML	M	Zawarib	ML	M	MH
Zouq El Hosniyeh	M	M	MH	Zouq El-Haddara	M	M	MH	Zouq El-Hbalsa	M	M	MH
Zouq El-Moqachrine	M	M	H								

## Sud

### Sour

Municipality	08-Dec	09-Dec	10-Dec	Municipality	08-Dec	09-Dec	10-Dec	Municipality	08-Dec	09-Dec	10-Dec
Aaiyeh	M	MH	H	Aalma El-Chaab	L	M	MH	Aaytit	M	MH	H
Abbassiyeh Sour	M	MH	MH	Abou Chech	ML	M	MH	Ain Abou Abdallah	M	MH	MH
Ain Baal	M	MH	H	Arzoun	M	M	MH	Aziyeh	L	M	H
Baflaya	M	MH	MH	Barich	M	MH	MH	Batouliyeh	M	MH	H
Bayad	M	MH	H	Bazouriyeh	M	MH	H	Bediass	M	MH	MH
Bestiyat	M	MH	H	Borj El Chemali	M	MH	MH	Borj En-Naqoura	ML	M	MH
Borj Rahhal	M	MH	MH	Boustane	ML	M	MH	Btaychiyeh	ML	M	MH
Chaaitiye	M	MH	H	Chameh	L	M	MH	Chehabiye	M	M	H
Chehour	L	M	MH	Chihine	ML	M	MH	Debaal Sour	M	MH	H
Deir Amess	ML	M	MH	Deir Kifa	M	M	H	Deir Qanoun El-Ain	M	MH	H
Deir Qanoun El-Naher	M	MH	MH	Derdghaiya	M	MH	MH	Dhayra	ML	M	MH
Halloussiyeh	M	MH	MH	Hamoul	L	M	MH	Hanaouey	M	MH	H
Henniye	M	MH	MH	Hmairi Sour	M	MH	MH	Iskandarouna Sour	ML	M	H
Jbal El Botom	ML	M	H	Jebbin	ML	M	MH	Jennata	M	MH	H
Jijim	L	M	MH	Jouaiya	M	MH	H	Kneisset Sour	M	MH	H

Maarake	M	MH	MH	Maaroub	M	MH	H	Majadel	M	MH	H
Majdalzoun	ML	M	MH	Mansouri Sour	M	M	MH	Marnba	L	M	MH
Marouahine	L	M	MH	Mazraat El-Zalloutiy	M	M	H	Mazraat Mechref	M	MH	H
Mazraat Tayr Semhat	L	M	MH	Mheilib	M	MH	MH	Neffakhiyeh	M	M	MH
Niha Sour	M	M	H	Ouadi Jilo	M	MH	H	Qana	M	MH	H
Qolaileh Sour	M	M	H	Rechknany	ML	M	H	Rmadiyeh	M	MH	H
Selha Sour	M	M	MH	Siddiqine	M	MH	H	Sour	M	MH	H
Srifa	M	M	MH	Tayr Debbe	M	MH	H	Tayr Felsay	M	MH	MH
Tayr Harfa	ML	M	MH	Touayri	ML	M	MH	Toura	M	MH	MH
Yanouh Sour	M	MH	MH	Yarine	ML	M	MH	Zebqine	L	M	MH

## Saida

Municipality	08-Dec	09-Dec	10-Dec	Municipality	08-Dec	09-Dec	10-Dec	Municipality	08-Dec	09-Dec	10-Dec
Aanqoun	M	M	MH	Aaqtanit	M	MH	MH	Aarab Ej-Jall	M	M	MH
Aarab Tabbaya	M	M	MH	Abra Saida	M	M	MH	Adloun	M	MH	MH
Adousiyeh	M	MH	MH	Ain-El-Deleb	M	M	MH	Arzai	M	MH	MH
Babliyeh	M	MH	MH	Barty	M	M	MH	Bissariyeh	M	MH	MH
Bnaafoul	M	MH	MH	Bqosta	M	M	MH	Bramiy --	M	M	H
Daoudiyeh	M	MH	MH	Dareb El-Sim	M	M	MH	Erkay	M	MH	MH
Ghassanieh	M	MH	H	Ghazieh	M	MH	MH	Hajeh	M	MH	MH
Haret Saida	M	M	MH	Hartiyeh	M	MH	MH	Hlaliye Saida	M	M	MH
Insariyat	M	MH	MH	Jazira Saida	M	MH	MH	Kafar Bit	M	M	MH
Kaoutariyet El-Siyad	M	MH	MH	Kfar Chellal	M	M	MH	Kfar Hatta Saida	M	M	MH
Kfar Milke Saida	M	M	MH	Khartoum	M	MH	MH	Khaziz	M	MH	MH
Khirbet Ed-Douair Sa	M	MH	MH	Khirbet El-Bassal	M	MH	MH	Khrayeb Saida	M	MH	MH
Loubieh	M	MH	MH	Maghdouche	M	MH	MH	Majdelyoun	M	M	H
Matariyet El-Choumar	M	MH	H	Matayriyeh	M	MH	MH	Mazraat 'Mseileh	M	MH	MH
Mazraat 'Snaiber	M	MH	MH	Mazraat Aarab Soukka	M	M	MH	Mazraat Deir Taqla	M	MH	MH
Mazraat El Yahoudiye	M	MH	MH	Mazraat El-Housseini	M	MH	MH	Mazraat El-Mhaydaleh	M	MH	MH
Mazraat El-Ouasta	M	MH	MH	Mazraat Jamjim	M	MH	H	Mazraat Kaoutariyet	M	MH	H
Mazraat Kfar Badda	M	MH	H	Mazraat Oussamiyat	M	MH	MH	Mazraat Sari	M	MH	MH
Mazraat Sinai	M	MH	MH	Meemariyeh	M	MH	MH	Merouaniyeh	M	MH	MH
Miyeh ou Miyeh	M	M	MH	Najjariyeh	M	MH	H	Qaaqiyat El-Snaouba	M	MH	MH
Qnarit	M	MH	MH	Qraiye Saida	M	M	MH	Saida Ed-Dekermane	M	M	MH
Saida El-Oustani	M	M	MH	Saida El-Qadimeh	M	M	MH	Saida Kefraya	M	M	MH
Saksakiyeh	M	MH	MH	Salhieh Saida	M	M	H	Sarafand	M	MH	MH
Sfenta	ML	M	MH	Tafahta	M	MH	H	Tanbourit	M	MH	MH
Tebna	M	MH	MH	Zaghdraiya	M	M	MH	Zeita	M	MH	MH
Zrariyeh	M	MH	MH								

## Jezzine

Municipality	08-Dec	09-Dec	10-Dec	Municipality	08-Dec	09-Dec	10-Dec	Municipality	08-Dec	09-Dec	10-Dec
Ain El-Mir (El Estab	M	M	MH	Anane	L	M	MH	Aramta	ML	M	MH
Ariya	L	M	MH	Aychiyeh	ML	M	MH	Azour	L	M	MH
Baba	L	M	MH	Baysour Jezzine	M	M	MH	Benoueteh Jezzine	ML	M	MH
Bhannine	L	M	MH	Bisri	L	M	M	Bkassine	L	M	MH
Bouslaya	L	M	M	Btedine El-Leqech	L	M	MH	Chbail	L	L	M
Choualiq Jezzine	M	M	MH	Dahr Ed-Deir	L	M	MH	Deir El Qattine	L	M	MH

Demachqiyeh	M	M	MH	Ghabbatiyeh	L	M	MH	Harf Jezzine	L	M	M
Hassaniyeh	M	M	MH	Haytouleh	M	M	MH	Haytura	L	M	MH
Hidab	ML	M	MH	Homsiyeh	L	M	MH	Jabal Toura	ML	M	MH
Jarmaq	M	M	MH	Jensnaya	M	M	MH	Jernaya	M	M	MH
Jezzine	ML	M	MH	Karkha	M	M	MH	Kfar Falous	M	M	MH
Kfar Houna	L	M	MH	Kfar Jarrah	M	M	MH	Lebaa	M	M	MH
Louayzet Jezzine	ML	M	MH	Machmouche	L	M	MH	Mahmoudiyeh Jezzine	M	M	MH
Maknounye Jezzine	L	M	M	Maraat Ouazaiyeh	ML	M	MH	Mazraat Daraya	L	M	MH
Mazraat El-Aarqoub	L	ML	M	Mazraat El-Mathane	L	M	M	Mazraat El-Rahbane	L	M	M
Mazraat Khallet Khaz	L	M	MH	Mazraat Louzid (Loua	L	L	M	Mazraat Qrouh	ML	M	MH
Mazraat Tamra	M	M	MH	Mazraat Zighrine Jez	L	M	M	Mazraat	L	M	M
Mharbiyeh	M	M	MH	Midane Jezzine	L	M	MH	Mjeydel Jezzine	M	M	MH
Mlikh	L	M	MH	Mrah El-Hbasse	M	M	MH	Ouadi Baanqoudaine	M	M	MH
Ouadi El-Laymoun	M	M	MH	Ouardiyeh	VL	L	M	Qabaa Jezzine	L	M	MH
Qatrani	L	ML	M	Qaytouleh	L	M	MH	Qtaleh Jezzine	L	M	MH
Rihane Jezzine	ML	M	MH	Rimat	ML	M	MH	Roum	L	M	MH
Roummanet	ML	M	MH	Sabbah	L	M	MH	Saydoun	L	M	MH
Sfaray	L	M	MH	Snaya	L	M	MH	Sojoud	L	M	MH
Srayri	ML	M	MH	Taaid	L	M	MH	Wadi Jezzine	L	M	M
Zhalta	L	M	MH								

## Bekaa

### West Bekaa

Municipality	08-Dec	09-Dec	10-Dec	Municipality	08-Dec	09-Dec	10-Dec	Municipality	08-Dec	09-Dec	10-Dec
Aammiq BG	L	ML	MH	Ain El Tineh BG	ML	M	MH	Ain Zebdeh	ML	M	MH
Ana	VL	ML	M	Aytanit	L	M	MH	Baaloul BG	L	M	MH
Bab Mareh	ML	M	MH	Chouberqiye Aammiq	L	M	MH	Dakoue	ML	M	MH
Deir Ain El-Jaouze	ML	M	MH	Deir Tahniche	VL	ML	MH	Ghaza	L	M	MH
Harime El-Soughra	ML	M	MH	Hoch Harimeh	ML	M	MH	Jazira BG	ML	M	MH
Jib Jennine	L	M	MH	Kamed-El-Laouz	L	M	MH	Kefraya BG	VL	L	M
Khiara El Atika	L	M	MH	Khiara	ML	M	MH	Khirbet Qanafar	L	M	MH
Lala	L	M	MH	Lebbaya BG	ML	M	MH	Loussa	M	M	MH
Machghara	ML	M	MH	Manara (Hammar) BG	L	M	M	Mansoura BG	L	ML	MH
Marej BG	ML	M	MH	Maydoun	ML	M	MH	Ouaqf BG	ML	M	MH
Qaraaoun	ML	M	MH	Qelya	M	M	MH	Raouda (Istabel)	ML	M	MH
Saghbine	L	ML	MH	Sohmor	ML	M	MH	Soltan Yacoub el Ara	ML	M	MH
Souairy	ML	M	MH	Sultan Yaacoub	ML	M	MH	Tal Znoun	VL	ML	MH
Yehmor BG	ML	M	MH	Zilaya	ML	M	MH				

### Zahle

Municipality	08-Dec	09-Dec	10-Dec	Municipality	08-Dec	09-Dec	10-Dec	Municipality	08-Dec	09-Dec	10-Dec
Aanjar (Haouch Mouss	ML	M	MH	Ablah	ML	M	MH	Ain Kfarzabad	M	M	MH
Ali-El-Nahri	ML	M	MH	Bar Elias	M	M	MH	Bouarej	M	M	MH
Cheberqiyet Tabet	M	M	MH	Chtaura	M	M	MH	Deir El Ghazal	M	M	MH
Delhamiyet Zahle	M	M	MH	Ferzol	ML	M	MH	Haouch El-Ghanam	ML	M	MH
Haouch Es-Siyadeh	L	M	MH	Haouch Hala	ML	M	MH	Haouch Mandara	ML	M	MH

Haouch Qayssar	ML	M	MH	Hezerta	M	M	MH	Hosh Moussa	M	M	MH
Jdita	M	M	MH	Kfarzabad	M	M	MH	Ksara	M	M	MH
Majdel Aanjar	ML	M	MH	Makssi	ML	M	MH	Massa	M	M	MH
Mazraat Er-Remtaniye	M	M	MH	Mrayjat Zahle	M	M	MH	Mzaraa Zahle	ML	M	MH
Nabi Ayla	ML	M	MH	Nasriyet Rizk	ML	M	MH	Nasriyet Zahle	ML	M	MH
Niha Zahle	ML	M	MH	Ouadi Ed-Deloum	M	M	MH	Ouadi El-Arayech	ML	M	MH
Qaa El Rim	M	M	MH	Qab Elias	ML	M	MH	Qousaya	M	M	MH
Rhit	M	M	MH	Riyak	M	M	MH	Saadnayel	M	M	MH
Taal El-Akhdar	ML	M	MH	Taalbeya	M	M	MH	Taanayel	M	M	MH
Talamara	ML	M	MH	Tcheflik Edde Haouch	ML	M	MH	Tcheflik Qiqano	ML	M	MH
Terbol Zahle	M	M	MH	Touaite Zahle	M	M	MH	Zahle Aradi	M	M	MH
Zahle El-Berbara	M	M	MH	Zahle El-Maallaqa	M	M	MH	Zahle El-Midane	M	M	MH
Zahle Er-Rassiye	M	M	H	Zahle Haouch El-Ouma	M	M	MH	Zahle Haouch El-Ouma	M	M	MH
Zahle Haouch Ez-Zara	M	M	MH	Zahle Maalaqa Aradi	ML	M	MH	Zahle Mar Antonios	M	M	MH
Zahle Mar Elias	M	M	MH	Zahle Mar Gerios	M	M	MH	Zahle Saydet En-Naja	M	M	MH
Zebdoul	ML	M	M								

## Rachaiya

Municipality	08-Dec	09-Dec	10-Dec	Municipality	08-Dec	09-Dec	10-Dec	Municipality	08-Dec	09-Dec	10-Dec
Ain Arab Rachaiya	L	M	MH	Ain Ata	ML	M	M	Ain Harche	ML	M	MH
Aqabe Rachaya	ML	M	MH	Ayha	M	M	MH	Ayta El Fokhar	ML	M	MH
Bakifa Rachaya	ML	M	MH	Bakka	ML	M	MH	Beit Lahya	ML	M	MH
Bireh Rachaiya	L	M	MH	Daher El Ahmar	ML	M	MH	Deir El-Achayer	ML	M	M
Heloua Rachaiya	ML	M	M	Hoch El Qannabeh Rac	L	M	M	Kaoukaba Bou Arab	ML	M	M
Kfar Danis	ML	M	MH	Kfar Mechki	ML	M	MH	Kfar Qouq	L	M	M
Kherbet Rouha	L	M	MH	Majdel Balhiss	ML	M	MH	Mdoukha	L	M	MH
Mhaydseh Rachaiya	ML	M	MH	Nabi Safa	ML	M	MH	Rachaiya	ML	M	MH
Rafid Rachaiya	ML	M	MH	Selsata (Mazraat Dei	L	ML	M	Tannoura	M	M	MH
Yanta	L	M	M								

## Beyrouth

### Beyrouth

Municipality	08-Dec	09-Dec	10-Dec	Municipality	08-Dec	09-Dec	10-Dec	Municipality	08-Dec	09-Dec	10-Dec
Achrafieh	M	M	MH	Ain el-Mreisse	M	M	H	Bachoura	M	M	MH
Beirut Central Distr	M	M	MH	Marfai	M	M	MH	Mazraa	M	M	MH
Medaouar	M	M	MH	Minet el-Hosn	M	M	MH	Mwssaitbeh	M	M	MH
Ras Beirut	M	M	H	Rmeil	M	M	MH	Saifi	M	M	MH
Zqaq el-Blat	M	M	MH								