

# Lebanon Fire Risk Bulletin



CIVIL DEDEFENCE

**Refer to cadast table condition.**

**Please note that the indicated temperature is at 2 meters height from the ground.**

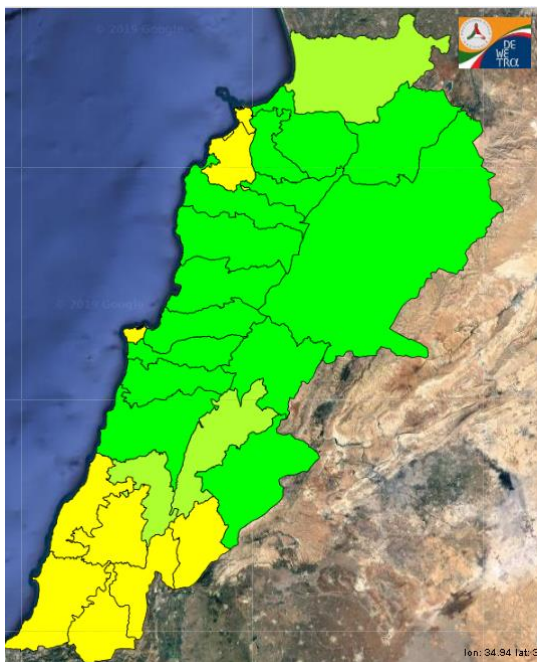
General description of potential fire risk situation

Symbol	Level of risk	Meaning and actions
VL	Very low	Very low fire risk. Controlled burning operations can be hardly executed due to high fuel moisture content. Normally wildfires self-extinguish.
L	Low	Low fire risk. Controlled burning operations can be executed with a reasonable degree of safety.
ML	Medium low	Medium-low fire risk. Controlled burning operations can be executed in safety conditions. All the fires need to be extinguished.
M	Medium	Medium fire risk. Controlled burning operations would be avoided. All the fires need to be very well extinguished.
M	Medium high	Controlled burning is not recommended. Open flame will start fires. Cured grasslands and forest litter will burn readily. Spread is moderate in forests and fast in exposed areas. Patrolling and monitoring is suggested. Fight fires with direct attack and all available resources.
H	High	Ignition can occur easily with fast spread in grass, shrubs and forests. Fires will be very hot with crowning and short to medium spotting. Direct attack on the head may not be possible requiring indirect methods on flanks. Patrolling and monitoring the territory is highly suggested.
E	Extreme	Ignition can occur also from sparks. Fires will be extremely hot with fast rate of spread. Control may not be possible during day due to long range spotting and crowning. Suppression forces should limit efforts to limiting lateral spread. Damage potential total. Patrolling and monitoring the territory is highly suggested.

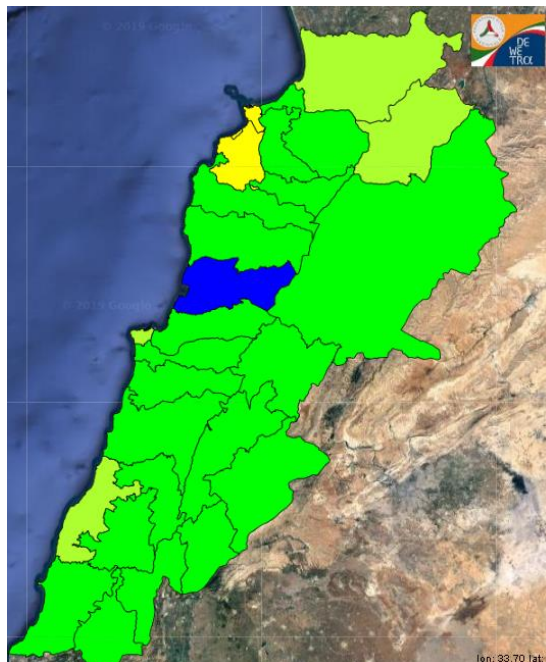
**Beirut, 8 December 2019**

# FIRE RISK INDEX

7 December 2019



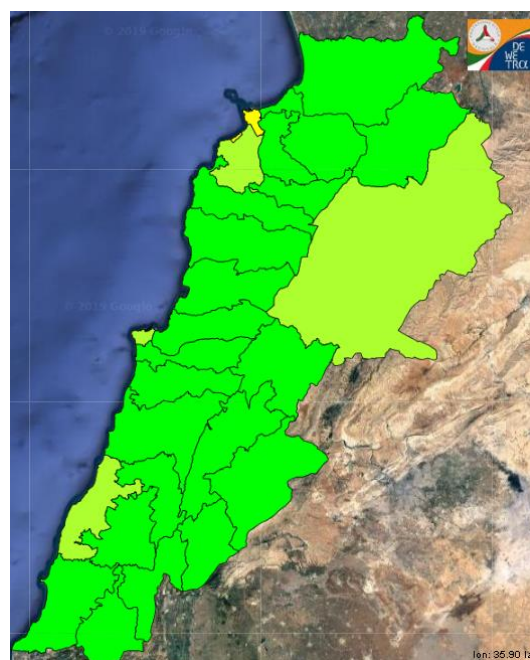
8 December 2019



9 December 2019



10 December 2019



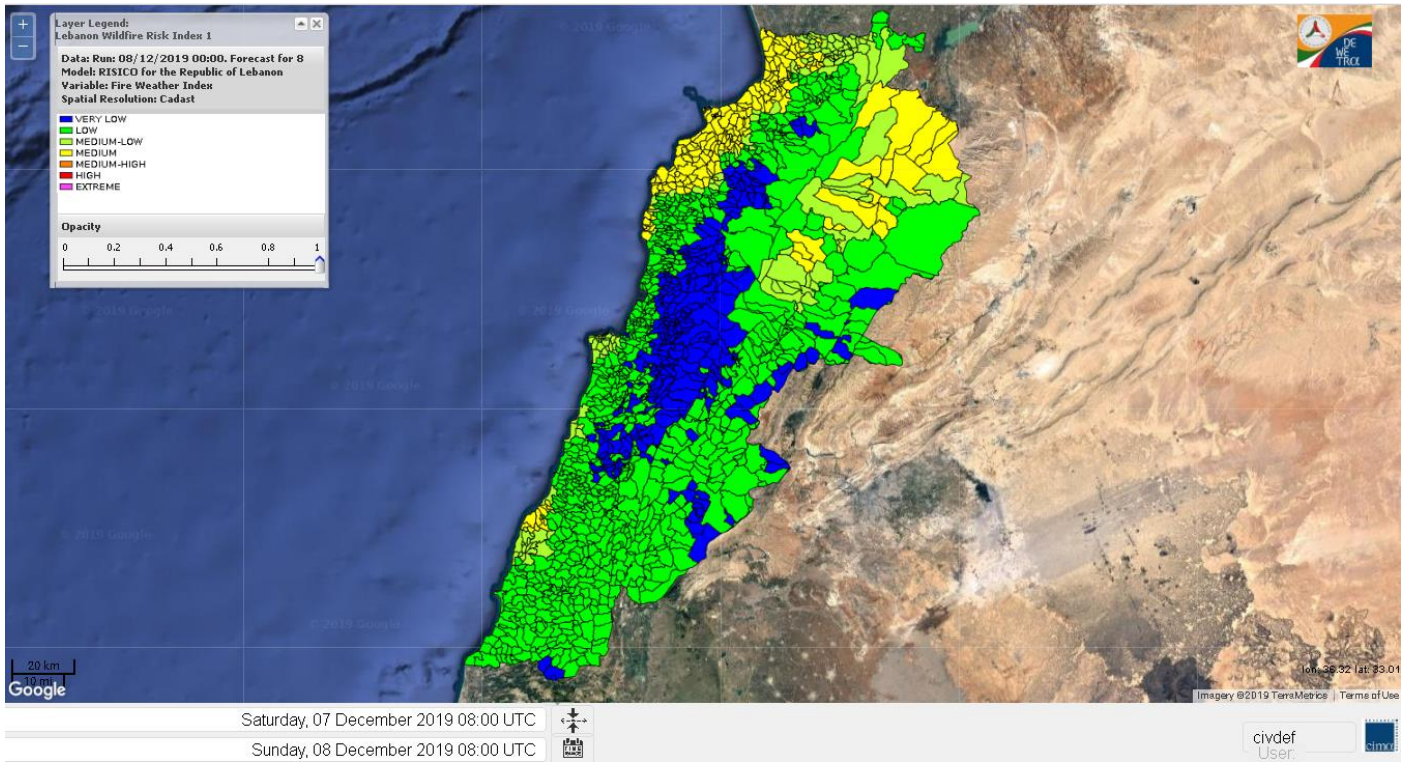
**Layer Legend:**  
**Lebanon Wildfire Risk Index 1**

**Data: Run: 08/12/2019 00:00. Forecast for 8**  
**Model: RISICO for the Republic of Lebanon**  
**Variable: Fire Weather Index**  
**Spatial Resolution: Caza**

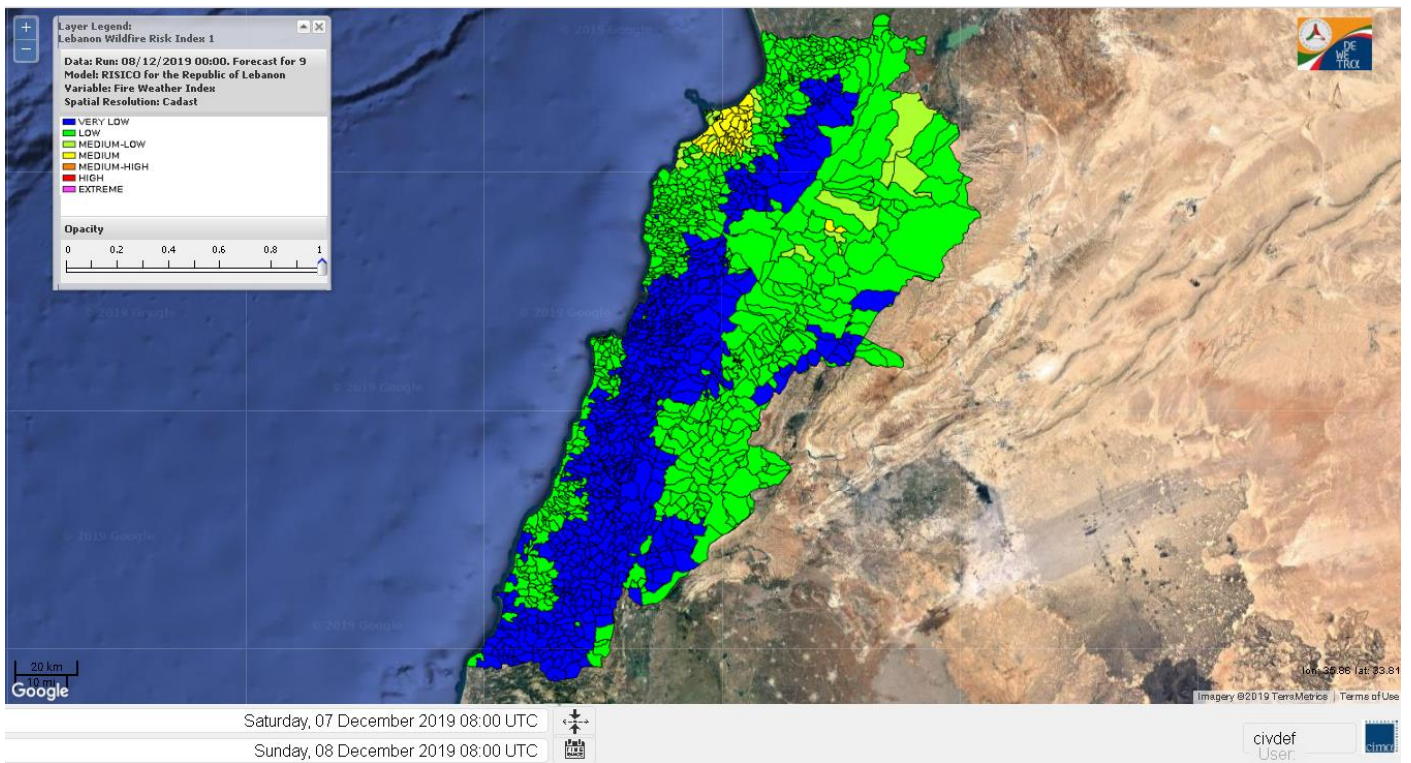
- VERY LOW
- LOW
- MEDIUM-LOW
- MEDIUM
- MEDIUM-HIGH
- HIGH
- EXTREME



# Lebanon for 8 December 2019

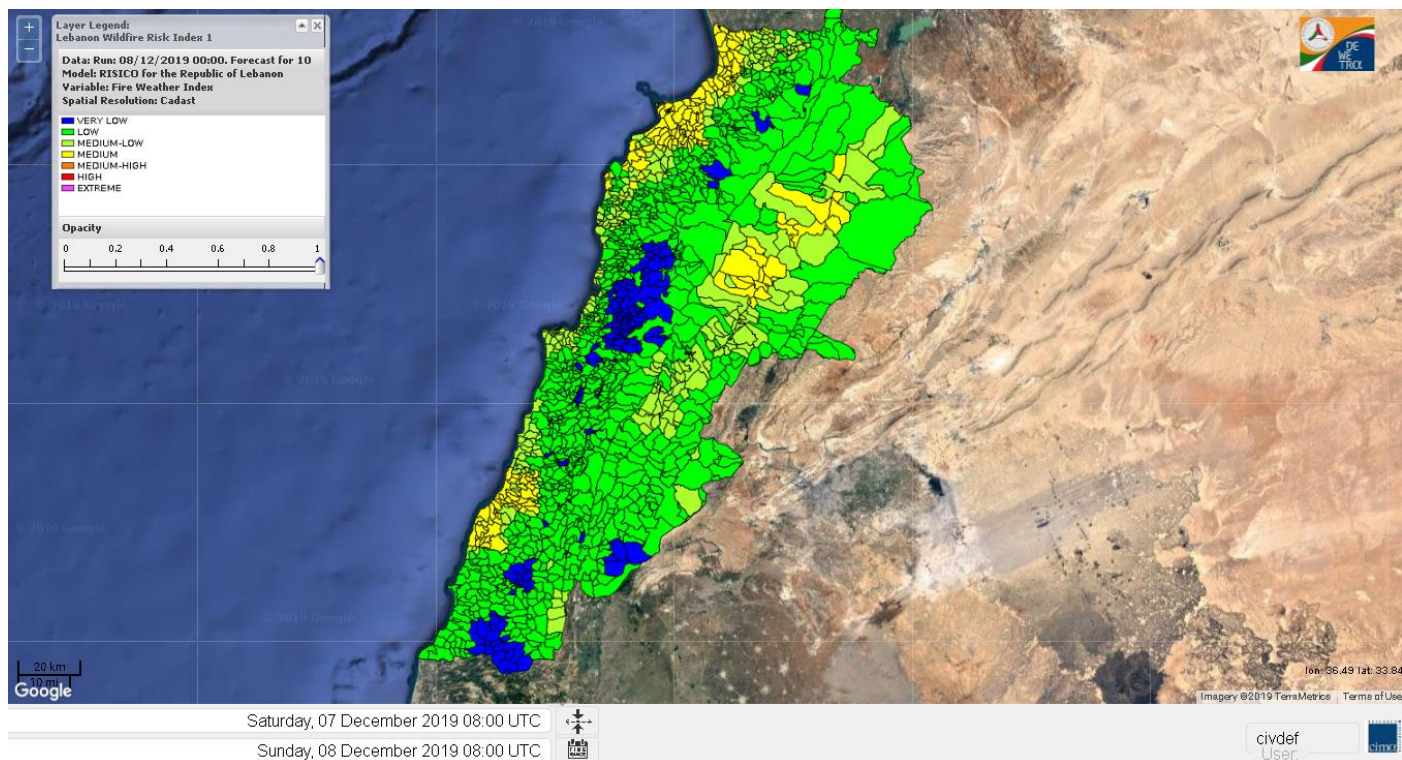


# Lebanon for 9 December 2019





# Lebanon for 10 December 2019

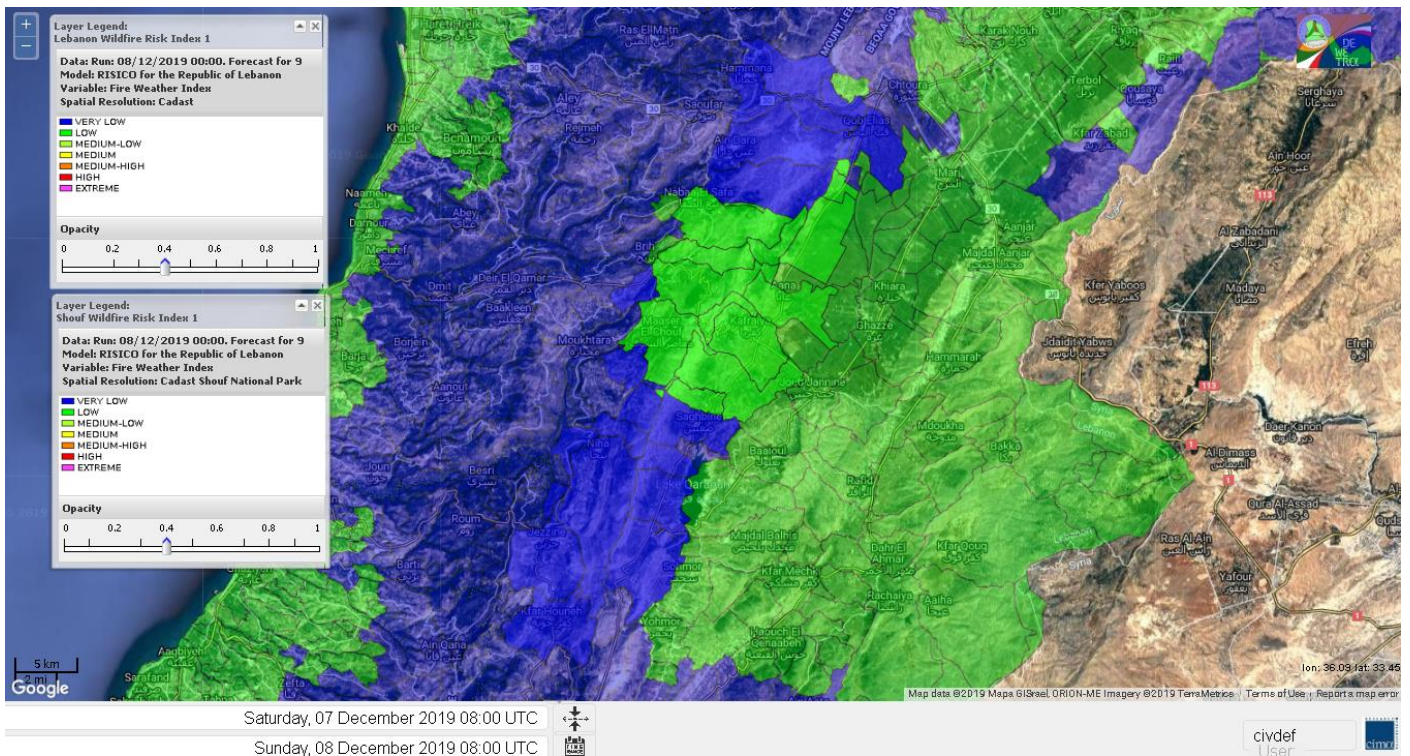


# Shouf Biosphere Reserve Forecast for 8 December 2019

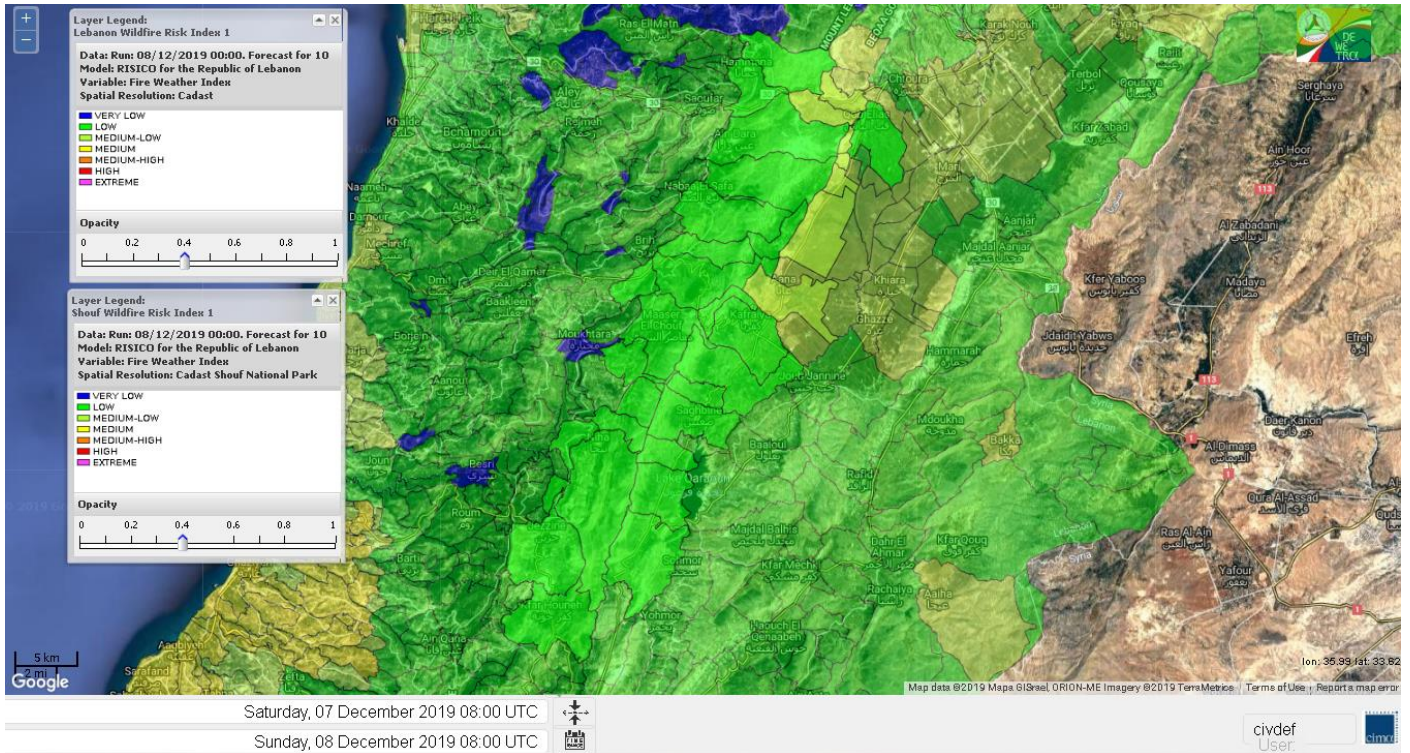




# Shouf Biosphere Reserve Forecast for 9 December 2019

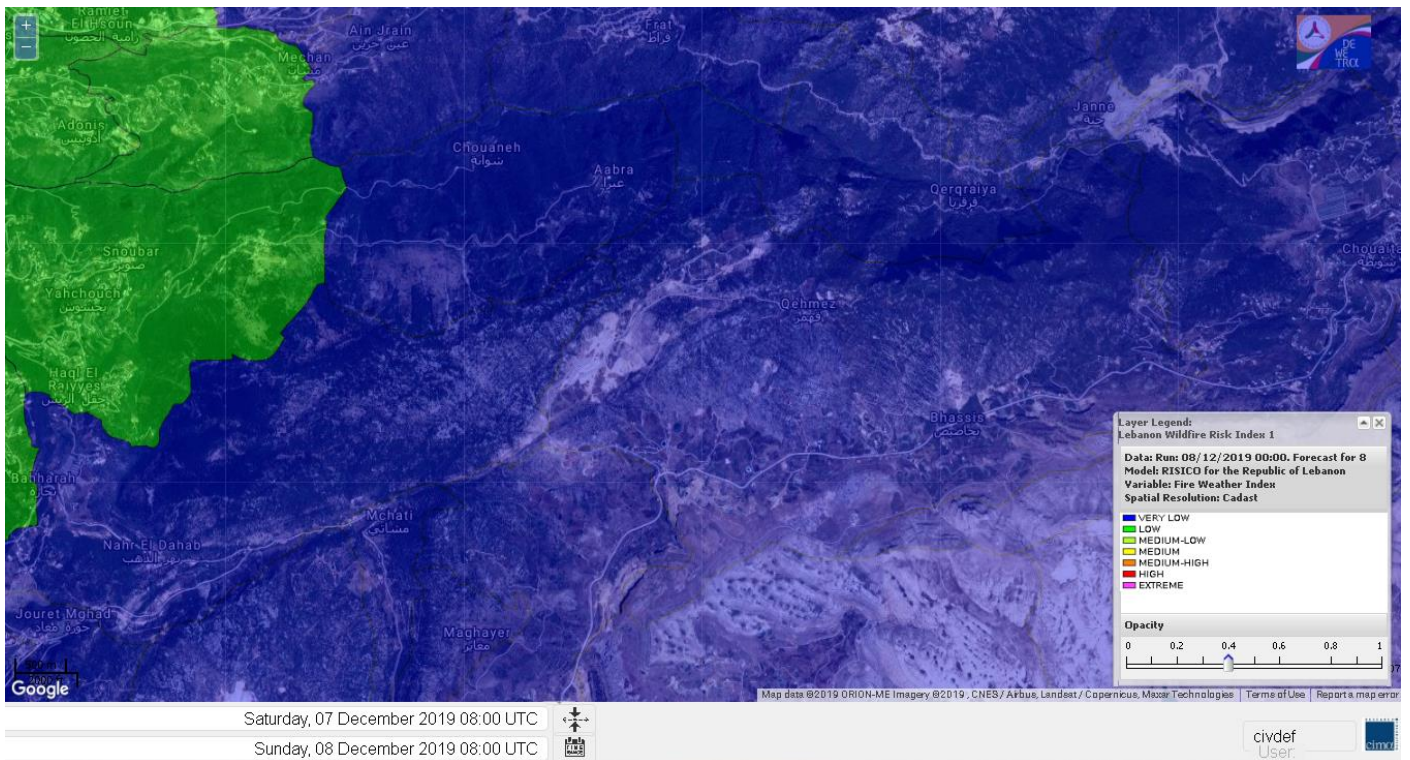


# Shouf Biosphere Reserve Forecast for 10 December 2019

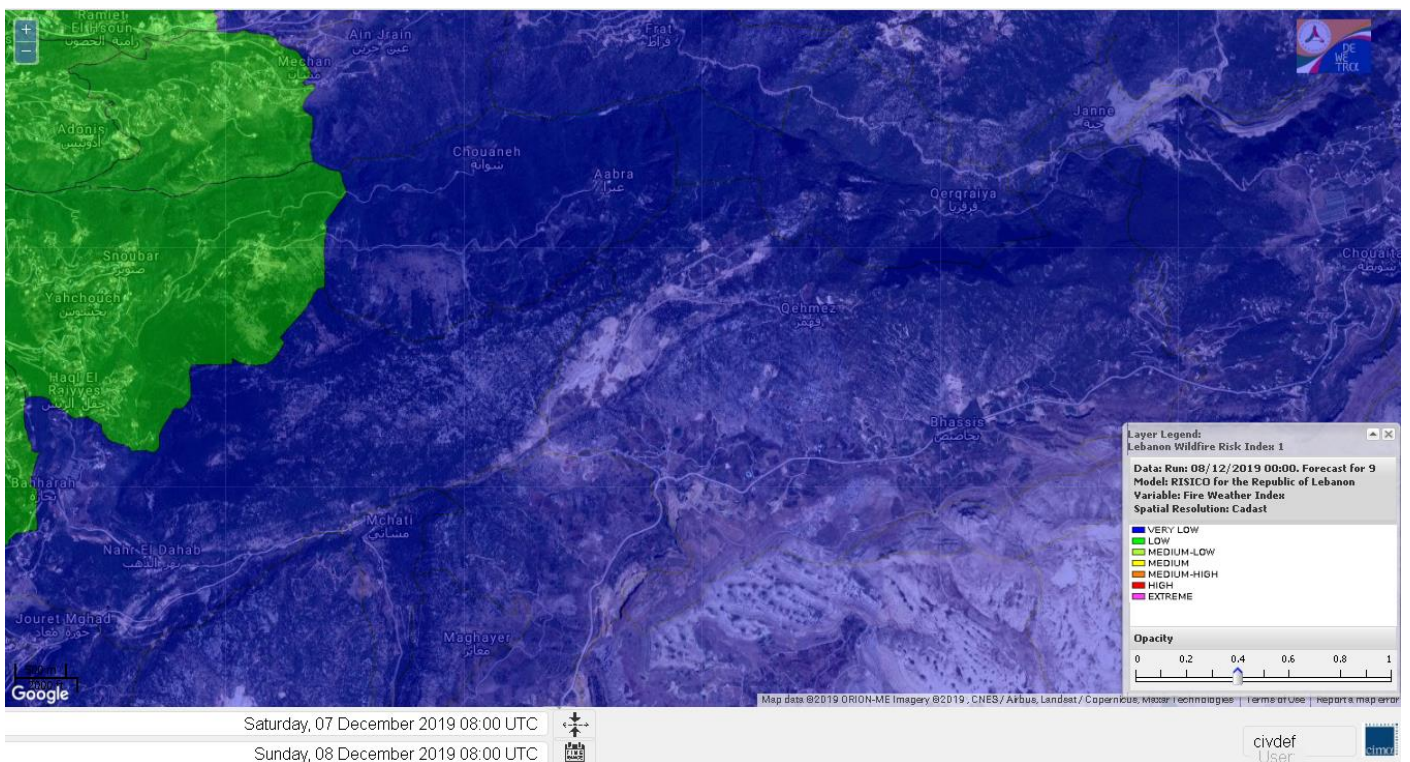




# Jabal Moussa Reserve Forecast for 8 December 2019

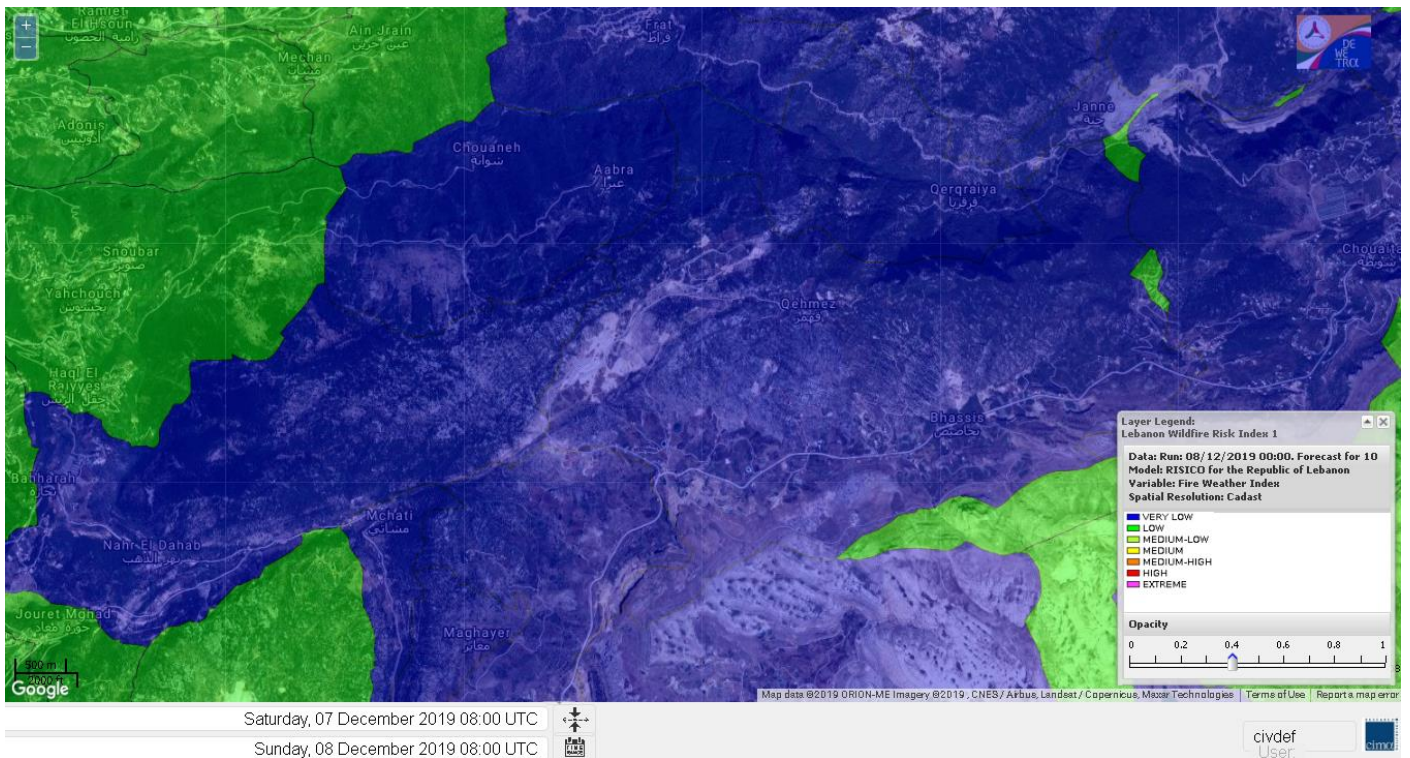


# Jabal Moussa Reserve Forecast for 9 December 2019



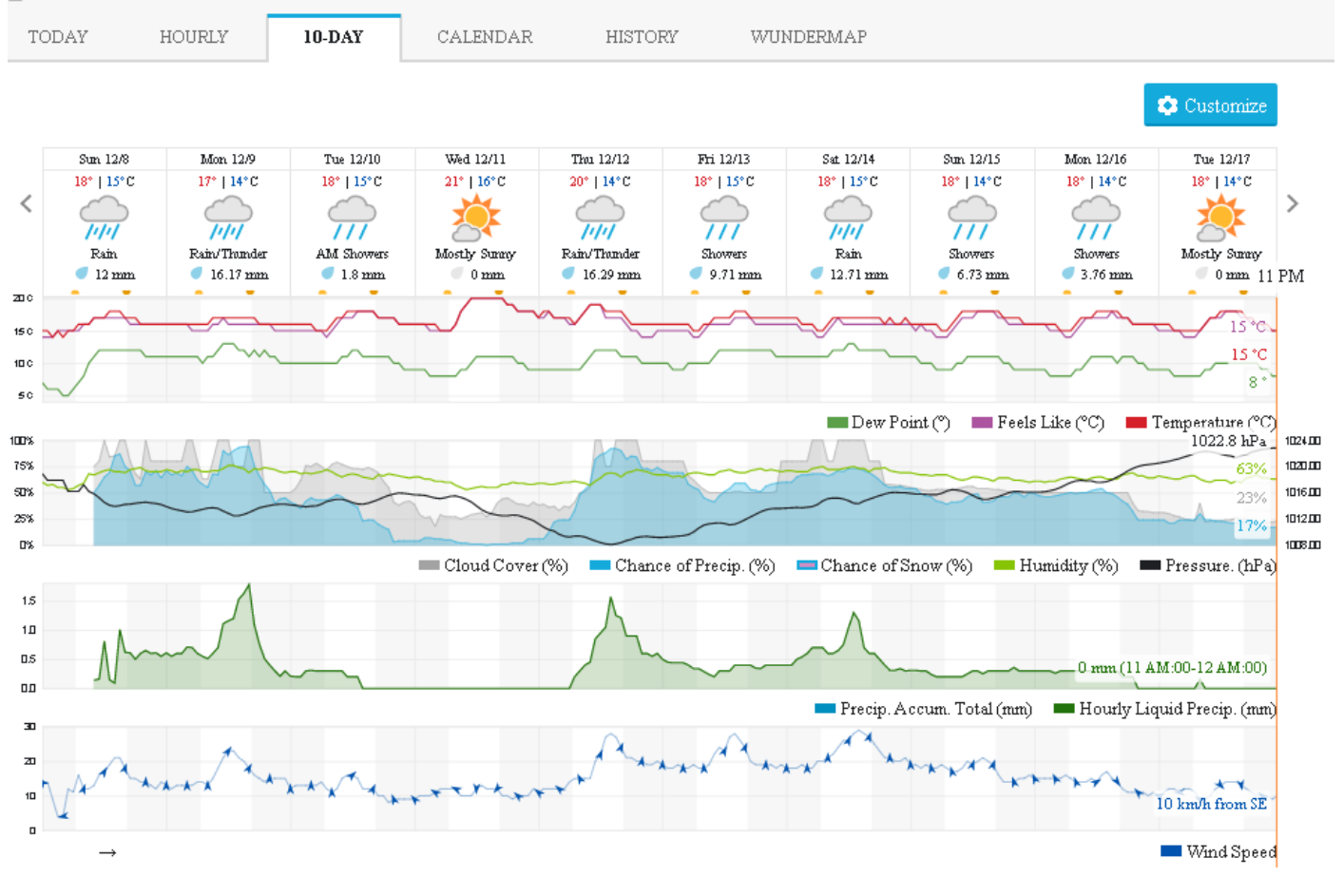


# Jabal Moussa Reserve Forecast for 10 December 2019



## Beirut, Beirut Governorate, Lebanon 10-Day Weather Forecast

16° ACHRAFIEH,RIZK STATION | CHANGE



Nord

## Koura

Municipality	08-Dec	09-Dec	10-Dec	Municipality	08-Dec	09-Dec	10-Dec	Municipality	08-Dec	09-Dec	10-Dec
Aaba	M	L	ML	Afsaddiq	M	L	ML	Ain Ekrine	M	L	ML
Amioun	M	L	ML	Anfeh	M	ML	M	Badbhoun	M	L	M
Barghoun	M	L	M	Barsa	M	ML	M	Batroumine	M	M	M
Bdebba	M	ML	M	Bechmizine	M	L	ML	Bednayeil-Koura	M	L	ML
Bhabbouch El-Koura	ML	L	ML	Bkeftine	M	M	M	Bnehran	ML	L	L
Bqaiia El-Koura	M	M	M	Bsarma	M	L	ML	Btaaboura	M	L	M
Bterram	M	L	ML	Btouratij	M	M	M	Bziza	M	L	ML
Dar Beechtar	M	L	ML	Dar Chmezzine	M	L	ML	Deddeh	M	M	M
Deir El-Balamand	M	L	ML	Fih	M	ML	M	Hraiche	M	ML	ML
Ijdaabrine	M	L	ML	Kaftoun	M	L	ML	Kefraya El-Koura	M	L	M
Kfarakka	M	L	ML	Kfarhata	M	L	ML	Kfarhazir	M	L	M
Kfarkahel	M	ML	M	Kfarsaroun	M	L	ML	Kosba	M	L	ML
Mejdel el-Koura	ML	L	L	Nakhle	M	M	M	Qalhat	M	L	ML
Ras Masqa	M	M	M	Rechdibbine	ML	L	L	Zakroun	M	L	ML
Zgharta El-Mtaouile	L	L	L								

## Bcharre

Municipality	08-Dec	09-Dec	10-Dec	Municipality	08-Dec	09-Dec	10-Dec	Municipality	08-Dec	09-Dec	10-Dec
Aabdine	VL	VL	L	Bane	VL	VL	L	Barhelioun	L	L	L
Bazoune	VL	VL	L	Becharre	L	VL	L	Beit Menzer	VL	VL	L
Billa	VL	VL	L	Blaouza	VL	VL	L	Bqaa Kafra	VL	VL	L
Bqerqacha	VL	VL	L	Breissat	VL	VL	L	Dimane	VL	VL	L
Hadath El Jobbeh	VL	VL	L	Hadchit	VL	VL	VL	Hasroun	VL	VL	L
Mazraat Aassaf	L	VL	L	Mazraat Bani Saab	VL	VL	L	Mchaa El-Jobbeh	VL	VL	L
Metrit	ML	L	L	Moghr El-Ahoual	VL	VL	L	Ouadi Qannoubine	VL	VL	L
Qanat	VL	VL	L	Qnayouer	VL	VL	L	Tourza	VL	VL	L

## Batroun

Municipality	08-Dec	09-Dec	10-Dec	Municipality	08-Dec	09-Dec	10-Dec	Municipality	08-Dec	09-Dec	10-Dec
Aabrine	M	L	L	Aalali	L	L	L	Aartz	L	L	L
Abdelli	L	L	L	Ajdabra	ML	L	L	Assia	L	L	L
Basbina	L	L	ML	Batroun	M	L	M	Bcheleh	VL	L	L
Bechtoudar	VL	L	L	Beit Chlala	VL	L	L	Beit Kassab	L	L	L
Bijdarfil	ML	L	ML	Bqesmaya	M	L	L	Chatine	VL	VL	L
Chebtin	L	L	L	Chekka	M	ML	M	Daael	L	L	L
Dahr Abi Yaghi	L	L	L	Daraya El-Batroun	L	L	ML	Deir Billa	L	L	L
Deir Kifane	L	L	ML	Deir Mar Youhanna EL	VL	L	L	Deir Mar Youssef Jra	L	L	L
Douma	VL	L	L	Douq	L	L	L	Eddeh El-Batroun	L	L	ML
Ftahat El-Batroun	L	L	L	Ghouma	L	L	ML	Hadatoun	VL	L	L
Hamat	M	L	L	Harbouna	L	L	L	Hardine	L	L	L
Helta	L	L	L	Hery	M	L	M	Jebbla	L	L	L
Jrabta El-Batroun	L	L	ML	Jrane El-Batroun	L	L	M	Kfar Aabida	ML	L	ML
Kfar Halda	VL	L	L	Kfarb Shlaimane	VL	L	L	Kfarhatna	L	L	L
Kfarhay	M	L	M	Kfarhelos	M	L	L	Kfifane	L	L	ML
Kfour El Arabi	VL	VL	L	Koubba	M	L	ML	Kour	L	L	ML



Mar Mama	L	L	L	Masrah	L	L	L	Mehmarch	L	L	L
Mrah Chdid	L	L	L	Mrah El Ziyat	L	L	ML	Mrah El-Hajj	VL	L	L
Nahle El-Batroun	VL	L	L	Niha El-Batroun	VL	VL	L	Oujh El-Hajjar	M	L	ML
Ouata Houb	VL	VL	L	Qatnaaoun	M	L	ML	Racha	VL	L	L
Rachana	L	L	L	Rachkida	M	L	ML	Ram El-Batroun	VL	L	L
Ras Nahhach	M	L	L	Selaata	M	L	M	Sghar	L	L	ML
Smar Jbayl	L	L	ML	Sourat El-Batroun	L	L	L	Tannourine El-Faouqa	L	L	L
Tannourine Et-Tahta	VL	VL	L	Thoum	M	L	L	Toula El-Batroun	L	L	L
Zan	L	L	L								

## Zgharta

Municipality	08-Dec	09-Dec	10-Dec	Municipality	08-Dec	09-Dec	10-Dec	Municipality	08-Dec	09-Dec	10-Dec
Aachach	M	M	M	Aalma	M	M	M	Aarde	M	M	M
Aintourine	VL	VL	L	Arabet Qozhaya	VL	VL	L	Arde	M	M	M
Arjis	L	L	L	Asnoun	M	M	M	Ayto	VL	VL	L
Basloukit	VL	VL	VL	Bchannine	ML	L	ML	Besebeel	M	M	M
Bhairat Toula	VL	VL	VL	Bnachee	L	L	L	Boussit	M	M	M
Danha	M	M	M	Daraiya Zgharta	L	L	L	Deir Jdeide	M	M	M
Ehden	VL	VL	VL	Halan	ML	ML	ML	Hariq Zgharta	M	M	M
Houakir	ML	ML	M	Hraiqis	M	M	M	laal	M	M	M
Ijbaa	VL	VL	L	Karm Saddeh	VL	VL	L	Kfarchakhna	M	M	M
Kfardlaqous	M	M	M	Kfarfou	VL	VL	L	Kfarhata Zgharta	M	M	M
Kfarhoura	M	M	M	Kfarsghab	VL	VL	VL	Kfaryachit	M	M	M
Kfarzaina	M	M	M	Khaldiye	M	M	M	Mazraat Ajbeaa	M	M	M
Mazraat Et-Teffah	VL	VL	L	Mazraat Jneid	M	M	M	Mejdlaya Zgharta	M	M	M
Merh Kfarsghab	ML	L	ML	Miryata	M	M	M	Miziara	L	L	L
Mzraat Kefraya	ML	L	ML	Qorah Bach	M	M	M	Rachiine	M	M	M
Ras Kifa	L	L	L	Sakhra	M	M	M	Sebhel Zgharta	VL	VL	L
Serhel	VL	VL	L	Tallet Zgharta	M	M	M	Toula Zgharta	VL	VL	L
Zgharta	M	M	M								

## Minieh-Denniye

Municipality	08-Dec	09-Dec	10-Dec	Municipality	08-Dec	09-Dec	10-Dec	Municipality	08-Dec	09-Dec	10-Dec
Aasaymout	L	VL	L	Aaymar	L	L	L	Aazki	L	L	L
Ain El-Tineh-Miniyeh	VL	VL	L	Assoun	L	L	L	Bakhaaoun	L	L	L
Bchennata	L	VL	L	Bechehhara	L	ML	M	Beddawi	M	M	M
Behouaita	VL	VL	L	Beit El Foqss	VL	VL	L	Beit Haouik	VL	VL	VL
Beit Zoud	L	L	L	Bekaasafrine	L	VL	L	Borj El Yahoudiyeh	M	M	M
Bqarsouna	L	VL	L	Btermaz	L	L	L	Debaael	VL	VL	L
Deir Ammar	M	M	M	Deir Nbouh	ML	ML	M	Haouaret-Miniyeh	VL	VL	L
Haql el Azimeh	L	L	L	Harf El Siyad	L	L	L	Hazmiye-Miniyeh	VL	VL	L
Izal	L	L	L	Jarjour	L	L	M	Jayroun	VL	VL	VL
Kahf El-Malloul	L	L	ML	Karm El-Moher	L	L	L	Kfar Binine	VL	VL	L
Kfarchalane	L	L	L	Kfarhabou	L	L	ML	Kharroub-Miniyeh	L	L	L
Mazraat El-Kreme	L	L	ML	Mazraat Ketrane	L	L	L	Merkebtta	M	ML	M
Minyeh	M	M	M	Mrah El Sfirat	VL	VL	L	Mrah Sraj	L	L	L
Mrebbine	L	VL	L	Nabi Youcheaa	M	M	M	Nemrine	VL	VL	L
Qarhaiya	L	VL	L	Qarne	L	VL	L	Qarsita	VL	VL	L



Qattineh-Miniyeh	L	L	L	Qemmamine	VL	VL	VL	Qraine	VL	VL	L
Raouda-Aadoua	M	L	ML	Rihaniyet-Miniyeh	M	L	M	Sfireh	VL	VL	L
Sir Ed-Danniyeh	L	L	L	Tarane	L	L	L	Terbol-Miniyeh	M	M	M
Zaghartagrhrine	ML	ML	M	Zouq Bhannine	M	ML	M				

## Nabatiye

### Nabatiye

Municipality	08-Dec	09-Dec	10-Dec	Municipality	08-Dec	09-Dec	10-Dec	Municipality	08-Dec	09-Dec	10-Dec
Aabba	L	VL	L	Aazzi	L	VL	ML	Adchit El-Chqif	L	VL	L
Ain Bou Swar	L	VL	L	Ain Kana	L	VL	L	Ali El-Tahter	L	VL	L
Ansar	ML	VL	M	Arab Salim	L	VL	L	Arnoun	L	VL	L
Bfaroue	L	VL	L	Breyqaah	L	VL	L	Charqiyeh	L	VL	L
Choukine	L	VL	L	Deir El Zahrani	L	VL	L	Doueir El-Nabatiyeh	L	VL	L
Habbouch El-Nabatiye	L	VL	L	Hamra El-Nabatiyeh	L	VL	ML	Harouf El-Nabatiyeh	L	VL	L
Hmaile	L	VL	L	Houmin El Faouqa	L	VL	L	Houmin El Tahta	L	L	M
Jarjouh	L	VL	L	Jbaah El-Nabatiyeh	L	VL	L	Jebchit	L	VL	L
Kfar Djal El-Nabatiy	L	VL	L	Kfar Remmane	L	VL	L	Kfar Sir	L	VL	VL
Kfar Tebnit	L	VL	L	Kfarfila	L	VL	L	Kfour El-Nabatieh	L	VL	L
Mayfadoun	L	VL	L	Mazraat Bsaffour	L	VL	L	Mazraat Chalbaal	L	VL	L
Mazraat Dmoul	L	VL	L	Mazraat El Khreibeh	L	L	ML	Mazraat El-Bayad El-	L	VL	VL
Mazraat Kfarjaouz	L	VL	L	Mazraat Qalaat Meiss	L	VL	ML	Nabatiyeh El-Fawka	L	VL	L
Nabatiyeh Et-Tahta	L	VL	L	Namiriyeh	L	VL	L	Qaaqaiyet El Jisr	L	VL	VL
Qossaibeh El-Nabatiy	L	VL	VL	Roumine	L	L	M	Sarba El-Nabatieh	L	VL	L
Sir El-Gharbiyeh	L	L	L	Toul	L	VL	L	Yehmor El-Nabatiyeh	L	VL	L
Zaoutar El Charkiyeh	L	VL	L	Zaoutar El-Gharbiyeh	L	VL	L	Zebdine El-Nabatiyeh	L	VL	L
Zefta	L	VL	L								

### Hasbaiya

Municipality	08-Dec	09-Dec	10-Dec	Municipality	08-Dec	09-Dec	10-Dec	Municipality	08-Dec	09-Dec	10-Dec
Aain Jarfa	L	VL	VL	Abou Qamha	L	VL	L	Ain Qania	L	VL	VL
Bourghos	L	VL	L	Chebaa	L	VL	VL	Chouaya Hasbaya	L	VL	VL
Dellafeh	L	VL	L	Fardiss Hasbaiya	L	VL	L	Hasbaya	L	VL	L
Hbariyeh	L	VL	VL	Kaoukaba Hasbaiya	L	VL	L	Kfar Chouba	L	VL	VL
Kfar Hamam	L	VL	VL	Kfeir El-Zait	L	VL	L	Khalwat Hasbaya	L	VL	VL
Khreibet Hasbaiya	L	VL	L	Majidiyeh Hasbaiya	L	VL	L	Marj Ez-Zhour (Haouc	VL	L	L
Meri	L	VL	L	Mimass	L	VL	L	Rachaiya El-Fokhar	L	VL	L
Salaiyeb	L	VL	VL								

### Marjayoun

Municipality	08-Dec	09-Dec	10-Dec	Municipality	08-Dec	09-Dec	10-Dec	Municipality	08-Dec	09-Dec	10-Dec
Aalmane Marjaayoun	L	VL	L	Aamra	L	VL	L	Adayseh Marjaayoun	L	VL	ML
Adchit El-Koussair	L	VL	L	Ain Aarab Marjaayoun	L	VL	VL	Bani Haiyann	L	VL	L
Blatt Marjaayoun	L	VL	L	Blida	L	L	L	Borj El-Moulouk	L	VL	L
Boueyda Marjaayoun	L	VL	L	Deir Mimass	L	VL	L	Deir Siriane	L	VL	L
Dibbine	L	VL	L	Ebel El Saqi	L	VL	L	Houla	L	VL	ML
Houra	L	VL	L	Kfar Kila	L	VL	L	Khiam Marjaayoun	L	VL	L
Klayaa	L	VL	L	Majdel Selem	L	VL	L	Marjaayoun	L	VL	L



Markaba	L	VL	ML	Mays El-Jabal	L	VL	ML	Mazraat Doumiat	L	VL	L
Mazraat Sarada	L	VL	VL	Mhaibib	L	L	L	Qabrikha	L	VL	L
Qantara	L	VL	L	Rab El-Thalathine	L	VL	ML	Saouaneh Marjayoun	L	VL	L
Talloussa	L	VL	L	Taybeh Matjaayoun	L	VL	L	Touline	L	VL	L

## Bent Jbail

Municipality	08-Dec	09-Dec	10-Dec	Municipality	08-Dec	09-Dec	10-Dec	Municipality	08-Dec	09-Dec	10-Dec
Ain-Ebel	L	VL	VL	Aitaroun	L	L	L	Aynata Bint Jbeil	L	VL	L
Ayta El-Chaeb	VL	VL	VL	Ayta El-Jabal	L	VL	L	Beit Lif	L	VL	VL
Beit Yahoun	L	VL	L	Bint Jbeil	L	VL	L	Borj Qalaway	L	VL	VL
Braachit	L	VL	L	Chakra	L	VL	L	Debel	L	VL	VL
Deir Antar	L	VL	L	Froun	L	VL	VL	Ghandouriyeh Bint Jb	L	VL	VL
Hanine	L	VL	VL	Hariss	L	VL	L	Hdatha	L	VL	L
Jmeymeh	L	VL	L	Kafra Bint Jbeil	L	VL	VL	Kfar Dounine	L	VL	L
Khirbet Selm	L	VL	L	Kounine	L	VL	L	Maroun El Ras	L	VL	L
Qalaway	L	VL	L	Qaouzah	L	VL	VL	Qatmoun	VL	VL	VL
Ramya Bint Jbeil	L	VL	VL	Rchaf	L	VL	VL	Rmeich	VL	VL	VL
Safad Al Battikh	L	VL	L	Salhaneh	L	VL	VL	Serbine	L	VL	L
Sultanieh Bint Jbeil	L	VL	L	Tibnine	L	VL	L	Tiri	L	VL	L
Yaroun	L	VL	VL	Yater	L	VL	VL				

## Mont Liban

### Jbail

Municipality	08-Dec	09-Dec	10-Dec	Municipality	08-Dec	09-Dec	10-Dec	Municipality	08-Dec	09-Dec	10-Dec
Aabeydat	L	L	L	Aalita	VL	L	L	Aamchit	M	L	ML
Aarab El-Lahib	VL	VL	VL	Aarasta	VL	VL	L	Adonis Jbeil	VL	L	L
Afqa Jbeil	VL	VL	L	Ain El Delbeh Jbeil	VL	VL	L	Ain El-Ghouayba	VL	VL	VL
Ain Jrain	VL	VL	L	Ain Kfah	L	L	ML	Almat El Chemaliyat	VL	VL	VL
Almat El-Jenoubiya	VL	VL	VL	Aqoura	L	L	L	Bayzoun	VL	L	L
Bchille Jbeil	VL	L	L	Bechtlida	VL	L	L	Behdaydat	L	L	L
Beit Habbaq	L	L	ML	Bejeh	L	L	ML	Bekhaaz	M	L	L
Berbara Jbeil	M	L	ML	Bintael	L	L	L	Birket Hjoula	L	L	L
Blatt Jbeil	L	L	L	Boulhos	VL	VL	VL	Breyj Jbeil	VL	L	L
Chamat	L	L	M	Chikhane	M	L	ML	Chmout	L	VL	L
Eddeh Jbeil	L	L	L	Ehmej	VL	VL	L	Fatre	VL	L	L
Ferhet	VL	L	L	Fghal	ML	L	L	Frat	VL	VL	VL
Ghabat	VL	VL	L	Ghalboun	L	L	ML	Gharzouz	L	L	ML
Ghofrine	ML	L	ML	Habil	L	L	L	Halate	L	L	L
Haqel	L	L	L	Hbaline	L	L	ML	Hboub	L	L	L
Hdeine	VL	VL	L	Hema Er-Rehban	VL	VL	L	Hema Mar Maroun Aann	VL	VL	VL
Hjoula	L	L	L	Hosrayel	M	L	ML	Hsarat	L	L	ML
Hsoun	VL	L	L	Jaj	VL	L	L	Janne	VL	VL	VL
Jbeil	L	L	ML	Jeddeyeh Jbeil	M	L	ML	Jlisse	VL	L	L
Jouret El-Qattine	VL	L	L	Kfar Baal Annaya	VL	L	L	Kfar Kidde	M	L	L
Kfar Kouas	VL	L	L	Kfar Mashoun	L	L	ML	Kfoun	L	L	L
Kharbe Jbeil	L	L	ML	Laqlouq	VL	VL	L	Lassa	VL	VL	VL



Lehfed	L	L	L	Maad	L	L	ML	Mar Sarkis	VL	VL	L
Mastita	L	L	ML	Mayfouq	L	L	L	Mazraat El Siyad	VL	VL	L
Mazraat El-Maaden	VL	VL	VL	Mechane	VL	L	L	Mechmech Jbeil	L	VL	L
Mehrin	VL	L	L	Mejdel El-Akoura	VL	VL	L	Mghayreh Jbeil	VL	VL	L
Mounsef	M	L	ML	Nahr Ibrahim	L	L	ML	Qahmez	VL	VL	VL
Qartaba	VL	VL	VL	Qartaboun	L	L	ML	Qattara Jbeil	VL	L	L
Qorqraya	VL	VL	VL	Ramout	L	L	ML	Ras Osta	VL	L	L
Rihane Jbeil	M	L	ML	Sakiet El-Khayt	L	L	L	Saqi Richmaya	VL	L	L
Sebrine	VL	L	L	Seraita	VL	VL	L	Souane Jbeil	VL	VL	L
Tadmor	VL	VL	L	Tartej	VL	L	L	Torzaiya	VL	VL	L
Yanouh Jbeil	VL	VL	L	Zibidine Jbeil	VL	L	L				

## El Metn

Municipality	08-Dec	09-Dec	10-Dec	Municipality	08-Dec	09-Dec	10-Dec	Municipality	08-Dec	09-Dec	10-Dec
Aain El-Qabu	VL	VL	VL	Aain El-Qach	VL	VL	VL	Aain El-Teffaha	VL	VL	VL
Aain el-Safssaf El-M	VL	VL	VL	Abou Mizane	VL	VL	VL	Ain Aar	L	VL	ML
Ain Alaq	L	VL	L	Ain El-Kharroube	VL	VL	VL	Ain El-Sendianeh	VL	VL	VL
Ain El-Zeitoune	VL	VL	VL	Ain Saadeh	L	VL	L	Aintoura El-Matn	VL	VL	VL
Amaret Chalhoub	VL	VL	ML	Antelias	L	VL	ML	Atchaneh	L	VL	L
Ayroun	VL	VL	VL	Baabdat	VL	VL	VL	Baouchariyeh	ML	L	ML
Baskinta	VL	VL	VL	Beit Chabab	VL	VL	L	Beit El-Chaar	L	VL	ML
Beit El-Kekko	L	VL	ML	Beit Mery	L	VL	L	Bhersaf	VL	VL	VL
Bikfaya	VL	VL	VL	Biyakout	L	VL	ML	Bnabil	VL	VL	VL
Bourj Hammoud	ML	L	ML	Bqennaya	VL	VL	L	Broummana El-Matn	L	VL	L
Bsalim	L	VL	L	Bsifrine	VL	VL	VL	Bteghrine	VL	VL	VL
Chaouiye	L	VL	L	Chouaya El-Matn	VL	VL	VL	Choueir	VL	VL	VL
Chrine	VL	VL	VL	Dahr El Sawan El-Mat	L	VL	L	Daychouniyeh	L	VL	L
Dbayeh	L	VL	ML	Deir Chamra	VL	VL	VL	Deir Mar Abda el Mch	L	VL	L
Deir Mar Roukouz	L	L	ML	Deir Tamiche	L	VL	L	Dik El-Mehdi	L	VL	L
Dikwaneh	ML	L	ML	Douar El-Matn	VL	VL	VL	Fanar	L	VL	L
Fraike	L	VL	L	Haret El-Ballaneh	L	VL	L	Hbous	L	VL	ML
Himlaya	VL	VL	VL	Jal El Did	VL	VL	ML	Jdeideh El-Metn	L	VL	ML
Jouar El-Matn	VL	VL	VL	Jouret El-Ballout	L	VL	L	Kaaqour	VL	VL	VL
Kfar Aaqab	VL	VL	VL	Kfertay El-Matn	VL	VL	VL	Khenchara	VL	VL	VL
Khillet El-Mtain	VL	VL	VL	Konnabat Broummana	L	VL	L	Konnabat Salima	VL	VL	VL
Machraah El-Matn	VL	VL	VL	Majdel Tarchich	VL	VL	VL	Majzoub	L	VL	L
Mansouriyeh El-Metn	L	L	ML	Mar Boutros Karm Et-	VL	VL	VL	Mar Chaya et Mzekke	L	VL	L
Mar Moussa Ed-Douar	VL	VL	VL	Marjaba	VL	VL	VL	Masqa	L	VL	L
Mayasse	VL	VL	VL	Mazraat Deir Aoukar	L	VL	L	Mazraat El-Hadirat	L	VL	L
Mazraat Yachouh	L	VL	ML	Mchikha	VL	VL	VL	Menqlet Mezher	L	VL	L
Mhaydseh Matn	VL	VL	VL	Mkalles	ML	L	ML	Mrouj	VL	VL	VL
Mtain	VL	VL	L	Mtayleb	L	VL	L	Nabay	L	VL	L
Naccache	L	VL	L	Ouadi Chahine	VL	VL	VL	Ouadi El-Karm El-Mat	VL	VL	VL
Ouata El-Mrouj	VL	VL	VL	Ouyoun El-Matn	VL	VL	VL	Qornet Chehwan	L	VL	L
Qornet El-Hamra	L	VL	L	Roumieh	L	VL	L	Sfeilet Bikfaya	VL	VL	VL
Sinn El-Fil	ML	L	ML	Zabbougha	VL	VL	VL	Zalqa	VL	VL	ML
Zarououn	VL	VL	VL	Zekrite	L	VL	L	Zighrine El-Matn	VL	VL	VL



Zouk El-Khrab	L	VL	ML								
---------------	---	----	----	--	--	--	--	--	--	--	--

## Chouf

Municipality	08-Dec	09-Dec	10-Dec	Municipality	08-Dec	09-Dec	10-Dec	Municipality	08-Dec	09-Dec	10-Dec
Aalmane El-Chouf	L	VL	ML	Aammiq El-Chouf	VL	VL	L	Ain Ouzein	VL	VL	L
Ain Qani	VL	VL	VL	Ain Zhalta	VL	L	L	Ainbal	VL	VL	L
Amatour	VL	VL	L	Anout	VL	VL	L	Atrine	VL	VL	L
Baadarane	VL	VL	L	Baaqline	VL	VL	L	Baasir	ML	L	ML
Barja	L	L	ML	Barouk	VL	L	L	Bater	VL	VL	L
Batloun	VL	VL	L	Bayqoun	VL	VL	L	Bchetfine	VL	VL	L
Beiteddine	VL	VL	L	Benouati Ech-Chouf	VL	VL	L	Berjein	VL	VL	L
Bireh et Mtalleh	VL	VL	L	Biret El-Chouf	VL	VL	L	Bkechtine Ouel Mchei	VL	VL	L
Bkifa El-Chouf	VL	VL	L	Botme	VL	VL	L	Bqaiia Ech-Chouf	VL	VL	L
Bsaba El-Chouf	VL	VL	L	Chammis El-Chouf	L	L	ML	Chehim	L	VL	L
Chemaarine	VL	VL	L	Chourit	VL	VL	VL	Daher El-Chouf	ML	L	L
Dalhoun	L	VL	L	Damour	ML	L	ML	Daraya El-Chouf	VL	VL	L
Deir El-Moukhalles	VL	VL	L	Deir Baba	VL	VL	L	Deir Dourit	VL	VL	L
Deir El-Qamar	VL	VL	L	Deir Kouche	VL	VL	L	Dibbieh	L	VL	L
Dmit	VL	VL	L	Fouara Jaafar	VL	VL	VL	Fraidis El-Chouf	VL	L	L
Ghabet Jaafar	VL	VL	L	Gharife	VL	VL	L	Haret Jandal	VL	VL	L
Hasrout	VL	VL	L	Jadra	L	L	ML	Jahlieh	VL	VL	L
Jbeih El-Chouf	VL	VL	L	Jdeidet El-Chouf	VL	VL	L	Jiyeh	ML	L	ML
Jleiliyeh	VL	VL	L	Jmailiyeh	L	VL	ML	Joun	L	VL	L
Kahlounie El-Chouf	VL	VL	L	Ketermaya	L	VL	ML	Kfar Faqoud	VL	VL	L
Kfar Hamal	VL	VL	L	Kfar Him	VL	VL	L	Kfar Katra	VL	VL	L
Kfar Niss	VL	VL	L	Kfar hay	VL	VL	VL	Kfarnabrakh	VL	VL	L
Khirbet Bisri	VL	VL	L	Knayse El-Chouf	VL	VL	VL	Maaniyeh	L	L	ML
Maasser Beiteddine	VL	VL	L	Maasser El-Chouf	VL	L	L	Majdalouna	L	VL	ML
Majdel El-Meouch	VL	VL	L	Mazboud	VL	VL	L	Mazmoura	VL	VL	L
Mazraat El Chouf	VL	VL	L	Mazraat El Daher	VL	VL	L	Mazraat El-Douair	VL	VL	L
Mechref	L	VL	L	Mghairie	L	VL	ML	Mghayrie El-Chouf	VL	VL	L
Moukhtara	VL	VL	VL	Mrusti	VL	VL	L	Mtolle	VL	VL	L
Naameh	L	L	L	Niha El-Chouf	L	VL	L	Ouadi Abou Youssef	VL	VL	VL
Ouadi Ed-Deir	VL	VL	L	Ouadi El-Sit	VL	VL	L	Ouadi bnehlay	VL	VL	L
Qraibeh	VL	VL	L	Qreiaa	VL	VL	VL	Rmayle El-Chouf	L	VL	ML
Semqaniyeh	VL	VL	L	Sibline	L	L	ML	Sirjbeil	VL	VL	L
Warhanieh	VL	L	L	Werdaniyeh	L	VL	ML	Zaarourieh	VL	VL	L

## Baabda

Municipality	08-Dec	09-Dec	10-Dec	Municipality	08-Dec	09-Dec	10-Dec	Municipality	08-Dec	09-Dec	10-Dec
Abadiyeh	VL	VL	VL	Ain Mouaffaq	VL	VL	VL	Araiya	VL	VL	L
Arbaniyeh	VL	VL	VL	Arsoun	VL	VL	VL	Baabda	L	L	L
Baalchmey	VL	VL	L	Bmaryam	VL	VL	L	Bourj El-Brajneh	L	L	L
Boutchay	L	VL	L	Bsaba Baabda	L	VL	L	Btekhney	VL	VL	L
Btibyat	VL	VL	L	Bzebdine	VL	VL	VL	Chbeniyeh	VL	VL	L
Chiyah	ML	L	ML	Chmeisset Baabda	VL	VL	VL	Chouit	VL	VL	VL
Deir El-harf	VL	VL	L	Deir Khouna	VL	VL	L	Dlaybeh	VL	VL	VL
Falougha	VL	VL	L	Furn El-Chebbak	ML	L	ML	Hadath Beyrouth	L	L	L

Halaliyeh Baabda	VL	VL	VL	Hammana	VL	VL	L	Haret El Sett	VL	VL	L
Haret Hamze	VL	VL	L	Haret Hreik	ML	L	ML	Hasbaiya El-Metn	VL	VL	VL
Jouar El-Hoz	VL	VL	VL	Jouret Arsoun	VL	VL	VL	Kfar Chima	L	VL	L
Kfar Selouane	VL	VL	L	Khalouat Baabda	VL	VL	L	Kneisset Baabda	VL	VL	VL
Laylakeh	L	VL	L	Louayzeh Baabda	L	VL	L	Merdache	L	VL	L
Mzairaa Baabda	VL	VL	L	Ouadi Chahrour El OI	L	VL	L	Ouadi Chahrour El So	L	VL	L
Qalaa Baabda	VL	VL	L	Qhraybe Baabda	VL	VL	L	Qobbayaa	VL	VL	L
Qornayel	VL	VL	VL	Qortada	VL	VL	VL	Qrayeh Baabda	VL	VL	L
Qsaibeh Baabda	L	VL	L	Qtale Baabda	VL	VL	L	Ras El Metn	VL	VL	L
Ras El-Haref	VL	VL	L	Rouayset El-Ballout	VL	VL	VL	Salima Baabda	VL	VL	VL
Tahouitat El Ghadir	L	VL	L	Tarchich	VL	VL	VL	Zandouqa	L	VL	VL

## Aley

Municipality	08-Dec	09-Dec	10-Dec	Municipality	08-Dec	09-Dec	10-Dec	Municipality	08-Dec	09-Dec	10-Dec
Abey	VL	VL	L	Aghmid	VL	VL	L	Ain Dara	VL	VL	L
Ain Drafil	L	VL	L	Ain El Halazoun	VL	VL	L	Ain El-Rmmaneh	VL	VL	VL
Ain Jedideh	VL	VL	L	Ain Ksour	L	VL	L	Ain Onoub	L	VL	L
Ain Traz	VL	VL	VL	Ainab	L	VL	L	Aley	VL	VL	L
Aramoun	L	VL	L	Aytat	L	VL	L	Azouniyeh	VL	VL	L
Baawerta	L	VL	L	Badghan Oua Wadi Bad	VL	VL	L	Bassatine	L	VL	L
Bayssour	L	VL	L	Bchamoun	L	VL	L	Bdadoun	L	VL	L
Behouara	VL	VL	L	Bennay	VL	VL	L	Bhamdoun El-Dayaa	VL	VL	L
Bhamdoun El-Mhatta	VL	VL	L	Bkhechtey	VL	VL	L	Bleibel	L	VL	L
Bmaknine	L	VL	L	Bmehray	VL	VL	L	Bouzirid	VL	VL	VL
Bserrine	VL	VL	L	Bsous	VL	VL	VL	Btalloun	VL	VL	L
Btater	VL	VL	L	Chanay	VL	VL	L	Charoun	VL	VL	L
Chartoun	VL	VL	VL	Chemlane	L	VL	L	Choueifat El-Aamrous	L	VL	L
Choueifat El-Oumara	L	VL	L	Choueifat El-Quoubbe	L	L	L	Dakkoun	VL	VL	L
Deir Qoubel	L	VL	L	Dfoun	L	VL	L	Douair El Remmaneh	VL	VL	VL
Ghaboun	VL	VL	L	Habramoun	VL	VL	VL	Homs Oua Hama	VL	VL	L
Houmal	L	VL	L	Jisr El Qadi	VL	VL	L	Kehaleh	VL	VL	L
Keyfoun	L	VL	L	Kfar Aamey	VL	VL	L	Kommatyeh	VL	VL	L
Maasrati	VL	VL	L	Majdel Baana	VL	VL	L	Mansourieh et Ain El	VL	VL	L
Mazraat El-Nahr	VL	VL	L	Mchakhte	VL	VL	L	Mecherfeh	VL	VL	L
Mejdlaya	L	VL	L	Mrayjat	VL	L	L	Ramliyah	VL	VL	L
Rechmaya	VL	VL	L	Rejmeh	VL	VL	L	Remhala	L	VL	L
Rouayset El Neemane	VL	VL	L	Saoufar	VL	VL	L	Selfaya	VL	VL	VL
Sirhmoul	L	VL	L	Souq El Ghareb	L	VL	L	Taazanieh	VL	VL	L

## Kesrouane

Municipality	08-Dec	09-Dec	10-Dec	Municipality	08-Dec	09-Dec	10-Dec	Municipality	08-Dec	09-Dec	10-Dec
Achkout	VL	VL	VL	Adma Oua Dafneh	L	VL	L	Ain Ed-Delbe Kesroua	VL	VL	VL
Ain El-Rihane	L	VL	L	Aintoura Kesrouane	L	VL	L	Ajaltoun	VL	VL	VL
Akaybeh Kesrouane	L	L	ML	Aramoun Kesrouane	VL	VL	VL	Azra ouel Ozor	VL	L	L
Ballouneh	L	VL	VL	Batha	L	VL	L	Bekaatat Achkout	VL	VL	VL
Bekaatat Kanaan	VL	VL	L	Bizhel	VL	L	L	Bouar	L	L	ML
Bqaatouta	VL	VL	VL	Bqaq Ed-Dine	L	L	L	Bzommar	VL	VL	L
Chahtoul	VL	VL	L	Chnaniir	L	VL	L	Chouan	VL	VL	VL



Daraya Kesrouane	VL	VL	VL	Darououn	L	VL	L	Deir Baqlouch	L	VL	L
Dlebta	VL	VL	VL	Eghbeh	VL	VL	VL	Faraya	VL	VL	VL
Fatka	L	VL	L	Feytroun	VL	VL	VL	Ghazir	L	VL	L
Ghbaleh Kesrouane	VL	L	L	Ghedrass	VL	VL	L	Ghosta	VL	VL	VL
Ghyneh	VL	VL	L	Harharaya w Kattine	VL	VL	L	Harissa Kesrouane	L	VL	L
Hayata	VL	VL	VL	Hosein	VL	VL	L	Hrajel	VL	VL	VL
Jdeideh Ghazir	VL	VL	VL	Jeita	L	VL	L	Jounieh Ghadir	L	VL	L
Jounieh Haret Sakhr	L	VL	ML	Jounieh Salel Alma	L	VL	L	Jounieh Sarba	L	VL	ML
Jouret Bedrane	VL	L	L	Jouret Mhad	VL	VL	L	Jouret Termos	VL	VL	L
Kfar Debiane	VL	VL	VL	Kfar Tay Kesrouane	VL	VL	VL	Kfar Yassine	L	L	ML
Kfour Kesrouane	VL	VL	L	Kharayeb Nahr Ibrahi	L	L	L	Klayaat Kesrouane	VL	VL	VL
Maarab	VL	VL	VL	Maaysra Kesrouane	L	L	L	Mayrouba	VL	VL	VL
Mazraat Er-Ras	L	L	L	Mazraat Mrah El-Mir	VL	VL	VL	Mchaa El Ftouh	VL	VL	L
Mchaa Faraya	VL	VL	L	Mchaa Kfar Dibiane	VL	VL	L	Mghaer	VL	VL	VL
Mradiyah	VL	L	L	Nahr Ed-Dahab	VL	VL	VL	Nammoura Kesrouane	L	L	L
Ouata El Jaouz	VL	VL	L	Ouata Sillam	L	VL	ML	Raachine	VL	VL	VL
Rayfoun	VL	VL	VL	Safra Kesrouane	L	L	ML	Shayle Kesrouane	L	VL	L
Tabarja	L	L	ML	Yahchouch	VL	L	L	Zaaytreh	VL	L	L
Zeytoun	L	L	L	Zouk Mikael	L	VL	ML	Zouk Mosbeh	L	VL	ML

## Baalbek\_Hermel

### Baalbek

Municipality	08-Dec	09-Dec	10-Dec	Municipality	08-Dec	09-Dec	10-Dec	Municipality	08-Dec	09-Dec	10-Dec
Aadous	L	L	M	Aamchki	VL	VL	L	Aarsal	L	L	L
Ain Baalbek	L	L	L	Ain Bourday	VL	VL	ML	Ain El-Benye	L	VL	L
Ain El-Jaouz Baalbek	L	L	L	Ain El-Siya Chadoura	L	L	L	Al Khodr Baalbek	VL	VL	L
Al Nabi Chit	VL	VL	ML	Aynata Baalbek	L	L	L	Baalbek	L	L	ML
Bachwat	L	L	L	Barqa	L	L	L	Bednayel Baalbak	L	L	L
Beit Chama	L	L	ML	Bijjaje	M	L	M	Bouday	ML	L	M
Brital	L	L	L	Btadi	M	ML	M	Chaat	ML	L	M
Chaibe	L	L	L	Chlifa	M	L	M	Chmestar	L	L	ML
Dar El-Oussa	ML	ML	ML	Deir El-Ahmar	M	L	ML	Deir Mar Maroun Baal	M	ML	ML
Douris	L	L	ML	Fakiha	ML	L	ML	Hadath Baalbek	ML	L	M
Ham	VL	VL	L	Haour Taala	VL	VL	L	Hizzine	ML	L	M
Hlebta	ML	L	L	Hosh Barada	ML	L	M	Hosh El Dahab	ML	L	M
Hosh El Snid	L	L	ML	Hosh El-Nabi	L	L	ML	Hosh El-Rafiq	L	L	ML
Hosh Tal Safiya	ML	L	M	Hrebta	M	ML	M	laat	ML	L	M
Jebaa	ML	L	ML	Jenta	VL	VL	L	Kfar Dabach	L	L	ML
Kfar Dane	ML	L	M	Khraibeh El-Hermel	ML	L	L	Khreibet Baalbek	VL	VL	L
Kneisset Baalbek	L	L	ML	Labueh	M	L	M	Maarboun	VL	VL	L
Majdaloun	ML	L	M	Maqneh	L	L	ML	Mazraat Beit Mcheik	ML	L	ML
Misraya	L	L	ML	Moqraq	M	L	M	Nabha El-Damdoum	ML	L	ML
Nabi Chbay	VL	VL	L	Nabi Osman	L	L	ML	Nahleh baalbek	L	L	L
Ouadi El-Oss	ML	L	L	Qaa Baayoun	M	L	L	Qaa Jouar Maqiye	M	L	L
Qaa Ouadi El-Khanzir	M	L	ML	Qah Baalbek	M	L	ML	Qarha Baalbek	M	M	M
Qsarnaba	L	L	ML	Ram Baalbek	M	M	M	Ras Baalbek El Sahl	M	ML	ML

Ras Baalbek El-Charq	ML	L	L	Riha	ML	ML	M	Saaide	ML	L	M
Sbouba	M	L	ML	Seriine El-Tahta	L	L	ML	Slouqi	L	L	L
Taiba Baalbek	L	L	ML	Talia	L	L	ML	Taraiya	L	L	ML
Temnin El Fawqa	L	L	ML	Temnin El-Tahta	L	L	ML	Tfail	L	L	L
Yahfoufa	VL	VL	L	Yammouneh	L	L	ML	Younine	L	L	ML
Zboud	M	L	ML								

## Hermel

Municipality	08-Dec	09-Dec	10-Dec	Municipality	08-Dec	09-Dec	10-Dec	Municipality	08-Dec	09-Dec	10-Dec
Charbine El-Hermel	M	L	L	Hermel Jbab	L	L	L	Hermel	M	ML	L
Maaysra El-Hermel	M	L	L	Michaa Mrajhine	L	L	L	Ouadi Faara	ML	L	L
Ras Baalbek - Ouadi	M	ML	M	Ras Baalbek El Gharb	M	L	L	Zighrine	ML	L	L

## Akkar

### Akkar

Municipality	08-Dec	09-Dec	10-Dec	Municipality	08-Dec	09-Dec	10-Dec	Municipality	08-Dec	09-Dec	10-Dec
Aain Tinta	ML	L	ML	Aaiyat	L	VL	L	Aakkar El-Aatiqa	L	L	L
Aamar Aakkar	M	L	M	Aamar El Baykat	ML	L	ML	Aamayer	L	L	L
Aamriyet Aakkar	ML	L	ML	Aandqet	ML	L	L	Aarmeh	ML	L	L
Aarqa	M	L	M	Aawaynat	ML	L	L	Aayoun Aakkar	L	VL	L
Abboudiye	ML	L	M	Ain El-Zeit	ML	L	ML	Ain Yaaqoub	L	VL	L
Akroum	ML	L	L	Aridet Cheikh Zennad	M	L	M	Baldeh w Mazraat Bal	M	L	ML
Barcha	ML	L	ML	Bardeh	ML	L	ML	Bebnine	M	L	M
Beino	ML	L	L	Beit Ayoub	ML	VL	ML	Beit El-Haouch	M	L	M
Beit Mellat	L	L	L	Beit Younes	L	VL	L	Berbara Aakkar	ML	L	ML
Berqayel	M	L	M	Bezbina	L	VL	L	Bireh Aakkar	ML	L	ML
Borj	L	VL	L	Bqerezla	M	L	ML	Bzal	M	L	L
Chane	L	VL	L	Chaqdouf	L	VL	L	Charbila	M	L	ML
Cheikh Mohammad	M	L	ML	Cheikh Taba Es-Sahl	M	L	M	Cheikh Taba	L	L	L
Cheikh Zennad	M	L	M	Cheikhlar	ML	L	L	Chir Hmairine	ML	L	ML
Daghle	ML	L	ML	Dahr Laissine	L	L	ML	Darine	M	L	ML
Dawra	L	L	L	Dawsa w Baghdadi	ML	L	L	Dayret Nahr El-Kabir	L	VL	L
Deir Dalloum	M	L	M	Deir Jennine	ML	L	L	Denbou	L	L	L
Dibbabiye	ML	L	ML	Douair Aadwiyeh	ML	L	ML	Fassikine	ML	L	ML
Fnaydek	L	VL	L	Fraydes Aakkar	ML	L	L	Ghazayle	ML	L	ML
Habchit	L	L	L	Hakour	M	L	M	Halba	ML	L	ML
Haouchab	M	L	ML	Hayssat	M	L	M	Haytla	ML	L	ML
Hayzouq	M	L	ML	Hedd	M	L	ML	Hmaira Aakkar	M	L	ML
Hmaiss Aakkar	ML	L	ML	Hnaider	L	L	L	Hokr Ed-Dahri	M	L	M
Hokr Etti	ML	L	ML	Hokr Jouret Srar	ML	L	M	Houaich	L	VL	L
Hrar	L	VL	L	Idbil	L	L	L	Ilal	L	VL	L
Janine	ML	L	M	Jdeidet El-Joumeh	ML	L	ML	Jdeidet El-Kaiteh	M	L	ML
Jebrayel	L	VL	L	Kafr	L	L	ML	Kafr	ML	L	ML
Karm Asfour	ML	L	L	Kfar Melki Aakkar	M	L	M	Kfar Noun	ML	L	L
Kfarharra	M	L	ML	Khalsa	ML	L	L	Kharnoubet Aakkar	ML	L	ML
Khirbet Daoud Aakkar	ML	L	ML	Khirbet El Remmane	ML	L	L	Khirbet Shar	ML	L	ML



Khoreybet El-Jindi	M	L	ML	Khreibet Aakkar	L	VL	L	Kneisset Aakkar	M	L	M
Kneisset Hnaider	L	L	L	Knisse	M	L	ML	Kroum El-Aarab	M	L	ML
Kwachra	ML	L	ML	Kweykhat	M	L	ML	Machta Hammoud	L	L	L
Majdala	M	L	M	Majdel Akkar	ML	L	ML	Mar Touma	M	L	M
Marlaya Melhem	M	L	M	Mashha	ML	L	ML	Massoudiye	M	L	M
Mazraat Beit Ghattas	M	L	M	Mazraat En-Nahriye	ML	L	L	Mechmech	L	VL	L
Memneh	L	VL	L	Mhammara	M	L	M	Mighraq Aakkar	M	L	M
Minyara	M	L	ML	Moqayteh	M	L	M	Mounjez	ML	L	L
Msalla	ML	L	ML	Mzeihmeh	ML	L	ML	Nfaisch	ML	L	ML
Noura Et-Tahta	ML	L	L	Ouadi El-Haour	M	L	ML	Ouadi El-Jamous	M	L	M
Ouyoun El-Ghizlane	M	L	M	Qaabarine	M	L	M	Qabaait	L	L	L
Qachlaq	M	L	ML	Qantara Aakkar	L	VL	L	Qarha Aakkar	L	L	L
Qarqaf	M	L	M	Qboula	L	VL	L	Qleiaat Aakkar	M	L	M
Qloud El-Baqie	M	L	M	Qobaiyat Aakkar	ML	L	L	Qobbat Chamrat	M	L	M
Qorayat	L	VL	L	Qornet Aakkar	L	VL	L	Qsair Aakkar	ML	L	ML
Rahbe	L	VL	L	Rihaniyet Aakkar	M	L	ML	Rmah	ML	L	L
Rmoul	M	L	M	Saadine	M	L	ML	Sadaqa	ML	VL	ML
Saidnaya	ML	L	ML	Sammouniye	M	L	M	Sayssouq	M	L	ML
Semmaqiye	M	L	M	Semmaqli	M	L	M	Sfinet El-Dreib	M	L	ML
Sfinet El-Qaitaa	ML	L	L	Sindyanet Zeidane	ML	L	L	Souaisset Aakkar	M	L	ML
Srar	ML	L	ML	Tal Abbas El Gharby	M	L	ML	Tal Abbas El-Charqy	M	L	ML
Tal Biret	M	L	M	Tal Hmayra	M	L	M	Tal Maayan Tal Kiri	M	L	M
Tal Sibel	M	L	M	Tallet Chattaha	L	VL	L	Tikrit	L	VL	L
Tleil	ML	L	ML	Tshea	L	VL	L	Zawarib	L	VL	L
Zouq El Hosniyeh	M	L	M	Zouq El-Haddara	M	L	M	Zouq El-Hbalsa	M	L	M
Zouq El-Moqachrine	M	L	M								

## Sud

### Sour

Municipality	08-Dec	09-Dec	10-Dec	Municipality	08-Dec	09-Dec	10-Dec	Municipality	08-Dec	09-Dec	10-Dec
Aaiyeh	L	VL	VL	Aalma El-Chaab	L	VL	L	Aaytit	L	VL	VL
Abbasiyeeh Sour	L	L	L	Abou Chech	L	VL	L	Ain Abou Abdallah	L	L	L
Ain Baal	L	VL	L	Arzoun	L	VL	VL	Aziyeh	L	VL	L
Baflaya	L	L	L	Barich	L	L	L	Batouliyeh	L	VL	L
Bayad	L	VL	VL	Bazouriyeh	L	L	L	Bediass	L	L	L
Bestiyat	L	L	L	Borj El Chemali	L	VL	L	Borj En-Naqoura	L	L	L
Borj Rahhal	L	L	L	Boustane	L	VL	L	Btaychiyeh	L	VL	L
Chaaitiye	L	VL	L	Chameh	L	VL	L	Chehabiye	L	VL	L
Chehour	L	VL	VL	Chihine	L	VL	L	Debaal Sour	L	L	L
Deir Amess	L	VL	VL	Deir Kifa	L	VL	L	Deir Qanoun El-Ain	L	VL	L
Deir Qanoun El-Naher	L	L	L	Derdghaiya	L	VL	L	Dhayra	L	VL	L
Halloussiyeh	L	L	L	Hamoul	L	VL	L	Hanaouey	L	VL	L
Henniye	L	VL	L	Hmairi Sour	L	L	L	Iskandarouna Sour	L	VL	L
Jbal El Botom	L	VL	VL	Jebbin	L	VL	L	Jennata	L	L	L
Jijim	L	VL	L	Jouaiya	L	L	L	Kneisset Sour	L	VL	L
Maarake	L	L	L	Maaroub	L	L	L	Majadel	L	VL	L

Majdalzoun	L	VL	L	Mansouri Sour	L	VL	L	Marnba	L	VL	VL
Marouahine	L	VL	VL	Mazraat El-Zalloutiy	L	VL	L	Mazraat Mechref	L	VL	L
Mazraat Tayr Semhat	L	VL	VL	Mheilib	L	VL	L	Neffakhiyeh	L	VL	VL
Niha Sour	L	VL	VL	Ouadi Jilo	L	L	L	Qana	L	VL	VL
Qolaileh Sour	L	VL	L	Rechknanay	L	VL	VL	Rmadiyah	L	VL	VL
Selha Sour	L	VL	VL	Siddiqine	L	VL	VL	Sour	L	VL	L
Srifa	L	VL	VL	Tayr Debbe	L	L	L	Tayr Felsay	L	L	L
Tayr Harfa	L	VL	L	Touayri	L	VL	VL	Toura	L	L	L
Yanouh Sour	L	L	L	Yarine	L	VL	L	Zebqine	L	VL	VL

## Saida

Municipality	08-Dec	09-Dec	10-Dec	Municipality	08-Dec	09-Dec	10-Dec	Municipality	08-Dec	09-Dec	10-Dec
Aanqoun	L	L	M	Aaqtanit	L	L	M	Aarab Ej-Jall	L	VL	M
Aarab Tabbaya	L	VL	M	Abra Saida	L	VL	ML	Adloun	ML	VL	M
Adousiyeh	M	L	M	Ain-El-Deleb	L	L	M	Arzai	L	L	L
Babliyah	ML	L	M	Barty	L	VL	L	Bissariyeh	M	L	M
Bnaafoul	L	L	M	Bqosta	L	VL	ML	Bramiy	L	VL	ML
Daoudiyeh	M	L	M	Dareb El-Sim	L	L	M	Erkay	L	L	M
Ghassanieh	ML	VL	ML	Ghazieh	ML	L	M	Hajjeh	L	L	M
Haret Saida	L	VL	ML	Hartiyeh	ML	VL	M	Hlaliye Saida	L	VL	ML
Insariyat	ML	VL	M	Jazira Saida	L	L	L	Kafar Bit	L	L	ML
Kaoutariyet El-Siyad	L	VL	L	Kfar Chellal	L	VL	L	Kfar Hatta Saida	L	L	M
Kfar Milke Saida	L	VL	L	Khartoum	L	VL	L	Khaziz	L	VL	M
Khirbet Ed-Douair Sa	M	L	M	Khirbet El-Bassal	ML	L	M	Khrayeb Saida	ML	L	L
Loubieh	ML	L	M	Maghdouche	L	L	ML	Majdelyoun	L	VL	ML
Matariyet El-Choumar	L	L	L	Matariyeh	L	L	ML	Mazraat 'Mseileh	M	L	M
Mazraat 'Snaiber	M	L	M	Mazraat Aarab Soukka	L	VL	M	Mazraat Deir Taqla	ML	VL	M
Mazraat El Yahoudiye	ML	L	ML	Mazraat El-Housseini	M	L	M	Mazraat El-Mhaydaleh	ML	VL	M
Mazraat El-Ouasta	L	L	L	Mazraat Jamjim	ML	VL	ML	Mazraat Kaoutariyet	ML	VL	M
Mazraat Kfar Badda	ML	VL	M	Mazraat Oussamiyat	ML	VL	M	Mazraat Sari	ML	VL	M
Mazraat Sinai	L	VL	ML	Meemariyeh	L	L	M	Merouaniyeh	L	L	ML
Miyeh ou Miyeh	L	L	M	Najjariyeh	M	L	M	Qaaqiyat El-Snaouba	M	L	M
Qnarit	L	L	M	Qraiye Saida	L	L	M	Saida Ed-Dekermane	L	L	M
Saida El-Oustani	L	VL	ML	Saida El-Qadimeh	L	VL	ML	Saida Kefraya	L	VL	ML
Saksakiyeh	M	L	M	Salhie Saida	L	VL	ML	Sarafand	M	L	M
Sfenta	L	VL	L	Tafahta	L	L	ML	Tanbourit	L	L	M
Tebna	M	L	M	Zaghdraiya	L	L	ML	Zeita	L	L	M
Zrariyeh	L	L	L								

## Jezzine

Municipality	08-Dec	09-Dec	10-Dec	Municipality	08-Dec	09-Dec	10-Dec	Municipality	08-Dec	09-Dec	10-Dec
Ain El-Mir (El Estab	L	VL	ML	Anane	VL	VL	L	Aramta	L	VL	L
Ariya	VL	VL	L	Aychiyeh	L	VL	L	Azour	VL	VL	L
Baba	VL	VL	L	Baysour Jezzine	L	L	M	Benoueteh Jezzine	VL	VL	L
Bhannine	VL	VL	L	Bisri	VL	VL	VL	Bkassine	L	VL	L
Bouslaya	L	VL	L	Btedine El-Leqech	VL	VL	L	Chbail	L	VL	L
Choualiq Jezzine	L	VL	ML	Dahr Ed-Deir	L	VL	L	Deir El Qattine	L	VL	L
Demachqiyeh	L	VL	L	Ghabbatiyeh	VL	VL	L	Harf Jezzine	VL	VL	L



Hassaniyeh	L	L	ML	Haytouleh	L	VL	L	Haytoura	L	VL	L
Hidab	L	VL	L	Homsiyeh	L	VL	L	Jabal Toura	L	VL	L
Jarmaq	L	VL	L	Jensnaya	L	L	M	Jernaya	L	VL	L
Jezzine	L	VL	L	Karkha	L	VL	L	Kfar Falous	L	VL	L
Kfar Houna	L	VL	L	Kfar Jarrah	L	VL	M	Lebaa	L	L	M
Louayzet Jezzine	L	VL	L	Machmouche	VL	VL	L	Mahmoudiyeh Jezzine	L	VL	L
Maknounye Jezzine	L	VL	L	Maraat Ouazaiyeh	L	VL	L	Mazraat Daraya	L	VL	L
Mazraat El-Aarqoub	L	VL	L	Mazraat El-Mathane	VL	VL	VL	Mazraat El-Rahbane	L	VL	L
Mazraat Khamlet Khaz	L	VL	L	Mazraat Louzid (Loua)	L	VL	L	Mazraat Qrouh	L	VL	L
Mazraat Tamra	L	VL	VL	Mazraat Zighrine Jez	L	VL	L	Mazraat	L	VL	L
Mharbiyeh	L	VL	M	Midane Jezzine	VL	VL	L	Mjeydel Jezzine	L	VL	M
Mlikh	L	VL	L	Mrah El-Hbasse	L	VL	ML	Ouadi Baanqoudaine	L	L	M
Ouadi El-Laymoun	L	VL	L	Ouardiyeh	L	VL	VL	Qabaa Jezzine	L	VL	L
Qatrani	L	VL	L	Qaytouleh	L	VL	L	Qtaleh Jezzine	VL	VL	L
Rihane Jezzine	L	VL	L	Rimat	L	VL	L	Roum	L	VL	L
Roummanet	L	VL	L	Sabbah	VL	VL	L	Saydoun	L	VL	L
Sfaray	VL	VL	L	Snaya	L	VL	L	Sojoud	L	VL	L
Srayri	L	VL	L	Taaïd	VL	VL	VL	Wadi Jezzine	L	VL	L
Zhalta	L	VL	L								

## Bekaa

### West Bekaa

Municipality	08-Dec	09-Dec	10-Dec	Municipality	08-Dec	09-Dec	10-Dec	Municipality	08-Dec	09-Dec	10-Dec
Aammiq BG	VL	L	ML	Ain El Tineh BG	L	VL	L	Ain Zebdeh	VL	VL	L
Ana	VL	L	ML	Aytanit	VL	VL	L	Baaloul BG	VL	L	L
Bab Mareh	VL	VL	L	Chouberqiye Aammiq	VL	L	ML	Dakoue	VL	L	ML
Deir Ain El-Jaouze	VL	VL	L	Deir Tahniche	VL	L	ML	Ghaza	VL	L	ML
Harime El-Soughra	VL	L	L	Hoch Harimeh	VL	L	ML	Jazira BG	VL	L	ML
Jib Jennine	L	L	L	Kamed-El-Laouz	L	L	L	Kefraya BG	VL	L	L
Khiara El Atika	VL	L	ML	Khiara	VL	L	ML	Khirbet Qanafar	VL	L	L
Lala	L	L	L	Lebbaya BG	VL	L	L	Loussa	L	VL	L
Machghara	L	VL	L	Manara (Hammara) BG	VL	L	L	Mansoura BG	VL	L	ML
Marej BG	VL	L	ML	Maydoun	L	VL	L	Ouaqf BG	VL	L	ML
Qaraaoun	VL	L	L	Qelya	L	VL	L	Raouda (Istabel)	VL	L	ML
Saghbine	VL	VL	L	Sohmor	VL	L	L	Soltan Yacoub el Ara	VL	L	ML
Souairy	VL	L	L	Sultan Yaacoub	L	L	ML	Tal Znoub	VL	L	ML
Yehmor BG	L	L	L	Zilaya	VL	L	L				

### Zahle

Municipality	08-Dec	09-Dec	10-Dec	Municipality	08-Dec	09-Dec	10-Dec	Municipality	08-Dec	09-Dec	10-Dec
Aanjar (Haouch Mouss)	VL	L	L	Ablah	L	L	ML	Ain Kfarzabad	VL	VL	L
Ali-El-Nahri	L	L	ML	Bar Elias	L	L	ML	Bouarej	VL	VL	ML
Cheberqiyet Tabet	VL	VL	ML	Chtaura	VL	VL	ML	Deir El Ghazal	VL	VL	L
Delhamiyet Zahle	VL	VL	ML	Ferzol	L	L	L	Haouch El-Ghanam	L	L	ML
Haouch Es-Siyadeh	VL	VL	L	Haouch Hala	L	L	ML	Haouch Mandara	VL	VL	ML
Haouch Qayssar	VL	VL	ML	Hezerta	VL	VL	L	Hosh Moussa	VL	VL	L

Jdita	VL	VL	L	Kfarzabad	VL	VL	L	Ksara	VL	VL	ML
Majdel Aanjar	VL	L	L	Makssi	VL	VL	ML	Massa	L	L	ML
Mazraat Er-Remtaniye	VL	VL	ML	Mrayjat Zahle	VL	VL	ML	Mzaraa Zahle	VL	VL	ML
Nabi Ayla	L	L	L	Nasriyet Rizk	L	L	ML	Nasriyet Zahle	VL	L	ML
Niha Zahle	L	L	ML	Ouadi Ed-Deloum	VL	VL	ML	Ouadi El-Arayech	VL	L	L
Qaa El Rim	VL	L	L	Qab Elias	VL	VL	L	Qousaya	VL	VL	L
Rhit	L	L	L	Riyak	L	L	ML	Saadnayel	VL	VL	ML
Taal El-Akhdar	VL	L	ML	Taalbeya	VL	VL	ML	Taanayel	VL	VL	ML
Talamara	L	L	ML	Tcheflik Edde Haouch	VL	L	ML	Tcheflik Qiqano	VL	L	ML
Terbol Zahle	VL	VL	L	Touaite Zahle	VL	VL	L	Zahle Aradi	VL	L	L
Zahle El-Berbara	VL	VL	L	Zahle El-Maallaqa	VL	VL	ML	Zahle El-Midane	VL	VL	L
Zahle Er-Rassiyeh	VL	VL	L	Zahle Haouch El-Ouma	VL	VL	ML	Zahle Haouch El-Ouma	VL	VL	ML
Zahle Haouch Ez-Zara	VL	VL	ML	Zahle Maallaqa Aradi	VL	L	ML	Zahle Mar Antonios	VL	VL	L
Zahle Mar Elias	VL	VL	ML	Zahle Mar Gerios	VL	VL	ML	Zahle Saydet En-Naja	VL	VL	ML
Zebdoul	VL	VL	L								

## Rachaiya

Municipality	08-Dec	09-Dec	10-Dec	Municipality	08-Dec	09-Dec	10-Dec	Municipality	08-Dec	09-Dec	10-Dec
Ain Arab Rachaiya	VL	L	L	Ain Ata	VL	VL	L	Ain Harche	VL	L	L
Aqabe Rachaya	VL	L	L	Ayha	L	L	ML	Ayta El Fokhar	VL	L	L
Bakifa Rachaya	VL	L	L	Bakka	VL	L	ML	Beit Lahya	VL	L	L
Bireh Rachaiya	L	L	L	Daher El Ahmar	L	L	L	Deir El-Achayer	L	L	L
Heloua Rachaiya	VL	L	L	Hoch El Qannabeh Rac	L	L	L	Kaoukaba Bou Arab	VL	L	L
Kfar Danis	L	L	L	Kfar Mechki	VL	L	L	Kfar Qouq	L	L	L
Kherbet Rouha	L	L	L	Majdel Balhiss	L	L	L	Mdoukha	VL	L	L
Mhaydseh Rachaiya	L	L	L	Nabi Safa	VL	L	L	Rachaiya	L	L	L
Rafid Rachaiya	L	L	L	Selsata (Mazraat Dei	VL	L	L	Tannoura	VL	L	L
Yanta	VL	L	L								

## Beyrouth

### Beyrouth

Municipality	08-Dec	09-Dec	10-Dec	Municipality	08-Dec	09-Dec	10-Dec	Municipality	08-Dec	09-Dec	10-Dec
Achrafieh	ML	L	ML	Ain el-Mreisse	ML	L	ML	Bachoura	ML	L	ML
Beirut Central Distr	ML	L	ML	Marfai	ML	L	ML	Mazraa	ML	L	ML
Medaouar	ML	L	ML	Minet el-Hosn	ML	L	ML	Mwssaitbeh	ML	L	ML
Ras Beirut	ML	L	ML	Rmeil	ML	L	ML	Saifi	ML	L	ML
Zqaq el-Blat	ML	L	ML								