

Lebanon Fire Risk Bulletin



CIVIL DEDEFENCE

Refer to cadast table condition.

Please note that the indicated temperature is at 2 meters height from the ground.

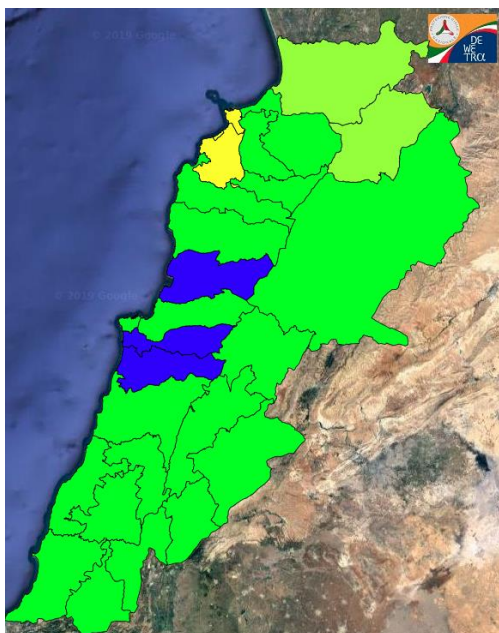
General description of potential fire risk situation

Symbol	Level of risk	Meaning and actions
VL	Very low	Very low fire risk. Controlled burning operations can be hardly executed due to high fuel moisture content. Normally wildfires self-extinguish.
L	Low	Low fire risk. Controlled burning operations can be executed with a reasonable degree of safety.
ML	Medium low	Medium-low fire risk. Controlled burning operations can be executed in safety conditions. All the fires need to be extinguished.
M	Medium	Medium fire risk. Controlled burning operations would be avoided. All the fires need to be very well extinguished.
M	Medium high	Controlled burning is not recommended. Open flame will start fires. Cured grasslands and forest litter will burn readily. Spread is moderate in forests and fast in exposed areas. Patrolling and monitoring is suggested. Fight fires with direct attack and all available resources.
H	High	Ignition can occur easily with fast spread in grass, shrubs and forests. Fires will be very hot with crowning and short to medium spotting. Direct attack on the head may not be possible requiring indirect methods on flanks. Patrolling and monitoring the territory is highly suggested.
E	Extreme	Ignition can occur also from sparks. Fires will be extremely hot with fast rate of spread. Control may not be possible during day due to long range spotting and crowning. Suppression forces should limit efforts to limiting lateral spread. Damage potential total. Patrolling and monitoring the territory is highly suggested.

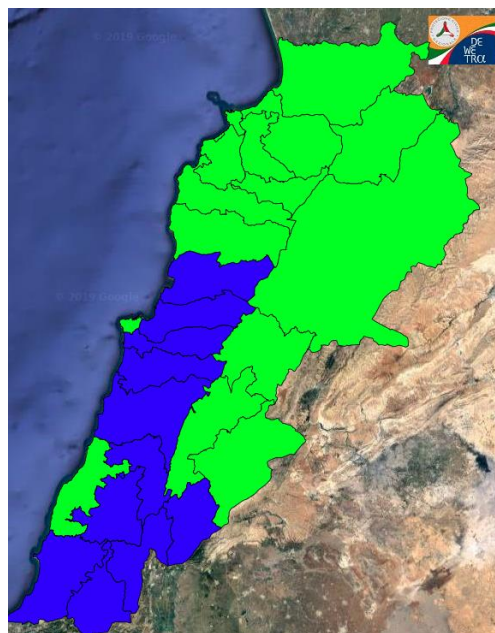
Beirut, 9 December 2019

FIRE RISK INDEX

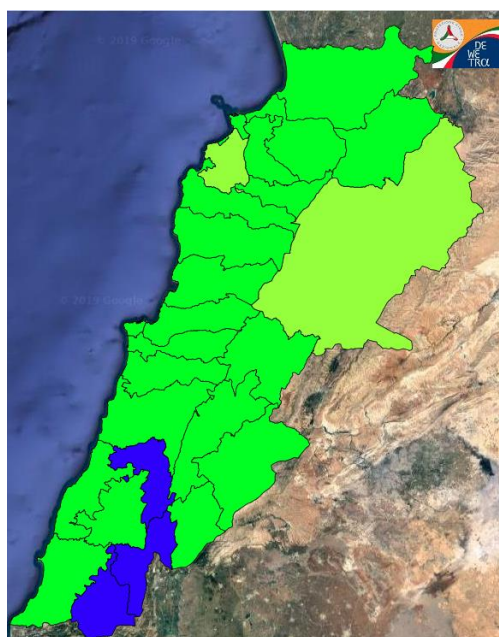
8 December 2019



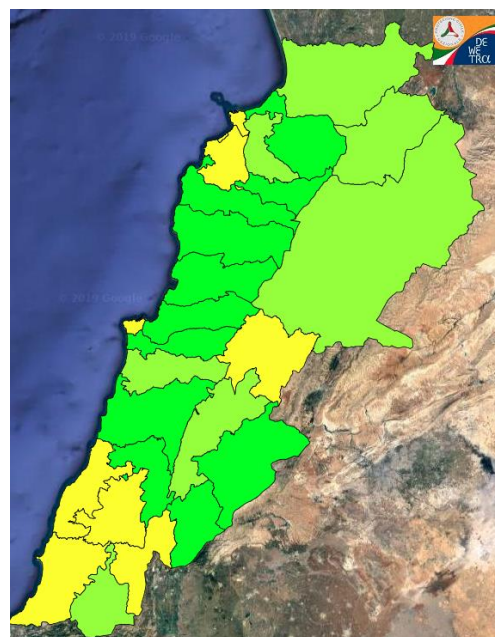
9 December 2019



10 December 2019



11 December 2019

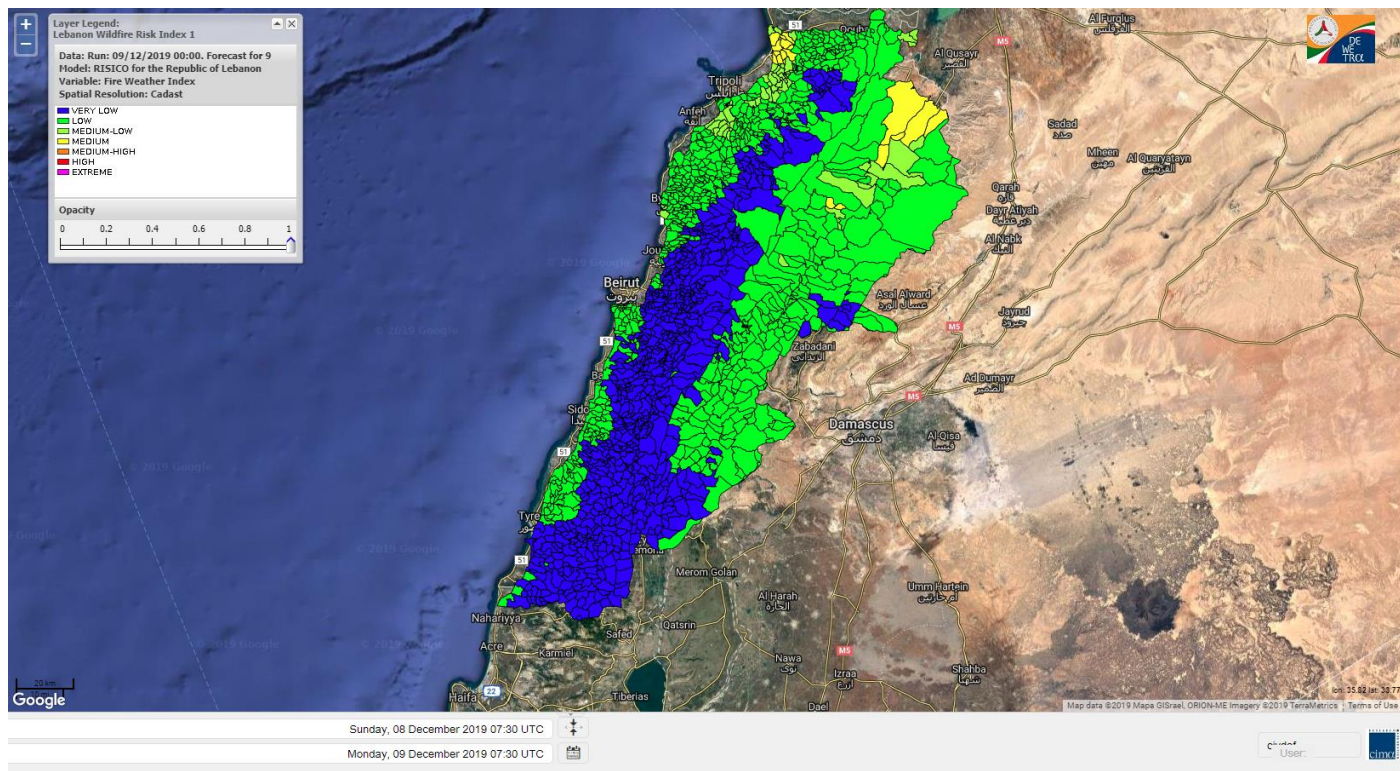


Layer Legend:
Lebanon Wildfire Risk Index 1

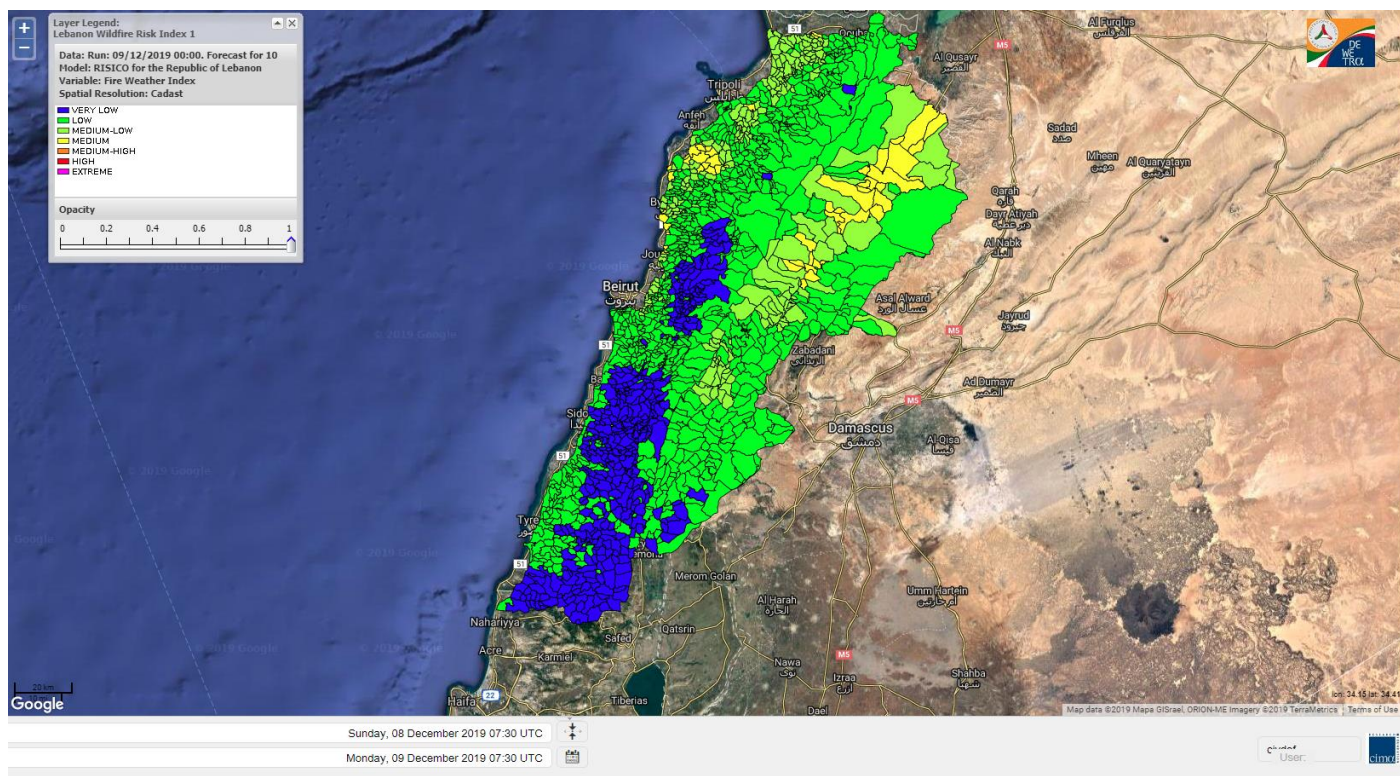
Data: Run: 09/12/2019 00:00. Forecast for 9
Model: RISICO for the Republic of Lebanon
Variable: Fire Weather Index
Spatial Resolution: Caza

- VERY LOW
- LOW
- MEDIUM-LOW
- MEDIUM
- MEDIUM-HIGH
- HIGH
- EXTREME

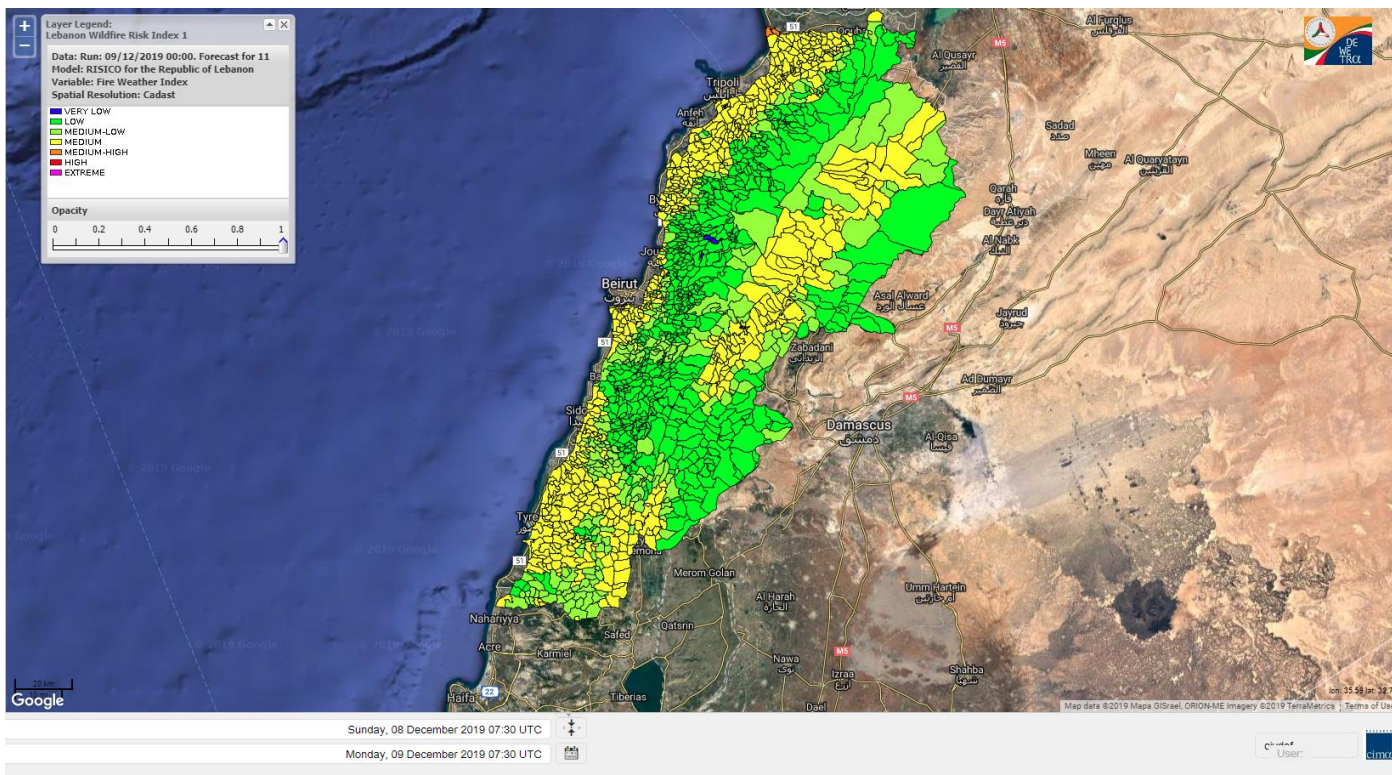
Lebanon for 9 December 2019



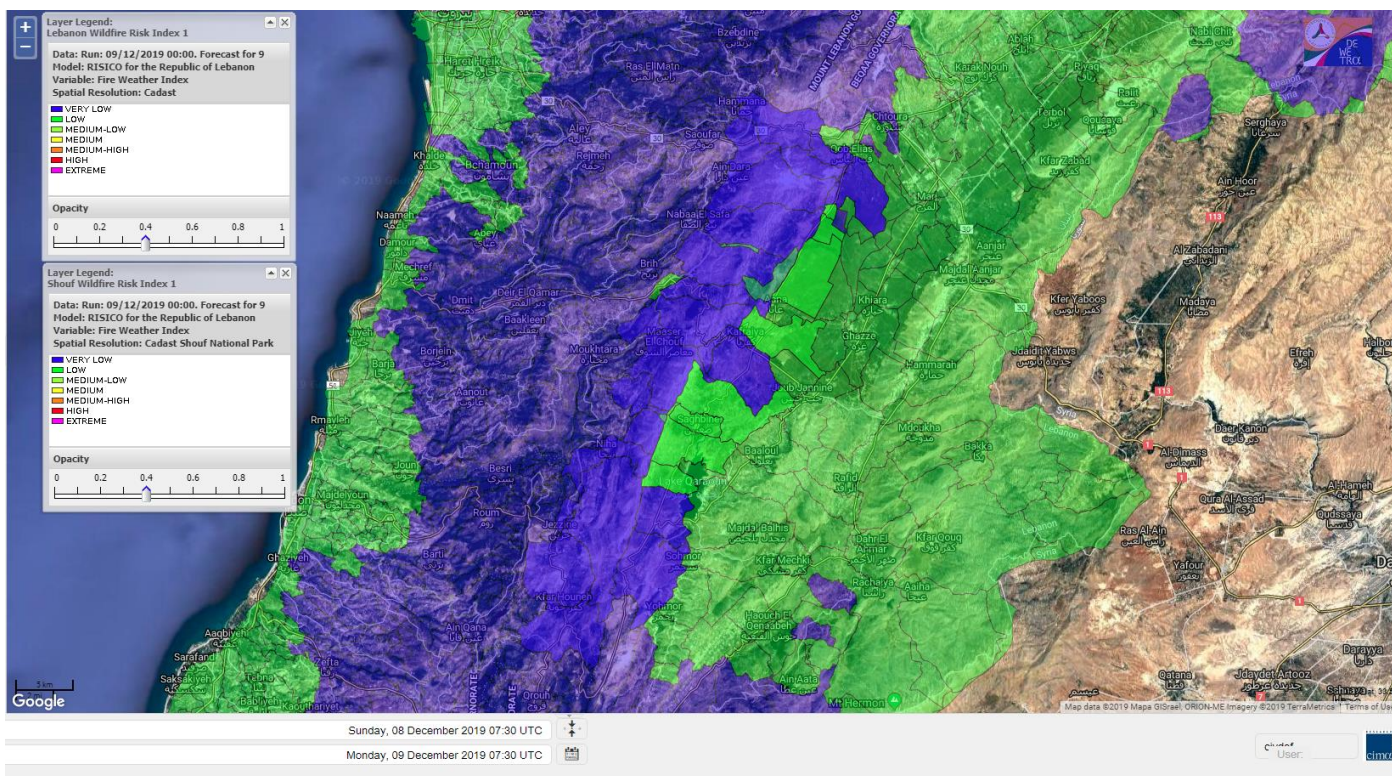
Lebanon for 10 December 2019



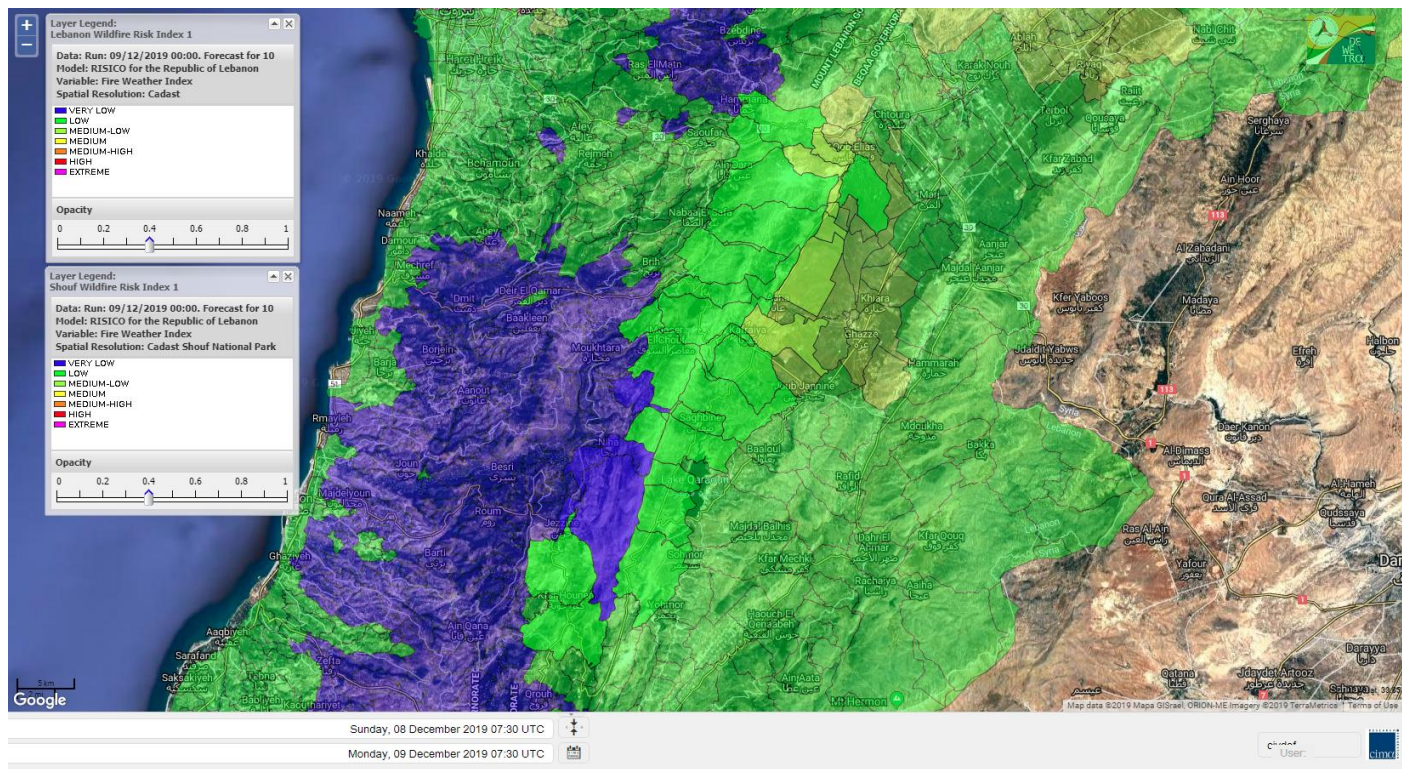
Lebanon for 11 December 2019



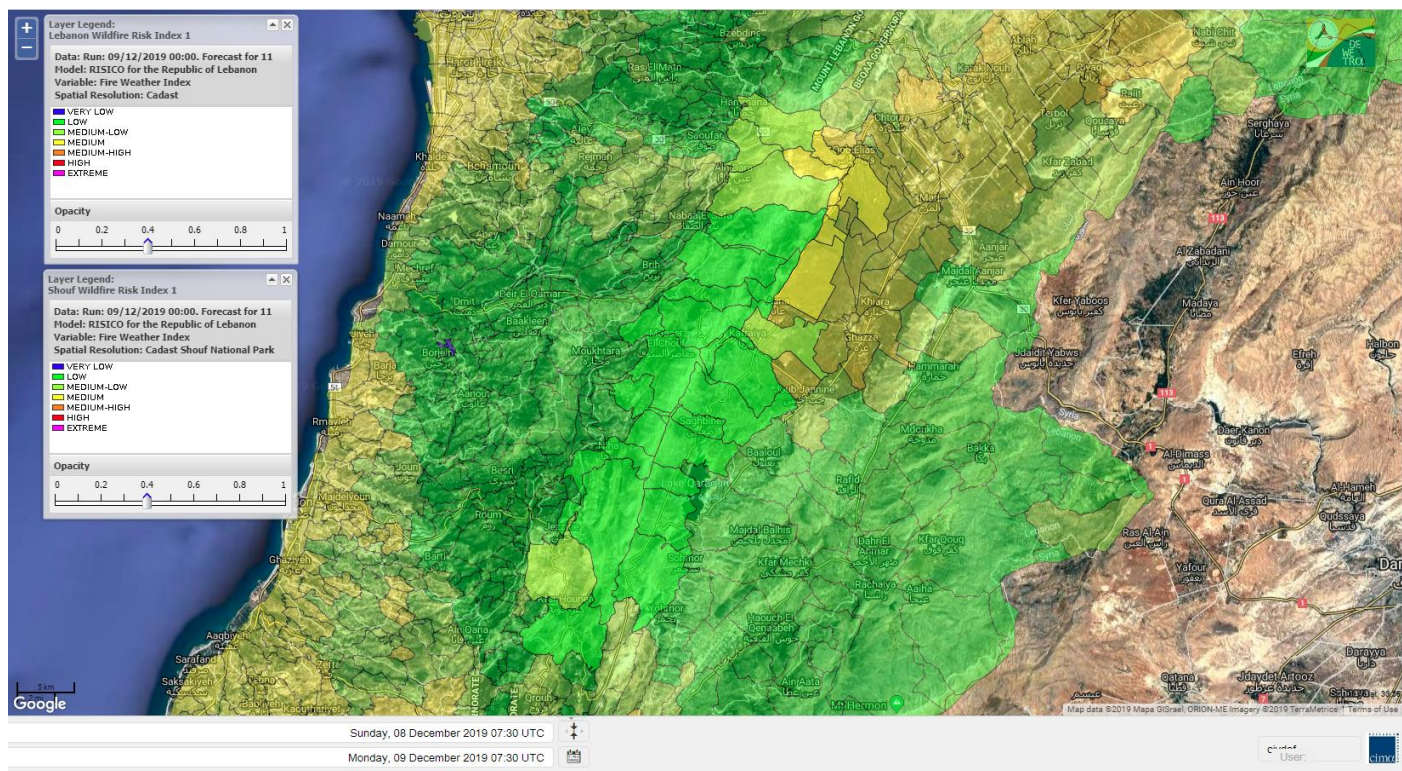
Shouf Biosphere Reserve Forecast for 9 December 2019



Shouf Biosphere Reserve Forecast for 10 December 2019



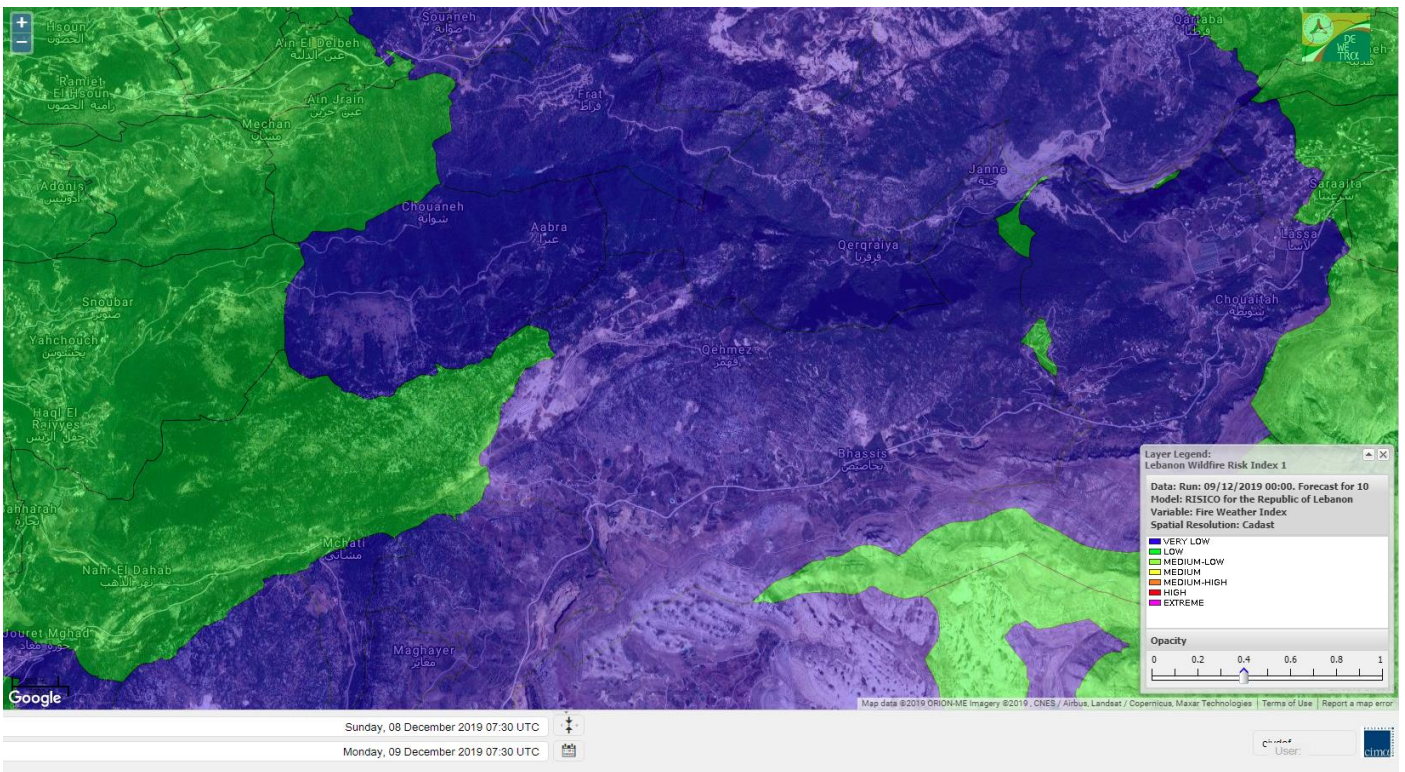
Shouf Biosphere Reserve Forecast for 11 December 2019



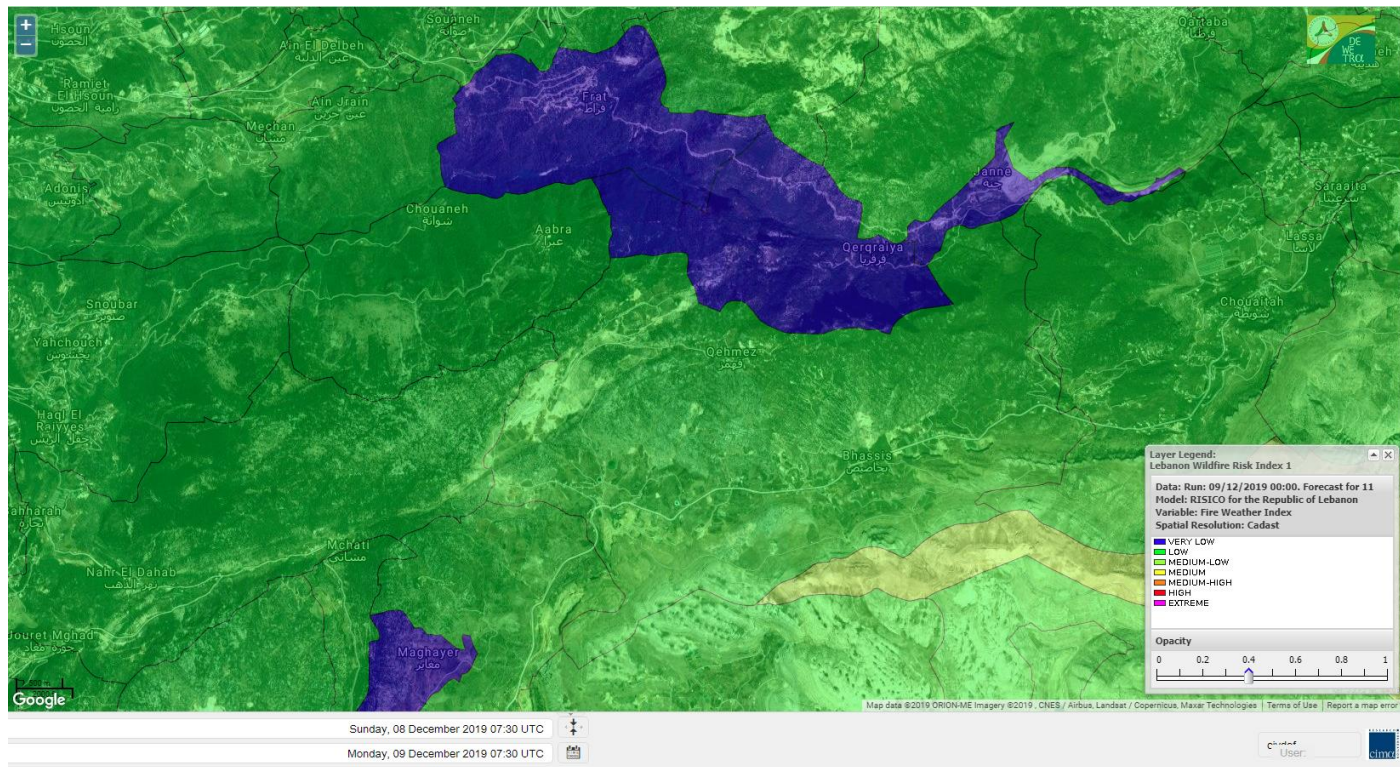
Jabal Moussa Reserve Forecast for 9 December 2019



Jabal Moussa Reserve Forecast for 10 December 2019



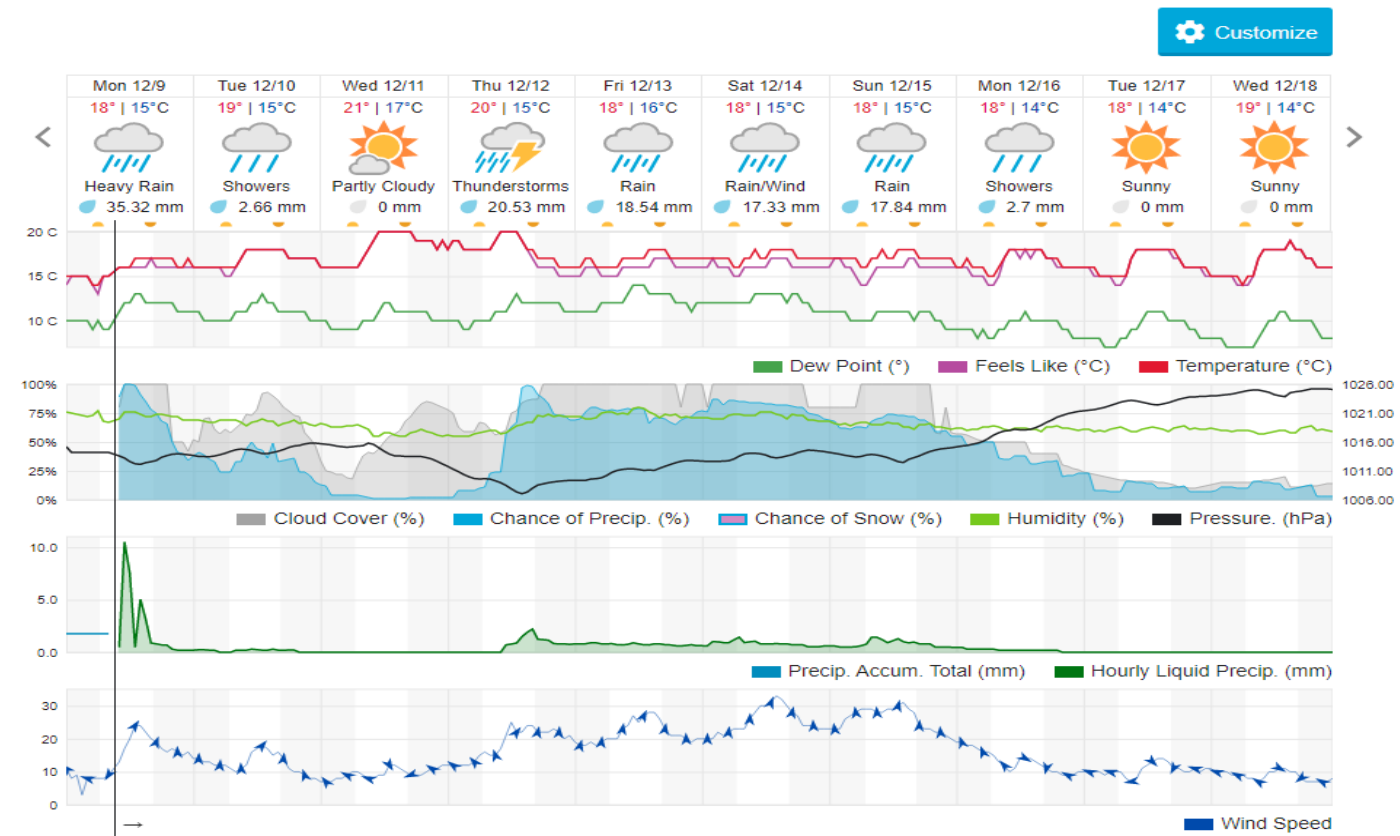
Jabal Moussa Reserve Forecast for 11 December 2019



Beirut, Beirut Governorate, Lebanon 10-Day Weather Forecast

16° ACHRAFIEH,RIZK STATION | CHANGE

TODAY HOURLY 10-DAY CALENDAR HISTORY WUNDERMAP



Nord

Koura

Municipality	09-Dec	10-Dec	11-Dec	Municipality	09-Dec	10-Dec	11-Dec	Municipality	09-Dec	10-Dec	11-Dec
Aaba	L	ML	M	Afsaddiq	L	M	M	Ain Ekrine	L	M	M
Amioun	L	M	M	Anfeh	L	ML	M	Badbhoun	L	M	M
Barghoun	L	M	M	Barsa	ML	L	M	Batroumine	ML	L	M
Bdebba	L	L	M	Bechmizine	L	M	M	Bednayet El-Koura	L	ML	M
Bhabbouch El-Koura	L	ML	M	Bkeftine	ML	L	M	Bnehran	L	L	ML
Bqaiia El-Koura	ML	L	M	Bsarma	L	ML	M	Btaaboura	L	M	M
Bterram	L	ML	M	Btouratij	ML	L	M	Bziza	L	M	M
Dar Beechtar	L	M	M	Dar Chmezzine	L	M	M	Deddeh	ML	L	M
Deir El-Balamand	L	L	L	Fih	L	ML	M	Hraiche	L	L	M
Ijdaabrine	L	ML	M	Kaftoun	L	ML	M	Kefraya El-Koura	L	M	M
Kfarakka	L	ML	M	Kfarhata	L	ML	M	Kfarhazir	L	M	M
Kfarkahel	ML	L	M	Kfarsaroun	L	ML	M	Kosba	L	ML	M
Mejdel el-Koura	L	ML	ML	Nakhle	ML	L	M	Qalhat	L	L	ML
Ras Masqa	ML	L	M	Rechdibbine	L	ML	M	Zakroun	L	L	M
Zgharta El-Mtaouile	L	L	ML								

Bcharre

Municipality	09-Dec	10-Dec	11-Dec	Municipality	09-Dec	10-Dec	11-Dec	Municipality	09-Dec	10-Dec	11-Dec
Aabdine	VL	L	L	Bane	VL	L	L	Barhelioun	L	L	L
Bazooune	VL	L	L	Becharre	L	L	L	Beit Menzer	VL	L	L
Billa	VL	L	L	Blaouza	VL	L	L	Bqaa Kafra	VL	L	L
Bqerqacha	VL	L	L	Breissat	VL	L	L	Dimane	VL	L	L
Hadath El Jobbeh	VL	L	L	Hadchit	VL	VL	L	Hasroun	VL	L	L
Mazraat Aassaf	L	L	L	Mazraat Bani Saab	VL	L	L	Mchaa El-Jobbeh	VL	L	L
Metrit	L	L	M	Moghr El-Ahoual	VL	L	L	Ouadi Qannoubine	VL	L	L
Qanat	VL	L	L	Qnayouer	VL	L	L	Tourza	VL	L	L

Batroun

Municipality	09-Dec	10-Dec	11-Dec	Municipality	09-Dec	10-Dec	11-Dec	Municipality	09-Dec	10-Dec	11-Dec
Aabrine	L	L	M	Aalali	L	L	L	Aartziz	VL	L	ML
Abdelli	L	L	ML	Ajdabra	L	L	M	Assia	L	L	L
Basbina	L	ML	M	Batroun	L	M	M	Bcheleh	VL	L	L
Bechtoudar	VL	L	L	Beit Chlala	VL	L	L	Beit Kassab	L	L	L
Bijdarfil	L	ML	M	Bqesmaya	L	L	M	Chatine	VL	L	L
Chebtin	L	L	ML	Chekka	L	M	M	Daael	L	L	L
Dahr Abi Yaghi	L	L	ML	Daraya El-Batroun	L	ML	M	Deir Billa	L	L	ML
Deir Kfifane	L	ML	M	Deir Mar Youhanna EL	VL	L	L	Deir Mar Youssef Jra	L	L	M
Douma	VL	L	L	Douq	L	L	ML	Eddeh El-Batroun	L	L	M
Ftahat El-Batroun	L	L	ML	Ghouma	L	L	M	Hadtoun	VL	L	L
Hamat	L	L	M	Harbouna	L	L	ML	Hardine	L	L	L
Helta	L	L	L	Hery	L	M	M	Jebbla	L	L	L
Jrabta El-Batroun	L	L	M	Jrane El-Batroun	L	ML	M	Kfar Aabida	L	ML	M
Kfar Halda	VL	L	L	Kfarb Shlaimane	VL	L	L	Kfarhatna	L	L	M

Kfarhay	L	ML	M	Kfarhelos	L	L	M	Kfifane	L	ML	M
Kfour El Arabi	VL	L	L	Koubba	L	ML	M	Kour	L	L	M
Mar Mama	L	L	ML	Masrah	L	L	ML	Mehmarch	L	L	ML
Mrah Chdid	L	L	M	Mrah El Ziyat	L	L	M	Mrah El-Hajj	VL	L	L
Nahle El-Batroun	VL	L	L	Niha El-Batroun	VL	L	L	Oujh El-Hajjar	L	ML	M
Ouata Houb	VL	L	L	Qatnaaoun	L	ML	M	Racha	VL	L	L
Rachana	L	L	M	Rachkida	L	L	M	Ram El-Batroun	VL	L	L
Ras Nahhach	L	ML	M	Selaata	L	M	M	Sghar	L	L	M
Smar Jbayl	L	L	M	Sourat El-Batroun	L	L	ML	Tannourine El-Faouqa	VL	L	L
Tannourine Et-Tahta	VL	L	L	Thoum	L	L	M	Toula El-Batroun	L	L	M
Zan	L	L	ML								

Zgharta

Municipality	09-Dec	10-Dec	11-Dec	Municipality	09-Dec	10-Dec	11-Dec	Municipality	09-Dec	10-Dec	11-Dec
Aachach	L	ML	M	Aalma	L	ML	M	Aarde	L	ML	M
Aintourine	VL	L	L	Arabet Qozhaya	VL	L	L	Arde	L	ML	M
Arjis	L	L	L	Asnoun	L	ML	M	Ayto	VL	L	L
Basloukit	VL	L	L	Bchannine	L	L	M	Besebeel	L	ML	M
Bhairret Toula	VL	VL	VL	Bnachee	L	L	L	Boussit	ML	M	M
Danha	L	ML	M	Daraiya Zgharta	L	L	L	Deir Jdeide	L	ML	M
Ehden	VL	L	L	Halan	L	ML	M	Hariq Zgharta	L	ML	M
Houakir	L	L	ML	Hraiqis	L	L	M	Iaal	L	ML	M
Ijbaa	VL	L	L	Karm Saddeh	VL	L	L	Kfarchakhna	L	L	M
Kfardlaqous	L	ML	M	Kfarfou	VL	L	L	Kfarhata Zgharta	L	ML	M
Kfarhoura	L	L	M	Kfarsghab	VL	L	L	Kfaryachit	L	ML	M
Kfarzaina	L	ML	M	Khaldiye	L	ML	M	Mazraat Ajbeaa	L	ML	M
Mazraat Et-Teffah	VL	L	L	Mazraat Jneid	L	ML	M	Mejdlaya Zgharta	L	ML	M
Merh Kfarsghab	L	L	ML	Miryata	L	ML	M	Miziara	L	L	L
Mzraat Kefraya	L	L	M	Qorah Bach	L	ML	M	Rachiine	L	ML	M
Ras Kifa	L	L	L	Sakhra	L	ML	M	Sebhel Zgharta	VL	L	L
Serhel	VL	L	L	Tallet Zgharta	L	ML	M	Toula Zgharta	VL	L	L
Zgharta	L	ML	M								

Minieh-Denniye

Municipality	09-Dec	10-Dec	11-Dec	Municipality	09-Dec	10-Dec	11-Dec	Municipality	09-Dec	10-Dec	11-Dec
Aasaymout	VL	L	L	Aaymar	VL	L	L	Aazki	VL	L	ML
Ain El-Tineh-Miniyeh	VL	L	L	Assoun	VL	L	L	Bakhaaoun	VL	L	L
Bchennata	VL	L	L	Bechehhara	L	L	L	Beddawi	L	L	M
Behouaita	VL	L	L	Beit El Foqss	VL	L	L	Beit Haouik	VL	L	L
Beit Zoud	VL	L	L	Bekaasafrine	VL	L	L	Borj El Yahoudiyeh	L	L	M
Bqarsouna	VL	L	L	Btermaz	VL	L	L	Debaael	VL	L	L
Deir Ammar	L	L	M	Deir Nbouh	L	L	ML	Haouaret-Miniyeh	VL	L	L
Haql el Azimeh	VL	L	L	Harf El Siyad	VL	L	L	Hazmiye-Miniyeh	VL	L	L
Izal	L	L	ML	Jarjour	L	L	L	Jayroun	VL	L	L
Kahf El-Malloul	L	L	L	Karm El-Moher	L	L	L	Kfar Binine	VL	L	L
Kfarchalane	VL	L	ML	Kfarhabou	L	L	ML	Kharroub-Miniyeh	VL	L	ML
Mazraat El-Kreme	L	L	L	Mazraat Ketrane	VL	L	L	Merkebta	ML	L	M

Minyeh	L	L	M	Mrah El Sfirat	VL	L	L	Mrah Sraj	VL	L	L
Mrebbine	L	L	L	Nabi Youcheaa	L	L	M	Nemrine	VL	L	L
Qarhaiya	VL	L	L	Qarne	VL	L	L	Qarsita	VL	L	L
Qattineh-Miniyeh	VL	L	L	Qemmamine	VL	L	L	Qraine	VL	L	L
Raouda-Aadoua	ML	L	M	Rihaniyet-Miniyeh	ML	ML	M	Sfireh	VL	L	L
Sir Ed-Danniyeh	VL	L	L	Tarane	VL	L	L	Terbol-Miniyeh	ML	ML	M
Zaghartaghrine	L	L	ML	Zouq Bhannine	L	L	M				

Nabatiye

Nabatiye

Municipality	09-Dec	10-Dec	11-Dec	Municipality	09-Dec	10-Dec	11-Dec	Municipality	09-Dec	10-Dec	11-Dec
Aabba	VL	VL	M	Aazzi	VL	VL	ML	Adchit El-Chqif	VL	VL	M
Ain Bou Swar	VL	VL	ML	Ain Kana	VL	VL	ML	Ali El-Taher	VL	VL	ML
Ansar	L	L	M	Arab Salim	VL	VL	ML	Arnoun	VL	VL	M
Bfaroue	VL	VL	ML	Breyqaah	VL	L	M	Charqiyeh	VL	VL	M
Choukine	VL	VL	M	Deir El Zahrani	VL	VL	M	Doueir El-Nabatiyeh	VL	VL	M
Habbouch El-Nabatiye	VL	VL	M	Hamra El-Nabatiyeh	VL	L	M	Harouf El-Nabatiyeh	VL	VL	M
Hmaile	VL	VL	ML	Houmin El Faouqa	VL	VL	M	Houmin El Tahta	VL	VL	ML
Jarjough	VL	VL	ML	Jbaah El-Nabatiyeh	VL	VL	L	Jebchit	VL	VL	M
Kfar Djal El-Nabatiy	VL	VL	ML	Kfar Remmane	VL	VL	ML	Kfar Sir	VL	VL	ML
Kfar Tebnit	VL	VL	M	Kfarfila	VL	VL	ML	Kfour El-Nabatieh	VL	VL	M
Mayfadoun	VL	L	M	Mazraat Bsaffour	VL	VL	M	Mazraat Chalbaal	VL	VL	M
Mazraat Dmoul	VL	L	M	Mazraat El Khreibeh	VL	VL	M	Mazraat El-Bayad El-	VL	VL	M
Mazraat Kfarjaouz	VL	VL	M	Mazraat Qalaat Meiss	L	L	M	Nabatiyeh El-Fawka	VL	VL	M
Nabatiyeh Et-Tahta	VL	VL	M	Namiriyeh	VL	VL	M	Qaaqaiyet El Jisr	VL	VL	ML
Qossaibeh El-Nabatiy	VL	VL	ML	Roumine	VL	VL	ML	Sarba El-Nabatieh	VL	VL	ML
Sir El-Gharbiyeh	VL	L	M	Toul	VL	VL	M	Yehmor El-Nabatiyeh	VL	L	M
Zaoutar El Charkiyeh	VL	VL	M	Zaoutar El-Gharbiyeh	VL	VL	M	Zebdine El-Nabatiyeh	VL	VL	M
Zefta	VL	VL	M								

Hasbaiya

Municipality	09-Dec	10-Dec	11-Dec	Municipality	09-Dec	10-Dec	11-Dec	Municipality	09-Dec	10-Dec	11-Dec
Aain Jarfa	VL	VL	L	Abou Qamha	VL	L	ML	Ain Qania	VL	L	L
Bourghos	VL	L	M	Chebaa	VL	L	L	Chouaya Hasbaya	VL	L	L
Dellafeh	VL	L	M	Fardiss Hasbaiya	VL	L	ML	Hasbaya	VL	L	ML
Hbariyeh	VL	VL	L	Kaoukaba Hasbaiya	VL	L	M	Kfar Chouba	VL	VL	L
Kfar Hamam	VL	VL	L	Kfeir El-Zait	VL	L	L	Khalwat Hasbaya	VL	VL	L
Khreibet Hasbaiya	VL	VL	ML	Majidiyeh Hasbaiya	VL	VL	ML	Marj Ez-Zhour (Haouc	L	L	L
Meri	VL	VL	M	Mimass	VL	L	L	Rachaiya El-Fokhar	VL	L	ML
Salaiyeb	VL	VL	M								

Marjayoun

Municipality	09-Dec	10-Dec	11-Dec	Municipality	09-Dec	10-Dec	11-Dec	Municipality	09-Dec	10-Dec	11-Dec
Aalmane Marjaayoun	VL	VL	ML	Aamra	VL	VL	M	Adayseh Marjaayoun	VL	VL	M
Adchit El-Koussair	VL	VL	M	Ain Aarab Marjaayoun	VL	VL	M	Bani Haiyann	VL	VL	M
Blatt Marjaayoun	VL	L	M	Blida	VL	VL	M	Borj El-Moulouk	VL	VL	M

Boueyda Marjaayoun	VL	VL	ML	Deir Mimass	VL	VL	ML	Deir Siriane	VL	VL	M
Dibbine	VL	L	M	Ebel El Saqi	VL	VL	M	Houla	VL	VL	M
Houra	VL	VL	M	Kfar Kila	VL	L	M	Khiam Marjaayoun	VL	VL	M
Klayaa	VL	VL	M	Majdel Selem	VL	VL	M	Marjaayoun	VL	L	M
Markaba	VL	VL	M	Mays El-Jabal	VL	VL	M	Mazraat Doumiat	VL	VL	M
Mazraat Sarada	VL	VL	M	Mhaibib	VL	VL	M	Qabrikha	VL	VL	ML
Qantara	VL	VL	ML	Rab El-Thalathine	VL	VL	M	Saouaneh Marjayoun	VL	VL	M
Talloussa	VL	VL	M	Taybeh Matjaayoun	VL	VL	M	Touline	VL	VL	ML

Bent Jbail

Municipality	09-Dec	10-Dec	11-Dec	Municipality	09-Dec	10-Dec	11-Dec	Municipality	09-Dec	10-Dec	11-Dec
Ain-Ebel	VL	VL	ML	Aitaroun	VL	VL	M	Aynata Bint Jbeil	VL	VL	ML
Ayta El-Chaeb	VL	VL	ML	Ayta El-Jabal	VL	VL	ML	Beit Lif	VL	VL	ML
Beit Yahoun	VL	VL	ML	Bint Jbeil	VL	VL	ML	Borj Qalaway	VL	VL	M
Braachit	VL	VL	ML	Chakra	VL	VL	M	Debel	VL	VL	ML
Deir Antar	VL	VL	M	Froun	VL	VL	ML	Ghandouriyeh Bint Jb	VL	VL	ML
Hanine	VL	VL	ML	Hariss	VL	VL	M	Hdatha	VL	VL	ML
Jmeyjmeh	VL	VL	ML	Kafra Bint Jbeil	VL	VL	ML	Kfar Dounine	VL	VL	M
Khirbet Selm	VL	VL	ML	Kounine	VL	VL	M	Maroun El Ras	VL	VL	M
Qalaway	VL	VL	M	Qaouzah	VL	VL	ML	Qatmoun	VL	VL	M
Ramya Bint Jbeil	VL	VL	ML	Rchaf	VL	VL	ML	Rmeich	VL	VL	ML
Safad Al Battikh	VL	VL	ML	Salhaneh	VL	VL	ML	Serbine	VL	VL	M
Sultanieh Bint Jbeil	VL	VL	M	Tibnine	VL	VL	ML	Tiri	VL	VL	ML
Yaroun	VL	VL	ML	Yater	VL	VL	ML				

Mont Liban

Jbail

Municipality	09-Dec	10-Dec	11-Dec	Municipality	09-Dec	10-Dec	11-Dec	Municipality	09-Dec	10-Dec	11-Dec
Aabeydat	L	L	ML	Aalita	VL	L	L	Aamchit	ML	M	M
Aarab El-Lahib	VL	L	L	Aarasta	VL	L	L	Adonis Jbeil	VL	L	L
Afqa Jbeil	VL	L	L	Ain El Delbeh Jbeil	VL	L	L	Ain El-Ghouayba	VL	VL	L
Ain Jrain	VL	L	L	Ain Kfah	L	ML	M	Almat El Chemaliyat	VL	VL	L
Almat El-Jenoubiya	VL	VL	L	Aqoura	L	L	ML	Bayzoun	VL	L	L
Bchille Jbeil	VL	L	L	Bechtlida	L	L	L	Behdaydat	L	L	ML
Beit Habbaq	L	ML	M	Bejjeh	L	L	M	Bekhaaz	L	L	M
Berbara Jbeil	L	ML	M	Bintael	L	L	L	Birket Hjoula	L	L	L
Blatt Jbeil	L	L	L	Boulhos	VL	VL	L	Breyj Jbeil	VL	L	L
Chamat	L	ML	M	Chikhane	L	ML	M	Chmout	L	L	ML
Eddeh Jbeil	L	L	ML	Ehmej	VL	VL	L	Fatre	VL	L	L
Ferhet	VL	L	L	Fghal	L	L	M	Frat	VL	VL	VL
Ghabat	VL	L	L	Ghalboun	L	L	M	Gharzouz	L	ML	M
Ghofrine	L	ML	M	Habil	L	L	ML	Halate	L	L	ML
Haqel	L	L	ML	Hbaline	L	ML	M	Hboub	L	L	L
Hdeine	VL	L	L	Hema Er-Rehban	VL	L	L	Hema Mar Maroun Aann	VL	VL	L
Hjoula	L	L	L	Hosrayel	L	ML	M	Hsarat	L	ML	M

Hsoun	VL	L	L	Jaj	VL	L	L	Janne	VL	VL	VL
Jbeil	L	M	M	Jeddeyl Jbeil	ML	M	M	Jlisse	VL	L	L
Jouret El-Qattine	VL	L	L	Kfar Baal Annaya	VL	L	L	Kfar Kidde	L	L	M
Kfar Kouas	VL	L	L	Kfar Mashoun	L	ML	M	Kfoun	L	L	ML
Kharbe Jbeil	L	ML	M	Laqlouq	VL	L	L	Lassa	VL	VL	L
Lehfed	L	L	L	Maad	L	ML	M	Mar Sarkis	VL	L	L
Mastita	L	M	M	Mayfouq	L	L	L	Mazraat El Siyad	VL	L	L
Mazraat El-Maaden	VL	VL	L	Mechane	VL	L	L	Mechmech Jbeil	VL	L	L
Mehrin	VL	L	L	Mejdel El-Akoura	VL	L	L	Mghayreh Jbeil	VL	L	L
Mounsef	L	ML	M	Nahr Ibrahim	L	M	M	Qahmez	VL	VL	L
Qartaba	VL	VL	L	Qartaboun	L	M	M	Qattara Jbeil	VL	L	L
Qorqraya	VL	VL	VL	Ramout	L	ML	M	Ras Osta	VL	L	L
Rihane Jbeil	ML	ML	M	Sakiet El-Khayt	L	L	M	Saqi Richmaya	VL	L	L
Sebrine	VL	L	L	Seraita	VL	L	L	Souane Jbeil	VL	VL	L
Tadmor	VL	L	L	Tartej	VL	L	L	Torzaiya	VL	L	L
Yanouh Jbeil	VL	L	L	Zibdine Jbeil	VL	L	L				

El Metn

Municipality	09-Dec	10-Dec	11-Dec	Municipality	09-Dec	10-Dec	11-Dec	Municipality	09-Dec	10-Dec	11-Dec
Aain El-Qabu	VL	VL	L	Aain El-Qach	VL	VL	L	Aain El-Teffaha	VL	VL	L
Aain el-Safssaf El-M	VL	VL	L	Abou Mizane	VL	VL	L	Ain Aar	VL	ML	M
Ain Alaq	VL	L	ML	Ain El-Kharroube	VL	VL	L	Ain El-Sendianeh	VL	VL	L
Ain El-Zeitoune	VL	VL	L	Ain Saadeh	VL	L	M	Aintoura El-Matn	VL	L	ML
Amaret Chalhoub	VL	ML	M	Antelias	VL	ML	M	Atchaneh	VL	L	ML
Ayroun	VL	VL	L	Baabdat	VL	VL	L	Baouchariyeh	L	L	M
Baskinta	VL	VL	L	Beit Chabab	VL	L	L	Beit El-Chaar	VL	ML	M
Beit El-Kekko	VL	ML	M	Beit Mery	VL	L	ML	Bhersaf	VL	VL	L
Bikfaya	VL	VL	L	Biyakout	VL	ML	M	Bnabil	VL	VL	L
Bourj Hammoud	L	L	M	Bqennaya	VL	L	ML	Broummana El-Matn	VL	L	ML
Bsalim	VL	L	M	Bsifrine	VL	VL	L	Bteghrine	VL	VL	L
Chaouiye	VL	L	ML	Chouaya El-Matn	VL	L	L	Choueir	VL	VL	L
Chrine	VL	VL	L	Dahr El Sawan El-Mat	VL	L	L	Daychouniyeh	VL	L	ML
Dbayeh	VL	ML	M	Deir Chamra	VL	VL	L	Deir Mar Abda el Mch	VL	L	ML
Deir Mar Roukouz	L	L	M	Deir Tamiche	VL	L	ML	Dik El-Mehdi	VL	L	M
Dikwaneh	L	L	M	Douar El-Matn	VL	VL	L	Fanar	VL	L	M
Fraike	VL	L	ML	Haret El-Ballaneh	VL	L	M	Hbous	VL	ML	M
Himlaya	VL	VL	L	Jal El Did	VL	ML	M	Jdeideh El-Metn	VL	ML	M
Jouar El-Matn	VL	VL	L	Jouret El-Ballout	VL	L	ML	Kaaqour	VL	VL	L
Kfar Aaqab	VL	VL	L	Kfertay El-Matn	VL	VL	L	Khenchara	VL	VL	L
Khillet El-Mtain	VL	VL	L	Konnabat Broummana	VL	L	ML	Konnabat Salima	VL	VL	L
Machraah El-Matn	VL	VL	L	Majdel Tarchich	VL	L	ML	Majzoub	VL	L	M
Mansouriyeh El-Metn	L	L	M	Mar Boutros Karm Et-	VL	VL	L	Mar Chaya et Mzekke	VL	L	ML
Mar Moussa Ed-Douar	VL	VL	L	Marjaba	VL	VL	L	Masqa	VL	L	ML
Mayasse	VL	VL	L	Mazraat Deir Aoukar	VL	ML	M	Mazraat El-Hadirat	VL	L	M
Mazraat Yachouh	VL	ML	M	Mchikha	VL	VL	L	Menqlet Mezher	VL	ML	M
Mhayseh Matn	VL	VL	L	Mkalles	L	L	M	Mrouj	VL	L	L

Mtain	VL	L	ML	Mtayleb	VL	L	M	Nabay	VL	L	ML
Naccache	VL	ML	M	Ouadi Chahine	VL	VL	L	Ouadi El-Karm El-Mat	VL	VL	L
Ouata El-Mrouj	VL	VL	L	Ouyoun El-Matn	VL	L	L	Qornet Chehwan	VL	L	M
Qornet El-Hamra	VL	L	ML	Roumieh	VL	L	ML	Sfeilet Bikfaya	VL	VL	L
Sinn El-Fil	L	L	M	Zabbougha	VL	VL	L	Zalqa	VL	ML	M
Zarououn	VL	VL	L	Zekrite	VL	L	ML	Zighrine El-Matn	VL	VL	L
Zouk El-Khrab	VL	ML	M								

Chouf

Municipality	09-Dec	10-Dec	11-Dec	Municipality	09-Dec	10-Dec	11-Dec	Municipality	09-Dec	10-Dec	11-Dec
Aalmane El-Chouf	L	VL	M	Aammiq El-Chouf	VL	VL	L	Ain Ouzein	VL	VL	L
Ain Qani	VL	VL	L	Ain Zhalta	VL	L	L	Ainbal	VL	VL	L
Amatour	VL	VL	L	Anout	VL	VL	L	Atrine	VL	VL	L
Baadarane	VL	VL	L	Baaqline	VL	VL	L	Baasir	L	L	M
Barja	L	L	M	Barouk	VL	L	L	Bater	VL	VL	L
Batloun	VL	L	L	Bayqoun	VL	VL	L	Bchetfine	VL	VL	L
Beiteddine	VL	VL	L	Benouati Ech-Chouf	VL	VL	L	Berjein	VL	VL	L
Bireh et Mtalleh	VL	VL	L	Biret El-Chouf	VL	L	L	Bkechtine Ouel Mchei	VL	VL	L
Bkifa El-Chouf	VL	VL	L	Botme	VL	VL	L	Bqaiaa Ech-Chouf	VL	VL	L
Bsaba El-Chouf	VL	VL	L	Chammis El-Chouf	L	VL	ML	Chehim	VL	VL	L
Chemaarine	VL	VL	L	Chourit	VL	VL	L	Daher El-Chouf	L	L	L
Dalhoun	L	VL	L	Damour	L	L	ML	Daraya El-Chouf	VL	VL	L
Deir El-Moukhalles	VL	VL	L	Deir Baba	VL	VL	L	Deir Dourit	VL	VL	L
Deir El-Qamar	VL	VL	L	Deir Kouche	VL	VL	L	Dibbieh	VL	VL	L
Dmit	VL	VL	L	Fouara Jaafar	VL	VL	L	Fraidis El-Chouf	VL	L	L
Ghabet Jaafar	VL	VL	L	Gharife	VL	VL	L	Haret Jandal	VL	VL	L
Hasrout	VL	VL	L	Jadra	L	VL	M	Jahlieh	VL	VL	L
Jbeih El-Chouf	VL	VL	L	Jdeidet El-Chouf	VL	VL	L	Jiyeh	L	L	M
Jleiliyeh	VL	VL	L	Jmailiyeh	L	VL	ML	Joun	L	VL	ML
Kahlounie El-Chouf	VL	VL	L	Ketermaya	L	VL	M	Kfar Faqoud	VL	VL	L
Kfar Hamal	VL	L	L	Kfar Him	VL	VL	L	Kfar Katra	VL	VL	L
Kfar Niss	VL	L	L	Kfar hay	VL	VL	L	Kfarnabrakh	VL	VL	L
Khirbet Bisri	VL	VL	L	Knayse El-Chouf	VL	VL	L	Maaniyeh	L	VL	ML
Maasser Beiteddine	VL	VL	L	Maasser El-Chouf	VL	L	L	Majdalouna	L	VL	ML
Majdel El-Meouch	VL	VL	L	Mazboud	VL	VL	L	Mazmoura	VL	VL	L
Mazraat El Chouf	VL	VL	L	Mazraat El Daher	VL	VL	L	Mazraat El-Douair	VL	VL	L
Mechref	VL	VL	L	Mghairie	L	VL	ML	Mghayrie El-Chouf	VL	VL	L
Moukhtara	VL	VL	L	Mrusti	VL	L	L	Mtolle	VL	VL	L
Naameh	L	L	ML	Niha El-Chouf	VL	VL	L	Ouadi Abou Youssef	VL	VL	VL
Ouadi Ed-Deir	VL	VL	L	Ouadi El-Sit	VL	VL	L	Ouadi bnehlay	VL	VL	L
Qraibeh	VL	VL	L	Qreiaa	VL	VL	L	Rmayle El-Chouf	L	VL	M
Semqaniyeh	VL	VL	L	Sibline	L	VL	M	Sirjbeil	VL	VL	L
Warhanieh	L	L	L	Werdaniyeh	L	VL	M	Zaarourieh	VL	VL	L

Baabda

Municipality	09-Dec	10-Dec	11-Dec	Municipality	09-Dec	10-Dec	11-Dec	Municipality	09-Dec	10-Dec	11-Dec
Abadiyeh	VL	L	L	Ain Mouaffaq	VL	L	L	Araiya	VL	L	L

Arbaniyeh	VL	VL	L	Arsoun	VL	VL	L	Baabda	L	L	M
Baalchmey	VL	L	ML	Bmaryam	VL	L	L	Bourj El-Brajneh	L	L	M
Boutchay	VL	L	ML	Bsaba Baabda	VL	L	ML	Btekhney	VL	VL	L
Btibyat	VL	L	L	Bzebdine	VL	VL	L	Chbeniyeh	VL	L	L
Chiyah	L	L	M	Chmeisset Baabda	VL	VL	L	Chouit	VL	L	L
Deir El-harf	VL	VL	L	Deir Khouna	VL	L	L	Dlaybeh	VL	VL	L
Falougha	VL	L	ML	Furn El-Chebbak	L	L	M	Hadath Beyrouth	L	L	M
Halaliyeh Baabda	VL	VL	L	Hammana	VL	L	ML	Haret El Sett	VL	L	L
Haret Hamze	VL	L	L	Haret Hreik	L	L	M	Hasbaiya El-Metn	VL	VL	L
Jouar El-Hoz	VL	VL	L	Jouret Arsoun	VL	VL	L	Kfar Chima	VL	L	M
Kfar Selouane	VL	L	L	Khalouat Baabda	VL	L	ML	Kneisset Baabda	VL	VL	L
Laylakeh	L	L	M	Louayzeh Baabda	VL	L	L	Merdache	VL	L	M
Mzairaa Baabda	VL	L	L	Ouadi Chahrour El OI	VL	L	ML	Ouadi Chahrour El So	VL	L	ML
Qalaa Baabda	VL	VL	L	Qhraybe Baabda	VL	L	L	Qobbayaa	VL	L	L
Qornayel	VL	VL	L	Qortada	VL	L	L	Qrayeh Baabda	VL	L	L
Qsaibeh Baabda	VL	L	ML	Qtale Baabda	VL	VL	L	Ras El Metn	VL	L	L
Ras El-Haref	VL	L	L	Rouayset El-Ballout	VL	L	L	Salima Baabda	VL	VL	L
Tahouitat El Ghadir	L	L	M	Tarchich	VL	L	L	Zandouqa	VL	VL	L

Aley

Municipality	09-Dec	10-Dec	11-Dec	Municipality	09-Dec	10-Dec	11-Dec	Municipality	09-Dec	10-Dec	11-Dec
Abey	VL	VL	L	Aghmid	VL	L	L	Ain Dara	VL	L	ML
Ain Drafil	VL	L	ML	Ain El Halazoun	VL	L	ML	Ain El-Rmmaneh	VL	VL	L
Ain Jedideh	VL	L	ML	Ain Ksour	VL	VL	L	Ain Onoub	VL	L	ML
Ain Traz	VL	VL	L	Ainab	VL	L	ML	Aley	VL	L	ML
Aramoun	VL	L	ML	Aytat	VL	L	M	Azouniyeh	VL	L	ML
Baawerta	VL	VL	L	Badghan Oua Wadi Bad	VL	L	ML	Bassatine	VL	L	ML
Bayssour	VL	L	ML	Bchamoun	VL	L	ML	Bdadoun	VL	L	L
Behouara	VL	L	L	Bennay	VL	VL	L	Bhamdoun El-Dayaa	VL	L	ML
Bhamdoun El-Mhatta	VL	L	ML	Bkhechtey	VL	L	ML	Bleibel	VL	L	ML
Bmakine	VL	L	ML	Bmehray	VL	L	L	Bouzrid	VL	VL	L
Bserrine	VL	L	L	Bsous	VL	VL	L	Btalloun	VL	L	ML
Btater	VL	L	ML	Chanay	VL	L	ML	Charoun	VL	L	ML
Chartoun	VL	L	L	Chemlane	VL	L	ML	Chouefat El-Aamrous	VL	L	M
Chouefat El-Oumara	VL	L	M	Chouefat El-Quoubbe	L	L	M	Dakkoun	VL	VL	L
Deir Qoubel	VL	L	ML	Dfoun	VL	L	ML	Douair El Remmaneh	VL	VL	L
Ghaboun	VL	L	L	Habramoun	VL	L	L	Homs Oua Hama	VL	L	ML
Houmal	VL	L	ML	Jisr El Qadi	VL	VL	L	Kehaleh	VL	L	L
Keyfoun	VL	L	ML	Kfar Aamey	VL	L	L	Kommatyeh	VL	L	L
Maasrati	VL	L	L	Majdel Baana	VL	L	ML	Mansourieh et Ain El	VL	L	ML
Mazraat El-Nahr	VL	L	L	Mchakhte	VL	L	L	Mecherfeh	VL	L	ML
Mejdlaya	VL	L	ML	Mrayjat	VL	L	L	Ramliyeh	VL	L	L
Rechmaya	VL	L	L	Rejmeh	VL	L	L	Remhala	VL	L	L
Rouayset El Neemane	VL	L	L	Saoufar	VL	L	ML	Selfaya	VL	VL	L
Sirhmoul	VL	L	ML	Souq El Ghareb	VL	L	ML	Taazanieh	VL	L	ML

Kesrouane

Municipality	09-Dec	10-Dec	11-Dec	Municipality	09-Dec	10-Dec	11-Dec	Municipality	09-Dec	10-Dec	11-Dec
Achkout	VL	VL	L	Adma Oua Dafneh	VL	L	M	Ain Ed-Delbe Kesroua	VL	VL	L
Ain El-Rihane	VL	L	ML	Aintoura Kesrouane	VL	L	M	Ajaltoun	VL	VL	L
Akaybeh Kesrouane	L	M	M	Aramoun Kesrouane	VL	VL	L	Azra ouel Ozor	VL	L	L
Ballouneh	VL	VL	L	Batha	VL	L	L	Bekaatat Achkout	VL	VL	L
Bekaatat Kanaan	VL	VL	L	Bizhel	VL	L	L	Bouar	L	ML	ML
Bqaatouta	VL	VL	L	Bqaq Ed-Dine	L	ML	M	Bzommar	VL	L	L
Chahtoul	VL	L	L	Chnaniir	VL	L	L	Chouan	VL	VL	L
Daraya Kesrouane	VL	VL	L	Daroun	VL	L	ML	Deir Baqlouch	VL	L	ML
Diebta	VL	VL	L	Eghbeh	VL	VL	L	Faraya	VL	VL	L
Fatka	VL	L	L	Feytroun	VL	VL	L	Ghazir	VL	L	L
Ghbaleh Kesrouane	VL	L	L	Ghedrass	VL	L	L	Ghosta	VL	VL	L
Ghyneh	VL	L	L	Harharaya w Kattine	VL	VL	L	Harissa Kesrouane	VL	L	ML
Hayata	VL	VL	L	Hosein	VL	L	L	Hrajel	VL	VL	L
Jdeideh Ghazir	VL	VL	L	Jeita	VL	L	ML	Jounieh Ghadir	VL	L	M
Jounieh Haret Sakhr	VL	ML	M	Jounieh Salel Alma	VL	L	M	Jounieh Sarba	L	ML	M
Jouret Bedrane	VL	L	L	Jouret Mhad	VL	VL	L	Jouret Termos	VL	L	L
Kfar Debiane	VL	VL	L	Kfar Tay Kesrouane	VL	VL	L	Kfar Yassine	L	ML	M
Kfour Kesrouane	VL	L	L	Kharayeb Nahr Ibrahi	L	L	L	Klayaat Kesrouane	VL	VL	L
Maarab	VL	VL	L	Maaysra Kesrouane	L	L	L	Mayrouba	VL	VL	L
Mazraat Er-Ras	L	L	M	Mazraat Mrah El-Mir	VL	VL	L	Mchaa El Ftouh	VL	L	ML
Mchaa Faraya	VL	L	L	Mchaa Kfar Dibiane	VL	L	L	Mghaer	VL	VL	VL
Mradiyah	VL	L	L	Nahr Ed-Dahab	VL	L	L	Nammoura Kesrouane	L	L	L
Ouata El Jaouz	VL	VL	L	Ouata Sillam	L	ML	M	Raachine	VL	VL	L
Rayfoun	VL	VL	L	Safra Kesrouane	L	ML	M	Shayle Kesrouane	VL	L	ML
Tabarja	L	L	M	Yahchouch	VL	L	L	Zaaytreh	VL	L	L
Zeytoun	L	L	L	Zouk Mikael	L	ML	M	Zouk Mosbeh	L	ML	M

Baalbek_Hermel

Baalbek

Municipality	09-Dec	10-Dec	11-Dec	Municipality	09-Dec	10-Dec	11-Dec	Municipality	09-Dec	10-Dec	11-Dec
Aadous	L	M	M	Aamchki	L	L	L	Aarsal	L	L	L
Ain Baalbek	L	L	ML	Ain Bourday	VL	L	ML	Ain El-Benye	VL	L	L
Ain El-Jaouz Baalbek	L	L	L	Ain El-Siya Chadoura	L	L	L	Al Khodr Baalbek	VL	L	ML
Al Nabi Chit	VL	L	ML	Aynata Baalbek	L	L	ML	Baalbek	L	L	ML
Bachwat	L	L	L	Barqa	L	L	L	Bednayel Baalbak	L	ML	M
Beit Chama	L	ML	M	Bijjaje	L	M	M	Bouday	L	ML	M
Brital	L	L	L	Btadi	L	ML	M	Chaat	L	M	M
Chaibe	L	L	L	Chlifa	L	M	M	Chmestar	L	ML	M
Dar El-Oussa	L	L	M	Deir El-Ahmar	L	ML	M	Deir Mar Maroun Baal	M	M	M
Douris	L	L	M	Fakiha	ML	M	M	Hadath Baalbek	L	ML	M
Ham	VL	L	L	Haour Taala	VL	L	L	Hizzine	L	M	M
Hlebta	L	L	M	Hosh Barada	L	M	M	Hosh El Dahab	L	M	M
Hosh El Snid	L	L	ML	Hosh El-Nabi	L	ML	M	Hosh El-Rafiq	L	ML	M
Hosh Tal Safiya	L	M	M	Hrebta	ML	M	M	laat	L	ML	M

Jebaa	ML	ML	M	Jenta	VL	L	L	Kfar Dabach	L	ML	M
Kfar Dane	L	M	M	Khraibeh El-Hermel	L	M	M	Khreibet Baalbek	VL	L	L
Kneisset Baalbek	L	ML	M	Labueh	L	M	M	Maarboun	VL	L	L
Majdaloun	L	M	M	Maqneh	L	ML	M	Mazraat Beit Mcheik	L	ML	M
Misraya	L	ML	M	Moqraq	L	M	M	Nabha El-Damdoum	L	ML	ML
Nabi Chbay	VL	L	L	Nabi Osman	L	ML	ML	Nahleh baalbek	L	L	L
Ouadi El-Oss	L	ML	M	Qaa Baayoun	L	ML	ML	Qaa Jouar Maqiye	M	M	M
Qaa Ouadi El-Khanzir	M	M	M	Qah Baalbek	ML	M	M	Qarha Baalbek	M	M	M
Qsarnaba	L	ML	M	Ram Baalbek	M	M	M	Ras Baalbek El Sahl	ML	M	M
Ras Baalbek El-Charq	L	ML	ML	Riha	ML	M	M	Saaide	L	M	M
Sbouba	ML	M	M	Seriine El-Tahta	L	ML	M	Slouqi	L	L	ML
Taiba Baalbek	L	ML	M	Talia	L	ML	M	Taraiya	L	ML	M
Temnin El Fawqa	L	ML	M	Temnin El-Tahta	L	ML	M	Tfail	L	ML	L
Yahfoufa	L	L	ML	Yammouneh	L	L	M	Younine	L	ML	ML
Zboud	ML	M	M								

Hermel

Municipality	09-Dec	10-Dec	11-Dec	Municipality	09-Dec	10-Dec	11-Dec	Municipality	09-Dec	10-Dec	11-Dec
Charbine El-Hermel	L	L	L	Hermel Jbab	L	L	ML	Hermel	M	ML	ML
Maaysra El-Hermel	ML	M	M	Michaa Mrajhine	L	L	L	Ouadi Faara	L	L	M
Ras Baalbek - Ouadi	M	M	M	Ras Baalbek El Gharb	L	ML	M	Zighrine	L	L	ML

Akkar

Akkar

Municipality	09-Dec	10-Dec	11-Dec	Municipality	09-Dec	10-Dec	11-Dec	Municipality	09-Dec	10-Dec	11-Dec
Aain Tinta	L	L	M	Aaiyat	L	L	ML	Aakkar El-Aatiga	L	L	L
Aamar Akkar	ML	ML	M	Aamar El Baykat	L	ML	M	Aamayer	L	L	L
Aamriyet Akkar	L	L	M	Aandqet	L	L	L	Aarmeh	L	L	M
Aarqa	ML	ML	M	Aawaynat	L	L	ML	Aayoun Akkar	VL	L	ML
Abboudiye	L	M	MH	Ain El-Zeit	L	L	M	Ain Yaaqoub	VL	L	L
Akroum	L	L	L	Aridet Cheikh Zennad	ML	ML	MH	Baldeb w Mazraat Bal	L	ML	M
Barcha	L	ML	M	Bardeh	L	L	ML	Bebnine	ML	ML	M
Beino	L	L	M	Beit Ayoub	VL	ML	M	Beit El-Haouch	ML	ML	M
Beit Mellat	VL	L	M	Beit Younes	VL	L	ML	Berbara Akkar	L	L	M
Berqayel	ML	ML	M	Bezbin	VL	L	L	Bireh Akkar	L	L	ML
Borj	VL	L	M	Bqerezla	L	L	M	Bzal	L	L	ML
Chane	VL	L	L	Chaqdouf	VL	L	ML	Charbila	L	ML	M
Cheikh Mohammad	L	ML	M	Cheikh Taba Es-Sahl	ML	ML	M	Cheikh Taba	VL	L	M
Cheikh Zennad	M	ML	M	Cheikhlar	L	L	L	Chir Hmairine	L	ML	M
Daghle	L	L	M	Dahr Laissine	L	ML	M	Darine	L	ML	M
Dawra	L	L	ML	Dawsa w Baghdadi	L	L	M	Dayret Nahr El-Kabir	L	L	M
Deir Dalloum	ML	ML	M	Deir Jennine	L	L	M	Denbou	L	L	ML
Dibbabiye	L	L	M	Douair Aadwiyeh	L	L	M	Fassikine	L	L	M
Fnaydek	VL	L	L	Fraydes Akkar	L	L	ML	Ghazayle	L	ML	M
Habchit	L	L	L	Hakour	ML	ML	M	Halba	L	ML	M

Haouchab	L	ML	M	Haysat	M	L	M	Haytla	L	ML	M
Hayzouq	L	L	M	Hedd	L	ML	M	Hmaira Aakkar	ML	ML	M
Hmaiss Aakkar	L	ML	M	Hnaider	ML	L	L	Hokr Ed-Dahri	M	ML	MH
Hokr Etti	L	ML	M	Hokr Jouret Srar	L	ML	M	Houaich	VL	L	ML
Hrar	VL	L	M	Idbil	VL	L	M	Ilat	VL	L	M
Janine	L	M	M	Jdeidet El-Joumeh	L	ML	M	Jdeidet El-Kaiteh	ML	ML	M
Jebrayel	VL	ML	M	Kafr	L	L	M	Kafr	L	L	M
Karm Asfour	L	L	M	Kfar Melki Aakkar	M	ML	M	Kfar Noun	L	L	M
Kfarharra	L	ML	M	Khalsa	L	L	M	Kharnoubet Aakkar	L	M	M
Khirbet Daoud Aakkar	L	L	M	Khirbet El Remmane	L	L	L	Khirbet Shar	L	L	M
Khoreybet El-Jindi	L	ML	M	Khreibet Aakkar	VL	L	M	Kneisset Aakkar	M	ML	M
Kneisset Hnaider	ML	L	L	Knisse	L	ML	M	Kroum El-Aarab	L	ML	M
Kwachra	L	L	M	Kweykhata	L	ML	M	Machta Hammoud	L	L	ML
Majdala	ML	ML	M	Majdel Akkar	L	L	ML	Mar Touma	ML	ML	M
Marlaya Melhem	ML	ML	M	Mashha	L	L	M	Massoudiye	M	ML	M
Mazraat Beit Ghattas	ML	ML	M	Mazraat En-Nahriye	L	L	L	Mechmech	VL	L	L
Memneh	VL	L	L	Mhammara	ML	ML	M	Mighraq Aakkar	M	ML	M
Minyara	L	ML	M	Moqayteh	M	ML	M	Mounjez	L	L	M
Msalla	L	L	M	Mzeihmeh	L	ML	M	Nfaiseh	L	ML	M
Noura Et-Tahta	L	L	M	Ouadi El-Haour	L	ML	M	Ouadi El-Jamous	ML	ML	M
Ouyoun El-Ghizlane	ML	ML	M	Qaabarine	M	ML	M	Qabaait	L	L	ML
Qachlaq	L	ML	M	Qantara Aakkar	VL	L	M	Qarha Aakkar	ML	L	L
Qarqaf	ML	ML	M	Qboula	VL	L	M	Qleiaat Aakkar	M	ML	M
Qloud El-Baqie	ML	ML	M	Qobaiyat Aakkar	L	L	L	Qobbat Chamrat	ML	ML	M
Qorayat	VL	L	ML	Qornet Aakkar	VL	L	L	Qsair Aakkar	L	L	ML
Rahbe	VL	L	M	Rihaniyet Aakkar	L	ML	M	Rmah	L	L	L
Rmoul	M	ML	M	Saadine	L	ML	M	Sadaqa	VL	ML	M
Saidnaya	L	ML	M	Sammouniye	M	ML	M	Sayssouq	L	ML	M
Semmaqiye	ML	ML	MH	Semmaqli	ML	ML	M	Sfinet El-Dreib	L	ML	M
Sfinet El-Qaitaa	L	L	ML	Sindyanet Zeidane	L	L	ML	Souaisset Aakkar	L	ML	M
Srar	L	ML	M	Tal Abbas El Gharby	L	ML	M	Tal Abbas El-Charqy	L	L	M
Tal Biret	ML	ML	M	Tal Hmayra	L	ML	M	Tal Maayan Tal Kiri	M	ML	M
Tal Sibel	M	ML	M	Tallet Chattaha	VL	L	M	Tikrit	VL	L	ML
Tleil	L	ML	M	Tshea	VL	L	L	Zawarib	VL	L	M
Zouq El Hosniyeh	ML	ML	M	Zouq El-Haddara	ML	ML	M	Zouq El-Hbalsa	ML	ML	M
Zouq El-Moqachrine	ML	ML	M								

Sud

Sour

Municipality	09-Dec	10-Dec	11-Dec	Municipality	09-Dec	10-Dec	11-Dec	Municipality	09-Dec	10-Dec	11-Dec
Aaiyeh	VL	VL	M	Aalma El-Chaab	VL	VL	ML	Aaytit	VL	VL	M
Abbassiyeh Sour	VL	L	M	Abou Chech	VL	VL	ML	Ain Abou Abdallah	L	L	M
Ain Baal	VL	VL	M	Arzoun	VL	VL	ML	Aziyeh	VL	VL	L
Baflaya	VL	VL	M	Barich	VL	VL	M	Batouliyeh	VL	VL	M
Bayad	VL	VL	M	Bazouriyeh	VL	L	M	Bediass	VL	VL	M

Bestiyat	VL	VL	M	Borj El Chemali	VL	L	M	Borj En-Naqoura	L	L	M
Borj Rahhal	VL	VL	M	Boustane	VL	VL	M	Btaychih	VL	VL	ML
Chaaitiye	VL	VL	M	Chameh	VL	VL	L	Chehabiye	VL	VL	ML
Chehour	VL	VL	L	Chihine	VL	VL	ML	Debaal Sour	VL	VL	M
Deir Amess	VL	VL	ML	Deir Kifa	VL	VL	M	Deir Qanoun El-Ain	VL	VL	M
Deir Qanoun El-Naher	VL	VL	M	Derdghaiya	VL	VL	M	Dhayra	VL	VL	ML
Halloussiyeh	VL	VL	M	Hamoul	L	VL	L	Hanaouey	VL	VL	M
Henniye	VL	VL	M	Hmairi Sour	VL	VL	M	Iskandarouna Sour	VL	VL	L
Jbal El Botom	VL	VL	ML	Jebbin	VL	VL	ML	Jennata	VL	VL	M
Jijim	VL	VL	ML	Jouaiya	VL	VL	M	Kneisset Sour	L	VL	M
Maarake	VL	VL	M	Maaroub	VL	VL	M	Majadel	VL	VL	M
Majdalzoun	VL	VL	ML	Mansouri Sour	L	VL	ML	Marnba	VL	VL	L
Marouahine	VL	VL	ML	Mazraat El-Zalloutiy	VL	VL	M	Mazraat Mechref	VL	VL	M
Mazraat Tayr Semhat	VL	VL	L	Mheilib	VL	L	M	Neffakhiyeh	VL	VL	ML
Niha Sour	VL	VL	ML	Ouadi Jilo	VL	VL	M	Qana	VL	VL	M
Qolaileh Sour	VL	VL	M	Rechknany	VL	VL	ML	Rmadiyah	VL	VL	M
Selha Sour	VL	VL	ML	Siddiqine	VL	VL	M	Sour	VL	L	M
Srifa	VL	VL	ML	Tayr Debbe	VL	L	M	Tayr Felsay	VL	VL	M
Tayr Harfa	VL	VL	ML	Touayri	VL	VL	L	Toura	VL	VL	M
Yanouh Sour	VL	VL	M	Yarine	VL	VL	M	Zebqine	VL	VL	L

Saida

Municipality	09-Dec	10-Dec	11-Dec	Municipality	09-Dec	10-Dec	11-Dec	Municipality	09-Dec	10-Dec	11-Dec
Aanqoun	VL	VL	ML	Aaqtanit	VL	L	M	Aarab Ej-Jall	VL	VL	ML
Aarab Tabbaya	VL	VL	ML	Abra Saida	L	VL	M	Adloun	L	L	M
Adousiyeh	L	L	M	Ain-El-Deleb	L	VL	ML	Arzai	L	L	M
Babliyah	L	L	M	Barty	VL	VL	ML	Bissariyeh	L	L	M
Bnaafoul	VL	VL	ML	Bqosta	L	VL	M	Bramiy	L	VL	M
Daoudiyeh	L	L	M	Dareb El-Sim	VL	VL	M	Erkay	VL	VL	ML
Ghassanieh	L	L	M	Ghazieh	L	L	M	Hajeh	VL	VL	M
Haret Saida	L	VL	M	Hartiyeh	L	L	M	Hlaliye Saida	L	VL	M
Insariyat	L	L	M	Jazira Saida	L	L	M	Kafar Bit	VL	VL	M
Kaoutariyet El-Siyad	VL	VL	M	Kfar Chellal	VL	VL	ML	Kfar Hatta Saida	VL	VL	M
Kfar Milke Saida	VL	VL	ML	Khartoum	VL	L	M	Khaziz	VL	VL	ML
Khirbet Ed-Douair Sa	L	L	M	Khirbet El-Bassal	L	L	M	Khrayeb Saida	L	L	M
Loubieh	L	L	M	Maghdouche	VL	VL	M	Majdelyoun	L	VL	M
Matariyet El-Choumar	L	L	M	Matayriyeh	VL	VL	M	Mazraat 'Mseileh	L	L	M
Mazraat 'Snaiber	L	L	M	Mazraat Aarab Soukka	VL	VL	ML	Mazraat Deir Taqla	L	L	M
Mazraat El Yahoudiye	L	L	M	Mazraat El-Housseini	L	L	M	Mazraat El-Mhaydaleh	L	L	M
Mazraat El-Ouasta	L	L	M	Mazraat Jamjim	L	L	M	Mazraat Kaoutariyet	L	L	M
Mazraat Kfar Badda	L	L	M	Mazraat Oussamiyat	L	L	M	Mazraat Sari	L	L	M
Mazraat Sinai	L	L	M	Meemariyeh	L	L	M	Merouaniyeh	L	L	M
Miyeh ou Miyeh	L	VL	ML	Najjariyeh	L	L	M	Qaaqiyat El-Snaouba	L	L	M
Qnarit	VL	L	M	Qraiye Saida	L	VL	ML	Saida Ed-Dekermane	L	L	M
Saida El-Oustani	L	VL	M	Saida El-Qadimeh	L	VL	M	Saida Kefraya	L	VL	ML
Saksakiyeh	L	L	M	Salhieh Saida	L	VL	M	Sarafand	L	L	M

Sfenta	VL	VL	L	Tafahta	L	L	M	Tanbourit	VL	VL	M
Tebna	L	L	M	Zaghdraiya	VL	VL	ML	Zeita	VL	VL	ML
Zrariyeh	L	L	M								

Jezzine

Municipality	09-Dec	10-Dec	11-Dec	Municipality	09-Dec	10-Dec	11-Dec	Municipality	09-Dec	10-Dec	11-Dec
Ain El-Mir (El Estab)	VL	VL	ML	Anane	VL	VL	L	Aramta	VL	L	ML
Ariya	VL	VL	L	Aychiyeh	VL	VL	ML	Azour	VL	VL	L
Baba	VL	VL	L	Bayssour Jezzine	VL	VL	ML	Benoueteh Jezzine	VL	VL	L
Bhannine	VL	VL	L	Bisri	VL	VL	L	Bkassine	VL	VL	L
Bouslaya	VL	VL	L	Btedine El-Leqech	VL	VL	L	Chbail	VL	VL	L
Choualiq Jezzine	L	VL	M	Dahr Ed-Deir	VL	VL	L	Deir El Qattine	VL	VL	L
Demachqiyeh	VL	VL	M	Ghabbatiyeh	VL	VL	L	Harf Jezzine	VL	VL	L
Hassaniyeh	VL	VL	M	Haytouleh	VL	VL	ML	Haytura	VL	VL	L
Hidab	VL	VL	L	Homsiyeh	VL	VL	L	Jabal Toura	VL	L	L
Jarmaq	VL	VL	ML	Jensnaya	VL	VL	ML	Jernaya	VL	VL	ML
Jezzine	VL	L	ML	Karkha	L	VL	ML	Kfar Falous	VL	VL	L
Kfar Houna	VL	L	L	Kfar Jarrah	L	VL	M	Lebaa	L	VL	M
Louayzet Jezzine	VL	VL	L	Machmouche	VL	VL	L	Mahmoudiyeh Jezzine	VL	VL	ML
Maknounye Jezzine	VL	VL	L	Maraat Ouazaiyeh	VL	L	ML	Mazraat Daraya	VL	L	L
Mazraat El-Aarqoub	VL	VL	L	Mazraat El-Mathane	VL	VL	L	Mazraat El-Rahbane	VL	VL	L
Mazraat Khallet Khaz	VL	L	ML	Mazraat Louzid (Loua	VL	VL	L	Mazraat Qrouh	VL	VL	ML
Mazraat Tamra	VL	VL	M	Mazraat Zighrine Jez	VL	VL	L	Mazraat	VL	VL	L
Mharbiyeh	VL	VL	ML	Midane Jezzine	VL	VL	L	Mjeydel Jezzine	VL	VL	ML
Mlikh	VL	VL	L	Mrah El-Hbasse	L	VL	ML	Ouadi Baanqoudaine	L	VL	ML
Ouadi El-Laymoun	VL	VL	ML	Ouardiyeh	VL	VL	L	Qabaa Jezzine	VL	VL	L
Qatrani	VL	L	ML	Qaytouleh	VL	VL	L	Qtaleh Jezzine	VL	VL	L
Rihane Jezzine	VL	VL	ML	Rimat	VL	VL	L	Roum	VL	VL	L
Roummanet	VL	VL	ML	Sabbah	VL	VL	L	Saydoun	VL	VL	L
Sfaray	VL	VL	L	Snaya	VL	VL	L	Sojoud	VL	VL	L
Srayri	VL	L	ML	Taaid	VL	VL	L	Wadi Jezzine	VL	VL	L
Zhalta	VL	VL	L								

Bekaa

West Bekaa

Municipality	09-Dec	10-Dec	11-Dec	Municipality	09-Dec	10-Dec	11-Dec	Municipality	09-Dec	10-Dec	11-Dec
Aammiq BG	L	ML	M	Ain El Tineh BG	VL	L	ML	Ain Zebdeh	L	L	L
Ana	L	ML	ML	Aytanit	VL	L	L	Baaloul BG	L	L	L
Bab Mareh	L	L	L	Chouberqiye Aammiq	L	ML	M	Dakoue	L	L	ML
Deir Ain El-Jaouze	L	L	L	Deir Tahniche	L	ML	M	Ghaza	L	ML	M
Harime El-Soughra	L	L	ML	Hoch Harimeh	L	ML	M	Jazira BG	L	ML	M
Jib Jennine	L	L	ML	Kamed-El-Laouz	L	L	L	Kefraya BG	VL	L	L
Khiara El Atika	L	ML	M	Khiara	L	ML	M	Khirbet Qanafar	L	L	L
Lala	L	L	L	Lebbaya BG	L	L	L	Loussa	VL	L	ML
Machghara	VL	L	L	Manara (Hammara) BG	L	L	L	Mansoura BG	L	ML	M

Marej BG	L	L	M	Maydoun	VL	L	ML	Ouaqf BG	L	ML	M
Qaraaoun	L	L	L	Qelya	VL	L	ML	Raouda (Istabel)	L	L	M
Saghbine	L	L	L	Sohmor	L	L	L	Soltan Yacoub el Ara	L	L	ML
Souairy	L	L	ML	Sultan Yaacoub	L	ML	ML	Tal Znoub	L	ML	M
Yehmor BG	L	L	L	Zilaya	L	L	L				

Zahle

Municipality	09-Dec	10-Dec	11-Dec	Municipality	09-Dec	10-Dec	11-Dec	Municipality	09-Dec	10-Dec	11-Dec
Aanjar (Haouch Mouss)	L	L	ML	Ablah	L	ML	M	Ain Kfarzabad	L	L	ML
Ali-El-Nahri	L	ML	M	Bar Elias	L	L	M	Bouarej	VL	ML	M
Cheberqiyet Tabet	L	L	M	Chtaura	VL	ML	M	Deir El Ghazal	L	L	ML
Delhamiyet Zahle	L	L	M	Ferzol	L	L	M	Haouch El-Ghanam	L	ML	M
Haouch Es-Siyadeh	VL	ML	M	Haouch Hala	L	L	M	Haouch Mandara	L	ML	M
Haouch Qayssar	VL	ML	M	Hezerta	VL	L	ML	Hosh Moussa	L	L	ML
Jdita	L	L	M	Kfarzabad	L	L	ML	Ksara	L	L	M
Majdel Aanjar	L	L	L	Makssi	L	ML	M	Massa	L	L	ML
Mazraat Er-Remtaniye	VL	ML	ML	Mrayjat Zahle	VL	ML	M	Mzaraa Zahle	VL	ML	M
Nabi Ayla	L	ML	M	Nasriyet Rizk	L	L	M	Nasriyet Zahle	L	ML	M
Niha Zahle	L	ML	M	Ouadi Ed-Deloum	VL	ML	M	Ouadi El-Arayech	L	L	ML
Qaa El Rim	L	ML	ML	Qab Elias	VL	L	M	Qousaya	L	L	ML
Rhit	L	L	M	Riyak	L	ML	M	Saadnayel	L	L	M
Taal El-Akhdar	L	ML	M	Taalbeya	L	L	M	Taanayel	L	L	M
Talamara	L	ML	M	Tcheflik Edde Haouch	L	ML	M	Tcheflik Qiqano	L	ML	M
Terbol Zahle	L	L	ML	Touaite Zahle	VL	L	ML	Zahle Aradi	L	L	M
Zahle El-Berbara	VL	ML	ML	Zahle El-Maallaqa	L	L	M	Zahle El-Midane	L	L	M
Zahle Er-Rassiyeh	L	ML	ML	Zahle Haouch El-Ouma	L	L	M	Zahle Haouch El-Ouma	L	L	M
Zahle Haouch Ez-Zara	L	L	M	Zahle Maalaqa Aradi	L	L	M	Zahle Mar Antonios	VL	ML	ML
Zahle Mar Elias	L	L	M	Zahle Mar Gerios	L	L	M	Zahle Saydet En-Naja	L	L	M
Zebdoul	VL	L	ML								

Rachaiya

Municipality	09-Dec	10-Dec	11-Dec	Municipality	09-Dec	10-Dec	11-Dec	Municipality	09-Dec	10-Dec	11-Dec
Ain Arab Rachaiya	L	L	L	Ain Ata	VL	L	L	Ain Harche	L	L	L
Aqabe Rachaya	VL	L	L	Ayha	L	L	L	Ayta El Fokhar	L	L	L
Bakifa Rachaya	L	L	L	Bakka	L	L	L	Beit Lahya	VL	L	L
Bireh Rachaiya	L	L	L	Daher El Ahmar	L	L	L	Deir El-Achayer	L	L	ML
Heloua Rachaiya	L	L	L	Hoch El Qannabeh Rac	L	L	L	Kaoukaba Bou Arab	L	L	L
Kfar Danis	L	L	L	Kfar Mechki	L	L	L	Kfar Qouq	L	L	L
Kherbet Rouha	L	L	L	Majdel Balhiss	L	L	L	Mdoukha	L	L	L
Mhaydseh Rachaiya	L	L	L	Nabi Safa	L	L	L	Rachaiya	L	L	L
Rafid Rachaiya	L	L	L	Selsata (Mazraat Dei	L	L	L	Tannoura	L	L	L
Yanta	L	L	L								

Beyrouth

Beyrouth

Municipality	09-Dec	10-Dec	11-Dec	Municipality	09-Dec	10-Dec	11-Dec	Municipality	09-Dec	10-Dec	11-Dec
--------------	--------	--------	--------	--------------	--------	--------	--------	--------------	--------	--------	--------

Achrafieh	L	L	M	Ain el-Mreisse	L	L	M	Bachoura	L	L	M
Beirut Central Distr	L	L	M	Marfai	L	L	M	Mazraa	L	L	M
Medaouar	L	L	M	Minet el-Hosn	L	L	M	Mwssaitbeh	L	L	M
Ras Beirut	L	L	M	Rmeil	L	L	M	Saifi	L	L	M
Zqaq el-Blat	L	L	M								