

Lebanon Fire Risk Bulletin



CIVIL DEDEFENCE

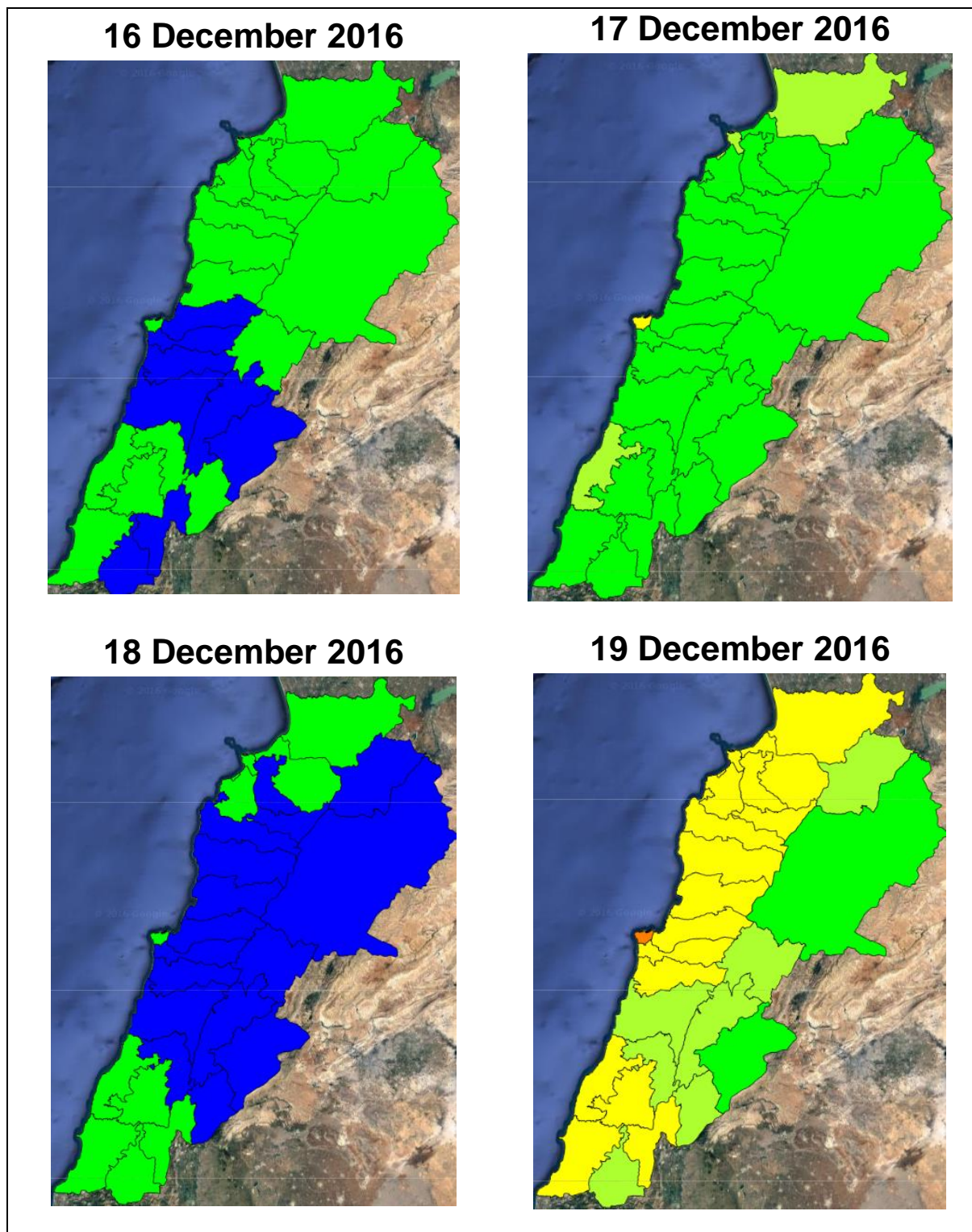
Refer to cadast condition.

General description of potential fire risk situation

Symbol	Level of risk	Meaning and actions
VL	Very low	Very low fire risk. Controlled burning operations can be hardly executed due to high fuel moisture content. Normally wildfires self-extinguish.
L	Low	Low fire risk. Controlled burning operations can be executed with a reasonable degree of safety.
ML	Medium low	Medium-low fire risk. Controlled burning operations can be executed in safety conditions. All the fires need to be extinguished.
M	Medium	Medium fire risk. Controlled burning operations would be avoided. All the fires need to be very well extinguished.
M	Medium high	Controlled burning is not recommended. Open flame will start fires. Cured grasslands and forest litter will burn readily. Spread is moderate in forests and fast in exposed areas. Patrolling and monitoring is suggested. Fight fires with direct attack and all available resources.
H	High	Ignition can occur easily with fast spread in grass, shrubs and forests. Fires will be very hot with crowning and short to medium spotting. Direct attack on the head may not be possible requiring indirect methods on flanks. Patrolling and monitoring the territory is highly suggested.
E	Extreme	Ignition can occur also from sparks. Fires will be extremely hot with fast rate of spread. Control may not be possible during day due to long range spotting and crowning. Suppression forces should limit efforts to limiting lateral spread. Damage potential total. Patrolling and monitoring the territory is highly suggested.

Beirut, 17 December 2016

FIRE RISK INDEX

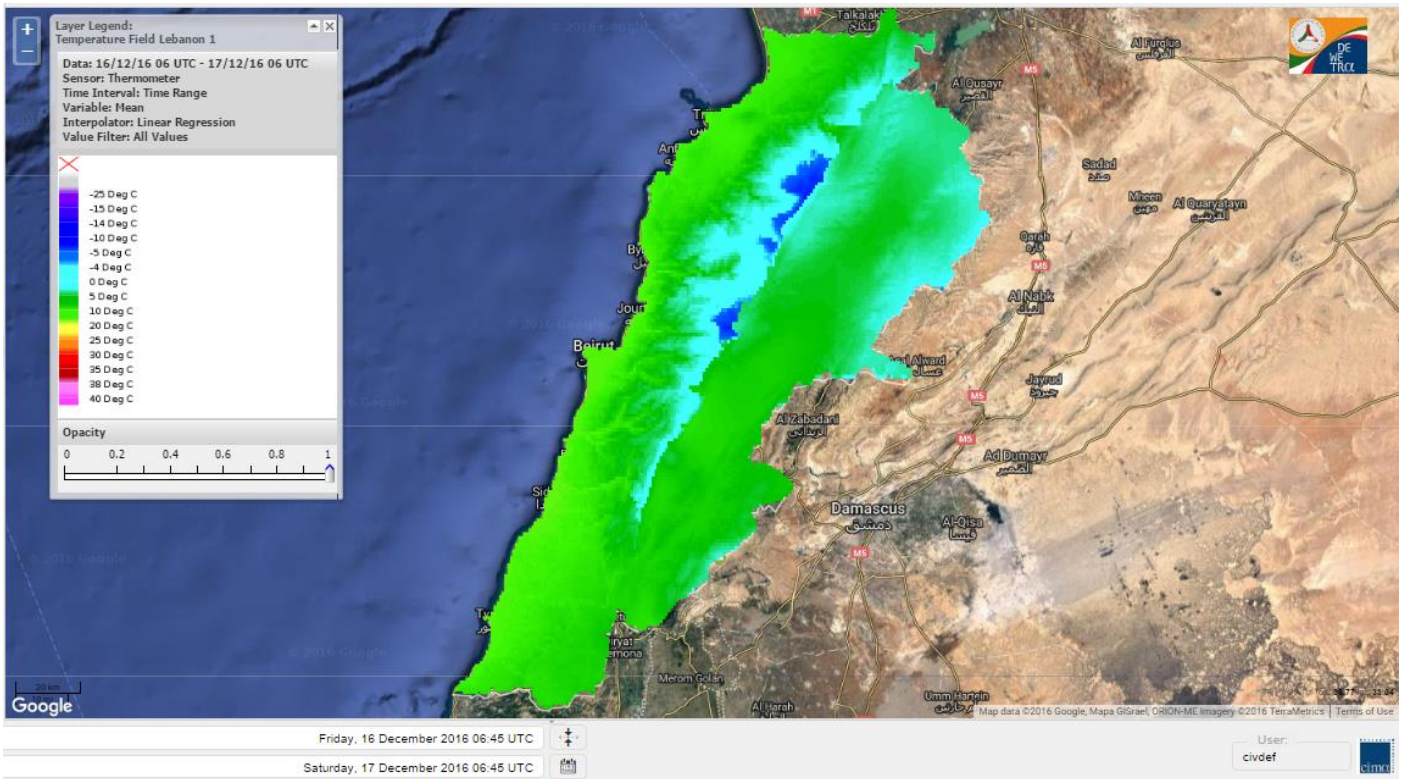


Layer Legend:
Lebanon Wildfire Risk Index 1

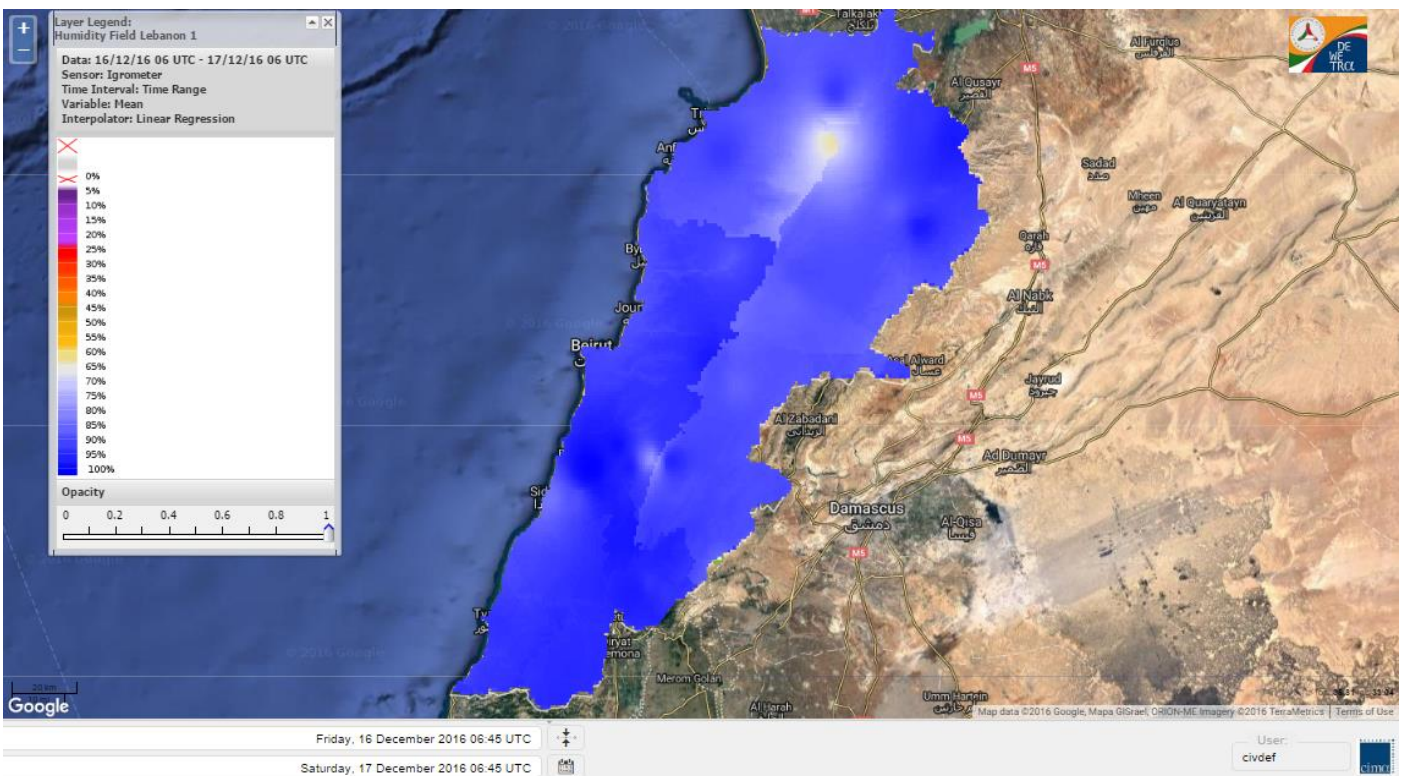
Data: Run: 17/12/2016 00:00. Forecast for 17
Model: RISICO for the Republic of Lebanon
Variable: Fire Weather Index
Spatial Resolution: Caza

- VERY LOW
- LOW
- MEDIUM-LOW
- MEDIUM
- MEDIUM-HIGH
- HIGH
- EXTREME

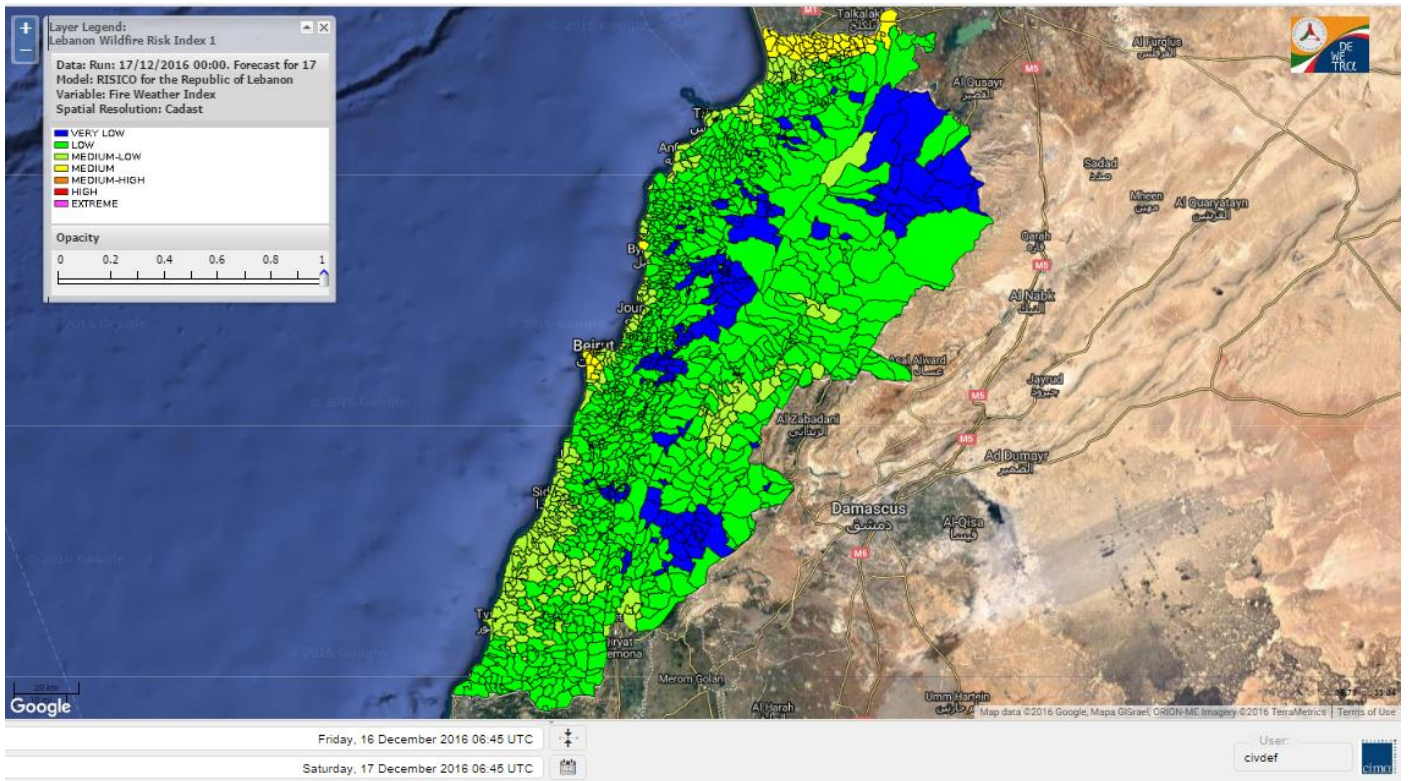
Lebanon temperature for 17 December 2016



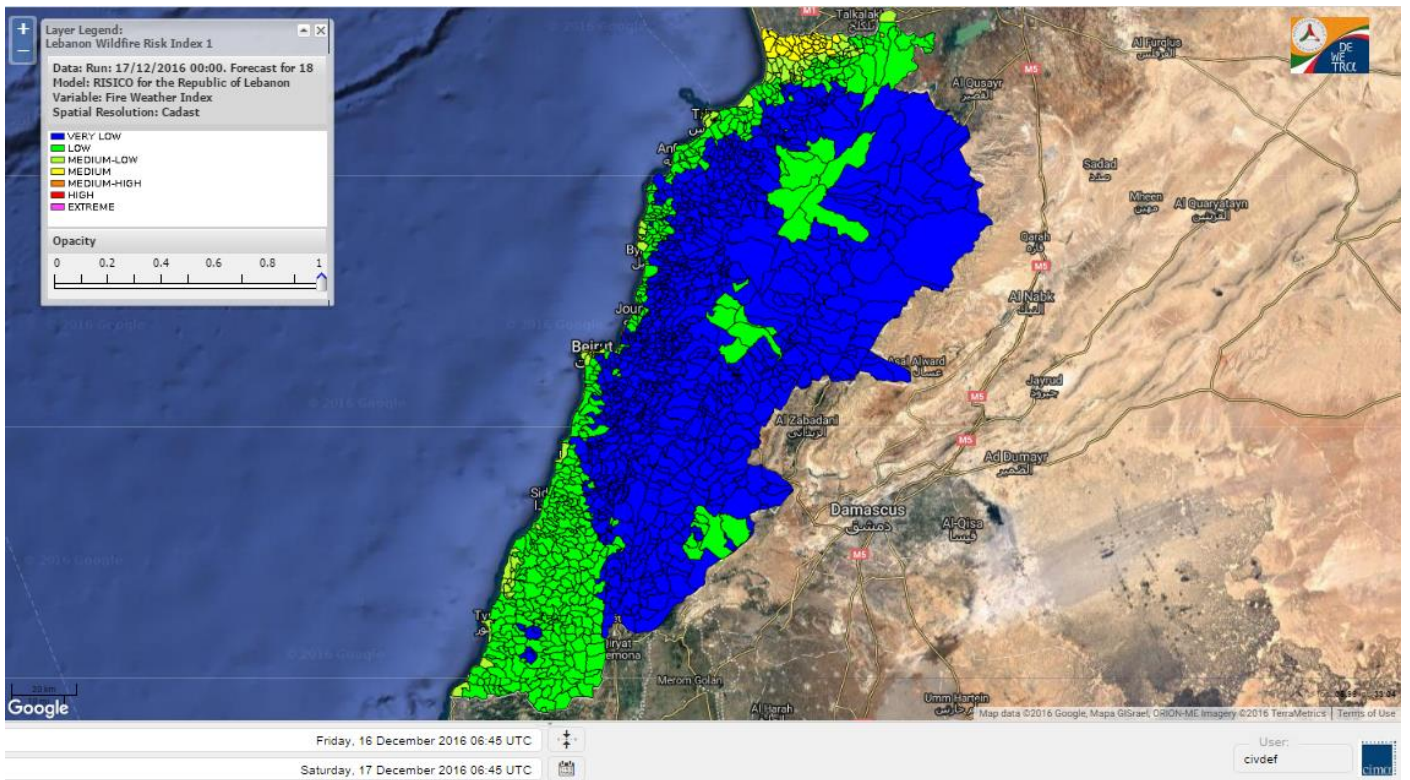
Lebanon humidity for 17 December 2016



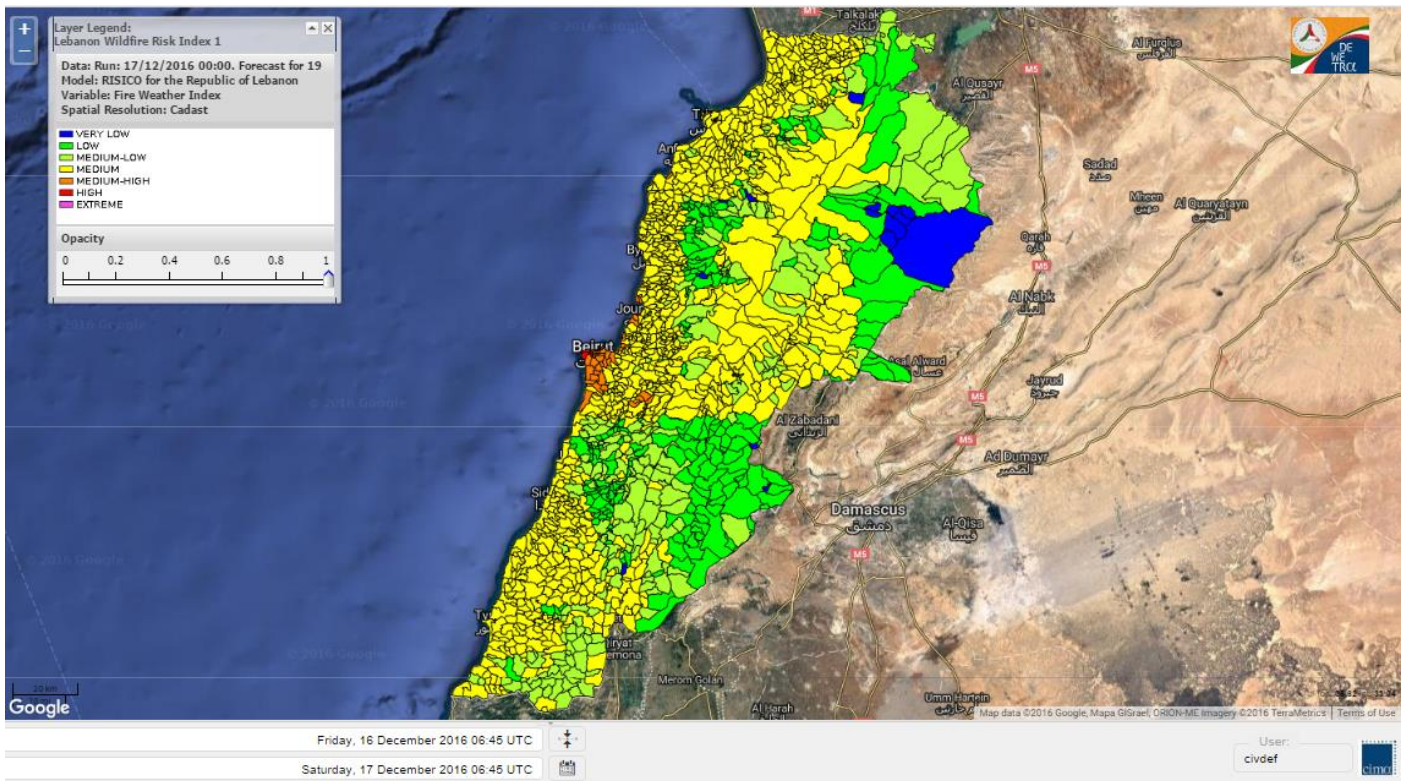
Lebanon for 17 December 2016



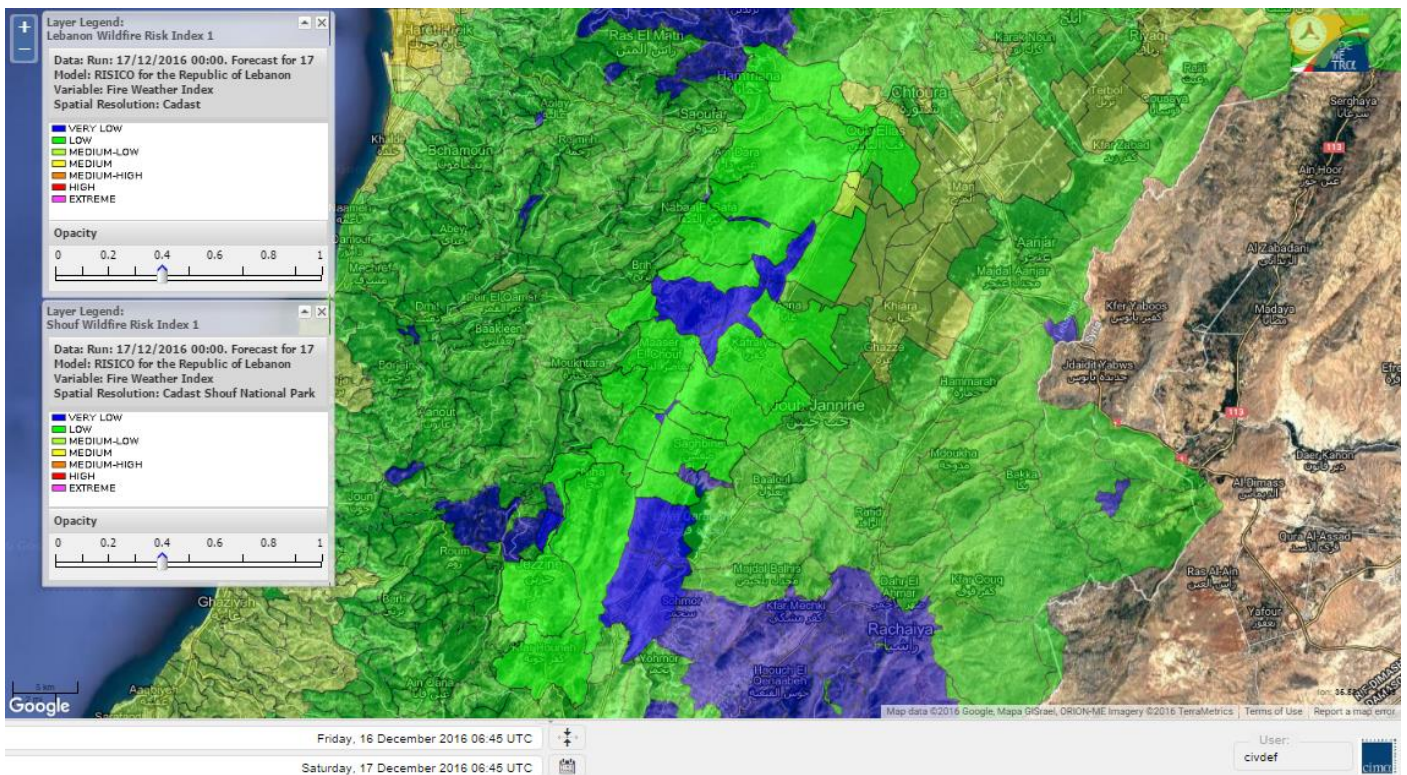
Lebanon for 18 December 2016



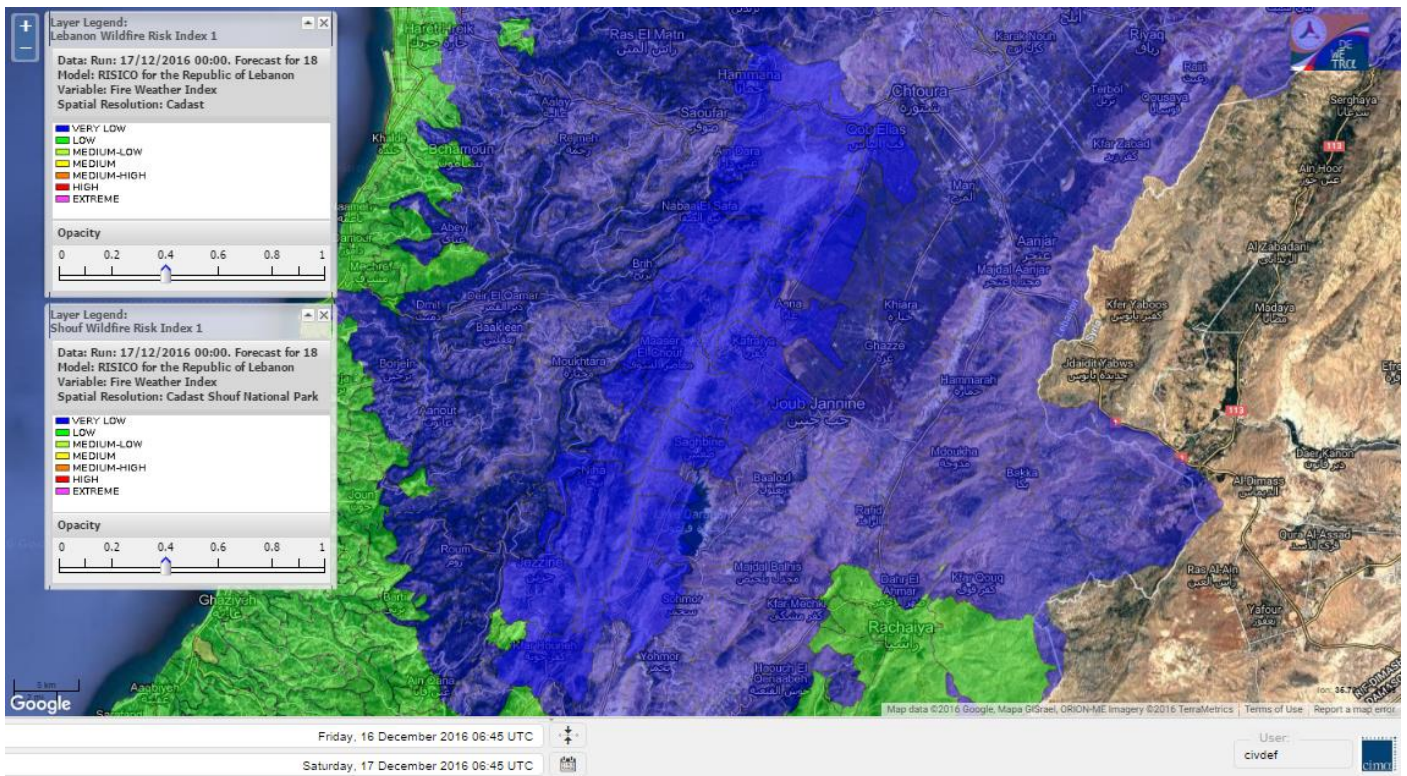
Lebanon for 19 December 2016



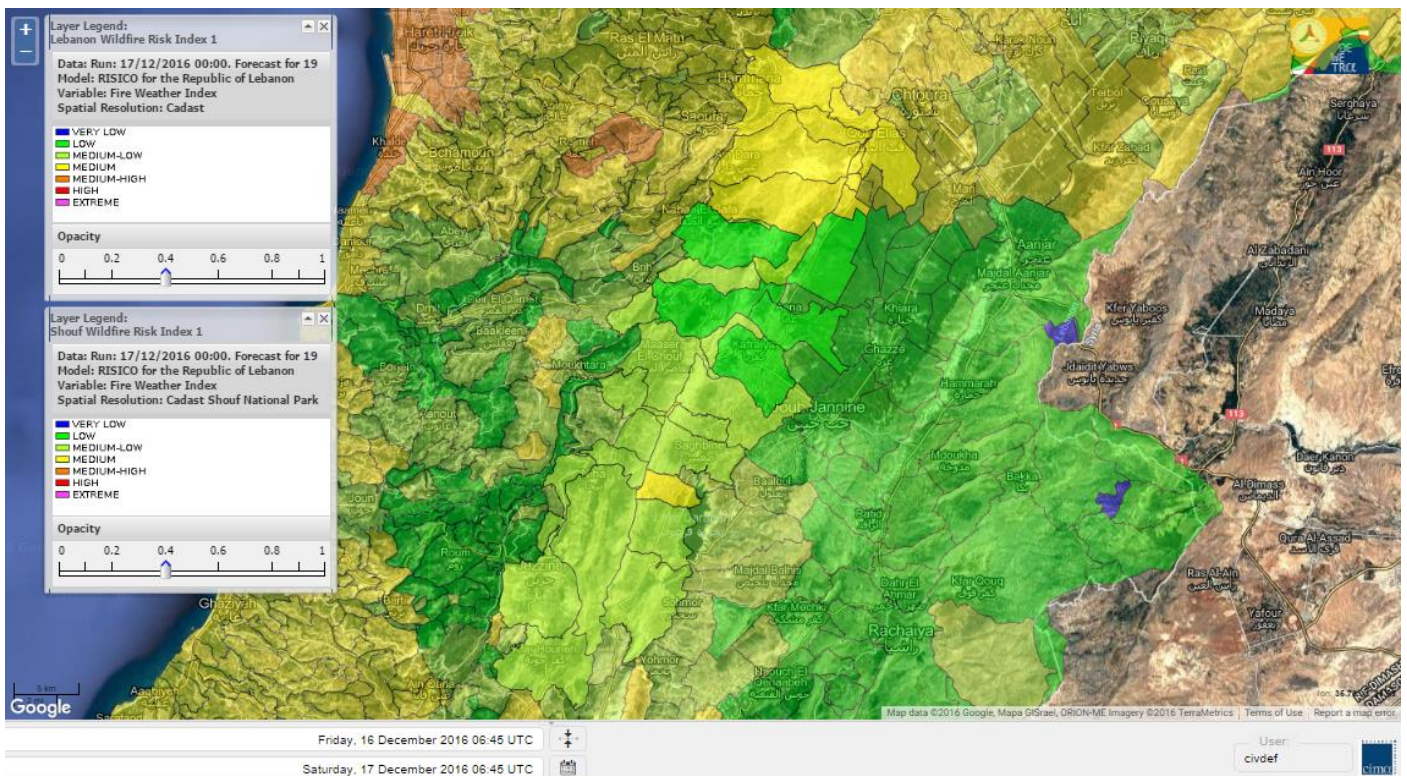
Shouf Biosphere Reserve Forecast for 17 December 2016



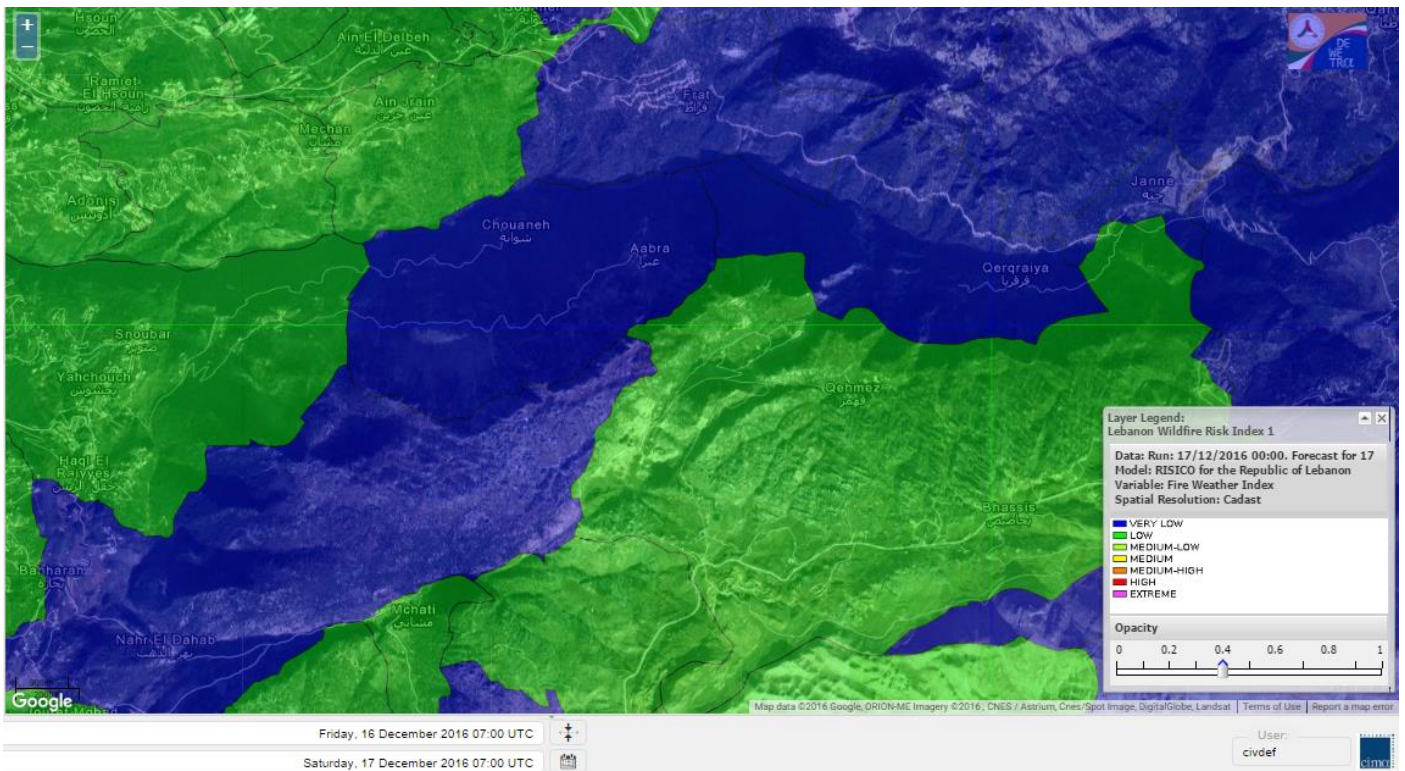
Shouf Biosphere Reserve Forecast for 18 December 2016



Shouf Biosphere Reserve Forecast for 19 December 2016



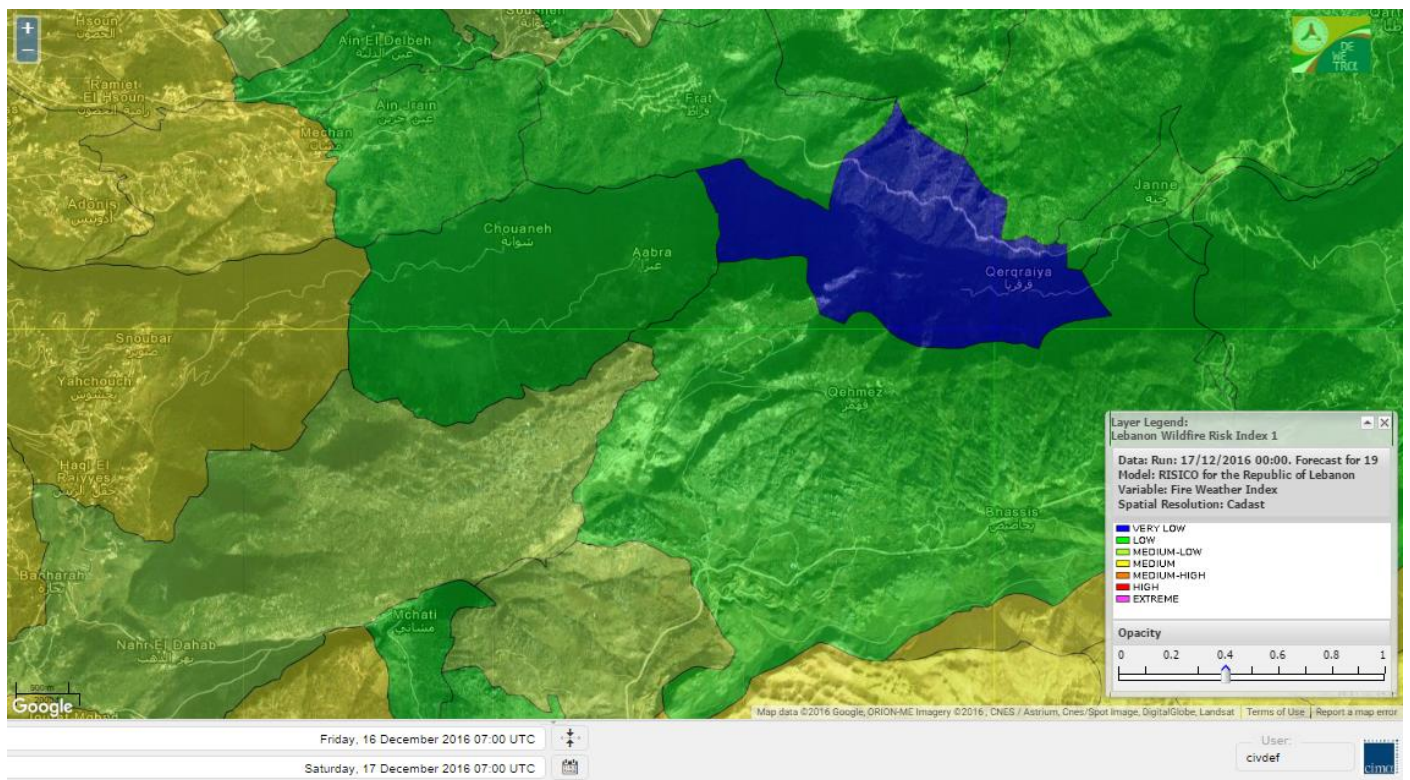
Jabal Moussa Reserve Forecast for 17 December 2016



Jabal Moussa Reserve Forecast for 18 December 2016



Jabal Moussa Reserve Forecast for 19 December 2016



Nord

Koura

Municipality	17-Dec	18-Dec	19-Dec	Municipality	17-Dec	18-Dec	19-Dec	Municipality	17-Dec	18-Dec	19-Dec
Aaba	L	VL	M	Afsaddiq	ML	L	M	Ain Ekriane	L	VL	M
Amioun	L	VL	M	Anfeh	ML	L	M	Badbhoun	ML	L	M
Barghoun	ML	L	M	Barsa	L	VL	M	Batroumine	L	L	M
Bdebba	L	VL	M	Bechmizzine	L	VL	M	Bednayet El-Koura	L	VL	M
Bhabbouch El-Koura	L	VL	M	Bkeftine	L	VL	M	Bnehran	L	VL	M
Bqaiia El-Koura	L	VL	M	Bsarma	L	VL	M	Btaaboura	L	VL	M
Bttram	L	L	M	Btouratij	L	VL	M	Bziza	L	VL	M
Dar Beechtar	L	VL	M	Dar Chmezzine	L	VL	M	Deddeh	L	L	M
Deir El-Balamand	L	L	ML	Fih	ML	L	M	Hraiche	ML	L	M
Ijdaabrine	L	VL	M	Kaftoun	L	VL	M	Kefraya El-Koura	ML	L	M
Kfarakka	L	VL	M	Kfarhata	L	VL	M	Kfarhazir	L	VL	M
Kfarkahel	L	VL	M	Kfarsaroun	L	VL	M	Kosba	L	VL	M
Mejdel el-Koura	L	VL	M	Nakhle	L	VL	M	Qalhat	L	L	ML
Ras Masqa	L	L	M	Rechdibbine	L	VL	M	Zakroun	L	L	M
Zgharta El-Mtaouile	L	VL	ML								

Bcharre

Municipality	17-Dec	18-Dec	19-Dec	Municipality	17-Dec	18-Dec	19-Dec	Municipality	17-Dec	18-Dec	19-Dec
Aabdine	L	VL	M	Bane	L	VL	M	Barhelioun	L	VL	M
Bazouone	VL	VL	ML	Becharre	L	L	M	Beit Menzer	L	VL	M
Billa	L	VL	M	Blaouza	L	VL	M	Bqaa Kafra	VL	VL	M
Bqerqacha	VL	VL	ML	Breissat	L	VL	ML	Dimane	L	VL	ML
Hadath El Jobbeh	L	VL	ML	Hadchit	VL	VL	M	Hasroun	VL	VL	ML
Mazraat Aassaf	VL	VL	VL	Mazraat Bani Saab	L	VL	L	Mchaa El-Jobbeh	L	VL	M
Metrit	L	VL	M	Moghr El-Ahoul	L	VL	M	Ouadi Qannoubine	VL	VL	VL
Qanat	L	VL	ML	Qnayouer	VL	VL	L	Tourza	L	VL	M

Batroun

Municipality	17-Dec	18-Dec	19-Dec	Municipality	17-Dec	18-Dec	19-Dec	Municipality	17-Dec	18-Dec	19-Dec
Aabrine	L	VL	M	Aalali	L	VL	L	Aartziz	VL	VL	ML
Abdelli	L	VL	M	Ajdabra	L	VL	M	Assia	L	VL	L
Basbina	L	L	M	Batroun	L	L	M	Bcheleh	L	VL	L
Bechtoudar	L	VL	L	Beit Chlala	L	VL	L	Beit Kassab	VL	VL	L
Bijdarfil	L	L	M	Bqesmaya	L	VL	ML	Chatine	L	VL	L
Chebtin	L	VL	M	Chekka	ML	L	M	Daael	L	VL	L
Dahr Abi Yaghi	L	VL	M	Daraya El-Batroun	L	L	M	Deir Billa	L	VL	ML
Deir Kfifane	L	L	M	Deir Mar Youhanna EL	L	VL	L	Deir Mar Youssef Jra	L	VL	M
Douma	L	VL	L	Douq	L	VL	M	Eddeh El-Batroun	L	L	M
Ftihat El-Batroun	L	VL	L	Ghouma	L	L	M	Hadoutoun	L	VL	L
Hamat	L	VL	M	Harbouna	L	VL	M	Hardine	VL	VL	L
Helta	L	VL	L	Hery	ML	L	MH	Jebbla	L	VL	L
Jrabta El-Batroun	L	L	M	Jrane El-Batroun	L	L	M	Kfar Aabida	L	L	M
Kfar Halda	L	VL	L	Kfarb Shlaimane	VL	VL	L	Kfarhatna	L	VL	M
Kfarhay	L	VL	M	Kfarhelos	L	VL	M	Kfifane	L	L	M

Kfour El Arabi	L	VL	ML	Koubba	L	L	M	Kour	L	VL	M
Mar Mama	VL	VL	L	Masrah	VL	VL	M	Mehmarch	L	VL	ML
Mrah Chdid	L	L	M	Mrah El Ziyat	L	L	M	Mrah El-Hajj	VL	VL	L
Nahle El-Batroun	L	VL	L	Niha El-Batroun	L	VL	ML	Ouahj El-Hajjar	L	L	M
Ouata Houb	VL	VL	L	Qatnaaoun	L	VL	M	Racha	L	VL	ML
Rachana	L	L	M	Rachkida	L	VL	M	Ram El-Batroun	L	VL	L
Ras Nahhach	L	VL	M	Selaata	ML	L	M	Sghar	L	L	M
Smar Jbayl	L	L	M	Sourat El-Batroun	L	VL	L	Tannourine El-Faouqa	VL	VL	M
Tannourine Et-Tahta	VL	VL	L	Thoum	ML	L	M	Toula El-Batroun	L	VL	M
Zan	L	VL	M								

Zgharta

Municipality	17-Dec	18-Dec	19-Dec	Municipality	17-Dec	18-Dec	19-Dec	Municipality	17-Dec	18-Dec	19-Dec
Aachach	L	L	M	Aalma	L	L	M	Aarde	L	L	M
Aintourine	L	VL	M	Arabet Qozhaya	L	VL	ML	Arde	L	L	M
Arjis	L	VL	M	Asnoun	L	VL	M	Ayto	L	VL	M
Basloukit	L	VL	M	Bchannine	L	VL	M	Besebeel	L	VL	M
Bhairret Toula	VL	VL	ML	Bnachee	L	VL	M	Boussit	ML	L	M
Danha	L	L	M	Daraiya Zgharta	L	VL	M	Deir Jdeide	L	VL	M
Ehden	L	VL	M	Halan	ML	L	M	Hariq Zgharta	L	VL	M
Houakir	L	VL	ML	Hraiqis	L	L	M	laal	L	VL	M
Ijbaa	L	VL	M	Karm Saddeh	L	VL	M	Kfarchakhna	L	VL	M
Kfardlaqous	L	VL	M	Kfarfou	L	VL	M	Kfarhata Zgharta	L	VL	M
Kfarhoura	L	VL	M	Kfarsghab	VL	VL	M	Kfaryachit	L	VL	M
Kfarzaina	L	VL	M	Khaldiye	L	VL	M	Mazraat Ajbeaa	L	VL	M
Mazraat Et-Teffah	L	VL	ML	Mazraat Jneid	L	VL	M	Mejdlaiya Zgharta	L	L	M
Merh Kfarsghab	L	VL	M	Miryata	L	L	M	Miziara	L	VL	M
Mzraat Kefraya	ML	L	M	Qorah Bach	L	VL	M	Rachiine	L	L	M
Ras Kifa	L	VL	M	Sakhra	L	VL	M	Sebhel Zgharta	L	VL	M
Serhel	VL	VL	L	Tallet Zgharta	L	L	M	Toula Zgharta	L	VL	M
Zgharta	L	VL	M								

Minieh-Denniye

Municipality	17-Dec	18-Dec	19-Dec	Municipality	17-Dec	18-Dec	19-Dec	Municipality	17-Dec	18-Dec	19-Dec
Aasaymout	VL	VL	L	Aaymar	L	VL	M	Aazki	L	VL	M
Ain El-Tineh-Miniyeh	VL	VL	ML	Assoun	L	VL	M	Bakhaaoun	L	VL	M
Bchennata	L	VL	M	Bechehhara	L	VL	L	Beddawi	ML	L	M
Behouaita	L	VL	M	Beit El Foqss	L	VL	ML	Beit Haouik	L	VL	M
Beit Zoud	L	VL	ML	Bekaasafrine	L	L	M	Borj El Yahoudiyeh	L	L	M
Bqarsouna	VL	VL	ML	Btermaz	VL	VL	L	Debaael	L	VL	L
Deir Ammar	ML	L	M	Deir Nbouh	L	VL	M	Haouaret-Miniyeh	L	VL	M
Haql el Azimeh	L	VL	L	Harf El Siyad	L	VL	L	Hazmiye-Miniyeh	VL	VL	L
Izal	L	VL	M	Jarjour	VL	VL	L	Jayroun	L	VL	L
Kahf El-Malloul	L	VL	ML	Karm El-Moher	L	VL	M	Kfar Binine	L	VL	M
Kfarchalane	L	VL	M	Kfarhabou	L	VL	M	Kharroub-Miniyeh	L	VL	M
Mazraat El-Kreme	VL	VL	L	Mazraat Ketrane	L	VL	M	Merkebeta	L	L	M
Minyeh	ML	ML	M	Mrah El Sfirat	VL	VL	L	Mrah Sraj	L	VL	ML
Mrebbine	L	L	M	Nabi Youcheaa	ML	L	M	Nemrine	L	VL	M

Qarhaiya	L	VL	M	Qarne	VL	VL	L	Qarsita	VL	VL	L
Qattineh-Miniyeh	VL	VL	L	Qemmamine	VL	VL	L	Qraine	VL	VL	L
Raouda-Aadoua	L	VL	M	Rihaniyet-Miniyeh	L	L	M	Sfireh	L	VL	ML
Sir Ed-Danniyeh	L	VL	ML	Tarane	L	VL	L	Terbol-Miniyeh	ML	L	M
Zaghartaghriine	L	VL	M	Zouq Bhannine	ML	L	M				

Nabatiye

Nabatiye

Municipality	17-Dec	18-Dec	19-Dec	Municipality	17-Dec	18-Dec	19-Dec	Municipality	17-Dec	18-Dec	19-Dec
Aabba	L	L	M	Aazzi	L	L	M	Adchit El-Chqif	ML	L	M
Ain Bou Swar	L	VL	M	Ain Kana	L	L	M	Ali El-Taher	L	VL	ML
Ansar	ML	L	M	Arab Salim	L	L	M	Arnoun	L	VL	ML
Bfaroue	L	L	ML	Breyqaah	L	L	M	Charqiyeh	ML	L	M
Choukine	ML	L	M	Deir El Zahrani	L	L	M	Doueir El-Nabatiyeh	ML	L	M
Habbouch El-Nabatiye	ML	L	M	Hamra El-Nabatiyeh	ML	L	M	Harouf El-Nabatiyeh	ML	L	M
Hmaile	L	L	ML	Houmin El Faouqa	L	L	M	Houmin El Tahta	ML	L	M
Jarjough	L	L	ML	Jbaah El-Nabatiyeh	L	VL	ML	Jebchit	L	L	M
Kfar Djal El-Nabatiy	ML	L	M	Kfar Remmane	L	L	M	Kfar Sir	L	L	M
Kfar Tebnit	ML	L	M	Kfarfila	L	L	M	Kfour El-Nabatieh	ML	L	M
Mayfadoun	ML	L	M	Mazraat Bsaffour	L	L	M	Mazraat Chalbaal	L	L	M
Mazraat Dmoul	ML	L	M	Mazraat El Khreibeh	L	L	M	Mazraat El-Bayad El-	ML	L	M
Mazraat Kfarjaouz	ML	L	M	Mazraat Qalaat Meiss	L	L	M	Nabatiyeh El-Fawka	ML	L	M
Nabatiyeh Et-Tahta	ML	L	M	Namiriyeh	ML	L	M	Qaaqaaiyet El Jisr	L	L	M
Qossaibeh El-Nabatiy	ML	L	M	Roumine	L	L	M	Sarba El-Nabatieh	L	L	M
Sir El-Gharbiyeh	ML	L	M	Toul	ML	L	M	Yehmor El-Nabatiyeh	L	L	M
Zaoutar El Charkiyeh	L	L	M	Zaoutar El-Gharbiyeh	ML	L	M	Zebdine El-Nabatiyeh	ML	L	M
Zefta	L	L	M								

Hasbaiya

Municipality	17-Dec	18-Dec	19-Dec	Municipality	17-Dec	18-Dec	19-Dec	Municipality	17-Dec	18-Dec	19-Dec
Ain Jarfa	VL	VL	L	Abou Qamha	L	VL	ML	Ain Qania	VL	VL	ML
Bourghos	L	VL	M	Chebaa	L	VL	ML	Chouaya Hasbaya	L	VL	ML
Dellafeh	L	VL	M	Fardiss Hasbaiya	L	VL	ML	Hasbaya	L	VL	ML
Hbariyeh	L	VL	ML	Kaoukaba Hasbaiya	L	VL	M	Kfar Chouba	L	VL	L
Kfar Hamam	L	VL	ML	Kfeir El-Zait	VL	VL	L	Khalwat Hasbaya	VL	VL	L
Khreibet Hasbaiya	L	VL	M	Majdiyeh Hasbaiya	L	VL	ML	Marj Ez-Zhour (Haouc	VL	VL	L
Meri	L	VL	M	Mimass	L	VL	M	Rachaiya El-Fokhar	L	VL	ML
Salaiyeb	ML	VL	M								

Marjayoun

Municipality	17-Dec	18-Dec	19-Dec	Municipality	17-Dec	18-Dec	19-Dec	Municipality	17-Dec	18-Dec	19-Dec
Aalmane Marjaayoun	L	L	ML	Aamra	ML	VL	M	Adayseh Marjaayoun	ML	VL	M
Adchit El-Koussair	L	L	M	Ain Aarab Marjaayoun	ML	VL	M	Bani Haiyann	L	L	ML
Blatt Marjaayoun	L	VL	M	Blida	L	L	M	Borj El-Moulouk	L	VL	M
Boueyda Marjaayoun	L	VL	ML	Deir Mimass	L	VL	ML	Deir Siriane	L	L	ML
Dibbine	L	VL	M	Ebel El Saqi	L	VL	M	Houla	L	L	ML
Houra	L	VL	M	Kfar Kila	L	VL	M	Khiam Marjaayoun	ML	VL	M

Klayaa	L	VL	M	Majdel Selem	L	L	ML	Marjaayoun	L	VL	M
Markaba	L	L	ML	Mays El-Jabal	L	L	M	Mazraat Doumiat	ML	VL	M
Mazraat Sarada	ML	VL	M	Mhaibib	L	L	ML	Qabrikha	L	L	ML
Qantara	L	L	ML	Rab El-Thalathine	L	L	M	Saouaneh Marjayoun	L	L	ML
Talloussa	L	L	ML	Taybeh Matjaayoun	L	L	M	Touline	L	L	ML

Bent Jbail

Municipality	17-Dec	18-Dec	19-Dec	Municipality	17-Dec	18-Dec	19-Dec	Municipality	17-Dec	18-Dec	19-Dec
Ain-Ebel	L	L	ML	Aitaroun	L	L	ML	Aynata Bint Jbeil	L	L	ML
Ayta El-Chaeb	L	L	ML	Ayta El-Jabal	L	L	ML	Beit Lif	L	L	ML
Beit Yahoun	L	L	ML	Bint Jbeil	L	L	ML	Borj Qalaway	ML	L	M
Braachit	L	L	ML	Chakra	L	L	ML	Debel	L	L	ML
Deir Antar	ML	L	M	Froun	L	L	ML	Ghandouriyeh Bint Jb	L	L	M
Hanine	L	L	ML	Hariss	L	L	M	Hdatha	L	L	ML
Jmeymeh	L	L	ML	Kafra Bint Jbeil	L	L	ML	Kfar Dounine	L	L	M
Khirbet Selm	L	L	ML	Kounine	L	L	ML	Maroun El Ras	L	L	ML
Qalaway	L	L	M	Qaouzah	L	L	ML	Qatmoun	L	L	M
Ramya Bint Jbeil	L	L	ML	Rchaf	L	L	ML	Rmeich	L	L	M
Safad Al Battikh	L	L	ML	Salhaneh	L	L	ML	Serbine	L	L	M
Sultanieh Bint Jbeil	L	L	M	Tibnine	L	L	ML	Tiri	L	L	ML
Yaroun	L	L	ML	Yater	L	L	M				

Mont Liban

Jbail

Municipality	17-Dec	18-Dec	19-Dec	Municipality	17-Dec	18-Dec	19-Dec	Municipality	17-Dec	18-Dec	19-Dec
Aabeydat	L	VL	M	Aalita	L	VL	M	Aamchit	M	ML	M
Aarab El-Lahib	VL	VL	M	Aarasta	VL	VL	L	Adonis Jbeil	L	VL	M
Afqa Jbeil	VL	VL	L	Ain El Delbeh Jbeil	L	VL	L	Ain El-Ghouayba	VL	VL	L
Ain Jrain	L	VL	L	Ain Kfah	L	L	M	Almat El Chemaliyat	L	VL	L
Almat El-Jenoubiya	VL	VL	L	Aqoura	L	VL	M	Bayzoun	L	VL	ML
Bchille Jbeil	L	VL	M	Bechtlida	VL	VL	M	Behdaydat	L	VL	M
Beit Habbaq	L	L	M	Bejjeh	L	L	M	Bekhaaz	L	L	M
Berbara Jbeil	ML	ML	M	Bintael	L	VL	M	Birket Hjoula	VL	VL	M
Blatt Jbeil	L	VL	M	Boulhos	VL	VL	L	Breyj Jbeil	L	VL	M
Chamat	L	L	M	Chikhane	ML	L	M	Chmout	L	VL	M
Eddeh Jbeil	L	L	M	Ehmej	L	VL	L	Fatre	L	VL	M
Ferhet	L	VL	M	Fghal	L	L	M	Frat	VL	VL	L
Ghabat	VL	VL	ML	Ghalboun	L	L	M	Gharzouz	L	L	M
Ghofrine	L	L	M	Habil	VL	VL	ML	Halate	L	L	M
Haqel	L	VL	M	Hbaline	L	L	M	Hboub	L	VL	M
Hdeine	VL	VL	ML	Hema Er-Rehban	L	VL	M	Hema Mar Maroun Aann	VL	VL	M
Hjoula	L	VL	M	Hosrayel	L	L	M	Hsarat	L	L	M
Hsoun	L	VL	M	Jaj	L	VL	ML	Janne	VL	VL	L
Jbeil	ML	L	M	Jeddeyl Jbeil	M	ML	M	Jlisse	L	VL	M
Jouret El-Qattine	L	VL	M	Kfar Baal Annaya	L	VL	M	Kfar Kidde	L	L	M
Kfar Kouas	L	VL	M	Kfar Mashoun	L	L	M	Kfoun	L	VL	M

Kharbe Jbeil	L	VL	M	Laqlouq	L	VL	M	Lassa	VL	VL	L
Lehfed	L	VL	L	Maad	L	L	M	Mar Sarkis	L	VL	M
Mastita	ML	L	M	Mayfouq	L	VL	L	Mazraat El Siyad	VL	VL	M
Mazraat El-Maaden	VL	VL	L	Mechane	L	VL	M	Mechmech Jbeil	L	VL	L
Mehrin	L	VL	M	Mejdel El-Akoura	VL	VL	ML	Mghayreh Jbeil	VL	VL	ML
Mounsef	ML	ML	M	Nahr Ibrahim	ML	L	M	Qahmez	L	VL	L
Qartaba	VL	VL	L	Qartaboun	ML	L	MH	Qattara Jbeil	VL	VL	L
Qorqraya	VL	VL	VL	Ramout	L	L	M	Ras Osta	L	VL	M
Rihane Jbeil	ML	ML	M	Sakiet El-Khayt	L	VL	M	Saqi Richmaya	L	VL	L
Sebrine	L	VL	M	Seraita	VL	VL	ML	Souane Jbeil	L	VL	ML
Tadmor	VL	VL	ML	Tartej	L	VL	ML	Torzaiya	L	VL	M
Yanouh Jbeil	VL	VL	ML	Zibidine Jbeil	L	VL	M				

El Metn

Municipality	17-Dec	18-Dec	19-Dec	Municipality	17-Dec	18-Dec	19-Dec	Municipality	17-Dec	18-Dec	19-Dec
Aain El-Qabu	VL	VL	L	Aain El-Qach	L	VL	M	Aain El-Teffaha	L	VL	M
Aain el-Safsaf El-M	L	VL	M	Abou Mizane	L	VL	M	Ain Aar	L	VL	M
Ain Alaq	L	VL	M	Ain El-Kharroube	L	VL	M	Ain El-Sendianeh	L	VL	M
Ain El-Zeitoune	VL	VL	M	Ain Saadeh	L	VL	M	Aintoura El-Matn	L	VL	M
Amaret Chalhoub	ML	ML	MH	Antelias	ML	L	MH	Atchaneh	L	VL	M
Ayroun	L	VL	M	Baabdat	VL	VL	M	Baouchariyeh	ML	VL	MH
Baskinta	VL	VL	ML	Beit Chabab	L	VL	M	Beit El-Chaar	L	VL	M
Beit El-Kekko	ML	VL	MH	Beit Mery	L	VL	M	Bhersaf	L	VL	M
Bikfaya	L	VL	M	Biyakout	L	VL	M	Bnabil	VL	VL	M
Bourj Hammoud	ML	L	MH	Bqennaya	L	VL	M	Broummana El-Matn	L	VL	M
Bsalim	L	VL	M	Bsifrine	VL	VL	ML	Bteghrine	VL	VL	ML
Chaouiye	L	VL	M	Chouaya El-Matn	L	VL	M	Choueir	L	VL	M
Chrine	L	VL	M	Dahr El Sawan El-Mat	L	VL	M	Daychouniyeh	L	L	M
Dbayeh	ML	VL	MH	Deir Chamra	L	VL	M	Deir Mar Abda el Mch	L	VL	M
Deir Mar Roukouz	L	VL	M	Deir Tamiche	L	VL	M	Dik El-Mehdi	L	VL	M
Dikwaneh	ML	VL	MH	Douar El-Matn	L	VL	M	Fanar	L	VL	M
Fraike	L	VL	M	Haret El-Ballaneh	L	VL	M	Hbous	L	VL	M
Himlaya	L	VL	M	Jal El Did	ML	L	MH	Jdeideh El-Metn	L	VL	M
Jouar El-Matn	L	VL	M	Jouret El-Ballout	L	VL	M	Kaaqour	VL	VL	M
Kfar Aaqab	VL	VL	M	Kfertay El-Matn	L	VL	L	Khenchara	VL	VL	M
Khilllet El-Mtain	L	VL	M	Konnabat Broummana	L	VL	M	Konnabat Salima	VL	VL	ML
Machraah El-Matn	L	VL	ML	Majdel Tarchich	L	VL	M	Majzoub	L	VL	M
Mansouriyeh El-Metn	L	VL	M	Mar Boutros Karm Et-	L	VL	M	Mar Chaya et Mzekke	L	VL	M
Mar Moussa Ed-Douar	L	VL	M	Marjaba	VL	VL	M	Masqa	VL	VL	M
Mayasse	L	VL	M	Mazraat Deir Aoukar	L	VL	M	Mazraat El-Hadirat	L	VL	M
Mazraat Yachouh	L	VL	M	Mchikha	L	VL	M	Menqlet Mezher	L	VL	M
Mhaydseh Matn	L	VL	M	Mkalles	L	VL	M	Mrouj	L	VL	M
Mtain	L	VL	M	Mtayleb	L	VL	M	Nabay	L	VL	M
Naccache	L	VL	M	Ouadi Chahine	L	VL	M	Ouadi El-Karm El-Mat	VL	VL	ML
Ouata El-Mrouj	L	VL	M	Ouyoun El-Matn	VL	VL	ML	Qornet Chehwan	L	VL	M
Qornet El-Hamra	L	VL	M	Roumieh	L	VL	M	Sfeilet Bikfaya	L	VL	M
Sinn El-Fil	ML	VL	MH	Zabbougha	VL	VL	M	Zalqa	L	L	M

Zarouon	VL	VL	M	Zekrite	L	VL	M	Zighrine El-Matn	L	VL	M
Zouk El-Khrab	ML	VL	M								

Chouf

Municipality	17-Dec	18-Dec	19-Dec	Municipality	17-Dec	18-Dec	19-Dec	Municipality	17-Dec	18-Dec	19-Dec
Aalmane El-Chouf	ML	L	M	Aammqi El-Chouf	L	VL	L	Ain Ouzein	L	VL	L
Ain Qani	L	VL	L	Ain Zhalta	L	VL	L	Ainbal	L	VL	L
Amatour	L	VL	L	Anout	L	VL	ML	Atrine	L	VL	ML
Baadarane	L	VL	ML	Baaqline	L	VL	ML	Baasir	ML	L	M
Barja	ML	L	M	Barouk	VL	VL	L	Bater	L	VL	ML
Batloun	L	VL	ML	Bayqoun	L	VL	M	Bchetfine	L	VL	L
Beiteddine	L	VL	L	Benouati Ech-Chouf	L	VL	L	Berjein	L	VL	ML
Bireh et Mtalleh	L	VL	ML	Biret El-Chouf	L	VL	M	Bkechtine Ouel Mchei	L	VL	L
Bkifa El-Chouf	L	L	ML	Botme	L	VL	L	Bqaiaa Ech-Chouf	L	VL	L
Bsaba El-Chouf	L	VL	ML	Chammis El-Chouf	ML	L	M	Chehim	L	VL	ML
Chemaarine	L	VL	L	Chourit	L	VL	L	Daher El-Chouf	L	L	L
Dalhoun	L	L	ML	Damour	L	L	M	Daraya El-Chouf	L	VL	L
Deir El-Moukhalles	L	VL	L	Deir Baba	L	VL	L	Deir Dourit	L	VL	ML
Deir El-Qamar	L	VL	ML	Deir Kouche	L	VL	L	Dibbieh	L	VL	L
Dmit	L	VL	ML	Fouara Jaafar	L	VL	L	Fraidis El-Chouf	L	VL	ML
Ghabet Jaafar	L	VL	L	Gharife	L	VL	L	Haret Jandal	L	VL	ML
Hasrout	L	VL	ML	Jadra	ML	L	M	Jahlieh	L	VL	L
Jbeih El-Chouf	L	VL	ML	Jdeidet El-Chouf	L	VL	ML	Jiyeh	ML	ML	M
Jleilyeh	L	VL	ML	Jmailiyeh	L	L	M	Joun	L	L	ML
Kahlounie El-Chouf	L	VL	M	Ketermaya	L	L	M	Kfar Faqoud	L	VL	L
Kfar Hamal	ML	VL	M	Kfar Him	L	VL	ML	Kfar Katra	L	VL	ML
Kfar Niss	L	VL	ML	Kfar hay	L	VL	ML	Kfarnabrakh	L	VL	ML
Khirbet Bisri	L	VL	L	Knayse El-Chouf	L	VL	L	Maaniyeh	L	L	M
Maasser Beiteddine	L	VL	ML	Maasser El-Chouf	L	VL	ML	Majdalouna	L	L	ML
Majdel El-Meouch	L	VL	ML	Mazboud	L	L	M	Mazmoura	L	VL	ML
Mazraat El Chouf	L	VL	ML	Mazraat El Daher	L	VL	L	Mazraat El-Douair	L	VL	L
Mechref	L	L	ML	Mghairie	L	L	M	Mghayrie El-Chouf	L	L	L
Moukhtara	L	VL	ML	Mrusti	L	VL	ML	Mtolle	L	VL	ML
Naameh	L	L	M	Niha El-Chouf	L	VL	ML	Ouadi Abou Youssef	VL	VL	L
Ouadi Ed-Deir	L	VL	ML	Ouadi El-Sit	L	VL	ML	Ouadi bnehlay	L	VL	L
Qraibeh	L	VL	ML	Qreiaa	VL	VL	L	Rmayle El-Chouf	ML	L	M
Semqaniyeh	L	VL	M	Sibline	ML	L	M	Sirjbeil	L	VL	ML
Warhanieh	L	VL	ML	Werdaniyeh	ML	L	M	Zaarourieh	L	VL	ML

Baabda

Municipality	17-Dec	18-Dec	19-Dec	Municipality	17-Dec	18-Dec	19-Dec	Municipality	17-Dec	18-Dec	19-Dec
Abadiyeh	L	VL	M	Ain Mouaffaq	L	VL	M	Araiya	L	VL	M
Arbaniyeh	VL	VL	M	Arsoun	VL	VL	M	Baabda	L	VL	M
Baalchmey	L	VL	M	Bmaryam	VL	VL	M	Bourj El-Brajneh	M	L	MH
Boutchay	L	VL	M	Bsaba Baabda	L	VL	M	Btekhney	VL	VL	M
Btibyat	VL	VL	M	Bzebdine	VL	VL	M	Chbeniyeh	L	VL	M
Chiyah	M	L	MH	Chmeisset Baabda	VL	VL	ML	Chouit	L	VL	M
Deir El-harf	L	VL	M	Deir Khouna	L	VL	M	Dlaybeh	VL	VL	M

Falougha	L	VL	M	Furn El-Chebbak	ML	VL	MH	Hadath Beyrouth	ML	VL	MH
Halaliyeh Baabda	VL	VL	M	Hammana	L	VL	M	Haret El Sett	L	VL	M
Haret Hamze	L	VL	M	Haret Hreik	ML	L	MH	Hasbaiya El-Metn	VL	VL	M
Jouar El-Hoz	VL	VL	L	Jouret Arsoun	VL	VL	M	Kfar Chima	L	VL	MH
Kfar Selouane	L	VL	ML	Khalouat Baabda	L	VL	M	Kneisset Baabda	VL	VL	M
Laylakeh	ML	VL	MH	Louayzeh Baabda	L	VL	M	Merdache	L	VL	M
Mzairaa Baabda	L	VL	M	Ouadi Chahrour El Ol	L	VL	M	Ouadi Chahrour El So	L	VL	M
Qalaa Baabda	VL	VL	M	Qhraybe Baabda	L	VL	M	Qobbayaa	L	VL	M
Qornayel	VL	VL	M	Qortada	VL	VL	ML	Qrayeh Baabda	L	VL	M
Qsaibeh Baabda	VL	VL	M	Qtale Baabda	VL	VL	M	Ras El Metn	L	VL	M
Ras El-Haref	L	VL	M	Rouayset El-Ballout	L	VL	M	Salima Baabda	VL	VL	M
Tahouitat El Ghadir	ML	L	MH	Tarchich	L	VL	ML	Zandouqa	VL	VL	M

Aley

Municipality	17-Dec	18-Dec	19-Dec	Municipality	17-Dec	18-Dec	19-Dec	Municipality	17-Dec	18-Dec	19-Dec
Abey	L	VL	ML	Aghmid	L	VL	M	Ain Dara	L	VL	M
Ain Drafil	L	VL	M	Ain El Halazoun	L	VL	M	Ain El-Rmmaneh	VL	VL	M
Ain Jedideh	L	VL	M	Ain Ksour	L	VL	M	Ain Onoub	L	VL	M
Ain Traz	L	VL	L	Ainab	L	VL	M	Aley	L	VL	M
Aramoun	L	L	M	Aytat	L	VL	M	Azouniyeh	L	VL	M
Baawerta	L	L	ML	Badghan Oua Wadi Bad	L	VL	M	Bassatine	L	VL	M
Bayssour	L	VL	M	Bchamoun	L	L	M	Bdadoun	L	VL	M
Behouara	L	VL	M	Bennay	L	VL	ML	Bhamdoun El-Dayaa	L	VL	MH
Bhamdoun El-Mhatta	L	VL	M	Bkhechthey	L	VL	M	Bleibel	L	VL	M
Bmakine	L	VL	M	Bmehray	L	VL	M	Bouzrid	VL	VL	L
Bserrine	L	VL	M	Bsous	L	VL	M	Btalloun	L	VL	MH
Btater	L	VL	M	Chanay	L	VL	MH	Charoun	L	VL	M
Chartoun	L	VL	M	Chemlane	L	VL	M	Choueifat El-Aamrous	ML	L	MH
Choueifat El-Oumara	L	L	M	Choueifat El-Quoubbe	ML	L	MH	Dakkoun	L	VL	ML
Deir Qoubel	L	VL	M	Dfoun	L	VL	M	Douair El Remmaneh	VL	VL	M
Ghaboun	L	VL	M	Habramoun	L	VL	M	Homs Oua Hama	L	VL	M
Houmal	L	VL	M	Jisr El Qadi	L	VL	ML	Kehaleh	L	VL	M
Keyfoun	L	VL	M	Kfar Aamey	L	VL	M	Kommatyeh	L	VL	M
Maasrati	L	VL	M	Majdel Baana	L	VL	M	Mansourieh et Ain El	L	VL	MH
Mazraat El-Nahr	L	VL	M	Mchakhte	VL	VL	M	Mecherfeh	L	VL	M
Mejdaya	L	VL	M	Mrayjat	L	VL	M	Ramliyah	L	VL	M
Rechmaya	L	VL	M	Rejmeh	L	VL	M	Remhala	L	VL	M
Rouaysset El Neemane	L	VL	M	Saoufar	L	VL	M	Selfaya	L	VL	L
Sirhmoul	L	VL	M	Souq El Ghareb	L	VL	M	Taazanieh	L	VL	M

Kesrouane

Municipality	17-Dec	18-Dec	19-Dec	Municipality	17-Dec	18-Dec	19-Dec	Municipality	17-Dec	18-Dec	19-Dec
Achkout	L	VL	M	Adma Oua Dafneh	ML	L	M	Ain Ed-Delbe Kesroua	L	VL	L
Ain El-Rihane	L	VL	M	Aintoura Kesrouane	L	VL	M	Ajaltoun	L	VL	M
Akaybeh Kesrouane	ML	L	MH	Aramoun Kesrouane	L	VL	M	Azra ouel Ozor	L	VL	M
Ballouneh	L	VL	M	Batha	L	VL	M	Bekaatat Achkout	L	VL	M
Bekaatat Kanaan	L	VL	L	Bizhel	L	VL	M	Bouar	ML	L	M
Bqaatouta	L	VL	ML	Bqaq Ed-Dine	ML	L	M	Bzommar	L	VL	M

Chahtoul	L	VL	M	Chnaniir	L	VL	M	Chouan	VL	VL	L
Daraya Kesrouane	L	VL	M	Darououn	L	VL	M	Deir Baqlouch	L	VL	M
Dlebta	L	VL	M	Eghbeh	L	VL	ML	Faraya	VL	VL	M
Fatka	ML	VL	M	Feytroun	L	VL	M	Ghazir	ML	VL	M
Ghbaleh Kesrouane	L	VL	M	Ghedrass	L	VL	M	Ghosta	L	VL	M
Ghyneh	L	VL	M	Harharaya w Kattine	L	VL	M	Harissa Kesrouane	L	VL	M
Hayata	L	VL	M	Hosein	L	VL	M	Hrajel	L	VL	M
Jdeideh Ghazir	L	VL	M	Jeita	L	VL	M	Jounieh Ghadir	ML	L	M
Jounieh Haret Sakhr	ML	L	M	Jounieh Salel Alma	ML	L	M	Jounieh Sarba	ML	L	MH
Jouret Bedrane	L	VL	M	Jouret Mhad	L	VL	M	Jouret Termos	L	VL	M
Kfar Debiane	L	VL	ML	Kfar Tay Kesrouane	VL	VL	L	Kfar Yassine	ML	L	MH
Kfour Kesrouane	L	VL	M	Kharayeb Nahr Ibrahi	L	L	M	Klayaat Kesrouane	L	VL	M
Maarab	L	VL	M	Maaysra Kesrouane	L	VL	M	Mayrouba	L	VL	ML
Mazraat Er-Ras	L	VL	M	Mazraat Mrah El-Mir	L	VL	M	Mchaa El Ftouh	VL	VL	M
Mchaa Faraya	VL	VL	M	Mchaa Kfar Dibiane	VL	L	M	Mghaer	VL	VL	L
Mradiyah	L	VL	M	Nahr Ed-Dahab	VL	VL	ML	Nammoura Kesrouane	L	VL	M
Ouata El Jaouz	L	VL	M	Ouata Sillam	ML	L	MH	Raachine	L	VL	M
Rayfoun	L	VL	M	Safra Kesrouane	ML	L	M	Shayle Kesrouane	L	VL	M
Tabarja	ML	L	M	Yahchouch	L	VL	M	Zaaytreh	L	VL	M
Zeytoun	L	VL	M	Zouk Mikael	ML	L	MH	Zouk Mosbeh	ML	L	M

Baalbek_Hermel

Baalbek

Municipality	17-Dec	18-Dec	19-Dec	Municipality	17-Dec	18-Dec	19-Dec	Municipality	17-Dec	18-Dec	19-Dec
Aadous	L	VL	M	Aamchki	L	VL	L	Aarsal	L	VL	VL
Ain Baalbek	VL	VL	VL	Ain Bourday	L	VL	M	Ain El-Benye	L	VL	ML
Ain El-Jaouz Baalbek	L	VL	L	Ain El-Siya Chadoura	L	VL	L	Al Khodr Baalbek	L	VL	ML
Al Nabi Chit	L	VL	M	Aynata Baalbek	L	L	M	Baalbek	L	VL	M
Bachwat	L	VL	L	Barqa	VL	VL	L	Bednayel Baalbak	L	L	M
Beit Chama	L	VL	M	Bijjaje	VL	VL	VL	Bouday	L	VL	ML
Brital	L	VL	M	Btadi	L	VL	ML	Chaat	L	VL	L
Chaibe	L	VL	L	Chlifa	L	VL	ML	Chmestar	L	VL	M
Dar El-Oussa	L	VL	L	Deir El-Ahmar	L	VL	ML	Deir Mar Maroun Baal	VL	VL	ML
Douris	ML	VL	M	Fakiha	VL	VL	L	Hadath Baalbek	L	VL	ML
Ham	L	VL	M	Haour Taala	L	VL	M	Hizzine	L	VL	M
Hlebta	L	VL	L	Hosh Barada	ML	VL	M	Hosh El Dahab	L	VL	M
Hosh El Snid	L	VL	M	Hosh El-Nabi	L	VL	M	Hosh El-Rafiq	L	VL	M
Hosh Tal Safiya	L	VL	M	Hrebta	L	VL	L	laat	L	VL	M
Jebaa	L	VL	M	Jenta	L	VL	M	Kfar Dabach	L	VL	M
Kfar Dane	L	VL	M	Khraibeh El-Hermel	VL	VL	VL	Khreibet Baalbek	L	VL	M
Kneisset Baalbek	L	VL	M	Labueh	VL	VL	VL	Maarboun	L	VL	M
Majdaloun	ML	VL	M	Maqneh	L	VL	M	Mazraat Beit Mcheik	L	VL	M
Misraya	L	VL	M	Moqraq	L	VL	VL	Nabha El-Damdoum	L	L	M
Nabi Chbay	L	VL	M	Nabi Osman	VL	VL	VL	Nahleh baalbek	L	VL	L
Ouadi El-Oss	VL	VL	L	Qaa Baayoun	VL	VL	ML	Qaa Jouar Maqiye	L	VL	ML
Qaa Ouadi El-Khanzir	L	VL	ML	Qah Baalbek	VL	VL	ML	Qarha Baalbek	VL	VL	ML

Qsarnaba	L	VL	ML	Ram Baalbek	L	VL	L	Ras Baalbek El Sahl	VL	VL	ML
Ras Baalbek El-Charq	VL	VL	ML	Riha	L	VL	ML	Saaide	ML	VL	M
Sbouba	VL	VL	VL	Seriine El-Tahta	L	VL	M	Slouqi	L	L	M
Taiba Baalbek	L	VL	M	Talia	L	VL	M	Taraiya	L	VL	M
Temnin El Fawqa	L	VL	M	Temnin El-Tahta	L	VL	ML	Tfail	L	VL	VL
Yahfoufa	ML	VL	M	Yammouneh	L	VL	ML	Younine	L	VL	L
Zboud	VL	VL	L								

Hermel

Municipality	17-Dec	18-Dec	19-Dec	Municipality	17-Dec	18-Dec	19-Dec	Municipality	17-Dec	18-Dec	19-Dec
Charbine El-Hermel	VL	VL	L	Hermel Jbab	ML	L	M	Hermel	VL	VL	ML
Maaysra El-Hermel	VL	VL	L	Michaa Mrjihine	L	VL	M	Ouadi Faara	L	VL	ML
Ras Baalbek - Ouadi	VL	VL	ML	Ras Baalbek El Gharb	L	VL	M	Zighrine	VL	VL	L

Akkar

Akkar

Municipality	17-Dec	18-Dec	19-Dec	Municipality	17-Dec	18-Dec	19-Dec	Municipality	17-Dec	18-Dec	19-Dec
Aain Tinta	M	ML	M	Aaiyat	L	L	M	Aakkar El-Aatiqa	L	L	ML
Aamar Akkar	ML	ML	M	Aamar El Baykat	M	M	M	Aamayer	L	L	ML
Aamriyet Akkar	M	ML	M	Aandqet	L	L	L	Aarmeh	M	ML	M
Aarqa	ML	ML	M	Aawaynat	M	L	ML	Aayoun Akkar	L	L	M
Abboudiye	M	M	M	Ain El-Zeit	M	ML	M	Ain Yaaqoub	L	L	M
Akroum	L	L	L	Aridet Cheikh Zennad	M	M	M	Baldeh w Mazraat Bal	L	L	M
Barcha	M	M	M	Bardeh	M	ML	M	Bebnine	L	L	M
Beino	L	L	M	Beit Ayoub	L	VL	M	Beit El-Haouch	L	L	M
Beit Mellat	L	L	M	Beit Younes	L	VL	M	Berbara Akkar	L	L	M
Berqayel	L	L	M	Bezbina	L	VL	ML	Bireh Akkar	M	ML	M
Borj	L	L	M	Bqerezla	L	VL	M	Bzal	L	VL	M
Chane	L	VL	ML	Chaqdouf	L	L	M	Charbila	M	ML	M
Cheikh Mohammad	ML	ML	M	Cheikh Taba Es-Sahl	ML	ML	M	Cheikh Taba	ML	ML	M
Cheikh Zennad	M	M	M	Cheikhlar	M	L	ML	Chir Hmairine	M	M	M
Daghle	ML	L	M	Dahr Laissine	ML	L	M	Darine	M	M	M
Dawra	L	L	ML	Dawsa w Baghdadi	M	ML	M	Dayret Nahr El-Kabir	M	ML	ML
Deir Dalloum	ML	L	M	Deir Jennine	L	L	M	Denbou	L	VL	M
Dibbbiyeh	M	ML	M	Douair Aadwiyeh	ML	L	M	Fassikine	ML	L	M
Fnaydek	L	VL	M	Fraydes Akkar	M	L	M	Ghazayle	M	M	M
Habchit	L	VL	ML	Hakour	ML	ML	M	Halba	ML	ML	M
Haouchab	M	M	M	Hayssat	M	M	M	Haytla	M	M	M
Hayzouq	L	L	M	Hedd	L	L	M	Hmaira Akkar	L	VL	M
Hmaiss Akkar	ML	L	M	Hnaider	L	L	ML	Hokr Ed-Dahri	M	M	M
Hokr Etti	ML	ML	M	Hokr Jouret Srar	M	M	M	Houaich	L	VL	M
Hrar	L	VL	M	Idbil	ML	ML	M	Ilfat	L	L	M
Janine	M	M	M	Jdeidet El-Joumeh	ML	ML	M	Jdeidet El-Kaiteh	L	VL	M
Jebayel	L	L	M	Kafr	L	VL	M	Kafr	M	ML	M
Karm Asfour	ML	L	M	Kfar Melki Akkar	ML	ML	M	Kfar Noun	M	L	ML
Kfarharra	L	L	M	Khalsa	M	ML	ML	Kharnoubet Akkar	M	M	M

Khirbet Daoud Aakkar	M	ML	M	Khirbet El Remmane	M	L	ML	Khirbet Shar	L	L	M
Khoreybet El-Jindi	ML	ML	M	Khreibet Aakkar	L	VL	M	Kneisset Aakkar	M	M	M
Kneisset Hnaider	VL	VL	ML	Knisse	L	L	M	Kroum El-Aarab	ML	ML	M
Kwachra	M	ML	M	Kweykhath	M	M	M	Machta Hammoud	M	L	ML
Majdala	L	VL	M	Majdel Akkar	L	L	M	Mar Touma	L	L	M
Marlaya Melhem	ML	ML	M	Mashha	ML	L	M	Massoudiye	M	M	M
Mazraat Beit Ghattas	ML	ML	M	Mazraat En-Nahriye	M	L	ML	Mechmech	L	VL	ML
Memneh	VL	VL	L	Mhammara	ML	L	M	Mighraq Aakkar	M	M	M
Minyara	ML	ML	M	Moqayteh	ML	ML	M	Mounjez	M	L	M
Msalla	M	M	M	Mzeihmeh	M	M	M	Nfaiseh	ML	ML	M
Noura Et-Tahta	M	M	M	Ouadi El-Haour	M	M	M	Ouadi El-Jamous	L	L	M
Ouyoun El-Ghizlane	L	L	M	Qaabarine	ML	ML	M	Qabaait	L	VL	ML
Qachlaq	M	M	M	Qantara Aakkar	ML	L	M	Qarha Aakkar	VL	VL	ML
Qarqaf	L	L	M	Qboula	L	L	M	Qleiaat Aakkar	M	M	M
Qloud El-Baqie	L	VL	M	Qobaiyat Aakkar	L	L	L	Qobbat Chamrat	ML	ML	M
Qorayat	L	VL	M	Qornet Aakkar	L	VL	M	Qsair Aakkar	M	ML	M
Rahbe	L	VL	M	Rihaniyet Aakkar	M	ML	M	Rmah	M	L	ML
Rmoul	ML	ML	M	Saadine	M	M	M	Sadaqa	L	VL	M
Saidnaya	M	M	M	Sammouniye	ML	ML	M	Sayssoq	L	L	M
Semmaqiye	M	M	M	Semmaqli	ML	ML	M	Sfinet El-Dreib	M	L	M
Sfinet El-Qaitaa	L	VL	M	Sindyanet Zeidane	L	L	M	Souaisset Aakkar	L	L	M
Srar	M	M	M	Tal Abbas El Gharby	M	M	M	Tal Abbas El-Chargy	M	M	M
Tal Biret	M	M	M	Tal Hmayra	M	M	M	Tal Maayan Tal Kiri	M	M	M
Tal Sibel	ML	ML	M	Tallet Chattaha	L	L	M	Tikrit	L	L	M
Tleil	M	M	M	Tshea	L	VL	M	Zawarib	ML	ML	M
Zouq El Hosniyeh	L	L	M	Zouq El-Haddara	L	VL	M	Zouq El-Hbalsa	L	VL	M
Zouq El-Moqachrine	L	L	M								

Sud

Sour

Municipality	17-Dec	18-Dec	19-Dec	Municipality	17-Dec	18-Dec	19-Dec	Municipality	17-Dec	18-Dec	19-Dec
Aaiyeh	ML	L	M	Aalma El-Chaab	L	L	M	Aaytit	ML	L	M
Abbassiyeh Sour	ML	L	M	Abou Chech	L	L	M	Ain Abou Abdallah	ML	L	M
Ain Baal	ML	L	M	Arzoun	L	L	M	Aziyeh	L	L	ML
Baflaya	L	L	M	Barich	L	L	M	Batouliyeh	L	L	M
Bayad	L	VL	M	Bazouriyeh	ML	L	M	Bediass	L	L	M
Bestiyat	ML	L	M	Borj El Chemali	ML	L	M	Borj En-Naqoura	L	ML	M
Borj Rahhal	ML	L	M	Boustane	L	L	M	Btaychiyeh	L	L	M
Chaaitiye	L	L	M	Chameh	L	L	M	Chehabiye	L	L	M
Chehour	L	L	L	Chihine	L	L	ML	Debaal Sour	L	VL	M
Deir Amess	L	VL	ML	Deir Kifa	ML	L	M	Deir Qanoun El-Ain	L	L	M
Deir Qanoun El-Naher	L	L	M	Derdghaiya	L	L	M	Dhayra	L	L	M
Halloussiyeh	ML	L	M	Hamoul	L	L	ML	Hanaouey	ML	L	M
Henniye	L	L	M	Hmairi Sour	L	L	M	Iskandarouna Sour	L	L	M
Jbal El Botom	L	L	ML	Jebbin	L	L	M	Jennata	ML	L	M
Jijim	L	L	ML	Jouaiya	ML	VL	M	Kneisset Sour	ML	L	M

Maarake	ML	L	M	Maaroub	ML	L	M	Majadel	L	L	M
Majdzoun	L	L	M	Mansouri Sour	L	ML	M	Marnba	L	L	L
Marouahine	L	L	ML	Mazraat El-Zalloutiy	L	L	M	Mazraat Mechref	L	L	M
Mazraat Tayr Semhat	L	L	L	Mheilib	ML	L	M	Neffakhiyeh	L	L	M
Niha Sour	L	L	M	Ouadi Jilo	L	L	M	Qana	L	L	M
Qolaileh Sour	L	L	M	Rechknany	L	VL	ML	Rmadiyeh	ML	L	M
Selha Sour	L	L	M	Siddiqine	L	VL	M	Sour	ML	ML	M
Srifa	L	L	ML	Tayr Debbe	ML	L	M	Tayr Felsay	L	L	M
Tayr Harfa	L	L	M	Touayri	L	L	ML	Toura	ML	L	M
Yanouh Sour	L	VL	M	Yarine	L	L	M	Zebqine	L	L	L

Saida

Municipality	17-Dec	18-Dec	19-Dec	Municipality	17-Dec	18-Dec	19-Dec	Municipality	17-Dec	18-Dec	19-Dec
Aanqoun	ML	L	M	Aaqtanit	ML	L	M	Aarab Ej-Jall	ML	L	M
Aarab Tabbaya	ML	L	M	Abra Saida	ML	L	M	Adloun	ML	ML	M
Adousiyeh	ML	L	M	Ain-El-Deleb	ML	L	M	Arzai	ML	L	M
Babliyah	ML	L	M	Barty	L	L	M	Bissariyeh	ML	L	M
Bnaafoul	ML	L	M	Bqosta	ML	L	M	Bramiy	L	L	M
Daoudiyeh	ML	L	M	Dareb El-Sim	ML	L	M	Erkay	ML	L	M
Ghassanieh	ML	L	M	Ghazieh	ML	L	M	Hajjeh	ML	L	M
Haret Saida	ML	L	M	Hartiyeh	ML	ML	M	Hlaliye Saida	ML	L	M
Insariyat	ML	ML	M	Jazira Saida	ML	ML	M	Kafar Bit	L	L	M
Kaoutariyet El-Siyad	ML	L	M	Kfar Chellal	L	L	M	Kfar Hatta Saida	L	L	M
Kfar Milke Saida	L	L	M	Khartoum	ML	L	M	Khaziz	ML	L	M
Khirbet Ed-Douair Sa	ML	L	M	Khirbet El-Bassal	ML	L	M	Khrayeb Saida	ML	L	M
Loubieh	ML	L	M	Maghdouche	ML	L	M	Majdelyoun	ML	L	M
Matariyet El-Choumar	ML	ML	M	Matayriyeh	ML	L	M	Mazraat 'Mseileh	ML	L	M
Mazraat 'Snaiber	ML	L	M	Mazraat Aarab Soukka	ML	L	M	Mazraat Deir Taqla	L	L	M
Mazraat El Yahoudiye	ML	ML	M	Mazraat El-Housseini	ML	ML	M	Mazraat El-Mhaydaleh	ML	L	M
Mazraat El-Ouasta	ML	ML	M	Mazraat Jamjim	ML	ML	M	Mazraat Kaoutariyet	ML	L	M
Mazraat Kfar Badda	ML	ML	M	Mazraat Oussamiyat	ML	L	M	Mazraat Sari	ML	ML	M
Mazraat Sinai	ML	L	M	Meemariyeh	ML	L	M	Merouaniyeh	ML	L	M
Miyeh ou Miyeh	ML	L	M	Najjariyeh	ML	L	M	Qaaqiyat El-Snaouba	ML	L	M
Qnarit	ML	L	M	Qraiye Saida	ML	L	M	Saida Ed-Dekermane	ML	L	M
Saida El-Oustani	ML	L	M	Saida El-Qadimeh	ML	L	M	Saida Kefraya	L	L	M
Saksakiyeh	ML	ML	M	Salhie Saida	ML	L	M	Sarafand	ML	L	M
Sfenta	L	VL	ML	Tafahta	ML	L	M	Tanbourit	ML	L	M
Tebna	ML	L	M	Zaghdraiya	L	L	M	Zeita	ML	L	M
Zrariyeh	L	L	M								

Jezzine

Municipality	17-Dec	18-Dec	19-Dec	Municipality	17-Dec	18-Dec	19-Dec	Municipality	17-Dec	18-Dec	19-Dec
Ain El-Mir (El Estab	ML	L	M	Anane	L	VL	L	Aramta	L	L	M
Ariya	VL	VL	ML	Aychiyeh	L	VL	ML	Azour	VL	VL	L
Baba	VL	VL	L	Baysour Jezzine	ML	L	M	Benoueteh Jezzine	L	VL	ML
Bhannine	VL	VL	ML	Bisri	VL	VL	L	Bkassine	VL	VL	L
Bouslaya	L	VL	L	Btedine El-Leqech	VL	VL	L	Chbail	VL	VL	L
Choualiq Jezzine	L	L	M	Dahr Ed-Deir	L	L	L	Deir El Qattine	L	VL	L

Demachqiyeh	L	VL	M	Ghabbatiyeh	L	VL	L	Harf Jezzine	VL	VL	L
Hassaniyeh	L	L	M	Haytouleh	L	L	ML	Haytura	L	VL	L
Hidab	L	VL	ML	Homsiyeh	L	VL	L	Jabal Toura	L	L	ML
Jarmaq	L	VL	ML	Jensnaya	ML	L	M	Jernaya	L	L	M
Jezzine	L	VL	ML	Karkha	L	L	ML	Kfar Falous	L	L	M
Kfar Houna	L	VL	ML	Kfar Jarrah	ML	L	M	Lebaa	L	L	M
Louayzet Jezzine	L	VL	ML	Machmouche	VL	VL	L	Mahmoudiyeh Jezzine	L	VL	M
Maknounye Jezzine	L	VL	L	Maraat Ouazaiyeh	L	VL	ML	Mazraat Daraya	L	VL	ML
Mazraat El-Aarqoub	L	VL	L	Mazraat El-Mathane	VL	VL	L	Mazraat El-Rahbane	L	VL	L
Mazraat Khallet Khaz	L	VL	ML	Mazraat Louzid (Loua	VL	VL	L	Mazraat Qrouh	L	VL	M
Mazraat Tamra	ML	VL	M	Mazraat Zighrine Jez	L	VL	ML	Mazraat	L	VL	L
Mharbiyeh	ML	L	M	Midane Jezzine	L	VL	L	Mjeydel Jezzine	ML	L	M
Mlikh	L	VL	ML	Mrach El-Hbasse	L	L	M	Ouadi Baanqoudaine	ML	L	M
Ouadi El-Laymoun	L	L	M	Ouardiyeh	VL	VL	VL	Qabaa Jezzine	L	VL	L
Qatrani	L	VL	ML	Qaytouleh	L	VL	L	Qtaleh Jezzine	L	VL	L
Rihane Jezzine	L	L	ML	Rimat	L	VL	L	Roum	L	VL	L
Roummanet	L	L	M	Sabbah	L	VL	L	Saydoun	L	VL	L
Sfaray	L	VL	L	Snaya	L	VL	L	Sojoud	L	L	ML
Srayri	L	VL	ML	Taaïd	VL	VL	L	Wadi Jezzine	L	VL	L
Zhalta	L	VL	L								

Bekaa

West Bekaa

Municipality	17-Dec	18-Dec	19-Dec	Municipality	17-Dec	18-Dec	19-Dec	Municipality	17-Dec	18-Dec	19-Dec
Aammiq BG	L	VL	L	Ain El Tineh BG	L	VL	ML	Ain Zebdeh	L	VL	ML
Ana	L	VL	L	Aytanit	VL	VL	ML	Baaloul BG	L	VL	ML
Bab Mareh	L	VL	M	Chouberqiye Aammiq	ML	VL	L	Dakoue	ML	VL	L
Deir Ain El-Jaouze	VL	VL	ML	Deir Tahniche	L	VL	L	Ghaza	ML	VL	L
Harime El-Soughra	ML	VL	L	Hoch Harimeh	ML	VL	L	Jazira BG	ML	VL	L
Jib Jennine	L	VL	L	Kamed-El-Laouz	L	VL	L	Kefraya BG	L	VL	L
Khiara El Atika	ML	VL	L	Khiara	ML	VL	L	Khirbet Qanafar	L	VL	ML
Lala	L	VL	L	Lebbaya BG	VL	VL	ML	Loussa	L	VL	M
Machghara	VL	VL	ML	Manara (Hammar) BG	L	VL	L	Mansoura BG	L	VL	L
Marej BG	ML	VL	M	Maydoun	L	VL	ML	Ouaqf BG	ML	VL	L
Qaraaoun	L	VL	ML	Qelya	L	VL	M	Raouda (Istabel)	ML	VL	ML
Saghbine	L	VL	ML	Sohmor	VL	VL	ML	Soltan Yacoub el Ara	ML	VL	L
Souairy	L	VL	L	Sultan Yaacoub	L	VL	L	Tal Znoun	L	VL	L
Yehmor BG	L	VL	ML	Zilaya	VL	VL	ML				

Zahle

Municipality	17-Dec	18-Dec	19-Dec	Municipality	17-Dec	18-Dec	19-Dec	Municipality	17-Dec	18-Dec	19-Dec
Aanjar (Haouch Mouss	L	VL	L	Ablah	L	VL	ML	Ain Kfarzabad	L	VL	ML
Ali-El-Nahri	ML	VL	ML	Bar Elias	ML	VL	M	Bouarej	ML	VL	M
Cheberqiyet Tabet	ML	VL	M	Chtaura	ML	VL	M	Deir El Ghazal	L	VL	ML
Delhamiyet Zahle	ML	VL	M	Ferzol	L	VL	M	Haouch El-Ghanam	ML	VL	M
Haouch Es-Siyadeh	L	VL	M	Haouch Hala	L	VL	ML	Haouch Mandara	ML	VL	M

Haouch Qayssar	ML	VL	M	Hezerta	L	VL	M	Hosh Moussa	ML	VL	M
Jdita	L	VL	M	Kfarzabad	L	VL	M	Ksara	ML	VL	ML
Majdel Aanjar	L	VL	L	Makssi	ML	VL	M	Massa	L	VL	M
Mazraat Er-Remtaniye	L	VL	M	Mrayjat Zahle	L	VL	M	Mzaraa Zahle	ML	VL	M
Nabi Ayla	L	VL	ML	Nasriyet Rizk	ML	VL	M	Nasriyet Zahle	ML	VL	ML
Niha Zahle	L	VL	M	Ouadi Ed-Deloum	L	VL	M	Ouadi El-Arayech	L	VL	M
Qaa El Rim	L	L	M	Qab Elias	L	VL	M	Qousaya	L	VL	M
Rhit	L	VL	M	Riyak	ML	VL	ML	Saadnayel	ML	VL	ML
Taal El-Akhdar	ML	VL	L	Taalbeya	L	VL	M	Taanayel	ML	VL	M
Talamara	ML	VL	ML	Tcheflik Edde Haouch	ML	VL	M	Tcheflik Qiqano	ML	VL	M
Terbol Zahle	ML	VL	M	Touaite Zahle	L	VL	M	Zahle Aradi	L	VL	M
Zahle El-Berbara	ML	VL	M	Zahle El-Maallaqa	ML	VL	M	Zahle El-Midane	ML	VL	M
Zahle Er-Rassiye	ML	VL	M	Zahle Haouch El-Ouma	ML	VL	ML	Zahle Haouch El-Ouma	ML	VL	ML
Zahle Haouch Ez-Zara	ML	VL	M	Zahle Maalaqa Aradi	L	VL	M	Zahle Mar Antonios	ML	VL	M
Zahle Mar Elias	ML	VL	M	Zahle Mar Gerios	L	VL	M	Zahle Saydet En-Naja	L	VL	M
Zebdoul	L	VL	ML								

Rachaiya

Municipality	17-Dec	18-Dec	19-Dec	Municipality	17-Dec	18-Dec	19-Dec	Municipality	17-Dec	18-Dec	19-Dec
Ain Arab Rachaiya	L	VL	L	Ain Ata	VL	L	L	Ain Harche	VL	L	L
Aqabe Rachaya	VL	L	L	Ayha	L	L	ML	Ayta El Fokhar	L	VL	L
Bakifa Rachaya	VL	L	L	Bakka	L	VL	L	Beit Lahya	VL	VL	L
Bireh Rachaiya	L	VL	L	Daher El Ahmar	L	VL	L	Deir El-Achayer	L	VL	L
Heloua Rachaiya	L	VL	L	Hoch El Qannabeh Rac	VL	VL	L	Kaoukaba Bou Arab	L	VL	L
Kfar Danis	L	VL	L	Kfar Mechki	VL	VL	L	Kfar Qouq	L	VL	L
Kherbet Rouha	L	VL	L	Majdel Balhiss	L	VL	ML	Mdoukha	L	VL	L
Mhaydseh Rachaiya	L	VL	L	Nabi Safa	VL	VL	ML	Rachaiya	VL	L	L
Rafid Rachaiya	L	VL	L	Selsata (Mazraat Dei	VL	VL	VL	Tannoura	VL	VL	L
Yanta	L	VL	L								

Beyrouth

Beyrouth

Municipality	17-Dec	18-Dec	19-Dec	Municipality	17-Dec	18-Dec	19-Dec	Municipality	17-Dec	18-Dec	19-Dec
Achrafieh	ML	VL	MH	Ain el-Mreisse	M	M	H	Bachoura	ML	ML	MH
Beirut Central Distr	M	M	MH	Marfai	M	ML	MH	Mazraa	M	L	MH
Medaouar	ML	ML	MH	Minet el-Hosn	M	M	MH	Mwssaitbeh	M	ML	MH
Ras Beirut	M	ML	H	Rmeil	ML	VL	MH	Saifi	ML	L	MH
Zqaq el-Blat	ML	ML	MH								



نشرة الطقس الصادرة عن دائرة التقديرات في مصلحة الأرصاد الجوية

النشرة: المسائية

الجمعة: ١٦ كانون الأول ٢٠١٦

الحالة العامة: تأثير المنخفض الجوي "سوزي" على الحوض الشرقي للمتوسط مستمر بكتل هوائية باردة تؤدي الى طقس متقلب وبارد خلال الأيام القادمة.

الطقس المتوقع في لبنان:

السبت: أمطار وتلوج على ارتفاع 1000م وما فوق فجراً، يتحول صباحاً الى قليل الغيوم وغائم جزئياً مع ضباب على المرتفعات وانخفاض محدود بدرجات الحرارة، لتعود ليلاً الأمطار والتلوج على ارتفاع 1000 م ومادون ذلك في المناطق الشمالية.

الأحد: غائم مع ضباب على المرتفعات وانخفاض اضافي بدرجات الحرارة وأمطار، تتساقط الثلوج على ارتفاع 1000م ويتدنى مستوى تساقطها في المناطق الداخلية الشمالية لتلامس 600م، كما نحذر من خطر تكوّن الجليد على الطرقات الجبلية والداخلية خلال الليل وصباح الإثنين.

الاثنين: قليل الغيوم الى غائم جزئياً وانخفاض إضافي بدرجات الحرارة على الجبال وفي الداخل ودون تعديل يُذكر على الساحل مع خطر تكوّن الجليد على الطرقات الجبلية والداخلية.

الأحد		السبت		الجمعة		درجات الحرارة المتوقعة	
٨/١٤	٦/١٤	٩/١٦	٨/١٦	١٠/١٧	٩/١٧	صور	الساحل
٨/١٣		٩/١٥		١٠/١٦		بيروت	
٦/١٢		٨/١٤		٩/١٥		طرابلس	
١/٥	٠/٥	٣/٧	٢/٧	٤/٨	٣/٨	بيصور	الجبال
٠/٤		٢/٦		٣/٧		قرطبا	
٦-/-٢-		٥-/-١-		٤-/-٠		الأرز	
٤/٦	١/٧	٥/٧	٣/٨	٦/٧	٥/١٠	مرجعيون	الداخل
١/٧		٣/٨		٥/١٠		زحلة	

الرياح السطحية: متقلبة ليلاً، شمالية شرقية وشمالية غربية نهاراً، سرعتها بين ١٠ و ٣٠ كلم/س.

الانقشاع: متوسط، يسوء أحياناً.

الرطوبة النسبية على الساحل: بين ٥٥ و ٨٥ %.

حال البحر: معتدل

الضغط الجوي: ١٠٢٣ HPA

ساعة شروق الشمس: ٠٦:٣٦

حرارة سطح الماء: ٢٠°م.

أي ما يعادل: ٧٦٧ ملم زئبق

ساعة غروب الشمس: ١٦:٣١